



# Rock County STAR HERALD

Rock County's oldest business, printing since 1873

Thursday, December 24, 2015

## Land sale near Steen sets new county record at \$19,000 per acre

By Lori Sorenson

Eighty acres of land near Steen sold for \$19,000 per acre Thursday morning, topping Rock County's previous land sale record of \$16,200 per acre in November 2012.

"It just blew me out of the water," said Tom Houselog of the Rock County Land Records Office. "The bidding started at \$12,000 and went to \$19,000 in a matter of a few minutes."

The successful bidder was Steen farmer Matt Boeve, who lives directly across the road (Highway 270) from the 80-acre parcel, which sold for a total of \$1,520,000.

Houselog said the tract of land, all tillable ground, is among the best and most fertile in Rock County, but he was still surprised by the record sale, due to dropping commodity prices.

"With prices half of what they were at their highest, I didn't know how the market would react," Houselog said.

*"It just blew me out of the water. The bidding started at \$12,000 and went to \$19,000 in a matter of a few minutes."*

— Tom Houselog, Rock County Land Records Office

"But it's just one sale. ... It could have been \$9,000 instead of \$19,000 and would that mean the market is tanking? Again, it's just one sale, and it's hard to know what motivated the bidders."

He said one factor that drives up land auction prices is proximity to adjacent ground, especially if more



Lori Sorenson file photo/1224 land

Until Thursday, the all-time record sale in Rock County was in Beaver Creek Township in 2012 when Eric Fick bought 80 acres for \$16,200 per acre.

than one bidder shares that interest.

While Thursday's land sale is a record-breaker, Houselog said the

implications for land values in the neighborhood will not be. "It's only one of several sales we'll be looking at

for our 2017 assessments," Houselog said.

The highest-priced land so far in 2015 was 56 acres in Springwater Township that sold in April to the Hoogland Trust for \$13,850 per acre.

The highest price in 2014 was \$15,250 per acre in Kanaranzi Township, and in 2013 the high sale was \$15,300 in Kanaranzi Township.

Until Thursday, the all-time record sale in Rock County was in Beaver Creek Township in 2012 when Eric Fick bought 80 acres for \$16,200 per acre. The land had been in the Walter and Leora Hellwinckel family for 85 years.

Houselog said he often attends land auctions to get a feel for why and how land sells for the prices it gets. When asked about Thursday's auction by Steen, he said, "It was such an extreme sale, I didn't know what to take away from it."

## City to blend L&C water with local well water

By Lori Sorenson

Luverne city officials are preparing for the arrival of water from Lewis and Clark Regional Water System in January.

The water will be piped from the Missouri River aquifer and will be blended with Luverne's current water supply. Luverne City Council members spent time at their Dec. 15 meeting learning what to expect.

Attending Tuesday's meeting were Red Arndt with Lewis and Clark, Al Lais with the city's water department and Verne Jacobsen of TKDA engineering.

They said Lewis and Clark water is treated with chloramine disinfection, rather than with the current disinfectant, chlorine, and there are some precautions some residents will need to take.

In particular, customers with aquariums where living fish, animals or plants are kept will need to use de-chlorinator drops to remove chloramines. Tap water with only a slight amount of chloramine will kill fish in a short period of time, Jacobson said.

He said customers will also notice a slight change in taste during the time they become adjusted to the

Blended city water/see page 8A



Mavis Fodness photo/1224 Pillow Case Project

LHS 2011 graduate Morgan Sommers (center) works for the American Red Cross and returned to Luverne Friday to present The Pillowcase Project to fifth-graders in their classrooms at school.

## Luverne grad returns home with Red Cross message of preparedness

By Mavis Fodness

Morgan Sommers returned to Luverne Friday morning armed with more than 80 white pillowcases.

Sommers, an LHS Class of 2011 graduate and local disaster program specialist with the American Red Cross, instructed fifth-graders at Luverne Elementary School about preparing for emergencies.

Being ready for emergencies is similar to learning a sport, Sommers said. "Learn, practice, share," she said.

The Red Cross has launched a nationwide cam-

paign to reduce the number of deaths and injuries due to fires by 25 percent over the next five years.

Students learned that every eight minutes a house fire starts somewhere in the United States. Two minutes is all the time a person has to safely exit. Having a plan saves time and lives.

"I want you to go home and practice," Sommers said. "And don't keep it a secret."

Students received workbooks to draw safe routes out of their homes.

Pillowcase Project/continued on page 2A

## 'Colors of Death' book captures local author's fascination with horror

By Lori Sorenson

Luverne High School graduate Rona Vaselaar has authored a book, "Colors of Death, Fifteen Tales of Horror," released in October online and in bookstores.

The series of short horror

stories are described on the book's back cover: "Humanity has long been fascinated by its darkest hours, secretly thrilled with terror and death, musing endlessly over visions of supernatural horrors lurking in dark corners," the description states.

"This book follows our impulses into the shadows of the mind and what lies beyond it, tracing through death and, sometimes, even further."

On Amazon.com, three out of three reviewers gave Vaselaar's book five out of five stars.

"If you enjoy suspenseful horror that has excellent character development and vivid imagery, Rona is the author for you," one reviewer wrote.

"I loved this book," wrote another. "Each story had its own feel and identity; the twists were a surprise; and the writing was outstanding."

"Good luck sleeping again after reading this," wrote the third reviewer.

Vaselaar herself is an unlikely author of horror fiction. At age 21, she is a senior at the University of Notre Dame in Indiana studying Chinese.

She has studied abroad twice in China, in 2013 and 2015 and is considering a career in teaching English to people in China.

But Vaselaar keeps in touch with her creative English side by posting fiction stories on thought-catalog.com, a website that publishes submitted stories and ideas.

She's been paid for stories and podcasts (actors' voices portray her stories) — she's posted dozens on the site this year alone — and she was eventually approached about publishing some of them in a book.

Vaselaar said she's always had a fascination with horror, even at a young age. "Some people are drawn to science fiction. I just happen to be drawn to horror," she said.

"I like the feeling of being scared just as much as I like scaring



'Colors of Death'/see page 3A

*'As one person, I cannot change the world, but I can change the world for one person.'* — Paul Shane Spear



Lori Sorenson photo/1224 VanDerBrink retires

Since Greta VanDerBrink took the reins as Rock County RSVP (Retired Senior Volunteer Program) coordinator 13 years ago, the program has grown to be the largest and most successful in the seven-county southwest Minnesota area, according to regional director Michelle Baumhoefner. VanDerBrink manages an army of 520 volunteers who assist with 67 different agencies who need help. In 2014 alone, she coordinated 64,196 volunteer hours.

## VanDerBrink retires from work connecting local generosity with local needs

By Lori Sorenson

*"As one person, I cannot change the world, but I can change the world for one person."*

Greta VanDerBrink said this quote by Paul Shane Spear captures the essence of her work matching volunteers with people who need help.

"This has been one of the hardest decisions I've ever made," said VanDerBrink, about her retirement Dec. 31. "It's all about the people; I'll miss them."

Since she took the reins as Rock County RSVP (Retired Senior Volunteer Program) coordinator 13 years ago, the program has grown to be the largest and most successful in the seven-county southwest

Minnesota area.

VanDerBrink manages an army of 520 volunteers who assist with 67 different agencies who need help. In 2014 alone, she coordinated 64,196 volunteer hours.

"I don't think the program would be where it is today without Greta," said Michelle Baumhoefner, director of the agency that oversees the southwest Minnesota offices.

VanDerBrink hesitates to take credit for those successes.

"We just have such good people in Rock County," she explains. "They care about each other and they take care of each other."

She admits other RSVP co-

VanDerBrink retires/see page 3A



Opinion Page 4A Sports 3B  
Obituaries Page 7A Public notices 8B

Volume 140, Number 52

Luverne, MN 56156 USPS 468-040

www.star-herald.com

How to reach us

507-283-2333 PO Box 837

editor@star-herald.com Luverne, MN 56156

## COMMUNITY CALENDAR

### Meetings

**Blue Mound Quilters** will meet at 7 p.m. Monday, Jan. 4, at the Luverne Senior Center. Members are to bring fabric for pillow cases for teen boys and 11 exchange blocks. Plans will be made for the quilt show.

**Lady Luverne Red Hats** will meet at 11:30 a.m. Friday, Jan. 8, at the Luverne Senior Dining Center for lunch. Members are asked to bring a Red Hat item for a rummage sale. RSVP by Wednesday, Jan. 6, to Luverne Senior Dining at 283-9846.

**Al-Anon** meets at 6:30 p.m. Wednesdays in the Buffalo Ridge Meeting Room (lower level) at the Sanford Medical Center in Luverne. Call Stephanie at 507-449-1246.

**Narcotics Anonymous** meets at 7 p.m. Fridays and for basic text study at 7:30 p.m. Tuesdays in the basement of St. Catherine Catholic Rectory, 203 E. Brown St., Luverne. Use east door. For more information call 507-220-0137.

**Alcoholics Anonymous** meets at 8 p.m. Wednesdays and Saturdays in the Rock County Community Library. Call 605-321-4324.

### Carnegie extends holiday hours

The Carnegie Cultural Center is hosting its annual Festival of Trees on North Freeman Avenue and will be open from noon to 4 p.m. Wednesday through Saturday until Christmas.

### Christmas Eve meal at Methodist Church

A free community Christmas Eve meal will be served at 7 p.m. Christmas Eve, Dec. 24, at the United Methodist Church in Luverne.

### Dungeons & Dragons event Dec. 28

Fans of Dungeons & Dragons are invited to the Adrian Branch Library at 214 Maine Avenue in Adrian to learn more about playing D&D. The meeting begins at 6 p.m. Monday, Dec. 28. Although the focus will be on the fifth edition, all D&D enthusiasts are encouraged to participate.

The gathering is for both amateurs and those who have played. There is no need to register, but contact Kim at kimhannan4@gmail.com or Meredith at the library, 507-483-2541 or email Adrian@plumcreeklibrary.net.

### Blood drive in Adrian Dec. 29

Community Blood Bank will host a blood drive from 11:30 a.m. to 1:30 p.m. and from 3 to 6 p.m. Tuesday, Dec. 29, at the Adrian Ambulance Garage on Main Street.

All donors are required to bring an ID to the donation site. Donors must be at least 17 years old, weigh 110 pounds or more and be in good general health.

Community Blood Bank is the sole provider of blood and blood products for area hospitals. Call 507-483-2668 for information or appointments.

### H-BC schools celebrate anniversaries

The Hills-Beaver Creek school will celebrate the 50<sup>th</sup> anniversary of the consolidation of the two districts and the 25<sup>th</sup> anniversary of the H-BC football team's state championship Dec. 29 at the high school. A meal will be served at 5 p.m. with a freewill donation. The program begins at 7 p.m. with Family Fun Night events following the program. Proceeds from the event support H-BC Foundation.

### Caregivers Support Group meets Dec. 29

The Caregivers Support Group will meet at 5 p.m. Tuesday, Dec. 29, in the conference room at Mary Jane Brown Good Samaritan Society. A video relating to caregiving and dementia will be shown. Anyone dealing with caregiving and the available resources is encouraged to attend.

### 'Minions' at Palace Jan. 7 for Bank Nite

The free Bank Nite movie, "Minions," will begin at 6 p.m. Thursday, Jan. 7, at the Palace Theatre in Luverne.

Sponsored by First Farmers & Merchants National Bank and Papik Motors, a free, family-friendly movie is shown on the first Thursday of every month as it was done for "Bank Nite" in the 1930s. A cash prize drawing will follow the movie. Must be present to win.

### Fifth/sixth-grade basketball tourney

Luverne Community Education will sponsor an invitational basketball tournament for grades 5-6 boys' and girls' basketball teams Saturday, Jan. 30. Each team will play at least two games in pool play format. Entry fee is \$100 per team. Register online at www.isd2184.net under Community Education, or call 507-2833-4724.

## Shaffers named Light 'Em Up contest winner

By Glenda McGaffee

The first-place winner of the Light 'Em Up contest sponsored by the Hills Lions Club in Beaver Creek is Sterling Shaffer who lives at 402 East 1<sup>st</sup> Ave.

Shaffer, 76, describes himself as one of the elite seniors in the town of Beaver Creek. He has a passion for Christmas and decorates both the outside and inside of his house.

He and his wife, Lois, moved from Sioux Falls to Beaver Creek in 1975 after he accepted a position in the Hills Municipal Liquor Store.

Shaffer shared memories of his childhood in Milbank, South Dakota.

"I grew up in the Depression years, but we always had a big Christmas tree with electric lights," he said. "As I became older, my mom didn't want to decorate the tree, so I did it."

The Shaffers have two children, Julie and her husband, Wade Roos, who live in Prior Lake, and Richard and his wife, Karen, who live in Duluth. There are six grandchildren.

"At first this year I thought I would not put up decorations since we will be out of town visiting our children, but after some thought I decided to decorate," Shaffer said.

"I usually start a couple of weeks before Thanksgiving and first put up the Christmas tree in the house."

He said he has seven to choose from in his garage.

"Every year I put up a



Glenda McGaffee photo/1224 Shaffer

Light 'Em Up! first-place contest winner in Beaver Creek is Sterling Shaffer, who's pictured on his front yard at 402 East 1<sup>st</sup> Street on Friday, Dec. 18. His wife, Lois, did not know what to buy him for a Christmas present and decided the best present would be recognizing his passion for decorating for Christmas and putting his picture in the local newspaper.

First-place holiday lighting winners in Steen are Linda and Brad Bosch, and second-place Steen winners are Scott and Cindy Hartog. First place winners in Hills are Tim and Wendy Buss, and second-place winners in Hills are Wayne and Janice Ward. Second-place holiday lighting winners in Beaver Creek are Heidi and Travis Broesder.

different one with a different theme of decorations," he said.

"Lois and I feel the nativity scene is the most important part of Christmas and this is the focus of my décor. My goal is to have the outside of the house decorated by black Friday."

He said he's downsized decorating a bit through the

years. "Outside is a moose I purchased at auction across the street. My wife said, 'I didn't know a moose was part of the Christmas décor,' but it blends well with the other decorations. Every window in the house has a light."

Shaffer said, "I plan on decorating for Christmas until

I can't do it anymore."

First place winners received \$25 dollars and second-place received \$10 dollars.

Judges for the event were Laura Preheim, administrator of the Tuff Memorial Home, Shateen Lichter, activity director of the Tuff Memorial Home and Teresa Johnson from Sioux Falls, S.D.

## Pillowcase Project prepares families for disaster/continued from page 1A

Besides fire, Sommers offered the students tips to play safely outside in cold weather, stay calm in emergencies and to organize their own emergency preparedness kit using a pillowcase.

Called The Pillowcase Project, it was developed for students in grades 3-5 and is patterned after the New Orleans Red Cross chapter's experience with Hurricane Katrina in 2005.

Sommers said the same disaster helped direct her career path when she traveled with her youth group from Luverne to the New Orleans area.

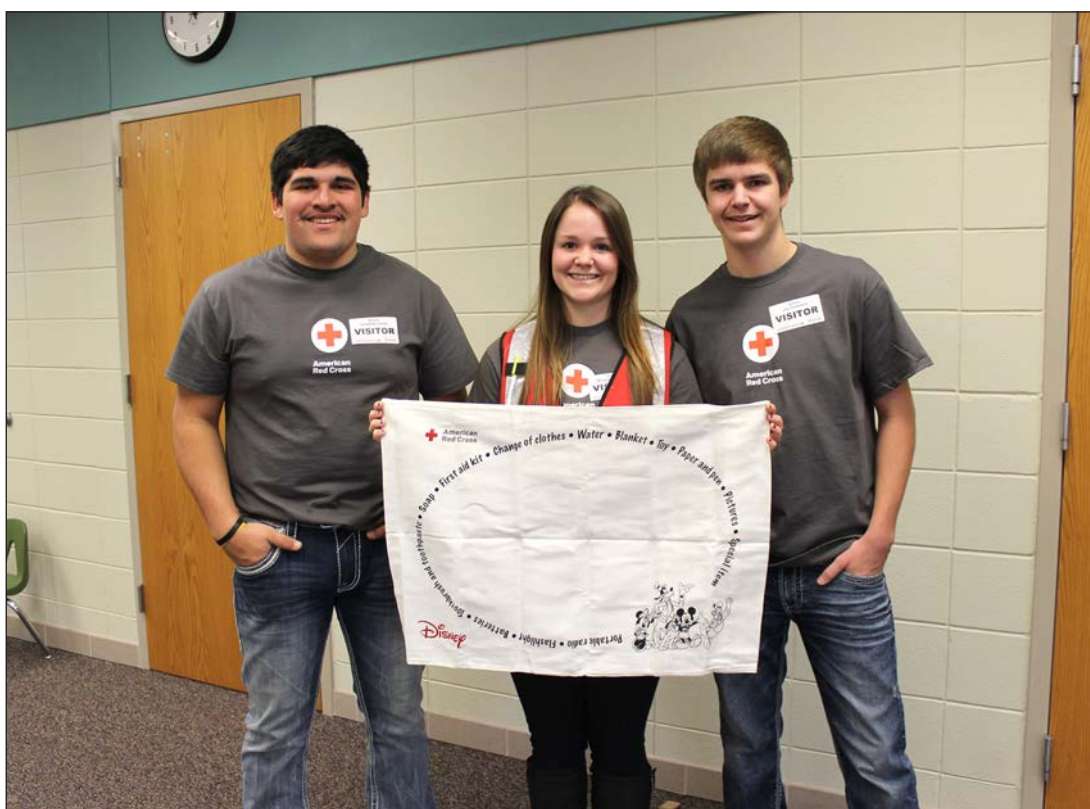
While there, they helped residents recover from the disaster. After attending the University of Minnesota in Mankato, Sommers began working full time with the Red Cross in August.

Friday's presentation was the first time The Pillowcase Project was represented in a large group setting within her 19-county coverage area.

"It's a large area," she said of her southwest Minnesota territory. "And it's kind of cool I can bring it to my hometown area."

After the presentation, students used markers to decorate their pillowcases and to take them home.

Items such as bottled water, food, a first-aid kit, flash-



Mavis Fodness photo/1224 Pillow Case Project

Morgan Sommers (center) works for the American Red Cross and returned to Luverne Friday to present The Pillowcase Project to fifth-graders. Sommers graduated from Luverne in 2011 and was assisted by Jonathan Gacke (left) and her brother, Joe, both LHS 2015 graduates.

light, radio and one special comfort item such as a stuffed animal should be placed in the pillowcase and placed where it can be easily grabbed in an emergency.

Each family member

should fill an individual pillowcase, Sommers said.

Tornadoes are the most common disaster in the Midwest, she pointed out.

Fires, flooding, thunderstorms and winter weather

are typical emergency events.

Helping Sommers with the large group presentation were her brother, Joe, and friend Jonathan Gacke.

Both graduated from Luverne in 2015.



# Dial-A-Specialist

*Your One Stop Guide to Local Businesses*

**Papik MOTORS**  
1-90 Luverne, MN  
Box 536 • 801 West Commerce Road  
Luverne, MN 56156

Certified USED VEHICLES  
No worries.  
certified pre-owned  
Jeep

(507) 283-9171  
(800) 634-7701  
www.papik.com

**• Automotive**



**ROCK COUNTY CHIROPRACTIC**

• Men, Women & Children's Health  
• Custom Orthotics • Kinesiotape • Athletic Care • Massage Therapy • Work & Auto Injuries • Postural Restoration

WWW.ROCKCOUNTYCHIROPRACTIC.COM  
283-2561 • 103 E. MAIN, LUVERNE  
Monday 7:30 a.m. - 6 p.m. • Tuesday 7:30 a.m. - 3 p.m.  
Wednesday 7:30 a.m. - 6 p.m. • Thursday 7:30 a.m. - 1 p.m.  
Friday 7:30 a.m. - 5 p.m.

**• Chiropractic**

**STAR HERALD**  
**ANNOUNCER**

**Chantel Connell**  
Sales Representative  
117 W. Main, Luverne, MN  
**507-283-2333**

**Rick Peterson**  
General Manager

**• Advertising**

**LUVERNE HEALTH & WELLNESS**  
*Codie Zentgraf, D.C.*

• Chiropractic Care  
• Family Care • Sports Injuries  
• Kinesiotape • Auto & Work Injuries

**Massage Available 5 Days A Week**  
Kris Van Der Brink M.T. & Amy Rosales M.T.  
www.luvernechiro.com  
109 S Freeman Ave, Luverne MN  
**507.449.4400**

**• Chiropractic**

**COMRAY COMPUTERS**  
Computer Repair and System Builders  
Ray Hansen - 1726 140th Ave.,  
Luverne, MN 56156 • **507-669-2621**  
Mark Stewart -  
Lismore, MN 56155  
**507-472-8479**  
or email us at  
comraycomputers@myclearwave.net

**• Computer**

**Rock County EYE CLINIC**  
**507-283-2345**  
102 N. Freeman Ave.  
Luverne, Minnesota

*Dr. Sandra Carman*

**• Eye**

*Kneading Relief*  
**THERAPEUTIC MASSAGE**  
www.kneadingrelief-mn.massagetherapy.com

Kayla Hailey  
Licensed Massage Therapist  
Swedish • Deep Tissue  
Pregnancy • Geriatric  
Sports • Chair Massage

**HOURS:** Monday: 9:00 am to 5:00 pm  
Tuesday: 9:00 am to 7:00 pm  
Thursday: 9:00 am to 7:00 pm  
Friday: 9:00 am to 5:00 pm

319 W. Brown St. Luverne, MN 56156 • (507) 449-0330

**• Massage**

**Luverne MINNESOTA City Offices**  
*Love the life!*

PO Box 659, Luverne, MN 56156  
507-449-2388 (24 hour voice mail)  
**www.cityofluverne.org**

**• City**

Dakota Land Surveying and Engineering, Inc.



Steven B. Kor  
Professional Engineer  
Registered Land Surveyor

2000 W. 42nd Street, Suite B-6  
Sioux Falls, SD 57105  
605-334-4882  
605-334-5745 Fax

506 Almar  
Luverne, MN 56156  
507-283-3803  
steve.dis@midconetwork.com

**• Land Surveying**

## Greta VanDerBrink retires/ continued from page 1A

ordinators have asked her advice on how to bring their successes in line with Rock County's.

"It's all about the personal connections," VanDerBrink said. "But it helps that our roots here go so deep; so many people know your grandpa and grandma ... your heritage is here."

As such, VanDerBrink said, this has made her job easier to connect with people who know people who are able to help people who know people who need help.

The positive outcomes are moments VanDerBrink lives for. "They don't realize how much joy I've gotten out of it," she said about her accolades.

"We're serving others, and for me, this work has been a mission — serving God by serving others."

She points to Jesus' sermon in which he said, "Do unto these the least of my children, and you do unto me." (Matthew 5 in the Bible)

"Just today, we got the toys delivered for the Angel Tree requests," VanDerBrink said. "It's just so fun to know we're making someone's Christmas brighter."

VanDerBrink took over as RSVP coordinator after Ruth Pickett retired from her 25-year position.

Today the office is known as ACE — Advocate, Connect, Educate, but the job description hasn't changed from the day Pickett started in 1976 — "to match willing volunteers with local organizations that needed volunteers."

Pickett had said she was happy to leave before she had to learn computers, but VanDerBrink said electronic messaging has been helpful in summoning large groups of volunteers in a short amount of time.

Still, the personal connections are necessary to seal the deal. "I can put out an APB, but lots of times I'll end up calling people who say, 'Yeah I saw that and I was thinking about helping ...'"

Volunteer Judy Ripley credits VanDerBrink for her own active lifestyle, despite having multiple sclerosis. "If you're not moving you start to feel sorry for yourself," said Ripley, who's retired from a 28-year child care career.

"She's kind of got a knack about her — she knows people and she knows what they enjoy doing," said Ripley, who volunteers at Senior Dining taking meal tickets and answering the phone.

"It's not a hard job, and I can do it sitting down. ... It's just a good time to get out and about, and I can meet new people and see people I know."

When her MS made it difficult to walk across the parking lot at school, she

*"They don't realize how much joy I've gotten out of it ... We're serving others, and for me, this work has been a mission — serving God by serving others."*

**Greta VanDerBrink,  
ACE volunteer  
coordinator**

told VanDerBrink she'd have to give up her volunteer job greeting elementary students in the morning at breakfast.

Instead of accepting Ripley's resignation, VanDerBrink suggested the Heartland Express bus service that delivers riders from door to door. And the ACE office has a fund for bus tickets to transport volunteers.

"People don't refuse her; she's just too good," Ripley said about VanDerBrink.

"And I so enjoy the kids. It's such a treat for me to go there and get my 'kid fix.'"

When VanDerBrink started in 2001, she had just wrapped up a 21-year career at Mary Jane Brown Good Samaritan Center where she worked in the activities department.

"I guess I've worked with old people all my life — and now I'm one of them," she laughed.

"You learn through the years from these people — it's incredible. Life is short; you learn to celebrate life while you can."

She said that's also been her motto since her son, Mike, died from cancer 10 years ago. "He taught us how to live, and he taught us how to die," she said. "He told me he wasn't afraid of dying, because a brand new body was waiting for him in heaven."

Greta said she looks forward to retirement (her job was a 30-hour-per week commitment) and spending some quality time with her husband, Richard, and their grandchildren.

She said she's confident in her replacement, Norma Brands, who has already started training. "She's got a compassionate heart, and it starts there," VanDerBrink said.

When asked about the most important lesson she's learned from her career, she said, "Volunteer — even if it's only one hour a week. You won't regret it."



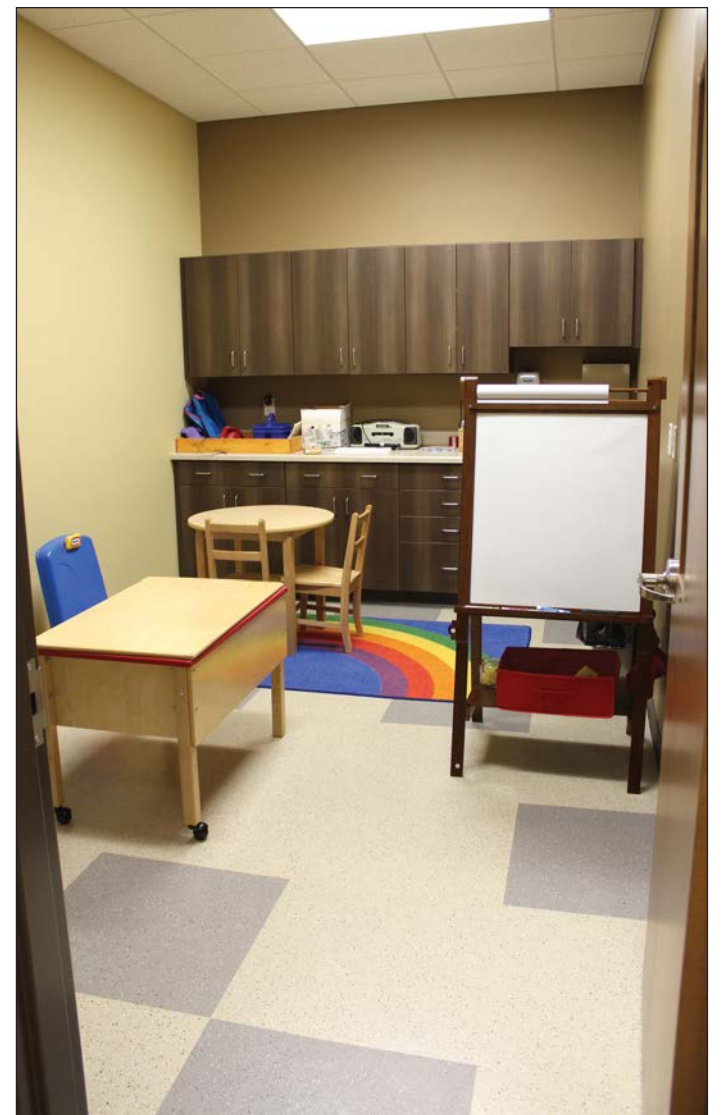
Mavis Fodness photo/1224 SWMH Ribbon Cutting

## Southwestern Mental Health celebrates new location

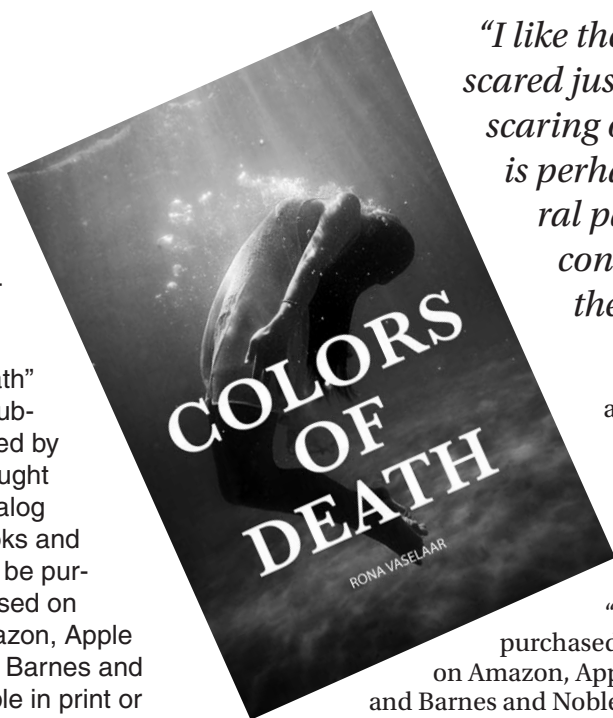
Luverne Area Chamber and the community celebrated Southwestern Mental Health Center's ribbon-cutting and open house Friday afternoon. SWMH Center's Board of Directors President Marlene Tregaser (holding scissors) cut the ceremonial ribbon.

Pictured (from left) are Chamber Board President Derek Boeve, SWMH board director Les Nath, general contractor Curt Valnes, Tregaser, SWMH board director Ron Boyenga, SWMH executive director Scott Johnson, SWMH business manager Dennis Gyberg, and Chamber board members Ryan Wynia, Faye Bremer, Laurie Ketterling, Sherri Thompson, Heidi Sehr and Mark Ommen.

In late October, SWMH staff moved into the 9,700-square-foot facility just off East Main Street in Luverne on South Spring Street. The \$1.2 million renovation of the former Lewis Drug building was financed through the USDA's Community Facilities Loan Program. There are 22 full- and part-time employees at the facility that includes private offices (pictured below at left) and activity rooms for children (below right).



## Rona Vaselaar's book, 'Colors of Death'/continued from page 1A



"Colors of Death" is published by Thought Catalog Books and can be purchased on Amazon, Apple and Barnes and Noble in print or digital format.

*"I like the feeling of being scared just as much as I like scaring other people. Fear is perhaps the most natural part of the human condition, making it the most interesting to explore."*

other people. Fear is perhaps the most natural part of the human condition, making it the most interesting to explore."

When asked if her work could be compared with that of author Stephen King, Vaselaar humbly said she couldn't hope to compare her style on that creative level.

"King has amazing talent that hasn't been seen in the horror scene in decades, perhaps centuries," she said. "However, he is one of my greatest influences, and I think that it probably reflects in my work."

The site offers a paragraph "about the author" that describes Vaselaar this way, "Growing up in a small town in rural Minnesota, she developed a love for horror and literature at a young age, fueled by the town's small, one-room library and the plethora of local urban legends. Her family includes her father, mother, an older brother and an older sister."

Her parents are Eric and Meredith Vaselaar, rural Adrian, and her siblings are Eldon and Samantha. "Colors of Death" is published by Thought Catalog Books and can be

purchased on Amazon, Apple and Barnes and Noble in print or digital format.

**Wishing Russell Wenzel a Happy 87<sup>th</sup> Birthday December 28**

Greetings may be sent to:  
787 171st St. Luverne, MN 56156

**Rejoice at Christmas**

Working for you-meeting your needs.

**Buffalo Ridge INSURANCE**

South Hwy. 75, Luverne, MN • Ph. 507-283-2381

**HAPPY BIRTHDAY DOROTHY WILLIAMSON**

Dorothy Williamson will be 90 years young on January 3rd. She and all her family (4 children, 12 grand children, and 19 great grand children) would like to hear from you. Please send a Happy Birthday card to her at Good Samaritan Society 110 S. Walnut Ave., Luverne, MN. 56156. Thank you for helping us celebrate this great day.

**Warren "The Candyman" Herreid**

"He takes a lickin' and keeps on tickin' – Still running like a clock at 95!"

Please take a little time to stop in at Warren's Birthday Open House Monday, December 28 2 – 4 pm

**MN Veterans Home (Dining Room)**  
(You just might get a chocolate nugget or two!)

## A Christmas Letter From our house to yours

Dear Friends,

It's been a busy and blessed year at the Juhl-Winter household.

In January our sweet Kate left for an 11-month stint on the mission fields of Thailand.

In February Brenda traveled to the Twin Cities with college friends to attend a John Cougar Mellencamp concert. For three hours the four women were 19 again (even though their combined age is 208.)

In March we traveled to California to attend an alternative health conference as we continue to seek non-traditional means of engaging Brenda's cancer.

In April our daughter Emilia and her husband, Adam, moved from Charleston, South Carolina, to Norfolk, Nebraska. We are so excited to have them just three hours away. We learned they are expecting in August.

In May Brenda completed her fourth year as the teaching leader for the Sioux Falls Evening Women's Bible Study Fellowship. Jim completed his seventh year as the assistant teaching leader for the Sioux Falls men's class.

In June we became grandparents for the first time with the arrival of Tenley Louise.

In July we were blessed again when Evelyn Ann arrived a month early.

In August we spent three weeks at a cancer clinic in Mexico. The various things we've done to engage cancer with nontraditional means are slowing the tumor's growth, but not shrinking it. The clinic was wonderful. We met people from all over the world and made new life-long friends.

Our son, Joe, and his wife, Jennifer, moved to Tea, South Dakota, where Joe works for a disaster cleanup company. We miss having them nearby, but they "love the life" in Tea.

In September Bible Study Fellowship launched the long-awaited study of the book of Revelation. Both Jim's and



### THE NORTHVIEW

By Brenda Winter, Columnist

*This will be a bittersweet Christmas. Two pink bundles of joy sharing the room with unanswered questions regarding 'the Big C.'*

Brenda's classes saw huge increases in enrollment which, for the women, includes a satellite class that meets in Luverne. Fifty women from nearly every church in Luverne meet weekly to study God's word together. (After the granddaughters, this is the highlight of the year!)

October and November are a blur.

In December Kate returned with stories of adventure from Thailand and we returned to Mexico for a checkup.

The news wasn't good. The tumor continues to grow. And so, we find ourselves again standing at the crossroads of cancer treatments. What to embrace? What to avoid?

This will be a bittersweet Christmas. Two pink bundles of joy sharing the room with the unanswered questions regarding "the Big C." So much of life is unknown.

What do we know for sure? God is good. All the time.

Luke 2:10-11 But the angel said to them, "Do not be afraid. I bring you good news that will cause great joy for all the people. Today in the town of David a Savior has been born to you; he is the Messiah, the Lord.

From our house to yours -  
Merry Christmas,  
Love, Jim and Brenda

## As new holiday gifts are received, remember to properly dispose of the old stuff

As we marvel at the new and shiny Christmas gifts we anxiously waited to unwrap, please take a moment and think about what to do with the old stuff.

We live in a disposable age where unwanted and broken items are thrown away. In fact, more and more of today's items are designed with discarding in mind when broken. The price of these items is lower than their fixable predecessors, making the practice affordable. With the money saved, however, purchasers should easily afford the proper disposal.

For the most part, Rock County residents have been good at recycling plastic, paper, glass, cardboard and tin or aluminum cans. About 800 tons of recyclable materials are collected from our county on a yearly basis, a practice that has been going on for decades.

Newer to the recycling realm is clothing.

Since July 2011 50,404 pounds, or more than 25 tons, of unwanted clothes or other wearable materials have been dropped off at one of four USAGain locations in Luverne.

Recycling of clothing is a free service. The items are simply placed in the white and green metal boxes. Regularly these boxes are emptied and the clothes are taken to a central location where items are sorted for resale, reuse or recycled.

Combined, these two recycling avenues prevent more than 825 tons of stuff from being dumped into the landfill, helping our communities stay healthier places to live.

Now with the new Christmas items in the hands of residents, will we do the right thing and dispose of old items properly? Or will we throw

### STAR HERALD EDITORIAL



Dumping furniture at the USAGain location at the corner of Highway 75 and Main Street is not an appropriate disposal location for these items.

unwanted items into the garbage can or dumpster and simply be done with it?

Please do better than the resident who left a couch, television stand, box springs and mattress at USAGain recycling boxes at the corner of Main Street and Highway 75. Written in bold lettering are the words "Clothing & Shoes" on those metal containers.

Misuse of these containers could result in their removal, eliminating a recycling avenue for all of us.

The containers' removal could

result in more materials hitting the landfill, filling it to capacity at a faster rate. It costs tens of thousands of dollars to construct and properly line a municipal landfill. Let's keep the ones we have as long as possible.

Please, residents, take the time and effort to repurpose items. A neighbor, friend or an organization may be able to reuse items.

At the very least, pay the \$25 for proper disposal at the county's transfer station so you don't burden someone else with your garbage.



## Paper Christmas lists withstand the test of time, technology

Christmas 2015 is tomorrow, and while everything around us seems to be changing, at least the Christmas story remains the same. I noticed at least one other thing that hasn't changed. It seems the Christmas shopping list has stood the test of time and modern technology.

With the advent of the cellphone and all things computer, I was happy to notice shoppers pulling out their paper Christmas lists and checking it twice.

Oh, they weren't checking it to see who's been naughty or nice. They were checking to see what they had bought and what they had left to buy.

The time-honored Christmas shopping list comes in many forms and colors but so far not electronically.

Good old-fashioned paper is the foundation of a real Christmas shopping list.

The paper can be any size or shape but the 8 1/2-by-11-inch standard-sized paper works best because you can fold and unfold it over and over again and it can withstand the harshest of holiday shoppers.

The pen works best when composing the Christmas shopping list.



### FOR WHAT IT'S WORTH

By Rick Peterson, General Manager  
Tollefson Publishing

With the pen if you change your mind about something on the list, you simply scribble it out; if you buy something on the list, you check it off.

It was truly refreshing during this Christmas shopping season to see people sitting at a table in a restaurant mulling over their list and talking to the other people at the table about what they had left on their list. The shoppers would compare notes and plan the rest of their shopping day by what was left on the list.

I am not really sure why the Christmas shopping list has been spared the same fate of many other things, but I am glad it has.

On the subject of a list at Christmastime, I

can't help but think of my mom's Christmas card list.

Her Christmas card list (or book) really had grown over the years. It was torn and tattered but still served its purpose. Once you were on her list, you were never unfriended.

Mom died a year ago this week. She had mailed her Christmas cards out weeks before her passing, so this will be the first year that there will be no Christmas card from mom.

Yep, never thought I would say it, but I am tearing up a bit because I miss that card. Merry Christmas.

## Palace committee thanks community

To the Editor:

Christmas At The Palace Committee would like to thank the community for its support over the years by attending Christmas At the Palace. We sincerely appreciate all the participants over the years, and we want to recognize Terri Ebert for being the emcee for the past several years and Arlin Sandbulte for so graciously doing sound each year for us.

It has been our pleasure and total enjoyment putting this show together for the community but as time passes things change and it is time for us to say goodbye. Wishing all of you a very Merry Christmas and Happy New Year.

### VOICE OF OUR READERS

Dianne Ossenfort  
LaDonna Van Aartsen  
Lorna Bryan  
Sue Sandbulte  
Terri Ebert  
Deb Aanenson  
Linda Iverson  
Luverne

E-mail: editor@star-herald.com Web site: star-herald.com  
Phone: 507-283-2333 Fax: 507-283-2335

Published Thursdays by Tollefson Enterprises, POSTMASTER:  
Send address changes to 117 West Main, P.O. Box 837, Luverne,  
MN 56156. Periodicals postage paid at Luverne, Permit #33 and at  
additional mailing offices.

**General manager:** Rick Peterson **News staff:**  
**Office manager:** Deb Lusty Lori Sorenson, editor  
**Circulation manager:** Mavis Fodness, reporter  
**Advertising:** Chantel Connell John Rittenhouse, sports editor  
**Production manager:** Abbe Kolar Esther Frakes, copy editor  
**Production:** Amanda McDonald

Rock County  
**STAR HERALD**  
Rock County's newspaper since 1873

(ISSN 0889-888X)  
SUBSCRIPTION RATES

\$68 per year in Rock County; \$85 per year all other areas. Single copies \$1.25

Entire contents copyrighted by  
Tollefson Publishing Roger Tollefson, publisher

The *Star Herald* encourages letters to the editor expressing the opinions of readers and intends to print all letters. Letters not meeting the guidelines will not be printed. The *Star Herald* will verify the authenticity of all letters. Letters must have the name of the writer, a signature and address.

Unsigned letters will not be considered. The *Star Herald* will edit for grammar, spelling and clarity. Any letters containing offensive language, libelous or slanderous material, or misleading or false information will be rewritten before being published. The *Star Herald* will not publish letters written with the sole intent to advertise or serve as a thank-you. Letters with more than 300 words may be edited. The deadline for letters is Monday 10 a.m. They may be delivered or mailed to the editor, *Rock County Star Herald*, P.O. Box 837, 117 W. Main St., Luverne, Minn. 56156.

## ON THE RECORD

### Dispatch report

**Dec. 11**

- Complainant reported that he is doing some work in Rock County for a few days and gave us his information.
- Complainant reported theft of five candycanes that were connected and wired together with lights. He had them lined up along his sidewalk up by his house.
- Complainant reported that they are sending us a copy of a restraining order on a couple of residents from Rock County.
- Deputy notified subject that he had until 1 p.m. Dec. 12 to move a vehicle from West Main Street.
- Complainant reported that there is a house that no one lives in and there are lights on. Complainant requested that someone check it out.
- Complainant reported she lost her hearing aid somewhere in Luverne.
- Deputy stopped a vehicle and cited driver for no Minn. driver's license, speeding and no proof of insurance.
- Complainant reported her vehicle broke down on I-990 westbound at MM 11. Transferred to state patrol.

**Dec. 12**

- Dispatch received numerous calls about two round bales in the road by Gold'n Plump. Deputy cleared some off and stood by for traffic control while a farmer moved the rest.
- Complainant reported a vehicle all over the road and speeding. They were swerving in both lanes. Complainant is willing to sign a complaint.

**Dec. 13**

- Reserved for narcotics information.
- Complainant reported a male wearing a gray coat and jeans walking around East Crawford. Complainant reported he has gotten into two vehicles and is headed in the area of the church. Complainant said subject dropped a bag and then took off running and hid behind a tree. Shortly after, he ran back out and picked up the bag and headed toward the apartments.
- Dispatch received a 911 hang-up. No answer on callback. Deputy reported everything was OK. It was a misdial.
- Complainant requested a deputy speak with her neighbors who are harassing her. Complainant was advised how to get a restraining order.
- Complainant reported her daughter was playing at the neighbor's and left a doll her grandpa gave her and a couple of coats. The neighbor told her she was going to destroy the property.

**Dec. 14**

- Complainant reported a car has been parked in front of her house for three days. She is afraid someone is going to hit it and thinks it should be moved before the snow. It does not have a front plate. Vehicle was towed.
- \*Deputy reported a white van with paper plates and Dish Network on it. Driver had a Dish Network ID card. He looks a little shady but seems to be legit. We may be getting calls on him.
- Complainant reported the theft of LED lights.
- Complainant reported he put his daughter on the school bus this morning and the bus driver didn't notice that she was still on the bus. Driver parked the bus and left. Subject was brought home after another bus driver noticed her. Complainant was going to take her to the ER to be checked out.
- Complainant reported subject tackled her and is threatening to kill her. He also punched her multiple times and broke a window. When she tried to call 911, he

pulled the cord out of the wall. Subject was taken to jail.

- Complainant reported she was having a disagreement with subject. Subject was given options about getting an order and calling the Crisis Center.

**Dec. 15**

- Complainant turned himself in on a warrant out of Pipestone County. Subject was taken to the county line to meet a Pipestone deputy.
- Complainant requested a welfare check on his grandson and his wife. He is unable to get hold of them.
- Complainant reported someone is shooting out windows on the east side of his building on E. Maple St.
- Complainant requested a deputy be present for a child exchange.
- Complainant reported there are people making death threats on Facebook.
- Complainant reported a group of people at an abandoned house in Beaver Creek shining spotlights into the house trying to get in. Complainant walked by again and the group is now in the house shining spotlights.
- Complainant reported someone driving a red Monte Carlo recklessly on North Kniss Avenue.

**Dec. 16**

- Complainant reported sometime during the night someone stole her burlap Christmas flag from her front yard.
- Complainant reported they took a call regarding power lines swinging in the wind on I-90 eastbound, MM 18. They are not down but caller thought it looked unsafe. Notified Sioux Valley Energy.
- Complainant reported that she believes a neighbor's daughter stole her phone. She went to speak to the neighbor and got into a confrontation. Complainant requested to speak with a deputy.
- Complainant reported that several younger people in a newer blue minivan tried to lure her dog into their vehicle while she was outside with it. They left when they saw her.
- Deputy stopped a vehicle and cited driver for no Minnesota driver's license.

**Dec. 17**

- Deputy arrested subject for DWI and took him to jail.
- Complainant reported that she had something stolen and she observed a dark charcoal gray or black, newer model square sedan pull up with a young man with light-colored hair run up to the yard with two other younger kids with him. The neighbor had taken her decorations in so they left.
- Complainant reported that she was having issues with her ex-husband who texted her this morning at 12:30 a.m. in reference to picking up the kids.
- Complainant reported a vehicle parked in the crosswalk by the school blocking the crosswalk.
- Complainant reported he was going to beat up complainant's new boyfriend if she brings him around the kids. They are only allowed to communicate about the kids so she thinks he violated the order for protection.
- Complainant reported she is now getting harassing text messages from subject.

In addition, officers responded to 7 motor vehicle accidents, 1 transport, 10 ambulance runs, 6 paper services, 2 animal complaints, 1 false alarm, 4 fingerprint requests, 2 driver's license checks, 7 log/alarm sheets, 5 drug court tests, and issued 17 purchase/carry permits.

## Magnolia has 'Little Free Library'

Magnolia area residents will now have access to 24-hour library materials in their hometown, thanks to the Southwest Area Multicounty Multitype Interlibrary Exchange (SAMMIE).

A Little Free Library has been set up in front of the post office in Magnolia to allow people to take books and return them when done.

The small outside structure has books that are donated by users under the motto, "Take a book, return a book," which is what the little libraries provide: free reading materials.

SAMMIE, an organization devoted to the promotion of libraries and reading, decided to devote funds to be used to establish a Little Free Library in a town or area that did not have a local library.

Meredith Vaselaar, librarian at the Adrian Branch Library, is on the SAMMIE council and volunteered to look for a possible site for a Little Free Library in the Plum Creek System.

"I wanted a place that was easily accessible to the public, but would be secure," Vaselaar said. "I also wanted a place in which the local residents were willing to work with SAMMIE to ensure its success."

After checking with a few towns in the area, Vaselaar decided to see if the town of Magnolia was interested in having a Little Free Library.

She learned that Magnolia had its own free book donation library housed inside the post office and that it was already popular with the residents of Magnolia.

The only downside was that they could be accessed only during the few open hours daily at the post office.

Part of the Little Free Library movement is that books are available 24 hours a day, seven days a week, so the Magnolia City Council recognized the opportunity to increase the availability of reading resources to its citizens.

The City Council approved the installation of a Little Free Library, and on Oct. 29 the donated structure (built by Vaselaar's husband, Eric) was placed at the Post Office.

If the enterprise is successful, SAMMIE will provide full funding for a more durable, permanent Little Free Library in Magnolia.

There are more than 32,000 Little Free Library structures, many of them handmade, in all 50 states, plus 70 countries.

Vaselaar said the SAMMIE organization is unfamiliar to most people, but she said it has



A Little Free Library has been set up in front of the post office in Magnolia to allow people to take books and return them when done. (Submitted photo)

## More Little Free Libraries coming to Rock County

By Mavis Fodness

This spring readers in Rock County will have four additional locations to pick up or drop off a book.

Each will be a part of the Little Free Library program that allows people to take books and return them once they're read.

The Rock County Early Childhood Initiative is coordinating the project with the help of the Luverne Area Chamber and Rock County Community Library.

"The whole idea is to encourage people to read and use the library," said Karen Willers, ECI member.

All four locations will be located on public property and directed toward children's books.

Proposed locations include the Luverne City Park, Luverne Community Education, Redbird Field in Luverne and Blue Mounds State Park.

Each location will have a small structure to protect the books from the elements.

Luverne Community Education's Free Little Library was on display at the recent Rock County Children's Fair.

Early Childhood educator Deb Mitchell was excited about having the library up and available to the public by March 2016.

She has a plan to stock the little library with books. "For my birthday, I want friends to give me books," she said.

contributed a great deal to library services in the region, since it was established by the legislature in 1979.

The 197 Minnesota libraries that belong to SAMMIE are made up of public libraries, school

library/media centers, academic libraries and special libraries. The region covers the 18 counties of southwest Minnesota.

More information is available at [www.sammie.org](http://www.sammie.org).



**PRE-HOLIDAY PARTY HO-HO-HOEDOWN**  
**Wednesday, Dec. 23**

FROM 9-1

ADVANCE TICKETS \$5 AT THE POOR \$7

**NEW YEARS EVE BASH**  
 BIG TRAINWRECK 9-CLOSE

**NEW YEARS DAY**  
 Indoor Bean Bag Tournament  
 Registration - noon  
 Tournament - 1 p.m.

**GREEN LANTERN CAFE & BAR**  
 HARDWICK, MN 507-669-2246

**"Keep On Truckin' Benefit!"**  
**Eric Van Grootheest Benefit**  
**Hog Roast- Live & Silent Auction**  
**January 9, 2016 5:30 PM**  
**Blue Mound Banquet Center**  
**401 W. Hatting St, Luverne, MN 56156**

Eric was diagnosed with Grade 3 Oligodendroglioma, a form of cancer.

- Hog Roast with meal- Free will donation- starts at 5:30 pm
- Live Auction!!!!- Starts approx. 7pm
- Silent Auction Items- Baskets- 5:30 till 7:30
- Heads-Tails Game!
- Fund the Need- Mystery Auction Item!

So gear up for a good time! Come on out and help Eric "Keep On Truckin'" !!

For more information or if you would like to donate an item, service or help- call one of these Reps-  
 Yvette VanDerBrink-VanDerBrink Auctions- 605-201-7005 MN 67-73  
 Justin Van Grootheest- 507-227-7728 MN 67-89

See you there! For more information [www.vanderbrinkauctions.com](http://www.vanderbrinkauctions.com) or Visit our Facebook-VanDerBrink Auctions, LLC page for more details.

**Saturday, December 26**

**LUVERNE HOCKEY ALUMNI GAME**

**BOYS GAME STARTS 7:00 P.M.**  
 Blue Mound Ice Arena | Luverne, MN

**WISHING YOU A MERRY CHRISTMAS FROM THE HOWLING DOG!**

**OPEN CHRISTMAS DAY AT 5PM**  
 (Kitchen will be closed)

**Howling Dog SALOON**  
 507-449-0454



Harper Renken (left) plays with shaving cream with her dad, TJ Renken, during the Rock County Children's Fair Thursday at the Luverne Elementary commons.

## Attendance at annual Children's Fair almost doubles

By Mavis Fodness

More than 130 children and adults attended the Rock County Children's Fair Thursday at the Luverne Elementary School commons.

"It was the first time at a new date," said Karen Willers with the Rock County Early Childhood Initiative, which sponsored the event.

The event is designed to let families with young children know all the services and agencies that are available to them in Rock County.

It's typically offered in September, but moving the interactive activities and information sessions to a later date almost doubled attendance numbers.



**Above:** Bob Anderson, Mr. Twister of Sioux Falls, ties a snowflake made of balloons to Mollee Pick, celebrating the activity's completion.

**Left:** Rock County Master Gardeners is a new organization to the Rock County Children's Fair this year. Chloe Strassburg, 3, makes a bird/squirrel feeder by covering a pinecone with Crisco (later rolling it in birdseed with Master Gardeners (from left) Lynette Jauert and Dawn Sandager.

Mavis Fodness photos/1224 Childrens Fair

## 1922: Spearfishing in Rock River yields 600 pounds of Carp

The following appeared in the Rock County Herald on December 1, 1922:

### 600 POUNDS OF FISH TAKEN FROM RIVER WITH SPEARS

### Two Luverne Fishermen Make Record Haul from Rock River in 2½ Hours—All Carp

Substituting spears for fish poles, two Rock county disciples of Isaac Walton pulled out of Rock



## BITS BY BETTY

By Betty Mann, president, Rock County Historical Society

river over six hundred pounds of fish on Friday of last week, within a period of two and a half hours.

This unusual harvest for Rock river fishing, was secured by the two fishermen within

an area of about forty rods of river bed, and the fish taken ranged from four to ten pounds in weight.

The one big drawback to the haul was that they were all carp. But at any rate they filled

eight grain sacks, and in the aggregate proved such a heavy load, that the axle of the Ford car in which they were loaded broke down on the way to town, and a motor truck was secured to complete the delivery.

Donations to the Rock County Historical Society can be sent to the Rock County Historical Society, P.O. Box 741, Luverne, MN 56156.

Mann welcomes correspondence sent to manmade@iw.net.

## ENGAGEMENT

Jed Matthiesen, Magnolia, and Deann Popkes, Sioux Falls, South Dakota, announce their engagement.

Deann is the daughter of Greg and Lori Popkes, Rock Rapids, Iowa. Jed is the son of the late Lyle and Emily Matthiesen.

Deann graduated in 2006 from Central Lyon High School in Rock Rapids and in 2010 from the University of South Dakota in Vermillion. She is currently in graduate school at Creighton University and is a nurse at Avera McKennan.

Jed graduated in 2000 from Luverne High School and in 2005 from the University of Min-



Deann Popkes and Jed Matthiesen

nesota-Morris. He is a farmer and a personal trainer at Sanford Family Wellness in Sioux Falls.

The couple is planning a Feb. 19, 2016, wedding at the Palace Theatre in Luverne.

## PEOPLE IN THE NEWS

### New State Farm agent starts Jan. 1

The State Farm agent that serviced the Luverne office for the past 30 years, Pat Foerster, retired in June, and a new agent will start in January.

David Vetch, formerly of Rapid City, South Dakota, will move to Luverne to fill the position as State Farm's new local agent.

Vetch will be accompanied by his wife, Sara, and their four children (three of whom are in college and one still in high school).

Existing State Farm team members Renee Sudenga and Morgan Hawkins remain in the Luverne office in their current positions.

"I'm excited to offer my services to the Luverne community," Vetch said. "And I believe I will be a good fit as I was raised on a small farm in Aberdeen, South Dakota."

He has been with State Farm for over 21 years and has held multiple positions within the organization.

Vetch is licensed in property and casualty insurance, as well as life and health insurance and said he looks forward to helping service all local needs.

The State Farm office hours in Luverne are from 8:30 a.m. to 5 p.m. Monday through Friday and evening and Saturday morning appointments as needed.

The office location is at 122 E. Main St. in downtown Luverne, and the staff can be reached via phone at (507) 283-4401.



### Fransen joins First Dakota team

Bryan Fransen, Luverne, recently joined First Dakota National Bank's Agribusiness Division as a Legacy Consultant.

Fransen joins the bank's Keep Farmers Farming Division, which helps customers maximize the success of their farm or ranch operation through the specific tools of strategic planning and legacy planning.

Fransen has an associate degree in business management and has worked in the ag industry for his entire career.

He worked for Legend Seeds for seven years, Syngenta for eight years, and for an ag retail location in southwest Minnesota for 21 years prior to that.

Fransen is active in his church in Luverne, currently serving as an elder. He grew up on a farm near Edgerton and currently lives in rural Luverne.

First Dakota was founded in 1872 and has 17 full-service banking locations in 13 South Dakota cities.



## CELEBRATIONS

### Open House

Warren Herreid will celebrate his 95<sup>th</sup> birthday with an open house from 2-4 p.m. Monday, Dec. 28, in the Minnesota Veterans Home dining room.

Pipestone, MN 56164, or to her email at mary.efting378@caregram.com.

Russell Wenzel will celebrate his 87<sup>th</sup> birthday Monday, Dec. 28. Greetings may be sent to him at 787 171<sup>st</sup> St., Luverne, MN 56156.

### Card Showers

Mary Efting will celebrate her 90<sup>th</sup> birthday Sunday, Dec. 27. Greetings may be sent to her at Good Samaritan Society, 1311 N. Hiawatha Ave.,

Dorothy Williams will celebrate her 90<sup>th</sup> birthday Sunday, Jan. 3. Greetings may be sent to her at Good Samaritan Society, 110 S. Walnut Ave., Luverne, MN 56156.

## SCHOOL NEWS

### University of Nebraska - Lincoln

Aaron Wollman, Luverne, graduated Saturday, Dec. 19, from the University of Nebraska - Lincoln, College of Engineering, with a Bachelor of Science degree in computer engineering.

Aaron is the son of Jeff and Lori Wollman, Luverne.

## REMEMBER WHEN

### 10 years ago (2005)

The Luverne Fire Department has decided to expand its current site rather than to build new in order to get an updated facility. ...

The preliminary plans have the addition going to the west of the current building, doubling its size and bringing it up to handicap accessibility codes.

### 20 years ago (1995)

Luverne Schools last week averaged 100 sick students per day out of a student body of 1,500.

On Friday the number was up to 120 and then to 155 on Monday, Dec. 18.

School nurse Deb Vander Kooi said separating the kids over Christmas vacation should be a big help.

### 50 years ago (1965)

(What did children ask Santa for 50 years ago?)

Dear Santa, I have been a good boy. When you come to my house will you please bring me a Red River Gun, and tractor and wagon, and Bib Bruiser, Secret Sam and B-B gun. Your friend, Bryan Fodness.

Dear Santa, Please bring me a Mary Make-up doll. I have been a good girl. Thank you, Santa. Love, Megan Connell.

Dear St. Nickolous, I have been fine all this year and I was a good girl. How are you? Please bring me Baby Boo, Posi Barbi, candy and nuts for Glen my little brother. There will be a cookie under the tree. You can get milk out of refrigerator. Your friend, Sandra Eeten

Dear Santa, I want a Johnny Express. And a G.I. Joe. And I want a Sting Ray. My brother and I want a motorific torture track. I am good. Love, Richard Halverson.

### 75 years ago (1940)

The football banquet featuring the motion pictures of the eight games played this fall on the Minnesota Gophers' road to the national gridiron championship, will be held Monday, Dec. 30. ...

The dinner will be served at 6:30 p.m. at the Manitou hotel, to be followed by a short speaking program. The films of the Minnesota games played against some of the country's leading teams will be the climax of the evening.

Dick Wildung, Luverne member of the Gopher regulars, will be in attendance.

### 100 years ago (1915)

New Year's eve — one week from tonight — is the date for the presentation of the big Christmas cantata, "Lord and King," by a chorus of nearly one hundred voices. The cantata will be given at the New Palace theatre, and the receipts from the venture are to be contributed to a fund for the purchase of equipment for the city park. ...

Tickets have been placed at the uniform price of 25 cents for all parts of the house, and seats may be reserved without extra charge at the Leas bookstore.



Lori Sorenson photos/1224 band concert

## Students perform winter band concert

Luverne instrumental students entertained audiences Thursday night, Dec. 17, with their performance of the Winter Band Concert in the Luverne High School gym. Fifth-graders, under the direction of Angie Swenson (above), made their performance debut, and the evening's music grew more polished as the older grades took their turns in the spotlight. Middle school (below right) and high school (below) students performed under the direction of Richard Owen, who also directs the high school jazz band (below left), which performed several numbers for a full gym of audience members.



## DEATH NOTICES

### Velma Grant

Velma Grant, 87, Sioux Falls, South Dakota, died Sunday, Dec. 13, 2015, at Southridge Nursing Home in Sioux Falls.

A funeral service was Friday, Dec. 18, 2015, at St. Paul Lutheran Church in Humboldt,

South Dakota. Burial was at St. Paul Lutheran Cemetery.

Arrangements were by George Boom Funeral Home of Sioux Falls, www.georgeboom.com.

(1224 DN)

### Milton Gibbs

Milton Donald Gibbs, 80, Luverne, died Monday, Dec. 21, 2015, at the Sanford Luverne Hospice Cottage.

A funeral service will be at 2 p.m. Wednesday, Dec. 23, at Living Rock Church in Luverne.

Burial will follow at Maplewood Cemetery in Luverne.

Arrangements are through Hartquist Funeral Home, Luverne, www.hartquistfuneral.com.

(1224 DN)

## MENU

### Senior Citizens

**Monday, Dec. 28:** Cranberry-glazed chicken, baked potato with sour cream, broccoli, bread, fruit cocktail.

Program: 1 p.m. pinocchle.

**Tuesday, Dec. 29:** Hamburger tomato casserole, green beans, fruit cup, bread, cookie.

Program: 9 a.m. Senior Citizens Board meeting. Two-

buck Tuesday sponsored by Main Street Financial.

**Wednesday, Dec. 30:** Potato soup, meat sandwich, pineapple, crackers, bar.

**Thursday, Dec. 31:** Lemon pepper fish, tri-taters, mixed vegetables, dinner roll, fruit cobbler.

Program: 11:30 a.m. Noon Year's Eve party.

**Friday, Jan 1:** Happy New Year! Site closed.

MAY HIS LOVE  
FILL YOUR HEART  
& HOME THIS  
CHRISTMAS  
SEASON  
AND IN THE  
COMING YEAR.



**D. & G.**  
Drinking  
Water  
Systems

610 West Hatting  
Luverne, MN  
507-283-4630  
Darin Smeins  
Lic. # WM068242

Thank you for  
your business.  
I look forward to  
helping you in 2016!

## OBITUARIES

### Louise Kiebach

Louise Lena Kiebach, 101, Luverne, died Saturday, Dec. 19, 2015, at Parkview Manor Nursing Home in Ellsworth.

A funeral service was Tuesday, Dec. 22, at St. John Lutheran Church in Luverne. Burial followed at Memory Gardens near Luverne.

Louise Kiebach was born June 23, 1914, to Robert and Erene (Hagedorn) Staeffler at their home in Battle Plain Township, Rock County. She was baptized Aug. 18, 1918, at St. John's Lutheran Church in Trosky and confirmed Dec. 20, 1959, at St. John Lutheran Church in Luverne. She grew up on the family farm northeast of Hardwick and attended country school through the eighth grade.

Louise married Harold Kiebach Sept. 21, 1938, at the parsonage of Our Savior's Lu-



theran Church in Luverne. The couple farmed and raised their five children in Mound Township. They later moved to Luverne. Louise was a housekeeper for various families in the area and later served as a cook for Iowa Beef Processors (IBP) for many years. After Harold began Luverne to have a decline in health, they moved to Sommerview Arms Apartments. Harold died March 16, 1988, at which time Louise continued to live at the apartments until she reached 100 years of age. She then became a resident at Parkview Manor in Ellsworth.

Louise was a member of St. John Lutheran Church in Luverne. She enjoyed bowling until she was 89 years old, embroidery, bingo, playing in card clubs, and volunteer work. She recently was named Rock County Senior Citizen of the Year. She especially enjoyed

time spent surrounded by family, friends, love, and laughter.

Louise is survived by her children, Marilyn Carlson, Lake Wilson, Nancy (Norman) Overgaard, Luverne, Dale (Pat) Kiebach, Harrisburg, South Dakota, Joyce (Robert) Saarloos, Norwood Young America, daughter-in-law, Jenny Kiebach, Hardwick, 13 grandchildren, 30 great-grandchildren, 12 great-great-grandchildren, three siblings, Alice Schmuck, Longview, Washington, Agnes Koens, Santa Maria, California, and Horton Staeffler, Gladbrook, Iowa.

She was preceded in death by her husband, Harold, a son, Arlyn Kiebach, a son-in-law, Lyle Carlson, a great-grandson, Aaron Aubert, five brothers and five sisters.

Arrangements were by Hartquist Funeral Home of Luverne, hartquistfuneral.com.

(1224 F)

### Raymond Boelman

Raymond Benjamin Boelman, 94, Ellsworth, died Saturday, Dec. 19, 2015, at his home.

A funeral service was Tuesday, Dec. 22, at the Zion Presbyterian Church in Ellsworth. Burial was at the Grand Prairie Cemetery in Ellsworth.

Raymond Boelman was born Nov. 24, 1921, to Rudolph and Tillie (Mennen) Boelman in Ash Creek. He attended school in Ash Creek. Ray married Adeline Hisken on Oct. 6, 1944, at Zion Presbyterian Church in Ellsworth. The couple farmed west of Ellsworth beginning in 1945, where they raised their three children. In 1955 he and Adeline farmed near Kanaranzi until he retired from farming. He also worked at the Ellsworth School for



fifteen years. In retirement, Ray and Adeline split their time between warm Texas winters and beautiful Minnesota summers. Ray loved the outdoors. The family spent summer vacations on Minnesota lakes and traveled to Florida, Montana, New York, Arizona and Europe to visit family. Ray enjoyed fishing and was an avid gardener and animal lover. He will be remembered for his kindness and strong work ethic.

Ray is survived by his wife, Adeline Boelman, Ellsworth; two children, Daryle Boelman, Florence, Montana; and Mary (Dan) Setness, Torrington, Connecticut; nine grandchildren, Scott (Angie) Boelman, Billings, Montana; Susan Boelman, Florence, Mon-

tana; Shawn (Amy) Boelman, Corvallis, Montana; Steven (Susie) Boelman, Missoula, Montana; Alex (Christine) Setness, Scarsdale, New York; Krister Setness, New York, New York; Jeff (Doreen) Heikes, Sioux Falls, South Dakota; Brian (Tena) Heikes, Brandon, South Dakota; and Melissa (Tyler) Artlip, Bismarck, North Dakota; 14 great-grandchildren; and two great-great-grandchildren.

He was preceded in death by his parents; a daughter, Gloria; a son-in-law, Ron Heikes; a daughter-in-law, Jean Boelman; two brothers, Marvin and Eddie Boelman; and several brothers-in-law, sisters-in-law, half-brothers and half-sisters.

Arrangements were by Dingmann Funeral Home of Luverne, dingmannandsons.com

(1224 F)

## Remember as we celebrate this Christmas...

Having a joyous, happy Christmas isn't always possible. With the death of a loved one, holidays are particularly stressful. The social role of the loved one will need to be filled by someone else or altered significantly because that person will no longer be sharing in the holiday experiences with family and friends. For families dealing with such a loss, there will be difficult days coping with their feelings about the holiday season. Such families may fear the pain of the actual holiday, they may wish to avoid the whole season, they may feel pressure wondering what their friends expect of them and what traditions they should now follow or change.

The names below are the loved ones of families served by our funeral home during this past year. With Christmas upon us, these families need a gift of love from you. Maybe the best gift you could give them is a few moments of your time to show them your concern for them and their loss during this time.

Bernice Bouma	Gerald Moose	Verona Engebretson
Myron Hehr	William Bullis	Robert Knips
Kenneth Staeffler	Donald Hansen	Robert Schmitz
Chad Oakley	Barbara Davis	Nathan Skattum
Robert Duchholz	Delmar Pap	Jurgen Oeding
Patricia Mann	Larry Boelman	Dorothy Rodman
Darvin Eernisse	Cheryl Pavel	LuVerna Hilliard
Milton Seeman	Marvin Tokheim	C. Virginia Fries
Leo Swenson	Steven Hup	Richard Johnson
Darrell Huiskes	Dr. Donald Mogck	Effie Gertz
Janice Riggins	Edward Wehler	Rufus Garnmeister
Dorothea Huiskes	Carrie Boom	Vernon Brower
Kristy Giesler	Jerry Binford	Bernie Top
Robert Knebel	Doris Hickman	Charles Herreid
Marjorie Staeffler	Henrietta Mulder	Lois Olson
Bonnie Ralph	Lorna Schmidt	Evelyn Feit
A.D. "Bud" Bjerrum	Ralph Lais	Henrietta Hargesheimer
Betty Ann Lorenzen	Veda Mae Klaassen	Lila Baustian
Verla Swenson	Virgil Staeffler	Wilfred Stueven
Steven Schneekloth	Lauretta Ladd	Wade Brooks
Esther Vande Hoef	Delores Melton	Tamara Kurtz
Arnold "Bud" Wenzel	Robert Severson	Harold VanDeBerg
Anita Cook	Cornelius Verhey	Fred Robison
Merlyn Lopau	Larry Hellwickel	Alice Birkeland

"Our reputation is created by the families  
that we are privileged to serve."  
-Jeff & Sara Hartquist



**HARTQUIST**  
Funeral and Cremation Services

"Rock County's only local family owned and operated funeral home."



# Hark the Herald

Grace Lutheran Church hosted its annual outdoor live nativity Sunday in its east parking lot. The event featured fire pits, singing, snacks and live animals. Pictured above in the manger scene are Samantha Wieneke (angel), Erik Tofteland, Madi Oye and Dylan Thorson. Below, shepherds Daniel Tofteland and Colton Arends tend to the camels. At right are shepherds Ben Wagner, Eric Thorson and Nathan Overgaard.



## Big Buddies of Rock County honors 2015 mentor

### Pierce named 2015 Big Buddy of the Year

By Mavis Fodness

Steen's Marilyn Van Wyhe used three simple words to describe her granddaughter Ella's feelings toward her Big Buddy Stephanie Pierce. "She loves her."

In addition to the feelings from the Luverne Elementary fourth-grader, those within the Big Buddies of Rock County Program think so too and recently named Pierce the program's 2015 Big Buddy of the Year.

For the past seven years, Pierce has volunteered her time as a one-on-one mentor to a school-aged child fifth grade or younger. Pierce and Ella Van Wyhe have been paired since 2012.

"She is very good with her and very in tune with what Ella likes," her grandmother Marilyn added. "Ella is a 'girly girl.'"

Pierce has plenty of experience with young girls.

She and her husband, Travis, have three daughters, Paige Paquette, 23, Abby, 21, and Samantha, 16. Paquette is also a Big Buddy and Abby plans to be involved as a Big Buddy soon.

"It is like my whole family is part of the Big Buddy program," Pierce said.

Each of her family members has joined in some of the activities completed beyond the regularly scheduled Big Buddy/Little Buddy events.

Those activities include art projects, baking, attending sporting events, watching movies, doing homework and playing outside.

"Last year we made her dad (Justin Van Wyhe) a tie blanket for Christmas," Pierce said.

In addition to the activities she does with her Little Buddy, Pierce is program director for Sanford's chemical dependency department



Mavis Fodness photo/1224 Stephanie Pierce Big Buddy Stephanie Pierce (left) is the 2015 Big Buddy of the Year. She is pictured with her current Little Buddy, Ella Van Wyhe.

*"It is like my whole family is part of the Big Buddy program."*

— Stephanie Pierce, Big Buddy of the Year

in Luverne, and she coordinates the every-other-month activities for the Rock Youth program. Rock Youth, which targets middle school students, began in 2013.

"Travis is just as much involved in this group as I am," Pierce said.

Rock Youth is an extension of the Big Buddies program involving group activities such as gym nights, girls' night, guys' night and dance.

There is no one-on-one mentoring; instead, adults serve as role models during the activities that include educational presentations. Presentation topics include respect, bullying and self-esteem.

Pierce said her involvement in Big Buddies began seven years ago because she

enjoys spending time with young people.

"I love kids," said the LHS Class of 1987 graduate.

#### About Big Buddies

Big Buddies of Rock County promotes positive family and community values by mentoring children one-on-one.

It is hoped the connection enhances a child's quality of life, character development and education. It is open to all kindergarten through fifth-grade students in Rock County.

Mentors and their children generally spend one to two hours together weekly.

Anyone who is interested in becoming a Big Buddy or who knows a child that could benefit from a mentor can call 507-283-9165.

O, Come Let Us Adore Him

The Christmas Season is our time to worship, love, hope and renew the Joy given us through the birth of our Lord.

903 S Walnut Ave | Luverne, MN  
866-752-3865 or 507-449-0315

Luverne Family Dental  
REBECCA A. VIS, D.D.S.  
MAIN: (507) 283-9129 FAX: (507) 283-4159 115 EAST MAIN STREET LUVERNE, MN 56156

Merry Christmas

"May the miracle of the first Christmas renew your heart with joy."

Rock County STAR HERALD

Subscriptions make great Christmas gifts! Call 283-2333

## Blended city water from Lewis and Clark/continued from page 1A

new blended water supply.

Chloramines are used in many public water supplies and pose no health risks, but Luverne city officials have mailed an informational letter to residents to answer questions they might have.

In addition to the precautions for home aquariums, the letter will advise dialysis patients not to use city water for dialysis treatments without special filters to remove chloramines.

The letter tells residents, "Water treated with chloramines is safe for drinking, bathing and other household uses," and it includes a list of frequently asked questions, which are also posted on the city's website, cityofluverne.org.

Chloramines last longer than chlorine and are necessary to accommodate the

distance traveled and the time spends in the pipeline. (Depending on demand, water can travel for weeks from the treatment plant in Vermillion before it reaches Luverne faucets.)

Unlike chlorine, which will dissipate after water sits for a few days, chloramines may take weeks to disappear.

In addition to noticing a different taste, residents may also notice their water will be softer after mixing with the new water supply.

In order to provide Luverne water users with consistent water quality, city staff will try to utilize 80 percent of the Lewis and Clark water and blend with 20 percent of city treated water.

Lewis and Clark Water is expected to arrive in Luverne early in January. A second letter will be sent at that time.

# Merry Christmas & Happy New Year

Remembering special people at Christmas fills our hearts with joy. We wish you a joyous holiday season and a New Year filled with peace and happiness.

Left to right: Heather Erickson, Carol Nelson, Ryan DeBates, Nicie Bosch, Sheryl Klaassen, Don Bryan, Chelle DeGroot, Kelly Kramer.

## Exchange STATE BANK

Local. Dependable. Strong.

(507) 962-3250 Hills, MN (507) 967-2570 Ellsworth, MN (507) 449-6000 Luverne, MN Member FDIC



# A LIFE-SAVING GIFT



## Luverne couple participate in unique organ-matching program

**By Mavis Fodness**

As Greg and Patti Aubert celebrate Christmas, the Luverne couple hopes to meet the individual who gave a special gift to Greg almost seven weeks ago.

On Nov. 3 Greg received a kidney from a living donor while on the same day Patti donated one. The transplant, however, wasn't between the two of them.

The Auberts were the first paired-match kidney donations between Sanford Hospital in Sioux Falls and Mayo Clinic in Rochester. It was also the 116<sup>th</sup> kidney transplant conducted at Sanford.

The living donor program allows a better match between patients and recipients. The anonymous process begins with a family or friend willing to donate a healthy kidney.

Without hesitation Patti knew she would donate a kidney for her husband of 25 years to receive a better match.

"Quality of life is so much better," said Patti. "And it isn't really going to change my quality of life."

The live donor procedure was the best option for Greg, who suffers from polycystic kidney disease.

PKD is an inherited disorder in which clusters of fluid-filled cysts develop around the kidneys. It is a painful disease that has no treatment or cure, and dialysis or transplants are last-resort treatments.

"If you have it, you can develop cysts at any time," Patti said. "They tend to come in the fourth and fifth decades of life."

For Greg, who turned 50 this year, PKD was first diagnosed in 2008, after he suffered his second pulmonary embolism.

Since then his kidney functions have gradually declined, prompting the search for a transplant while there was still some function.

He said his dad died as a result of PKD in the mid 1980s after going through kidney dialysis, a treatment that was both physically and emotionally tough on his dad and for Greg and his family to experience.

The Auberts expected to wait a year before seeking other medical options.

"What was fortunate for me, I avoided (dialysis)," Greg said.

On the afternoon of Nov. 3, Greg received his new right kidney in Sioux Falls. It came from Rochester's Mayo Clinic.

That morning Patti's left kidney was also removed in Sioux Falls and transported to the Mayo Clinic in Rochester.

"We don't really know a whole lot, but it was a really good match for him," Patti said.

"Comparable to a sibling donating," added Greg.

One thing known about Greg's new kidney is that it came from a female, possibly similar in body build to Greg.

They don't know if the other donor and recipient are a husband-wife, brother-sister or just friends.

"I think it would be interesting to know them — know their story," Patti said.

Medical staff is still coordinating the meeting.

The Auberts suspect the medical situations may have been more dire for the two near Rochester.

Original plans had the kidney swap scheduled for Oct. 20, a little over a month after the Auberts were added to the national exchange list.

"It was almost too quick," Greg said.

The Auberts asked for a two-week delay to prepare and to allow Greg to attend the University of Minnesota Golden Gophers football game on Oct. 31.

Ironically Luverne native Kelsey Petersen attended the same game. Petersen was a nurse to both Greg and Patti as they recovered from surgery in Sioux Falls.

It was the kidneys that made the four-hour trip to the hospitals and not the patients.

"People do better by following up with their own transplant team," Patti explained.

The Auberts were also able to recover together in their Luverne home with the help of family members including their sons, Zane and Wyatt.

Since the surgeries, Patti has returned to work as a pharmacist at Sanford in Sioux Falls. Greg is cleared to return to his work as plant manager of Gold'n Plump in Luverne on Jan. 4.



Mavis Fodness photo/1224 Greg Patti Aubert

Greg and Patti Aubert hold the therapeutic pillows they received from Sanford Hospital in Sioux Falls marking the pair as the 116<sup>th</sup> kidney transplant under their kidney transplant program. The transplant team and support personnel signed the pillow. Signers include 2006 LHS graduate Kelsey Petersen, whose grandparents are neighbors to the Auberts.

*"Quality of life is so much better and it isn't really going to change my quality of life."* — Patti Aubert

# Drink responsibly this holiday season

## Know your alcohol, know your limits, think before you drink

## DNR issues thin ice warning

The holidays are a happy time of year, but for those who abuse alcohol — and for the loved ones of those who do — it can be a difficult time of year.

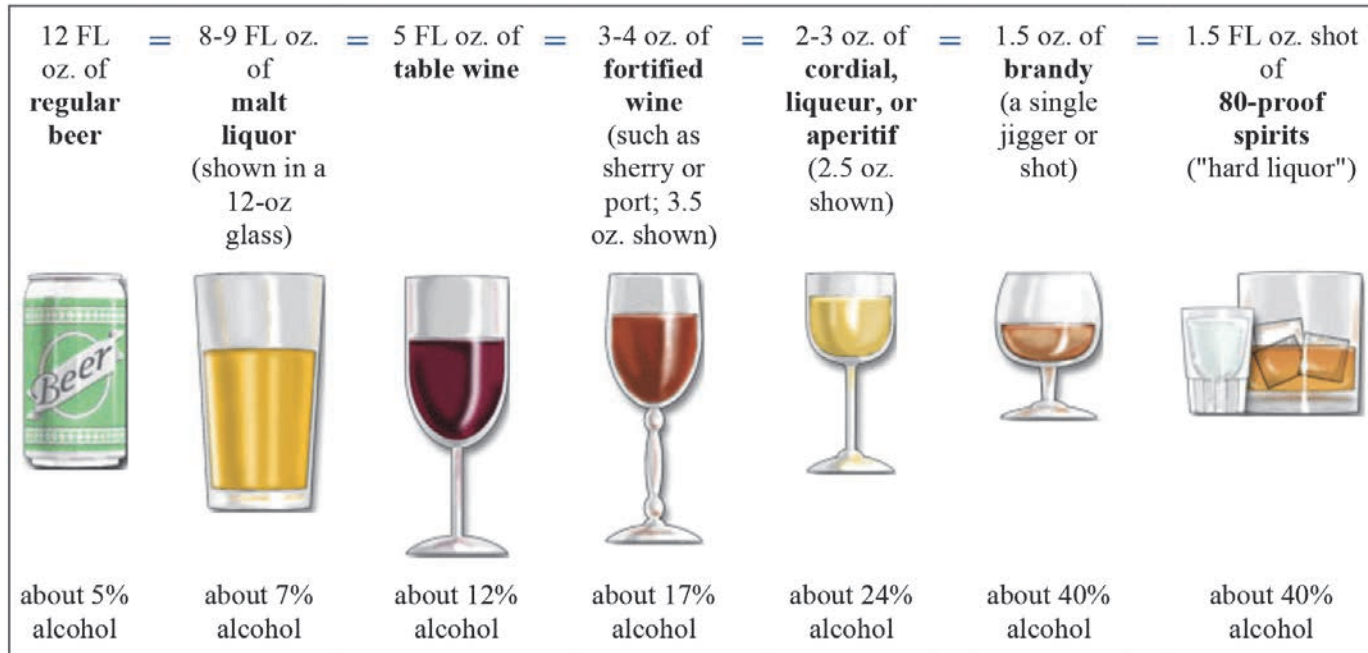
The National Institute of Alcohol Abuse and Alcoholism (NIAAA) define binge drinking as a pattern of drinking that brings blood alcohol concentration (BAC) levels to 0.08, the legal limit for driving.

This typically occurs after four drinks for women and five drinks for men within two hours.

According to the NIAAA, “moderate” drinking is considered up to one drink per day for women and up to two drinks per day for men.

To understand these guidelines, it is important to know just how a drink is defined. Percentages of pure alcohol in drinks vary by type of alcohol and their individual sizes. Health organizations collect data throughout the years and health standards are set.

Mixed drinks are often more than one standard drink, and proofs/percentages are different from beverage to



The percent of "pure" alcohol, expressed here as alcohol by volume (alc/vol), varies by beverage.

beverage.

The old saying, “Think before you drink,” rings true because as blood alcohol levels rise, mental capacity diminishes. It doesn’t take long for protecting the things we value to go by the wayside.

On an average, after one

hour, one standard drink will decrease blood alcohol levels (BAC) back down to zero. Drinking water while drinking consuming alcohol will help keep the body hydrated, diluting the alcohol and assisting in decreasing blood alcohol levels.

While having a designated driver decreases drunk driving, it does not decrease the impairment issues of the individual who chooses to drink too much.

Compass Pointe Behavioral Health can answer questions at 712-439-1170.

“We wish you the best this holiday season and throughout 2016,” said Cheryl Buntisma of Compass Point Behavioral Health.

“Be safe, set limits, have fun and protect the things you value.”

With daytime temperatures still climbing above freezing even in the northern parts of the state, the Minnesota Department of Natural Resources is reminding outdoor enthusiasts to stay clear of early ice and use extreme caution when recreating on dangerously cold water.

Although some locations in the northern and western regions of the state were reporting ice formation at the end of November, the recent fluctuations in weather have led to degraded ice conditions and warnings from public safety officials to stay off the ice until at least 4 inches of new, clear ice is present.

“No fish is worth the risk of going through thin ice,” said DNR conservation officer Lt. Adam Block.

“At this point, it is going to take several consecutive days of below-freezing temperatures before enough solid ice has formed to support foot traffic, and even longer before snowmobilers should be on the ice.”

## New law aims to reduce number of people driving without insurance

Minnesotans who are registering, renewing license tabs or transferring ownership of motor vehicles and motorcycles will need to provide insurance information under a law change that takes effect on Jan. 1.

The Minnesota Legislature changed the state law last session to require insurance information for vehicle registration. Prior to the change, the law required owners to attest that the motor vehicle or motorcycle was covered by an insurance policy during the registration process; the specific policy information was not required.

Under the new law, every owner, when applying for mo-

tor vehicle or motorcycle registration, renewing their tabs, or transferring ownership, must provide information showing that the motor vehicle or motorcycle is covered by an insurance policy. Owners will need to provide the following information:

- name of insurance company
- policy number
- expiration date of the policy

The Department of Public Safety Driver and Vehicle Services division (DPS-DVS) is notifying vehicle owners of the new requirement on all 2016 renewal notices, some of which are being mailed

this month.

Customers will be prompted to provide the information when applying online, in person and by mail. If a customer fails to provide the information by mail, DVS will contact the customer and require the information to be returned within 30 days.

Why the change?

Minnesota lawmakers changed the law at the recommendation of the Motor Vehicle Insurance Task Force to reduce the number of people driving without insurance. The 2014 Minnesota Legislature established the task force, which deliberated for seven months before submitting a

report to the 2015 Minnesota Legislature on Feb. 1.

Minnesota law requires drivers to possess proof of insurance at all times and maintain insurance when a vehicle is operated or when its use is contemplated. According to the task force report, an estimated 10.8 percent of Minnesotans drive without insurance.

One of the recommendations of the task force was to strengthen the state’s proof of insurance requirements and processes.

About the Minnesota Department Public Safety (DPS)

DPS comprises 11 divisions where 2,100 employees

operate programs in the areas of law enforcement, crime victim assistance, traffic safety, alcohol and gambling, emergency communications, fire safety, pipeline safety, driver licensing, vehicle registration and emergency management. DPS activity is anchored by three core principles: education, enforcement and prevention.

### About the DPS Driver and Vehicle Services Division (DPS-DVS)

DVS is responsible for driver testing, driver licensing and maintenance of driver records; driver evaluation and compliance; motor vehicle title and registration; com-

mercial vehicle registration; motor vehicle dealer licensing and regulation; and enforcement of no-fault insurance requirements.

In 2014:

- DVS conducted more than 500,000 written and road tests and issued about 3.8 million.

- DVS registered 4.658 million vehicles and issued 1.462 million titles.

- The DVS Public Information Center handled 1.031 million telephone calls and 77,000 emails.

- DVS licenses and regulates 3,558 vehicle dealers in Minnesota.

## Holiday checklist: Line up a sober ride

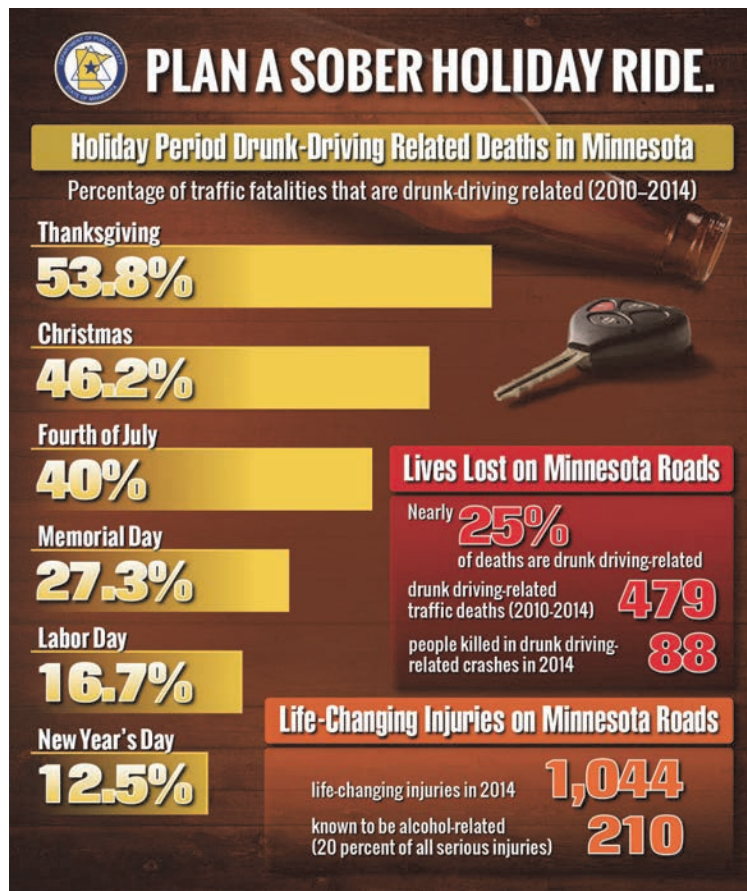
This holiday season, the Department of Public Safety reminds people not to forget to line up a sober ride, as the Christmas holiday period ranks as the second deadliest for drunk-driving related fatalities compared with other major holidays in Minnesota.

On average, 320 people are arrested for DWI and 600 crashes result in at least two deaths and six life-changing injuries.

Nearly half of the fatalities will be drunk driving related, and about one in four serious injuries will be alcohol-related.

### Don't let drunk driving ruin your holiday cheer

In the last five years (2010 through 2014), the Christmas reporting period resulted in 1,590 DWIs, 13 deaths, six of which were drunk-driving related and 33 life-changing injuries, eight of which were alcohol-related.



The extra DWI enforcement campaign started Nov. 25 and runs on weekends through Jan. 2. The statewide enforcement involves police departments, sheriff’s offices and the State Patrol.

During the first three weeks of the campaign, law enforcement took 1,487 drunk drivers off Minnesota roads, compared with 1,527 DWIs during the same time last year.

### To prevent drunk driving:

- Plan for a safe ride – designate a sober driver, use a cab/public transportation or stay at the location of the celebration.
- Offer to be a designated driver or be available to pick up a loved one anytime, anywhere.
- Buckle up – the best defense against a drunk driver.
- Report drunk driving – call 911 when witnessing impaired driving behavior. Be prepared to provide the location, license plate number and observed dangerous behavior.

## DNR NEWS

### DNR question of the week: white Christmas

Question: Historically speaking, how often do we have a white Christmas in Minnesota?

Answer: Having a white Christmas is generally defined as having one inch of snow on the ground on Christmas Day.

In the Twin Cities, this happens about 72 percent of the time.

In northern Minnesota, the chance of a white Christmas is 90 percent or greater.

In the Boundary Waters Canoe Area Wilderness and the Lake Superior Highlands, a white Christmas is almost guaranteed.

The chances decrease to the south and west, down to around 60 percent in far southwestern Minnesota.

For more details on the subject, including the probabilities of various snow depths in select cities, visit [www.mndnr.gov/climate/summaries\\_and\\_publications/white\\_christmas.html](http://www.mndnr.gov/climate/summaries_and_publications/white_christmas.html).

Check out our sports online  
[www.star-herald.com](http://www.star-herald.com)

Rock County **STAR HERALD**

Christmas Season is **HERE**

**GIVE THE GIFT THAT LASTS ALL YEAR!**

to subscribe visit:  
**STAR-HERALD.COM**  
or call:  
**283-2333**

a subscription to the  
**Rock County Star Herald**  
or  
**Star Herald Online Edition**



John Rittenhouse photo/1224 lh bb 3

Luverne senior Erik Wohnoutka drives to the basket against H-BC's Zach Scholten during Monday's game in Hills.

## Luverne boys pound Windom, Worthington

By John Rittenhouse

The Luverne boys' hockey team is riding a run of four consecutive wins after routing a pair of BigSouth Conference opponents at home last week.

The Cardinals cruised to a 12-goal win over Windom Dec. 15 before downing Worthington by 14 goals Friday.

The 7-2 Cards host Litchfield Tuesday.

### LHS 14, Worthington 0

The Cardinals matched their season high in goals scored during Friday's 14-goal shutout against the Trojans.

Luverne outshot WHS 77-9 in the game and scored at least three goals in every period of the lopsided contest.

Chaz Smedsrud and Jaxon Nelson registered hat tricks for the winners, while Nick Harder, Nick Behrend and Jesse Reed chipped in two goals each.

Kaden Ericson served up a nine-save shutout in goal.

Harder scored 58 seconds into the game to spark a seven-goal surge in the first period.

Smedsrud scored twice and Behrend and Nelson put the puck in the net one time each in the game's first 6:13 to make it a 5-0 game.

Reed scored with 5:35 remaining before Smedsrud completed his hat trick with a short-handed tally with 3:58 remaining in the first stanza.

Nelson scored 1:37 into the second period to make it 8-0.

Colton Kunkel netted his first goal of the season with 8:31 remaining before Harder netted a short-handed tally with three minutes left in the period to up the lead to 10-0.

Reed, Jack Baustian and Nelson (a short-handed effort)

Pound/continued on page 4B

## Cards withstand late challenge from Patriots Monday in Hills

By John Rittenhouse

The Luverne boys' basketball team survived a late challenge by Hills-Beaver Creek to win the annual rivalry game between the two Rock County teams Monday in Hills.

Luverne led by as many as 18 points during the game's first half and sported a 16-point advantage at the intermission.

H-BC battled back to trim the difference to two points with 4:35 remaining in the second half, but the Cardinals countered with a 15-5 run to secure a 63-51 victory.

Both teams sported leads in the game's first six minutes. LHS trailed 11-10 before

reeling off five consecutive points to open a 15-11 lead when Erik Wohnoutka canned a pair of charity shots at the 11:12 mark.

Following a field goal by H-BC to make it a 15-13 game, Luverne went on a 17-1 run ending with Layne Curtis sinking one free throw at the 4:58 mark to give the Cardinals a 32-14 cushion.

The Patriots countered with a 7-0 spurt capped by a free throw from Dylan Forshey to trim the difference to 13 points (34-21) with 1:13 remaining in the stanza.

Luverne, however, increased its lead to 16 points (37-21)

when Nick Overgaard capped the scoring in the first half with a three-point shot with six seconds left.

H-BC scored the first four points of the second half as a part of a 7-2 surge ending with a three-point shot from Zach Scholten to make it an 11-point (39-28) game.

Wohnoutka canned a three for Luverne to make it a 44-32 game with 12:13 remaining, but the Patriots dominated play over the next eight minutes.

H-BC went on a 14-4 run to trim the difference to two points (48-46) when Scholten buried one charity shot with

4:35 left to play.

Luverne answered the challenge by reeling off eight consecutive points to open a 56-46 cushion when Cole Bosch canned a three at the 2:16 mark.

LHS led by 13 (61-38) when Quinton Siebenahler sank one free throw with 39 seconds left before winning by 12 points at game's end.

Overgaard (20 points and eight rebounds), Wohnoutka (12 points, five assists and three steals) and Mitchell Muller (11 points and three steals) paced LHS offensively.

Late/continued on page 5B



John Rittenhouse photo/1224 lbh 7

Luverne senior Spencer Swier advances the puck during Friday's 14-0 win over Worthington at the Blue Mound Ice Arena.

## Dragons win team title at SFW Warrior Invitational

By John Rittenhouse

The Adrian wrestling team experienced a successful weekend that included the Dragons competing on consecutive days.

Adrian went 2-0 at the Pipestone Triangular Friday before winning the Sioux Falls Washington Warrior Invitational Tournament Saturday.

Adrian wrestles at the Rumble on the Red Tournament in Fargo, North Dakota, Tuesday and Wednesday.

### SFW tourney

The Dragons claimed the team title and landed three individual championships during Saturday's tournament in Sioux Falls.

Adrian scored 199.5 points to best second-place Rapid City Stevens (188 points) and the other six squads in an eight-team field.

Greg Kern, Hunter Heitkamp and Gavin Engelkes earned individual titles at 126, 182 and heavyweight respectively.

Kern pinned Sioux Falls Roosevelt's Traevon Kruger in 2:23, prevailed by technical fall over Watertown's Dan Kliegel, and secured a 5-0 victory against Brandon Valley's Dawson Kremlacek to claim his crown.

Heitkamp posted consecutive pins against Mitchell's Carter Max (34 seconds) and BV's Lincoln Ode (5:53) to claim his crown. Engelkes pinned Kendrick Rawls, who was wrestling unattached, in 39 seconds and stuck Watertown's Dane Stahl in 1:09 to prevail at heavyweight.

Skylar Hieronimus, Ryan Elias and Dylan Gyberg placed second at 132, 138 and 220.

Hieronimus pinned SFW's Alfredo Sanchez (20 seconds) and posted a 12-4 win against SFW's Kobe Kortan before

dropping a 3-2 decision to Yankton's Spencer Huber.

Elias pinned Mitchell's Barry Browning in 2:40 and secured a 3-1 win over Watertown's Kyle Tulowitzke before falling 5-2 to SFR's Carter Lohr.

Gyberg posted pins against unattached wrestler Dalton Sobatka (47 seconds) and RCS' Joe Gibson (2:47) before taking a 5-0 setback from BV's Andrew Sorensen.

Alex Fuerstenberg, Michael Preuss and Logan Rogers placed third at 120, 152 and 160 with 3-1 records.

Beau Bullerman went 2-2 to place fourth at 13, while Marshall Taylor finished sixth at 145 with a 0-3 mark.

Chandler Combs dropped both of his matches at 106.

### Pipestone triangular

The Dragons raised their match record to 5-0 after sweeping the field at Friday's triangular in Pipestone.

Adrian rolled to a 68-9 victory over Lake Crystal Welcome-Memorial and secured a comfortable 48-18 win over the Arrows.

Nine Dragons sported perfect 2-0 records at the end of the event.

Bullerman (39 seconds over LC-W-M's Shane Stevenson and 1:06 over Pipestone's Grant Budden), Preuss (1:51 over LC-W-M's Garrett Gillman and 2:17 over Pipestone's Jamison Vanderwal), Heitkamp (1:20 over LC-W-M's Edorado Contania and 54 seconds over Pipestone's Dustin Olsen) and Dylan Gyberg (1:11 over LC-W-M's Gillman and 27 seconds over Pipestone's Dylan Ahrendt) won their matches with pins.

Hieronimus pinned LC-W-M's Kyle Jones in 52 seconds and won by injury default against Pipestone's Jordan Baatz, while Elias drew a forfeit

Title/continued on page 4B

## Girls take two of three ice challenges

By John Rittenhouse

The Luverne girls' hockey team went 2-1 during a stretch of playing three games in five days.

The Cardinals beat Windom by six goals at home Dec. 15 before rolling to a 10-goal win over Worthington in Luverne Friday.

LHS dropped a one-goal decision to Mankato East in Mankato Saturday.

The 10-3 Cardinals play at the Schwan Cup in Blaine Dec. 29-31.

### ME 5, Luverne 4

A run of three wins came to an end when the Cardinals challenged the Cougars in Mankato Saturday.

Luverne led 4-3 when Mariah Aukes netted an unassisted goal with 5:20 left to play, but ME scored twice in the final 4:07 of the game to secure a one-goal victory.

ME's Gina Stoner knotted the score at two with 4:07 remaining before Taylor Kanstrup completed a hat trick by netting the game-winning goal with 3:11 left to play.

Kastrup gave the Cougars a 1-0 lead in the first period, but Luverne outscored the hosts 3-1 in the second period to gain a 3-2 advantage.

Back-to-back goals by Mekayla Sterrett in the first 8:59 of the second period gave the Cards a 2-1 edge.

Kanstrup tied the game at two for ME with 7:04 remaining in the second period, but Madisyn Dingmann countered for Luverne with 2:49 left in the stanza to give the Cards a one-goal edge heading into the final period.

ME's Ali Schreiber scored 21 seconds into the third period to knot the score at three before the teams scored a combined three goals in the final 5:20 of the stanza.

Lexi Hinrichs recorded three assists, Dingmann two and Sterrett one for an LHS team that came up on the



John Rittenhouse photo/1225 lgh 6

Luverne's Mariah Aukes handles the puck in front of Worthington's net during Friday's girls' hockey game in Luverne. Aukes scored three goals in a 10-0 victory.

short end of a 41-25 tally in shots on goal.

Emilie Bartels made 25 saves for the Cards.

### LHS 10, Worthington 0

The Cardinals dominated play during Friday's 10-goal thumping of the Trojans at the Blue Mound Ice Arena.

Aukes and Sterrett recorded hat tricks for an LHS team that outshot Worthington 61-5 in the game and Kennedy Gonnerman registered a five-save shutout in goal.

Luverne set the tone for the night by turning in a five-goal first period.

Aukes netted a power-play goal 6:22 into the contest to open the scoring and scored again with 6:07 remaining in the first period to ignite a four-goal spurt in a span of 3:17.

Dingmann netted a power-play tally and scored a goal with the teams at even strength during the run, and Sterrett

chipped in a power-play goal to the rally.

The Cards added four more goals in the second period to make it a 9-0 game.

Sterrett scored twice in the first 7:53 of the stanza to complete her hat trick, and Aukes completed her hat trick with 8:57 remaining in the stanza.

Adayla Rouzer scored the final goal of the second period at the 4:20 mark.

Luverne's Carly Serie netted the lone goal of the third period with 12:28 left to play.

Sterrett turned in a three-assist effort to the winning cause, while Aukes and Madison Crabtree added two assists each.

Dingmann, Claire Baustian, Hinrichs and Cori Nath charted one assist each.

### LHS 6, Windom 0

The Cardinals opened a stretch of playing three games

in five days by recording a six-goal win over the Eagles at the Blue Mound Ice Arena Dec. 15.

Aukes registered a hat trick to lead an LHS offense that outshot the Eagles 52-8 in the game and Bartels shined in net by recording an eight-save shutout.

Serie, one of three Cardinals to record three assists in the game, gave LHS a 1-0 lead when she scored the lone goal of the first period with 9:51 remaining in the stanza.

Aukes upped the advantage to 3-0 in the second period by netting one goal 1:08 into the stanza before registering a power-play tally with 7:06 remaining in the period.

Dingmann, Aukes and Sterrett iced the final by scoring one goal each in a span of 1:18 in the final six minutes of the third period.

Sterrett and Dingmann matched Serie's output by recording three assists each.

## Gymnasts win big in Pipestone Dec. 15

By John Rittenhouse

The Luverne gymnastics team ran its record to 5-1 with a 126-113.995 win in Pipestone Dec. 15.

Luverne athletes won all four individual event titles and the all-around crown during the victory.

Madison Schandelmeier had a big night for the Cardinals by winning the bars (8.85), beam (8.5), floor (8.225) and all-around (34.425) titles along with placing second on the vault (8.85).

Erin Sietsema, who finished fourth on the bars (7.55), took top honors on the vault with an 8.95.

Bergin Flom placed second on the bars (7.75), third on the vault (8.625) and fourth all-around

(29.675) for LHS.

Samantha Pierce and Meghan Witte finished third and fourth on the floor with respective 7.875 and 7.8 tallies, while Shelbie Nath placed fourth on the beam with a 6.9.

Luverne, which capped the 2015 portion of its schedule in Hendricks Tuesday, hosts West Central Jan. 5.

**Individual results**  
**Vault:** Sietsema, 8.95; Schandelmeier, 8.85; Flom, 8.625; Pierce, 8.575; Nath, 8.35.  
**Bars:** Schandelmeier, 8.85; Flom, 7.75; Sietsema, 7.55; Nath, 7.125; Witte, 6.475.  
**Beam:** Schandelmeier, 8.5; Nath, 6.9; Madigan Flom, 6.7; Pierce, 6.525; B. Flom, 6.425.  
**Floor:** Schandelmeier, 8.225; Pierce, 7.875; Witte, 7.8; Nath, 7.175; B. Flom, 6.85.

## Cards rally to post first BSC victory

By John Rittenhouse

A second-half rally by the Luverne boys' basketball team gave the Cardinals their first Big South Conference win of the season Dec. 15.

Entertaining rival Pipestone, the Cardinals found themselves facing a 33-27 deficit at the intermission.

Luverne, however, outscored the Arrows 48-36 in the second half to secure a 75-69 victory and up their BSC record to 1-2.

The Cardinals closed to within one point (36-35) early in the second half when Quinton Siebenahler sank one free throw at the 12:16 mark, but the Arrows scored the next five points to extend their lead to six points (41-35).

Luverne fought back to knot the score at 41 when Nick Overgaard sank two free throws at 10:03 and he gave the Cards their first lead of the second half (46-45) when he drained two more charity shots at 7:13.

LHS still led by one (53-52) when Overgaard capped a 4-1 spurt to up the lead to 57-53 before the Arrows scored four consecutive points to tie the score at 58 with 3:05 remaining.

The Cardinals moved in front to stay with a 13-3 run that started and ended with

Cole Bosch draining three-point shots at the 2:38 and 1:02 marks to give the hosts a 71-61 cushion.

Pipestone outscored LHS 8-4 the rest of the night, but it wasn't enough to challenge the Cardinals.

Luverne sported a series of two-point edges early in the game's first half before the Arrows went on a 10-0 run to open a 25-17 lead with 5:10 remaining.

The Arrows extended their lead to nine points (27-18) before LHS went on a 9-4 run ending with Overgaard sinking one free throw with 20 seconds left to make it a 31-27 game.

Pipestone scored the final two points of the half to lead by six at the break.

Siebenahler (26 points and 15 rebounds), Overgaard (23 points and seven rebounds) and Erik Wahnoutka (10 points, seven assists and seven steals) led the Cards to victory.

**Box score**  
 Overgaard 4 2 9-10 23, Muller 0 1 1-2 4, Wahnoutka 1 1 5-9 10, Curtis 1 0 1-3 3, Siebenahler 9 0 8-12 26, Bosch 0 2 3-4 9.

**Team statistics**  
 Luverne: 21 of 49 field goals (43 percent), 27 of 40 field goals (68 percent) 34 rebounds, nine turnovers. Pipestone: 26 of 73 field goals (36 percent), 12 of 18 free throws (67 percent), seven turnovers.



John Rittenhouse photo/1224 lbb 9  
 Nick Overgaard gets Pipestone's Caleb Tinklenberg to leave the court during Luverne's 75-69 home win Dec. 15.

## Pound/continued from page 3B

scored one goal each in the first 5:18 of the third period to give the Cards a 13-0 cushion.

Behrend capped the scoring with 3:35 left to play.

Declan Beers led the Cards with four assists in the game, while Nelson, Smedsrud and Kasyn Kruse notched three assists each.

Brennan Hart, Kunkel and Erik Tofteland chipped in one assist each.

### LHS 12, Windom 0

The Cardinals had little trouble in disposing of the Eagles at the Blue Mound Ice Arena Dec. 15.

An eight-goal second period and a 12-save shutout in goal by Daniel Tofteland proved to be the highlights of a 12-0 victory.

Nelson registered a hat trick and Hart, Smedsrud and Behrend scored two goals each in the game for LHS, which outshot Windom 62-12 in the rout.

Beers opened the scoring 1:17 into the game and Hart

and Nelson netted one goal each in the final 4:39 of the stanza to give the Cards a 3-0 cushion at period's end.

LHS iced the game by registering 24 shots on goal and scoring eight times in the second period.

Nelson registered a goal 1:56 into the stanza and added a short-handed tally with 10:07 remaining to complete his hat trick.

Harder and Smedsrud recorded power-play goals, Kruse notched a short-handed goal and Behrend scored twice in the final 8:30 of the period to give the Cards a commanding 11-0 lead.

Smedsrud capped the scoring with 8:42 remaining in the game.

Beers led LHS with three assists, while Nelson and Smedsrud recorded two assists each.

Harder, Jacob Van Santen, Behrend, Kruse, Erik Tofteland, Chris Jelken, Swier and Jesse Reed added one assist each to the winning effort.

## Nielsen, Olson win weight classes in Spencer

By John Rittenhouse

The Luverne Cardinal wrestling team turned in a strong showing at Spencer Invitational Tournament Saturday in Spencer, Iowa.

Competing in a field of 13 teams, LHS athletes registered 124.7 points to place fifth in the final standings.

Sergeant Bluff-Luton claimed the team title with 205 points.

Along with a solid team effort, two Cardinals won individual titles and two more LHS entries placed second in their weight classes.

Solomon Nielsen and Jakob Olson took top honors at 160

and 195 respectively.

Nielsen won by technical fall over LeMars' Myle Kass before posting 15-3 and 11-1 wins over Boyden-Hull-Rock Valley's Brandon Rau and West Lyon's Noah Heathcott.

Nielsen edged Sibley-Ocheyedan's Garrett Slayer 8-7 in the finals.

Olson pinned B-H-RB's Austin Mohring (2:26) and Central Lyon-George-Little Rock's Austin Winkel (3:12) to reach the finals, where he posted a 4-1 win over Humboldt's Trayton Harris.

Tucker Oeltjenbruns and Will Natte placed second at 113 and 132.

Oeltjenbruns topped WL's Justin Severson 7-4 and SB-L's Ethan Kempema 5-3 in overtime to reach the finals, where he came up on the short end of a 10-4 decision against Spirit-Lake Park's Nate Cornwall.

Natte secured a 3-1 win over Humboldt's Joe Busse and pinned S-LP's Gavin Kramer in 2:20 to advance to the championship match, where he was pinned by B-H-RV's Austin Rozeboom in 2:57.

Jake Haugen placed third at 145 with a 4-1 record, while Jeremiah Dooyema and Zach Luke placed fifth at 152 and 182 with respective 3-2 and

2-2 records, while Hunter Baker went 2-3 and placed sixth at 106.

Brandon Claussen went 1-2 without placing at 170, while Riley Baker (0-2) and Jed Dooyema (1-2) competed without placing at 126 and 138.

Unfortunately, the tournament ended in tragic fashion for everyone involved.

Spencer senior Austin Roberts, a state-place winner in Iowa last year, collapsed on the mat following the 220-pound championship match.

Roberts was unable to be resuscitated.

## Blue Mound Ice Arena

507-449-9138

### Christmas Break Schedule 2015

Wed., Dec. 23 7:30p - 8:50p..... Oldtimers Hockey  
 9p - 10p..... Adult Open Hockey

Thur., Dec. 24 10a - 11a..... Open Figure Skating  
*Christmas Eve* 11a - 12p..... Open Hockey (*Squirt & below*)  
 12p - 12:45p..... Open Hockey (*PeeWee & above*)  
 1p - 3p..... Open Skate  
 Closed at 3p

*Closed Christmas Day ~ Merry Christmas!*

Sat., Dec. 26 2p - 4p..... Open Skate  
 7p..... Alumni Game

Sun., Dec. 27 12p - 1p..... In-House League  
 1:30p - 3:30p..... Open Skate  
 3:45p - 5p..... Adult Open Hockey

Mon., Dec. 28 1p - 3p..... Open Skate

Tue., Dec. 29 8:30a - 9:30a..... Open Figure Skating  
 9:30a - 10:30a..... Open Hockey (*Squirt & below*)  
 10:30a - 11:30a..... Open Hockey (*PeeWee & above*)  
 12p..... LHS JV vs Litchfield  
 2p..... LHS Boys vs Litchfield

Wed., Dec. 30 10:45a - 11:45a..... Open Hockey (*Squirt & below*)  
 11:45a - 12:45p..... Open Hockey (*PeeWee & above*)  
 1p - 3p..... Open Skate  
 5p - 6p..... Open Figure Skating  
 6:15p - 7:15p..... BMFS  
 7:30p - 8:50p..... Oldtimers Hockey  
 9p - 10p..... Adult Open Hockey

Thurs., Dec. 31 10a - 11a..... Open Figure Skating  
 11a - 12p..... Open Hockey (*PeeWee & above*)  
 11a - 12p..... Open Hockey (*Squirt & below*)  
 1p - 3p..... Open Skate

Fri., Jan. 1 10:45a - 11:45a..... Open Hockey (*Squirt & below*)  
 11:45a - 12:45p..... Open Hockey (*PeeWee & above*)  
 1p - 3p..... Open Skate  
 3:15p - 4:15p..... Open Figure Skating

### PRICING

Open Hockey and Figure Skating

Member - Free  
 Non member - \$10

Open Skate  
 12 and under - \$5  
 13 and over - \$6  
 (Includes Skates)



## Title/continued from page 3B

from LC-W-M and pinned Pipestone's Emerson Winter in 52 seconds.

Combs (pinned Pipestone's Eric Lange in 2:42 and edged LC-W-M's Trayton Hewitt 7-5), Logan Nelson (pinned LC-W-M's Kalen Magers in 3:38 and topped Pipestone's

Jesse Fenton 7-3) and Rogers (pinned LC-W-M's Cooper Martens in 5:04 and edged Pipestone's McKinley Bush 1-0) went 2-0 as well.

**Match wrap-ups**  
 AHS 48, LC-W-M 18  
 106 (A) Combs 7-5 Hewitt.  
 113 (A) Bullerman pins Stevenson.  
 120 (L) Magers 7-6 Fuerstenberg.

126 (A) Kern pins Begnaud.  
 132 (A) Hieronimus pins Jones.  
 138 (A) Elias by forfeit.  
 145 (L) Colon pins Taylor.  
 152 (A) Nelson pins Magers.  
 160 (A) Rogers pins Martens.  
 170 (A) Slater t.f. Northquest.  
 182 (A) Preuss pins Gillman.  
 195 (A) Heitkamp pins Contania.  
 220 (A) Engelkes pins Hartman.  
 285 (A) Gyberg pins Gillman.

106 (A) Combs pins Lange.  
 113 (A) Bullerman pins Budden.  
 120 (P) Burnett 12-7 Fuerstenberg.  
 126 (P) Suda 17-5 Kern.  
 132 (A) Hieronimus by i.d.  
 138 (A) Elias pins Winter.  
 145 (A) Nelson 7-3 Fenton.  
 152 (P) Steenstra pins Taylor.  
 160 (A) Rogers 1-0 Bush.  
 170 (P) Ploeger 7-6 Slater.  
 182 (A) Preuss pins Vanderwal.  
 195 (A) Heitkamp pins Olsen.  
 220 (A) Gyberg pins Arndt.  
 285 (P) Wolters 14-6 Engelkes.

AHS 48, Pipestone 18

## ROCK COUNTY TOWNSHIP ASSOCIATION FILING NOTICE

Filing for township supervisor for a three-year term and a clerk for a two-year term. Filing will open on December 29, 2015 and closes January 12, 2016 at 5:00 p.m.

Filing with township clerks as follows:  
 Beaver Creek, Clinton, Kanaranzi, Luverne, Magnolia, Mound, Springwater

Battle Plain filing at the Llyod Prins residence.

Pete Bakken, Secretary-Treasurer  
 Rock County Township Association

*Health & Happiness to All*  
**May you be blessed with much good fortune this holiday season.**  
**Thanks for the trust you've shown in us.**

**Closed Thursday, Dec. 24 at 3 pm**  
**Closed Friday, Dec. 25**  
**Open all day Thursday, Dec. 31**  
**Closed Friday, Jan. 1**

ROCK COUNTY HEARTLAND EXPRESS  
 Luverne, MN  
 507-283-5058

## Wolverines upend H-BC in Hills Friday

By John Rittenhouse

The Hills-Beaver Creek boys' basketball team slipped to 2-3 in Red Rock Conference play after losing a home game

Friday.

The Patriots entertained Mountain Lake Area for their

Upend/continued on page 5B



### Brennan Hart

**Sport:** Hockey  
**Position:** Forward  
**Parents:** Mike and Kristee Hart  
**Favorite Subject:** PT  
**Extra-Curricular Activities:** None  
**Future Plans:** Go to STI for auto service mechanics



### Cole Bosch

**Sport:** Basketball  
**Position:** Guard/Forward  
**Parents:** Jason and Jodi Bosch  
**Favorite Subject:** English  
**Extra Curricular Activities:** Band, Student Council, Math League, Basketball and Baseball  
**Future Plans:** Go to college and major in biology. Hopefully go on to dental school.



Pipestone Pepsi | 1809 Forman Drive, Pipestone, MN 56164

# Early injury changes everything for LHS

Premade plans can change in an instant when one is the head coach of an athletic team.



Just ask T.J. Newgard, the head coach of the Luverne girls' basketball program.

The LHS mentor had big plans for sophomore guard Joci Oye this season, and he spent a good share of the summer workouts and preseason practice sessions grooming the prospect to be the team's point guard.

All of the preparation put into the project blew up Dec. 7 when Oye suffered a severe knee injury (torn ACL) that will not only keep her off the court the rest of the winter, it will keep her from participating in track next spring.

"What happened to Joci is a worst-case scenario for a coach," Newgard said.

"To see a kid who worked her butt off in the offseason get hurt in the second game of the year makes you sick to your stomach. She came to every one of our optional workouts in the summer and worked hard in the weight room every day. When something like that happens to a kid like Joci, it just doesn't seem to be fair."

As an observer of the team, I'm pretty sure Oye will be missed.

In my mind, she is the top ball-handler on the team and had the ability to knock down the three-point shot.

Having Oye run the point enabled senior Morgan Haugen, the team's top offensive threat, from expending a lot of energy handling the ball when opposing teams apply full-court pressure.

Not only that, Oye's ability to hit the three-point shot forced opponents to rethink playing zone defense against LHS.

According to Newgard, Oye gave the Cards more than a ball-handler who could shoot the rock. "She is good at reading defenses and getting us

## FROM THE SIDELINES

By John Rittenhouse, sports editor

in the right offenses to acclimate to the different situations we'll be facing," he said.

Now that Oye is on the shelf for the season, roles will change for many of the Cardinal players.

Having played as a point guard in the past, Haugen will take over the position once again.

Sophomore Sierra Schmuck, who started the season as a reserve, has been thrown into the starting lineup, and she will be asked to give the Cardinals more scoring punch than was expected of her.

LHS fans also can expect to see more of sophomore guard Hannah VerSteege on the court than was previously planned.

Players do need to take breaks and teams do get into foul trouble during games, so someone like VerSteege, who has little varsity experience, will play an expanded role for LHS.

"It's not just one or two players. Everyone will have to do a little more than expected to fill in for Joci," Newgard said.

"Joci got hurt during a Monday night game and you could tell everything was different in practice the next day. It was like we were starting the whole season over again with only two practices before playing our first game."

Things didn't go so well for LHS when the Cards took on Southwest Christian three nights after Oye's injury, but they played much better against H-BC Dec. 14.

That leads me to believe the Cardinal players are ready to face challenges of the season without their fallen comrade. I wish nothing but the best for Joci and hope she experiences a speedy recovery.



John Rittenhouse photo/1224 he gb 8

H-BC's Avery Van Roekel delivers a pass between Ellsworth defenders Kallie Chapa (15) and Hannah Kramer during Thursday's 72-50 win over the Panthers in Ellsworth. Van Roekel scored 14 points and nabbed six rebounds during the game.

## H-BC prevails by 22 points in Ellsworth

By John Rittenhouse

The Hills-Beaver Creek girls' basketball team raised its Red Rock Conference record to 2-1 with a convincing win in Ellsworth Thursday.

The visiting Patriots outscored the Panthers in both halves of the game to secure a 72-50 victory.

Ellsworth netted the first two points of the contest and the score was knotted at two early in the game, but the rest of the first half belonged to H-BC.

The Patriots registered 10 consecutive points as a part of an 18-point run ending with Mekayla Kolbrek draining a pair of charity shots at the

8:56 mark to give H-BC a 22-6 cushion.

H-BC extended the lead to 19 points (27-8) when Kourtney Rozeboom converted a field goal at 6:21, but the Panthers countered with a 10-2 run ending with a pair of free throws from Megan Popkes to make it a 29-18 game with 2:46 left in the half.

The Patriots ended the half with a 12-4 surge capped by a three-point shot from Jasmine Lingen to give them a 41-22 advantage at the intermission.

H-BC scored the first nine points of the second half and led by 29 (51-22) when Avery Van Roekel converted a three-point play 3:22 into the stanza.

The Patriots led by 30 (57-27) when Lingen registered a field goal at 12:15, but that proved to be as big a lead H-BC would sport in the contest.

EHS trimmed the difference to 19 points (68-49) with less than two minutes remaining before falling by 22 points at game's end.

Rozeboom (18 points and five rebounds), Van Roekel (14 points and six rebounds), Sidney Fick (13 points and 10 rebounds) and Grace Bundesen (10 points) played key roles in the win.

Lingen added nine rebounds and three assists to the cause, while Paige Tilstra chipped in five assists and four steals.

Devin Dreesen (14 points, seven rebounds, six steals and three assists) and Popkes (11 points, six rebounds and three assists) led EHS statistically.

### Box score

**H-BC**  
 Bos 1 0 0-0 2, Tilstra 0 0 0-0 0, Spath 1 0 0-0 2, Kolbrek 1 0 2-2 4, Lingen 2 1 2-3 9, Fick 5 0 3-8 13, Bundesen 3 0 4-5 10, Gehrke 0 0 0-0 0, Van Roekel 5 0 4-5 14, Rozeboom 9 0 0-1 18.  
**Ellsworth**  
 Kramer 2 0 3-5 7, L.Chapa 0 0 2-2 2, Mulder 0 0 0-0 0, K.Chapa 0 0 1-2 1, Meester 0 0 4-4 4, D.Dreesen 4 1 3-5 14, Popkes 2 1 4-6 11, M.Dreesen 0 0 0-0 0, DeBeer 0 1 0-0 3, Smith 3 0 2-3 8.

### Team statistics

**H-BC:** 29 of 71 field goals (41 percent), 15 of 24 free throws (63 percent), 44 rebounds, 19 turnovers.  
**Ellsworth:** 14 of 47 field goals (30 percent), 19 of 27 free throws (70 percent), 25 rebounds, 24 turnovers.

## Tigers, Arrows keep Cardinal girls winless in Big South Conference play

By John Rittenhouse

The Luverne girls' basketball team took a pair of Big South Conference setbacks on the road.

Luverne lost a 28-point game in Marshall Friday before falling by 12 points in Pipestone Monday.

The 1-5 Cardinals play in Redwood Falls Jan. 2.

### Pipestone 44, LHS 32

The Cardinals wrapped up the 2015 portion of their schedule by taking on the Arrows in Pipestone.

Luverne sported a two-point advantage after 18 minutes of play, but the Arrows rallied to outscore the Cards 26-12 in the second half to prevail by 12 points.

LHS led 20-18 at the game's

intermission before being limited to 12 points in the second half.

Hailey Remme led the Cardinals with nine points and eight rebounds in the game.

Morgan Haugen collected five caroms.

### Box score

**VerSteege** 0 0 0-0 0, **Schmuck** 1 1 2-3 7, **Remme** 4 0 1-3 9, **Kneip** 3 0 0-4 6, **Jacobsma** 1 0 0-0 2, **Haugen** 3 0 2-4 8, **Hustoft** 0 0 0-0 0, **Rogers** 0 0 0-0 0.

### Team statistics

**Luverne:** 13 of 35 field goals (37 percent), five of 14 free throws (36 percent), 31 rebounds, 20 turnovers.  
**Pipestone:** 17 of 39 field goals (44 percent), eight of 16 free throws (50 percent), 21 rebounds, 11 turnovers.

### Marshall 57, Luverne 23

The Cardinals were unable to pull off an upset when they challenged the Tigers in Marshall Friday.

Marshall opened a commanding 33-18 lead in the game's first half.

The Tigers went on to outscore LHS 24-11 in the second half to complete a 28-point victory.

Nicole Kneip led the Cards in scoring with eight points.

Haugen collected seven rebounds and Bailey Jacobsma passed for four assists.

### Box score

**VerSteege** 0 0 0-0 0, **Schmuck** 3 0 0-0 6, **Remme** 3 0 0-0 6, **Anderson** 0 0 0-0 0, **Kneip** 2 1 1-2 8, **Jacobsma** 0 0 0-0 0, **Bosch** 0 0 0-0 0, **Petersen** 0 0 0-0 0, **Haugen** 1 1 1-4 6, **Hustoft** 0 0 0-2 0, **Rogers** 1 0 1-4 3.

### Team statistics

**Luverne:** 12 of 37 field goals (32 percent), three of 12 free throws (25 percent), 22 rebounds, 21 turnovers.  
**Marshall:** 23 of 55 field goals (42 percent), three of five free throws (60 percent).

## Late/cont. from page 3B

Siebenahler grabbed 10 rebounds and Bosch registered five steals for the 5-4 Cardinals.

Isaiah Vis (17 points and four steals) and Scholten (16 points, 15 rebounds, four steals and eight blocked shots) led H-BC.

Stuart Plimpton passed for four assists, while Trenton Bass and Cooper Vaughn charted three assists each for the 2-6 Patriots.

### Box score

**Luverne**  
 Overgaard 2 4 4-5 20, Muller 1 2 3-4 11, Wohnoutka 2 2 2-2 12, Schoeneman 0 0 0-0 0, Curtis 3 0 1-3 7, Siebenahler 0 0 4-8 4, Wagner 0 0 0-1 0, Bosch 3 1 0-0 9.  
**H-BC**  
 Vaughn 1 1 0-0 5, Burgers 1 2 0-0 8, Vis 8 0 3-5 17, Plimpton 0 0 0-0 0, Bass 0 1 0-0 3, Kueter 0 0 0-0 0, Scholten 3 3 1-2 16, Dr.Forshey 0 0 0-0 0, Dy.Forshey 0 2 2-4 11.

### Team statistics

**Luverne:** 20 of 54 field goals (37 percent), 14 of 23 free throws (61 percent), 30 rebounds, nine turnovers.  
**H-BC:** 20 of 51 field goals (39 percent), four of 11 free throws (36 percent), 30 rebounds, 19 turnovers.

## Upend/continued from page 4B

final league game of 2015.

MLA gained the upper hand early by opening a 36-28 lead in the first half and outscored H-BC 29-27 in the second half to secure a 65-55 victory.

Cooper Vaughn led the Patriots with 18 points and five steals.

Isaiah Vis and Josh Kueter collected eight and seven rebounds respectively, while

Stuart Plimpton recorded three assists.

### Box score

**Bass** 1 1 0-0 5, **Burgers** 0 0 1-2 1, **Dr.Forshey** 1 0 1-6 3, **Dy.Forshey** 1 0 0-2 2, **Kueter** 3 0 0-3 6, **Plimpton** 1 0 3-4 5, **Scholten** 3 0 2-2 8, **Vaughn** 6 0 6-11 18, **Vis** 2 0 3-7 7.

### Team statistics

**H-BC:** 19 of 53 field goals (36 percent), 16 of 37 free throws (43 percent), 31 rebounds, 17 turnovers.  
**MLA:** 20 of 49 field goals (41 percent), 19 of 32 free throws (59 percent), 35 rebounds, 17 turnovers.

P  
A  
P  
I  
K  
.  
C  
O  
M

### 2014 GMC Sierra SLT



Stock #155770N  
63K

Papik Price \$34,900

### 2013 Ford F-150



Stock #51463U  
54K

Papik Price \$27,900

### 2011 Chevy Silverado LTZ



Stock #229473N  
70K

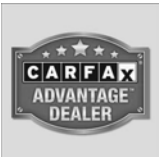
Papik Price \$29,900

### 2012 GMC Sierra SLE



Stock #154340N  
65K

Papik Price \$25,900



**CERTIFIED PRE-OWNED**  
 CHEVROLET BUICK GMC  
 No Worries.™



507-283-9171 or 800-634-7701

**PAPIK.COM**



# AHS drops three tilts

**By John Rittenhouse**

A slumping Adrian boys' basketball team dropped three games in a span of five days. The Dragons lost games to Russell-Tyler-Ruthron and Wabasso during the R-T-R Tournament in Tyler Thursday and Saturday respectively. AHS came up on the short end of a 22-point decision when it entertained Windom Monday. The Dragons play in Minneota Jan. 4.

## Windom 66, Adrian 44

The Dragons dropped their seventh consecutive contest when they entertained the Eagles in Adrian Monday. Windom got off to a strong start by outscoring Adrian 31-17 in the first half.

The Eagles used a 35-27 scoring cushion in the second half to make it a 22-point difference at game's end. Zach Hendel led the Dragons in scoring with 13 points.

Nate Lonneman and Mitchell Lonneman pulled down seven and six rebounds respectively.

**Box score**  
Stamer 1 0 1-2 3, Serrao 2 1 2-4 9, Bierman 0 0 0-0 0, White 0 0 0-0 0, A.Loosbrock 1 1 0-0 5, Varley 0 0 0-0 0, N.Lonneman 0 0 1-3 1, Hendel 4 0 5-8 13, Z.Loosbrock 0 0 0-0 0, Wieneke 1 1 0-0 5, Werkman 0 0 0-0 0, M.Lonneman 3 0 2-8 8, Swank 0 0 0-0 0.

**Team statistics**  
Adrian: 15 of 54 field goals (28 percent), 11 of 19 free throws (58 percent), 30 rebounds, 18 turnovers.  
Windom: 28 of 66 field goals (42 percent), zero of one free throws (zero percent), 26 rebounds, 10 turnovers.

## Wabasso 73, Adrian 62

The Dragons came up on the short end of an 11-point decision during the third-place game of the R-T-R tourney Saturday in Tyler.

Adrian played with Wabasso in the first half of the game, which ended with the Rabbits

sporting a 33-29 lead. Wabasso proceeded to outscore AHS 40-33 in the second half to prevail by 11 points. Alex Loosbrock (16 points), Ryan Wieneke (13 points and seven assists) and Nate Lonneman (12 points) led AHS offensively. Mitchell Lonneman pulled down seven rebounds for the Dragons.

**Box score**  
Stamer 0 0 0-2 0, Serrao 1 1 0-0 5, Bierman 0 0 0-0 0, White 1 0 0-0 2, A.Loosbrock 5 2 0-0 16, N.Lonneman 6 0 0-0 12, Z.Loosbrock 0 2 1-3 7, Wieneke 5 1 0-0 13, Werkman 0 0 0-0 0, M.Lonneman 2 0 3-5 7.

**Team statistics**  
Adrian: 26 of 60 field goals (43 percent), four of 10 free throws (40 percent), 19 rebounds, 20 turnovers.  
Wabasso: 26 of 58 field goals (45 percent), 16 of 28 free throws (57 percent), 30 rebounds, 13 turnovers.

## R-T-R 68, Adrian 39

The Dragons opened the R-T-R Tournament by dropping a 29-point decision to the host team Thursday in Tyler.

The Knights rolled to a 46-25 advantage in the first half and outscored the Dragons 22-14 in the second stanza to seal a lopsided victory.

Mitchell Lonneman turned in a 12-point, five-rebound effort for the Dragons. Hendel grabbed five rebounds for AHS, while Nate Lonneman and Wieneke charted three assists each.

**Box score**  
Stamer 1 0 0-0 2, Serrao 1 0 0-0 2, Bierman 0 0 2-2 2, White 0 0 0-0 0, A.Loosbrock 2 0 0-1 4, Varley 0 0 0-0 0, N.Lonneman 0 0 0-0 0, Hendel 2 0 2-5 6, Z.Loosbrock 0 1 0-0 3, Wieneke 1 1 3-4 8, Werkman 0 0 0-0 0, M.Lonneman 3 0 6-7 12, Swank 0 0 0-0 0.

**Team statistics**  
Adrian: 12 of 34 field goals (35 percent), 13 of 19 free throws (68 percent), 29 rebounds, 26 turnovers.  
R-T-R: 25 of 59 field goals (42 percent), 11 of 18 free throws (61 percent), 25 rebounds, nine turnovers.

# Adrian girls host holiday tournament

**By John Rittenhouse**

The Adrian girls' basketball team dropped a pair of games during the Adrian Holiday tournament over the weekend. Tracy-Milroy-Balaton topped the Dragons by 10 points during Friday's opening round. Wabasso handed AHS a 14-point setback in Saturday's third-place game. Adrian sported a 1-5 record at event's end.

## Wabasso 48, AHS 34

The Dragons couldn't overcome an early run by the Rabbits during Saturday's third-place game in Adrian.

After taking a one-point edge early in the game, the Dragons watched Wabasso go on a 20-2 run to open a commanding 18-point lead.

AHS did fight back to make things interesting, but it wasn't enough to keep the Rabbits from securing a 14-point victory.

Adrian's Jodi Bents canned a three-point shot 1:40 into the contest to give the Dragons a 3-2 edge.

Wabasso scored the next 10 points as part of a 20-1 surge that left the Rabbits sporting a 22-4 lead with 5:54 remaining in the first half.

Adrian responded by going on a 12-0 run ending with a field goal from Rebecca Sjogren to make it 22-16 with 3:04 remaining in the first half.

Wabasso, however, outscored the Dragons 10-4 the rest of stanza to lead 32-20 at intermission.

AHS trimmed the difference to 10 points at three occasions and trailed by eight when Paige Bullerman converted a field goal at the 12:29 mark of the second half to make it a 38-32 game.

Adrian sputtered offensively the rest of the night as Wabasso



John Rittenhouse photo/1224 agb 4

Adrian sophomore post Paige Bullerman scored six points during Saturday's home game against Wabasso.

outscored the Dragons 10-2 in the final 12 minutes to seal a 14-point victory. Bents turned in a 15-point,

five-rebound, three-steal performance for AHS.

Paige Bullerman and Sjogren collected seven and six rebounds respectively, while Hannah Bullerman charted three steals.

**Box score**  
H.Bullerman 0 0 3-4 3, J.Hokeness 0 0 0-0 0, Tweet 1 0 0-0 2, Bents 2 2 5-5 15, Loonan 0 0 0-0 0, Weidert 0 0 0-0 0, Kunkel 0 0 0-0 0, Christians 1 0 0-0 2, Grussing 0 0 0-0 0, Sjogren 2 2-2 6, Jeffers 0 0 0-0 0, Slater 0 0 0-0 0, Heidebrink 0 0 0-0 0, P.Bullerman 3 0 0-1 6.

**Team statistics**  
Adrian: 11 of 43 field goals (26 percent), 10 of 12 free throws (83 percent), 31 rebounds, 30 turnovers.  
Wabasso: 20 of 61 field goals (33 percent), four of 12 free throws (34 percent), 29 rebounds, 16 turnovers.

## T-M-B 46, Adrian 36

The Dragons were pushed into the third-place game of their own tournament when they bowed to the Panthers by 10 points in Friday's opening round.

Adrian matched blows with T-M-B during a first half that ended with the Panthers sporting a 21-20 edge.

T-M-B outscored the Dragons 25-16 in the second half to win by 10.

Bents tossed in 13 points and passed for three assists for AHS, which received a 13-rebound effort from Paige Bullerman.

Hannah Bullerman charted four assists and Kaitlyn Christians registered three steals for the Dragons.

**Box score**  
H.Bullerman 0 0 0-0 2, R.Hokeness 1 0 3-4 5, J.Hokeness 0 0 0-0 0, Tweet 0 0 0-0 0, Bents 1 3 2-2 13, Kunkel 0 0 2-2 2, Christians 1 1 2-4 7, Grussing 0 0 0-1 0, Sjogren 0 0 0-0 0, Jeffers 0 0 0-0 0, Slater 0 0 0-1 0, P.Bullerman 3 0 3-4 9.

**Team statistics**  
Adrian: 10 of 44 field goals (23 percent), 12 of 18 free throws (67 percent), 28 rebounds, 26 turnovers.  
T-M-B: 15 of 58 field goals (26 percent), 13 of 24 free throws (54 percent), 45 rebounds, 27 turnovers.

# DECEMBER 15 SPORTS REPLAY

## H-BC boys withstand late challenge in Fulda

The Hills-Beaver Creek boys picked up their second Red Rock Conference basketball victory of the season when they nipped Fulda 52-50 in Fulda.

After sporting a 31-22 lead in the first half, H-BC was outscored 28-21 in the second half and prevailed by two points when the Raiders missed a potential game-winning three-point shot in the final seconds.

Zach Scholten (17 points and seven rebounds), Stuart Plimpton (11 points and five rebounds), Isaiah Vis (eight assists and three steals) and Jed Burgers (five rebounds) led H-BC to victory.

## Wolverines rally to knock off Adrian boys

The Adrian boys' basketball team couldn't withstand a second-half rally when the Dragons challenged Mountain Lake Area in Mountain Lake.

The Dragons led 37-36 after 18 minutes of play, but the Wolverines outscored AHS 40-26 in the second half to secure a 76-63 win.

Zach Hendel (17 points and three steals), Mitchell Lonneman (16 points), Ryan Wieneke (three assists) and Alex Loosbrock (three assists) led the Dragons statistically.

## Ellsworth boys drop fourth consecutive contest

The Ellsworth boys lost their fourth-straight basketball game when they took on Westbrook-Walnut Grove in Westbrook.

W-WG led 35-23 at the intermission before EHS rallied to outscore the hosts 35-24 in the second half of a 59-58 loss.

Malik Herman (24 points and 13 rebounds), Bobby Walkowaik (10 points) and Jared Leuthold (five assists) paced the Panthers statistically.

# Ellsworth falls after competitive first half Monday

**By John Rittenhouse**

The Ellsworth girls were unable to record their first basketball win of the season when they entertained Central Lyon for a clash Monday in Ellsworth.

The Panthers put themselves in a position to win the game in the first half when they matched blows with the Lions before falling behind 17-14 at the intermission.

The second half belonged to Central Lyon, which outscored Ellsworth 32-20 to nail down a 49-34 victory.

Megan Popkes turned in a 13-point, four-steal effort for the Panthers.

Devin Dreesen collected six caroms, passed for three assists and charted four steals for the hosts.

Hannah Kramer recorded four steals as well for the 0-6 Panthers, who play at Southwest Christian Jan. 7.



John Rittenhouse photo/1224 he gb 12

Danielle Vander Poel (right) and the EHS girls lost a home game to Central Lyon Monday.

**Box score**  
Kramer 1 0 0-0 2, L.Chapa 1 0 1-2 3, K.Chapa 2 0 0-0 4, Dreesen 2 1 0-2

7, Popkes 4 1 2-4 13, Smith 2 0 1-1 5.

**Team statistics**  
Ellsworth: 14 of 41 field goals (34 percent), four of nine free throws (44 percent), 18 rebounds, 13 turnovers.

# Losing skid reaches five games for Panther boys

**By John Rittenhouse**

The Ellsworth boys' basketball team couldn't snap what stands as a five-game losing skid after dropping two games in four days.

The Panthers came up on the short end of a 22-point decision in a Red Rock Conference game against Murray County Central in Slayton Friday.

Central Lyon saddled the Panthers with a 31-point setback Monday in Ellsworth.

The losses left the Panthers with a 2-7 record.

## CL 62, Ellsworth 31

The Panthers lost their fifth consecutive game when they entertained the Lions in Ellsworth Monday.

Central Lyon gained control of the game in the first half by rolling to a 29-13 lead.

The Lions outscored the Panthers 33-18 in the second half to prevail by 31 points.

Trei Hinrichs tossed in 14 points to lead the Panthers in scoring.

Malik Herman and Zach Buntjer nabbed 10 and six rebounds respectively.

Brandon Kramer recorded

six steals and Jared Leuthold charted five assists for EHS.

**Box score**  
Leuthold 0 1 0-0 3, Walkowaik 0 1 2-4 5, Hinrichs 4 2 0-0 14, Herman 1 0 1-4 3, Kramer 0 0 0-0 0, Buntjer 1 0 4-6 6, Kruse 0 0 0-0 0, Wallenburg 0 0 0-0 0, Curtis 0 0 0-0 0.

**Team statistics**  
Ellsworth: 14 of 59 field goals (24 percent), seven of 14 free throws (50 percent), 22 rebounds, 20 turnovers.

## MCC 69, Ellsworth 47

The Panthers took on one of the Red Rock Conference's top teams when they challenged the Rebels in Slayton Friday.

Ellsworth played well in a first half that ended with MCC sporting a 32-23 lead.

The Rebels, however,

outscored EHS 37-24 in the second half to prevail by 22 points.

Herman turned in a big game for EHS by scoring 15 points, pulling down 17 rebounds and passing for four assists.

Hinrichs netted 11 points for the Panthers, while Leuthold and Bobby Walkowaik charted six and four assists respectively.

**Box score**  
Kruse 0 0 0-0 0, Wallenburg 0 0 0-0 0, Leuthold 1 1 2-2 7, Walkowaik 2 0 2-3 6, Hinrichs 1 3 0-0 11, Herman 7 0 1-3 15, Kramer 4 0 0-0 8.

**Team statistics**  
Ellsworth: 21 of 54 field goals (39 percent), five of eight free throws (63 percent), 23 rebounds, 16 turnovers.

# WRAPPING PAPER & GIFT BAGS

belong in your TRASH CAN

Luverne Love the life! Rock County LAND MANAGEMENT

NOT RECYCLABLE



The City of Luverne & RC Land Management wishes you a Green Christmas

**Luverne**  
*Love the life!*

**CHRISTMAS & NEW YEAR'S HOLIDAY RECYCLING PICKUP**

**RECYCLING PICKUP HOLIDAY SCHEDULE**

**DECEMBER 25 RECYCLING WILL BE PICKED UP DECEMBER 28**

**NORTH OF DODGE AND JANUARY 1 RECYCLING WILL BE PICKED UP JANUARY 4 SOUTH OF DODGE.**

~The City of Luverne

**St. Catherine Catholic Church**  
203 E. Brown St., Luverne  
St. Catherine Ph.: 283-8502

**St. Mary Catholic Church, Ellsworth**  
Thursday, Dec. 24: 4:30 p.m. St. Catherine Christmas Eve mass. 7:30 p.m. St. Mary's Christmas Eve mass. Friday, Dec. 25: 9 a.m. Christmas Day Mass at St. Catherine. Sunday, Dec. 27: 8:30 a.m. Mass at St. Mary's. No Faith Formation. 10:30 p.m. Mass at St. Catherine. No Sunday School. Monday, Dec. 28: 7 p.m. Divorce Support Group. Wednesday, Dec. 30: No Faith Formation. 8:15 a.m. St. Mary's Mass with Communion. 10 a.m. Mass at Mary Jane Brown Home. Thursday, Dec. 31: 5:30 p.m. New Year's Eve Mass at St. Catherine. Friday, Jan. 1: 8:30 a.m. New Year's Day Mass at St. Mary. 10 a.m. Mass at St. Catherine.

**Luverne Christian Reformed Church**  
605 N. Estey St., Luverne  
Office Ph. 283-8482; Prayer Line Ph. 449-5982  
www.luverncrc.com — luverncrc@gmail.com  
**Roger Sparks, Pastor**

Friday, Dec. 25: 9:30 a.m. Christmas Day service. Sunday, Dec. 27: 9:30 a.m. Worship service. 6:30 p.m. Worship service. Monday, Dec. 28: 9 a.m. Perk Up at Edgerton. Tuesday, Dec. 29: 9:30 a.m. CoffeeBreak/Story Hour.

**First Baptist Church**  
1033 N. Jackson St., P.O. Box 975, Luverne  
Ph. 283-4091; email: fbcluv@iw.net — www.fbcluverne.org  
**Dick Lauger, Pastor**

Thursday, Dec. 24: 5 p.m. Christmas Eve Candlelight Service. 7 p.m. Worship service on Channel 3. Sunday, Dec. 27: 9:15 a.m. Sunday School. 10:30 a.m. Morning Service. 6 p.m. Evening Service. Tuesday, Dec. 29: 7 a.m. Men's Bible Study. Wednesday, Dec. 30: No Awana. Thursday, Dec. 31: 7 p.m. Worship service on Channel 3.

**Grace Lutheran Church**  
500 N. Kniss Ave., Luverne  
Ph. 283-4431; www.graceluverne.org — Nichols-glc@live.com  
**Ron Nichols, Pastor; Cole McCormick, Interim Pastor**

Thursday, Dec. 24: Noon Church office closes. 3 p.m. Christmas Eve service. 5 p.m. Musical prelude. 5:30 p.m. Christmas Eve service. Friday, Dec. 25: 9 a.m. Radio Broadcast of Christmas Eve service. 10 a.m. Christmas Day worship. 6:30 p.m. Telecast Channel 3. Saturday, Dec. 26: 5:30 p.m. Worship. Sunday, Dec. 27: 9 a.m. Radio Broadcast of Christmas Day service. 10 a.m. Worship. Monday, Dec. 28: 4 p.m. Telecast of worship on Channel 3. Tuesday, Dec. 29: 9 a.m. Staff meeting. 10 a.m. Assemble Grace Notes. Wednesday, Dec. 30: 7 a.m. Men's Study. No Confirmation.

**Bethany Lutheran Church**  
720 N. Kniss Ave., Luverne  
Ph. 283-4571 — pastorapalmquist67@yahoo.com  
Thursday, Dec. 24: 5:30 p.m. Christmas Eve worship. Friday, Dec. 25: 10:15 a.m. Christmas Day worship. Sunday, Dec. 27: No Sunday School or Bible Class. 10:15 a.m. Worship with Communion.

**American Reformed Church**  
304 N. Fairview Dr., Luverne  
Ph. 283-8600; email: office@arcluverne.org  
Thursday, Dec. 24: 5 p.m. Candlelight Christmas Eve service. Sunday, Dec. 27: 9:30 a.m. Worship Service with Communion. No Sunday School. Tuesday, Dec. 29: 10 a.m. Staff meeting. Wednesday, Dec. 30: No Midweek.

**Holy Trinity Episcopal Church**  
220 N. Cedar St., Luverne  
Sundays: 10:30 a.m. Worship Service; Fellowship after service. Wednesdays: 6:30 p.m. Bible Study. Our Mission Statement: Historic Holy Trinity strives to serve God and our community through worship, stewardship and friendship. Contact Emily Lodine Overgaard at (507) 227-6175 for information. Come as you are — our leader wore sandals.

**Ben Clare United Methodist Church**  
26762 Ben Clare Ave., Valley Springs, S.D.  
igtwlb@WOW.net  
Bill Bates, Pastor  
Sundays: 9 a.m. Worship; 10 a.m. Fellowship; 10:30 a.m. Sunday School for all ages.

**First Assembly of God Church**  
1075 110<sup>th</sup> Ave., 2 miles west of Luverne on County Rd. 4  
Kenneth and Gloria Kashner, Pastors

Sundays: 9 a.m. Sunday School. 10 a.m. Morning Worship. 6:30 p.m. School of the Holy Spirit. Wednesdays: 7 p.m. Kids Connection; Men's Bible Study with Pastor Ken; Women's Bible Study with Pastor Gloria.

**United Methodist Church**  
109 N. Freeman Ave., Luverne  
Ph. 283-4529; email: luverneumc@iw.net

Thursday, Dec. 24: 5 p.m. Candlelight Worship. 7 p.m. Free Community Christmas Eve meal. 11 p.m. Candlelight Worship with Communion. Sunday, Dec. 27: 9 a.m. Traditional Worship. 10 a.m. Coffee Hour. 11 a.m. Come As You Are. No Bait of Satan Bible Study; No A.L.I.V.E. Youth Group. Monday, Dec. 28: No Bible Study. Tuesday, Dec. 29: 9 a.m. Newsletter Folding Team. Wednesday, Dec. 30: No F.U.E.L. or Confirmation. Thursday, Dec. 31: 1-3 p.m. Rock County Food Shelf.

**First Presbyterian Church**  
302 Central Lane, Luverne  
Ph. 283-4787; email: Firstpc@iw.net — www.fpcluverne.com50

Thursday, Dec. 24: 5 p.m. and 7 p.m. Christmas Eve services. Sunday, Dec. 27: 9 a.m. Sunday School. 10:15 a.m. Worship. 1:30 p.m. Worship at Mary Jane Brown Home. 2:15 p.m. Worship at Poplar Creek.

**St. John Lutheran Church**  
803 N. Cedar St., Luverne  
Ph. 283-2316, Dial-A-Devotion Ph. 283-4005  
email: stjoh@iw.net — www.stjohnlutheranluverne.org  
**Gary Klatt, Pastor**

Thursday, Dec. 24: 5 p.m. Christmas Eve service. Friday, Dec. 25: 9 a.m. Christmas Day worship with Communion. Saturday, Dec. 26: 5:30 p.m. Worship with Communion. Sunday, Dec. 27: 9 a.m. Worship with Communion. 10:15 a.m. Adult Bible Study. No Sunday School, Junior Choir rehearsal or Youth Fellowship Night. Tuesday, Dec. 29: 1 p.m. and 6:30 p.m. Quilting. Thursday, Dec. 31: 6:30 p.m. New Year's Eve Worship.

**Living Rock Church**  
500 E. Main St., Luverne  
Ph. 449-0057; www.livingrockswmn.org  
**Billy Skaggs, Pastor**

Sundays: 10:30 a.m. Worship; Kids Rock Children's Ministry. 6 p.m. Youth Ministry. Life groups meet throughout the week.

**New Life Celebration Church**  
211 E. Main St., Luverne  
Ph. 449-6522; email: newlifecel@iw.net  
Sundays: 9:30 a.m. Worship in the lower level meeting room of the Creeger building. Every third Thursday: 5 p.m. Food giveaway. Bible Study groups meet at various times and days.

**Zion Evangelical Lutheran Church**  
305 E. 2<sup>nd</sup> St., P.O. Box 36, Hardwick  
Ph. 669-2855; email: revmumme@gmail.com — www.zionlutheranhardwick.com  
**Mark W. Mumme, Pastor**

Thursday, Dec. 24: 4 p.m. Zion worship airs on Channel 3. 5 p.m. Christmas Eve Candlelight Service; Sunday School program. Friday, Dec. 25: 9 a.m. Christmas Day worship service; choir sings. 4 p.m. Zion worship airs on Channel 3. Sunday, Dec. 27: No Sunday School or Adult Bible Study. 10:30 a.m. Worship service; installation of 2016 church officers. Monday, Dec. 28: 1 p.m. Quilting. Wednesday, Dec. 30: No confirmation. Thursday, Dec. 31: 4 p.m. Zion worship airs on Channel 3.

**First Lutheran Church**  
300 Maple St., Valley Springs, S.D.  
Ph. (605) 757-6662  
**Ray Heidenson, Pastor**  
Thursday, Dec. 24: 6 p.m. Christmas Eve Candlelight Service with Communion. Sunday, Dec. 27: 10 a.m. Joint Worship Service at Palisade Lutheran with the Hallelujah Hooligans.

**Hills United Reformed Church**  
410 S. Central Ave., Hills  
Office Ph. 962-3254  
hillsurc@alliancecom.net  
Alan Camarigg, Pastor  
Sundays: 9:30 a.m. and 6 p.m. Worship Services.

## Remember real reason for Christmas season

When it comes to the days leading up to Christmas Eve, I'm pretty much of a "Bah Humbug" kind of guy.

I find it difficult to get into the spirit of Christmas when stores start advertising Christmas items weeks before Thanksgiving and radio stations begin to play Christmas music almost as soon.

The reason for the season appears to have become profits and presents and the cynic in me begins to rebel.

Yet something amazing happens to me and I hope to all the other Scrooges out there.

When I hear the Christmas story of Jesus' birth and sing the beloved Christmas carols, the Scrooge in me suddenly has an "Aha" moment. "Aha, this is the reason for the season!"

And then my imagination begins to work overtime thinking about all those "what if" things. What if friends and

## BUILT ON A ROCK

**By Grant Fischer,  
Interim Pastor,  
Bethlehem Lutheran  
Church, Hills**

neighbors could share this much good will and peace with one another all year long?

What if all those broken relationships could be healed so easily?

What if people were as eager to share all year long as they are at Christmas?

Oh, what if ...?

And that is part of the mystery and challenge of the incarnation. Once Jesus the Christ is born in our hearts, the Scrooge in us begins to see the world and others differently — moving to bring peace and goodwill to all.

Wouldn't that be a grand Christmas present? Merry Christmas!

**Palisade Lutheran Church**  
211 121<sup>st</sup> St., Garretson, S.D.  
Ph. (507) 597-6257 — firstpalisade@alliancecom.net  
**Ray Heidenson, Pastor**

Thursday, Dec. 24: 8 p.m. Christmas Eve Candlelight Service with Communion. Sunday, Dec. 27: 10 a.m. Joint Parish Worship Service with the Hallelujah Hooligans. Sunday, Jan. 3: 9 a.m. Worship with Communion. 10 a.m. Special Congregational Meeting to vote on a proposal for residing the church.

**First Presbyterian Church**  
201 S. 3<sup>rd</sup> St., Beaver Creek

**Magnolia United Methodist Church**  
501 E. Luverne St., Magnolia  
Church Ph. 283-9698; cell 227-7821  
adrmagumc@frontiernet.net — www.adrianmagnoliaumc.com  
**Kristi Franken, Pastor**

Thursday, Dec. 24: 5:30 p.m. Christmas Eve Candlelight Service with Communion at United Methodist Church in Adrian. Sunday, Dec. 27: 9 a.m. Worship service.

**Steen Reformed Church**  
112 W. Church Ave., Steen  
Ph. 855-2336  
**Reuben Sinnema, Youth Pastor**

**Bethlehem Lutheran Church**  
Interim Pastor Grant Fisher  
112 N. Main St., Hills  
Thursday, Dec. 24: 2 p.m. Christmas Eve service at Tuff Chapel. 5 p.m. Christmas Eve Candlelight service with Communion at Bethlehem Lutheran Church. Sunday, Dec. 27: 9 a.m. Worship at Tuff Chapel. 10:30 a.m. Worship at Bethlehem. No Youth Night. Tuesday, Dec. 29: 2:30 p.m. Bible Study at Tuff Home. 3:15 p.m. Bible Study at Tuff Village. Wednesday, Dec. 30: 9 a.m. Quilting. No Confirmation or Youth Night.

**These Weekly Church  
Page Messages are  
contributed to God's  
Work through the  
Church and by these  
concerned and  
responsible citizens  
& businesses:**

Call Rick or Chantel to  
place your ad!

283-2333

**Tuff Memorial Home,  
Retirement Apartments  
& Tuff Village**  
"A Home Where Residents SMILE"  
Hills, Minnesota  
Phone 507-962-3275

**Papik  
MOTOR  
LUVERNE, MINN.**  
I-90 in Luverne, MN  
507-283-9171 • 1-800-634-7701

Read us online!

Rock County  
**STAR HERALD**  
www.Star-Herald.com

*Trust In Him*



**Pizza Ranch**  
110 E. Main,  
Luverne, MN  
Phone 507-283-2379

**MANLEY**  
TIRE & OIL SERVICE  
Manley Minnesota  
1-800-615-3704  
Open six days a week - Closed on Sundays  
To God be the Glory.

**CWGW**  
Business Insurance.  
Tri-State Region *Period!*

Rock County  
**STAR HERALD**  
Luverne, MN • 507-283-2333

**Bruce's Electric**  
residential, commercial and farm wiring  
**Bruce Umbreit**  
Electrical Contractor  
1200 Linden, Luverne, MN 56156  
Phone 507-283-4917

**Luverne  
ANNOUNCER**

**To Advertise  
Call  
283-2333**

**Buffalo Ridge  
INSURANCE**  
507-283-2381 www.buffaloridgeins.com E-mail: info@buffaloridgeins.com

**McClure Electric**  
Alan M. Aanenson, owner  
Farm, Home & Commercial Wiring  
Luverne, MN Phone 507-283-4716

**First Farmers & Merchants**  
303 E. Main, Luverne, MN  
507-283-4463  
www.fimbank.com  
**We believe in you.**  
Member FDIC. And the community.

**HILLS STAINLESS STEEL  
& EQUIPMENT CO., INC.**  
506 W. Koehn, P.O. Box 987, Luverne, MN  
PHONE 507-283-4405  
Church is Important - Please Attend!

**MINNWEST  
BANK**  
• 116 E. Main St., Luverne 507-283-2366  
• S. Hwy. 75, Luverne 507-283-9131  
• Main St., Beaver Creek 507-673-2333  
Member FDIC www.minnwestbank.com

**HARTQUIST**  
Funeral and Cremation Services  
- ENGBRETSON CHAPEL -  
507-283-2777  
www.HartquistFuneral.com  
"Let our family help your family"  
Serving the Luverne and Surrounding Communities

**Tollefson Publishing**  
117 W. Main  
Luverne, MN 56156  
507-283-2333

# Star Herald PUBLIC NOTICES

## Mortgage foreclosure sale set for Jan. 7

**NOTICE OF MORTGAGE FORECLOSURE SALE**  
PUBLIC NOTICE: NOTICE OF MORTGAGE FORECLOSURE SALE  
THE RIGHT TO VERIFICATION OF THE DEBT AND IDENTITY OF THE ORIGINAL CREDITOR WITHIN THE TIME PROVIDED BY LAW IS NOT AFFECTED BY THIS ACTION.

NOTICE IS HEREBY GIVEN: That default has occurred in the conditions of the following described mortgage:

DATE OF MORTGAGE: September 15, 2006  
ORIGINAL PRINCIPAL AMOUNT OF MORTGAGE: \$37,899.00  
MORTGAGOR(S): Bernie Christensen and Javon Christensen, Husband and Wife

MORTGAGEE: Mortgage Electronic Registration Systems, Inc., as nominee for First Franklin a division of National City Bank

TRANSACTION AGENT: Mortgage Electronic Registration Systems, Inc. MIN#: 100425240010209283

SERVICER: Specialized Loan Servicing  
LENDER: First Franklin a division of National City Bank.

DATE AND PLACE OF FILING: Rock County Minnesota, Recorder, on September 20, 2006, as Document No. 164852.

ASSIGNED TO: Deutsche Bank National Trust Company, as Trustee for First Franklin Mortgage Loan Trust 2006-FF16, Asset-Backed Certificates, Series 2006-FF16 Dated: August 12, 2015, and recorded August 20, 2015 by Document No. 186841.

LEGAL DESCRIPTION OF PROPERTY:  
A tract of land located in Block 6 in Greenvale Addition to the City of Luverne, Rock County, Minnesota, described by metes and bounds as follows:

Beginning at a point on the West line of Block 6 in Greenvale Addition to the City of Luverne, 125 feet South and 272 1/2 feet West of the Northeast Corner of said Block; thence East 136 feet 3 inches; thence South 25 feet; thence West 8 feet 3 inches; thence South 65 feet; thence West 128 feet; thence North on the West line of said Block 6, 90 feet to the point of beginning and Lot 8 in 1st Sub-division of Block 6 in Greenvale Addition to the City of Luverne, Rock County, Minnesota

PROPERTY ADDRESS: 309 S Donaldson St, Luverne, MN 56156  
PROPERTY I.D.: 20-0662-000

COUNTY IN WHICH PROPERTY IS LOCATED: Rock  
THE AMOUNT CLAIMED TO BE DUE ON THE MORTGAGE ON THE DATE OF THE NOTICE: Forty-Six Thousand Two Hundred Forty-Seven and 77/100 (\$46,247.77)

THAT no action or proceeding has been instituted at law to recover the debt secured by said mortgage, or any part thereof; that there has been compliance with all pre-foreclosure notice and acceleration requirements of said mortgage, and/or applicable statutes;

PURSUANT, to the power of sale contained in said mortgage, the above described property will be sold by the Sheriff of said county as follows:

DATE AND TIME OF SALE: 10:00 AM on January 7, 2016  
PLACE OF SALE: Law Enforcement Center, Lobby, 1000 North Blue Mound Avenue, Luverne, MN

to pay the debt then secured by said mortgage and taxes, if any actually paid by the mortgagee, on the premises and the costs and disbursements allowed by law. The time allowed by law for redemption by said mortgagor(s), their personal representatives or assigns is 6.00 months from the date of sale.

If Mortgage is not reinstated under Minn. Stat. Section 580.30 or the property is not redeemed under Minn. Stat. Section 580.23, the Mortgagor must vacate the property on or before 11:59 p.m. on July 7, 2016, or the next business day if July 7, 2016 falls on a Saturday, Sunday or legal holiday.

"THE TIME ALLOWED BY LAW FOR REDEMPTION BY THE MORTGAGOR, THE MORTGAGOR'S PERSONAL REPRESENTATIVES OR ASSIGNS, MAY BE REDUCED TO FIVE WEEKS IF A JUDICIAL ORDER IS ENTERED UNDER MINNESOTA STATUTES, SECTION 582.032, DETERMINING, AMONG OTHER THINGS, THAT THE MORTGAGED PREMISES ARE IMPROVED WITH A RESIDENTIAL DWELLING OF LESS THAN FIVE UNITS, ARE NOT PROPERTY USED IN AGRICULTURAL PRODUCTION, AND ARE ABANDONED."

Dated: November 19, 2015  
Deutsche Bank National Trust Company, as Trustee for First Franklin Mortgage Loan Trust 2006-FF16, Asset-Backed Certificates, Series 2006-FF16 Randall S. Miller and Associates, PLLC Attorneys for Assignee of Mortgage/Mortgagee  
Canadian Pacific Plaza,  
120 South Sixth Street, Suite 2050  
Minneapolis, MN 55402  
Phone: 952-232-0052  
Our File No. 15MNO0066-1

**THIS IS A COMMUNICATION FROM A DEBT COLLECTOR.** A-4550998 (11-19, 11-26, 12-3, 12-10, 12-17, 12-24)

## Mortgage foreclosure sale set for Jan. 21

**NOTICE OF MORTGAGE FORECLOSURE SALE**  
THE RIGHT TO VERIFICATION OF THE DEBT AND IDENTITY OF THE ORIGINAL CREDITOR WITHIN THE TIME PROVIDED BY LAW IS NOT AFFECTED BY THIS ACTION.

NOTICE IS HEREBY GIVEN: That default has occurred in the conditions of the following described mortgage:

DATE OF MORTGAGE: February 4, 2008  
ORIGINAL PRINCIPAL AMOUNT OF MORTGAGE: \$124,200.00  
MORTGAGOR(S): Jesse A. Akkerman a/k/a Jesse Akkerman and Candyce Akkerman, husband and wife

MORTGAGEE: Wells Fargo Bank, N.A.

DATE AND PLACE OF FILING: Recorded on February 12, 2008 as Document Number 168325 in the Office of the County Recorder of Rock County, Minnesota.

ASSIGNMENTS OF MORTGAGE: Assigned to: None.

LEGAL DESCRIPTION OF PROPERTY: Lot 6 in Block 1 of The Sybesma Subdivision, Luverne, Rock County, Minnesota

STREET ADDRESS OF PROPERTY: 212 PINE DRIVE, LUVERNE, MN 56156  
COUNTY IN WHICH PROPERTY IS LOCATED: Rock County, Minnesota

THE AMOUNT CLAIMED TO BE DUE ON THE MORTGAGE ON THE DATE OF THE NOTICE: \$132,621.48

TRANSACTION AGENT: None  
NAME OF MORTGAGE ORIGINATOR (LENDER): Wells Fargo Bank, N.A.

RESIDENTIAL SERVICER: Wells Fargo Bank, N.A.  
TAX PARCEL IDENTIFICATION NUMBER: 20.2030.000

TRANSACTION AGENT'S MORTGAGE ID NUMBER (MERS NUMBER): None  
THAT no action or proceeding has been instituted at law to recover the debt secured by said mortgage, or any part thereof; that there has been compliance with all pre-foreclosure notice and acceleration requirements of said mortgage, and/or applicable statutes;

PURSUANT, to the power of sale contained in said mortgage, the above described property will be sold by the Sheriff of said county as follows:

DATE AND TIME OF SALE: January 21, 2016 at 10:00 am  
PLACE OF SALE: Rock County Sheriff's Office, in the Lobby of the Rock County Law Enforcement Center, 213 East Luverne, Luverne, Minnesota

to pay the debt then secured by said mortgage and taxes, if any actually paid by the mortgagee, on the premises and the costs and disbursements allowed by law. The time allowed by law for redemption by said mortgagor(s), their personal representatives or assigns is six (6) months from the date of sale.

Unless said mortgage is reinstated or the property redeemed, or unless the time for redemption is reduced by judicial order, you must vacate the premises by 11:59 p.m. on July 21, 2016.

MORTGAGOR(S) RELEASED FROM FINANCIAL OBLIGATION ON MORTGAGE: None

THE TIME ALLOWED BY LAW FOR REDEMPTION BY THE MORTGAGOR, THE MORTGAGOR'S PERSONAL REPRESENTATIVES OR ASSIGNS, MAY BE REDUCED TO FIVE WEEKS IF A JUDICIAL ORDER IS ENTERED UNDER MINNESOTA STATUTES, SECTION 582.032, DETERMINING, AMONG OTHER THINGS, THAT THE MORTGAGED PREMISES ARE IMPROVED WITH A RESIDENTIAL DWELLING OF LESS THAN FIVE UNITS, ARE NOT PROPERTY USED IN AGRICULTURAL PRODUCTION, AND ARE ABANDONED."

Dated: November 18, 2015

WELLS FARGO BANK, N.A.  
Mortgagee

SCHILLER & ADAM, P.A.

By: /s/  
Rebecca F. Schiller, Esq.  
Sarah J.B. Adam, Esq.  
N. Kibongni Fondungallah, Esq.  
Curt N. Trisko, Esq.  
Samuel R. Coleman, Esq.  
Attorneys for Mortgagee  
The Academy Professional Building  
25 North Dale Street  
St. Paul, MN 55102  
(651) 209-9760  
(13-2601-FC02)

**THIS IS A COMMUNICATION FROM A DEBT COLLECTOR.** (11-25, 12-3, 12-10, 12-17, 12-24, 12-31)

## Mortgage foreclosure sale set for Dec. 17

**NOTICE OF MORTGAGE FORECLOSURE SALE**  
THE RIGHT TO VERIFICATION OF THE DEBT AND IDENTITY OF THE ORIGINAL CREDITOR WITHIN THE TIME PROVIDED BY LAW IS NOT AFFECTED BY THIS ACTION.

NOTICE IS HEREBY GIVEN, that default has occurred in conditions of the following described mortgage:

DATE OF MORTGAGE: August 8, 2007  
MORTGAGOR: Robert Scott Harvey and Michele Harvey, AKA Michele Virginia Harvey, husband and wife.

MORTGAGEE: Citicorp Trust Bank, fsb.  
DATE AND PLACE OF RECORDING: Recorded August 22, 2007 Rock County Recorder, Document No. 167271.

ASSIGNMENTS OF MORTGAGE: Assigned to: CitiMortgage, Inc., Dated March 28, 2014 Recorded April 9, 2014, as Document No. 183751. And thereafter assigned to: U.S. Bank National Association, as Legal Title Trustee to PROF-2013-S3 Legal Title Trust. Dated July 24, 2015 Recorded July 27, 2015, as Document No. 186641.

TRANSACTION AGENT: NONE  
TRANSACTION AGENT'S MORTGAGE IDENTIFICATION NUMBER ON MORTGAGE: NONE

LENDER OR BROKER AND MORTGAGE ORIGINATOR STATED ON MORTGAGE: Citicorp Trust Bank, fsb

RESIDENTIAL MORTGAGE SERVICER: Fay Servicing LLC  
MORTGAGED PROPERTY ADDRESS: 608 West Main Street, Luverne, MN 56156

TAX PARCEL I.D. #: 200891000  
LEGAL DESCRIPTION OF PROPERTY:  
Lot Four (4) in Block Six (6) in Kniss Park Addition to the City of Luverne, Rock County, Minnesota.

COUNTY IN WHICH PROPERTY IS LOCATED: Rock  
ORIGINAL PRINCIPAL AMOUNT OF MORTGAGE: \$95,706.23  
AMOUNT DUE AND CLAIMED TO BE DUE AS OF DATE OF NOTICE, INCLUDING TAXES, IF ANY, PAID BY MORTGAGEE: \$104,493.99

THAT prior to the commencement of this mortgage foreclosure proceeding Mortgagee/Assignee of Mortgagee complied with all notice requirements as required by statute; That no action or proceeding has been instituted at law or otherwise to recover the debt secured by said mortgage, or any part thereof;

PURSUANT to the power of sale contained in said mortgage, the above described property will be sold by the Sheriff of said county as follows:

DATE AND TIME OF SALE: December 17, 2015 at 10:00 AM  
PLACE OF SALE: Sheriff's Office, Main Entrance, Law Enforcement Center, 1000 North Blue Mound Avenue, Luverne, MN to pay the debt then secured by said Mortgage, and taxes, if any, on said premises, and the costs and disbursements, including attorneys' fees allowed by law subject to redemption within six (6) months from the date of said sale by the mortgagor(s), their personal representatives or assigns unless reduced to Five (5) weeks under MN Stat. §580.07.

TIME AND DATE TO VACATE PROPERTY: If the real estate is an owner-occupied, single-family dwelling, unless otherwise provided by law, the date on or before which the mortgagor(s) must vacate the property if the mortgage is not reinstated under section 580.30 or the property is not redeemed under section 580.23 is 11:59 p.m. on June 17, 2016, unless that date falls on a weekend or legal holiday, in which case it is the next weekday, and unless the redemption period is reduced to 5 weeks under MN Stat. Secs. 580.07 or 582.032.

MORTGAGOR(S) RELEASED FROM FINANCIAL OBLIGATION ON MORTGAGE: None

"THE TIME ALLOWED BY LAW FOR REDEMPTION BY THE MORTGAGOR, THE MORTGAGOR'S PERSONAL REPRESENTATIVES OR ASSIGNS, MAY BE REDUCED TO FIVE WEEKS IF A JUDICIAL ORDER IS ENTERED UNDER MINNESOTA STATUTES, SECTION 582.032, DETERMINING, AMONG OTHER THINGS, THAT THE MORTGAGED PREMISES ARE IMPROVED WITH A RESIDENTIAL DWELLING OF LESS THAN FIVE UNITS, ARE NOT PROPERTY USED IN AGRICULTURAL PRODUCTION, AND ARE ABANDONED."

Dated: October 13, 2015

U.S. Bank National Association, as Trustee  
Mortgagee/Assignee of Mortgagee

USSET, WEINGARDEN AND LIEBO, P.L.L.P.  
Attorneys for Mortgagee/Assignee of Mortgagee  
4500 Park Glen Road #300  
Minneapolis, MN 55416  
(952) 925-6888  
150 - 15-005520 FC

**THIS IS A COMMUNICATION FROM A DEBT COLLECTOR.**

**NOTICE OF POSTPONEMENT OF MORTGAGE FORECLOSURE SALE**

Pursuant to the provisions of Minnesota Statutes 580.07, the foregoing foreclosure sale is postponed until March 17, 2016 at 10:00 a.m. at the Sheriff's Office, Main Entrance, Law Enforcement Center, 1000 North Blue Mound Avenue, Luverne, MN, in said county and state.

Dated: December 17, 2015.

U.S. Bank National Association, as Trustee  
Mortgagee/Assignee of Mortgagee

USSET, WEINGARDEN AND LIEBO, P.L.L.P.  
Attorneys for Mortgagee/Assignee of Mortgagee  
4500 Park Glen Road #300  
Minneapolis, MN 55416  
(952)925-6888  
150-15-005520 FC

**THIS IS A COMMUNICATION FROM A DEBT COLLECTOR.** (12-24)

**Severson probate**

PROBATE COURT  
DISTRICT COURT  
PROBATE DIVISION

ORDER AND NOTICE OF HEARING FOR FORMAL PROBATE OF WILL AND APPOINTMENT OF PERSONAL REPRESENTATIVE IN SUPERVISED ADMINISTRATION AND NOTICE TO CREDITORS

STATE OF MINNESOTA  
COUNTY OF ROCK  
Estate of Robert Lee Severson, a/k/a Robert L. Severson, Deceased

TO ALL INTERESTED PERSONS AND CREDITORS:

It is Ordered and Notice is hereby given that on 11th day of January, 2016 at 3:30 O'clock P.M., a hearing will be held in the above named Court at Rock County Courthouse, Luverne, Minnesota for the formal probate of an instrument purporting to be the will of the above named deceased, dated September 29, 2015, and for the appointment of Abby Moeller, who address is 509 W. Luverne St., Luverne, MN 56156, as personal representative of the estate of the above named decedent in supervised

administration, and that any objections thereto must be filed with the Court. That, if proper, and no objections are filed, said personal representative will be appointed to administer the estate, to collect all assets, pay all legal debts, claims, taxes and expenses, and sell real and personal property, and do all necessary acts for the estate. Upon completion of the administration, the representative shall file a final account for the allowance and shall distribute the estate to the persons thereto entitled as ordered by the Court, and close the estate.

Notice is further given that ALL CREDITORS having claims against said estate are required to present the same to said personal representatives or to the Court Administrator within four months after the date of this notice or said claims will be barred.

Dated: December 15, 2015 /s/ Terry S. Vajrjt  
Terry S. Vajrjt  
District Court Judge

/s/ Denise Brandel  
Denise Brandel  
Court Administrator

/s/ Jennifer L. Eisma-Remke  
Jennifer L. Eisma-Remke  
Attorney For Petitioner  
Eisma and Eisma  
130 East Main, Box 625  
Luverne, MN 56156  
(507) 283-4828  
I.D. #389457

(12-24, 12-31)

## Mortgage foreclosure sale set for Feb. 11

**NOTICE OF MORTGAGE FORECLOSURE SALE**  
THE RIGHT TO VERIFICATION OF THE DEBT AND IDENTITY OF THE ORIGINAL CREDITOR WITHIN THE TIME PROVIDED BY LAW IS NOT AFFECTED BY THIS ACTION.

NOTICE IS HEREBY GIVEN: That default has occurred in the conditions of the following described mortgage:

MORTGAGOR(S): Darryl R. Boltjes and Marti K. Boltjes, husband and wife  
MORTGAGEE: Mortgage Electronic Registration Systems, Inc., a Delaware corporation as nominee for Aegis Lending Corporation, a Delaware corporation

ASSIGNMENTS OF MORTGAGE: Assigned to: Deutsche Bank National Trust Company, as Trustee for Soundview Home Loan Trust 2006-3, Asset-Backed Certificates, Series 2006-3 by assignment recorded on March 5, 2014 as Document Number 183568 in the Office of the County Recorder of Rock County, Minnesota.

ORIGINAL PRINCIPAL AMOUNT OF MORTGAGE: \$76,500.00  
DATE OF MORTGAGE: April 11, 2006  
DATE AND PLACE OF FILING: Recorded on September 25, 2006 as Document Number 164883 in the Office of the County Recorder of Rock County, Minnesota.

THE AMOUNT CLAIMED TO BE DUE ON THE MORTGAGE ON THE DATE OF THE NOTICE: \$76,472.99

LEGAL DESCRIPTION OF PROPERTY: The South Seventy Feet of the West One Hundred Thirty-five Feet of the North Half of Lot Five (5) in Block Three (3) of PJ Kniss Addition to the City of Luverne, Minnesota, subject to easements, if any, Rock County, Minnesota.

STREET ADDRESS OF PROPERTY: 114 N DONALDSON ST, LUVERNE, MN 56156-1418

COUNTY IN WHICH PROPERTY IS LOCATED: Rock County, Minnesota  
TRANSACTION AGENT: Mortgage Electronic Registration Systems, Inc.

NAME OF MORTGAGE ORIGINATOR: Aegis Lending Corporation, a Delaware corporation  
RESIDENTIAL SERVICER: Wells Fargo Bank, N.A.

TAX PARCEL IDENTIFICATION NUMBER: 20-0970-000  
TRANSACTION AGENT'S MORTGAGE IDENTIFICATION NUMBER: 100055140023452580

THAT no action or proceeding has been instituted at law to recover the debt then remaining secured by such mortgage, or any part thereof, or, if the action or proceeding has been instituted, that the same has been discontinued, or that an execution upon the judgment rendered therein has been returned unsatisfied, in whole or in part.

PURSUANT, to the power of sale contained in said mortgage, the above described property will be sold by the Sheriff of said county as follows:

DATE AND TIME OF SALE: February 11, 2016 at 10:00 AM  
PLACE OF SALE: Rock County Sheriff's Office, in the Lobby of the Rock County Law Enforcement Center, 213 East Luverne, Luverne, Minnesota to pay the debt then secured by said mortgage and taxes, if any actually paid by the mortgagee, on the premises and the costs and disbursements allowed by law. The time allowed by law for redemption by said mortgagor(s), their personal representatives or assigns is six (6) months from the date of sale.

TIME AND DATE TO VACATE PROPERTY: Unless said mortgage is reinstated or the property redeemed, or unless the time for redemption is reduced by judicial order, you must vacate the premises by 11:59 p.m. on August 11, 2016.

THE TIME ALLOWED BY LAW FOR REDEMPTION BY THE MORTGAGOR, THE MORTGAGOR'S PERSONAL REPRESENTATIVES OR ASSIGNS, MAY BE REDUCED TO FIVE WEEKS IF A JUDICIAL ORDER IS ENTERED UNDER MINNESOTA STATUTES, SECTION 582.032, DETERMINING, AMONG OTHER THINGS, THAT THE MORTGAGED PREMISES ARE IMPROVED WITH A RESIDENTIAL DWELLING OF LESS THAN FIVE UNITS, ARE NOT PROPERTY USED IN AGRICULTURAL PRODUCTION, AND ARE ABANDONED.

MORTGAGOR(S) RELEASED FROM FINANCIAL OBLIGATION ON MORTGAGE: None

Dated: December 17, 2015

DEUTSCHE BANK NATIONAL TRUST COMPANY, AS TRUSTEE FOR SOUNDVIEW HOME LOAN TRUST 2006-3, ASSET-BACKED CERTIFICATES, SERIES 2006-3  
Mortgagee

SCHILLER & ADAM, P.A.  
By: /s/  
Rebecca F. Schiller, Esq.  
Sarah J.B. Adam, Esq.  
N. Kibongni Fondungallah, Esq.  
"Curt N. Trisko, Esq."  
Samuel R. Coleman, Esq.  
Attorneys for Mortgagee  
The Academy Professional Building  
25 North Dale Street  
St. Paul, MN 55102  
(651) 209-9760  
(15-2085-FC01)

**THIS IS A COMMUNICATION FROM A DEBT COLLECTOR.** (12-24, 12-31, 1-7, 1-14, 1-21, 1-28)

**Star Herald CLASSIFIEDS**

**EMPLOYMENT**

**HELP WANTED**

The Garretson School District has an opening for a **part-time van driver**. Clean driving record required.

Pay is \$15 per hour for driving time.

The driver will transport students to and/or from various educational facilities in Sioux Falls. Position is open until filled.

Call (605) 594-3451 or stop into the Administration Office to pick up an application.

The Garretson School District does not discriminate in hiring or compensation based on race, creed, color, religion, nationality, sex, handicapping condition, or age.



### EMPLOYMENT

Herman Motor Co., the Ford Dealer in Luverne for 83 years, is seeking a fulltime salesperson. This is a great opportunity for the right individual. New, State of the Art Facility with a wonderful opportunity to expand and grow. Please send resume to joel@hermanmotor.com (12.20-1.7)

Ellsworth Public School is accepting applications for a school bus route driver. Applications can be picked up in the school office at 513 S. Broadway St., Ellsworth, MN or by calling 507-967-2242. (12.6-12.24)

Nursing Assistant-Parkview Manor has openings for full-time nurse aides with benefits to include: health insurance, public retirement plan, and holiday pay. Part-time positions also available. New Wages \$11.40-12.00/hr. \$2000 scholarships available for students. Will provide training or pay for experience. Contact Darnell Krull, 308 Sherman Ave., Ellsworth, MN 56129 or call (507) 967-2388. (tc)

Registered Nurse/LPN-Parkview Manor, a municipal skilled nursing facility is accepting applications for a part-time charge nurse position. Wages commensurate with experience. \$2000 Scholarship available for students. Benefits include vacation, holiday and PERA retirement plan. Contact Darnell Krull, 308 Sherman Ave. Ellsworth, MN 56129 or call (507) 967-2482. (tc)

Adrian Public School is accepting applications for an Elementary Secretary. This is a part time position consisting of 1720 hours. The preferred applicant will have excellent interpersonal communication and customer service skills, be highly organized and able to handle multiple tasks. Be highly proficient with technology in regards to the use of: Microsoft Word, Excel, Google Docs, software information systems and be able to do general website updates, use a phone system, operate fax and copier machines. In addition, the preferred applicant will have two or more years of clerical training in office management and/or two or more years of work experience as a secretary. Pay rate ranges between \$14.65 and \$15.65 depending on education and work experience. The position is open until filled and the District will determine the start-date.

Interested applicants must submit a letter of application complete the district application along with three letters of recommendation to Mr. Roger Graff Superintendent, PO Box 40, Adrian, MN 56110. Adrian Public Schools is an equal opportunity employer. (12.24-1.10)

### EMPLOYMENT

EXTRA MONEY? Work part-time or full-time from your home office with our wellness company. No stocking, selling, or delivery. Computer required. www.NewFreedom4u.Biz. Call 507-962-3444 or 507-227-7975. (tc)

**SON-D-FARMS**  
**ADRIAN**

is hiring General Farm, Hog, Field Work, Truck Driver, Maintenance person & Mill person. Experience wanted but willing to train. PTO benefits. Call (507) 483-2245, 370-1590 or e-mail jessihoffman@sondfarms.com

### EMPLOYMENT

## EMPLOYMENT NOTICE ROCK COUNTY SHERIFF'S OFFICE DISPATCHER

The Rock County Administrator's Office is now accepting applications for the position of dispatcher in the Rock County Sheriff's Office until January 11, 2016 at 5:00 pm. This is a full time position with full benefits. Minimum qualifications are a High School diploma or equivalent with one year of work related experience. Applicants must possess excellent communication skills, have the ability to read a map and multi-task duties in a fast paced environment. Starting hourly wage will be \$14.54-\$15.72 per hour DOQ. A detailed job description and an application for this position can be accessed at <http://www.co.rock.mn.us/employment.html> or by emailing [susan.skattum@co.rock.mn.us](mailto:susan.skattum@co.rock.mn.us) or by phone at 507-283-5065.  
*An Equal Opportunity Employer*

### EMPLOYMENT

### EMPLOYMENT

### EMPLOYMENT

## HELP WANTED

The Garretson School District has an opening for a **Head Custodian**. Successful candidates will have strong communication skills, aptitude for organization and coordination, the ability to supervise school custodians, knowledge of cleaning techniques and the ability to do a wide variety of maintenance and repair work. Salary for this position starts at \$40,000, depending on skills and experience. Benefits include health insurance, dental insurance and South Dakota Retirement. Hours for this position are from 1:00-9:00 PM, but can be flexible. The position is open until filled. Contact the Administration Office for an application at (605)594-3451.  
The Garretson School District does not discriminate in hiring or compensation based on race, creed, color, religion, nationality, sex, handicapping condition or age.



**MCAN**

Minnesota Classified Advertising Network

#### HELP WANTED - DRIVERS

**CDL A DRIVERS**  
\$7,500 sign-on-bonus. Medical benefits on day 1 & \$65k+ in your first year!!! Guaranteed pay. Profit sharing. 401K with company match & more! Email resume: [mnhr@mclaneco.com](mailto:mnhr@mclaneco.com) or call Hollie now! 507/664-3038

**NOW HIRING**  
Company OTR drivers. \$2,000 sign on bonus, flexible home time, extensive benefits. Call now! Hibb's & Co. 763/389-0610

**TMC HAS OPENINGS**  
hauling boats to waterfront locations throughout US and Canada. CDL Class A, 1yr. OTR experience. Full benefits, employee owned company 855/409-3630 [www.tmctrans.com](http://www.tmctrans.com)

#### MISCELLANEOUS

**SELL YOUR STRUCTURED SETTLEMENT**  
or annuity payments for CASH NOW. You don't have to wait for your future payments any longer! Call 800/218-8581

**GOT KNEE PAIN?**  
Back Pain? Shoulder Pain? Get a pain-relieving brace -little or no cost to you. Medicare patients call health hotline now! 800/755-6807

**SAVE MONEY!**  
Call your local newspaper or MNA 800-279-2979 to find out how you can save money by placing your advertisement here!

#### MISCELLANEOUS

**DONATE YOUR CAR**  
truck or boat to Heritage For The Blind. Free 3 day vacation, tax deductible, free towing, all paperwork taken care of 800/439-1735

**DISH NETWORK**  
Get more for less! Starting \$19.99/month (for 12 months), plus bundle & save (Fast Internet for \$15 more/month.) Call now 800/297-8706

**STOP OVERPAYING FOR YOUR PRESCRIPTIONS!**  
Save up to 93%! Call our licensed Canadian and International pharmacy service to compare prices and get \$15.00 off your first prescription and free shipping. Call 800/259-1096

## RATE INCREASE NOTICE

### XCEL ENERGY MINNESOTA ELECTRIC PRICES

Interim Change in Electric Rates Starting January 1, 2016  
*Until Final Decision is Made*

#### XCEL ENERGY'S RATE INCREASE REQUEST

Xcel Energy has asked the Minnesota Public Utilities Commission (MPUC) for a three-year increase in electricity rates. For 2016, the requested increase is for \$194.6 million, or about 6.4 percent. For 2017, Xcel Energy requested an additional \$52.1 million, or about 1.7 percent. For 2018, Xcel Energy requested an additional \$50.4 million, or about 1.7 percent. The total increase requested for the three-year period is \$297.1 million, or about 9.8 percent. (Xcel Energy has also offered an option for a five year rate plan.)

While the MPUC reviews Xcel Energy's request, state law allows Xcel Energy to collect higher rates on an interim (temporary) basis. The interim rate increase for 2016 is \$163.7 million or about 5.5 percent over total current rates. This appears on customer bills as an interim rate adjustment. It is calculated from a change to the "Basic Service Charge," "Energy Charge," and, if applicable, the "Demand Charge." The interim rate adjustment is billed as a 7.75 percent increase, or about \$5.06 per month, for a typical residential customer using 675 kWh.

Because Xcel Energy is requesting a multi-year rate plan, it also requested an increase to the interim rate starting January 1, 2017. If approved, the company will provide additional details before this increase happens.

The MPUC will likely make its decision on the overall rate request in 2017. If final rates are lower than interim rates, Xcel Energy will refund the difference. If final rates are higher than interim rates, Xcel Energy will not charge customers the difference.

#### WHY IS XCEL ENERGY ASKING FOR AN INCREASE?

Xcel Energy's last request for a rate increase was in 2013. Xcel Energy continues to invest in maintaining and upgrading its system. A multi-year rate plan provides customers more predictability and rate stability for a longer period of time than is achievable under a single year rate request.

#### HOW WILL THE RATE CHANGE AFFECT MONTHLY BILLS?

The proposed rate increase will affect individual monthly bills differently depending on electricity use and customer type. The proposed rate increase mainly affects the "Basic Service Charge," "Energy Charge," and, if applicable, the "Demand Charge." These charges cover the cost of providing electric service to our customers, representing about 70 percent of your total bill. This rate increase does not affect the Fuel Cost Charge.

#### WHAT IS XCEL ENERGY DOING TO CONTROL COSTS?

- Providing energy conservation options. This helps customers manage energy use and save money on their bills. This also helps to delay generation investments.
- Reviewing and monitoring our business to minimize operating and maintenance cost increases.
- Operating power plants efficiently.
- Using a variety of fuel sources to manage costs and protect the environment.

#### WHAT IS THE PROCESS FOR REVIEWING XCEL ENERGY'S REQUEST?

The MPUC, the Minnesota Department of Commerce, the Office of the Attorney General-Residential Utilities and Antitrust Division, public interest groups, and large commercial and industrial customer groups will investigate our proposal.

The MPUC will hold public hearings and accept written comments about our rate request. Customers and others will be able to comment on our rate request at the public hearings. You may add verbal comments, written comments, or both into the record. Notice of the public hearing dates and locations will be published in local newspapers, included in monthly bills, and at: [xcelenergy.com/rates](http://xcelenergy.com/rates), select "Minnesota" in top right-hand corner, select "Rates" then select "2016 Minnesota Electric Rate Case"

#### SUBMIT COMMENTS

##### Minnesota Public Utilities Commission

Online: Visit [mn.gov/puc](http://mn.gov/puc), select Speak Up!, find this docket (15-826), and add your comments to the discussion.  
U.S. Mail: 121 7th Place East, Suite 350, St. Paul MN 55101  
Phone: 651-296-0406 or 1-800-657-3782

#### PROPOSED CHANGES FOR MONTHLY ELECTRICITY BASE RATES

This chart shows the current and proposed electricity base rates for each customer type.

##### AVERAGE MONTHLY BILLS

Customer type	Average monthly kWh usage	Current monthly cost	2016 Interim monthly increase	Proposed 2017 final monthly increase	Proposed 2018 final monthly increase
Residential - Overhead line service	544	\$71.11	\$4.20	\$7.92	\$9.24
Residential - Underground line service	800	\$102.82	\$6.04	\$10.71	\$12.59
Energy-Controlled (Dual Fuel)	1,050	\$82.58	\$3.87	\$3.70	\$4.90
Small General Service	923	\$112.24	\$6.41	\$6.04	\$7.95
Small General Time-of-Day Service	1,417	\$147.06	\$7.89	\$11.45	\$13.91
General Service	17,014	\$1,677.48	\$89.86	\$103.54	\$130.74
General Time-of-Day Service	168,653	\$13,535.11	\$667.95	\$879.51	\$1,081.99
Peak-Controlled Service	66,550	\$8,200.22	\$467.83	\$524.81	\$670.09
Peak-Controlled Time-of-Day Service	582,250	\$56,211.88	\$2,961.60	\$3,768.58	\$4,681.73
Small Municipal Pumping	658	\$82.89	\$4.80	\$4.88	\$6.31
Municipal Pumping	4,826	\$557.31	\$31.53	\$32.88	\$42.40

**Note:** Proposed lighting rate changes vary according to the type of lighting. The proposed final increase is 15.9 percent for full service street lighting, 8.6 percent for energy-only street lighting service, and 11.2 percent for residential and commercial protective lighting.

##### MONTHLY CUSTOMER CHARGES

Customer type	Current	Proposed 2017	Proposed 2018
<b>Residential</b>			
Overhead line	\$8.00	\$10.00	\$10.20
Overhead line - electric heating	\$10.00	\$12.00	\$12.24
Underground line	\$10.00	\$12.00	\$12.24
Underground line - electric heating	\$12.00	\$14.00	\$14.28
<b>Small Commercial</b>			
Small General	\$10.00	\$12.00	\$12.24
Small General Time-of-Day	\$12.00	\$14.00	\$14.28
<b>Commercial and Industrial</b>			
General	\$25.75	\$25.78	\$26.30
General Time-of-Day	\$29.75	\$29.78	\$30.38
Peak-Controlled	\$55.00	\$55.00	\$56.11
Peak-Controlled Time-of-Day	\$55.00	\$55.00	\$56.11

**Note:** For 2018 rates, Xcel Energy proposed a 2.026 percent General Rate Surcharge instead of an increase to the per kWh energy rates and the per kW demand rates. If approved, this will be applied to rate components specified in the "General Rate Adjustment Surcharge Rider" to service provided beginning January 1, 2018.

#### IMPORTANT

Comments will be made available to the public on the MPUC's website, except in limited circumstances consistent with the Minnesota Government Data Practices Act. The MPUC does not edit or delete personally identifying information from submissions.

#### HOW TO LEARN MORE

Xcel Energy's current and proposed rate schedules are available at:

##### Xcel Energy

Web: [xcelenergy.com/rates](http://xcelenergy.com/rates) (see previous instructions)  
Phone: 1-800-895-4999  
414 Nicollet Mall  
Minneapolis, MN 55401

##### Minnesota Department of Commerce

Web: <https://www.edockets.state.mn.us/Efiling/search.jsp>  
Select 15 in the year field, enter 826 in the number field, click on Search, and the list of documents will appear on the next page.

Phone: 651-539-1534 or 1-800-657-3710  
85 Seventh Place East, Suite 500  
St. Paul, MN 55101

Citizens with hearing or speech disabilities may call through their preferred Telecommunications Relay Service.

##### ENERGY (PER KWH) AND DEMAND (PER KW) RATES

Customer type	Current	Proposed 2017	Proposed 2018
<b>Residential</b>			
Energy: Summer (June-Sept)	9.395 ¢	10.865 ¢	11.085 ¢
Energy: Winter (Other months)	8.040 ¢	9.285 ¢	9.473 ¢
Energy: Winter - electric heating	5.819 ¢	6.394 ¢	6.524 ¢
<b>Small General</b>			
Energy: Summer	8.787 ¢	9.655 ¢	9.851 ¢
Energy: Winter	7.432 ¢	8.076 ¢	8.240 ¢
<b>Small General Time-of-Day</b>			
Energy: On-Peak Summer	15.123 ¢	15.443 ¢	15.756 ¢
Energy: On-Peak Winter	12.280 ¢	12.118 ¢	12.364 ¢
Energy: Off-Peak Summer	3.015 ¢	4.420 ¢	4.510 ¢
Energy: Off-Peak Winter	3.015 ¢	4.420 ¢	4.510 ¢
<b>General</b>			
Energy	3.201 ¢	3.619 ¢	3.692 ¢
Demand: Summer	\$14.07	\$15.79	\$16.11
Demand: Winter	\$9.96	\$11.09	\$11.31
<b>General Time-of-Day</b>			
Energy: On-Peak	4.482 ¢	5.158 ¢	5.263 ¢
Energy: Off-Peak	2.233 ¢	2.487 ¢	2.537 ¢
Demand: Summer	\$14.07	\$15.79	\$16.11
Demand: Winter	\$9.96	\$11.09	\$11.31



[www.xcelenergy.com](http://www.xcelenergy.com) © 2015 Xcel Energy Inc.

**Sterling's**  
Cafe & Grille

**Help Wanted**

Dishwasher  
Servers  
Host/Hostess  
Cooks  
(Experience preferred but not necessary)

Competitive wages for all positions.  
Contact Brian at Sterlings in Luverne during business hours  
507-449-0220

# Star Herald CLASSIFIEDS

**EMPLOYMENT**

**EMPLOYMENT NOTICE  
ROCK COUNTY DEPUTY SHERIFF**

The Rock County Administrator's Office is now accepting applications for the position of part time Intermittent Deputy for the Rock County Sheriff's Office until January 11, 2016. The position assists the Rock County Sheriff's Department in enforcing the law and the protection of life and property throughout the county. Work is performed on a rotating shift basis.

Applicants must possess a high school diploma or equivalent and a two-year degree in law enforcement, plus an eight-week skills course. Upon being hired, the officer must either be eligible to be licensed as a "part time licensed" or "full time licensed" Peace Officer in order to comply with the post standards in Minnesota. In addition, the applicant must have completed the following training: qualified in the use of firearms, First Responder course, possess a current CPR card and a valid Minnesota class "C" driver's license. The starting salary range is \$19.50 per hour. The application process will involve the creation of a list of qualified applicants that will be valid through June 30, 2016.

A detailed job description and an application for this position can be accessed at <http://www.co.rock.mn.us/employment.html> or by emailing [susan.skattum@co.rock.mn.us](mailto:susan.skattum@co.rock.mn.us) or by phone at 507-283-5065. An Equal Opportunity Employer

**EMPLOYMENT**

**RENTALS**

For rent: Nice two-bedroom condo style apartment. Garage, low utilities, cost \$550. Deposit, reference required. Rick 507-227-5103 (12.17-1.3)

Two-bedroom and four-bedroom house. Appliances furnished. No pets. References. 507-283-8151 (12.6-12.24)

For rent: Two-bedroom apartment with stairs. Tenant pays gas and electric. No smoking, no pets. Must have good references. Call 507-283-9794. (tc)

For rent: One-bedroom, second floor apartment in downtown Luverne. Older building with updates. \$290 plus utilities. No pets. Call 605-201-6427. (tc)

**FOR SALE**

Cars for sale: 1999 Buick LaSabre, 69k miles. Nice. Asking \$5,700. 1996 Lincoln Towncar, 120k miles. Nice. Asking \$3,600. Please call 605-413-8862. (12.13-12.31)

**WANTED**

Buying old cars, trucks, scrap iron, old farm equipment, tin, wire. Ericksen Salvage, Charlie Ericksen, 605-254-4654. (tc)

**COMMERCIAL**

Office Space for Rent: Ideal downtown location. Quality building. Several sizes available. Utilities included. Call Randy Creeger, 507-220-1105 or [randy.creeger@gmail.com](mailto:randy.creeger@gmail.com). (tc)

**RENTALS**

**Happy Holidays from  
STONE CREEK  
TOWNHOMES**

**2 BR & 3 BR**  
Income based rent.  
Includes water, sewer, trash.  
Melissa: 507-625-0259  
[LloydManagementInc.com](http://LloydManagementInc.com)  
Equal Housing Opportunity

**FOR RENT**

Maintenance FREE living for those 50+ or disabled at Centennial Apartments.  
1 Bedroom  
Income based rent, includes ALL utilities!  
[LloydManagementInc.com](http://LloydManagementInc.com)

**CENTENNIAL APARTMENTS**  
Jane: 507-283-2652  
Equal Housing Opportunity

**Damax Apartments**  
Rental Assistance Available

602 E. Warren St, Luverne, MN  
Inquire about move-in specials  
Accepting all income levels  
1 & 2 Bedrooms  
Newly Remodeled

Van Binsbergen & Associates, Inc.  
320-269-6640 ext. #22  
[www.vanblc.com](http://www.vanblc.com)

**CARDS OF THANKS**

The family of Larry Hellwinckel would like to say thank you for all the kind words, prayers, food and memorials. Thank you to Pastor Mummie and Beth for all your support during our time of need, to the ladies in the kitchen for all your hard work, Dr. Ceynowa for the years of care and support, Hartquist for doing such a great job at guiding us all through a difficult time and Hospice for being so kind and supportive. God's blessings to you all.

**Barb Hellwinckel  
Karen and Arlyn Sneller and family  
Kristy and Mike Willers and family  
Kim and Ron Ramert and family  
Lisa and Rod Rosin and family  
Kelly and Tom Dohlmann and family**  
(12.13-12.24)

Dal and I want to give a big thank you to all the people that helped us go through a lot of changes in our lives. Thanks to Pastor Joe and our church, all the doctors and nurses at Sanford Luverne and Sioux Falls and Edgebrook Care Center, our darling children, special cousins, friends and neighbors for prayers, phone calls, cards, food etc. Most of all, thanks to our God who answered many of our prayers for us. Have a blessed Christmas and a great new year.

**Dal and Joyce Schelhaas  
Kenneth, MN**  
(12.24-12.27)

**MISCELLANEOUS**

HAVE A UNIQUE SERVICE OR BUSINESS? Get the word out to over 1.4 million households. Call WIDE AREA CLASSIFIEDS today, 507-359-7326. (tc)

**WINDOWS**

We custom build and install Energy Star Therm-O-Loc Windows. Call Mike at Adrian Glass for a free in-home demonstration and estimate. 101 E. Pearl, Adrian, MN 56110. 507-483-2228. (tc)

**RENTALS**

**RENTALS**

**BLUE MOUND TOWER**



**Luverne HRA • Blue Mound Tower**  
216 McKenzie Street  
Luverne, MN 56156

**507-283-4922**

Apartments available!

- All Ages Welcome
- Close to Senior Dining
- Close to Minnesota West College
- Income Based
- Handicap Accessible
- Pet Friendly
- Smoke Free
- Secure Entry System
- On Site Laundry
- Utilities included

**ADVERTISE TODAY!**  
with the  
**Star Herald**  
call  
**507-283-2333**

## Celebrating life with light.

**SANFORD**  
Luverne

### Luverne Tree of Lights

Thank you for supporting Sanford Luverne Hospice through the Tree of Lights events.

**In Honor of:**

Enore Boelman  
Barb Connell  
Merecie Domagala  
Delvin Domagala  
Eileen Domagala  
Jon Everetts  
Tracie Fulleston  
Ruth Wallig  
Rev. Gary Klatt  
Jeane Swenson  
Bob Pile & Family  
Helen Schultz  
Louise Stegemann  
Rita Sterrett

**In Memory of:**

John G. Aanenson  
Florence Aanenson  
Jacqueline Aanenson  
Russell Aanenson  
Jaden Richard Adams  
Harley Ailts  
Dean Anderson  
Norma Anderson  
Delwin Anderson  
Lyle Anderson  
Ruth Arp  
Dick Arp  
Harley Aukes  
Harold Baker  
Bertha Baker  
Margret Behrends  
Philip Behrends  
Gene Bendix and family members  
Chris Biren  
Tommy Birkeland  
Marion Birkeland  
Bud Bjerrum  
Al Bjerrum Jr.  
Gordon Bloemendaal  
Henry Blom  
Larry W. Boelman  
Eddie Boelman  
Troy L. Boelman  
Larry Boelman  
Jim Boeve  
Cynthia Boeve  
Arnold Bonnema  
Jane Bonnema  
Elaine Bosch  
Bernice Bouma  
Maurice Bouynga  
Ed Brands  
Les Brehm  
Dorothy Brehm

Basil Bremer  
Evelyn Bremer  
Fred J. Bristow  
Albert Brooks  
Gesine Brooks  
Patrica Buss  
Dee Buss  
Florence Buys  
Mary Buys  
Molly Charling  
Dwayne Christensen  
Betty Colbeck  
Keith Connell  
Bill Cuda  
ClaraBelle Cuda  
Lori Dahlen Carlson  
Penni Damon  
Jim DeBoer  
Gert DeBoer  
Ben Dirks  
Tony Dispanet  
Darlene Doering  
Wayne Domeyer  
Elmer Drost  
Frances Drost  
Frank Drost  
Sena Drost  
Chuck Ebert  
Gene Edstrom  
Pat Eeten  
Fred Eeten  
Darvin Eernisse  
Lavonne Einck  
Betty Entenman  
David Fenske  
Paul Fick  
Milo Fodness  
Roxanne Fodness  
Sharee Fritzemeier  
Leo Fuerstenberg  
Perry Etta Fuerstenberg  
John R. Gabrielson  
Jens Gabrielson  
Karen Gabrielson  
Kristy (VanSurksun) Giesler  
Jeanette Goebel  
Harriet Gonnerman  
LeRoy Gonnerman  
Judy Gott  
Glenda Groen  
Helen Guthrie  
Sonia "Sunny" Haggard  
Roger Hamm  
Shelly Hamm  
Carrie Hamm  
Ralph Hamm  
Marian Hamann

Donald A. Hansen  
Martin S. Hansen  
Wade A. Hansen  
Helen Hansen  
Esther Hansen  
Gordon W. Hansen  
Henrietta Hargesheimer  
Dale Hartz  
Clem Hatting  
Margaret Hatting  
Bob Hatting  
Scott Hatting  
Loni Hatting Batcheller  
Tami Hatting Bovitz  
David Hauge  
Orville Hebig  
Bud Heck  
Pauline Heck  
Bernice Heckt  
Marlyn Heeren  
Walter Hellwinckel  
Leora Hellwinckel  
Johnny Hemme  
Luella Hemme  
David Hessel  
Laura Hewitt  
Mel Hickenbotham  
Peggy Hickenbotham  
Rachel Hickenbotham  
Kitty Hickenbotham  
Bonnie Hilger  
Myron "Shorty" Hilger  
Margaret Hitch  
Harvey Hitch  
Alvina Hitch  
George Hocking  
La'Quan Howard  
Minnie Hubbling  
Darrell Huiskes  
Dorothy Huiskes  
Ray Jacobson  
Ray Jessen  
Karl Johnson  
Anna Johnson  
Jed Johnson  
Harvey Kemerling  
Harland Kessler  
Wilfred Kirk  
Nellie Kirk  
John Clay  
Geraldine Klein  
Sam Klein  
Ramona Klooster  
Rudolph Klosterbuer  
Lena Klosterbuer  
Mildred Klosterbuer

Onno Klosterbuer  
Bob Knebel  
Robert Knips  
Don Kuhlman  
Olga Kuhlmann  
Tami Kurtz  
Doris Laackman  
Connie Lange  
Reuben Larson  
Tilda Larson  
Flora Larson  
Dennis Loonan  
Elvin Lorenzen  
Betty Ann Lorenzen  
Al Luethje  
Albert Luethje  
Irene (Babe) Luethje  
Margarete Sonja Luitjens  
Delbert Lutmer  
Pat (Patricia) Mann  
Verlyn Mann  
Nicholas Mann  
Diane Benson Mann  
Debra Mann Jongerius Barnes  
Joyce Matthiesen  
Barb McClure  
Harold Meyer  
Gurina Meyer  
Eileen Mickelson  
Linda Molitor Hurd  
Arnie Mollberg  
Hadleigh Mullenberg  
Orlen Nath  
WM Nath  
Joel Nath  
Eleanor Nelson  
Val Nibbelink  
Dr. Don Odland  
Bryan Okonkowski  
Jordyn Olsen  
Lois Olson  
Bert Olson  
Jeremy Olson  
Ray O'Toole  
Michael O'Toole  
Jeff O'Toole  
Orin Oye  
Vince Oye  
Virginia Oye  
Marilyn Peters  
Ralph Petersen  
Lee Petersen  
Peggy Peterson  
Allen Pierson  
Michelle Pierson  
Suzanne Pierson-Dunbar

Harold A. Priesz  
Helen L. Priesz  
Carol Reimer  
Gale K. Remme  
Nellie Remme  
Lawrence Reuter  
Robert Reuter  
Buddy Roberts  
Ann Roberts  
Ginger Rogers  
Agnes Rother  
Russell Roos  
Shirley Roos  
Jesse Allen Saum  
Estle Saum  
Steve Saum  
Lois Schadwinkel  
Tony Scheidt  
Dominic Scheidt  
Zelda Scheidt  
Leona Schmidt  
Robert Schmitz  
John Schneekloth  
Dean Schultz  
Donald Schutz  
Marie Schutz  
John Serie  
Bobbie Serie  
Olin Shelton  
Irene Shelton  
Phyllis Siebenahler  
Nathan Skattum  
Bob Small  
Lilly Anne Small  
Mary Small-Tubbs  
Fred Smeins  
Virginia Smedsrud  
Abe Smith  
Mary Smits  
Harold Smook  
Marjorie Smook  
Daniel Sorby  
Cletus Spieker  
Dianna Spieker  
Marjorie Staeffler  
Virgil Staeffler  
Dan Stasch  
Fred Stegemann  
Norma Stettnich  
Dave Stroh  
Effie Stroh  
Jerry Stroh  
Rod Stroh  
Russ Swenson  
Dorothy Thorson  
Norman Thorson

Fred Tilstra  
Wayne Tilstra  
John J. Tinklenberg  
Hermina Tinklenberg  
Margaret Traen  
Paul Traen  
Edith Umland  
Otto Umland  
Henry Van Der Linden  
Daniel Van Der Linden  
Bud Van Eck  
James Van Hove  
Lois Van Hove  
Don Van Nieuwenhuizen  
Darla Van Nieuwenhuizen  
John Van Ruler  
Gertie Van Ruler  
Myrna Van Voorst  
Marian Vance  
Esther Vande Hoef  
Mandi VandeKieft  
Cody VandeKieft  
Katie VandeKieft  
Lois Vanden Bosch  
Willie VanEssen  
Albert Van't Hul  
Gertrude Van't Hul  
Fannie VanKlei  
Andy Vatland  
Carl Vegge  
Eunice Vegge  
Louise Vegge  
Margaret Vegge  
Norman Vegge  
Trygve Vegge  
Vernon VerSteege  
Johanna VerSteege  
Homer Vos  
Stacey Vos  
Leonard Wahlert  
Mavis Wahlert  
Jolene Wessels  
Sharon Wessels  
Everett Wharton  
May Wharton  
Corky Wiekeraad  
Fannie Wiekeraad  
Charles Wilson  
Grace Wittrock  
Joseph Wolf  
Sara Womack  
Norwyn Ykema  
Noreen Ykema  
Clara Yotter  
Jean Zandt  
George Zoellner



**Magnolia & Kanaranzi Grain**

12/24/15 ..... Closed at 1pm  
 12/25/15 ..... Closed  
 12/31/15 ..... Closed at 1pm  
 1/1/16 ..... Closed

**Magnolia Ag Center**

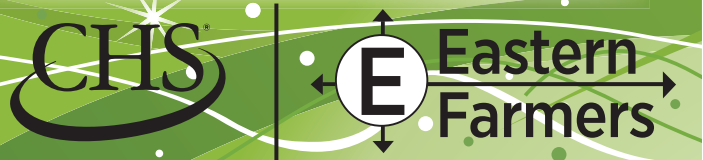
12/24/15 ..... Closed at 12pm  
 12/25/15 ..... Closed  
 12/31/15 ..... Open 8am to 5pm  
 1/1/16 ..... Closed

**Minnesota Propane**

12/24/15 ..... Off duty at 1pm  
 12/25/15 ..... Emergency on call only  
 12/31/15 ..... Off duty at 4pm  
 1/1/16 ..... Emergency on call only

**Luverne Feed & Grain**

12/24/15 ..... Closed at 1pm  
 12/25/15 ..... Closed  
 12/31/15 ..... Open until 5pm  
 1/1/16 ..... Closed



Feed Mill 507-449-2002  
 Main Office 507-283-4418  
 Magnolia Ag Center 507-283-3700  
 Magnolia Elevator 507-283-9121  
 Kanaranzi Elevator 507-283-8989

Payment drop box by main office



**MERRY CHRISTMAS AND HAPPY NEW YEAR**

Front: Don Baustian, Jeff Van Santen, Bryan Barnhart, Landon Gacke, Jake Nelson, Cory Schoeneman. Back: Dave Sandbulte, Karlin Van Otterloo, Adam Ulthoven, Bob Krull, Lowell Schelhaas, Merlin Cleveringa. Not pictured: Harlin Roozeboom, Derek Sandbulte, Glen Oeltjenbruns, Nate Cleveringa, Nick Cleveringa and Carol Cleveringa.

**BARCK AVENUE TRIPLEXES**

*Call Today!*  
**CLEVERINGA CONSTRUCTION, INC.**  
 507-920-5631  
 LUVERNE, MN

*If you would live in a twin home there's NO SHOVELING OR MOWING!*

The daily news off Rock County  
**Star-Herald.com**

Rock County  
**STAR HERALD**  
**Christmas Coloring Contest**

The 1st place winner in each age category awarded two \$10 gift cards to Pizza Ranch.  
 Thanks to all who participated.

**WINNERS**

**Avalynn Van Belle, Age 5**  
 Parents : Jason & Teresa Van Belle  
 From: Beaver Creek

**Ella Schmuck, Age 7**  
 Parents: Cory & Sara Schmuck  
 From: Luverne

**Makenzie Pap, Age 9**  
 Parents: Jamie & Brigitte Pap  
 From: Luverne

Bringing you Rock County's News since 1873

# EARLY DEADLINES



Deadline for the December 27 issue of the Luverne Announcer for advertising will be at 5 p.m. on Tuesday, December 22.

Deadline for the January 3 issue of the Luverne Announcer for advertising will be at 5 p.m. on Tuesday, December 29.

HAVE A MERRY CHRISTMAS & HAPPY NEW YEAR!

any questions, please call 283-2333

Santa

## JAYCOX IMPLEMENT, INC.

1909 Oxford Street, Worthington, MN • 507-376-3147  
403 Market Street, Lake Park, IA • 712-832-3151  
410 Koehn Avenue, Luverne, MN • 507-283-2319  
www.jaycoximplement.com

CNH CAPITAL  
CASE III



*Thank you for your patronage in 2015. We are looking forward to working with you in 2016.*

# HAPPY HOLIDAYS

FROM OUR STAFF



She will give birth to a son, and you are to give him the name Jesus, because he will save his people from their sins. All this took place to fulfill what the Lord had said through the prophet: "The virgin will conceive and give birth to a son, and they will call him Immanuel."  
~Matthew 1:21-23



The Evangelical Lutheran Good Samaritan Society, dba Good Samaritan Society—Luverne, provides services to qualified individuals without regard to race, color, religion, sex, disability, familial status, national origin or other protected statuses according to applicable federal or state law. All faiths or beliefs welcome. 2007-G0050



## Holiday Hours

All locations will be closing at Noon on Christmas Eve (December 24th) And Closed Christmas Day (December 25th) Closed Saturday, December 26th Closed New Years Day (January 1st)

*This Christmas may you remember the dreams of childhood, and may you experience the wonder they once held.*



Member FDIC

MINNWEST BANK

116 East Main Street • Luverne • 507-283-2366  
Hwy. 75 • 800 South Kniss • Luverne • 507-283-9131  
304 East 1st Ave. • Beaver Creek • 507-673-2334

www.minnwestbank.com

MoneyLine 888-616 BANK



*We hope you have a happy and healthy holiday season. Best wishes for the new year!*

FROM ALL OF US AT TOLLEFSON PUBLISHING

STAR HERALD Luverne ANNOUNCER CRESCENT  
117 W. Main St • Luverne, MN • 507.283.2333



Family Drug

Thanks you for your continued patronage.

*May beautiful moments and happy memories surround you with joy this holiday season.*

202 Kniss Ave. South, Luverne • 507-283-9549

## Season's Greetings from all of us to all of you

*At this special time of year, we'd like to take a moment to wish all our friends and neighbors a blessed holiday season.*

*We thank all of our customers for their business & support. It's been a pleasure working with all of you. We look forward to serving you in 2016.*

The Luverne Farm Store Family

**Closed Dec. 25, Dec. 26 & Jan. 1, Jan. 2**

True Value

LUVERNE FARM STORE

S. Highway 75 • Luverne, MN  
507-283-9555 • 1-800-956-9556

*From our family to yours -*

# Merry Christmas

*from the Star Herald*

