



Rock County STAR HERALD

Rock County's oldest business, printing since 1873

Thursday, December 22, 2016

Rock County residents weather heavy snow and c-c-cold snap

By Lori Sorenson

After a long fall of mild weather, last week's cold snap seemed particularly brutal.

Nearly 8 inches of snow blanketed the county and then perfect polar vortex formed over the Upper Midwest to deliver several days of North Pole-type air.

Temperatures plummeted to 20 belowzero and wind chills registered

at minus 40 to 50 degrees.

Elementary students in area schools had inside recess for much of the week, and then school was called off entirely halfway through Friday, as blowing snow became an issue for visibility on the roads.

Weekend sports and other activities were postponed or canceled, and Sunday morning church services were canceled across the region.

Many delivered their scheduled Christmas programs and pageants later on Sunday after temperatures began to rise.

And Grace Lutheran's Outdoor Nativity made Sioux Falls television news for its hardy participants and audience members bundling up for the annual show.

While many people hunkered down and stayed indoors, the cold

weather made extra work for some local professionals.

Mark Kurtz of Kurtz Plumbing, Heating and Electrical, said he's been scrambling to keep up with calls about faulty furnaces

"It's been extremely busy," he said. "We're doing whatever we can to keep everyone warm."

Other professionals affected by the cold snap include auto repair

businesses.

Phil Gorter of G&S Auto said he responded to nearly two-dozen calls for towing or repair services for cars broken-down on roadways.

"They were mostly for non-starts, and most of them had to be towed," said Gorter, who is registered for roadside service with AAA and Agero.

Cold snap/see page 2A

City staff salaries to increase next year

By Lori Sorenson

Luverne City Council members approved pay raises for employees and administrative staff at their Dec. 13 meeting.

There are 162 people on the city's payroll, 30 of them full-time. The list includes pool and liquor store employees as well as firemen and election judges, all of them part-time.

From 2012 to 2016, city personnel costs increased from \$740,000 to nearly \$969,000. By 2020, it's estimated to reach \$1.24 million.

At Tuesday's meeting City Council members approved a three-year labor agreement, effective Jan. 1, 2017, through Dec. 31, 2019.

Pay for city union employees will increase 3 percent in 2017, 2.5 percent in 2018, and 2 percent in 2019, when city personnel costs will be roughly \$1.176 million.

The city's pay and classification plan for non-union employees is set according to the union agreement.

As part of approving the 2017 budget, the council authorized a 3 percent increase for non-union staff, primarily administrative and department heads.

The following increases, which includes step and lane increases for some, were approved for 2017:

City Administrator John Call's salary remains at \$120,570 because he received an extra week of vacation per year in lieu of a raise;

City Clerk Jessica Mead from \$59,529 to \$63,252;

Finance Director Barb Berghorst from \$96,304 to \$101,130;

Accountant Candy Reese from \$68,994 to \$71,053;

Deputy Finance Clerk Robyn Wessels from \$58,573 to \$60,341;

EDA Director Holly Sammons from \$58,57 to \$62,296;

Building Official Chad McClure from \$65,936 to \$68,890.

Public Works Supervisor John Stoffel from \$74,443 to \$77,646;

Water/Wastewater Supervisor Al

City salaries/continued on page 2A



Mavis Fodness Photo/1222 O Christmas Tree

Large and small ornaments decorate the 25-foot-tall Christmas tree in Kenneth.

Kenneth gets into holiday spirit

By Mavis Fodness

A 25-foot Christmas tree greets visitors to the city of Kenneth.

The festive creation was erected by two of its residents, one of whom loves holiday decorating.

For three weekends in November Theresa and Mike Conklin spent hours constructing and decorating the metal tree.

While family members said Mike likes all holidays, it is Christmas that evokes the fondest of memories.

Mike said when the family lived on the East Coast two decades ago, he recalled the excitement

of piling into a car to view the holiday lights and decorations of a nearby neighborhood.

He wants to bring that excitement to Kenneth.

"I thought it would be fun to construct a different tree every year to make it interesting for people to come and look," Mike said.

For this year's tree, the Conklins strung together 12 50-foot holiday lights and wrapped yards of green garland around the cables that hold the metal tree trunk in place. They assembled the tree outside their construction shop at the

Kenneth Christmas tree/continued on 3A

Rock County levy draws public debate

Sheriff's Office, prisoner care costs bump county budget

By Mavis Fodness

For the past five years, Rock County Commissioners approved property tax levy increases averaging 2.8 percent.

If the five-member board keeps within that range for 2017, they would have to make two assumptions: The Rock County Sheriff's Office would make fewer arrests, and no emergencies would tax the county's limited reserves fund.

Commissioners will wait until their final meeting of the year, Dec. 27, to make the final levy determination.

In September commissioners established the preliminary levy at \$5.35 million, which would be a 6.13-percent increase, or an additional \$250,130, in local property taxes.

Since then, commissioners looked at various ways to lower that percentage and continued discussions Tuesday night, Dec. 13, at the county's state-mandated Truth-in-Taxation meeting.

The meeting offers the public the opportunity to make comments on the 2017 county budget and/or preliminary levy.

Two residents were at the meeting at 6 p.m. Tuesday in the commissioners room.

Beaver Creek Township resident Marlin Fick and retired Springwater Township supervisor Darrell Hoek spoke at the meeting. Fick's question, however, was about a property tax value, which Land Records Director Tom Houselog answered for Fick after the meeting.

Hoek was primarily concerned about county road repairs and was satisfied commissioners implemented a wheelage tax and increased the gravel tax. Monies from both taxes are dedicated to road improvements and bridge repairs in the county.

"That should be about \$90,000

County levy/see page 8A

Magnolia fire chief praises family's quick response

By Lori Sorenson

A Magnolia family had a close call at their home on 201 State Street after a fire started in the wall between the house and garage Saturday, Dec. 10.

According to Magnolia Fire Chief Scott Dohlmann, the Magnolia Fire Department was called to the home of Steve and Tina Auch for a report of a chimney fire.

The call came in around 7:50 p.m. and Dohlmann said the Auch's had already doused the flames by the time they got there.

"It was just smoldering in the wall when we got there, and we didn't even have to charge a hose," he said, crediting the Auch's for their quick response.

"Had it been left five minutes

longer, they'd be looking for another place to reside."

Dohlmann said his crews first addressed the hot wood-burning stove — giving it adequate distance from the wall and removing the burning wood to cool it off faster.

Firemen also cut a 2-foot wide hole in the length of the wall and near the chimney to make sure nothing else would reignite.

Other than some smoke damage, he said it could have been worse, and it's fortunate the family still has their home intact.

Dohlmann said the specific cause of the fire is unclear, but its proximity to the hot stove would sug-

Magnolia housefire/see page 2A



Mavis Fodness Photo/1222 Merts Demo

The walls came tumbling down ...

W & N Construction of Luverne peels apart the metal quonsets of the former Mert's Machine & Repair shop on Hatting Street late Monday afternoon. Business owner Mert Kracht moved his business to a new building in Luverne's Industrial Park. The city of Luverne purchased Kracht's property and plans to create a tax increment finance district along with the Sharkee's property it purchased from Dave Halverson earlier this month. Demolition on that building is set for early next year.



COMMUNITY CALENDAR

Meetings

Stataline Cemetery Association Annual Meeting will be at 12:30 p.m. Monday, Jan. 9, at the Pizza Ranch in Rock Rapids, Iowa. Call 507-920-2871 with questions.

Vienna Township meets at 7 p.m. the second Tuesday of each month at the Kenneth Community Center.

Narcotics Anonymous will meet every Thursday evening at 6:30 p.m. at the Steen Reformed Church. Contact Robert for more information 507-329-2642.

Women's Alcoholics Anonymous meets at 8 p.m. Mondays in the United Methodist Church.

Al-Anon meets from 6:30 to 7:30 p.m. Wednesdays in Sanford Luverne. Call Stephanie at 507-449-1246.

Narcotics Anonymous meets at 7 p.m. Fridays and for basic text study at 7:30 p.m. Tuesdays in the basement of St. Catherine Catholic Rectory, 203 E. Brown St., Luverne. Use east door. Call 507-220-0137.

Alcoholics Anonymous meets at 8 p.m. Wednesdays and Saturdays in the United Methodist Church, Luverne. Call 605-321-4324.

Alcoholics Anonymous and Al-Anon meet from 8 to 9 p.m. every Tuesday in Runals Memorial Hall, Edgerton. Call Naomi, 507-215-2956, with questions.

'Create Your New Year's Vision for 2017'

Roni Feit of Gentle Winds Studio will host a Vision Board Workshop from 6:30 to 8 p.m. Wednesday, Dec. 28, in Hilger Commons at 215 Cedar St. (across from Holy Trinity church). Participants will make poster boards illustrating their vision for 2017.

Craft supplies will be provided, but bring specific photos or other images as desired. The goal of the workshop is to encourage better health through healthier activities, such as organic gardening, yoga, meditation and more. RSVP to ronifeit@gmail.com or to Roni at 605-351-3522. Suggested fee is \$5 to \$15.

'Reason for the Season'

The United Methodist Church in Luverne will host a Christmas Meditation, "The Reason for the Season," from 6:30 to 9:30 p.m. Friday, Dec. 23. Come and go as you please. Sit and listen to Christmas music and enjoy cookies and apple cider.

Christmas Eve Meal

The United Methodist Church in Luverne will host a Community Christmas Eve Meal at 6:30 p.m. Saturday, Dec. 24, following a candlelight service at 5 p.m. The event is open to all at no charge.

Salvation Army seeks bellringers

The Salvation Army is in need of volunteer bell ringers to man the red kettle at Glen's Food Center in December. Every dollar collected in Rock County stays here and benefits organizations like Southwest Youth Services and disadvantaged children in the school system.

If you are able to help, contact Suanne Ohme at 507-283-4914 or 507-920-0053.

Carnegie hosts Festival of Trees

The Festival of Trees at the Carnegie Cultural Center is now open for the community's enjoyment from 5-7 p.m. Thursdays and from 1-4 p.m. Fridays and Saturdays. Doors will not be open on Christmas Eve day.

Library 'winter getaway' begins Jan. 1

The annual winter reading program, hosted by the Plum Creek Library System, begins Jan. 1 and runs through March 31. Participants read at least 12 books of their choice in order to compete for the traveling Champion Reader trophy. The program is open to those age 16 and older. Simply stop by your local library to sign up.

Sign up for Community Ed basketball

Luverne Community Education is sponsoring an invitational basketball tournament Saturday, Jan. 28, for both boys' and girls' fifth- and sixth-grade basketball teams. Format guarantees each team at least two games. Teams can register at www.isd2184.net under Community Education or call 507-283-4724. Cost is \$125 per team, and payment must accompany registration.

Caregivers Support meets Dec. 27

The Caregivers Support Group will meet in the conference room at Mary Jane Brown Home from 5-6:30 p.m. Tuesday, Dec. 27. Anyone dealing with caregiving or having questions regarding caregiving and available resources is encouraged to attend.

For sale: Blue Mound Banquet Center

Banquet Center lease not part of Glen's grocery sale agreement with Teals

By Lori Sorenson

The Blue Mound Banquet Center in Luverne is for sale, and Sarah DeBeer will continue operating the catering business through the new Teals Grocery bakery and deli.

Glen Gust sold his grocery store and gas station to the Teal family, which will officially take over the business next week.

Not part of the arrangement, however, was the Blue Mound Banquet Center, which Gust has been leasing from his ex-wife, Peggy Gust, who owns the building.

Event bookings were catered through Glen's deli and bakery, and Glen estimates the facility accommodates roughly 300 bookings a year, including smaller meetings of Rotary Club, Lions Club and other civic groups.

While he typically profits from the food and beverage sales for these events, Glen said he almost always dropped or lowered the facility charge for non-profit groups.

With his pending retirement, Glen didn't renew his lease agreement for the Ban-



Lori Sorenson photo/1222 banquet center

Blue Mound Banquet Center owner Peggy Gust has listed the 7,800-square-foot facility and adjacent land for \$450,000.

quet Center, and bookings into 2017 were canceled.

"I actually thought it would sell right away," Glen said. "It's basically a turn-key operation."

From Peggy's perspective, only a long-term lease arrangement or sale would work.

"I could rent it out one event at a time, but someone needs to be there for cleanup afterward," she said.

Despite the demand for the services, Peggy said she's

not interested in managing an event center, so she'd simply like to sell. She has it listed through Gregg Brown, a commercial realtor with offices in Brandon and Sioux Falls.

According to his sales information, the property on West Hatting Street features:

- A commercial kitchen
- 7,800 total building square feet
- 5,400 square-foot banquet hall

- 2,400 square-foot warehouse
- Maximum occupancy of 450
- Warehouse built in 1998, banquet hall added in 2001
- Building lot size is 1.051 acres

• 1.457 acres of excess land included in sale price

• 26 paved parking spaces and overflow parking on gravel lot

• Building signage

The property lists for \$450,000. Real estate taxes are \$8,946. Brown can be reached for inquiries at gbrown@naisiouxfalls.com or at 605-444-7103.

Meanwhile Glen is on his way to retirement.

"We're happy for all the support through the years, and we hope things will work out for the center," Glen said Monday.

The grocery store will close at 6 p.m. Tuesday for inventory and will reopen Wednesday morning as Teals.

Similarly, Glen's Food and Gas will close at 8 p.m. Tuesday and will reopen the following day under Teals ownership.



Mavis Fodness Photo/1222 SWCD Norm Overgaard

Overgaard recognized for years of service

Monday was Norm Overgaard's last meeting as one of five directors of the county's Soil and Water Conservation District. He served as representative for Clinton, Kanaranzi and Magnolia Townships from January 2001 to this past Monday, when the SWCD conducted its regular monthly meeting.

Overgaard was elected to four four-year terms and decided to retire from the board earlier this year. Roger Hoff was elected in November and will take over Overgaard's seat in January. SWCDs direct natural resource management programs at the local level working with landowners and with other units of government on conservation, use and development of soil, water and related resources.

SWCDs provide technology, funding and educational services governed by local leaders and focused on conservation of local soil and water resources.

City salaries/continued from 1A

Lais from \$81,058 to \$85,446;

Pool Manager Sam Honerman from \$62,358 to \$65,208;

Assistant Pool Manager Michelle DeKam from \$40,747 to \$45,718;

Liquor Store Manager Kenny Rolling from \$62,358 to \$64,230.

• Electric department salaries are paid from the city's \$440,000 contract with Missouri River Energy Services. Those workers are MRES employees, and their salary information is not public.

Utility rates to increase

In other business at the Dec. 13 meeting, Luverne City Council

members set license fees, rates and charges for services.

The rate increases approved for 2017 averaged 15 percent for water, 5 percent for sewer, 5 percent for garbage/recycling and 2.5 percent for electricity.

The average increase for a residential customer for all billed services is estimated to be 4.38 percent.

Rates are evaluated internally each year and rate studies are conducted, on average, every three years by an outside consultant.

The rates include financing depreciation up to 75 percent in order to prepare for expenses related to maintaining and operating utilities.

Cold snap/continued from page 1A

"I have three booster packs and I had them all charged and ready to go."

He said Greg Lingen, who works part-time for G&S, called in extra help from other G&S part-timers Jonah Lingen and Mike Hart.

"They're the best help in the world," Gorter said. "They will go above and beyond, and they're not afraid to call each other for help."

They were sent all over the tri-state area, including I-90, Mankato, Bigelow, Sioux Falls and Grand Falls Casino in Larchwood, to name a few.

He said the cold didn't discriminate among makes or models of ve-

hicles, new or old. "I had a 2015 Chevy Equinox with a dead battery, and people say that shouldn't happen," Gorter said. "New cars are better, but they're not perfect."

When asked for cold weather automobile tips, Gorter advised motorists to check their tires before leaving home.

"When it gets cold like this, tires lose air," he said. "We had to change four or five tires over the weekend."

And, of course, he said it doesn't hurt to stay home.

"Stay home, stay by the fire, drink some hot cocoa," he said.

Magnolia fire/continued from page 1A

gest it started there or around the hot stovepipe in the wall.

Given the recent frigid temperatures, Dohmann said he hopes his crew doesn't see more fires like this.

"Check your furnaces, change the filters and make sure they're not plugged, because this is when they're getting a workout, when it's super cold," he said.

"This is when people start plug-

ging in space heaters and using other forms of extra heat... we warn everyone to use caution with these."

He also added that now is a good time to check smoke detectors and carbon monoxide detectors.

The Rock County Sheriff's Office assisted at the scene, and the Rock County Ambulance was paged but wasn't needed.



Dial-A-Specialist

Your One Stop Guide to Local Businesses

 <p>DR. MICHAEL SMITH • Men, Women & Children's Health • Custom Orthotics • Kinesiotape • Athletic Care • Massage Therapy • Work & Auto Injuries • Postural Restoration WWW.ROCKCOUNTYCHIROPRACTIC.COM 283-2561 • 103 E. MAIN, LUVERNE Monday 7:30 a.m. - 6 p.m. • Tuesday 7:30 a.m. - 3 p.m. Wednesday 7:30 a.m. - 6 p.m. • Thursday 7:30 a.m. - 1 p.m. Friday 7:30 a.m. - 5 p.m.</p> <p>• Chiropractic</p>	 <p>Chantel Connell Sales Representative</p> <p>117 W. Main, Luverne, MN 507-283-2333</p>  <p>Rick Peterson General Manager</p> <p>• Advertising</p>	<p>LUVERNE HEALTH & WELLNESS Codie Zeutenhorst, D.C., CAC</p> <ul style="list-style-type: none"> ✓ Acupuncture ✓ Chiropractic Care ✓ Family Care ✓ Sports Injuries ✓ Kinesiotape ✓ Auto & Work Injuries <p>Acupuncture and Massage Available Kris Van Der Brink M.T. & Amy Rosales M.T.</p> <p>507.449.4400 www.luvernechiro.com 109 S. Freeman Ave. Luverne, MN</p> <p>• Chiropractic</p>	<p>COMRAY COMPUTERS Computer Repair and System Builders</p> <p>Ray Hansen - 1726 140th Ave., Luverne, MN 56156 • 507-669-2621</p> <p>Mark Stewart - Lismore, MN 56155 507-472-8479 or email us at comraycomputers@myclearwave.net</p> <p>• Computer</p>
 <p>Rock County EYE CLINIC 507-283-2345 102 N. Freeman Ave. Luverne, Minnesota</p> <p>• Eye</p>	 <p>Papik MOTORS 1-90 Luverne, MN Box 536 • 801 West Commerce Road Luverne, MN 56156</p> <p>(507) 283-9171 (800) 634-7701 www.papik.com</p> <p>• Automotive</p>	<p>Luverne MINNESOTA City Offices Love the life!</p> <p>PO Box 659, Luverne, MN 56156 507-449-2388 (24 hour voice mail)</p> <p>www.cityofluverne.org</p> <p>• City</p>	<p>Dakota Land Surveying and Engineering, Inc.</p>  <p>Steven B. Kor Professional Engineer Registered Land Surveyor</p> <p>2000 W. 42nd Street, Suite B-6 Sioux Falls, SD 57105 605-334-4882 605-334-5745 Fax</p> <p>506 Almar Luverne, MN 56156 507-283-3803 steve.dis@midconetwork.com</p> <p>• Land Surveying</p>

City levy set to increase 5.13 percent; budget increases 3

By Lori Sorenson

No one attended the Dec. 13 Truth in Taxation hearing in Luverne City Hall, mostly because property taxes aren't changing much.

"Thanks to growth and a solid tax base, our property taxes will stay about the same as inflation," City Administrator John Call said during his budget presentation.

"We have a balanced budget, we're on firm financial footing with double A-plus bond rating, and we continue to have the lowest property taxes in the region."

After the public hearing closed, the council continued with its regular meeting and approved the 2017 tax levy.

The levy has been set at \$1,717,393, which includes the general fund, debt service, and TIF fund deficit.

That amount is a 5.13-percent increase (\$83,770) over the current levy.

Actual spending in the general fund (which is supported by property taxes) increased by 3 percent.

Call praised city finance staff and department heads for prudent fiscal management, but he said there are budget increases for good reasons.

•A \$180,000 road grader will replace a 17-year-old grader in the street department.

•Phase 2 of the Luverne Loop biking and walking trail will be built next year for an estimated \$715,000.

It will continue Phase 1 of the path from Dodge Street

near the school around the ice arena, and then east to Highway 75.

A \$400,000 grant from the Minnesota Department of Transportation will offset some costs.

•The Highway 75 water tower will be repainted for \$400,000, which includes replacing some metal structural parts. The new Luverne Logo will be included with the exterior painting of the tank.

•A \$100,000 elevator project at the Carnegie and a \$100,000 three-stall garage for the Fire Department are also part of the 2017 budget.

The \$1.7 million levy includes \$1.4 million for the general fund, \$272,393 for principal and interest on debt and \$40,000 to partially fund the sewer fund debt.

Call said thanks to the city's expanding tax base, most homeowners in Luverne won't see an increase in their city property taxes next year.

For an average \$100,000 home in Luverne, property taxes are \$942 per year. That compares to a \$100,000 home in St. James, for example, that is taxed \$1,600 per year.

Call pointed to a bar graph showing Luverne and Rock County with lowest property taxes among comparably sized cities in Southwest Minnesota.

"We can thank our friends in school and county government for their prudent fiscal decisions that help to keep our overall property taxes low," he said.

Kenneth Christmas tree/ continued from page 1A

corner of Highways 3 and 9 in Kenneth. It can easily be seen as visitors enter town from the south.

Red ribbons and large ornaments are tied to the cables anchoring the metal pole into the ground and the strings of lights that give the tree its form. Theresa's garage sale purchases of two cutout wooden snowmen greet passersby.

The decorations were assembled to withstand the cold weather.

"It's holding up pretty good," she said. "Everything is tied on really well."

As the Conklins began working on the tree, an im-

prompt holiday gathering sprung up as other Kenneth residents joined in the construction process. Hot chocolate appeared to give the assembly process a merry feel.

Theresa estimates 25 people helped with the construction.

"It was a spur of the moment thing," she said.

Since the tree's appearance, townspeople have also added lights and decorations to their own homes and businesses.

The Conklins' tree, however, stands out from the rest.

"The tree says Christmas," Theresa said.

Blue Mound Tower shows off new look

By Mavis Fodness

Blue Mound Tower opened its doors last week for a holiday open house that also revealed its new inside look to the public.

Changes in carpet, new paint on the walls and updated furnishings were approved by the Luverne Housing and Redevelopment Authority Board of Directors and selected by director Tammy JoYson.

JoYson, who began as building head two years ago, selected white and gray colors to replace the peach- and pink-colored carpets and walls that were last painted in the 1990s.

"The atmosphere is so much better," said board member Mike Engesser. "So much is her (JoYson's) personality."

JoYson worked within the budgeted \$10,500 from the general fund that included new mailboxes and furnishings. The new carpet in the atrium, common room and second floor gathering area cost around \$20,000, paid from the building's capital fund.

The result is "warm and inviting" said HRA treasurer Sue Schneekloth. That's a different description for the seven-story building constructed in the early 1970s as affordable housing for the elderly.

Today the Tower provides affordable housing for income-eligible individuals and couples ages 18 to 91.

About a third of its 69 tenants attend classes at the Minnesota West Community and Technical College facility located across the street.

During the open house ScYeeckloth said she talked with one student who just moved into the facility.

The student's mother had warned about poor conditions associated with subsidized housing facilities. When the student moved into the Tower, however, the mom looked at the freshly painted walls, bright holiday decorations and new carpet and told the student not to get used to living in a nice building.

"It's amazing what a little paint, a little carpet and a little care can do," ScYeeckloth said.

Existing residents have told JoYson due to her taking pride in the building, they are also taking pride in their own apartment units.

Three of the 70 units are undergoing renovations and will be ready for tenants soon. As a federal project, the \$97,000 renovation was subject to the Davis-Bacon prevailing wage act, which increased the cost.

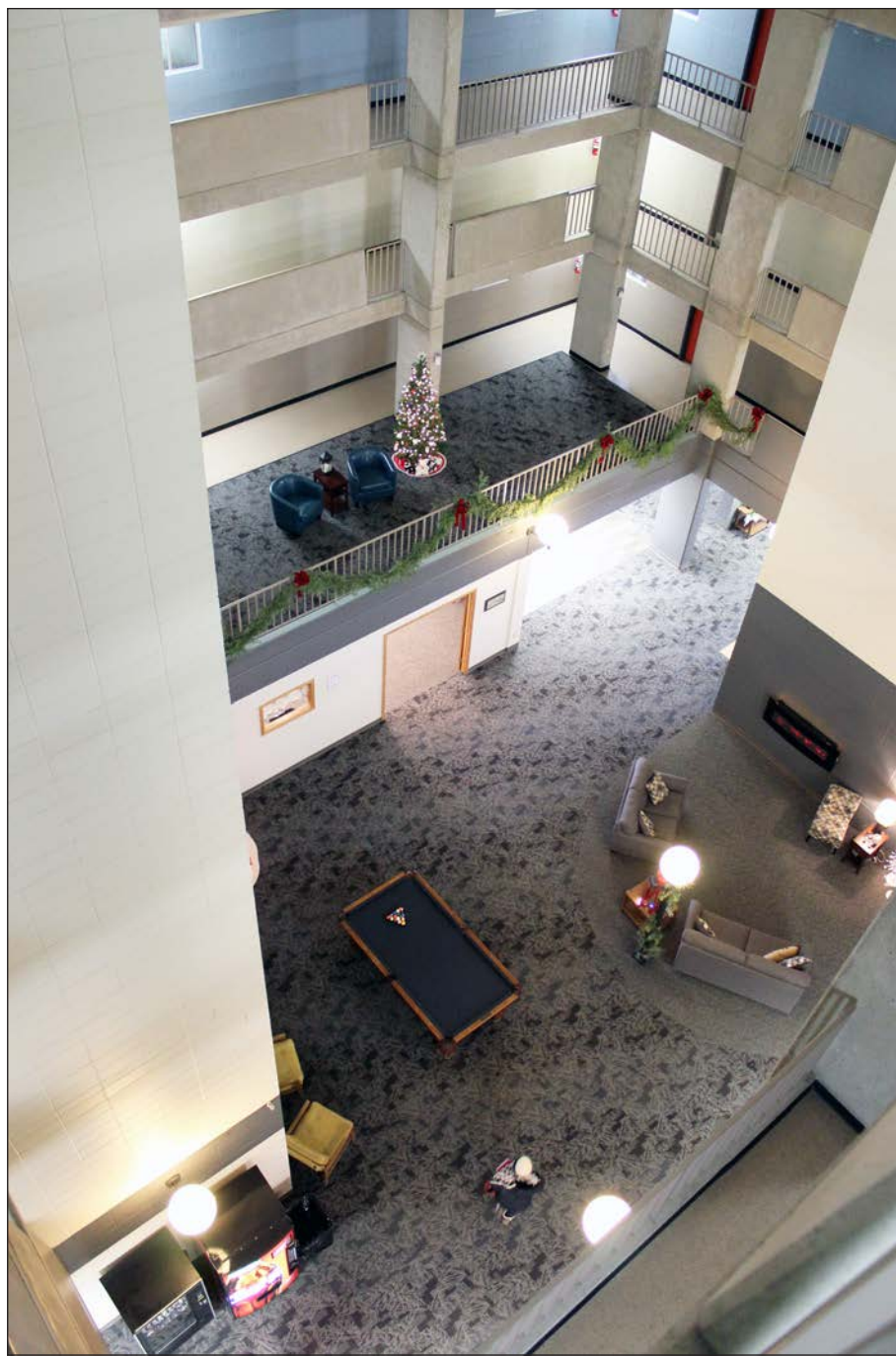
Design Craft of Luverne was the general contractor for the room renovations.

HRA tenant representative Wayne Holmgren said the updated atmosphere has residents leaving their apartments more and mingling in the common areas.

He also credits JoYson for the welcome change.

Since taking the helm, JoYson's focus has been on the residents.

"To me that's more important than updated furnishings," she said. "People feel better if they feel good about where they live. I really want us (the Tower) to be a choice and not have folks feel we're their 'only choice.'"



Mavis Fodness photos/1222 Blue Mound Towers

A holiday open house Wednesday, Dec. 14, at Blue Mound Tower in downtown Luverne allowed the public to view new carpet and freshly painted walls. A look over the sixth-floor balcony provides a birds-eye view of the new carpet, paint and furnishings in the Blue Mound Tower atrium and other public areas.

Pictured below, Derek Valnes with Design Craft of Luverne is almost finished renovating three of the 70 apartments in the seven-story Blue Mound Tower.



WRAPPING PAPER & GIFT BAGS belong in your TRASH CAN



NOT RECYCLABLE

Luverne Love the life!
Rock County LAND MANAGEMENT



The City of Luverne & RC Land Management wishes you a Green Christmas

YOU'RE INVITED

Please Join Us For

Coffee at the Exchange

9:00 am - 11:00 am Exchange State Bank
310 Gabrielson Rd • Luverne, MN

2016 Coffee at the Exchange Schedule: Coffee & goodies served.

Tuesday, December 27, 2016

MARK YOUR CALENDAR & BRING YOUR FRIENDS. ENJOY REFRESHMENTS & FELLOWSHIP.



December Sale 50% off frame with purchase of lenses



Offer cannot be combined with insurance.

Sale ends 12/31/16

Rock County EYE CLINIC
507-283-2345
102 N. Freeman Ave.
Luverne, Minnesota
www.rockcountyeyeclinic.com

Rock County Eye Clinic, locally owned, community involved, clearly different.

WE HAVE MOVED! 830 W Hatting

MERRY CHRISTMAS AND HAPPY NEW YEAR!

THANK YOU FOR YOUR PATRONAGE IN 2016!

WE LOOK FORWARD TO 2017



Mert's Machine and Repair • 507-449-0479



Bree, the family dog, is not adjusting well to being an empty nester.

Family dog's role changes as house becomes empty

Since becoming an empty nester, I've noticed changes in how the household operates without children at home.

No one tells Mom milk is needed. The shoes piled in the entryway belong to one adult (not me) and the family dog is starved for attention.

Bree is a 10-year-old chocolate Labrador we've had since she was a puppy. Her job is to guard the livestock from the numerous foxes, raccoons and coyotes in the area.

However, she thinks she is a family member and she thinks she should be treated as such.

We learned early on that she is not a hunting dog. Loud sounds (such as gunfire) send her hiding. She will retrieve and will spend hours chasing a tennis ball and bringing it back to be thrown again and again. Her ever-wagging tail acts as a billy club, hitting anything in its way, including one's leg.

Bree is a good dog. She's had formal obedience training by our children's 4-H dog projects. She's generally calm and is a good companion.

While she doesn't like guns, she will go hunting. I often see her in the waterway and ditch, nose to the ground, sniffing after some rodent or bird. She'll happily trot along during horseback rides or run alongside one of the kids out playing.

She's a busy family dog and now that our at-home members have dwindled from six to two, Bree has become what I describe as a little "needy."

Without one of the kids sneaking her into the house as a sleeping companion or taking her along during one of their outdoor adventures, Bree has taken it upon herself to get a pat on the head or scratch behind the ears any time she can.

It doesn't matter who gives her the attention either.

Visitors to the farm would often get an uncomfortable nuzzle in the butt as Bree poked her head between their legs. The attention-getting gesture would get a startled cry from the recipient — and the much wanted pat on the head.

With visitor numbers also dwindling, Bree attaches herself to me anytime I am outside.



RUMINATIONS

By Mavis Fodness, Reporter

... now that our at-home members have dwindled from six to two, Bree has become what I describe as a little "needy."

Generally that means twice a day when I do morning and evening chores. Bree can expect a pat on the head and a scratch behind the ears, but only when I exit the house.

I, in return, have tripped over her, been uprooted as she suddenly appears between my legs, and licked on the face as I bend over to pet the tomcat.

Her nose slowly nuzzles its way into the doorframe as I try to shoo her from the front door. Because pushing a 60-pound dog with puppy eyes out of the way is hard, I have relented and have let her take residence in her kennel in the basement. It's cold outside so coming inside prevents frozen paws.

Having her inside also breathes some life into the house. Empty nests are quiet and, at times, a little lonely when you're the only one home in the evening.

While Bree is banned from the furniture, she has been allowed to leave the basement and lie in the sun in front of the patio doors on Saturday afternoons. She's a good companion for a mother who is used to having children underfoot.

So while Bree has become needy, I too miss the daily hellos and goodbyes of the children coming and going. Back then I relished a little quiet in the house. Now that it's always quiet, a dog has become a good substitute.

Sometimes a hug with a needy dog is all we empty nesters need.

Beware of ATM and gas pump skimmers

If card reader looks different or tampered with, don't use machine

Criminals are constantly using new types of technology in order to steal consumers' credit and debit card information. It is important that consumers are aware of these methods so that they can better protect their money and credit. Recently, criminals are attaching credit or debit card readers, known as "skimmers," to ATMs and gas pumps.

What are "skimmers?"

A skimmer is a small device, often smaller than a deck of cards, that can scan credit or debit card data from the card's magnetic stripe. Criminals often install a skimmer onto an ATM or gas pump and then collect it a day or two later.

For debit cards, criminals will also place a small camera in order to record a cardholder's Personal Identification Number (PIN).

Once the criminals retrieve the skimmer and camera, they can either sell the information over the Internet or create counterfeit cards to use for shopping sprees.

Oftentimes, the cardholder does not know about the theft until they get their card statement. The newer credit cards that have security chips installed still have information on the magnetic strips that can still be recorded by a skimmer.

How can you tell if a skimmer is attached to a gas pump or ATM?

One way is to look at other nearby gas pumps or ATM machines. They should all have the same set-up. If the card reader at the gas pump or ATM you are using looks different from

the others or looks like it has been tampered with, do not use it.

Look for security tape. Many gas stations are now putting a piece of security tape over where the card reader is installed. The security tape is modified so that any tampering will be obvious to the casual observer.

Look for tampering. Some criminals have the time and expertise to break into the gas pump or ATM and install the skimmer inside the machine. However, there will usually be signs of the break-in: different colored parts that don't match the rest of the pump or ATM, graphics that are not lined up, or signs of tampering at keypad or card reader itself.

Wiggle everything. If you cannot see any visual differences, push at different parts of the machine, especially the card reader. ATMs and gas pumps are solidly constructed and should not have parts that are loose.

How can I protect myself?

If you can, pay with cash inside the gas station to ensure any card information remains safe. If that is not an option, only use a credit card at the gas pump or choose the credit

card option for your debit card. There is significantly more fraud protection for credit cards than debit cards. Also, by using the credit card option for your debit card, you will not have to enter in your PIN and that information will not be recorded.

When using your debit card at an ATM, use your other hand to cover the keypad as you enter PIN. That should block any cameras from recording your PIN.

If you believe your card information was stolen by a skimmer, report that immediately to your bank or credit card company and the police. Since criminals act quickly with this type of stolen information, you need to report the matter as soon as possible so that you can limit your liability for any fraudulent transactions.

Regularly review your bank and credit card statements for any unauthorized charges to your account. If you suspect fraud contact your bank or credit card company as soon as possible.

There are laws to protect you from certain unauthorized charges if you promptly report them.

GUEST EDITORIAL

By Minnesota Attorney General Lori Swanson

Memories of grandparents past, present and future

I think the gifts are all wrapped and under the tree, so it looks like Santa made an early visit to the Peterson house.

Mary and I, like most grandparents, are looking forward to having a house full of grandkids over the holidays.

As we anticipate the upcoming weekend, I find myself remembering how we spent Christmas with our grandparents.

As kids we always went over to Grandma Pete's house on Christmas Eve. Her house was small and full of her collection of all things that grandmas collected. On Christmas morning we would open gifts at our house as a family and by 10 a.m. would be headed to Grandma Schultz's for Christmas dinner. Grandma Schultz's Christmas dinners were the best.

After Mary and I were married, we would go to her Grandma Schaffer's house on Christmas Eve. That is where I was introduced to S cookies. An S cookie is a butter cookie in the shape of an S for Schaffer no doubt and I couldn't get enough of them.

Mary's Grandma Schaffer was always very nice to me, and when we would leave her house on Christmas Eve, she always made sure I had at least one more S cookie for the trip home.



FOR WHAT IT'S WORTH

By Rick Peterson, General Manager
Tollefson Publishing

Once Mary and I had kids of our own, we would spend Christmas Eve with Mary's mom. That is when I was introduced to the ever-popular fruitcake and ham salad. It was really bologna salad but we called it ham salad. I still buy a fruitcake every year and throw most of it away, and we still serve up ham salad sandwiches.

We would open gifts at our house on Christmas morning, then head over to my mom's house for Christmas dinner. You could count on the best undercooked vegetables and some of the oddest-shaped lefse you've ever seen at my mom's.

As our parents got older, we tried to bring them to our house for Christmas for as many years as we could.

To this day it still breaks Mary's heart that it became much too difficult to get her mother to our house for Christmas. Although Mary's mom

wasn't able to make it to the house, Mary made sure her mom never ate Christmas dinner alone.

A few years back my mom moved from Brewster to Westbrook. Each Christmas I would drive from Luverne to Westbrook, pick her up, bring her back to Luverne for the day, then take her home later that afternoon and return back to Luverne. I used to complain about driving four hours on Christmas Day to spend Christmas at my own home. My mom died two years ago this week. Oh, how I wish I could spend four hours on the road Christmas Day just to have Christmas at my own home one more time.

I'm not sure what our grandkids will one day remember about spending Christmas with the grandparents. I do hope, however, their memories are as fond as ours are.

Merry Christmas.

VOICE OF OUR READERS

Biever: Gift of freedom came from Korean War, other veterans

To the Editor:

As we consider our blessings this Christmas season, let's remember the gift of freedom that our current and past military service people have so generously provided.

In particular, let's remember our Korean War veterans. Though others have forgotten, we must remember

the price they paid.

The United States casualties in Korea between June 25, 1950, and July 27, 1953, resulted in 54,236 soldiers killed, 103,000 wounded, and 8,177 missing in action.

Of the 7,000 prisoners of war, 51 percent died in prison camps and 389 POW were never accounted for. Only

3,450 returned alive.

Let's count our blessings this Christmas, and let's thank our veterans for sacrificing so much for our freedoms. We shall never forget our comrades and their service.

**Wayne Biever, Luverne,
Korean War Veteran,
U.S. Marine Corp 1950-1953**

E-mail: editor@star-herald.com Web site: star-herald.com
Phone: 507-283-2333 Fax: 507-283-2335

Published Thursdays by Tollefson Enterprises, POSTMASTER:
Send address changes to 117 West Main, P.O. Box 837, Luverne,
MN 56156. Periodicals postage paid at Luverne, Permit #33 and at
additional mailing offices.

General manager: Rick Peterson **News staff:**
Office manager: Deb Lusty Lori Sorenson, editor
Circulation manager: Jennifer Kor Mavis Fodness, reporter
Advertising: Chantel Connell John Rittenhouse, sports editor
Production manager: Abbe Kolar Esther Frakes, copy editor
Production: Amanda McDonald Joseph Stearns, composition

Rock County
STAR HERALD
Rock County's newspaper since 1873

(ISSN 0889-888X)
SUBSCRIPTION RATES

\$72 per year in Rock County; \$89 per year all other areas. Single copies \$1.25

Entire contents copyrighted by
Tollefson Publishing Roger Tollefson, publisher

The *Star Herald* encourages letters to the editor expressing the opinions of readers and intends to print all letters. Letters not meeting the guidelines will not be printed. The *Star Herald* will verify the authenticity of all letters. Letters must have the name of the writer, a signature and address.

Unsigned letters will not be considered. The *Star Herald* will edit for grammar, spelling and clarity. Any letters containing offensive language, libelous or slanderous material, or misleading or false information will be rewritten before being published. The *Star Herald* will not publish letters written with the sole intent to advertise or serve as a thank-you. Letters with more than 300 words may be edited. The deadline for letters is Monday 10 a.m. They may be delivered or mailed to the editor, *Rock County Star Herald*, P.O. Box 837, 117 W. Main St., Luverne, Minn. 56156.

ON THE RECORD

Dispatch report

Dec. 9

•Complainant requested a deputy to check out a vehicle that is on a gravel road just north of the Eagles Club. Vehicle is making a lot of noise and revving his engine. Sounds like he is tearing up the lot. Deputy arrested subject for DUI and took him to jail.

•Complainant reported he lost his wallet with credit cards and bank cards along with ID.

•Complainant reported someone tried to scam her on Craigslist through her Paypal account. They overpaid her and wanted her to cash the check and send them the balance of the money. They also wanted her to respond to the email and not Paypal. Complainant also notified Paypal.

•Complainant reported someone stole his green Bowman generator valued at \$500.

•Complainant reported that woman set off her Lifeline button, and they can't contact her. Deputy sent to check on her. She hit it by mistake.

•Complainant reported her husband fell and is not injured, but she can't get him up.

•Complainant reported that the guy who lives on the 100 block of West Warren has made his own sticker for the back window of his vehicle, and he drives it all the time.

•Complainant reported two people would be out soliciting business for American Exteriors, LLC, on Dec. 12-14 around Luverne.

•Complainant requested a deputy to accompany him to retrieve some personal property.

•Dispatcher received a 911 call from a teacher who called by accident trying to call out. No emergency. No services needed.

•Complainant reported a barn fire in area of 131st Street and 60th Avenue. Deputy reported fire is at 13196th Avenue. Paged Beaver Creek Fire Department. Paged Rock County Ambulance. Beaver Creek Fire Department requested mutual aid from Luverne Fire Department. Paged Luverne Fire Department.

•Complainant reported that he is being harassed by the City Council in Steen.

•Complainant reported a possible vulnerable adult.

•Complainant reported a semi truck without a trailer and no rear lights on. Truck is blue with graphics.

•Complainant requested Rock County Sheriff's Office be on standby for a pursuit on a

black 2007 Honda Accord that was stolen from the Nobles County Jail by a released inmate. Pursuit is westbound on I-90 at mile marker 31. Pursuit headed south at Adrian and ended in a personal injury motor vehicle accident in Iowa.

•Complainant reported a pickup doing "cookies" in parking lot at St. Joÿ's parking lot. Pickup is coming in and out of the lot. Pickup is described as an S-10 or a Ranger style.

•Complainant reported his estranged wife is making suicidal statements to him.

•Dispatch received several calls from a lady out of gas on I-90. She did not know where she was. Deputy did find the female. She will wait there, as she has a family member bringing her gas.

Dec. 10

•Complainant reported a small white car was driving erratically up and down the street on the 600 block of Central Lane. Car is sliding around the road and almost hitting parked cars.

•Complainant requested a deputy speak to six children that are hanging around the south parking lot at the school. Complainant reported that the children have been told before that they are not allowed in that area after school hours.

•Complainant requested a welfare check on subject who is overstressed due to living conditions and separation from spouse.

•Complainant reported a fire in garage wall at 1425 81st Street. Paged Luverne Fire Department.

•Complainant reported that her card was hacked. Complainant did not want to bring in documentation proving that her card was compromised. When complainant was told that she needed documentation, she hung up.

•Complainant reported that her power is out.

•Complainant reported that when he picked up his mail today at 4 p.m., someone had torn his letter from the Social Security office in half. It was supposed to contain his new social security card which it did not. Complainant was told to contact the Social Security office and the post office on Monday morning. Called back on Monday morning and said that it might have gotten caught in the machine and may be in the distribution center.

•Complainant reported a

white four-door car speeding up and down Michael Street. Complainant reported that the vehicle almost took out his mailbox.

•Complainant reported that they have an active chimney fire at location. Paged Magnolia Fire Department. Occupants not out of home. Rock County ambulance to location as precautionary for smoke inhalation.

•Complainant reported exhibition driving in back parking lot of Power Fitness. Complainant spoke with mother of the registered owner at 8:50 p.m. Subject was not home, and mother will call when subject is, so he can speak with a deputy about his driving conduct.

•Complainant requested to speak to a deputy regarding a theft in his home somewhere between 5:30 p.m. and 9:30 p.m. tonight.

Dec. 11

•Complainant reported that he was crossing the bridge on I-90 between mile marker three and four and almost lost it due to the ice. Patrol will notify the trucks that are out sanding and have them take care of it.

•Complainant reported two 911 hang-ups with no sounds of distress and no audible voices.

•Complainant reported that he doesn't have any money and no place to go. Complainant is requesting ride to Sioux Falls. Complainant was given a ride to South Dakota rest area.

•Complainant reported that she was concerned that the person who was committing the recent burglaries is still in the area. Complainant was told to keep the doors of her home, garage and vehicle locked whether she is at home or not.

•Complainant reported that his mailbox had been knocked over by the city plow at location.

•Complainant reported that a white four-door car was driving recklessly in the area of East Dodge Street and North Cedar Street.

Dec. 12

•Complainant reported he is being harassed by the guy that went to jail last time he called in. He blocked his number.

•Complainant requested a deputy be present at 8 a.m. this morning while he speaks with three juveniles and their parents about trespassing on school property. They were each given trespass notices.

•Complainant reported that subject didn't wait for his sister, and now they cannot find him. Possibly walked to a friend's and then maybe walked home. Subject was found at home.

•Complainant reported a vagrant at the Howling Dog, possibly a little intoxicated, trying to get a ride to the Interstate to get his "gear." Deputy transported vagrant to South Dakota state line.

•Deputy arrested subject for DWI and took him to jail.

•Complainant reported there is a car parked on the 100 block of South Oakley. No one is around, and there is loud music coming from it. It has been going on for about 15 minutes. Called back. The car is gone. Would like a deputy to talk to them about it.

Dec. 13

•State Patrol reported a stalled vehicle on I-90, mile marker 13.5. They have a trooper en route from Worthington but would like a deputy to check and make sure it is not occupied.

•Deputy reported he is out with a stalled vehicle on County Road 4 and 190th Avenue.

•Complainant reported a green rusty vehicle doing exhibition driving down Fairview Drive and by the baseball diamonds.

•Reserved for narcotic info.

•Complainant reported that her wallet was stolen from her vehicle while she was in the post office.

•Complainant reported someone broke into his workshop. Craftsman toolbox and wrench and socket set stolen. Possibly occurred a week ago.

•Complainant reported her daughter found a wallet on the 100 block of West Warren Street.

•Complainant reported driving complaint vehicle all over center and fogline on I-90. Deputy stopped the vehicle by the Veterans Home. Complainant will sign a complaint.

Dec. 14

•Deputy reported a car sat

for about five minutes on the 300 block of East Oakant Avenue with car running then left.

•Complainant reported a chair in the roadway on I-90 westbound mile marker 11. Also notified State Patrol.

•Complainant reported possible sexual abuse.

•Complainant reported abuse and neglect.

•Complainant requested to speak with a deputy about some threats being made.

•Complainant reported that a motorist assist was requested at West Warren Street and South Cedar Street. Deputy provided lights and traffic control for stalled vehicle.

•Complainant reported that subject hit her in the face. No medical needed. Subject left in a tan Ford Escape possibly heading to West Hatting Street. Subject has two young girls with her ages five and six.

•Complainant reported he received a note from his landlord about eviction. Complainant requested information as to what his options are.

•Complainant requested deputy assistance to move personal possessions out of the residence. Subject has been violent in the past.

Dec. 15

•Complainant reported her house was egged last night. She believes it happened at approximately 2 a.m. because a noise woke her up at that time.

•Deputy patrolled school zone and stopped a vehicle to warn for speed.

•Complainant reported she locked her keys in her car.

•Complainant reported his son's car was egged last night. Complainant thought he knew who it was because his son and another boy had a confrontation at school yesterday.

•Complainant reported that at approximately 2:45 a.m. this morning her dogs were barking and her husband got up and saw a 90's style Ford Taurus turning around slowly in the neighbor's driveway. The car was possibly gray in color. This morning when complainant went outside, she noticed someone cut their Christmas lights on their house.

•Complainant reported an older man sitting in front of her house regularly in the morning before the kids go to

school. If noticed, the driver usually drives off. Complainant's son did ask the driver what he was doing. He said reading the paper, and the son asked him to leave this morning, and he did.

•Complainant reported an abandoned vehicle at County Road 4 and 100th Avenue. Dispatch contacted owner. He has a flat and will get it moved today.

•Complainant reported a general fire alarm at location. Paged Beaver Creek Fire Department. Fire Chief called and reported false alarm. Canceled Beaver Creek Fire Department.

•Complainant requested a welfare check on subject. Nobody has heard from her since Sunday.

•Complainant reported that a mail truck was broke down at Highway 75 and County Road 7. It will be moved from the location before the end of today.

•Complainant reported that she is leaving her vehicle at 150th Avenue and 141st Street. It has a flat, and her husband is on the way from Edgerton to fix it. Complainant reported that the vehicle is off the roadway.

•Complainant requested a welfare check on subject at his residence, as he has missed several appointments with her office. She requested a deputy accompany her.

•Complainant reported he locked his keys in his vehicle on 181st Street.

•Complainant requested a deputy go to location with her to get her child that she says has been abducted. The child is supposed to be with the grandmother in Adrian. Deputy spoke with the complainant and advised her, as he has in the past, that she needs to get an attorney and have child custody arrangements made. While deputy was speaking to complainant, she hung up on him.

In addition, officers responded to 3 motor vehicle accidents, 1 vehicle in ditch, 1 deer accident, 1 transport, 1 funeral escort, 4 traffic stops, 24 ambulance runs, 2 paper services, 5 animal complaints, 2 false alarms, 2 money escorts, 7 log/alarm sheets, 4 drug court tests, and issued 6 purchase/carry permits.

Health & Happiness to All
May you be blessed with much good fortune this holiday season.
Thanks for the trust you've shown in us.

Running Friday, Dec. 23 until 3 pm
Closed Dec. 24, 25 & 26
Running Dec. 30
Closed Dec. 31, Jan. 1 & 2

ROCK COUNTY HEARTLAND EXPRESS
 Luverne, MN
 507-283-5058



At the close of another year, we take time to say
"Thank You"
 and wish you a Joyous Holiday Season!

WE WILL BE OPEN
 December 26 & January 2

ROCK VETERINARY CLINIC, P.A.
 South Hwy. 75, • 1295 101 St., Luverne, MN
 Emergency Number Call 507-283-9524



Save **BIG** on our Year End **CLOSEOUTS**

Papik MOTORS
 1-90 Luverne, MN

283-9171 | PAPIK.COM

CHEVROLET GMC CHRYSLER DODGE Jeep RAM

2017 Chevrolet Silverado LT
 M.S.R.P. **\$53,745** Stock #100598C
 Z71 Rally 2
\$11,000 OFF
Papik Price \$42,745



2016 Cadillac CTX Luxury
 M.S.R.P. **\$55,275** Stock #137678K
\$10,000 OFF
Papik Price \$45,275



2017 Ram 1500 Laramie
 M.S.R.P. **\$51,895** Stock #583968D
\$10,000 OFF
Papik Price \$41,895



2017 GMC Sierra 1500 SLT
 M.S.R.P. **\$57,440** Stock #140852G
 Premium
\$9,000 OFF
Papik Price \$48,440





Adult volunteer Scott Remme (above, left) passes bowls of mashed potatoes and kernel corn around the table as son Xander watches. Each of Luverne Elementary School's six grade levels participated in Respect Lunch Friday, where the regular lunch was served family style. Adult volunteers like Remme ate and explained table manners like how to pass bowls around the table to the other students. Volunteer Chad Overgaard (below) sets tables for Gordy Hansen's fifth-grade students.

Respect Lunch volunteer Rhonna Jarchow (above, center) sets down the serving tray for fifth-grade students (from Jarchow's right) Zoe Perkins, Morgan Ahrendt, Makena Nelson, Skyler VanderSteen, adult volunteer Daniel VanderSteen and Emma Lusty. **Above, far left:** Fifth-grader Jenna DeBates adds a spoonful of kernel corn to her plate while classmate Makena Nelson reaches for a ham slice.



the Respect Lunch, PPIE uses funds raised at its annual "Cardinal Dash: Keeping Cardinal Kids Running." The event is scheduled for May.

PPIE's Respect Lunch prepares students to participate in holiday dinners at home

Story and photos by Mavis Fodness

Luverne Elementary School students learned about "please" and "thank you" Friday during the annual Respect Lunch.

The event began in 1997 to teach students about proper table manners and uses a series of adult volunteers to complete the task.

This year's event involved about 90 parents and grandparents who sat and ate with the kindergarten through fifth-grade

students, whose lunches were divided into three equal time periods.

According to organizer Anne Shelton, an additional 17 adults helped with serving, with one volunteer adding the piano music.

Parents Partners in Education, or PPIE, coordinated the volunteers and worked with the kitchen staff on the menu. The group also purchased the holiday dinnerware.

Instead of the normal cafeteria-style service, where students walk through a line and are handed

a tray of their lunch items, the elementary commons was transformed into a family dining hall.

Each of the cafeteria's tables was draped with a white cloth, and place settings were added. When the students were seated, bowls of potatoes, kernel corn, buns and plates of ham were delivered by volunteers to each table. Another adult, eating with the students, coordinated the serving around the table.

Students were encouraged to

dress up for the event.

"Lunch time is a little longer than usual, and the kids have a slightly shorter recess than usual that day," said Shelton.

With single-digit temperatures outside, students didn't mind lingering at the dinner table longer.

School was also dismissed early due to impending bad weather.

For the costs of staging

REMEMBER WHEN

10 years ago (2006)

•With the city of Sioux Falls bonding to repay its share of Lewis and Clark Water System, the project has been a topic of local conversation.

Troy Larson, director of Lewis and Clark, visited with the Luverne City Council members Tuesday to update them on the system.

The city of Sioux Falls will repay \$66.3 million. Sixteen of the 20 Lewis and Clark members are prepaying, including the city of Luverne and Rock County Rural Water.

25 years ago (1991)

•In a stream of bright sunlight on a winter morning, Joan Heeren's needle flashes among the sparkling sequins of one more Christmas stocking.

She hasn't counted the stockings, tree skirts, tablecloths, table runners, wall hangings, switchplate covers and other items she has decorated with sequins and beads over the past 30-some years, but the number is high. ...

Heeren started making sequined Christmas items when she saw a sequined mail bag designed to hold Christmas cards. Once she got started, she couldn't stop.

50 years ago (1966)

•In a unanimous decision the Minnesota Supreme Court handed down a ruling that Hardwick School District 667 can consolidate with Luverne School District 670.

Action against the consolidation had been taken by the school boards of Jasper and Edgerton, each board wanting a slice of the area proposed in the consolidation plat.

In summary the decision says that "school districts are quasi-

municipal corporations and the creatures of statute, enjoying only the rights expressly conferred on them by the legislature. They have no standing to challenge the constitutionalities of a law which withholds from them other powers.

75 years ago (1941)

•One of the heaviest and most direct contributions to national defense in Rock county is that of Mr. and Mrs. Frank Frakes, of Magnolia, who have four sons in the military service of the nation. Marion, with the army, is believed to have left Honolulu nearly 2 weeks ago on a 21-day transport trip, his destination unknown; Allen was last known to have been in an army camp in Oklahoma; Gordon is with the navy, a torpedo-man on a destroyer in the Atlantic, according to the latest information available, and Lieut. Dale Frakes is with the navy on Atlantic patrol duty.

100 years ago (1916)

•Three children, Agnes, age 8, and Sidney, age 6, children of Mr. and Mrs. Sievert Skrondahl, and Hazel, age 5, daughter of Mr. and Mrs. G.E. Grovenberg, were run down late Monday afternoon by an automobile being driven by Rev. H.W. Baumann. ...

The two children on the sled escaped without a scratch. Agnes was taken to her home nearby and Dr. E.O. Thorson summoned. Upon examination the doctor found that her injuries consisted of painful but not serious bruises on the hip and back, and a few scratches on her face. During the night the little girl complained of pains in her stomach, but since then she has been getting along finely and the indications are that she is none the worse for the experience.

1900: Many improvements made to farms and villages

The following appeared in the Rock County Herald on December 21, 1900:

SOME BUILDING OPERATIONS

Improvements on the Farms and in the Villages—A Few of the Many

Some recent improvements in Luverne and vicinity are: Theodore Ahnert, west of town, barn, 34x40, 16-foot posts; H. B. Bullis, cattle sheds; H. W. Ferguson, addition to residence; Al. Muxlow, improvements on dwelling south of the poorhouse; Wm. Stelling, Mound township, hog house; J. Speers, blacksmith shop for his well boring business; A. Putnam, Luverne township, cattle sheds; Fred Kreps, sheds and barn; George Fores, corn cribs; Jacob Welbert, sheds for cattle; J. R. Wright, shed and barn on Mound township farm; Frank Loose, machine sheds and corn crib.

The development of the stock and cattle feeding industry in this county is in-



BITS BY BETTY

By Betty Mann, president, Rock County Historical Society

dictated by the large number of hog houses, cattle sheds and new barns erected within the past year. A local lumber dealer says his firm has sold more material for the construction of such buildings this year than it has ever done before.

The Hills Crescent gives the following list of building operations in that portion of the county: "Following are a few of the improvements now in course of construction or recently completed by our prosperous farmers: Isaac Nerison is erecting a new residence on lots north of the Iver Thompson residence in West Hills, Tom Colby, a new barn; Free Scott, a large barn; H. P. Sandbo, a first class hog house; Nels Jacobson, a

hog house; Andrew Sundem, large addition to his barn; K. G. Qually, large cow barn; J. C. Steensen, large corn crib; Ed Sexe, large barn; P. A. Arnett, large corn crib; G. D. Nelson, large cow barn; G. T. Rovang, corn crib; Martin Peterson, granary and corn crib combined; H. Halvorson, cow barn; Arne Sundem, large barn; Sam Johnson, large barn; J. H. Zenker, new barn; H. M. Moen, granary and corn crib."

The Magnolia Advance of a few weeks ago noted a number of improvements in that portion of the county and said: "The past season has brought many improvements to our village and country adjoining in the way of buildings and the list below

CELEBRATIONS

Births

A boy, Elias Jude, weighing 9 pounds, 4 ounces, and 21 1/2 inches long, was born Wednesday, Dec. 7, 2016, at Sanford in Sioux Falls, South Dakota, to **Andrew and Amanda Blank**, Beaver Creek. Grandparents are Doug and Ellen Olson and Mike and Jane Blank. Great-grandparents are Louise Stegemann and Hilde Thompson.

SENIOR MENU

Monday, Dec. 26: Closed.

Tuesday, Dec. 27: Hamburger tomato casserole, green beans, pineapple, bread, lemon chiffon dessert.

Program: Two-buck Tuesday sponsored by Exchange State Bank

Wednesday, Dec. 28: Vegetable beef soup, meat salad sandwich, pea and cheese salad, crackers, bar.

Thursday, Dec. 29:

Salmon loaf, baked potato with sour cream, mixed vegetables, dinner roll, pie.

Friday, Dec. 30: Sloppy Joe, potato salad, country blend vegetables, bun, fresh orange.

Senior Dining offers well-balanced and affordable meals in a community atmosphere.

Bring a friend or make new ones.

Call 283-9846 to make dining reservations or for home-delivered meals.

ENGAGEMENT

Larry Mueller, Danube, and Michael and Kathy Foerster, Winona, announce the engagement of their children Maribeth Mueller of Rochester and Tony Foerster of Minneapolis.

Maribeth graduated from BDRSH High School, Renville, in 2000 and from the University of Minnesota Duluth in 2004. She is employed by Mayo Clinic College of Medicine and Science as the assistant director of student financial aid.

Tony graduated from Burnsville High School in 2000. He graduated from the University of Wisconsin La-Crosse in 2004 with a major in economics and from Winona State University, Winona, in



Maribeth Mueller and Tony Foerster

2012 with a major in computer science. He works at PhData as a software architect.

They are planning a Feb. 25, 2017, wedding in Stillwater.

SCHOOL NEWS

Reker graduates from MSU Mankato

Amie Reker, Sherman, South Dakota, graduated from Minnesota State University, Mankato, on Dec. 10 with a Master of Science degree in experiential education.

is in a measure incomplete as there has been considerable work done that has escaped our notice; George Spencer, farm buildings, \$1,800; T. P. Roach, farm buildings, \$2,000; Theo Hamm, buildings, \$1,400; H. Rust, house, \$1,000; Ole Remme, barn, \$1,300; N. A. Christianson, house, \$450; John Carlson, barn, \$250; G. S. Barclay, barn, \$375; C. J. Frahm, barn, \$200; John Steffin, Barn, \$175; Kittil Oleson, sheep barn, \$150; Andrew Shelby, barn, \$300; V. M. Rolph, addition to house, \$250; Wm. Kline, stock barn, \$250; J. J. Kendall, corn crib, \$50; I. M. Cady, house, \$700; C. H. Walker, farm buildings, \$350; T. H. Bonnett, barn, \$240; Jas. Soutar barn, \$150; John McGee, addition to house, \$200; Thos. Robinson, barn, \$500; Herman Thomte, addition to house \$350; D. F. Sargent, cribs, \$125; Frank M. Knowlton, addition to house and barn, \$225."

Donations to the Rock County Historical Society can be sent to the Rock County Historical Society, P.O. Box 741, Luverne, MN 56156.

Mann welcomes correspondence sent to mannmade@iwi.net.



Mavis Fodness Photos/1222 Discovery Chairs

Discovery Time Teacher Debbie Mitchell lifts a new chair out of the box as her students eagerly help move the chairs into their classroom.

Christmas comes early at Discovery Time Preschool

By Mavis Fodness

Christmas came a little early for Debbie Mitchell's Discovery Time Preschool class.

For weeks an excited Mitchell prepped her 3- to 5-year old students on the expected arrival of 24 brand new oak chairs.

"They are so beautiful," Mitchell said. "They will outlast me."

With a life expectancy of 35 to 40 years, the 20 12-inch child-sized and four 14-inch adult chairs will provide a solid seat for decades to come.

The previous metal and plastic chairs, which were also used for decades, have become grubby from years of fingerprints and are unable to be scrubbed clean. Their metal footings also left rust rings on the floor after mopping.

The new wooden chairs match those used in the other early childhood classroom and have plastic caps on the legs.

They arrived outside the Luverne Community Education office in 12 large boxes that were opened on Wednesday morning, Dec. 14.

As Mitchell lifted the chairs out of the boxes, students provided the manpower to bring the new chairs into the classroom. Some carried the new purchases while others dragged or pushed the chairs into place.



Justin Mulder wastes no time using his new chair.

Quiet ensued as the students climbed onto the new seats and busied themselves with various activities.

A difference in posture was also easily noticeable as the higher backs helped promote sitting up straight.

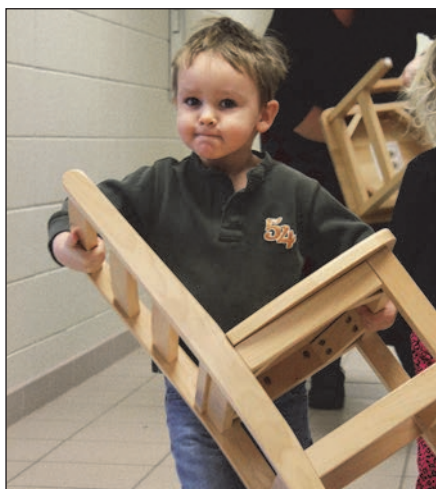
Smiles were also noticeable, especially from Mitchell who worked hard to secure the better chairs.

She said she received a grant from the Luverne Area Community Foundation for just over \$1,400 for new chairs. The estimate, however, was for 24 pine chairs, but when Mitchell saw the oak versions at an early childhood convention last month, she knew they were the ones she wanted.

The upgrade in wood and craftsmanship made the 24 oak chairs more than her grant allotment — until she talked with the School Specialty salesman.



David Waddington (right) pulls his chair to the classroom while Emery Vanderburg carries hers with supervision from paraprofessional Stacey Rolling.



Aiden Reese uses a little muscle to carry his newly unpacked chair.

"He undercut the cost so it matched the grant amount," she said. "Basically for every two chairs, I got one free."

Also at the convention, Mitchell's name was selected to receive \$1,000 in Crayola products. The two large boxes were unpacked earlier this year.

OBITUARY

Raymond Anderson

Raymond D. Anderson, 92, Luverne, died Saturday, Dec. 17, 2016, at the Tuff Memorial Home in Hills.

A funeral service will be at 10:30 a.m. Thursday, Dec. 22, at St. John Lutheran Church in Luverne. Burial will be at Maplewood Cemetery in Luverne. Visitation is from 4-7 p.m. Wednesday, Dec. 21, at Hartquist Funeral Home in Luverne.

Raymond Anderson was born Jan. 13, 1924, to Edmund and Marie (Renaas) Anderson on the family farm in Sanborn County, near Woonsocket, South Dakota. He attended country school through the eighth grade and high school in town. Due to the tough times, at age 16, Ray moved with his grandparents to Oakland, California, where he found work while continuing school. The summer before his senior year, Ray was drafted into the United States Army and was transferred to the Army Air Corps. He served during World War II as an aerial engineer and gunner. Ray flew over 35 missions from the southern part of Italy through northern Europe in a B-24 Bomber plane. Ray returned to Sioux Falls, South Dakota, where he finished as a sergeant of the Air Guards. On Oct. 3, 1945,



he received his honorable discharge from the service. He returned to Woonsocket and farmed for one year with his family. He then worked at the local lumberyard and then at a lumberyard in Pipestone and in Luverne. He then began working for Pat's Plumbing in Luverne.

On May 2, 1952, Ray married Jennie Tinklenberg at the Ebenezer Christian Reformed Church in Leota. The couple lived in Luverne. In 1961 Ray took a plumber position at the Veterans Administration Hospital in Sioux Falls, South Dakota, and retired after 25 years in 1986. Ray remained very active with volunteer work and working on his house or in his yard. Ray and Jennie moved to an apartment near Veterans Pond for four years and then to The Oaks for four years. In June 2016 Ray became a resident at the Tuff Memorial Home in Hills.

Ray was baptized Feb. 24, 1928, at Silver Creek Church in Artesian, South Dakota. He was confirmed July 2, 1939, at Bethany Lutheran Church in Woonsocket. He

was currently a member of St. John Lutheran Church in Luverne, where he had served in the past as an elder. He was a member of the Last Man Club and Glen's Coffee Club. He was also a member of the VFW and Luverne Lions Club, where he had served as a president. He enjoyed having a cup of coffee with friends, traveling throughout the country, and putting puzzles together.

Ray is survived by his wife, Jennie; two sons, Terry Anderson, St. Paul, and Todd (Veronica) Anderson, Oak Grove; a daughter, Janine (Darwin) Brands, Luverne; four grandchildren, Nathan Brands, Amanda (Matt) Hoffenkamp, Jessica Brands, and Cassandra (Glenn) Yonzon; five great-grandchildren; two brothers, Kenneth Anderson and Jerome (Leslie) Anderson, all of Woonsocket; and a sister, Darlene Smith, Montague, California.

He was preceded in death by his parents; an infant brother, Merlin; and a brother, Donley Anderson.

Arrangements are by Hartquist Funeral Home of Luverne, www.hartquistfuneral.com.

(1222 F)

DEATH NOTICE

Todd Christenson

Todd Michael Christenson, 55, Boynton Beach, Florida, formerly of Hills, died Friday, Dec. 9, 2016. Burial was Thursday, Dec. 15, at the South Florida National Cemetery in Lake Worth, Florida.

Funeral arrangements were through Palm Beach National Chapel, Lake Worth, www.palmbeachnationalchapel.com (1222 DN)

Remember as we celebrate this Christmas...

Having a joyous, happy Christmas isn't always possible. With the death of a loved one, holidays are particularly stressful. The social role of the loved one will need to be filled by someone else or altered significantly because that person will no longer be sharing in the holiday experiences with family and friends. For families dealing with such a loss, there will be difficult days coping with their feelings about the holiday season. Such families may fear the pain of the actual holiday, they may wish to avoid the whole season, they may feel pressure wondering what their friends expect of them and what traditions they should now follow or change.

The names below are the loved ones of families served by our funeral home during this past year. With Christmas upon us, these families need a gift of love from you. Maybe the best gift you could give them is a few moments of your time to show them your concern for them and their loss during this time.

Louise Kiebach	Milton Gibbs	Edwina Rust
Dorothea Goemmel	Darla Green	Dorothy Ask
Maurice Fitzer	Melvin Paulsen	Eileen Bouwman
Evelyn Silvrants	Alexandra Rozeboom	Virginia Gerken
Hattie Vanderziel	Janice Kroontje	Arnold Rieckman
Esther Weber	Helen Meyer	Leroy Lindblom
Leona Klosterbuer	Robert Anderson	Jean Vahey
Chad Carlson	Roger Gehrke	Daniel "Danny" Kvaas
John Crawford	Brian Bork	Adeline Chovancek
Olga Thorson Gabrielson	Albert Bot	Robert Bakken
Lucille Fick	Evan Ver Steeg	Opal Claussen
Robert Olson	Robert Drake	Debra Thovson
Gladys VanWettering	Stanley Wessels	Verna Busch
Marcella Scott	Glenn Vos	Harold Orvis
Lillian Anderson	Audrey Faber	Clifford Anderson
Burdell Enninga	Jennie Bosch	Lois Holling
William McCormick	Nina Mae Earnisse	Rita Stirling
Harvey Hemme	Lori Klein	Emerson "Whitey" Russman
James Fodness	Kenneth Busch	Lillian Mouw
Robert Rolph	Arthur Grootwassink	Miriam Hansen
Linda Finke	Viola Klosterbuer	Maynard Lafrenz
Dennis Gyberg	John Mouw	Jennie Nieuwboer
Nellie Van Santen	Raymond Anderson	Virginia Schei

"Our reputation is created by the families that we are privileged to serve."
-Jeff & Sara Hartquist



"Rock County's only local family owned and operated funeral home."



OB/GYN services here at home

At Sanford Luverne, we believe quality care should be delivered close to home. Sanford Health specialists provide health and healing where it's convenient to you. Where you feel at home.

Common Services:

- Colposcopy
- Essure® Permanent Birth Control
- Gynecologic Surgery
- Laparoscopic Hysterectomy
- NovaSure® Heavy Bleeding Control
- Obstetrics
- Prenatal Ultrasound

Anthony Sierra, MD
Obstetrics and Gynecology

SANFORD
Luverne

To schedule an appointment, call (507) 283-4476.



Hardy Lutherans perform in sub-zero weather

Grace Lutheran Church members performed their annual outdoor live Nativity over the weekend, despite temperatures plunging well-below zero. Some accommodations were made, such as shorter shifts, choirs singing indoors and a live angel not perched on top of the stable. But overall the show went on with camels and all, but with many more layers (snow suits) on actors, heaters and fire pits and plenty of soup and hot chocolate.



Lori Sorenson photos/1222 concert

Students perform Winter Band Concert

Luverne Fifth-Grade, Middle School and High School bands performed their winter concert Thursday, Dec. 15, in the high school gym under the direction of Angie Swenson and Richard Owen. Pictured above, the high school band performs "All I want for Christmas is You." At right, sixth-grade percussion students steal the show during "Christmas in the Kitchen." At right, the fifth-grade woodwinds contribute to "Good King Wenceslas." Counting all the students at all the band levels, roughly 230 musicians contributed to the event. Admission was a donation to the Rock County Emergency Food Shelf.



May this Christmas end the present year on a cheerful note and make way for a fresh and bright New Year. Here's wishing you a Merry Christmas and a Happy New Year!

605-759-8194
507-449-8005 - Luverne
licensed - bonded - insured
Minnesota and South Dakota

MIL ELECTRIC, LLC

County levy increases provoke public debate over budget/ continued from page 1A

to \$100,000 in new revenue annually," said County Administrator Kyle Oldre.

The wheelage tax was approved earlier this year.

The county collects \$10 per vehicle when licenses are renewed.

Hoeck also questioned the \$84,576 increase in the sheriff's office budget and its need for an additional full-time officer.

Board Chairman Jody Reisch explained the Sheriff's Office operates 24/7 to provide services to the county as well as its contracted cities.

In the past year the department has discontinued the hiring of part-time officers.

"These officers would fill in as needed when the full-time officer was off duty.

However, the part-time officers would often leave for full-time positions elsewhere after just months on the job.

"It was more cost beneficial to have that full-time person and alleviate some of that overtime cost," Reisch said.

In going through the 2017 budget line by line, Oldre had commissioners take a second look at the proposed increase for prisoner care budget.

In 2016 commissioners set a budget of \$80,000 and planned to increase that fund to \$100,000 in 2017.

So far this year, prisoner care expenditures have almost doubled.

Oldre said during the first 10 months of 2016 more than \$125,000 was been spent on prisoner care.

The final two months' billings could push the amount to as much as \$150,000.

Rock County houses an average of six prisoners a day in the Nobles County Jail in Worthington.

In previous years, the county averaged 3.5 prisoners a day.

Rock County's contract is \$52.50 a day, an amount that won't change next year.

Reserves would pay for this year's budget overture, according to Oldre.

In 2016 the county earmarked \$55,000 for reserves. In 2017 the proposed reserve amount is \$60,000.

Currently the county has five months of operating capital in reserves.

Before the 2014 flood, the county had 10 months of operating capital in reserves.

Oldre said each levy percentage generates about \$54,000. To reduce the proposed levy to 3 percent would mean cutting more than \$150,000 from the proposed 2017 budget.

Agricultural land picks up the majority of the county's proposed \$5.35 million budget.

In the past 15 years, the market values of agricultural properties have grown to pay 82.8 percent of the county's levied taxes.

Residential and commercial/industrial properties pay 10.6 and 6.7 percent respectively.

During the regular meeting prior to the Truth-in-Taxation public hearing, Commissioner Ken Hoime said the board usually sets the preliminary budget high with expectations to lower that amount to be more in line with the five-year average.

"It would show we are trying to do something for the taxpayers and I think it wouldn't hurt to look at something a little different," he said.

The next and final commissioner meeting for 2016 is set for 9 a.m. Tuesday, Dec. 27, in the commissioners room.

MERRY CHRISTMAS AND HAPPY NEW YEAR

Left to right: Landon Gacke, Cory Schoeneman, Bob Krull, Dave Sandbulte, Adam Uithoven, Jeff Van Santen, Derek Sandbulte, Lowell Schelhaas, Karlin Van Otterloo, Merlin Cleveringa.

BARCK AVENUE TRIPLEXES

AG NEEDS | FARM SHOPS | POLE BARNS

Call us today!

CLEVERINGA CONSTRUCTION

507-920-5631
LUVERNE, MN

Merry Christmas & Happy New Year

Remembering special people at Christmas fills our hearts with joy. We wish you a joyous holiday season and a New Year filled with peace and happiness.

Exchange STATE BANK
Local. Dependable. Strong.

Front: Carol Nelson, Ryan DeBates, Don Bryan, Sheryl Klaassen.
Back: Chelle DeGroot, Heather Erickson, Nicie Bosch, Kelly Kramer.

Holiday Hours
Friday, December 23
Closing at Noon
Monday, December 26
Closed
Friday, December 30
Open Normal Hours
Monday, January 2
Closed

(507) 962-3250 Hills, MN
(507) 967-2570 Ellsworth, MN
(507) 449-6000 Luverne, MN

Member FDIC



Logan Willi had help from grandma Bonnie Haugen and great-aunt Monica Appel with his decorated gingerbread house and tree.



Harlie DeKam uses a Lifesaver candy as a window for her gingerbread house. Dad Jeremy was ready to lend a hand in Harlie's classroom at Luverne Elementary School.

Luka Smith finished this gingerbread house with help from his mom, Andrea.



Candied Creations

Parents, grandparents join second-graders for traditional gingerbread house-making event



Grandma Karen Rollag holds her grandson Dylan Braucht's gingerbread house steady as he presses decorative candy pieces on the graham cracker siding using white frosting. Great-grandmother Anna Tilstra watches the construction with an approving eye during the Dec. 15 event.



Syanne Nava-Dagel enjoys some of the white frosting used on her gingerbread house.



Karlee Mulvihill-Turner spreads white frosting across her milk carton. The frosting held the graham crackers in place on her gingerbread house.



Colton Haubrich concentrates on spreading white frosting on the back of a candy drop with mom Jodee during the annual event.

Photos by Mavis Fodness

Dragon boys drop first game Monday

By John Rittenhouse

A five-game winning streak put together by Adrian's boys' basketball team came to an end Monday with a 15-point loss in Windom.

The streak reached five games when the Dragons saddled Wabasso with a 30-point setback in Wabasso Thursday.

Adrian, 5-1 overall, travels to Iowa Thursday to take on Spirit Lake.

Windom 63, Adrian 48

The Dragons fell from basketball's unbeaten ranks when they challenged the Eagles in Windom Monday.

Windom outscored Adrian in both halves of the contest to win the game by 15 points.

The Eagles led 33-25 after 18 minutes of play and outscored the Dragons 30-23 in the second half to seal the victory.

Zach Hendel turned in a 16-point, six-rebound effort for the Dragons.

Jacob Stamer (five rebounds and three assists), Zach Bierman (six rebounds), Mitchell Lonnenman (eight rebounds) and Nate Lonnenman (four assists) turned in productive nights as well.

Box score
Stamer 0 1 1-2 4, Serrao 1 2 0-0 8, Bierman 3 1 0-2 9, White 0 0 0-0 0, Henning 0 0 0-0 0, N.Lonnenman 1 0 0-0 2, Hendel 6 0 4-7 16, M.Lonnenman 4 0 1-3 9.

Team statistics
Adrian: 19 of 52 field goals (37 percent), six of 14 free throws (43 percent), 29 rebounds, 16 turnovers.
Windom: 22 of 51 field goals (43 percent), 15 of 23 free throws (65 percent), 27 rebounds, seven turnovers.

AHS 67, Wabasso 37

The Dragons earned a berth in the championship game of

Drop/continued on page 4B

Patriots race past Flying Dutchmen

By John Rittenhouse

The Hills-Beaver Creek girls' basketball team posted consecutive wins for the first time this season when the Patriots squared off against Edgerton in Hills Thursday.

With sophomores Sidney Fick and Grace Bundesen combining efforts to score 51 points to lead the charge, the home-standing Patriots rolled to a 72-47 victory.

Bundesen registered a double-double by scoring 18 points and collecting 11 rebounds.

Fick converted 13 of 20 field goals and drained six three-point shots to highlight a 33-point, eight-rebound effort.

A field goal by Bundesen gave H-BC a 5-0 lead 1:52 into the game before Edgerton trimmed the difference to two points (5-3).

The difference remained at two points (14-12) at the 9:22 mark, but the Patriots gained control of the contest over the next eight minutes.

H-BC embarked on a 28-10 scoring run ending with Bundesen turning an offensive rebound into a field goal that led the Patriots sporting a 20-point lead (42-22) with 1:45 remaining in the half.

The Flying Dutchmen did trim the difference to 15 points (42-27) before the first half was complete, but they never did offer a serious challenge to H-BC the rest of the night.

Fick canned a three-point shot two minutes into the second half to up H-BC's lead to 21 points (50-29).

Edgerton scored the next three points to make it a 50-32 game, but the Patriots iced the contest over the next six minutes.

A 13-2 surge capped by a three-point shot from Jasmine Lingen gave the Patriots a 63-34 advantage with 10:28 left to play.

The Flying Dutchmen



John Rittenhouse photo/1222 hgb 9

Hills-Beaver Creek sophomore Sidney Fick puts up a shot in front of an Edgerton defender during Thursday's girls' basketball game in Hills. Fick poured in 33 points during a 72-47 victory over the Flying Dutchmen.

closed the gap to 25 points at two different occasions in the final 10 minutes before falling by 25 at game's end.

Kourtney Rozeboom col-

lected five caroms for the 3-2 Patriots, who capped their December scheduled with a Tuesday (Dec. 20) game in Adrian.

Box score
Bos 0 0 0-0 0, Tilstra 0 0 0-0 0, Spath 1 0 0-0 2, Kolbrek 0 0 0-0 0, Lingen 1 2 0-0 8, Fick 7 6 1-2 33, Bundesen 5 1 5-6 18, Swan 0 0 0-0 0, Van Roekel 2 0 2-6 6, Gehrke 0 0 0-0 0, Rozeboom 2 0 1-2 5.

Team statistics
H-BC: 27 of 67 field goals (40 percent), nine of 16 free throws (56 percent), 39 rebounds, 22 turnovers.
Edgerton: 13 of 59 field goals (22 percent), 19 of 29 free throws (66 percent), 30 rebounds, 22 turnovers.



John Rittenhouse photo/1222 lgb 2

Luverne sophomore Jadyn Anderson slips a pass under the hand of Redwood Valley's Rose Frank during Monday's game in Luverne. Anderson scored 12 points to help the Cards win their Big South Conference debut.

Girls open BSC play with home conquest

By John Rittenhouse

The Luverne girls' basketball team snapped a four-game skid by winning their Big South Conference opener against Redwood Valley Monday in Luverne.

Luverne, which had not posted a victory since opening the season with a home win over Ellsworth Nov. 29, overcame a 23-turnover outing to outscore RWV in both halves of the game and secure

a 45-30 victory.

RWV produced the game's first point before the Cardinals countered with a 9-0 run to open an eight-point lead (9-1) when Jadyn Anderson drained one free throw at the 9:52 mark of the first half.

The Cards led by seven (13-6) when senior Hailey Hemme recorded a field goal in the paint at the 7:35 mark, but Redwood Valley answered the challenge over the next 5:21.

RWV put together an 11-5 surge to trim the difference to two points (19-17) with 2:04 remaining in the stanza.

Luverne thwarted the challenge by scoring six unanswered points in the final two minutes of the half to open a 25-17 cushion at the intermission.

LHS senior Zayna Hustoft scored the first two points of the second half to up the lead to 10 (27-17) before RWV

climbed back into contention with an 11-5 surge that left the Cards sporting a 32-28 lead with 10:34 remaining.

The hosts put the game away after that by limiting RWV to two points in the final 10 minutes.

A 5-0 spurt ending with a field goal from Remme at 7:03 upped the lead to nine points (37-28).

Girls/continued on page 4B

Thier's goal gives LHS girls 1-0 victory

By John Rittenhouse

An early goal for the Luverne girls proved to be the difference during a Dec. 13 girls' hockey game against Albert Lea at the Blue Mound Ice Arena.

Luverne registered a goal 1:32 into the game and the teams battled to a scoreless draw over the next 49:28 during a 1-0 victory for the Cards.

Brynn Thier, an eighth-grade defenseman, was given

credit for an unassisted goal that settled the issue.

A shot by Thier found the net with the help of a carom by an Albert Lea skater.

Both teams finished the game with 28 shots on goal.

Emilie Bartels made 28 saves to record her second consecutive shutout for the Cards.

The 5-2-1 Cardinals skate in Windom Thursday.

SWC, Windom top AHS

By John Rittenhouse

The Adrian girls' basketball team lost a pair of games on the road.

Adrian fell by 34 points to Southwest Christian in Edgerton Thursday before falling by 21 points in Windom Monday.

The 3-3 Dragons play in Worthington Thursday.

Windom 63, Adrian 42

A rough second half for the Dragons led to a 21-point loss when they took on the Eagles in Windom Monday.

Adrian stayed with Windom in the first half of the game, which ended with the hosts sporting a 25-22 advantage.

Windom went on to outscore AHS 38-20 in the second half to win the game handily.

Paige Bullerman (14 points and nine rebounds) and Hannah Bullerman (10 points and five rebounds) turned in solid efforts for Adrian.

Moriah Bullerman (five rebounds, three assists and four steals) and Lexi Slater (five rebounds) played solid games as well.

Box score
Kemper 2 0 0-0 4, H.Bullerman 1 2 2-2 10, M.Bullerman 2 0 2-3 6, Kunkel 1 0 0-0 2, Christians 1 0 0-2 2, Jeffers 0 0 0-0 0, Slater 2 0 0-0 4, Heidebrink 0 0 0-0 0, P.Bullerman 7 0 0-2 14.

Team statistics
Adrian: 18 of 50 field goals (36 percent),

four of nine free throws (44 percent), 28 rebounds, 25 turnovers.
Windom: 21 of 44 field goals (48 percent), 19 of 29 free throws (66 percent), 20 rebounds, 17 turnovers.

SWC 70, Adrian 36

The Dragons received their first Red Rock Conference setback of the season when they took on the E-Gals in Edgerton Thursday.

SWC canned 50 percent of its field goals and outscored AHS in both halves of a 34-point victory.

The E-Gals more than doubled Adrian's scoring output (39-17) in the game's first half and went on to outscore the Dragons 31-19 in the second half to win handily.

Paige Bullerman (12 points, nine rebounds and four steals) played a strong game for the Dragons.

Slater and Miah Kunkel contributed nine and six rebounds respectively to Adrian's cause.

Box score
Kemper 0 0 0-0 0, H.Bullerman 2 1 0-1 7, M.Bullerman 4 0 0-1 8, Kunkel 0 0 0-0 2, Christians 1 0 0-0 2, Jeffers 0 0 2-2 4, Slater 1 0 1-4 3, Heidebrink 0 0 0-1 0, P.Bullerman 6 0 0-2 12.

Team statistics
Adrian: 16 of 53 field goals (30 percent), three of 11 free throws (27 percent), 38 rebounds, 25 turnovers.
SWC: 27 of 54 field goals (50 percent), 12 of 24 free throws (50 percent), 33 rebounds, 18 turnovers.

DEC. 13 SPORTS REPLAY

Adrian boys remain perfect with home win

The Adrian boys' basketball team ran its record to 4-0 with a 65-42 home victory over Edgerton. After sporting a six-point lead (28-22) at halftime, the Dragons outscored the Flying Dutchmen 32-20 in the second half to prevail by 18. Zach Hendel (20 points and three steals), Ryan Wieneke (13 points) and Mitchell Lonneman (six rebounds) led the Dragons to victory.

Patriots blow out Heron Lake-Okabena

The Hills-Beaver Creek boys' basketball team evened its record at 2-2 after rolling to an 87-39 win over Heron Lake-Okabena in Hills. H-BC led 44-28 at the intermission before outscoring the Wildcats 43-11 in the second half to prevail by 48 points. Preston Wilhelmi (36 points, six steals and five assists), Zach Scholten (16 points, 10 rebounds and three assists), Trenton Bass (12 points, five rebounds, five steals and four assists), Josh Kueter (eight rebounds), Isaiah Vis (seven steals and three assists) and Jed Burgers (three assists) paced H-BC statistically.

Murray County Central rolls over Ellsworth boys

The Ellsworth boys' basketball team came up on the short end of a 68-27 decision when it took on Murray County Central in Slayton. The Rebels coasted to a 44-19 lead in the first half and outscored the Panthers 24-8 in the second half to notch a 41-point win. Brandon Kramer netted 11 points and Jared Leuthold grabbed eight rebounds for the Panthers.

Panther girls fall in double overtime

The Ellsworth girls' basketball team lost a 38-36 game when it entertained Dell Rapids St. Mary's in Ellsworth. The Panthers rallied from a 24-14 halftime deficit to knot the score at 35 at the end of regulation. Both teams scored one point in the first overtime, but DRSM used a 2-0 scoring edge in the second overtime to pull out a victory.



John Rittenhouse photo/1222 lw jeremiah 2 cut

Luverne senior Jeremiah Dooyema works over Marshall's Devyn Martzloff during a wrestling triangular in Pipestone Dec. 13. Dooyema split matches at 152 pounds for an LHS squad that went 0-2 as a team.

Arrows, Tigers topple Luverne's wrestlers

By John Rittenhouse

The Luverne wrestling team dropped a pair of matches to Big South Conference opponents during the Pipestone Triangular Dec. 13. Marshall handed LHS a 45-30 setback in the opening round and Pipestone saddled the Cards with a 55-21 loss in the finale. Hunter Baker, Jake Haugen and Solomon Nielsen put together 2-0 nights for Luverne. Baker registered pins

against Marshall's Connor Roth (53 seconds) and Pipestone's Ryan Woodbury (1:05), while Haugen recorded pins against Marshall's Zach Stahl (53 seconds) and Pipestone's Logan Steenstra (55 seconds). Nielsen drew a forfeit against Marshall before sticking Pipestone's Steven Czech in 3:35. Tucker Oeltjenbruns, Riley Baker, Jeremiah Dooyema and Zach Luke went 1-1 at the event. Zach Bradley, Justuce Ripka,

Jed Dooyema, Will Natte, Matt Hup and Jon Diaz went 0-2. The 1-3 Cards wrapped up their December schedule by competing at a triangular in St. James Tuesday (Dec. 20).

Match wrap-ups
Marshall 45, LHS 30
106 (L) H. Baker pins Roth.
113 (M) La Eh pins Bradley.
120 (M) Jensen pins Ripka.
126 (M) Louwagie 12-8 Oeltjenbruns.
132 (L) R. Baker pins Wambeke.
138 (M) Dulas pins Jd. Dooyema.
145 (M) Semler pins Natte.
152 (L) Jr. Dooyema 5-2 Martzloff.
160 (L) Haugen pins Stahl.

170 (M) Sterner pins Hup.
182 (L) Nielsen by forfeit.
195 (M) Martin pins Diaz.
220 (L) Luke 7-0 Felcyn.
285 (M) Bahr by forfeit.

Pipestone 55, LHS 21
106 (L) H. Baker pins Woodbury.
113 (P) Budden pins Ripka.
126 (L) Oeltjenbruns 5-4 Lange.
132 (A) Suda 16-7 R. Baker.
138 (P) Winter pins Jd. Dooyema.
145 (P) Olsen pins Natte.
152 (P) Fenton 7-5 Jr. Dooyema.
160 (L) Haugen pins Steenstra.
170 (P) Ploeger pins Hup.
182 (L) Nielsen pins Czech.
195 (P) Vanderwal pins Diaz.
220 (P) Stangeland pins Luke.
285 (P) Arndt by forfeit.

Rejoice at Christmas

Working for you - meeting your needs.

Buffalo Ridge INSURANCE

South Hwy. 75, Luverne, MN • Ph. 507-283-2381

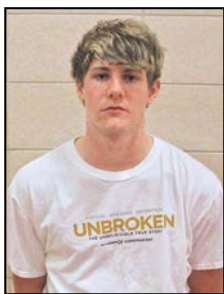
FRANKEN CONSTRUCTION
1332 181st St., Luverne, MN

Warmest wishes are what this brings to you. For joy that lasts all season and throughout the new year, too! Thank you for your business!

Travis Franken,
Lic #20627458
Insured
Cell: 507-920-8253
Call today for a FREE ESTIMATE

WINTER SENIOR ATHLETES OF THE WEEK

Matt Hup
Sport: Wrestling
Position: 152
Parents: Ken and Sue Hup
Favorite Subject: CTV
Extra Curricular Activities: Pole Vaulting, Dirt Biking
Future Plans: College for business



Kami Sawtelle
Sport: Basketball
Position: Post
Parents: Tom and Renee Sawtelle
Favorite Subject: Psychology/Biology
Extra Curricular Activities: Volleyball, Basketball, Track, Choir, Community Choir, Church Choir, Bell Choir
Future Plans: Attending University of Wisconsin - Stout and study Human Development and Family Studies



Pipestone Pepsi | 1809 Forman Drive, Pipestone, MN 56164

ADS BULK SEED BUGGY
Since 1999

MINERAL MATRON
Cattlemen's Answer to Handle Mineral & Fly Control
Only \$1,995

New ADS Pond-Tini

BST Models 100-200-300 units

All Galvanized Construction
Call Eric
605-261-1562
dnefarms1@gmail.com
MANUFACTURED BY AG DRYER SERVICES, INC., ELM CREEK, NE.

New ADS Seed Tote
Hard top and Roll Tops Available

ST Models (Pro -Box) Standard 2 or 4 Box

ST50
Perfect for small operations
\$4,995

Seeing Your Doctor Shouldn't Be So Hard

We're disappointed Avera is not included in Blue Cross Blue Shield's BlueConnect limited health insurance doctor network, because we are the closest and most convenient care option for many of you. Depending on where you live in southwest Minnesota:

You'll have to drive to another community for your care

You can't have your baby at your hometown hospital

You can't keep the doctor you know and trust

Our mission at Avera and Pipestone County Medical Center is to increase access to health care in the communities we serve.

We've contacted Minnesota officials to alert them of this issue. We hope you will, too.

Take action today.

Go to Avera.org/mnhealthplan

for information on how to contact your legislators.



H-BC boys are getting big numbers from smaller player

If they didn't believe it before, backers of the Hills-Beaver Creek boys' basketball team may start embracing the old saying that the best gifts come in small packages.



FROM THE SIDELINES

By John Rittenhouse, sports editor

At 5-9 and possibly 150 pounds, Preston Wilhelmi may not bring the most intimidating presence to H-BC's 2016-17 roster. Placing his physical appearance on the side, I would caution future H-BC opponents to not take Wilhelmi's presence on the court lightly.

He may be small in stature, but this sophomore sensation can burn the nets off a rim with his shooting skills. The Edgerton Flying Dutchmen and Heron Lake-Okabena found that out firsthand in H-BC's last two outings.

Wilhelmi pumped in 32 points during a 70-53 home win over Edgerton Dec. 6 and bettered that effort with a 36-point eruption during an 87-39 conquest over HL-O in Hills Dec. 13.

Along with the 30-plus-point outbreaks, Wilhelmi scored 18 points against R-T-R in the season opener and netted eight more in a game at West Lyon a couple of days later.

He leads H-BC in scoring through four games with 94 points, which averages out to a gaudy 24-point-per-outing average.

According to Patriot coach Steve Wiertzema, Wilhelmi's scoring output isn't a product of good fortune. The success he is experiencing is the result of a strong work ethic.

"Preston is a kid who has put in a lot of time shooting the basketball," Wiertzema offered.

"When you put in a lot of time and effort, you can become a good shooter. Preston has put in that time."

Had it not been for some misfortune, Wilhelmi would have displayed his abilities more last winter.

Back problems kept him off the court for the better part of the first two months of the 2015-16 campaign.

Wilhelmi received his first taste of varsity competition in late January of his freshman season and became a regular in H-BC's player rotation in February.

The experience he gained last season has paid dividends in 2016-17 as Wilhelmi has emerged as an offensive threat in a

lineup that includes the top two scorers (Zach Scholten and Isaiah Vis) from the 2015-16 team.

"I'm not really surprised by the way Preston has played so far this year," Wiertzema said.

"He has worked really hard to play the game at the varsity level and it's not a surprise to see how well he's been playing. It will be nice to have him around for a couple of more years because he'll only get better. He just needs to get a little stronger, working on his ball-handling skills some, and improve his passing. He sees the floor really well, but he's not making all the passes he will someday after he gets a little more experience."

The seasoning Wilhelmi needs will have to wait until January as a sprained ankle he sustained in practice last Thursday was expected to keep him off the court during road games against Luverne and Ellsworth this week.

He should return to the court during a Jan. 5 home game against Fulda, when a promising season resumes for H-BC's small package of dynamite.

LHS boys fall in home opener

By John Rittenhouse
Visiting Redwood Valley spoiled the home debut for the Luverne boys' basketball team Monday.

After playing three road games to open the 2016-17 campaign, the Cardinals finally received the opportunity to play a game on the home court.

RWV, however, spoiled the occasion.

The visitors canned 48 percent of their field goals and outscored LHS by comfortable margins in both halves of a 77-40 victory.

After RWV scored the first three points of the night, Luverne's Cole Claussen trimmed the difference to one point (3-2) with a field goal 1:36 into the contest.

The way things panned out, that was as close as the Cards would come to catching RWV.

The visitors went on a 20-7 run to open a 14-point (23-9) lead at the 8:49 mark of the opening stanza.

Luverne countered with a 7-0 run ending with Mark Robinson sinking a pair of charity shots to make it a seven-point (23-16) game with 7:01 remaining in the stanza.

RWV, however, dominated the rest of the half.

The visitors went on a 19-4 run in the final seven minutes



John Rittenhouse photo/1222 lbb 4

Luverne's Eli Haugom scored six points during Monday's 77-40 home loss to Redwood Valley in boys' basketball.

to open a 42-20 cushion at the intermission.

LHS was unable to climb back into contention in the second half.

RWV scored the first five points of the stanza as a part of a 29-11 run that left it sporting a 71-31 lead with 10:06 left to play.

RWV led by as many as 41 points in the final 10 minutes before settling with a 37-point victory at game's end.

Senior Layne Curtis netted 13 points to lead the Cardinals

in scoring. Claussen grabbed five rebounds and Robinson charted three assists for the 1-3 Cards.

Box score
Robinson 0 0-2-2, Lundgren 0 0-0-0, Rahm 0 0-0-0, Guy 0 0-0-0, Claussen 3 0 1-2-7, Curtis 4 1 2-2 13, Jacobsma 1 0 0-1-2, Bierman 0 0-0-1 0, Stemper 0 0 0-0, Siebenahler 2 0 4-6 8, Eitrem 1 0 0-0-2, Golla 0 0-0-0, Haugom 3 0 0-0-6.

Team statistics
Luverne: 15 of 51 field goals (29 percent), 14 of 19 free throws (74 percent), 18 rebounds, five turnovers.
RWV: 27 of 56 field goals (48 percent), 15 of 22 free throws (68 percent).

BOWLING CLIPBOARD

Monday Night League 12-19
Games won: Luverne Lanes, 2; Rock Vet Clinic, 2.
High Scratch Game: Pat Weerheim, 168; Evie Kephart, 158; Marie Ophelm, 151.
High Scratch Series: Pat Weerheim, 460; Evie Kephart, 369; Marie Ophelm, 360.
Team High Scratch Game: Rock Vet Clinic, 557.
Team High Scratch Series: Rock Vet Clinic 1586.
Team High Handicap Game:

Luverne Lanes, 729.
Team High Handicap Series: Luverne Lanes, 2040.
Thursday Night Bowling League 12-15
Games won: Billy Goats, 3; PD's Bar Files, 3; Kruser's Bruisers, 3; The Troublemakers, 1; Mark's Electric, 1.
High Scratch Game: Dave Nelson, 195; Jeff Runia, 188; Billy Debates, 186.
High Scratch Series: Zach Runia, 535; Chris Nelson, 503; Brandon Berkenpas, 501.
Team High Scratch Game: The Troublemakers, 676; Billy Goats, 618; Mark's Electric, 547.
Team High Scratch Series: The Troublemakers, 1768; Billy Goats, 1759; Mark's Electric, 1576.
Team High Handicap Game: The Troublemakers, 830; Kruser's Bruisers, 792; Kruser's Bruisers, 773.
Team High Handicap Series: Billy Goats, 2281; Kruser's Bruisers, 2257; PD's Bar Files, 2233.

Edgerton saddles Ellsworth with setback

By John Rittenhouse
The Ellsworth boys remained winless for the season after dropping a Red Rock Conference basketball game at Edgerton Public School Monday.

The Panthers entered the contest with a 0-3 record and took their fourth consecutive setback after coming up on the short end of a 75-45 decision to the Flying Dutchmen. Edgerton scored early and

often as the Flying Dutchmen opened a 39-24 lead in the first half.

When the hosts outscored the Panthers 36-21 in the second half, their 30-point conquest was complete.

Grant Jansma buried four three-point shots and led the Panthers in scoring with 12 points.

Jared Leuthold (five rebounds and four assists), Rison Curtis (five rebounds

and three assists), Brandon Kramer (six rebounds) and Carter Boyenga (six rebounds) also turned in productive nights.

Ellsworth hosts Hills-Beaver Creek Thursday.

Box score
Leuthold 0 1 2-2 5, Curtis 4 0 0-0 8, T.Kruse 0 0 2-2 2, Jansma 0 4 0-0 12, S.Kramer 1 0 0-0 2, Boyenga 1 0 3-6 5, B.Kramer 4 0 1-3 9, Buntjer 0 0 2-6 2.

Team statistics
Ellsworth: 15 field goals made, 10 of 21 free throws (48 percent), 31 rebounds, 21 turnovers.

Drop/continued from page 2B

the Wabasso Tournament by knocking off the host school Thursday.

AHS converted 60 percent of its field goals and outscored the Rabbits in both halves of a 30-point victory.

Adrian led 36-24 after 18 minutes of play and outscored Wabasso 31-14 in the second half to complete a lopsided

win. Hendel (18 points), Mitchell Lonneman (17 points and four rebounds) and Stamer (11 points) played key roles in the win.

Nate Lonneman grabbed four rebounds and Ryan Wieneke passed for three assists for the Dragons.

Box score
Stamer 1 1 6-8 11, Serrao 2 0 2-6, Bierman 1 0 0-0 2, White 0 0 0-0 0, Wieneke 2 1 0-0 7, Ross 0 0 0-0 0, Henning 0 0 0-0 0, N.Lonneman 3 0 0-0 6, Hendel 8 0 2-6 18, Veld 0 0 0-0 0, Werkman 0 0 0-0 0, M.Lonneman 8 0 1-2 17, Swank 0 0 0-0 0, Polzine 0 0 0-0 0.

Team statistics
Adrian: 27 of 45 field goals (60 percent), 11 of 18 free throws (61 percent), 10 turnovers.
Wabasso: 14 of 44 field goals (32 percent), six of nine free throws (67 percent), four turnovers.

SPORTS BRIEF

Vis graces list

A Hills-Beaver Creek senior received a prestigious post-season award for his prowess on the football field during the 2016 season.

Isaiah Vis, H-BC's starting tailback who led the Patriots in rushing and scoring, drew honorable mention recognition on the 2016 Minnesota Nine-Man Football All-State

Team. Vis is one of 17 players to receive honorable mention from the state's nine-man coaches, who select the team.

Girls/continued from page 2B

LHS went on to outscore RWV 8-2 the rest of the night and prevailed by 15 points after Anderson capped the scoring with one free throw with 12 seconds remaining.

Remme (13 points and seven rebounds) and Anderson (12

points and seven rebounds) led the Cards to victory.

Sierra Schmuck recorded three assists for the 2-5 Cardinals, who host Jackson County Central Thursday.

0, Remme 6 0 1-2 13, Oye 0 0 0-0 0, Anderson 3 0 6-10 12, Thorson 0 0 0-0 0, Sawtelle 2 0 1-2 5, Bosch 0 2 1-2 7, Oftedah 1 0 0-3 2, Petersen 0 0 0-0 0, Hustoft 1 0 3-4 5.

Team statistics
Luverne: 15 of 43 field goals (35 percent), 13 of 17 free throws (76 percent) 31 rebounds, 23 turnovers.

Dining & Entertainment

Happy Holidays
For your holiday gatherings
GROWLER FILLS

OPEN Thursday & Friday DECEMBER 22 & 23 4 - 7 PM

OPEN Thursday & Friday & Saturday DECEMBER 29 & 30 & 31 4 - 7 PM

509 E Main Luverne 1-855-5-Take16

UP THE DAM CREEK

Enjoy this holiday season with your family and friends

MERRY CHRISTMAS

Downtown Beaver Creek • 507-204-7740
3-7 Mon-Thurs • 10am - 1am Fri & Sat

Merry Christmas

Thanks for your patronage in 2016. We look forward to seeing you in 2017.

OPEN Christmas Eve & New Years day at noon

GREEN LANTERN CAFE & BAR
HARDWICK, MN
507-669-2246

Join us Christmas WEEK

AT UNITED METHODIST CHURCH IN LUVERNE

CHRISTMAS MEDITATION "THE REASON FOR THE SEASON" FRI., DECEMBER 23 6:30 - 9:30 PM

COME AND GO AS YOU PLEASE. SIT AND LISTEN TO THE CHRISTMAS MUSIC. COOKIES AND CIDER AVAILABLE

COMMUNITY CHRISTMAS EVE MEAL SAT., DECEMBER 24 6:30 PM

OPEN TO ALL AT NO CHARGE
CANDLE LIT SERVICE AT 5 PM

DEUCES WILD

DUELING PIANOS

DECEMBER 30, 2016 | 8:00PM

AT THE HISTORIC PALACE THEATRE
RESERVED SEATING \$30 | BALCONY SEATING \$25

TICKETS AVAILABLE AT THE PALACE BOX OFFICE
507.283.4339
104 EAST MAIN STREET, LUVERNE, MN

St. Catherine Catholic Church
203 E. Brown St., Luverne
St. Catherine Ph.: 283-8502

St. Mary Catholic Church, Ellsworth
Thursday, Dec. 22: 4 p.m. Mass at Veterans Home. Saturday, Dec. 24: 4 p.m. Music at St. Catherine. 4:30 p.m. Mass at St. Catherine. 7 p.m. Music at St. Mary. 7:30 p.m. Mass at St. Mary. Sunday, Dec. 25: 9 a.m. Mass at St. Catherine. Tuesday, Dec. 27: 9:30 a.m. Bible Study. 4 p.m. Mass at Poplar Creek. 7 p.m. Cub Scouts. 7:30 p.m. St. Catherine Knights of Columbus. Wednesday, Dec. 28: 10 a.m. Mass at Mary Jane Brown Home. Thursday, Dec. 29: 4 p.m. Mass at Veterans Home.

Luverne Christian Reformed Church
605 N. Estey St., Luverne
Office Ph. 283-8482; Prayer Line Ph. 449-5982
www.luverncrc.com — luverncrc@gmail.com
Roger Sparks, Pastor

First Baptist Church
1033 N. Jackson St., P.O. Box 975, Luverne
Ph. 283-4091; email: fbcluv@iw.net — www.fbcluverne.org

Walt Moser, Pastor
Thursday, Dec. 22: 6 a.m. Men's Bible Study at First Baptist Church. 7 p.m. Worship service on Channel 3. Saturday, Dec. 24: 5 p.m. Christmas Eve Service. Sunday, Dec. 25: 9:15 a.m. Sunday School and Adult Fellowship. 10:30 a.m. Morning Service. No evening Service. Tuesday, Dec. 27: 7 a.m. Men's Bible Study at First Baptist Church. Thursday, Dec. 29: 6 a.m. Men's Bible Study at First Baptist Church. 7 p.m. Worship on Channel 3.

Grace Lutheran Church
500 N. Kniss Ave., Luverne
Ph. 283-4431; www.graceluverne.org — Nichols-glc@live.com

Ron Nichols, Pastor; Cole McCormick, Interim Pastor
Thursday, Dec. 22: 9:30 a.m. Rachel Circle at Grace Lutheran. 12:30 p.m. Lydia Circle at Grace Lutheran. 7 p.m. Priscilla/Elizabeth Circle at Dianna Spath. Friday, Dec. 23: Noon Office closes. 6:30 p.m. Worship on Channel 3. Saturday, Dec. 24: 3 p.m. Worship. 5 p.m. Musical Prelude. 5:30 p.m. Candlelight Worship with Communion. Sunday, Dec. 25: 9 a.m. Radio Broadcast of Christmas Eve Service. 10 a.m. Worship with Communion.

Bethany Lutheran Church
720 N. Kniss Ave., Luverne
Ph. 507-283-4571 or 507-449-0291 or 605-215-9834
pastorpalmquist67@yahoo.com

Andrew Palmquist, Pastor
Saturday, Dec. 24: 5:30 p.m. Christmas Eve Worship Service. Sunday, Dec. 25: No Sunday School or Bible Class. 10:15 a.m. Festive Christmas Worship with Communion.

American Reformed Church
304 N. Fairview Dr., Luverne
Ph. 283-8600; email: office@arcluverne.org
Friday, Dec. 23: 6:30 a.m. Community Men's Bible Study. Saturday, Dec. 24: 5 p.m. Christmas Eve Candlelight Service. Sunday, Dec. 25: 9:30 a.m. Worship with Communion. No Sunday School. Noon Fellowship Hall reserved. Tuesday, Dec. 27: 10 a.m. Staff meeting. Wednesday, Dec. 28: 7 p.m. Magnify Praise Team.

First Assembly of God Church
1075 110th Ave., 2 miles west of Luverne on County Rd. 4
Kenneth and Gloria Kashner, Pastors
Sundays: 9 a.m. Sunday School. 10 a.m. Morning Worship. 6:30 p.m. School of the Holy Spirit. Wednesdays: 7 p.m. Kids Connection; Men's Bible Study with Pastor Ken; Women's Bible Study with Pastor Gloria.

Magnolia United Methodist Church
501 E. Luverne St., Magnolia
Church Ph. 283-9698; cell 227-7821
adrmagumc@frontiernet.net — www.adrianmagnoliaumc.com

Kristi Franken, Pastor
Saturday, Dec. 24: 5:30 p.m. Adrian and Magnolia Christmas Eve Service with Communion in Magnolia. Sunday, Dec. 25: 10 a.m. Adrian and Magnolia Christmas Service in Adrian.

United Methodist Church
109 N. Freeman Ave., Luverne
Ph. 283-4529; email: luverneumc@iw.net

Thursday, Dec. 22: 1-3 p.m. Rock County Emergency Food Shelf. Saturday, Dec. 24: 5 p.m. Christmas Eve service. 6:30 p.m. Free Christmas Eve community meal. Sunday, Dec. 25: No worship service. Thursday, Dec. 29: 1-3 p.m. Rock County Emergency Food Shelf.

First Presbyterian Church
302 Central Lane, Luverne
Ph. 283-4787; email: Firstpc@iw.net — www.fpcluverne.com50

Saturday, Dec. 24: 5 p.m. and 7 p.m. Christmas Eve Services. Sunday, Dec. 25: No Sunday School. 10:15 a.m. Worship. Monday, Dec. 26: 5-6 p.m. Weight Watchers. Tuesday, Dec. 27: 5:30 p.m. Worship on Channel 3. Wednesday, Dec. 28: No Youth Club, Bell Choir or Chancel Choir.

St. John Lutheran Church
803 N. Cedar St., Luverne
Ph. 283-2316, Dial-A-Devotion Ph. 283-4005
email: stjoh@iw.net — www.stjohnlutheranluverne.org
Saturday, Dec. 24: 5 p.m. Christmas Eve Worship. Sunday, Dec. 25: 9 a.m. Worship with Holy Communion. Monday, Dec. 26: Church office closed. Wednesday, Dec. 28: No activities.

Living Rock Church
500 E. Main St., Luverne
Ph. 449-0057; www.livingrockswmn.org
Billy Skaggs, Pastor
Sundays: 10:30 a.m. Worship; Kids Rock Children's Ministry. 6 p.m. Youth Ministry. Life groups meet throughout the week.

New Life Celebration Church
211 E. Main St., Luverne
Ph. 449-6522; email: newlifecel@icloud.com
Sundays: 9:30 a.m. Worship in the lower level meeting room of the Creeger building. Every third Thursday: 5 p.m. Food give-away. Bible Study groups meet at various times and days.

Zion Evangelical Lutheran Church
305 E. 2nd St., P.O. Box 36, Hardwick
Ph. 669-2855; email: revmumme@gmail.com — www.zionlutheranhardwick.com
Mark W. Mumme, Pastor

Thursday, Dec. 22: 3:30 p.m. Zion Worship on Channel 3. Friday, Dec. 23: 3:30 p.m. Zion Worship on Channel 3. Saturday, Dec. 24: 5 p.m. Christmas Eve Worship Service and Sunday School program. Sunday, Dec. 25: 9:30 a.m. Christmas Day Worship Service with Holy Communion; adult choir sings. Monday, Dec. 26: 1 p.m. Quilting. Thursday, Dec. 29: 3:30 p.m. Zion Worship on Channel 3.

Ben Clare United Methodist Church
26762 Ben Clare Ave., Valley Springs, S.D.
igtwlb@WOW.net
Bill Bates, Pastor
Sundays: 9 a.m. Worship; 10 a.m. Fellowship; 10:30 a.m. Sunday School for all ages.

First Lutheran Church
300 Maple St., Valley Springs, S.D.
Ph. (605) 757-6662
Friday, Dec. 23: 1:30 p.m. Advent Bible Study at Palisade Lutheran. Saturday, Dec. 24: 8 p.m. Candlelight Christmas Eve Service with Holy Communion. Sunday, Dec. 25: 10 a.m. Joint Parish Christmas Day Service. Wednesday, Dec. 28: No Confirmation.

Palisade Lutheran Church
211 121st St., Garretson, S.D.
Ph. (507) 597-6257 — firstpalisade@alliancecom.net
Friday, Dec. 23: 1:30 p.m. Advent Bible Study. Saturday, Dec. 24: 6 p.m. Candlelight Christmas Eve Service with Holy Communion. Sunday, Dec. 25: 10 a.m. Joint Parish Christmas Day Service at First Lutheran. Wednesday, Dec. 28: No Confirmation.

First Presbyterian Church
201 S. 3rd St. P.O. Box 73, Beaver Creek
Ph. (507) 673-2428 — lori.1stpc@centurylink.net
Worship Leaders Michael Blank and Andy Anderson
Sundays: 9:30 a.m. Worship; 9:45 a.m. Sunday School. Deborah Circle — Third Wednesday of the month.

Bragg Nobel Prize

There is a story of a man named William Lawrence Bragg, a twenty-five year old man, the youngest person ever to win the Nobel Prize in physics. Bragg was an avid amateur gardener.



BUILT ON A ROCK

By Pastor Ron Nichols,
Grace Lutheran
Church, Luverne

When he moved to London to head the Royal Institution, he reluctantly left behind the beautiful Cambridge garden he spent so many years perfecting. Life in a city apartment made him restless and unhappy until he found an ingenious solution to his problem.

Dressed in old gardening clothes with a spade over his shoulder, he patrolled the streets of a nearby wealthy district until he found a house whose garden tempted him. Then he rang the bell and, tipping his hat respectfully to the lady of the house, introduced himself as "Willie," an odd-job gardener with one free afternoon a week. His employer found Willie an absolute treasure.

One day a knowledgeable visitor looked out the window and gasped, "Good heavens, what is Sir Lawrence Bragg doing in your garden?"

We too might gasp and say, "What is God doing in a stable?"

What is the God of the universe, the creator of all

things, doing in a humble manger?

This is God's way of fulfilling a promise, a promise to show us the way, and a promise to make every effort to bring us back home. God is not willing to just speak to us through prophets. God is not willing to simply write His name in the sky to make us believe. God is not willing to give up on us. But, God is, however, willing to become one of us and to become just like us in every way in order to show us the way home.

Jesus left the throne of glory to become the babe of Bethlehem, born in a stable because there was no room in the inn. Why did he do it? Because "the world sat in darkness," as the prophet Isaiah puts it.

Christmas is not simply the celebration of the birthday of a good man, but of light penetrating darkness, hope penetrating despair, life overcoming death, salvation delivered to a fallen humanity.

Steen Reformed Church
112 W. Church Ave., Steen
Ph. 855-2336

Jeremy Wiersema, Pastor
Sundays: 9:30 a.m. Worship. Sunday School follows Worship. 6:30 p.m. RCYF.

Bethlehem Lutheran Church
Pastor Maggie Berndt-Dreyer
112 N. Main St., Hills
Ph. 962-3270

e-mail: bethlehemluth@alliancecom.net
Saturday, Dec. 24: 2 p.m. Christmas Eve Service at Tuff Chapel. 5 p.m. Christmas Eve Candlelight Service with Communion at Bethlehem Lutheran Church. Sunday, Dec. 25: 9 a.m. Worship at Tuff Chapel. No Sunday School. 10:30 a.m. Communion at Bethlehem Lutheran Church. Tuesday, Dec. 27: 2:30 p.m. Bible Study at the Tuff Home. 3:15 p.m. Bible Study at the Village. Wednesday, Dec. 28: 9 a.m. Quilting. No Confirmation or Youth Night.

Hills United Reformed Church
410 S. Central Ave., Hills
Office Ph. 962-3254
hillsurc@alliancecom.net
Alan Camarigg, Pastor

Sundays: 9:30 a.m. and 6 p.m. Worship Services.

**These Weekly Church
Page Messages are
contributed to God's
Work through the
Church and by these
concerned and
responsible citizens
& businesses:**

Call Rick or Chantel to
place your ad!

283-2333

**Tuff Memorial Home,
Retirement Apartments
& Tuff Village**

"A Home Where Residents SMILE"
Hills, Minnesota
Phone 507-962-3275

**Papik
MOTORS**
LUVERNE, MINN.

I-90 in Luverne, MN
507-283-9171 • 1-800-634-7701

Read us online!

Rock County
STAR HERALD
www.Star-Herald.com

Trust In Him



Prizza Ranch
110 E. Main,
Luverne, MN
Phone 507-283-2379

MANLEY
TIRE & OIL SERVICE
Manley Minnesota
1-800-615-3704
Open six days a week - Closed on Sundays
To God be the Glory.

CWGW
Business Insurance.
Tri-State Region *Period!*

Rock County
STAR HERALD
Luverne, MN • 507-283-2333

Bruce's Electric
residential, commercial and farm wiring
Bruce Umbreit
Electrical Contractor
1200 Linden, Luverne, MN 56156
Phone 507-283-4917

**Luverne
ANNOUNCER**

To Advertise
Call
283-2333

**Buffalo Ridge
INSURANCE**
507-283-2381 www.buffaloridgeins.com E-mail: info@buffaloridgeins.com

McClure Electric
Alan M. Aanenson, owner
Farm, Home & Commercial Wiring
Luverne, MN Phone 507-283-4716

First Farmers & Merchants
303 E. Main, Luverne, MN
507-283-4463
www.fmbank.com
We believe in you.
Member FDIC. And the community.

**HILLS STAINLESS STEEL
& EQUIPMENT CO., INC.**
506 W. Koehn, P.O. Box 987, Luverne, MN
PHONE 507-283-4405
Church is Important - Please Attend!

**MINNWEST
BANK**
• 116 E. Main St., Luverne 507-283-2366
• S. Hwy. 75, Luverne 507-283-9131
• Main St., Beaver Creek 507-673-2333
Member FDIC www.minnwestbank.com

HARTQUIST
Funeral and Cremation Services
- ENGBRETSON CHAPEL -
507-283-2777
www.HartquistFuneral.com
"Let our family help your family"
Serving the Luverne and Surrounding Communities

Tollefson Publishing
117 W. Main
Luverne, MN 56156
507-283-2333

Star Herald PUBLIC NOTICES

Star Herald CLASSIFIEDS

Rock County Commissioners meet Nov. 22

Herred Board Room 9:00 A.M.
Rock County Courthouse November 22, 2016

The meeting was called to order by Chair Reisch with all Commissioners present; the Pledge of Allegiance was recited.

Motion by Boyenga, seconded by Thompson, to approve the November 22, 2016 County Board agenda, declared carried on a voice vote.

Motion by Hoime, seconded by Williamson, to approve the November 08, 2016 County Board minutes, declared carried on a voice vote.

Motion by Williamson, seconded by Hoime, to approve the consent agenda, declared carried on a voice vote.

1. RCO contracts – Courthouse/Tunnel cleaning \$5.50/client and Shredding -.175/lb

The County Board was informed of the receipt of the MCIT Dividend of \$60,633; presented as information only.

The County Board discussed MCIT voting delegates, it was determined to leave the delegates the same, that being Commissioner Hoime and Administrator Oldre as the alternate.

Rock County Auditor/Treasurer Ashley Kurtz, Rock County Attorney Don Klosterbuer, and Rock County Highway Engineer Mark Sehr, discussed repairs totaling \$59,000 made to Judicial Ditch No. 2; as per County Board action of 05/03/2016, Judicial Ditch No. 2 users would be subject to a 1-year assessment of \$50,000 for repairs and any remaining balance would be used for future maintenance costs of the ditch. After considerable discussion as to whether or not to rescind the action on 05/03/16 and modify the 1-year assessment to \$59,000 (the actual cost) so there would be adequate funds to be used for maintenance, it was determined to leave the 1-year assessment at \$50,000. The Auditor/Treasurer requested to collect interest on the 1-year assessment if the assessment ended up on the 2017 tax roll. Motion by Williamson, seconded by Hoime, to authorize a 5% interest rate on the 1-year \$50,000 Judicial Ditch No. 2 assessment effective 02/01/2017, declared carried on a voice vote.

The County Attorney reviewed proposed changes to the Plum Creek Joint Powers Agreement; it was determined that the draft JPA document would be returned requesting the proposed changes, so no action was taken at this time.

The Auditor/Treasurer presented the claims with additions and per diems of \$2,325.00; motion by Boyenga, seconded by Thompson, to approve as presented, declared carried on a voice vote. A complete listing of the claims is available upon request at the Auditor/Treasurer's Office.

Claims over \$2,000:

CHS EASTERN FARMERS COOP	5,935.70
DAVE'S REPAIR	5,365.89
EMERGENCY AUTOMOTIVE TECHNOLOGIES	2,963.76
EXPRESSWAY-LUVERNE	4,656.43
GRAHAM TIRE-WORTHINGTON	3,772.70
JOHNSON CONTROLS	38,525.00
KETTERLING SERVICES INC	8,528.60
LUVERNE BODY SHOP	4,124.90
LUVERNE/CITY OF	6,287.88
LYON COUNTY LANDFILL	16,626.00
MIDSTATES EQUIPMENT & SUPPLY	5,295.00
RANDY'S PUMPING SERVICE	4,100.00
RETROFIT COMPANIES, INC	4,829.90
ROCK COUNTY OPPORTUNITIES	2,821.29
ROCK SOIL & WATER CONSERVATION DIST	3,041.24
RUPP CONSTRUCTION CO INC	3,250.98
SANDERS INC	3,827.19
SEACHANGE	6,426.44
W & N CONSTRUCTION INC	7,382.30
ZIEGLER INC	6,843.00
86 Payments less than \$2,000	29,686.81
TOTAL	\$174,291.01

The County Board was in receipt of the Fund Balance report; there was a brief discussion regarding the Environmental Fund and its correlation to Soil and Water. Motion by Hoime, seconded by Williamson, to approve the Fund Balance report, declared carried on a voice vote.

The Auditor/Treasurer informed the County Board that final settlement is scheduled for December 2nd and that Truth and Taxation notices will be mailed this week. The Truth and Taxation meeting is scheduled for December 13th @ 6:00PM.

The Auditor/Treasurer stated that Rock County is in receipt of its first Wheelage tax revenue of \$49.88.

The County Board was in receipt of the 2017 Tax Capacity Rates; presented as information only.

The County Board was in receipt of a current revenue and expenditure report; no action was taken.

The County Board was in receipt of a thank you letter from Rock County Opportunities for the opportunity to purchase the surplus Chevy Impala automobile.

The County Board was informed of the Rock/Nobles Community Corrections Annual meeting scheduled for November 22nd @ 11:30AM at the Rock County Law Enforcement Center.

Attendance at the AMC Annual Conference was briefly discussed.

Motion by Hoime, seconded by Boyenga, to declare the 2006 Heartland Bus as surplus and sell on the government auction, declared carried on a voice vote.

Commissioner Items:

Commissioner Williamson stated that he attended a Soil & Water meeting with the following recap: 6,000 trees were planted at 14 sites, there are currently 840 buffer strips in the county and 344 are compliant, 350 are non-compliant and in need of repairs, and 150 sites are questionable. Also stated that he will be attending a Water Plan Taskforce meeting scheduled for December 14th, and attended the Canvassing Board, Southwest Mental Health meeting, and Extension meeting where they reported that 4-H Roundup had 120 attendees and that 56 youth had exhibits at the State Fair; the Extension meeting also resulted in concerns regarding rent paid at the Senior Citizen building.

Commissioner Hoime stated that he attended the Community Corrections CCA State Plan review, a City/County Liaison meeting and Extension Committee meeting.

Commissioner Boyenga attended a SWHHS meeting and stated that they are trying to reduce their proposed budget.

Commissioner Thompson also attended a SWHHS meeting, an A.C.E meeting and stated that she was at the Courthouse on election night and enjoyed watching processing and meeting all the election judges from various precincts.

Commissioner Reisch attended a Broadband Governor's Taskforce meeting, Economic Development meeting, union negotiations, and the RNCC CCA plan review and has been in discussions with the Land Records Director regarding his employment contract.

With no further business to come before the County Board, meeting was declared adjourned.

(12-22)

ISD #2184 School Board meets Nov. 22

MINUTES OF THE SCHOOL BOARD MEETING OF INDEPENDENT SCHOOL DISTRICT NO. 2184, ROCK COUNTY, LUVERNE, MINNESOTA.

A regular meeting of the Board of Education, ISD #2184, was held in the District Office on November 22, 2016, at 7:00 p.m.

The following members were present: Katie Baustian, Colleen Deutsch, Eric Hartman, Dave Riphagen, and Reva Sehr. Absent: Jodi Bosch and Shelley Sandbulte. Also present: Craig Otfedahl, Marlene Mann, Stacy Gillette, Tim Jarchow, Dylan Thorson, Jim Gilman, Mike Hubbard, and Lori Eckrich.

Chairperson Baustian called the meeting to order. Motion made by Deutsch, second by Hartman, to approve the agenda as presented. Motion unanimously carried.

Angie Swenson, German teacher, shared photos and information about the German Class trip taken this past summer to Germany and Switzerland. Five students were involved in this trip.

Administrative reports were given.

Motion made by Deutsch, second by Hartman, to approve the October 27 and November 14, 2016, school board minutes as presented. Motion unanimously carried.

Business Manager Marlene Mann reviewed the school district bills with the school board. Motion made by Riphagen, second by Sehr, to approve payment of the bills as presented in the amount of \$1,376,891.29. Motion unanimously carried.

Motion made by Deutsch, second by Sehr, to receive the Student Activity Report showing the balances as of October 31, 2016. Motion unanimously carried.

Jim Gilman, representing Conway, Deuth, and Schmiessing, LLP, presented the fiscal year 2015-16 audit report. Motion made by Hartman, second by Riphagen, to approve the report as presented. Motion unanimously carried.

Motion made by Hartman, second by Deutsch, to approve the World's Best Workforce Report as presented. It was noted that this report had been reviewed at a previous work session. Motion unanimously carried.

Business Manager Marlene Mann reviewed the required Budget Publication report with the School Board. We are required to publish this report in the newspaper and it will also be on the school's website. Motion made by Deutsch, second by Sehr, to approve the District Revenues and Expenditures Report (Budget Publication) as presented. Motion unanimously carried.

Discussion was held regarding hiring a consulting firm to help the School Board in doing some facilities planning. Two proposals had been received. One was from Ingensa, Inc., located in Plymouth, MN and one was from Foster, Jacobs and Johnson, Inc., located in Sioux Falls, SD.

Motion made by Hartman, second by Riphagen, to accept the proposal from Foster, Jacobs and Johnson, Inc. Motion unanimously carried.

Elementary Principal Stacy Gillette reviewed some information regarding the possibility of hiring someone to work with Spanish speaking students.

Motion made by Sehr, second by Deutsch, to approve the hiring of Adam Geraets as 7th grade Boys Basketball coach. Motion unanimously carried.

Motion made by Hartman, second by Deutsch, to approve a request from Minnesota West Community and Technical College for Ingrid Gonzalez to complete 20 hours of field experience with Deb Ward, special education teacher. Motion unanimously carried.

Committee reports were given.

Chairperson Baustian requested a work session to meet with Superintendent Otfedahl to set his goals. Discussion was held. It was decided to schedule a work session for Tuesday, November 29, at 5:30 p.m.

The upcoming meeting dates were reviewed. Motion made by Deutsch, second by Hartman, to adjourn the meeting. Motion unanimously carried.

Dated: November 22, 2016

Shelley Sandbulte, Clerk
(12-22)

Star Herald CLASSIFIEDS

EMPLOYMENT

SUMMER JOBS

Fun and rewarding summer jobs that looks great on your resume and jobs after retirement! Applications are being accepted for seasonal summer employment at: Palisades State Park (Garretson) and Big Sioux Rec. Area (Brandon). Campground attendant, security, supervisor, education, maintenance, crew leader, and law enforcement. Crew Leader position will work from April 1 through October 31. Education coordinator to implement and lead our summer park programs. Application deadline 2/28/2017. Must be at least 17 years old by date of hire. Salaries from \$9.60-17.00/hour. Information and applications can be found online at: <https://bhr.sd.gov/workforum/gfp.aspx>. Questions can be answered at: Palisades and Big Sioux - 605-594-3824 EOE

(12.22-2-16)

EMPLOYMENT

CONSTRUCTION CAREERS

INSTRUCTOR – SWWC is accepting applications for a part-time Construction Careers Instructor for second semester of the 2016-17 school year, starting January 23, 2017. This position is for placement at Luverne Public Schools. MN teaching license in Construction Careers from MDE is preferred or considerable experience in a similar field. Online application can be filled out at www.swsc.org/application. Application deadline is December 29, 2016. Contact Tom Hoff at 507-537-2271 or tom.hoff@swsc.org or Lisa Gregoire at 507-537-2294 or lisa.gregoire@swsc.org for more information. EOE

(12.22-1-8)

HELP WANTED

Howling Dog Luverne is seeking cooks, wait staff and bartenders. Please apply in person - no phone calls.



SON-D-FARMS ADRIAN

is hiring General Farm, Hog, Field Work, Truck Driver, Maintenance person, Farm Shop Mechanic & Farm Delivery Person. Experience wanted but willing to train. PTO benefits. Call (507) 483-2245, 370-1590 or e-mail office@sondfarms.com

HELP WANTED

CHS Eastern Farmers Luverne, MN is looking for a full-time **semi-feed truck driver (JOB #8112BR)**. Must have a CDL and clean driving record. CHS Eastern Farmers offers a competitive pay and benefits package. **Apply online at www.chsinc.com click on careers.**



Are you looking for a rewarding career in healthcare? Sanford Luverne has the perfect position for you. We are accepting applications for the following positions:

- Patient Care Tech** – Part-time and as needed
- Patient Access Representative** – Full-time and Part-time
- Respiratory Therapist** – As needed
- PT and PTA** – As needed
- LPN** – Part-time and as needed
- Medication Assistant Certified** – Part-time and as needed
- Home Health Aide** – Part-time and as needed
- Paramedic** – as needed
- Cook** – as needed
- Medical Tech** – as needed

These positions offer a challenging opportunity to be part of a recognized healthcare team and offer a competitive wage and benefits package.

To view a full job description and apply, please visit www.sanfordhealth.jobs



EO/AA

MCAN Minnesota Classified Advertising Network

<p>HELP WANTED - DRIVERS</p> <p>CDL A DRIVERS</p> <p>\$7,500 sign-on-bonus. Medical benefits on day 1 & earn \$65k+ in your first year!!! Guaranteed pay. Profit sharing, 401k with company match & more! Email mhr@mcianeco.com or call Kalen now! 262/504-1617</p>	<p>FURNITURE</p> <p>THAT FURNITURE OUTLET</p> <p>(A+ BBB rating) Minnesota's #1 Furniture Outlet. High Quality. Tremendous Selection. Exceptional Prices. Most Items in Stock. Call for Pickup Availability Before Christmas. 7427 Washington Ave South, Edina, www.thatfurniture.net 952/808-8876</p>	<p>MISCELLANEOUS</p> <p>GOT KNEE PAIN?</p> <p>Back Pain? Shoulder Pain? Get a pain-relieving brace - little or no cost to you. Medicare patients call health hotline now! 800/755-6807</p>
<p>Classified Advertising that is Easy!</p> <p>THE MINNESOTA CLASSIFIED AD NETWORK</p> <p>Make an impact with your advertising dollar with classified advertising that reaches over 3 million readers!</p> <p>Easy!</p> <p>Your newspaper representative can provide complete details.</p> <p>The 24 Hour Network is a program of the MAA, phone 800-279-2979</p>	<p>MISCELLANEOUS</p> <p>DRIVE WITH UBER</p> <p>No experience is required, but you'll need a Smartphone. It's fun and easy. For more information, call: 800/912-3649</p>	<p>DISH TV – BEST DEAL EVER!</p> <p>Only \$39.99/mo. Plus \$14.99/mo Internet (where avail.) Free Streaming. Free Install (up to 6 rooms.) Free HD-DVR. Call 800/297-8706</p>
	<p>DONATE YOUR CAR</p> <p>truck or boat to Heritage For The Blind. Free 3-day vac., tax deductible, free towing, all paperwork taken care of 800/439-1735</p>	<p>STOP OVERPAYING FOR YOUR PRESCRIPTIONS!</p> <p>Save up to 93%! Call our licensed Canadian and International pharmacy service to compare prices and get \$15.00 off your first prescription and free shipping. Call 800/259-1096</p>

Read all public notices online at www.Star-Herald.com

Star Herald CLASSIFIEDS

EMPLOYMENT

Habilitative Services, Inc. in Luverne, MN is seeking to hire a full-time Team Lead Assist (TLA). This position supports the individuals with disabilities we serve in the community. This position will support the individuals on day/evening hours, every other weekend, rotating holidays, and provide administrative support to the Team Lead. If you are someone that has a passion for persistence, positive interactions, and believing in others, the Team Lead Assist position will allow you the opportunity to put your skills to work while supporting the individuals, the team, and the Team Lead at this site. We are looking for the person that wants to build their leadership skills, and support the team in all aspects of the services. This position will give you the amazing opportunity to support people in the community to experience things they enjoy, all while making a difference. If you want meaningful work, this is the career for you. If your passion is to help others in life, we assure you that you will get more from this career opportunity than you can imagine, and you are the person we are looking for to join our teams. Habilitative Services, Inc. offers a competitive benefit package, a great place to learn and grow, and career opportunities. For more information or to apply, go to www.habsvinc.com. EOE/AA (12.18-1.4)

EMPLOYMENT

Luverne Public Schools is seeking applications for: a part-time and a full-time Para-professional. Application form available to www.isd2184.net. Submit letter of application to Luverne Schools, 709 North Kniss, Luverne, MN 56156. (12.15-12.25)

Nursing Assistant: Parkview Manor has openings for part-time nursing aides with benefits to include: health insurance, public retirement plan, and holiday pay. New wages \$11.90/ hr. or more with experience. \$2000 scholarships available for students. Will provide training or pay for experience. Contact Darnell Krull, 308 Sherman Ave. Ellsworth, MN 56129 or call 507-967-2388. (tc)

RENTALS

Apartment for rent: upstairs one-bedroom one-bath, close to downtown. \$350 per month, No pets. Call 507-283-8711. (12.15-1.1)

For Rent in Magnolia: one-bedroom apartment. Stove, refrigerator, washer and dryer, bed, and dresser. References Required. Call 507-283-8593 (Jean) or 507-220-5198 (Kelly) (12.11-12.29)

For Rent: a very nice two-bedroom house with attached garage. All appliances included. \$625/month with deposit and references required. Sorry no pets. Phone 507-283-9878. (tc)

RENTALS

AGRICULTURAL

We have several crews of rock pickers and we also do any type of farm work. Call 712-943-2084. (tc)

MISCELLANEOUS

HAVE A UNIQUE SERVICE OR BUSINESS? Get the word out to over 1.4 million households. Call WIDE AREA CLASSIFIEDS today, 507-359-7326. (tc)

EMPLOYMENT

WINDOWS

We custom build and install Energy Star Therm-O-Loc Windows. Call Mike at Adrian Glass for a free in-home demonstration and estimate. 101 E. Pearl, Adrian, MN 56110. 507-483-2228 or 605-770-7677 or email mbyler@santel.net. (tc)

FOR SALE

For Sale: Fish houses. 4x6, 4x8, and a one man clam. Call 507-215-2619. (tc)

EMPLOYMENT

CARDS OF THANKS

The family of Viola Klosterbuer wish to extend our deep appreciation for the kindnesses, support and messages of sympathy that we have received during this difficult time. We also send gratitude to the staff of Parkview Manor for your care during Mom's stay. Also thanks to Pastor Cunningham, the lunch servers, and Hartquist Funeral Home. We have been blessed by all of you.

**Merle and Joyce
Klosterbuer and family
Gordon and Lois Mulder
and family
Steve and Sandy
Klosterbuer and family**
(12.18-12.22)

CARDS OF THANKS

Thanks to all the people who stopped to help me Sunday morning, especially the man who pulled me out. Thanks again and God Bless you.

A Grateful Grandma
(12.18-12.22)

Many thanks to all who came to help me celebrate my 80th Birthday. Your presence and all the beautiful cards made a very special day for me. God Bless,

Jane Baker Bosch
(12.18-12.22)

RECYCLE!

DOING WHAT WE SAY SINCE 1935.
SEE FOR YOURSELF.

**NOW HIRING DRIVERS FOR
A NEW, LARGE DEDICATED ACCOUNT!**

Up to \$10,000 sign-on bonus | Earn up to \$70,000/year
Weekly home time | Haul freight for one customer

Other opportunities available in these divisions
VAN | INTERMODAL
Team and Solo • Regional and Over-the-Road

COMPANY DRIVER BENEFITS
\$6,000 tuition reimbursement | Paid orientation and ongoing training
Medical, dental and vision insurance and 401(k) plan

SCHNEIDER schneiderjobs.com
800-44-PRIDE

DOING WHAT WE SAY SINCE 1935.
SEE FOR YOURSELF.

**NOW HIRING DRIVERS FOR
A NEW, LARGE DEDICATED ACCOUNT!**

LIMITED TIME—UP TO \$10,000 SIGN-ON BONUS

**Hire on before January 1, 2017 and
receive additional incentive bonus!**

Earn up to \$70,000/year
Home weekly | Haul freight for one customer

Additional opportunities available in our Van and Intermodal divisions.

SCHNEIDER schneiderjobs.com
800-44-PRIDE

BLUE MOUND TOWER



Luverne HRA • Blue Mound Tower
216 McKenzie Street
Luverne, MN 56156

Apartment available!

507-283-4922

- All Ages Welcome
- Close to Senior Dining
- Close to Minnesota West College
- Income Based

- Handicap Accessible
- Pet Friendly
- Smoke Free
- Secure Entry System
- On Site Laundry
- Utilities included

FOR LEASE CENTENNIAL APARTMENTS

1 Bedrooms
For those 50+ or Disabled
Income based rent +
All utilities included
JANE: 507-283-2652
Equal Housing Opportunity
LloydManagementInc.com

FOR LEASE STONE CREEK TOWNHOMES

2 & 3 Bedrooms
available!
Income based rent.
Includes water,
sewer, trash
Tim: 507-220-0757
Equal Housing Opportunity
LloydManagementInc.com

FOR LEASE ROCK CREEK TOWNHOMES

Has a 3 Bedroom
available!
\$615/month.
Includes water,
sewer, trash
Tim: 507-220-0757
Equal Housing Opportunity
LloydManagementInc.com

Storage units for rent
10x20 10x30 15x50

Dak Storage
309 E Linden St
Brandon, SD 57005
605-359-5107

Thank you for your business and we look forward to serving you in the new year!



For God so loved the world,
that He gave His only begotten
Son, that whoever
believes in Him shall
not perish, but have eternal
life. ~ John 3:16

M&H Hardware & Appliance Sales & Service
813 Main Street • Edgerton, MN • 507-442-5671 • www.mhhardwareedgerton.com
8 - 5:30 Monday-Friday • 8 - 4 Saturday • 6:30 - 8:30 Wednesday Evening

Good Samaritan Society
LUVERNE

She will give birth to a son, and you are to give him the name Jesus, because he will save his people from their sins. All this took place to fulfill what the Lord had said through the prophet: "The virgin will conceive and give birth to a son, and they will call him Immanuel."
~Matthew 1:21-23



The Evangelical Lutheran Good Samaritan Society, dba Good Samaritan Society—Luverne, provides services to qualified individuals without regard to race, color, religion, sex, disability, familial status, national origin or other protected statuses according to applicable federal or state law. All faiths or beliefs welcome. 2007-G0050

Interested in Advertising in the Classifieds?
IT'S EASY!
Call 283-2333
Stop by our offices at 117 W. Main in Luverne

EASY TO CLEAN
Wipe messes and spills clean with mild soap and water—no need for special cleaners or rough scrubbing.
Visit maytag.com to learn more about the entire line up of fingerprint resistant stainless steel kitchen appliances.

M&H Hardware & Appliance Sales & Service
813 Main Street • Edgerton, MN • 507-442-5671
www.mhhardwareedgerton.com
8 - 5:30 Monday-Friday • 8 - 4 Saturday • 6:30 - 9 Wednesday Evening

THANK YOU for all you do! Merry Christmas and a Happy New Year to you and your families!

Merry Christmas

Magnolia & Kanaranzi Grain

12/26/16Closed
1/2/17Closed

Magnolia Ag Center

12/23/16Open 8am to 4pm
12/24/16Closed
12/26/16Closed
1/2/17Closed

Minnesota Propane

12/26/16Emergency on call only
1/2/17Emergency on call only

Luverne Feed & Grain

12/26/16Closed
1/2/17Closed

Jasper Grain

12/26/16Closed
1/2/17Closed

CHS | **Eastern Farmers**

Feed Mill 507-449-2002
Main Office 507-283-4418
Magnolia Ag Center 507-283-3700
Magnolia Elevator 507-283-9121
Kanaranzi Elevator 507-283-8989
Jasper Grain 507-348-3911

Payment drop box by main office

Holiday Hours

Hwy 75 will be open Saturday, December 24 ~
Lobby 9 am - 12 pm | Drive up 8 am - 12 pm

All Minnwest Bank locations will be closed on Monday, December 26

Hwy 75 will be open Saturday, December 31 ~
Lobby 9 am - 12 pm | Drive up 8 am - 12 pm

All Minnwest Bank locations will be closed on Monday, January 2, 2017

All items accepted after 4 pm on Friday, December 30, 2016 will be posted Tuesday, January 3, 2017



116 East Main Street • Luverne • 507-283-2366
Hwy. 75 • 800 South Kniss • Luverne • 507-283-9131
304 East 1st Ave. • Beaver Creek • 507-673-2334

Member FDIC

www.minnwestbank.com

MoneyLine 888-616 BANK



*Thank you for your patronage in 2016.
We are looking forward to working with you in 2017.*

HAPPY HOLIDAYS FROM OUR STAFF

JAYCOX IMPLEMENT, INC.
1909 Oxford Street, Worthington, MN • 507-376-3147
403 Market Street, Lake Park, IA • 712-832-3151
410 Koehn Avenue, Luverne, MN • 507-283-2319
www.jaycoximplement.com



Family Drug

Thanks you for your continued patronage.

May beautiful moments and happy memories surround you with joy this holiday season.

202 Kniss Ave. South, Luverne • 507-283-9549

Season's Greetings from all of us to all of you

At this special time of year, we'd like to take a moment to wish all our friends and neighbors a blessed holiday season.

We thank all of our customers for their business & support. It's been a pleasure working with all of you. We look forward to serving you in 2017.

The Luverne Farm Store Family

Closed December 24



**S. Highway 75 • Luverne, MN
507-283-9555 • 1-800-956-9556**

Rock County STAR HERALD Christmas Coloring Contest

The 1st place winner in age each category awarded two \$10 gift cards to Pizza Ranch.
Thanks to all who participated.

WINNERS



Sophia Nolz, Age 5
Parents: Zach & Angela Nolz
From: Luverne



Ava VanBelle, Age 6
Parents: Jason & Teresa VanBelle
From: Beaver Creek



Caitlin Kindt, Age 9
Parents: Darin & Diane Kindt
From: Luverne



Kylie Kindt, Age 8
Parents: Darin & Diane Kindt
From: Luverne