



Rock County STAR HERALD

Rock County's oldest business, printing since 1873

Thursday, December 3, 2015

Fresh snow blankets region; schools canceled, roads hazardous



Jessica Mulvihill digs out of her driveway on East Park Street Monday afternoon. She was on her way to the grocery store to buy ingredients for chicken soup. At right, Luverne students Zakadah Bradley (left) and Ava Moyer make their way home from school after classes dismissed at 1 p.m. Many schools canceled for the whole day.

By Lori Sorenson
A major winter storm system moved slowly through the upper Midwest early this week, dumping more than eight inches of snow on



Lori Sorenson photos/1203 snow cutlines

Rock County and the tri-state area. Accumulations prompted school closings Monday and Tuesday and made for a busy stretch of work for public workers in transportation and



Mavis Fodness photo/1203 Snowman Building Brothers Levi (left) and Luke Thielbar work on a snowman Tuesday morning when school started late.

public safety. According to the Minnesota State Patrol, more than 390 weather-related crashes occurred on Minnesota roads, with 37 injuries and two fatalities.

In all, snow that started early Monday morning and continued through Tuesday officially measured 8.2 inches, according to Luverne volunteer weather recorder Troy Thone. In an email at 5 p.m. Monday, Thone said Luverne had doubled its normal snowfall for the month of November, which is typically around 7 inches.

He said 7.8 inches were recorded Nov. 30 with another .4 by 8 a.m. Dec. 1. Snow continued to fall as the Star Herald went to press midday on Tuesday with another inch expected by later in the day.

Winterfest set for this weekend in Luverne

By Mavis Fodness
Luverne's annual kick-off to the holiday season brings local businesses and community organizations together for an activity-packed weekend.

Winterfest 2015 will be Friday through Sunday, Dec. 4 through 6. "We continue to thank all the people who come together to continually make Winterfest an exciting event," said Luverne Area Chamber Director Jane Wildung Lanphere.

New events, expanded business hours and the use of local talent highlight this year's Winterfest lineup.

Activities begin Friday morning with the Rock County Community Library hosting a puppet show at 10 a.m.

The public viewing of Christmas trees at the Carnegie Cultural Center will be from 1 to 4 p.m. Friday and again from 1 to 4 p.m. Saturday. Also on Saturday at the Carnegie, local thespian Shawn Kinsinger will read "Christmas Stories for Kids" from 1:30 to 2:30 p.m.

Blue Mound Liquor will host a wine and beer tasting from 5 to 8 p.m. Friday and again on Saturday at the same times.

The Eagles Club will set up a cribbage tournament beginning at 6:30 p.m. Friday and a steak fry from 6 to 9 p.m. on Saturday.

The Palace Theatre is the location that culminates Winterfest activities by showing "The Peanuts Movie" at 7 p.m. Friday and again at 2 p.m. Sunday.

"A free box of popcorn will be given for every ticket purchased,"

Winterfest/continued on page 5A



Carol Ceynowa's "Christmas in the Forest" is set up in the window of the Hinkly House library. Below, ballerina mice dance in the sitting room window and a hedgehog nestles in Ceynowa's palm.

Needle felted creatures host Christmas at Hinkly House

By Lori Sorenson
Luverne's Hinkly House Victorian period home is decorated for next weekend's Winterfest Celebration with an eye toward childish imagination.

Luverne artist Carol Ceynowa has taken up needle felt art, and the Hinkly House rooms are filled with her whimsical miniature creations.

From fuzzy cats and dogs to mice and pigs — and myriad of others in between, Ceynowa's fingertips and needle points have been busy cranking out 3-inch-tall characters, each with its own story and circumstance.

For example, her favorite display in the Hinkly library is "Christmas in the Forest," which features a wise old owl (which bears a striking resemblance to the one pictured in a frame on



the library wall) surrounded by bunnies and other forest animals.

With a gleam in her eye, Ceynowa says, "Is the owl sharing gifts with the others, or is he planning to eat them?"

Similarly, a shoebox-size candy store in the dining room, "Piggies Pastries," features a wolf approaching the store with pigs inside.

Hinkly needle felt/see 5A



Luverne trail master plan available for public perusal

Document includes possible trailhead designs and work to improve blighted areas

By Lori Sorenson
There's a master plan in place for developing the Luverne Loop trail, and it's online and available in print for public perusal.

"This plan helps us identify what needs to be done and prioritize how we do it," said Holly Sammons, Luverne Economic Development Authority director.

Sammons credits local bicycling enthusiast Preston Vermeer for his vision of a path that would loop around and through Luverne.

But Sammons has used her professional connections and key resources to connect Vermeer's vision with the expertise and funds to make it happen.

"This isn't just a jaunt around Luverne," Sammons told Luverne City Council members Nov. 17 when she presented her 142-page plan.

"This will help us set ourselves up for success 30 years down the road."

The 7.1-mile, asphalt Luverne Loop trail for non-motorized uses will incorporate the 6-mile Blue Mounds Trail for 13 miles of continuous path that will make Luverne a biking destination.

"Thirteen miles is apparently the magic number for biking," Sammons said.

The Loop, estimated to cost \$2 million once complete, will be developed in four phases over a five-year time period.

Phase 1 is 1.5 miles that is scheduled to start next year. It includes

Luverne Loop plan/see page 8A

County denies Enel fund request

By Mavis Fodness
Rock County Commissioners denied a request from Enel Green Power North America to return a \$71,299 tax penalty it was assessed for late payment.

Enel paid the 2014 Wind Production Tax of \$891,531 on May 31 along with an 8 percent late fee.

The once-a-year payments are due May 15 and are based on the electricity generated from the company's 119-turbine Prairie Rose Wind Farm, located in northwest Rock County.

County Auditor-Treasurer Ashley Kurtz received a letter Oct. 26 from Enel's tax director Tom Kucharski requesting the penalty monies back.

"EGP-NA has a solid history of on-time payment and this particular issue was a one-time, unintentional

oversight that was immediately resolved," Kucharski wrote.

Rock County Board members at their Nov. 17 meeting unanimously denied Enel's request and directed County Administrator Kyle Oldre to write a letter in response.

Oldre's Nov. 23 letter addressed to Enel's Andover, Massachusetts, office pointed to Minnesota Statute 375.192, "which provides that abatement can occur only in instances in which a penalty or interest has been 'erroneously or unjustly' paid."

Oldre stated that Prairie Rose Wind Farm had received sufficient notice of the tax amount and its due date, and the county was not unjust in assessing a penalty for a late payment.

The penalty money is property of the Auditor-Treasurer's office.

Council to condemn hazardous property



Property owners of this house on the corner of Lincoln Street and Highway 75 have been cited for numerous city code violations.

By Lori Sorenson
Luverne City Council members took action at their Nov. 24 meeting to acquire the dilapidated property at Highway 75 and Lincoln Street.

According to the resolution that was approved unanimously, the old yellow house north of the Culligan office is a public nuisance and a hazardous building.

The resolution states, "the benefits of acquiring the real estate through eminent domain outweigh the costs."

It also states that due process has been given to the owners, and this process was discussed at the meeting.

City staff documented that the

Condemned property/see 2A



COMMUNITY CALENDAR

Meetings

Rock County Township Association annual meeting will be at 1:30 p.m. Friday, Dec. 4, in the meeting room at the Rock County Community Library in Luverne.

Blue Mound Quilters will meet at 6 p.m. Monday, Dec. 7, for a potluck meal at the home of Verla Fick. Members are to bring a wrapped fat quarter for the gift exchange and their completed challenge project.

Springwater Township Board will meet at 7 p.m. Tuesday, Dec. 8, in the home of township clerk Teresa Kramer. This meeting was rescheduled from Dec. 1.

VFW Auxiliary #2757 will meet at 11:15 a.m. Tuesday, Dec. 8, at the Minnesota Veterans Home.

American Legion Post 123 and Auxiliary will meet at 6 p.m. Wednesday, Dec. 9, at the Post Home for Christmas potluck. Please bring a covered dish to share.

Beaver Creek Township will meet at 7:30 p.m. Thursday, Dec. 10, at the township hall.

Lady Luverne Red Hats will meet at 11:30 a.m. Friday, Dec. 11, for a Christmas luncheon at Sterling's Café and Grille. RSVP by Tuesday, Dec. 8, to Connie at 283-8470.

Luverne Pink Ladies will meet at noon Monday, Dec. 14, at the Blue Room at Sanford Hospital. Bring a dish to share and your own tableware for Christmas potluck dinner.

Hospice Tree of Lights ceremonies in area communities

Sanford Luverne Hospice is sponsoring the Annual Tree of Lights in five area communities. The public is encouraged to attend a short program of music and reading of the names at the tree-lighting ceremonies as follows:

- Edgerton at 7 p.m. Wednesday, Dec. 2, at First State Bank Southwest
- Luverne at 6 p.m. Thursday, Dec. 3, at the corner of Main Street and Hwy. 75 (or Cottage if bad weather)
- Adrian at 6:30 p.m. Thursday, Dec. 3, at Adrian Fire Hall
- Hills at 2 p.m. Sunday, Dec. 13, at Tuff Village.

Bank Nite movie 'Home Alone' Dec. 3

The free Bank Nite movie, "Home Alone," will begin at 6 p.m. Thursday, Dec. 3, at the Palace Theatre in Luverne.

Sponsored by First Farmers & Merchants National Bank and Papik Motors, a free, family-friendly movie is shown on the first Thursday of every month as it was done for "Bank Nite" in the 1930s. A cash prize drawing will follow the movie. Must be present to win.

Carnegie extends holiday hours

The Carnegie Cultural Center is hosting its annual Festival of Trees on North Freeman Avenue and will be open from noon to 4 p.m. Wednesday through Saturday until Christmas.

Winter Concert at school Dec. 11

The Luverne Middle and High School choirs will present their winter concert at 7:30 p.m. Friday, Dec. 11, in the high school gymnasium. The concert will feature the sixth-grade and seventh/eighth grade choirs as well as the ninth-grade girls' choir and the concert choir.

Admission to the concert is a donation to the Rock County Food Shelf.

Christmas at the Palace Dec. 12

Christmas at the Palace will be at 7 p.m. Saturday, Dec. 12, at the Historic Palace Theatre in Luverne. Admission is \$12 for advanced reserved tickets available at the Palace Theatre Box Office 507-283-4339 (open Monday-Friday from 1-5 p.m.)

Community Ed

Register for these activities by calling Community Ed at 283-4724.

This year, the prize awarded at **Winterfest Cookie Contest kids in the kitchen class on Thursday, Dec. 3**, will be for the best cookie variety plate. There will be some to take home, too. Grades K-6. Fee is \$18.

Kids in the kitchen class "Gingerbread Time" on Monday, Dec. 14. Fudge, pinwheels and more will be made. Grades K-6. Fee is \$18.

Register now for the **refresher defensive driving class** meeting on Monday, Dec. 14. Fee is \$20 prepaid.

School Readiness Preschool program has openings for children ages 3-5 years. The program will meet once a week during the school year on Tuesday morning or Tuesday afternoon. Call 283-4724 for more details.

Take 16 announces local craft beer now available in bottles

Paul Sundvold, Sioux Falls, is the first customer to buy Luverne's Take 16 bottled beer at Blue Mound Liquor Wednesday, Nov. 25.

He's pictured with liquor store manager Kenny Rolling who said the first delivery of the locally brewed beer came in that morning — 10 cases of Country Mile Kolsch and 10 cases of Kick the Can IPA.

So far only those two varieties are available in bottles; the others can be purchased in growlers at the Take 16 brewery on East Main Street or on tap at local bars and restaurants.

Lori Sorenson photo/1203 take 16



Library renovations set to begin in early 2016

Plans call for moving materials to basement for continued access to public

By Mavis Fodness

Library patrons won't have to go far to check out a book when the Rock County Community Library begins renovations next year.

The move to the library's basement means the facility can stay open during the two-to-four-week process.

Earlier this year, county commissioners approved a \$175,000 capital improvement plan to renovate the former savings and loan building on Main Street.

Originally, improving the safety and function of the 8,500-square-foot facility was to be conducted over a period of four years.

When the proposal was brought to the commissioners for approval, plans changed to complete the renovations by closing the public facility only once.

Work is scheduled to begin late February and early March 2016.

"We may have to close

two days for demolition," said library director Serena Gutnik.

Gutnik was hired in June, after former director Clint Wolthuizen accepted a similar position in Worthington. She supported the proposed work plan and continues to work with the Library Consulting LLC out of the Twin Cities.

Plans call for the removal of walls to enlarge the library's service area and open the separation between the children's and main library areas.

Safety concerns will be addressed by moving the children's library closer to the service desks as well as by replacing the current bookshelves and repositioning them in an east-west direction.

The facility's main floor will also be painted, new ceiling tile added and carpet replaced.

"We are really excited," Gutnik said. "I envision this space as more inviting."

Staff and Friends of the Library began preparing for the

renovation in August, when the current library collections received a thorough "weeding," meaning outdated and underutilized materials were removed and offered for purchase on the Friends' annual book sale, Gutnik said.

The same workers will box up the majority of the library's remaining materials for storage in the back of the library's basement. They will also assist in setting up the library in its temporary location in the basement front area.

Besides allowing the library to stay open, the short move to the basement simplifies the moving process.

"We didn't want to move the entire collection to some place else only to move it back in a few weeks," Gutnik explained.

Setup in the basement may include continued access to a computer and the Internet along with a representative sample of new books, DVDs and audio books available for

patrons to borrow.

Gutnik's push to keep the library available to patrons during the remodeling comes from the community support the project has received since its unveiling in April. She said many of her fellow librarians have had to find creative ways to make their limited budgets stretch further.

"It's an honor" to work for a county who decides to invest in the library when other communities have closed their facilities," Gutnik said.

Once the library renovation is completed and materials moved back upstairs, a grand re-opening celebration would take place.

Gutnik said once items are back into place she plans on expanding the library's current community outreach offerings. Currently, these offerings include increasing faxing and scanning capabilities plus the conducting sessions on checking out library materials electronically.

City proceeds with process to condemn property/from page 1A

homeowner, Marja Ramage, had been advised in January of 2015 that the house needed upgrades in order to comply with city code.

For example, windows at the attic level are broken, the roof is failing, the basement is full of mold, the furnace is inoperable and siding, cladding and soffits need to be repaired.

At that time Ramage said the exterior would be painted, and that essential exterior repairs would be made.

As of now, however, code issues haven't been addressed, and Ramage, who lives in Townsend, Georgia, is requesting additional time.

At an Oct. 13 public hearing on the matter, Ramage told the council, via speakerphone, that she'd lined up a buyer, Troy Duskin, who

had agreed to paint the house.

She went on to explain that her purchase agreement with Duskin was at first set up on a contract for deed, and he's failed to keep up with payments.

He's also failed to make the promised repairs and improvements.

The Nov. 24 resolution puts the wheels in motion to get the property appraised in order for the city to pay the homeowner what is determined to be fair market value.

The fact that two owners are involved may complicate the eminent domain process for the city, because it requires a marketable deed.

At the moment, neither party lives there. Documentation has been filed in the Rock County Courthouse that Duskin is in default on pay-

ments, and it may require court action to get a marketable title.

Ramage traveled to Luverne and attended the Nov. 17 City Council meeting to explain her position and plead for more time.

"I have \$85,000 of my own money into the house, and I said I'd accept \$57,000, which Mr. Duskin said he'd pay," Ramage said, adding that Duskin still owes \$53,000 and she's not optimistic that he'll come through with the payments.

Ramage told the council she intends to sell the property and make the improvements, but she needs more time.

"I dropped the price to \$40,000, but until he's out, I can't do much more," Ramage said.

"Just don't be too hasty

to go ahead and condemn it."

At the Nov. 17 meeting, the council reviewed the notes on the property and determined that years of issues with the property require that action be taken soon.

"It puts people on notice that we take our ordinances seriously," Mayor Pat Baus-tian said.

"It's not right for adjoining property owners that the value of their properties is brought down... We have to protect all citizens with our ordinances."

He also noted that even though the process of eminent domain is underway, the city and homeowner could still negotiate a real estate sale.

If the city acquires the property, the house would be demolished and the lot would be prepared for future development.



Dial-A-Specialist

Your One Stop Guide to Local Businesses



Papik MOTORS
1-90 Luverne, MN
Box 536 • 801 West Commerce Road
Luverne, MN 56156

(507) 283-9171
(800) 634-7701
www.papik.com

Automotive



ROCK COUNTY CHIROPRACTIC
• Men, Women & Children's Health
• Custom Orthotics • Kinesiotape • Athletic Care • Massage Therapy • Work & Auto Injuries • Postural Restoration

WWW.ROCKCOUNTYCHIROPRACTIC.COM
283-2561 • 103 E. MAIN, LUVERNE
Monday 7:30 a.m. - 6 p.m. • Tuesday 7:30 a.m. - 3 p.m.
Wednesday 7:30 a.m. - 6 p.m. • Thursday 7:30 a.m. - 1 p.m.
Friday 7:30 a.m. - 5 p.m.

Chiropractic



STAR HERALD ANNOUNCER

Chantel Connell
117 W. Main, Luverne, MN
507-283-2333



Rick Peterson
General Manager

Advertising

LUVERNE HEALTH & WELLNESS
Codie Zentgraf, D.C.

Chiropractic Care
Family Care • Sports Injuries
Kinesiotape • Auto & Work Injuries

Massage Available 5 Days A Week
Kris Van Der Brink M.T. & Amy Rosales M.T.

www.luvernechiro.com
109 S Freeman Ave, Luverne MN
507.449.4400

Chiropractic

COMRAY COMPUTERS
Computer Repair and System Builders

Ray Hansen - 1726 140th Ave.,
Luverne, MN 56156 • 507-669-2621

Mark Stewart -
Lismore, MN 56155
507-472-8479
or email us at
comraycomputers@myclearwave.net

Computer



Rock County EYE CLINIC
507-283-2345
102 N. Freeman Ave.
Luverne, Minnesota

Eye



Kneading Relief THERAPEUTIC MASSAGE
www.kneadingrelief-mn.massagetherapy.com

Kayla Hailey
Licensed Massage Therapist
Swedish • Deep Tissue
Pregnancy • Geriatric
Sports • Chair Massage

MONDAYS: 9:00 am to 5:00 pm
TUESDAYS: 9:00 am to 7:00 pm
THURSDAYS: 9:00 am to 7:00 pm
FRIDAYS: 9:00 am to 5:00 pm

319 W. Brown St. Luverne, MN 56156 • (507) 449-0330

Massage

Luverne MINNESOTA City Offices
Love the life!

PO Box 659, Luverne, MN 56156
507-449-2388 (24 hour voice mail)
www.cityofluverne.org

City

Dakota Land Surveying and Engineering, Inc.



Steven B. Kor
Professional Engineer
Registered Land Surveyor

2000 W. 42nd Street, Suite B-6
Sioux Falls, SD 57105
605-334-4882
605-334-5745 Fax

506 Almar
Luverne, MN 56156
507-283-3803
steve.dis@midconetwork.com

Land Surveying

Local investors buy back Minwind assets in bankruptcy sale

By Lori Sorenson

The 11 Minwind turbines in southwest Rock County will remain under local ownership after a bankruptcy sale last month.

According to the terms of the court agreement that closed Nov. 12, a group of community investors purchased four turbines for \$622,000.

The buyers are current and former investors of Minwind I-IV who organized under Community Renewables LLC.

First Farmers and Merchants Bank, Luverne, (Minwind's lender) purchased the other seven turbines for \$1.96 million in a non-cash transaction called a credit bid.

It's estimated that the 300-some local shareholders, many of them farmers, stood to lose as much as \$5.5 million in the Minwind bankruptcy.

Buying back the assets reportedly averted the costs of bankruptcy court and also the debilitating fines levied by the Federal Energy Regulatory Commission, for unfiled paperwork.

According to Dean Tofteland, the managing member of Community Renewables, the companies are going through a Chapter 11 bankruptcy, and are still subject to the court and the associated costs, which are substantial.

"The asset sale (auction) was the first part of the process of getting money back for the creditors and shareholders," Tofteland said.

"There was never enough money to pay for the FERC-ordered refunds — incidentally, for damages that were not actually incurred by the utilities — and that was the reason for the bankruptcy. The penalty was very extreme for such a small oversight."

Aside from financial reasons, the new owners say their primary motivation was to keep the wind production local.

"The ownership had always been local," Tofteland said.

"In bankruptcy, anyone could bid on them, even Wall Street vulture funds."

He said Community Renewables and First Farmers holding company were among five qualified bidders participating in the bankruptcy auction of Minwind's assets.

The two buyers said Minwind's financial troubles stem from last year's \$1.9 million penalty for not filing paper-

"Rock County has always been cutting edge, whether it was developing one of the earliest ethanol plants, organizing the very first community wind farm or even building the Minnesota Veterans Home. We feel it is important to continue that heritage, and local ownership plays a key part."

— Dean Tofteland
Community Renewables

work as a qualified renewable energy facility.

Tofteland said he's optimistic about the future of wind production in Rock County.

"Although the bankruptcy was a complicated and expensive process, we feel successful that we are keeping the projects under local ownership," he said, speaking for the group of investors who bought Minwind's four original turbines.

"Rock County has always been cutting edge, whether it was developing one of the earliest ethanol plants, organizing the very first community wind farm or even building the Minnesota Veterans Home," Tofteland said.

"We feel it is important to continue that heritage, and local ownership plays a key part."

He said Community Renewables is already researching ways to keep the local wind production viable.

"We are looking at some of the newer controller technologies to optimize the turbines, such as more precise yaw calibration and pitch sensitivity," he said.

Tofteland was one of the early investors in Minwind, which dates back to 2002 when the first four turbines were built near Hills.

They produced power for Alliant Energy, which was sold in August to Sioux Valley Energy.

In 2004 seven more Minwind turbines were built north of Beaver Creek. This energy is sold to Xcel energy, which sends power via transmission lines to the Twin Cities.

The 11 turbines produce a combined output of roughly 15 1/2 megawatts per hour, which is enough energy to power a community 1 1/2 times the size of Luverne for an hour.

The "locally owned" business model for Minwind was based on the fact that each tower was organized as a separate business consisting of a single 1.65 mw wind turbine owned by 33 local investors.

The idea was that these projects benefit from the economies of scale and professional management of a larger project.

Yet their cooperative-type business structure spreads financial benefits of community wind ownership to a large number of local farmers and landowners.

The turbines have continued to operate during the Chapter 11 bankruptcy case, which was filed in January.

Give where you live



Lori Sorenson photo/1203 lacf office

Emily Crabtree is director of Luverne Area Community Foundation.

Foundation celebrates new space

LACF open house set for 5 to 7 p.m. Thursday, Dec. 10

By Lori Sorenson

The Luverne Area Community Foundation will host an open house in its new location in the Palace Theatre building next week.

The event is designed to show off the recent renovations in the 100-year-old space and to remind the public what LACF is all about.

"We provide the framework for charitable giving," said LACF director Emily Crabtree.

"We link people with their passions ... We help people realize their charitable goals and help them figure out their legacy footprints."

For example, Crabtree said donor advised funds allow givers to participate in the grant-making process.

"If a charitable need comes up that matches this interest, we can call the donor and advise them of this opportunity to give," Crabtree said.

The fund is already set up with LACF, which can allocate dollars at the donor's discretion. "It's like a charitable savings account," Crabtree said.

She said options like these allow people to plan their charitable giving beyond one gift at a time and think about where they'd like to leave their legacy.

Also, she said LACF serves as a funding host for 20 non-profit organizations, such as the Rock County Historical Society, in the community. "We accept money on their behalf," Crabtree said.

In addition to these donor options, LACF (which began as the hospital foundation) has a 31-year history of gifting money to local charitable groups and causes.

For example, in its last spring grant cycle, LACF gave

over \$35,000 to 14 local causes — with local being the key word.

LACF's motto is "Give where you live," and all of its charitable efforts are focused on causes in the Luverne area.

And in order to make sure 100 percent of donations are allocated to charities, LACF has benefitted from a small group of "VisionVesters" who have each committed to giving up to \$5,000 per year for five years to help cover overhead costs.

Among these costs is the new office space in the Palace building on the corner of Main Street and Freeman Avenue.

The space originally served as the Palace Sweets soda fountain and cafe, and its original mosaic tiles and tin ceiling have been preserved in the renovation process.

In addition, Crabtree said the space has been improved with new heating and cooling and more efficient insulation.

The result, she said, is a grand historic space with all the benefits of a "greener" heating and cooling system. "Having a community foundation housed in a historic building — what a perfect pairing," she said.

Crabtree is in the office from 9 a.m. to 4 p.m. Tuesday, Wednesday and Thursday. When she's not there, the office is manned by staff with the Blue Mound Area Theatre board, which manages the Palace Theatre.

That person also mans the desk and phones for the Palace Box Office, which used to operate out of the Carnegie Cultural Center.

Crabtree said having a physical space downtown has been good for LACF to educate the public on its mission, since she used to work from her home.

"It's amazing the incredible number of people who come in from the street to ask about us," she said. "Nobody would ever come to my house for that."

The space is also used by the LACF nonprofits who meet there.

"I love working here on the corner, downtown, feeling the pulse of what's going on," Crabtree said. "I feel much more connected."

The LACF open house will be from 5 to 7 p.m. Thursday, Dec. 10, with tours of the new space and refreshments offered.

Beaver Creek City Council seeks council member for empty seat

By Mavis Fodness

The Beaver Creek City Council is seeking to fill a vacancy on the council since Mayor Carolyn DeBoer died this fall of cancer.

At their regular monthly meeting Nov. 18, councilmen Pat Bender, Al Harnack and Josh Teune moved current councilman Jamie Dysthe from acting mayor to mayor when no one stepped forward to fill the mayor position.

DeBoer died in September, and the council is working on plans for a memorial in her honor.

Dysthe, who has been

on the council for 11 years, had been serving as acting mayor since September. As the city's official mayor, Dysthe's term will end in December 2016.

Bender was elected as acting mayor.

The group passed a resolution declaring a vacancy on the council, with plans to appoint someone to the vacancy. The term will be for 13 months.

"Next year the person can run and be elected into the position," Dysthe said.

According to the League of Minnesota Cities website, any elected city official must

be an eligible voter of Beaver Creek, at least 21 years old on the date of taking office, a U.S. citizen and be a resident of Beaver Creek 30 days before the appointment.

Any individual who has been convicted of a felony under state or federal law is not eligible unless the individual's civil rights have been restored.

Each interested candidate must submit a letter of interest in the council position to the city clerk in order to be considered for appointment by the council.

Until the appointment, the council seat will remain vacant.

DON'T PLACE SNOW ON PUBLIC ROADWAYS

Luverne, MN
— The Rock

County Highway Department would like to remind everyone, especially rural residents, that it is against the law to deposit snow, in any fashion, on or next to a public highway or street.

Minnesota State law and many local ordinances prohibit the plowing, blowing, shoveling or otherwise placing of snow onto public roadways. This provision also includes the ditch and right of way area.

Violations are considered a misdemeanor, but civil penalties can also apply if the placement of snow creates a hazard such as slipper area, frozen rut or bump, which contributes to a motor vehicle or pedestrian accident. The civil liability can extend to both the property owner and the person who placed the snow.

Other hazards created by improper placement of snow on or near a public roadway include drainage problems, drifting, sight obstruction, and safe accessibility. Special attention should be made to keep crosswalks, intersections, entrances and exits clean and unobstructed.

To determine the proper placement of snow for a specific location along the county highway stem, you can contact the Rock County Highway Department at 283-5010.

Mark R. Sehr, PE

Rock County Highway Engineer

Angel Tree


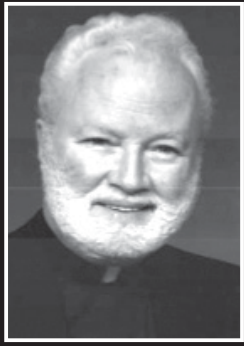
Please remember these young men during the holiday season

SOUTHWESTERN YOUTH SERVICES
IN MAGNOLIA

Please stop by and pick up a card or call 507-283-4425 for more information.

Interested in Advertising?
Call 283-2333 to advertise in the Announcer

ABUSED BY CLERGY IN MN?

Fr. Thomas Adamson Fr. William Curtis

Deadline to bring a claim is May 25, 2016

If you have information regarding abuse by these men, please contact us.

Confidentially contact us at:
507.593.7655
info@andersonadvocates.com

JEFF ANDERSON & ASSOCIATES PA

ANDERSONADVOCATES.COM/VICTIMS

24/7 ... Rain or Shine ...

Your local, independent agent will be there.

Working for you - meeting your needs.



Buffalo Ridge
INSURANCE

South Hwy. 75, Luverne, MN • Ph. 507-283-2381

Auto-Owners Insurance







She's back! World-traveling daughter returns from Thailand

She's back.

Our baby girl, age 21, is back from the ends of the earth.



THE NORTHVIEW

By Brenda Winter, Columnist

Well, OK, she's back from Thailand, which is not the end of the earth, but it's a looooooong way from Luverne.

She flew to Sioux Falls from Bangkok Tuesday night. (Nothing says "Welcome Home" from a tropical climate like 10 inches of fresh snow.)

And now she's asleep in her room in the basement.

Eleven months have passed since she left on New Year's Day. Almost all of 2015 happened without her.

She missed the arrival of two nieces. She missed the demolition of the farmstead on which she was raised. (Including the horse barn. Might be a few tears on that one.) She missed Hot Dog Night and the county fair.

And we missed her.

She went to Thailand to volunteer with a Christian mission that tries to help women get out of the sex industry. She learned there is good money to be made in the sex industry and some women don't feel a need to leave.

As part of the ministry, she sometimes bought drinks for girls in bars so they didn't have to "go with" customers. She watched girls younger than she is walk off with customers and disappear into back rooms. She cared for children who were the product of some of these business transactions.

She learned there is an Eastern belief that one's station in life is not meant to change. There is no notion of pulling oneself up by one's bootstraps.

There is little concern for one's neighbor. There is no "American dream."

She helped the mission open a coffee shop in Bangkok. The shop will employ a few of the women who left the sex industry. She used the baking skills she inherited from her Grandma Jean to develop a homemade bagel that is a coffee shop favorite. Her dad was proud as punch when she discussed with him business planning, marketing options and the ins and outs of cash-flowing a small business.

She traveled. For breakfast one morning, she ate chopped frogs with rice at the home of a friend in a rural Thai village. She slept in an outdoor hammock near a pack of wild monkeys.

She attended a parade through a small town and wrote home, "I think I may have been the main attraction." Thin white women nearly six feet tall are not a common sight in rural Thai villages.

Next, she's off to Nebraska to live with her sister, brother-in-law and baby niece. She's going to study international business at the community college there. I'm guessing she's got a pretty good handle on the subject.

Three years ago she lived in London. Two years ago it was Beijing. Then Bangkok and now Norfolk, Nebraska — home of the Johnny Carson Museum, the Aqua-Venture Water Park and Poppy's Pumpkin Patch!

She's back, but I'm thinking maybe not for long.

Opportunity knocks for increased growth in area wind production

GUEST EDITORIAL

By Chris Kunkle, Wind on the Wires

In November community and industry leaders gathered in Slayton to celebrate the contributions that wind energy has made to southwest Minnesota.

As the representative of the state's wind industry, I couldn't have been happier to deliver a ceremonial "big check" in the amount of \$7,224,246, which was paid out earlier this year, based on production in 2014. (Rock County received \$896,430 this year from the 2014 production.)

Communities in southwest Minnesota use this revenue to pay for highway upgrades, update infrastructure and keep property taxes low.

The best news is that this development is far from over — our member companies continue to see tremendous potential to invest in the region, helping take advantage of the excellent wind resource and export the region's "wind crop" to neighboring areas, just as farmers export corn and beans.

Minnesota currently supplies

15.9 percent of our electricity needs with 3,039 MW of installed wind capacity, which has invested \$5.6 billion into our economy, supplied 1,700 Minnesotans with jobs, and helped support 125 wind-related businesses. And we believe these numbers will only continue to grow.

The Department of Energy released its Wind Vision report earlier this year, and it projects that wind power can supply 10 percent of America's electricity by 2020, 20 percent by 2030, and 35 percent by 2050.

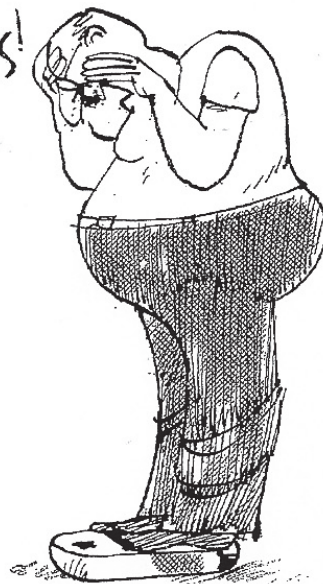
Opportunity is knocking on our door. Minnesota is currently using only 1 percent of our wind potential; we have a massive amount of room

for growth — and that's good news for wind developers, construction companies, and rural Minnesota communities who can all benefit from low-cost clean energy, jobs and the economic development that wind provides.

Let's make that big check even bigger next year by investing in the wind crop that is blowing across our state.

Kunkle is the regional policy manager for Minnesota, Iowa, Wisconsin, North and South Dakota. A wind marketing company, Wind on the Wire, was launched in 2001 and is headquartered in St. Paul.

OH MY GOSH!
I've gained
10
pounds!



Following basic winter driving tips may reduce accidents

Question: Can you talk about winter driving safety?



ASK A TROOPER

By Sgt. Troy Christianson,
Minnesota State Patrol

Answer: This is a great time to talk about it and remind drivers about the dangers of driving on slippery roads and reducing chances of being involved in a crash.

- Avoid unnecessary travel if conditions are poor.
- Buckle up, and make sure child restraints are tightly secured.
- Drive at safe speeds according to road conditions, and provide for plenty of travel time.
- Increase safe stopping distance between vehicles.
- Use extra precautions when driving around snowplows by keeping at least five car-lengths behind plows.
- If skidding, remain calm, ease foot off the gas, and turn the steering wheel in the direction you want the front of the vehicle to go.
- If vehicle has an anti-lock braking system (ABS), apply a steady firm pres-

sure to the brake pedal. **Never** pump ABS brakes.

- Clear snow and ice from vehicle windows, hood, headlights, brake lights, and directional signals.
- Headlights must be turned on when it is snowing or sleeting.
- Do not use cruise control on snow/icy/wet roads. Conditions can change over every hill and around every curve. Be very aware of bridge decks and overpasses as they become icy.
- Equip vehicles with a scraper/brush, small shovel, jumper cables, tow chain, and a bag of sand or cat litter for tire traction. Blanket(s), heavy boots, warm clothing, and flashlights are also important, as are storing high-energy foods such as chocolate or energy bars.
- Be sure cell phones are charged

for long trips, and inform family of destination plans and schedule.

- If stranded, stay in the vehicle.
- Parents of teen drivers should make sure new motorists experience snow and ice driving in a safe environment, such as an empty parking lot.
- Slow down and move over for emergency vehicles parked at a scene.
- Have good winter-type tires on your vehicle.
- Have a good set of windshield wipers on your vehicle.
- For weather-related road condition information, call 5-1-1 or visit www.511mn.org.

Remember that you can't control how other drivers are driving, but you can reduce your chances of being involved in a crash if you follow basic winter driving safety tips.

If you have any questions concerning traffic-related laws or issues in Minnesota, send your questions to Sgt. Troy Christianson - Minnesota State Patrol at 2900 48th Street NW, Rochester MN 55901-5848. (Or reach him at, Troy.Christianson@state.mn.us)

Preuss: Another freedom lost

To the Editor:

I read Rick Peterson's column concerning the Affordable Care Act, and a few quotes came to my mind. It led me to think. (Here's trouble.)

Dick Gregory, the black activist and comedian, said, "Everything we do we should look at in terms of the millions of people who can't afford it."

You are one of the millions who had affordable health insurance but now find it hard to afford or worse can't afford it all. 536 elected officials in Washington are so entrenched in their ideology and agenda they have forgotten their primary objective is to protect our freedoms. From without with armed forces, from within with a police force and the freedom to pursue our own happiness.

Laws are passed not to allow us to do things but to prevent us from doing them. We are forced to give 6.2 percent of our earnings to the government for our retirement. The employer is forced to give the same amount. What does the government do?

VOICE OF OUR READERS

They spend it. What an investment! Two questions: Why can't we invest it ourselves? Why is the employer forced to give up part of his profit to someone else's retirement?

Health insurance is another loss of freedom. You are forced to have insurance or pay a penalty. Social Security and Obamacare are noble objectives but the effects are less than desirable.

Dick Gregory also said, "The most difficult thing to get people to do is the obvious."

What I fear is that when the elected read our words, I am reminded of what Redd Fox said: "If you can read the writing on the wall, you're on the toilet." Lets hope they get off the pot!

Bill Preuss
Luverne

E-mail: editor@star-herald.com Web site: star-herald.com
Phone: 507-283-2333 Fax: 507-283-2335

Published Thursdays by Tollefson Enterprises, POSTMASTER:
Send address changes to 117 West Main, P.O. Box 837, Luverne,
MN 56156. Periodicals postage paid at Luverne, Permit #33 and at
additional mailing offices.

General manager: Rick Peterson
Office manager: Deb Lusty
Circulation manager:
Stephanie Christensen
Advertising: Chantel Connell
Production manager: Abbe Kolar
Production: Amanda McDonald

News staff:
Lori Sorenson, editor
Mavis Fodness, reporter
John Rittenhouse, sports editor
Esther Frakes, copy editor
Stephanie Christensen,
composition/web/photos

Rock County
STAR HERALD
Rock County's newspaper since 1873

(ISSN 0889-888X)
SUBSCRIPTION RATES

\$68 per year in Rock County; \$85 per year all other areas. Single copies \$1.25

Entire contents copyrighted by
Tollefson Publishing Roger Tollefson, publisher

The *Star Herald* encourages letters to the editor expressing the opinions of readers and intends to print all letters. Letters not meeting the guidelines will not be printed. The *Star Herald* will verify the authenticity of all letters. Letters must have the name of the writer, a signature and address.

Unsigned letters will not be considered. The *Star Herald* will edit for grammar, spelling and clarity. Any letters containing offensive language, libelous or slanderous material, or misleading or false information will be rewritten before being published. The *Star Herald* will not publish letters written with the sole intent to advertise or serve as a thank-you. Letters with more than 300 words may be edited. The deadline for letters is Monday 10 a.m. They may be delivered or mailed to the editor, *Rock County Star Herald*, P.O. Box 837, 117 W. Main St., Luverne, Minn. 56156.

ON THE RECORD

Dispatch report

Nov. 20
 •Deputy stopped subject who had a suspended driver's license. She was cited for no Minnesota driver's license and G&S towed the vehicle.
 •Complainant reported that a vehicle just went through the stop arm of a bus by the American Reformed Church. A gold-colored vehicle that is now in the lot of the church.
 •Complainant reported possible child abuse.
 •Complainant reported child neglect.
 •Complainant reported possible child abuse.
 •Complainant reported possible child abuse.
 •Complainant reported little kids playing in a snow pile on S. Kniss Ave. It is close to the street and is worried they could get hit by a car.
 •Deputy assisted State Patrol with a rollover on I-90, mm 16.

Nov. 21
 •Complainant reported a red SUV in the ditch on County Rd. 3, south of I-90. Contacted Erwin's to tow.
 •Deputy arrested subject for 5th degree assault and subject was taken to jail.
 •Complainant reported Lifeline button activation. No ambulance needed.

Nov. 22
 •Complainant requested a deputy for a disorderly person.
 •Deputy arrested subject for 5th degree assault. Subject was taken to jail.

Nov. 23
 •Complainant reported a bad check to Godfather's Pizza in the amount of \$30.81.
 •Complainant reported she was hired by a mortgage company to take pictures of a property. When she attempted to make contact with the resident to advise what she was doing, no one answered the door so she started taking pictures. A woman came out of the house with a gun and asked what she was doing. She was told to get off the property. She would like a deputy to go with her if she has to go back.
 •Complainant reported they had snowmobiles go across their yard Friday night. They now have marks on their driveway and would like a deputy to follow the tracks and see who is doing it.

Nov. 24
 •Complainant turned in a license plate that was found at the car wash. Notified owner.
 •Complainant reported she made a right hand turn off Main Street and she heard a noise. She went to the gas station and noticed that her mirror was pushed in. She wanted to let us know in case we had any reports of anything getting hit. She has a gray Trailblazer.
 •Complainant reported some people going door to door with dish soap trying to sell the product. They were headed east and driving a white or gray Dodge Durango. Complainant wanted to make sure they were legit. They do not have a solicitor's license from the city.

Nov. 25
 •Complainant reported she is a crossing guard at Dodge Street and Kniss Avenue and there is a bike lying in someone's yard. Deputy put the bike in the impound at the Rock County Sheriff's Office. If someone identifies it, they can claim it.
 •Complainant reported identity theft. Someone used her debit card in Colorado.
 •Complainant is on work release and requested to work in Rock County. Permission was granted.
 •Complainant reported she got most of her things out of the house but male is intoxicated and won't let her take her TV. Advised she needs paperwork because it's a civil matter. She will get the paperwork and come back.
 •Complainant reported a CO2 alarm at McDonald's. Paged Luverne Fire Department.
 •Deputy arrested subject for DWI and took him to jail.

Nov. 26
 •Complainant reported he has not had contact with his son for 2 1/2 weeks and he is very concerned about him and would like someone to check on him. Contacted the mother who said everything was fine.
 •Complainant reported she locked her one-year-old in the van. Deputy assisted in getting child out.
 •Complainant reported he can't control his 17-year-old son and requested to speak with someone about it.
 •Dispatcher received a 911 call from a home with no answer on ringback. Sent deputy who reported no one was home.
 In addition, officers responded to 13 motor vehicle accidents, 1 deer accident, 1 vehicle in ditch, 1 transport, 4 funeral escorts, 10 ambulance runs, 1 parking violation, 1 paper service, 6 animal complaints, 3 false alarms, 7 log/alarm sheets, 7 drug court tests, and issued 7 purchase/carry permits and 3 burn permits.



Carol Ceynowa (left) created more than 70 needle felted creatures for the Winterfest Christmas at the Hinkly House this weekend in Luverne..

Needle felt at Hinkly/continued from 1A

"Is the wolf there for the pigs or for the pastries?" Ceynowa says, one eyebrow raised.

From room to room, similar tales play out with the endearingly awkward needle felt characters.

Needle felting is the art of sculpting wool with special barbed needles. Stabbing the wool over and over again meshes the wool fibers together.

Many archaeologists believe that felt, made from animal hair, was the first textile made by human beings.

Needle felting became a popular art in the 1980s, but Ceynowa said she took it on this year as a personal challenge after her mother passed away.

"I knew it would distract me," said the artist who is known for her talent in pottery, ceramics, painting, drama and many other fine arts mediums.

She said all art is a "journey" that presents

continual challenges, but she said she needed something that would create a new challenge, and she found that in needle felting.

If it's true that art is therapy, Ceynowa should be in good shape after a whole year of needle felting. Each piece takes two to three hours to complete, and she has more than 70 displayed at the Hinkly House.

They won't have price tags on them, but many will eventually be for sale — either at next year's Holiday Studio Art Tour in Luverne or on Etsy, where Ceynowa has an online account.

Or, she said, talk to her at Saturday's Winterfest open house at the Hinkly House.

A few special collections have been specially created as Christmas presents for her grandchildren, but she said she will sell some pieces following Winterfest.

Winterfest hours at the Hinkly House are from 1 to 5 p.m. Saturday, Dec. 5, with tours of the Hinkly House and refreshments served.

Donations will be accepted for the ongoing maintenance and preservation of the Hinkly House.

Winterfest/continued from 1A

Lanphere said. The popcorn is compliments of Luverne Area Chamber.

The Winterfest Arts and Crafts show at the Luverne Elementary School starts off Saturday's activities. The show begins at 9 a.m.

"We added another hour to the craft show," Lanphere said about the new 4 p.m. closing.

The event features 90 vendors, some of whom are attending the show for the first time due to vendor retirements, she added.

Rock County 4-H Ambassadors will conduct their Santa's Workshop for grades kindergarten through four in a larger location at the elementary school.

Participants are able to make holiday projects for gift giving from 10 a.m. to 1 p.m. Saturday.

Lunch will be available at the craft show through the Luverne Music Boosters.

For the second year, the Rock County Sno Masters will conduct a free swap meet and membership drive beginning at 10 a.m. at the Howling Dog.

The Rusty Nutz Vintage Snowmobile Club will also

conduct a show and a scheduled ride will take place pending snow conditions.

Myhre Studio will photograph individuals with Santa from 11 a.m. to 1 p.m. Saturday at the elementary commons.

Proceeds will be given to Rock County SHARE.

Participants at Thursday's Luverne Community Education's "Kids in the Kitchen — Winterfest Cookie Contest" event will assemble a plateful of decorated cookies for display at the elementary.

Attendees to the Art and Craft Show may vote for their favorite plate with the top three vote-getters receiving prizes.

The Hinkly Christmas Open House will be from 1 to 5 p.m. Saturday, featuring fine arts displays by local artist Carol Ceynowa (see separate story.)

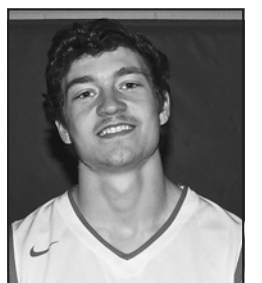
Luverne Street Music's Sounds of Christmas at the Palace Theatre will be performed in two holiday recitals this year, both on Saturday, with one at 4:30 and another at 7 p.m.

Selected Luverne merchants have expanded their business hours until 7 p.m. on Saturday.



Mitchell Muller

Sport: Basketball
Position: Guard
Parents: Bonnie and Randy Muller
Favorite Subject: History
Extra-Curricular Activities: I like to hang out with friends and spend time at the gym.
Future Plans: Go to college for economics at Mankato or USD



Alec Hoven

Sport: Hockey
Position: Defense
Parents: Jessy and Richard Hoven
Favorite Subject: Math
Extra Curricular Activities: Hockey
Future Plans: College, Law Enforcement



Pipestone Pepsi | 1809 Forman Drive, Pipestone, MN 56164

P
A
P
I
K
.
C
O
M

2012 Chevrolet Traverse 2LT



Stock #344255U
43K

Papik Price \$23,900

2015 Dodge Durango Limited



Stock #695533Z
20K

Papik Price \$38,900

2014 Chrysler Town and Country



Stock #440394Z
39K

Papik Price \$21,400

2015 GMC Acadia Denali



Stock #180179N
32K

Papik Price \$43,900



CERTIFIED PRE-OWNED
CHEVROLET BUICK GMC
No Worries.™



certified pre-owned
CHRYSLER | JEEP | DODGE | RAM



507-283-9171 or 800-634-7701
PAPIK.COM



Papik
MOTORS
I-90 Luverne, MN

Hardwick recognizes last World War II veteran

By Mavis Fodness

The last of Hardwick's World War II veterans received a special visit last week and a personal thank you for his 59 years of continuous membership to the Arthur Moeller American Legion Post 478.

Bill Holling, at age 92 years and 8 months, has outlived his fellow soldiers, an accomplishment the former farmer downplays.

"It wasn't necessary," he said.

A man of few words, Holling briefly talked about his two-year stint in the U.S. Army.

Drafted in 1944 at the age of 21, the Hardwick native left the family farm for basic training and was assigned to work in the motor pool. His unit spent six months in Europe after basic training.

"I did quite a bit of driving on the Autobahn," Holling said. "They were very smooth."

He would also fix the generally reliable vehicles.

"The GMCs didn't have too many problems but they were slow," Holling said.

His infantry unit did not encounter any fighting while in Europe and returned to the U.S. in 1945. The group was preparing for deployment to Asia when the war ended.

"We were going to invade Japan," Holling recalled. "Luckily, we didn't go."

He spent time at Army bases in Minnesota, Texas, California and Illinois before his discharge in 1946.

He returned to the family farm southeast of Hardwick and spent decades in agriculture before he and his wife of 52 years, Lois, retired to Luverne in 1992. The couple has two daughters and six grandchildren.

Holling joined the Hardwick legion in 1956.



Mavis Fodness photos/1203 Bill Holling

Bill Holling of Luverne is a 59-year member of the Arthur Moeller American Legion Post 478 and is the group's last remaining World War II veteran.

Top left: A picture of Bill Holling in his Army uniform hangs in the Legion Hall in Hardwick. Holling served from 1944 to 1946.

Left: Members of Hardwick's Arthur Moeller American Legion Post visit Poplar Creek Estates Monday, Nov. 23, where they presented Bill Holling with a 59-year membership award. Making the presentation were (front, from left) Bill DeBates, Larry Tweet, Holling, Wayne Holmgren, Lowell Ahrendt, (back) Wes Pierson, Bruce Wilson, Paul Aukes, Don Bryan and Gary Holmgren.



MENU

Senior Citizens

Monday, Dec. 7: Swiss steak, mashed potatoes, peas, bread, pineapple.

Program: 1 p.m. Senior Citizens meeting.

Tuesday, Dec. 8: Lasagna, California blend vegetables, peaches, garlic bread, cookie.

Program: 10 a.m. Make cards with Neva.

Wednesday, Dec. 9: Honey mustard chicken breast, baked potato with sour cream, green beans, bread, cake.

Program: 11:15 a.m. Christmas music with Betty Mann on the organ.

Thursday, Dec. 10: Pork loin, potatoes, creamed corn, dinner roll, fruit crisp.

Friday, Dec. 11: Lemon pepper fish with tartar sauce, au gratin potatoes, mixed vegetables, bread, pie.

Program: 12:15 p.m. Site Council.

Senior Dining offers well-balanced and affordable meals in a community atmosphere.

Bring a friend or make new ones.

Call Janice Fick at 283-9846 to make dining reservations or for home-delivered meals.

Social Security class begins Tuesday

Area residents ages 55 to 62 years of age, a class on Social Security benefits will be conducted Dec. 8. The class will sort through a wide variety of options available as the time for retirement nears.

Fee is \$5.

Please contact Luverne Community Education, 283-4724, for more information or to register.

1923: Thrift Week encouraged footwear repair

The following appeared in the Rock County Herald on August 31, 1923:

SHOE THRIFT WEEK BEING QUITE GENERALLY OBSERVED

But Two Days Remain of Nationally Designated Period for Promoting Health, Comfort, Economy

Two more days of Shoe Thrift Week still remain, the week which has been set aside the nation over for the shoe repair trade, when everybody is urged to have their old shoes repaired and thus make a saving in footwear expenses. But there is no reason why the spirit of the week should not be carried out throughout the month of September.

"Have 'em repaired," is the slogan which has been adopted by shoe repair men and jobbers all over the country during shoe thrift week. And in keeping with this



BITS BY BETTY

By Betty Mann, president Rock County Historical Society

idea, Luverne shoe shops are putting forth special efforts in order to most efficiently handle the greater volume of business which has been coming in.

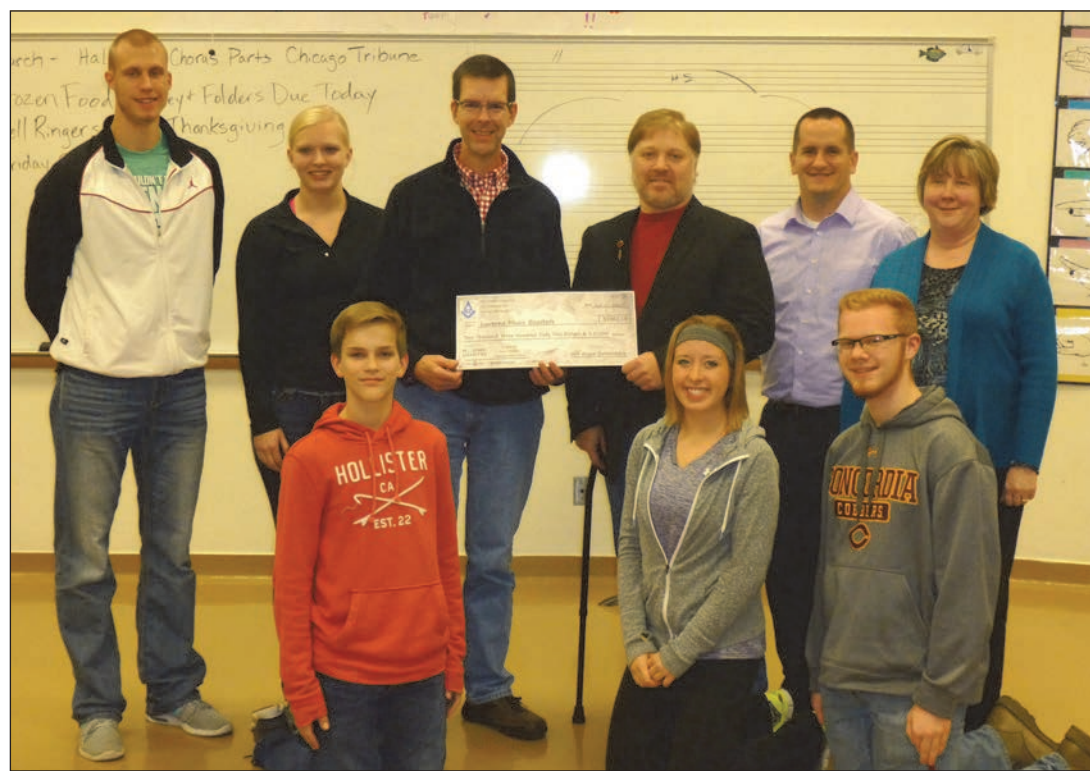
National shoe thrift week had been created for the purpose of redeeming a great part of the perfectly good leather which is wasted

each year in the form of worn shoes. In this county alone, it is held, hundreds of pairs of shoes are discarded each year merely because the soles are worn or the heels are run down. This amounts to a tremendous waste of leather and money, which is wholly unnecessary when the shoes can be repaired and give the wearer several more months of service and comfort.

Shoe repairers point out that now is also an opportune time to have the school children's shoes repaired, to get them ready for the hard wear they will receive and to insure the children's health and comfort during the cold and rainy fall season.

Donations to the Rock County Historical Society can be sent to the Rock County Historical Society, P.O. Box 741, Luverne, MN 56156.

Mann welcomes correspondence sent to manmade@iu.net.



Submitted photo

Masons give to Luverne Music Boosters

Ben Franklin Lodge, Minnesota Masonic Charities recently presented a check for \$2,362.19 to Luverne Music Boosters in support of the Luverne Public Schools music programs. Pictured are (front, from left) Matthew Jelken, Madi Oye, Mitchell Graber, (back) Quinton Siebenahler, Nicole Kneip, Music Boosters President Jim Jelken, Lodge Master Bryce Stoltenberg, instrumental instructor Richard Owen and vocal instructor Seana Graber.

CELEBRATIONS

Births

A girl, Marriah Ann, weighing 7 pounds, 13 ounces, 21 inches long, was born to **Shane and Julie Becker**, Worthington, on Sunday, Nov. 15, 2015, at Sanford Hospital in Sioux Falls, South Dakota. He joins a brother, Landon, 2. Grandparents are John and Nyla Sohl, Luverne, and Agnes Becker, Worthington. Great-grandparent is Wilmanette Spykerboer, Rock Rapids, Iowa.

Showers

A Come and Go shower for Samuel Eli, 6 months old, who has come to live with Wayne, Amy and Courtney Kruger, will be from 2-4 p.m. Saturday, Dec. 12, at United Methodist Church Upper Room.

10 years ago (2005)

Effective today, the Coffey Haus on Luverne's Main Street will no longer be the property of founder Sue Gruis.

Gruis, who started the Coffey Haus in September 1996, has sold the business to Tammy Makram.

20 years ago (1995)

After 66 years of serving Luverne and area retail customers, the Creeger family will no longer be in the clothing business. ...

The family business was started in 1929 by Randy's grandfather, Harley Creeger. The business was passed down from Harley to his son, Richard, and from Richard to his son, Randy.

50 years ago (1965)

A shorthorn yearling shown by Cheryl Kramer, 19, of Magnolia, won two prizes at the International Live Stock Exposition at Chicago last week.

Her 930-pound steer named Supreme was picked as junior grand champion and also won the Shorthorn breed championship. Her steer won over a field of 40 in the largest show in the United States.

REMEMBER WHEN

Cheryl (now Cheryl Miller) is the daughter of Mr. and Mrs. Alvin Kramer of Magnolia.

75 years ago (1940)

A meeting of local aviation enthusiasts and members of the Civic and Commerce association will be held ... for the purpose of discussing the possibility of establishing an airfield here. A number of Luverne residents are interested in taking flying lessons, and if sufficient interest can be generated, a fling club may be formed and a plane purchased for use by the club members. The Civil Aeronautics Board last October designated an appropriation of \$5,500 for the development of an airfield in Luverne, but to date no further action has been taken.

100 years ago (1915)

The tuberculosis commissioners for this district met at Worthington Wednesday for the purpose of cleaning up an accumulation of matters pertaining to the construction of the sanatorium for this district at Worthington. Dr. C. L. Sherman, president of the board, and County Attorney C. H. Christopherson, and commissioners for Rock County drove to Worthington to attend the meeting.

OBITUARIES

Larry Hellwinckel

Larry James Hellwinckel, 76, Hardwick, died Monday, Nov. 23, 2015, at his home.

A funeral service was Saturday, Nov. 28, at Zion Lutheran Church in Hardwick with burial at Maplewood Cemetery in Luverne.

Larry Hellwinckel was born Feb. 5, 1939, to Henry and Helen (Brockberg) Hellwinckel in Pipestone. He was baptized and confirmed at St. John's Lutheran Church in Trosky. He was raised on the family farm. He attended country school through the seventh grade in Elmer Township and then Pipestone High School through the 11th grade.

On April 5, 1958, Larry married Barbara Fodness at Blue Mound Lutheran Church in Rock County. During the first years of their marriage the couple lived in various places, and Larry worked as a farm laborer. In 1966 the couple moved to their current residence in Hardwick,

and Larry became employed at Luverne Creamery, which later became Land O' Lakes. At the age of 56 he became disabled and retired after 30 years of service to his company.

He was a member of Zion Lutheran Church in Hardwick. He enjoyed fishing, camping, working on cars and remodeling Barb's house.

Larry is survived by his wife, Barbara; five children, Karen (Arlyn) Sneller, Kenneth, Kristy (Mike) Willers, Beaver Creek, Kimberly (Ron) Ramert, Russell, Lisa (Rod) Rosin, Hardwick, and Kelly (Tom) Dohlmann, Luverne; 17 grandchildren; and 24 great-grandchildren.

He was preceded in death by his parents; a grandson, Colin Rosin; stillborn twin grandchildren; and a sister-in-law, Lucille Fodness.

Arrangements were by Hartquist Funeral Home of Luverne, hartquistfuneral.com.

(1203 F)

Alice Birkeland

Alice Birkeland, 85, Grace Lutheran Church in Luverne, died Thursday, Nov. 26, 2015, at Sanford Luverne Hospice Cottage.

A funeral service was Monday, Nov. 30, at Grace Lutheran Church in Luverne with burial at Maplewood Cemetery in Luverne.

Alice Sternberg was born Sept. 9, 1930, to Frederick and Alvina (Bauman) Sternberg in Western Township, Ottertail County. She was baptized and confirmed at Immanuel Lutheran Church in Ottertail County and attended country school in Ottertail and Wilkin counties. She graduated from Campbell High School, Campbell, in 1948 and attended college in Fargo, North Dakota, East Grand Forks, Mayville, North Dakota, and Augustana College, Sioux Falls, South Dakota. She taught in rural schools in North Dakota and Minnesota and was later a substitute teacher in Luverne.

On June 12, 1955, Alice married Thomas Birkeland at Immanuel Lutheran Church in Ottertail County. They lived northeast of Luverne at the base of the cliffs at Blue Mounds State Park. Tom died July 21, 2010. Alice continued to live in their home until she moved to Poplar Creek in 2014.

Alice was a member of

Grace Lutheran Church in Luverne. She taught Sunday School, Release School, served as GLCW president and worked on various boards at church. She was also a member of the Luverne Tourist Club. She was an avid furniture refinisher and enjoyed buying and selling antiques.

Alice is survived by four children, Teresa (Duane Hemme) Ziebarth, Lakeville, Melissa Lage, Audubon, Tim (Lisa) Birkeland, Terry (Tori) Birkeland, Prior Lake; six grandchildren, Stephanie and Sam Lage, Erika, Nick, and Isaak Birkeland and Kellie Ziebarth; two brothers, Ed Sternberg, Port Charlotte, Florida; and Walter (Res) Sternberg, Lakeville; and other relatives and friends.

She was preceded in death by her husband, Tom; a son, Todd Birkeland; her parents; three brothers, Herman, Arthur and Frederick Sternberg; and two sisters, Elizabeth Raguse and Eleanor Lade.

Memorials may be directed to Grace Lutheran Church (Building Fund) or Sanford Luverne Hospice Cottage.

Arrangements were by Hartquist Funeral Home of Luverne, hartquistfuneral.com.

(1203 F)

Mary Emery

Mary Helen Emery, 83, Luverne, died Wednesday, Nov. 25, 2015, at the Minnesota Veterans Home in Luverne.

A funeral service was Sunday, Nov. 29, at the United Methodist Church in Luverne with burial at Maplewood Cemetery in Luverne.

Mary McRobert was born Feb. 17, 1932, to J. Bryan and Gail (Carter) McRobert in Luverne. She graduated from Luverne High School before attending the University of South Dakota in Vermillion, South Dakota.

On July 14, 1952, Mary married Howard Emery in Luverne. The couple lived in California while Howard was in the Navy. After Howard was honorably discharged from the Navy, the couple started farming north of Luverne. After five years they moved to a farm east of Beaver Creek. In 1971 Howard and Mary moved north of Luverne and continued farming until 1985. The couple moved to Scottsdale, Arizona, where Mary worked

at AMK Storage. In 2011 they returned to Luverne to fulfill their retirement. Mary entered the Minnesota Veterans Home in Luverne in 2012.

Mary was a member of the United Methodist Church in Luverne, the Luverne Eagles Auxiliary, Kappa Alpha Beta and the PEO. She enjoyed knitting, reading, traveling and dancing.

Mary is survived by her son, Mark (Deb) Emery, Luverne; four grandchildren, Sandy Emery, Tami (Kyle) Van Heerde, Joe (friend Lexi) Emery and Jay Dee Emery; seven great-grandchildren; five step-grandchildren; thirteen step-great-grandchildren; a sister, Sara (Richard) Dorn, St. Cloud; and a brother-in-law, Buster (Ardella) Emery, Hector.

She was preceded in death by her parents; her husband, Howard; and a son, Thomas B. Emery.

Arrangements were by Dingmann Funeral Home of Luverne, dingmannandsons.com.

(1203 F)

Vivian Else

Vivian Elaine Else, 82, Brandon, South Dakota, died Thursday, Nov. 26, 2015, at Bethany Home in Brandon.

A visitation was Monday, Nov. 30, at George Boom Funeral Chapel, and the family will have a private funeral.

Vivian Elaine Letcher was born July 2, 1933, to Everett and Viola (Cummings) Letcher in Hanson County, South Dakota.

On June 6, 1952, she married Ivan Cleo Else in Luverne. She was a homemaker. She was active in the local VFW and the American Legion, where she was past president of the Ladies Auxiliary. She taught Sunday school and was a Girl Scouts leader. She enjoyed knitting and crocheting, but also playing bingo, pinocle and pitch with friends

and family.

Vivian is survived by her children, Amanda Pauline (Keith) Thorson, Hardwick, Connie (Bob) Hayne, Rapid City, South Dakota, Candy Larson, Luverne, Cregg (Rhonda) Else, Sioux Falls, Wade (Melinda) Else, and Launa Else, all of Brandon; 26 grandchildren; 39 great-grandchildren; her sister, Patricia (Don) LaFrenz, Luverne, and her brother, Donald (Alvina) Letcher, Hardwick.

She was preceded in death by her husband, Ivan; her parents; brothers Lester, Nolan and James; sisters Carol and Delores; and her great-granddaughter, Emma.

Arrangements were by George Boom Funeral Home of Brandon, www.georgeboom.com.

(1203 F)

Anita Cook

Anita Marie Cook, 73, died Tuesday, Nov. 17, 2015, in Shelton, Washington.

A memorial service was Monday, Nov. 30, at St. John Lutheran Church in Luverne with burial at Maplewood Cemetery in Luverne.

Anita Godfrey was born March 7, 1942, to Otis and Lois (Schlicht) Godfrey at the Luverne Community Hospital in Luverne. She was baptized and confirmed at St. John Lutheran Church in Luverne. Following her graduation from Luverne High School in 1960 she attended beauty school in Sioux Falls, South Dakota. She became a hairdresser in Webster, South Dakota, and later in Luverne.

On June 6, 1971, Anita married Ronald Cook at St. John Lutheran Church. As Ron was in the United States Navy, they lived in Florida, New York, New Jersey, Pennsylvania and Illinois. Following Ron's

retirement the couple returned to Minnesota and lived in the Twin Cities area. In 2008 they moved to Shelton, Washington.

Anita kept active in her church. Through the years she taught Sunday School, sang in the choir, participated in the quilting guild and was a member of a card group through her church in Shelton.

Anita is survived by her husband, Ron; a daughter, Jennifer, St. Paul Park; her siblings, George (Donna) Godfrey, Virginia, Carol (Robert) Lundholm, Plymouth, and Cathlaine Godfrey, Shelton, Washington; a sister-in-law, Janice Godfrey, Shakopee; and other family and friends.

She was preceded in death by her parents and two siblings, James Godfrey and Linda Godfrey.

Arrangements were by Hartquist Funeral Home of Luverne, hartquistfuneral.com.

(1203 F)

Rosella McCorkell

Rosella M. McCorkell, 91, Luverne, died Saturday, Nov. 21, 2015, at Sanford Foundation Hospice Cottage in Sioux Falls, South Dakota.

A funeral service was Saturday, Nov. 28, at the Dingmann Funeral Home in Luverne with burial at New Woodlawn Cemetery in Pipestone.

Rosella Smeins was born May 28, 1924, to Mike and Eva (Schmit) Meyers near Chamberlain, South Dakota. She grew up in the Chamberlain area and attended country school. In 1937 she moved with her parents to Montrose, South Dakota. She accepted her Christian faith in 1946.

On Jan. 26, 1947, Rosie married Vernon Smeins. They farmed in the Holland area. They had three children, Mary, Jack and Betty. Her husband, Vernon, died March 22, 1984. She moved to Sioux Falls in 1986 and did housework, babysitting, worked in a craft store and in a meat locker system. In 1992 she married Bruce McCorkell, and in 1993 they moved to Luverne.

Rosie will be remembered for her home-cooked meals and especially for her caramel rolls.

She is survived by her children, Mary (Chris) Genna, Seattle, Washington, Jack (Leanne) Smeins, Holland, Betty (Dick) Moss, Sioux Falls, South Dakota; five grandchildren; three great-grandchildren; two step-grandchildren; three step-children, Harlan (Linda) McCorkell, Mankato, Larry (Virginia) McCorkell, Blaine, Lois (Tim) Holman, Liberty Lake, Washington, their children and grandchildren; her sisters, Mary (Si) DeJonge, Sister Michelle Meyers and special friend Sister Kay O'Neil; and many other relatives and friends.

She was preceded in death by her parents; her husbands, Vernon Smeins in 1984 and Bruce McCorkell in 2008; an infant sister; and four brothers and one sister.

Arrangements were by Dingmann Funeral Home of Luverne, www.dingmannandsons.com.

(1203 F)

Merlyn Lopau

Merlyn Wayne Lopau, 72, Luverne, died Saturday, Nov. 21, 2015, at his home.

A memorial gathering will be from 4-8 p.m. Thursday, Dec. 3, 2015, at the Hartquist Funeral Home in Luverne. (Note change in date due to weather.)

Merlyn Lopau was born Aug. 24, 1943, to Milton and Florence (Graphenteen) Lopau at Ashton Memorial Hospital in Pipestone. He graduated from Lake Benton in 1961.

On April 9, 1963, he married Alene "Lynn" McCallum at the Good Shepherd Episcopal Church in Sioux Falls, South Dakota. They lived in Pipestone where Merlyn worked for Lange Hardware installing heating and air conditioning. In 1965 they joined Lynn's dad and brother John in operating M&M Distributing Company in Luverne. They continued to run the business until selling it in October 2008. Merlyn worked part time for the new owners, Bomgaars.

Merlyn was a past elder at the Presbyterian Church in Luverne. He was a charter member of the Eagles Club in Luverne. He was a past president of the Chamber of Commerce, served on the board of directors for the Rock County Historical Society and was a member of the Luverne Fire Department for over 20 years.

Merlyn was passionate about horses. He was a leader in the 4-H Saddle Club and served as a mentor to many horse enthusiasts. He was president and delegate for the Southwest Trail Riders. He volunteered for Sanford Luverne Hospital, working

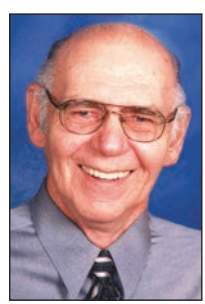
in the Healing Garden and assisting with the Bloodmobile.

Merlyn is survived by his wife, Lynn; their children, Beth Lopau, Owatonna, and Scott Lopau, Pipestone; two grandchildren, Jessica (Eric) Johnson, Mankato, and Halie Lopau, Luverne; two great-grandchildren, Brayden and Dylan Johnson; his siblings, Barb (Tom) Feuerhelm, Madison, South Dakota, Karen (Rich) Johnson, Slayton, Ron Lopau, Raton, New Mexico, Rita (Dale) VonArb, Spring, Texas, Randy (Donna) Lopau, Canby, Steve (Linda) Lopau, Preston, Arlyn (Julie) Lopau, Dawson, Mark (Melissa) Lopau, Dover, and Jolene Lopau, St. Leo; three sisters-in-law, Sandy Lopau, Pipestone, Sharon Lopau, Lake Benton, and Gay Lopau; and other relatives and friends.

He was preceded in death by his parents and his brothers, Delwyn, David and Edward Lopau.

Arrangements were by Hartquist Funeral Home, www.hartquistfuneral.com.

(1203 F)



come & go show
for Samuel Eli, 6 months old, who has come to live with Wayne, Amy and Courtney Kruger
Saturday, Dec. 12
2 - 4 pm
United Methodist Church
Upper Room

ANNUAL MEETING NOTICE

The annual meeting of the Rock County Township Association will be held on **Friday, December 4, 2015** at 1:30 p.m. at the Community Library meeting room, Luverne.
Pete Bakken,
Secretary/Treasurer

Overactive bladder? You're not alone.

One in three women face overactive bladder problems. Drs. Michael Fiegen and Kevin Benson offer the latest in treatment options and clinical trials available for bladder incontinence and female pelvic organ prolapse.

Call (605) 328-8750 to schedule an appointment.

Sanford Female Pelvic Medicine and Reconstructive Surgery Clinic
womens.sanfordhealth.org
keyword: Bladder Health

SANFORD
WOMEN'S



This office has achieved Safety Certification in Outpatient Practice Excellence from the American Congress of Obstetricians and Gynecologists

ACOG SCOPE Certified is the registered certification trademark or certification trademark of the American Congress of Obstetricians and Gynecologists.

Now Open

THE DEN
DISCOUNT LIQUOR

Stop into our new business and see what we have to offer.

HOURS
Monday-Saturday
10 a.m. - 10 p.m.

Downtown Adrian
507-827-0803

Luverne Loop master plan available for public perusal/continued from page 1A

Veterans Memorial Pond west across Highway 75 through Tonto Park to the top of the existing berm west of the city. The trail then will turn south along the west side of the school ball fields to Dodge Street.

Phase 2 is a 1.6-mile segment that will run south of Dodge Street to Hatting then turn east past the ice arena to Highway 75.

Phase 3 will cross Highway 75, travel north along the highway and then turn east at Hatting and north on Freeman. It will then head east to the Rock River, then north to the planned trailhead at Redbird Field.

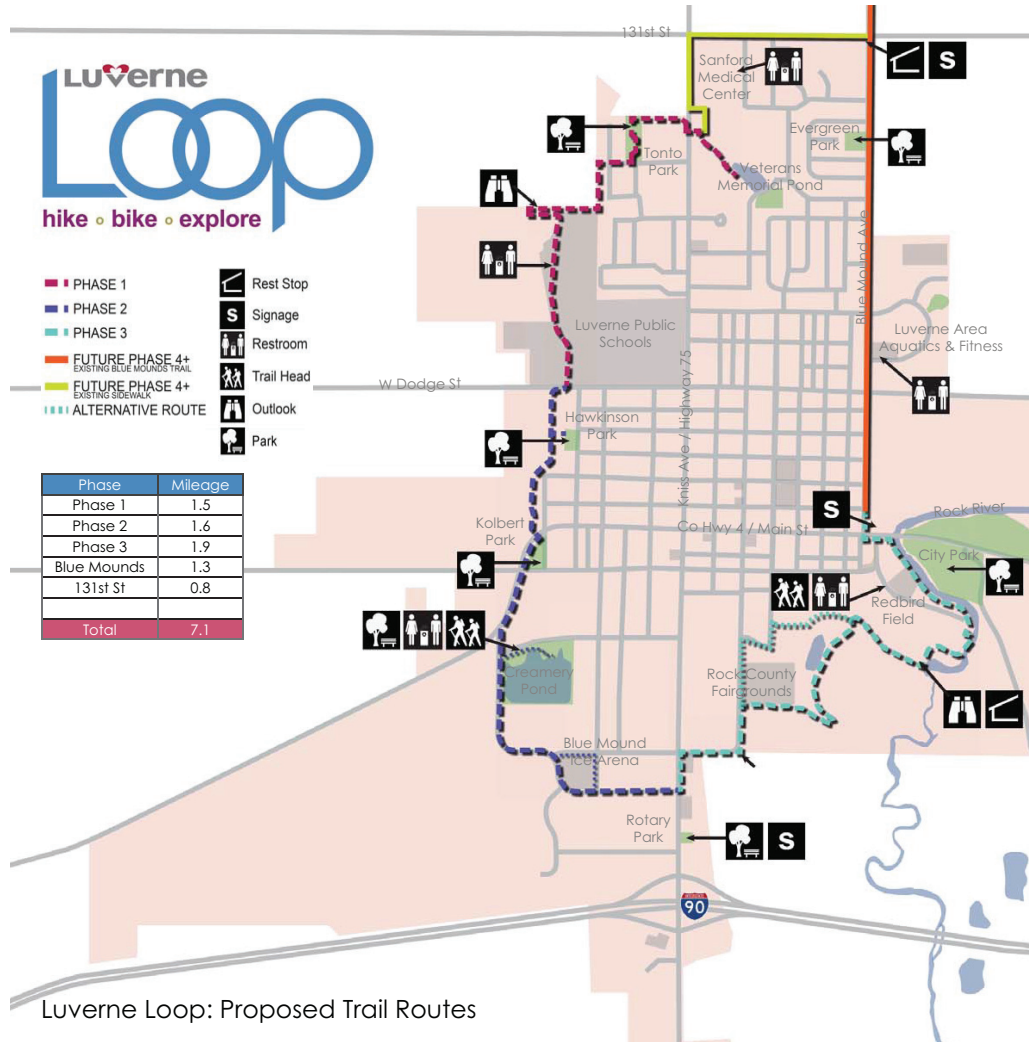
Phase 4 will extend north from the Redbird Field trailhead across Main St., with crossing improvements. It will then join the existing Blue Mound Trail.

In order to be a "trail of regional significance," it must be 10 feet wide, Sammons said, so the plan calls for eventually widening existing sidewalks and the city portion of the Blue Mound Trail.

The exact course of the completed Loop will be determined in later phases, but Sammons said a preferred route would bring the southeast part of the trail through conservation ground owned by Warren Baker.

It would bring bikers and hikers through pristine wooded areas of the Rock River. "Our goal is to get people to the Rock River," Sammons said.

"This route has a phenomenal view, and it's peaceful and quiet. ... Some people who have lived in Luverne all their life have probably never been to this spot. It's a hidden gem." She said the land is en-

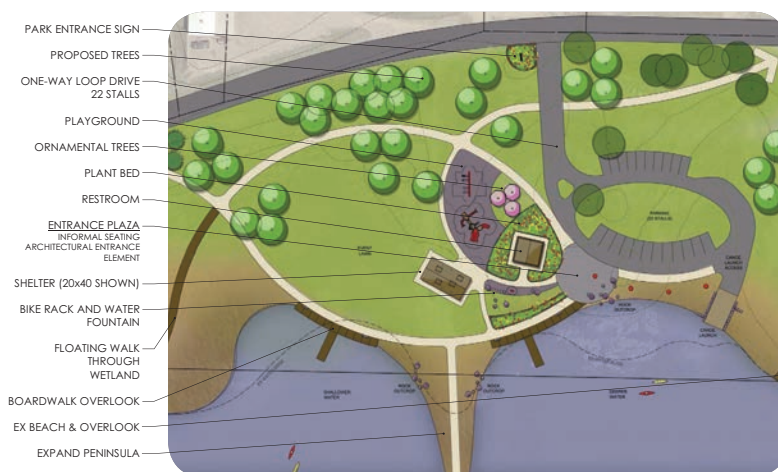


Luverne Loop: Proposed Trail Routes

REDBIRD FIELD TRAILHEAD DEVELOPMENT - CONCEPT 1



CREAMERY POND DEVELOPMENT - CONCEPT 1 ZOOM



Graphic at top, right: Redbird Field, situated perfectly along the Rock River on County Road 4, is envisioned to be the visitor center and kickoff/ending point to the Luverne Loop trail network. Redbird Field also conveniently connects Main Street, the Blue Mound Trail, and the beautiful City Park. At nearly 13 acres, with access to nearly 13 miles of trails, Redbird Field will house trailhead amenities such as a bike pump/repair station, a park shelter, trails, parking, site furnishings, litter/recycling receptacles, restrooms, and a site way-finding map and interpretive signage program.

Graphic at right: The Creamery Pond, located near County Road 4 and Edgehill Street, is envisioned to be the outdoor recreation hub nestled right within the city. At nearly 22 acres, with a 12-acre permanent pond, Creamery Pond has the potential to house many amenities of an outdoor recreation area – with fishing piers, a kayak/canoe launch, park shelters, parking and handicap accessibility, site furnishings, litter/recycling receptacles and a site way-finding and interpretive signage program. (Text as printed in the Luverne Loop Master Plan, which can be viewed in its entirety at www.cityofluverne.org or www.star-herald.com)

rolled in Reinvest in Minnesota, a conservation program that may prohibit easements for the trail.

The Loop master plan includes basic information about the trail and its proposed routes, but it also includes ideas

for improving blighted areas and developing potential trailheads along the route.

For example, shelter structures, benches, playground equipment, garbage receptacles and other details are sketched out in the master plan, which also shows how planting more trees and parking areas could improve public access and enjoyment of the trail.

Also specific ideas for the Redbird Field trail head and parking and fishing piers at the Creamery Pond are included in the plan.

Although a good share of

the plan includes indefinite proposals and ideas, Sammons said the document will be a useful tool going forward. "We finally have it all in one place so people can know what we're doing and why," she said.

She added that the plan has been in the works for nearly two years and that many local professionals and citizens have been involved in developing it. They are listed in the acknowledgement pages at the start of the document.

Mayor Pat Baustian com-

mended Sammons on her efforts. "This is a wonderful plan and you've put an immense amount of work into it," he said. "Kudos to you and to the committee."

Sammons said the fact Luverne's Loop now has an approved master plan (which identifies key characteristics and community advantages) makes it more eligible for state and federal grant funding.

The document can be viewed at City Hall or on the city website, www.cityofluverne.org. It can also be found with on www.star-herald.com

Luverne Area Community Foundation
You're Invited!
New Office
Open House
Thursday, December 10
5-7 pm
102 East Main, Luverne
Stop by for some holiday refreshments

LUVERNE AREA COMMUNITY FOUNDATION

Weight Loss Surgery Works

- ❖ Lose excess weight for good.
- ❖ Regain your health.
- ❖ A safe long-term solution.

Is Weight Loss Surgery Right For You?
Tuesday, December 8 • 6:30 pm
Forster Community Center-Southeast Rm
404 Main Street, Rock Rapids, IA

Join us for a free informational seminar on Bariatric Surgery. Dr. William Lee will address Weight Loss Surgery options offered at Hegg Memorial Health Center:

- Adjustable gastric banding (LAP-BAND® REALIZE Band®)
- Sleeve gastrectomy (gastric sleeve and vertical sleeve gastrectomy)
- Benefits of weight loss surgery and of each procedure
- Risks and complications
- Dietary issues
- Who may be a candidate for surgery
- Answers to your questions

Friends and family are welcome to attend so they can learn how to best support you on your weight loss journey; however, please do not bring children.
Please call to reserve your spot, walk-ins are welcome.

Have The Life You Want.
Weight loss surgery can help people lose significant amounts of weight safely, successfully and permanently. It can dramatically reduce diabetes, high blood pressure, sleep apnea and other conditions. It can open the door to a more active, happier life. Our program is comprehensive—designed for lifelong success.

Hegg Memorial Health Center
Avera

Dr. William Lee, General Surgeon
1202 21st Avenue, Rock Valley, IA 51247 • (712) 476-8052 • www.hegghc.org

Holiday OPEN HOUSE
MONDAY, DECEMBER 7
9 AM TO 4:30 PM

**REGISTER FOR DOOR PRIZES!
HOLIDAY TREATS WILL BE SERVED!**

It's Christmas and we just wanted to say Thank You for another great year! It's been a pleasure working with you.

First Farmers & Merchants
NATIONAL BANK
We believe in you.™
Member FDIC. And the community.
303 E. Main, Luverne
ffmbank.com
507-283-4463

Girls top section contender

By John Rittenhouse

An impressive start to the 2015-16 hockey season continued for the Luverne girls Nov. 25 in Fairmont.

With Madisyn Dingmann recording a hat trick and Carly Serie and Mariah Aukes chipping in two goals each, the Cardinals posted an 8-3 victory and recorded their fifth-straight win.

Fairmont is expected to be one of Luverne's top contenders in Section 3A this year, but the Cardinals didn't give the hosts much to be proud about in the first of two scheduled meetings between the teams.

Luverne scored the first four goals of the game and added another four-goal run in the third period to prevail by five.

Serie opened the scoring 2:06 into the game, setting up Luverne's first four-goal run of the game that included three tallies in the first 8:57 of the second period.

Aukes scored the first goal of the second period before Dingmann scored twice in a 56-second span to make it 4-0.

Fairmont climbed back into contention when Taylor Nuss and Logyn Cone netted goals 2:18 apart to slice Luverne's lead in half (4-2), but Aukes registered an unassisted tally for the Cards with 2:58 remaining in the stanza to make it 5-2.

The Cards iced the contest by scoring the first three goals of the third period.

Serie registered an unassisted, power-play goal 1:05 into the stanza before Makayla Sterrett netted an unassisted, short-handed goal

Girls/continued on page 2B

Cardinals split weekend set at BMIA

By John Rittenhouse

The Luverne boys' hockey team broke even when the Cardinals played their first two home games of the season over the weekend.

LHS posted a five-goal victory over St. Peter-Le Sueur-Henderson Friday before dropping a one-goal decision to St. Paul Academy Saturday.

Luverne, 2-1 overall, hosts Orono Friday.

SPA 5, Luverne 4

A battle of two state-ranked teams fell in favor of the Spartans at the Blue Mound Ice Arena Saturday.

After falling behind 1-0 early in the game, SPA, the state's fourth-ranked team, netted four consecutive goals and withstood an impressive comeback attempt by the Cards to pull out a one-goal victory.

Eighth-ranked LHS drew first blood when Jaxon Nelson opened the scoring 2:24 into the contest.

Matt Dahlseide netted an unassisted goal with 9:06 remaining in the first period to knot the score and Jack Johnston and Will Kelly netted goals 48 seconds apart less than two minutes later to give the Spartans a 3-1 advantage they would take into the second period.

An unassisted power-play tally by Justin Jallen upped SPA's lead to 4-1 2:10 into the second stanza, but Luverne's Declan Beers scored with 3:50 remaining to make it 4-2 contest.

Both teams scored goals in the final 20 seconds of a second period that ended with SPA sporting a 5-3 cushion.

Cullen McCabe scored with 17 seconds left for the Spartans and Chaz Smedsrud countered with a power-play tally for LHS with one second left.



John Rittenhouse photo/1203 lhb 10

Luverne sophomore Declan Beers scored four goals and recorded one assist during Friday's 8-3 win over St. Peter-Le Sueur-Henderson at the Blue Mound Ice Arena.

A power-play goal by Nick Harder capped the scoring with 10:34 left in the game.

Kaden Ericson made 29 saves in goal for an LHS team that came up on the short end

of a 34-32 tally in shots on goal in the contest.

Nelson led the Cards with two assists, while Trey Roberts, Smedsrud and Nick Behrend notched one assist each.

LHS 8, SP-L-H 3

The Cardinals opened their home slate and Big South Conference play by entertaining St. Peter-Le Sueur-Henderson at the Blue

Mound Ice Arena Friday.

Luverne fell behind 1-0 in the game's opening period, but the Cardinals outscored the Bulldogs 8-2 the rest of the night to secure a five-goal victory.

Beers led the charge for LHS by netting four goals and recording one assist. Nelson chipped in two goals and two assists.

SP-L-H turned a two-skater advantage into a 1-0 lead when McCary Grams scored the lone goal of the first period with 6:21 remaining.

After being blanked in the first stanza, Luverne exploded for five goals in the second period to gain control of the contest.

Beers scored Luverne's first three goals in a span of 5:41.

Nelson and Chris Jelken netted short-handed goals 31 seconds apart late in the period to up the lead to 5-1.

Luverne's run reached six consecutive goals when Beers scored 19 seconds into the third period, but the Bulldogs received tallies from Isaac Westphal and Alex Hoehn to make it a 6-3 game with 11:06 left to play.

Luverne erased any chance of a SP-L-H rally when Nelson and Jesse Reed scored goals to cap the scoring with 6:32 left to play.

The Cardinals sported a 52-11 advantage in shots on goal and received a two-assist effort from Nick Harder.

Reed, Kasyn Kruse, Connor Sandbulte, Brennan Hart and Behrend added one assist each to the winning cause.

Daniel Tofteland, who made his first varsity start in goal, stopped seven of the 10 saves he made in goal for LHS before giving way to Ericson with 11:06 remaining in the third period.

Ericson stopped the one shot he faced in net.



John Rittenhouse photo/1203 hbb 13

H-BC junior Zach Scholten releases a shot over Pipestone's Justin Rops during a Nov. 25 game in Pipestone.

Arrows spoil H-BC's debut

By John Rittenhouse

The Hills-Beaver Creek boys' basketball team opened the 2015-16 season in a disappointing way Nov. 25 in Pipestone.

After playing with the lead for a good share of the game's first 12 minutes, H-BC was outscored 61-23 in the final 25:37 of a 71-40 setback.

Surrendering the first two points of the game to Pipestone, the Patriots battled back to sport a series of six two-point leads in the first 7:23 of the game.

H-BC led 12-10 when it scored five consecutive points ending with a layup from Isaiah Vis to open a 17-10 cushion at the 7:37 mark of the first half.

Pipestone rallied with a 12-4 run to gain a 22-21 edge before H-BC's Cooper Vaughn knotted the score at 22 with one free throw.

The Arrows, however, outscored the Patriots 15-2 the rest of the half to sport a 37-24 advantage at the break.

H-BC never did make a run at Pipestone in the second half.

The Arrows scored the first six points of the stanza as a part of a 22-3 run that left the hosts sporting a 59-27 lead.

H-BC never trailed by less than 27 points the rest of the night

Debut/continued on page 2B

Boys break even in two home games

By John Rittenhouse

The Luverne boys' basketball team split a pair of home games to open the 2015-16 season.

The Cardinals pulled out an eight-point victory over Southwest Christian Nov. 24 before falling by three points to Fulda Saturday.

Luverne plays in Jackson Thursday.

Fulda 56, Luverne 53

A spirited effort by the Cardinals in the second half went unrewarded when they entertained the Raiders Saturday in Luverne.

Luverne, which trailed by 19 points early in the second half, battled back to knot the score with 1:45 left to play.

Fulda hit a three-point shot to regain the lead and won by three points when both teams were limited to one free throw the rest of the game.

The Raiders hit three three-point shots during a 12-0 run in the game's first 3:43.

Luverne countered with a 10-4 run ending with a three-point shot from Nick Overgaard to trim the difference to six (16-10) at the 11:35 mark.

Fulda, however, outscored the hosts 18-7 the rest of the half to sport a 34-17 advantage at the break.

The Raiders extended their lead to 19 points (36-17) early in the second half, but the Cardinals didn't give up the fight.

A 20-9 run capped by a field goal by Cole Bosch at 8:48 made it an eight-point difference (45-37) before the Raiders extended their lead to 13 (52-39) with 6:23 left to play.

Luverne met the challenge by mounting a 13-0 run capped by a field goal in the paint from Erik Wahnoutka to knot the score at 52 with 1:45 remaining.

Fulda buried a three-point shot with 1:23 remaining to move in front 55-52 and matched Luverne's scoring output of one point the rest



John Rittenhouse photo/1203 lhb 12 cut

Senior Cole Bosch has the ball stripped out of his hands by Fulda's Brandon Everett during Saturday's game in Luverne. The Raiders edged the Cardinals by three points.

of the way to prevail by three points.

Overgaard led the Cardinals with 22 points and three steals. Wahnoutka added eight assists to Luverne's cause, Quinton Siebenahler pulled down a team-high seven rebounds and Mitchell Muller chipped in three assists.

Box score
Overgaard 3 5 1-2 22, Muller 1 1 0-0 5, Wahnoutka 3 0 1-2 7, Curtis 0 0 0-0 0, Siebenahler 4 0 0-3 8, Wagner 1 0 0-0 2, Bosch 3 0 3-4 9.

Team statistics
Luverne: 21 of 52 field goals (40 percent), five of 12 free throws (42 percent), 17 rebounds, 12 turnovers. Fulda: 20 of 42 field goals (48 percent), seven of 13 free throws (54 percent), 23 rebounds, six turnovers.

Luverne 87, SWC 79

The Cardinals made a splash in their season when they posted an overtime victory over the Eagles Nov. 24 in Luverne.

Luverne fell behind 41-34 in the game's first half only to outscore SWC by seven points (39-32) in the second half to send the game to overtime.

The Cards trailed by one point late in regulation play until Overgaard buried a three-point shot to give the hosts a 73-71 advantage.

SWC, however, hit two free throws with 15 seconds left to knot the score at 73 and force an extra session.

Overgaard scored the first five points in overtime, helping the Cards outscore the Eagles

14-6 to win by eight points.

Overgaard (25 points, eight rebounds and four steals), Wahnoutka (17 points, five rebounds, nine assists and five steals), Siebenahler (16 points, eight rebounds and four steals) and Muller (13 points and three assists) turned in key nights for the Cards.

Box score
Overgaard 7 3 2-4 25, Muller 4 1 2-5 13, Wahnoutka 6 0 5-6 17, Robinson 0 0 0-0 0, Curtis 4 0 0-1 8, Siebenahler 7 0 2-3 16, Wagner 1 0 2-2 4, Bosch 1 0 2-2 4.

Team statistics
Luverne: 34 of 70 field goals (49 percent), 15 of 23 free throws (65 percent), 32 rebounds, 15 turnovers. SWC: 29 of 54 field goals (54 percent), 10 of 18 free throws (56 percent), 28 rebounds, 18 turnovers.

Beers makes his presence known

I finally understand what a former Luverne coach was trying to tell me last year.



Derrick Brown, the head coach of Luverne's first Section 3A boys' hockey championship team, gave me the following "heads up" many times before he moved to St. Cloud over the summer.

"Keep an eye on this freshman class (now LHS sophomores)," Brown offered.

"I really think they could do something special."

I've heard coaches say similar things in the past.

More times than not, the optimistic views of these mentors didn't completely pan out.

After taking in the first home game of the 2015-16 season Friday night and watching the third period of Saturday's battle against state-ranked St. Paul Academy, I get what Brown was trying to tell me.

LHS may have lost some outstanding hockey players from last year's team, but it looks like the sophomore class will do more than fill in the holes in the lineup.

They could make this the best LHS team in program

FROM THE SIDELINES

By John Rittenhouse, sports editor

history.

I've been watching sophomore Jaxon Nelson play at the varsity level for two years now, and I doubt I'll ever see a better player on the ice than the future Minnesota Gopher.

I also was impressed with the sophomores Kasyn Kruse and Nick Harder, who performed at the varsity level last season, which leads me to believe they'll be even better this year.

As much as I admire those three players, no one captured my attention like one of their classmates did over the weekend.

After watching him burn the net for four goals against SP-L-H Friday night, I came to the conclusion that sophomore Declan Beers is the real deal as well.

Beers may be playing at the varsity level for the first time, but it's clear the situation isn't too big for him.

Along with his four-goal explosion Friday, Beers scored one goal in each of Luverne's other two games

and shares the team lead with Nelson (6) after three outings.

Along with his knack for putting the puck in the net, Beers appears to be a playmaker as well.

He registered three assists during his varsity debut in Kasson Nov. 21 and added another one Friday to share the team lead with Nelson in that category (4) as well as total points (10).

Maybe I shouldn't be so quick to place Beers on a pedestal based on a small sample size of games, but there is something else I like about this athlete.

He is a three-sport participant. I know LHS football coach Todd Oye and Cardinal baseball coach Mike Wenninger are convinced Beers will be a productive member of their programs in the coming seasons.

Based on the way he has played in his first three hockey games, I think Declan Beers will be one of those kids who excel in all three sports he participates in.



Submitted photo

State participants

The Luverne Cardinal Special Olympic bowling squad made an appearance at the Minnesota State Bowling Tournament in Lakeville. Twenty-six local competitors produced eight first-place efforts, six second-place efforts, one third-place performance, eight fourth-place showings and three fifth-place outings. The athletes also competed in unified and traditional doubles events, placing between first and fourth place. Team members include (front) Arianna Weidert, (middle row), Brendan Kurrasch Jr., Erika Egdorf, Andrew Dooyerna, (third row) Jennifer Moeller, Edward Svoboda, Tyler Briggs, Adam Cox, Bethany Starling, Marie Gleis, Aaron Dyk, Nakota Baumann, (top row), Tim Ebert, Aaron Hoffman, Evan Ushijima, Derek Deutsch, Michelle South, Nikole Kuffman, David Weis, Teresa Berghorst, Nancy Lewis, Hailey Baumann, Kristi Brandt and Jolene Hunt. Missing are Janet Sandbulte and Katie Fick.

Knights pull away from Panther boys

By John Rittenhouse

The Ellsworth boys' basketball team put up a good fight before dropping its first game of the season Nov. 25 in Tyler.

Taking on the Russell-Tyler-Ruthon Knights on their home court, the Panthers battled the hosts to a draw at 27 during the game's first half.

After playing the first half

without making a three-point shot, the Knights canned six in the second half to set the stage for a 65-54 victory.

"We went cold in the second half and they started to hit their threes," said EHS coach Mac McDowell.

Malik Herman led the Panthers with 16 points and 12 rebounds in the game.

Jared Leuthold and Brandon

Kramer chipped in 15 and 14 points respectively, while Bobby Walkowaik collected six caroms.

Box score
Hinrichs 1 2 1-2 9, Herman 5 0 6-9 16, Leuthold 3 1 6-10 15, Kramer 5 0 4-7 14, Walkowaik 0 0 0-2 0.

Team statistics
Ellsworth: 17 of 34 field goals (50 percent), 17 of 30 free throws (57 percent), 26 rebounds, 17 turnovers.

Girls/continued from page 1B

1:33 later.

Dingmann capped her hat trick with 1:56 left to play to make it an 8-2 game before Fairmont's Jordyn Junkermeier netted the final

goal of the game with 21 seconds left to play.

Luverne, which sported a 33-30 edge in shots on goal in the game, received a 27-save effort from Emilie Bartels.

Sterrett recorded three assists for the Cards, while Madison Crabtree and Maddie Dinger chipped in one assist each.

before falling by 29 points at game's end.

Stuart Plimpton turned in a 10-point, five-rebound, five-assist effort for H-BC.

Zach Scholten (nine rebounds and six blocked shots), Drew Forshey (eight

rebounds), Vaughn (six steals and four assists) and Vis (five steals and four assists) also turned in productive nights.

Box score
Vaughn 2 0 2-4 6, Burgers 0 0 0-0 0, Vis 2 0 0-4 4, Leuthold 0 0 0-0 0, Plimpton 4 0 2-5 10, Bass 0 1 0-0 3, Kueter 1 0

2-5 4, Scholten 3 0 3-4 9, Dy.Forshey 1 0 2-4 4, Dr.Forshey 0 0 0-1 0.

Team statistics
H-BC: 14 of 55 field goals (25 percent), 11 of 27 free throws (41 percent), 36 rebounds, 23 turnovers.
Pipestone: 23 of 67 field goals (34 percent), 20 of 34 free throws (59 percent), 43 rebounds, 18 turnovers.

PANCAKE BREAKFAST
Sunday, Dec. 6
9am - 1pm
Adults \$6.00 12 & Under \$3.00
American Legion Luverne
124 W Main

Dining & Entertainment

THE OPLAND SINGERS
Mystery of The Season
CHRISTMAS 2015
DECEMBER 4, 5, 11 & 12 AT 7:30 P.M.
MATINEES ON DECEMBER 6 & 13 AT 3:00 P.M.
PIPESTONE PERFORMING ARTS CENTER
BOX OFFICE: PIPESTONE COUNTY MUSEUM 507.825.2020 • TOLL FREE: 877.722.2787
TICKET PRICES: ADULTS: \$15.00 • STUDENTS: \$3.00 SPECIAL FAMILY RATE: \$35.00

You're invited to God's House for prayer & worship as we prepare our hearts for our Savior Jesus' birth!

Advent Vespers
December 2, 9, 16 - 7 pm

Children's Christmas Program
December 20 - 4 pm

Christmas Eve Lessons & Carols
December 24 - 5:30 pm

Christmas Day Festive Worship
December 25 - 10:15 am

Everyone is welcome!

Bethany Lutheran Church
720 N Kniss, Luverne
507-283-4571

LUVERNE ST Music Presents:
The Sounds of Christmas 2015
Saturday, December 5
4:30pm & 7:00pm
Monday, December 7
7:00pm
Historic Palace Theatre

Luverne Street Music will be presenting three different recitals showcasing our students and staff during Winterfest weekend. Each performance is expected to last 1^{1/2} hours or less. We invite you to come and enjoy the sounds of the Christmas season! A free will offering will be collected.

Advent - Christmas Worship Schedule

November 28, 5:30 p.m.
First Sunday of Advent

November 29, 9:00 a.m.
First Sunday of Advent

December 2, 6:00 p.m.
Midweek Advent 1
"Advent Silence & Expectation"

December 2, 6:40 p.m.
Supper by Men's Club

December 5, 5:30 p.m.
December 6, 9:00 a.m.
December 9, 6:00 p.m.

December 9, 6:40 p.m.
December 12, 5:30 p.m.
December 13, 9:00 a.m.
December 16, 6:00 p.m.

December 16, 6:40 p.m.
December 19, 5:30 p.m.
December 20, 9:00 a.m.
4:00 p.m.

December 24, 5:00 p.m.
December 25, 9:00 a.m.
December 26, 5:30 p.m.
December 27, 9:00 a.m.
December 31, 6:30 p.m.

St. John Lutheran Church
803 N. Cedar

Second Sunday of Advent
Second Sunday of Advent
Midweek Advent 2
"Advent Faith"
Supper by Board of Social Ministry
Third Sunday of Advent
Sr. Choir Christmas Cantata
Midweek Advent 3
"Advent Action"
Supper
Fourth Sunday of Advent
Fourth Sunday of Advent
Sunday School Christmas Program
"Christmas Lights"
Christmas Eve Service
Christmas Day Service
First Sunday of Christmas
First Sunday of Christmas
New Year's Eve Service

Christmas Open House

Southwestern Youth Services
Magnolia, MN
PLEASE JOIN US FOR COFFEE, HOT CHOCOLATE AND ASSORTED CHRISTMAS GOODIES!
MONDAY, DEC. 7
3:30-6:30pm
STUDENTS WILL GIVE TOURS OF THE BUILDING

Palace Theatre Downtown Luverne

Misfit, Blockhead, Hero.

THE PEANUTS MOVIE

FRI., DEC. 4 - 7 P.M.
SAT., DEC. 5 - 7 P.M.
SUN., DEC. 6 - 2 P.M.

Check our Web site for updates
www.palacetheatre.us
Find us on Facebook

PUNTA CANA
From \$1,407 pp
5 nights all-inclusive
RT air from Sioux Falls
RT transfers included
Pricing based on 2 adults
Select Jan. - Feb. dates
Pricing based on availability

JAMAICA
From \$1,318 pp
5 nights all-inclusive
RT air from Minneapolis
RT transfers included
Pricing based on 2 adults
Select Jan.-Feb. dates
Pricing based on availability

ALL ABOUT TRAVEL
8-Year Winner! Layaway & Gift Certificates Available!
605-339-8911 • 1-800-390-6610
3801 S. Western Ave., Suite 103, Sioux Falls, SD
Open: Mon-Fri. 8 a.m. - 7 p.m. • Saturday 9 a.m. - 1 p.m.
www.AllAboutTravel.org www.facebook.com/AllAboutTravelInc
Helping You Find Your Personal Paradise!

ROCK COUNTY SNOWMASTERS
FREE SWAP MEET & RUST NUTS VINTAGE SNOWMOBILE SHOW & SHINE & MEMBERSHIP DRIVE

WHEN: SATURDAY, DEC. 5 AT 10 AM
HOWLING DOG PARKING LOT
(WE WILL RIDE IF THERE'S SNOW!)

FOR MORE INFORMATION CONTACT: GREG AT 507-920-5189

Star Herald CHURCH

December 3, 2015 Page 3B

St. Catherine Catholic Church

203 E. Brown St., Luverne
St. Catherine Ph.: 283-8502

St. Mary Catholic Church, Ellsworth

Saturday, Dec. 5: 5:30 p.m. St. Catherine Mass. Sunday, Dec. 6: 8:30 a.m. St. Mary Mass. 10:30 a.m. St. Catherine Mass. SS/CLW.

Luverne Christian Reformed Church

605 N. Estey St., Luverne
Office Ph. 283-8482; Prayer Line Ph. 449-5982
www.luverneccrc.com — luverneccrc@gmail.com

Roger Sparks, Pastor

Saturday, Dec. 5: 9:30 a.m. Christmas Program Practice for grades 1-6. Sunday, Dec. 6: 9:30 a.m. Worship Service. 10:45 a.m. 3 yr. olds-sixth grade Christmas Program Practice; 7-12 Catechism Classes. 6:30 p.m. Worship Service. Monday, Dec. 7: 9 a.m. PERK UP-Pizza Ranch. Tuesday, Dec. 8: 9:30 a.m. CoffeeBreak/Story Hour. Wednesday, Dec. 9: 7:30 p.m. Youth Group.

First Baptist Church

1033 N. Jackson St., P.O. Box 975, Luverne

Ph. 283-4091; email: fbcluv@iw.net — www.fbcluverne.org

Dick Lauger, Pastor

Thursday, Dec. 3: 6 p.m. Senior Focus Christmas Dinner. 7 p.m. Worship Service on Vast Channel 3. Friday, Dec. 4: 6 a.m. Men's Bible Study. Sunday, Dec. 6: 9:15 a.m. Sunday School. 10:30 a.m. Morning Service with Communion. 6 p.m. Evening Service. 7:30 p.m. Choir Practice. Tuesday, Dec. 8: 7 a.m. Men's Bible Study at FBC. 7 p.m. Deacons meeting. Wednesday, Dec. 9: 6:55 p.m. Awana. Thursday, Dec. 10: 9:30 a.m. Women's Bible Study at FBC. 7 p.m. Worship Service on Vast Channel 3.

Grace Lutheran Church

500 N. Kniss Ave., Luverne

Ph. 283-4431; www.graceluverne.org — Nichols-glc@live.com

Ron Nichols, Pastor; Cole McCormick, Interim Pastor

Thursday, Dec. 3: 8:30 a.m. MIA. 9:30 a.m. Coffee. Rock County Ministerial. 1:30 p.m. Endowment meeting. 4:30 p.m. Book Study. Friday, Dec. 4: 6:30 p.m. Telecast Ch. 3 (VAST). Saturday, Dec. 5: 5:30 p.m. Worship with Communion. Sunday, Dec. 6: 8:15 a.m. Radio Broadcast; Worship. 9:15 a.m. Coffee. 9:30 a.m. Sunday School & Adult Study. 10:45 a.m. Worship with Communion. Monday, Dec. 7: 4 p.m. Telecast Ch. 3 (VAST). 5:45 p.m. Echoes. Tuesday, Dec. 8: 9 a.m. Staff meeting. 1:30 p.m. GLCW Executive Board. 6:45 p.m. Ministry meetings. 8 p.m. PPC. Wednesday, Dec. 9: 7 a.m. Men's Study. 3:15 p.m. Faith Weavers. 5:30 p.m. Confirmation supper. 7 p.m. Chancel Choir; Confirmation grades 6-9. Thursday, Dec. 10: 2 p.m. GLCW. 4:30 p.m. Book Study.

Bethany Lutheran Church

720 N. Kniss Ave., Luverne

Ph. 283-4571 — pastorapalmquist67@yahoo.com

Thursday, Dec. 3: 5 p.m. Service on Ch. 3. Sunday, Dec. 6: 9 a.m. Sunday School. No Bible Class. 10:15 a.m. Worship. 3 p.m. Advent by Candlelight. Tuesday, Dec. 8: 3:30 p.m. Communion at Veterans Home. Wednesday, Dec. 9: 6 p.m. Soup Supper. 7 p.m. Advent Vespers. Thursday, Dec. 10: Noon Ladies Aid meeting and potluck. 5 p.m. Service on Channel 3.

American Reformed Church

304 N. Fairview Dr., Luverne

Ph. 283-8600; email: office@arcluverne.org

Thursday, Dec. 3: 6 p.m. Ladies Night Out. Friday, Dec. 4: Noon to 6 p.m. Holiday Bake Sale. 6:30 a.m. Community Men's Bible Study. Sunday, Dec. 6: 9:30 a.m. Worship Service with Communion. 10:50-11:50 a.m. Family Education. 3:30 p.m. to 7 p.m. Partner Class. 7 p.m. SR. RCYF; Junior RCYF. Monday, Dec. 7: 6 p.m. Esther Circle. Tuesday, Dec. 8: 10 a.m. Staff Meeting. Noon Rebecca Circle. 7 p.m. Consistory Meeting; Bible Study Fellowship. Wednesday, Dec. 9: 5:30 p.m. Midweek Meal. 6:30 p.m. Pioneer Clubs/YEL. 6:45 p.m. Rachel Circle. 7 p.m. Abide Praise Team. 8 p.m. Adult Choir.

Holy Trinity Episcopal Church

220 N. Cedar St., Luverne

Sundays: 10:30 a.m. Worship Service; Fellowship after service. Wednesdays: 6:30 p.m. Bible Study. Our Mission Statement: Historic Holy Trinity strives to serve God and our community through worship, stewardship and friendship. Contact Emily Lodine Overgaard at (507) 227-6175 for information. Come as you are — our leader wore sandals.

First Assembly of God Church

1075 110th Ave., 2 miles west of Luverne on County Rd. 4

Kenneth and Gloria Kashner, Pastors

Sundays: 9 a.m. Sunday School. 10 a.m. Morning Worship. 6:30 p.m. School of the Holy Spirit. Wednesdays: 7 p.m. Kids Connection; Men's Bible Study with Pastor Ken; Women's Bible Study with Pastor Gloria.

Steen Reformed Church

112 W. Church Ave., Steen

Ph. 855-2336

Reuben Sinnema, Youth Pastor

United Methodist Church

109 N. Freeman Ave., Luverne

Ph. 283-4529; email: luverneumc@iw.net

Thursday, Dec. 3: 1-3 p.m. Rock County Food Shelf. Sunday, Dec. 6: 9:30 a.m. Coffee Hour. 10:30 a.m. Hanging of the Greens Service. 11:30 a.m. All-church potluck dinner and cookie exchange. 4:30 p.m. Bait of Satan Bible Study. 6 p.m. A.L.I.V.E. Youth Group.

First Presbyterian Church

302 Central Lane, Luverne

Ph. 283-4787; email: Firstpc@iw.net — www.fpcluverne.com50

Thursday, Dec. 3: 9 a.m. Presbyterian Women Executive Committee. Sunday, Dec. 6: 9 a.m. Sunday School. 10:15 a.m. Worship. 11:15 a.m. Special congregational meeting. 6 p.m. Christmas Caroling. Monday, Dec. 7: 5 p.m. Weight Watchers. Wednesday, Dec. 9: 3:15 p.m. Youth Club. 6 p.m. Confirmation; Bells. 7 p.m. Choir.

St. John Lutheran Church

803 N. Cedar St., Luverne

Ph. 283-2316, Dial-A-Devotion Ph. 283-4005

email: stjoh@iw.net — www.stjohnlutheranluverne.org

Gary Klatt, Pastor

Thursday, Dec. 3: 9 a.m. and 1 p.m. Little Lambs Devotions. 9:45 a.m. Ministerial Association. 11:45 a.m. Women's Society Christmas Luncheon. Saturday, Dec. 5: 5:30 p.m. Worship. Sunday, Dec. 6: 9 a.m. Worship. 10:15 a.m. Sunday School Christmas Rehearsal. 10:15 a.m. Adult Bible Study. 11:30 a.m. Junior Choir Rehearsal. Monday, Dec. 7: 9 a.m. Circuit Pastors Conference in Marshall. 7:30 p.m. Elders Meeting. Tuesday, Dec. 8: 1:15 p.m. Communion in Ellsworth. 2:15 p.m. Communion at Lyon Manor. 2:45 p.m. Communion at Rock Rapids Health Centre. 3:30 p.m. Communion at Hills. 6 p.m. Mom's Night Out; Guild Christmas Party. Wednesday, Dec. 9: 9 a.m. Little Lambs Devotions. 9:30 a.m. Bible Study. 11:15 a.m. Staff Meeting. 6 p.m. Advent Worship. 6:30 p.m. Light Supper. 7 p.m. Senior Choir; KFC/Catechism; Youth Bible Study. Thursday, Dec. 10: 9 a.m. and 1 p.m. Little Lambs Devotions. 1:30 p.m. Communion at Mary Jane Brown Home. 2:15 p.m. Communion at Poplar Creek. 3:30 p.m. Communion at Veterans Home.

Living Rock Church

500 E. Main St., Luverne

Ph. 449-0057; www.livingrockswmn.org

Billy Skaggs, Pastor

Sundays: 10:30 a.m. Worship; Kids Rock Children's Ministry. 6 p.m. Youth Ministry. Life groups meet throughout the week.

New Life Celebration Church

211 E. Main St., Luverne

Ph. 449-6522; email: newlifecel@live.com

Sundays: 9:30 a.m. Worship in the lower level meeting room of the Creeger building. Every third Thursday: 5 p.m. Food give-away. Bible Study groups meet at various times and days.

Zion Evangelical Lutheran Church

305 E. 2nd St., P.O. Box 36, Hardwick

Ph. 669-2855; email: revmumme@gmail.com — www.zionlutheran-hardwick.com

Mark W. Mumme, Pastor

Thursday, Dec. 3: 4-5 p.m. Zion Worship airs on Cable 3TV-Luverne. Friday, Dec. 4: 4-5 p.m. Zion Worship airs on Cable 3TV-Luverne. Sunday, Dec. 6: 9 a.m. Sunday School/Adult Bible Study. 10 a.m. Mentor Program. 10:30 a.m. Worship Service/Communion. 4:30 p.m. Congregational Christmas Party. Monday, Dec. 7: 9 a.m. Circuit Pastors' Meeting at Marshall. 1 p.m. Quilting. Tuesday, Dec. 8: 7 p.m. Elders Meeting. 8 p.m. Church Council Meeting. Wednesday, Dec. 9: 6 p.m. Confirmation. 7 p.m. Advent Worship Service. Thursday, Dec. 10: 4-5 p.m. Zion Worship airs on Cable 3TV-Luverne.

Ben Clare United Methodist Church

26762 Ben Clare Ave., Valley Springs, S.D.

igtwb@WOW.net

Bill Bates, Pastor

Sundays: 9 a.m. Worship; 10 a.m. Fellowship; 10:30 a.m. Sunday School for all ages.

First Lutheran Church

300 Maple St., Valley Springs, S.D.

Ph. (605) 757-6662

Ray Heidenson, Pastor

Sunday, Dec. 6: 9:30 a.m. Sunday School. 10:30 a.m. Worship Service with Communion and Christmas Cantata.

Bethlehem Lutheran Church

Interim Pastor Grant Fisher

112 N. Main St., Hills

Thursday, Dec. 3: Interim Meeting at Redwood Falls. Sunday, Dec. 6: 9 a.m. Communion at Tuff Chapel; Christmas Program Practice. 10:30 a.m. Communion at Bethlehem. 7 p.m. Grades 6-8 Youth Night. Tuesday, Dec. 8: 2:30 p.m. Bible Study at Tuff. 3:15 p.m. Bible Study at the Village. Wednesday, Dec. 9: 9 a.m. Quilting. 7 p.m. Confirmation; Circle of Hope. 7:30 p.m. Grades 9-12 Youth Night.

Not what it seems

"Judge not, that you be not judged." Matthew 7:1



Sven was riding the city bus to town. When he reached his stop, it looked like rain and without thinking he picked up the umbrella belonging to the man sitting next to him.

"Stop, thief," Lars yelled. "Stop dat man. He took my umbrella."

Sven apologized profusely. "I was not thinking when I picked it up. I thought it was my umbrella. I must haf left mine at home."

Later in the day Sven saw a shop that had umbrellas on sale. It had been raining off and on, so he bought a large black one for himself.

Then he thought, "I tink I vill surprise my Ingrid, Little Sven, Grandma and Grandpa with new umbrellas." Picking out a bright pink one, a light blue one, a rose-colored, flowered one and a dark gray one, he made his purchases and walked to the bus stop.

He sat down on the bench next to Lars who was also heading home. When Lars saw Sven with five umbrellas he pulled his own close. "Vell," he said, "you didn't get mine dis morning, but it looks like you had a good day after dat."

Things aren't always what they seem. It's easy for us to judge others and

BUILT ON A ROCK

By Martha Fick, Good Samaritan, Mission Effectiveness

their behavior, but God tells us not to judge. Many time things are altogether different from what they first seem. Sometimes we look at other people and wonder, "Now why did they do that?" But, if we were in the same situation, we might make the same decisions. And, well, if we're honest with ourselves, we have to admit that many times we've come to conclusions about other people that aren't even close to the truth.

God doesn't call us to judge people. He calls us to love them. He wants us to protect each other, to support each other. And if we know someone who has strayed into wrong things, He wants us to care enough to help them get back on the right track.

Lord, all judgment belongs to You, and we're glad it does, because You are the only one who can get it right. Keep us faithful to You, always seeking our answers in Your word. Thank You for forgiving us when we make mistakes. Help us forgive each other — to give each other the benefit of the doubt — instead of judging. Bless and keep us for Jesus' sake, Amen

Palisade Lutheran Church

211 121st St., Garretson, S.D.

Ph. (507) 597-6257 — firstpalisade@alliancecom.net

Ray Heidenson, Pastor

Sunday, Dec. 6: 9 a.m. Worship Service with Communion. 10 a.m. Sunday School. Thursday, Dec. 10: 7:30 p.m. Church Council meeting.

First Presbyterian Church

201 S. 3rd St., Beaver Creek

Magnolia United Methodist Church

501 E. Luverne St., Magnolia

Church Ph. 283-9698; cell 227-7821

adrmagumc@frontiernet.net — www.adrianmagnoliaumc.com

Kristi Franken, Pastor

Hills United Reformed Church

410 S. Central Ave., Hills

Office Ph. 962-3254

hillsurc@alliancecom.net

Alan Camarigg, Pastor

Sundays: 9:30 a.m. and 6 p.m. Worship Services.

These Weekly Church Page Messages are contributed to God's Work through the Church and by these concerned and responsible citizens & businesses:

Call Rick or Chantel to place your ad!

283-2333

Tuff Memorial Home, Retirement Apartments & Tuff Village

"A Home Where Residents SMILE!" Hills, Minnesota
Phone 507-962-3275

Papik Motors
LUVERNE, MINN.

1-90 in Luverne, MN
507-283-9171 • 1-800-634-7701

Read us online!

Rock County
STAR HERALD
www.Star-Herald.com

Trust In Him



110 E. Main, Luverne, MN
Phone 507-283-2379

MANLEY
TIRE & OIL SERVICE
Manley Minnesota
1-800-615-3704
Open six days a week - Closed on Sundays
To God be the Glory.

CWG
Business Insurance.
Tri-State Region

Rock County
STAR HERALD
Luverne, MN • 507-283-2333

Bruce's Electric
residential, commercial and farm wiring
Bruce Umbreit
Electrical Contractor
1200 Linden, Luverne, MN 56156
Phone 507-283-4917

Luverne
ANNOUNCER

To Advertise
Call
283-2333

Buffalo Ridge
INSURANCE
507-283-2381 www.buffaloridgeins.com E-mail: info@buffaloridgeins.com

McClure Electric
Alan M. Aanenson, owner
Farm, Home & Commercial Wiring
Luverne, MN Phone 507-283-4716

First Farmers & Merchants
303 E. Main, Luverne, MN
507-283-4463
www.ftmbank.com
We believe in you.
Member FDIC. And the community.

HILLS STAINLESS STEEL & EQUIPMENT CO., INC.
506 W. Koehn, P.O. Box 987, Luverne, MN
PHONE 507-283-4405
Church is Important - Please Attend!

MINNWEST
BANK
• 116 E. Main St., Luverne 507-283-2366
• S. Hwy. 75, Luverne 507-283-9131
• Main St., Beaver Creek 507-673-2333
Member FDIC www.minnwestbank.com

HARTQUIST
Funeral and Cremation Services
- ENGBRETSON CHAPEL -
507-283-2777
www.HartquistFuneral.com
"Let our family help your family"
Serving the Luverne and Surrounding Communities

Tollefson Publishing
117 W. Main
Luverne, MN 56156
507-283-2333

Star Herald PUBLIC NOTICES

Mortgage foreclosure sale set for Jan. 7

NOTICE OF MORTGAGE FORECLOSURE SALE

THE RIGHT TO VERIFICATION OF THE DEBT AND IDENTITY OF THE ORIGINAL CREDITOR WITHIN THE TIME PROVIDED BY LAW IS NOT AFFECTED BY THIS ACTION.

NOTICE IS HEREBY GIVEN, that default has occurred in conditions of the following described mortgage:

DATE OF MORTGAGE: September 2, 2008
MORTGAGOR: Daniel L. Wendland and Jennifer D. Wendland, husband and wife.
MORTGAGEE: Minnwest Mortgage Corporation.
DATE AND PLACE OF RECORDING: Recorded September 3, 2008 Rock County Recorder, Document No. 169736.
ASSIGNMENTS OF MORTGAGE: Assigned to: Minnesota Housing Finance Agency. Dated September 2, 2008 Recorded September 3, 2008, as Document No. 169737.

TRANSACTION AGENT: NONE
TRANSACTION AGENT'S MORTGAGE IDENTIFICATION NUMBER ON MORTGAGE: NONE
LENDER OR BROKER AND MORTGAGE ORIGINATOR STATED ON MORTGAGE: Minnwest Mortgage Corporation
RESIDENTIAL MORTGAGE SERVICER: U.S. Bank National Association
MORTGAGED PROPERTY ADDRESS: 603 East Park Street North, Luverne, MN 56156
TAX PARCEL I.D. #: 20.1371.100
LEGAL DESCRIPTION OF PROPERTY: Lot 3 in Block 2 in Thompson's Addition to the City of Luverne, Rock County, Minnesota

COUNTY IN WHICH PROPERTY IS LOCATED: Rock
ORIGINAL PRINCIPAL AMOUNT OF MORTGAGE: \$138,265.00
AMOUNT DUE AND CLAIMED TO BE DUE AS OF DATE OF NOTICE, INCLUDING TAXES, IF ANY, PAID BY MORTGAGEE: \$160,957.41

That prior to the commencement of this mortgage foreclosure proceeding Mortgagee/Assignee of Mortgagee complied with all notice requirements as required by statute; That no action or proceeding has been instituted at law or otherwise to recover the debt secured by said mortgage, or any part thereof;

PURSUANT to the power of sale contained in said mortgage, the above described property will be sold by the Sheriff of said county as follows:

DATE AND TIME OF SALE: January 7, 2016 at 10:00 AM
PLACE OF SALE: Sheriff's Office, Main Entrance, Law Enforcement Center, 1000 North Blue Mound Avenue, Luverne, MN

to pay the debt then secured by said Mortgage, and taxes, if any, on said premises, and the costs and disbursements, including attorneys' fees allowed by law subject to redemption within six (6) months from the date of said sale by the mortgagor(s), their personal representatives or assigns unless reduced to Five (5) weeks under MN Stat. §580.07.

TIME AND DATE TO VACATE PROPERTY: If the real estate is an owner-occupied, single-family dwelling, unless otherwise provided by law, the date on or before which the mortgagor(s) must vacate the property if the mortgage is not reinstated under section 580.30 or the property is not redeemed under section 580.23 is 11:59 p.m. on July 7, 2016 unless that date falls on a weekend or legal holiday, in which case it is the next weekday, and unless the redemption period is reduced to 5 weeks under MN Stat. Secs. 580.07 or 582.032.

MORTGAGOR(S) RELEASED FROM FINANCIAL OBLIGATION ON MORTGAGE: None
"THE TIME ALLOWED BY LAW FOR REDEMPTION BY THE MORTGAGOR, THE MORTGAGOR'S PERSONAL REPRESENTATIVES OR ASSIGNS, MAY BE REDUCED TO FIVE WEEKS IF A JUDICIAL ORDER IS ENTERED UNDER MINNESOTA STATUTES, SECTION 582.032, DETERMINING, AMONG OTHER THINGS, THAT THE MORTGAGED PREMISES ARE IMPROVED WITH A RESIDENTIAL DWELLING OF LESS THAN FIVE UNITS, ARE NOT PROPERTY USED IN AGRICULTURAL PRODUCTION, AND ARE ABANDONED."

Dated: October 29, 2015

Minnesota Housing Finance Agency
Mortgagee/Assignee of Mortgagee

USSET, WEINGARDEN AND LIEBO, P.L.L.P.
Attorneys for Mortgagee/Assignee of Mortgagee
4500 Park Glen Road #300
Minneapolis, MN 55416
(952) 925-6888
135 - 15-008140 FC

THIS IS A COMMUNICATION FROM A DEBT COLLECTOR.

(11.-12, 11,19, 11-26, 12-3, 12-10, 12-17)

Mortgage foreclosure sale set for Jan. 7

NOTICE OF MORTGAGE FORECLOSURE SALE

PUBLIC NOTICE: NOTICE OF MORTGAGE FORECLOSURE SALE
THE RIGHT TO VERIFICATION OF THE DEBT AND IDENTITY OF THE ORIGINAL CREDITOR WITHIN THE TIME PROVIDED BY LAW IS NOT AFFECTED BY THIS ACTION.

NOTICE IS HEREBY GIVEN: That default has occurred in the conditions of the following described mortgage:

DATE OF MORTGAGE: September 15, 2006
ORIGINAL PRINCIPAL AMOUNT OF MORTGAGE: \$37,899.00
MORTGAGOR(S): Bernie Christensen and Javon Christensen, Husband and Wife

MORTGAGEE: Mortgage Electronic Registration Systems, Inc., as nominee for First Franklin a division of National City Bank
TRANSACTION AGENT: Mortgage Electronic Registration Systems, Inc. MIN#: 100425240010209283

SERVICER: Specialized Loan Servicing
LENDER: First Franklin a division of National City Bank.
DATE AND PLACE OF FILING: Rock County Minnesota, Recorder, on September 20, 2006, as Document No. 164852.

ASSIGNED TO: Deutsche Bank National Trust Company, as Trustee for First Franklin Mortgage Loan Trust 2006-FF16, Asset-Backed Certificates, Series 2006-FF16 Dated: August 12, 2015, and recorded August 20, 2015 by Document No. 186841.

LEGAL DESCRIPTION OF PROPERTY:

A tract of land located in Block 6 in Greenvale Addition to the City of Luverne, Rock County, Minnesota, described by metes and bounds as follows:
Beginning at a point on the West line of Block 6 in Greenvale Addition to the City of Luverne, 125 feet South and 272 1/2 feet West of the Northeast Corner of said Block; thence East 136 feet 3 inches; thence South 25 feet; thence West 8 feet 3 inches; thence South 65 feet; thence West 128 feet; thence North on the West line of said Block 6, 90 feet to the point of beginning and Lot 8 in 1st Sub-division of Block 6 in Greenvale Addition to the City of Luverne, Rock County, Minnesota

PROPERTY ADDRESS: 309 S Donaldson St, Luverne, MN 56156
PROPERTY I.D.: 20-0662-000
COUNTY IN WHICH PROPERTY IS LOCATED: Rock

THE AMOUNT CLAIMED TO BE DUE ON THE MORTGAGE ON THE DATE OF THE NOTICE: Forty-Six Thousand Two Hundred Forty-Seven and 77/100 (\$46,247.77)

THAT no action or proceeding has been instituted at law to recover the debt secured by said mortgage, or any part thereof; that there has been compliance with all pre-foreclosure notice and acceleration requirements of said mortgage, and/or applicable statutes;

PURSUANT to the power of sale contained in said mortgage, the above described property will be sold by the Sheriff of said county as follows:

DATE AND TIME OF SALE: 10:00 AM on January 7, 2016
PLACE OF SALE: Law Enforcement Center, Lobby, 1000 North Blue Mound Avenue, Luverne, MN

to pay the debt then secured by said mortgage and taxes, if any actually paid by the mortgagee, on the premises and the costs and disbursements allowed by law. The time allowed by law for redemption by said mortgagor(s), their personal representatives or assigns is 6.00 months from the date of sale.

If Mortgage is not reinstated under Minn. Stat. Section 580.30 or the property is not redeemed under Minn. Stat. Section 580.23, the Mortgagor must vacate the property

on or before 11:59 p.m. on July 7, 2016, or the next business day if July 7, 2016 falls on a Saturday, Sunday or legal holiday.

"THE TIME ALLOWED BY LAW FOR REDEMPTION BY THE MORTGAGOR, THE MORTGAGOR'S PERSONAL REPRESENTATIVES OR ASSIGNS, MAY BE REDUCED TO FIVE WEEKS IF A JUDICIAL ORDER IS ENTERED UNDER MINNESOTA STATUTES, SECTION 582.032, DETERMINING, AMONG OTHER THINGS, THAT THE MORTGAGED PREMISES ARE IMPROVED WITH A RESIDENTIAL DWELLING OF LESS THAN FIVE UNITS, ARE NOT PROPERTY USED IN AGRICULTURAL PRODUCTION, AND ARE ABANDONED."

Dated: November 19, 2015

Deutsche Bank National Trust Company,
as Trustee for First Franklin Mortgage Loan Trust 2006-FF16,
Asset-Backed Certificates, Series 2006-FF16 Randall S. Miller and Associates, PLLC
Attorneys for Assignee of Mortgage/Mortgagee
Canadian Pacific Plaza,
120 South Sixth Street, Suite 2050
Minneapolis, MN 55402
Phone: 952-232-0052
Our File No. 15MN00066-1

THIS IS A COMMUNICATION FROM A DEBT COLLECTOR. A-4550998
(11-19, 11-26, 12-3, 12-10, 12-17, 12-24)

Mortgage foreclosure sale set for Jan. 21

NOTICE OF MORTGAGE FORECLOSURE SALE

THE RIGHT TO VERIFICATION OF THE DEBT AND IDENTITY OF THE ORIGINAL CREDITOR WITHIN THE TIME PROVIDED BY LAW IS NOT AFFECTED BY THIS ACTION.

NOTICE IS HEREBY GIVEN: That default has occurred in the conditions of the following described mortgage:

DATE OF MORTGAGE: February 4, 2008
ORIGINAL PRINCIPAL AMOUNT OF MORTGAGE: \$124,200.00
MORTGAGOR(S): Jesse A. Akkerman a/k/a Jesse Akkerman and Candyce Akkerman, husband and wife

MORTGAGEE: Wells Fargo Bank, N.A.
DATE AND PLACE OF FILING: Recorded on February 12, 2008 as Document Number 168325 in the Office of the County Recorder of Rock County, Minnesota.

ASSIGNMENTS OF MORTGAGE: Assigned to: None.
LEGAL DESCRIPTION OF PROPERTY: Lot 6 in Block 1 of The Sybesma Subdivision, Luverne, Rock County, Minnesota
STREET ADDRESS OF PROPERTY: 212 PINE DRIVE, LUVERNE, MN 56156
COUNTY IN WHICH PROPERTY IS LOCATED: Rock County, Minnesota

THE AMOUNT CLAIMED TO BE DUE ON THE MORTGAGE ON THE DATE OF THE NOTICE: \$132,621.48
TRANSACTION AGENT: None

NAME OF MORTGAGE ORIGINATOR (LENDER): Wells Fargo Bank, N.A.
RESIDENTIAL SERVICER: Wells Fargo Bank, N.A.
TAX PARCEL IDENTIFICATION NUMBER: 20.2030.000

TRANSACTION AGENT'S MORTGAGE ID NUMBER (MERS NUMBER): None
THAT no action or proceeding has been instituted at law to recover the debt secured by said mortgage, or any part thereof; that there has been compliance with all pre-foreclosure notice and acceleration requirements of said mortgage, and/or applicable statutes;

PURSUANT to the power of sale contained in said mortgage, the above described property will be sold by the Sheriff of said county as follows:

DATE AND TIME OF SALE: January 21, 2016 at 10:00 am
PLACE OF SALE: Rock County Sheriff's Office, in the Lobby of the Rock County Law Enforcement Center, 213 East Luverne, Luverne, Minnesota

to pay the debt then secured by said mortgage and taxes, if any actually paid by the mortgagee, on the premises and the costs and disbursements allowed by law. The time allowed by law for redemption by said mortgagor(s), their personal representatives or assigns is six (6) months from the date of sale.

Unless said mortgage is reinstated or the property redeemed, or unless the time for redemption is reduced by judicial order, you must vacate the premises by 11:59 p.m. on July 21, 2016.

MORTGAGOR(S) RELEASED FROM FINANCIAL OBLIGATION ON MORTGAGE: None

"THE TIME ALLOWED BY LAW FOR REDEMPTION BY THE MORTGAGOR, THE MORTGAGOR'S PERSONAL REPRESENTATIVES OR ASSIGNS, MAY BE REDUCED TO FIVE WEEKS IF A JUDICIAL ORDER IS ENTERED UNDER MINNESOTA STATUTES, SECTION 582.032, DETERMINING, AMONG OTHER THINGS, THAT THE MORTGAGED PREMISES ARE IMPROVED WITH A RESIDENTIAL DWELLING OF LESS THAN FIVE UNITS, ARE NOT PROPERTY USED IN AGRICULTURAL PRODUCTION, AND ARE ABANDONED."

Dated: November 18, 2015

WELLS FARGO BANK, N.A.
Mortgagee

SCHILLER & ADAM, P.A.

By: /s/
Rebecca F. Schiller, Esq.
Sarah J.B. Adam, Esq.
N. Kibongni Fondungallah, Esq.
Curt N. Trisko, Esq.
Samuel R. Coleman, Esq.
Attorneys for Mortgagee
The Academy Professional Building
25 North Dale Street
St. Paul, MN 55102
(651) 209-9760
(13-2601-FC02)

THIS IS A COMMUNICATION FROM A DEBT COLLECTOR.
(11-25, 12-3, 12-10, 12-17, 12-24, 12-31)

Public Service Commission of Wisconsin hearing Jan. 5

Application of Wisconsin Power and Light Company for a Certificate of Public Convenience and Necessity to Build an Approximately 650 Megawatt Natural Gas-Fueled Power Plant at its Riverside Energy Center Facility in the Town of Beloit, Rock County, Wisconsin

NOTICE IS GIVEN that the Public Service Commission of Wisconsin will hold an additional public hearing in this proceeding on Tuesday, January 5, 2016, at 4:00 p.m. The Commission shall receive comments from members of the public in the Beloit Public Library, 605 Eclipse Boulevard, Beloit, Wisconsin. This public hearing is intended for the receipt of testimony from individuals who have neither testified at the public hearing held on November 17, 2015, nor submitted public comments through one of the other methods described below.

This is a Class 1 proceeding as defined in Wis. Stat. § 227.01(3)(a).
DOCUMENTS. All documents in this docket are filed on the Commission's Electronic Regulatory Filing (ERF) system. To view these documents: (1) go to the Commission's web site at <http://psc.wi.gov>, (2) enter "6680-CE-176" in the box labeled "Link Directly to a Case," and (3) select "GO."

PUBLIC COMMENTS. A person may testify in this proceeding without becoming a party and without attorney representation. A person may submit this testimony in only one of the following ways:

Web Comment. Go to the Commission's web site at <http://psc.wi.gov>, click on the "Public Comments" button on the side menu bar. On the next page select the "File a comment" link that appears for docket number 6680-CE-176. Web comments shall be received no later than Tuesday, January 5, 2016.

- Oral Comment. Spoken testimony at the public session.
- Written Comment. Instead of speaking at the hearing, write out a comment and submit it at the public session.
- Mail Comment. All comments submitted by U.S. mail shall be received no later than Tuesday, January 5, 2016. A mail comment shall include the phrase "Docket 6680-CE-176 Comments" in the heading, and shall be addressed to:

Docket 6680-CE-176 Comments
Public Service Commission
P.O. Box 7854
Madison WI 53707-7854

The Commission will not accept comments submitted via e-mail or facsimile (fax).

A person shall limit a public comment to non-technical personal knowledge or personal opinion. A person may include references to other materials in a comment, but may not include as part of a comment, any document not written or substantially modified by that person. The Commission shall only accept documents that a person offers to supplement a comment for the purpose of showing the basis of an opinion, not for proof of the matter asserted. Parties may object to the receipt of a public comment.

Any material submitted to the Commission is a public record and may appear on the Commission web site. Only one comment may be submitted per person during a comment period. The Commission may reject a comment that does not comply with the requirements described in this notice.

AMERICANS WITH DISABILITIES ACT. The Commission does not discriminate on the basis of disability in the provision of programs, services, or employment. Any person with a disability who needs accommodations to participate in this docket or who needs to obtain this document in a different format should contact the docket coordinator listed below. Any hearing location is accessible to people in wheelchairs.

CONTACT. Please direct questions about this docket or requests for additional accommodations for the disabled to the Commission's docket coordinator, Jeff Kitsemel, at (608) 266-9658 or jeff.kitsemel@wisconsin.gov.

Michael E. Newmark
Administrative Law Judge

(12-3)

Star Herald CLASSIFIEDS

EMPLOYMENT

Habilitative Services, Inc. in Luverne, MN has an opening for a Direct Support Professional to provide support to persons with disabilities. Job duties will include providing personal cares, community involvement and encouraging growth and development for the individuals. Part-time hours available are every-other weekend Sat. 9a-9p and Sun. 9a-5p. Applicants must be at least 18 years old with an acceptable driving record. NEW!! HSI offers a \$100 Sign On Bonus after the completion of 6 months of employment. Apply online at www.habsvinc.com. EOE/AA (11.29-12.3)

Luverne Ace Hardware has both full-time and part-time positions available for sales associates. Must be 16 years old to apply. Some evenings (until 7) and weekends are required for full-time. Must be prompt, courteous, able to lift 40 lbs., willing to work and learn and have basic computer skills. Advancement possibilities to motivated candidates. Apply in person to Kevin Mick. (11.22-12.10)

Help wanted as soon as possible. Domeyer Implement is looking for a full time mechanic. Pay based on experience. 401K and paid vacation is offered. For more info. Call 507-967-2468 and ask for Curt or Dean. (11.22-12.10)

EMPLOYMENT

Looking for people to bottle feed calves and daily chores. Feeding, watering and bedding. Must be able to lift 50 lbs. and be reliable. Contact Gary 507-920-5942. (11.15-12.3)

Nursing Assistant-Parkview Manor has openings for full-time nurse aides with benefits to include: health insurance, public retirement plan, and holiday pay. Part-time positions also available. New Wages \$11.40-12.00/hr. \$2000 scholarships available for students. Will provide training or pay for experience. Contact Darnell Krull, 308 Sherman Ave., Ellsworth, MN 56129 or call (507) 967-2388. (tc)

Registered Nurse/LPN-Parkview Manor, a municipal skilled nursing facility is accepting applications for a part-time charge nurse position. Wages commensurate with experience. \$2000 Scholarship available for students. Benefits include vacation, holiday and PERA retirement plan. Contact Darnell Krull, 308 Sherman Ave. Ellsworth, MN 56129 or call (507) 967-2482. (tc)

EXTRA MONEY? Work part-time or full-time from your home office with our wellness company. No stocking, selling, or delivery. Computer required. www.NewFreedom4u.Biz. Call 507-962-3444 or 507-227-7975. (tc)

Tiling • Excavation • Bulldozing
We offer **FREE ESTIMATES** and Drainage Planning.
Volume discounts and Summer tiling discounts.
Tile is a one time investment with a lifetime of results.

**Call us at
(320) 226-7268**
to get your tiling project started or visit us online at nelsonagdrainage.com



Help Wanted - Immediate Opening
Tollefson Publishing
Part-time Multi-Faceted Office Position

This is multi-faceted position with an array of job duties including, but not limited to, working with walk-in and phone customers, generating postal reports and circulation-related matters, typing, proof reading and readying content for printing.

Applicant must have PC/Mac experience, data entry skills (will train on our software), be detail-oriented with strong customer service skills, be organized and have the ability to be responsible for all areas related to the position.
Competitive pay and flexible hours.

Email letter of application and resume to:
Rick Peterson
Tollefson Publishing
email: rick@star-herald.com
Or mail it to: P.O. Box 837
Luverne MN 56156
Call: 507-283-2333

Star Herald CLASSIFIEDS

Read all public notices online at www.Star-Herald.com

EMPLOYMENT

Parkview Manor is seeking an Activity Director/Aide. Experience in activity programming, MDS, and Care Plans preferred. Wage commensurate with experience. Contact Mike Werner at 308 Sherman Ave. Ellsworth, MN 56129 or call (507) 967-2482. (11.22-12.10)

SON-D-FARMS ADRIAN

is hiring General Farm, Hog, Field Work, Truck Driver, Maintenance person & Mill person. Experience wanted but willing to train. PTO benefits. Call (507) 483-2245, 370-1590 or e-mail jessihoffman@sondfarms.com

ADVERTISE TODAY!
with the **Star Herald**
Call Rick or Chantel
507-283-2333

COMMERCIAL

Office Space for Rent: Ideal downtown location. Quality building. Several sizes available. Utilities included. Call Randy Creeger, 507-220-1105 or randy.creeger@gmail.com. (tc)

CHILD CARE

Peggy's Daycare is opening Dec. 7. All ages accepted. Call or text Peggy at 507-220-0621 for more information. (11.22-12.10)

Peyten's Daycare is opening in Luverne. Accepting all ages, Monday-Friday 6:45 a.m.-5:15 p.m. Call for more information. 507-215-2322. (11.19-12.6)

FOR SALE

For Sale: Electric Stove. \$60. 507-449-0090. (12.3-12.6)

For Sale: 24" 2 stage Snapper, 8.4 horse Tecumseh snow blower. One owner. Phone (507) 920-8450. (11.29-12.3)

EMPLOYMENT

Now Hiring - Apply Today! General Laborer

C & B Operations, LLC is seeking a full time General Laborer to work at our John Deere Dealership in Luverne, MN.

- Competitive Pay
 - Clothing Allowance
 - Health Insurance, 401k, Vision, Dental
 - Professional training and more!
- This individual will provide a full range of general labor activities for the store managers, employees and customers. They will perform a variety of responsibilities including cleaning and detailing equipment, moving equipment and lot management. Must have great people and communication skills, the ability to multi task, perform moderate lifting and activities requiring physical dexterity.

Qualified candidates should send an application to: Dan Block, Store Manager: BlockD@deerequipment.com or Ph: (507)283-4430

ROCK COUNTY IMPLEMENT
1480 S. Kniss Ave • Luverne, MN 56156

www.deerequipment.com



MN VETERANS HOME

The Minnesota Veterans Home - Luverne has opportunities available for **Human Services Technicians (Certified Nursing Assistants)**
Starting wage: \$13.61 + shift differential
Great benefits & insurance eligible
Previous Long-Term Care Experience Preferred

If interested in applying for this opportunity, please contact Sandy Kelm at 507-283-6211. AA/EOE



CARDS OF THANKS

Our sincere thanks to everyone for your support, prayers, visits, cards, plants, flowers, food and memorials throughout Ron's illness and following his death. The overwhelming outpouring of love from our caring community has provided comfort and healing for us through this journey. We're very grateful that Ron now is finally at peace. Remember him for his warm smile and the wonderful man you always knew him to be.

The family of Ron McClure
(12.3-12.6)

Thank you to the residents at Mary Jane Brown for packaging the October backpacks.

The Backpack Program
(11.29-12.3)

Thank you for all the birthday cards I received for my 80th birthday. God bless you all.
Virgene Bullis
(11.29-12.3)

Thanks everyone for all the beautiful cards and well wishes for my 85th birthday. Also to my family for my party.
Verna Schmuck
(11.29-12.3)

WINDOWS

We custom build and install Energy Star Therm-O-Loc Windows. Call Mike at Adrian Glass for a free in-home demonstration and estimate. 101 E. Pearl, Adrian, MN 56110. 507-483-2228. (tc)

WANTED

Buying old cars, trucks, scrap iron, old farm equipment, tin, wire. Ericksen Salvage, Charlie Ericksen, 605-254-4654. (tc)

MISCELLANEOUS

HAVE A UNIQUE SERVICE OR BUSINESS? Get the word out to over 1.4 million households. Call WIDE AREA CLASSIFIEDS today, 507-359-7326. (tc)

SERVICES

Gentle Winds Studio is opening in Luverne
COMPLIMENTARY HEALTHCARE
Leasing Space For:
Massage Therapist
Yoga Instructor
Crystal Bowls
Spiritual Counselor
Alternative Medicine
Contact Roni for more information 605-351-3522

RENTALS

For rent: Nice two-bedroom ground floor all electric apartment with kitchen appliances, attached garage, laundry hook-ups and central AC. Call 507-283-2574. (11.29-12.17)

Home for rent: Two-bedroom, one-bathroom. Attached garage. Fireplace. 711 N. Estey. \$575. 605-201-7294. (11.29-12.17)

Indoor storage rental available in Hills, MN area for larger vehicles. Large doors for easy access. Call for pricing before 9 p.m. 507-962-3724. (11.26-12.13)

STONE CREEK TOWNHOMES

Winter is coming - move today!
2 BR & 3 BR
Income based rent. Includes water, sewer, trash. Bi-level units, green space, W/D hook-ups
Call Robin: 507-283-4793
LloydManagementInc.com
Equal Housing Opportunity

RENTALS

Three-bedroom house for rent. Appliances included. No cats. References required. Call 507-348-4282 or 507-215-2619. (tc)

Apartment for rent in Luverne. Two-bedroom, \$250 a month plus utilities. No pets, need references. Call Randy at 605-261-4050. (11.22-12.10)

One-bedroom apartment, upstairs downtown. No pets, no smoking. Stove, fridge and utilities included. 507-227-1589. (11.15-12.3)

RENTALS

For rent: Two-bedroom apartment with stairs. Tenant pays gas and electric. No smoking, no pets. Must have good references. Call 507-283-9794. (tc)

For rent: One-bedroom, second floor apartment in downtown Luverne. Older building with updates. \$290 plus utilities. No pets. Call 605-201-6427. (tc)

Centennial Apartments has one and two bedroom, no smoking apartments available. All utilities included except cable and phone. Section 8 assistance available. Must be 50, handicapped or disabled. Call 507-283-2652. EHO. (tc)

Oakwood Apartments

401 Oak St., Ellsworth

• 1 Bedroom Unit Available

Unit Available
Water, Sewer & Garbage Included.
Rent Based on Income
AVAILABLE IMMEDIATELY
Van Binsbergen & Associates, Inc.
320-269-6640 ext. 22
Equal Housing Opportunity

www.vanblc.com



Damax Apartments

Rental Assistance Available

602 E. Warren St, Luverne, MN

Inquire about move-in specials

Accepting all income levels

1 & 2 Bedrooms

Newly Remodeled



Van Binsbergen & Associates, Inc.
320-269-6640 ext. #22
www.vanblc.com

BLUE MOUND TOWER



Luverne HRA • Blue Mound Tower
216 McKenzie Street
Luverne, MN 56156

507-283-4922 EHO

Apartments available!

- All Ages Welcome
- Close to Senior Dining
- Close to Minnesota West College
- Income Based

- Handicap Accessible
- Pet Friendly
- Smoke Free
- Secure Entry System
- On Site Laundry
- Utilities included

HONORING THOSE WHO HELP FEED THE WORLD

NOMINATE SOMEONE BY JANUARY 15, 2015

www.siehlprize.umn.edu

Siehl Prize for EXCELLENCE in AGRICULTURE
UNIVERSITY OF MINNESOTA

1168918



MCAN

Minnesota Classified Advertising Network



HELP WANTED

UNITED QUALITY COOPERATIVE at Parshall/New Town ND is seeking a qualified CEO/General Manager. This is a multi-location energy, grain, agronomy, and farm retail cooperative with sales of \$350 million. Business degree and/or successful agricultural business management experience desired. To Apply: <http://tinyurl.com/o3yxchx> For more info contact Larry Fuller, 701/220-9775 or Email larry.fuller@chsinc.com

HELP WANTED - DRIVERS

NOW HIRING
Company OTR drivers. \$2,000 sign on bonus, flexible home time, extensive benefits. Call now! Hibb's & Co. 763/389-0610

TMC HAS OPENINGS

hauling boats to waterfront locations throughout US and Canada. CDL Class A, 1yr. OTR experience. Full benefits, employee owned company 855/409-3630 www.tmctrans.com

ONLY \$279 to reach a statewide audience of 3 million readers!!! 1-800-279-2979

EMPLOYMENT

RAILROAD VEGETATION CONTROL: Full-time traveling opportunity, 60-80 hours/week, \$12-\$15/hour starting, meal allowance, paid lodging & benefit package. RAW, Inc. in Cooperstown, ND 888/700.0292 info@rawapplicators.com www.rawapplicators.com

ADOPTIONS

ADOPTION: INCREDIBLY LOVING young couple wants to give your baby a warm, caring, happy home with every advantage. Expenses paid. Call/text Rebecca & David 646/378-9326

STEEL BUILDINGS

DIAMOND STEEL STRUCTURES Fall close out. Prices slashed. Arch-wall & straight wall steel buildings. 40' X 62' starting at \$9,900. Factory direct pricing. Call 844-297-8335

MISCELLANEOUS

DONATE YOUR CAR truck or boat to Heritage For The Blind. Free 3 day vacation, tax deductible, free towing, all paperwork taken care of 800/439-1735

MISCELLANEOUS

SELL YOUR STRUCTURED SETTLEMENT or annuity payments for CASH NOW. You don't have to wait for your future payments any longer! Call 800/218-8581

GOT KNEE PAIN?

Back Pain? Shoulder Pain? Get a pain-relieving brace - little or no cost to you. Medicare patients call health hotline now! 800/755-6807

DISH NETWORK

Get more for less! Starting \$19.99/month (for 12 months), plus bundle & save (Fast Internet for \$15 more/month.) Call now 800/297-8706

STOP OVERPAYING FOR YOUR PRESCRIPTIONS!

Save up to 93%! Call our licensed Canadian and International pharmacy service to compare prices and get \$15.00 off your first prescription and free shipping. Call 800/259-1096

ONLY \$279 to reach a statewide audience of 3 million readers!!! 1-800-279-2979



It's more than a job, it's a calling.

We are currently accepting applications for senior living manager. This exceptional and experienced candidate will oversee operations and sales at our Poplar Creek Estates assisted living and The Oaks senior living community.

Apply online at www.good-sam.com/luverne.



LUVERNE

All qualified applicants will receive consideration for employment without regard to race, color, religion, gender, national origin, disability or protected veteran status. 14-G2114

Nuts.com 100% SATISFACTION GUARANTEED

BOX OF WINTER WONDERLAND
 Packed in this gorgeous snowflake box is 4 pounds of deliciousness, including salted almonds, butter toffee pecans, mint chocolate espresso beans, peppermint malted milk balls, and much more. **ONLY \$29.99**

Extra Special Offer For New Customers:
 Get 4 FREE samples of your choice with your first purchase*
nuts.com/festive

*Offer valid for new customers only, with \$25 minimum order. See website for full details.

purplewave.com CONSTRUCTION EQUIPMENT INTERNET AUCTION **BID NOW!**

THUR., DEC. 3
 Bidding starts to close at 10 a.m. CST

purple wave auction

EQUIPMENT LOCATED IN MINNESOTA! Auction Inventory: boom lifts, dozers, dump trucks, excavators, heavy trucks, rollers, skid steers and more. 10% buyer's premium. **866.608.9283**

SAINT PAUL ICE FISHING & WINTER SPORTS SHOW

THE ULTIMATE SHOW FOR THE ICE FISHING FANATIC

DECEMBER 4-6
 ST. PAUL RIVER CENTRE
stpaulicefishingshow.com

FRIDAY: 1pm-9pm | SATURDAY: 10am-7pm | SUNDAY: 10am-5pm

HOLIDAY PHOTO GREETING CARDS

\$12.99
 20 for

Choose from a large assortment of designs.
 Order in-store or online at www.lewisdrug.com

Lewis Family Drug
 202 Kniss Ave. South • Luverne • 507.238.9549

We carry Russell Stover Candy and Willow Tree Figurines

Star-Herald.com
 Get your Rock County News Anywhere, Anytime

HOLIDAY OPEN HOUSE
 Thursday, December 10 9:00am - 6:00pm
 At all locations!

Luverne
 Left to right: Heather Erickson, Carol Nelson, Ryan DeBates, Nicie Bosch, Sheryl Klaassen, Don Bryan, Chelle DeGroot, Kelly Kramer.

Hills
 Front row left to right: Shirley Walraven, Marlys Rauk, Trista Bosch, Kathy Fick, Kyla Jellema, Erin Metzger, Heidi Van Wyhe
 Back row: Aaron Erickson, Rod Bonander, Tim Plimpton, Caleb Ellingson

Ellsworth
 Front row left to right: Dave Huisman, Theresa Theesfeld, Mark Iveland
 Back row left to right: Mary DeBuhr, Dorene Chapa, Amber VanDenOever-Smid, Nora Huisman, Laurie Deutsch

Stop in and visit with Shirley Walraven on her retirement

Exchange STATE BANK Member FDIC
 Local. Dependable. Strong.

(507) 967-2570 Ellsworth, MN
 (507) 962-3250 Hills, MN
 (507) 449-6000 Luverne, MN

The news of Rock County. Updated daily.
Star-Herald.com