



# Rock County STAR HERALD

Rock County's oldest business, printing since 1873

Wednesday, November 22, 2017

## So close

County is 94 percent compliant with state buffer law

By Mavis Fodness

Two years after Minnesota established its water quality buffer initiative, more than 90 percent of the state's landowners have complied with the mandate.

Landowners faced a Nov. 1 deadline to establish vegetative buffers along the state's public waterways or to request a waiver moving the compliance date to next year.

In Rock County 94 percent of the 840 identified parcels were in compliance by the deadline. Of that number, 27 percent or 223 parcels received a waiver to be in compliance by July 1, 2018.

Rock County Land Management Office personnel will conduct site reviews on the 54 parcels (6 percent) and work with the 38 affected landowners that are currently not in compliance.

"It is not determined whether they are truly compliant or not until the on-site review is done," said LMO Director Eric Hartman.

When the on-site reviews will take place was not released.

However, after Oct. 1, 2018, any parcels deemed non-compliant could be subject to monetary fines.

As LMO personnel implemented the buffer law, they have developed prescriptive practices to meet water quality buffer requirements.

Assistant LMO Director Doug Bos said he has worked with ag cooperatives and conservation groups to help producers develop practices specific to their type of land.

"We are actually putting wider buffers where they need to be and narrow buffers where you don't really need them (as wide)," he said.

"Hopefully those 54 parcels or 38 landowners will look at those options and potentially that will be a winning point for them, too."

Statewide compliance to the buffer law was at 95 percent, according to the governor's office.

The law was passed in response to studies showing more than 40 percent of Minnesota's waters are polluted or impaired. The list includes the Rock River.

Vegetative buffers improve water quality by filtering out contaminants before they reach streams, lakes and rivers.



Mavis Fodness photo/1122 Medical Careers

Luverne students Courtney Meeker (left) and Genna Natte watch Dr. Naomi Walks unwrap a suture during a general surgery demonstration. Below, Luverne High School junior Sage Ver Steeg does delicate work stitching on a Styrofoam patient Thursday morning, Nov. 16, during the Introduction to Health Care Careers at the Luverne Educational Center for Health Careers.

## Medical considerations

Luverne High School students explore medical careers

By Mavis Fodness

Brianna Huether knows her future health care career won't include surgery.

"I am not a fan of blood," said the Luverne High School senior. "I am leaning toward a medical coder."

This fall Huether and 20 other students from Luverne and Adrian high schools have been participating in "Introduction to Health Care Careers," a multi-school vocational education class, the first such offering to area high schools in decades.

The class meets twice weekly for 90-minute lectures at the Minnesota West Luverne Educational Center for Health Careers.

The other three days students job-shadow or complete assignments in the home districts. They earn one college credit through Minnesota West Community and Technical College.

Students choose three health care careers to explore during the semester-long class.

Huether said she job-shadowed a surgical nurse and a medical coder. Her third in-depth look will be in-home health care.

Medical careers exploration/continued on 2A



## City expands Highway 75 lot to east

Golla sells 2.13 acres of bare ground east of former Sharkee's to square off lot from Highway 75 east to Freeman Street

By Lori Sorenson

The city of Luverne has purchased the remaining ground behind the former Sharkee's lot (to the east) to square off that 6.5-acre lot for future development.

Gary Golla sold 2.13 acres to the city this fall for \$155,000.

The bare ground is on the corner of Hatting and Freeman, and a small piece of it wraps around the former Sharkee's lot on the north.

The city purchased the Sharkee's property from Dave Halverson in December of 2016 for \$220,000 through condemnation proceedings after the abandoned bar and restaurant became a public health hazard.

The city later paid \$160,000 for commercial property from Mert Kracht, who moved his farm equipment repair business to a new building in the Industrial Park.

The costs for acquisition and demolition of both lots will be recouped in the TIF amount, \$600,000.

What that means is whoever buys the bare lot will pay full taxes on the improved property, but the difference between the current tax amount and the new tax amount will pay down the \$600,000 TIF debt.

This summer, Des Moines, Iowa, developer William Ludwig submitted a proposal to the city for that area to be a mixed development of retail, offices and housing.

The units will be offered both to rent and own.

Details are still being worked out, but the initial plan would feature market rate apartments — up to 16 units — to start construction early in 2018.

Subsequent plans would involve three- to four-story "higher end" properties in the plaza above the retail spaces facing Highway 75.

City buys Golla land/see page 5A



Lori Sorenson photo/1122 history center

## History Center ribbon-cutting for Winterfest

The History Center on East Main Street will celebrate its opening with a ribbon-cutting at 10 a.m. and an open house Friday morning, Dec. 1, the first day of the 2017 Winterfest weekend in Luverne. A holiday highlight will be Betty Mann's permanent display of 2,800 nutcrackers and also the Christmas Haus gift shop. The History Center will be open throughout Winterfest weekend for visitors to peruse the collection of thousands of photographs, articles and memorabilia from Rock County's 10 communities and their early settlers, pioneers and community builders.

## School bonds up for sale; low interest expected

By Mavis Fodness

A low interest rate is expected for Luverne Public School's first bond sale, according to action taken during a special Nov. 14 board meeting.

Gary Olsen, senior municipal adviser with Ehlers Inc., presented the pre-sale report.

He said he expects the bond's interest rate to be less than 2.63 percent for two reasons: first, the sale takes place now; and second, the amount is under \$10 million.

"We can make them bank qualified," Olsen said. "What that does is give some of the purchasers a tax break. So they generally give you a break on the interest rate."

Board members will meet Dec. 7 to award the \$8 million bond sale. Repayment of the bonds is divided over 12 years and one month.

These funds will be used to improve indoor air quality, fire

suppression improvements and asbestos removal throughout the school campus.

The bond sale for the \$23 million voter-approved referendum to remodel/expand existing school facilities and construct a new performing arts center will take place in January.

Meanwhile an underlying credit rating will be determined based on information specific to the district. Application to the state's credit enhancement program will also take place.

Olsen said the state credit enhancement would bring a Moody's "AA2" rating to the project. Historically, a district's rating is usually "a notch below the state's credit rating."

The two credit ratings "will make sure we'll get some good interest on your bonds," Olsen said.

Estimated closing date on the \$8 million bond is Dec. 28.

Volume 142, Number 47

Luverne, MN 56156  
USPS 468-040



The Star Herald is Rock County's oldest business, documenting the news of its citizens since 1873

Article 47: Premium Packing Company comes to Luverne on 133-acre site along County Road 4

This is the 47th in a series that shares the rich history of Luverne as it celebrates 150 years. This week is a piece from 1962 about the start of a meat packing company.

Rock County Historical Society President Betty Mann this week shares a news story from the April 12, 1962, Rock County Star Herald about Premium Packing Company planning a \$900,000 dressed beef plant west of town. It was called the largest single private investment ever made in Rock County.

Luverne celebrates 150 years — Premium Packing Co./see page 6A

This week's moment in time is sponsored by:

Luverne ANNOUNCER



## COMMUNITY CALENDAR

### Meetings

**Caregiver Support Group** will meet from 5 to 6:30 p.m. Tuesday, Nov. 28, in the Mary Jane Brown Good Samaritan Home.

**Meditation and Mindfulness Practice** meets at 7 p.m. the second and fourth Wednesdays of the month in Hilger Commons at 215 N. Cedar Street in Luverne. For more information call Kim at 507-353-0041 or email kimberlyelizabeth@live.com.

**Narcotics Anonymous** will meet every Thursday evening at 6:30 p.m. at the Steen Reformed Church. Contact Robert for more information 507-329-2642.

**Women's Alcoholics Anonymous** meets at 8 p.m. Mondays in the United Methodist Church.

**Narcotics Anonymous** meets at 7 p.m. Fridays and for basic text study at 7:30 p.m. Tuesdays in the basement of St. Catherine Catholic Rectory, 203 E. Brown St., Luverne. Use east door. For more information call 507-220-0137.

**Alcoholics Anonymous** meets at 8 p.m. Wednesdays and Saturdays in the United Methodist Church, Luverne. Call 605-321-4324.

**Alcoholics Anonymous** meets from 8 to 9 p.m. every Tuesday in Runals Hall, Edgerton. Call 507-215-2956.

**Hardwick Goal Seekers** meet every Monday in Hardwick City Hall for the purpose of support and encouragement for weight loss journeys. Weigh-in begins at 6 p.m., and the meeting starts at 6:30 p.m. Call Glenda, 449-0568, with questions.

### Join De-Light-Ful 5K race Nov. 25

The 15<sup>th</sup> Annual De-Light-Ful 5K is planned for 6 p.m. Saturday, Nov. 25, starting and ending at the Luverne Armory at 309 South Freeman Avenue. Registration is online at [www.allsportcentral.com](http://www.allsportcentral.com) or at 5 p.m. at the armory the day of the race. A post-race party/dance will follow at the armory with the Casey Meussigmann Band. There is no cover charge for the dance.

For more information contact Dave Duffy at [dduffy@rconnect.com](mailto:dduffy@rconnect.com) or 507-920-3345.

### Sign up by Nov. 30 for SHARE; distribution is Dec. 6 at Armory

The Rock County SHARE program will distribute groceries, clothing and toys to Rock County residents in need from noon to 1:30 p.m. Wednesday, Dec. 6, at the Luverne National Guard Armory on South Freeman Avenue. Those wishing to receive from the program must apply by Thursday Nov. 30. Note: The SHARE program no longer accepts donations of used items. To support SHARE, mail tax-deductible donations to SHARE, P.O. Box 792, Luverne, MN 56156. Call Molly at 507-227-9282.

### Tree of Lights deadline is Dec. 1

The public is invited to submit name(s) in honor or remembrance of loved ones for the Sanford Luverne Hospice Tree of Lights for the upcoming holidays. Names received by Dec. 1 will be read at the lighting ceremonies. Call Sanford Luverne Hospice at 507-283-1805 with questions.

Lighting ceremonies are scheduled as follows:

- Edgerton: 7 p.m. Wednesday, Dec. 6, at First State Bank SW.
- Hills: 2 p.m. Sunday, Dec. 10, at Tuff Village.
- Luverne: 6:30 p.m. Sunday, Dec. 10, at the Cottage.
- Adrian/Ellsworth: 6:30 p.m. Sunday, Dec. 10, at Adrian Fire Hall.

### Tax credit information for landowners and new farmers Dec. 11

Minnesota West Community & Technical College Farm Business Management program will host an informational meeting at 6:30 p.m. Monday, Dec. 11, at the Luverne campus in Room 208 about new tax credit legislation for landowners and beginning farmers in multiple communities throughout southwest Minnesota.

Registration is not required. The same information is offered in several other communities on other dates. Call 800-828-6651.

### CoffeeBreak and StoryHour meets

Luverne Christian Reformed Church will host the community Bible study CoffeeBreak and StoryHour at 9:30 a.m. Tuesdays. The study of Jonah will begin Tuesday, Oct. 10. It's for all faiths — no previous Bible knowledge is needed. StoryHour is available for children ages 2 through kindergarten and nursery if available for babies. Call Kristi at 227-5102 with questions.



### Operation Christmas Child boxes collected

Karen Bosch of Beaver Creek prepares to package up gift boxes dropped off Nov. 13 at the American Reformed Church in Luverne for this year's Operation Christmas Child collection. The Samaritan's Purse-sponsored program encourages organizations such as churches in Rock County to collect items such as socks, hats, washcloths, soap, notebooks, crayons, etc. that fit into the shoe box-sized containers for distribution to children overseas.

Locally, this is the fifth year of Operation Christmas Child collections. Bosch said 850 boxes were collected at the Rock County relay center last year. "We would love to (surpass that number this year)," she said. Collection at the church's south entrance continues through Sunday, Nov. 19.

Mavis Fodness photo/1116 Operation Christmas Child 2017

### Medical careers exploration/continued from page 1A

Seeing and studying what is required for a specific health career helped Huether point her efforts in the direction of her liking before graduating from high school.

"This really gives you a better insight into different occupations," she said.

Next fall Huether will attend Southeastern Technical College in Sioux Falls for medical coding.

During the two class times, guest speakers (many of them local residents) have discussed with students the requirements, duties and educational paths.

Last week speakers addressed careers in laboratory research and general surgery.

Casey McKenzie talked about his research position with Sanford Laboratories, and Dr. Naomi Walks, a general surgeon with Sanford Luverne Medical Center, shared her experiences.

Both speakers were honest in their discussions with students.

"Medicine is no picnic," Walks said. "It's a long, hard road."

Depending on the specialty, she said becoming a surgeon means eight years of college and five years in a



Mavis Fodness photo/1122 Medical Careers  
Adrian students Halle Heitkamp (left) and McKinley Nelson take their turn at learning suturing techniques.

residency.

The hard work, however, "is really worth it to help people," she said.

Luverne junior Sage Ver Steeg has been on the receiving end of that help and she wants to take the next steps to become a doctor herself.

At a young age, Ver Steeg was diagnosed with Ehlers-

Danlos Syndrome, a rare connective tissue disorder.

She said she has worked with a team of doctors to develop a plan that keeps life for Ver Steeg as productive as possible.

Besides becoming a surgeon, Ver Steeg also considered becoming a psychologist or possibly a radiologist.

First-year instructor Tam-

my Loosbrock with Sanford Health teaches the 18-week class.

"I have enjoyed getting to know the students, sharing what I know, and helping them try to figure out their interests," she said.

"They really are great kids and I am excited to see where all of them end up."

Loosbrock hopes they end up working at one of the hospitals or clinics she oversees in Luverne, Adrian, Edgerton, Rock Rapids and George, Iowa.

A shortage of health care workers is expected within the next three years, and Loosbrock and local supporters see the Introduction to Health Care Careers as a way to develop a workforce locally.

A local "Grow Our Own" initiative assists students in developing marketable skills before they graduate from high school.

According to Luverne High School Principal Ryan Johnson, the health care careers class will be offered again next year.

"We are exploring some options of expanding our course offerings within the inter-district partnership we have," he said.



# Dial-A-Specialist

## Your One Stop Guide to Local Businesses

 <p><b>ROCK COUNTY CHIROPRACTIC</b> • Men, Women &amp; Children's Health • Custom Orthotics · Kinesiotape · Athletic Care · Massage Therapy · Work &amp; Auto Injuries · Postural Restoration <a href="http://www.rockcountychiropractic.com">www.rockcountychiropractic.com</a> 283-2561 • 103 E. MAIN, LUVERNE Monday 7:30 a.m. - 6 p.m. • Tuesday 7:30 a.m. - 3 p.m. Wednesday 7:30 a.m. - 6 p.m. • Thursday 7:30 a.m. - 1 p.m. Friday 7:30 a.m. - 5 p.m.</p> <p><b>• Chiropractic</b></p>	 <p><b>STAR HERALD</b> <b>ANNOUNCER</b> Chantel Connell Sales Representative 117 W. Main, Luverne, MN <b>507-283-2333</b></p>  <p><b>Rick Peterson</b> General Manager</p> <p><b>• Advertising</b></p>	<p><b>LUVERNE HEALTH &amp; WELLNESS</b> Codie Zeutenhorst, D.C., CAC ✓ Acupuncture ✓ Chiropractic Care ✓ Family Care ✓ Sports Injuries ✓ Kinesiotape ✓ Auto &amp; Work Injuries Acupuncture and Massage Available Kris Van Der Brink M.T. &amp; Amy Rosales M.T. <a href="http://www.luvernechiro.com">www.luvernechiro.com</a> 507.449.4400   109 S. Freeman Ave.   Luverne, MN</p> <p><b>• Chiropractic</b></p>	<p><b>COMRAY COMPUTERS</b> Computer Repair and System Builder</p> <p><b>Ray Hansen</b> 1726 140th Ave., Luverne, MN 56156 <b>507-669-2621</b> <a href="mailto:comraycom@gmail.com">comraycom@gmail.com</a></p> <p><b>• Computer</b></p>
 <p><b>Rock County EYE CLINIC</b> <b>507-283-2345</b> 102 N. Freeman Ave. Luverne, Minnesota</p> <p><b>• Eye</b></p>	 <p><b>Papik MOTORS</b> 1-90 Luverne, MN Box 536 • 801 West Commerce Road Luverne, MN 56156 (507) 283-9171 (800) 634-7701 <a href="http://www.papik.com">www.papik.com</a></p> <p><b>• Automotive</b></p>	<p><b>Luverne MINNESOTA City Offices</b> <i>Love the life!</i> PO Box 659, Luverne, MN 56156 507-449-2388 (24 hour voice mail) <a href="http://www.cityofluverne.org">www.cityofluverne.org</a></p> <p><b>• City</b></p>	<p><b>Dakota Land Surveying and Engineering, Inc.</b></p>  <p><b>Steven B. Kor</b> Professional Engineer Registered Land Surveyor 2000 W. 42nd Street, Suite B-6 Sioux Falls, SD 57105 605-334-4882 605-334-5745 Fax 506 Almar Luverne, MN 56156 507-283-3803 <a href="mailto:steve.dis@midconetwork.com">steve.dis@midconetwork.com</a></p> <p><b>• Land Surveying</b></p>



# H-BC students pen winning essays in VFW contest for writing about patriotism and democracy

By Lori Sorenson

Two Rock County students were honored for their writing skills at the Veterans Day Banquet in Luverne Saturday night, Nov. 11.

Middle school student Leif Tollefson and high school student Josie Scholten, both in the Hills-Beaver Creek School District, wrote winning essays for the VFW scholarship competition, which recognizes excellence in original writing about patriotism and democracy.

Tollefson's essay in the Patriot's Pen category (for grades 6-8) won first place among local students, and he received \$100 for his entry, written under the 2017 theme, "America's Gift to My Generation."

Scholten's essay in the Voice of Democracy category (for grades 9-12) won first place among local students, and she received \$100 for her entry written under the 2017 theme, "American History: Our Hope for the Future."

Second- and third-place high school winners are, respectively, Allison LaRock and Amber Mace, both of Hills.

Second- and third-place middle school winners are, respectively, Tara Paulsen, Steen, and Samantha Moser, Beaver Creek.

Second and third place writers received \$75 and \$50 respectively.

The first-place student writers will advance in VFW essay competition and were invited to read their essays to audience members Friday night at the Banquet Center.

Scholten and Tollefson were unable to attend Saturday night's banquet because they were performing in the Green Earth Players' production at the Palace Theatre.

Terrie Gulden read their winning essays to the audience, and they are printed here.

## "America's Gift to My Generation," by Leif Tollefson

There are many people on this earth, but few are willing to risk their lives for their country, which makes me think America's gift to my generation is that we have a chance to keep going. America has offered us protec-



Middle school student Leif Tollefson (above) and high school student Josie Scholten (at right), both in the Hills-Beaver Creek School District, wrote winning essays for the VFW scholarship competition, which recognizes excellence in original writing about patriotism and democracy.

tion. America has given us a chance to have an education. Last, but certainly not least, it has given us freedom. All of these things have given us a way to keep going. Because of this, I think America will be in great hands.

Protection is supervision or support of someone who is weaker. America has given us the Army, the Navy, the Air Force, and the Coast Guard. The armed forces have given us a chance to keep going. There are many great people who go into the armed forces not even knowing if they will come out alive. If they do, they bring back the experiences and become our doctors, police, and our firefighters. We also get protection from being persecuted because of our religion. Because we are protected, we can keep going.

Education is the process of being educated. We have education from schools where you learn math, grammar, and history. Teachers help us learn many wise things. We have education from our parents. They teach us life lessons. We are now protected and educated so we can keep going.

Freedom is something held very dear to America. In fact, America is often referred to as the land of the



free. We have the freedom to say whatever we would like. We also have freedom to write whatever we want and we won't be in trouble because of it. Finally, we have the freedom to live the way we want. We now have protection, education, and freedom, so we can keep going.

Now you may be wondering where we are going to. I'm not sure, but I know we are going forward. We have the veterans to thank for that because they not only come back to be the good people of the world, but they also come back and start families. Families are the core of what moves us into the future, with each new generation born. Because of the protection, education, and freedom, that the United States provides us, we are able to keep going into the future.

## "American History: Our Hope for the Future," by Josie Scholten

What makes us who we are? Is it our religion, political views, favorite song, those we love, or those who love us? I would say that we are a culmination of all those things, every quality we possess or hope to attain, and still something more. We are the roots of our character. We are our past - our history. In this same way, America is her history. It is also much more. America is her success, her failures, pride, shame, ambitions, and goals. She is all that she was and all she hopes to be. Her history has shaped what she is and who her citizens are. America has stood witness to some of the greatest movements in history, and these movements are crucial to observe, to learn, and to understand. History propels us forward to a brighter future. Today, and every day that follows, will be shaped not only by the people we are

today, but also by the people we were yesterday. That said, I am hopeful.

The United States of America has been the prime location for some of the most important moments of history. She has led revolutions and battles, advanced the rights of her people, and established herself as the pinnacle of human achievement. A word that comes to mind is "revolutionary." She was born through a revolution, and she continues to live in the same manner. Where would we be today if some of America's great citizens had not stepped up to challenge the ideas of the time? Before the United States even became a country, the American spirit was embodied. Seeking religious freedoms, pilgrims journeyed across an ocean. They had the pure uninhibited desire to be free to worship their God as they saw fit, even if it meant abandoning all that they have ever known. For this resolve, they were rewarded with a land that they could call their own. A land of the free.

Decades later, the founders of America gathered in a humble courthouse in Philadelphia. They wrote down the foundation of what America would forever be. They established our government, our society, and our rights. The document they created over two hundred years ago, the United States Constitution, is still the basis for American civilization today. When we call attention to an injustice, we cite the Constitution. It is one of a rare sort of object; it made and changed history.

America's history is beautiful. It's full of underdog stories, rebellions against injustice and evil, and amazing stories of indomitable American spirits. However, America is also haunted by her mistakes. The figured of the past whom we revere were human and were subject to human errors. The United States is marred by such atrocities as massacres of Native people, hundreds of years of slavery, and the imprisonment of over one hundred thousand Japanese-Americans in de-

tainment camps. We still feel the effects of these choices. Instead of ignoring them or shrugging them off as "how things were back then," we need to recognize them. We need to address them. We need to have open, honest difficult conversations about them. They serve as reminders as what can happen to us if we let hatred and fear take precedence over mercy and good will. These horrible events propel us forward. They should make us want to be better. We can't and shouldn't hope to erase these events from our minds. For as horrible as racial division, senseless violence, and domestic terrorism are, they offer us a chance to learn. From wars come alliances. From injustice comes understanding. From pain comes healing. History is more than names, dates, and places. It is cause and effect. It is people making mistakes and living with the subsequent consequences. It teaches us what works and what doesn't, what is morally just and what is not, and why we stand for what we do.

We as a country hope to leave behind us a better world for our children than the one that was left for us. We want to give them their best possible chance to succeed and be happy. One day, the decisions we have made may be revered as turning points in history. We must strive to make choices that will withstand the test of time and that future generations will look back with gladness. Titus 2:7-8 says the following: "In everything set them an example by doing what is good. In your teaching show integrity, seriousness, and soundness of speech that cannot be condemned, so that those who oppose you may be ashamed because they have nothing bad to say about us." There is no way of knowing how to best serve our future generations or how to leave them with their greatest prospects. What we can do is try. We must honor those who have led us, fought for us, died for us, and sacrificed for us. We must live every day as though history has its eyes on us because it does.

**READ THE NEWS ONLINE!**

Sports  
Opinion  
News  
Classifieds

Subscribe to the online edition of the **Star Herald**

star-herald.com

**YOU'RE INVITED**

Please Join Us For  
**Coffee at the Exchange**  
9:00 am - 11:00 am Exchange State Bank  
310 Gabrielson Rd • Luverne, MN

2017 Coffee at the Exchange Schedule: Coffee & goodies served.  
**Tuesday, November 28, 2017**

MARK YOUR CALENDAR & BRING YOUR FRIENDS.  
ENJOY REFRESHMENTS & FELLOWSHIP.

**Exchange STATE BANK** Member FDIC  
Local. Dependable. Strong

**Happy Thanksgiving**

We are thankful and grateful today and every day for our customers.

**Rock MOTORSPORTS, LLC**  
MOTORSPORTS AND POWER EQUIPMENT  
PARTS-SALES-SERVICE  
507-449-4386

BILL & MICHELLE AANENSON  
621 S KNISS AVE • LUVERNE, MN 56156

**Craft Show**  
324 W Main St  
Luverne

Friday November 24 | 10am-6pm  
Saturday, November 25 | 10am-6pm  
Sunday, November 26 | 2-5pm

Interested in Advertising?  
Call 283-2333 to advertise in the **Announcer**

**CITY OF LUVERNE**  
**THANKSGIVING GARBAGE SCHEDULE**  
**THURSDAY'S ROUTE MOVES TO FRIDAY**

Happy Thanksgiving

North of Dodge recycling will be picked up on Friday as scheduled.

**Luverne**  
Love the life!



## Season of Thanksgiving This year, readers, I'm thankful you read my columns

The Season of Thanksgiving — and thankfulness — is upon us, to be followed shortly by the Season of Giving, which presumably adds up to one lump sum of Happy Holidays.



### ON SECOND THOUGHT

By Lori Sorenson, editor

Which can be overwhelming.

Most all of us, if we're lucky (blessed, I like to call it), are thankful for clothes on our backs, a roof over our heads, food on the table and a family to share it all with.

And presumably those of us blessed souls are eternally grateful for these priceless blessings.

But the Happy Holidays can sometimes be overwhelming to consider all at once.

And sometimes we question our personal gratitude. "Why am I not feeling warm and fuzzy inside?"

To help, I might humbly suggest we break down our blessings — and subsequent gratitude — into smaller pieces.

For example, instead of being thankful for the broad category of "family," try thinking of them individually.

I'm thankful for a husband who makes me laugh, even at myself.

I'm thankful for the college son who can balance his own checkbook — without asking for account transfers (very often).

I'm thankful for the high school kid who made the A honor roll this quarter, despite a demanding school and farming schedule.

I'm thankful for the dog who faithfully greets me at the door, wriggling with pure joy that Mom is home.

I'm thankful for my own

parents and parents-in-law who have modeled loving relationships and devotion to each other and their children.

And I'm thankful for my sisters who love me despite my quirky flaws.

Still need ideas?

Let's break it down even more.

For example:

I'm thankful for silence after a busy noisy day. I love people and working with people, but there's nothing like the blessed solitude of a quiet house at the end of the day where only the tick-tocking of the clock can be heard.

Similarly, I'm thankful for a good night's sleep.

I come from a long line of restless sleepers and my babies were also, not surprisingly, poor sleepers. I loved rocking my babies in the night; I'm just thankful now not to have to.

I'm thankful for coupons redeemed before they've expired, sale prices on groceries that are already on the list, and buy-one, get-one-free Maybel-line offers.

I'm thankful for dark chocolate, gourmet coffee and crispy Cheetos.

And I'm thankful that my health allows for a brisk run (plod) around the section to work them off.

And, with that in mind, I'm thankful for turkey, mashed potatoes, gravy, stuffing, green bean casserole and pumpkin pie.

Happy Thanksgiving, readers. I'm thankful that you read my columns ... all the way to the last sentence.

## Shop local for holidays, every day

I find it kind of amazing how we are all getting "duped" into believing that online and big box store shopping are the most convenient and cheapest ways to shop.

A couple of weeks ago I had a phone call from a college friend who lives in a big city on the East Coast. While we were talking, her doorbell rang and she excused herself for a minute. When she came back to the phone, she told me that Amazon had just delivered a two-pack of paper towels and toilet bowl cleaner.

I couldn't believe what I heard. It seems like everything we need in life can arrive at our doorstep in two days with free shipping. You never have to leave your house, get dressed or interact with anyone. You can spend your days tethered to your computer. Doesn't that sound like an interesting and exciting life?

Advertisements and social media have drummed into our heads that on those rare occasions when we actually need to go out and shop for something, we should head to some big city to some big box store because that is the cheapest and best way to shop. Just think how much fun it is to hop in the car and drive 45 minutes or 4 hours to those big box stores, spend 20 minutes driving around trying to find a place to park just to be bagged searched or carded on your way into the store.

Once you are in the store, you have to wind your way around after aisle shoppers and through aisle after aisle

### GUEST EDITORIAL

By Jane Wildung Lanphere, Luverne Area Chamber Director

to find what you are looking for. The whole time you are there, you probably don't have a conversation with another person. You check out, haul your bags to the car and make your way home. Where does your money go? It goes to another state and a corporation that never gives back to the people or the community where you are from.

I am inviting you to join me this holiday season for the opportunity to make your shopping less stressful, discover wonderful gifts to buy for those you love, and really make a difference to the people in our community. How can you do that? SHOP LUVERNE SMALL!

Small businesses give back. An independent research firm recently published data that reported that 90 percent of small business owners contribute to their communities through volunteering, in-kind contributions, and cash donations. They understand the concept of "pay it forward."

The future of our local small businesses will be so much brighter if all of us intentionally make a great effort to shop in our hometown. When we shop local, we know the real live person who does a "happy

dance" when the sale is closed. In return, our "happy" small business owners will build their business and continue to serve you and your needs. Everyone wins!

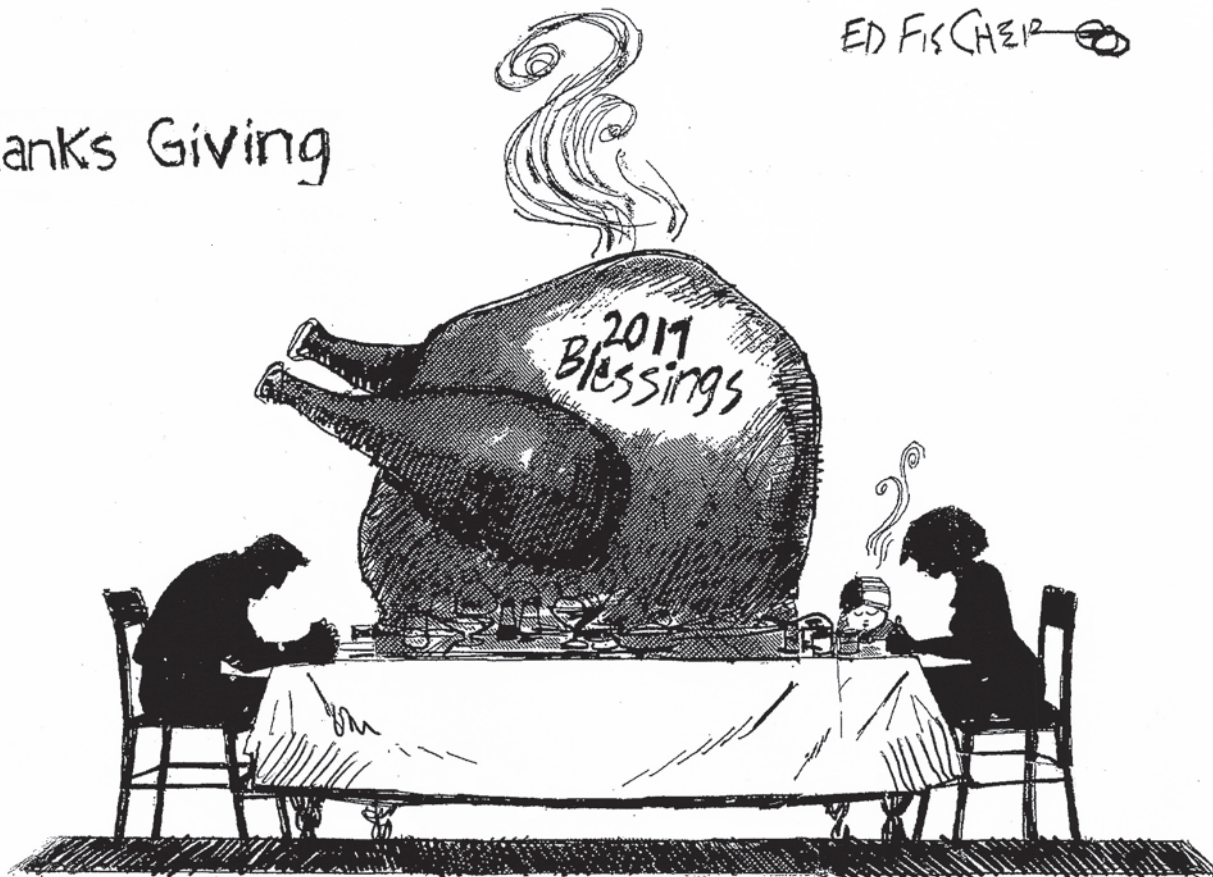
When we buy it locally we are saving on the packaging and carbon emissions that it takes to ship all our online orders. We save the environment by walking or spending only a few minutes in the car to a local store rather than a 45 minute trip to a box store. Just think about the added savings when you can make a return in 10 minutes and not have to use multiple boxes and packaging or spend a lot of time in the car driving and waiting in lines.

Shopping local builds community. The Luverne brand, "Love the Life," expresses the feeling we have in living in our town.

By shopping small and shopping local we are supporting our local entrepreneurs and partaking in community. Help us build this town we love. At the end of the day, where and how we shop matters for ourselves, our community, and the environment.

Love the Life...SHOP LUVERNE, SHOP LOCAL!

### Thanks Giving



ED FISCHER

## Ver Steeg: Are the governor's pheasant hunt and buffer law just coincidences?

### To the Editor:

I'm just curious, does anybody else find it somewhat coincidental that the state of Minnesota [Governor Dayton] signs into law that there has to be buffer strips along certain protected waterways in the name of soil conservation right at the time Governor Dayton is trying to build us as a state of great pheasant hunting. I don't know of a single farmer who doesn't want clean water and less soil erosion and that's why there hasn't been more of a public outrage about the fact that the state of Minnesota is strong-arming many of us into taking productive land out of production. In some cases buffer strips are a good idea others not, one size does not fit all along a river or other public waterways. The one thing I do know for sure is that the state of Minnesota should never have the right to force us to set land aside without some form of compensation [in my mind that is simply theft] oh and we get to keep paying property tax on our now unproductive land. If it is deemed to be for the greater good of which

I am not convinced [soil erosion or more hunting land] should we not be fairly compensated.

I think the 2018 Governors Pheasant Opener is like someone planning a huge backyard barbecue and then saying our yard isn't big enough and we don't want the mess so we're going to tell {not ask} the neighbor that he has to have it in his yard, oh and tell him he has to pay for it too and if he don't want to, we'll come up with some elaborate scheme to fine him. That is exactly what the state of Minnesota is doing to us landowners. In the Oct. 19 Star Herald it is mentioned that this event could mean as much as \$1 million worth in publicity for the community. As long as we're pulling numbers out of a hat one could say that an influx of thousands of hunters and so-called dignitaries and media as stated in the paper could do \$1 million worth of damage to our private properties. As a side note, if I were a local hunter the last thing I would want is thousands of hunters and so-called dignitaries hunting the

land I've always hunted and mess up the relationships I have with the local landowners. Generally speaking, local hunters care about our land and relationships, kind of like shopping "keep it local."

I think with the 2018 Governor's Pheasant Opener scheduled to be in Rock County, the Rock County farmers, maybe all farmers in the state of Minnesota and landowners have the opportunity to express our lack of appreciation for the unfair disrespectful trampling of our rights as a landowner and citizen of the state of Minnesota by posting our properties and the properties we are responsible for "KEEP OUT PRIVATE PROPERTY. NO TRESSPASSING" (especially Governor Dayton and his so-called dignitaries and the thousands of hunters from the metropolitan areas). Unfortunately some of our local hunters and local Pheasants Forever group will be affected by this as well so I would encourage them to call their reps and the governor's office and express their feelings of this unfair treatment.

Harold Ver Steeg  
Hardwick

## Thanks for the little things

It's that time of the year again to give thanks for so many of the things we take for granted.

When was the last time you flipped a light switch and said "thanks" when the lights came on? Just think about all the things around the house we never give a second thought to until they don't work. There's running water, electricity, sewer, furnace and air conditioning, not to mention cable television.

Let's give thanks.

While I am giving thanks for household items, I would like to give a shout out to Ziploc bags, scented garbage bags, those little white miracle scrubbing spongy things that somehow clean just about everything.

Making my way through the house, a quick thank you stop in the bathroom calls attention to hot water, the toilet and the ceiling fan.

I am going to bypass the bedroom because I am pretty sure my thank you list is the same as yours, and I'll leave it at that.

Now let's head to the garage.

This is where the thank you list might get a little out of hand. Let's start with the garage door opener. Before I move on, did you notice what I just wrote? For some reason the garage



### FOR WHAT IT'S WORTH

By Rick Peterson, General Manager  
Tollefson Publishing

door closing part of the automatic garage door gets cheated when you talk about your garage door so that said, I would like to tip my thank you hat to the closing part of my automatic garage door.

I give thanks for my tools, whether electric, battery, air or hand. I give thanks.

The lawn mower and snowblower top the lawn and garden department.

While I am thankful for the aforementioned items, they mean nothing if I don't have my family and good health to enjoy them and for that I am most thankful.

Happy Thanksgiving.

E-mail: editor@star-herald.com Web site: star-herald.com  
Phone: 507-283-2333 Fax: 507-283-2335

Published Thursdays by Tollefson Enterprises, POSTMASTER:  
Send address changes to 117 West Main, P.O. Box 837, Luverne,  
MN 56156. Periodicals postage paid at Luverne, Permit #33 and at  
additional mailing offices.

General manager: Rick Peterson  
Office manager: Deb Lusty  
Circulation manager: Jennifer Kor  
Advertising: Chantel Connell  
Production manager: Abbe Kolar  
Production: Heather Johnson

News staff:  
Lori Sorenson, editor  
Mavis Fodness, reporter  
John Rittenhouse, sports editor  
Esther Frakes, copy editor

Rock County  
**STAR HERALD**  
Rock County's newspaper since 1873

(ISSN 0889-888X)  
SUBSCRIPTION RATES  
\$72 per year in Rock County; \$89 per year all other areas. Single copies \$1.25

Entire contents copyrighted by  
Tollefson Publishing Roger Tollefson, publisher

The *Star Herald* encourages letters to the editor expressing the opinions of readers and intends to print all letters. Letters not meeting the guidelines will not be printed. The *Star Herald* will verify the authenticity of all letters. Letters must have the name of the writer, a signature and address.

Unsigned letters will not be considered. The *Star Herald* will edit for grammar, spelling and clarity. Any letters containing offensive language, libelous or slanderous material, or misleading or false information will be rewritten before being published. The *Star Herald* will not publish letters written with the sole intent to advertise or serve as a thank-you. Letters with more than 300 words may be edited. The deadline for letters is Monday 10 a.m. They may be delivered or mailed to the editor, *Rock County Star Herald*, P.O. Box 837, 117 W. Main St., Luverne, Minn. 56156.

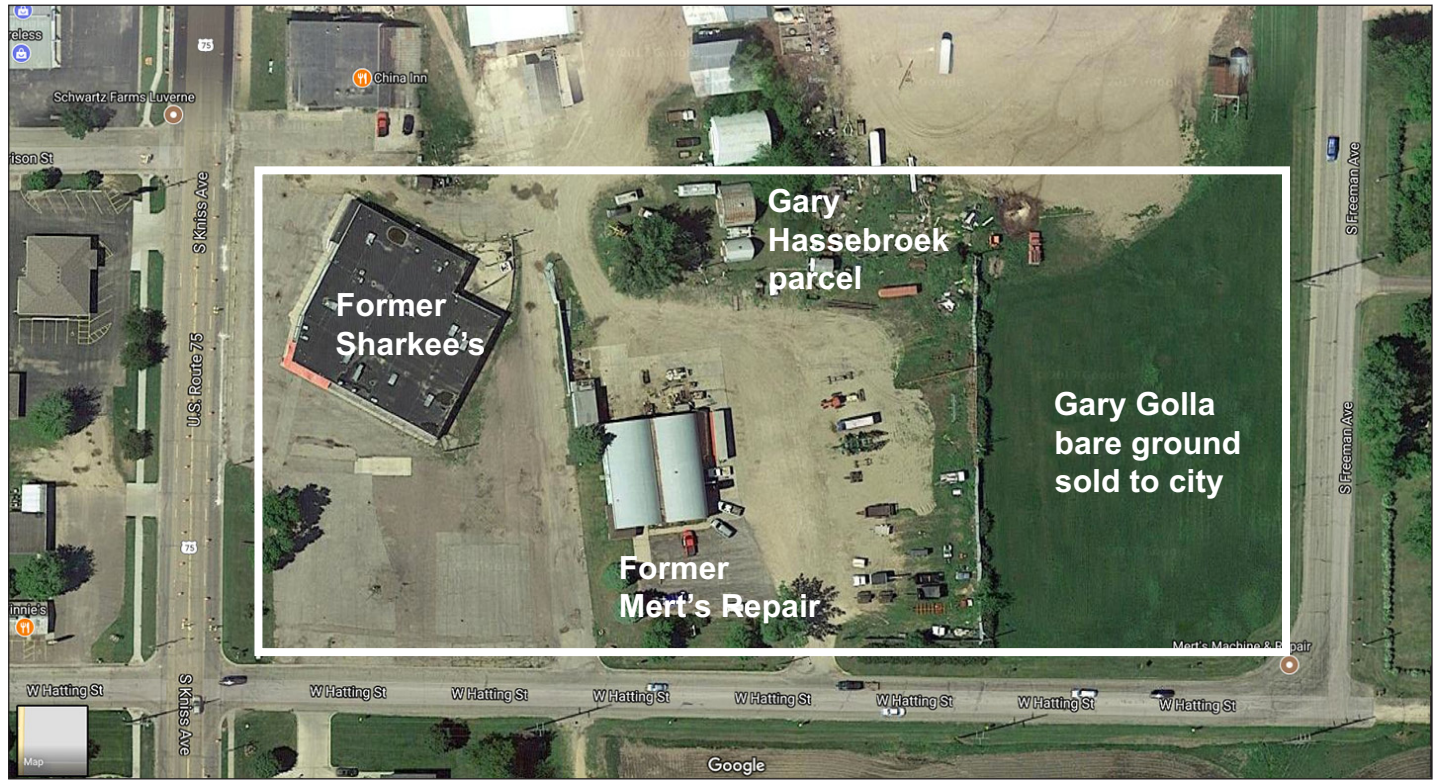


## ON THE RECORD

### Dispatch report

**Nov. 10**  
 •Complainant reported pickup that stopped in lane of traffic on I-90, mm 16 eastbound. Transferred to State Patrol.  
 •Complainant reported lost property.  
 •Complainant reported man walking on side of road on I-90, mm 21 eastbound. Transferred to State Patrol.  
 •Complainant reported cooler on fire on the side of the road at 483<sup>rd</sup> Avenue and 265<sup>th</sup> Street. Transferred to metro.  
 •Complainant reported items found on East Lincoln Street.  
 •Complainant came to Law Enforcement Center and requested to speak with deputy.  
 •Complainant reported erratic driver on I-90, mm 11 eastbound.  
 •Complainant reported erratic driver on I-90, mm 20 eastbound.  
**Nov. 11**  
 •Complainant reported road damage. Transferred to State Patrol.  
 •Complainant reported bin fire at location near Beaver Creek. Paged Luverne Fire Department.  
 •Complainant reported Order for Protection violation.  
 •Complainant reported alarm at East Main Street location.  
 •Complainant reported erratic driver on I-90, mm 20 westbound. Transferred to State Patrol.  
 •Complainant reported two pickups blocking mailbox on South Fairview Drive.  
 •Complainant in Beaver Creek reported subject took his bike and won't give it back.  
**Nov. 12**  
 •Complainant reported a vault motion detector alarm at South Freeman location.  
 •Complainant from Hills came to Law Enforcement Center and requested to speak with deputy regarding theft.  
 •Subject from previous ICR has Rock County warrant.  
 •Complainant reported approximately six teenagers at pocket park acting suspicious.  
 •South Kniss business reported individuals who are not to come to the business continue to be on the property.  
**Nov. 13**  
 •Complainant reported trouble with student at Luverne school. Subject just left.  
 •Complainant reported a kindergartner got on the wrong bus and they can't locate her now. She was located.  
 •Luverne Fire Department reported a controlled burn will happen tonight. All ambulance calls to Mary Jane Brown Home should use Warren Street.  
**Nov. 14**  
 •Complainant reported

fish house parked on North Estey Street.  
 •Complainant at Mead Court reported subject refusing to go to school.  
 •Complainant reported a stalled vehicle on I-90, mm 4 near Beaver Creek. Transferred to State Patrol.  
**Nov. 15**  
 •Complainant at 150<sup>th</sup> Avenue reported construction equipment parked in his driveway.  
 •Complainant reported man sitting on median at I-90 mm 406 near Brandon, South Dakota. Transferred to Metro.  
 •Complainant reported car was vandalized on N. East Park Street.  
 •Search warrant was executed for known DNA sample on subject.  
 •Complainant came to Law Enforcement Center and requested to speak with deputy regarding POR.  
 •Complainant requested death notification of subject.  
 •South Kniss business reported assault at property.  
**Nov. 16**  
 •South Kniss business reported possible fire in the fuse box.  
 •Complainant reported a scam.  
 •Business requested to speak to a deputy about someone trying to put money on a gift card. Thinks they have some stolen from them.  
 •Complainant reported smoke coming from the house that was burned the other night. Contacted Dave. He will check it out.  
 •Complainant reported a construction truck and trailer, one orange, turned onto the interstate and lost some tools. She will bring them to the office. Gave to patrol.  
 •Complainant reported "they" moved all her stuff so they can park in her lot. Deputy expressed to her that it is a civil matter.  
 •Luverne Fire Department ladder 3 is out for training.  
 •Complainant reported suspicious noises at library.  
**Nov. 17**  
 •Complainant reported a blue Hyundai Elantra that has a child in the front seat, two in the back, and no restraints.  
 •Complainant reported individual with prior history of assault at motel threatening complainant.  
 In addition, officers responded to 4 motor vehicle accidents, 4 deer accidents, 24 traffic stops, 3 DWI incidents, 2 trespassing complaints, 2 debris on roadway complaints, 2 transports, 4 escorts, 30 ambulance runs, 2 paper services, 2 background checks, 7 animal complaints, 2 fingerprint requests, 8 log/alarm sheets, 8 drug court tests, 4 abandoned 911 calls, and issued 2 purchase/carry permits and 3 burn permits.



The city now owns 6.5 acres along Hatting Street between Highway 75 and Freeman Avenue for future development.

### City of Luverne buys Golla land/continued from page 1A

A purchase agreement would hinge on stipulations outlined in a development agreement — possibly by this winter.  
 Meanwhile, acquiring the Golla property next door to the east will

ensure a suitable future development — likely residential — next to the planned townhomes and retailers.  
 To complete the northern property border, the city also purchased a small piece of ground from Gary Hassebroek

who had storage sheds north of Sharkee's east of China Inn.  
 The city paid him \$25,000 in a deal that closed Oct. 10. He'll have use of the buildings rent-free for 36 months, according to the purchase agreement.

## County receives 'unmodified' audit rating

By Mavis Fodness

Rock County continued to build its budget reserves in 2016, according to findings from the state auditor's office.  
 Melody Caron traveled from her Marshall office to present her finding of the recently completed 2016 audit to Rock County Commissioners at their Nov. 7 meeting. Caron was lead auditor for the annual review.  
 Caron said the audit is a one-day budget snapshot on Dec. 31, 2016. She gave the county an "unmodified" audit rating. "We feel all the accounting guidelines were followed and it's an accurate representation of where the county sits at the end of 2016."  
 No adjustments or deficiencies in internal controls were noted in the final audit.  
 Caron offered this commendation.  
 "You have been able to get rid of the segregation of duties ... that counties never thought

they would do away (with)," she said.  
 The segregation was accomplished by not having key accounting functions completed by a single person but through shared responsibilities between departments. The segregation process reduces the risk of fraud and errors.  
 Rock County began 2016 with a budget of \$13.855 million on Jan. 1 and spent \$13.975 million by Dec. 31.  
 The over-expenditure is primarily attributed to the county's \$1 million contribution to the broadband project.  
 Caron said her office recommends counties have at least five months of expenditures in the general fund at the end of the year.  
 Rock County had 7.02 months of reserves or \$6.7 million on hand.  
 In 2015 the county had 7.39 months in reserves and in 2014 6.55 months for future expenditures.

*With Warm Wishes at Thanksgiving*

**McClure Electric**  
 Alan M. Aanenson, owner  
 121 N. Cedar, Luverne  
 507-283-4716

Call 283-2333 to advertise

Check out our selection of **GOLDEN POWER LIFT RECLINERS!**

Golden Power Lift Recliners Offer the MOST Customizable Options

- Junior Petite Option - For those under 5' tall
- Tall Option - For those above 6'3"
- Extra Wide/Increased Weight Capacity - Up to 700 lbs.
- Gel Memory Foam - Cooling gel beads that promote air circulation
- Nanotex - Stain resistant, antibacterial fabric
- Brisa - Breathable, luxury fabric upgrade
- Autoflex - Power lumbar system
- Heat & Massage - For soothing rejuvenation
- PowerPillow - Powered head and neck positioning
- Straight Lift - Lifts you straight out of the chair
- Foot Rest Extension - Extends chair length by 3"

**SANFORD**  
 HOME MEDICAL EQUIPMENT

Monday-Friday 9am-5pm

**20% OFF** ALL CASH & CARRY ITEMS

No Insurance Billed - Expires 12/31/17

Online subscription rate: **Star Herald**  
**\$44 per year**

To subscribe, Call 507-283-2333 or visit us online: [www.star-herald.com](http://www.star-herald.com)

Current and New Online Subscribers can enjoy **OUR** Mobile Content - Online Content E-Edition newspaper

Check out our **Black Friday** prices!

**283-9171 | PAPIK.COM**

**2015 Chevrolet Equinox LTZ**

Stock #147084N  
31K

*Black Friday Price \$21,990*

**2014 Chevrolet Silverado LTZ**

Stock #301188N  
36K

*Black Friday Price \$31,990*

**2014 Ford F-150 Lariat**

Stock #26160N  
29K

*Black Friday Price \$31,990*

**2015 GMC Sierra SLT**

Stock #319430N  
30K

*Black Friday Price \$34,990*





# A bounty of good will

Chantel Connell photo/1122 hoff harvest

Semitrailers line up to deliver corn harvested for the late Verlyn Hoff Wednesday, Nov. 15, northwest of Luverne.

## More than two dozen lend hand to finish Hoff family harvest in one day

By Lori Sorenson

Friends and neighbors of the Verlyn Hoff family pooled their time and resources Wednesday, Nov. 15, to harvest the remaining Hoff crops northwest of Luverne.

Verlyn died unexpectedly on Wednesday, Oct. 25, while working near his home.

With a good share of his corn still in the field, his son, Chad Hoff, said offers for help started coming in immediately.

"Chad just kept telling everyone to finish their work and then he would maybe

take some help if there was more left to do," said Chad's wife, Darcy Hoff.

"Well, the minute some were finished, they came. Some of them still have combining to do themselves."

She said it made her proud to be from Luverne.

"It's small town living for you. But it's hard to be on the receiving end of this much giving," she said. "It's humbling, that's for sure. It makes you want to be a better person."

She told the Star Herald that Steve Top primarily organized Wednesday's group

field effort.

"Chad and I were expecting a 'few extra people' and we thought that was great," she said.

"I never in a million years thought it would be that many willing to give up a perfectly good working day for us."

She said five extra combines showed up Wednesday along with three extra grain carts and 16 extra trucks.

She shared the names of people who helped in the field. In addition to Top, those names include Scott Roos, Larry Mulvihill, Bob



Pictured are Chad Hoff and Tamie Hoff (left), son and wife of the late Verlyn Hoff, and Steve Top, who helped organize the harvest help.

Feikema, Dustin Hubbling, Kurt Burmeister, Larry Swenson, Ron, Ryan, Melvin and Jim Fick, Harlan Kroon, Josh Rheault, Gerald Sandbulte, Larry Smith, Lowell Fick, Craig Bosch, Jason Fick, Duane and Cory

Vander Vliet, Stan Gyberg, Jim Ouverson, Dean Tofteland, Cody and John Hemme, Eric VanGrootheest, Willy Sandbulte and Keith Schmuck. "They're a group of great men," Hoff said.

## Winners selected for 'Talk Turkey' initiative

By Mavis Fodness

Seven health care directives were submitted to Sanford Luverne Medical Center and entered into the first turkey raffle through the "It's Time to Talk Turkey" initiative to promote meaningful conversations about death and dying.

Two names of those who submitted directives were drawn to receive a frozen turkey donated by Teal's Market, Luverne.

Winners were Briana Conrad, Jasper, and Russ Sehr, Larchwood, Iowa.

The "It's Time to Talk Turkey" initiative grew out of The Convenings and The reConvenings conducted recently in Luverne. The initiative is a statewide effort to engage families in end-of-life decisions and conversations about what matters most to individuals.

Kelly Schroer is a member of the local committee to continue The Convenings project. She is also Sanford Luverne Medical Center's advanced health care planning coordinator.

She intends to have "It's Time to Talk Turkey" become an annual event, and this year's kick-off was a good start, with seven directives submitted and more people asking for information.

Schroer hopes more families will talk about their last wishes around the Thanksgiving table.

Printouts of the advanced care forms are available at [www.sanfordhealth.org](http://www.sanfordhealth.org).

## REMEMBER WHEN

### 10 years ago (2007)

The Laundry Room opened its doors for business last week in the former Dairy Queen building on the corner of Main Street and Highway 75.

The brightly lit Laundromat features 18 washers in three sizes and 18 dryers in two sizes, and all are brand new Maytag equipment.

The coin-operated laundry business opens at 6 a.m. and closes at 10 p.m. with the last wash starting no later than 9 p.m.

Owner Mike Jarchow said he's already seen grateful customers.

### 25 years ago (1992)

Filling the city administrator position left vacant by Steve Perkins will be a complicated process.

To help them, the Luverne City Council hired The Brimeyer Group which is an executive search consultant firm from Hopkins that specializes in matching people and positions.

Jim Brimeyer, Hopkins, said using firms like his is becoming more common in government. "Council members don't have time to do a profile and develop consensus. Many feel they need a third party," Brimeyer said.

Brimeyer met with people representing different interests in the city while developing a profile for the job. Some of the

people he said he would contact represent the school, county, city staff, city council, bankers, nursing home administrators, hospital administrators, and business persons. He plans to have a rough draft of the profile completed by Thanksgiving.

### 50 years ago (1967)

You could have heard the proverbial pin drop at the Luverne High School gymnasium Monday afternoon as the man dressed in a denim shirt and blue jeans said: "There are 20 of you here today that are going to end up in the Penitentiary."

The man with the smooth voice and sad face, deeply somber, leaned forward over the rostrum and told the high school students "I don't qualify as to telling you how to be a success but I can tell you how to become a failure."

This was No. 16007 from the South Dakota State Penitentiary, who with four other inmates was staffing "Operation Pitfall" for the benefit of the Luverne students Monday.

### 75 years ago (1942)

Announcement that Minnesota will be included in the nine-state blackout test on December 14 spurred Luverne and Rock County civilian defense officials to speed air raid precautionary measures this week.

The coming blackout is scheduled to take place between 10:30 and 11 p.m. on December 14, and the entire county is expected to cooperate. Even persons driving cars on highways or streets are to stop and shut off their lights during the half hour alert. Homes and streets must also be darkened.

### 100 years ago (1917)

The City Heating Company's plant, which has been in course of installation since the fore part of last summer, is now fully completed, with the exception of a few minor details.

The system was installed by Bain & Robb, of Minneapolis, and represents an expenditure of \$37,000. Of this amount \$21,150 was provided through the sale of stock to business and professional men of the city, which is fully paid and non-assessable, and the remaining amount is covered by local loans, which will eventually be taken up by a bond issue by the company, which will draw six per cent interest.

There are thirty-three stockholders in the company, which controls thirty-seven business structures and provides heat for forty-one patrons. All of the stockholders have their buildings connected with the heating system, except three. One of the stockholders will have heat connections within a week or ten days, and the remaining two will not take advantage of the service until next spring.

## Blue Mounds State Park hosts Family Turkey Trek Nov. 24

Join the naturalist from 3 to 4 p.m. Friday, Nov. 24, at the Blue Mounds State Park for a Family Turkey Trek.

Meet at the visitor's center (former Interpretive Center) parking lot for a one-mile hike to the upper cliff line of the historic quarry. Participants can continue further down the trail with your family or hike back to your car at your leisure. We'll talk about wild turkeys and their unique history in Minnesota.

The trail is uneven in places and may require stepping up or down. Comfortable footwear and warm clothes are recommended.

Admission is free on the day after Thanksgiving in all Minnesota state parks.

Call 507-283-6057 with questions.

## 1962: Premium Packing plans to locate plant near Luverne

The following appeared in the Rock County Star Herald on April 12, 1962, and is the first part of the story.

### \$1.25 Million Industry to Locate Here

### Premium Packing Co. Plans To Employ About 75 Persons

A \$900,000 dressed beef plant will be constructed three-quarters of a mile west of Luverne this summer in the largest single private business investment ever made in Rock County.

Construction of the plant on its 133-acre site is scheduled to begin in May. Completion is set for October.

Name of the dressed beef plant is Premium Packaging Company. It is owned by a group of Sioux City men who also have Sioux City Dressed Pork in that city. Final arrangements for the new industry were completed this week between the owners of the firm and the Luverne Industrial Committee.

### Will Employ About 75

Approximately 75 persons will be employed by Premium Packaging when it begins operations here next fall. This includes five to ten



## Bits by Betty

By Betty Mann, president Rock County Historical Society

administrative and executive staff members who will come from outside the area. The rest will be employed from the local area.

The new plant, which signals an unprecedented economic improvement for the city and county, will process 440 beef animals per day. It will operate on eight-hour shifts, 5 1/2 says a week, 52 weeks a year.

While the cost of the building, equipment and land will be about \$900,000 the new company will be investing approximately \$1.25 million in the enterprise with the necessary operating capital that it will need to begin and maintain operations here.

### \$30 Million Annual Volume

With a volume of 440 animals per day, the plant will do an annual business of approximately \$30 million. Its

annual payroll will be in the neighborhood of \$375,000.

### Resident Manager

Donald E. Dennis, 35, of Sioux City, will be resident manager of the new plant. He will be here during construction and plans to move to Luverne with his wife and three children when school is out and when they can located a home. He is also a member of the board of directors for Premium Packing Co. He has been sales manager for Sioux City Dressed Pork in the past year. Prior to that, Dennis was salesman for Sioux City Dressed Beef.

### President Is C.W. Dennis

President and treasurer of the new company is C.W. Dennis, of Sioux City Dressed Beef from 1953 until it was sold early in 1960. He was

one of the original promoters of Sioux City Dressed Beef, and, later, Dressed Pork. When the dressed pork plant opened in the fall of 1957 he became its vice president and treasurer and was elected president in 1960 when the beef plant was sold. Dennis, an uncle of the plant manager, is also president of refrigeration wholesale supply house with offices in Sioux City, Omaha, Grand Island, Des Moines and Davenport. It has been an established business since 1936.

### Kuecher is Vice President

James H. Kuecher, of Sioux City, is vice president. He, like C.W. Dennis, was with Sioux City Dressed Beef from the time it was organized. He was the plant manager of that firm for three years. He transferred to the dressed pork plant in Sioux City in 1958 as vice president and general manager of the pork plant. He has a wealth of experience in handling beef, having owned and operated his own farm-ranch near Miller, S.D. for a time.

### Elkin is Secretary

Third officer of the company is Leonard Elkin, secretary. He has been secretary of Sioux City Dressed Pork since

its inception. He was in the automobile business in Sioux City until about ten years ago.

The three officers will not live here, but will make frequent trips to their new business investment in Rock County.

### Six Other Directors

Besides the officers and plant manager, there are six other directors of Premium Packing Co. All are prominent Sioux City businessmen who have reached the top in their field. They are:

Robert D. Anderson, president of Sioux City Stationary; F. A. Evans, president of Woodbury Bank and Trust Co.; W. A. Klinger, president of Klinger Construction Co.; H. H. Holdcroft, president of Holdcroft Transport Co.; E. R. Monson, former president of Sanitary Rendering Co.; and Edgar Pechacek, president of Record Printing Co.

Story continues next week.

Donations to the Rock County Historical Society can be sent to the Rock County Historical Society, 312 E. Main Street, Luverne, MN 56156.

Mann welcomes correspondence to [mannmade@iw.net](mailto:mannmade@iw.net).



## OBITUARIES

### Barbara Slieter

Barbara Joan "Barb" Slieter, 85, Norfolk, Nebraska, formerly of Hardwick, died Thursday, Nov. 16, 2017, at Homestead Assisted Living in Norfolk.

A funeral service was Monday, Nov. 20, at Grace Lutheran Church in Norfolk. A graveside committal service was Tuesday, Nov. 21, at Memorial Garden Cemetery near Luverne.

Barbara Quantz was born Aug. 11, 1932, to Herbert and Josephine (Gazzano) Quantz in San Francisco, California. She attended school in San Francisco and graduated from St. Paul's High School in 1950. That summer she began working at Wells Fargo Bank in San Francisco.

In 1953 she married Allan Slieter. They moved to southern California, then the Sacramento area, Denver, and then Bingham City, Utah.

In 1965 they moved to the farm near Hardwick, and Barb became a farm wife and raised five children there. From 1984 through 1986 she attended school at Minnesota West Community College in Worthington, graduating with a business degree. She went to work for Southwest Minnesota Opportunity Council in 1986 as an outreach worker for



Pipestone County and retired in 1999.

Barb was a member of Zion Lutheran Church in Hardwick since 1965. She played the organ for church services for over 30 years, had been a Sunday school teacher, an officer of the LWML, and was active in other activities. She enjoyed quilting with the group from church, playing cards with friends and family, and especially enjoyed getting together with her family.

Barb is survived by a daughter, Jeanette (James) Rutten, Norfolk; two sons, John (Jean) Slieter, Lincoln, Nebraska, and Randall (Susan) Slieter, Olivia; a daughter-in-law, Janet Slieter, Luverne; 25 grandchildren; 13 great-grandchildren; and a sister, Ann Marie Callahan, Burnt Ranch, California.

Barb was preceded in death by her parents; her husband, Allan; two sons, Robert and Dale; and a grandchild, Alene.

In lieu of flowers, memorials may be sent to Zion Lutheran Quilters, PO Box 36, Hardwick, MN 56134.

Arrangements are through Home for Funerals in Norfolk and Hartquist Funeral Home of Luverne, www.hartquistfuneral.com. (1122 F)

### Isak Rye

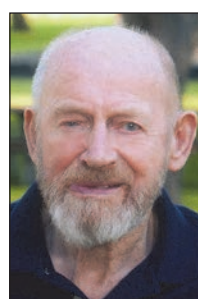
Isak Rye, 92, Luverne, died Thursday, Nov. 16, 2017, at his home surrounded by family.

A funeral service was Tuesday, Nov. 21, at Bethany Lutheran Church in Luverne. Burial followed at Maplewood Cemetery in Luverne.

Isak Rye was born Sept. 4, 1925, to Nils and Bertha (Muus) Rye in Vestre Toten, Norway. He was raised on the family farm in Norway. At the age of 22, Isak immigrated to the United States of America. He arrived in New York on June 21, 1948. He then moved to Luverne to live on the farm with his uncle, Pete Nelson.

In 1958 Isak met his future wife, Irma "Trudy" Kondert, at the YWCA International Friendship Club in Sioux Falls, South Dakota. They were married on July 29, 1961, at Bethany Lutheran Church in Luverne. The couple lived in Luverne until 1969 when they purchased an acreage in Kanaranzi Township in Rock County. In 2000 they moved back to Luverne.

Isak worked at AR Wood Manufacturing from 1950 to 1981. He also enjoyed working for Don Storaker at Storaker Drug while owning and operating his own saw sharpening business, Ike's Saw Sharpening. He worked as a custodian at Luverne Public



Schools from 1982 until retiring in 1992.

During retirement, he and Trudy enjoyed traveling, including trips to Norway, Germany and Canada. Isak was a charter member of Bethany Lutheran Church and a member of Luther League. He was a lifetime member of the Sons of Norway. In his younger years, he enjoyed skiing, photography. He was known for his great wit and good sense of humor.

Isak is survived by his wife, Trudy; a son, Bruce Rye, Luverne; a daughter, Idella Rye (special friend, Terry Hastings), Sioux Falls; four grandchildren, Jessica Rye (special friend, Jeremy Dobernecker), Jason (Crystal) Remme, Brian Remme, and Becky Jo (Curt) Nelson; five great-grandchildren, Alyssa, Dominic, Ayden, Duane, and Ezra; and two brothers, Syver Rye, Boverbru, Norway, and Knut (Karen) Rye, Reinsvoll, Norway.

He was preceded in death by his parents and two siblings, Nils Rye and Ingeborg Paulson.

Arrangements were provided by Hartquist Funeral Home of Luverne, www.hartquistfuneral.com. (1122 F)

### Earleen Hinrichs

Earleen "Lynn" Hinrichs, 65, Ellsworth, died Thursday, Nov. 16, 2017, at the CLA Home in Luverne.

A funeral service was Tuesday, Nov. 21, at Zion Presbyterian Church in Ellsworth. Burial followed at Grand Prairie Cemetery in Ellsworth.

Earleen Skillman was born Nov. 4, 1952, to Raymond and Leona (Stubbe) Skillman in George, Iowa. She attended George school through the eighth grade. She completed half of her ninth grade year and began working at Swalve Produce.

Lynn married Ron Hinrichs on April 1, 1971. Throughout their marriage they lived in various homes in Ellsworth and the surrounding area.

Lynn was a caring and hard-working person, who enjoyed keeping busy. She delivered the Worthington Daily Globe, Sioux Falls Argus Leader, and worked at the Ellsworth Bar, where she was well known as "Poopsy." She also worked at Parkview Manor as a CNA. She most recently worked at RCO in Luverne, where she made a lot of new friends.

Ron and Lynn enjoyed doing lots of things together, especially riding around looking for deer or checking out the crops. She also enjoyed shooting darts, playing bingo, playing cards, baking, hunting, and collecting anything Elvis



and John Deere.

She was a member of Zion Presbyterian Church in Ellsworth. Shortly after Ron's death in 2012, Lynn was unable to stay at her home and after moving a couple times she settled at the CLA 216 home in Luverne, where she made some lifelong friendships.

On Nov. 1, 2017, Lynn was diagnosed with pancreatic cancer.

Lynn is survived by her two children, Jody (Merrily) Hinrichs and Christina (Ray) Palmer, both of Ellsworth; five grandchildren, Jordan (Krystal) Hinrichs, Amber (Spencer) Swanson, Trei Hinrichs, McKenna Hinrichs and Kaci Palmer, all of Ellsworth; three great-grandchildren, Skyla, Logan and Avia; two sisters, Judy (Gary) Meester, Sioux Falls, South Dakota, and Laureen (Norbert Sr.) Fick, Luverne; several nieces, nephews and cousins; and many good friends at CLA 216.

She was preceded in death by her parents; her husband, Ron; her parents-in-law, Jake and Marion Hinrichs; a grandson, Carter Palmer; a step-granddaughter, Elizabeth Palmer; and a brother-in-law, Marvin Hinrichs.

Arrangements were provided by Jurrens Funeral Home of Hills, jurrensfuneralhome.com. (1122 F)

### Minnesota West to award workforce scholarships

Minnesota West Community and Technical College will be participating in the Workforce Development Scholarship Pilot program by awarding twenty \$2,500 scholarships to students who plan to enroll at Minnesota West for the Fall 2018 term.

The 2017 Minnesota Legislature created the Workforce Development Scholarship Pilot to encourage students to enroll in high-demand occupations in areas of advanced manufacturing, agriculture, health care services and information technology programs.

Minnesota West also hopes to enhance the Workforce Development Scholarships by partnering with individuals, organizations, and industries that will benefit from graduates in the targeted programs.

Scholarship recipients will need to complete at least 9 credits per term and maintain a cumulative 2.0 GPA.

Application information is available at [www.mnwest.edu/paying-for-college/scholarships/workforce-development-scholarship](http://www.mnwest.edu/paying-for-college/scholarships/workforce-development-scholarship).

Call 800-658-2330 with questions. Deadline to apply is March 1, 2018, and scholarship recipients will be announced by March 30, 2018.



Submitted photo

### Local students sing in honor choir

Several Luverne students participated in the seventh- and eighth-grade Minnesota State Honor Choir Concert Saturday, Nov. 18, at St. Andrew's Lutheran Church in Mahtomedi. They are (front, from left) Elise Ferrell, Averill Sehr, (back) Ethan Nath, Ross Bergman, Parker Carbonneau, Pierce Cunningham and Ashton Sandbulte. The annual event is organized through the American Choral Directors Association of Minnesota.

## DEATH NOTICES

### Howard De Weerd

Howard De Weerd, 96, Edgerton, died Tuesday, Nov. 14, 2017, at Sanford Luverne Hospice.

A funeral service was Saturday, Nov. 18, at First Christian Reformed Church in Edgerton. Burial followed at Hillside Cemetery in Edgerton.

Arrangements were with Colonial Funeral Chapel in Edgerton, www.edgertonburialassociation.com. (1122 DN)

### Joel Olson

Joel E. Olson, 76, Moore, Oklahoma, formerly of Magnolia, died Tuesday, Nov. 14, 2017, at his home.

A memorial service will take place at a later date at the Dingmann Funeral Home in Luverne.

Arrangements are by Dingmann Funeral Home of Luverne, dingmannandsons.com. (1122 DN)

### Cornie Veldhuisen

Cornie Veldhuisen, 88, Pipestone, died Thursday, Nov. 16, 2017, at the Minnesota Veterans Home in Luverne.

A funeral service was Monday, Nov. 20, at First Presbyterian Church in Pipestone. Burial was in Hillside Cemetery, Edgerton.

Arrangements were by Hartquist Funeral Home, Pipestone Chapel, hartquistfuneral.com. (1122 DN)

The Rock County Star Herald strives to publish obituaries that pay tribute to the lives of the deceased. Our policy is to summarize the education, professional history, places of residence, immediate family, achievements, hobbies and community involvement of your loved one.

Please indicate, when sending an obituary, if you would like it to be placed in the paper as an edited piece according to our newspaper format for \$49 OR if you would like it to run as submitted for \$149. Either choice of obituary includes a photo and will be published in the Rock County Star Herald print edition as well as online at [www.star-herald.com](http://www.star-herald.com).

Death notices will continue to run at no charge.

## MENU

**Monday, Nov. 27:** Beef noodle casserole, green beans, peaches, bread, pudding.  
Program: Pinochle.  
**Tuesday, Nov. 27:** Barbe-

cue pork chops, sweet potatoes, winter blend vegetables, bread, scalloped apples.

Program: 9 a.m. Board Meeting. Two-buck Tuesday sponsored by Exchange State Bank.

**Wednesday, Nov. 27:** Meatloaf with ketchup, au gratin potatoes, creamed corn,

bread, mandarin oranges.

**Thursday, Nov. 30:** Oven-crispy chicken, mashed potatoes with gravy, carrots, bread, poke cake.

**Friday, Dec. 1:** Meaty beef stew with carrots and potatoes, cole slaw, biscuit, cheesecake.

Senior Dining offers well-

balanced and affordable meals in a community atmosphere.

Gift certificates are available at the meal site or online at [www.lssmn.org/nutrition](http://www.lssmn.org/nutrition).

Call Lauree Teunissen at 283-9846 to make dining reservations or for home-delivered meals.



"Locally owned and operated by the Hartquist family."

Wishing you the gift of faith and the blessing of hope this Thanksgiving.

We give a special thanks for friends like you, who placed your trust and confidence in us during this past year of professionally serving families in the Luverne and surrounding communities.

**HARTQUIST**  
Funeral and Cremation Services  
Pipestone • Luverne • Tyler • Lake Benton • Jasper  
[www.HartquistFuneral.com](http://www.HartquistFuneral.com)

Give thanks with a grateful heart.

**Dingmann**  
Funeral Home & Cremation Service

Wishing all of you and your loved ones a Happy Thanksgiving

Worthington 507-372-4250    Adrian 507-483-2761    Wilmont 507-372-4250    Luverne 507-283-4567  
[www.dingmannandsons.com](http://www.dingmannandsons.com)



# Furry companions

## Veterans Home adopts canine sisters Izzie and Thora

By Mavis Fodness

Two golden retriever-Labradors have found a new home at the Minnesota Veterans Home in Luverne.

Sisters Izzie and Thora arrived last month to a reception with residents and staff.

They also passed a poster taped to the glass front doors that read, "The MN Veterans Home will be welcoming 2 new residents on Tuesday, October 24<sup>th</sup>!!! Welcome Izzie and Thora!"

Pictures of the littermates accompanied the welcoming message.

Volunteer services coordinator Duane Mabon made the posters and coordinated the dogs' 600-mile journey.

"These dogs traveled through three states to get here," he said.

The journey started from their home for the past two months in Godfrey, Illinois, to a stopover with Mabon's parents in Waterloo, Iowa, and finally to Luverne.

For months, local Veterans Home staff searched for a perfect canine replacement after the death of their previous golden retriever, Lucky.

"Residents were saddened when Lucky died," Mabon recalled.



Mavis Fodness photos/1109 Vet Home Dogs  
Thora stares attentively at a Minnesota Veterans Home Luverne staff member next to her sister Izzie. The two dogs became the facility's newest companion animals when they arrived Oct. 24.

At right, Thora (left) and Izzie interact with veteran Bill Rosa (seated) last week as his great-granddaughter Hadley Ettesvold of Wahpeton, North Dakota, pets the dogs and granddaughter Sarah Unke of Fairmont snaps a picture. Ten-month-old Parker Ettesvold is also pictured.



The Veterans Home has had a resident dog companion for at least 15 years.

Dogs are donated to provide companionship to the residents, to be friendly greeters to visitors, and to help to calm residents.

Through the years, golden retrievers have proven themselves as the best pals for the residents.

Docile, friendly and intelligent, Mabon said the breed makes them ideal for the 85-bed facility.

"The dogs have always been a welcome addition to the home," he said.

Canines fit into the home's "Eden Alternative" philosophy of creating a home-like environment within the institution.

Many residents recall having pets of their own before their move into the veterans home, Mabon said. Special public events, a bird aviary and an adopt-a-grandparent program at the home are also part of the Eden philosophy.

With invisible fencing around portions of the facility, the resident dogs safely roam around the grounds and through the automatic opening front door.

Izzie and Thora, however, are still leashed until they are introduced to the fencing that uses a static device in a special collar to keep them on the correct side of the buried wire.

They proved to be well behaved on their road trip.

Mabon's parents, Bryce and Ruth Mabon, traveled

from their Waterloo home to Godfrey and the Alton Area Animal Aid Association. The 5A's is a no-kill, non-profit animal shelter.

The shelter received the sisters in August, given up by their family because they couldn't take pets on their move.

According to director Ric Jun, the shelter waived its normal adoption fees (about \$100 per animal) for the veterans.

"It was hard to say 'no,'" said Jun, who is also a veteran. "We are able to do something ... we are normally on the other end."

The shelter relies on donations and its retail store to find homes for the 350 surrendered dogs and cats.

Each animal receives vaccinations and is neutered/

spayed before leaving.

Animals' availability is advertised through their own website and other sites like Petfinder.com, where the Luverne staff found Izzie and Thora's posting.

Jun said most adopters search for one dog; two at a time are harder to place.

"This was just perfect," Jun said about Mabon's call.

"The only expense for this venture was gas, which was covered by a loving and caring individual who has a passion for dogs — Lora Anker," Mabon said.

As Izzie and Thora adjust to a new home in Luverne, Mabon said it won't be long before they are freely roaming the lawn and halls of the veterans home.

"Like our other dogs, they will be spoiled," he said.

24/7 ... Rain or Shine ...

Your local, independent agent will be there.

Working for you-meeting your needs.



Buffalo Ridge INSURANCE

South Hwy. 75, Luverne, MN • Ph. 507-283-2381

Auto-Owners INSURANCE

LIFE • HOME • CAR • BUSINESS



# Winter Break Courses

December 26 - January 4

EARN 3 CREDITS IN SEVEN DAYS!



# REGISTER NOW!

## Spring Semester

Registration is now open!  
Classes begin January 8, 2018.



www.mnwest.edu  
800-658-2330  
@minnesotawest



A member of Minnesota State.  
An Affirmative Action Equal Opportunity Educator/Employer.

# PICK YOUR PACKAGE

	CHOICE 60 ENTERTAINMENT	XSTREAM 100 SILVER
230+ TV and music channels	✓ with FREE HD	✓ with FREE HD
17,000+ FREE On Demand titles	✓	✓
Internet download speeds	UP TO 60 Mbps <sup>1</sup> with In-Home Wi-Fi	UP TO 100 Mbps <sup>2</sup> Matching Wi-Fi up to 100 Mbps
TiVo <sup>®</sup> DVR service	✓	✓ 1,000 <sup>+</sup> TiVo <sup>®</sup> DVR recording hours
TV on the go with TV Everywhere <sup>®</sup>	✓	✓
Digital Phone	✓	✓
30 minutes of International calling <sup>1</sup>	✓	✓



NOW SAVE 50% OFF  
TV, Internet & Phone  
**\$26<sup>67</sup>\***  
each service / mo. for one year when bundled  
Plus activation, installation, modem rental, sports and broadcast surcharges, taxes and fees

NOW SAVE 44% OFF  
TV, Internet & Phone  
**\$33<sup>33</sup>\***  
each service / mo. for one year when bundled  
Plus activation, installation, modem rental, sports and broadcast surcharges, taxes and fees

SWITCHING FROM A SATELLITE TV OR ANOTHER INTERNET PROVIDER? You may qualify for an additional savings of \$25 per month! Call for more details.

Mediacom

855-803-7466

\*Choice 60 Entertainment Pricing: Monthly bundled price is \$79.98 for one year and thereafter increases by \$20 each year until the fourth year, when each service will begin to be billed at its standard rate (currently \$159.98 for all three services). Xstream 100 Silver Pricing: Monthly bundled price is \$99.98 for one year and thereafter increases by \$20 each year until the fourth year, when each service will begin to be billed at its standard rate (currently \$179.98 for all three services). All Packages: If you cancel any of the three services in the package during the first year, standard rates will be charged for any continuing services. Package prices do not include standard installation fee (\$99.99; more if special work is needed); a one-time \$10 activation fee; or other one-time fees that may apply because of options you select. Prices also do not include the following recurring monthly charges: (i) modem fee, currently \$10; (ii) a surcharge for regional sports networks, currently up to \$4.57, depending on your location; (iii) a surcharge for local broadcast stations, currently up to \$11.94, depending on your location; (iv) taxes, franchise fees and other amounts required by law to be collected or paid; or (v) fees for optional services or equipment you may want. All of these monthly charges may increase from time to time. After the first year, if our standard rate for any service in your package that is not free increases or we institute a new fee for service subscribers generally, we can pass that increase or new fee along to you. <sup>1</sup>Internet Service Usage Allowance & Speeds: Internet 60 is subject to a usage allowance of 400 gigabytes per monthly billing period. Internet 100 is subject to a usage allowance of 1,000 gigabytes per monthly billing period. Excess usage will be billed at \$10 for every increment of up to 50 additional gigabytes used. For example, if usage exceeded the allowance by 51 gigabytes, the additional charge would be \$20. Usage allowances and excess usage charges are subject to change at any time. Download and upload speeds are not guaranteed and may vary. Offer Availability: Offers expire on date stated above and may be terminated any time without notice. Offers may not be available in all areas, cannot be combined with any other offer, are not transferable and are void where prohibited. Available only to residential customers who have not subscribed to any other Mediacom service within the prior 90 days and meet applicable credit and other requirements. Customer must agree to all applicable subscriber terms and policies. Other terms and conditions may apply. <sup>2</sup>WorldTalk 30: 30 minutes a month of international calling only available to customers who don't subscribe to WorldTalk service. M737-32607 Competitive Print Update



## Girls take two of three games to open season

By John Rittenhouse

The Luverne girls' hockey team won two of three games during a stretch of taking the ice three times in five days to open the 2017-18 season.

The Cardinals rolled to a three-goal win over Alberta Lead during their home and season debut Nov. 14.

Luverne lost a two-goal game in Litchfield Friday before bouncing back to best Prairie Center by two goals Saturday in Long Prairie.

The 2-1 Cards entertain New Ulm for their conference debut Tuesday (Nov. 21) before hosting St. Peter-Le Sueur-Henderson-Tri-City United Saturday.

### Luverne 5, PC 2

The Cardinals had to erase an early deficit to secure their second win of the season Saturday in Long Prairie.

The Prairie Center Blue Devils sported a 1-0 lead early in the contest, but LHS netted five of the final seven goals of the game to pull out a victory.

Trailing 1-0 after a first period that included a short-handed tally by PC's Kylee Hopp, LHS scored twice in the first 6:40 of the second period to gain a 2-1 advantage.

Kamryn Van Batavia knotted the score at one with a power-play goal 5:40 into the second stanza before Regan Feit gave the Cards a one-goal lead exactly one minute later.

PC battled back to knot the score at two when Lupita Mora registered a power-play goal with 7:26 remaining in the second period, but the Cards scored twice in the final 3:26 of the period to take a 4-2 lead into the third period.

Claire Baustian snapped the deadlock with 3:26 remaining and Feit made it a two-goal difference with a power-play

tally with one minute left in the period.

Regan gave the Cards a 5-2 lead when she scored 5:47 into the third period.

PC capped the scoring in the game when Reece Ritter recorded a goal with 9:13 left to play.

Luverne, which was outshot 35-25 in the contest, received one assist each from Shelby Kracht, Rozilyn Oye, Van Batavia, Lexi Henrichs and Feit.

Emilie Bartels saved 32 of the 35 shots she faced in goal for the Cardinals.

### L-D-C 2, Luverne 0

The Cardinals fell from hockey's unbeaten ranks during their first road test of the year Friday in Litchfield.

In what was the first of two road games over the weekend, the Cardinals came up on the short end of a two-goal decision against the Litchfield-Dassel-Cokato Dragons.

Goals came at a minimum during the contest.

The Dragons opened the scoring early in the contest and added a goal late in the third period to complete their victory.

Alyssa Olson gave L-D-C a 1-0 cushion 1:42 into the game.

Olson's tally was an unassisted effort.

The score remained 1-0 until 2:25 remained in the game, when the Dragons registered their second goal.

Delaney Keaveny netted the final tally after being set up by Courtney Carlson.

L-D-C sported a 28-17 advantage in shots on goal in the contest.

Emilie Bartels made 26 saves in net for the Cardinals.

### Luverne 4, AL 1

The Cardinal girls got off to a strong start to the season by



John Rittenhouse photo/1122 lgh 4

Luverne sophomore Claire Baustian clears the puck out of the defensive zone during a 4-1 win over Albert Lea Nov. 14.

skating to a three-goal win over Albert Lea Nov. 14 at the Blue Mound Ice Arena.

The score was knotted at one after the first period of play, but the rest of the night belonged to LHS eighth-grader Regan Bork.

Playing in her first varsity game, Bork snapped the deadlock by netting a pair

of second-period goals and finished the night with a hat trick after producing the lone goal of the third period.

Bork started her big night at the 11:56 mark of the second period, when she lifted a wrist shot into the net to break the deadlock at one.

Lexi Henrichs and Claire Baustian received assists for

the goal.

Bork upped the lead to 3-1 with an unassisted tally that came with 6:14 remaining in the second stanza.

She completed her hat trick with another unassisted goal that came with 2:59 left in the game.

Luverne took a 1-0 lead 7:26 into the first period when

Regan Feit netted a power-play goal after being set up by Henrichs.

The Tigers tied the game with 4:27 remaining in the stanza when Katie Steven recorded AL's lone goal of the night.

Emilie Bartels made 20 saves in goal for an LHS squad that sported a 23-21 edge in shots on goal during the contest.



Farrell



Schmuck

## Cardinals grace BSC list

By John Rittenhouse

Two Luverne High School seniors received postseason honors from Big South Conference officials last week.

One Cardinal player made the 2017 All-Big South Conference Western Division Volleyball Team and another LHS athlete drew honorable mention from the league's coaches.

Middle hitter Lexi Farrell landed one of 12 positions on the all-league squad.

Setter Sierra Schmuck is one of six players to receive honorable mention from the coaches.

Marshall, champion of the BSC, led all teams by securing four all-league selections.

Senior Whitney Schwartz, junior Erica Jones and sophomores Paige Andries and Mia Schnaible are the Tigers on the

all-conference squad.

Windom and Jackson County Central collected three and two all-conference selections respectively.

Seniors Porsha Porath and Emily Steen and junior Becca Hacker grace the list for Windom.

Senior Lauren Murphy and sophomore Alaina Wolff made the team for the Huskies.

Pipestone senior Shelby Bloemendaal and Worthington senior Anneke Weg round out the all-conference squad.

Other players drawing honorable mention include Pipestone seniors Logan Winter and MacKenzie Haroldson, Marshall senior Kaylee Gossen, JCC senior Tiara Menke and Redwood Valley freshman Sydney Sommers.

## Luverne's Chaz Smedsrud is pursuing hockey dream in tiny Canadian town

The place he calls home for six months out of the year may have changed, but the goal remains the same for 2016 Luverne High School graduate Chaz Smedsrud.



A standout player for the LHS boys' hockey program during his high school days, Smedsrud always harbored a dream of playing college hockey at the Division 1 level.

Living his dream has eluded Smedsrud to this point, but his quest to make it a reality continues at a tiny town in Canada.

Smedsrud is in the middle of his second season as a member of the Notre Dame Hounds, a team that is a member of the Saskatchewan Junior Hockey League based in tiny Wilcox.

The hamlet, which has a population of less than 400 residents, is roughly the size of Magnolia.

What Wilcox does have is Athol Murray College of Norte Dame, where Smedsrud attends classes and plays home hockey games in a 1,200-seat rink more than twice the size of the town.

There are times when the arena accommodates fewer than 120 fans for Hounds' home games, but it's the focal point of Smedsrud's life right now and he seems to be comfortable in his surroundings.

"I'm loving this," he exclaimed. "I'm playing hockey every day. It's not a job, but it's kind of like having a job. We just don't get paid for playing."

### FROM THE SIDELINES

By John Rittenhouse, sports editor

Smedsrud made the trek to his second stint in Wilcox back in late August.

Training camp for the upcoming season began on Aug. 30, and Smedsrud has been there ever since.

He wouldn't want to miss any potential day of preparation to get ready to play a demanding schedule against some top-notch competition.

"I'm starting to get used to it now," he said.

"The pace of the game is a lot quicker than it was in high school, and you face tough competition every game. As for the climate, it's always super cold and windy at this time of year. It might be hard for some of you to believe, but it's a lot windier here than it is in Southwest Minnesota. It's icy all the time, too. One of the things I like about life here is the people are all really nice."

One of the biggest challenges he's faced in his two seasons in Wilcox is adjusting to a hectic schedule.

The typical day starts with a 10 a.m. practice followed by lunch at 11:30. After a short break, the players return to the arena for a short workout or stretching exercises, which are determined if there is a game at night.

The team studies film at 3:30 p.m., and if there is no game to follow, Smedsrud attends an anatomy class in the evening.

"We are in a 12-team league and our game

schedule varies," he said. "We can play up to four games each week and as few as one game in a week. There are 58 games in the regular season, which is followed by playoffs. Depending on how a team does, they could play more than 20 or more playoff games."

Considering the most games Smedsrud played in a single high school season was 31, junior hockey is much more of a grind.

It also can challenge players in other ways. "In my first year of junior hockey, I didn't get much playing time right away," Smedsrud recalled.

"Then January came around and I got put on a line, and we just started to blow things up."

Once he got his chance to play last season, he cashed in on the opportunity.

He ended up producing 33 points in 45 games, scoring 15 goals and registering 18 assists for a Hounds team that won one playoff series before being eliminated in the next round.

Based on his on-ice production to date this season, it's safe to say Smedsrud no longer is adjusting to his current surroundings.

He is thriving in them. After netting a goal during a 5-1 win over the Battlefords North Stars last Wednesday (Nov. 15), he already has registered

30 points in the first 21 games of the season.

He has 16 goals and 14 assists for a team that has a 12-5-1-3 record.

Smedsrud's 30-point effort leads the Hounds in scoring and leaves him third overall on the league's scoring list. "I've been clicking this year," he admitted.

"I just think I'm more comfortable with the pace of play. It also helps to be more acclimated to the routine and everything else."

If Smedsrud continues to produce points at the level he is now, it could give him an opportunity to live his dream.

Although no college coaches have addressed him directly, Smedsrud said they have been talking to his coach about him.

That is promising news for an athlete who would like to study engineering while playing hockey at a Division 1 school.

"I really would like to go to Mankato, and Northern Michigan would be a nice place to go because I really like the coach there," he said.

"I would go to any Division 1 school that wanted me to play."

If that offer doesn't come at the end of this season, Smedsrud does have one more year of eligibility to play junior hockey.

In that case, the dream would remain in place.

### SPORTS BRIEF

#### Coach named

A Luverne High School coach drew an honor from his peers late in the cross country season.

Pete Janiszewski, a longtime leader of the LHS cross country program, was named the Sec-

tion 3A Girls' Cross Country Coach of the Year.

Janiszewski's team won the Section 3A title for the third consecutive season and placed sixth at the state meet this season.

### BOWLING NEWS

**Thursday Bowling National League Nov. 16**  
Games won: Rock Stars 3; Those Girls 2; Those Guys 2; The Troublemakers 2; The Real Guys 2; The Stooges 1.  
High Scratch Game Men: Dave Nelson 241; Zach Runia 203.  
High Scratch Game Women: Kathy Matson 168; Marie Opheim 139.  
High Scratch Series Men: Zach Runia 547; Dave Nelson 545.

High Scratch Series Women: Kathy Matson 459; Marie Opheim 390.  
Team High Scratch Game: The Troublemakers 534; The Real Guys 525.  
Team High Scratch Series: The Troublemakers 1444; The Real Guys 1422.  
Team High Handicap Game: The Troublemakers 654; Those Guys 642.  
Team High Handicap Series: The Troublemakers 1804; Those Girls 1790.



# Star Herald CHURCH

Page 2B November 22, 2017

**St. Catherine Catholic Church**  
203 E. Brown St., Luverne  
St. Catherine Ph.: 283-8502; email: stcatherine@iw.net  
**St. Mary Catholic Church, Ellsworth**  
Saturday, Nov. 25: 5:30 p.m. Mass at St. Catherine. Sunday, Nov. 26: 8:30 a.m. Mass at St. Mary. 10:30 a.m. Mass at St. Catherine; Sunday School and CLW. Tuesday, Nov. 28: 7:30 p.m. St. Catherine Knights of Columbus. Wednesday, Nov. 29: 3:30 and 7 p.m. Faith Formation. Thursday, Nov. 30: 9 a.m. Head Start. 1-4 p.m. Fun Day.

**Luverne Christian Reformed Church**  
605 N. Estey St., Luverne  
Office Ph. 283-8482; Prayer Line Ph. 449-5982  
www.luvernrcr.com — luvernrcr@gmail.com  
Roger Sparks, Pastor

**First Baptist Church**  
1033 N. Jackson St., P.O. Box 975, Luverne  
Ph. 283-4091; email: fbcluv@iw.net — www.fbcluverne.org  
Walt Moser, Pastor  
Thursday, Nov. 23: 7 p.m. Worship service on Channel 3. Sunday, Nov. 26: 9:15 a.m. Sunday School. 10:30 a.m. Morning Service. Noon: Decorate FBC for Christmas. 6 p.m. Evening service. Tuesday Nov. 28: 7 a.m. Men's Bible Study at First Baptist Church. Wednesday, Nov. 29: 6:30 p.m. Awana. Thursday, Nov. 30: 6 a.m. Men's Bible Study. 7 p.m. Worship service on Channel 3.

**Grace Lutheran Church**  
500 N. Kniss Ave., Luverne  
Ph. 507-283-4431; www.graceluverne.org — graceluverne@iw.net  
Ron Nichols, Pastor; Stephen Hilding, Associate Pastor  
Friday, Nov. 24: 6:30 p.m. Worship on Channel 3. Saturday, Nov. 25: 5:30 p.m. Worship. Sunday, Nov. 26: 8:15 a.m. Radio broadcast. 9 a.m. Worship followed by Annual Meeting. Fellowship, coffee following meeting. 10 a.m. Grades 1-5 Christmas practice. Monday, Nov. 27: 4:30 p.m. Worship on Channel 3. 5:45 p.m. Echoes of Harmony rehearsal. Tuesday, Nov. 28: 7 a.m. Dorcas Circle at The Bean. 9 a.m. Staff meeting; Grace Notes assembly. 1:30 p.m. Worship at Mary Jane Brown Home. 2:30 p.m. Worship at Poplar Creek. 4 p.m. Worship at Veterans Home. 7 p.m. Mary/Martha Circle. Wednesday, Nov. 29: 7 a.m. Men's Bible Study. 3:15 p.m. Faithweavers. 5:30 p.m. Youth Supper. 6 p.m. Woven Worship. 7 p.m. Confirmation grades 6-9; Chancel Choir rehearsal. Thursday, Nov. 30: 8:30 a.m. Missions in Action.

**Bethany Lutheran Church**  
720 N. Kniss Ave., Luverne  
Ph. 507-283-4571 or 507-449-0291 or 605-215-9834  
pastorapalmquist67@yahoo.com  
Andrew Palmquist, Pastor  
Sunday, Nov. 26: 9 a.m. Sunday School. 9:15 a.m. Bible Class. 10:15 a.m. Worship with Communion. Wednesday, Nov. 29: 3:30 p.m. Catechism Class.

**American Reformed Church**  
304 N. Fairview Dr., Luverne  
Ph. 283-8600; email: office@arcluverne.org  
Mike Aitena, Pastor  
Friday, Nov. 24: 6:30 a.m. Community Men's Bible Study. 4 p.m. REFIT Fitness Class; Commons reserved. Sunday, Nov. 26: 9:30 a.m. Worship Service. 10:50 a.m. Family Education. Noon Commons reserved. 1:30 Service at Mary Jane Brown Home. 2:15 p.m. Service at Poplar Creek. Tuesday, Nov. 28: 10 a.m. Staff meeting. 6:45 p.m. Bible Study Fellowship. Wednesday, Nov. 29: 4:30 p.m. REFIT Fitness Class. 5:30 p.m. Midweek meal. 6:30 p.m. Pioneer Clubs/YEL. 6:45 p.m. Rachel Circle. 7 p.m. Magnify Praise Team. 8 p.m. Adult Choir. Thursday, Nov. 30: 5:30 p.m. Tumbling Tikes.

**First Assembly of God Church**  
1075 110<sup>th</sup> Ave., 2 miles west of Luverne on County Rd. 4  
Sundays: 9 a.m. Sunday School. 10 a.m. Morning Worship. 6:30 p.m. School of the Holy Spirit. Wednesdays: 7 p.m. Kids Connection; Men's Bible Study with Pastor Ken; Women's Bible Study with Pastor Gloria.

**United Methodist Church**  
109 N. Freeman Ave., Luverne  
Ph. 283-4529; email: luverneumc@iw.net  
Dorie Hall, Pastor  
Saturday, Nov. 25: 8 p.m. AA Meeting. Sunday, Nov. 26: 9 a.m. Traditional Service. 10 a.m. Coffee Hour and Adult Sunday School. 11 a.m. Come as You Are Service. 4:30 p.m. Genesis/Revelation Bible Study. No ALIVE Youth Group. Monday, Nov. 27: 8 p.m. AA Meeting. Tuesday, Nov. 28: 9 a.m. Folding team. 9:30 a.m. Sanctuary Care Meeting — Christmas decorations. Wednesday, Nov. 29: 6:30 p.m. FUEL and Confirmation. 8 p.m. AA meeting. Thursday, Nov. 30: 1-3 p.m. Rock County Food Shelf.

**First Presbyterian Church**  
302 Central Lane, Luverne  
Ph. 283-4787; email: Firstpc@iw.net — www.fpcluverne.com  
Sunday, Nov. 26: 9 a.m. Sunday school. 10:15 a.m. Worship. 11:15 a.m. Coffee and fellowship; Deacons. Monday, Nov. 27: 9 a.m. -noon Quilting. Tuesday, Nov. 28: 10 a.m. and 6 p.m. Worship service on Channel 3. Home Communion. 7 p.m. Esther Circle. Wednesday, Nov. 29: 3:15 p.m. Youth Club. 6 p.m. Bells. 6:10 p.m. Confirmation. 7 p.m. Choir; Worship Committee; Decorating. Thursday, Nov. 30: 10 a.m. Worship service on Channel 3.

**First Lutheran Church**  
300 Maple St., Valley Springs, S.D.  
Ph. (605) 757-6662  
Intern Pastor Laura Phillips  
Sunday, Nov. 26: 9:30 a.m. Sunday School. 10:30 a.m. Worship Service. Wednesday, Nov. 29: 7 p.m. Confirmation.

**St. John Lutheran Church**  
803 N. Cedar St., Luverne  
Ph. 283-2316, Dial-A-Devotion Ph. 283-4005  
email: stjoh@iw.net — www.stjohnlutheranluverne.org  
Gary Klatt, Pastor  
Saturday, Nov. 25: 5:30 p.m. Worship. Sunday, Nov. 26: 9 a.m. Worship. 10:15 a.m. Christian Education Hour. 11:15 a.m. Junior Choir. 1:30 p.m. Worship at Mary Jane Brown Home. 2:15 p.m. Worship at Poplar Creek. Wednesday, Nov. 29: 9 a.m. and 1 p.m. Little Lambs Devotions. 9:30 a.m. Bible Study. 10:30 a.m. Assemble newsletter. 6 p.m. youth dinner. 6:30 p.m. Catechism. 7 p.m. High School Bible Study; KFC; Senior Choir. 8 p.m. Youth Board. Thursday, Nov. 30: 9 a.m. Little Lambs devotions. 11:30 a.m. Mary Jane Brown Home devotions by Jessica.

**Living Rock Church**  
500 E. Main St., Luverne  
Ph. 449-0057; www.livingrockswmn.org  
Billy Skaggs, Pastor  
Sundays: 10:30 a.m. Worship; Kids Rock Children's Ministry. 6 p.m. Youth Ministry. Life groups meet throughout the week.

**New Life Celebration Church**  
110 N. Oakley, Luverne  
Ph. 449-6522; email: newlifecel@iw.net  
Sundays: 9:30 a.m. Worship at 110 N. Oakley. Every third Thursday: 5 p.m. Food give-away at Senior Citizens Center. Bible Study groups meet at various times and days.

**Zion Evangelical Lutheran Church**  
305 E. 2<sup>nd</sup> St., P.O. Box 36, Hardwick  
Ph. 669-2855; email: www.zionlutheranhardwick.com  
Thursday, Nov. 23: 3:30 p.m. Worship service on Channel 3. Friday, Nov. 24: 3:30 p.m. Worship service on Channel 3. Sunday, Nov. 26: 9 a.m. Sunday School/Adult Bible Study. 10 a.m. Mentor Program. 10:30 a.m. Worship Service with Communion. 11:30 a.m. Youth Group meets to decorate for Christmas. Monday, Nov. 27: 1 p.m. Quilting. Tuesday, Nov. 28: 7 p.m. Women's Bible Study at church. Wednesday, Nov. 29: 6 p.m. Confirmation at St. John. Thursday, Nov. 30: 3:30 p.m. Worship service on Channel 3.

**Ben Clare United Methodist Church**  
26762 Ben Clare Ave., Valley Springs, S.D.  
igtwb@WOW.net  
Bill Bates, Pastor  
Sundays: 9 a.m. Worship; 10 a.m. Fellowship; 10:30 a.m. Sunday School for all ages.

**Palisade Lutheran Church**  
211 121<sup>st</sup> St., Garretson, S.D.  
Ph. (507) 597-6257 — firstpalisade@alliancecom.net  
Intern Pastor Laura Phillips  
Sunday, Nov. 26: 9 a.m. Worship service. 10 a.m. Sunday School. Wednesday, Nov. 29: 7 p.m. Confirmation at First Lutheran.

**First Presbyterian Church**  
201 S. 3<sup>rd</sup> St., P.O. Box 73, Beaver Creek  
Ph. 507-935-5025  
Email: lori.firstpres@gmail.com  
Worship Leader Michael Blank  
Sundays: 9:30 a.m. Morning Worship. 10:30 a.m. Sunday School.

**Magnolia United Methodist Church**  
501 E. Luverne St., Magnolia  
Church Ph. 507-483-2492; cell 227-7821; email: adrmagumc@gmail.com  
www.facebook.com/adrianmagnoliaumc  
Kristi Franken, Pastor  
Sunday, Nov. 26: 9 a.m. Magnolia Worship Service with Sunday School following service. 10:30 a.m. Adrian Worship Service. 4 p.m. DVD study "The Promised Land" at Magnolia. Wednesdays: 6:30 p.m. Confirmation at Magnolia UMC.

**Steen Reformed Church**  
112 W. Church Ave., Steen  
Ph. 855-2336  
Jeremy Wiersema, Pastor  
Sundays: 9:30 a.m. Worship; service broadcast on KQAD. 10:45 a.m. Sunday School. 6 p.m. Youth Group. Evening worship at 6 p.m. first and third Sundays. Wednesdays: 7 p.m. Midweek.

**Bethlehem Lutheran Church**  
Pastor Maggie Berndt-Dreyer  
112 N. Main St., Hills  
Ph. 962-3270  
e-mail: bethlehmluth@alliancecom.net  
Sunday, Nov. 26: 9 a.m. Worship at Tuff Chapel. 9:30 a.m. Reading the Bible. No Sunday School. 10:30 a.m. Worship at Bethlehem. Tuesday, Nov. 28: 2:30 p.m. Bible Study at Tuff Home. 3:15 p.m. Bible Study at the Village. Wednesday, Nov. 29: 9 a.m. Quilting. 7 p.m. Confirmation Grades 8-9.

**Hills United Reformed Church**  
410 S. Central Ave., Hills  
Office Ph. 962-3254  
hillsurc@alliancecom.net  
Alan Camarigg, Pastor  
Sundays: 9:30 a.m. and 6 p.m. Worship Services.

## Miracle of Thanksgiving

Several years ago our Thanksgiving celebration was in trouble! With no money to afford even a small turkey, we were determined as a family to enjoy one another and express grateful hearts no matter what we had on the table. As a father it broke my heart for my children to experience want, but as a father I viewed it as a teaching time for my kids to learn about the miracle of thanksgiving.

Through giving thanks in difficult circumstances, we were learning to apply lessons in thanksgiving modeled by Jesus Christ. How can we express genuine thanks in the face of overwhelming needs?

**1. Do not panic.**  
When Jesus noticed a huge crowd coming toward Him, He asked Philip, "Where will we buy bread so these people can eat?" (John 6:5)

Quite suddenly Jesus and the disciples were confronted with an overwhelming need. Jesus did not respond as if something terrible or unusual has happened. He does not panic. We will always have needs. It is the nature of being human. We were not created to be self-sufficient. Needs are a normal part of life.

The fact that some needs surprise us does not mean that God is surprised. Our Father is well aware of our needs. All of them. All the time.

**2. Throw away your safety nets.**  
Jesus asked Philip where they were going to get the food to feed the huge crowd. Jesus was conscious of the need and already had a supernatural solution in mind but was calling it to Philip's attention. It was a test.

Needs will show you in whom or what you are really trusting. They serve a purpose. Jesus was really testing Philip to see where he would run when confronted with a need so great that no human safety net would work.

Your Father in heaven is calling you to live without safety nets. No matter how great the need, He desires that you run and call upon Him. Your needs are designed to draw your heart into greater dependence upon your Father, and not upon yourself or your resources.

**3. Keep your eye on the Lord.**  
Philip answered, "Two hundred denarii worth of bread wouldn't be enough

## BUILT ON A ROCK

By Don Pucik,  
Associate Executive  
Director of the  
Arkansas Baptist  
Convention

for each of them to have a little." One of His disciples, Andrew, Simon Peter's brother, said to Him, "There's a boy here who has five barley loaves and two fish — but what are they for so many?" (John 7:7-9)

Philip ran to his personal ability to feed the crowd. His calculations were flawless but his formula was flawed. He left God out of the equation.

Andrew looked at what was immediately available as a solution. The small lunch was a feast for the boy, but it could not begin to eliminate the need confronting the disciples.

We can seek God and call upon Him, believing in our hearts that He is an incredibly gracious and generous Father.

**4. Choose to thank God for all things.**

Jesus had the 5,000 people sit down, took the loaves, and after giving thanks He and his disciples distributed them along with the fish.

Jesus took the resources the disciples had — which were inadequate — and gave thanks to God. Two miracles resulted. There was the miracle of the inadequate becoming more than adequate. Everyone ate as much as they wanted! And there was the miracle of understanding. The disciples never forgot what they had witnessed.

During that Thanksgiving several years ago, I had no alternative: we had to face the need together. We prayed and thanked God for His care, determined to honor the Lord as a gracious, loving Father, no matter what needs we faced.

Shortly before Thanksgiving Day a friend arrived on our doorstep offering our family a turkey. It was an extra one they had received from his wife's employer. Unaware of our need, that friend was really an instrument of God.

The unexpected arrival of that turkey impressed our children with the importance of maintaining a grateful spirit in the face of needs. We experienced the miracle of thanksgiving!

These Weekly Church  
Page Messages are  
contributed to God's  
Work through the  
Church and by these  
concerned and  
responsible citizens  
& businesses:

Call Rick or Chantel to  
place your ad!

283-2333

Tuff Memorial Home,  
Retirement Apartments  
& Tuff Village  
"A Home Where Residents SMILE"  
Hills, Minnesota  
Phone 507-962-3275

Papik  
MOTOR OIL  
LUVERNE, MINN.

I-90 in Luverne, MN  
507-283-9171 • 1-800-634-7701

Read us online!

Rock County  
STAR HERALD  
www.Star-Herald.com

Trust In Him



110 E. Main,  
Luverne, MN  
Phone 507-283-2379

MANLEY  
TIRE & OIL SERVICE  
Manley Minnesota  
1-800-615-3704  
Open six days a week - Closed on Sundays  
To God be the Glory.

CWG  
Business Insurance.  
Tri-State Region Period!

Rock County  
STAR HERALD  
Luverne, MN • 507-283-2333

Advertise  
Here

Luverne  
ANNOUNCER

To Advertise  
Call  
283-2333

Buffalo Ridge  
INSURANCE  
507-283-2381 www.buffaloridgeins.com E-mail: info@buffaloridgeins.com

McClure Electric  
Alan M. Aanenson, owner  
Farm, Home & Commercial Wiring  
Luverne, MN Phone 507-283-4716

First Farmers & Merchants  
303 E. Main, Luverne, MN  
507-283-4463  
www.fmbank.com  
We believe in you.  
Member FDIC. And the community.

HILLS STAINLESS STEEL  
& EQUIPMENT CO., INC.  
506 W. Koehn, P.O. Box 987, Luverne, MN  
PHONE 507-283-4405  
Church is Important - Please Attend!

MINNWEST  
BANK  
• 116 E. Main St., Luverne 507-283-2366  
• S. Hwy. 75, Luverne 507-283-9131  
• Main St., Beaver Creek 507-673-2333  
Member FDIC www.minnwestbank.com

HARTQUIST  
Funeral and Cremation Services  
- ENGBRETSON CHAPEL -  
507-283-2777  
www.HartquistFuneral.com  
"Let our family help your family"  
Serving the Luverne and Surrounding Communities

Tollefson Publishing  
117 W. Main  
Luverne, MN 56156  
507-283-2333



## City of Magnolia adopts Ordinance No. 31

ORDINANCE NO. 31  
ADMINISTRATION ENFORCEMENT PROGRAM

SECTION 31.01. ADMINISTRATIVE CITATIONS AND CIVIL PENALTIES. Sections 31.01 through 31.07 govern administrative citations and civil penalties for violations of the City Code.

Section 31.02. VIOLATION. City of Magnolia Code provides that any person, firm, corporation or other group found to be in violation of any ordinance or law of the City, as defined in this section, shall be deemed to be guilty of a misdemeanor. Every day any violation of the Municipal Code or any other ordinance continues shall constitute a separate offense. Ant condition caused or permitted to exist in violation of the Code or any ordinance is deemed to be a public nuisance and may be summarily abated as such.

Section 31.03. APPLICABILITY OF ORDINANCE. The Administrative Enforcement Program shall apply only to the following provisions of the Municipal Code of the City of Magnolia:

Building Regulations  
Streets and Sidewalks  
Parking Regulations  
Unlawful Deposit of Garbage, Litter and the Like  
Animals and Fowl  
Shade Tree Disease and Prevention  
Open Burning of Leaves  
Nuisances  
Land Use (Zoning) Regulations  
Water Hook-up (fees only)  
Curfew  
Animal Licensing  
ATV

### SECTION 31.04. GENERAL PROVISIONS

Subd. 1. Administrative Offense. A violation of any provision of the city code note in Section 31.03 is an administrative offense that may be subject to an administrative citation and civil penalties. Each day a violation exists shall constitute a separate offense.

Subd. 2. Code Compliance Officer. The Mayor, City Council in conjunction with the Rock County Sheriff's Office will serve as compliance officers.

Subd. 3 Exemption. Alcohol and tobacco license violations are not subject to administrative citation under this ordinance.

Subd. 4. Civil Penalty. Any violation for which an Administrative Citation shall be issued pursuant to the Chapter may be subject to a civil penalty not to exceed the maximum penalty for a misdemeanor violation under state law.

Subd. 5. Schedule of Fines and Fees. The standard fine for a violation under this Chapter shall be one hundred dollars (\$100.00) per offense per day plus seventy five dollars (\$75.00) assessment of costs. The City Council shall annually review the schedule of fines and fees and may amend or modify by resolution the schedule of the fines and fees for offenses initiated by administrative citation.

/s/ Glenda Schomacker,  
City Clerk  
/s/ Dennis Madison  
Mayor

Adopted: January 1, 2018.

To view the complete document, visit the Magnolia City Office.

(11-22)

## LPRW assessment hearing Dec. 27

STATE OF MINNESOTA  
COUNTY OF LYON

IN DISTRICT COURT  
Fifth Judicial District  
Subject Matter: 14 Other Civil  
Court File No. 42-CV-06-1150  
Judge Leland Bush

In the Matter of  
LINCOLN PIPESTONE RURAL WATER SYSTEM

Petitioner  
TO WHOM IT MAY CONCERN:

### NOTICE OF ASSESSMENT HEARING FOR LINCOLN PIPESTONE RURAL WATER SYSTEM

Notice is hereby given that Lincoln Pipestone Rural Water System ("LPRW") has filed a Petition at the Lyon County, Minnesota District Court, which requests that the real estate owned by all individuals and businesses who connected LPRW in 2017, and who have not fully paid for their connection to LPRW, be assessed for all remaining costs to connect to LPRW.

A hearing on this Petition is going to occur in the courtroom at the Lyon County Government Center, which is located at 607 West Main Street, Marshall, Minnesota 56258 on December 27, 2017 at 1:30 p.m.

Written or oral objections will be considered at the hearing.

The proposed assessment rolls are on file with the County Auditors of Jackson County, Lincoln County, Lyon County, Nobles County, Pipestone County, Redwood County, Rock County, and Yellow Medicine County.

The area proposed to be assessed consists of every parcel of land benefited by the connection to LPRW, and which was previously petitioned for improvement by the owners of said parcel of land.

The assessments will be made without regard to acreage or frontage on the water mains or branches of the water system. No assessment will be made upon land, which has not been made the subject of a petition or has not been designated and requested to be served by the owner.

Dated: November 13, 2017

Karen Bierman  
District Court Administrator  
Tammy Horner  
Deputy Court Administrator

Ronald J. Schramel  
Attorney for Lincoln Pipestone Rural Water  
Atty. Reg. No. 254757  
Schramel Law Office  
910 Fourth Avenue - PO Box 505  
Windom, MN 56101  
P - 507-831-1301  
F - 507-831-42003

(11-22)

## City of Luverne adopts Ordinance No. 360

ORDINANCE NO. 360, THIRD SERIES  
AN ORDINANCE AUTHORIZING CONVEYANCE OF REAL ESTATE  
(A TRACT IN THE E. 150' OF LOT 15, BLOCK 4, RANDALL AND HOLBERT'S  
ADDITION TO THE CITY OF LUVERNE, MN)

THE CITY OF LUVERNE DOES HEREBY ORDAIN:

SECTION 1. Pursuant to City Charter, Section 12.05, the City Council is authorized to sell or convey the following described real estate located in the City of Luverne, County of Rock, State of Minnesota, described as follows, to-wit:

A Tract in the E. 150' of Lot 15, Block 4,  
in Randall and Holbert's Addition of the City of Luverne,  
Rock County, Minnesota, and subject to easements of record.

See attached Exhibit B  
to Joanne Maras.

SECTION 2. The Mayor and City Administrator are hereby authorized and directed to execute such legal documents as are necessary to accomplish this sale and are further authorized to execute and deliver a warranty deed upon complete fulfillment of all terms and conditions.

SECTION 3. This ordinance takes full force and effect seven (7) days after its publication.

Persons interested in viewing the complete copy of the ordinance may do so at the City Offices during business hours.

/s/ Patrick T. Baustian, Mayor  
/s/ John M. Call, City Administrator  
(11-22)

## Tofteland probate

FIFTH JUDICIAL DISTRICT  
DISTRICT COURT  
PROBATE DIVISION  
COURT FILE NO. \_\_\_\_\_

STATE OF MINNESOTA  
COUNTY OF ROCK  
Estate of: Erling Tofteland,  
Decedent

### NOTICE AND ORDER OF HEARING ON PETITION FOR PROBATE OF WILL AND APPOINTMENT OF PERSONAL REPRESENTATIVE AND NOTICE TO CREDITORS

It is Ordered and Notice is given that on December 11, 2017, at 3:30 p.m., a hearing will be held in this Court at 204 E. Brown Street, Luverne, MN 56156 for the formal probate of an instrument purporting to be the Will of the Decedent, dated July 10, 2017 and codicil(s) to the Will dated \_\_\_\_, and separate writing(s) under Minn. Stat. 524.2-513 ("Will"), and for the appointment of Andrew Tofteland whose address is 5690 156th LW NW, Ramsey, MN 55303, and of Debra Corey whose address is 4530 145th Lane NW, Andover, MN 55304 as Personal Representatives of the Estate of the Decedent in an Unsupervised administration.

Any objections to the petition must be filed with the Court prior to or raised at the hearing. If proper and if no objections are filed or raised, the Personal Representatives will be appointed with full power to administer the Estate including the power to collect all assets, to pay all legal debts, claims, taxes and expenses, to sell real and personal property, and to do all necessary acts for the Estate.

Notice is also given that (subject to Minn. Stat. 524.3-801) all creditors having claims against the Estate are required to present the claims to the Personal Representatives or to the Court Administrator within four months after the date of this Notice or the claims will be barred.

A charitable beneficiary may request notice of the probate proceedings be given to the Attorney General pursuant to Minn. Stat. 501B.41 subd. 5.

Dated:

By the Court  
/s/ Terry S. Vajrt  
Judge of District Court  
/s/ Denise Brandel  
Court Administrator

Attorney for Petitioners  
Benjamin Vander Kooi, Jr.  
Vander Kooi Law Offices, P.A.  
127 E. Main, PO Box 746  
Luverne, MN 56156  
Attorney License No: 112124  
Telephone: 507-283-9546  
FAX: 507-283-9629  
Email: lawkooi@gmail.com

(11-16, 11-22)

## Mortgage foreclosure sale set for Jan. 4

### NOTICE OF MORTGAGE FORECLOSURE SALE

Minnesota Uniform Conveyancing Blanks

Minn. Stat. 580.025, 580.04

Form 60.2.1 (2009)

THE RIGHT TO VERIFICATION OF THE DEBT AND IDENTIFICATION OF THE ORIGINAL CREDITOR WITHIN THE TIME PROVIDED BY LAW IS NOT AFFECTED BY THIS ACTION.

DATE: November 20, 2017.

YOU ARE NOTIFIED that default has occurred in the conditions of the following described Mortgage:

INFORMATION REGARDING MORTGAGE TO BE FORECLOSED

1. Date of Mortgage: June 29, 2012.
2. Mortgages: Randy W. Perkins
3. Mortgagee: Minnwest Bank Luverne
4. Recording Information: Recorded on July 2, 2012, as Document Number 179516, in the Office of the County Recorder of Rock County, Minnesota.
5. Assignments of Mortgage, if any: None.

INFORMATION REGARDING MORTGAGED PREMISES

6. Tax parcel identification number of the mortgaged premises: 20-1650-000
7. Legal description of the mortgaged premises:  
Lots Thirteen (13) and Fourteen (14) in Block Twelve (12) in Warren and Kniss' Addition to the Village (now City) of Luverne, Minnesota, subject to easements of record, if any.

Check here if all or part of the described real property is Registered (Torrens) 0

8. The physical street address, city, and zip code of the mortgaged premises: 202 West Main Street, Luverne, Minnesota 56156.

### OTHER FORECLOSURE DATA

9. The person holding the Mortgage:  
is a transaction agent as defined by Minn. Stat. 58.02, subd. 30.  
The name(s) of the transaction agent, residential mortgage servicer, and the lender or broker, as defined in Minn. Stat. 58.02 is/are Not applicable.  
The transaction agent's mortgage identification number, if stated on the Mortgage, is Not applicable.

X is not a transaction agent, as defined by Minn. Stat. 58.02, subd. 30.  
The name(s) of the residential mortgage servicer and the lender or broker, as defined in Minn. Stat. 58.02, is Minnwest Bank Luverne.

10. If stated on the Mortgage, the name of the mortgage originator, as defined in Minn. Stat. 58.02, is not applicable.

### INFORMATION REGARDING FORECLOSURE

11. The requisites of Minn. Stat. 580.02 have been satisfied.
12. The original principal amount secured by the Mortgage was \$40,000.00.
13. At the date of this notice the amount due on the Mortgage, including taxes, if any, paid by the holder of the Mortgage, is: \$26,753.16.

14. Pursuant to the power of sale in the Mortgage, the Mortgage will be foreclosed, and the mortgaged premises will be sold by the Sheriff of Rock County, Minnesota, at public auction on January 4, 2018 at 10:00 a.m., at the Rock County Sheriff's Office at 1000 North Blue Mound Avenue, Luverne, Minnesota 56156.

15. The time allowed by law for redemption by Mortgagor or Mortgagor's personal representatives or assigns is six (6) months after the date of sale.

16. Minn. Stat. 580.04(b) provides, "If the real estate is an owner-occupied, single-family dwelling, the notice must also specify the date on or before which the mortgagor must vacate the property if the mortgage is not reinstated under section 580.30 or the property redeemed under section 580.23." If this statute applies, the time to vacate the property is 11:59 p.m. on July 4, 2018.

THE TIME ALLOWED BY LAW FOR REDEMPTION BY THE MORTGAGOR, THE MORTGAGOR'S PERSONAL REPRESENTATIVES OR ASSIGNS, MAY BE REDUCED TO FIVE WEEKS IF A JUDICIAL ORDER IS ENTERED UNDER MINNESOTA STATUTES, SECTION 582.032, DETERMINING, AMONG OTHER THINGS, THAT THE MORTGAGED PREMISES ARE IMPROVED WITH A RESIDENTIAL DWELLING OF LESS THAN FIVE UNITS, ARE NOT PROPERTY USED IN AGRICULTURAL PRODUCTION, AND ARE ABANDONED.

THIS COMMUNICATION IS FROM A DEBT COLLECTOR ATTEMPTING TO COLLECT A DEBT. ANY INFORMATION WILL BE USED FOR THIS PURPOSE.

Name and address of Attorney for Mortgage  
or Mortgage Assignee:

Name of Mortgagee or Mortgage Assignee:  
MINNWEST BANK LUVERNE

/s/ Greg J. Bucher  
Greg J. Bucher  
STONEBERG, GILES & STROUP, P.A.  
300 South O'Connell Street  
Marshall, MN 56258  
Telephone: (507) 537-0591  
Attorney Reg. No: 299601

(11-22, 11-30, 12-07, 12-14, 12-21, 12-28)

## City of Luverne adopts Ordinance No. 359

ORDINANCE NO. 359, THIRD SERIES  
AN ORDINANCE AUTHORIZING CONVEYANCE OF REAL ESTATE  
(A TRACT IN THE E. 150' OF LOT 15, BLOCK 4, RANDALL AND HOLBERT'S  
ADDITION TO THE CITY OF LUVERNE, MN)

THE CITY OF LUVERNE DOES HEREBY ORDAIN:

SECTION 1. Pursuant to City Charter, Section 12.05, the City Council is authorized to sell or convey the following described real estate located in the City of Luverne, County of Rock, State of Minnesota, described as follows, to-wit:

A Tract in the E. 150' of Lot 15, Block 4,  
in Randall and Holbert's Addition of the City of Luverne,  
Rock County, Minnesota, and subject to easements of record.

See attached Exhibit A

to Lyland and Sonna Behr.

SECTION 2. The Mayor and City Administrator are hereby authorized and directed to execute such legal documents as are necessary to accomplish this sale and are further authorized to execute and deliver a warranty deed upon complete fulfillment of all terms and conditions.

SECTION 3. This ordinance takes full force and effect seven (7) days after its publication.

Persons interested in viewing the complete copy of the ordinance may do so at the City Offices during business hours.

/s/ Patrick T. Baustian, Mayor  
/s/ John M. Call, City Administrator  
(11-22)

## City of Luverne adopts Ordinance No. 361

ORDINANCE NO. 361, THIRD SERIES  
AN ORDINANCE AUTHORIZING CONVEYANCE OF REAL ESTATE  
(WALNUT INDUSTRIAL SUBDIVISION, CITY OF LUVERNE, ROCK COUNTY, MN)  
THE CITY OF LUVERNE DOES HEREBY ORDAIN:

SECTION 1. Pursuant to City Charter, Section 12.05, the City Council is authorized to sell or convey the following described real estate located in the City of Luverne, County of Rock, State of Minnesota, described as follows, to-wit:

Lots 1, and 3  
in Walnut Industrial Subdivision of the City of Luverne,  
Rock County, Minnesota, and subject to easements of record.

See attached Exhibit C.

To the Luverne Economic Development Authority.

And

Lot 2  
in Walnut Industrial Subdivision of the City of Luverne,  
Rock County, Minnesota, and subject to easements of record.

See attached Exhibit C.

to RSD Development, LLC.

SECTION 2. The Mayor and City Administrator are hereby authorized and directed to execute such legal documents as are necessary to accomplish this sale and are further authorized to execute and deliver a warranty deed upon complete fulfillment of all terms and conditions.

SECTION 3. This ordinance takes full force and effect seven (7) days after its publication.

Persons interested in viewing the complete copy of the ordinance may do so at the City Offices during business hours.

/s/ Patrick T. Baustian, Mayor  
/s/ John M. Call, City Administrator  
(11-22)

## City of Magnolia Summary of Ordinances

### Summary of Ordinances

The Magnolia City Council reviewed their present Ordinances and made amendments to the Ordinance Book of the City of Magnolia.

They included General Provisions, Title I, taken from the League of MN Code of Ordinances which includes rules of Interpretation, how to correct or change an ordinance and the general penalty and enforcement of the code.

Title III, Chapter 30 General Provision of Administration, also taken from the League of MN Code of Ordinances is about the council meetings, presiding officer, minutes, order of business, and all persons desiring to present new business before the Council shall inform the City Clerk at least 72 hours before new business is to be heard. Chapter 32 also from the League of MN Code of Ordinances in regards to Emergency Management which is how an Emergency Disaster shall be handled.

Title V, Public Works, Chapter 50 Garbage and Rubbish also taken from the League of MN Code of Ordinances relates to garbage and rubbish and how the garbage shall be taken care of in the city.

Title IX, Animals, Ordinance 116 to state the penalty of violation of this ordinance will be a separate offense and will be punished by the administration enforcement program to be adapted in the future.

The Sections 713 and 733 will be replaced by sections in the Section 9.55 of Nuisances and prepared by the City Attorney which is filed under General Regulations 125.

These changes to be in full force after approved and publication is completed.

/s/ Dennis Madison  
Mayor  
/s/ Glenda Schomacker,  
City Clerk  
(11-22)

## ISD #2184

### Notice of intent to issue bonds

NOTICE OF INTENT TO ISSUE FACILITIES MAINTENANCE BONDS TO  
FINANCE PROJECTS INCLUDED IN THE DISTRICT'S TEN-YEAR FACILITY  
PLAN  
LUVERNE SCHOOL DISTRICT NO. 2184  
(LUVERNE PUBLIC SCHOOL)  
STATE OF MINNESOTA

NOTICE IS HEREBY GIVEN that the School Board of Independent School District No. 2184, State of Minnesota (the "District"), adopted a resolution (the "Resolution") on November 14, 2017, stating the intention of the School Board to issue general obligation facilities maintenance bonds (the "Bonds") in the total principal amount of not to exceed \$8,135,000 pursuant to Minnesota Statutes, Section 123B.595 and Chapter 475, as amended. The proceeds of the Bonds will be used to fund the costs of the following projects as included in the District's approved ten-year facility plan and related financing costs:

- Indoor air quality improvements, fire suppression improvements and asbestos removal

The total amount of District indebtedness as of October 23, 2017, is \$890,000. If these proposed Bonds were issued after that date, the total indebtedness of the District at that time would be \$9,025,000.

Dated: November, 14, 2017

BY ORDER OF THE SCHOOL BOARD  
/s/ Shelley Sandbulte  
School District Clerk  
Independent School District No. 2184  
(Luverne Public School)  
State of Minnesota  
(11-22)



# Star Herald CLASSIFIEDS

Page 4B November 22, 2017

## EMPLOYMENT

Lutheran Social Service of MN is seeking dedicated volunteers for our innovative new service in both metro and rural areas across the state. I have an opening in Luverne Volunteers interested in sharing their skills, meeting new people and having fun in their community are invited to apply. As a volunteer you will: Do something meaningful and fun. Be an ongoing friend, advocate and resource for an older adult. Provide transportation to medical appointments, grocery shopping and errands and receive a monthly stipend of \$90/client and mileage reimbursement. Contact Gail Sumerfelt at 507-530-2295 (11.9-11.26)

## Skattum's Confinement HELP WANTED

Skattum's Confinement Luverne, MN Office Manager & Bookkeeper Position Two Year Accounting Degree Required. Quickbooks Experience. Inventory And Sales Tax Knowledge Is A Plus. Email Resume And References To: ndilly@sondfarms.com

## EMPLOYMENT

Earn Extra Cash At A Rewarding Volunteer Position in Luverne & Surrounding area: Become a Senior Companion by making friendly visits to older adults in need. Senior Companions must be 55 years of age or older; flexible service of 15 hours or more a week earns a small tax free hourly stipend, plus receive mileage reimbursement and other benefits. 507.530.2295 for more information. (11.9-11.26)

CSR Fueler/Washer/Detailer, Part-time Opening in Sioux Falls, SD. Excellent Hourly Pay! Great opportunity to learn the fundamentals of preventative maintenance on diesel vehicles and grow into a diesel career or vehicle maintenance. Call Penske Truck Leasing: 855-517-2507. (11.16-11.26)

## HELP WANTED

Age 55+ workers needed for part-time custodial work at the Adrian rest areas

Contact Green View 651-639-1913

## EMPLOYMENT

Help Wanted: Hiawatha Manor Inc. has 2 Direct Support Professional positions available in Luverne, MN. Hours include paid sleep time! Position 1: Every Thursday 2p.m. to Friday 8:30 a.m. and Every Sunday 12 p.m. to Monday 8:30 a.m. Position 2: Every Monday, Wednesday and Friday from 8:30 a.m. to 2 p.m. Applicants must be at least 18 years of age, have a valid driver's license, pass background study, and possess excellent life coaching skills, any additional training needed will be provided. For additional information regarding either position or to request an application call or text your inquiry to 605-530-4440. (11.9-11.26)

Adrian Public School is currently seeking applicants for a Long Term Substitute Middle School Language Arts/9-10 English Instructor beginning January 2nd through February 5, 2018. Interested Applicants please send a letter of application, resume, current letters of recommendation, college transcripts, a copy of MN Teaching license, and a completed district application to Mr. Roger Graff, Superintendent, Adrian, Public School, PO Box 40 Adrian, MN 56110 (11.12-11.30)

## EMPLOYMENT

WANTED: Assistant Teacher for Rock Rapids Head Start Center. Monday- Thursday, 26 hours a week, 37 weeks per year. Eligible for benefits, including IPERS. For more information or to apply online, please visit [www.midsioux.org](http://www.midsioux.org). 1-800-859-2025. An Equal Opportunity Employer. (11.19-12.7)

CNA: Parkview Manor is looking for CNAs! Benefits include health insurance, PERA retirement plan, holiday pay, and a \$2,000 scholarship available for students! We will provide training or pay for experience. Wages are based on experience level. If interested, contact Darnell Krull at (507) 967-2388 or Sam Quam at (507) 967-2482. (tc)

Dietary Aide: Parkview Manor is looking for part-time Dietary Aides! Benefits include vacation, PERA retirement plan, and holiday pay. Training is available on-site. Wages are based on experience level. If interested, contact Sam or Arlys at 507-967-2482, or come visit us to pick up an application! (tc)

## EMPLOYMENT

Southwestern Center for Independent Living (SWCIL), is seeking an Independent Living (IL) Specialist for Murray, Rock, and Nobles Counties. Full time: 40 hours per week during normal business hours. Must have knowledge of disabilities and their characteristics, reliable transportation, and pass a DHS background study. Primary job functions include: providing independent living skills training, advocacy, and peer counseling services to individuals with disabilities including youth in schools and adults in the community. This position will also provide benefit planning services in coordination with the area Workforce Center. Persons with disabilities constitute more than 50% of SWCIL's governing board and employees in decision-making and staff positions. Persons with disabilities are strongly urged to apply. Minimum qualifications require a four year degree in a human/social services or related field or a two year degree in a human/social services field combined with one year of experience in a disability related position. To apply, send cover letter, resume and 3 references to: ILS Program Manager, SWCIL, 109 S. 5th Street, #700, Marshall MN 56258 or [swcil@swcil.com](mailto:swcil@swcil.com). SWCIL is an equal opportunity employer. (11.16-12.7)

## RENTALS

For Rent: one-bedroom apartment near downtown Luverne. \$290 per month. No Pets. Call 605-201-6427. (tc)

Mobile Home for rent in Luverne: two-bedroom, one-bath, all appliances included. Water and sewer included. Call 605-366-7695 (11.5-11.23)

For Rent: 2 Bedroom Duplex in Luverne. \$500 a month. No smokers, no pets. Call 507-227-1423 (11.16-12.3)

## Oakwood Apartments

401 Oak St., Ellsworth

• 1 Bedroom Unit Available

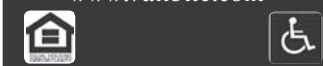
Unit Available Water, Sewer & Garbage Included.

Rent Based on Income AVAILABLE IMMEDIATELY

Van Binsbergen & Associates, Inc. 320-269-6640 ext. 22

Equal Housing Opportunity

[www.vanblc.com](http://www.vanblc.com)



[star-herald.com](http://star-herald.com)

## EMPLOYMENT



## Who inspires

our team with fresh ideas, new insights and real faith?

## You inspire.

We believe that, "In Christ's Love, Everyone Is Someone," and that each person should be treated with dignity, love and respect. Join us, and help make a difference. You'll enjoy great benefits and receive encouragement and opportunities to grow personally and professionally with the support of your peers and supervisors.

If this sounds like an environment that calls to you, we invite you to join us in serving those who most need our skilled talents and loving hearts.

Nursing Assistants | CNA's | Dietary  
Universal Workers | Nurses

Show YOU care. Join us today.  
[good-sam.com/careers](http://good-sam.com/careers)



The Evangelical Lutheran Good Samaritan Society is an affirmative action/equal opportunity employer and does not discriminate on the basis of race, religion, color, national origin, gender (including pregnancy, gender identity, and sexual orientation), genetic information, age, marital or family status, disability, veteran status, or other protected status. All faiths or beliefs are welcome. © 2017 The Evangelical Lutheran Good Samaritan Society. All rights reserved. 17-G1499

## HELP WANTED

### FULL TIME INFORMATION SYSTEMS ASSISTANT

Perform operational computer-related tasks within a bank data center located in Luverne. Qualified candidate will have a strong attention to detail, problem solving skills and computer skills with an emphasis in computer applications and processes. Two year post-secondary education with technology emphasis is preferred.

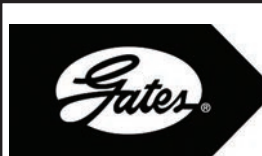
Please send resume to:  
[timnissen@ffmbank.com](mailto:timnissen@ffmbank.com)

First Farmers & Merchants Bank  
Attn: Tim Nissen  
PO Box 867, Luverne, MN 56156

We are an equal opportunity employer



We believe in you.



## NOW HIRING

2nd and 3rd shift Assembly Operators, Maintenance Techs and Health, Safety and Environmental Techs

Gates Corporation is excited to join the Community! Formerly Atlas Hydraulics, Gates is growing in Brandon, SD and we are hiring 2nd and 3rd shift Assembly Operators, Maintenance Techs and Health, Safety and Environmental Techs. These roles have competitive pay and benefits.

Applications will be accepted online at [www.gates.com/careers](http://www.gates.com/careers) or in person at our facility (700 East Redwood Blvd, Brandon SD).

Gates Corporation is the world's leading manufacturer of power transmission belts and fluid transfer products. Gates products are recognized by distributors, original equipment manufacturers, and installers as the premium brand for quality and technological innovation, a reputation we have built for over a century since our founding in 1911.

If it moves you, there's a good chance Gates has a part in it.  
Gates. Powering Progress.

## Sanford Luverne Medical Center

is currently accepting applications for FT (Full-Time), PT (Part-Time) and PRN (Part-Time as Needed) positions:

- CERTIFIED MEDICATION ASSISTANT – PRN
- CERTIFIED REGISTERED NURSE ANESTHETIST – FT
- HOME HEALTH AIDE – PT, PRN
- LICENSED ALCOHOL AND DRUG COUNSELOR - PT
- LPN, HOSPICE – PRN
- PARAMEDIC – FT
- RECEPTIONIST – PT
- SURGICAL TECHNOLOGIST – PRN

To apply, visit [sanfordhealth.jobs](http://sanfordhealth.jobs) search "Luverne" in the location search bar.

## SANFORD HEALTH

"Your Calling, Your Place."

Sanford Luverne Medical Center | 877-243-1372

EEO/AA

## HELPING PEOPLE ~ CHANGING LIVES

### Dispatcher – Rock County

Part-time Dispatcher for local public transit system. Must work well with the public and team members, be capable of working with various computer programs, 2-way radios, telephone system, and have the ability to complete multi-tasked projects in a fast-paced environment.

Read about us, learn more about this opportunity, and apply online at [www.unitedcapmn.org](http://www.unitedcapmn.org).

AA/ADA/EOE Employer.

## Smithfield Sioux Falls Meat Your Career

- \*Production Team Members
- \*Warehouse Team Members
- \*Maintenance Team Members
- \*Maintenance Supervisor

### Sizzling Hot Benefits

- Competitive Pay
- Excellent Medical, Dental & Vision
- Pay as little as \$24.71 per week
- Paid vacations, holidays, bereavement and sick leave
- Tuition Reimbursement
- Up to \$6,000 per year
- Company Meat Store Discounts
- 401(k) Plan with Matching Funds
- Many opportunities to advance your career!

See all our sizzling hot careers at:

[www.smithfieldfoods.com/career](http://www.smithfieldfoods.com/career)

Or call 605-330-3354

Smithfield is an EEO/AA Employer

Smithfield

Good food. Responsibly.®

## NOW HIRING!

Swine Technicians  
Full time in Southern MN or Eastern SD

Relocation Assistance Available

- WE OFFER:
- Competitive Wages - based on position and experience
  - Health, Dental and Vision Insurance
  - Referral Bonus Program
  - Scholarship Program
  - Bereavement Leave
  - Jury Duty
  - Production Bonus
  - Flex Plan
  - 401K Plan
  - Life and Long & Short Term Disability Insurance
  - Paid Holidays and Paid Time Off (PTO)

Apply at [www.pipestonesystem.com](http://www.pipestonesystem.com)  
Questions? Call HR at 866-918-7378 or email [hr@pipestones.com](mailto:hr@pipestones.com)

Pre-employment drug testing and background screening required



## AHORA CONTRATANDO! Técnicos Porcinos

Tiempo completo en el Sur de MN- o- en el Este de SD

Asistencia de reubicación disponible

- OFRECEMOS:
- Sueldo competitivo - basado en la posición y experiencia
  - Seguro de salud, dental y de la vista
  - Programa de bonificación de referencia
  - Programa de becas
  - Licencia por duelo
  - Servicio de jurado
  - Bonificación de producción
  - Plan flexible
  - 401K Plan
  - Seguro de vida y de discapacidad a largo y corto plazo
  - Vacaciones pagadas y tiempo libre pagado

Aplicar en [www.pipestonesystem.com](http://www.pipestonesystem.com)  
Preguntas? Llame HR al 866-918-7378 o por correo electrónico [hr@pipestone.com](mailto:hr@pipestone.com)

Pruebas de drogas previas al empleo y antecedentes

PIPESTONE SYSTEM

[WWW.PIPESTONESYSTEM.COM](http://WWW.PIPESTONESYSTEM.COM)

Christmas Season is approaching...  
**GIVE THE GIFT THAT LASTS ALL YEAR!**

Rock County Star Herald

to subscribe visit:  
[STAR-HERALD.COM](http://STAR-HERALD.COM) or call: 283-2333

a subscription to the Rock County Star Herald Star Herald Online Edition



# Star Herald CLASSIFIEDS

### WORK WANTED

Wanted: snow removal jobs in the Luverne area. Call 507-920-0573 to inquire.  
(11.12-12.31)

Work wanted for a senior companion: will do light house-keeping, laundry, groceries and shopping. Call 507-962-3214.  
(11.5-11.23)

### FOR SALE

2003 Jeep Wrangler. 5.8L V6. 124K miles. 4X4. Automatic. Great Condition. Price: \$2100. Call or text: 507-564-2654.  
(11.19-11.23)

### GIVE AWAY

Free to a good, loving home: three adorable, kittens. Would like them to stay together if possible. Call 507-283-9794.  
(11.16-12.3)

### MISCELLANEOUS

HAVE A UNIQUE SERVICE OR BUSINESS? Get the word out to over 1.4 million households. Call WIDE AREA CLASSIFIEDS today, 507-359-7326.  
(tc)

### WINDOWS

We custom build and install Energy Star Therm-O-Loc Windows. Call Mike at Adrian Glass for a free in-home demonstration and estimate. 101 E. Pearl, Adrian, MN 56110. 507-483-2228 or 605-770-7677 or email mbyler@santel.net. (tc)

### CARDS OF THANKS

It's hard to put in words our heartfelt thanks for the sympathy and help extended toward our family during the sudden passing of Verlyn. We deeply appreciate all the food, gifts, kind words, prayers and offerings of harvest help. Verlyn touched so many lives and we are grateful for all who came to honor him and the stories you shared. The outpouring of love and support has been overwhelming; please know your generosity has given us strength to face each day. We will always remember and be thankful for the warm and loving community we live in. You're forever in our hearts,  
**The Family of Verlyn Hoff**  
(11.19-11.23)

### CARDS OF THANKS

Thank you to Dave Van Batavia and the Luverne Fire Department, Evan Verbrugge, Lori Halsne, Justin Kemp with Kemp Electric, Mike and Brian from city utilities and Pat Strassburg from Pat's Electric for all their help during the scary situation at the Howling Dog on Thursday.

Thanks again,  
**Craig and Jodi**  
At the Howling Dog  
(11.19-11.23)

**ADVERTISE TODAY!**

with the  
**Star Herald**  
Call Rick or Chantel  
**507-283-2333**

Give a little  
**TENDERNESS**



### The Family Gourmet Buffet

- 2 (5 oz.) Filet Mignons
- 2 (5 oz.) Top Sirloins
- 2 (4 oz.) Boneless Pork Chops
- 4 Boneless Chicken Breasts (1 lb. pkg.)
- 4 (3 oz.) Kielbasa Sausages
- 4 (4 oz.) Omaha Steaks Burgers
- 4 (3 oz.) Potatoes au Gratin
- 4 (4 oz.) Caramel Apple Tartlets
- OS Seasoning Packet (.33 oz.)

51689HCR | \$199.90\* separately

Combo Price **\$49.99**

Call 1-844-383-1775 and ask for 51689HCR  
www.OmahaSteaks.com/excellent79

Plus, get  
4 more Burgers and  
4 more Kielbasa  
**FREE!**



\*Savings shown over aggregated single item base price. Limit 2 pkgs. Free gifts must ship with #51689. Standard S&H will be added. Expires 2/28/18. ©2017 OCG 17M1957 Omaha Steaks, Inc.

**READ THE NEWS ONLINE!**  
Sports  
News  
Opinion  
Videos  
Subscribe to the online edition of the  
**Star Herald**  
**283-2333**  
star-herald.com

## Happy Thanksgiving



DURING THIS SPECIAL HOLIDAY, WE ARE ESPECIALLY THANKFUL FOR ALL OUR VALUED CUSTOMERS. YOUR PATRONAGE DURING THE PAST YEAR IS APPRECIATED AND WE LOOK FORWARD TO SERVING YOU AGAIN SOON.

BOTH STORES CLOSED  
Thursday, November 23

**True Value**

**LUVERNE FARM STORE**  
Quality & Service

S. Highway 75 • Luverne, MN • 507-283-9555 or 1-800-956-9556

### POST YOUR CLASSIFIEDS ONLINE

Visit [www.Star-Herald.com](http://www.Star-Herald.com) and click on "Classifieds"

**SHARE**  
the Spirit of Thanksgiving

happy Thanksgiving from everyone at:

SHARE donation box is in bank lobby for your cash donations.  
Donation Deadline: Friday, December 1st

Minnwest Bank is happy to donate \$1,000 to this worthwhile program.

**MINNWEST BANK**  
Minnwest Bank  
All locations  
CLOSED on Nov. 23rd  
116 East Main Street • Luverne • 507-283-2366  
Hwy. 75 • 800 South Kniss • Luverne • 507-283-9131  
304 East 1st Ave. • Beaver Creek • 507-673-2334  
MoneyLine 888-616 BANK www.minnwestbank.com Member FDIC



**mcan**

## Minnesota Classified Advertising Network



### EMPLOYMENT

#### RAILROAD

#### VEGETATION CONTROL:

Full-time traveling opportunity starting in January 2018, 60-80 hours/week, \$13-\$15/hour starting, meal allowance, paid lodging, health/dental, 401(k) & Paid time off. RAW, Inc. in Cooperstown, ND. 888/700.0292 info@rawapplicators.com www.rawapplicators.com

### FEED/SEEDS/GRAINS

#### LOSING SOYBEAN YIELD

to white mold? New EPA registered seed treatment available. Ask for Heads Up® seed treatment. Call 866/368-9306 or view data at [www.headsupst.com](http://www.headsupst.com)

**ADVERTISE HERE STATEWIDE IN 260+ NEWSPAPERS FOR ONLY \$279 PER WEEK! CALL 800-279-2979**

### WANTED TO BUY

#### CHRISTMAS CASH

Motorcycles Wanted. 1960s-1970s models, 2 stroke & 4 stroke. No mopeds please. Call: 612/720-2142

### MISCELLANEOUS

#### A PLACE FOR MOM

The nation's largest senior living referral service. Contact our trusted, local experts today! Our service is free/no obligation. Call 844/347-2104

#### GOT KNEE PAIN?

Back Pain? Shoulder Pain? Get a pain-relieving brace - little or no cost to you. Medicare patients call health hotline now! 800/755-6807

#### DONATE YOUR CAR

truck or boat to Heritage For The Blind. Free 3-day vacation, tax deductible, free towing, all paperwork taken care of 800/439-1735

### MISCELLANEOUS

#### STOP OVERPAYING

#### FOR YOUR PRESCRIPTIONS!

Save! Call our licensed Canadian & International pharmacy, compare prices & get \$25.00 OFF your first prescription! Call 877/210-2257 Promo Code: CDC201725

#### DISH NETWORK

190+ channels. Free install. Free hopper HD-DVR. \$49.99/month (24 mos.) Add high speed internet - \$14.95 (where avail.) Call today & save 25%! 855/562-4309

**Classified Advertising that is**

**Easy!**

THE MINNESOTA CLASSIFIED AD NETWORK

Make an impact with your advertising dollar with classified advertising that reaches over 3 million readers!



Your newspaper representative can provide complete details.

The 2x4 Network is a program of the MNA, phone 800-279-2979



# Rock County STAR HERALD

# Christmas Coloring Contest



PRIZES WILL BE AWARDED  
IN EACH AGE CATEGORY!  
WINNERS ANNOUNCED IN THE  
DECEMBER 21 STAR HERALD

## RULES

1. Contest is open to children ages 4 through 9.
2. Color the picture below with paints, markers, crayons or colored pencils.
3. Decision of judges is final.

ALL entries must be returned to the Star Herald office no later than NOON ON WEDNESDAY, DECEMBER 13.  
Please return your colored entry to the Star Herald office rolled or flat - DO NOT FOLD.



NAME \_\_\_\_\_ ADDRESS \_\_\_\_\_

AGE \_\_\_\_\_

PARENTS' NAME(S) \_\_\_\_\_

PHONE NUMBER \_\_\_\_\_





*Thanksgiving Eve*  
**9-1** Wednesday, November 22  
 drink specials

**Howling Dog SALOON**  
 507-449-0454

OPEN at 5pm on Thanksgiving Day  
*November 23*

**9-1** Friday, November 24  
*Tammy Birford*

*Happy Thanksgiving*  
 from all of us at the Howling Dog

THURSDAY, NOV. 30 **PALACE THEATRE**

"Same Kind of Different As Me"  
 2PM

*Afternoon Escape*  
 Admission is \$5

SPONSORED BY: **LUVERNE FARM STORE**

**De-Light-Ful Dance**

**SATURDAY, NOVEMBER 25**  
 8:45pm-12:45am  
 (doors open at 8:15pm)

**LIVE MUSIC**  
**Luverne Armory**  
 BAR PROVIDED BY THE BLUESTEM

**Casey Messigmann**  
*Dream Big, Live Big!*

**NO COVER CHARGE - PUBLIC INVITED**

**When You Recycle Newspapers, the Savings Add Up!**

If You Recycle **1 ton** of newspaper...

You save **4,000 kwh** of electricity

you save **17 Trees**

you save **380 gallons** of oil

you save **7,000 gallons** of water

and you save **60 pounds** of air pollution

**'TIS THE SEASON TO PARTY AT TAKE 16**

**GIVE THANKS FOR BEER**  
 WEDNESDAY, NOV. 22 | 7-12

**BLACK FRIDAY SALE**  
 FRIDAY, NOV. 24 | 5-10

**UGLY SWEATER PARTY**  
 SATURDAY, NOV. 25 | 5-10

**UGLY SWEATER CHRISTMAS PARTY**  
 SATURDAY, DEC. 23 | 5-12

**THE MOST WONDERFUL TIME FOR A BEER NEW YEAR PARTY**  
 SATURDAY, DEC. 30 | 5-12

**DOWNTOWN LUVERNE**  
 509 EAST MAIN STREET, LUVERNE

**Thanksgiving Buffet**  
 THURSDAY • NOVEMBER 23  
 11 A.M. - 2 P.M.

**Adults \$12.95**  
**10 and under \$6.95**

Turkey and all the trimmings with salad bar.  
 Drinks included.

Stay and watch the Vikings vs. Detroit game with us.

*Happy Thanksgiving from all of us at Green Lantern.*

**GREEN LANTERN CAFE & BAR**  
 HARDWICK, MN  
 507-669-2246

The Daily News of Rock County  
**Star-Herald.com**

**Happy Thanksgiving**

Front row (left to right): Marilyn VanSanten, Lynette Ossefoort, Nancy VanDeBerg, Alexis Klarenbeek, and Christina Koedam  
 Back row (left to right): Michael Cox, Teresa Hup, Edna Buys, David Riphagen

**Main Street FINANCIAL SERVICES**

*Luverne, MN • 212 East Main Street*  
*507-283-9590 or 1-800-260-1014*  
*www.mainstreetfinancial.net*

*The office will be closed Thursday, November 24.*  
*Open Friday by appointment only.*

Securities offered through Registered Representatives of Cambridge Investment Research, Inc., a broker-dealer member FINRA/SIPC. Advisory services through Cambridge Investment Research Advisors, Inc., a Registered Investment Advisor. Cambridge and Main Street Financial Services, Inc., are not affiliated.

*Give thanks with a grateful heart*



# The Bluestem

CASUAL • FRESH • LOCAL

So many blessings to be thankful for, including our loyal customers. **Happy Thanksgiving!**

**WEDNESDAY, NOVEMBER 22  
BAR BINGO**

Chance to win \$100 bar tab that night and many other prizes including gift cards and a TV

**HAPPY HOUR ALL NIGHT  
\$3 POUNDERS | \$1 MYSTERY SHOTS**

**CLOSED** • Thanksgiving Day • Dec. 24 and Dec. 25 • New Year's Day



NOW BOOKING HOLIDAY CATERING & PARTIES  
Just email us at [bluestemparties@outlook.com](mailto:bluestemparties@outlook.com)

507-449-2583  
1202 S Kniss, Luverne, MN  
[www.the-bluestem.com](http://www.the-bluestem.com)

Like us on **facebook** for weekly updates

Thank you for your business for the past six years

*Give thanks not just on Thanksgiving Day, but every day of your life. Appreciate and never take for granted all that you have.*

~ Catherine Pulsifer

**Closed  
Thanksgiving  
Day**

Full service Case-IH dealership,  
truck and trailer service and parts



**Happy  
Thanksgiving  
from all of us at  
Jaycox!**

410 Koehn Avenue, Luverne, MN | 507-283-2319 | [www.jaycoximplement.com](http://www.jaycoximplement.com)

**Orange Spectacular!**



**ONLY \$19.99**  
Special limited time offer!  
**SAVE \$15!**  
Reg. Price \$34.99

Call 1-844-296-0498 to order item 453X or Visit [HaleGroves.com/D19126](http://HaleGroves.com/D19126)

\*Only \$19.99 (reg. \$34.99) plus \$5.99 shipping and handling to 48 contiguous states. **Hale Groves**  
Some restrictions may apply. IC: 8SH-D926

**SAINT PAUL ICE FISHING & WINTER SPORTS SHOW**

THE ULTIMATE SHOW FOR THE ICE FISHING FANATIC

**DECEMBER 1-3**  
ST. PAUL RIVERCENTRE  
[stpaulicefishingshow.com](http://stpaulicefishingshow.com)

Presented by CLAM

SNEAK PEEK  
FRI: 1pm-8pm 11am-1pm | SAT: 10am-7pm 8am-10am | SUN: 9am-4pm

# HAPPY THANKSGIVING

*Give thanks*  
TO THE LORD FOR HE IS GOOD;  
HIS LOVE *endures forever.*  
PSALM 136:1

**Exchange**  
STATE BANK  
Local. Dependable. Strong.

## LUVERNE

Front row: Ryan DeBates, Tyler Bush, Brent Gorter

Back row: Heather Erickson, Chelle DeGroot, Don Bryan, Nicie Bosch, Sheryl Klaassen, Carol Nelson



## HILLS

Front row: Angie Sjaarda, Amanda Metzger, Tim Plimpton, Heidi Van Wyhe, Marlys Rauk

Back row: Erin Metzger, Josh Tollefson, Kathy Fick, Caleb Ellingson, Trista Bosch, Aaron Erickson, Kyla Jellema



## ELLSWORTH

Front row: Laurie Deutsch, Jen Debeer, Kelly Kramer

Back Row: Dorene Chapa, Dave Huisman, Mark Iveland, Theresa Theesfeld



(507) 962-3250  
Hills, MN

(507) 967-2570  
Ellsworth, MN

(507) 449-6000  
Luverne, MN

Member **FDIC**



Christmas Season is **HERE GIVE THE GIFT THAT LASTS ALL YEAR!**

Rock County **STAR HERALD**

a subscription to the **Rock County Star Herald** or **Star Herald Online Edition**

to subscribe visit: **STAR-HERALD.COM** or call: **283-2333**

