



Rock County STAR HERALD

Rock County's oldest business, printing since 1873

October 15, 2015

No charges will be filed in animal cruelty case

By Mavis Fodness

No criminal charges will be brought against Christensen Farms for animal abuse allegations brought by Last Chance for Animals, an animal activist group.

Assistant County Attorney Jeff Haubrich reviewed the allegations and the sheriff's office investigation, and he released his findings in a letter dated Oct. 7.

"We are declining to prosecute any alleged violations of law," the letter stated.

"It is not within our consideration of this matter whether or not industry standard practices, such as the euthanization boxes or gestation crates, are acceptable to the Last Chance for Animals."

The letter was addressed to Sgt. Jeff Wieneke, an investigator with the Rock County Sheriff's Office.

"This is not to say that our office condones the specific isolated actions of certain employees uncovered in the course of observations ... but rather, it is a decision based upon whether or not the actions rise to the level that criminal prosecution is necessary."

Last Chance for Animals, headquartered in California, released its findings from an undercover investigation in early August. Included in its finding was hidden-camera video taken this spring in a Christensen Farms breed-to-wean confinement facility located in northwestern Rock County.

The video footage was released to its website www.factoryfarm360.org on Aug. 11.

Using the video as primary evidence, the group filed a complaint with the Rock County Sheriff's Of-

Christensen Farms/see page 3A



Mavis Fodness photo/1015 Fire Truck Watering

Getting the green on

City of Luverne employee and volunteer firefighter Jordan Siebenahler waters the newly planted sod along Highway 75 Monday morning. The truck tank holds 3,000 gallons of water, and he estimates using more than 12,000 gallons to complete both sides of the highway. With recent improvements to Luverne's South Highway 75 gateway, there are now sidewalks and grassy boulevards where they had never existed before. Greening up the boulevards has long been a priority for city planners as part of what's been a three-year South 75 improvement project.

Last call for broadband installation; sign-up deadline extended

By Mavis Fodness

Before work begins on burying miles of fiber-optic cable, organizers want to know how many customers want the service in greater Rock County.

For several weeks Alliance Communications Cooperative has been marketing the Internet, cable TV and/or telephone service by advertising in newspapers, on billboards and

radio, through social media and by direct mail. Deadline to sign up for free installation was Oct. 9.

As of Monday, more than 50 percent of eligible subscribers have contacted Alliance with interest in the service.

"We have had a very good response," said Amy Ahlers, Alliance's marketing supervisor. "We are very happy."

In the grant application to the state of Minnesota, 1,300 residences and businesses currently do not have access to high-speed Internet.

For a limited time, the free installation offer has been extended, Ahlers said.

After this period is over, however, installation can still be completed, but there may be an extra charge, she added.

Sign-up can be completed by calling 1-888-990-0991 or at www.alliancecom.net.

Alliance's goal is to have 70 percent of potential customers signed up before the burial of the 554 miles of fiber begins this spring.

"It makes the process run smoother ... versus backtracking," she said.

The \$14 million project is expected to be completed in December 2016.

'World's toughest row'

Luverne grad embarks on 3,000-mile Atlantic Challenge

By Lori Sorenson

A Luverne High School graduate is training for the physically demanding "Talisker Whiskey Atlantic Challenge," a 90-day, 3,000-mile journey across the Atlantic Ocean starting in December.

Caitlin Miller, Hardwick, and her race partner, George Pagano, Philadelphia, recently returned from the UK where they've been training for the trip across the world's second-largest ocean.

"George and I watched a documentary about four guys from the UK who did the race to raise money for spinal research," Miller said.

"It's an awesome video and we thought it would be a great way to have a rowing adventure while also giving back."

Team "Cranial Quest," as they're called, is raising money for the ALS Foundation, in memory of Pagano's grandfather who died from ALS when Pagano was 10.

Miller, a 2010 Luverne High School graduate and daughter of Alex and Karen Miller, Hardwick, rowed for three years on the club team at the University of Nebraska, Lincoln, where she recently earned her degree in environmental restoration.

She and Pagano, a former Nebraska rowing teammate, have spent the past several months working to meet the entry requirements for the Atlantic Challenge.

For example, each competitor must hold a valid RYA Yacht-master Ocean Theory, First Aid at Sea, Sea Survival and a VHF Radio License.



Submitted photo

Caitlin Miller, Hardwick, and rowing team partner George Pagano, Philadelphia, are training for the grueling Talisker Whiskey Atlantic Challenge, a 90-day, 3,000 mile journey across the Atlantic Ocean.

"The race is dangerous but less dangerous than doing an independent row," Miller said.

"The organizers' main priority is to keep us safe. That's why we have to do the training classes. They also have a duty officer on call 24/7 during the race who tracks us from shore, sends us weather updates, and makes sure we have all the equipment we need before we leave."

The two will sleep in two-hour shifts, one rowing while the other sleeps.

All the boats are equipped

with water makers, which change seawater into drinking water, and solar panels, which power GPS and other electrical equipment for communication with land.

The boats are approximately 7.5 meters long and 1.8 meters wide built of wood, Fiberglass, carbon fiber and Kevlar. Small cabins provide some protection from the ocean and sun. All the vessels are built to self-right in the event that they capsize.

"Our boat is a specially made

Miller rowing challenge/see 5A

What's under your landfill?

State studies water flow under local landfill

By Mavis Fodness

How water moves around and through the Rock County Demolition Debris Landfill will receive an in-depth look as required by the state's permit renewal process.

County commissioners recently hired Melanie Niday, a hydrogeologist with Short Elliot Henderson Inc., St. Cloud, for \$13,450.

Niday will evaluate the current groundwater-monitoring plan in cooperation with Minnesota Pollution Control Agency (MPCA) officials to renew the facility's use permit.

The Rock County Land Management Office submitted paperwork for its permit renewal in March 2009. The state, however, waited until earlier this year to request more information as part of the permit process.

Changing opinion on landfills

"The state is going through a thought process with demolition landfills to make sure things are working," said Niday, who has worked as a hydrogeologist for 27 years. "Today's landfills are very different than they were 30 years ago."

In the past decade MPCA officials have been studying what is occurring underneath demolition landfills and how effective clay-based facilities are at protecting water supplies.

While no new regulations have stemmed from the MPCA's concerns, the closer look has slowed the permit renewal process.

Rock County continues to oper-

ate under a permit that expired six years ago and will do so until it is renewed.

Niday said Rock County's clay-based facility is inert and has provided sufficient protection to the water supply since it was first permitted in 1998.

She is examining decades-old water sampling results and comparing them to current samples. There hasn't been any significant change.

"The clay soil absorbs some of the contaminants," she said. "I don't expect to find any problems."

Niday and local staff have reviewed a preliminary permit draft and the state is also requesting additional test wells.

Niday said she is advocating for one new testing well (at a cost of \$3,000 to \$5,000) at the demolition site, bringing the total to three. She will also advocate sampling those wells twice a year instead of three.

The goal is to reduce the landfill's future operating costs and "meet that happy medium where everything makes sense" between the parties involved, she said.

About the landfill

The Rock County Demolition Debris Landfill was originally permitted by the MPCA in 1998.

"The purpose of the demolition landfill is not to make money but to provide a service to the community," Niday explained.

Landfill study/continued on 8A



COMMUNITY CALENDAR

Meetings

Thrivent of Rock County Board will meet at 6 p.m. Thursday, Oct. 15, at Luverne Pizza Ranch.

MS Support Group will meet at 7:30 p.m. Thursday, Oct. 15, at Southwest Health and Human Services in Luverne. All persons with MS, family and friends are invited. Call 283-2069 or 283-2964.

AI-Anon meets at 6:30 p.m. Wednesdays in the Buffalo Ridge Meeting Room (lower level) at the Sanford Medical Center in Luverne. Call Stephanie at 507-449-1246.

Narcotics Anonymous meets at 7 p.m. Fridays and for basic text study at 7:30 p.m. Tuesdays in the basement of St. Catherine Catholic Rectory, 203 E. Brown St., Luverne. Use east door. For more information call 507-220-0137.

Alcoholics Anonymous meets at 8 p.m. Wednesdays and Saturdays in the Luverne library. Call 605-321-4324.

Alcoholics Anonymous and AI-Anon meet from 8 to 9 p.m. every Thursday in Runals Memorial Hall, Edgerton. Call Naomi, 507-215-2956, with questions.

One Warm Coat Project

The Rock County One Warm Coat Project is collecting clean, reusable coats (children's coats especially). Coats may be brought to ATLAS for Life, 201 E. Main Street in Luverne Mondays, Tuesdays and Wednesdays from 9 a.m. to 4:30 p.m. and Thursdays from 1 to 8 p.m. through Oct. 31. Coats may also be dropped off at the Luverne Elementary School during the month of October. Contact Wanda Jarchow at 283-9664 or Lisa Dinger (school) at 283-4497.

Firemen's show at Palace Oct. 14-16

The Luverne Firemen's showtimes of "Big Hero 6" are set for 7 p.m. Wednesday, Oct. 14; 4 p.m. and 7 p.m. Thursday, Oct. 15; and 4 p.m., 7 p.m., and 9 p.m. Friday, Oct. 16, at the Palace Theatre.

Monthly Food Ministry Oct. 15

The monthly Food Ministry, sponsored by New Life Celebration Church, will be from 5 to 6 p.m. Thursday, Oct. 15, at the Luverne Senior Center. If you're having trouble putting food on the table, come for fresh produce, bread and meat. Children will be asked to wait outside.

Medicare appointments Oct. 21 and 22

A class on Medicare and Insurance Services offered by the Minnesota Regional Area Agency on Aging and Senior LinkAge Line will be at 10 a.m. Wednesday, Oct. 21, at the Law Enforcement Center in Luverne.

Medicare Part D drug coverage and enrollment questions will also be answered by a trained counselor in Luverne by appointment. Call 1-800-333-2433 to schedule. Available times and dates are: •12:30 to 3 p.m. Wednesday, Oct. 21, at the Law Enforcement Center. •Noon to 1 p.m. Thursday, Oct. 22, at Luverne Senior Center. Medicare open enrollment period is Oct. 15 through Dec. 7.

Mobile pillow cleaning at ARC Oct. 23

Mobile pillow cleaning service will be available from 7:30 a.m. to 4 p.m. Friday, Oct. 23, at the American Reformed Church in Luverne. Custom-made new pillows and down comforters will be for sale.

Hospice Tour of Tables Oct. 24

Sanford Luverne Hospice will host its annual Tour of Tables luncheon Saturday, Oct. 24. Call 283-1805 if you are interested in decorating and hosting a table, donating a gift basket, or purchasing an individual ticket.

Trick-or-Treating at Good Sam Oct. 30

All children are welcome to attend trick-or-treating from 3:30 to 5:30 p.m. Friday, Oct. 30, at Good Samaritan Society-Mary Jane Brown, Poplar Creek and the Oaks. For information call 507-283-2375.

'Balance and Falls' offered Oct. 21

Take an assessment and find out if you are at risk of falling and then learn ways to improve your balance at **Balance and Falls on Oct. 21**. Register for this class and others by calling Community Ed at 283-4724. Fee is \$5.

Library offers Fall Story Hour events

Story Hour is open to pre-school children ages 4-5. Story Hour will be from 10 to 11 a.m. every Thursday until Nov. 19. Register your child by calling 449-5040.

Laptime Story Hour is open to ages birth-3 with an adult. No registration is required. Laptime Story Hour will be from 10:30 to 11 a.m. every Friday through Nov. 20.



Contributed photo

A worker from Bergen Inc. of Mountain Lake power-washes the dirt and grime from the skylights of Blue Mound Tower.

Improvements planned for Blue Mound Tower

By Mavis Fodness

Luverne's Blue Mound Tower received a minor face-lift last week when workers power-washed the building's skylights.

Workers from Bergen Inc. of Mountain Lake spent Tuesday, Sept. 27, ridding the flat rooftop skylights of several years of dirt and grime.

"They're still discolored," said Executive Director

Tammy Johnson. "Ours are flat, and in this climate they should be slanted or domed so dirt and snow doesn't sit on them."

However, cleaning was a more economical option for the senior and low income housing facility. Replacing the skylights on the North McKenzie Street facility would be in the ballpark of \$70,000, Johnson said.

Built in 1971, the seven-story highrise will be updated in the coming months.

New carpet will be installed in the atrium, and the hallway lighting will be improved. Both projects have the support of the Luverne Housing and Redevelopment Authority, Johnson said.

Currently 73 people live in Blue Mound Tower. The

most recent tenants are students from Minnesota West in the mostly senior citizen clientele. All but two of the 70 apartments are occupied.

"We hope to change people's perceptions of this building," Johnson said.

"It's beautiful. Some remodeled apartments are gorgeous and spacious. Not to mention the beautiful view of Luverne is priceless."

September throws out rule book for cooling temps

By Troy Thone, Luverne volunteer weather recorder

As I've mentioned in previous months' weather summaries, one can always be assured of the fact that at the moment you think you have it all figured out, you don't.

On a personal level, that is probably what drives my fascination with weather. It is constantly changing and seldom does what I expect.

In last month's column I mentioned that it was likely a dream that we would see any future 90-degree days.

Wrong. Not only did we reach 90 on Sept. 5, we came very close as mid to upper 80s occurred on five other days as well. In fact, September was downright warm.

Average highs topped 4 degrees above normal while average lows soared to over 7 degrees above normal.

September's overall average temperature was pretty near August's average where, in a normal year (whatever that is), average temperatures between the two months are nearly 10 degrees different.

I also stated that the average first frost occurs around Sept. 28. In my defense this is the average, but this year the weather appears to be thumbing its nose at averages.

We have yet, as of Oct. 11 (the writing of this report), to really even come close,

| Date | High Temp (°F) | Low Temp (°F) | Avg Wind Speed (mph) | High Wind Gust (mph) | Significant Weather | Total Precip (in) | |
|----------------|----------------|---------------|----------------------|----------------------|--|-------------------|------------|
| | | | | | | Snow (in) | |
| 1 | 81 | 64 | 5 | | Mist, Lgt Rain, Rain, Tstorm | 0.02 | |
| 2 | 86 | 66 | 7 | 20 | | | |
| 3 | 88 | 68 | 8 | 18 | | | |
| 4 | 81 | 72 | 7 | 17 | Lgt Drizzle, Lgt Rain, Rain, Tstorm | 0.10 | |
| 5 | 90 | 72 | 10 | 24 | | | |
| 6 | 84 | 70 | 8 | 33 | Lgt Rain, Rain, Tstorm | 0.12 | |
| 7 | 77 | 59 | 7 | 16 | Lgt Drizzle, Lgt Rain, Rain | 0.02 | |
| 8 | 77 | 55 | 7 | 23 | Lgt Rain, Rain, Tstorm | 0.15 | |
| 9 | 79 | 50 | 8 | 27 | Rain, Tstorm | Trace | |
| 10 | 72 | 54 | 7 | 18 | Fog, Mist, Lgt Rain, Rain, Tstorm | 0.09 | |
| 11 | 63 | 45 | 7 | 16 | Haze | | |
| 12 | 68 | 37 | 4 | | | | |
| 13 | 79 | 43 | 11 | 25 | | | |
| 14 | 82 | 57 | 9 | 23 | | | |
| 15 | 82 | 64 | 13 | 36 | | | |
| 16 | 86 | 68 | 10 | 25 | Lgt Rain | Trace | |
| 17 | 82 | 57 | 9 | 23 | | | |
| 18 | 61 | 52 | 6 | 20 | Lgt Drizzle, Lgt Rain, Rain | 0.18 | |
| 19 | 66 | 43 | 6 | 20 | Fog | | |
| 20 | 77 | 46 | 10 | 28 | | | |
| 21 | 79 | 50 | 10 | 30 | | | |
| 22 | 81 | 61 | 8 | 22 | Fog | | |
| 23 | 77 | 64 | 8 | 33 | Lgt Drizzle, Drizzle, Lgt Rain, Rain, Tstorm | 0.21 | |
| 24 | 66 | 63 | 10 | 22 | Lgt Drizzle, Drizzle, Lgt Rain, Rain, Hvy Rain | 1.91 | |
| 25 | 81 | 61 | 7 | 18 | | | |
| 26 | 81 | 54 | 8 | 18 | | | |
| 27 | 84 | 54 | 11 | 32 | | | |
| 28 | 75 | 55 | 7 | 20 | Lgt Drizzle, Lgt Rain, Rain | 0.16 | |
| 29 | 70 | 50 | 7 | 20 | Haze | | |
| 30 | 68 | 45 | 7 | 17 | | | |
| TOTAL | | | | | | 2.96 | 0.0 |
| AVERAGE | 77.4 | 56.6 | | | | | |

although Sept. 12 did record a low of 37 (still a good 5 degrees or so from frost potential).

While September temperatures were soaring, precipitation was near normal. The month was primarily comprised of eight to nine small rains with a significant

rainfall event on the 23rd and 24th. In fact, the 2.12 inches that officially fell these two days accounts for nearly three-quarters of the rainfall for the month.

Looking into October, we appear to be heading into a dry streak, allowing for a

significant number of days for farmers to get out into the fields.

Will the above-normal temperatures continue? Will the spigot stay turned off for most of the month? The next few weeks will tell the story, but one thing you can be sure of is that nothing can be assured.



Dial-A-Specialist

Your One Stop Guide to Local Businesses



Papik MOTORS
1-90 Luverne, MN
Box 536 • 801 West Commerce Road
Luverne, MN 56156

(507) 283-9171
(800) 634-7701
www.papik.com

Automotive



ROCK COUNTY CHIROPRACTIC
• Men, Women & Children's Health
• Custom Orthotics • Kinesiotape • Athletic Care • Massage Therapy • Work & Auto Injuries • Postural Restoration

WWW.ROCKCOUNTYCHIROPRACTIC.COM
283-2561 • 103 E. MAIN, LUVERNE
Monday 7:30 a.m. - 6 p.m. • Tuesday 7:30 a.m. - 3 p.m.
Wednesday 7:30 a.m. - 6 p.m. • Thursday 7:30 a.m. - 1 p.m.
Friday 7:30 a.m. - 5 p.m.

Chiropractic



STAR HERALD ANNOUNCER

Chantel Connell
117 W. Main, Luverne, MN
507-283-2333



Rick Peterson
General Manager

Advertising

LUVERNE HEALTH & WELLNESS
Codie Zentgraf, D.C.

• Chiropractic Care • Family Care • Kinesiotape • Massage Available 5 Days A Week
• Sports Injuries • Auto & Work Injuries

Kris Van Der Brink M.T. & Amy Rosales M.T.
www.luvernechiro.com
109 S Freeman Ave, Luverne MN
507.449.4400

Chiropractic

COMRAY COMPUTERS
Computer Repair and System Builders
Ray Hansen - 1726 140th Ave.,
Luverne, MN 56156 • 507-669-2621
Mark Stewart -
Lismore, MN 56155
507-472-8479
or email us at
comraycomputers@myclearwave.net

Computer



Rock County EYE CLINIC
507-283-2345
102 N. Freeman Ave.
Luverne, Minnesota

Eye



Kneading Relief THERAPEUTIC MASSAGE
www.kneadingrelief-mn.massagetherapy.com

Kayla Hailey
Licensed Massage Therapist
Swedish • Deep Tissue
Pregnancy • Geriatric
Sports • Chair Massage

319 W. Brown St. Luverne, MN 56156 • (507) 449-0330

Massage

Luverne City Offices
MINNESOTA
Love the life!

PO Box 659, Luverne, MN 56156
507-449-2388 (24 hour voice mail)
www.cityofluverne.org

City

Dakota Land Surveying and Engineering, Inc.



Steven B. Kor
Professional Engineer
Registered Land Surveyor

2000 W. 42nd Street, Suite B-6
Sioux Falls, SD 57105
605-334-4882
605-334-5745 Fax

506 Almar
Luverne, MN 56156
507-283-3803
steve.dis@midconetwork.com

Land Surveying

To FLY or not to FLY ... Luverne board continues debate on merits of Flexible Learning Year

By Mavis Fodness

Luverne school officials will conduct another survey to decide whether or not to continue starting school before Labor Day.

This time, however, instead of an online poll, the board plans to conduct a simpler paper survey during parent-teacher conferences in late October and early November.

At the Oct. 8 board meeting, Superintendent Craig Oftedahl discussed with board members survey drafts of three surveys: one for students, one for staff and one for parents/community.

In Oftedahl's versions the number of questions range from one (the student survey) to four (the survey for staff and parents/community members.)

Students will be asked if they prefer starting classes as part of the Flexible Learning Year/before Labor Day or the regular calendar year/begin the Tuesday after Labor Day. Students can also indicate if they have no preference/undecided.

Staff and parents/community members will be asked the same start question and why they support or don't support a chosen start date.

Previous survey results were inconclusive

A previous survey in April of this year was conducted online and involved answering 28 questions.

The survey garnered 800 responses.

However, attempts to tally the results by computer failed, along with the discovery of some duplicate responses. The manual tabulation of three of the questions didn't result in a clear indication of what was preferred.

Last month board members decided to conduct the survey again.

Luverne Middle/High School will conduct conferences from 4 to 9 p.m. Thursday, Oct. 22, and Monday, Oct. 26. The elementary school will have conferences from 4 to 8 p.m. Thursday, Oct. 29, and from 4 to 7 p.m. Thursday, Nov. 5.

Only three schools remain in original FLY plan

Oftedahl and superintendents from the 21 other school districts involved in the Flexible Learning Year (FLY) Consortium met Sept. 30.

In his report to the board members, only three superintendents (Windom, Springfield and Sleepy Eye) have committed their districts to another three years of starting school before Labor Day.

Only Luverne and Redwood Falls Area have yet to make a formal decision.

Since 2010 the local FLY consortium has received a special exemption from the Minnesota Department of Education to begin classes earlier than the rest of the state under the department's Flexible Learning Year program.

Application for another three-year early start needs to be submitted to the state by February 2016.

The application requirements include the continuation of professional learning communities and full implementation of the standards-referenced reporting or standards-based grading within a three-year window.

Adrian and Westbrook-Walnut Grove, however, are looking to revert back to starting school after Labor Day and working with the Southwest West Central Service Cooperative for implementing standards-based grading over a five-year period. Russell-Tyler-Ruthton, Ivanhoe, Lynd and Hendricks have already chosen this path.

Minneota and Lakeview will join with the Minnesota River Valley Education District Cooperative in submission of their own FLY proposal.

Hills-Beaver Creek, Jackson County Central, Worthington, Edgerton, Round Lake-Brewster, Comfrey, Mountain Lake and Marshall have all dropped from the FLY Consortium.



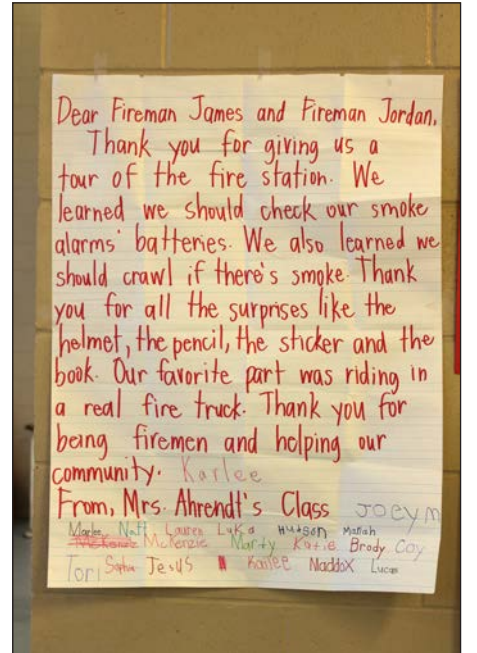
Mavis Fodness photo/1015 Fire Open House

Local department hosts Fire Prevention Week events

The Luverne Fire Department opened its doors to the public Thursday night, Oct. 9, in celebration of Fire Prevention Week Oct. 5-9. Members of the public were able to explore the department's trucks, equipment and enjoy supper with local firefighters during the two-hour annual open house. The event included a demonstration of the department's new Jaws of Life, which operates by battery power versus connecting to hydraulic hoses, making it easier to maneuver at an accident scene.



Above, Nolin Shelton, 4, from Luverne models his junior fireman's helmet. Above right, Children watch intently as Luverne firefighters use a crowbar to open the vehicle door. Inside, firefighters rescued a dummy used in the demonstration. Below left, Visitors to the Luverne Fire Department's open house watch what happens when water is added to a grease fire. Below right is a thank-you letter to firefighters from Luverne first-graders in Angie Ahrendt's class.



Pillow Cleaning
Mobile Pillow Cleaning Service
*Cleaned * Deodorized * Sanitized * Fluffed
Friday, October 23
7:30 a.m. to 4 p.m.
FOR SALE: Custom made new pillows & down comforters
American Reformed Church
304 N Fairview, Luverne

Devon Fluit
Custom Manure Handling
507-220-0067
Flow Control
No Till Injectors
GPS Rate Mapping
Pit Additives
Nitrogen Stabilizer Additives

Pro-Life Gathering
Monday, October 19
7 p.m.
Pipestone Pizza Ranch
Join us as a Minnesota Citizens Concerned for Life representative speaks on pro-life news and legislation in Minnesota.

OPEN HOUSE
Bridal Shower
Whitney Stoffel
Bride to be of Eric Harnack
Saturday, Oct. 24 • 9 - 11 a.m.
St. Catherine Catholic Church
Luverne, Gathering Space
* the couple is registered at Ace Luverne, Target & Kohls *

PAPIK.COM

Harvest the Savings Sales Event

2014 Chevy Silverado High Country Stock #306027N
Was \$42,900 Papik Price \$39,900

2015 Chrysler 200 S Stock #514925Z
Was \$20,900 Papik Price \$18,900

2014 Dodge Avenger Stock #214793Z
Was \$14,900 Papik Price \$12,900

2011 Honda Accord Stock #33213U
Was \$14,900 Papik Price \$13,900

CERTIFIED PRE-OWNED
CHEVROLET BUICK GMC No Worries.™

CERTIFIED PROTECTION WARRANTY

507-283-9171 or 800-634-7701
PAPIK.COM

Papik MOTORS
I-90 Luverne, MN

Newspaper week highlights power of the press

It's not that we haven't missed our unpacked stuff; it's just waiting to be 'rediscovered'

"If you haven't used it or missed it in three months, you can probably just throw it out."



ON SECOND THOUGHT

By Lori Sorenson, editor

I gasped when someone gently suggested this as a solution to our delayed unpacking.

It's been nearly a year since we moved Matt out of the old farmhouse that got bulldozed, and it's been four months since we moved into our new home that went up in its place.

Yet, the machine shed at our place is still full of boxes, furniture and miscellaneous stuff waiting to be assigned to their new locations.

And waiting.

And collecting dust.

And prompting bewildered comments from visitors when the overhead doors happen to be up (revealing what looks like a garage sale).

Except the stuff is not for sale. It's our stuff that we may or may not actually need.

We don't know, because we haven't felt motivated to make the final push for unpacking.

After moving Matt from his house, moving the boys and me from my house and (finally) moving all of us back into the new home, we had all lost our appetites for any more moving.

We'd both been in our respective homes for nearly 20 years, and moving was a big deal. Getting married was a big deal. The past year has just been a pretty big year.

So, we're taking a little break.

Still.

Four months later.

We have what we need, and we know where to find what hasn't yet been unpacked.

For example, when the

college kid left home with his Pizzazz pizza maker, we dug out Matt's Pizzazz from a box marked "kitchen stuff" in the shop.

That's where I also found some sharp knives to replace some bad ones from my place that we threw away. And a mixing bowl to replace the one that got dropped.

Last weekend a box spring and mattress found their way to the guest bedroom, because we're expecting overnight company this weekend.

And we'd better find the snow boots and mittens pretty soon, because we all know winter's coming.

A co-worker (who started working with us in February) recently complimented me on my new sandals and scarf.

"Oh these old things?" I laughed. "You just haven't seen these yet. I found them in a box that I forgot to unpack."

It was a bonus discovery for me, too. I put them away for the winter a year ago, and they haven't seen the light of day since. They felt new again.

It's better than shopping.

True — this isn't an ideal way to live, but it's working for us until we muster the motivation to finish unpacking.

Until then, please don't suggest we throw away what hasn't been missed over the past several months.

I prefer to approach the random rediscoveries as moments of appreciation for old items that — one by one — get welcomed into our new lives.

The power of the press should never be underestimated, must never be abused

GUEST EDITORIAL

By Jim Zachary, Director of the Transparency Project

Last week marked the 75th anniversary of National Newspaper Week, and the theme, "The Power of the Press," points to the importance of watchdog journalism, accurate reporting, strong editorials, comprehensive public notices and a free, open public forum.

In 1841 Thomas Carlyle wrote about the power of the press, conjuring the words of Edmond Burke.

"Burke said there were Three Estates in Parliament; but, in the Reporters' Gallery yonder, there sat a Fourth Estate more important far than they all."

Burke may have been chiding the press for its sense of itself, but Carlyle used his words to write about the importance of newspapers to democracy.

In an often quoted letter to Edward Carrington, Thomas Jefferson wrote that if he were to have to choose between "a government without newspapers or newspapers without a government, I should not hesitate a moment to prefer the latter."

Democracy is best served when the newspaper provides checks and balances as the Fourth Estate of government. Newspapers are not the enemy of government — rather we are the champions of ordinary

men and women.

Newspapers are not bullies out to pick a fight. Rather, they hold public officials accountable, advocate for openness in government and champion the cause of the public, because they are committed to the neighborhoods, cities, counties, states and coverage areas they serve.

With intelligent, thoughtful, compelling commentary, coupled with clearly written, straightforward news reporting, newspapers wield the power of the press in ways that make communities better by giving a voice to the voiceless and empowering the powerless.

Newspapers hold government accountable because at our very core we believe that government belongs to the governed and not to the governing.

If newspapers do not stand up for the public, protect the rights of free speech and the rights of access

to government, then no one will.

Newspapers are the most powerful advocate the public can have and should always provide an open forum for a redress of grievances.

Any newspaper that represents the interests of the governing more than the interests of the governed is not worth the paper it is printed on or the ink that fills its pages.

Newspapers, the good ones, use their power to make a difference in the communities they serve, by accurate reporting, comprehensive coverage and strong commentary.

Margaret Mead famously said, "Never doubt that a small group of thoughtful, committed citizens can change the world; indeed, it's the only thing that ever has."

A newspaper should always be just that — a small group of thoughtful, committed citizens — committed to serving the public in real and meaningful ways.



social studies

Mark time by pheasant events, upcoming Eagles concert

Well, both the Rock County Pheasants Forever banquet and the Minnesota pheasant hunting season opener have come and gone since my last column.

To give you an update, the local Pheasants Forever chapter hosted one of its most successful events in recent years.

Credit for that success goes to the hard-working committee that plans for months and to the tremendous support the local chapter receives from local businesses that sponsor the banquet and the event.

The Rock County Pheasants Forever chapter is currently working on a habitat management project of current wildlife management areas as well as always looking for ways to expand those areas.

As far as the pheasant opener goes, one's success depends on how he measures his success.

Let's face it — with a daily bag limit of two birds per hunter, it's not the bird count that really matters. The bird in the bag count is sure to go up once the corn has been harvested.

For most hunters, if you can get



FOR WHAT IT'S WORTH

By Rick Peterson, General Manager
Tollefson Publishing

together with family or friends for the opener, that's the first step to a great opener. Second, if you have dogs and the dogs do their thing, you're on your way to a great day.

Third, if you are lucky enough to find a bird or two, that's frosting on the cake. If you manage to harvest one of those birds, you get to eat your cake as well.

The Fabulous Armadillos will perform at the historic Palace Theatre on Friday, Oct. 23. That is less than two weeks away, and if you haven't got your tickets yet, that begs the question: What are you waiting for?

Those of you who attended the Fabulous Armadillos Eagles Tribute

concert a couple of years ago will remember how great that was.

Eight very talented musicians, including the blind guy, will be on stage to bring us the greatest in Stadium Rock hits for the '70s, '80s and '90s.

Tickets are going fast. The lower level is nearly sold out, but there are a number of good seats left in the balcony.

The concert starts at 7:30 p.m. with doors opening at 6:30 p.m. Spirits will be available as well as pop and water.

The remaining tickets on the lower level are reserved seats and go for \$35. The balcony seats are \$25 each. Tickets are available at the Palace Box Office at 102 East Main Street.

It's the law, not a suggestion

By Evan Verbrugge
Rock County Sheriff

Recently I was asked about whether a semitrailer can park on the streets in a residential area. We have been noticing more and more individuals are doing this, and it actually goes against the City of Luverne Ordinance.

According to Ordinance SEC. 9.30 TRUCK PARKING.

•Subd. 1. It is unlawful to park a detached semitrailer upon any street, City-owned parking lot, or other public property, except on streets as specifically designated by the Council by resolution.

•Subd. 2. It is unlawful to park a semitrailer, truck trailer, or box whether or not attached to a

truck-tractor or to its original chassis, within a residential district zone, except for the purpose of promptly loading or unloading the same.

We have seen a few drivers starting to park their semitrailers in the residential area, so now you know the ordinance. We ask that if you are a driver, to please park in an area of town that allows parking, such as the BP gas station, the lot south of Blue Stem, or any other truck parking lot in Luverne. Unfortunately, Law Enforcement will be issuing citations for this violation as it is against City Ordinance.

If you have questions about this ordinance, please contact me at 507-283-5000 or via email at evan.verbrugge@co.rock.mn.us.

Underwood: Thank you for the Flag Park

To the Editor:

As a member of the Rock County V.F.W., I would like to give all the people involved with putting the Flag Park together a great "Thank You." It gives me a

great feeling of pride every time I go by it, and it makes the city that much more appealing.

Thank you much!

**Buck Underwood, Luverne
Quartermaster #2757**

E-mail: editor@star-herald.com Web site: star-herald.com
Phone: 507-283-2333 Fax: 507-283-2335

Published Thursdays by Tollefson Enterprises, POSTMASTER:
Send address changes to 117 West Main, P.O. Box 837, Luverne,
MN 56156. Periodicals postage paid at Luverne, Permit #33 and at
additional mailing offices.

General manager: Rick Peterson
Office manager: Deb Lusty
Circulation manager:
Stephanie Christensen
Advertising: Chantel Connell
Production manager: Abbe Kolar
Production: Amanda McDonald

News staff:
Lori Sorenson, editor
Mavis Fodness, reporter
John Rittenhouse, sports editor
Esther Frakes, copy editor
Stephanie Christensen,
composition/web/photos

Rock County
STAR HERALD
Rock County's newspaper since 1873

(ISSN 0889-888X)
SUBSCRIPTION RATES

\$68 per year in Rock County; \$85 per year all other areas. Single copies \$1.25

Entire contents copyrighted by
Tollefson Publishing Roger Tollefson, publisher

The *Star Herald* encourages letters to the editor expressing the opinions of readers and intends to print all letters. Letters not meeting the guidelines will not be printed. The *Star Herald* will verify the authenticity of all letters. Letters must have the name of the writer, a signature and address.

Unsigned letters will not be considered. The *Star Herald* will edit for grammar, spelling and clarity. Any letters containing offensive language, libelous or slanderous material, or misleading or false information will be rewritten before being published. The *Star Herald* will not publish letters written with the sole intent to advertise or serve as a thank-you. Letters with more than 300 words may be edited. The deadline for letters is Monday 10 a.m. They may be delivered or mailed to the editor, *Rock County Star Herald*, P.O. Box 837, 117 W. Main St., Luverne, Minn. 56156.

ON THE RECORD

Dispatch report

Oct. 2

- Dispatch received an alarm for a business. Contacted keyholder and sent deputy.
- Complainant on South Kniss reported that sometime last night someone hit their building and left.
- Complainant reported someone stole his auction-real estate sign.
- Complainant reported they are replacing a culvert on 110th Avenue between 211th and 201st streets.
- Complainant requested a deputy be present for an eviction.
- Deputy stopped a vehicle and cited driver for no Minnesota driver's license and no proof of insurance.
- Deputy stopped vehicle and cited driver for no Minnesota driver's license.
- Complainant reported four or five vehicles ripping around the area of the softball fields and driving through fields.

Oct. 3

- Complainant reported they are driving 100 mph with subject with alcohol poisoning. They cannot get her to wake up and advised they will not be stopping for any officer.
- Complainant requested to speak with a deputy about a car vandalized and a hubcap stolen.
- Complainant requested a deputy stand by for a property exchange.
- Complainant requested a welfare check on subject because of comments made by her.
- Deputy was flagged down by the mailman who reported a gas smell in an apartment complex. Sent deputy who didn't smell anything.
- Complainant requested a locksmith for a car that is locked and running.
- Complainant reported a U-Haul van that passed them on I-90 eastbound at mm 1 with no taillights.

Oct. 4

- Deputy stopped a vehicle and arrested subject for DWI. He was taken to jail.
- Complainant reported the neighbor to the east of them is having a party for the second night in a row in the garage and it is very noisy.
- Complainant reported a domestic. Subject taken to jail for 5th degree assault.
- Complainant reported subject was bitten by a stray kitten yesterday.
- Complainant reported credit cards were stolen.
- Complainant reported credit cards were stolen.
- Complainant reported the mother of his child had an open container in the vehicle and did not restrain the child.
- Complainant reported she picked up her mail and opened a letter not ad-

ressed to her. She brought it to the Rock County Sheriff's Office.

- Complainant requested a deputy for problems with child and her ex.

Oct. 5

- Deputy cited subject for no Minnesota driver's license, expired registration, and speed. Vehicle was towed by Erwin's.
- Complainant reported his car had some problems and is parked in a field approach at County roads 4 and 11. Complainant requested a ride to town.
- Complainant requested deputy's help with a belligerent child.
- Complainant reported someone applied for a loan with her identity.
- Complainant reported someone is harvesting his beans and he doesn't know who they are.

Oct. 6

- Reserved for POR registration.
- Reserved for POR registration.
- Complainant requested a welfare check on child.
- Complainant reported his wife received a voicemail and it sounded like her ex was trying to use her social security number.
- Deputy cited subject for driving after revocation.
- Complainant reported a disgruntled employee that will not leave the property and she made threats.

Oct. 7

- Dispatcher received a trouble alarm. Notified keyholder.
- Complainant reported a red Chevy cavalier parked the wrong way on the side of the road on W. Crawford Street.
- Reserved for POR registration.
- Complainant reported subject is harassing her over text messages.
- Complainant reported her backyard neighbors are shooting bow and arrows and hit her garage.

Oct. 8

- Complainant reported a break-in.
- Complainant reported a dead animal on Main Street by Loopy's. Notified city shop.
- Complainant reported subject has driven by his house twice in two days and yells things at him.
- Complainant reported she is being harassed.
- Complainant reported he is being deprived of his parental rights.

In addition, officers responded to 6 motor vehicle accidents, 1 deer accident, 1 transport, 1 funeral escort, 14 ambulance runs, 1 parking violation, 6 paper services, 7 animal complaints, 1 false alarm, 8 log/alarm sheets, 6 drug court tests, and issued 5 purchase/carry permits and 1 burn permit.



Flowers need to pack 90 days' worth of rations, first aid kits, and safety equipment for the entire crossing. As the rules state — if they run out of rations and have to ask for extras, they will be disqualified.

Miller Atlantic rowing challenge/continued from 1A

ocean rowing boat that was built in Port Townsend, Washington," Miller said. "It is the first ever American made boat to be entered in the race. We are hoping to be the first Americans to win the race."

The \$100,000 vessel was named "Washington's Crossing."

Rowers need to pack 90 days' worth of rations, first aid kits, and safety equipment for the entire crossing. As the rules state — if they run out of rations and have to ask for extras, they will be disqualified.

As the Atlantic Challenge website states, "Once they leave the safety of the harbor, they'll be on their own on the vast ocean and at the mercy of the elements until the race comes into its final stretch."

The Talisker Whiskey Atlantic Challenge has been dubbed "the world's toughest row," because competitors must endure blisters, salt rash, possible sharks and sleep deprivation to make the trip.

Essentially, it attracts the same class of adventure seekers as Mt. Everest climbers, due to the physical and mental demands of the event.

Alex Miller said he's not surprised about his daughter's venture across the ocean.

"She was always the one pushing to do more," he said. "Whether we were in the Big Horns or the Boundary Waters."

He admitted he felt better once he learned his daughter's boat has passed the self-righting test.

On Dec. 15 they'll begin the challenge at San Sebastian in La Gomera in



On Dec. 15 they'll begin the challenge at San Sebastian in La Gomera in Spain's Canary Island chain just off the coast of Africa. They'll return 40 to 90 days later to Nelson's Dockyard English Harbor in the southern coast of Antigua.

Spain's Canary Island chain just off the coast of Africa.

They'll return — if all goes well — 40 to 90 days later to Nelson's Dockyard English Harbor in the southern coast of Antigua.

The Cranial Quest's official sponsor is the Philadelphia Urban Affairs Coalition, but both Miller and Pagano have been working to secure other corporate sponsors, in addition to raising money for ALS.

To support their cause, visit <http://www.thecranialquest.com>, which offers a link to track the team as it crosses the Atlantic.



dining & entertainment

SOUP, SANDWICH & DESSERT SUPPER

Grace Lutheran Church IN LUVERNE

THURSDAY, OCTOBER 22 5 TO 7 P.M.

Free Will Offering Proceeds to benefit World Hunger

Supplemented by Rock County Chapter of Thrivent Financial

Palace Theatre Downtown Luverne

Experience never gets old.

A new film by NANCY MEYERS
Robert DE NIRO • Anne HATHAWAY

INTERN

SAT., OCT. 17 - 4 & 7 P.M.
SUN., OCT. 18 - 7 P.M.

Check our Web site for updates
www.palacetheatre.us
Find us on Facebook

Under New Ownership

Stop up & see what we have to offer

Restaurant opens at 10 a.m.
Bar opens at 3 p.m.-close

green Lantern

CAFE & STEAK HOUSE Hardwick, MN 507-669-2246

Daily Specials
Happy Hour 3-6 p.m.
\$2 Bud & Miller products

Hours:
Mon.-Sat.: 10 a.m.-close
Sundays: Bar opens at 3 p.m.

SEE YOU SOON!

A night at the Green Lantern *Priceless*

LUVERNE FIRE DEPARTMENT

Firemen's Show - MEA Kick-off

SHOWTIMES

Wednesday, Oct. 14 7 pm

Thursday, Oct. 15 4 pm, 7 pm

Friday, Oct. 16 4 pm, 7 pm & 9 pm

AT THE PALACE

Big Hero 6

BLUE MOUND LIQUOR STORE PRESENTS

Beer Dinner

3 COURSE MEAL FEATURING

BELL'S

OCTOBER 22 AT 7 PM

BLUE MOUND BANQUET CENTER

\$20 PER PERSON

PURCHASE AT BLUE MOUND LIQUOR OR CALL TO RESERVE YOUR SPOT 507-449-5052

SIGN UP BY END OF BUSINESS DAY OCTOBER 19

Wine & Beer Bus Tour

OCTOBER 24

Leave from Luverne at 9 am

FEATURING SCHELL'S BREWERY
MORGAN CREEK VINEYARD
CHANKASKA CREEK WINERY

ALSO STOPPING AT
New Ulm Turner Hall & Lone Star BBQ & Grill
Authentic German Lunch & Fine Texas BBQ in MN

\$60 includes bus ride, meals & tastings

Tickets can be purchased at Blue Mound Liquor

Schell's BEER German Craft Beer
MORGAN CREEK Vineyards
CHANKASKA CREEK

Trick-or-Treating

Friday, Oct. 30 • 3:30 – 5:30 p.m.

Come to Good Samaritan Society - Mary Jane Brown, Poplar Creek and The Oaks for some trick-or-treating. All children are welcome to attend.

For more information, call (507) 283-2375.

Good Samaritan Society
LUVERNE

All faiths or beliefs are welcome.



Lori Sorenson photos/1015 fire prevention winning posters

Luverne Fire Department member James Rahm (above) presents fifth-graders with their awards for winning the 2015 Fire Prevention Week poster contest Friday morning in the Luverne Elementary School. Ashlyn Johnson (far right) won first place, Reyna DeSollar (center) was second and Cedar Viessman (left) was third. Johnson's winning poster will be entered in a state contest that will be decided later in Minneapolis.

Rahm (left) demonstrates to Luverne fifth-graders what he does to prepare and gear up for fighting a fire, which can burn at 2,000 degrees. For example, his steel-toe boots have metal plating on the bottoms, and his pants and jacket are lined with material that provides limited protection against that kind of heat.

ENGAGEMENT

Dave and Teresa Hup, Luverne, and Arlyn and Melanie Tilstra, Hills, announce the engagement of their children, Bethany Hup and Cory Tilstra, both of Luverne.



Bethany Hup and Cory Tilstra

Bethany graduated from Luverne High School in 2013 and from Minnesota West Community and Technical College in 2015. She works at Pfiffer Dental in Sioux Falls, South Dakota.

Cory graduated from Hills-Beaver Creek High School in 2011 and from Lake Area Technical Institute, Watertown, South Dakota, in 2014. He works

at Rheault Ag Supply as a Pioneer seed salesman in Hills. They are planning a July 16, 2016, wedding.

1923: Alfalfa acreage doubles in county, Beaver Creek leads charge

The following appeared in the Rock County Herald on April 6, 1923:

BEAVER CREEK LEADS IN ALFALFA ACREAGE

County Agent Roeke Finds That Acreage in County is 1560 Acres, With 350 Acres in Beaver Creek

"Rock county doubled its acreage in alfalfa the last two years. In 1920 there were but 850 acres in the county. In 1922 there were 1560 acres in the county," contends county agent Roske.

"The largest acreage of alfalfa is in the southwest part of the county. Beaver Creek leads in this with 350 acres; Martin township follows with 255 acres



BITS BY BETTY

By Betty Mann,
president Rock County Historical Society

and Springwater with 181 acres; Luverne township also has 181 acres and Clinton township has 160 acres. It is expected that this average will be doubled again by the end of this year.

"Farmers have left orders at the Farm Bureau office for 3000 pounds of this seed already this spring. This seed is being secured from farmers in other parts of the county that have

state inspected fields and the seed is known to be pure as to the particular kind, either grim or South Dakota No. 12.

"We would like very much to keep a check on the alfalfa planted this year so as to determine the increase in the county. We know that five acres of good alfalfa is the most valuable five acres in crop that can be planted. Five acres

of alfalfa will take care of 100 swine from May through the season. If five acres will take care of 100 to 150 swine, one can readily figure up what that five acres is worth by comparing it to the amount of feed necessary to grow the above amount of swine out during the same period.

"Besides the feed item, the condition of hogs that are grown on alfalfa should never be lost sight of. It produces the bone and stretch and that thrifty condition of swine that the farmer most desires when he places his swine in the feed lot in the fall."

Mann welcomes correspondence to tomannmade@iu.net.

PEOPLE IN THE NEWS

NWS honors Kurtz for 15 years of volunteer data collection

The National Weather Service recently honored Luverne's Gary Kurtz for 15 years of gathering and sending hourly precipitation data to the NWS office in Sioux Falls.

The award was presented by Brad Adams, observing program leader from the National Weather Service office.

"The hourly precipitation data collected by Mr. Kurtz becomes a permanent part of the climatic record for the local area and nation," Adams said.

"This data is used extensively by many other sectors including the National Weather Service and state climatologists."

Adams said the data is also used by numerous agencies in the public and private sectors for agricultural planning and assessment, engi-



Submitted photo

Luverne's Gary Kurtz was recently honored for 15 years of collecting monthly data for the National Weather Service.

neering, environmental impact assessment, utilities planning, and litigation. "These records continue to acquire greater value with the

passing of time," Adams said. The first network of cooperative stations was set up as a result of an act of Congress in 1890 that established the Weather Bureau.

"The nation owes a sincere debt of gratitude to the cooperative weather observers and organizations who have quietly and steadily built up what amounts to a priceless national treasure in the finest tradition of volunteer service to their country," Adams said.

"The National Weather Service, State Climatologist, community and others greatly appreciate this service, and thank those such as Mr. Kurtz who have worked diligently to assist the NWS with collecting hourly precipitation data from the Luverne area over the past 15 years."



Submitted photo

Twenty-five years in dealership

Gary Papik, Luverne, was recently recognized as being a Chevrolet, Buick, GMC and Cadillac dealer for 25 years. Pictured in the Papik Motors dealership, Luverne, are (from left) General Motors representative Harsha Yarram, Micky Sehr, Gary Papik, Jordan Papik, and GM representatives Joel Kruger and Molly Hilburger.

REMEMBER WHEN

10 years ago (2005)

•City Administrator John Call attended his first Luverne City Council meeting Tuesday. ...

He started the job Monday and will spend the first few weeks working closely with department heads, meeting people in the general public and familiarizing himself with current issues in the city of Luverne.

20 years ago (1995)

•For the second time in less than a year, Casey's General Store on South Highway 75, Luverne, was held up by an armed robber Saturday night.

On Feb. 26, the same Casey's store in Luverne was robbed at gunpoint.

50 years ago (1965)

•A new doctor of chiropractic has opened offices here. He is Dr. William L. Preuss, St. Paul, who will practice his profession in the offices vacated by Dr. F. W. Bofenkamp on the second floor of

the old First National Bank building.

75 years ago (1940)

•Rock County's young men between the ages of 21 and 35 will go to the regular election polling places in their respective precincts next Wednesday, the 16th, to register under the nation's first peacetime compulsory military training law.

Latest estimates concerning the number in the county who will be affected by this historic measure sets the figure at 1,708, or approximately 15 per cent of the county's total population.

100 years ago (1915)

•According to announcement made this week by the owners of Luverne's two dairies, patrons of the Eureka and Pleasant Hill dairies will be required to pay an increased price for milk beginning with November 1st. Under the rates that have been in force for some time, patrons have been paying 7 cents a quart for milk or \$1 for fourteen quarts, but under the new rates a charge of 8 cents a quart or 12 1/2 cents a quart for \$1 will be made.

MENU

Senior Citizens

Monday, Oct. 19: Swiss steak, mashed potatoes, peas, bread, pineapple.

Program: Pack backpacks for SYS.

Tuesday, Oct. 20: Honey mustard chicken breast, baked potato, green beans, bread, cake.

Wednesday, Oct. 21: Lasagna, California blend vegetables, peaches, garlic bread, cookie.

Thursday, Oct. 22: Pork loin, potatoes, green bean casserole, dinner roll, fruit crisp.

Program: 11 a.m. Medicare D and Senior Linkage Line info with Gail Radke.

Friday, Oct. 23: Fish, tartar sauce, au gratin potatoes, mixed vegetables, bread, pie.

Program: Deliver backpacks to SYS.

Senior Dining offers well-balanced and affordable meals in a community atmosphere.

Bring a friend or make new ones.

Call Janice Fick at 283-9846 to make dining reservations or for home-delivered meals.

Leadership program brings Luverne people together for training

By Lori Sorenson

Twenty-six residents of the Luverne area returned Friday from the prestigious Blandin Community Leadership Program, an intense five-day training at Sugar Lake Lodge, Grand Rapids.

Local residents participating in this training were Johnna Ahrendt, Mike Davis, Mike DeJong, Lisa Dinger, Judy Fenske, Stacy Gangesstad, Tim Gust, Lori Hallstrom, Mike Jarchow, Wanda Jarchow, Ryan Johnson, Jane Lanphere, Tyler LeBrun, Jeremy Lehman, Tammy Loosbrock, Matt Mostad, Mark Opitz, Dianne Ossenfort, Jordan Papik, Phillip Paquette, Dave Riphagen, Craig Rogers, Holly Sammons, Deb Schandelmeier, Sherri Thompson and Caroline Thorson.

The goal of the Blandin Community Leadership Program is to develop and train a broad base of local leaders to build healthy communities.

At Monday's Luverne Economic Development Authority meeting Thompson (who is also a county commissioner) and Sammons (EDA director) said their Blandin experience was worth the weeklong commitment.

"It was a wonderful experience," Thompson said.

Sammons shared her Blandin experience in her director's report.



Luverne participants in Blandin Community Leadership Program training Oct. 5-9 are (front, from left) Johnna Ahrendt, Judy Fenske, Stacy Gangesstad, Mike Davis, Mark Opitz, Tim Gust, Phillip Paquette, Craig Rogers, Wanda Jarchow, (second row) trainer Ann Glumac, Sherri Thompson, Jane Lanphere, Deb Schandelmeier, Dianne Ossenfort, Caroline Thorson, Ryan Johnson, Tammy Loosbrock, Mike DeJong, Lori Hallstrom, trainers Nehrw Abdul-Wahid and Vic Klimoski, (back) Tyler LeBrun, Dave Riphagen, Jeremy Lehman, Holly Sammons, Lisa Dinger, Matt Mostad, Jordan Papik, and Mike Jarchow.

"It was a wonderful week," she said. "Thanks for the opportunity to go."

She said she appreciated the chance to meet and

connect with other Luverne residents who were interested in working for the good of the community.

"It was a unique mix of

people — some who have lived here their entire lives, and some who have been here only a short time. Building these relationships is a

big part of the retreat."

Topics covered during the retreat included identifying and describing community issues and opportuni-

ties, effective interpersonal communication, building social capital, appreciating

Leadership/see page 8A



ATLAS of Rock County Director Vicki Altena (right) accepts a check from Mina Iskandr, acting director of Good Samaritan Society in Luverne at the Redeemed Remnants store.

Good Samaritan Society provides grant to ATLAS

Through the Social Accountability Grant Program started in 2010, the Good Samaritan Society offers grants up to \$10,000 each for start-up or continued support for social accountability projects.

These projects must primarily serve individuals in the community and reflect the Christian mission of the Good Samaritan Society.

Good Samaritan Society-Luverne submitted a grant application on behalf of ATLAS of Rock County, which resulted in a \$2,500 grant for the program.

For the last year, ATLAS of Rock County has been helping individuals and families in the community by working to locate and deliver needed furniture.

Additionally, they have been helping those without support systems in the area move from one home to

another.

Sometimes these situations are emergencies. Both of these activities have produced the need for an enclosed trailer.

The \$2,500 grant provided by Good Samaritan Society will be used to help purchase a trailer and moving equipment.

About the Good Sam:

The Evangelical Lutheran Good Samaritan Society, the nation's largest not-for-profit provider of senior care and services, owns and operates more than 240 long-term health care centers and senior living communities, including Good Samaritan Society - Luverne.

Founded in 1922, the Good Samaritan Society's mission is to share God's love in word and deed by providing shelter and services to older persons and others in need, believing that "In Christ's Love, Everyone Is Someone."

Esther Vande Hoef

Esther Rose Vande Hoef, 90, Hills, formerly of Luverne, died Tuesday, Oct. 6, 2015, at the Sanford Medical Center in Sioux Falls, South Dakota.

A funeral service was Saturday, Oct. 10, at the American Reformed Church in Luverne with burial at Memory Gardens Cemetery in Sioux Center, Iowa.

Esther Van Wyhe was born Dec. 18, 1924, to Lambert and Annie (Van Muyden) Van Wyhe on a farm by Akron, Iowa. She lived there for two years before her family moved to a farm near Ireton, Iowa. She graduated from Hawarden High School in Hawarden, Iowa, and then attended Westmar College in LeMars, Iowa, for teaching.

On Nov. 26, 1945, Esther married Dick Vande Hoef at the Christian Reformed Church parsonage in Sioux City, Iowa. The couple farmed near Ireton until 1949 when they moved to Artesia, California. In 1952 they moved to a farm south of Luverne. Esther was a farm wife and stay-at-home mom.

In 1967 Dick died in a farm accident and Esther moved with her children into Luverne. She worked at the Luverne Community Hospital for two years and then at Rock County Day Activity Center from 1969 to 1975. She returned to work at the Luverne Community Hospital from 1979 until she retired in Dec. 1989. In July 2009 she moved

to Tuff Memorial Home in Hills.



Esther was a charter member of the American Reformed Church in Luverne. She was a member of the Mary Circle and taught Sunday School and Catechism. She enjoyed crocheting and reading and was an avid Minnesota Twins baseball fan.

Esther is survived by her children, Diane (Steve) Thompson, Brandon, South Dakota, Elaine (Allen) Boeve, Steen, Ladonna (Jerry) Behnke, Rapid City, South Dakota, and Kevin Vande Hoef, Rock Rapids, Iowa; nine grandchildren; 15 great-grandchildren; three brothers, Duane (Helen) Van Wyhe, Sioux Center, Iowa, Wayne (Hendrene) Van Wyhe, Hills, and Marlin (Darlene) Van Wyhe, Hawarden, Iowa; a sister-in-law, Kathy Van Wyhe, Ireton; and other friends and relatives.

She was preceded in death by her husband, Dick Vande Hoef; two sons, Milo and Milen Vande Hoef; her parents; a brother, Gordon Van Wyhe; four sisters, Margaret Vander Griend, Gertrude Webert, Dorothy Vander Griend and Alice Moerman; four brothers-in-law, William Moerman, Dick Vander Griend, Ordean Webert, and Pete Vander Griend; and a sister-in-law, Jennie Van Wyhe.

Arrangements were by Hartquist Funeral Home of Luverne, www.hartquistfuneral.com.

(1015 F)

Lauretta Ladd

Lauretta Theodora Ladd, 96, Luverne, died Tuesday, Sept. 29, 2015, at her home.

A memorial graveside service was Monday, Oct. 12, at Maplewood Cemetery in Luverne.

Lauretta Olson was born July 19, 1919, to Theodore and Laura (Jacobson) Olson on the family farm near Kenneth. She attended a country school that was located on their section of land. On May 29, 1947, Lauretta married Lauren Ladd Jr. at Zion Lutheran Church in Luverne.

They made their livelihood from the land by farming. They retired from farming in

1985 and moved to Luverne in 1999. Lauren died on March 27, 2012, and Lauretta continued to reside in their home.

She is survived by her son, Leighton, St. Louis Park; a sister, Marion Helling, Luverne; a sister-in-law, Doris Olson, Adrian; and other relatives and friends.

Lauretta was preceded in death by her husband, Lauren; her parents, Theodore and Laura Olson; a brother, Donald Olson; and a sister, Thelma Wittenberger.

Arrangements were by Hartquist Funeral Home of Luverne, www.hartquistfuneral.com. (1015 F)

DEATH NOTICES

Wade Brooks

Wade C. Brooks, 57, Sioux Falls, South Dakota, formerly of Luverne, died Monday, Oct. 5, 2015, in Sioux Falls.

A memorial service was Saturday, Oct. 10, at the

Hartquist Funeral Home in Luverne.

Arrangements were by Hartquist Funeral Home of Luverne, hartquistfuneral.com. (1015 DN)

Dolores Melton

Dolores Melton, 90, Holland, Michigan, formerly of Beaver Creek, died Friday, Oct. 9, 2015, at Rest Haven Care Center in Holland.

Arrangements are pending with Hartquist Funeral Home in Luverne, www.hartquistfuneral.com. (1015 DN)

CELEBRATIONS

Open Houses

An open house bridal shower for Whitney Stoffel (bride-to-be of Eric Harnack) will be from 9 to 11 a.m. Saturday, Oct. 24, in the Gathering Space at St. Catherine Catholic Church in Luverne.

W
WISE COMPANY
QUALITY PREPARED FOODS

THE NATION'S LEADING EMERGENCY FOOD PROVIDER

CALL NOW AND RECEIVE A FREE SAMPLE
800-381-7969

Have you been diagnosed with **Non-Hodgkin's Lymphoma?**

If you have been diagnosed with a serious medical condition, such as Non-Hodgkin's Lymphoma, after exposure to **Monsanto's Roundup pesticide, you may be entitled to compensation.**

Call Us Toll Free: 800-304-8171

Pulaski Law Firm
4615 Southwest Freeway, Suite 850 • Houston, TX • 77027

PALACE THEATRE UPCOMING EVENTS

October 14-16 Annual Fireman's Movie - Big Hero 6
October 17-18 Movie "The Intern"
October 23 LACF presents Stadium Rock with the Fabulous Armadillos
October 24-25 Movie "Hotel Transylvania 2"
Oct. 30, 31 & Nov. 1 Movie "Pan"
November 1 Sweet Adeline's "Let's Sing Again" with Step it Up Men's Barbershop
November 5 Bank Nite FREE Movie (sponsored by Papik & First Farmer's & Merchants)
Nov. 13-15 & 20-22 Green Earth Players present "The Homecoming"
November 28 Tonic Sol Fa Holiday Show (sponsored by The Bluestem & Main Street Financial)
November 30 Brian Petersen from the Star Tribune presents "State of Wonders" photos of Minnesota - LIFT Annual Meeting
December 3 Bank Nite FREE Movie (sponsored by Papik & First Farmer's & Merchants)
December 4-6 Movie TBD
December 5-7 Luverne Street Music presents "The Sounds of Christmas"
December 12 Christmas at the Palace
December 19 Monroe Crossing presents "A Bluegrass Christmas"

Visit us at www.palacetheatre.us
or on Facebook: Palace Theatre Luverne for our current listing of upcoming events!



Mavis Fodness photos/1015 Painting Lines

Final touches

Workers from AAA Striping of Minneapolis use an air gun to apply a blend of white latex paint to U.S. Highway 75 on Friday, Oct. 9, the last day of an almost two-week process that included grinding grooves into the pavement to help the paint wear better. The final step in painting traffic symbols on the roadway surface is the sprinkling of untreated retro-reflective glass beads on top of the freshly applied paint (above). According to AAA Striping workers, the beads only adhere to the wet paint, with the spillage giving the lines and road symbols a splattered look. The spillage gradually disappears as traffic travels the roadway, leaving crisp painted lines in its wake.



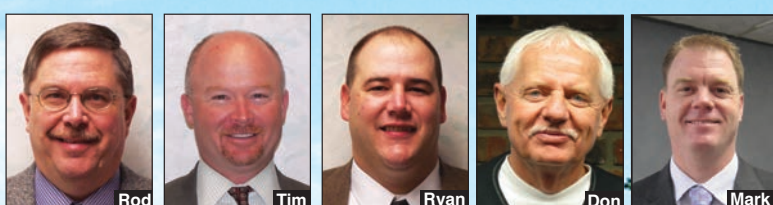
Your Agri-Business Needs an Agri-Bank

At Exchange State Bank, we know what it takes to run a successful Ag operation.

We are always available to work with you on:

- Ag Operating Loans • Livestock Loans • Machinery Loans
- Crop Planting Loans • Long Term Farm Real Estate Loans • Internet Banking

October is National Pork Month
We Salute all Pork Producers!



Good farm planning depends on you and you can depend on us for your farm operation loans.

Exchange
STATE BANK
Local. Dependable. Strong.

We are locally owned and responsible to the community!



(507) 962-3250
Hills, MN

(507) 967-2570
Ellsworth, MN

(507) 449-6000
Luverne, MN

Member
FDIC

Tickets on sale now!

Luverne Area Community Foundation

THE FABULOUS ARMADILLOS PRESENT

STADIUM ROCK



Historic Palace Theatre
Friday, October 23 | 7:30 p.m.

Doors open at 6:45 p.m.

\$35 Lower Level (reserved) | \$25 Balcony

Available at the Palace Box Office (102 E Main, Luverne | 283-4339)

Spirits will be available, pop and water too

A fundraising concert put on by the Luverne Area Community Foundation general fund. Putting money back into the community through the gift of grants.

Landfill study/continued from 1A

The demolition landfill gives residents a place to deposit debris from construction projects or from natural disasters.

Niday said having an adequate place to bring materials has eliminated the burning and burial of debris on private land throughout the state.

Possible leaching in demolition landfills is the primary concern from MPCA officials.

Rock County's demolition landfill is constructed with a clay base, which acts

as a natural filter to retain surface water and allows it to slowly penetrate through the clay soils. Some officials think a plastic liner and not clay is the only safe protection for the environment.

Niday disagrees.

By examining previous water tests, she said she would be able to prove that Rock County's clayliner and current practices (such as banning materials like treated lumber) are effective protection for the area's groundwater.

Niday expects to finalize her report in February 2016.

Christensen Farms/from page 1A

the video's release. "Dr. Ruen found the facilities and methods acceptable within industry standards," stated Haubrich.

"The farm facility was in good working repair and in my professional opinion the animals were well cared for."

Haubrich concluded that no criminal charges would be brought against any Christensen Farms employees.

After the video's August release, Christensen Farms suspended seven of its employees for allegedly violating the company's animal welfare policies.

Christensen Farms is a family-owned pork production company based in Sleepy Eye. It markets approximately four million hogs per year through 54 sow farms in six states, and major retailers sell its products across the U.S., including Wal-Mart.

Leadership training/from page 7A

personality differences, managing interpersonal conflict, understanding community power, mobilizing community resources and goal setting.

"A healthy community depends on leadership engagement of community members," said Valerie Shangreaux, director of Blandin leadership programs.

"The leadership demonstrated by these participants reflects their commitment to their community as well as to the region and to rural Minnesota."

Last week's retreat is the first segment of leadership

training, which will include three follow-up workshops.

A program of the Grand Rapids-based Blandin Foundation, BCLP has provided experiential leadership training for more than 7,000 community leaders from more than 425 rural Minnesota communities since it began in 1985.

This is the third time in the past 20 years that Luverne residents have participated in the BCLP leadership program.

BCLP training programs are funded entirely by the Blandin Foundation, whose mission is to strengthen rural Minnesota communities, especially the Grand Rapids area.



Combine your Passion with a Growing Career

Christensen Farms

is seeking

Animal Care Workers

in the Luverne and Jasper areas.

No Experience Required

Excellent benefits including health, dental & life insurance, 401K, vision plan, and paid time off

\$250 sign on bonus after completion of 90 days of employment

Starting pay \$13.50/hour with a pay increase to \$14.55/hour after 180 days.

Apply online at www.christensenfarms.com

or contact Jake in HR at 507-794-8594

Equal Opportunity Employer

Respect • Integrity • Excellence • Adaptability • Innovation

Cards host annual invitational

By John Rittenhouse

The Luverne Cardinal cross country teams wrapped up their 2015 home schedule by hosting the annual Luverne Cross Country Invitational Thursday.

The day included cool and windy conditions, but the Cardinals represented themselves well in front of their home crowd.

The LHS boys placed second in a five-team field, while the Cardinal girls finished third in a field of six complete teams.

Luverne's boys turned in a 49-point performance to place second to Pipestone.

The Arrows walked away with the team championship after registering 23 points.

Austin Winter set the pace for the Cardinals by finishing eighth individually with a time of 18:57.

Erik Wohnoutka (10th in 19:07), Adam Fodness (11th in 19:14), Dalton DeSollar (12th in 19:19) and Hunter Hamann (13th in 19:22) capped the team scoring for LHS.

Tom Brown (16th in 19:39), Shane Berning (18th in 20:09), Cole Claussen (21st in 20:29), Di Ma (31st in 21:39.4), Carter Riphagen (32nd in 21:39.5), Michael Rahm (35th in 21:54), Mark Robinson (38th in 21:59), Carter Baumberger (41st in 22:21) and Tanner Baustian (47th in 24:12) also competed in the varsity race.

The LHS girls turned in a 78-point effort to finish third at the meet.

Canby-Minnesota-Lincoln HI claimed the team championship with 42 points.

Madison Schandelmeier and Gabrielle Ferrell placed first and second in the individual standings with respective 19:50 and 20:10 times.

Madison Reisdorfer (15th in 22:30), Tianna Doppenberg (22nd in 21:59) and Jaidyn Elbers (45th in 25:32) made



Luverne's Tianna Doppenberg leads a pair of Pipestone runners during a stretch of the girls' varsity race during the Luverne Cross Country Invitational Thursday.

contributions to the team tally. Bergin Flom finished 53rd in 26:57 during the varsity race.

Here is a look at the team standings and the rest of Luverne's individual results from the meet.

Boys' standings: Pipestone 23, Luverne 49, C-M-LH 76, Adrian 114, Tracy-Milroy-Balaton 120.

John Rittenhouse photo/1015 lcc 3

Girls' standings: C-M-LH 42, Pipestone 62, Luverne 78, Adrian 106, T-M-B 108, Southwest Christian 126.

Junior high girls: Regan Feit, first, 10:54; Autumn Nath, third, 11:52; Cassie Flanagan, fourth, 12:09.7; Claire Baustian, fifth, 12:09.9; Madigan Flom, ninth, 12:37; Leslie Van Engelenhoven, 14th, 13:04. Luverne placed first out of three teams with 22 points.

Junior high boys: Jonah Friedrichsen, first, 10:41; John Miller, 18th, 13:08.



John Rittenhouse photo/1015 lcc 9

Erik Wohnoutka helps the Luverne boys place second as a team during their annual home meet Thursday.

Luverne football team completes 5-3 regular season

By John Rittenhouse

The Luverne football team wrapped up a 5-3 regular season by posting a convincing victory in Sherburn Thursday.

Taking on the Martin County West Mavericks on their home field, the Cardinals never trailed in the contest and scored 19 unanswered points at the end of the game to secure a 33-6 victory.

Senior running back Erik Tofteland carried the ball for 160 yards and one touchdown in the game.

Junior Jaxon Nelson ran for two touchdowns, passed for another and found himself on the receiving end of a touchdown reception during the contest.

LHS assumed control of the contest by putting together a 14-point first quarter.

The Cards received the game's opening kickoff and promptly advanced the ball 70 yards in nine plays.

Nelson capped the march with a one-yard run at the 7:54 mark of the first quarter, and Chris Jelken booted his first of three extra points after the touchdown to make it a 7-0 game.

Tofteland produced runs of 14 and 33 yards during the drive.

Luverne's second offensive possession of the contest developed into a 66-yard, eight-play drive.

Tofteland, who ripped off runs covering 20 and 13 yards during the possession, ended the march with a one-yard plunge with 2:24 remaining in the opening

stanza.

Nelson added a 17-yard run to the drive, which ended with the Cards sporting a 14-0 advantage.

Luverne's 14-point scoring run came to an end early in the second quarter.

After the Cardinals lost the ball on downs at the MCW 45-yard line, the Mavericks produced their lone touchdown of the game.

A five-play possession ended when Richard Eckmann tossed a 40-yard touchdown pass to Brandon Williamson.

MCW's pass for a two-point conversion failed, leaving the Mavericks facing a 14-6 deficit with 9:07 remaining in the first half.

The Cardinals took advantage of one of six MCW turnovers in the game to set up their final touchdown of the first half.

After an LHS punt, the Cards regained possession of the ball when the MCW return specialist fumbled and Solomon Nielsen recovered the loose ball on the Mavericks' 40-yard line.

The Cards used six plays to cover 40 yards during a possession ending with Nelson scoring on a 19-yard touchdown run with 1:33 remaining in the second quarter.

Tofteland registered an 11-yard run during the possession, which gave the Cards a 21-6 lead entering the second half.

Luverne upped its lead to 27-6 with its second possession of the third

Team/continued on page 2B



John Rittenhouse photo/1015-atb 5

Adrian's Hunter Heitkamp is driven out of bounds after picking up some yardage during Thursday's regular season finale against Dawson-Boyd in Adrian.

D-B's second-half rally derails Adrian Thursday

By John Rittenhouse

The Adrian football team wrapped up a 5-3 regular season by dropping a 32-23 home decision to Dawson-Boyd Thursday.

Adrian sported a 15-12 edge at the intermission.

D-B, however, outscored the Dragons 20-8 in the second half to pull out a nine-point victory.

"Our kids played hard. We just had too many stupid penalties," said Adrian coach Randy Strand.

"We ran 70 plays and gained more than 400 yards, so we played pretty well. They had a fumble return for a touchdown and a kick return for a touchdown. That's what hurt us."

The Dragons appeared to be in a position to beat the Blackjacks for the first time in eight years during the game's first half.

After the teams exchanged possessions to open the game, the Dragons drew first blood at the end of their second possession.

AHS marched 53 yards in 11 plays with Michael Preuss capping the drive with a four-yard run at the 4:13 mark of the first quarter. Preuss added the extra point to make it a 7-0 game.

D-B answered the challenge with its next offensive play, when quarterback Jess Hansen delivered a 57-yard touchdown pass to Donny Bothun.

Rally/continued on page 2B

Patriots take down Edgerton, Fulda in RRC play

By John Rittenhouse

The Hills-Beaver Creek volleyball team compiled a 3-4 record during a stretch of playing in three events in seven days.

H-BC notched Red Rock Conference victories over Fulda and Edgerton Oct. 6 and Monday respectively.

The Patriots went 1-4 at the Subway Classic staged at Southwest Minnesota State University in Marshall Friday and Saturday.

The 10-12 Patriots play at Edgerton Public School Monday.

H-BC 3, Edgerton 1

The Patriots racked up a league victory by upending the Flying Dutchmen during a four-set match staged in Hills Monday.

H-BC won the first two sets of the night and overcame a rough third set by posting a convincing victory in the fourth set.

The score was knotted at one in the opening set before the Patriots gained some separation by going on a 14-4 run ending with a service point from Courtney Kruger to open a 15-5 lead.

Edgerton fought back to trim the difference to seven points (17-10), but a 7-2 spurt capped by a service point from Avery Van Roekel gave the hosts a 24-12 advantage before settling with a 25-14 win.

The Flying Dutchmen scored the first two points of the second set and sported a series of two-point leads before H-BC went on an 11-2 run capped by a kill from Van Roekel to open a 23-16 cushion.

H-BC prevailed by eight points (25-17) after Van Roekel served the final point of the set.

The score was knotted at four in the third set when Edgerton went on a 10-2 run to sport a 14-6 advantage.

The Patriots battled back to slice the margin down to two points (15-13) with a service point from Jasmine Lingen, but the Flying Dutchmen went



John Rittenhouse photo/1015 hvb 2

Hills-Beaver Creek sophomore Olivia Richards spikes the ball at the net in front of Edgerton's Chynna Berning during Monday's 3-1 home win over the Flying Dutchmen.

on to outscore H-BC 10-7 the rest of the set to prevail 25-20.

The score was tied at one in the fourth set before H-BC gained control of the situation by going on a 19-7 run ending with a service point from Mekayla Kolbrek to take a commanding 20-8 lead that set the stage for a 12-point (25-13) win.

Van Roekel (11 kills, seven blocks and five ace serves), Lingen (11 kills and eight blocks) and Sidney Fick (10 kills) had big nights at the net for the Patriots.

Kolbrek charted 25 set assists and Kruger added three ace serves to the winning cause.

Subway Classic

The Patriots found wins hard to come by during the Subway Classic in Marshall Friday and Saturday.

Competing in the Brown Division of the event, H-BC won its first match before dropping four consecutive

Play/continued on page 4B

Girls complete tennis season at individual tourney Friday

By John Rittenhouse

The 2015 tennis season came to an end for the Luverne Cardinals during the opening rounds of the Section 3A Individual Tennis Tournament Friday in St. Peter.

Two singles players and two doubles teams represented Luverne at the event.

Unfortunately, no Cardinals were able to advance to the semifinal round.

Samantha Pierce and Carissa Cunningham played in the singles competition for LHS.

Pierce reached the quarterfinals by defeating Redwood Valley's Jillian Read by 6-2 and 6-1 tallies.

Blue Earth Area's Karli Olson, the second-seeded singles player, ended Pierce's season by handing her 6-2 and 6-0 setbacks in the semifinals.

Carissa Cunningham lost a pair of 6-0 sets to River Valley's Kalyan Hass, the fourth seed, in the first round.

"Sam (Pierce) really played two nice matches," said LHS coach Greg Antoine.

"She really has come a long way this year with her game. She is more aggressive in trying to set up her points and good at finishing them off when it happens. Carissa ran into a good senior with a lot of experience. Playing at the sections will help her next year."

Emily Wendland and Sierra Wieneke topped RWV's Sydney Peyerl and Kaitlin Steffl by 6-1 and 6-2 scores in a match in the opening round.

BEA's Natali Fellows and Paige Darrington, the second seed doubles team, saddled the Cardinals with a pair of 6-0 setbacks in the next round.

Joci Oye and Kayla Rud squared off against RV's Natalie Stevens and Lauren Laffen, the fourth seed in doubles, in the opening round.

The River Valley squad came out on the winning end of a 6-2, 2-6, 6-2 decision.

"Emily and Sierra played really well against RWV," Antoine said.

"They were setting each other up well with good serves and volleys, then putting away shots when they had the opportunity. They ran into a very good team from BEA and were defeated in the next round. Joci and Kayla lost to the fourth seed from RV. They couldn't have played any better, especially in winning the second set. We just weren't consistent enough to come through in the third set."

Dutchmen, Raiders top Dragon spikers

By John Rittenhouse

The Adrian volleyball team slipped to 2-6 in Red Rock Conference play after dropping a pair of league matches last week.

Murray County Central handed the Dragons a three-set loss in Adrian Oct. 6. AHS fell in straight sets at Edgerton Public School Friday.

The 5-12 Dragons play in Slayton Monday.

Edgerton 3, Adrian 0

The Dragons lost their sixth league match of the season when they were swept by the Flying Dutchmen in Edgerton Friday.

Adrian struggled early in the match and was outscored 50-19 by EHS in the first two sets.

The Dragons played better in the third set, but it wasn't enough to keep the Flying Dutchmen from prevailing.

Adrian trailed by one point (3-2) after Madisyn Dingmann delivered a service point early in the first set, but the rest of the set was dominated by EHS.

Edgerton outscored the Dragons 22-6 the rest of the set to post a 25-8 win.

The Flying Dutchmen turned a pair of 9-1 runs into a commanding 18-2 lead in the second set.

AHS trimmed the difference to 13 points (24-11) when Jodi Bents registered a service



John Rittenhouse photo/1015 avb 10

Adrian's Jackie Hokeness registered a team-high four kills during Friday's 3-0 road loss in Edgerton.

point, but Edgerton clinched a 25-11 victory moments later.

After falling behind 5-0 in the third set, AHS went on an 8-2 run capped by a service ace from Kaitlyn Christians to gain its first lead of the night at 8-7.

Edgerton countered with an 11-2 surge to move in front 18-10, but the Dragons countered with a 7-0 surge capped by a kill from Jackie Hokeness to trim the difference to one point (18-17).

Edgerton withstood the challenge by scoring seven of the next 11 points to notch a 25-22 victory.

Hokeness (four kills), Bents (three blocks), Kasie Tweet (three ace serves) and Dingmann (nine set assists) emerged as Adrian's statistical leaders during the match.

MLA 3, Adrian 0

Adrian's bid to win consecutive conference matches fell short when the Dragons entertained the Wolverines Oct. 6 in Adrian.

Five days after claiming their first RRC conquest against Fulda, the Dragons couldn't keep the momentum going against MLA.

The Wolverines outscored AHS 75-50 during a win in straight sets.

MLA came out on the

Top/continued on page 4B

Rally/continued from page 1B

D-B's extra-point attempt failed, leaving the Dragons with a 7-6 edge.

Adrian made a bid to pad its lead with a lengthy drive with its next offensive possession, but the Dragons lost the ball on downs at the D-B four-yard line.

The Blackjacks' offense took the field and advanced the ball 96 yards in 14 plays to gain a 12-7 lead when Bothun scored on a nine-yard run with 6:25 remaining in the second quarter.

Adrian regained the lead before the second quarter was complete after putting together an eight-play, 60-yard drive ending with a trick play.

AHS quarterback Logan Rogers handed the ball off to wide receiver Ryan Wieneke, who was crossing the field behind Rogers as the play began.

Wieneke made D-B believe he was going to run the ball before stopping and delivering a pass to Rogers, who circled out of the backfield.

Rogers hauled in the pass and raced 25 yards for a



John Rittenhouse photo/1015 afb 6

Adrian senior Logan Rogers jars the ball out of the hands of Dawson-Boyd receiver Colton Husby during Thursday's football game in Adrian. D-B topped AHS by nine points.

touchdown and Preuss carried in the ensuing two-point conversion to give the Dragons a 15-12 lead they would take into the second half.

D-B moved in front 20-15 midway through the third quarter when Eli Weber scooped up a lateral pass by the Dragons that was ruled a fumble. He returned it 30 yards for a touchdown at the 6:16 mark of the stanza.

The Blackjacks got the ball back late in the third quarter, when they started an eight-play, 85-yard drive.

Bothun capped the march

with an 11-yard touchdown run at the 9:03 mark of the fourth quarter to up the lead to 26-15.

Adrian climbed back into contention with its next possession, when the Dragons put together a nine-play, 65-yard drive ending with a 13-yard touchdown run by Rogers with 5:15 left to play.

When Rogers delivered a successful conversion pass to Skylar Hieronimus following the touchdown, AHS trailed by three points (25-22).

D-B iced the contest when Weber returned the ensuing kickoff 83 yards for a

touchdown to cap the scoring in a nine-point game.

Team statistics
Adrian: 358 rushing yards, 107 passing yards, 465 total yards, 28 first downs, six penalties for 55 yards, four turnovers.

D-B: 154 rushing yards, 184 passing yards, 338 total yards, 12 first downs, seven penalties for 70 yards, one turnover.

Individual statistics
Rushing: Preuss 26-98, Rogers 19-121, Hieronimus 5-65, Hunter Heitkamp 2-23, Ryan Elias 11-41, Dylan Gyberg 2-10.
Passing: Rogers 6-12 for 82 yards, Wieneke 1-1 for 25 yards.
Receiving: Alex Loosbrock 2-18, Hieronimus 3-36, Heitkamp 1-18, Rogers 1-25.
Defense: Gyberg seven tackles, Rogers eight tackles, Matt Slater seven tackles, Zach Bierman one fumble recovery.

Team/continued from page 1B

quarter.

The Cardinals marched the ball 81 yards in eight plays with Nelson delivering a 20-yard touchdown pass to Layne Curtis with 38 seconds remaining in the stanza.

Tofteland had a key play in the drive when he registered a 40-yard run.

Luverne capped the scoring at the 6:18 mark of the fourth quarter, when a two-play possession ended with reserve quarterback Jake Haugen throwing a 57-yard touchdown pass to Nelson.

Team statistics

Luverne: 243 rushing yards, 95 passing yards, 338 total yards, 13 first downs, 11 penalties for 110 yards, one turnover.
MCW: 102 rushing yards, 135 passing yards, 237 total yards, 14 first downs, nine penalties for 65 yards, six turnovers.

Individual statistics

Rushing: Tofteland 26-160, Nelson 13-63, Cyris Halverson 3-8, Blake Baum 1-5, Nielsen 2-5, Kevin Zheng 1-2.
Passing: Nelson 4-7 for 38 yards, Haugen 1-1 for 57 yards.
Receiving: Curtis 3-35, Nelson 1-57, Tofteland 1-3.

Defense: Declan Beers 5.5 tackles, Brandon Claussen 3.5 tackles, Mitchell Muller three tackles, one interception and one fumble recovery, Brennan Hart three tackles, Nelson one interception, Nielsen one fumble recovery, Jeremiah Dooyema one fumble recovery.

AGRICULTURAL SOLUTIONS THROUGH THICK & THIN

OCTOBER IS NATIONAL PORK MONTH

The history of the pork industry is a rich tradition in Minnesota. And that's something that we understand at Minnwest Bank. We've been providing superior service in Ag Financing for over a century. Our lenders will take the time to get to know you and your operation, and they'll work hard to help you finance for success!



Luverne (Downtown)
116 East Main Street
(507) 283-2366

Luverne (Highway 75)
800 South Kniss
(507) 283-9131

www.minnwestbank.com



We'll see it through.

Fall Leaf Pick-Up

2015 PICK-UP DATES
(ONE ROUND PER WEEK)

LEAVES RAKED INTO GUTTER BY 7 A.M.

1ST PICK-UP
OCT. 19-23

2ND PICK-UP
OCT. 26-30

DUE TO WEATHER SCHEDULE MAY CHANGE

- Leaves should be raked into the street no earlier than the weekend immediately prior to the first day of pickup.
- Debris such as branches, shrub prunings, rocks, metal, lawn clippings and leaves in plastic bags will not be picked up.
- Do not place leaf piles close to parked cars.
- Keep the street grates free of leaves.
- Pile leaves so they do not block bike or traffic lanes.
- Do not put leaves in plastic bags.

LISTEN TO K101, CHECK THE CITY'S FACEBOOK & WEBSITE FOR ADDITIONAL PICKUPS



H-BC enters playoffs in unfamiliar role of tourney favorite

The Hills-Beaver Creek football team received its just reward Saturday for putting together a solid 7-1 regular season.



The Patriots learned they received the No. 1 seed for the Section 3 Nine-Man Football Playoffs late Saturday morning.

Not only does that mean they have the opportunity to host the first two games of the annual tournament, they have to be considered the favorites to capture the section title.

Considering the last time H-BC advanced to state in football was in 2001, when it shared a program with neighboring Ellsworth, one could safely say the Patriots are entering unfamiliar territory.

"I can't even remember the last time we were the No. 1 seed in the section," said H-BC coach Rex Metzger, who served as the program's mentor since 2010.

"I've been coaching here since 2004 (as an assistant to Dan Ellingson), and I know we haven't been the top seed since then."

To his credit, Metzger really isn't concerned with what has happened in past years.

He is wrapped up in the 2015 season, which has been a surprisingly good one for the Patriots.

The coach believed H-BC would experience a winning regular season, but Metzger had a concern back in August that made him believe a seven-win regular season was out of the question.

"The concern we had going into the regular season was how our offensive line would play," Metzger recalled.

"We lost some key senior linemen from 2014, so we had to find some younger guys to replace them. We've had a couple of juniors, Logan Leuthold and Dylan Forshey, and sophomore Garrett Raymon step up, and they have jelled together well as a group. It's been kind of surprising seeing those guys play as well as they have."

FROM THE SIDELINES

By John Rittenhouse, sports editor

With the linemen taking care of business up front, H-BC playmakers have turned the Patriot offense into an explosive unit.

Junior running back Isaiah Vis has displayed the ability to break a long run at any moment, and sophomore Trenton Bass has produced big plays as a runner and a receiver.

Junior quarterback Zach Scholten has emerged as one of the area's top passers, hooking up with speedy senior wide receiver Cooper Vaughn and steady senior Drew Forshey for a number of big plays.

H-BC has played solid defense as well in 2015, limiting opponents to 20 or fewer points in five of the eight regular season games.

Although the Patriots carried a four-game winning streak into Tuesday night's quarterfinal round playoff game against Heron Lake-Okabena (a team H-BC defeated 46-6 in Heron Lake Sept. 3), Metzger isn't ready to crown his team as the section champion quite yet.

"I think any one of the top four seeds could win the section," he said.

"We'll probably face a tough fourth seed in Edgerton-Ellsworth in the semifinals, and they've changed some personnel around since the first time we played them. They will be a different team. We've never faced No. 2 Madelia yet, and No. 3 Mountain Lake Area is the team that beat us. We have four good teams in our section."

In order to emerge as the section champions, the Patriots will need to play every game with a chip on their shoulders.

"The key for us will be to be the most physical team on the field in every game," Metzger said.

"E-E, Madelia and MLA are three physical teams, so it comes down to us being more physical than they are."

Dragons run in Luverne Thursday

By John Rittenhouse

The Adrian Dragons fielded complete teams for the Luverne Cross Country Invitational Thursday.

The Dragon boys registered 114 points to place fourth in a five-team field, while the AHS girls placed fourth out of six teams with 106 points.

Pipestone claimed the team title in the boys' competition with 23 points, while Canby-Minneota-Lincoln captured the girls' championship with 42 points.

Brady Henning turned in a solid race for the Dragon boys by finishing fifth individually with a time of 18:20.

Christian Weidert (29th in 21:09), Brody Loosbrock (36th in 21:57), Colton Lynn (42nd in 22:38) and Brent Hokeness (43rd in 23:03) padded Adrian's team tally.

Caleb Hornstein placed 44th in the varsity race with a time of 23:08.

Morgan Penning (14th in 22:17), Jasmine Kohorst (29th in 24:16), Halle Heitkamp (31st in 24:20) and Hannah



John Rittenhouse photo/1015 acc 3

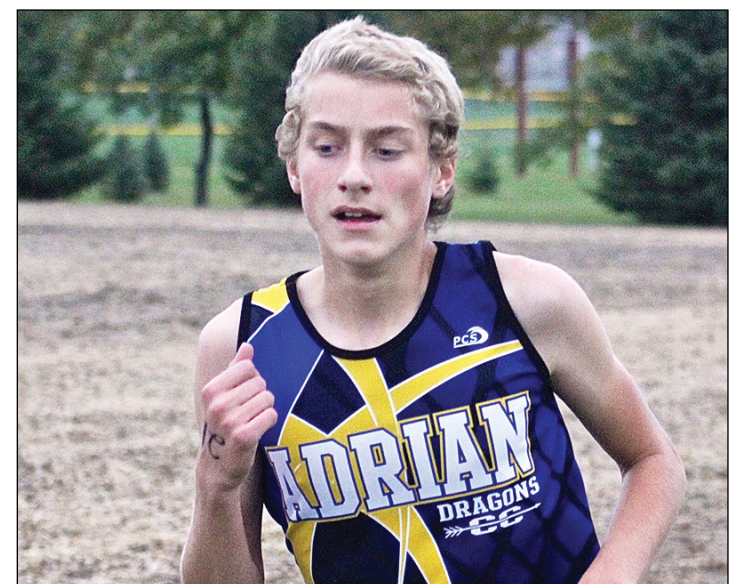
Adrian's Jada Elias (left) and Cheyenna John (right) run together during the girls' varsity race at the Luverne Cross Country Invitational Thursday. AHS placed fourth as a team.

Bullerman (32nd in 24:29) capped the team scoring for AHS.

Cheyenna John (36th in 24:41), Gracia Elias (38th in 24:56), Samantha Moulton (42nd in 25:24), Jada Elias (44th in 25:31), Elizabeth Erwin (46th in 24:43), Courtney Penning (47th in 25:48) and Annika Elias (52nd in 26:56) also ran the race for the Dragons.

Here is a look at the rest of Adrian's results from Thursday's meet.

Adrian runs at the annual conference meet Monday in Slayton.



John Rittenhouse photo/1015 acc 9

Adrian's Brady Henning placed fifth in the boys' varsity race at the Luverne Cross Country Invitational Thursday.

Junior high girls: Hiltyn Heitkamp, 16th, 13:22; Karis Barr, 19th, 14:14; Ashlee Christians, 20th, 14:42; Abbey Leuthold, 22nd, 15:44.

Patriots secure No. 1 seed for postseason play

By John Rittenhouse

The Hills-Beaver Creek football team wrapped up a 7-1 regular season by posting a convincing victory in Fulda Thursday.

With Isaiah Vis running for 147 yards and three touchdowns and Zach Scholten adding three touchdowns to lead the charge, H-BC stroled to a 54-21 win.

The Patriots scored all 54 of their points in the game's first half, leading to a second half of a game that was played under running time.

"We jumped on them early on offense and took away some of the things they wanted to do when we were on defense," said H-BC coach Rex Metzger.

"It was the second-straight game when we sat our regulars down before halftime, but that's the way it goes sometimes."

H-BC never punted in a first half that ended with the Patriots sporting a 54-6 lead.

After the defense forced Fulda to punt without registering a first down with its first two offensive possessions, the Patriots opened a quick 16-0 cushion.

A three-play, 46-yard

possession ended with Scholten firing a 24-yard touchdown pass to Cooper Vaughn to open the scoring.

A successful Scholten-to-Drew Forshey conversion pass followed the touchdown.

Vis capped H-BC's second possession (five plays, 72 yards) with a 15-yard touchdown run and Trenton Bass toted in the two-point conversion to make it 16-0.

Fuldashed some lifewhen quarterback Justin Dierks fired a 52-yard touchdown pass to Brandon Everett to make it a 16-6 game moments later, but H-BC didn't allow the Raiders to gain any momentum with the big play.

The Patriots scored 16 more points before the first quarter was complete and added 22 unanswered points in the second quarter to up their lead to 48 points.

Scholten delivered a 15-yard touchdown pass to Forshey to cap a seven-play, 54-yard drive following Fulda's touchdown.

Bass threw a successful conversion pass to Scholten after the tally.

Jed Burgers intercepted a pass on Fulda's 28-yard line during the second play of

the Raiders' next offensive possession.

Vis raced 28 yards for a touchdown on the next play and Scholten hooked up with Vaughn for a conversion pass following the touchdown to give the Patriots a 32-6 advantage before the first quarter was complete.

The onslaught continued on the first play of the second quarter, when H-BC's Logan Leuthold intercepted a pass and returned in 19 yards for a touchdown.

Bass toted in the ensuing conversion to make it 40-6.

H-BC got the ball back moments later and proceeded to put together a five-play, 67-yard drive.

Vis scored on a 15-yard run to end the possession and Preston Maassen ran in the two-point conversion to up the lead to 48-6.

H-BC's Josh Kueter recovered a fumble on Fulda's 14-yard line as the second quarter progressed.

Maassen scored on a three-yard run two plays later to cap the scoring in the first half.

Fulda recorded a pair of

meaningless touchdowns against H-BC's reserves in the second half.

Dierks hooked up with Aaron Hulstein for a 34-yard touchdown pass and Everett added the extra point in the third quarter.

Levi Spittle scored on an eight-yard run and Everett carried in the ensuing two-point conversion in the fourth quarter.

Team statistics
H-BC: 228 rushing yards, 47 passing yards, 275 total yards, 10 first downs, six penalties for 55 yards, zero turnovers.
Fulda: 12 rushing yards, 144 passing yards, 156 total yards, six first downs, four penalties for 40 yards, four turnovers.

Individual statistics
Rushing: Vis 11-147, Bass 6-31, Maassen 12-17, Dean Fuerstenberg 4-13, Hunter Bork 3-20.
Passing: Scholten 3-4 for 47 yards, Bass 0-2 for zero yards.
Receiving: Scholten 1-24, Forshey 1-15, Bass 1-8.
Defense: Forshey two sacks, Fuerstenberg six tackles, Bergers two tackles and one interception, Dawson Leenderts three tackles, Vis two tackles, Bass four tackles, Maassen three tackles and one interception, Leuthold six tackles and one interception, Dylan Forshey four tackles, Jesse Elbers two tackles and one sack, Kueter one tackle and one fumble recovery, Bailey Susie four tackles, Luke LaRock one sack.



MEATLOAF SUPPER

United Methodist Church downtown Luverne

WEDNESDAY, OCTOBER 21

SERVING 5:30-7:30 PM

adults: \$8
10 and under: \$5

serving:
Buffalo meatloaf, cheesy potatoes, vegetable, relishes, dinner roll, beverage and dessert

TAKE OUT AVAILABLE



Shorter drive. Same expert care.

Sanford Luverne Therapy Services

When you are recovering from an illness, injury or surgery traveling for therapy is the last thing you want to do. Sanford Luverne can help you stay at home and still receive the quality rehabilitative care you need.

Our team can help improve your range of motion, strength and endurance, and reduce your pain with latest techniques and equipment. We also offer aquatic therapy.

Schedule your therapy care in Luverne or Adrian by calling (507) 449-1229.

Sanford Luverne
1600 N Kniss Avenue
Luverne, MN 56156

Monday - Friday : 7 a.m. - 5:30 p.m.

SANFORD
Luverne

830-12400-0445 3/14

FALL SENIOR ATHLETES OF THE WEEK

Derek Krueger

Sport: Cross Country
Position: Captain
Parents: Don and Shelley Krueger
Favorite Subject: History
Extra-Curricular Activities: Speech, Track, Peer Helping and Church
Future Plans: Attending NDSU or another college for zoology

Jack Baustian

Sport: Cross Country
Parents: Pat and Katie Baustian
Favorite Subject: Media Production
Extra-Curricular Activities: Cross Country, Hockey and Golf
Future Plans: Join SDANG (basic and AIT) and attend SDSU

Blake Baum

Sport: Football
Position: Running Back, Linebacker
Parents: Lori and Ben Baum
Favorite Subject: Lunch
Future Plans: Go to school for welding

Pipestone Pepsi | 1809 Forman Drive, Pipestone, MN 56164

Panther spikers complete busy week



John Rittenhouse photo/1015 hvb 4

Avery Van Roekel turned in an 11-kill, seven-block performance during Monday's 3-1 home win over Edgerton.

Play/continued from page 1B

contests during a 1-4 showing. The Patriots split matches on Friday.

H-BC notched 26-24 and 25-16 wins over Lac qui Parle Valley during the opening round, but Gibbon-Fairfax-Winthrop saddled the Patriots with a 25-23, 15-25, 13-15 setback in the second round.

The Patriots dropped all three of the matches on Saturday.

H-BC secured a 25-22 win the first set against Cedar Mountain-Comfrey, but CM-C rallied to win the next two sets by 25-23 and 15-1 margins.

Martin Luther (25-15 and 25-22) and Redwood Valley (27-25 and 25-18) posted straight-set victories over H-BC later in the day.

H-BC 3, Fulda 0

The Patriots posted their third conference win of the

season after coming from behind to defeat the Raiders Oct. 6 in Fulda.

After dropping the first set of the night to the Raiders, the Patriots bounced back to outscore Fulda 75-52 in the final three sets to secure a 3-1 victory.

Fulda drew first blood in the match by securing a 25-22 win in the opening set.

H-BC evened the match with a 25-14 victory in the second set before securing a pair of 25-19 wins in the final two sets to collect an RRC conquest.

Fick had a big night for the winners by serving three aces and registering 21 kills.

Lingen and Van Roekel added 11 and nine kills respectively to the winning cause, while Avery Wysong chipped in 19 set assists.

Top/continued from page 2B

winning end of a 25-16 decision in the opening set.

The Wolverines completed their sweep by posting 25-16 victories in the final two sets.

Tweet and Miah Kunkel

registered five kills and four blocks each at the net for AHS.

Alexia Kemper led the Dragons defensively with seven digs.

By John Rittenhouse

The Ellsworth volleyball team was put to the test of competing in four events in a seven-day span.

The Panthers dropped three-set matches in Edgerton and Lambertton Oct. 6 and Monday respectively, and came up on the short end in a five-set decision in Hendricks Thursday.

EHS went 0-6 at the Harris-Lake Park Tournament Saturday in Lake Park, Iowa.

The 1-23 Panthers cap the regular season in Mountain Lake Thursday.

RRC 3, Ellsworth 0

Points were tough to come by for the Panthers when they challenged Red Rock Central in Lambertton Monday.

EHS was limited to 11 or fewer points in all three sets of a 3-0 loss to the Falcons.

RRC outscored the Panthers 75-27 in the process of securing 25-10, 25-6 and 25-11 victories.

Sierra Smith led Ellsworth with two blocks and one kill in the match.

H-LP tourney

The Panthers came up empty in six attempts to post a victory during Saturday's Harris-Lake Park Tournament staged in Lake Park, Iowa.

Ellsworth lost all six of its matches in straight sets to place ninth at the event.

Central Lyon handed the Panthers a 21-14, 21-8 setback in the opening round and Kingsley Pierson topped EHS by 21-11 and 22-20 tallies in the second round.

Hartley-Melvin-Sanborn notched 21-14 and 21-17 victories against EHS in Round 3, while Rock Valley upended the Panthers 21-10, 21-14 in the fourth round.

South O'Brien came out on the winning end of 21-16 and 21-15 decisions in the fifth round against EHA, and a rematch with K-Pin a match for eighth and ninth place ended with the Panthers taking 21-16 and 21-15 setbacks.



John Rittenhouse photo/1015 evb 9 cut

Ellsworth senior Megan Popkes recorded three kills and two blocks during a 3-0 loss in Edgerton Oct. 6.

Hendricks 3, EHS 0

The Panthers were unable to sweep their season series with the Grizzlies when the teams squared off in Hendricks Thursday.

Ellsworth nipped Hendricks in a five-set battle in Ellsworth Sept. 28.

The Grizzlies overcame a 1-0 deficit in the rematch to prevail in four sets.

Ellsworth gained the upper hand early by securing a 25-16 victory in the opening set.

Hendricks bounced back by producing 25-21, 25-14 and 25-13 wins in the final three

sets to win the match.

Megan Popkes (four ace serves and four kills) and Devin Dreesen (two kills and two ace serves) turned in solid efforts for Ellsworth.

Hannah Kramer contributed four kills to the cause.

Edgerton 3, Ellsworth 0

The Panthers were unable to notch their first conference win of the season when they challenged the Flying Dutchmen in Edgerton Oct. 6.

Ellsworth sported leads in every set, but Edgerton met the challenge to sweep the Panthers on its home court.

An ace tip by Popkes gave the Panthers a 3-1 advantage in the opening set, which was knotted at six moments later.

Edgerton moved in front 19-10 after putting together a 13-6 run.

Ellsworth trimmed the difference to five points (22-17) with a service point from Maggie Kruse, but the Flying Dutchmen registered three of the next four points to clinch a 25-18 win.

Kramer served an ace to give the Panthers a 2-0 lead in the second set, and a block by Popkes knotted the score at four moments later.

Edgerton dominated the rest of the set by outscoring the Panthers 21-6 to secure a 25-10 victory.

A service point from Kramer gave the Panthers a 2-1 edge in the third set.

EHS trailed by one point (7-6 after Dreesen served an ace and 12-11 when Kramer recorded a service point) as the set progressed, but Edgerton countered with an 11-4 run to open a 23-15 advantage.

Ellsworth trimmed the difference to five points (23-18) with a service point from Smith, but Edgerton scored the next two points to cap a 25-18 victory.

Kramer recorded six kills and two ace serves for EHS.

Popkes added three kills and two blocks to the cause.

Cardinals earn win at Pipestone Tournament

By John Rittenhouse

The Luverne volleyball team made two trips to Pipestone late last week.

The Cardinals dropped a four-set conference match to the Arrows Thursday. LHS returned to Pipestone Saturday, where it went 1-2 to place seventh in the Pipestone Tournament.

The 10-11-2 Cards host Redwood Valley Thursday.

Pipestone tourney

The Cardinals went 1-2 and placed seventh in an eight-team field during

the Pipestone Tournament Saturday.

LHS dropped its first two matches of the day before posting a pair of wins against Fairmont in a match for seventh and eighth place.

Luverne registered 25-12 and 25-22 victories in the finale against Fairmont.

Wabasso saddled the Cards with 25-14 and 25-16 setbacks in the opening round.

Canby topped LHS by 25-17 and 25-21 tallies in the second round.

Hailey Franken (four service aces and six kills), Hailey

Remme (10 kills and three blocks), Lexi Ferrell (21 kills and two blocks) and Nicole Kneip (six kills and 24 of 24 serving with five aces) played well at the net for LHS.

Ariel DeBeer (14 of 14 serving with four aces, 11 digs and 151 of 152 setting with 47 set assists), Katie Kracht (24 digs) and Sierra Schmuck (14 digs) also played well at the tournament.

Pipestone 3, Luverne 1

The Cardinals slipped to 1-4 in Big South Conference play after dropping a four-set match to the Arrows in Pipestone Thursday.

Luverne got off to a good

start by securing a 25-21 win in the opening set.

The rest of the night belonged to the Arrows, who outscored the Cards 75-45 to capture the final three sets and win the match.

Pipestone's victories came by the margins of 25-12, 25-19 and 25-14.

Remme (five ace serves and 10 kills), Ferrell (five blocks, one ace serve and 10 kills) and DeBeer (nine of nine serving with one ace, 105 of 105 setting with 20 set assists and 15 digs) turned in productive nights for the Cards.

Kneip (eight blocks), Kracht (17 digs) and Franken (eight kills) also played well for LHS.

REPAIR SKILLS.

EXPERIENCE SERVICE FROM SOMEONE WITH A LOT OF EXPERIENCE.

For fast, reliable service, call McClure Plumbing & Heating.



RECEIVE UP TO **\$1,700** OR **NO PAYMENTS AND NO INTEREST UNTIL 2017*** IN REBATES*

with the purchase of a qualifying Lennox® home comfort system.



NO PAYMENTS AND NO INTEREST UNTIL 2017*



Luverne, MN
(507) 449-2828

Offer expires 11/27/2015. *On a qualifying system purchase. Lennox system rebate offers range from \$200 to \$1,700. Some restrictions apply. One offer available per qualifying purchase. See your local Lennox Dealer or www.lennox.com for details. © 2015 Lennox Industries Inc. Lennox Dealers include independently owned and operated businesses.

24/7 ... Rain or Shine ...

Your local, independent agent will be there.

Working for you - meeting your needs.



South Hwy. 75, Luverne, MN • Ph. 507-283-2381



Auto-Owners Insurance

REQUEST FOR SURPLUS PROPERTY SEALED BIDS

LUVERNE PUBLIC SCHOOLS

Luverne School District is requesting bids for the following surplus property:

- 8 - Lincoln Idealarc 250 AC/DC Electrode Welders
- 1 - Miller 250 Twin AC/DC 3-Phase Electrode Welders
- 1 - Kiln

May be seen in the Ag Shop between 8 a.m. and 3 p.m. on October 15 and 16 or by appointment. Call 283-8088.

Bids will be received by Independent School District No. 2184 until 2 p.m., November 2, 2015, at the office of the Superintendent of Schools, 709 North Kniss Avenue, Luverne, Minnesota.

Each bid must be in a sealed envelope marked "Surplus Property Bid." Property sold "as is."

Bids may not be withdrawn within thirty days after the scheduled closing time for receiving bids. The Independent School District No. 2184, Luverne, Minnesota, reserves the right to reject any or all bids and to waive any irregularities in bids.

Jodi Bosch
Clerk

FOOTBALL STANDINGS

| | | |
|--------------------------------|-----|-------------------------------|
| South Central District | | |
| White Division football | | |
| Pipestone | 7-0 | Lakeview 2-5 |
| JCC | 6-1 | MCC 2-5 |
| BEA | 4-3 | Ortonville 1-6 |
| Luverne | 4-3 | R-T-R 0-7 |
| RWV | 4-3 | |
| St. James | 1-6 | South District |
| MCW | 1-6 | West Division football |
| Windom | 1-6 | H-BC 7-1 |
| | | Cleveland 7-1 |
| | | MLA 6-2 |
| | | Madelia 6-2 |
| | | E-E 5-3 |
| | | G-H-EV-T 4-4 |
| | | W-WG 3-5 |
| | | Fulda 1-7 |
| | | HL-O 1-7 |
| | | Nicollet 0-8 |
| Southwest District | | |
| West Sub-District | | |
| Minnesota | 7-0 | |
| T-M-B | 6-1 | |
| Canby | 6-2 | |
| Adrian | 4-3 | |
| D-B | 4-3 | |
| LQPV | 4-4 | |

Hardwick Variance Hearing Set for October 28, 2015

Pursuant to the Hardwick Zoning Ordinance, notice is hereby given by the Hardwick City Council of Adjustment that a public hearing will be held at the Hardwick City Hall located on Main Street, Hardwick, MN at 6:30 p.m. Wednesday, October 28, 2015. The purpose of this hearing is to rule on the application submitted by Darrin Prins for a variance to allow for the placement/building of a wood frame and siding pitched, roof building proposed to be located on the following: AUDITOR'S OUTLOTS 26-104-45; OUTLOTS 22 & 23; Property Address 101 First Street East, Hardwick, Rock County, MN 56134. By order of the Hardwick City Planning and Zoning Commission.

John Javner, Mayor

St. Catherine Catholic Church
203 E. Brown St., Luverne
St. Catherine Ph.: 283-8502

St. Mary Catholic Church, Ellsworth
Thursday, Oct. 15: 9 a.m. St. Catherine Communion Service. 10 a.m. Tuff Anointing Mass. Saint Catherine Rummage Sale. Friday, Oct. 16: St. Catherine Rummage Sale. 9:30 a.m. Mass at Parkview Manor. Saturday, Oct. 17: Vouchers/Fair Trade. 9 a.m.-3 p.m. DOW Social Justice Day at Albert Lea. 2:15 p.m. Vets Bingo. 5:30 p.m. Mass. Sunday, Oct. 18: 8:30 a.m. St. Mary Mass; Faith Formation. 10:30 a.m. Mass at St. Catherine; KC Breakfast; Vouchers' Fair Trade; Bread for World. Monday, Oct. 19: 9 a.m. Mass. Tuesday, Oct. 20: 9:30 a.m. Bible Study; 10 a.m. Mass at Mary Jane Brown Home; 7 p.m. Fall Fest; Cub Scouts. Wednesday, Oct. 21: 10 a.m. Mass at Mary Jane Brown Home. 3:30 p.m. and 7 p.m. Faith Formation. 7:30 p.m. SM-KC. Thursday, Oct. 22: 9 a.m. Mass. 4 p.m. Mass at Veterans Home. 7 p.m. SC-PC.

Luverne Christian Reformed Church
605 N. Estey St., Luverne
Office Ph. 283-8482; Prayer Line Ph. 449-5982
www.luvernecrc.com — luvernecrc@gmail.com
Roger Sparks, Pastor

Sunday, Oct. 18: 9:30 a.m. Worship Service; 11 a.m. Sunday School and Catechism Classes; 6:30 p.m. Worship Service. Monday, Oct. 19: 9 a.m. Perk up at Mary Jane Brown Home. Tuesday, Oct. 20: 9:30 a.m. CoffeeBreak/Story Hour. Wednesday, Oct. 21: 7 p.m. GEMS and Cadets.

First Baptist Church
1033 N. Jackson St., P.O. Box 975, Luverne
Ph. 283-4091; email: fbcluv@iw.net — www.fbcluverne.org
Dick Lauger, Pastor

Thursday, Oct. 15: 7 p.m. Worship Service on Channel 3. Friday, Oct. 16: 6 a.m. Men's Bible Study. Sunday, Oct. 18: 9:15 a.m. Sunday School. 10:30 a.m. Morning Service. 6 p.m. Quarterly Business Meeting. Tuesday, Oct. 20: 7 a.m. Men's Bible Study at FBC. 4 p.m. Women's Bible Study at FBC. Wednesday, Oct. 21: 6:55 p.m. Awana. Thursday, Oct. 22: 9:30 a.m. Women's Bible Study at FBC. 7 p.m. Worship Service on Channel 3.

Grace Lutheran Church
500 N. Kniss Ave., Luverne
Ph. 283-4431; www.graceluverne.org — nichols-glc@live.com
Ron Nichols, Pastor; Cole McCormick, Interim Pastor

Thursday, Oct. 15: 8:30 a.m.-12:30 p.m. MIA. 9:30 a.m. Coffee. 4:30 p.m. Book Study. Friday, Oct. 16: 6:30 p.m. Telecast Channel 3 (VAST). Saturday, Oct. 17: 5:30 p.m. Worship with Communion. Sunday, Oct. 18: 8:15 a.m. Radio Broadcast; Worship. 9:15 a.m. Coffee. 9:30 a.m. Sunday School and Adult Study. 10:45 a.m. Worship with Communion. Monday, Oct. 19: Grace Notes Deadline. 4 p.m. Telecast on Channel 3 (VAST). 5:45 p.m. Echoes. Tuesday, Oct. 20: 9 a.m. Staff Meeting. Wednesday, Oct. 21: 7 a.m. Men's Study. 8:15 a.m. Caring Ministry. 7 p.m. Choir. 7-8 p.m. 6-9th grade Confirmation. 8-9 p.m. 10th grade. Thursday, Oct. 22: Circles. 4:30 p.m. Book Study. 5-7 p.m. Soup Supper.

Bethany Lutheran Church
720 N. Kniss Ave., Luverne
Ph. 283-4571 — pastorapalmquist67@yahoo.com
Andrew M. Palmquist, Pastor

Thursday, Oct. 15: 5 p.m. Worship Service on Channel 3. Sunday, Oct. 18: 9/9:15 a.m. Sunday School and Bible Class. 10:15 a.m. Worship (Mission Festival). Monday, Oct. 19: 7 p.m. Quarterly Voters' Meeting/Open Forum. Wednesday, Oct. 21: 6:30 p.m. Catechism Class. Thursday, Oct. 22: 5 p.m. Worship service on Channel 3.

American Reformed Church
304 N. Fairview Dr., Luverne
Ph. 283-8600; email: office@arcluverne.org

Friday, Oct. 16: 6:30 a.m. Community Men's Bible Study; Rehearsal. Saturday, Oct. 17: Kody Doerr and Heather Vanden Busche Wedding. Sunday, Oct. 18: 9:30 a.m. Sunday Worship Service. 10:50-11:50 a.m. Family Education. 7 p.m. Senior RCYF. Tuesday, Oct. 20: 10 a.m. Staff Meeting. 7 p.m. Bible Study Fellowship. Wednesday, Oct. 21: 5:30 p.m. Midweek Meal. 6:30 p.m. Pioneer Clubs/YEL. 6:45 p.m. Rachel Circle. 7 p.m. Abide Praise Team. 8 p.m. Adult Choir.

Ben Clare United Methodist Church
26762 Ben Clare Ave., Valley Springs, S.D.
igtwb@WOW.net
Bill Bates, Pastor

Sundays: 9 a.m. Worship; 10 a.m. Fellowship; 10:30 a.m. Sunday School for all ages.

First Lutheran Church
300 Maple St., Valley Springs, S.D.
Ph. (605) 757-6662
Ray Heidenson, Pastor

Sunday, Oct. 18: 9:15 a.m. Sunday School; 10:30 a.m. Worship Service.

Palisade Lutheran Church
211 121st St., Garretson, S.D.
Ph. (507) 597-6257 — firstpalisade@alliancecom.net
Ray Heidenson, Pastor

Sunday, Oct. 18: 9 a.m. Worship Service. 10:15 a.m. Sunday School.

Holy Trinity Episcopal Church
220 N. Cedar St., Luverne

Sundays: 10:30 a.m. Worship Service; Fellowship after service. Wednesdays: 6:30 p.m. Bible Study. Our Mission Statement: Historic Holy Trinity strives to serve God and our community through worship, stewardship and friendship. Contact Emily Lodine Overgaard at (507) 227-6175 for information. Come as you are — our leader wore sandals.

First Assembly of God Church
1075 110th Ave., 2 miles west of Luverne on County Rd. 4
Kenneth and Gloria Kashner, Pastors

Sundays: 9 a.m. Sunday School. 10 a.m. Morning Worship. 6:30 p.m. School of the Holy Spirit. Wednesdays: 7 p.m. Kids Connection; Men's Bible Study with Pastor Ken; Women's Bible Study with Pastor Gloria.

United Methodist Church
109 N. Freeman Ave., Luverne
Ph. 283-4529; email: luverneumc@iw.net
Dorie Hall, Pastor

Thursday, Oct. 15: 1-3 p.m. Rock County Food Shelf. Sunday, Oct. 18: 9 a.m. Traditional Service. 10 a.m. Coffee Hour. 10:05 a.m. Adult Sunday School in the Upper Room. 11 a.m. Come As You Are Service. 4:30 p.m. Bait of Satan Bible Study. 6 p.m. No A.L.I.V.E. Youth Group-MEA Break. Monday, Oct. 19: 8 a.m. Newsletter Deadline. 7 p.m. Living Beyond Yourself Women's Bible Study. Tuesday, Oct. 20: 8 a.m. Priscilla Circle at Luverne Pizza Ranch. 7 p.m. Church Council Meeting. Wednesday, Oct. 21: 5:30 to 7:30 p.m. Annual Bison Dinner. No F.U.E.L. Children's Ministry Activities. Thursday, Oct. 22: 1-3 p.m. Rock County Food Shelf.

First Presbyterian Church
302 Central Lane, Luverne

Ph. 283-4787; email: Firstpc@iw.net — www.fpcluverne.com
Sunday, Oct. 18: 9 a.m. Sunday School. 10:15 a.m. Worship. Monday, Oct. 19: 5-6 p.m. Weight Watchers. Tuesday, Oct. 20: 5:30 p.m. Service of Worship on Channel 3. Wednesday, Oct. 21: 9:15 a.m. Mary Circle. 1:30 p.m. Rebekah Circle. 3:15 p.m. Youth Club. 6 p.m. Bells; Confirmation. 7 p.m. Choir. 7:30 p.m. Esther Circle. Thursday, Oct. 22: 5 p.m. Personnel Reviews.

St. John Lutheran Church
803 N. Cedar St., Luverne

Ph. 283-2316, Dial-A-Devotion Ph. 283-4005
email: stjoh@iw.net — www.stjohnlutheranluverne.org
Gary Klatt, Pastor

Thursday, Oct. 8: 9 a.m. and 1 p.m. Little Lambs devotions. 11 a.m. to 1 p.m. Fall Salad Luncheon. 1:30 p.m. Communion at Mary Jane Brown. 2:15 p.m. Communion at Poplar Creek. 3:30 p.m. Communion at Veterans Home. Saturday, Oct. 10: 5:30 p.m. Worship with Communion. Sunday, Oct. 11: LWML Sunday. 9 a.m. Worship with Communion. 10:15 a.m. Christian Education Hour. 11:15 a.m. Junior Choir. 6:30 p.m. Youth Fellowship Night. Monday, Oct. 12: 11:15 a.m. Staff meeting. 7:30 p.m. Men's Club. Tuesday, Oct. 13: 1:15 p.m. Communion at Ellsworth. 2:15 p.m. Communion at Lyon Manor. 2:45 p.m. Communion at Rock Rapids Health Centre. 3:30 p.m. Communion at Hills. 6 p.m. Mom's Night Out. 7 p.m. Missionary Guild. Wednesday, Oct. 14: 9:30 a.m. Bible Study. No evening activities. Thursday, Oct. 15, and Friday, Oct. 16: No Little Lambs.

Living Rock Church
500 E. Main St., Luverne
Ph. 449-0057; www.livingrockswmn.org
Billy Skaggs, Pastor

Sundays: 10:30 a.m. Worship; Kids Rock Children's Ministry. 6 p.m. Youth Ministry. Life groups meet throughout the week.

New Life Celebration Church
211 E. Main St., Luverne

Ph. 449-6522; email: newlifecel@icloud.com
Sundays: 9:30 a.m. Worship in the lower level meeting room of the Creeger building. Every third Thursday: 5 p.m. Food give-away. Bible Study groups meet at various times and days.

Zion Evangelical Lutheran Church
305 E. 2nd St., P.O. Box 36, Hardwick
Ph. 669-2855; email: revmumme@gmail.com — www.zionlutheranhardwick.com
Mark W. Mumme, Pastor

Thursday, Oct. 15: 2 p.m. MJB Home Birthday Party (Service Group #2). 4 p.m. Zion Worship airs on Channel 3. Friday, Oct. 16: 4 p.m. Zion Worship airs on Channel 3. Sunday, Oct. 18: 9 a.m. Sunday School/Adult Bible Study. 10 a.m. Mentor Program. 10:30 a.m. Worship Service/Communion. 11:30 a.m. Choir Practice. Monday, Oct. 19: 1 p.m. Quilting. Wednesday, Oct. 21: 1:30 p.m. Hannah Bible Study at Church. 6 p.m. Confirmation. 7 p.m. LWML Planning Meeting for 2016. Thursday, Oct. 22: 4-5 p.m. Zion Worship airs on Channel 3.

First Presbyterian Church
201 S. 3rd St., Beaver Creek

Magnolia United Methodist Church
501 E. Luverne St., Magnolia
Church Ph. 283-9698; cell 227-7821
adrmagumc@frontiernet.net — www.adrianmagnoliaumc.com
Kristi Franken, Pastor

Bearing up

From the words of Psalm 91:16, "Because you have made the Lord your refuge, the Most High your dwelling place, no evil shall befall you, no scourge come near your tent. For he will command his angels concerning you to guard you in all your ways. On their hands they will bear you up, so that you will not dash your foot against a stone. You will tread on the lion and the adder, the young lion and the serpent you will trample under foot. Those who love me, I will deliver; I will protect those who know my name. When they call to me, I will answer them; I will be with them in trouble, I will rescue them and honor them. With long life I will satisfy them, and show them my salvation."

Over the summer I had a fishing outing with another gentleman. I was so looking forward to catching a fish or two, but we ended up catching a bunch of weeds instead. However, it was surely nice and relaxing to be out on the water and receiving a suntan.

On the edge of the water, very high up in some old trees, perched two eagles keeping watch. Eagles simply have a way of soaring through the creation that God has so graciously and abundantly made. For me the eagles are one example of being brought up. On the flip side, we also definitely do

BUILT ON A ROCK

By Cole McCormick,
Interim Pastor,
Grace Lutheran Church

have times that we will fall, that we will stumble and that we will crash.

Recently I had dinner with some friends who have a young daughter. She is at the point where she is walking, bumping and crashing into everything. Many times she just stumbles, gets back up and does it all over again.

We also get brought down when it does not seem like God answers, with all the violence in the world and when a life is all of a sudden cut short.

As Jesus cried out from the cross, "My God, my God, why have you forsaken me?" he had no answer.

Yet, during the falling is precisely when these promises enter in, to let us know and hear of the promises that God is our protector and dwelling place. We are brought down in order to be brought up. We are dragged through the rubble of death that leads into life, and it is in this very darkness where the light of hope and life comes to be and being brought up in and through God. Amen.

Steen Reformed Church
112 W. Church Ave., Steen
Ph. 855-2336

Reuben Sinnema, Pastor
Sunday, Oct. 18: 9:30 a.m. Worship. 11 a.m. Sunday School. 6:30 p.m. RCYF.

Bethlehem Lutheran Church
Interim Pastor Grant Fisher
112 N. Main St., Hills
507-962-3270

Thursday, Oct. 15: 9 a.m. Shetek Conference meeting at Shalom Hills. Sunday, Oct. 18: 9 a.m. Worship at Tuff Chapel. 10:30 a.m. Worship at Bethlehem. MEA Weekend-No Sunday School or 6-8th Youth Night. Tuesday, Oct. 20: 10:30 a.m. Grace Lutheran Bible Study. 2:30 p.m. Tuff Home. 3:15 p.m. Tuff Village. Wednesday, Oct. 21: 9 a.m. Quilting. 2 p.m. Village Circle Garden Room Tuff Village. 7 p.m. Circle of Hope (Marilyn Nelson's Home). 7-8 p.m. Eighth- and ninth-grade confirmation. 7:30 p.m. Grades 9-12 Youth Group meets.

Hills United Reformed Church
410 S. Central Ave., Hills
Office Ph. 962-3254
hillsurc@alliancecom.net
Alan Camarigg, Pastor

Sundays: 9:30 a.m. and 6 p.m. Worship Services.

These Weekly Church
Page Messages are
contributed to God's
Work through the
Church and by these
concerned and
responsible citizens
& businesses:

Call Rick or Chantel to
place your ad!

283-2333

**Tuff Memorial Home,
Retirement Apartments
& Tuff Village**
"A Home Where Residents SMILE"
Hills, Minnesota
Phone 507-962-3275

Papik
MOTOR OIL
LUVERNE, MINN.
I-90 in Luverne, MN
507-283-9171 • 1-800-634-7701

Read us online!
**Rock County
STAR HERALD**
www.Star-Herald.com

Trust In Him



Pizza Ranch
110 E. Main,
Luverne, MN
Phone 507-283-2379

MANLEY
TIRE & OIL SERVICE
Manley Minnesota
1-800-615-3704
Open six days a week - Closed on Sundays
To God be the Glory.

CWG
Business Insurance.
Tri-State Region *Period!*

Rock County
STAR HERALD
Luverne, MN • 507-283-2333

Bruce's Electric
residential, commercial and farm wiring
Bruce Umbreit
Electrical Contractor
1200 Linden, Luverne, MN 56156
Phone 507-283-4917

**Luverne
ANNOUNCER**

To Advertise
Call
283-2333

Buffalo Ridge
INSURANCE
507-283-2381 www.buffaloridgeins.com E-mail: info@buffaloridgeins.com

McClure Electric
Alan M. Aanenson, owner
Farm, Home & Commercial Wiring
Luverne, MN Phone 507-283-4716

First Farmers & Merchants
303 E. Main, Luverne, MN
507-283-4463
www.fimbank.com
We believe in you.
Member FDIC. And the community.

**HILLS STAINLESS STEEL
& EQUIPMENT CO., INC.**
506 W. Koehn, P.O. Box 987, Luverne, MN
PHONE 507-283-4405
Church is Important - Please Attend!

**MINNWEST
BANK**
• 116 E. Main St., Luverne 507-283-2366
• S. Hwy. 75, Luverne 507-283-9131
• Main St., Beaver Creek 507-673-2333
Member FDIC www.minnwestbank.com

HARTQUIST
Funeral and Cremation Services
- ENGBRETTSON CHAPEL -
507-283-2777
www.HartquistFuneral.com
"Let our family help your family"
Serving the Luverne and Surrounding Communities

Tollefson Publishing
117 W. Main
Luverne, MN 56156
507-283-2333

Mortgage foreclosure sale set for Nov. 5

NOTICE OF MORTGAGE FORECLOSURE SALE THE RIGHT TO VERIFICATION OF THE DEBT AND IDENTITY OF THE ORIGINAL CREDITOR WITHIN THE TIME PROVIDED BY LAW IS NOT AFFECTED BY THIS ACTION.

NOTICE IS HEREBY GIVEN: That default has occurred in the conditions of the following described mortgage:

DATE OF MORTGAGE: February 4, 2008
ORIGINAL PRINCIPAL AMOUNT OF MORTGAGE: \$124,200.00
MORTGAGOR(S): Jesse A. Akkerman a/k/a Jesse Akkerman and Candyye Akkerman, husband and wife
MORTGAGEE: Wells Fargo Bank, N.A.
DATE AND PLACE OF FILING: Recorded on February 12, 2008 as Document Number 168325 in the Office of the County Recorder of Rock County, Minnesota.
ASSIGNMENTS OF MORTGAGE: Assigned to: None.
LEGAL DESCRIPTION OF PROPERTY:
Lot 6 in Block 1 of The Sybesma Subdivision, Luverne, Rock County, Minnesota
STREET ADDRESS OF PROPERTY: 212 PINE DRIVE, LUVERNE, MN 56156
COUNTY IN WHICH PROPERTY IS LOCATED: Rock County, Minnesota
THE AMOUNT CLAIMED TO BE DUE ON THE MORTGAGE ON THE DATE OF THE NOTICE: \$130,952.14

TRANSACTION AGENT: None
NAME OF MORTGAGE ORIGINATOR (LENDER): Wells Fargo Bank, N.A.
RESIDENTIAL SERVICER: Wells Fargo Bank, N.A.
TAX PARCEL IDENTIFICATION NUMBER: 20.2030.000
TRANSACTION AGENT'S MORTGAGE ID NUMBER (MERS NUMBER): None
THAT no action or proceeding has been instituted at law to recover the debt secured by said mortgage, or any part thereof; that there has been compliance with all pre-foreclosure notice and acceleration requirements of said mortgage, and/or applicable statutes;

PURSUANT, to the power of sale contained in said mortgage, the above described property will be sold by the Sheriff of said county as follows:

DATE AND TIME OF SALE: November 5, 2015 at 10:00 a.m.
PLACE OF SALE: Rock County Sheriff's office, in the Lobby of the Rock County Law Enforcement Center, 213 East Luverne, Luverne, Minnesota

to pay the debt then secured by said mortgage and taxes, if any actually paid by the mortgagee, on the premises and the costs and disbursements allowed by law. The time allowed by law for redemption by said mortgagor(s), their personal representatives or assigns is six (6) months from the date of sale.

Unless said mortgage is reinstated or the property redeemed, or unless the time for redemption is reduced by judicial order, you must vacate the premises by 11:59 p.m. on May 5, 2016.

MORTGAGOR(S) RELEASED FROM FINANCIAL OBLIGATION ON MORTGAGE: None

"THE TIME ALLOWED BY LAW FOR REDEMPTION BY THE MORTGAGOR, THE MORTGAGOR'S PERSONAL REPRESENTATIVES OR ASSIGNS, MAY BE REDUCED TO FIVE WEEKS IF A JUDICIAL ORDER IS ENTERED UNDER MINNESOTA STATUTES, SECTION 582.032, DETERMINING, AMONG OTHER THINGS, THAT THE MORTGAGED PREMISES ARE IMPROVED WITH A RESIDENTIAL DWELLING OF LESS THAN FIVE UNITS, ARE NOT PROPERTY USED IN AGRICULTURAL PRODUCTION, AND ARE ABANDONED."

Dated: September 9, 2015

WELLS FARGO BANK, N.A.
Mortgagee

SCHILLER & ADAM, P.A.
By: /s/ Rebecca F. Schiller
Rebecca F. Schiller, Esq.
Sarah J.B. Adam, Esq.
N. Kibongni Fondungallah, Esq.
Curt N. Trisko, Esq.
Samuel R. Coleman, Esq.
Attorneys for Mortgagee
The Academy Professional Building
25 North Dale Street
St. Paul, MN 55102
(651) 209-9760
(13-2601-FC02)

THIS IS A COMMUNICATION FROM A DEBT COLLECTOR.

(9,17, 9-24,10-1,10-8,10-15, 10-22)

Mortgage foreclosure sale set for Dec. 3

NOTICE OF MORTGAGE FORECLOSURE SALE

THE RIGHT TO VERIFICATION OF THE DEBT AND IDENTITY OF THE ORIGINAL CREDITOR WITHIN THE TIME PROVIDED BY LAW IS NOT AFFECTED BY THIS ACTION.

NOTICE IS HEREBY GIVEN, that default has occurred in conditions of the following described mortgage:

DATE OF MORTGAGE: June 20, 2013
ORIGINAL PRINCIPAL AMOUNT OF MORTGAGE: \$68,000.00
MORTGAGOR(S): Josh Bruhn and April Bruhn, husband and wife
MORTGAGEE: Worthington Federal Savings Bank, F.S.B.
TRANSACTION AGENT: Not Applicable
TRANSACTION AGENT'S MORTGAGE IDENTIFICATION NUMBER ON MORTGAGE: Not Applicable
LENDER OR BROKER AND MORTGAGE ORIGINATOR STATED ON MORTGAGE: Worthington Federal Savings Bank, F.S.B.
SERVICER: Worthington Federal Savings Bank, F.S.B.
DATE AND PLACE OF RECORDING: Recorded June 27, 2013, Rock County Recorder as Document No. 182151.

ASSIGNMENTS OF MORTGAGE: None
LEGAL DESCRIPTION OF PROPERTY: A tract of land lying in the NW 1/4 of Section 27 in Township 102 North of Range 44 West of the 5th PM, described as follows: Commencing at the Northwest Corner of said NW 1/4, thence east 23.5 rods along the North Line of said Section to the point of beginning, thence south 26 rods along a line parallel with the West Line of said Section; thence east 30.9 rods along a line parallel with the North Line of said Section; thence north 26 rods along a line parallel with the West Line of said Section; thence west along the North Line of said Section 30.9 rods to the place of beginning. Rock County, Minnesota.

MORTGAGED PROPERTY ADDRESS: 1812 91st Street, Magnolia MN 56158
PROPERTY IDENTIFICATION NUMBER: 07-0085-100
COUNTY IN WHICH PROPERTY IS LOCATED: Rock
AMOUNT DUE AND CLAIMED TO BE DUE AS OF DATE OF NOTICE, INCLUDING TAXES, IF ANY, PAID BY MORTGAGEE: \$68,116.14

THAT all pre-foreclosure requirements have been complied with; that no action or proceeding has been instituted at law or otherwise to recover the debt secured by said mortgage, or any part thereof;

PURSUANT to the power of sale contained in said mortgage, the above described property will be sold by the Sheriff of said county as follows:

DATE AND TIME OF SALE: December 3, 2015 at 10:00 a.m.
PLACE OF SALE: Rock County Sheriff's Office, Main Lobby, 1000 N. Blue Mound Avenue, Luverne MN 56156

to pay the debt then secured by said Mortgage, and taxes, if any, on said premises, and the costs and disbursements, including attorneys' fees allowed by law subject to redemption within six (6) months from the date of said sale by the mortgagor(s), their personal representatives or assigns.

MORTGAGOR(S) RELEASED FROM FINANCIAL OBLIGATION ON MORTGAGE: None

TIME AND DATE TO VACATE PROPERTY: If the real estate is an owner-occupied, single-family dwelling, unless otherwise provided by law, the date on or before which the mortgagor(s) must vacate the property, if the mortgage is not reinstated under section 580.30 or the property is not redeemed under section 580.23, is 11:59 a.m. on June 3, 2016, or the next business day if June 3, 2016 falls on a Saturday, Sunday or legal holiday.

THE TIME ALLOWED BY LAW FOR REDEMPTION BY THE MORTGAGOR, THE MORTGAGOR'S PERSONAL REPRESENTATIVES OR ASSIGNS, MAY BE REDUCED TO FIVE WEEKS IF A JUDICIAL ORDER IS ENTERED UNDER MINNESOTA STATUTES, SECTION 582.032, DETERMINING, AMONG OTHER THINGS, THAT THE MORTGAGED PREMISES ARE IMPROVED WITH A RESIDENTIAL DWELLING OF LESS THAN FIVE UNITS, ARE NOT PROPERTY USED IN AGRICULTURAL PRODUCTION, AND ARE ABANDONED."

DUCE TO FIVE WEEKS IF A JUDICIAL ORDER IS ENTERED UNDER MINNESOTA STATUTES, SECTION 582.032, DETERMINING, AMONG OTHER THINGS, THAT THE MORTGAGED PREMISES ARE IMPROVED WITH A RESIDENTIAL DWELLING OF LESS THAN FIVE UNITS, ARE NOT PROPERTY USED IN AGRICULTURAL PRODUCTION, AND ARE ABANDONED."

Dated: October 9, 2015

Worthington Federal Savings Bank, F.S.B., Mortgagee
By: Andrew E. Hagemann, Jr.
MORK, DARLING & HAGEMANN
Attorneys for Mortgagee
912 Third Avenue, PO Box 607
Worthington MN 56187
(507) 372-2974

PURSUANT TO THE FAIR DEBT COLLECTION PRACTICES ACT, YOU ARE ADVISED THAT THIS OFFICE IS DEEMED TO BE A DEBT COLLECTOR. ANY INFORMATION OBTAINED WILL BE USED FOR THAT PURPOSE. THIS NOTICE IS REQUIRED BY THE PROVISIONS OF THE FAIR DEBT COLLECTION PRACTICES ACT AND DOES NOT IMPLY THAT WE ARE ATTEMPTING TO COLLECT MONEY FROM ANYONE WHO HAS DISCHARGED THE DEBT UNDER THE BANKRUPTCY LAWS OF THE UNITED STATES.

(10-15, 10-22, 10-29, 11-5, 11-12, 11-19)

Notice of special election

NOTICE OF SPECIAL ELECTION INDEPENDENT SCHOOL DISTRICT NO. 2184 (LUVERNE PUBLIC SCHOOLS) STATE OF MINNESOTA

NOTICE IS HEREBY GIVEN that a special election has been called and will be held in and for Independent School District No. 2184 (Luverne Public Schools), State of Minnesota, on Tuesday, November 3, 2015, for the purpose of voting on the following question:

SCHOOL DISTRICT QUESTION 1 RENEWAL OF EXPIRING REFERENDUM REVENUE AUTHORIZATION

The board of Independent School District No. 2184 (Luverne Public Schools) has proposed to renew the school district's existing referendum revenue authorization of \$763.34 per pupil which is scheduled to expire after taxes payable in 2015. The proposed referendum revenue authorization would be applicable for ten years, beginning with taxes payable in 2016, unless otherwise revoked or reduced as provided by law.

Yes Shall the increase in the revenue proposed by the board of Independent School District No. 2184 be approved?

No **BY VOTING "YES" ON THIS BALLOT QUESTION, YOU ARE VOTING TO EXTEND AN EXISTING PROPERTY TAX REFERENDUM THAT IS SCHEDULED TO EXPIRE.**

Passage of this referendum extends an existing operating referendum at the same amount per pupil as in the previous year.

The annual dollar increases for typical residential homesteads, apartments, commercial-industrial properties, and most other classes of property within the school district are as shown in the table below.

For agricultural property (both homestead and non-homestead), the taxes for the proposed referendum will be based on the value of the house, garage and surrounding one acre of land only. There will be no referendum taxes paid on the value of other agricultural lands and buildings. For seasonal residential recreational property (i.e. cabins), there will be no taxes paid for the proposed referendum.

| Type of Property | Referendum Market Value | Pay 2015 Expiring Authority | Pay 2016 Proposed New Authority | Net Change |
|--|-------------------------|-----------------------------|---------------------------------|------------|
| Residential Homesteads, Apartments, and Commercial-Industrial Property | \$50,000 | -\$59 | \$62 | \$3 |
| | 75,000 | -89 | 93 | 4 |
| | 100,000 | -119 | 124 | 5 |
| | 125,000 | -149 | 155 | 6 |
| | 150,000 | -178 | 187 | 9 |
| | 175,000 | -208 | 218 | 10 |
| | 200,000 | -238 | 249 | 11 |
| | 225,000 | -267 | 280 | 13 |
| | 250,000 | -297 | 311 | 14 |
| | 275,000 | -327 | 342 | 15 |
| | 300,000 | -356 | 373 | 17 |
| | 325,000 | -386 | 404 | 18 |
| | 350,000 | -416 | 435 | 19 |
| | 375,000 | -446 | 466 | 20 |
| | 400,000 | -475 | 498 | 23 |
| | 425,000 | -505 | 529 | 24 |
| | 450,000 | -535 | 560 | 25 |
| | 475,000 | -564 | 591 | 27 |
| | 500,000 | -594 | 622 | 28 |
| 550,000 | -654 | 684 | 30 | |

The combined polling place for this election and the precincts served by that combined polling place will be as follows:

COMBINED POLLING PLACE: Luverne Middle School/
High School Gymnasium
709 North Kniss Avenue
Luverne, MN 56156

This polling place serves all territory in Independent School District No. 2184 located in the City of Luverne, Precincts W-1 NE, W-1 NW, W-2 SE and W-2 SW; the City of Hardwick, Kenneth and Magnolia; and Battle Plain, Beaver Creek, Clinton, Denver, Kanaranzi, Luverne, Magnolia, Mound, Rose Dell, Springwater and Vienna Townships, all in Rock County; and Leota, Lismore and Westside Townships, all in Nobles County, Minnesota.

Any eligible voter residing in the school district may vote at said election at the combined polling place designated above. The polls for said election will be opened at 10:00 o'clock a.m. and will close at 8:00 o'clock p.m. on the date of said election.

A voter must be registered to vote to be eligible to vote in this election. An unregistered individual may register to vote at the combined polling places on election day.
Dated: August 13, 2015.

BY ORDER OF THE SCHOOL BOARD
/s/ Jodi Bosch
Jodi Bosch
School District Clerk
Independent School District No. 2184
(Luverne Public Schools)
State of Minnesota
(10-15, 10-22)

ISD #2184 School Board meets Sept. 24

MINUTES OF THE SCHOOL BOARD MEETING OF INDEPENDENT SCHOOL DISTRICT NO. 2184, ROCK COUNTY, LUVERNE, MINNESOTA.

A regular meeting of the Board of Education, ISD #2184, was held in the M/HS Media Center on September 24, 2015, at 7:00 p.m.

The following members were present: Katie Baustian, Jodi Bosch, Dave Riphagen, Shelley Sandbulte, and Reva Sehr. Absent: Colleen Deutsch and Eric Hartman. Also present: Craig Oftedahl, Marlene Mann, Ryan Johnson, Stacy Gillette, Kara Ahrendt, Becky Rahm, Jodi Rops, Jennifer Engesser, Marie Atkinson-Smeins, Caroline Thorson, Lori Oechsle, Deb Hoogendoorn, Becky Runnoe, Sandy Klosterbuer, Beth Capistran, Pam Christensen, Jan Olson, Mary Jo Graphenteen, Patsy Amborn, Doug Dooyema, Anthony Speltz, Elaine Harms, Jane Cote, Greg Antoine, Cole Bosch, and Mavis Fodness - Rock County Star Herald.

Chairperson Dave Riphagen called the meeting to order. Motion made by Baustian, second by Bosch, to approve the agenda as presented. Motion unanimously carried. Administrative reports were given.

Motion made by Bosch, second by Sandbulte, to approve the consent agenda

to include the school board minutes of September 10, 2015; removal of policies 100, 100.01, 100.02, 102.20, 200, 201.01, 201.03, 201.04, 202.02, 203.01, 203.02, 203.03, 203.04, 204.01, 204.03, 204.04, 204.06, and 204.07; renumbering of policy 100.03 to 601, policy 102.25 to 612.1, policy 202.01 to 209, policy 202.03 to 210, policy 203.07 to 714, policy 204.08 to 214, and policy 205.01 to 616; first reading of policy 511 and first reading of policy 706. Motion unanimously carried.

Business Manager Marlene Mann reviewed the school district bills. Motion made by Baustian, second by Sehr, to approve payment of the bills as presented in the amount of \$556,091.97. Motion unanimously carried.

Motion made by Baustian, second by Bosch, to receive the Student Activity report showing the balances as of August 31, 2015. Motion unanimously carried.

Middle/High School Principal Ryan Johnson reported on the Lego League. They currently have one team registered. The Corn/Soybean Growers Association is sponsoring the purchase of one of the robot sets. Advisor pay will be handled through the negotiation process with the Luverne Education Association. Motion made by Baustian, second by Sandbulte, to approve the Lego League. Motion unanimously carried.

Superintendent Oftedahl recommended that the school board set December 17 at 7:00 p.m. to hold the truth-in-taxation hearing which will coincide with the regular school board meeting. Motion made by Bosch, second by Sehr, to set the truth-in-taxation hearing for December 17 at 7:00 p.m. Motion unanimously carried.

Superintendent Oftedahl reviewed the preliminary levy information with the school board. He recommended the School Board set the maximum levy at this time to allow for changes to be made prior to setting the final levy in December. Motion made by Baustian, second by Bosch, to set the preliminary levy at maximum. Motion unanimously carried.

SEPTEMBER 24, 2015, SCHOOL BOARD MINUTES CONTINUED

Discussion was held regarding revised policy 102.30 - Manual for Booster Clubs. This policy would be renumbered to 511.1. Superintendent Oftedahl recommended tabling any action on this policy as the policy committee is also in the process of reviewing the Rental of Facility policy and those two policies may need to coincide.

Superintendent Oftedahl reviewed the resolution relating to Concurrent Enrollment Courses in Schools. Motion made by Baustian, second by Sehr, to approve the following resolution:

BE IT RESOLVED that MSBA urges the legislature to continue the support of students in Concurrent Enrollment Courses in the Schools, by supporting current policy and practice used by Minnesota Universities and Colleges to credential high school teachers to teach courses and codify a state-wide workable policy to assure Minnesota students' success with dual-credit courses while attending high school.

Motion unanimously carried.

Motion made by Baustian, second by Sehr, to approve a request from Sarah Schoeneman, paraprofessional, for twelve weeks of maternity leave beginning approximately December 17, 2015. Motion unanimously carried.

Motion made by Sandbulte, second by Bosch, to approve Greg Harner as volunteer football coach. Motion unanimously carried.

Motion made by Baustian, second by Bosch, to approve a medical leave request from Michelle Curtis, administrative assistant, for approximately three weeks beginning October 5, 2015. Motion unanimously carried.

Motion made by Baustian, second by Sandbulte, to approve the hiring of Kullen Schroft as head boys hockey coach. Motion unanimously carried.

Motion made by Bosch, second by Sandbulte, to approve a request from Amy Cook to complete a 600 hours counseling internship. She will be working with elementary, middle and high school staff. Motion unanimously carried.

Committee reports were given.

Member Sehr reported she and Superintendent Oftedahl attended the MSBA advocacy workshop.

Chairperson Riphagen reported on the personnel committee meeting and negotiations session with the Luverne Education Association on September 14. The District proposed to the LEA an 8.77% increase over two years and a total package worth \$589,468. The LEA had indicated that the insurance was the most important piece of the contract. The district offered the insurance increase of 16% and 4%. The increase on the salary schedule was 2.4% each year, the increase on Schedule C each year was 2%. The LEA did not accept the last offer on the table, and the evening ended. We currently are waiting for the next meeting date to be set.

SEPTEMBER 24, 2015, SCHOOL BOARD MINUTES CONTINUED

The upcoming meeting dates were reviewed. It was noted that having representatives at the parent-teacher conferences will need to be discussed at the October 8 meeting.

Motion made by Baustian, second by Bosch, to adjourn the meeting. Motion unanimously carried.

Dated: September 24, 2015

Jodi Bosch, Clerk
(10-1)

Mortgage foreclosure sale set for Nov. 5

NOTICE OF MORTGAGE FORECLOSURE SALE THE RIGHT TO VERIFICATION OF THE DEBT AND IDENTITY OF THE ORIGINAL CREDITOR WITHIN THE TIME PROVIDED BY LAW IS NOT AFFECTED BY THIS ACTION.

NOTICE IS HEREBY GIVEN, that default has occurred in the conditions of the following described mortgage:

DATE OF MORTGAGE: April 6, 2005
ORIGINAL PRINCIPAL AMOUNT OF MORTGAGE: \$116,000.00
MORTGAGOR(S): David L. Olson and Rosanne Olson, Husband and Wife
MORTGAGEE: New Century Mortgage Corporation
LENDER OR BROKER AND MORTGAGE ORIGINATOR STATED ON THE MORTGAGE: New Century Mortgage Corporation
SERVICER: Carrington Mortgage Services, LLC
DATE AND PLACE OF FILING: Filed May 11, 2005, Rock County Recorder, as Document Number 161378

ASSIGNMENTS OF MORTGAGE: Assigned to: Deutsche Bank National Trust Company, as Trustee, for Carrington Home Equity Loan Trust, Series 2005-NC4 Asset-Backed Pass-Through Certificates

LEGAL DESCRIPTION OF PROPERTY:

Lot 7, in Block 5, in Charles O. Hawes' Addition to the Village (now City) of Luverne
PROPERTY ADDRESS: 317 N Kniss Avenue, Luverne, MN 56156
PROPERTY IDENTIFICATION NUMBER: 20-0748-000
COUNTY IN WHICH PROPERTY IS LOCATED: Rock
THE AMOUNT CLAIMED TO BE DUE ON THE MORTGAGE ON THE DATE OF THE NOTICE: \$109,246.16

THAT all pre-foreclosure requirements have been complied with; that no action or proceeding has been instituted at law or otherwise to recover the debt secured by said mortgage, or any part thereof;

PURSUANT, to the power of sale contained in said mortgage, the above described property will be sold by the Sheriff of said county as follows:

DATE AND TIME OF SALE: November 5, 2015, 10:00 a.m.
PLACE OF SALE: Sheriff's Main Office, West Side Sheriff Dept, Front Step, Luverne, MN 56156

to pay the debt secured by said mortgage and taxes, if any, on said premises and the costs and disbursements, including attorneys fees allowed by law, subject to redemption within 6 months from the date of said sale by the mortgagor(s) the personal representatives or assigns.

TIME AND DATE TO VACATE PROPERTY: If the real estate is an owner-occupied, single-family dwelling, unless otherwise provided by law, the date on or before which the mortgagor(s) must vacate the property, if the mortgage is not reinstated under section 580.30 or the property is not redeemed under section 580.23, is 11:59 p.m. on May 5, 2016, or the next business day if May 5, 2016 falls on a Saturday, Sunday or legal holiday.

"THE TIME ALLOWED BY LAW FOR REDEMPTION BY THE MORTGAGOR, THE MORTGAGOR'S PERSONAL REPRESENTATIVES OR ASSIGNS, MAY BE REDUCED TO FIVE WEEKS IF A JUDICIAL ORDER IS ENTERED UNDER MINNESOTA STATUTES SECTION 582.032 DETERMINING, AMONG OTHER THINGS, THAT THE MORTGAGED PREMISES ARE IMPROVED WITH A RESIDENTIAL DWELLING OF LESS THAN 5 UNITS, ARE NOT PROPERTY USED FOR AGRICULTURAL PRODUCTION, AND ARE ABANDONED."

Dated: September 14, 2015

Deutsche Bank National Trust Company, as Trustee, for Carrington Home Equity

continued on next page...

...continued from previous page

Loan Trust, Series 2005-NC4 Asset-Backed Pass-Through Certificates
Assignee of Mortgagee

SHAPIRO & ZIELKE, LLP

BY:
Lawrence P. Zielke - 152559
Diane F. Mach - 273788
Melissa L. B. Porter - 0337778
Randolph W. Dawdy - 2160X
Gary J. Evers - 0134764
Tracy J. Halliday - 034610X

Attorneys for Mortgagee
12550 West Frontage Road, Ste. 200
Burnsville, MN 55337
(952) 831-4060

THIS IS A COMMUNICATION FROM A DEBT COLLECTOR.

(9,17, 9-24, 10-1, 10-8, 10-15, 10-22)

Mortgage foreclosure sale set for Dec. 3

**NOTICE OF MORTGAGE FORECLOSURE SALE
THE RIGHT TO VERIFICATION OF THE DEBT AND IDENTITY OF THE ORIGINAL CREDITOR WITHIN THE TIME PROVIDED BY LAW IS NOT AFFECTED BY THIS ACTION.**

NOTICE IS HEREBY GIVEN, that default has occurred in conditions of the following described mortgage:

DATE OF MORTGAGE: March 5, 1999
MORTGAGOR: Bruce D. Vastenhout a/k/a Bruce Dale Vastenhout and Jeannine Clark, both single.

MORTGAGEE: CitiFinancial Services, Inc. successor by merger to CitiFinancial Services Inc. 336, LLC, successor by merger to Associates Industrial Loan Company successor by merger to AVCO Financial Services Three, Inc.

DATE AND PLACE OF RECORDING: Recorded March 16, 1999 Rock County Recorder, Document No. 145141.

ASSIGNMENTS OF MORTGAGE: NONE
TRANSACTION AGENT: NONE
TRANSACTION AGENT'S MORTGAGE IDENTIFICATION NUMBER ON MORTGAGE: NONE

LENDER OR BROKER AND MORTGAGE ORIGINATOR STATED ON MORTGAGE: AVCO Financial Services Three, Inc

RESIDENTIAL MORTGAGE SERVICER: CitiFinancial Services, Inc.
MORTGAGED PROPERTY ADDRESS: 112 West Meade Court, Luverne, MN 56156

TAX PARCEL I.D. #: 20.0134.000
LEGAL DESCRIPTION OF PROPERTY:

The East 67 1/2 feet of the West 135 feet of the South 118 feet of Outlot 5 in County Auditor's Plat of Luverne, Outlots in Section 11, Township 102N, Range 45W, City of Luverne, Rock County, Minnesota

COUNTY IN WHICH PROPERTY IS LOCATED: Rock
ORIGINAL PRINCIPAL AMOUNT OF MORTGAGE: \$40,321.55

AMOUNT DUE AND CLAIMED TO BE DUE AS OF DATE OF NOTICE, INCLUDING TAXES, IF ANY, PAID BY MORTGAGEE: \$40,668.86

That prior to the commencement of this mortgage foreclosure proceeding Mortgagee/Assignee of Mortgagee complied with all notice requirements as required by statute; That no action or proceeding has been instituted at law or otherwise to recover the debt secured by said mortgage, or any part thereof;

PURSUANT to the power of sale contained in said mortgage, the above described property will be sold by the Sheriff of said county as follows:

DATE AND TIME OF SALE: December 3, 2015 at 10:00 AM
PLACE OF SALE: Sheriff's Office, Main Entrance, Law Enforcement Center, 1000 North Blue Mound Avenue, Luverne, MN to pay the debt then secured by said Mortgage, and taxes, if any, on said premises, and the costs and disbursements, including attorneys' fees allowed by law subject to redemption within six (6) months from the date of said sale by the mortgagor(s), their personal representatives or assigns unless reduced to Five (5) weeks under MN Stat. §580.07.

TIME AND DATE TO VACATE PROPERTY: If the real estate is an owner-occupied, single-family dwelling, unless otherwise provided by law, the date on or before which the mortgagor(s) must vacate the property if the mortgage is not reinstated under section 580.30 or the property is not redeemed under section 580.23 is 11:59 p.m. on June 3, 2016, unless that date falls on a weekend or legal holiday, in which case it is the next weekday, and unless the redemption period is reduced to 5 weeks under MN Stat. Secs. 580.07 or 582.032.

MORTGAGOR(S) RELEASED FROM FINANCIAL OBLIGATION ON MORTGAGE: None
"THE TIME ALLOWED BY LAW FOR REDEMPTION BY THE MORTGAGOR, THE MORTGAGOR'S PERSONAL REPRESENTATIVES OR ASSIGNS, MAY BE REDUCED TO FIVE WEEKS IF A JUDICIAL ORDER IS ENTERED UNDER MINNESOTA STATUTES, SECTION 582.032, DETERMINING, AMONG OTHER THINGS, THAT THE MORTGAGED PREMISES ARE IMPROVED WITH A RESIDENTIAL DWELLING OF LESS THAN FIVE UNITS, ARE NOT PROPERTY USED IN AGRICULTURAL PRODUCTION, AND ARE ABANDONED."

Dated: September 22, 2015

CitiFinancial Services, Inc.
Mortgagee/Assignee of Mortgagee

USSET, WEINGARDEN AND LIEBO, P.L.L.P.
Attorneys for Mortgagee/Assignee of Mortgagee
4500 Park Glen Road #300
Minneapolis, MN 55416
(952) 925-6888
168-15-004249 FC

THIS IS A COMMUNICATION FROM A DEBT COLLECTOR.

(10-1, 10-8, 10-15, 10-22, 10-29, 11-5)

Mortgage foreclosure sale set for Nov. 19

**NOTICE OF MORTGAGE FORECLOSURE SALE
NOTICE IS HEREBY GIVEN that default has occurred in the conditions of the following described mortgage:**

DATE OF MORTGAGE: October 09, 2012
ORIGINAL PRINCIPAL AMOUNT OF MORTGAGE: \$107,257.00
MORTGAGOR(S): Jason Wicks and Shelley Wicks, Husband and Wife
MORTGAGEE: Mortgage Electronic Registration Systems, Inc., as nominee for Premier Home Mortgage, Inc., its successors and/or assigns

DATE AND PLACE OF RECORDING:
Recorded: October 11, 2012 Rock County Recorder
Document Number: 180397

ASSIGNMENTS OF MORTGAGE:
And assigned to: First Guaranty Mortgage Corporation
Dated: July 31, 2015
Recorded: August 10, 2015 Rock County Recorder
Document Number: 186773

Transaction Agent: Mortgage Electronic Registration Systems, Inc.
Transaction Agent Mortgage Identification Number: 100966251208200245
Lender or Broker: Premier Home Mortgage, Inc.
Residential Mortgage Servicer: RoundPoint Mortgage Servicing Corporation
Mortgage Originator: Not Applicable
COUNTY IN WHICH PROPERTY IS LOCATED: Rock

Property Address: 404 N Estey St, Luverne, MN 56156-1464
Tax Parcel ID Number: 20-1731-000
LEGAL DESCRIPTION OF PROPERTY:

The W.90 feet of the S.77 feet of Lot 3 in Block 21 in Warren and Kniss' Second Addition to the City of Luverne, Rock County, Minnesota
AMOUNT DUE AND CLAIMED TO BE DUE AS OF DATE OF NOTICE: \$108,173.74
THAT all pre-foreclosure requirements have been complied with; that no action or proceeding has been instituted at law or otherwise to recover the debt secured by said mortgage, or any part thereof;

PURSUANT to the power of sale contained in said mortgage, the above-described property will be sold by the Sheriff of said county as follows:
DATE AND TIME OF SALE: November 19, 2015 at 10:00 AM

PLACE OF SALE: Law Enforcement Center, Lobby, 1000 N. Blue Mound Ave., Luverne, Minnesota

to pay the debt secured by said mortgage and taxes, if any, on said premises and the costs and disbursements, including attorney fees allowed by law, subject to redemption within six (6) months from the date of said sale by the mortgagor(s), their personal representatives or assigns.

If the Mortgage is not reinstated under Minn. Stat. §580.30 or the property is not redeemed under Minn. Stat. §580.23, the Mortgagor must vacate the property on or before 11:59 p.m. on May 19, 2016, or the next business day if May 19, 2016 falls on a Saturday, Sunday or legal holiday.

Mortgagor(s) released from financial obligation: NONE
THIS COMMUNICATION IS FROM A DEBT COLLECTOR ATTEMPTING TO COLLECT A DEBT. ANY INFORMATION OBTAINED WILL BE USED FOR THAT PURPOSE.

THE RIGHT TO VERIFICATION OF THE DEBT AND IDENTITY OF THE ORIGINAL CREDITOR WITHIN THE TIME PROVIDED BY LAW IS NOT AFFECTED BY THIS ACTION.

THE TIME ALLOWED BY LAW FOR REDEMPTION BY THE MORTGAGOR, THE MORTGAGOR'S PERSONAL REPRESENTATIVES OR ASSIGNS, MAY BE REDUCED TO FIVE WEEKS IF A JUDICIAL ORDER IS ENTERED UNDER MINNESOTA STATUTES, SECTION 582.032, DETERMINING, AMONG OTHER THINGS, THAT THE MORTGAGED PREMISES ARE IMPROVED WITH A RESIDENTIAL DWELLING OF LESS THAN FIVE UNITS, ARE NOT PROPERTY USED IN AGRICULTURAL PRODUCTION, AND ARE ABANDONED.

DATED: September 23, 2015

ASSIGNEE OF MORTGAGEE:
First Guaranty Mortgage Corporation

Wilford, Geske & Cook P.A.
Attorneys for Assignee of Mortgagee
7616 Currell Blvd Ste 200
Woodbury, MN 55125-2296
(651) 209-3300
File Number: 033794F01.

(10-1, 10-8, 10-15, 10-22, 10-29, 11-5)

Rock County Commissioners meet July 7

**Herreid Board Room 9:00 A.M.
Rock County Courthouse July 7, 2015**

The meeting was called to order by Chair Boyenga with all Commissioners present.

Motion by Reisch, seconded by Thompson, to approve the July 7, 2015 County Board agenda, declared carried on a voice vote.

Motion by Hoime, seconded by Reisch, to approve the June 17, 2015 County Board minutes and the June 17, 2015 Board of Equalization minutes, declared carried on a voice vote.

The Administrator informed the County Board that the Veterans Service Officer's job description had been re-evaluated due to the education requirements and the additional duties of the museum at the Rock County Veterans Memorial Building; motion by Reisch, seconded by Williamson, to approve a revised job description and new placement on pay plan from H10 to H17 effective 01/01/2015, declared carried on a voice vote.

The Administrator informed the County Board of a July 9th meeting with representatives from the 9- county region to discuss dispatch; it was determined that Commissioner Thompson would attend the event along with the Administrator, Deputy Administrator and Sheriff Verbrugge.

Ashley Kurtz, Auditor/Treasurer, presented the claims and per diems of \$1,200.00; motion by Hoime, seconded by Boyenga, to approve the claims and per diems, declared carried on a voice vote. A complete listing of the claims is available upon request at the Auditor/Treasurer's Office.

| | |
|------------------|--------------|
| General | \$62,485.45 |
| General Reserves | \$138,137.92 |
| Library | \$4,503.19 |
| Road and Bridge | \$518,334.54 |
| Transfer Station | \$5,119.24 |
| Land Management | \$7,974.65 |
| TOTAL | \$736,554.99 |

Claims over \$2,000:

| | |
|-------------------------------------|------------|
| Fleet Services | \$5,877.64 |
| Hedeon, Hughes & Wetering | 3,308.85 |
| Herman Motor | 4,612.32 |
| Nobles County Auditor/Treas | 5,433.25 |
| Southwestern MN Opportunity Council | 8,290.74 |
| Streicher's | 2,301.00 |
| University of MN | 16,882.50 |
| Nuss Truck & Equipment | 124,496.00 |
| Pictometry | 10,913.91 |
| Pictometry | 5,456.94 |
| Commissioner of Transportation | 498,061.60 |
| Construction Products | 2,124.95 |
| Erickson Engineering | 4,751.50 |
| Fulda Electric Service | 2,503.36 |
| Jaycox | 2,861.57 |
| Liberty Tire Recycling | 2,233.00 |

The Auditor/Treasurer presented the Fund Balance report and stated that it did not reflect the receipt of recent bond proceeds; motion by Reisch, seconded by Thompson, to approve the Fund Balance report, declared carried on a voice vote.

Tom Houselog, Land Records Office Director, discussed the Pictometry contract and the upcoming second fly over as per the contract and requested to add (2) additional features to the contract - ChangeFinder and Sketch Check for an additional cost of \$7,750.00; Houselog stated the expense could be paid from either the Technology Fund or the Compliance Fund. Motion by Williamson, seconded by Reisch, to approve the contract additions and pay the expenditure from the Compliance Fund pending approval from the Compliance Fund committee, declared carried on a voice vote.

The Land Records Office Director introduced new employee Rachel Jacobs to the County Board.

The County Board was in receipt of a response from MPCA regarding the 2009 demolition landfill application and the delayed process and lack of communication; presented as information only.

The Administrator informed the County Board that he approved an expenditure of \$10,571.98 to Johnson Controls for repairs to the Courthouse HVAC cooling system that resulted from the weekend storms on June 19-20; the damages are covered by insurance and the county will be reimbursed minus the \$1,000 deductible.

The County Board was informed that Rock County Opportunities has provided notice to Ketterling Sanitation terminating their labor contract for single sort services. The County Board discussed changes to the county recycling process; motion by Hoime, seconded by Boyenga, to send a letter to Millennium Recycling, Inc. committing 5-years of all unsorted recycling, declared carried on a voice vote.

Mark Sehr, Engineer, requested to declare the following property as surplus and be sold on Govdeals Auction Internet site:

- 2003 Sterling LT9511 Tandem axle dump truck
- 2008 Ford E450 transit bus
- 2009 Ford E450 transit bus
- 1992 Advantage Lift System (non operational)

Motion by Thompson, seconded by Boyenga, to declare the list as surplus equipment and list for sale, declared carried on a voice vote.

The Engineer informed the County Board of fire damage due to an electrical short on Unit #220, a Tiger Tractor; the incident will be reported to insurance.

Motion by Williamson, seconded by Reisch, to authorize county departments to participate in an auction sale on July 23rd, sponsored by the Rock County Historical Society to sell miscellaneous surplus equipment, declared carried on a voice vote.

Motion by Hoime, seconded by Reisch, to purchase 50 new reception chairs at the Human Services building for \$3,000.00 plus shipping and handling, and to pay the expenditure from the Human Services Reserves fund, declared carried on a voice vote.

The Administrator informed the County Board that he met with Judge Vajrgt, the Assistant County Attorney Haubrich and Sheriff Verbrugge regarding courthouse security; immediate issues identified are updated and additional cameras, bullet proof glass at Court Administrator window, building sweeps at the end of the day and conducting emergency exit drills. The Administrator stated that price quotes are forthcoming.

The County Board was in receipt of an Annual Meeting Notice from the Southwest Regional Development Commission to discuss and set the 2016 budget; meeting date is July 9 at 3:00PM in Heron Lake, Minnesota.

Motion by Thompson, seconded by Hoime, to approve the purchase of a new lawn mower from Rock Motor Sports, LLC for \$9,854.99, a ExMark Lazer Z SD Series 60" Side Discharge, declared carried on a voice vote. The new equipment will replace a Grasshopper mower and the attachments of the cab, snow blower and broom.

The County Board was in receipt of a thank you from the Green Earth Players for the 2015 appropriation that was recently distributed.

Commissioner Items:
Reisch attended a Plum Creek Library meeting
Williamson expressed his concerns regarding legislators potentially modifying wind production taxes.

Thompson informed the County Board of an upcoming Pedal/Bike Tour scheduled for July 28-31; Administrator Oldre stated that the Lieutenant Governor will be touring the southwest region on those same dates.

Boyenga stated that the Southwestern Mental Health building renovation is progressing nicely and that SWHHS is drafting their 2017 budget.

With no further business to come before the County Board, the meeting was declared adjourned.

(10-15)

Rock County Commissioners meet July 21

**Herreid Board Room 9:00 A.M.
Rock County Courthouse July 21, 2015**

The meeting was called to order by Chair Boyenga with all Commissioners present.

Motion by Thompson, seconded by Reisch, to approve the July 21, 2015 County Board agenda, declared carried on a voice vote.

Motion by Williamson, seconded by Hoime, to approve the July 07, 2015 County Board minutes, declared carried on a voice vote.

Motion by Hoime, seconded by Reisch, to approve the consent agenda, declared carried on a voice vote.

1. Resolution No. 17-15, appointment of LPRW Board of Commissioners Mitch Kling and Bill Ufkin

Eric Hartman, Land Management Office Director and Doug Bos, Assistant Land Management Office Director, and presented an overview of additional funding that the department will receive in 2015 through 2020. First reviewed was the partners in the various projects that they will have coming forward as far as buffer strips and the flood damage repairs; also reviewed the fact that they will receive an additional \$100,000 to the Soil & Water Conservation District in reoccurring funding from the State Water Plan; \$50,000 annually for the buffer strip administration; \$2.3 million to be distributed to agriculture producers who received damage in the 2014 flood of which ten-percent can be retain for administration of the program. As to date, they have received calls from 70 landowners requesting assistance from the SWCD in make flood damage repairs.

Hartman and Bos presented a request to the County Board along with the SWCD to add a technical position to the Land Management Office to assist with the upcoming projects; motion by Williamson, seconded by Hoime, to authorize a grant funded FTE Land Management Office Technician, declared carried on a voice vote.

Bos informed the County Board that the office has been currently targeting nitrate sampling in various townships throughout the county.

Mark Sehr, Engineer, presented bids for the 2015 pavement striping contract:

| | |
|--------------------------|-------------|
| Traffic Marking Services | \$44,467.82 |
| AAA Striping | \$46,419.20 |

Motion by Reisch, seconded by Thompson, to approve the bid from Traffic Marking Services for \$44,467.82, declared carried on a voice vote.

The Engineer presented the 2014 Annual Report which reflected per mile maintenance costs; motion by Williamson, seconded by Boyenga, to accept the 2014 Annual Report, declared carried on a voice vote.

The Engineer requested the approval to bid let the following 2015 box culvert projects for August 14th at 10:00AM; motion by Hoime, seconded by Reisch, to authorize the Engineer to bid let the following projects, declared carried on a voice vote.

SAP 067-599-170: bridge L2194 in Magnolia Township on 200th Ave
SAP 067-599-172: bridge L2177 in Battle Plain Township on 221st Street

59 SAP 067-598-017: bridge L2138 in Springwater Township on County Highway

59 SAP 067-598-018: bridge L2140 in Springwater Township on County Highway

The Engineer presented various construction updates on County Road 8, County Road 6 and County Road 17.

Evan Verbrugge, Sheriff, led a discussion along with the County Administrator regarding a meeting with Murray Prairie Community Care, presented a 2014 overview. Currently the organization has twelve counties participating through the SWHHS JPA with their target being regional health care reform. They provide services to 23,000 members through the 12-county area.

Dr. Anderson provided specific examples of how integrated care relating to diabetes prevention is working as part of the project.

Ms. Fisher also identified that they will be providing rebates from revenue received from the State of Minnesota, to the providers on the following basis:

- 60% will go to participating clinics
- 30% will go to participating hospitals
- 5% will go to mental health centers
- 5% will go to counties - in Rock County's case, there will \$20,000 returned to SWHHS and \$15,000 to Southwest Mental Health Center; Sanford is not a provider in the integrated health partnership

Neil Steffi, Southwestern MN Opportunity Council Director, presented the 2014 program report and invited the County Board to the 50th Anniversary celebration; also stated that SMOC will have a booth at the Rock County Fair.

George Eilertson, Northland Securities Senior Vice President, presented the bid results of the CIP bond along with fiber optic bond; the total bond was \$1,175,000 with \$1,000,000 allocated to the fiber optic project and \$175,000 allocated to the CIP. After the bond sale, the proceeds would be available on August 13, 2015 with a call date of February 1, 2022. Motion by Reisch seconded by Boyenga to approve Resolution No. 18-15, accepting the sale of \$1,175,000 GO bonds, declared carried on a voice vote.

Motion by Hoime, seconded Thompson, to approve the claims, declared carried on a voice vote. A complete listing of the claims is available upon request at the Auditor/Treasurer's Office.

| | |
|------------------|--------------|
| General | \$66,000.01 |
| General Reserves | \$4,030.74 |
| Library | \$2,373.66 |
| Road and Bridge | \$53,134.76 |
| Debt Service | \$387,270.00 |
| Ditch | \$7,468.75 |
| Transfer Station | \$36,205.70 |
| Land Management | \$2,742.55 |
| TOTAL | \$559,226.17 |

Star Herald PUBLIC NOTICES

Star Herald CLASSIFIEDS

...continued from previous page

Claims over \$2,000:

| | |
|----------------------------------|------------|
| Computer Professionals Unlimited | \$5,934.00 |
| Dakota Security | 4,616.10 |
| Expressway - Luverne | 2,193.74 |
| Fleet Services | 5,679.10 |
| City of Luverne | 6,031.26 |
| Morris Electronics | 2,723.25 |
| Rock County Opportunities | 3,131.10 |
| Runchey, Louwagie & Wellman | 2,284.70 |
| SWHHS | 17,557.75 |
| Fidlar Technologies | 2,955.20 |
| CHS | 5,676.42 |
| Contech Construction Products | 5,488.84 |
| Expressway | 8,609.56 |
| W & N Construction | 25,878.14 |
| Northland Trust Services | 7,468.75 |
| Northland Trust Services | 387,270.00 |
| Ketterling Services | 17,386.47 |
| Lyon County Landfill | 15,903.36 |

Motion by Boyenga, seconded by Reisch, to approve the Fund Balance Report, declared carried on a voice

Motion by Reisch, seconded by Boyenga, to approve security cameras on the 3rd Floor of the Courthouse for Courts and not to exceed \$7,000.00, declared carried on a voice vote.

The County Board was reminded of the DNR Commissioner participating in the Regional Bike Ride on July 28th.

The County Board was informed of a meeting date of August 6th to meet with cities other than the City of Luverne to discuss the renewal of law enforcement services contracts; the meeting will be led by Sheriff Verbrugge and County Administrator Oldre and commissioners were invited to attend as well.

The Administrator presented a lease agreement from North Central Bus Company for (1) 2015 transit bus that will replace (2) Heartland Buses that have engine troubles and declared as surplus; motion by Williamson, seconded by Thompson, to authorize the \$2,000/mo lease for 1-year with the understanding that 85% would be paid by the state grant and 15% being the local share, declared carried on a voice vote.

Motion by Williamson, seconded Reisch, to approve a RCRW payment to Winter Brothers Underground, Inc for \$596,455.17, which includes Change order #1 resulting in a net change of \$130,710, all pending approval from Rural Development, declared carried on a voice vote.

The County Board was in receipt of a recycling update, the recycling operation in the City of Luverne operated by Ketterling Sanitation Inc is changing and single sort recycling will be transported to Millenium in Sioux Falls, SD in the near future.

Commissioner Reisch informed the County Board that he attended the Rock/Nobles Community Corrections meeting and that Community Corrections will be sending a letter to the three area judges requesting to support community services.

Commissioner Hoime requested that the County Board develop a certificate to Angel Otero, Rock/Nobles Community Corrections Work Site Supervisor for his many years of service; Otero retires on August 28, 2015. The request was authorized by Order of the County Board Chair.

Commissioner Thompson informed the County Board that she attended the Regional Development Commission Annual meeting and provided highlights on their collaboration as well as the P. A. C. E. program.

Commissioner Boyenga stated that he attended the Southwest Mental Health Center meeting and provided a building update for the site in the City of Luverne.

The County Board was in receipt of a letter from the Luverne Area Chamber of Commerce providing a pedestrian traffic update that have been through the attractions in the Rock County Veterans Memorial Building.

With no further business to come before the County Board, the meeting was declared adjourned.

(10-15)

EMPLOYMENT

Looking for regional driver to pull hopper. Leave Monday morning and you are home Friday night. Good Equipment. Good Pay. Call 507-220-1924. (10.11-10.29)

Habilitative Services, Inc. in Luverne, MN has openings for Direct Support Professionals to provide support to persons with disabilities. Job duties will include providing personal cares, community involvement and encouraging growth and development for the individuals. A variety of part-time (possible full-time) flexible hours are available. Applicants must be at least 18 years old with an acceptable driving record. NEW!! HSI offers a \$100 Sign On Bonus after the completion of 6 months of employment. Apply online at www.habsvinc.com. EOE/AA (10.11-10.29)

Ellsworth Public School is accepting applications for a Paraprofessional. Applications can be picked up at the school office or by calling 507-967-2242. (10.11-10.15)

Help Wanted: Farm help and Semi driver wanted. CDL license not required. Call 507-360-6013. (10.11-10.22)

Babysitter needed for active nine and 11 year old. Prefer an animal lover and must be comfortable around dogs. We have two Labradors. Hours needed will vary but for the most part will be after school and early evenings. Ideal candidate will have drivers license, excellent driving record and references, love animals and the outdoors. Please call Jenny at 507-220-1472 for more information. (10.8-10.25)

Wanted: Truck driver with Class A CDL. Clean driving record and pass drug test. Home nights and weekends. Hauling corn and beans. Call 507-220-0820. (10.8-10.25)

Nursing Assistant-Parkview Manor has openings for full-time nurse aides. Benefits to include health insurance, public retirement and holiday pay. Starting wage \$10.86. Will provide training or pay for experience. Will need day and night shift staff and part-time all shifts. Contact Darnell Krull, 308 Sherman Ave., Ellsworth, MN 56129 or call (507) 967-2388. (tc)

Registered Nurse/LPN-Parkview Manor, a municipal skilled nursing facility is accepting applications for a part-

COMMERCIAL

Office Space for Rent: Ideal downtown location. Quality building. Several sizes available. Utilities included. Call Randy Creeger, 507-220-1105 or randy.creeger@gmail.com. (tc)

AGRICULTURAL

Custom large square baling alfalfa, grass and straw. No job too far. Call David Kramer at 507-967-2140 or 507-360-9963. (tc)

We have several crews of rock pickers and we also do any type of farm work. 712-943-2084. (tc)

CARDS OF THANKS

The family of Teresa Smith wishes to express sincere appreciation for all the outpouring of kindness shown during Mom's passing. Your prayers, cards and gifts are truly appreciated. A special thank you to Good Samaritan of Pipestone for the wonderful care given to Mom over the years. Thank you Pastor Lauger for your prayer and visit to hospital, all the staff at Pipestone County Hospital and Hartquist Funeral home. Thank you.

**Morgan and Rhonda Smith
Maggie and Tom Dibble
Michele and Brent Gerloff
and family**
(10.11-10.15)

The number of greetings I received for my birthday was overwhelming! The cards and comments were beautiful. Thanks for making my 90th so special.

Doreen Rollag
(10.11-10.15)

EMPLOYMENT

time charge nurse position. Wages commensurate with experience. Benefits include vacation, holiday and PERA retirement plan. Contact Darnell Krull, 308 Sherman Ave. Ellsworth, MN 56129 or call 507-967-2482. (tc)

EXTRA MONEY? Work part-time of full-time from your home office with our wellness company. No stocking, selling, or delivery. Computer required. www.NewFreedom4u.Biz. Call 507-962-3444 or 507-227-7975. (tc)

MISCELLANEOUS

HAVE A UNIQUE SERVICE OR BUSINESS? Get the word out to over 1.4 million households. Call WIDE AREA CLASSIFIEDS today, 507-359-7326. (tc)

WINDOWS

We custom build and install Energy Star Therm-O-Loc Windows. Call Mike at Adrian Glass for a free in-home demonstration and estimate. 101 E. Pearl, Adrian, MN 56110. 507-483-2228. (tc)

RENTALS

Two-bedroom house for rent in Luverne. Appliances included. 507-348-4282 or 507-215-2619. (tc)

Three-bedroom, one bathroom and two-bedroom, one bathroom trailer homes for rent. All appliances included. Water and sewer included along with central air. Call 605-366-7695. (10.8-10.25)

Ground floor two-bedroom, two bathroom apartment. Clean, quiet and affordable. No smoking and no pets. References required. Call 507-283-4885 or 507-290-0394. (tc)

One-bedroom, one-bathroom, close to downtown. Hardwood floors, walk-in closets. Call 507-283-8711 or 507-227-2604. (tc)

For rent: One-bedroom, second floor apartment in downtown Luverne. Older building with updates. \$290 plus utilities. No pets. Call 605-201-6427. (tc)

Centennial Apartments has a one-bedroom, no smoking apartment available. All utilities included except cable and phone. Section 8 assistance available. Must be 50, handicapped or disabled. Call 507-283-2652. EHO. (tc)

One-bedroom apartment for rent in Magnolia. All appliances included. Washer and dryer. No pets. No smoking. Call Jean Cowell 283-8593. (9.27-10.15)

WANTED

Buying old cars, trucks, scrap iron, old farm equipment, tin, wire. Ericksen Salvage, Charlie Ericksen, 605-254-4654. (tc)

RENTALS

**MOVE TO
STONE CREEK
TOWNHOMES**
before the snow flies!
2 BR available 11/1!

Income based rent. Includes water, sewer, trash.

Call Robin: 507-283-4793
LloydManagementInc.com
Equal Housing Opportunity

**ROCK CREEK
TOWNHOMES**
is looking for you!
**3 bedroom
available 11/1**
\$580/month
Includes water, sewer, trash
Call Pam:
507-283-4746
LloydManagementInc.com
Equal Housing Opportunity

BLUE MOUND TOWER
Apartments available!
Rent based on income or flat rent.
Includes utilities, laundry facility
and secure entry.
Luverne HRA • Blue Mound Tower
216 McKenzie Street
Luverne, MN 56156
507-283-4922 EHO

**Oakwood
Apartments**
401 Oak St., Ellsworth

• 1 Bedroom Unit Available

Unit Available
Water, Sewer &
Garbage Included.
Rent Based on Income
AVAILABLE IMMEDIATELY
**Van Binsbergen
& Associates, Inc.**
320-269-6640 ext. 22
Equal Housing Opportunity

www.vanblc.com

RECYCLE!

WANTED TO LEASE BY USDA

The US Dept of Agriculture in Rock County, City of Luverne, MN, seeks to lease 2,700-2,870 ABOA/net usable square feet, not to exceed 3,200 rentable square feet, class A office space with 16 parking spaces for a 10 year lease term.

To be considered, space offered must be located in the delineated area: bound on the North by 131st Street; on the East by 140th Ave; on the South by 101st Street; on the West by 110th Ave.

Offered space must meet Government requirements for fire safety, accessibility, seismic and sustainability standards per the terms of the lease. A fully serviced lease is required. Offered space shall not be in the 100-year floodplain.

Expressions of Interest with contact info and location/size of offered space due by 3:30pm Central time October 21, 2015 to:

Scott Adams, Cragoe Realty
203 E Main St
Luverne, MN 56156
Voice: 507.283.2647
Email: info@cragoe.com

See www.fbo.gov for more info.



| | | |
|---|--|--|
| HELP WANTED - DRIVERS CDL A DRIVERS \$7,500 sign-on-bonus. Medical benefits on day 1 & \$65k+ in your first year!! Guaranteed pay. Profit sharing. 401K with company match & more! Email: resume: mtr@mcaneco.com or call Hollie now! 507/664-3038 | ADOPTIONS ADOPTION: INCREDIBLY LOVING young couple wants to give your baby a warm, caring, happy home with every advantage. Expenses paid. Call/text Rebecca & David 646/378-9326 | MISCELLANEOUS DONATE YOUR CAR truck/boat to Heritage For The Blind. Free 3 day vacation, tax deductible, free towing, all paperwork taken care of 800/439-1735 |
| NOW HIRING Company OTR drivers. \$2,000 sign on bonus, flexible home time, extensive benefits. Call now! Hibbs & Co. 763/389-0610 | STRUCTURED SETTLEMENT or annuity payments for CASH NOW. You don't have to wait for your future payments any longer! Call 800/218-8581 | DISH NETWORK Get more for less! Starting \$19.99/month (for 12 months), plus bundle & save (Fast Internet for \$15 more/month). Call now 800/297-8706 |
| WANTED AG PRODUCERS FARMERS/RANCHERS Factory direct steel buildings - discounts for display buildings - 60'x120' - 70'x15' - 80'x200'. Building could be 100% tax deductible, call now 844/297-8335 | STOP OVERPAYING FOR YOUR PRESCRIPTIONS! Save up to 93%! Call our licensed Canadian and International pharmacy-relieving brace - little or no cost to you. Medicare patients call get \$15.00 off your first prescription health hotline now! 800/755-6807 and free shipping. Call 800/259-1096 | AGRICULTURE ADVERTISE HERE STATEWIDE IN 260+ NEWSPAPERS FOR ONLY \$279 PER WEEK! CALL 800-279-2979 |

Star Herald CLASSIFIEDS

EMPLOYMENT

EMPLOYMENT

NHF
NEWHORIZONFARMS

New Horizon Farms is looking for a full time Maintenance Technician to service our sow farms. All applicants should have verifiable welding, electrical and mechanical experience.

Apply today by calling New Horizon Farms LLP at **507.825.5462** or stop by the office to pick up an application.

New Horizon Farms LLP offers a great benefit package to full-time employees including, Paid Vacation/Sick Time, Health Insurance, Employer Funded Health Savings Account, Life Insurance, 401 (k) Retirement Plan and Bonus Incentives.

CALL TODAY!

319 N. HIAWATHA, PO BOX 708 - PIPESTONE, MN 56164
507.825.5462 / 800.906.7447 / 507.825.5877 (Fax)
www.newhorizonfarms.com

Luverne Public Schools is seeking applications for a full-time Custodian.

Shift differential paid after 6 p.m.

Benefits include hosp. insurance, holidays, vacation and sick leave.

Day hours during summer/evening hours during the school year.

Submit letter of application and resume to Luverne Public Schools, 709 North Kniss, Luverne, MN 56156. EOE.

WWW.ISD2184.NET

**SON-D-FARMS
ADRIAN**

is hiring General Farm, Hog, Field Work, Truck Driver, Maintenance person & Mill person. Experience wanted but willing to train. PTO benefits. Call (507) 483-2245, 370-1590 or e-mail jessihoffman@sondfarms.com

Interested in Advertising?

Call **Rick or Chantel** to advertise in the Announcer

283-2333

Your Calling.
YOUR PLACE.

Are you looking for a rewarding career in healthcare? Sanford Luverne has the perfect position for you. We are accepting application for the following positions:

| | |
|--|--|
| Respiratory Therapist—Full or part time | LPN/TMA—As needed |
| RN—Full time | Environmental Spec. — As needed |
| Home Health Aide — As needed | Cook—Part time & As needed |
| Patient Care Tech—Full or part time | Receptionist—As needed |
| Patient Access Specialist—As needed | Dietary Assistant—Part time |
| EMT/Paramedic — As needed | |

These positions offer a challenging opportunity to be part of a recognized healthcare team and offer a competitive wage and benefits package. Please apply online:
www.sanfordhealth.org/careers

SANFORD
Luverne

Hear it first at www.star-herald.com