



# Rock County STAR HERALD

Rock County's oldest business, printing since 1873

Thursday, September 29, 2016

## To berm or not to berm?

*Project to protect Redbird Field raises questions of floodway development, costs of protecting it and impact downstream*

By Lori Sorenson

Luverne City officials are working with engineers on a berm that would minimize flood damage at Redbird Field.

In the June 2014 flooding, a raging Rock River spilled its banks and deposited corn stalks, debris and tons of sand and silt onto Redbird Field.

After spending \$200,000 to clean it up, the city looked for ways to reduce similar damage in the future.

Working with its city engineer, Gary Kurth of DGR, Rock Rapids, they came up with a plan that DNR hydrologists have signed off on.

There is an existing berm that runs along the outfield of the ball diamond.

The proposal is a 4-foot-high earthen berm 450 feet long that extends from the Main Street bridge to the northeast corner of Redbird Field.

The estimated cost of the project is \$55,000, and a state grant will cover most of that cost.

Both engineers and state hydrologists note that the berm won't prevent flooding; water will still fill this area during floods. The goal is to divert water through the floodway in order to slow the rushing river and avoid the debris.

Downstream property owners Mike and Karen Mensen attended the Sept. 20 City Council meeting to express concern about how the berm would affect their property downstream.

"This is all about ball diamonds versus personal property," they wrote

Redbird Field berm/see page 8A



Lori Sorenson photo/0929 band festival parade Luverne

The Luverne High School marching band makes its way through the parade route Saturday morning for the Tri-State Band Festival Parade.

## Mother Nature has her way with Band Festival

By Lori Sorenson

Saturday's Tri-State Band Festival started out like most of the others have for the past 66 years in Luverne.

High school students marched down Main Street in a parade of festive band music and bright colors under a crisp autumn sky.

But clouds rolled in for the afternoon per-

formances at Cardinal Field, and after the 2 p.m. break, O' Gorman High School's routine was cut short by an announcement to take cover.

A thunderstorm — with threatening lightning — forced bands and fans inside the school for a 45-minute recess.

The plan was to resume competition after the storm passed, but it lingered. And persistent

torrential rains forced event organizers to consider a Plan B.

Remaining participants performed in the Cardinal Gym, but only bands and judges would be allowed, since there was no room for spectators.

The awards ceremony also remained in the gym while rain continued to fall outdoors.

See page 1B for photos and more information.

## Arbitrator rules in favor of teacher in salary grievance

By Mavis Fodness

An arbitrator with the state's Bureau of Mediation Services ruled in favor of a Luverne Public Schools teacher in a grievance filed in October 2015.

Luverne Education Association filed the grievance on behalf of Shirlee Gilmore, an elementary music instructor, after district officials denied her requested salary lane

change based on graduate credits.

Both parties attended an arbitration hearing in April with written briefs submitted to the arbitrator on May 27.

Arbitrator Thomas Yaeger made his decision Sept. 14. "We are going to look at what's going to change for us going forward in some of our hiring practices," Luverne Superintendent Craig Oftedahl told School Board

members at their Sept. 22 meeting.

The current district practice provides for the superintendent to approve accepted graduate credits in writing at the time of hiring.

In Gilmore's grievance she thought she had 17 graduate credits recognized at the time of her June 2014 hiring, according to the grievance.

It wasn't until her request for a

salary lane change was denied that she learned seven of those credits were not recognized, until the arbitrator ruled in her favor.

Gilmore is in her third year of teaching vocal music at Luverne Elementary School.

No specific dollar amount was released, but Gilmore will be granted her salary lane request retroactive to the grievance file date.



Lori Sorenson photo/0929 corn harvest

Lyle Rollag's combine gobbles up stalks and fills grain carts with corn Friday, Sept. 23, in this field along County Road 5 in western Rock County. Rollag was combining corn for Blac-X Farms that day.

## Rock County harvest will likely see delays

By Lori Sorenson

Rock County Harvest 2016 will have varied results, based on where the most rain fell.

Some soybean fields are standing in water, while other areas of the county are dry, having missed most

of the recent heavy rains.

Farmers are reporting some stress to plants as a result of persistent rain. For example, mold and fungus will be an issue if fields don't dry out.

"I anticipate harvest delays," said

Beaver Creek farmer Peter Bakken. "The variability within the county is going to be significant."

So far, he said the grain is in good shape and yields have been good in his western Rock County fields, despite wet conditions.

## County Board divided over 6.13-percent levy increase

By Mavis Fodness

Rock County's preliminary levy for 2017 is set to increase 6.13 percent over the current county levy.

Three motions at different percentages were made at the Sept. 20 County Board meeting before 6.13 percent was accepted.

Two motions for a 6.5 and a 5.75 percent increase failed in 2-3 votes. Commissioner Stan Williamson moved the vote to 3-2 for the 6.13 percent.

Commissioners Ron Boyenga and Ken Hoime cast the dissenting votes.

Each year Boyenga advocates for a zero percent increase. He garnered

no support for his suggestion to cut programs in order to afford upcoming salary increases.

Hoime supported a levy increase but at a lower percentage than what was accepted. He supported the 5.75-percent increase in the failed second motion.

"We need a starting place so this is a compromise," he said.

Commissioners have until December to finalize the levy. It can be set lower than the preliminary levy of 6.13 percent, but it cannot be increased.

Because union negotiations

County Board/continued on 5A

## School levy to decrease

By Mavis Fodness

Timely taxpayer payments and debt refinancing resulted in a decrease of the Luverne School District 2017 preliminary levy of 2.77 percent.

Marlene Mann, the district's business manager, told board members at their meeting Thursday, Sept. 22, that local on-time tax payments helped reduce this year's property tax payments to the district by \$70,770.

The state's formula for property

taxes is calculated at 105 percent, or 5 percent above the district's voter-approved bond, Mann said.

The added percentage above 100 percent compensates for the non-payment of taxes from property owners within the school district. If all tax payments are made within a school district, the percent over 100 is given back to local taxpayers in a reduced levy the following year.

This is the third year District

School Board/continued on 2A







# Rock County STAR HERALD

Rock County's oldest business, printing since 1873

Thursday, September 29, 2016

## To berm or not to berm?

*Project to protect Redbird Field raises questions of floodway development, costs of protecting it and impact downstream*

**By Lori Sorenson**

Luverne City officials are working with engineers on a berm that would minimize flood damage at Redbird Field.

In the June 2014 flooding, a raging Rock River spilled its banks and deposited corn stalks, debris and tons of sand and silt onto Redbird Field.

After spending \$200,000 to clean it up, the city looked for ways to reduce similar damage in the future.

Working with its city engineer, Gary Kurth of DGR, Rock Rapids, they came up with a plan that DNR hydrologists have signed off on.

There is an existing berm that runs along the outfield of the ball diamond.

The proposal is a 4-foot-high earthen berm 450 feet long that extends from the Main Street bridge to the northeast corner of Redbird Field.

The estimated cost of the project is \$55,000, and a state grant will cover most of that cost.

Both engineers and state hydrologists note that the berm won't prevent flooding; water will still fill this area during floods. The goal is to divert water through the floodway in order to slow the rushing river and avoid the debris.

Downstream property owners Mike and Karen Mensen attended the Sept. 20 City Council meeting to express concern about how the berm would affect their property downstream.

"This is all about ball diamonds versus personal property," they wrote

**Redbird Field berm/see page 8A**



Lori Sorenson photo/0929 band festival parade Luverne

The Luverne High School marching band makes its way through the parade route Saturday morning for the Tri-State Band Festival Parade.

## Mother Nature has her way with Band Festival

**By Lori Sorenson**

Saturday's Tri-State Band Festival started out like most of the others have for the past 66 years in Luverne.

High school students marched down Main Street in a parade of festive band music and bright colors under a crisp autumn sky.

But clouds rolled in for the afternoon per-

formances at Cardinal Field, and after the 2 p.m. break, O' Gorman High School's routine was cut short by an announcement to take cover.

A thunderstorm — with threatening lightning — forced bands and fans inside the school for a 45-minute recess.

The plan was to resume competition after the storm passed, but it lingered. And persistent

torrential rains forced event organizers to consider a Plan B.

Remaining participants performed in the Cardinal Gym, but only bands and judges would be allowed, since there was no room for spectators.

The awards ceremony also remained in the gym while rain continued to fall outdoors.

**See page 1B** for photos and more information.

## Arbitrator rules in favor of teacher in salary grievance

**By Mavis Fodness**

An arbitrator with the state's Bureau of Mediation Services ruled in favor of a Luverne Public Schools teacher in a grievance filed in October 2015.

Luverne Education Association filed the grievance on behalf of Shirlee Gilmore, an elementary music instructor, after district officials denied her requested salary lane

change based on graduate credits.

Both parties attended an arbitration hearing in April with written briefs submitted to the arbitrator on May 27.

Arbitrator Thomas Yaeger made his decision Sept. 14. "We are going to look at what's going to change for us going forward in some of our hiring practices," Luverne Superintendent Craig Oftedahl told School Board

members at their Sept. 22 meeting.

The current district practice provides for the superintendent to approve accepted graduate credits in writing at the time of hiring.

In Gilmore's grievance she thought she had 17 graduate credits recognized at the time of her June 2014 hiring, according to the grievance.

It wasn't until her request for a

salary lane change was denied that she learned seven of those credits were not recognized, until the arbitrator ruled in her favor.

Gilmore is in her third year of teaching vocal music at Luverne Elementary School.

No specific dollar amount was released, but Gilmore will be granted her salary lane request retroactive to the grievance file date.



Lori Sorenson photo/0929 corn harvest

Lyle Rollag's combine gobbles up stalks and fills grain carts with corn Friday, Sept. 23, in this field along County Road 5 in western Rock County. Rollag was combining corn for Blac-X Farms that day.

## Rock County harvest will likely see delays

**By Lori Sorenson**

Rock County Harvest 2016 will have varied results, based on where the most rain fell.

Some soybean fields are standing in water, while other areas of the county are dry, having missed most

of the recent heavy rains.

Farmers are reporting some stress to plants as a result of persistent rain. For example, mold and fungus will be an issue if fields don't dry out.

"I anticipate harvest delays," said

Beaver Creek farmer Peter Bakken. "The variability within the county is going to be significant."

So far, he said the grain is in good shape and yields have been good in his western Rock County fields, despite wet conditions.

## County Board divided over 6.13-percent levy increase

**By Mavis Fodness**

Rock County's preliminary levy for 2017 is set to increase 6.13 percent over the current county levy.

Three motions at different percentages were made at the Sept. 20 County Board meeting before 6.13 percent was accepted.

Two motions for a 6.5 and a 5.75 percent increase failed in 2-3 votes. Commissioner Stan Williamson moved the vote to 3-2 for the 6.13 percent.

Commissioners Ron Boyenga and Ken Hoime cast the dissenting votes.

Each year Boyenga advocates for a zero percent increase. He garnered

no support for his suggestion to cut programs in order to afford upcoming salary increases.

Hoime supported a levy increase but at a lower percentage than what was accepted. He supported the 5.75-percent increase in the failed second motion.

"We need a starting place so this is a compromise," he said.

Commissioners have until December to finalize the levy. It can be set lower than the preliminary levy of 6.13 percent, but it cannot be increased.

Because union negotiations

**County Board/continued on 5A**

## School levy to decrease

**By Mavis Fodness**

Timely taxpayer payments and debt refinancing resulted in a decrease of the Luverne School District 2017 preliminary levy of 2.77 percent.

Marlene Mann, the district's business manager, told board members at their meeting Thursday, Sept. 22, that local on-time tax payments helped reduce this year's property tax payments to the district by \$70,770.

The state's formula for property

taxes is calculated at 105 percent, or 5 percent above the district's voter-approved bond, Mann said.

The added percentage above 100 percent compensates for the non-payment of taxes from property owners within the school district. If all tax payments are made within a school district, the percent over 100 is given back to local taxpayers in a reduced levy the following year.

This is the third year District

**School Board/continued on 2A**





# Bovine emergency response training to be offered Oct. 5 in Luverne

By Lori Sorenson

When a livestock carrier is involved in an accident, cattle and pigs are often among the victims — and they can also cause additional crashes if they wander from the scene. Emergency responders are trained to help humans at a crash scene, and there's often confusion about how to handle the affected livestock. A Bovine Emergency Response Plan and Training in Luverne Wednesday, Oct. 5, will offer tips and tools for law enforcement, fire and rescue personnel, public safety officials and veterinarians. Rock County Sheriff Evan Verbrugge said one of his dep-

uties will attend the training. "We are seeing more and more animal transportation on our roads and we have dealt with these types of crashes in the past," Verbrugge said. "It is always good for us to train and get a better perspective on how to treat and deal with animals when they are stressed." Sponsored by the Minnesota Beef Council, the training will address transportation hazards, euthanizing injured animals, safe animal handling, familiarity with livestock trailers and more. The curriculum is approved for eight hours of continuing education credits

by law enforcement, EMS, emergency management and veterinarians. Veterinarian Erin deKoning of the Rock Veterinary Clinic, Luverne, said she's glad to see the training offered locally. "I don't think people know about it," she said about livestock emergencies on the road. "I think we're grossly underprepared for how we would handle something like that, if a cattle truck were to tip over in the middle of the road." Luverne's training is at the Pizza Ranch on Wednesday, Oct. 5. Similar trainings are set for Rochester Oct. 4 and Staples Oct. 6.

# Oliver and Friends coming to Palace this weekend, Oct. 1 and 2

By Lori Sorenson

Todd Oliver and his talking dog, Irving, have performed in New York City, Hollywood, Branson and other major venues, but he's looking forward to the Palace Theatre this weekend in small-town Luverne.



Todd Oliver and his talking dog, Irving, will be at the Palace this weekend.

"I can clearly remember the Palace Theatre in Luverne — I was completely charmed," Oliver said of his Luverne visit 30 years ago. "It was one of my favorite shows in my entire career."

His show, "Todd and Oliver and Friends," will perform at 7:30 p.m. Saturday, Oct. 1, and at 2 p.m. Sunday, Oct. 2, at the Palace Theatre.

When Oliver was 10 years old growing up in Minneapolis, his father died of cancer, and he said his first ventriloquist dummy helped him get over his sadness.

In 1971 he started entertaining in nursing homes and libraries, mostly volunteering. "That taught me so much about life and about show business," Oliver said.

As his comedy ventrilo-

quist act became more popular, he acquired bigger audiences.

He and Irving have been featured on "The Late Show" with David Letterman, "The Tonight Show" with Jay Leno, "The Late Late Show" with Craig Ferguson, "The Today Show," and a couple of episodes of "Walker Texas Ranger." In 2012 they were semifinalists on "America's Got Talent."

But his act has remained rooted in Minnesota Nice, according to Oliver.

"American comedy is dirty now and I don't want to com-

pete with that," he said. "I'm not old-fashioned, but I don't use bad language or sexual innuendos. I'm family-friendly, hip and fun."

And, it's original, he points out. "It's a talking dog, for gosh sakes," he said.

While he's enjoyed national stardom, Oliver said he's enjoying smaller venues today and is particularly happy to be returning to Luverne.

"People say there's something magical about the Ed Sullivan Theatre, but I think there's something magical about the Palace," he said. "I think Luverne is very lucky to have the Palace."

Tickets for this weekend's shows are available at the Palace Theatre Box office on Main Street or by calling 507-283-4339.

When he's in the area for the show at the Palace, Oliver and Friends will also visit area schools in Luverne, Adrian and Brandon.

Information about the act can be found at [www.funnydog.com](http://www.funnydog.com) and [toddoliver-schoolassembly.com](http://toddoliver-schoolassembly.com).



Mavis Fodness photo/0929 Redeemed Remnants

# Façade work begins at Redeemed Remnants building

David Niessink with Superior Caulking power-washes the brick façade of the Redeemed Remnants storefront Sept. 21. "It's so terribly dirty," said Marion Van Bommel, Niessink's father-in-law, who was helping keep an eye on the project from the ground. The cleaning allowed Niessink to assess the condition of the brick and mortar. The project at Redeemed Remnants is one of several approved through the Luverne Economic Development Authority's Historic Façade Improvement Program.



# Luverne community to 'go nuts' with holiday nutcracker theme

By Lori Sorenson

Christmas is more than 12 weeks away, but local planners are working on a project they hope will make Luverne a holiday destination.

The Luverne Area Chamber, Rock County Historical Society, Luverne Initiatives for Tomorrow Design Committee and the city of Luverne are partnering in promoting Luverne as "The Nutcracker Capital of the Midwest."

In an email to Chamber members, Chamber Director

Jane Wildung Lanphere explained how nutcrackers were selected as a theme.

"We need to give all the credit to Betty Mann," she said. "Betty gave her wonderful collection of 2,500 nutcrackers to the Rock County Historical Society."

The collection is now on permanent display at the History Center, which will soon open in the former Ford dealership on East Main Street.

To help make that connection, she said the goal is

to get as many nutcrackers as possible outside businesses or homes for the Christmas season and to keep building on that theme in the future.

"We are inviting you to become part of this movement ... part of all things nutcracker in Luverne for Christmas 2016," Lanphere wrote in her Sept. 21 letter to businesses.

She said the Chamber will sponsor a "nutcracker-go" contest (similar to a scavenger hunt) for individuals and families to participate in during the

month of December.

Beginning at the Winterfest Arts & Crafts Show Dec. 3 and ending on Dec. 23, people will be able to pick up the entry form with a map of the businesses or residences participating so that they can drive or walk to these locations to "uncover" the names of the nutcrackers. Correct entries will be put in a drawing where six names will be drawn to receive \$50 Chamber gift cards.

There is no cost to be part of the game, but registration

(the name of the nutcracker and its participating address) is due Nov. 15 by calling the Chamber, 507-283-4061 or emailing [luvernechamber@co.rock.mn.us](mailto:luvernechamber@co.rock.mn.us).

The only requirement is that the nutcracker be at least 4 feet tall and be outside or seen from the outside 24 hours per day. The nutcracker's name must be at least 1 1/2 inches high. Nutcrackers can be attached to the outside of a business or placed in a yard. Buildings with glass lob-

bies may display nutcrackers inside as long as they can be seen from outside.

They can be secured to a boulevard sign, tree or railing on participants' properties.

"Ideas about where to put nutcrackers are endless," Lanphere said. "All you have to do is make sure that you are OK with people coming up to the nutcracker and looking for the nutcracker's name."

To learn how to get a nutcracker, contact the Chamber office, 283-4061.

# Area churches sponsor Cloverton concert Oct. 2 at Grand Prairie Events Center

By Lori Sorenson

Cloverton, a contemporary Christian and worship band from Manhattan, Kansas, will perform in Luverne Sunday, Oct. 2.

Luverne area churches will sponsor the free event at 6:30 p.m. in the Grand Prairie Events Center on South Estey Street.

According to the Cloverton website, the band's trademark is parting from the patterns and behaviors of the world.

"None of us are into compromising or settling for the status quo. It's a daily choice. To what or whom am I surrendering today?" said lead vocalist Lance Stafford, who also plays piano.

The band also includes his twin brother, Layne Stafford,

on bass, Rains Wall on drums and Conner Giles on guitar.

"We all have a choice to either conform to the worldly patterns set before us, or to pioneer a new way," Lance Stafford said.

"Each of us is committed to our God-given passion and we're willing to choose a different path to be faithful to His calling. We hope others will be inspired to do the same."

Cloverton entered the Christian music scene in 2011 as the first-ever Rock the Camp contest winners hosted by TobyMac and Camp Electric.

Soon after receiving this honor, Cloverton recorded the No. 1 most downloaded song in the history of KLOVE radio for the first single, "Take Me into the Beautiful," which also climbed the CHR (Con-

temporary Hit Radio) charts to No. 12 and No. 17 on the overall Christian Billboard Top 25.

More information is available at [clovertonmusic.com](http://clovertonmusic.com).

Doors open at 6 p.m. Call 507-449-0057 with questions.

Pictured at right are members of the Cloverton Christian band.



**40<sup>th</sup> Wedding Anniversary Card Shower**  
**Edward & Jeanne Woodley**  
 October 7  
 Greetings may be sent to:  
 710 N. McKenzie  
 Luverne, MN 56156



4.42 acres near Edgerton, MN  
 This is an attractive, well-kept unit. 3 bedroom/3 bath, all electric home with lots of storage, attached 2-car garage. Large storage unit/shop, rural water, Sioux Valley Energy.

**Adrian & Caroline Kuipers**  
 194 175th Ave  
 (near intersection of County Rd 18 & County Rd 9)  
 Shown by appointment only. Call 507-442-8442

**Acreage for Sale**

**Happy 98<sup>th</sup> Birthday Louise!**

**October 6**

Greetings may be sent to:  
 LOUISE STEGMANN  
 120 N. SPRING ST. APT. 110  
 LUVERNE, MN 56156

**WILLY BAKER**  
 for  
**Hardwick Mayor**



**I appreciate your vote on November 8**

*Paid for by the candidate on his own behalf*



## Rare praying mantis sighting brings images of horror movie to mind

As a child growing up in the 1970s and '80s, I couldn't wait to see the latest horror flick.

Movies like "The Shining," "Christine," "Nightmare on Elm Street," and "Friday the 13th" would garner excitement. These movies featured a creepy bad guy who was out to hurt teenagers or their family members.

Now as an adult, however, I purposely steer clear of horror movies. They have become too real due to computer-generated special effects, and I have nightmares for days if not months. While I know the creatures in the current movies are not real, they have the appearance that they could be.

The last horror movie I watched came out more than a decade ago.

Never again will I watch "The Descent," much to the delight of my children.

The movie follows six women into a cave where they encounter and become hunted by flesh-eating humans.

For the record, I won't be going spelunking anytime soon either.

As scary movies go, "The Descent" kept me on the edge of my seat despite being in a living room full of people. I couldn't help but feel we were being hunted.

I was reminded of this feeling a few weeks ago as I walked down Main Street in Luverne. Passing the State Farm office I noticed Renee Sudenga photographing something through the window with her cellphone.

What she was taking a picture of caused me to stop and take my own picture.

As my lens zoomed in on the insect clinging to the windowsill, we both wondered, "Was that really a praying mantis?"

The long-legged stick-like creature measured more than 3 inches long and looked like a twig.



### RUMINATIONS

By Mavis Fodness, Reporter

Both of us inched our way toward the insect for a closer look.

The slight turn of the insect's brown head (which other insects cannot do) made us run for cover, as the look appeared to be that of an alien creature looking for human flesh to capture in its front claw-like legs.

Renee said the praying mantis stayed around the office's front door for a day or two and then it left.

It may be the one that appeared on Jill Thielbar's car roof. Her Facebook page featured the insect in a full stretch pose, giving it an appearance of being even bigger than the one I saw.

It's this car surfing that may have brought the insect to Minnesota, where sightings are

rare.

Praying mantis, or mantis religiosa, are not native to our state, Master Gardener Tim Olsen emailed me after viewing my picture of the intimidating insect.

He said the northern range for the insect is Missouri.

Tim speculated the six-legged, winged creature hitch-hiked on a vehicle from the south. Another possibility is that a gardener brought praying mantis egg cases to hatch in a garden to feed on pests.

As a voracious carnivore, the praying mantis will eat any insect, even its own kind.

Tim included this fun fact: After mating, the female eats the male.

So while this alien-looking creature gives me the creeps, I would be most grateful if they could thin down the cricket population. The chirping is really annoying.



Praying mantis sightings in Luverne are rare, according to scientists who say the northernmost region for the insects is Missouri.

## For Mental Illness Awareness Week Oct. 2-8, let's celebrate achievements and commit to compassion

Next week is Mental Illness Awareness Week. If you don't have a mental illness or disorder, count your blessings, and if you don't know someone with a mental illness or disorder, you're in the minority.

According to the National Alliance on Mental Illness, an estimated 26.2 percent of Americans ages 18 and older — about one in four adults — experience a diagnosable mental disorder in a given year.

When applied to the U.S. census residential population estimate for ages 18 and older, this figure translates to more than 60 million people.

One in 10 children have a diagnosable mental disorder in a given year.

One in 4 families have at least one member with a mental disorder, whether it's depression, bipolar, anxiety, panic disorder, post-traumatic stress disorder, phobias, schizophrenia, autism, ADHD or various combinations and degrees of severity.

Many people experience more than one mental disorder at a given time, and nearly half (45 percent) of those with any mental disorder meet criteria for two or more dis-

### STAR HERALD EDITORIAL

orders.

While living or caring for a person with mental illness is difficult enough, enduring the stigma can be worse.

Next week is designated Mental Illness Awareness Week as a time to build awareness. We'd like to take it one more step and work on building compassion.

For one thing, we can make a conscious effort to use "People First Language," as we do for people with any disability. For example, "a person with schizophrenia" rather than describing someone as "schizophrenic." Maintain the individuality of people rather than defining them by a condition.

"People First Language" emphasizes worth and abilities and puts the person before the diagnosis or the label.

And some words should never

be used, such as crazy, crazed, nuts, lunatic, deranged, psycho and wacko.

The same is true for phrases such as "afflicted with," "crippled with," "suffers from," "victim of," "stricken with." This verbiage passes negative judgment on the quality of life for people with mental illnesses. Instead of "John is afflicted with depression," say "John, who has depression ..."

If you or a family member isn't touched by mental illness, be grateful. If you are, you're not alone.

Luverne has a long-held reputation for welcoming adults with disabilities of all kinds (through employment and housing opportunities) and for making special education a priority in our schools.

In addition to building awareness of mental illness next week, let's celebrate these achievements and commit to continued compassion and acceptance.

## Fans of time, Chicago need to attend LACF fundraiser

My last column was about buying a new alarm clock. This one is going to be about time. More precisely, the following is more about the word "time" than how to tell time.

I figured there is no better time to write about time than now, so I suppose you could say it's about time. We have part time, full time and vacation time. Some people consider vacation time as party time or just leisure time.

If there's a stop in play during a football game, that is a timeout. If you're a little unruly as a child, you're put in a timeout.

We have nap time and bedtime and time to wake up.

Some of my favorite times are lunchtime and supertime. I also prefer an early tee-time.

If "only time will tell," does that mean you will know what time it is?

Since the beginning of time we have had wartime followed by peacetime, and that has repeated itself far too many times.

The music industry has ties to time as well.



### FOR WHAT IT'S WORTH

By Rick Peterson, General Manager  
Tollefson Publishing

There is "Summertime" by Janis Joplin, "No Time Left For You," by the Guess Who, "Time in a Bottle," by Jim Croce, and "If I Could Turn Back Time," by Cher.

Cindy Lauper's biggest hit was a song called "Time After Time," and who could forget Hammer Time or his pants?

Does anybody know what time it is? That wasn't really a question but more of a segue into my next topic.

"Does Anybody Know What Time It Is" was the title of No. 1 song for Chicago.

If you are a fan of Chicago, mark Saturday, Oct. 2, on your calendar.

The Luverne Area Community

Foundation will host its annual fundraising concert that night.

The entertainment for the evening is a band called the Transit Authority. This eight-member band is the premier tribute band to the music of Chicago.

Tickets go on sale Monday Oct. 3 and will be available at the Palace Box Office. The Palace Box Office has a new location.

If you are standing in front of the Historic Palace Theater, the box office is the next door to the left.

It used to be to the right but now that is wrong, so remember it's on the left.

## Frakes: Political correctness has many applications in current events

To the Editor:

Politically correct. Seems like we hear that a lot, but when have our politicians actually been correct?

Social security? Korea? Vietnam? Medicare? War on poverty? Energy

policy? Taxes?? Spending?? National debt?? Middle East???

I thought it hit a new low when college students were criticized for handing out sombreros at a margarita party, but I may have been wrong.

The sportscasters at the Vikings-Panthers football game surmised that "problems" in Charlotte could have affected the Panthers' performance!

Bill Frakes  
Luverne

## Hartman: Thanks for the countless hours that ensure many more successful Tri-State Band Festivals

To the Editor:

The Tri-State Band Festival Committee would like to salute the Luverne community for the overwhelming support and participation in the 66th Annual Tri-State Band Festival.

This event would not happen without the involvement, commitment and energy of businesses, organizations and individuals in the tri-state region.

We would like to specifically acknowledge the tremendous contribution of:

- The city of Luverne and the public works department for the

assistance, coordination and operation of the Band Festival Parade competition;

- Superintendent Craig Oftedahl and the staff of Luverne Public Schools (particularly Todd Mann and the custodians) for their work in hosting and arrangements for the field competition;

- Businesses, organizations and institutions for their financial support of this event through button sales and advertising in the official Tri-State Band Festival booklet;

- The over 200 community volunteers who help out this day;
- Minnesota National Guard —

Luverne for their assistance in providing safety, security and organization for the bands on the parade route;

- Director Richard Owen, Luverne High School and Luverne Middle School bands in hosting the 2016 competition;

The greatest accolades belong to the directors and members of the 20 competitive bands and two host bands who participated in the festival. These individuals have spent countless hours in practice to prepare for this festival, and it showed

"Mother Nature" challenged us this year with the wind, rain and lightning during the field competition.

With that, a special note of thanks must go out to all who were involved in moving the field performances of four bands to the Cardinal Gym. The bands, directors, fans and school custodial staff were all incredibly accommodating as we transitioned (in a relatively short time) to a safe place to wrap up the event. As the saying goes, "when life hands you lemons, make lemonade."

On a personal level, I would like to applaud the members of the Band Festival Committee and Staff who have spent the entire year working with me to put together and operate this tremendous community event.

It has been an honor for me to serve as your chairperson.

Our community has a 66-year tradition in the operation of this festival. In order to maintain that reputation, it requires the hard work and dedication of everyone. Be proud of what this community has created!

As planning begins for next year's event, may that sense of community and partnership be the springboard for a great 2017 Tri-State Band Festival on Saturday, Sept. 30 - 67 years strong!

Eric Hartman  
Chairman  
Tri-State Band Festival  
Committee

E-mail: editor@star-herald.com Web site: star-herald.com  
Phone: 507-283-2333 Fax: 507-283-2335

Published Thursdays by Tollefson Enterprises, POSTMASTER:  
Send address changes to 117 West Main, P.O. Box 837, Luverne,  
MN 56156. Periodicals postage paid at Luverne, Permit #33 and at  
additional mailing offices.

**General manager:** Rick Peterson  
**Office manager:** Deb Lusty  
**Circulation manager:** Jennifer Kor  
**Advertising:** Chantel Connell  
**Production manager:** Abbe Kolar  
**Production:** Amanda McDonald

**News staff:**  
Lori Sorenson, editor  
Mavis Fodness, reporter  
John Rittenhouse, sports editor  
Esther Frakes, copy editor  
Joseph Stearns, composition

Rock County  
**STAR HERALD**  
Rock County's newspaper since 1873

(ISSN 0889-888X)  
SUBSCRIPTION RATES

\$72 per year in Rock County; \$89 per year all other areas. Single copies \$1.25

Entire contents copyrighted by  
Tollefson Publishing Roger Tollefson, publisher

The *Star Herald* encourages letters to the editor expressing the opinions of readers and intends to print all letters. Letters not meeting the guidelines will not be printed. The *Star Herald* will verify the authenticity of all letters. Letters must have the name of the writer, a signature and address.

Unsigned letters will not be considered. The *Star Herald* will edit for grammar, spelling and clarity. Any letters containing offensive language, libelous or slanderous material, or misleading or false information will be rewritten before being published. The *Star Herald* will not publish letters written with the sole intent to advertise or serve as a thank-you. Letters with more than 300 words may be edited. The deadline for letters is Monday 10 a.m. They may be delivered or mailed to the editor, *Rock County Star Herald*, P.O. Box 837, 117 W. Main St., Luverne, Minn. 56156.



## ON THE RECORD

### Dispatch report

Sept. 16

Centerpoint Energy reported they will be purging gas lines from 7:30 a.m. to noon in the area of South Freeman Avenue and West Fletcher Street.

Complainant reported she and her boyfriend had a fight last night, and today he is still upset and sending her texts and calling her. Complainant was told to get an order for protection. She was given contact information for the Southwest Crisis Center.

Complainant reported a beige Chevy Malibu has been driving in the left lane for miles and has gone into the weeds on the side of the road and then way over the centerline. Notified State Patrol and Minnehaha County.

Complainant requested a deputy present while they meet with her ex-husband who is transporting some horses for them to the location.

Complainant requested a deputy to his residence to take a statement from his mother that his wife tried to assault her.

Sept. 17

Complainant reported the previous owners got into the abandoned house, and she is concerned kids will go into the house and party.

Complainant reported they received a call from subject that her one-year-old is locked in a Chevy Blazer. Dispatch made contact and was advised they did get the child out unharmed.

Sept. 18

Complainant reported abandoned vehicle at Gold N' Plump. Complainant was advised to call a tow service as the vehicle is parked on private property.

Complainant reported someone drove through his crops a mile south of where his residence is. Complainant requested a deputy come out to look at it.

Complainant reported some kids walking on a canopy at the high school.

Complainant reported he could hear someone yelling for help in the quarry. Complainant yelled back asking if they needed help, and they answered yes. Complainant went to the quarry and yelled for the subject and got no response. Complainant advised there is a van parked in the lot. Fire and ambulance were paged. Trooper advised the party was located and is OK. All units were cancelled.

Sept. 19

Complainant reported child abuse.

Complainant reported child abuse and neglect.

Complainant reported his daughter did not go with him to his home for visitation. This occurred in Madelia, but complainant wanted it on the Rock County records since his daughter lives in Luverne.

Complainant requested someone to check on her mom in Sioux Falls. Transferred to Minnehaha County.

Complainant reported that they have two vehicles and a trailer that have been vandalized.

Complainant reported that he heard from the school that the boys rode the bus home today to Ellsworth. They don't do that. They go to an after-school program. And then either mom or dad picks them up from there. Mom has been trying out a new day care. He cannot get in touch with mom and would like a deputy to go out and check on the boys. At 6:30 p.m. complainant called back and said he got in touch with his mom, and she is home and the boys are OK. Cancel the deputy.

Dispatch received a 911 about a male and female on the shoulder on the eastbound side of I-90 just west of Beaver Creek. They were waving but

not sure if it was for help. No vehicle around. State Trooper took them to the Iowa State Line to meet officer there. Both parties were wanted.

Sept. 20

Complainant reported that every day vehicles run the stop sign at County Road 1 and 190th Avenue. Complainant has almost been hit several times and has had her kids with her in the vehicle at times. Made a note for deputies to patrol the area.

Complainant reported that someone used her bank debit card in Altoona, Iowa. The bank cancelled her card. Then she got another notification from the bank that the person who made the purchase had used an actual card, which she had in her possession. Deputy is working with Altoona Law Enforcement.

Complainant reported a semi swerving all over the road at location. Transferred to State Patrol.

Complainant reported theft of pills from his home.

Dispatcher received a 911 call with no information coming up on the screen. Tried a ringback, but they didn't have a voicemail set up.

Dispatcher received an abandoned 911. Complainant called right away to advise she accidentally dialed 911. No emergency.

Complainant requested to speak to a deputy regarding a restraining order she has against subject who is staying across the street from her. She has been gone for a couple of days, so it has not been an issue, but she is home and is concerned he may be there tonight.

Complainant reported three vehicles parked at an intersection and black marks on the road. Complainant did not know if there had been an accident or something, but said it looked like everyone was out of the vehicles and walking around. Complainant thought a deputy might want to check it out. Deputy advised the only vehicle in the area was a blue GMC Sierra parked in a field approach by County Road 1 and County Road 3.

Complainant reported subject was at work at Glen's Food and his car was stolen somewhere between 2 p.m. and 6 p.m. 1999 Green Chevy Lumina.

Complainant reported that the fire alarms were going off in the Centennial building. Paged Luverne Fire Department.

Complainant reported a white four door sedan with a woman riding on the hood on the 200 block of West Virginia Street.

Sept. 21

Complainant reported that a white four door Volkswagen Jetta is tearing up the road doing donuts on 181st Street. This happens every day at this time. Complainant says the vehicle is at Luverne School everyday. Complainant would like a deputy to speak to the driver. Deputy warned driver, and said he would be cited next time.

Complainant reported that a construction company that is working next door to location is parking equipment and vehicles on complainant's property. Complainant would like a deputy to come by and see if the construction crew would move the vehicles.

Complainant reported that someone applied for a credit card in his name using his information.

Dispatch received a 911 only call and people were visiting in the background. No response. No sign of distress. Pocket dial.

Complainant reported that her son either lost his phone or it was stolen at the school. It is a Samsung Galaxy

S5, black in color, with a black weather case. This happened on Sept. 19 between 3:30 p.m. and the time the school was locked.

Complainant came to the law enforcement center and wanted a deputy to come out to her car to speak with her daughter who doesn't want to listen to her.

Complainant reported a male just left Glen's Food and Gas Center who was highly intoxicated and should not have been driving. Complainant said he advised he was going to Glen's Grocery Store. Complainant is willing to sign a complaint. Deputy conducted traffic stop. Subject was OK and preliminary breathalyzer was 0.00.

Complainant reported a Ford Explorer with a male who has been sitting outside the gas station since about 3 p.m. today. Complainant would like a welfare check done, and subject advised there is no loitering. A gas voucher was given to subject.

Sept. 22

Complainant requested to speak with someone in regard to some stolen property.

Complainant reported that the residents in the house at location moved a work trailer that was legally parked on the street. Residents didn't want it in front of their house, so they moved it.

Dispatch received abandoned 911 call. Deputy advised the number came from a fax machine. All is OK.

Complainant reported she let her friend take her car to work until 5:30 p.m. They came back to her house but left with her car again, so she wants to report it stolen. Complainant was advised that since she gave permission, and subject is staying with her again tonight, that it can't be entered as stolen.

In addition, officers responded to 6 motor vehicle accidents, 3 funeral escorts, 9 traffic stops, 17 ambulance runs, 1 parking violation, 6 paper services, 4 animal complaints, 4 false alarms, 1 driver's license check, 2 fingerprint requests, 7 log/alarm sheets, 4 drug court tests, and issued 2 purchase/carry permits and 2 burn permits.



Lori Sorenson photo/0929 quality printing

### Quality face lift

Dave Niessink and his crew remove shakers and faux brick at the Quality Printing building on West Main Street Thursday, Oct. 22.

The work is part of Luverne's Historic Facade Improvement Program, which provides grants and loans to downtown businesses to improve their storefronts in a uniform fashion. Workers had to remove the old front in order to see which products to order.



### County Board/continued from page 1A

have not been finalized, commissioners reserved a portion of the estimated \$360,000 in increased levy monies for the employees' cost of living increases.

After the union negotiations are settled, the rest of the additional levy monies are allotted for reserves, or commissioners could decide to finalize the levy at a lower percentage.

The reserve fund currently hasenough to cover five months of actual county operating expenditures.

County Administrator Kyle Oldre presented a revised fund

balance chart minus any bond payment amounts.

"It's a cleaner picture on reserves," he explained.

The county reserve fund had been significantly lowered after the 2014 flood events. At that time county officials chose to use reserves to pay for infrastructure damage instead of borrowing the funds.

At their two budget workshops, commissioners considered several departmental requests for additional monies.

At their Sept. 20 meeting commissioners chose not to earmark more monies to the

community library or sheriff's office for additional staff.

In other business, the commissioners:

- accepted Terri Ebert's retirement from the Sheriff's Office effective at the end of the year. They also approved hiring a replacement prior to Ebert's last day.

- met Rock County's newest deputy, Chad Kempema. He and his family live in Luverne, but he has been working for the sheriff's office in Nobles County for the past 15 years. He also served as a part-time officer for Rock County for a portion of that time.

**AMERICAN WATERWORKS**  
★ Basement Systems ★  
www.american-waterworks.com  
Basement Waterproofing & Repair  
Foundation Repair - Uneven Concrete Repair  
Radon Testing & Mitigation  
CALL TODAY  
1-800-795-1204  
★ Free Estimates ★ Interest Free Financing ★

**Papik MOTORS**  
1-90 Luverne, MN

**283-9171 | PAPIK.COM**

CHEVROLET GMC CHRYSLER DODGE Jeep RAM

**2016 GMC Acadia**  
Stock #181298Z  
32K  
Was \$35,990 Now \$32,990

**2011 Buick Enclave**  
Stock #406065U  
79K  
Was \$16,490 Now \$13,990

**2014 GMC Sierra**  
Stock #261421N  
30K  
Was \$37,990 Now \$34,990

**2014 Chevrolet Silverado**  
Stock #496698Z  
35K  
Was \$36,990 Now \$32,990





Mavis Fodness Photo/0929 Legion Riders

Eighteen Legion members from posts in Blue Earth, New Ulm, Hardwick and Pipestone met in Hardwick Saturday afternoon. Hardwick or Pipestone will be the home post for the next Legion Riders, a group of motorcycle enthusiasts for Legion members, who conduct fundraisers to help various organizations. Pictured are (from left) Scott Phillips, Gene Ludtke, Melonie Phillips, Chuck Stone, Richard Skillstead, Randy Olson, Robin Olson, Jeremy Evans, Hope Paz, Mark Coney, Ricky Paz, Tony Dunn, Brock Thielbar, Scott Park, Jaquie Pribyl, Jill Thielbar, Kris Schneeberg and Erv Pribyl.

## New Legion Riders bring three American Legion groups together for common causes

By Mavis Fodness

Almost five years after the last American Legion Riders group formed in the Minnesota American Legion's second district, another group is forming and this time it's at a local level.

Hardwick's Mark Coney conducted the organizational meeting for the new Legion Riders chapter.

"I tried three years ago to get the third chapter started in the district," said Coney, a member of the Arthur Moeller American Legion Post 478 and current commander of the state Legion's second district.

"But the weather didn't cooperate."

Despite Saturday's rain, motorcycle enthusiasts and members of the Blue Earth and New Ulm Legion Rider groups traveled to Hardwick to help organize the local riders group.

Their efforts added six people.

New auxiliary member Jill Thielbar of Luverne is one of the new members of the local riders group.

She said Saturday's organizational meeting introduced her to the auxiliary's purpose to support veterans like her husband, Brock.

"I didn't know much about it (the auxiliary)," she said. "It (the motorcycle group) was a factor in deciding to join and be a part of a group where I can spend time with Brock."

Membership in one of the three American Legion organizations is a prerequisite to joining the Legion Riders.

The three organizations include the Legion, which is for veterans, the Auxiliary is for the female relatives of a



American Legion Riders' insignia features a bald eagle spreading its wings with the American Legion emblem on its chest. The Legion post hosting the riders group in the region is included on the bottom.

veteran, and sons join the Sons of the American Legion.

Legion Riders include members from all three groups in support of wounded servicemen and children of military personnel killed since Sept. 11, 2001. Their fundraising efforts can be completed at a local, state, national or international level.

"It's just a different way to how the Legion can give to communities," Coney said.

Legion Riders were developed in 1993 in Michigan by two Legionnaires who shared a love of motorcycles and charity.

"A common goal is to build the Legion family," said Randy Olson, a Legion Rider from Winnebago and first vice commander of the second district.

The second district encompasses the 13 counties of southwest Minnesota. Olson traveled to Saturday's organizational meeting in Hardwick to assist in organizing a new riders group.

He said since the formation of the Legion Riders in New Ulm and Blue Earth areas six and four years ago respectively, each local Legion has met their yearly membership goals.

"It's bringing the Legion members together," Olson said. Riders membership is open to all second district Legion members who may not want to travel to New Ulm or Blue Earth for meetings and events.

Coney said the local meetings could rotate around the area, or its initial members could decide a central meeting location.

Contact Coney at 507-669-2006 to join or for more information.

## Rock County 4-H'ers compete at state horse show

By Mavis Fodness

Nine Rock County 4-H'ers qualified for the Minnesota State 4-H Horse Show Sept. 16-19 at the Minnesota State Fairgrounds in St. Paul.

They were among 725 4-H'ers at 82 county fairs to earn state trips to compete in performance and game riding classes along with the events of horse judging, speech, demonstration, hippology, speech, horseless horse and

horse-related events.

Seven of the local 4-H'ers rode horses at the state show with four earning Top 10 ribbons in the game events.

Andrea Severtson competed in Grade 13. She finished fifth in both pole weaving and key race.

Thea Richards earned two ribbons in Grade 12. She received seventh in both the jumping figure eight and key race.

Kallie Chapa entered Grade 8 events finishing sixth in barrels, sixth in jumping figure eight and third in pole weaving.

Ayden Bonnett earned ninth in Grade 6 poles, tenth in key race and ninth in jumping figure eight.

Meranda Fick participated in Grade 13 western and English performance events. Lizzie Chapa participated in Grade 9 performance events.

Joni Vander Beek participated in Grade 9 gaming events. She was also the county's grand entry rider.

Gretchen Jacobsma participated in the Grade 6-8 horseless horse and Annaliese Braucht participated in the Grade 6-8 horse-related events.

Complete show results are available at the U of M Extension's Minnesota 4-H State Horse Show website.

## CELEBRATIONS

### Births

A boy, Ezra Campbell, weighing 7 pounds, 15 ounces, and 21 inches long, was born Monday, Aug. 1, 2016, to **Nicholas Perret and Chelsea Parke Perret** in New Orleans, Louisiana. Grandparents are Mike and Paula Lammert, Luverne, and John and Lauren Buttler, New Orleans. Great-grandparents are Kaye and Devere Johnson and LaJean Lammert, all of Luverne.

A girl, Luella Adele, weighing 9 pounds, 15 ounces, and 21 inches long, was born Saturday, Sept. 24, to **Nic and Kristen Uilk**, Brookings, South Dakota,

at the Brookings hospital. She joins a sister Chloe. Grandparents are John and Kathy Carlisle, Scandia, and Wayne and Becky Uilk, Jasper.

### Card Showers

**Edward and Jeanne Woodley** will celebrate their 40<sup>th</sup> anniversary Friday, Oct. 7. Greetings may be sent to them at 710 N. McKenzie, Luverne, MN 56156.

**Louise Stegemann** will celebrate her 98<sup>th</sup> birthday Thursday, Oct. 6. Greetings may be sent to her at 120 N. Spring St., Apt. 110, Luverne, MN 56156.

## SENIOR MENU

**Monday, Oct. 3:** Creamy vegetable soup with crackers, turkey sandwich, fruit cup, cookie.

**Tuesday, Oct. 4:** roast beef, mashed potatoes, peas, dinner roll, bread pudding.

Program: Two-buck Tuesday sponsored by Dick Smook family.

**Wednesday, Oct. 5:** Swedish meatballs, mashed pota-

toes, corn, bread, ice cream.

Program: Music by Bruce Dysthe.

**Thursday, Oct. 6:** Chicken lasagna, tropical fruit, lettuce with dressing, breadstick, bar.

**Friday, Oct. 7:** Liver or pepper steak, au gratin potatoes, carrots, bread, fruit crisp.

Call 283-9846 to make dining reservations or for home-delivered meals.

## REMEMBER WHEN

### 10 years ago (2006)

•By Saturday about 150 Rock County residents will be trained to the federal standards of the National Incident Management System.

If training isn't completed and a disaster comes to the county, federal funding for mitigation might not be granted....

The federal training is supposed to unify procedures that will be used across state lines.

For example, people from Minnesota might help in a South Dakota or Iowa disaster and with NIMS the protocol and procedures are the same.

### 25 years ago (1991)

•Construction should begin soon on the Southwest Minnesota Veterans Nursing Home, according to Luverne City Administrator Steve Perkins.

Perkins told the Luverne City Council Monday that a letter from the U.S. Department of Veterans Affairs came Sept. 19, obligating \$4.8 million in federal funds to assist Luverne in the construction. ...

The \$4.8 million is about 65 percent of the total cost of \$7.4 million. The remaining \$2.6 million is being paid by the city of Luverne.

### 50 years ago (1966)

•A boy with arsonist tendencies has caused two minor incidents at the Luverne High School.

A match had been touched one evening to a small pile of rags or waste paper on the terrace floor.

A member of the football squad came along and saw the blaze and stamped it out.

The next day there was a fire in the light fixture, in the very same area, which had been caused by a wad of paper or rags being stuffed back of the fixture. When the light bulb got hot enough, the paper, or rags, ignited. The fixture was damaged by fire and the wall was scorched in an area corresponding in size to the fixture.

### 75 years ago (1941)

•The W.P.A. national defense sheet metal training class, which has been in progress for the past thirteen weeks under the instruction of Arden Canfield, drew to a close Friday afternoon, of last week.

Nine men completed the course which was conducted five days a week at the Luverne high school industrial training room.

The schooling which these men have received will better enable them to handle the more technical work which is being done by the W.P.A. workers in this community.

### 100 years ago (1916)

•With a total of \$7,000 already pledged for the purpose of providing a race track in connection with the Rock county fair grounds, the prospects for securing this apparently much desired acquisition appear to be exceptionally bright.

The amount represents subscriptions for stock at \$100 a share, which were secured during the three days of the fair through the effort of President Herman Fitzer and Secretary A.A. Anderson, of the fair association, who made an active canvass in behalf of the project.

## ENGAGEMENT

Debra and Brian Remme and John and Lori Stoffel, all of Luverne, announce the engagement of their children, Britton Dyer and Trevor Stoffel.

Britton graduated from Luverne High School in 2010 and from Southwest Minnesota State University in 2013. She is a Human Resources generalist at Raven Industries in Sioux Falls, South Dakota.

Trevor graduated from Luverne High School in 2010 and from the University of Sioux Falls in 2014. He works as a radiologic technologist at Sanford Health in Sioux Falls. They are planning a June



Britton Dyer and Trevor Stoffel

17, 2017, wedding at St. Catherine Catholic Church in Luverne.

## Family cabin near Waubun site of Priebe, Guy wedding

Alexa Priebe and Jacob Guy were married Thursday, July 14, 2016, at the Guy cabin on South Twin Lake in Waubun.

Parents of the bride are Jeff Priebe, Sioux Falls, South Dakota, and Cyndi and Barry Sutherland, Luverne. Parents of the groom are Tim and Renee Guy, Luverne.

Pastor Mike Altena officiated the ceremony.

The bride's maid of honor was Samantha Priebe, and Lauren Guy was bridesmaid.

The best man was Joseph Guy. Groomsman was Seth Priebe.

A wedding reception was Saturday, July 16, at the Guy cabin on

South Twin Lake.

Alexa graduated from Luverne High School in 2011. She is a senior majoring in nutrition and dietetics at South Dakota State University in Brookings and will graduate in Spring 2017.

Jacob works for Robbins Construction and Inspecting in Brookings, South Dakota. He graduated from Luverne High School in 2013 and completed his degree in building inspection technology at North Hennepin Community College in Brooklyn Park in 2015.

They live in Elkton, South Dakota.



Jacob and Alexa Guy



## 1896: 'Satisfactory record' allows Hills creamery patrons to net 16 cent payment for butter

The following appeared in the Rock County Herald on November 27, 1896:

### Hills Creamery

The Hills creamery made a very satisfactory record during the month of October. The Crescent says: "The board of directors of the Hills Creamery association met Monday of last week. After allowing bills for expenses during the month of October, they found they could allow the patrons 16 cents net for their butter. This is a better showing than any creamery throughout this section was able to make the same month this year, and if the farmer living in this vicinity furnishes milk to the creamery and wishes then to trade with our merchants, they will give you \$11.00 worth of goods for every \$10.00 in milk checks or \$1.10 for \$1.00. The goods are marked in plain figures and it is square dealing."

### Reminder:

Our auction will begin at 1 p.m. Saturday, Oct. 8, at The History Center.

We would welcome any items you might have for a



## BITS BY BETTY

By Betty Mann, president Rock County Historical Society

donation to this sale. The matching funds available now will not be given after Jan. 1. Thank you for all the support you have given us in the past.

Donations to the Rock County Historical Society can be sent to the Rock County Historical Society, P.O. Box 741, Luverne, MN 56156.

Mann welcomes correspondence sent to manmade@iw.net.



Photo courtesy of Joyce McCarthy

## Serrao, Hokeness named Adrian Homecoming king, queen

Adrian High School crowned its 2016 Homecoming king and queen during coronation ceremonies Monday night at Adrian High School. Pictured above are (front, from left) queen candidates Katie Reisdorfer and Brittney Loonan, pages Hayden Van Ede and Bryson Kunkel, queen candidates MiKayla Jeffers and Ashley Schnoor, (back) king candidates Alex Loosbrock and Dylan Gyberg, Homecoming king and queen Jackie Hokeness and Frank Serrao, and king candidates Zack Loosbrock and Zachary Bierman.

## OBITUARIES

### Peggy Harms

Peggy Jo Harms, 58, Luverne, died Friday, Sept. 16, 2016, at the Sanford USD Medical Center in Sioux Falls, South Dakota.



A private family service is scheduled for a later date.

Peggy was born Oct. 21, 1957, to Harvey and Dorothy (Croswell) Dunbar in Gardena, California. She married Wayne Harms on Oct. 21, 1994, in Sioux Falls, South Dakota. The couple lived in Luverne.

Peggy loved helping people. She worked in Luverne as a waitress and later at various places assisting with

the handicapped.

She enjoyed helping at the Special Olympics, cooking, and caring for her pets.

Peggy is survived by her husband, Wayne Harms, Luverne; a daughter, Caisie Shields, California; four grandchildren, Kyler Ayden, KyAnn and Kira.

She was preceded in death by her daughter, Cali; her mother, Dorothy; and her Nana Croswell.

Arrangements were by Dingmann Funeral Home of Luverne, www.dingmannandsons.com.

(0929 F)

### Kenneth Busch

Kenneth Raymond Busch, 92, formerly of Luverne, died Friday, Sept. 23, 2016, at the Good Samaritan Village in Loveland, Colorado.



A funeral service will be at 11 a.m. Friday, Sept. 30, with visitation beginning at 10 a.m., all at St. John Lutheran Church in Luverne. Burial with military honors will follow at Prairie Hill Cemetery in Fulda.

Kenneth Busch was born Sept. 28, 1923, to Leonard and Matilda (Dierks) Busch on the family farm in Nobles County near Fulda. He was baptized Oct. 21, 1923, at St. Paul Lutheran Church in Fulda. He was raised on the family farm and attended school in Fulda. He was confirmed March 21, 1937, at St. Paul Lutheran Church in Fulda, and he graduated from Fulda High School in 1941. He helped on the family farm until he was drafted into the United States Army on April 28, 1943. He was honorably discharged on March 4, 1946.

On July 26, 1946, he married Verna Bartels at St. John Lutheran Church in Trosky. The couple resided in Hardwick. Kenneth worked as a mechanic for Van Brothers in Hardwick for three years and then became the postmaster at the U.S. Post Office in Hardwick from 1949 until he retired in 1979.

In 1979 the couple moved to Luverne and later to Worthington from 1981 to 1986, and Fulda from 1986 to 2002. The couple moved back to Luverne in 2002. In July of 2009, because of their health, they moved to Loveland, Colo-

rado, to be closer to family. Verna died June 20, 2016.

Kenneth was a member of St. John Lutheran Church in Luverne. While he was a member of Zion Lutheran Church in Hardwick, he held various church offices with local, zone and state. He served as an elder and president of the congregation, Bible class teacher, and he belonged to Lutheran Laymen's League. He was a 30-year member of the Hardwick Fire Department, where he held various offices. He belonged to the VFW, American Legion, Hardwick Commercial Club and the Hardwick PTA.

Ken enjoyed woodworking, gardening, crafts, and traveling throughout the United States, Europe, Alaska and Hawaii. He and his wife enjoyed winters in Arizona. Most of all he enjoyed the time spent with his family.

Kenneth is survived by a daughter, Barbara (Gaylord) De Groot, Andover; a son, David (Kathy) Busch, Loveland, Colorado; seven grandchildren; and eleven great-grandchildren.

He was preceded in death by his wife, Verna; his parents, Leonard and Matilda; a great-granddaughter, Kaylie Dickerson; six sisters, Ida, Julia, Amelia, Elsie, Martha, and Esther; and two brothers, George and Clarence.

Arrangements were by Hartquist Funeral Home of Luverne, www.hartquistfuneral.com.

(0929 F)

### John Tilstra

John Howard Tilstra, 88, Hills, died Monday, Sept. 19, 2016, at Sanford Luverne Hospital in Luverne.



A funeral service was Friday, Sept. 23, at the Reformed Church of Steen. Burial followed in the Eastside Cemetery near Steen.

John Tilstra was born Feb. 24, 1928, to Cornelius and Fannie (Hommes) Tilstra in Rock Rapids, Iowa. He grew up in Rock Rapids and attended school, graduating from the eighth grade.

On Dec. 11, 1947, he married Anna Nyhuis in Rock Rapids. The couple farmed various places in Minnesota throughout their life together. They lived on a farm near Beaver Creek from 1947 to 1962, northeast of Hills from 1962 to 1977, and on a new farmstead near Hills from 1977 to 2007. John not only farmed throughout his life but he also drove school bus for the Hills, Beaver Creek school district for 26 years. He retired from farming in 1992 and moved to Hills in 2007. Because of declining health, he moved into the Tuff Memorial Home in Hills in 2010.

John was a member of Valley Springs Reformed Church in Valley Springs, South Dakota, for fifteen years. He was active as a Sunday school and catechism teacher, served as a deacon,

and sang in a quartet. After moving to their second farm, he became a member of the Reformed Church of Steen. In his spare time he enjoyed oil and acrylic painting, woodworking, playing the harmonica and listening to music from opera to country. He also liked to garden and fish. He enjoyed taking trips with his family. A fond memory the family has was John's creative cooking.

John is survived by his wife, Anna Tilstra, Hills; four children, Ray (Ginny) Tilstra, DeKalb, Illinois, Linda (Howard) Soehl, Howell, Michigan, John (Leesa) Tilstra, Brandon, Wisconsin, and Cindy (Bob) Gannon, Marcus, Iowa; nine grandchildren; twelve great-grandchildren; two brothers, Arvin (Cena Mae) Tilstra, Steen, and Ferdinand (Bernice) Tilstra, Hills; one sister, Inez (Don) Hoogveen, Le Mars, Iowa; several nieces and nephews; and other relatives and friends.

He was preceded in death by his parents; three brothers, Raymond, Fred and Cornelius Tilstra; and a sister-in-law, Evelyn Tilstra.

Arrangements were by Jurrens Funeral Home of Hills, www.jurrensfuneralhome.com.

(0929 F)

### Rory Burke

Rory Clyde Burke, 61, Sioux Falls, South Dakota, formerly of Luverne, died Friday, Sept. 23, 2016, at the Bethany Home in Brandon, South Dakota.



A gathering of family and friends will be from 3-5 p.m. Saturday, Oct. 8, 2016, at the Dingmann Funeral Home in Luverne. A private family committal of cremains will be at a later date.

Rory was born May 25, 1955, to Clyde and Patricia (Dell) Burke in Rochester.

In 1960 the family moved to Luverne, where Rory attended school. He graduated from Luverne High School in 1973. He then attended Augustana College, Sioux Falls, South Dakota State University, Brookings, South Dakota, and Southwest Minnesota State University, Marshall.

Rory lived in Brookings before moving to his home

in Sioux Falls. He enjoyed reading, watching movies, and listening to music. He owned an extensive album collection.

Rory is survived by his brother, Tim (Pam) Frakes, St. Cloud; two sisters, Keely (Tommy)

Frakes-Rau, Avon, and Karen Ylvisaker-Ancil, Marion, Indiana; many nieces, nephews, great-nieces, great-nephews and cousins; and his good friend, Jim (Rachelle) Hoh, Sioux Falls.

He was preceded in death by his father, Clyde Burke; his mother, Patricia (Burke) Frakes; his stepfather, Dallis Frakes; and a brother, Perry Frakes.

Arrangements were by Dingmann Funeral Home of Luverne, www.dingmannandsons.com.

(0929 F)



Lori Sorenson photos/0929 homecoming candidates LHS

## And the candidates are ...

Luverne High School Homecoming king and queen candidates for 2016 are (front, from left) Layne Curtis, Logan Stratton, Solomon Nielsen, Chris Jelken, Dylan Thorson, (back) Itzel Soto Guerrero, Ashton Krueger, Bergin Flom, Madison Crabtree and Mariah Aukes. Coronation activities are 7 p.m. Tuesday in the elementary school gym. The Cardinals will take on St. James for the Homecoming football game Oct. 7.

## DEATH NOTICES

### Edyth Briggs

Edyth Mae Briggs, 87, Hills, died Monday, Sept. 26, 2016, at Sanford Hospital in Sioux Falls, South Dakota.

A funeral service will be at 10:30 a.m. Friday, Sept. 30, at Bethlehem Lutheran Church in Hills. Burial will be at Riverview Cemetery in Rock Rapids, Iowa. Visitation will be from 5-8 p.m. Thursday, Sept. 29, at the Jurrens Funeral Home in Hills.

Arrangements are by Jurrens Funeral Home of Hills, www.jurrensfuneralhome.com.

(0929 DN)

### Erwin De Boer

Erwin Roy De Boer, 73, Hills, died Monday, Sept. 26, 2016, at his home in Hills.

The funeral service is at 1:30 p.m. Thursday, Sept. 29, at the Steen Reformed Church in Steen. A private burial will be at United Reformed Cemetery in Hills. Visitation is from 4-8 p.m. Wednesday, Sept. 28, at the Jurrens Funeral Home in Hills, with family present from 5-8 p.m.

Arrangements are with Jurrens Funeral Home in Hills, www.jurrensfuneralhome.com.

(0929 DN)

### James Fodness

James Fodness, 75, Luverne, died Monday, Sept. 19, 2016, at the Sanford Luverne Hospital.

A funeral service was Friday, Sept. 23, at Bethany Lutheran Church in Luverne.

Funeral arrangements were through Hartquist Funeral Home in Luverne, www.hartquistfuneral.com.

(0929 DN)

### 'Reclaim Community' meets Saturdays

Reclaim Community, the local non-profit group that is refurbishing the Jasper School building, will host several cleanup days at the school on Saturdays, Oct. 8 and Oct. 22, from 8 a.m. to 1 p.m.

The group will also host a soup supper and T-shirt event from 4 to 7 p.m. Saturday, Oct. 15, at the Jasper Memorial Hall. Proceeds will support electrical updates and roof repairs. Call Elicia Kortus at 605-595-4693 or reclaimcommunitymn@gmail.com visit the Reclaim Community Facebook page.



**The Bluestem**  
 CASUAL • FRESH • LOCAL  
**4TH YEAR ANNIVERSARY**

Thank you for an amazing four years here at The Bluestem, where we are keeping it casual, fresh and local! Your support has been overwhelming!

**ONE DAY ONLY Saturday, October 1**

**\$4 OFF BURGERS, SANDWICHES & ENTREES**  
*and*  
**\$4 SANGRIA**

**Two Free Tickets**



**Vikings vs. Bears**  
 January 1, 2017

Enter for a chance to win a pair of Vikings tickets with a one night hotel stay and \$50 cash  
 Must be 18 or over to win

COME CELEBRATE WITH US!

Try our new fall menu items starting September 26



**BLUESTEM CARROT CAKE**



**APPLE FENNEL BONELESS PORK CHOP**



**GRILLED CHICKEN ROMANO**

Like us on **facebook** for weekly updates  
 507-449-2583  
 1202 S Kniss, Luverne, MN  
 www.the-bluestem.com



Indicated in orange on this Google image, there is an existing berm between the ballfield and the river. The new berm would be from the bridge to the north corner of Redbird Field.

**Redbird Field berm/continued from page 1A**

in a letter that was also signed by their neighbors, Arne and Gloria Vink.

"We are opposed to this project and want that opposition to be public record."

Hydrology and engineering studies have confirmed that the berm won't affect river flow for properties downstream.

At the meeting Karen said she respects the opinion of the DNR and the council, but she wanted their concern noted for future city council and state officials.

"If you lived where we live, you would have the same concern," she said.

"We have lived there 45 years and pumped our basement three times. Our house it built up, and we have a berm of our own."

Mayor Pat Baustian noted the increasing frequency of significant rain events due to global warming.

"You may want to keep those pumpshandy," he said.

"Our flood in 1993 was considered a 100-year flood, but we've had five significant rain events since 2000."

While questions linger about the berm's impact downstream, the council is still left to consider future development in an area that is designated for flooding.

Most communities develop parks and ball diamonds in floodplains, because that's the best use for that type of ground.

But in light of the trend toward "significant rain events," the question appears to center on how much money a city should spend to develop these properties and clean them up after flooding.

According to Public Works Supervisor John Stoffel, the berm would prevent the \$200,000 damage (that FEMA helped pay for) caused by

the 2014 flood and possibly reduce cleanup costs to \$100,000.

With plans in place to develop a Luverne Loop trailhead in the floodway next to Redbird Field, the Mensens and others are questioning the wisdom of those investments.

Trailhead cost estimates are \$1.2 million, which includes parking, playground equipment, restrooms, shelter house, benches, waste receptacles and more. (The city has applied for a Legacy grant to support this project.)

A "regulatory floodway" is designated to take on floodwaters, according to local emergency management protocol.

This means "the channel of a river or other watercourse and the adjacent land areas must be reserved in order to discharge the base flood without cumulatively increasing the water surface elevation more than a designated height."

It goes on to describe development of these areas.

"Communities must regulate development in these floodways to ensure that there are no increases in upstream flood elevations," the statement reads.

"For streams and other watercourses where FEMA has provided Base Flood Elevations (BFEs), but no floodway has been designated, the community must review floodplain development on a case-by-case basis to ensure that increases in water surface elevations do not occur, or identify the need to adopt a floodway if adequate information is available."

Grant money for the berm is available until December of 2017. "So we do have some time on it," said City Administrator John Call.

Be a part of Rock County's oldest business at [www.star-herald.com](http://www.star-herald.com)

**Luverne Area Community Foundation**

**Transit Authority**  
 The Premier Tribute Band to the Music of Chicago



**TICKETS GO ON SALE MONDAY, OCTOBER 3**

**Historic Palace Theatre**  
**Saturday, October 29 | 7:30 pm**  
 Doors open at 6:45 pm

**\$35 LOWER LEVEL (Reserved)**  
**\$25 BALCONY**  
 Available at the Palace Box Office  
 New Location - 106 E Main St. Luverne | 283-4339

[www.transitauthorityband.com](http://www.transitauthorityband.com)

Spirits will be available, pop and water too  
 A fundraising concert put on by the Luverne Area Community Foundation general fund.  
 Putting money back into the community through the gift of grants.

Some of the best deals around...  
 are advertised in the  
**Luverne ANNOUNCER**

Don't forget all the ads for local events and community happenings!

Read your Luverne Announcer! Available online at [www.star-herald.com](http://www.star-herald.com)

Check out this week's front page featuring...  
**DEBOER EDGERTON**

**2017 Luverne Welcome Book**

**COVER PHOTO CONTEST**

**ENTRIES DUE MONDAY, OCTOBER 10, 2016**

Would you like to have your original photograph featured on the cover of the **2017 Luverne Welcome Book**? We are inviting submissions of photographs depicting Luverne at its finest that could be selected for display on the front cover.

**Rules:**

1. Photographs must be in high resolution jpg or jpeg digital format.
2. Photographs must be images of Luverne or surrounding landmarks.
3. Photographs must be the original work of the entrant.
4. By submitting a photo, all entrants grant the Rock County Star Herald license to reproduce, distribute, display and create different works of the entries (along with a name credit).
5. All judges decisions are final.

Submit the following information along with your entries to [editor@star-herald.com](mailto:editor@star-herald.com)

Your name - Address - City & State - Phone #  
 Caption & location of photograph





Luverne High School Marching Band Director Richard Owen (lower left) addresses his troops in the band room during the rain delay Saturday. They were looking at a big screen that showed weather radar moving into the Brandon area where they would perform later in the day.

## Tri-State Band Festival moves indoors

Photos and text by Lori Sorenson

Field competition of Luverne's Tri-State Band Festival was moved indoors Saturday due to threatening weather.

Event organizers said it was the only time this had happened in the 66-year history of the Tri-State Band Festival event.

There has been snow, blistering heat and wet conditions, but the bands have played on.

Many remember the 2005 thunderstorm when the field cleared for an hour-and-a-half rain delay. The field competition resumed, but just as the last band completed its performance, threatening weather returned.

Award ceremonies were moved indoors that year, but organizers were criticized for waiting too long to send people for cover.

Following that event, Band Festival organizers developed a clearer plan for when to halt a performance and how to proceed with weather delays.

Luverne High School band students, as hosts of the Tri-State Band Festival, do not participate in their own festival, but they did participate in the Big Sioux Review Saturday night in Brandon. The festival there was able to proceed outdoors, since Brandon hadn't received as much rain.

The marching Cardinals ended their long wet day on a high note by bringing home a first-place rating for their performance in Brandon.

See [star-herald.com](http://star-herald.com) for results from parade and field competition.



Above, umbrellas open at the field prior to the weather announcement to take cover. At right, Luverne band student Emma Mumme watches the rain.



Above, Tea, S.D., color guard marches in the parade Saturday morning on Main Street. At far left, Luverne color guard marches in the parade. At left, Luverne's Kristin Ziegler and the rest of the Luverne Band do their field performance in the Cardinal Gym.



Luverne's Will Mumme is the trumpet soloist in the Cardinal Marching Band field program, "Phantom of the Opera."



Below, parade fans (from left) Colton Corn, Mila Hawkins and Sullivan Benjergdes anticipate the next band approaching them on Main Street Saturday. At right, crowds soak in the early autumn sunshine on the parade route.



## Outdoor vacation time is over for houseplants; time for poinsettias to get ready for Christmas

Just a reminder that if you have had indoor plants "vacationing" outdoors for the summer, it is time to start acclimating them to coming back inside. A day or two inside followed by a day or two outside will give them a chance to adjust to lower light and the warmer temperature



### KNOW IT AND GROW IT

By George Bonnema, Luverne Horticulturalist

without shocking the plant by an abrupt change which often results in a lot of leaves turning yellow and dropping. Do this inside/ outside routine for a couple of weeks and the plant

should be able to handle the indoor environment without too much complaining.

I also recommend spraying upper and lower sides of the leaves with an insecticide

to avoid bringing in unwanted pests. Systemic insecticide granules applied to the soil is another good way to prevent a bug problem later.

If you planted your amaryllis bulb out in the garden, be sure to get the bulb dug, repotted, and brought in before we have frost. Amaryllis will not tolerate that cold of a temperature, and chances are the bulb would be ruined.

If you kept your poinsettia growing since last Christmas

and want it to rebloom, it is very important to have the plant in a window where it gets only natural daylight. Plants like poinsettias initiate their flower buds when the daylight hours decrease.

We are at the fall equinox, so nights and days are equal. But the night hours are lengthening and the days are getting shorter, so the plant's photoperiod tells it that it is time to bloom.

If you turn the room light

on where the plant is growing, you just made the day longer and cancelled out that photoperiod, thereby totally confusing the plant ... maybe I've totally confused you with this information, but that is how nature works. That bud initiation is usually from Sept. 15 through Oct. 25.

Bonnema is a gardening enthusiast and former greenhouse owner. He can be reached at [flowersgb@iw.net](mailto:flowersgb@iw.net).



## H-BC racks up RRC conquests

By John Rittenhouse

The Hills-Beaver Creek volleyball team upped its Red Rock Conference record to 5-0 after racking up three league victories on the road.

The Patriots swept Southwest Christian and Edgerton Sept. 20 and Monday respectively and pulled out a five-set win over Heron Lake-Okabe-na in Okabe-na Thursday.

H-BC, 12-1 overall, plays in Mountain Lake Tuesday.

### H-BC 3, Edgerton 0

The Patriots raised their league record to 5-0 with a sweep of the Flying Dutchmen in Edgerton Monday.

In what was a commanding performance, H-BC never trailed in the match and outscored Edgerton 75-38 overall.

The Patriots scored the first four points of the opening set on the way to building a 17-6 advantage after Sidney Fick delivered a kill at the net.

Edgerton managed to trim the difference to eight points at two different occasions (17-9 and 21-13) as the set progressed, but a 4-0 surge by the Patriots capped by a service point from Avery Van Roekel gave H-BC a 25-14 win.

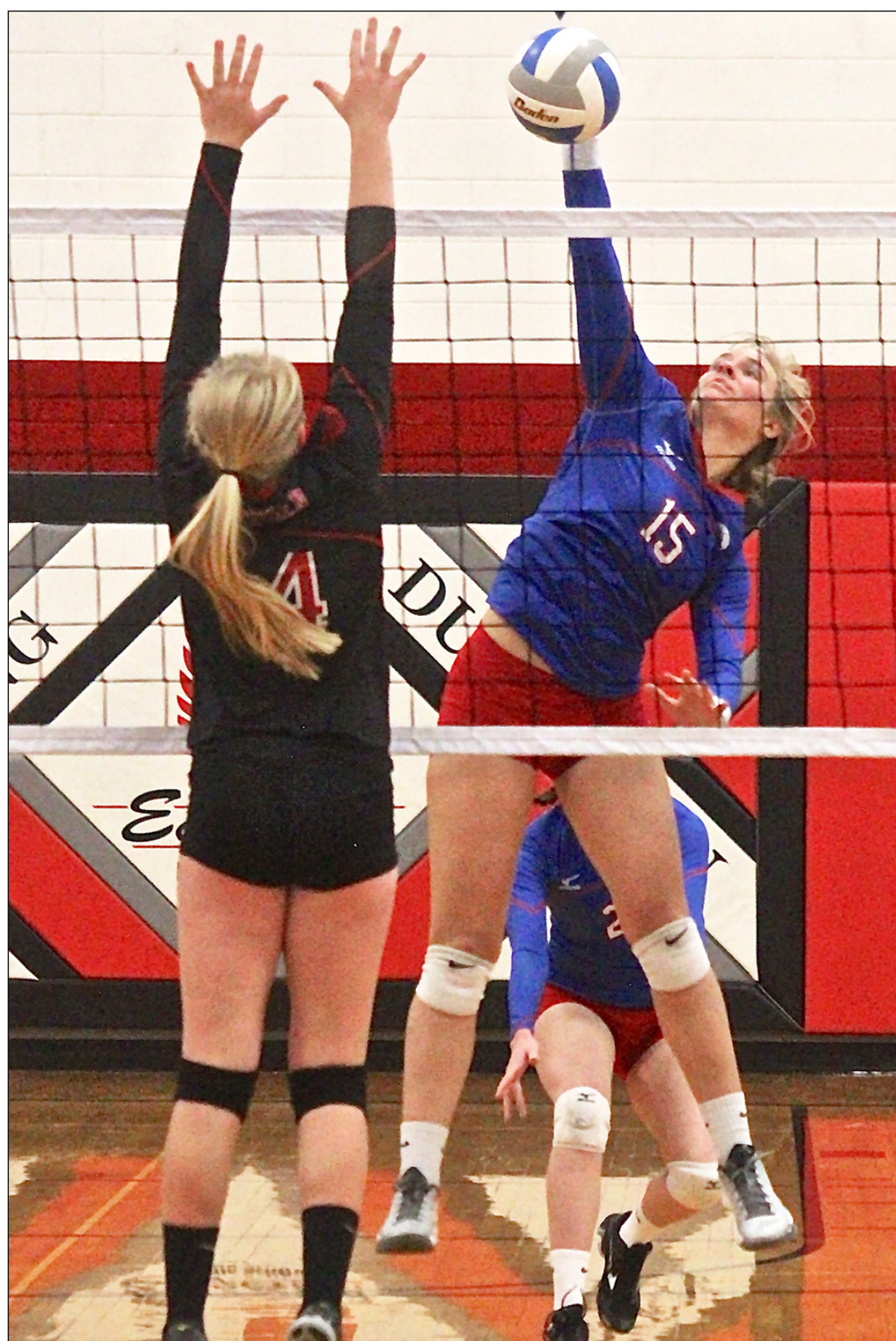
The second set was tied at one when H-BC went on a 13-2 run to open a 14-3 advantage after Jasmine Lingen registered a service point.

The Flying Dutchmen countered with an 8-4 surge to trim the difference to seven points (18-11).

H-BC, however, reeled off the next seven points to prevail 25-11 when Van Roekel served the final point of the set.

The Patriots scored the first four points of the third set and led 7-1 when Lingen registered a kill.

Edgerton scored the next two points before H-BC went on a 13-4 run ending with an



Hills-Beaver Creek senior Jasmine Lingen registers one of her team-high 13 kills during Monday's 3-0 conference victory over the Edgerton Flying Dutchmen in Edgerton.

John Rittenhouse photo/0929 hvb 3

## Dragons knock off previously unbeaten MCC

By John Rittenhouse

The Adrian football team displayed an ability to bounce back nicely Friday in Slayton.

One week after dropping their first game of the season to Minneota, the Dragons returned the favor to Murray County Central by knocking the Rebels out of the state's unbeaten ranks.

After surrendering a first-quarter touchdown to the Rebels, Adrian fought back to score the final three touchdowns of the game to secure an 18-8 victory.

"It was a good win for us," said AHS coach Randy Strand.

"MCC was unbeaten and I think there's a pretty good chance we'll see them again in the playoffs."

The Rebels played like a worthy opponent in the game's first quarter.

After the teams exchanged possessions to open the contest, MCC's second offensive possession developed into a 10-play, 80-yard drive.

The march ended with Cole Bassett scoring on an eight-yard run. When Bassett hauled in a two-point conversion pass from Brady Kremer following the touchdown, the Rebels sported an 8-0 advantage with 3:37 remaining in the first quarter.

The Dragons took advantage of an MCC miscue to trim the difference to two points (8-6) before the first half was complete.

MCC was attempting to punt deep inside its own territory when a poor snap forced the punter to kneel down in order to field the ball.

MCC lost the ball on downs at that point, giving the Dragons the ball on the MCC five-yard line.

Adrian senior tailback Frank Serrao took advantage of the situation by scoring on a five-yard run during the next play to cap the scoring in the first half at the 7:25 mark of the second quarter.

The Dragons put together a pair of lengthy scoring drives to settle the issue in the second half.

Adrian received the kick to start the third quarter and promptly advanced the ball 80 yards in 10 plays.

Serrao capped the drive with a three-yard run, but a failed run for the two-point conversion left the Dragons sporting a 12-8 advantage with 6:42 remaining in the third quarter.

The Dragons racked up some insurance points with their third possession of the second half.

Adrian covered 53 yards in nine plays with Serrao ending the drive with a three-yard run at the 10:20 mark of the fourth quarter to make it an 18-8 game.

MCC did have four more offensive possessions before the game was complete, but three of the possessions stalled on downs and one ended with an interception.

The 3-1 Dragons entertain Canby for their Homecoming game Friday night.

### Team statistics

Adrian: 256 rushing yards, 52 passing yards, 308 total yards, 14 first downs, five penalties for 25 yards, two turnovers.  
MCC: 175 rushing yards, 41 passing yards, 216 total yards, 11 first downs, six penalties for 65 yards, two turnovers.

### Individual statistics

Rushing: Serrao 25-150, Nick Harder 12-52, Dylan Gyberg 5-16, Dakota John 5-34, Alex Loosbrock 2-4.  
Passing: Loosbrock 4-12 for 52 yards.  
Receiving: Zach Hendel 4-52.  
Defense: Harder 10 tackles, John 12 tackles, Gyberg 15 tackles, Serrao one interception, Brendyn White one interception.

H-BC/continued on page 5B



Luverne junior Hannah VerSteeg attacks the ball at the net during a home win over Fulda Sept. 20.

John Rittenhouse photo/0929 lvb13

## Volleyball team splits tilts with Fulda, Huskies

By John Rittenhouse

The Luverne volleyball team experienced different results during a pair of three-set matches last week.

The Cardinals swept Fulda during a home match Sept. 20 before coming up on the short end of a 3-0 decision in Jackson Thursday.

Luverne, 8-8 overall, hosts Windom Thursday.

### JCC 3, Luverne 0

The Cardinals slipped below the .500 mark in Big South Conference play when they challenged Jackson County Central in Jackson Thursday.

The home-standing Huskies grew stronger with every set

during the sweep.

After pulling out a 25-22 win in the opening set, JCC secured 25-16 and 25-15 wins in the second and third sets to complete a match in which the Huskies outscored the Cards 75-53.

Luverne, which dipped to 1-2 in league play with the loss, received solid efforts from Alexis Ferrell (seven kills and three blocks), Hailey Remme (three blocks, seven digs, seven kills and 11 of 13 serving with one ace) and Ariel DeBeer (eight of eight serving and eight set assists).

Sierra Schmuck (eight set

Split/continued on page 3B

## Cards slip to 2-2 with home loss Friday

By John Rittenhouse

The Luverne Cardinal football team lost its first home game of the 2016 season when it entertained Redwood Valley Friday.

Luverne sported 6-0 and 18-14 leads in the game's second quarter, but RWV scored 21 of the game's final 23 points to secure a 35-20 victory.

A state-ranked team in Class AA, RWV withstood every challenge offered by the Cardinals to win the game by 15 points.

RWV, which intercepted five passes in the game, scored three touchdowns at the end of short-field situations and registered a pair of long-distance tallies during the 15-point win.

It looked as if Luverne might be able to saddle the visitors with their first loss of the season during the game's first half.

The teams exchanged punts in the game's first quarter before LHS put together the most impressive offensive drive with its second possession of the contest.

LHS put together a 16-play, 73-yard drive that featured the Cardinals turning four third-down plays into first downs.

Senior fullback Solomon Nielsen, who ran the ball for 128 yards in the game, capped the drive with a three-yard run



Luverne junior Tyler Reisdorfer attempts to elude Redwood Valley's Mitchell Irlbeck as he returns a punt during Friday's 35-20 home loss. It was the second consecutive loss for LHS.

John Rittenhouse photo/0929 lvb 17

on the first play of the second quarter to give the hosts a 6-0 lead.

Unfortunately for the Cardinals, their first lead of the game didn't last long.

RWV displayed its explosiveness when Jared Lund returned the ensuing kickoff 86 yards for a touchdown and Thomas Ahmberg added his

first of five extra points following the touchdown to give the visitors a 7-6 edge.

RWV took advantage of the first of five LHS interceptions moments later to up the lead to 14-6.

Two plays into Luverne's next offensive possession, Lund picked off a pass to give RWV the ball on Luverne's

23-yard line.

RWV quarterback Mitchell Irlbeck scored on a one-yard run five plays later to give his team an eight-point cushion.

The Cardinals fought back to reclaim the lead at 18-14 after producing touchdowns on consecutive possessions.

Cards/continued on page 3B

## LHS girls fourth, boys fifth at JCC Invitational

By John Rittenhouse

The Luverne cross country teams made an appearance at the Jackson County Central Invitational Thursday.

The Cardinal girls placed fourth in varsity competition, while the LHS boys finished fifth.

Luverne scored 98 points to place fourth in a field of nine compete teams during the girls' race.

Martin County West claimed the team title with 59 points.

Madison Schandelmeier set the pace for Luverne by finishing sixth in 21:13.

Claire Baustian (10<sup>th</sup> in 21:59), Madison Reisdorfer (15<sup>th</sup> in 22:59), Mariah Aukes (28<sup>th</sup> in 24:08) and Megan Rogers (39<sup>th</sup> in 25:29) made contributions to Luverne's team tally.

Madigan Flom (40<sup>th</sup> in 25:36), Zayna Hustoft (34<sup>th</sup> in 25:50), Tianna Doppenberg (48<sup>th</sup> in 26:03) and Carly Serie (51<sup>st</sup> in 26:34) ran in the varsity race as well.

The Cardinal boys compiled 148 points to place fifth out of nine teams.

Mankato East claimed the team championship with 49

points.

Austin Winter led the charge for the Cards by placing 12<sup>th</sup> in 18:15.

Shane Berning (23<sup>rd</sup> in 18:57), Hunter Hamann (28<sup>th</sup> in 24:08), Michael Rahm (51<sup>st</sup> in 20:37) and Jackson Golla (62<sup>nd</sup> in 21:02) padded Luverne's team tally.

Brayden Tofteland (65<sup>th</sup> in 21:05), Carter Baumberger (71<sup>st</sup> in 21:31), Carter Riphagen (77<sup>th</sup> in 21:36), Jordan Winter (80<sup>th</sup> in 22:06), Nick Feit (81<sup>st</sup> in 22:07) and Nick Rogers (104<sup>th</sup> in 26:53) represented LHS during the varsity

race as well.

Here is a look at the rest of Luverne's results from Thursday's meet.

Junior high girls: Regan Feit, first, 9:09; Brooklyn VerSteeg, second, 9:10; Tenley Nelson, third, 9:11; Autumn Nath, fourth, 10:14; Cassie Flanagan, fifth, 10:02; Solveig Tofteland, seventh, 10:14; Leslie Van Engelenhoven, eighth, 10:17. Luverne placed first out of three complete teams with 15 points.

Junior high boys: Seno Chanthalangsy, ninth, 9:18; Ethan Rahm, 35<sup>th</sup>, 10:22; John Miller, 38<sup>th</sup>, 10:41; Alex Baumberger, 44<sup>th</sup>, 10:58; Sam Emery, 45<sup>th</sup>, 11:00. Luverne capped a four-team field with 108 points. Mankato East won the team title with 18 points.





Star Herald file photo

Luverne's Shane Fick has put together a sensational summer as a micro sprints driver with eight consecutive feature race wins late in the 2016 season.

## Fick puts together incredible 2016 run

The summer of 2016 will be a season that will be unforgettable for Shane Fick.



Fick, a 2008 Luverne High School graduate who farms in the area, has emerged as a dominating presence on the micro sprints racing scene over the past couple of months.

The fact that Fick won the micro sprints points championship at Badlands Motor Speedway (Brandon, South Dakota) says something about the summer he has experienced.

That accomplishment, however, has not made this season unique.

Fick has won the points championship at the same track two times before 2016, when it was called Huset's Speedway.

What sets this summer apart for Fick is the impressive winning streak he put together, and it's the result of experience he has gained from his commitment to racing.

During his high school days, Fick competed as a drag racer.

It's a different type of racing, but it did help him groom his skills and give him the confidence to join the micro sprint circuit six years ago.

Fick has posted his share of wins over the past six seasons, but not like the victories he has racked up at the tail end of the 2016 campaign.

After posting a pair of second-place finishes, a one-third-place effort and a ninth-place effort during his first four appearances of the year at BMS, Fick's fortunes changed for the better.

He won three consecutive victories at the South Dakota track from July 10-24.

Fick gave local fans a treat by winning the feature race at the Rock County Fair races on July

## FROM THE SIDELINES

By John Rittenhouse, sports editor

28, and he proceeded to win the final four feature events at BLM (from July 31 through September 11) to secure his track championship.

When all was said and done, Fick had put together a run of winning eight consecutive feature victories, which is a feat he never dreamed of accomplishing.

"Before winning the last eight races, the most features I've won in a row was three, and I did that over one weekend," Fick offered.

"I can't believe the way things have turned out for us this year. It's like everything is working out in our favor."

All good things do come to an end, and Fick's impressive run came to an end during the Papik Motors Rock County Speedway Fall Races in Luverne Sunday.

Fick won his heat race, but he ended up placing fourth in the feature event.

Although his winning streak came to an end, Fick doesn't let it bother him.

The 2016 racing season has been an outstanding one for Shane Fick, who gives a lot of the credit for the success to friends and family.

"Winning eight feature races in a row is not all because of me. I have a really good support group behind me," he said.

"We worked really hard at it this year, including working on the car in the shop just about every night. Our work paid off this year."

## Split/continued from page 2B

assists), Katie Kracht (10 digs), Hailey Franken (seven kills) and Madison Crabtree (eight of nine serving) also made positive contributions to Luverne's effort.

### Luverne 3, Fulda 0

The Cardinal girls took care of business when they swept the Raiders during a three-set match in Luverne Sept. 20.

Luverne outscored Fulda 75-42 overall and won two of the three sets by 11 or more points.

LHS recorded the first three points in the opening set and proceeded to pad the lead to 16 points (24-8) after DeBeer registered a service point.

The Cardinals prevailed by 16 points (25-9) moments later.

Fulda sported a series of one-point leads early in the second set that was tied at 10 in one instance.

A 6-0 run capped by a kill from Remme gave LHS a 16-10 cushion, but the Raiders trimmed the difference to four points (18-14) moments later.



John Rittenhouse photo/0929 lrb 1

Luverne senior Kami Sawtelle records a block at the net during a Sept. 20 home win over the Fulda Raiders.

The Cardinals thwarted the challenge by reeling off seven

consecutive points to prevail 25-14 after DeBeer delivered

## Cards/continued from page 2B

Luverne put together an 11-play, 58-yard drive following Irlbeck's rushing touchdown.

Sophomore quarterback Ben Serie capped the drive with a two-yard run that trimmed RWV's lead to two points (14-12) with 3:47 remaining in the first half.

Serie helped keep the drive alive when he turned a third-and-eight situation into a first down with an eight-yard pass completion to Layne Curtis.

The Cardinals caught a break when their ensuing kickoff hit a member of RWV's return team and Luverne's Riley Baker recovered the ball on the LHS 48-yard line.

Eight plays later, sophomore quarterback Jake Haugen scored on a one-yard run to put the Cards in front 18-14 with 47 seconds remaining in the second quarter.

Nielsen provided the key play during the drive when he registered a 33-yard run.

Once again, RWV didn't allow Luverne to keep its lead very long.

On the first play of RWV's next offensive possession, running back Logan Josephson exploded for an 84-yard touchdown run with 30 seconds remaining in the second quarter to give the visitors a 21-18 lead they would take into the second half.

The Cardinals took advantage of another RWV turnover to produce the first points of the second half.

## Patriots knock Wolverines out of unbeaten ranks

By John Rittenhouse

The Hills-Beaver Creek football team posted an important victory on the road Friday.

Playing a Mountain Lake Area team that saddled the Patriots with their lone regular season loss in 2015, H-BC turned the tables on the Wolverines.

The Patriots produced touchdowns with their first seven offensive possessions



John Rittenhouse photo/0929 lrb 4

Luverne's Solomon Nielsen hauls in a 14-yard pass reception during Friday's 35-20 home loss to Redwood Valley.

Luverne's Tyler Reisdorfer recovered a fumble during the opening kickoff of the third quarter on the RWV 25-yard line.

The ensuing offensive pos-

session stalled on downs at the RWV one, but the Cards cashed in when RWV tried to pass during the next play and Nielsen and Logan Stratton sacked Irlbeck in the end zone

of the game and rolled to a 52-22 win.

"Offensively we were pretty efficient and put a lot of long drives together," said H-BC coach Rex Metzger.

"I was really happy with the fact that we had 19 first downs. We were able to set up some things for our passing game with our ground-and-pound running game."

The Wolverines made a statement early when Levi Stoesz raced 63 yards for a touchdown on the second play of the game before tossing a successful conversion pass to Jesse Jepsen that gave the hosts an 8-0 advantage.

The rest of the first half belonged to H-BC, which scored

36 unanswered points to open a 28-point (36-8) cushion at the intermission.

Senior tailback Isaiah Vis, who ran for 181 yards, broke free for a 55-yard run during H-BC's second play of the game and scored on a five-yard run during the next play.

Senior quarterback Zach Scholten, who threw for 186 yards and four touchdowns, carried in the ensuing two-point conversion to knot the score at eight.

H-BC registered a pair of long scoring marches before the first quarter was complete to gain a 22-8 advantage.

A nine-play, 71-yard march ended with Trenton Bass scoring on a one-yard plunge and

a set-ending service ace.

The third set was tied at three when LHS went on an 8-2 run ending with a service point from Schmuck to open an 11-5 lead.

Fulda closed the gap to four points (11-7) before the Cards gained some separation by putting together a 10-2 run capped by an ace serve from DeBeer to open a 21-9 advantage.

The Raiders scored the next seven points to make it a 21-16 tally, but Luverne used a 4-3 scoring edge late in the contest to prevail 25-19.

DeBeer (20 set assists and 18 of 18 serving with two aces), Remme (12 digs and four blocks), Schmuck (13 set assists and 13 of 13 serving with one ace) and Kracht (14 digs and 13 of 13 serving with one ace) played well in multiple aspects for LHS.

Franken led the Cards with nine kills, Ferrell and Kami Sawtelle chipped in eight kills each and Rachel Ohtedahl charted two blocks.

for a safety.

The Cards trailed 21-20 at that point, but they were unable to retake the lead.

LHS was forced to punt into a stiff wind twice as the third quarter progressed, and both punts gave RWV excellent field position it would use to ice the win.

After taking over on the LHS 33-yard line, RWV needed three plays to up the lead to 28-20 when Irlbeck scored on a 15-yard run with 2:10 remaining in the third quarter.

Luverne's second punt into the wind gave RWV the ball at LHS' 42-yard line with 28 seconds left in the third stanza.

Eight plays later, with 9:07 remaining in the game, Irlbeck capped the scoring with a four-yard touchdown run.

The 2-2 Cardinals play in Pipestone Friday.

### Team statistics

Luverne: 239 rushing yards, 43 passing yards, 282 total yards, 16 first downs, one penalty for five yards, five turnovers.  
RWV: 217 rushing yards, 35 passing yards, 252 total yards, nine first downs, three penalties for 25 yards, two turnovers.

### Individual statistics

Rushing: Nielsen 18-128, Declan Beers 12-46, Kasyn Kruse 11-41, Serie 4-19, Haugen 5-3, Curtis 2-2.  
Passing: Haugen 3-8 for 28 yards, Serie 2-9 for 15 yards.  
Receiving: Curtis 2-15, Nielsen 1-14, Kruse 1-8, Reisdorfer 1-6.  
Defense: Stratton six tackles and one-half sack, Nielsen 5.5 tackles and one-half sack, Chris Jelken five tackles, Baker three tackles and one fumble recovery, Haugen two tackles, Reisdorfer one fumble recovery.

Vis carrying in the two-point conversion to give H-BC a 16-8 lead.

A four-play, 51-yard possession capped by a 14-yard Scholten-to-Josh Kueter touchdown pass left the Patriots sporting a 14-point cushion.

The Patriots assumed control of the contest with a 14-point second quarter.

After MLA lost the ball on downs, H-BC put together a 15-play, 72-yard drive that resulted in a 28-8 advantage when Scholten hooked up with Jed Burgers for a 14-yard touchdown pass.

The Scholten-to-Burgers

Knock/continued on page 4B

# Flu Vaccinations NOW Available

Give yourself and those around you a fighting chance this flu season and get vaccinated.

Vaccinations are available for children and adults.

Monday - Friday  
10 a.m. - 3 p.m.

No appointment necessary.

Call (507) 283-4476 for more information.

**SANFORD**  
Luverne

### NOTICE ROSE DELL TOWNSHIP

Rose Dell Township will be spraying the Rose Dell Township road ditches in the next couple weeks if you do not want your ditch sprayed you may call CPS of Pipestone at 825-2008.  
**Rose Dell Township Board**

### NOTICE ROSE DELL TOWNSHIP MOWING NOTICE

All land owners and renters, please have all township road shoulders mowed by October 10, 2016. If not done the township may hire it done and it will be charged to the taxes.

**Rose Dell Township Board**

### Springwater Township Mowing Notice

Springwater Township ditches final mowing should be done by October 10th. Failure to do so will result in a township official performing the task at \$100 per half mile.

**Teresa Kramer, Clerk/Treasurer**



# Netters wrap up division play with 3-2 record

By John Rittenhouse

The Luverne tennis team wrapped up Big South Conference play by splitting a pair of home matches last week.

Luverne topped Redwood Valley by five points Sept. 20 before coming up on the short end of a one-point decision against Pipestone Thursday.

The loss left LHS with a 7-7 overall record.

## Pipestone 4, LHS 3

Luverne finished league play with a 3-2 record after falling to the Arrows by one point Thursday in Luverne.

Pipestone took three of the four singles matches and claimed one doubles conquest to win a competitive match from LHS.

"It was a great match," said Cardinal coach Greg Antoine. "It was very close in points and the end result. There were a lot of nice points played by both sides. It's the kind of match you want to end the season with."

Pipestone's play in singles proved to be the difference in the match.

The Arrows received wins from Lauren Laphorn (7-5, 4-6, 7-6 over Samantha Pierce at No. 1), Hannah Berg (6-0, 6-1 over Lexi Severson at No. 3) and Serena Wipf (6-2, 6-3



Luverne's Shelby Nath prepares to strike a forehand during a 6-1 home win over Redwood Valley Sept. 20. The Cardinals lost a home match to Pipestone Thursday.

over Ainslie Robinson at No. 4) in singles.

Pipestone also received a victory from the No. 3 doubles team of Marah Steenstra

and Adrianna Johnson, who notched a 6-4, 7-6 (7-4 in the tiebreaker) win over Emilie Bartels and Kacie Kracht.

Carissa Cunningham pro-

duced a point at second singles for LHS by posting 6-0 and 6-3 wins over Paige Ahrendt.

Wrap/continued on page 5B

# Falcons, Chargers top Dragon girls in conference clashes

By John Rittenhouse

The Adrian volleyball team came up empty in two attempts to secure its first Red Rock Conference victory of the season last week.

The Dragons lost a four-set match to Westbrook-Walnut Grove in Adrian Sept. 20 before falling in three sets to Red Rock Central Thursday in Lambertton.

Adrian, 2-10 overall, plays in Ellsworth Thursday.

## RRC 3, Adrian 0

The Dragons dipped to 0-4 in conference play after falling to the Falcons in Lambertton Thursday.

Adrian produced more points in every set, but it wasn't enough to keep RRC from registering a three-set sweep.

The Falcons outscored AHS 75-40 overall as they collected 25-6, 25-13 and 25-21 victories.

No statistical information from Adrian was available at the end of the match.

## W-WG 3, Adrian 1

The Dragons put up a good fight before dropping their third conference match of the season in Adrian Sept. 20.

Visiting W-WG came in to the match with a 2-0 RRC mark, but Adrian made the Chargers work to gain their third victory in four sets.

W-WG secured a 25-16 win in the opening set and pulled out a 25-23 victory in the second set before the Dragons tallied to take the third set by a 26-24 tally.

The Chargers completed their four-set win with a 25-16 victory in the finale.

Kasie Tweet (10 kills and 14 of 14 serving with three aces) and Miah Kunkel (13 kills and 13 of 14 serving with four aces) kept the Dragons competitive against W-WG.

Paige Bullerman chipped in five kills to Adrian's cause.

# Knock/continued from page 3B

combination clicked again for a 31-yard score late in the second quarter.

A successful conversion pass from Scholten to Jax Wysong followed the touchdown, upping the lead to 36-8 at the intermission.

H-BC continued its offensive domination in the second half as the Patriots received the kickoff to open the third quarter and promptly moved the ball 65 yards in 11 plays.

Scholten fired a 12-yard touchdown pass to Bass at the end of the possession and the same combination clicked for the two-point conversion to make it a 44-8 game.

MLA's snapped H-BC's 44-point run when A.J. Vongsy raced 47 yards for a touchdown and reserve quarterback Weston Osland delivered a successful two-point conversion pass to Drake Harder.

H-BC answered by putting together a seven-play, 65-yard drive ending with Scholten scoring on a one-yard run.

Scholten tossed the ensuing conversion pass to Bass to up the lead to 52-16.

MLA's Malek Stewart produced the lone touchdown of the fourth quarter at the end of an 11-yard run.

Although Metzger was happy with his team's effort, he believes a future rematch could play out differently.

"We did catch some breaks in the game. MLA dropped two potential touchdown passes and their stud quarterback got hurt and left the game when we were leading 28-6. I know it looks like it might have been a rout, but we'll have to make some adjustments if we play them again," he said.

H-BC hosts Granada-Huntley-East Chain for their annual Homecoming game Friday in Hills.

**Team statistics**  
H-BC: 289 rushing yards, 186 passing yards, 475 total yards, 19 first downs, three penalties for 40 yards, zero turnovers.  
MLA: 184 rushing yards, 33 passing yards, 217 total yards, seven first downs, eight penalties for 55 yards, zero turnovers.

**Individual statistics**  
Rushing: Vis 23-181, Bass 19-81, Scholten 5-14, Preston Maassen 2-5, Dean Fuerstenberg 3-8, Hunter Bork 1-0.  
Passing: Scholten 11-15 for 186 yards.  
Receiving: Burgers 3-88, Kueter 2-27, Bass 5-64, Wysong 1-7.  
Defense: Burgers three tackles, Scholten seven tackles and one sack, Vis eight tackles, Wysong three tackles and one sack, Fuerstenberg two tackles, Bass seven tackles, Maassen four tackles, Logan Leuthold 12 tackles, Dylan Forshey six tackles, Garrett Raymon seven tackles.

# Adrian fields incomplete teams at Iowa meet

By John Rittenhouse

The Adrian cross country program was represented by incomplete teams at the Sioux Center Warrior Invitational Thursday at The Ridge in Sioux Center, Iowa.

Four Dragon girls ran in the

varsity race and one AHS boy mixed it up against varsity competition.

Moriah Bullerman led the AHS girls by placing ninth with a time of 21:25.

Halle Heitkamp (49<sup>th</sup> in 24:31), Gracia Elias (52<sup>nd</sup> in

24:39) and Courtney Penning (68<sup>th</sup> in 28:54) also represented the Dragons in the varsity race.

Brady Henning, Adrian's lone entry in the boys' varsity race, placed 12<sup>th</sup> with a time of 17:52.

Here is a look at the rest of

Adrian's meet results.

**Junior varsity girls:** Hiltyn Heitkamp, 12<sup>th</sup>, 27:11; Annika Elias, 16<sup>th</sup>, 27:58.

**Junior varsity boys:** Caleb Hornstein, 52<sup>nd</sup>, 23:02; Colton Lynn, 61<sup>st</sup>, 23:50.

**Junior high girls:** Morgan Penning, second, 14:27; Abbey Leopold, 45<sup>th</sup>, 21:14.

**Junior high boys:** Josh Barr, 61<sup>st</sup>, 18:37.

# Fall race caps season at Rock County Speedway

By John Rittenhouse

Patience was necessary for racing fans and drivers wanting to be a part of the Papik Motors Rock County Fall Speedway Race in Luverne over the weekend.

After Saturday afternoon's rain forced the event to be postponed that evening, the event took place Sunday with an afternoon start that stretched into the evening.

The show featured five classes of completion including front-wheel drive, pure stock, hobby stock, B modified and micro sprints.

Success proved to be elusive for most Rock County entries, but area drivers did post two heat wins and one feature victory during the event.

The day turned into a good one for Luverne's Josh Uhl,

who won the 12-lap feature race in the front-wheel drive division after placing fourth in the lone heat race for the class.

St. James driver Austin Fredrick won the front-wheel drive heat race.

Two Rock County drivers raced well in the pure stock competition.

Luverne's Seth Miller won the first heat race before finishing ninth in the 12-lap feature.

Steve Walker, another Luverne entry, placed second to Miller in the first heat race and went on to place third in the feature event.

Rushmore's Eric Gaul won the second heat race and the feature title in the pure stock division, while Sioux Falls' driver Nick Brady placed second to Gaul in the feature.

Sioux Falls drivers stole the show in the hobby stock class.

Dustin and Jason Bradley won the first and second heat races respectively.

Lee Schlumbohm, another Sioux Falls' entry, won the 12-lap feature event.

Bradley finished second and Sioux Falls driver Jim Ross placed third in the hobby stock feature.

Another South Dakota driver controlled the B-modified competition, which included one heat and one feature race.

Trevor Tesch, of Lennox, won the heat race and the 12-lap feature.

Sioux Falls driver Zac Puner and Apple Valley's Andrew Hulstein placed second and third respectively in the B-modified feature.

With Chuck Brennan, of

Badlands Motor Speedway, putting up \$10,000 bonus money, the stakes were high in the micro sprint class Sunday.

Luverne's Shane Fick, who had won eight straight feature races entering Sunday's outing, put himself in position to make it nine consecutive wins after he won the second of three heat races in the class.

Unfortunately for Fick, his winning streak came to an end when he placed fourth in the 25-lap feature race.

Jody Rosenboom, Rock Rapids, Iowa, took top honors in the feature race.

Hartford, South Dakota, driver Jacob Hughes won the third race and placed second to Rosenboom in the feature, while Lakefield's Skylar Prochaska won the first race and placed third in the feature.

**Is Your Family Eligible?**  
EARLY LEARNING SCHOLARSHIPS ARE AVAILABLE!  
Scholarship eligibility is based on family income.  
Contact—  
Karen DeBoer, Region 8 Child Care Aware  
Southwestern Minnesota Opportunity Council, Inc.  
1106 3rd Avenue, PO Box 787  
Worthington, MN 56187  
**1-800-658-2444**  
Email: [kdeboer@smoc.us](mailto:kdeboer@smoc.us)  
To learn more go to—  
[education.state.mn.us](http://education.state.mn.us)  
or [parentaware.org](http://parentaware.org)

**WE'RE JUST AS RELIABLE, WITHOUT THE DROOL.**  
In the face of a heating and cooling emergency, consider us your new best friend. We'll go to great lengths to make you comfortable and happy.  
**RECEIVE UP TO \$1,600 IN REBATES WITH 9.99% FINANCING\***  
with the purchase of a qualifying Lennox® home comfort system.  
**OR**  
**UP TO 60 MONTHS NO INTEREST FINANCING\*\***

**Learn to Skate Hockey**  
**Figure Skating Lessons**  
**Learn to Skate**  
ONLINE REGISTRATION  
OPEN NOW!  
Come to our Registration Open House for assistance with online registration, skate and check out our equipment swap on **October 10th from 5:30-7:30pm**  
Offering basic learn to skate classes as well as learn to skate hockey and figure skating classes. Classes are 30 minutes long with class times beginning at 5pm, 5:30pm and 6pm for Learn to Skate and Learn to Skate Hockey. More advanced figure skating lessons and skating team practices are from 6:30pm-9:30pm. Classes run for 14 weeks!!!  
**Classes Begin Monday, October 24th**  
[www.bluemoundfigureskating.com](http://www.bluemoundfigureskating.com)  
For more info, call: Cathy 712-540-9021 Katie 507-227-1999

**McClure**  
PLUMBING, HEATING, AIR CONDITIONING, INC.  
Luverne, MN  
**(507) 449-2828**  
**412 S. Kniss, Luverne, MN 56156**  
Offer expires 11/25/2016.  
\*On a qualifying system purchase. Lennox system rebate offers range from \$275 to \$1,600. Some restrictions apply. One offer available per qualifying purchase. See your local Lennox Dealer or [www.lennox.com](http://www.lennox.com) for details. \*\*See your local Lennox Dealer or [www.lennox.com](http://www.lennox.com) for details. Some restrictions apply.  
©2016 Lennox Industries Inc. Lennox Dealers include independently owned and operated businesses.

**FALL SENIOR ATHLETES OF THE WEEK**

**Layne Curtis**  
Sport: Football  
Position: WR and S/LB  
Parents: Jim and Michelle Curtis  
Favorite Subject: Math  
Extra-Curricular Activities: Lifting, Skiing, Tubing  
Future Plans: Becoming an Engineer

**Carter Riphagen**  
Sport: Cross Country  
Parents: Stacy and David Riphagen  
Favorite Subject: History  
Extra-Curricular Activities: Cross Country, Golf, BPA  
Future Plans: Attend college and figure out more of what I want to do

**Katie Kracht**  
Sport: Volleyball  
Position: Libero  
Parents: Pete and Tammy Kracht  
Favorite Subject: Biology  
Extra-Curricular Activities: Volleyball and Softball  
Future Plans: Occupational Therapy at USD

**Hanna Honerman**  
Sport: Volleyball  
Position: Right Side  
Parents: Sam and Curt Honerman  
Favorite Subject: Lunch :) or Art  
Extra-Curricular Activities: Softball, Sunday School Teacher, Peer Helping, Volleyball  
Future Plans: Go to college for Special Education teaching and own a lot of dogs.

**pepsi**  
Pipestone Pepsi | 1809 Forman Drive, Pipestone, MN 56164



## Arrows, Cards to tackle cancer

Luverne and Pipestone Area high schools will participate in the 2016 Tackle Cancer Fundraising Event the night of Friday, Sept. 30, when the two teams play each other for the Battle Axe trophy.

Fans and players are asked to support the teams and donate to the cause as the buckets are passed around at the game. Game time is 7 p.m. in Pipestone.

Tackle Cancer is supported by the Minnesota Football Coaches Association to fund cancer research at the University of Minnesota or other cancer research projects within the state.

## H-BC/continued from page 2B

ace serve by Courtney Kruger to open a commanding 20-7 advantage.

The Patriots eventually won the set by 12 points (25-13) when Ashley Esselink recorded a match-ending tip.

Lingen (13 kills), Van Roekel (eight kills and eight blocks) and Fick (seven kills) helped the Patriots control the net during the match.

Avery Wysong and Mekayla Kolbrek added 17 and 14 set assists respectively to the winning cause.

### H-BC 3, HL-O 2

The Patriots locked up their third conference win of the season by collecting a five-set win over the Wildcats in Okabena Thursday.

The match was competitive from beginning to end, but H-BC withstood a late push by H-L-O to leave the venue with a victory.



H-BC gained the upper hand early by posting 25-19 and 25-20 victories in the first two sets.

HL-O, however, answered the challenge to knot the match at 2-2 with 25-23 and 25-18 wins in the third and fourth sets.

H-BC bounced back in the final set to prevail 15-7 and notch its fourth league win of the fall.

Lingen (16 kills and four ace

serve) and Van Roekel (13 kills and eight blocks) led the Patriots to victory.

Fick (14 kills), Esselink (seven blocks), Wysong (19 set assists) and Kolbrek (17 set assists) also played key roles in the win.

### H-BC 3, SWC 0

The Patriots opened their stretch of playing key RRC matches by sweeping the E-Gals in Edgerton Sept. 20.

In a match between a pair of 2-0 league teams, H-BC walked away with a 3-0 victory.

H-BC outscored the hosts 75-53 in a 3-0 victory, securing 25-21, 25-20 and 25-12 set wins.

Van Roekel (nine kills and eight blocks) and Lingen (eight kills and three blocks) helped the Patriots control the net against SWC.

Wysong charted 14 ace sets and Kruger nine digs to the winning cause.



John Rittenhouse photo/0929 tennis 7

Sierra Wieneke (above) teamed up with Shelbie Nath at second doubles to post a win against RWV Sept. 20 in Luverne.

## Wrap/continued from page 4B

Cardinals Kalya Rud and Natasha Ihone topped Kristen Houg and Camren Skyberg by 6-2 and 6-3 tallies at first doubles, while Sierra Wieneke and Shelbie Nath registered 6-2 and 6-4 wins over Aspen Schelhaas and Paige Morgan at No. 3.

### Luverne 6, RWV 1

The Cardinals picked up their third conference win of the season when they bested Redwood Valley by five points Sept. 20 in Luverne.

LHS swept RWV in singles play and took two of three doubles matches to win the match handily.

"The singles players really kept up their intensity from the St. James match (a home loss on Sept. 19) and played well," said coach Antoine.

"We keep improving our shot-making and shot-building with every match. Our doubles teams also played hard and well, losing a tiebreaker and winning a tiebreaker. We are putting more shots away at the net, which is something we have worked on all season

long."

Luverne's singles wins all came in straight sets.

Pierce (6-1, 6-0 over Janessa Whitaker at No. 1), Cunningham (6-1, 6-2 over Gabby Houle at No. 2), Severson (6-0, 6-2 over Ashlyn Doering at No. 3) and Robinson (6-2, 6-1 at No. 4) prevailed in singles.

Cardinals' Wieneke and Nath notched a pair of 6-3 wins against Kaitlin Steff and Bailey Klause at second doubles, but Elise Jarchow and Bartels needed to work harder to dispose of Tess Munshower and Amanda Tersteeg at third doubles.

Bartels and Jarchow posted a 6-2 win in the opening set and prevailed 7-6 in the second set after prevailing 10-7 in the tiebreaker.

RWV's Jillian Reed and Lauren Kodet lost 6-3 in the first set to Rud and Thone at first doubles.

The RWV Cardinals won 7-6 (12-10 in the tiebreaker) in the second set and secured a 10-6 victory in the super tiebreaker that settled the third set.

## Henning posts Adrian's top effort in Madison

By John Rittenhouse

The Adrian cross country program sent runners to Madison Sept. 20 for the Lac qui Parle Valley Invitational.

Adrian came up one runner short to field complete varsity teams for the meet, but eight Dragons did compete at the

varsity level.

Brady Henning turned in the top effort by the Dragons when he finished sixth at the varsity level with a time of 17:53.

Christian Weidert placed 35<sup>th</sup> in 20:14, Caleb Hornstein 53<sup>rd</sup> in 23:12 and Colton Lynn 57<sup>th</sup> in 25:28.

Morgan Penning led the charge for the Adrian girls by finishing 26<sup>th</sup> in 23:54.

Gracia Elias placed 39<sup>th</sup> in 25:01, Courtney Penning 53<sup>rd</sup> in 20:05 and Annika Elias 55<sup>th</sup> in 30:22.

Here is a look at the rest of Adrian's results from the meet.

**Junior high girls:** Hiltyn Heitkamp, 12<sup>th</sup>, 12:59; Jasmine Kohorst, 14<sup>th</sup>, 13:19; Karis Barr, 21<sup>st</sup>, 14:04; Ashlee Christians, 22<sup>nd</sup>, 14:11; Abbey Leopold, 29<sup>th</sup>, 16:18. Adrian scored 45 points to place second in a three-team field led by Lac qui Parle Valley-Dawson-Boyd (18 points).

**Junior high boys:** Brody Loosbrock, 12<sup>th</sup>, 11:33; Josh Barr, 51<sup>st</sup>, 16:24.

## Panthers drop home matches to HL-O, Hendricks

By John Rittenhouse

The Ellsworth volleyball team came up empty in two attempts to register its first victory of the season last week.

The Panthers lost a three-set Red Rock Conference match to Heron Lake-Okabena in

Ellsworth Sept. 20 before falling in three sets to Hendricks in Ellsworth Friday.

EHS, 0-14 overall, hosts Adrian Thursday.

### Hendricks 3, EHS 0

The Panthers were unable to

knock off the Grizzlies when the teams squared off in a rare Friday match in Ellsworth.

EHS put up a good fight before falling 25-21 in the first set. Hendricks completed the sweep by registering 25-15 and 25-16 victories in the final two sets.

Hannah Kramer (five kills and one ace serve) and Devin Dreesen (four kills and one block) led EHS statistically.

Lizzie Chapas served one ace for the Panthers, while Ashlyn Meester and Kallie Chapa chipped in one kill each.

### HL-O 3, Ellsworth 0

The Panthers couldn't stage

an upset when they entertained the Wildcats for a Red Rock Conference match in Ellsworth Sept. 20.

HL-O entered the match unbeaten in league play and remained that way by saddling the Panthers with a 3-0 setback.

The Wildcats outscored Ellsworth 75-23 during a sweep that included 25-9, 25-6 and 25-8 set tallies.

Dreesen recorded three kills and served one ace for the Panthers.

Meester charted a pair of ace tips and Sierra Smith delivered one kill for the Ellsworth Panthers.



**PANCAKE BREAKFAST**

**Sunday, Oct. 2**  
9am - 1pm

Adults \$6.00 12 & Under \$3.00

**American Legion**  
Luverne  
124 W Main

**65<sup>TH</sup> ANNUAL ROCK COUNTY DFL**

**Chuckwagon Feed**

Tuesday, October 4  
Serving from 5:30 p.m. to 7:30 p.m.

★ Through the regular buffet ★

**Luverne Pizza Ranch**  
(Paid for by Rock County DFL Committee. Carole Ryden, Treasurer, Luverne)

**Octoberfest**

**BLOCK PARTY**  
Saturday  
OCTOBER 1  
3 - 8 PM

Food by the Howling Dog  
Music by Elliot Graber

509 E Main, Luverne

**8th Annual 2016 Rock River PUMPKIN FESTIVAL**

A great place for families to come and have fun!

**Saturday, October 1** Main events start at 11:00 a.m.

Located in Edgerton, MN at Southwest MN Christian School, 550 Elizabeth St.

11:00 a.m. - 4:00 p.m. **Vendor Fair & Farmer's Market**

8:00 am - 5K **Pumpkin Fun Run/Walk**

11:00 am - grades 5-8 **Amazing Pumpkin Race**

2:00 pm - Carved or Decorated **Pumpkin Contest**

2:00 pm - **Fastest Pumpkin Pie Eater Contest - All Ages**

4:00 pm - **Pumpkin Launching Contest**

5:00 Westband for ages 2 and older covers most activities

**Corn Maze**

**MEDALLION HUNT**

11:00 am - 4:00 pm - **Paintball Game Available**

Please join us for

**St. Mary's Fall Fest**  
Sunday, October 2 | 4-7 p.m.

St. Mary's Redder Hall, Ellsworth, MN

Serving a delicious roast beef dinner!

- Quilt Raffle
- Grocery Cart Raffle
- Country Store & more!

5th grade to Adult - \$8.50  
Age 5 to 4th grade - \$4.00  
Age 4 and under - free

Dinner takeout call 967-2273

**LUVERNE FIRE DEPARTMENT**

will be out selling tickets for their annual benefit drive.

**MONDAY, OCTOBER 3**

ANNUAL BENEFIT SHOWTIMES

**Wednesday, Oct. 19**  
7 pm

**Thursday, Oct. 20**  
4 pm & 7 pm

**Friday, Oct. 21**  
4 pm, 7 pm & 9 pm

AT THE PALACE  
**The BFG**

**Don't Wait CHECK the date!**

REPLACE SMOKE ALARMS EVERY 10 YEARS

FIRE PREVENTION WEEK  
OCTOBER 9-15, 2016

firepreventionweek.org

**Open house**  
LUVERNE FIRE HALL

**Thursday, Oct. 13**  
6-8 p.m.

MEET MEMBERS OF THE LFD  
FREE HOT DOGS, BEANS, CHIPS

DEMONSTRATIONS  
SMOKE DETECTORS  
HOME SPRINKLER DEMO AT 7PM

**Come join us!**

**FALL FESTIVAL SOUP SUPPER**

**SUNDAY, OCTOBER 9 | 5-7 P.M.**

Zion Lutheran Church  
Hardwick, MN

handicap seating is available

Free will offering to benefit local and regional missions

Support provided by Thrivent Financial Action Team

125th Anniversary Cookbooks will be available for \$16. Zion Quilters will have a selection of quilts available for purchase.

serving homemade soups  
chicken noodle, chili, cheesy broccoli, vegetable beef & tea rolls, pies, desserts

AS SEEN ON "AMERICA'S GOT TALENT"

**TODD OLIVER & friends**

SAT, OCT 1 • 7:30pm | SUN, OCT 2 • 2:00pm

\$25 for Adults • \$15 for Students

Tickets available at the Palace Theatre Box Office  
507.283.4339 • 104 East Main Street

**PALACE THEATRE**

Get ready because you're going to meet the funniest character on 4 legs living (the talking dog) and virtuoso Todd Oliver will talk up a storm. The duo has been a feature on Late Show With David Letterman, The Tonight Show With Jay Leno, The Late Late Show with Craig Ferguson, The Today Show, a couple episodes of Walker Texas Ranger, and in 2012 they were a semi-finalist on America's Got Talent! Get your tickets today!

WWW.PALACETHEATRE.US • WWW.FACEBOOK.COM/PALACETHEATRELU



# Star Herald CHURCH

Page 6B September 29, 2016

**St. Catherine Catholic Church**  
203 E. Brown St., Luverne  
St. Catherine Ph.: 283-8502

**St. Mary Catholic Church, Ellsworth**  
Thursday, Sept. 29: 9 a.m. St. Catherine Communion Service.  
Friday, Sept. 30: 9:30 a.m. Mass at Parkview Manor. Saturday,  
Oct. 1: 5:30 p.m. Mass at St. Catherine. Sunday, Oct. 2: 8:30  
a.m. Mass at St. Mary. 10:30 a.m. Mass at St. Catherine. 4-7  
p.m. St. Mary's Fall Dinner. Tuesday, Oct. 4: 9 a.m. Mass at  
St. Catherine. Wednesday, Oct. 5: 10 a.m. Mass at Mary Jane  
Brown Home. Thursday, Oct. 6: 9 a.m. Mass at St. Catherine.

**Luverne Christian Reformed Church**  
605 N. Estey St., Luverne  
Office Ph. 283-8482; Prayer Line Ph. 449-5982  
www.luverncrc.com — luverncrc@gmail.com

**Roger Sparks, Pastor**  
Sunday, Oct. 2: 9:30 a.m. Worship. 6:30 p.m. Worship.

**First Baptist Church**  
1033 N. Jackson St., P.O. Box 975, Luverne  
Ph. 283-4091; email: fbcluv@iw.net — www.fbcluverne.org

**Dick Lauger, Pastor**  
Thursday, Sept. 29: 7 p.m. Worship on Channel 3. Friday, Sept.  
30: 6 a.m. Men's Bible Study at First Baptist Church. Sunday,  
Oct. 2: 9:15 a.m. Sunday School. 10:30 a.m. Morning Service  
with Communion. 6 p.m. Evening Service. Tuesday, Oct. 4: 7  
a.m. Men's Bible Study at First Baptist Church. 4 p.m. Women's  
Bible Study at First Baptist Church. Wednesday, Oct. 5: 6:55  
p.m. Awana. Thursday, Oct. 6: noon Senior Focus potluck. 7  
p.m. Worship Service on Channel 3.

**Grace Lutheran Church**  
500 N. Kniss Ave., Luverne  
Ph. 283-4431; www.graceluverne.org — Nichols-glc@live.com

**Ron Nichols, Pastor; Cole McCormick, Interim Pastor**  
Thursday, Sept. 29: 8:30 a.m. MIA. 9:30 a.m. Coffee. 4:30  
p.m. Book Study. 7:30-8:30 p.m. Kids Against Hunger. Friday,  
Sept. 30: 6:30 p.m. Worship on Channel 3. Saturday, Oct. 1:  
5:30 p.m. Worship with Communion. Sunday, Oct. 2: 8:15 a.m.  
Worship with Communion; Radio Broadcast. 9:30 a.m. Staff  
Appreciation with coffee and cake in Fellowship Hall; Sunday  
School and Adult Study. 10:45 a.m. Worship with Communion.

**Bethany Lutheran Church**  
720 N. Kniss Ave., Luverne  
Ph. 507-283-4571 or 507-449-0291 or 605-215-9834  
pastorpalmquist67@yahoo.com

**Andrew Palmquist, Pastor**  
Thursday, Sept. 29: 5 p.m. Worship on Channel 3. Sunday,  
Oct. 2: 9 a.m. Sunday School. 9:15 a.m. Bible Class. 10:15  
a.m. Worship. Wednesday, Oct. 5: 9:30 a.m. Rebekah Circle.

**American Reformed Church**  
304 N. Fairview Dr., Luverne  
Ph. 283-8600; email: office@arcluverne.org  
Thursday, Sept. 29: Adult Discipleship team meeting. Friday,  
Sept. 30: 6:30 a.m. Community Men's Bible Study. Sunday,  
Oct. 2: 9:30 a.m. Worship. 10:50 a.m. Family Education. 7 p.m.  
Senior RCYF. Monday, Oct. 3: 7 p.m. Esther Circle. Tuesday,  
Oct. 4: 10 a.m. Staff meeting. 1:30 p.m. Rebecca Circle. 6:45  
p.m. Bible Study Fellowship. 7 p.m. Ridder Team. Wednesday,  
Oct. 5: 5:30 p.m. Midweek Meal. 6:30 p.m. Pioneer Clubs/YEL.  
6:45 p.m. Rachel Circle. 7 p.m. Abide Praise Team. 8 p.m.  
Choir. Thursday, Oct. 6: 6:30 p.m. Ladies Night Out.

**Bethlehem Lutheran Church**  
Pastor Maggie Berndt-Dreyer  
112 N. Main St., Hills  
Ph. 962-3270

e-mail: bethlehemluth@alliance.com.net  
Sunday, Oct. 2: 9 a.m. Worship at Tuff Chapel. 9:30 a.m. Sunday  
School. 10:30 a.m. Communion at Bethlehem. Tuesday, Oct.  
4: 2:30 p.m. Bible Study at Tuff Home. 3:15 p.m. Bible Study  
at the Village. Wednesday, Oct. 5: 9 a.m. Quilting. 6:30 p.m.  
8<sup>th</sup> and 9<sup>th</sup> grade Confirmation. 7:30 p.m. 9<sup>th</sup>-12<sup>th</sup> grade Youth  
Group. 8 p.m. Church Council.

**Holy Trinity Episcopal Church**  
220 N. Cedar St., Luverne

Sundays: 10:30 a.m. Worship Service; Fellowship after service.  
Wednesdays: 6:30 p.m. Bible Study. Our Mission Statement:  
Historic Holy Trinity strives to serve God and our community  
through worship, stewardship and friendship. Contact Emily  
Lodine Overgaard at (507) 227-6175 for information. Come  
as you are — our leader wore sandals.

**First Assembly of God Church**  
1075 110<sup>th</sup> Ave., 2 miles west of Luverne on County Rd.  
4

**Kenneth and Gloria Kashner, Pastors**  
Sundays: 9 a.m. Sunday School. 10 a.m. Morning Worship.  
6:30 p.m. School of the Holy Spirit. Wednesdays: 7 p.m. Kids  
Connection; Men's Bible Study with Pastor Ken; Women's  
Bible Study with Pastor Gloria.

**United Methodist Church**  
109 N. Freeman Ave., Luverne  
Ph. 283-4529; email: luverneumc@iw.net

Thursday, Sept. 29: 1-3 p.m. Food Shelf open; Kids Against  
Hunger packing event. Friday, Sept. 30: Kids Against Hunger  
Packing Event. Saturday, Oct. 1: 8 p.m. AA Meeting in the Up-  
per Room. Sunday, Oct. 2: 9 a.m. Traditional Worship Service.  
10 a.m. Coffee Hour; Adult Sunday School. 11 a.m. Come as  
you are Worship Service. 6-7:30 p.m. Youth Group. Thursday,  
Oct. 6: 1-3 p.m. Food Shelf open.

**First Presbyterian Church**  
302 Central Lane, Luverne  
Ph. 283-4787; email: Firstpc@iw.net — www.fpcluverne.com50

Sunday, Oct. 2: 9 a.m. Sunday School. 10:15 a.m. Service  
of Worship.

**St. John Lutheran Church**  
803 N. Cedar St., Luverne

Ph. 283-2316, Dial-A-Devotion Ph. 283-4005  
email: stjohnl@iw.net — www.stjohnlutheranluverne.org

Thursday, Sept. 29: Kids Against Hunger. Saturday, Oct. 1:  
5:30 p.m. Worship. Sunday, Oct. 2: LWML Sunday. 9 a.m.  
Worship. 10:15 a.m. Christian Education Hour. 11:15 a.m.  
Junior Choir. Wednesday, Oct. 5: 9:30 a.m. Bible Study. 6:30  
p.m. Catechism; Midweek Dinner. 7 p.m. Senior Choir; KFC;  
High School Bible Class.

**Living Rock Church**  
500 E. Main St., Luverne

Ph. 449-0057; www.livingrockswmn.org  
**Billy Skaggs, Pastor**  
Sundays: 10:30 a.m. Worship; Kids Rock Children's Ministry.  
6 p.m. Youth Ministry. Life groups meet throughout the week.

**New Life Celebration Church**  
211 E. Main St., Luverne

Ph. 449-6522; email: newlifecelbration@gmail.com  
Sundays: 9:30 a.m. Worship in the lower level meeting room  
of the Creeger building. Every third Thursday: 5 p.m. Food  
give-away. Bible Study groups meet at various times and days.

**Zion Evangelical Lutheran Church**  
305 E. 2<sup>nd</sup> St., P.O. Box 36, Hardwick

Ph. 669-2855; email: revmumme@gmail.com — www.zionlutheranhardwick.com  
**Mark W. Mumme, Pastor**  
Thursday, Sept. 29: 3:30 p.m. Zion Worship on Channel  
3. Friday, Sept. 30: 3:30 p.m. Zion Worship on Channel 3.  
Sunday, Oct. 2: 9 a.m. Sunday School; Adult Bible Study. 10  
a.m. Mentor Program. 10:30 a.m. Worship with Communion.  
11:30 a.m. Potluck Dinner by Service Group 2. Monday, Oct.  
3: 1 p.m. Quilting. Wednesday, Oct. 5: 7 p.m. LWML meeting.  
8 p.m. Bible Study. Thursday, Oct. 6: 3:30 p.m. Zion Worship  
on Channel 3.

**Ben Clare United Methodist Church**  
26762 Ben Clare Ave., Valley Springs, S.D.

igtwlb@WOW.net  
**Bill Bates, Pastor**  
Sundays: 9 a.m. Worship; 10 a.m. Fellowship; 10:30 a.m.  
Sunday School for all ages.

## Clearer, purer prism

"Let there be no filthiness nor foolish talk nor crude joking, but instead let there be thanksgiving." Ephesians 5:4



### BUILT ON A ROCK

By Martha Fick, Good Samaritan, Mission Effectiveness

Several years ago a Sunday school student gave me a beautiful rain-drop-shaped prism. I hung it on a clear thread in front of a south window, not sure what to expect. The following morning I was delighted to find sparkling little rainbows dancing around my living room.

The clearer and purer a prism is, the brighter the colors are when the sun shines through it. In our lives, also, God calls us to put aside coarseness and foolishness. He wants us

to be pure and clear so that He can shine through us, creating rainbows of light in His name.

I need You, Lord to walk with me,  
To hold me tight through all life's storms,  
To shelter me and give me strength,  
To keep me safe from harm.

But more than that, I want You, Lord,  
To live Your life through me.  
So like a clear and crystal prism,  
I would like to be.

**First Lutheran Church**  
300 Maple St., Valley Springs, S.D.  
Ph. (605) 757-6662

Sunday, Oct. 2: 9 a.m. Worship with Holy Communion. 10 a.m. Sunday School. Wednesday, Oct. 5: 7 p.m. Confirmation; Choir Practice.

**Palisade Lutheran Church**  
211 121<sup>st</sup> St., Garretson, S.D.

Ph. (507) 597-6257 — firstpalisade@alliancecom.net  
Sunday, Oct. 2: 9:15 a.m. Sunday School. 10:30 a.m. Worship with Holy Communion. Wednesday, Oct. 5: 7 p.m. Confirmation at First Lutheran. Thursday, Oct. 6: 8 p.m. Church Council meeting.

**First Presbyterian Church**  
201 S. 3<sup>rd</sup> St. P.O. Box 73, Beaver Creek

Ph. (507) 673-2428 — lori.1stpc@centurylink.net  
Worship Leaders Michael Blank and Andy Anderson  
Sundays: 9:30 a.m. Worship; 9:45 a.m. Sunday School. Debrah Circle — Third Wednesday of the month.

**Magnolia United Methodist Church**  
501 E. Luverne St., Magnolia

Church Ph. 283-9698; cell 227-7821  
admagumc@frontier.net — www.adrianmagnoliaumc.com  
**Kristi Franken, Pastor**  
Sundays: 10:30 a.m. Worship. Sunday School starts fall 2016.

**Steen Reformed Church**  
112 W. Church Ave., Steen

Ph. 855-2336  
**Jeremy Wiersema, Pastor**  
Sundays: 9:30 a.m. Worship. Sunday School follows Worship. 6:30 p.m. RCYF.

**Hills United Reformed Church**  
410 S. Central Ave., Hills

Office Ph. 962-3254  
hillsurc@alliancecom.net  
**Alan Camarigg, Pastor**  
Sundays: 9:30 a.m. and 6 p.m. Worship Services.

These Weekly Church Page Messages are contributed to God's Work through the Church and by these concerned and responsible citizens & businesses:

Call Rick or Chantel to place your ad!

283-2333

**Tuff Memorial Home, Retirement Apartments & Tuff Village**  
"A Home Where Residents SMILE"  
Hills, Minnesota  
Phone 507-962-3275

**Papik Motors**  
LUVERNE, MINN.  
I-90 in Luverne, MN  
507-283-9171 • 1-800-634-7701

Read us online!  
**Rock County STAR HERALD**  
www.Star-Herald.com

Trust In Him



**Pizza Ranch**  
110 E. Main, Luverne, MN  
Phone 507-283-2379

**MANLEY**  
TIRE & OIL SERVICE  
Manley Minnesota  
1-800-615-3704  
Open six days a week - Closed on Sundays  
To God be the Glory.

**CWG**  
Business Insurance.  
Tri-State Region Period!

**Rock County STAR HERALD**  
Luverne, MN • 507-283-2333

**Bruce's Electric**  
residential, commercial and farm wiring  
**Bruce Umbreit**  
Electrical Contractor  
1200 Linden, Luverne, MN 56156  
Phone 507-283-4917

**Luverne ANNOUNCER**

To Advertise  
Call  
283-2333

**Buffalo Ridge INSURANCE**  
507-283-2381 www.buffaloridgeins.com E-mail: info@buffaloridgeins.com

**McClure Electric**  
Alan M. Aanenson, owner  
Farm, Home & Commercial Wiring  
Luverne, MN Phone 507-283-4716

**First Farmers & Merchants**  
303 E. Main, Luverne, MN  
507-283-4463  
www.fmbank.com  
We believe in you.™  
Member FDIC. And the community.

**HILLS STAINLESS STEEL & EQUIPMENT CO., INC.**  
506 W. Koehn, P.O. Box 987, Luverne, MN  
PHONE 507-283-4405  
Church is Important - Please Attend!

**MINNWEST BANK**  
• 116 E. Main St., Luverne 507-283-2366  
• S. Hwy. 75, Luverne 507-283-9131  
• Main St., Beaver Creek 507-673-2333  
Member FDIC www.minnwestbank.com

**HARTQUIST**  
Funeral and Cremation Services  
- ENGETREBSON CHAPEL -  
507-283-2777  
www.HartquistFuneral.com  
"Let our family help your family"  
Serving the Luverne and Surrounding Communities

**Tollefson Publishing**  
117 W. Main  
Luverne, MN 56156  
507-283-2333



# Star Herald PUBLIC NOTICES

## Mortgage foreclosure sale set for Oct. 27

NOTICE OF MORTGAGE FORECLOSURE SALE  
THE RIGHT TO VERIFICATION OF THE DEBT AND IDENTITY OF THE ORIGINAL CREDITOR WITHIN THE TIME PROVIDED BY LAW IS NOT AFFECTED BY THIS ACTION.

NOTICE IS HEREBY GIVEN, that default has occurred in the conditions of the following described mortgage:

DATE OF MORTGAGE: July 2, 2009  
ORIGINAL PRINCIPAL AMOUNT OF MORTGAGE: \$54,863.43  
MORTGAGOR(S): Jacob Ely Wright and Amber Rae Wright, a married couple  
MORTGAGEE: CitiFinancial Services, Inc.  
LENDER OR BROKER AND MORTGAGE ORIGINATOR STATED ON THE MORTGAGE: CitiFinancial Services, Inc.  
SERVICER: CitiFinancial Services, Inc.  
DATE AND PLACE OF FILING: Filed July 7, 2009, Rock County Recorder, as Document Number 171680  
LEGAL DESCRIPTION OF PROPERTY:

The North Fifty-eight (N. 58) feet of Lot Three (3) in Block Two (2) in Kniss Park Addition to the Village (now City) of Luverne

PROPERTY ADDRESS: 120 Donaldson St S, Luverne, MN 56156  
PROPERTY IDENTIFICATION NUMBER: 20-0852-000  
COUNTY IN WHICH PROPERTY IS LOCATED: Rock  
THE AMOUNT CLAIMED TO BE DUE ON THE MORTGAGE ON THE DATE OF THE NOTICE: \$82,100.08

THAT all pre-foreclosure requirements have been complied with; that no action or proceeding has been instituted at law or otherwise to recover the debt secured by said mortgage, or any part thereof;

PURSUANT, to the power of sale contained in said mortgage, the above described property will be sold by the Sheriff of said county as follows:

DATE AND TIME OF SALE: October 27, 2016, 10:00am  
PLACE OF SALE: Sheriff's Main Office, West Side Sheriff Dept, Front Step, Luverne, MN 56156

to pay the debt secured by said mortgage and taxes, if any, on said premises and the costs and disbursements, including attorneys fees allowed by law, subject to redemption within 6 months from the date of said sale by the mortgagor(s) the personal representatives or assigns.

TIME AND DATE TO VACATE PROPERTY: If the real estate is an owner-occupied, single-family dwelling, unless otherwise provided by law, the date on or before which the mortgagor(s) must vacate the property, if the mortgage is not reinstated under section 580.30 or the property is not redeemed under section 580.23, is 11:59 p.m. on April 27, 2017, or the next business day if April 27, 2017 falls on a Saturday, Sunday or legal holiday.

"THE TIME ALLOWED BY LAW FOR REDEMPTION BY THE MORTGAGOR, THE MORTGAGOR'S PERSONAL REPRESENTATIVES OR ASSIGNS, MAY BE REDUCED TO FIVE WEEKS IF A JUDICIAL ORDER IS ENTERED UNDER MINNESOTA STATUTES SECTION 582.032 DETERMINING, AMONG OTHER THINGS, THAT THE MORTGAGED PREMISES ARE IMPROVED WITH A RESIDENTIAL DWELLING OF LESS THAN FIVE UNITS, ARE NOT PROPERTY USED FOR AGRICULTURAL PRODUCTION, AND ARE ABANDONED.

Dated: September 1, 2016

CITIFINANCIAL SERVICES, INC.

Mortgagee

SHAPIRO & ZIELKE, LLP

BY \_\_\_\_\_

Lawrence P. Zielke - 152559

Diane F. Mach - 273788

Melissa L. B. Porter - 0337778

Randolph W. Dawdy - 2160X

Gary J. Evers - 0134764

Tracy J. Halliday - 034610X

Attorneys for Mortgagee

12550 West Frontage Road, Suite 200

Burnsville, MN 55337

(952) 831-4060

THIS IS A COMMUNICATION FROM A DEBT COLLECTOR

(09-08, 09-15, 09-22, 09-29, 10-06, 10-13)

## Mortgage foreclosure sale set for Nov. 3

NOTICE OF MORTGAGE FORECLOSURE SALE  
THE RIGHT TO VERIFICATION OF THE DEBT AND IDENTITY OF THE ORIGINAL CREDITOR WITHIN THE TIME PROVIDED BY LAW IS NOT AFFECTED BY THIS ACTION.

NOTICE IS HEREBY GIVEN: That default has occurred in the conditions of the following described mortgage:

MORTGAGOR(S): Darryl R. Boltjes and Marti K. Boltjes, husband and wife  
MORTGAGEE: Mortgage Electronic Registration Systems, Inc., a Delaware corporation as nominee for Aegis Lending Corporation, a Delaware corporation  
ASSIGNMENTS OF MORTGAGE: Assigned to: Deutsche Bank National Trust Company, as Trustee for Soundview Home Loan Trust 2006-3, Asset-Backed Certificates, Series 2006-3 by assignment recorded on March 5, 2014 as Document Number 183568 in the Office of the County Recorder of Rock County, Minnesota.  
ORIGINAL PRINCIPAL AMOUNT OF MORTGAGE: \$76,500.00  
DATE OF MORTGAGE: April 11, 2006  
DATE AND PLACE OF FILING: Recorded on September 25, 2006 as Document Number 164883 in the Office of the County Recorder of Rock County, Minnesota.  
THE AMOUNT CLAIMED TO BE DUE ON THE MORTGAGE ON THE DATE OF THE NOTICE: \$84,388.10  
LEGAL DESCRIPTION OF PROPERTY: The South Seventy Feet of the West One Hundred Thirty-five Feet of the North Half of Lot Five (5) in Block Three (3) of PJ Kniss Addition to the City of Luverne, Minnesota, subject to easements, if any, Rock County, Minnesota.  
STREET ADDRESS OF PROPERTY: 114 N DONALDSON ST, LUVERNE, MN 56156-1418  
COUNTY IN WHICH PROPERTY IS LOCATED: Rock County, Minnesota  
TRANSACTION AGENT: Mortgage Electronic Registration Systems, Inc.  
NAME OF MORTGAGE ORIGINATOR: Aegis Lending Corporation, a Delaware corporation  
RESIDENTIAL SERVICER: Wells Fargo Bank, N.A.  
TAX PARCEL IDENTIFICATION NUMBER: 20-0970-000  
TRANSACTION AGENT'S MORTGAGE IDENTIFICATION NUMBER: 100055140023452580

THAT no action or proceeding has been instituted at law to recover the debt then remaining secured by such mortgage, or any part thereof, or, if the action or proceeding has been instituted, that the same has been discontinued, or that an execution upon the judgment rendered therein has been returned unsatisfied, in whole or in part.

PURSUANT, to the power of sale contained in said mortgage, the above described property will be sold by the Sheriff of said county as follows:

DATE AND TIME OF SALE: November 3, 2016 at 10:00 AM  
PLACE OF SALE: Rock County Sheriff's Office, in the Lobby of the Rock County Law Enforcement Center, 213 East Luverne, Luverne, Minnesota.

to pay the debt then secured by said mortgage and taxes, if any actually paid by the mortgagee, on the premises and the costs and disbursements allowed by law. The time allowed by law for redemption by said mortgagor(s), their personal representatives or assigns is six (6) months from the date of sale.

TIME AND DATE TO VACATE PROPERTY: Unless said mortgage is reinstated or the property redeemed, or unless the time for redemption is reduced by judicial order, you must vacate the premises by 11:59 p.m. on May 3, 2017.

THE TIME ALLOWED BY LAW FOR REDEMPTION BY THE MORTGAGOR, THE MORTGAGOR'S PERSONAL REPRESENTATIVES OR ASSIGNS, MAY BE REDUCED TO FIVE WEEKS IF A JUDICIAL ORDER IS ENTERED UNDER MINNESOTA STATUTES, SECTION 582.032, DETERMINING, AMONG OTHER THINGS, THAT THE MORTGAGED PREMISES ARE IMPROVED WITH A RESIDENTIAL DWELLING OF LESS THAN FIVE UNITS, ARE NOT PROPERTY USED IN AGRICULTURAL PRODUCTION, AND ARE ABANDONED.

MORTGAGOR(S) RELEASED FROM FINANCIAL OBLIGATION ON MORTGAGE: None  
Dated: August 30, 2016

DEUTSCHE BANK NATIONAL TRUST COMPANY, AS TRUSTEE FOR SOUNDVIEW HOME LOAN TRUST 2006-3, ASSET-BACKED CERTIFICATES,

THIS IS A COMMUNICATION FROM A DEBT COLLECTOR

(09-08, 09-15, 09-22, 09-29, 10-06, 10-13)

THE ACADEMY LAW GROUP, P.A.

By: /s/

Rebecca F. Schiller, Esq.

N. Kibongni Fondungallah, Esq.

\*Curt N. Trisko, Esq.\*

Samuel R. Coleman, Esq.

Attorneys for Mortgagee

The Academy Professional Building

25 North Dale Street

St. Paul, MN 55102

(651) 209-9760

(15-2085-FC01)

THIS IS A COMMUNICATION FROM A DEBT COLLECTOR.

(09-08, 09-15, 09-22, 09-29, 10-06, 10-13)

## Mortgage foreclosure sale set for Nov. 3

NOTICE OF MORTGAGE FORECLOSURE SALE  
NOTICE IS HEREBY GIVEN that default has occurred in the conditions of the following described mortgage:

DATE OF MORTGAGE: November 20, 2002  
ORIGINAL PRINCIPAL AMOUNT OF MORTGAGE: \$55,000.00  
MORTGAGOR(S): Pamela K. Duerr, a married woman, as her sole and separate property  
MORTGAGEE: U.S. Bank National Association ND  
DATE AND PLACE OF RECORDING:  
Recorded: November 21, 2002 Rock County Recorder  
Document Number: 154376  
Transaction Agent: Not Applicable  
Transaction Agent Mortgage Identification Number: Not Applicable  
Lender or Broker: U.S. Bank National Association ND  
Residential Mortgage Servicer: U.S. Bank National Association  
Mortgage Originator: Not Applicable  
COUNTY IN WHICH PROPERTY IS LOCATED: Rock  
Property Address: 210 S Donaldson St, Luverne, MN 56156-1709  
Tax Parcel ID Number: 20-1286-000  
LEGAL DESCRIPTION OF PROPERTY: The S. 50 feet of Lots 1 and 2 and the S. 50 feet of the E. 7 feet of Lot 3 all in Block 4 in Randall and Holbert's Addition to the City of Luverne, Rock County, Minnesota  
AMOUNT DUE AND CLAIMED TO BE DUE AS OF DATE OF NOTICE: \$49,166.26  
THAT all pre-foreclosure requirements have been complied with; that no action or proceeding has been instituted at law or otherwise to recover the debt secured by said mortgage, or any part thereof;

PURSUANT to the power of sale contained in said mortgage, the above-described property will be sold by the Sheriff of said county as follows:

DATE AND TIME OF SALE: November 03, 2016 at 10:00 AM  
PLACE OF SALE: Law Enforcement Center, Lobby, 1000 N. Blue Mound Ave., Luverne, Minnesota

to pay the debt secured by said mortgage and taxes, if any, on said premises and the costs and disbursements, including attorney fees allowed by law, subject to redemption within six (6) months from the date of said sale by the mortgagor(s), their personal representatives or assigns.

If the Mortgage is not reinstated under Minn. Stat. §580.30 or the property is not redeemed under Minn. Stat. §580.23, the Mortgagor must vacate the property on or before 11:59 p.m. on May 03, 2017, or the next business day if May 03, 2017 falls on a Saturday, Sunday or legal holiday.

Mortgagor(s) released from financial obligation: NONE  
THIS COMMUNICATION IS FROM A DEBT COLLECTOR ATTEMPTING TO COLLECT A DEBT. ANY INFORMATION OBTAINED WILL BE USED FOR THAT PURPOSE.

THE RIGHT TO VERIFICATION OF THE DEBT AND IDENTITY OF THE ORIGINAL CREDITOR WITHIN THE TIME PROVIDED BY LAW IS NOT AFFECTED BY THIS ACTION.

THE TIME ALLOWED BY LAW FOR REDEMPTION BY THE MORTGAGOR, THE MORTGAGOR'S PERSONAL REPRESENTATIVES OR ASSIGNS, MAY BE REDUCED TO FIVE WEEKS IF A JUDICIAL ORDER IS ENTERED UNDER MINNESOTA STATUTES, SECTION 582.032, DETERMINING, AMONG OTHER THINGS, THAT THE MORTGAGED PREMISES ARE IMPROVED WITH A RESIDENTIAL DWELLING OF LESS THAN FIVE UNITS, ARE NOT PROPERTY USED IN AGRICULTURAL PRODUCTION, AND ARE ABANDONED.

DATED: August 01, 2016  
MORTGAGEE: U.S. Bank, National Association successor by merger to U.S. Bank National Association ND  
Wilford, Geske & Cook P.A.  
Attorneys for Mortgagee  
7616 Currell Blvd Ste 200  
Woodbury, MN 55125-2296  
(651) 209-3300  
File Number: 036131F01

(09-15, 09-22, 09-29, 10-6, 10-13, 10-20)

## Xcell Towers II, LLC public notice

Xcell Towers II, LLC is proposing to construct a 125-foot AGS Monopole Telecommunications Tower.

Anticipated lighting application is medium intensity dual red/white strobes. The Site Location is at 401 S. Cedar Street in Luverne, Rock County, Minnesota 56156 (43-39-3.80 N, 96-12-18.43 W). The Federal Communications Commission (FCC) Antenna Structure Registration (ASR, Form 854) filing number is A1050081.

ENVIRONMENTAL EFFECTS - Interested persons may review the application (www.fcc.gov/asr/applications) by entering the filing number. Environmental concerns may be raised by filing a Request for Environmental Review (www.fcc.gov/asr/environmentalrequest) and online filings are strongly encouraged. The mailing address to file a paper copy is: FCC Requests for Environmental Review, Attn: Ramon Williams, 445 12th Street SW, Washington, DC 20554. HISTORIC PROPERTIES EFFECTS- Public comments regarding potential effects on historic properties may be submitted within 30 days from the date of this publication to: Terracon Consultants, ATTN: J. Shepard, 3535 Hoffman Road East, White Bear Lake, MN 55110, (651)770-1500 or jennifer.shepard@terracon.com.

(09-29)

## First Class Flooring assumes name

MINNESOTA SECRETARY OF STATE  
CERTIFICATE OF ASSUMED NAME  
MINNESOTA STATUTES, CHAPTER 333

The filing of an assumed name does not provide a user with exclusive rights to that name. The filing is required for consumer protection in order to enable consumers to be able to identify the true ownership of a business.

ASSUMED NAME: **First Class Flooring**  
PRINCIPAL PLACE OF BUSINESS:  
**606 West Hatting Street, Luverne, MN 56156 USA**

NAMEHOLDER(S):  
Name: **Chris W. Sopkowiak**  
Address: **606 West Hatting Street, Luverne, MN 56156**

By typing my name, I, the undersigned, certify that I am signing this document as the person whose signature is required, or as agent of the persons(s) whose signature would be required who has authorized me to sign this document on his/her behalf, or in both capacities. I further certify that I have completed all required fields, and that the information in this document is true and correct and in compliance with the applicable chapter of Minnesota Statutes. I understand that by signing this document I am subject to the penalties of perjury as set forth in Section 609.48 as if I had signed this certificate under oath.

Signature : /s/ **Christopher Sopkowiak** DATE: 8-21-16  
MAILING ADDRESS: **None Provided**  
EMAIL FOR OFFICIAL NOTICES: **wildgreenthumb@gmail.com**

List a name and daytime phone number of a person who can be contacted about this form:

(09-22, 09-29)

SERIES 2006-3

Mortgagee

## Schomacker Flooring and Appliance assumes name

MINNESOTA SECRETARY OF STATE  
CERTIFICATE OF ASSUMED NAME  
MINNESOTA STATUTES, CHAPTER 333

The filing of an assumed name does not provide a user with exclusive rights to that name. The filing is required for consumer protection in order to enable consumers to be able to identify the true ownership of a business.

ASSUMED NAME: **Schomacker Flooring and Appliance**  
PRINCIPAL PLACE OF BUSINESS:  
**202 East Main Street, Luverne, MN 56156**

NAMEHOLDER(S):  
Name: **Schomacker's Office Cleaning, LLC.**  
Address: **126 West Main Street, Luverne, MN 56156**

By typing my name, I, the undersigned, certify that I am signing this document as the person whose signature is required, or as agent of the persons(s) whose signature would be required who has authorized me to sign this document on his/her behalf, or in both capacities. I further certify that I have completed all required fields, and that the information in this document is true and correct and in compliance with the applicable chapter of Minnesota Statutes. I understand that by signing this document I am subject to the penalties of perjury as set forth in Section 609.48 as if I had signed this certificate under oath.

Signature : /s/ **Joe Schomacker** DATE: 7-18-16  
**Joe Schomacker, CFO**

MAILING ADDRESS:  
EMAIL FOR OFFICIAL NOTICES: **schomackerclean@gmail.com**  
List a name and daytime phone number of a person who can be contacted about this form:

Joe Schomacker 507-227-2183. (09-29, 10-06)

## ISD #2184 School Board meets Aug 25

MINUTES OF THE SCHOOL BOARD MEETING OF INDEPENDENT SCHOOL DISTRICT NO. 2184, ROCK COUNTY, LUVERNE, MINNESOTA.

A regular meeting of the Board of Education, ISD #2184, was held in the District Office on August 25, 2016, at 7:00 p.m.

The following members were present: Katie Baustian, Jodi Bosch, Colleen Deutsch, Eric Hartman, Dave Riphagen, and Reva Sehr. Absent: Shelley Sandbulte. Also present: Craig Oftungdahl, Marlene Mann, Ryan Johnson, Stacy Gillette, Jodi Rops, and Mavis Fodness – Rock County Star Herald.

Chairperson Baustian called the meeting to order. It was noted there is an addendum to the agenda. Motion made by Riphagen, second by Deutsch, to approve the agenda with addendum. Motion unanimously carried.

Administrative reports were given.

Motion made by Sehr, second by Bosch, to approve the July 21, 2016, School Board minutes as presented. Motion unanimously carried. Motion made by Deutsch, second by Hartman, to accept the listing of policies to be removed and renumbered as recommended by the Policy Committee. Motion unanimously carried.

Business Manager Marlene Mann reviewed the school district bills. Motion made by Hartman, second by Riphagen, to approve payment of the bills as presented in the amount of \$725,433.46. Motion unanimously carried.

Motion made by Deutsch, second by Bosch, to receive the Student Activity report showing the balances as of July 31, 2016. Motion unanimously carried.

The following fuel quotations were received on July 18, 2016:

	Expressway	I-90 Fuel Services
Unleaded Gasoline	-10.1 cents/gallon	-12.0 cents/gallon
Ethanol	-10.1 cents/gallon	-12.0 cents/gallon
#1 Diesel	-10.1 cents/gallon	No Quote Provided
#2 Diesel	-10.1 cents/gallon	-12.0 cents/gallon
50/50 Blend Diesel	10.1 cents/gallon	-12.0 cents/gallon

It was noted that all products must be available for quote to be considered. Motion made by Deutsch, second by Hartman, to accept the quote from Expressway-Luverne BP. Motion unanimously carried.

Motion made by Bosch, second by Riphagen, to approve the request from Tri-State Band Festival Committee for facilities use on September 24, 2016. Motion unanimously carried.

Motion by Riphagen, second by Hartman, to change the date of Baccalaureate from May 14 to May 21, 2017. Motion unanimously carried.

Motion made by Deutsch, second by Sehr, to change the December 15 school board meeting time from 7:00 p.m. to 5:30 p.m. This will accommodate the band concert that evening at 7:30 p.m. The truth-in-taxation hearing will still be held at 7:00 p.m. on December 15. Motion unanimously carried.

The first reading of Policy 721 – Uniform Grant Guidance Policy Regarding Federal Revenue Sources was held. A second reading and approval will be on the agenda for the September 22 school board meeting.

Motion made by Deutsch, second by Hartman, to accept the retirement of Gladys Siebenahler, two-hour food service worker, effective August 16, 2016. Motion unanimously carried.

Motion made by Bosch, second by Sehr, to approve a request from Brooke VanEssen for half-time maternity leave from August 29 to September 30, 2016. Motion unanimously carried.

Motion made by Deutsch, second by Hartman, to accept the resignation of Jessica DeKam, paraprofessional, effective July 26, 2016. Motion unanimously carried.

Motion made by Sehr, second by Riphagen, to accept the resignation of Stacy Ommen, paraprofessional, effective August 23, 2016. Motion unanimously carried.

Motion made by Hartman, second by Sehr, to approve the hiring of Jodi Nelson as cross country assistant coach. Motion unanimously carried.

Motion made by Hartman, second by Deutsch, to approve the hiring of Greg Antoine as head girls tennis coach. Motion unanimously carried.

Motion made by Deutsch, second by Sehr, to approve Josh Crabtree as volunteer football coach. Motion unanimously carried.

Motion made by Sehr, second by Bosch, to approve Dan Serie as volunteer football coach. Motion unanimously carried.

Motion made by Deutsch, second by Bosch, to approve the hiring of Phil Paquette as head boys hockey coach. Motion unanimously carried.

Motion made by Hartman, second by Deutsch, to approve the hiring of Jill Arp as full-time special education paraprofessional effective August 24, 2016. Motion unanimously carried.

Motion made by Riphagen, second by Sehr, to approve the hiring of Ashley Monier as full-time special education paraprofessional effective August 24, 2016. Motion unanimously carried.

Motion made by Deutsch, second by Hartman, to approve the hiring of Angela Sneller as part-time early childhood paraprofessional effective August 24, 2016. Motion unanimously carried.

Motion made by Deutsch, second by Bosch, to accept the resignation of Jacqueline Altman, special education paraprofessional, effective August 22, 2016. Motion unanimously carried.

Motion made by Bosch, second by Sehr, to approve the hiring of Christie Mounce as part-time special education paraprofessional effective August 25, 2016. Motion unanimously carried.

Motion made by Hartman, second by Riphagen, to approve the hiring of Kairie Franken as part-time paraprofessional effective August 25, 2016. Motion unanimously carried.

Motion made by Deutsch, second by Sehr, to approve the hiring of Jessica Buntjer as part-time paraprofessional effective August 25, 2016. Motion unanimously carried.

Committee reports were given. The Policy Committee met on Tuesday. It was decided the school board members would not have a table at the Open Houses next week.

The upcoming meeting dates were reviewed. Motion made by Riphagen, second by Hartman, at 8:10 p.m. to move into executive session to conduct the Superintendent's Performance Appraisal. Motion made by Deutsch, second by Hartman, to re-open the school board meeting after completion of the performance appraisal. Motion unanimously carried.

Motion made by Bosch, second by Deutsch, to adjourn the meeting. Motion unanimously carried.

Dated: August 25, 2016

Shelley Sandbulte, Clerk (09-29)



# Star Herald PUBLIC NOTICES

# Star Herald CLASSIFIEDS

## ISD #2184 School Board meets Sept. 9

MINUTES OF THE SPECIAL SCHOOL BOARD MEETING OF INDEPENDENT SCHOOL DISTRICT NO. 2184, ROCK COUNTY, LUVERNE, MINNESOTA.

A special meeting of the Board of Education, ISD #2184, was held in the District Office on September 9, 2016, at 7:30 a.m.

The following members were present: Katie Baustian, Jodi Bosch, Eric Hartman, and Dave Riphagen. Absent: Colleen Deutsch, Shelley Sandbulte, and Reva Sehr. Also present: Craig Otte Dahl, Marlene Mann, Stacy Gillette, and Mavis Fodness - Rock County Star Herald.

Chairperson Baustian called the meeting to order. Motion made by Riphagen, second by Bosch, to approve the agenda as presented. Motion unanimously carried.

Motion made by Hartman, second by Riphagen, to accept the retirement of Jane Cote, elementary teacher, effective September 1, 2016. This position will be advertised and the person hired will be working in fourth grade helping with reading and math and will also be working with RTI. Motion unanimously carried.

Motion made by Hartman, second by Bosch, to adjourn the meeting. Motion unanimously carried.

Dated: September 9, 2016

Shelley Sandbulte, Clerk  
(09-29)

# Star Herald CLASSIFIEDS

### EMPLOYMENT

Great Plains Processing in Luverne is hiring for multiple positions. Great pay and benefits! Please visit our website [www.gpp-co.com](http://www.gpp-co.com) for details and to apply. (9.25-9.29)

Nursing Assistant: Parkview Manor has openings for part-time nursing aides with benefits to include: health insurance, public retirement plan, and holiday pay. New wages \$11.90/ hr. or more with experience. \$2000 scholarships available for students. Will provide training or pay for experience. Contact Darnell Krull, 308 Sherman Ave. Ellsworth, MN 56129 or call 507-967-2388. (tc)

### EMPLOYMENT

Help Wanted: Full-time mechanic needed to work on C.I.H equipment. Competitive salary based on experience. 401K and Health Insurance offered. Contact Curt or Dean at Domeyer Implement 507-967-2468. (9.18-10.6)

Registered Nurse/LPN- Parkview Manor, a municipal skilled nursing facility is accepting applications for a part-time charge nurse position. Wages commensurate with experience. \$2000 scholarship available for students. Benefits include vacation, holiday, and PERA retirement plan. Contact Darnell Krull 308 Sherman Ave., Ellsworth, Mn 56129 or call 507-967-2482. (tc)

### EMPLOYMENT

Client Community Services, Inc. has several openings for Direct Support Professionals/ Caregivers at its two homes in Luverne. DSPs provide support and training to consumers such as meal planning, cooking, cleaning, shopping, laundry, money management, social interactions, personal cares, etc. They also assist the consumers in planning and carrying out individual or small group social and recreational activities. DSPs must have good verbal and written communication skills along with basic math and computer skills. A working knowledge of the English language is required for effective communication and documentation. Various shifts and hours are available with a starting wage of \$10.00 per hour. Interested applicants may apply online at [www.clientcommunityservices.org](http://www.clientcommunityservices.org) or request an application by calling 507-376-3171, extension 2. CCSI is an Equal Opportunity/Affirmative Action Employer. (9.15-10-3)

### EMPLOYMENT

Smith Trucking is now taking applications for an Information Technology Manager. Please visit our website at [www.smithtruckinginc.com](http://www.smithtruckinginc.com) for a detailed job description and to fill out an application. Resumes can be emailed to [mike.smith@smithtruckinginc.com](mailto:mike.smith@smithtruckinginc.com). (9.11-9.29)

New Prairie Insulation of Beaver Creek has a full-time Insulation Installer position available. Monday through Friday, health insurance, vacation, holiday, bonus opportunities. Will train. Call Dean at 605-376-3006 or 507-673-2548. (tc)

### CARDS OF THANKS

How blessed we are to live in a caring and loving community. No words could ever express my appreciation for the love and support you have shown me and my family after the passing of my brother, Jim. I'm deeply grateful for all your prayers, kind words, support, and memorials. A special thank you to the residents and staff at the Minnesota Veterans Home for all your kindness and loving care given to Jim's mother, Evelyn, during this difficult time. We are deeply grateful  
**Joyce Thode and  
The family of Jim Thode**  
(9.29-10.2)

### CHILD CARE

Daycare: Licensed daycare has openings available for ages ranging from 12 months to 11 years of age. Please call 507-920-8449 for more details. (tc)

### WINDOWS

We custom build and install Energy Star Therm-O-Loc Windows. Call Mike at Adrian Glass for a free in-home demonstration and estimate. 101 E. Pearl, Adrian, MN 56110. 507-483-2228 or 605-770-7677 or email [mbyler@santel.net](mailto:mbyler@santel.net). (tc)

### WANTED

Land Wanted: Looking to rent farm land. Any piece big or small, give me a call. 507-290-2000. (9.22.10.9)

Buying old cars, trucks, scrap iron, old farm equipment, tin, wire. Ericksen Salvage, Charlie Ericksen, 605-254-4654. (tc)

### AGRICULTURAL

We have several crews of rock pickers and we also do any type of farm work. Call 712-943-2084. (tc)

### FOR SALE

1063 C.I.H Corn Head, good condition. Also, 1020 20ft Bean Head and trailer. Call 507-227-3128. (9.25-9.29)

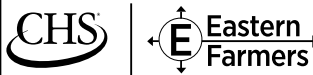
New Yamaha Alto Saxophone: \$1,150.00 Model 23, closeout. Call Larry Paulson at 507-442-4981. (9.25-9.29)

### SON-D-FARMS ADRIAN

is hiring General Farm, Hog, Field Work, Truck Driver, Maintenance person, Farm Shop Mechanic & Farm Delivery Person. Experience wanted but willing to train. PTO benefits. Call (507) 483-2245, 370-1590 or e-mail [office@sondfarms.com](mailto:office@sondfarms.com)

### HELP WANTED

**CHS Eastern Farmers Luverne is looking for a full-time semi-feed truck driver (JOB #8112BR). Must have a CDL and clean driving record. CHS Eastern Farmers offers a competitive pay and benefits package. Apply online at [www.chsinc.com](http://www.chsinc.com) click on careers.**



**TUFF MEMORIAL HOME "A Home With a Heart"**  
The Tuff Memorial Home is currently hiring for a part-time evening CNA. 2-10 pm. Experience preferred. If interested, contact Alex Dysthe at 507-962-3275. or email [adysthe@tuffmemorialhome.com](mailto:adysthe@tuffmemorialhome.com)  
Competitive Wage  
Full Benefits  
Pension Plan  
Friendly Atmosphere

**The Family of  
Nina Mae Eernisse**  
(9.29-10.06)

Thank you to everyone who came and helped me celebrate my 100th birthday. Also, thank you to the people who sent me birthday cards. More thanks to all the people who performed in the program and to Larry Nath who set up the video displays. Being party of my big day was greatly appreciated.  
**Ruth Ashby**  
(9.25-9.29)

### EMPLOYMENT

### EMPLOYMENT

*Join our team!*

WE HAVE OPENINGS NEAR EDGERTON, MN  
**FILTER COMPLIANCE TECHNICIANS**

Responsibilities include:

- Ensure implementation of biosecurity protocols
- Maintain the security for the structural areas of the farm
- Complete daily audits of the fans. Record back drafts and repair if necessary
- Keep all chutes in proper working order
- Monitor inventory and supplies in biosecure areas

Filter Compliance Technicians should have good attention to detail with mechanical aptitude. **We will train the right person.**

**PIPESTONE**  
SYSTEM

**We offer an excellent compensation & benefit package:**

- ▶ HEALTH & DENTAL COVERAGE ▶ Competitive Wages - based on position & experience
- ▶ 401k Retirement Plan ▶ Life and Long Term Disability Insurance ▶ Paid Holidays
- ▶ PTO ▶ Scholarship Programs ▶ Production Bonus ▶ Pork Program ▶ Flex Plan

**If you or someone you know is interested in these opportunities, apply today online at [www.pipestonesystem.com](http://www.pipestonesystem.com) or call Human Resources at 507.825.2532**  
Pre-employment drug testing & background screening required

## EMPLOYMENT NOTICE ROCK/NOBLES COMMUNITY CORRECTIONS CORRECTIONS AGENT

The Rock County Administrator's Office is currently accepting applications for Corrections Agent for the Rock/Nobles Community Corrections organization until **October 07, 2016**. The purpose of this position is to conduct assessment and investigative services and to supervise and counsel individuals referred through the criminal justice system. Duties include but are not limited to: conducting investigations; conducting assessments; evaluating clients; supervising probationers; monitoring compliance with court order; attending client related meetings; making recommendations to the court; and performing additional tasks as assigned by the Director. This is a full time and benefit eligible position with a hourly range of \$21.52 minimum and maximum of \$30.63; the position will be located in the Worthington office. Qualifications:

Four year Bachelor's degree in Criminal Justice, Sociology, Psychology, Social Work, or related field required, with a minimum of one year experience as an adult and/or juvenile agent. Must possess a valid driver's license.

A full job description, application or general questions for this position can be obtained at <http://www.co.rock.mn.us/employment.html>; or by email: [susan.skattum@co.rock.mn.us](mailto:susan.skattum@co.rock.mn.us) or contact the Rock County Administrator's office at 507-283-5065. Office hours are from 8:00 a.m. to 5:00 p.m., Monday through Friday.

*An Equal Opportunity Employer*

**NOW HIRING AT**

**Luverne**  
Area Aquatics & Fitness

**GREAT FLEXIBLE HOURS!**  
Part-time shift supervisor positions and lifeguard positions are open!

The City of Luverne is accepting applications for these great year-round opportunities! The job is fun, challenging, and works with a wide variety of ages. No dull routine-wonderful chance to work in a fitness environment. Strong swimming ability desired. Competitive pay. For further information, contact LAAF Manager Sam Honerman at (507) 449-5036. Anyone needing reasonable accommodations or interpreter contact the City Clerk's office. Applications accepted until positions filled. Applications available at LAAF, online at [www.cityofluverne.org](http://www.cityofluverne.org) or from City Clerk Jessica Mead, City Offices, 305 E Luverne St., Luverne MN 56156 (507) 449-9898.  
EOE

**CLASS A CDL DRIVERS  
\$7500 SIGN ON BONUS**

**PERFORMANCE FOOD GROUP CURRENTLY HAS AN OPENING FOR A CDL CLASS A DRIVER - LUVERNE MN**

This position include a very competitive, daily guarantee wage along with many benefits and bonus opportunities. Our drivers make 54k+! Great benefit package and many opportunities!

**Must possess valid Class A CDL**

- Monday through Friday routes/ 4 day work week - home every night!
- Paid Training
- \$500.00 Quarterly Safety bonus
- Quarterly fuel incentive & Annual Safe Driving Bonus
- Tractors are 2012 and newer day cabs
- Paid vacation, sick time & holiday pay after six months!
- \$1500 Driver Referral Bonus
- Medical, Dental, Life Insurance, paid Short Term & Long Term Disability
- 401k profit sharing
- Onsite maintenance facility with 24/7 fleet repair coverage

**PERFORMANCE FOODSERVICE**

Apply online at [www.pfgc.com](http://www.pfgc.com) for questions please call 320-393-5210



**McAN**

Minnesota Classified Advertising Network



### HELP WANTED

**ROSEBUD FARMERS UNION**  
Gregory, SD is seeking a qualified General Manager. This is a three location energy, agronomy, propane, and retail store cooperative with sales of \$20 million. Successful agricultural business management experience desired. To Apply: <http://tinyurl.com/jkg93v9> For more info contact David.lemmon@chsinc.com or call 320/219-0270

**Classified Advertising that is Easy!**

THE MINNESOTA CLASSIFIED AD NETWORK

Make an impact with your advertising dollar with classified advertising that reaches over 3 million readers!

Your newspaper representative can provide complete details.

The 2x4 Network is a program of the MNA, phone 800-279-2979

### FURNITURE

**THAT FURNITURE OUTLET (A+ BBB RATING)**  
Minnesota's #1 furniture outlet. Statewide delivery available or bring your own truck or trailer. 7427 Washington Ave. South, Edina. [www.thatfurniture.net](http://www.thatfurniture.net) 952/808-8876

### HEALTH & FITNESS

**ALL BACK PAIN & SCOLIOSIS** are caused by injury created "Hidden Tension". See pictures of my spectacularly wonderful results with my child: [www.ScoliosisReversal.org](http://www.ScoliosisReversal.org)

### MISCELLANEOUS

**STOP OVERPAYING FOR YOUR PRESCRIPTIONS!**  
Save up to 93%! Call our licensed Canadian and International pharmacy service to compare prices and get \$15.00 off your first prescription and free shipping. Call 800/259-1096

### MISCELLANEOUS

**DISH NETWORK**  
New flex pack! Select the channels you want. Free installation. Free Streaming. \$39.99/24 months. Add internet for \$14.95 a month. Call 800/297-8706

### LUNG CANCER?

60 or older? If so, you and your family may be entitled to a significant cash award. Call 800/918-0376 to learn more. No risk. No money out of pocket.

### GOT KNEE PAIN?

Back Pain? Shoulder Pain? Get a pain-relieving brace - little or no cost to you. Medicare patients call health hotline now! 800/755-6807

### DONATE YOUR CAR

truck or boat to Heritage For The Blind. Free 3-day vacation, tax deductible, free towing, all paperwork taken care of 800/439-1735



**EMPLOYMENT**

## NEED EXTRA CASH?

Luverne Announcer Carriers needed for

### LUVERNE

Call **283-2333** or stop in at the Announcer office (ask for Jenn)

**MISCELLANEOUS**

HAVE A UNIQUE SERVICE OR BUSINESS? Get the word out to over 1.4 million households. Call WIDE AREA CLASSIFIEDS today, 507-359-7326. (tc)

**SERVICES**

Piano Tuning Service: \$73.00 No travel charge. Call Larry Paulson at 507-442-4981. (9.25-9.29)



**REAL ESTATE**

For Sale: Two-bedroom home with attached big single garage, new garage door, new shingles, permanent siding, carpeted, custom made kitchen cabinets, and all appliances. Call 507-227-7215. James Ouverson 720 Britz Drive Luverne, MN 56156. (9.22-10.9)

**RENTALS**

For Rent: 46' x 56' insulated new building, three overhead doors sized 10' x 10'. Located on southwest corner of Luverne. Room for an office if needed. Call 507-920-6424. (tc)

**RENTALS**

## Oakwood Apartments

401 Oak St., Ellsworth

• 1 Bedroom Unit Available  
Unit Available Water, Sewer & Garbage Included.  
Rent Based on Income  
**AVAILABLE IMMEDIATELY**  
Van Binsbergen & Associates, Inc.  
320-269-6640 ext. 22  
Equal Housing Opportunity

www.vanblle.com



**EMPLOYMENT**

### TOTAL PROCESS RELIABILITY COORDINATOR

Duininck, Inc., is seeking a Total Process Reliability (TPR) Coordinator to facilitate TPR and continuous improvement activities within the organization. Responsibilities include providing subject matter expertise on TPR, helping develop process flow diagrams, supporting action plans, communicating with teams and steering council, identifying continuous improvement opportunities, and facilitating/monitoring completion of assignments needed to meet established goals.

Must be motivated, high energy team player with strong communication, coaching, and time-management skills. Proficient in MS Office software. Experience with a computerized maintenance management system (CMMS) or similar software and training in total process reliability a plus, but training will be provided.

Must have high school diploma & 5 years of experience with continuous improvement processes, or an equivalent combination of education/experience in related fields.

We are proud to be a third generation family-owned company. Our employees are the key to our success and we encourage all qualified candidates to apply, including women, minorities, veterans and individuals with disabilities. Duinick, Inc. offers a competitive benefits package.



FIND MORE INFORMATION AND APPLY ONLINE AT:  
**www.Duinick.com**  
**320-978-6011**

## Director/Manager

Jasper Sunrise Village, an assisted living facility, is accepting applications for a full-time position immediately.

- Prefer, but not mandatory, some medical knowledge
- Basic computer skills
- Need to be able to effectively communicate both verbally and written
- Customer service skills with staff, residents and families
- Applicant must be a self-starter, organized, able to problem-solve and adjust to changing conditions
- Competitive wage and benefits

Applications for employment available at Jasper Sunrise Village, 100 Robert Avenue, Jasper, MN, or contact nurse Rita DeWitte at 507-348-8620

## The Need For Quality Child Care Providers Is Growing!

If you are interested in becoming a licensed family child care provider, give us a call:

REGION 8  
CHILD CARE AWARE  
Southwestern MN Opportunity Council, Inc.  
507-376-4195 OR 800-568-2444



We'll help you care for children for a living!

## MN VETERANS HOME

### CERTIFIED NURSING ASSISTANTS

Join an organization dedicated to serving Minnesota's Veterans and their families. Positions are eligible for comprehensive health insurance coverage for the entire family for less than \$200 per month. Additional benefits include dental insurance, life insurance, pension plan, paid vacation, sick leave and holiday pay. Salary range: \$13.95/hour - \$22.13 per hour plus \$0.65/hour shift differential. Will reimburse training costs for eligible applicants. **Apply online:**

<https://mn.gov/mmb/careers/> or call 507-283-6211 for additional information.

AA/EOE



**EMPLOYMENT**

### SKILLED MASONRY WORKERS NEEDED

Double J Concrete and Masonry needs Masons, Finishers and skilled Laborers to join a growing company specializing in commercial concrete projects. Self motivated individuals interested in year around work should apply at [www.doublejasonry.com](http://www.doublejasonry.com). Benefits include retirement and insurance. Applicant must be reliable, energetic and have means of transportation. Having a CDL or equipment operators experience is a definite plus. Experience with concrete preferred, but not necessary, will train the right candidates. We are a drug free workplace.



APPLY ONLINE AT [www.doublejasonry.com](http://www.doublejasonry.com) OR CALL 320-354-4945

**EMPLOYMENT**

### ALLIED UNIVERSAL

GET HIRED TODAY  
Weekly pay - Paid training!



Security professionals for businesses in Luverne, MN.  
Part Time positions working 24 hours per week.  
Fridays-Sundays.  
No experience required.

Call 952 881 5865

Or apply online: [www.Aus.com/careers.com/universal](http://www.Aus.com/careers.com/universal)

Come & Be Part of a Great Team!



Part-Time Swine Technicians WANTED  
In the Lismore, MN Area

Apply @

[www.pipestonesystem.com](http://www.pipestonesystem.com)

Call 866-918-7378 to explore your future with us.  
No experience necessary - we will train  
Pre-employment drug testing and background screening required

## PIPESTONE

SYSTEM

## Luverne Public Schools

is seeking applications for a full-time Elementary Education teacher for the 2016-17 school year. Must have MN teaching license. Reading literacy emphasis preferred.

Send letter of application (available at [www.isd2184.net](http://www.isd2184.net)), resume, college transcript and three letters of reference to Superintendent of Schools, 709 North Kniss, Luverne, MN 56156  
Open until filled. EOE



## HELP WANTED

FULL TIME - Reconditioning Manager •Competitive Pay/Benefits  
Contact Stewart Kreun at DeBoer Chevrolet Company 507-442-4341



Certified Service Experts

[www.deboerchev.com](http://www.deboerchev.com)  
507-442-4341 or 1-800-658-2395  
Wed. Nights til 8 p.m. & Sat. 8-12 Open Mon-Fri 8-5

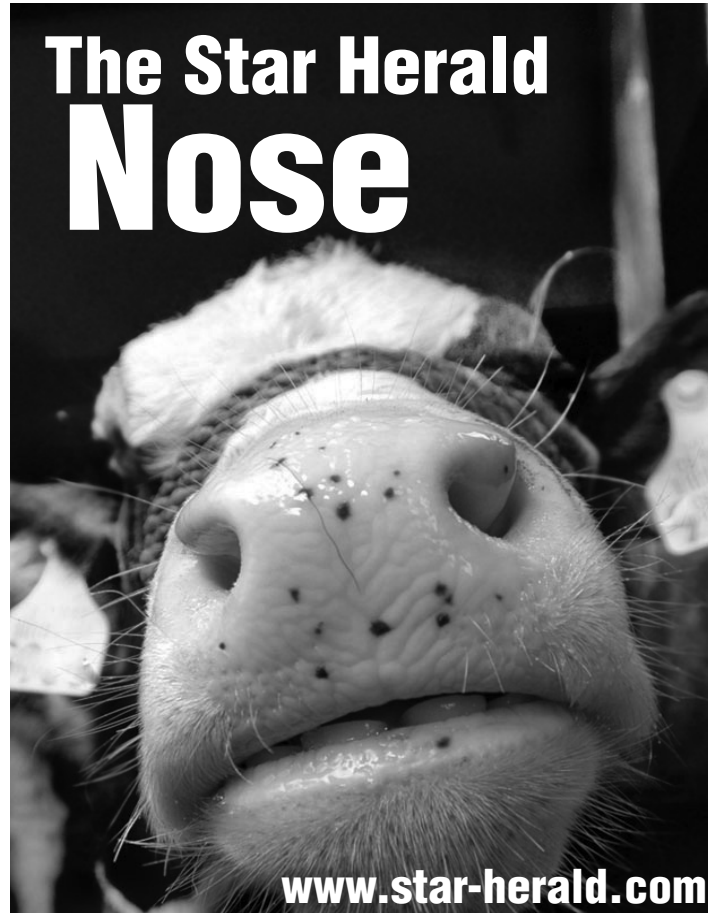


Read The Luverne Announcer Online Edition

Star-Herald.com

Updated every Saturday

## The Star Herald Nose



[www.star-herald.com](http://www.star-herald.com)



# 32<sup>nd</sup> Annual Banquet

## Thursday, October 6

Blue Mound Banquet Center, 401 W Hatting, Luverne, MN

### ROCK COUNTY

### Crowing Time

5:30 - 7:00 p.m.

Meal 7:00 p.m.



## PHEASANTS

*forever*

Funds raised in Rock County over the past 32 years have gone to...

- Food plots - 1,286.5 acres .... 103 Food Plots - \$967.50
- Tree planting - 103 acres... 43 Tree plantings - \$27,533
- Nesting cover - 367 acres... 18 Nesting cover sites - \$5,739
- Land acquisitions - 1,054.9 acres - \$1,001,539.50

**Tickets:**

<b>Sponsor</b>	<b>Member</b>	<b>Spouse Meal</b>
\$275. <sup>00</sup>	\$60. <sup>00</sup>	(ticket only) \$25. <sup>00</sup>

All money raised at the local banquet stays in Rock County.

**For tickets contact**

Jeff Stewart 507-227-3859 or Rick Peterson at 283-2333.

Or mail to Matt Sorenson, 1337 State Hwy 23, Garretson, SD 57030.

Tickets available at Rock County Star Herald office.

Limited tickets will be available at the door.

### The Pheasants Forever Story

Pheasants Forever is a nonprofit conservation organization founded in 1982 in response to the continuing decline of the ring-necked pheasant population.

Pheasants Forever is dedicated to the protection and enhancement of pheasant and other upland wildlife populations through habitat improvement, public awareness and education, and land management policy changes.

Pheasants Forever is fortified by a unique system of county chapters that provide incentive for sportsmen and women to raise money because chapters get to decide how to spend 100% of the net funds they raise.



Thanks to these businesses for taking pride in their community and sponsoring this promotional page!

- Agri-Energy, LLC/Gevo
- Blue Mound Area Theatre
- Cattnach Insurance
- CHS Eastern Farmers
- Connell Car Care
- Continental Western Group
- Cragoe Realty
- Design Craft - General Contractors
- Eisma & Eisma
- Estenson Company, Inc.
- Exchange Bank-Luverne Member FDIC
- First Farmers & Merchants Member FDIC
- Glen's Food Center
- Hartquist Funeral Home-Luverne Chapel

- Heidebrink & Associates
- Jensen Management Services, Inc.
- Ketterling Services, Inc.
- Klosterbuer & Haubrich
- Lewis Family Drug
- Luverne Country Club
- Luverne Lanes
- Luverne Schools
- Mark's Plumbing, Heating and AC/LLC.
- McClure Electric
- Meulebroeck & Taubert Co.
- Minnwest Bank Member FDIC
- Papik Motors
- Real Estate Retrievers

- Rock County
- Rock County Heartland Express
- Rock County Chiropractic
- Rock County Opportunities, Inc.
- Rock County Star Herald
- Rock Veterinary Clinic
- S&S Carwash
- Skattum's Confinement/Superior Buildings
- St. Catherine Church
- St. John/Little Lambs
- Stroeh's Auto Center
- Sudenga Communications
- SW Mental Health
- Vander Kooi Law Office