



# Rock County STAR HERALD

Rock County's oldest business, printing since 1873

Thursday, September 8, 2016

## Council plans \$3.1 million in purchases next year

By Lori Sorenson

The Luverne City Council is considering more than \$3.1 million in capital purchases next year, according to estimates from city department heads.

In 2015 the budget was \$2.5 million and in 2018 it's anticipated city capital expenses will be \$4.7 million.

The council met with city department heads to review upcoming spending in the areas of fire, government buildings, parks and recreation, streets, airport, pool and fitness center, the Luverne Loop, water, sewer, storm sewer, refuse, electric, liquor store and others.

The capital improvement plan allows city leaders to prepare for future expenses, but purchases are often delayed or expedited, depending on needs.

Following is the 2017 expense list, which includes items with an expected life of more than one year and a value of more than \$5,000.

•The fire department plans to spend \$100,000 next year on a three-stall garage for equipment storage on city property south of Holy Trinity Episcopal Church.

The garage to the north of the fire hall would house items such as the rescue boat, lights, washer and dryer and other equipment, and would free up space inside the fire hall for training.

Also on 2017's budget is \$50,000 to replace the current 1988 air supply truck that refills individual air tanks at fire calls.

The next major expense in the fire department will be in 2019 when a \$500,000 heavy rescue vehicle may be needed.

A \$400,000 platform truck had been budgeted for 2018, but that item was purchased late in 2015 when the fire chief found a used one for sale that met his specifications.

It's a 2010 Rosenbauer 101-foot platform truck that cost \$550,000, and the 2015 budget was amended to accommodate it. A new one costs more than \$1 million.

Luverne's 1985 unit was valued at \$60,000 and was sold to the Miller Fire Department for \$30,000.

•Parks and recreation plans to spend \$117,000 next year. That includes \$67,000 for a new 11-foot mower.

This one is in addition to the 11-foot mower currently in the fleet because of all the new mowing areas the city has taken on (Loop, Rotary Park, Flag Park, Lake area, EDA empty lots, etc.) The city also owns a 16-foot mower and a smaller 6-foot mower for downtown.

The Parks and Rec Department will also spend \$5,000 to trade up on a new track skidloader.

According to Public Works Supervisor John Stoffel, with the city's municipal discount, it pays to trade yearly for \$5,000 rather than pay for repairs and parts.

The other two costs for next year include \$35,000 for a small play structure in Hawkinson Park by the trail and \$10,000 to bore a waterline to the main city park restrooms (current ones are leaking).

•The Street Department is planning to spend \$240,500 in 2017.

That includes \$180,000 (the price after \$60,000 trade-in) for a used road grader, which is used for windrowing snow downtown and moving snow at the airport. It's also used for some gravel grading.

Street Department purchases in 2017 also include \$37,000 to replace street signs in Luverne.

The new signs will have Luverne's logo and will be a couple of inches

City purchases/see page 2A



## Classes resume for 2016-17 year

Buses line the curb in front of Luverne Elementary School Tuesday morning as students arrive for the first day of school between morning rain showers.

At far right, second-grader Wed Kadhim is all smiles as she gets off the bus. At right, second-grader Anna Reisdorfer (left) gives Nyla Sohl a brief hug Tuesday morning as she enters school.

This is the first school year to begin after Labor Day in six years locally after the district dropped out of the flexible learning year agreement that had classes beginning in August.

Mavis Fodness Photo/0908 Back to School



## Cardinal Bowl, airport fly-in and more this weekend

By Lori Sorenson

There will be no shortage of things to do in the coming days with several events and activities slated in Luverne and Rock County.

The Take 16 Block Party will be Thursday night, Sept. 8, with live music, local food, free games and beer in the Take 16 Brewery parking lot on East Main Street in Luverne.

The annual Cardinal Gold'n Bowl will be Friday night, Sept. 9, at Cardinal Field during the first home football game in Luverne.

The Luverne Area Chamber, Gold'n Plump and Glen's Food Center will serve grilled chicken sandwiches and chips starting at 5:30 p.m. LHS Cardinal Country clothing and gear will also be for sale and the Luverne High School Marching Band will perform a preview of their 2016 show, "Phantom of the Opera."

On Saturday morning the Luverne airport will host a fly-in and drive-in breakfast from 7 a.m. to noon. The event features a pancake breakfast, classic cars and plans and free in-

flatables. Skydive Adventures will be jumping if weather conditions permit.

Sept. 11 will mark the 15<sup>th</sup> anniversary of the terror attacks on the United States.

Remember Rally volunteers will dedicate a time capsule at the Rock County Library at 2 p.m. Friday, Sept. 9. The Blue Light Ceremony originally planned for the event has been cancelled.

More information about these and other events can be found on the Chamber website, www.luvernechamber.com.

## Rock County corn silage harvest gets underway



Mavis Fodness Photo/0908 Silage Harvest

Corey Nelson holds the tractor and silage wagon steady as Jeff Ahrendt operates the chopper filling the wagon Friday morning north of Magnolia. At an average of 23 tons per acre, the yield is considered about average for the area so far this year.

### Farmers report average silage yields; corn and soybeans will depend on frost and moisture

By Mavis Fodness

With rain predicted in the weekend forecast, Magnolia farmer Chad Nelson was busy hauling silage to the concrete bunker on his farmyard.

"This (today) seems like a pretty ideal time for us," Nelson said.

Nelson hopes by late Saturday night that he, his brother Corey, dad Jim and chopper operator Jeff Ahrendt will have the 90-acres of corn chopped, packed and sealed under plastic.

For Nelson's corn, Friday's moisture levels were in the mid 60s, an ideal level for corn silage.

With an average of 23 tons per acre, yield was in the average category.

A wet spring delayed planting of the field, possibly losing some plant growth, Nelson said.

**Soybeans 'abnormally tall'**

The regular rains have been beneficial for area soybeans but the vegetative growth may be too much of a good thing.

While some fields contain plants at the normal waist tall height, several areas are growing plants that are almost chest high.

"They are abnormally tall this year," said Andy Krueger with New Vision Co-Op in Hills.

He cautioned tall soybean plants are not indicators of high yields since the plant is utilizing most of this energy for plant growth.

However, the additional rainfall received in **Rock County silage harvest/continued on 8A**



## COMMUNITY CALENDAR

### Meetings

**Parkinson's Support Group** will meet at St. John Lutheran Church at 11 a.m. Thursday, Sept. 8. For more information call Dianne Karlstad, 507-530-3307.

**Beaver Creek Township Board** will meet at 7:30 p.m. Thursday, Sept. 8, in the township hall.

**Lady Luverne Red Hats** will meet at 11 a.m. Friday, Sept. 9, at St. Catherine Church east parking lot to carpool to Grand Falls Casino for lunch and games. Friends are welcome. Bring your player's card. Call Connie, 283-8470.

**Vienna Township Board** will meet at 10 a.m. Saturday, Sept. 10, in the Kenneth Senior Center.

**Matthew 6 Board of Directors** will meet at 7 p.m. Monday, Sept. 12, at Pizza Ranch.

**Blue Mound Quilters** will meet at 6 p.m. Monday, Sep. 12, at the Luverne Senior Center for a workshop for the hospice quilt. Also, fat quarters for the Christmas Challenge Project will be distributed. (Note the in location.)

**Pink Ladies** will meet at 1:30 p.m. Monday, Sept. 12, in the Blue Mound Room at Sanford Luverne Hospital.

**Luverne Tourist Club** will meet at 7 p.m. Tuesday, Sept. 13, in the Grand Prairie Events Center.

**Rock County VFW 2757** will meet at 7 p.m. Tuesday, Sept. 13, in the Herreid Military Building. Call Buck Underwood at 449-0632 for more information.

**The American Legion Post 123 and Auxiliary** will meet at 7:30 p.m. Wednesday, Sept. 14, in the Post home.

**MS Support Group** will meet at 7:30 p.m. Thursday, Sept. 15, at Southwest Health and Human Services, Luverne. All persons with MS, family and friends are invited. For information call 283-2069 or 283-2964.

### 9-11 time capsule dedication Sept. 9

To observe the 15<sup>th</sup> anniversary of the 9-11 terror attacks on the United States, a time capsule will be placed in the Rock County Library at 2 p.m. Friday, Sept. 9. (not on Sept. 11 as earlier reported). The event will honor and thank local first responders while remembering those who perished during the attacks and later from illnesses resulting from conditions at Ground Zero. **The Blue Light Ceremony at the courthouse Sept. 11 has been cancelled.** Call Diane Sherwood, 283-4194, with questions.

### Veterans Home Scarecrow Festival

The Veterans Home is planning its 10<sup>th</sup> annual Fall Festival. Organizations are encouraged to join in the fun and put up their own scarecrow creations. There is no specific theme this year. The home also invites the public to join them Saturday, Oct. 8, from 10-11:15 a.m. for carnival games and great prizes. Scarecrow displays will be judged that day, too, so come out and vote for your favorites.

### Cardinal Gold'n Bowl Sept. 9

The annual Gold'n Bowl is scheduled for Friday, Sept. 9, at the Luverne Public School Football Field before the Luverne-Windom football game. The Luverne Area Chamber will team up with Gold'n Plump and Glen's Food Center to serve grilled chicken sandwiches and chips. Meals cost \$3 each. Serving begins at 5:30 p.m. LHS Cardinal clothing and gear will also be for sale at the event. Food is donated by Gold'n Plump and Glen's Food Center. Participating in this event supports the Luverne Cardinal Athletic Program and the Luverne Area Chamber.

### Blue Mound Fall Festival Sept. 18

The Blue Mound Lutheran Church, rural Luverne, Fall Festival will be at 11 a.m. Sunday, Sept. 18. Pastor Gary Anderson will be the guest speaker and a catered meal will follow the service. All are welcome.

### Kids' Fishing Derby Sept. 18

The Luverne Optimist Club will sponsor a free kids' fishing derby from 3-6 p.m. Sunday, Sept. 18, for ages 5-15 at the Luverne Veterans Pond. Participants need to bring a fishing pole and tackle or call ahead to reserve a pole.

Complimentary hot dogs and beverages will be served after the derby along with prizes and drawings. Children must be accompanied and supervised by an adult.

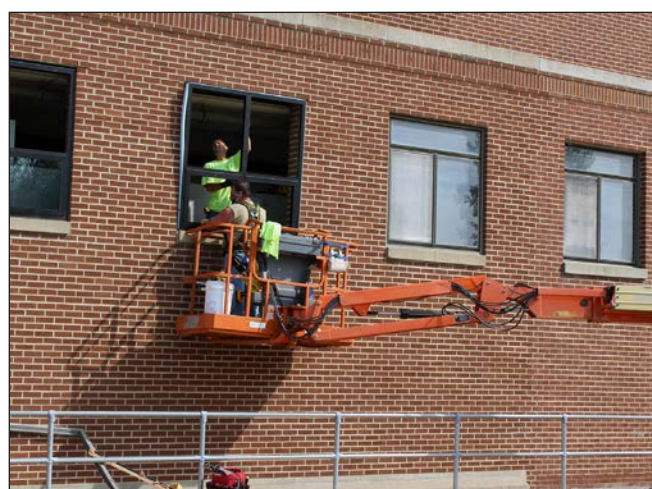
Contact Stan Steensma, 507-227-0681, or Travis Pierce, 507-220-5191, with questions.

### Sign up for Hospice Tour of Tables

Sanford Luverne Hospice will host its annual Tour of Tables Saturday, Oct. 8, at the Blue Mound Banquet Center in Luverne. The event begins at 9 a.m. to tour the tables and bid on a basket auction, and brunch will be served at 10:30 a.m. To participate with decorating a table or donating a gift basket, or to purchase a ticket, contact the hospice office at 283-1805. Deadline is Sept. 23.



Mavis Fodness Photo/0908 Power Plant Work



### City invests \$200,000 into tuck-pointing and replacing windows on 100-year-old building

Jamie Rotert with Superior Caulking tuck-points the west side of the former power plant on East Main Street Aug. 29. At left, Jason Waltman from G & D Viking Glass, Sioux Falls, stands in the window opening as Nate Carlson puts the new window frame into place

The city of Luverne is investing \$200,000 this year and next to tuck-point and install new windows. The building houses the city's electrical department equipment and a generator to be used by Missouri River Energy Services to provide back-up power in case of an emergency. Portions of the power plant were built in 1915, with additions added in the '30s and again in the '40s.

### City plans capital purchases for 2017/continued from page 1A

taller and wider, according to code.

The old signs are 30 years old and many are fading. The new ones will be reflective.

Other Street Department costs next year are \$16,000 to trade for a new payloader (the city trades this equipment every two years to save on maintenance costs) and \$7,500 to buy a plow for the skid loader.

•The **airport** is planning to spend \$65,000 next year to relocate the automated weather observing system. The airport capital budget for 2018 includes \$470,000 for a corporate hangar building.

•The **pool and fitness center** is planning to spend its annual \$10,000 for new exercise equipment (to keep it new and working well), and \$12,000 for an ultraviolet light system for sanitation.

The city is considering a major addition and or expansion to the facility, but those expenses are not factored in regular budgeted capital expenses.

•There are no major **street projects** planned for 2017, but in 2018 there are plans for \$1.5 million in street, sidewalk and parking lot improvements.

•**Luverne Loop** expenses next year will be an estimated \$775,000. This includes \$60,000 to establish parking at the Lake, \$20,000 for way-



Lori Sorenson photo/0908 stoffel street sign

Public Works Supervisor John Stoffel holds one of the new reflective larger street signs that will be put up next year.

finding signs and \$695,000 for Phase 2 work on the trail.

•The **water department** plans to spend \$722,000 next year for capital improvements.

This includes \$400,000 to paint the downtown water tower, which was originally scheduled for this year. (City officials deemed they would get better bid results this winter for 2017 work.)

Other 2017 water expenses include \$167,000 for an underground waterline project on Luverne Street from Blue Mound Avenue to Cedar Street, \$40,000 for a pickup replacement, \$25,000 for a conservation system at the city park

(drawing from the Rock River to water grass), \$10,000 for one-third of a backhoe (to be shared with street and electric departments) \$40,000 for annual water main looping and \$40,000 for annual system upgrades.

Looking ahead to 2018, \$750,000 will be needed to bring water service to the industrial park.

•**Sewer department** expenses are expected to come to \$305,000 next year.

That includes \$50,000 for annual sewer line replacement, \$10,000 for one third of the new backhoe cost, \$90,000 for the Luverne Street utility

project (from Blue Mound to Cedar Street), \$100,000 to replace the septic system at the city park with a sanitary sewer line, \$40,000 to upsize three effluent pumps and controls and \$15,000 for annual new equipment costs.

Looking ahead to 2018, \$750,000 will be needed to bring sanitary sewer service to the industrial park.

•The **electric department** is anticipating \$701,000 in capital expenses next year.

That includes \$100,000 for a community solar project (see related story), \$20,000 for substation improvements, \$50,000 to replace streetlight poles, fixtures and banners, \$106,000 for a refurbished bucket truck, \$140,000 for breaker replacement, \$100,000 for improvements at the power plant (tuckpointing, windows, roof), \$25,000 annual expense for transformers, \$150,000 for annual distribution upgrades, and \$10,000 for one-third of the shared backhoe.

•Expenses for **storm sewer** services next year are \$30,000 to clean out creeks throughout the city and \$10,000 for a flail mower.

These expenses are considered as part of the overall five-year capital improvement plan for Luverne and are taken into account when the city approves a proposed levy in September.

# Dial-A-Specialist

Your One Stop Guide to Local Businesses

**ROCK COUNTY CHIROPRACTIC**  
 • Men, Women & Children's Health  
 • Custom Orthotics • Kinesiotape • Athletic Care • Massage Therapy • Work & Auto Injuries • Postural Restoration  
 WWW.ROCKCOUNTYCHIROPRACTIC.COM  
 283-2561 • 103 E. MAIN, LUVERNE  
 Monday 7:30 a.m. - 6 p.m. • Tuesday 7:30 a.m. - 3 p.m.  
 Wednesday 7:30 a.m. - 6 p.m. • Thursday 7:30 a.m. - 1 p.m.  
 Friday 7:30 a.m. - 5 p.m.  
**Most Insurance Accepted**

• Chiropractic

**STAR HERALD**  
**ANNOUNCER**  
**Chantel Connell**  
 Sales Representative  
 117 W. Main, Luverne, MN  
**507-283-2333**  
**Rick Peterson**  
 General Manager

• Advertising

**LUVERNE HEALTH & WELLNESS**  
**Codie Zeutenhorst, D.C., CAC**  
 ✓ Acupuncture ✓ Chiropractic Care  
 ✓ Family Care ✓ Sports Injuries  
 ✓ Kinesiotape ✓ Auto & Work Injuries  
**Acupuncture and Massage Available**  
 Kris Van Der Brink M.T. & Amy Rosales M.T.  
**507.449.4400** www.luvernechiro.com  
 109 S. Freeman Ave. | Luverne, MN

• Chiropractic

**COMRAY COMPUTERS**  
 Computer Repair and System Builders  
**Ray Hansen - 1726 140th Ave., Luverne, MN 56156 • 507-669-2621**  
**Mark Stewart - Lismore, MN 56155 507-472-8479**  
 or email us at comraycomputers@myclearwave.net

• Computer

**Rock County EYE CLINIC**  
**507-283-2345**  
 102 N. Freeman Ave.  
 Luverne, Minnesota  
**Dr. Sandra Carman**

• Eye

**Papik MOTORS**  
 1-90 Luverne, MN  
 Box 536 • 801 West Commerce Road Luverne, MN 56156  
 (507) 283-9171 (800) 634-7701  
 www.papik.com  
 Certified USED VEHICLES No warranties  
 Certified pre-owned  
 GM, Chrysler, Dodge, Jeep, Ram

• Automotive

**Luverne MINNESOTA City Offices**  
*Love the life!*  
 PO Box 659, Luverne, MN 56156  
 507-449-2388 (24 hour voice mail)  
**www.cityofluverne.org**

• City

**Dakota Land Surveying and Engineering, Inc.**  
**Steven B. Kor**  
 Professional Engineer  
 Registered Land Surveyor  
 2000 W. 42nd Street, Suite B-6  
 Sioux Falls, SD 57105  
 605-334-4882  
 605-334-5745 Fax  
 506 Almar Luverne, MN 56156  
 507-283-3803  
 steve.dis@midconetwork.com

• Land Surveying

# Safe walking, bicycling and driving needed as schools start new year

Department of Transportation says all three groups should practice safety

There is an increase in pedestrian and bicycle traffic around schools starting this week as students across the state head back to school.

The Minnesota Department of Transportation is asking pedestrians, bicyclists and motorists to practice safety as they travel.

Pedestrians should use crosswalks and sidewalks when available, and look left, right and left again before crossing the street. When no sidewalks are available, they should walk on the left side of the road toward traffic.

About a third of all pedestrian crashes occur during the weekday morning and afternoon rush hour driving times.

In 2015, 32 percent of pedestrians killed and 26 percent injured were trying to cross a road at an area with no crosswalk and no signal.

In 2015 the top two most contributing factors for crashes between vehicles and pedestrians were motorist failure to yield right of way and motorist inattention or distraction.

Bicyclists should ride predictably so motorists know what their intentions are.

This means using hand signals, riding in a straight line and obeying traffic signals. Bicyclists are subject to the same laws as motor

**About a third of all bicycle crashes occur during the afternoon rush hours of 3 to 6 p.m.**

vehicles. They should wear helmets and wear reflective gear to increase their visibility.

About a third of all bicycle crashes occur during the afternoon rush hours of 3 to 6 p.m.

Bicyclists' failure to yield right of way and disregard for traffic control devices were the top two contributing factors to crashes in 2015 when bicyclists were at fault.

When motorists were at fault, the contributing factors were failure to yield right of way and driver inattention or distraction.

Motorists should look for children at intersections, crosswalks and along roads. It's the law to stop for pedestrians within the crosswalk. It's also the law to give a three-foot clearance, and to yield to bicyclists before making a turn.

Motorists should also focus on driving and avoid distractions, such as eating or drinking and using cell phones, while operating their vehicles.



## Grand Prairie Events Center ready for first event

Dan Hamann (left) and Gene McClain attach signage on the new Grand Prairie Events facility on South Estey Street in Luverne Wednesday afternoon, Aug. 31.

Remodeling of the 11,500-square-foot former Family Dollar Store began last fall with the finishing touches completed last week.

The first event, a wedding, will be staged in the building on Friday and Saturday. Mike and Wanda Jarchow, Luverne, own the events facility.

Mavis Fodness Photo/0908 sign



Lori Sorenson photo/0908 tanks for thanks

## Cenex, Glen's Food and Gas awards 'Tanks of Thanks'

Glen's Food and Gas Center honored several local individuals last week through the Cenex Tanks for Thanks program. Pictured are (front, from left) Sue Sandbulte, Joyce Hansen, Teresa Latten, Alice Hansen, Beth Capistran, Gib and Henrietta Elbers, (back) Glen's employees Nicole Baler, Macey Edwards, Andrea Woods, Logan Bosch, Crystal Phillips, Shirli Akkerman and Sherri Thompson. The Tanks of Thanks program recognizes people for their civic contributions and rewards them with Cenex gas cards for their kind deeds.

Capistran was nominated for her volunteer efforts in dog rescues, the Elberses were nominated for serving popcorn to staff at Sanford Luverne clinic and hospital, the two Hansens volunteer at local nursing and assisted living facilities, Latten volunteers with and helps coordinate fundraisers for the Pink Ladies group that supports cancer survivors and their families, and Sandbulte volunteers with several local organizations, including Sanford Luverne, Green Earth Players and various musical events throughout the community.

## USDA offers new loans for portable farm storage and handling equipment

USDA's Farm Service Agency (FSA) will provide a new financing option to help farmers purchase portable storage and handling equipment.

The loans, which now include a smaller microloan option with lower down payments, are designed to help producers, including new, small and mid-sized producers, grow their businesses and markets.

The new "microloan" option allows applicants seeking less than \$50,000 to qualify for a reduced down payment of five percent and no requirement to provide three years of production history.

Farms of all sizes are eligible. However, the microloan option is expected to be of particular benefit to smaller farms, and specialty crop producers who may not have access to commercial storage or on-farm storage after harvest.

These producers can invest in equipment like conveyers, scales or refrigeration units and trucks that can store commodities before delivering them to market. Producers do not need

to demonstrate the lack of commercial credit availability to apply.

Earlier this year, FSA significantly expanded the list of commodities eligible for Farm Storage Facility Loans.

Eligible commodities now include aquaculture, floriculture, fruits (including nuts) and vegetables, corn, grain sorghum, rice, oilseeds, oats, wheat, triticale, spelt, buckwheat, lentils, chickpeas, dry peas sugar, peanuts, barley, rye, hay, honey, hops, maple sap, unprocessed meat and poultry, eggs, milk, cheese, butter, yogurt and renewable biomass.

Microloans can also be used to finance washing and packing equipment used post-harvest, before a commodity is placed in cold storage.

To learn more about Farm Storage Facility Loans, visit [www.fsa.usda.gov/pricesupport](http://www.fsa.usda.gov/pricesupport), or contact the Rock County FSA Office.

For more information on FSA programs, please visit the Rock County FSA Office, go to [www.fsa.usda.gov/conservation](http://www.fsa.usda.gov/conservation), or give us a call at 507-283-2369.

**Luverne Rotary 2016 Rose Sale**  
 Luverne Rotary members will be taking orders now through Sunday, September 18

Note: Roses do not come with a vase, but include baby's breath

**\$20 per dozen**

Contact any Rotary member or call Curt Bloemendaal at 507-227-2090 and leave a message.

**Delivery: 9am - 12 pm | Thursday, October 13**  
 FREE delivery within Luverne city limits

This rose sale is the Luverne Rotary Club's largest yearly fundraiser. The proceeds have been used for the Back Pack Program, S.H.A.R.E., Honor Flight, Summer Recreation and many more community programs.

Open House **100<sup>th</sup>** birthday celebration  
**Ruth Ashby**  
 Sunday, Sept. 11  
 Dinner starting at 12pm • Program - 2pm  
 Blue Mound Banquet Center  
 (401 W. Hatting, Luverne)

**Cards may be sent to:**  
 1495 Co. Hwy 4  
 Luverne, MN 56156

**Mowing Notice: MOUND TOWNSHIP**

Notice is hereby given to all landowners or tenants to mow at least one swath along township road ditches by September 15, 2016. If not done, the township may hire it done and have it assessed against the landowners taxes. Also, please spray noxious weeds (Canadian thistles) at this time.

**Mound Township**

**Are You Interested in Caring for Children?**

*The need for quality, professional child care providers is growing.*

**As a licensed family child care provider, you would:**

- Run your own business
- Set your own hours
- Use your skills to provide a service to the community's families and children

**WE CAN HELP!**

- Assist you in getting grants
- Connect you to other financial incentives
- Link you to local resources
- Help you find Pre-service & In-service training
- Provide support to help you establish and manage a successful business

**Contact Us! Region 8 Child Care Aware**  
 Southwestern MN Opportunity Council  
 1106 Third Avenue • PO Box 787  
 Worthington, MN 56187  
 507-376-4195 • 800-658-2444  
[www.smoc.us](http://www.smoc.us)

**Interested in Advertising?**  
 Call 283-2333 to advertise in the Announcer

## Emotions run gamut as admission to graduation possibly denied

*Warning: Words printed in italics convey true feelings.*

Come mid-October residents with Minnesota driver's licenses may have trouble boarding an airplane or entering military bases or federal buildings.

This could include my family as we travel to San Antonio, Texas, for Adam's graduation from basic training at Lackland Air Force Base.

The baby of the family left Wednesday.

*Taking a deep breath.*

For the better part of a week I have been researching the REAL ID Act of 2005. The federal act established uniform minimum standards for issuance of state identifications including driver's licenses.

*Big yawn here for the reading pages and pages of reference materials.*

What makes REAL IDs special is the tiny microchip attached to the card.

Authorized individuals can access biographic and biometric data through a special reader about the person presenting the card. The card also includes bar codes with the same information.

REAL ID proves I am who I am and that I legally live in Minnesota. It's the same sort of information on my recently renewed driver's license, but it's delivered in a manner harder to forge by people with bad intentions in mind.

*Yes ... head nodding ... this makes sense.*

For the past 11 years the political powers that be in Minnesota have blocked any steps to comply with the federal mandate.

They even went so far as to pass legislation in the middle of the night in 2009 that blocked state officials from even talking to the department of homeland security to determine better way to identify people.

In all that time no one has taken the initiative to get this changed or even comply with homeland security measures.

*Eye roll ... big eye roll.*

The feet dragging to change



## RUMINATIONS

By Mavis Fodness, Reporter

the 2009 legislation is still occurring and simply comes down to not wanting to share information with the federal government.

*Are you kidding me? What are people trying to hide?*

The feet dragging has become so bad that Minnesota is not even in line for a deadline extension for next month when Minnesota driver's licenses won't be sufficient proof of identity. (I would need to get a passport or purchase a REAL ID in Mankato.)

*Blood pressure rising.*

This fall a half dozen of our high school graduates will be repeating their service oaths to defend our freedoms as citizens of the United States.

Because my state chose not to assist homeland security with possible terrorist activities, some of us may not get to witness our children's achievement.

*Swear words inserted here.*

We need to keep our commercial airline service and our federal installations safe. I, too, remember feeling the horror as I repeatedly watched the media footage of two passenger jets flying into the World Trade Towers on Sept. 11, 2001.

Like millions of people, I was equally horrified when the buildings collapsed and rescue workers stood by waiting to help the thousands of people inside emerge from the rubble. No one emerged. Almost 3,000 people lost their lives that day.

*Eyes tear up.*

Tears will be in my eyes as well as other Minnesota parents as we are reunited with our basic training graduates — tears of pride for the next generation willing to serve their country through military service.

There could also be tears of sorrow if we are unable to enter the military base for the ceremony because our state couldn't get its act together and issue a more secure ID to its residents.

## The general election is only a few weeks away; how well do you know your candidates?

Voting is both a right and a privilege, but it's also an important responsibility of every eligible citizen.

This election season is shaping up to be a pivotal moment of changing leadership in many levels of government, from township halls to the White House, so it's never been more important to research ballot options and the candidates you'll support.

For our local elections, we hope you'll turn to the Star Herald for thorough, unbiased information in Q and A profiles of city council, school board and county commissioner candidates.

As we do for each election cycle, the Star Herald news team will soon send the candidates in contested races a list of questions about themselves and issues facing their districts, and they'll have equal opportunity to provide thought-out, detailed answers.

Those answers, in their own words, will be printed in upcoming issues of the Star Herald, and we hope you take the time to read them.

What we also do for each elec-

## STAR HERALD EDITORIAL

tion cycle is restate our Opinion Page policy for letters to the editor. We protect this space for readers to share their opinions on matters of community interest, and during elections, people tend to have strong opinions.

We will not, however, print letters submitted for the express purpose of endorsing or condemning a candidate. That information is reserved for expression in paid advertisements and is handled as such.

Letters must reflect the original thought of the writer (not a form letter sent by a campaign), they must be factually accurate and must adhere to our usual policy of 300 words or less.

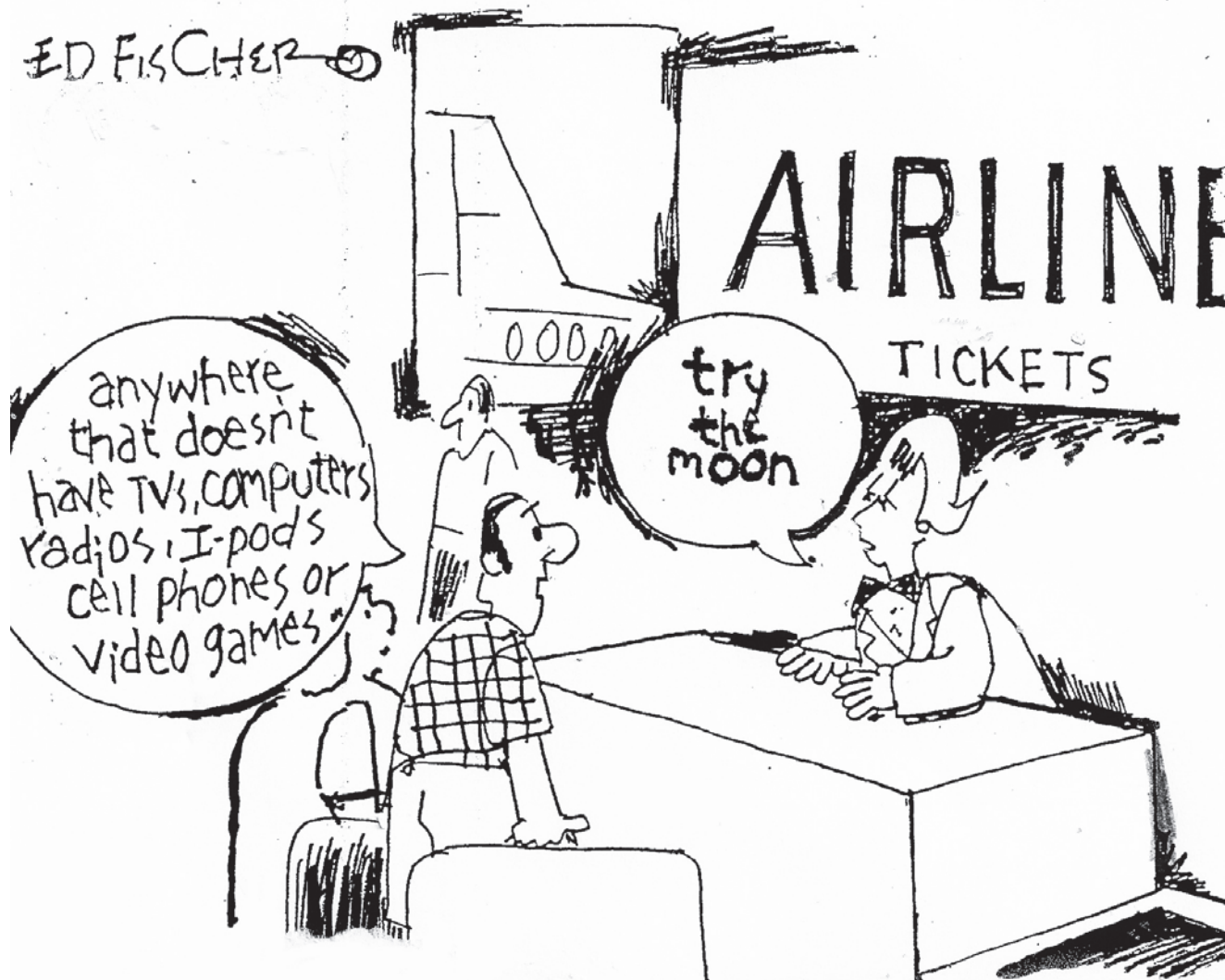
The Star Herald will not print letters containing personal attacks or vulgar letters or any anonymous submissions, and finally, we will not

accept political letters in the week just prior to Nov. 8, because it would leave no opportunity for rebuttal, if need be.

While the rules may seem stern, they're in place to encourage fair expression of views and opinions of our readers, and we truly hope to see letters to the editor about issues and topics that matter to us in Rock County.

Meanwhile, our news team will cover candidate forums and other political events leading up to the general election in an effort to provide every resource possible for an educated voting public.

For questions about our policies or to share ideas on how to improve Star Herald election coverage, call editor Lori Sorenson at 507-283-2333 or email editor@star-herald.com.



## School bus safety tips for motorists, parents and children

With the school year quickly approaching I would like to focus on the safety of our children.

### School bus safety tips for motorists:

Motorists must stop at least 20 feet from a school bus displaying red flashing lights and/or its stop arm is extended. This is important not only when approaching a school bus from the rear, but also when approaching the bus from the opposite direction on undivided roads.

- Red flashing lights on buses indicate that students are either entering or exiting the bus.

- Motorists are not required to stop for a bus if the bus is on the opposite side of a separated roadway (median, etc.) — but they should remain alert for children.

- Altering a route or schedule to avoid a bus is one way motorists can help improve safety.

- Always reduce speeds in and around school zones.



## ASK A TROOPER

By Sgt. Troy Christianson,  
Minnesota State Patrol

- Watch and stop for school crossings and pedestrians — the law applies to all street corners and for both marked and unmarked crosswalks (all street corners) — every corner is a crosswalk.

### School bus safety tips for children:

Parents should discuss and demonstrate pedestrian safety with their children and reinforce safe crossing after exiting a bus:

- When exiting a bus, always look to be

sure no cars are passing on the shoulder.

- Make eye contact with the bus driver and cross when the driver signals that it is safe.

- Look left-right-left when coming to the edge of the bus to be sure traffic is stopped. Continue to watch for changes in traffic while crossing.

Send your questions to Sgt. Troy Christianson, Minnesota State Patrol, 2900 48th Street NW, Rochester, Minnesota 55901-5848 or Troy.Christianson@state.mn.us.

## VOICE OF OUR READERS

### Pear theft disappoints Berg

#### To the Editor:

My husband and I planted a pear tree four years ago in our backyard. We were told that it would take at least three years to get any pears on it. Last year we got two pears. This year the tree had between two to three dozen pears on it.

We went out in the evening on Aug. 15 to look at the pears and decided to pick them the next afternoon. On the 16<sup>th</sup> we went out to pick them and there was not one pear left on the tree.

I have always been taught if it is not yours leave it alone. Sometimes I feel that this rule only applies to me. If whoever took them would have asked, I would have gladly shared.

I hope whoever took the pears enjoyed them as much as I think we would have. If you need more food, please come to our door. I would love to bless you, as I don't like to see anyone go hungry.

Sheryl Berg  
Luverne

E-mail: editor@star-herald.com Web site: star-herald.com  
Phone: 507-283-2333 Fax: 507-283-2335

Published Thursdays by Tollefson Enterprises, POSTMASTER:  
Send address changes to 117 West Main, P.O. Box 837, Luverne,  
MN 56156. Periodicals postage paid at Luverne, Permit #33 and at  
additional mailing offices.

**General manager:** Rick Peterson  
**Office manager:** Deb Lusty  
**Circulation manager:** Jennifer Kor  
**Advertising:** Chantel Connell  
**Production manager:** Abbe Kolar  
**Production:** Amanda McDonald

**News staff:**  
Lori Sorenson, editor  
Mavis Fodness, reporter  
John Rittenhouse, sports editor  
Esther Frakes, copy editor  
Joseph Stearns, composition

Rock County  
**STAR HERALD**  
Rock County's newspaper since 1873

(ISSN 0889-888X)  
SUBSCRIPTION RATES

\$72 per year in Rock County; \$89 per year all other areas. Single copies \$1.25

Entire contents copyrighted by  
Tollefson Publishing Roger Tollefson, publisher

The *Star Herald* encourages letters to the editor expressing the opinions of readers and intends to print all letters. Letters not meeting the guidelines will not be printed. The *Star Herald* will verify the authenticity of all letters. Letters must have the name of the writer, a signature and address.

Unsigned letters will not be considered. The *Star Herald* will edit for grammar, spelling and clarity. Any letters containing offensive language, libelous or slanderous material, or misleading or false information will be rewritten before being published. The *Star Herald* will not publish letters written with the sole intent to advertise or serve as a thank-you. Letters with more than 300 words may be edited. The deadline for letters is Monday 10 a.m. They may be delivered or mailed to the editor, *Rock County Star Herald*, P.O. Box 837, 117 W. Main St., Luverne, Minn. 56156.

## ON THE RECORD

### Dispatch report

**Aug. 26**  
 •Complainant reported that there were three white males outside asking people for money, one sitting by the stop sign on Highway 75, and two others in the cul-de-sac. Deputy spoke with them, and they said they needed gas. Someone bought them gas, and they will be on their way.  
 •Complainant reported that earlier this week he lost his cell phone. Not sure where. It is a black NET10LG with no case.  
 •Dispatch received many calls about a black pickup that was all over the road and it almost hit several vehicles. It ended up in the ditch on County Road 17, and subject was arrested for DWI.  
 •Complainant reported subject was making threats.  
**Aug. 27**  
 •Complainant reported child abuse and neglect.  
 •Complainant requested to have a child stay with them. SWHHS was notified and was fine with the situation for the weekend.  
 •Complainant reported subject left for an off-campus visit with his legal guardian in a grey Chevy Impala with eight people in it heading to Luverne. Felt that was unsafe.  
 •Complainant reported he blew a tire and has his trailer parked in parking lot at 207 South Kniss Avenue. Attempted to contact owner to notify him.  
 •Complainant reported burglary. Unknown if anything is missing.  
 •Complainant reported vehicle on his property that is unoccupied. Made contact with relative of owner in Luverne, and he advised that they are kayaking and he would contact them to move vehicle as soon as possible.  
 •Deputy stopped a vehicle and cited four juveniles from South Dakota with small amount of marijuana and

charged driver with speeding. Contacted parents.  
**Aug. 28**  
 •Deputy arrested female for DWI and took her to jail.  
 •Complainant reported there is a sewage truck sitting by the café and it is leaking sewage that is going toward her back door. NO plates or name on the truck. Managed to make contact with the owners. They will come and get the truck.  
 •Complainant reported he was assaulted with a wrench and his vehicle was stolen by subject. Notified surrounding region. Entered stolen. Vehicle recovered by South Dakota Highway Patrol and suspect taken into custody to be held on our charges.  
 •Complainant requested to speak to deputy about horse boarder keeping his horse and him not being able to afford boarding costs. Deputy told him this was a civil matter, but he entered into an agreement, and if he paid the boarder, the problem would be resolved.  
 •Complainant reported he is getting threatening text messages from his ex's brother.  
**Aug. 29**  
 •Complainant reported some kids with flashlights in his bushes on the 400 block of North Oakley Street. Deputy escorted two male juveniles to where they will both be staying for the night, and both were warned of curfew. Another deputy transported one female juvenile home. Female was also warned for curfew.  
 •Complainant in Magnolia reported that he and his wife were getting ready to go to bed, and his wife heard a noise outside. They went to check, and someone ran out of their shed toward their trampoline then took off. Deputy advised he was flagged down by complainant who was out with his son in a golf cart with a baseball bat. Complainant told deputy the suspect was a male 6 feet plus in height.

•Complainant reported child neglect.  
 •Complainant reported that fraudulent charges were made on a card in her and her husband's name from Columbus, Nebraska.  
 •Complainant reported she keeps getting calls from numbers that she doesn't know. This is a scam.  
 •Complainant reported child abuse. SWHHS was also notified.  
 •Complainant reported he found some keys at the car wash that are from Lamberton. Called owner.  
 •Complainant requested a residence check while they are gone.  
 •Dispatch received a 911 call from location and heard yelling in a foreign language in the background. Deputy investigated and reported that there were four Hispanic individuals working on the railroad tracks at County Road 4 and South Walnut Avenue. Everything is OK.  
 •Complainant reported a silver vehicle on the shoulder at Highway 75 and County Road 7 with an individual lying on the hood. Subject was out of gas and awaiting assistance. All is OK with him and vehicle is not blocking.  
 •Deputy arrested subject for domestic abuse and threats and took him to jail.  
 •Complainant reported a four-wheeler with one adult and three kids on it speeding on Pine Drive. Nobody on the four-wheeler has protective equipment. Complainant says this happens every day.  
 •Complainant reported that there was a white vehicle flashing its lights around the area and at her neighbor's house early this morning around 4 a.m. Complainant was advised to call the Law Enforcement Center if she sees this happens again, and to call when it is actually happening.

•Deputy conducted traffic stop on East Lincoln Street. Both parties were warned about hitching on to a vehicle when on a bicycle.  
**Aug. 30**  
 •Complainant reported shingles spilled across County Road 1 and 130th Avenue. They were being cleaned up while deputy was there.  
 •Complainant requested welfare check on subject. Deputy checked and everything was OK.  
 •Complainant reported he was getting phone calls telling him he had won money and just had to pay the taxes. When complainant told the caller that he knew it was a scam, complainant's life was threatened.  
 •Reserved for predatory offender registration.  
 •Complainant reported credit card fraud.  
 •Complainant requested a welfare check on subject. Subject failed to use his home monitoring system at the scheduled time. Subject also fails to answer the phone. Pipestone County advises dispatch that subject has missed his scheduled court date, and a warrant has been filed from the judge.  
**Aug. 31**  
 •Complainant reported a Dodge Avenger abandoned on the side of the road, off on the shoulder, no plate. Advised Patrol and Metro.  
 •Complainant requested welfare check on subject who has not taken home-monitoring tests all night. Subject was not there. No contact.  
 •Dispatch received a 911 call with no callback number. Sent deputy to check and see if something was wrong. There were guys working on the road, and there were no problems.  
 •Complainant reported child neglect.  
 •Complainant reported she is being harassed by phone by subject. He is giving out her

number and texting her and her friends. Advised to get an order for protection.  
 •State Patrol reported vehicle spun out somewhere on I-90 between westbound mile markers four and 12 and almost took out another car. Requested deputy check it out.  
 •Complainant reported a gravel truck kicked up a rock and cracked his windshield. Has trailer plate.  
 •Complainant reported that her boyfriend was assaulted at location by several people, and the stroller pushing their daughter was knocked over. Three suspects: first is a white male, late 40s, bald with glasses, 6'1" heavy set wearing a muscle shirt with a heart shaped tattoo; second is a white male wearing a cowboy hat and button up shirt with glasses, thick mustache, 6'0" and skinny; third subject was a white male in a jeans jacket.  
 •Complainant requested welfare check on subject. Stated he has a GI bleed and sounds intoxicated.  
 •Complainant reported he has wood chips form East Minnesota Avenue to the edge of town in Steen. Deputy reported city has given notice to complainant to clean up wood chips by Aug. 31 or the city would do it. Civil issue.  
 •Complainant requested welfare check done on niece who has some developmental disabilities and broke her right arm recently. Unable to cook or shower and has minimal food in apartment.  
 •Complainant reported baler and hay bale on fire at location. Paged Luverne Fire Department.  
 •Complainant turned in debit card. Contacted relative of owner.  
 •Complainant requested room for the night through Salvation Army.  
**Sept. 1**  
 •Complainant reported his son had a flat tire and is

off the road. He is going to call G&S and have it towed, so it should be gone shortly.  
 •Complainant requested to speak to deputy regarding issues where there is an order for protection in place against him, and the other party contacts him.  
 •Complainant reported vehicle on fire at location. Paged Beaver Creek Fire Department and notified Valley Springs. Contacted Erwin's to tow.  
 •Complainant requested to speak to deputy regarding neighbor coming over and yelling at her for her kids playing outside. Deputy mediated the situation.  
 •Complainant reported that someone is threatening to release a video of him masturbating onto the Internet unless he pays money. Person trying to blackmail him lives in Africa.  
 •Complainant reported the Minnesota Department of Transportation discovered suspected urea spill on shoulder of ramp.  
 •Complainant reported subject is threatening to burn their house down while they sleep.  
 •Deputy reported an open door on a business. Went inside and found workers.  
 •Complainant reported that the subject left his construction trailer at Luverne Body Shop. If the owner of that business has any issues with that, dispatch is to give out the subject's cell phone number.

In addition, officers responded to 1 motor vehicle accident, 1 vehicle in ditch, 1 deer accident, 3 transports, 2 funeral escorts, 13 traffic stops, 16 ambulance runs, 1 paper service, 4 animal complaints, 3 false alarms, 1 driver's license check, 7 log/alarm sheets, 7 drug court tests, 5 money escorts, and issued 9 purchase/carry permits and 5 burn permits.

### Community Ed announces class offerings

Luverne Community Education will offer the following upcoming classes and activities. Call 283-4724 to register.  
**Pop-in-Play Time** is Tuesday evening, Sept. 6, or Wednesday morning, Sept. 7, for parents and children to play in the preschool classrooms at school. No fee, but registration requested.  
**Early Childhood Family Education** classes begin the week of Sept. 12 for 13 sessions to help families provide the best environment to raise their children ages 0-5.  
**Therapy Across the Ages on Sept. 14** teaches how physical and occupational therapy benefit you no matter what your age. Fee is \$5.  
**Volleyball for grades 5 and 6** begins Sept. 19. Fee is \$25.  
**Refit Revolution** is a cardio, agility, strength, toning, flexibility, stretching program that will meet for 6 weeks starting Sept. 19. Fee is \$42.  
**Yoga** class will meet for 6 weeks beginning on Sept. 21. Fee is \$42 per person.  
 See the Olympic gymnastics stars on **Oct. 8 at the Kellogg's Tour of Gymnastic Champions in Omaha**. We have great seats just behind the VIP section. **Register by Sept. 22**. Fee is \$170 for ticket and bus.  
 Girls in Grades 2-3 will follow clues to find hidden boxes at **Letterboxing on Sept. 22 and 29**.  
 Students in grades K-5 will learn a dance along with cheers at **Cheer Camp on Sept. 23** after school. Fee includes a pass to the game that evening. Fee is \$12.  
**Football 101 for Moms on Sept. 26** will help parents make some sense of the game of football. Registration required, but fee is paid by Main Street Financial.  
**Gymnastics** for ages 4 through grade 6 will be the week of **Sept. 26-29**. Fee is \$45 for school age, \$36 for preschool.  
 Girls grades K-5 are invited to make a **paper bag purse** at the class **Discover Girl Scouts on Sept. 27**. Parents with questions may attend. Fee is \$20 for non-girl scouts and \$5 for girl scouts.  
 Give cross country running a try at **Runnin' For Fun on Sept. 30** for kindergarten and older. Fee is \$5.



**283-9171 | PAPIK.COM**

---








**2010 Dodge Journey**

Stock #283113N  
89K



Papik Price \$10,990

**2012 GMC Terrain**

Stock #181629N  
44K



Papik Price \$17,990

**2015 Dodge Grand Caravan**

Stock #549713N  
42K



Papik Price \$20,990

**2014 Chrysler Town & Country**

Stock #311304N  
42K



Papik Price \$23,990

YOU'RE INVITED

PLEASE JOIN US FOR OUR FIELD DAY EVENT

Tuesday, September 13, 2016  
at 5:00 p.m.

Bill Spieker - Kenneth, MN



See first-hand the industry-leading lineup of genetics and trait technologies built for your farm! Learn how Titan Pro can be your whole farm solution for your seed, crop production, fertilizer and crop insurance needs.

Enjoy a customer appreciation meal after the plot!

Please RSVP to Bill at 507-920-8656

Plot located at Bill Spieker farm, 17525 Birkett Ave, Kenneth, MN

**Local Titan Dealers**

Bruce Larson - Balaton, MN 507-829-3364  
 Bruce Lubben - Worthington, MN 507-370-2989  
 Bill Spieker - Kenneth, MN 507-920-8656

Be a part of Rock County's oldest business at [www.star-herald.com](http://www.star-herald.com)

# Making dreams come true

## Luverne graduate helps mom become published author

By Mavis Fodness

According to former Rock County resident Carol Poppenga, everyone should do three things during their lifetime: follow their dreams, learn something new each day and forget about the housework.

The last piece of advice garnered laughter during last week's phone interview from Poppenga's summer home in Lennox, South Dakota.

One of her own dreams was realized recently when she became a published children's author at the age of 79.

"Andrew and the Land of Legs" debuted for sale on Amazon.com Aug. 14.

Poppenga credited her youngest daughter, Trudy Tollefson, for making the 24-page paperback a reality.

"Without her help my little story would have just sat around," she said.

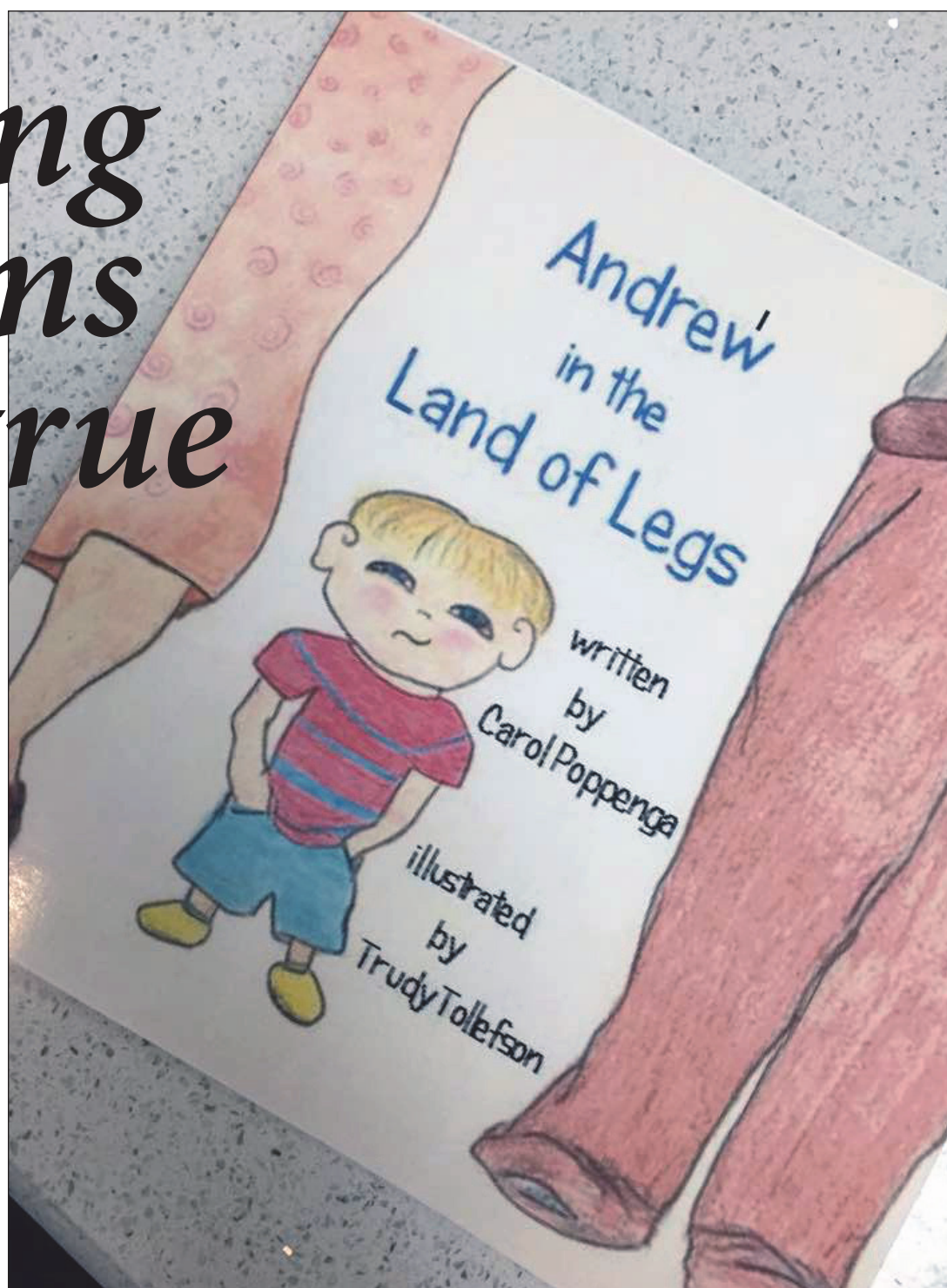
Tollefson was also the illustrator for Poppenga's story written for and about Tollefson's son Andrew, when he turned 3 years old. Andrew is currently 21.

The body poses and facial expressions for the book's freehand drawings were derived from Tollefson's 23 years as a day care provider.

Recently retired, Tollefson was able to devote all her time to finishing the illustrations and assist her mother with her dream.

"To be a published author was sort of a bucket list thing for my mom," said Tollefson, who now lives in Florida. "I wanted to do this for her — to get it done."

Tollefson grew up in Luverne and is a 1987 LHS graduate. She witnessed firsthand her mom's continued passion for creativity. Whether it was journal writing, flower gardening or handmade gifts, creativity was always squeezed



"Andrew and the Land of Legs" is available for purchase on Amazon.com. The children's book was written and illustrated by two former Luverne residents.

into Poppenga's daily routine.

On one such occasion Tollefson remembered she and her younger brother helped Poppenga finish a gift for one of her older stepbrother's and stepsister's children. The audio recording needed something special that Poppenga's two youngest children could provide.

"Robbie and I would make the clanging noise (possibly with pot lids) to turn the page," Tollefson said.

For almost four decades Poppenga was a housewife raising the blended Krueger/

Moore family of eight children on North Blue Mound Avenue in Luverne. She married Willie Poppenga in 1991.

Poppenga estimated she has written about two dozen children's stories over the years. "Andrew and the Land of Legs" is the first to be published.

"I can't believe it," she said. "I am in awe it actually happened."

Her story about her grandson Andrew was inspired by real-life events.

As a toddler Andrew was sitting on the floor surrounded by standing adults as they con-

*"Without her help my little story would have just sat around."*

— Carol Poppenga



Submitted Photo

Trudy (Moore) Tollefson (left) and her mom, Carol Poppenga, recently published a children's book that Poppenga wrote and Tollefson illustrated.

versed during a family gathering. Poppenga said she commented about Andrew surrounded by a "land of legs."

The story was more fully developed as Poppenga finished sewing a quilt for her grandson.

"I could visualize the pictures but I wasn't a drawer, so I cut pictures out of magazines instead," she said.

Eighteen years later, with Tollefson's help, a hardcover book was made this spring, and now paperback copies of the self-published book are available through Create Space Publishing, an Amazon company.

On its website Poppenga's book is described as bringing "to life the very big thoughts of very small children in a heart-warming, fun-loving adventurous way — sure to please children and grown-ups alike."

The book retails for \$7.99.

## REMEMBER WHEN

### 10 years ago (2006)

•Two building projects may be in Rock County's future. Heartland Express and the Rock County Highway Department both fall short of what they could have for space and working environments.

Heartland Express, the public busing system, received a \$400,000 grant from the state with a matching \$100,000 from Rock County to build a new office space and bus bay area.

### 25 years ago (1991)

•What will county government look like in 10 years? Would combining county and city law enforcement staffs save dollars?

The Rock County Board ordered two committees to study those questions and report back in a year.

### 50 years ago (1966)

•Fire of undetermined origin caused an estimated \$2,000 in damages to a warehouse at the Paulson Dehydrated Products Company early Tuesday.

Firemen were called to the blaze at 4 a.m. after a motorist reported the metal sided frame building, just south of the mill building, was on fire. ...

The warehouse was used to house some equipment, bags, and a quantity of bulk dehydrated alfalfa.

### 75 years ago (1941)

•August was an exceptionally dry month, but even so, few people would have imagined that the amount of water used in the city during that month aggregated 10,776,800 gallons, or more than 3,457 gallons for every man, woman and child in the city. That's a lot of water, but the records at the city light and water plant, as reported by City Recorder Roy Fitzer, who that amount stated was pumped into the city water mains during the month, and, having pumped in must have been used.

### 100 years ago (1916)

•The T.J. McDermott barber shop, operated by Chas. Hall, was entered by burglars Thursday night of last week and a considerable number of razors stolen. Entrance was gained through a rear window.

When the barbers quit work Thursday evening they left their razors lying on the cabinets in front of their respective chairs. The thieves apparently grabbed the razors on the two rear cabinets and then ducked, for not only were the razors on the third cabinet, which is nearest the front of the building, untouched, but several pairs of scissors and clippers in open drawers in the two rear cabinets were not molested. The hurried manner in which the job was performed was no doubt due to the street lap in front of the shop, the light making the operation of the thieves rather dangerous.

## Four new teachers start at H-BC Public Schools

By Glenda McGaffee

Four new teachers will be working in classrooms when the school doors open for students at H-BC for the 2016-17 school year.

Samantha McGaffee will be teaching special education in the elementary and high school.

She lives in Sioux Falls. McGaffee attended Southwest Minnesota State University in Marshall and graduated with degrees in Early Childhood Education and Academic Behavioral Strategist.

She previously taught third and fourth grade for one year at West Side Elementary School in Marshall. McGaffee is a graduate of H-BC. She said, "My goal at H-BC is to individualize my instruction for my students based on their specific needs to help them achieve at their highest level."

Christopher Haak will teach fifth through 12<sup>th</sup>-grade band. Currently living in Sioux Falls he graduated from Augustana University, Sioux Falls, in 2012.

His previous teaching experience was teaching K - 6 vocal music in the Sioux Falls Catholic School.

Jannelle Lafrentz will be teaching general music in grades K - 6, junior high choir, exploration and high school choir grades 9 through 12 and



Glenda McGaffee photo/0908 new teachers

New teachers at H-BC schools for the 2016-17 school year are (from left) Chris Haak, Jannelle Lafrentz, Randi Oftedahl and Samantha McGaffee. Classes began Tuesday.

voice lessons.

She lives in Sioux Falls with her husband, Mike, and their 1 1/2-year-old-son, James. Her favorite part of teaching is letting her students shine like the stars.

Her favorite quote about

music is "Where words fail, music speaks." — Hans Christian Andersen.

Randi Oftedahl will teach junior high science, English and social studies. She lives in Luverne with her husband, Craig, who is superintendent at

Luverne Public Schools.

They have four children, Eleanor, Teresa, Rachael and Carlton. This is Oftedahl's 23<sup>rd</sup> year of teaching. She has taught in grades 2-8 and was active in coaching volleyball, basketball and track.

## CELEBRATIONS

### Births

A girl, Stella, weighing 7 pounds, 10 ounces, and 20 inches long, was born to **Amos and Heather Kittleson**, Hills, on Thursday, Aug. 28, 2016, at Avera McKennan Hospital in Sioux Falls, South Dakota. She joins a brother, Jacob, 8, and a sister, Brittany, 2 1/2. Grandparents are Larry and Linda Sanow, Hills, and Spencer and Sheila Kittleson, Sioux Falls.

### Open House

**Ruth Ashby** will celebrate her 100<sup>th</sup> birthday with an open house from noon to 4 p.m. Sunday, Sept. 11, at the Blue Mound Banquet Center in Luverne. The luncheon begins at noon with a program at 2 p.m. Greetings may be sent to her at 1495 County Highway 4, Luverne, MN 56156. She requests no gifts.



# Give Where You Live

today, tomorrow & beyond

 LUVERNE AREA COMMUNITY FOUNDATION

## GRANT APPLICATIONS DUE SEPTEMBER 30, 2016

Not sure how to apply for a grant?

Let us help.

Grant Writing Class  
Wednesday, September 14 | 7 p.m. | LACF Office

### Who can apply?

Not-for-profit organizations (either singly or as a consortium), government agencies, academic and research institutions located within Rock County are among the organizations eligible to request support from the Luverne Area Community Foundation.

The Luverne Area Community Foundation invites applications that will enhance the quality of life in the following areas:

- Arts & Humanities
- Social & Economic Growth
- Environment
- Education
- Community Health & Wellness including physical & mental health
- Community & Civic Affairs
- Nutrition
- Recreation
- Support Programs - children to senior citizen

### How to apply?

Apply online at  
[www.luvacf.org](http://www.luvacf.org)

or contact Emily Crabtree at  
507-220-2424 or [emily@luvacf.org](mailto:emily@luvacf.org)  
or stop at office 102 E. Main St. Luverne

 LUVERNE AREA COMMUNITY FOUNDATION

P.O. Box 623 | Luverne, Minnesota | 507-220-2424

Allow us to help you establish your legacy.

[www.luvacf.org](http://www.luvacf.org)



Mavis Fodness Photo/0908 Silage Harvest

Moisture levels in Nelson's silage were in the mid-60s last week, which he considers ideal. He hoped to have the silage sealed under plastic before predicted weekend rains.

## County silage harvest/continued from page 1A

August may help the soybeans generate enough energy to also fill the extra pods.

Regional crop specialist Liz Stahl with the University of Minnesota Extension said several factors combined for Rock County's exceptional soybean height beyond just adequate moisture.

These factors include genetics, plant population and soil fertility.

"All of these can come together and make some pretty lush growth," Stahl said.

The exceptional growth, however, can lead to problems come harvest time.

Wind can tangle the stems together, creating lodging or tangled conditions when combining, Stahl said.

Too much vegetation can also inhibit air circulation, allowing mold growth.

### Corn 'about average'

With frost almost certain for the later part of September, Carl Gehrke with CHS Eastern Farmers in Magnolia hopes a killing frost stays away for as long as possible for this year's corn crop.

"I am thinking this year's yields will be about average," he said.

"We can hold off on the frost — the longer the better."

A delayed frost would help the grain finish maturing as well as lower the moisture levels while still in the field.

According to the Midwestern Regional Climate Center,

Rock County's median freeze date is Sept. 21-30.

Last year Rock County set all-time yield records for both soybeans (58.2 bushels per acre) and for corn (198.8 bushels per acre).

### Grain prices mixed

The USDA National Agricultural Statistics Service released its monthly corn and soybean prices on Aug. 31.

The July average for corn in the state was \$3.47 per bushel.

That's down 18 cents from last month as well as from the July 2015 price.

Soybeans averaged \$10 per bushel, up 11 cents from June and 26 cents higher than the July 2015 price.

FREE PANCAKE BREAKFAST  
FOR PILOTS AND CLASSIC CAR  
OWNERS OR DRIVERS!

ENJOY THESE  
OTHER ATTRACTIONS:  
SKYDIVE ADVENTURE | INFLATABLES FOR KIDS  
AIRCRAFT ON DISPLAY | AIR AMBULANCE ON DISPLAY



FLY-IN OR DRIVE-IN

pancake breakfast



Saturday,  
September 10, 2016



QUENTIN AANENSON FIELD  
LUVERNE MUNICIPAL AIRPORT

7 A.M. - 12 P.M.

Online subscription rate:

**\$44 per year**

To subscribe,

Call 507-283-2333

or visit us online:

[www.star-herald.com](http://www.star-herald.com)

# Star Herald

Current and New Online Subscribers can enjoy our

Mobile Content - Online Content

E-Edition newspaper - Make online comments





Chantel Connell photos/0908 tractor parade

A parade of tractors as far as the eye can see leaves Luverne City Park Friday morning and heads east.

## Viewing Rock County from seat of a tractor

By Lori Sorenson

Forty-six tractors were part of a long parade of both old and new farm implements that assembled at Luverne City Park Friday morning for a ride around the county.

According to one of the organizers, Rodger Ossenfort, Friday's event was a dry run for a tractor ride planned for next year's 150th Anniversary

celebration in Luverne.

The idea came up one day while he and Ken Vos were having coffee.

"We just thought let's do a pre-run this year to see how it goes," Ossenfort told the Star Herald for an Aug. 18 preview story.

"Then we can hopefully get even more people next year."

The two men joined with Jerold Mann, who has participated in similar tractor rides in Iowa, and they began planning Luverne's first tractor ride.

They were hoping to get at least a dozen or so entries, but they said they were pleased to see 46 from all over the tri-state area.

The ride was open to all tractors — new and

old; the only requirement was that they be able to keep up with a 10- to 12-mph pace and last for a trip around the county.

Participants gathered at the Luverne City Park at 8 a.m. and departed at 8:30 under sunny skies and mild conditions. A registration fee of \$25 included breakfast in Magnolia and lunch in Hardwick after traveling through Kenneth.



In the photograph on the left, Ron Brink, Orange City, Iowa, parks his double-seater Hundred Series Farmall in Luverne City Park. The Farmall collector said he participated in 22 tractor rides last year traveling over 1,000 miles. In the photograph on the right, William Duncan of New Zealand takes his place in the parade. He's an exchange farmer working with the Sandagers by Hills.



Chantel Connell photos/0908 tractor parade

## Hardwick banks merger 'beneficial' in 1925

The following appeared in the Rock County Herald on January 9, 1925.

### CONSOLIDATION OF HARDWICK BANKS FOUND BENEFICIAL

#### Results Attained Following Merge Held to Justify Elimination of Double Overhead Expense.

In proof of the assertion that nothing is to be gained commercially or economically by too many institutions of a similar nature in a restricted field of endeavor, officers of the Farmers State Bank of Hardwick are viewing with pleasure and pointing with pride to the showing made in



### BITS BY BETTY

By Betty Mann, president  
Rock County Historical Society

this bank's latest statement of condition at the close of business on December 31<sup>st</sup>, 1924.

It will be recalled that about six months previous, or on July 5<sup>th</sup> to be exact, the consolidation of the Farmers State Bank and the Security State Bank of Hardwick was effected. But this was only

accomplished after many overtures.

Prior to the consolidation neither one of the institutions was really making any money, and that intangible thing, known as overhead, was consuming the accrued profits to a pronounced extent.

Under the consolidation,

operating expenses were reduced practically one-half without curtailing service to patrons of either institution to any detrimental extent.

The statement of the Farmers State Bank, published in these columns last week, shows that net profits were \$1,263.06, and that the amount of cash reserve on hand totals \$52,256.25. The bank's total footings are given as \$391,434.59.

Donations to the Rock County Historical Society can be sent to the Rock County Historical Society, P.O. Box 741, Luverne, MN 56156.

Mann welcomes correspondence sent to [mannmade@iw.net](mailto:mannmade@iw.net).

## Deer lottery deadline Sept. 8

Firearms and muzzleloader hunters who want to harvest antlerless deer in a deer permit area designated as lottery this hunting season are reminded they must purchase their license and apply for an antlerless permit by Thursday, Sept. 8.

Rock County is part of permit area 234, which will offer 100 antlerless permits this year.

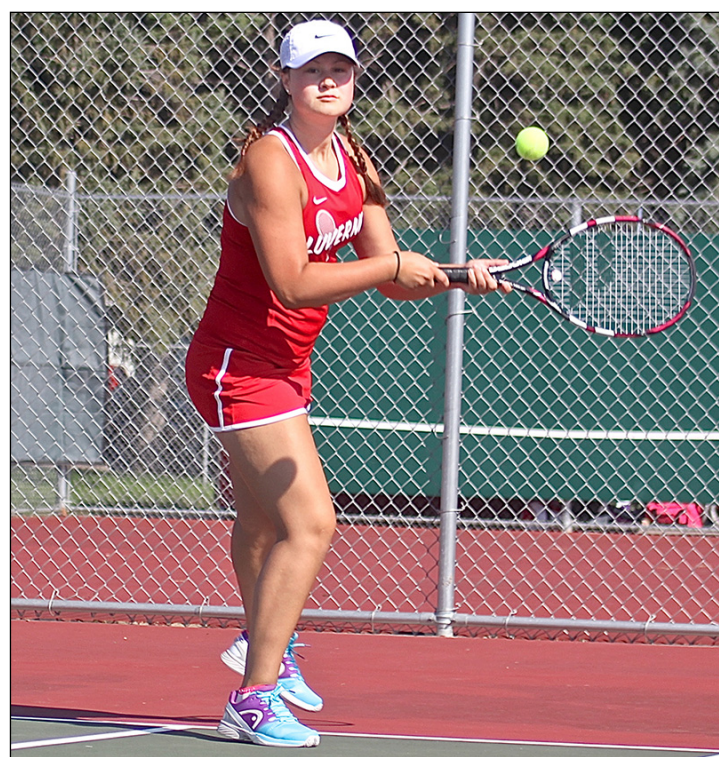
The lottery is a way to evenly distribute antlerless permits, which limits harvest of antlerless deer and moves deer populations toward goal levels.

Antlerless deer are without an antler at least 3 inches long.

All hunters who purchase a firearms or muzzleloader license, and declare a lottery permit area by Sept. 8 will be automatically entered into the lottery for an either-sex permit.

Hunters who want to participate in special firearm deer hunts also need to apply for permits that are issued by lottery, and the application deadline is Sept. 8.

More information on deer permit areas and special hunts is available in the 2016 Minnesota Hunting and Trapping Regulations Handbook, found online at [www.mndnr.gov/hunting/deer](http://www.mndnr.gov/hunting/deer).



John Rittenhouse photo/0908 tennis 4

Senior Kayla Rud prepares to strike a backhand during Thursday's 6-1 home victory over Fairmont.

## Tennis team reaches .500 mark with victories

By John Rittenhouse

The Luverne tennis team evened its record at 4-4 after posting wins on consecutive days last week.

The Cardinals strolled to a five-point home win over Fairmont Thursday before pulling out a one-point road victory over Sioux Falls Lincoln's junior varsity Friday.

Luverne plays in Marshall Friday.

### LHS 5, Lincoln JV 4

The Cardinals won a tight battle with the Patriots Friday in Sioux Falls.

The teams split six singles matches, but Luverne went 2-1 in doubles to pull out a one-point win.

"We continue our improvement," said LHS coach Greg Antoine.

"We are hitting with more confidence, playing better points and are being a little more consistent in all phases of the game."

LHS received key wins at first and third doubles.

Natasha Thone and Kayla Rud nailed down 6-4 and 6-3 victories over Elle Dobbs and Brita Quello at No. 1, while Sierra Wieneke and Riley Severtson topped Ellie Lamberty and Ree Baireddy by 6-0 and 6-1 tallies at No. 3.

Severtson (6-3, 7-5 over Maggie Stock at No. 3), Elise Jarchow (6-1, 6-4 over Lamberty at No. 5) and Amelia Jarchow (4-6, 6-3, 10-5 over Baireddy at No. 6) secured singles wins for LHS.

Lincoln's singles wins came from Dobbs (6-4, 7-5 over Samantha Pierce at No. 1), Quello (6-2, 6-2 over Carissa Cunningham at No. 2) and Meredith Reiner (1-6, 6-4, 10-8 over Ainslie Robinson at No. 4). Lincoln's Stock and Reiner topped Pierce and Cunningham by 7-5, 7-6 scores at second doubles.

Tennis/continued on page 3B

## Spikers open with two wins

By John Rittenhouse

The Luverne volleyball team opened the 2016 season in style by recording a pair of wins last week.

The Cardinals swept a three-set match against Southwest Christian in Edgerton Aug. 30 before posting a straight-set win over St. James in their home opener Thursday.

The 2-0 Cards play in Redwood Falls Thursday.

### Luverne 3, SJ 0

An LHS senior reached a milestone and the Cardinals won their second consecutive match during a successful home debut against the Saints Thursday.

Standout setter Ariel DeBeer surpassed the 1,000-ace set mark for her career to highlight a three-set sweep of the Saints.

DeBeer, who served three aces in the match, completed all 94 of her sets and registered 28 ace sets during the contest.

She reached the 1,000-ace set mark for her career during the second set.

LHS turned in a commanding performance as a team by recording 25-19, 25-9 and 25-14 victories during the match.

Alexis Ferrell (seven kills and five blocks), Hailey Remme (eight kills, three blocks and three ace serves) and Katie Kracht (12 of 12 serving with two aces and 15 digs) had big statistical nights for the Cards.

Madison Crabtree contributed six kills to the winning cause.

### Luverne 3, SWC 0

A promising season got off to a good start when the Cardinals swept the E-Gals on their home floor in Edgerton Aug. 30.

Luverne faced deficits in all three sets before bouncing back to win the battle by outscoring SWC 75-52 during the evening.

The Cardinals scored the



John Rittenhouse photo/0908 lvb 10

Luverne senior Hailey Remme tips the ball away from Southwest Christian blocker Jazlynn Prins during a 3-0 LHS victory over the E-Gals in Edgerton Aug. 30.

first five points of the opening set on the way to opening a six-point lead (8-2) after Remme

delivered a service point. SWC answered the challenge by putting together a

9-3 run to knot the score at 11

Wins/continued on page 3B

## Cards overcome turnovers to top WHS

By John Rittenhouse

The Luverne Cardinals opened the 2016 football season by posting a 20-6 victory in Worthington Friday.

Led by a stout defense and the hard running of senior Solomon Nielsen, the Cardinals were able to overcome four turnovers to secure a 14-point win.

The LHS defense limited the Trojans to 92 yards and Nielsen carried the ball for 147 yards and scored three touchdowns in the contest.

"We played a good game defensively. We were able to stop Worthington after we turned the ball over," said Cardinal coach Todd Oye.

"We were able to move the ball offensively. It was the matter of turning the ball over that hurt us. We were a little concerned about turning the ball over going into the game because of our inexperience. We'll learn from those mistakes and get better."

After losing two fumbles during the first two offensive possessions of the contest, the Cards turned their third possession into a 7-0 lead.

LHS covered 65 yards in 11 plays with Nielsen capping the drive with an 11-yard touchdown run with 37 seconds remaining in the first quarter.

Chris Jelken booted his first of two extra points following the touchdown.

Worthington took advantage of a short field to trim the difference to one point (7-6) before the first half was complete.

LHS was forced to punt deep inside its own territory, giving WHS the ball on Luverne's 27-yard line.

Trojan back Easton Sauerbrei scored on a two-yard plunge five plays later to cap the scoring in the first half with 6:49 remaining in the second quarter.

LHS iced the win by produc-



John Rittenhouse photo/0908 lfb 14

Luverne sophomore quarterback Jake Haugen pulls away from Worthington defender Nathan Boneschans to gain some rushing yardage during Friday's 20-6 win in Worthington.

ing touchdowns in the third and fourth quarters.

The Cards received great field position to start their second offensive possession of the third quarter when senior Layne Curtis returned a punt 38 yards to the Trojans' 19-yard line.

Nielsen scored on a five-yard run two plays later to up the lead to 14-6 at the 7:04 mark of the third quarter.

Luverne put together its

most impressive drive of the game in the fourth quarter, when it moved the ball 89 yards in 15 plays to cap the scoring with 1:37 remaining when Nielsen punched the ball into the end zone from two yards out.

The Cards converted three third-down conversions during a drive that featured Jake Haugen recording an 11-yard run and hauling in a 14-yard pass reception from Kasyn

Kruse.

The 1-0 Cardinals make their home debut Friday when they host Windom. The Eagles bring an 0-1 record into the game.

### Team statistics

Luverne: 191 rushing yards, 48 passing yards, 239 total yards, 18 first downs, five penalties for 35 yards, four turnovers.  
Worthington: 61 rushing yards, 31 passing yards, 92 total yards, eight

Cards/continued on page 3B

## Luverne girls claim meet title in Canby

By John Rittenhouse

The Luverne girls' cross country team captured its first meet title of the season at the Canby Late Night Invite Friday.

Competing in a field of five complete teams, Luverne led the pack with a 47-point effort.

Three Cardinal runners placed among the top eight finishers to lead LHS to victory.

Madison Schandelmeier won the race with a time of 19:33, Regan Feit placed fifth in 20:29 and Autumn Nath finished eighth in 21:01.

Claire Baustian and Madison Reisdorfer capped the team scoring by placing 19th and 34th with respective 22:26 and 23:14 efforts.

Mariah Aukes (42nd in 24:22) and Zayna Hustoft (44th in 25:44) also ran in the varsity race.

The Cardinal boys placed sixth in a nine-team field led by Sioux Falls Washington (57

points) with 150 points.

Dalton DeSollar led the Cards by placing 12th in 18:13.

Shane Berning (22nd in 18:51), Austin Winter (29th in 19:17), Michael Rahm (47th in 20:09) and Cole Claussen (57th in 21:39) also competed for LHS.

Luverne hosts the annual Cardinal Showdown Saturday.



Schandelmeier

Junior high girls: Brooklyn VerSteeg, first, 7:50; Tenley Nelson, second, 7:59; Cassie Flanagan, third, 8:42; Solveig Toffeland, sixth, 9:00.

Junior high boys: Seno Chanthelandsy, 11th, 8:20; John Miller, 27th, 9:16; Ethan Rahm, 29th, 9:17; Sam Emery, 39th, 9:45; Alex Baumberger, 40th, 9:57. Luverne placed fifth out of five teams with 97 points.

Junior varsity girls: Megan Rogers, 13th, 25:17; Tianna Doppenberg, 16th, 25:44; Carly Serie, 30th, 28:03.

Junior varsity boys: Jackson Golla, 17th, 20:52; Brayden Toffeland, 31st, 21:49; Carter Baumberger, 41st, 23:01; Jordan Winter, 51st, 24:17; Nick Feit, 59th, 26:15. Luverne placed sixth out of six teams with 150 points.

## Dragons crush Cathedral

By John Rittenhouse

The Adrian football team opened the season by posting a convincing victory in New Ulm Friday.

Taking on New Ulm Cathedral on its home field, the Dragons scored the first 36 points of the game to set the stage for a 36-7 victory.

"It was a good start for us," said Adrian coach Randy Strand.

"We played solid defense. Offensively, our linemen did well and our backs ran hard

after first contact. It will get tougher, but this was a good game for us."

The Dragons took advantage of two mistakes by NUC's punting unit to open a 16-0 lead in the first quarter.

The hosts were attempting to punt four plays into the game when a low snap led to the punter touching his knee on the ground

in the process of trying to field the ball.

AHS took over on the NUC

Crush/continued on page 3B



Serrao

**Crush/continued from page 2B**

12-yard line and Dylan Gyberg scored on a one-yard plunge two plays later.

Frank Serrao carried in the ensuing two-point conversion following the touchdown to make it 8-0:12 into the game.

NUC was attempting to punt again late in the first quarter when a high snap allowed Landon Rogers to block the kick. Rogers picked up the loose ball and returned it 12 yards for a touchdown.

Serrao carried in the ensuing two-point conversion to up the lead to 16-0 with nine seconds left in the opening stanza.

Adrian added another eight points in the second quarter to make it 24-0 at the intermission.

Serrao capped a 16-play, 90-yard march with a nine-yard run before toting his third two-point conversion of the game.

The Dragons opened the second half with a 14-play, 62-yard drive.

The possession ended with quarterback Ryan Wieneke tossing a five-yard touchdown pass to Serrao to make it a 30-0

game at the 5:27 mark of the third quarter.

Adrian's 36-point run came to an end when Wieneke hooked up with Alex Loosbrock for a 15-yard touchdown pass to cap a 13-play, 54-yard drive with 9:27 remaining in the third quarter.

NUC avoided a shutout when Nathan Hauser scored on an 11-yard run and David Berg booted the extra point following the touchdown with 53 seconds left in the game.

Adrian hosts Lakeview Friday.

**Team statistics**

Adrian: 207 rushing yards, 36 passing yards, 243 total yards, 13 first downs, six penalties for 50 yards, one turnover. NUC: 124 rushing yards, 14 passing yards, 138 total yards, seven first downs, five penalties for 35 yards, one turnover.

**Individual statistics**

Rushing: Serrao 17-65, Nick Harder 12-60, Brandon Schnoor 3-3, Dylan Gyberg 7-25, Ian Stamer 1-2, Wieneke 6-30, Dakota John 4-22. Passing: Wieneke 4-5 for 36 yards. Receiving: Serrao 3-21, Loosbrock 1-15. Defense: Harder eight tackles, John six tackles, Rogers seven tackles and one blocked punt, Serrao one interception.

**Wins/continued from page 2B**

before opening an 18-16 lead as the set progressed.

The score was tied at 21 moments later before a late service run by Crabtree sealed a 25-21 victory for the visitors.

SWC scored the first four points of the second set before Luverne went on a 16-2 run capped by a service point from Remme to open a 10-point (16-6) advantage.

The lead swelled to 14 points and the Cards won by 14 (25-11) when Ferrell produced a set-ending kill.

Luverne scored the first five points of the third set and led 7-1 when Rachel Oftedahl registered a kill at the net.

SWC countered with a 10-1 run to move in front 11-8, but the Cards answered with a 12-3 surge capped by a kill from Hailey Franken to open a 20-14 cushion.

The E-Gals did trim the difference to one point (21-20) as the set progressed, but a late service run by Kracht locked up a 25-20 win for the Cardinals.

Remme (16 of 18 serving, four blocks and five kills) and DeBeer (two blocks, 17 of 18 serving with one ace and 74 of 75 serving with 25 set assists) turned in big nights statistically for LHS.

Ferrell and Kami Sawtelle led the Cards with seven and six kills respectively, while Sawtelle chipped in two blocks.

Kracht recorded a team-high 16 digs for LHS.



John Rittenhouse photo/0908 lvb 3

Luverne senior Kami Sawtelle spikes the ball at the net during a 3-0 win over SWC in Edgerton Aug. 30. The Cardinals defeated SWC and St. James in the first week of the season.



John Rittenhouse photo/0908 lfb 6

Luverne's Daniel Tofeland attempts to haul in a pass reception during Friday's 20-6 victory in Worthington.

**Tennis/continued from page 2B**

**LHS 6, Fairmont 1**

The Cardinals had little trouble in disposing of Fairmont when the teams squared off in Luverne Thursday.

LHS swept all four singles matches and went 2-1 in doubles to win handily.

"The girls really responded to two days of practice where we concentrated on different situations and how to win points," said coach Antoine.

"The singles players kept their opponents on the run. They were confident and in control of many of the points and rallies. The doubles teams were much more aggressive in their play. They finished points when they had the chance to and they were in the right positions."

Luverne's Pierce (6-1, 6-3 over Lauren Carlson), Cunningham (6-0, 6-1 over Sydney Hainey), Severtson (6-2, 6-0 over Claire Nemmers) and Robinson (7-6, 6-1 over Brianna Joseph) posted straight-set wins in singles.

Thone and Rud secured a pair of 6-1 wins against Bergen Senf and Brittany Bass at first doubles, while Emilie Bartels and Elise Jarchow topped Emily O'Connor and Maggy Totzki by 6-2 and 6-1 tallies at third doubles.

Fairmont's win came at second doubles, where Holly Petrowiak and Morgan Chioski secured a 3-6, 7-6 (7-3 in the tiebreaker), 10-6 (super tiebreaker) over Shelbie Nath and Wieneke.



John Rittenhouse photo/0908 tennis 11

Luverne senior Natasha Thone sends a forehand over the net during Thursday's 6-1 home win over Fairmont. Thone and Kayla Rud prevailed at No. 1 doubles.

**Cards/continued from page 2B**

first downs, six penalties for 65 yards and two turnovers.

Individual statistics  
Rushing: Nielsen 23-147, Declan Beers 7-30, Kruse 10-14, Haugen 6-2, Tanner Wiese 1-minus 1, Cyris Halverson 1-minus 1.  
Passing: Haugen 4-11 for 34 yards, Kruse 1-1 for 14 yards.

Receiving: Curtis 3-21, Haugen 1-14, Tucker Oeltjenbruns 1-13.  
Defense: Nielsen 4.5 tackles and one sack, Jeremiah Dooyema four tackles and one sack, Jelken four tackles, Curtis four tackles, Kruse three tackles, one sack and one fumble recovery, Logan Stratton 2.5 tackles and one fumble recovery, Beers 2.5 tackles.

**CLIPBOARD**

**Rock County Sportsman's Club Aug. 30**

**Team Scores:**  
Slocum Taxidermy 2 - 109  
Bill's H2O - 109, 92  
Slocum Taxidermy 1 - 107  
Agri-Energy LLC - 107  
Timmer Dairy - 105  
Minnwest Bank - 104

Big Or's Bar - 103  
Freedom Ranch Firearms - 101  
Blue Mound Auto Glass - 100  
Main Street Financial - 97  
Howling Dog - 89

**Individual scores:**  
25x25  
Rick Ossefort  
Del Gangestad

Dave Stearns - 2  
Chris Balster - 2

24 x 25  
Mike Gangestad  
Chris Balster  
Jim Slocum  
Bruce Hess

**YOU'RE INVITED**  
LUVERNE FIELD DAY  
MONDAY, SEPTEMBER 12<sup>TH</sup>

<p><b>DATE:</b> MONDAY, SEPTEMBER 12<sup>TH</sup></p> <p><b>WHERE:</b> LUVERNE GOLF COURSE PLOT</p> <p><b>TIME:</b> 1:00<sup>PM</sup> - 2:30<sup>PM</sup>: PLOT TOUR FOR GOLFERS/SHOOTERS 3:00<sup>PM</sup> - 5:30<sup>PM</sup>: GOLF / TRAP SHOOT 5:00<sup>PM</sup> - 6:30<sup>PM</sup>: PLOT TOURS 5:30<sup>PM</sup> - 7:30<sup>PM</sup>: CATERED MEAL</p>	<p><b>RSVP:</b> PLEASE RSVP FOR GOLF AND TRAP SHOOTING TO YOUR DEALER</p> <p>WE LOOK FORWARD TO SEEING YOU THERE! -YOUR MN WEST TEAM</p>	
--	--	--

**Advanced surgical care here at home**

**Experience expert surgical care right in Luverne.**

Dr. Norma Walks is dedicated to giving you individualized, compassionate care – whether you are undergoing a major or minor procedure.

- Colonoscopy and upper endoscopy
- Laparoscopic surgery for gall bladder or appendectomy.
- Small and large bowel surgery
- Hernia repair
- Breast cancer surgery
- Skin cancer removal
- Cancer surgery
- Cesarean section

Norma Walks, MD  
General Surgery

**Call (507) 283-4476 to schedule an appointment.**

sanfordluverne.org Luverne

018019-00234 7/16



John Rittenhouse photo/0908 hfb 9

H-BC quarterback Zach Scholten hands the ball off to tailback Isaiah Vis during Thursday's 68-6 rout of W-WG in Hills.

## H-BC routs W-WG in football opener

**By John Rittenhouse**

The Hills-Beaver Creek football team turned in a dominating performance during their 2016 debut against Westbrook-Walnut Grove in Hills Thursday.

H-BC scored 54 first-half points and outscored the Chargers 14-0 in the second half during a 68-6 victory.

Senior quarterback Zach Scholten threw for four touchdowns and 133 yards during the win, while senior tailback Isaiah Vis ran for 133 yards and three touchdowns for an H-BC squad that scored 60 unanswered points to end the game.

"I thought we would win, but I didn't think it would be quite like it turned out," said H-BC coach Rex Metzger.

"W-WG is a young team that doesn't have many upperclassmen. They are searching for an identity."

Although H-BC won the game by a lopsided margin, it didn't start that way.

Vis broke free for a 61-yard touchdown run during H-BC's first offensive play of the contest and Trenton Bass toted in

the ensuing two-point conversion to make it 8-0:25 into the game, but W-WG answered quickly.

Charger running back Kyle Kuehl scored on a 56-yard run on the first play of W-WG's next offensive possession to trim the difference to two points (8-6).

The rest of the game belonged to H-BC, which scored points in bundles while blanking W-WG over the final 45:48.

After the H-BC defense forced W-WG to punt deep inside Charger territory as the first quarter progressed, Vis broke free for a 26-yard run on first down before scoring on a one-yard plunge to cap a two-play, 27-yard possession. Bass carried in the two-point conversion to up the lead to 16-6.

H-BC's Logan Leuthold recovered a fumble two plays into W-WG's next possession, and Scholten fired a 42-yard touchdown pass to Josh Kuetter and Bass carried in the conversion to make it a 24-6 game at the 3:14 mark of the opening stanza.

The Patriots iced the win

with a 30-point second quarter.

A seven-play, 55-yard drive ended with Scholten tossing a nine-yard touchdown pass to Jed Burgers and Vis carrying in the two-point conversion 1:25 into the second quarter.

H-BC moved the ball 50 yards with its next possession that was capped by a 10-yard touchdown run by Vis and a successful Scholten-to-Bass conversion pass that upped the lead to 40-6.

A pair of W-WG turnovers enabled the Patriots to add two more touchdowns in the final five minutes of the first half.

Preston Maassen recovered a fumble on the W-WG 25, setting up a four-play possession capped by a six-yard Scholten-to-Bass touchdown pass that upped the lead to 46-6 at the 4:05 mark of the second quarter.

Burgers intercepted a pass moments later, setting up a four-play possession that ended with him hauling in a 29-yard touchdown pass from Scholten with 1:38 remaining in the first half.

When Scholten threw a successful conversion pass to Vis following the touchdown, H-BC sported a 54-6 lead.

H-BC's reserves registered a pair of fourth-quarter touchdowns.

Nick Kiers scored on a 15-yard run and carried in a two-point conversion after Bailey Susie registered a 28-yard touchdown scamper in the final stanza.

**Team statistics**  
H-BC: 258 rushing yards, 132 passing yards, 390 total yards, 11 first downs, six penalties for 30 yards, one turnover.  
W-WG: 122 rushing yards, 28 passing yards, 150 total yards, five first downs, six penalties for 50 yards, six turnovers.

**Individual statistics**  
Rushing: Vis 15-133, Bass 7-35, Maassen 2-10, Kiers 5-22, Susie 2-36, Easton Harnack 3-9, Hunter Bork 6-13.  
Passing: Scholten 7-8 for 133 yards, Harnack 1-2 for 18 yards.  
Receiving: Kuetter 2-50, Burgers 3-56, Bass 2-8, Jax Wysong 1-18.  
Defense: Kiers two tackles, Burgers, five tackles and one interception, Dawson Leenderts one tackle and one interception, Vis three tackles, Wysong four tackles, Susie three tackles and one fumble recovery, Dean Fuerstenberg eight tackles, Maassen five tackles, one fumble recovery and one interception, Leuthold three tackles and one fumble recovery, Dylan Forshey four tackles, Garrett Raymon three tackles, Jesse Eibers two tackles, Dylan Tieszen four tackles, Luke LaRock four tackles.

## Dragons place seventh at Mountain Lake Area meet

**By John Rittenhouse**

The Adrian girls' cross country team made its 2016 debut at the Mountain Lake Area Invitational Aug. 31 in Mountain Lake.

Competing in a field of 10 complete varsity teams, the Dragons placed seventh with 180 points.

Fairmont captured the team title with 33 points.

Moriah Bullerman set the pace for Adrian by finishing 11<sup>th</sup> in 21:42.

Morgan Penning (32<sup>nd</sup> in 23:53), Gracia Elias (45<sup>th</sup> in 25:23), Jasmine Kohorst (59<sup>th</sup> in 28:01) and Karis Barr (66<sup>th</sup> in 28:40) made contributions

to the team tally.

Courtney Penning (67<sup>th</sup> in 28:57), Annika Elias (72<sup>nd</sup> in 29:51) and Kahilee Nelson (80<sup>th</sup> in 31:01) also ran in the varsity race.

The AHS boys competed as an incomplete team.

Brady Henning led the Dragons by placing sixth in

18:14.

Christian Weidert and Caleb Hornstein placed 39<sup>th</sup> and 77<sup>th</sup> with respective 20:13 and 23:58 efforts.

Adrian runs in Tracy Thursday.

**Junior high girls:** Ashlee Christians, 28<sup>th</sup>, 7:30; Abbey Leopold, 45<sup>th</sup>, 9:06.  
**Junior high boys:** Josh Barr, 28<sup>th</sup>, 10:15.

## DeBeer reaches setting milestone during 2-0 start

What I'm thinking is that a promising season for the Luverne volleyball team started in grand fashion last week.



Some may look at Luverne's three-set victories over Southwest Christian and St. James as being nothing other than non-conference conquests.

I'm not buying into that vision, and neither is senior setter Ariel DeBeer.

Both SWC and the Saints swept the Cardinals during early-season matches in 2015, but this is a different LHS team.

Led by a seven-member senior class and a number of talented underclassmen, Luverne is a more experienced team in 2016 with a roster full of players harboring higher expectations.

"I'm very happy with our start. Now we just have to keep the momentum going," DeBeer said.

"We have a team that wants to keep improving and achieve the goals we've set for ourselves before the season."

If the Cardinals meet their preseason objectives, DeBeer will play a key role in the outcome of every match.

As the team's setter with two-plus years of varsity experience, DeBeer basically is volleyball's version of a football quarterback as she is the one who runs what will be a potent LHS offensive attack.

"I have to make sure we speed up the game," DeBeer responded, when asked what her responsibilities are on the court.

"I have to get our hitters going so we can play a faster game, which is the way we want to play."

Considering the milestone she reached during Thursday's home win over St. James, DeBeer does her job very well.

## FROM THE SIDELINES

**By John Rittenhouse, sports editor**

Needing 16 ace sets to reach the 1,000 mark for her career, DeBeer reached the standard during the second set of what ended as a 28-assist night for the LHS standout.

Luverne's leader on the court appreciates what she has accomplished as a varsity setter, but she realizes it was her teammates who helped make it happen.

"I was excited I was able to share the moment with the team because a lot of players made this happen," she said.

"Our hitters helped a lot and so did our passers. I have to receive a pass in order to make a set, so they deserve credit, too."

I believe it's that type of "we're all in this together" team unity DeBeer displays on and off the court that will make 2016 a special year at LHS.

"Our goals are to finish the year in the top three (teams) in our conference and to make it to the state tournament."

Luverne's conference schedule starts Thursday in Redwood Falls, and the Cards need a victory to reach their league expectations.

A win would also help LHS in its quest for post-season success.

With the top two seeds earning a possible two chances to host games in the opening rounds of the South Section 3AA Tournament, there would be no easier trek to advance to the championship match by winning enough regular season contests to gain a home-court advantage for the playoffs.

## Patriot girls sweep AHS to open volleyball campaign Aug. 30

**By John Rittenhouse**

Two volleyball teams from the Star Herald coverage area squared off against each other to open the 2016 season Aug. 30.

The Hills-Beaver Creek Patriots made the trip to Adrian to take on the Dragons in a non-conference clash.

The night belonged to H-BC, which secured a 3-0 victory by outscoring the Dragons 75-42 during the match.

The Patriots dominated the first and third sets by securing convincing 25-11 and 25-12 victories.

Adrian offered more of a challenge to H-BC during a 25-19 loss in the second set. Jasmine Lingen, who record-

ed five kills for the winners, led an H-BC team that served 21 aces with eight ace serves.

Sidney Fick and Avery Van Roekel charted six and five kills respectively for the Patriots, who received four ace serves from Mekayla Kolbrek and four digs from Courtney Kruger.

Miah Kunkel and Paige Bullerman registered five and four kills for the Dragons.

Lexi Slater and Brittney Loonan contributed 10 digs each to Adrian's cause, while Avery Balster chipped in seven digs.

H-BC hosts Edgerton Thursday, while Adrian entertains Murray County Central Thursday.

### FALL SENIOR ATHLETES OF THE WEEK

**Tom Wiebe**

**Sport:** Football  
**Position:** OL, DL  
**Parents:** Jen Wiebe and Scott Kramer  
**Favorite Subject:** Lifetime Fitness  
**Extra-Curricular Activities:** Football  
**Future Plans:** Riverland University to be an officer

**Damian Reese**

**Sport:** Football  
**Position:** WR, CB  
**Parents:** Andrea Kubesh and Adam Reese  
**Favorite Subject:** Math  
**Extra-Curricular Activities:** Student Council  
**Future Plans:** Become a Physical Therapist or an Athletic Trainer

**Ariel DeBeer**

**Sport:** Volleyball  
**Position:** Setter  
**Parents:** Jason and Sarah DeBeer  
**Favorite Subject:** English  
**Extra-Curricular Activities:** Volleyball, Softball and Choir  
**Future Plans:** Go to college for Pre-Physical Therapy

### Panthers take set from Edgerton

**By John Rittenhouse**

The Ellsworth High School volleyball team made its 2016 debut under the guidance of first-year head coach Jessica Albrecht Aug. 30 at Edgerton Public School.

The Panthers forced the Flying Dutchmen to play four games on their home floor, but it was Edgerton that came out on the winning end of a 3-1 decision.

Edgerton gained an early advantage by securing 25-20 and 25-12 victories in the opening sets.

Ellsworth bounced back to secure a 26-24 victory in the third set, but the Flying Dutchmen responded to the challenge by rolling to a 25-5 win in the fourth set.

Hailee Nolte served three aces and Sierra Smith registered four blocks at the net for an Ellsworth team that displayed strong court coverage during serve receive situations, according to Albrecht.

Hannah Kramer and Devin Dreesen recorded two kills.

**Shelbie Nath**

**Sport:** Tennis  
**Position:** Doubles  
**Parents:** Scott and Lori Nath  
**Favorite Subject:** English  
**Extra-Curricular Activities:** Gymnastics, Track and Speech  
**Future Plans:** Go to college for Architecture and Interior Design

Pipestone Pepsi | 1809 Forman Drive, Pipestone, MN 56164

## EMPTY PESTICIDE CONTAINER COLLECTION & RECYCLING

### Monday, Sept. 19 • 10:30 a.m. to 12 noon

#### Ketterling Services at 401 S. Cedar, Luverne

ELIGIBLE PARTICIPANTS:	PESTICIDE CONTAINERS MUST:	WILL NOT ACCEPT
Farmers Commercial Applicators Golf Courses Government Agencies	Be #2 HDPE Plastic (identifier shown on bottom of container) Be clean, dry and properly rinsed (inside and out) Have caps removed Have labels remove as best you can <b>Containers must be triple rinsed</b>	Bags (either plastic or paper) Aerosol containers Glass containers Mini-bulks or containers larger than 2 1/2 gallons

For more information about the empty pesticide container collection event, contact:  
Rock County Land Management Office, Phone 507-283-8862, Ext. 4  
Minnesota Department of Agriculture, 1-800-657-3986





# Star Herald CLASSIFIEDS

### EMPLOYMENT

Help Wanted: someone to do housework. Four hours every other week. Call 507-669-2585. (9.4-9.22)

Rapids Chiropractic in Rock Rapids is seeking an Office Assistant. Send or drop off resume to 206 S. Union Street Rock Rapids, IA 51246 or call 712-472-2481. (9.4-9.22)

Help Wanted: Part-time wait staff, bartenders, and cooks! Apply in person to pick up an application. No phone calls please. Howling Dog. South 75 in Luverne. (8.31-9.15)

Registered Nurse/LPN- Parkview Manor, a municipal skilled nursing facility is accepting applications for a part-time charge nurse position. Wages commensurate with experience. \$2000 scholarship available for students. Benefits include vacation, holiday, and PERA retirement plan. Contact Darnell Krull 308 Sherman Ave., Ellsworth, Mn 56129 or call 507-967-2482. (tc)

### EMPLOYMENT

Adrian Public School is seeking applications for classroom/special education paraprofessionals at the Middle/High School. Candidates will work with teachers providing academic and behavioral support to students. Candidates must hold an associates degree, or have certification via the Para Pro assessment. If interested, please submit a letter of application, resume, current letters of reference, and a completed district application found at [www.isd511.net](http://www.isd511.net). Send application materials to: Roger Graff, Superintendent, Adrian Public School, PO Box 40, Adrian, MN 56110. For additional information on the Para Pro assessment, please contact Tim Christensen at [t.christensen@isd511.net](mailto:t.christensen@isd511.net). Positions open until filled. (8.31-9.15)

Part-time Cleaner Needed in Pipestone and Luverne. Starting pay is \$15.00/hour Background check required. One day per week / 4 hours per day Call 612-208-3441 (8.28-9.11)

### EMPLOYMENT

CHS Eastern Farmers is looking for Seasonal Fall help in the Grain Dept. in Luverne, Kanaranzi and Jasper Mn. Apply on line @[www.chsinc.com](http://www.chsinc.com) click on careers/under CHS Opportunities find "CHS career search here" then click Search openings. CHS Inc. is an EOE employer. (8.28-9.15)

### EMPLOYMENT

Nursing Assistant: Parkview Manor has openings for part-time nursing aides with benefits to include: health insurance, public retirement plan, and holiday pay. New wages \$11.90/ hr. or more with experience. \$2000 scholarships available for students. Will provide training or pay for experience. Contact Darnell Krull, 308 Sherman Ave. Ellsworth, MN 56129 or call 507-967-2388. (tc)

### EMPLOYMENT

The Quality Inn Motel in Luverne has immediate part-time and full-time openings available for housekeeping, front desk, and maintenance. All shifts available. Under new management. Please stop in at The Quality Inn located on Highway 75 in Luverne. EOE. (8.21-9.8)

### EMPLOYMENT

New Prairie Insulation of Beaver Creek has a full-time Insulation Installer position available. Monday through Friday, health insurance, vacation, holiday, bonus opportunities. Will train. Call Dean at 605-376-3006 or 507-673-2548. (tc)

RECYCLE!

ALL TEMPORARIES MIDWEST, INC.

## RN/LPN/CNA

Weekly Pay—Direct Deposit

RN—\$28 to \$33/hr.  
LPN—\$20.50 to \$24/hr.  
CNA—\$14 to \$15/hr.

Call anytime—  
**952-941-1064**  
Ext. 5

ALL TEMPORARIES MIDWEST

### HELP WANTED Independent Living (IL) Specialist

Southwestern Center for Independent Living (SWCIL), a community-based, non-profit organization serving people of all ages and disabilities is seeking an Independent Living (IL) Specialist. Persons with disabilities constitute more than 50% of SWCIL's governing board and employees in decision-making and staff positions. Persons with disabilities and veterans are strongly urged to apply. Full time: 40 hours per week during normal business hours. Must have knowledge of disabilities and their characteristics, ability to work with diverse populations of individuals with disabilities, have reliable transportation, and pass a DHS background study. Minimum qualifications require a four year degree in a human/social services or related field or a two year degree in a human/social services field combined with one year of experience in a disability related position. Responsibilities include independent living skills training, community activity development and other IL services. Position requires travel within the local region. SWCIL provides staff orientation and in-depth training. Wage range based on experience and qualifications. Competitive benefits offered. Review of applications begins immediately until filled. To apply, send cover letter, resume and 3 references to: ILS Program Coordinator, SWCIL, 109 S. 5th Street, #700, Marshall MN 56258 or [swcil@swcil.com](mailto:swcil@swcil.com). SWCIL is an equal opportunity employer.



### HELP WANTED

At GNP we are passionate about what we do and are guided by a strong work ethic and a commitment to doing things right. Strong relationships with our team members, family farm partners, customers, suppliers and the communities in which we operate are what makes our business thrive. We are currently seeking candidates who share these same ideals and values to join our team at our Luverne, MN location.

- The **Maintenance Station Mechanic** is responsible for safely monitoring, maintaining, repairing and modifying all equipment at the Luverne processing facility, ensuring safe, efficient equipment performance.
- The **Team Member Communications Associate** facilitates confidential communication with production team members and applicants between English and Spanish languages. Assist with HR related activities of hiring, orientation, new hire training program and benefit enrollment. May assist with interpreting for performance reviews, crew meetings and training, translations and delivery of team member programs, etc.

Also seeking a **Day and Afternoon Production Associate**.

Apply online.

**To apply submit application to**  
**[www.gnpcompany.com](http://www.gnpcompany.com)**

Must be at least 18 years old Equal Opportunity Employer

### SON-D-FARMS ADRIAN

is hiring General Farm, Hog, Field Work, Truck Driver, Maintenance person, Farm Shop Mechanic & Farm Delivery Person. Experience wanted but willing to train. PTO benefits. Call (507) 483-2245, 370-1590 or e-mail [office@sondfarms.com](mailto:office@sondfarms.com)

**Find Us Online!**  
**[star-herald.com](http://star-herald.com)**



### TUFF MEMORIAL HOME

"A Home With a Heart"

The Tuff Memorial Home is currently hiring for a full-time RN/LPN. Experience preferred. If interested, contact Alex Dysthe at 507-962-3275, or email [adysthe@tuffmemorialhome.com](mailto:adysthe@tuffmemorialhome.com)

Competitive Wage  
Full Benefits  
Pension Plan  
Friendly Atmosphere

**DOING WHAT WE SAY SINCE 1935.**  
**SEE FOR YOURSELF.**

**SIGN-ON BONUSES – UP TO \$7,500 – AVAILABLE IN YOUR AREA!**

Opportunities available in these divisions  
**VAN | DEDICATED**  
Team and Solo | Regional and Over-the-Road

**COMPANY DRIVER BENEFITS**  
\$6,000 tuition reimbursement | Paid orientation and ongoing training  
Medical, dental and vision insurance and 401(k) plan

**SCHNEIDER** [schneiderjobs.com](http://schneiderjobs.com)  
[schneiderowneroperators.com](http://schneiderowneroperators.com)  
800-44-PRIDE | 800-28-LEASE

### MN VETERANS HOME

#### Recreation Program Assistant

The Minnesota Veterans Home is seeking applicants for a Recreation Program Assistant. This position assists with the implementation of a meaningful recreation program that promotes spiritual and emotional wellness and physical well-being for our residents. This part time position will normally work 7:30 am – 4:00 pm, 40 hours per two week pay period, including some weekends and evenings (12:00 pm-8:30 pm). Starting wage: \$16.91. Benefits available. Application deadline: September 15, 2016. Apply online: <https://mn.gov/mmb/careers/> For information call 507-283-6211. AA/EOE



### Help Wanted

*The*  
**Bluestem**  
CASUAL • FRESH • LOCAL

The Bluestem offers a fast paced work environment in a family style atmosphere and we are looking to add a few more members to our team! Full and part time hours available for the following positions: **Bussers, dishwashers, servers, and bartenders.** If you are looking to supplement your income by working a few nights a week, we would like to talk with you! Call us at 507-449-2583 and leave a message for Skyler, or stop in and pick up an application after 4 PM.

## VOLUNTEER FIREFIGHTERS

The City of Luverne Fire Department is accepting applications for **part-time, paid-on-call Volunteer Firefighters**. This position performs skilled work in the performance of fire suppression and first aid work; respond to fire alarms and other emergency calls; extinguish and control fires as assigned.

**Experience and Training**  
High school diploma or GED equivalency; or any equivalent combination of experience and training which provides the knowledge, skills and abilities to perform the work.

**Special Requirements**  
Must be 18 years of age. Possession of and ability to maintain a valid Minnesota driver's license. Seven (7) minute emergency call response time is required to be met within six (6) months of hire. Must pass a thorough background investigation, pre-employment physical examination including drug screen and physical agility test. May require 240 hours of training within 18 months of hire.

Applications will be accepted until September 29, 2016 at 4:00 p.m. Application packets are available at [www.cityofluverne.org](http://www.cityofluverne.org) or from City Clerk Jessica Mead at City Offices, 305 E. Luverne Street, PO Box 659, Luverne, MN 56156 (507)449-9898. EOE.

**Luverne**  
*Love the life!*



### Intake Specialist

Avera Partner

Southwestern Mental Health Center is currently seeking applications for a **Full-Time Intake Specialist** position at our Luverne, MN office. Hours are Monday – Friday, 8 AM to 5 PM, with extended hours on Monday from 8:00 AM to 7:00 PM. The **Intake Specialist** is responsible for the general functioning of the Front Office duties. Provide face-to-face and phone reception services to all clients, families, vendors, agencies, and co-workers. Enters new client data into Information System, completes clinical transactions in system. Assist Lead Intake Specialist with completing Initial Intake packets, Face-to-Face Intake packets, consent to treatment agreement, fee agreements and release of information & annual updates. Knowledge of Microsoft Office Suite. Must be able to perform basis operations on a computer within the Windows operating system.

Apply online at Southwestern Mental Health  
Please apply at: <http://www.swmhc.org>

1. Click on the Careers tab toward the top of the web page.
2. Click on Search for Jobs.
3. In the Quick Search, click on Positions by Locations.
4. Click on Luverne, MN and search for this position to apply.

If you need further assistance,  
Email: [david.vinzant@swmhc.org](mailto:david.vinzant@swmhc.org)  
Phone: 507-283-9511  
EEO/AA



## mcan

### Minnesota Classified Advertising Network

#### HELP WANTED

**HARVEST HELP WANTED:**  
Experienced semi-drivers for sugar-beet, potato harvest. Sept 26-Oct 26. Valid driver's license required. Camper hookups available. Emanulson Family Farms, Drayton ND 701/454-6122

**NOW HIRING:**  
Work and travel. 6 openings now. \$20+ per hour. Full-time travel, paid training, transportation provided. Ages 18+, BBB Accredited. Apply [www.protekchemical.com](http://www.protekchemical.com) 866/751-9114

#### EVENTS

**BEST GRAPE STOMP!**  
Sept. 16-18. 150 vendors, Monroe Crossing, dueling pianos, 12 bands, 700+ grape stompers, \$5 admission. Carlos Creek Winery, Alexandria, MN

#### FOR SALE

**KILL BED BUGS**  
& their eggs! Buy Harris Bed Bug Killers/Kit complete treatment system. Available: hardware stores, the Home Depot, homedepot.com

#### FARM EQUIPMENT

**OUR HUNTERS**  
will pay Top \$\$\$ to hunt your land. Call for a free Base Camp Leasing info packet & quote: 866/309-1507 [www.BaseCampLeasing.com](http://www.BaseCampLeasing.com)

#### MISCELLANEOUS

**SAWMILLS**  
from only \$4,397.00 Make & save money with your own bandmill. Cut lumber any dimension. In stock, ready to ship! Free Info/DVD: 800/578-1363 Ext.300N [www.NorwoodSawmills.com](http://www.NorwoodSawmills.com)

#### MISCELLANEOUS

**GOT KNEE PAIN?**  
Back Pain? Shoulder Pain? Get a pain-relieving brace - little or no cost to you. Medicare patients call health hotline now! 800/755-6807

**LUNG CANCER?**  
60 or older? If so, you and your family may be entitled to a significant cash award. Call 800/918-0376 to learn more. No risk. No money out of pocket.

**DISH TV**  
190 channels plus High-speed Internet Only \$54.94/mo! Ask about a 3-year price guarantee & get Netflix included for 1 year! Call Today 800/297-8706

**STOP OVERPAYING FOR YOUR PRESCRIPTIONS!**  
Save up to 93%! Call our licensed Canadian and International pharmacy service to compare prices and get \$15.00 off your first prescription and free shipping. Call 800/259-1096

**ADVERTISE HERE STATEWIDE IN 260+ NEWSPAPERS FOR ONLY \$279 PER WEEK!**  
**CALL 800-279-2979**

# Star Herald CLASSIFIEDS

## CARDS OF THANKS

A sincere thank you to everyone who in any way remembered us in our father, Norman's, passing. It is truly appreciated. These acts of kindness will always be remembered. Also, thank you to Pastor Hansen for his words of comfort and support, and to Jurrens Funeral Home for the arrangements.

**Beverly and Marsha Kitchenmaster**  
(9.4-9.8)

A sincere thank you for all your prayers, cards, food, flowers, and memorials for Bob. We would like to thank the doctor and nurses at the Sanford-Luverne Emergency Room. A special thanks to all the staff at The Minnesota Veterans Home for the good care you gave Bob. Also, thank you to the people at the Presbyterian Church and to Pastor Cunningham for the beautiful service, also to Dingmann's Funeral Home.

Love and Prayers to you all,  
**The Family of Robert Miller**  
(9.4-9.11)

## CARDS OF THANKS

Mary Ann Ackermann and her family would like to thank everyone who participated in her birthday with their presence, cards, and kind thoughts. Because of you it was a very special day.

(9.4-9.8)

**ADVERTISE TODAY!**  
with the  
**Star Herald**  
call  
**507-283-2333**

**Palace Theatre**  
Downtown Luverne

**BEN-HUR**  
FIRST TO FINISH. LAST TO DIE.  
AUGUST 25

**Rated PG-13**

**FRI., SEPT. 9 - 7 P.M.**  
**SAT., SEPT. 10 - 7 P.M.**  
**SUN., SEPT. 11 - 7 P.M.**

Check our web site for updates  
[www.palacetheatre.us](http://www.palacetheatre.us)  
Find us on Facebook

**ST. ADRIAN FALL DINNER**  
Sunday, Sept. 18, 4-7pm

512 Maine Ave, Adrian  
(elevator located on the north side of church)  
Come and enjoy a delicious meal!

Roast Beef Dinner  
REAL Mashed Potatoes and Gravy  
Corn, Coleslaw, Buns  
Pies & Desserts, Beverages

Adults: \$9 Children ages 6-12: \$4  
Ages 2-5: \$2

Big Ticket Drawings!  
Quilt Raffle!  
Raffle Prizes!  
Fish Pond!  
Country Store!

Home delivered take-out meals in Adrian city limits will be available from 4-6 p.m. To order, call 483-2317 between 2:30 and 6 p.m. on the day of the dinner!



# Dining & Entertainment

**MARK YOUR CALENDARS**

*upcoming*  
**Rock County Speedway Fall Enduro**  
Saturday, September 17 | 7pm  
\$10 - Adults | \$2 - 8 & under

**Papik Motors' Rock County Fall Speedway Race**  
Saturday, September 24 | 7pm  
Micro Sprints / Hobby Stocks  
Super Chargers / B-Mods  
Pure Stocks

PROMOTED BY ROCK COUNTY AG SOCIETY

SLAYTON WOMEN OF TODAY'S  
*Autumn Boutique*

**September 9 & 10, 2016**  
Friday 9 a.m. - 8 p.m. and Saturday 9 a.m. - 3 p.m.  
Murray County Fairgrounds

Over 90 exhibitors from the Midwest! Seven buildings, plus outdoor!

- ♦ FREE Admission & Parking
- ♦ Boutique Bucks Drawn Hourly!
- ♦ Lunch on Grounds & Entertainment
- ♦ Slayton, MN on Hwy 30 & 59, follow the signs!

Plan to visit us each year, the weekend after Labor Day!

*Cancun*  
From \$920 per person

5 nights, all-inclusive  
Round trip air from Sioux Falls  
Round trip transfers  
Select October - December dates  
Pricing based on 2 adults and 2 kids  
Pricing based on availability  
Call for more details!

*St. Pete Beach*  
From \$715 per person

5 nights hotel  
Round trip air from Sioux Falls  
Car Rental  
Select October - November dates  
Pricing based on 2 adults & 2 kids  
Pricing based on availability  
Call for more details

**ALL ABOUT TRAVEL INC.**  
8-Year Winner! Layaway & Gift Certificates Available!  
605-339-8911 • 1-800-390-6610  
3801 S. Western Ave., Suite 103, Sioux Falls, SD  
Open: Mon.-Fri. 8 a.m. - 7 p.m. • Saturday 9 a.m. - 1 p.m.  
[www.AllAboutTravel.org](http://www.AllAboutTravel.org) [www.facebook.com/AllAboutTravelInc](http://www.facebook.com/AllAboutTravelInc)  
Helping You Find Your Personal Paradise!

# Child Care Matters

90 percent of your child's brain develops by age 5.  
Looking for Child Care?  
Questions on Child Care?  
**WE CAN HELP!**

Find and learn about child care.

Child Care Aware Minnesota:  
call 1(888) 291-9811  
or visit [childcareawaremn.org](http://childcareawaremn.org)

Quality child care looks like...

- ☐ Child care providers talk with children often and at their own level.
- ☐ Parents and child care providers communicate daily about the children's well-being.
- ☐ Child care providers are knowledgeable and have been trained to care for children.
- ☐ Children are cared for in small groups and receive the attention they need from adults.
- ☐ The child care space is clean and the care provider has a plan in place to keep children safe and healthy.
- ☐ A variety of activities are planned throughout the day that are interesting and involve each child.

**ChildCare Aware OF MINNESOTA**

Region 8 Child Care Aware:  
Bringing Up What Matters Most  
Southwestern MN Opportunity Council, Inc.  
1106 3rd Avenue, Worthington, MN 56187  
507-376-4195

2016 Minnesota  
**Renaissance Festival**  
NEW FOR 2016!

- Wizard's School Zip Line
- King's Karpool Competition
- Renaissance Bingo
- Bloody Mary Bar
- Whiskey & Scotch Tastings
- 250 Artisan Booths for Endless Shopping
- Over 50 FREE Family Activities
- 16 Stages of Entertainment
- Food Fit for a King
- Live Armored Jousting
- Mermaids, Fairies & more

Open Weekends August 20 - October 2nd, 2016  
Plus Labor Day & Festival Friday, Sept. 30th  
9am to 7pm • Rain or Shine • (952) 445-7361

**FREE Parking!**  
[RenaissanceFest.com](http://RenaissanceFest.com)

The news of Rock County. Updated daily.

# Star-Herald.com