



Rock County STAR HERALD

Rock County's oldest business, printing since 1873

Thursday, September 7, 2017

Barn destroyed, calves perish in Friday night fire

By Lori Sorenson

More than 350 dairy calves perished in a barn fire Friday night at the Gary Frodermann farm south of Magnolia.

Neighbor Chad Nelson called in the fire shortly before 8 p.m. Firefighters from Magnolia, Kenneth, Ellsworth, Adrian and Luverne were on the scene from 8 p.m. Friday to 2 a.m. Saturday fighting to prevent flames from spreading to nearby buildings.

Despite the loss Frodermann said, "It could have been worse. If the wind had been blowing, it could have taken all the buildings."

Magnolia Fire Chief Scott Dohmann said crews focused their efforts on protecting the nearby structures. "We knew the barn was a total loss,

so we were protecting the building that was two feet away," he said. "We kept the propane tank cool and kept the shop cool."

With a steady stream of pumper trucks filling at hydrants in Adrian and Magnolia, the Rock County Rural Water tower by Magnolia dropped 56,000 gallons, according to Dohmann.

Frodermann said he and his family had finished chores and left home around 5:30 p.m. for a camping weekend near Fulda. Not long after they set up camp, Frodermann's neighbor Don Mulder called about the fire. So Frodermann and his sons, Devon, 17, and Dawson, 13, immedi-

Barn fire/continued on page 5A



Lori Sorenson photo/0907 frodermann barn fire

Firemen from Magnolia, Kenneth, Ellsworth, Adrian and Luverne work to contain a fire at the Gary Frodermann farm south of Magnolia Friday night. More than 350 calves perished in the blaze, which also destroyed the barn.

No student is a failure; Viland brings message to LHS teachers

By Mavis Fodness

In her 30 years of working in education, Vonda Viland has taken an important lesson to heart.

"I've never met a student who wants to be a failure," she said.

Viland spoke at Luverne Public School's final teacher in-service day on Thursday, Aug. 31.

Students returned to classes on Tuesday.

Viland's message evolved around the students whom she encountered in her position as principal at Black Rock Continuation High School near California's Mojave Desert.

Before getting to her message, however, the LHS class of 1984 graduate made some observations about her hometown.

"It's really green here," Viland said.

She also observed Luverne still spouts an excellent education system and caring community.

"I've yet to find a community that cares for their students as much as Luverne does," she said.

Viland has become a sought-after speaker and education advocate after the documentary, "The Bad Kids," was released late last year.

The award-winning film followed Viland for more than two years as her school staff offered at-risk youth one last chance at earning a high school diploma.

Film producers encouraged Viland to co-author a book of the same name. The documentary has since aired on public television stations, and resource materials are available to educators online.

Viland in LHS/continued on 2A



Lori Sorenson photos/0907 tractor ride

Tractors tour Rock County on second annual ride

There were farm tires and smokestacks as far as the eye could see Friday when nearly 70 tractors paraded around Rock County for the Second Annual Tractor Ride. This photograph was taken on County Road 5 just as riders turned in to Blac-X Farms where Peter and Jay Bakken hosted the group for lunch sponsored by Rock County Farm Bureau. See the story and more photos on the Variety Page 1B.

Volunteer drivers scarce after mileage law

By Mavis Fodness

For years Rock County residents could count on the public transportation network for a ride.

For rides outside the network area, United Community Action Partnership would rely on a group of volunteer drivers.

However, a federal law has caused the volunteer drivers to quit in the past two months.

"We know rides are not happening," said Shelly Pfau, UCAP's access coordinator. "The main reason we don't have rides in Rock County is catalyzed by the mileage reimbursement."

In March the Minnesota Department of Revenue clarified questions about volunteer driver reimbursement.

The federal law indicated only 14 cents of the 53 cents UCAP was reimbursing its drivers per mile was untaxed. The 39 cents per mile is taxable income. Since the statute became known, UCAP has followed the 14-cent non-taxable income formula.

Pfau said the majority of Rock County's volunteer drivers are retired and many are on fixed incomes. Any additional income could jeopardize their current retirement benefits.

"They can't afford to volunteer both their time and upkeep of their vehicles," she said.

In the first five months, Rock County logged 127 volunteer trips or an average of 25 trips per month, according to data supplied by UCAP, who began administering the county's Heartland Express service in 2016.

The trips averaged 130 miles and required about four hours of volunteer time.

The majority of the trips were for medical reasons, Pfau said.

In June three trips were logged. "We have had no active volunteer drivers since then," she said.

As a response, UCAP has launched a campaign to have lawmakers reconsider the non-taxable mileage reimbursement amount.

Rock County Commissioners supported the efforts to change the law by providing a letter of support.

"This is the ideal solution for transit systems in small Minnesota towns that are often located 30 miles or more from regional hubs, and in particular, specialized medical care," the letter stated.

"In Minnesota, without volunteer

Volunteer drivers/see page 2A

Bike share proposed for Luverne; state grant to help with costs

By Lori Sorenson

Plans are underway to develop a bike share program in Luverne that would allow people to "borrow" and return bicycles around town.

The Luverne Chamber Office last summer requested state funding to purchase bikes for a loan program, but it didn't qualify.

But last month the Statewide Health Improvement Program offered Luverne \$3,000 for bikes — if they could be purchased and invoiced

prior to Nov. 1.

"So for the last month we have been scrambling to put together a simple program that would offer these bikes for loan to residents and visitors," said Luverne Chamber Director Jane Wildung Lanphere.

"We wanted to set up a program that made the bikes available 24/7 without cost to the resident or visitor."

The Chamber and Luverne Economic Development Authority have stated a goal to purchase eight adult

and four child bikes.

"The bikes we would purchase are designed specifically for bike-share programs," Lanphere said. "They are extremely durable and easy to ride."

The chamber is working with Ken Petersen of Ken's Bike Shop in Luverne to order and maintain the bikes.

Maintenance and operation of the program would be a local responsibility, according to the terms of the grant.

Bikes need to be inspected at least two times a year and funding would need to be available for bike chains (\$20 each), replacement of tire and tubes (\$40 each) and other repair items.

In her September Chamber Chat, Lanphere called this a "wonderful opportunity" for Luverne businesses or organizations to "give back" by being a sponsor of a bike.

Bike share/continued on page 2A

Volume 142, Number 36

Luverne, MN 56156
USPS 468-040



7 28028 20389 9

The Star Herald is Rock County's oldest business, documenting the news of its citizens since 1873

Article 36: New Luverne High School opens in 1926 (in what is now the City Centre Apartments)

This is the 36th in a series that shares the rich history of Luverne as it celebrates 150 years. This week features a submission by Betty Mann about the new school in 1926.

Rock County Historical Society President Betty Mann this week shares a story from the Nov. 5, 1926, Rock County Herald about the "Splendid Value and many Merits of the New Structure Outlined by Different Speakers." See those interesting details on the front of this week's Community Section.

Luverne celebrates 150 years — New Luverne High School/see 6A

This week's moment in time is sponsored by:

Luverne
Area Chamber & CVB

Loving the Past...
Living the Future!

COMMUNITY CALENDAR

Meetings

Lady Luverne Red Hats will meet at 11 a.m. Friday, Sept. 8, at St. Catherine's east parking lot in Luverne to carpool to Grand Falls Casino, Larchwood, Iowa, for Casino Day. Call 283-8470 if you plan to attend.

Matthew 6 Board of Directors will meet at 7 p.m. Monday, Sept. 11, at the Luverne Pizza Ranch.

Blue Mound Quilters will meet at 6:30 p.m. Monday, Sept. 11, at the Senior Citizens Center to discuss upcoming events and next year's schedule. New members are welcome. Denice Dirks will do a demo on a gift bag for a gift card.

Sanford Luverne Pink Ladies will meet at 1:30 p.m. Monday, Sept. 11, in the Blue Mound Room at Sanford Luverne Hospital.

Rock County VFW Post 2757 will meet at 7 p.m. Tuesday, Sept. 12, in the Rock County Military Museum.

Vienna Township Board will meet at 7 p.m. Tuesday, Sept. 12, in the Kenneth Community Center.

American Legion and Auxiliary will meet at 7:30 p.m. Wednesday, Sept. 13, in the post home.

Grand Prairie Cemetery Association will meet at 5:30 p.m. Wednesday, Sept. 20, at the Grand Prairie Cemetery. In case of rain, the meeting will be in the back room of Orvand Sons Plumbing in Ellsworth. Call Robert Essman at 507-290-0368 with questions.

Narcotics Anonymous will meet every Thursday evening at 6:30 p.m. at the Steen Reformed Church. Contact Robert for more information 507-329-2642.

Women's Alcoholics Anonymus meets at 8 p.m. Mondays in the United Methodist Church.

Narcotics Anonymous meets at 7 p.m. Fridays and for basic text study at 7:30 p.m. Tuesdays in the basement of St. Catherine Catholic Rectory, 203 E. Brown St., Luverne. Use east door. For more information call 507-220-0137.

Alcoholics Anonymous meets at 8 p.m. Wednesdays and Saturdays in the United Methodist Church, Luverne. Call 605-321-4324.

Alcoholics Anonymous meets from 8 to 9 p.m. every Tuesday in Runals Memorial Hall, Edgerton. Call Naomi, 507-215-2956.

Library book sale runs Sept. 21-23

The Friends of the Library will host their annual book sale open to the public from 10 a.m. to 8 p.m. on Thursday, Sept. 21; from 10 a.m. to 5 p.m. Friday, Sept. 22; and for the bag day special from 10 a.m. to 2 p.m. Saturday, Sept. 23.

A pre-sale from 5-7 p.m. Wednesday, Sept. 20, is for Friends of the Library only.

Donate books for library sale

The Friends of the Library are now collecting books until Sept. 16 for the upcoming book sale Sept. 20-23 at the Rock County Library. Accepted items include audio tapes, records, CDs, hardcover and paperback books. Items **not** accepted are encyclopedias and textbooks.

'Diary of a Wimpy Kid' Sept. 7

The free Bank Nite movie, "Diary of a Wimpy Kid — The Long Haul," rated PG, will begin at 6 p.m. Thursday, Sept. 7, at the Palace Theatre in Luverne.

Sponsored by First Farmers & Merchants National Bank and Papik Motors, a free, family-friendly movie is shown on the first Thursday of every month as it was done for "Bank Nite" in the 1930s. A cash prize drawing will follow the movie. Must be present to win.

Cardinal Gold'n Bowl football Sept. 8

Luverne Cardinal football players will face Jackson County Central Friday, Sept. 8, on the Luverne High School football field. Grilled chicken sandwiches and chips will be available starting at 5:30 p.m. for \$3 as a fundraiser for Luverne athletics programs and the Luverne Area Chamber. Chicken is donated by Gold'n Plump and buns and chips are donated by Teal's Market.

Blue Mounds weekend events Sept. 8-9

•6 p.m. Friday, Sept. 8: Mammals of the Mounds
- Learn about common mammals at Blue Mounds State Park. Meet at 4 p.m. in the campground amphitheater and bring a camp chair or blanket as seating is limited.

•6 p.m. Saturday, Sept. 9: Geology ROCKS!
Meet at 10 a.m. at the visitors center parking lot off County Highway 8 for a less-than-one-mile, slow-paced guided hike with an emphasis on the geology at Blue Mounds State Park. Bring comfortable shoes and a bottle of water. The trail may be rocky and uneven and require stepping down and up.

Former teacher takes helm at Adrian Middle-High School

By Mavis Fodness

For two decades Adrian educator Cate Koehne immersed herself as a classroom teacher in helping her special education students achieve their individual learning goals.

On Tuesday, Sept. 5, when Adrian's 350 seventh-through twelfth-grade students return to school, Koehne steps into the official role as the school's new principal.

"I loved special education," she said. "I got to work with students for several years. It was never the same day twice."

Now Koehne's time with the same students expands to six years, time she said she wants herself and her staff to make connections.

"We want them to have a great experience," Koehne said.

The focus on building a positive school environment began last year under the guidance of the school's late principal Tim Christensen. His sudden death in February devastated the district.

"It was definitely sad," she recalled. "As a staff our No. 1 goal was to help them work through the sadness."

During her 15 years with the Adrian School District, Koehne stepped into various leadership positions, including dean of students to fill the leadership void. She found she enjoyed being of adults as well as children.

"I love the idea of teaching teachers to help school be great for kids," she said.

Koehne's own positive experience as a student in Adrian led her to select teach-



Mavis Fodness photo/0831 Adrian Principal Cate Koehne Former Adrian Public Schools teacher Cate Koehne is the district's new middle-high school principal. In her first year as an administrator, Koehne intends to continue building a positive learning environment, a goal set by her predecessor, the late Tim Christensen.

ing as a career. At Winona State University she focused on elementary education until she was encouraged to add special education to her major.

After college Koehne spent five years in Fulda before

returning to her home school district 15 years ago.

"I needed to know who I was as a teacher before I came back," she said.

The daughter of Norman and Helen Steve of Wilmont

continued to expand her own education by spending her summers completing her master's degree and completing administration classes. She has also spent time as adjunct professor at St. Mary's University in the Twin Cities.

She has learned a lot about herself though her continued education studies.

Koehne said she learned she is passionate about helping kids, is patient, and looks for the latest in trends in education when she sees certain strategies leave students struggling to learn.

Overall Koehne wants students to enjoy coming to school.

"I want them to have a great experience," Koehne said. "We care about them."

The beginning of a positive school experience began with staff on Monday when Koehne led the opening day in-service with her secondary teaching staff dressed as a pirate, an outfit inspired by Dave Burgess' book, "Teach like PIRATE."

"It's an acronym for what makes a great teacher great," she said.

The acronym stands for passion, immersion, rapport, ask and analyze, transformation and enthusiasm.

Activities are planned throughout the school year around Burgess' book, which ignites a teacher's passion for instruction to increase student engagement in learning.

Koehne and her husband, Bob, have three children, Luke, 9, Maddy, 6, and Emery, 3. They live near Lismore.

Viland at Luverne High School/continued from page 1A

She cautions that despite how incredible the Luverne community and its residents are, there are still students at risk of not completing high school through no fault of their own.

Like the students in the documentary whose personal lives are negatively affected by outside factors such as sexual abuse, alcoholic parents, homelessness and poverty, Luverne has students facing the same issues that result in anger issues, suicidal thoughts, anxiety and low self-esteem.

"They didn't choose to be in those situations," Viland said. "They just don't have the skills or knowledge to break those patterns."

As a student at LHS, Viland said she found herself in one of those situations during her parents' divorce.

She credits her teachers who helped her understand and cope with the personal events and described herself as a "not-so-easy student."

Viland said she talked incessantly in class, suffered from a lack of focus, and she needed to question everything.

As a result of her teachers' guidance, she discovered who she was as a person. "I will never forget them," she said.

The discovery led Viland to become a teacher. She ac-



Mavis Fodness photo/0907 Vonda Viland Black Rock Alternative High School Principal Vonda Viland addresses Luverne Public School's staff on Thursday, Aug. 31, about listening to adolescents. The Luverne High School Class of 1984 graduate said teachers are often the first adults to whom students confide that issues at home are overwhelming.

celerated through college and entered the classroom as a teacher at age 20.

As a teacher, Viland found she was often the first adult a student confided in when overwhelmed by issues out-

side the classroom.

"If we don't look at ways to deal with issues in adolescence, we deal with them later when they are adults," she said.

In her school, staff and students focus on positive

thinking and making a connection with students.

"We give ourselves and our kids a fresh start every day," she said. "(And) educate the child, not just teach the curriculum."



Dial-A-Specialist

Your One Stop Guide to Local Businesses

 <p>DR. MICHAEL SMITH Most Insurance Accepted</p>	 <p>ROCK COUNTY STAR HERALD ANNOUNCER</p>	 <p>Rick Peterson General Manager</p>	 <p>LUVERNE HEALTH & WELLNESS Codie Zeutenhorst, D.C., CAC</p>	 <p>COMRAY COMPUTERS Computer Repair and System Builder</p>
<p>• Men, Women & Children's Health • Custom Orthotics • Kinesiotape • Athletic Care • Massage Therapy • Work & Auto Injuries • Postural Restoration</p> <p>WWW.ROCKCOUNTYCHIROPRACTIC.COM 283-2561 • 103 E. MAIN, LUVERNE Monday 7:30 a.m. - 6 p.m. • Tuesday 7:30 a.m. - 3 p.m. Wednesday 7:30 a.m. - 6 p.m. • Thursday 7:30 a.m. - 1 p.m. Friday 7:30 a.m. - 5 p.m.</p>	<p>Chantel Connell Sales Representative</p> <p>117 W. Main, Luverne, MN 507-283-2333</p>	<p>507.449.4400 www.luvernechiro.com 109 S. Freeman Ave. Luverne, MN</p>	<p>Ray Hansen 1726 140th Ave., Luverne, MN 56156 507-669-2621 comraycom@gmail.com</p>	<p>• Chiropractic</p>
 <p>Rock County EYE CLINIC 507-283-2345 102 N. Freeman Ave. Luverne, Minnesota</p>	 <p>Papik MOTORS 1-90 Luverne, MN Box 536 • 801 West Commerce Road Luverne, MN 56156</p>	 <p>Luverne MINNESOTA City Offices Love the life! PO Box 659, Luverne, MN 56156 507-449-2388 (24 hour voice mail) www.cityofluverne.org</p>	 <p>Dakota Land Surveying and Engineering, Inc. Steven B. Kor Professional Engineer Registered Land Surveyor</p>	<p>• Advertising</p>
<p>• Eye</p>	<p>• Automotive</p>	<p>• City</p>	<p>• Computer</p>	<p>• Land Surveying</p>

Regional Autism Support Group open to local parents, interested individuals

By Mavis Fodness

Allison Eitreim's passion for teaching is extending beyond the school's walls.

As autism specialist at Worthington Public Schools, Eitreim started the Regional Autism Networking Group late last year and now the group regularly draws 30 or more people to its quarterly meetings.



search strategies," Eitreim said.

As organizer of the support group, Eitreim regularly shares her insights of effectively working with ASD children with parents and other early childhood groups.

She said she has researched various teaching techniques and shares several at the regional meetings.

Her group's next meeting is at 6:30 p.m. Monday, Sept. 11, at Worthington High School, 1211 Clary St.

While the support group focuses on parents, Eitreim welcomes co-workers, grandparents, friends and others with questions on raising and working with ASD children and adults to become productive members of the group.

"I feel we are missing out on a whole group of people if we don't empower more of us in the world to socialize with people with autism," she said. "I've had so many parents in tears because they are on such an island."

Along with parent support meetings, Eitreim has also developed a quarterly newsletter detailing lessons and resources discussed during the two-hour regional meetings.

Contact Eitreim at 507-376-6121 ext. 3744 or allison.eitreim@isd518.net



Lori Sorenson photos/0907 oasis

The 3,500-square-foot Oasis Care Home offers six bedrooms and three bathrooms on the main level, with common living room and kitchen areas. It's open now, and an open house for public viewing will be from 9 to 11 a.m. Saturday, Sept. 16.

Oasis Care Home opens for residents

An open house for public viewing will be from 9 to 11 a.m. Saturday, Sept. 16

By Lori Sorenson

A new option for senior housing is now available in Luverne with the recent opening of the Oasis Care Home at 514 Britz Drive in the Evergreen Addition.

An open house for public viewing will be from 9 to 11 a.m. Saturday, Sept. 16.

The 3,500-square-foot house offers six bedrooms and three bathrooms on the main level, with common living room and kitchen areas.

The half basement has a meeting area and office space for staff — a registered nurse who will oversee operations and three aids who will work eight-hour shifts, morning, afternoon and overnight.

One client is moved in, another is coming soon, and four spots remain available.

Owner-operator Mandy Brecher said her motivation to open the home in Luverne came from her experience as a certified nursing assistant working in a similar facility in Savage.

"It's similar to assisted living with aids doing housework, dispensing meds and helping residents with some personal care," Brecher said in January.

"But since there are only six clients, we can offer more daily care that allows an option instead of nursing home care."

She said Oasis Care Home will have a small, family-like atmosphere like the Savage facility where she previously worked.

"I cooked breakfast and helped them get up in the morning and take their meds. I'd do their laundry," Brecher said. "It was such a neat feel to have such a small setting."

DenHerder Construction is the general contractor for the project, and local providers were utilized whenever possible.

Jim Den Herder said he enjoyed the new challenge of building a residential home that also met commercial requirements of a care facility.

"As far as building a home, the sticks went together just like any other home," he said.

"But this is the first time for a project like this — building a home for adult care."

He pointed out the "fire hydrant" sprinkler system plumbing in the basement utility room, which requires a 4-inch service line to city water, which required connecting to a city main at the property line.

DenHerder said the commercial aspect of the project required consulting with state inspectors — health, electric and fire marshal — in addition to the city's building inspector.

Despite adaptations, such as extra hand-washing and food prep sinks in the kitchen, the Oasis Home looks very much like a home, which Brecher said was her goal.

"It's a high level of care with the comfort of home," she said.



Jim DenHerder (left) and Cal Den Herder (not pictured) of DenHerder Construction were the general contractors for the Oasis Care Home. Jim is pictured with owner-operators Mandy and Jason Brecher and their daughter, Stella Brecher. More photos of the home are on the Star Herald website, www.star-herald.com.

Brecher's inspiration for the project comes in part from her late mother, Elaine Lupkes of Hardwick, who died four years ago of complications from Parkinson's disease.

"Her health started declining, and assisted living wasn't enough," Brecher said. "She wasn't ready for the nursing home — mentally — but that was really the only option."

She praised the local nursing home staff, but her mother wasn't ready to be there. "She got depressed and died three months later," Brecher said.

"It's hard on families — it's heartbreaking. After we went through that, we started thinking about providing this as an option in Luverne."

The Oasis Care Home sits on an extra-large lot that will allow for gardening and other outdoor activities, "These are some of the things my mother liked to do," Brecher said, adding that residents can help in the kitchen and plan menus, if that suits them.

"That's one thing residents in larger facilities complain about — they don't like the food. This way they can have familiar food that tastes like home."

Other personal touches include assistance with online communication, like Skype, so residents can stay in touch with family members far away. The facility will make a large iPad available for this and other purposes.

The Oasis Care Home helps the city meet increasing demand for senior housing.

A recent housing study identifies potential demand for nearly 360 new

housing units in Luverne over the next 10 years, and about 65 percent of that is for senior housing.

Demand is strongest for market rate (as opposed to subsidized) senior housing, which represents 165 of the 390 new housing units recommended.

Brecher and her husband, Jason, live in Hatfield with their 3-year-old daughter Stella.

Information about Oasis Care Home can be found at oasiscarehome.com and on Facebook.

'Nutcracker capital of Midwest' and downtown plaza

Sept. 5 and Sept. 12 meetings allow input for developing plans

By Lori Sorenson

Community consultant Roger Brooks recognized the nutcracker collection at Luverne's History Center as a tourism draw for the community.

"This is flat-out amazing," he said in his June 9 assessment of the town. "This is worth getting off the interstate for."

He showed an artist's rendering of an I-90 billboard, "Luverne: Home of the largest nutcracker collection in the Midwest."

It sounds far-fetched to some, but Betty Mann, who donated her 2,500-piece nutcracker collection, said travelers are indeed interested in nutcrackers.

The History Center opened its doors this spring before construction was finished on the former Ford Motors building.

In April and May, more than 200 travelers stopped in each month, and that was before the History Center was officially open.

Mann said most of them were I-90 travelers who had heard about the nutcrackers online or in brochures.

In July more than 1,000 visitors came through the History Center, a good share of them drawn in by the nutcrackers.

"They are a unique collection," Mann said. "The only other one I'm aware of is in Leavenworth, Washington."

Nutcracker Committee meets Sept. 12

On Aug. 15 Chamber Director Jane Wildung Lanphere hosted a meeting to organize a Nutcracker Committee to help Luverne be the "nutcracker capital of the Midwest."

The committee is tasked with working on how to build Luverne as a nutcracker destination.

"The work at their next meeting will focus on trying to expand the nutcracker theme this holiday season

and to continue to work on some of the ideas they had for making Luverne a nutcracker destination," Lanphere said.

The second meeting is at 7 p.m. Tuesday, Sept. 12, in the lower level of the Chamber.

Plaza Concept Committee met Sept. 5

In his June 9 community assessment, Brooks also said downtown plazas are a popular way to encourage inner city gatherings.

He shared a graphic of East Main Street's History Center block showing where a plaza might fit.

"Suburban malls are dying," he said. "Downtowns are back ... It's where we go after work and on weekends. Nothing is more vital than downtown."

Particularly, he said downtown plazas — with outdoor seating, greenery, a movie screen and even splash parks (with water valves flush with the street surface) are becoming popular.

"At their first meeting, they came up with a whole lot of great ideas about what could be included in a plaza," Lanphere said about the Aug. 22 organizational meeting.

"I believe that at the next meeting, the committee will work on how to get ideas, thoughts and information from the public about building a plaza in Luverne."

The Plaza meeting Tuesday, Sept. 5, in the Chamber, and future meetings will be set.

"The Plaza Committee is tasked with developing a concept for size, type, possible locations, amenities and possible programming for the plaza in Luverne," Lanphere said.

She encouraged more public participation in the committees. "The more the merrier and the better the ideas," Lanphere said.

To get involved, call the Chamber office at 283-4061.

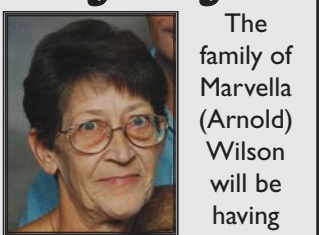
Open House Bridal Shower
Sydney Giinthir
 bride to be of Zack Staeffler
 Sun., Sept. 17
 2 - 4 p.m.
 Luverne Senior Center
 319 E Lincoln, Luverne
 Registered at
 Wal-Mart



—celebrating—
60th WEDDING ANNIVERSARY
Del & Eileen Domagala
 Open house Saturday, Sept. 9
 2-4 pm
 St. Catherine Catholic Church
 gathering space



Celebration of Life



The family of Marvella (Arnold) Wilson will be having

a celebration of life for Marvella who passed away July 5th. A burial service will be held at the Catholic Cemetery on September 8th at 2:00pm. Following the burial service the family would like to invite you for a gathering at Jeremy's house at 1258 160th Ave Luverne, MN from 3-7pm.

Our discount trip to Vegas was as smart as our smartphones allowed

My friend, Carrie, and I recently took advantage of cheap airfare and an invitation to stay in her family's Las Vegas timeshare.



ON SECOND THOUGHT

By Lori Sorenson, editor

Trip preparation was easy; our goal was to relax. Sunblock, pool floaties and insulated Bubba mugs were at the top of the packing list.

I wouldn't describe either of us as impulsive, but sometimes good deals are too good to pass up, and sometimes spur-of-the-moment plans actually work.

Within days of spotting the deal we chose our dates and booked our flights. A few weeks later the schoolteacher and news editor landed in the desert oasis of Sin City.

Trip preparation was easy; our goal was to relax. Sunblock, pool floaties and insulated Bubba mugs were at the top of the packing list.

We also did some discount shopping — which amounted to downloading Groupon, Vegas.com and a few other deals on our smartphones.

Our resort was just south of the Vegas Strip, which meant we needed transportation.

We intended to try Uber, but a friend had shared a first-ride-free coupon for Lyft, which I downloaded and studied a few days prior to departure.

As it turns out, Lyft (not available in Rock County) was the most fascinating discovery of my first-time Las Vegas experience.

The app opens with a map showing a number of nearby available drivers, one of which can be summoned within seconds to our location (which is already known, thanks to the location setting on my phone).

The app tells us the driver's first name along with the color, make and model of the car we should watch for. No cash is exchanged — not even a tip (which can be set in the app). It's all done through the app, which is synced to a PayPal or credit card account.

I loved it.

Even after several rides, it didn't get old watching the map on my phone as the

drivers navigated the streets toward us in real time.

I felt smart.

Much like I did at the start of our trip, armed with our discount-loaded smart phones at the airport check-in desk.

Until my husband called moments after dropping us off. "You forgot your phone in the car," he said with a sense of urgency. "I'm still outside if you want to run out and get it."

Knowing all my Vegas coupons, discount tickets and necessary apps were on my iPhone, I fell for the mean prank.

"Stay where you are, I'll be right ..."

It dawned on me after I responded. Ugh.

"That's not funny."

He was laughing on his end of the call.

So much for smart.

For the record, the trip was exactly what we hoped it would be, and our discount planning mostly proved to be smart.

As smart as our smartphones allowed us to be, that is,

As the new school year opens, keep students in mind

Thousands of preschool through 12th-grade students entered schools throughout the area this week.

It's a fresh start.

A clean slate.

A new way to start over with a positive focus on the tasks at hand.

Most importantly, the new school year is a chance for young people to learn to communicate and understand that, while issues seem overwhelming, there are ways to overcome them.

This summer the Luverne community experienced the loss of Daniela Gacke, who took her own life at the age of 13.

She would have been an eighth-grader in Luverne Middle School.

The school's doors opened without her, and her absence was noticed in the classrooms, hallways and locker rooms.

It's too late for Dani, but there are others who could use a boost.

In this week's Star Herald we can see there are sincere professionals working on behalf children to nurture their academic and emotional wellbeing.

Allison Eitrem, a 1992 graduate of Luverne High School, heads up the Regional Autism Networking Group in support of children with autism spectrum disorder. Her 22 years in education has shown her that students can look forward to rewarding

futures if we as a community understand their needs.

Anyone can attend Eitrem's quarterly meetings to learn how. It boils down to positive encouragement to counter what might seem insurmountable hurdles. Suicide is preventable.

Vonda Viland (LHSClass of 1984) works with at-risk students in California. As a principal at an alternative learning school, she and her staff are often the last chance for students to receive a high school diploma.

Viland recently addressed Luverne teachers and administrators (see the story) to emphasize the value of positive student interaction and crisis intervention.

Dani's parents, Tony and Wendy Gacke, are encouraging these very efforts — essentially talking — as they open their rural Luverne home to students and parents.

The Luverne School District released a public invitation encouraging people to attend the commemoration of Dani's life.

The Celebration of Life, "Rock It With Dani," will take place over three days.

Senior high students are invited to the Gacke farm from 5 to 7 p.m. Sunday, Sept. 10.

Sixth- and seventh-grade students are invited from 6:30 to 8:30 p.m. Monday, Sept. 11.

Eighth-graders are invited from 6:30 to 8:30 p.m. Thursday, Sept. 14.

Participants are invited to paint rocks with messages of life, hope and kindness for Dani's memorial garden. While the rocks dry, the group will enjoy s'mores and share with Dani's family about the impact of her death on family, school and community.

Rides are available to the Gacke farm, 549 150th Ave. Meet 15 minutes prior to the events' start times at the school.

As classes resume, Luverne staff put up inspirational sayings in the middle school bathrooms.

One saying, "Believe in YOURself," with the hidden "Be You" inside.

Words for all of us to take to heart.



Message to city officials: 'No twin homes'

To the Editor:

We all here at the Tri-State Addition received our letters from the city of Luverne in regard to the storm water drainage study.

Well, we all know how that's going to turn out. I have received countless thanks sticking up for my neighborhood and the citizens of Luverne who enjoy the Roundwind Road neighborhood in which the city of Luverne has plans to destroy. I think it is time the city of Luverne listen to the people on this and it's time to stay out of the real estate business if this moves forward for which I hope it doesn't. You said we could have input. Ha, ha.

I and we think it is of the

VOICE OF OUR READERS

utmost importance that our neighborhood maintains its integrity. Option 1: leave it alone. Option 2: extend Fireleaf Road to the south. Place for twin homes eight addresses on the west side of the street only leaving us a 60+ buffer zone. These are prime lots 40,000 each address to help pay for the road. I hope you are not giving these lots away for future tax revenue. That would be a 20-plus years payback plus it's not

fair to the citizens of Luverne and I will want to see the check from the developer for the purchase of these lots.

The meeting is on Monday, Sept. 11, at 5:30 p.m. Oh how convenient. Some of us aren't even home from work yet.

P.S. I think it is time this city listens to its taxpayers and do the right thing here. No twin homes.

Kenny Scheidt
Luverne

Pick: What is a debt ceiling?

To the Editor:

Once again we have to increase the debt ceiling. What is that? That's when you spend more than you take in. Families go without — government just borrows more — they sell bonds. We borrow from Japan and China and must pay interest yearly. The rest we borrow from ourselves.

Case in point. The Social Security Administration, which has accumulated a surplus since it was first set up in the 1930s by FDR has invested all of our extra

money in government bonds and currently owns \$5 trillion worth of our national debt.

Then our elected folks tell us, "Sorry, no raise. We are out of money." Stop spending and giving it to other countries.

Someone asked John Dillinger why he robbed banks. His answer was, "That's where they keep the money."

Leon Pick
Luverne

This is your page! Your opinion matters.

This is your place to express your opinion on matters of community importance. A strong opinion page in a community newspaper is a sign of a strong and cohesive community. The Star Herald Letters to the Editor policy appears each week in the space below, outlining letter length, content, deadlines and contact information.

E-mail: editor@star-herald.com Web site: star-herald.com
Phone: 507-283-2333 Fax: 507-283-2335

Published Thursdays by Tollefson Enterprises, POSTMASTER:
Send address changes to 117 West Main, P.O. Box 837, Luverne,
MN 56156. Periodicals postage paid at Luverne, Permit #33 and at
additional mailing offices.

General manager: Rick Peterson	News staff:
Office manager: Deb Lusty	Lori Sorenson, editor
Circulation manager: Jennifer Kor	Mavis Fodness, reporter
Advertising: Chantel Connell	John Rittenhouse, sports editor
Production manager: Abbe Kolar	Esther Frakes, copy editor
Production: Amanda McDonald	Joseph Stearns, composition

Rock County
STAR HERALD
Rock County's newspaper since 1873

(ISSN 0889-888X)
SUBSCRIPTION RATES
\$72 per year in Rock County; \$89 per year all other areas. Single copies \$1.25

Entire contents copyrighted by
Tollefson Publishing Roger Tollefson, publisher

The *Star Herald* encourages letters to the editor expressing the opinions of readers and intends to print all letters. Letters not meeting the guidelines will not be printed. The *Star Herald* will verify the authenticity of all letters. Letters must have the name of the writer, a signature and address.

Unsigned letters will not be considered. The *Star Herald* will edit for grammar, spelling and clarity. Any letters containing offensive language, libelous or slanderous material, or misleading or false information will be rewritten before being published. The *Star Herald* will not publish letters written with the sole intent to advertise or serve as a thank-you. Letters with more than 300 words may be edited. The deadline for letters is Monday 10 a.m. They may be delivered or mailed to the editor, *Rock County Star Herald*, P.O. Box 837, 117 W. Main St., Luverne, Minn. 56156.

ON THE RECORD

Dispatch report

Aug. 25

- Complainant on E. Warren Street reported child endangerment and drug activity.
- Complainant reported insufficient funds checks.
- Complainant reported son making threats and destroying property. Has since left the home. Requested deputy presence.
- Complainant reported three older boys throwing rocks at younger children in Kolbert Park.
- Complainant reported people in a gold Caravan running around selling stuff. Seems they are acting strange. Unable to locate.

- State Patrol reported a stalled white Equinox on I-90. Unable to locate.

- Complainant in Hills called to report her son is with his girlfriend, and her car overheated.

Aug. 26

- Complainant reported two cars parked on S. Kniss, and the occupants are fighting.
- Complainant in Hills reported subject walking around town and through backyards drunk.

- Fire department reported out at the races.

- Ambulance out at the races.

- Complainant reported that she is being harassed by someone that she has an order against.

- Deputies arrested subject on a warrant from Lyon County, Iowa. Taken to Nobles County Jail.

Aug. 27

- Patrol arrested subject for DWI.

- Complainant reported someone put cones all the way across the highway.

- Deputy spotted two people wearing black and carrying a Bose speaker. Took pictures of items. Bose speaker with white label saying 'Rublocs.'

- Complainant reported electric outage at location.

- Complainant reported subject harassing via phone calls and text messaging.

- Complainant reported individual sitting in car at location for over an hour. Information passed from spouse. Complainant is not at location.

- Complainant reported driving on interstate. Followed a vehicle since South Dakota that was swerving, nearly hitting cones, with multiple children not in car seats. Transferred to State Patrol.

- Complainant requested deputy presence for property exchange with subject at location.

- Complainant reported minor son is bridge jumping somewhere near Luverne.

- Deputy reported failed field sobriety. Towed by G&S. Can be released to registered owner. Pay tow bill.

- Complainant reported he was chatting with subject, and she made suicidal statements.

- Complainant reported his girlfriend has a lot of information about fraud, and now his accounts are drained, and his doors are unlocked. He told her to leave, and she took her kids and walked off.

Aug. 28

- Deputy reported a black semitrailer is stuck. He will

stay there and sleep tonight and take care of it in the morning.

- Complainant requested a welfare check on her brother. She was supposed to call him at 4 p.m., and he isn't answering the phone.

- Complainant reported Cabela's Club card found at McDonald's.

- Complainant requested a deputy to location for assistance with property exchange.

- Complainant reported that subject is trying to throw her out of the house. Complainant also reported that subject threw her down and threatened to break her nose.

- Complainant reported subject has a warrant that is payable. Subject wishes to pay warrant at Rock County Sheriff's Office.

- Complainant reported that his motorcycle fell out of the back of his pickup at location.

- Complainant reported motorcycle at location that is registered to subject. Requested assistance contacting subject.

- Complainant reported alarm at location

- Complainant reported subject sending threatening texts and driving by her house. See linked incoming call reports.

- Complainant requested deputy to assist them with contacting subject. See linked incoming call report.

- Complainant reported assault in progress at location.

- Complainant reported subject is sending messages to family stating she is going to commit suicide.

Aug. 29

- Complainant reported possible Medicare scam.

- Complainant reported that subject and her boyfriend are selling methamphetamine at location.

- Complainant reported loud vehicles tearing around near location.

- Complainant reported that he found a brown wallet on the street at location.

- Complainant reported finding a gray and black backpack at location that belongs to a resident of Luverne.

- Reserved for narcotic laws.

- Deputy reported a weapon offense.

- Complainant requested deputy on scene while she picked up some property.

Aug. 30

- Deputy reported door open.

- Complainant reported man lying on side of interstate at location. Transferred to State Patrol. State Patrol was out of area.

- Complainant reported neighbor had a fire pit burning, and it blew up. Complainant advised they witnessed the neighbor pouring gasoline on the pit then later pouring water on it. Complainant was concerned because it has happened before where the pit blew up.

- Complainant called law enforcement center to report subject making threats.

- Complainant reported need for deputy presence at home. Subject out of control.

- Received report from SWHHS.

- Complainant reported smells natural gas outside of home.

- Complainant requested to speak to a deputy about trespassing.

- Complainant reported a lot of people he works with on construction are being charged for rooms at Quality Inn, and they are not staying there.

- Deputy conducted a probation check.

- Deputy reported motorist assist. Checking emails.

- Complainant reported loud music playing at location. It will play, then they shut it off, then turn it back on again. Unable to locate.

Aug. 31

- Complainant reported man walking on road at location carrying large bags.

- Complainant reported possible break-in on West Main Street. Window is broken, and screen appears to be cut.

- Complainant reported unsupervised young children in neighborhood coming from location playing in others' yards and near Highway 75 and Main Street.

- Complainant requested driver's license or motor vehicle data.

- Complainant at law enforcement center to report stolen 18 speed bike.

- Informational purposes only.

- Complainant reported suspicious markings on vehicle and vandalism to window in home.

- Complainant reported property damage on I-90 while traveling. Transferred to State Patrol.

- Complainant reported subject threatened his wife with a knife.

- Complainant at W. Hatting Street reported people that don't live at the property are hanging out near the north garages and storage units. Complainant felt that this was suspicious.

In addition, officers responded to 2 motor vehicle accidents, 1 transport, 21 traffic stops, 18 ambulance runs, 6 paper services, 10 animal complaints, 7 log/alarm sheets, 4 drug court tests, 4 money escorts, 4 abandoned 911 calls and issued 3 purchase/carry permits and 1 burn permit.



With a steady stream of pumper trucks filling at hydrants in Adrian and Magnolia, the Rock County Rural Water tower by Magnolia reportedly dropped 56,000 gallons.

Frodermann barn fire/continued from page 1A

ately returned home.

The barn and calves were gone when they arrived. "There's no way to say what caused it," Frodermann said. "Everything was so charred."

He did mention starting a load of clothes in the dryer in the building before leaving. Dohlmann said this may have been a cause, or a lightning strike a week earlier could have shorted wiring in the building.

Both Dohlmann and Frodermann said neighbors played an important role in reporting the fire and helping with cleanup.

"People were just coming out of the woodwork to help," Frodermann said. "The food we had was tremendous. ... So many people were offering to help, we had to turn some away."

Dohlmann said Bill Fluit from Kenneth brought an excavator to pull apart the debris in order for hoses to douse smoldering remains. "That was a big help," Dohlmann said. Frodermann said by Monday the barn

remains had been buried and the site was cleared. "This is great, because we have to start rebuilding," he said. "We're getting more calves and we need a place for them."

The barn was equipped with individual pens for bottle-feeding calves from 1 day old to 8 weeks old. From there, they get moved to the next-door building for feeding up to 250 pounds.

Frodermann said the calves are constantly moving as they grow, but at any given time there can be 370 to 400 calves in the barn that burned.

"The barn can be rebuilt. I just felt sad for the cattle," he said. "These poor calves. They were just beautiful."

What's worse, he said his daughters Kendra, 14, and Kaytlen, 11, grow attached to the calves during their 10- to 12-week stint on the farm.

"They were devastated," Frodermann said. "There were six or eight that they were going to keep back for 4-H next year."

Volunteer drivers/ continued from 1A

drivers, human service agencies and transit systems will struggle to find transportation resources for more than 250,000 trips a year."

Pflaum said discussions with other public transportation personnel reveal the shortage of volunteer drivers is occurring throughout the Midwest.

In the meantime, UCAP is partnering locally with A.C.E. of Southwest Minnesota to coordinate volunteer drivers for Rock County residents. A.C.E. is exempt from the mileage reimbursement tax under the Domestic Volunteer Service Act.

For more information about volunteer driving, contact A.C.E. in Rock County at 507-283-5064.

Bike share program/ continued from 1A

Specifically, 12 sponsors need to pledge \$150 annually to support the effort. The money will be put in a special Bike Program Account for the maintenance of the bikes.

Each sponsor will be recognized with a name and logo on the bike basket (for the adult bikes) or a vinyl graphic logo on the youth bikes. Sponsorship fees will be assessed annually in January and February.

The bike share program will be in place from early spring through mid October starting next spring.

"What a great way to advertise and to support healthy living," Lanphere said.

Interested sponsors can contact the Chamber at 507-283-4061.



283-9171 | PAPIK.COM








2007 GMC Sierra 1500 6.0L

Stock #711536U
160K



Papik Price **\$16,990**

2014 Chevrolet Silverado LTZ

Stock #418529N
28K



Papik Price **\$33,990**

2014 Chevrolet Silverado LTZ

Stock #301188N
36K



Papik Price **\$33,990**

2016 GMC Sierra SLT

Stock #342578N
27K



Papik Price **\$40,990**



Meet Your New Boss

The need for quality child care is greater than ever. Consider becoming a family child care provider. Be self-employed in your own home - doing a job you'll love!

The rewards of working in child care are numerous. You will have the satisfaction of knowing you are accomplishing something important - helping children grow and develop. You will also be helping our communities grow and thrive. Child care keeps Southwest Minnesota working!

Contact us for information about becoming a family child care provider. We'll show you how to take your love for children and turn it into a living.

Region 8 Child Care Aware
Southwestern MN Opportunity Council
1106 3rd Avenue, PO Box 787
Worthington, MN 56187
507-376-4195
www.smoc.us

Quality Care and Education for Every Child



CELEBRATIONS

Bridal Showers

A bridal shower for **Lucas Frahm and Victoria Brouwer Frahm** will be from 1-3 p.m. Saturday, Sept. 9, at Bethany Lutheran Church in Luverne.

An open house bridal shower for **Sydney Giinthir**, bride-to-be of **Zach Staeffler**, will be from 2-4 p.m. Sunday, Sept. 17, at the Luverne Senior Center at 319 E. Lincoln Street in Luverne.

Open Houses

Del and Eileen Domagala will celebrate their 60th wedding anniversary with an open house from 2-4 p.m. Saturday, Sept. 9, at the St. Catherine Catholic Church gathering space.

MENU

Monday, Sept. 11: Swiss steak, buttered boiled potatoes, corn, bread, pineapple.
Program: Pinochle.

Tuesday, Sept. 12: Senior Dining Closed.

Wednesday, Sept. 13: Roast turkey, mashed potatoes, peas and carrots, cranberry garnish, bread, fruit shortcake.
Two-buck day sponsored by State Farm.

Program: Cards with Alyce.

Thursday, Sept. 14: Pork chop with gravy, mashed potatoes, carrots, dinner roll, fruit crisp.
Program: Pastor of the Month Pastor Cunningham, First Presbyterian.

Friday, Sept. 15: Lasagna, country blend vegetables, lettuce salad with dressing, garlic bread, bar.
Program: Birthday party with Kitchen Band.

Senior Dining offers well-balanced and affordable meals in a community atmosphere.

Gift certificates are available at the meal site or online at www.lssmn.org/nutrition.

Call Lauree Teunissen at 283-9846 to make dining reservations or for home-delivered meals.

SCHOOL NEWS

Prekker graduates from SMSU, Marshall

Elizabeth Prekker, Luverne, graduated from Southwest Minnesota State University in Marshall following spring semester. She earned an associate's degree in liberal arts and sciences.



Volunteers with Luverne's Backpack Program Carol McDonald (left), Shirley Klosterbuer, Lona Klosterbuer and Rhonna Jarchow (not pictured) sort through food boxes last week at the program's downtown storage room for food items that are distributed at the middle/high school.

Need and expenses increase as Luverne Backpack Program reaches ten-year milestone

By Mavis Fodness

Entering its 10th year, the Luverne Backpack Program is experiencing growing pains and needs renewed financial support from the community.

The program gives preschool through 12th-grade students foods they prepare and serve themselves each weekend during the school year. The volunteer-led organization provided food for 206 students during the 2016-17 school year.

"For some of these kids, this is what they are eating over the weekend," said Lisa Dinger, Luverne Public School's child guide and backpack program volunteer.

During weekdays, students are eligible for the district's free-and-reduced meal program. The Luverne Backpack Program uses the same confidentiality and financial guidelines.

Student sign-up for this year's distribution is currently taking place along with the committee preparing for its annual financial appeal.

Since the program began in 2007 through the suggestion and efforts of Carrie Soto, who continues to serve on the Backpack commit-

tee, expense per student has grown from an average of \$120 to \$150.

"That's a \$30,000-a-year price tag to run the program," she said.

Because the program reaches all school-aged children this year, expenses are \$5,000 to \$6,000 more per year since the program started, Soto added.

The program will conduct its annual financial appeal in October and November. During this month, focus is on enrolling students into the food distribution program.

USDA officials reported in 2015 that 16.6 percent of households with children in the U.S. were classified as food insecure, often skipping meals due to the lack of funds.

The added expense of clothes and supplies for the new school year often taxes many families' already tight food budgets, Dinger said.

Donations for the Backpack Program can be directed to the Luverne Area Community Foundation, P.O. Box 623, 102 E. Main St., Luverne. Sponsorship for one student is \$150 for the school year.

"Any amount will help," Soto said.



Luverne Backpack Program volunteer Lona Klosterbuer packs a box of applesauce cups in the minivan for transport last week to the middle/high school.

1926: New \$230,000 school lauded as 'the most practicable and satisfactory for the money'

The following appeared in the *Rock County Herald* on November 5, 1926:

SCHOOL BUILDING IS FORMALLY DEDICATED

Large Throng Attends Exercises and Inspects Luverne's New High School Friday Evening.

DESIGNERS AND BUILDERS ARE WARMLY PRAISED

Splendid Value and many Merits of New Structure Are Outlined by Different Speakers.

About seven hundred and fifty or eight hundred patrons and taxpayers of this city and community attended the exercises for the formal dedication of Luverne's splendid new high school building, which were held Friday evening, commencing at 8:00 o'clock, at the high school auditorium.

Every seat in the large auditorium, which has a capacity of almost six hundred

people, was occupied, while a large number of people who were unable to be seated, and could not get within audible distance of the speakers, had resorted to an inspection of the building. It is thought that this was the largest crowd that has ever turned out for any school activity of this nature for a number of years and it shows that the public is inter-

ested in what the school board and their subordinates are doing to further the education of the younger generation.

This new building represents an expenditure of approximately \$230,000, of which \$200,000 is the cost of the structure and permanent equipment, and \$30,000 the cost of furnishings. It is conceded by disinterested out-of-town architects, contractors and school superintendents familiar with the costs of such school buildings, who have inspected the new building, to be one of the greatest values for the money to be found in the Northwest.

The opening number of the evening included several selections by the Luverne high school orchestra, of which H. L. Nowka is director, after which W. E. E. Greene, of the Architectural company, architects and supervisors of the construction of the building, was introduced by Supt. H. C. Bell, who presided. Mr. Greene gave a very interesting talk in which he explained the main features of the building, perhaps the

most important of which was the fact that the new building is absolutely fireproof from the ground floor up as far as the roof, which is of wood construction. There is a layer of sheet metal constructed in the roof, however, which together with the metallath that was used, makes the entire building practically fireproof. All the electrical wiring for every purpose throughout the building has been run through conduits to give further protection from fire. He also showed by actual figures and comparison that the cost of this new building was not as costly in proportion to size and cost of construction as was the old high school building on the hill and that the difference in the conveniences and general layout of the two buildings could not be compared.

President O. E. Ferguson, of the school board, then formally accepted the structure and complimented the Messrs. Greene and Oscar Rosin, of The Architectural company, for the diligent efforts that they had extended in making the new building the success that it

is. He also lauded Supt. Bell for his untiring efforts, both in giving suggestions for the betterment of the building itself, and for the knowledge and good judgment used in choosing and purchasing the equipment, which is conceded to be the most practicable and satisfactory for the money of that in any school in this section of the country.

A short talk by Supt. Bell followed. He stated that the new building did not belong to the school board, the faculty and the students, but that the building belonged to the taxpayers and citizens of this community and that it was open to the public at any reasonable time, whenever the occasion warranted. He explained how the school district secured their funds with which to finance such an institution and showed how the taxes were divided so as to allow the right apportionment to the public schools throughout the state.

After a few selections were sung by the audience, two motion picture reels were

shown, one of which was a comedy and the other made up of educational news films. An inspection of the building was permitted after the motion pictures had been shown. The entire building was opened up and the attendants permitted to wander around at their own leisure and view the various rooms.

A dance was also staged in the gymnasium, but due to the fact that no wax could be put on the floor because of rendering it too slippery for basketball and other gymnastics, not a very large number of people participated in this part of the program. The music for the dance was furnished by a phonograph, by the courtesy of the Myhre Studio, and a radio, by the courtesy of J. E. Treat.

Donations to the Rock County Historical Society can be sent to the Rock County Historical Society, 312 E. Main Street, Luverne, MN 56156.

Mann welcomes correspondence sent to manned@iw.net.



Bits by Betty

By Betty Mann, president Rock County Historical Society

OBITUARIES

Deborah Scoggins

Deborah Jane Scoggins, 57, Luverne, died Sunday, Sept. 3, 2017, at the Sanford Hospice Cottage in Luverne after battling lymphoma.



A time of fellowship will be from 9 to 11 a.m. Saturday, Sept. 9, at the American Reformed Church in Luverne with a memorial service at 11 a.m. at the church. A private committal of cremains will take place at a later date.

Deborah Clousing was born Nov. 22, 1959, to David and Anna (Schipper) Clousing in Gallatin, Montana. When she was a small child, the family moved around often. She graduated from Manhattan Christian High School in Montana.

Deb loved spending time with her long-term boyfriend, Dean Tuinstra. She lived in Luverne for 20 years and had worked as an environmental service specialist at the Sanford Luverne Medical Center for 12 years and at the Mary Jane Brown Good Samaritan Home, in Luverne, for 13

years. In the little spare time she had, Deb loved spending time with her family and her pets. She enjoyed camping and attending as many of her grandkids' events as she could. Deb had just started rekindling her faith in God and occasionally attended the American Reformed Church in Luverne with her daughter.

Deb is survived by her daughter, Amy (Travis) Chapa, Luverne; her son, Jason (Julie) Bechler, Sioux Falls, South Dakota; three grandchildren, Jaycee, Addy and Kamdyn Chapa; a stepgrandson, Cameron; special friend Dean Tuinstra, Pipestone; a sister, Bev Herman, Riverton, Wyoming; and two brothers, David Clousing, Bedford, Kentucky, and Calvin Clousing, Geraldine, Montana.

She was preceded in death by her parents; a sister, Linda Hessbeck; and a brother-in-law, Bill Herman.

Arrangements were by Dingmann Funeral Home of Luverne, www.dingmannandsons.com.

(0907 F)

Barbara Ball

Barbara Ball, 84, Luverne, died Sunday, Aug. 27, 2017, at the Sanford USD Medical Center in Sioux Falls, South Dakota.



A funeral was Friday, Sept. 1, 2017, at the United Methodist Church in Luverne. Burial followed in the Maplewood Cemetery in Luverne.

Barbara Newton was born July 18, 1933, in Luverne, to Harold and Laura (Swenson) Newton. She graduated from Luverne High School in 1951. After high school Barb worked in Auburn, Washington, at the Rainbow Café with her aunt. She then worked as a telephone operator for 31 1/2 years for U.S. West telephone in Albert Lea, Luverne and Sioux Falls, South Dakota.

Barb married Harvey Ball on June 18, 1994. The couple lived in Luverne. Harvey died on Jan. 31, 2002.

She was a member of the United Methodist Church in Luverne and served in several positions in the church. She was also a member of the Telephone Pioneers, Grief Share

Group and Coloring Club in Luverne. Barb had many interests and hobbies which included traveling, playing games, shopping, enjoying time at the family cabin on Lake Sarah, cooking, and making chocolates and caramels to share.

Barb is survived by her daughters, Luana (Jeff Boomgaarden) Ball, Minneapolis, and Linda (Randy Patrick) Ball, Lakeville; close family members Colleen and Richard DeSchepper, Luverne, Ann and Don Ciochetto, Brandon, South Dakota, Lori and Jim VonHoltum, Lismore, Cindy and Dale Reverts, Luverne, Duane and Joyce Mulder, Luverne; and many other relatives and friends.

She was preceded in death by her parents; a sister, Marlys Mulder; and her husband, Harvey Ball.

Arrangements were by Dingmann Funeral Home of Luverne, www.dingmannandsons.com.

(0907 F)

Mary Osenga

Mary L. Osenga, 85, Leota, died Tuesday, Aug. 29, 2017, at the Edgebrook Care Center in Edgerton.



A funeral service was Friday, Sept. 1, at the Bethel Reformed Church in Leota. Burial was in the Leota Community Cemetery.

Mary Bolluyt was born Jan. 2, 1932, to Marinus and Eugenia (Van Reulder) Bolluyt in Chandler. She attended Leota Public School.

Mary married Cornelius "Case" Osenga on Jan. 25, 1960, in Leota and they lived in Leota. Mary cleaned houses for area residents. The couple moved to Luverne in 1973 before retiring and moving back to Leota in 1997.

She was a member of the Bethel Reformed Church in Leota. She loved to spend

time with her grandchildren.

Mary is survived by two sons, Ronald (Lori) Osenga, Jasper, and Bruce Osenga, Sioux Falls, South Dakota; a daughter, Barbara Osenga (friend Jesse Shaffer), Sioux Falls; five grandchildren, Dustin, Benjamin, Alyssa, Colton and Shane; a brother, Larry (Ethel) Bolluyt, Revere; and a sister-in-law, Jean Bolluyt, Luverne.

She was preceded in death by her parents; her husband, Case Osenga, on Dec. 14, 2007; two brothers, Jim and Walt Bolluyt; and an infant brother.

Arrangements were by the Leota Burial Association and the Dingmann Funeral Home, dingmannandsons.com.

(0907 F)

Deer lottery application deadline is today

Firearms and muzzle-loader hunters who want to harvest antlerless deer in a deer permit area designated as lottery this hunting season are reminded they must purchase their licenses by Thursday, Sept. 7.

Hunters who purchase their licenses before this date are automatically entered into the lottery for the deer permit area or special hunt area they declare.

This season, antlerless deer permits are issued by

lottery in 48 of Minnesota's 130 deer permit areas. No application is needed to take antlerless deer in permit areas with hunters choice, managed or intensive designations.

Hunters who want to participate in special firearm deer hunts also need to apply today. More information about deer permit areas, how their designations are set and special hunts is available on the DNR website at mndnr.gov/deer and in the 2017 Regulations Handbook.

K.A.H.R. Foundation supports local students and teachers

Students attend career, leadership program; teachers attend technology integration workshop

Luverne High School students Jacinda Hustoft and Lindsey Roemeling attended a week of BestPrep's Minnesota Business Venture (MBV) this summer, thanks to sponsorship from the local K.A.H.R. Foundation.

MBV is a business and career skills camp held each summer in partnership with the Herberger Business School at St. Cloud State University and the Donald McNeely Center for Entrepreneurship at St. John's University.

Hustoft and Roemeling were among 324 students representing 100 schools who spent the week preparing for life after high school, developing workplace skills and improving their financial literacy skills.

More than 170 business professionals shared experiences and insights with the future workforce by volunteering as session presenters, mock interviewers, financial advisers and more.

For example, speakers from 3M, Allstate, General Mills, Pearson's Candy and the Minnesota Timberwolves offered information on managing personal finance, experiences in entrepreneurship, business ethics and building one's personal brand.

Teachers attend BestPrep technology workshop

Area teachers Diane Robinson, Corey Nelson, Jon Schomacker, Kristin Schomacker, Diana Erickson,



Teachers who attended the BestPrep technology workshop include (front, from left) Jodi Nelson, Susan Beers, Theresa Graff, Laura Endres, (back) Diane Robinson, Corey Nelson, Jon Schomacker, Kristin Schomacker and Diana Erickson.

Jodi Nelson, Susan Beers, Theresa Graff and Laura Endres attended BestPrep's Technology Integration Workshop (TIW) sponsored by the K.A.H.R. Foundation.

They were among 61 other Minnesota teachers challenged to think in new ways about technology in the classroom July 31 through Aug. 3 at the University of St. Thomas Opus College of Business.

Each educator visited corporate workplaces in the Twin Cities metro and shadowed volunteer business partners to understand the workflow, environment and culture of businesses their students may one day work in.

For example, they were exposed to tech tools, websites and apps (such as Code.org, MakerSpaces, Virtual



Luverne High School students Lindsey Roemeling (left) and Jacinda Hustoft attended a week of BestPrep's Minnesota Business Venture (MBV) this summer.

Reality and 3D Printing), and they developed a technology unit plan to bring back to their schools this fall.

The K.A.H.R. Founda-

tion is a family foundation started in 2005 by Jeannine M. Rivet and Warren G. Herreid II for philanthropic endeavors.

REMEMBER WHEN

10 years ago (2007)

The highly anticipated PBS documentary film, "The War," premieres in Luverne's historic Palace Theatre today, and an entire day's worth of celebratory events lead up to the red carpet event at 8 p.m. downtown.

Luverne is one of four towns featured in the 14-hour miniseries that tells the story of World War II through the voices of ordinary men and women who experienced it.

Acclaimed American filmmaker Ken Burns focuses on the events of World War II from the perspective of individuals from four American towns: Luverne, Sacramento, Calif.; Mobile, Ala.; and Waterbury, Conn.

25 years ago (1992)

Luverne City Administrator Steve Perkins said getting housing in place soon is a necessity for the city if it plans to benefit from the Minnesota Veterans Home, under construction north of Luverne.

A housing plan completed by Southwest Regional Development Corporation in August 1991 indicated a housing shortage. Perkins said the city has been trying to encourage private sector construction, but apartments haven't been built.

50 years ago (1967)

Local national guardsmen will receive special training in riot control this month, according to Sgt. Robert Sanny, administrative supply technician with Company A, 3rd Battalion, 135th Infantry S.R.F. Guardsmen will receive 32 hours of special instruction over a period of four days, starting Sept. 23 and 24, and concluding on Sept. 30-Oct. 1.

Riots and other strife resulting from civil rights movements in cities such as Newark and Detroit this summer resulted in the National Guard ordering riot training on a nation-wide scale.

The lessons and special training to be given will be followed by an actual exercise here in Luverne, if present plans materialize. The local police department and fire department will be asked

to participate in the exercise, Sgt. Sanny said.

75 years ago (1942)

A damage suit against the city of Luverne and Selmar Anderson for \$30,000 is expected to lead off all other cases in the September session of district court from the standpoint of public interest. Court will open here Tuesday with the call of the calendar. Jurors will be called at 10 a.m. on Wednesday, Sept. 9.

Plaintiffs in the action are the widow of three Lincoln, Nebr. men killed in an auto crash near Luverne a year ago in July, namely Mrs. Edith A Baker, Mrs. Vivian E. Dillman and Mrs. Ethel B. Pierson. Each of them is asking for \$10,000 in damages...

In their action against the city and Selmar Anderson, the plaintiffs claim that Anderson, who was driving the city street flusher on the highway in the vicinity of the crash, contributed to the accident by failing to signal properly, and that he and the city, which owns the truck, are liable in the damage action.

100 years ago (1917)

The Rock County Public Safety Committee last Friday accepted new and greater duties when in response to a request from the State Public Safety Commission it agreed to act as a market club for the county. The duties of the club will be to see that the people find a ready market for their farm, garden and orchard products, promote the conservation of forage and endeavor to aid farmers who have plenty of feed to dispose of their animals not only to advantage themselves but in such manner that these animals will be kept from the market until they are in proper condition, thereby helping to increase the country's meat supply.

PRIME FARMLAND FOR SALE BY SEALED BIDS

FSA information is available from the

Lynn A. Johnson Law Office, LLC

PO Box 217

Slayton, MN 56172

P: 507-836-6757 ; email lynnj1@frontiernet.net

LEGAL DESCRIPTION: The Northeast Quarter (NE1/4) of Section Twenty-seven (27), Township One-Hundred Four (104), Range Forty-four (44), located in Rock County, Minnesota.

FARM INFORMATION: Farmland includes 72.18 tillable acres in W1/2 of the NE1/4, 71.76 tillable acres in the E 1/2 of the NE1/4; 6.75 acres in the pasture and 7.37 acres, more or less, in the building site. CER is 82.08.

METHOD OF SALE: Sealed bids, with the privilege of increasing the same, will be received at Lynn A. Johnson Law Office, LLC, either by delivering the bids or by mailing the bids to her office at P. O. Box 217, Slayton, MN 56172 on or before **September 21, 2017, at 10:00 a.m.** At such time, the bids will be opened and all bidders present will be allowed to increase their bid until the successful high bid is reached and approved by the seller.

TERMS OF SALE: The successful bidder will be required to enter into a written purchase agreement along with a lender pre-approved letter or a proof of funds letter.

A 10% non-refundable earnest money payment will be due immediately after the sale from the successful bidder. Buyer will enter into a purchase agreement immediately after the sale.

The balance of the purchase price is due and payable at closing in cash. Closing will be held within sixty (60) days of the sale at the office of Lynn A. Johnson Law Office, LLC.

Sellers will provide marketable title to Buyer as evidenced by an Abstract of Title continued and certified to date. 2017 Real Estate Taxes will be paid by the Seller.

Possession will be given to buyer on the date of closing. Buyer will be able to prepare the land for 2018 crop once all 2017 crops have been harvested and removed. Seller reserves the right to reject any and all bids.

All property is sold "as-is-where-is" with no warranties or guarantees, expressed or implied, by the owner or its agents.

Lynn A. Johnson, Attorney for the Iris Fodness family.

Open House

Tuff Village Assisted Living

The Tuff Village is hosting an Open House for Prospective Tenants during National Assisted Living Week. The theme is *Family is Forever!*

Tuesday, September 12th
5:00 – 7:00 PM

Personal Tours, Light Refreshments, and Door Prizes will be provided!

301 County Road 6, Hills, MN 56138
Contact Jocelyn or Mary for Questions at 507.962.3500

PICK YOUR PACKAGE

	CHOICE 60 ENTERTAINMENT	XSTREAM 100 SILVER
230+ TV and music channels	✓ with FREE HD	✓ with FREE HD
17,000+ FREE On Demand titles	✓	✓
Internet download speeds	UP TO 60 Mbps ¹ with In-Home Wi-Fi	UP TO 100 Mbps ¹ Matching Wi-Fi up to 200 Mbps
TiVo® DVR service		✓ 1,000+ TV® DVR recording hours
TV on the go with TV Everywhere™	✓	✓
Digital Phone	✓	✓
30 minutes of International calling ¹		✓
	NOW SAVE 50% OFF TV, Internet & Phone \$26.67* each service / mo. for one year when bundled	NOW SAVE 44% OFF TV, Internet & Phone \$33.33* each service / mo. for one year when bundled
	<small>Plus activation, installation, modem rental, sports and broadcast surcharges, taxes and fees</small>	<small>Plus activation, installation, modem rental, sports and broadcast surcharges, taxes and fees</small>



SWITCHING FROM A SATELLITE TV OR ANOTHER INTERNET PROVIDER?
You may qualify for an additional savings of \$25 per month! Call for more details.



855-803-7466

* Choice 60 Entertainment Pricing: Monthly bundled price is \$79.98 for one year and thereafter increases by \$20 each year until the fourth year, when each service will begin to be billed at its standard rate (currently \$159.98 for all three services). Xstream 100 Silver Pricing: Monthly bundled price is \$99.98 for one year and thereafter increases by \$20 each year until the fourth year, when each service will begin to be billed at its standard rate (currently \$179.98 for all three services). All Packages: If you cancel any of the three services in the package during the first year, standard rates will be charged for any continuing services. Package prices do not include standard installation fee (\$99.99; more if special work is needed); a one-time \$10 activation fee; or other one-time fees that may apply because of options you select. Prices also do not include the following recurring monthly charges: (i) modem fee, currently \$10; (ii) a surcharge for regional sports networks, currently up to \$4.57, depending on your location; (iii) a surcharge for local broadcast stations, currently up to \$11.94, depending on your location; (iv) taxes, franchise fees and other amounts required by law to be collected or paid; or (v) fees for optional services or equipment you may want. All of these monthly charges may increase from time to time. After the first year, if our standard rate for any service in your package that is not free increases or we institute a new fee for service subscribers generally, we can pass that increase or new fee along to you. ¹Internet Service Usage Allowance & Speeds: Internet 60 is subject to a usage allowance of 400 gigabytes per monthly billing period. Internet 100 is subject to a usage allowance of 1,000 gigabytes per monthly billing period. Excess usage will be billed at \$10 for every increment of up to 50 additional gigabytes used. For example, if usage exceeded the allowance by 51 gigabytes, the additional charge would be \$20. Usage allowances and excess usage charges are subject to change at any time. Download and upload speeds are not guaranteed and may vary. ²Offer Availability: Offers expire on date stated above and may be terminated any time without notice. Offers may not be available in all areas, cannot be combined with any other offer, are not transferable and are void where prohibited. Available only to residential customers who have not subscribed to any offered Mediacom service within the prior 90 days and meet applicable credit and other requirements. Customer must agree to all applicable subscriber terms and policies. Other terms and conditions may apply. ³WorldTalk 30: 30 minutes a month of international calling only available to customers who don't subscribe to WorldTalk service. M737-32607 Competitive Print Update



Impact of infrastructure

On Sunday, Aug. 27, Sen. Amy Klobuchar, along with Luverne and Rock County officials, toured the construction underway on the 4-million-gallon reservoir being constructed southwest of Luverne. Pictured are (front from left) Red Arndt, Klobuchar, Rock County Commissioner Sherri Thompson, Lewis and Clark's Troy Larson, (back) Luverne City Councilwoman Caroline Thorson and County Commissioners Stan Williamson and Gary Overgaard. The group discussed the impact of federal infrastructure projects like the Lewis and Clark Rural Water System on Luverne and Rock County — specifically the tru Shrimp Luverne Bay Harbor coming in 2019.

Landowners have new options to meet Buffer Law requirements

Funds available to soil and water conservation districts for implementation of buffer law

Almost \$5 million dollars is now available to support landowners in meeting the requirements of Minnesota's buffer law.

Funds distributed to soil and water conservation districts (SWCDs) are to be used for cost-sharing contracts with landowners or their authorized agents to implement riparian buffers or alternative

practices on public waters and public drainage ditches.

The 2017 legislation also recognizes that some landowners may have hardships (such as weather) in meeting the public waters deadline.

The added language allows for an eight-month extension for implementation when a landowner or authorized agent has filed a riparian

protection "compliance plan."

These plans need to be filed with local SWCD by **Nov. 1, 2017**. Compliance waivers offer a buffer deadline extension until **July 1, 2018**.

"Over 70 percent of the affected parcels in Rock County are currently in compliance with the buffer law," said Arlyn Gehrke of the Rock County Land Management Office.

"The eight-month extension option will allow remaining buffer areas to be seeded in the spring of 2018 and still comply with the law."

The state buffer law requires a buffer on public waters by Nov. 1, 2017, and a buffer on public drainage ditches by Nov. 1, 2018.

For more information on the buffer law, including the cost-share program, contact the Rock County Land Management Office and Soil and Water Conservation District at 507-283-8862.

24/7 ... Rain or Shine ...

Your local, independent agent will be there.

Working for you—meeting your needs.

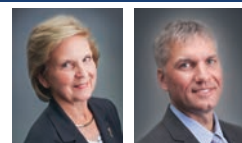


INSURANCE

South Hwy. 75, Luverne, MN • Ph. 507-283-2381

Auto-Owners
INSURANCE

LIFE • HOME • CAR • BUSINESS



Martin Bloemendal, CFCU



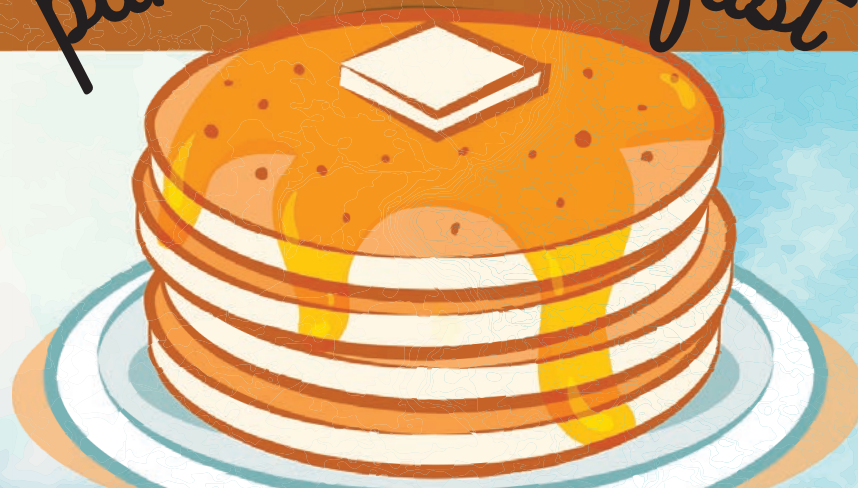
Steve Smedstad, CIC

FREE PANCAKE BREAKFAST FOR PILOTS AND CLASSIC CAR OWNERS OR DRIVERS!

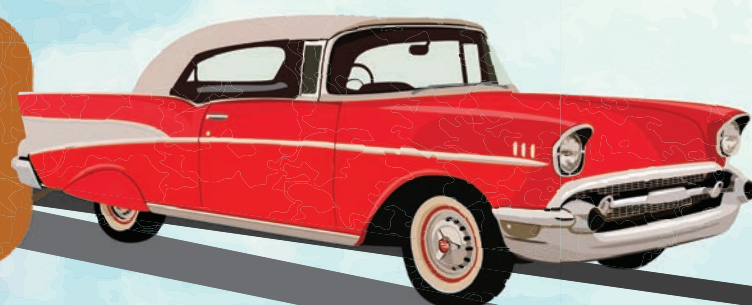
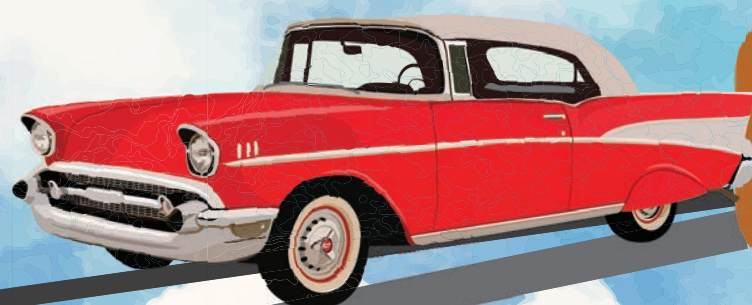
ENJOY THESE OTHER ATTRACTIONS: SKYDIVE ADVENTURE | AIRCRAFT ON DISPLAY | INFLATABLES FOR KIDS | AIR AMBULANCE ON DISPLAY

FLY-IN OR DRIVE-IN

pancake breakfast



Saturday, September 9, 2017



**QUENTIN AANENSON FIELD
LIVERNE MUNICIPAL AIRPORT**



7 A.M. - 12 P.M.

Along for the ride



Peter Bakken captured this photograph with his drone when the tractors and riders stopped at the Blac-X Farms feedlot shop where Farm Bureau sponsored lunch for tractor enthusiasts. Nearly 70 tractors and 80 people were involved in the event.

Second Annual Tractor Ride winds through Rock County Friday

By Lori Sorenson

There were farm tires and smokestacks as far as the eye could see Friday when nearly 70 tractors left Luverne City Park and toiled around Rock County.

Many of the riders and drivers were returnees from last year's popular event, which immediately prompted plans for a 2017 encore.

"It was a good ride," Iowa rider Jim VanDerWerff said Friday. He and his friend, Ken Johnson, also from Iowa, were in the 2016 tractor ride.

They said they enjoyed it for many reasons, but mostly it's for the chance to rub shoulders with other gear heads.

"You get to talk to other tractor folks — there's a few lies get told ..." he laughed.

Another rider, Don Krommendyke, Sioux County, Iowa, approached from his Ford tractor when the group stopped for lunch. "Are you telling lies?" he said to VanDerWerff and Johnson.

Mostly, the stories center on what's special about their tractors — a 1962 Allis Chalmers D15 Series 1, a 1946 Farmall H, and a 1954 NAA Golden Jubilee Ford.

All three men are nostalgic about their old family workhorses, now restored to a polished shine. This was a familiar theme among lunch conversations at Blac-X Farms in western Rock County where Peter and Jay Bakken hosted the group for burgers, baked beans, potato salad and fresh watermelon wedges.

As Rock County Farm Bureau leaders, the Bakken brothers recognized the tractor ride was about "Farmers, Family, Food,"

"It looked like fun, and we wanted to be part of it."

— Peter Bakken, president, Rock County Farm Bureau



which is Minnesota Farm Bureau's official logo.

"We saw it as an ag-related, community-supported activity that Farm Bureau could help out with," Peter said. "It looked like fun, and we wanted to be part of it."

In addition to tractor talk, the group was also concerned about Worthington riders Don Olson and his passenger, Nadine Sorby, who were injured in a crash at the state park.

The route took the tractors up the interpretive center hill where they looped around the parking lot and headed back down.

The Olson tractor reportedly left the park roadway, headed down the hill and was stopped by a tree.



Iowa riders Ken Johnson (left) and Jim VanDerWerff park their tractors in the lot at Blac-X Farms where they and the other riders were treated to burgers, baked beans, potato salad and fresh watermelon wedges. At far left is Kenny Vos, is one of the organizers along with Rodger Ossenfort and George Mann.

The two riders were taken to Sanford Luverne with what was reported as non-life-threatening injuries, and fellow riders drove the tractor back to the driveway.

The ride started at 8:30 a.m. in Luverne City Park after a "tractor blessing" from Father Tom Jennings who also drove a tractor in the lineup.

Planners were Ossenfort, Jerold Mann and Ken Vos.

The route included the Magnolia Café for breakfast, then the Interpretive Center at Blue Mounds State Park, lunch at Bakken feedlot shop and then Rauk's in Beaver Creek.

The last stop was at Loren Forrest's for homemade ice cream before heading down Main Street back to the park.



Star Herald photos by Lori Sorenson



Pictured at far right, the hilly countryside of the Beaver Creek area afforded a unique view of the 67 tractors as they topped the final hill and turned into Blac-X Farms for lunch.



Local Minnesota State Fair 2017 results

Rock County 4-H'ers earn ribbons for general projects

By Mavis Fodness

Conference judging is used at the Minnesota State Fair to determine ribbon placings for purple, blue, red and white. A purple ribbon is the highest ranking given by judges in the general project area.

Two Rock County 4-H'ers earned purple ribbons during their general project encampment.

Receiving purple ribbons were Kaylie Ossefoort, home environment grades 9+, and Alexandra Hartman, cats grades 9+.

Blue ribbons were earned by Burke Johnson, computers; Elisabeth Kelm, food revue; Joni Vander Beek, needle arts grades 9+; Allison LaRock, performing arts grades 6-8; Josie Scholten, performing arts grades 9+; Erika Dysthe, photography grades 6-8; Ashlyn Johnson, photography grades 6-8; Morgan Gonnerman, clothes you buy; Emily Malson, citizenship; and Brianna Jonas, clothes non-garment grades 9+.

Juniors 4-H Club, club banner; Livewires 4-H Club, community pride; Sage Ver Steeg, crafts grades 9+; Gretchen Jacobsma, food and nutrition grades 6-8; Joshua Wiersema, food and nutrition grades 6-8; Deven Porter, foods and nutrition grades 9+; Elisabeth Kelm, food review grades 6-8; Katie Fick, health grades 9+; Austin Ossefoort, home environment grades 6-8; Joni Vander Beek, needle arts grades 9+; Allison LaRock, performing arts grades 6-8; Josie Scholten, performing arts grades 9+; Erika Dysthe, photography grades 6-8; Ashlyn Johnson, photography grades 6-8; Morgan Gonnerman, clothes you buy; Emily Malson, citizenship; and Brianna Jonas, clothes non-garment grades 9+.

Red ribbons were awarded to Krista Burkeman, geology grades 6-8; Cassie Flanagan, crafts grades 6-8; Brooke Feit, fine arts grades 9+; Mia Wenzel, quilting grades 6-8; Aisha



Alexandra Hartman, purple ribbon cat project grades 9+



Kaylie Ossefoort, purple ribbon home environment grades 9+

Porter, wildlife grades 9+; and Alexa Chesley, clothes you

make grades 9+. Candace Porter, photography grades 9+, received a white ribbon.

Rock County 4-H livestock exhibitors compete during four-day encampment

By Mavis Fodness

Rock County 4-H'ers joined representatives from the state's 87 counties to exhibit 2,843 animals during this year's Minnesota State Fair livestock encampment Aug. 23-27.

Five local 4-H'ers received champion or reserve champion honors during the event. They are Justin Mente, champion cow/calf pair and champion prospect market calf intermediate showperson; Ryleigh Beers, reserve champion shorthorn plus heifer; Trevor Mente, reserve champion Maine-Anjou heifer; Jacob Raak, reserve champion Ayrshire cow; and Trey Baustian, reserve champion lightweight market lamb and fourth place showperson.

Purple ribbons were awarded to Cassie Flanagan, middleweight market meat goat; Christian Kruse, lightweight black-face market lamb; Riley Baker, middleweight black-face market lamb; and Hallie Hough, crossbred market swine;

Recipients of blue ribbons were Tommy Norman, registered junior yearling breeding heifer; Michael Kinsinger, commercial junior yearling breeding heifer; Tyler Reisdorfer, Red Angus junior yearling breeding heifer; Leah Kruse, Hereford junior yearling breeding heifer; Dylan Mente, prospect calf and fourth-place senior prospect calf showperson; Andrew Raak, red-and-white winter or fall calf and dairy showcase finalist; Drew Fick, prospect beef steer; Payton Fick, prospect beef steer; Tory Knobloch, slick-shown market steer; Sean Elbers crossbred market beef; Joshua Raak, spring

yearling Holstein; Brooke Feit, large breed senior buck and advanced rabbit project interview finalist; Hunter Baker, middleweight black-face market lamb; Adayla Rouzer, speckle-face market lamb; Mira Uithoven, speckle-face market lamb; Trista Baustian, crossbred February gilt; Tyler Fick, Duroc market barrow; and Aleck Schoeneman, crossbred market barrow.

Earning red ribbons were Karly Kruse, Hereford spring calf breeding heifer; Hannah Kruse, Hereford market steer and individual livestock demonstration; Whitney Elbers, slick-shown market steer; Caleb Raak, Guernsey winter or fall calf; Breanna Richters, senior yearling breeding doe; Moriah Flanagan, senior meat breeding doe kid and meat goat project finalist; Gracie Sandbulte, Mini Rex senior buck; Payton Bork, New Zealand junior buck; Tacey Baustian, lightweight black-face market lamb; William Stegenga, market gilt and fourth-place senior showman; and Tanner Baustian, market gilt.

Beers receives livestock association scholarship

Each year the Minnesota Livestock Breeders' Association Scholarship is awarded to 4-H and FFA youth who are active members and exhibitors during the year of application.

Rock County 4-H'er Ryleigh Beers received a \$1,000 scholarship based on her leadership experience and personal growth achievement along with academic excellence and outstanding livestock production.

In 2017, 31 scholarships ranging from \$1,000 to \$4,000 were awarded.



Trey Baustian, reserve champion lightweight market lamb



Jacob Raak, reserve champion Ayrshire cow



Ryleigh Beers, reserve champion shorthorn plus heifer



Trevor Mente, reserve champion Maine-Anjou heifer

Picture not available: Justin Mente, champion cow/calf pair and champion prospect market calf intermediate showperson.

CD SPECIAL

Guaranteed rates of return.

1.25% APY*

11 MONTHS

\$5,000 MINIMUM

1.55% APY*

19 MONTHS

\$5,000 MINIMUM

Fixed term. Fixed rate. Guaranteed return.

* APY is Annual Percentage Yield. Yield effective as of August 11, 2017 and subject to change. Substantial penalty for early withdrawal. Fees may reduce earnings. Member FDIC.

Doers Welcome™

minnwestbank.com

Member FDIC

Fall duck and goose seasons opening around state

Minnesota waterfowl season opens Saturday, Sept. 23.

"Habitat conditions look good in most areas, wild rice reports are good for hunters in the northern portions of the state and waterfowl numbers are favorable," said Steve Cordts, waterfowl specialist with the Minnesota Department of Natural Resources.

The waterfowl season will open with similar bag limits and season dates that were in place last year. The early goose season will open Sept. 2, and extend through Sept. 17.

Duck seasons and limits

Duck season will again be open for 60 days in each of the three waterfowl zones.

In the north zone, duck season is Saturday, Sept. 23, through Tuesday, Nov. 21.

In the central zone, duck season is Saturday, Sept. 23, through Sunday, Oct. 1, closes for five days, then reopens Oct. 7, and runs through Nov. 26.

In the south zone, duck

season is Sept. 23, through Oct. 1, closes for 12 days, then reopens Oct. 14, and runs through Dec. 3.

The daily bag limit for ducks remains at six per day.

Limits are four mallards (only two can be hens), three scaup, three wood ducks, two redheads and two canvasbacks, except the pintail bag limit was reduced to one per day and the black duck limit increased to two per day.

Canada goose seasons, limits

The goose season and limits will also be the same.

The early September goose season will open statewide on Sept. 2 and run through Sept. 17. Bag limits for dark geese are five per day statewide. A \$4 permit is required to hunt geese during September.

The restriction prohibiting hunting within 100 yards of surface water remains in effect in the northwest goose zone, Carlos Avery Wildlife Management Area, Ocheda

Lake Game Refuge and an area surrounding Swan Lake in Nicollet County.

Early season goose hunters should consult the 2017 Waterfowl Supplement for zone maps and additional details.

Minnesota's regular goose season will open in conjunction with the duck season statewide Sept. 23, with a bag limit of three dark geese per day.

"Dark" geese include Canada geese, white-fronted geese and brant. Goose season will close in the central and south duck zones when duck season is closed.

Other seasons

Youth Waterfowl Day will be Saturday Sept. 9. The season for sandhill cranes runs Saturday, Sept. 16, through Sunday, Oct. 22, in the northwest goose and sandhill crane zone only.

For more detailed information, the 2017 waterfowl hunting regulations are available online at mndnr.gov/waterfowl.

Luverne sweeps SWC E-Gals

By John Rittenhouse

The Luverne volleyball team ran its record to 3-0 after posting a pair of victories last week.

The Cardinals swept Southwest Christian during their home opener Aug. 29 before winning in straight sets against St. James in Butterfield Thursday.

Luverne hosts Redwood Valley Thursday for the Big South Conference opener.

LHS 3, St. James 0

The Cardinals registered their second sweep of the week when they topped the Saints in three sets Thursday in Butterfield.

Luverne controlled play during the match by outscoring St. James 75-47.

The Cards posted a pair of 25-15 victories to open the match before prevailing 25-17 in the finale.

Senior Alexis Ferrell had a big night that included her registering 17 kills, 16 digs and six blocks.

Sierra Schmuck and Tacey Baustian chipped in 17 and 13 set assists respectively to the winning cause, while Gracie Bosch led the Cards with 21 digs.

Luverne 3, SWC 0

The Cardinals opened the home portion of their schedule by recording a three-set



John Rittenhouse photo/0907-lvb 15

Luverne senior Alexis Ferrell tips the ball away from a pair of Southwest Christian blockers during an Aug. 29 match in Luverne. Ferrell had 19 kills and 20 digs during a 3-0 victory.

sweep of the Eagles Aug. 29. Luverne pulled out a tight win in the opening set before

securing convincing victories to complete its second sweep of SWC in the last two seasons.

The Cards scored the first five Sweep/continued on page 5B



John Rittenhouse photo/0907-tennis 2

Senior Samantha Pierce bounced back from a one-set deficit to post a 2-1 victory at first singles against Fairmont Aug. 29.

Cardinals take care of Fairmont netters

By John Rittenhouse

What has been a successful start to the tennis season continued for the Luverne Cardinals when they entertained Fairmont for a match Aug. 29.

Luverne had to battle in order to knock off a scrappy Fairmont squad, but the Cards came up on the winning end of a pair of three-set decisions to set the stage for a 5-2 victory.

"It was a really close match, but we came out on top," said Cardinal coach Greg Antoine.

Luverne won all three doubles clashes and split the singles contest to up its season record to 6-1-1.

Emilie Bartels and Riley Severson notched a three-set win (6-1, 6-7, 6-3) over Brittany Bass and Bergen Senf at first doubles.

Rozilyn Oye and Elise Jarchow came out on the winning end of 7-5 and 6-1 scores against Makena Rodriguez and Lauren Green at No. 2, while Mela Jarchow and Lauren Ver Steeg came out on the winning end of 6-0 and 6-2 tallies against Holly Petrowick and Lauren Davis at No. 3.

Joci Oye notched 6-2 and 6-1 wins over Briana Joseph at third singles, but Samantha Pierce had to stage a rally to best Sydney Hainey in a three-set match at first singles.

Hainey prevailed 6-2 in the opening set, but Pierce bounced back to secure 6-2 and 6-4 wins in the final two sets.

Fairmont's Claire Hemmers edged Carissa Cunningham 7-6, 6-4 at second singles, while Maggy Totzke upended Ainslie Robinson 6-1, 6-4 at No. 4.

Luverne hosts Marshall Thursday.

Patriots crush Wildcats

By John Rittenhouse

A fast start by the Hills-Beaver Creek Patriots led to a successful football debut Thursday in Hills.

H-BC scored a pair of touchdowns in the first 4:22 of the game as a part of a 28-point first half, which set the stage for a 46-0 thrashing of Heron Lake-Okabena.

"We came out with a fast start, scoring with our first two possessions after creating two turnovers," said H-BC coach Rex Metzger.

"We were able to run the ball the way we wanted to, and that allowed us to set up a few play-action passes that really helped us in the second quarter."

The H-BC defense, which limited the Wildcats to 44 yards in the game, came up with two key plays early in the game to ignite the rout.

HL-O's first play from scrimmage resulted in a fumble that was recovered by H-BC's Josh Kueter on the Wildcats' 31-yard line.

Gavin Wysong scored on a 20-yard run three plays later and Trenton Bass carried in the ensuing two-point conversion to make it 8-0 1:37 into the contest.

H-BC's Preston Maassen picked off a pass on the first play of HL-O's second offensive possession, setting up a seven-play, 29-yard drive for the Patriots.

Bass capped the series with a two-yard plunge and Wysong carried in the conversion to up the lead to 16-0 with 7:38 remaining in the first quarter.



John Rittenhouse photo/0907-hfb 2

Hills-Beaver Creek freshman tailback Gavin Wysong ran for 75 yards and one touchdown during Thursday's football debut against HL-O in Hills. The Patriots coasted to a 46-0 win.

The Patriots settled the issue with a 22-point second quarter, which gave the hosts a 38-0 advantage at the intermission.

Jax Wysong recovered a fumble on the HL-O 49 with 9:07 remaining in the first half to initiate the scoring spree.

The Patriot offense took advantage of HL-O's third turnover of the contest by covering 51 yards in five plays with sophomore quarterback Easton Harnack tossing a 38-yard touchdown pass to Jax Wysong to cap the series.

Bass carried in the conversion to make it 24-0.

A pair of impressive punt returns by Bass set up H-BC's final two tallies of the first half.

After a three-and-out offensive possession by the Wildcats, Bass fielded a punt

and returned the ball 27 yards to the HL-O 33.

Harnack hooked up with Kueter for a 14-yard touchdown pass four plays later to up the lead to 30-0.

Another three-and-out possession by the Wildcats resulted in a punt that Bass returned 45 yards to the HL-O five-yard line.

Bass scored on a five-yard run on the second play of the possession and Hunter Bork toted in the two-point conversion to cap the scoring in the first half.

Bork also recorded the game's final touchdown when he returned the opening kickoff of the third quarter 88 yards for a tally.

Jax Wysong grabbed a conversion pass from Harnack

following the touchdown.

Metzger was impressed with H-BC's defensive effort during the shutout win.

"We have some big guys and they were pretty physical up front. They took care of the line of scrimmage, which allowed our linebackers to run free all night," he said.

H-BC plays in Mountain Lake Friday.

Team statistics
H-BC: 252 rushing yards, 73 passing yards, 325 total yards, 12 first downs, nine penalties for 70 yards, two turnovers.
HL-O: minus 6 rushing yards, 50 passing yards, 44 total yards, five first downs, two penalties for nine yards, four turnovers.

Individual statistics
Rushing: G. Wysong 12-75, J. Wysong 4-37, Bass 7-20, Harnack 2-31, Tyson

Crush/continued on page 5B

Girls place second, boys sixth in Mountain Lake

By John Rittenhouse

The Luverne cross country runners experienced meet competition for the second time this season at the Mountain Lake Area Invitational Aug. 30.

The Luverne girls made their presence felt at the meet by placing second in an 11-team field of complete teams.

Luverne's boys placed sixth in a 12-team field.

The LHS girls compiled 71 points to finish second behind Fairmont, which recorded 47 points.

Regan Feit led the Cardinals by finishing ninth with a time of 21:01.

Tenley Nelson (12th in 21:34), Brooklynn Ver Steeg (14th in 21:49), Gabrielle Ferrell (16th in 22:01) and Madison Residorfer (24th in 23:15) rounded out the team scoring for LHS.

Leslie Van Engelenhoven (26th in 23:25), Claire Baustian (65th in 27:24), Megan Rogers (67th in 27:48) and Madigan Flom (87th in 30:28) also ran in the varsity race.

The LHS boys turned in a 141-point effort to place sixth

in a field led by Worthington, which won the team title with 38 points.

Dalton DeSollar set the pace for the Cards by finishing fourth in 17:25.

Shane Berning (23rd in 18:50), Austin Winter (32nd in 19:18), Brayden Tofteland (35th in 19:23) and Michael Rahm (59th in 20:46) made contributions to the team tally.

Jackson Golla (60th in 20:48), Seno Chanthalangsy (61st in 20:55), Jonah Friedrichsen (87th in 22:04), Tom Brown (104th in 23:13), Abraham Her-

andez (107th in 23:27), John Miller (109th in 23:37) and Nick Rogers (124th in 26:54) also ran in the varsity race.

The Cardinals host the Bruce Gluf Classic Saturday.

Junior high boys: Brady Bork, fifth, 7:05; Griffen Jachow, 17th, 7:33; Sam Emery, 22nd, 7:49; Ethan Rahm, 28th, 7:57; Ashton Eitrem, 33rd, 8:06; Camden Janiszski, 41st, 8:18; Alex Baumberger, 42nd, 8:25; Carsen Tofteland, 43rd, 8:25.2; Camden Hoven, 45th, 8:27; Henry Ramstorf, 46th, 8:29; Burke Johnson, 53rd, 8:46. Luverne placed third with 63 points in a six-team field led by Worthington (37 points).

Junior high girls: Tiana Lais, second, 7:47; Elizabeth Wagner, fourth, 7:58; Grace Ingebretson, eighth, 8:07.

Maple River spoils football debut for LHS

By John Rittenhouse

A strong Maple River football team knocked off the Luverne Cardinals during the season debut for both squads Friday at Cardinal Field.

Maple River, which reached the state semifinals in Class AA last season, dominated play during the first half on the way to opening a 24-0 lead.

The Cardinals, however, blanked the Eagles in the second half and produced a late touchdown to make it a 24-6 tally at game's end.

"Maple River is a very good football team," said Cardinal coach Todd Oye.

"They were bigger, stronger and faster than we are. They could run the ball and we couldn't. The thing I liked was our kids played hard the entire game, and that's why a lot of good things happened to us at

the end of the game."

The beginning of the game belonged to the Maple River Eagles, when they produced points with four of their first five offensive possessions of the contest.

The Eagles' defensive unit also played well in a first half that ended without LHS registering a first down.

Maple River received the game's opening kickoff and moved the ball 62 yards to Luverne's 16-yard line.

Facing a fourth down situation, the Eagles sent the field goal team on the field, and Nathan Moore converted a 33-yard attempt to make it a 3-0 game 3:57 into the contest.

Maple River increased its lead to 17-0 by producing touchdowns with its next two

Spoil/continued on page 4B



John Rittenhouse photo/0907-lfb 3

Luverne freshman defender Zach Ahrendt attempts to snag the jersey of a Maple River runner during Friday's home debut.

Family's fun stay relieves my pressure

It was only two days, but it seemed like I was carrying around the full weight of a week on my shoulders last weekend.



FROM THE SIDELINES

By John Rittenhouse, sports editor

Apparently that's the price I have to pay for writing a column on nearly a weekly basis.

I've often wondered if anyone takes the time to read my musings online or in the paper, but I was made aware that Dave or Lisa DeBoer read my column at least once this summer.

Kathy Thompson, the owner of Three Lakes Resort in Otter Tail County, gave me a call in July saying a family from Luverne decided to rent one of her cabins for a week-plus stay that included the Labor Day weekend.

She then thanked me for writing a column about her business, where the Rittenhouse family spends two weeks every June.

"They said they read something about the resort in your paper and decided to give it a try," Thompson said.

It felt pretty good knowing someone from Rock County was inspired to give the hidden treasure on Deer Lake a try after reading about our vacation in my column last June.

At the same time, I had placed a little bit of pressure on myself.

I knew we had been invited for a free weekend getaway at the resort over the Labor Day weekend, which left me feeling somewhat responsible for a Luverne area family being there at the same time.

"What if they didn't like the setup?" I was thinking. "What if their week's stay was plagued by rain and forced them to spend most of their time inside the cabin instead of enjoying the great outdoors?"

My concerns were reasonable, but they proved

to be unfounded.

When we arrived at the resort early Saturday afternoon, it became evident the DeBoer clan was more than comfortable in their surroundings.

The smiles on the faces of the DeBoer girls, Kate and Erica, were genuine when I witnessed them posing for pictures with two 22-inch-plus northern pike they apparently caught earlier that morning.

Lisa appeared to take great pleasure in watching her granddaughters playing with toys on the sand beach, while Dave was busy preparing something on the grill before taking some of the family members on a kayak adventure on the Otter Tail River.

It was a trip that had to cover four-plus miles, and it must have taken a slight toll on Dave's train of thought.

The leader of the DeBoer clan must have mistaken my family for fitness-seekers when he asked us if we wanted to join them on another kayaking trip on Sunday.

He may as well have been talking to a wall because the only activity taking place on the Rittenhouse side of the compound was an occasional game of beanbag toss, which isn't exactly a high-stress cardio workout.

Regardless of Dave's temporary lapse of reason, it was clear the DeBoer family had a great time during their stay at the resort.

So did the Rittenhouse family, and I was feeling especially good knowing a family from Rock County appreciates the resort as much as we do.



John Rittenhouse photo/0907 lfb 11

Luverne sophomore running back Kane Weston splits a pair of Maple River defenders during Friday's season-opening football game at LHS. Weston ran for 48 yards and scored Luverne's lone touchdown during a 24-6 loss.

Spoil/continued from page 3B

offensive possessions.

The Eagles second offensive series turned into a nine-play, 65-yard march ending with Moore scoring on a five-yard run with 2:08 left in the opening stanza.

Moore booted his first of three extra points following the touchdown to up the lead to 10-0.

Maple River's first possession of the second quarter developed into a seven-play, 31-yard drive that was set up by a short punt by LHS.

Moore capped the series with a five-yard run to make it a 17-0 game with 7:57 left in the second stanza.

The Cardinals forced the Eagles to punt at the end of the fourth offensive possession of the first half, but Maple River reached the end zone again with its fifth possession.

A seven-play, 41-yard march ended with Hunter Pederson scoring on a one-yard plunge with 34 seconds left in the second quarter to give the Eagles a 24-0 advantage at the intermission.

Maple River's best scoring chance in the second half slipped away when a botched hold foiled a field-goal attempt.

Luverne, which produced nine first downs and a good

share of its 118 total yards of the game in the second half, had two scoring opportunities in the fourth quarter.

The Cards put together a nine-play, 61-yard drive that started in the third quarter and ended in the fourth quarter when a pass during a fourth-and-four situation fell incomplete in the end zone with 9:52 left to play.

LHS got the ball back four plays later and proceeded to mount an impressive 13-play, 48-yard drive.

Sophomore Kane Weston, who ran the ball for 48 yards in the fourth quarter, capped the march with a one-yard run

with 52 seconds left to play. The 0-1 Cardinals host Jackson County Central Friday.

Team statistics
Luverne: 118 rushing yards, five passing yards, 123 total yards, nine first downs, one penalty for five yards, two turnovers.
Maple River: 296 rushing yards, five passing yards, 301 total yards, 17 first downs, seven penalties for 60 yards, zero turnovers.

Individual statistics
Rushing: Declan Beers 9-53, Weston 8-48, Colby Crabtree 9-11, Mark Sterrett 2-10, James Chanthalangsy 1-3, Jed Dooyema 1-0, Brayden Jacobsma 5-minus 7.
Passing: Crabtree 1-8 for five yards.
Receiving: Beers 1-5.
Defense: Tyler Reisdorfer 8.5 tackles, Charlie Reich seven tackles, Dooyema 5.5 tackles, Sterrett 3.5 tackles, Payne Bonnett 2.5 tackles.

Patriot spikers secure three-set win over Adrian

By John Rittenhouse

A pair of teams from the Star Herald coverage area squared off for a volleyball match Tuesday in Hills.

The Adrian Dragons traveled to Hills-Beaver Creek High School to play their second match of the year against the Patriots, who were making their 2017 debut.

H-BC stole the show by outscoring Adrian 75-54 during a 3-0 victory.

The Patriots got off to a good start by rolling to a 25-15 win in the opening set.

H-BC went on from there to notch 25-20 and 25-19 con-

quests to complete a sweep.

Avery Wysong (41 set assists and three ace serves), Olivia Richards (12 kills and four aces), Sidney Fick (nine kills, four blocks and three ace serves) and Kourtney Rozboom (seven kills and two blocks) experienced big nights for the winners.

Grace Bundesen added eight kills to the victory.

Avery Balster completed all eight of her serves (one ace) and charted three kills for the Dragons.

Kasie Tweet compiled 16 set assists and Miah Kunkel led Adrian with seven kills.

Dragon runners open cross country campaign

By John Rittenhouse

The Adrian cross country teams opened the 2017 season at the Mountain Lake Area Invitational Aug. 30.

The Dragons fielded a complete varsity girls' squad that finished ninth in a field of 11 complete teams with 212 points.

Fairmont claimed the team title with 47 points.

Moriah Bullerman set the pace for the Dragons by placing 18th in 22:38.

Hilryn Heitkamp (48th in 25:03), Gracia Elias (53rd in 26:01), Halle Heitkamp (56th in 26:12) and Courtney Penning

(85th in 30:24) rounded out the team scoring for Adrian.

The Dragon boys competed as an incomplete team.

Brady Henning turned in a strong individual performance by placing second with a time of 17:16.

Christian Weidert and Caleb Hornstein placed 44th and 89th with respective 19:40 and 22:12 efforts.

The Dragons run in Tracy Thursday.

Junior high boys: William White-McLeise, 57th, 8:51.

Junior high girls: Ashlee Christians, 28th, 9:17; Abbey Leopold, 31st, 9:26.

Panthers bow to Flying Dutchmen in Ellsworth Aug. 29

By John Rittenhouse

The Ellsworth volleyball team opened the 2017 season by entertaining Edgerton for a match Aug. 29.

The Panthers came up with a set victory during the con-

test, but the Flying Dutchmen came up on the winning end of a 3-1 win.

Edgerton played well early to post 25-6 and 25-11 victories in the first two sets.

Ellsworth bounced back for

a fourth set by prevailing 25-23 in the third contest.

Edgerton, however, settled the issue by securing a 25-16 win in the fourth set.

Devin Dreesen led the Panthers with nine kills.

Kallie Chapa charted three kills and three ace serves, while Ashlyn Meester served a pair of aces and recorded three kills.

Sierra Smith added two kills for Ellsworth.

SPORTS CLIPBOARD

Rock County Sportsman's Club Aug. 29

Team Scores:
Luverne Body Shop - 124
Howling Dog - 112
Blue Mound Auto Glass - 111
Slocum Taxidermy 1 - 110
Freedom Ranch - 108
Slocum Taxidermy 2 - 108
Agri-Energy LLC - 106
Nergaard Construction - 105
Big Orv's Bar - 104
Minnwest Bank - 103
Pizza Ranch - 103

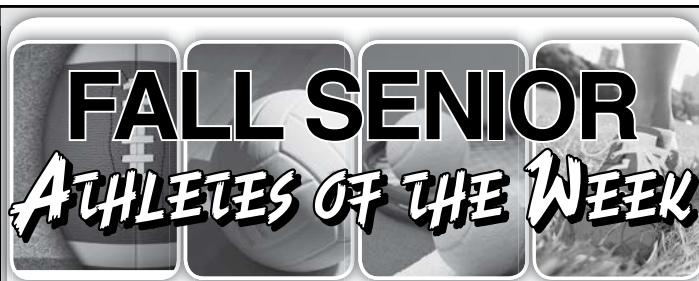
Timmer Dairy - 99

Individual scores:

25 x 25
Chris Balster
Jim Slocum - 2
Del Gangestad
Steve Nath
Bill Claussen
Dean VonHoltum

24 x 25

Bruce Predmore - 2
Del Gangestad
Logan Kluever - 2



Sport: Tennis
Position: Singles
Parents: Todd and Carrie Oye
Favorite Subject: Math
Extra-Curricular Activities: Choir, Basketball, Tennis
Future Plans: Go to college somewhere cool. I'm winging it.

Joci Oye



Pernille Kjørum

Sport: Volleyball
Parents: Monica Kjørum and Jon Inge Kjørum; Hosted by Phoebe and Mike Flom
Extra-Curricular Activities: Volleyball, Gymnastics, Handball
Future Plans: Going back to Norway to graduate



Michael Rahm

Sport: Cross Country
Parents: Becky and James Rahm
Favorite Subject: Science
Extra-Curricular Activities: Band, Student Council, Mock Trial, Math League, Basketball, Track, National Honor Society
Future Plans: Go to college for Chemical Engineering



Pipestone Pepsi | 1809 Forman Drive, Pipestone, MN 56164

EMPTY PESTICIDE CONTAINER COLLECTION & RECYCLING

Monday, Sept. 18 • 10:30 a.m. to 12 noon
Ketterling Services at 401 S. Cedar, Luverne

ELIGIBLE PARTICIPANTS:

Farmers
Commercial Applicators
Golf Courses
Government Agencies

PESTICIDE CONTAINERS MUST:

Be #2 HDPE Plastic (identifier shown on bottom of container)
Be clean, dry and properly rinsed (inside and out)
Have caps removed
Have labels remove as best you can
Containers must be triple rinsed

WILL NOT ACCEPT

Bags (either plastic or paper)
Aerosol containers
Glass containers
Mini-bulks or containers larger than 2^{1/2} gallons



For more information about the empty pesticide container collection event, contact:
Rock County Land Management Office, Phone 507-283-8862, Ext. 4
Minnesota Department of Agriculture, 1-800-657-3986



Adrian posts second win of young season

By John Rittenhouse

The Adrian volleyball team remained unbeaten in the young season after posting a three-set sweep over Granada-Huntley-East Chain-Martin Luther Thursday.

AHS pulled out a tight set to open the match and went on to outscore G-H-EC-ML 75-61 overall during a 3-0 win.

The Dragons survived a scare to secure a 28-26 victory

in the opener.

AHS iced the match by posting 25-20 and 25-15 wins in the final two sets.

Lexi Slater led AHS with eight kills and completed all six of her serves in the match.

Miah Kunkel recorded seven kills and three blocks, while Kasie Tweet charted 23 set assists.

The 2-1 Dragons host Hills-Beaver Creek Thursday.



John Rittenhouse photo/0907 afb 2

Adrian's Trace Kremin snags the jersey of Dawson-Boyd's Josh Anyasike during the second half of Thursday's football game in Adrian. D-B saddled the Dragons with a 46-14 setback in the 2017 debut for both teams.

Crush/continued from page 3B

Bork 10-57, H.Bork 6-26, Bailey Susie 3-6.
 Passing: Harnack 4-5 for 73 yards.
 Receiving: J.Wysock 2-48, Kueter 2-25.
 Defense: Luke LaRock six tackles, Dawson Leenders three tackles, J.Wysock three tackles, two sacks and one fumble recovery, Susie three tackles and one fumble recovery,

Dean Fuerstenberg three tackles and one sack, Maassen seven tackles, one sack and one interception, Noah Hellerud two tackles, Garrett Raymon two tackles, George Merson two tackles, Kueter two tackles, one sack and one fumble recovery, Dylan Taubert two tackles and one blocked punt.

Sweep/continued from page 3B

points of the opening set and led 8-1 when Maddie Dinger recorded a service point.

Luverne's advantage swelled to 11 points (17-6) when Bosch delivered a service point, but the E-Gals battled back with an 18-7 run to knot the score at 24.

The Cardinals met the challenge by scoring the next two points to clinch a 26-24 victory when Ferrell produced a set-ending kill.

SWC scored the first point of the second set, but Luverne went on a 19-5 run ending with a kill from Ferrell to open a 13-point (19-6) advantage.

The E-Gals trimmed the difference to seven points (23-16) before Mallory Thorson nailed down a 25-16 victory for the

Cards with a service point.

Luverne scored the first three points of the third set and led 7-1 when Dinger served a point.

SWC closed the gap to three points (7-4) before the Cards went on a 15-7 run ending with a service point from Dinger to open a 22-11 cushion, setting the stage for a 25-16 conquest.

Ferrell (19 kills, 14 of 15 serving with one ace, 20 digs and two blocks) and Sierra Schmuck (18 of 18 serving with two aces, 10 digs and 16 set assists) turned in productive nights for LHS.

Baustian charted seven set assists and Rachel Oftedahl added two blocks to the winning cause.



John Rittenhouse photo/0907 lhs vb 7

Senior libero Gracie Bosch fields a spike during a 3-0 win over Southwest Christian Aug. 29 in Luverne.

Schettler era begins at AHS

By John Rittenhouse

The Dawson-Boyd Blackjacks spoiled the coaching debut of Randy Schettler and the Adrian Dragons during the 2017 football opener Thursday in Adrian.

The game was a competitive clash throughout the first half, but a talented D-B squad outscored the Dragons 26-0 in the final 24:15 of the game to secure a 46-14 victory.

"They have a good football team," Schettler said of the Blackjacks.

"They are well-coached and do a lot of things very well. They won the game at the line of scrimmage. Their linemen controlled the line of scrimmage and their linebackers played well. Their linebackers were all over the place and did a better job of tackling than we did."

The Blackjacks drew first blood in the contest after forcing the Dragons to punt early in the first quarter.

D-B's opening possession with a 23-yard touchdown

pass from Alex Swenson to Keaton Schuelke gave the visitors a 6-0 lead 4:43 into the game.

Adrian answered the challenge by turning its second offensive possession into a 64-yard march.

Senior quarterback Ryan Wieneke capped the drive with a one-yard plunge and Dominiq Canales added his first of two extra points to give AHS a 7-6 edge with 3:45 remaining in the opening quarter.

With the help of some big plays, D-B proceeded to produce touchdowns with its next three offensive possessions to gain control of the contest.

"They had the ball four times in the first half and scored on every possession," Schettler said.

"They had three fourth-down conversions that just killed us in the first half. Two of them resulted in touchdowns, and the other one came in the middle of a drive."

The Blackjacks regained the lead (12-7) when Swenson tossed a 32-yard touchdown

pass to Cotton Husby 51 seconds into the second quarter.

The score was 20-7 when D-B's Bentley Boike scored on a six-yard run and Husby carried in the ensuing two-point conversion at the 3:59 mark of the stanza.

Adrian countered with a 59-yard drive ending with Wieneke firing a 42-yard touchdown pass to Ian Stamer to trim the difference to six points (20-14) with 1:47 remaining in the first half.

D-B, however, stole the momentum for the rest of the night when Swenson threw a 15-yard touchdown pass to Schuelke with 15 seconds left in the half to make it a 26-14 game at the break.

The Blackjacks iced the win by scoring 20 points in the fourth quarter after a scoreless third stanza.

Boike ignited the scoring spree with a 48-yard punt return for a touchdown with 9:32 left to play.

Husby carried in the conversion to up the lead to 34-14.

Boike scored on a 41-yard touchdown run 22 seconds after his punt return, and Jordan Husted capped the scoring with a six-yard touchdown run with 1:13 remaining.

"I think we learned that we have to play 48 minutes of football to be successful," Schettler said.

AHS plays in Tracy Friday.

Team statistics
 Adrian: 136 rushing yards, 38 passing yards, 174 total yards, six first downs, seven penalties for 42 yards, one turnover.
 D-B: 240 rushing yards, 152 passing yards, 392 total yards, 11 first downs, five penalties for 35 yards, two turnovers.

Individual statistics
 Rushing: Brandon Schnoor 10-35, Wieneke 5-36, Dakota John 3-13, Landon Rogers 4-5, Trace Kremin 2-minus 2, Nick Harder 2-4, Beau Bullerman 2-3, Corbin Burcham 2-0.
 Passing: Wieneke 2-7 for 38 yards.
 Receiving: Stamer 1-42, Rogers 1-minus 4.
 Defense: Lance Luettel 15 tackles, Rogers 13 tackles, Harder eight tackles, Schnoor six tackles, Devin Frodermann eight tackles, Scot Edwards five tackles, Skylar Dingmann five tackles, Wieneke one fumble recovery, Bryce Wilson one fumble recovery.

dining & entertainment

ST. ADRIAN FALL DINNER
 Sunday, Sept. 17, 4-7pm
 512 Maine Ave, Adrian
 (elevator located on the north side of church)
 Come and enjoy a delicious meal!

Roast Beef Dinner
 REAL Mashed Potatoes and Gravy
 Corn, Coleslaw, Buns
 Pies & Desserts, Beverages

Adults: \$9 Children ages 6-12: \$4
 Ages 2-5: \$2

Big Ticket Drawings!
 Quilt Raffle!
 Raffle Prizes!
 Fish Pond!
 Country Store!

Home delivered take-out meals in Adrian city limits will be available from 4-6 p.m.
 To order, call 483-2317 between 2:30 and 6 p.m. on the day of the dinner!

the LOCALS
 present a tribute to
STEVE MILLER BAND
 FUNDRAISER FOR
 LUVERNE STREET MUSIC

OCTOBER 7
8:00 PM
 doors open at 7:30 pm

RESERVED MAIN FLOOR
 \$20 ADULT • \$10 STUDENT

Palace Theatre
 104 East Main Street
 Luverne, MN 56156

SPONSORED BY

Main Street FINANCIAL SERVICES

MEN & WOMEN BOWLING LEAGUES
 Join a team or bring your own team

Women start Sept. 11 @ 7 p.m.
 Men start Sept. 14 @ 7:30 p.m.

Luverne Lanes
 117 N. Cedar, Luverne • 507-283-8172
 Like us on Facebook

Contact Nikki 507-283-8172

Daily News → star-herald.com

You are invited to Sandals Caribbean Night at All About Travel, Inc.!

Please join us to learn more about a Luxury-Included Vacation with Sandals Resorts! Our representative will show the many sides, inclusions and benefits of a Sandals get away

Date: September 7th, 2017
 Time: 6:00 P.M.
 Location: All About Travel
 3801 S. Western Ave, Suite 103
 Sioux Falls, SD 57105

Please RSVP to hold your spot!
 Call us at - 605-339-8911
 Email us at - aat@allabouttravel.org
 Sign up on our website: www.allabouttravel.org

ALL ABOUT TRAVEL INC.
 10-Year Winner! Layaway & Gift Certificates Available!
 605-339-8911 • 1-800-390-6610
 3801 S. Western Ave., Suite 103, Sioux Falls, SD
 Open: Mon.-Fri. 8 a.m. - 7 p.m. • Saturday 9 a.m. - 1 p.m.
 www.AllAboutTravel.org www.facebook.com/AllAboutTravelInc
 Helping You Find Your Personal Paradise!

9th Anniversary Open House

Thursday, September 7
 11:30 a.m. - 1:30 p.m.
 Burgers and Brats (until gone), Baked Beans, Chips & Pop
 Stop by 310 Gabrielson Road.

Cookies & Drinks served throughout the day.

WE THANK EACH OF YOU FOR YOUR PATRONAGE. YOUR BUSINESS IS GREATLY APPRECIATED. THANK YOU FOR BEING OUR CUSTOMERS.

Exchange STATE BANK
 Local. Dependable. Strong. Member FDIC

Hills (507) 962-3250 • Ellsworth (507) 967-2570 • Luverne (507) 449-6000

Star Herald CHURCH

Page 6B September 7, 2017

St. Catherine Catholic Church

203 E. Brown St., Luverne
St. Catherine Ph.: 283-8502; email: stcatherine@iw.net
St. Mary Catholic Church, Ellsworth

Thursday, Sept. 7: 9 a.m. Head Start. 4 p.m. Mass at Veterans Home. Friday, Sept. 8: 9:30 a.m. Parkview Manor Mass. Saturday, Sept. 9: 5:30 p.m. Mass at St. Catherine. Sunday, Sept. 10: 8:30 a.m. Mass at St. Mary. 10:30 a.m. Mass at St. Catherine. Family Registration and Lunch. Tuesday, Sept. 12: 9:30 a.m. and 7 p.m. Adult Faith Formation begins. 6:30 p.m. St. Catherine FC. Wednesday, Sept. 13: 10 a.m. Mass at Mary Jane Brown Home. 4 and 7 p.m. Catechist Inservice. 7 p.m. St. Mary's FC and PC. Thursday, Sept. 14: 9 a.m. Head Start. 2:30 p.m. Mass at Tuff Home.

Luverne Christian Reformed Church

605 N. Estey St., Luverne
Office Ph. 283-8482; Prayer Line Ph. 449-5982
www.luverncrc.com — luverncrc@gmail.com
Roger Sparks, Pastor

Sunday, Sept. 10: 9:30 a.m. Worship Service. 6:30 p.m. Worship Service.

First Baptist Church

1033 N. Jackson St., P.O. Box 975, Luverne
Ph. 283-4091; email: fbcluv@iw.net — www.fbcluverne.org
Walt Moser, Pastor

Thursday, Sept. 7: 6 a.m. Men's Bible Study at FBC. Noon Senior Focus Potluck. 7 p.m. Worship service on Channel 3. Sunday, Sept. 10: 9:15 a.m. Sunday School. 10:30 a.m. Worship service. 6 p.m. Evening Service. Tuesday, Sept. 12: 7 a.m. Men's Bible Study. Thursday, Sept. 14: 6 a.m. Men's Bible Study at FBC. 7 p.m. Worship service on Channel 3.

Grace Lutheran Church

500 N. Kniss Ave., Luverne
Ph. 507-283-4431; www.graceluverne.org — graceluverne@iw.net
Ron Nichols, Pastor; Stephen Hilding, Associate Pastor

Thursday, Sept. 7: 7:30 a.m. Moms Bible Study at The Bean. 8:30 a.m. Missions in Action. 4:30 p.m. Book Study. Friday, Sept. 8: 6:30 p.m. Worship on Channel 3. Saturday, Sept. 9: 5:30 p.m. Worship. Sunday, Sept. 10: Rally Sunday. 8:15 a.m. Radio broadcast. 9:30 a.m. Sunday School/Carnival. 10:45 a.m. Worship with meal following. Monday, Sept. 11: 4:30 p.m. Worship on Channel 3. Tuesday, Sept. 12: 9 a.m. Staff meeting; GLCW Executive Board. 6:45 p.m. Ministry meetings. 8 p.m. PPC meeting. Wednesday, Sept. 13: 7 a.m. Men's Bible Study. 6 p.m. Confirmation meeting for grades 6-9 and parents. 7 p.m. Confirmation meeting for grade 10 and parents. Thursday, Sept. 14: 7:30 a.m. Moms Bible Study at The Bean. 9 a.m. MIA assemblies kits. 4:30 p.m. Book Study.

Bethany Lutheran Church

720 N. Kniss Ave., Luverne
Ph. 507-283-4571 or 507-449-0291 or 605-215-9834
pastorapalmquist67@yahoo.com
Andrew Palmquist, Pastor

American Reformed Church

304 N. Fairview Dr., Luverne
Ph. 283-8600; email: office@arcluverne.org
Mike Altena, Pastor

Thursday, Sept. 7: 6 p.m. Ladies Night Out. Friday, Sept. 8: 6:30 a.m. Community Men's Bible Study. 4 p.m. REFIT Fitness Class. Sunday, Sept. 10: 9:30 a.m. Worship Service. 10:50 a.m. Family Education begins. 11:45 a.m. Church picnic and carnival. 6 p.m. Senior High RCFY kick-off. Tuesday, Sept. 12: 10 a.m. Staff meeting. 6:45 p.m. Bible Study Fellowship. 7 p.m. Consistory meeting. Wednesday, Sept. 13: 4:30 p.m. REFIT Fitness Class. 5:30 p.m. Midweek meal. 6:30 p.m. Pioneer Clubs; YEL. Thursday, Sept. 14: 1:30 p.m. Rebecca Circle.

First Assembly of God Church

1075 110th Ave., 2 miles west of Luverne on County Rd. 4

Sundays: 9 a.m. Sunday School. 10 a.m. Morning Worship. 6:30 p.m. School of the Holy Spirit. Wednesdays: 7 p.m. Kids Connection; Men's Bible Study with Pastor Ken; Women's Bible Study with Pastor Gloria.

United Methodist Church

109 N. Freeman Ave., Luverne
Ph. 283-4529; email: luverneumc@iw.net
Dorie Hall, Pastor

Thursday, Sept. 7: 1-3 p.m. Rock County Food Shelf. Saturday, Sept. 9: 8 p.m. AA meeting. Sunday, Sept. 10: 9:30 a.m. Coffee Hour. 10:30 a.m. Celebration Service with Communion; backpacks blessing. 4:30 p.m. Genesis/Revelation Bible Study. 6 p.m. A.L.I.V.E. Youth Group kick-off. Open House — Education Wing. Monday, Sept. 11: 8 p.m. AA meeting. Wednesday, Sept. 13: 6:30 p.m. FUEL and Confirmation. 8 p.m. AA meeting. Thursday, Sept. 14: 12:30 p.m. Rock the Edge. 1-3 p.m. Rock County Food Shelf. 7 p.m. Coloring Ministry. Conference Health Care Meeting.

Ben Clare United Methodist Church

26762 Ben Clare Ave., Valley Springs, S.D.
igtwb@WOW.net
Bill Bates, Pastor

Sundays: 9 a.m. Worship; 10 a.m. Fellowship; 10:30 a.m. Sunday School for all ages.

St. John Lutheran Church

803 N. Cedar St., Luverne
Ph. 283-2316, Dial-A-Devotion Ph. 283-4005
email: stjoh@iw.net — www.stjohnlutheranluverne.org
Gary Klatt, Pastor

Thursday, Sept. 7: First day of Tues/Thu Little Lambs class. 2 p.m. Women's Society. Friday, Sept. 8: First day of Little Lambs M/W/F class. Saturday, Sept. 9: 9 a.m. LWML Board Meeting in Marshall. 5:30 p.m. Worship with Communion; door offering for The Banquet. Sunday, Sept. 10: Rally Day. 9 a.m. Worship with Communion; door offering for The Banquet. 10:15 a.m. Christian Education Hour. 11:15 a.m. Junior Choir. 3:30 p.m. Bike/Walk Trail event and picnic supper following. Monday, Sept. 11: 1:45 p.m. Communion at Brandon. 3 p.m. Communion in Sioux Falls. 7:30 p.m. Men's Club. Tuesday, Sept. 12: 11:15 a.m. Staff meeting. 2:15 p.m. Communion at Hills. 6:30 p.m. Mom's Night Out. 7 p.m. Guild. Church group serves The Banquet at Sioux Falls Fairgrounds. Wednesday, Sept. 13: 9:30 a.m. Bible Study. 5:45 p.m. Little Lambs Family Picnic. 6 p.m. Youth dinner. 6:30 p.m. Catechism. 7 p.m. Senior Choir, KFC, Youth Group. 8 p.m. Acolyte Training. Thursday, Sept. 14: 12:30 p.m. Rock the Edge. 1 p.m. Parkinson's Support Group. 1:30 p.m. Communion at Mary Jane Brown Home. 2:15 p.m. Communion at Poplar Creek. 3:30 p.m. Communion at Veterans Home.

Living Rock Church

500 E. Main St., Luverne
Ph. 449-0057; www.livingrockswmn.org
Billy Skaggs, Pastor

Sundays: 10:30 a.m. Worship; Kids Rock Children's Ministry. 6 p.m. Youth Ministry. Life groups meet throughout the week.

New Life Celebration Church

110 N. Oakley, Luverne
Ph. 449-6522; email: newlifecelebration@gmail.com

Sundays: 9:30 a.m. Worship at 110 N. Oakley. Every third Thursday: 5 p.m. Food give-away at Senior Citizens Center. Bible Study groups meet at various times and days.

Zion Evangelical Lutheran Church

305 E. 2nd St., P.O. Box 36, Hardwick
Ph. 669-2855; email: www.zionlutheranhardwick.com

Thursday, Sept. 7: 3:30 p.m. Worship service on Channel 3. Friday, Sept. 8: 3:30 p.m. Worship service on Channel 3. Saturday, Sept. 9: 9 a.m. LWML Delegate Board Meeting in Marshall. Sunday Sept. 10: 9 a.m. Sunday School/Adult Bible Study. 10 a.m. Mentor Program. 10:30 a.m. Rally Day Worship Service; Sunday School sings. 11:30 a.m. Picnic Lunch. Monday, Sept. 11: 1 p.m. Quilting. Tuesday, Sept. 12: 6:30 p.m. Elders Meeting. 7:45 p.m. Church Council meeting. Wednesday, Sept. 13: 6:30 p.m. Confirmation. Thursday, Sept. 14: 3:30 p.m. Worship service on Channel 3.

First Lutheran Church

300 Maple St., Valley Springs, S.D.
Ph. (605) 757-6662

Intern Pastor Laura Phillips

Sunday, Sept. 10: 9:30 a.m. Sunday School begins. 10:30 a.m. Worship service; blessing of backpacks. 11:30 a.m. Fellowship dinner. Monday, Sept. 11: 7 p.m. Internship Committee meets at Palisade Lutheran. Wednesday, Sept. 13: 7 p.m. Confirmation.

Palisade Lutheran Church

211 121st St., Garretson, S.D.
Ph. (507) 597-6257 — firstpalisade@alliancecom.net

Intern Pastor Laura Phillips

Thursday, Sept. 7: 8 p.m. Church Council meeting. Sunday, Sept. 10: 9 a.m. Worship service; blessing of backpacks. Monday, Sept. 11: 7 p.m. Internship Committee meets at Palisade. Wednesday, Sept. 13: 7 p.m. Confirmation at First Lutheran.

First Presbyterian Church

201 S. 3rd St., P.O. Box 73, Beaver Creek
Ph. 507-935-5025

Email: lori.firstpres@gmail.com

Worship Leader Michael Blank

Sundays: 9:30 a.m. Morning Worship. 10:30 a.m. Sunday School.

Magnolia United Methodist Church

501 E. Luverne St., Magnolia
Church Ph. 507-483-2492; cell 227-7821; email: adrmagumc@gmail.com
www.facebook.com/adrianmagnoliaumc

Kristi Franken, Pastor

Sundays: 9 a.m. Magnolia Worship Service with Sunday School following service. 10:30 a.m. Adrian Worship Service. Wednesdays: 6:30 p.m. Confirmation at Magnolia UMC.

Hills United Reformed Church

410 S. Central Ave., Hills
Office Ph. 962-3254

hillsurc@alliancecom.net

Alan Camarigg, Pastor

Sundays: 9:30 a.m. and 6 p.m. Worship Services.

What to expect

"And when evening came, the owner of the vineyard said to his foreman, 'Call the laborers and pay them their wages, beginning with the last, up to the first.'" Matthew 20:8 (ESV)



BUILT ON A ROCK

By Martha Fick, Good Samaritan, chaplain retired

Lars was applying for a job at the local pizzeria. He got to the line, "Salary expected?" and wasn't sure what to write. He didn't want to jeopardize his chances of getting the job, but he did need the money. Chewing on the end of his pencil he deliberated hard, flipped a coin and finally wrote, "Yes."

How many of us would work at our jobs if we didn't receive a salary? Most people who are employed work because the income is important to them. We expect a return for our labors.

The same should be true for the rest of our lives as well. We need to take stock of the personal investments we are making. What do we expect to get in return for time spent with family? Will our investments yield stronger and better family relationships? Are we building something solid? If growth isn't happening we need to make adjustments.

And then there is the matter of faith. Is faith

just a mystery or is it reasonable to expect a given outcome to what we believe? Sometimes people have gone to church for years, but still have a hard time verbalizing their beliefs. When asked if they are going to heaven, many reply, "I hope so."

According to the Bible, we should be able to know our destination when our lives are over. Many verses tell us that we can have eternal life through faith in Jesus Christ. "For God so loved the world, that He gave His only Son, that whoever believes in Him should not perish but have eternal life." John 3:16

We don't have to hope that we will get to heaven. Heaven isn't something we earn by being good enough. We can trust that God's promises are true and that all who believe in Him will live with Him forever.

Gracious God, thank you for promising us heaven. Help us trust in you and believe that Jesus is our Savior. We look forward to living with you forever. Amen.

Steen Reformed Church

112 W. Church Ave., Steen
Ph. 855-2336

Jeremy Wiersema, Pastor

Sundays: 9:30 a.m. Worship; service broadcast on KQAD. 10:45 a.m. Sunday School. 6 p.m. Youth Group. Evening worship at 6 p.m. first and third Sundays. Wednesdays: 7 p.m. Midweek.

Bethlehem Lutheran Church

Pastor Maggie Berndt-Dreyer
112 N. Main St., Hills
Ph. 962-3270

e-mail: bethlehemluth@alliancecom.net

Saturday, Sept. 9: Church reserved. Sunday, Sept. 10: 9 a.m. Worship at Tuff Chapel. 9:30 a.m. Sunday School. 10:30 a.m. Communion at Bethlehem; Rally Day; Installation of Sunday School staff; backpack blessings. Tuesday, Sept. 12: 2:30 p.m. Bible Study at Tuff Home. 3:15 p.m. Bible Study at the Village. Wednesday, Sept. 13: 9 a.m. Quilting. 2 p.m. Circles meet at Assisted Living Garden Center. 6:30 p.m. Grades 8-9 Confirmation. 7:30 p.m. Church Council meeting; Grades 9-12 Youth Night.

First Presbyterian Church

302 Central Lane, Luverne
Ph. 283-4787; email: Firstpc@iw.net — www.fpcluverne.com

These Weekly Church Page Messages are contributed to God's Work through the Church and by these concerned and responsible citizens & businesses:

Call Rick or Chantel to place your ad!

283-2333

Tuff Memorial Home, Retirement Apartments & Tuff Village



"A Home Where Residents SMILE"
Hills, Minnesota
Phone 507-962-3275



1-90 in Luverne, MN
507-283-9171 • 1-800-634-7701

Read us online!

Rock County STAR HERALD
www.Star-Herald.com

Trust In Him



110 E. Main, Luverne, MN
Phone 507-283-2379

MANLEY TIRE & OIL SERVICE
Manley Minnesota
1-800-615-3704
Open six days a week - Closed on Sundays
To God be the Glory.

CWGW Business Insurance.
Tri-State Region

Rock County STAR HERALD
Luverne, MN • 507-283-2333

Advertise Here

Luverne ANNOUNCER

To Advertise Call 283-2333

Buffalo Ridge INSURANCE
507-283-2381 www.buffaloridgeins.com E-mail: info@buffaloridgeins.com

McClure Electric
Alan M. Aanenson, owner
Farm, Home & Commercial Wiring
Luverne, MN Phone 507-283-4716

First Farmers & Merchants
303 E. Main, Luverne, MN
507-283-4463
www.flmbank.com
We believe in you.™
Member FDIC. And the community.

HILLS STAINLESS STEEL & EQUIPMENT CO., INC.
506 W. Koehn, P.O. Box 987, Luverne, MN
PHONE 507-283-4405
Church is Important - Please Attend!

MINNWEST BANK
• 116 E. Main St., Luverne 507-283-2366
• S. Hwy. 75, Luverne 507-283-9131
• Main St., Beaver Creek 507-673-2333
Member FDIC www.minnwestbank.com

HARTQUIST Funeral and Cremation Services
- ENGBRETSON CHAPEL -
507-283-2777
www.HartquistFuneral.com
"Let our family help your family"
Serving the Luverne and Surrounding Communities

Tollefson Publishing
117 W. Main
Luverne, MN 56156
507-283-2333

Mortgage foreclosure sale set for Sept. 28

NOTICE OF MORTGAGE FORECLOSURE SALE
THE RIGHT TO VERIFICATION OF THE DEBT AND IDENTITY OF THE ORIGINAL CREDITOR WITHIN THE TIME PROVIDED BY LAW IS NOT AFFECTED BY THIS NOTICE IS HEREBY GIVEN, that default has occurred in conditions of the following described mortgage:

DATE OF MORTGAGE: March 26, 2008
 MORTGAGOR: Jamil A. Davis, a single person.
 MORTGAGEE: Mortgage Electronic Registration Systems, Inc.
 DATE AND PLACE OF RECORDING: Recorded March 26, 2008 Rock County Recorder, Document No. 168657.

ASSIGNMENTS OF MORTGAGE: Assigned to: Chase Home Finance, LLC. Dated October 20, 2009 Recorded November 9, 2009, as Document No. 172510. And also assigned to: JPMorgan Chase Bank, National Association. Dated March 12, 2013 Recorded March 25, 2013, as Document No. 181529.

TRANSACTION AGENT: Mortgage Electronic Registration Systems, Inc.
 TRANSACTION AGENT'S MORTGAGE IDENTIFICATION NUMBER ON MORTGAGE: 100052217005069633

LENDER OR BROKER AND MORTGAGE ORIGINATOR STATED ON MORTGAGE: First Premier Bank

RESIDENTIAL MORTGAGE SERVICER: JPMorgan Chase Bank, National Association

MORTGAGED PROPERTY ADDRESS: 124 Water Avenue South, Hills, MN 56138

TAX PARCEL I.D. #: 15-0059-000
 LEGAL DESCRIPTION OF PROPERTY:
 The N. 60 feet of Lots 18, 19, 20, 21, 22 and 23, All in Block 3, Original Plat of the City of Hills, Rock County, Minnesota

COUNTY IN WHICH PROPERTY IS LOCATED: Rock

ORIGINAL PRINCIPAL AMOUNT OF MORTGAGE: \$71,354.00

AMOUNT DUE AND CLAIMED TO BE DUE AS OF DATE OF NOTICE, INCLUDING TAXES, IF ANY, PAID BY MORTGAGEE: \$141,175.98

That prior to the commencement of this mortgage foreclosure proceeding Mortgagee/Assignee of Mortgagee complied with all notice requirements as required by statute; That no action or proceeding has been instituted at law or otherwise to recover the debt secured by said mortgage, or any part thereof;

PURSUANT to the power of sale contained in said mortgage, the above described property will be sold by the Sheriff of said county as follows:

DATE AND TIME OF SALE: September 28, 2017 at 10:00 AM
 PLACE OF SALE: Sheriff's Office, Main Entrance, Law Enforcement Center, 1000 North Blue Mound Avenue, Luverne, MN

to pay the debt then secured by said Mortgage, and taxes, if any, on said premises, and the costs and disbursements, including attorneys' fees allowed by law subject to redemption within six (6) months from the date of said sale by the mortgagor(s), their personal representatives or assigns unless reduced to Five (5) weeks under MN Stat. §580.07.

TIME AND DATE TO VACATE PROPERTY: If the real estate is an owner-occupied, single-family dwelling, unless otherwise provided by law, the date on or before which the mortgagor(s) must vacate the property if the mortgage is not reinstated under section 580.30 or the property is not redeemed under section 580.23 is 11:59 p.m. on March 28, 2018, unless that date falls on a weekend or legal holiday, in which case it is the next weekday, and unless the redemption period is reduced to 5 weeks under MN Stat. Secs. 580.07 or 582.032.

MORTGAGOR(S) RELEASED FROM FINANCIAL OBLIGATION ON MORTGAGE: None

"THE TIME ALLOWED BY LAW FOR REDEMPTION BY THE MORTGAGOR, THE MORTGAGOR'S PERSONAL REPRESENTATIVES OR ASSIGNS, MAY BE REDUCED TO FIVE WEEKS IF A JUDICIAL ORDER IS ENTERED UNDER MINNESOTA STATUTES, SECTION 582.032, DETERMINING, AMONG OTHER THINGS, THAT THE MORTGAGED PREMISES ARE IMPROVED WITH A RESIDENTIAL DWELLING OF LESS THAN FIVE UNITS, ARE NOT PROPERTY USED IN AGRICULTURAL PRODUCTION, AND ARE ABANDONED."

Dated: July 25, 2017

JPMorgan Chase Bank, National Association
 Mortgagee/Assignee of Mortgagee

USSET, WEINGARDEN AND LIEBO, P.L.L.P.
 Attorneys for Mortgagee/Assignee of Mortgagee

4500 Park Glen Road #300
 Minneapolis, MN 55416

(952) 925-6888
 30 - 17-004731 FC

THIS IS A COMMUNICATION FROM A DEBT COLLECTOR.

(08-03, 08-10, 08-17, 08-24, 08-31, 09-07)

Luverne Planning Commission public hearing Sept. 28

City Planning Commission
Public Hearing set for September 28, 2017
NOTICE OF PUBLIC HEARING

NOTICE IS HEREBY GIVEN, by the City Planning Commission that a public hearing will be held in the Council Chambers located in the City Offices Building, 305 East Luverne Street, Luverne, Minnesota, commencing at 5:30 p.m. on Thursday, September 28, 2017. The purpose of the hearing is to rule and make recommendation to the Luverne City Council on the following:

Land use amendment at three contiguous undeveloped parcels (20-0228-000, 20-0227-000, and 20-0228-300) Luverne, MN to rezone from R-1 - Single Family Residential to I-1 Limited Industrial.

All persons desiring to be heard on these matters should be present at the hearing or present written comments prior to the hearing to the Building Official, PO Box 659, Luverne, MN 56156. Anyone needing reasonable accommodations or an interpreter should contact the City Clerk's Office, 305 East Luverne Street, Luverne, MN. (507) 449-9898.

By order of the Luverne City Planning Commission, Luverne, Minnesota, this 31st day of August, 2017.

Jessica Mead
 City Clerk
 (09-07)

Verizon Wireless Public Notice

Celco Partnership and its controlled affiliates doing business as Verizon Wireless is proposing to construct a Self-Support Telecommunications Tower located on the north side of County Highway 4, Magnolia, Rock County, Minnesota 56156 (43-38-48.90 section N, 96-4-19.77 sec W). The overall structure height (including attachments) is 259-feet AGS. Public comments regarding potential effects from this site on historic properties may be submitted within 30 days from the date of this publication to: Terracon Consultants, ATTN: J. Shepard, 3535 Hoffman Road East, White Bear Lake, MN 55110, (651) 770-1500, or jennifer.shepard@terracon.com.

(09-07)

NOTICE OF EXPIRATION OF REDEMPTION

STATE OF MINNESOTA

ASHLEY KURTZ

COUNTY OF ROCK

COUNTY AUDITOR-TREASURER

TO: ALL PERSONS WITH A LEGAL INTEREST IN THE PARCELS OF REAL PROPERTY DESCRIBED IN THE FOLLOWING NOTICE

You are hereby notified that the parcels of real property described below and located in Rock County, Minnesota, are subject to forfeiture to the state of Minnesota because of the nonpayment of delinquent property taxes, special assessments, penalties, interest, and costs levied on those parcels. The time for redemption from forfeiture expires if a redemption is not made by the later of (1) 60 days after service of this notice on all persons having an interest in the parcels, or (2) May 8, 2017.

The following information is listed below: the names of the property owners, taxpayers and interested parties who have filed their addresses under Minnesota Statute 276.041; the addresses of the parties; the legal description and parcel identification number of each parcel; and the amount necessary to redeem a parcel as of the date listed below.

Name & Address	Parcel ID & Legal Description	Amount Due
Marilyn Louise Sheehan c/o Scott Kruger 1406 37 th St Steen MN 56173-4066	Parcel 03-0216-000 Lots Five (5) and Six (6) in Block Four (4) in the Unincorporated Village of Ash Creek, in Clinton Township, Rock County, Minnesota, subject to easements, if any.	\$2,269.81
Douglas Dean LaFrenz 2425 US Hwy 75 Hardwick MN 56134-4071	Parcel 04-0052-000 A tract of land in the Southeast Quarter of Section 4, Township 104 North, Range 45 West, 5 th Principal Meridian, Rock County, Minnesota, and more particularly described as follows; Commencing at the intersection of the centerline of US Highway No. 75 with the south line of Section 3-104-45, 95.2 feet easterly from (measured along said south line) the southwest corner of said Section 3; thence northwesterly on said centerline - N24°34'00"W (assumed bearing), 1236.6 feet; thence S65°26'00"W, 75.00 feet to the true point of beginning, also being a point on the southwesterly right-of way line of said US Highway No. 75; thence continuing S65°26'00"W, 15.00 feet, thence continuing on said southwesterly line, N24°34'00"W, 123.24 feet; thence leaving said southwesterly line and bearing S89°16'25"W, 467.38 feet; thence S 0°55'08"E in the direction of an old fence line, 190.20 feet; thence S88°45'16"E, 199.17 feet, thence S1°23'16"W, 170.63 feet; thence S79°47'08"E, 504.27 feet to the southwesterly right-of-way line of US Highway No. 75 above named; thence N24°34'00"W, 389.87 feet to the point of beginning, subject to easements, if any.	\$4,946.54
Mary Jo Huckins 305 S Broadway Ave Rockham SD 57470-2101	Parcel 14-0082-000 Lots Five (5) and Six (6) in Ross's Addition to the City of Hardwick, Minnesota.	\$3,014.36
Rodney M & Alena D Zike 144 Branch St Mooresboro NC 28114-6803	Parcel 14-0096-000 Lot Thirty-Two (32), except the South Seventy-Five (S 75) feet thereof, and all of Lot Thirty-Three (33) in Ross's Addition to the City of Hardwick, Minnesota.	\$13,573.55

Brandon SD 57005-1537	the Village of Hills, Rock County, Minnesota.	
Dale D & Patricia M Auch PO Box 13 Magnolia MN 56158-0013	Parcel 18-0057-000 Lots Nine (9), Ten (10), Eleven (11) and the West Ten (W 10) Feet of Lot Twelve (12), all in Block Three (3) in the Original Plat of the Village of Magnolia, Minnesota.	\$668.95
Ryan Boltjes 309 S Steen St Steen MN 56173-9635	Parcel 19-0028-000 A tract of land in the Northeast Quarter of the Northwest Quarter (NE 1/4 of NW 1/4) of Section Thirty-Two (32) in Township One Hundred One (101) North, of Range Forty-Five (45) West, of the 5th P. M. described as follows: Beginning at the Northwest corner of Lot One (1) in Block One (1) of the Platted Town of Virginia (Steen) Minnesota, thence North to the point of intersection with the south line of public road on the section line between Sections Twenty-Nine (29) and Thirty-Two (32), thence East on the South line of said public road for a distance of 81 2/3 feet, thence South to the Northeast corner of Lot Two (2) in said Block One (1), thence West to the place of beginning.	\$8,107.14
Jodie Marshall 232 S Steen St Steen MN 56173-9648	Parcel 19-0039-000 The South Half (S 1/2) of Lot Four (4) and all of Lot Five (5), all in Block Four (4), in the Original Plat of the City of Steen, Minnesota.	\$8,046.97
Randy & Kathryn Marshall 412 S Steen St Steen MN 56173-9634	Parcel 19-0103-000 Lot Three (3) in Block Ten (10) in Dries Bosch Addition to the Village (now City) of Steen, Minnesota, said tract and lot being also described by metes and bounds as follows: Commencing at the Northwest (NW) corner of the Northeast Quarter (NE 1/4) of Section Thirty-Two (32) in Township One Hundred One (101) North, of Range Forty-Five (45) West, of the 5th P. M., Rock County, Minnesota; thence South 1036.5 feet; thence East 96 feet to the place of beginning; thence South 134.25 feet; thence East 48 feet; thence North 134.25 feet; thence West 48 feet to the place of beginning.	\$5,903.14
Randy & Kathryn Marshall 412 S Steen St Steen MN 56173-9634	Parcel 19-0104-100 A parcel of land located in the Northeast Quarter (NE 1/4) of Section Thirty-Two (32), in Township One Hundred One (101) North, of Range Forty-Five (45) West, of the 5th P. M., and described by metes and bounds as follows, to-wit: Commencing at the Northwest corner of the Northeast Quarter (NE 1/4), thence South 1182.75 feet; thence East 96 feet to the place of beginning; thence South 90.25 feet; thence East 26.5 feet; thence South 44 feet; thence East 21.5 feet; thence North 134.25 feet; thence West 48 feet to the place of beginning; otherwise known as Lot Six (6), Block Ten (10) in the unrecorded plat of Dries Bosch Addition to the City of Steen, Minnesota.	\$300.39

Matthew W Landes & Patrick J Lucci PO Box 372 Mullan ID 83846-0372	Parcel 19-0105-000 All that part of the former railroad right of way lying and being in the Northeast Quarter (NE 1/4) of Section Thirty-Two (32) in Township One Hundred One (101) North, of range Forty-Five (45) West of the 5th P. M., described as follows: Commencing at the Southwest corner of the N 1/2 of said NE 1/4 as the point of beginning; thence Easterly along the South line of said N 1/2 of	\$6,678.38
--------------------------------------------------------------------------	---------------------------------------------------------------------------------------------------------------------------------------------------------------------------------------------------------------------------------------------------------------------------------------------------------------------------------------------------------------------------------------------------------------------	------------

continued on page 8

PUBLIC HEARING NOTICE COMPREHENSIVE WATER MANAGEMENT PLAN AMENDMENT

Notice is hereby given that on Tuesday, September 19th at 2:00 pm the Rock County Board of Commissioners will hold a public hearing in the Commissioners room of the Rock County Courthouse to discuss proposed amendments to the Rock County Comprehensive Local Water Management Plan.

A copy of the draft amendment is available for viewing at <http://www.rockswcd.org/>, or by contacting the Rock County SWCD/Land Mgt, 311 W Gabrielson, Luverne, MN 56156 - Phone: (507) 283-8862

Read all public notices online at
www.Star-Herald.com

Star Herald PUBLIC NOTICES

continued from page 7

	the NE 1/4 a distance of 96 feet; thence Northerly along a line parallel with the West line of said section 44 feet, said point being the Southeast corner of Lot 7 in Block 10 in the Unrecorded Plat of Dries Bosch Addition to the Village of Steen, Minnesota; thence Westerly along a line parallel with the South line of said N 1/2 of the NE 1/4, 96 feet to the West line of said NE 1/4, said point being the Southwest corner of Lot 8, Block 10, in the Unrecorded Plat of Dries Bosch Addition to the Village of Steen, Minnesota; thence Southerly along the West line of said NE 1/4, 44 feet to the point of beginning. And a tract of land described as: Beginning at a point Forty-Four (44) feet North of the Southwest corner of the West Half of the Northwest Quarter of the Northeast Quarter (W 1/2 of NW 1/4 of NE 1/4) of Section Thirty-Two (32) in Township One Hundred One (101) North, of Range Forty-Five (45) West, of the 5th P. M., thence North 90.25 feet, thence East 96 feet, thence South 90.25 feet, thence West 96 feet to the place of beginning, said tract being also known and described as: Lots Seven (7) and Eight (8) in Block Ten (10) in the Unrecorded Plat of Dries Bosch Addition to the Village of Steen, Rock County, Minnesota.	
Farm-Direct Marketing LLC 25233 479 th Ave Garretson SD 57030-6035	Parcel 20-0044-000 That part of the Northwest Quarter of the Southwest Quarter (NW 1/4 of SW 1/4) of Section Eleven (11), Township One Hundred Two (102) North, of Range Forty-Five (45) West, of the 5th P. M., bounded and described as follows: Beginning at a point in the extended North line of Mead Court in the County Auditor's Plat of Luverne Outlots, Luverne, Minnesota, that is Nine (9) feet Southeasterly of, as measured radially from a curved segment of the centerline of the Chicago, Saint Paul, Minneapolis and Omaha Company Spur Track I. C. C. Number 17 as now located and established; thence Northeasterly parallel to said Spur Track I. C. C. Number 17, an arc distance of One Hundred Forty (140) feet; thence Southeasterly along a straight line, a distance of Seventy-Seven (77) feet, more or less, to an intersection with a curved line that is One Hundred Twenty-Five (125) feet Southeasterly of, as measured radially and parallel to the center line of the main track, now removed, of the former Doon Branch of said Railway Company, as said main track (now removed) was located and established, in a Westerly and Southerly direction, over and across said Northwest Quarter of the Southwest Quarter (NW 1/4 of SW 1/4) of Section Eleven (11), said point of intersection being Forty (40) feet Southwesterly, as measured along the last said parallel line, from the North line of Lot Three (3) of County Auditor's Plat of Luverne Outlots; thence Southwesterly along the last said curved and parallel line, to a point in the North line of Mead Court extended; thence Westerly along said North line of Mead Court extended; a distance of Eight-Seven (87) feet, more or less, to the point of beginning.	\$1,110.90
Dennis W J Baatz c/o Lisa Hastings 19275 Whitewood Valley Rd Whitewood SD 57793-8100	Parcel 20-0267-000 The West Sixty-Three (63) feet of Lot Four (4) in Block Four (4) in Barck, Adams and Howe's Addition to the Village (now City) of Luverne, Minnesota.	\$8,108.84
Douglas Dean LaFrenz 2425 US Hwy 75 Hardwick MN 56134-4071	Parcel 20-0722-000 Lot Five (5) Block Three (3) in Charles O'Hawes' Addition to the City of Luverne, Minnesota.	\$2,530.42
Elvira Humanzor Mejia & Eulises Humanzor Mejia 219 S East Park St Luverne MN 56156-1732	Parcel 20-1261-000 Lot Ten (10) in Block One (1) of Randall & Holbert's Addition to the City of Luverne, Rock County, Minnesota, subject to easements, if any.	\$530.15
Harlan R Sipma 835 2nd Ave SW Pipestone MN 56164-1415		
Rosalia Baumgard 109 S Cottage Grove Ave Luverne MN 56156-1701	Parcel 20-1611-000 Lot Five (5) in Block Ten (10) in Warren and Kniss Addition to the City of Luverne, Minnesota, subject to easements, if any.	\$4,961.90

Failure to redeem the lands prior to the expiration of redemption will result in the loss of the land and forfeiture to the State of Minnesota.

The amounts listed above must be paid to redeem if paid on or before September 30, 2017. Please contact the Rock County Auditor-Treasurer's Office to verify the amount due if paid after September 30, 2017.

Inquiries about the delinquent tax proceedings described above can be made to the Rock County Auditor-Treasurer at the address and phone number listed below.

Witness my hand and seal this 1st day of September, 2017.


Ashley Kurtz
Rock County Auditor-Treasurer
204 E. Brown St
PO Box 509
Luverne, MN 56156-0509
Telephone: (507) 283-5060

Juhl probate

STATE OF MINNESOTA PROBATE COURT
COUNTY OF ROCK DISTRICT COURT
PROBATE DIVISION
COURT FILE NO. 67-PR-17-

In Re: Estate of
Curtis Waldemar Juhl, a/k/a Curtis W. Juhl,
Deceased

**ORDER AND NOTICE OF HEARING
FOR FORMAL PROBATE OF WILL AND
APPOINTMENT OF PERSONAL REPRESENTATIVE
IN SUPERVISED ADMINISTRATION
AND NOTICE TO CREDITORS**

TO ALL INTERESTED PERSONS AND CREDITORS:

It is Ordered and Notice is hereby given that on the 18th day of September, 2017, at 3:30 O'clock P.M., a hearing will be held in the above named Court at Rock County Courthouse, Luverne, Minnesota, for the formal probate of an instrument purporting to be the will of the above named deceased, dated August 27, 2010, and for the appointment of Kathleen S. Heeren, whose address is 500 Britz Drive, Luverne, Minnesota 56156, as personal representative of the estate of the above named decedent in supervised administration, and that any objections thereto must be filed with the Court. That, if proper, and no objections are filed, said personal representative will be appointed to administer the estate, to collect all assets, pay all legal debts, claims, taxes and expenses, and sell real and personal property, and do all necessary acts for the estate. Upon completion of the administration, the representative shall file a final account for the allowance and shall distribute the estate to the persons thereto entitled as ordered by the Court, and close the estate.

Notice is further given that ALL CREDITORS having claims against said estate are required to present the same to said personal representative or to the Court Administrator within four months after the date of this notice or said claims will be barred.

Dated: August 28, 2017

/s/ Damon T. Eisma
Attorney for Petitioner
Eisma and Eisma
130 East Main, Box 625
Luverne, MN 56156
(507)283-4828
I.D. #249269

/s/ Terry S. Vajrt
District Court Judge
/s/ Denise Brandel
Court Administrator

(08-31, 09-07)

Arp probate

STATE OF MINNESOTA FIFTH JUDICIAL DISTRICT
COUNTY OF ROCK DISTRICT COURT
PROBATE DIVISION
COURT FILE NO. _____

Estate of Dennis Wayne Arp
Decedent

**NOTICE AND ORDER OF HEARING ON
PETITION FOR FORMAL ADJUDICATION OF
INTESTACY, DETERMINATION OF HEIRSHIP,
APPOINTMENT OF PERSONAL
REPRESENTATIVE AND NOTICE TO CREDITORS**

It is Ordered and Notice is given that on September 25, 2017 at 3:30 p.m., a hearing will be held in this Court at 204 E. Brown Street, Luverne, MN 56156, for the adjudication of intestacy and determination of heirship of the Decedent, and for the appointment of David Alan Arp, whose address is 1612 11th Ave, Sweet Home, OR, 97386 as Personal Representative of the Estate of the Decedent in an unsupervised administration. Any objections to the petition must be filed with the Court prior to or raised at the hearing. If proper and if no objections are filed or raised, the Personal Representative will be appointed with full power to administer the Estate, including the power to collect all assets, to pay all legal debts, claims, taxes, and expenses, to sell real and personal property, and to do all necessary acts for the Estate.

Notice is also given that (subject to Minn. Stat. 524.3-801) all creditors having claims against the Estate are required to present the claims to the Personal Representative or to the Court Administrator within four months after the date of this Notice or the claims will be barred.

Dated: September 6, 2017
(COURT SEAL)

BY THE COURT
/s/ Terry S. Vajrt
Judge of District Court
/s/ Denise Brandel
Court Administrator

(09-07, 09-14)

Rock County seeks sealed proposals by Sept. 18

**NOTICE TO CONTRACTORS
BRIDGE REPLACEMENT & APPROACH GRADING / S.A.P. 067 - 598 - 016
BIDS CLOSE @ 11:00 A.M. SEPTEMBER 18, 2017
LUVERNE, MINNESOTA**

Sealed proposals will be received by the Rock County Highway Department at Luverne, Minnesota until 11:00 A.M. on Monday, September 18, 2017.

READ CAREFULLY THE PROVISIONS FOR THE WAGE RATES AS CONTAINED IN THE PROVISIONS, AS THEY WILL AFFECT THIS PROJECT.

Attention is called to the fact that the contractor must comply with the ****Special Equal Employment Opportunity Provisions**** as contained in this Proposal.

Proposals will be opened and read publicly in the presence of the Rock County Highway Engineer at the Rock County Highway Building located at 1120 North Blue Mound Avenue in Luverne, MN immediately following the hour set for receiving bids for the following Rock County Highway work. Bids will be awarded on Tuesday, September 19TH, 2017 at the regular Board of Commissioners Meeting.

Construction of Bridge 67569, an 82 foot Concrete Slab Span. The project is located in Magnolia Township on County Road 55, 2-1/2 Miles South of the Intersection of CSAH 4 and County Road 55 over The Elk Creek.

The major items of work are: 86 Cu. Yds. Structural Concrete; 2,957 Sq. Ft. of Bridge Slab Concrete; 168 Lin. Ft. of Type F (TL-4) Railing Concrete; 38,090 Pounds of Reinforcement Bars (Epoxy Coated); 500 Cu. Yds. Random Riprap (Class IV); 420 Lin. Ft. 12" - C-I-P Piling; 2 - 12" C-I-P Test Piles 80 Ft. Long; 560 Lin. Ft. 16" - C-I-P Piling; and 2 - 16" C-I-P Test Piles 80 Ft. Long.

Plans, specifications, and proposals may be viewed, and downloaded at www.questcdn.com and at the Rock County Highway Department website, www.co.rock.mn.us/highway. Questions may be directed to the office of the Rock County Highway Engineer, 1120 North Blue Mound Avenue, P.O. Box 808, Luverne, Minnesota 56156-0808 / (507) 283 - 5010.

The non-refundable cost for plans and one proposal will be \$30.00.

Bids must be accompanied by a certified check or corporate surety bond drawn in favor of the Rock County Treasurer in the amount of at least five percent (5%) of the proposal.

Sealed bids shall be clearly marked ****PROJECT NO. S.A.P. 067-598-016****
The Board of Rock County Commissioners reserves the right to reject any or all bids and to waive any defects therein.

Rock County is an Equal Opportunity/Affirmative Action Employer.

Mark R. Sehr, P.E.
Rock County Highway Engineer
(08-24, 08-31, 09-07)

Be a part of Rock County's oldest
business at www.star-herald.com

**INJURED AT WORK?
DISABILITY DENIED?**

**Contact Us Today
For Free Advice**

Workers' Compensation
Long-Term Disability
Social Security Disability

1-888-343-5375
www.GetFields.com


Steve Fields
Minnesota Attorney



Foundation failure?



- Residential
- Commercial
- Agricultural

AMERICAN WATERWORKS Free Estimates! Call Today
1-800-795-1204

Star Herald PUBLIC NOTICES

Star Herald CLASSIFIEDS

Rock County Commissioners meet Aug. 8

Herreid Board Room 9:00 A.M.
Rock County Courthouse August 8, 2017

The meeting was called to order by Chair Williamson with all Commissioners present; the Pledge of Allegiance was recited.

Motion by Burger, seconded by Reisch, to approve the August 8, 2017 County Board agenda, declared carried on a voice vote.

Motion by Reisch, seconded by Thompson, to approve the July 25, 2017 County Board minutes, declared carried on a voice vote.

Motion by Thompson, seconded by Overgaard, to approve Resolution No. 13-17, Veterans Service Office grant application, declared carried on a voice vote.

Motion by Burger, seconded by Reisch, to approve Resolution 14-17 supporting an application for Job Creation Fund in connection with Midwest Dry Cast, declared carried on a voice vote.

Ashley Kurtz, Auditor/Treasurer, presented claims and per diems of \$835.15; motion by Overgaard, seconded by Burger, to approve, declared carried on a unanimous vote. A complete listing of the claims is available upon request at the Auditor/Treasurer's Office.

Claims over \$2,000:

A & B BUSINESS INC	2,487.98
AAA STRIPING SERVICE CO	44,027.00
AMERICAN COMMUNICATIONS INC	2,897.50
COMPUTER PROFESSIONALS UNLIMITED INC	6,231.00
DGR ENGINEERING	2,747.20
EXPRESSWAY-LUVERNE	3,796.32
LUVERNE/CITY OF	7,885.24
MORRIS ELECTRONICS	3,033.60
NEOFUNDS BY NEOPOST	3,999.37
NOBLES COUNTY AUDITOR-TREASURER	13,260.25
NORTHERN TRUCK EQUIPMENT CORP	3,515.00
NUSS TRUCK & EQUIPMENT	123,451.00
PICTOMETRY INTERNATIONAL CORP	16,373.50
ROCK COUNTY OPPORTUNITIES	2,612.23
ROCK SOIL & WATER CONSERVATION DIST	2,000.00
TOLLEFSON PUBLISHING	2,313.25
WIDSETH SMITH NOLTING & ASSOC, INC	3,108.00
65 Payments less than 2,000	26,909.25
Total	270,647.69

The County Board was in receipt of the Fund Balance; motion to accept the report by Thompson, seconded by Overgaard, declared carried on a voice vote.

Ms. Kurtz informed the board that the license center is currently functioning at 20% as a result of the new software the state has implemented; she also informed the board that the state claims they are continuing to try to remedy the problem.

The Administrator presented information regarding rezoning parcel #06-0098-0000 from A-2 to I-1; after discussion, motion Overgaard, seconded by Reisch to direct the Planning and Zoning board to consider the rezoning parcel number #06-0098-0000 from A-2 to I-1 carried on a voice vote.

Don Klosterbuer, County Attorney and Kyle Oldre, Administrator presented a follow-up to the Tax Abatement meeting held with four of the cities in Rock County. They discussed information and options of what could be included in the policy. Following discussions, the chair directed that Oldre and Klosterbuer present Abatement options at the next board meeting.

The Administrator informed the board that the property declared surplus at a previous meeting will be sold on the website govdeals.com.

The board was informed the MCIT dividend for 2017 will be \$47,981.

Doug Bos, Land Management Office Assistant Director, discussed the scheduled meeting for One Watershed One Plan. He encouraged the County Board members to attend a meeting and provide input.

Commissioner Thompson stated that she attended the following meeting: Tax Abatement.

Commissioner Burger stated that he attended the following meeting: Caring Hands and Tax Abatement.

Commissioner Overgaard attended the following meetings: Rural Energy Board and Tax Abatement, he also wanted to congratulate the Rock County Agricultural Society for a very successful Fair.

Commissioner Williamson attended the following meeting: Tax Abatement. Greg Ous, District Engineer and Gordon Regenscheid, District State Aid Engineer, presented the MnDOT District 7 10 year construction plan.

Evan Verbrugge Sheriff and Matt Sorenson Lt. MN State Patrol demonstrated Computer Aided Dispatch. The board thanked them for their presentation.

With no further business the meeting was adjourned.

(09-07)

Rock County Commissioners meet July 25

Herreid Board Room 9:00 A.M.
Rock County Courthouse July 25, 2017

The meeting was called to order by Chair Williamson with all Commissioners present; the Pledge of Allegiance was recited.

Motion by Reisch, seconded by Thompson, to approve the July 25, 2017 County Board agenda, declared carried on a voice vote.

Motion by Burger, seconded by Overgaard, to approve the July 11, 2017 County Board minutes, declared carried on a voice vote.

Motion by Overgaard, seconded by Thompson, to approve the consent agenda, declared carried on a voice vote.

1. Amendment to Rock County IT Disaster Recovery Plan – policy update Sara Wahl, Executive Director of Southwest Crisis Center along with Allan Bakke, SWMN Regional Navigator and Jennifer Lindsey, Southwest Crisis Center Local Advocate, together presented program updates. The agency offers excellent outreach services and is trying to initiate preventative programming; the County Board requested additional information on the preventative programs to include the collaborative partners and a proposed budget. Bakke also briefly discussed a Safe Harbor program that deals with sexual exploitation of youth. Overall, the agency's state and federal funding sources remain stable; however there is no current funding source for prevention initiatives.

Mark Sehr, Engineer, requested final payment to Henning Construction for \$34,539.55 for the (5) box culvert projects constructed in 2016; motion by Overgaard, seconded by Reisch, to approve the final payment, declared carried on a voice vote.

The Engineer requested to declare the following vehicles as surplus and list for sale: (2) 2006 IH tractors, (1) 2006 Elkhart Coach Bus, (1) 2006 Ford F150 Pickup; motion by Reisch, seconded by Burger, to approve, declared carried on a voice vote. The County Board requested that the government auction site to be added to the county web page and also an ad informing the public of the sale of surplus equipment.

The Engineer presented an update regarding bridge L2165 on County Road 52 over the Burlington Northern Santa Fe (BNSF) railroad track and stated that an at grade level crossing is not a feasible option as it will not be approved by BNSF. Sehr presented (3) other options:

1. Bridge replacement be added to the MnDOT Bridge Waiting List after MnDOT/BNSF RR plan approval for bridge bonding in 2019 legislative session
2. Borrow (bond)
3. Transfer \$564,628 of assigned Bridge Bond Funds from Project SAP 067-598-016, Bridge L2171 replacement project on County Road 55 over Elk Creek; this replacement project has been on the bridge waiting list for 3 years. After considerable discussion, it was determined to seek input from the townships affected – Magnolia, Martin and Beaver Creek townships; no action was taken as this time.

Ashley Kurtz, Auditor/Treasurer, presented claims and per diems of \$609.36; motion by Thompson, seconded by Reisch, to approve, declared carried on a unanimous vote. A complete listing of the claims is available upon request at the Auditor/Treasurer's Office.

Claims Listing – July 25, 2017

A.C.E. OF SOUTHWEST MINNESOTA	3,923.25
AMERICAN COMMUNICATIONS INC	3,500.00
CHS EASTERN FARMERS COOP	3,890.24
ERICKSON ENGINEERING	5,660.00
FIDLAR TECHNOLOGIES INC	2,557.50
FLEET SERVICES DIVISION-ADMIN FMR	4,656.87
KETTERLING SERVICES INC	9,387.97

LUVERNE/CITY OF	7,910.69
LYON COUNTY LANDFILL	17,907.00
MIDWEST TECHNOLOGY SERVICES, LLC	3,673.52
NORTHERN TRUCK EQUIPMENT CORP	6,261.00
SMITH & JOHNSON	2,081.50
SOUTHWEST HEALTH & HUMAN SERVICES	26,077.69
THOMSON REUTERS - WEST	2,021.41
75 Payments less than 2000	27,700.28
Total	127,208.92

The County Board was in receipt of the Fund Balance report which reflected receipt of the first half of County Program Aide and Riparian Aide (buffer strip); motion by Overgaard, seconded by Williamson, declared carried on a voice vote.

The County Board was also in receipt of a mid-year revenue and expenditure report; no action was taken.

Jim Trojanowski, Director of Plum Creek Library system presented an organizational review and discussed some building issues and their initial plan on how to make the repairs with existing funds.

The Administrator presented a Building Committee meeting recap where they discussed an HVAC repair at the Library Building for \$19,573.47 and a Service Maintenance Contract for the Rock County Veteran's Memorial building for \$6,670.00 for the first year effective November 1, 2017. The Administrator stated that the new expenditure for the Veteran's Memorial building will take the place of an existing expenditure from that fund that will be adjusted and the library building expense will be paid from reserves. Motion by Reisch, seconded by Williamson, to approve the repair contract with Johnson Controls for \$19,573.47 and the new service contract with Johnson Controls for \$6,670, declared carried on a voice vote.

The Administrator informed the County Board of the August 1st meeting with city mayors to discuss tax abatements; the meeting is scheduled for 7:30PM in the Training Room at the Rock County Law Enforcement building.

The County Board was reminded of the road tour scheduled for August 8th following the regular scheduled County Board meeting.

The Administrator informed the County Board that the Comparable Worth Study timeline has been pushed back which will impact the budget process; more information forthcoming.

The County Board was in receipt of information regarding the AMC Fall Policy Conference scheduled for September 14-15.

The Administrator provided an update regarding the DNR-Blue Mound State Park water hook up project stating that a draft agreement between RCRW and the DNR has been reviewed by the County Attorney and returned back to the DNR with some comments and concerns and that they awaiting a response.

Commissioner Reisch stated that he attended the following meetings: Library, Governor's Broadband Taskforce, SMOOC Annual meeting and Buildings Committee meeting.

Commissioner Thompson stated that she attended the following meetings: Regional Development Commission annual meeting, SWHHS, DNR - Blue Mound State Park Friends group.

Commissioner Burger stated that he attended a Southwest Mental Health meeting and SWHHS meeting.

Commissioner Overgaard attended the following meetings: Land Use, City/County Liaison, Regional Solid Waste, Rural Energy meeting and informed the County Board of bus tour to visit a natural gas facility scheduled for July 31st; also encouraged Commissioner to attend the County Fair.

Commissioner Williamson attended the following meetings: Southwest Mental Health, SWCD and Buildings Committee meeting.

The Administrator provided an update regarding the railroad tie cleanup project stating that the project is complete; the BRRRA will determine if another effort needs to be addressed for the smaller pieces next spring and that Hokeness is still hauling ground and stockpiled material to the approved disposal site.

With no further business the meeting was adjourned.

(09-07)

GARAGE SALES

Thur., Sept. 7 & Fri., the 8th. 8-5 at 500 Phyleon Dr double glider, toys, bench, fern peonies, plants, rugs, lots of Misc. furniture, matching recliner chairs, fishing rods & tackle, Red hats, 2X ladies tops, wooden puzzles, misc.

(9.3-9.7)

WINDOWS

We custom build and install Energy Star Therm-O-Loc Windows. Call Mike at Adrian Glass for a free in-home demonstration and estimate. 101 E. Pearl, Adrian, MN 56110. 507-483-2228 or 605-770-7677 or email mbyler@santel.net. (tc)

FOR SALE

For Sale: Landscaping rock 1 1/2 or 3/4 inch, gravel, dirt. Also do tree stump grinding. Phone 507-227-4521. Wayne Biever. (9.3-9.21)

For Sale: 1997 Terry 27 ft. Fifth Wheel Camper. In great shape. \$6,000 or best offer. Please call 283-2460 Marinus Cross. (8.31-9.17)

RENTALS

1 bedroom apartment. Stove and refrigerator furnished. Large basement, space for your washer and dryer. No smokers and no pets. 507-283-4095 or 507-290-1948. (tc)

CARDS OF THANKS

A sincere thank you to everyone who in any way remembered us in our sister and aunt, Florence's passing. It is truly appreciated. These acts of kindness will always be remembered. Also, thank you to Pastor Hansen for his words of comfort and support and to Jurrens Funeral Home for the arrangements.

**Family of Florence
Kitchenmanster**

(9.7-9.14)

MISCELLANEOUS

HAVE A UNIQUE SERVICE OR BUSINESS? Get the word out to over 1.4 million households. Call WIDE AREA CLASSIFIEDS today, 507-359-7326. (tc)

AGRICULTURAL

WE HAVE SEVERAL CREWS OF BEAN WALKERS. We also pick rock, put up and take down fences. We will do any type of farm work. Call 712-943-2084, 712-251-3277 or 712-899-5219. (4.27-9.20)

Covered by Medicare and suffering from Back or Knee Pain?



RELIEVE YOUR PAIN NOW!
Give your back or knees the support and relief they need to reduce your pain

- Fast and Easy Medicare Approvals
- Free Nationwide Shipping

Learn for FREE how a Back or Knee Brace can help: 844-358-9125

CHANGE THE FUTURE – BECOME A TUTOR

- Help students build math skills
- Serve 5+ hours, every school day
- Receive student loan and tuition help for yourself, your child or grandchild
- Full-time positions receive free health insurance

Learn more and apply at: readingandmath.net



Donate A Boat or Car Today!
BoatAngel

"2-Night Free Vacation!"
800-700-BOAT (2628)

www.boatangel.com

sponsored by boat angel outreach centers STOP CRIMES AGAINST CHILDREN



Call Now for Winter Discount!




Experience the RAM Advantage!

RAM Buildings Inc. **320-485-2844**
rambuildings.com

NFBA Accredited

Specializing in Post Frame and Steel Frame Buildings
Agricultural • Equestrian • Storage • Commercial • Residential • Hangars

Star-Herald.com
Get your Rock County News Anywhere, Anytime



Star Herald CLASSIFIEDS

September 7, 2017 Page 10B

EMPLOYMENT

CNA: Parkview Manor is looking for CNAs! Benefits include health insurance, PERA retirement plan, vacation and sick time, holiday pay, and a \$2,000 scholarship available for students! We will provide training or pay for experience. Wages are based on experience level. If interested, contact Darnell Krull at (507) 967-2388 or Sam Quam at (507) 967-2482. (tc)

EMPLOYMENT

Dietary Aide: Parkview Manor is looking for part-time Dietary Aides! Benefits include vacation, PERA retirement plan, and holiday pay. Training is available on-site. Wages are based on experience level. If interested, contact Sam or Arlys at 507-967-2482, or come visit us to pick up an application! (tc)

EMPLOYMENT

Cook: Parkview Manor is looking for a part-time cook! Benefits include vacation, PERA retirement plan, and holiday pay. Training is available on-site. Wages are based on experience level. If interested, contact Sam or Arlys at 507-967-2482, or come visit us to pick up an application! (tc)

RN/LPN: Parkview Manor is looking for a part-time RN/LPN to fill in as needed! Benefits include vacation, PERA

EMPLOYMENT

retirement plan, and holiday pay. Wages are based on experience. If interested, contact Darnell Krull at 507-967-2388. (tc)

Help wanted: Milk Hauler. Local company looking for full and part-time drivers. Full-time is Monday through Friday, 2 weeks vacation, full health insurance for driver, retirement plan! Contact Roos & Son Inc. Luverne, MN 507-993-8801 Scott Roos. (8.27-9.14)

EMPLOYMENT

New Prairie Insulation of Beaver Creek has a full-time Insulation Installer position available. Monday through Friday, health insurance, vacation, holiday, bonus opportunities. Will train. Call Dean at 605-376-3006 or 507-673-2548. (tc)

EMPLOYMENT

FT CARPET CLEANING TECHNICIAN
Duties include steam cleaning carpets, rugs, and upholstery; air-duct cleaning; water clean-up; and janitorial work. Ideal candidate understands we're a guest in customers' homes. Will be mechanically inclined to operate/troubleshoot equipment, and thorough in their work. Applicants must be able to lift at least 80 pounds and have a valid drivers' license. \$14/hr (more with experience) and health insurance. Apply at Schomackers.com or 202 E Main - Luverne (8.31-9.14)

VOLUNTEER FIREFIGHTERS

The City of Luverne Fire Department is accepting applications for **part-time, paid-on-call Volunteer Firefighters**. This position performs skilled work in the performance of fire suppression and first aid work; respond to fire alarms and other emergency calls; extinguish and control fires as assigned.

Experience and Training

High school diploma or GED equivalency; or any equivalent combination of experience and training which provides the knowledge, skills and abilities to perform the work.

Special Requirements

Must be 18 years of age. Possession of and ability to maintain a valid Minnesota driver's license. Seven (7) minute emergency call response time is required to be met within six (6) months of hire. Must pass a thorough background investigation, pre-employment physical examination including drug screen and physical agility test. May require 240 hours of training within 18 months of hire.

Applications will be accepted until September 22, 2017 at 4:00 p.m. Application packets are available at www.cityofluverne.org or from City Clerk Jessica Mead at City Offices, 305 E. Luverne Street, PO Box 659, Luverne, MN 56156 (507)449-9898. EOE.

Luverne
Love the life!

HELP WANTED

Berkley Classics, a W. R. Berkley Company, is looking for a full-time Customer Service Representative in it's Luverne office. This position would provide information to customers in response to inquiries about products and services, in addition to assisting individual's interest in servicing accounts. The representative will explain how to use account features, billing inquiries and solve customer application and internet problems. The customer service representative will receive, document and resolve customer issues and complaints. 4+ years of experience in a customer service or help desk capacity required. Ability to communicate clearly and professionally, both verbally and in writing. Willingness to work a flexible schedule and occasional overtime when needed. Knowledge of technical support issues. Basic Insurance knowledge is a plus. High School Diploma required.

The Company offers a competitive benefit package including medical, dental, vision, 401(k) and Profit Sharing. Please send resumes via email to rfey@berkleyclassics.com or via mail to Berkley Classics, PO Box 500, Luverne, MN 56156



Berkley Classics
| a Berkley Company

HELP WANTED

Age 55+ workers needed for **part-time custodial work** at the Adrian and Beaver Creek rest areas and Blue Mound State Park
Contact Green View 651-639-1913

Hear it first at
www.star-herald.com

Sanford Luverne Medical Center

is currently accepting applications for FT (Full-Time), PT (Part-Time) and PRN (Part-Time as Needed) positions:

CERTIFIED MEDICATION ASSISTANT – PT, PRN
HOME HEALTH AIDE – PT, PRN
HOUSEKEEPING – PT
LICENSED ALCOHOL AND DRUG COUNSELOR – PT
LPN, HOSPICE – PRN
RN, INPATIENT – PT
PATIENT ACCESS REPRESENTATIVE – FT
PATIENT CARE TECHNICIAN – FT, PT
PARAMEDIC – FT

To apply, visit sanfordhealth.jobs search "Luverne" in the location search bar.

SANFORD HEALTH

"Your Calling, Your Place."

Sanford Luverne Medical Center | 877-243-1372

EEO/AA

POSITIONS AVAILABLE

- Great hours! Paid benefits including paid holidays.
- Hours vary between 6:15am – 4pm Monday through Friday
- Full time approximately 35 hours per week
- Sub hours as needed

We are seeking compassionate, assertive, reliable, energetic and self-motivated people to fill open full time and substitute direct care staff positions on our team. On the job paid training provided. Experience related to human services such as working with people with disabilities, social work, psychology, special education, and/or C.N.A. is helpful but not required.

Call or stop by to pick up an application. RCO, 807 W Main St, Luverne, 507-283-4582. If interested, submit your application before **September 7, 2017**.



WE ARE ADDING TO OUR FARROWING AND BREEDING TEAM!

Established training program to set you up for a successful future
Great work environment
Rotating 7 days on 3 days off schedule
Competitive pay and benefits
Experience Preferred

Check out these opportunities
www.pighillfarm.com/careers
call: (605)-951-2360



NEED EXTRA CASH?

Announcer Carriers
needed for
LUVERNE
Call **283-2333**
or stop in at the
Announcer office



MCAN

Minnesota Classified Advertising Network



HELP WANTED

EXPERIENCED SEMI-DRIVERS
Sugarbeet, potato harvest. Sept 20-Oct 28. Valid driver's license required. Employees subject to random drug testing. Camper hookups available. Emanuelson Farms, Drayton ND 701/454-6122

HELP WANTED - DRIVERS

SYNERGY RV TRANSPORT
is looking for your 3/4 or 1 ton truck. Get paid to travel the country. Call recruiting @ 574/537-1860

EMPLOYMENT

PATTERSON DAHLBERG INJURY LAWYERS
seeking full-time receptionist. Word and Excel proficiency required, bilingual desired. Email Sarah Rossow with resume at s.rossow@pattersondah1berg.com

NOTICES

LOOKING FOR SEAN BANKS & DEANNA BANKS
Please get in touch with your sister Laura Banks 858/243-8288. Our mother Dorothy has passed.

EVENTS

BEST GRAPE STOMP!
Sept. 15-17 - 150 vendors, 13 bands, 700+ grape stompers, stunt dog show, stomp for paws rescue auction and more! Carlos Creek Winery, Alexandria

WANTED TO BUY

MOTORCYCLES WANTED
1960S-1970S, 2 & 4 strokes, running & not-running. CASH to you: 612/720-2142

FARM EQUIPMENT

GOT LAND?
Our hunters will pay top \$\$\$ to hunt your land. Call for a free info packet & quote. 866/309-1507 www.BaseCampLeasing.com

MISCELLANEOUS

A PLACE FOR MOM
The nation's largest senior living referral service. Contact our trusted, local experts today! Our service is free/no obligation. Call 844/347-2104

ONLY \$279 to reach a statewide audience of 3 million readers!!! **1-800-279-2979**

MISCELLANEOUS

DISH TV
190 channels. \$49.99/mo. for 24 mos. Ask about exclusive Dish features like Sling® and the Hopper®. Plus high-speed internet, \$14.95/mo. (Availability and restrictions apply) TV for less, not less TV 855/562-4309

SAVE MONEY!

Call your local newspaper or MNA 800-279-2979 to find out how you can save money by placing your advertisement here!

DONATE YOUR CAR

truck or boat to Heritage For The Blind. Free 3-day vacation, tax deductible, free towing, all paperwork taken care of 800/439-1735

STOP OVERPAYING FOR YOUR PRESCRIPTIONS!

Save! Call our licensed Canadian & International pharmacy, compare prices & get \$25.00 OFF your first prescription! Call 877/210-2257 Promo Code: CDC201725

HELP WANTED

Graphic Designer

IMMEDIATE OPPORTUNITY

DESIGN
NEWSPAPER



STYLE & FUNCTION

Apply TODAY

Your new career is CALLING

Check out STAR-HERALD.COM

CONTACT US TODAY ABOUT THIS EXCITING CAREER

The Rock County Star Herald, an award-winning weekly newspaper in Luverne, Minnesota, is seeking a dependable, hard working Graphic Designer to join our Production Department. Full or Part-Time available. Two years graphics experience preferred.

Must have experience with Adobe Creative Suite (specifically InDesign and Photoshop), Mac OSX, Microsoft Office. Knowledge of Final Cut Pro, Dreamweaver, HTML and CSS helpful.

Design and create ads for one of the three newspapers we produce weekly. Design a variety of print media to meet the needs of our customers.

If you would like to work in a friendly, fast-paced environment with tight deadlines, please send letter of application and resume to Rick Peterson at rick@star-herald.com or call 507-283-2333.

www.star-herald.com

Keep up with Rock County's news with The Star Herald