



Rock County STAR HERALD

Rock County's oldest business, printing since 1873

Thursday, July 6, 2017

New Internet customers save money, enjoy speed

By Mavis Fodness

New Internet users in Rock County shared firsthand accounts last week about how reliable broadband service has changed how they conduct business.

Members of the Governor's Task Force on Broadband traveled to several new Internet users Wednesday, June 28, for their regular monthly meeting in Rock County.

Rock County Commissioner Jody Reisch is a member of the 15-person task force.

He said access to broadband has "leveled the playing field" for potential economic development throughout the county.

"Reality for us is that farmers are our customers," County Administrator Kyle Oldre told task force members.

Last year the Rock County Broadband Alliance began the installation of a 531-mile fiber-optic cable that brought service to 1,100 residences.

The project, which will wrap up this summer, provides high-speed Internet service to areas that were previously unserved or underserved.

Now everyone in the county has access.

Luverne was not included in the project because access to a high-speed Internet service already existed.

High-speed Internet access already making a local impact

Installation of the fiber-to-the-premises service in Rock County began in April 2016.

By that fall, the first customers, including rural Jasper farmer Jim Veldkamp, began receiving Internet service.

Veldkamp's crop and pork production facility in Rosedell Township was one of four tour stops for the task force members.

The fiber-optic line attaches his machine shop, home and feed mill, and Veldkamp uses an iPad to track his operations.

In the feed mill, computers measure weekly grinding of almost 80 tons of feed used in his multiple wean-to-finish confinement barns.

"We are excited about this technology," he said. "It's how you stay competitive."

An improved Internet connection



Mavis Fodness photo/0706 Broadband Tour

Members of the Governor's Task Force on Broadband tour the feed mill at the Jim and Joann Veldkamp farm in northwestern Rock County. "It's not a luxury," said Jim Veldkamp (facing camera) about the high-speed Internet connection to his farm. "It's a necessity."

allows Veldkamp to instantly communicate with veterinarians and measure feed ingredients down to the ounce.

The precision also extends to early an warning system in the confinement barns.

Brad Bergman, general manager of Skattum Confinement Systems, rural Luverne, said maintaining the correct temperature in a hog confinement

High-speed Internet in county/see page 3A

Hot dogs to kick off 150th party July 13 in Luverne

Event features 10,000 free hot dogs, wiener dog races, Wienerman Triathlon, live music and more

By Lori Sorenson

Luverne's 55th annual Hot Dog Night is Thursday, July 13, and the event this year kicks off the town's 150th anniversary celebration.

The event will again feature 10,000 free hot dogs shared by local businesses, who will also serve beverages and condiments.

At 7 p.m. the seventh annual Wienerman Triathlon will start. The four-person relay race includes eating, swimming, biking and running. See wienermanevents.com.

The popular Wiener Dog Beauty Pageant and Races also starts at 7 p.m., the races immediately following the pageant, both events sponsored by Rock Veterinary Clinic.

Sterling's Grille and Café will sponsor Music on Main from 7 to 11 p.m. and the Wienerman Triathlon dance will be from 8 to 11 p.m. at Main and McKenzie streets.

The Beer Garden on Main will be at Main Street and Freeman (Sterling's) and also at Main and McKenzie streets (Bluestem).

Take 16 on East Main Street will serve cold beer with outdoor seating from 4 to 10 p.m. and the Fine Art Hot Dog Contest will be judged at 5:45.

Luverne Tae Kwon Do demonstrations start at 6 p.m., the ARC Youth Band plays from 6:30 to 7 p.m. on North Freeman and Spotlight Dancers perform at 6:30.

Fantasy face painting, free inflatables, kettle corn, ice cream and cotton candy will be on hand.

Midwest Fire will serve free Freeze Pops at their new fire engine.

More details are available at www.luvernechamber.com.

Rock County to enforce state buffer law

By Mavis Fodness

More than 65 percent of Rock County landowners are already in compliance with the state's new buffer law.

The law states landowners across the state have until November to install 30- to 50-foot-wide perennial vegetation buffers next to designated rivers and streams.

A deadline of November 2018 is set for similar buffers along judicial ditches.

Under a resolution passed June 20, Rock County Commissioners agreed to enforce the buffer law within county borders.

The county's Land Management Office is tasked with implementing local enforcement of the buffer law.

LMO has identified 841 parcels in the county that are subject to the buffer law.

Each landowner was notified of the buffer requirement through a letter mailed in August and a follow-up postcard

Buffer law enforcement/see page 3A

Poisonous weeds spreading in Rock County

By Lori Sorenson

Residents, landowners and farmers are being warned about a potentially deadly weed that's taking hold along the river and local road ditches.

Doug Bos of the Rock County Land Management Office has taken the lead on getting the word out about poison hemlock that is often mistaken for wild parsnip or Queen Anne's lace.

The weeds, which are in the carrot family, have tough stalks and a white flowering top.

They can be discerned from Queen Anne's lace by their height — 4 to 8 feet tall — and their leaves, which are more serrated. Also, Queen Anne's lace has a fuzzy stalk and leaves.

Hemlock and water hemlock were first identified in Rock County in 2014, and since then the prolific invasive species has taken over ditches and low lying areas, mostly along the river.

Both hemlock and its close

Poisonous hemlock/see page 2A



Lori Sorenson photo/0706 poisonous hemlock

Kent Schaap (left) and Bill Schuner of the Minnesota DNR Slayton office test a trial application of Milestone herbicide on an infestation of poison hemlock in the Wildlife Management Area on East River Road Thursday. If that doesn't work, they'll use 2-4D, which will also kill the native grasses.

Volume 142, Number 27

Luverne, MN 56156
USPS 468-040



The Star Herald is Rock County's oldest business, documenting the news of its citizens since 1873

Article 27: Rock County is no stranger to anniversary and homecoming celebrations

This is the 27th in a series that shares the rich history of Luverne as it celebrates 150 years. This week we bring you Part 2 in a three-part series on the 1926 county party.

Rock County Historical Society President Betty Mann this week submits the second of a three-part series on the 1926 homecoming party in Luverne and surrounding area. We felt it's appropriate to feature these in our 150th anniversary series to highlight Luverne's reputation for memorable parties.

Luverne celebrates 150 years — Homecoming/continued on page 6A

This week's moment in time is sponsored by:

Luverne
Area Chamber & CVB

Loving the Past...
Living the Future!



COMMUNITY CALENDAR

Meetings

Sanford Luverne Pink Ladies will meet at 1:30 p.m. Monday, July 10, in the Blue Mound Room at Sanford Luverne Hospital.

Beaver Creek Township Board will meet at 7:30 p.m. Monday, July 10, at the township hall.

Rock County VFW Post 2757 will meet at 7 p.m. Tuesday, July 11, at the Rock County Veterans Memorial Building.

Parkinson's Support Group will meet at 1 p.m. Thursday, July 13, at St. John Lutheran Church in Luverne. Speaker will be Norma Brands from ACE. For more information, call 507-530-3307

MS Support Group will meet at 7:30 p.m. Thursday, July 20, at Southwest Health and Human Services in Luverne. All persons with MS, family and friends are invited. For info call 507-283-2069 or 507-283-2964.

Narcotics Anonymous will meet every Thursday evening at 6:30 p.m. at the Steen Reformed Church. Contact Robert for more information 507-329-2642.

Women's Alcoholics Anonymous meets at 8 p.m. Mondays in the United Methodist Church.

Narcotics Anonymous meets at 7 p.m. Fridays and for basic text study at 7:30 p.m. Tuesdays in the basement of St. Catherine Catholic Rectory, 203 E. Brown St., Luverne. Use east door. For more information call 507-220-0137.

Alcoholics Anonymous meets at 8 p.m. Wednesdays and Saturdays in the United Methodist Church, Luverne. Call 605-321-4324.

Alcoholics Anonymous meets from 8 to 9 p.m. every Tuesday in Runals Memorial Hall, Edgerton. Call Naomi, 507-215-2956.

I-90 construction starts July 5

Construction on I-90 westbound from Magnolia to Luverne is scheduled to begin July 5.

I-90 will be two-way traffic in the eastbound lanes with speeds reduced to 55 mph. The westbound ramps at Magnolia will be closed.

The project consists of repairing the concrete and replacing the shoulders and lighting.

The timetable is for completion in September.

Luverne Post Office alerts to changes

Because of construction on Luverne Street, the post office north drive-up drop box is closed to traffic. Patrons may walk to the box, but customer vehicles are not allowed in the north lot until the end of construction.

The post office recommends that customers use the mailboxes at the northeast corner of Freeman and Main and at the southwest corner of Cedar and Main. Letters mailed before 11:45 a.m. at those locations will be picked up and on the mail truck the same day.

Customers may also use the dropbox inside the post office lobby.

Sign up for 'I Can Climb' at Blue Mounds

The "I Can Climb" program at the Blue Mounds State Park is open to anyone age 5 or older. Trained professionals from Vertical Endeavors Guided Adventures will provide equipment and instruction. Climbing sessions will be July 15 and 16 and Aug. 12 and 13. Cost is \$10 per child or \$20 per adult, including a park vehicle permit. Register online at www.mndnr.gov/reservations or call 866-857-2757.

Hinkly House open Thursdays

The Hinkly House will be open from 2 to 4 p.m. every Thursday during the summer.

Bloodmobile at Adrian High School

The American Red Cross Bloodmobile will be at the Adrian High School from 1 to 7 p.m. Thursday, July 6. Donors may make an appointment at redcrossblood.org or by calling 1-800-733-2767. A blood donor card, driver's license, or two other forms of identification are required. A pre-donation questionnaire is available at redcrossblood.org/RapidPass to expediate the registration.

Missoula Children's Theatre in July

Missoula Children's Theatre will be in Luverne the week of July 17-21 to perform "Jack and the Beanstalk" using local children's talent. There are openings for roles for kindergarten through age 7, and for three directors ages 12-18. The fee is \$40. Call 507-283-4724 to register. Rehearsals will be Monday through Friday with performances at 7 p.m. Friday, July 21, and at 10 a.m. Saturday, July 22.

Poisonous hemlock/continued from page 1A

cousin, water hemlock, can kill livestock and humans if they're accidentally ingested, according to Bos.

"Both can affect the central nervous system, causing paralysis and seizures that can happen within 15-minutes to six hours," he said. "The sap is probably the most toxic."

While he's not aware of any human or livestock casualties yet, he said it's important that people know about the hazards.

He said horses grazing along River Road east of Luverne left a wide circle of grass around the base of a hemlock plant. "Horses somehow knew," Bos said. "They wouldn't go near it."

Cattle, however, might not be as fortunate if the hemlock gets baled along with other grasses for hay. "They could eat it along with the hay without knowing," he said.

If livestock consume contaminated hay, they could experience muscle paralysis that begins in the legs and progresses upward until asphyxia occurs.

Bos reached out to local veterinarians to alert them of potentially poisoned cattle.

"This poison hemlock looks like some really nasty stuff," said Dr. Erin deKoning, a veterinarian at Rock Veterinary Clinic, Luverne.

"If it gets baled, that would be a problem, because the dried weed can actually be more toxic than the fresh."

She added that health problems can persist long-term.

"It can cause birth defects if it doesn't kill the cow," deKoning said. "So it can cause problems way later after they've eaten it."

The Land Management Office personally spoke with six landowners along River Road and the former Boy Scouts camp area to be on alert for hemlock and to destroy it before it becomes an infestation.

Broadleaf herbicides, such as 2-4D are recommended for killing hemlock, and River Road residents Mike and Karen Mensen have been doing just that.

"We actually spotted them a year ago," Karen Mensen said. "We knew it was invasive, but we didn't know what it was."

They brought a sample to local elevators and agronomists who at the time didn't know what it was. "This year it just exploded all around us," she said.

Now that it's recognized as a poisonous and dangerous weed, she said she hopes the right people heed warnings. "It's pretty nasty and we need to get the word out," she said.

As a case in point, she said a landowner sent a worker out with a corn knife Thursday to cut down the hemlock in the ditch across from their home.

"He was just covered in it — his arms, the back of his neck," Karen said. "We hosed him off and he went home to change clothes.... This is why we need to get the word out, before



At left, poisonous hemlock are in the carrot family and have tough stalks and a white flowering top.

They can be discerned from Queen Anne's lace (pictured below) by their height — 4 to 8 feet tall — and their leaves, which are more serrated.

Also, Queen Anne's lace has a fuzzy stalk and leaves.

Hemlock and water hemlock were first identified in Rock County in 2014, and since then the prolific invasive species has taken over ditches and low lying areas, mostly along the river.

Both hemlock and its close cousin, water hemlock, can kill livestock and humans if they're accidentally ingested.

USDA officials are urging land managers, the local public and road crews to learn how to identify non-native noxious species so they can help report all suspected infestations.

Reports can be directed to Bos at the Land Management Office, 507-283-2333.



someone gets sick or worse." Controlling and eradicating hemlock will work only if all affected property owners do their part, Mensen said.

In her neighborhood, the worst hemlock infestation is in a 5-acre wildlife management area where the DNR is nurturing a native prairie grass stand.

"We're doing what we can to stop it," said Bill Schuner of the Slayton DNR office.

"We at first planned to mow it, but then we switched to Plan B for the safety of the person working with the

equipment, and the plant particles and sap."

Plan B is to treat with chemicals, which is what they had hoped to avoid.

"We know this isn't the best time of year to spray," Schuner said. "But we hope to at least ding it so it doesn't set seed, and then hit it again in the spring."

Bos said that should be the approach everyone uses: act now, not later. Doing nothing could mean a strong infestation the following year.

Information about hem-

lock can be found on the USDA website <https://www.fs.usda.gov>.

"Prevention, early detection, and plant removal are critical for preventing poison hemlock establishment," the site says.

USDA officials are urging land managers, the local public and road crews to learn how to identify non-native noxious species so they can help report all suspected infestations.

Reports can be directed to Bos at the Land Management Office, 507-283-2333.



Dial-A-Specialist

Your One Stop Guide to Local Businesses

| | | | |
|---------------------------------------------------------------------------------------------------------------------------------------------------------------------------------------------------------------------------------------------------------------------------------------------------------------------------------------------------------------------------------------------------------------------------------------------------------------------------------------------------------------------------------------------------------|------------------------------------------------------------------------------------------------------------------------------------------------------------------------------------------------------------------------------------------------------------------------------------------------------------------------------------------------------------------------------------------------|-----------------------------------------------------------------------------------------------------------------------------------------------------------------------------------------------------------------------------------------------------------------------------------------------------------------------------------------------------------------------------------------------------------|--------------------------------------------------------------------------------------------------------------------------------------------------------------------------------------------------------------------------------------------------------------------------------------------------------------------------------------------------------------------------------------------------------------------------------------------|
|  <p>ROCK COUNTY CHIROPRACTIC • Men, Women & Children's Health • Custom Orthotics • Kinesiotape • Athletic Care • Massage Therapy • Work & Auto Injuries • Postural Restoration WWW.ROCKCOUNTYCHIROPRACTIC.COM 283-2561 • 103 E. MAIN, LUVERNE Monday 7:30 a.m. - 6 p.m. • Tuesday 7:30 a.m. - 3 p.m. Wednesday 7:30 a.m. - 6 p.m. • Thursday 7:30 a.m. - 1 p.m. Friday 7:30 a.m. - 5 p.m.</p> <p>• Chiropractic</p> |  <p>STAR HERALD Luverne ANNOUNCER Chantel Connell Sales Representative 117 W. Main, Luverne, MN 507-283-2333</p>  <p>Rick Peterson General Manager</p> <p>• Advertising</p> | <p>LUVERNE HEALTH & WELLNESS Codie Zeutenhorst, D.C., CAC ✓ Acupuncture ✓ Chiropractic Care ✓ Family Care ✓ Sports Injuries ✓ Kinesiotape ✓ Auto & Work Injuries Acupuncture and Massage Available Kris Van Der Brink M.T. & Amy Rosales M.T. www.luvernechiro.com 109 S. Freeman Ave. Luverne, MN 507.449.4400</p> <p>• Chiropractic</p> | <p>COMRAY COMPUTERS Computer Repair and System Builder</p>  <p>Ray Hansen 1726 140th Ave., Luverne, MN 56156 507-669-2621 comraycom@gmail.com</p> <p>• Computer</p> |
|  <p>Rock County EYE CLINIC 507-283-2345 102 N. Freeman Ave. Luverne, Minnesota</p> <p>• Eye</p> |  <p>Papik MOTORS 1-90 Luverne, MN Box 536 • 801 West Commerce Road Luverne, MN 56156 (507) 283-9171 (800) 634-7701 www.papik.com</p> <p>• Automotive</p> | <p>Luverne MINNESOTA City Offices Love the life! PO Box 659, Luverne, MN 56156 507-449-2388 (24 hour voice mail) www.cityofluverne.org</p> <p>• City</p> | <p>Dakota Land Surveying and Engineering, Inc.</p>  <p>Steven B. Kor Professional Engineer Registered Land Surveyor 2000 W. 42nd Street, Suite B-6 Sioux Falls, SD 57105 605-334-4882 605-334-5745 Fax 506 Almar Luverne, MN 56156 507-283-3803 steve.dis@midconetwork.com</p> <p>• Land Surveying</p> |

Dawg Days of Summer to honor law enforcement and veterans

By Lori Sorenson

Adrian will host an event July 8 that highlights people and resources that support veterans.

The event, called the "Dawg Days of Summer" Veterans Summit, features a mobile unit that memorializes military working dogs and their handlers who have been killed in the War on Terror.

This year's event will honor local law enforcement personnel, according to organizer Curtis Hendel, Adrian.

"In both the military and law enforcement, men and women put themselves in the position to run toward the sound of gunfire, not away from it," he said.

"They also deal with long shifts that include overnights, nasty weather, helping the injured in emergencies, and working holidays and weekends. They are the Thin Blue Line between honorable citizens and those that wish to do us harm."

Hendel said the July 8 event will honor all law enforcement from Nobles and Rock counties who can attend.

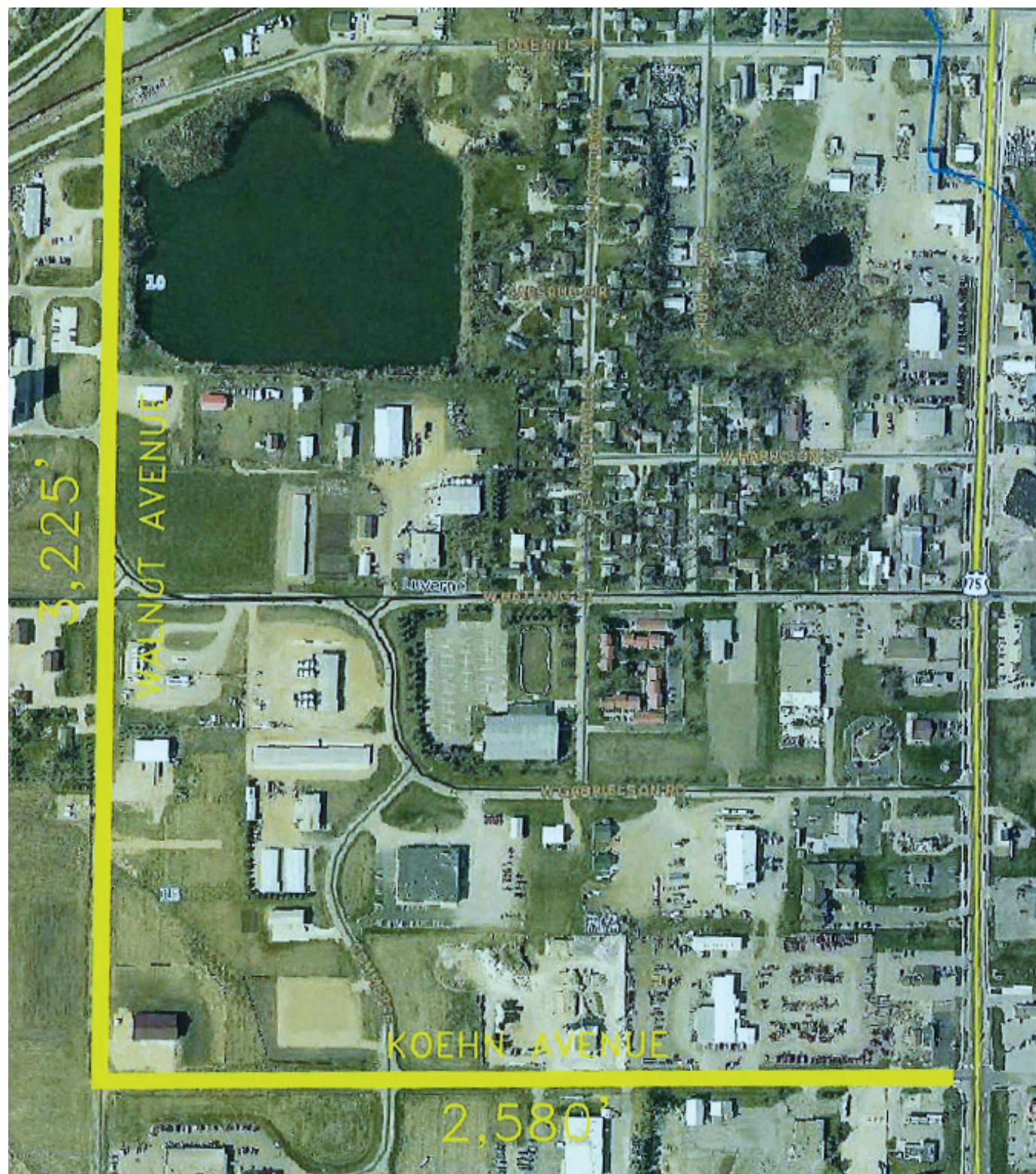
At least one K9 team will be in attendance for demonstrations.

The list of participants includes Warriors Reintegration photographer Mike MacDonald, local veterans service officers, veterans suicide prevention and PTSD awareness representatives, Legion Riders and American Legion members.

The event is free and open to the public, and food and beverages will be served.

Hendel can be reached at erodawg@yahoo.com for more information.

Rock County takes over street in Luverne's industrial park



Graphic courtesy of Rock County Highway Department

In a resolution passed Tuesday, Rock County Commissioners initiated the application to designate Koehn Avenue west from U.S. Highway 75 to Walnut Avenue north to County Road 4 as a county state aid highway. If approved, the current municipal streets would be improved to a 10-ton roadway and become County Road 38.

Application to MnDOT requests 1.1 miles from bank to develop a 10-ton road located in the city of Luverne

By Mavis Fodness

The number of county state aid highway miles will increase if an application from Rock County Commissioners to the Minnesota Department of Transportation is approved.

Prior to the commissioners' unanimous vote June 6, Rock County had 1.3 miles available in a state-aid program developed in the late 1950s that allows county road miles for future development.

The application to MnDOT requests to use 1.1 miles from the bank to develop a 10-ton road located in the city of Luverne.

Koehn Avenue west from U.S. Highway 75 to Walnut Avenue north to County Road 4 would be included in the county state aid highway system.

Sehr estimates annual state aid for Rock County will increase \$25,000 if the additional miles are approved.

"Long-term, this will be a great improvement," said County Administrator Kyle Oldre.

The move will provide access for future business development along the improved roadway.

Application to MnDOT includes a review and comment period before its potential approval.

With the application approval, the county would have two-tenths of a mile banked for future road development.

High-speed Internet improves business in county/from 1A

ment is critical.

"If the controller goes down, pigs suffocate," he said.

Nighttime failures are the most frequent, Bergman said, and with a reliable web-based connection, producers receive life-saving notifications that temperatures are rising to dangerous levels in a specific barn.

"From a cell phone, you can change what is happening in a barn," Bergman said.

Technical improvement has also enhanced crop production.

Scott Drey from Pipestone is with C&B Operations customer support center, a John Deere dealership.

He explained the improved Internet service in Rock County allows farmers to more easily from tracking field inputs to yields in specific areas to finding necessary equipment parts.

"The great thing that is happening in rural areas today is ... the filing of information wirelessly," he said.

No more lost or damaged memory devices and information can be accessed from one or more devices at home or in the field. Through a strong Internet system, Drey can tap into another computer as far away as 60 miles and make repairs from his desk.

"It saves time from physically going to the farm," he said.

Time is often crucial in medical emergencies also.

In a letter to task force members from Dr. Rich-

ard Morgan with Sanford Luverne Clinic, he explained the difference the improved service has made in his profession.

He explained patient charts were computerized a decade ago, and on average a Minnesota family physician spends more than two hours a day updating patient charts.

With the improved broadband service, Morgan indicated seven out of the 10 local physicians could now work out of their rural Rock County residences.

"Allowing us to work from home gives us more flexibility in the quest for that elusive work/family balance," Morgan wrote.

Previously his residence was served by a dial-up Internet service and later by three different microwaved sourced providers.

"I was unable to do any clinic work from home," Morgan wrote.

Better Internet access provides cost savings

Radio station manager Steve Graphenteen told task force members on their tour to the facility outside of Luverne that broadband has made a significant impact on broadcasting to residents, most noticeably the airing of local sporting events.

"We haven't had any trouble since we've been hooked up," he said.

Significant cost savings have been experienced by the station where Internet bills reached as much as \$2,000 a month.

"Now we pay \$85 a month and it's three to five times faster," he said.

Hill-Beaver Creek Public Schools Superintendent Todd Holthaus told task force members without the Internet service they wouldn't be able to launch their one-on-one computer initiative this fall. The initiative provides its 370 third-through 12th-grade students with computers to use at school and at home.

"It was a case of the haves and the have-nots," he said. "Some families couldn't get Internet access."

Now all families have equal access.

According to Alliance Communication officials, the parent company of the Rock County Broadband Alliance, 80 percent of Rock County's rural residents chose to have the Internet service connected to their homes or other rural sites.

"Fifteen percent of our drops are to bin, confinement, or equipment sites," said Andy Hulcher, technical supervisor with Alliance Communications.

According to Commissioner Reisch, the partnership with the local communications cooperative was key in getting the improved Internet service to all county residents.

The business motto for

the cooperative is "Wired Differently."

"We really truly believe we are wired differently," said chief financial officer Kari Flanagan.

Flanagan said the hurdles the cooperative and county officials had to overcome since 2013 in order for Alliance to expand broadband service through Rock County were significant.

A \$5 million grant from the state of Minnesota's Border-to-Border Broadband Development Program made a significant difference.

"Without those grants, it would have taken us 9.5 years to recoup the costs," she said.

Flanagan said installation in Rock County averaged \$11,500 per customer.

The average bill to its new Rock County customers is \$100.

Rock County will be used as an example for other initiatives in the state.

"You've taught us things already," said task force chairwoman Margaret Anderson-Kelliher.

Each year task force members develop action plans identifying and correcting disparities in access and adoption of broadband in all Minnesota communities.

The task force was established in 2012.

Buffer law/from page 1A

in December.

The correspondence offered technical assistance to install a proper buffer, according to LMO director Eric Hartman.

Using detailed maps, LMO officials identified 379 parcels — mostly pastureland — already compliant with the buffer law.

After the initial mailings, 164 additional parcels are in the process of complying with the buffer mandate.

Hartman said staff would need to physically view 106 parcels to determine if the buffer requirement is met. He said he anticipates half of those parcels (53) would be found already in compliance.

However, 22 percent or 192 parcels in Rock County are out of compliance. The parcels involve 164 landowners.

Currently, LMO doesn't plan on adding more staff to enforce the buffer law but will inform landowners of their responsibility.

"What we want to do is ramp up the mailing because ... we have a few months before the Nov. 1 deadline," Hartman said. "I think we have made pretty good progress so far."

Similar to its agreement to monitor local feedlots, the county will receive \$200,000 over the next two years to implement the buffer law.

Included in the imple-

mentation is the imposing of penalties to landowners who remain out of compliance after the law's November deadline.

Penalties include both criminal prosecution (non-compliance is a misdemeanor offense) and the issuance of fines.

Fines could reach up to \$100,000 for each parcel out of compliance over a two-year period, according to the proposed enforcement model.

Local officials are not expecting many parcels to remain out of compliance after the Nov. 1 deadline.

"In most cases the land you're going to take out ... is marginal in production," said County Attorney Don Klosterbuer.

All cropland adjacent to rivers, creeks or streams in Rock County needs to have a protective buffer.

The county has two judicial ditches, both located in the northwest section of the county.

According to the Minnesota Department of Natural Resources, vegetative buffers are designed to intercept storm water runoff and prevent river and stream bank erosion.

The buffers also reduce the amount of sediment, nitrogen and phosphorous entering the public waters, improving the water quality.

COME & GO
BRIDAL SHOWER
Hanna (Hemme)
bride of Dustin Walters
Saturday, July 8
9:30-11:30 a.m.
St. Catherine
Gathering Space
Luverne
The couple is registered at
Dragon Fly and Bed Bath
& Beyond

come & go
Bridal Shower
Natalie Stueven
bride-to-be of GREG FICK
SUNDAY, JULY 9 • 2-4PM
St. John Lutheran
Church, Luverne
registered at
Target & Bed,
Bath & Beyond

CARD SHOWER - 60TH WEDDING ANNIVERSARY
Sidney & Lorraine (Baker) Giskoot
TUESDAY, JULY 18
Their daughters are requesting
greetings be sent to:
358 Sawgrass Trail
Sioux Center, IA 51250

Happy 80th
Birthday
VIVIAN HOLST
on July 10
Greetings may be sent to
910 N. McKenzie St Luverne, MN 56156

**Mowing Notice:
MOUND TOWNSHIP**
Notice is hereby given to all landowners or tenants to mow at least one swath along township road ditches by July 15, 2017. If not done, the township may hire it done and have it assessed against the landowners taxes. Also, please spray noxious weeds (Canadian thistles) at this time.
Mound Township

**Mowing Notice:
BATTLE PLAIN TWP.**
Battle Plain Township farmers and landowners: you are encouraged to mow at least one swath along all ditches to control weeds and decrease the clumps formed when grading.
**Thank you.
Battle Plain Township**

Interested in Advertising?
Call 283-2333 to advertise in the
Announcer

Empty nest woes replaced by arrival of first grandchild

A relaxing routine developed nine months ago when the Fodness household transitioned into an empty nest.

Weekday mornings lacked the panic of getting out of the house on time.

Supper was hardly ever planned since no one was home to enjoy a large meal.

Weekends began to fill with adult activities long abandoned when the four children began arriving almost 30 years ago.

The quiet existence was shaken a bit on May 20 with the arrival of our first grandchild.

Jayden Carmilla Blenner was born on May 20, and I instantly became smitten to spend as much time as possible with the wee little one.

My first glimpse of Jayden was as a sleeping bundle in the darkened hospital room. She was just 12 hours old.

I can't describe the strong feeling that welled up from inside when I picked her up.

The feeling was different from holding her mother for the first time. Twenty-six years ago that feeling was of joy of having a girl. There was no panic of how do I care for this young person.

With Jayden, the feeling was of wonder and how do I behave as a first-time grandmother?

I found I just have to enjoy. With no parenting responsibilities, being a grandmother is fairly easy — as well as a little historical.

You see, Jayden is named after me.

Carmilla is my middle name, too. It's also Courtney's and my mom's.

Four generations linked by a funny name I couldn't ever spell as a kid was originally spelled with a "K" if we lived in Norway.

Since her arrival I've made a point to Jayden weekly. As a newborn, she changes a great deal in looks and personality.

The visits, however, mean sitting in a vehicle for more than



RUMINATIONS

By Mavis Fodness, Reporter

During the visits, time does seem to stand still.

two hours to Schaller, Iowa.

I've found the drive time has been worthwhile as I snuggle with and get to know this new little person.

During the visits, time does seem to stand still. In a blink of an eye, four hours pass and it's time for the drive home.

Last week Jayden visited her grandparents. Again the three hours of alone time while Mom visited with friends passed quickly.

I am learning quickly the perks of grandparenting — you can hand them back at any time. I forgot how exhausting little ones could be until they learn to talk. I also learned how quickly the newest generation would dictate how the grandparent relationship will evolve.

After a bottle and a clean diaper, I learned my granddaughter is a heartbreaker. With no parents in sight, hours of cuddling seemed to be on the horizon.

Soon, however, the little face I adoringly was watching began to frown and turn red. I learned she no longer wanted to be held but placed in her bassinette to sleep unencumbered by my arms.

The following morning, however, she didn't mind the grandma snuggles as she slept against my shoulder.

Ahh, I am enjoying how this relationship is evolving.

It happens once every 150 years; we're honored to be part of the celebration

It's probably an understatement in Luverne to say we're defined by our history. So much of who we are today and what we'll do tomorrow hinges on who we were and what we've done in the past.

Luverne's 150th anniversary is all about that — about honoring our past and imagining our future. In doing so, we're looking at history to chart our direction for the future. We don't have to be history buffs to understand the significance of our roots.

When we at the Star Herald considered what our role would be in the 150th birthday party, we approached it from several different angles. We knew the party was going to be a big deal — it's a once-in-a-lifetime event, after all. With an eye toward history, we began in January publishing weekly features about significant developments in Luverne's past.

They appear at the bottom of Page 1 each week explaining that the series "shares the rich history of Luverne as it celebrates 150 years." This week we're on the 26th in the series, which will continue through Week 52.

The Star Herald is Luverne's oldest business, documenting the news of its citizens since 1873. With that in mind, we wanted to do something special.

We envisioned a special edition outlining and promoting all the special events and activities of the 150th anniversary party. We also felt it was important to publish a coffee-table version of Luverne's history highlights.

All this would take a book.

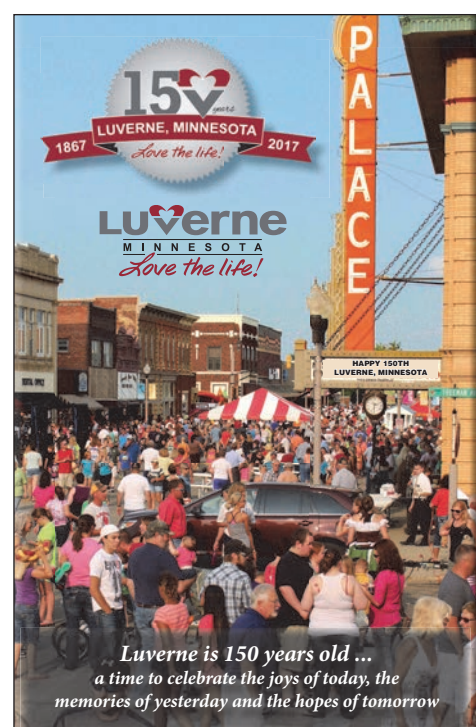
So we decided to publish a book. With the help of our great advertisers, we share this book with our readers and the community next week, just ahead of the big weekend bash.

The response has been great. Businesses and organizations with even the smallest advertising budgets jumped on board to tell their stories and to herald Luverne's 150th milestone.

As a Star Herald staff, we're proud to present the 150th souvenir edition next week, but more than anything, we're grateful to our advertisers and to our accommodating sources.

This — like the celebration itself — is a tribute to all of you and the community you represent.

STAR HERALD EDITORIAL



Another celebration complete, more to come

With the Fourth of July celebration in the books — and another great day at The Lake it was — now it's on to the next Luverne celebration.

In one week (next Thursday) we kick off Luverne's 150th celebration with Hot Dog Night. This is the 55th annual Hot Dog Night, and as per the norm, the event gets bigger and better each year.

When you throw in the farmers market, free hot dogs with all the fixings, ice cream sodas, wiener dog races, Wienerman Triathlon, inflatables, face painting, temporary tattoos, music on Main, and beer gardens, it doesn't get any more fun than that. Like I said, that's just the start to a fun-filled weekend.

Friday events get started early at 9 a.m. at the southern kiosk of Touch the Sky Prairie with a walk on the prairie with Howard Paul.

Throughout the day there will be historic re-enactments around town.

If you like to soar to higher heights, you can catch a ride on a helicopter down at Riverside Park.



FOR WHAT IT'S WORTH

By Rick Peterson, General Manager
Tollefson Publishing

If enjoying live music is your thing, check out The Suburbs at Take 16 or stop down at Sterling's for some tunes and food.

And if a beach party fits your fancy, head down to the National Guard Armory and hang 10 with Surfin' Safari.

If you can get yourself out of bed by 10 a.m. on Saturday, get downtown for the 150th parade. The Luverne Band is the headliner along with floats, firetrucks, collector cars and all things parade.

The parade ends at Blue Mound Avenue and that is where the after-

parade party starts at Take 16.

There will be hayrides, a Red-birds vs Marshall A's baseball game, and a party at the Luverne City Park starting at 5 p.m. with three stages of music. The night comes to an end with a fireworks show fitting a 150th celebration.

On Sunday you can catch another baseball game at Redbird field and at 3 p.m. there will be a community 150th Thanksgiving worship service at the American Reformed Church.

After the 150th weekend, catch up on rest, then get ready for the Rock County Fair in just a couple of weeks.

Ask a Trooper: Zipper Merge keeps construction zones safe

Question: I was told that the fine for speeding in a construction zone had increased recently. Could you also explain the Zipper Merge for merging into construction zones?

Answer: During the spring and summer months, construction season is in full swing in Minnesota. Many motorists continue to risk their lives and the lives of others by not slowing down and not paying attention.

The Minnesota Department of Transportation urges motorists to use both lanes of traffic in a construction zone. Traffic should not merge together until reaching the designated merge area. At that time, vehicles should alternate in a "zipper" fashion into the open lane.

Some drivers slow down and merge too quickly. This can lead to unexpected and dangerous lane changes, serious crashes and rage.

Some motorists will intentionally drive slow or block the lane that is

closing because they believe drivers trying to "beat" the traffic are rude. This is not only dangerous and can lead to a crash or road rage, but it's also illegal. Remember, the driver using the open lane is following the proper way to merge.

Studies show that the "zipper merge" works to keep traffic flowing, especially in heavy traffic, by:

- Reducing fluctuations in speeds between the lanes.
- Reducing the overall length of traffic backup by almost 40 percent.
- Reducing congestion on freeway interchanges.
- Creating a sense of fairness and equity that all lanes are moving at the same rate.

If you have any questions concerning traffic-related laws or issues in Minnesota, send your questions to Sgt. Troy Christianson, Minnesota State Patrol, Troy.Christianson@state.mn.us.

E-mail: editor@star-herald.com Web site: star-herald.com
Phone: 507-283-2333 Fax: 507-283-2335

Published Thursdays by Tollefson Enterprises, POSTMASTER:
Send address changes to 117 West Main, P.O. Box 837, Luverne,
MN 56156. Periodicals postage paid at Luverne, Permit #33 and at
additional mailing offices.

General manager: Rick Peterson **News staff:**
Office manager: Deb Lusty Lori Sorenson, editor
Circulation manager: Jennifer Kor Mavis Fodness, reporter
Advertising: Chantel Connell John Rittenhouse, sports editor
Production manager: Abbe Kolar Esther Frakes, copy editor
Production: Amanda McDonald Joseph Stearns, composition

Rock County
STAR HERALD
Rock County's newspaper since 1873

(ISSN 0889-888X)
SUBSCRIPTION RATES

\$72 per year in Rock County; \$89 per year all other areas. Single copies \$1.25

Entire contents copyrighted by
Tollefson Publishing Roger Tollefson, publisher

The *Star Herald* encourages letters to the editor expressing the opinions of readers and intends to print all letters. Letters not meeting the guidelines will not be printed. The *Star Herald* will verify the authenticity of all letters. Letters must have the name of the writer, a signature and address.

Unsigned letters will not be considered. The *Star Herald* will edit for grammar, spelling and clarity. Any letters containing offensive language, libelous or slanderous material, or misleading or false information will be rewritten before being published. The *Star Herald* will not publish letters written with the sole intent to advertise or serve as a thank-you. Letters with more than 300 words may be edited. The deadline for letters is Monday 10 a.m. They may be delivered or mailed to the editor, *Rock County Star Herald*, P.O. Box 837, 117 W. Main St., Luverne, Minn. 56156.

ON THE RECORD

Dispatch report

June 23
 •Deputy tested subject; arrested for probation violation.
 •Complainant reported radiostolen out of vehicle on Warren Street.
 •Complainant reported a hit and run on his vehicle.
 •Complainant on Warren Street reported a pickup ran into his vehicle sitting in front of his house.
 •Deputy conducted traffic stop at Kenneth. Driver was cited for no MN driver's license, expired registration and no proof of insurance. Vehicle was driven one block to Park Avenue and advised if it moves without current registration, it will be towed.
 •Complainant requested extra patrol at night due to theft.
 •Complainant came into Law Enforcement Center and requested to speak with deputy regarding Craigslist sales. Deputy spoke with complainant.
 •Complainant reported white semi with lights blinking on and off traveling westbound on I-90 from Luverne. No plate number. Notified state patrol.
 •Complainant reported vehicle parked in his mother's yard that does not belong to her. Deputy warned two subjects for trespassing.
June 24
 •Complainant reported patient that had his foot run over by a truck. Driver of the truck left scene. Complainant requested deputy to take report. Deputy reported patient refused to give information and left ER.
 •Complainant reported train loading at location so road will be closed.
 •Complainant reported fire alarms activated in kitchen. No emergency.
 •Complainant reported vandalism due to attempted break-in at S. West Park Street.
 •Complainant reported subject is attempting to contact her.
 •Complainant requested presence during a property exchange at location.
 •Received call from Pipestone County. Complainant in Jasper area re-

ported items missing from home.
 •Complainant requested deputy for possible probation violation.
 •Complainant received Order for Protection violation report.
 •Complainant reported a wedding dance across the street from her home with music that is too loud.
June 25
 •Deputy stopped vehicle. Driver was warned for curfew.
 •Complainant found wallet at Crawford Street.
 •Complainant at Veterans Home reported male walking two dogs often comes in parking lot and by building requesting somebody speak with him.
 •Complainant requested traffic control for large semitrailer getting off I-90 to go south on Highway 75.
 •Complainant reported a subject with a small stature carrying a string backpack walking west about 1 1/2 miles west of Magnolia. Deputy reported subject is headed to Luverne to stay with a friend.
June 26
 •Received report from Southwest Health and Human Services.
 •Received report from Southwest Health and Human Services.
 •Complainant requested to speak to deputy to report suspected employee stealing medication.
 •Minnehaha County reported subject was involved in domestic in Valley Springs and took off with two kids ages 2 and 5. Was also assaulting 5-year-old. Possibly heading to Luverne.
 •Deputy checked on abandoned vehicle at I-90 westbound, mile marker 11.
 •Complainant reported phone found at Blue Mounds State Park.
 •Complainant reported that her son and his friend were riding bikes at Kniss/Main intersection and got hit by a woman in silver pickup on her cell phone. No injuries. Person in pickup did not stop.
 •Complainant reported verbal domestic situation had occurred on June 26.

Complainant was given information for the Crisis Center and was told to seek out an order for protection.
 •Complainant reported subject came to location to turn self in on warrant. Subject is held at the Nobles County Jail.
June 27
 •Complainant reported there is a trailer parked on the street for too long. Deputy advised owners.
 •Complainant reported neighbor yelling at him and firing a gun.
 •Complainant called Law Enforcement Center and requested to speak with deputy regarding property left on her property. Deputy spoke with complainant.
June 28
 •Complainant reported hit and run at location. Complainant heard the accident but did not see anything.
 •Complainant requested warrant entry from a state patrol case.
 •Complainant reported a door and window and AC unit had been damaged in Hills. A door was also ajar at a different entrance to the building. It is unknown if anything was stolen at this time.
 •Complainant reported semitrailer driving erratically. Transferred to state patrol.
 •Deputy reported vehicle abandoned off roadway.
 •Complainant reported a male is taking pictures of small children playing at The Lake. Complainant described male as white wearing gray shorts, dark shirt and sunglasses. Also described as having sandy-colored hair and a beard. The man left in a red minivan heading east toward South Kniss Avenue.
June 29
 •Deputy reported vehicle parked in handicapped spot at Redbird Field.
 •Complainant requested a deputy attempt to make contact with subject at his parents' house in regard to a domestic abuse.
 •Complainant reported speeding gravel trucks near County Highway 4 and County Road 9.
 •Complainant reported

she was chased by a dog that is owned by subject. Complainant reported that the dog was vicious and chased her for over a block.
 •Complainant reported that vehicle has not moved for months at location. It does not belong to the owner of the residence on Crawford Street.
 •Complainant reported that she found some vehicle tabs at JJ's Drive-in.
 •Complainant reported that someone came on his yard and let his dog off its chain again. Complainant was told to call back if it happens again.
 •Complainant requested extra patrol during the day as his dog keeps getting let off the chain at location. See previous ICRS.
 •Complainant reported subject verbally harassed her and her son at location. The subject is now sitting in a green car across the street watching the apartment.
 •Complainant reported something on fire in the ditch north of County Road 7 and 164th Avenue. Dispatch contacted landowners. Trees cut and burning in the ditch. All is OK.
June 30
 •Complainant requested to speak with deputy about family and child issues.
 •Deputy reported he is out with a stalled vehicle on North Kniss. Deputy advised trailer brakes locked up. Driver has someone coming to help.
 •Complainant reported bolt sticking out of railroad at intersection. Contacted Eric from the railroad company and he will get it taken care of.
 In addition, officers responded to 3 motor vehicle accidents, 1 deer accident, 1 vehicle in ditch, 5 public assists, 1 transport, 39 traffic stops, 17 ambulance runs, 3 paper services, 6 animal complaints, 3 abandoned 911 calls, 8 log/alarms sheets, 1 POR registration, 5 drug court tests, 5 welfare checks, 5 money escorts, and issued 6 purchase/carry permits and 8 burn permits.



Mavis Fodness photo/0706 History Center Sign

First sign goes up at History Center

Travis Cole (pictured) and Chuck Nolz with Pride Neon Sign Company of Sioux Falls work to weld the History Center sign into place Friday afternoon in front of the center's new location on Luverne's Main Street. The sign is the first of a series of signage planned for the building. The signs, painting of the facility and landscaping are expected to be finished later this month. The center is currently open Tuesdays through Saturdays from 10 a.m. to 4 p.m.

ADVERTISEMENT FOR BIDS

MERRILL PIONEER COMMUNITY HOSPITAL - CRITICAL ACCESS HOSPITAL REPLACEMENT, ROCK RAPIDS IA

Owner: Merrill Pioneer Community Hospital
 PO Box 550
 Rock Rapids, IA 51246
 (712) 348-2442

Architect: BWBR
 380 St Peter Street, Suite 600
 Saint Paul, MN 55102
 (651) 222-3701

Construction Manager: Journey Construction Professionals
 4500 West 58th Street
 Sioux Falls, SD 57108
 605-332-5968

Bid Date: Wednesday, July 19th, 2017
Bid Time: 11:00 AM

Pre Bid Date: Tuesday, July 11th, 2017
Pre Bid Time: 11:00 AM

Location: Journey Group Office, 4500 58th Street, Sioux Falls, SD 57108

Bids will be received by the Construction Manager as Constructor, Journey Construction Professionals, at the date and time listed directly above via PHYSICAL MAIL or HAND DELIVERY.

Bids will be received for the following Bid Packages: 3.1 FOOTINGS AND FOUNDATIONS, 3.2 CONCRETE FLATWORK, 3.3 CONCRETE REINFORCING - SUPPLY ONLY, 4.1 MASONRY AND PRECAST ARCHITECTURAL CONCRETE, 5.1 STRUCTURAL STEEL SUPPLY, 5.2 STRUCTURAL STEEL ERECTION, 6.1 ROUGH CARPENTRY, 6.2 FINISH CARPENTRY, ARCH CASEWORK - INSTALL ONLY, 6.3 FINISH CARPENTRY, ARCH CASEWORK, COUNTERTOPS - VENDOR ONLY, 7.1 WATERPROOFING, 7.2 ROOFING AND METAL PANELS, 7.3 FOAMED IN PLACE INSULATION, 7.4 FIREPROOFING, 7.5 JOINT SEALANTS AND FIRESTOPPING, 8.1 DOORS, FRAMES AND HARDWARE - VENDOR ONLY, 8.2 DOORS AND HARDWARE - INSTALL ONLY, 8.3 SPECIALTY DOORS, 8.4 ALUMINUM FOREFRONT, CURTAIN WALLS, GLAZING, 9.1 DRYWALL AND METAL STUD FRAMING, 9.2 TILING, 9.3 ACOUSTICAL CEILINGS, 9.4 RESILIENT FLOORING, CARPETING, 9.5 PAINTING, WALL COVERING, AND INTUMESCENT FIREPROOFING, 9.6 EPOXY QUARTZ FLOORING, 9.7 SPECIALTIES - VENDOR ONLY, 9.8 SPECIALTIES - INSTALL ONLY, 10.1 FIREPLACES, 12.1 WINDOW SHADES, 21.1 FIRE SUPPRESSION, 22.1 PLUMBING AND HYDRONIC PIPING, 23.1 HVAC, 26.1 ELECTRICAL, 31.1 EARTHWORK, 32.1 SITE CONCRETE AND CONCRETE PAVING, 32.2 ASPHALT PAVING ALTERNATE, 32.4 PAVEMENT MARKINGS AND SIGNAGE, 33.1 SITE UTILITIES

Access to Plans and Specifications will be available to bidders via the following avenues:

• Electronically via Grade Beam for this project. For access to the electronic plans email your name, company, phone number, fax number and email address to jnieuwohner@journeycorstruction.com. You will receive an email from Grade Beam for access.

All costs associated with printing for either option shall be the responsibility of the Bidder

Anyone requesting, reviewing, or copying Plans and Specifications for this project (such individual is hereinafter referred to as "bidder") agrees that they are doing so for the sole purpose of submitting a bid on the project. Bids may not be modified or withdrawn within 30 days after bids are received.

Each bid in excess of \$50,000.00 must be accompanied by a certified check, cashier's check or draft in the amount of 5% of the base bid and all add alternates and drawn on a State or National Bank or a 10% bid bond issued by a surety authorized to do business in the State of Iowa and made payable to Journey Construction Professionals.

Used clearance SALE

283-9171 | PAPIK.COM

CHEVROLET GMC CHRYSLER DODGE Jeep RAM

| | |
|----------------------------------------------------------------------------------------------------------------------------------|-----------------------------------------------------------------------------------------------------------------------------------------|
| <p>2017 Jeep Compass</p> <p>Stock #104193Z 15K</p> <p><i>Save \$3,000</i></p> <p>Was \$18,990 Now \$15,990</p> | <p>2014 Buick Lacrosse</p> <p>Stock #101533N 39K</p> <p><i>Save \$4,000</i></p> <p>Was \$18,990 Now \$14,990</p> |
| <p>2013 Toyota Rav4</p> <p>Stock #9700N 51K</p> <p><i>Save \$4,000</i></p> <p>Was \$20,990 Now \$16,990</p> | <p>2015 Jeep Grand Cherokee</p> <p>Stock #191843N 33K</p> <p><i>Save \$4,000</i></p> <p>Was \$36,990 Now \$32,990</p> |

**needsomething?
(new vehicle)**

try
pages
6&7B
STAR HERALD
theclassifieds



Lori Sorenson photo/0706 star herald float

Happy 150th birthday, Luverne!

Chantel Connell and Rick Peterson work on the Star Herald's entry in the office garage Thursday for Luverne's 150th Parade. Businesses, churches, families and other community groups are encouraged to participate in Luverne's 150th Grand Parade with a float or other entry. The parade will travel down Main Street at 10 a.m. Saturday, July 15. Cash prizes will be awarded in five different categories (family or neighborhood, organization or government, church or religious group, business or commercial, and musical group.) Parade registration and information is available at the Luverne Chamber office, 283-4061. According to Luverne Chamber Director Jane Wildung Lanphere, parade-goers are encouraged to stay to the end for a special treat. "We'll be handing out 1,500 "Happy 150th Luverne" frosted cookies while we sing Happy Birthday," she said.



1926: Days of Yore relived

The following is continued from last week:

DAYS OF YORE BEING RE-LIVED OVER COUNTY

In a store one had a chance to greet Cora Woodruff, while in another aisle one came upon Martha Oestern and a few feet away stood Addie Henderson talking to a child. Then too, one met Ola Philbrick, Carrie Gunderson and Frankie McDermott as they strolled down the street. At the corner Carrie Hawes was conversing with a friend, and on the opposite side of the street one could plainly recognize Alice Lemka and Minnie Spalding, while comfortably seated in a car were Etta and Phoebe Coon. Alice Kitterman is also here and there is Edna Norelius and Effie McMillan. Still farther down the street one came upon Margaret Devy, and Ella Ross.

Near the bank corners one's eyes focused in turn on J. E. Leslie, Isaac Abbot, P. H. Bly and Al. Webber. Across the square one saw Myrtle Woodle and Alma Tierney. Near the post office one chanced to meet Hazel Roberts and Sadie Standish. But this list would not be even five per cent complete without mentioning Mike Morgan, C. A. Mead, Andy Webber, John Marsden, Wm. March and Geo. Steen.

The first three days of the homecoming were given over almost exclusively to visiting around, the only deviation being that of attending chautauqua, but as Wednesday evening was ushered in, a special home-coming program was given at the Palace theatre, following the screen feature, "Rolling Home."

One of the popular features of each evening was a film showing local people and scenes, taken in 1917. Among those shown in these pictures were Mayor W. A. Wright, the late C. C. Drew, the late Dr. A. H. Carver, the Rev. Fr. Mangan and Rev. H. W. Bedford. These views gave an interesting contrast in the styles of feminine wearing apparel as compared with those of today.

The home-coming portion of the program consisted of an address of welcome by Mayor John Connell; a group of famous melodies, given by an old-time choir of about twenty-five voices; indoor sports; the family album, by a cast composed of Mesdames Emil Frick,



BITS BY BETTY

By Betty Mann, president Rock County Historical Society

Nels Peterson, John Houg, and the Misses Madeline Dunn, Barbara Brown, Mary Jane Brown and the Messers Emil Frick, Nels Peterson, Perry Arnette and Art. Berg; minuet, by Mary Jane Brown, granddaughter of E. A. Brown and Jos. K. Knight; George Bert LaDue, grandson of A. D. LaDue and F. A. Hyke, with humorous reminiscences by Judge C. A. Mead, of Clear Lake, S. D.; a tribute to the pioneer girls by Effie Lindsley Grout, of Minneapolis; reminiscences by Frank McMillan, of Chicago, and a vocal solo by Mrs. Clara Henton Hayes.

Somewhat the same program was presented last evening at the theatre, with the address, of welcome by E. H. Canfield and talks by M. U. S. Kjolroug, of Minneapolis, and Ella Donaldson Crawford, of Sioux Falls.

A broom brigade drill was a feature each evening, the brigade being composed of Misses Irma Engelking, Beatrice Ryan, Irma Jarchow, Edna Norton, Irene Marr, Minnie Mathiesen, Beulah Backer, and Agnes Hansen, with Helen Goettsch as captain. The broom Brigade was revived in commemoration of an early day organization that was responsible for establishing the first reading room in Rock county, which was forerunner of Luverne's library.

Donations to the Rock County Historical Society can be sent to the Rock County Historical Society, 312 E. Main Street, Luverne, MN 56156. Mann welcomes correspondence sent to mannmade@iu.net.

CELEBRATIONS

Births

A girl, Taya Jennie, weighing 7 pounds, 4 ounces, and 20 inches long, was born Wednesday, June 21, 2017, at Sanford Luverne to Halden and Erica Van Wyhe, Hills. She joins a brother, Teagan, 2. Grandparents are Ron and Kellie Thier, Adrian, and Howard and Heidi Van Wyhe, Hills. Great-grandparents are Joe and Elaine Scheidt, Adrian, and Wayne and Hendrene Van Wyhe, Hills.

Bridal Showers

An open house bridal shower for Natalie Stueven, bride-to-be of Greg Fick, will be from 2-4 p.m. Sunday, July 9, at St. John Lutheran Church in Luverne.

An open house bridal shower for Hanna (Hemme) Walters, bride of Dustin Walters, will be from 9:30 to 11:30 a.m. Saturday, July 8, at St. Catherine's Gathering Space in Luverne.

Card Showers

Vivian Holst will celebrate her 80th birthday on July 10. Greetings may be sent to her at 910 N. McKenzie St., Luverne, MN 56156.

Sidney and Lorraine (Baker) Jiskoot will celebrate their 60th wedding anniversary on Tuesday, July 18. Greetings may be sent to them at 358 Sawgrass Trail, Sioux Center, IA 51250.

Let spinach die now for wonderful fall crop

As the squash vines take off conquering the garden, it is time to protect them from the squash vine borer. An application of dust or spray at the base of the plant will give you protection from this pest.



The moth lays its eggs at the base of the plant, not along the length of vine. The eggs hatch and the larvae eat their way into the vine and continue to tunnel along the vine. Their feeding interrupts the flow of sap and that length of the vine will initially wilt and eventually dies. Once the larvae have entered the vine,

KNOW IT AND GROW IT

By George Bonnema, Luverne Horticulturalist

Tend to squash vines, spireas, too

It is pretty hard to stop the damage because we won't notice the symptoms until it is too late. Prevention is the best cure.

Summer-blooming spireas have finished flowering, so give them a shearing to remove the faded flowers and they will reward you with a fresh look that will carry

through the remainder of the growing season.

My spinach has totally gone to seed (bolted) so I will allow the plants to grow until they die. Then I'll just thrash the seed out of the stem and leaf debris and allow it to begin growing when rain encourages that to happen or when I do the

rain's job with the water hose. Spinach will come back for a wonderful fall crop. The shortening days of fall will prevent it from going to seed again, so you can keep harvesting fresh spinach as long as it keeps growing. Then with a little luck and good snow cover, it will be ready to go again in the spring.

If you didn't plant spinach but want to use it as a fall crop, buy the seed now while it is still available and sow it in late August.

Bonnema is a gardening enthusiast and former greenhouse owner. He can be reached at flowersgb@iu.net.

REMEMBER WHEN

10 years ago (2007)

Luverne School Board members approved \$2,737 in expenses related to the damage to school property that occurred during a Jan. 7 school burglary.

This amount covers replacement and finishing of the doors that were damaged when burglars broke into the middle school/high school building in January.

Locks for the doors are expected to cost about another \$600.

25 years ago (1992)

The first commercially produced tape of Luverne's Grace Notes is now on sale in local stores.

The tape was produced when the group took a trip to Nashville over Mother's Day weekend.

Some of the selections include "The Orange Blossom Special," "The Blue Mound Opry Strut," "Amazing Grace," "Cotton Eye Joe" and more.

The group is directed by Janine Papik and includes Ingrid Sanden, Heidi Papik, Gretchen Papik, Leif Berg and Susan Herman.

50 years ago (1967)

Mark Jacobson, owner of Mark Jacobson, Inc., local International Harvester dealer, announced this week that he was planning to build a new building on the Gabrielson property, just south of Luverne. He has purchased about three acres of land from Gabriel Gabrielson, Jr., just north of the Minnesota Highway Department building. Construction will be started

later this year, Jacobson said, and he expects it to be ready for occupancy by December 1. ...

Jacobson said that his business has outgrown his present location on South McKenzie Street. The new building will be on a site large enough so that he can have his used machinery lot immediately adjacent to it. Now, a large share of his machinery is on a lot that is several blocks from his store and shop.

75 years ago (1942)

It's grand opening day tomorrow for the J.C. Penney Co. department store in Luverne, and at the same time, it will be bargain day for thrifty shoppers in the Luverne trade area, R.A. Ronlund, manager of the store, announced yesterday.

For the past several weeks, the store has been undergoing a remodeling and modernizing program, and promptly at 9 a.m. Friday, the front doors will swing wide for the official celebration. Thousands of dollars of specially selected merchandise will go on sale for the event Ronlund said.

100 years ago (1917)

After seven days of excellent entertainment, every number of which had been largely attended, Luverne's 11th annual chautauqua came to a close Tuesday evening. ...

The program given Sunday by Kryl's famous band proved the greatest attraction of the chautauqua, and was accorded the most popular approval of audiences. It is estimated that there were over three thousand paid admissions during the afternoon and evening, with about nineteen hundred people present at the evening concert.

SCHOOL NEWS

Concordia College Moorhead releases list

Kira Graber, a junior at Concordia, was named to the dean's list for Spring 2017 semester. To be named, students must earn a 3.7 or higher on a 4.0 scale.

Kira is the daughter of Keith and Seana Graber, Luverne.

Crabtree receives Concordia scholarship

Madison Crabtree is the recipient of an Excellence Scholarship to attend Concordia College, Moorhead.

Madison, a 2017 graduate of Luverne High School, is the daughter of Josh and Emily Crabtree, Luverne.

Bonnett graduates from DWU

Anntoinette Bonnett, Luverne, graduated from Dakota Wesleyan University in Mitchell, South Dakota, at Spring 2017 commencement exercises May 7 with a Bachelor of Science degree in nursing.

Augustana announces spring dean's list

Augustana University in Sioux Falls, South Dakota, has released the Spring 2017 dean's list. Named to the list from Luverne were Paige Baker, Tyler Johnson, Aimee Moss, Megan Petersen and Cody Rofshus.

To be named, students must earn a minimum of 12 credit hours with a 3.5 or higher GPA on a 4.0 scale.

Harvest for Hunger gives over \$11,000 for food relief

By Mavis Fodness

A monetary donation from CHS Eastern Farmers of Luverne means resources at the Rock County Food Shelf and Luverne Back-Pack Program will stretch further.

Through its Harvest for Hunger fundraiser, CHS of Luverne raised \$11,721.39 and gave \$8,271.39 to the Rock County Food Shelf and \$3,450 to the BackPack Program.

"Our numbers are up in the summer when the kids are home," said Food Shelf director Mary Gehrke.

In 2016 the Food Shelf housed in the Luverne United Methodist Church on Main Street served 821 families or 3,305 people. They distributed more than 46,000 pounds of food, Gehrke said.

During the school year families' grocery budgets are stretched through the Luverne BackPack Program which provides students with food items for the weekends.

The pre-school through 12th-grade program averages 210 students throughout the school year.

The BackPack program began in 2009, according to Lisa Dinger with Luverne's Child Guide Program.

The local food shelf began in the 1970s and operates on donations from individuals and various organizations.

CHS began its annual Harvest for Hunger campaign in 2011 to alleviate food insecurity within its

service areas.

USDA describes food insecurity as reduced food intake or skipped meals because the household lacks money or other resources for food.

"Hunger is a reality for many in our communities and we may not even know it," said Chuck Miller, CHS Country Operations general manager. "Through CHS Harvest for Hunger, we are helping those in need."

For 20 days in March, the 50 CHS locations conduct grain drives and employee fundraisers with proceeds later distributed to local organizations.

Top: Through its Harvest for Hunger fundraiser, CHS Farmers Co-op Luverne donated \$8,271.39 to the Rock County Food Shelf. Pictured are (front row, from left) Food Shelf board members John Oksness and Katie Baustian, CHS' Dan Kindt, (back) Tonner Bowman, Tom Nelson and Josh Hansen.

Bottom: CHS Farmers Co-op Luverne donated \$3,450 to the Luverne BackPack Program through its Harvest for Hunger fundraiser. Pictured are (from left) BackPack Program board member Ginger Schomacker, CHS' Matt Mostad, Josh Hansen, Gary Lee, Tonner Bowman and Michelle Reinke.



DEATH NOTICE

Blanche Schei

Blanche Schei, 84, formerly of Luverne, died Sunday, July 2, 2017, at the Good Samaritan Communities of Pipestone.

A funeral service will be at 10 a.m. Friday, July 7, at St. James Lutheran Church in Holland. Interment will follow at Greenwood Cemetery in Brookings, South Dakota. Visitation will be from 4-7 p.m. Thursday, July 6, at Hartquist Funeral Home - Pipestone Chapel.

Arrangements are through the Hartquist Funeral Home, www.hartquistfuneral.com. (0706 DN)

MENU

Monday, July 10: Liver or Pepper steak, butter boiled potatoes, peas, bread, apricots. Program: Senior meeting. Fourth of July celebration.

Tuesday, July 11: Swedish meatballs, mashed potatoes and gravy, spinach, bread, ice cream.

Two-buck Tuesday sponsored by Main Street Financial Services

Wednesday, July 12: Chef salad, cucumber salad, muffin.

Thursday, July 13: Roast beef with gravy, mashed potatoes, carrots, dinner roll, pudding dessert.

Friday, July 14: Chicken chow mein, rice, chow mein noodles, oriental vegetables, mandarin oranges, cookie.

For reservations, call 283-9846.

PEOPLE IN THE NEWS

Hansen and Goehle honored for 50 years in banking

The Minnesota Bankers Association recently inducted Elaine Hansen and Linda Goehle into its Pioneer Club during the Annual Summit and 128th Annual Meeting at the Duluth Entertainment Convention Center in Duluth.

The Pioneer Club honors bankers who have been in the banking industry for 50 or more years.

Hansen started her banking career at Pipestone National Bank as a teller, and her latest position is Exception Items Specialist at First Farmers & Merchants Bank in Luverne.

Linda Goehle began her banking career on Sept. 12, 1966, as an audit clerk for First National Bank of Luverne. Her current position is bookkeeper for First Farmers & Merchants Bank in Luverne.

"We are proud to honor these bankers for their tremendous and lifelong commitment to the industry," said Joe Witt, President and CEO of the banking association.

"It is because of their hard work and dedication that banks remain a solid foundation in their communities."

In addition to Hansen, and Goehle, two other bankers in the state were inducted into the MBA's Pioneer Club.

They are Jerine Hoffmann, Frandsen Bank & Trust, New Ulm; and Dennis Troff, Peoples Bank of Commerce, Cambridge.



Pictured at the Duluth Convention Center are (from left) Joe Witt, MBA president/CEO; Gail Mikolich, MBA past chair; Linda Goehle; and Mark White, MBA Chair.



Pictured at the Duluth Convention Center are (from left) Joe Witt, MBA president/CEO; Gail Mikolich, MBA past chair; Elaine Hansen; and Mark White, MBA Chair.

League honors Weber as a 2017 Legislator of Distinction

The League of Minnesota Cities has selected 32 state lawmakers, including Senator Bill Weber, as Legislators of Distinction for 2017. The honor recognizes legislators for specific actions that aided efforts of Minnesota cities during the past year's legislative session.

Sen. Weber was chosen specifically for authoring legislation supported by the League that provides city wastewater treatment facilities with assurance that once they improve their facility to meet new environmental standards, they will not need to rebuild until they have been able to pay off a reasonable portion of the debt they incurred. He also chief-authored the legislation to restore LGA funding to the 2002 level, and he coauthored several other League-supported bills, including the League's bill to generally authorize local sales taxes, workforce housing TIF, the border-to-border broadband grant program, the construction sales tax exemption, and the road construction vehicle sales tax exemption.

Recipients of the recognition received a letter of appreciation and a certificate.

A complete list of all Legislators of Distinction can be found at <http://www.lmc.org/lod>.

FSA office closed Monday, Tuesday for office relocation

July 10-11 - FSA Office limited service due to Service Center relocation.

July 17 - 2016 NAP Crop production reporting deadline; Crop acreage certification deadline.

The Farm Service Agency (FSA) would like to remind Conservation Reserve Program (CRP) participants of their responsibility to ensure that acres enrolled in CRP are properly maintained throughout the contract period, as agreed to in their CRP contract (CRP-1 Appendix) and the Conservation Plan of Operations (CPO). FSA encourages contract participants to regularly visit and evaluate the condition of the CRP acreage to ensure the vegetative cover and conservation practice are properly maintained to adequately control erosion, protect air and water quality and enhance the wildlife habitat, as agreed to in the approved CPO.

CRP contract participants are required to control undesirable weeds, invasive plants, insects, pests and rodents on the entire CRP acreage covered by the CPO, as determined by the FSA County Committee (COC). This is to insure that the existing CRP cover, as well as surrounding landowners, air and water quality, and wildlife habitat, are not adversely impacted. FSA has the authority to determine that a violation has occurred when any portion of the CRP acreage is infested, degraded,

destroyed or otherwise compromised to the point that the established conservation practice no longer functions as intended.

Participant awareness of the condition of CRP acreage is crucial to remaining in compliance with CRP regulations. Failure to adequately maintain CRP acreage may result in a compliance violation. FSA randomly spot-checks CRP acreage. If the acreage is found to have areas not in compliance with the CPO, a violation will be determined by the COC.

CRP policies also require CRP acreage to be in compliance with the State noxious weed law as determined by the State or local noxious weed commission. The established payment reduction for lack of control of undesirable weeds on CRP in Rock County is \$50 per acre in violation.

CRP maintenance activities may be conducted without FSA approval anytime outside the established primary nesting and brood rearing season from May 15 through August 1.

In addition, CRP participants are required to conduct any management activities, outside of the nesting season, that are scheduled in their CPO. For any activity not scheduled in the CPO, FSA approval must be obtained prior to conducting the activity.

For more information, contact Fraser Norton, Rock County FSA executive director, at 311 W. Gabrielson Road, Suite 1, or call 507-283-2369, ex. 2, or email at fraser.norton@mn.usda.gov.

BUTCHER BOX

Get the best meat delivered directly to your door for less than \$6.00 per meal.

\$129/mo.

FREE Shipping

Our Promise

- ✓ Never ever antibiotics or hormones
- ✓ Humanely Raised
- ✓ Never feed lots

Pick from our great selection:

- 100% grass-fed and grass-finished beef
- Free range organic chicken
- Heritage Breed pork

1-855-380-4240

ROUNDUP WEEDKILLER ALERT

If you or a loved one were frequently exposed to Roundup weed killer for more than a year and developed **Non-Hodgkin Lymphoma** you may have a claim for money damages.

If you or a loved one were diagnosed with **Non-Hodgkin Lymphoma**

CALL TODAY

You May Be Entitled to **MONEY DAMAGES CALL 1-800-769-2889**

CANCER ALERT

www.weedkillerclaims.com

If You or a Loved One Were Diagnosed With **CANCER** After Regular Roundup Weed Killer Exposure **CALL**

MONEY DAMAGES CALL 1-800-769-2889

Goza & Honnold, L.L.C. Law Firm. This is a legal ad. The choice of a lawyer is an important decision and should not be based solely upon advertisements.

INJURED AT WORK? DISABILITY DENIED?

Contact Us Today For Free Advice

Workers' Compensation
Long-Term Disability
Social Security Disability

1-888-343-5375
www.GetFields.com

Steve Fields
Minnesota Attorney

FIELDS LAW FIRM

WILDER PAGEANT

Walnut Grove, MN
40th annual outdoor drama, based on the life of
Laura Ingalls Wilder

July 14-15, 21-22,
28-29, 2017

888-859-3102

walnutgrove.org

Performed along the Banks of Plum Creek

ITEMS THROUGHOUT MS / HS FACILITY

- ELECTRICAL DISTRIBUTION UPGRADES AND MORE ELEC. CIRCUITS & OUTLETS IN EDUC. SPACES
- FIRE SPRINKLERING & CLASSROOM DOOR REPLACEMENT
- DOOR ACCESS CONTROLS AND SECURITY CAMERAS
- UPDATE CORRIDOR FINISHES AND REPLACE LOCKERS
- UPGRADE CLASSROOM INTERIORS, FIXTURES, FURNITURE AND EQUIPMENT.
- NEW HEATING, VENTILATION, AND AIR CONDITIONING SYSTEMS
- NEW CENTRAL HEATING PLANT, CONVERT REMAINING STEAM TO HOT WATER, AND UPGRADE DOMESTIC WATER SYSTEM
- REMOVE OF ASBESTOS CONTAINING MATERIALS

ITEMS THROUGHOUT ELEMENTARY FACILITY

- DOOR ACCESS CONTROL & SECURITY CAMERAS

IMPROVEMENTS LEGEND:

- NEW CONSTRUCTION
- RENOVATED / REMODELED SPACE
- REFRESHED SPACE

Educational Adequacy Color Key

| | |
|---------------|-----------------------------------------------------------------------------------------------------------------------------------------------------------------------|
| Green | Adequate - Meets 4-5 of the Analysis Criteria - including MDE Guidelines for School Educational Adequacy |
| Yellow | Questionable Adequacy - Meets only 2-3 of the Analysis Criteria, but may be considered adequate based upon current programming/enrollment and/or size of area. |
| Red | Inadequate - Meets 1 or none of the Analysis Criteria - is perceived as a significant need by staff |

LUVERNE SCHOOL PROJECT IMPROVEMENTS
JUNE 19, 2017 | JLG 17047 | © 2017 JLG ARCHITECTS

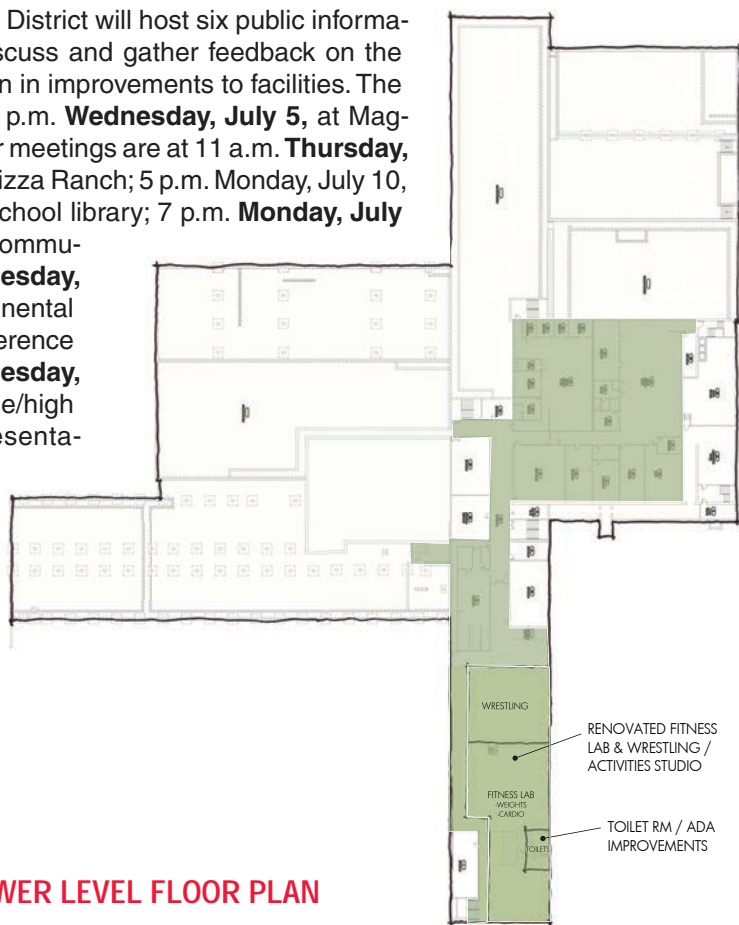
FOSTER JACOBS & JOHNSON, INC.
LISTEN + PLAN + DESIGN + EXECUTE®

JLG
DESIGN FOR LIFE

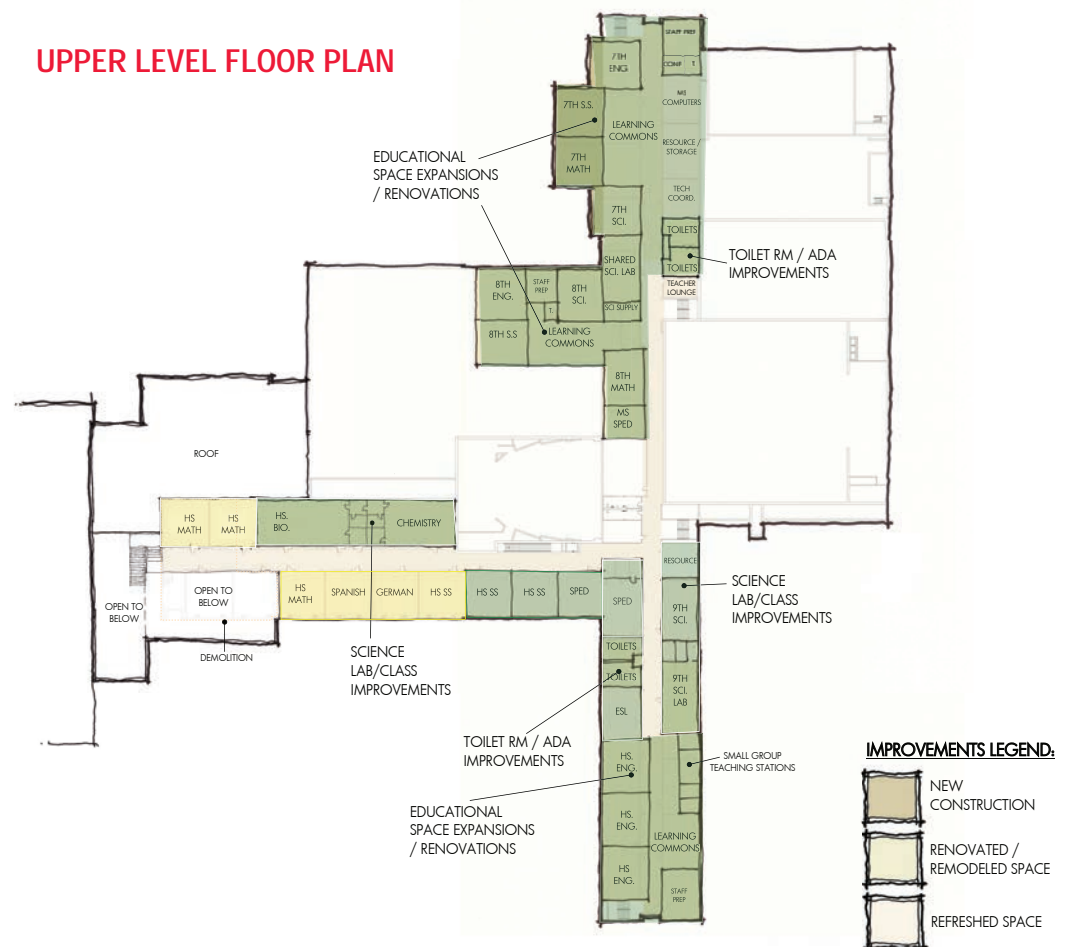
Public encouraged to attend meetings about school district's proposed plans for facilities improvements

Luverne School District will host six public information meetings to discuss and gather feedback on the proposed \$24 million in improvements to facilities. The first meeting is at 8 p.m. **Wednesday, July 5**, at Magnolia City Hall. Other meetings are at 11 a.m. **Thursday, July 6**, at Luverne Pizza Ranch; 5 p.m. Monday, July 10, in the middle/high school library; 7 p.m. **Monday, July 10**, at Hardwick Community Center; noon **Tuesday, July 11**, in the Continental Western Group conference room; and 5 p.m. **Tuesday, July 11**, in the middle/high school library. Presentations at each meeting will be similar and are an hour in length. The meetings will allow time for questions.

LOWER LEVEL FLOOR PLAN



UPPER LEVEL FLOOR PLAN



24/7 ... Rain or Shine ...

Your local, independent agent will be there.

Working for you-meeting your needs.

Buffalo Ridge INSURANCE

South Hwy. 75, Luverne, MN • Ph. 507-283-2381

Auto-Owners INSURANCE
LIFE • HOME • CAR • BUSINESS

Marilyn Bloomendal, CPCU
Cory Bloomendal, CIC
Steve Smedstad, CIC

DAKOTA VISION CENTER
Best care in sight.

2nd Location Open
at Arrowhead Plaza, just South of Menards
5418 E. Arrowhead Pkwy.
Sioux Falls, SD 57110

Comprehensive Eye Exams Available

- VSP, Eyemed, Medicare, SD Medicaid
 - o Many other plans accepted
- Large Selection of Eyewear
 - o Coach, Jimmy Choo, Ray-Ban and more
- Contact Lens Specialist
 - o Visit our Website to learn more

www.DakotaVisionCenter.com

Call to schedule an appointment today!
605-271-0464

CAN YOU SEE ME NOW?

Your property taxes.
The roads you travel.
Our local water supply.
School finance.

No one covers the news that affects your life like your community newspaper.

your community. your newspaper.

Rock County
Star Herald
We're *your* newspaper.

Luverne Legion runs table in St. James

By John Rittenhouse

The Luverne American Legion baseball team won three consecutive games to win the St. James Tournament over the weekend.

Luverne nipped St. James by one run in Friday's opener before posting one- and five-run victories over Windom and Blue Earth respectively on Saturday.

The 8-3 Cardinals wrap up the regular season by playing a game in Tea, South Dakota, Wednesday (July 5).

Luverne hosts the Sub-District Playoffs at Redbird Field Friday through Sunday.

Luverne 8, Blue Earth 3

The Cardinals completed their undefeated appearance at the St. James Tournament by besting Blue Earth by five runs in Saturday's finale.

Luverne fell behind early in the game before settling the issue with a big inning at the plate.

Luverne's perfect record appeared to be in jeopardy when Blue Earth plated one run in the bottom half of the second inning and added two more runs in the third to open a 3-0 advantage.

The Cardinals settled the issue in the top of the fourth, when they erupted to plate eight runs and cap the scoring in the game.

Mark Sterrett and Charlie Reisch came up with two of the biggest hits of the rally when they registered two-run singles.

Sterrett led the Cards with two hits in the game.

Declan Beers and Chase Johnson singled home one run each.

Jaden Knips drew a bases-loaded walk to earn an RBI for the Cards, while another run scored on an error.

Jake Haugen secured the pitching win after tossing seven innings of three-run ball.

| | | | | |
|---------|---|---|---|---|
| Reisch | 4 | 1 | 1 | 2 |
| Serie | 4 | 1 | 0 | 0 |
| Beers | 4 | 1 | 1 | 1 |
| Johnson | 4 | 1 | 1 | 1 |
| Buss | 4 | 1 | 0 | 0 |
| Vis | 3 | 1 | 1 | 0 |
| Van Dam | 3 | 0 | 1 | 0 |
| Knips | 1 | 1 | 0 | 0 |

Luverne 4, Windom 3

The Cardinals plated a run in the bottom half of the seventh inning to nip Windom by one in Saturday's opening game.

Luverne sported a 3-0 lead early in the game only to have Windom battle back to knot the score at three.

The Cardinals produced the game-winning run in the seventh frame.

Sterrett reached base on an error, Reisch was hit by a pitch and Serie singled to load the sacks in the seventh.

Beers ended the game with an RBI single to plate Sterrett.

Luverne took a 3-0 lead after scoring one run in the first inning and two in the second.

Reisch was hit by a pitch, stole second and third base before scoring the first-inning run when Serie recorded a sacrifice fly.

Quinn Buss singled and Nathan Nekali was hit by a pitch to set the stage for Luverne's two-run second inning.

Buss scored on a single by Jacob Van Dam and Nekali scored when Knips delivered an RBI single.

Windom battled back to knot the score at three by scoring one run in the fourth inning and two in the sixth.

Serie secured the pitching win for the Cards by twirling seven innings of three-run ball.

| | | | | |
|-----------|----|---|---|----|
| Box score | AB | R | H | BI |
| Sterrett | 4 | 1 | 0 | 0 |
| Reisch | 2 | 1 | 0 | 0 |
| Serie | 4 | 0 | 1 | 1 |
| Beers | 4 | 0 | 1 | 1 |
| Johnson | 3 | 0 | 0 | 0 |
| Buss | 3 | 1 | 1 | 0 |
| Nekali | 2 | 1 | 1 | 0 |
| Van Dam | 2 | 0 | 1 | 1 |
| Knips | 2 | 0 | 1 | 1 |

Luverne 6, St. James 5

The Cardinals opened the tournament by nipping the host team by one run Friday evening.



Luverne's Tyler Roberts slaps a tag to register the final out of a 4-0 American Legion baseball victory in Heron Lake June 27. Luverne reeled off three consecutive victories to win the St. James Tournament over the weekend.

John Rittenhouse photo/0706 legion 14

| | | | | |
|-----------|----|---|---|----|
| Box score | AB | R | H | BI |
| Sterrett | 2 | 1 | 2 | 2 |

Luverne gained a 5-0 lead in the top half of the third inning only to have St. James trim the difference to one run (5-4) after the hosts scored twice in the fourth and fifth innings.

The Cards upped the lead to 6-4 when Derek Lundgren slapped an RBI in the top of the seventh before the Saints scored the game's final run in the bottom half of the frame.

Luverne's five-run third inning featured a three-run triple by Beers and an RBI single from Serie.

Lundgren pitched six innings of four-run ball to nail

down the win.

Beers notched a save by pitching a one-run seventh inning.

No box score was available from this game.

Redbirds upend Adrian, Jackson in amateur ball

By John Rittenhouse

The Luverne Redbirds posted back-to-back wins to up their season record to 10-5 last week.

Luverne edged Jackson by one run at Redbird Field June 27 before downing the A's by eight runs in Adrian June 28.

The Redbirds played in Pipestone Wednesday (July 5).

Luverne 9, Adrian 1

A late push by the Redbirds turned what was a close game into a lopsided contest when they topped the A's by eight runs in Adrian June 28.

Luverne sported a 2-0 edge after six innings of play before outscoring Adrian 7-1 in the final three frames to win handily.

Connor Hoffman had a big game on the mound and at the plate for the winners.

Hoffman emerged as one of two players to record three hits at the plate along with pitching a complete game.

Hefanned 11 batters, walked five and hit four Adrian players with pitches.

The lone hit Hoffman surrendered was a single in the third inning.

Luverne plated single runs in the fifth and sixth innings and scored three times in the seventh to gain a 7-0 advantage.

Connor Sandbulte, who recorded three hits at the dish, singled and scored in the fifth when Skyler Wenninger registered a sacrifice fly.

Connor Crabtree doubled and scored on a single by Sandbulte in the sixth.

Luverne's three-run rally in the seventh included RBI singles by Codie Zeutenhorst and Andrew Verhey and a sacrifice fly by Crabtree.

Adrian produced its lone run in the bottom of the eighth before Luverne capped the scoring with a four-run ninth inning.



John Rittenhouse photo/0706 redbirds 3

Luverne pitcher Connor Hoffman pitched nine innings of one-hit ball to lead the Redbirds to a 9-1 win in Adrian June 28. Hoffman also recorded three hits at the plate in the game.

Phil Paquette doubled home a run, Crabtree notched an RBI single and Brooks Mayer and Zane Hiller picked up RBIs with groundouts in the ninth.

| | | | | |
|-------------|----|---|---|----|
| Box score | AB | R | H | BI |
| Hoffman | 5 | 0 | 3 | 1 |
| Wenninger | 2 | 2 | 0 | 1 |
| Zeutenhorst | 3 | 2 | 1 | 1 |
| Verhey | 4 | 0 | 1 | 1 |
| Paquette | 1 | 1 | 1 | 1 |
| Crabtree | 4 | 2 | 2 | 2 |
| Mayer | 3 | 0 | 0 | 1 |
| Fodness | 4 | 0 | 0 | 0 |
| Hiller | 1 | 0 | 0 | 1 |
| Sandbulte | 5 | 1 | 3 | 1 |
| Overgaard | 3 | 1 | 0 | 0 |



John Rittenhouse photo/0706 redbirds 6

Luverne's Connor Crabtree drove in two runs and registered two hits during a 9-1 win in Adrian June 28.

Upend/continued on page 2B



John Rittenhouse photo/0706 vfw

Short start

A game that started in a promising way for Luverne VFW pitcher Colby Crabtree ended in disappointing fashion at Redbird Field Thursday night. Crabtree fanned two Adrian batters and retired the side in order in the top half of the first inning. Unfortunately for Crabtree and the Cardinals, that's when the game came to an end. With rain falling and lightning visible in the sky, the contest was postponed after a 30-minute delay. It was the third time the Luverne VFW baseball team had a game postponed this summer, and all three contests are expected to be played before the playoffs begin July 20. Thursday's Adrian tilt and the June 12 postponed game against Slayton have not been rescheduled yet. The game against Pipestone postponed June 8 will be played as part of a doubleheader July 13 when Luverne hosts Marshall Black as well.



John Rittenhouse photo/0706 legion 5

Luverne's Jade Smith dives back to first base to foil a pickoff attempt by Heron Lake during a June 27 game in Heron Lake. Smith singled and scored a run during a 4-0 victory.

Jade Smith is earning future opportunities

With a solid group of sophomores making key contributions to the effort, the Luverne baseball team turned some heads during the high school season this spring.



Although Luverne lacked experience at the varsity level, the Cardinals earned a share of second place in the Big South Conference's Small School Division and was one win away from advancing to the state tournament before falling to New London-Spicer in the final game of the Section 3AA Tournament.

Considering the fact the Cardinals only had one senior contributing at the varsity level at season's end, Luverne's future looks bright for the next couple of years.

It's safe to say the five sophomores who played varsity ball on a consistent basis will be a part of the team's nucleus the next two years, along with four very productive juniors.

The thing about baseball is a team can't have enough talented players, and Luverne might have another diamond in the rough that Cardinal coach

FROM THE SIDELINES

By John Rittenhouse, sports editor

Mike Wenninger believes has a good chance to help his program in the coming years.

Jade Smith didn't get the chance to play a lot of varsity innings last spring, and his playing time was limited as a member of Luverne's state-qualifying VFW team in 2016.

Based on what I witnessed during a pair of summer ball games last week, I think Smith's role will expand over the next couple of years.

Wenninger didn't argue with my assessment when I offered it to him during a conversation we shared last week.

"I think so," the coach replied, when I told him my belief that Smith will be able to help his teams in the coming years.

"His prospects have improved greatly from his years as a seventh- and eighth-grade player through his freshman and sophomore years. The thing about Jade is he has no quit in him. He takes the direction he is offered and

he runs with it. He wants to find out what he needs to do to get better and he's willing to work on it."

Smith proved to his coach between his freshman and sophomore years that he is willing to do what it takes to elevate his game.

Wenninger believed becoming a faster and stronger athlete would help the prospect in the coming years and suggested that weight training could help Smith in those areas.

To his credit, Smith accepted the advice.

"I told him that he needed to get a little faster and a little stronger, and then I saw him in the weight room three or four times a week for four months over the winter," Wenninger said.

"He is committed to doing his work, and he arrives at practice and leaves practice with a smile on his face every day. Unlike a lot of kids, Jade has internal instincts that tell him it's time to go to work, and he does. He doesn't need me, his mom or his dad to tell him it's time to go to work. He does

it on his own."

With the new pitch-count rules in place for high school baseball, Wenninger believes Smith has an extra arm count on in the future.

Smith also turned in an impressive defensive showing at third base during a recent VFW win over Marshall Orange on June 26 and displayed some promise at the plate when he roped a pair of line drives during a Legion victory in Heron Lake the next night.

Adding the proper mindset to his improved skills leads Wenninger to believe Smith has the potential be a contributor to the baseball program in the coming years.

"You bet I think he can help us," the coach offered.

"His work in the weight room has made him a stronger thrower, and his confidence grows every time he puts his bat on the ball at the plate. The one thing I like best about Jade is his positive attitude. I don't think I've ever heard this kid complain about anything."

Luverne Legion blanks Heron Lake June 27

By John Rittenhouse

The Luverne American Legion baseball team upped its record to 5-3 with a 4-0 victory over Heron Lake June 27 in Heron Lake.

Two Luverne pitchers combined efforts to toss a seven-inning shutout.

Jake Haugen and Jacob Van Dam blanked the hosts during the contest as well as limiting Heron Lake to three hits.

Haugen worked the first four innings on the mound to earn the win.

He surrendered one hit, walked two batters, hit one batter and registered three strikeouts.

Van Dam limited Heron Lake to a pair of hits over the final three frames.

Van Dam fanned three batters and walked two.

Luverne, which produced 10 hits during the game, scored all four of its runs in the top

half of the third inning.

Jade Smith opened the third with a single before advancing to second base when Tyler Roberts laid down a sacrifice bunt.

Charlie Reisch singled home Smith and advanced to third base when Derek Lundgren doubled.

Ben Serie tripled home Reisch and Lundgren before scoring the final run of the frame when Declan Beers bounced out.

Reisch, Lundgren and Serie led the Cardinals at the plate with two hits each.

| Box score | AB | R | H | BI |
|------------|----|---|---|----|
| Reisch | 4 | 1 | 2 | 1 |
| Lundgren | 3 | 1 | 2 | 0 |
| Serie | 4 | 1 | 2 | 2 |
| Beers | 3 | 0 | 0 | 1 |
| Johnson | 3 | 0 | 1 | 0 |
| Buss | 3 | 0 | 1 | 0 |
| Van Dam | 3 | 0 | 1 | 0 |
| Smith | 2 | 1 | 1 | 0 |
| Herman | 0 | 0 | 0 | 0 |
| Nekali | 1 | 0 | 0 | 0 |
| Roberts | 2 | 0 | 0 | 0 |
| Von Tersch | 0 | 0 | 0 | 0 |



John Rittenhouse photo/0706 legion 10

Luverne's Nathan Nekali takes a cut at a pitch during an American Legion road victory in Heron Lake June 27.

Upend/continued from page 1B

Luverne 7, Jackson 6

The Redbirds pulled out a one-run victory in 11 innings when they took on the Bulls June 27 at Redbird Field.

After falling behind 4-0 early in the game, the Redbirds battled back to knot the score at four in the bottom of the seventh.

Both teams plated a pair of runs in the 10th inning before Luverne settled the issue by plating the decisive run in the 11th frame.

Mauer drew a walk, Rob Fodness was hit by a pitch, and both runners advanced one base after a wild pitch to get things rolling in the 11th.

Zeutenhorst plated Mauer with the winning run after lifting a sacrifice fly to center field.

Jackson scored three runs in the third inning and added another counter in the top of the fifth to open a 4-0 cushion.

Luverne sent the frame to extra innings by scoring once in the bottom of the fifth and three times in the seventh.

Wenninger plated the first run with an RBI single in the

fifth. Paquette delivered a two-run single and Crabtree received an RBI for a fielder's choice when the Redbirds knotted the score in the seventh.

Following a two-run rally by Jackson in the top of the 10th, Paquette was hit by a pitch with the bases loaded and Cody Christensen registered an RBI with a fielder's choice to knot the score at six in the bottom of the inning.

Crabtree worked the first 10 innings on the mound without gaining a decision. He fanned nine batters and yielded six hits and six runs (five were earned).

Hoffman pitched a scoreless, hitless 11th inning to collect the win.

| Box score | AB | R | H | BI |
|-------------|----|---|---|----|
| Hoffman | 6 | 2 | 3 | 0 |
| Wenninger | 4 | 1 | 1 | 1 |
| Paquette | 4 | 0 | 2 | 3 |
| Christensen | 6 | 0 | 3 | 1 |
| Crabtree | 6 | 0 | 1 | 0 |
| Mauer | 4 | 1 | 1 | 0 |
| Fodness | 4 | 0 | 0 | 0 |
| Sandbulte | 5 | 1 | 1 | 0 |
| Zeutenhorst | 4 | 2 | 1 | 1 |

SPORTS CLIPBOARD

Rock County Sportsman's Club
June 27

Team Scores:
Slocum Taxidermy 1 - 114
Slocum Taxidermy 2 - 111
Howling Dog - 110

Luverne Body Shop - 105
Nergaard Construction - 105
Pizza Ranch - 104
Agri-Energy LLC - 102
Freedom Ranch - 98
Minnwest Bank - 95
Blue Mound Auto Glass - 94

Big Orv's Bar - 92
Timmer Dairy - 83

Individual scores:
25x25
Jim Slocum - 2

24 x 25
Tony Miller
Paul Steen
Cole Vos
Jim Slocum
Bruce Predmore
Doug Deutsch - 2
Mike Metz

The Kingery Family
live in concert
music with a vision
Bethel Reformed Church
Little Rock, IA
July 9 at 7pm

Court Santa Maria #247
Catholic Daughters of the Americas
Invites you to our annual
SALAD & DESSERT LUNCHEON
Wednesday, July 12
St. Adrian Church Parlors
Adrian, MN
Serving 11 a.m. to 12:30 p.m.
Adults \$7.00
Ages 5-12 \$4.00
Treat yourself and a friend!

Palace Theatre
Downtown Luverne
Disney Pixar
Cars 3
FRI., JULY 7 - 7 P.M.
SAT., JULY 8 - 7 P.M.
SUN., JULY 9 - 7 P.M.
Check our web site for updates
www.palacetheatre.us
PALACE THEATRE
LUVERNE

2017 ROCK COUNTY FAIR
Advance Ride Tickets
8 TICKETS FOR \$18.00
(Advance tickets 1 ticket per ride)
ON SALE NOW!
TICKETS AVAILABLE AT:
RAUKS HILLTOP STOP
TEAL'S FOOD CENTER
LUVERNE PIZZA RANCH
LUVERNE CHAMBER
TICKET SALES END:
THURSDAY, JULY 27

Salad Luncheon
First Presbyterian Church, Luverne
Thursday, July 13 from 11am-1pm
Breads, salads & beverages will be served
Adults - \$6 Elevator available
Children (12 & under) - \$2
Proceeds will support the Presbyterian Women

NOW OPEN
PICK AT YOUR OWN CONVENIENCE
Raspberry U-Pick
one mile east on Old 16,
one mile north on River Road
questions call 605-351-1649
River Bend
"Healthy food, land, lives."
"Fostering local community."

St. Catherine Catholic Church

203 E. Brown St., Luverne
St. Catherine Ph.: 283-8502; email: stcatherine@iw.net
St. Mary Catholic Church, Ellsworth

Thursday, July 6: 4 p.m. Veterans Home Communion. Saturday, July 8: 5:30 p.m. St. Catherine Mass. Sunday July 9: 8:30 a.m. St. Mary Mass. 10:30 a.m. St. Catherine Mass. Tuesday, July 11: 6:30 p.m. St. Catherine FC. 7 p.m. Cub Scouts. Thursday, July 13: 2:30 p.m. Tuff Communion Service.

Luverne Christian Reformed Church

605 N. Estey St., Luverne
Office Ph. 283-8482; Prayer Line Ph. 449-5982
www.luverncrc.com — luvernecrc@gmail.com
Roger Sparks, Pastor

Sunday, July 9: 9:30 a.m. Worship Service. Noon Church Potluck. 6:30 p.m. Worship Service. Monday, July 10: 9 a.m. PERK UP in Hills. Wednesday, July 12: 6:15 a.m. Women's Bible Study.

First Baptist Church

1033 N. Jackson St., P.O. Box 975, Luverne
Ph. 283-4091; email: fbcluv@iw.net — www.fbcluverne.org
Walt Moser, Pastor

Thursday, July 6: 6 a.m. Men's Bible Study at FBC. 7 p.m. Worship service on Vast Channel 3. Sunday, July 9: 9:15 a.m. Sunday School. 10:30 a.m. Worship Service. 6 p.m. Evening Service. Monday, July 10: 7 p.m. Carpool at FBC for Union Gospel Mission Service. Tuesday, July 11: 7 a.m. Men's Bible Study. 7 p.m. Deacon meeting. Thursday, July 13: 6 a.m. Men's Bible Study at FBC. 7 p.m. Worship service on Vast Channel 3.

Grace Lutheran Church

500 N. Kniss Ave., Luverne
Ph. 507-283-4431; www.graceluverne.org — graceluverne@iw.net
Ron Nichols, Pastor; Stephen Hilding, Associate Pastor

Thursday, July 6: 7:30 a.m. Moms Bible Study at the Bean. 8:30 a.m. Missions in Action. Friday, July 7: 6:30 p.m. Worship on Channel 3. Saturday, July 8: 5:30 p.m. Worship. Sunday, July 9: 8:15 a.m. Radio Broadcast. 9 a.m. Worship/Estes send-off. 10 a.m. Coffee. 6 p.m. Estes Meeting. Monday, July 10: Noon Rock County 4-H. 4:30 p.m. Worship on Channel 3. Tuesday, July 11: 9 a.m. Staff Meeting; GLCW Exec Board Mtg. 6:45 p.m. Parish Planning Council. Wednesday, July 12: 7 a.m. Men's Bible Study. 7 p.m. Exaltation Music Practice. Thursday, July 13: 7:30 a.m. Moms Bible Study at the Bean. 2 p.m. GLCW program at church. 4:30 p.m. Book Study.

Bethany Lutheran Church

720 N. Kniss Ave., Luverne
Ph. 507-283-4571 or 507-449-0291 or 605-215-9834
pastorapalmquist67@yahoo.com
Andrew Palmquist, Pastor

Sunday, July 9: 9:15 a.m. Bible Class. 10:15 a.m. Worship with Communion. Monday-Friday, July 10-14: Camp Indianhead. Thursday, July 13: 2 p.m. Ladies Aid.

American Reformed Church

304 N. Fairview Dr., Luverne
Ph. 283-8600; email: office@arcluverne.org
Mike Altena, Pastor

Thursday, July 6: 8 a.m. Youth Worship Camp. 6 p.m. Ladies Night Out. 6:30 p.m. Motorcycle ride. Friday, July 7: 6:30 a.m. Community Men's Bible Study. 8 a.m. Youth Worship Camp. Sunday, July 9: 9:30 a.m. Worship Service. 7 p.m. Senior RCYF. Tuesday, July 11: 10 a.m. Staff Meeting. 1:30 p.m. Rebecca Circle. 7 p.m. Ridder Team Meeting. Wednesday, July 12: 7 p.m. Abide Praise Team.

First Assembly of God Church

1075 110th Ave., 2 miles west of Luverne on County Rd. 4
Kenneth and Gloria Kashner, Pastors

Sundays: 9 a.m. Sunday School. 10 a.m. Morning Worship. 6:30 p.m. School of the Holy Spirit. Wednesdays: 7 p.m. Kids Connection; Men's Bible Study with Pastor Ken; Women's Bible Study with Pastor Gloria.

United Methodist Church

109 N. Freeman Ave., Luverne
Ph. 283-4529; email: luverneumc@iw.net
Dorie Hall, Pastor

Thursday, July 6: 1-3 p.m. Rock County Food Shelf. Saturday, July 8: 8 p.m. AA Meeting in Upper Room. Sunday, July 9: 9:30 a.m. Coffee Hour. 10 a.m. Celebration Service with Communion. 4:30 p.m. Genesis/ Revelation Bible Study. Monday, July 10: 8 p.m. AA Meeting. Wednesday, July 12: 8 p.m. AA Meeting. Thursday, July 13: 1-3 p.m. Rock County Food Shelf.

First Presbyterian Church

302 Central Lane, Luverne
Ph. 283-4787; email: Firstpc@iw.net — www.fpcluverne.com
Jason Cunningham, Pastor

Thursday, July 6: 10 a.m. Worship Service on Vast. Sunday, July 9: 9:30 a.m. Service of Worship. 10:30 a.m. Coffee and Fellowship. Tuesday, July 11: 10 a.m. and 6 p.m. Worship service on Vast. 1:15 p.m. Communion at Veterans Home. 1:45 p.m. Communion at Centennial. 2:15 p.m. Communion at The Oaks. 2:45 p.m. Communion at Mary Jane Brown Home. Thursday, July 13: 10 a.m. Worship service on Vast. 11 a.m.-1 p.m. Salad Luncheon.

St. John Lutheran Church

803 N. Cedar St., Luverne
Ph. 283-2316, Dial-A-Devotion Ph. 283-4005
email: stjoh@iw.net — www.stjohnlutheranluverne.org
Gary Klatt, Pastor

Thursday, July 6: 2 p.m. Women's Society. Saturday, July 8: 10:30 a.m. Memorial Service for Dorothy Koens. 5:30 p.m. Worship with Communion. Sunday, July 9: 9 a.m. Worship with Communion. 10:15 a.m. Special Voters' Meeting. Monday, July 10: 1:45 p.m. Communion in Brandon. 3 p.m. Communion in Sioux Falls. 7 p.m. Elders Meeting. Tuesday, July 11: 1 p.m. and 6:30 p.m. Quilting. 1:15 p.m. Communion in Ellsworth. 2:15 p.m. Communion in Hills. Wednesday, July 12: 9:30 a.m. Bible study. 7 p.m. Senior LYF. Thursday, July 13: 1:30 p.m. Communion at Mary Jane Brown. 2:15 p.m. Communion at Poplar Creek. 3:30 p.m. Communion at the Veterans Home.

Living Rock Church

500 E. Main St., Luverne
Ph. 449-0057; www.livingrockswmn.org
Billy Skaggs, Pastor

Sundays: 10:30 a.m. Worship; Kids Rock Children's Ministry. 6 p.m. Youth Ministry. Life groups meet throughout the week.

New Life Celebration Church

110 N. Oakley, Luverne
Ph. 449-6522; email: newlifecelebration@gmail.com
Sundays: 9:30 a.m. Worship at 110 N. Oakley. Every third Thursday: 5 p.m. Food give-away at Senior Citizens Center. Bible Study groups meet at various times and days.

Zion Evangelical Lutheran Church

305 E. 2nd St., P.O. Box 36, Hardwick
Ph. 669-2855; email: revmumme@gmail.com — www.zionlutheran-hardwick.com
Mark W. Mumme, Pastor

Thursday, July 6: 3:30 p.m. Zion Worship airs on Channel 3. Friday, July 7: 3:30 p.m. Zion Worship airs on Channel 3. Sunday, July 9: 9 a.m. Worship service/Farewell service for Pastor Mumme. 10:15 a.m. Coffee and reminiscing. 11 a.m. Picnic luncheon. Monday, July 10: 1 p.m. Quilting. Tuesday, July 11: 6:30 p.m. Elders meeting. 7:45 p.m. Church Council. Wednesday, July 12: 5:15 p.m. Zion serves at The Banquet. Thursday, July 13: 3:30 p.m. Zion Worship airs on Channel 3.

Ben Clare United Methodist Church

26762 Ben Clare Ave., Valley Springs, S.D.
igtwb@WOW.net
Bill Bates, Pastor
Sundays: 9 a.m. Worship; 10 a.m. Fellowship; 10:30 a.m. Sunday School for all ages.

First Lutheran Church

300 Maple St., Valley Springs, S.D.
Ph. (605) 757-6662
Intern Pastor Laura Phillips
Sunday, July 9: 10 a.m. Valley Springs Community Worship Service at the Legion Ballpark. (Rain location: Valley Reformed Church.)
Palisade Lutheran Church
211 121st St., Garretson, S.D.
Ph. (507) 597-6257 — firstpalisade@alliancecom.net
Intern Pastor Laura Phillips
Thursday, July 6: 8 p.m. Church Council meeting. Sunday, July 9: 10 a.m. Valley Springs Community Worship Service at the Legion Ballpark. (Rain location: Valley Reformed Church.)

First Presbyterian Church

201 S. 3rd St., P.O. Box 73, Beaver Creek
Ph. 507-935-5025
Email: lori.firstpres@gmail.com
Worship Leader Michael Blank
Sundays: 9:30 a.m. Morning Worship. 10:30 a.m. Sunday School.

Magnolia United Methodist Church

501 E. Luverne St., Magnolia
Church Ph. 283-9698; cell 227-7821
adrmagumc@frontiernet.net — www.adrianmagnoliaumc.com
Kristi Franken, Pastor
Sundays: 9 a.m. Worship. Sunday school follows service.

Steen Reformed Church

112 W. Church Ave., Steen
Ph. 855-2336
Jeremy Wiersema, Pastor
Sundays: 9:30 a.m. Worship; service broadcast on KQAD. 10:45 a.m. Sunday School. 6 p.m. Youth Group. Evening worship at 6 p.m. first and third Sundays. Wednesdays: 7 p.m. Midweek.

Hills United Reformed Church

410 S. Central Ave., Hills
Office Ph. 962-3254
hillsurc@alliancecom.net
Alan Camarigg, Pastor
Sundays: 9:30 a.m. and 6 p.m. Worship Services

True freedom in Christ

"It is for freedom that Christ has set us free. Stand firm, then, and do not let yourselves be burdened again by a yoke of slavery" (Galatians 5:1)

Freedom! — Is it just a word, or a way of life? As Americans, we greatly value our freedoms, although so often many do not fully appreciate or understand them. Today many express concerns that we are losing our freedoms, as government regulates more and more of our lives.

It is important for all our citizens — but especially for Christians, who have been sanctified in the truth — to be active and educated, not only about the freedoms our country enjoys, but also in doing our part in maintaining those precious freedoms. That's simply being a good steward of our American citizenship, which we have been blessed to possess.

But as wonderful as America's freedoms are, more valuable still is the spiritual freedom we have in Christ Jesus. His freedom brings forgiveness, new life now, and life forever in heaven.

The chains of sin that shackled us at the moment of our conception and condemned us to an eternity in hell were destroyed by Jesus, who replaced our sinful lives with His own sinless life on Calvary's Cross. His shed blood paid the price for the whole world's sins and brought forgiveness and salvation to all who believe in Him.

In Christ, we have been freed from the guilt and condemnation of sin. In Christ, we have been freed for serving God and one another! And in Christ, we have

BUILT ON A ROCK

By Rev. Andrew Palmquist, Bethany Lutheran Church, Luverne

the certainty that our eternal salvation has been secured.

But just as our nation's freedoms need to be guarded and maintained, we also have to be careful and diligent about our spiritual freedom.

The apostle Paul calls for a proper understanding of the spiritual freedom we have in Christ so that we don't lose it or take it for granted but always maintain it through God's Word and sacrament.

By way of our Lord's life, death and resurrection, Jesus has lifted off the burden of our sin so that we can be free of its guilt and punishment. He has removed the overbearing pressure of the law from cutting off our right standing with God. He has pulled us away from our sinful and selfish ways and put us on the liberating course of serving Him, that involves honoring His will, growing in our faith and dealing with others, in Christian love.

We have been freed from sin and freed to serve. So, you see, freedom — in Christ — is more than just a word ... it is our way of life!

May His freedom always ring loud and clear, as it reigns in our hearts and lives ... and daily proclaims the saving name of Jesus for all the world to see and hear.

Bethlehem Lutheran Church

Pastor Maggie Berndt-Dreyer
112 N. Main St., Hills
Ph. 962-3270
e-mail: bethlehemluth@alliancecom.net
Sunday, July 9-Thursday, July 13: 5:30-8:30 p.m. Vacation Bible School. Sunday, July 9: 9 a.m. Worship at Tuff Chapel. 10 a.m. Communion at Bethlehem. Tuesday, July 11: 2:30 p.m. Bible Study at Tuff Home. 3:15 p.m. Bible Study at The Village. Wednesday, July 12: 9 a.m. Quilting. No Council meeting in July.

These Weekly Church Page Messages are contributed to God's Work through the Church and by these concerned and responsible citizens & businesses:

Call Rick or Chantel to place your ad!

283-2333

Tuff Memorial Home, Retirement Apartments & Tuff Village



"A Home Where Residents SMILE"
Hills, Minnesota
Phone 507-962-3275

Papik
MOTOR OIL
LUVERNE, MINN.

I-90 in Luverne, MN
507-283-9171 • 1-800-634-7701

Read us online!

Rock County
STAR HERALD
www.Star-Herald.com

Trust In Him



110 E. Main,
Luverne, MN
Phone 507-283-2379



Manley Minnesota
1-800-615-3704
Open six days a week - Closed on Sundays
To God be the Glory.



Rock County
STAR HERALD
Luverne, MN • 507-283-2333



To Advertise
Call
283-2333



McClure Electric
Alan M. Aanenson, owner
Farm, Home & Commercial Wiring
Luverne, MN Phone 507-283-4716



303 E. Main, Luverne, MN
507-283-4463
www.fmbank.com
We believe in you.
Member FDIC. And the community.



116 E. Main St., Luverne 507-283-2366
S. Hwy. 75, Luverne 507-283-9131
Main St., Beaver Creek 507-673-2333
Member FDIC www.minnwestbank.com

HILLS STAINLESS STEEL & EQUIPMENT CO., INC.
506 W. Koehn, P.O. Box 987, Luverne, MN
PHONE 507-283-4405
Church is Important - Please Attend!

MINNWEST BANK
117 W. Main
Luverne, MN 56156
507-283-2333

Luverne Dist. 2184 seeks bakery quotes

REQUEST FOR QUOTES
LUVERNE PUBLIC SCHOOLS

Notice is hereby given that quotes for bakery products will be received until 10:30 a.m. on Tuesday, July 11, 2017, at the Office of the Superintendent, Luverne High School, Luverne, Minnesota.

Detailed specifications and information are available at the Office of Superintendent of Schools.

The School Board reserves the right to reject any and all quotes and bids and to waive any technicalities.

Shelley Sandbulte
Clerk
(06-29, 07-06)

Luverne Dist. 2184 seeks fuel quotes

REQUEST FOR QUOTES
LUVERNE PUBLIC SCHOOLS

Notice is hereby given that quotes for vehicle fuels will be received until 11:00 a.m. on Tuesday, July 11, 2017, at the Office of the Superintendent, Luverne High School, Luverne, Minnesota.

Detailed specifications and information are available at the Office of the Superintendent of Schools.

The School Board reserves the right to reject any and all quotes and bids and to waive any technicalities.

Shelley Sandbulte
Clerk
(06-29, 07-06)

Mortgage foreclosure sale set for Aug. 17

NOTICE OF MORTGAGE FORECLOSURE SALE
THE RIGHT TO VERIFICATION OF THE DEBT AND IDENTITY OF THE ORIGINAL CREDITOR WITHIN THE TIME PROVIDED BY LAW IS NOT AFFECTED BY THIS ACTION.

NOTICE IS HEREBY GIVEN, that default has occurred in the conditions of the following described mortgage:

DATE OF MORTGAGE: January 24, 2005
ORIGINAL PRINCIPAL AMOUNT OF MORTGAGE: \$77,600.00
MORTGAGOR(S): Michael John Van Der Brink and Kristin Marie Van Der Brink, husband and wife

MORTGAGEE: Mortgage Electronic Registration Systems, Inc.
TRANSACTION AGENT: Mortgage Electronic Registration Systems, Inc.
MIN#: 100010402012328732
LENDER OR BROKER AND MORTGAGE ORIGINATOR STATED ON THE MORTGAGE: Suntrust Mortgage, Inc.

SERVICER: Specialized Loan Servicing LLC
DATE AND PLACE OF FILING: Filed January 31, 2005, Rock County Recorder, as Document Number 160673

ASSIGNMENTS OF MORTGAGE: Assigned to: Specialized Loan Servicing LLC;
Dated: May 17, 2017 filed: May 22, 2017, recorded as document number 190654

LEGAL DESCRIPTION OF PROPERTY:
That part of the N 1/2 of Section 9, Township 101 North, Range 45 West of the 5th P.M., Rock County, Minnesota, described as follows: Commencing at the Northwest corner of said Section 9; thence Easterly along the North line of the NW 1/4 of said Section 9 for a distance of 1867.17 feet to the point of beginning; thence continuing East along the North line of said Section 9 for a distance of 779.85 feet to the Northeast corner of the NW 1/4 of said Section 9; thence South 90 degrees for a distance of 390.00 feet; thence Southwesterly to a point 485.00 feet directly South of the point of beginning; thence North 90 degrees a distance of 485 feet to the point of beginning, containing 7.83 acres more or less, the North 33 feet of which is reserved as a public road right-of-way, subject to easements of record, if any.

PROPERTY ADDRESS: 1138 61st St, Luverne, MN 56156
PROPERTY IDENTIFICATION NUMBER: 03-0042-000
COUNTY IN WHICH PROPERTY IS LOCATED: Rock
THE AMOUNT CLAIMED TO BE DUE ON THE MORTGAGE ON THE DATE OF THE NOTICE: \$54,538.82

THAT all pre-foreclosure requirements have been complied with; that no action or proceeding has been instituted at law or otherwise to recover the debt secured by said mortgage, or any part thereof;

PURSUANT, to the power of sale contained in said mortgage, the above described property will be sold by the Sheriff of said county as follows:

DATE AND TIME OF SALE: August 17, 2017, 10:00am
PLACE OF SALE: Sheriff's Main Office, West Side Sheriff Dept, Front Step, Luverne, MN 56156

to pay the debt secured by said mortgage and taxes, if any, on said premises and the costs and disbursements, including attorneys fees allowed by law, subject to redemption within 6 months from the date of said sale by the mortgagor(s) the personal representatives or assigns.

TIME AND DATE TO VACATE PROPERTY: If the real estate is an owner-occupied, single-family dwelling, unless otherwise provided by law, the date on or before which the mortgagor(s) must vacate the property, if the mortgage is not reinstated under section 580.30 or the property is not redeemed under section 580.23, is 11:59 p.m. on February 17, 2018, or the next business day if February 17, 2018 falls on a Saturday, Sunday or legal holiday.

THE TIME ALLOWED BY LAW FOR REDEMPTION BY THE MORTGAGOR, THE MORTGAGOR'S PERSONAL REPRESENTATIVES OR ASSIGNS, MAY BE REDUCED TO FIVE WEEKS IF A JUDICIAL ORDER IS ENTERED UNDER MINNESOTA STATUTES SECTION 582.032 DETERMINING, AMONG OTHER THINGS, THAT THE MORTGAGED PREMISES ARE IMPROVED WITH A RESIDENTIAL DWELLING OF LESS THAN 5 UNITS, ARE NOT PROPERTY USED FOR AGRICULTURAL PRODUCTION, AND ARE ABANDONED.

Dated: June 22, 2017
Specialized Loan Servicing LLC
Assignee of Mortgagee
SHAPIRO & ZIELKE, LLP
BY _____
Lawrence P. Zielke - 152559
Diane F. Mach - 273788
Melissa L. B. Porter - 0337778
Randolph W. Dawdy - 2160X
Gary J. Evers - 0134764
Tracy J. Halliday - 034610X
Attorneys for Mortgagee
Shapiro & Zielke, LLP
12550 West Frontage Road, Suite 200
Burnsville, MN 55337
(952) 831-4060

THIS IS A COMMUNICATION FROM A DEBT COLLECTOR

Kayla Gunderson
Legal Assistant
Shapiro & Zielke, LLP
12550 West Frontage Rd., Suite 200
Burnsville, MN 55337
952-831-4060 ext. 3188 Office
847-954-4800 Fax
kgunderson@LOGS.com
www.zielkeattorneys.com
Supervisory Contact
Melissa Porter
952-831-4060 ext. 3138
mporter@logs.com

(06-29, 07-06, 07-13, 07-20, 07-27, 08-03)

Luverne Dist. 2184 seeks dairy bids

REQUEST FOR BIDS
LUVERNE PUBLIC SCHOOLS

Notice is hereby given that bids will be received until 10:00 a.m. on Tuesday, July 11, 2017, at the Office of the Superintendent, Luverne High School, Luverne, Minnesota, for the furnishing of the following products:

A. Dairy Products

Detailed specifications and information are available at the Office of the Superintendent of Schools.

The School Board reserves the right to reject any and all quotes and bids and to waive any technicalities.

Shelley Sandbulte
Clerk
(06-29, 07-06)

Veldkamp probate

FIFTH JUDICIAL DISTRICT
DISTRICT COURT
PROBATE DIVISION
COURT FILE NO. _____

STATE OF MINNESOTA
COUNTY OF ROCK
Estate of JAMES GORDON VELDKAMP
Decedent

NOTICE AND ORDER OF HEARING ON
PETITION FOR PROBATE OF WILL AND
APPOINTMENT OF PERSONAL REPRESENTATIVE
AND NOTICE TO CREDITORS

It is Ordered and Notice is given that on July 24, 2017 at 3:30 p.m., a hearing will be held in this Court at 204 E. Brown Street, Luverne, Minnesota, for the formal probate of an instrument purporting to be the Will of the Decedent, dated May 8, 2007 and codicil(s) to the Will dated n/a, and separate writing(s) under Minn. Stat. 524.2-513 ("Will"), and for the appointment of Frances F. Veldkamp, whose address is 211 Cashin Drive, Luverne, MN 56156 as Personal Representative of the Estate of the Decedent in an unsupervised administration.

Any objections to the petition must be filed with the Court prior to or raised at the hearing. If proper and if no objections are filed or raised, the Personal Representative will be appointed with full power to administer the Estate including the power to collect all assets, to pay all legal debts, claims, taxes, and expenses, to sell real property, and to do all necessary acts for the Estate.

Notice is also given that (subject to Minn. Stat. 524.3-801) all creditors having claims against the Estate are required to present the claims to the Personal Representative or to the Court Administrator within four months after the date of this Notice or the claims will be barred.

A charitable beneficiary may request notice of the probate proceedings be given to the Attorney General pursuant to Minn. Stat. 501B.41, subd. 5.

Dated: June 28, 2017
(COURT SEAL)

BY THE COURT
/s/ Terry S. Vajrt
District Court Judge
/s/ Denise Brandel
Court Administrator

Attorney for Petitioner
Benjamin Vander Koor, Jr.
Vander Kooi Law Offices, P.A.
127 E. Main, PO Box 746
Luverne, MN 56156
Attorney License No: 112124
Telephone: 507-283-9546
FAX: 507-283-9629
Email: lawkooi@gmail.com

(06-29, 07-06)

Disabled Veterans' Homestead Market Value Exclusion

Changes to Disabled Veterans' Homestead Market Value Exclusion effective July 1, 2017

A law enacted in 2017 changes some parts of the Disabled Veterans' Homestead Market Value Exclusion (Minnesota Statutes, section 273.13, subdivision 34).

The changes impact:

*Qualified veterans who have a service-connected disability rating of either 70% to 100%, or 100% total and permanent

*Spouses of deceased veterans who were 100% totally and permanently disabled.

*Spouses who receive dependency and indemnity compensation.

Starting with assessment 2017, an annual application is no longer required. The qualified veteran or surviving spouse is still responsible for disclosing any change that may disqualify them from the exclusion.

In addition:

*The spouse of a veteran who was 100% totally and permanently disabled may now qualify for the homestead exclusion even if the veteran did not apply or receive the exclusion before their death, as long as the veteran died after December 31, 2011. The spouse must apply within two years of the veteran's death or by June 1, 2019, whichever is later.

*Veterans or primary family caregivers who are applying for the first time must do so by July 1 of each year to qualify for the following year tax exclusion.

If you qualify or have questions, please call Tom Houselog (Land Records) at 507-283-5022 or Dave Haugom (Veteran Services) at 507-283-5061.

(07-06)

FOR SALE

For Sale: Yearling Red Angus Bulls - EPD, semen-tested, shots, \$2,000 to \$3,000. Baltic, South Dakota. Call Paul 605-360-2556. (6.22-8.20)

For Sale: Two 9x7 over-head garage doors in good working condition. Call 507-669-2585. (6.22-7.9)

WINDOWS

We custom build and install Energy Star Therm-O-Loc Windows. Call Mike at Adrian Glass for a free in-home demonstration and estimate. 101 E. Pearl, Adrian, MN 56110. 507-483-2228 or 605-770-7677 or email mbyler@santel.net. (tc)

CARDS OF THANKS

Thank you all for your caring ways and for thinking of me at the time of my diagnosis, surgery and recovery. Prayers, cards, visits, food, treats, calls and texts are so very much appreciated and continue to be a blessing to me and my family.

Cheryl Cronberg
(7.2-7.6)

MISCELLANEOUS

HAVE A UNIQUE SERVICE OR BUSINESS? Get the word out to over 1.4 million households. Call WIDE AREA CLASSIFIEDS today, 507-359-7326. (tc)

AGRICULTURAL

WE HAVE SEVERAL CREWS OF BEAN WALKERS. We also pick rock, put up and take down fences. We will do any type of farm work. Call 712-943-2084, 712-251-3277 or 712-899-5219. (4.27-9.20)



READ THE NEWS ONLINE!
News
Sports
Opinion
Videos
Photo Galleries
Columns

Subscribe to the online edition of the Star Herald

EMPLOYMENT

Client Community Services, Inc., Worthington, Minnesota, has an immediate opening for a Residential Supervisor at our home located at 106 E. Christensen Drive in Luverne, Minnesota. The Supervisor will oversee the residential program to provide supported living services for 4 adult females with disabilities. The supervisor will supervise and schedule direct care staff, oversee implementation of consumer program goals, support and evaluate services, manage budgeted finances and ensure compliance with relevant rules governing the program. Preferred applicants will have: 1. Four year degree in a field related to service provision and one year work experience with consumers with developmental disabilities or related conditions preferred, OR 2. A two year degree in a field related to service provisions, and two years of work experience with consumers with developmental disabilities or related conditions, OR 3. A certificate of competence from accredited post-secondary program in the area of developmental disabilities and two years' work experience. 4. Any variance from these education/experience criteria requires approval by CCSI Executive Director and the Waivered Services Program Director. Benefits include health, life and dental insurance and optical insurance, PTO, 403(b) retirement plan. (6.18-7.6)

Southwestern Youth Services in Magnolia, MN is hiring Day/Evening Youth Supervisors to work with male juveniles in a residential setting. Part time, and/or Full-time, \$11.50-\$12.00/hr (or based on education), benefits, pd. holidays. Must be 21 yrs old and have high school diploma. Send application or resume to PO Box 40 Magnolia, MN 56158 or stop by for an application. For further information contact Don or Jeremy at 507-283-4425. (6.18-7.6)

We are a Southwestern Minnesota Cable Contractor company. We are hiring Backhoe Operator. A valid CDL is required. Pay is competitive depending on experience. We offer Short-Term and Long-Term Disability Insurance, 401(k), and Health Insurance plan. Send resume to: ldsinc@lismoretele.com. (7.2-7.20)

ADVERTISE TODAY!
with the Star Herald
call 507-283-2333

Bridal Shower?
Wedding Announcement?
Get the word out with the Star Herald!
283-2333

EMPLOYMENT

Help Wanted: The Rock County Ag Society is looking to hire Fair Staff for this year's upcoming fair, July 26-29. We are looking for morning and night help. If you are interested, please contact Adam Kinsinger at 507-220-3278.
(7.2-7.20)

Parkview Manor is hiring both full and part-time CNAs for all shifts (including nights)! Benefits include health insurance, vacation, PERA retirement plan, holiday pay, and a \$2,000 scholarship available for students! We will provide training or pay for experience. Wages are based on experience level. If interested, contact Darnell Krull at (507) 967-2388 or Sam Quam at (507) 967-2482. (tc)

EMPLOYMENT

Help Wanted: Looking for a reliable person that is able to clean place of residence one day a week. Must be able to do household cleaning and general lifting. Please email resume to bsl_1960@hotmail.com.
(7.2-7.20)

Parkview Manor is looking for someone to work in the Laundry AND Kitchen departments. The employee would be cross-trained to learn the job functions of a Laundry Assistant and Cook. This position is approximately 32 hours per week. Benefits include health insurance, PERA retirement plan, vacation, and holiday pay. Wages are based on experience level. If interested, contact Sam Quam at (507) 967-2482. (tc)

EMPLOYMENT

Parkview Manor is looking for a part-time LPN/RN! Benefits include vacation, PERA retirement plan, and holiday pay! Wages are based on experience level. If interested, contact Darnell Krull at (507) 967-2388 or Sam Quam at (507) 967-2482. (tc)

EMPLOYMENT

New Prairie Insulation of Beaver Creek has a full-time Insulation Installer position available. Monday through Friday, health insurance, vacation, holiday, bonus opportunities. Will train. Call Dean at 605-376-3006 or 507-673-2548. (tc)

EMPLOYMENT

Sanford Luverne Medical Center is currently accepting applications for FT (Full-Time), PT (Part-Time) and PRN (Part-Time as Needed) positions:

- CERTIFIED MEDICATION ASSISTANT – PT, PRN
- EMERGENCY MEDICAL TECHNICIAN – PRN
- ENVIRONMENTAL SERVICE TECHNICIAN – PT, PRN
- HOME HEALTH AIDE – PT, PRN
- LPN, AMBULATORY – FT, PRN
- LPN, HOSPICE – PT, PRN
- MEDICAL ASSISTANT, AMBULATORY – FT
- RECEPTIONIST – PT
- PARAMEDIC – FT
- RN, INPATIENT – PT

To apply, visit sanfordhealth.jobs search "Luverne" in the location search bar.

SANFORD HEALTH

"Your Calling, Your Place."

Sanford Luverne Medical Center | 877-243-1372

EEO/AA

MN VETERANS HOME NURSING SCHEDULER

Applications are being accepted for the position of Office & Administrative Specialist Intermediate (Nursing Scheduler). The primary responsibility of this position is to create and maintain the bi-weekly staff schedule for the Nursing department. Excellent benefit package. View complete job announcement and apply online: <https://mn.gov/careers>.
Deadline to apply: July 14, 2017.
Job ID 14589
For further information, call 507-283-6211.
EEO/AAO



The Tuff Memorial Home is currently hiring a **Dietary Aide** part-time 5am-1:30pm shifts. If interested, contact Alex Dysthe at 507-962-3275 or email adysthe@tuffmemorialhome.com

Competitive Wage
Pension Plan
Friendly Atmosphere



TUFF MEMORIAL HOME
"A Home With a Heart"



TUFF MEMORIAL HOME
"A Home With a Heart"

The Tuff Memorial Home is currently hiring for a day time **CNA**, 6am-2:30pm. Experience preferred. If interested, contact Alex Dysthe at 507-962-3275. or email adysthe@tuffmemorialhome.com

Competitive Wage
Full Benefits
Pension Plan
Friendly Atmosphere

HELP WANTED

Buffalo Ridge Concrete, Inc. is seeking **CONCRETE TRUCK DRIVERS**

We offer competitive wages, health insurance, 401k, vacation & holiday pay and flex compensation. Pre-employment drug test required.



www.buffaloridgeconcrete.com

For an application visit our website www.buffaloridgeconcrete.com or stop by our office. For a complete job description

Call AJ at **605-360-1808**

HILLS-BEAVER CREEK SCHOOLS

Hills-Beaver Creek School District
301 N. Summit Avenue – PO Box 547
Hills, Minnesota 56138

Website: www.hbc Patriots.com
Email: t.holthaus@isd671.net
Telephone: (507) 962-3240 Ext. 13

Cook's Assistant Part-Time Opening 2017-2018 School Year

- **Position:** Cook's Assistant—174 work days during school year. Four (4) hours per day. 10 am-2 pm. Position begins end of August 2017
- **Qualifications:** Ability to work in sanitary school food service department. Must be available for training in proper food and sanitation in food service area. Previous food experience desired but not necessary.
- **Application Deadline:** Open Until Filled
- **Apply To:** Todd Holthaus, Superintendent, Hills-Beaver Creek Schools, PO Box 547, 301 N Summit Ave, Hills, MN 56138 or email t.holthaus@isd671.net—Please send letter of application. Also, fill out district application located at www.hbc Patriots.com and return with letter of application to address above.
- **Comments:** Individual(s) must have calm demeanor willing to add to a positive team work environment helping to supply school lunch/nutrition. This position assist's the Head Cook with duties.

- An Equal Opportunity Employer -



Minnesota West Community and Technical College, Luverne Center, is accepting applications for:

Surgical Tech Instructor Part-time

For detailed information and application procedures, please visit <http://www.mnwest.edu/hr/employment>

Minnesota West Community and Technical College is a comprehensive community and technical college with five southwestern Minnesota campuses: Canby, Granite Falls, Jackson, Pipestone and Worthington and centers in Luverne and Marshall. Students have the opportunity to earn an Associate Degree, Diploma, or Certificate in more than 60 disciplines. www.mnwest.edu.
Minnesota West is a member of the Minnesota State which is an Equal Opportunity Employer/Educator.

SW MN PRIVATE INDUSTRY COUNCIL, INC.
SEEKING PROFESSIONAL FOR EXECUTIVE DIRECTOR POSITION

The Executive Director is responsible for strategic oversight and leadership within a large geographical region of 14 counties in southwest Minnesota. The Executive Director is responsible for providing comprehensive leadership to fulfill the organization's vision, mission, strategy, annual goals and objectives. The Executive Director will work with local, regional, state and federal stakeholders to drive successful and prosperous partnerships. SW MN PIC is looking for an Executive Director with strong networking capabilities with the ability to think strategically and utilize a high level of business and financial expertise.
Salary: DOQ and Experience; Benefit Package Available

Interested individuals should submit a Letter of Interest, Resume, References and an application by 4:30 p.m. on Friday, July 14, 2017 to: Juanita Lauritsen by email at: JLauritsen@swwmpic.org or by U.S. Mail at:
Juanita Lauritsen
SW Minnesota Private Industry Council
Lyon County Government Center
607 W Main
Marshall, MN 56265

A copy of the Application and Position Description can be obtained on the SW MN PIC website at: www.swwmpic.org

Southwestern Mental Health Luverne Administrative Assistant
Avera Partner

LEAD INTAKE/ADMINISTRATIVE ASSISTANT
Southwestern Mental Health Center is currently seeking applications for a full-time Lead Intake/Administrative Assistant to work in our Luverne Office.

This position is responsible of functioning of intake, verification, and prior authorization procedures and Electronic Health Records (EHR) systems duties. Position also provides backup for Intake and Front Desk duties. Provide Assistance to the Executive Director, CFO and Administrative Services Director regarding the retention and organization of administrative documentation.

Candidate should have knowledge or experience working with Microsoft Office, Contracts, Grants, Healthcare Credentialing process; strong organization, and computer skills. Knowledge or experience in Electronic Health Record (EHR) systems is a plus.

Apply online at Southwestern Mental Health
Please apply at: <http://www.swwmhc.org>

1. Click on the Careers tab toward the top of the web page.
2. Click on Search for Jobs.
3. In the Quick Search, click on Positions by Locations.
4. Click on Luverne, MN and search for this position to apply.

EEO/AA



MCAN

Minnesota Classified Advertising Network



EMPLOYMENT

KMS PUBLIC SCHOOLS

seeking high school English teacher. Current Minnesota teaching licensure required. Apply online: www.kms.k12.mn.us; or send application, copy of license and three letters of reference to KMS, Box 168, Kerkhoven, MN 56252.

KMS PUBLIC SCHOOLS

seeking preschool teacher. Current Minnesota license required. Apply online: www.kms.k12.mn.us or send letter of interest, resume, three letters of recommendation to KMS, Box 168, Kerkhoven, MN 56252.

SAVE MONEY!

Call your local newspaper or MNA 800-279-2979 to find out how you can save money by placing your advertisement here!

WANTED TO BUY

MOTORCYCLES WANTED

Cash paid for old motorcycles sitting in the barn or shed. Non-running, no titles OK! Local buyer always paying more! 320/420-7675

OLD ORIENTAL RUGS

Any size or condition. Top price paid. 800/363-3097

MOTORCYCLES WANTED

1960S & 1970S - All makes! Running & not-running. Cash paid & trailer pickup. Dan: 612/720-2142

EDUCATION

INDEPENDENCE UNIVERSITY

Offering Associate's, Bachelor's & Master's Degree Programs. Study online around your schedule! Healthcare, Business, Technology, Graphic Arts, more! Financial Aid for those that qualify! Call 877/228-7783 for info! Accredited member, ACCSC

MISCELLANEOUS

THINKING OF BUYING A NEW OR USED CAR?

Call to get current promotional pricing and local dealer incentives for free. No hassle. No obligation. Call: 844/617-9515

DISH NETWORK TV

for Less, Not Less TV! Free DVR. Free Install (up to 6 rooms.) \$49.99/mo. Plus, Hi-Speed Internet - \$14.95/mo. (where available). Call 855/562-4309

STOP OVERPAYING FOR YOUR PRESCRIPTIONS!

Save! Call our licensed Canadian & International pharmacy, compare prices & get \$25.00 OFF your first prescription! Call 877/210-2257 Promo Code: CDC201725

DONATE YOUR CAR

truck or boat to Heritage For The Blind. Free 3-day vacation, tax deductible, free towing, all paperwork taken care of 800/439-1735

150 years

LUVERNE, MINNESOTA

1867 *Love the life!* 2017

Luverne's 150th booklet will be in the July 13th edition of the Star Herald and available around town

| | |
|-----------------------------------------------------------------------------------------------------------------------------------------------------------------------------------------------------------------------------------------------------------------------------------------------------------------------------------------------------------------------------------------------------------------------------------------------------------------------------------------------------------------------------------------------------------------------------------------------------------------------------------------------------------------------------------------------------------------------------------------------------------------------------------------------------------------------------------------------------------------------------------------------------------------------------------------------------------------------------------------------------------------------------------------------------------------------------------------------------------------------------------------------------------------------------------------------------------------------------------------------------------------------------------------------------------------------------------------------------------------------------------------------------------------------------------------------------------------------------------------------------------------------------------------------------------------------------------------------------------------------------------------------------------------------------------------|------------------------------------------------------------------------------------------------------------------------------------------------------------------------------------------------------------------------------------------------------------------------------------------------------------------------------------------------------------------------------------------------------------------------------------------------------------------------------------------------------------------------------------------------------------------------------------------------------------------------------------------------------------------------------------------------------------------------------------------------------------------------------------------------------------------------------------------------------------------------------------------------------------------------------------------------------------------------------------------------------------------------------------------------------------------------------------------------------------------------------------------------------------------------------------------------------------------------------------------------------------------------------------------------------------------------------------------------------------------------------------------------------------------------|
| <p>THURSDAY EVENTS - JULY 13</p> <p>Starting at 5:30 pm 55th Annual Hot Dog Nite <i>15,000 free hot dogs given away; wiener dog events; wienerman triathlon; beer garden; live band & more</i></p> <p>FRIDAY EVENTS - JULY 14</p> <p>9 am Walk on the Prairie with Howard Paul <i>Touch the Sky Prairie (southern kiosk) – US Fish & Wildlife</i></p> <p>Starting at 9 am Love Luverne Trolley Tours <i>Meet at Chamber - \$5/person 9 am, 11 am, 1 pm, & 3 pm</i></p> <p>Open 10 am to 4 pm Love the History <i>History Center & Historic Palace Theatre Museum & Hinkly House</i></p> <p>11am-1pm & 4-6 pm They Remember When <i>Live historic re-enactors: Herman & Maude Jochims at the Palace Theatre; R. B. & Mrs. Hinkly at the Hinkly House; Jay Gerber at Gerber Hardware (now Rock River Relics); Al McIntosh at Star Herald; Inez Isabel Smith at the History Center; Philo, Malvina & Eva LuVerne Hawes at Rock River; A. D. LaDue & Mrs. LaDue at LaDue House (515 North Estey); E. A. Canfield at Carnegie; Leicher Brothers at History Center; Quentin Aanenson on Main Street; Mike McCarthy at Take 16 Brewing Company</i></p> <p>5 to 10 pm Take 16's 150th Birthday Bash with the "Suburbs" <i>Luverne School Foundation Fundraiser</i></p> <p>5 to 8 pm Ride the Sky Helicopter Rides <i>Riverside Park</i></p> <p>Evening Sterling's 150th Night Out <i>Live music & food</i></p> <p>Evening Performing Live SURFIN SAFARI <i>At the Armory – \$10 cover Hosted by LHS Class of 1967</i></p> | <p>SATURDAY EVENTS - JULY 15</p> <p>10 am Luverne's 150th Parade <i>Main Street</i></p> <p>Starting at 11 am Take 16 Parade Feed, Tours & Entertainment <i>Food by Luverne School Foundation</i></p> <p>1 pm Ryan Hardy Organ Recital "Uncovering the Hidden Gem of the Palace" <i>Historic Palace Theatre</i></p> <p>1 to 3 pm Old Fashioned Hay Rides <i>Minnwest Bank Downtown Parking Lot – Sponsored by Minnwest</i></p> <p>5 pm Redbirds vs. Marshall A's <i>Redbird Field</i></p> <p>Starting at 5:30 pm Party at the Park <i>Luverne City Park; Food, beverages, beer & wine garden; 3 Stages with Live Music: Carnegie Minstrels, Spotlight Dance, Colby Anderson, Tequila Sunrise, Not Exactly, Jim Groth, Neo Johnson, John David & the Jerks</i></p> <p>11 pm 150th Birthday Fireworks <i>Luverne City Park</i></p> <p>SUNDAY EVENTS - JULY 16</p> <p>9:30 am Worship at First Presbyterian Church <i>Tom Getman, preaching</i></p> <p>11 am Prairie Plant Medicine Walk with Jeffrey Emmel <i>Touch the Sky Prairie</i></p> <p>2 pm Redbirds Vs. Milroy Irish <i>Redbird Field</i></p> <p>3 pm Community Worship & 150th Celebration Service <i>American Reformed Church – Sponsored by the Rock County Ministerial Association</i></p> |
|-----------------------------------------------------------------------------------------------------------------------------------------------------------------------------------------------------------------------------------------------------------------------------------------------------------------------------------------------------------------------------------------------------------------------------------------------------------------------------------------------------------------------------------------------------------------------------------------------------------------------------------------------------------------------------------------------------------------------------------------------------------------------------------------------------------------------------------------------------------------------------------------------------------------------------------------------------------------------------------------------------------------------------------------------------------------------------------------------------------------------------------------------------------------------------------------------------------------------------------------------------------------------------------------------------------------------------------------------------------------------------------------------------------------------------------------------------------------------------------------------------------------------------------------------------------------------------------------------------------------------------------------------------------------------------------------|------------------------------------------------------------------------------------------------------------------------------------------------------------------------------------------------------------------------------------------------------------------------------------------------------------------------------------------------------------------------------------------------------------------------------------------------------------------------------------------------------------------------------------------------------------------------------------------------------------------------------------------------------------------------------------------------------------------------------------------------------------------------------------------------------------------------------------------------------------------------------------------------------------------------------------------------------------------------------------------------------------------------------------------------------------------------------------------------------------------------------------------------------------------------------------------------------------------------------------------------------------------------------------------------------------------------------------------------------------------------------------------------------------------------|

Happy Birthday Luverne!

Thanks to these businesses for taking pride in their community and sponsoring this promotional page!

- | | | |
|----------------------------------------------------------------------------------------------------------------------------------------------------------------------------------------------------------------------------------------------------------------------------------------------------------------------------------------------------------------------------------------------------------------------------------------------------------------------------------------------------|----------------------------------------------------------------------------------------------------------------------------------------------------------------------------------------------------------------------------------------------------------------------------------------------------------------------------------------------------------------------------------------------------------------------------------------------------------------------------|-----------------------------------------------------------------------------------------------------------------------------------------------------------------------------------------------------------------------------------------------------------------------------------------------------------------------------------------------------------------------------------------------------------------------------------------------------------------------------------------------------------------------------|
| <p>Agri-Energy, LLC/Gevo Blue Mound Area Theatre Cattnach Insurance CHS Eastern Farmers Connell Car Care Continental Western Group Cragoe Realty Eisma & Eisma Estenson Company, Inc. Exchange Bank-Luverne Member FDIC First Farmers & Merchants Member FDIC Hartquist Funeral Home Luverne Chapel Heidebrink & Associates</p> | <p>Jensen Management Services, Inc. Ketterling Services, Inc. Klosterbuer & Haubrich Lewis Family Drug Luverne Country Club Luverne Lanes Luverne Schools Mark's Plumbing, Heating and AC/LLC. McClure Electric Meulebroeck & Taubert Co. Minnwest Bank Member FDIC Papik Motors Real Estate Retrievers</p> | <p>Rock County Community Transit Serving Rock County Rock County Chiropractic Rock County Opportunities, Inc. Rock County Star Herald Rock Veterinary Clinic S&S Carwash Skattum's Confinement/Superior Buildings St. Catherine Church St. John/Little Lambs Stroeh's Auto Center Sudenga Communications SW Mental Health Vander Kooi Law Office</p> |
|----------------------------------------------------------------------------------------------------------------------------------------------------------------------------------------------------------------------------------------------------------------------------------------------------------------------------------------------------------------------------------------------------------------------------------------------------------------------------------------------------|----------------------------------------------------------------------------------------------------------------------------------------------------------------------------------------------------------------------------------------------------------------------------------------------------------------------------------------------------------------------------------------------------------------------------------------------------------------------------|-----------------------------------------------------------------------------------------------------------------------------------------------------------------------------------------------------------------------------------------------------------------------------------------------------------------------------------------------------------------------------------------------------------------------------------------------------------------------------------------------------------------------------|