



Rock County STAR HERALD

Rock County's oldest business, printing since 1873

Thursday, June 28, 2018

Rock County declares state of emergency due to flood damages

By Mavis Fodness

Rock County Commissioners met in an emergency session Friday afternoon to declare a state of emergency for Rock County from the June 20 excessive rain event.

County administrator and emergency management director Kyle Oldre estimates the county suffered about \$25,000 in damages to public infrastructure.

A state fund to help with 75 percent of the repair costs was established to help counties recover from natural disasters.

In Rock County, the state put the damage threshold between \$17,500 and \$18,000 based on its population.

"I don't think there is any question we will hit the state's threshold," Oldre said.

Costs could rise as officials in

the 12 townships assess damage to their infrastructures. In Magnolia Township alone, officials counted 29 road washouts that will need new gravel and grading.

"Everybody's got something," Oldre said.

Highway engineer Mark Sehr said Friday afternoon all county roadways were clear of water and debris except County Road 15 south of Luverne. He expected the roadway to be reopened as soon as water from the Rock River subsided.

Road shoulders received the most damage from the June 20 rain event. Sehr estimated water ran over roadways for several hours.

"This event was pretty short-term as far as water going over the road than four years ago," Sehr said.

Rock County received more than



Lori Sorenson photo/0628 flood magnolia township

Water rushes over the Magnolia Township road at the intersection of 180th Street and County Road 4 Friday morning.

13 inches of rain from June 14-16, 2014, causing the Rock River to swell to a new record high of 14.9 feet that year.

Rain reports from June 20 placed rainfall around 5 to 6 inches last week. The Rock River at Luverne crested at

11.7 feet, according to the National Weather Service.

However, the Split Rock Creek near Jasper in Rose Dell Township in northwestern Rock County did set a new record high of 98.66 feet on June 21, just topping the previous record of 98.5 feet.

The 2014 flood caused \$4 million in damage to public property and another estimated \$4.8 million in damage to agricultural land.

More recently, commissioners declared a state of emergency after the April 13-15 blizzard earlier this year caused \$728,886 in damages.

The state paid 75 percent of the recovery costs. The majority of the repair costs were from damaged electrical transmission poles.

See page 1B for more flood coverage and photographs.

Rock River high and fast for Saturday's water tour

By Lori Sorenson

Saturday's Rock the River water trip could be quite an adventure for thrill-seeking kayak and canoe enthusiasts Saturday, June 30.

But organizers are concerned about the safety of 60-plus people signed up for the event, and as of Tuesday, the river in Luverne was still moving rapidly at only a few inches below flood level.

"We'll check it Friday morning and see what it looks like," said one of the organizers, Mike Davis.

Those who have pre-registered will be alerted to changes in plans; latecomers should check the Luverne Area Chamber Facebook page for updates.

Departure times are 9:30, 10 and 10:30 from the grassy lot east of the Luverne City Park where transportation will be provided to an entry point upstream.

Those who bring their own canoes and kayaks should come 60 minutes early to allow time to load them.

Entry points upstream will be determined by the depth and speed of the river.

Davis said the system isn't very scientific, but he checks the river at Ruddy's Bridge northeast of Luverne, and if a particular set of rocks is visible above water, it's safe to proceed.

If they're underwater, that generally means the river is too deep and too fast to be safe.

"This is actually Kraig Rust's method," Davis said about the rural Kenneth sportsman. "If there's just a little rock showing, that's usually ideal; a lot of exposed rock means it's probably too shallow."

An ideal depth without a strong headwind typically means a kayak will navigate from Ruddy's Bridge to Luverne in 3 to 4 hours.

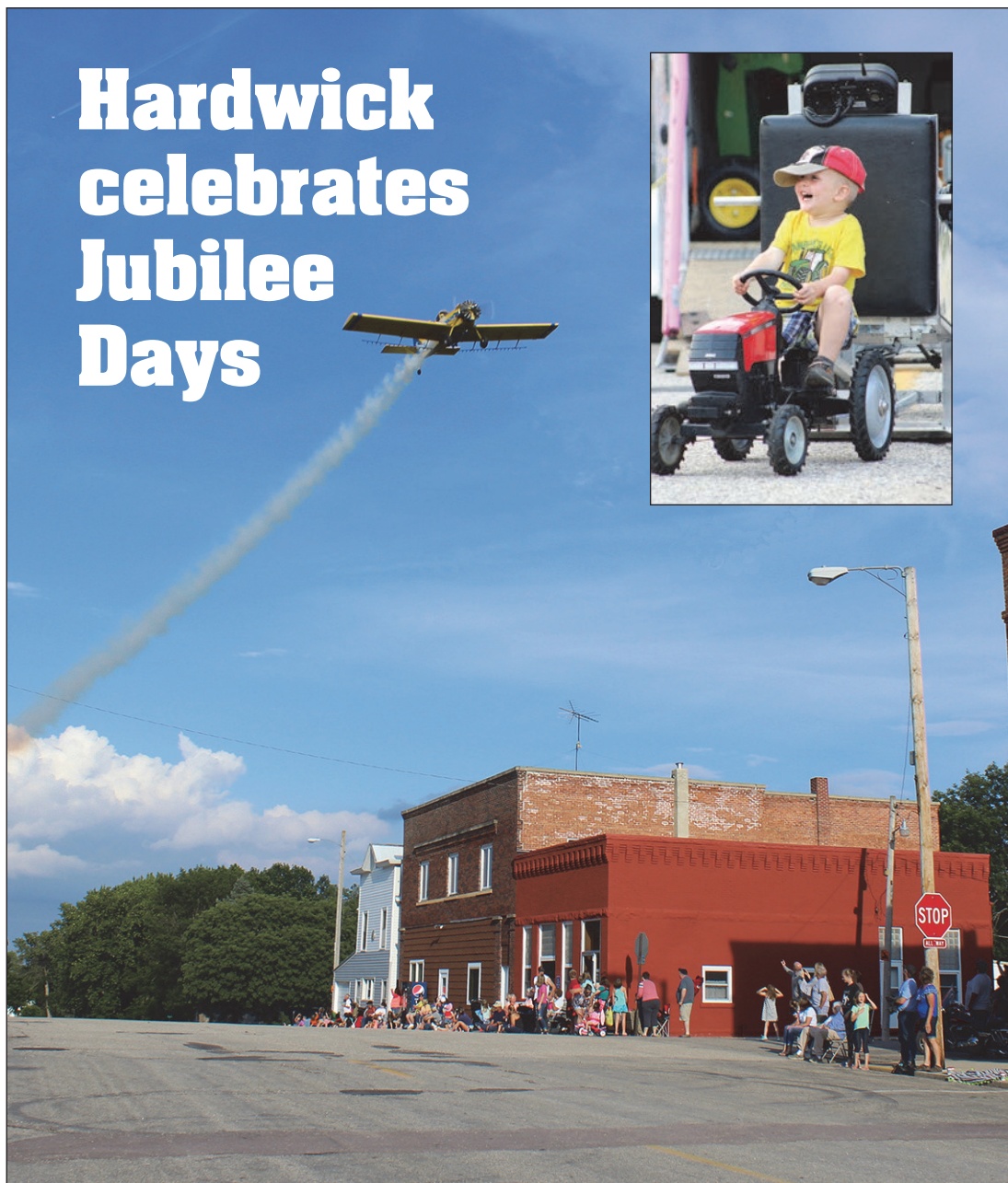
"Some people like to take their time, but the dedicated ones will whiz right through it," Davis said.

He said latecomers will be welcome to join, but there are a limited number of available canoes and kayaks. Those who have their own watercraft can show up and pay the registration fee to participate.

It costs \$20 each for those who use their own canoes and kayaks or \$35 per person to use watercraft that is provided.

All participants must wear life jackets and shoes and all must sign

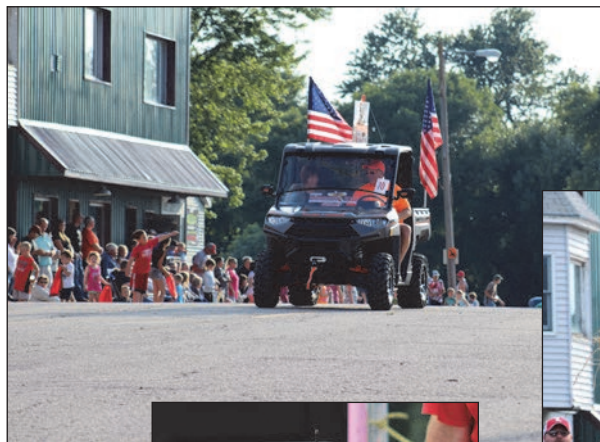
Rock River Tour/see page 3A



Mavis Fodness photos/0628 Jubilee Days 2018

Saturday was a beautiful day for a parade

A picture-perfect evening greeted parade-goers Saturday night at the Hardwick Community Club's Jubilee Days. The 30-unit parade was kicked off with Rick Wenzel piloting a spray plane over Main Street. Hank Petersen, 3, smiles at family members as he competes in the Pedal Pull.



Trevor Teal tests his strength in the bale toss after the Hardwick Jubilee Days parade Saturday night. The competition was open to both guys and gals to see who could toss the alfalfa bale the farthest



Three-year-old Ethan Lindsey takes his turn in the Pedal Pull



Pork business clears first city hurdle after public P&Z hearing

By Lori Sorenson

Luverne's Planning and Zoning Commission voted unanimously Monday night to approve a conditional use permit request by a Hosper, Iowa, pork processor to slaughter 2,200 hogs per day in the former Gold'n Plump facility.

Two interested citizens attended Monday night's public hearing in City Hall, and neither of them raised concerns about the permit request.

Premium Iowa Pork, which specializes in antibiotic-free meat, has an option to buy the property that 20 years ago served as Luverne's Iowa Beef Processing plant.

If the planning and zoning commission's recommendation is approved at the July 10 City Council meeting, the company would start out slaughtering 1,200 hogs per day and eventually build up to 2,200 allowed by permit.

The acquisition would initially bring 200 production workers (at \$13

Premium Iowa Pork/see page 8A

Rock the Edge volunteers for 'Service Over Self' missions

By Lori Sorenson

Rock the Edge ecumenical youth group recruited dozens of volunteer teenagers and adult supervisors for a "Service Over Self" mission week this week in Rock County.

More than 50 teens divided into adult-supervised work teams to tackle 47 community projects ranging from painting and yard work to home-delivered meals and tying blankets for SHARE.

Volunteers met daily in Grand Prairie Events for morning kickoff and afternoon wrap up, which included feedback on each day's work.

"I didn't hear any grumbling or complaining," said Jessica Blocker, director of Christian education at St. John Lutheran Church in Luverne.

"As everyone arrived back at the events center for the end of the day, I was so thankful to hear laughter and story-sharing."

Rock the Edge Youth/see page 2A



COMMUNITY CALENDAR

Meetings

Luverne Senior Citizens Organizational Board meeting will be at 12:30 p.m. Monday, July 2, in the Senior Center.

Pink Ladies will meet at 1:30 p.m. Monday, July 9, in the Blue Mound Meeting Room at Sanford Luverne. Program will be Terry Gaalswyk, president of Minnesota West Community College.

Springwater Township Board will meet at 7 p.m. Tuesday, July 10, at the home of clerk Teresa Kramer.

Blue Mound Cemetery Association will host its annual picnic at 7 p.m. Monday, July 23, at the home of Randy and Kathy Remme.

Narcotics Anonymous meets at a new time: 7:30 p.m. Tuesdays and Fridays in the basement of St. Catherine Catholic Rectory, 203 E. Brown St., Luverne. Use east door. Call 507-220-0137 with questions.

Women's Alcoholics Anonymous meets at 8 p.m. Mondays in the United Methodist Church.

Alcoholics Anonymous meets at 8 p.m. Wednesdays and Saturdays in the United Methodist Church, Luverne. Call 605-321-4324.

Alcoholics Anonymous meets from 8 to 9 p.m. every Tuesday in Runals Memorial Hall, Edgerton. Call Naomi, 507-215-2956.

Red Cross blood drives in area

The American Red Cross is sponsoring blood drives in three locations as follows:

- Adrian High School from 1-7 p.m. Thursday, July 5.
 - Jasper Evangelical Lutheran Church from 12:30-6:30 p.m. Thursday, July 5.
 - Luverne High School 12-6 p.m. Wednesday, June 27.
- For more information go to RedCrossBlood.org.

Make a difference in the life of a child

Would you be willing to share a bit of your time and talents to make a difference in the life of a child? Rock County Big Buddies is looking for caring adults to mentor children in kindergarten through fifth grade. For more information contact program coordinator Lisa J. Nath 283-9165..

Three races scheduled for July in Luverne

Event organizer Dave Duffy has announced plans for three races in July as follows:

•**July 4** is the Davis Lake Triathlon, a canoe/kayak, bike and running race. Minnow race is at 8:30 a.m. Shark race starts at 9:15 a.m. at Luverne's Fourth of July celebration at The Lake.

•**July 12** is the Eighth Annual Wienerman World Championship, a 4-person relay at Luverne Hot Dog Night. Start time is 7 p.m.

•**July 14** is Tour de Donut Minnesota, a unique bicycle event where eating donuts is as important as riding bicycle.

For information or registration, visit www.allsportcentral.com or www.wienermanevents.com.

Tai Ji Quan balance class starts July 3

A 12-week program to address better balance will be offered at Luverne Senior Center beginning at 9 a.m. Tuesday, July 3, and will meet at 9 a.m. Tuesdays and Thursdays for 12 weeks. Emphasis will be on improving balance, flexibility and strength. Participants should be able to walk (canes and walkers are OK). To register, contact Norma Brands at 507-283-5064 with questions. Suggested donation is \$10 but is not required.

Bus trip to Chanhassen 'Newsies' July 12

Join Luverne Community Education for a bus trip to Chanhassen Theatre on July 12 to see Disney's "Newsies" inspired by the real-life Newsboys Strike of 1899. This is a high energy musical for all ages. Fee is \$110/person.

Library summer reading program

The Rock County Community Library is excited to launch its 2018 summer reading program, "Reading Takes You Everywhere!" The program is open to ages Pre-K through grade 12.

During June and July the library will host a variety of events for families to encourage and support a love of reading. Participants will win prizes for reaching their reading goals.

Registration starts Tuesday, May 29. For more information call the library at 507-449-5040.



Lori Sorenson photos/0628 rock the edge

More than 50 teens divided into adult-supervised work teams to tackle 47 community projects ranging from painting and yard work to home-delivered meals and tying blankets for SHARE. Volunteers met daily in Grand Prairie Events for morning kickoff and afternoon wrap up, which included feedback on each day's work. "I didn't hear any grumbling or complaining," said Jessica Blocker, director of Christian education at St. John Lutheran Church in Luverne.

Rock the Edge Youth work on 'Service Over Self' from page 1A

Blocker, one of the week's coordinators, said Monday's rainy weather presented challenges and forced teams to adjust schedules and processes.

"Nothing brings a group together quite like a shared challenge, and in a way that made the rain today a blessing," Blocker said.

"I was blown away by the flexibility of the youth and the volunteers to not only be willing to switch up their tasks for the day, but also to work out in the rain."

One team of workers helped a Luverne resident clean a backyard Monday in pouring rain.

The resident didn't want to be named but said the experience was overwhelming.

"I'm very grateful for everything they did," the resident told the Star Herald Monday night.

"They wiped out in a single night something that would have taken me two years to do on my own — and they did it under monsoon rains."

Volunteers painted the house later in the week, and the resident described the work as a "fresh start" toward helping maintain the property.

"I prayed a lot about this — about how I could do it," the resident said. "I don't have the words to describe what this means to me."

The group had raised \$6,000 to help pay for supplies, and local churches, businesses and organizations donated tools, trailers, transportation and other resources to help students get their work done.

Most of the work is due to wrap up by the end of the day Thursday, and volunteers will celebrate with a community meal.

The public is encouraged to attend the celebration, which will include burgers and rib ticklers from local pork producers and cattlemen.

Teal and Casey's are also donating food for the event from 5 to 7 p.m.

After the Thursday night



Above, Elise Jarchow, Mary-Frances Ladd, Rebecca Austin and Xavier Carbonneau tie blankets for SHARE. Below, Kynzie Hamann paints the interior of the gun club.

"I'm very grateful for everything they did. They wiped out in a single night something that would have taken me two years to do on my own — and they did it under monsoon rains."

— Resident helped by teen volunteers

supper, Christian musician Connor Flanagan will perform in concert at the History Center Plaza.

Friday morning was dubbed "fun day" at The Lake in Luverne where volunteers will celebrate with volleyball, bean bag, kayaking, canoeing, log rolling, dunk tanks and other activities.

The week concludes Friday at noon with a meal donated by Pizza Ranch.

Blocker said the "Service Over Self" mission week appeared to accomplishing its intended goal on Day 1.

"They served Christ and their community in the midst of a literal storm, and I pray



that that makes a difference for those going through the storms of life," Blocker said Monday evening.

"I am excited to see what the rest of the week brings and to see how God uses this amazing group as they strive to live out Ephesians 4:4 as 'one body, one spirit, with one hope.'"

Rock the Edge volunteer students and adult supervisors hope to accomplish the following "Service Over Self" projects this week: Build a ramp, paint a house and garage, paint a cemetery fence and park shelter, paint the gun club, stain three decks, remove a deck, deliver Meals on Wheels, clean wheel chairs, serve root beer floats in seven locations, clean the Historical Society properties at the fairgrounds, finish eight landscaping projects, clean three gutters, tie dozens of tie blankets for SHARE, organize the food shelf, move the Backpack program, organize Redeemed Remnants, repair two faucets, weed the Garden of Hope, attend a comfort dog training, prepare and serve a community meal at UMC, set up and serve a community meal at the Thursday night concert, help at Prairie Ally Food Forest and weed the Nature Outdoors campus at the elementary school.



Dial-A-Specialist

Your One Stop Guide to Local Businesses

 <p>ROCK COUNTY CHIROPRACTIC • Men, Women & Children's Health • Custom Orthotics • Kinesiotape • Athletic Care • Massage Therapy • Work & Auto Injuries • Postural Restoration WWW.ROCKCOUNTYCHIROPRACTIC.COM 283-2561 • 103 E. MAIN, LUVERNE Monday 7:30 a.m. - 6 p.m. • Tuesday 7:30 a.m. - 3 p.m. Wednesday 7:30 a.m. - 6 p.m. • Thursday 7:30 a.m. - 1 p.m. Friday 7:30 a.m. - 5 p.m.</p> <p>• Chiropractic</p>	 <p>STAR HERALD ANNOUNCER Chantel Connell Sales Representative 117 W. Main, Luverne, MN 507-283-2333</p> <p>• Advertising</p>	 <p>LUVERNE HEALTH & WELLNESS Codie Zeutenhorst, D.C., CAC ✓ Acupuncture • Chiropractic Care ✓ Family Care • Sports Injuries ✓ Kinesiotape • Auto & Work Injuries Acupuncture and Massage Available Kris Van Der Brink M.T. & Amy Rosales M.T. www.luvernechiro.com 109 S. Freeman Ave. Luverne, MN 507.449.4400</p> <p>• Chiropractic</p>	<p>COMRAY COMPUTERS Computer Repair and System Builder</p> <p>Ray Hansen 1726 140th Ave., Luverne, MN 56156 507-669-2621 comraycom@gmail.com</p> <p>• Computer</p>
 <p>Rock County EYE CLINIC 507-283-2345 104 N. Freeman Ave. Luverne, Minnesota</p> <p>• Eye</p>	 <p>Papik MOTORS 1-90 Luverne, MN Box 536 • 801 West Commerce Road Luverne, MN 56156 (507) 283-9171 (800) 634-7701 www.papik.com</p> <p>• Automotive</p>	<p>Luverne MINNESOTA City Offices <i>Love the life!</i> PO Box 659, Luverne, MN 56156 507-449-2388 (24 hour voice mail) www.cityofluverne.org</p> <p>• City</p>	<p>Dakota Land Surveying and Engineering, Inc.</p>  <p>Steven B. Kor Professional Engineer Registered Land Surveyor</p> <p>2000 W. 42nd Street, Suite B-6 Sioux Falls, SD 57105 605-334-4882 605-334-5745 Fax</p> <p>506 Almar Luverne, MN 56156 507-283-3803 steve.dis@midconetwork.com</p> <p>• Land Surveying</p>

Library chosen to implement broadband communities grant

By Mavis Fodness

Rock County Library is one of four entities chosen for the Blandin Foundation 2018-2020 Broadband Communities Grant that will help local entities make the most of Internet capabilities.

The library joins Swift County, Cannon Falls School District and Koochiching Tech Initiative in the current four-member cohort.

"It is an unusual cohort of communities in that most already have good broadband access that they can use to make the most of this program," said Alie McNerney with the Blandin Foundation.

Rock County Library Director Calla Jarvie is the project coordinator and will attend the Blandin training session with the other three members next month.

"I am very excited to move forward with this project," she said. "We have

a great broadband service in Rock County and our goal is to utilize it to its full potential."

She said the primary goal is to increase broadband Internet usage across all sectors including agriculture, education, health, private business and private use.

Other goals are to close gaps in available services, conduct business locally and, in general, make the lives and businesses of the citizens easier, Jarvie said.

As part of the communities grant program, the library will be eligible for a matching grant from Blandin up to \$75,000 and an equipment grant up to \$25,000.

Broadband Internet access became available to all premises in Rock County in late 2016 through the Rock County Broadband Alliance, a subsidiary of Alliance Communications Cooperative based in Garretson, South Dakota.

Bid period opens for school project

By Mavis Fodness

Managers of Luverne School District's \$32 million building improvement project anticipate a mid-August groundbreaking for the 15-month project.

Local school board members unanimously approved a 1 p.m. July 24 bid letting at their meeting Thursday night, June 21.

Joel Bornhoft with ICS/FJJ is the project manager.

Bornhoft said estimated costs are currently projected at \$24.5 million for the voter-approved bond. The district levied an additional \$8 million for health and safety improvements.

"We hope on bid day we come in below that," Bornhoft said.

School officials also viewed a 3-D architectural design and reviewed the chosen wall colors and furnishings.

JLG architect Lynn Remmers said the building committee has a list of alternative items that could be added if current projects are bid lower than anticipated.

Alternative items include a new elevator, upgrades in floor finish materials, new lockers and/or squaring off the elementary addition.

"The school committee is looking at different options," she said.

Construction is divided into 12 phases, Bornhoft said, with some work completed before classes resume Sept. 4.

School officials and project designers have developed a schedule for classes to continue as the renovation progresses through the middle-high school.

The project is expected to be completed in December 2019.

Bosshart retires after 34 years of teaching at Luverne Elementary

By Mavis Fodness

Fun and enjoyable describe Wendy Bosshart's focus in the classroom for the past 34 years, and now, as she settles into retirement, the words also describe the next chapter in her life.

Since 1984 Bosshart has taught fifth grade at Luverne Elementary, an age group that has its instructional challenges.

At ages 10 and 11, the students are starting the physical maturity process, Bosshart said.

The challenges are that their minds are easily distracted with more concentration on activities such as sports and making friends.

Technology is often among the distractions.

In Bosshart's classroom, cell phones were placed in a basket until the end of the school day. From the time students gave up the phones until they got them back, she worked tirelessly and creatively to engage students in the learning process.

"I hate to do the same things all the time," she said.

Interactive lessons, small group activities and hands-on challenges were common in Bosshart's classroom.

She also fulfilled students' needs for socializing through communicating.

"I really want them to feel like they have a relationship with me and leave with a good feeling that they had a good year," she said.

Her innovative knowledge to engage students in their own learning came from watching her late father, Milburne "Big" Carrigan, who was a teacher at Jackson Middle School and later the athletic director for the Jackson district.

"I learned from him you have to put in a lot of time and hard work," she said.

Also influencing her teaching focus was her husband, Don. The couple began dating as high school freshmen.

Both attended Minnesota State University in Mankato to study education, marrying in 1981 as college sophomores.



Mavis Fodness photos/0607 Wendy Bosshart

After 35 years in elementary education, fifth-grade teacher Wendy Bosshart retired from teaching at Luverne Public Schools following the completion of the 2017-18 school year.

Wendy Bosshart received degrees in elementary education and coaching. She later achieved a master's degree in education leadership from Southwest Minnesota State University in Marshall.

Upon graduation the Bossharts searched for schools that needed to fill two teaching positions and needed two coaches.

Wagner, South Dakota, fit the first-job criteria, where in 1983 both received teaching positions. Wendy taught second grade and coached gymnastics.

A year later Luverne was seeking an elementary teacher and gymnastics coach. Wendy served as the high school coach for seven years.

While Wendy joined Luverne staff, Don filled a leave of absence at Hills-Beaver Creek Elementary and was hired full time the following year. He retired last year from H-BC.

The couple has three

grown children, Callen, Morgan and Sydney, and three grandchildren.

Her father's retirement experience prompted Wendy to step out of the classroom after this school year.

"My dad had 20 years of retirement," she said. "I thought that was really cool."

For two decades her dad devoted time visiting their children and engaging in the grandkids' activities. Those are activities Bosshart is looking forward to experiencing for herself.

Bosshart has no plans to move from her Luverne home since the grandchildren already live in the area. She does plan to travel to see her siblings more regularly. They live in various parts of the U.S. and all of them are currently enjoying retirement.

With no more time devoted to lessons and teaching, Bosshart said she will have more time to read, shop, garden, walk and enjoy



In her last month on the job, Wendy Bosshart (left) works with fifth-grade student Keaton Ahrendt on a reading assignment.

nature. The Bossharts are also devoted Minnesota Twins and Vikings fans. They plan to attend more games played by the professional teams.

Wind production farm planned for Martin Township

Walleye Wind Farm project estimates completing construction by end of 2020

By Mavis Fodness

Plans are underway to develop a 100-megawatt wind farm in Martin Township in southwestern Rock County.

Walleye Wind Farm is being developed by Renewable Energy Systems, a global renewable energy company headquartered in England with offices in Broomfield, Colorado.

RES received approval Tuesday night, June 19, from Rock County Commissioners to erect a meteorological tower in section 1 of Martin

Township on land owned by Mark Gath of Luverne.

According to the permit application, instruments on the tower will record on-site climatic conditions for future development of a wind energy production farm.

RES Development Manager Scott Jansen told commissioners that the Walleye Wind Project would be 100 MW in size and involve the construction of 36 to 40 turbines, about a third smaller than the current industry average.

"It won't be a super-sized project like a lot of modern-day wind farms," he said.

A transmission line currently exists in Martin Township with RES' requesting an interconnection of 100 MW.

"That point of interconnect won't handle more than that," Jansen said.

With the conditional use permit secured for the meteorological tower, Jansen said RES representatives would begin securing potential turbine locations.

"We have a lot of work to

do," he said. "We still need to meet with as many landowners as we can."

Future outreach meetings are planned with affected landowners.

Jansen said permit paperwork is being prepared with possible submission to the state energy commission planned for later this year.

If the permitting process goes as planned, construction on the wind farm could begin in late 2019 with completion in 2020.

Rock River Tour/from page 1A

waivers.

Children under 18 must be accompanied by an adult.

The trip on the river includes two stops — one about an hour out for a drink of water and snack, and another for a catered lunch. Both stops will have portable bathroom facilities available.

Groups of roughly 30 people will depart at a time, and paddlers can choose to get out of the river either before or after the rapids, which are between Main Street and the railroad

bridge to the south.

Paddlers are encouraged to bring sunscreen, sunglasses, hats and other items for comfort, and they can bring their own snacks and beverages, as long as they aren't in glass containers.

Emergency staff will be available both on the river and on land if needed, with an emergency contact number of 507-920-5197.

Contact the Chamber, 507-283-4061 or email luvernechamber@co.rock.mn.us for details.

COME & GO
BABY SHOWER
mom-to-be & baby boy
PAQUETTE
Saturday, June 30
11am - 1pm
TAKE 16 BREWING,
LUVERNE
registered at Target & Amazon

Interested in Advertising?
Call Rick or Chantel to advertise in the Announcer
283-2333

FIRE UP THE GRILL Award Winning Brats

- Cajun Brats
- Taco Brats
- Supreme Pizza Brats
- Tomato Basil Brats
- Jalapeno & Pepperjack
- Buffalo Wings Brats
- Hawaiian Brats
- Philly Steak Brats
- Buffalo Wing Bleu Cheese Brats
- Southwest Chipotle Brats
- Minnesota Brats
- Maple Brats
- Beer Brats
- Green Onion Brats
- Italian Parmesan Brats
- Bacon Cheeseburger
- Honey Mustard Brats
- Panther Brats
- Pineapple Brats
- Mushroom & Swiss
- Ranch Brats
- Honey BBQ Brats
- Reuben Brats
- Smoked Fajita Brats
- Regular Brats
- Onion & Pepper Brats
- Chicken Alfredo Brats
- Ball Park Brats
- French Onion Brats
- Jamaican Brats
- Chicken Bacon Ranch
- Nacho Supreme Brats
- Korean BBQ Brats
- Jalapeno Beer Cheddar

Gourmet Patties

- Bacon Cheese Burger Patties
- Rib Patties
- Seasoned Ground Pork Patties
- Pizza Patties
- Mushroom & Swiss Patties
- Philly Steak Patties
- Brat Patties
- Monster Burger (1/2 lbs.) Patties
- Ground Beef (1/3 lb.) Patties
- Ground Beef Patties (1/4 lb.) Patties

Ellsworth Locker
Open Mon.-Fri. 7:30 a.m.-6:00 p.m.; Sat. 7:30 a.m.-3:00 p.m.
24 Hour Emergency Service
Phone 967-2544 • Ellsworth, MN • Home 967-2537
Brian & Kathy Chapa

Meats & Sausages

The Luverne Trap Team would like to thank the 2018 sponsors and parents for a successful year!

Adrian Tile Company
Agri-Energy, LLC
Ahrendt Brothers
Brad VerSteeg-Channel Seeds
Braun Farms & Trucking
Buffalo Ridge Insurance

Damon Eisma
ExpressAg
Howling Dog
Jarrod Sandbulte
Jaycox Implement
Ketterling Services
Loosbrock Electrical Construction, LLC
Luverne Body Shop
Luverne Building Center
Luverne Farm Store
Mert's Machine & Repair
Minnwest Bank
Mouw's Feed & Grain, Inc.
Papik Motors
Professional AG Marketing
Randy's Plumbing
The Bluestem
Rock Vet Clinic
Skattum Confinement & Superior Buildings
Top Farms/Steve & Shirley Top
V&M Locker Leota
Wieneke Dairy Inc.
Pheasants Forever

Busse Plumbing, Heating & A/C
C&B Operations/Rock Co. Implement
Chad Hoff - Wyffels Seeds
Chandler Feed Company
CHS
Cleveringa Construction
Compeer Financial
Connell Car Care
Country Cupboards
Dammann Trucking

Thank You!

Behind the camera for a 70th wedding anniversary photo

This past Saturday I served as the "official" photographer at the 70th wedding anniversary celebration of my husband Bryan's aunt and uncle.



RUMINATIONS

By Mavis Fodness, Reporter

It's not been unusual for the Fodnesses and Stuckenbrokers to be together at special events over the past seven decades.

I met Doris and Harry three decades ago as a bride-to-be of their nephew, and our families have been woven together through various events ever since.

At their 70th anniversary party, photographs lined the shelter house in Pipestone. It wasn't a surprise to see my husband in many photos taken at their farm near Ihlen.

Harry shared stories about those photos as we waited for family members to assemble for the photo session. The decades-old black and white pictures brought to mind special moments of their 70 years together.

As the "official" photographer, I realized I would play a very special role in their big day — I would help capture one of their important memories.

From behind the camera I viewed the smiles of the 50 people connected to Doris and Harry over the course of their marriage.

I can image the stories that photo will conjure up years from now, much like the ones Harry told me from those old photos displayed at the anniversary party.

But Saturday's photos will bring a more personal story to mind for me.

When I look at the photos, I recall all the events Doris and Harry have shared with me.

They were there for my engagement party, the wedding,

the household moves, births of my children, their baptisms, their graduations, their marriages and the funerals of loved ones who became part of my family because I became part of their family.

Doris and Harry's presence (depending on the event) brought joy or solace to the occasion. They brought strength, understanding and wisdom. To many of those events, however, they also brought humor.

In typical fashion Doris brought that humor to Saturday's event.

During the wait for the group picture, I asked Doris her secret to a long-lasting marriage.

"We didn't know it was a secret," she said with her typical laugh.

More seriously, Harry added that the long-lasting marriage was due to "God's blessing."

Their daughters, Linda and Nancy, gave a little more insight into what they learned from their parents during a heartfelt speech they read at the family gathering.

"Falling in love is easy. Staying in love is very special — 70 years special.

"Mom and dad are happy. They didn't and don't have the best of everything. They just make the best of everything they have and do. If it broke, they fixed it, not throwing it away or giving up.

"Thank you, Mom and Dad, for being such great role models. You have given us a legacy of love and memories."

I hope I captured a little of that love and legacy in the anniversary photos.

As national leaders focus on 'me first' local teens work on 'Service Over Self'

Anyone who's been paying attention in neighborhoods around Luverne and communities in Rock County this week may have noticed something encouraging.

Teenagers are busy doing the right thing for the sake of doing the right thing. How cool is that?

Truth be told, they may have needed gentle nudges (or a strong push) from parents or church leaders in their lives, but they're working hard, nonetheless, willingly and even cheerfully in some cases.

More than 50 kids from all over Rock County have divided and conquered some pretty big volunteer projects as part of what they're calling "Service Over Self" mission week.

It started with a handful of student members in the Rock the

Edge ecumenical youth group.

They recruited some friends in other youth groups, who recruited other friends and now they're a small army of energetic workers.

It goes without saying that they've needed a strong core of adult volunteers to organize what would have otherwise been a chaotic force of here and there efforts.

But all this is encouraging.

Not necessarily surprising in this community that's known for generous citizens, but encouraging nonetheless.

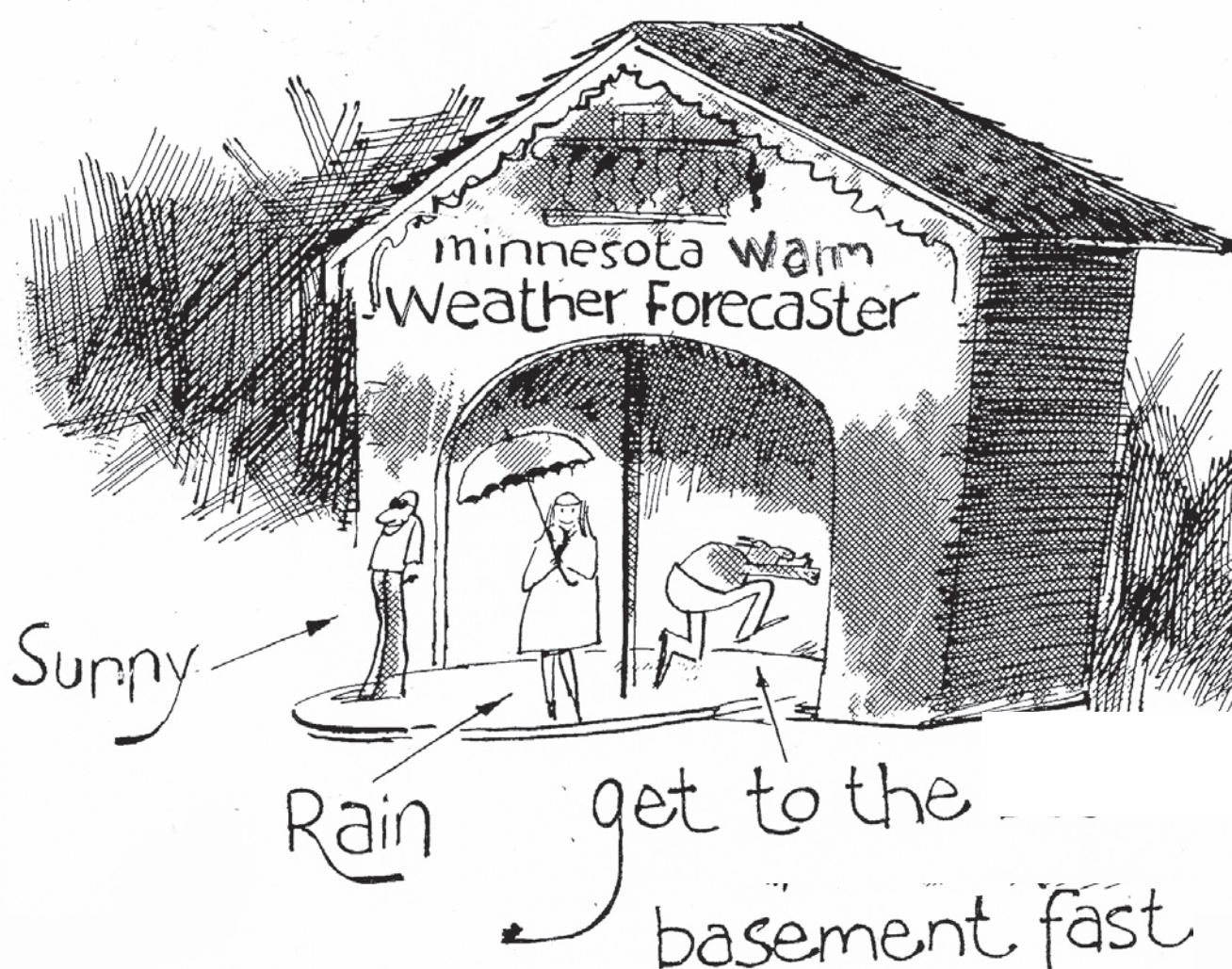
At a time when our White House leadership seems ever more focused on "me first," these kids seem to understand the concept of "doing unto others" in the spirit of "what would Jesus do?"

Kudos to all the volunteers involved, and to local sponsors who supported their efforts this week.

We look forward to celebrating with you at 5 p.m. Thursday, June 28, on the History Center Plaza for a community meal and live concert. Read the news story on Page 1A.

STAR HERALD EDITORIAL

ED FISCHER



Minors must wear helmets on ATVs, in OHVs

Question: I recently purchased a 2018 Polaris Ranger. We have a 2-year-old son and I am wondering what the laws are. Does he need to be in a car seat or booster seat with a helmet? Thank you in advance.

Answer: When riding ATVs, OHVs and motorcycles on public lands or waters, or on a public road right-of-way, a passenger under age 18 must:

- Wear an approved helmet.
- Wear a seat belt if provided by the manufacturer.

An approved helmet must meet federal law, which requires the helmet to display the symbol "DOT." DOT is the manufacturer's certification that the helmet conforms to the applicable federal motor vehicle safety standards. Standard bicycle helmets and hockey helmets do not meet legal requirements.

It is important to keep in mind the size of the child's head and neck,



ASK A TROOPER

By Sgt. Troy Christianson, Minnesota State Patrol

as well as the weight of the legal helmet. The weight of the helmet may be too heavy for the child's head and neck to safely support, especially when being bounced around on the trail. Again, bike or hockey helmets do not meet the legal standards and would not provide the level of protection necessary.

For more information, visit https://files.dnr.state.mn.us/rhp/regulations/ohv/ohv_regs.pdf

You can avoid a ticket — and a crash — if you simply buckle up, drive at safe speeds, pay attention and always drive sober.. Help us drive Minnesota Toward Zero Deaths.

If you have any questions concerning traffic-related laws or issues in Minnesota, send your questions to Sgt. Troy Christianson — Minnesota State Patrol at 2900 48th Street NW, Rochester MN 55901-5848. Or at (Troy.Christianson@state.mn.us) Twitter: MSPPPIO_SOUTH.

VOICE OF OUR READERS

Fick: Seeing the real problem will help bring solutions to immigration problem

To the Editor:

Why doesn't the United States send some military to Central America to help their local police and law enforcement restore peace and order? I am sure most of the immigrants coming to our borders would prefer to stay at home where their relatives and friends are, but because of the lawlessness must leave to seek a better and safer life.

The United States seems to think it is our duty to calm the lawlessness halfway around the world. Why, then, do we overlook this violence right in our hemisphere? It seems to me some of these foolish, costly experiments serve no purpose, only caus-

ing more costly problems. Where is all this money going to come from? The military is already on the payroll.

When the firemen are called to a fire, they aim the water at the base of the fire, the cause, not at the top of the flame. I feel we should go after the cause of this problem rather than punish the victims of these violations.

I think our representatives in Washington should live by the rules we live by. Either produce, or you get your two-week notice and you're out of here with no benefits. They have to learn to compromise.

**Robert Fick
Luverne**

E-mail: editor@star-herald.com Web site: star-herald.com
Phone: 507-283-2333 Fax: 507-283-2335

Published Thursdays by Tollefson Enterprises, POSTMASTER:
Send address changes to 117 West Main, P.O. Box 837, Luverne,
MN 56156. Periodicals postage paid at Luverne, Permit #33 and at
additional mailing offices.

General manager: Rick Peterson
Office manager: Deb Lusty
Circulation manager: Jennifer Kor
Advertising: Chantel Connell
Production manager: Abbe Kolar
Production: Heather Johnson

News staff:
Lori Sorenson, editor
Mavis Fodness, reporter
John Rittenhouse, sports editor
Esther Frakes, copy editor

Rock County
STAR HERALD
Rock County's newspaper since 1873

(ISSN 0889-888X)
SUBSCRIPTION RATES

\$72 per year in Rock County; \$89 per year all other areas. Single copies \$1.25

Entire contents copyrighted by
Tollefson Publishing Roger Tollefson, publisher

The *Star Herald* encourages letters to the editor expressing the opinions of readers and intends to print all letters. Letters not meeting the guidelines will not be printed. The *Star Herald* will verify the authenticity of all letters. Letters must have the name of the writer, a signature and address.

Unsigned letters will not be considered. The *Star Herald* will edit for grammar, spelling and clarity. Any letters containing offensive language, libelous or slanderous material, or misleading or false information will be rewritten before being published. The *Star Herald* will not publish letters written with the sole intent to advertise or serve as a thank-you. Letters with more than 300 words may be edited. The deadline for letters is Monday 10 a.m. They may be delivered or mailed to the editor, *Rock County Star Herald*, P.O. Box 837, 117 W. Main St., Luverne, Minn. 56156.

ON THE RECORD

Dispatch report

June 15

- Complainant requested to speak with a deputy.
- Complainant in Hills requested a welfare check.
- Stalled motorist in Beaver Creek.
- Complainant reported a suspicious phone call regarding utilities.
- Pedestrian given a ride from Magnolia to the South Dakota border.
- Complainant reported a silver Jeep all over the road on Brown Street.
- Complainant reported an ATV driving with three people on Brown Street.
- Complainant reported a 4-wheeler speeding and popping wheelies in town.
- Complainant reported a child custody issue in Hardwick.
- Deputy out with people shooting fireworks on Freeman Avenue.
- Complainant reported she has had several calls about a big fire at the campgrounds in Hardwick.
- Complainant reported a party going on.

June 16

- Deputy reported someone put the traffic cones in the middle of the road on Gabrielson Road.
- Complainant requested assistance at the Beaver Creek rest stop. Traveling on foot.
- Complainant reported a stalled vehicle in Beaver Creek, informed state patrol.
- Complainant requested a welfare check on pedestrian.
- Complainant reported a vehicle is parked blocking the driveway on Highway 75.
- Complainant requested a welfare check on subject.
- Deputy reported an open door/window on Kniss Avenue. White car on scene.

June 17

- Complainant reported a wrong way driver on I-90.
- Reserved for DWI investigation.
- Report of male riding bike down center of the road on County Road 4.
- Assistance requested by outside department.

June 18

- Erratic driver reported on I-90.
- Complainant requested assistance in Magnolia.
- Complainant reported he was almost run over by a vehicle on Warren Street.
- Reserved for prosecution.
- Complainant reported harassment order

- violation.
- Reserved for harassment order violation.
- Deputy conducted a follow-up.
- Complainant reported a stoplight violation on Main Street.
- Complainant reported a driving complaint in Steen.
- Complainant requested a hotel voucher.

June 19

- Complainant reported harassing phone calls to his daughter.
- Complainant reported possible driver's license photo scam.
- Deputy reported an abandoned vehicle on County Road 20.
- Complainant reported a trespasser wouldn't leave in Hills.
- Complainant reported a red car with a kid on top on Main Street.

June 20

- Complainant requested a deputy speak with subject about abuse allegations.
- Complainant reported a phone scam.
- Complainant reported a warrant hit on subject.
- Call-out for an ERU in Iowa.
- Complainant requested property from vehicle in the impound lot.
- Complaint reported a strange phone call in Jasper. Requested welfare check.
- Complainant reported a red sedan has been sitting in the parking lot on Jackson Street at various times.
- Complainant at location on South Kniss Avenue reported she had problems.

June 21

- Complainant reported a pickup sitting out in front of his house on Davidson Street eving the motor up.
- Complainant reported vehicle in the ditch by Manley. Unable to exit due to water.
- Complainant requested to speak with a deputy.
- Complainant reported traffic issues on County Road 5 due to detour from flooding.
- Complainant reported pumping waste at location.

In addition, officers responded to 5 motor vehicle accidents, 2 vehicles in ditch, 2 transports, 8 escorts, 5 ambulance runs, 6 animal complaints, 6 burn permits, 3 drug court tests, 3 permits to purchase/carry, 2 fingerprint requests, 3 abandon 911 calls, 13 traffic stops, 9 paper services, 2 tests, 11 closed roads and 4 road repairs.



Lori Sorenson photos/0628 car wash ribbon-cutting

Top Notch Car Wash opens for business

Pete and Kristie Jessen (center, with scissors) celebrated a ribbon-cutting and open house at their new business, Top Notch Car Wash, south of I-90 on the Shopko road. Pictured are (from left) Faye Bremer, Judy Fenske, Annie Opitz, Delores and Shorty Leenderts, Ashley Carlson, Pete Jessen (holding grandson Levi Jessen), Kristie Jessen, Matt Jessen, Trisha Jessen, Eric and Jessica Boersma, Dave Deragisch, Judy Shelman, Leona Hoeck and Nancy Scheidt. The other Jessen grandchildren are (standing, from left) Natalie Boersma (holding Guinevere Carlson), Colby Boersma, Keagan Jessen, Landon Jessen, Elliott Boersma (behind Landon), McKinleigh Boersma and Garrett Carlson. All nine of the Jessen grandchildren, their three children and spouses were at the ribbon-cutting except for Ashley's husband, Robert Carlson. **Right:** Visitors take a close-up view of the four wash bays.



LACF announces Spring 2018 grant recipients

The Luverne Area Community Foundation is excited to announce its Spring 2018 Grant Awards in the amount of \$33,808.

Community General Fund Grants

- L.I.F.T./2018 Governor's Hunt \$5,000 education sessions for children at LPS and HBC.
- City of Kenneth \$1,000 for park beautification.
- Blue Mound Area Theater \$1,200 ticket printer/new online ticketing.
- City of Hardwick/Fire Department \$3,000 toward a new tanker truck.
- Rock County Ag Society \$2,500 sanitary serving counter in eat stand.

Healthcare Grants

- Sanford Luverne Medical \$9,094 for an autoclaveable camera head.
- Luverne Backpack Program \$2,000 for weekend nutrition needs for students.
- LIFT/Luverne Farmers Market \$1,000 healthy eating program/family education.
- Rock Ranch \$500 for senior saddles program.
- Rock County Food Shelf \$1,000 nutrition dollars for Farmers Market.
- Luverne Public School \$2,448 flu shot clinic.

- Hills-Beaver Creek School \$816 flu shot clinic.
- Lutheran Social Services \$750 for post-hospitalization meals for seniors.
- Project Food Forest \$500 community food source and education.
- PPIE \$1,000 dental health program at Luverne elementary school.
- Rock County Opportunities Inc. \$2,000 exercise bike for disabled residents.

Twice yearly the Luverne Area Community Foundation invites applications that will enhance the quality of life in the areas of arts and humanities, community and civic affairs, social and economic growth, environment, support for youth through senior citizens and health and wellness.

Nonprofits, government agencies and academic and research institutions located in Rock County are eligible to request support from the Luverne Area Community Foundation.

The deadline for the 2018 fall cycle is Sept. 30. Applications are at www.luvacf.org.

Questions can be directed to Emily Crabtree, Executive Director LACF, 507-220-2424 or in the office 102 E Main St. Luverne.

At Minnesota Girls State, local teen introduces 'law' to ban sale of flavored tobacco products

Jadyn Anderson, an incoming senior at Luverne High School, advocated for policies against flavored tobacco products during her recent participation in the 2018 session of the American Legion Auxiliary Minnesota Girls State in St. Paul.

Anderson introduced mock legislation that would ban the sale of flavored tobacco products, which are popular among teens because flavors mask the tobacco taste.

American Legion Auxiliary Minnesota Girls State is a statewide conference for girls interested in becoming future political and community leaders.

A committee passed the legislation, which was then signed into "law" by the Minnesota Girls State governor.

"Flavored tobacco products are clearly aimed to addict youth to cigarettes and vaping," said Anderson, 17. "Teen tobacco use has skyrocketed in recent years with the aggressive marketing of flavored tobacco products like e-cigarettes."

Earlier this year the Minnesota Department of Health released the 2017 Minnesota

Youth Tobacco Survey, which found that youth tobacco use has risen for the first time in 17 years.

The increase is due to a sharp rise in e-cigarette use by teens and by the tobacco industry's marketing to youth, including prolific advertising, new products, easy access and kid-friendly flavors.

The 2017 survey found that more than 60 percent of youth tobacco users reported using flavored products in the past 30 days.

"Tobacco use remains the No. 1 preventable cause of death and disease in Minnesota," said Anderson.

"The tobacco industry targets teens to protect their profits, like it has done for previous generations. Restricting tobacco flavors is one key way to protect youth from tobacco addiction."

Several local governments in Minnesota have taken action to restrict the sale of flavored tobacco products to protect youth.

The 72nd Annual Session of American Legion Auxiliary Minnesota Girls State completed its one-week session on Saturday, June 16, at Bethel University in Arden Hills.



Papik picks of the week...



2012 Chevrolet Malibu LT
91K • Stock #332022U
\$8,990



2013 Chevrolet Silverado 1500
63K • Stock #369747N
\$25,990



2010 GMC Terrain
77K • Stock #362911U
\$10,990



2013 GMC Acadia Denali
126K • Stock #205615N
\$18,990

283-9171

PAPIK.COM I-90 Luverne, MN 56156





Mavis Fodness photos/0628 Summer Science

Reagan Gangstad (right) reacts in surprise as the egg she and Jenna Bullerman were examining breaks open revealing a soft yoke. The egg was soaked in vinegar overnight as part of a three-day "Make-A-Mess Science" offering through Luverne Community Education. By Wednesday morning, June 20, the egg was held together by a membrane.

'Make-a-Mess Science' brings fun to summer learning

By Mavis Fodness

Learning at Luverne Public Schools hasn't stopped for the summer as various classes for children and adults are offered through the school's community education program.

For three days last week students in grades 1 through 5 attended "Make-a-Mess Science" class to brush up on or possibly better understand key scientific principles.

"It's kind of a mish-mash of science experiences we can get results from right away," said instructor Trisha Hess of Pipestone, a Flaudreau Middle School teacher.

"Science is fun to do."

Density, balance, gravity and static electricity were among the experiments completed by the 15 elementary students participating in the class.

Hess will bring summer fun to learning math in another three-day "Math + Games = Fun" event next month.

A full listing of activities is available in the Summer 2018 community education catalog or online at www.isd2184.net/Community_Ed.

For more information or to register, contact the community education office at 283-4724.



Above: Sophia Gutkoski moves a magnetic disk through a popsicle stick obstacle course.

Far left: Ava Sieve watches static electricity move the Styrofoam beads inside a balloon.

Left: Traytan Sayavong holds a magnet he ran through a bowl of crushed Cheerios, a cereal that contains 25 percent of daily iron requirements. The magnet picked up small bits of iron.



CELEBRATIONS

Births

Twins, a boy, Lucah Alexander, weighing 4 pounds, 14 ounces, and 18.5 inches long, and a girl, Laina Grace, weighing 5 pounds, 2 ounces, and 18.75 inches long, were born Monday, April 2, at Avera McKennan in Sioux Falls, South Dakota, to **TJ and Jenn Barron**, Luverne. They join siblings Asher, Micah, Elias and Siena. Grandparents are Tom and Linda Barron of Ruthton, and Jon Bloom and Nancy Bloom, both of Tyler.

Open houses

An open house bridal shower for **Ashley Sundem**, bride-to-be of **Jarrett Friend**, will be from 10 a.m. to noon Saturday, June 30, at Bethlehem Lutheran Church in Hills.

A come-and-go bridal shower for **Sam Gerloff**, bride-

to-be of **Connor Sandbulte**, will be from 9:30-11:30 a.m. Saturday, June 30, at the American Reformed Church in Luverne.

An open house bridal shower for **Kelby Robinson**, bride-to-be of **Christen Hildebrandt**, will be from 1-3 p.m. Saturday, June 30, at the First Presbyterian Church in Luverne.

A come-and-go baby shower for mom-to-be **Paige Paquette** (and baby boy) will be from 11 a.m. to 1 p.m. Saturday, June 30, at Take 16 Brewing Company in Luverne.

An open house bridal shower for **Emilie Baloun**, bride-to-be of **Marc Boelman**, will be from 6-8 p.m. Friday, July 13, at the GrandStay Hotel and Suites in Luverne.

SENIOR MENU

Monday, July 2: Beef tips in gravy, mashed potatoes, country blend vegetables, bread, cookie.

Program: 12:30 p.m. Senior Citizens meeting.

Tuesday, July 3: Country steak with gravy, mashed potatoes, squash, bread, pudding.

Half-price day sponsored by Dingmann Funeral Home.

Wednesday, July 4: Closed.

Thursday, July 5: Roast turkey, mashed potatoes with gravy, green beans, cranberry sauce garnish, frosted cake.

Half-price day.

Friday, July 6: Turkey on bun, creamy cucumber salad, fresh fruit, bar.

Half-price day.

Senior Dining offers well-balanced and affordable meals in a community atmosphere.

Gift certificates are available at the meal site or online at www.lssmn.org/nutrition.

Call Lauree Teunissen at 283-9846 to make dining reservations or for home-delivered meals.

COMMUNITY EDUCATION

Community Ed contact info: C.Arends@isd2184.net or 507-283-4724.

Summer Community Ed hours: 7:30 to 4:00 Monday through Thursday. Closed on Fridays. Closed July 16-27 (last 2 weeks in July). Please call by July 10 to register for classes after July 15.

Math + Games = Fun class will be July 10-12. Fee is \$30.

See the difference that active movement makes in brain growth at **Be SMART—Move It!** class July 16-27. Fee is \$28.

Early Play Ball will be offered for children ages 4 through kindergarten for eight sessions starting July 9 during late afternoon/evening. Fee is \$30.

New: Evening Time Soccer for ages 3-5 years will be offered for two weeks beginning July 9. Fee is \$33.

Morning Soccer for grades 2-4 has openings and is daily for two weeks beginning July 9. Fee is \$33.

Pottery Wheel Throwing will begin July 10 for six sessions at the Deuschle Studio. Focus will be on perfecting technique. Fee is \$59 plus \$10 material fee.

Bring your own lunch and eat while you attend **Frugal Family Living** on July 11. Learns ideas on ways to save money, repurpose items, make cheaper meals, homemade cleaners, etc. Fee is \$5.

Amazing Experiments is an adventure day camp put on by 4-H members on Friday morning, July 13. Camp is for students who attended grades 1-4 during past school year. Fee is \$15.

Survival on the Prairie for grades 3 and older will be offered July 16 at the History Center. Fee is \$16 for child/adult pair.

Introduction to Horsemanship for adult/open ages will be July 16. Dress to interact with horses. Fee is \$15.

Art Camp to study cartoons, comics and pop art will be three sessions on July 17-19 at Coffey Contemporary Arts. Fee for children who attended grades K-5 during the past year is \$30.

REMEMBER WHEN

10 years ago (2008)

At the end of Luverne's Hatting Street, where the Rock River and Poplar Creek meet, sits a former dumping ground.

From the 1940s to the 1960s the city of Luverne used the dump, and people could bring anything and everything there.

"Back then they burned everything," Doug Bos, assistant director of the Land Management Office, said.

The ash buried in the dumping ground contains arsenic, copper, lead and mercury, but the river has been cutting through it, carrying contaminants downstream.

Bos said the risk of the contaminants getting into the water supply has been on his mind for some time.

Tests in 2000 revealed the contaminants were being exposed by river erosion that created a 20-foot embankment.

"Basically, we had a bad situation get even worse," Bos said.

25 years ago (1993)

While a water shortage seems hard to believe this summer, members of the fledgling Lewis and Clark Rural Water System believe finding a new source of clean drinking water is essential to the health and economic well-being of the communities.

Five members of the Minnesota Legislative Water Commission gathered in Luverne City Council chambers Tuesday for a fact-finding meeting on the proposed Lewis and Clark Rural Water Project. They toured water facilities in the area Monday. About 23 people testified in the three-hour meeting. Those

who testified represented the Lewis and Clark system, participating water systems, residents from watershed areas affected by water shortages, private well-drilling businesses, and government agencies involved with water planning. The individuals also answered questions.

50 years ago (1968)

Wind velocities estimated at 100 mph tore through Luverne, known as the city of trees, and Rock county early Friday morning between the hours of 1 and 2:30, leaving behind uprooted trees, broken windows, broken tree limbs, power outages, blocked roads, downed utility and telephone lines, and thousands and thousands of dollars in destruction. According to reports, no one in Luverne or Rock county was injured from the high winds.

No official clocking of the wind in Luverne is available but local law officers estimated Friday morning's wind at 80-100 mph. The official clocking of the wind by the weather bureau in Sioux Falls was 81 mph.

75 years ago (1943)

Rock county motorists who drive more than 35 miles an hour on any road, be it local, county, state or a federal highway, are violating the law, according to the order issued by Governor Thyne this week.

Acting under authority of war-time emergency powers conferred on him by the 1943 legislature, the governor officially

proclaimed the 35 mile national speed limit to be in full force on the 99,000 miles of county and township roads, as well as on the 11,265 miles of state trunk highways.

100 years ago (1918)

With the deportation from the state of John Meints, of this city, on the charge of being strongly pro-German, and the renunciation of all affiliations with the nonpartisan league by over one hundred of its members, the complete disintegration of the league in Rock county is virtually an accomplished thing.

The deportation of Meints occurred on Thursday night of last week, when a delegation of loyalists, about half of whom were farmers, escorted him across the state line into Iowa and ordered him to keep out of Minnesota until after the war under penalty of more severe treatment. This action followed the acquisition of substantial evidence that at a previous conference Meints had given false testimony when he denied that he was a member of the nonpartisan league and that he owned stock on the Rock County Leader Publishing company. When proof of these things was obtained last Thursday night, the committee visited Meints' home and gave him an opportunity to square himself by signing a paper renouncing his connection with the league, affirming his allegiance to the United States and pledging his support of the government in the prosecution of the war. Meints denied that he was pro-German and claimed to be neutral. He refused to sign the pledge, and thereupon was required to get into his own automobile and drive to the Iowa state line.



Class of 1973 gathers for reunion

The Luverne High School Class of 1973 gathered for a class reunion Saturday, June 2, at the Luverne Country Club. Attending were (front, from left) Debra (Meyer) Tilberg, Jolene (De Boer) Van Den Brink, Julie (Mann) Vogel, Barbara (Johnson) Stensland, Carol (Kjenslee) Hagen, Barb (Henrickson) Stanley, Dawn Maxwell, (second row) Robin (Bot) Fritsch, Deb (Visker) Iveland, Gloria (Schneekloth) Evans, Jeff Laackmann, Jim Clark, Jane (Goebel) Bockman, Betty (Hitch) Schnettler, Don Maras, Rita (Gacke) Clarkersen, Becky (Boelman) Sehr, Pam Hoiland, Jim Hoh, Donn Sandbulte, (third row) Alan Aanenson, Tom Brakke, Gregg Ormseth, Lyle Petersen, Darrel Hemme, Jim Bierkamp, Vern Van Peurse, Keith Petersen, Jeff Bowen, Gary Meinders and Jim Petersen. Julie (Arends) Burmeister attended the reunion but isn't pictured.

1952: A 90-minute variety show, dance planned for Sept. 24 at the Armory

The following appeared in the Rock County Star Herald on September 11, 1952.



Jaycees Will Sponsor Show Dance Sept. 24

A 90-minute variety show, and an evening of dancing has been planned here for Wednesday night, September 24, by the Luverne Junior Chamber of Commerce. Proceeds above expenses will be used by the Jaycees to furnish a room at the Luverne Hospital.

Known as the KELO Hometown Jamboree Show and Dance, the fun event will feature the music of Don Shaw and his orchestra and a large variety of entertainment, according to the Jaycees. Dancing will take place after the show.

BITS BY BETTY

By Betty Mann, president Rock County Historical Society

American community. This couple, "Mr. and Mrs. Rock County" will be nominated by the people of the community, and judged on the following points: number of children, appearance, home, civil activities, good neighborliness, etc. Ballots will be distributed through local merchants, and the three couples receiving the most votes will appear on the stage the evening of the jamboree, and one couple selected as the final winner, and named "Mr. and Mrs. Rock County." The overall winner, "Mr. and Mrs. Minnesota," will receive a two week second honeymoon in Chicago with all expenses paid.

Don Shaw's orchestra will feature outstanding musical numbers and novelties, as well as the famous 'beat the band' contest, a popular audience participation guessing game. The evening's radio show will be climaxed with Dean Montgomery 10 o'clock news.

During the dance, following the show, a television set will be given away.

An advance ticket sale is now in progress by the Jaycee members.

Donations to the Rock County Historical Society can be sent to the Rock County Historical Society, 312 E. Main Street, Luverne, MN 56156.

Mann welcomes correspondence sent to manmade@iw.net.

OBITUARIES

Kenneth Wendt

Kenneth A. Wendt, 91, Chandler, Arizona, died Tuesday, May 15, 2018.

A family memorial service was May 25 at the Village of Ocotillo Assisted Living in Chandler. Inurnment will be at a later date in Lincoln, Nebraska.

Kenneth Wendt was born Aug. 3, 1926, to William J. and Bertha K. (Wallace) Wendt in Luverne.

Upon graduation from Luverne High School, he joined the Army Air Force, serving from January 1945 to September 1946. He was assigned to the 1503rd Army Air Force and was trained in maintenance and repair of B-29 bombers. He served as a flight traffic clerk and steward on C-47 and C-54 air transport aircraft bringing troops home from the Philippines. Following honorable discharge, he attended South Dakota State University, Brookings, South Dakota.

He married Bonnie Jorde of Mandan, North Dakota, in 1950. They lived in Fairmont, where Ken built the family home. He worked in sales and manufacturing of pharmaceuticals for the animal health industry in the family business, Northern States Laboratories. He later became co-owner with his brothers William and Robert. After they sold the business, Ken and his family moved to Fremont, Nebraska, where Ken and his brother started another veterinary pharmaceutical business. At age 58, he returned to college at Southeast Community College in Milford, Nebraska, where he received an associate's degree in machining. After graduation, Ken and Bonnie moved to Scottsdale, Arizona, where he

worked for a short time in a mobile home manufacturing factory.

Ken excelled at woodworking projects. He and his friends built five matching pop-up campers. He enjoyed playing golf, bridge and pinocle. Ken loved dogs and enjoyed the constant companionship of pets. In his younger years, Ken sang in a barbershop choir, and he enjoyed ballroom dancing.

He was a member of the United Methodist Church, a Master Mason, and 32nd degree Scottish Rite, affiliated with the Ben Franklin Lodge in Luverne.

Following the death of Bonnie in 1996, he married Elizabeth Schwinden in 2000. They lived in Fountain Hills, Arizona, and then Chandler.

Ken is survived by his wife, Elizabeth Schwinden; a brother, Robert (Jean) Wendt; four children, Kathy (Don) Siebe, Barbara Bergsten, Paul (Sandy) Wendt, and Cheryl Heinzman; six grandchildren, Craig and David Siebe, Lacy Bergsten (Zack) Best, Jeffrey (Aimee) Bergsten, and Kristen and Eric Heinzman; and three great-grandchildren.

He was preceded in death by his first wife, Bonnie Wendt; his parents; a brother, William Wendt Jr.; two sisters, Caroline Binford and Phyllis Helgeson; and a son-in-law, Rodney Bergsten.

In lieu of flowers, donations may be given to a no-kill animal shelter, veterans group, Shriners Hospital, or a charity of choice.

Arrangements were provided by Horizon Funeral Home of Mesa, Arizona, www.horizonfuneralcare.com (0628 F)

Calene Birky Williams

Calene Birky Williams, 59, Roseville, California, died Saturday, June 9, 2018, from breast cancer at her home surrounded by her family.

A family memorial service will be July 14, 2018, in Roseville, California.

Calene was born Aug. 12, 1958, to Lyle and Lorraine (Lundberg) Birky in Detroit Lakes. In 1964 the family moved to Luverne, where she graduated from Luverne High School in 1976. She attended Bemidji State University and attained her associate's degree after which she joined the U.S. Army. She served on active duty for four years and then earned her B.S. degree from Bethel University.

In 1990 she married J. David Williams in Golden, Colorado, where she worked for the Defense Investigative Service which took them

to the Washington, D.C., area for a number of years. Eventually they relocated to California where Calene became employed in the property casualty insurance industry investigating fraudulent claims. She was employed by Esurance at the time of her death.

Calene is survived by her husband, David; two sons, Brian and Jon Williams, all of Roseville; a brother, Zane (Barb) Birky of Eden Prairie; sisters Zoe (Alan) Harnack of Beaver Creek, Rachele (Roger) Taylor of Lakeville, and Memory (Mark) Hokanson of Sauk Centre; a stepbrother, Gene (Sherry) Vorwerk of North Branch; and many nieces and nephews.

Memorials are preferred either to the family to be used for college expenses or to your favorite cancer charity. (0628 F)

Robert Wassenaar

Robert Wayne "Bob" Wassenaar, 68, Steen, died Tuesday, June 19, 2018, at the Sanford Hospital in Sioux Falls, South Dakota.

A funeral service was Monday, June 25, at Bethlehem Lutheran Church in Hills. Burial followed at Flowerfield Cemetery.

Robert Wassenaar was born Jan. 29, 1950, to George and Henrietta (Van Den Oever) Wassenaar in Luverne. He was raised on the family's farm two miles east of Hills. He attended Hills-Beaver Creek School and graduated in 1968. He served in the Army Reserves from 1969 to 1975.

Bob was married to Norma Schubert on March 20, 1982, until 1996. They lived just east of Hills for five years before moving into Hills. Bob continued to farm and also worked part time as a rural mail carrier. He raised crops, had milk cows and in 2002 built a hog barn.

Bob was a member of



Bethlehem Lutheran Church in Hills, where he served as a deacon, as past president and as current vice president of the church council. He also was a member of the Hills American Legion and was active with the Hills Community Club. He enjoyed grilling, entertaining during the holidays, shopping, and spending time with his family.

He is survived by two children, Nick Wassenaar (April, Hazel and Griffin Sailor) of Luverne and Jessica Wassenaar of St. Louis Park; two siblings, Marv Wassenaar of Luverne and Glenda (Sam) McGaffee of Hills; nieces Brenda Wesels, Wendy Stegenga, Katie McGaffee and Samantha McGaffee; special friend Norma Wassenaar; and other relatives and friends.

He was preceded in death by his parents and his niece, Tammy Wassenaar.

Arrangements were provided by Jurrens Funeral Home of Hills, jurrensfuneralhome.com.

(0628 F)

DEATH NOTICES

Mary Jenniges

Mary Jenniges, 92, Ellsworth, died Monday, June 25, 2018, at the Parkview Manor Nursing Home in Ellsworth.

A funeral Mass will be at 11 a.m. Saturday, June 30, at St. Mary Catholic Church in Ellsworth. Burial will be in the St. Mary Cemetery. Visitation will be from 4-7 p.m. Friday, June 29, at the church and also one hour prior to the service.

Arrangements are provided by Dingmann Funeral Home in Adrian.

(0628 DN)

Johanna Aykens

Johanna "Jo" Aykens, 98, Steen, died Sunday, June 24, 2018, at the Tuff Memorial Home in Hills.

A funeral service will be at 10:30 a.m. Thursday, June 28, at the Reformed Church of Steen. Burial will follow at Eastside Cemetery in rural Steen. Visitation was scheduled from 5-7 p.m. Wednesday, June 27, at the Hartquist Funeral Home in Luverne.

Arrangements are through the Hartquist Funeral Home of Luverne, www.hartquistfuneral.com.

(0628 DN)

FATHER'S DAY SALE!



Custom Windows PLUS

\$200 OFF
6 WINDOWS OR MORE
with this coupon

- Free Installation
- Lifetime Warranty
- Financing Available: 12 MONTHS SAME AS CASH

*White vinyl, double hung, double pane windows; four windows minimum; up to 101 sq. ft. Standard installation includes removal of wood windows without capping or Low E.

Family Owned and Operated
CUSTOM WINDOWS PLUS • 712-720-0759

WILDER PAGEANT

Walnut Grove, MN
41st annual outdoor drama, based on the life of
Laura Ingalls Wilder
July 6-7, 13-14, 20-21, 2018
888-859-3102
Performed along the Banks of Plum Creek

walnutgrove.org

WALK TO END ALZHEIMER'S

alzheimer's association

Find a walk near you at alz.org/walk.

800.272.3900

SCHOOL OF NURSING
UNIVERSITY OF MINNESOTA

Do you have a family member with memory loss who lives in a care facility?

The University of Minnesota is examining the effects of an educational program to support family members with a loved one in a care facility. It will be led by a trained coach. Learn more about participating in this free study by contacting Professor Joe Gaugler at 612.626.2485 or gaug0015@umn.edu.

Visit <http://z.umn.edu/transitionmodule> to learn more

READ US ONLINE!
star-herald.com

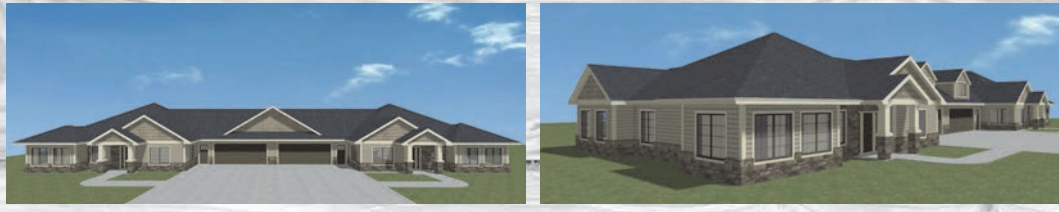
In the works for Cleveringa!

Into the next phase at Roundwind Estates!

Four twin home structures (eight units) on Roundwind Road. The twin homes will be two or three bedroom units, square footage will vary, with double garages.

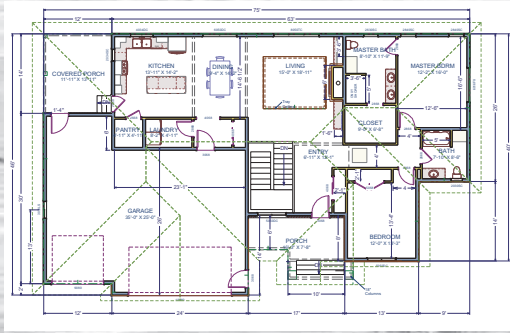
No shoveling, mowing or homeowners association dues!

MAINTENANCE-FREE LIVING



Inquire NOW - units will go fast

New spec home
306 E VETERANS DR



Whatever the job - our guys get it done!



From new homes, garages, offices, pole buildings, farm shops, cattle pit barns - whatever our clients want, we can do it for them.
My employees are very dedicated to their jobs. They give 125 percent or more to make these jobs possible. Because of our employees' quality work, every Cleveringa Construction job is a success. A big thank you to all the customers we were able to do projects for. We are looking forward to repeat and new customers. We have been very blessed! Just remember, in all things give thanks.
-The Cleveringa Construction Team

CLEVERINGA CONSTRUCTION, INC.

879 100th Ave., Luverne, MN | cleveringaconstruction@gmail.com

cleveringaconstruction.com

Merlin Cleveringa - 507-920-5631 | Adam Uithoven - 507-207-1770 | Derek Sandbulte - 507-227-1065

Premium Iowa Pork clears first hurdle/from 1A

to \$20 per hour) to Luverne. That number could grow to more than 300 employees, depending on growth.

PIP President Dan Paquin, Hospers, attended Monday's hearing to answer questions and offer information about the business.

He said he hopes to draw back some of the 200 employees displaced by the chicken processing closure, but the company will recruit workers from the tri-state area.

The Hospers plant processes 3,100 hogs per day and employs 415 people with an annual payroll of \$17 million.

Paquin said work would take place over the next 12 to 15 months to retrofit the existing 78,000-square-foot facility to accommodate pork slaughter, processing and packing.

The company will also expand the east side of the building by roughly 12,500 square feet for a total area of 90,500 square feet.

He said changes to the property would still conform to the existing uses permitted by the zoning.

In terms of other neighborhood impacts, the company estimates 30 trucks will enter and exit the site per day as part of its operations, and current parking allows for 355 stalls for employee vehicles in addition to space for truck parking.

Paquin said no pollution

or negative impacts to the environment are anticipated and technology will be installed to prevent or control offensive odor, fumes, dust, noise and vibration.

All processes would take place inside the facility, including effluent treatment before it's sent to Luverne's water treatment. No sludge or waste will be land applied, and blood and rendering is handled off site.

Improvements and retrofits for the facility would cost PIP an estimated \$25 to \$30 million.

In addition, the company would pay \$6.76 million for necessary upgrades to Luverne's wastewater facilities due to the plant's sewage load into the city's system. (PIP also did the same in Hospers.)

Under a proposed agreement, the company would pay half upfront, \$3.375 million, and make payments on the other half over a five-year period.

The PIP facility would use roughly 150,000 gallons of water per day, so a "significant use agreement" with the city would be required by the state (for anything over 25,000 gallons per day).

The agreement would set limits on suspended solids and biochemical substances sent to the local wastewater plant, based on the 2,200 per day kill rate.

The existing 17.15-acre

parcel is currently zoned I-2, Special Industry, which accommodates a wide variety of uses, including hog slaughter.

Building and zoning inspector Chad McClure explained at the hearing that the conditional use permitting process allows the city to vet the process to make sure a new industrial use won't adversely affect the neighborhood.

The Planning and Zoning Commission determined that PIP's conditional use permit would not "substantially diminish or impair property values within the immediate vicinity."

Also, it won't "impede the normal and orderly development of surrounding properties due to the existing and planned future industrial/commercial land uses surrounding and adjacent to the project area."

Before voting on the request, commission member Caroline Thorson commended PIP officials for what appears to be a well-run operation.

"Wedrove through Hospers with our windows down and we didn't smell anything and it looked well-kept," she said.

Other Luverne city officials had previously toured the facility and had conversations with Hospers city leaders and residents who reported they experienced no problems with PIP.

READ THE NEWS ONLINE!

**Sports
Opinion
News
Classifieds**

Subscribe to the online edition of the **Star Herald**

24/7 ... Rain or Shine ...

Your local, independent agent will be there.

Working for you - meeting your needs.

Buffalo Ridge INSURANCE

South Hwy. 75, Luverne, MN • Ph. 507-283-2381

Auto-Owners INSURANCE

LIFE • HOME • CAR • BUSINESS

To advertise in the Star Herald, call 507-283-2333

God Bless the USA!

WISHING YOU A SAFE AND HAPPY FOURTH OF JULY.



Now the *Lord is the Spirit*, and where the Spirit of the Lord is, there is *freedom*.

2 Corinthians 3:17 (NIV)

Front row (left to right): Marilyn VanSanten, Lynette Ossefoort and Christina Koedam
Back row (left to right): Edna Buys, Teresa Hup, Alexis Klarenbeek, Nancy VanDeBerg and David Riphagen

Main Street FINANCIAL SERVICES

Closed Wednesday, July 4th

Securities offered through Registered Representatives of Cambridge Investment Research, Inc., a broker-dealer member FINRA/SIPC. Advisory services through Cambridge Investment Research Advisors, Inc., a Registered Investment Advisor. Cambridge and Main Street Financial Services, Inc., are not affiliated.

212 East Main Street, Luverne, MN | 507-283-9590 or 1-800-260-1014 | www.mainstreetfinancial.net



Mavis Fodness photo/0628 Flooding Friday Road Fixing

Rock County Highway Department crews were busy Friday morning repairing eroded county gravel roads after excessive rains on June 20 caused water to flow over roadways including a section of 221st Street (County Road 21) in Battle Plain Township near the Rock River. Area farmers are also evaluating their options after corn and soybeans have been under water for several days, likely resulting in crop loss and diminished yields.

Rock County mops up after June flood event

By Lori Sorenson

Eight to 10 inches of rain saturated widespread areas of Rock County and the tri-state area over the past week, causing damage to roads and public property in addition to homes, fields and livestock.

The first deluge hit Wednesday and Thursday, June 20 and 21 when nearly six inches fell in a 24-hour period.

Dozens of local roads and major highways closed Thursday morning due to flooding. These included I-90 west of Beaver Creek, Highway 75 north of the county line and Highway 23 at the County Road 7 intersection west of Hardwick.

County Road 5 west of Luverne and County Road 4 east of Luverne were briefly closed Thursday morning, as were dozens of county and township gravel roads.

And then the Rock River spilled over its banks Thursday night. It happened near Hardwick around 10 p.m. and in Luverne at the city park around 1 a.m.

By 8:30 a.m. Friday the Luverne City Park and Riverside Park to the north were under water, and within a few hours waters receded and cleanup began.

"It could have been a lot worse," said Luverne Public Works Supervisor John Stoffel.

On Friday morning he

Flooding prompts manure pits to overflow

By Lori Sorenson

The Rock County Land Management Office was flooded with calls Monday about flooded livestock manure pits.

"Livestock pits are overflowing, and farmers are asking what they can do about it," said Doug Bos, assistant Land Management Office director. "We're telling them to do the best they can to mitigate contamination."

He said that includes constructing temporary berms of dirt or bales to contain or slow down overflows.

As of Monday, some parts of Rock County had received nearly 10 inches of rain in five days, and about a half dozen open livestock manure pits had overflowed and another half dozen may be close to overflowing if we get more rain.

The pits are slowly overflowing to grass areas and farmers will empty them when fields are accessible.

Typically, producers face MPCA penalties for manure pit breaches, but in cases of natural disasters, they won't be fined for overflows.

"If the pits were constructed according to the rules, they won't be held responsible. Producers just need to notify the Rock County Land Management Office or the MPCA," Bos said.

"A lot of these structures were built for a year's worth of rainfall, but I think we've already reached that amount."

Open manure pits are most affected by flooding as opposed to underground pits in covered operations that are typically tiled around the outside of the pits to direct water away.

Bos said he hadn't heard reports of producers losing cattle in rushing floodwater, but soggy feedlots take a toll on animals, especially in yards that don't have concrete slabs to help with footing.

"It takes effort for cattle to get to their feed and to get to drinking water," Bos said. "There's going to be some rate-of-gain loss."

Bos said another problem on many flooded farms is private well contamination.

"If you look out the window and can't see your well, it's probably contaminated," he said.

A simple shock treatment with bleach is a relatively easy fix, and information about how to do it can be found on the Rock County Land Management website or by calling 507-283-8862.

to do," Stoffel said Friday.

As of noon on Friday, there was still standing water in the outfield, but baseball organizers were pumping out the puddles to ready the diamond for the next game.

Disaster declaration

Most residents are quick to point out that the flooding wasn't nearly as destructive as the Father's Day flood of 2014, but it hit hard nonetheless.

The Rock County Board of Commissioners convened for an emergency meeting Friday afternoon to declare a state of emergency due to the June 20-21 excessive rain event.

Doing so puts the wheels in motion for local governments to apply for funding through state and federal disaster relief agencies.

The resolution approved by commissioners states that the disaster event impacted Rock County's population and cities and caused a significant amount of public property damage. (See the related story)

Wet basements

Dozens of area homeowners spent a good portion of the day Thursday monitoring their sump pumps, many of which didn't keep up with falling rain and a rising water table.

Flood damage/see page 2B

pointed to the metal railing on the concrete deck at the Rock River rapids near the railroad bridge.

"When it reaches the top railing, that's when the real destruction begins," said Stoffel, who has worked for the city nearly 30 years. "The next one down was under water, so we were close."

By "real destruction," he means rushing water that

deposits debris all over the city park and Redbird Field, prompting costly cleanup.

He and the Public Works staff had moved picnic tables and other moveable equipment out of the park to higher ground before the river flooded.

Berm saves Redbird Field

Stoffel pointed out that the new berm between the

river and Redbird Field did its job during last week's flooding.

"We can thank the berm for saving hundreds of thousands of dollars," he said. "As it is now, the water will just recede and it won't have wrecked anything."

The city worked with engineers and DNR hydrologists on a 4-foot-high earthen berm 450 feet long that extends from the Main Street bridge to the northeast

corner of Redbird Field.

Most of the \$55,000 cost was covered by a state flood mitigation grant.

Engineers and state hydrologists designed the berm not to prevent flooding (water comes in during floods), but rather to divert water through the floodway in order to slow it down and avoid debris.

"It did what it was supposed



Lori Sorenson photo/0628 flood city park

City of Luverne Public works Department crews set up a hose in Luverne City Park Friday morning to start pumping flood waters back into the Rock River after it receded into its banks. If they can dry the grass soon enough, reseeding won't be necessary. At right, a raging Rock River rushes under the Main Street Bridge Friday morning after it crested around 8:30 that morning.



At left is a pile of ruined basement carpet from one of dozens of homes damaged by floodwater.

Lori Sorenson photos/0628 flood



Rock County mops up after June flood damage/continued from page 1B

Customers in local hardware store checkout lanes were buying shop vacs, cleaning supplies, hoses and other water response supplies.

Bomgaars employees said they ran out of sump pumps and had to get more in from nearby stores.

In many neighborhoods, soggy carpets and other water-laden possessions could be seen piled in driveways and on trailers.

Joe Schomacker of Schomacker Cleaning said his family's business took calls from 25 homeowners who needed emergency flood cleaning — some of them repeat customers from the 2014 flood.

"We saw everything from quite a bit of damage — including to Sheetrock — to some that were just a little wet and needed to have water sucked up," Schomacker said.

He said he and others found themselves frequently comparing this flood to the Father's Day Flood of 2014.

"That was quite a bit worse," Schomacker said. "And we've learned a few things since then — about how to save carpet and dry it out."

He said carpet that's been in water for more than 24 hours is likely ruined and needs to be removed. "By then the glue is bad and there's nothing you can do," Schomacker said.

He advises homeowners to take moisture seriously and to keep air moving — with fans, air conditioning and humidifiers, in areas that have been wet.



Lori Sorenson photo/0628 flood

Cows and calves in northern Rock County seek refuge on an island in their flooded pasture Thursday evening while they wait for floodwaters to recede.



In Luverne, the river rose from 5 feet Wednesday morning to 9.69 feet Thursday morning.

Flood stage is 10 feet in Luverne, and it rose to 11.7 feet Friday morning before coming back down. That's about 2 feet below the record peak of 14.9 feet set on June 17, 2014.

After Monday's additional downpour, the river in Luverne

rose to 9.2 feet at 10 a.m. Tuesday, before dropping slowly throughout the day.

According to local weather recorder Troy Thone, the total June rainfall has been 8.74 inches as of Tuesday.

"Normal for Sioux Falls is about 3.30 inches, so we have seen nearly three times the normal rainfall amount in June," Thone said.



Lori Sorenson photo/0628 flood

Some roads in Rose Dell Township were closed for several days while waters receded and officials worked to repair washouts. This photograph was taken Thursday evening at 10th Street and 190th Avenue. The photo above left shows how rushing water erodes shoulders along bridge decks and culverts. This Rose Dell Township road will need major repairs.

Dining and Entertainment

Rome

From \$1015 per person

6 nights hotel
Round trip airfare from Sioux Falls
Select October-November dates
Pricing based on 2 adults
Pricing based on availability
Call for more information!

ALL ABOUT TRAVEL INC.
10-Year Winner! Layaway & Gift Certificates Available!
605-339-8911 • 1-800-390-6610
3801 S. Western Ave., Suite 103, Sioux Falls, SD
Open: Mon.-Fri. 8 a.m. - 7 p.m. • Saturday 9 a.m. - 1 p.m.
www.AllAboutTravel.org | www.facebook.com/AllAboutTravelInc
Helping You Find Your Personal Paradise!

2019 Disney Pricing is now OPEN!
Let us help you plan your next Disney Vacation!
The 2019 pricing is now open.
Call us at 605-339-8911 or email us at aat@allabouttravel.org to start planning today!

2018 ROCK COUNTY FAIR

Advance Ride Tickets

8 TICKETS FOR \$20.00
(Advance tickets 1 ticket per ride)

ON SALE NOW!

TICKETS AVAILABLE AT:
RAUKS HILLTOP STOP
TEAL'S FOOD CENTER
LUVERNE PIZZA RANCH
LUVERNE CHAMBER

TICKET SALES END OF THE DAY:
TUESDAY, JULY 24

OPEN 10AM-8PM July 4th
for all your holiday needs

Please drink responsibly!

Happy 4th July

LuVerne
Blue Mound Liquor

Gift Cards available

319 W Main St, Luverne 507-449-5052
Follow us on Twitter @bluemoundliquor & Instagram luvernebluemoundliquor

GREEN LANTERN Steakhouse

NOW OPEN
Daily at 5 p.m.

Call us for your anniversaries, graduations, small business meetings

Sunday Brunch

Every Sunday 10 a.m. - 2 p.m.

- ROAST BEEF • HAM
- BACON • SAUSAGE
- EGGS • FRENCH TOAST
- AND LOTS MORE!

Adults \$10.95
Kids under 13 \$7.95

GREEN LANTERN Opens 7 a.m. daily
CAFE & BAR
HARDWICK, MN
507-669-2246

July 20, August 17
9:30am movies
Kids Summer Cinema
\$5 admission

PALACE THEATRE

104 E. MAIN ST. • PO BOX 541 • LUVERNE, MN 56156
507.283.4339 • WWW.PALACETHEATRE.US

PALACE THEATRE UPCOMING EVENTS

June 28, Thursday • 2 p.m.
Afternoon Escape Movie - "Book Club"

June 29, 30, July 1, Friday - Sunday • 7:00 p.m.
Movie - "Tag" - Rated R

Find us on Facebook
Palace Theatre Luverne

Box office is open Monday - Friday 12 p.m. - 5 p.m. 507-283-4339

Rock the Edge's Service Over Self Mission Week

Meal Thursday, June 28 5p.m. until gone

Free Outdoor Concert & Free Meal

MEAL COURTESY OF THE ROCK/NOBLES CATTLEMEN ASSOCIATION, THE ROCK COUNTY PORK PRODUCERS, TEAL'S, AND CASEYS

See our Facebook page for more information (Rock the Edge)

Bring a lawn chair or blanket everyone is welcome!

Thursday, June 28 | 7p.m.
The Plaza
(Rock County History Center parking lot)

Concert featuring Connor Flanagan

TOUCH THE SKY AT NIGHT

Friday, June 29 6:30-8:30 pm Tommy Binford - "Live on the Prairie"

8:30 pm Ethno-botanist Jeff Emmel - "Stories of Constellations & Myths"

Rain location - Brandenburg Gallery

171st Street, Luverne FREE event bring lawn chairs
luvernechamber.com 507-283-4061

ROCK the EDGE

JESUS IS OUR ROCK
Rock County's Christian Youth in Action

CONNOR FLANAGAN: MOVING 'MOUNTAINS'

Seniors will leave void in Luverne's lineup

Although their ultimate goal of qualifying for the state tournament went unrealized, the members of the 2018 Luverne High School baseball team have a lot to be proud of.



FROM THE SIDELINES

By John Rittenhouse, sports editor

Not only did the Cardinals produce the second most wins (24) in Mike Wenninger's coaching career, the Cardinals sported the highest team batting average in Wenninger's tenure at season's end.

The 2018 squad was a well-balanced unit that received major contributions from a good share of the roster, but I believe things may not have worked out so well for LHS without the production of seniors Tyler Reisdorfer, Declan Beers and Jaxon Nelson.

Wenninger doesn't always agree with the observations I share with him, but he didn't disagree with me when I shared my take on the senior trio. "Our team had some very talented younger guys who played very well for us, but we also had three really good senior players," he said.

"They are high-quality kids, and all three of them produced good numbers for us this year." Beers and Reisdorfer turned in eye-popping numbers that not only earned them positions on the Minnesota State Class AA Baseball Team, they also garnered more attention.

Reisdorfer was invited to play in the Play Ball All-Star Series in Chaska over the weekend as a member of the South All-Star Team (see the related story), and Beers was named as

an alternate for the same team without playing.

Beers served the LHS squad well as a catcher, but he also was a key offensive weapon (.443 average, five triples, two homeruns and 22 RBIs).

Reisdorfer had an outstanding year at the plate (.429 average, two homeruns, five triples, six doubles and 15 RBIs), but he may have been even more valuable to the team as a pitcher.

Reisdorfer went 5-0 on the mound with a 0.58 ERA. He fanned 47 batters in 36 innings.

Beers and Reisdorfer deserved spots on the All-State squad, but I can't explain why Nelson didn't grace the same roster.

All Nelson did this year was lead the team with a .600 average and 36 RBIs to go along with two homeruns, three triples and eight doubles.

Until someone explains to me why those totals are not deserving of a spot on the All-State squad, Nelson's omission on that list will be something I'll regard as a great injustice for the rest of my life.

To be fair, LHS has a lot of good baseball players returning to what should be a very good team again in 2019.

However, when a team loses three of the first four hitters in its batting order like LHS will with the absence of Reisdorfer, Beers and Nelson, I have to believe it will impact the squad's offensive production next spring.

Pull/continued from page 3B

fly and Chase Johnson walked and scored on a wild pitch in the sixth.

Jacob Van Dam tossed five innings of three-run, five-hit ball to earn the win. Johnson pitched a hitless sixth inning.

Box score	AB	R	H	BI
Haugen	3	2	1	0
Serie	3	1	0	0
Beers	2	2	2	1
Reisch	3	1	1	2
Lundgren	3	3	3	0
Bartels	3	1	0	1
Smith	1	1	1	1
Van Dam	1	0	0	0
Johnson	0	2	0	0
Sterrett	2	0	0	2
Crabtree	2	0	0	0

Luverne 9, DR 1

The Cardinals opened the tournament by besting Dell Rapids by eight runs Saturday morning.

The game was up for grabs with Luverne sporting a 2-1 edge after four and one-half innings of play, but the Cards won handily after scoring seven runs in the fifth and sixth innings.

Luverne took a 2-0 lead when Crabtree doubled home two runs in the bottom of the second inning before DR plated its lone run in the top of the fourth.

The Cards scored five times in the fifth inning to gain separation.

Beers tripled home two runs and scored at the end



Luverne's Declan Beers slides safely to third base during the opening game of the Luverne American Legion Baseball Tournament against Dell Rapids Saturday at Luverne High School.

of a double-steal, Reisch was hit by a pitch and scored on a throwing error and Bartels received an RBI for a ground out in the fifth.

Reisch drew a bases-loaded walk and Lundgren recorded a sacrifice fly when the Cards

capped the scoring in the sixth inning.

Haugen fanned 10 batters and limited DR to one run and four hits in six innings to collect the pitching win. Smith tossed one hitless inning of relief.

Box score	AB	R	H	BI
Haugen	3	2	1	0
Serie	4	2	2	0
Beers	3	1	2	2
Reisch	2	1	1	2
Lundgren	3	1	0	1
Bartels	3	1	0	1
Smith	1	0	0	0
Johnson	2	0	0	0
Van Dam	1	0	0	0
Sterrett	2	1	0	0
Crabtree	3	0	1	2

Co-champion AHS rakes in postseason awards

By John Rittenhouse

Seven members of the Adrian baseball program raked in postseason honors from Red Rock Conference officials.

Four Dragons made the 2018 All-RRC Baseball Team and three other Adrian players drew honorable mention recognition.

Making the 18-players All-RRC squad for co-league champion Adrian were seniors Skylar Polzine and Landon Rogers and sophomores Ian Stamer and

Brent Hokeness.

Senior Jeffery Cauwels and sophomores Grant Jansma and Noah Reyne secured three of the 12 honorable mention selections doled out by league officials.

Murray County Central, which shared the league title with Adrian, matched the Dragons by landing four all-conference selections.

Juniors Justin Benda, Nate Everson, Spencer Wajer and Matt Wendt represent the Rebels on the roster.

Mountain Lake Area and

Red Rock Central-Westbrook Walnut Grove secured three positions each on the all-league list.

MLA senior Dylan Hillesheim and sophomores Abraham Stoesz and Brett Willaby made the team, as did RRC-W-WG senior Daawon Sorenson and juniors Trenton Halverson and Austin Irlbeck.

Edgerton-Southwest Christian and Heron Lake-Okabena-Fulda athletes round out the all-conference squad.

Seniors Jaden Bloemendaal

and Josh Agresto represent E-SWC, while seniors Ethan Becker and Jacob Burdick represent HL-O-F.

Other honorable mention selections include MCC senior Brandon Winter and juniors Danny Blankenship and Mason Woldt, RRC-W-WG seniors Sam Hansen and Nathan Knutson, HL-O-F senior Taylor DeWall and junior Eli Fest, MLA junior Zach Spinks and Edgerton-Southwest Christian senior Landon Buckridge.

Four Dragons draw honors from RRC coaches

By John Rittenhouse

Four members of the Adrian Area softball team received honors from Red Rock Conference officials due to their on-field efforts in the spring.

Three Dragons made the 2018 All-RRC Softball Team and another AA athlete drew honorable mention recognition.

Making the All-RRC roster for AA are senior Devin Dreesen and juniors Avery Balster and Autumn Grussing.

Senior Paige Bullerman is one of the league's 11 honorable mention selections. RRC champion and state runner-up Edgerton-Southwest Christian led all teams by nailing down five all-conference selections.

Seniors Chynna Berning and Jasmine Jensen, juniors Sierra Van Dyke and Hannah Nerem and sophomore Jazzy Prins represent the Flying Dutchmen on the team.

Mountain Lake Area and Murray County Central

received four all-league selections each.

MCC juniors Montana Beckman, Laney Brown, Amanda Muecke and Lily Schmahl made the squad.

Juniors Molly Camell, Taylor Naas and Rylie Tollefson and sophomore Margo Stoesz represent MCC.

Red Rock Central-Westbrook-Walnut Grove junior Haley Simonson and Heron Lake-Okabena-Fulda senior Jessica Van Westen round out the all-league team.

Other players drawing honorable mention include E-SWC senior Emily Nerem, junior Liz Prins and sophomore Gabby Buckridge, MLA senior Jordan Boldt and sophomore Destiny Sybounhuan, MCC senior MacKenzie DeLong and junior Courtney Schmitz, RRC-W-WG senior Meghan Shannon and Heron Lake-Okabena-Fulda senior Tessla Crowell and eighth-grader Faith Kazemba.

SPORTS BRIEFS

Streak ends

An eight-game winning streak put together by the Luverne Redbirds came to an end Sunday in Hadley.

Luverne, which had not lost a game since May 18, came up on the short end of an 8-3 decision against the Buttermakers.

No information was available from this game.

The 10-3 Redbirds host Garretson, South Dakota, Friday.

All-state players

Three seniors from the Star Herald coverage area raked in postseason baseball honors last week.

Luverne's Declan Beers and Tyler Reisdorfer were two of 25 players named to the Minnesota State Class AA All-State Baseball Team.

Adrian's Landon Rogers made the 25-player Minnesota State Class A All-State Baseball Team.

SPORTS CLIPBOARD

Rock County Sportsman's Club June 19

Team Scores:
 Bill's H2O - 108
 Agri-Energy LLC - 107
 Slocum Taxidermy 1 - 106
 Loosbrock Electric - 104, 106
 Nergaard Construction - 105
 Luverne Body Shop - 104
 Minnwest Bank - 104
 Main St. Financial - 103
 Pizza Ranch - 103
 Mickie's Bar & Grill - 103

Big Orv's Bar - 97
 Freedom Ranch Firearms - 95
 Howling Dog - 89
 Slocum Taxidermy 2 - 88

Individual scores:
 25 x 25
 Jim Slocum
 Bob May

24 x 25
 Austin Watts
 Marshal Damman
 Paul Steen

ROCK COUNTY VETERANS

Did you serve on Active Military Duty?

Do you have an honorable discharge?

Contact your veteran services officer to discuss eligibility for federal and state benefits.

Veterans Linkage Line
 minnesotaveteran.org | 1-888-LinkVet (546-5838)

Help for veterans and families

Rock County Veterans Services
 507-283-5061
 M-F: 8 a.m. to Noon
 Rock County Courthouse

Harmed by Kwik Trip Outbreak?

We're Food Safety Lawyers.

Attorney Ryan Osterholm has filed lawsuits in Minnesota and Wisconsin on behalf of people sickened by a parasite called Cyclospora from eating Fresh Del Monte Produce veggie trays sold at Kwik Trip.

If you or a loved one was sickened by Cyclospora from eating veggie trays sold at Kwik Trip, contact Ryan for a FREE consultation.

612-338-0202
 ryan@pritzkerlaw.com
 No fee unless you win.

Pritzer Hagman, PA
 Attorneys

Advertising Material



Luverne's Jade Smith combined efforts with Jacob Van Dam to toss a four-hit shutout against Tracy June 12.

Dinner Train/Motel Package

3 hr Train Ride, 4 course elegant dinner, cash bar, overnight at Country House Motel with Pool and Spa

Special \$169/couple

Tuesday - Thursday Evenings

Reservations
 715-635-3200
 www.spoonetrainride.com

N6639 Dilly Lake Rd
 Trego, WI

Wet basement?...

We've got you covered!

Free Estimates. Call Today!
 1-800-795-1204

Radon | Foundation Repair | Basement Waterproofing | Crawl Space Repair

St. Catherine Catholic Church
203 E. Brown St., Luverne
St. Catherine Ph.: 283-8502; email: stcatherine@iw.net
Saturday, June 30: 5:30 p.m. St. Catherine's Mass. Sunday, July 1: 8:30 a.m. St. Mary's Mass. 10:30 a.m. St. Catherine's Mass. Wednesday, July 4: Office closed.

Luverne Christian Reformed Church
605 N. Estey St., Luverne
Office Ph. 283-8482; Prayer Line Ph. 449-5982
www.luvernecrc.com — office@luvernecrc.com
Roger Sparks, Pastor
Sunday, July 1: 9:30 a.m. Worship Service. 6:30 p.m. Worship Service.

First Baptist Church
1033 N. Jackson St., P.O. Box 975, Luverne
Ph. 283-4091; email: fbcluv@iw.net — www.fbcluverne.org
Walt Moser, Pastor
Thursday, June 28: 6 a.m. Men's Bible Study. 8 p.m. Worship service on Channel 3. Sunday, July 1: 9:15 a.m. Sunday School. 10:30 a.m. Morning Service. 6 p.m. Evening Service. Monday, July 2: 7 p.m. Constitution Review Team Meeting. Tuesday, July 3: 7 a.m. Men's Bible Study. Thursday, July 5: 6 a.m. Men's Bible Study. 8 p.m. Worship service on Channel 3.

Grace Lutheran Church
500 N. Kniss Ave., Luverne
Ph. 507-283-4431; www.graceluverne.org — graceluverne@iw.net
Ron Nichols, Pastor; Stephen Hilding, Associate Pastor
Thursday, June 28: 7:30 a.m. Mom's Bible Study at The Bean. 9 a.m. Naomi Circle at MJB. 9:30 a.m. Rachel Circle at Grace. 1:30 p.m. Lydia Circle at Grace. 2 p.m. Sarah Circle at The Camelot. 7 p.m. Priscilla/Elizabeth Circle. Friday, June 29: 6:30 p.m. Worship on Channel 3. Saturday, June 30: 5:30 p.m. Worship with Communion. Sunday, July 1: Noisy Sunday. 8:15 a.m. Radio Broadcast. 9 a.m. Worship with Communion. 10 a.m. Fellowship coffee; Adult Study. Monday, July 2: 4:30 p.m. Worship on Channel 3. Tuesday, July 3: 9 a.m. Staff meeting. Wednesday, July 4: Office closed. Thursday, July 5: 7:30 a.m. Mom's Bible Study at The Bean. 8:30 a.m. Missions in Action.

Bethany Lutheran Church
720 N. Kniss Ave., Luverne
Ph. 507-283-4571 or 507-449-0291 or 605-215-9834
pastorapalmquist67@yahoo.com
Andrew Palmquist, Pastor
Sunday, July 1: 9:15 a.m. Bible Class. 10:15 a.m. Worship.

American Reformed Church
304 N. Fairview Dr., Luverne
Ph. 283-8600; email: office@arcluverne.org
Mike Altena, Pastor
Friday, June 29: 6:30 a.m. Community Men's Bible Study. 4:30 p.m. REFIT Fitness. Saturday, June 30: 9:30 a.m. Gerloff/Sandbulte bridal shower. Sunday, July 1: 9:30 a.m. Worship service.

First Assembly of God Church
1075 110th Ave., 2 miles west of Luverne on County Rd. 4
Sundays: 9 a.m. Sunday School. 10 a.m. Morning Worship. 6:30 p.m. School of the Holy Spirit. Wednesdays: 7 p.m. Kids Connection; Men's Bible Study with Pastor Ken; Women's Bible Study with Pastor Gloria.

United Methodist Church
109 N. Freeman Ave., Luverne
Ph. 283-4529; email: luverneumc@iw.net
Dorie Hall, Pastor
Thursday, June 28: 1-3 p.m. Rock County Food Shelf. Friday, June 29: Mission Week ends. Saturday, June 30: 2-4 p.m. Vogt open house. 8 p.m. AA Meeting. Sunday, July 1: 9 a.m. Coffee Hour; Adult Sunday School. 10 a.m. New United Church Service. 4:30 p.m. Genesis/Revelation Bible Study. Monday, July 2: 8 p.m. AA Meeting. Tuesday, July 3: 8 a.m. Priscilla Circle. Wednesday, July 4: Office closed. 1-3 p.m. Sewing Day (if desired). Thursday, July 5: 1-3 p.m. Rock County Food Shelf.

First Presbyterian Church
302 Central Lane, Luverne
Ph. 283-4787; email: Firstpc@iw.net — www.fpcluverne.com
Jason Cunningham, Pastor
Thursday, June 28: 10 a.m. Worship on Channel 3. Saturday, June 30: 1-3 p.m. Robinson/Hildebrandt bridal shower. Sunday, July 1: 9:30 a.m. Worship service. 10:30 a.m. Coffee and fellowship. Tuesday, July 3: 10 a.m. and 6 p.m. Worship Service on Channel 3.

St. John Lutheran Church
803 N. Cedar St., Luverne
Ph. 283-2316, Dial-A-Devotion Ph. 283-4005
email: stjoh@iw.net — www.stjohnlutheranluverne.org
Gary Klatt, Pastor
Thursday, June 28: 9:45 a.m. Rock County Ministerial Association. Saturday, June 30: 5:30 p.m. Worship. Sunday, July 1: 9 a.m. Worship. Monday, July 2: 7 p.m. Elders meeting. Tuesday, July 3: 1 and 3:30 p.m. Quilting. Wednesday, July 4: Church office closed. Thursday, July 5: 2 p.m. Women's Society.

Living Rock Church
500 E. Main St., Luverne
Ph. 449-0057; www.livingrockswmn.org
Billy Skaggs, Pastor
Sundays: 10:30 a.m. Worship; Kids Rock Children's Ministry. 6 p.m. Youth Ministry. Life groups meet throughout the week.

New Life Celebration Church
110 N. Oakley, Luverne
Ph. 449-6522; email: newlifecel@iw.net
Sundays: 9:30 a.m. Worship at 110 N. Oakley. Every third Thursday: 4:30 p.m. Food give-away at Senior Citizens Center. Bible Study groups meet at various times and days.

Zion Evangelical Lutheran Church
305 E. 2nd St., P.O. Box 36, Hardwick
Ph. 669-2855; email: www.zionlutheranhardwick.com
June 28-30: MN District LWML Convention in Mankato. Thursday, June 28: 3:30 p.m. Worship on Channel 3. Friday, June 29: 3:30 p.m. Worship on Channel 3. Sunday, July 1: 10:30 a.m. Worship with Communion; Baustian baptism. Monday, July 2: 1 p.m. Quilting. Thursday, July 5: 3:30 p.m. Worship on Channel 3.

Ben Clare United Methodist Church
26762 Ben Clare Ave., Valley Springs, S.D.
igtwlb@WOW.net
Bill Bates, Pastor
Sundays: 9 a.m. Worship; 10 a.m. Fellowship; 10:30 a.m. Sunday School for all ages.

Palisade Lutheran Church
211 21st St., Garretson, S.D.
Ph. (507) 597-6257 — firstpalisade@alliancecom.net
Thursday, June 28: 1:30 p.m. WELCA regular meeting. Sunday, July 1: 10 a.m. Joint Parish Worship Service at Palisade Lutheran.

First Presbyterian Church
201 S. 3rd St., P.O. Box 73, Beaver Creek
Ph. 507-935-5025
Email: lori.firstpres@gmail.com
Sundays: 9:30 a.m. Morning Worship.

Magnolia United Methodist Church
501 E. Luverne St., Magnolia
Church Ph. 507-483-2492; email: adrmagumc@gmail.com
www.facebook.com/adrianmagnoliaumc
Sundays: 9 a.m. Magnolia Worship Service. Wednesdays: 6:30 p.m. Confirmation.

Steen Reformed Church
112 W. Church Ave., Steen
Ph. 855-2336
Jeremy Wiersema, Pastor
Sundays: 9:30 a.m. Worship; service broadcast on KQAD. 10:45 a.m. Sunday School. 6 p.m. Youth Group. Evening worship at 6 p.m. first and third Sundays. Wednesdays: 7 p.m. Midweek.

Bethlehem Lutheran Church
Pastor Maggie Berndt-Dreyer
112 N. Main St., Hills
Ph. 962-3270
e-mail: bethlehemluth@alliancecom.net
Saturday, June 30: 10 a.m. to noon Sundem/Friend bridal shower. Sunday, July 1: 9 a.m. Communion at Tuff Chapel. 10 a.m. Communion at Bethlehem. Tuesday, July 3: 2:30 p.m. Bible Study at Tuff Home. 3:15 p.m. Bible Study at Village. Wednesday, July 4: Office closed.

Hills United Reformed Church
410 S. Central Ave., Hills
Office Ph. 962-3254
hillsurc@alliancecom.net
Alan Camarigg, Pastor
Sundays: 9:30 a.m. and 6 p.m. Worship Services.

Pray for and expect miracles

In Acts 9:32-42, the Bible mentions a couple of miracles that God worked through the ministry and witness of the Apostle Peter.

Peter visited a couple of towns, Lydda and Joppa, in order to encourage the believers in those places. At Lydda God healed a man who had been paralyzed and bedridden for about eight years. At Joppa God raised from the dead a woman named Tabitha, also known as Dorcas.

In response to the miracles, many people "turned to the Lord." Many people began to follow Jesus. In view of these incidents we may wonder if we should pray for, and expect, God to work miracles among us. If you're like me, you've probably prayed for miracles.

We've asked God to intervene in powerful, even supernatural ways. We've been concerned for friends whose marriages were at the breaking point, and we've asked God to preserve their homes. We've been concerned for others who've been diagnosed with cancer or other diseases and we've asked God to heal them. We've looked at trends in our culture and we've prayed, asking God to stem the tide of immorality.

In these and other situations, sensing our weakness, we've cried out to the One for whom all things are possible, asking God to intervene.

But should we even ask God to do the impossible?

Yes! When we do so, we honor God. When we ask God to do extraordinary things, it means we believe He is able to do great things.

Imagine a king saying to a dinner guest, "Ask me for whatever you want, up to half the value of my kingdom." If the guest

BUILT ON A ROCK

By Roger Sparks, pastor, Christian Reformed Church, Luverne

asks for something small, like a second piece of pie, the king will be insulted. But if the guest asks for an estate in a beautiful neighborhood, the king will be honored. The guest praises the king by assuming that the king is rich and generous enough to grant the lavish request.

So, too, we honor God when we ask Him to do great things. We honor God when we ask Him to reveal among us His everlasting power and wisdom. When we ask God to do the seemingly impossible, it means we trust that He is able to do the extraordinary.

Can God heal the sick? Yes. Can God preserve marriages? Yes. Can God revive churches? Yes! Can God change the direction of nations? Yes. With God, all things are possible!

But as we honor God by praying boldly, let us also honor Him by praying humbly. God is wiser than we are. God knows better than we do how to answer our prayers. As Isaiah 55 says, God's ways are higher than our ways. As the heavens are higher than the earth, God's thoughts are higher than our thoughts. It's good to pray, along with Jesus, "Thy will be done."

By the way, we don't have to witness miracles firsthand to know what He is able to do. In Acts 9 and all through the Bible, God reminds us of signs and wonders He has done. As people did in Lydda and in Joppa, let us turn to the Lord for the miracle of salvation.

First Lutheran Church
300 Maple St., Valley Springs, S.D.
Ph. (605) 757-6662

Sunday, July 1: 10 a.m. Joint Parish Worship Service at Palisade Lutheran.

These Weekly Church Page Messages are contributed to God's Work through the Church and by these concerned and responsible citizens & businesses:

Call Rick or Chantel to place your ad!

283-2333

Tuff Memorial Home, Retirement Apartments & Tuff Village
"A Home Where Residents SMILE"
Hills, Minnesota
Phone 507-962-3275

Papik
MOTOR OIL
LUVERNE, MINN.
I-90 in Luverne, MN
507-283-9171 • 1-800-634-7701

Read us online!
Rock County STAR HERALD
www.Star-Herald.com

Trust In Him



Pizza Ranch
110 E. Main, Luverne, MN
Phone 507-283-2379

MANLEY
TIRE & OIL SERVICE
Manley Minnesota
1-800-615-3704
Open six days a week - Closed on Sundays
To God be the Glory.

CWG
Business Insurance.
Tri-State Region *Period!*

Rock County STAR HERALD
Luverne, MN • 507-283-2333

Advertise Here

Luverne ANNOUNCER

To Advertise Call 283-2333

Buffalo Ridge INSURANCE
507-283-2381 www.buffaloridgeins.com E-mail: info@buffaloridgeins.com

McClure Electric
Alan M. Aanenson, owner
Farm, Home & Commercial Wiring
Luverne, MN Phone 507-283-4716

First Farmers & Merchants
303 E. Main, Luverne, MN
507-283-4463
www.fimbank.com
We believe in you.
Member FDIC. And the community.

HILLS STAINLESS STEEL & EQUIPMENT CO., INC.
506 W. Koehn, P.O. Box 987, Luverne, MN
PHONE 507-283-4405
Church is Important - Please Attend!

MINNWEST BANK
• 116 E. Main St., Luverne 507-283-2366
• S. Hwy. 75, Luverne 507-283-9131
• Main St., Beaver Creek 507-473-2333
Member FDIC www.minnwestbank.com

HARTQUIST
Funeral and Cremation Services
- ENGBRETSON CHAPEL -
507-283-2777
www.HartquistFuneral.com
"Let our family help your family"
Serving the Luverne and Surrounding Communities

Tollefson Publishing
117 W. Main
Luverne, MN 56156
507-283-2333

EMPLOYMENT

IMMEDIATE OPENING Class A or B CDL Driver

Ferrellgas, a nationwide leader in the propane industry, is looking for a full time Class B Driver in Luverne, MN

Apply online at: www.ferrellgas.com

REQUIREMENTS:

- Must to be able to lift up to 75 lbs
- High School Diploma or equivalent
- At least 1 year driving experience preferred
- Class A or B CDL license with air brake, hazmat, and tanker endorsements
- Clean driving record



EMPLOYMENT

New Position

Wild Rose Home Care LLC

is looking for a part-time

Homemaker and Personal Care Attendant (PCA) in Luverne.

10-15 hours a week with flexible scheduling with a female client. Must be able to pass a background check. This is a new position, qualified individuals must be dependable and reliable.

Call for application, 507-337-1101

EMPLOYMENT

EMPLOYMENT

Sanford Luverne Medical Center

is currently accepting applications for PT (Part-Time) and PRN (Part-Time as Needed) positions:

- CERTIFIED MEDICATION ASSISTANT, HOSPICE – PT
- HOME HEALTH AIDE – PRN
- COOK – PRN
- HOUSEKEEPING – PT
- LICENSED ADDICTION COUNSELOR – PT
- LPN, HOSPICE – PT, PRN
- PATIENT CARE TECHNICIAN – PT
- RECEPTIONIST – PRN

To apply, visit sanfordhealth.jobs search "Luverne" in the location search bar.



"Your Calling, Your Place."
Sanford Luverne Medical Center | 877-673-0854

EO/AA

Petroleum Transport Driver

We have an opening for an additional Petroleum Transport Driver based out of the Luverne area. We operate throughout Southern Minnesota, Northern Iowa and Eastern South Dakota serving our customer's needs with great attention to detail, excellent service and safety standards on a daily basis.

We Offer:

- Excellent income—ability to earn +/- \$60,000 annually.
- No Sundays. Home every night. Occasional Saturdays.
- Excellent health insurance
- 401(k) plan with employer match
- Vacation pay/PTO pay
- Company provided smart phone

Qualifications:

- Class A CDL with combination vehicle, air brakes, general, tanker and hazardous materials endorsements
- Prior Class A driving experience with good driving record
- Operate computerized loading system
- Willing to learn/perform a variety of job tasks



If interested, email resume to Pete Bartelt at: peteb@staplesoil.com
Or call: 507-220-4521



The Gas Stop, owns and operates Holiday branded convenience Stores across South Dakota and Minnesota. The Gas Stop is a leader in the convenience store industry. We are committed to providing top tier fuel along with an extensive product selection, great value, and friendly, helpful service.

The Gas Stop Holiday in Luverne, MN is currently accepting applications for immediate openings:

- Full-Time and Part-Time Sales Associates - \$11-\$12 an hour

Working at The Gas Stop isn't just a job — it's a full customer service experience. You will receive Top Pay in a Family Friendly Atmosphere! The Gas Stop offers competitive wages, discount on gas and an excellent benefits program. Satisfying your needs every day, wherever you're going, we're on your way.

Jump start your career with an industry leader. Apply now to ensure this opportunity doesn't pass you by!

Apply at our store or on-line at www.GasStop.com

915 S. Kniss Ave. Luverne, MN

Seeking Drivers or Owner Operators

Full-time or Part-time
Haul weaned pigs and cull sows
Local Hauls - Home Nightly

PIPESTONE®

TRANSPORT

WWW.PIPESTONESYSTEM.COM

Apply today online at www.pipestonesystem.com or call Human Resources at 507-825-2532. Pre-employment drug testing and background screening required.

Find Us Online!
star-herald.com

BRING HOME THE BACON



\$4,000 Hiring Bonus!

Electrical/Electronic Technicians
Starting at \$20 hr.

Refrigeration/Boiler Technicians
Starting at \$17.95 hr.

Positions located at Sioux Falls facility

APPLY TODAY!

www.smithfieldfoods.com/careers

Smithfield is an EEO/AA Employer

Smithfield

Good food. Responsibly.®

EARLY DEADLINE

DUE TO THE 4TH OF JULY

Deadline for the July 5 issue of the Star Herald for advertising, editorial & legals will be noon on

Friday, June 29

any questions, please call 283-2333



MCAN

Minnesota Classified Advertising Network



HELP WANTED - DRIVERS

LINSMEIER TRUCKING

A MN based company is now hiring Owner Operators to pull hopper bottom in the upper Midwest. Home weekends. Call 320/382-6644

EMPLOYMENT

SPECIAL EDUCATION ELEMENTARY TEACHER

New London-Spicer Schools. MN Special Education License required. EBD License preferred. See www.nls.k12.mn.us for more information.

WANTED TO BUY

MOTORCYCLES WANTED

2-stroke & 4-stroke. 70's Japanese & British. Street, Enduros, Triples. Cash paid/trailer pickup. Call: 612/655-3320

ANTIQUES & COLLECTIBLES

JUNKATHON FLEA MARKET

June 30 - July 1-2. Hwy 371 Pine River, MN. Huge amount of rusty old farm stuff to repurpose. Yard art iron galore!! Admission \$2. FirstMondayMn.com 218/507-0706

MISCELLANEOUS

DIRECTV SELECT PACKAGE

Over 150 channels, only \$35/month (for 12 mos.) Order now! Get a \$100 AT&T Visa Rewards gift card (some restrictions apply) Call 844/279-6018

**ADVERTISE HERE
STATEWIDE IN 260+
NEWSPAPERS FOR
ONLY \$279 PER WEEK!
CALL 800-279-2979**

MISCELLANEOUS

LUNG CANCER CLASS ACTION

Were you an industrial or construction tradesman and recently diagnosed with lung cancer? You and your family may be entitled to a significant cash award. Call 844/238-0340 for your risk-free consultation.

A PLACE FOR MOM

The nation's largest senior living referral service. Contact our trusted, local experts today! Our service is free/no obligation. Call 844/347-2104

DISH NETWORK

190+ channels. Free install. Free hopper HD-DVR. \$49.99/month (24 mos.) Add high speed internet - \$14.95 (where avail.) Call today & save 25%! 855/562-4309

Star Herald CLASSIFIEDS

Page 8B June 28, 2018

EMPLOYMENT

Family & Children's Social Services Supervisor Nobles County Community Services. If you have a passion to supervise others and to promote the goals of family & children's social services, this may be the career for you! **QUALIFICATIONS:** Bachelor's degree in Social Work, Psychology, Sociology, or related field with a minimum of four years' experience in public or private social work. Previous supervisory experience preferred. Valid Driver's License required. For complete job description visit: co.nobles.mn.us/Jobs&Careers. **APPLY TO:** Merit application required, visit: <http://agency.governmentjobs.com/mnmeritsystem/default.cfm>. Closing Date for Merit Applications: June 29, 2018, 12:00 p.m. (6.14-6.17)

EMPLOYMENT

Dave's Construction, Inc. is now hiring underground cable installers, both power and CATV, full-time positions available that include a benefit package, vacation and sick pay, 401k, health insurance, excellent starting wages. High school education, pre-employment drug test required, Class CDL a plus. To apply call or email Jeff at 605-366-8848 or jeffnaak@yahoo.com (6.24-7.12)

A&B Pressure Washing, Inc. is now taking applications for a dedicated employee. For more information and to set up an interview call 507-283-4321 and leave a message. (6.21-7.3)

MISCELLANEOUS

HAVE A UNIQUE SERVICE OR BUSINESS? Get the word out to over 1.4 million households. Call WIDE AREA CLASSIFIEDS today, 507-359-7326. (tc)

EMPLOYMENT

HELP WANTED
Age 55+ workers needed for **part-time custodial work** at the Adrian & Beaver Creek rest areas
Contact Green View 651-639-1913

GARAGE SALES

Garage Sale: 8-4 Thur. June 28, Fri.- Sat 8 AM 500 Phyleon Drive Luverne new garden dump cart, Syber shot camera, dog crate, fishing tackle, glider, meat slicer, decorating stuff, office chair, sandwich maker, walker, nike spike shoes, clip on earrings, nut crackers, cd player am fm, alarm radios, Red Hat stuff free, womens clothes up to 2X, Keurig coffee maker, New Insta Pot (used once). Wicker Furniture, Kids toys. (6.24-6.28)

RENTALS

For Rent: 2 one-bedroom apartments in Adrian. Call 507-442-3007 after 6 p.m. for more information. (6.24-7.12)

RENTALS

For Rent: one-bedroom one-bathroom upstairs duplex in the downtown area. \$400 per month. No pets. Call 507-283-8711. (6.21-7.8)

For rent in Magnolia: one-bedroom apartment. Stove, refrigerator, washer and dryer. References required. Call Jean at 283-8593 or Kelly at 220-5198. (6.17-7.5)

For Rent: one-bedroom apartment near downtown Luverne. \$290 per month. No pets. Call 605-201-6427. (tc)

Large apartment upstairs, downtown Luverne, utilities paid, stove and refrigerator included. References required, no pets, no smoking. Call 507-227-1589. (tc)

CARDS OF THANKS

Thank you to all our friends who sent cards for our 50th wedding anniversary.

Kermit and Linda Limesand

(6.28-7.1)

RENTALS

FOR RENT

Rock Creek Townhomes
4 Bedroom Townhouse
Handicap Accessible
\$655/mo Includes water, sewer, trash
Available mid-July
Tim: (507) 220-0757
Equal Housing Opportunity
LloydManagementInc.com



RC Ag Society

Rock County

& STAR HERALD

RC Fair Coloring Contest

RIDE TICKETS WILL BE AWARDED IN EACH AGE CATEGORY!

RULES

- Contest is open to children ages 4 through 9.
- Color the picture below with paints, markers, crayons or colored pencils.
- Decision of judges is final.

ALL entries must be returned to the Star Herald office no later than NOON ON WEDNESDAY, JULY 18.

Please return your colored entry to the Star Herald office rolled or flat - DO NOT FOLD.

ENTRIES WILL BE DISPLAYED AT THE FAIR



NAME _____

ADDRESS _____

AGE _____

PARENTS' NAME(S) _____

PHONE NUMBER _____