



# Rock County STAR HERALD

Rock County's oldest business, printing since 1873

Thursday, June 9, 2016

## 2016 spring planting season plagued by rain delays

By Mavis Fodness

Rock County farmers experienced typical spring weather as they worked to get crops into the ground for the 2016 crop season.

Luverne dairyman and crop farmer Rick Van Santen described this year's planting season. "It was long and strung out," he said.

In southwest Minnesota measurable rain continued to average 10 days a month, according to Troy Thone, local volunteer weather recorder.

He said the current rain pattern began in February and continued through May. The frequent showers left only a few continuous days where conditions were appropriate for fieldwork.

While the rest of the state's farmers progressed well ahead of the five-year corn planting average (sometimes as much as 17 days according to the state's May 8 USDA crop progress report) area farmers' pace caught up to the rest of the state as of last week.



Mavis Fodness Photo/0609 Spring Fieldwork 2016

Area farmers are catching up with the rest of the state in getting the 2016 crop planted. Since February southwest Minnesota has averaged 10 days of measurable precipitation that continued through May.

Luverne's Dale Reverts works seasonally with CHS Eastern Farmers agronomy department

in Magnolia. He was helping sprayer operator Steve Hansen apply emergence herbicide on Van Santen's corn last week.

Reverts said the cold soil temperatures delayed the majority of the agronomy work about a month, pushing work typically done in

peratures delayed the majority of the agronomy work about a month, pushing work typically done in

Spring planting/see page 3A

## City, county races have multiple candidates

Fields to narrow in August 9 primary election

By Lori Sorenson

When the filing deadline closed on May 31, three local races emerged with three or more candidates.

Four candidates are seeking election to the open county commissioner seat in District 1 currently held by Ken Hoime, who opted not to seek re-election.

Candidates are Don Bryan, Hardwick; Mike Davis, rural Luverne; Kyle Hemme, rural Hardwick; and Gary Overgaard, rural Magnolia.

The District 3 county commission seat is being sought by incumbent Ron Boyenga, rural Ellsworth, and challengers Greg Burger, Luverne, and Darrel Van Aartsen, rural Luverne.

Another three-way contested race is for the Luverne City Council Ward 1 seat currently held by Esther Frakes, who is not seeking re-election.

Seeking her seat on the council are Lennis "Red" Arndt, Larry Lanphere and Daniel Nath.

Running uncontested for city office are Patrick Baustian for re-election as Luverne mayor and Lori Hallstrom for Ward 2 city council currently held by Eugene Marshall, who is not seeking re-election.

Other uncontested county elections include Jody Reisch, who filed for re-election to the District 5 county board seat, and Soil and Water Supervisors District 1, 3 and 4. Filing for those seats respectively are Eugene Cragoe, Roger Hoff and Dave Esselink.

At the state level, incumbent Bill Weber, Luverne, has filed for re-election to the State Senate District 22 seat on the Republican ticket with Brian Abrahamson of Luverne challenging Weber on the Democratic-Farmer-Labor side. Both candidates threw their hats into the ring on the first day of filing.

Laura Woods of Luverne has filed for election to the Minnesota House of Representatives District 22A on the DFL ticket. She is challenging incumbent Joe Schomacker (R-Luverne) who filed for re-election.

At the federal level, DFL incumbent Tim Walz has filed for re-election to U.S. House District 1 seat. Two Republican challengers have also filed — Jim Hagedorn and Steve Williams.

Candidate filings/see page 3A

## 'Unconditional contentment'

## Luverne couple to speak at Rock County Relay for Life

By Lori Sorenson

Jim Juhl and Brenda Winter believe cancer has strengthened them — both in their Christian faith and in their relationship with each other.

As Rock County Relay for Life honorary chairwoman and caregiver, they're looking forward to sharing this message during Friday night's event in Luverne City Park.

"It will be an opportunity to talk about God's faithfulness in our lives," Brenda said.

As a Star Herald columnist, she's written about her past two years with anal cancer and has shared thoughts on her CaringBridge page.

But Friday night she has a specific message in mind. "Unconditional contentment."

She said Christians tend to pray for things that they believe will make them happy.

"We tend to think, 'I can be happy if ...' Right now it's easy to be content, because things are going well," she said. "But we need to be unconditionally content."

Jim agreed.

As Relay for Life's first honorary caregiver, he plans to also talk about faith.

"We as a couple going through this cancer journey have a great opportunity to witness about our faith," he said. "My take on it is this: When you get a cancer diagnosis, what is the first thing you do? You either lash out at God or look to him for healing."

In all prayer requests, he said, it's important to keep an open mind.

"You ask for things in prayer; he always answers, but not always in ways you would expect. ... I prayed for healing, and he healed me of my selfishness," Jim said about his caregiving role.

"It's through pain and frequent prayer that you grow closer to God; maybe that's how God is healing you. Maybe you need spiritual healing way more than you and your spouse need physical healing."



Lori Sorenson photo/0609 juhl winter relay for life

Brenda Winter, Luverne, is the 2016 Rock County Relay for Life honorary chairwoman, and her husband, Jim Juhl, is the events first ever honorary caregiver. The two speak at the American Cancer Society fundraiser, which begins at 5:15 p.m. Friday in Luverne City Park.

And he said he's grateful for new perspectives.

"When you are faced with losing someone or something close to you — that person and those things become so important to you," he said.

Brenda joked that Jim's easiest caregiving moment was when she ended up hospitalized with an infection.

"She couldn't even talk," Jim said. "For the first time I was in control."

Those who know Jim and Brenda know they're quick with humor and they promise to bring some of that to the park Friday night.

Mostly, though, they look forward to the comfort of being with others who share similar cancer experiences.

"There are thousands of people who could do this," Brenda said about their honorary Relay for Life roles.

Juhl, Winter Relay for Life/continued on 8A

## Broadband work hits rock, rain and theft delays

By Mavis Fodness

Crews working on the \$14 million broadband Internet service project in Rock County are about 10 percent finished after two months on the job.

Boring of the main fiber line began April 11 in Jasper.

Since then crews have finished Beaver Creek and have moved on to Hardwick.

The work slowed almost immediately when \$30,000 in boring equipment was stolen while crews set up in the Jasper area.

The first crew is responsible for boring the orange plastic tubing into the ground. The plastic tubing is used in municipalities to protect the fiber optic cable pulled through the tube by a second crew.

While work in the cities has progressed with the boring of



Lori Sorenson photo/0609 alliance broadband

Crews with Michels Corporation pull cable through the south ditch of County Road 5 west of Luverne Wednesday, June 1. The company is installing approximately 550 miles of fiber across Rock County to bring high-speed Internet to rural residences that were previously underserved.

Broadband delays/see page 3A

## Texas thieves abscond with Oldre truck and \$17,000 worth of guns and equipment

By Lori Sorenson

A Texas hunting trip became a nightmare for Luverne's Kyle Oldre and his travel companions last week when his truck and their guns and possessions were stolen.

Plans for wild boar hunting were shaping up nicely when Kyle and his son Knute arranged to meet Kyle's father-in-law, Tim Dispanet, in San Antonio where he was visiting his brother, Jim Dispanet.

Kyle's brother Keith would fly in from Philadelphia and they would all stay at a bed and breakfast in Utopia, Texas, near the hunting ranch.

On Thursday, May 26, Kyle and Knute left Luverne with their 2011 Ford F150 pickup loaded with guns

and hunting equipment.

Kyle said the trip already started to sour when they found themselves driving through the torrential rains and flooding that hit Texas at that time.

"I was driving through water up to my floorboards," Kyle said. "When we got to San Antonio, I told Knute, 'At least the bad stuff is behind us.' Little did I know we'd be robbed the next day."

Before meeting the rest of their hunting party, Kyle and Knute took in some tourist attractions in San Antonio — the Riverwalk, Tower of the Americas and the Alamo.

Stolen truck, guns/see page 2A



## COMMUNITY CALENDAR

### Meetings

**Beaver Creek Township Board** monthly meeting is at 7:30 p.m. Thursday, June 9, at the township hall.

**Matthew 6 Board of Directors** will meet at 7 p.m. Monday, June 13, at the Pizza Ranch.

**Pink Ladies** will meet at 1:30 p.m. Monday, June 13, in the Blue Mound Room of Sanford Luverne.

**Rock County VFW 2757** will meet at 7 p.m. Tuesday, June 14, in the Herreid Military Building. For information contact Buck Underwood at 449-0632.

**Tourist Club** will meet at 5 p.m. Tuesday, June 14, at The Bluestem in Luverne with installation of officers.

**Rock County Thrivent Board** will meet at 6 p.m. Thursday, June 16, at The Bluestem.

**MS Support Group** will meet at 6:30 p.m. Thursday, June 16, at Southwest Health and Human Services. For information call 283-2069 or 283-2964.

**Women's Alcoholics Anonymous** meets at 8 p.m. Wednesdays in the United Methodist Church basement. Use the east entrance.

**Al-Anon** meets from 6:30 to 7:30 p.m. Wednesdays in the Buffalo Ridge Meeting Room (lower level) at the Sanford Medical Center in Luverne. Call Stephanie at 507-449-1246.

**Narcotics Anonymous** meets at 7 p.m. Fridays and for basic text study at 7:30 p.m. Tuesdays in the basement of St. Catherine Catholic Rectory, 203 E. Brown St., Luverne. Use east door. For more information call 507-220-0137.

**Alcoholics Anonymous** meets at 8 p.m. Wednesdays and Saturdays in the United Methodist Church, Luverne. Call 605-321-4324.

**Alcoholics Anonymous and Al-Anon** meet from 8 to 9 p.m. every Thursday in Runals Memorial Hall, Edgerton. Call Naomi, 507-215-2956, with questions.

### Hills Friendship Days this weekend

The community of Hills is celebrating Friendship Days this weekend, June 10-12. The annual Friendship Days Parade begins at 10:30 a.m. Saturday. Other events Saturday include a pancake breakfast from 7-9 a.m. at the Legion, a 5K run/walk at 7 a.m. at Around the Clock Fitness, a bean bag tournament at noon on Main Street, a kiddie tractor pull at 12:30 p.m. on Main Street, an evening steak fry from 5-7 p.m., and a street dance at 9 p.m., as well as other events. Sunday will feature a fishing derby at 12:30 p.m. at the Rez.

### Re-Creation performs at Vets Home

Re-creation, a musical group known as America's ambassadors to hospitalized veterans, will perform at the Minnesota Veterans Home at 2 p.m. Tuesday, June 14.

### Farmers Market open Thursdays

The Luverne Farmers Market is now open for business from 4-7 p.m. Thursdays at Redbird Field. Farmers Market continues Thursdays through October 26. Watch for the signs on Main Street.

### Food Ministry June 16

The monthly Food Ministry, sponsored by New Life Celebration Church, will be from 5 to 6 p.m. Thursday, June 16, at the Luverne Senior Center. If you're having trouble putting food on the table, come for fresh produce, bread and meat. Children will be asked to wait outside.

### Library hosts 'Minnesota Gold'

"Minnesota Gold" author Patrick Mader will visit the Rock County Library at 2 p.m. Thursday, June 23. His book celebrates the perseverance and triumphs of 57 Minnesota Olympic athletes from 1948-2014. The free program is funded by the Minnesota Arts & Cultural Heritage and is open to the public.

### 'Gitchee Girl' author at library June 25

The Rock County Library will host "Gitchee Girl" authors Phil and Sandy Hamman from 10:30 a.m. to noon Saturday, June 25. The authors will discuss survivor Sandra Chesky's struggles in rebuilding her life emotionally and spiritually after witnessing the Gitchee Manitou 1973 mass murders and being sexually assaulted. A book signing will follow the event. Books will be available for purchase.

### Summer Reading Program

Be a good sport and sign up for the 2016 Summer Reading Program, open to all ages from pre-K through 12<sup>th</sup> grade at the Rock County Library. For information contact the library at 507-449-5040.

## Stolen truck, hunting equipment in Texas trip/continued from page 1A

They parked the truck in parking spot No. 65 in the lot near the Alamo. "I knew I'd remember that, because it's the year I was born," Kyle said. "And I parked next to a nice Camaro, so I knew I wouldn't get door dings."

Three hours later they returned to parking stall No. 65 to find a small Nissan parked where their truck was supposed to be.

"The first thing that came to mind was to talk to the parking lot folks," Kyle said. "I paid \$15 to park there, so where's my truck?"

They soon learned the parking managers hadn't towed their vehicle, and there was no video surveillance to show what had happened.

It became apparent their truck — and \$17,500 worth of hunting equipment — had been stolen.

They scratched their heads over how that could happen in broad daylight (between 9 a.m. and noon) along a busy city street with 10 times more traffic than Highway 75 in Luverne.

"And we parked kitty corner from a federal court building," Kyle said. "If you had asked me where the safest place would be to park, I'd say we were there."

As they waited for law enforcement to arrive, the reality of their situation sank in. They were 1,000 miles from home with nothing but the clothes on their backs, their billfolds and their cellphones.

"Knut was on the ball; he said the first thing we need to do is get phone chargers because we were going to be making a lot of calls," Kyle said. "So we went to the CVS and bought two cellphone chargers, notebooks and pens."

And the phone calls commenced. After calling their insurance company, the rest of the calls were to cancel their trip — to the others in their hunting party, to the bed and breakfast, to the hunting ranch and others.



Kyle and Knute Oldre parked in a lot near the Alamo in San Antonio. Three hours later they returned to the lot to find their truck and all its contents (hunting supplies for their trip) had been stolen. "And we parked kitty corner from a federal court building," Kyle said. "If you had asked me where the safest place would be to park, I'd say we were there."

"There was no way we were going to salvage this trip," Kyle said.

Along with the truck, thieves made off with 10 guns (four long guns and six handguns), binoculars, range finders, coolers and personal items. "The guns were all under the backseat," Kyle said.

"There's no way they knew about those until they drove off with them."

Also in the truck were Knute's glasses and a week's supply of daily contact lenses. "Knut said to me, 'You know Dad, after today I won't be able to see.' So we arranged to have glasses made for him

in Dallas, where we stopped on the way back."

Insurance agents sent an Enterprise rental car to pick them up at the Alamo — a Kia Sorrento, a vehicle half the size of the Oldre truck.

"The thing leans when I get into it," Kyle said. "It's embarrassing that I have to ride around in that thing with Texas plates for three weeks while the claim is processed."

While insurance will likely cover a good share of the value of the stolen items, Kyle said there's sentimental value in one of the guns — a .30-30 lever-action Winchester rifle that belonged to his grandfather.

"It's one of the only things I had from my grandpa on my mom's side, and I've never had it out of the gun case until now," Kyle said. "It's a Model 94 known as a western gun — the kind John Wayne carried in 'True Grit' and I figured it would be cool to take this old gun out west."

While he and Knute made their two-day journey home, they took in some sites, along with shopping to replace stolen clothes and personal items.

"We figured we might as well salvage a little of our vacation," said Kyle, who returned Tuesday to his job as Rock County administrator.

But he said there was no chance of staying in Texas.

"We turned right around and went home," he said. "I wanted to put miles between us as quickly as I could."

Law enforcement officials have all but said the truck probably won't be found.

"They figure it went straight to a chop shop," Kyle said, adding that if anyone did see the theft in progress, it's likely that no one would come forward.

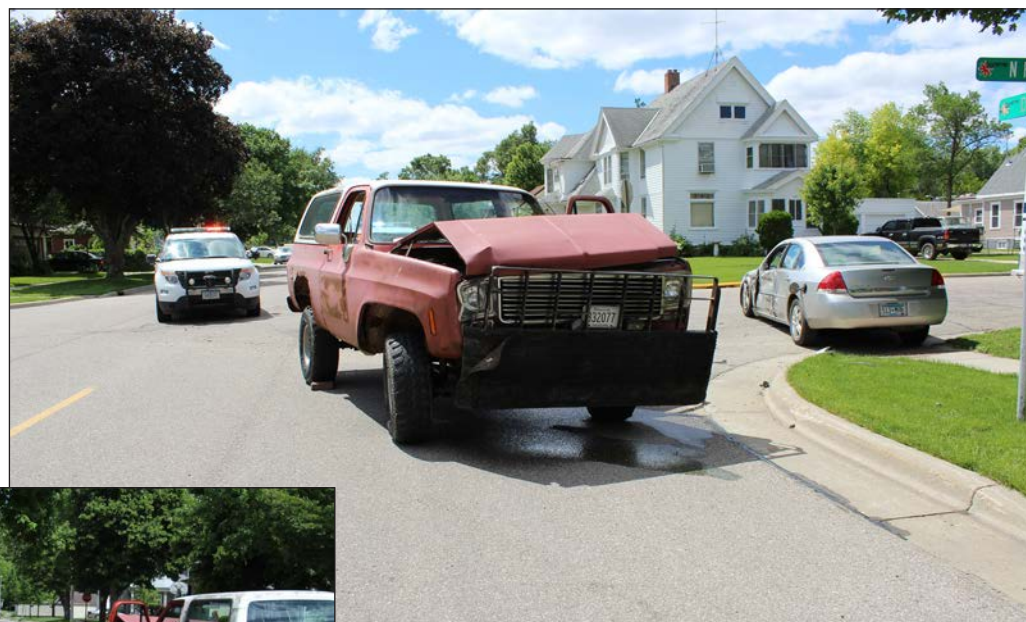
While the incident has left them shaken and upset, Kyle said he keeps repeating the words of his mother, Joyce Oldre, Luverne:

"At least no one got hurt."

### No one injured in two-vehicle accident June 6

The Rock County Sheriff's Office and the Rock County Ambulance were called to a two-vehicle accident with possible injuries at 3 p.m. Monday at the intersection of Dodge Street and North Freeman Avenue in Luverne.

Mavis Fodness Photo/0609 Accident 0606



Amanda Goettig, 23, Hardwick, was driving a 2006 Chevrolet Impala and was traveling north on Freeman Avenue when she failed to stop at the stop sign. Goettig collided with an eastbound 1977 Chevrolet SUV driven by Robert Wenzel, 41, of Luverne. According to Sheriff Evan Verbrugge, alcohol and drugs were not a factor in the accident, and both drivers were wearing seatbelts. Neither driver was seriously hurt. Goettig was issued a failure to yield citation.

# Dial-A-Specialist

Your One Stop Guide to Local Businesses

**DR. MICHAEL SMITH**  
 • Men, Women & Children's Health  
 • Custom Orthotics • Kinesiotape • Athletic Care • Massage Therapy • Work & Auto Injuries • Postural Restoration  
 WWW.ROCKCOUNTYCHIROPRACTIC.COM  
 283-2561 • 103 E. MAIN, LUVERNE  
 Monday 7:30 a.m. - 6 p.m. • Tuesday 7:30 a.m. - 3 p.m.  
 Wednesday 7:30 a.m. - 6 p.m. • Thursday 7:30 a.m. - 1 p.m.  
 Friday 7:30 a.m. - 5 p.m.

• Chiropractic

**STAR HERALD**  
**ANNOUNCER**  
**Chantel Connell**  
 Sales Representative  
 117 W. Main, Luverne, MN  
**507-283-2333**  
**Rick Peterson**  
 General Manager

• Advertising

**LUVERNE HEALTH & WELLNESS**  
 Codie Zeitelhorst, DC  
 ✓ Chiropractic Care  
 ✓ Family Care ✓ Sports Injuries  
 ✓ Kinesiotape ✓ Auto & Work Injuries  
**Massage Available 5 Days A Week**  
 Kris Van Der Brink M.T. & Amy Rosales M.T.  
 www.luvernechiro.com  
 109 S Freeman Ave, Luverne MN  
**507.449.4400**

• Chiropractic

**COMRAY COMPUTERS**  
 Computer Repair and System Builders  
**Ray Hansen** - 1726 140th Ave., Luverne, MN 56156 • **507-669-2621**  
**Mark Stewart** - Lismore, MN 56155  
**507-472-8479**  
 or email us at  
 comraycomputers@myclearwave.net

• Computer

**Rock County EYE CLINIC**  
**507-283-2345**  
 102 N. Freeman Ave.  
 Luverne, Minnesota  
**Dr. Sandra Carman**

• Eye

**Papik MOTORS**  
 1-90 Luverne, MN  
 Box 536 • 801 West Commerce Road  
 Luverne, MN 56156  
 (507) 283-9171  
 (800) 634-7701  
 www.papik.com

• Automotive

**Luverne MINNESOTA City Offices**  
*Love the life!*  
 PO Box 659, Luverne, MN 56156  
 507-449-2388 (24 hour voice mail)  
**www.cityofluverne.org**

• City

**Dakota Land Surveying and Engineering, Inc.**  
**Steven B. Kor**  
 Professional Engineer  
 Registered Land Surveyor  
 2000 W. 42nd Street, Suite B-6  
 Sioux Falls, SD 57105  
 605-334-4882  
 605-334-5745 Fax  
 506 Almar  
 Luverne, MN 56156  
 507-283-3803  
 steve.dis@midconetwork.com

• Land Surveying

# First biofuels flights run on corn processed at Gevo

By Lori Sorenson

Minnesota corn made history Tuesday when Alaska Airlines flew with alcohol-to-jet biofuel made from corn at the Gevo plant in Luverne.

The recently certified fuel underwent extensive testing and analysis and received certification from ASTM International last month.

Tuesday's flights were the first to be flown on Minnesota corn, and Beaver Creek corn farmer David Kolsrud said this is significant in the world of renewable fuel and commercial agriculture.

"This is a big deal," said Kolsrud, one of several local farmers to build the Luverne ethanol plant 20 years ago.

"We're starting to bridge that gap between the environmental community and commercial farming."

This "circle of life" corn and beef production (feeding corn and applying manure) allows farmers to leave a lighter carbon footprint in their operations.

"Most of the arguments about farming's effects on the environment are based on antiquated practices," Kolsrud said.

"Today's farmer uses modern technology and is better for the environment — they use less tillage and chemicals and more precision nutrient management."

He said farmers have adapted well to more environmentally sustainable practices, but they haven't done well communicating these successes with the public.

With Gevo's launch of commercial biofuel in Tuesday's Alaskan Airlines flight, Kolsrud said the message is

finally reaching consumers where the discussion is most intense — in California and Washington, D.C.

"It's going to start changing the dialogue of the argument about food versus fuel, which was actually started by others in agriculture (chicken production) who wanted cheap corn," he said.

Kolsrud shared results of a survey of local farmers who supply corn grain to Gevo's isobutanol facility in Luverne, and he said it offers an unprecedented glimpse of practices and outcomes for local farm operations.

"One thing is abundantly clear: Regardless of how we parse the data, these farmers stand out from the so-called average U.S. corn farmer, whether we are talking about their ability to produce corn at impressively high yields or we are talking about their ability to manage their land and resources as parsimoniously as possible," the survey's executive summary states.

"Both aspects of this community of producers point to a corn grain supply that stands head and shoulders above the U.S. corn producers in terms of its sustainability."

Kolsrud said these might be obvious observations, but they're not at the national level of promoting sustainable, low carbon biofuels.

For Tuesday's flights, Alaska Airlines used a mixture of traditional petroleum and a 20 percent blend of Luverne's biofuel on two flights departing Seattle for San Francisco and Washington, D.C. The airline's goal is to use sustainable aviation biofuel at one or more of its airports by 2020.

## Spring planting delayed/from page 1A

March to April.

"We are about 97 percent done now," Reverts said last week. "There are one or two fields out there (that are not planted)."

Van Santen said he finished planting three weeks ago when the area experienced six days out of seven suitable for fieldwork, according to the May 22 USDA crop report.

It indicated the six days were the most so far for the 2016 crop season.

Van Santen, who has been

farming since 1993, said this year's frequent rain showers were the most he experienced since the early 1990s.

"You just kind of accept it as the way it is," he said.

According to Thone, (his full report is located on page 5A) spring 2016 did not set any precipitation records.

May's total rainfall measured just less than 3 inches at 2.92. April's total was 1.94.

So far for 2016 the area has had almost 8 inches of rain.

## Broadband progress/from page 1A

the tubing, the frequent rain showers and the rock formations located in northeast Rock County have slowed the burying of the fiber.

Currently there are three crews working on the project who have completed about 50 miles of the 554-miles of fiber necessary to complete the project.

"The exposed rock areas that the crews have crossed have been very tough on equipment and on the progress of the job, but they have been able to overcome all those obstacles," said Andy Hulcher with Alliance Communications Cooperative.

Alliance, located in Garretson, South Dakota, is the lead partner in the Rock County Broadband Alliance to bring fiber-to-the-premise and high-speed Internet service to all Rock County residents.

Another project delay has

been the average of 10 days of rain experienced in the area the past two months.

"The plow crews will catch up fast and make up valuable time as things dry out from the recent rains," Hulcher said.

"They are plowing between four and five miles a day in good soil so I am confident they are going to be ahead of schedule in a very short period of time."

Crews have also progressed to the rural areas between Jasper and Beaver Creek. Hulcher said progress is faster in the rural areas because very little protective tubing is necessary.

Progress will also increase once crews make their way out of the rock formation areas of the county.

The bulk of the cable is expected to be buried by this fall with all installations completed by June 2017.

## Candidates file for office/from page 1A

Primary set for Aug. 9

The local offices that have three or more people that have filed will be on the primary ballot so that it's narrowed down to just two candidates for the general election.

The primary election is

Aug. 9, and the general election is Nov. 8.

The Rock County Auditor's Office can be reached at 507-283-5060.

Also election information is available on the Minnesota Secretary of State website, sos.state.mn.us.



Mavis Fodness Photo/0609 Master Gardeners Tour

Marilyn Bloemendaal's backyard garden is one of four stops on the annual Rock County Master Gardeners Garden Tour. Bloemendaal said she uses gardening as a way to relax. The gardens have been rebuilt since the 2014 flood.

## Spring beauty on display during Master Gardeners' annual tour June 20

By Mavis Fodness

As spring rolls into summer, the Rock County Master Gardeners are organizing their annual garden tour as a fundraiser and as a way to showcase local gardens to the public.

Cindy Arends of Hardwick became a master gardener through the University of Minnesota program. She said she was asking so many questions that it was suggested she take the online classes.

The Extension program introduced her to a wide variety of topics from soil structure to plantings for shade or sun in more detail than what even she expected.

"It's (Master Gardeners) a good resource," Arends said. "It's a trusted resource to answer questions."

Answers to questions and enjoying the beauty of nature are the central purpose for the Master Gardeners' annual tour Monday, June 20.

This year's tour features gardens located in or near Luverne. Garden stops in-

clude Tom and Sara Lanoue's backyard, the community garden plots on the east edge of town, St. Catherine gardens and Curt and Marilyn Bloemendaal's garden east of Luverne.

As the first-time organizer for this year's Master Gardeners tour, Arends said she had trouble convincing residents to share their gardens with others. She had previously taken garden tours to Worthington and Brookings through her job with Luverne Community Education with no such problem.

"We are talking about giving up the garden tour because not too many people are willing to share their gardens," she said.

Marilyn Bloemendaal viewed Arends' request as her

Garden tour/see page 8A



Rocks form a channel around Marilyn Bloemendaal's garden shed, providing an eye-pleasing way to move water away from the building and onto the lawn. Below, bridges are used as an easy pathway from the Bloemendaal home to a backyard machine shed.



Below, a taller and longer retaining wall was constructed at the home of Curt and Marilyn Bloemendaal to move water away from their home. Several water features dot the backyard gardens including one with these three vases (pictured at right).



**Happy 80th Birthday Evelyn!**  
Friday, June 17  
Greetings may be sent to:  
EVELYN REYNE  
1106 N CAROL  
LUVERNE, MN 56156

**Clinton Township**  
Mowing notice: All owners/renters of land in Clinton Township are required to mow one swath of their roadside ditch by July 4.  
Also all trees must be removed from the roadside ditches.  
- Clinton Township Board

**MOWING NOTICE: DENVER TOWNSHIP**  
Notice is hereby given to all landowners or tenants to mow at least one swath along township road ditches, by June 10, 2016. If not done, the township may hire it done and have it assessed against the landowners taxes.  
Denver Township Supervisors

**39th Annual WILDER PAGEANT**  
Walnut Grove, MN  
Charlotte Stewart "Miss Beadle" & Author William Anderson July 9-10, 2016  
Karen Grassle "Ma Ingalls" July 16-17, 2016  
Outdoor drama based on the life of Laura Ingalls Wilder  
July 8-9, 15-16, 22-23, 2016  
Performed along the banks of Plum Creek  
"The sun goes down, the lights go up, and so begins the magic on the hillside"  
888-859-3102 walnutgrove.org

## In Darwin's theory of survival, these robin eggs didn't stand a chance

One of my Memorial Day projects was to clean up an abandoned robin nest that had been built on the porch.



### ON SECOND THOUGHT

By Lori Sorenson, editor



On May 4 four blue eggs appeared in the nest resting on the brick ledge outside our front door. The nestlings were later named Randy, Roland, Ramona and Rebecca.

Rebecca," I posted on May 19.

The introduction garnered dozens of likes and several comments, and I looked forward to keeping my Facebook friends posted on their development.

But the posts stopped there.

One by one the featherless hatchlings disappeared from the nest. The first such absence coincided with the discovery of a bloodstain near the patio door where the cat strolled by licking her chops.

The next unfortunate baby was found on the cement below the nest with a broken neck. Did it fall out? Was the mother robin pruning her brood? Was the cat to blame for this one, too?

Then one morning only one ugly chick remained in the nest, and it didn't look very healthy. That evening, predictably, it was gone. Without a trace.

The fate of those doomed robins may forever remain unknown. But Darwin's theory of survival has become pretty obvious in the chronicles of our little robin family: Nests built in nature result in healthy reproduction. Chicks born at cat level do not survive.

As I removed evidence of their existence last week, I reflected on their short life story. Rest in peace, Randy, Roland, Ramona and Rebecca. Let's hope your mother learned her lesson.

It took only a few minutes to rip the tidy round nest from its perch on the brick ledge and scrub away the mud with Dawn soap and water.

There, in the span of five minutes, went an entire week's worth of robin construction.

Actually, it may have taken her only a day, but my husband kept insisting that she build elsewhere. Each time he ripped it down she'd put back another one, until I convinced him to let her keep it.

"You know, she's just going to keep coming back," I reasoned. "Let her raise her family there, and we'll remove it when her chicks take flight."

Secretly, I was looking forward to the little miracle of birth unfolding right there at eye level.

The arrival of cheery blue eggs was documented on my Facebook page, each with its own photo and announcement. "Our family is growing," I posted on May 4 with a photo of four eggs.

And then we waited. I worried the constant interruption of the front door opening and closing could interfere with nurturing.

One chilly night, we hosted a neighborhood gathering on the porch, and the poor eggs were left uncovered for several hours.

I imagined the mother robin waiting in distress from a nearby tree branch. "Stupid humans. Why don't they leave my habitat alone?"

Of course her nest was planted squarely in human territory. It wasn't our fault.

Just when I began to suspect a failure to hatch, the four eggs became four homely pink nestlings with thin skin and tiny yellow beaks — all wide open pointed upward, waiting for their next meal to drop in.

Their arrival called for another Facebook photo announcement. "Introducing Randy, Roland, Ramona and

## New spin on county's economic development Build new house, get tax break

### STAR HERALD EDITORIAL

As work continues on bringing broadband Internet to all rural residences in Rock County, commissioners are reconsidering the county's current tax abatement resolution.

For almost 20 years Rock County has offered tax incentives to new businesses that move into or expand within the county boundaries.

Passed in 1997, the tax abatement resolution allowed commissioners to forego their share of the property taxes for up to 10 years on business expansions.

Since then, the county has received fewer than 10 requests based on the current criteria.

In a cumbersome process, all requests are discussed in front of the board and have been approved.

We think re-examining the resolution is a good idea and is probably long overdue.

Commissioners should discuss and seriously consider amending the current resolution to include all property improvements by any resident in Rock County.

With high speed Internet access coming this fall, more county residents may consider working out of their homes. Why not receive a tax break for building a new house for that home office?

The state's tax abatement laws are very broad, and it is up to county governments to establish a resolution as to how the law is used locally.

Just across the county line, Nobles County has a tax abatement

process that encourages the building of new single-family homes or rental housing units.

Prior to adopting its Nobles Home Initiative, about 10 new structures were built in the county. After its adoption a few years ago, the county averages 40 new homes annually.

The expansion of Rock County's tax abatement resolution is a way to encourage growth and be available to every resident. It is a good way to say, "We want you to live in Rock County."

For years Rock County has received pressure from bordering states encouraging residents to move there instead of staying in Minnesota. What better way to show people Rock County has something to offer residents too.

It's not to say the county should write a blank check to those wanting to build in Rock County. Appropriate limits should be set and every request should be double-checked before receiving commissioner approval.

But make it easy.

An easy-to-fill-out form open to anyone interested in requesting abatement should be developed.

Also make it easy for people to

make the request.

No begging. No discrimination. No hassles to those who request the incentive to improve their properties.

Forgiving the taxes on improvements to a property for a specific number of years is not giving money away.

It may be a way to spruce up our county. Too many homes are abandoned or have fallen into disrepair.

And if the number of years hasn't expired for a specific abatement before the house is sold, transfer abatement to the new owners.

Remember, the county would still collect taxes on the original value of the parcel, just not the improvement part until later.

We encourage our commissioners to take a serious look at the current tax abatement resolution and make changes.

Opponents to the proposal would say that this progress would take place regardless of tax abatement incentives.

They would also argue by rewarding these builders you're robbing tax revenue from our citizens.

What do you think?

## Stearns: Young people taught 'earn more, borrow more, owe more'

### To the Editor:

In several of his letters Bill Frakes has made observations about the habits of younger generations. As one of those younger people, I would like to share some thoughts in response.

After graduating from high school I spent almost a decade away from Luverne. It was the expected thing. Across America small towns are witnessing the mass exodus of their young people to urban centers, so they can buy more goods and services.

During my last years of high school I remember seeing posters plastering the school hallways. The writing on the wall made it clear. Go to college and get a good job, so you can get away from this place. College graduates earn so much more in their lifetime than someone with just a high school diploma. College is the ticket to success.

Whatever happened to the idea of going to college to learn? That's not the point any more. Instead we "invest in our future" by buying college degrees.

### VOICE OF OUR READERS

Next to homeowners, the largest debt in our nation belongs to college students who have taken out loans to pay for their college experience.

Get busy. Get educated. Earn more. Spend more.

Self worth, it seems, comes from the size of our paychecks.

Those posters never mentioned that approximately half of all students who enter college as freshmen never finish. They never told students that at the national level, a majority of college graduates work in a field that does not require a college degree.

Earn more. Borrow more. Owe more.

Bill Frakes is right. I am from a generation taught to consume. Consume the most at the best prices.

Expect everything, and work as little as possible for it.

Maybe we should readjust our values and invest in our communities again. Schools across the country are cutting classes like shop and home economics in favor of teaching kids subjects like Sports History or Video Game Programming. Our culture now teaches us that instead of sewing a missing button back on a shirt, we should just throw it away and get a new one. Why not? We make enough money, and clothes are cheap.

Healthy home-cooked meals? Who needs to know how to make those? We can eat fast food, then buy gym memberships.

So I have to ask: Does it really mean you're wealthy if you drive a nice car or live in a big house when it's the bank who really owns them? What happens when nobody can do anything for themselves anymore, and all they own is a maxed-out credit card? Maybe then we can realize what is truly valuable.

Joseph Stearns  
Luverne

## Nelson brings one last thought on Memorial Day

Before we close the books on Memorial Day 2016, I would like to extend a thank you to Lois Nelson.

It wasn't until Memorial Day this year that I learned of Lois Nelson and her commitment to playing taps as part of military honors at local veterans' funerals for the past 20 years.

A few years ago I had the honor of speaking at the Memorial Day service at the Maplewood Cemetery.

That day I shared my personal experiences as a kid growing up in Heron Lake and the importance the local Legion members put toward honoring their fallen comrades.

A very important part of honoring a veteran is the playing of taps at his or her funeral.

I've attended a number of funerals where taps was played at the end of the 21-gun salute, and I have been moved to tears because of the sound of the bugle off in the distance.



### FOR WHAT IT'S WORTH

By Rick Peterson, General Manager  
Tollefson Publishing

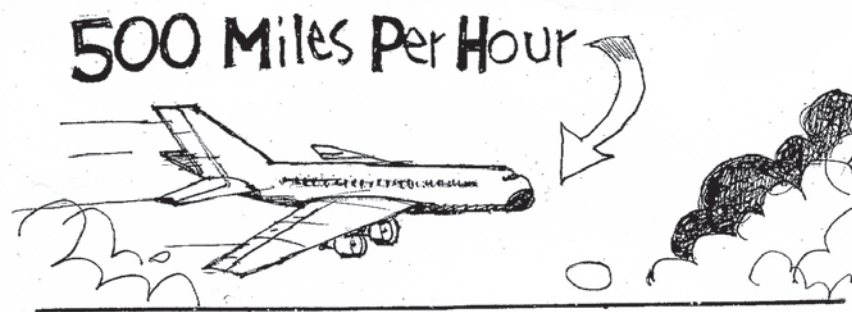
It wasn't until my father's funeral that I realized the importance of taps to the surviving family.

There are three components to military honors at a funeral — the firing of the rifles, taps, and the flag presentation.

For me, the firing of the rifles signifies our military strength. The flag presentation is a sign of a grateful nation. But for me the playing of taps was the most important part of the

military honors. Listening to the soft, soothing tones of the bugle somehow gave me the feeling that the whole nation was sharing in our family's grief. It was so profound, so touching and so important to my mom.

Lois Nelson has provided that feeling to hundreds of families over the past 20 years. I'm sure many of those families have no idea who the person behind the bugle was, but now that I do, Lois Nelson is my hero.



E-mail: editor@star-herald.com Web site: star-herald.com  
Phone: 507-283-2333 Fax: 507-283-2335

Published Thursdays by Tollefson Enterprises, POSTMASTER:  
Send address changes to 117 West Main, P.O. Box 837, Luverne,  
MN 56156. Periodicals postage paid at Luverne, Permit #33 and at  
additional mailing offices.

**General manager:** Rick Peterson **News staff:**  
**Office manager:** Deb Lusty Lori Sorenson, editor  
**Circulation manager:** Jennifer Kor Mavis Fodness, reporter  
**Advertising:** Chantel Connell John Rittenhouse, sports editor  
**Production manager:** Abbe Kolar Esther Frakes, copy editor  
**Production:** Amanda McDonald Joseph Stearns, composition

Rock County  
**STAR HERALD**  
Rock County's newspaper since 1873

(ISSN 0889-888X)  
SUBSCRIPTION RATES

\$72 per year in Rock County; \$89 per year all other areas. Single copies \$1.25

Entire contents copyrighted by  
Tollefson Publishing Roger Tollefson, publisher

The *Star Herald* encourages letters to the editor expressing the opinions of readers and intends to print all letters. Letters not meeting the guidelines will not be printed. The *Star Herald* will verify the authenticity of all letters. Letters must have the name of the writer, a signature and address.

Unsigned letters will not be considered. The *Star Herald* will edit for grammar, spelling and clarity. Any letters containing offensive language, libelous or slanderous material, or misleading or false information will be rewritten before being published. The *Star Herald* will not publish letters written with the sole intent to advertise or serve as a thank-you. Letters with more than 300 words may be edited. The deadline for letters is Monday 10 a.m. They may be delivered or mailed to the editor, *Rock County Star Herald*, P.O. Box 837, 117 W. Main St., Luverne, Minn. 56156.

## ON THE RECORD

### Dispatch report

May 27

•Complainant reported a verbal domestic. Female party left for the night.

•Reserved for emergency response unit callout in Jackson County.

•Complainant reported that his daughter is stealing from him, and he doesn't want her to come back to his residence. Deputy spoke with her and told her to stay away.

•Complainant reported a silver car has sat in front of her house for about an hour several times this week. The driver never gets out. Deputy advised the driver is on his lunch break from work and pulls under the tree for shade and reads.

•Complainant reported she had her bike stored with a person that lives on West Edgell Street all winter, and they are hesitant to get it back to her, so she came to Luverne to get it, and it is all broken like it has been in a wreck. Complainant is unsure of the person's name because her boyfriend had it stored. She also reported items stolen off of it on May 25.

May 28

•Deputy reported a gray Ford Focus sale vehicle locked and running at location. Attempted to locate key holders, but there was no answer.

•Deputy arrested subject for DWI. Had G&S tow vehicle, and subject was taken to jail.

•Complainant reported they got a call that sounded like gurgling and someone pressing buttons. Contacted Verizon to get subscriber information. Phone is a pre-paid, and no information is available.

•Complainant reported something hit their windshield. Complainant did not know what road they were on just that they thought they were in Pipestone County. Transferred to Pipestone.

•Complainant reported a male just took off with his own child, and the mother wants the child back. They contacted us to see if the male was in Luverne. Minnehaha County called and said the male had returned the child to the mother.

•Dispatcher received a 911 hang-up call. Called the number back and spoke to subject who advised his daughter was playing with his phone. No sign of distress.

•Complainant reported a white F150 with a Luverne Hockey sticker in the window was four wheeling in the dirt at the creamery pond. Complainant advised the pickup got stuck then tore out of the area at 60 mph.

•Complainant requested we do a welfare check on his baby daughter. The mother lives in Pipestone but stays in Luverne. Deputy checked, and they said that the mother doesn't stay in Luverne. He was told to contact Pipestone County.

•Complainant advised they were behind a drunk driver on I-90. Transferred to State Patrol.

•Complainant reported a domestic on State Highway 23. Small blue car parked in the lane of traffic. Both female and male party got out of the car and started walking away from the vehicle. Unable to locate vehicle.

•Complainant reported a domestic. Deputy arrested subject and took him to jail. Also charged with probation violation.

•Deputy reported a stalled vehicle at location. Made contact with relative of registered owner, and they will be getting vehicle later tonight or tomorrow morning.

•Complainant reported

loud music somewhere, possibly a backyard neighbor, on the 1000 block of North Blue Mount Avenue.

May 29

•Complainant reported fire alarm in Zone 1 at the Minnesota Veterans Home. Paged Luverne Fire Department.

•Deputy reported vehicle abandoned approximately 1.5 miles east of Beaver Creek. Vehicle is off the roadway. On May 31 at 12:47 p.m., deputy reported the vehicle still has not moved. Had it towed by G&S.

•Complainant reported a driver who looked to be only 13 years old driving by himself. He left the gas station headed westbound on I-90. Gave to State Patrol.

•Complainant reported the rotten corn at the elevator in Hardwick is toxic and needs to be removed because it is going to kill someone. He was advised to speak with the city, but said law enforcement needs to take care of it. Deputy spoke with him and told him it was the elevator's issue, and he can contact an attorney regarding it.

•Complainant reported theft of money from a vehicle.

•Complainant reported a bolt sticking up from the railroad tracks by Magnolia. Deputy went and pushed the bolt back down.

•Complainant reported being harassed by subject who has threatened her in the past, and now he is pounding on the door.

•Complainant reported her landlord left a hand-written note on her door as notice of eviction stating they need to be out tomorrow.

•Complainant reported that there was a large flatbed that pulled into the parking lot with its lights on and then turned them off. A pickup did the same. Complainant could now see people walking around the parking lot with flashlights. Deputies checked and said there was a large group of boys there, and they kicked them out.

May 30

•Complainant reported that she lost the front license plate off their vehicle.

•Complainant reported vandalism to a vehicle, and there is a suspect.

•Complainant reported a theft from her garage.

May 31

•Complainant reported that she was following a white cargo van heading westbound on I-90 that was going all over the road. Transferred call to Minnehaha County as they were nearing Brandon, South Dakota.

•Dispatcher received a 911 call from McDonald's. It was a pocket dial.

•Minnehaha County reported an offense that occurred in Rock County.

•Complainant reported some vandalism to a lock.

•Complainant reported her car died on the 600 block of East Main Street. She will get it out of there today.

•Complainant reported problems with subject who has threatened to come and get his child and take the child to Kentucky.

•Complainant reported Alliant is going to dig wire up to his house, and they don't have permission. Deputy advised him to contact an attorney.

•Complainant reported she got home, and her boyfriend changed the locks on the house and won't let her in. Deputy reported complainant is going to stay in Sioux Falls tonight and try and get more of her belongings tomorrow. Subject is willing to let her have her material possessions.

•Deputy arrested subject for a probation violation. He

was taken to jail.

June 1

•Complainant reported she lost a set of keys at the cemetery.

•Complainant reported what she suspects is a monument of some kind lying in the east ditch near location intersection. Deputy reported it was a utility access box with stainless steel lids on it in the ditch.

•Complainant requested a welfare check on subject. Deputy reported that subject is fine and is out mowing his lawn. Notified complainant.

•Complainant reported that an early 2000 blue four-door Dodge pickup at location does not have plates or insurance. He is also concerned about a harassment issue between the owner of the vehicle and himself.

•Complainant reported a vehicle speeding. Vehicle is headed east out of Jasper on 251<sup>st</sup> Street toward Highway 75.

•Complainant reported a trailer generator they would like us to be aware of parked on McKenzie Street. They would like a patrol to drive by a few times in the night if possible.

•Complainant reported a burglar alarm had been manually activated at location. Complainant spoke with party at location, and they requested law enforcement as they are in fear of being robbed by men there. Suspect vehicle went westbound down I-90. Passed information along to South Dakota.

June 2

•Dispatch received an automated temperature alarm. Contacted maintenance person.

•Complainant requested a welfare check on his child. Deputy checked, and everything is fine.

•Dispatch received a 911 hang-up call. Deputy checked, and everything was OK.

In addition, officers responded to 2 motor vehicle accidents, 4 deer accidents, 2 transports, 1 parking violation, 1 funeral escort, 9 traffic stops, 13 ambulance runs, 2 paper services, 9 animal complaints, 2 false alarms, 1 driver's license check, 7 log/alarm sheets, 6 drug court tests, and issued 7 purchase/carry permits and 14 burn permits.

Date	High Temp (°F)	Low Temp (°F)	Avg Wind Speed (mph)	High Wind Gust (mph)	Significant Weather	Total Precip (in)	Snow (in)
1	55	37	10	22	Lgt Drizzle, Drizzle, Lgt Rain, Rain	0.02	
2	63	32	6				
3	70	36	15	29			
4	68	43	9	24			
5	77	37	7	16			
6	86	46	14	32	Tstorm		
7	64	46	9	35	Lgt Rain, Tstorm	0.01	
8	72	45	12	30	Tstorm		
9	64	52	14	39	Drizzle, Lgt Rain, Rain, Hvy Rain, Tstorm	0.49	
10	68	54	8	17	Lgt Rain	Trace	
11	64	48	9	28	Lgt Drizzle, Drizzle, Lgt Rain, Rain, Hvy Rain	0.42	
12	61	45	13	30			
13	45	37	14	33	Lgt Drizzle, Lgt Rain, Rain, Tstorm	0.03	
14	55	32	14	33			
15	64	34	9	24			
16	66	36	6		Lgt Rain	Trace	
17	64	41	6	17			
18	68	37	5				
19	70	45	11	30			
20	66	45	10	28			
21	75	43	12	29	Haze		
22	82	45	16	36			
23	73	59	11	40	Lgt Drizzle, Lgt Rain, Rain, Tstorm	0.16	
24	82	55	6		Fog, Mist		
25	79	61	10	39	Drizzle, Lgt Rain, Rain, Tstorm	0.20	
26	75	54	6	20	Lgt Drizzle, Tstorm	Trace	
27	73	55	5	16	Lgt Rain, Rain	Trace	
28	64	59	6	18	Lgt Drizzle, Drizzle, Lgt Rain, Rain, Hvy Rain, Tstorm	1.20	
29	77	55	9	23			
30	82	55	11	31	Lgt Rain, Rain, Tstorm	0.26	
31	72	59	11	25	Lgt Rain, Rain, Tstorm	0.13	
<b>TOTAL</b>						<b>2.92</b>	<b>0.0</b>
<b>AVERAGE</b>	<b>69.3</b>	<b>46.1</b>					

#### Temperature Summary

Warmest High Temperature 86 (6th)  
Coolest Low Temperature 32 (2nd, 14th)

#### Precip Summary

Total Precip  
Snowfall Summary

Month	Year	Season
2.92	7.89	
0.0	31.9	62.7

#### Wind Summary

Peak Wind Gust 40 (23rd)

## May seemed wetter than it was

By Troy Thone, Luverne volunteer weather recorder

One of the odd happenings of weather this spring has been the fact that, by all appearances, it should be a very wet one on record.

However, that is all it has been — appearances.

For the second straight month in a row, I completed my tally of precipitation and found to be surprised where the numbers ended up: slightly below normal.

If one would have polled me at month's end to find out where I thought our rainfall was for April and May, I would have been the first one to say "above normal" — and I would have been completely and utterly wrong.

Granted, there have been spotty thunderstorms producing heavy rain amounts in localized areas of the county, but overall rainfall has been below normal, but not terribly so.

For May rainfall amounts came in just shy of 3 inches, which is about a half-inch below normal for the month — definitely not dry, but far from breaking any records either.

I think one of the contributing factors to the misperception of things being wet is the number of days that occurred with measurable precipitation.

The last four months have produced, on average, between 10 and 11 days per month with measurable precipitation

(one-third of each month).

This implies that the heavy rain has, for the most part, stayed away with frequent days of light to moderate rainfall.

It also has a tendency to make the idiom "watching grass grow" obsolete. I think, given the amount of times my lawn has needed mowing, you should literally be able to watch the grass grow.

On the temperature side of things, May was our first month, this year with below-normal average temperatures.

Temperatures averaged 4 degrees below normal with both high and low temperatures seeing about the same drop in the average.

In fact, May 2 saw a low temperature at freezing with numerous frost and freeze advisories out for the area during that time.

As we look at June, our statistical wettest month of the year, we should see more of the same with adequate precipitation amounts and increasingly warmer temperatures.

Plus, the June solstice (our day with the greatest amount of daylight) will occur on June 20, the astronomical start to summer.

A blog of daily summary and other interesting weather events for the Luverne area is at <http://luvernemnweather.blogspot.com>. Thone can be reached at [tathone@gmail.com](mailto:tathone@gmail.com).

**Parents... do you know where your kids are?**  
**We can help.**  
Pool Tables • Dart Boards  
Air Hockey • Ping Pong • Shuffleboards  
**Family FUN CENTER** | The Game Room Store  
With So Much More!  
2207 7th St. NW, Rochester, MN  
**FamilyFunCenter.com 507-282-7682**



**283-9171 | PAPIK.COM**

---








**2007 GMC Acadia**



Stock #137016U  
137K

*Papik Price* \$11,990

**2011 Dodge Durango**



Stock #617255N  
44K

*Papik Price* \$19,990

**2012 Chevrolet Silverado**



Stock #124460N  
48K

*Papik Price* \$29,990

**2013 Chrysler Town & Country**



Stock #532134N  
76K

*Papik Price* \$19,990

# Nashville couple makes Take 16 stop their 130<sup>th</sup> brewery appearance

By Mavis Fodness

Take 16 Brewing Co.'s latest Block Party on Main features a husband-wife duo with a full band sound.

Calling themselves You Knew Me When, Cie and Karisa Hoover have been performing full time since quitting their Nashville jobs four years ago.

Tonight's appearance in Luverne marks the 130<sup>th</sup> craft brewery performance for the couple. Their performance at Take 16, 509 E. Main St., begins at 6 p.m.

There is no cover charge.

Kirk Bloemendaal with Take 16 said the Hoovers contacted the brewery earlier this year as they were scheduled to be in the Midwest. Bloemendaal researched and listened to the couple's music through the Internet and immediately booked them.

"They are very talented," he said, adding that he's especially impressed with their latest single, "Only You."

"That one is as good as it gets," he said. "They are definitely going places."

The Hoovers describe their musical style as indie folk rock; a style Luverne doesn't experience everyday, Bloemendaal said.

You Knew Me When's Cie Hoover indicated through email the band's name reflects the couple's musical style about relationships and how relationships change and progress over the years.

"It (You Knew Me When) is a phrase that anyone around the world can relate to — to relationships with friends, family and colleagues and how we all grow and change through the years," he wrote. "But we can always look back and say You Knew Me When."

The duo also describes their pairing as having a full band sound.

Karisa, who was a Nashville public school music teacher, provides the piano, ukulele, glockenspiel and percussion for the duo.

Cie (pronounced See) was a special events production manager for Gibson Guitar in Nashville. He adds the guitar and other rhythmic nuances to their performances.

The couple took nearly a decade to blend their styles of music together and have been performing original material since 2009.

Their latest album, "We Found Roads," is described to be upbeat and folksy at times with some melancholy and introspective thrown in.

According to their press release, the album is a reflection of mile markers and moments derived from giving up everything and finding new paths together.

Performing at craft breweries fits the couple's musical style.

"We've found there to be a special kind of camaraderie and respect at breweries when it comes to the arts and live music," Cie Hoover said.

"There is always a sense of community and appreciation in the air for music and beer lovers alike."

The Take 16 Block Party begins at 5 p.m. and continues until 10 p.m. Besides the live music performance, the event also includes cold beer and drinks, hot food, free family-friendly games and outdoor seating.



Submitted Photo

Tonight's performance of Nashville's You Knew Me When will be the duo's 130<sup>th</sup> performance at a craft brewery. Their performance begins at 6 p.m.

## CELEBRATIONS

### Card Showers

**Evelyn Reyne** will celebrate her 80<sup>th</sup> birthday Friday, June 17. Greetings may be sent to her at 1106 North Carol, Luverne, MN 56156.

**Gary and Emily Overgaard** will celebrate their 20<sup>th</sup> anniversary. Greetings may be sent to them at 1923 131<sup>st</sup> St., Magnolia, MN 56158.

### Bridal Showers

An open house bridal shower for **Macy Oldre**, bride-to-be of **Caleb Ellingson**, will be from 9:30-11 a.m. Saturday, June 18, in the basement at St. John Lutheran Church in Luverne.

An open house bridal shower for **Alyssa Stegenga**, bride-to-be of **Ryan Hoff**, will be from 9:30-11:30 a.m. Saturday, June 25, at the Luverne Country Club.

## MENU

### Senior Citizens

**Monday, June 13:** Chicken hotdish, broccoli, lettuce, bread, tropical fruit.

Program: 1 p.m. Pinochle

**Tuesday, June 14:** Sweet and sour pork, rice, oriental vegetables, fruit, gelatin with whipped topping.

Program: Senior Dining Fundraiser from 4:30-7:30 p.m. (No \$2 Buck Tuesday.)

**Wednesday, June 15:** Lemon pepper fish, baked potato with sour cream, creamed peas, bread, pie slice.

Program: 12:30 p.m. Site Council meeting

**Thursday, June 16:** Meatballs with gravy, mashed potatoes, beets, bread, fruit crisp.

Program: 5 p.m. NLCC food giveaway - cut rhabarb

**Friday, June 17:** Baked chicken, potato salad, mixed vegetables, bread, fresh melon cubes.

Program: 11:30 a.m. Monthly Birthday Party with Kitchen Band

Senior Dining offers well-balanced and affordable meals in a community atmosphere.

Bring a friend or make new ones.

Call Janice Fick at 283-9846 to make dining reservations or for home-delivered meals.

## 1924: Rock County tops in state for gasoline usage last year

The following appeared in the Rock County Herald on August 29, 1924:

**ROCK COUNTY USED 1,223,002 GALLONS OF GASOLINE IN 1923**

**Report of State Oil Inspection Department Shows Rock County Generous Buyer of Gas**

Rock county used 1,223,002 gallons of gasoline during 1923, according to the annual report of the division of oil inspection of the Dairy and Ford Department. In addition to this quantity of gasoline, a total of 247,197 gallons of kerosene was used in the county in the same period. The report shows that the total number of gallons of gasoline used in the state in 1923 to be 185,785,042.

While Rock is one of the smallest counties in the state, in only forty-four of the eighty-seven counties was more gasoline used than in Rock county. Thirty-two of the eighty-seven counties used less than a million gallons. Hennepin heads the list with 34,034,833 gallons, while Ramsey comes next with 22,957,407, and St. Louis next with 13,954,546. Stearns takes fourth place with



## BITS BY BETTY

By Betty Mann, president Rock County Historical Society

4,936,887, and Blue Earth fifth with 3,480,472. No other county in the state reaches the three million mark.

Donations to the Rock County Historical Society can be sent to the Rock County Historical Society, P.O. Box 741, Luverne, MN 56156.

Mann welcomes correspondence sent to mannmade@i.w.net.

## REMEMBER WHEN

### 10 years ago (2006)

The Agri-Energy ethanol plant in Luverne is a mystery to many who know little more than the fact that it uses corn to make car fuel.

For the 220 members of the limited liability corporation, however, it's been as close to a gold mine as they'd find in Rock County.

Agri-Energy Director David Kolsrud wouldn't say exactly how much investors have been paid in the eight years the plant has been up and running. He did say that the stock has increased in value "several times."

### 25 years ago (1991)

A crowd of about 400 people took time away from Buffalo Days activities Saturday for the Southwest Minnesota Veterans Home ground-breaking.

In addition to the citizens, the hour-long event drew local, state and federal officials to the 13-acre site on North Highway 75.

Mayor Gordon Gits welcomed the crowd and Veterans Task Force Chair Ben VanderKooi introduced those seated on the red, white and blue decorated platform.

### 50 years ago (1966)

Rock County has more beef cattle per square mile than any other in the state, County Agent Laverne Forest said Friday.

Because of this fact, more emphasis will be placed on beef production than ever before for the year 1966-67, Forest told a group of representative citizens, interested in the County agricultural extension program, at a meeting

at Lamberton's Cafe.

According to the county agent, Rock county has approximately 146 beef cattle per square mile of area. Pipestone county is second in the state with approximately 116.

### 75 years ago (1941)

Although questionnaires are being mailed out at regular intervals to draft registrants in Rock county, the draft quota for the county is completed up to the first of July, at which time a new quota will be assigned.

Last October, when the selective service law went into effect, 1337 young men in Rock County registered for the draft. A quota of 150 was assigned to the county, but no one had to be drafted because 129 went in the National Guard, 19 were in the Navy, and the remainder volunteered, thus automatically filling the quota.

### 100 years ago (1916)

Luverne and Cherokee will again be opponents in two games to be played at Athletic park tomorrow and Sunday afternoons. This brief announcement is all that is necessary to insure the attendance of a large majority of those who witnessed any one of the three battles fought here by these clubs during the past week.

But for the information of those who are not initiated the Herald wishes to state that these two teams are recognized as the fastest semi-professional aggregations in Southwestern Minnesota or Northwestern Iowa. Although Cherokee's monthly pay roll is said to be nearly a \$1,000 greater than Luverne's the clubs are unusually evenly matched and intense rivalry exists between them.

## Gardening tasks take on urgency as moisture moves ripening up by two weeks

We have had wonderful moisture for our flower and vegetable gardens and our season is about two weeks early.



## KNOW IT AND GROW IT

By George Bonnema, Luverne Horticulturalist

a preventative measure. Some varieties of hostas have thicker leaves than others, and the slugs seem to prefer the more delicate thin-leaved type.

Weigelas have put on an amazing color show this year and like lilacs, you need to prune them right after they

finish blooming. Always remove the oldest branches to encourage new growth, and cut them back far enough to allow room for them to grow ... cutting back to the size you want them to be will not give them that option.

Mock orange will be the

next shrub to bloom, and that will require the same pruning. With any of these shrubs, pruning in fall or spring will remove the growth that has the flowerbuds for the next season.

I picked my first strawberries last week, but the robins still beat me to the first ripe berries. I once read that animals and birds are colorblind, but I highly doubt that to be true. So, now the patches are netted and we'll see who come out with the most!

With warm temperatures, high humidity, and much dew at night, be watching your rose bushes for mildew and black

spot. Black spot will defoliate the shrub quickly if not prevented or stopped. The inner leaves of the plant will show a yellow blotch with a black spot in the center, and that leaf will soon drop as the fungus spreads from leaf to leaf, and it seems to happen overnight.

Mildew will show up as a powdery white spot on the leaf, causing the leaf to curl. Both of these diseases result in foliage loss and foliage loss, resulting in the energy and health of the rose bush being compromised ... not a good thing if you expect the shrub to present a great show and survive our winter.

The diseased leaves that drop will host the fungus through the winter, so as soon as conditions are right, you get a repeat performance the next season.

Some varieties are very resistant to both of these diseases and other varieties seem to welcome them. If you have had a problem in the past, you can expect a repeat visit, thus prevention is much easier than a cure.

Bonnema is a gardening enthusiast and former greenhouse owner. He can be reached at flowersgb@i.w.net.

## OBITUARIES

### Arlene Backer

Born to Carl and Irene Isaacson on June 15, 1928, on the farm she grew up on. Attended a one-room country school grades 1-8. Graduated from Litchfield High School in 1946.

Attended the University of Minnesota—graduated in 1951 with Bachelor of Science in Public Health Nursing.

On the staff of University of Minnesota Hospital for three years. Head nurse on medical station.

1954 married Gordon L. Backer.

1955 first child, Carl, born at University of Minnesota hospital, moved to Seattle, Washington, where Gordon interned. Second son, Eric, born in Seattle. After internship Gordon was in the U.S. Navy (Flight Surgeon) for 2 ½ years. Arlene became a "Navy Wife" and they lived in Sanford, Florida, where third son, Tom, was born.

After the Navy Gordon was an ophthalmology resident at the Mayo Clinic in Rochester, Minnesota, for 3 years and a fourth son, Paul, was born. The last three months of Gordon's residency they lived on the Navajo Indian reservation in Ft. Defiance, Arizona. In 1962, they moved to Wausau.

Housewife and mother. Den mother, Cub Scouts, active in the First Presbyterian Church as both an elder and



deacon. Presbyterian Women's Association, Medical auxiliary, AAUW.

Enjoyed travel with husband after children all out of the nest. Sailed in Caribbean, visited Hawaii, New Zealand, Australia, Africa (twice), South Africa, Kenya, and Tanzania, Italy, Germany, Switzerland, China, Russia, Moscow, and St. Petersburg.

Arlene wrote down these elements of her life story in 2010, before she started to suffer from the effects of Alzheimer's. She and Gordon were inseparable, married for more than 60 years, and they shared their lives together at home in Wausau until Gordon died in 2014. Following Gordon's death, Arlene moved to Stoney River Assisted Living, where she remained until she died on May 30, 2016. Arlene was 87. Arlene is survived by her four sons (Carl of Winnetka, IL; Eric of Durango, CO; Tom of Bainbridge Island, WA; and Paul (Gus) of Lake Forest, IL), seven grandchildren, and many nieces and nephews.

A celebration of Arlene's life will be held at the family's cabin in Lac du Flambeau on July 30th. Please contact a family member for details. Memorials may be directed to the First Presbyterian Church of Wausau, the Marathon County Historical Society, or the Woodson Art Museum. (0609 V)

### Gladys Van Wetering

Gladys Van Wetering, 84, Luverne, died Monday, June 6, 2016, at the Tuff Memorial Home in Hills.



A funeral service will be at 2 p.m. Friday, June 10, at the American Reformed Church in Luverne with burial at Eastside Cemetery in Steen. A visitation will be from 4-7 p.m. Thursday, June 9, at Hartquist Funeral Home in Luverne.

Gladys Hoff was born Sept. 24, 1931, to John and Jennie (Teune) Hoff in rural Steen. She was baptized and later confirmed at the Steen Reformed Church. She first attended country school, then school in Steen and finished her education through the eighth grade at the Hills Public School. She began working soon afterward at Fikse Produce in Hills, candling eggs.

On Aug. 28, 1951, Gladys married Otto Van Wetering in her parents' home. They first lived in Rock Rapids, Iowa, where Gladys worked at the JC Penney store. Almost a year later they moved to Steen.

In September of 1952, Otto was inducted into the United States Army and was first stationed at Fort Riley, Kansas. Gladys moved to nearby Manhattan, Kansas. Otto was later transferred to Fort Carson in Colorado and Gladys joined him there, living in Colorado Springs, Colorado.

The couple moved to a farm near Steen in 1954 after Otto's honorable discharge. In 1970 they moved to a farm south of Luverne.

Two years later the couple no longer farmed but continued to live on the farm while Otto pursued a career in trucking and Gladys worked at K Prod-

ucts in Rock Rapids. When Otto retired in 1993, the couple moved to Luverne.

Gladys began doing home health care visits. In 1996 Otto became a resident of the Minnesota Veterans Home, and Gladys and their dog Buttons began to visit twice daily to entertain Otto and the other residents. Otto died in March 2007.

Gladys was most recently a member of the American Reformed Church in Luverne and had previously been a member of the Steen Reformed Church. Gladys and Otto enjoyed the chapel services at the Minnesota Veterans Home. After Otto's death Gladys volunteered at the Minnesota Veterans Home, often in the chapel. She also enjoyed reading and spending time with family and friends.

Gladys is survived by seven children, Cynthia (Howard) Schneekloth of Watertown, South Dakota, Janice (David) Sasse of Randolph, Stanley (Karen) Van Wetering of Luverne, Audrey (Dwight) Hemme of Chaska, Gloria (Kelly) Gangestad of Gillette, Wyoming, Andrew Van Wetering (friend, Christie Vitse) of Rochester, and Ardell (Jennifer) Van Wetering of Luverne; 13 grandchildren, Rachel, Michelle, Michael, Julie, Derek, Morgan, Connor, Eric, Amber, Leah, Kyle, Brooke, and Ashley; seven great-great children; a sister, Bernice Aukes of Hills; two brothers, Peter Hoff of Hills, and Jerry (Mary) Hoff of Luverne; and one sister-in-law, Reva Hoff of Luverne.

She was preceded in death by her husband; her parents; a brother, Cornelius Hoff; and a grandson-in-law, Robert Gusso.

Arrangements are by Hartquist Funeral Home of Luverne, www.hartquistfuneral.com. (0609 F)



### LHS Class of 1976 celebrates 40th high school reunion

Luverne High School Class of 1976 celebrated its 40th class reunion this past weekend in conjunction with Luverne's Buffalo Days celebration. Pictured in the front row (from left) are Deone Perkins Hemme, Aryln Sneller, Bill Ripley, Bob Vrtacnik, Sharon Remme Miller, Pat Teclaw, Nancy McGuire Versteeg, Joyce Forsberg Jacobson, Candy Rosin Gilbertson, (second row, left from middle) Betty Glaser, Jeanne Loose Vander Hoef, Jane Jarchow Huwe, Nancy DeJongh VanHeerde, Sara McClure Van-Nieuwenhuizen, (third row) Becky Arp Eeten, Steve Hoffman, Karen Pederson Petersen, Penny Ohlen Owen, Teresa Birkeland Ziebarth, Alma Stroeh Thomsen, (back row) Harold Versteeg, Jill Wildung Schmidt, Brad Bouma, Rick Olson, Paula Petersen-Gilles, Dewey VanEngelenhoven, Duane Hemme, Dale Hunter, Tom Sargent, Steve Top, Steve Haper and Norris Thorson.

### DNR designates Friday through Sunday as Take a Kid Fishing Weekend

Minnesotans can take children 15 or younger fishing without licenses on Friday, June 10, to Sunday, June 12, during Take a Kid Fishing Weekend.

"This weekend is a way to introduce a kid to fishing without purchasing a fishing license," said Jeff Ledermann, angler recruitment, retention and education supervisor with the Minnesota Department of Natural Resources. "We hope the annual opportunity leads

to great memories and sparks kids' interest in fishing."

Beginners and even those without fishing gear have abundant opportunities to try fishing in Minnesota. Fishing gear is available to borrow at Minnesota state parks, and the DNR's I Can Fish! program teaches all the basics of fishing and runs throughout the summer at state parks.

Throughout the state, anyone can fish from shore or one of Minnesota's many fishing piers, which feature nearby

parking and have hard surface paths from parking areas. Pier locations are listed at www.mndnr.gov/fishing\_piers.

Metro area shore fishing sites that provide great opportunities to catch fish are listed by county at www.mndnr.gov/fin. Check the "Places" section on the DNR fishing page at www.mndnr.gov/fishing for even more ideas about where to fish. Visit www.mndnr.gov/fishmn to learn about the basics of fishing, explanations of fishing terminology and

current fishing regulations.

At state parks, even when it's not Take a Kid Fishing Weekend, Minnesota residents generally can fish in state parks without a fishing license if the body of water doesn't require a trout stamp. More information is available at www.mndnr.gov/state\_parks/starter\_kit/fishing.html.

For a beginner's guide to fishing and more, see the DNR's Take a Kid Fishing page at www.mndnr.gov/takekid-fishing.

## SCHOOL NEWS

### American Legion awards Richters

The American Legion Auxiliary #123, Luverne, announces that the Department Past President's Parley Chairman has awarded Brittney Richters one of seven \$1,000 scholarships to be paid once she finishes her first semester at college.

### Bethany Lutheran releases dean's list

Bethany Lutheran College, Mankato, has named Cora Mumme and Andrew Jelken to the Spring 2015-16 dean's list. Cora is the daughter of Mark and Beth Mumme, Hardwick, and Andrew is the son of James and Paula Jelken, Luverne.

To qualify for the dean's list, students must earn a grade point average of at least 3.5 with at least 14 credits.

### Morningside College recognizes Taubert

Morningside College, Sioux City, Iowa, has named Carey Taubert, a sophomore nursing student from Beaver Creek, as a Dimmitt Scholar.

To earn this honor, students must be enrolled full time and complete at least 45 credits of college work while maintaining a grade point average between 3.5 and 3.75.

### Morgan graduates from Iowa State

Natalie Morgan received her Doctor of Veterinary Medicine degree at the Spring 2016 commencement exercises at Iowa State University in Ames, Iowa.

Natalie is the daughter of Dr. Richard and Carol Morgan, Luverne.

### NDSU releases dean's list

North Dakota State University, Fargo, has released the Spring 2015-16 dean's list. To earn this distinction students must earn a grade point average of 3.5 or higher while taking at least 12 credit hours.

Named to the dean's list from Magnolia was Yssi Cronquist, animal science; and from Luverne Paige Adams, nursing, Savanna Thielbar, women and gender studies, and Sydney Thielbar, accounting.

### Northern State names Thielbar to dean's list

Northern State University, Aberdeen, South Dakota, has named Brooke Thielbar, Luverne, to the dean's list for the Spring 2016 semester.

To earn this honor, students must earn a grade point average of 3.5 or higher.

### SMSU releases spring dean's list

Southwest Minnesota State University, Marshall, has named several area students to the Spring 2016 dean's list.

Katlyn Sandbulte, Hills, was named to the High Honors list with a 4.0 GPA. Darcy Lowman-Craig, Beaver Creek, Alizabeth

Prekker, Brooke Thompson, and Alex Weis, all of Luverne, and Emilie Baartman, Brandon, South Dakota, were named to the Honors list with a GPA of 3.5 or higher.

### St. Mary's University of Minnesota Winona

Haley Boltjes and Jase Pater graduated May 7 from Saint Mary's University in Winona with Bachelor of Arts degrees.

Boltjes is the daughter of David and Sharon Boltjes, and Jase is the son of Darrin and Joan Pater, all of Adrian.

### St. Mary's Winona honors area students

Saint Mary's University of Minnesota, Winona, has named Kynzie Smedsrud and Haley Boltjes to the Spring 2016 dean's list.

Kynzie is the daughter of Steve and Pat Smedsrud, Luverne. Haley is the daughter of David and Sharon Boltjes, Adrian.

To be named, students must earn a grade point average of 3.6 or higher.

### UMD releases dean's list

The University of Minnesota Duluth has released the Spring 2016 dean's list. The following students were named:

From Adrian, Mitchell Oehlerts, College of Science and Engineering, undeclared.

From Beaver Creek, Sean Rollag, chemical engineering.

From Luverne, Madison Stearns, criminology, Kayla Thone, early childhood studies, and Kaitlin Wahnoutka, biology.

To earn this distinction students must earn a grade point average of 3.5 or higher.

### SDSU Spring 2016 dean's list

South Dakota State University, Brookings, has released the Spring 2016 dean's list, and a number of area students have made the list. Students must earn a 3.5 or higher for the honor. An asterisk denotes a 4.0 GPA.

From Adrian: David Cook, Bridget Kramer\*, Aaron Marsh.

From Ellsworth: Cole Meester\* and Paige Meester\*.

From Hills: Natalie Leuthold\* and Haley Van Wyhe.

From Lismore: Alisha Boomgaarden\* and Anthony Lynn.

From Luverne: David Aukes\*, Ellen Dahl, Hilary Deragisch\*, Alyssa Frakes, Brandon Klein, Madison Reisch, Elizabeth Scheidt\*, Kristen Scheidt, Brenton Thompson\*, and Syndie Jo Weiss-Anderson.

From Rushmore: Samantha Croat\*.

From Steen: Caleb Schroer\*.

### DSU, Madison, names honor students

Dakota State University, Madison, South Dakota, released its 2016 Spring President's Academic Honors list. To qualify, students must earn at least a 3.5 on a 4.0 scale.

Full-time students named to the honors list are Austin Dirks, Ellsworth; Riley Lentz, Hills; Logan Herman, Luverne; and Alexis Hanson, Steen.

Part-time student Hailey Stulen, Luverne, was also named.

### WET BASEMENT?!

- Wet Basement?
  - Basement Wall Bowed?
  - Foundation Settling?
  - Driveway/Concrete Slab Sinking?
  - Radon Testing & Mitigation
- FOUNDATION CRACKED?!**

**AMERICAN WATERWORKS**  
★ Basement Systems ★  
FREE ESTIMATES  
FINANCING AVAILABLE  
TOLL FREE 1-800-795-1204  
www.american-waterworks.com

5% OFF Your Next Project  
(Cannot be combined with any other offers)

### BABY POWDER OR OTHER TALCUM POWDER LINKED TO OVARIAN CANCER

Long-term use of baby/talcum powder is linked to ovarian cancer. If you or a loved one suffered from ovarian cancer after using Johnson's Baby Powder, Shower to Shower or other talcum powder, you may be entitled to substantial compensation. Call us at 1-800-THE-EAGLE now. No fees or costs until your case is settled or won. We practice law only in Arizona, but associate with lawyers throughout the U.S.



**GOLDBERG & OSBORNE**  
1-800-THE-EAGLE  
(1-800-843-3245)  
www.1800theeagle.com

Open 7 Days a Week

Easy to Use!

### MINNESOTA CRP SEED

### QUICK ORDER FORM!

Go to prairieseedsfarms.com to download

800-582-2788 or 641-766-6790

**PRAIRIE SEED FARMS**  
the prairie experts



## First Prairie Photo Contest winners chosen

By Lori Sorenson

Board members of the Luverne Convention and Visitors Bureau selected the May winners of the Prairie Photo Contest.

With over 50 entries submitted, the board selected two photos, which will be made into postcards and sold to support programs at Blue Mounds State Park and Touch the Sky Prairie.

The winning photographers — Kelly Sandager of Hills (dragonfly) and former Luverne resident Derek Boeve (tree atop Blue Mounds) — will receive a check for \$50.

The Prairie Photo Contest continues every month through October as part of this summer's celebration of state and national parks. It's the 150<sup>th</sup> anniversary of Minnesota State Parks and the 100<sup>th</sup> anniversary of American's national parks.

To participate in the contest, submit digital entries on or before the first day of the month to [luvernechamber@co.rock.mn.us](mailto:luvernechamber@co.rock.mn.us). Include a name, address, phone, email and the title of the photo. There is a maximum of five entries accepted per person each month.

**Photographer Brian Peterson hosts prairie photo walk**

Prairie celebration events in June include photographer Brian Peterson's photo program and prairie photography walk on June 11.

Peterson is a photojournalist who recently published "Minnesota State of Wonders," a 2014 adventure of photographing the four corners of Minnesota. He'll be at the Palace Theatre at 3:30 p.m. Saturday for a show on nature in Minnesota.

Saturday night, register for a photo walk with Peterson at Blue Mounds State Park. The evening begins with dinner at 6:30 p.m. at the Brandenburg Gallery followed by the photo walk. Call the Chamber for reservations, 507-283-4061.

**'Lord Grizzly' vs 'Revenant'**

Also this weekend, at 1:30 p.m. Sunday, June 12, the late author Fred Manfred's story of "Lord Grizzly" will come to life in a presentation by his children, Fred and Freya.

They will read excerpts from the novel based on the true story of Hugh Glass and provide a comparative narrative of the book with the Academy Award-winning movie, "Revenant"



The winning photographers — Kelly Sandager of Hills (dragonfly) and former Luverne resident Derek Boeve (tree atop Blue Mounds) — will receive a check for \$50. Submit photos to [luvernechamber@co.rock.mn.us](mailto:luvernechamber@co.rock.mn.us).

## Juhl, Winter honorary Relay/from 1A

"I'm happy to share what I've learned, but I'm not going to be telling anyone at the park anything they don't already know."

Brenda considers herself fortunate among cancer survivors. "I feel better today than I have in years," she said about recently concluding six weeks of chemotherapy and radiation.

Other than a bout with an infection that landed her in the hospital, she said she's grateful to feel healthy.

Her radiologist, in fact, said he's never seen a cancer patient tolerate treatment as well as she did.

She and Jim attribute this good fortune to two things: prayer and responsible health choices.

Prior to starting traditional cancer treatment, they turned first to nutritional and holistic approaches that had been proven effective against cancer.

In many ways it worked; "starving the cancer" of sugars and other simple carbohydrates brought her cancer markers down to nearly non-existent, and she felt healthy as a result of the healthy choices.

But the tumor wasn't shrinking, and caused discomfort that required prescription pain relief.

In her column, Brenda shared with readers that she "waved the white flag" of defeat and was opting for traditional treatment, which included a colostomy as a precaution for possible tissue damage.

In hindsight, the colostomy wouldn't have been necessary, but they made decisions based on the information they had. Just like they did with alternative medicine.

"I didn't want to spend the rest of my life wondering, 'what if I'd tried the alternative approach?' In this case, traditional medicine was the responsible choice for that type of tumor."

And they said they have

few regrets. "I'm glad we learned what we learned," Jim said. "It's all about nutrition. Chemo and radiation treat symptoms, not cancer."

Brenda said they also learned about the human response to stress and toxins that can produce cancer and other illnesses.

"It's all about being responsible — with nutrition and exercise," she said.

In the past couple of years Jim and Brenda said they have made observations about cancer and the human response to it.

"What makes cancer different? There are many dread diseases — Alzheimer's, MS — tragic diseases. But cancer is associated with death. If you have MS, you ask, what does this mean? If you have cancer, you ask, 'Am I going to die?'"

"The idea of facing ones mortality and what that means — it calls to question life, living, faith, God and eternity."

Jim said Christians have an inside look at what's in store for the afterlife.

"The book of Revelation ends with this picture of heaven that we can look forward to," he said. "If we have that end in mind, there's nothing to fear in death."

Brenda agreed, but she offered that death is still difficult for mortals to accept.

"I'm not afraid of being dead," she said. "But the process of dying — for family members, etc. — is what's not enjoyable."

The 2016 Rock County Relay for Life will begin at 5:15 in Luverne City Park. The survivors' lap and balloon release begins at 7 p.m. followed by a lap dedicated to caregivers.

A luminaria ceremony is at 8:30 p.m. and closing activities are at 10:30 p.m.

So far, 12 teams and 126 participants have raised nearly \$6,000 for the American Cancer Society. More information is available at [acevents.org](http://acevents.org).

## Master Gardeners Tour/continued from page 3A

responsibility of being a part of a community.

"It was my pleasure to accept it," she said.

Bloemendaal's garden has been a tour stop in the past and is typical of many homeowners who tuck their gardens into their backyards.

One of their backyard garden features, a retaining wall, serves a practical purpose.

Located on River Road east of Luverne, the Bloemendaals' home is built on the east side of the Rock River. T

he retaining wall was constructed in response to the 2014 flood event to prevent the river from reaching the Bloemendaal home.

Bloemendaal dressed up the backside of the wall with a flower garden and replanted all her garden elements that were ruined by the floodwaters.

Those other garden ele-



Mavis Fodness Photo/0609 Master Gardeners Tour

All types of flowers fill various pots around the Bloemendaal home on River Road located east of Luverne. To register for the garden tour or for more information, contact Community Education at 283-4724.

ments also include a water feature and many varieties of flowers.

"My therapy is working in the flower garden. A way to relax," Bloemendaal said.

She will share results of her therapy activities beginning at 6 p.m. Monday, June 20, when tourgoers board the bus at the Luverne Community Education parking lot to visit each of the garden locations.

Cost is \$10 if prepaid to community education by June 16. The cost is \$15 on the day of the tour.

The community education office is closed Fridays during the summer.

The tour will end around 9 p.m.

To register for the garden tour or for more information, contact Community Education at 283-4724.

To connect with a Master Gardener for answers to questions or to become a Master Gardener, contact the county coordinator, Lynette Jauert, 507-283-8539, or email: [ljauert@vastbb.net](mailto:ljauert@vastbb.net).

In case of rain, the garden tour will take place June 21.

# The Bluestem

CASUAL • FRESH • LOCAL

Stop in and try our **NEW MENU**



Don't forget we cater lunch anywhere from 10-300 people! A great way to have lunch delivered for the same price as going out!

~We will be closed~  
Saturday, July 2  
through  
Monday, July 4  
to observe the  
holiday

**HOURS**  
Bar open 4pm-close  
Dining Room open  
5-9pm  
Monday through  
Thursday  
5-10pm Friday and  
Saturday  
Closed Sunday

Like us on Facebook for weekly updates & specials!  
Looking to have a party? Contact us at [bluestemparties@outlook.com](mailto:bluestemparties@outlook.com)

1202 S. Kniss Ave. Luverne, MN. 56156 | 507-449-2583 | [WWW.THE-BLUESTEM.COM](http://WWW.THE-BLUESTEM.COM)

## You're invited to an exclusive Rock County Farm to Table Event

Hosted by the Luverne Area Community Foundation and the Rock County Corn & Soybean Growers

Sunday, June 12 • 5:30 pm • The Bluestem  
Only 100 tickets available - on sale now!  
Tickets \$40 each - available at the Luverne Area Community Foundation office - 102 E. Main

All the proceeds from the evening will go to support the Luverne Area Community Foundation through the Corn and Soybean Growers to support the Community General Fund grants program.

Skyler Hoiland will create a four-course meal featuring locally-grown food, local beer and wines.

Come out for a unique meal, time with friends and be educated about topics that affect the places we live.

- Water quality and buffer strips in Rock County
- Organic farming and the food supply
- New food labeling and GMOs

Menu

- 1st Course - Shrimp & Corn Arancini
- 2nd Course - Roasted Corn & Arugula Salad
- 3rd Course - Teriyaki Flat Iron Steak & Sweet Corn Edamame Succotash
- 4th Course - Maple Corn Cake with Coconut Soy Sweet Corn Ice Cream





# Rain, rain go away

Friday Night Cruise-in, Saturday races canceled; fewer vendors at park due to rainy weather

Saturday parade,  
 Sunday afternoon  
 Tales from the Grave  
 enjoy sunshine,  
 solid attendance

By Lori Sorenson

Despite careful planning and well-laid plans, Mother Nature had her way with Luverne's 32<sup>nd</sup> Annual Buffalo Days celebration.

The weekend's kick-off signature event, the Friday Night Cruise-In on Main Street, was canceled due to threatening weather.

According to Chamber Director Jane Wildung Lanphere, this is a first in the history of the town's celebration.

"Special acknowledgements to Bill Miller and the Buffalo Days Cruise-In crew," Lanphere said.

"They made a difficult call but the right one. There is always next year. As a side note, Bill had a call from a couple who had left Kansas City on their way to the car show but heard about the weather and wondered if it was going to be called."

When it was first announced Friday afternoon that the event would be canceled, the sun was shining, and some wondered about the decision, but by 7 p.m. thunderstorms rolled through the area, reaffirming the cancellation.

Saturday's parade enjoyed mild weather, but Lanphere said Arts in the Park suffered a bit. "Although it was a cool and windy day at the park we escaped the rain," she said.

"We had several vendors that showed up on Friday and left after the storm. We also had a few that didn't show on Saturday."

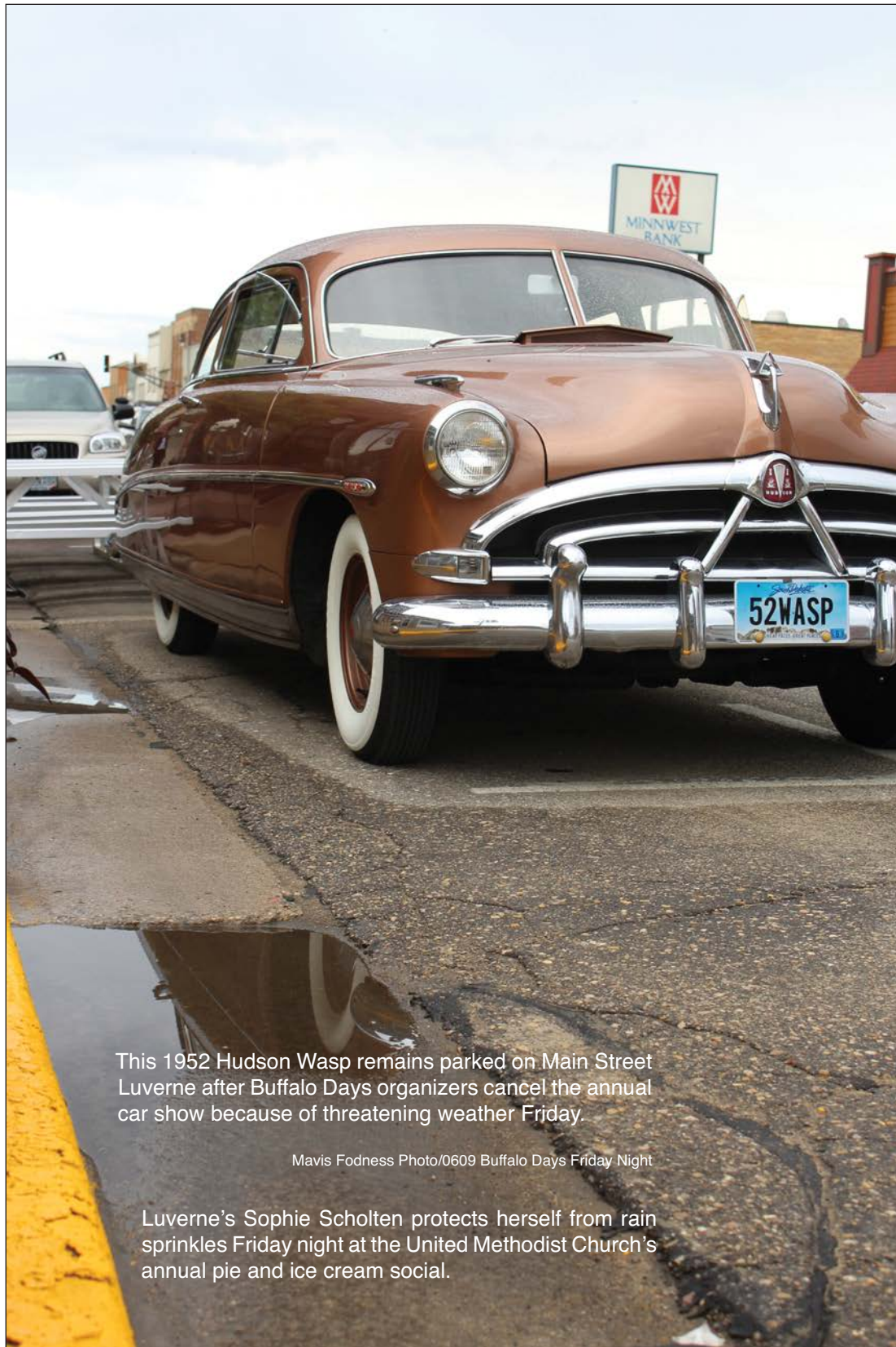
Vendors and visitors who did participate in the park had a good day, Lanphere said.

"All in all, it was a great day for the vendors," she said, adding that the lawn art people did a "whopping" business.

"The crowd might have been a little smaller than usual because of the cold weather, but overall it went well."

Another victim of the weather was Saturday night's races at the fairgrounds. Officials made the decision to cancel the races due to wet track conditions.

The real story from the weekend was Sunday's Tales from the



This 1952 Hudson Wasp remains parked on Main Street Luverne after Buffalo Days organizers cancel the annual car show because of threatening weather Friday.

Mavis Fodness Photo/0609 Buffalo Days Friday Night

Luverne's Sophie Scholten protects herself from rain sprinkles Friday night at the United Methodist Church's annual pie and ice cream social.



Ominous rain clouds moved into Luverne around 6:45 p.m. Friday night. In a half hour, Main Street Luverne received .23 inches of rain during what should have been the Buffalo Days Cruise-In.

Mavis Fodness Photo/0609 Buffalo Days Friday Night



Graves event in Maplewood Cemetery, Lanphere said.

"Tales from the Graves was outstanding," she said. "We had terrific re-enactors who really played their parts well."

She referenced Mary Jo O'Toole Hemme, who played the role of her grandmother, and Richard Bakken and Pete Bakken, who played Richard's grandfather and Peter's great-grandfather.

"That was really great," Lanphere said about the Bakkens. "The story was written by Richard's brother, Howard, who lives in North Carolina."



Arts in the park photos by Lori Sorenson/0609 arts in park  
 Above, the free inflatables, sponsored by Living Rock Church, was a popular place to be in Luverne City Park during arts in the park. Below right, artist Chris Nowatzki (right) shows his work to Wayne Zewiske.

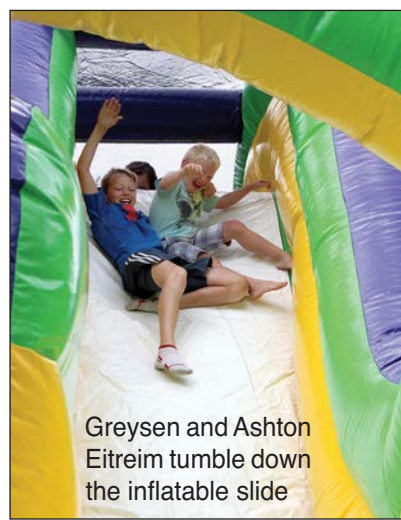


Above, the Buffalo Chip Throwing Contest is underway by the shelter house.

At right, Jaxon Lais takes aim with his marshmallow shooter.



Below, crowds make their way through the food vendors. At right, Brooklyn Ver Steeg considers her shopping options.



Greysen and Ashton Eitrem tumble down the inflatable slide



## Luverne girls win fourth consecutive section title

Seven Cardinals to compete at state track meet this weekend

By John Rittenhouse

The Luverne girls put an exclamation point on a sensational season at the Section 3A Track and Field Championships in Redwood Falls Thursday.

The Cardinals registered 99 points to win their fourth consecutive Section 3A team championship.

Luverne led a 24-team field and outscored second-place Springfield-Cedar Mountain-Comfrey (86) by 13 points.

The Cards are in a position to experience more success at this weekend's Minnesota State Class A Track and Field Championships at Hamline University in St. Paul.

A total of seven LHS athletes qualified for state competition individually or as members of relay teams by placing first or second at the section meet.

LHS claimed six section titles and placed second in two events in Redwood Falls to punch their tickets to the state meet.

Senior Morgan Edwards and juniors Courtney Siebenahler and Madison Schandemeier captured individual section titles.

Edwards, who placed fourth in the discus with a toss of 110-11, claimed the section title in the shot put with a distance of 38-11.

Siebenahler finished fourth in the long jump with a distance of 16-2 ¼ and won the

section title in the triple jump with a 36-1 effort.

Schandemeier took top honors in the 3,200-meter run (11:46.78) and ran a leg with Luverne's 3,200-meter relay, which claimed a section title with a time of 9:42.37.

Gabrielle Ferrell, Autumn Nath and Jadyn Anderson teamed up with Schandemeier to form the championship-earning relay.

Anderson, a freshman, and seventh-grader Regan Feit advance to the state meet as section runners-up in individual events.

Anderson placed second in the 800-meter run with a time of 2:20.83, while Feit finished second in the 1,600-meter run with a time of 5:35.81.

Schandemeier will run in the 3,200-meter finals at the state meet on Friday, while Anderson competes in the 800-meter preliminaries on Friday with hopes of making the finals on Saturday.

Edwards, Feit and Siebenahler will compete in the shot put, 1,600-meter run and triple jump finals on Saturday.

The finals of the 3,200-meter relay are set for Saturday as well.

LHS athletes produced six other point-producing efforts at the section meet.

Kami Sawtelle placed third in the shot put and discus with

LHS track/Continued on 3B



John Rittenhouse photo/0609 lgt 11

Luverne seventh-grader Regan Feit (middle) is one of seven Cardinal girls to earn a berth in state competition during Thursday's Section 3A Track and Field Championships in Redwood Falls.

## Three Cardinal boys qualify for state track competition

By John Rittenhouse

Three members of the Luverne High School boys' track team earned berths into state competition during the Section 3A Track and Field Championships Thursday in Redwood Falls.

Two Cardinals captured section titles and another LHS athlete placed second in an individual event to earn a trip to Hamline University in St. Paul, where the Minnesota State Class A meet is set for Friday and Saturday.

Senior Mitchell Muller and junior Matthew Hup advance to state as section champions.

Muller, who placed fourth in the 110-meter hurdles with a time of 16.87, took top honors in the 300-meter hurdles with a time of 41.31.

Hup earned the title of a section champion by clearing 12-6 to win the pole vault competition.

Joining Hup and Muller in St. Paul is junior Logan Stratton.

Stratton, who placed third in the discus with a toss of 138-3, turned in a second-place effort in the shot put with a 50-4 ¾ effort.

Both Stratton and Hup will compete in their events Friday afternoon.

Muller runs in the 300-meter hurdle preliminaries Friday evening with hopes of advancing to Saturday's finals.

With the state-qualifiers leading the charge, the LHS boys compiled 58.5 points to place fourth as a team in a 21-squad field at the section meet.

Montevideo (113 points), Pipestone (112) and Redwood Valley (89.5) topped the Cardinals in the standings.

Luverne athletes registered nine other point-producing efforts during the section meet.

Jed Dooyema (10-6 in the pole vault), Brennan Hart (132-6 in the discus) and Brandon Winter (2:06.22 in the 800) placed fifth individually.

Jeremiah Dooyema cleared 10-6 to place sixth in the pole vault.

Dalton DeSollar finished seventh in the 3,200-meter run with a time of 10:46.34, while Quinton Siebenahler placed eighth in the long jump with a distance of 19-1 ½.

Luverne placed eighth in the 400- and 800-meter relays with respective 47.19 and 1:37.2 times to cap the team scoring.

Hup, Tanner Wiese, Brandon Claussen and Siebenahler teamed up in the 400, while Hup, Muller, Claussen and Siebenahler formed the 800-meter squad.

Here is a look at the rest of the performances turned in by LHS athletes at the meet.

Ninth place: Siebenahler, 200, 24.04.  
11th place: Dylan Thorson, shot, 41-6.  
12th place: Shane Berning, 3,200, 11:11.8; 3,200 relay (Austin Winter, DeSollar, Berning and Chandler Eitrem), 9:13.16.  
16th place: Hart, shot, 40-3 ¾.



John Rittenhouse photo/0609 lbt 6

Senior Mitchell Muller claimed a section title in the 300-meter hurdles at the meet in Redwood Falls Thursday.

## Smedsrud qualifies for state golf play

By John Rittenhouse

An impressive rally by a Luverne High School senior resulted in a berth in the state golf tournament May 31.

Chaz Smedsrud, one of two LHS boys to advance to the second day of play in the Section 3AA Golf Tournament staged at the Oakdale Golf Club near Buffalo Lake, had some ground to make up.



After carding an 83 during the opening round of play May 25, Smedsrud's chances of earning one of the five individual berths into state play during the second round of the tournament were slim.

Smedsrud overcame the odds with what may have been the best 18-hole round of golf in his life.

Smedsrud fired a one-under-par 71 during his second tour of the course May 31.

The impressive effort left him with a two-day total of 154 strokes, giving Smedsrud the fifth and final qualifying position into the state tournament.

Smedsrud will play at the Minnesota State Class AA Golf Tournament June 14-15 at the Ridges at Sand Creek Golf Club near Jordan.

He will be the first LHS state

Smedsrud/continued on 4B

## LHS doubles team captures section tennis title, on to state

By John Rittenhouse

A Luverne doubles team qualified for state play by winning the championship at the Section 3A Individual Tournament in Redwood Falls May 31.

After going 2-0 during the opening rounds of the event at the same venue May 26, LHS senior Erik Wohnoutka and Chris Jelken advanced to the tournament semifinals five days later.

Wohnoutka and Jelken completed their trek by post-



Wohnoutka



Jelken

ing straight-set wins in the semifinals and finals last week to earn a berth in the Minnesota State Class A Doubles Tournament.

The state classic begins

Thursday at the Reed-Sweet Family Tennis Center in Minneapolis.

"They played very well the whole tournament," said Cardinal coach Greg Antoine, summing up the efforts by his championship-earning doubles team.

"I told the guys that we are already going to state as a team so they should just relax and play hard. It's just like frosting on a cake, and they put a big layer of frosting on their cake."

The Luverne team squared off against Worthington's Blaine Doeden and Bryan Doeden in the semifinals, where the Cards secured 6-3 and 6-1 wins.

The victory sent the LHS squad to the championship match, where they met Montevideo's Taylor Landmark and Riley Emery.

Wohnoutka and Jelken saddled the Montevideo team with a pair of 6-3 setbacks to capture the title.

"They put it all together,"

Antoine said.

"They served the ball really well in the first match, which always sets up your partner in doubles. They scrambled well and were the aggressors in most of the points. It was close early in both sets of the second match, but then we stretched out the lead and were never threatened late in either set. Again, our big serves set up some really easy put-away shots at the net."

## Four golfers advance to state Class A tournament; Plimpton first H-BC boy

By John Rittenhouse

Four golfers from the Star Herald coverage area qualified for state play during the final round of the Section 3A Golf Tournament staged at the Worthington Country Club June 1.

Two Adrian High School girls and one boy qualified for state competition individually, as did one boy from Hills-Beaver Creek.

All four athletes advance

to the Minnesota State Class A Golf Tournament set for June 14-15 at the Pebble Creek Golf Course near Becker.

Adrian senior Jada Elias and sophomore Alexia Kemper secured two of the five individual state-



Jada Elias



Kemper

qualifying positions that were up for grabs at the section event.

Kemper, who fired a 97 during the tournament's opening round May 25, carded a 102 during the second round for a 199-stroke total

for the tournament.

She secured the third qualifying position into the state field.

Elias, who shot a 99 May 25, registered a 104 during the second round for a two-day total of 203 strokes.

Elias, who qualified for state



Ryan Elias

play individually last season, earned the fifth and final qualifying position into the state tournament when play was complete June 1.

Kemper and Elias led an AHS girls' team that finished play with a 26-14 record at the section event.

The Dragons qualified for the second day of play as a team by placing third as a team during the first day of competition May 25.

They remained in third place with an 860-stroke total when the second day was complete.

Windom (751) and Westbrook-Walnut Grove (817) led the field, while Fulda (915) finished fourth.

Mackenzie Wagner (212 total strokes) carded a 106 for the Dragons during the second round, while Madelyn

Golf/Continued on page 3B

# Adrian baseball team still in hunt for state tournament berth

By John Rittenhouse and Jason Berghorst

The Adrian Dragons played four games in the Section 3A baseball tournament this week.

After winning the opening game of the tournament, the Dragons lost to Canby and then continued their season by winning two games in the elimination bracket.

Adrian played Kerkhoven-Murdock-Sunburgin Milroy on Tuesday night for a chance to reach the tournament championship tonight.

## Adrian 4, MCC 0

All year Adrian senior Logan Rogers has been the dominant pitcher for the Dragons.

On Saturday in Milroy his younger brother Landon took center stage.

The sophomore Rogers pitched a complete game, allowing no runs on just four hits while striking out three batters and walking none in a 4-0 victory over the Murray County Central Rebels.

Offensively the Dragons were led by Zach Loosbrock who was two for three at the plate including a two-run home run.

Adrian's Michael Preuss hit an RBI double while going two for two and Mitchell Wagner was two for three at the plate for the Dragons.

## Adrian 1, Wabasso 0

The Dragons survived an extra-inning challenge to



John Rittenhouse photo/0609 abb 7

Adrian junior Alex Loosbrock dives to snag a bouncing ball during a May 31 tourney win over E-SWC in Adrian.

avoid elimination Thursday in Milroy.

Adrian and Wabasso played eight scoreless innings before the Dragons broke through for the lone run of the game in the top of the ninth inning.

Michael Preuss, one of three AHS players to register two hits in the contest, lifted a softball fly ball to left field that fell in front of Wabasso's left fielder and eluded the defender long enough for Preuss to reach second base.

Preuss eventually advanced to third base before scoring the

decisive run on a wild pitch.

Logan Rogers earned the pitching win by tossing six innings of 13-strikeout, one-hit, scoreless relief.

Jacob Stamer started the game on the mound and blanked the Rabbits through three innings. Stamer surrendered two hits and fanned three batters.

Logan Rogers and Zach Loosbrock added two hits each to the winning cause.

## Canby 4, Adrian 1

The Dragons slipped into

the tournament's elimination bracket after taking a three-run setback from Canby June 1 in Milroy.

The score was knotted at one after one inning of play, but the Lancers put together a three-run rally in the top half of the fifth inning to settle the issue.

Adrian, which was limited to one hit in the game, received an infield single from Preuss in the bottom half of the first inning.

Preuss scored the team's lone run of the game later in

the inning on a throwing error by the Lancers.

Alex Loosbrock took the pitching loss after tossing four and two-thirds innings of nine-hit, five-walk, four-run ball.

## Adrian 5, E-SWC 0

The Dragons passed their first test of the tournament when they topped the Flying Dutchmen by five runs May 31 in Adrian.

Logan Rogers pitched a one-hitter and Alex Loosbrock drove in a pair of runs to high-

light the win.

Rogers fanned 15 batters during his complete game on the mound.

Loosbrock gave Rogers a 2-0 cushion when he lifted a two-run single to right field in the first inning.

Rogers singled and scored in the fifth when Landon Rogers laid down a successful bunt to make it a 3-0 game.

Preuss singled home a run and scored on a throwing error when the Dragons capped the scoring in the sixth inning.

## Golf/continued from page 2B

Odell (246) and Annika Elias (254) recorded 125s for AHS.

Courtney Penning (298) shot a 156 without impacting the team scoring during the second day.

Adrian senior Ryan Elias and H-BC senior Stuart Plimpton punched their tickets to the state tournament June 1 as well.

Elias advances to state for the second consecutive season after locking up the second of five individual qualifying positions at the section meet.

Elias, who shot an 88 to open the tournament May 25, turned in an 83 during the second round for a 171-stroke effort.

Plimpton earned a share of fourth place in the individual standings along with Westbrook-Walnut Grove's Kyle Kuehl, who shot identical 180-stroke tallies during the 36-hole event.

Plimpton, who registered a pair of 90s during the tournament, becomes H-BC's first male player to advance to the state tournament.

He is the first program member to qualify for state play since 1997, when Kristen Top made it for the Patriot girls.

Adrian's Mitchell Veld (96-92-188) and Brady Henning (98-106-204) capped the season during the second day of section play.



John Rittenhouse photo/0609 plimpton swing

Hills-Beaver Creek senior Stuart Plimpton made history by becoming the school's first male player to qualify for the state tournament.

## LHS track/continued from page 2B

respective 37-5 1/2 and 112-7 efforts, and the 1,600-meter relay consisting of Schandelmeier, Ferrell, Nath and Anderson placed third with a time of 4:14.67.

Luverne's 400-meter relay placed fourth with a time of 52.46.

Tianna Doppenberg, Ivy Hudson, Sierra Schmuck and Siebenahler formed the squad.

Jaidyn Elbers, Mackenzie Petersen, Schmuck and Siebenahler teamed up to place fifth in the 800-meter relay with a time of 1:49.95.

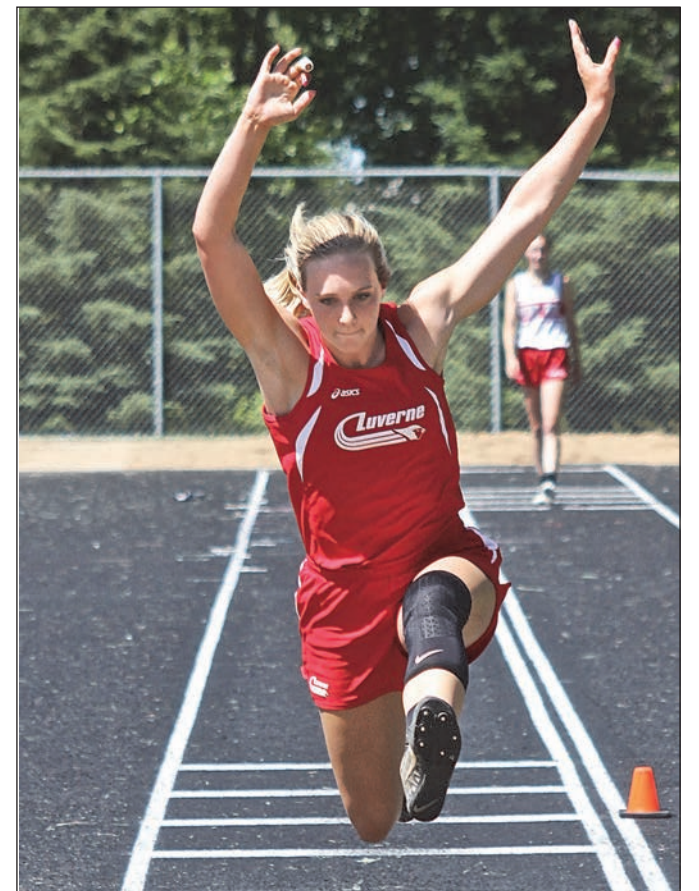
Elbers (50.8 in the 300-meter hurdles) and Bergin Flom (8-6 in the pole vault) placed sixth individually for the Cardinals.

Here is a look at the rest of the results turned in by Luverne athletes at the section event.

12<sup>th</sup> place: Flom, high jump, 4-7; Schmuck, 200, 28.06.

14<sup>th</sup> place: Mallory Thorson, triple jump, 30-10; Doppenberg, 100, 13.82.

15<sup>th</sup> place: Petersen, high jump, 4-7. 16<sup>th</sup> place: Hudson, 100, 13.98; Claire Baustian, 1,600, 6:09.12.



John Rittenhouse photo/0604 lgt 4

Junior Courtney Siebenahler won the triple jump title at the Section 3A Track and Field Championships.

Introducing... **FIGO** PET INSURANCE

Working for you-meeting your needs.

**Buffalo Ridge** INSURANCE

South Hwy. 75, Luverne, MN • Ph. 507-283-2381

**Auto-Owners Insurance**

Take a closer look You know you want to

BOTOX® Cosmetic (onabotulinumtoxinA) is the **only** FDA-approved treatment to temporarily improve **both** moderate to severe frown lines between the brows and crow's feet in adults.

You can get treated in both areas at the same time—that's the beauty of BOTOX® Cosmetic.

**MEDI SPA**  
BOTOX & DERMAL FILLERS

The Face Place  
DAVE KNIPS  
botoxluverne.com

507.283.9820 OR 507.227.4851  
626 S. KNISS • SUITE 103 • LUVERNE, MN 56156

**DAIRY MONTH**

Saluting the Dairy Industry during June, National Dairy Month

Thanks to all local Dairy Producers!

Proud partner of the Dairy Industry!

**Crystalyx** Brand Supplements

**FormAFeed Inc.**

Since 1948

**LUVERNE FARM STORE**

Quality & Service

Find us on Facebook

S. Highway 75 • Luverne, MN  
507-283-9555 or 1-800-956-9556  
www.luvernefarmstore.com

# H-BC boys, girls track teams compete at section meet

Scholten moves on to state action in high jump

By John Rittenhouse

The Hills-Beaver Creek track squads turned in 17<sup>th</sup>-place performances at the Section 3A Track and Field Championships in Redwood Falls Thursday.

The Patriot boys shared 17<sup>th</sup> place in a 21-team field by registering 11 points at the meet.

Montevideo claimed the boys' team championship with 113 points.

H-BC's girls scored 11 points as well to finish 17<sup>th</sup> in a 24-team field.

Luverne walked away with the girls' section team title after registering 99 points.

One H-BC athlete earned the right to compete at the Minnesota State Class A Track and Field Championships at Hamline University in St. Paul.

Zach Scholten advances to the final meet of the year in the high jump.

Scholten cleared 6-5 during the section event, which was two-inches higher than the state-qualifying standard of 6-3 that was in place for the section meet.

Scholten shares second place with Redwood Valley's Cade Johnson.

The H-BC junior competes at the state classic at 3:30 p.m. Saturday in St. Paul.

H-BC senior Drew Forshey also turned in a point-earning effort for the Patriot boys in Redwood Falls.

Forshey, who placed 11<sup>th</sup> in the 300-meter hurdles with a time of 46.52, finished fifth in the 110-meter hurdles with a time of 17.08 to complete the scoring for the boys.

The Patriot girls ended the



John Rittenhouse photo/0609 hbc 5

H-BC's Paige Tilstra (left) prepares to hand the baton to Sidney Fick (right) during the 400-meter relay at the Section 3A Track and Field Championships in Redwood Falls Thursday.

season at the section event, but they did register five point-earning performances at the meet.

Kourtney Rozeboom placed fifth in the discus and eighth in the shot put with respective 104-10 and 32-11 1/2 distances. H-BC's top relay effort came from the 800-meter squad consisting of Taryn Rauk, Madison Spath, Paige Tilstra and Sidney Fick, who finished sixth with a time of 1:52.3.

The Patriot girls also placed seventh in the 1,600-meter relay and eighth in the 400-meter relay with respective 4:20.74

and 53.43 times.

Fick, Spath, Grace Bundesen and Tilstra formed the 1,600-meter squad, while Rauk, Spath, Tilstra and Fick teamed up in the 400.

Here is a look at the rest of H-BC's efforts at the section meet.

**H-BC boys**  
11<sup>th</sup> place: 1,600 relay (Nick Kiers, Luke LaRock, Isaiah Vis and Jax Wyson), 3:46.25.

12<sup>th</sup> place: 400 relay (Hunter Bork, Wyson, Vis and Forshey), 47.78; 800 relay (Trenton Bass, Dean Fuerstenberg, Jed Burgers and Kiers), 1:40.3.

**H-BC girls**  
12<sup>th</sup> place: Rauk, long jump, 14-11.



John Rittenhouse photo/0609 lbb 4

Luverne senior second baseman Connor Sandbulte blocks the bag before grabbing the ball to tag out a stealing Redwood Valley runner during a May 31 section game in Jackson.

## Luverne baseball bows out of Section 3AA Tournament with opening round loss to Redwood Valley

By John Rittenhouse

The Luverne baseball team bowed out of the Section 3AA Tournament with an opening-round loss in Jackson May 31.

Luverne, the tournament's fourth seed, took on No. 5 Redwood Valley in the first round.

The Cardinals swept a twin bill from RWV in April, but RWV gained revenge by handing LHS a 4-0 setback in the tournament.

Luverne ends the year with an 11-10 record.

RWV plated single runs in

the first, third, fourth and fifth innings of the game.

The first-inning tally was an earned run, the other three were unearned runs.

Luverne did record four hits in the game, but the Cardinals hurt themselves giving up four of their 21 outs on the base paths.

Cole Bosch recorded an infield single in the second inning, while Connor Sandbulte, Jaxon Nelson and Jakob Olson slapped singles in the third inning.

Nick Overgaard pitched all seven innings and took the loss.

He fanned seven batters and yielded three hits and five walks.

Box score	AB	R	H	BI
Sandbulte	2	0	1	0
Beers	3	0	0	0
Ericson	0	0	0	0
Nelson	4	0	1	0
Olson	2	0	1	0
Baum	0	0	0	0
Reed	2	0	0	0
Overgaard	3	0	0	0
Bosch	2	0	1	0
Reisdorfer	2	0	0	0
Haugen	3	0	0	0

## CLIPBOARD

### Rock County Sportsman's Club May 31

**Team Scores:**  
Freedom Ranch Firearms - 110  
Agri-Energy LLC - 109  
Slocum Taxidermy 2 - 108  
Slocum Taxidermy 1 - 107  
Minnwest Bank - 107  
Blue Mound Auto Glass - 105  
Big Orv's Bar - 103  
Main St Financial - 96  
Timmer Dairy - 94  
Howling Dog - 85  
Bills H2O - 75, 87

**Individual scores:**  
25x25  
Doug Deutsch  
Mike Gangestad  
24 x 25  
Clint Metz  
Dave Stearns  
Jim Slocum

## Redbirds put another game into win column

By John Rittenhouse

The Luverne Redbirds played just one game this week, defeating the Adrian A's in Adrian June 1.

The Redbirds plated eight runs in the final four innings of the game to secure a five-run victory.

Luverne was blanked during the first five innings of the contest and faced a 2-0 deficit

after Adrian plated single runs in the third and fifth innings.

The Redbirds, however, scored the next eight runs to set the stage for victory.

Tanner Skattum knotted the score at two with a two-run single in the top of the sixth inning.

A four-run rally in the seventh inning featuring a two-run double by Jared Pick

and run-scoring singles from James Fisher and Dominic Nibbelink gave Luverne a 6-2 advantage.

Joey Slieter slapped RBI singles in the eighth and ninth innings before Adrian capped the scoring by plating one run in the bottom of the ninth.

Andrew DeBoer tossed all nine innings on the mound to earn the win.

The Redbirds return to action this weekend with a tournament in Belle Plaine.

Box score	AB	R	H	BI
Slieter	4	1	3	2
Norman	3	1	1	0
Nibbelink	5	2	2	1
Pick	4	2	1	2
Fisher	5	0	2	1
Verhey	4	0	0	0
Crabtree	1	1	0	0
Skattum	4	0	1	2
Mauer	4	0	0	0
Sandbulte	0	0	0	0
Hoffman	5	1	1	0

## Smedsrud/continued from page 2B

competitor since Ben Nath qualified in 2011.

Coy Gonnerman wrapped up his 2016 season at the second day of the section tournament.

After shooting an 80 during the opening round, Gonnerman carded an 81 during his second round for a two-day total of 161 strokes.

Minnewaska Area's Isaac Burgess claimed the individual title with a 143.

The Luverne girls completed

the 2016 season during the final day of section play as well.

The Cardinals were one of five teams that advanced to the second day of section play.

LHS was in the fourth position after 18 holes of play and remained in fourth place (372 strokes) when the second round was complete, capping a 41-13 season.

After turning in a 353-shot team tally during the second round, LHS (735 strokes) topped Worthington in the

final standings.

Minnewaska Area (680), Jackson County Central (686) and Marshall (no final score was available) led the field.

Madison Crabtree led the Cards with an 88, while Makayla Sterrett and Hailey Remme added 90s to Luverne's team tally during the second round of play.

Hannah VerSteeg capped the team tally with a 94, while Jenna Zewiske and Anna Huisman shot respective 107-

and 115-stroke rounds without influencing the scoring.

A player needed to shoot a 171 for both rounds to claim one of the five individual entries into the state tournament.

Sterrett, Remme and Crabtree all shot 181s to lead the Cards, while VerSteeg (188), Zewiske (206) and Huisman (224) missed the cut as well.

MA's Ashlyn Guggisberg shot a 143 to secure the individual title.

## Hills-Beaver Creek ISD #671

### EXCESS PROPERTY FOR SALE

The Hills-Beaver Creek ISD #671 Board of Education has designated the following items as excess property and directed the Superintendent to place items up for sale:

- Hills-Beaver Creek Existing Playground Equipment

#### Items for Sale Description and terms:

##### Playground Equipment Items:

- Equipment is located at 404 S 4th Street, in Beaver Creek, MN
  - Cost to transport equipment is responsibility of winning quote
  - Transport of equipment must be completed from start to finish in seven (7) business days from notification that individual was awarded.
  - Quote may be for all of equipment or a parcel of the equipment.
- Quote must be specific to equipment desired.
- Three sets of tires. May be purchased as a sets or individual set.
  - Swing set. (Includes 4 belt swings)
  - GameTime Blue Slide and Rock Climbing Equipment
  - Little Tykes Red Slide/Monkey Bars Equipment
  - Metal Climbing Cage

Perspective buyers may inspect the equipment by appointment. Please call Jason Phelps, Elementary School Principal—ph 507-673-2541 x11

Equipment is sold "as is." The Hills-Beaver Creek School District #671 provides no warranty or service/upkeep of equipment. It is the buyer's responsibility to ensure safety of equipment and its intended use.

**Procedure:** Individuals desiring to provide a Quote for one or more of the above listed items may request a Quote form from Glenda Kuehl, Business Manager at: [g.kuehl@isd671.net](mailto:g.kuehl@isd671.net), or interested individuals may stop by the District Office at 301 N. Summit Ave, Hills, MN 56138 between 8 am and 3:30 pm. Quote submittal deadline 3:00 pm cst on Thursday, June 23. Quotes must either be mailed to Glenda Kuehl, HBC Schools PO Box 547, Hills, MN 56138 or may be hand delivered to 301 N Summit Ave, Hills, MN 56138, Door #1. Quotes will be opened at a public Board Meeting on Monday, June 27, 2016. Quotes submitted after the deadline will not be considered. The School District reserves the right to accept or reject any or all quotations in whole or part & reserves the right to waive any formalities without cause and without explanation to anyone submitting a quote.

# June is Dairy Month

We salute all dairy producers for their hard work and dedication. With superior service and agriculture knowledge, Exchange Bank welcomes the opportunity to get to know your Ag operation and financially help you with your success. Call one of us today.

Galeb

Tim

Ryan

Mark

Don

Exchange  
STATE BANK  
Local. Dependable. Strong.

(507) 962-3250  
Hills, MN

(507) 967-2570  
Ellsworth, MN

(507) 449-6000  
Luverne, MN

Member  
FDIC  
EQUAL HOUSING  
LENDER

# Luverne VFW team opens season with five consecutive wins

By Jason Berghorst

The Luverne VFW baseball team opened the 2016 campaign in fine fashion by winning their home Buffalo Days tournament over the weekend.

Luverne followed up with a win on the road at Marshall on Monday to gain its fifth win in four days.

The 5-0 Cardinals will host Pipestone tonight and Slayton on Monday at Redbird Field.

## Luverne 11, Orange 0

Luverne VFW went on the road for the first time this summer and defeated Marshall Orange 11-0 at Legion Field Monday.

Luverne's bats came alive in the first inning with four runs scored to start the game.

The visitors followed up with two runs in the third inning and five more runs in the fourth inning to open up an eleven-run lead that caused the game to be shortened to five innings.

Declan Beers pitched four innings for Luverne and had four strikeouts. Trey Roberts pitched the fifth inning for the victors.

Tyler Reisdorfer led the offense for Luverne going three for four at the plate and scoring three runs.

Beers, Jake Haugen, and Will Mumme each had two hits for the Cardinals.

Box score	AB	R	H
Nath	3	1	1
Beers	3	2	2
Haugen	3	2	2
Smith	1	0	0
Reisdorfer	4	3	3
Reisch	3	2	0
Roberts	1	0	0
Serie	2	1	0
Mumme	3	0	2
Lundgren	3	0	1
Sterrett	3	0	0

## Luverne 15, Pipestone 5

Luverne only needed five innings to defeat Pipestone for the championship of the Luverne Buffalo Days VFW tournament.

Tyler Reisdorfer was the



Jason Berghorst photo/0609 VFW Baseball

Luverne's Jake Haugen pitched all seven innings of his team's 8-0 victory over New Ulm Silver in the semi-final round of the Buffalo Days VFW baseball tournament Sunday.

starting pitcher for the home team. He pitched three innings and gave up three runs.

Nick Harder came in to pitch the final two innings and earned the win for Luverne.

Declan Beers led the offensive output for Luverne going two for three at the plate and scoring three runs.

Harder scored twice for Luverne off of his two hits and Gaige Nath had two hits and scored one run.

Box score	AB	R	H
Beers	3	3	2
Haugen	3	2	1
Harder	2	2	2
Reisdorfer	3	2	1
Mumme	2	1	0
Nath	4	1	2
Reisch	4	1	1
Roberts	3	2	1
Ziegler	2	0	0
Sterrett	1	1	1

## Luverne 8, NU Silver 0

Jake Haugen pitched all seven innings to defeat New Ulm Silver on Sunday and reach the championship of their home tournament.

Haugen allowed only two hits and struck out four New Ulm batters.

Will Mumme and Tyler Reisdorfer each had two hits

and each scored two runs in the contest.

Box score	AB
R H	
Beers	3 1 1
Smith	1 0 0
Haugen	4 0 1
Harder	4 1 1
Reisdorfer	4 2 2
Lundgren	1 0 0
Sterrett	2 0 0
Mumme	3 2 2
Serie	2 1 0
Roberts	3 0 1
Ziegler	2 1 1
Reisch	0 0 0

Box score	AB	R	H
Beers	3	0	1
Lundgren	3	0	0
Mumme	1	0	1
Haugen	4	2	2
Smith	1	0	0
Harder	2	1	1
Reisdorfer	4	1	1
Serie	1	1	1
Sterrett	2	0	0
Roberts	2	0	0
Ziegler	0	0	0
Reisch	3	1	0
Nath	2	0	1

## Luverne 6, Tracy 1

The Cardinals won their second game of their home tournament and of the season when they defeated Tracy 6-1 on Saturday.

Tracy scored its only run of the game in the first inning. Luverne scored one run in the first inning and five more in the second inning to cap the scoring in the game.

Jake Haugen led the offense by going two for four at the plate and scoring two runs for Luverne.

Ben Serie pitched four innings for the home team. Derek Lundgren pitched one inning and Jade Smith threw the final two innings.

## Luverne 8, Renner 0

Luverne opened its season with an 8-0 victory over Renner, South Dakota.

Matt Ziegler and Jade Smith pitched for Luverne and combined to give up only two hits.

Jake Haugen led the offense for the Cardinals going three for four at the plate and scoring one run.

Box score	AB	R	H
Lundgren	2	0	0
Haugen	3	1	1
Beers	4	1	3
Harder	2	1	1
Reisdorfer	2	1	0
Serie	2	1	0
Ziegler	2	0	0
Mumme	1	1	1
Roberts	3	0	0
Sterrett	2	1	1
Nath	1	1	1



John Rittenhouse photo/0609 adrian 1

Adrian's Logan Ahlers sprints to a slim lead over a Montevideo entry during the 100-meter dash at the Section 3A Track and Field Championships in Redwood Falls.

## Adrian ends track season

By John Rittenhouse

The 2016 track season came to an end for the Adrian Dragons at the conclusion of Thursday's Section 3A Track and Field meet in Redwood Falls.

The Adrian boys' and girls' teams were represented in a combined eight events at the meet.

Unfortunately for the Dragons, they didn't meet the criteria to qualify for state.

Athletes advance to state placing first or second in any event, or by meeting the state-qualifying standards that are in place for the section meet.

The Adrian girls registered one team point to place 24th in a 24-team field that was led by Luverne, which compiled 99 points.

Moriah Bullerman, who placed ninth in the 3,200-meter run with a time of 12:54.5, registered Adrian's counter by finishing eighth in the

1,600-meter run in 5:42.94.

Shania Combs also competed individually for the Dragon girls, finishing 16th in the discus with a toss of 86-0.

Adrian's 400- and 800-meter relays placed 13th with respective 54.85 and 1:57.5 times.

Michaela Kern, Morgan Kern, Katie Reisdorfer and Katia Suarez formed both relays.

The Adrian boys were unable to register a team point at the meet.

Logan Ahlers turned in the team's top effort by finishing 10th in the 100-meter dash with a time of 12.03.

The 400- and 1,600-meter relays placed 11th and 12th with respective 47.76 and 3:46.71 efforts.

Zach Bierman, Hunter Heitkamp, Frank Serrao and Ahlers competed in both relays.

## Tri-State Buffalos tally fifth straight loss at Saturday's game in Hills

By Jason Berghorst

The Tri-State Buffalos suffered their fifth loss of the season on Saturday in Hills.

Hosting the Buffalo Ridge Wildcats, an undefeated team that is tied for the lead of the Southern Plains Football League, the Buffalos were un-

able to pull out the upset.

The Wildcats dominated play throughout the game, which ended with a 52-6 victory for the Buffalo Ridge team.

The Buffalos, now 1-5 on the season, have two regular season games remaining.

The Tri-State team travels to Watertown, South Dakota, to take on the Rebels this Saturday at 4 p.m.

The final home game for the Buffalos is scheduled for June 18 at 6 p.m. in Hills when the locals host the Southwest Minnesota Crusaders.

# June is ... Dairy Month

Minnwest Bank is proud to support our local dairy farmers. We appreciate you!



See our loan officers for all your lending needs!

- REAL ESTATE LOANS • OPERATING LOANS • LIVESTOCK LOANS
- MACHINERY LOANS & LEASING OPTIONS



Member FDIC



Luverne  
507-283-2366



**Palace Theatre**  
Downtown Luverne

**MONEY MONSTER**  
GEORGE CLOONEY ALIA ROBERTS JACK O'CONNELL  
"A COMPASSIONATE STORY OF A MAN WHOSE ONLY CONSCIOUSNESS IS A THEORY"

FRI., JUNE 10 - 7 P.M.  
SAT., JUNE 11 - 7 P.M.  
SUN., JUNE 12 - 7 P.M.

Check our web site for updates  
[www.palacetheatre.us](http://www.palacetheatre.us)  
Find us on Facebook

**Salad Luncheon**

Thursday, June 16  
11 a.m. - 1 p.m.  
American Reformed Church  
North Hwy. 75, Luverne

Adults \$6.00  
Kids \$3.00

Proceeds go to Talking Bibles International

**SENIOR DINING**  
ANNUAL FUNDRAISER

LUVERNE SENIOR CENTER (Corner of Lincoln & Spring)

TUESDAY, JUNE 14 • 5-7 P.M.

Ice Cream Sundaes 1/4 LB. HAMBURGER  
ADULTS: \$7.00 UNDER 12: \$4.00 POTATO SALAD  
BAKED BEANS

**Arts on the Prairie**

A CELEBRATION OF THE 100TH ANNIVERSARY OF THE NATIONAL PARKS AND 125TH ANNIVERSARY OF MINNESOTA STATE PARKS

**BRIAN PETERSON'S—MINNESOTA STATE OF WONDERS**

Join famed photo journalist Brian Peterson as he shares his 2014 adventure photographing the four corners of the State of Minnesota. Brian will share his relationship to the prairie through the photos he took at Blue Mounds State Park and how this once vast natural eco-system has been reduced to just a few acres from the more than 30 million that originally existed. Enjoy Minnesota through the eyes of a true artist!

PHOTO PROGRAMS  
SATURDAY, JUNE 11TH at 3:30 PM—HISTORIC PALACE THEATRE  
PRAIRIE PHOTOGRAPHY WALK  
SATURDAY, JUNE 11TH at 6:30 PM  
Advance registration required - \$55/person/dinner included Call 807 283-4061

**HUGH GLASS—THE STORY OF LORD GRIZZLY**

Join Frederick Marfield's daughter Freya and son Fred as they share memories of their father's work in writing the novel, LORD GRIZZLY. Son-in-law and screenwriter Tom Pope will provide a comparative analysis of Marfield's book with the Academy Award winning movie, "Beverly Hills Cop." Enjoy hearing excerpts from letters and manuscripts Marfield compiled as he studied the story of Hugh Glass.

SUNDAY, JUNE 12TH at 1:30 PM  
BLUE MOUNDS STATE PARK INTERPRETIVE CENTER  
(Fair location, Brandenburg Gallery)

All events are coordinated through the Luverne Area Chamber with support by Blue Mounds State Park, Luverne Initiative for Tourism & Leisure, Convention and Visitors Bureau. [www.luvernechamber.com](http://www.luvernechamber.com) 507-283-4061  
This activity is made possible by the voters of Minnesota through a grant from the Southwest Minnesota Arts Council, thanks to a legislative appropriation from the arts and heritage fund.

# Star Herald CHURCH

Page 6B June 9, 2016

**St. Catherine Catholic Church**  
203 E. Brown St., Luverne  
St. Catherine Ph.: 283-8502

**St. Mary Catholic Church, Ellsworth**  
Thursday, June 9: 9 a.m. Mass at St. Catherine. Friday, June 10: 9:30 a.m. Mass at Parkview Manor. Saturday, June 11: 5:30 p.m. Mass at St. Catherine. Sunday, June 12: 8:30 a.m. Mass at St. Mary in Ellsworth. 10:30 a.m. Mass at St. Catherine in Luverne. Tuesday, June 14: 9 a.m. Mass at St. Catherine. Wednesday, June 15: 10 a.m. Mass at Mary Jane Brown Home. Thursday, June 16: 9 a.m. Mass at St. Catherine.

**Luverne Christian Reformed Church**  
605 N. Estey St., Luverne  
Office Ph. 283-8482; Prayer Line Ph. 449-5982  
www.luvnrcr.com — luvnrcrcr@gmail.com  
Roger Sparks, Pastor

Sunday, June 12: 9:30 a.m. Worship (Pastor Lee Christoffels). Noon Church Potluck. 6:30 p.m. Worship. Monday, June 13: 9 a.m. PERK UP in Hills. Tuesday, June 14: 5 p.m. Church Directory pictures.

**First Baptist Church**  
1033 N. Jackson St., P.O. Box 975, Luverne  
Ph. 283-4091; email: fbcluv@iw.net — www.fbcluverne.org  
Dick Lauger, Pastor

Thursday, June 9: 7 p.m. Worship on Channel 3. Friday, June 10: 6 a.m. Men's Bible Study at First Baptist. Sunday, June 12: 9:15 a.m. Sunday School. 10:30 a.m. Morning Service with Randy Tschetter. 6 p.m. Evening Service with Natking Cole-Kraty. Tuesday, June 14: 7 a.m. Men's Bible Study at First Baptist. Wednesday, June 15: 7 p.m. Summer Youth Program. Thursday, June 16: 7 p.m. Worship on Channel 3.

**Grace Lutheran Church**  
500 N. Kniss Ave., Luverne  
Ph. 283-4431; www.graceluvne.org — Nichols-glc@live.com  
Ron Nichols, Pastor; Cole McCormick, Interim Pastor

Thursday, June 9: 8:30 a.m. MIA. 9:30 a.m. Coffee. 4:30 p.m. Book Study. Friday, June 10: 5 p.m. Wedding rehearsal. 6:30 p.m. Worship on Channel 3. Saturday, June 11: 4 p.m. Bosshart/Thranum wedding. 5:30 p.m. Worship. Sunday, June 12: 8:15 a.m. Radio Broadcast. 9 a.m. Worship. Monday, June 13: 4 p.m. Worship on Channel 3. Tuesday, June 14: 9 a.m. Staff meeting. 7 p.m. Ministry Team retreat at The Bluestem. Wednesday, June 15: 7 a.m. Men's Study. 8:15 a.m. Caring Ministry in Fireside. 7 p.m. Exaltation Team rehearsal. Thursday, June 16: 8:30 a.m. MIA. 9:30 a.m. Coffee. 1:30 p.m. Lydia Circle at Grace Lutheran. 4:30 p.m. Book Study.

**Bethany Lutheran Church**  
720 N. Kniss Ave., Luverne

Thursday, June 9: 2 p.m. Ladies Aid. 5 p.m. Worship on Channel 3. Sunday, June 12: 9:15 a.m. Bible Class. 10:15 a.m. Worship with Communion. 1:30 p.m. Worship at Mary Jane Brown Home. 2:15 p.m. Worship at Poplar Creek. Thursday, June 16: 5 p.m. Worship on Channel 3.

**American Reformed Church**  
304 N. Fairview Dr., Luverne

Friday, June 10: Last day of VBS 8:30 a.m. to noon. 6:30 a.m. Community Men's Bible Study. Saturday, June 11: 11:45 a.m. Senior RCYF mission trip send-off. 8 p.m. Union Gospel Mission Service. Sunday, June 12: 9:30 a.m. Worship Service (Arvin Wester). Monday, June 13: 3-8 p.m. Project Underpanz. Wednesday, June 15: 7 p.m. Praise Team. Thursday, June 16: 11 a.m. Salad Luncheon.

**Holy Trinity Episcopal Church**  
220 N. Cedar St., Luverne

Sundays: 10:30 a.m. Worship Service; Fellowship after service. Wednesdays: 6:30 p.m. Bible Study. Our Mission Statement: Historic Holy Trinity strives to serve God and our community through worship, stewardship and friendship. Contact Emily Lodine Overgaard at (507) 227-6175 for information. Come as you are — our leader wore sandals.

**First Assembly of God Church**  
1075 110<sup>th</sup> Ave., 2 miles west of Luverne on County Rd. 4  
Kenneth and Gloria Kashner, Pastors

Sundays: 9 a.m. Sunday School. 10 a.m. Morning Worship. 6:30 p.m. School of the Holy Spirit. Wednesdays: 7 p.m. Kids Connection; Men's Bible Study with Pastor Ken; Women's Bible Study with Pastor Gloria.

**United Methodist Church**  
109 N. Freeman Ave., Luverne

Thursday, June 9: 1-3 p.m. Rock County Food Shelf. 7-9 p.m. Coloring and Crafting gathering. Saturday, June 11: 8 p.m. AA Meeting in Upper Room. Sunday, June 12: 9:30 a.m. Summer Worship in Back Courtyard — All-church picnic. 10:30 a.m. Coffee Hour. 10:35 a.m. Adult Sunday School. 4:30 p.m. Angels Bible Study. Monday, June 13: 8 p.m. Women's AA in Upper Room. Tuesday, June 14: 2 p.m. Pastoral Gathering at Tuff Home. 7 p.m. Finance Committee meeting. Wednesday, June 15: 8 p.m. AA Meeting in Upper Room.

Thursday, June 16: 1-3 p.m. Rock County Food Shelf.

**First Presbyterian Church**  
302 Central Lane, Luverne

Ph. 283-4787; email: Firstpc@iw.net — www.fpcluverne.com50  
Sunday, June 12: 9 a.m. Sunday School. 10:15 a.m. Worship Service. Monday, June 13: 5 p.m. Weight Watchers. Tuesday, June 14: 5:30 p.m. Worship on Channel 3.

**St. John Lutheran Church**  
803 N. Cedar St., Luverne

Ph. 283-2316, Dial-A-Devotion Ph. 283-4005  
email: stjoh@iw.net — www.stjohnlutheranluverne.org  
Saturday, June 11: 5:30 p.m. Worship with Communion. Sunday, June 12: 9 a.m. Worship with Communion. 10:15 a.m. Adult Bible Study. Tuesday, June 14: 1 p.m. and 6:30 p.m. Quilting. 6 p.m. Missionary Guild meets at City Park.

**Living Rock Church**  
500 E. Main St., Luverne

Ph. 449-0057; www.livingrockswmn.org  
Billy Skaggs, Pastor  
Sundays: 10:30 a.m. Worship; Kids Rock Children's Ministry. 6 p.m. Youth Ministry. Life groups meet throughout the week.

**New Life Celebration Church**  
211 E. Main St., Luverne

Ph. 449-6522; email: newlifecel@iw.net  
Sundays: 9:30 a.m. Worship in the lower level meeting room of the Creeger building. Every third Thursday: 5 p.m. Food give-away. Bible Study groups meet at various times and days.

**Zion Evangelical Lutheran Church**  
305 E. 2<sup>nd</sup> St., P.O. Box 36, Hardwick

Ph. 669-2855; email: revmumme@gmail.com — www.zionlutheran-hardwick.com  
Mark W. Mumme, Pastor  
Thursday, June 9: 2-9 p.m. Church Directory pictures. 4 p.m. Zion Worship on Channel 3. Friday, June 10: 2-9 p.m. Church Directory pictures. 4 p.m. Zion Worship on Channel 3. Saturday, June 11: 9 a.m.-4 p.m. Church Directory pictures. Sunday, June 12: 9:30 a.m. Worship Service. Monday, June 13: 1 p.m. Quilting. Tuesday, June 14: 6:30 p.m. Elders' meeting. 7:45 p.m. Church Council meeting. Thursday, June 16: 4 p.m. Zion Worship on Channel 3.

**Ben Clare United Methodist Church**  
26762 Ben Clare Ave., Valley Springs, S.D.

Ph. (605) 757-6662  
Sundays: 9 a.m. Worship; 10 a.m. Fellowship; 10:30 a.m. Sunday School for all ages.

**First Lutheran Church**  
300 Maple St., Valley Springs, S.D.

Ph. (605) 757-6662  
Sunday, June 12: 10 a.m. Joint Parish Worship at First Lutheran with Communion.

**Palisade Lutheran Church**  
211 121<sup>st</sup> St., Garretson, S.D.

Ph. (507) 597-6257 — firstpalisade@alliancecom.net  
Sunday, June 12: 10 a.m. Joint Parish Worship at First Lutheran with Communion.

**First Presbyterian Church**  
201 S. 3<sup>rd</sup> St. P.O. Box 73, Beaver Creek

Ph. (507) 673-2428 — lori.1stpc@centurylink.net  
Worship Leaders Michael Blank and Andy Anderson  
Sundays: 9:30 a.m. Worship; 9:45 a.m. Sunday School. Deborah Circle — Third Thursday of the month.

**Magnolia United Methodist Church**  
501 E. Luverne St., Magnolia

Church Ph. 283-9698; cell 227-7821  
adrmagumc@frontiernet.net — www.adrianmagnoliaumc.com  
Kristi Franken, Pastor  
Sundays: 9 a.m. Worship. 10:15 a.m. Sunday School. Wednesdays: 6:30 p.m. Confirmation; Adrian Sunday School.

**Steen Reformed Church**  
112 W. Church Ave., Steen

Ph. 855-2336  
Jeremy Wiersema, Pastor  
Sunday, June 12: 9:30 a.m. Worship. Sunday School follows Worship. 6:30 p.m. RCYF.

## Communication

"Is not the arrow beyond you?" I Samuel 20:37b  
ESV



### BUILT ON A ROCK

By Martha Fick, Good Samaritan Western Minnesota Network chaplain

*Communication needs to be clear and effective. How can people know what we need and want unless we tell them in ways that they can bear and understand?*

Ole, Lars and Sven went deer hunting. Sven said to Ole and Lars, "I will go south into de prairie grass. You two head north into de grove of trees. If you get lost, fire three shots into de air so dat I will be able to find you."

Ole and Lars agreed and set off into the trees. About a half hour later they were lost and Lars fired three shots into the air. When Sven didn't show up, Ole suggested that Lars try again. "Yah, sure, you betcha, Ole, dat would be a good idea," said Lars, "but I haf already used up almost all of de arrows."

Communication needs to be clear and effective. How can people know what we need and want unless we tell them in ways that they can hear and understand? Many misunderstandings between individuals and even nations are the result of faulty communication. Sometimes we didn't hear correctly what the other person said. It could be their fault, ours or both.

Even sadder, sometimes we don't want to hear what someone else is saying. We've got our minds made up and won't listen to what is really being said. Misunderstandings can be the result of many different things: poor communication skills, deception, stubbornness or self-centeredness, not letting the other person say what is important to them.

Dear Lord, we confess that sometimes our communications skills are severely lacking. We don't listen to You the way that we should. Sometimes our minds are so full of what we think is right that we have no room for other people's opinions. Remind us that You are the only one who is always right. Help us measure all opinions, especially our own, against Your words to us. Teach us how to be clear and gentle-hearted as we communicate with You and others. In Jesus' name, Amen

**Bethlehem Lutheran Church**  
Interim Pastor Grant Fisher

112 N. Main St., Hills  
Hills United Reformed Church  
Sunday, June 12: 9 a.m. Worship at Tuff Chapel. 10:30 a.m. Worship at Bethlehem Lutheran. Tuesday, June 14: 2:30 p.m. Bible Study at Tuff Home. 3:15 p.m. Bible Study at The Village. Wednesday, June 8: 9 a.m. Quilting.

**Hills United Reformed Church**  
410 S. Central Ave., Hills

Office Ph. 962-3254  
hillsurc@alliancecom.net  
Alan Camarigg, Pastor  
Sundays: 9:30 a.m. and 6 p.m. Worship Services.

**These Weekly Church Page Messages are contributed to God's Work through the Church and by these concerned and responsible citizens & businesses:**

Call Rick or Chantel to place your ad!

**283-2333**

**Tuff Memorial Home, Retirement Apartments & Tuff Village**

"A Home Where Residents SMILE"  
Hills, Minnesota  
Phone 507-962-3275

**Papik**  
MOTOR OIL  
LUVERNE, MINN.

I-90 in Luverne, MN  
507-283-9171 • 1-800-634-7701

Read us online!

Rock County  
**STAR HERALD**  
www.Star-Herald.com

*Trust In Him*



**Pizza Ranch**  
110 E. Main, Luverne, MN  
Phone 507-283-2379

**MANLEY**  
TIRE & OIL SERVICE  
Manley Minnesota  
1-800-615-3704  
Open six days a week - Closed on Sundays  
To God be the Glory.

**CWG**  
Business Insurance.  
Tri-State Region *Period!*

Rock County  
**STAR HERALD**  
Luverne, MN • 507-283-2333

**Bruce's Electric**  
residential, commercial and farm wiring  
Bruce Umbreit  
Electrical Contractor  
1200 Linden, Luverne, MN 56156  
Phone 507-283-4917

**Luverne ANNOUNCER**

To Advertise  
Call  
283-2333

**Buffalo Ridge**  
INSURANCE  
507-283-2381 www.buffaloridgeins.com E-mail: info@buffaloridgeins.com

**McClure Electric**  
Alan M. Aanenson, owner  
Farm, Home & Commercial Wiring  
Luverne, MN Phone 507-283-4716

**First Farmers & Merchants**  
303 E. Main, Luverne, MN  
507-283-4463  
www.fimbank.com  
We believe in you.<sup>SM</sup>  
Member FDIC. And the continuity.

**HILLS STAINLESS STEEL & EQUIPMENT CO., INC.**  
506 W. Koehn, P.O. Box 987, Luverne, MN  
PHONE 507-283-4405  
Church is Important - Please Attend!

**MINNWEST BANK**  
• 116 E. Main St., Luverne 507-283-2366  
• S. Hwy. 75, Luverne 507-283-9131  
• Main St., Beaver Creek 507-473-2333  
Member FDIC www.minnwestbank.com

**HARTQUIST**  
Funeral and Cremation Services  
- ENGBRETSON CHAPEL -  
507-283-2777  
www.HartquistFuneral.com  
"Let our family help your family"  
Serving the Luverne and Surrounding Communities

**Tollefson Publishing**  
117 W. Main  
Luverne, MN 56156  
507-283-2333

## Rock County Opportunities public notice

Rock County Opportunities, Inc. hereby provides notice that it intends to apply to the Minnesota Department of Transportation for the following equipment to serve elderly and persons with disabilities in Rock County: Ford bus with 10 passenger seats and 3 wheelchair spots. Individuals or agencies seeking to request transportation service, coordinate transportation with Rock County Opportunities, Inc. or comment about the application should contact Beth Bartels, 807 W. Main Street, PO Box 626, Luverne, MN 56156, 507-283-4582 by June 27, 2016.

(06-09)

## VerSteeg probate

FIFTH JUDICIAL DISTRICT  
DISTRICT COURT  
PROBATE DIVISION  
COURT FILE NO. \_\_\_\_\_

NOTICE AND ORDER OF HEARING ON PETITION FOR PROBATE OF WILL AND APPOINTMENT OF PERSONAL REPRESENTATIVE AND NOTICE TO CREDITORS

STATE OF MINNESOTA  
COUNTY OF ROCK  
Estate of EVAN EARL VERSTEEG

### Decedent

It is ordered and Notice is given that on July 11, 2016, at 3:30 P.M., a hearing will be held in this Court at 204 E Brown Street, Luverne, Minnesota, for the formal probate of an instrument purporting to be the Will of the Decedent, dated February 28, 2004 and codicil(s) to the Will dated \_\_\_\_\_, and separate writing(s) under Minn. Stat. 524.2-513 ("Will"), and for the appointment of Twila Jean VerSteeg, whose address is 706 Fireleaf Road, Luverne, MN 56156 as Personal Representative of the Estate of the Decedent in an UNSUPERVISED administration.

Any objections to the petition must be filed with the Court prior to or raised at the hearing. If proper and if no objections are filed or raised, the Personal Representative will be appointed with full power to administer the Estate including the power to collect all assets, to pay all legal debts, claims, taxes and expenses, to sell real and personal property, and to do all necessary acts for the Estate.

Notice is also given that (subject to Minn. Stat. 524.3-801) all creditors having claims against the Estate are required to present the claims to the Personal Representative or to the Court Administrator within four months after the date of this Notice or the claims will be barred.

A charitable beneficiary may request notice of the probate proceedings be given to the Attorney General pursuant to Minn. Stat. 501B.41, subd. 5.

Dated:

BY THE COURT  
/s/ Terry S. Vajgrt  
Judge of District Court  
/s/ Denise Brandel  
Court Administrator

Attorney for Petitioner  
Benjamin Vander Kooi, Jr.  
Vander Kooi Law Offices, P.A.  
127 E Main, PO Box 746  
Luverne, MN 56156  
Attorney License No: 112124  
(507) 283-9546  
FAX: (507) 283-9629  
lawkooi@gmail.com

(06-09, 06-16)

## Thorson Gabrielson probate

FIFTH JUDICIAL DISTRICT  
DISTRICT COURT  
PROBATE DIVISION  
COURT FILE NO. \_\_\_\_\_

NOTICE AND ORDER OF HEARING ON PETITION FOR PROBATE OF WILL AND APPOINTMENT OF PERSONAL REPRESENTATIVE AND NOTICE TO CREDITORS

STATE OF MINNESOTA  
COUNTY OF ROCK  
Estate of Olga E. Thorson Gabrielson

### Decedent

It is Ordered and Notice is given that on July 11, 2016, at 3:30 P.M., a hearing will be held in this Court at 204 E Brown Street, Luverne, Minnesota 56156, for the formal probate of an instrument purporting to be the Will of the Decedent, dated September 30, 2009 and codicil(s) to the Will dated \_\_\_\_\_, and separate writing(s) under Minn. Stat. 524.2-513 ("Will"), and for the appointment of Pamela Hommen, whose address is 3619 10th Street S, Fargo, ND 58104 as Personal representative of the Estate of the Decedent in an UNSUPERVISED administration.

Any objections to the petition must be filed with the Court prior to or raised at the hearing. If proper and if no objections are filed or raised, the Personal representative will be appointed with full power to administer the Estate including the power to collect all assets, to pay all legal debts, claims, taxes and expenses, to sell real and personal property, and to do all the necessary acts for the Estate.

Notice is also given that (subject to Minn. Stat. 524.3-801) all creditors having claims against the Estate are required to present the claims to the Personal Representative or to the Court Administrator within four months after the date of this Notice or the claims will be barred.

A charitable beneficiary may request notice of the probate proceedings be given to the Attorney General pursuant to Minn. Stat. 501B.41, subd. 5.

Dated:

BY THE COURT  
/s/ Terry S. Vajgrt  
Judge of District Court  
/s/ Denise Brandel  
Court Administrator

Attorney for Petitioners  
Benjamin Vander Kooi, Jr.  
Vander Kooi Law Offices, P.A.  
127 E Main, PO Box 746  
Luverne, MN 56156  
Attorney License No: 112124  
(507) 283-9546  
FAX (507) 283-9629  
lawkooi@gmail.com

(06-09, 06-16)

# DEADLINE FOR LEGALS is MONDAY @ 10 a.m.



## CITY OF LUVERNE, MINNESOTA SUMMARY FINANCIAL REPORT

The purpose of this report is to provide a summary of financial information concerning the City of Luverne to interested citizens. The complete financial statements may be examined at City Offices, 305 East Luverne Street, Luverne, MN, 56156. Questions about this report should be directed to Barbara Berghorst at (507) 449-9900.

### SUMMARY FINANCIAL REPORT REVENUES AND EXPENDITURES FOR GENERAL OPERATIONS GOVERNMENTAL FUNDS FOR THE YEARS ENDED DECEMBER 31, 2015 AND 2014

	Total 2015	Total 2014	Percent Increase (Decrease)
<b>REVENUES</b>			
Taxes	\$ 1,957,562	\$ 1,912,478	2.36 %
Special assessments	3,290	5,570	(40.93)
Licenses and permits	81,861	115,962	(29.41)
Intergovernmental	1,737,431	1,806,070	(3.80)
Charges for services	797,945	685,052	16.48
Investment earnings	99,033	98,943	0.09
Miscellaneous	46,083	180,484	(74.47)
<b>TOTAL REVENUES</b>	<b>\$ 4,723,205</b>	<b>\$ 4,804,559</b>	<b>(1.69) %</b>
Per Capita	\$ 1,004	\$ 1,020	(1.57) %
<b>EXPENDITURES</b>			
<b>Current</b>			
General government	\$ 566,236	\$ 543,492	4.18 %
Public safety	1,198,483	1,140,298	5.10
Public works	1,094,617	1,038,500	5.40
Culture and recreation	1,031,291	1,259,812	(18.14)
Conservation and development	101,837	94,172	8.14
<b>Capital outlay</b>			
Public safety	559,176	291,915	91.55
Public works	500,496	272,636	83.58
Culture and recreation	299,534	302,707	(1.05)
Conservation and development	101,580	42,000	141.86
<b>Debt service</b>			
Principal	407,556	320,556	27.14
Interest and other costs	40,419	58,172	(30.52)
<b>TOTAL EXPENDITURES</b>	<b>\$ 5,901,225</b>	<b>\$ 5,364,260</b>	<b>10.01 %</b>
Per Capita	\$ 1,255	\$ 1,139	10.15 %
Total Long-term Indebtedness	\$ 2,500,147	\$ 2,907,703	(14.02) %
Per Capita	531	617	(13.91)
General Fund Balance - December 31	\$ 3,016,105	\$ 2,837,223	6.30 %
Per Capita	641	602	6.44

### STATEMENTS OF NET POSITION PROPRIETARY FUNDS DECEMBER 31, 2015

	Business-type Activities - Enterprise Funds						Governmental Activities
	601 Water	602 Sewer	604 Electric	609 Liquor	Other Proprietary Funds	Total	Internal Service Funds
<b>ASSETS</b>							
<b>CURRENT ASSETS</b>							
Cash and temporary investments	\$ 2,243,081	\$ 3,282,235	\$ 7,272,965	\$ 364,377	\$ 899,269	\$ 14,061,927	\$ 1,519,592
Receivables (net of allowance for uncollectibles)							
Accrued interest	5,986	11,490	12,659	694	1,894	32,723	3,188
Delinquent taxes	-	13	-	-	-	13	-

continued on next page...

# Star Herald PUBLIC NOTICES

Read all public notices online at  
[www.Star-Herald.com](http://www.Star-Herald.com)

Page 8B June 9, 2016

...continued from previous page

Accounts, net	88,442	99,046	334,192	-	49,691	571,371	146
Loans	2,373	8,830	9,064	-	5,112	25,379	3,651
Delinquent special assessments	2,119	-	-	-	-	2,119	-
Intergovernmental	-	1,430	147	-	-	1,577	-
Due from other funds	19,768	19,768	39,536	-	19,768	98,840	86
Inventories, at cost	-	-	379,476	158,967	-	538,443	-
Prepaid items	-	-	-	-	-	-	6,554
<b>TOTAL CURRENT ASSETS</b>	<b>2,361,769</b>	<b>3,422,812</b>	<b>8,048,039</b>	<b>524,038</b>	<b>975,734</b>	<b>15,332,392</b>	<b>1,533,217</b>
<b>NONCURRENT ASSETS</b>							
Restricted assets							
Cash and temporary investments	379,394	213,808	47,900	-	5,708	646,810	-
Special assessments receivable							
Noncurrent	1,043	1,077	-	-	1,341	3,461	-
Loans receivable - noncurrent	61,669	137,591	73,157	-	132,826	405,243	94,876
Capital assets							
Land	102,967	18,451	11,325	78,860	62,632	274,235	-
Buildings	973,702	409,094	1,151,915	107,064	79,566	2,721,341	226,134
Improvements and infrastructure	10,868,380	8,888,723	15,735,875	20,359	1,339,721	36,853,058	79,763
Machinery and equipment	344,886	487,500	692,394	82,185	848,851	2,455,816	462,943
Construction in progress	1,092,739	223,764	539,905	-	195,510	2,051,918	-
Total capital assets	13,382,674	10,027,532	18,131,414	288,468	2,526,280	44,356,368	768,840
Less accumulated depreciation	(5,391,005)	(5,085,647)	(10,162,874)	(144,235)	(1,335,938)	(22,119,699)	(514,489)
Total capital assets (net of accumulated depreciation)	7,991,669	4,941,885	7,968,540	144,233	1,190,342	22,236,669	254,351
<b>TOTAL NONCURRENT ASSETS</b>	<b>8,433,775</b>	<b>5,294,361</b>	<b>8,089,597</b>	<b>144,233</b>	<b>1,330,217</b>	<b>23,292,183</b>	<b>349,227</b>
<b>TOTAL ASSETS</b>	<b>10,795,544</b>	<b>8,717,173</b>	<b>16,137,636</b>	<b>668,271</b>	<b>2,305,951</b>	<b>38,624,575</b>	<b>1,882,444</b>
<b>DEFERRED OUTFLOWS OF RESOURCES</b>							
Deferred pension resources	18,151	23,558	9,447	10,933	9,040	71,129	25,227
<b>LIABILITIES</b>							
<b>CURRENT LIABILITIES</b>							
Accounts payable	22,954	13,008	442,525	33,174	11,594	523,255	46,174
Contracts payable	62,783	19,673	-	-	24,212	106,668	-
Retainage payable	18,905	12,197	-	-	-	31,102	-
Due to other funds	-	43	-	-	-	43	-
Due to other governments	1,049	-	19,950	13,100	4,098	38,197	-
Accrued interest payable	46,540	12,547	-	-	-	59,087	-
Wages and related benefits payable	1,652	2,220	1,278	1,072	811	7,033	2,262
Compensated absences payable - current	15,457	17,903	10,037	4,053	6,865	54,315	71,134
Customer deposits payable	9,604	9,511	47,900	1,404	5,708	74,127	-
Bonds payable - current	323,250	191,750	-	-	-	515,000	-
<b>TOTAL CURRENT LIABILITIES</b>	<b>502,194</b>	<b>278,852</b>	<b>521,690</b>	<b>52,803</b>	<b>53,288</b>	<b>1,408,827</b>	<b>119,570</b>
<b>NONCURRENT LIABILITIES</b>							
Compensated absences payable	62,638	60,034	45,578	8,801	26,250	203,301	252,106
Other postemployment benefits liability	6,585	9,832	7,110	3,183	4,933	31,643	11,476
Bonds payable	4,212,076	1,440,505	-	-	-	5,652,581	-
Pension liability	153,454	199,157	79,862	92,418	76,422	601,313	213,273
<b>TOTAL NONCURRENT LIABILITIES</b>	<b>4,434,753</b>	<b>1,709,528</b>	<b>132,550</b>	<b>104,402</b>	<b>107,605</b>	<b>6,488,838</b>	<b>476,855</b>
<b>TOTAL LIABILITIES</b>	<b>4,936,947</b>	<b>1,988,380</b>	<b>654,240</b>	<b>157,205</b>	<b>160,893</b>	<b>7,897,665</b>	<b>596,425</b>
<b>DEFERRED INFLOWS OF RESOURCES</b>							
Deferred pension resources	25,658	33,299	13,353	15,452	12,778	100,540	35,659
<b>NET POSITION</b>							
Net investment in capital assets	3,986,343	3,309,630	7,968,540	144,233	1,190,342	16,599,088	349,227
Restricted for debt service	432,782	220,704	-	-	-	653,486	-
Unrestricted	1,431,965	3,188,718	7,510,950	362,314	950,978	13,444,925	926,360
<b>TOTAL NET POSITION</b>	<b>\$ 5,851,090</b>	<b>\$ 6,719,052</b>	<b>\$ 15,479,490</b>	<b>\$ 506,547</b>	<b>\$ 2,141,320</b>	<b>\$ 30,697,499</b>	<b>\$ 1,275,587</b>

Adjustment to reflect the consolidation  
of internal service fund activities  
related to enterprise funds

782,509

Net position of business-type activities

\$ 31,480,008

## STATEMENTS OF REVENUES, EXPENSES AND CHANGES IN NET POSITION PROPRIETARY FUNDS FOR THE YEAR ENDED DECEMBER 31, 2015

	Business-type Activities - Enterprise Funds						Governmental
	601	602	604	609	Other	Total	Internal
	Water	Sewer	Electric	Liquor	Proprietary Funds		Service Funds
<b>OPERATING REVENUES</b>							
Charges for services/sales	\$ 1,349,515	\$ 1,295,183	\$ 7,210,419	\$ 1,313,045	\$ 647,033	\$ 11,815,195	\$ 695,418
Cost of sales	-	-	-	(984,039)	-	(984,039)	-
Service income	14,556	29,699	119,268	-	6,175	169,698	-
Other income	773	886	139,610	675	676	142,620	57,279
<b>TOTAL OPERATING REVENUES</b>	<b>1,364,844</b>	<b>1,325,768</b>	<b>7,469,297</b>	<b>329,681</b>	<b>653,884</b>	<b>11,143,474</b>	<b>752,697</b>
<b>OPERATING EXPENSES</b>							
Personal services	262,613	343,546	206,735	151,334	140,230	1,104,458	350,656
Supplies	168,082	110,013	369,084	18,484	51,095	716,758	65,353
Other services and charges	278,529	205,545	1,320,880	89,112	182,658	2,076,724	513,270
Power purchased/delivered	-	-	4,300,162	-	-	4,300,162	-
Depreciation	278,854	307,854	730,944	6,087	111,955	1,435,694	39,634
Pension expense	2,703	2,289	(2,078)	(5,533)	(8,758)	(11,377)	(8,474)
<b>TOTAL OPERATING EXPENSES</b>	<b>990,781</b>	<b>969,247</b>	<b>6,925,727</b>	<b>259,484</b>	<b>477,180</b>	<b>9,622,419</b>	<b>960,439</b>
<b>OPERATING INCOME (LOSS)</b>	<b>374,063</b>	<b>356,521</b>	<b>543,570</b>	<b>70,197</b>	<b>176,704</b>	<b>1,521,055</b>	<b>(207,742)</b>
<b>NONOPERATING REVENUES (EXPENSES)</b>							
Property taxes	-	49,956	-	-	-	49,956	-
Investment income	41,565	46,975	85,921	4,777	13,851	193,089	22,755
Rental income	1,497	448	-	-	12,849	14,794	-

continued on next page...



...continued from previous page

Gain (loss) on disposition of assets	-	-	3,250	-	-	3,250	-
Interest and other costs	(117,424)	(31,633)	-	-	(10)	(149,067)	-
Interest on customer deposits	(1)	(1)	(66)	-	-	(68)	-
Amortization expense	(571)	(856)	-	-	-	(1,427)	-
Contributions to component unit	(60,000)	(60,000)	(60,000)	-	(20,000)	(200,000)	-
<b>TOTAL NONOPERATING REVENUES (EXPENSES)</b>	<b>(134,934)</b>	<b>4,889</b>	<b>29,105</b>	<b>4,777</b>	<b>6,690</b>	<b>(89,473)</b>	<b>22,755</b>
INCOME (LOSS) BEFORE TRANSFERS	239,129	361,410	572,675	74,974	183,394	1,431,582	(184,987)
TRANSFERS OUT	(160,000)	(165,000)	(445,000)	(45,000)	(138,000)	(953,000)	-
CHANGE IN NET POSITION	79,129	196,410	127,675	29,974	45,394	478,582	(184,987)
NET POSITION, JANUARY 1 AS RESTATED (NOTE 6)	5,771,961	6,522,642	15,351,815	476,573	2,095,926	30,218,917	1,460,574
NET POSITION, DECEMBER 31	<u>\$ 5,851,090</u>	<u>\$ 6,719,052</u>	<u>\$ 15,479,490</u>	<u>\$ 506,547</u>	<u>\$ 2,141,320</u>	<u>\$ 30,697,499</u>	<u>\$ 1,275,587</u>

Change in net position as shown above \$ 478,582

Adjustment to reflect the consolidation of internal service fund activities related to enterprise funds (102,955)

Change in net position of business-type activities \$ 375,627

STATEMENTS OF CASH FLOWS  
PROPRIETARY FUNDS  
FOR THE YEAR ENDED DECEMBER 31, 2015

	Business-type Activities - Enterprise Funds					Total	Governmental Activities Internal Service Funds
	601 Water	602 Sewer	604 Electric	609 Liquor	Other Proprietary Funds		
<b>CASH FLOWS FROM OPERATING ACTIVITIES</b>							
Cash receipts from customers	\$ 1,367,552	\$ 1,320,637	\$ 7,571,248	\$ 1,313,772	\$ 652,659	\$ 12,225,868	\$ 688,743
Cash paid to suppliers	(448,344)	(321,958)	(6,015,125)	(1,100,066)	(222,025)	(8,107,518)	(527,315)
Cash paid to and on behalf of employees	(257,372)	(342,078)	(207,331)	(158,683)	(148,862)	(1,114,326)	(362,598)
Other receipts	1,497	448	-	-	12,849	14,794	57,279
<b>NET CASH PROVIDED (USED) BY OPERATING ACTIVITIES</b>	<b>663,333</b>	<b>657,049</b>	<b>1,348,792</b>	<b>55,023</b>	<b>294,621</b>	<b>3,018,818</b>	<b>(143,891)</b>
<b>CASH FLOWS FROM NONCAPITAL FINANCING ACTIVITIES</b>							
Transfers to other funds	(160,000)	(165,000)	(445,000)	(45,000)	(138,000)	(953,000)	-
Payment to component unit	(60,000)	(60,000)	(60,000)	-	(20,000)	(200,000)	-
Loans made	-	(11,904)	(4,127)	-	-	(16,031)	-
Loan payments received	7,945	17,432	20,021	-	17,111	62,509	-
(Increase) decrease in due from other funds	3,551	3,551	7,102	-	3,551	17,755	(86)
Increase (decrease) in due to other funds	(14)	43	-	-	-	29	-
Property taxes received	-	50,008	-	-	-	50,008	-
<b>NET CASH PROVIDED (USED) BY NONCAPITAL FINANCING ACTIVITIES</b>	<b>(208,518)</b>	<b>(165,870)</b>	<b>(482,004)</b>	<b>(45,000)</b>	<b>(137,338)</b>	<b>(1,038,730)</b>	<b>(86)</b>
<b>CASH FLOWS FROM CAPITAL AND RELATED FINANCING ACTIVITIES</b>							
Acquisition of capital assets	(1,351,731)	(335,126)	(462,911)	(70,520)	(274,681)	(2,494,969)	(127,743)
Proceeds from sale of capital assets	-	-	3,250	-	-	3,250	-
Principal paid on long-term borrowings	(215,250)	(194,750)	-	-	-	(410,000)	-
Interest and fiscal charges paid on long-term borrowings	(141,664)	(31,841)	-	-	-	(173,505)	-
<b>NET CASH PROVIDED (USED) BY CAPITAL AND RELATED FINANCING ACTIVITIES</b>	<b>(1,708,645)</b>	<b>(561,717)</b>	<b>(459,661)</b>	<b>(70,520)</b>	<b>(274,681)</b>	<b>(3,075,224)</b>	<b>(127,743)</b>
<b>CASH FLOWS FROM INVESTING ACTIVITIES</b>							
Interest received	45,285	44,193	85,593	4,820	13,598	193,489	23,143
<b>NET INCREASE (DECREASE) IN CASH AND CASH EQUIVALENTS</b>	<b>(1,208,545)</b>	<b>(26,345)</b>	<b>492,720</b>	<b>(55,677)</b>	<b>(103,800)</b>	<b>(901,647)</b>	<b>(248,577)</b>
CASH AND CASH EQUIVALENTS, JANUARY 1	3,831,020	3,522,388	6,828,145	420,054	1,008,777	15,610,384	1,768,169
CASH AND CASH EQUIVALENTS, DECEMBER 31	<u>\$ 2,622,475</u>	<u>\$ 3,496,043</u>	<u>\$ 7,320,865</u>	<u>\$ 364,377</u>	<u>\$ 904,977</u>	<u>\$ 14,708,737</u>	<u>\$ 1,519,592</u>

<b>CASH AND CASH EQUIVALENTS ARE COMPRISED OF</b>							
Cash and temporary investments	\$ 2,243,081	\$ 3,282,235	\$ 7,272,965	\$ 364,377	\$ 899,269	\$ 14,061,927	\$ 1,519,592
Restricted assets							
Cash and temporary investments	379,394	213,808	47,900	-	5,708	646,810	-
<b>TOTAL CASH AND CASH EQUIVALENTS</b>	<b>\$ 2,622,475</b>	<b>\$ 3,496,043</b>	<b>\$ 7,320,865</b>	<b>\$ 364,377</b>	<b>\$ 904,977</b>	<b>\$ 14,708,737</b>	<b>\$ 1,519,592</b>

<b>RECONCILIATION OF OPERATING INCOME (LOSS) TO NET CASH PROVIDED (USED) BY OPERATING ACTIVITIES</b>							
Operating income (loss)	\$ 374,063	\$ 356,521	\$ 543,570	\$ 70,197	\$ 176,704	\$ 1,521,055	\$ (207,742)
Adjustments to reconcile operating income (loss) to net cash provided (used) by operating activities							
Depreciation	278,854	307,854	730,944	6,087	111,955	1,435,694	39,634
Other income related to operations	1,497	448	-	-	12,849	14,794	-
Interest paid on customer deposits	(1)	(1)	(66)	-	(10)	(78)	-
(Increase) decrease in assets							
Accounts receivable	2,854	(6,097)	101,342	-	(1,490)	96,609	12,450
Special assessments receivable	(705)	816	-	-	42	153	-
Due from other governments	-	(290)	-	-	-	(290)	-
Inventories	13,088	-	94,883	(12,688)	1,371	96,654	-
Prepaid items	-	-	-	-	-	-	(234)
(Increase) decrease in deferred outflows of resources							
Deferred pension resources	4,875	6,503	3,043	3,976	3,897	22,294	8,555
Increase (decrease) in liabilities							
Accounts payable	(12,049)	(4,110)	(121,701)	(1,983)	1,011	(138,832)	43,068
Due to other governments	(68)	-	(193)	707	598	1,044	-
Wages and related benefits payable	(6,760)	(8,666)	(5,365)	(4,656)	(3,706)	(29,153)	(9,735)
Deposits payable	559	440	609	52	223	1,883	-
Compensated absences payable	8,386	7,551	6,356	2,620	3,726	28,639	(13,531)
Other postemployment benefits liability	912	294	491	220	106	2,023	673
Pension liability	10,733	12,832	2,444	8	(3,766)	22,251	3,887
Increase (decrease) in deferred inflows of resources							
Deferred pension resources	(12,905)	(17,046)	(7,565)	(9,517)	(8,889)	(55,922)	(20,916)
Total adjustments	289,270	300,528	805,222	(15,174)	117,917	1,497,763	63,851
<b>NET CASH PROVIDED (USED) BY OPERATING ACTIVITIES</b>	<b>\$ 663,333</b>	<b>\$ 657,049</b>	<b>\$ 1,348,792</b>	<b>\$ 55,023</b>	<b>\$ 294,621</b>	<b>\$ 3,018,818</b>	<b>\$ (143,891)</b>

<b>SCHEDULE OF NONCASH INVESTING, CAPITAL AND FINANCING ACTIVITIES</b>							
Capital assets acquired on account	\$ 81,688	\$ 31,870	\$ -	\$ -	\$ 24,212	\$ 137,770	\$ -
Special assessments levied	705	-	-	-	206	911	-
Amortization of bond (premium) discount	571	856	-	-	-	1,427	-

The notes to the financial statements are an integral part of this statement.

## Mortgage foreclosure sale set for June 30

**NOTICE OF MORTGAGE FORECLOSURE SALE  
THE RIGHT TO VERIFICATION OF THE DEBT AND IDENTITY OF THE ORIGINAL  
CREDITOR WITHIN THE TIME PROVIDED BY LAW IS NOT AFFECTED BY THIS  
ACTION.**

NOTICE IS HEREBY GIVEN, that default has occurred in the conditions of the following described mortgage:

DATE OF MORTGAGE: December 4, 2009  
ORIGINAL PRINCIPAL AMOUNT OF MORTGAGE: \$51,020.00  
MORTGAGOR(S): Joshua DePyper, an unmarried man  
MORTGAGEE: Mortgage Electronic Registration Systems, Inc.  
TRANSACTION AGENT: Mortgage Electronic Registration Systems, Inc.  
MIN#: 1003109-0000616275-8  
LENDER OR BROKER AND MORTGAGE ORIGINATOR STATED ON THE MORTGAGE: GSF Mortgage Corporation  
SERVICER: JPMorgan Chase Bank, N.A.  
DATE AND PLACE OF FILING: Filed December 4, 2009, Rock County Recorder, as Document Number 172688

ASSIGNMENTS OF MORTGAGE: Assigned to: JPMorgan Chase Bank, National Association; Dated: February 16, 2016 filed: February 23, 2016, recorded as document number 187859

LEGAL DESCRIPTION OF PROPERTY:  
W.80 feet of Lot 4, in Block 3, in Barck, Adams & Howe's Addition to the Village (now City) of Luverne

PROPERTY ADDRESS: 702 N McKenzie St, Luverne, MN 56156  
PROPERTY IDENTIFICATION NUMBER: 20.0252.000  
COUNTY IN WHICH PROPERTY IS LOCATED: Rock  
THE AMOUNT CLAIMED TO BE DUE ON THE MORTGAGE ON THE DATE OF THE NOTICE: \$47,604.28

THAT all pre-foreclosure requirements have been complied with; that no action or proceeding has been instituted at law or otherwise to recover the debt secured by said mortgage, or any part thereof;

PURSUANT to the power of sale contained in said mortgage, the above described property will be sold by the Sheriff of said county as follows:

DATE AND TIME OF SALE: June 30, 2016, 10:00am  
PLACE OF SALE: Sheriff's Main Office, West Side Sheriff Dept, Front Step, Luverne, MN 56156

to pay the debt secured by said mortgage and taxes, if any, on said premises and the costs and disbursements, including attorneys fees allowed by law, subject to redemption within 6 months from the date of said sale by the mortgagor(s) the personal representatives or assigns.

TIME AND DATE TO VACATE PROPERTY: If the real estate is an owner-occupied, single-family dwelling, unless otherwise provided by law, the date on or before which the mortgagor(s) must vacate the property, if the mortgage is not reinstated under section 580.30 or the property is not redeemed under section 580.23, is 11:59 p.m. on December 30, 2016, or the next business day if December 30, 2016 falls on a Saturday, Sunday or legal holiday.

THE TIME ALLOWED BY LAW FOR REDEMPTION BY THE MORTGAGOR, THE MORTGAGOR'S PERSONAL REPRESENTATIVES OR ASSIGNS, MAY BE REDUCED TO FIVE WEEKS IF A JUDICIAL ORDER IS ENTERED UNDER MINNESOTA STATUTES SECTION 582.032 DETERMINING, AMONG OTHER THINGS, THAT THE MORTGAGED PREMISES ARE IMPROVED WITH A RESIDENTIAL DWELLING OF LESS THAN 5 UNITS, ARE NOT PROPERTY USED FOR AGRICULTURAL PRODUCTION, AND ARE ABANDONED.

Dated: May 6, 2016  
JPMorgan Chase Bank, National Association  
Assignee of Mortgagee  
SHAPIRO & ZIELKE, LLP  
Lawrence P. Zielke - 152559  
Diane F. Mach - 273788  
Melissa L. B. Porter - 0337778  
Randolph W. Dawdy - 2160X  
Gary J. Evers - 0134764  
Tracy J. Halliday - 034610X  
Attorneys for Mortgagee  
12550 West Frontage Road, Suite 200  
Burnsville, MN 55337  
(952) 831-4060

**THIS IS A COMMUNICATION FROM A DEBT COLLECTOR**  
(05-12, 05-19, 05-26, 06-02, 06-09, 06-16)

## Mortgage foreclosure sale set for July 14

NOTICE IS HEREBY GIVEN that default has occurred in the conditions of the following described mortgage:

DATE OF MORTGAGE: November 07, 2006  
ORIGINAL PRINCIPAL AMOUNT OF MORTGAGE: \$64,260.00  
MORTGAGOR(S): Michael Zinnel, a single person  
MORTGAGEE: Mortgage Electronic Registration Systems, Inc., as nominee for Taylor, Bean & Whitaker Mortgage Corp, its successors and/or assigns  
DATE AND PLACE OF RECORDING:  
Recorded: November 09, 2006 Rock County Recorder  
Document Number: 165362  
ASSIGNMENTS OF MORTGAGE:  
And assigned to: Bank of America, N.A., successor by merger to BAC Home Loans Servicing, LP FKA Countrywide Home Loans Servicing, LP  
Dated: March 23, 2012  
Recorded: April 02, 2012 Rock County Recorder  
Document Number: 178916  
And assigned to: Selene Finance LP  
Dated: October 09, 2014  
Recorded: April 14, 2015 Rock County Recorder  
Document Number: 185779  
Transaction Agent: Mortgage Electronic Registration Systems, Inc.  
Transaction Agent Mortgage Identification Number: 100029500014247724  
Lender or Broker: Taylor, Bean & Whitaker Mortgage Corp  
Residential Mortgage Servicer: Selene Finance LP  
Mortgage Originator: Not Applicable  
COUNTY IN WHICH PROPERTY IS LOCATED: Rock  
Property Address: 119 E Barck Ave, Luverne, MN 56156-1107  
Tax Parcel ID Number: 20-0375-000

LEGAL DESCRIPTION OF PROPERTY: The W1/2 of Lot 4 in Block 15 in Barck, Adams & Howe's Addition to the City of Luverne, Rock County, Minnesota

AMOUNT DUE AND CLAIMED TO BE DUE AS OF DATE OF NOTICE: \$71,440.30

THAT all pre-foreclosure requirements have been complied with; that no action or proceeding has been instituted at law or otherwise to recover the debt secured by said mortgage, or any part thereof;

PURSUANT to the power of sale contained in said mortgage, the above-described property will be sold by the Sheriff of said county as follows:

DATE AND TIME OF SALE: July 14, 2016 at 10:00 AM  
PLACE OF SALE: Law Enforcement Center, Lobby, 1000 N. Blue Mound Ave., Luverne, Minnesota

to pay the debt secured by said mortgage and taxes, if any, on said premises and the costs and disbursements, including attorney fees allowed by law, subject to redemption within six (6) months from the date of said sale by the mortgagor(s), their personal representatives or assigns.

If the Mortgage is not reinstated under Minn. Stat. §580.30 or the property is not redeemed under Minn. Stat. §580.23, the Mortgagor must vacate the property on or before 11:59 p.m. on January 16, 2017, or the next business day if January 16, 2017 falls on a Saturday, Sunday or legal holiday.

Mortgagor(s) released from financial obligation: NONE

**THIS COMMUNICATION IS FROM A DEBT COLLECTOR ATTEMPTING TO COLLECT A DEBT. ANY INFORMATION OBTAINED WILL BE USED FOR THAT PURPOSE.**

**THE RIGHT TO VERIFICATION OF THE DEBT AND IDENTITY OF THE ORIGINAL CREDITOR WITHIN THE TIME PROVIDED BY LAW IS NOT AFFECTED**

BY THIS ACTION.

THE TIME ALLOWED BY LAW FOR REDEMPTION BY THE MORTGAGOR, THE MORTGAGOR'S PERSONAL REPRESENTATIVES OR ASSIGNS, MAY BE REDUCED TO FIVE WEEKS IF A JUDICIAL ORDER IS ENTERED UNDER MINNESOTA STATUTES, SECTION 582.032, DETERMINING, AMONG OTHER THINGS, THAT THE MORTGAGED PREMISES ARE IMPROVED WITH A RESIDENTIAL DWELLING OF LESS THAN FIVE UNITS, ARE NOT PROPERTY USED IN AGRICULTURAL PRODUCTION, AND ARE ABANDONED.

DATED: May 09, 2016  
ASSIGNEE OF MORTGAGEE: Selene Finance LP  
Wilford, Geske & Cook P.A.  
Attorneys for Assignee of Mortgagee  
7616 Currell Blvd Ste 200  
Woodbury, MN 55125-2296  
(651) 209-3300  
File Number: 032673F03

(05-26, 06-02, 06-09, 06-16, 06-23, 06-30)

## Mortgage foreclosure sale set for July 15

**NOTICE OF MORTGAGE FORECLOSURE SALE  
THE RIGHT TO VERIFICATION OF THE DEBT AND IDENTITY OF THE ORIGINAL CREDITOR  
WITHIN THE TIME PROVIDED BY LAW IS NOT AFFECTED BY THIS ACTION.**

NOTICE IS HEREBY GIVEN, that default has occurred in conditions of the following described mortgage:

DATE OF MORTGAGE: October 24, 2003  
ORIGINAL PRINCIPAL AMOUNT OF MORTGAGE: \$ 78,625.00  
MORTGAGOR(S): Randolph L. Scoggins and Deborah Scoggins  
MORTGAGEE: Mortgage Electronic Registration Systems, Inc.  
DATE AND PLACE OF RECORDING: Recorded with the County Recorder in and for the County of Rock, State of Minnesota, on the 29th day of October, 2003, as Document No. 157417

ASSIGNMENTS OF MORTGAGE: Assigned to The Bank of New York Mellon Trust Company, National Association in assignment recorded August 4, 2011, as Document No. 177180, subsequently assigned to Residential Funding Company, LLC in assignment recorded January 10, 2014, as Document No. 183263, subsequently assigned to Kajaine Estates, LLC in assignment recorded January 10, 2014, as Document No. 183264, subsequently assigned to Gemini Capital Managers, LLC in assignment recorded January 10, 2014, as Document No. 183265, and subsequently assigned to Platinum Notes, LLC in assignment recorded January 10, 2014, as Document No. 183266

LEGAL DESCRIPTION OF PROPERTY:

Lot 7, Block 3, Davis Addition to the City of Luverne

PROPERTY ADDRESS:  
1025 Elmwood Avenue, Luverne, MN 56156

COUNTY IN WHICH PROPERTY IS LOCATED: Rock

AMOUNT DUE AND CLAIMED TO BE DUE AS OF DATE OF NOTICE, INCLUDING TAXES, IF ANY, PAID BY MORTGAGEE: \$106,461.03

THAT there has been compliance with all pre-foreclosure requirements; that no action or proceeding has been instituted at law or otherwise to recover the debt secured by said mortgage, or any part thereof;

THAT pursuant to the power of sale contained in said mortgage, the above-described property will be sold by the Sheriff of Rock County as follows:

DATE AND TIME OF SALE: July 15, 2016, at 10:00 a.m.

PLACE OF SALE: Rock County Law Enforcement Center, 1000 N. Blue Mound Avenue, Luverne, Minnesota to pay the debt secured by said mortgage and taxes, if any, on said premises and the costs of disbursements, including attorneys' fees allowed by law subject to redemption within six (6) months from the date of said sale by the mortgagor(s), their personal representatives or assigns;

THE TIME ALLOWED BY LAW FOR REDEMPTION BY THE MORTGAGOR, THE MORTGAGOR'S PERSONAL REPRESENTATIVES OR ASSIGNS, MAY BE REDUCED TO FIVE WEEKS IF A JUDICIAL ORDER IS ENTERED UNDER MINNESOTA STATUTES, SECTION 582.032, DETERMINING, AMONG OTHER THINGS, THAT THE MORTGAGED PREMISES ARE IMPROVED WITH A RESIDENTIAL DWELLING OF LESS THAN FIVE UNITS, ARE NOT PROPERTY USED IN AGRICULTURAL PRODUCTION, AND ARE ABANDONED.

Dated: May 12, 2016

Platinum Notes, LLC  
Assignee of Mortgagee

**HOELSCHER LAW FIRM, PLLC**

By: /s/ Brian G. Hoelscher #0238752

Attorneys for Assignee of Mortgagee  
13100 Wayzata Boulevard, Suite 100  
Minnetonka, MN 55305  
(952) 224-9551

**THIS IS A COMMUNICATION FROM A DEBT COLLECTOR.**

**FORECLOSURE DATA**  
**Minn. Stat. Sec. 580.025**

(1) the physical street address, city, and zip code of the mortgaged premises is 1025 Elmwood Avenue, Luverne, MN 56156;

(2) the name of the transaction agent, residential mortgage servicer, and the lender or broker, as defined in section 58.02, if the person holding the mortgage is a transaction agent as defined in section 58.02, subdivision 30 are as follows: - not applicable; or the name of the residential mortgage servicer and the lender or broker, as defined in section 58.02, if the person holding the mortgage is not a transaction agent as defined in section 58.02, subdivision 30 are as follows: residential mortgage servicer - FCI Lender Services, Inc., lender or broker - Platinum Notes, LLC;

(3) the tax parcel identification number of the mortgaged premises is: 20-0576-000;

(4) if stated on the mortgage, the transaction agent's mortgage identification number is: -1001958-000009895-0;

(5) if stated on the mortgage, the name of the residential mortgage originator as defined in section 58.02 is: BWM Mortgage, LLC.

(05-26, 06-02, 06-09, 06-16, 06-23, 06-30)

## Mortgage foreclosure sale set for June 23

**NOTICE OF MORTGAGE FORECLOSURE SALE**

NOTICE IS HEREBY GIVEN that default has occurred in the conditions of the following described mortgage:

DATE OF MORTGAGE: August 31, 2005  
ORIGINAL PRINCIPAL AMOUNT OF MORTGAGE: \$70,000.00  
MORTGAGOR(S): Pamela G. Den Herder, a married person  
MORTGAGEE: ABN AMRO Mortgage Group, Inc.  
DATE AND PLACE OF RECORDING:  
Recorded: September 12, 2005 Rock County Recorder  
Document Number: 162275  
ASSIGNMENTS OF MORTGAGE:  
And assigned to: Pretium Mortgage Credit Partners I Loan Acquisition, LP  
Dated: December 02, 2015  
Recorded: December 03, 2015 Rock County Recorder  
Document Number: 187419  
And assigned to: Wilmington Savings Fund Society, FSB, d/b/a Christiana Trust, not individually but as trustee for Pretium Mortgage Acquisition Trust  
Dated: December 21, 2015  
Recorded: January 19, 2016 Rock County Recorder  
Document Number: 187696  
Transaction Agent: Not Applicable  
Transaction Agent Mortgage Identification Number: Not Applicable  
Lender or Broker: ABN AMRO Mortgage Group, Inc.  
Residential Mortgage Servicer: Selene Finance LP  
Mortgage Originator: Not Applicable  
COUNTY IN WHICH PROPERTY IS LOCATED: Rock  
Property Address: 601 S Donaldson St, Luverne, MN 56156-2206  
Tax Parcel ID Number: 20-1323-000

LEGAL DESCRIPTION OF PROPERTY: The W 1/2 of Lots 2 and 3 in Block 2 in H. Snook Addition to the City of Luverne, Rock County, Minnesota

AMOUNT DUE AND CLAIMED TO BE DUE AS OF DATE OF NOTICE: \$60,457.62

THAT all pre-foreclosure requirements have been complied with; that no action or proceeding has been instituted at law or otherwise to recover the debt secured by said mortgage, or any part thereof;

PURSUANT to the power of sale contained in said mortgage, the above-described property will be sold by the Sheriff of said county as follows:

DATE AND TIME OF SALE: June 23, 2016 at 10:00 AM  
PLACE OF SALE: Law Enforcement Center, Lobby, 1000 N. Blue Mound Ave., Luverne, Minnesota

to pay the debt secured by said mortgage and taxes, if any, on said premises and the costs and disbursements, including attorney fees allowed by law, subject to redemption within six (6) months from the date of said sale by the mortgagor(s), their personal representatives or assigns.

If the Mortgage is not reinstated under Minn. Stat. §580.30 or the property is not redeemed under Minn. Stat. §580.23, the Mortgagor must vacate the property on or before 11:59 p.m. on December 23, 2016, or the next business day if December 23, 2016 falls on a Saturday, Sunday or legal holiday.

Mortgagor(s) released from financial obligation: NONE

**THIS COMMUNICATION IS FROM A DEBT COLLECTOR ATTEMPTING TO COLLECT A DEBT. ANY INFORMATION OBTAINED WILL BE USED FOR THAT PURPOSE.**

**THE RIGHT TO VERIFICATION OF THE DEBT AND IDENTITY OF THE ORIGINAL CREDITOR WITHIN THE TIME PROVIDED BY LAW IS NOT AFFECTED BY THIS ACTION.**

**THE TIME ALLOWED BY LAW FOR REDEMPTION BY THE MORTGAGOR, THE MORTGAGOR'S PERSONAL REPRESENTATIVES OR ASSIGNS, MAY BE REDUCED TO FIVE WEEKS IF A JUDICIAL ORDER IS ENTERED UNDER MINNESOTA STATUTES, SECTION 582.032, DETERMINING, AMONG OTHER THINGS, THAT THE MORTGAGED PREMISES ARE IMPROVED WITH A RESIDENTIAL DWELLING OF LESS THAN FIVE UNITS, ARE NOT PROPERTY USED IN AGRICULTURAL PRODUCTION, AND ARE ABANDONED.**

DATED: March 01, 2016

ASSIGNEE OF MORTGAGEE: Wilmington Savings Fund Society, FSB, d/b/a Christiana Trust, not individually but as trustee for Pretium Mortgage Acquisition Trust

Wilford, Geske & Cook P.A.  
Attorneys for Assignee of Mortgagee  
7616 Currell Blvd Ste 200  
Woodbury, MN 55125-2296  
(651) 209-3300  
File Number: 035309F01

(05-05, 05-12, 05-19, 05-26, 06-02, 06-09)

## Rock County Commissioners meet April 5

**9:00 A.M.**  
**Rock County Courthouse**  
**April 5, 2016**

The meeting was called to order by Chair Reisch with all Commissioners present.

A Joint Rock County/Martin Township Public Hearing was called order by the respective chairs at 9:00AM. Purpose of the hearing was to allow public comment on proposed tax abatement for New Vision Cooperative. The amount requested is \$5,222 per year for ten years for a new grain storage and agronomy facility located in Martin Township; the abatement would be on the grain storage bin only. Gloria Rolfs, Rock County Citizen, opposed the abatement request due to an abatement already granted on the feed mill project in Magnolia Township, which will expire for the 2016 taxes, payable in 2017.

Frank McDowell, New Vision Coop Director, presented an update of the feed mill project in Magnolia stating that the total project cost \$20 million, current employment is at 23 employees (60% more than anticipated) and that overall the project has exceeded their expectations. Construction estimates for the new facility in Martin Township is \$9.2 million and will employ the current employees in Hills with an additional 6-8 employees over the next three years.

Hearing no other public comments, the Public Hearing was closed at 9:50AM. Motion by Thompson, seconded by Williamson, to approve Resolution No. 11-16, a tax abatement for New Vision Coop on parcel # 08-0092-100 located in Martin Township; a roll call vote was taken and the motion was declared carried on a 3-2 vote with Commissioners Boyenga and Hoime voting nay.

Motion by Thompson, seconded by Hoime, to approve the April 05, 2016 County Board agenda, declared carried on a voice.

Motion by Boyenga, seconded by Williamson, to approve the March 22, 2016 County Board minutes, declared carried on a voice vote.

Motion by Hoime, seconded by Reisch, to approve the consent agenda, declared carried on a voice vote.

1. Resolution No. 10-16, Joint Rock County/City of Luverne Regional Park or Trail Designation Application in Greater Minnesota

Evan Verbrugge, Sheriff, introduced new employee Aaron Blank, Rock County Dispatcher; Mr. Blank was welcomed by the County Board.

Eric Hartman, Land Management Office Director, requested approval of (6) conditional use permits (CUP); action was taken on the following:

1. Motion by Williamson, seconded by Hoime, to approve a CUP for Central Specialties for the placement and operation of a temporary hot mix asphalt plant located in the W 1/2 of the SE 1/4 of 35-103-45 of Mound Township, declared carried on a voice vote.

2. Motion by Hoime, seconded by Boyenga, to approve a CUP for Central Specialties for the placement and operation of a temporary hot mix asphalt plant located in the E 1/2 of the NW 1/4 of 23-104-45 in Denver Township, declared carried on a voice vote.

3. Motion by Williamson, seconded by Reisch, to approve a CUP for Duininc, Inc. for the placement and operation of a temporary hot mix asphalt plant located in the NW 1/4 of Section 04 and part of NE 1/4 of the SW 1/4 of Section 14-104-45 of Denver Township, declared carried on a voice vote.

4. Motion by Hoime, seconded by Thompson, to approve a CUP for Duininc, Inc. for the placement and operation of a temporary hot mix asphalt plant located in the SW 1/4 of 21-104-44 of Battle Plain Township, declared carried on a voice vote.

5. Motion by Boyenga, seconded by Williamson, to approve a CUP for Jansma Farms, Inc. for an expansion of an existing feedlot with 1/4 mile of a nearby residence by more than 250 animal units, located in the SE 1/4 of 14-101-44 of Kanaranzi Township, declared carried on a voice vote.

6. Motion by Williamson, seconded by Boyenga, to approve a CUP for Brad Van De Berg for an expansion of an existing feedlot within 1/4 mile of a nearby residence by more than 250 animal units, located in the NW 1/4 of 22-101-45 of Martin Township, declared carried on a voice vote.

Motion by Williamson, seconded by Hoime, authorizing the Land Management Office to purchase the R10 Trembler GPS from the Rock County Highway Department for \$32,255.75, declared carried on a voice vote. The original purchase was paid from the General Fund.

Hartman informed the County Board of a press release from the Southwest Marketing Advisory Center informing residents the 12-County area of the Southwest Regional Solid Waste Commission of a random survey regarding recycling. Hartman estimates 200 households in Rock County will receive the survey.

Hartman stated that Mark Jensen, LMO Engineering Technician has submitted his resignation effective April 15, 2016 and that the hiring process for the vacant position has begun.

Ashley Kurtz, Auditor/Treasurer, presented the claims and per diems of \$900.00; motion by Reisch, seconded by Thompson, to approve the claims and per diems, declared carried on a voice vote. A complete listing of the claims is available upon request at the Auditor/Treasurer's Office.

**Claims Listing – April 05, 2016:**

City of Luverne	3,459.57
Lyle Signs, Inc.	5,030.29
MN Counties Computer Coop	2,661.00
Morris Electronics	3,940.49
Regents of the U of M	16,673.43
Ziegler Inc	3,159.85
79 payments under \$2,000	29,274.10
	\$64,198.73

Motion by Boyenga, seconded by Hoime, to approve the Fund Balance report as presented by the Auditor/Treasurer, declared carried on a voice vote.

continued on next page...

## ...continued from previous page

The Administrator informed the County Board that Rock County will proceed with a loan closing with USDA on July 1, 2016 for the rural water improvement and expansion project.

The County Board was in receipt of an invitation to the Southwest Mental Health Annual meeting on April 13 at 6:00PM at their new building facility.

The Administrator presented an update regarding a meeting with representatives from NRCS and FSA agencies regarding a new office location and allowing the Rock County Land Management Office to be part of the new location. One of many options discussed was having Rock County being the building owner and lease space to NRCS and FSA. After a considerable discussion, it was the consensus of the County Board to bid for the upcoming NRCS/FSA building project; the Administrator stated he would discuss land acquisitions with the City of Luverne.

Motion by Williamson, seconded by Thompson, authorizing the signature of an MOU with Alliance Communications and the payment of \$1 million dollars to Alliance Communications for the fiber connect project in Rock County, declared carried on a voice vote.

Commissioner Hoime stated that they had attended a Solid Waste Commission and Rural Energy meetings.

Commissioner Boyenga reported that the cell phone coverage in the southeast part of the county remains substandard.

Commissioner Thompson thanked all organizations that supported the volunteer recognition declaration and acknowledgement; also stated that the pedestrian crossing lights on US Highway 75 are currently being installed.

Commissioner Reisch stated that he will be attending the Alliance pre-construction meeting and a transit meeting in Marshall scheduled for April 7th.

With no further business to come before the County Board, motion by Boyenga, seconded by Thompson, to adjourn the meeting, declared carried on a voice vote.

(06-09)

## ISD #2184 School Board meets May 12

### MINUTES OF THE SCHOOL BOARD MEETING OF INDEPENDENT SCHOOL DISTRICT NO. 2184, ROCK COUNTY, MINNESOTA.

A regular meeting of the Board of Education, ISD #2184, was held in the M/HS Media Center on May 12, 2016, at 7:00 p.m.

The following members were present: Katie Baustian, Colleen Deutsch, Eric Hartman, Dave Riphagen, Shelley Sandbulte, and Reva Sehr. Absent: Jodi Bosch. Also present: Craig Oftedahl, Marlene Mann, Stacy Gillette, Ryan Johnson, Dylan Thorson, Tomm Eitrem, Amber Mathis, Allison Eitrem, Stacey Rolling, Kate Rolling, Kenny Rolling, Jule-Alice Nath, Marie Nath, Adrianna Pilarcik, Ryan Debates, Stacy Debates, Jill Thielbar, Brock Thielbar, Mike Davis, Traci Davis, Kayla Evers, Diane Lutmer, Trisha Goemmel, Wendy Bosshart, Ann Robinson, Jennifer Engesser, Patsy Amborn, Jane Cote, Natking Cole-Kraty, Esther Cole-Kraty, Chandler Eitrem, Lynn Petersen, Lois Petersen, Ashton Eitrem, Greysen Eitrem, LaDonna Van Aartsen, Julie Haugom, Lisa Dinger, Carrie Soto, Patti DeBates, Becky Rahm, Kara Ahrendt, Angie Janiszkeski, Becky Runnoe, Theresa Graff, Tonya Rule with Eide Bailly, Mavis Fodness - Rock County Star Herald, and Max Hodgdon, K101-KQAD Radio.

Chairperson Baustian called the meeting to order. It was noted that there was one correction to the agenda - item 8.5.1 should read Carmen Thompson not Courtney Thompson. Motion by Deutsch, second by Hartman, to approve the agenda with this correction. Motion unanimously carried.

Tonya Rule, representing Eide Bailly, presented information to the School Board regarding the Affordable Care Act and the possible penalties that the school district could incur.

Chairperson Baustian noted that there was community input this evening at 6:30 p.m. Stacy Rolling addressed the School Board regarding Special Education teacher Allison Eitrem.

Administrative reports were given.

Motion made by Riphagen, second by Hartman, to approve the April 28, 2016, School Board minutes as presented. Motion unanimously carried.

Motion made by Deutsch, second by Sehr, to receive the Student Activity Report showing the balances as of April 30, 2016. Motion unanimously carried.

Motion made by Riphagen, second by Sehr, to approve the 2016-17 Resolution for Membership in the Minnesota State High School League. Motion unanimously carried.

Motion by Hartman, second by Deutsch, to approve the offering of student accident insurance through Student Assurance Services to district families at no charge to the school district. Motion unanimously carried.

Motion by Riphagen, second by Sandbulte, to approve the following Resolution of the Board of Education of Independent School District 2184, Luverne, Minnesota, Approving the Application for the Purpose of Receiving Benefits from the Lyon County Riverboat Foundation. The following voted in favor: Baustian, Hartman, Riphagen, Sandbulte, Sehr and Deutsch; and the following voted against: None.

Motion made by Deutsch, second by Riphagen, to approve the hiring of Carmen Thompson as Family and Consumer Science Teacher and FCCLA Advisor for a salary of \$45,401. Motion unanimously carried.

Board Member Deutsch introduced the following and moved its adoption: Resolution Relating to the Termination and Nonrenewal of the Teaching Contract of Allison Eitrem, a Probationary Teacher. The motion for the adoption of the foregoing resolution was duly seconded by Board Member Riphagen and upon vote being taken thereon, the following voted in favor thereof: Hartman, Riphagen, Sehr, Deutsch, and Baustian; and, the following voted against: Sandbulte; whereupon said resolution was declared duly passed and adopted.

Motion made by Deutsch, second by Hartman, to accept the resignation of Jessica VanBatavia as Middle School Volleyball coach. Motion unanimously carried.

Motion made by Sandbulte, second by Deutsch, to accept the resignation of Mark Lundgren as 7/8th grade Football coach. Motion unanimously carried.

Committee reports were given. The upcoming meeting dates were reviewed. Motion made by Hartman, second by Deutsch, to adjourn the meeting. Motion unanimously carried.

Dated: May 12, 2016

Shelley Sandbulte, Clerk  
(06-09)

## Rock County Commissioners meet May 3

Herreid Board Room 9:00 A.M.  
Rock County Courthouse May 3, 2016

The meeting was called to order by Chair Reisch with all Commissioners present.

Motion by Hoime, seconded by Boyenga, to approve the May 03, 2016 County Board agenda, declared carried on a voice vote.

Motion by Thompson, seconded by Williamson, to approve the April 19, 2016 County Board minutes, declared carried on a voice vote.

Motion by Boyenga, seconded by Reisch, to approve the consent agenda, declared carried on a voice vote.

1. Amendment No. 1-Lease #PS0335, 2-year renewal with Department Public Safety Driver and Vehicle Services
2. Resolution No. 18-16, Rock County Snomasters Snowmobile Club Trail Agreement

Don Klosterbuer, County Attorney, led a discussion regarding repairs and potential improvements to Judicial Ditch No. 2 located in Rosedell Township; currently a portion of the tile that starts at the northwest corner of Section 12 and then runs south along the east side of CSAH66 needs replacing which is considered a repair and paid through an assessment of the users. On a recommendation from the Judicial Ditch Advisory Board, motion by Williamson, seconded by Hoime, to authorize the repair of damaged tile, declared carried on a voice vote.

Motion by Williamson, seconded by Hoime, to authorize a 1-year assessment of \$50,000 for repairs to the Judicial Ditch No. 2 and to notify the land owners within the judicial ditch of the assessment, declared carried on a voice vote.

The County Attorney stated that the Judicial Ditch Board was also in receipt of a request to extend an inlet at the north end of the line located in the northwest corner of section 13 of Rosedell Township as it is not functioning properly; the County Attorney stated that this would be deemed an improvement and that improvement procedures would need to be followed or a private ditch agreement between the property owners could be utilized. It was determined that a ditch agreement would be drafted between the property owners and the Rock County Highway Department

as the ditch right of way would benefit from the improvement as well.

Motion by Boyenga, seconded by Thompson, to approve Resolution No. 15-16, Redemption of GO Temporary Water Revenue Bonds, declared carried on a voice vote.

Motion by Hoime, seconded by Boyenga, to approve Resolution No. 16-16, a Subordination of Septic System Lien, declared carried on a voice vote.

Motion by Boyenga, seconded by Hoime, to Resolution No. 17-16, authorizing the County Attorney to sign the Mater Subscriber Agreement for Minnesota Data Services for Government Agencies, declared carried on a voice vote.

The County Attorney led a discussion regarding the Tax Abatement Policy which was adopted in 1997. Klosterbuer stated that the law is very broad and that the County Boards can abate anything for public purpose, whereas a Tax Increment Financing (TIF) is more restrictive than an abatement. Commissioner Reisch suggested utilizing tax abatements as an economic development incentive for either new construction or improvements; after discussion, it was the consensus of the County Board to continue the discussion regarding tax abatement.

Mark Sehr, Engineer, presented the bids for the 2016 pavement striping project:

- AAA Striping Service \$57,698.00
- Traffic Marking Services, Inc \$59,319.46
- Swanson Equipment Co \$72,745.74

Motion by Hoime, seconded by Reisch, to accept the low bid from AAA Striping Service for \$57,698.00, declared carried on a voice vote.

Motion by Williamson, seconded by Thompson, to approve an equipment purchase for a Model 1800 Hydraulic Truck Conveyor for \$7,591.00 from H. T. C. Inc, declared carried on a voice vote.

Motion by Boyenga, seconded by Thompson, to re-appoint Mark Sehr as the Rock County Highway Engineer for a 4-year appointment, declared carried on a voice vote.

Ashley Kurtz, Auditor/Treasurer, presented the claims and per diems of \$450.00; motion by Thompson, seconded by Reisch, to pay the claims and per diems, declared carried on a voice vote.

Claims over \$2,000:

Butler Machinery Co.	7,197.46
Election Systems & Software Inc.	4,935.00
Fleet Services Division-Admin FMR	5,305.47
Information Systems Corp	5,359.00
Macqueen Equipment, Inc	3,744.75
Morris Electronics	3,742.80
Office Depot	2,704.87
Total Funds by Hasler	4,000.00
Ziegler Inc	2,058.88
81 payments less than \$2,000	26,801.13
Total	65,849.36

Motion by Boyenga, seconded by Williamson, to approve the Fund Balance report, declared carried on a voice vote.

The County Board was in receipt of a request from the Nobles County Board for support in implementing a state wide fuel tax; no action was taken.

The Administrator presented an update regarding the FSA/NRCS/LMO building status; currently he is reviewing the specifications from federal representatives and will be reviewing the specifications with the Southwest Minnesota Housing Partnership; the Administrator requested to appoint (2) commissioners to assist with the project. By order of the Chair, the Administrator and Commissioners Hoime and Reisch were appointed to this building project.

The Administrator presented the following bids for and enclosed trailer at the Land Management Office:

- Luden's Inc \$7,400.00
- Iverson Chrysler \$10,310.00

Motion by Hoime, seconded by Williamson, to accept the low bid from Luden's Inc. for \$7,400.00, declared carried on a voice vote.

Commissioner Hoime stated that he attended the Rock/Nobles Community Corrections audit exit.

Commissioner Boyenga stated that he attended a transit meeting and a SWHHS meeting and was informed that Southern Prairie Community Care will lose its BCBS funding.

Commissioner Reisch stated that he had attended a Plum Creek Governing Board meeting.

Commissioner Thompson stated that the Southwest Regional Development Commission will be having their meeting in Hills, Minnesota on May 12th and that she also attended a SWHHS meeting, Southern Prairie Community Care and A.C.E. Joint Powers meeting at Windom.

With no further business the meeting was declared adjourned.

(06-09)

## Rock County Commissioners meet April 18

Herreid Board Room 9:00 A.M.  
Rock County Courthouse April 18, 2016

The meeting was called to order by the Chair Commissioner Reisch with all commissioners present.

The April 18, 2016 agenda was approved on a motion by Hoime and seconded by Thompson, declared carried on a voice vote.

Minutes of April 04, 2016 were approved on a motion by Williamson seconded by Reisch, declared carried on a voice vote.

Motion by Boyenga, seconded by Thompson, to approve the consent agenda, declared carried on a voice vote.

1. Building lease with SWHHS for 2016

Beverly Herfdal, Greater Minnesota Transit Program Coordinator and Cathleen Amick, Western Community Action (WCAP) Transportation Director discussed services currently provided by WCAP as well as what services they could provide to Rock County. After the presentation and questions from the commissioners, motion by Hoime seconded by Boyenga to approve Resolution No. 14a-16, authorizing Rock County to study transit delivery/administration options with WCAP, motion declared carried on a voice vote.

Sheriff Evan Verbrugge informed the County Board that he is certified in Integrated Public Alert Warning System (IPAWS), and that his office is one of the few in the region with this designation; he also reviewed the capabilities of the system.

Jenny Gieseke, Board of Water and Soil Resources Performance Review and Assistance Program Coordinator, Eric Hartman, Land Management Office Director and Doug Bos, Land Management Office Assistant Director attended the board meeting to present the results of the recent level II Performance Review. The office was commended for meeting 9 of 12 high performance standards for counties and 10 of 14 high performance standards for SWCDs. The following (5) recommendations were presented to the County Board:

1. Use the major or minor watershed scale for plan organization in the next water management plan
2. Use Prioritized, Targeted and Measureable criteria for goals and objectives in the next water management plan
3. Structure website information to report progress and share success
4. Conduct a detailed analysis of organizational structure and staffing needs
5. Create training plans for each staff member based on staffing assessment results, and take advantage of training opportunities as they arise

The Land Management office was given 30 days to respond the recommendations.

Doug Bos then presented the One Watershed One Plan which is the next generation of water planning, doing so on a larger scale focusing in on watersheds as boundaries instead of county lines, following the presentation the county board adopted resolution 13-16 supporting our involvement in the Missouri River Basin Watershed One Plan project motion to adopt Williamson seconded by Hoime carried on a voice vote.

Motion by Boyenga, seconded by Reisch to authorize signature of the County Board Chair on the 2015 feedlot report, declared carried on voice vote.

Eric Hartman presented (2) conditional use permits for approval:

1. Motion by Hoime, seconded by Williamson, to approve a conditional use permit for Vernon and Gloria Brouwer to operate a dog kennel in section 4 Rose Dell Township with conditions identified on the permit, carried on a voice vote.
2. There was considerable discussion regarding a conditional use permit for Reker Construction for a gravel extraction operation located in the NE 1/4 of Section 26 of Clinton Township; the adjoining

landowner presented a number of concerns about the permit regarding future water quality in a shallow aquifer. After the discussion, motion by Williamson to approve the conditional use permit; the motion failed for lack of second. After additional discussion, motion by Hoime, seconded by Williamson, to approve the conditional use permit, declared carried on a voice vote.

Don Klosterbuer, County Attorney, presented information regarding the Aggregate Material Removal Production Tax MN statute 298.75; Rock County has been informed that Pipestone County has adopted the Aggregate Material Tax and as a result the exemption rate from special legislation for Rock County will be terminated. As a result, the new rate for Aggregate Tax will be 21.5 cents per cubic yard or 15 cents per ton of aggregate material. Motion by Boyenga, seconded by Thompson, to postpone the collection of the new rate until January 1, 2017 to allow pit operators to notify patrons and honor existing contracts, declared carried on a voice vote.

Mark Sehr, Public Works Director, presented Resolution No 12-16, an agreement with the state transportation fund for local bridge replacement program for project SP 067-615-009; motion by Boyenga, seconded by Reisch to approve declared carried on a voice vote.

Ashley Kurtz, Auditor Treasurer, presented claims; motion by Thompson, seconded by Williamson to approve, declared carried on a voice vote.

Claims over \$2,000:

A. C. E. of Southwest MN	3,753.75
American Communications Inc	2,743.40
Canfield Business Interiors	5,953.75
CHS Eastern Farmers Coop	4,170.30
Computer Professionals Unlimited	5,956.30
Expressway-Luverne	4,301.80
Graham Tire-Worthington	3,537.92
Hildi Inc.	2,250.00
Honken Construction Inc	2,087.50
Ketterling Services, Inc.	7,302.18
City of Luverne	25,271.85
Lyon County Landfill	16,007.50
MN Counties Computer Coop	5,636.44
Nobles Co Auditor/Treasurer	5,084.65
Rock Co Auditor/Treasurer	3,915.00
Rock County Opportunities	2,490.10
Southwest Health & Human Services	20,643.31
Stonebrooke	2,699.42
Tolletson Publishing	6,302.10
Vander Stoep Furniture Inc.	2,092.00
Ziegler Inc.	9,792.16
109 payments less than 2,000	47,322.61
Total	\$189,314.04

Fund balances were accepted and approved on a motion by Boyenga, seconded by Reisch, declared carried on a voice vote.

The Auditor/Treasurer presented a request to authorize a grace period for adoption of an updated Procurement Policy until December 31, 2016; motion by Boyenga, seconded by Thompson, to authorize the grace period, carried on a voice vote.

Administrator Oldre reminded the members of the Ditch Board that there would be a meeting on Friday, April 22nd at the Judicial Ditch site location.

Commissioner Williamson updated the County Board that he had been meeting with construction staff from Alliance regarding the fiber build-out.

Commissioner Hoime informed the County Board that he had attended an Extension meeting and City/County Liaison Meeting.

Commissioner Boyenga requested the County Board discuss the County Tax Abatement Policy at its next meeting, and that he has received some calls regarding township roads and he referred the callers to the township boards.

Commissioner Thompson informed the County Board that she had attended a Regional Development Commission meeting and that there are concerns regarding Wind Production Tax changes that are being discussed in the Minnesota State Senate, she also had discussions with Regional DNR staff about the Blue Mound State Park Dam.

Commissioner Reisch informed the County Board he had attended a meeting regarding transit, state broadband meeting and the city county liaison meeting. With no further business the meeting was declared adjourned.

(06-09)

**Don't move firewood!**  
Emerald ash borer can live in firewood for up to two years!

Minnesota Department of Agriculture  
mda.state.mn.us/firewood

**Walnut AMVETS Wants You!!**  
**34th Annual Walnut Antique Show**  
**June 17-19, 2016**  
Walnut AMVETS's Post #45 • PO Box 746, Walnut, Iowa, 51577  
Free Parking 712-784-3710 Free Admission  
**300+ QUALITY DEALERS • 17 CITY BLOCKS**  
Located about 50 miles east of Omaha, NE, and 90 miles west of Des Moines, IA, at exit 46 of Interstate 80.  
[www.walnutantiqueshow.com](http://www.walnutantiqueshow.com)

**Psychic Medium & Author**  
**John Edward**  
Sept 29<sup>th</sup>, 2016 - 7:00PM  
Courtyard by Marriott • Fargo/Moorhead, MN  
Sept 30<sup>th</sup>, 2016 - 7:00PM  
Crowne Plaza MSP Airport • Minneapolis, MN  
Get Tickets TODAY! **1 (800) 514-3849**  
[JohnEdward.net](http://JohnEdward.net) or [ETix.com](http://ETix.com)  
(A Reading Not Guaranteed)

**News for all ages.**  
[www.star-herald.com](http://www.star-herald.com)

## RENTALS

For Rent in Luverne: three-bedroom house. Near schools. \$675 per month plus deposit. Call 507-227-5103. (5.19-6.5)

For Rent: three-bedroom house with three garages, stove, refrigerator, dishwasher furnished. References required. Deposit \$650. Rent is \$650 a month. No pets. Call 507-227-3061. Available June 1. (tc)

**STONE CREEK TOWNHOMES**

**3 BR available 7/1**

Income based rent. Includes water, sewer, trash.

Income restrictions apply. Tim: 507-220-0757

LloydManagementInc.com  
Equal Housing Opportunity

**ROCK CREEK TOWNHOMES**

**3 bedroom available now!**

\$600/month

Includes water, sewer, trash. Income restrictions apply. Pam: 507-283-4746

LloydManagementInc.com  
Equal Housing Opportunity

**Oakwood Apartments**

401 Oak St., Ellsworth

**• 1 Bedroom Unit Available**

Unit Available  
Water, Sewer & Garbage Included.

Rent Based on Income  
**AVAILABLE IMMEDIATELY**

**Van Binsbergen & Associates, Inc.**  
320-269-6640 ext. 22

Equal Housing Opportunity

[www.vanblc.com](http://www.vanblc.com)

Interested in Advertising in the Classifieds?

**IT'S EASY!**

Call **283-2333**

## CARDS OF THANKS

A simple note of appreciation cannot express our gratefulness in all of the support and comfort extended to our family after the loss of Gary Berndt. We deeply appreciate your expression of sympathy, thoughts, gifts and prayers through this time. We Also wish to extend a special thank you to Chaplin Tom Vogt as well as Dan and Jordan Dingmann for their impeccable service. The family would also like to convey sincere gratitude to all extended family and friends for the offering of your love and support during this difficult time. You were all a blessing.

**From George Berndt  
Terry Berndt and family  
Brenda Berndt and family  
Trevor Berndt and Barbara Freeman**  
(6.9-6.12)

The family of Robert (Bob) Olson would like to thank the staff at the Tuff Home, Jeff Hartquist and staff and the Beaver Creek firemen. Thank you to Pastor Mike Blank and the Beaver Creek Presbyterian Church, as well as the ladies that served the lunch. Thanks to everyone for their kind words, food, and cards. It was very much appreciated.

**The family of Bob Olson**  
(6.5-6.9)

My thanks to all of the wonderful people at Sanford-Luverne for the care I received while a surgical patient. We are blessed to have such a great place here in Luverne for our health needs.

**Evelyn Reyne**  
(6.5-6.9)

We would like to thank our friends and relatives for the kindness you showed to our mother during her illness. Thank you for your good wishes and help that everyone showed during mom's passing. We do appreciate it all so very much.

**The family o Olga Thorson  
Gabrielson  
Jeff Thorson  
Jack and Pam Hommen and Family**  
(6.5-6.9)

Thank you for your kindness and sympathy at a time when it was deeply appreciated

**The Family of Daryl Reese**  
(6.5-6.9)

## GARAGE SALES

Rummage Sale: 1015 N. Blue Mound. Friday June 10th 4-7 Saturday June 11th 7-12. Clothes for kids through adults. Chromcraft table with five chairs, like new elliptical, hutch, quilt rack, lots of decor items, books, porcelain dolls, and an electric stove. (6.5-6.9)

Mom that likes to shop: Boys clothes 6 month - 2T, girls clothes 2T- 7/8, kids shoes, toys, kids books, Pack N Play, Boppy Pillow, girls crib bedding, Women's clothes L-plus size, men's clothes, women's and men's shoes, knick-knacks, partylite items, purses/bags. June 9th-11th. Thursday 10-7, Friday 9-5, Saturday 8-12. 718 N. Spring. (Garage behind the house) (5.29-6.9)

## AGRICULTURAL

Custom large square bailing. Alfalfa, grass, or straw. No job too far. Call David Kramer at 507-967-2140 or 507-360-9963 (tc)

We have several crews of rock pickers and we also do any type of farm work. Call 712-943-2084. (tc)

## WINDOWS

We custom build and install Energy Star Therm-O-Loc Windows. Call Mike at Adrian Glass for a free in-home demonstration and estimate. 101 E. Pearl, Adrian, MN 56110. 507-483-2228 or 605-770-7677 or email mbyler@santel.net. (tc)

## CHILD CARE

Daycare: Licensed daycare has openings available for ages ranging from 12 months to 11 years of age. Please call 507-920-8449 for more details. (tc)

## WANTED

Buying old cars, trucks, scrap iron, old farm equipment, tin, wire. Ericksen Salvage, Charlie Ericksen, 605-254-4654. (tc)

## MISCELLANEOUS

HAVE A UNIQUE SERVICE OR BUSINESS? Get the word out to over 1.4 million households. Call WIDE AREA CLASSIFIEDS today, 507-359-7326. (tc)

## EMPLOYMENT

Southwestern Youth Services in Magnolia, MN is hiring for a part-time cook position. Paid holidays, days mat vary, shifts may vary. Standard shift runs from 1:00 pm - 6:00 pm. Must be 21 years old and have a high school diploma. Send application or resume to PO Box 40 Magnolia, MN 56158 or stop by for an application. For further information, contact Don or Jeremy at 507-283-4425. (6.5-6.23)

Cook/Dietary Aide: Part-time 12-7pm. Wages \$11.50. MN PERA retirement plan. Contact Mike Werner at Parkview Manor, 308 Sherman Ave, Ellsworth, MN 56129 or call 507-967-2482. (6.2-6.19)

Activity Aide: Parkview Manor is seeking a part-time aide to help with resident activities. Wage commensurate with experience. Contact Mike Werner at 308 Sherman Ave. Ellsworth, MN 56129 or call 507-967-2482. (6.2-6.19)

## SON-D-FARMS ADRIAN

is hiring General Farm, Hog, Field Work, Truck Driver, Maintenance person, Farm Shop Mechanic & Farm Delivery Person. Experience wanted but willing to train. PTO benefits. Call (507) 483-2245, 370-1590 or e-mail office@sondfarms.com

The Tuff Memorial Home has a need for a full-time **Cook and Maintenance Supervisor**. Experience preferred but will provide training if necessary. If interested, contact Alex Dysthe at 507-962-3275 or email adysthe@tuffmemorialhome.com.

**Full Benefits  
Competitive Wage  
Pension Plan  
Friendly Atmosphere**



**TUFF MEMORIAL HOME**  
"A Home With a Heart"

**MAKE THE WISE CHOICE**



**RECYCLE THIS NEWSPAPER!**

## EMPLOYMENT

Nursing Assistant: Parkview Manor has openings for part-time nursing aides with benefits to include: health insurance, public retirement plan, and holiday pay. New wages \$11.90/ hr. or more with experience. \$2000 scholarships available for students. Will provide training or pay for experience. Contact Darnell Krull, 308 Sherman Ave. Ellsworth, MN 56129 or call 507-967-2388. (tc)

Help Wanted: Loosbrock Digging Service, Inc. is looking for a shop laborer to assist in miscellaneous shop work and lawn care including mowing and gardening. Starting wage is \$15.00/hr. Please call 507-472-8448 for more information and instructions on how to apply. (5.22-6.9)

We are a small custom cabinet shop near Hills, MN and are looking for professionals to join our close knit team. We serve Sioux Falls and the surrounding area. Applications are being taken for cabinet making, finishing, assembly, and delivery. A combination

## EMPLOYMENT

of these is desired but not required. If you are punctual, experienced, and have the desire to excel in this craft, please apply! Contact Dennis or Tim at 507-962-3105. (tc)

Registered Nurse/LPN- Parkview Manor, a municipal skilled nursing facility is accepting applications for a part-time charge nurse position. Wages commensurate with experience. \$2000 scholarship available for students. Benefits include vacation, holiday, and PERA retirement plan. Contact Darnell Krull 308 Sherman Ave., Ellsworth, Mn 56129 or call 507-967-2482 (tc)

Nursing Assistant-Parkview Manor has openings for full-time nurse aides with benefits to include: health insurance, public retirement plan, and holiday pay. Part-time positions also available. New Wages \$11.90/hr. \$2000 scholarships available for students. Will provide training or pay for experience. Contact Darnell Krull, 308 Sherman Ave., Ellsworth, MN 56129 or call (507) 967-2388. (tc)

## NEED EXTRA CASH?

Luverne Announcer Carriers needed for **LIVERNE**

Call **283-2333**

or stop in at the Announcer office (ask for Jen)

## HELP WANTED

Payroll/Bookkeeper/General Office Assistant

Join a multi-professional CPA firm in Luverne, Minnesota. We are looking for an individual who is organized, detail-oriented, self-motivated and flexible.

Payroll, computer and calculator experience preferred. Responsibility to perform a wide variety of assignments and strong communication skills necessary.

Please mail resumes to:

Meulebroeck, Taubert & Co., PLLP  
PO Box 685  
Luverne, MN 56156

Deadline: June 30, 2016

**Meulebroeck, Taubert & Co., PLLP**



**GRANDSTAY HOTEL & SUITES**

GRANDSTAY HOTEL & SUITES of Luverne is currently seeking applicants for the following positions:

- General Manager (Full-Time)
- Front Desk (Part-Time)
- Housekeeper (Part-Time)

APPLY NOW in person or online at [www.morrisseyhospitality.com/careers](http://www.morrisseyhospitality.com/careers).

Please be sure to include a copy of your cover letter and resume.

**GRANDSTAY HOTEL & SUITES**  
of Luverne  
908 S. Kniss Avenue  
Luverne, MN 56156  
Phone: 507-449-4949

Keep up with what's happening in Rock County  
[www.star-herald.com](http://www.star-herald.com)



**MCAN**

Minnesota Classified Advertising Network



## EMPLOYMENT

**PRESS OPERATOR WANTED**  
for a Goss Community 6-Unit Web Press. Call Moberge Tribune, Moberge, SD at 800/594-9418

## HELP WANTED - DRIVERS

**NOW HIRING**  
Company OTR drivers. \$2,000 sign on bonus, flexible home time, extensive benefits. Call now! Hibb's & Co. 763/389-0610

## CDLA DRIVERS

\$7,500 sign-on-bonus. Medical benefits on day 1 & earn \$65k+ your first year!!! Guaranteed pay. Profit sharing, 401k with company match & more! Apply online: [driveformcane.com/goto/minnesota](http://driveformcane.com/goto/minnesota) or call Hollie now! 507/664-3038

ONLY \$279 to reach a statewide audience of 3 million readers!!! 1-800-279-2970

## BUSINESS OPPORTUNITY

**CONTRACT SALESPERSON**  
selling aerial photography of farms on commission basis. \$4,225.00 first month guarantee. \$1,500-\$3,000 weekly proven earnings. Travel required. More info [mphotosd.com](http://mphotosd.com) or 877/882-3566

## FARM EQUIPMENT

**OUR HUNTERS**  
will pay Top \$\$\$ to hunt your land. Call for a free Base Camp Leasing info packet & quote: 866/309-1507 [www.BaseCampLeasing.com](http://www.BaseCampLeasing.com)

## MISCELLANEOUS

**STOP OVERPAYING FOR YOUR PRESCRIPTIONS!**  
Save up to 93%! Call our licensed Canadian and International pharmacy service to compare prices and get \$15.00 off your first prescription and free shipping. Call 800/259-1096

## MISCELLANEOUS

**PROTECT YOUR HOME**  
with fully customizable security and 24/7 monitoring right from your smartphone. Receive up to \$1,500 in equipment, free (restrictions apply). Call 800/203-6905

## GOT KNEE PAIN?

Back Pain? Shoulder Pain? Get a pain-relieving brace - little or no cost to you. Medicare patients call health hotline now! 800/755-6807

## DONATE YOUR CAR

to Heritage For The Blind. Free 3-day vacation, tax deductible, free towing, all paperwork taken care of 800/439-1735

## DISH TV

190 channels plus High-speed Internet Only \$49.94/mo! Ask about a 3-year price guarantee & get Netflix included for 1 year! Call Today 800/297-8706

**CITY OF LUVERNE**

## WATER/WASTEWATER OPERATOR

Entry level position to become an operator skilled in the technical work needed to operate, maintain and repair process, control and support systems at the City of Luverne Water/Wastewater Treatment Facilities. Full-time, union position, excellent benefits package, starting salary range of \$14.42-\$19.98/hour (DOQ). Min. Req.: high school diploma or equivalent, 10 mile response area requirement must be met within 6 months of hire, must possess a MN Class A CDL with tanker endorsement or able to obtain one within 12 months of hire, satisfactory driving record, and must meet Federal DOT regulations.

See job description for qualifications & further details.

Applications available at: City Offices, 305 E. Luverne St., Luverne, MN 56156; (507) 449-9898; or at [www.cityofluverne.org](http://www.cityofluverne.org)

**Applications must be received by 4:30 p.m. on Friday, June 24, 2016**  
The City of Luverne is an Affirmative Action/Equal Employment Opportunity Employer.