



# Rock County STAR HERALD

Rock County's oldest business, printing since 1873

Thursday, March 31, 2016

## Sharkee's and Mert's Repair to be demolished for future development

### Mert's Machine and Repair sells current property to city, Kracht buys new city lot on Gabrielson Road for biz expansion

**By Lori Sorenson**

The Sharkee's property on South Highway 75 and the adjacent Mert's Repair property on Hatting Street may be combined into a single tax increment financing district to encourage future development.

Luverne City Council members took action on this TIF plan during their March 22 meeting.

Sharkee's bar and restaurant has been closed since April 2014 when health code violations, mainly basement sewage backup, forced its shutdown.

Then on May 26, 2014, the build-

ing suffered damage from a fire reportedly set by arsonists.

The arson remains under investigation by state and local officials but is essentially a cold case.

Meanwhile, the property has fallen into further disrepair, and property owner Dave Halverson has reportedly ignored notices of building code violations in April 2014 and April 2015.

As such, city charter and state law allows the city to acquire the property through condemnation proceedings, which were set in motion September 2015.

**Two parcels, one TIF district**

As city officials considered ways to encourage new development in that blighted area, they also approached Marlin "Mert" Kracht of Mert's Machine and Repair about including his property in those development plans.

Kracht has been working with planning and zoning officials about a business expansion on his current lot east of Sharkee's along Hatting Street, namely adding on to his current shop.

But since that area is zoned

**Sharkee's, Mert's TIF/see page 8A**



The Sharkee's property on South Highway 75 and the adjacent Mert's Repair property on Hatting Street may be combined into a single TIF district.

## Local officials concerned over new USDA office

**By Mavis Fodness**

Plans to move two federal service offices to a new location in Luverne has Rock County officials concerned about the impact on area farmers.

The Farm Service Agency and Natural Resources Conservation Service lease space in a privately owned building on Gabrielson Road.

Rock County's Land Management Office is also housed in the same complex creating a "one-stop shop" for area landowners and producers.

On Friday county commissioners, LMO representatives and SWCD supervisors met with two USDA officials about keeping the three entities at the same location.

"It's critical that we stay together," said County Administrator Kyle Oldre.

Two decades ago the county's environmental services and soil and water conservation district merged into a single entity. The combined staff eliminated task duplications and provided better customer service.

"We wanted that same producer to be able to walk into one building and answer all of his or her questions at one stop," Oldre said.

For more than a decade LMO has worked with the two federal agencies in the same one-stop service environment.

The three have conducted joint monthly meetings, shared training and software resources and have

**USDA office/see page 3A**



## Celebrating state and national parks

This year is the 125th anniversary of Minnesota state parks and the 100th anniversary of America's national parks

Lori Sorenson photo/0331 prairie photo contest

Photo entries will be accepted each month from May through October 2016, and each monthly winner will receive a \$50 cash prize. Winning photographs will be used to create postcards that will be sold to raise money for programming at the Blue Mounds State Park and Touch the Sky Prairie.

## Photographers encouraged to enter Prairie Photo Contest

**By Lori Sorenson**

Area photographers of all ages and abilities are invited to participate in the upcoming Prairie Photo Contest sponsored by the Luverne Convention and Visitors Bureau.

"We're trying to encourage people to get out and enjoy the prairie," said Luverne Chamber Director Jane Wildung Lanphere, who also serves on the CVB.

She said the Prairie Photo Contest is a way to celebrate the 125th anniversary of Minnesota state parks and the 100th anniversary of America's national parks.

Here's how the contest works:

The CVB will accept photo entries each month from May through October 2016, and each monthly winner will receive a \$50 cash prize. The winning monthly photograph will then

be used — along with the other monthly winners — to create postcards that will be sold to raise money for programming at the Blue Mounds State Park and Touch the Sky Prairie.

Contest entrants may be amateur or professional, but the CVB will retain the rights to use the winning images for the postcard promotion.

**Prairie Photo Contest/continued on page 2A**

## County hires deputy-dispatcher

### Hybrid position seen as model for other county departments

**By Mavis Fodness**

County commissioners and union representatives have approved a combined deputy/dispatcher position within the Rock County Sheriff's Office.

The move may save the department as much as \$25,000 in annual costs.

Last month, County Administrator Kyle Oldre brought the hybrid proposal to the county's personnel committee when a current part-time deputy applied and was the best candidate for a full-time dispatcher opening.

"We discussed having this deputy — instead of taking a full-time dispatch job — become a hybrid," Oldre said.

Deputy Lee Christians was open to filling both positions as a full-time county employee. "The main reason I was open was because I would stay working here," he said in an interview last week.



Mavis Fodness photo/0331 Hybrid Deputy Dispatcher

Lee Christians is the first dispatcher/deputy under a hybrid full-time position arrangement within the Rock County Sheriff's Office.

For the past four years, Christians was a part-time deputy in Rock County as he worked the family farm with his parents,

Ron and Ava Christians, of rural Kenneth. Prior to returning

**Deputy-dispatcher/see 2A**

## Local townships targeted for nitrate testing in private wells; water kits mailed this week

**By Lori Sorenson**

The quality of drinking water is important for every rural well owner, and nitrate is one of the most common ground water contaminants found in rural areas.

Drinking water with high nitrate concentrations can cause serious health effects in infants, and the presence of nitrate may indicate other contaminants in water.

The Rock County Soil and Water Conservation District is assisting rural well owners in testing their water for nitrates through a partnership with the Minnesota Department of Agriculture.

Several townships in Rock County have been targeted for testing, due to the type of geology and depth of groundwater in these areas.

They include Rose Dell, Battle Plain, Mound, Vienna, Luverne, Magnolia and

*In all, 930 wells are eligible for testing in these areas, and well owners this week received information in the mail about free nitrate sample kits that will be mailed to them April 1.*

Clinton townships. The Nobles County townships of Lismore, Westside, Olney and Grand Prairie are also targeted.

These townships have vulnerable access to the aquifer and a high proportion of land in row crop production.

In all, 930 wells are eligible for testing in these areas, and well owners this

**Well test kits/see page 8A**



Opinion Page 4A Sports 2B  
Obituaries Page 7A Public notices 4B

Volume 141, Number 14

Luverne, MN 56156 USPS 468-040

[www.star-herald.com](http://www.star-herald.com)

How to reach us

507-283-2333 PO Box 837

editor@star-herald.com Luverne, MN 56156



## COMMUNITY CALENDAR

### Meetings

**Kenneth Cemetery Association** will host an informational meeting at 10 a.m. Saturday, April 2, at the Kenneth Community Center. This meeting is for all who have loved ones buried in the Kenneth Cemetery.

**Blue Mound Quilters** will meet at 7 p.m. Monday, April 4, at the Rock County Public Library. Mary Akkerman will do a demonstration. All quilters are invited.

**Pleasant View Cemetery Association** annual meeting will be at 7 p.m. Monday, April 4, at the home of Richard and Ruth Opsata at 110 West Luverne Street. For more information contact Jan Nuffer at 507-855-2266.

**Springwater Township Board** will hold their regular monthly meeting at 7 p.m. Tuesday, April 5, at the home of Teresa Kramer.

**Luverne Lady Red Hats** will meet for lunch at Sterling's Café at 11:30 a.m. Friday, April 8. Contact Kay Umbreit at 507-283-2778 to RSVP by Tuesday, April 5.

**Beaver Creek Township Board of Appeal and Equalization** will meet at 11 a.m. Monday, April 11.

**Tourist Club** will meet at 7 p.m. Tuesday, April 12, at the home of Connie Lindbloom.

**Al-Anon** meets from 6:30 to 7:30 p.m. Wednesdays in the Buffalo Ridge Meeting Room (lower level) in Sanford Luverne. Call Stephanie at 507-449-1246.

**Narcotics Anonymous** meets at 7 p.m. Fridays and for basic text study at 7:30 p.m. Tuesdays in the basement of St. Catherine Catholic Rectory, 203 E. Brown St., Luverne. Use east door. For more information call 507-220-0137.

**Alcoholics Anonymous** meets at 8 p.m. Wednesdays and Saturdays in the United Methodist Church, Luverne. Call 605-321-4324.

**Alcoholics Anonymous and Al-Anon** meet from 8 to 9 p.m. every Thursday in Runals Memorial Hall, Edgerton. Call Naomi, 507-215-2956, with questions.

### Grace Lutheran hosts blood drive

Grace Lutheran Church in Luverne will host a Red Cross blood drive from 1-7 p.m. Monday, April 4. The double red cell machines will be available. To make an appointment to donate, download the free Red Cross **Blood Donor App**, visit [redcrossblood.org](http://redcrossblood.org) or call 1-800-733-2767.

### Luverne Kindergarten Round-Up

Luverne Kindergarten Round-Up will be Thursday, March 31, at the Luverne Elementary School. Session one is geared toward new kindergarten parents and will begin at 5:30 p.m. Session 2 is an informal meet and greet time and will run from 6:30 p.m. to 7 p.m. Children must be five years old before Sept. 1, 2016, in order to register for kindergarten. Contact the 507-283-4497 with questions.

### 'I STILL Do' Marriage Enrichment

Couples are welcome to join FamilyLife from 9 a.m. to 5 p.m. Saturday, April 2, at the Living Rock Church in Luverne to affirm the fundamental importance of a strong, healthy, committed marriage in every culture. Couples will have a chance to reaffirm that their marriage matters to both their children and the rest of society. Lunch will be catered by The Bluestem. Cost is \$40 per couple.

### Grief support group begins April 4

Sanford Luverne Hospice will offer a five-week Grief Support Group beginning April 4. Meetings will be Mondays from April 4 to May 2 from 5-6:30 p.m. at Sanford Luverne Medical Center in the Blue Mound Room. Register by calling the Hospice office at 507-283-1805.

### Bible Study Fellowship April 5

A Bible Study Fellowship group for women meets Tuesdays at 6:45 p.m. in the American Reformed Church, Luverne. Tuesday, April 5, is guest night. Those interested in learning more about BSF and those interested in registering for the Fall 2016 study of the Book of John are invited to attend. Email Brenda at [Brenda@myhrestudio.com](mailto:Brenda@myhrestudio.com) with questions. See also [bsfinternational.org](http://bsfinternational.org).

### 'Alvin and the Chipmunks' April 7

The free Bank Nite movie, "Alvin and the Chipmunks: The Road Chip," rated PG, will begin at 6 p.m. Thursday, April 7, at the Palace Theatre in Luverne.

Sponsored by First Farmers & Merchants National Bank and Papik Motors, a free, family-friendly movie is shown on the first Thursday of every month as it was done for "Bank Nite" in the 1930s. A cash prize drawing will follow the movie. Must be present to win.



Lori Sorenson photo/0331 prairie photo contest

Photographs submitted for the Prairie Photo Contest may be new images or selections from existing portfolios, but they must all be digitally submitted with a resolution of 300 pixels per inch or greater. Individuals may submit up to five images per entry per month. Submissions should be emailed on or by the first day of each month to [luvernechamber@co.rock.mn.us](mailto:luvernechamber@co.rock.mn.us).

## Prairie Photo Contest/continued from page 1A

All photographs not selected as winners in the monthly judging will be retained in the pool of photos to be considered in the following month's judging.

Photographs may be new images or selections from existing portfolios, but they

must all be digitally submitted with a resolution of 300 pixels per inch or greater.

Individuals may submit up to five images per entry per month.

Submissions should be emailed on or by the first day of each month to

[luvernechamber@co.rock.mn.us](mailto:luvernechamber@co.rock.mn.us).

The photographer's name, address, phone number and email should be submitted with each entry, along with the title of the entry.

Lanphere said the Prairie Photo Contest is a fitting way

to celebrate parks and to capture the beauty of the local prairie parks.

"We hope it's something the community can envision being part of," she said.

Lanphere can be reached at 283-4061 with questions.

## Deputy-dispatcher/ continued from page 1A

home, the 2001 graduate of Southwest Christian High School in Edgerton was a peace officer in Sioux Falls.

Christians and his wife, Dawn, and their two young children currently live near Leota.

The County Board approved the idea of a deputy/dispatcher position Feb. 16 and recently received approval from union representatives earlier this month.

Christians is already in his new position and has begun dispatcher certification training.

The hybrid position becomes a possible tool to keep part-time deputies on the force.

The sheriff's department has hired 14 part-time deputies during the past nine years. The part-time deputies, including last year's hiring of Kyle Watkins, leave the department when full-time positions open elsewhere.

Sheriff Evan Verbrugge estimated Christians' schedule would be 75 percent deputy and 25 percent dispatcher.

The flexibility would aid other employees in both positions with their own schedules.

"It helps other officers in their ability and, dispatchers in their ability, to take time off without having their vacations denied," Oldre said.

Christians would assist in covering open shifts created by vacations, sick leaves and officer trainings, as well as help lower the department's annual overtime costs.

His yearly salary plus benefits was approved at \$59,327.

Success of the department's hybrid position may be duplicated in other county departments.

Commissioner Ron Boyenga said, "This may set the stage for future hires as a model."

## Farm Storage Facility Loans available through Farm Service Agency

The Farm Service Agency's Farm Storage Facility Loan (FSFL) program provides low-interest financing to producers to build or upgrade storage facilities.

Producers do not need to demonstrate the lack of commercial credit availability to apply. The loans are designed to assist a diverse range of farming operations, including small and mid-sized businesses, new farmers, operations supplying local food and farmers markets, non-traditional farm products and underserved producers.

The funds can be used to build or upgrade permanent facilities to store commodities.

Eligible commodities include corn, grain sorghum, soybeans, oats, wheat, barley, minor oilseeds harvested as whole grain, pulse crops (lentils, chickpeas and dry peas), hay, honey, renewable biomass, fruits, nuts and vegetables for cold storage facilities, floriculture, hops, maple sap, rye, milk, cheese, butter, yogurt, meat and poultry (unprocessed), eggs and aquaculture (excluding systems that maintain live animals through uptake and discharge of water). Qualified facilities include grain bins, hay barns and cold storage facilities for eligible commodities.

Loans up to \$50,000 can be secured by a promissory note/security agreement and some loans between \$50,000 and \$100,000 will no longer require

additional security.

The maximum principal amount of a loan through the program is \$500,000. Participants are required to provide a down payment of 15 percent, with the Commodity Credit Corporation (CCC) providing a loan for the remaining 85 percent of the net cost of the storage facility, including any permanent drying or handling equipment. Loan terms of seven, ten, or twelve years are available depending on the amount of the loan. Interest rates for each term will be different and are based on the rate which CCC borrows from the U.S. Treasury Department. Current interest rates are between 1.625 and 2.0 percent, depending on the length of the loan.

A Farm Storage Facility Loan must be approved before any site preparation or construction can begin. This is very important since the County Committee is unable to approve a loan request without first obtaining concurrence from the State Committee if either site preparation has begun or materials have been delivered to the site prior to the loan being approved.

To learn more about FSA Farm Storage Facility Loans, visit [www.fsa.usda.gov/pricesupport](http://www.fsa.usda.gov/pricesupport), or contact the Rock County FSA Office at (507) 283-2369.



# Dial-A-Specialist

## Your One Stop Guide to Local Businesses

 <p><b>ROCK COUNTY CHIROPRACTIC</b> • Men, Women &amp; Children's Health • Custom Orthotics • Kinesiotape • Athletic Care • Massage Therapy • Work &amp; Auto Injuries • Postural Restoration <a href="http://WWW.ROCKCOUNTYCHIROPRACTIC.COM">WWW.ROCKCOUNTYCHIROPRACTIC.COM</a> 283-2561 • 103 E. MAIN, LUVERNE Monday 7:30 a.m. - 6 p.m. • Tuesday 7:30 a.m. - 3 p.m. Wednesday 7:30 a.m. - 6 p.m. • Thursday 7:30 a.m. - 1 p.m. Friday 7:30 a.m. - 5 p.m.</p> <p><b>• Chiropractic</b></p>	 <p><b>STAR HERALD</b> <b>Luverne ANNOUNCER</b></p> <p><b>Chantel Connell</b> Sales Representative</p> <p>117 W. Main, Luverne, MN <b>507-283-2333</b></p>  <p><b>Rick Peterson</b> General Manager</p> <p><b>• Advertising</b></p>	<p><b>LUVERNE HEALTH &amp; WELLNESS</b> Codie Zeitelhorst, DC Chiropractic Care</p> <p>✓ Family Care ✓ Sports Injuries ✓ Kinesiotape ✓ Auto &amp; Work Injuries <b>Massage Available 5 Days A Week</b> Kris Van Der Brink M.T. &amp; Amy Rosales M.T. <a href="http://www.luvernechiro.com">www.luvernechiro.com</a> 109 S. Freeman Ave., Luverne MN <b>507.449.4400</b></p> <p><b>• Chiropractic</b></p>	<p><b>COMRAY COMPUTERS</b> Computer Repair and System Builders Ray Hansen - 1726 140th Ave., Luverne, MN 56156 • <b>507-669-2621</b> Mark Stewart - Lismore, MN 56155 <b>507-472-8479</b> or email us at <a href="mailto:comraycomputers@myclearwave.net">comraycomputers@myclearwave.net</a></p> <p><b>• Computer</b></p>
 <p><b>Rock County EYE CLINIC</b> <b>507-283-2345</b> 102 N. Freeman Ave. Luverne, Minnesota</p> <p><b>• Eye</b></p>	 <p><b>Papik MOTORS</b> 1-90 Luverne, MN Box 536 • 801 West Commerce Road Luverne, MN 56156</p> <p>(507) 283-9171 (800) 634-7701 <a href="http://www.papik.com">www.papik.com</a></p> <p><b>• Automotive</b></p>	<p><b>Luverne MINNESOTA City Offices</b> <i>Love the life!</i></p> <p>PO Box 659, Luverne, MN 56156 507-449-2388 (24 hour voice mail) <a href="http://www.cityofluverne.org">www.cityofluverne.org</a></p> <p><b>• City</b></p>	<p>Dakota Land Surveying and Engineering, Inc.</p>  <p><b>Steven B. Kor</b> Professional Engineer Registered Land Surveyor</p> <p>2000 W. 42nd Street, Suite B-6 Sioux Falls, SD 57105 605-334-4882 605-334-5745 Fax</p> <p>506 Almar Luverne, MN 56156 507-283-3803 <a href="mailto:steve.dis@midconetwork.com">steve.dis@midconetwork.com</a></p> <p><b>• Land Surveying</b></p>



# Thursday night comeback

Retail marketing group brings live music to Main Street on fourth Thursday to fill out final Thursday night on monthly calendar

By Lori Sorenson

It was once a popular pastime to spend Thursday nights on Main Street in Luverne when businesses were open late and community members came downtown to shop and socialize.

Business owners and local leaders are working to restore that pastime by creating additional reasons to be downtown Luverne on a Thursday night to support commerce.

At their March 22 meeting, City Council members approved a request by the Luverne Retail Marketing Group to temporarily close off parking spaces downtown on the fourth Thursday night of each month. The closures are from May through August to accommodate live music and outdoor seating.

The temporary closures will be from 4:30 to 9:30 p.m. with live acoustic music playing from 5 to 9 p.m.

The parking closures will be on the north side of Main Street from Sterling's to approximately Reborn Furnishings and on the south side of Main Street in front of Pizza Ranch.

The parking areas will be sectioned off by cones, and

the activity won't block traffic traveling both directions on Main Street.

Luverne Area Chamber Director Jane Wildung Lanphere attended the March 22 meeting to answer questions about the parking closure request.

Councilman Eugene Marshall asked how seating would work in the parking areas.

"We would actually use seating on the sidewalks, and we wouldn't block traffic," Lanphere said.

"The Retail Marketing Group sees this as a way to build traffic downtown.... The idea is to build community success on Thursday night by having something going on every Thursday night to keep that going."

She said the Palace Theatre has its free Bank Night movies sponsored by Papik Motors and the local banks, Take 16 Brewery has its block party on East Main Street the second Thursday of the month and the Hinky House hosts special events every third Thursday in the summer.

"The Retail Marketing Group would fill in on that fourth Thursday," Lanphere said.

## Luverne band, choirs earn three superiors at large group contest

Luverne High School's concert band, concert choir and ninth-grade girls' choir received superior ratings March 15 at the Minnesota State High School League's large group music contest in Pipestone.

Three judges evaluated each group's performances out of a possible top score of 40. Superior is the highest rating a group can earn.

"The band did earn a perfect score from one of the judges," said band instructor Richard Owen. "The students really worked hard and saw it pay off."

*"The band did earn a perfect score from one of the judges. The students really worked hard and saw it pay off."*

— Richard Owen.

The concert choir earned scores of 36, 38 and 38 for a superior rating and the ninth-grade girls' choir received scores of 36, 37 and 38, also a superior rating.



Mavis Fodness photo/0331Crisis Advocate Jen Lindsey

Jen Lindsey is Southwest Crisis Center's new Rock County advocate. She will work full time at the Luverne office's new location on West Main Street in the American Family Insurance building.

## Southwest Crisis Center hires full-time advocate in-house at Luverne office

By Mavis Fodness

A familiar face recently became the full-time Rock County advocate in Southwest Crisis Center's Luverne office.

Jen (Lass) Lindsey began in the new position early February, moving from answering the center's crisis line to the office advocate position.

Lindsey, a 2002 Luverne High School graduate, brings the Luverne office to full staff. Hers was one of the last open positions filled within the Crisis Center's five-county service area.

The organization currently employs 19, more than tripling the staff of four years ago when Sara Wahl began as director.

"It feels good," Wahl said. "We have come through a transition — a lot of growth."

Through additional grant funding and an expanded service focus, the Crisis Center now provides a holistic approach to persons of all ages in coping with abusive relationships or situations. The center has also expanded its hours, with Luverne being supported

*"I like the one-on-one, direct contact with clients ... hear their stories and help in the progress toward a more positive place. I do a lot of listening. Then give them options and support them."*

— Jen Lindsey, advocate

by a rotating staff on a weekly basis.

Lindsey works full time in the Luverne office.

She and her husband, Michael, live in Hardwick and have two young children.

Her college business degree has allowed her to choose from a wide variety of careers. She said she has found working for the Crisis Center to be the most fulfilling.

"I like the one-on-one, direct con-

tact with clients ... hear their stories and help in the progress toward a more positive place," she said.

Last year the Luverne office assisted 73 people, representing one person, sometimes two, who reached out for assistance on a weekly basis.

As the full-time advocate, Lindsey will be the first person to meet clients when they contact the office.

"I do a lot of listening," she said. "Then give them options and support them."

As she settles into her new position, Lindsey said she is looking forward to starting and leading a support/empowerment group as one of her long-range plans.

She said she would organize activities and guest speakers as part of her duties.

The support would be offered at the center's new office located within the American Family Insurance building on West Main Street in Luverne. To contact the office, phone 283-9917.

## USDA office may move/continued from page 1A

been able to leverage state and federal dollars for the similar soil conservation and water quality projects within the county.

The county recently signed a 10-year lease on the current facility to continue this one-stop service. The lease is contingent on the USDA programs occupying the same location, however.

USDA's current lease in the same building will expire in December 2017.

The facility, however,

ranks low with USDA standards, prompting federal officials to consider other long-term leasing options.

Jen Frohnauer, FSA realty specialist, and Cathee Pullman, NRCS state conservationist, attended the local meeting from the USDA St. Paul office.

Frohnauer said due to the age and condition of the current office complex, a new building was the best long-term option for the two USDA programs.

"We decided we could

open up the market and see if we can drum up competition to improve our space," she said.

While the USDA prefers a new building, proposals would be accepted to improve the current facility.

One new building proposal is already in the works for the USDA to consider.

A representative from the Paul E. Moriarty Trust out of Brookings, South Dakota, recently signed a purchase option for .86 acres with the city of Luverne.

That new building, which would be located just south of the ice arena, cannot be expanded to include the LMO due to land constraints, Oldre said.

Federal rules prohibit the USDA from owning its own facilities; instead it operates on long-term leases. Rules also prohibit Frohnauer from working directly with county officials or releasing specific lease information for a possible co-location site.

She encouraged county

officials to advertise their co-location needs and/or submit their own building proposal to the USDA.

Frohnauer expects two other new building proposals to be submitted before the June 1 deadline.

"I have that same scenario with several municipalities that came up against this and said 'we want you on-site,' she said. "By no means is this a done deal; we are very much in the infancy stage at this process."

READ THE NEWS ONLINE!

Sports  
Opinion  
News  
Classifieds

Subscribe to the online edition of the

Star Herald

star-herald.com

**Joint Religious Legislative Coalition (JRLC) and Interfaith Children's Advocacy Network Present:**

**bottom**  
by blank slate theatre

**Sex Trafficking in Minnesota**  
April 14, 2016  
St. Catherine's Catholic Church in Luverne  
7 pm performance with panel discussion to follow  
**Free Admission**

The original play **BOTTOM** tells the story of Amber Cregg, a previously prostituted young woman who cooperates with investigative authorities as they search for Coco, an eleven year-old girl who had been trafficked in northern Minnesota. As the play unfolds, the audience learns about the systemic nature of the sex trafficking industry and witnesses its psychological impact on those who become trapped within it. By citing Minnesota-specific trafficking data and casually mentioning cities where trafficking is known to occur, **BOTTOM** hits home – sex trafficking is a reality, here and now.  
*Recommended for ages 13+ due to strong language and honest content.*

Sponsored by St. Catherine's/St. Mary's Partners for Human Concerns, St. Catherine's LCCW and JRLC

**DFL PARTY**

DON'T FORGET TO VOTE

NOTICE TIME CORRECTION

**Rock County Convention**

April 2  
Luverne Senior Center  
Registration 12:30 p.m.  
Convention 1 p.m.

Paid for by the Rock County DFL  
Carole Ryden, Treasurer  
803 E. Dodge, Apt 203, Luverne, MN 56156

TEN LITTLE FINGERS, TEN LITTLE TOES

*Boy or Girl*

NOBODY KNOWS!

OPEN HOUSE BABY SHOWER

*Steph Roogenboom*

Sat., April 2  
1:30-3:30 p.m.  
American Reformed Church  
304 N Fairview Dr., Luverne

Registered at Target & Bed, Bath & Beyond

**CITY OF HARDWICK ASSESSMENT NOTICE**

The Board of Appeal and Equalization for Hardwick, will meet at **7:00 pm**, on **Tuesday, the 12th day of April, 2016**, at the Hardwick City Hall. The purpose of this meeting is to determine whether property in the jurisdiction has been properly valued and classified by the assessor.

If you believe the value or classification is incorrect, please contact the assessor's office to discuss your concerns. If you disagree with the valuation or classification after discussing it with your assessor, you may appear before the local board of appeal and equalization. The board will review your assessments and may make corrections as needed. Generally, you must appeal to the local board before appealing to the county board of appeal and equalization.

Tammy J. Johnson  
Hardwick City Clerk

Interested in Advertising?

Call 283-2333 to advertise in the Announcer



## What comes around goes around; becoming history means becoming trendy

My college son spent some time over his Easter weekend volunteering for the Rock County Historical Society. It was an assignment for school, and he was grateful that Betty Mann had some work at the museum that he could help with.



### ON SECOND THOUGHT

By Lori Sorenson, editor

Somewhere in the process of clipping and filing information at the museum, he came across a 20-year-old newspaper page with an early photo of his mother.

It was a column mug shot taken on my first day at the Star Herald in 1993.

Amused, he snapped a photo of the page and sent it to me. "Yes," I replied to him. "Your mother is history."

Most grownups eventually reach this realization — after all, the older we get, the more we join the ranks of history.

But in the newspaper business, our work is recorded weekly in black ink on white paper, and there's something about the ever-accumulating archives that serve as material reminders of our accumulating age.

I first felt like history when my own work started showing up in the "10 years ago today" portion of the Star Herald "Remember When" column. In a couple of years, I'll start reading my stories from 25 years ago in that column (assuming I'm still here).

That's probably appropriate, since I find myself starting sentences with the words "Remember when we used to..."

It happened Saturday after a duck on the road prompted a

conversation with my husband about our childhood days on the farm with chickens, ducks, pigs and other barnyard animals.

Of course we had vivid recollections of headless birds running circles around the yard during butchering. And we recalled farm kitchen assembly lines processing chicken meat, pork rendering and endless garden produce.

Those were the days of small-scale production farming primarily for personal consumption.

Another sure sign of old age is finding that old things from our past are trendy again.

Just like 80s-style shoulder pads and leggings, small-scale farming is back in style in the form of "natural" and "organic" products.

Hmm. Our parents were trendy and they didn't even know it.

Our "free-range" chickens and pigs were as "natural" and "organic" as it gets, and our daily meals were farm fresh and "farm to table" like healthy families aspire to today.

Of course, back then it was cool to eat store-bought cookies, but I suppose that's why we hear about age and wisdom.

We really had it pretty good back then, but it's taking old age for us to look back and appreciate it.

While it's no fun to realize we're history, we can at least enjoy the trendy status that comes with it.

## Pulling together brought Rock County to stronger economic levels

A report released earlier this year named Rock County as one of only 10 counties in Minnesota to have fully recovered from the 2010 recession.

The National Association of Counties report indicated a large majority (93 percent) of U.S. counties have not recovered to prerecession levels in jobs, unemployment rates, economic outputs and median home values.

Fortunately, Rock County is among the 214 counties out of the nation's 3,069 that have recovered. Other successful Minnesota counties include Blue Earth, Carlton, Clay, LeSueur, Marshall, Nicollet, Olmsted, Pennington and Polk.

Sadly, the report stated that for 27 states not a single county in their area has reached prerecession levels.

While so many counties still have struggling economies, why is Rock County able to bounce back so quickly?

The answer may lie in our government leaders' unselfishness and willingness to work together.

The report is a reminder that county economies are where Americans most directly feel the effects of the nation's economic health.

At the national level our political leaders have spent years working against one another, and it shows.

It appears this I-won't-compromise-with-anyone-outside-my-party attitude has become the norm in Washington, D.C.

In Rock County, fortunately, that

attitude isn't the norm.

Two years ago, the report indicated it's the smaller counties (fewer than 50,000 people) who were making the best recoveries. Energy and agricultural sectors were singled out as positive factors in a county's recovery.

Two years ago Rock County's slowest growth indicator was in job growth.

In one year Rock County jumped to prerecession levels with a .4 percent job growth in 2015.

This rate didn't improve because a large company moved its business to Rock County. The increase was accomplished by existing businesses who chose to expand their employment base here, not across state borders.

In 2015 our product output was \$362.6 million as measured by gross domestic product output. GDP is the total value of goods and services produced in a county.

As a result, the median home prices in Rock County grew by 17.2 percent for existing single-family homes in the past year.

### STAR HERALD EDITORIAL

Economic recovery is closely linked to government entities working together within its borders, the report indicated. A strong local-state-federal partnership also helps to secure a strong economy at a local county level.

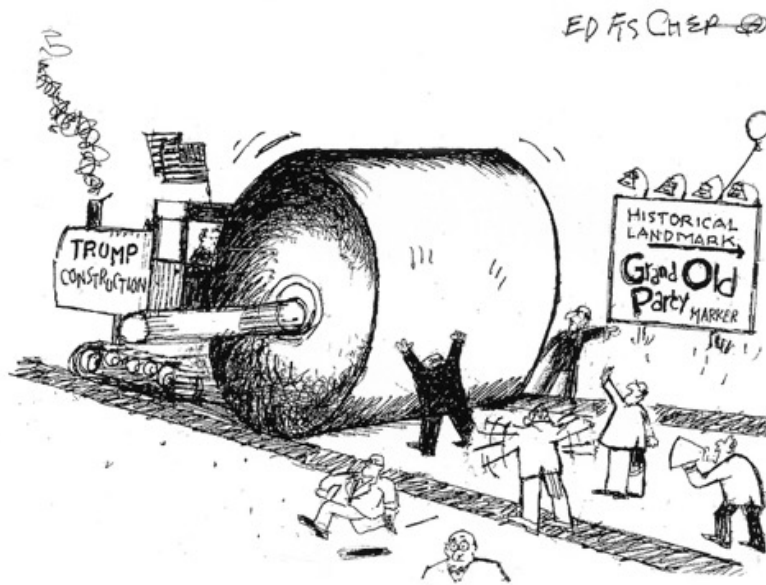
Rock County hasn't been without its challenges since the 2010 recession.

In the past six years, residents have experienced ice storms, hail, strong winds and catastrophic flooding events. In recovering from those events, we managed to set record corn and soybean yields in just a matter of years.

We in Rock County should pat ourselves on the backs for working quickly to improve where we live.

In this election year, our Star Herald readers should reward those who helped Rock County be among the 7 percent of counties who have bounced back to prerecession levels.

These government representatives at the local, state and national levels have demonstrated we are important. These are the people we need to support with our votes.



## Wild weekend of snow, basketball and taking my turn as a hockey goalie

This column is mostly about this, that and the other thing.

Did you notice this past Easter weekend how Easter Sunday started out with the winter white stuff on the ground and then grass covered lawns by the end of the day? Compare that to this past Christmas.

If you remember, that day started out with brown grass everywhere only to be covered by the winter white stuff by day's end.

I noticed another sign that our world is changing, and this isn't a good sign. It seems to me that our nation's flag has been flying at half-staff far too often in recent years.

Like many of you, I watched a lot of basketball over the weekend, and as far as I'm concerned, far and away the best game on television was the



### FOR WHAT IT'S WORTH

By Rick Peterson, General Manager  
Tollefson Publishing

Augustana Vikings against Lincoln Memorial Railsplitters for the NCAA Men's Basketball Division II National Championship. By the way, I really like the nickname the Railsplitters.

The final score was 90 to 81 with the Vikings coming away with the win.

Ellsworth High School standout Casey Schilling was a dominating force for the Augustana Vikings, pulling

down 19 rebounds and scoring 20 points along with two steals and an assist. But what really stood out to me about Schilling was with less than four minutes to play and the outcome of the game still in doubt, the Railsplitter stole the ball and was heading for a layup. The only thing stopping that from happening was Schilling. He did the only thing he could do and

that was foul the Railsplitter player. It was a good foul — Schilling prevented the Railsplitter player from making an easy two-point layup. In doing so, the Railsplitter player ended up on the floor.

Schilling quickly ran over to the opposing player and extended his hand to assist the player to his feet. Sportsmanship — it's good to see it's still part of the game, at least out in this part of the country.

Mixed in with all the basketball this past weekend was a little hockey. No, I didn't watch any hockey — I actually played it, kind of.

The 4-year-old grandson, Owen, was at our house for the Easter weekend and apparently he doesn't travel without his hockey stick.

Because of the crappy weather

on Saturday, grandpa's garage was turned into a makeshift hockey rink.

After an hour or so of slap shots into the garage door, the older two grandkids decided they had had enough.

Now it was just me and Owen. I knew what was about to happen. Owen looked up at me and said, "Grandpa, will you play hockey with me?"

What could I say? Maybe I could persuade him it was time for a break, maybe it was time for a cookie, ice cream, candy bar — anything — but before I could say anything, he told me I was going to play goalie.

Again I asked myself what could I say? So I said the only thing I could say, "I would love to." And truth be told, I did.

### Frakes: 'Bern' makes heart glow

To the Editor:

Minnesota has endorsed Rubio and the "Bern." We've seen how Rubio will probably end up, but doesn't the "Bern" make your heart glow?

The media says the "Bern" wants to be the first democratic socialist president of the United States. I suppose that means that he likes to socialize and party, but don't they

all. Hillary and Bill get paid millions to do it.

But wouldn't it be great if the old "Bern" really believed in socialism? Makes my heart glow! Just look up 'socialism' in your Webster's New World Pocket Dictionary, and feel the same glow I feel.

Bill Frakes  
Luverne

### Luitjens: Questions appearance of out-of-town electrician

To the Editor:

Over the course of the last couple of weeks I have noticed an electrician's van from Mankato at the former Ford dealership in town. This building is being remodeled to be used for the Rock County Historical Society.

There are several Luverne area electricians that would probably like

to do that work. I asked my electrician, and he said he would have liked to do the work, but he wasn't even given the chance to bid on the job.

Does the phrase "spend your money locally" only apply during the Christmas season?

Dean Luitjens  
Luverne

### VOICE OF OUR READERS

E-mail: editor@star-herald.com Web site: star-herald.com  
Phone: 507-283-2333 Fax: 507-283-2335

Published Thursdays by Tollefson Enterprises, POSTMASTER:  
Send address changes to 117 West Main, P.O. Box 837, Luverne,  
MN 56156. Periodicals postage paid at Luverne, Permit #33 and at  
additional mailing offices.

General manager: Rick Peterson  
Office manager: Deb Lusty  
Circulation manager: Jennifer Kor  
Advertising: Chantel Connell  
Production manager: Abbe Kolar  
Production: Amanda McDonald

News staff:  
Lori Sorenson, editor  
Mavis Fodness, reporter  
John Rittenhouse, sports editor  
Esther Frakes, copy editor

Rock County  
**STAR HERALD**  
Rock County's newspaper since 1873

(ISSN 0889-888X)  
SUBSCRIPTION RATES

\$72 per year in Rock County; \$89 per year all other areas. Single copies \$1.25

Entire contents copyrighted by  
Tollefson Publishing Roger Tollefson, publisher

The *Star Herald* encourages letters to the editor expressing the opinions of readers and intends to print all letters. Letters not meeting the guidelines will not be printed. The *Star Herald* will verify the authenticity of all letters. Letters must have the name of the writer, a signature and address.

Unsigned letters will not be considered. The *Star Herald* will edit for grammar, spelling and clarity. Any letters containing offensive language, libelous or slanderous material, or misleading or false information will be rewritten before being published. The *Star Herald* will not publish letters written with the sole intent to advertise or serve as a thank-you. Letters with more than 300 words may be edited. The deadline for letters is Monday 10 a.m. They may be delivered or mailed to the editor, *Rock County Star Herald*, P.O. Box 837, 117 W. Main St., Luverne, Minn. 56156.



## ON THE RECORD

### Dispatch report

**March 18**

•Complainant reported vandalism to a vehicle.

•Deputies did a check in Hardwick.

•Complainant requested a deputy come to the jail to help him with an issue.

•Complainant reported she passed a green SUV that was all over the road and driver was slouched. Complainant thinks he is intoxicated or having a medical condition.

•Complainant came to the Rock County Sheriff's Office and said he and his girlfriend were homeless and wanted to see if they could get some help.

•Complainant reported issues with her child exchange between her and her ex.

•Complainant reported kids standing at location being rowdy as well as two cars driving through alleys and running stop signs fast on Cedar Street and Lincoln Street. One vehicle is a white Pontiac G6 and the other is a Pontiac Bonneville.

**March 19**

•Deputy stood by while subjects got personal items from a vehicle that had the plates stripped.

•Deputy reported a bunch of for sale signs and a China Inn sign in a yard on West Crawford Street. Resident at location will get them returned.

•Complainant reported vandalism to his vehicle. He has a suspect.

•Trooper arrested subject and took him to jail for driving with revoked license.

**March 20**

•Deputy stopped at location to assist two vehicles on County Road 4 one mile east of Luverne. They are checking out possible damage from hitting a raccoon. All is OK.

•Deputy reported seeing vehicle going into the Drive-In. It is the owner. All is OK.

•Dispatcher received a 911 call with no answer on callback.

•Dispatcher received two 911 calls from a small child playing on a disabled phone. Parents were unaware that old phones still work for 911 and let kids play with them.

•Complainant reported he had a vehicle fire and took the fire extinguisher from CHS. Complainant wanted to get in touch with them to find if they need to do anything for using the fire extinguisher. Deputy got a phone number off the building and gave it to complainant.

•Complainant reported crossing arms and lights are going off and there is no train. BNSF was contacted.

They will send someone to fix it.

•Complainant reported that his friend told him a male driving a white Intrepid stopped by location and asked him where the nearest bar was. The male came back around shortly and told him the bar was closed and asked how to get to Hills because he is running drugs and two people are following him. Complainant said the male offered his friend \$100 for directions, but his friend said he didn't know. The male then told him not to look at his plate when he drove away.

**March 21**

•Complainant in Hills reported there was someone in the tanning booth, and according to the clock they have been in there since 2:30 a.m. Booth is not running. They can hear subject snoring. Deadbolt is locked. Requested a deputy to come. While talking with them, an employee was able to wake him by pounding on the door. Subject had been drinking and passed out. Complainant will make sure he gets home OK. He advised he no longer needed a deputy to respond.

•Complainant reported a vulnerable adult.

•Complainant requested a deputy on the 700 block of South Donaldson Street for a car that was speeding and revving engine.

•Complainant requested a residence check for three weeks.

•Complainant requested a deputy accompany him to get his personal belongings from his forfeited vehicle.

•Complainant requested assistance with a dead raccoon in a bag found near the city sewage ponds in Hills.

•Complainant requested that a vehicle on the roadway immediately in front of their yard, on 31st Street, be checked. It has been there all day. It is a silver Chrysler 300 with dealer plates. Dispatch contacted Honest Dan's and he stated that he was getting his trailer and going to go out and pick up the vehicle.

•Complainant reported that a lot of water was leaking from the water tower on North Kniss Avenue. The on-call water worker was notified.

•Complainant reported that he was at the ethanol plant, and they have a dryer fire going. They are fighting it with fire hoses. Luverne Fire Department started. Ambulance started to be on stand-by at the scene.

**March 22**

•Complainant requested we deliver a death message to subject.

•Complainant is going to be measuring the 300 block of East Main Street. He is a hot air balloon operator who will be attempting to land the balloon on Main Street during Buffalo Days. He is

wondering if the area is large enough to land it.

•Complainant requested a voucher for subject.

•Complainant reported Luverne Fire Department will be out for training.

•Complainant reported the light pole at Evergreen Drive is lying in the street. Contacted the on-call person from the city. Deputy reported pole was moved and disconnected. It appears it has been hit.

•Complainant reported subject being loud and belligerent at location. Subject no longer on scene, not on lease and female party does not want him there. Advised to lock door and call us if he shows up.

**March 23**

•Complainant requested to speak with someone about custody issues. Complainant has the proper paperwork.

•Complainant reported they just repossessed a vehicle in Luverne.

•Complainant reported that the 200 block of 151st Street will be closed for approximately one week because it is in very poor condition and needs repair. Complainant will call back when road is repaired.

**March 24**

•Dispatch received a 911 call from someone who had dialed it accidentally.

•Hotel called 911 and reported they had dialed a long distance number trying to get in touch with a guest, not 911, and they did not have an emergency.

•Complainant reported some pills left behind at facility that were not in a marked bottle. Turned out to be heart medication, and they were going to contact the person they belonged to.

•Complainant called upset about a helicopter flying around his land. He was advised it is believed to be for mapping purposes. He is irate because he thinks it will cause a stampede with his cattle. Sheriff spoke with complainant, and deputy will drive to area.

•Deputy attempted to make contact with subject on a warrant from South Dakota. They advised subject no longer lives at the address and was in the Yankton area.

•Complainant reported people riding all-terrain vehicles up and down the street in Magnolia and causing a lot of noise.

In addition, officers responded to 1 motor vehicle accident, 3 funeral escorts, 3 traffic stops, 5 school zone patrols, 13 ambulance runs, 3 DWIs, 4 paper services, 5 animal complaints, 4 false alarms, 2 finger print requests, 2 driver's license checks, 7 log/alarm sheets, 4 drug court tests, and issued 14 purchase/carry permits and 45 burn permits.



Lori Sorenson photo/0331 sewer repair

## Sewer repair at Brown and Highway 75

Workers tear into the asphalt and dig through aggregate to locate a broken sewer line under the intersection of Brown Street and Highway 75 Wednesday, March 16. According to city officials, the line was repaired quickly and the cones were removed from the highway that same day. A few cones remain in the intersection until the street can be repaired.

## Blood donors can use RapidPass to preregister on donation day

RapidPass from the American Red Cross allows blood donors to register and answer questions online in order to save time when they arrive to donate blood.

Donors can use their computer or smart phone to start the blood donation process from the comfort of their home or office and save time at the donation site.

The process is simple:  
•visit [www.redcrossblood.org/rapidpass](http://www.redcrossblood.org/rapidpass).

•read the information and complete the questions online,  
•print the RapidPass or email it to a phone or device  
•bring the printout along to donate blood or show it on a mobile device.

RapidPass must be completed on the day of the dona-

tion; it cannot be completed prior to the date.

Red Cross volunteers are encouraging donors to use the RapidPass to save time.

"The more donors utilize RapidPass, the quicker they will move through the donation process, allowing your blood drive to help save more lives in the same amount of time."

## Enroll now for 2016 USDA Safety Net Coverage

The Farm Service Agency urges producers who chose one of the safety net programs known as Agriculture Risk Coverage (ARC) or Price Loss Coverage (PLC) to give the Rock County FSA Office a call at 507-283-2369 to schedule an appointment to complete their 2016 enrollment.

Although the choice between ARC and PLC is completed and remains in effect through 2018, producers must

still enroll their farm by signing a contract each year to receive coverage.

If a farm is not enrolled during the 2016 enrollment period, producers on that farm will not be eligible for financial assistance from the ARC or PLC programs should crop prices or farm revenues fall below the historical price or revenue benchmarks established by the program.

Although enrollment will

run through Aug. 1, 2016, the FSA Office would like to complete this task before farmers get busy in the spring and before they come into the office to certify their acreage. So please contact the FSA Office as soon as possible.

For more information on FSA conservation programs, please visit the Rock County FSA Office, go to [www.fsa.usda.gov/conservation](http://www.fsa.usda.gov/conservation), or give us a call at 507-283-2369.

**PANCAKE BREAKFAST**  
Sunday, April 3  
9am - 1pm  
Adults \$6.00 12 & Under \$3.00  
**American Legion**  
Luverne  
124 W Main

**Palace Theatre**  
Downtown Luverne  
Disney  
**ZOOPIA**  
WELCOME TO THE SAVANNAH  
MARCH 4  
FRI., APRIL 1 - 7 P.M.  
SAT., APRIL 2 - 7 P.M.  
SUN., APRIL 3 - 2 P.M.  
Check our web site for updates  
[www.palacetheatre.us](http://www.palacetheatre.us)  
Find us on Facebook  
PALACE THEATRE  
LUVERNE

ENTERTAINMENT & DINING  
An owl illustration is centered on a background of horizontal stripes.

Everyone is invited to celebrate the completion of the **HOLTKAMP PIPE ORGAN**  
Sunday, April 10 | 2pm  
Church of St. Adrian  
Adrian, MN  
~Dave Knips, Recitalist  
512 Maine Ave, Adrian  
(elevator located on the north side of church)

### GRAVEL BIDS: MAGNOLIA TOWNSHIP

Magnolia Township will be accepting gravel bids for gravel to be applied on township roads. Bids may be sent by April 12, 2016.

Send to: Magnolia Township  
1581 121st St.  
Luverne, MN 56156

Magnolia Township Board

### WANTED GRAVEL BIDS

Clinton Township seeking bids for crushed and/or screened gravel to be delivered on the township roads.

Please submit bids to  
**Lowell Bonnema**  
1161 21st St, Steen, MN 56173  
bids will be opened

**Monday, April 4**  
at 8p.m. at the  
**Township Hall**  
Lowell Bonnema, Clerk

**BABY POWDER OR OTHER TALCUM POWDER LINKED TO OVARIAN CANCER**  
Long-term use of baby/talcum powder is linked to ovarian cancer. If you or a loved one suffered from ovarian cancer after using Johnson's Baby Powder, Shower to Shower or other talcum powder, you may be entitled to substantial compensation. Call us at 1-800-THE-EAGLE now. No fees or costs until your case is settled or won. We practice law only in Arizona, but associate with lawyers throughout the U.S.  
**GOLDBERG & OSBORNE**  
915 W. Camelback Rd. Phoenix, AZ 85013  
1-800-THE-EAGLE  
(1-800-843-3245)  
[www.1800theeagle.com](http://www.1800theeagle.com)  
Open 7 Days a Week

Interested in Advertising?  
Call 283-2333 to advertise in the Announcer

**BLUE MOUND FIGURE SKATERS**  
**SPRING LESSONS**  
**LEARN TO SKATE**  
HOCKEY SKATING SKILLS • FIGURE SKATING LESSONS  
ONLINE REGISTRATION  
[WWW.BLUEMOUNDFIGURESKATING.COM](http://WWW.BLUEMOUNDFIGURESKATING.COM)  
SIX WEEK LESSONS  
**APRIL 6 - MAY 11**  
LEARN TO SKATE & HOCKEY SKILLS  
**\$75**  
FOR MORE INFORMATION VISIT: [WWW.BLUEMOUNDFIGURESKATING.COM](http://WWW.BLUEMOUNDFIGURESKATING.COM)



## Winter tops in local geography bee

By Mavis Fodness

Jordan Winter's first thoughts on Luverne Middle School's geography bee were based on reality.

"I wasn't really thinking I would win it," he said. "There are a lot of smart kids in Luverne."

Winter is now included as one of them as Luverne Middle School's 2016 Geography Bee champion.

Students in sixth- through eighth-grade completed a series of written tests through the National Geographic-sponsored contest that "is designed to inspire students to be curious about the world," according to its website.

This is the third time Winter, an eighth-grader, participated in the local geography bee. He said it's usually an eighth-grader who wins the local Bee.

Each of Luverne's 279 middle school students completed the first multiple-choice test to be eligible for this year's school finals.

"It (the first test) was pretty easy, I think," Winter said.

The first written test focused on U.S. states and cities. The second written test was harder.

According to adviser and eighth-grade geography teacher April Wallace, 15 students completed the second test.

As the local winner, Winter qualified to take an online test to qualify as one of 100 students from each state to participate in their state's contest April 1.

Winter did not qualify. "It was really difficult," he said.

The state contest delved beyond geographic landmarks and asked questions on regional economies.

Winter recalled one question about islands he never heard of and posed ques-



Submitted Photo

Jordan Winter is Luverne Middle School's 2016 Geography Bee champion.

tions such as where a cocoa bean farmer would best locate his farm.

"The (state) competition is really tough," Wallace said. "By conduct-

ing the geography bee every year, I hope it inspires students to become more curious about their world."

## CELEBRATIONS

### Births

A boy, Isaiah Allan, weighing 6 pounds, 9 ounces, 19 inches long, was born Sunday, March 6, 2016, in Memphis Tennessee, and was adopted by **Mark and Erin Top**, Hills, on Friday, March 11, 2016. He joins a sister, Norah, who is 6 1/2 years old. Grandparents are Allan and Judy Top, Hills and Dave and Robyn Funk, Worthington. Great-grandmothers are Mae Top, Hills, and Dorothy Funk, Worthington.

### Open Houses

**Bob Siebenahler** will

celebrate his 88<sup>th</sup> birthday with an open house from 2 to 4 p.m. Saturday, April 2, at the Jasper Memorial Hall in Jasper.

An open house bridal shower for **Heather Hansel**, bride-to-be of **Greg Dougherty II**, will be from 2 to 4 p.m. Saturday, April 2, at 120 West 1<sup>st</sup> Street (Hwy 270), Hills.

An open house baby shower for **Steph Roozenboom** will be from 1:30 to 3:30 p.m. Saturday, April 2, at the American Reformed Church, 304 North Fairview Drive, Luverne.

## MENU

### Senior Citizens

**Monday, April 4:** Liver or pepper steak, buttered potatoes, peas, bread, apricots.

Program: 9:30 a.m. U Care meeting. 1 p.m. Senior Citizens meeting.

**Tuesday, April 5:** Swedish meatballs, potatoes, spinach, bread, ice cream.

Program: Two-buck Tuesday sponsored by McClure Electric.

**Wednesday, April 6:** Chef salad with turkey, ham, cheese, lettuce, tomato and cucumber slices with dressing; muffin, bar.

Program: 11:30 a.m. Services for hard of hearing and telephone equipment.

**Thursday, April 7:** Hon-

ey mustard chicken breast, potato salad, green beans, bread, cake.

Program: Music with Carol Hoogeveen.

**Friday, April 8:** Meaty beef stew with carrots and potatoes, cole slaw, biscuit, cheesecake.

Program: 11:30 a.m. "Protect Yourself" with Jen Lindsey from the Southwest Crisis Center.

Senior Dining offers well-balanced and affordable meals in a community atmosphere. Bring a friend or make new ones. Call Janice Fick at 283-9846 to make dining reservations or for home-delivered meals.

## PEOPLE IN THE NEWS

### Luverne natives coordinate event for nutrition experts

Luverne natives Abby Klosterbuer, Twin Cities, and Tami Gangestad, Luverne, teamed up to organize an event for 35 nutrition experts in Minnesota. The event was at the Nestle Health Science Global Research and Development Headquarters in Minnetonka Wednesday, March 16.

Gangestad and Klosterbuer work as registered dietitians for Nestle Health Science in the Twin Cities, and had spent time together consulting with hospitals and registered dietitians who use Nestle's specialized nutrition products.

Based on these successful consults, the two women collaborated on a larger scale to benefit more nutrition experts in Minnesota during the March 16 event.

Klosterbuer, a senior scientist for Nestle Health Science, has a PhD in nutrition and is a registered dietitian. She develops specialized nutrition products globally for Nestle Health Science. She is the daughter of Don and Lona Klosterbuer, Luverne.

Gangestad, a strategic national account executive for Nestle Health Science, has a master's degree in nutrition and is a registered dietitian. She supports large health systems and Nestle Health Science contracts nationally. Gangestad and her husband, Tim, live in Luverne with their two children, Tryg and Inge. She is the daughter of Leroy and Pearl Breuer, Luverne.

Nestle Health Science provides specialized nutrition products for patients who need nutrition support such as tube feedings and nutritional drinks.

## Gerbera daisies are easy to plant, bloom entire summer

Here is another of my favorite annual flowers for great all-summer color.



## KNOW IT AND GROW IT

By George Bonnema, Luverne Horticulturalist

Gerbera daisies are a very easy plant to grow. I enjoy the "happy" look of their flowers which just keep coming all summer. The color range covers everything but blue.

In previous seasons the only plants available for bedding plant growers were the dwarf or compact varieties. The beautiful long-stemmed varieties were grown for greenhouse cut flower production.

Last year we were introduced to a new variety labeled patio gerberas. I bought one plant and I was hooked. Huge magenta flowers on long stems and that single plant was not

without several open flowers at any time the entire summer. That particular one was named Bighorn and was one of 19 color and flower forms of the series. I'll be looking for more colors this season.

Gerberas grow well in hot sun and will perform well if they receive a minimum of six hours of direct sun per day. They appreciate a growing mix that stays uniformly moist and will tolerate going a little on the dry side, but absolutely will not survive in soil that is too wet. I feed mine every other watering with a water-soluble plant

food, and they reward me with nonstop color.

The patio series grows about 18 to 20 inches tall. They make a great specimen planter on their own and will work in combination pots if the pot size is large. The more commonly available smaller varieties work well in all sizes of containers because their growth habit is not nearly as aggressive.

Removing flower stems after the blossom is finished is necessary to keep these plants looking clean and to encourage the continual flower production that we expect.

I'll remind you that the fact of success with any planter often is determined by the size of the container. Large pots hold a much larger quantity of growing mix, resulting in much more uniform moisture and more capacity for the plants to grow and thrive. I know that potting mixtures are expensive, but if you are trying to save a couple of bucks, this isn't the place to do it.

I like recycling that potting mix. Clean it out of the pot into a wheelbarrow or even on the driveway ... break it loose to eliminate clods, and reuse it, mixing it half and half with new grower mix. Fill the pot to within one inch of the rim: that will give you sufficient room to water without overflowing.

*Bonnema is a gardening enthusiast and former greenhouse owner. He can be reached at [flowersgb@iuw.net](mailto:flowersgb@iuw.net).*

## REMEMBER WHEN

### 10 years ago (2006)

•As part of state requirements, all school districts must implement a policy and procedure for dealing with crisis situations.

Luverne School District established its policy in 2001, but on Monday last week Luverne Elementary School faculty and students put their crisis plan to the test.

### 25 years ago (1991)

•Keeping track of law violators has taken on a Star Trek-like theme in Rock County.

Probation officers can keep an eye on violators in their homes, using the OnSight Monitoring system, based out of Minneapolis. ...

Some of the machines are also equipped with a breath analyzer, for alcohol-related violations. When a call comes in, the violator must blow into the breath analyzer and send a picture of the reading to Minneapolis.

### 50 years ago (1966)

•A special election will be held Monday evening between 7 and 8 p.m. to dispose of the real and personal property of School District 1847 at the school house. The election is to decide on the question of authorization of the school board to dispose of all real and personal property owned by the district.

### 75 years ago (1941)

•A native of Iceland, the very mention of whose name sends cold shivers coursing down the spines of most persons, experienced her

most miserable winter right here in Minnesota, although the Arctic Circle skirts the northern tip of Iceland.

She is 17-year old Miss Stafania Bjarnason, who is a guest this week at the home of Mr. and Mrs. Lester Sovereign, of this city. She arrived Saturday evening from Minneapolis in company with Miss June Sovereign, both being students at the University of Minnesota. ...

"We have no Eskimos, no polar bears nor extremely cold weather as most people seem to think," Miss Bjarnason remarked. "In fact," she said, "I've never experienced a more miserable winter than this one in Minnesota."

### 100 years ago (1916)

•Snook's restaurant was broken into Friday night of last week, the cash register rifled of its contents and a liberal supply of cigars and smoking tobacco taken. Entrance was gained through a small window in the front of the basement, by way of a trap door and the thief made his exit through the rear door of the restaurant.

From the cash register \$8 in small change was secured and the thief then showed a marked preference for a brand of 10-cent cigars and Prince Albert smoking tobacco. So far as known nothing else was taken, and the valuation of the "swag" is supposed to approximate \$12. The first intimation that the place had been robbed was secured early Friday morning when E.R. Coss went to the till to make change. The restaurant was not closed Friday night until 11:30 o'clock and Mr. Coss opened the place Saturday morning at 5:30.

## SCHOOL NEWS

### Iowa Lakes Community College releases Fall 2015 honors list

Benjamin Henning, Adrian, and Tara Sudenga\*, Luverne, have been named to the Iowa Lakes Community College honors list. To earn this honor students must be enrolled full time while earning a grade point average of 3.25 on a 4.0 scale. \*Indicates that a student earned a 4.0.

### Northwestern St. Paul announces Fall 2015 dean's list

Thomas McCarthy, Adrian, majoring in marketing, earned a spot on the Fall 2015 dean's list at the University of Northwestern St. Paul. To earn this honor, students must attain a grade point average of 3.65 on a 4.0 scale.

*Make the dean's list? Let us share the news*

*The Star Herald strives to recognize all academic accomplishments of students from its coverage areas, and our news department relies on multiple sources (colleges, students, parents, etc.) for that information. Send school news to [editor@star-herald.com](mailto:editor@star-herald.com) or call 507-283-2333.*



### Luverne farmer wins top yield award

Paul Arends, Luverne (right), was recently honored for being among the nation's highest-producing farmers in the 2015 Asgrow® National Yield Contest. Arends captured an award with a yield of 88.40 bushels of soybeans per acre. He and other contest winners were honored at the 2016 Commodity Classic, an annual farmer-focused convention held earlier this month in New Orleans. He is pictured with Jesse Hamonic, Asgrow DEKALB brand lead.



# FFA'ers receive well deserved recognition

The Luverne-Adrian FFA Chapter annual awards banquet was Tuesday, March 29, at the Luverne Elementary School commons.

The 2015-16 FFA chapter officer team conducted the meeting. Officers include Ryleigh Beers, president; Stephanie Riggs, vice president; Madi Oye, secretary; Kris Severtson, treasurer; Jacob Van Santen, reporter; Eli Bakken, sentinel; and Jeremiah Dooyema, parliamentarian.

Numerous awards were given out for member achievements.

## Scholarship

Scholarship pins were awarded to members who achieved 3.2 grade point averages during the school year.

First-time recipients were Brooke Brust, Trevor Mente, Paige Hinrichs, Riley Severtson, Will Stegenga, Paige Madison, Nick Overgaard, Tucker Sievers, Emily Zemler, Hannah Kruse and Genna Natte.

Repeat recipients include Hans Bakken, Trey Baustian, Tyler Fick, Aric Meinerts, Dylan Mente, Tyler Reisdorfer, Cody Saker, McKenna Westphal, Will Natte, Jeremiah Dooyema, Tommy Norman, Kris Severtson, Tanner Baustian, Ryleigh Beers, Madi Oye, Stephanie Riggs, Mira Uithoven, Jacob Van Santen, Jeffrey Cauwels, Josh Zemler, Mackenzie Wagner and Megan Tweet.

## Leadership

Leadership pins are awarded to members who have earned at least 100 points or more during the past year. The award is also given to all senior FFA members.

Pins were earned by Michael Kinsinger, Trevor Mente, Aleck Schoeneman, Riley Severtson, Grace Steensma, Will Stegenga, Paige Madison, Hannah Kruse, Emily Zemler, Mitchell Buss, Genna Natte, Jayda Walgrave, Jared Jose, Itzel



Luverne-Adrian FFA Chapter officers for 2016-17 are (front, left) Tyler Reisdorfer, Kris Severtson, Michael Kinsinger, Eli Bakken, Kaylie Ossefoort, adviser Dennis Moritz, (back) Cody Saker, Aric Meinerts, Tyler Fick and Dylan Mente. Not pictured is Will Natte.

Tanner Baustian, Madi Oye, Stephanie Riggs, Jacob Van Santen, Ryleigh Beers, Karissa Hamann, Brandon Oakley, Eric Tofteland, Megan Tweet, Mira Uithoven, Mackenzie Wagner and Merrissa Brandt.

## Greenhand

Greenhand pins were presented to first-year FFA members Brooke Brust, Paige Hinrichs, Halle Hough, Michael Kinsinger, Trevor Mente, Tyler Moss, Kaylie Ossefoort, Breanna Richters, Adayla Rouzer, Aleck Schoeneman, Riley Severtson, Tucker Siever, Max Skattum, Grace Steensma, Will Stegenga, Paige Madison, Hannah Kruse, Emily Zemler, Mitchell Buss, Genna Natte, Jayda Walgrave, Jared Jose, Itzel

FFA/see page 8A



Earning the local chapter's top awards are (from left) Karissa Hamann, star ag placement; Stephanie Riggs, star agribusiness; Ryleigh Beers, star farmer and DeKalb award recipient; and Trevor Mente, star greenhand.

# Luverne High School releases honor rolls

## Quarter 3 - A Honor Roll

**Seniors:** Samantha Aanenson, Jack Baustian, Ryleigh Beers, Zoe Brown, Christina Cassazza, Sierra Christenson, Jaidyn Elbers, Tatiana Gust, Karissa Hamann, Morgan Haugen, Hannah Hoogland, Bailey Jacobsma, Jacob Jarchow, Brianna Jonason, Alyssa Kienholz, Nicole Kneip, Di Ma, Nicholas Overgaard, Ann Rogers, Jenna Schelhaas, Katerina Siebert, Allie Skattum, Christopher Syphokham, Caden Vickery.

**Juniors:** Marissa Fick, Bergin Flom, Madison Frankenhoff, Mitchell Graber, Marisol Hartshorn, Jake Henckel, Hanna Honerman, Makayla Huisman, Zayna Hustoft, Christopher Jelken, Ashton Krueger, Shelbie Nath, Knute Oldre, Kayla Rud, Kristoffer Severtson, Courtney Siebenahler, Logan Stratton, Erin Suelter, Dylan Thorson, Danielle Watts-Boll, Tanner Wiese, Brandon Winter, Samantha Ykema, Linda Zheng, Kristen Ziegler.

**Sophomores:** Madelyn Aleman, Hans Bakken, Emilie Bartels, Jarod Berndt, Anthony Cavazos, Alexis Ferrell, Anika Gust, Janae Kopp, Aric Meinerts, Jaxon Nelson, Jocilyn Oye, Samantha Pierce, Michael Rahm, Mark Robinson, Megan Rogers, Sierra Schmuck, Emma Verbrugge, Benjamin Wagner, McKenna Westphal.

**Freshmen:** Jady Anderson, Jessica Anderson, Shane Berning, Carissa Cunningham, Jedidiah Dooyema, Julia Ferguson, Gabrielle Ferrell, Jackson Golla, Quinn Graber, Jacinda Hustoft, Matthew Jelken, Josiah Luethje, Derek Lundgren, William Mumme, Rylee Olson, Joel Ortiz, Mackenzie Petersen, Lindsey Roemeling, Emilie Staeffler, Grace Sweeney, Melissa Teal, Matthew Ziegler.

## Quarter 3 - B Honor Roll

**Seniors:** Tanner Baustian, Codie Benson, Cole Bosch, Merrissa Brandt, Elijah Click, Naomie Daniel, Alex Dara, Madison Dass, Christin Dohlmann, Morgan Edwards, Ingrid Gonzalez, Brennan Hart, Tayler Hoogveen, Mitchell Muller, Cori Nath, Taylor Nelson, Jakob Olson, Anthony Opitz, Madilyn Oye, Brian Richters,

Stephanie Riggs, Bailey Rise, Kaitlyn Roberts, Alyssa Schipper, Amanda Schultz, Quinton Siebenahler, Chaz Smedsruud, Makalya Sterrett, Jordin Swanson, Spencer Swier, Susan Thompson, Erik Tofteland, Melissa Tweet, Mira Uithoven, Jacob Van Santen, Mace Walgrave, Emily Wendland, Dylan Westerbur, Chase Wiederhoeft, Paul Witte, Erik Wohnoutka.

**Juniors:** Griffin Ahrendt, Mariah Aukes, Aidan Bartels, Madison Crabtree, Layne Curtis, Matthew Davis, Ariel DeBeer, Jeremiah Dooyema, Tianna Doppenberg, Kaden Erickson, Hailey Franken, Isaac Gillette, Autumn Hamann, Jenae Hamann, Molly Hansen, Matthew Hup, Matthew Keller, Taylor Kern, Jesse Kontz, Katlyn Kracht, Emma Mumme, William Natte, Thomas Norman, Connor Peterson, Brianna Pilarcik, Andrew Reisch, Hailey Remme, Kathryn Renken, Carter Riphagen, Kammon Sawtelle, Madison Schandelmeier, Karli Schilling, Matthew Schmuck, Carly Serie, Adam Somnis, Itzel Soto Guerrero, Bethany Starling, Natasha Thone, Michaela VanGrootheest, Sierra Wieneke.

**Sophomores:** Trey Baustian, Ashlee Boltjes, Gracie Bosch, James Erickson, Brooke Feit, Kathryn Fick, Tyler Fick, Joseph Guy, Alexis Henrichs, Alena Hilfers, Timothy Lingen, Dylan Mente, Genevieve Natte, Alexander Nelson, Donald Ray, Tyler Reisdorfer, Jayden Renken, Trey Roberts, Michaela Sandbulte, Zoey Sandbulte, Cody Saker, Daniel Tofteland, Hope Van Meeteren, Wyatt VanSteenBerg, Cade VerSteeg, Hannah VerSteeg.

**Freshmen:** Nicole Aanenson, Greta Ahrendt, Payne Bonnett, Brookelynn Brust, James Chanthalangsy, Likki Chanthalangsy, Kyle Christenson, Zoe DeBates, Autumn Emery, Tia Hadler, Jake Haugen, Abraham Hernandez, Luke Jarchow, Brianna Jonas, Sadie Kindt, Michelle Kramer, Ty Lindemann, Trevor Mente, Nathan Overgaard, Aliah Pilarcik, Madison Reisdorfer, Justyce Ripka, Riley Severtson, Jade Smith, Grace Steensma, McCall Stegenga, William Stegenga, Eric Thorson, Evan Ushijima, Sage Ver Steeg, Courtney Wendland, Mikayla Wiederhoeft, Austin Winter and Jenna Zewiske.

# Luverne Middle School announces honor rolls

## Quarter 3 A Honor Roll

**Eighth Grade:** Dalwa Alinzi, Isaiah Bartels, Claire Baustian, Tacey Baustian, Sydney Biever, Justice Brandt, Alexa Chesley, Anita Cole-Kraty, Colby Crabtree, Graham Cunningham, Hannah Ehlers, Sara Ernst, Madigan Flom, Zayda Holmgren, Nicole Hoogland, Anna Huisman, Amelia Jarchow, Kacie Kracht, Sophia Lanoue, Jonah Louwagie, Kaitlyn McDowell, Reka Meinerts, Meghan Mollberg, Gunnar Oldre, Melanie Rittenhouse, Mallory Thorson, Austin Watts-Boll, Sydney Wicks, Jordan Winter.

**Seventh Grade:** Kaitlyn Anderson, Peter Baustian, Ethan Beyer, Annaliese Braucht, Xavier Carbonneau, Rachel DenHerder, Dyllon Gehrke, Josephine Golla, Rahma Hassan, Emma Hinz, Ellie Hodgen, Benjamin Jarchow, Elise Jarchow, Autumn Nath, Ainslie Robinson, Brynn Their, Solveig Tofteland, Lauren VerSteeg, Cade Wenninger, Gracie Zewiske.

**Sixth Grade:** Rylee Anderson, Trista Baustian, Seth Bose, Pierce Cunningham, Elise Ferrell, Trygve Gangestad, Kester Grimm, Kayetlin Huiskes, Olivia Huisman, Griffen Jarchow, Tenley Nelson, Chase Overgaard, Eli Radtke, Ethan Rahm, Kristin Rud, Lacey Saker, Madeleine Schmuck, Cheyenne Schutz, Casey Sehr, Hope Thorson, Chance Tunnissen, Brooklynn Ver Steeg, Olivia Wieneke.

## Quarter 3 B Honor Roll

**Eighth Grade:** Bailey Anderson, Martin Anderson, Jocelyne Cazares, Brody DeBates, Jesson Delfs, Jacqueline Diaz, Carson

Ehde, Jonah Friedrichsen, Madison Gebauer, Caitlun Halverson, Kynzie Hamann, Meagan Hansen, Alexandra Hartman, Noah Herman, Gracie Hudson, Chandra Javner, Sydne Johnson, Joel Kruse, Carter Loosbrock, Gabrielle Miller, Alyssa Nattress, Nathan Nekali, Samantha Niessink, Tyler Roberts, Henry Rolling, Gracie Rozeboom, Austin Schipper, Matthew Sehr, Riley Siebenahler, Isabel Smeins, McKenzie Swenson, Brayden Tofteland, Jacob Von Tersch, Andrew Wagner, Meghan Witte.

**Seventh Grade:** Russell Aanenson, Zachary Ahrendt, Cooper Arends, Rebecca Austin, Anna Boltjes, Brody Bonnett, Seno Chanthalangsy, Ethan Curtiss, Tyrcia Davis, Isaac Eidem, Regan Feit, Cassie Flanagan, Mia Halverson, Trevor Halverson, Katarina Horn, Gretchen Jacobsma, Kameron Keene, Elisabeth Kelm, Camron Kopp, Shelby Kracht, Kaden Lampron-DeSollar, Alex Mann, Destiny Mathiesen, John Miller, Carlton Oftung, Rozilyn Oye, Katlin Petronek, Sadie Reisdorfer, Genevieve Rolfs, Jayson Rops, Paige Sandbulte, Crystal Sayavong, Savannah Siebenahler, Haleah Soto, Tiffany Suelter, Ethan Teunissen, Leslie Van Engelenhoven, McKenzie VanGrootheest, Leah Wynia.

**Sixth Grade:** Hunter Ahrendt, Kaden Anderson, Reghan Bork, Luke Bosch, Kendall Buss, Sam Emery, Kyle Ferguson, Blake Frahm, Jordan Friedrichsen, Daniella Gacke, Hunter Gaffaney, Morgan Gonnerman, Hamza Hassan, Burke Johnson, Matthew McClure, Justin Mente, Mary Opitz, Braydon Ripka, Ethan Roemeling, Ashton Sandbulte, Grace Sandbulte, Colin Schoeneman, Jacey Smith, Levi Thielbar, Mia Wenzel and Dawson Wicks.

# OBITUARIES

## Robert Anderson

Robert William Anderson, 91, Luverne, died Wednesday, March 23, 2016, at the Minnesota Veterans Home in Luverne.

A funeral service was Tuesday, March 29, 2016, at St. John Lutheran Church in Luverne. Burial of cremains will take place at Fort Snelling National Cemetery in Minneapolis.

Robert Anderson was born Dec. 26, 1924, to Arthur and Anna (Meier) Anderson in Worthington. He grew up on a farm in Brewster. He was baptized on Jan. 25, 1925, and confirmed on June 5, 1938, all at Trinity Lutheran Church in Brewster. He graduated from Brewster High School in 1942. He then worked various jobs in Worthington until he enlisted in the United States Army in 1943.

He served in the European Theater-Infantry-101st Airborne-Paratrooper, participating in the Siege of Bastogne, which was part of the larger Battle of the Bulge. He was a purple heart recipient with four bronze battle stars and a combat infantry badge. He was honorably discharged in March 1946.

He returned to Worthington and married Reva Wagar on June 25, 1947, at Church of the Brethren in Reading. He attended Mankato Technical School for radio repair and maintenance, graduating in 1949. Robert owned and operated Andy's TV & Radio from 1951 to 1962 in Worthington.

The family moved to Milwaukee, Wisconsin in 1962, where Robert received training by Lutheran Lay Training Institute at Concordia College.

He then worked as a lay pastor at Layton Park Lutheran Church in Milwaukee. The family moved to Luverne in 1970. He then worked for AAL/Thrivent until 1986 when he retired. In retirement, the couple enjoyed time in Arizona and at their Lake Benton



home, returning to Luverne in 1994. His wife, Reva, died June 1, 2010. In June of 2015 Robert entered the care of the Minnesota Veterans Home in Luverne.

Robert was a member of St. John Evangelical Lutheran Church in Luverne, and for years he was involved in the Lutheran Layman's League. He was also a member of Luverne's "Last Man Club" of World War II Veterans. Robert enjoyed fishing while at their cabin in Lake Benton, hunting, playing cards, woodcarving, bowling, and telling jokes. He was a parade clown during their time in Worthington. He played harmonica and guitar and was known for his famous dog bark.

He is survived by four children, Robert (Elizabeth) Anderson, Custer, South Dakota, Russell (Harriet) Anderson, Palm Coast, Florida, Renae (Jerry) Reu, Luverne, and Randall (Polly) Anderson, Adel, Iowa; 21 grandchildren; and 31 great-grandchildren.

He was preceded in death by his wife, Reva; his parents; one sister, Marjorie Voss; and a grandson, Bradley Anderson.

Arrangements were by Hartquist Funeral Home of Luverne, www.hartquistfuneral.com.

(0331 F)

## Alan Stroh

Alan L. "Al" Stroh, 68, Luverne, died Sunday, March 27, 2016, at the Sanford Luverne Medical Center.

A funeral service was Thursday, March 31, 2016, at the United Methodist Church in Luverne. Burial was in the Garden of Memories Cemetery, Luverne.

Alan Stroh was born June 28, 1947, to Vernon and Gladys (McClure) Stroh in Luverne. Alan attended country school near Luverne. He served his country in the United States Army during the Korean Conflict.

Al married Sue Burnett on Sept. 26, 1970, in Luverne. The couple lived in Luverne where Al worked at IBP for over 41 years and at Gold'n Plump for over 12 years. He retired in 2013.

He was a member of the United Methodist Church in

Luverne and the Luverne VFW. He loved spending time with his grandchildren, attending their events and taking them fishing.

Al is survived by his wife, Sue Stroh, Luverne; a daughter, Tammy (Matt) Petty, Brandon, South Dakota; a son, Scott Stroh, Luverne; five grandchildren, Breanna (special friend Patrick Schmidt) Tofteland, Brittany Tofteland, Jacob Tofteland, Ayden Petty and Ashlyn Petty; a great-grandchild, Kyan Tofteland; a brother, Jim (Pat) Stroh, Luverne; and two sisters, Judy (Daryl) Reese, Worthington; and Carol (Dean) Brouwer, Lennox, South Dakota.

He was preceded in death by his parents.

Funeral arrangements were through Dingmann Funeral Home, Luverne, dingmannandsons.com.

(0331 F)

**WET BASEMENT?**

- Wet Basement?
- Basement Wall Bowed?
- Foundation Settling?
- Driveway/Concrete Slab Sinking?
- Radon Testing & Mitigation

**FOUNDATION CRACKED?**

**AMERICAN WATERWORKS**  
★ Basement Systems ★

FREE ESTIMATES  
FINANCING AVAILABLE  
TOLL FREE 1-800-795-1204  
www.american-waterworks.com

**5% OFF Your Next Project**  
(Cannot be combined with any other offers)

**UTERINE CANCER ALERT**  
Power Morcellator Compensation

The FDA issued a warning that power morcellation devices (commonly used during hysterectomy and fibroid surgeries) can spread uterine cancer.

If You or a Loved One Were Diagnosed With UTERINE CANCER After Surgery With This Device Call Now.

**MONEY DAMAGES CALL 1-800-483-7500**

**OVARIAN CANCER ALERT**  
Talcum Powder Compensation

Studies show that regular use of the following Talcum Powder Products may increase risk of OVARIAN CANCER:

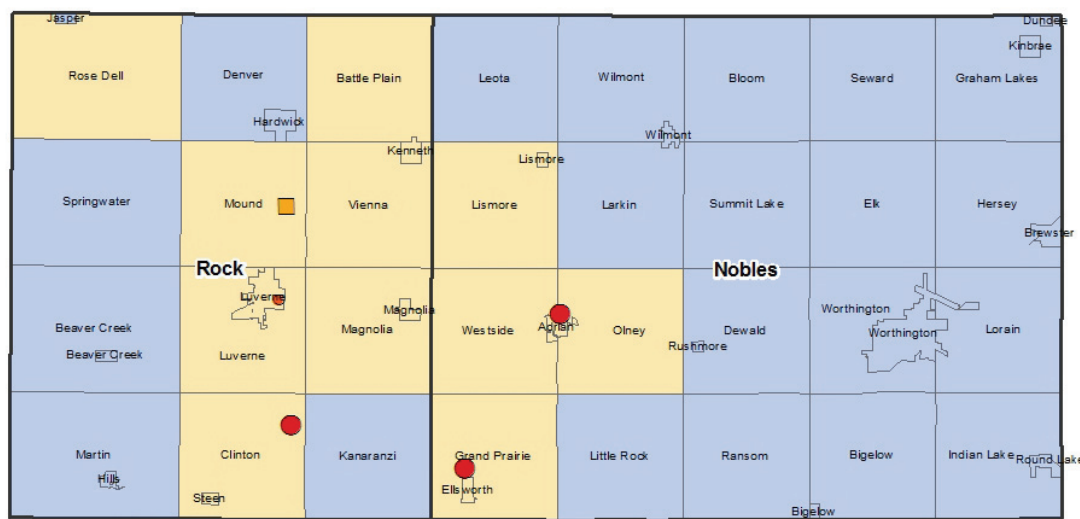
- Johnson & Johnson's Baby Powder®
- Shower to Shower®

If You or a Loved One Were Diagnosed With OVARIAN CANCER After Regular use of These Products CALL

**MONEY DAMAGES CALL 1-800-483-7500**

Goza & Honnold, L.L.C. Law Firm. This is a legal ad. The choice of a lawyer is an important decision and should not be based solely upon advertisements.





**Legend**  
 Community Water Supply Wells (MDH) Maximum Nitrate-N mg/L  
 • 4.5 - 9.9  
 • 10.0 - 22.0  
 Non-Community > 5 Nitrate-N mg/l  
 Selected Townships for Testing  
 Proposed townships for nitrate testing in Nobles and Rock counties

## Well nitrate test kits/continued from page 1A

week received information in the mail about free nitrate sample kits that will be mailed to them April 1.

Arlyn Gehrke, engineering technician with the Rock County Land Management Office, is coordinating the program and said he expects a high rate of participation.

"We've had a lot of interest already," he said.

When well owners receive their kits, they simply need to answer the survey questions and fill the water sample bottles following the sampling instructions and mail it back

in a prepaid mailer.

The sample must be taken the same day as it is mailed, and results will be sent to well owners free of charge with their names, mailing addresses, phone numbers and emails kept confidential.

Gehrke said the nitrate results will be mapped at a countywide scale, summarized and assessed by township as part of the Draft Minnesota Nitrogen Fertilizer Management Plan.

In areas where wells are shown to have high levels of nitrate, the MDA will inves-

tigate possible sources of contamination and attempt to address those conditions.

Gehrke said these sources could be septic systems, feedlots or fertilizer runoff from row-crop fields.

"The knowledge gained by having your well tested will not only help protect you and your family, but will also assist your county to gain a better picture of the presence of nitrate in drinking water," he said.

Gehrke can be reached at the Land Management Office at 283-8862, ext. 4.

## FFA Award Banquet/continued from page 7A

Soto and Nick Overgaard. Chapter degree pins (two-year members) were awarded to Eli Bakken, Hans Bakken, Trey Baustian, Amber DeGroot, Payton Fick, Tyler Fick, Alena Hilfers, Aric Meinerts, Dylan Mente, Tyler Reisdorfer, Cody Saker, Ethan Thorson, McKenna Westphal, Jeffrey Cauwels, Will Natte, Jack Baustian, Eric Tofteland and Jacob Van Santen.

### Proficiency

Proficiency plaques are given out to all the chapter members who have a Supervised Agricultural Experience project and have kept records on that project. The following received proficiency plaques:

**Freshmen:** Riley Severtson, grain production placement, and Emily Zemler, small animal production and care.

**Sophomores:** Jeffrey Cauwels, beef production entrepreneurship; Amber DeGroot, agricultural services placement, forage production entrepreneurship, vegetable production placement; Tyler Fick, beef production entrepreneurship; Alena Hilfers, agricultural services placement, vegetable production

placement; Ethan Thorson, agricultural mechanics design and fabrication placement.

**Juniors:** Kris Severtson, beef production entrepreneurship; Itzel Soto, agricultural services placement; Josh Zemler, goat production.

**Seniors:** Ryleigh Beers, agricultural services proficiency placement, beef production entrepreneurship, home and/or community development, swine production entrepreneurship; Karissa Hamann, agricultural services proficiency placement; Stephanie Riggs, agricultural services proficiency placement; Micah Stensland-Bos, beef production entrepreneurship, agricultural mechanics design entrepreneurship; Megan Tweet, beef production entrepreneurship; Jacob Van Santen, agricultural mechanics design and fabrication placement, dairy production placement; and Mackenzie Wagner, beef production entrepreneurship.

### Star awards

Star awards are given to the top member in four categories: Ryleigh Beers, star farmer; Stephanie Riggs, agribusiness; Karissa Hamann, ag placement; and

Trevor Mente, greenhand.

### DeKalb award

DeKalb Ag Accomplishment award went to Ryleigh Beers for her academic standing, FFA supervised agricultural experiences and record-keeping and leadership activities.

### Next year's officer team

Officers for the 2016-2017 are Kris Severtson, president; Will Natte, vice president; Kaylie Ossefoort, secretary; Tyler Fick, treasurer; Tyler Reisdorfer, reporter; Michael Kinsinger, sentinel; Eli Bakken, parliamentarian; Cody Saker, historian; Aric Meinerts, officer-at-large; and Dylan Mente, student adviser.

### Graduates

Fourteen FFA'ers will graduate from the high school FFA program.

They are Jack Baustian, Tanner Baustian, Ryleigh Beers, Merrissa Brandt, Karissa Hamann, Brandon Oakley, Madi Oye, Nick Overgaard, Stephanie Riggs, Megan Tweet, Eric Tofteland, Mira Uithoven, Jacob Van Santen, and Mackenzie Wagner.

## Sharkee's and Mert's Machine and Repair to be single TIF district/continued from page 1A

commercial and Kracht's business activity is considered to be industrial, the non-conforming zoning issue prompted city officials to propose a land swap.

Kracht has agreed to sell his 2-acre lot to the city for \$160,000, and he is buying a new 3-acre lot from the city for \$10,000 on Gabrielson Road, which is zoned for industrial use.

"He needs to expand his business," City Administra-

tor John Call said about the land deal with Kracht. "That's really what's been driving this whole conversation."

Luverne Economic Development Director Holly Sammons said the new lot was sold to Kracht at a discount (from the \$13,000 asking price) as an incentive.

"It's a win-win situation for everyone," Sammons said.

"We were excited to assist him with relocating his business to an industrial area where he will have a more valuable business property going forward.

"Plus, it opens the door for additional development to occur in our Highway 75 corridor."

Kracht will continue his welding and repair operations at the current site through the summer while his new shop is being built.



Lori Sorenson file photo/0331 sharkee's.tif

Sharkee's bar and restaurant has been closed since April 2014 when health code violations, mainly basement sewage backup, forced its shutdown. Then on May 26, 2014, the building suffered damage from a fire reportedly set by arsonists. The arson remains under investigation by state and local officials but is essentially a cold case and the property has fallen into disrepair.

### Public hearing for TIF proposal set for March 24

With the city acquiring both the Sharkee's and Mert's Welding properties, discussions about future development turned to TIF, an economic development tool that promotes growth while

removing blight.

"It's not unlike what happened with the new Ford dealership on South Highway 75," Call said.

In that case, substandard properties formerly occupying the 430 feet along the west side of the highway were

demolished to make way for the new \$2 million Herman Motors dealership.

When a tax increment district is established, the property owner pays more in property taxes as they are calculated on the higher market value after the improvements are made.

The original amount of taxes continues to be paid to the county, city and school district.

The difference between the two amounts (the old taxes and what would be the new taxes based on the property's improved value) is used to pay off the debt accrued to pay for the improvements.

Once the city owns both the Sharkee's and Mert's Repair properties (roughly four acres total), the plan is to demolish the buildings on the lots and use TIF as a tool to work with a private developer to redevelop the properties.

The Luverne City Council set a public hearing on the proposed TIF establishment for 5 p.m. Tuesday, May 24, in Luverne City Hall.

In related action during the March 22 meeting, the City Council approved an agreement with Northland Securities to assist Luverne's finance department in creating the new TIF redevelopment district.

Northland Securities will collect data for the TIF district, evaluate and advise on the type of TIF district, provide guidance and review basis for statutory findings and prepare notices, resolutions, development agreements (if applicable) and transcripts.

The city will pay a lump sum of \$7,000 for these financial services for the TIF project, which will require another \$1,500 to \$2,500 in legal services.

City Councilwoman Esther Frakes said, "It's a worthwhile project going forward, so it's money well spent, I'm sure."



Advanced surgical care here at home

## Sanford Luverne

Experience the latest in surgical services while remaining close to the comforts of home. Norma Walks, MD provides expert surgical care on a full-time basis in Luverne.

With extensive expertise, Dr. Walks is dedicated to providing individualized, compassionate care – whether you are undergoing a major or minor procedure. Minimally invasive, laparoscopic and endoscopic surgical techniques are all available locally.

Surgical specialties at Sanford Luverne include:

- Colonoscopy and upper endoscopy
- Laparoscopic surgery for gall bladder or appendectomy.
- Small and large bowel surgery
- Hernia repair
- Breast Cancer Surgery
- Skin Cancer Removal
- Cancer Surgery
- Cesarean section

Call (507) 283-4476 to schedule an appointment with Dr. Walks.

sanfordluverne.org



Norma Walks, MD  
General Surgery

**SANFORD**  
Luverne

WE'RE JUST AS TRUSTY, WITHOUT THE WET NOSE.

We're like your new best friend for home heating and cooling. When your system needs service, we'll be right by your side.



— RECEIVE UP TO —  
**\$1,700 IN REBATES\***  
 with the purchase of a qualifying Lennox® home comfort system.  
 OR  
**NO PAYMENTS AND NO INTEREST UNTIL 2017\***

**McClure**  
 PLUMBING, HEATING, AIR CONDITIONING, INC.  
 Luverne, MN  
**(507) 449-2828**  
 412 S. Kniss, Luverne, MN 56156

Offer expires 6/10/2016. \*On a qualifying system purchase. Lennox system rebate offers range from \$250 to \$1,700. Some restrictions apply. One offer available per qualifying purchase. See your local Lennox Dealer or www.lennox.com for details. ©2016 Lennox Industries Inc. Lennox Dealers include independently owned and operated businesses.



# Spring Production



The final chapter brings both decathlon teams together as Drexton Cage (center, played by Paul Witte III) talks through who would have stolen answers for the upcoming meet. Pictured from left are Betty Ann (Hannah Hoogland), Patience (Emma Verbrugge), Abner (Michael Kinsinger), Sylvia (Freddi Stroeh), Reginald (Brandon Claussen), Electra (Katerina Siebert), Cloris (Carly Serie), Cage, Giggles (Ashlee Boltjes), Sincere (Aiden Bartels), Parker (Emily Wendland), Smilin' Bob (Josh Schoneman) and Pensicola (Megan Rogers)

## Luverne students set to perform 'Gumshoe High' Friday and Saturday

### Story and photos by Mavis Fodness

Tricks and tomfoolery will be performed on stage during Luverne High School's performance of "Gumshoe High: A Totally Teen Mystery" Friday, April 1, and Saturday, April 2, in the high school auditorium.

A student suggestion led spring play director Sharon Boltjes to select a similar genre as the second play Boltjes had ever directed, "Lucky Dollar."

"It was a fun play," she recalled.

Thirty students are involved in Boltjes' most recent production. Both performances begin at 7:30 p.m.

The play models the reading of a dime-store detective novel complete with various chapters (scene changes) set up by "pages."

Freshman Sadie Kindt plays Chapter; classmate Grace Sweeney is Glossary and senior Brianna Jonas is Index. They announce and bring props on and off stage for the various scene changes.

The scenes center around three areas: main character Drexton Cage's office that is a janitor's closet in Chandler High School, at Hammet High School (home to the opposing IQ-decathlon team) and

in an alley for meeting Fred Backwards (sophomore Donald Ray), Cage's tight-lipped underworld connection.

The story opens with the Humphrey Bogart-like high school detective Drexton (portrayed by senior Paul Witte III) in one-in-one conversations with the audience. Cage instructs viewers to try to figure out what information is real and what is make-believe in the clever story involving a simple frame job that quickly becomes a tangled web of intrigue.

Cage is convinced by the mysterious femme fatale Carmen Hardstone (played by sophomore Megan Rogers) to clear the name of an IQ-decathlete/boyfriend Abner Johnson (freshman Michael Kinsinger). Johnson was expelled from Chandler High School for supposedly stealing test answers.

Cage interviews various characters to find out who framed Abner. He eventually narrows the possible suspects to the real thief, who is a decathlon team member.

Chandler decathlon team members include Reginald Wellington III (senior Brandon Claussen), Electra who is also Reginald's girlfriend (senior Katerina Siebert), Cloris (junior Carly Serie)

and Patience (sophomore Emma Verbrugge), who is the team's newest member with Abner's absence.

Decathlon members of Hammet include Smilin' Bob (junior Josh Schoneman), Giggles Fontaine (sophomore Ashlee Boltjes), Parker Roberts (senior Emily Wendland), and Sincere Thatcher (junior Aidan Bartels).

Annabell Petronek, a junior, is assistant director.

The play is about 90 minutes in length and includes an intermission.

Concessions will be available both before the play and at intermission.

There is a charge for the play performances.



Under a blue light, Index (Brianna Jonas), Chapter (Sadie Kindt) and Glossary (Grace Sweeney) introduce a scene during rehearsal.



High school detective Drexton Cage (left, played by Paul Witte III) talks with his friend Reginald Wellington III (Brandon Claussen) about the members of the Chandler High School IQ-decathlon team and the legacy agreement Wellington's family has for his automatic acceptance to Harvard University.



Cast and crew perform the Luverne High School spring play "Gumshoe High: A Totally Teen Mystery" Friday and Saturday in the school auditorium. Involved in the production are (front, left) Doug Rozeboom, Megan Rogers, Nicole Aanenson, Ashlee Boltjes, (second row) Jake Henckel, Emily Wendland, Ryleigh Beers, Freddi Stroeh, Josh Schoneman, Tatiana Gust, Julia Ferguson, Grace Sweeney, Brianna Jonas, Sadie Kindt, Carrissa Cunningham, (back) Quinton Nelson, Logan Bosch, Kat Siebert, Carly Serie, Emma Verbrugge, Michael Kinsinger, Aidan Bartels, Brandon Claussen, Paul Witte III and Hannah Hoogland. Not pictured: Donald Ray, Anna Petronek, Izlet Soto, Merrissa Brandt and Sandra Renken.

## 1924: Committee begins fund drive for Salvation Army; organization aids homeless and unfortunate

The following appeared in the Rock County Herald on April 18, 1924:

### DRIVE FOR SALVATION ARMY FUND UNDERWAY

Annual Campaign to Raise funds for Support of Mercy Workers Started Wednesday

### LOCAL COMMITTEE OF FOUR PLACED IN CHARGE

### Receipts to Go Into General Fund of Organization to Aid the Homeless and Unfortunate

The annual Salvation Army drive in this county commenced Wednesday, and is under the personal supervision of Miss Gillespie, of Salvation



### BITS BY BETTY

By Betty Mann, president Rock County Historical Society

Army headquarters. The Kiwanis and Commercial clubs of Luverne have jointly undertaken to carry on the campaign in this county, and solicitation for funds will be made in this city and in the other towns of the county. The quota for the county is \$900.00.

A committee of four, composed of F. A. Leicher and Ben Pelstring, of the

Commercial club, and A. A. Anderson and Ivan O. Hansen, of the Kiwanis club, will be in charge of the drive. This is the annual appeal for funds made by Salvation Army headquarters, and takes the place of all other drives.

All of the money collected in North and South Dakota and Minnesota will be used in this district,

which comprises these three states. In cities where the Army has a corps, as in Sioux Falls for instance, all the donations are used entirely for relief work in that place. The contributions from Rock county will be forwarded to the Minneapolis headquarters.

Although the money is sent from Rock county to the twin cities, it does not mean that Luverne and the county are not entitled to share in the funds or the relief work, for the money is available here as well as in any other place. Any cases of needy persons or families in poor and suffering circumstances should be brought to the attention of Ivan O. Hansen, who will make report of same to headquarters and secure the necessary relief. Wives and children left in destitute circum-

stances without a husband or father to support them, may make application for aid, and they will either be cared for at the Salvation Army home or assistance will be rendered as long as necessary.

It is everywhere recognized that the Salvation Army is doing a wonderful work throughout this country in saving the homeless and unfortunate, and an urgent appeal is made to all to donate as liberally as their purse will allow, to this worthy cause.

Donations to the Rock County Historical Society can be sent to the Rock County Historical Society, P.O. Box 741, Luverne, MN 56156.

Mann welcomes correspondence sent to mannmade@iu.net.



## Cardinal track teams make 2016 debut in Vermillion

By John Rittenhouse

The Luverne Cardinal track teams made their 2016 debut Monday at the Dakota Dome in Vermillion, South Dakota.

Competing against the stiff competition in the Class A version of the Dan Lennon Invitational, Cardinal coach Craig Nelson said he had limited expectations entering the meet.

After watching his athletes produce a combined 11 top-10 finishes at the event, Nelson was happy with the way things unfolded at the University of South Dakota.

"We did well. Better than I anticipated," he said.

"We have a young group of kids this year, and anytime you can get top-10 finishes at this meet is a good showing."

The Luverne girls placed sixth or better in seven events.

Courtney Siebenahler turned in the top performance by covering 34-7 1/2 to finish third in the triple jump.

Morgan Edwards, one of Minnesota's top Class A throwers, started the season with a solid showing.

Edwards placed fourth in the shot put with a toss of 35-9.

Kami Sawtelle and Madison Schandelemeier turned in fifth-place efforts for the Cardinals.

Sawtelle placed fifth in the shot put with a distance of 33-9.

Schandelemeier cleared 7-6 to place fifth in the pole vault.

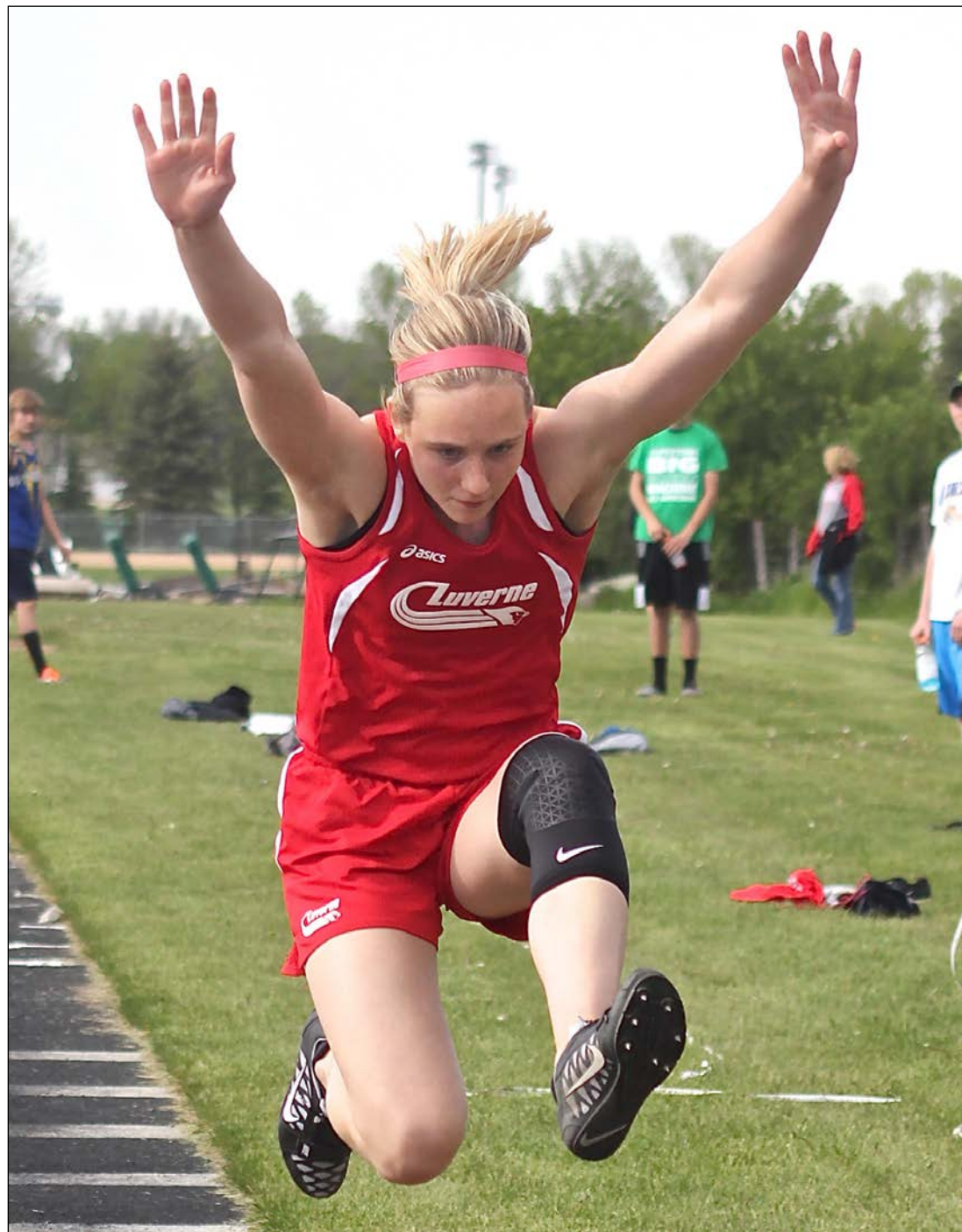
The LHS girls also recorded three sixth-place performances at the meet.

Gabrielle Ferrell ran 800 meters in 2:34 to finish sixth, while Bergin Flom cleared 7-0 to place sixth in the pole vault.

Luverne's sprint-medley relay placed sixth with a time of 2:31.81.

Sierra Schmuck, Jaidyn Elbers, Ferrell and Schandelemeier formed the team.

The Luverne boys finished



Star Herald file photo

Luverne's Courtney Siebenahler turned in the top effort by a Cardinal athlete when she placed third in the triple jump at the Dan Lennon Invitational Monday in Vermillion, South Dakota.

the day with four top-10 efforts.

Matthew Hup turned in the best effort by clearing 12-0 to place fifth in the pole vault.

Logan Stratton finished

sixth in the shot put after registering a toss covering 46-1.

Quinton Siebenahler placed eighth in the long jump with a distance of 19-7.

Dalton DeSollar placed ninth in the 3,200-meter run with a time of 11:09.98.

The Cards host the annual Luverne Invitational Tuesday.

## Luverne hosts two triathlons this summer

By John Rittenhouse

The man who brought the World Wienerman Championships to Luverne is ready to unveil two new events to the community in the coming months.

Luverne native Dave Duffy has always liked fitness challenges, and now he is ready to share his passion with anyone interested from the surrounding area and beyond.

Duffy is putting together a pair of triathlons to be staged in conjunction with two of Luverne's upcoming celebrations.

The first Take 16 Brewery Kick the Can Triathlon will make its debut over Buffalo Days weekend in early June.

One month later, Duffy plans to stage the Davis Lake Triathlon on the Fourth of July. The Take 16 event is designed to attract the attention of the more serious athletes.

Designed as a team competition event for two-, three- or four-athlete squads, the event will consist of swimming, biking and running challenges that will cover over a combined 150 miles.

"I was thinking about making it a little shorter than 150 miles," Duffy said.



Star Herald file photo

Biking competitions will be a part of both triathlons coming to Luverne this summer.

"Then Jane (Wildung Lanphere) asked why not make it 150 miles because we'll be celebrating Luverne's 150th year in 2017? That's when I said why not 150 miles?"

The event is scheduled to start at 7 a.m. Saturday, June 4, at the Rock County Health and Fitness Center.

That's where the teams will need to compete a 2.5-mile swim.

A 120-mile bike competition is up next that will be staged

on hard-surfaced roads.

A 30-mile run on mostly hard-surfaced roads wraps up the event.

"It will depend upon how many teams we get, but we might use a staggered start at the swimming pool," Duffy said.

"I'm thinking it should be done between 4 and 5 p.m. and it will end at the Take 16 Brewery. Since this is a new event and we will be going up against an event in Madison, South Dakota, on the same day, I'll be happy if we can get five to 10 teams the first year. Having this triathlon on Buffalo Days will give out-of-town people more of a reason to come because there are other things going on besides the triathlon."

Interested participants can register for the event at all-sportcentral.com right now.

Registration for the Davis Lake Triathlon set for the Fourth of July will be open on the same site as well.

"This will be more of a family-oriented event and a smaller version of the Take 16 Triathlon," Duffy said.

"It will be advertised as a solo event, but I'll be happy to take two- and three-person teams

if they want to compete. There are a lot of people out there who never have participated in a triathlon, but they want to. This would be perfect for them because it will be more about having fun and doing it together with friends or family members."

The event starts at 10 a.m. with a half-mile to one-mile kayak event on The Lake (Creamery Pond).

The kayaks will be provided. An eight- to 10-mile bike ride (hard-surfaced roads) is up next, followed by a 2.5- to 3-mile in-town run.

"I have not finalized any of the distances yet, but I do want to make it a fun thing friends and family members can enjoy together," Duffy said.

If that sounds too challenging, Duffy said he plans to offer a scaled-down version of the triathlon that will start at 9 a.m.

The smaller version of the event includes a 400- to 800-meter kayak race, a two- to three-mile bike ride and a one-mile run.

"I'm hoping we can get 40 to 50 people to compete. It's a good triathlon for people who don't like swimming. It should be a good, fun event."

## Schilling, Vikings win national title

An athlete from Southwest Minnesota helped make history as a member of the



Augustana College men's basketball program over the weekend.

Casey Schilling, a 2012 graduate of Ellsworth High School, and the Vikings captured their NCAA Division II national championship Saturday in Frisco, Texas.

Augustana defeated Lincoln Memorial (Harrogate, Tennessee), 90-81 in the title tilt, giving the Vikings their first national title in program history.

"It was really something special," Schilling said on Saturday, when celebrating Easter at a family gathering on Sunday.

"It definitely will be something I'll remember for the rest of my life."

Schilling was more than a contributing player during Augustana's remarkable 34-2 season.

He was a Vikings' standout.

Schilling registered a double-double before the first half was complete and went on to score 20 points and collect 19 rebounds in Saturday's championship.

He was one of three Vikings players to be named to the All-Elite Eight Tournament Team at event's end.

Based on Schilling's statistics during his senior season, Saturday's performance was just one of many big-time efforts he produced during the 2015-16 season.

Schilling led the Vikings in blocked shots (31) and in rebounding with a 9.7 average per game this winter.

He also was the team's second-leading scorer with an average of 19.6 points per game.

For a player I remember as a wing back in his high school days, the 6-6 Schilling sure looked comfortable in filling the role of a power forward when I was watching Saturday's championship game.

"I played as a two (shooting guard) during my first year in college," he recalled.

"It was during my sophomore season when we were running short on posts when the coach said he would like me to play as a stretch wing (small forward), and I did because I wanted to help the team any way I could. My role eventually evolved into a four (power forward) during my junior and senior years."

It was Schilling's willingness to not only accept his new role with the team, but to thrive in it, that helped forge Augustana's path to a national championship.

The Vikings didn't qualify for the national tournament during his sophomore season, but they did make the field and bowed out of the event in the round of 32 teams during his freshmen and junior

## FROM THE SIDELINES

By John Rittenhouse, sports editor



Schilling

seasons.

Earning a berth in the national tournament twice was a gratifying experience for Schilling and fellow seniors Alex Richter and Daniel Jansen.

Collectively, they wanted to do more than that this winter.

"The other seniors and I had been talking about leaving a legacy at Augustana for a couple of years now," he said.

"It doesn't get any better than finishing the year on top."

Schilling doesn't have any immediate plans to continue his playing career right now.

If the right offer came to play overseas and the deal was right, it would be something Casey would consider.

Currently he is focusing on getting married this summer and plans to work on the family farm in the coming months.

Schilling does want to continue a basketball project he started a couple of years ago.

"I've been running a basketball workout thing in the Baltic and Dell Rapids areas the last couple of years," he explained.

"I love working with the youth and it's designed to help kids develop their skills. I'm still working out the kinks, but I would like to bring my program to southwest Minnesota and help the kids around here. Someone was there to help me when I was a kid in Ellsworth, and that would be a way for me to give something back."

Schilling seems to be all about giving back to those who remained loyal to him in recent years.

Augustana College rewarded him with an opportunity to play college basketball for four years.

Schilling and his senior teammates returned the favor in a big way on Saturday.

"To do something that has never been done at Augustana before is amazing," he said.

"I guess you can say we left our stamp on the (Vikings) basketball program."

## Spring sports season takes off this week

By John Rittenhouse

Weather permitting, all of the spring sports teams from the Star Herald coverage area will make their 2016 debuts in the next seven days.

Mother Nature could throw a wrench into the mix, but decent weather could allow all of the area track, baseball, softball, tennis and golf programs to open the season prior to next Friday.

The spring season for the Luverne and Hills-Beaver Creek track programs started early this week in Vermillion,

South Dakota.

LHS competed at the Class A version of the Dan Lennon Invitational at the University of South Dakota Monday, while H-BC mixed it up in the Class B version of the event Tuesday.

The Luverne Invitational is set for next Tuesday.

H-BC is expected to be on hand for the meet, and Adrian and Ellsworth will make their 2016 debuts at the event.

The Luverne and Adrian baseball teams are scheduled to open the season by playing each other today in Adrian.

LHS opens its home slate by hosting Red Rock Central-Westbrook-Walnut Grove Friday before entertaining Martin County West Tuesday.

Adrian hosts Worthington Monday and RRC-W-WG Tuesday.

The LHS and Adrian Area softball teams open the campaign by meeting each other today in Luverne.

The Luverne boys' tennis team makes its season debut by hosting Vermillion, South Dakota, for a match in Luverne on Tuesday.

The Hills-Beaver Creek boys' golf team faces a hectic schedule next week starting with a match against Southwest Christian in Adrian Tuesday.

The Patriots play in Lakefield Thursday before hosting Westbrook-Walnut Grove for a match in Larchwood, Iowa, Friday.

The Luverne and Adrian golf teams are scheduled to make their debuts next Thursday.

Luverne plays at the Red Rock Central Triangular, while Adrian takes on Russell-Tyler-Ruthon in Tyler.

## CORRECTION

### Correction

A correction needs to be made to the cutline that ran underneath the photo of Luverne High School senior Morgan Haugen in the March 24 edition of the Star Herald.

The cutline indicates Haugen drew honorable mention from the Big South Conference girls' basketball coaches.

Haugen actually made the 2015-16 All-BSC Western Division Team as indicated in the story that ran with the photo.

We regret this error.



**St. Catherine Catholic Church**  
203 E. Brown St., Luverne  
St. Catherine Ph.: 283-8502

**St. Mary Catholic Church, Ellsworth**  
Thursday, March 31: 1-4 p.m. Parish Fun Day. Friday, April 1: 9:30 a.m. Anointing Mass at Parkview Manor. 3 p.m. Holy Hour of Mercy at St. Catherine. Saturday, April 2: 5:30 p.m. Mass at St. Catherine. Sunday, April 3: 8:30 a.m. Mass at St. Mary in Ellsworth. 10:30 a.m. Mass at St. Catherine in Luverne. Sunday School and CLW. 6 p.m. LCF. 7:30 p.m. Bible Study. Tuesday, April 5: 9:30 a.m. and 7 p.m. Bible Study. 7 p.m. LCCW; Cub Scouts. Wednesday, April 6: 10 a.m. Mass at Mary Jane Brown Home. 3:30 and 7 p.m. Faith Formation. 5:30 p.m. Social Ministry. Thursday, April 7: 10 a.m. Anointing Mass at St. Catherine. 4 p.m. Anointing Mass at Veterans Home.

**Luverne Christian Reformed Church**  
605 N. Estey St., Luverne  
Office Ph. 283-8482; Prayer Line Ph. 449-5982  
www.luverncrc.com — luvernecrc@gmail.com  
Roger Sparks, Pastor

Sunday, April 3: 9:30 a.m. Worship. 11 a.m. Sunday School and Catechism Classes. 6:30 p.m. Worship. Monday, April 4: 9 a.m. PERK UP. Tuesday, April 5: 9:30 a.m. CoffeeBreak/Story Hour.

**First Baptist Church**  
1033 N. Jackson St., P.O. Box 975, Luverne  
Ph. 283-4091; email: fbcluv@iw.net — www.fbcluverne.org  
Dick Lauger, Pastor

Thursday, March 31: 7 p.m. Worship Service on Channel 3. Friday, April 1: 6 a.m. Men's Bible Study at First Baptist Church. Sunday, April 3: 9:15 a.m. Sunday School. 10:30 a.m. Morning Service with Communion. 6 p.m. Evening Service. Tuesday, April 5: 7 a.m. Men's Bible Study. Wednesday, April 6: 6:55 p.m. Awana. Thursday, April 7: 7 p.m. Worship Service on Channel 3.

**Grace Lutheran Church**  
500 N. Kniss Ave., Luverne  
Ph. 283-4431; www.graceluverne.org — nichols-glc@live.com  
Ron Nichols, Pastor; Cole McCormick, Interim Pastor

Thursday, March 31: 8:30 a.m. MIA. 9:30 a.m. Coffee. 4:30 p.m. Book Study. 7:30 p.m. Priscilla and Elizabeth circles at Helen Laabs. Friday, April 1: 6:30 p.m. Worship on Channel 3. Saturday, March 5: 5:30 p.m. Worship with Communion. Sunday, April 3: Noisy Sunday. 8:15 Radio broadcast; Worship with Communion. 9:15 a.m. Coffee. 9:30 a.m. CAT FORUM; Sunday School and Adult Study. 10:45 a.m. Worship with Communion. Monday, April 4: 1 to 7 p.m. Red Cross Blood Drive. 4 p.m. Worship on Channel 3. Tuesday, March 8: 9 a.m. Staff meeting. Wednesday, April 6: 7 a.m. Men's Study. 2 p.m. CAT Forum. 3:15 p.m. Faithweavers. 7 p.m. CAT Forum; Chancel Choir rehearsal. Thursday, April 7: 8:30 a.m. MIA. 9:30 a.m. Coffee. 1:30 p.m. Endowment. 4:30 p.m. Book Study.

**Bethany Lutheran Church**  
720 N. Kniss Ave., Luverne  
Ph. 283-4571 — pastorapalmquist67@yahoo.com

Thursday, March 31: 5 p.m. Worship on Channel 3. Sunday, April 3: 9 a.m. Sunday School. 9:15 a.m. Bible Class. 10:15 a.m. Worship. Thursday, April 7: 5 p.m. Worship on Channel 3.

**American Reformed Church**  
304 N. Fairview Dr., Luverne  
Ph. 283-8600; email: office@arcluverne.org

Friday, April 1: 6:30 a.m. Community Men's Bible Study. Saturday, April 2: 10 a.m. Priebe/Guy bridal shower. 1:30 p.m. Commons reserved. 6 p.m. BELONG Bowling. Sunday, April 3: 9:30 a.m. Worship. 10:50 a.m. Family Education. 7 p.m. Senior RCYF. Monday, April 4: 7 p.m. Esther Circle. VBS teachers. Tuesday, April 5: 1:30 p.m. Rebecca Circle. 7 p.m. Bible Study Fellowship; Women's Study. Wednesday, April 6: 5:30 p.m. Midweek meal. 6:30 p.m. Pioneer Clubs/YEL. 6:45 p.m. Rachel Circle. 7 p.m. Abide praise team. 8 p.m. Adult choir. Thursday, April 7: 10 a.m. Staff meeting. 6 p.m. Ladies Night Out.

**Holy Trinity Episcopal Church**  
220 N. Cedar St., Luverne

Sundays: 10:30 a.m. Worship Service; Fellowship after service. Wednesdays: 6:30 p.m. Bible Study. Our Mission Statement: Historic Holy Trinity strives to serve God and our community through worship, stewardship and friendship. Contact Emily Lodine Overgaard at (507) 227-6175 for information. Come as you are — our leader wore sandals.

**First Assembly of God Church**  
1075 110<sup>th</sup> Ave., 2 miles west of Luverne on County Rd. 4  
Kenneth and Gloria Kashner, Pastors

Sundays: 9 a.m. Sunday School. 10 a.m. Morning Worship. 6:30 p.m. School of the Holy Spirit. Wednesdays: 7 p.m. Kids Connection; Men's Bible Study with Pastor Ken; Women's Bible Study with Pastor Gloria.

**St. John Lutheran Church**  
803 N. Cedar St., Luverne

Ph. 283-2316, Dial-A-Devotion Ph. 283-4005  
email: stjoh@iw.net — www.stjohnlutheranluverne.org

Thursday, March 31: 9 a.m. and 1 p.m. Little Lambs Devotions. Saturday, April 2: 5:30 p.m. Worship. Sunday, April 3: 9 a.m. Worship. 10:15 a.m. Christian Education Hour. 11:15 a.m. Junior Choir Rehearsal. 4 p.m. Junior LYF. Monday, April 4: 5 to 8 p.m. Little Lambs Tip Night at Pizza Ranch. 7:30 p.m. Elders' Meeting. Tuesday, April 5: 1 and 6 p.m. Quilting. Wednesday, April 6: 9 a.m. Little Lambs Devotions. 9:30 a.m. Bible Study. 11:15 a.m. Staff Meeting. 6:30 p.m. Fellowship Meeting. 7 p.m. Youth Bible Study at Pipestone; KFC; Senior Choir. 8 p.m. Kingdom Builders. Thursday, April 7: 9 a.m. and 1 p.m. Little Lambs Devotions. 2 p.m. Women's Society.

**United Methodist Church**  
109 N. Freeman Ave., Luverne  
Ph. 283-4529; email: luverneumc@iw.net

Thursday, March 31: 1-3 p.m. Rock County Food Shelf. Saturday, April 2: 8 p.m. AA meeting in Upper Room. Sunday, April 3: 9 a.m. Traditional Worship. 10 a.m. Coffee Hour. 10:05 a.m. Bible Study in Upper Room. 11 a.m. Come as You Are Worship. 6 p.m. A.L.I.V.E. Youth Group. Wednesday, April 6: 8 p.m. AA meeting in Upper Room. Thursday, April 7: 1-3 p.m. Rock County Food Shelf.

**First Presbyterian Church**  
302 Central Lane, Luverne

Ph. 283-4787; email: Firstpc@iw.net — www.fpcluverne.com50  
Sunday, April 3: 9 a.m. Sunday School. 10:15 a.m. Worship Service. Tuesday, April 5: 5:30 p.m. Worship on Channel 3. Wednesday, April 6: 6 p.m. Confirmation; Bells. 8 p.m. Choir.

**Living Rock Church**  
500 E. Main St., Luverne  
Ph. 449-0057; www.livingrockswmn.org  
Billy Skaggs, Pastor

Sundays: 10:30 a.m. Worship; Kids Rock Children's Ministry. 6 p.m. Youth Ministry. Life groups meet throughout the week.

**New Life Celebration Church**  
211 E. Main St., Luverne

Ph. 449-6522; email: newlifecelabration@gmail.com  
Sundays: 9:30 a.m. Worship in the lower level meeting room of the Creeger building. Every third Thursday: 5 p.m. Food give-away. Bible Study groups meet at various times and days.

**Zion Evangelical Lutheran Church**  
305 E. 2<sup>nd</sup> St., P.O. Box 36, Hardwick  
Ph. 669-2855; email: revmumme@gmail.com — www.zionlutheran-hardwick.com  
Mark W. Mumme, Pastor

Thursday, March 31: 4 p.m. Zion Worship on Channel 3. Friday, April 1: 4 p.m. Worship on Channel 3. Sunday, April 3: 9 a.m. Sunday School and Adult Bible Study. 10 a.m. Mentor Program. 10:30 a.m. Worship Service. 11:30 a.m. Potluck Dinner. Monday, April 4: 9 a.m. Circuit Pastors meeting. 1 p.m. Quilting. Wednesday, April 6: 6 p.m. Confirmation. 7 p.m. Bible Study. 8 p.m. LWML meeting. Thursday, April 7: 4 p.m. Zion Worship on Channel 3.

**Ben Clare United Methodist Church**  
2672 E. Ben Clare Ave., Valley Springs, S.D.  
igtwlb@WOW.net  
Bill Bates, Pastor

Sundays: 9 a.m. Worship; 10 a.m. Fellowship; 10:30 a.m. Sunday School for all ages.

**First Lutheran Church**  
300 Maple St., Valley Springs, S.D.  
Ph. (605) 757-6662  
Ray Heidenson, Pastor

Sunday, April 3: 9:30 a.m. Sunday School. 10:30 a.m. Worship with Communion; Augustana Outreach Team visit. Wednesday, April 6: 7 p.m. Choir; Confirmation.

**Palisade Lutheran Church**  
211 121<sup>st</sup> St., Garretton, S.D.  
Ph. (507) 597-6257 — firstpalisade@alliancecom.net  
Ray Heidenson, Pastor

Sunday, April 3: 9 a.m. Worship with Communion; Augustana Outreach Team visit. 10 a.m. Sunday School. Wednesday, April 6: 7 p.m. Confirmation at First Lutheran. Thursday, April 7: 1:30 p.m. WELCA regular meeting. 7:30 p.m. Church Council meeting.

**First Presbyterian Church**  
201 S. 3<sup>rd</sup> St. P.O. Box 73, Beaver Creek  
Ph. (507) 673-2428 — lori.1stpc@centurylink.net  
Worship Leaders Michael Blank and Andy Anderson

Sundays: 9:30 a.m. Worship; 9:45 a.m. Sunday School. Deborah Circle — Third Thursday of the month.

**Magnolia United Methodist Church**  
501 E. Luverne St., Magnolia  
Church Ph. 283-9698; cell 227-7821  
adrmagumc@frontiernet.net — www.adrianmagnoliaumc.com

Sundays: 9 a.m. Worship. 10:15 a.m. Sunday School.

**Steen Reformed Church**  
112 W. Church Ave., Steen  
Ph. 855-2336  
Reuben Sinnema, Youth Pastor

Sunday, April 3: 9:30 a.m. Worship. Sunday School follows Worship. 6:30 p.m. RCYF. Wednesday, April 6: 7 p.m. Midweek.

**Bethlehem Lutheran Church**  
Interim Pastor Grant Fisher  
112 N. Main St., Hills

**Hills United Reformed Church**

Sunday, April 3: 9 a.m. Worship at Tuff Chapel. 9:30 a.m. Sunday School. 10:30 a.m. Worship at Bethlehem. Tuesday, April 5: 2:30 p.m. Bible Study at Tuff Home. 3:15 p.m. Bible Study at The Village. Wednesday, April 6: 9 a.m. Quilting. 6:30 p.m. Confirmation for grades 8-9.

## Going to God's House

### BUILT ON A ROCK

By Pastor Anthony Palmquist, Bethany Lutheran Church

and Holy Spirit. To thank God for all his many blessings freely, graciously given to us. To hear again how he sent his Son Jesus to become one of us so he could take our place. Jesus perfectly kept God's law, innocently suffered, died on the cross to pay for our sins, and rose victorious from the grave. By this he assures us that he is God's Son, he keeps his promises, his work of salvation is complete, and that we too will rise.

Do you enjoy going to church on Sunday? Or on Saturday or Wednesday? There are many opportunities to do so here in Luverne and the surrounding area. In 2013 the Pew Research Center reported that 37 percent of all Americans attended church on a weekly basis. (Pewresearch.org, Sept. 13, 2013.) This seems to be an increase from a few years earlier. Are these statistics similar for the Luverne area? It would be interesting to know.

What are our reasons for going to God's House? Some people mistakenly think that going to church is like going to a social club. Yes, it's great to see family and friends in this setting, but that's not our primary reason for going to church. We also don't attend in order to look good to others in our community.

God says in his word: "Let us hold unswervingly to the hope we profess, for he who promised is faithful. And let us consider how we may spur one another on toward love and good deeds. Let us not give up meeting together, as some are in the habit of doing, but let us encourage one another — and all the more as you see the Day approaching." (Hebrews 10:23-25 NIV 1984)

The purpose of going to God's House then is to be built up and strengthened by God's word in his Means of Grace. The Holy Spirit uses the proclaimed word to strengthen our faith and to draw us closer to him. He uses the word with the waters of Holy Baptism to create faith in our hearts and to bring us into the family of believers. He uses the word and presence of Jesus in the Lord's Supper to build up our faith and encourage us while on this difficult life journey.

We also attend in order to sing praises to our Creator, Savior, and Sanctifier — Father, Son,

We also go to God's House to join our family of believers in prayer. Here we bring our concerns and needs before the Lord who promises to hear and answer according to his will. We also give and receive encouragement at church. You too provide encouragement to others, even if you don't realize it. Just by your presence you are showing others that going to church is important for our spiritual growth. By talking with your "brothers and sisters" you're showing concern for them and can reassure them that you're praying for them.

If you haven't been to God's House in a while, I encourage you to do so. Like the parable of the Prodigal Son, the Father is waiting to welcome you with open arms. He forgives all of our sins, our waywardness, our laziness. He gives you strength and resolve to improve your life, to overcome temptations, and to share His selfless love with others.

Psalm 122:1 "I rejoiced with those who said to me, Let us go to the house of the Lord." We look forward to seeing you in God's House this Sunday!

**Hills United Reformed Church**  
410 S. Central Ave., Hills  
Office Ph. 962-3254  
hillsurc@alliancecom.net  
Alan Camarigg, Pastor

Sundays: 9:30 a.m. and 6 p.m. Worship Services.

**These Weekly Church  
Page Messages are  
contributed to God's  
Work through the  
Church and by these  
concerned and  
responsible citizens  
& businesses:**

Call Rick or Chantel to  
place your ad!

**283-2333**

**Tuff Memorial Home,  
Retirement Apartments  
& Tuff Village**



"A Home Where Residents SMILE"  
Hills, Minnesota  
Phone 507-962-3275

**Papik  
MOTORS**  
LUVERNE, MINN.

I-90 in Luverne, MN  
507-283-9171 • 1-800-634-7701

Read us online!

**Rock County  
STAR HERALD**  
www.Star-Herald.com

*Trust In Him*



**Pizza Ranch**  
110 E. Main,  
Luverne, MN  
Phone 507-283-2379

**MANLEY**  
TIRE & OIL SERVICE  
Manley Minnesota  
1-800-615-3704  
Open six days a week - Closed on Sundays  
To God be the Glory.

**CWCG**  
Business Insurance.  
Tri-State Region *Period!*

**Rock County  
STAR HERALD**  
Luverne, MN • 507-283-2333

**Bruce's Electric**  
residential, commercial and farm wiring  
**Bruce Umbreit**  
Electrical Contractor  
1200 Linden, Luverne, MN 56156  
Phone 507-283-4917

**Luverne  
ANNOUNCER**

**To Advertise  
Call  
283-2333**

**Buffalo Ridge  
INSURANCE**  
507-283-2381 www.buffaloridgeins.com E-mail: info@buffaloridgeins.com

**McClure Electric**  
Alan M. Aanenson, owner  
Farm, Home & Commercial Wiring  
Luverne, MN Phone 507-283-4716

**First Farmers & Merchants**  
303 E. Main, Luverne, MN  
507-283-4463  
www.fmbank.com  
**We believe in you.**  
Member FDIC. And the community.

**HILLS STAINLESS STEEL  
& EQUIPMENT CO., INC.**  
506 W. Koehn, P.O. Box 987, Luverne, MN  
PHONE 507-283-4405  
Church is Important - Please Attend!

**MINNWEST  
BANK**  
• 116 E. Main St., Luverne 507-283-2366  
• S. Hwy. 75, Luverne 507-283-9131  
• Main St., Beaver Creek 507-673-2333  
Member FDIC www.minnwestbank.com

**HARTQUIST**  
Funeral and Cremation Services  
— ENGEBRETSON CHAPEL —  
507-283-2777  
www.HartquistFuneral.com  
"Let our family help your family"  
Serving the Luverne and Surrounding Communities

**Tollefson Publishing**  
117 W. Main  
Luverne, MN 56156  
507-283-2333



# Star Herald PUBLIC NOTICES

Read all public notices online at  
[www.Star-Herald.com](http://www.Star-Herald.com)

## Mortgage foreclosure sale set for May 19

**NOTICE OF MORTGAGE FORECLOSURE SALE**  
**THE RIGHT TO VERIFICATION OF THE DEBT AND IDENTITY OF THE ORIGINAL CREDITOR WITHIN THE TIME PROVIDED BY LAW IS NOT AFFECTED BY THIS ACTION.**

NOTICE IS HEREBY GIVEN, that default has occurred in conditions of the following described mortgage:

DATE OF MORTGAGE: July 30, 2009  
MORTGAGOR: Shawn M. Sweeney and Deanna M. Sweeney, husband and wife.  
MORTGAGEE: Mortgage Electronic Registration Systems, Inc..  
DATE AND PLACE OF RECORDING: Recorded July 30, 2009 Rock County Recorder, Document No. 171844.  
ASSIGNMENTS OF MORTGAGE: Assigned to: Bank of America, N.A. successor by merger to BAC Home Loans Servicing, LP f/k/a Countrywide Home Loans Servicing LP. Dated February 27, 2012 Recorded March 5, 2012, as Document No. 178695.  
TRANSACTION AGENT: Mortgage Electronic Registration Systems, Inc.  
TRANSACTION AGENT'S MORTGAGE IDENTIFICATION NUMBER ON MORTGAGE: 100061907000105866  
LENDER OR BROKER AND MORTGAGE ORIGINATOR STATED ON MORTGAGE: First Farmers & Merchants National Bank, a Minnesota Corporation  
RESIDENTIAL MORTGAGE SERVICER: Bank of America, N.A.  
MORTGAGED PROPERTY ADDRESS: 1119 North Lindale Street, Luverne, MN 56156

TAX PARCEL I.D. #: 20.0470.000  
LEGAL DESCRIPTION OF PROPERTY:  
Lot 5 in Block 8 in Blue Mound 1st Addition to the City of Luverne  
COUNTY IN WHICH PROPERTY IS LOCATED: Rock  
ORIGINAL PRINCIPAL AMOUNT OF MORTGAGE: \$125,152.00  
AMOUNT DUE AND CLAIMED TO BE DUE AS OF DATE OF NOTICE, INCLUDING TAXES, IF ANY, PAID BY MORTGAGEE: \$129,232.66

That prior to the commencement of this mortgage foreclosure proceeding Mortgagee/Assignee of Mortgagee complied with all notice requirements as required by statute; That no action or proceeding has been instituted at law or otherwise to recover the debt secured by said mortgage, or any part thereof;

PURSUANT to the power of sale contained in said mortgage, the above described property will be sold by the Sheriff of said county as follows:

DATE AND TIME OF SALE: May 19, 2016 at 10:00 AM  
PLACE OF SALE: Sheriff's Office, Main Entrance, Law Enforcement Center, 1000 North Blue Mound Avenue, Luverne, MN to pay the debt then secured by said Mortgage, and taxes, if any, on said premises, and the costs and disbursements, including attorneys' fees allowed by law subject to redemption within six (6) months from the date of said sale by the mortgagor(s), their personal representatives or assigns unless reduced to Five (5) weeks under MN Stat. §580.07.

TIME AND DATE TO VACATE PROPERTY: If the real estate is an owner-occupied, single-family dwelling, unless otherwise provided by law, the date on or before which the mortgagor(s) must vacate the property if the mortgage is not reinstated under section 580.30 or the property is not redeemed under section 580.23 is 11:59 p.m. on November 21, 2016 unless that date falls on a weekend or legal holiday, in which case it is the next weekday, and unless the redemption period is reduced to 5 weeks under MN Stat. Secs. 580.07 or 582.032.

MORTGAGOR(S) RELEASED FROM FINANCIAL OBLIGATION ON MORTGAGE: None

"THE TIME ALLOWED BY LAW FOR REDEMPTION BY THE MORTGAGOR, THE MORTGAGOR'S PERSONAL REPRESENTATIVES OR ASSIGNS, MAY BE REDUCED TO FIVE WEEKS IF A JUDICIAL ORDER IS ENTERED UNDER MINNESOTA STATUTES, SECTION 582.032, DETERMINING, AMONG OTHER THINGS, THAT THE MORTGAGED PREMISES ARE IMPROVED WITH A RESIDENTIAL DWELLING OF LESS THAN FIVE UNITS, ARE NOT PROPERTY USED IN AGRICULTURAL PRODUCTION, AND ARE ABANDONED."

Dated: March 16, 2016

Bank of America, N.A.  
Mortgagee/Assignee of Mortgagee

USSET, WEINGARDEN AND LIEBO, P.L.L.P.  
Attorneys for Mortgagee/Assignee of Mortgagee  
4500 Park Glen Road #300  
Minneapolis, MN 55416  
(952) 925-6888  
18 - 16-001246 FC

**THIS IS A COMMUNICATION FROM A DEBT COLLECTOR.**

(03-24, 03-31, 04-07, 04-14, 04-21, 04-28)

## Rock County seeks sealed proposals by April 22

**NOTICE TO CONTRACTORS**  
**C.P. 067-401-016**

Sealed proposals will be received by the Rock County Highway Department at Luverne, Minnesota until 11:00 A.M. on Friday, April 22nd, 2016.

**READ CAREFULLY THE PROVISIONS FOR THE WAGE RATES AS CONTAINED IN THE SPECIAL PROVISIONS, AS THEY WILL AFFECT THIS PROJECT.**

Attention is called to the fact that the Contractor must comply with the Special Equal Employment Opportunity Provisions as contained in the Proposal.

Proposals will be opened and read publicly in the presence of the Rock County Highway Engineer at the Rock County Highway Building located at 1120 North Blue Mound Avenue in Luverne, Minnesota immediately following the hour set for receiving bids for the following Rock County Highway work. Bids will be awarded on Tuesday, May 3rd, 2016 at the regular Rock County Board of Commissioners Meeting held in the Law Library at the Rock County Courthouse.

**The Quantities of Work are:** 2,194 gallons of 4" ReflectORIZED Edgeline Pavement Marking Paint - White and 2,792 gallons of 4" ReflectORIZED Centerline Pavement Marking Paint - Yellow.

Plans, specifications, and proposals may be viewed, and downloaded at [www.questcdn.com](http://www.questcdn.com) and at the Rock County Highway Department website, [www.co.rock.mn.us/highway](http://www.co.rock.mn.us/highway).

**The non-refundable cost for plans and one proposal will be \$30.00**

Bids must be accompanied by a certified check or corporate surety bond drawn in favor of the Rock County Treasurer in the amount of at least five percent (5%) of the proposal.

Sealed bids shall be clearly marked **"PROJECT NO. SAP 067-401-016"**. The Board of Rock County Commissioners reserves the right to reject any or all bids and to waive any defects therein.  
Rock County is an Equal Opportunity/ Affirmative Action Employer.

Mark R. Sehr, P.E.  
Rock County Highway Engineer  
(3-24, 3-31, 4-7)

## Eie variance request hearing April 11

**NOTICE OF PUBLIC HEARING FOR VARIANCE REQUEST**

Pursuant to the Rock County Zoning Ordinance, notice is hereby given that the Rock County Board of Adjustment will hold a public hearing on Monday, April 11, 2016, at the Rock County USDA Service Center, located at 311 West Gabrielson, Luverne, Minnesota, at 7:30 p.m. The purpose is to act on the application submitted by Randy and Norma Jean Eie to place more than one non-farm dwelling in a 40 acre parcel located on 6.78 acre tract in the SE 1/4 of the SE 1/4 of Section 3 of Kanaranzi Township, T101N, R44W, Rock County Minnesota. All persons interested may appear and be heard at said time and place, or submit views in writing or by representative.

Dated: March 31, 2016.

By Order of the Rock County Board of Adjustment  
Eric Hartman, Zoning Administrator  
311 W. Gabrielson Road  
Luverne, MN 56156  
507-283-8862, ext. 4

(3-31, 4-7)

DELINQUENT TAX LIST				
The following table contains a list of real property located in Rock County on which taxes and penalties became delinquent on January 2, 2016. Interest calculated from January 1, 2016, and county costs must be paid along with the total tax and penalties in order for a parcel of real property to be removed from the delinquent tax list.				
NAME OF OWNERS, TAXPAYERS & INTERESTED PARTIES	PARCEL NUMBER & DESCRIPTION OF PROPERTY	YEAR	TOTAL TAX AND PENALTY	
TOWN OF BATTLE PLAIN				
MATTHEW L WIEKERAAD	01-0093-000 SECT-22 TWP-104 RNG-44 5.76 A TR IN N 760' OF W 300' OF NW 1/4 EXC .29 A TR #75 & EXC .11 A CSAH #2	2015	560.35	
TOWN OF CLINTON				
MARILYN LOUISE SHEEHAN	03-0216-000 VILLAGE OF ASHCREEK LOTS 5 & 6 BLOCK 4	2015	200.45	
TOWN OF DENVER				
DOUGLAS DEAN LAFREZ	04-0052-000 SECT-04 TWP-104 RNG-45 A 4.44 A TR IN S 1/2 OF SE 1/4 COM AT + OF C L OF US HWY 75 WITH S LN OF SEC 3, NWLY ON C L 1236.6', WLY 75' TO POB, WLY 15', NWLY 123.24', WLY 467.38', SLY 190.20', SELY 199.17', SLY 170.63', SELY 504.27', NWLY 389.87' TO POB	2015	978.67	
JAMES WM BROOMFIELD & PATTY A BROOMFIELD	04-0143-000 SEC-29 TWP-104 RNG-45 7.80 A TR IN NE1/4 DESC AS: COM AT NE COR OF SD NE1/4 AS POB; S ALG E SEC LN 546'; W390'; N43'; W250'; N503'; E640' ALG N SEC LN TO POB 7.80 ACRES	2015	426.40	
DONALD BEAUBIEN	04-0169-000 SEC-36 TWP-104 RNG-45 S 551' OF E 336' OF SE 1/4 LESS .21 A CSAH #19 4.25 ACRES	2015	205.12	
TOWN OF MARTIN				
ENCHANTED LAKES PROPERTIES LLC	08-0254-000 SECT-24 TWP-101 RNG-47 N 650' OF W 450' OF NE 1/4 6.72 ACRES	2015	1,310.52	
SHERI ROZEBOOM	08-0269-000 SEC-26 TWP-101 RNG-47 7.11 A TR IN SW1/4 DESC AS: COM AT SW COR OF SEC 26; ELY ALG S LN OF SD 1/4 353' TO POB; NLY 33'; CONTN NLY 459.09'; ELY 622.36'; SLY 459.73'; CONTN SLY 33' TO SD S LN; WLY ALG S LN 636' TO POB	2015	902.21	
TOWN OF ROSE DELL				
WAYNE C KISLOWSKI	10-0036-000 SEC-07 TWP-104 RNG-46 4.47 A TR IN NW1/4 DESC AS: COM AT C OF MN HWY 23 AT N SIDE OF SEC 7; WLY 7.5' ON N SIDE OF SD SEC TO POB; WLY ON N SIDE OF SD SEC 572.5'; SLY 340' = W SIDE OF SD SEC; ELY 572.5' = N SIDE OF SD SEC; NLY 340' TO POB LESS .30 A HWY #23	2015	135.01	
MICHAEL LORENZEN	10-0083-000 SECT-17 TWP-104 RNG-46 S 955' OF W 535' OF SW 1/4 11.73 ACRES	2015	176.10	
TOWN OF SPRINGWATER				
LEO SWENSON	11-0183-000 SECT-35 TWP-103 RNG-46 THAT PART OF NE 1/4 DESC AS: BEG AT NE COR OF SEC 35; SLY ALG E LN OF NE 1/4 2636.57' TO E QTR COR; WLY ALG S LN OF NE 1/4 804.6'; NLY 930.35'; SELY 515', NWLY 1680'; CONTN NWLY 50' TO N LN OF NE 1/4; ELY ALG SD N LN 320.83' TO POB 29.09 ACRES	2015	969.32	
TOWN OF VIENNA				
GENE A & CHRISTINE MC CLAIN	12-0019-000 SECT-11 TWP-103 RNG-44 6.00 A TR IN SE 1/4 DESC AS: COM AT SE COR OF SD SE 1/4; NLY ON E SIDE OF SD SE 1/4 933' TO POB; WLY 541' = S SIDE OF SD SE 1/4 NLY 483' = E SIDE OF SD SE 1/4; ELY 541' = S SIDE OF SD SE 1/4; SLY 483' TO POB LESS .19 A CSAH #3	2015	415.13	
GARY JOHN MURPHY	12-0175-100 SECT-30 TWP-103 RNG-44 10.00 A TR IN NW 1/4 DESC AS: COM AT PT ON S LN OF NW 1/4 40 RDS W OF SE COR AS POB; NLY 40 RDS = E LN OF SD QTR SEC; WLY 40 RDS = S LN OF SD QTR SEC; SLY 40 RDS TO SEC LN; E ON SEC LN 40 RDS TO POB	2015	301.49	
CITY OF BEAVER CREEK				
BERTHA ALICIA CAMPOS	13-0032-000 ORIGINAL PLAT W 135.5; OF BLOCK 5	2015	590.73	
THOMAS B & LINDA SWANSON	13-0058-000 ORIGINAL PLAT LOTS 9 & 10 BLOCK 11	2015	762.40	
THOMAS B & LINDA SWANSON	13-0058-100 ORIGINAL PLAT LOTS 3 & 4 BLOCK 11	2015	132.68	
CITY OF HARDWICK				
MARY JO HUCKINS	14-0082-000 ROSS'S ADDITION LOTS 5 & 6	2015	270.56	
RODNEY M & ALENA D ZIKE	14-0096-000 ROSS'S ADDITION N25' OF LOT 32 & ALL OF LOT 33	2015	5,028.69	
JERRY PETERSEN & JEFFREY G & KATHERINE E PETERSEN & JAMES PETERSEN	14-0110-100 ROSS'S SECOND ADDITION S 40' OF LOT 17 & ALL OF LOT 18 IN BLOCK 2	2015	139.69	
JAMES A HOLLOWAY & NICOLE HALVERSON	14-0125-000 HALVERSON'S ADDITION LOT 3 BLOCK 1	2015	602.41	
CITY OF HILLS				
MARK DE BOER	15-0042-000 ORIGINAL PLAT LOT 1 BLOCK 2	2015	1,123.56	
MARK & KELLY DE BOER	15-0075-000 ORIGINAL PLAT LOTS 13 & 14 BLOCK 7	2015	1,411.02	
KEITH W & JENNIFER L FORSHEY	15-0088-000 ORIGINAL PLAT LOTS 6 & 7 BLOCK 10	2015	1,897.11	
MARK DE BOER	15-0101-000 ORIGINAL PLAT S 1/2 OF LOT 4 & ALL LOT 5 & N 12' OF LOT 6 BLOCK 13	2015	464.53	
HILLS BAR LLC	15-0121-100 N 1/2 (EXC 9" & BRICK WALL) OF LOT 12 IN BK 8, LESS N 6 3/4' OF W 60 2/3' OF LOT 12	2015	330.15	
TERRANCE MICHAEL METZLER	15-0136-000 F.C. FINKE'S ADDITION S36' OF LOT 4 & ALL OF LOT 5 & N1/2 OF LOT 6 BLOCK 17	2015	364.39	
JUD DUNN	15-0234-000 QUALLEY ADDITION N 34' OF LOT 11 & S 38' OF LOT 12 BLOCK 2	2015	1,354.93	
MARK DE BOER	15-0275-000 PARK VIEW FIRST ADDITION LOT 19 BLOCK 1	2015	2,054.51	
CITY OF JASPER				
SHERRY WURTZ	16-0025-000 WEST-JASPER LOTS 13 & 14 BLOCK 7	2015	270.28	
MICHAEL GRAVES	16-0034-000 ROSE DELL ADDITION LOTS 11 & 12 BLOCK 14	2015	324.93	
MICHELE MERCADO VILLANUEVA	16-0045-200 ROSE DELL ADDITION N 1/2 OF LOTS 1 & 2 BLOCK 17	2015	721.81	
MICHAEL E GRAVES	16-0051-000 ROSE DELL ADDITION N 75' OF E 150' OF LOWER PARK	2015	1,665.75	
SHANNON & LISA RODMAN	16-0053-000 ROSE DELL ADDITION W 75' OF E 225' OF LOWER PARK	2015	1,703.14	
MICHAEL E GRAVES	16-0055-000 ROSE DELL ADDITION S 60' OF W 85' OF E 310' OF LOWER PARK	2015	459.86	
CITY OF KENNETH				
GREGORY SCOTT BODKIN	17-0037-000 ORIGINAL PLAT N 1/2 OF LOT 14 & ALL OF LOTS 15 & 16 BLOCK 2	2015	163.06	
CITY OF MAGNOLIA				
AMY COWELL	18-0032-000 ORIGINAL PLAT LOTS 1 & 2 & N 100' OF LOTS 15 THRU 18 & VACATED ALLEY BLOCK 1	2015	174.97	
MALIKA PHOMMARACKSA	18-0076-000 ORIGINAL PLAT W 1/2 OF LOT 2 & ALL OF LOT 3 BLOCK 7	2015	152.42	
CITY OF STEEN				
LORI KERNER	19-0020-000 SEC-29 TWP-101 RNG-45 .27 A TR IN SE 1/4 OF SW 1/4 DESC AS: BEG AT PT 60 RDS W OF C OF S LN OF SEC 29; N 119'; E 100'; S 119'; W 100' TO POB	2015	469.25	
REMINGTON CAIN	19-0031-000 THAT PART OF UNPLATTED PORTION OF CITY OF STEEN IN NE 1/4 OF NW 1/4 32-101-45 DESC AS: COMM AT NE COR OF LOT 6 BLK 1 OF ORIG PLAT; N ALG W LN OF MAIN ST 77.50' TO POB; CONTN N ALG SD W LN 97.22'; CONTN N 33' TO N SEC LN OF NW 1/4; WLY 80.34'; S 33'; CONTN S 97.77'; ELY 80.34' TO POB	2015	453.46	
JANICE K HARRIS	19-0035-100 ORIGINAL LOTS 1, 2 & 3 BLOCK 3	2015	569.17	
O - BRIAN & SHIRLEY RITTER				
DURANT KRUGER	19-0036-000 ORIGINAL LOT 1 BLOCK 4	2015	1,023.07	
JODIE MARSHALL	19-0039-000 ORIGINAL S 1/2 OF LOT 4 & ALL OF LOT 5 BLOCK 4	2015	1,120.94	
REMINGTON CAIN	19-0059-000 ORIGINAL LOTS 4 & 5 BLOCK 7	2015	43.87	
LISA REISGIES	19-0094-100 UNRECORDED DRIES BOSCH ADDITION TR IN NE1/4 OF 32-101-45 DESC AS: COM AT NW COR OF SD NE 1/4; S 726.5'; E 324' TO POB; S 119'; E 120'; N 119'; W 120' TO POB SAID TR ALSO DESC AS E 1/2 OF LOT 2 & ALL OF LOTS 3 & 4, BLOCK 5 UNRECORDED DRIES BOSCH ADDITION	2015	329.44	
RANDY & KATHRYN MARSHALL	19-0103-000 UNRECORDED DRIES BOSCH ADDITION TR IN NE1/4 OF 32-101-45 DESC AS: COM AT NW COR OF SD NE1/4; S1036.5'; E96; TO POB; S134.25'; E48'; N134.25'; W48' TO POB SAID TR ALSO DESC AS LOT 3, BLOCK 10 UNRECORDED DRIES BOSCH ADDITION	2015	27.27	
RANDY & KATHRYN MARSHALL	19-0104-100 UNRECORDED DRIES BOSCH ADDITION 2 PRCLS IN NE1/4 OF 32-101-45 DESC AS: ALL THAT PART OF FORMER RR R/W LNG IN SD NE1/4 DESC AS: COM AT SW COR OF N1/2 OF SD NE1/4 AS POB; ELY ALG S LN OF SD N1/2 OF NE1/4 96' TO POB; CONTN E ALG SD S LN 26.5'; NLY = W LN OF SD NE1/4 44'; WLY = S LN OF SD N1/2 26.5'; SLY = W LN OF SD NE1/4 44' TO POB & COM AT NW COR OF SD NE1/4; S1182.75'; E96' TO POB; S90.25'; E26.5'; S44'; E21.5' N134.25'; W48' TO POB SAID TR ALSO DESC AS LOT 6, BLOCK 10 UNRECORDED DRIES BOSCH ADDITION	2015	27.27	
MATTHEW W LANDES & PATRICK J LUCCI	19-0105-000 UNRECORDED DRIES BOSCH ADDITION 2 PRCLS IN NE1/4 OF 32-101-45 DESC AS: ALL THAT PART OF FORMER RR R/W LNG IN SD NE1/4 DESC AS: COM AT SW COR OF N1/2 OF SD NE1/4 AS POB; ELY ALG S LN OF SD N1/2 OF NE1/4 96'; NLY = W LN OF SD SEC 44' SD PT BNG SE COR OF LOT 7, BLOCK 10, UNRECORDED DRIES BOSCH ADDITION; WLY = S LN OF SD N1/2 OF NE1/4 96' TO W LN OF SD NE1/4, SD PT BNG SW COR OF LOT 8, BLOCK 10, UNRECORDED DRIES BOSCH ADDITION; SLY ALG W LN OF SD NE1/4 44' TO POB & BEG AT PT 44' N OF SW COR OF W1/2 OF NW1/4 OF NE1/4 OF SD SEC 32; N90.25'; E96'; S90.25'; W96' TO POB SAID TR ALSO DESC AS LOTS 7 & 8, BLOCK 10 UNRECORDED DRIES BOSCH ADDITION	2015	361.70	

NOTICE OF DELINQUENT TAXES continued on next page...



# Star Herald PUBLIC NOTICES

# Star Herald CLASSIFIEDS

## NOTICE OF DELINQUENT TAXES continued from previous page...

CITY OF LUVERNE			
FARM-DIRECT MARKETING LLC	20-0044-000 SECT-11 TWP-102 RNG-45 TR IN NW 1/4 OF SW 1/4 DESC AS: BEG AT PT IN EXTENDED N LN OF MEAD COURT 9' SELY OF C L OF CSTPM & O RR SPUR TRACK ICC #17; NELY = SD SPUR TRACK 140'; SELY 77'; M OR L, TO + 40' SWLY FROM N LN OF LOT 3 OF COUNTY AUDITOR'S PLAT OF LUVERNE OUTLOTS; SWLY TO PT IN N LN OF MEAD COURT EXTENDED; WLY ALG SD N LN OF MEAD COURT EXTENDED 87', M OR L, TO POB	2015	399.09
LUELLA ENGER	20-0086-000 CO AUD PLAT LUVERNE OUTLOTS 10-102-45 S 50' OF N 200' OF OUTLOT 9	2015	712.25
DAVID LEROY KELDERMAN	20-0126-000 CO AUD PLAT LUVERNE OUTLOTS 11-102-45 W 60' OF E 134' OF N 167' OF OUTLOT 2	2015	331.69
CHRISTINE HOLTER O - ROBERT J & DARLA FABER	20-0241-000 BARCK, ADAMS & HOWE'S ADDITION S 86.5' OF LOT 1 BLOCK 2	2015	410.62
DENNIS W J BAATZ	20-0267-000 BARCK, ADAMS & HOWE'S ADDITION W 63' OF LOT 4 BLOCK 4	2015	983.34
KEITH C PAULSON & ROLF I BERG & STEPHEN HARTMANN	20-0689-000 E 164' OF LOT 1 BLOCK 1	2015	705.24
DOUGLAS DEAN LAFREZ	20-0722-000 CHARLES O HAWES' ADDITION LOT 5 BLOCK 3	2015	471.50
MATTHEW & HOLLI KLINGER O - DAVID & ROSANNE OLSON	20-0748-000 CHARLES O HAWES' ADDITION LOT 7 BLOCK 5	2015	1,202.12
JACOB ELY & AMBER RAE WRIGHT	20-0852-000 KNISS PARK ADDITION N 58' OF LOT 3 BLOCK 2	2015	525.62
MICHAEL ROGERS & KELLY R GOETTIG	20-1100-000 ORIGINAL PLAT N 112 1/2' OF LOTS 1-2 & 3 BLOCK 7	2015	186.24
CINDY ADAMSON	20-1104-000 ORIGINAL PLAT LOTS 8 & 9 BLOCK 7	2015	259.53
PAMELA KAY DUERR	20-1286-000 RANDALL & HOLBERT'S ADDITION S 50' OF LOTS 1 & 2 & S 50' OF E 7' OF LOT 3 BLOCK 4	2015	293.36
SUE KERNS	20-1332-000 H SNOOK ADDITION E 130' OF LOT 2 BLOCK 3	2015	199.77
MICHAEL J ARNSTON & PATRICIA A ARNSTON	20-1452-000 VAN EPS AND VARY'S ADDITION W 71.5' OF LOT 7 BLOCK 23	2015	351.99
MATTHEW JOE KRUEGER	20-1459-000 VAN EPS AND VARY'S ADDITION LOT 4 EXC N 72' BLOCK 25	2015	432.98
LEO SWENSON	20-1582-000 WARREN AND KNISS' ADDITION W 22' OF LOT 17, ALL LOT 18 & E 18' OF LOT 19 BLOCK 7	2015	1,046.53
ROSALIA BAUMGARD	20-1611-000 WARREN AND KNISS' ADDITION LOT 5 BLOCK 10	2015	773.01
TROY & JODY DUSKIN O - MARJA RAMAGE	20-1657-000 WARREN AND KNISS' ADDITION N 92' OF W 50' OF LOT 19 & N 96' OF LOT 20 BLOCK 12	2015	866.49
SARP LLC	20-1852-000 TR IN NW 1/4 OF NW 1/4 DESC AS: BEG AT NW COR OF SEC 14; S ALG W LN OF SD SEC 322.63'; SELY 357.47' TO ELY R/W LN OF CSTPM&O R/W; NWLY ALG SD WLY R/W LN 317.39' TO N LN OF SD SEC; NWLY ON SD N LN 322.43' TO POB	2015	15,684.24
SARP LLC	20-1941-000 SATER'S CREEK ADDITION BLOCK 6	2015	7,461.51

(3-31)

## Mortgage foreclosure sale set for May 19

YOU ARE NOTIFIED THAT: 1. Default has occurred in the conditions of the Mortgage dated 06/20/2008 executed by Enchanted Lakes Properties, LLC, a Limited Liability Company ("Original Mortgagor"), to 21st Century Bank, a Minnesota Corporation ("Mortgagee"), and recorded on 06/30/2008 as Document No. 169393 in the Office of the County Recorder of Rock County, Minnesota.

2. The original principal amount secured by the Mortgage was \$67,500.00.

3. At the date of this notice, the amount due on the Mortgage and taxes, if any, paid by the holder of the Mortgage is: \$56,937.11 (Mortgage) plus \$4,819.42 (Real Estate Taxes and late charges), for a total owing of \$61,756.53.

4. Pursuant to the power of sale clause in the Mortgage, the Mortgage will be foreclosed, and the land legally described as:

The North 650 feet of the West 450 feet of the Northeast Quarter of Section 24, in Township 101 North, of Range 47 West of the 5th Principal Meridian, Rock County, Minnesota.

Common Address: 256 41st Street, Hills, MN 56138.  
PID: 08-0254-000

will be sold by the Sheriff of Rock County, Minnesota at public auction on Thursday, May 19, 2016 at 10:00 A.M. at the Rock County Sheriff's Office, Law Enforcement Center, Lobby, 1000 N. Blue Mound Ave., Luverne, Minnesota 56156.

5. The time allowed by law for redemption by Mortgagor or Mortgagor's personal representatives or assigns is 6 months after the date of the sale.

6. THE TIME ALLOWED BY LAW FOR REDEMPTION BY THE MORTGAGOR, THE MORTGAGOR'S PERSONAL REPRESENTATIVES OR ASSIGNS, MAY BE REDUCED TO FIVE WEEKS IF A JUDICIAL ORDER IS ENTERED UNDER MINNESOTA STATUTES SECTION 582.032, DETERMINING, AMONG OTHER THINGS, THAT THE MORTGAGED PREMISES ARE IMPROVED WITH A RESIDENTIAL DWELLING OF LESS THAN FIVE UNITS, ARE NOT PROPERTY USED FOR AGRICULTURAL PRODUCTION, AND ARE ABANDONED.

Mortgagee or Assignee of Mortgage:  
21st Century Bank

Attorneys for Mortgagee or Assignee of Mortgage:

Thomas P Dolphin, Jr. - 0386646  
Wayne M. Spangler - 0396721  
21st Century Bank  
17 Washington Avenue N  
Minneapolis, MN 55401  
(763)792-3711

(3-24, 3-31, 4-7, 4-14, 4-21, 4-28)

## Reker conditional use hearing April 11

### NOTICE OF PUBLIC HEARING FOR CONDITIONAL USE PERMIT

Pursuant to the Rock County Zoning Ordinance, notice is hereby given that the Rock County Board of Adjustment will hold a public meeting on Monday, April 11, 2016, at the Rock County USDA Service Center, located at 311 West Gabrielson, Luverne, Minnesota, at 7:50 p.m. The purpose is to act on the application for Conditional Use Permit for the following:

Applicant: Reker Construction & Aggregate, Inc.  
Property Owner: Matt Boeve  
Location: The NE 1/4 of the NE 1/4 of Section 26 of Clinton Township, T101N, R45W, Rock County, Minnesota  
Conditional Use: Gravel extraction, stockpiling, and processing  
Zoning District: A-2, General Agriculture  
Dated: March 31, 2016

By Order of the Rock County Planning Commission  
Eric Hartman, Zoning Administrator  
311 W. Gabrielson Road  
Luverne, MN 56156  
507-283-8862, ext. 4

(3-31, 4-7)

## Brouwer conditional use hearing April 11

### NOTICE OF PUBLIC HEARING FOR CONDITIONAL USE PERMIT

Pursuant to the Rock County Zoning Ordinance, notice is hereby given that the Rock County Board of Adjustment will hold a public hearing on Monday, April 11, 2016, at the Rock County USDA Service Center, located at 311 West Gabrielson, Luverne, Minnesota, at 7:40 p.m. The purpose is to act on the application submitted by Vernon and Gloria Brouwer to operate a dog kennel located on 9.28 acre tract in the SE 1/4 of the NE 1/4 of Section 4 of Rosedell Township, T104N, R46W, Rock County, Minnesota. All persons interested may appear and be heard at said time and place, or submit views in writing or by representative.

Dated: March 31, 2016

By Order of the Rock County Planning and Zoning Commission  
Eric Hartman, Zoning Administrator  
311 W. Gabrielson Road  
Luverne, MN 56156  
507-283-8862, Extension 4

(3-31, 4-7)

## City of Luverne adopts Ordinance No. 345

### ORDINANCE NO. 345, THIRD SERIES AN ORDINANCE AUTHORIZING SALE OF REAL ESTATE (LOT 1, BLOCK 1, INDUSTRIAL PARK FIRST ADDITION)

THE CITY OF LUVERNE DOES HEREBY ORDAIN:

SECTION 1. Pursuant to City Charter, Section 12.05, the City Council is authorized to sell or convey the following described real estate located in the City of Luverne, County of Rock, State of Minnesota, described as follows, to-wit:

Lot One (1), Block One (1)  
in Industrial Park First Addition of the City of Luverne, Minnesota,  
and subject to easements of record.

SEC. 2. The Mayor and City Administrator are hereby authorized and directed to execute such legal documents as are necessary to accomplish this sale and are further authorized to execute and deliver a warranty deed upon complete fulfillment of all terms and conditions.

SEC. 3. This ordinance takes full force and effect seven (7) days after its publication.

/s/ Esther Spease-Frakes, Mayor Pro-Tem  
/s/ John M. Call, City Administrator

Introduced: March 22, 2016  
Adopted: March, 22, 2016  
Published: March 31, 2016  
Effective: April 7, 2016

(3-31)

## County property tax abatement hearing April 5

NOTICE IS HEREBY GIVEN that the Rock County Board of Commissioners will conduct a public hearing at 9:00 a.m. on Tuesday, April 5, 2016, at the Commissioners' Room, Rock County Courthouse, 204 East Brown Street, Luverne, Minnesota 56156, for the abatement of certain real property located in the Township of Martin, County of Rock, more particularly described as:

That part of the Southwest Quarter (SW 1/4) of Section Sixteen (16), Township One Hundred One (101) North, of Range Forty-six (46) West, of the 5th Principle Meridian, in Rock County, Minnesota described as follows:

Commencing at the Southwest corner of the Southwest Quarter of said Section 16; thence North 89 degrees 57 minutes 34 seconds East, (assumed bearings), along South line of Southwest Quarter of said Section 16, a distance of 846.29 feet to the POINT OF BEGINNING; thence North 03 degrees 12 minutes 26 seconds West a distance of 1200.00 feet; thence at a right angle, North 86 degrees 47 minutes 34 seconds East a distance of 400.00 feet; thence at a right angle, North 03 degrees 12 minutes 26 seconds West to the North line of the Southwest Quarter of said Section 16, a distance of 1424.71 feet; thence North 89 degrees 57 minutes 14 seconds East, along the North line of the Southwest Quarter of said Section 16 to Burlington Northern right of way, a distance of 100.00 feet; thence South 03 degrees 12 minutes 26 seconds East, along Burlington Northern right of way, to the South line of the Southwest Quarter of said Section 16, a distance of 2646.81 feet; thence South 89 degrees 57 minutes 34 seconds West, along the South line of the Southwest Quarter of said Section 16 a distance of 500 feet to the POINT OF BEGINNING.

for the abatement of real estate taxes for a period of up to ten (10) years pursuant to Minnesota Statutes §469.183. That the estimated total abatement, on an annual basis, for the County of Rock, is \$5,222.00. All persons desiring to be heard should appear at the hearing or present written comments to be presented at the hearing by delivering the same to the Rock County Administrator, 204 East Brown Street, Luverne, Minnesota 56156.

Dated this 8th day of March, 2016.

County of Rock  
By: /s/ Kyle Oldre  
Its County Administrator  
(3-24, 3-31)



## EMPLOYMENT

Cook/Dietary Aide: Part-time 12-7 p.m.. Wages \$11.50. MN PERA retirement plan. Contact Mike Werner at Parkview Manor, 308 Sherman Ave., Ellsworth, Mn 56129 or call 507-967-2482. (3.31-4.17)

Wildrose Home Care is accepting applications for home health aids/ personal care attendants to work in Pipestone. Day, evening, and night shifts available. Cares would include assisting client in home with activities of daily living such as dressing, bathing, and grooming. Willing to train. Applications may be picked up at 1210 East College Drive in Marshall or call 1-507-337-1101. (3.27-4.21)

FamilyU, Luverne's School Aged Child Care Program, is seeking applicants for a Child Care Assistant for Summer 2016. Qualified candidates must be a high school sophomore or older, have experience working with K-5 children, and demonstrate positive behavior management skills. Weekday hours vary from 15-40 hours per week, May 16 through August 26. Apply at Luverne Community Education, 709 N. Kniss Ave, Luverne. Application deadline is April 15. EOE (3.24-4.7)

Registered Nurse/LPN- Parkview Manor, a municipal skilled nursing facility is accepting applications for a part-time charge nurse position. Wages commensurate with experience. \$2000 scholarship available for students. Benefits include vacation, holiday, and PERA retirement plan. Contact Darnell Krull 308 Sherman Ave., Ellsworth, Mn 56129 or call 507-967-2482 (tc)

## EMPLOYMENT

Nursing Assistant-Parkview Manor has openings for full-time nurse aides with benefits to include: health insurance, public retirement plan, and holiday pay. Part-time positions also available. New Wages \$11.90/hr. \$2000 scholarships available for students. Will provide training or pay for experience. Contact Darnell Krull, 308 Sherman Ave., Ellsworth, MN 56129 or call (507) 967-2388. (tc)

Southwestern Youth Services in Magnolia, MN is hiring Night Supervisors (11 pm-7 am) to work with male juveniles in a residential setting. Part time, and/or Full-time, \$11.50-\$12.00/hr (or based on education), benefits, pd, holidays, overnight shifts. Must be 21 yrs old and have high school diploma. Send application or resume to PO Box 40 Magnolia, MN 56158 or stop by for an application. For further information contact Don or Jeremy at 507-283-4425. (3.24-4.11)

## SON-D-FARMS ADRIAN

is hiring General Farm, Hog, Field Work, Truck Driver, Maintenance person, Farm Shop Mechanic & Farm Delivery Person. Experience wanted but willing to train. PTO benefits. Call (507) 483-2245, 370-1590 or e-mail jessihoffman@sondfarms.com

## HELP WANTED

Age 55+ workers needed for part-time custodial work at the Adrian rest area.

Contact Green View  
651-639-1913

**HELP WANTED** Design Craft of Luverne, Inc. YOUR LOCAL Commercial Construction Contractor is looking for construction laborers and experienced carpenters for immediate employment. Stop in at our office at 904 Commerce Road and fill out an application. Phone 507-283-2600. Labor rates \$12-15/hr, experienced carpenters \$15/20 DOQ.

**CONSTRUCTION LABORERS NEEDED IMMEDIATELY**

- Wage is Negotiable
- Full Time Year Round Employment
- Must Have a VALID Drivers License or ID
- Benefit Package Available
- Mandatory Pre-Emp. Drug Screening

**ARS**  
Architectural Roofing & Sheetmetal, Inc.  
www.arsinc-roofing.com  
605-332-1698

**GREAT JOBS ARE OUT THERE FIND YOURS HERE!**

Pipestone System is hiring for **FULL TIME SWINE TECHNICIANS** at our locations in the George, IA area.

**Pipestone System offers an excellent compensation & benefit package:**

- ▶ Competitive Wages - based on position and experience
- ▶ 401k Retirement Plan
- ▶ Life and Long Term Disability Insurance
- ▶ HEALTH & DENTAL COVERAGE
- ▶ Paid Holidays and PTO Scholarship Programs
- ▶ Production Bonus
- ▶ Pork Program
- ▶ Flex Plan

**PIPESTONE**  
SYSTEM

If you or someone you know is interested in these opportunities, contact Pipestone System today: Apply online at www.pipestonesystem.com or call 1.866.918.7378



# Star Herald CLASSIFIEDS

## EMPLOYMENT

The Garretson School District is seeking a full-time custodian for a 3:00p.m. to 11:00p.m. shift during the school year and day hours during the summer. Duties include cleaning and light maintenance. Benefits include health insurance, dental insurance, and South Dakota Retirement. Applications may be picked up at the Garretson School Administration Office. The Garretson School District does not discriminate in hiring or compensation based on race, creed, color, religion, nationality, sex, handicapping condition, or age. Position opened until filled. EOE (3.13-3.31)

We are a small custom cabinet shop near Hills, MN and are looking for professionals to join our close knit team. We serve Sioux Falls and the surrounding area. Applications are being taken for cabinet making, finishing, assembly, and delivery. A combination of these is desired but not required. If you are punctual, experienced, and have the desire to excel in this craft, please apply! Contact Dennis or Tim at 507-962-3105. (tc)

## EMPLOYMENT

Adrian Elementary School is seeking applications for Elementary Title I with K-12 ELL combination teaching position, Beginning the 2016-17 school year. Minnesota Licensure Required and preferable with ELL Licensures. Coaching opportunities available. Submit a Letter of Application, Resume, District Employment Application, Credential Package including Transcript, Letters of Reference, and Copy of MN License to: District Office, Adrian Public School, PO Box 40, Adrian, MN 56110. For additional information you may contact Principal, Russ Lofthus at r.lofthus@isd511.net or call 507-483-2225. Position open until filled. (3.13-3.31)

Help wanted: part-time lawn care. Call 507-227-4609. (3.27-4.17)

Adrian Elementary School is seeking applications for an Upper Elementary Classroom Instructor, beginning the 2016-17 school year. Minnesota Licensure required. Coaching opportunities available. Submit a Letter of Application, Resume, District Employment Application, Credential Package including Transcript, Letters of Reference, and Copy of MN License to: District Office, Adrian Public School, PO Box 40, Adrian, MN 56110. For additional information you may contact Principal, Russ Lofthus at r.lofthus@isd511.net or call 507-483-2225. Position open until filled. (3.13-3.31)

## EMPLOYMENT

mit a Letter of Application, Resume, District Employment Application, Credential Package including Transcript, Letters of Reference, and Copy of MN License to: District Office, Adrian Public School, PO Box 40, Adrian, MN 56110. For additional information you may contact Principal, Russ Lofthus at r.lofthus@isd511.net or call 507-483-2225. Position open until filled. (3.13-3.31)

## CARDS OF THANKS

The family of Janice Ward would like to thank everyone for their thoughts, prayers, cards and memorials during this difficult time.

**Wayne Ward  
And Family**  
(3.31-4-3)

Thank you Cathy Sherear and figure skate coaches for the thank you gift. I enjoyed seeing the girls in early morning practice and watching the ice show Friday. They were super from Tiny Tots through Seniors. I'm enjoying the Ipad I won. Thanks again girls, moms, dads, and coaches

**Susie Van Batavia**  
(3.27-3.31)

## AUTOMOTIVE

2001 Grand Prix GT, it's nice. \$4,200. 2007 Chevy Cobalt 76,000 miles. \$5350. 2003 Oldsmobile Alero, four door, 118,000 miles, very good. \$3,400 Call Curt at 605-413-8862. (3.27-3.31)

## WINDOWS

We custom build and install Energy Star Therm-O-Loc Windows. Call Mike at Adrian Glass for a free in-home demonstration and estimate. 101 E. Pearl, Adrian, MN 56110. 507-483-2228 or 605-770-7677 or email mbyler@santel.net. (tc)

## SERVICES

For Sale: Yard dirt, landscaping, rock, gravel sand. Also do tree stump grinding. Call Wayne Biever 507-227-4521 or 507-283-4614. (3.17-4.3)

## CHILD CARE

Daycare: Licensed daycare has openings available for ages ranging from 12 months to 11 years of age. Please call 507-920-8449 for more details. (tc)

## MISCELLANEOUS

HAVE A UNIQUE SERVICE OR BUSINESS? Get the word out to over 1.4 million households. Call WIDE AREA CLASSIFIEDS today, 507-359-7326. (tc)

## WANTED

Buying old cars, trucks, scrap iron, old farm equipment, tin, wire. Ericksen Salvage, Charlie Ericksen, 605-254-4654. (tc)



Minnesota Classified Advertising Network

<p><b>HELP WANTED - DRIVERS</b></p> <p><b>NOW HIRING</b> OTR drivers. \$2,000 sign on bonus, flexible home time, extensive benefits. Call now! Hibbs &amp; Co. 763/389-0610</p> <p><b>CDL A DRIVERS</b> \$7,500 sign-on-bonus. Medical benefits on day 1 &amp; earn \$65K+ in your first year!! Guaranteed pay, profit sharing, 401k with company match &amp; more! Email resume: mshr@mcancos.com or call Hollie now! 507/664-3038</p> <p><b>EXPERIENCED CDL-A TRUCK DRIVERS</b> for the Midwest Region. Driver friendly company with good pay and benefits. Tax-free money and bonuses available. Call 507/437-9905 www.mcrftg.com</p> <p><b>DRIVERS WANTED</b> Scheduled home time, steady miles. Newer equipment. No East Coast. Call 800/645-3748 or apply online at www.gfltruck.com</p>	<p><b>HELP WANTED</b></p> <p><b>EVENING COOKLINE SUPERVISOR</b> Candidates must have 2 years of experience in cooking, organizing, cleaning, time management, menu planning and possess strong supervisory skills. Applicants must be willing/able to relocate to Baudette, MN and have or obtain a Minnesota Food Managers Certificate, 40 hours per week with seasonal schedule adjustments. Benefits include Simple IRA and paid vacation. Send resume and cover letter with salary requirements to: info@bondevisionodge.com</p> <p><b>MISCELLANEOUS</b></p> <p><b>GOT KNEE PAIN?</b> Back Pain? Shoulder Pain? Get a pain-relieving brace - little or no cost to you. Medicare patients call health hotline now! 800/755-6807</p> <p><b>DISH TV</b> 190 channels plus High-speed Internet Only \$49.99/mo! Ask about a 3 year price guarantee &amp; get Netflix included for 1 year! Call Today 800/297-8706</p>	<p><b>MISCELLANEOUS</b></p> <p><b>DOES YOUR AUTO CLUB</b> offer no hassle service and rewards? Call Auto Club of America (ACA) &amp; Get \$200 in ACA Rewards! (New members only) Roadside Assistance &amp; Monthly Rewards. Call 800/279-8096</p> <p><b>ADVERTISE HERE STATEWIDE IN 260+ NEWSPAPERS FOR ONLY \$279 PER WEEK! CALL 800-279-2979</b></p> <p><b>DONATE YOUR CAR</b> truck or boat to Heritage For The Blind. Free 3 day vacation, tax deductible, free towing, all paperwork taken care of 800/439-1735</p> <p><b>STOP OVERPAYING FOR YOUR PRESCRIPTIONS!</b> Save up to 93%! Call our licensed Canadian and International pharmacy service to compare prices and get \$15.00 off your first prescription and free shipping. Call 800/259-1096</p>
--	---	--

**L. G. Everist, Inc.**, a highly reputable producer of construction aggregates, is seeking a **general laborer** for their operations in Jasper, MN.

All new employees must pass a drug test. We offer a strong salary and benefits package and a very positive family orientated work atmosphere. Construction experience is helpful but not required.



Apply in person at 309 S Sherman Jasper MN, call 605-334-5000 or email [hr@lgeverist.com](mailto:hr@lgeverist.com).

## HILLS-BEAVER CREEK PUBLIC SCHOOLS

Hills-Beaver Creek School District  
301 N. Summit Avenue - PO Box 547  
Hills, Minnesota 56138  
Website: [www.hbcpsd.net](http://www.hbcpsd.net)  
Email: [lholthaus@isd671.net](mailto:lholthaus@isd671.net)  
Telephone: (507) 962-2440

## VACANCY NOTICE

- **Position:** 1fte SLD-(Specific Learning Disabilities) Teacher
- **Case load:** Both Elementary and Secondary students
- **Qualifications:** Current Minnesota K-12 SLD Teacher license or the ability to obtain MN licensure.
- **Application Deadline:** Position open until filled.
- **Starting Date:** August 2016
- **Apply To:** Superintendent, Todd Holthaus, Hills-Beaver Creek Jr./Sr. High School, PO Box 547, 301 N Summit Ave, Hills, MN 56138 [lholthaus@isd671.net](mailto:lholthaus@isd671.net) Please send letter of application, copy of teaching license, college transcripts and three current letters of reference
- **Comments:** Preference will be given to candidates having experience working with Autistic students and a willingness to secure additional coursework to qualify for the MN ASD Licensure. MN EBD licensure also preferential.
- **Location:** The Hills-Beaver Creek School District is located in Southwest MN-- approximately 20 miles from Sioux Falls, SD. The district borders both South Dakota and Iowa. The district's K-12 enrollment is approximately 360 students. Pay and benefits are competitive for the area.

- An Equal Opportunity Employer -

March 15, 2016

## Oakwood Apartments

401 Oak St., Ellsworth

• 1 Bedroom Unit Available  
Unit Available  
Water, Sewer & Garbage Included.  
Rent Based on Income  
**AVAILABLE IMMEDIATELY**  
**Van Binsbergen & Associates, Inc.**  
320-269-6640 ext. 22  
Equal Housing Opportunity

[www.vanbllc.com](http://www.vanbllc.com)



## Damax Apartments

Rental Assistance Available

602 E. Warren St, Luverne, MN  
Inquire about move-in specials  
• Accepting all income levels  
1 & 2 Bedrooms  
Newly Remodeled

Van Binsbergen & Associates, Inc.  
320-269-6640 ext. #22  
[www.vanbllc.com](http://www.vanbllc.com)

## BLUE MOUND TOWER



Luverne HRA • Blue Mound Tower  
216 McKenzie Street  
Luverne, MN 56156 EHD

507-283-4922

Apartment available!

- All Ages Welcome
- Close to Senior Dining
- Close to Minnesota West College
- Income Based
- Handicap Accessible
- Pet Friendly
- Smoke Free
- Secure Entry System
- On Site Laundry
- Utilities included

RECYCLE!



283-9171 | PAPIK.COM



### 2011 Buick Lacrosse

Stock #296059N  
42K



Papik Price \$15,990

### 2014 Jeep Cherokee Limited

Stock #300654N  
24K



Papik Price \$23,990

### 2016 Buick Enclave

Stock #125854Z  
16K



Papik Price \$38,990

### 2012 Dodge Charger

Stock #306589N  
38K



Papik Price \$21,990