



Rock County

STAR HERALD

www.star-herald.com

Rock County's oldest business, printing since 1873

Thursday, March 9, 2017

Kenneth Fire Department disbands; nearby crews offer services

By Mavis Fodness

Kenneth's request for fire service was answered Feb. 27 when representatives from five area towns met at the Rock County Courthouse Commissioners room.

The hour-long meeting resulted in all five potentially submitting proposals to replace the emergency services currently contracted through Kenneth's fire department.

In late January, Kenneth Mayor Del Gangestad and council member Keith Hoven met with county and state fire officials and representatives from Luverne, Magnolia and Hardwick.

Gangestad and Hoven asked what would happen if Kenneth disbanded its fire department.

Also willing to assist Kenneth were representatives from Lismore in Nobles County and Edgerton in Pipestone County.

The Kenneth Fire Department currently provides emergency services for the city plus nine sections of Battle Plain Township and 19 sections in Vienna Township.

The Kenneth council set April 1 for ending its fire department, which has dwindled to a handful of active volunteers with aging equipment.

The ending of the department also means Battle Plain and Vienna townships would have to find fire and medical emergency coverage.

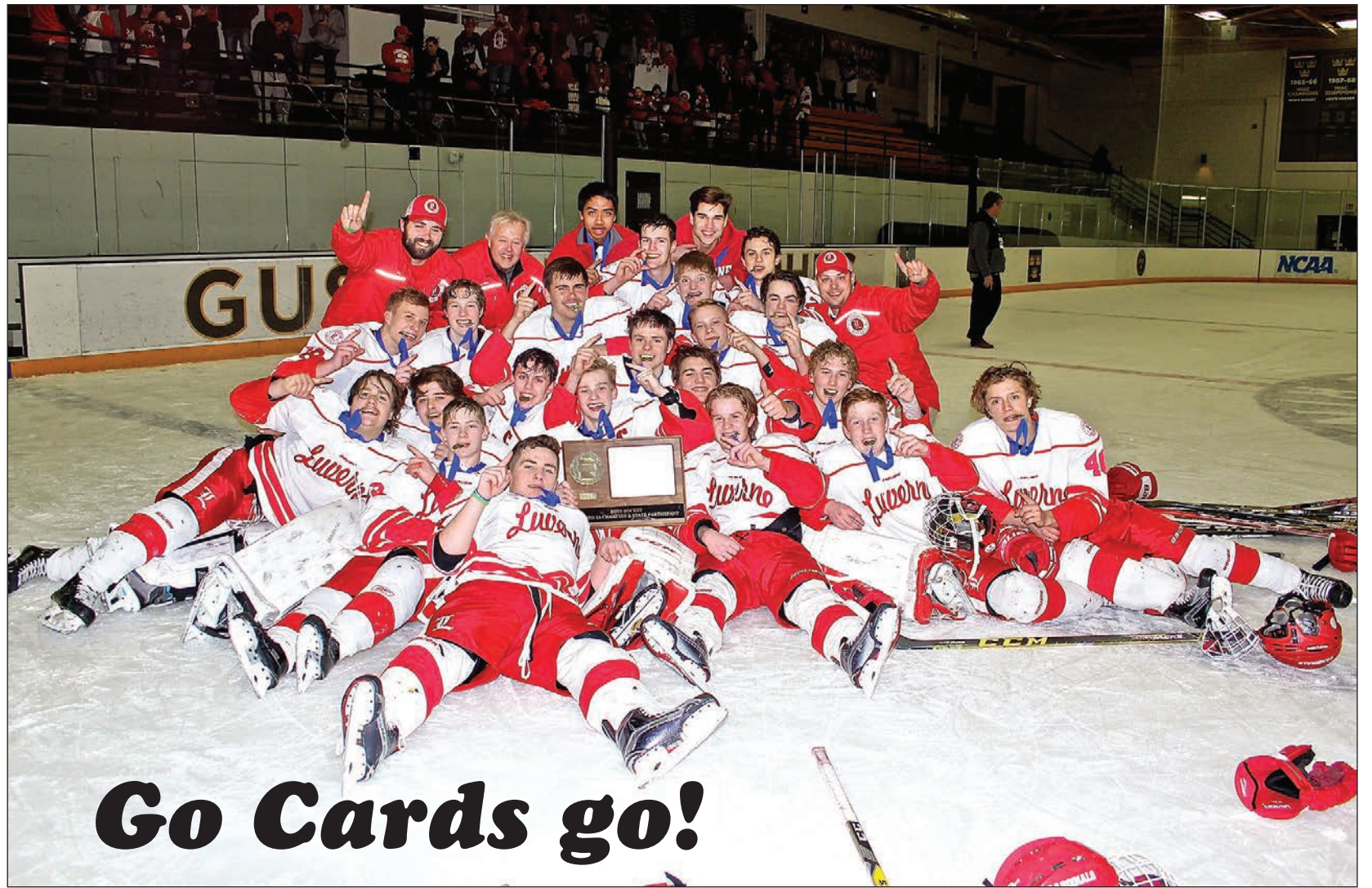
"We could be in a pickle," Hoven said.

With all departments willing to expand their current coverage areas, Kenneth and township supervisors discussed contract costs between departments.

Battle Plain Township chose Edgerton to provide emergency coverage to the nine sections previously covered by Kenneth.

Township representative Aaron Sandbulte, who is a Kenneth firefighter, said after the meeting

Kenneth fire coverage/see 3A



John Rittenhouse photo/0309 hockey 24

Section champs head to state hockey tournament this week

The Luverne High School boys' hockey team members punched their ticket to the Minnesota State Class A Boys' Hockey Tournament for the second time in school history at the Lund Center on the campus of Gustavus Adolphus in St. Peter March 1. The Cardinals defeated Marshall 5-1 to complete a three-game run through the Section 3A Tournament. Pictured above are team members (lying on the ice, from left) Nick Harder, Max Skattum, Mark Sterrett, Trey Roberts, Declan Beers, Kaden Ericson, Daniel Tofteland, Kasyn Kruse, Coy Gonnerman, Gaige Nath, Charlie Reisch, (kneeling) Andrew Reisch, Jim Erickson, Cade VerSteege, Tyler Reisdorfer, Skylar Dingmann, Jesse Kontz, Ben Serie, assistant coach Adam Ossefoort, (back) head coach Phillip Paquette, assistant coach Paul Erickson, manager James Chanthalangsy, Chris Jelken, manager Levin Stuker and Jesse Reed. The Luverne Cardinals open the state tournament Wednesday (March 8) by playing a quarterfinal round game at 6 p.m. against No. 1 Hermantown at the Xcel Energy Center in St. Paul.

Public art planned for History Center corner

By Lori Sorenson

The new History Center on East Main Street conveyed a corner of its northwest lot to the city in order to facilitate a large piece of public art.

Luverne artist Scott Viessman is creating a large metal sculpture at the corner of McKenzie and Main streets on a 50-by-30-foot piece of ground.

He hesitated to offer specifics about the design because it hasn't been finalized, but he described it as a large piece that people can sit

inside of and be protected from the elements.

"I like functional design — design with purpose," Viessman said. "I don't want to create something that would be just an observed piece; I prefer something interactive."

He's working with the Luverne Area Chamber, the Historical Society and members of Luverne Initiatives For Tomorrow to fine-tune the design, which will tie in with Luverne's 150th celebration.

"It's very exciting to be part of this project," Viessman said. "I'm looking forward to seeing the process through."

The sculpture won't be in place by then, but Chamber Director Jane Wildung Lanphere said she hopes to have an unveiling of the conceptual design during the 150th celebration.

She's applied for grants to support the project, but those wouldn't be awarded until May, so the sculpture won't be built until 2018.

The corner, which will be known as "Plaza 150," will also have some low-maintenance landscaping, providing a natural accent amid a large area of concrete at that intersection.

"There is a need to have some green space," Lanphere said. "This is a way to do that and to have a place downtown that people can identify with."

At their Feb. 28 meeting City

Public art/continued on page 5A

Condemned Sharkee's building cleanup begins

By Lori Sorenson

Heavy equipment broke through the east wall of the former Sharkee's building last week to provide skid loader access for waste removal.

Luverne city workers and professional asbestos removal professionals began that process Monday to make way for spring demolition.

In addition to teardown expenses, it will cost the city \$28,500 to remove asbestos and general garbage from the condemned building. This includes landfill fees, equipment and labor.

"Nobody should be in that basement without masks on or without professional training," City Administrator John Call said following the Feb. 21 final closing. "There's sewage down there ... it's a bad situation."

The city paid Sharkee's owner Dave Halverson \$220,000 following an agreement that was negotiated in December 2016.

By that time city officials had begun acquiring the structure and lot through eminent domain.

The abandoned building — once a bar and restaurant — has for two

Sharkee's cleanup/see page 2A



Lori Sorenson photo/0309 sharkee's demolition

A hole was dug in the side of the Sharkee's building last week, and cleanup efforts began in earnest Monday to prepare the condemned former Sharkee's building for asbestos removal and eventual demolition. Pictured here, city workers assist with the process of removing garbage and waste from the basement.



Daylight saving begins March 12

At 2 a.m. Sunday, March 12, clocks nationwide will "spring forward," saving an hour of daylight at the end of the day.

Daylight saving time is in effect from March 12 through Nov. 5, at which time clocks will "fall back."

That's been the schedule since Congress lengthened daylight saving time by a month as part of the 2005 Energy Bill. The new time schedule went into effect in 2007.

Volume 142, Number 10

Luverne, MN 56156
USPS 468-040



The Star Herald is Rock County's oldest business, documenting the news of its citizens since 1873

Article 10: Luverne has a long history of supporting and promoting hockey

This is the 10th in a series that shares the rich history of Luverne as it celebrates 150 years. This guest submission comes from former LHS hockey player John Paquette:

The success of this year's Luverne boys' hockey team is the realization of a dream born long before these players were even born. My brother Deny and I began playing hockey at the same time in 1984 when I was 5 years old and he was 9. Our dad, Dave, also began refereeing hockey games in the area that same year,

Luverne celebrates 150 years/continued on page 10A

This week's moment in time is sponsored by:



COMMUNITY CALENDAR

Meetings

Lady Luverne Red Hats will meet for lunch and to volunteer at the Historical Society at 11:30 a.m. Friday, March 10. Meet first to eat at the Pizza Ranch. RSVP Connie Wieneke at 283-8470.

Parkinson's Support Group will meet at 1 p.m. Tuesday, March 14, at St. John Lutheran Church. Contact Dianne Karlstad at 507-530-3307 with questions.

Rock County VFW 2757 will meet at 7 p.m. Tuesday, March 14, in the Rock County Military Museum.

Tourist Club will meet at 7 p.m. Tuesday, March 14, at Betty Mann's home. Call 507-283-8442 with questions.

Maple syrup at State Park March 11

The Blue Mounds State Park will host maple syrup making at 2 p.m. Saturday, March 11, at the picnic shelter near the walk-in campsites. Learn the history of maple tree tapping, how to tap a tree and sample local maple syrup. Call 283-4796.

'Looney Lutherans' March 12

Laugh with "The Looney Lutherans" as they perform a fun, interactive, family-friendly show at the historic Palace Theatre at 2 p.m. Sunday, March 12. As part of their 125th anniversary, St. John Lutheran Church in Luverne is sponsoring the group and invites the community to enjoy the performance. Admission is free. A freewill donation will be accepted. You don't even have to be Lutheran.

Blood drive in Adrian March 13

Sanford Adrian and Adrian Ambulance will host a blood drive from 11:30 a.m. to 1:30 p.m. and 3-6 p.m. on Monday, March 13, at the Adrian Ambulance Garage.

Caregiver sessions begin March 13

A.C.E. will sponsor "Powerful Tools for Caregivers" at 2:30 p.m. for six consecutive Mondays beginning March 13 in the Veterans Home in Luverne. Respite care is available during class. Call Norma Brands at 507-283-5064 or email ace.rock@co.rock.mn.us. Donations are accepted.

'Hoops for Food' slated for March 14

Luverne High School's student council will host Hoops for Food Tuesday, March 14, in the high school gymnasium. All proceeds benefit the Rock County Food Shelf. Games begin at 8 p.m. Admission is \$2 or a canned food item.

Two games will be played: boys' hockey versus wrestlers followed by the Spotlight Game of boys' and girls' basketball against LHS faculty. At halftime a lightning tournament will take place between various winter activities.

Monthly Food Ministry March 16

The Monthly Food Ministry, sponsored by New Life Celebration Church, will be from 5 to 6 p.m. Thursday, March 16, at the Luverne Senior Center for those having trouble putting food on the table. Children will be asked to wait outside. Call Gloria at 283-4366 with questions.

Interested in a food co-op?

Attend March 15 and 16 meetings

Kim Rockman, Roni Feit and others are considering opening a food co-op in Luverne to provide food, wellness products, classes and outreach. A public input meeting will be from noon to 1 p.m. Wednesday, March 15, and from 6:30 to 7:30 p.m. Thursday, March 16, in Hilger Commons, 215 N Cedar in Luverne. The meetings will gauge interest in a food co-op and educate the public on food co-ops. Reach Rockman at 507-353-0041 kimberlyelizabeth@live.com or Feit at 605-351-3522 ronifeit@gmail.com.

Blue Ribbon Gardening

Rev. Tim Olsen will offer information to grow champion vegetables Thursday, March 16 and Thursday March 23 from 7 - 8:30 p.m. at 709 N. Kniss in Luverne. Call 283-4724 for more information.

St. Patrick's Day Parade March 17

The St. Patrick's Day Parade in Luverne will be at 4:30 p.m. Friday, March 17, starting on the east end of Main Street, and all businesses and individuals are encouraged to participate. Meet between 4 and 4:30 p.m. in the parking lot of Living Rock Church on East Main Street to line up before the parade. Decorations don't have to be complicated; just wear green and an Irish smile.

The parade route ends at the Palace Theatre. Call the Chamber 507-283-4061.

Walz awards Bronze Star Medal to Korean War hero

Unites with veteran's loved ones to honor his brave service to the country

Congressman Tim Walz awarded a Bronze Star Medal to local veteran Sylvester (Sy) Lonneman in a ceremony Saturday at the Minnesota Veterans Home in Luverne.

Lonneman was awarded the Bronze Star Medal on April 27, 1953, but never received a proper ceremony in recognition of his courageous service.

"I can't begin to explain how honored I am to have had the privilege of joining with Mr. Lonneman's family today to provide him a proper Bronze Star Medal ceremony," said Rep. Walz, ranking member of U.S. House Committee on Veterans Affairs.

"Having been almost 64 years since Mr. Lonneman was awarded the Bronze Star Medal, this ceremony was long overdue, and I'm humbled to be a part of such a dignified day.

"I thank Mr. Lonneman's family for reaching out and working together to honor his service."

A sergeant in the U.S.



Congressman Tim Walz awards a Bronze Star Medal to local veteran Sylvester (Sy) Lonneman in a ceremony Saturday at the Minnesota Veterans Home in Luverne.

Army, Lonneman was an infantryman assigned to a heavy weapons platoon attached to a rifle company in the Korean War.

Despite suffering head and leg injuries from an

exploding mortar shell on Sept. 26, 1952, Lonneman continued to distinguish himself and was awarded the Bronze Star Medal for his meritorious achievement in ground operations against

the enemy from Feb. 1, 1952, through March 12, 1953.

Authorized by President Franklin D. Roosevelt on Feb. 4, 1944, the Bronze Star Medal may be awarded for acts of heroism, acts of merit, or meritorious service in a combat zone.

In addition to the Bronze Star, Lonneman is also a recipient of the Purple Heart, was awarded the Republic of Korea War Service Medal, and earned the Combat Infantryman's Badge.

Lonneman is from the Adrian area and currently resides at the Minnesota Veterans Home in Luverne.

He and his wife of 61 years, Helen Lonneman, had nine children. They are Mark (Lori) Lonneman, Jerry (Connie) Lonneman, Tim (deceased), Cindy Lonneman, Linda Lonneman and Terry, Dean (deceased), Kevin (Nancy) Lonneman, Ron (Leah) Lonneman and Allan (Val) Lonneman.

Lonneman has been a longtime member of the Adrian Argonne Post 32.

Sharkee's cleanup/continued from page 1A

years been in violation of health department and city codes and is considered a public nuisance and a hazard.

Sharkee's and the Mert's Repair property are both part of a tax increment financing district. The city purchased Mert's Repair lot for \$160,000 to the east of Sharkee's and sold Marlin Kracht a new lot in the Industrial Park (for \$10,000) for his expansion.

The costs for acquisition and demolition of both lots — a total of four acres — will be recouped in the TIF amount, \$600,000.

What that means is whoever buys the bare lot will pay full taxes on the improved property, but the difference between the current tax amount and the new tax amount will pay down the \$600,000 TIF debt.

After the TIF expires in 25 years, local governments will benefit from taxes paid on the full value of the developed lots.

Meanwhile, the city has circulated requests for proposals asking developers what they would do with the property and how much they're willing to pay for it.

If an appropriate plan is approved, new development could start as soon as this year or at least by the 2018 construction season.

In particular, city planners have specified that they would prefer to have a general mix of retail and possibly a mixed use residential development.

There have reportedly been several inquiries, but the city is not in negotiation with a particular developer at this time.

Healthier Topeka shiner means more time for road and bridge work

By Mavis Fodness

Contractors may have two extra months to work on Rock County's road and bridge projects, thanks to the U.S. Fish and Wildlife Service.

The federal agency recently released new habitat restrictions for the endangered minnow, the Topeka shiner.

The new construction timeline is on the agenda of the county's annual road and bridge meeting slated for 1:30 p.m. Tuesday, March 21, at the Rock County Community Library.

Until now, construction in streambeds that provide habitat for the minnow couldn't occur between spring melt and Aug. 15. The new timeline shortens the ban on construction from May 15 to July 31.

"The impact should average an additional 60 days of available working time," said Mark Sehr, Rock County's highway engineer.

Residents will notice the extended working time when an upcoming project in Martin Township will open earlier than normal.

The county plans to replace the bridge on County Road 17, a mile north of Manley. The project will take 12 weeks to complete.

"It's the first bridge that can be completed in July," Sehr said.

Topeka shiner restrictions affect small area of state

Streambed construction restrictions were put into place in 1999 to protect the Topeka shiner, an endangered prairie fish.

Rock County and portions of Pipestone, Lincoln and Murray counties are the only areas affected by the construction restrictions in the state.

U.S. Fish and Wildlife Service's Nick Utrup suggested the changes due to the state's vague and sometimes confusing timeline.

"We realized there were some discrepancies between Minnesota and Iowa," he said. "People interpreted that you can't do anything (in Minnesota) until August." Utrup said the guidelines also apply to

conservation work in agricultural-related projects. The USFWS would allow projects to progress in the streambed during the Topeka shiner's spawning season, but pre-approval is needed.

However, most federally funded projects follow the restrictions, he added.

The restrictions are in place to increase the population of the small hardy fish found only in Iowa, South Dakota, Kansas, Missouri and parts of Minnesota.

The minnows grow to roughly 3 inches in length and live to be 3 to 4 years old.

"There are very few minnows that are endangered," Utrup said.

Also complicating Utrup's job in preserving the minnow is that very few species of endangered animals are located in the Midwest. However, the vague restrictions had caused many projects to be lengthened or started late in the construction season.

"Hopefully these (new) guidelines will help," he said.

Utrup is optimistic Rock County's efforts to preserve habitat would remove the Topeka shiner from the endangered list, USFWS' long-range goal.

Currently very few of the minnows exist in Missouri and Kansas.

"In Minnesota and South Dakota they have a chance to come back to good levels," he said.

Road, bridge meeting March 21 outlines five-year projects

City officials and township supervisors have been invited to the annual road and bridge meeting.

The March 21 meeting is also open to the public.

An estimated \$3.1 million in improvements are planned for this year.

Included in the improvements are three county roads, a new intersection warning system installation and eight bridges.

Also planned is a total of 52 miles of rout and seal work on various county state aid highways throughout the county.



Dial-A-Specialist

Your One Stop Guide to Local Businesses

 <p>DR. MICHAEL SMITH • Men, Women & Children's Health • Custom Orthotics • Kinesiotape • Athletic Care • Massage Therapy • Work & Auto Injuries • Postural Restoration WWW.ROCKCOUNTYCHIROPRACTIC.COM 283-2561 • 103 E. MAIN, LUVERNE Monday 7:30 a.m. - 6 p.m. • Tuesday 7:30 a.m. - 3 p.m. Wednesday 7:30 a.m. - 6 p.m. • Thursday 7:30 a.m. - 1 p.m. Friday 7:30 a.m. - 5 p.m.</p> <p>• Chiropractic</p>	 <p>Chantel Connell Sales Representative 117 W. Main, Luverne, MN 507-283-2333</p>  <p>Rick Peterson General Manager</p> <p>• Advertising</p>	<p>LUVERNE HEALTH & WELLNESS Codie Zeutenhorst, D.C., CAC ✓ Acupuncture ✓ Chiropractic Care ✓ Family Care ✓ Sports Injuries ✓ Kinesiotape ✓ Auto & Work Injuries Acupuncture and Massage Available Kris Van Der Brink M.T. & Amy Rosales M.T. 507.449.4400 www.luvernechiro.com 109 S. Freeman Ave. Luverne, MN</p> <p>• Chiropractic</p>	<p>COMRAY COMPUTERS Computer Repair and System Builder</p> <p>Ray Hansen 1726 140th Ave., Luverne, MN 56156 507-669-2621 comraycom@gmail.com</p> <p>• Computer</p>
 <p>Rock County EYE CLINIC 507-283-2345 102 N. Freeman Ave. Luverne, Minnesota</p> <p>• Eye</p>	 <p>Papik MOTORS 1-90 Luverne, MN Box 536 • 801 West Commerce Road Luverne, MN 56156 (507) 283-9171 (800) 634-7701 www.papik.com</p> <p>• Automotive</p>	<p>Luverne MINNESOTA City Offices <i>Love the life!</i> PO Box 659, Luverne, MN 56156 507-449-2388 (24 hour voice mail) www.cityofluverne.org</p> <p>• City</p>	<p>Dakota Land Surveying and Engineering, Inc.</p>  <p>Steven B. Kor Professional Engineer Registered Land Surveyor</p> <p>2000 W. 42nd Street, Suite B-6 Sioux Falls, SD 57105 605-334-4882 605-334-5745 Fax</p> <p>506 Almar Luverne, MN 56156 507-283-3803 steve.dis@midconetwork.com</p> <p>• Land Surveying</p>

April 1 is deadline for corn growers to opt out of class action lawsuit

By Lori Sorenson

Attorney Paul Vis is encouraging his local clients to take action on the Syngenta corn litigation that was filed in 2015.

An important deadline of April 1 is looming for those who wish to opt out of the class action suit and pursue individual damages.

"If they do nothing, they'll still be part of the class action, but if they want to pursue individual representation they'll need to opt out by the end of March," said Vis, an attorney with Eisma and Eisma Law Office in Luverne.

The suit alleges that Syngenta sold genetically modified corn seed before it was approved by China.

When China rejected the U.S. corn, the suit claims those supplies flooded the U.S. grain markets, forcing down prices for the 2014 harvest.

Lead attorneys in Kansas moved to have the case certified as a class action suit, which means a large enough group of people experienced the same or similar damages caused by the same action.

Producers across the country who meet the requirements to be included in the classes have been receiving letters in the mail informing them of the deadlines and potential paperwork.

Vis is assisting local corn farmers seeking damages — up to \$1 per bushel of corn sold in 2014-15.

He said more than 160 corn producers in nearby counties have so far filed individual claims through his office.

If they want to remain on track for individual cases, Vis said they need to pay attention to the legal notices and complete the forms to opt out of class action.

"I'm afraid they're going to get mail from the attorney representing them and throw it away since they have been getting so much mail from attorneys who

aren't representing them," Vis said.

"These are important documents, and producers need to read them and take action."

In a class action lawsuit settlement (if any), damages can be claimed for market loss by the class as a whole.

Vis said that if corn producers seek individual claims they could possibly seek damages from more specific factors than just market loss, such as damages from crop rotation.

And he said lead attorneys are working on these arguments and gathering information for the suit.

"Guys keep asking me, 'What's going on with this?' and I keep telling them there's so much going on behind the scenes, even if they don't see it," Vis said.

He said the paperwork might seem intimidating, but he urges farmers to take action now, before they get busy with spring planting and before the deadline gets too close.

Information about the case can be found at syngentacornlitigation.com.

Some corn producers disagree with the lawsuit

While attorneys maintain the case is likely to succeed, many corn producers are skeptical.

Some cite market forces that were already driving down grain prices before the Syngenta product was rejected by China. They further point out that China did accept the product several months later without much effect on corn prices.

Skeptics also point out that successfully suing a company like Syngenta could effectively hamper technology improvements in grain.

This would in turn result in yield losses for grain that's less resistant to pests and climate.

More information about Corn Growers Association's reaction can be found at ncga.com.

Kenneth Fire Department/ continued from page 1A

that Edgerton already covers 18 sections of the township's northeast corner.

The familiarity is what drew township officials to add more sections to the Edgerton Fire Department.

The possible cost of \$200 per section was also something the township could afford, Sandbulte said.

Vienna Township will accept proposals for its 19 sections not covered by Luverne or Hardwick.

However, costs per section vary from department to department.

Luverne Fire Chief Dave VanBatavia said his department's current service contracts are \$645 per section with the price lowered to \$590 with the possible addition of more sections.

Magnolia charges \$500 per section; Hardwick \$400; Lismore \$180 and Edgerton \$200, a rate the department has not finalized, according to Edgerton's Huck Tinklenberg.

In the last four years, the Kenneth Fire Department received 20 calls.

During that timeframe all but five calls were medical-related, according to Sheriff Evan Verbrugge.

With Kenneth's fire department roster at about

five members, the city of 67 residents has relied on mutual aid to assist with coverage, especially medical emergencies.

Mutual aid is an unwritten agreement between the county's departments and is currently provided for free. Only the department who receives the initial emergency would receive payment for the call.

While cooperation would continue between firefighters, one department is considering charging a mutual aid fee if the department under contract is unable to handle the call, said Luverne City Administrator John Call.

Vienna Township and the city of Kenneth could make decisions on who would provide emergency service coverage as soon as next week.

Mayor Gangestad along with council members Keith Hoven and Dave Groen indicate they have a tough decision to make with limited finances.

"Luverne is top-notch but we have to look at money and distance (to get to Kenneth)," Gangestad said. "If mutual aid has a charge then there has to be a charge."

"We are up against price," Groen added.

St. Joseph in Jasper to close; LHS student last confirmed in 112-year-old church

Historic structure to be a public building, becoming new home for the city of Jasper's wellness center, book exchange and other purposes

By Mavis Fodness

When Jasper's St. Joseph Catholic Church hosts its final worship service Sunday, a local student will have a spot in the church's 112-year history.

Tim Lingen, a Luverne High School junior, will be the church's last confirmand at a special 10 a.m. service.

Bishop John Quinn along with St. Joseph's Monsignor Gerald Kosse will preside over the building's formal closure as a church.

Lingen's journey to the March 12 service began on the same day 17 years ago, when he was baptized at St. Joseph as an infant. His parents, Ted and Paula Lingen, were married in the brick church, which was built in 1918. Tim's grandparents are 34-year members and it's where he first received communion.

"It feels like home," he said. "Everybody there is part of the family."

Lingen has served his church family for eight years as an altar boy, six of those as the sole eligible youth in the congregation.

The coincidence of both his baptism and his confirmation on March 12 is an inspirational sign for the 17-year-old as he continues his faith journey with another church and congregation.

The Lingens are among 68 families who will find a new place to worship after Sunday. Tim will take a lasting memory to his new church.

Saint Joseph was selected as Lingen's patron saint. He used the saint as a guide as he finished his confirmation lessons and application to the bishop for the sacrament.

"He (Saint Joseph) was a hard worker," Lingen said. "Being a hard worker in life is good to get a grasp on."

Parishioners of St. Joseph grasped the idea of closing a year ago.

The Diocese of Winona was in the midst of preparing its Vision 2016, a comprehensive vision for the Catholic churches in southern Minnesota.

Parishioners of St. Joseph realized they couldn't meet the human and fiscal resource criteria needed to continue into the future.

Church to become Jasper wellness center

"It's a bittersweet feeling," said Stella Lingen, who served on parish council.

Tim Lingen is her grandson. "The sweetness is that we sold the building," she said.

St. Joseph will continue as a public building, becoming the new home for the city of Jasper's wellness center, book exchange and purposes yet to be determined.

The commercial kitchen and dining hall could be available for rent.

The city purchased the handicap-accessible building for \$12,000 and takes over possession next month.

Lingen said funds from the building sale and its furnishings will support the St. Joseph Cemetery located west of Jasper.



Mavis Fodness Photo/0309 St Joseph

St. Joseph Catholic Church in Jasper will close Sunday with a special 10 a.m. service. Luverne High School junior Tim Lingen will be the church's last confirmand.

"It's always hard to think of what was and what could have been ... It has been a challenge. It has been good, with people ... taking ownership with which direction they want to go."

Monsignor Gerald Kosse

The sale was "an answer from heaven," she said.

St. Joseph parishioners could have asked the diocese for an oratory designation, staying open as a chapel for marriages and funerals.

However, parishioners would still would have had to maintain an almost 100-year-old building.

In January the diocese agreed to the parishioners' request to find a suitable buyer for the building.

Final service begins at 10 a.m. Sunday, March 12

Monsignor Gerald Kosse said last week the one confirmand for the

2016 class represents the declining attendance at rural churches.

From a practical standpoint fewer attendees and fewer young men entering the priesthood meant congregations needed to decide their future.

"It has been a challenge," Kosse said. "It has been good, with people ... taking ownership with which direction they want to go."

St. Joseph's closure is the first of several in southwestern Minnesota under the Vision 2016 plan.

Its sister parish, St. Martin in Woodstock, will eventually close. Both will merge with St. Leo in Pipestone. Eventually St. Leo will merge with St. Catherine Catholic Church in Luverne.

The closure and merger process slowed when Father Tom Jennings in Luverne postponed his retirement for at least another year. Jennings also serves St. Mary Catholic Church in Ellsworth, a parish that will also close and merge with St. Catherine.

A single priest will serve the two parishes.

Kosse likened the parishioners' decisions to facing a fork in the road.

"It's always hard to think of what was and what could have been," he said.

Happy 70th Birthday Bruce!
from your womb-mate Barb

Come & Go Baby Shower
COURTNEY GONNERMAN
SAT. March 18
10 a.m. - 1 p.m.
Grace Lutheran Church, Luverne
registered at Target, Babies R' Us, Shopko Luverne

READ THE NEWS ONLINE!
Subscribe to the online edition of the
Star Herald

REQUEST FOR BIDS
Class 5 crushed gravel to be spread on Martin Township roads.
Township residents are able to buy gravel at the same price with limitations.
Submit bids on or before
March 10th to Gawaine Diekevers
857 41st Street Steen, MN 56173
Job must be completed by July 1st. Martin Township has the right to reject any or all bids.

Beaver Creek Annual Meeting Notice
Beaver Creek Township will be holding their Annual Meeting on Tuesday, March 14, 2017 from 4:00-5:00 p.m. Township elections will follow from 5:00-8:00 p.m.
One Supervisor to be elected
Inclement weather date: Tuesday, March 21, 2017
Kathy King
Township Clerk

Palace Theatre
Blue Mound Area Theatre Annual Meeting Notice
Thursday, March 9 at 7 p.m. at Bluestem
Public welcome

What will this soon-to-be grandma be called?

This summer Bryan and I will celebrate our 30th wedding anniversary.



RUMINATIONS

By Mavis Fodness, Reporter

It will be a time to look back at the events in our lives and prepare for an event I knowingly prepared for three decades ago — becoming a grandparent.

By the time the “I dos” were uttered, Bryan and I planned on starting a family right away. If God wasn’t going to bless us with offspring, we were young enough to undergo medical options or adopt.

Back then, I also decided by age 30 I would be done having children.

As it turned out, God blessed us with four children in nine years, and this spring I will become the young grandma that I envisioned back in 1987.

I admit I am a little nervous.

I am entering uncharted territory. I had no living grandparents when I was born. Having missed the interaction, I want to be younger when the first of I hope many grandchildren arrives. I want decades of interacting with them.

I look forward to attending school programs, sporting events and graduations. Teaching the wee little ones about cooking, minding their manners and riding horse will also be on the agenda for years to come.

One thing I always joked about is giving the grandchildren sweets and caffeinated pop so they would go home in a hyperactive state. This may still occur, but whatever the experience, I want my grandchildren to fondly remember activities with their grandma.

I’ve often wondered if there’s a handbook for expecting grandparents, and as it turns out, there are dozens.

One title stood out from

the others: “Funny, You Don’t Look Like Grandmother,” by Lois Wyse. It was published in 1988, around the same time I became pregnant with my first child, setting into motion the goal of becoming a young grandmother.

Wyse describes her book as a perfect bouquet for today’s grandmother: “that active and interesting woman who is old enough to be somebody’s grandmother and young enough to run around the world.”

The first chapter is “What will we name the Grandmother?”

Currently my children call their grandparents “Grandma O” or “G-pa” and Grandma Kathy.”

This is an interesting question.

As a young grandma I am hoping for something cool. But what should that be? Nana? Granny? Mom’s Mom? Grandmama?

My pregnant daughter Courtney recommended Grandma F but flip the two words around to F----- Grandma.

This may be a tough decision when my granddaughter is old enough to speak. No swear words will be allowed.

Another book, “The Grandparents’ Handbook,” may be a better reference since its first chapter is “How to Change a Diaper.”

It’s been awhile since I maneuvered a diaper under a wiggling bottom.

This grandma has already earmarked this e-book from the local library.

State’s compliance with Real ID offers choice for residents

The Minnesota House of Representatives has approved legislation that would allow the implementation of REAL ID. Without it, Minnesota driver’s licenses can no longer be used to board airplanes beginning January 2018. I voted in favor of the measure.

I had families telling me they couldn’t see their kids graduate at military ceremonies because it was on federal government property and they couldn’t enter because they didn’t have REAL ID compliant identification or a passport. That’s something that just shouldn’t happen.

The legislation would bring Minnesota into full compliance with the federal Real ID act, which was a federal law passed in 2005. Its goal was to make it more difficult for potential terrorists to obtain

GUEST EDITORIAL

By State Representative
Joe Schomacker, R-Luverne

fake identification cards by setting standards that states must meet for their driver’s licenses.

If Minnesota’s state-issued identification cards don’t meet federal standards by 2018, residents will be unable to board a domestic airline flight or access federal buildings or military bases. Under the House bill, Minnesota residents would be able to choose a Real ID compliant driver’s license or a non-compliant license.

This should have been a bill that was passed last year, but wasn’t. This year we have a much improved bill and we’re giving options for people who are concerned about data privacy. These people would have the option to go with a different type of card, but without a passport they won’t be able to fly or access federal buildings, but that’s their choice.

The legislation now heads to the Minnesota Senate for further debate.

ED FISCHER



This is your page! Your opinion matters.

This is your place to express your opinion on matters of community importance. A strong opinion page in a community newspaper is a sign of a strong and cohesive community. The Star Herald Letters to the Editor policy appears each week in the space below, outlining letter length, content, deadlines and contact information.

Vehicle speed contributes to crash deaths, injuries

Question: Why do officers assume someone was speeding when a driver hits ice and loses control? That can happen to the most experienced drivers. Using 169.14.1 to give a person a ticket because he hit some ice and went off the side of the highway seems like that officer has very little compassion.

Answer: Our main mission is to promote traffic safety through education and enforcement. One of the top contributing factors to why people are losing their lives and being injured on our roadways is speeding or traveling too fast for conditions. Law enforcement sees this far too often. In most cases, these tragic crashes are preventable.

Many of the fatal and serious injury crashes that I have investigated are the one-vehicle rollovers — or a two-vehicle crash where one of the vehicles was traveling too fast for conditions, lost control and struck another vehicle.

We all have an obligation to drive with due care and adjust our driving skills to the weather, road and traffic conditions. This is especially true in winter when weather and road conditions can frequently change.

Losing control of a vehicle is evidence that the driver committed a violation of a traffic or equipment law. Failure to drive with due care is the most common violation



ASK A TROOPER

By Sgt. Troy Christianson,
Minnesota State Patrol

when a vehicle loses control and goes off the roadway.

The number one thing we can all do is slow down and increase our following distances, especially when roads are slippery and the visibility becomes poor.

In my experience and when talking with my co-workers, the reasons found for a vehicle losing control on slippery road surfaces are typically:

- traveling too fast for conditions.
- using cruise control on poor road conditions.
- following too close.
- distracted driving
- unsafe tires
- driving while impaired
- fatigued driving

Each year, 20-30 State Patrol squad cars

are struck while at the scene of a crash or traffic stop because of one or more of these factors. Other factors include drivers that fail to move over for emergency vehicles.

We take traffic enforcement very seriously. Our goal is to reduce crashes and keep everyone safe on our roadways.

You can avoid a ticket — and a crash — if you simply buckle up, drive at safe speeds, pay attention and always drive sober. Help us drive Minnesota Toward Zero Deaths.

If you have any questions concerning traffic-related laws or issues in Minnesota, send your questions to Sgt. Troy Christianson, Minnesota State Patrol, at 2900 48th Street NW, Rochester, Minnesota 55901-5848, or reach him at Troy.Christianson@state.mn.us.

VOICE OF OUR READERS

Bill creates food access

To the Editor:

I want to applaud Senator Bill Weber for introducing a bill at the capitol to fund the Minnesota Good Food Access Program, which was created last year to increase opportunities for Minnesotans to buy healthy and affordable foods in locations that currently lack access to such foods.

The bill is especially important for parts of rural Minnesota where the health of seniors and children is often impacted because of the distance to a grocery store or other food outlets.

One of the great features of the program is the flexibility it will provide communities and businesses to create opportunities that work best to help serve the food needs of local residents — be it a grocery store, expanded offerings at a convenience store, a farmers market or even food markets on wheels.

Luverne residents have access to several healthy and affordable food options while others in rural Minnesota do not, but everyone will benefit from this bill. The importance and benefits of Senator Weber’s legislation is clear in its bipartisan support. Both Republicans and Democrats are cosponsoring the bill with him, something that doesn’t happen very often these days.

Paula Bloemendaal
Luverne

E-mail: editor@star-herald.com Web site: star-herald.com
Phone: 507-283-2333 Fax: 507-283-2335

Published Thursdays by Tollefson Enterprises, POSTMASTER:
Send address changes to 117 West Main, P.O. Box 837, Luverne,
MN 56156. Periodicals postage paid at Luverne, Permit #33 and at
additional mailing offices.

General manager: Rick Peterson **News staff:**
Office manager: Deb Lusty Lori Sorenson, editor
Circulation manager: Jennifer Kor Mavis Fodness, reporter
Advertising: Chantel Connell John Rittenhouse, sports editor
Production manager: Abbe Kolar Esther Frakes, copy editor
Production: Amanda McDonald Joseph Stearns, composition

Rock County
STAR HERALD
Rock County's newspaper since 1873

(ISSN 0889-888X)
SUBSCRIPTION RATES
\$72 per year in Rock County; \$89 per year all other areas. Single copies \$1.25

Entire contents copyrighted by
Tollefson Publishing Roger Tollefson, publisher

The *Star Herald* encourages letters to the editor expressing the opinions of readers and intends to print all letters. Letters not meeting the guidelines will not be printed. The *Star Herald* will verify the authenticity of all letters. Letters must have the name of the writer, a signature and address.

Unsigned letters will not be considered. The *Star Herald* will edit for grammar, spelling and clarity. Any letters containing offensive language, libelous or slanderous material, or misleading or false information will be rewritten before being published. The *Star Herald* will not publish letters written with the sole intent to advertise or serve as a thank-you. Letters with more than 300 words may be edited. The deadline for letters is Monday 10 a.m. They may be delivered or mailed to the editor, *Rock County Star Herald*, P.O. Box 837, 117 W. Main St., Luverne, Minn. 56156.

ON THE RECORD

Dispatch report

Feb. 24
 •Complainant reported vehicle parked in his lot where he piles snow.
 •Complainant reported that she bought a puppy from subject, and it has fleas and worms. Complainant believes dogs at location are neglected and malnourished.
 •Complainant reported the crosswalk lights at location are not shutting off.
 •Complainant reported subject may have fallen and hit her head this morning and did not seek medical attention. Complainant is concerned for her welfare.
 •Complainant reported domestic abuse at location.
 •Complainant requested welfare check on a male party who is on probation and is not supposed to drink but drinks all the time.
 •Deputy completed escort.
 •Deputy out with vehicle.
 •Deputy reported vehicle locked. No keys. Parked in roadway. Hazard. Towed by G&S.
Feb. 25
 •Complainant reported car on his lawn. Deputy requested G&S to tow.
 •Complainant reported a man is abusing her sister. The sister told her to take her car and leave.
 •Complainant reported break in earlier this week at location. Minor damages to drawer locks and door. Nothing missing. Wanted it reported. No action needed.
 •Complainant reported there are two men at location that missed the Jefferson Lines bus.
 •Complainant reported hay trailer with possible broken wheel on side of road, north of Country Road 16 on 150th Avenue. No lights. May be a safety hazard.
 •Complainant reported a lady tried to use a card for gas, and they got the message to take it because it is lost or stolen.
 •Complainant reported he told a girl her dog was pretty. She told him to shut up. He asked her why, and her dad came over and punched out their taillight.
 •Deputy completed the escort.
Feb. 26
 •Complainant reported two guys all dressed in black walking toward Main Street. As he drove by, they turned and looked at him then kept walking. Thought they may be involved in the burglaries.
 •Complainant reports snowmobile driving on his lawn. Deputy spoke with complainant.
 •Complainant requested to speak to deputy regarding

landlord not allowing them to retrieve some of his brother's property. It was a money issue with other renter. Party picked up brother's property.
 •Complainant requested to speak to deputy regarding custody. Deputy spoke with complainant.
 •Complainant requested to speak with deputy regarding taillight.
 •Complainant requests extrapatrol at North McKenzie. Deputy spoke with complainant.
 •Deputies checked doors at location.
Feb. 27
 •Received report from SWHHS.
 •SWHHS sent report.
 •Complainant reported the dog at location is skin and bones.
 •Complainant reported a suspicious light blue Ford van sitting on the road for several hours. Earlier a relative was outside and the person in the van ducked. Complainant said he could not see anyone. Deputy spoke to subject who said they were having car trouble but thinks he has it fixed.
 •Caller reported he stopped to check on subject who has passed away and is cold. Sent deputy. Caller wanted dispatch to get Hartquist Funeral Home. Called Hartquist.
 •Complainant reported a FedEx truck parked partially on the roadway at location. Complainant advised flashers were on but are off now. Complainant was worried someone would run into it.
 •Complainant requested to speak to a deputy about not being able to see his kids. He is outside the apartment at location waiting for deputy to assist him.
 •Subway reported a suspicious pickup parked in the rear of location. Has been sitting there running for over an hour. Deputy advised that parties are sleeping and taking a break from the road. They will be gone in a couple of hours.
 •Caller reported people at the house at location that has been abandoned. Would like it checked out.
Feb. 28
 •Complainant stopped in the office to talk to a sergeant about being harassed by one of our officers. Deputy talked to her and took a statement.
 •Complainant reported someone ran into his fence with a vehicle sometime between Friday night closing and Monday morning.
 •Complainant received a letter of fraud in his wife's name.
 •Complainant reported an orange semitrailer with a flat bed trailer was at his

parents' place and tore up the yard and broke the gate. The truck went into he neighbor's yard also. When complainant tried to catch up with the truck it took off approximately 75 mph on I-90 west. The semi said Schmidt Trucking on the side, complainant thinks. Complainant found out why the truck was there and spoke to the company. He will deal with the company, and if he has any issues will call back.
March 1
 •Employee at location requested deputy for female who came in and acted suspicious and is now sitting in her car for the last hour. Party left. Was stopped at I-90 eastbound mile marker 16. Deputy reports all appears to be OK.
 •Complainant wanted to talk to deputy about what she thinks is fraud.
 •Complainant reported someone has been stealing wood from his woodpile.
March 2
 •Complainant reported she is in extreme pain.
 •Complainant reported she has an unserved restraining order against her ex. He was in the apartment and garage. He sent her pictures of her clothes and shoes.
 •Complainant reported he repossessed a vehicle.
 •Complainant requested a door unlock.
 •Deputy reported the crossing lights are not turning off. Called the highway department.
 •Complainant reported that she believes she was called by a scammer.
 •Complainant reported his neighbor's music is too loud.
 In addition, officers responded to 2 motor vehicle accidents, 6 vehicles in ditch, 3 transports, 1 funeral escort, 20 traffic stops, 17 ambulance runs, 2 fingerprint requests, 1 paper service, 4 animal complaints, 1 false alarm, 7 log/alarm sheets, 4 drug court tests, 6 background checks, 1 money escort, 7 tobacco license background checks, and issued 5 purchase/carry permits and 13 burn permits.

Rock County Township Well Water Testing Results

Township	Number of Wells Tested	Mean	Median	Percent of Wells Exceeding 10 mg/L
Battle Plain	23	21.1	17.9	62.5
Clinton	10	13.4	15.5	80.0
Luverne	37	8.0	6.8	40.5
Magnolia	20	16.2	9.4	45.0
Mound	28	11.2	11.9	57.1
Rose Dell	30	12.0	8.1	43.3
Vienna	23	20.2	9.9	47.8
Total	119.0	13.9	11.1	50.9

Half of tested township wells show high nitrate levels

By Mavis Fodness

Keeping Rock County's private well water safe to drink was the focus of a Targeted Township Nitrogen Testing Program over the past year. Rock County was the second in the state to enroll in the program that tests private wells for nitrate concentrations.

Participation was voluntary for the program that's administered through the Minnesota Department of Agriculture and the Rock County Land Management Office.

Water testing kits were sent to 674 households in seven townships — Clinton, Luverne, Magnolia, Mound, Vienna, Rose Dell and Battle Plain.

These townships were selected because their groundwater is vulnerable to contamination, based on land use (row crops) and topography.

The results released recently show 50 percent of the 171 private well samples exceeded the state's health standard for nitrates.

Wells with nitrate levels exceeding 10 parts per million in the first test will be retested this year.

"It paints the picture we are getting nitrates in our water," said Doug Bos, assistant Land Management director.

Results from the second test may necessitate a site visit to determine possible non-fertilizer sources of nitrates as well as the condition of the well.

A well with construction problems may be more susceptible to contamination.

A final report will be finished in 2018 when the vulnerable areas may be subject to land use practice changes and/or mandates to reduce nitrate levels.

Voluntary "best management" practices

Until then, state officials want Rock County to voluntarily reduce its nitrate levels by adopting Best Management Practices for applying nitrogen in crop fields, the most common source for nitrates in drinking water.

If 80 percent of producers use one or more of these practices, no regulations would come from the state.

Nitrogen is commonly applied to fields as a corn fertilizer; however, the corn plant utilizes only about 50 percent of the applied

nitrogen and takes up the nitrogen over a short time period. The rest of the nitrogen is susceptible to water runoff and leaching into aquifers.

Bos said over the last 20 years, 30 percent of the area's precipitation has come in extreme rain events.

"We have to find a way to spoon-feed it (to the corn) to reduce nitrogen from getting into our water," Bos said.

A change in cropping practices has shown nitrates can be reduced locally.

Bos and Land Management staff have worked with Clinton Township producers in or near the wellhead feeding the Rock County Rural Water System.

The work group, consisting of agronomists, farmers, crop consultants, community members and state and local officials, will be formed after the final nitrate report is published.

The same group of experts will also assist the township program to reduce nitrates.

Small changes yield big results

The group has found cover crops can reduce nitrate levels by 50 percent.

Producer Jim Ladd farms on the east side of the wellhead area.

His use of cover crops and nitrogen side dressing at critical corn growth stages has kept nitrates at safe drinking levels, Bos said.

Ladd recently earned the MDA's agricultural water quality certification designation for his efforts.

Ladd showed changes in traditional farming practices could be positive for an operation's bottom line. However, not all producers are convinced change could be positive.

"With grain prices today it's tough to make much of a change without financial risk," Bos said.

The local staff in partnership with Minnesota Department of Agriculture and Rock County Rural Water have been using financial incentives with producers in the wellhead area to at least give a few of the Best Management Practices a try.

"A really good thing about a little bit of time and a little bit of incentive ... farmers are willing to make the changes," Bos said.

Public art at History Center corner/ continued from page 1A

Council members approved a resolution conveying and recording the subdivided property from the Historical Society to the city of Luverne. Councilman Kevin Aaker supported the resolution, but asked if the city should consider a public art ordinance, to keep future possible art projects in line with the city's vision for aesthetics. "Let's figure it out before we need to decide something in a hurry," Aaker said. The budget for the public art corner has not yet been determined because it hinges on approval of grants. The city will own the piece of ground and will maintain it, but it is not paying for its development.

Luverne Baseball Traveling Team
 sign up

MONDAY MARCH 20th

- ▶ Howling Dog
- ▶ Baseball, Burgers and Fries Night

(free for families who sign up)

5-7 p.m.
 Traveling baseball team sign up and parent meeting for anyone grades 3-6 interested in playing traveling baseball

Talk to your friends about playing a little extra baseball this summer!

Interested in coaching?
Please Come!

Also sign up for Girls Softball, VFW, Legion or Community Ed Baseball

Call
283-2333
 to advertise in
 the Star Herald




Going on NOW
 at Papik's!

283-9171 | PAPIK.COM



2017 Dodge Charger SXT
 M.S.R.P. ~~\$35,585~~ Stock #505869D



25% OFF M.S.R.P.
 Papik Price **\$26,688**

2017 Chevrolet Impala LTZ
 M.S.R.P. ~~\$38,550~~ Stock #184989C



20% OFF M.S.R.P.
 Papik Price **\$30,840**

2017 Chevrolet Sonic LT RS
 M.S.R.P. ~~\$20,495~~ Stock #136576C

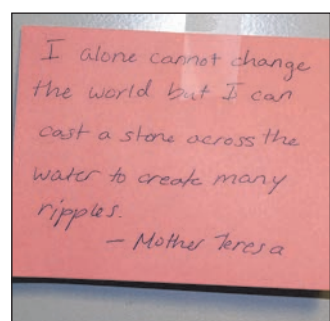
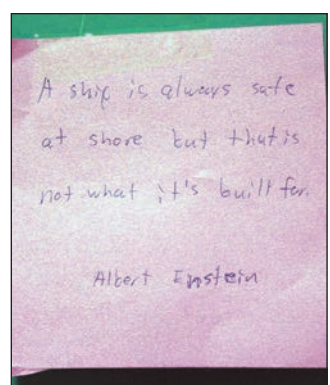
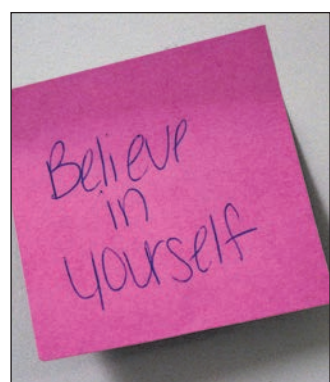
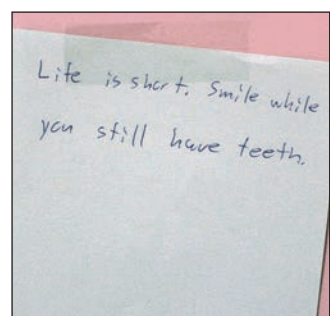
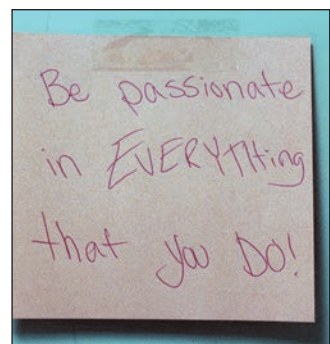
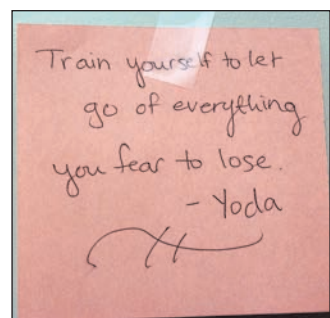


20% OFF M.S.R.P.
 Papik Price **\$16,396**

2017 Chevrolet Sonic LT RS
 M.S.R.P. ~~\$20,495~~ Stock #123865C



20% OFF M.S.R.P.
 Papik Price **\$16,396**



Notes of

Encouragement

Mavis Fodness Photo/0309 Notes of Encouragement

Luverne High School seniors Ariel DeBeer (left) and Jena Hamann tape a "Note of Encouragement" to lockers in the high school wing before school Thursday, March 2. The handwritten messages were written by the two seniors and 18 others participating in the Thursday before-school senior leadership class.

Senior leaders share personal messages

By Mavis Fodness

Almost 600 inspirational sayings were taped to individual lockers last week by the Luverne High School's senior leadership class.

Each of the 20 seniors participating in the Thursday before-school sessions was responsible for gathering about 30 phrases of encouragement or advice to share with their fellow classmates and underclassmen in grades 7 through 12.

The process to hand-write sayings on 3x3-inch pieces of paper took several Thursday mornings to

complete.

"It takes a long time," admitted senior Samatha Ykema. "We looked up quotes or thought of some of our own."

Some seniors used phrases from movie characters like Yoda: "Train yourself to let go of everything you fear to lose."

Others used anonymous sources with one including a drawing of a turtle: "Be not afraid of going slowly, be afraid only of standing still."

Some students included humor: "Life is short. Smile while you still have teeth." And one offered some personal advice: "It's cold.

Don't wear shorts."

The seniors guided their own early morning lessons, ranging from inviting former students to talk about college life to professionals discussing finances.

The early-morning sessions were started last year by female students to grow their leadership skills.

School social worker Stacy Schepel and teacher Amy Cook (now high school counselor) continue to advise the group.

This year's group also included a handful of male students.

"It's an easy way to learn," said senior Knute Oldre.

"Just wake up and come in early."

Writing the notes of encouragement was the group's last activity and was borrowed from what other schools have done.

As the middle and high school students arrived for classes Thursday, March 2, they stopped to read their personalized messages.

Some left the notes on the outside of their lockers for others to read, some placed the notes inside their lockers for safe-keeping.

"They are so nice," replied one sixth-grader.

CELEBRATIONS

Birth

A girl, Charlie Ray, weighing 8 pounds, 7 ounces, 21 3/4 inches long, was born Monday, Jan. 23, 2017, at the Worthington Hospital to **Kalea Thompson and Cody Jagow**, Westbrook. Grandparents are Dave and Viva Jagow, Hardwick, Terry and Lydell Sik, Westbrook, and Scott Thompson, Stordan.

Baby Shower

A come and go baby shower for **Courtney Gonneman** will be from 10 a.m. to 1 p.m. Saturday, March 18, at Grace Lutheran Church in Luverne.

MENU

Senior Citizens

Monday, March 13: Swiss steak, mashed potatoes, peas and carrots, bread, pineapple.

Program: Pinochle.
Tuesday, March 14: Honey mustard chicken breast, baked potato with sour cream, green bean casserole, bread, cake.

Two-buck Tuesday sponsored by State Farm Insurance.

Wednesday, March 15: Lasagna, California blend vegetables, peaches, garlic bread, cookie.

Program: Site Council meeting; Ann Marie, dietician.

Thursday, March 16: Pork loin, mashed potatoes and gravy, buttered cabbage, dinner roll, fruit crisp.

Food Give-away.
Friday, March 17: Lemon pepper fish with tartar sauce, au gratin potatoes, mixed vegetables, bread, pie.

Program: Birthday party; Kitchen Band plays.

Senior Dining offers well-balanced and affordable meals in a community atmosphere.

Bring a friend or make new ones.

Call 283-9846 to make dining reservations or for home-delivered meals.

1925: Highway department works to eliminate all sharp turns on county roads

The following appeared in the Rock County Herald on November 13, 1925:

COUNTY ELIMINATES SHARP TURNS ON STATE AID ROADS

State to Re-Route Ashcreek Trunk Highway to Do Away With Sharp Turns and Two Railway Crossings.

Rock county's highway department has completed or is just finishing the grading of several sharp curves at the intersection of trunk and state aid highways that will, unquestionably, materially reduce the chances of motor accidents.



BITS BY BETTY

By Betty Mann, president, Rock County Historical Society

This includes the rounding out of two curves at the east side junction of trunk highway No. 6 and state aid highway No. 8, near the Mounds, and two curves on the junction of the Hardwick-Kenneth road, with that of the Edgerton road four miles east of Hardwick. In each case the

curves were made on a 29th degree, which enables a motorist to swing around them with comparative safety, providing the speedometer does not show more than forty miles.

In order to eliminate these sharp turns, it was necessary to purchase one-eighth of an acre of ground for each curve. There

still remains a sharp turn on the Hardwick-Kenneth road, seven miles east of Hardwick, where the road turns south to Kenneth but thus far the county has not been able to secure the needed additional land from the owners, who are non-residents of this county. There is also need of a curve on state aid road No. 6 at the Iowa state line, south of Hills, but in this case traffic is not especially heavy and the danger of accidents is, therefore, considered remote.

On trunk highway No. 6, between Luverne and the Iowa state line, there are nine sharp turns which highway authorities agree should be

eliminated, but as in the case of all trunk highways, the state highway department has initiative and exclusive authority. The chances are that nothing will be done in the near future to eliminate these bad places, for it is an open secret that the state department has virtually decided to change the route of this highway so that it will run straight south to the Iowa state line, between the Kohn farms and then south. This will make the road strike the Iowa line three-fourths of a mile west of the graveled road leading into Rock Rapids from the north. But in doing this, all of the sharp turns and two railway crossings will be done away with, achievements

which the state department is consistently endeavoring to bring about through the state.

This means that the road will pass by Ashcreek, but the state department has long contended that it sees no good reason why trunk highways should run through municipalities, while the elimination of every railway crossing possible is held to be of the utmost importance.

Donations to the Rock County Historical Society can be sent to the Rock County Historical Society, 312 E. Main Street, Luverne, MN 56156.

Mann welcomes correspondence sent to manmade@iw.net.

COMMUNITY EDUCATION

Mimic famous artists by painting moods, without brushes and a mural at **Painting for grades 2-3 on March 16.**

Master Gardener Tim Olsen will offer information and best practices for growing **Blue Ribbon Vegetables on March 16 & 23.** Both youth and adult will learn the secrets to growing the best vegetables in your own garden. Fee is \$20.

Register students grades **K-12 for softball and baseball NOW before March 20.** The fee will be \$15 higher after March 20 and registrations accepted only if there are open spots on the rosters. Reserve your seats now for the most popular, fun filled musical **Grease at the Chanhassen Dinner Theater on April 22.** Register for this chartered **bus trip by March 31.** Fee is \$110.

Students grades 8 and older may register for **Student Driver Education** class now. Register by June 12 for the class that begins June 19. Limited seats available. Fee is \$325 due at the time of registration. There is an informative **parent session** available the evening of June 19 at no cost.

The process will be explained and information provided to help you supervise your new driver. A certificate will be presented to parents who attend class, lowering the required 50 hours of logged driving time down to 40 hours.



Kurtis and Brittney Van Gent

Richters, Van Gent wed in Luverne Sept. 10

Kurtis Van Gent and Brittney Richters were married Saturday, Sept. 10, 2016, at Grace Lutheran Church in Luverne.

Parents of the couple are Keith and Jeannetta Van Gent, Algona, Iowa, and Rodney and Laura Richters, Luverne.

The Rev. Ron Nichols officiated at the ceremony.

The bride's matron of honor was Katelyn Conover, friend of the couple. Breanna Richters, sister of the bride, was maid of honor. Bridesmaids were Missy Riddle, Chelsey Javner, and Alysha Kientopf, friends of the bride, and Emily Van Gent, sister of the groom. Flowergirls were Nevaeh Lund, cousin of the bride, and Elah Hiemstra,

cousin of the groom. Personal attendants were Amanda Fedders and Megan Van Meeteren, friends of the bride.

The best man was Jarod Fedders, friend of the couple. Groomsmen were Cody Vander Ziel, Nate Christensen, Ben Erickson, and Tyler Baetz, friends of the groom, and Kris Van Gent, the groom's brother. Ringbearer was Otto Lund, cousin of the bride. Ushers were Brenton and Brian Richters, brothers of the bride, Dylan and Austin Richters, cousins of the bride, and Kyle Van Wyk, cousin of the groom.

A reception followed the ceremony at the golf course in Brandon, South Dakota.

The couple is living in Vermillion, South Dakota.

Cardinals finish eighth at state Mock Trial event

By Mavis Fodness

The Luverne High School Mock Trial team earned an eighth-place finish at the state Mock Trial Tournament March 3-4 in St. Cloud.

Two Luverne students earned individual accolades for their performances.

Senior Knute Oldre earned All-State Attorney, the third consecutive time he has earned the honor. Junior Emma Verbrugge was named All-State Witness.

The 2017 tournament is the third consecutive appearance for the Luverne team. The team finished eighth last year and 10th the previous year.

This year's championship went to Lakeville South High School.

Luverne competed against Nova Classical, Princeton and Brainerd during the three rounds of competition. The opponents



Knute Oldre (left) was named All-State Attorney and Emma Verbrugge earned All-State Witness honors at the state Mock Trial event in St. Cloud.

ended the competition in third, ninth and eleventh out of 12 teams respectively.

"The team performed at the top of their game and I couldn't be more proud of them," said coach Deb Schandelmeier. "It was obvious that they had worked very hard on the case and everyone had a great grasp on it. It was also

obvious that the kids had really meshed as a team."

Participating at the state tournament for the Luverne team were attorneys Oldre, Dylan Thorson, Hans Bakken and Alexa Chesley. Witnesses were Verbrugge, Madison Schandelmeier, Zayna Hustoft, Gunnar Oldre, Jady Anderson and Megan Rogers. Understudies were Grace Sweeney and Sophia Lanoue.

Cardinal speech hosts meet

The Luverne speech team hosted 16 teams and 199 students at its home invitational Saturday.

Seventeen Cardinal speakers were medal winners:

Creative expression: Shelbie Nath, second; Cameron Wessels, third; Hope Thorson, sixth.

Discussion: Samantha Ykema, second.

Extemp reading: Courtney Wendland, first.

Extemp speaking: Shane Berning, second; Chance Tunnessen, sixth.

Great speeches: Rylee Anderson, sixth.

Humorous: Seno Chanthalangsy, first.

Original oratory: Emma Mumme, fourth; Lindsey Roemeling, sixth.

Poetry: Naomi Ring, fourth.

Prose: Sage VerSteege, third.

Storytelling: Xavier Carbonneau, first; Marisol Hartshorn, third; Julia Ferguson, fourth; Jonah Louwagie, fifth.

The Cardinals will compete again Saturday in Montevideo.

Junior high travels to Adrian for competition

It was a great night for Luverne's junior high speakers as they traveled to Adrian for a grades 7-9 speech invitational Monday.

The following students brought home individual honors:

Discussion: Melanie Rittenhouse, second; Alexa Chesley, third.

Extemporaneous reading: Destiny Matthiesen, first; Sophia Lanoue, fourth; Nicole Hoogland, sixth; Gryphon Norrenberg, red ribbon.

Extemporaneous speaking: Chance Tunnessen, first.

Great speeches: Rylee Anderson, fifth.

Humorous: Seno Chanthalangsy, second; Gunnar Oldre, third; Mia Wenzel, red ribbon; Luke Thorson, red ribbon.

Informative speaking: Rebecca Austin, fifth; Cassie Flannigan, sixth.

Poetry: Brodi Oakley, third; Hannah Ehlers, red ribbon.

Prose: Shelby Kracht, sixth.

Storytelling: Xavier Carbonneau, second; Jonah Louwagie, third; Hannah Baker, fifth.



Happy birthday, Dr. Seuss!

The Luverne Elementary School commons area was buzzing Thursday, March 2, as students read aloud to each other in small groups during "Read Across America Day" sponsored by the National Education Association to promote a day of reading. NEA began the event in 1998 on Theodor Seuss Geisel's birthday to commemorate his books published under the name Dr. Seuss, a popular children's author and illustrator.

Luverne Public School Superintendent Craig Oftedahl (above) joins the fun by reading various Dr. Seuss books to each of the grade levels in the elementary library. For the fourth-grade students, Oftedahl read, "Oh, the Places You'll Go."

Sharing a book are students (center right, from left) Cash Bonnett, Jacob Madison and Lucus Madison, while at another table (right, from left) Tenley Behr, Tucker Damann and Macie Edstrom share another book. The students dressed in pajamas on March 2, Pajama Day, after classes were canceled Feb. 24 due to icy road conditions.

Luverne High School students perform skits based on a children's book as an assignment for their college speech class. Performing the book, "Officer Buckle and Gloria," to second-grade and Discovery Time students are (below, front, left) John Diaz as the dog named Gloria and Aiden Bartels as Officer Buckle with (back, left) narrator Emilie Bartels and teacher Erin Suelter.

Mavis Fodness Photos/0309 Read Across American 2016



REMEMBER WHEN

10 years ago (2007)

Color Guard members stood at attention for the groundbreaking ceremony Thursday morning, March 1, in front of the courthouse for the Rock County War Memorial. Turning shovels amid the snowstorm were Susan Skattum, John Call, Gloria Rolfs, Warren Herreid, Annabelle Frakes, Rick Peterson, Andy Steensma and Kyle Oldre.

Tires held down plastic sheets that covered the ground for several days prior to the groundbreaking to keep the soil from freezing. Dirt work started Monday morning, and it's scheduled to be completed by Memorial Day.

25 years ago (1992)

Parts of Highway 75 will get a facelift, and businesses along the stretch will feel the effects. ...

One of the biggest changes is the widening of the bridge that runs across Interstate 90 on South Highway 75. It'll be widened 30 feet to the west, and left turning lanes will be added. ...

Highway 75 entrances for the Mobil Station and Hardee's will be closed and traffic rerouted through entrances on side streets. The entrances to Magnolia Steak House and Country Kitchen will be relocated but will remain on Highway 75.

50 years ago (1967)

A Luverne policeman has been named a deputy sheriff for Rock County.

Rock County Sheriff Ole Hommen announced this week the appointment of James Johannsen, 23, as second Deputy Sheriff of the county.

75 years ago (1942)

If Rock county is to produce its share of the increased acreage of flax deemed necessary to meet wartime needs, there should be 25,000 to 30,000 acres planted in the crop during the coming growing season. ...

The farmers met in order to receive the latest information on the revised U.S. farm program which has been adapted to war production needs of more flax and soybeans.

A few years ago Rock county farmers planted between 2,000 and 3,000 acres of flax.

100 years ago (1917)

A handsome new home for the First National bank of this city will be built this summer, and when completed the bank will have one of the finest and best equipped bank buildings in this section. ...

The new building will be erected upon the site of the present structure and upon the west half of the lot formerly occupied by what was known as the Glass building. This will give a frontage of 36 feet on Main street and 100 feet on Cedar street. It will join Hawes & Son's store on the east, and on the north will abut the grocery annex built by Hawes & Son last summer.

Sixty-degree temps means it's time for spring pruning

When we finally get to the month of March, I feel like the worst of winter is behind us. Thus a few days of 60-degree weather has been invigorating, not only to me but also to the pussy willows. I've never had them break bud this early. That means that a good share of the snow has melted, so I'm excited to get out and start my spring pruning.

One perennial plant I want to encourage you to prune early is Karl Forster ornamental grass. I like the look of the upright stems to give interest to the winter garden, but by this time of year, those stems have often collapsed because of the snow, so then aren't as attractive. Also, they are one of the first perennials to start growing. Cut the clump down as close to the ground as possible. You will notice that even this early, new growth is evident. Waiting will mean cutting some of the new growth off with the old.

This is also a good time to prune fruit trees, grapes and raspberries.

If you have an itch to start vegetable seeds for transplants for your gar-



KNOW IT AND GROW IT

By George Bonnema, Luverne Horticulturalist

den, I suggest you wait until April 1. Generally planting those seeds six weeks prior to our last expected frost date will produce plants that are a good size for moving outdoors. The reason is that we are at the point of rapidly lengthening daylight hours, which means much sturdier growth for any seedlings.

If you want specific named varieties of vegetables or maybe less common varieties, your best source to find those seeds is going to be mail order catalogs. Now is a good time to look

for sources of what you may be looking for.

I said my pussy willows were opening, which means the lilac buds are swelling, which means I am cutting a few branches of both of those

to force indoors ... I am an impatient gardener.

Bonnema is a gardening enthusiast and former greenhouse owner. He can be reached at flowersgb@iw.net.

The Browns Gospel Music

MOTHER'S DAY SUNDAY, MAY 14 | 2 P.M.

TICKETS: \$25 reserved main floor seating
\$20 balcony

PALACE THEATRE

Tickets on Sale MARCH 14
PALACE Box Office
104 E MAIN, LUVERNE
OPEN: Mon-Fri - Noon-5 pm

507-283-4339

OBITUARIES

Doris Deragisch Blom

Doris Deragisch Blom, 82, Luverne, died Monday, Feb. 27, 2017, in her home.

A funeral service was Friday, March 3, at the American Reformed Church in Luverne. Burial followed at Bethlehem Cemetery in Hills.

Doris Louise Smith was born April 23, 1934, to Carl and Rose (Berger) Smith on the family farm in Erwin, South Dakota, where she was raised. She graduated from high school in 1952 in Arlington, South Dakota.

On May 24, 1953, Doris married Dean Deragisch in Arlington. The couple first made their home in Arlington. In 1958 they moved to Hills. Dean died Jan. 9, 1973. The couple had six children, Debbie, Donna, Dan, Dave, Doug and Dawn. Along with raising their children, Doris worked over the years at Central Plains Clinic, Family Drug, and Priebe Chiropractic Clinic. She volunteered as a book'n buddy at Luverne Public Schools and also volunteered wherever else she could, whenever she was able. On July 12, 1982, Doris married Henry Blom. The couple made their home in Luverne. Henry died Nov. 22, 2000. Doris formally retired in



2006 but remained connected to her community and friends.

Doris was a member of the American Reformed Church in Luverne. She enjoyed attending Christian music groups. Doris was an avid fan of all Minnesota sports teams. She enjoyed traveling and golfing with her husband, Hank.

Doris is survived by her children, Deb (Mark) Emery, Luverne, Donna (Steve) Schneider, Fargo, North Dakota, Dan (Lola) Deragisch, Eagan, Dave (Lori) Deragisch, Luverne, Doug (Danette) Deragisch, Marshall, and Dawn (Art Crain) Deragisch, Stillwater; 19 grandchildren; 29 great-grandchildren; a sister, Mary Johnson, Duluth; and other relatives and friends.

She was preceded in death by her husbands, Dean Deragisch and Henry Blom; her parents, Carl and Rose Smith; and a sister, Audrey Thomas.

Memorials are preferred to the American Cancer Society, the American Heart Association or the Sanford Luverne Hospice Program.

Arrangements were by Hartquist Funeral Home of Pipestone, www.hartquistfuneral.com. (0309 F)

Lois Hatting

Lois Hatting, 78, Luverne, died Sunday, March 5, 2017, at the Sanford Luverne Hospice Cottage.

A funeral service will be at 10:30 a.m. Thursday, March 9, at Grace Lutheran Church in Luverne. Burial will follow at Maplewood Cemetery in Luverne. Visitation is from 4-7 p.m. Wednesday, March 8, at Hartquist Funeral Home in Luverne.

Lois Binford was born Aug. 4, 1938, to Harold and Clara (Nelson) Binford in Luverne, where she was raised. She received her education and graduated from Luverne High School in 1956.

On Aug. 28, 1971, Lois married Robert Hatting at the Grace United Methodist Church in Moorhead. The couple made their home in Luverne.

Throughout her life, Lois worked sales positions at Ben Franklin, True Value and Loopy's. She also worked for a time in the deli at Glen's Food Center. Her husband, Bob, died Jan. 26, 2011. Lois continued working part time until her health declined. Lois was a member of



Grace Lutheran Church in Luverne. She enjoyed decorating her home and putting together puzzles. She will be remembered for her humility, great wit and joy, and the compassion she had for others.

Lois is survived by her children, Connie (Brian) Berseth, Fridley, and Darcy Mulvihill (Bryan Sandwick), Rogers; a daughter-in-law, Suzanne Mulvihill, Cheyenne, Wyoming; six grandchildren, Chris Berseth, Chad Berseth, Eric Berseth, Derek Mulvihill, Breanna Kodet and Brielle Mulvihill; two great-grandchildren, Etta Berseth and Eisley Berseth; and other relatives and friends.

She was preceded in death by her husband, Bob; a son, Gregg Mulvihill; her parents; and four brothers, Howard, Lowell, Jerry and Keith Binford.

Memorials may be directed to the Sanford Luverne Hospice Cottage.

Arrangements are by Hartquist Funeral Home of Luverne, www.hartquistfuneral.com. (0309 F)

The Rock County Star Herald strives to publish obituaries that pay tribute to the lives of the deceased. Our policy is to summarize the education, professional history, places of residence, immediate family, achievements, hobbies and community involvement of your loved one.

Please indicate, when sending an obituary, if you would like it to be placed in the paper as an edited piece according to our newspaper format for \$49 OR if you would like it to run as submitted for \$149.

Either choice of obituary includes a photo and will be published in the Rock County Star Herald print edition as well as online at www.star-herald.com. Death notices will continue to run at no charge.

Melvin DeGroot

Melvin Ray DeGroot, 63, Spencer, Iowa, died Feb. 4, 2017, in the outdoors.

A funeral service was Thursday, Feb. 9, at Grace United Methodist Church in Spencer, Iowa. Burial was at the Maplewood Cemetery in Luverne.

Melvin DeGroot was born June 9, 1953, to George and Florence (Smeins) DeGroot in Luverne. He graduated from Luverne High School in 1971 and from Morningside College in 1974 with a bachelor's degree in elementary education and library science.

Mel started his teaching career in the Anthon-Oto School District. He taught math and science in the middle school of Graettinger-Terril Community School District in Northwest Iowa for



over 15 years.

Mel's favorite pastime was hunting and spending time with his hunting dogs.

Mel will be remembered for his positive attitude, being quick with a joke and always trying to make everyone's day a little better.

He is survived by his children, Megan, Wichita, Kansas, Nicki, Minneapolis, and Jud (Grace), Wichita, Kansas; a sister, Vickie (Mike) Sorn, Cambridge, his former wife, Dorothy, and dogs Rocky and Gus.

He was preceded in death by his parents and his older brothers, George (Bud) and Larry.

Arrangements were by Warner Funeral Home of Spencer, Iowa, www.warnerfuneralhome.com. (0309 F)

Jeanne Van Lant

Jeanne Van Lant, 86, Leota, died Wednesday, March 1, 2017, at the Sanford USD Medical Center in Sioux Falls, South Dakota.

A funeral was Monday, March 6, at Bethel Reformed Church in Leota. Burial was in the Leota Community Cemetery.



rural Leota; four children, Verna (Warren) Netjes, Andover; Brad (Deb) Van Lant, Linn Creek, Missouri; Brenda (Dwayne) Vander Vliet, Luverne; and Diane Irish, Sioux Falls, South Dakota; thirteen grandchildren, Tammy, Kari, Sherri, Vicki, Michael, Jackie, Tyler, David, Cory, Brett, Amber, Ashley and Adam; nine great-grandchildren, Morgan, Abby, Ashton, Addison, Sofie, Alexander, Savanna, Hunter and Jaymeson; a brother, Leroy (Joyce) DeJong, Oak Harbor, Washington; and a sister, Arla (Dick) Ruitter, Leota.

She was preceded in death by her parents; a daughter, Joyce Shultis in 2007; and three siblings, Esther Landhuis, Don DeJong and Jackie Pronk.

Arrangements were by Dingmann Funeral Home in Adrian, www.dingmannandsons.com. (0309 F)

David Granneman

David John Granneman, 67, Coon Rapids, formerly of Luverne, died Saturday, Feb. 25, 2017, at United Hospital in St. Paul from ongoing health problems.

Mass of Christian burial was Monday, March 6, at Epiphany Catholic Church in Coon Rapids.

David Granneman was born April 12, 1949, to John and Alvera (Biever) Granneman in Tyler. He grew up in Tyler and in Luverne. He graduated from Luverne High School in 1967. As a young adult he worked at Iowa Beef Processors and for the local newspaper, and in 1968 he joined the United States Air Force.

He married Joanne (Joni) Cavers on Aug. 25, 1973, in Antigo, Wisconsin. After moving to Duluth following David's



discharge from the service, the couple moved to suburban Minneapolis. David worked on computer systems throughout his career and retired from CenturyLink in 2014.

David is survived by his wife, Joni, Coon Rapids; his daughter, Diana, Minneapolis; six siblings, Steven (Marge) Granneman, Lakeville, Dale (Debbie) Granneman, Faribault, Joanne (Bruce) Fodness, Hardwick, Mark (Cleo) Granneman, Northfield, Brian (Pam) Granneman, Jasper, and Stewart Granneman, Golden Valley; and many nieces, nephews and other relatives and friends.

He was preceded in death by his parents. (0309 F)

Tammie Swenson

Tammie Jungers Swenson, 58, formerly of Luverne, died Tuesday, Feb. 28, 2017, at Oakland Manor Nursing Home in Oakland, Iowa.

A memorial visitation was Sunday, March 5, at Hartquist Funeral Home in Luverne.

Tammie Jungers was born March 13, 1958 to James and Donna (Peters) Jungers in Sibley, Iowa. She was baptized in March of 1958 in Sibley and later confirmed at Little Flower in Sioux Falls, South Dakota. Tammie lived in Sibley and briefly in Sioux Falls until she and her family settled in Luverne. Tammie graduated from Luverne High School in 1976.

On June 4, 1977, she married Rick Behr at St. John Lutheran Church in Luverne. She and Rick were later divorced. On Oct. 26, 1993, Tammie married Thomas Swenson at the Rock County Courthouse in Luverne. Tammie lived most of her adult life in Luverne. She worked various jobs until she became disabled. She recently became a resident of Oakland Manor Nursing Home in Oakland.

Tammie enjoyed helping

with the church services at Oakland Manor Nursing Home. She also enjoyed gardening, playing cards, cooking, couponing, fishing, helping others and spending time with family and friends.

Tammie is survived by her husband, Thomas Swenson, Luverne; two daughters, Trista Behr and Jessica Behr, both of Luverne; two grandchildren, Blake Swenson and Shaun Swenson Jr.; her father, James Jungers, Luverne; her siblings, Terrie (John) Binford, Luverne, and Timothy Jungers (Robyn Flick), Sioux Falls; an aunt, Colleen Macken, Portland, Oregon; an uncle, Dale Peters, Worthington; her mother-in-law, Virgene Bullis, Luverne; a brother-in-law, Rodney Swenson, Knoxville, Iowa; nieces, and nephews; two great-nieces; and other relatives and friends.

She was preceded in death by her mother, Donna Jungers, and her grandparents, Chester and Agatha Peters and Emil and Clara Jungers.

Arrangements were by Hartquist Funeral Home of Luverne, www.hartquistfuneral.com. (0309 F)



David O'Connor

David Francis O'Connor, 92, Pipestone, died Tuesday, Feb. 28, 2017, at the Minnesota Veterans Home in Luverne.

Mass of Christian burial is at 10:30 a.m. Thursday, March 9, at St. Leo Catholic Church in Pipestone. Burial will be in Fort Snelling National Cemetery in Minneapolis.

David O'Connor was born to Joe and Marie (Bourdelaix) O'Connor on May 10, 1924, in Beresford, South Dakota. He grew up in Vermillion, South Dakota, and left high school early to enter the military at age 18. He served his country during the D-Day landing June 6, 1944, as a medic on Utah Beach. After his military discharge, David completed his high school requirements in May 1946 and graduated from the University of South Dakota in May 1950 with a B.S. in education.

On May 28, 1949, David married Charlotte Ann Kalsulas. He taught at Wallace, South Dakota, before he was called to active duty Oct. 1, 1950, for the Korean War. As a first lieutenant and company commander, David earned the Silver Star, the Bronze Star and two Purple Hearts. Upon his discharge from the military in 1952, David taught industrial arts at Jeffers. He was company commander of the Worthington Army Reserve Unit until 1965, when he moved his family from Jeffers to Pipestone.

He was a recruiter for the Pipestone National Guard unit and worked as a ranger



at the Pipestone National Monument. He retired from teaching in 1989.

David was a member of St. Leo Catholic Church in Pipestone. He loved to make furniture, and he also enjoyed refinishing the furniture he and Charlotte bought at auctions.

When David was afflicted with Alzheimer's disease, he lived at the Minnesota Veterans Home in Luverne for the last five years.

David is survived by his wife, Charlotte O'Connor, Pipestone; four children, Stephen (Bev) O'Connor, Rosemount, Gregory O'Connor, Lenexa, Kansas, Elizabeth (friend, Martie Garcia) O'Connor, Saint Paul, and Letitia "Tish" (Tom) Abrahamson, Pipestone; four grandchildren, David (Karen) Abrahamson, Sarah (Nick) Wagner, Mark (Santana) Abrahamson, and Alex Abrahamson; five great-grandchildren, Charlie and Lauren Wagner, and Cole, Noah, and Connor Abrahamson; four sisters, Catherine Danielson, Vermillion, South Dakota, Suzanne (Clare) Sorheim, Gillette, Wyoming, Letitia (Ed) Joyce, Middletown, New Jersey, and Judy (Bob) Shannon, Modesto, California.

David was preceded in death by his parents; one brother, Willard, and one sister, Margaret Fortin.

Arrangements were by Hartquist Funeral Home of Pipestone, www.hartquistfuneral.com. (0309 F)

HARTQUIST
Funeral and Cremation Services

209 Elm Street
Luverne, MN 56156
507-283-2777

"We honor all pre-arrangements from other funeral homes."

Call today to schedule a free appointment to record your wishes.

Jeff Hartquist
Owner/Funeral Director

Locally owned and operated by the Hartquist family.

Palace Theatre
Downtown Luverne

HIDDEN FIGURES

FRI., MAR. 10 - 7 P.M.
SAT., MAR. 11 - 7 P.M.
SUN., MAR. 12 - 7 P.M.

Check our web site for updates
www.palacetheatre.us

Find us on Facebook

DEATH NOTICES

Catherine Fikse

Catherine Ella Fikse, 87, Hills, died Thursday, March 2, 2017, at Tuff Memorial Home in Hills.

A funeral service is at 1:30 p.m. Thursday, March 9, at the American Reformed Church in Luverne. Burial will be in the

United Reformed Cemetery in Hills. Visitation is one hour prior to the service at the church.

Arrangements are through Jurrens Funeral Home of Hills, www.jurrensfuneralhome.com. (0309 DN)

Wilma Van't Hul

Wilma Van't Hul, 93, formerly of Leota, died Saturday, March 4, 2017, at the Edgebrook Care Center in Edgerton.

A funeral service was Wednesday, March 8, at Ebenezer Christian Reformed Church in Leota. Burial fol-

lowed at the Leota Community Cemetery near Leota.

Arrangements were through Hartquist Funeral Home in Luverne, www.hartquistfuneral.com. (0309 DN)

St. Catherine Catholic Church
203 E. Brown St., Luverne
St. Catherine Ph.: 283-8502

St. Mary Catholic Church, Ellsworth
Thursday, March 9: 2:30 p.m. Tuff Mass. 6:30 p.m. St. Catherine Stations.
Friday, March 10: 3:30 p.m. St. Mary Stations. Saturday, March 11: 5:30 p.m. Mass at St. Catherine. Sunday, March 12: 8:30 a.m. Mass at St. Mary. Faith Formation K-5. 10:30 a.m. Mass at St. Catherine. Sunday School and CLW. 6 p.m. LCF. 7:30 p.m. Bible Study. Monday, March 13: Serving at Sioux Falls Banquet. Tuesday, March 14: 9:30 a.m. Bible Study. 6:30 p.m. St. Catherine FC. 7 p.m. Scouts. Wednesday, March 15: 10 a.m. Mass at Mary Jane Brown Home. 3:30 p.m. and 7 p.m. Faith Formation. 5 p.m. Spaghetti Supper. 6:30 p.m. RCIA. 8 p.m. St. Mary Knights of Columbus. Thursday, March 16: 1-4 p.m. Fun Day. 6:30 p.m. St. Catherine Stations. 7 p.m. St. Catherine PC.

Luverne Christian Reformed Church
605 N. Estey St., Luverne
Office Ph. 283-8482; Prayer Line Ph. 449-5982
www.luverncrc.com — luvernecrc@gmail.com
Roger Sparks, Pastor

Sunday March 12: 9:30 a.m. Worship Service. 11 a.m. Sunday School and Catechism Classes. Noon Church potluck. 6:30 p.m. Worship Service. Monday, March 13: 9 a.m. PERK UP at Hills. 7 p.m. Friendship Class. Tuesday, March 14: 9:30 a.m. Coffee Break/Story Hour. Wednesday, March 15: 7 p.m. GEMS/Cadets.

First Baptist Church
1033 N. Jackson St., P.O. Box 975, Luverne
Ph. 283-4091; email: fbcluv@iw.net — www.fbcluverne.org
Walt Moser, Pastor

Thursday, March 9: 6 a.m. Men's Bible Study at FBC. 9:30 a.m. Women's Bible Study at FBC. 7 p.m. Worship Service on Vast Channel 3. Sunday, March 12: 9:15 a.m. Sunday School. 10:30 Morning Service. 6 p.m. Evening Service. Monday, March 13: 8 p.m. Union Gospel Mission service. Tuesday, March 14: 7 a.m. Men's Bible Study at FBC. 7 p.m. Deacon meeting. Wednesday, March 15: 6:55 p.m. Awana. Thursday, March 16: 6 a.m. Men's Bible Study at FBC. 9:30 a.m. Women's Bible Study at FBC. 7 p.m. Worship service on Vast Channel 3.

Grace Lutheran Church
500 N. Kniss Ave., Luverne
Ph. 283-4431; www.graceluverne.org — Nichols-glc@live.com
Ron Nichols, Pastor; Cole McCormick, Interim Pastor

Thursday, March 9: 2 p.m. GLCW. 4:30 p.m. Book Study. Friday, March 10: 6:30 p.m. Worship on Channel 3. Saturday, March 11: 5:30 p.m. Worship. Sunday, March 12: 8:15 a.m. Worship; Radio Broadcast. 9:15 a.m. Coffee. 9:30 a.m. Sunday School and Adult Study. 9:50 a.m. Fifth grade First Communion. Monday, March 13: Grace Notes deadline. 4:30 p.m. Worship on Channel 3. 5:45 p.m. Echoes. Tuesday, March 14: 9 a.m. Staff Ministry/PPC. Wednesday, March 15: 8:30 a.m. MIA. 9:30 a.m. Coffee. 4:30 p.m. Book Study.

Bethany Lutheran Church
720 N. Kniss Ave., Luverne
Ph. 507-283-4571 or 507-449-0291 or 605-215-9834
pastorapalmquist67@yahoo.com
Andrew Palmquist, Pastor

Thursday, March 9: 2 p.m. Ladies Aid. Sunday, March 12: 9 a.m. Sunday School. 9:15 a.m. Bible Class. 10:15 a.m. Worship with Communion. 1:30 p.m. Worship at Mary Jane Brown Home. 2:15 p.m. Worship at Poplar Creek. Monday, March 13: 9:30 a.m. ELS Pastors meeting in Mankato. Wednesday, March 15: 7 a.m. Men's Bible Study. 3:30 p.m. FW. 5:30 p.m. Lenten meal. 6:45 p.m. Lenten worship. 7 p.m. Choir. Thursday, March 16: 3:45 p.m. Catechism. 6 p.m. Soup Supper. 7 p.m. Lent Vespers. 7:45 p.m. Catechism Class.

American Reformed Church
304 N. Fairview Dr., Luverne
Ph. 283-8600; email: office@arcluverne.org
Mike Altana, Pastor

Thursday, March 9: 9 a.m. Classis meeting at Chandler Reformed Church. Friday, March 10: 6:30 a.m. Community Men's Bible Study. Sunday, March 12: 9:30 a.m. Sunday Worship Service. 10:50 a.m. Family Education. 5 p.m. Prayer and Praise. 7 p.m. Junior RCYF; Senior RCYF. Tuesday, March 14: 10 a.m. Staff Meeting. 6:45 p.m. Bible Study Fellowship. 7 p.m. Consistory Meeting. Wednesday, March 15: 5:30 p.m. Midweek Meal. 6:30 p.m. Pioneer Clubs. 6:45 p.m. Rachel Circle/YEL. 7 p.m. Magnify Praise Team. 8 p.m. Choir.

First Assembly of God Church
1075 110th Ave., 2 miles west of Luverne on County Rd. 4
Kenneth and Gloria Kashner, Pastors

Sundays: 9 a.m. Sunday School. 10 a.m. Morning Worship. 6:30 p.m. School of the Holy Spirit. Wednesdays: 7 p.m. Kids Connection; Men's Bible Study with Pastor Ken; Women's Bible Study with Pastor Gloria.

United Methodist Church
109 N. Freeman Ave., Luverne
Ph. 283-4529; email: luverneumc@iw.net
Dorie Hall, Pastor

Thursday, March 9: 1-3 p.m. Rock County Food Shelf. 7 p.m. Coloring Ministry. Saturday, March 11: 8 p.m. AA Meeting in Upper Room. Sunday, March 12: 9 a.m. CMA Pancake Feed. 9:30 a.m. Coffee Hour. 10:30 a.m. Celebration Service with Communion. 4:30 p.m. Genesis/Revelations Bible Study. 6 p.m. A.L.I.V.E. Youth Group. Monday, March 13: 8 p.m. AA Meeting. Wednesday, March 15: 5:30 p.m. Meal for F.U.E.L. & Confirmation Families. 6 p.m. F.U.E.L. Children's Ministry. 7 p.m. Lent Service. 8 p.m. AA Meeting.

First Presbyterian Church
302 Central Lane, Luverne
Ph. 283-4787; email: Firstpc@iw.net — www.fpcluverne.com50
Jason Cunningham, Pastor

Sunday, March 12: 9 a.m. Sunday School. 10:15 Worship. Monday, March 13: 5-6 p.m. Weight Watchers.

St. John Lutheran Church
803 N. Cedar St., Luverne
Ph. 283-2316, Dial-A-Devotion Ph. 283-4005
email: stjoh@iw.net — www.stjohnlutheranluverne.org
Gary Klatt, Pastor

Thursday, March 9: 9 a.m. Little Lambs Devotions. 1:30 Communion at The Mary Jane Brown Home. 2:15 p.m. Communion at Poplar Creek. 3:30 p.m. Communion at The Veterans Home. Saturday, March 11: 9 a.m. Pipestone Zone LWML Board meeting in Holland. 5:30 p.m. Worship with Communion. 6:30 p.m. Soup and Bingo Night. Sunday, March 12: 9 a.m. Worship with Communion. 10:15 a.m. Christian Education Hour. 11:15 Junior Choir Rehearsal. 2 p.m. St. John's sponsors "Looney Lutherans" at Palace Theatre. 4 p.m. Junior LYF. Monday March 13: 2 p.m. Communion at Brandon. 3 p.m. Communion at Sioux Falls. 7:30 p.m. Men's Club. Tuesday, March 14: 11:15 p.m. Staff Meeting. 1 p.m. Parkinson's Support Group. 1:15 p.m. Communion at Ellsworth. 2:15 p.m. Communion at Hills. 6 p.m. Mom's Night Out. 7 p.m. LWML Guild. Wednesday, March 15: 9 a.m. & 1:30 p.m. Little Lambs Devotions. 9:30 a.m. Bible Study. 6 p.m. Worship. 6:30 Supper (Youth). 7 p.m. KFC/Catechism; H.S. Bible Study; Senior Choir. Thursday, March 16: 9 a.m. Little Lambs Devotions.

Living Rock Church
500 E. Main St., Luverne
Ph. 449-0057; www.livingrockswmn.org
Billy Skaggs, Pastor

Sundays: 10:30 a.m. Worship; Kids Rock Children's Ministry. 6 p.m. Youth Ministry. Life groups meet throughout the week.

New Life Celebration Church
110 N. Oakley, Luverne
Ph. 449-6522; email: newlifeceleration@gmail.com

Sundays: 9:30 a.m. Worship at 110 N. Oakley. Every third Thursday: 5 p.m. Food give-away at Senior Citizens Center. Bible Study groups meet at various times and days.

Zion Evangelical Lutheran Church
305 E. 2nd St., P.O. Box 36, Hardwick
Ph. 669-2855; email: revmumme@gmail.com — www.zionlutheran-hardwick.com
Mark W. Mumme, Pastor

Thursday, March 9: 3:30 p.m. Zion Worship airs on Cable 3 TV. Friday, March 10: 3:30 p.m. Zion Worship airs on Cable 3 TV. Saturday, March 11: 9 a.m. LWML Delegate Board meeting in Holland. Sunday, March 12: 9 a.m. Sunday School/Adult Bible Study. 10 a.m. Mentor Program. 10:30 a.m. Worship/Baptism. 1:45 p.m. Meet at Palace Theatre for "Looney Lutherans" performance. Monday, March 13: 1 p.m. Quilting. Tuesday March 14: 6:30 p.m. Elders meeting. 7:45 p.m. Church Council. Wednesday, March 15: 6 p.m. Confirmation; Lenten Luncheon. 7 p.m. Lenten Worship Service. 7:45 p.m. Chop Practice. Thursday March 16: 3:30 p.m. Zion Worship Service airs on Cable 3 TV.

Ben Clare United Methodist Church
26762 Ben Clare Ave., Valley Springs, S.D.
igtwlb@WOW.net
Bill Bates, Pastor

Sundays: 9 a.m. Worship; 10 a.m. Fellowship; 10:30 a.m. Sunday School for all ages.

First Lutheran Church
300 Maple St., Valley Springs, S.D.
Ph. (605) 757-6662
Intern Pastor Laura Phillips

Sunday, March 12: 9 a.m. Worship Service. 10 a.m. Sunday School. Wednesday, March 15: 7 p.m. Lenten Service with Pastor Greg Johnson. Saturday, March 18: April Newsletter deadline.

Palisade Lutheran Church
211 121st St., Garretson, S.D.
Ph. (507) 597-6257 — firstpalisade@alliancecom.net
Intern Pastor Laura Phillips

Sunday, March 12: 9:15 a.m. Sunday School. 10:30 a.m. Worship. Wednesday, March 15: 7 p.m. Lenten Service at First Lutheran with Pastor Greg Johnson. Saturday, March 18: April Newsletter deadline.

First Presbyterian Church
201 S. 3rd St., P.O. Box 73, Beaver Creek
Ph. 507-935-5025
Email: lori.firstpres@gmail.com
Worship Leader Michael Blank

Sundays: 9:30 a.m. Morning Worship. 10:30 a.m. Sunday School. Third Wednesday: Deborah Circle.

Magnolia United Methodist Church
501 E. Luverne St., Magnolia
Church Ph. 283-9698; cell 227-7821
adrmagumc@frontiernet.net — www.adrianmagnoliaumc.com
Kristi Franken, Pastor

Sundays: 9:30 a.m. Sunday School. 10:30 a.m. Worship. Wednesday, March 15: 6 p.m. Soup Supper. 6:45 p.m. Lenten Service at Magnolia. 6:30 p.m. G1 in Adrian.

If not you, then who?

There was a famous professor who often challenged his students with questions like ...



BUILT ON A ROCK

By Pastor Ron Nichols,
Grace Lutheran
Church, Luverne

Which of you is going to be a great writer? Which of you is going to be a great saint like Francis of Assisi? Which of you is going to be a great humanitarian like Albert Schweitzer?

Presented with such big ideas, the students would squirm and giggle. But the famous professor would tell them that these were not idle questions; he really meant what he said. Then he would always say, "If not you, then who?"

Every time we gather for worship, we hear God's Word read to us and we are challenged with these same kinds of questions. We hear Jesus question us over and over again: "If not you, then who?"

We are not put here on this earth by blind chance. A loving God put us here as part of a plan for the fulfillment of all creation. Each of us is unique and, therefore, each of us is entrusted with a life to live and opportunities given to no one else. And we have a lifetime opportunity to help shape the world we live in, or at least our little corner of the world. We have a lifetime opportunity to enrich the lives of others who, like ourselves, are unique members of God's creation.

Sometimes people tell me that the problem with the world today is that

people are not willing to do their fair share, not at home or in the community or the church. They say if everyone just did their fair amount, everything would be better.

The problem with this kind of thinking is that there is no such thing as a fair share. There is no such thing as a parceled portion we are obligated to do. There are only choices — choices to live your life the way you want to live. There is no fair share of what is expected of us, only choices. There is only the choice to reach out beyond ourselves or to step back and expect someone else to do things.

So, which one of you is going to make a better world? Which one of you is going to be a great writer? Which one of you is going to be a famous saint, like Francis of Assisi or Mother Teresa? Which one of you is going to take a home-cooked meal to someone who is unable to leave their home, shovel a sidewalk or wave at someone you don't know?

We have a choice. We have the freedom. And, well, if not you, then who?

Steen Reformed Church
112 W. Church Ave., Steen
Ph. 855-2336

Sundays: 9:30 a.m. Worship. Sunday School follows Worship. 6:30 p.m. RCYF.

Bethlehem Lutheran Church
Pastor Maggie Berndt-Dreyer
112 N. Main St., Hills
Ph. 962-3270

e-mail: bethlemluth@alliancecom.net
Maggie Berndt-Dreyer, Pastor
Sunday, March 12: 9 a.m. Worship at Tuff Chapel. 9:30 a.m. Sunday School. 10:30 a.m. Communion at Bethlehem. Tuesday, March 14: 2:30 p.m. Bible Study at the Tuff Home. 3:15 Bible Study at the Village. Wednesday, March 15: 9 a.m. Quilting. 2 p.m. Joint Circles meet at Village. 6 p.m. Lent Meal served by Executive Board. 7 p.m. Lent Service. Thursday, March 16: 7 p.m. Circle of Hope at Marilyn Nelson's home.

Hills United Reformed Church
410 S. Central Ave., Hills
Office Ph. 962-3254

hillsurc@alliancecom.net
Alan Camarigg, Pastor
Sundays: 9:30 a.m. and 6 p.m. Worship Services.

**These Weekly Church
Page Messages are
contributed to God's
Work through the
Church and by these
concerned and
responsible citizens
& businesses:**

Call Rick or Chantel to
place your ad!

283-2333

**Tuff Memorial Home,
Retirement Apartments
& Tuff Village**
"A Home Where Residents SMILE!"
Hills, Minnesota
Phone 507-962-3275

**Papik
MOTOR OIL**
LUVERNE, MINN.

I-90 in Luverne, MN
507-283-9171 • 1-800-634-7701

Read us online!

Rock County
STAR HERALD
www.Star-Herald.com

Trust In Him



Pizza Ranch
110 E. Main,
Luverne, MN
Phone 507-283-2379

MANLEY
TIRE & OIL SERVICE
Manley Minnesota
1-800-615-3704
Open six days a week - Closed on Sundays
To God be the Glory.

CWG
Business Insurance.
Tri-State Region

Rock County
STAR HERALD
Luverne, MN • 507-283-2333

Bruce's Electric
residential, commercial and farm wiring
Bruce Umbreit
Electrical Contractor
1200 Linden, Luverne, MN 56156
Phone 507-283-4917

**Luverne
ANNOUNCER**

To Advertise
Call
283-2333

**Buffalo Ridge
INSURANCE**
507-283-2381 www.buffaloridgeins.com E-mail: info@buffaloridgeins.com

McClure Electric
Alan M. Aanenson, owner
Farm, Home & Commercial Wiring
Luverne, MN Phone 507-283-4716

First Farmers & Merchants
303 E. Main, Luverne, MN
507-283-4463
www.fmbank.com
We believe in you.
Member FDIC. And the community.

**HILLS STAINLESS STEEL
& EQUIPMENT CO., INC.**
506 W. Koehn, P.O. Box 987, Luverne, MN
PHONE 507-283-4405
Church is Important - Please Attend!

**MINNWEST
BANK**
• 116 E. Main St., Luverne 507-283-2366
• S. Hwy. 75, Luverne 507-283-9131
• Main St., Beaver Creek 507-673-2333
Member FDIC www.minnwestbank.com

HARTQUIST
Funeral and Cremation Services
- ENGBRETSON CHAPEL -
507-283-2777
www.HartquistFuneral.com
"Let our family help your family"
Serving the Luverne and Surrounding Communities

Tollefson Publishing
117 W. Main
Luverne, MN 56156
507-283-2333



Lori Sorenson file photo/davis creamery pond

Mike Davis is selling his property near The Lake.

Davis pulls plug on his end of The Lake

By Lori Sorenson

It's unclear what it will mean for the future of The Lake in Luverne, but Mike and Traci Davis announced last week they are selling their property adjacent to the water.

"... It saddens me to tell you that I will be putting my land up for sale," he shared in an online post March 4.

"I have given the city of Luverne first option to purchase it so it can remain all a public area. If they are not interested, it will still be sold. I will make sure all events planned for this year will remain."

Davis is asking \$80,000 for three tracts totaling nearly 4 acres at the east end of The Lake.

That includes a small part of the beach, but it does not include the city-owned areas that have received public investments — such as the parking lot, road, fishing pier and other city-owned areas.

The city also owns The Lake itself as a body of water.

Davis said his property is for sale because his goals for the area "do not have enough support to go forward in the amount of time that is suitable for me."

Specifically, he wants to develop a campground near The Lake and he said public process is moving too slowly.

"I've been waiting two years for this, and the patience is gone," Davis said,

when asked why the campground development was so urgent.

He also alluded to his personal investments in his property.

"I've done this out of the goodness of my heart, and I've gotta start making some money," he said.

The Luverne City Council has been clear about its intent to assist with campground development, but it is not interested in owning and operating a public campground.

While The Lake area has been considered for this purpose, City Administrator John Call said there's more involved than preparing lots for campers.

"That ground is predominantly flood plain, and it would have to be approved by not only city code but by the DNR and public health officials," Call said Monday.

He said he couldn't comment on Davis' offer to sell to the city until the City Council meets to discuss it.

Call said he's been pleased with the working arrangement with Davis and others at The Lake, but a campground would be a public policy question.

Davis said his offer with the city has been verbal, and he hasn't put a deadline on response time.

"It's just a business transaction, and if they don't want to do it, someone else will get the chance," Davis said.

Luverne 150th celebration; looking back on hockey/ from page 1A

and my first coach was Tim Medill.

At that time, Luverne did not have an indoor ice arena. In fact, very few of the nearby communities had indoor ice, and so our seasons were largely dictated by the weather. This somehow instilled a magical burning desire to be on the ice whenever it was possible, and that flame, I must say, has remained lit for over 30 years.

It was pretty incredible as a young child in the early '80s to have been a firsthand witness and participant during the true infancy of our program.

Everything that was happening was happening at this little, now nondescript, section of grass on the west bank of the Rock River. There was one full set of boards and an adjacent circular open skating area, as well as an ice path that went around the east side of the hockey rink and stretched the entire length of the boards.

On winter evenings, under the lights, the varsity-aged "Junior Gold" team would play and fans of every age would line the entire circumference of the rink, with the ice path on the east side almost entirely occupied by youngsters like Deny and me on skates.

These early players included Bobby Kunkel, Kirby Heck, Steve Smedsrud, Cory Norman, David Van Batavia, Troy Bullis, Tim Walgrave, Thad, Shane and Wade Roberts, to name just a few.

There was also a single warming house with a partition separating the hockey dressing room from the general public or "open skater" area. Just outside the door leading into the hockey side, there was an office managed by Roy

Former LHS hockey player John Paquette reminisces about early days on ice and reminds current players they've achieved what used to be 'the impossible dream.'

Buss. The space consisted of a shelf which held the calendar, one stool, and a gray rotary-style phone high on the wall and well out of my reach, so that stool was actually pretty vital to my getting home each night.

It was from the hockey side of the warming house where I have some of my most vivid memories of the early days in Luverne. Being so young, ages 5-10, I was impressionable and absolutely fascinated with the older kids, who were at that time, of course, just kids; but to me they were full-fledged adults. They could drive themselves to the rink, they could carry these huge hockey bags and tie their own skates without any help in a matter of seconds. Some had jobs, some had girlfriends, and I'm pretty sure some occasionally had a Budweiser or two in their bags.

There were two things though that really set them apart for me: 1) the blowtorch, and 2) the language. With the popularity of aluminum sticks and replacement blades at that time, the blowtorch was such a powerful image; the potential danger inspired respect in a young kid's eyes. That sound, and most memorably, that smell of burnt wood and glue is something that still instantaneously transports me back in time to that little hockey haven.

As for the language, there is no greater education on the ways of the world than a hockey locker room. I'm certain hockey locker rooms are just as eye-opening today as they were then, but in those days I truly believe the older kids were a little rougher, a little tougher and could be a little more mean. You really had to watch yourself, because if you didn't, you could get seriously hurt, and Deny and I saw more than a few examples of what not to do, and what not to say.

They were tough as nails and they had the most amazing stories of fistfights, girls, fighting over girls, etc.

Yes there were the shenanigans, but I believe those families still deserve a ton of credit for the toughness, speed and resilience of the hockey teams that come out of Luverne to this day.

One last contextual piece from that time period which cannot go untold is that of the city's only skate sharpening machine.

Marlyn Roberts built Luverne's first skate sharpener in his basement, which became a pretty legitimate pro-shop. You could go over to Marlyn's, which was across the street for Deny and me, and pick up a couple sticks, laces, mouth guards, tape, pucks, cups, even shin pads and breezers.

I still remember the crackling sound of his son Shane Roberts' skates and strides on the old outdoor rink. He always had the sharpest skates in town and he was a hell of a player. To no surprise, Shane's son and Marlyn's grandson Trey Roberts is a captain and stand-out defenseman on this year's team.

By the close of the 1980s more kids were playing hockey in Luverne and the teams got consistently better. They were traveling farther and farther to find better competition, playing more games, going to camps, and getting more experience. So naturally it was time to build an indoor facility. This too was a pretty remarkable thing to see.

Through the leadership of the Luverne Optimist Club, which managed the hockey program, the project took off almost entirely by parent and volunteer funding and construction. There is certainly a lot of detail that went into it, and Verlyn Van Batavia would be the person who could tell you anything you would ever want to know about how it was built.

I was only 10 years old at the time, so as I recall, somebody's dad knew how to run a Bobcat, someone else's knew how to pour concrete, and just

like that, we had a real rink. They even recruited the kids' help to do some of the simple things and I clearly remember tightening bolts with my best friend and teammate Pat Connell and fastening down the coolant tubes with double-looped wire twist ties. Those of us who were there for that are still proud to have had an actual hand in it.

In 1990 Luverne's current coach and former all-time school-scoring leader Phillip Paquette was born, and we had our little brother on skates almost immediately. By then the hockey program had a lot of momentum, and Dan Smeins as well as retired district court judge Tim Connell, two former coaches of mine, were instrumental in improving the quality of play on the ice as well as broadening the overall profile and vision for what Luverne hockey could be.

It was not until the 1998-99 hockey season that a varsity team from Luverne ever had any possibility or path to playing in the Minnesota State High School Hockey Tournament. Up until then it all was truly and simply an impossible dream. I can guarantee you that everyone I knew back then dreamed of playing in the Saint Paul Civic Center with the clear boards.

Since 1998 the program and the teams consistently continued to accelerate. Dave Siebenahler was spearheading the girls' program.

Ultimately there was a huge culmination in 2014 when the Luverne boys won Section 3A and earned their first-ever berth into the Minnesota State High School Hockey Tournament.

It is important for the players and coaches who make up this year's team in Luverne to understand this history

By representing Luverne at the state tournament, you are the representation of hundreds of families, thousands of kitchen table conversations, millions of miles traveled.

Most importantly, as you stood there in red and white, you were the presentation of the once impossible dream held for decades by hundreds of young hockey players from Luverne, Minnesota.

SAVE 57%*

off the standard rate in the first year

ON CHOICE 60 ENTERTAINMENT

- 20,000+ FREE On Demand movies and shows
- Download speeds up to 60 Mbps¹ with in-home Wi-Fi
- 225+ digital TV and music channels with FREE HD
- Unlimited nationwide calling with 17 calling features

CHOICE 60 ENTERTAINMENT TV, INTERNET & PHONE

Just \$79⁹⁸/mo. for one year
(plus activation, installation, modem rental, sports and broadcast surcharges, taxes and fees)

That's an average discounted rate of:

\$26⁶⁷

FOR EACH SERVICE

NO CONTRACT REQUIRED!

PREMIUM CHANNELS INCLUDED FOR 1 YEAR!²

SHOWTIME®

STARZ®

» MOVE FORWARD WITH Mediacom

CALL TODAY 855-803-7466

*Choice 60 Entertainment Pricing: Monthly package price is good for one year and thereafter increases by \$30 (or \$20 if you cancel Showtime and Starz) each year until the fourth year, when each service will begin to be billed at its standard rate (currently \$185.93 for all three services or \$159.98 if you cancel Showtime and Starz). If you cancel any of the three services in the package during the first year, standard rates will be charged for any continuing services. Package price does not include standard installation fee (\$99.99, more if special work needed); a one-time \$10 activation fee; or other one-time fees that may apply because of options you select. Prices also do not include the following recurring monthly charges: (i) modem fee, currently \$10; (ii) a surcharge for regional sports networks, currently up to \$4.57, depending on your location; (iii) a surcharge for local broadcast stations, currently up to \$11.94, depending on your location; (iv) taxes, franchise fees and other amounts required by law to be collected or paid; or (v) fees for optional services or equipment you may want. All of these monthly charges may increase from time to time. After the first year, if our standard rate for any service in your package that is not free increases or we institute a new fee for service subscribers generally, we can pass that increase or new fee along to you. ¹Internet Service Usage Allowance & Speeds: Internet 60 is subject to a usage allowance of 400 gigabytes per month billing period. Excess usage will be billed at \$10 for every increment of up to 50 additional gigabytes used. For example, if usage exceeds the allowance by 51 gigabytes, the additional charge would be \$20. Usage allowances and excess usage charges are subject to change at any time. Download and upload speeds are not guaranteed and may vary. ²Offer Availability: Offer expires on date stated above and may be terminated any time without notice. Offer may not be available in all areas, cannot be combined with any other offer, is not transferable and is void where prohibited. Available only to residential customers not subscribing to any offered service within prior 90 days and who meet applicable credit and other requirements. Customer must agree to all applicable subscriber terms and policies. Other terms and conditions may apply. ³Other Information: On Demand services are included with subscription to STARZ and STARZ ENCORE linear television services. STARZ online services are only accessible through participating partners in the U.S. and certain U.S. territories where a high-speed broadband connection is available. STARZ and related service marks are the property of Starz Entertainment, LLC. SHOWTIME and related marks are trademarks of Showtime Networks Inc., a CBS company. Logos, brand names, trademarks and other branding are the property of their respective owners.

Give Where You Live

today, tomorrow & beyond

LUVERNE AREA COMMUNITY FOUNDATION

GRANT APPLICATIONS DUE MARCH 31, 2017

Who can apply?

Not-for-profit organizations (either singly or as a consortium), government agencies, academic and research institutions located within Rock County are among the organizations eligible to request support from the Luverne Area Community Foundation.

The Luverne Area Community Foundation invites applications that will enhance the quality of life in the following areas:

- Arts & Humanities
- Community & Civic Affairs
- Social & Economic Growth
- Nutrition
- Environment
- Recreation
- Education
- Community Health & Wellness including physical & mental health

How to apply?

Find an application and instructions on our recently updated website!

www.luvacf.org

or contact Emily Crabtree at 507-220-2424 or emily@luvacf.org

LUVERNE AREA COMMUNITY FOUNDATION

102 E. Main | Luverne, Minnesota | 507-220-2424

Allow us to help you establish your legacy.

www.luvacf.org

Dragons fight off Rebels to advance

By John Rittenhouse

The Adrian boys advanced to the semifinal round of the South Section 3A Basketball Tournament by posting a victory during Saturday's quarterfinals in Worthington.

The third-seeded Dragons made their postseason debut against No. 6 Murray County Central, a team that handed AHS a 64-38 setback in Slayton Jan. 13.

Adrian avenged the loss, posting a 56-44 victory over the Rebels during Saturday's rematch.

The win sends 16-9 Adrian back to Worthington Thursday, where they will meet No. 2 Westbrook-Walnut Grove at 7:30 p.m.

AHS only trailed briefly during the semifinal against the Rebels, but the Dragons didn't put the game away until the final two minutes of play.

A 7-1 spurt ending with Zach Bierman sinking one free throw gave the Dragons an 8-2 lead at the 12:52 mark of the first half.

MCC scored the next four points to make it 8-6 before AHS went on a 10-3 run to gain an 18-9 advantage when Jacob Stamer buried a pair of free throws at the 8:06 mark.

The Rebels countered with a 7-2 surge to make it a 20-16 game with 3:30 remaining, but Adrian's Ryan Wieneke upped

Fight/continued on page 5B



Star Herald file photo

Luverne senior Solomon Nielsen wrapped up his high school wrestling career by placing second at 170 pounds at the Minnesota State Class AA Wrestling Championships in St. Paul Friday and Saturday.

Nielsen caps standout career with second-place finish

By John Rittenhouse

The most successful wrestler in Luverne High School history wrapped up a storied career at the Minnesota State Class AA Wrestling championships in St. Paul Friday and Saturday.

Solomon Nielsen, one of three Cardinal mat men to qualify for the state classic, didn't experience the end result he wanted.

Regardless of his expectations, there is no shame in the second-place performance he turned in at 170 pounds over the weekend.

"He was pretty upset because his No. 1 goal was to be a state champion," said Luverne coach Tony Johnson.

"We still are very proud of him. It was tough sledging for

him just to make it to the state championship match. There is absolutely no shame in placing second at state."

The dream of winning a state title was a realistic one for Nielsen, who ends his LHS career as the program's all-time leader in wins (144) and as the program's lone multiple place-winner in state competition.

The LHS standout placed fourth at 152 pounds at state as a sophomore and second at 160 at state last year, which played a big part in Nielsen receiving the No. 1 seed for the 170-pound weight class for this year's tourney.

For the most part, Nielsen

wrestled like a No. 1 seed should during his 3-1 state appearance.

He opened the event by rolling to a 13-2 victory over Orono freshman Danny Striggo before winning a 3-1 decision against Perham sophomore Zachary Petersen in the quarterfinals by registering a takedown late in the second period and an escape early in the third period.

The Friday wins sent Nielsen to Saturday's semifinals, where he was pitted against a personal friend, Tri-City United senior Mason Rutt.

Nielsen opened a 3-1 lead with a takedown and an

escape only to surrender a takedown to Rutt during a match that was tied at three in the third period.

Nielsen's second escape of the match came with 45 seconds remaining and gave him a 4-3 victory.

Kasson-Mantorville freshman Patrick Kennedy, who placed third at state at 152 pounds last year, emerged as Nielsen's opponent in the finals.

Kennedy managed to outscore Nielsen 9-6 and never trailed in the championship match.

"We knew that Kennedy was going to be a tough wrestler to beat in the final match," Johnson said.

Cap/continued on page 2B



John Rittenhouse photo/0309 abb 2

Adrian senior Zach Bierman goes up for a layup during Saturday's win over Murray County Central in Worthington.

Cardinals capture second Section 3A hockey championship

By John Rittenhouse

There was no disappointment in St. Peter for the Luverne High School hockey team this time.

After devastating losses in the past two Section 3A championship games as the tournament's No. 1 seed, the 2016-17 Cardinal boys finished the job March 1 by securing a 5-1 victory over No. 2 Marshall at the Lund Center on the campus of Gustavus Adolphus College.

The win ups Luverne's record to 22-5-1 and gives the Cardinals their first section crown since 2014.

The Cardinals make their second appearance at the Minnesota State Class A Hockey Tournament Wednesday (March 8) at the Xcel Energy Center in St. Paul.

Trips to the state tournament are a welcome blessing, but this one is a product of a script laid out by first-year head coach Phillip Paquette.

Paquette was well aware of the stunning results of Luverne's past two appearances (a 7-6 overtime loss to Litchfield-Dassel-Cokato in 2016 and a 7-5 loss to New Ulm in 2015), and he came to the conclusion that his team needed to stress defense in order to get over the hump.

It was Luverne's defense that was the difference in the championship game as the Cardinals limited Marshall to 18 shots on goal over 51 minutes.

"When I was thinking about our season at the beginning of the year, this is exactly how I envisioned it," Paquette said.

"I was hoping we would be playing a sharp style of hockey without making a lot of mistakes. We didn't want to be losing 7-6 games any more. We wanted to play solid, mistake-free defense and let ability of our kids decide games. That's what happened against Marshall."



John Rittenhouse photo/0309 hockey 10

Luverne junior forward Declan Beers protects the puck from Marshall's Dawson Deutz during the Section 3A championship game at the Lund Center in St. Peter March 1. Beers scored the final goal of a 5-1 win.

Luverne meets No. 1 Hermantown in state quarterfinals Wednesday

By John Rittenhouse

Luverne's second appearance at the Minnesota State Class A Boys' Hockey Tournament will start the same way as it did in 2014.

When the brackets were released for the 2017 version of the event Saturday morning, the 22-5-1 Cardinals found out they will be playing the Hermantown Hawks in Wednesday's quarterfinals at 6 p.m. at the Xcel Energy

Center in St. Paul.

LHS faced Hermantown in the quarterfinals in 2014, when the Hawks were the tournament's second seed and handed the Cardinals their first loss (6-3) of that season.

Hermantown enters this year's tournament as the defending Class A champion and No. 1 seed with a 26-1-1 record.

Other teams included

in the lower portion of the bracket along with LHS and Hermantown include fourth-seeded East Grand Forks (17-8-2) and fifth-seeded St. Cloud Cathedral (20-6-2).

East Grand Forks didn't qualify for the state tournament last year, but they claimed the state titles in 2014 and 2015.

St. Cloud Cathedral (20-6-2) claimed the consolation championship at last year's

state tournament. Former LHS coach Derrick Brown is the head coach of the Crusaders.

Teams in the upper half of the bracket include second-seeded Delano (24-3-1) and third-seeded Mahtomedi (16-11-1).

Delano takes on Monticello-Annandale-Maple Lake (21-6-1) at 11 a.m., while Mahtomedi meets Northfield (20-5-3) at 1 p.m.

The title tilt was a defensive battle through the first two periods of play.

Luverne gained a 1-0 advantage when senior Jesse Reed recorded an unassisted tally

with 7:16 remaining in the first period.

LHS stifled Marshall de-

fensively as the Tigers were limited to two shots on goal in the opening stanza.

Luverne's one-goal cushion remained intact until 7:30 remained in the second period, when Mason Plante netted an unassisted tally for the Tigers to knot the score at one.

It was anybody's game at that point and the Cardinals seized the opportunity.

LHS produced two of its most important goals of the season late in the second period and early in the third period to gain a 3-1 advantage.

The Cardinals went on to add two more third-period goals and outshot the Tigers 14-7 in the final stanza to clinch the section title.

Junior Kasyn Kruse regained the lead (2-1) for LHS when he netted his first of two goals after being set up by Nick Harder with 2:59 remaining in the second period.

Sophomore Mark Sterrett netted an equally important goal, with an assist going to Reed, 58 seconds into the third period to make it a 3-1 game.

"Kruse's goal was huge, but our play was up and down in the second period and we didn't carry a lot of momentum into the second intermission. Then we came out in the third period and Mark (Sterrett) poked the puck into the net right away. That goal sent a message that we were looking to walk away with the win."

The Cardinals did just that by scoring twice in the final eight minutes of the game.

Kruse netted his second goal of the game when he registered a power-play tally after being set up by Trey Roberts with 7:49 left to play.

Declan Beers put an exclamation point on the victory when he drilled a slap shot into the net with 59 seconds left.

Kruse and Harder assisted for the final goal.

Luverne sported a 33-18 advantage in shots on goal and received a 17-save performance in goal by Kaden Ericson.

Arrows end Luverne's 7-18 campaign

By John Rittenhouse

The 2016-17 boys' basketball season came to an end for the Luverne Cardinals Saturday in Pipestone.

Luverne, the sixth seed for the South Section 3AA Tournament, mixed it up with the third-seeded Arrows during the tournament's quarterfinal round.

The game was a competitive one for most of the night, but a late surge by the Arrows gave them a 76-57 victory at game's end.

Luverne ends the season with a 7-18 record.

Pipestone sported an 8-5 lead nearly five minutes before Luverne rallied to knot the score at 10 when Riley Siebenahler converted a three-point play at the 11:43 mark of the first half.

The score was tied at 12 when Pipestone gained some separation with a 12-2 run that left the Arrows sporting a 24-14 advantage with 5:17 left in the half.

Luverne battled back to trim the difference to three points (24-21) with 3:05 remaining and Mark Robinson converted a field goal to make it 29-27 with 54 seconds left and cap the scoring in the first half.

Pipestone scored the first four points of the second half as a part of a 13-7 spurt that left the Arrows sporting a 42-34 cushion at the 14:47 mark.

Luverne's Derek Lundgren trimmed the difference to three points (44-41) with a field goal at 12:44 and the Cards trailed by four (55-51) when Cole Claussen drained a three-point shot with 7:49 remaining.

Pipestone, however, gained control of the game in the final seven minutes.

The Arrows went on an 18-4 run to open a 73-55 cushion with 1:43 remaining and outscored LHS 3-2 the rest of the way to prevail by 19 points.

Claussen (15 points, six



John Rittenhouse photo/0309 lbb 2

Luverne junior center Eli Haugom netted six points and passed for four assists during Saturday's 76-57 loss to the Pipestone Arrows during South Section 3AA play in Pipestone.

rebounds and three steals), Layne Curtis (14 points, seven rebounds and five assists) and Siebenahler (10 points, five rebounds and three steals) played solid games for LHS.

Eli Haugom charted four

assists for the Cardinals.

Box score
Robinson 2 0 1-2-5, Lundgren 1 0 0-1-2, Ahanaf 0 0 0-0-0, Rahm 0 0 0-0-0, Guy 0 0 0-0-0, Claussen 3 3 0-0-15, Curtis 5 1 1-2-14, Bierman 0 1 2-2-5, Stemper 0 0 0-0-0, Siebenahler 2 0 6-10-10, Golla

0 0 0-0-0, Haugom 3 0 0-0-6.
Team statistics
Luverne: 21 of 56 field goals (38 percent), 10 of 19 free throws (53 percent), 21 rebounds, 14 turnovers.
Pipestone: 32 of 63 field goals (51 percent), six of 11 free throws (55 percent), 34 rebounds, nine turnovers.



Trieweiler

John Rittenhouse photo/0309 tkd

Trieweiler earns honors

By John Rittenhouse

The honors just keep rolling in for Perceyis Trieweiler.

Trieweiler, a fifth-grader at Luverne Elementary School and a longtime member of the Luverne Tae Kwon Do Club, received good news twice in the past couple of weeks.

A strong performance at the United States Tae Kwon Do Association Qualifier in Osseo Feb. 25 provided Trieweiler with her first piece of good news.

With berths on the line for the top three finishers in both forms and sparring competition in the United States Tae Kwon Do Association's National Competition up for grabs at the qualifier, Trieweiler proved to be up to the task.

The Luverne standout placed second in sparring and third in forms to earn the right to compete at the national event set for June 30-July 3 in Detroit, Michigan.

Along with the summer trip she earned two weeks ago, Trieweiler received a prestigious award at the 42nd annual Cyclone Martial Arts Group Awards Banquet staged Saturday in Ames, Iowa.

The CMAG consists of thousands of martial artists from the Midwestern States, and Trieweiler was selected its 2017 recipient of the Junior Leadership of the Year Award.

"It's a great honor and Perceyis is a deserving recipient," said Wes Grieme, the instructor of the Luverne Tae Kwon Do Club.

"This is the third time our members have received an award at this banquet. Considering how many martial artists there are in our group, it's quite an honor."

Chad Balster became the first local club member to win the award in 1993, and Suzie Walgrave was so honored in 1998.

Grieme nominated Trieweiler for the award based on her commitment to the sport and the success she has experienced at competitions.

"The award goes to individuals with dedication and outstanding commitment to the sport," Grieme said.

"Perceyis is disciplined and committed to the sport. She trains in two of our classes every day and works with another group for strictly sparring work as well. She definitely loves the art. If we show her a different form in class, she is the type of kid who goes home and practices it."

Cap/continued from page 1B

"Kennedy is an extremely strong wrestler and we knew his strategy was using his hands to disrupt Solomon's timing. He went out on the mat and executed his strategy exactly the way he wanted to. I wouldn't say Kennedy would beat Solomon if they wrestled again, but he did a nice job taking Solomon out of his plan

for this match."

The luck of the draw worked against Luverne's other two participants at the state tournament.

Both eighth-grader Hunter Baker and sophomore Zach Luke, who were making their initial appearances at the state classic, received the misfortune of wrestling against the eventual state champions in their respective weight classes.

Baker and Luke both went 0-2 for the tournament.

Baker, who finishes the season with a 28-12 record, faced

a pair of top-notch wrestlers in the 106-pound weight class.

Byron senior Matthew Petersen, who won four consecutive matches to claim the state title, defeated Baker by technical fall in the opening round.

Baker received the right to compete in the consolation bracket when Petersen won in the quarterfinals, but his luck didn't get any better.

Albert Lea sophomore Nick Cantu, who went on to place third in the weight class, handed Baker an 11-0 setback in the first round of consolation

competition.

Luke capped a 15-15 campaign with two consecutive setbacks at 220 pounds.

Defending 2016 state champion (at 195) Noah Ryan, a senior from Kasson-Mantorville who claimed the state title at 220, pinned Luke in 1:10 during the opening round.

Ryan's win in the quarterfinals sent Luke into the consolation bracket, where he was pinned by Hutchinson's Tyler Stenzel in 48 seconds.

Stenzel lost his next match.

LAND FOR SALE

LEGAL: Two tracts of productive Murray County land for sale as follows:

Tract 1: Approximately 147.33 acres described as the NE1/4 of 32-105-43, less 12.67 acre acreage, Murray County, Minnesota.

Tract 2: Approximately 80 acres described as the W1/2 of the SE1/4 of 32-105-43, Murray County, Minnesota.

TERMS: Sealed bids will be accepted until 5:00 p.m., March 10, 2017, at the Eisma Law Office, 130 East Main, Luverne, MN or 821 Main Street, Edgerton, MN. All bidders will have the opportunity to submit additional bids until property is sold. Tracts will be sold individually. Highest bidder will be required to sign a Purchase Agreement with ten percent (10%) non-refundable earnest money down payment on the date of the sale and the balance at closing on or by May 1, 2017. Possession will be given when purchase agreement is signed.

Sale is subject to approval by the heirs of Nelvina DeKam. For further details contact Douglas Eisma, Eisma & Eisma, Attorneys at Law, (507) 283-4828/(507) 227-2829.

BOWLING CLIPBOARD

Monday Night Bowling League

Feb. 27

Games won: Rock Vet Clinic, 2; Luverne Lanes, 2.

High Scratch Game: Pat Weerheim, 172; Evie Kephart, 154; David Weis, 135.
High Scratch Series: Pat Weerheim, 497; Evie Kephart, 378; Brandon Kurrasch Jr., 350.

Team High Scratch Game: Rock Vet Clinic, 469; Luverne Lanes, 437.
Team High Scratch Series: Rock Vet Clinic, 1254; Luverne Lanes, 1248.

Team High Handicap Game: Rock Vet Clinic, 757; Luverne Lanes, 712.

Team High Handicap Series: Rock Vet Clinic, 2118; Luverne Lanes, 2073.

Thursday Night Bowling League

March 2

Games won: Mark's Electric, 4; Kruser's Bruisers, 4; The Troublemakers, 2; Billy Goats, 2; PD's Bar Flies, 0.

High Scratch Game: Zach Runia, 265; Ken Clark, 219; Landon Runia, 203.
High Scratch Series: Zach Runia,

753; Ken Clark, 521; Jeff Runia, 507.

Team High Scratch Game: Billy Goats, 667; The Troublemakers, 662; Kruser's Bruisers, 639.

Team High Scratch Series: Kruser's Bruisers, 1896; The Troublemakers, 1840; Billy Goats, 1822.

Team High Handicap Game: Kruser's Bruisers, 872; Billy Goats, 832; The Troublemakers, 815.

Team High Handicap Series: Kruser's Bruisers, 2595; PD's Bar Flies, 2324; Billy Goats, 2317.

Introducing Minnwest Preferred Checking with ID Protect[®]

Working to protect Doers like you.

Doers Welcome[™]

MINNWEST BANK
MEMBER FDIC

www.minnwestbank.com

Luverne Downtown
116 E. Main
(507) 283-2366

Luverne Highway 75
800 S. Kniss
(507) 283-9131

Beaver Creek
304 E. First Ave.
(507) 673-2334

BOTTOMS UP!

DON'T DUCK OUT ON YOUR COLONOSCOPY.

We get it. Colonoscopies are no picnic, but your health and life could depend on this important screen. So if you're going through this process, give yourself every advantage against colorectal cancer. Make sure you're getting the highest quality of screening possible.

Call (507) 283-4476 to schedule your colonoscopy at Sanford Luverne today.

bottomsuptoday.com

018019-00179 2/16

Hockey boys face unenviable task

Fate didn't favor the Luverne Cardinals at the end of Saturday's seeding meeting for the state hockey tournament.



FROM THE SIDELINES

By John Rittenhouse, sports editor

The Cardinals, as expected, didn't receive one of the top five seeds for the eight-team tournament, which starts Wednesday (March 8) at the Xcel Energy Center in St. Paul.

That left LHS as one of three teams involved in a random draw that dictated the Cardinals will face No. 1 Hermantown at 7 p.m. in the quarterfinals.

The Hawks happen to be the hottest team in the state entering the tournament.

After losing its first game of the season to defending Class AA champion Wayzata (5-1) Dec. 2 and skating to a draw against Lakeville South the next day, Hermantown has reeled off 26 consecutive victories.

The Hawks are the defending Class A champions and have outscored their opponents 135-35 this winter.

Luverne enters the tournament on a roll as well.

The Cardinals have won 13 consecutive games and bring a 22-5-1 record into the tournament under first-year head coach Philip Paquette.

Taking on Hermantown in the quarterfinals isn't exactly what he wanted, but Paquette and the Cards have accepted the challenge.

"Everyone in the state knows what we're up against," he said.

"We got together with the boys after Saturday's seeding meet and the boys seemed excited and ready to accept the challenge. We'll go into the game and give it the best shot we can."

The Cardinals need to concentrate on the two points of emphasis Paquette has implemented in the program this year in order to make a game of it against the Hawks.

They are discipline and defense.

"Those are the areas we definitely tried to improve on this year," he said.

"Discipline was our No. 1 goal. We were taking four, five and six penalties per game in the past and were getting away with it. That got us into trouble earlier in the year, so we started focusing on playing good, clean hockey. We have improved in that area throughout the season, and the section championship game against Marshall is a perfect example of that. We had one penalty in that game and it was a questionable 'too many men on the ice' call."

Improved play defensively has been Luverne's calling card this year.



0309 hockey 13

Luverne junior Tyler Reisdorfer and the rest of the LHS defensemen will be tested by Hermantown.

One year after yielding 1.92 goals per game during the 2015-16 season, LHS has limited opponents to 45 goals through 28 games (1.66 goals per game) this winter.

Senior Chris Jelken and juniors Trey Roberts, Jim Erickson and Tyler Reisdorfer are defensemen on the ice on a regular basis.

Senior goalie Kaden Ericson and junior net-minder Daniel Tofteland have played well behind the defense.

"We have a strong defensive core that we have leaned on this year, and we have worked on getting our forwards more involved in playing defense in our zone," Paquette said.

"Both Kaden and Daniel have played well in the backend of our defense. Kaden has battled injuries throughout the year, but he has been steady for us. Daniel did a great job for us, too. We had a tough decision to make in terms of who would be the goalie down the stretch when Kaden injured his knee two weeks before the playoffs. We decided to go with our senior captain and he helped lead us to the promised land."

Strong goaltending and solid defense will be a must for LHS to find success against the Hawks.

"We need to do everything we can to make life tough on them when they have the puck in our zone, and we have to take advantage of every opportunity they give us offensively," Paquette said.

"We need to get off to a strong start and be prepared to weather the storm and we have to be really solid in our defensive zone. If we start giving up a lot of odd-man rushes, we will be in trouble."



Submitted photo

Strong showing

The Blue Mound Figure Skating Club turned in a solid effort at the Skate Parade staged at the Parade Ice Garden in Minneapolis over the weekend. The local skaters competed at the event and helped the BMFSC turn in a second-place finish as a team. The host rink took the team title. BMFSC team members include (front row, from left) Kendall Buss, Marik Thier, Marisa Thier, (second row) Katharine Kelm, Emma Schneekloth, Addison Wieneke, Brylee Zebe, Mara Thier, Hannah Henning, Augusta Papik, (third row) Madi Jo Frankenhoff, Maranda Thier, Moriah Flanagan, Ashley Hohn, Lauren Versteeg, Bailey Weg, Brooke Top, Alyssa Nattress, (fourth row), Liz Spiegelhoff, Sophia Eisma, Grace Schneekloth, Elisabeth Kelm, Breanna Richters, Sydney Maciej, Alysha Wieneke, Zayda Holmgren, (fifth row) Anisa VandenBosch, Emma Baker, Hannah Hofer, Makayla Huisman, Morgan Bain, Madison Ruesch, Riley Severtson, and Isabella Donohue. Not pictured are Reese Henning, Ciana VandenBosch and McKenzie Engwicht. The team is coached by Cathy Shearer, Katie Kopp, Sabrina Sowles, Sarah Nuffer and Courtney DeBoer. Some club members will skate at the Sioux Falls Ice Classic this weekend.

Adrian's Gyberg completes career at state

By John Rittenhouse

An Adrian senior wrapped up his high school career at the Minnesota State Class A Wrestling Championships staged at the Xcel Energy Center in St. Paul Friday and Saturday.

Dylan Gyberg, the top wrestler for Adrian this season, received an opportunity to find more success at the state level. Unfortunately for the AHS standout, it didn't pan out that way.

Gyberg dropped a pair of matches to finish the season with a 19-6 record.

Gyberg made his second individual appearance at the state meet after winning the 195-pound title at the Section 3A Tournament for the second consecutive year.

The Dragon went 1-2 at the state classic without placing in 2016.

Gyberg, who missed a share of the 2016-17 regular season due to injury, couldn't generate much offense during his second state appearance.

Johnathan Smid, a senior from Blackduck-Cass Lake-Bena, was Gyberg's opponent in Friday's opening round.

Smid, who eventually placed sixth at 195, saddled Gyberg with an 8-0 setback.

With Smid posting a win in the quarterfinals, Gyberg received the opportunity to



Photo courtesy Joyce McCarthy

Adrian senior Dylan Gyberg capped his high school wrestling career at the state tournament in St. Paul Friday and Saturday. Gyberg lost two matches at 195 pounds.

compete in the consolation bracket. Minnewaska Area freshman

Tyler VanLuik eliminated Gyberg from further competition by besting the AHS entry 6-0.

VanLuik was defeated in his next match and didn't place.

24/7 ... Rain or Shine ...

Your local, independent agent will be there.

Working for you-meeting your needs.

South Hwy. 75, Luverne, MN • Ph. 507-283-2381

Auto-Owners INSURANCE

BASEBALL & SOFTBALL FUNDRAISER

SALT SALE

Sponsored by **Bill's Water Conditioning**

Delivery will be April 1, from 9am-2pm

FREE IN-TOWN DELIVERY

2 FOR \$14 (50 pound bags - not 40 pound)

If you pick up, price is 2 for \$12

12 bags or more for out of town delivery

Pre order & prepay by April 1

Orders will be door to door (starting March 20), or you may stop at Bill's Water Conditioning or Call Bill's Water Conditioning at 283-4448 or Coach Wenninger at 220-0110

www.Star-Herald.com

ADRIAN FUNERAL HOME

Bronze Tribute Plan

Complete funeral service, visitation, vehicles, standard stationary package, choice of (4) 20 gauge steel caskets, basic outer burial container. **\$6,000**

Memorial Tribute

Basic services of funeral director and staff, local transportation of remains to the funeral home, filing of all documents, authorization and permits, online obituary, standard cremation container, placement of cremated remain into urn, staff and equipment for a memorial service at the funeral home or church, a standard stationary package with printing, your choice of a cultured granite urn suitable for direct ground burial. **\$2,995**

**Cash advance items and cemetery expenses are not included in these packages.

105 N Maine, Adrian, MN 56110

507-483-2700

www.adrianfuneralhome.com

Notice:

Students of Luverne High School Take Notice

The Scholarship Committee of the A.R. Wood Educational Trust is currently accepting applications for initial or renewal scholarships from seniors and previous graduates of Luverne High School.

To be eligible for consideration candidates must:

1. Be graduates of Luverne High School
2. Rank in the upper fifteenth percent (15%) of his/her graduating class; and
3. Have maintained a 3.0 GPA or better grade point average.

Requests for applications should be directed to:

First Bank & Trust
Wealth Management Services
 Attn: A.R. Wood Educational Trust
 P.O. Box 1347
 Sioux Falls, SD 57101-1347

All requests for applications must be received by First Bank & Trust no later than **May 1, 2017**. All completed applications must be postmarked and submitted to First Bank & Trust by **June 1, 2017**.

In accordance with the A.R. Wood Educational Trust, decisions regarding recipients, amounts and number of awards will be made at the sole discretion of the Scholarship Committee.

Flying Dutchmen oust Ellsworth boys Thursday

By John Rittenhouse

The Ellsworth boys' basketball team bowed out of the South Section 3A Boys' Basketball Tournament Thursday at Edgerton Public School.

The ninth-seeded Panthers were pitted against No. 8 Edgerton in a battle for a trip to Saturday's quarterfinals in Worthington.

Ellsworth sported a pair of leads early in the opening round contest, but the Flying Dutchmen walked away with a 59-32 victory. Ellsworth ends the season with a 2-21 record.

EHS senior Jared Leuthold opened the scoring in the game by hitting a three-point shot and the Panthers led 7-5 when Zach Buntjer converted a field goal in the paint at the 13:05 mark of the first half to make it a 7-5 game.

Unfortunately for the Panthers, that would be the last time they sported a lead in the game.

Edgerton put together a 12-0 run to open a 17-7 advantage with 6:43 remaining in the opening half.

Ellsworth trimmed the difference to six points (17-11) with a field goal from Brandon Kramer with 5:29 left in the half, but the Flying Dutchmen scored the next six points to up the lead to 12 (23-11) before settling with a 25-14 cushion at the intermission.

The Panthers were unable to pose a threat to Edgerton in the second half.

Edgerton scored the first four points of the second stanza as a part of a 17-6 run that left them sporting a 42-20 lead with 11:19 left to play.

The Flying Dutchmen upped the lead to 29 points (57-28) with 4:00 remaining in the game before the Panthers trimmed the difference to 27 at game's end.

Kramer led the Panthers with 10 points and nine rebounds. Leuthold grabbed five rebounds and charted three assists.

Box score
Wallenberg 0 0-0-0, Leuthold 0 3-0-9, N.Kruse 0 0-0-0, Curtis 0 0 1-2 1, S.Boltjes 0 0 0-0 0, K.Boltjes 0 0 0-0 0, T.Kruse 1 0 0-2 2, Blair 0 0 0-0 0, Jansma 1 1 0-0 5, S.Kramer 0 0 0-0 0, Boyenga 0 0 0-0 0, B.Kramer 2 0 1-3 5, Nave 0 0 0-0 0, Buntjer 5 0 0-10.

Team statistics
Ellsworth: 13 of 45 field goals (29 percent), two of five free throws (40 percent), 25 rebounds, 11 turnovers.



John Rittenhouse photo/0309 hbb 2

H-BC's Preston Wilhelmi tossed in 17 points during Saturday's South Section 3A Tournament loss to W-WG in Worthington Saturday. Also pictured for H-BC is Zach Scholten, who netted his 1,000th point Thursday.

H-BC's late rally falls short Saturday

By John Rittenhouse

The Hills-Beaver Creek boys advanced before bowing out of the South Section 3A Basketball Tournament.

The seventh-seeded Patriots topped No. 10 Heron Lake-Okabena by 14 points during an opening round game in Hills Thursday before falling by 10 points to No. 2 Westbrook-Walnut Grove during Saturday's quarterfinals in Worthington.

H-BC ends the year with an 11-15 record.

W-WG 84, H-BC 74

A late rally by the Patriots wasn't enough to overcome a 22-point deficit against the Chargers during Saturday's game in Worthington.

The situation appeared to be dim for the Patriots when they faced a 22-point (64-42) deficit against W-WG with 9:38 remaining in the game.

H-BC did manage to make things interesting.

The Patriots trimmed the difference to six points at two different occasions in the game's final two minutes before the

Chargers thwarted the challenge to secure an 84-74 win.

W-WG had its way with the Patriots most of the first half.

The Chargers scored the first five points of the game before H-BC trimmed the difference to one point (9-8) when Preston Wilhelmi canned a three-point shot at the 11:38 mark of the opening stanza.

W-WG responded by going on a 22-4 run to open a commanding 31-12 lead with 5:06 remaining.

Wilhelmi hit a three with 3:34 left to make it a 13-point (32-19) game, but the Chargers outscored the Patriots 9-6 the rest of the half to sport a 41-25 cushion at the intermission.

W-WG inflated the lead to 20 points (46-26) 1:23 into the second stanza before H-BC used a 14-9 scoring spurt to slice the margin to 15 points (55-40) when Trenton Bass nailed a field goal at 11:34.

W-WG countered with a 9-2 surge to up the lead to 64-42 with less than 10 minutes remaining, but the Patriots didn't give up the fight.

A 28-12 run ending with a

three-point shot by Bass with 1:45 left to play made it a six-point (76-70) difference.

The Patriots still trailed by six (78-72) when Isaiah Vis recorded a field goal with 52 seconds remaining.

W-WG, however, scored the final four points of the game to win by 10.

Zach Scholten (22 points, nine rebounds and three blocked shots), Wilhelmi (17 points), Jax Wysong (13 points) and Vis (10 points, seven rebounds, five assists and three steals) emerged as H-BC's statistical leaders of the game.

Box score
Scholten 6 17-9 22, Vis 4 0-2-9 10, Burgers 0 0 0-0 0, Wilhelmi 2 4 1-3 17, Bass 4 0 1-3 9, Kueter 1 0 0-0 2, Wysong 4 0 5-9 13, Burgers 0 0 1-2 1.

Team statistics
H-BC: 26 of 54 field goals (48 percent), 17 of 35 free throws (49 percent), 31 rebounds.
W-WG: 31 field goals made, 14 of 26 free throws (54 percent), 29 rebounds, 11 turnovers.

H-BC 80, HL-O 66

The Patriots passed their first section test by notching a 14-point win over the Wildcats

Thursday in Hills.

H-BC got off to a strong start by opening a 44-28 advantage in the first half.

HL-O sported a 38-36 scoring edge in the second half, but it wasn't enough to keep H-BC from prevailing by 14 points.

Scholten, who scored 25 points and pulled down 10 rebounds in the contest, reached a milestone during the contest by netting his 1,000th career point.

Wilhelmi (17 points and three steals), Wysong (12 points and 11 rebounds), Vis (10 points, eight steals, seven rebounds and five assists) and Josh Kueter (six rebounds) made key contributions to the winning cause as well.

Box score
Scholten 11 0 3-7 25, Leuthold 1 0 0-0 2, Vis 4 0 2-4 10, Burgers 0 0 0-0 0, Leenderts 0 0 0-0 0, Wilhelmi 2 3 4-4 17, Bass 0 1 0-0 3, Kueter 2 0 0-0 4, Forshey 2 0 3-6 7, Taubert 0 0 0-0 0, LaRock 0 0 0-0 0, Wingert 0 0 0-2 0, Wysong 3 0 6-8 12.

Team statistics
H-BC: 29 of 63 field goals (46 percent), 18 of 31 free throws (58 percent), 40 rebounds, 18 turnovers.
HL-O: 25 of 66 field goals (38 percent), 12 of 22 free throws (55 percent), 21



John Rittenhouse photo/0309 ebb 8

Ellsworth's Grant Jansma leaves the court to complete a reverse layup during Thursday's tourney loss in Edgerton.

Dining & Entertainment

You are invited to Sandals Caribbean Night at All About Travel, Inc.!

Please join us to learn more about a Luxury-Included Vacation with Sandals Resorts! Our representative will show the many sides, inclusions and benefits of a Sandals get away

March 21, 2017 • 6:00 P.M.
All About Travel, 3801 S. Western Ave, Suite 103 • Sioux Falls, SD

Please RSVP to hold your spot!
Call us at - 605-339-8911
Email us at - aat@allabouttravel.org
Sign up on our website: www.allabouttravel.org

ALL ABOUT TRAVEL INC. 9-Year Winner! Layaway & Gift Certificates Available!
605-339-8911 • 1-800-390-6610
3801 S. Western Ave., Suite 103, Sioux Falls, SD
Open: Mon-Fri. 8 a.m. - 7 p.m. • Saturday 9 a.m. - 3 p.m.
www.AllAboutTravel.org | www.facebook.com/AllAboutTravelInc
Helping You Find Your Personal Paradise!

The Looney Lutherans

LAUGH WITH THE LOONEY LUTHERANS
(You don't even have to be Lutheran)

SUNDAY, MARCH 12 • 2:00pm
At the Historic Palace Theatre in Luverne, MN
Free Admission (A Freewill Donation will be taken)

Sponsored by St. John Lutheran Church in honor of their 125th Anniversary.
COME CELEBRATE WITH US!

The Looney Lutheran are a team of professional actresses who have come together in a fun, interactive and family-friendly show. "All roads lead to hotdish"

SATURDAY, MARCH 11 • 3pm

CHILI COOK-OFF

UP THE DAM CREEK

Downtown Beaver Creek • 507-204-7740
3-7 Mon-Thurs • 10am - 1am Fri & Sat

GREEN EARTH PLAYERS PROUDLY PRESENTS

the Dixie Swim Club

A JONES HOPE WOOTEN COMEDY DIRECTED BY SUE SANDBULVE

MARCH 24-26, 31 AND APRIL 1-2, 2017

THE HISTORIC PALACE THEATRE
LUVERNE, MINNESOTA

CONTACT THE PALACE BOX OFFICE FOR TICKET INFORMATION
507.283.4339

PRESENTED BY SPECIAL ARRANGEMENT WITH DRAMATISTS PLAY SERVICE, INC. NEW YORK

Make the Wise Choice...

...RECYCLE THIS NEWSPAPER!

THE EAGLES CLUB

Call the Club Manager at 283-9661 if you're interested in booking the Eagles Club for wedding receptions, class reunions, parties, etc.

312 W. Harrison, Luverne • Phone 283-9661 • Lic #00258

THURSDAY NIGHTS

14	28	45	50	61
BINGO				
6:30 pm				
3	45	50	61	
1	32	47	69	
11	19	55	63	
5	16	39	48	72

FRIDAY, MARCH 10

3rd annual CHS FUNDRAISER

Benefitting Harvest for Hunger

Soft Shell Tacos (beef or fish)

Free will donation
All proceeds will go to help local food shelves. Entertainment by Tim Neuroth!
Raffles, Games and Food!

5-7:30 pm

Falcons thwart Adrian's comeback bid

By John Rittenhouse

The Adrian girls' basketball team turned in a gritty performance during the semifinal round of the South Section 3A Tournament in Worthington Feb. 28.

Unfortunately for the Dragons, they simply ran out of time. With 7:51 remaining in the game, the situation appeared to be gloomy for the fifth-seeded Dragons facing a 21-point deficit against top-seeded Red Rock Central.

Adrian did fight back to make things somewhat interesting late in the game by outscoring RRC 15 points in the final seven minutes, but it wasn't enough to keep the Falcons from securing a 68-62 victory.

The loss ends Adrian's 11-14 campaign.

A scrappy Adrian squad gave the Falcons all they could handle in the game's first half.

The Dragons scored the first two points of the contest and led 8-2 when Kaitlyn Christians converted a field goal 2:29 into the game.

Adrian led 13-10 when Hannah Bullerman canned a three-point shot at the 12:47 mark of the stanza, and sported a pair of one-point advantages until RRC turned a 6-0 surge into a 22-17 lead with 4:16 remaining.

A three-point shot from Moriah Bullerman trimmed the difference to two points (22-20) late in the half and the Dragons trailed by four (30-26)



John Rittenhouse photo/0309 agb 6

Adrian senior Mikayla Jeffers releases a shot in front of a Fulda defender during the South Section 3A Girls' Basketball Tournament semifinals in Worthington Feb. 28.

at the intermission.

RRC opened the second half with an 11-0 run to increase its lead to 15 points (41-26) 3:50 into the stanza.

The lead swelled to 21 points (58-37) with 7:51 left to play, but the Dragons started to assert their will after that.

A methodical 25-10 run ending with a field goal from Paige Bullerman with seven

seconds left made it a 68-62 difference and capped the scoring in the game.

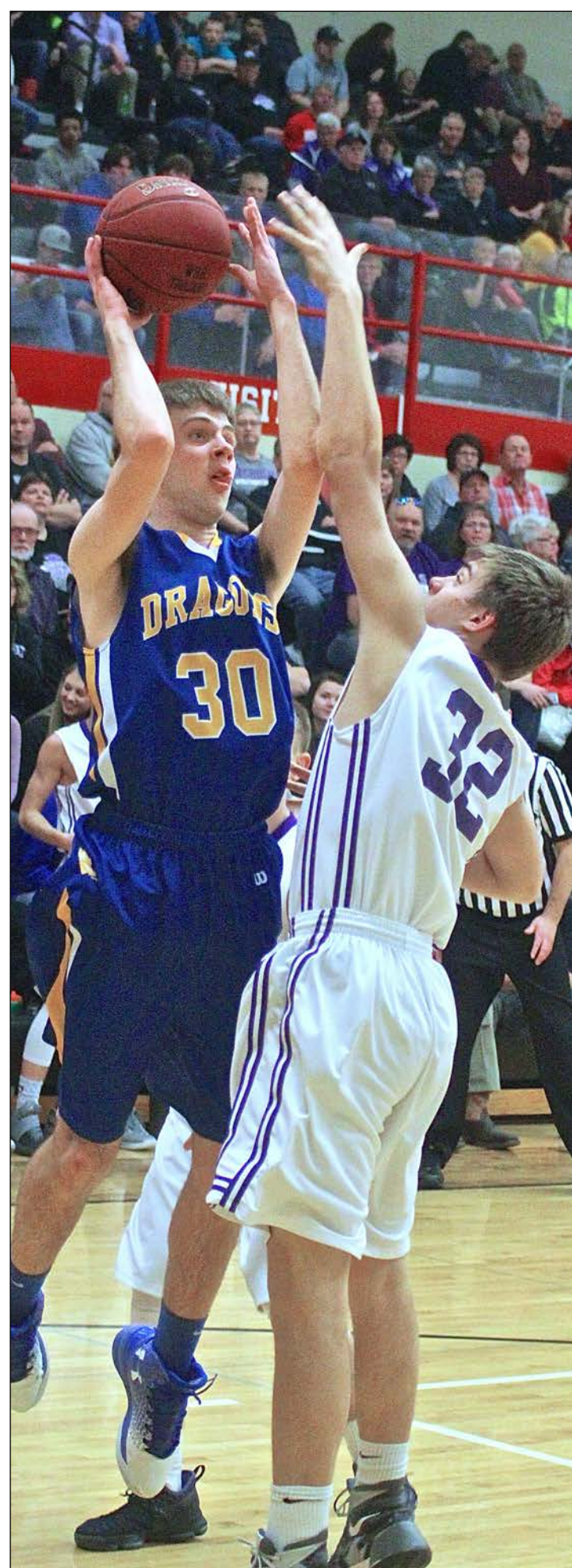
Hannah Bullerman (16 points, 12 rebounds and eight assists), Paige Bullerman (14 points and seven rebounds), Mikayla Jeffers (12 points) and Christians (10 points and five rebounds) kept AHS competitive against RRC.

Lexi Slater pulled down 10

rebounds for the Dragons.

Box score
H. Bullerman 2 2 6-10 16, M. Bullerman 0 1 0-0 3, Balster 0 0 0-0 0, Nelson 0 0 0-0 0, Christians 4 0 2-4 10, Lonneman 0 0 0-0 0, Jeffers 4 0 4-4 12, Grussing 0 0 0-0 0, Slater 3 0 1-3 7, P. Bullerman 6 0 2-4 14.

Team statistics
Adrian: 22 of 52 field goals (42 percent), 11 of 20 free throws (55 percent), 40 rebounds, 25 turnovers.
RRC: 23 of 60 field goals (38 percent), 21 of 35 free throws (60 percent), 38 rebounds, 21 turnovers.



John Rittenhouse photo/0309 abb 3

Adrian's Nate Lonneman shoots the ball under pressure by an MCC player during Saturday's game in Worthington.

Fight/continued from page 1B

the lead to 10 (26-16) when he hit a pair of charity shots with 18 seconds left.

MCC scored the final two points of the half to make it a 26-18 difference at the break and opened the second half with a 6-2 spurt to close the margin to four points (28-24).

The Dragons answered the challenge with a 7-0 surge ending with a field goal from Mitchell Lonneman to expand the lead to 11 points (35-24).

The Rebels bounced back to knot the score at 35 at the 9:38 mark of the second stanza before gaining a 38-37 edge with 8:41 left to play.

The Dragons regained their composure by putting together a 12-2 run ending with a three-point shot from Stamer that gave AHS a 49-40 lead with 4:19 remaining.

MCC did close the gap to five points (49-44) with less than

two minutes left to play, but AHS ended the game with a 7-0 run capped by a pair of free throws from Wieneke with 10 seconds remaining that gave the Dragons a 12-point victory.

Stamer (17 points, six rebounds and three steals), Lonneman (13 points and 11 rebounds) and Wieneke (11 points and 12 rebounds) led the Dragons statistically.

Zach Hendel added five rebounds to the winning cause.

Box score
Stamer 1 3 6-6 17, Serrao 0 0 0-0 0, Bierman 1 0 1-3 3, White 0 1 0-0 3, Wieneke 2 0 7-9 11, N. Lonneman 0 0 0-2 0, Hendel 4 0 1-2 9, M. Lonneman 5 0 3-4 13.

Team statistics
Adrian: 17 of 52 field goals (33 percent), 18 of 26 free throws (69 percent), 38 rebounds, 12 turnovers.
MCC: 17 of 71 field goals (24 percent), nine of 12 free throws (75 percent), 31 rebounds 12 turnovers.

By John Rittenhouse

The 2016-17 girls' basketball season came to an end for Hills-Beaver Creek during the semifinal round of the South Section 3A Tournament Feb. 28 in Worthington.

The third-seeded Patriots entertained hopes of knocking off No. 2 Southwest Christian for the first time in three meetings this season, but it didn't happen.

The E-Gals dominated play in the second half and rolled to a 74-50 victory.

H-BC's 20-6 season came to an end with the setback.

On a night in which the Patriots needed to play a perfect success, they did not.

SWC sported a commanding 49-23 advantage in rebounding and outshot H-BC 15-6 from the charity stripe to set the stage for a 24-point win.

H-BC's Grace Bundesen scored the first two points of the game before the E-Gals went on a 16-4 run to open a 10-point (16-6) lead 6:48 into the contest.

SWC's lead swelled to 11 points (21-10) with 8:28 remaining in the stanza before H-BC found its footing.

A 9-3 surge ending with a three-point shot from Sidney Fick trimmed the difference to five points (24-19) before Bundesen registered a field goal with 2:43 remaining to make it a four-point (33-29) game.

SWC answered the challenge by scoring the next five



John Rittenhouse photo/0309 hgb 5

Hills-Beaver Creek sophomore Grace Bundesen prepares to shoot in front of a Southwest Christian defender during the South Section 3A Tournament semifinals in Worthington Feb. 28.

points as a part of a 7-2 spurt the left the E-Gals sporting a 38-29 advantage at the intermission.

H-BC looked as if it might challenge the E-Gals by scoring four points in the first 27 seconds of the second half to make it a 40-35 game, but that proved to be as close as the Patriots would come to catching SWC.

The E-Gals went on a 14-2

run to open a 54-37 cushion at the 12:59 mark of the stanza.

SWC's lead swelled to 25 points (72-47) with 4:23 remaining before settling with a 24-point victory after outscoring the Patriots 34-19 in the second stanza.

Avery Van Roekel, Bundesen and Fick led H-BC with 16, 13 and 11 points respectively.

Van Roekel and Bundesen collected six and five rebounds

respectively.

Box score
Bos 0 0 0-0 0, Tilstra 0 0 0-0 0, Spath 1 0 0-0 2, Kolbrek 1 0 0-0 2, Lingen 0 0 0-0 0, Fick 5 0 1-3 11, Bundesen 5 0 3-6 13, Van Roekel 6 1 2-3 16, Rozeboom 3 0 0-0 6.

Team statistics
H-BC: 22 of 62 field goals (35 percent), six of 12 free throws (50 percent), 23 rebounds, 15 turnovers.
SWC: 27 of 79 field goals (34 percent), 15 of 19 free throws (79 percent), 49 rebounds, 13 turnovers.

Star Herald PUBLIC NOTICES

Rock County Commissioners meet Feb. 7

Herred Board Room 9:00 A.M.
Rock County Courthouse February 7, 2017

The meeting was called to order by Chair Williamson with all Commissioners present; the Pledge of Allegiance was recited.

Motion by Reisch, seconded by Thompson, to approve the February 07, 2017 County Board Agenda, declared carried on a voice vote.

Motion by Burger, seconded by Thompson, to approve the January 24, 2017 County Board minutes, declared carried on a voice vote.

Motion by Reisch, seconded by Overgaard, to approve the consent agenda, declared carried on a voice vote.

1. Subordination of Septic System Lien CWP-SSTS-23
Luverne Baseball Association (LBA) Representative Dan Serie, presented an project update regarding the placement of light poles and lights at Joe Roberts Field, located on property at the Highway Department; the property improvement was approved at the April 07, 2015 meeting, but funding was tabled. Serie informed the County Board that the LBA has secured funding for the materials totaling \$19,035.00 and stated that the City of Luverne has agreed to the install and labor if the county would split the in kind expenses estimated at \$10,000; Serie requested \$5,000 from the county. Serie also presented activity updates, utilization and current collaborations between the city, county, school and Community Ed. After discussion, motion by Thompson, seconded by Reisch, to approve up to \$5,000 for the labor and installation of the light poles and lights at Joe Roberts Field, declared carried on a 3-2 vote with Overgaard and Williamson voting nay.

Evan Verbrugge, Sheriff, requested approval of a State Homeland Security grant application to replace and upgrade the dispatch radio console equipment totaling \$94,340.00; the grant requires a fifty-percent match of \$47,170.00 which is an E911 eligible expense. Motion by Burger, seconded by Overgaard, to approve the grant

application and match of \$47,170.00, declared carried on a voice vote.

The Sheriff informed the County Board that the Rock County Sheriff's Office was selected as a grant recipient from the Prairie Rose Community Fund for \$1,600.00; the grant is for an AED unit to be placed in the new squad car.

Mark Sehr, Engineer, requested to bid let SAP 067-611-011, a bridge replacement project on CSAH 17 over the Beaver Creek located north of Manley; motion by Overgaard, seconded by Williamson, to approve, declared carried on a voice vote.

The Administrator presented the claims for payment and per diems of \$825.00; upon review, motion by Reisch, seconded by Thompson, to approve the claims and per diems as presented, declared carried on a voice vote. A complete listing of the claims is available upon request at the Auditor/Treasurer's Office.

Claims Listing - February 07, 2017	
A & B BUSINESS INC	2,177.36
AMERICAN COMMUNICATIONS INC	6,763.50
CENTERPOINT ENERGY	4,475.92
COMPUTER PROFESSIONALS UNLIMITED INC	7,236.00
FLEET SERVICES DIVISION-ADMIN FMR	4,147.00
INFORMATION SYSTEMS CORP	5,619.00
LUVERNE/CITY OF	19,509.31
NEWMAN SIGNS INC	4,674.22
NOBLES COUNTY AUDITOR-TREASURER	15,897.00
OFFICE OF THE STATE AUDITOR	3,549.50
PLUM CREEK LIBRARY SYSTEM	12,437.21
SW MN REGIONAL PUBLIC SAFETY BOARD	63,411.07
ZUERCHER TECHNOLOGIES, LLC	5,503.35
70 Payments less than 2000	23,778.26
TOTAL	179,178.70

Motion by Burger, seconded by Overgaard, to approve the Fund Balance report, declared carried on a voice vote.

Motion by Williamson, seconded by Overgaard, to authorize the transfer of the Rock County Rural Water (Phase I) fund 671 to the Rock County Rural Water Renewal

& Replacement fund 676 and close out the 671 fund, declared carried on a voice vote.

The County Board was in receipt of an activity report from Motor Vehicle; the report reflected a slight increase in transactions and fee for the 2016.

Motion by Reisch, by seconded by Thompson, to approve the 2017 Luverne Chamber dues \$693.00, declared carried on a voice vote.

The Administrator informed the County Board of a Regional Legislative meeting scheduled for February 10 in Slayton; Rock County will be providing an update regarding broadband.

The County Board was informed of Community Forum meetings hosted by United Community Action; the purpose of the forum meetings was to seek community input regarding transit services.

The Administrator briefly discussed the upcoming AMC Legislative Conference scheduled for February 16-17 in St. Paul; no action was taken.

The Administrator led a discussion regarding computer equipment for the County Board; it was determined to conduct additional research and options. Commissioner Reisch stated that he attended a Governor's Broadband Taskforce meeting.

Commissioner Thompson stated that she attended the Rock County Cattlemen's banquet, Southwest Regional Development Commission workshop for elected officials, and a BRRRA meeting.

Commissioner Burger stated that he attended the AMC New Commissioner training, a Personnel Committee meeting and the Southwest Regional Development Commission workshop for elected officials.

Commissioner Overgaard stated he attended the AMC New Commissioner training, a meeting regarding the Kenneth Fire Department, and a Rock County Corn and Soybean meeting.

Commissioner Williamson stated he attended the Southwest Regional Development Commission workshop for elected officials, a BRRRA meeting and the Rock County Cattlemen's banquet.

With no further business to come before the County Board, the meeting was declared adjourned.

Rock County seeks crack/sealing proposals by March 31

**NOTICE TO CONTRACTORS
BITUMINOUS CRACK SEALING / S.A.P 067 - 030 - 009
BIDS CLOSE AT 10:00 A.M. MARCH 31, 2017
LIVERNE, MINNESOTA**

Sealed proposals will be received by the Rock County Highway Department at Luverne, Minnesota until 10:00 A.M. on Friday, MARCH 31, 2017.

READ CAREFULLY THE PROVISIONS FOR THE WAGE RATES AS CONTAINED IN THE PROVISIONS, AS THEY WILL AFFECT THIS PROJECT.

Attention is called to the fact that the contractor must comply with the ****Special Equal Employment Opportunity Provisions**** as contained in this Proposal.

Proposals will be opened and read publicly in the presence of the Rock County Highway Engineer at the Rock County Highway Building located at 1120 North Blue Mound Avenue in Luverne, MN immediately following the hour set for receiving bids for the following Rock County Highway work. Bids will be awarded on Tuesday, April 4, 2017 at the regular Board of Commissioners Meeting.

Construction of Bituminous Crack Treatment. The project is located at various locations in Rock County

The major items of work are: 60,000 pounds Bituminous Sealant for Crackfilling Plans, specifications, and proposals may be viewed, and downloaded at www.questodn.com and at the Rock County Highway Department website, www.co.rock.mn.us/highway. Questions may be directed to the office of the Rock County Highway Engineer, 1120 North Blue Mound Avenue, P.O. Box 808, Luverne, Minnesota 56156-0808 / (507) 283 – 5010.

The non-refundable cost for plans and one proposal will be \$30.00.

Bids must be accompanied by a certified check or corporate surety bond drawn in favor of the Rock County Treasurer in the amount of at least five percent (5%) of the proposal.

Sealed bids shall be clearly marked **"PROJECT NO. S.A.P. 067-030-009"**

The Board of Rock County Commissioners reserves the right to reject any or all bids and to waive any defects therein.

Rock County is an Equal Opportunity/Affirmative Action Employer.

Mark R. Sehr, P.E.
Rock County Highway Engineer
(03-02, 03-09 - 03-16)

THE TIME ALLOWED BY LAW FOR REDEMPTION BY THE MORTGAGOR, THE MORTGAGOR'S PERSONAL REPRESENTATIVES OR ASSIGNS, MAY BE REDUCED TO FIVE WEEKS IF A JUDICIAL ORDER IS ENTERED UNDER MINNESOTA STATUTES, SECTION 582.032, DETERMINING, AMONG OTHER THINGS, THAT THE MORTGAGED PREMISES ARE IMPROVED WITH A RESIDENTIAL DWELLING OF LESS THAN FIVE UNITS, ARE NOT PROPERTY USED IN AGRICULTURAL PRODUCTION, AND ARE ABANDONED.

DATED: February 17, 2017

MORTGAGEE: U.S. Bank, National Association
Wilford, Geske & Cook P.A.
Attorneys for Mortgagee
7616 Currell Blvd Ste 200
Woodbury, MN 55125-2296
(651) 209-3300
File Number: 036880F01

(03-02, 03-09, 03-16, 03-23, 03-30, 04-06)

Rock County seeks pavement striping bids by April 7

**NOTICE TO CONTRACTORS
C.P. 067-401-018**

Sealed proposals will be received by the Rock County Highway Department at Luverne, Minnesota until 11:00 A.M. on Friday, April 7th, 2017.

READ CAREFULLY THE PROVISIONS FOR THE WAGE RATES AS CONTAINED IN THE SPECIAL PROVISIONS, AS THEY WILL AFFECT THIS PROJECT.

Attention is called to the fact that the Contractor must comply with the **Special Equal Employment Opportunity Provisions** as contained in the Proposal.

Proposals will be opened and read publicly in the presence of the Rock County Highway Engineer at the Rock County Highway Building located at 1120 North Blue Mound Avenue in Luverne, Minnesota immediately following the hour set for receiving bids for the following Rock County Highway work. Bids will be awarded on Tuesday, April 18th, 2017 at the regular Rock County Board of Commissioners Meeting held in the Law Library at the Rock County Courthouse.

The Quantities of Work are: 2,083 gals of 4" Reflectorized Edgeline Pavement Marking Paint – White & 1,527 gals of 4" Reflectorized Centerline Pavement Marking Paint – Yellow.

Plans, specifications, and proposals may be viewed, and downloaded at www.questodn.com and at the Rock County Highway Department website, www.co.rock.mn.us/highway.

The non-refundable cost for plans and one proposal will be \$30.00

Bids must be accompanied by a certified check or corporate surety bond drawn in favor of the Rock County Treasurer in the amount of at least five percent (5%) of the proposal.

Sealed bids shall be clearly marked **"PROJECT NO. SAP 067-401-018"**.

The Board of Rock County Commissioners reserves the right to reject any or all bids and to waive any defects therein.

Rock County is an Equal Opportunity/Affirmative Action Employer.

Mark R. Sehr, P.E.
Rock County Highway Engineer
(03-09, 03-16, 03-23)

Rock County seeks sealed proposals by March 31

**NOTICE TO CONTRACTORS
BRIDGE REPLACEMENT AND APPROACH GRADING / S.A.P. 067-617-011
BIDS CLOSE AT 11:00 A.M. MARCH 31, 2017
LIVERNE, MINNESOTA**

Sealed proposals will be received by the Rock County Highway Department at Luverne, Minnesota until 11:00 A.M. on Friday, March 31, 2017.

READ CAREFULLY THE PROVISIONS FOR THE WAGE RATES AS CONTAINED IN THE PROVISIONS, AS THEY WILL AFFECT THIS PROJECT.

Attention is called to the fact that the contractor must comply with the ****Special Equal Employment Opportunity Provisions**** as contained in this Proposal.

Proposals will be opened and read publicly in the presence of the Rock County Highway Engineer at the Rock County Highway Building located at 1120 North Blue Mound Avenue in Luverne, MN immediately following the hour set for receiving bids for the following Rock County Highway work. Bids will be awarded on Tuesday, April 4, 2017 at the regular Board of Commissioners Meeting.

Construction of Bridge 67570, a 127' Concrete Slab Span. The project is located 1 Mile South of Interstate 90 on CSAH 17 over The Beaver Creek.

The major items of work are: 87 Cu. Yd. Structural Concrete; 4,547 Sq. Ft. of Bridge Slab Concrete; 258 Lin. Ft. of Type F Railing Concrete; 143 Sq. Yds. Bridge Approach Panels; 72,490 Pounds of Reinforcement Bars (Epoxy Coated); 372 Cu. Yd. Random Riprap (Class III); 420 Lin. Ft. 12" - C-I-P Piling; 2 - 12" C-I-P Test Piles 80 Ft. Long; 560 Lin. Ft. 16" - C-I-P Piling; 2 - 16" C-I-P Test Piles 80 Ft. Long; and 574 Tons Bituminous Wear and Non-Wear Mix.

Plans, specifications, and proposals may be viewed, and downloaded at www.questodn.com and at the Rock County Highway Department website, www.co.rock.mn.us/highway. Questions may be directed to the office of the Rock County Highway Engineer, 1120 North Blue Mound Avenue, P.O. Box 808, Luverne, Minnesota 56156-0808 / (507)283-5010.

The non-refundable cost for plans and one proposal will be \$30.00.

Bids must be accompanied by a certified check or corporate surety bond drawn in favor of the Rock County Treasurer in the amount of at least five percent (5%) of the proposal.

Sealed bids shall be clearly marked **"PROJECT NO. S.A.P. 067-617-011"**

The Board of Rock County Commissioners reserves the right to reject any or all bids and to waive any defects therein.

Rock County is an Equal Opportunity/ Affirmative Action Employer

Mark R. Sehr, P.E.
Rock County Highway Engineer
(03-02, 03-09, 03-16)

Rock County Commissioners meet Jan. 3

**Herreid Board Room 9:00 A.M.
Rock County Courthouse January 3, 2017**

The meeting was called order by Administrator Oldre with Commissioners Gary Overgaard (District 1), Stan Williamson (District 2), Greg Burger (District 3), Sherri Thompson (District 4) and Jody Reisch (District 5) present; the Pledge of Allegiance was recited. Also in attendance was County Attorney Don Klosterbuer.

The Administrator requested nominations for the County Board Chair; Commissioner Thompson nominated Commissioner Williamson. The Administrator called three times for nomination for County Board Chair; motion by Thompson, seconded by Burger to have nominations cease and cast a unanimous ballot for Commissioner Williamson, declared carried on a voice vote.

The meeting was turned over to Chair Williamson. The Chair requested nominations for Vice Chair of the County Board; Commissioner Burger nominated Commissioner Thompson. The Chair called three times for nominations for Vice Chair; motion by Burger, seconded by Overgaard to have nominations cease and cast a unanimous ballot for Commissioner Thompson, declared carried on a voice vote.

Motion by Reisch, seconded by Thompson, to approve the January 3, 2017 County Board agenda, declared carried on a voice vote.

Motion by Overgaard, seconded by Thompson, to approve the consent agenda, declared carried on a voice vote.

1. Resolution No. 01-17, County Housekeeping Resolution

The County Board was in receipt of correspondence from the Southwest Regional Development Commissioner sponsoring an orientation for newly elected government officials in the southwest region; date of the training is February 4th 8:00AM – 12:00PM. Commissioners Thompson, Reisch and Burger in tentatively indicated that they would be attending.

Ashley Kurtz, Auditor/Treasurer, presented a recap of the 2016 gravel tax collection of \$66,159.55 and the distribution as follows: townships - \$26,711.91, Road & Bridge - \$26,711.91 and reclamation and administrative fees - \$12,735.73; activity between 2016 and 2015 reflected a 10% decrease. Motion by Reisch, seconded by Thompson to approve the 2016 gravel tax report, declared carried on a voice vote. The Auditor/Treasurer stated in 2017, the Rock County's gravel tax will increase as we will use the state's rate of \$-15 per ton/\$.21 per cubic yard as Rock County's special legislation expired in 2016.

The Auditor/Treasurer presented a list of the year end claims as of December 31, 2016 and requested approval to pay claims for January 3, 2017; motion by Reisch, seconded by Overgaard to approve, declared carried on a voice vote. A complete listing of the claims is available upon request at the Auditor/Treasurer's Office.

Claims Listing – December 31, 2016:

BEAVER CREEK/CITY OF	9,144.41
CENTERPOINT ENERGY	2,768.24
HARDWICK/CITY OF	7,560.00
HILLS/CITY OF	4,710.00
NOBLES COUNTY AUDITOR-TREASURER	15,388.30
SCHNEIDER CORPORATION	2,300.00
48 Payments less than 2000	14,824.15
Final Total:	56,695.10

Claims Listing – January 03, 2017:

ASSN OF MN COUNTIES	7,495.00
MN COUNTIES COMPUTER COOP	5,354.44
MN COUNTY ATTORNEYS ASSN 2	,149.00
SW MN WORKFORCE COUNCIL, INC 2,270.00	
7 Payments less than 2000	1,385.02
Final Total:	18,653.46

The Auditor/Treasurer reviewed the Fund Balance report with the County Board which generated a conversation with the County Attorney regarding the RCRW Phase I balance and whether or not it could be transferred to the other RCRW assessment account; it was determined that the Auditor/Treasurer and County Attorney would further discuss the issue. Motion by Thompson, seconded by Burger, to approve the Fund Balance report, declared carried on a voice vote.

The Auditor/Treasurer informed the County Board of Tobacco Compliance conducted by Southwest Health and Human Services stating that out of ten checkpoints, one failed resulting in a fine established by the ordinance.

The County Board reviewed all Boards and Committees appointments; motion by Thompson, seconded by Reisch, to approve the following appointments for 2017, declared carried on a voice vote.

Advocate Education Connect

Sherri Thompson
Greg Burger (Alternate)

Airport

Greg Burger
Paul Dougherty
Melvin Fick

Association of Minnesota Counties

All Commissioners
Kyle Oldre
Mark Sehr
Susan Skattum

AS400 Computer Committee

Kyle Oldre
Ashley Kurtz
Tom Houselog
Shawn Sweeney
Lana Henrichs

AMC Policy Committees

Environmental & Natural Resources – Overgaard
General Government – Reisch
Health & Human Svcs – Thompson
Public Safety – Burger
Transportation – Williamson

AMC District VIII Committees

Ag & Transportation – Overgaard
Ag & Rural Development Task Force - Burger & Overgaard
ATP – Burger (alternate)
Land Use – Overgaard
Health & Human Services - Thompson

Audit Committee

Greg Burger
Jody Reisch
Kyle Oldre
Susan Skattum
Ashley Kurtz
Lana Henrichs

Buffalo Ridge Regional

Railroad Authority

Stan Williamson
Sherri Thompson
Gary Lee
Kyle Oldre, Exe Sec
Ashley Kurtz, Treas
Susan Skattum

Children's Justice Initiative

Stan Williamson
SWSHS Rep

Budget Committee

Greg Burger
Jody Reisch
Kyle Oldre
Ashley Kurtz
Susan Skattum

Buildings Committee

Jody Reisch
Stan Williamson
Kyle Oldre

Compliance Committee

Eric Hartman
Ashley Kurtz
Tom Houselog
Jody Reisch
Sherri Thompson
Extension Committee
Gary Overgaard
Stan Williamson
Tom Sandager
Stacie Mente
Kristi Jessen
Nate Golla
Kyle Hemme
Teresa Kingsinger

Economic Development Committee

Anthony Boyenga
Jody Reisch
Sherri Thompson
Gary Overgaard
Stan Williamson
Tom Sandager
Stacie Mente
Kristi Jessen
Nate Golla
Kyle Hemme
Teresa Kingsinger
Karananzi-Little Rock Watershed

Law Library Committee

Jody Reisch
Tim Connell
Damon Eisma

Luverne Community Economic

Development Corporation

Jody Reisch
Kyle Oldre (Alternate)

Multi County HRA

Jody Reisch

Personnel Board of Appeals

Craig Oftedahl
John Call
Chris Sorenson

Planning & Zoning Board of Adjustments

Cliff Schilling
Brad Petersen
Gordon Mulder
Gawaine Dekievers
Mark Vander Pol

Plum Creek Library Committee

Jody Reisch
Greg Burger (Alternate)

Rock County Community Library

Jody Reisch
Barbie Meinerts
Rebecca Aanenson-Banks
Molly Carboneau
Bruce Olson

Rock County Opportunities

Stan Williamson

Rock County/Luverne

School Liaison

Sherri Thompson
Gary Overgaard
Kyle Oldre
Stacy Schepel
Scott Johnson
Don Klosterbuer
Evan Verbrugge

Rock/Nobles Community

Corrections Executive Board

Greg Burger
Jody Reisch
Evan Verbrugge

Rock County Veterans

Rick Peterson
Annabelle Frakes
Bill DeBates
Wendell Erickson
Gregg Groepel
Warren Herreid
Kyle Oldre

Soil & Water Conservation

District Board

Stan Williamson

SWCD/Rock County Liaison

Stan Williamson
Jody Reisch
SWCD Rep
Eugene Cragoe
Southern Prairie Community Care
Greg Burger
Sherri Thompson(alt)

Southwest Health & Human

Services Nursing Hands Committee

Greg Burger

Southwest MN Adult

Mental Health Consortium

Stan Williamson

Southwest Regional

Development Commission

Sherri Thompson

Southwest Regional

Radio Committee

Evan Verbrugge
Southwest Regional Rural
Energy Task Force
Gary Overgaard
Greg Burger (Alternate)

Southwest Regional

EMS Board

Harlan Vande Kieft

Jody Reisch (alternate)

SWMN Tourism

Jane Lanphere

Southwest Solid Waste Board

Gary Overgaard
Greg Burger (Alternate)

The County Board was informed of a resignation from Burdell Braa, Highway Maintenance Supervisor effective April 28, 2017.

With no further business to come before the County Board, the meeting was declared adjourned.

Rock County Commissioners meet Dec. 27

Herreid Board Room 9:00 A.M.
Rock County Courthouse December 27, 2016

The meeting was called to order by Chair Reisch with all Commissioners present; the Pledge of Allegiance was recited.
Motion by Hoime, seconded by Boyenga, to approve the December 27, 2016 County Board agenda, declared carried on a voice vote.

Motion by Thompson, seconded by Williamson, to approve the December 13, 2016 County Board minutes, declared carried on a voice vote.

Motion by Williamson, seconded by Thompson, to approve the consent agenda, declared carried on a voice vote.

1. 2017 County Board meeting schedule:

January 03	July 11
January 24	July 25
February 07	August 08
February 21	August 22
March 07	September 05
March 21	September 19
April 04	October 03
April 18	October 17
May 02	November 07
May 16	November 21
June 06	December 12
June 20	December 26

Alliance Communications representatives Ross Petrick and Andy Hulscher presented a Rock County broadband project update: Miles of buried fiber – 526; 100% of mainline construction completed; 18,819 feet of rock cut through during construction; currently, 96 customers are connected; estimated number of installs in January – 40/week; estimated number of installs in February – 60/week; project completion is targeted at June 2017.

Senator Bill Weber and Representative Joe Schomacker presented a brief overview of what the 2017 Legislative session will look like; together it was their consensus that there will be a fair amount of uncertainty and not to have high expectations due to the election changes. Items that were brought to their attention and/or awareness was the formula change for County Program Aid and its impact, who will pay for the water improvements at the Blue Mound State Park; 2014 flood repair funding, daycare shortage and the status of the demolition permit from MPCA.

Mark Sehr, Engineer and Al Hartz, Shop Foreman/Mechanic, requested authorization to purchase a Mack GU713 AF Tandem Axle dump truck from Nuss Truck & Equipment for \$123,451.00 with snow removal equipment from Townmaster, Inc for \$128,668.00; both bids are from the state bid program and would have a June of 2017 delivery date. Motion by Boyenga, seconded by Reisch, to approve the equipment purchases totaling \$252,119.00 and to pay the expenditure from the Road & Bridge General Reserve Fund which is funded by wind turbine revenues, declared carried on a voice vote.

The Engineer informed the County Board that the current Trimble Total Station, equipment used for survey designs and construction is in need of which the repairs are no longer available due to age of the equipment. The Engineer requested to purchase a new system in 2017, a Frontier Precision Trimble package \$33,499.10 from the state bid with a trade in allowance for the old system of \$4,500.00; motion by Boyenga, seconded by Hoime, to approve the 2017 purchase of \$28,999.10, declared carried on a voice vote.

Ashley Kurtz, Auditor/Treasurer, presented the claims for payment and per diems of \$750.00; motion by Thompson, seconded by Williamson to approve the claims and per diems, declared carried on a voice vote. A complete listing of the claims is available upon request at the Auditor/Treasurer's Office.

Claims over \$2,000:

AMERICAN COMMUNICATIONS INC	2,796.70
ASSN OF MN COUNTIES	2,350.00
CHS EASTERN FARMERS COOP	6,098.20
EXPRESS AG	7,004.03
FLEET SERVICES DIVISION-ADMIN FMR	4,013.23
KETTERLING SERVICES INC	7,168.02
LUVERNE/CITY OF	6,118.20
MN SHERIFFS ASSN	2,475.00
REGENTS OF THE UNIVERSITY OF MINNESOTA	17,220.24
ROCK COUNTY OPPORTUNITIES	2,755.97
SANDERS INC	3,787.93
SPARTZ AND SONS WELL COMPANY	7,000.00
101 Payments less than 2,000	44,041.98
Final Total:	112,829.50

The County Board was in receipt of the Fund Balance report; motion by Hoime, seconded by Boyenga, to approve, declared carried on a voice vote.

Motion by Williamson, seconded by Hoime, to adopt a Federal Award Procurement Policy, a compliance requirement in receiving federal grant funds, declared carried on a voice vote.

Motion by Boyenga, seconded by Thompson, to authorize the Auditor/Treasurer to pay claims through December 31, 2016, declared carried on a voice vote.

Motion by Reisch, seconded by Hoime, to adopt 2017 budget, which reflects a 6.13% levy increase, declared carried on a 4-1 vote with Commissioner Boyenga voting nay.

	GENERAL	HIGHWAY	FAMILY SERVICES	LAND MANAGEMENT	DITCH	DEBT SERVICE	2017 TOTAL
REVENUES							
Property Taxes	3,115,993	787,392	1,195,354	26,158	-	344,595	5,469,492
Other Taxes	34,600	385,000	-	-	-	481,843	901,443
Special Assessments	-	-	-	207,771	87,339	-	295,110
Licenses and Permits	2,400	-	-	56,600	-	-	59,000
Intergovernmental	254,511	1,334,397	36,640	380,402	-	10,562	2,016,512
Charges for Services	1,236,445	457,699	-	3,200	-	-	1,697,344
Fines & Forfeitures	1,500	-	-	-	-	-	1,500
Investment Earnings	57,000	6,000	-	-	-	-	63,000
Miscellaneous Revenue	185,950	11,500	-	18,500	-	-	215,950
TOTAL REVENUES	\$4,888,399	\$2,981,988	\$1,231,994	\$692,631	\$87,339	\$837,000	\$10,719,351
EXPENDITURES							
General Government	1,987,626	-	-	54,056	-	-	2,041,682
Public Safety	1,957,248	-	-	-	-	-	1,957,248
Highway	-	2,590,109	-	-	-	-	2,590,109
Sanitation	-	391,879	-	292,924	-	-	684,803
Family Services	-	-	1,231,994	-	-	-	1,231,994
Health	16,800	-	-	-	-	-	16,800
Culture & Recreation	432,428	-	-	-	-	-	432,428
Conservation of Natural Resources	146,731	-	-	349,130	-	-	495,861
Economic Development	1,940	-	-	-	-	-	1,940
Intergovernmental	195,135	-	-	-	-	-	195,135
Debt Service	-	-	-	-	87,339	837,000	924,339
TOTAL EXPENDITURES	\$4,737,908	\$2,981,988	\$1,231,994	\$696,110	\$87,339	\$837,000	\$10,572,339

Motion by Williamson, seconded by Boyenga, to approve (3) union contracts effective 01/01/2017 – 12/31/19, declared carried on a voice vote.

Motion by Boyenga, seconded by Reisch, to approve a 2% COLA increase for all non-union employees, declared carried on a voice vote.

Don Klosterbuer, County Attorney, discussed details regarding an agreement between United Community Action Program (UCAP) and Rock County for management of transit services within Rock County. After discussion, motion by Thompson, seconded by Hoime, to approve the agreement effective 01/01/2017 pending minor contract logistic changes, declared carried on a voice vote.

Motion by Thompson, seconded by Reisch, to recognize Commissioner Ken Hoime (24-years) and Commissioner Ron Boyenga (32 years) for their dedication and service to Rock County citizens in serving as a Rock County Commissioner, declared carried on a unanimous vote.

County Attorney Klosterbuer also conveyed his appreciation and gratitude to Commissioners Hoime and Boyenga for their combined service of 56 years to Rock County and acknowledged their efforts and dedication in moving Rock County forward throughout their tenure.

With no further business to come before the County Board, motion Hoime, seconded by Thompson, to adjourn, declared carried on a voice vote.

(03-09)

Road and bridge replacement information meeting March 21

NOTICE OF PUBLIC INFORMATION MEETING

An open meeting will be held to discuss the road and bridge replacement program for the transportation system of Rock County. The meeting will be at the Rock County Library Basement Meeting Room, 201 West Main Street, in Luverne, MN Tuesday, March 21 beginning at 1:30 p.m.

This public informational meeting will be held at the Rock County Library. Any individual, group or agency wishing information is urged to attend and participate in this meeting. The meeting is to provide information on the planning, programming and schedule of work on the County Highway System.

Mark R. Sehr
Rock County Highway Engineer
(03-09)

Mortgage foreclosure sale set for May 4

NOTICE OF MORTGAGE FORECLOSURE SALE

THE RIGHT TO VERIFICATION OF THE DEBT AND IDENTITY OF THE ORIGINAL CREDITOR WITHIN THE TIME PROVIDED BY LAW IS NOT AFFECTED BY THIS ACTION.

NOTICE IS HEREBY GIVEN, that default has occurred in conditions of the following described mortgage:
DATE OF MORTGAGE: December 20, 2012
MORTGAGOR: Travis Dammann, a single man.
MORTGAGEE: Mortgage Electronic Registration Systems, Inc.

DATE AND PLACE OF RECORDING: Recorded December 21, 2012 Rock County Recorder, Document No. 180873.

ASSIGNMENTS OF MORTGAGE: Assigned to: JPMorgan Chase Bank, National Association. Dated September 27, 2016 Recorded October 3, 2016, as Document No. 189217.

TRANSACTION AGENT: Mortgage Electronic Registration Systems, Inc.

TRANSACTION AGENT'S MORTGAGE IDENTIFICATION NUMBER ON MORTGAGE: 100521008080053334

LENDER OR BROKER AND MORTGAGE ORIGINATOR STATED ON MORTGAGE: Plains Commerce Bank

RESIDENTIAL MORTGAGE SERVICER: JPMorgan Chase Bank, National Association
MORTGAGED PROPERTY ADDRESS: 413 Spring Street North, Luverne, MN 56156
TAX PARCEL I.D. #: 201448000

LEGAL DESCRIPTION OF PROPERTY:
Lot 5 in Block 23 in Van Eps and Vary's Addition to the City of Luverne
COUNTY IN WHICH PROPERTY IS LOCATED: Rock
ORIGINAL PRINCIPAL AMOUNT OF MORTGAGE: \$80,070.00
AMOUNT DUE AND CLAIMED TO BE DUE AS OF DATE OF NOTICE, INCLUDING TAXES, IF ANY, PAID BY MORTGAGEE: \$76,314.72

That prior to the commencement of this mortgage foreclosure proceeding Mortgagee/Assignee of Mortgagee complied with all notice requirements as required by statute; That no action or proceeding has been instituted at law or otherwise to recover the debt secured by said mortgage, or any part thereof;

PURSUANT TO the power of sale contained in said mortgage, the above described property will be sold by the Sheriff of said county as follows:

DATE AND TIME OF SALE: May 4, 2017 at 10:00 AM
PLACE OF SALE: Sheriff's Office, Main Entrance, Law Enforcement Center, 1000 North Blue Mound Avenue, Luverne, MN

to pay the debt then secured by said Mortgage, and taxes, if any, on said premises, and the costs and disbursements, including attorneys' fees allowed by law subject to redemption within six (6) months from the date of said sale by the mortgagor(s), their personal representatives or assigns unless reduced to Five (5) weeks under MN Stat. §580.07.

TIME AND DATE TO VACATE PROPERTY: If the real estate is an owner-occupied, single-family dwelling, unless otherwise provided by law, the date on or before which the mortgagor(s) must vacate the property if the mortgage is not reinstated under section 580.30 or the property is not redeemed under section 580.23 is 11:59 p.m. on November 6, 2017, unless that date falls on a weekend or legal holiday, in which case it is the next weekday, and unless the redemption period is reduced to 5 weeks under MN Stat. Secs. 580.07 or 582.032.

MORTGAGOR(S) RELEASED FROM FINANCIAL OBLIGATION ON MORTGAGE:None

"THE TIME ALLOWED BY LAW FOR REDEMPTION BY THE MORTGAGOR, THE MORTGAGOR'S PERSONAL REPRESENTATIVES OR ASSIGNS, MAY BE REDUCED TO FIVE WEEKS IF A JUDICIAL ORDER IS ENTERED UNDER MINNESOTA STATUTES, SECTION 582.032, DETERMINING, AMONG OTHER THINGS, THAT THE MORTGAGED PREMISES ARE IMPROVED WITH A RESIDENTIAL DWELLING OF LESS THAN FIVE UNITS, ARE NOT PROPERTY USED IN AGRICULTURAL PRODUCTION, AND ARE ABANDONED."

Dated: March 1, 2017

JPMorgan Chase Bank, National Association
Mortgagee/Assignee of Mortgagee

USSET, WEINGARDEN AND LIEBO, P.L.L.P.

Attorneys for Mortgagee/Assignee of Mortgagee

4500 Park Glen Road #300

Minneapolis, MN 55416

(952) 925-6888

30 - 17-001222 FC

THIS IS A COMMUNICATION FROM A DEBT COLLECTOR.

(03-9, 03-16, 03-23, 03-30, 04-6, 04-13)

Mortgage foreclosure sale set for April 20

NOTICE OF MORTGAGE FORECLOSURE SALE

THE RIGHT TO VERIFICATION OF THE DEBT AND IDENTITY OF THE ORIGINAL CREDITOR WITHIN THE TIME PROVIDED BY LAW IS NOT AFFECTED BY THIS ACTION.

NOTICE IS HEREBY GIVEN, that default has occurred in conditions of the following described mortgage:

DATE OF MORTGAGE: December 23, 2015
MORTGAGOR: Tyller Kracht, a single person.
MORTGAGEE: Mortgage Electronic Registration Systems, Inc.
DATE AND PLACE OF RECORDING: Recorded December 23, 2015 Rock County Recorder, Document No. 187566.
ASSIGNMENTS OF MORTGAGE: Assigned to: JPMorgan Chase Bank, National Association. Dated December 1, 2016 Recorded December 7, 2016, as Document No. 189667.

TRANSACTION AGENT: Mortgage Electronic Registration Systems, Inc.
TRANSACTION AGENT'S MORTGAGE IDENTIFICATION NUMBER ON MORTGAGE: 100031200012614498
LENDER OR BROKER AND MORTGAGE ORIGINATOR STATED ON MORTGAGE: Wintrust Mortgage, a division of Barrington Bank and Trust Co., N.A.

RESIDENTIAL MORTGAGE SERVICER: JPMorgan Chase Bank, National Association
MORTGAGED PROPERTY ADDRESS: 241 Minnesota Avenue East, Steen, MN 56173
TAX PARCEL I.D. #: 19-0098-000

LEGAL DESCRIPTION OF PROPERTY:
A tract of land commencing at the Northwest corner of the NE 1/4 of Section 32, Township 101 North, Range 45 West, of the 5th P.M.; thence South 726.5 feet; thence East 96 feet to the place of beginning; thence South 119 feet; thence East 96 feet; thence North 119 feet; thence West 96 feet to the place of beginning; otherwise known as Lots 8 and 9 in Block 7 of the unrecorded plat of Dries Bosch Addition to the City of Steen, Rock County, Minnesota.

COUNTY IN WHICH PROPERTY IS LOCATED: Rock
ORIGINAL PRINCIPAL AMOUNT OF MORTGAGE: \$81,720.00
AMOUNT DUE AND CLAIMED TO BE DUE AS OF DATE OF NOTICE, INCLUDING TAXES, IF ANY, PAID BY MORTGAGEE: \$82,773.53

That prior to the commencement of this mortgage foreclosure proceeding Mortgagee/Assignee of Mortgagee complied with all notice requirements as required by statute; That no action or proceeding has been instituted at law or otherwise to recover the debt secured by said mortgage, or any part thereof;

PURSUANT TO the power of sale contained in said mortgage, the above described property will be sold by the Sheriff of said county as follows:

DATE AND TIME OF SALE: April 20, 2017 at 10:00 AM
PLACE OF SALE: Sheriff's Office, Main Entrance, Law Enforcement Center, 1000 North Blue Mound Avenue, Luverne, MN

to pay the debt then secured by said Mortgage, and taxes, if any, on said premises, and the costs and disbursements, including attorneys' fees allowed by law subject to redemption within six (6) months from the date of said sale by the mortgagor(s), their personal representatives or assigns unless reduced to Five (5) weeks under MN Stat. §580.07.

TIME AND DATE TO VACATE PROPERTY: If the real estate is an owner-occupied, single-family dwelling, unless otherwise provided by law, the date on or before which the mortgagor(s) must vacate the property if the mortgage is not reinstated under section 580.30 or the property is not redeemed under section 580.23 is 11:59 p.m. on October 20, 2017, unless that date falls on a weekend or legal holiday, in which case it is the next weekday, and unless the redemption period is reduced to 5 weeks under MN Stat. Secs. 580.07 or 582.032.

MORTGAGOR(S) RELEASED FROM FINANCIAL OBLIGATION ON MORTGAGE:None

"THE TIME ALLOWED BY LAW FOR REDEMPTION BY THE MORTGAGOR, THE MORTGAGOR'S PERSONAL REPRESENTATIVES OR ASSIGNS, MAY BE REDUCED TO FIVE WEEKS IF A JUDICIAL ORDER IS ENTERED UNDER MINNESOTA STATUTES, SECTION 582.032, DETERMINING, AMONG OTHER THINGS, THAT THE MORTGAGED PREMISES ARE IMPROVED WITH A RESIDENTIAL DWELLING OF LESS THAN FIVE UNITS, ARE NOT PROPERTY USED IN AGRICULTURAL PRODUCTION, AND ARE ABANDONED."

Dated: February 13, 2017

JPMorgan Chase Bank, National Association
Mortgagee/Assignee of Mortgagee
USSET, WEINGARDEN AND LIEBO, P.L.L.P.
Attorneys for Mortgagee/Assignee of Mortgagee
4500 Park Glen Road #300
Minneapolis, MN 55416
(952) 925-6888
30 - 17-001420 FC

THIS IS A COMMUNICATION FROM A DEBT COLLECTOR.

(02-23, 03-02, 03-09, 03-16, 03-23, 03-30)

Order to correct or remove hazardous property and to abate a nuisance

(MINN. STATS. § § 145A.05 SUBD. 9, 463.17;

LUVERNE CITY CODE § 10.56 SUBDS. 4(P), 6, 9, 11)

City of Luverne, a municipal corporation under the laws of the State of Minnesota,
Plaintiff,

vs.
JPMorgan Chase Bank, National Association,
and
Joshua D. De Pyper, a single individual,
and
John Doe and Jane Doe,
Defendants.

ORDER TO CORRECT OR REMOVE HAZARDOUS PROPERTY AND TO ABATE A NUISANCE (Minn. Stats § § 145 A.05 Subd. 9 , 463.17; Luverne City Code § 10.56 subds. 4(P), 6 , 9 , 11)

TO: J P MORGAN CHASE BANK, National Association, 100 S 5th Str c/o CT Corporation System Inc., Mpls, MN 55402 USA and JOSHUA DE PYPYR, whose last known address was 702 N. McKenzie Street., Luverne, MN 56156 AND JOHN DOE AND JANE DOE, who may assert any right, title, lien, tenancy, claim, or interest in that real property whose street address is 702 N. MCKENZIE STREET, LUVERNE, MN 56156, legally described as

The West Eighty Feet (W 80') of Lot Four (4) in Block Three (3) in Barck, Adams, and Howe's Addition to the City of Luverne, State of Minnesota,

You and each of you are hereby ORDERED to abate, within a reasonable amount of time NOT TO EXCEED 20 (twenty) DAYS FROM THE DATE OF SERVICE OF THIS ORDER UPON EACH OF YOU, the following which are hazardous property upon the above-described real property situate in the City of Luverne, Rock County:

all accumulations of discarded, worn-out and/or inoperable materials and items, garbage, refuse, debris and/or metallic articles held for scrap value which are on said real property and are not stored in an enclosed space, as well as all vehicles whether operable or inoperable parked on unapproved surfaces and/or on the front or side yards of the residence upon said real property.

A motion for summary enforcement of this Order will be made to the District Court, Rock County, unless corrective action is taken in full to the reasonable good-faith satisfaction of the City of Luverne within the time period set forth above or unless an Answer is filed within the time specified in Minnesota Statutes section 463.18.

Dated: February 16, 2017

City of Luverne
/s/ John Call
City Administrator
(02-23, 03-02, 03-09, 03-16)

Star Herald CLASSIFIEDS

Page 8B March 9, 2017

EMPLOYMENT

Helping People ~ Changing Lives Bus Driver – Rock County (Job #0217D) Community Transit of United Community Action Partnership is seeking bus drivers for our Rock County Area. This position offers flexible hours, training to obtain a CDL with passenger endorsement, PTO, holiday pay, and a competitive wage. Qualified applicants should have a clean driving record and will be required to pass a pre-employment drug screen. Please call us today at 507-537-1416 to request an application or visit our website at www.unitedcapmn.org for more information or to fill out an online application. Applications will be accepted until the position is filled. AA/ADA/EOE Employer. (3.5-3.9)

Adrian Public School is currently seeking applicants for a Long Term Substitute Special Education Teacher (SLD) to work at the High School through the end of the 2017 school year. (2.26-3.16)

EMPLOYMENT

Schomacker Cleaning seeks a reliable carpet cleaning technician for 30-40 hours per week. Shifts include days and weekends. No previous experience needed. Applicant must be self motivated, possess strong work ethic, demonstrate customer service skills, be reliable and prompt. Past sales experience can be very beneficial. If you're looking for fast-paced, ever changing work, this position may be for you. Responsibilities include providing superior carpet cleaning and building professional relationships with customers. REQUIREMENTS Valid driver license Smart phone use with internet access Must be organized and able to multi-task Friendly and professional attitude Flexible availability Dependable and reliable Fast learner Team player Candidates must be able pass a drug test, motor vehicle record check and criminal background check Apply online at Schomackers.com or at the Schomacker Flooring and Appliance at 202 E Main St. Luverne MN (2.26-3.16)

EMPLOYMENT

New Prairie Insulation of Beaver Creek has a full-time Insulation Installer position available. Monday through Friday, health insurance, vacation, holiday, bonus opportunities. Will train. Call Dean at 605-376-3006 or 507-673-2548. (tc)

SON-D-FARMS ADRIAN

is hiring General Farm, Hog, Field Work, Truck Driver, Maintenance person, Farm Shop Mechanic & Farm Delivery Person. Experience wanted but willing to train. PTO benefits. Call (507) 483-2245, 370-1590 or e-mail office@sondfarms.com

www.Star-Herald.com

EMPLOYMENT

Nursing Assistant: Parkview Manor has openings for part-time nursing aides with benefits to include: health insurance, public retirement plan, and holiday pay. New wages \$11.90/ hr. or more with experience. \$2000 scholarships available for students. Will provide training or pay for experience. Contact Darnell Krull, 308 Sherman Ave. Ellsworth, MN 56129 or call 507-967-2388. (tc)

NEED EXTRA CASH?

Announcer Carriers needed for **LUVERNE**
Call **283-2333** or stop in at the Announcer office (ask for Jenn)

MISCELLANEOUS

HAVE A UNIQUE SERVICE OR BUSINESS? Get the word out to over 1.4 million households. Call WIDE AREA CLASSIFIEDS today, 507-359-7326. (tc)

WINDOWS

We custom build and install Energy Star Therm-O-Loc Windows. Call Mike at Adrian Glass for a free in-home demonstration and estimate. 101 E. Pearl, Adrian, MN 56110. 507-483-2228 or 605-770-7677 or email mbyler@santel.net. (tc)

WANTED

Adult caregiver needed in rural Adrian. Elderly male in need of in home caregiver. Full-time and part-time available. Call for details at 605-370-9903. (2.19-3.9)

EMPLOYMENT

HELP WANTED

CHS Eastern Farmers Luverne, MN is looking for a full-time **semi-feed truck driver**. Must have a CDL and clean driving record. CHS Eastern Farmers offers a competitive pay and benefits package. **Apply by calling Gary at 507-283-4418 to set up an appointment.**



The Tuff Memorial Home has an opening in Dietary, part-time hours, 11:30am-7p.m. (24 hours a week) If interested, contact Alex Dysthe at 507-962-3275 or email adysthe@tuffmemorialhome.com.

Competitive Wage
Friendly Atmosphere



TUFF MEMORIAL HOME
"A Home With a Heart"

CALL TODAY!
Call RICK or CHANTEL to advertise in the Star Herald 283-2333
CALL TODAY!

RENTALS

CARDS OF THANKS

The Helgeson family would like to express their thanks to everyone who contributed by giving donations, food and money for the 24th annual Helgeson Father-Son Pool Tournament. It was greatly appreciated. Throughout the years the grand total of \$28,206 has been donated to various charities. (3.2-3.9)

Thank you for the messages of condolence I've received following the unexpected death of my son-in-law Edward Dean Andersen on Thursday, February 16 of Stockholm, SD.

Mary Keck

(3.5-3.9)

A special thank you to Toby Donth for packaging the bags in December.

Luverne Backpack Program
(3.5-3.9)

AGRICULTURAL

We have several crews of rock pickers and we also do any type of farm work. Call 712-943-2084. (tc)

RENTALS

For Rent: one-bedroom furnished upstairs apartment with car port. No pets allowed. References required. Call 507-283-9720. (tc)

Mobile Home for rent in Luverne: two-bedroom, one-bath, all appliances, water and sewer included. Call 605-366-7695. (2.23-3.16)

Available NOW! Three-bedroom one-bathroom main floor apartment. Dishwasher, washer/dryer, garbage disposal and one car attached garage. \$900/month utilities included. No pets. Outside smoking. Call or text Mary 605-366-6514. (2.23-3.12)

Oakwood Apartments

401 Oak St., Ellsworth

• 1 Bedroom Unit Available

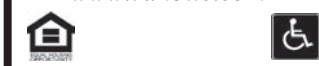
Unit Available
Water, Sewer & Garbage Included.

Rent Based on Income
AVAILABLE IMMEDIATELY

Van Binsbergen & Associates, Inc.
320-269-6640 ext. 22

Equal Housing Opportunity

www.vanblc.com



HELP WANTED:

- CDL DRIVER - home nightly
- Farm Labor - cattle and hogs
- General Labor

Immediate openings, full and part-time, flexible hours, home nightly and competitive pay with benefits. Willing to train.

Hokeness Grain & Livestock, Inc.

Adrian, MN area

Please call/text:

Sara: 605-366-7083

Todd: 507-227-8802

Help Wanted Internet Installer/Repair Technician

Lismore Cooperative Telephone Company is seeking a full-time individual to become a member or our team providing hybrid broadband service in and around Lismore, MN.

The work will include installation of our new wireless internet, maintenance and repair. Applicant must be comfortable with heights and have the ability to work in a customer orientated, fast-paced environment. Submit resume and letter of application to: Lismore Cooperative Telephone Company, PO Box 127, Lismore, MN 56155. Email: info@lismoretele.com by February 20 or until position is filled.

Lismore Coop Telephone Co.
Lismore, MN
(507)472-8748

FULL TIME PARTS POSITION AT THE LUVERNE LOCATION

RESPONSIBILITIES INCLUDE:

- Customer service of parts, both in person and over the phone.
 - Organize, shipping & receiving of parts inventory
 - Fun, friendly work environment
 - Store hours Mon - Fri 7:30-5:30 Sat 7:30-Noon (Rotating Saturdays)
- Employee package:**
- Competitive hourly pay
 - Paid vacations & holidays
 - Employee Health Insurance
 - PTO & Sick Leave
 - IRA
 - Bonuses
 - Uniforms provided

Please contact Mark Ommen at 507-283-2319 with any interest or to pick up an application.

JAYCOX IMPLEMENT, INC.

410 Koehn Avenue, Luverne, MN • 507-283-2319
www.jaycoximplement.com



HELP WANTED

Buffalo Ridge Concrete, Inc., is seeking qualified **CONCRETE TRUCK DRIVERS** at our Pipestone, Adrian, Luverne, Tyler, Edgerton and Slayton plants.

We offer competitive wages, health insurance, 401K, vacation & holiday pay and flex compensation. Pre-employment drug test required.



Buffalo Ridge Concrete Inc.

www.buffaloridgeconcrete.com

For an application visit our website www.buffaloridgeconcrete.com or stop by one of our locations.

For a complete job description call AJ at **605-360-1808**



MCAN

Minnesota Classified Advertising Network

EMPLOYMENT

RAILROAD VEGETATION CONTROL:
Full-time traveling opportunity, 60-80 hours/week, \$13-\$15/hour starting, meal allowance, paid lodging, 95% paid health/dental, 401(k) & paid time off. RAW, Inc. in Cooperstown, ND 888/700-0292 info@rawapplicators.com www.rawapplicators.com

BUYING

BUYING AND SELLING
gold & silver, collector coins, diamonds, gold jewelry, silver dollars, rare currency, any gold or silver items. Kuehl's Coins, Fairmont, Minnesota, 507/235-3886

ENTERTAINMENT & EVENTS

GUN SHOW: MARCH 17-19
Onalaska Omni Center, 255 Riders Club Road, Onalaska, WI. Fri 3-8pm, Sat 9am-5pm, Sun 9am-3pm. Free parking. Admission: \$6 (14 & Under FREE) Buy/Sell/Trade 608/752-6677 www.bobandrocco.com

ADOPTIONS

CALIFORNIA COUPLE PROMISES
baby secure future, loving home near ocean, education and travel, devoted grandparents, gentle pet. Living expenses paid. Call Danny/Aimee 714/305-4299 or attorney 310/663-3467

HEALTH

HERNIA REPAIR?
Did you receive a mesh patch between 2007 and the present? If you suffered complications of bowel perforation, abdominal wall tears, puncture of abdominal organs or intestinal fistulae after placement of this device, you may be entitled to compensation. Attorney Charles Johnson 800/535-5727

ADVERTISE HERE STATEWIDE IN 260+ NEWSPAPERS FOR ONLY \$279 PER WEEK! CALL 800-279-2979

MISCELLANEOUS

GOT KNEE PAIN?
Back Pain? Shoulder Pain? Get a pain-relieving brace - little or no cost to you. Medicare patients call health hotline now! 800/755-6807

DONATE YOUR CAR

truck or boat to Heritage For The Blind. Free 3-day vacation, tax deductible, free towing, all paperwork taken care of 800/439-1735

DISH TV - BEST DEAL EVER!
Only \$39.99/mo. Plus \$14.99/mo Internet (where avail). Free Streaming. Free Install (up to 6 rooms). Free HD-DVR. Call 800/297-8706

STOP OVERPAYING FOR YOUR PRESCRIPTIONS!
Save! Call our licensed Canadian and International pharmacy, compare prices and get \$25.00 OFF your first prescription! Call 877/210-2257 Promo Code: CDC201725

Creative Solutions to School Food Service®

Lunchtime Solutions, Inc., a growing food service management company, is currently accepting applications for the following position in the Garretson School District, Garretson, South Dakota.

Kitchen Manager: Responsibilities will include kitchen management, quantity and quality food preparation, product ordering, inventory, supervision of other employees, clean-up and other duties as assigned by the Food Service Director.

Qualified candidates must demonstrate good customer service skills and an ability to work in a team environment. Dependability is a must. We are offering a very competitive wage based on qualifications and skills.

For more information and application materials, contact Christina at 507-360-2715, christina@lunchtimesolutions.com, or fill out an application online at www.lunchtimesolutions.com.

Equal Opportunity Employer

MAKE THE WISE CHOICE

RECYCLE THIS NEWSPAPER!