



# Rock County STAR HERALD

www.star-herald.com

Rock County's oldest business, printing since 1873

Thursday, February 23, 2017

## City officials, Halverson sign closing documents for Sharkee's

By Lori Sorenson

With final closing Tuesday morning, Sharkee's owner Dave Halverson sold his condemned property on Highway 75 to the city of Luverne for \$220,000.

The agreement was negotiated in December 2016 after city officials had begun acquiring the structure and lot through eminent domain.

The abandoned building — once a bar and restaurant — has for two years been in violation of health department and city codes and is

considered a public nuisance and a hazard.

Councilwoman Esther Frakes said eminent domain is never the preferred method for addressing blight, but she said it was the only tool at the city's disposal in this case.

"In all my years on the council, this is the one thing that I got the most comments about," said Frakes, whose term expired in December. "People wanted to know when we were going to do something about Sharkee's."

As part of the eminent domain

process, the city ordered commercial appraisals, which arrived at an estimated value of \$135,000 on the bare lot. This price factored in the demolition costs that would have been incurred.

That amount is based on three other Highway 75 properties — GrandStay, Herman Motors and Kozlowski — that had been redeveloped after demolition.

Mayor Pat Baustian said the city offered Halverson more than the appraised value in order to avoid

increased legal costs that would be incurred with the condemnation process.

He said it's important to focus on the property's potential value, not the eyesore that it is today.

"It's a huge highway frontage lot," Baustian said.

Sharkee's and the Mert's Repair property are both part of a tax increment financing district. The city purchased Mert's Repair lot for \$160,000 to the east of Sharkee's and sold Marlin Kracht a new lot in the

Industrial Park (for \$10,000) for his expansion.

The costs for acquisition and demolition of both lots — a total of four acres — will be recouped in the TIF amount, \$600,000.

What that means is whoever buys the bare lot will pay full taxes on the improved property, but the difference between the current tax amount and the new tax amount will pay down the \$600,000 TIF debt.

Sharkee's purchase/See page 3A

## tru Shrimp promises economic boom locally

By Lori Sorenson

Dozens of area communities are hoping to attract a planned shrimp production facility that will generate over \$48 million in economic activity in southwest Minnesota.

Minnesota-based Ralco announced last week that it will construct a \$54 million nine-acre facility somewhere in Rock, Nobles, Murray, Lyon or Redwood county.

It would result in \$14.5 million of labor income and support an estimated 330 jobs.

The facility's footprint will be the size of four football fields long and one football field wide, with nine acres under one roof.

The harbor, the first of several planned around the state of Minnesota, would produce 20,000 pounds of shrimp per day of various sizes. Forty-two percent of them will be jumbo size.

That's more than 50 percent of the nation's current aquaculture shrimp production. Most U.S. shrimp (80 percent) is imported from other countries, which is why company officials see a strong demand for their product.

The facility will need 14 million gallons of water to fill the production basins and will require 60,000 to 100,000 gallons per day to operate.

Once the harbor is constructed it will continue to generate an estimated \$23 million annually in economic activity and provide employment directly and indirectly for 124 people.

The shrimp production company, owned by Ralco in Minnesota, is called tru Shrimp and its president and CEO is Michael Ziebell.

"The construction of a harbor will be a boom to local communities, and it will also mean good quality and well paid jobs for the long term," Ziebell said.

Also, he said the economic impact doesn't factor in feed commodities — such as corn and soybeans — required for a harbor.

"Tru Shrimp is creating more than economic ripples, it is an economic tsunami," Ziebell said.

Shrimp production/See page 2A



Mavis Fodness Photo/0223 Convening Event

Minnesota Public Radio's Cathy Wurzer addresses more than 175 people attending The Convenings event Feb. 16 in Luverne High School's auditorium. Wurzer was introduced by video by Rep. Joe Schomacker, who supported funding for Honoring Choices Minnesota, a statewide effort to engage and empower Minnesota families in end-of-life care conversations.

## End of life discussion kicks off Convenings event

By Mavis Fodness

More than 175 people attended the conversation in Luverne Thursday night, Feb. 16, about life, living and dying.

The Convenings is a community engagement event organized through Honoring Choices Minnesota and the Bruce Kramer Foundation.

Minnesota Public Radio's Cathy Wurzer hosted the 90-minute program that featured local residents and one special guest, the late Bruce Kramer.

Kramer was a college professor who died from ALS, amyotrophic lateral sclerosis.

It was Kramer's wish to share his living-while-dying experience and the importance of informing family and friends of end-of-life wishes.

He enlisted Wurzer in 2011 to share his message.

Together they aired a series of radio and television interviews, and they authored "We Know How This Ends: Living While Dying," published last year. The book includes Wurzer's experience with her late father's dementia.



Mavis Fodness Photo/0223 Convening Event

Cathy Wurzer (left) has a personal interview with Luverne's Brenda Winter about living with cancer.

Kramer died on March 23, 2015, at the age of 59. His presence in Luverne was through video recordings and readings from the book.

In Luverne Wurzer said she was at Kramer's bedside when he died, fulfilling her promise to be with him until the end.

Wurzer found Kramer's preparations for his death to be heartwarming, peaceful and well planned.

"Bruce had an amazing community of care," she said. "It's clever he arranged that some of his inner circle of friends became friends themselves."

One such friend Deb DeMeester works with local organizers to stage The Convenings. Luverne was the second such event that included personal discussions among attendees.

Currently 63 percent of Minnesotans have not completed a health care directive. The No. 1 reason stated is, "I haven't gotten around to it."

The Convenings are intended to help people get around to it.

A team of local facilitators have been trained to assist with end-of-life directives.

Kelly Schroer is the advanced care planning facilitator with Sanford Luverne Medical Center. She can be contacted at 507-449-1473.

Schroer was one of three local residents

The Convenings/See page 3A

## Members sought for service on local Selective Service board

By Mavis Fodness

A few good men and/or women are being sought to serve on a local Selective Service board.

More commonly known as a draft board, the group of up to five volunteers determines any necessary exemptions, deferments or postponements if Congress reinstates the military draft to provide manpower in a national emergency.

"Our job is to be ready if called upon," said Brett Williams, Selective Service System's operations manager of Region III, which includes Minnesota, Iowa and South Dakota.

The civilian-run agency does not work directly with the Department of Defense, but supports the military's efforts.

The Selective Service System keeps a registry of young men ages 18

to 26. They also train the draft boards.

Rock County is one of only a few counties in the state that no longer have an active board.

Because the draft was suspended more than 40 years ago, some members are no longer living, and in the case of Rock County the board membership was disbanded all together.

"We certainly have had a draft board," said Jane Wildung Lanphere,

director of Luverne Area Chamber. "Hopefully it's something we will never use."

A representative from the Minnesota Selective Service System visited Luverne recently to re-establish the local board.

The Luverne Area Chamber was asked to facilitate the board membership's reinstatement because of non-government connection.

Under the nation's Selective Service System, all males aged 18 to 26 are required to register with the SSS, according to the Military Selective Service Act.

Registration is a civic duty, Williams said, and does not guarantee registered males would be selected for military duty.

Selective Service/See page 5A

Volume 142, Number 8

Luverne, MN 56156  
USPS 468-040



The Star Herald is Rock County's oldest business, documenting the news of its citizens since 1873

Article 8: Luverne has a long history of supporting and promoting education

This is the eighth in a series that shares the rich history of Luverne as it celebrates 150 years. This comes from the archives of the newspaper and from Betty Mann:

The earliest history of schools in Luverne goes back to 1868 when it was noted that E.N. Darling taught four pupils in the Philo Hawes cabin. In 1871 the first public school was held in a sod blacksmith shop. There were six students and the teacher was paid \$16.66 per month. Also in 1871 the commu-

Luverne celebrates 150 years/continued on page 5A

This week's moment in time is sponsored by:



## COMMUNITY CALENDAR

### Meetings

**Helping Build Communities Stronger** will meet at 7:30 p.m. Tuesday, Feb. 21, in the Hills American Legion to discuss the June 9-11 Friendship Days.

**Lyons club** will meet at 6 p.m. Monday, Feb. 27, at The Pizza Ranch in Luverne. Guests are welcome to attend.

**Meditation and Mindfulness Practice**, a new meditation group, will meet at 7-7:45 p.m. every 2<sup>nd</sup> and 4<sup>th</sup> Wednesday in the lower level of Hilger Commons at 215 N. Cedar Street in Luverne. For more information call Kim at 507-353-0041 or email [kimberlyelizabeth@live.com](mailto:kimberlyelizabeth@live.com).

**Springwater Township Board** will hold their regular monthly meeting at 7 p.m. on Tuesday, March 7, 2017, at the home of the clerk, Teresa Kramer.

**Narcotics Anonymous** will meet every Thursday evening at 6:30 p.m. at the Steen Reformed Church. Contact Robert for more information 507-329-2642.

**Women's Alcoholics Anonymous** meets at 8 p.m. Mondays in the United Methodist Church.

**Al-Anon** meets from 6:30 to 7:30 p.m. Wednesdays in Sanford Luverne. Call Stephanie at 507-449-1246.

**Alcoholics Anonymous** meets at 8 p.m. Wednesdays and Saturdays in the United Methodist Church, Luverne. Call 605-321-4324.

**Alcoholics Anonymous and Al-Anon** meet from 8 to 9 p.m. every Tuesday in Runals Memorial Hall, Edgerton. Call Naomi, 507-215-2956, with questions.

### Interested in a food-co-op?

#### Attend Feb. 23 or March 1 meetings

Kim Rockman, Roni Feit and others are considering opening a food co-op in Luverne to provide food, wellness products, classes and outreach. Public input meetings will be from 6:30 to 7:30 p.m. Thursday Feb 23, and from noon to 1 p.m. Wednesday, March 15, both in Hilger Commons, 215 N Cedar in Luverne. The meetings will gauge interest in a food co-op and educate the public on food co-ops. Reach Rockman at 507-353-0041 [kimberlyelizabeth@live.com](mailto:kimberlyelizabeth@live.com) or Feit at 605-351-3522 [ronifeit@gmail.com](mailto:ronifeit@gmail.com)

### Hospice Charity Dinner and Auction

The annual Hospice Charity Dinner and Auction is planned for April 22 at Grand Prairie Events in Luverne. Tickets will go on sale Monday, Feb. 13, at the hospice office at 211 E. Main Street in Luverne and can also be purchased with VISA or Master Card by calling 507-283-1805.

### Story Hour and Laptime at library

Story Hour for ages 4-5 meets from 10 to 11 a.m. every Thursday from Feb. 9 through April 13. It includes stories, songs, crafts and more. Register by calling the Library at 449-5040.

Laptime for ages birth-through 3 with an adult meets from 10:30 to 11 a.m. every Friday from Feb. 10 through April 14. It includes stories, songs, crafts and more. No registration is needed for this free activity.

### 'Sister Act' Feb. 24-26 in Rock Rapids

The River Valley Players will perform "Sister Act," the musical, at 7:30 p.m. Friday and Saturday, Feb. 24 and 25, and 2 p.m. Sunday, Feb. 26, at the Forster Auditorium located in Central Lyon High School, Rock Rapids. Contact Angie at 712-472-3456 for ticket information.

### Little Lambs Preschool Recognition

Little Lambs Preschool will have have 35 years of recognition for Christian Education Service at 9 a.m. Sunday, Feb. 26, during worship at St. John Lutheran.

### Family fun reading night Feb. 27

A free family fun reading night will be from 6 to 7:30 p.m. Monday, Feb. 27, in the Luverne Elementary School commons. Prizes and snacks will be offered.

### Caregiver Support Group Feb. 28

The Caregivers Support Group will meet from 5-6:30 p.m. Tuesday, Feb. 28, at the Mary Jane Brown Good Samaritan Society home in the conference room. Anyone dealing with caregiving, or has questions in reference to caregiving and the resources available for their benefit is encouraged to attend.

### World Day of Prayer

World Day of Prayer will be at 1:30 p.m. Friday, March 3, at St. Catherine's Catholic Church, 203 East Brown Street. Fellowship will follow in the Gathering Space.

# Proposals sought for Beaver Creek bridge

By Mavis Fodness

Legacy grant monies may preserve one of Rock County's historical bridges for generations to come.

The Springbrook Bridge, located on the east side of Beaver Creek, is one of five bridges receiving funds through the Minnesota Historical Society.

The arched bridge was built in 1911.

Proposals for a rehabilitation plan are due to the Rock County Highway Department by March 3.

"This is the first time the state and historical society has had monies for these projects," said county engineer Mark Sehr.

Last spring, the city of Beaver Creek was invited by the Minnesota Department of Transportation to apply for a Minnesota Historical and Cultural Heritage grant.

MnDOT implements a Local Historical Bridge Study, which researches, stories and creates opportunities for funding locally owned historic bridges.

Once the preservation plans are complete, Beaver Creek is eligible to apply for rehabilitation funds.

Monies for the bridge projects are distributed from the Clean Water, Land and Legacy Act implemented in 2008.

Springbrook Bridge was added to the National Register of Historical Places in 1989. Its builder, Perley Gillham, built dozens of bridges throughout various townships in southwest Minnesota.

Gillham was known for



Mavis Fodness Photo/0223 Springbrook Bridge

A predevelopment plan is being sought for the Springbrook Bridge located on the east side of Beaver Creek. The plan would outline measures to preserve the 1911 bridge and would be paid through the state's Clean Water, Land and Legacy Amendment.

his unique concrete arch bridge designs.

"He put a different type of rail on each bridge that was aesthetically pleasing," Sehr said.

Construction of arch bridges was difficult in 1911, he said.

Concrete was mixed on site, and the Springbrook's more than 38-foot span had to be completed in several sections.

Sehr said wooden forms were used to create the arch. Workers placed steel bars in-

side the concrete for strength.

Today's bridges are also completed in sections, but often off-site, with the sections brought in by truck and lifted into place.

Rehabilitation, however, won't change Springbrook Bridge's current one-lane design.

When compared to today's bridge standards, Springbrook Bridge would continue to be classified as "functionally obsolete," a distinction it received in 1991.

Less than 100 vehicles

travel the gravel road over the Springbrook Bridge on a daily basis.

The bridge continues to be safe for use. "What we do today preserves Minnesota history for future Minnesotans," said Carolyn Veese-Egvide, grants manager for the Minnesota Historical Society. "It is exciting to see Minnesotans enthusiastic about preserving history."

Besides bridges, Gillham also worked with W.E.E. Greene to construct the Carnegie Library in Luverne.

## Christensen, 52, dies Sunday

By Jason Berghorst

Adrian Middle/High School Principal Tim Christensen, Luverne, died unexpectedly on Sunday.

According to Adrian Superintendent Roger Graff, Christensen had been the middle/high school principal since 2007.

"He immediately established himself as an effective leader and gained the respect of students, staff and parents," Graff said.

"He truly wanted what was best for our school and worked diligently towards that goal."

Prior to his time as principal in Adrian, Christensen was the principal at Russell-Tyler-Ruthton High School for two years.

Christensen, 52, was an elementary classroom teacher in Luverne, where his wife Pam still teaches, before becoming an administrator.

Adrian teacher Cate Koehne said that the staff and students are working together as they grieve the sudden loss of their leader.

"We are letting the students know that it's natural to be sad, but it's also okay to celebrate all the great memories



we have of Mr. C," Koehne said.

"Tim had a huge impact on our school and meant a lot to so many people."

Graff said, "He looked for the best in people and was a true servant-leader."

The Adrian School Board scheduled a special meeting on Tuesday to discuss plans for leadership at the middle/high school for the remainder of the school year.

Memorial services are scheduled for Saturday at Grace Lutheran Church in Luverne.

A full obituary will appear in the Star Herald next week.

## Shrimp facility/from page 1A

The company owns the patented shrimp production technology and has been fine-tuning the process in Balaton (in the former school building) for the past two years.

Ralco plans to begin the first harbor construction in the spring of 2018.

The first fully-integrated shrimp company also plans to construct two shrimp hatcheries to provide enough young shrimp to continuously stock as many as three harbors.

In addition to a harbor, tru Shrimp is looking to Marshall and Lyon county for the processing facility, distribution sales and marketing, and hatchery.

Ziebell said tru Shrimp is an opportunity for people from the Midwest to invest in the Midwest.

"We are building the tru Shrimp company on the idea that the people of the upper Midwest are the first to invest in a harbor and the tru Shrimp company," he said.

"We are not going to the coasts or Wall Street for investment money but invite the agriculture community of the upper Midwest to invest here and allow that

*"The construction of a harbor will be a boom to local communities, and it will also mean good quality and well paid jobs for the long term,"*

— Michael Ziebell, tru Shrimp CEO

money to grow and provide a return to everybody."

The U of M is studying the economic impact of the infrastructure tru Shrimp requires for operation including a genetics center, two hatcheries and processing facilities.

Tru Shrimp is a brand of Ralco, a third-generation family-owned multinational company with distribution in more than 20 countries.

Ralco is a leading global supplier of livestock nutrition, animal health products and crop enhancement technologies that support large segments of the livestock, poultry, aquaculture, and crop production industries.

# Dial-A-Specialist

Your One Stop Guide to Local Businesses

**DR. MICHAEL SMITH**  
 • Men, Women & Children's Health  
 • Custom Orthotics • Kinesiotape • Athletic Care • Massage Therapy • Work & Auto Injuries • Postural Restoration  
 WWW.ROCKCOUNTYCHIROPRACTIC.COM  
 283-2561 • 103 E. MAIN, LUVERNE  
 Monday 7:30 a.m. - 6 p.m. • Tuesday 7:30 a.m. - 3 p.m.  
 Wednesday 7:30 a.m. - 6 p.m. • Thursday 7:30 a.m. - 1 p.m.  
 Friday 7:30 a.m. - 5 p.m.

• Chiropractic

**STAR HERALD**  
**ANNOUNCER**  
**Chantel Connell**  
 Sales Representative  
 117 W. Main, Luverne, MN  
**507-283-2333**  
**Rick Peterson**  
 General Manager

• Advertising

**LUVERNE HEALTH & WELLNESS**  
**Codie Zeutenhorst, D.C., CAC**  
 ✓ Acupuncture ✓ Chiropractic Care  
 ✓ Family Care ✓ Sports Injuries  
 ✓ Kinesiotape ✓ Auto & Work Injuries  
**Acupuncture and Massage Available**  
 Kris Van Der Brink M.T. & Amy Rosales M.T.  
**507.449.4400** www.luvernechiro.com  
 109 S. Freeman Ave. | Luverne, MN

• Chiropractic

**COMRAY COMPUTERS**  
 Computer Repair and System Builder  
**Ray Hansen**  
 1726 140th Ave.,  
 Luverne, MN 56156  
**507-669-2621**  
 comraycom@gmail.com

• Computer

**Rock County EYE CLINIC**  
**507-283-2345**  
 102 N. Freeman Ave.  
 Luverne, Minnesota  
**Dr. Sandra Carman**

• Eye

**Papik MOTORS**  
 Certified USED VEHICLES  
 certified pre-owned  
**(507) 283-9171**  
**(800) 634-7701**  
 www.papik.com  
 Box 536 • 801 West Commerce Road  
 Luverne, MN 56156

• Automotive

**Luverne MINNESOTA City Offices**  
*Love the life!*  
 PO Box 659, Luverne, MN 56156  
 507-449-2388 (24 hour voice mail)  
**www.cityofluverne.org**

• City

**Dakota Land Surveying and Engineering, Inc.**  
**Steven B. Kor**  
 Professional Engineer  
 Registered Land Surveyor  
 2000 W. 42nd Street, Suite B-6  
 Sioux Falls, SD 57105  
 605-334-4882  
 506 Almar  
 Luverne, MN 56156  
 507-283-3803  
 605-334-5745 Fax  
 steve.dis@midconetwork.com

• Land Surveying

## Gevo to produce isobutanol for HCS Holding

Gevo Inc. announced last week that it signed a letter of intent with HCS Holding GmbH (HCS) to supply isooctane under a five-year offtake agreement.

HCS, owned by HIG Capital, manufactures specialty products and solutions in the hydrocarbons sector, operating under the brands Haltermann Carless, ETS Racing Fuels and EOS.

Haltermann Carless, one of the oldest companies in the world of chemistry, is expected to be the direct customer with Gevo under the proposed offtake agreement.

According to the letter of intent, an offtake agreement will have two phases.

In the first phase, HCS will purchase isooctane produced at Gevo's demonstration hydrocarbons plant located in Silsbee, Texas. This first phase is expected to commence in 2017 and would continue until completion of Gevo's future, large-scale commercial hydrocarbon plant, which is likely to be built at Gevo's existing isobutanol production facility located in Luverne.

Gevo expects revenue in the range of \$2 to 3 million per year from the first phase.

In the second phase, HCS will agree to purchase approximately 300,000 to 400,000 gallons of isooctane per year under a five-year offtake agreement.

Gevo would supply this isooctane from its first large-scale commercial hydrocarbons facility, which is likely to be built at Gevo's existing isobutanol production facility located in Luverne.

The letter of intent establishes a selling price that is expected to allow for an appropriate level of return on the capital required to build out Gevo's existing production facility in Luverne.

"Haltermann Carless and HCS will serve as a major and substantial offtaker of Gevo's renewable isooctane from Gevo's demonstration plant and a vital offtaker from Gevo's first commercial hydrocarbon plant," said Henrik Krüpper, chief sales officer and member of the HCS Group GmbH's Executive Committee.

"Gevo and HCS agree to evaluate options to make the partnership most impactful and provide maximum credibility for Gevo's next generation technology."

Dr. Patrick Gruber, Gevo's chief executive officer, said he's pleased to do business with HCS Holding, which he said is world renowned in the industry for high quality performance fuels.

"We expect that they will be an important customer and partner for Gevo," Gruber said.

"When we produce alcohol to jet fuel, we also produce other products such as isooctane and isooctene. We believe that a binding offtake agreement with HCS Holding is one more piece of the puzzle to validate our case for expanding the Luverne plant."

It is the intent of Gevo and HCS to establish further offtake arrangements for other products such as Gevo's alcohol-to-jet fuel (ATJ) and isobutanol. HCS is expected to market and distribute Gevo's products globally on a non-exclusive basis.



## Luverne's previous statewide high temperature broken Friday

A local statewide record-setting temperature for February was surpassed when Redwood Falls reached 58 degrees on Friday, according to Mark Seely, U of M Extension climatologist. Luverne set the previous state record with 57 degrees in 1977. These temperatures are 5 to 9 degrees higher than normal and drew large numbers of snow geese through the area in their migration north. Alex Miller captured this large gathering of snow geese east of Hardwick near the Rock River on Saturday. He said the birds were "extremely hard to get close to with 1,000 pairs of eyes keeping a lookout." (Photo Courtesy of Alex Miller)

## Sharkee's, city sign closing documents/continued from page 1A

After the TIF expires in 25 years, local governments will benefit from taxes paid on the full value of the developed lots.

### Removing asbestos and waste to cost \$28,500

In addition to demolition costs, it will cost the city \$28,500 to remove asbestos and general garbage and from the Sharkee's building. This includes landfill fees, equipment and labor.

"Nobody should be in that basement without masks on or without professional training," said City Administrator John Call. "There's sewage down there ... it's a bad situation."

He said the plan is to rip a hole in a wall so that skidloaders and other equipment can be used in the process of emptying the building.

### City to issue requests for proposals on development

Call said the city's economic development authority will soon circulate a request for proposals asking developers what they would do with the property and how much they're willing to pay for it.

"Once a developer is approved city staff will work on a development agreement that will be a part of the TIF plan for the 4-acre area (both Sharkees and the old Machine shop are in the TIF area)," Call said.

"The city is hoping that a new development can start on this ground during the 2017

*"Nobody should be in that basement without masks on or without professional training. There's sewage down there ... it's a bad situation."*

— City Administrator  
John Call

construction season or at minimum by the 2018 construction season."

Baustian said the city's immediate goal is to demolish the Sharkee's and Mert's Repair buildings and prepare the bare lot for future development.

In particular, city planners have specified that they would prefer to have a general mix of retail and possibly a mixed use residential development.

Baustian said there have been several inquiries, but the city is not in negotiation with a particular developer at this time.

### China Inn building not part of Sharkee's-Mert's TIF

According to Baustian, the China Inn property owner, who lives in Mankato, is not part of the current TIF arrangement with Mert's and Sharkee's.

But he did say that it's possible the China Inn owner may have been approached by a possible developer about the restaurant being part of a new structure. "If anything is happening with China Inn, we're not part of those discussions," Baustian said.

### Sharkee's background

In April of 2014 Sharkee's closed due to health code violations, mainly basement sewage backup, and on May 26, 2014, the building suffered damage from a fire reportedly set by arsonists.

The arson remains under investigation but is essentially a cold case.

Halverson's insurance carrier, Auto Owners, denied payment on the fire claim, alleging that "someone close to" Halverson — a former employee — had been implicated in the arson.

That individual had been questioned and no criminal charges were filed, so Halverson sued his insurance company several months ago, and that legal action was recently settled.

## The Convenings/continued from page 1A

who was interviewed on stage by Wurzer.

"There are ways to get the conversation started," Schroer said.

The Sanford Luverne gift shop will stock the "Go Wish Game," that consists of 36 cards, each describing a certain value relating to what a person finds important.

It's important friends and family know the dying person's wishes.

Tammy Loosbrock, Sanford Luverne's chief executive officer, said she used the cards with her mother with her siblings present during her interview with Wurzer.

"Then we all knew what my mother's values were," she said.

Loosbrock said people talk about the dispersal of assets and belongings but never how their health care should be carried out during their final days.

Sanford Luverne is stepping forward to lead the discussion about health care directives, and healthcare systems can help with end-of-life wishes.

No one may know the importance of lessening the stress, anxiety and depression that surrounds a life-threatening illness better than Luverne's Brenda Winter, who is living with cancer.

Wurzer asked Winter about how she copes with the range of emotions that facing death brings forth.

Winter said she likened cancer treatments to being stalked by a lion. During the heat of the battle she is strong and fearless. It was between treatments, when her defenses were down, that prayer and the support from friends, family and community bolstered the recovery.

Now, as she faces the possibility of more treatments, Winter said cancer is more than a physical battle.

"It's in my head if not in my body," she said.

She now focuses on activities that sooth the mind.

Humor and a new perspective have helped Winter reflect on her life with cancer. Some of those thoughts and struggles she has shared in her monthly Star Herald columns.

"When I write I have to be funny," Winter said.

As a listener of the Wurzer-Kramer interviews, Winter agreed with Kramer's statement of "That's OK."

It's OK that she cannot do all the physical activities be-

fore the diagnosis. It's OK she relies others for help. And it's OK, Winter said, to just enjoy the day playing with her toddler granddaughters.

"Bruce would have loved that we talked about living fully," Wurzer said.

Luverne's American Reformed Church praise team, Abide, sang the Beatles song, "Ob-La-Di, Ob-La-Da," Thursday night. Musicians included Leah Van Meeteren, Cory Grimm, Joe Dorhout, Jack Leslie and Sue Sandbulte.

Music was something both Kramer and Winter found soothing as they experienced grief, anger and the acceptance of help after their life-altering medical diagnoses.

"Music was how Bruce got through the tough times," Wurzer said.

A re-convening is currently being planned for this fall, focusing on the "rippling effect" the end-of-life talks The Convenings in Luverne generated.

## Annual LIFT meeting Feb. 27

### By Lori Sorenson

The annual meeting of LIFT (Luverne Initiatives For Tomorrow) will be at 5:30 p.m. Monday, Feb. 27, in the Palace Theatre.

LIFT was established in 2010 as collaborations of public and private sectors brainstorming about how to improve the Luverne community.

The annual meetings are chance to celebrate accomplishments and review goals yet to be reached.

The 2017 meeting will do the same, touching on highlights in the following areas:

- Medical
- Industrial
- Agriculture
- Retail
- Education
- Luverne's 150<sup>th</sup> Celebration

The meeting will also be a chance to learn about Roger Brooks and his upcoming one-week assessment of Luverne.

"We want people to know that he's coming," said Luverne Chamber Director Jane Wildung Lanphere. "We want people to know what a

*"It's a significant investment. We're going to get a project plan out of it, and it will help us determine if we have a product that we can sell as a community destination."*

— Jane Wildung Lanphere

community assessment is."


She said Brooks' services cost \$25,000, and some of those costs are covered by grants.

"It's a significant investment," Lanphere said. "We're going to get a project plan out of it, and it will help us determine if we have a product that we can sell as a community destination."

The Palace Theatre will provide popcorn and beverages for the event.

Call the Luverne Area Chamber Office, 283-4061, for details.

**Happy 85<sup>th</sup> Birthday**



**Dolores Dreesen**  
February 27

Greetings may be sent to:  
505 E. Luverne  
Luverne, MN 56156

**YOU'RE INVITED**

Please Join Us For  
**Coffee at the Exchange**  
9:00 am - 11:00 am Exchange State Bank  
310 Gabrielson Rd • Luverne, MN

**2017 Coffee at the Exchange Schedule: Coffee & goodies served.**  
**Tuesday, February 28, 2017**

MARK YOUR CALENDAR & BRING YOUR FRIENDS.  
ENJOY REFRESHMENTS & FELLOWSHIP.



**Exchange**  
STATE BANK  
Local. Dependable. Strong

Member  
**FDIC**

## I'm not planning to die (soon) but I can plan today how I'd like to die in the end

My mom and I attended "The Convenings" Thursday in Luverne, and after covering the topic in the Star Herald, I was looking forward to the event.



### ON SECOND THOUGHT

By Lori Sorenson, editor

Cathy Wurzer's discussion with local experts shed light on what it means to "die well," and the scenarios are all so thought-provoking.

What I wasn't expecting was audience participation and the resulting introspection that made me squirm.

"What does quality of life mean to you today and at the end of life?" was one of the questions.

My thoughts turned to Mom, who has brain cancer. The tumor has been removed and she's symptom-free, but this type of cancer always returns.

Quality of life for Mom and our family today means that life and its little blessings mean more in the face of terminal illness.

In other words, quality of life means living life to the fullest and being physically able to spend meaningful time with loved ones.

With a brain cancer diagnosis, Mom said quality of life at the end of life would be to maintain conscious human connections. "I'm terrified that my brain will be gone, but my healthy body will go on living."

It's a valid fear.

But it's not our choice.

We can, however, choose end of life medical treatments.

That's where the mission of The Convenings applies. We're urged to file an advanced care directive with our doctors and to be clear with our families about our end of life wishes.

Mom's actually more on the ball than most people. Her wishes are clearly spelled out and filed along with her funeral plans, legal documents and

other "death box" items, as she calls them.

I'm proud of her for this, and grateful, and I told her so Thursday night.

She then turned to me and asked if I had an advanced care directive.

I searched for excuses. "This whole time I've been thinking about your end of life," I told her. "I'm not planning to die."

More accurately, I don't have a plan in place for dying well.

... which is the point of The Convenings.

"I haven't really thought much about it, even though I know I should," I confessed.

She let me off the hook.

"Oh honey, you're too busy living," she said.

It's true. And I'm blessed to have that freedom — to live life without a terminal illness.

But I could die in a car crash tomorrow.

Tomorrow isn't guaranteed, so we should be prepared. For the sake of our loved ones.

Mom took the quality of life question another step further. "I wouldn't wish my tumor away," she said. "I don't wish it never happened."

Tears welled when she said the tumor has added quality to her life; it's allowed her to live life more richly. "Every day is a gift, and that's a wonderful way to live."

And that, my friends, is quality living. And it's what helps us plan for dying well.

For those who weren't able to attend, the website, [www.theconvenings.org](http://www.theconvenings.org) makes it easy to catch up.

## Let's show our support for FFA by wearing blue tomorrow

On Friday let's blanket Rock County in blue as we celebrate National FFA Week with our local high school chapters.

Agriculture is part of our daily lives—from the food we eat to the clothes we wear.

This week, more than 649,000 FFA members celebrated the role agriculture plays in our lives while sharing the message of agricultural education as part of National FFA Week, Feb. 18-25.

National FFA Week is a time for chapters to host a variety of activities to raise awareness about the role the National FFA Organization plays in the development of agriculture's future leaders and the importance of agricultural education.

National FFA Week always runs Saturday to Saturday and encompasses Feb. 22, George Washington's birthday.

The National FFA Board of Directors designated the weeklong tradition, which began in 1948, in recognition of Washington's legacy as an agriculturist and farmer.

A group of young farmers founded FFA in 1928, teaching generations that agriculture is more than planting and harvesting — it involves science, business and more.

The organization's mission is

### STAR HERALD EDITORIAL

National FFA Week • Feb. 18-25, 2017



to prepare future generations for the challenges of feeding a growing population.

Locally, Rock County is represented by a growing membership of students who are exploring various careers in agriculture while learning important leadership and organizational skills.

See page 8A for a tribute to these local FFA members.

Rock County has several generations involved in agriculture.

Today FFA continues to help the next generation rise up to meet new agricultural challenges by helping members develop their own unique

talents and explore their interests in a broad range of career pathways.

Members go on to enjoy careers as biologists, chemists, veterinarians, engineers and entrepreneurs.

Chapters use National FFA Week to share agriculture with their fellow students as well as their communities.

Chapters also give back to their communities through service projects and recruit students to become FFA members.

Friday is "Wear Blue Day." We should all don blue shirts in support of an organization whose impact can be witnessed locally as well as nationwide.



## Avoid distractions while driving to prevent crashes

**Question:** My husband was driving while I was a passenger, and an elderly man driving ran a stop sign and cut in front of us. My husband honked his horn to alert the driver prior to him attempting to come into our lane. However, he did not appear to hear us. Fortunately, we were able to avoid being hit, as my husband was an alert driver and saw this coming. Is this something we can report?

**Answer:** This situation is a good reminder of the importance of avoiding all distractions while behind the wheel, as you might see a potential hazard or crash before it happens. Your husband was able to avoid a crash because he was attentive.

If you witness any dangerous driving conduct, call law enforcement and report the incident as soon as possible. Report your location, direction of travel, the driving conduct you are seeing and attempt to get the license plate number. We will do our best to stop that vehicle before anyone is injured. Law enforcement will talk



### ASK A TROOPER

By Sgt. Troy Christianson, Minnesota State Patrol

to the driver to determine if they are/were impaired, distracted, fatigued, the reason for their driving conduct as well as if they are valid to drive.

Law enforcement officers can send a request for review to the Minnesota Department of Public Safety Driver and Vehicle Services (DPS-DVS) if they identify a driver who they believe should retest or be checked by a doctor. DPS-DVS can allow the person to continue to drive with increased limitations such as roadway speed, daylight only, certain times of the day or within a set limit of miles from his

or her home. They can also require follow-up doctor's exams.

Avoiding distractions while behind the wheel will increase your chances of avoiding a crash and could save your life. Take driving seriously each time you get behind the wheel.

*If you have any questions concerning traffic related laws or issues in Minnesota, send your questions to Trp. Troy Christianson - Minnesota State Patrol at 2900 48th Street NW, Rochester MN 55901-5848. or reach him at, Troy.Christianson@state.mn.us.*

## Gangestad: Do your homework before voting in the 2018 election

**To the Editor:**

It is refreshing to see that the Grand Old Party (GOP) is making Minnesota's First Congressional District a race worthy of backing, with the goal of replacing incumbent Democrat Tim Walz in 2018.

In his more than 10 years in Congress, the voters in the First Congressional District have been told what they want to hear by Walz when he comes home to stump. However, if you research his voting record, you will find that he does not, in any way shape or form represent the wishes of the majority of his constituents. He has voted for Obama initiatives like amnesty for illegals, support of sanctuary cities, implanting refugees in Minnesota communities from countries with known anti-American sentiment or direct radical Islamic beliefs with little or no vetting, Obamacare, Environmental Protection Agency regulations that hurt all Minnesotans and late-term abortion on demand.

Jim Hagedorn was outspent last cycle 4-1 and yet was only narrowly

defeated by Walz in one of the closest races in Minnesota history, 50.3% - 49.6%. While a certain amount of money is required to run a campaign, the more important issue is knowing who your candidate really is and showing up to the polls to support them.

While we don't have a voting record for Hagedorn to scrutinize yet, we certainly have that option for Tim Walz. The voters of the First Congressional District need to start actively participating in government. You may not take an interest in government, but rest assured, government takes an interest in you. This district is predominantly conservative. If you truly hold those beliefs, do your due diligence and look up the voting record of Walz and ask yourself if he is someone you should be supporting.

Elected officials, at every level of government, work for you. Private sector companies don't keep workers that don't do their job. Why do we continue to let elected officials keep theirs?

**Mike Gangestad**  
Luverne

E-mail: [editor@star-herald.com](mailto:editor@star-herald.com) Web site: [star-herald.com](http://star-herald.com)  
Phone: 507-283-2333 Fax: 507-283-2335

Published Thursdays by Tollefson Enterprises, POSTMASTER:  
Send address changes to 117 West Main, P.O. Box 837, Luverne,  
MN 56156. Periodicals postage paid at Luverne, Permit #33 and at  
additional mailing offices.

**General manager:** Rick Peterson  
**Office manager:** Deb Lusty  
**Circulation manager:** Jennifer Kor  
**Advertising:** Chantel Connell  
**Production manager:** Abbe Kolar  
**Production:** Amanda McDonald

**News staff:**  
Lori Sorenson, editor  
Mavis Fodness, reporter  
John Rittenhouse, sports editor  
Esther Frakes, copy editor  
Joseph Stearns, composition

Rock County  
**STAR HERALD**  
Rock County's newspaper since 1873

(ISSN 0889-888X)  
SUBSCRIPTION RATES

\$72 per year in Rock County; \$89 per year all other areas. Single copies \$1.25

Entire contents copyrighted by  
Tollefson Publishing Roger Tollefson, publisher

The *Star Herald* encourages letters to the editor expressing the opinions of readers and intends to print all letters. Letters not meeting the guidelines will not be printed. The *Star Herald* will verify the authenticity of all letters. Letters must have the name of the writer, a signature and address.

Unsigned letters will not be considered. The *Star Herald* will edit for grammar, spelling and clarity. Any letters containing offensive language, libelous or slanderous material, or misleading or false information will be rewritten before being published. The *Star Herald* will not publish letters written with the sole intent to advertise or serve as a thank-you. Letters with more than 300 words may be edited. The deadline for letters is Monday 10 a.m. They may be delivered or mailed to the editor, *Rock County Star Herald*, P.O. Box 837, 117 W. Main St., Luverne, Minn. 56156.

## ON THE RECORD

### Dispatch report

**Feb. 10**  
 •Deputy stopped to check possible abandoned vehicle. Vehicle had expired paper plates. Subject stated she is waiting for title to get it registered. Subject advised she had 24 hours to get vehicle off street.

•City called to report stop light at Main Street and Cedar Street will be off for repair for approximately one hour. Temporary four-way stop in place.

•Deputy reported male party knocking on door at location. Thought it was suspicious.

•Complainant reported identity theft.

•Complainant reported vehicle ran bus stop arm at location.

•Complainant reported her ex, who is from Sioux Falls, has not met her to pick up their child. He was supposed to be there at 5 p.m.

•Complainant reported her daughter was violated tonight.

•Complainant reported four shots fired around the area of the vacant house to the south.

•Complainant reported someone hit her daughter's head on the ground.

**Feb. 11**

•Complainant reported a bunch of kids have a fire going and are loud and drunk.

•Complainant reported seeing a chair fall out of the bed of a pickup. Chair not blocking traffic. Caller gave number listed on side of pickup. Unable to contact.

•Complainant reported a woman selling without a license at Computer Clinic. Complainant reported woman became belligerent and was asked to leave. Woman left in Honda sedan. Deputy advised complainant if woman returns to call back. Deputy spoke with Jeremy at Slayton Police Department regarding suspect and was advised that behavior is typical to suspect.

**Feb. 12**

•Complainant called for deer possession tag.

•Complainant reports three-year-old son having difficulty breathing. Advised to turn around and go to Sanford Luverne.

•Complainant reported a red and white four-wheeler driving on the ball field.

•Complainant reported two girls on a UTV driving crazy around Beaver Creek and on the baseball field.

•Received 911 complainant calling back numbers that were dialed from her son's missing cellphone. Complainant advised she spoke to dispatch about it this morning.

•Complainant reported lights on at location.

•Deputy conducted check on abandoned vehicle. Vehicle not blocking.

**Feb. 13**

•Complainant reported a predatory offender registration change.

•Complainant reported burglary at location.

•Complainant reported some kids are harassing her child.

•Complainant reported her car is being towed and wants a deputy for a report in case there is any damage.

•Reported out for drill.

•Complainant lost her phone. Thinks it was at Shopko or Bomgaars. May have been picked up by a little boy at Shopko. Black Samsung Galaxy s4.

**Feb. 14**

•Deputy reported out with a vehicle that just came out of an abandoned acreage.

•Complainant reported data breach on home computer about a week ago. Complainant reported that she had already notified the credit agency and an alert has been put in place. Complainant was advised to notify her banks about what happened.

•Information only: Complainant reported that his unlocked vehicle had been gone through last night. Contents in the center console had been disturbed. Nothing missing that he noticed.

•Complainant reported erratic driving. Transferred to patrol.

•Complainant requested a deputy for her child who is stuck in chair.

•Complainant reported a tanker with the lights flickering off an on. Transferred to patrol. Called back. Turned onto County Road 1.

**Feb. 15**

•Deputy radioed in for an incoming call report for two citations at location.

•Complainant reported the theft of a license plate.

•Deputy reported a yield sign cracked off at location. Called Lloyd DeBoer, from the city of Beaver Creek, for repairs.

•Complainant reported his mailbox was hit by unknown item. It has red paint on it. For our information only.

•Complainant reported a car parked in the lot with parking lights on. She doesn't think they are a guest there. Would like a deputy to drive through.

**Feb. 16**

•Complainant reported they are going to be moving in March and will have a trailer parked in front of their residence for 5-7 days. Will call when dates are confirmed. Cleared with the city.

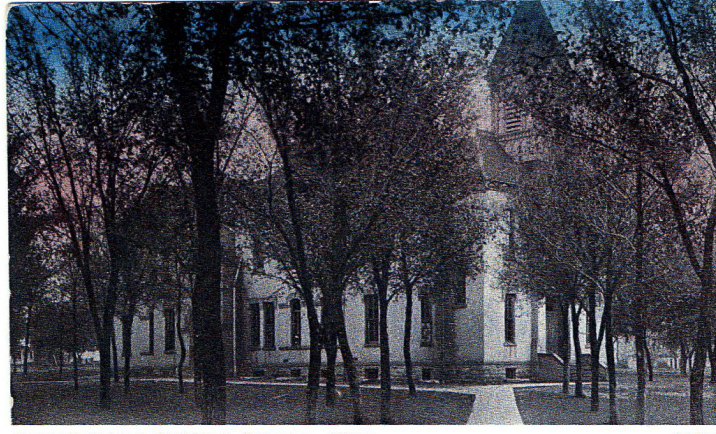
•Complainant reported possible fraud call. Dispatch told complainant to notify her bank to be on the lookout for possible fraudulent charges.

•Complainant reported erratic driver at location. Exited and headed north on Highway 75.

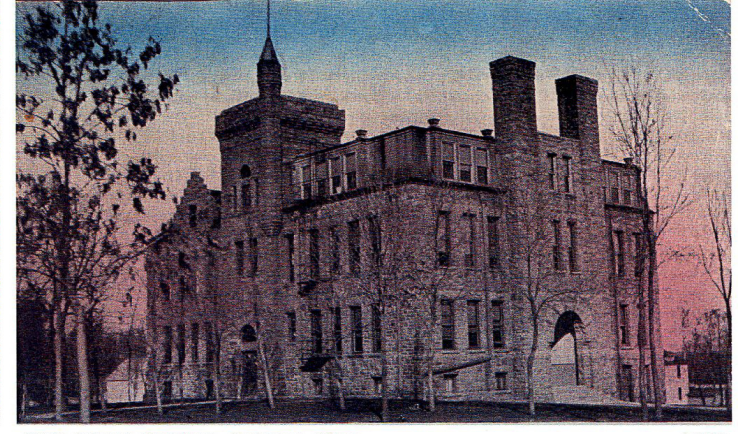
•Complainant reported a white van parked across the street is playing very loud music. Van occupied with two adult males.

•Complainant reported subject leaving Teal's Market appeared drunk and smelled of alcohol. G&S contacted for tow.

In addition, officers responded to 2 motor vehicle accidents, 1 vehicle in ditch, 5 transports, 1 funeral escort, 39 traffic stops, 10 ambulance runs, 3 paper services, 8 animal complaints, 1 false alarm, 5 911 hang-ups, 2 fingerprint requests, 7 log/alarm sheets, 3 drug court test, 7 purchase/carry permits and 27 burn permits.



Central School Building, Luverne, Minn. 1882



High School Building, Luverne, Minn. 1895



High School Building, Luverne, Minn. 1925



High School Building, Luverne, Minn. 1956

## Luverne 150 years/history of schools/continued from page 1A

nity issued bonds in the amount of \$200 for a school building.

In 1872 an additional \$500 was raised for the school building, and the school term was extended to six months. A wooden two-story structure was built in 1873 with the county offices occupying the second floor.

A fire in December 1875 destroyed this structure, but immediately the community passed a bond issue, not to exceed \$1,000, to build a brick building. In 1880 the school was divided into three departments: higher, intermediate, and primary. Following this division, another bond issue was passed in 1882 for the site of the new school. The total bond issue was \$1,100. In 1883 an addition was built which included a new heating system.

June of 1888 marked the first graduating class of Luverne. There were eight graduates. School continued until 1894 when the school purchased a lot for a new

school at a cost of \$1,750. The location was the former Fledgling Field, now the current home of Dingmann Funeral Home and Cremation Services, on Highway 75. In 1895 the school was completed at the Fledgling Field location, including electric lights.

In the 20th century the school program began to expand with the letting of bids for a new building that is now the City Centre Apartments. The bids for this new building totaled \$230,000.

Throughout the history of education in Luverne, the citizens have been responsive to the educational needs of its citizens.

In 1954 bonds were issued for a new junior/senior high school and the remodeling of the high school into an elementary school. The total cost was \$1,520,000.

\$453,000.

In 1974 bonds in the amount of \$370,000 were issued for an industrial arts, library addition and a second small gymnasium. The school continued in this format until the present day.

In the spring of 1996, the district purchased land for the construction of the new elementary school. In December 1996, voters approved a bond issue for the new elementary school to be attached to the current middle/high school. In December 1998, students moved into their new classrooms.

In addition to solid academic surroundings, the district now boasts a state-of-the-art three-station gymnasium that has already become a popular location for regional tournaments.

Also, improvements in recent years were made to the existing football, track and field complex. The tennis courts were improved and expanded and new baseball diamonds on the west of the district campus were

used for the first time this spring.

Today, the student body of Luverne Public Schools is comprised of nearly 1,200 students who represent a wide variety of needs and talents.

Preschool learning opportunities continue to expand, and all-day kindergarten is now standard.

Luverne High School students consistently lead the way in academic achievement, scoring above the national average in ACT tests and showing the lowest dropout rate at less than 3 percent per year.

The district now offers access to increased college credits, up to a full year, and pre-engineering credits in the graphics department.

In addition to athletics, middle and high school students also have the chance to participate in speech, debate, drama, newspaper, year book, band, student council, choir, math league, science fair, German Club, Spanish Club, FFA, FLA, BPA and mock trial.

## Selective Service/continued from page 1A

If the draft is initiated, however, the local draft board would be called on to determine which individuals, if any, should be deferred or exempted from service.

After the initial five hours of training, draft board members complete two hours of training yearly.

The training involves the simulation of deferment cases and the judgment process the board should follow.

Anyone interested in serving on the local draft board must apply for the voluntary position.

Board appointments are for 20 years.

Board members must be

age 18 or older, U.S. citizens and not members of law enforcement or military. Men or women can serve on the board.

To request an application go to [www.sss.gov/volunteers/board-member-program](http://www.sss.gov/volunteers/board-member-program).

Applications can take up to six months or longer for approval.

Call  
**283-2333**  
 to advertise in  
 the Star Herald



**283-9171 | PAPIK.COM**

---








**2017 GMC Acadia SLT-1**

M.S.R.P. **\$47,115**

Stock #180769G

All Terrain



**\$6,000 OFF**

*Papik Price \$41,745*

**2017 Chevrolet Silverado LT**

M.S.R.P. **\$53,745**

Stock #100598C

Z71 Rally 2



**\$12,000 OFF**

*Papik Price \$41,745*

**2017 GMC Sierra SLT**

M.S.R.P. **\$51,960**

Stock #298679G



**\$10,000 OFF**

*Papik Price \$41,960*

**2017 GMC Terrain SLE-2**

M.S.R.P. **\$32,520**

Stock #203799G



**\$6,000 OFF**

*Papik Price \$26,520*

# Thier comes out on top at local Geography Bee

By Mavis Fodness

Brynn Thier, a Luverne Middle School eighth-grader, knows the value of never giving up.

Her perseverance garnered the title of LMS' 2017 Geography Bee champion.

According to teacher April Wallace, Thier has made the final rounds each of the past three years.

This year's final round, however, was memorable.

"She beat out a fellow classmate (Jayson Rops) after five tiebreaker rounds to win the championship," Wallace said.

In order to get the tiebreaker, Thier and the other 300 middle-schoolers completed two qualifying rounds.

The first round involved completing a 50-question paper test. The second round (40 questions) narrowed the field to 45 finalists.

Thier, daughter of Jon and Nikki McLendon of Luverne, said her geography knowledge comes from traveling and a natural curiosity for people and places.

She said some class topics have led to additional research and reading after school.

Then arguments between friends were often settled by looking up the answers to prove who was right.

For the local Geography Bee Thier said she drew on a couple more tactics as she completed the winning written test.

"It wasn't anything I tried super hard for," she admitted. "There were times I guessed."

Thier has completed the on-line test to qualify for the state Geography Bee competition. One winner from Minnesota will travel to Washington, D.C., for the National Geography Bee.

Results are expected next month.



Submitted Photo

Luverne Middle School eighth-grader Brynn Thier was named the school's 2017 Geography Bee champion. Thier completed a five-question tiebreaker to qualify for the state tournament.

## CELEBRATIONS

### Card Shower

**Dolores Dreesen** will celebrate her 85<sup>th</sup> birthday on Monday, Feb. 27. Greetings may be sent to her at 505 E. Luverne St., Luverne, MN 56156.

## SENIOR MENU

### Monday, Feb. 27:

Creamy vegetable soup, turkey sandwich, fruit cup, crackers, cookie.

Program: Pinochle; Pastor Moser.

**Tuesday, Feb. 28:** Swedish meatballs, mashed potatoes, corn, bread, ice cream.

Program: Two-buck Tuesday sponsored by Exchange State Bank.

**Wednesday, March 1:** Lemon pepper fish, baked potato, creamed peas, dinner roll, pudding dessert.

### Thursday, March 2:

Chicken hotdish, tropical fruit, lettuce with dressing.

Program: Pastor Klatt from St. John Church.

**Friday, March 3:** Liver or pepper steak, scalloped potatoes, carrots, bread, fruit crisp.

Senior Dining offers well-balanced and affordable meals in a community atmosphere.

Bring a friend or make new ones.

Call 283-9846 to make dining reservations or for home-delivered meals.

## SCHOOL NEWS

### University of Nebraska Lincoln

Cole Bosch, Luverne, was named to the dean's list at the University of Nebraska-Lincoln for the Fall 2016 semester. Bosch is a freshman majoring in biological sciences.

To make the dean's list, students must earn a 3.75 GPA with 12 graded credits.

## Hills Community Theatre performs in March

Dinner theater and 'play only' tickets now available

The Hills Community Theater will be presenting "A Decimal Point of View," a comedy written and directed by Nancy

Kraayenhof, March 9,10,11, 16,17 and 18, at the American Legion in Hills.

To reserve tickets call 507-962-3791 or 605-941-5371. Dinner theater seats are \$25 each

Doors open at 6:15 p.m. with buffet dinner by Tony's Catering at 6:30 p.m. The show starts at 7:30 p.m.

"Play only" seating for \$15 begins at 7:15 p.m. for each show on a limited first come-first serve basis.

## COMMUNITY EDUCATION

The residents at the Mary Jane Brown Home enjoy doing crafts on Saturday mornings with the students. **At Wood Creations on March 4**, create airplanes, a bow and arrow and more. Fee is \$13.

Strengthen your muscles, increase your flexibility with six weeks of Yoga. New 6-week groups begin **March 8 and April 19**. Wednesdays at 4:30. Fee is \$42.

Save money by reducing your vehicle insurance when you attend the **Defensive Driving class** for participants that are 55 years of age or older. The beginning 8 hour class is offered two times a year. The spring class will be held on **Saturday, March 11**. Fee is \$25. The certificate you receive after class will lower your insurance for 3 years.

Get your winter wiggles out at **Family Gym time on Monday, March 13**. No fee, but registration required for kids 0-5 years and their families.

Kids in grades K-6 will learn new ways to frost cupcakes at **Frosting Frenzy Kids in the Kitchen Class on March 13**. You will take home cupcakes to share. Fee is \$18.

Mimic famous artists by painting moods, with-out brushes and a mural at **Painting for grades 2-3 on March 16**.



Lori Sorenson photos/0223 luverne street music at carnegie

## 'Live at the Carnegie'

Luverne Street Music students performed their February "Live at the Carnegie" event titled "Sweetheart Month" Thursday night, Feb. 16, in the Carnegie Cultural Center in Luverne. Pictured here, Holden Jepperson performs a number on his ukulele. The Carnegie main floor was filled with musicians and audience members who enjoyed 26 performances, most of them on the piano, but others on ukulele, violin, and trumpet.

## 1925: Nelson's variety store opens for business

The following appeared in the Rock County Herald on September 11, 1925:

### NELSON BROTHERS TO OPEN VARIETY STORE TOMORROW

New Annex to Department Store to Open With New and Enlarged Stock of Low Priced Merchandise.

S. B. Nelson, president of Nelson Bros., Inc., this week announced that the store formerly occupied by the Nolterieke Variety stock will be reopened tomorrow under the name of Nelson's Five and Ten Cent and Variety store.

The store building is owned by Nelson Bros. and since purchasing the stock and lease a few months ago, the place has been closed.



## BITS BY BETTY

By Betty Mann, president  
Rock County Historical Society

While it will be open for business beginning with tomorrow, the formal opening will be held next Thursday, Friday and Saturday, September 17, 18 and 19.

In connection with this announcement, Mr. Nelson states that a complete new stock is being installed and that in the future this place of business will endeavor to cater to the needs of the public with everything imaginable in the way of five and ten cent articles and other merchandise usu-

ally found in a variety store. The new store will be under the personal charge of Albert Remme, who will be assisted by Miss Irene Lamp and Miss Sina Shelby.

Donations to the Rock County Historical Society can be sent to the Rock County Historical Society, 312 E. Main Street, Luverne, MN 56156.

Mann welcomes correspondence sent to mannmade@iwi.net.



Submitted photo

## 'Souper Bowl of Caring'

Senior High Presbyterian Youth Group members recently collected canned soup for their annual "Souper Bowl of Caring." The collection is in addition to their regular church food ministry. Pictured are (from left) Mark Robinson, Gabbi Miller, McCall Stegenga, Lindsey Roemeling, Carissa Cunningham, Kami Sawtell, Ariel DeBeer, Samantha Pierce and Will Stegenga

**OBITUARY**

**Mildred Heikes**

Mildred Heikes, 86, Luverne, died Tuesday, Feb. 14, 2017, at the Parkview Manor in Ellsworth.



A funeral was Saturday, Feb. 18, 2017, at the Dingmann Funeral Home in Luverne. Burial followed at the Grand Prairie Cemetery near Ellsworth.

Mildred Baal was born March 27, 1930, in Nobles County, to Harvey and Etta (Lyons) Baal. She attended country school in Nobles County.

On Sept. 14, 1948, Mildred married Lawrence Heikes in Ellsworth. After their marriage, they farmed northeast of Ellsworth until 1955 when they began farming northeast of Luverne. They moved to a farm southeast of Magnolia in 1957, and in May of 1999 they moved to Luverne. Mildred helped on the farm and also was a cook at the Magnolia Steak House.

She was a member of the Zion Presbyterian Church in Ellsworth from 1948 to 1992 when she transferred membership to the First Presbyterian Church in Luverne. She was a member of the Luverne Senior Citizens Center where she served on the board. She enjoyed gardening and helping on the farm.

Mildred is survived by three children, Karen (Joe) Loosbrock, Magnolia; Larry (Aloise) Heikes, Ellsworth; Lyle Heikes, St. Paul; six grandchildren; ten great-grandchildren; four step-grandchildren; sister, Lois Stahl, Sibley, Iowa; and a stepdaughter, Ruth (Ervis) Schilling, Adrian.

She was preceded in death by her parents; and husband Lawrence.

Arrangements were by Dingmann Funeral Home of Luverne, [www.dingmannandsons.com](http://www.dingmannandsons.com).

(0223F)

**Gordon Jensen**

Gordon Lars Jensen, 85, Humboldt, South Dakota, died Saturday, Feb. 18, 2017, in Humboldt.



Funeral Services will be held at 10 a.m. Saturday, Feb. 25, at St. Ann's Catholic Church in Humboldt, South Dakota. The family will be present for visitation from 5 to 7 p.m. with the wake service and rosary beginning at 7 p.m. on Friday, Feb. 24, also at St. Ann's.

Gordon Lars Jensen, son of Lars and Benna (Mortensen) Jensen, was born on March 24, 1931, in Bassano, Alberta, Canada. Gordon was united in marriage with Sophie Lillian Tkacik on Sept. 1, 1954, in Leedale, Alberta, Canada. The couple moved to Billings, Montana with their six children in 1967. They moved to the Humboldt, South Dakota area in 1972. Gordon and Sophie became citizens of The United States in 1975.

Gordon's life was his family and the family business, N-Rich Plant Food Inc. He was active in the business every day, starting with morning coffee and rolling dice. He also enjoyed spending time with his family and friends playing a rousing game of cards, dice, cribbage, marbles, and especially the old country game of HOLA.

Grateful for having shared his life are his wife of 62 years, Sophie Lillian (Tkacik) Jensen, children Deborah (Verlyn) Letsche of Humboldt, Karen (Mark)

Willers of Beaver Creek, Daniel (Jodi) Jensen of Humboldt, Christopher (Cheryl) Jensen of Colorado Springs, Colorado, Rita Jensen Herreid of Sioux Falls, and Richard (Lori) Jensen of Humboldt, his grandchildren, Brad (Cate) Willers, Kayla (Kevin) Jackson, Matthew Jensen, Patricia (Matt Doyle) Willers, Kyle (Laura) Jensen, Nicole (Kyle) Woodley, Kimberly (fiance Michael) Graff, Brooke Jensen, Natalie (fiance Zach) Willers, Michael (fiance Rachel) Jensen, Whitney (fiance Austin) Graff, Eric Meinke, Brendan Jensen; his great grandchildren, Payton and Marcus Jensen, Hannah, Emmett, and Felicity Woodley, Lillian and Owen Willers; and sister Lois Anderson of Edmonton, Alberta, Canada. Gordon is also survived by many nieces and nephews in the U.S. and Canada.

Gordon was preceded in death by his parents and three brothers, Kenneth, Raymond and his wife, Lorna, and Ivan and his wife, Joyce, and his sister Lois's husband Archie Anderson. Gordon was also preceded in death by many close relatives and friends.

Gordon was a member of St. Ann's Catholic Church of Humboldt, and the Knights of Columbus.

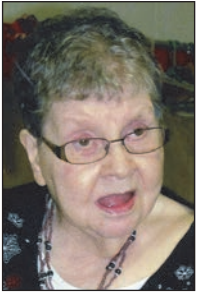
Memorials may be sent to The Humboldt Volunteer Fire Department and EMT or the Knights of Columbus.

Arrangements were by Miller Funeral Home of Sioux Falls, South Dakota, [www.millerfh.com](http://www.millerfh.com).

(0223 V)

**Myrna Nelson**

Myrna Luetette Nelson, 76, Luverne, died Monday, Feb. 20, 2017, at her home.



A funeral will be at Bethany Lutheran Church in Luverne at 2 p.m. Thursday, Feb. 23. Visitation will be from 5 to 8 p.m. Wednesday, Feb. 22, at the Dingmann Funeral Home in Luverne and also one hour prior to the Thursday service at the church.

Myrna was born April 14, 1940, to Annabelle DeBooy, at home in Magnolia. Myrna was adopted by Harry Nelson on Aug. 11, 1948. She resided at her home until she broke her leg and entered Parkview Manor Nursing Home in Ellsworth for rehabilitation. Following rehab, she entered a group home in Luverne and later began working at Rock County Opportunities for many years.

After Myrna retired, she continued to live in the group

home close to the hospital in Luverne. Myrna took ill on Sunday, Feb. 12, and entered into hospice care at the group home on Monday, Feb. 13.

She was a member of Bethany Lutheran Church in Luverne, the Friendship Circle and Peoples First. Myrna enjoyed watching TV, family holidays and outings with her friends and staff at the group home. She loved food and was always happy with anything you would set in front of her. She loved attending church and could sing the old hymns with the best of them.

Myrna is survived by her brother, Daniel (Debra) Nelson, Magnolia, and sister-in-law, Carol Nelson, Luverne. She was preceded in death by her parents; and her oldest brother, Norman Nelson.

Arrangements were by Dingmann Funeral Home of Luverne, [www.dingmannandsons.com](http://www.dingmannandsons.com).

(0223F)

**Luverne speech adds runner-up finish to season**

Luverne Cardinal speakers participated in the Redwood Valley Speech Invitational on Saturday, Feb. 18.

They brought home the second-place large team trophy after placing second as a team last week in Pipestone.

The host schools look for a natural break in number of entries (not size of school district) to determine large versus small team.

At Redwood that natural break came at 20+ entries. Luverne had 32 entries. The invitational hosted 22 schools with a total of 270 entries.

Students earned medals for placing first- through sixth-place. Blue ribbons are given one place out of medals (representing seventh place) and red ribbons are two places out of medals (eighth place).

Individual honors went to the following students according to category:

Creative expression: Jacinda Hustoft and Cameron Wessels, blue ribbons.

Discussion: Samantha Ykema, first, and Knute Oldre, second.

Dramatic interpretation: Brianna Jonas, blue ribbon and Megan Rogers, fifth.

Extemporaneous read-



The Luverne Cardinal Speech Team finished second Feb. 18 at the Redwood Valley Speech Invitational. Receiving individual honors are (front, from left) Xavier Carbonneau, Seno Chanthalangsy, Megan Rogers, Sage VerSteege, Samantha Ykema, Julia Ferguson, (second row) Adriana Gonzalez, Brianna Jonas, Courtney Wendland, Shane Berning, Dylan Thorson, Knute Oldre (back) Jacinda Hustoft, Jonah Louwagie, Chance Tunnissen and Cameron Wessels.

ing: Courtney Wendland, second.  
Extemporaneous speaking: Dylan Thorson, first, Shane Berning, third, Chance Tunnissen, fourth.  
Humorous interpreta-

tion: Seno Chanthalangsy, red ribbon.  
Poetry: Adriana Gonzalez, blue ribbon.  
Prose: Sage VerSteege, third.  
Storytelling: Jonah Lou-

wagie, blue ribbon; Xavier Carbonneau, sixth, and Julia Ferguson, fourth.  
The Cardinals host their first junior high meet today and travel to Adrian on Saturday for a varsity meet.

**REMEMBER WHEN**

**10 years ago (2007)**

If it hadn't been for Kathy Jarchow's 5 p.m. discovery of water in her store basement Friday, a major water main break downtown may not have been discovered until Saturday morning. ... She estimated she and her husband John removed about 200 gallons from the basement floor.

The water didn't damage furniture or valuables, but they did incur cleanup costs.

When city crews couldn't immediately locate the source of the water main break, they called a Twin Cities locator who arrived around midnight.

**25 years ago (1992)**

Heavy, wet snow on the roof has made leaks easy to find at the Luverne Elementary School this week.

"It may be a case of when it rains, ... but it's poured down there" Superintendent Norm Miller told the Luverne School Board Tuesday.

The Board swiftly selected to reroof the east half of the building and the section covering boiler room to the north. No additional insulation will be added. The estimated cost of the project is \$40,085. The district will be able to pay for the repairs without borrowing money.

**50 years ago (1967)**

A series of historical photographs depicting Rock county, will be published in the Star-Herald in commemoration of Luverne's centennial year.

**DEATH NOTICE**

**Tim Christensen**

Tim Christensen, 52, Luverne, died Sunday, Feb. 19, 2017, at his home.

Visitation will be from 4 to 7 p.m. Friday, Feb. 24, at the Dingmann Funeral Home in Luverne.

A memorial service will be at 10:30 a.m. Saturday, Feb. 25, at Grace Lutheran Church, in Luverne.

Burial will follow at Maplewood Cemetery in Luverne. Arrangements are through Dingmann Funeral Home in Luverne, [www.dingmannandsons.com](http://www.dingmannandsons.com).

(0223 DN)

**Public input needed for transportation assessment**

The Southwest Regional Development Commission (SRDC) is asking the public to participate in a survey to assess current transportation services in southwest Minnesota.

Anyone (user or non-user of current services) interested in completing the public survey can participate online at [www.SWRDC.org](http://www.SWRDC.org) or on paper

available at the Southwest Health and Human Services in Luverne.

Completed surveys can be returned via fax to 507-836-8866 or mailed to Center for Regional Development Office, 2401 Broadway Ave., Slayton, MN 56172.

The deadline to participate in the survey is Feb. 24.

**2 YEAR PRICE GUARANTEE**

Switch to DIRECTV and lock in your TV price at \$50/month for 2 years when you have AT&T Wireless!

SAVE UP TO 40% OFF

\$50.00 MO. plus taxes for 24 months when you switch to DIRECTV.

INCLUDES: SELECT All-Included Package - Over 145 Channels, Monthly fees for a Genie+ HD DVR and 3 HD receivers

PLUS: HBO STARZ COMET for the first 3 months at no extra cost!

CALL NOW and ask about Next Day Installation.

**IVS 855-419-4050** DIRECTV AUTHORIZED DEALER

Requires AT&T postpaid service on eligible plan (excl. Lifeline & Residential Wireless) on a smartphone or phone (excl. Wireless Home Phone). Service addresses must match. To be eligible for 2-year price guarantee, both services must remain active & in good standing during 2nd Year. Price Guarantee: TV (pkg only) After 24 mos. In case of eligibility, the prevailing monthly rate for All-Included TV Pkg applies, unless customer calls to cancel/change service prior to the end of 24 mos. Price Guarantee does not include equipment upgrades, late fees and other charges. Some offers may not be available through all channels and in select areas. See [att.com/directv](http://att.com/directv). DIRECTV SYNC TERMS: Subject to Equipment Lease & Customer Agreements. Must maintain a min. base TV pkg at \$39.99/mo. Add'l fees & taxes: \$39.99 handling & delivery for every 999 lbs. Programing, pricing, terms and conditions subject to change at any time. Visit [directv.com/legal](http://directv.com/legal) or call for details. PREMIUM MOVIES OFFER: After 3 mos., then-prevailing rate for all four (4) premium movie plus applies (currently \$5.99/mo.) unless canceled or changed by customer prior to end of promotional period. Expires 4/21/17.

Call Now: 877-210-2257

**Are You Still Paying Too Much For Your Medications?**

You can save up to 97% when you fill your prescriptions with our Canadian and International prescription service.

**Viagra™ \$2011.91** (Typical US Brand Price for 100mg x 40) **vs** **Sildenafil\* \$139.00** (Generic Price for 100mg x 40)

Get an extra \$15 off plus FREE SHIPPING

**Get An Extra \$15 Off & Free Shipping On Your 1st Order!**

Call the number below and save an additional \$15 plus get free shipping on your first prescription order with Canada Drug Center. Expires June 30, 2017. Offer is valid for prescription orders only and can not be used in conjunction with any other offers. Valid for new customers only. One time use per household. Use code 15FREE to receive this special offer.

**Call Toll-free: 877-210-2257**  
[www.canadadrug.us/minnesota](http://www.canadadrug.us/minnesota)

Please note that we do not carry controlled substances and a valid prescription is required for all prescription medication orders.

Canada Drug Center  
Your #1 Choice for Affordable International Medications

Use of these services is subject to the Terms of Use and accompanying policies at [www.canadadrugcenter.com](http://www.canadadrugcenter.com).

READ US ONLINE!  
[star-herald.com](http://star-herald.com)

**MOVING?** Don't forget to change your address for delivery of the Star Herald.

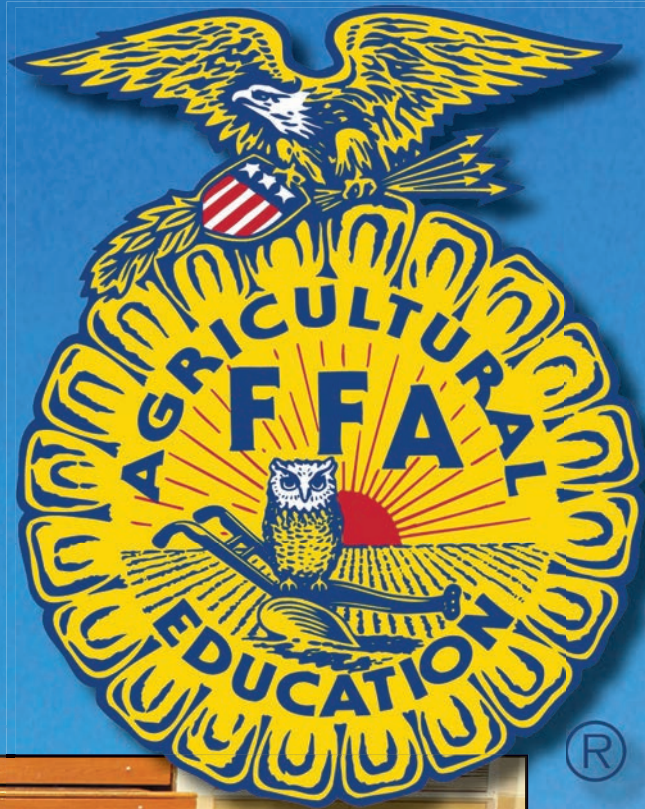
call the Star Herald  
**507-283-2333**

**current subscribers Don't miss an issue!**

We need your new address to make sure your paper is delivered with no interruptions.

**Rock County STAR HERALD**

# FFA Week February 18-25



## Luverne



Mavis Fodness photo

Luverne High School members of the Luverne-Adrian FFA organization are (front, from left) Eli Bakken, Tyler Fick, Dylan Mente, Tyler Reisdorfer, Will Natte, Kris Severson, Cody Saker, Aric Meinerts, Michael Kinsinger, Kaylie Ossefort (second row) Genna Natte, Amber DeGroot, Alena Hilfers, Justyce Brandt, Meagan Hansen, Alex Hartman, Ethan Thorson, Ainsley Rysdam, Halle Hough (third row) Max Skattum, Payton Fick, McKenna Westphal, Tommy Norman, Grace Steensma, Brooke Brust, Annabell Petronek (fourth row) Trey Baustian, Trevor Mente, Riley Siebenahler, Mason Wenzel, Tanner Wiese, J.J. Dooyema, Jared Jose (back) Aleck Schoneman, Will Stegenga, Hunter Hamann and Devin Susie.

Adrian High School members of the Luverne-Adrian FFA organization are (front row, from left) Hannah Kruse, Paige Hinrichs, Emily Zemler, Paige Madison, and Jamie Ross (back row) Calvin Ross, Tucker Sievers, Josh Zemler, Jeffery Cauwels, Blake Madison. Hills-Beaver Creek FFA members are (front row, from left) Noah Hellerud, Kaden Doerr, Jaxon Steensma, Parker Gehrke, Kiara Honken, Zoey Harvey, Hunter Harvey, Madison Spath, Caleb Zomer and Ronnie Russell (middle row) Bailey Susie, Hunter Bork, Britney Wilkus, Sadie Fuerstenberg, Bryn Mongeau, Easton Harnack, Brandon Gray, Avery Wysong, Sidney Fick, Jasmine Lingen, Whitney Elbers (third row) Jesse Elbers, Brandon Wilkus, Orvil Swenson, Malcolm Reid, Preston Maassen, Dustin Teune, Dawson Leenderts, Dean Fuerstenberg, Kirsten Kooistra, Dylan Tieszen, Isaiah Vis, Trenton Bass, Logan Leuthold, Josh Kueter, Luke LaRock, Matt Swenson, George Merson, Trevor Dolphin and Jax Wysong.

## Adrian



Joyce McCarthy photo

## Hills-Beaver Creek



Glenda McGaffee photo

*Thanks to these businesses for taking pride in their community and sponsoring this promotional page!*

Agri-Energy, LLC/Gevo  
Blue Mound Area Theatre  
Cattnach Insurance  
CHS Eastern Farmers  
Connell Car Care  
Continental Western Group  
Cragoe Realty  
Design Craft - General Contractors  
Eisma & Eisma  
Estenson Company, Inc.  
Exchange Bank-Luverne Member FDIC  
First Farmers & Merchants Member FDIC  
Hartquist Funeral Home Luverne Chapel  
Heidebrink & Associates

Jensen Management Services, Inc.  
Ketterling Services, Inc.  
Klosterbuer & Haubrich  
Lewis Family Drug  
Luverne Country Club  
Luverne Lanes  
Luverne Schools  
Mark's Plumbing, Heating and AC/LLC.  
McClure Electric  
Meulebroeck & Taubert Co.  
Minnwest Bank Member FDIC  
Papik Motors  
Real Estate Retrievers  
Rock County

Rock County Heartland Express  
Rock County Chiropractic  
Rock County Opportunities, Inc.  
Rock County Star Herald  
Rock Veterinary Clinic  
S&S Carwash  
Skattum's Confinement/Superior Buildings  
St. Catherine Church  
St. John/Little Lambs  
Stroeh's Auto Center  
Sudenga Communications  
SW Mental Health  
Vander Kooi Law Office



## Hockey boys take 10-game run into playoffs

By John Rittenhouse

Asurging Luverne boys' hockey team completed a 19-5-1 regular season by winning its 10th consecutive game Friday in Le Sueur.

Taking on St. Peter-Le Sueur-Henderson-Tri-City United in the Big South Conference finale for both teams, the visiting Cardinals strolled to a 7-0 win to finish league play with a 14-2 mark.

Luverne drew the No. 1 seed for the Section 3A Tournament and opens the event by hosting a game at the Blue Mound Ice Arena Thursday.

The Cards will take on either No. 8 Windom or No. 9 Fairmont at 7 p.m.

LHS experienced little trouble in disposing of the Bulldogs in Le Sueur.

The Cards scored four goals in the first period and three in the second to walk away with a convincing win.

Kasyn Kruse led the offensive charge by scoring three goals and charting two assists, while Nick Harder chipped in two goals and two assists.

Daniel Tofteland recorded an 18-save shutout in goal for the Cards.

Harder netted a power-play goal and Kruse scored eight seconds later to give LHS a 2-0 cushion at the 11:46 mark of the first period.

Harder netted his second goal of the period with 1:02 remaining before Mark Sterrett netted a power-play tally with five seconds left in the stanza to up the lead to 4-0.

Jesse Reed opened the scoring in the second period with a power-play tally with 10:11 remaining in the stanza.

Kruse registered an unassisted, short-handed tally with 8:23 remaining in the second period before completing his hat trick with 54 seconds left in the period.

Luverne sported a 49-18 advantage in shots on goal in the game.

Ben Serie added two assists to the winning cause, while Tyler Reisdorfer, Declan Beers, Reed and Sterrett chipped in one assist each.

## Adrian Dragons even series with Patriots Thursday

By John Rittenhouse

The Adrian boys' basketball team evened its annual season series with Hills-Beaver Creek during a game played in Hills Thursday.

Adrian, which lost a 67-64 game to H-BC on a last-second three-point shot in Adrian Jan. 10, gained its revenge in the rematch.

The Dragons notched their fourth consecutive win by downing the Patriots 66-58 on their home floor.

Adrian got off to a strong start by opening a 36-25 lead in the first half.

H-BC sported a 33-30 scoring cushion in the second half, but it wasn't enough to keep the Dragons from prevailing by eight points.

Mitchell Lonneman (19 points, 15 rebounds and three assists), Ryan Wieneke (13 points and five assists), Zach Hendel (13 points), Zach Bierman (11 points) and Nate Lonneman (10 points and nine rebounds) turned in key performances for the Dragons.

Jacob Stamer charted seven rebounds and four assists

Even/continued on page 2B



Hills-Beaver Creek senior guard Mekayla Kolbrek battles for a rebound with Adrian junior Kaitlyn Christians during Monday's girls' basketball game in Hills. H-BC posted a 58-43 win.

## H-BC upends AHS Monday in Hills

By John Rittenhouse

Two girls' basketball teams from the Star Herald coverage area wrapped up their regular seasons Monday in Hills.

The Hills-Beaver Creek Patriots entertained the Adrian Dragons in what was a rematch from a game played in Adrian Dec. 20.

H-BC topped the Dragons

by 20 points in the first battle and completed a sweep of the season series with a 58-43 win in Monday's contest in Hills.

The score was knotted at four and H-BC sported an 8-7 edge in the early stages of the first half before reeling off seven consecutive points to open a 15-7 cushion when Sidney Fick buried a three-point shot

at 11:24.

Adrian answered the challenge by going on an 11-2 run to gain an 18-17 edge when Mikayla Jeffers drained a three at 6:39.

The score was tied at 24 when Paige Bullerman hit a field goal for the Dragons

Upend/continued on page 4B



John Rittenhouse photo/0223 gym 3

Luverne freshman Meghan Witte strikes a pose during her floor routine at the Section 3A Gymnastics Championships Saturday in Windom. Luverne placed fifth as a team during its final event of the season.

## Gymnasts cap season Saturday

By John Rittenhouse

The 2016-17 gymnastics season came to an end for the Luverne Cardinals during the Section 3A Championships staged Saturday in Windom.

With four berths into state competition up for grabs in each individual event and in the all-around competition, as well as a trip to state for the team champion, LHS didn't meet the criteria.

Luverne placed fifth in a nine-team field with 133.025 points, ending the campaign with a 15-10 record.

In a tight battle for the team

championship, Worthington edged Jackson County Central by a 142.575-142.5 margin.

Martin County Area (139.85) and Hendricks (134.75) also topped the Cards in the team standings.

Luverne bested Redwood Valley (132.575), Windom (124.075), Marshall (119.775) and Pipestone (116.375) in team competition.

The day turned into a special one for MCA senior Bryanna Peterson, who left little doubt who the top gymnast in Section 3A is.

Peterson won the vault (9.6),

bars (9.7), floor (9.625), beam (9.5) and all-around (38.425) championships.

Five different athletes turned in Luverne's top scores during the events in Windom.

Senior Madison Schandelmeier produced Luverne's best scores on the bars (8.65) and all-around (33.3).

An athlete needed to register scores better than 8.725 on the bars and 36.15 all-around to advance to state.

Senior Bergin Flom and freshman Meghan Witte produced Luverne's best efforts of 8.8 on the vault.

Senior Shelbie Nath turned in Luverne's top effort on the floor with her 8.75, while junior Samantha Pierce paced the Cards on the beam with an 8.65.

An athlete needed to post a score better than 9.3 to advance to state on the floor, and better than 8.975 on the beam.

Individual scores

Vault: Flom, 8.8; Witte, 8.8; Pierce, 8.725; Schandelmeier, 8.65; Nath, 8.25. Bars: Schandelmeier, 8.65; Flom, 7.9; Witte, 7.875; Nath, 7.325; Anna Huisman, 6.6. Beam: Pierce, 8.65; Nath, 8.125; Schandelmeier, 7.75; Marisol Hartshorn, 7.525; Flom, 6.95. Floor: Nath, 8.75; Witte, 8.65; Pierce, 8.55; Flom, 8.3; Schandelmeier, 8.25.

## Cardinals score 100 points for second time in program history

By John Rittenhouse

The Luverne boys' basketball team broke even when it played a pair of home games last week.

The Cardinals dropped a two-point decision to Windom Feb. 14 before posting a 20-point win over Heron Lake-Okabena Thursday.

Luverne, 6-17 overall, caps the regular season by hosting Minneota Friday.

**Luverne 100, HL-O 80**

The Cardinals exploded for 100 points during a convincing home win over the Wildcats Thursday.

With six players scoring 11 or more points in the game, the Cardinals rolled to a 20-point victory.

Luverne pumped in 57 points in the first half to open an 18-point (57-39) advantage at the intermission.

The Cards used a 43-41 scoring edge in the second half to complete their 100-point performance.

It was the second time in program history Luverne reached the century mark in scoring during a game.

Luverne scored 107 points during a Feb. 25th, 1966 home conquest (107-60) over the Edgerton Flying Dutchmen.

Riley Siebenahler (18 points, 11 rebounds and four steals), Cole Claussen (18 points) and Layne Curtis (17 points and six assists) led the charge for LHS.

Brayden Jacobsma (14 points), Eli Haugom (14 points and six rebounds) and Andrew Bierman (11 points) made key contributions to the scoring output, while Derek Lundgren added three steals to the winning cause.

Box score  
Lundgren 1 0 0-0 2, Ahanaf 0 0 0-0 0, Rahm 0 0-0 2, Guy 0 1-1 2, Claussen 5 0 2-2 18, Curtis 7 0 3-4 17, Jacobsma 0 4 2-2 14, Bierman 1 3 0-0 11, Stemper 0 1 2-2 5, Siebenahler 5 1 5-6 18, Hau-



John Rittenhouse photo/0223 lbb 8

Luverne junior forward Andrew Bierman glides past Windom defender Luke Gilbertson to put up a layup during a Big South Conference boys' basketball game in Luverne Feb. 14.

gom 6 0 2-2 14.

Team statistics  
Luverne: 36 of 81 field goals (44 percent), 17 of 24 free throws (71 percent), 26 rebounds, six turnovers.

HL-O: 29 of 56 field goals (52 percent), 19 of 30 free throws (63 percent), 25 rebounds, six turnovers.

History/continued on page 2B



Luverne senior Riley Baker listens to advice coming from the Cardinal coaches during Thursday's Section 3AA Team Wrestling Tournament match against New Ulm in Worthington. The Eagles upset the Cardinals.

John Rittenhouse photo/0223 lw riley 2

## Cardinals bow out of team competition

*Nielsen sets new record in career victories*

By John Rittenhouse

The Luverne Cardinals became a victim in an upset during the opening round of the South Section 3AA Team Wrestling Tournament Thursday in Worthington.

The fourth-seeded Cardinals squared off against No. 5 New Ulm during the first match of the event.

The Eagles eliminated the Cardinals from the event by

handing LHS a 46-25 setback, ending Luverne's 7-9 team season.

New Ulm won six of the 11 matches staged on the mat and drew three forfeits during the process of ousting Luverne in the tournament's opening round for the first time since 2013.

Along with the three forfeits, New Ulm recorded three pins and two decisions and one

major decision.

Luverne wrestlers posted five victories during the match.

The highlight of the night for LHS came at 182 pounds, where Solomon Nielsen pinned Lane Miller in 1:22 to become Luverne's all-time leader in wins with 137 career victories.

Jed Dooyema and Jake Haugen registered pins as well for the Cards.

Dooyema covered Avery Hermel in 1:26, while Haugen stuck Riley Carson in 56 seconds.

Luverne's Jeremiah Dooyema recorded a 15-1 major decision against Matt Gug-

gisberg, while Hunter Baker secured a decision against Carter Brandes.

The Cardinals wrestle at the Section 3AA Individual Tournament in Redwood Falls Friday and Saturday.

**Match wrap-up**  
106 (L) H. Baker 10-7 Brandes.  
113 (N) Bode 6-0 Bradley.  
120 (N) Ranweiler pins Ripka.  
126 (N) Wacker 12-4 Oeltjenbruns.  
132 (N) Howk 5-0 R. Baker.  
138 (N) Ranweiler by forfeit.  
145 (L) Jd. Dooyema pins Hermel.  
152 (N) Stark pins Hup.  
160 (L) Jr. Dooyema pins 15-1 Guggisberg.  
170 (L) Haugen pins Carson.  
182 (L) Nielsen pins Miller.  
195 (N) Landsteiner by forfeit.  
220 (N) Wenninger pins Luke.  
285 (N) Linscheid by forfeit.

160 (A-M) open.  
170 (A) Bullerman by forfeit.  
182 (M) Osborne 3-1 Gyberg.  
195 (A) Wagner by forfeit.  
220 (A-M) open.  
285 (M) Firchau pins Edwards.

**Pipestone 68, AHS 10**  
106 (P) Budden pins B. Combs.  
113 (A) Nelson pins Ploeger.  
120 (P) Burnett t.f. Hix.  
126 (P) Suda pins Hokeness.  
132 (P) Lange 4-2 Sherer.  
138 (P) Winter pins C. Combs.  
145 (P) Olsen pins Castenada.  
152 (P) Busch pins Taylor.  
160 (P) Steenstra by forfeit.  
170 (P) Ploeger pins Bullerman.  
182 (A) Gyberg 11-3 Czech.  
195 (P) Vanderwal pins Wagner.  
220 (P) Stangeland by forfeit.  
285 (P) Arndt pins Edwards.

## Dragon wrestlers advance before falling

By John Rittenhouse

The team portion of the 2016-17 wrestling season came to an end for the Adrian Dragons Thursday in Pipestone.

Adrian, the eighth seed in the South Section 3A Tournament, posted a 57-9 win over No. 9 Madelia-Truman to reach the quarterfinals.

Top-seeded Pipestone handed AHS a 68-10 setback in the quarterfinals, ending Adrian's 5-21 team season.

Adrian received pins from Tylor Hix (3:14 over Gach Mar),

Preston Nelson (1:21 over Aiden Rathman), Chandler Combs (1:45 over William Castro), Jamie Castenada (52 seconds over Jed Altenburg) and Marshall Tylor (2:27 over Grant Koehler) in the win of M-T, while Brent Hokeness, Logan Sherer, Beau Bullerman and Mitchell Wagner drew forfeits.

Brandon Combs posted a 6-4 decision over Carlos Garcia during the 48-point win over M-T.

The Dragons were limited to two wins during their 58-point

loss to the Arrows.

Nelson pinned Luke Ploeger in 1:26, while Dylan Gyberg posted an 11-8 major decision over Steven Czech.

Adrian competes at the Section 3A Individual Wrestling Tournament in Jackson Friday and Saturday.

**Match wrap-ups**  
Adrian 57, M-T 9  
106 (A) B. Combs 6-4 Garcia.  
113 (A) Hix pins Mar.  
120 (A) Nelson pins Rathman.  
126 (A) Hoekeness by forfeit.  
132 (A) Sherer by forfeit.  
138 (A) C. Combs pins Castro.  
145 (A) Castenada pins Altenburg.  
152 (A) Taylor pins Koehler.

## Panther boys take setbacks from SWC, T-M-B

By John Rittenhouse

The Ellsworth boys' basketball team couldn't snap what stands as a nine-game losing skid when it lost a pair of games late last week.

Southwest Christian topped the Panthers by 34 points Thursday in Ellsworth. Ellsworth came up on the short end of a 17-point decision against Tracy-Milroy-Balaton Friday in Tracy.

The 1-18 Panthers host Heron Lake-Okabena Friday.

**T-M-B 57, Ellsworth 40**

A late challenge by the Panthers fell short when they took on T-M-B in Tracy Friday.

After falling behind 27-16 in the first half, Ellsworth trimmed the difference to six points with five minutes left to play in the second half.

T-M-B, however, outscored EHS by 11 points the rest of the night to win by 17.

Grant Jansma (14 points) and Jared Leuthold (11 points and six rebounds) led the

Panthers statistically.

Zach Buntjer pulled down five rebounds and blocked three shots for Ellsworth, while Brandon Kramer collected five rebounds.

**Box score**  
Wallenberg 1 1 0-0 5, Leuthold 2 2 1-2 11, Kruse 0 0 0-0 0, Curtis 0 0 0-0 0, Jansma 3 1 5-6 14, Boyenga 1 0 2-4 4, Kramer 1 0 2-4 4, Buntjer 1 0 0-0 2.

**Team statistics**  
Ellsworth: 4 of 31 field goals (45 percent), eight of 13 free throws (62 percent), 25 rebounds, eight turnovers.

**SWC 87, Ellsworth 53**

The Panthers couldn't contend with the Eagles when the teams squared off in Ellsworth Thursday.

SWC outscored EHS in both halves of a 34-point victory.

The Eagles opened a 44-25 lead in the first half and outscored the Panthers 43-28 in the second half to complete the win.

Jansma (14 points), Leu-

**Panthers/continued on page 3B**

## History/continued from page 1B

**Windom 56, LHS 54**

The Cardinals came up on the short end of a two-point decision when they faced the Eagles during a hard-fought game in Luverne Feb. 14

Luverne sported a four-point lead at halftime, but Windom used a 31-25 scoring advantage in the second half to pull out a victory.

Curtis canned a three-point shot 2:16 into the game to give the Cards a 6-2 lead that was erased when Windom went on an 18-9 run to open a 20-15 advantage at the 6:44 mark of the first stanza.

The Cardinals regained the lead (21-20) when Claussen registered a field goal at 4:14 and Lundgren upped the advantage to four points (29-25) when he capped the scoring in the first half with a field goal at 1:21.

Windom scored the first seven points of the second half and upped the lead to five points (37-32) 4:55 into

the stanza.

Claussen canned a pair of free throws with 7:42 remaining to give the Cards a 45-44 edge, and LHS led by two (48-46) when Siebenahler drained a three-point shot with 6:33 left to play.

The Eagles answered the challenge reeling off seven consecutive points to open a 53-48 lead with 3:15 remaining.

Luverne trimmed the difference to three points twice and fell by two points at game's end after Curtis canned a three-point shot in the final seconds.

Curtis and Claussen netted 19 points to lead the Cardinals in scoring.

No other team or individual statistics were available from this game.

**Box score**  
Lundgren 3 0 1-2 7, Claussen 6 1 4-7 19, Curtis 2 3 6-7 19, Jacobsma 0 0 0-0 0, Bierman 1 0 0-1 2, Siebenahler 1 1 2-4 7, Haugom 0 0 0-0 0.



John Rittenhouse photo/0225 lbb 5

Luverne freshman Riley Siebenahler scored seven points during a home loss to the Windom Eagles Feb. 14.

## Even/continued from page 1B

for 13-7 Adrian, which hosts Mountain Lake Area Friday.

Isaiah Vis (13 points and four steals), Jax Wysong (11 points) and Zach Scholten (10 points and seven rebounds) led H-BC statistically.

Josh Kueter pulled down six rebounds and Preston Wilhelm recorded three steals for the 9-13 Patriots, who host Southwest Christian Friday.

**Box score**  
Adrian

Stamer 0 0 0-1 0, Serrao 0 0 0-0 0, Bierman 1 3 0-0 11, White 0 0 0-0 0, Wieneke 1 1 8-9 13, N. Lonneman 5 0 0-0 10, Hendel 6 0 1-2 13, M. Lonneman 9 0 1-2 19.

**H-BC**  
Scholten 3 0 4-4 10, Leuthold 0 0 0-0 0, Vis 6 0 1-11 13, Burgers 2 1 0-2 7, Wilhelm 2 1 0-0 7, Bass 0 1 1-2 4, Kueter 3 0 0-0 6, Forshey 0 0 0-0 2, Wysong 4 1 0-0 11.

**Team statistics**  
Adrian: 26 of 62 field goals (42 percent), 10 of 14 free throws (71 percent), 41 rebounds, 15 turnovers.  
H-BC: 24 of 75 field goals (32 percent), six of 21 free throws (29 percent), 29 rebounds, eight turnovers.

**Podiatry services here at home**

At Sanford Luverne, we believe quality care should be delivered close to home. Sanford Health specialists provide health and healing where it's convenient to you. Where you feel at home.

**Common Services:**

- Surgical and non-surgical management of bunions
- Hammertoes
- Neuromas/nerve problems
- Other deformities of the foot
- Ingrown toenails
- Foot pain
- Diabetic wounds and infections
- Flat feet
- High arched feet
- Arthritic joints
- Fractures
- Dislocations of the foot and ankle

Adam Nichols, MD  
Podiatry Surgeon

**SANFORD**  
Luverne

To schedule an appointment with Dr. Nichols at Sanford Luverne, call (507) 283-4476.

Our roots are deeply imbedded in the ag community and that starts with our leaders of tomorrow. Exchange State Bank recognizes the importance of our leaders of tomorrow and supports Future Farmers of America.

**National FFA Week Feb. 19-25**

(507) 449-6000  
Luverne, MN

(507) 962-3250  
Hills, MN

(507) 967-2570  
Ellsworth, MN

**Exchange STATE BANK**  
Local. Dependable. Strong.

Member FDIC

# Luverne graduate claims World Fat Bike championship

A former Luverne resident who now resides in Colorado stepped out of her comfort zone in late January.



## FROM THE SIDELINES

By John Rittenhouse, sports editor

Karen Jarchow is an accomplished mountain bike racer, so she prefers spending her winter training for the upcoming season instead of mixing it up on the snow and ice-covered courses that host fat bike racing events at this time of year.

Unfortunately for the 2003 Luverne High School graduate, some situations call for athletes to take a hit for being a member of the team.

As a member of the racing team known as Topeak-Ergon, Jarchow was informed that she had to enter at least two fat bike events by the squad's sponsor, Canyon, a racing bike manufacturer based in Germany.

The daughter of former Luverne residents John and Kathy Jarchow didn't have much choice in the matter based on the directive delivered by the sponsor, but that may have turned out to be a blessing in disguise.

The current Eagle, Colorado, resident entered a pair of fat bike events during the month of January and found success during both outings.

"I actually don't like racing in the winter, and the old rule was not to do so," Jarchow said.

"Fat bike races are



Karen Jarchow

staged on Nordic trail courses, which are faster tracks. There's no snow to deal with on mountain bike courses. There's just more changes in elevation (inclines, descents, twists and turns) on mountain like courses."

Her first test on a fat bike track this winter came during a race in Breckenridge, Colorado.

It was a shorter race by fat bike standards, but Jarchow won the nine-mile event.

The event in Breckenridge was a tune up for the 2017 Fat Bike World Championships staged in Crested Butte, Colorado, in late January.

The World competition is

a much more taxing event that requires the racers to complete six, five-mile laps around a challenging course.

The event attracts elite bikers from all over the globe, so Jarchow didn't bring high expectations into the event.

The way things turned out, she may have short-changed herself.

Not only did she place among the 10th overall finishers, Jarchow claimed the women's world championship with a time of 2:04.02.

She beat the 2016 World champion, Amy Biesel (Colorado Springs, Colorado), by 13 minutes

"I was really surprised because the competition was pretty good at that race," Jarchow said.

"Winning by the gap I did was what surprised me the most. All I can say is that I've been working hard the past few years, and I guess all the hard work has paid off."

With that being said, Jarchow still plans to keep her focus on mountain bike racing as she is the defending champion of the National Ultra Endurance Series Women's Marathon Open Division champion.

"All the work I put in for the fat bike races should be good training for the mountain bike season," she concluded.



John Rittenhouse photo/0223 lgb 5

Luverne senior post Kami Sawtelle splits a pair of Windom defenders before putting up a shot during a home win over the Eagles Feb. 14. Sawtelle netted six points to help the Cardinals secure a 57-41 victory and complete a 4-8 Big South Conference slate.

## Girls split to wrap up regular season

By John Rittenhouse

The Luverne girls' basketball team capped a 10-14 regular season by splitting a pair of games late last week.

The Cardinals recorded a 16-point home win over Windom Feb. 14 before losing a 24-point game in Blue Earth Friday.

Luverne drew the sixth seed for the South Section 3AA Tournament and takes on No. 3 Minnesota 7 p.m. Saturday in Minnesota.

### BEA 52, Luverne 28

A run of three consecutive wins came to an end for the Cardinals when they locked horns with the Bucs Friday in Blue Earth.

BEA got off to a good start by outscoring LHS 29-16 in the first half.

The Bucs went on to sport a 23-12 scoring cushion in the second half to clinch a 24-point conquest.

Kami Sawtelle led the Cards with eight points, while Jadyn Anderson pulled down eight rebounds.

**Box score**  
Schmuck 3 0 0-0 6, Remme 2 0 0-0 4, Oye 0 1 1-2 4, Anderson 0 1 0-0 3, Thorson 0 0 0-0 0, Sawtelle 4 0 0-1 8,

Bosch 0 0 0-0 0, Oftedahl 0 0 0-0 0, Petersen 0 0 0-0 0, Hustoft 1 0 1-2 3.

**Team statistics**  
Luverne: 12 of 42 field goals (29 percent), two of five free throws (40 percent), 27 rebounds, 19 turnovers. BEA: 22 of 44 field goals (50 percent), three of six free throws (50 percent), 27 rebounds, 11 turnovers.

### LHS 57, Windom 41

The Cardinals completed Big South Conference play with a 4-8 record after posting a 16-point home win over the Eagles Feb. 14.

Luverne never trailed in the game and outscored Windom in both halves of the contest to win three consecutive contests for the first time this season.

The Cardinals scored the first six points of the contest and upped the lead to 8-1 when Mackenzie Petersen drained a field goal at the 12:50 mark of the first half.

Windom trimmed the difference to three points (13-10) with 8:58 remaining in the opening stanza, but Petersen capped a 7-0 run with a field goal at 6:30 that upped Luverne's lead to 10 points (20-10).

LHS extended its advantage to 11 points (26-15) when Sierra Schmuck converted a field goal with 4:49 remaining and the Cards maintained an 11-point cushion (29-18) when the first half was complete.

The Cardinals opened the second half with a 9-5 spurt to up the lead to 15 points (38-23) when Rachel Oftedahl scored in the paint at 11:03.

Windom closed the gap to 10 points (40-30) with 8:35 left to play before the Cards settled the issue with a 17-9 run that left them sporting an 18-point cushion (57-39) when Hailey Remme registered a field goal with 58 seconds remaining.

Remme and Schmuck paced LHS offensively by netting 14 and 13 points respectively.

No other individual or team statistics were available from this game.

**Box score**  
Schmuck 3 1 4-6 13, Remme 7 0 0-0 14, Oye 0 1 1-2 4, Anderson 1 0 4-4 6, Thorson 0 0 0-0 0, Sawtelle 3 0 0-0 6, Bosch 0 1 0-0 3, Oftedahl 1 0 0-0 2, Staeffler 0 0 0-0 0, Petersen 3 0 1-2 7, Ferrell 0 0 0-0 0, Hadler 0 0 0-0 0, Hustoft 1 0 0-0 2.

# Patriot girls stroll to big win at Edgerton Public School Friday

By John Rittenhouse

The Hills-Beaver Creek girls nailed down their third consecutive basketball victory when they paid a visit to Edgerton Public School Friday.

The visiting Patriots controlled the game by outscoring the Flying Dutchmen in both halves of a 68-48 win.

H-BC opened a 30-19 lead in the first half and outscored Edgerton 38-29 in the second

half to prevail by 20 points.

Avery Van Roekel (22 points and seven rebounds), Grace Bundesen (15 points, eight rebounds and four steals) and Sidney Fick (12 points and five assists) carried the Patriots to victory.

Jasmine Lingen and Kourtney Rozeboom added six rebounds each to the winning cause.

**Box score**  
Bos 0 0 2-2 2, Tilstra 0 1 0-0 3, Spath 1 0 0-0 2, Kolbrek 0 0 0-0 0, Lingen 2 1 0-0 7, Fick 3 1 3-3 12, Bundesen 4 1 4-5 15, Swan 0 0 0-0 0, Elbers 0 0 0-0 0, Van Roekel 6 0 10-12 22, Rozeboom 1 0 3-4 5.

**Team statistics**  
H-BC: 21 of 58 field goals (36 percent), 22 of 26 free throws (85 percent), 36 rebounds, 15 turnovers. Edgerton: 15 of 71 field goals (21 percent), 14 of 21 free throws (67 percent), 31 rebounds, 10 turnovers.

## Panthers/continued from page 2B

thold (13 points, eight rebounds and three assists) and Kramer (10 points, eight rebounds and three assists) emerged as Ellsworth's statistical leaders.

Buntjer added seven rebounds and three blocked

shots to the winning cause.

**Box score**  
Leuthold 4 1 2-4 13, Kruse 0 0 0-0 0, Curtis 4 0 0-0 8, Jansma 0 4 2-2 14, Kramer 5 0 0-2 10, Buntjer 4 0 0-0 8.

**Team statistics**  
Ellsworth: 22 of 38 field goals (58 percent), four of eight free throws (50 percent), 28 rebounds, 24 turnovers.

Introducing... **FIGO** PET INSURANCE

Working for you-meeting your needs.

**Buffalo Ridge INSURANCE**

South Hwy. 75, Luverne, MN • Ph. 507-283-2381

**Auto-Owners Insurance**

**Wet Basement Dampening Your Spirits?**  
Basement Waterproofing • Foundation Repair • Concrete Leveling

**AMERICAN WATERWORKS**

Free Estimates! Call Today.  
1.800.795.1204

**THE CITY OF LUVERNE STREET DEPARTMENT REMINDS YOU THAT:**

If it's snowing when you go to bed...  
If snow is in the forecast...  
If you're planning to be out of town...

**REMEMBER TO MOVE YOUR VEHICLES OFF THE STREET UNTIL THE PLOW HAS GONE BY CURB TO CURB**

**WINTER SENIOR ATHLETES OF THE WEEK**

**Andrew Reisch**  
Sport: Hockey  
Position: Forward  
Parents: Jody and Sharla Reisch  
Favorite Subject: Math  
Extra Curricular Activities: Riding dirtbike, Military, Football, Hunting, Track  
Future Plans: Go to Basic and then tech school and then work towards and Bachelors Degree in Criminal Justice

**Hailey Remme**  
Sport: Basketball  
Position: Post  
Parents: Jim and Stacie Remme  
Favorite Subject: Psychology  
Extra Curricular Activities: Volleyball, Basketball, Golf, Peer Helping, Math League  
Future Plans: Attend U of M - Morris and play volleyball. Major in Engineering or Pre-Med

**pepsi**

Pipestone Pepsi | 1809 Forman Drive, Pipestone, MN 56164

**Notice of Annual Township Meetings & Elections**

Notice is hereby given that the following townships will hold their annual meeting and elections on Tuesday, March 14, 2017. In case of inclement weather, they will be held one week later on March 21, 2017.

**Battle Plain Township**  
Lloyd Prins' farm. Meeting at 7 pm

**Beaver Creek Township**  
Beaver Creek Township Hall. Meeting 4-5 pm and Election 5-8 pm to elect one Supervisor 3-year term.

**Clinton Township**  
Business meeting at the Township Hall. 4-5pm Voting from 5-8 pm to elect one supervisor 3-year term and one Treasurer 2-year term

**Denver Township**  
Hardwick City Hall. Meeting 1:30-2:30 pm

**Kanaranzi Township**  
Kanaranzi Elevator. 4-5 pm and Election 5-8 pm to elect one Supervisor 3-year term

**Luverne Township**  
Luverne Pizza Ranch. Business Meeting 4-5 pm and Election 5-8 pm to elect one Supervisor 3-year term and one Treasurer 2-year term

**Magnolia Township**  
Arends Farm 1581 121st Luverne. Meeting 4-5 pm and Election 5-8 pm to elect one Supervisor 3-year term and one Treasurer 2-year term

**Martin Township**  
New Township Building 598 51st St Hills. Meeting at 7 pm

**Mound Township**  
Rock County Highway Building. Meeting 4-5 pm and Election 5-8 pm to elect one Supervisor 3-year term; (on ballot), Shall option B appointment of clerk-treasurer by the township board be adopted for the government of the township?

**Rosedell Township**  
Township Hall. 4-5 pm Business Meeting

**Springwater Township**  
Beaver Creek City Hall. Business meeting 1:30 pm and Election 5-8 pm to elect one Supervisor 3-year term

**Vienna township**  
Kenneth Community Hall. Business Meeting 7 pm

**Rock County Township Association**  
Peter Bakken, Secretary/Treasurer

# FEBRUARY 14 SPORTS REPLAY

## Patriots stroll to easy win in Okabena

The Hills-Beaver Creek girls registered a lopsided Red Rock Conference basketball victory in Okabena. The visiting Patriots coasted to a 44-20 halftime advantage and outscored the Wildcats 31-18 in the second half to complete a 75-38 rout.

Sidney Fick (23 points, Kourtney Rozeboom (17 points and eight rebounds), Grace Bundesen (12 points, 13 rebounds and three steals), Madison Spath (four assists), Paige Tilstra (three assists) and Avery Van Roekel (three assists) played well in the win for H-BC.

## Dragon girls register home win over Edgerton

The Adrian girls' basketball team posted a 51-42 home victory over the Edgerton Flying Dutchmen.

The Dragons sported a 22-17 lead after 18 minutes of play and used a 29-25 scoring cushion in the second half to complete a nine-point win.

Hannah Bullerman (13 points, five rebounds and four steals), Paige Bullerman (12 points and six rebounds), Lexi Slater (12 rebounds) and Mikayla Jeffers (10 rebounds) played key roles in the victory.

## H-BC boys squander halftime advantage to Arrows

The Hills-Beaver Creek boys' basketball team let a halftime lead slip away when they entertained Pipestone in Hills.

H-BC sported a 41-34 advantage at the intermission, but the Arrows rallied to outscore the Patriots 35-23 in the second half to secure a 69-64 win.

Preston Wilhelmi (21 points), Zach Scholten (13 points and 13 rebounds), Jax Wysong (12 points and 10 rebounds) and Isaiah Vis (five rebounds) led the Patriots statistically in the game.

## MCC Rebels upend Ellsworth girls

The Ellsworth girls' basketball team came up on the short end of a 57-44 decision when the Panthers took on Murray County Central in Slayton.

MCC sported a 28-20 advantage at the intermission and used a 29-24 scoring cushion in the second half to clinch a 13-point win.

Devin Dreesen (19 points and nine rebounds), Ashlyn Meester (10 points), Morgan Dreesen (six rebounds) and Kallie Chapa (three assists) turned in productive games for the Panthers.

## Southwest Christian pounds Ellsworth Monday

By John Rittenhouse

The Ellsworth girls faced a tough task when they traveled to Southwest Christian High School for the regular season basketball finale Monday in Edgerton.

SWC, the second seed for the upcoming South Section 3A Tournament, turned in a commanding performance in a lopsided victory over the Panthers.

The E-Gals rolled to a 49-16 lead in the first 18 minutes of play and outscored EHS 29-13 in the second half to secure a 77-39 win.

Devin Dreesen led the 3-21 Panthers with eight points and 10 rebounds in the game.

Ellsworth drew the ninth seed for the South Section event and takes on No. 8 Murray County Central to open the tournament Thursday in Slayton.

**Box score**  
Vander Poel 1 0 0-0 2, M.Dreesen 2 0 2-4 6, Chapa 1 0 0-0 2, Meester 2 0 2-4 6, D.Dreesen 1 2 0-0 8, Smith 2 0 1-2 5.

**Team statistics**  
Ellsworth: 11 of 39 field goals (28 percent), five of 10 free throws (50 percent), 20 rebounds, 29 turnovers.

## Luverne team captures District 9 championship

By John Rittenhouse

The Luverne Bantam A hockey team captured the District 9 championship by recording three consecutive wins in Faribault over the weekend.

The young Cardinals opened the tournament with a 6-0 win over Mankato on Friday before edging previously unbeaten Owatonna 2-1 on Saturday.

Luverne completed its path to the title by nipping Northfield 2-1 in Sunday's championship game.

By winning the District title, Luverne earns the right to compete in region competition March 3-5 in Red Wing.

Team members include Colton Schutz, Cade Wenninger, Shaide Shearer, Austin Watts-Boll, Easton Braun, Tyler Roberts, Mason Steensma, Jake Von Tersch, Adam Skindeliem, Nathan Nekali, Marshall Dammann, Carlton Oftedahl, Dylan Lebat, Colby Crabtree and Cooper Arends.

Brent Dinger, Anthony Graphenteen and Chris DenHoed coach the team.

# RRC Falcons snap Adrian's run Friday

By John Rittenhouse

A four-game winning streak came to an end for the Adrian boys' basketball team when the Dragons took on Red Rock Central Friday in Adrian.

RRC, the lone undefeated team in the Red Rock Conference, remained unbeaten (14-0) by handing AHS a 65-59 setback.

Adrian, however, did give the Falcons a run for their money.

The score was tied at two when AHS used a 6-2 spurt capped by a three-point shot from Jacob Stamer to open an 8-4 advantage 3:30 into the game.

RRC countered with a 7-0 run to move in front 11-8, but the Dragons answered with an 8-3 surge capped by a three-point shot from Tristian White to regain the lead at 16-14 with 9:57 remaining in the opening stanza.

The Falcons scored the next 10 points as a part of a 14-2 run to open a 10-point cushion (28-18) with 2:19 left in the half.

Adrian trimmed the difference to seven points (32-25) before the half was complete when Zach Hendel converted a three-point play with eight seconds remaining.

RRC scored the first seven points of the second half to open a 39-25 cushion, but that proved to be the biggest lead the Falcons would sport in the stanza.

The pesky Dragons trimmed the difference to 10 points three times and trailed by eight points four times before Ryan Wieneke sank three free throws with 2:07 left to play to make it a seven-point (59-52) game.

Mitchell Lonneman turned an offensive rebound into a field goal to make it a six-point game (60-44) before scoring again on a hook shot with 49 seconds left to trim the difference to five points (61-56).

AHS still trailed by five (64-



John Rittenhouse photo/0223 abb 3

Adrian senior guard Jacob Stamer puts up a shot in the paint during Friday's home loss to RRC.

59) when Stamer drained a three with 14 seconds left, but the Falcons scored the game's final point to win by six.

White (18 points) and Lonneman (14 points and eight rebounds) led AHS offensively.

Wieneke passed for six assists and collected six rebounds for the 13-8 Dragons, who received a six-rebound effort from Hendel.

**Box score**  
Stamer 0 2 2-2 8, Serrao 0 0 0-0 0, Bier-

man 10 0-0 2, White 0 6 0-0 18, Wieneke 2 0 3-7 1, N.Lonneman 1 0 0-0 2, Hendel 3 0 2-3 8, M.Lonneman 7 0 0-0 14.

**Team statistics**  
Adrian: 22 of 54 field goals (41 percent), seven of eight free throws (88 percent), 27 rebounds, 14 turnovers.  
RRC: 22 of 53 field goals (42 percent), 17 of 27 free throws (63 percent), 25 rebounds, eight turnovers.

## Upend/continued from page 1B

with 1:35 remaining, but a 5-0 surge ending with a field goal from Avery Van Roekel with 32 seconds left gave H-BC a 29-24 advantage that was trimmed to four points (31-27) at the intermission.

Fick buried a three to cap a 5-1 spurt that gave the Patriots a 36-28 lead 2:01 into the second half.

Adrian's Lexi Slater trimmed the difference to five points (36-31) at the 14:33 mark, but the Patriots responded with a 10-0 run that gave them a 16-point (47-31) lead when Grace Bundesen converted a field goal at 10:10.

The Dragons closed the gap to 10 points (47-37) when Jeffers canned a three at 9:19, but that proved to be as close as AHS would come to catching the Patriots.

An 8-0 run ending with a field goal from Bundesen at 6:12 gave H-BC an 18-point (55-37) advantage.

AHS trailed by 13 (55-42) when Avery Balster drained a three with 3:40 remaining, but H-BC outscored the Dragons 5-1 the rest of the night to prevail by 15 points.

Bundesen (23 points and eight rebounds) and Fick (19 points and four steals) led the 19-5 Patriots to victory.

H-BC drew the third seed for the South Section 3A Tournament and takes on No. 6 Fulda in Worthington at 12:30 p.m.

Jeffers (16 points and five rebounds), Slater (10 points and five rebounds) and Kaitlyn Christians (eight rebounds



John Rittenhouse photo/0223 ha gb 4 cut

Adrian freshman guard Moriah Bullerman drives past H-BC's Paige Tilstra during the second half of Monday's girls' basketball game in Hills. H-BC handed Adrian a 58-43 setback.

and three assists) led the 10-13 Dragons statistically.

No. 5 Adrian plays No. 4 Edgerton in Worthington at 4 p.m. Saturday.

**Box score**  
Adrian

M.Bullerman 1 0 1-3 3, Balster 0 1 2-4 5, Kunkel 0 0 2-2 2, Christians 0 0 0-0 0, Jeffers 1 4 2-2 16, Slater 3 0 4-6 10, Heidebrink 0 0 0-0 0, P.Bullerman 2 0 3-3 7.  
H-BC  
Tilstra 0 0 0-0 0, Spath 0 0 0-0 0, Kolbrek 1 0 0-0 2, Lingen 1 1 0-0 5, Fick 5 2 3-4 19, Bundesen 8 1 4-8 23, Van Roekel 1 0 3-4 5, Rozeboom 2 0 0-0 4.

**Team statistics**  
Adrian: 12 of 40 field goals (30 percent), 14 of 20 free throws (70 percent), 26 rebounds, 17 turnovers.  
H-BC: 22 of 58 field goals (38 percent), 10 of 18 free throws (56 percent), 27 rebounds, 10 turnovers.

Sports Scores & Stories updated daily.  
**star-herald.com**

DINING AND ENTERTAINMENT

**Sons of Norway Annual Torsk and Meatball Dinner and Bake Sale**

**March 3** Adults \$18  
4:30-7:00 p.m. Youth (6-12) \$8

To reserve tickets, call Beth at 605-310-2809  
Snow Date March 10

Frozen torsk and lefse will be pre-sold "to-go."  
Order deadline: Monday, February 27  
Pick-up: Friday, March 3, after 4 p.m.

Proceeds from the dinner and bake sale provide scholarships for youth to attend cultural heritage summer camps or college.

**The Nordic Hall**  
218 W 13th St | Sioux Falls, SD

**UP THE DAM CREEK**

JOIN US FOR OUR  
**2017 Mardi Gras Party**

**FEBRUARY 25**

Drink Specials

In the Wind Karaoke 9-1

**Downtown Beaver Creek • 507-204-7740**  
3-7 Mon-Thurs • 10am - 1am Fri & Sat

**The you headed to Mexico?**

Please join us for a fun-filled evening as we present Mexico! Our representative will share with us all that Mexico has to offer, including exciting excursions and travel safety updates.

Please RSVP to hold your spot!  
Call us at - 605-339-8911  
Email us at - aat@allabouttravel.org  
Sign up on our website: www.allabouttravel.org

**February 21, 2017 • 6:00 P.M.**  
All About Travel  
3801 S. Western Ave., Suite 103  
Sioux Falls, SD

**ALL ABOUT TRAVEL INC.**  
9-Year Winner! Layaway & Gift Certificates Available!  
605-339-8911 • 1-800-390-6610  
3801 S. Western Ave., Suite 103, Sioux Falls, SD  
Open: Mon-Fri. 8 a.m.-7 p.m. • Saturday 9 a.m.-3 p.m.  
www.AllAboutTravel.org | www.facebook.com/AllAboutTravelInc  
Helping You Find Your Personal Paradise!





# Star Herald PUBLIC NOTICES

# Star Herald CLASSIFIEDS

...continued from previous page

The West Eighty Feet (W 80') of Lot Four (4) in Block Three (3) in Barck, Adams, and Howe's Addition to the City of Luverne, State of Minnesota.

You and each of you are hereby ORDERED to abate, within a reasonable amount of time NOT TO EXCEED 20 (twenty) DAYS FROM THE DATE OF SERVICE OF THIS ORDER UPON EACH OF YOU, the following which are hazardous property upon the above-described real property situate in the City of Luverne, Rock County: **all accumulations of discarded, worn-out and/or inoperable materials and items, garbage, refuse, debris and/or metallic articles held for scrap value which are on said real property and are not stored in an enclosed space, as well as all vehicles whether operable or inoperable parked on unapproved surfaces and/or on the front or side yards of the residence upon said real property.**

A motion for summary enforcement of this Order will be made to the District Court, Rock County, unless corrective action is taken in full to the reasonable good-faith satisfaction of the City of Luverne within the time period set forth above or unless an Answer is filed within the time specified in Minnesota Statutes section 463.18. Dated: February 16, 2017

City of Luverne  
/s/ John Call  
City Administrator  
(02-23, 03-02, 03-09, 03-16)

## Kracht applies for conditional use permit

Notice of Public Hearing for Conditional Use Permit for Greg Kracht

Pursuant to the Rock County Zoning Ordinance, notice is hereby given by the Rock County Planning and Zoning Commission that a public hearing will be held at the Rock County Law Enforcement Center located at 1000 North Blue Mound Avenue, Luverne, Minnesota at 7:10 p.m. Monday, February 27, 2017. The purpose of this hearing is to rule on the application for Conditional Use Permit for the following:

Applicant & Property Owner: Greg Kracht  
Location: The NE 1/4 of the NE 1/4 of Section 31 of Magnolia Township, T101N, R44W, Rock County, Minnesota  
Conditional Use: Expansion and operation of an existing feedlot of more than 1000 animal units  
Zoning District: A-2, General Agriculture

The conditional use permit is for the expansion of an existing feedlot on the property described above. The existing feedlot consists of total confinement building housing 1830 head of finishing cattle. The proposed expansion will expand an existing total confinement barn to house an additional 730 head of finishing cattle.

After the expansion, the site will house 2560 head of finishing cattle. Manure from the total confinement barns will be stored in a poured reinforced concrete pit under the floor of the barn, and the manure pack on the lot. Total animal units after the expansion will be 2560 animal units.

Dated: February 16, 2017  
By Order of the Rock County Planning and Zoning Commission  
Eric Hartman, Zoning Administrator  
311 W. Gabrielson Road  
Luverne, MN 56156  
507-283-8862, Extension 4

(02-16, 02-23)

## Walleye Wind, LLC applies for conditional use permit

Notice of Public Hearing for Conditional Use Permit for Walleye Wind, LLC.

Pursuant to the Rock County Zoning Ordinance, notice is hereby given by the Rock County Planning and Zoning Commission that a public hearing will be held at the Rock County Law Enforcement Center located at 1000 North Blue Mound Avenue, Luverne, Minnesota at 7:30 p.m. Monday, February 27, 2017. The purpose of this hearing is to rule on the application for Conditional Use Permit for the following:

Applicant: Walleye Wind, LLC  
Property Owner: Mark Gath  
Conditional Use: Placement of a meteorological tower for wind energy development  
Project Location: S 1/2 of the NW 1/4 of Section 20 of Springwater Township, T103N, R46W, Rock County, Minnesota  
Dated: February 16, 2017

By Order of the Rock County Planning and Zoning Commission  
Eric Hartman, Zoning Administrator  
311 W. Gabrielson Road  
Luverne, MN 56156  
507-283-8862, Extension 4

(02-16, 02-23)

## Schadwinkel probate

FIFTH JUDICIAL DISTRICT  
DISTRICT COURT  
PROBATE DIVISION  
COURT FILE NO. 67-PR-17-39

NOTICE AND ORDER OF HEARING ON PETITION FOR FORMAL ADJUDICATION OF INTESACY, DETERMINATION OF HEIRSHIP, APPOINTMENT OF PERSONAL REPRESENTATIVE AND NOTICE TO CREDITORS  
STATE OF MINNESOTA  
COUNTY OF ROCK

Estate of Dennis Schadwinkel,  
Decedent

It is Ordered and Notice is given that on March 13, at 3:30 p.m., a hearing will be held in this Court at 204 East Brown, Luverne, Minnesota, for the adjudication of intestacy and determination of heirship of the Decedent, and for the appointment of Todd Schadwinkel, whose address is 822 N. Van Eps Ave., Sioux Falls, SD 57103 as Personal Representative of the Estate of the Decedent in an UNSUPERVISED administration. Any objections to the petition must be filed with the Court prior to or raised at the hearing. If proper and if no objections are filed or raised, the Personal Representative will be appointed with full power to administer the Estate, including the power to collect all assets, to pay all legal debts, claims, taxes, and expenses, to sell real and personal property, and to do all necessary acts for the Estate.

Notice is also given that (subject to Minnesota Statutes section 524.3-801) all creditors having claims against the Estate are required to present the claims to Personal Representative or to the Court Administrator within four months after the date of the Notice or the claims will be barred.

Dated: February 15, 2017  
BY THE COURT

/s/ Terry S. Vajrt  
Judge of District Court  
/s/ Denise Brandel  
Court Administrator

Attorney for Petitioners  
Donald R. Klosterbuer  
Klosterbuer & Haubrich, LLP  
120 N. McKenzie, PO Box 538  
Luverne, MN 56156  
Attorney License No: 0056674  
Telephone: (507) 283-9111  
FAX: (507) 283-9113  
Email: drklosterbuer@khlawmn.com

(02-23, 03-02)

## Duininck, Inc. applies for conditional use permit

Notice of Public Hearing for Conditional Use Permit for Duinick, Inc.

Pursuant to the Rock County Zoning Ordinance, notice is hereby given by the Rock County Planning and Zoning Commission that a public hearing will be held at the Rock County Law Enforcement Center located at 1000 North Blue Mound Avenue, Luverne, Minnesota at 7:40 p.m. Monday, February 27, 2017. The purpose of this hearing is to rule on the application for Conditional Use Permit for the following:

Location 1:  
Applicant: Duinick Inc.  
Property Owner: Bar S, Inc.  
Conditional Use: Operation of a temporary hot mix asphalt plant and associated stockpiling  
Project Location: NW 1/4 of the NW 1/4 of Section 14 of Denver Township, T104N, R45W, Rock County, Minnesota

Location 2:  
Applicant: Duinick, Inc.  
Property Owner: Marcella G. Scott c/o  
Conditional Use: Operation of a temporary hot mix asphalt plant and associated stockpiling  
Project Location: E 1/2 of the SW 1/4 and the W 1/2 of the SE 1/4 of the SW 1/4 of Section 21 of Battle Plain Township, T104N, R44W, Rock County, Minnesota

Dated: February 16, 2017  
By Order of the Rock County Planning and Zoning Commission  
Eric Hartman, Zoning Administrator  
311 W. Gabrielson Road  
Luverne, MN 56156  
507-283-8862, Extension 4

(02-16, 02-23)

# Star Herald CLASSIFIEDS

### WINDOWS

We custom build and install Energy Star Therm-O-Loc Windows. Call Mike at Adrian Glass for a free in-home demonstration and estimate. 101 E. Pearl, Adrian, MN 56110. 507-483-2228 or 605-770-7677 or email mbyler@santel.net. (tc)

### AGRICULTURAL

We have several crews of rock pickers and we also do any type of farm work. Call 712-943-2084. (tc)

### MISCELLANEOUS

Adult Prom  
Forster Community Center, Rock Rapids IA 8:00pm-12:00am, Saturday March 4 Come and dance the night away and relive the high school days! Formal attire, of any era, or come as you are! Must be 21 or older, ID check at the door. \$15 per individual, \$25 if you come as a couple, tickets at the door. Rock Rapids Fire Department will be selling beverages! Can't wait to see you there! (2.9-2.26)

HAVE A UNIQUE SERVICE OR BUSINESS? Get the word out to over 1.4 million households. Call WIDE AREA CLASSIFIEDS today, 507-359-7326. (tc)

CALL TODAY! CALL TODAY!  
Call RICK or CHANTEL to advertise in the Star Herald 283-2333  
CALL TODAY! CALL TODAY!

### FOR SALE

2002 Buick LaSaber - 85K, Nice. 2006 Dodge Dakota - 2x4 135k, nice \$5900. 2013 Hyundai Accent - 57k \$7995. Call Curtis at 605-413-8862. (2.9-2.26)

### RENTALS

### SHOP SPACE FOR LEASE in Luverne

Good location. Available July 1. Approximately 2,000 sq. ft. Can build to suit needs  
507-360-7844

## Oakwood Apartments

401 Oak St., Ellsworth

• 1 Bedroom Unit Available

Unit Available Water, Sewer & Garbage Included.

Rent Based on Income AVAILABLE IMMEDIATELY

Van Binsbergen & Associates, Inc.

320-269-6640 ext. 22

Equal Housing Opportunity



www.vanblc.com

### WANTED

Adult caregiver needed in rural Adrian. Elderly male in need of in home caregiver. full-time and part-time available. Call for details at 605-370-9903. (2.19-3.9)

### RENTALS

Available NOW! Three-bedroom one-bathroom main floor apartment. Dishwasher, washer/dryer, garbage displ and one car attached garage. \$900/mth utilities included. No pets. Outside smoking. Call or text Mary 605-366-6514. (2.23-3.12)

For Rent: downtown, upstairs, one-bedroom apartment. Available immediately. Rent includes utilities, refrigerator, stove and air conditioner. No smoking or pets. References and deposit required. Call 507-227-1589. (tc)

Large two-bedroom apartment in Hills. Utilities furnished except electricity. Available March 1st. Call Al Small at 605-759-4149. (2.9-2.26)

Find Us Online!  
star-herald.com

## BLUE MOUND TOWER



Luverne HRA • Blue Mound Tower  
216 McKenzie Street  
Luverne, MN 56156

507-283-4922

Apartments available!

- All Ages Welcome
- Close to Senior Dining
- Close to Minnesota West College
- Income Based

- Handicap Accessible
- Pet Friendly
- Smoke Free
- Secure Entry System
- On Site Laundry
- Utilities included

## LAND FOR SALE

LEGAL: Two tracts of productive Murray County land for sale as follows:

Tract 1: Approximately 147.33 acres described as the NE1/4 of 32-105-43, less 12.67 acre acreage, Murray County, Minnesota.

Tract 2: Approximately 80 acres described as the W1/2 of the SE1/4 of 32-105-43, Murray County, Minnesota.

TERMS: Sealed bids will be accepted until 5:00 p.m., March 10, 2017, at the Eisma Law Office, 130 East Main, Luverne, MN or 821 Main Street, Edgerton, MN. All bidders will have the opportunity to submit additional bids until property is sold. Tracts will be sold individually. Highest bidder will be required to sign a Purchase Agreement with ten percent (10%) non-refundable earnest money down payment on the date of the sale and the balance at closing on or by May 1, 2017. Possession will be given when purchase agreement is signed.

Sale is subject to approval by the heirs of Nelvina DeKam. For further details contact Douglas Eisma, Eisma & Eisma, Attorneys at Law, (507) 283-4828/(507) 227-2829.

Bridal Shower?  
Wedding Announcement?

Get the word out with  
the Star Herald!

283-2333



Announcer  
Printing  
283-2333

The daily news off Rock County  
Star-Herald.com

# Star Herald CLASSIFIEDS

### EMPLOYMENT

Grace Lutheran Church, Luverne, MN is seeking a full-time Office Manager. The ideal candidate will possess strong interpersonal, organizational and critical thinking skills, be proficient in word processing, excel, publisher, quick books and other software necessary to communicate and track church information. This position works closely with pastors and staff, volunteers, and parishioners, supporting the core values of our church. Typical hours are Monday through Friday 8 a.m. to 5 p.m., with occasional other hours. A copy of the position description is available at the Grace Lutheran Church office, or by calling 283-4431. To apply, please submit a resume to Grace Lutheran Church c/o Pastor Ron Nichols, 500 N. Kniss Ave. Luverne, MN 56156. This position will be opened until filled.  
(2.9-2.26)

Ellsworth Public School is accepting applications for a full-time Paraprofessional. Applications can be picked up in the school office or by calling 507-967-2242.  
(2.19-3.2)

**HELP WANTED**  
**CHS Eastern Farmers Luverne, MN** is looking for a full-time **semi-feed truck driver**. Must have a CDL and clean driving record. CHS Eastern Farmers offers a competitive pay and benefits package. **Apply by calling Gary at 507-283-4418 to set up an appointment.**



### EMPLOYMENT

New Prairie Insulation of Beaver Creek has a full-time Insulation Installer position available. Monday through Friday, health insurance, vacation, holiday, bonus opportunities. Will train. Call Dean at 605-376-3006 or 507-673-2548.  
(tc)

Southwestern Youth Services, a nonprofit residential behavior treatment center for boys ages 10-20, is seeking applications for a full-time teacher for the 2017-2018 school year, mid-August to early June. Summer teaching is optional. Hours are 7:30-3:30, M-F, with paid holidays. MN teaching license required but will consider SD teaching license with the understanding that application for a MN license would occur within one year. All certifications considered. Salary based on experience. SYS is located one mile north of Interstate 90 in Magnolia, MN, 26 miles east of Brandon and 27 miles west of Worthington. For more information, please email Carole Naasz at [cnaasz@southwestyouth.org](mailto:cnaasz@southwestyouth.org).  
(2.9-2.26)

The Tuff Memorial Home is currently hiring a **Part-time Evening Cook** 11a.m. - 7:30p.m. Experience preferred. If interested, contact Alex Dysthe at 507-962-3275 or email [adysthe@tuffmemorialhome.com](mailto:adysthe@tuffmemorialhome.com).

**Competitive Wage**  
**Full Benefits**  
**Pension Plan**  
**Friendly Atmosphere**



**TUFF MEMORIAL HOME**  
"A Home With a Heart"

### EMPLOYMENT

Carpenters and Labor Hiring, Luverne, MN. We are currently looking for Carpenters, Labor positions in or near Luverne. Please apply at Design Craft of Luverne, Inc., 904 Commerce Road, Luverne, MN or call 507-283-2600, hourly wage based on experience.  
(2.12-3.2)

**Nursing Assistant:** Parkview Manor has openings for part-time nursing aides with benefits to include: health insurance, public retirement plan, and holiday pay. New wages \$11.90/hr. or more with experience. \$2000 scholarships available for students. Will provide training or pay for experience. Contact Darnell Krull, 308 Sherman Ave. Ellsworth, MN 56129 or call 507-967-2388.  
(tc)

**Help Wanted**  
**We are hiring all shifts. Flexible schedules, competitive wages and fun work environment! Apply within at Luverne Subway or apply online at mysubwaycareer.com**  
No phone calls please.  


### EMPLOYMENT

New Life Treatment Center, Woodstock, MN, a faith-based non-profit sincerely dedicated to our clients, delivers quality care to clients who are chemically dependent. Great working environment. Competitive wages, great benefits, paid time off. EOE Call 507-777-4321 ext. 203 to apply. Positions available: Full/Part Time LPN - Must be licensed in MN. Limited physical demands. Must be available to work all shifts. Full-time LADC counselor - Must be licensed in MN Part-time Cook/kitchen helper  
(2.16-3.5)

Part-time RN Manager for 6 bedroom elderly care home in Luverne. Flexible hours with some opportunity of working from home. Call for details 612-269-2748.  
(2.9-2.26)

**SON - D - FARMS ADRIAN**  
is hiring General Farm, Hog, Field Work, Truck Driver, Maintenance person, Farm Shop Mechanic & Farm Delivery Person. Experience wanted but willing to train. PTO benefits. Call (507) 483-2245, 370-1590 or e-mail [office@sondfarms.com](mailto:office@sondfarms.com)

### EMPLOYMENT

Registered Nurse/LPN-Parkview Manor, a municipal skilled nursing facility is accepting applications for a part-time charge nurse position. Wages commensurate with experience. \$2000 scholarship available for students. Benefits include vacation, holiday, and PERA retirement plan. Contact Darnell Krull 308 Sherman Ave., Ellsworth, Mn 56129 or call 507-967-2482. (tc)

### CARDS OF THANKS

My 90th Birthday was the greatest. It was spent with family, friends, and neighbors who made it a very special day. I've had a wonderful life and have been so blessed to have many wonderful people to share it with. The beautiful cards, visits, and phone calls gave a special meaning to my birthday. Thank you. It's been a great life. Let's go for more!  
**Barb Connell**  
(2.23-2.26)

We would like to thank everyone for the prayers and the many expressions of sympathy for Doris Engelson Plahn. She was an amazing mom and grandmother. A special thank-you to St. Catherine's Church.  
**Jill and Jim Willers and family**  
(2.23-2.26)

Thank you everyone for all the cards, food, flowers and condolences for Vince Persing's funeral. You will never be forgotten.  
**Theresa Persing and family.**  
(2.23-2.26)

So thankful for the wonderful community we live in!! From the EMT's, Law Enforcement, Fire Dept, Sanford Luverne & Sioux Falls, doctors, nurses, dietary and now therapy dept you all have done a wonderful job of taking care of me. Also thanks to the family and friends for be there for us with cards, visits, food and most of prayers. Thanks to the Mayor for salting the driveway, Mike G, Chad, Mike D. and Jon and for the help with the snow removal, and the nephews for moving the skid loader out of sight asap. Sorry no thank yous will be sent due to injury of arm.  
**LeRoy and Glenda**  
PS He is right handed and hurt his left one. Nice excuse LeRoy!!  
(2.19-2.23)

My sincere thanks to all relatives and friends who prayed for me and sent thoughtful encouragement cards and gifts while I was in Bethany Care Center. I am on the road to recovery. Your many thoughtful acts of kindness were very much appreciated.  
**Jean Knips**  
(2.19-2.23)

Thank you to all who helped with the benefit for Jake. By contributing to the bake sale, silent auction, cooking or serving the supper, concessions or monetary donations. We are blessed to be part of such a caring community!  
**Paul & Deb Hartz Jacob Osborn**  
(2.23-2.26)


The family of Gene (Willie) De Smet, would like to say thanks for all the words of comfort, prayers, cards, and food from family, friends, and community during Gene's illness and death. Thank you Dr. Ceynowa and staff, Luverne Home Hospice, Jurrens Funeral Home, Pastor Cal Hoogedorn, Ron De Witt, Chad Byle for their visits and help with the funeral arrangements. Thank you to Tony's Catering and the volunteers of First Christian Reformed Church for serving the lunch and clean up. We were blessed to have Gene as a husband, father, grandfather, and great grandfather.  
**Audrey De Smet Drew De Smet and family Spencer and Lisa De Smet and family Cory De Smet and family Tedra and Jon Voss and family**  
(2.19-2.23)

The family of Stanley Stehlik would like to thank our friends, neighbors and co-workers for your caring thoughts, cards, food, and memorials. Special thanks to Pastor Ron Nichols for his visit and to the staff and volunteers at the Sanford Luverne Hospice Cottage. Your thoughtfulness will not be forgotten.  
**Jeff and Lynette Stehlik**  
(2.19-2.23)

**NEW VISION CO-OP**  
**Employment Opportunities**  
New Vision Co-op is looking for qualified individuals for the following positions:  
• Grain Elevator Operator – Hills, MN  
• Custom Applicator – Hills, MN  
• Diesel Mechanic – Magnolia, MN  
• Feed Truck Drivers – Magnolia, Windom & Worthington, MN  
• Feed Production Technician (AM & PM shifts) – Worthington, MN  
New Vision Co-op provides excellent benefits including health insurance, 401(k), paid time off, and competitive wages.  
**For an application or to see what other positions are available, go to: [www.newvision.coop](http://www.newvision.coop). You can also contact 507-842-2021 or [hr@newvision.coop](mailto:hr@newvision.coop).**  
Equal Opportunity Employer

### Help Wanted Internet Installer/Repair Technician

Lismore Cooperative Telephone Company is seeking a full-time individual to become a member of our team providing hybrid broadband service in and around Lismore, MN. The work will include installation of our new wireless internet, maintenance and repair. Applicant must be comfortable with heights and have the ability to work in a customer orientated, fast-paced environment. Submit resume and letter of application to: Lismore Cooperative Telephone Company, PO Box 127, Lismore, MN 56155. Email: [info@lismoretele.com](mailto:info@lismoretele.com) by February 20 or until position is filled.

**Lismore Coop Telephone Co. Lismore, MN (507)472-8748**  


**Help Wanted**  
Exchange State Bank, Luverne, continues to grow in our community and has an excellent opportunity for a full-time **customer service representative**. It is beneficial to have, but not required, previous banking/teller experience in conducting transactions, internal processing and providing exceptional customer service to customers in a community bank or equivalent retail setting. The successful candidate will be a team player with a strong work ethic, detail orientated, excellent oral and written communication skills, and time management skills. Exchange State Bank offers competitive wages and benefits; including health, dental, vision insurance and a 401k plan. Qualified candidates should mail their letter of application and resume to: Exchange State Bank PO Box 487, Hills, MN 56138 Attn: Trista Bosch. No resumes/applications accepted after March 1, 2017.

**Exchange STATE BANK**  
Local. Dependable. Strong  
(507) 449-6000 Member FDIC  
Luverne, MN

"Exchange State Bank is an Equal Opportunity Employer of women, minorities, protected veterans and individuals with disabilities"




**mcan**

## Minnesota Classified Advertising Network



**EMPLOYMENT**  
**RAILROAD VEGETATION CONTROL:**  
Full-time traveling opportunity, 60-80 hours/week, \$13-\$15/hour starting, meal allowance, paid lodging, 95% paid health/dental, 401(k) & paid time off. RAW, Inc. in Cooperstown, ND 888/700-0292 [info@rawapplicators.com](mailto:info@rawapplicators.com) [www.rawapplicators.com](http://www.rawapplicators.com)

**HELP WANTED**  
**GYPSY MOTH TRAPPERS**  
The MN Dept. of AG (MDA) is hiring Agricultural Technicians for the 2017 trapping survey in your area. View job post & apply online through March 9 at <http://mn.gov/mmb/careers>. MDA is an equal opportunity employer & provider. Questions? Call 651/201-6407 or email [gypsy.moth@state.mn.us](mailto:gypsy.moth@state.mn.us)

**HELP WANTED - DRIVERS**  
**CDL A DRIVERS**  
\$7,500 sign-on-bonus. Medical benefits on day 1 & earn \$65k+ in your first year!!! Guaranteed pay. Profit sharing, 401k with company match & more! For more information, call Jim Robbins now! 253/512-1887

**MISCELLANEOUS**  
**DRIVE WITH UBER**  
No experience is required, but you'll need a Smartphone. It's fun and easy. For more information, call: 800/912-3649

**STOP OVERPAYING FOR YOUR PRESCRIPTIONS!**  
Save! Call our licensed Canadian & International pharmacy, compare prices and get \$25.00 OFF your first prescription! Call 877/210-2257 Promo Code: CDC201725

**MISCELLANEOUS**  
**GOT KNEE PAIN?**  
Back Pain? Shoulder Pain? Get a pain-relieving brace - little or no cost to you. Medicare patients call health hotline now! 800/755-6807

**Your ad here!**  
Only \$279 to reach a statewide audience of 3 million readers!!! **1-800-279-2979**

**DONATE YOUR CAR**  
truck or boat to Heritage For The Blind. Free 3-day vacation, tax deductible, free towing, all paperwork taken care of 800/439-1735

**DISH TV - BEST DEAL EVER!**  
Only \$39.99/mo. Plus \$14.99/mo Internet (where avail). Free Streaming. Free Install (up to 6 rooms). Free HD-DVR. Call 800/297-8706

**CALL TODAY! CALL TODAY! CALL TODAY!**  
Call RICK or CHANTEL to advertise in the Star Herald 283-2333  
**CALL TODAY! CALL TODAY! CALL TODAY!**

**MAKE THE WISE CHOICE**  
  
**RECYCLE THIS NEWSPAPER!**

**ADVERTISE HERE STATEWIDE IN 260+ NEWSPAPERS FOR ONLY \$279 PER WEEK! CALL 800-279-2979**

**Star-Herald.com**  
Anywhere, Anytime  
