



Rock County STAR HERALD

www.star-herald.com

Rock County's oldest business, printing since 1873

Thursday, January 26, 2017

District seeks input on planning

Community meetings Jan. 30 and Feb. 6 in elementary commons

By Mavis Fodness

Luverne Public Schools is seeking input on the long-range education and facility plan for the district.

Two community listening sessions are planned to gather the public's thoughts and ideas.

The meetings are scheduled for 6:30 p.m., Monday, Jan. 30, and again Monday, Feb. 6. Both sessions are in the elementary school commons and take about an hour to complete.

Seven sessions are also scheduled this month with elementary, middle school and high school teachers and staff.

Facilitators encourage individuals to participate in only one listening session. Each session answers the same seven questions asked by facilitators from Foster, Jacobs and Johnson out of Sioux Falls.

The Luverne board hired the group in December to guide district leaders through a long-range plan process.

"With these sessions, we help districts define the desires and values of different stakeholder groups and point the district toward a collective vision," said facilitator Mike Hubbard.

His firm will also study the district's current facilities and demographics before prioritizing needs in the final report.

The first listening session took place Jan. 17 with board members and school administrators.

"We don't hand out the questions beforehand," Hubbard explained. "We want candid answers — we don't want it scripted."

Hubbard, discussion facilitator Roger DeGroot, and solutions engineer Lori Eckrich led the 12-member group through seven questions.

Seeking school input/see page 2A



"I like that it opens their eyes to a teacher's perspective. ... It is meant to reflect back on a typical school day with students pushing the teachers to the brink."

— Julie Fettes, one-act play director

Julie Fettes (far right) directs a 22-member cast (front row, sitting on floor) Emma Mumme, Ashlee Boltjes, Jacinda Hustoft, Aric Meinerts, (second row, standing) Brianna Jones, (in chairs) Megan Rogers, Will Mumme, Emma Verbrugge, Zoe DeBates, Jonah Louwagie, (third row standing) Naomi Ring, (in chairs) Nathan Overgaard, Julia Ferguson, Carissa Cunningham, Autumn Emery, (standing) Nicole Hoogland, (fourth row, standing) Jordan Winter, (sitting) Mikayla Wiederhoeft, Austin Winter, Ariana Gonzalez, (standing) Michael Kinsinger. Missing is Nicole Aanenson.

'Teachers on the Verge of a Nervous Breakdown'

Luverne High School One-Act Play students to perform comedy Thursday, Jan. 26

By Mavis Fodness

Eighteen Luverne High School students are learning what it's like to be a teacher.

"Teachers on the Verge of a Nervous Breakdown" is a one-act comedy students will perform at 7 p.m. today, Jan. 26, in the high school auditorium. Admission is free.

The 35-minute comedy features five teachers who find themselves at the ends of their ropes as the school opens for the first day of classes.

LHS sophomore Zoe DeBates portrays a moody English teacher, Miss Pat, while junior Emma Verbrugge plays Mrs. Riesenbach, a frazzled algebra teacher. Freshman Jonah Louwagie

is Mr. Tremblay, an elderly chemistry teacher, and junior Megan Rogers plays Ms. Fritz, a strict geography teacher. Sophomore Will Mumme plays Mr. Wiens, the exhausted drama teacher.

Third-year director Julie Fettes said the students selected this year's one-act play.

"I like that it opens their eyes to a teacher's perspective," she said. "It is meant to reflect back on a typical school day with students pushing the teachers to the brink."

A twist at the end of the school day places the students in the teachers' shoes.

LHS sophomore Naomi Ring plays thespian student Kylie, who encourages her fellow students

to go easy on the adults.

She reflected on the play's meaning. "Teachers got it rough," Ring said.

Outside of the play she said she finds herself acting more like her character because real-life students act like those in the play.

"I try to be nice and quiet," she said. "I find myself telling others, 'Shhhh, pay attention.'"

Portraying other students is sophomore Brianna Jonas as know-it-all Logan. The teacher's pet is Taryn (freshman Nicole Hoogland) and the heartbreaker is Cameron

'Teachers on the Verge'/see page 2A

Sewing Basket 'PHD Society' helps procrastinators finish their 'Projects Half Done' one month at a time

Interested society members are welcome to join anytime

By Lori Sorenson

Barb Bork and Barb Sandbulte at Luverne's Sewing Basket are helping people with their New Year's resolutions.

In particular, their Sewing Basket clients and crafty colleagues are getting support from the PHD Society, which stands for Projects Half Done.

"We wanted a good name so people would want to join our society," said Bork, Sewing Basket owner and society founder.

"Some clubs are called PIGS — Projects In Grocery Sacks, but we wanted something more distinguished."

In the invitation to join the group, the PHD Society asserts that "everyone needs an incentive to finish those projects, and we hope that by joining our 'society' you will be motivated to complete them and have some fun along the way."

Members identify 11 projects they'd like to complete in 2017. "I don't have any trouble filling a list," Sandbulte said.

Projects on each line are numbered from 1-11.

"They can be projects already started or one you are still designing or dreaming about," the invitation states.

Points are earned for projects completed, with more points awarded for more demanding projects. A 90-by-

Sewing Basket's PHD Society/see page 3A



Lori Sorenson photo/0126 phd society sewing basket

Barb Sandbulte (left) and Barb Bork at the Sewing Basket in Luverne display a finished project at the shop on Main Street. They're encouraging people to finish their artistic ventures by participating in their PHD Society for "projects half done."

Kenneth Bar fails tobacco compliance check

By Mavis Fodness

Compliance checks were completed recently in Rock County according to its tobacco ordinance adopted in 2013.

Nine out of the 10 businesses who are licensed to sell tobacco passed the test.

Kenneth Bar allowed someone under the age of 18 to purchase tobacco during business hours. State law prohibits such sales.

The fine for first-time violators is \$150.

Tobacco compliance checks in Rock County are contracted annually through Southwest Health and Human Services.

The most recent test was conducted Dec. 5.

Community Public Health Supervisor Ann Orren said a field worker and a youth traveled to each business. Cash was given to the youth older than age 15 but younger than 18 to enter the business and ask to purchase tobacco.

Orren said SWHHS chooses a youth who looks his or her age. The youth is instructed not to lie and doesn't carry any identification.

Businesses licensed to sell tobacco products are required to verify a buyer's

Tobacco compliance/see page 5A

Volume 142, Number 4

Luverne, MN 56156
USPS 468-040



The Star Herald is Rock County's oldest business, documenting the news of its citizens since 1873



Article 4: Palace Theatre puts Luverne on the map in early 1900s

This is the fourth in a series that shares the rich history of Luverne as it celebrates 150 years. This week comes from the archives of the Rock County Herald:

As Luverne became a bustling city around the turn of the century, the southeast corner of Main Street and Freeman Avenue became an important part of the community. Today, this corner is home to the Historic Palace Theatre, which observed its 100th anniversary in 2015. Luverne Chamber Director Jane

Luverne celebrates 150 years/continued on page 5A

This week's moment in time is sponsored by:



COMMUNITY CALENDAR

Meetings

Luverne Lions Club will meet at 6 p.m. Monday, Jan. 30, at the Pizza Ranch in Luverne. Guests are welcome.

American Legion Post 123 and Auxiliary will meet at 7:30 p.m. on Wednesday, Feb. 8, in the Post home.

Narcotics Anonymous will meet every Thursday evening at 6:30 p.m. at the Steen Reformed Church. Contact Robert for more information 507-329-2642.

Women's Alcoholics Anonymous meets at 8 p.m. Mondays in the United Methodist Church.

Al-Anon meets from 6:30 to 7:30 p.m. Wednesdays in Sanford Luverne. Call Stephanie at 507-449-1246.

Narcotics Anonymous meets at 7 p.m. Fridays and for basic text study at 7:30 p.m. Tuesdays in the basement of St. Catherine Catholic Rectory, 203 E. Brown St., Luverne. Use east door. For more information call 507-220-0137.

Alcoholics Anonymous meets at 8 p.m. Wednesdays and Saturdays in the United Methodist Church, Luverne. Call 605-321-4324.

Celebration Jan. 29 for St. John's 125th

St. John Lutheran Church invites the community to worship at 9 a.m. on Sunday, Jan. 29, in honor of the church's 125th Anniversary. The event, which features 1959 Luverne High School graduate Rev. Dan Schmalz, will be a kickoff celebration that will continue throughout the year.

Kids' Free Throw tourney Jan. 29

Boys and girls ages 9-14 (as of Jan. 1) are invited to participate in free throw championships at 4 p.m. Sunday, Jan. 29, in the Luverne Cardinal Gym. Registration is at the door. The free event is sponsored by St. Catherine Knights of Columbus. Call Mike Smith at 605-864-1148.

Pie and Piano music Jan. 30

The public is invited to Poplar Creek at 2 p.m. Monday, Jan. 30, for a slice of pie and some beautiful piano music.

Bloodmobile in Luverne Jan. 30

The American Red Cross Bloodmobile will be in Luverne from 1 to 7 p.m. Monday, Jan. 30, at Grace Lutheran Church. All donations are appreciated. To make an appointment to give blood, download the Red Cross Blood Donor App, visit redcrossblood.org or call 1-800-733-2767. Donors are encouraged to make appointments and complete the RapidPass online health history questionnaire at redcrossblood.org/rapidpass to save time when donating.

Free tax help available at library

Volunteers through AARP will provide free tax services at the Rock County Community Library in Luverne starting Monday, Feb. 6. Call the library, 449-5040, to make an appointment. Appointments are required. Evening appointments are also available. The service is free for any private individual with a simple tax format. It's not for commercial, farming or investment taxes.

History Center open for visitors

The History Center on East Main Street in Luverne (in the former Ford dealership) is open for visitors from 10 a.m. to 4 p.m. Tuesday through Friday, and by appointment on Saturdays. Call 220-1070 for information or to schedule a Saturday visit.

'Register by Jan. 30 for Driver's Ed

Students in eighth grade and older may register for Student Driver Education class by Jan. 30 for the class that begins Feb. 6 or by June 12 for the class that begins June 19. Limited seats available. Fee is \$325 due at the time of registration at the Luverne Community Education office.

'Secret Life of Pets' at Palace Feb. 2

The free Bank Nite movie, "Secret Life of Pets," rated PG, will begin at 6 p.m. Thursday, Feb. 2, at the Palace Theatre in Luverne. Sponsored by First Farmers & Merchants National Bank and Papik Motors, a free, family-friendly movie is shown on the first Thursday of every month as it was done for "Bank Nite" in the 1930s.

Winter Carnival set for Feb. 4

Luverne Music Boosters' annual Winter Carnival will be from 5 to 9 p.m. Saturday, Feb. 4, in the Luverne High School gym for families and children of all ages. The event, which raises money for music programs in Luverne schools, features carnival-style games, prizes, Bingo, raffle drawing, cake walk, cotton candy, root beer floats, pizza and more.



Mavis Fodness Photo/0126 One Act Play 2017

Freshman Jonah Louwagie (far left) plays Mr. Tremblay, an elderly chemistry teacher who explains to students Taryn (freshman Nicole Hoogland) and Cameron (freshman Jordan Winter) that his bowel obstruction will pass.

'Teachers on the Verge' /from 1A

(freshman Jordan Winter). Eight students make up the rest of the class with no specific speaking parts, but their roles are important, Fettes said.

"The extras have demanding roles," she said. "They have to convey emotions only through facial expressions and hand gestures to sell the classroom setting."

Playing the extra student roles are sophomores Julia Ferguson, Autumn Emery, Nicole Aanenson, Carissa Cunningham, Mikayla Wiederhoeft, Austin Winter, Adriana Gonzalez and Nathan Overgaard.

For Overgaard the one-act production is his first try at acting. "You have to react to everything on stage like you do in real life," he said.

His actions, no matter

how small, can enhance the performance of his classmates who portray the adult teachers, or be distracting to the audience.

"It has been hard to imagine one of your classmates having a breakdown," he said.

Fettes said many of the amateur actors have latched onto real-life actions in the classroom and brought them to the stage.

"It's not hard to imagine a role of a student (because they are students)," she said. "Some kids have latched onto the disciplines and associated them with one of their teachers."

Student directors are junior Ashlee Boltjes and sophomore Jacinda Hustoft.

Senior Emma Mumme and junior Aric Meinerts operate the lights and sound for the performance that will also



Mavis Fodness Photo/0126 One Act Play 2017

Frazzled algebra teacher Mrs. Riesenbach (played by Luverne High School junior Emma Verbrugge) receives encouragement from know-it-all student Logan (sophomore Brianna Jonas) in the LHS one-act play rehearsal of "Teachers on the Verge of a Nervous Breakdown."

take the cast to Pipestone on Saturday for the subsection One-Act Play competition.

The top two teams earn the right to perform at the

Feb. 4 regional competition for a chance to attend the one-act play festival Feb. 9-10 at St. Catherine University in St. Paul.

Beaver Creek farmer advises National Biodiesel Conference

By Lori Sorenson

Beaver Creek farmer Jim Willers added his unique perspective and experience to the National Biodiesel Conference last week in San Diego.

Willers joined more than two dozen representatives of the Minnesota Soybean Research and Promotion Council to meet with industry leaders in California.

He said their primary focus was to address a changing political landscape and its impact on lower carbon fuels.

"This is an opportunity for decision-makers in our industry to identify the challenges that may lie ahead," he said.

"I believe the potential for growth remains strong."

Willers, chairman of the New Uses Action Team for the Minnesota Soybean Research and Promotion Council, said biodiesel in Minnesota has a proven economic and environmental track record.

For example, Minnesota was the first in the nation to require 10 percent biodiesel, or B10, in diesel blends sold during the summer months. B10 is required from April 1

to Sept. 30 and B5 is required during the remaining winter months.

Minnesota will set B20, or 20 percent biodiesel, as the fuel standard beginning in the summer of 2018.

According to biodiesel leaders, Minnesota produces more than 60 million gallons of biodiesel a year, much of that made from soybean

oil. Only the oil portion of the soybean is used to process biodiesel, leaving all of the protein available for livestock and people. Each year biodiesel adds approximately \$237 million to the state's agriculture economy.

The American Lung Association of Minnesota shows the current use of 5-percent and 10-percent biodiesel blends results in greenhouse gas emissions reductions equal to removing 128,000 passenger vehicles from the state's roads each year.

"The biodiesel industry has carved out an impressive string of accomplishments in Minnesota," Willers said.

"But much work remains to be done."



Mavis Fodness Photo/0126 School Plan

Board members and school administrators vote for nine out of 16 priorities identified in a listening session Tuesday evening, Jan. 17, in the high school library. Individuals placed a round sticker on the sheet of paper listing what they see as a long-range priority for the district.

School input /from page 1A

"There is no right or wrong answer," Hubbard said. "The core questions get the information we want without leading down a certain corridor."

On yellow Post-It notes, the school board members and administrators wrote single answers or ideas that were read aloud before being categorized by the facilitators.

After the last question, the facilitators identified 16 commonalities that the group narrowed down to five top priorities by the end of the one-hour session.

Eckrich said all answers

from the notes would be documented and included in the final strategic plan, estimated to be complete about 30 days after the last meeting in February.

One of the district's top concerns is the age and upkeep of its current school facilities.

Its newest facility is the elementary school built in 1999.

The oldest is the middle-high school constructed in 1956 with additions added in 1965 and 1975.

An on-line questionnaire concludes FJJ's information gathering.



Dial-A-Specialist

Your One Stop Guide to Local Businesses

 <p>ROCK COUNTY CHIROPRACTIC • Men, Women & Children's Health • Custom Orthotics • Kinesiotape • Athletic Care • Massage Therapy • Work & Auto Injuries • Postural Restoration</p> <p>WWW.ROCKCOUNTYCHIROPRACTIC.COM 283-2561 • 103 E. MAIN, LUVERNE Monday 7:30 a.m. - 6 p.m. • Tuesday 7:30 a.m. - 3 p.m. Wednesday 7:30 a.m. - 6 p.m. • Thursday 7:30 a.m. - 1 p.m. Friday 7:30 a.m. - 5 p.m.</p> <p>Most Insurance Accepted</p> <p>• Chiropractic</p>	<p>Rock County STAR HERALD</p> <p>Luverne ANNOUNCER</p> <p>Chantel Connell Sales Representative</p> <p>117 W. Main, Luverne, MN 507-283-2333</p> <p>Rick Peterson General Manager</p> <p>• Advertising</p>	<p>LUVERNE HEALTH & WELLNESS</p> <p><i>Codie Zeutenhorst, D.C., CAC</i></p> <p>✓ Acupuncture ✓ Chiropractic Care ✓ Family Care ✓ Sports Injuries ✓ Kinesiotape ✓ Auto & Work Injuries</p> <p>Acupuncture and Massage Available Kris Van Der Brink M.T. & Amy Rosales M.T.</p> <p>507.449.4400 www.luvernechiro.com 109 S. Freeman Ave. Luverne, MN</p> <p>• Chiropractic</p>	<p>COMRAY COMPUTERS Computer Repair and System Builder</p> <p>Ray Hansen 1726 140th Ave., Luverne, MN 56156 507-669-2621 comraycom@gmail.com</p> <p>• Computer</p>
 <p>Rock County EYE CLINIC</p> <p>507-283-2345</p> <p>102 N. Freeman Ave. Luverne, Minnesota</p> <p>Dr. Sandra Carman</p> <p>• Eye</p>	<p>Papik MOTORS</p> <p>Box 536 • 801 West Commerce Road Luverne, MN 56156</p> <p>GM Certified USED VEHICLES certified pre-owned Chrysler Jeep Ram</p> <p>(507) 283-9171 (800) 634-7701 www.papik.com</p> <p>• Automotive</p>	<p>Luverne MINNESOTA City Offices</p> <p><i>Love the life!</i></p> <p>PO Box 659, Luverne, MN 56156 507-449-2388 (24 hour voice mail)</p> <p>www.cityofluverne.org</p> <p>• City</p>	<p>Dakota Land Surveying and Engineering, Inc.</p> <p></p> <p>Steven B. Kor Professional Engineer Registered Land Surveyor</p> <p>2000 W. 42nd Street, Suite B-6 506 Almar Sioux Falls, SD 57105 Luverne, MN 56156 605-334-4882 507-283-3803 605-334-5745 Fax steve.dis@midconetwork.com</p> <p>• Land Surveying</p>

Remember Rally plans walking military memorial for Sept. 11

Diane Sherwood, Luverne, is ready for the 2017 event of Remember Rally, which she started after the 9-11 terrorists' attack on the United States.

The event this year will be a "Walking Military Memorial" in downtown Luverne.

"We realize that many businesses will have pictures or items in their storefronts in conjunction with our 150th anniversary," she said.

"But we want to be able to tie in with the anniversary without interfering."

She said more details will be shared, but some of the basics are in place.

For example, Sherwood said she wants to display military pictures, information, medals, banners and other military memorabilia in windows of downtown businesses from Memorial Day weekend through Veterans Day on Nov. 11.

"Any business in town is welcome to display military information, but the 'Walking Memorial' part will be on our Main Street," Sherwood said.

She said the memorial will also be an educational tool with posters or information about a variety of subjects such as local military history, PTSD, Agent Orange from Vietnam and more.

"With all the normal business activity, the many events this year with the 150th anniversary, encouraging students to 'walk' our Main Street and even making this a tourist attraction — we can make this a very positive event," Sherwood said.

She suggested businesses offer specials or discounts if people mention the military display in their store window, which might help drive business traffic downtown.

"We feel this is a golden opportunity to honor our military, promote Luverne as the First Purple Heart City in Minnesota, and tie in with our 150th anniversary," she said.

To inquire about information or banners for storefront windows, Sherwood can be reached at 283-4194 and by e-mail at promos@iw.net.



Mavis Fodness Photo/0126 4H Leadership Blakley Fick searches for the right color of crayon Saturday during the "Exploring Colors" event sponsored by the Rock County 4-H program at the library. Pictured below is a completed tie-dyed coffee filter.



In the submitted photo at right, Josh Honken (far right) and Ava Steinhoff apply drops of food coloring on coffee filters.

USDA makes it easier to transfer land to the next generation of farmers

The U.S. Department of Agriculture (USDA) is now offering an early termination opportunity for certain Conservation Reserve Program (CRP) contracts, making it easier to transfer property to the next generation of farmers, including family members. The land that is eligible for the early termination is among the least environmentally sensitive land enrolled in CRP.

Normally if landowners terminate a CRP contract early, they are required to repay all previous payments plus interest. The new policy waives this repayment if the land is transferred to a beginning farmer through a sale or lease with an option to buy. With CRP enrollment close to the congressionally mandated cap of 24 million acres, the early termination will also allow USDA to enroll other land with higher conservation value elsewhere.

Acres terminated early from CRP under these land tenure provisions will be eligible for priority enrollment

consideration into the CRP Grasslands, if eligible; or the Conservation Stewardship Program or Environmental Quality Incentives Program, as determined by the Natural Resources Conservation Service.

According to the Tenure, Ownership and Transition of Agricultural Land survey, conducted by USDA in 2014, U.S. farmland owners expect to transfer 93 million acres to new ownership during 2015-2019. This represents 10 percent of all farmland across the nation. Details on the early termination opportunity are available at local USDA service centers. For more information about CRP and to find out if your acreage is eligible for early contract termination, contact the Rock County FSA Office, or go online at www.fsa.usda.gov/crp.

For more information on FSA programs, please visit the Rock County FSA Office, go to www.fsa.usda.gov/conservation, or give us a call at 507-283-2369.

PHD Society/continued from 1A

108-inch quilt earns five points compared with a potholder that's worth one point.

Current projects on some lists include baby blankets, schlepp bags, table runners, wall hangings and dish towels, to name a few.

Each point is worth \$2 in store credit at the Sewing Basket, which can be spent or accrued for later.

Each month, the Sewing Basket assigns PHD Society members to complete a numbered project.

For example, if No. 3 is chosen, members complete the item they have listed on their third line of the list.

At the end of the year, points are tallied and store credit is awarded, and those who have acquired the most points receive special recognition.

So far, about two dozen members have signed up for the 2017 campaign.

New members can join any time, and it's open to

anyone who's interested. "It's never too late to join," Bork said.

To sign up, stop at the Sewing Basket on East Main Street, call the store at 283-9769 or find them on Facebook.

Bork has operated the Sewing Basket in Luverne for 38 years and attributes her longevity to adapting with trends.

"We started out in garments, back when people sewed their own clothes," Bork said. "That's my first love."

But times changed and her business turned to arts and hobbies. "If we hadn't switched to quilting, we wouldn't be here today."

And the business has other perks.

The back wall of the shop is covered with awards for Husqvarna sewing machine sales. Last fall, company sent Bork to the national conference in Palm Springs, California, where she was recognized for outstanding sales performance in 2016.



In the photo at left, Kailee Sandbulte (left) places drops of dye on a white T-shirt bound together by rubber bands with the help of youth leader Christian Kruse during Saturday's Cloverbud Adventure called "Exploring Colors." In the photograph on the right, Rock County 4-H'er Justin Mente (left) helps Cloverbud Elijah Graves find the center of the T-shirt in preparation for Saturday's tie-dyeing session at the Rock County Library.



Mavis Fodness Photo/0126 4H Leadership

What's your leadership style?

4-H'ers use newly discovered talents with younger members

By Mavis Fodness

Magnolia Junior 4-H Club member Justin Mente is learning more about himself through Rock County 4-H Lead to Succeed Academy.

Mente and 14 other youth leaders met at the Rock County Library Saturday for the first of five sessions designed for youth in grades 7-12 to discover their personal leadership styles and their significance.

Each youth leader, including seventh-grader Mente, completed an online assessment identifying their top five leadership strengths.

According to 4-H program coordinator Chelsey Asche, the assessment can distinguish between 34 individual strengths through a series of questions.

"The odds of two people having the same top five leadership

strengths are 1 in 33 million," she said.

"My goal is for the youth to realize they can all be a leader."

Mente's five strengths included being very deliberate, focused, competitive, conductive and inclusive.

"I found I was more of a leader than I thought I was," he said.

The academy sessions occur once a month until May.

The youth will learn how their unique talents can make completing tasks easier.

With their new leadership knowledge, many of the youth leaders assisted with the first of five Cloverbud Adventures, also taking place once a month.

"Cloverbuds is the group of 4-H'ers in kindergarten through second grade," Asche said. "We

want our newest members to have the opportunity to grow and learn with their age group."

"Exploring Colors" was Saturday's Cloverbud Adventure theme.

The 12 Cloverbuds visited three stations led by the youth leaders.

They learned about various color applications by tie-dyeing coffee filters, practicing color mixing and tie-dyeing a white T-shirt or pillowcase.

"We hope the youth can go home with a project that they can display at the fair," Asche said.

The next Cloverbud Adventure is from 10:30 to 11:30 a.m. Saturday, Feb. 18, at the library. The theme is "Exploring Music and Sound."

The next leadership academy is also Feb. 18, from 9 to 10 a.m.

For more information contact Asche at 283-1302 or joh13978@umn.edu.

Rock County 4-H "Fruit & More" Sale
 Rock County 4-H'ers are selling assorted boxes of mouth watering fruit - apples, oranges, pears, grapefruit; along with cheeses, beef sticks, pickled herring, Puffins, PuffCrest Pizza and a variety of frozen foods. Here's your chance to eat healthy and support local youth. Contact a 4-H'er in your neighborhood or call the Rock County Extension Office (283-1302) from January 16 to February 5 to order. Delivery is March 17.

Introducing... FIGO PET INSURANCE
 Working for you - meeting your needs.
Buffalo Ridge INSURANCE
 South Hwy. 75, Luverne, MN • Ph. 507-283-2381

Notice To All Bidders
 Rock County Rural Water is accepting bids for mowing the wellfield, plant and two out buildings. Bids should be per mowing. Bidder will furnish their own equipment and fuel. The Rural Water board reserves the right to reject any and all bids.
 A certificate of insurance **MUST ACCOMPANY** all bids! Bids must be submitted before **Monday, February 13, 2017 at 10:00 am** to:
 Rock County Rural Water
 541 150th Ave., Luverne, MN 56156

Interested in Advertising?
 Call 283-2333 to advertise in the Announcer

Auto-Owners Insurance

I'll stick with craft of writing

'When life gives you misplaced modifiers, edit and make stories'

While interviewing Sewing Basket owner Barb Bork and employee Barb Sandbulte last week, I was struck by their enthusiasm for all things crafty and creative. To the non-crafty person (me), their world is a strange new territory.



ON SECOND THOUGHT

By Lori Sorenson, editor

However, a faint wave of nostalgia came over me when I stepped into that world.

My mother had sewn a good share of our clothing when my sisters and I were little. Wardrobes that didn't get handed down from cousins were often made on Mom's Singer sewing machine.

I would have forgotten those years, but Mom still has a faded photograph of the Leota Fourth of July Parade in 1976. It was the bicentennial celebration of our nation's independence, and we observed the occasion by dressing in period attire.

The blurry Kodak image features four girls lined up on the boulevard in blue-and-white gingham cotton dresses with matching bonnets. Mom, too, wore the same dress, and she's pictured with my baby sister in her arms — also wearing a blue-and-white gingham bonnet.

At the time, I was a big fan of the TV series "Little House on the Prairie," so I was happy to play the part, but today I wonder if Mom was crazy.

There were five of us, all under the age of 10, two in diapers; where did she find the time? (We must have been very well-behaved.)

The Sewing Basket visit last week summoned memories of fabric shopping with Mom — the aroma of brand-new cloth, the clash of colors, textures and patterns in the neatly displayed reams, and the myriad of scissors, needles, tools and gadgets necessary to

support serious stitching habits.

Mom usually knew what she wanted when she got there, so it wasn't long before we were at the cutting board (our eyes level with the surface back then) observing the yards of material being measured and cut.

The Barbys worked quickly and their utensils were razor sharp; we obeyed when they told us to stay back.

The Barbys were busy (measuring and cutting), when I stopped in with a camera and notebook, so I browsed the store aisles and took it all in.

In addition to offering the essentials for stitching and creating, the store is decorated wall to wall with projects the Sewing Basket women have made.

By hand, of course, with their own original patterns.

Stenciled on the back wall in metallic gold script are the words, "When life gives you scraps, make quilts."

The works of art include plenty of quilts, but there are also table runners, wall hangings, baby sundresses and more — all masterminded by the two Barbys and their colleagues.

I was in awe.

It was enough to make me want to thread a needle, but I know my limitations.

It occurred to me the world has — needs — all types.

While I'm grateful for the colorful creative sorts who decorate our lives, I'll stick to the craft of creating with words.

... "When life gives you misplaced modifiers, edit and make stories."

School needs community input

Independent School District 2184 is starting the process of developing a long-range plan for the educational and facility needs of the district.

The Board of Education has engaged Foster, Jacobs, & Johnson, a consulting firm from Sioux Falls, to lead the important step of community stakeholder meetings.

The scheduled meetings are an opportunity for community members to share thoughts, ideas, and visions for the future needs of learning and education now and into the 21st century.

Education today does not look and feel like it did 30, 20, or even 10 years ago. The constant change and evolution of various components in education make predicting the future extremely difficult. This is where the community plays an integral role.

By engaging in the community stakeholder meetings, input from the public is gathered to help shape the future of education in the community of Luverne.

The input received will not only add value to the process, it will help

GUEST EDITORIAL

by Craig Oftedahl,
Luverne Public Schools Superintendent

Community Stakeholder Meetings

Monday, Jan. 30

Monday, Feb. 6

6:30 to 7:30 p.m.

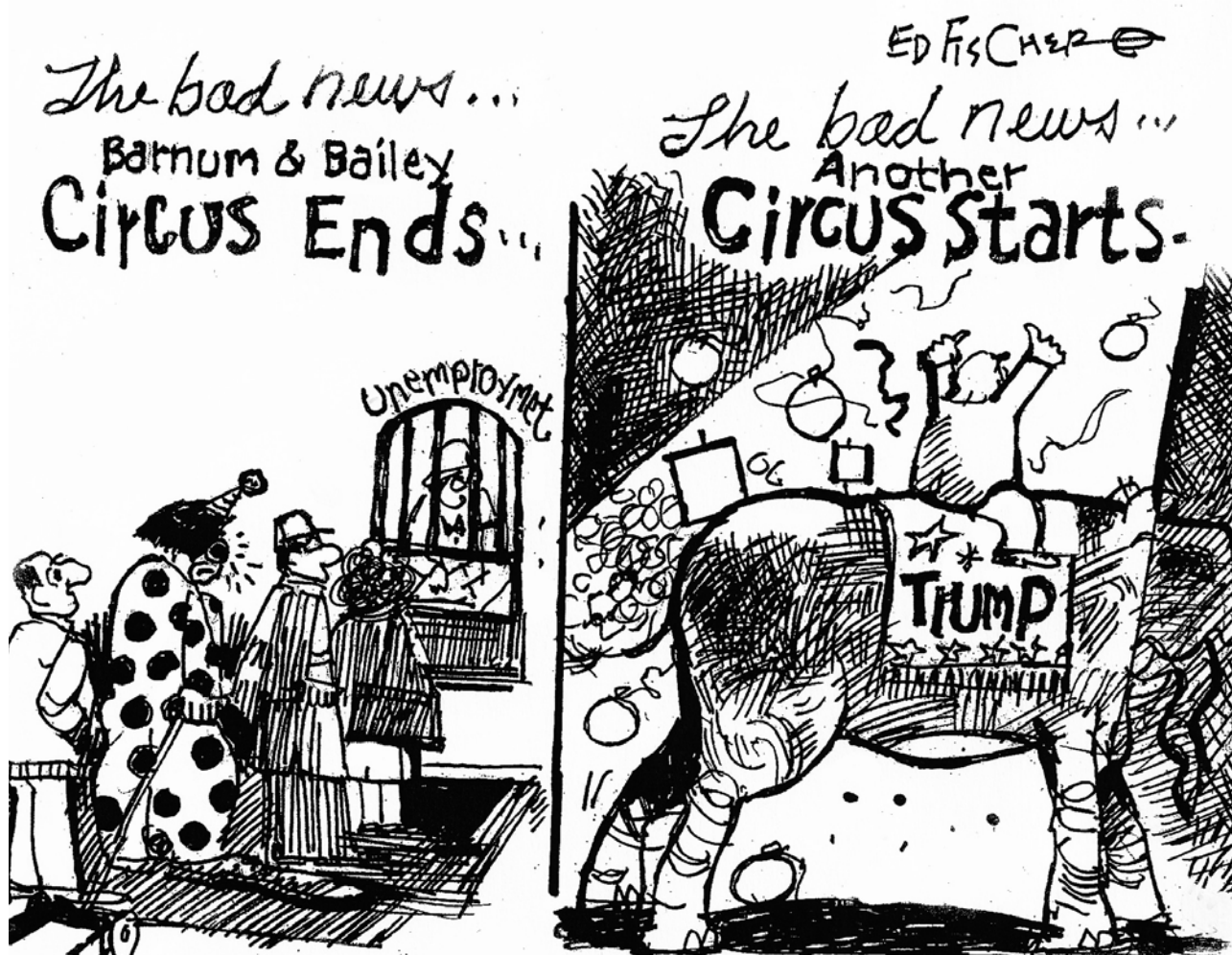
Luverne Elementary Commons

formulate changes to the educational programs and facilities that will be responsible for educating the students of Luverne for many years into the future.

Community stakeholder meetings will be Monday, Jan. 30, and Monday, Feb. 6.

The meetings will be conducted in the elementary school commons from 6:30 to 7:30 p.m.

You are encouraged to attend and be part of the positive outcome that will result from the long-range plan.



Naasz: I should never doubt the community's generosity

To the Editor:

I should have known. Yep, I just should have known. Looking back now, all my worry was for naught. Let me explain:

Albeit there are some students transferring in and out during the school year in most public schools, Southwestern Youth Services (SYS) is not like others where the school year begins and ends with a majority of the same students. We maintain a continually revolving door with long-term and short-term students coming and going almost weekly, sometimes daily, throughout the calendar year.

So as the Christmas season approaches each year, the anxiety levels are very high with our students who are not even sure where they'll be spending the holiday. Family issues, often traumatic memories of the season, abandonment and behavioral challenges make Christmastime at SYS a most difficult time of year. Most of our students do not have the "warm fuzzies" that accompany Christmas, and many put up emotional barriers to protect themselves from further disappointment.

Christmas 2016 brought a larger than normal number of unexpected students to our doors during Decem-

ber, and I have to admit that I was worried on how to spread out the donations that we had received. This is the point that my own doubt and worry began to creep in. Wow, did the surrounding community come through to prove my worry was futile.

Normally when a student arrives at our doors, it is not hard to imagine their emotional state upon entering a facility such as SYS. Caution, distrust, depression, anxiety and anger are only a few of the emotions, but add on to it the pressure of the holiday season and not having any rapport with your new peers and staff and you begin to understand the isolation one might feel.

So, when once again the surrounding community showed up in a big way to support our cause with an outpouring of Christmas gifts for the young men at SYS, we were able to provide all of them with something most had never before experienced.

New coats, team blankets, board games, candy, socks and underwear, clothing, calendars, art supplies, hygiene items, books, footballs and basketballs, new shoes, cash donations, and many other items poured into our school. Even the new enrollees were able to receive unexpected gifts, drop a few of their emotional barriers, and feel the joy of gifts given freely and without conditions attached.

So, I have learned my lesson. SYS is part of a larger community that time after time has supported our cause of helping these less fortunate young men. As we seek to provide opportunity, education, and reasons for hope and pride in our students, I am most humbled to once again say thank you, thank you, thank you for the outpouring of kindness and support. I will not doubt again.

Carole Naasz
Staff and Students Southwestern Youth Services

VOICE OF OUR READERS

Ask A Trooper

Necessities for winter survival kit

Question: What items should I have in my vehicle during this extreme cold weather? What is the proper procedure if I become stranded and/or go off the road?

Answer: With the recent below-zero temperatures, being prepared with an emergency kit and plan can save your life.

We recommend the following items be in your vehicle, especially in the winter: bag of abrasive material (sand, salt, cat litter) or traction mats, snow shovel, flashlight with extra batteries, window washer solvent, ice scraper with brush, cloth or roll of paper towels, jumper cables, tow chain or rope, extra warm clothing (gloves, hats, scarves), blankets, warning devices (flares or triangles), drinking water, non-perishable snacks for both human and pet passengers, first-aid kit, basic toolkit (screwdrivers, pliers, adjustable wrench) and mobile phone and car charger pre-programmed with rescue apps and important phone numbers including family and emergency services.

If stranded, stay in the vehicle and call 911. Provide the dispatcher

with the following information:

- problem you're experiencing.
- your location (Get in the habit of looking for mile markers and cross streets/roadways).
- any injuries to yourself or passengers.

•preferred tow company, otherwise the closest approved tow company will be dispatched.

At night, keep your dome light on and activate the vehicle's emergency flashers.

Be aware that snow can plug your vehicle's exhaust system and cause deadly carbon monoxide gas to enter your car, so make sure the exhaust pipe is free of snow and keep a window slightly open while the engine is running.

Make sure your vehicle is properly maintained and that you have at least a half tank of fuel.

If you have any questions concerning traffic-related laws or issues in Minnesota, send your questions to Sgt. Troy Christianson, Minnesota State Patrol, at 2900 48th Street NW, Rochester, Minnesota 55901-5848, or reach him at Troy.Christianson@state.mn.us.

E-mail: editor@star-herald.com Web site: star-herald.com
Phone: 507-283-2333 Fax: 507-283-2335

Published Thursdays by Tollefson Enterprises, POSTMASTER:
Send address changes to 117 West Main, P.O. Box 837, Luverne,
MN 56156. Periodicals postage paid at Luverne, Permit #33 and at
additional mailing offices.

General manager: Rick Peterson
Office manager: Deb Lusty
Circulation manager: Jennifer Kor
Advertising: Chantel Connell
Production manager: Abbe Kolar
Production: Amanda McDonald

News staff:
Lori Sorenson, editor
Mavis Fodness, reporter
John Rittenhouse, sports editor
Esther Frakes, copy editor
Joseph Stearns, composition

Rock County
STAR HERALD
Rock County's newspaper since 1873

(ISSN 0889-888X)
SUBSCRIPTION RATES

\$72 per year in Rock County; \$89 per year all other areas. Single copies \$1.25

Entire contents copyrighted by
Tollefson Publishing Roger Tollefson, publisher

The *Star Herald* encourages letters to the editor expressing the opinions of readers and intends to print all letters. Letters not meeting the guidelines will not be printed. The *Star Herald* will verify the authenticity of all letters. Letters must have the name of the writer, a signature and address.

Unsigned letters will not be considered. The *Star Herald* will edit for grammar, spelling and clarity. Any letters containing offensive language, libelous or slanderous material, or misleading or false information will be rewritten before being published. The *Star Herald* will not publish letters written with the sole intent to advertise or serve as a thank-you. Letters with more than 300 words may be edited. The deadline for letters is Monday 10 a.m. They may be delivered or mailed to the editor, *Rock County Star Herald*, P.O. Box 837, 117 W. Main St., Luverne, Minn. 56156.

ON THE RECORD

Dispatch report

Jan. 13
 •Complainant reported that they received a call from the subject stating the father kicked the minor child out of his house.

•Complainant reported that there is a big white pickup at location, and it is a real hazard when you are coming from the south. Unknown plate.

•Complainant called 911 saying some people are harassing him. Before he hung up, they left. Told to call back if we are needed.

•Complainant reported a fraud call saying they were from Social Security and if she didn't get an increase, she needed to answer three questions to get it. She called the SS office in Sioux Falls and it is a scam.

•Transferred a call to patrol of a semi all over the road.

•Complainant reported subject has not come home and cannot reach him. Complainant reported subject is back home now.

Jan. 14
 •Complainant reported shredded tire in roadway at location. Minnesota Highway Patrol out of position. Tire removed.

•Complainant requested deputy search residence because dog was whining in basement and wouldn't come upstairs. Felt this was suspicious. Deputy reports everything is OK.

Jan. 15
 •Complainant reported a tan four-door car has been parked on grass by stop sign at location for a couple of days. Wants it checked on. Advised it would get checked on in the morning. Deputy requested Erwin's to tow to our lot. It has a flat tire.

•Deputy stopped vehicle at location for DWI. Contacted G&S to tow.

•Complainant at County Road 8 reported her water is brown.

•Complainant reported his car is on fire.

•Complainant assisted subject as her vehicle is out of gas at location.

Jan. 16
 •Complainant reported that his dad is outside and the skid loader tipped over on top of him. He believes he is in the garage.

•Complainant reported that they had a young male over the weekend hit a staff member in the back of the head and spit all over the place. Asked to speak to a deputy and possibly have deputy come to location.

•Dispatch received several 911 calls about a blue van that crossed over the median and is the wrong way in the westbound lane.

•Complainant reported that there was an over-sized truck trying to turn and may need assistance. BP called back and truck was able to move.

•Residence check requested.

•Dispatch received a 911 from the Nobles County. Transferred.

•Deputy reported a red Yukon ran into a transformer box at location. The on call for electric company was contacted and will go to location to check the box. At 10:24 p.m. the scene was secure and the electric department cleared.

Jan. 17
 •Complainant requested a deputy at location as she is waiting for a tow. Deputies waited with complainant for tow. Erwin's was contacted.

•Received report from SWHHS.
 •Complainant reported that they have a feed truck that slid off the driveway at location. Requested deputy come to the south to direct traffic.

•Sioux Falls Metro contacted dispatch and said they had a third party call them. Third party had received a random phone call and there was a lot of screaming and someone running around and a lot more screaming, and the line went dead.

•Caller said she was following a semi going from shoulder to shoulder almost at the South Dakota border. Call was transferred to Sioux Falls dispatch.

•Stopped vehicle at location. G&S towed to their lot. Deputy transported to Nobles County jail on DWI.

Jan. 18
 •Emergency response call-out for search warrants in Pipestone County.

•Complainant reported a Chevy Traverse swerving and almost hitting cars.

•Deputy reported emergency response unit call-out in Fairmont.

•Complainant requested a welfare check on subject. He did not show up for work today and is not answering his phone. Subject was sleeping.

Jan. 19
 •Complainant reported to deputy that the front license plate was stolen from his vehicle at location.

•Complainant reported a stalled SUV. Transferred to Patrol.

•Complainant reported he had a call saying his grandson was in a car accident in the Dominican. He called them on it and didn't give any info. Fraudulent call.

•Complainant reported a customer paid for one night, stayed for three, and doesn't have money to pay for the last two nights.

In addition, officers responded to 5 motor vehicle accidents, 2 vehicles in ditch, 1 deer accident, 2 transports, 2 funeral escorts, 8 traffic stops, 25 ambulance runs, 5 animal complaints, 1 false alarm, 2 money escorts, 7 log/alarm sheets, 4 drug court tests, and issued 6 purchase/carry permits and 27 burn permits.

Luverne celebrates 150 years/Palace built 1915/from page 1A

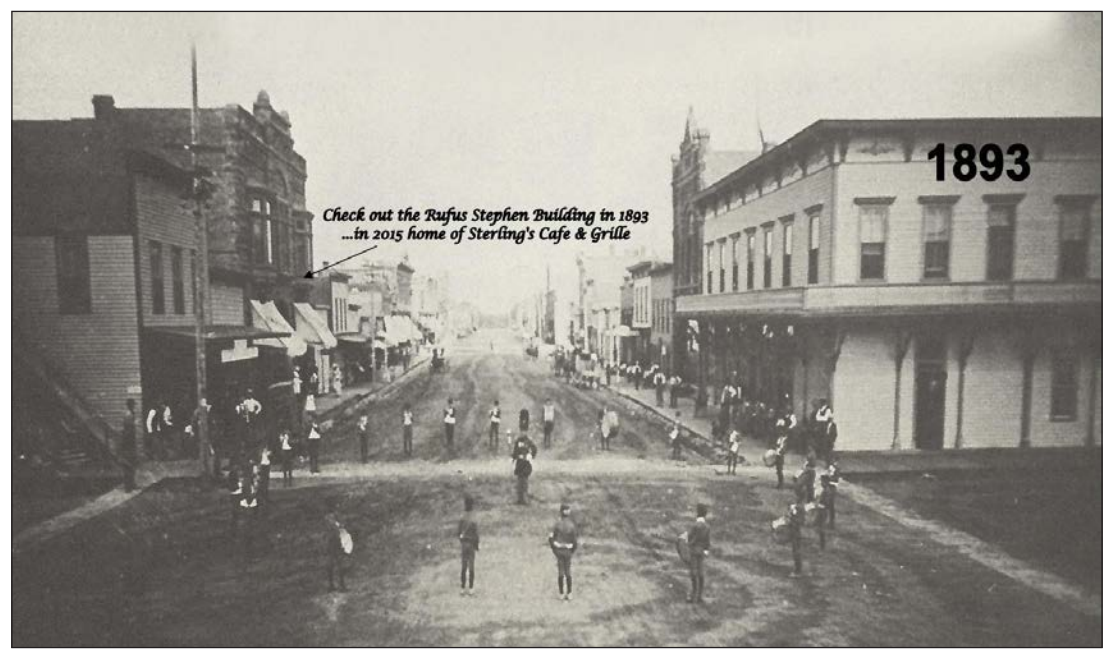
Wildung Lanphere compiled historical accounts of the grand theater to observe the 100-year mark, and that information is shared here as part of the Star Herald's tribute to Luverne's 150th anniversary.

In the early 1870s, B.S. Wold built a general merchandise store and residence on the southwest corner of Main and Oakley. With the growth of Luverne, Wold made the bold step to move "uptown" and build a new store on the southeast corner of Main Street and Freeman Avenue in the late 1870s. By 1883, with partners A. J. Warren (grain merchandiser) and Daniel Stone (grocer), Wold enlarged and improved his building, which became known as the Union Block.

By 1886, the building also housed the Commercial Hotel operated by Mike McCarthy and became the Hotel Luverne operated by Joles and Johnson. In 1892, the hotel was purchased by James Gray and remodeled. It was renamed the Luverne House.

The July 17, 1914, Rock County Herald printed a story that was probably the most significant transaction that ever happened to that property: LUVERNE TO HAVE NEW OPERA HOUSE; BIG BRICK BLOCK TO GO UP
 Iowa Man Buys Union Block and Will Build Brick Structure to Cover Entire Property - Ground Floor to be Used for Mercantile Establishments and Second Floor for Opera House.

"Union Block, as the property is commonly called, was sold yesterday by John Brewer to Herman Jochims of Schleswig, IA for \$12,000. The property has a frontage of 75 feet on Main Street and 136 feet on Freeman Avenue, and the building thereon is one



By 1886, the Union Block (where the Palace is now located) housed the Commercial Hotel operated by Mike McCarthy and became the Hotel Luverne operated by Joles and Johnson. In 1892, the hotel was purchased by James Gray and remodeled. It was renamed the Luverne House.

of the old landmarks of the city. According to the present plans of the new owner, this old landmark is soon to be razed and a brick building to cover the entire property to be erected thereon."

"Mr. Jochims, who is said to be a man of large means, stated yesterday that he had purchased the property for the purpose of erecting a fine opera house thereon, and that his plans are to fit the ground floor for mercantile establishments and the second floor for an opera house. The store buildings will be leased, but Mr. Jochims and his son will themselves conduct the opera house."

"The implement firm of Kartrude Brothers has a lease on part of the property which will not expire until the first of next January. As soon as this lease expires preparations for the construction of the new building will be started."

The following story appeared in the Jan. 22, 1915, Rock County Herald: OPERA HOUSE TO BE BUILT

Definite Assurance of Fine New Opera House for Luverne is Given and Work Will Be Started

Soon.
 "Big Brick Structure on Union Block Corner"

"Thoroughly Modern Opera House, Two Store Rooms and Dance Hall will be Contained in New Building."

"Positive assurance that Luverne will this year secure a new, thoroughly modern opera house representing an investment of approximately \$40,000 was given this week by Herman Jochims of Schleswig, Iowa. He is the owner of the property known as Union Block and the new play house will occupy that site."

"Mr. Jochims arrived here Monday and remained here until Wednesday evening working out general plans for the new structure, which will be a brick building 63 feet by 135 feet in ground dimensions, and the two full stories high, that will be similar in architecture and interior arrangements to that of the Orpheum Theatre in Sioux Falls."

"The plans provide for two store rooms for rental purpose at the front of the building, with an entrance way 14 feet wide extending north and south through the center of the building to the

opera house proper."
 "The store on the east of the entrance will be 23 feet wide and extend 60 feet, and on the west side the store room will be 23 feet wide and 48 feet long."

"The opera house or auditorium will be located at the south end of the structure, with the stage adjoining the alley, and will occupy a space about 63 by 75 feet. At the rear of the auditorium will be a balcony and on each side two opera boxes. In the front end of the second floor, immediately over the entrance way and two store rooms, a dance hall will be provided with floor space 50 by 60 feet."

"Entrance to the hall and to the balcony and opera boxes will be gained by stairways at the rear of the store room on the west side of the entrance way, and immediately adjoining the stairways on the south will be the ticket office. The plans also call for another and smaller stairway leading to the dance hall and balcony at the rear of the store rooms on the east side, and provision is made for entrance to

Luverne 150/see page 8A

Tobacco compliance/from 1A

age before completing the sale. Since the youth doesn't carry any identification, the sale should not take place.

The ordinance and state statute is in place to prevent minors from accessing cigarettes or other tobacco products until age 18 or older.

"There is no amount of tobacco use that's healthy," Orren said.

"The majority of smokers start before (age) 18."

Passing the December tobacco ordinance were Luverne

businesses of Glen's Food and Gas Center, Glen's Food Center, Casey's General Store on Main Street, Casey's General Store on Highway 75, Expressway, The Gas Stop, Herb n Legends LLC; and in Beaver Creek Rauk's Hilltop Stop.

Luverne Country Club also has a license to sell tobacco. The business, however, was not open in December and wasn't subject to a compliance check, according to county auditor-treasurer Ashley Kurtz.

HAPPY 75TH BIRTHDAY

Card Shower

Dorothy Klosterbuer

Monday, January 30

Greetings may be sent to:
 3403 E Main St, SP 1022
 Mesa, AZ 85213

283-9171 | PAPIK.COM

<p>2015 GMC Sierra Denali</p> <p>Stock #186001N 31K</p> <p>SAVE \$7,000</p> <p>Was \$44,990 Now \$37,990</p>	<p>2011 Jeep Compass</p> <p>Stock #248899N 52K</p> <p>SAVE \$3,000</p> <p>Was \$11,990 Now \$8,990</p>
<p>2016 Dodge Journey SXT</p> <p>Stock #196461Z 24K</p> <p>SAVE \$3,000</p> <p>Was \$19,990 Now \$16,990</p>	<p>2009 Pontiac G8</p> <p>Stock #240148U 82K</p> <p>SAVE \$5,000</p> <p>Was \$12,990 Now \$7,990</p>

CELEBRATION

Open House

A come-and-go bridal shower for **Hunter Hieronimus**, bride-to-be of **Derek Petersen**, will be from 10 a.m. to noon Saturday, Feb. 4, at Grace Lutheran Church in Luverne. Guests are asked to bring a favorite recipe.

MENU

Senior Citizens

Monday, Jan. 30: Chili, pears, cheese sandwich, bun, crackers, scalloped apples.

Tuesday, Jan. 31: Sausage egg bake, oven-baked potatoes, fruit cocktail, coffee cake, pumpkin custard.

Program: 9 a.m. Board Meeting. Two-buck Tuesday sponsored by Exchange State Bank.

Wednesday, Feb. 1: Baked chicken, baked potato with sour cream, squash, bread, sherbet.

Thursday, Feb. 2: Barbecued meatballs, mashed potatoes, beets, bread, lemon sponge cake.

Friday, Feb. 3: Ham boiled dinner (with cabbage, potatoes, carrots), fruit salad, breadstick, bar.

Senior Dining offers well-balanced and affordable meals in a community atmosphere.

Bring a friend or make new ones.

Call 283-9846 to make dining reservations or for home-delivered meals.

SCHOOL NEWS

Miller graduates from NDSU

Timothy Miller, Luverne, graduated from North Dakota State University in Fargo, North Dakota, following the Fall 2016 semester. He earned a Master of Science degree in international infectious disease management.

Knutson on dean's list at Northwestern

Klint Knutson, Luverne, has been named to the dean's list for the Fall 2016 semester at Northwestern College in Orange City, Iowa. To be named, students must earn a minimum of 12 graded credits and a 3.5 GPA or higher.

Lake Area Tech announces Fall 2016 president's list

Among the students named to the president's list at Lake Area Technical Institute in Watertown, South Dakota, are Kennedy Gonnerman and Trevor Teal, both of Luverne. The president's list is limited to full-time students who earn a GPA of 3.5 or higher.



Submitted Photo

Several cleanup Saturdays were conducted last year to prepare the former Jasper High School for repurposing plans and repairs including the reconnection of the heat registers to the boiler system. The cleanings have transformed some classrooms into usable areas again.

Reclaim Community enters second year of saving Jasper school

Sunday's pancake feed, silent auction fundraiser will help turn the lights back on



File Photo

A year ago members of Reclaim Community toured the former Jasper High School for the first time, documenting damage in each room of the school. Pictured in front are Elicia Kortus and Terry Skyberg; behind are Kristie Weinkauf and Jason Madtson.

By Mavis Fodness

The volunteer group charged with repurposing the former Jasper High School into a multi-use facility will repeat its most successful fundraiser on Sunday.

From 9 a.m. to 1 p.m., Reclaim Community will serve pancakes and conduct a silent auction at the Memorial Hall in Jasper.

The group used the more than \$25,000 raised during last year's event to purchase the building.

This year's event is titled "Help Us Turn the Lights Back On."

Elicia Kortus is president of the not-for-profit Reclaim Community LLC.

Kortus formed the LLC last year with the help of six others who want to save the school built in 1911.

Now the group wants to get electricity reconnected to the building that has not seen significant use since its closure as a school in 2001.

Estimates place reconnecting the building to electricity at \$20,000.

Protecting their investment has stepped up the local fundraising effort.

"We are not waiting (for grant monies) because the health of the building needs it now," Kortus said.

Electricity would allow the group to ventilate and control the climate inside the three-story building.

Since purchasing the former public school in May 2016, the Reclaim Community has organized several Saturday morning cleanup days.

Volunteers have spent hours cleaning the grounds (2.1 acres), sweeping up broken glass and removing the damage from several roof leaks and vandalism.

Through donated labor

Reclaim Community Pancake Feed and Silent Auction Sunday, Jan. 29 9 a.m. to 1 p.m. Jasper Memorial Hall

the roof leaks have been patched until additional funds are raised to replace the entire roof.

Electricity will also assist in further cleanup of dark areas in the building, and a working boiler system would improve the ventilation and overall health of the building.

Reflecting on its first year of existence, Kortus reported that Reclaimed Community raised \$45,000 last year.

The group purchased the building (\$26,000), repaired three roof sections (\$7,870) and has saved \$10,000 for monthly service expenses and upcoming property taxes.

"Our priority is to be as frugal as possible," Kortus said.

Reclaim Community and its supporters recognize repurposing the large structure will take time and outside monies.

"Everyone needs to take ownership so it (the building) won't go back to its prior condition," she said.

Kortus said the group is still working with the Preservation Alliance of Minnesota, who identified Jasper High School in 2007 as one of the state's most endangered historically significant high schools.

As a historical building, the former high school may be eligible for historical trust grants, she said.

Area middle, high school students selected to perform in honor bands

By Lori Sorenson

Local students were among more than 200 instrumentalists from 22 schools in southwest Minnesota selected to participate in the Minnesota Band Directors Association Honor Band event Saturday in Marshall.

After a full day of rehearsing with guest directors, students performed a public concert in three groups, 6-8 Honor Band, 9-10 Honor Band and 11-12 Honor Band.

Luverne High School

Richard Owen, director
Senior high students from Luverne included clarinetists Anika Gust and Kathryn Renken, with Hans Bakken on trumpet and Tommy Norman on percussion.

Freshman and sophomores participating from

Luverne were flutist Gabi Ferrell, clarinetist Jessica Anderson, saxophonists Reka Meinerts and Nathan Overgaard, trumpeter Will Mumme, horn player Alexa Chesley and percussionist Carson Ehde.

Luverne Middle School students in the honor band Saturday were flutist Analiese Braucht, saxophonist Connor Overgaard and percussionist Josephine Golla.

Hills-Beaver Creek

Christopher Haak, director
H-BC students in the Freshman-Sophomore Honor Band and were flutists Josie Scholten and Aleigha Glidewell and clarinetists Seth Glidewell and Michaela Abels.

H-BC Middle School band members were clarinetist Jacob Sheppard, trumpet player Tess VanMaanen, euphonium

player Ethan Kruger and percussionist Tara Paulsen.

Adrian High School

Ericka Bierman, director
Participating from Adrian in the Freshman-Sophomore Honor Band were flutist Emma Fuerstenberg, clarinetists Megan Fuerstenberg and Hannah Kruse, and saxophonist Kylee Breuer. Adrian students in the middle school band were trumpet player Joshua Barr, flutist Karis Barr and clarinetists Kaysie Lenz and Alicia McElicie.

Ellsworth High School

James Jarvie director
Ellsworth honor band students in senior high include flutist Samantha Armstrong and tuba player Mary Koffron. EHS freshmen-sophomores were flutist Danielle Van-



Lori Sorenson Photo/0126 Honor Band

Several instrumentalists from schools in the Star Herald coverage area performed in Marshall Saturday for the Minnesota Band Directors Association Honor Band event including the 9-10 Honor Band conducted by Jay Eichhorst, pictured above.

der Poel and trumpet players Sean and Kade Boltjes and Julia Bryngelson. EHS

middle school honor band members were trombonist Linkin Bossert, tuba player

Cole Boltjes and percussionist Kendra DeBeer.

REMEMBER WHEN

10 years ago (2007)

•A new program in Rock County tries to help people who have problems - from gambling to sexual abuse.

Bob Osterday, Luverne, is one of the leaders of the Celebrate Recovery group.

He has been a recovering alcoholic for 27 years and said, "The need is so great all across the board."

He said the focus is Biblically based and helps people look above rather than within for answers to their problems.

25 years ago (1992)

•Luverne High School's graduation falls on Sunday this year, something that some local pastors aren't too happy about.

Brian Jensen, president of the Rock County Ministerial Association, said he met with Luverne Superintendent Norman Miller Tuesday, at the request of some Association members.

Jensen said he was happy with the outcome of the meeting and said Miller agreed to avoid Sunday commencement in the coming years.

50 years ago (1967)

•The program "The Effects of TV. on Children," which was postponed due to inclement weather, has been rescheduled for 7:30 p.m. Monday, January 30, in the Friendship Room of Luverne Federal Saving & Loan.

Ronald Pitzer, Family Life Specialist from the University of

Minnesota will present the program, which is being sponsored by the Rock County Extension Services.

75 years ago (1942)

•If the Rock county Red Cross War Relief fund is not getting someone's goat, it's going to the dogs. The dog, a rat terrier, entered the picture Saturday at the livestock sale on the fair grounds here when it was donated by R. Swenson and sold by Auctioneer L.D. Long for a total of \$48.85, with 57 bids, ranging from 25 cents to \$5, being made and the proceeds going to the Relief fund.

The goat, a donation of John Mauch, brought a substantial sum to the fund earlier in the month and was finally taken to other communities in southern Minnesota to serve the same purpose.

100 years ago (1917)

•The lives of nearly one hundred persons attending a dancing party at the Palace ball room were imperiled Friday night by a fire that started in the Palace confectionery store, which is beneath a part of the dance hall. The fire was put out with hand fire extinguishers within a few minutes after the blaze started, but not until after the dancers were driven from the hall by clouds of smoke that poured through the floor and from the lobby and stairway.



Mavis Fodness Photo/0126 Snow Week Royalty 2017

Oldre, Flom named LHS king and queen

Luverne High School seniors Knute Oldre (left) and Bergin Flom were crowned king and queen at Monday's coronation ceremony. The two students were chosen by staff out of 103 eligible seniors for their excellence in leadership, character and academics. This is the second year where student council members planned a week of fun activities meant to lessen the effects of cold, wintry days.

OBITUARIES

Shirley Thoreson

Shirley Ann Thoreson, 82, Luverne, died Monday, Jan. 16, 2017, at the Sanford Luverne Hospice Cottage.



A funeral was Saturday, Jan. 21, at Grace Lutheran Church in Luverne. Burial followed at Prairie Queen Cemetery in rural Nunda, South Dakota.

Shirley Pederson was born Sept. 29, 1934, to Clifford and Ada (Stenseth) Pederson in Lake Preston, South Dakota. She was raised in Nunda, South Dakota, where she attended elementary school. She attended Rutland High School and graduated in 1952.

On June 20, 1952, she married Arvid Thoreson in Wichita Falls, Texas, where Arvid was stationed with the U.S. Air Force. They relocated near Riverside, California, while Arvid was stationed at the March Air Force Base. They moved to Downy, California, in 1955 where Shirley was a homemaker to the couple's four children. During the year that Arvid served overseas, Shirley returned with the children to Nunda. Upon Arvid's return stateside, they reunited in Downy and moved to Santa Maria, California, where they resided for the next 12 years. In 1967 they moved to Luverne, where Shirley worked at Creeger's clothing store. They then moved to Brandon, South Dakota, and Shirley worked at Sears in Sioux Falls, South Dakota. In 2008 the couple returned to Luverne.

Douglas McClure

Douglas C. McClure, 87, Luverne, died Sunday, Jan. 15, 2017, at the Minnesota Veterans Home in Luverne.



A funeral service was at 2 p.m. Wednesday, Jan. 18, at Bethany Lutheran Church in Luverne. Burial with full military honors followed at the Maplewood Cemetery in Luverne.

Douglas McClure was born Aug. 30, 1929, to John and Anna (Aanenson) McClure in Luverne. He was baptized on July 6, 1930, at Our Savior's Lutheran Church in Luverne. Doug attended country school near Luverne. He entered the United States Army on Sept. 28, 1951, and served his country during the Korean Conflict before being separated from the service on June 27, 1953.

Doug married Darlene Woolsey on Nov. 8, 1957, in Luverne. The couple lived in Luverne. Doug worked at Hating Gravel in Luverne before working at the Luverne Farm Store for many years. In 1989 Doug retired to care for his daughter, Darla, after her accident.

He was a member of

Shirley enjoyed baking, and was known for her beautifully decorated cakes made for special occasions. Shirley and Arvid enjoyed vacationing to Branson, Missouri, and Nashville, Tennessee, with her sister and brother-in-law, Barb and Chuck. Shirley also enjoyed shopping for antiques.

Shirley was a member of Grace Lutheran Church in Luverne, and was active in the Ladies Circle. She loved to spend time with her children, grandchildren, and great-grandchildren.

She is survived by her husband; her children, Judy (Rod) Walgrave of Luverne, Jannis (Les) Heikes of Eden Prairie, Randy Thoreson of Sioux Falls, South Dakota, and Greg Thoreson of Sioux Falls; 13 grandchildren, Shannon (Margo) Walgrave, Tim (Amber) Walgrave, Mandy Skattum, Nicky (Matt) Skattum, Matt Heikes, Tom Heikes, Treasure Thoreson, Tara Thoreson, Tori Thoreson, Taylor Thoreson, Jack (Nick) Thoreson, Derek (Veronica) Thoreson; and 16 great-grandchildren.

She was preceded in death by her parents; brothers Derward Pederson and Duane Pederson; a grandson, Andrew Heikes; daughters-in-law Patricia Thoreson and Kathy Thoreson; and a grandson-in-law, Nate Skattum.

Arrangements were by Hartquist Funeral Home of Luverne, www.hartquistfuneral.com.

(0126 F)

Milton Hebig

Milton Hebig, 86, Lismore, died Thursday, Jan. 19, 2017, at the Sanford Luverne Hospice Cottage in Luverne.



A funeral service was Monday, Jan. 23, at St. Anthony's Catholic Church in Lismore. Interment with military honors provided by the Lismore American Legion Post 636 was at St. Anthony's Catholic Cemetery in Lismore.

Milton Hebig was born Sept. 27, 1930, to John "Jack" and Margaret (Voss) Hebig near St. Kilian. When he was 5 years old, the family moved to a farm one mile north of Lismore, where he lived the rest of his life. Milton attended St. Anthony's School in Lismore, graduating in 1948.

Milton married Marilyn Ann Sieve on Sept. 25, 1956, at St. Kilian's Catholic Church in St. Kilian. After their marriage they lived on the family farm. He remained on the farm after Marilyn passed away in December of 2001.

Milton was a member of St. Anthony's Catholic Church in Lismore. He also belonged to the Knights of Columbus

and the Lismore American Legion. He enjoyed hunting, fishing, farm sales, pets and playing basketball in his younger years. He also enjoyed reading, fixing things, sarcasm and having the ability to converse with everyone.

He is survived by his children, Kevin Hebig of Lismore, Marjie (Douglas) Anderson of Litchfield, John Hebig of Lismore, Ginny (Mark) Verbrugge of St. Michael, Laurie (Tim) Hermeling of Iona, and Lisa (Paul) Kalis of Sartell; a son-in-law, Pat Thier of Adrian; 15 grandchildren; nine great-grandchildren and two sisters, Winifred Balkenol of Redwood Falls, and Darlene Pryor of St. Peter.

He was preceded in death by his parents, his wife, Marilyn, a daughter, Patty, a grandson, Thomas Verbrugge, great-grandchildren Paisley Mclendon, Emmitt Butenhoff and Keeston Thier, and brothers Orville and Rodney Hebig.

Arrangements were provided by Totzke Funeral Home of Fulda, www.totzkefuneralhome.com.

(0126 F)

Gladys Brandt

Gladys Emma Darlene Brandt, 87, Brandon, South Dakota, died Saturday, Jan. 14, 2017, at the Southridge Healthcare Center in Sioux Falls, South Dakota.



A funeral was Thursday, Jan. 19, at Heartland Funeral Home in Brandon, South Dakota. Burial followed at Memory Gardens Cemetery near Luverne.

Gladys Bjerk was born Jan. 27, 1929, to Ole and Mathilda (Skyberg) Bjerk on a farm north of Beaver Creek. She was raised and attended school at Beaver Creek, graduating in 1946. Gladys went on to Madison Teachers College.

On July 20, 1947, Gladys married Russel Brandt in Luverne. The couple resided in Beaver Creek where she worked at Beaver Creek State Bank for two years. She then was the bookkeeper at the Beaver Creek Co-op Elevator for 27 years and retired in 1991.

Gladys and Russel were members of Brandon Lutheran where she was very involved with the ladies circle Bible study, knitting, quilting, and the fall festivals. In her earlier years, she and Russel loved to go camping, fishing, and sometimes hunting.

Gladys enjoyed gardening and canning and making jams and lefse.

She is survived by five children, Jim (Marcia) Brandt, Beaver Creek, Ron (Karen) Brandt, Lead, South Dakota, Dennis (Shane) Brandt, Sioux Falls, South Dakota, Cheryl (David) Swenson, Arden Hills, and Debra Brandt

(fiancé Eric Black), Sioux Falls; 15 grandchildren Heather (Dale) Steensma, Amy (Mike) Kerkhove-Brandt, Jared (Julie) Brandt, Jenny (Lynn) Ferney, Matthew (Teresa) Brandt, Jill (Nick) Vicaretti, Heidi (Tim) Higgins, Danielle (Jeff) Nowak, Tom (Shanna) Brandt, Rachel Brandt, Tamara (Kevin) Kampfe, Todd (Jenna) Swenson, Tyler (Sara) Swenson, Joshua Brandt (fiancée Amber Olson) and Ryan Black-Brandt; 37 great-grandchildren, and one sister, Viola Peterson, Sioux Falls.

Gladys was preceded in death by her husband; her parents; one great-granddaughter, Mary; and three sisters, LaVonne Verhey, Ione Backus, and Olive Farrow.

Arrangements were by Heartland Funeral Home of Brandon, South Dakota, www.heartlandfunerals.com.

(0126 F)

Judy Thies

Judy Kay Thies, 77, Luverne, died Sunday, Jan. 15, 2017, at the Sanford USD Medical Center in Sioux Falls, South Dakota.



A funeral was Saturday, Jan. 21, at the Luverne United Methodist Church. Burial followed at the Salem Cemetery near Pipestone.

Judy Jones was born on June 16, 1939, to Kenneth and Beulah (Gochnour) Jones in Chester, South Dakota. She attended school in Egan, South Dakota, graduating in 1957. That following summer Judy traveled and went to work in Rockerville, South Dakota. She then attended General Beadle Teacher's School in Madison, South Dakota.

On Aug. 9, 1959, Judy married John Thies at the Presbyterian Church in Pipestone. The couple lived in Pipestone for the next 19 years. While raising their young family, Judy also cared for other children. When her children reached school age, Judy began working as a paraprofessional for Pipestone Schools.

In 1978 their family moved to Luverne. Judy continued to work in Pipestone for a couple of years before working in the same capacity for Luverne Schools. Throughout the years she also helped John at Sturdevant's Auto Parts. Judy became very involved in leading the Luverne AFS student exchange program, and the Thieses hosted several young adults. Judy started and organized an annual AFS weekend in Luverne where their family and others hosted exchange

students from other countries. Additionally, she was instrumental in developing the annual winter carnival for the Luverne Music Boosters. Judy retired in 1998; however, she continued to stay active with AFS and other community groups during her retirement years.

Judy was a member of the United Methodist Church in Luverne and a past member of Salem United Methodist Church in Pipestone. She served as president of the local Girl Scouts and volunteered at their day camps. She was a member of the Luverne Red Hat group and enjoyed her coffee club. Judy was a skilled cook and baker. She cherished her family and enjoyed attending her grandchildren's events and activities.

Judy is survived by her husband; her children, Terry (Lisa) Thies, Minnetonka, Jeffrey (Jeanne) Thies, Chaska, Kimberly (Jonathan) Mulder, Katy, Texas, and Shelly (Marty) Wold, New Richmond, Wisconsin; seven grandchildren; one great-granddaughter; and her brother, Jackie Jones of Mesa, Arizona, as well as her AFS children, Maria Fernanda Aparicio Trana, Angela Milena Arias, Paulo Arias, Ana Milena Arias, and Rhonda Cree-Knight.

She was preceded in death by her parents and siblings Joy Lacher and Jimmy Jones.

Arrangements were by Hartquist Funeral Home of Luverne, www.hartquistfuneral.com.

(0126 F)

DEATH NOTICE

Harlan Christians

Harlan Christians, 83, Little Rock, Iowa, died Saturday, Jan. 21, 2017, at Sibley Specialty Care in Sibley, Iowa.

A funeral service will be at 10:30 a.m. Saturday, Jan. 28, at Salem Reformed Church in Little Rock. Burial will follow at Pleasant View Cemetery in Little Rock. Visitation will be from 4-7 p.m. Friday, Jan. 27, at the Salem Reformed Church in Little Rock.

Arrangements are by Andringa Funeral Home, Sibley, Iowa, andringafuneralhome.com.

(0126 DN)

OPEN-HEART SURGERY?

Within the last 5 years?

You may have been exposed to **M. chimeara** due to contaminated surgical heater-cooler units. Patients could be infected for years without showing symptoms. You may be eligible for compensation to pay for medical testing, treatment and damages.

The CLASS ACTION lawyers at
Patterson Dahlberg Injury Lawyers can help.



PATTERSON DAHLBERG
INJURY LAWYERS

507-424-3000 • pattersondahlberg.com
Free Consultation - No Obligation - No Fee Unless You Collect

The Rock County Star Herald strives to publish obituaries that pay tribute to the lives of the deceased. Our policy is to summarize the education, professional history, places of residence, immediate family, achievements, hobbies and community involvement of your loved one. Please indicate, when sending an obituary, if you would like it to be placed in the paper as an edited piece according to our newspaper format for \$49 OR if you would like it to run as submitted for \$149. Either choice of obituary includes a photo and will be published in the Rock County Star Herald print edition as well as online at www.star-herald.com.

Death notices will continue to run at no charge.

(This obituary is reprinted to correct a submitted name.)



Mavis Fodness Photo/0126 Adrian Library Move

High school students enjoy sunshine and 40-degree temperatures as they wait outside the Adrian Branch Library while science teacher Rob Williamson exits. It took about 2 1/2 hours to move and place the books on shelves in the correct order at the temporary location

Many hands make light work

Students move books, supplies to temporary home for Adrian Branch Library

By Lori Sorenson

About 200 Adrian High School students and staff moved roughly 9,500 books from the community library in Adrian to a temporary location two blocks away.

The Adrian Branch Library is undergoing a major renovation, so the books and media will be stored at the New Vision Coop building where library operations will continue through spring.

According to Adrian Branch Librarian Meredith Vaselaar, it was the students' idea to help with the move. "It was quite an event," she said of the Jan. 18 book-moving project.

"Because we cannot operate out of the building during the renovation, the New Vision Coop in Adrian has loaned us the use of the west end of their facility for as long as we need it to operate a temporary library, rent free," Vaselaar said.

She said the Lismore Telephone Company is providing free Internet access for library staff and patron computers.

Fundraising continues

At the Jan. 24 Nobles County Board meeting, Commissioners accepted a bid of \$220,191 from Clair Van Grouw Construction, Worthington. Van Grouw was the only Nobles County firm to bid on the project.

The county has pledged up to \$300,000 toward the estimated \$350,000 costs to cover the repair, upgrade and renovation of the library building itself.

It includes the contractor bid, along with asbestos abatement, architect fees and some miscellaneous costs.

An \$80,000 fundraising effort through the Lismore Area Community Foundation will help cover the costs of shelving, desks, tables, chairs, children's area, etc. So far, just over \$70,000 has been raised toward that goal.

"All of the money raised through this fundraising effort will stay at the Adrian Branch Library, to be used only for the Adrian Branch Library," Vaselaar clarified.

Donations can still be mailed to the Adrian Branch Library, PO Box 39, Adrian, MN



Mavis Fodness Photo/0126 Adrian Library Move

Autumn Grussing (center) reads aloud one of the books she carries with classmates Emma Fuerstenberg (left) and Brisa Zebe.

56110, with checks being made out to the fundraiser: L.A.C.F. Online donations are also accepted at <http://www.plumcreeklibrary.org/adrian>

"We are so appreciative of the donations we have received thus far," Vaselaar said.

Donors, if they wish, can have their names placed on the Donators Wall of Honor at the library.

Donors can also request that gifts be made "in memory of" or "in tribute to." Some tributes so far include graduating classes, as well as children and or grandchildren, former librarians, etc.

"No donation is too small or, of course, too large," Vaselaar said.

"If you wish to make a donation and keep your name anonymous, yet still add a memorial or tribute, that works, too. A lot of people have chosen to do that."

Work will begin with the demolition of the inside of the building and removal of the asbestos floor tiles.

Part of the renovation plan includes a handicap-accessible entry and bathroom, as well as wall repair and new carpeting, ceiling and lighting and more.

The renovated library is scheduled to reopen to the public in May.

Luverne celebrates 150 years/from page 5A

the opera boxes from the stage."

"Aisles at the center and extreme sides of the auditorium are provided for. They extend north and south, and side aisles lead onto the stage, connecting with the doors opening onto the alley."

"The seating capacity of the auditorium will be 520, that of the balcony 144 and each of the opera boxes will accommodate 4 people."

"These plans will at once be submitted to the state fire marshal and if they meet with this official's approval, plans and specifications will be prepared and submitted to the common council. Mr. Jochims will return to Luverne the first part of February and expects to start work on the new project March 1st."

"Mr. Jochims has conducted the opera house at Schleswig, Iowa, for a number of years and is said to be not only thoroughly familiar with all the requirements of such a venture, but also has ample means to carry out the large project that he has undertaken here."

"He recently disposed of his opera house at Schleswig, and gives possession February 1."

Luverne is "buzzing" with excitement on Friday, March 26, 1915, when the Rock County Herald penned the following story:

NEW OPERA HOUSE CONTRACT AWARDED

Greene and Jensen of this City, Secure Contract for building Luverne's New \$40,000 Opera House

"The contract for the erection of Luverne's new \$40,000 opera house, was awarded yesterday afternoon to Green and Jensen by Herman Jochims of Schleswig, IA, owner of Union Block, which will be the site of the new structure. There were three bidders for the contract, the other two being The Carlson Construction and Anderson & Whitson of Mankato."

"The new playhouse will be a substantial structure 63 x 136 feet in ground dimensions, two stories high and not unlike the Orpheum Theatre in Sioux Falls. It will be constructed of yellow Luverne pressed brick, trimmed with Kasota stone. The plans and specifications provide for two store rooms at the front which will face Main Street. One of the store rooms, occupying a space 24 x 55 which will be at the northeast corner, has been leased to A. L. Vanderpoel of LeBon Marche, for a term of years, and the other at the northwest corner, with a floor space of 24 x 50 feet, will be utilized as a café. A fourteen foot entrance in the center of the building will lead to the opera house proper, which will have a seating capacity of 638. At the

rear of the building, adjoining the alley, will be the stage."

"On the second floor at the front end of the building provisions have been made for a dance hall 48 x 61 feet, with an eight foot balcony extending across the room and entrance to the floor will be gained by stairways leading from the general entrance way."

"The work of wrecking Union hall will be started today and will be carried on as rapidly as possible. While no specific time has been set for the completion of the new structure it is planned to have it finished by September 1."

With anticipation and excitement, the citizens of Luverne and Rock County waited for this historic grand opening, which happened only one month later than originally projected. The following story appeared in the October 1, 1915, edition of the Rock County Herald: NEW PALACE THEATRE A THING OF BEAUTY

Formal Opening of Luverne's \$50,000 Opera House Wednesday Eve a Happy Event

"The next production of the New Palace Theatre Wednesday eve was a particularly happy affair and one that will long be remembered by the people of Luverne. The opening attraction "The Prince of Tonight" was a delightful performance, but essentially the thing that gave the greatest job to those in attendance was the splendid realization of a long desired object - a new theatre."

"That Luverne's need had been splendidly met in the building of the New Palace was well demonstrated, in part by the manner in which "The Prince of Tonight" was produced, showing as this did that leading traveling theatrical companies hereafter can be brought to Luverne and give their performance in satisfactory and creditable manner, and in part by the beauty and comfort of the place in which such performers, as well as other entertainments will be presented."

"In the matter of the size and equipment of the stage, as well as in arrangement size and equipment of the opera house proper, nothing is left to be desired. In the style of architecture, decorating, finishing, the New Palace is not surpassed by any opera house in the state outside of the three big cities, and the people of Luverne, as well as the New Palace owner, who spent \$50,000 in its construction, have every reason to be proud of it. It is a notable credit to Luverne and to Mr. Jochims, its public spirited owner, who has earned the gratitude of all the people

of Luverne for his enterprise and accomplishment."

"Just before the curtain went up for the first act, city attorney C. H. Christopherson appeared before the foot light, at the request of manager Jochims, to express Mr. Jochims' appreciation of the patronage for the opening performance and to thank those whose efforts had contributed to the success of the opening event. After discharging his duty Mr. Christopherson took advantage of the opportunity to bespeak the gratitude of the people of Luverne to Mr. Jochims for his efforts and success in giving the people of Luverne its handsome and substantial playhouse and to call attention to the credit and benefit the theatre will be to the people of Luverne for many years to come."

"The presentation of "The Prince of Tonight" was very pleasing. Tom Arnold, in the title role, proved a strong character, and his support was excellent. The production was fully up to expectation and well received."

"The next production will be "The Shepherd of the Hills" which will be presented with a strong cast next evening the 5th. A number of other excellent attractions have been booked by Manager Jochims for the near future, but definite announcements cannot be made at this time."

"On evenings when theatrical attractions are not booked, the New Palace will be given over to moving picture shows. Manager Jochims has contracted with three film companies for service and he expected to give his first motion picture show last evening."

In the same edition of the Herald, Jochims posted the following ad:

"I wish to take this means of thanking my patrons and residents of Luverne for the support and patronage given in the opening of my theatre, the New Palace. I shall endeavor in the future in providing motion pictures and road attractions to serve you as to merit your patronage and continued good will, providing at all times the best attractions available. - Yours truly, Herman Jochims."

This little prairie town was changed overnight when the "opera house" opened. The New Palace Theatre was able to offer the finest in stage productions, vaudeville and music entertainment in the world. Located only a few short blocks from the rail line, entertainers would be able to amble their way to the theatre for the night's performance before making their way back to board the train for their next stop.

Learn. Connect. Share.

2017 Ag Seminar

Wed. February 1, 2017

10:30 am - 2:00 pm

Grand Prairie Events
105 South Estey Street
Luverne, MN 56156

Please bring a friend to this free and informative event!

Registration required.
RSVP to (507) 449-6000, (507) 449-2030 or
ESBLuverne@exchangestatebankmn or
kima@professionalagmarketing.com.

Enjoy sponsor presentations, lunch and our guest speaker, Trent Loos.

Trent Loos is a sixth-generation farmer and award-winning host of Loos Tales - a radio show broadcast in nearly 100 markets to around 3 million listeners daily. Loos travels the globe, exploring the world of food producers and people involved in the many different aspects of production agriculture. He was recently selected to serve on President-elect Trump's sixty-member Agricultural Advisory Committee where he will help communicate the issues facing rural America to the administration. Learn more about his work at www.loostales.com.



LAND FOR SALE

LEGAL: Two tracts of productive Rock County land for sale as follows:

Tract A: Approximately 95.97 acres located in the NW1/4 and the S1/2 of the NE1/4 of 13-104-45, Rock County, Minnesota.

Tract B: Approximately 88.47 acres located in the NW1/4 of 13-104-45, Rock County, Minnesota.

TERMS: Sealed bids will be accepted until 5:00 p.m., January 27, 2017, at the Eisma Law Office, 130 East Main, Luverne, MN or 821 Main Street, Edgerton, MN. All bidders will have the opportunity to submit additional bids until property is sold. Tracts will be sold individually. Highest bidder will be required to sign a Purchase Agreement with ten percent (10%) non-refundable earnest money down payment on the date of the sale and the balance at closing on or by March 1, 2017.

Sale is subject to approval by the heirs of Randall Kooi. For further details contact Douglas Eisma, Eisma & Eisma, Attorneys at Law, (507) 283-4828/(507) 227-2829.

125 Years

Yearlong celebration honors St. John Lutheran Church

Story and photo by *Navis Fodness*

St. John Lutheran Church is celebrating its 125th anniversary throughout 2017. "On Christ the Solid Rock We Stand" is the church's theme and has been commemorated in rock outside the church's northeast entrance.

St. John Lutheran Church parishioners will embark on a yearlong celebration in recognition of the church's 125th anniversary.

The kickoff event for the celebration will be Sunday, Jan. 29, with a special worship service at 9 a.m. The Rev. Daniel Schmalz will be the guest speaker.

Schmalz grew up in Luverne and graduated from Luverne High School. His late father, the Rev. Alfred Schmalz, served as pastor at St. John from 1956 to 1978.

Schmalz is one of three "sons of the congregation" (children who received their religious education at St. John and later became pastors) who are the invited guest speakers recognizing St. John's founding in 1892.

Other speakers are the Rev. Gary Oehlerts, a Magnolia High School graduate, and the Rev. Dr. Larry Stoterau, another LHS graduate.

The celebration's theme is "On Christ the Solid Rock We Stand," which states the church's founding belief and celebrates its future.

"It's the people who make the congregation, giving it the character of their faith," said current pastor Gary Klatt. "If you came to Minnesota in the 1880s you had to be pretty staunch."

According to "St. John Lutheran Church: The First One Hundred Years," 10 men signed St. John's charter on Nov. 14, 1892.

Many of their descendants are still members of St. John, including Lorna Schoeneman, who co-chairs the anniversary celebration committee with Jean Egland.

Egland, an 18-year member, said being a part of the celebration has been exciting.

"Being at 125 years and still functioning is phenomenal," she said.

About three dozen other parishioners have joined the co-chairs to fill various roles for the celebration. Egland said the planning sessions began in February 2016, and it was there that the celebration events evolved.

St. John currently has 550 parishioners.

After Jan. 29, the next celebration will be June 11, dubbed Heritage Day by the organizing committee. Pastor Klatt will deliver the address.

He said Heritage Day recognizes agriculture's role in the church's early start and in its longevity.

Parishioners are encouraged to drive their vintage tractors to church.

Aug. 13 will have the Rev. Oehlerts as the guest speaker under a tent at the Luverne City Park. The outdoor gathering will feature a 9 a.m. worship service and program, followed by a picnic and family-style entertainment.

The anniversary celebration will culminate on Sunday, Nov. 12, with the Rev. Dr. Stoterau followed by an anniversary program and a dinner at the church.

All events are open to the public. Some events require an RSVP. Contact the church at 283-2316 for more information.

Early church building referred to as 'The School'

Since its inception in 1892, St. John has had three worship buildings. They were all located in approximately the same location as today - the corner of Adams and Cedar streets.

The land was purchased in 1893. Instead of a building just for worship, the education-minded Missouri Synod Lutherans built a multi-purpose building for \$1,000, according to the church's early history.

Finished in 1895, the building was known as "The School."

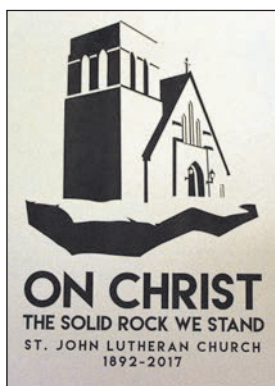
The School was replaced by the original church building in 1914. The late Herb Hamann, a parishioner, moved The School to his farm northwest of Luverne. The move happened sometime in the '50s or '60s.

At the Hamann farm, the former school was repurposed. For a time it stored soybeans in each of the six classrooms and office that lined both sides of the open center of the building.

"It's still there," said Hamann's great-grandson Jason Brandt, who now lives on the family farm.

Instead of grain, the school stores building materials. Brandt said writing is still on the building's exterior.

Previously the German words, "Deutsche Evangelisch Lutherische St. Johannes 1895 Schule" (German Evangelical Lutheran St. John 1895 School) was painted above the



St. John Lutheran Church had three wooden structures (from left) its school (built in 1895), the parsonage (moved into place in 1906) and the church (built in 1914).



school's entrance.

The 1914 church was dismantled and its wood repurposed in 1954 when the current brick facility was completed. The new church cost \$150,521 to build.

Growth in its education program brought the decision to construct an education building. The two-story annex was attached on the current church's south side, where the school, former parsonage and 1914 church used to be located.

The current parsonage on the corner of Cedar and Barck streets was built in 1958.

The education building was finished in 1966, in time for the church's 75th anniversary.

Rev. Klatt said he feels fortunate to have served as St. John's pastor for the past 15 years and to assist in recognizing the church's 125th anniversary.

"It is such a blessing in every way," he said. "It's been a great place with great people."

Klatt added the church's future also looks great due to the congregation's current mixture of old as well as young parishioners.

"It's a healthy congregation," he said.

1925: Rock County bankers gather for annual picnic, program at Blue Mounds

The following appeared in the *Rock County Herald* on Sept. 4, 1925:

ROCK COUNTY BANKERS TO HOLD PICNIC SEPTEMBER 6

Annual Event to be Held At Blue Mounds With Highly Promising Program of Events.

Sunday afternoon, September 6th, has been selected as the time, and the Blue Mounds north of Luverne as the place, for holding the annual



picnic of the Rock county Bankers association.

BITS BY BETTY

By Betty Mann, president
Rock County Historical Society

This action was taken at a meeting of the members of the association

held Saturday evening. At that time an earnest appeal was made to have all bankers, bank directors and their families attend the forthcoming event.

Program for the picnic will present a varied lot of entertainment events, a big feature of which will be a kittenball battle between the state and national bankers. Bryan McRobert will be captain of the national club, and Paul K. Myers at the head of the state bankers.

Committees appointed to look after the different phases of the ar-

rangements are:

Sports—O. J. Nash, of Hills; J. M. Baker, of Kanaranzi;

Entertainment—John Engbretson, of Kenneth; Geo. Heard, of Magnolia;

Refreshments—A. A. Anderson, (he to appoint his own co-workers.)

Donations to the Rock County Historical Society can be sent to the Rock County Historical Society, 312 E. Main Street, Luverne, MN 56156.

Mann welcomes correspondence sent to mannmade@iuw.net.

Boys skate to BSC conquests

By John Rittenhouse

The Luverne boys' hockey team is riding a run of four consecutive wins after posting a pair of shutout victories on the road.

The Cardinals registered a seven-goal win in Redwood Falls Thursday before besting Waseca by four goals Saturday.

Luverne, 13-5-1 overall, hosts New Prague Saturday.

LHS 4, Waseca 0

The Cardinals avenged their first loss of the season when they posted a win in Waseca Saturday.

The Blue Jays topped the Cards 6-3 in Luverne in December, but LHS skated to a 4-0 victory in the rematch.

Kaden Ericson registered a 23-save shutout in goal to highlight the win for a Luverne team that finished the game with 37 shots on goal.

LHS received goals from four different players on offense.

Mark Sterrett opened the scoring 3:52 into the game, and the Cards upped the lead to 3-0 with a two-goal second period.

Kasyn Kruse found the net at the 9:46 mark of the second period and Jesse Reed added a power-play tally 2:09 later to make it 3-0.

Declan Beers netted a short-handed goal 13 seconds into the third period to cap the scoring in the game.

Reed, Nick Harder, Beers, Ben Serie, Jim Erickson, Tyler Reisdorfer and Kruse finished the game with one assist each.

Luverne 7, RWV 0

The Cardinals posted their third consecutive conquest when they took on Redwood Valley Thursday in Redwood Falls.

With Sterrett registering his first varsity hat trick and Ericson turning in a 16-save shutout in net, the Cardinals coasted to a seven-goal victory.

Boys/continued on page 4B



John Rittenhouse photo/0126 hgb 9

Hills-Beaver Creek junior Kourtney Rozeboom came off the bench to score six points and grab eight rebounds during Friday's basketball game against Mountain Lake Area in Hills. H-BC posted a 45-37 win.

H-BC overcomes slow start

By John Rittenhouse

The Hills-Beaver Creek girls overcame a sluggish first half to defeat Mountain Lake Area during a Red Rock Conference basketball game in Hills Friday.

After being limited to 11 points in the first half, the Patriots faced a nine-point (20-11) deficit heading into the second stanza.

The Patriots answered the challenge by outscoring the Wolverines 34-17 in the final 18 minutes of play to secure a 45-39 win.

After taking a 3-0 lead

with a three-point shot from Jasmine Lingen 1:43 into the game, H-BC watched MLA put together an 11-2 run to open a five-point (11-5) advantage at the 12:03 mark of the first half. H-BC trimmed the difference to two points (11-9) when Sidney Fick drained a pair of charity shots at the 8:55 mark, but the Wolverines outscored the hosts 9-2 the rest of the half to lead by nine at the break.

MLA extended the lead to 10 points (22-12) 1:05 into the second half, but the Patriots didn't cave in.

A 16-4 run ending with a field

goal from Grace Bundesen gave H-BC a 28-26 edge with 6:37 left to play.

The Wolverines knotted the score at 28 and trailed by three (33-30) with 3:05 remaining before the Patriots put the game away.

Lingen gave H-BC a seven-point (37-30) cushion when she drained one free throw with two minutes remaining, and the Patriots used an 8-7 scoring edge in the final 120 seconds to win the game by eight points.

Avery Van Roekel led H-BC offensively with 15 points.

Lingen (seven rebounds and three steals), Bundesen (seven rebounds) and Kourtney Rozeboom (eight rebounds) also played key roles in the victory.

Box score
Tilstra 0 0-0-0, Spath 0 0-0-0, Kolbrek 0 0-0-0, Lingen 0 1 5-8 8, Fick 1 0 3-4 5, Bundesen 3 0 2-2 8, Van Roekel 5 0 5-6 15, Gehrke 1 0 1-2 3, Rozeboom 3 0 0-3 6.

Team statistics
H-BC: 14 of 55 field goals (25 percent), 16 of 24 free throws (67 percent), 32 rebounds, 11 turnovers.
MLA: 11 of 46 field goals (24 percent), 14 of 29 free throws (48 percent), 34 rebounds, 23 turnovers.



John Rittenhouse photo/1026 la bb 8

Pictured during a Jan. 17 home game against Adrian, Luverne's Brayden Jacobsma came off the bench to score seven points during a home victory over Flandreau Indian School Monday.

LHS wins fourth game

By John Rittenhouse

The Luverne boys' basketball team split a pair of games at different venues.

The Cardinals came up on the short end of a 34-point decision when they took on Jackson County Central in Jackson Thursday. LHS returned home to defeat Flandreau Indian School by 13 points Monday in Luverne.

The 4-11 Cardinals host Marshall Friday.

Luverne 74, FIS 61

The Cardinals picked up their fourth win of the season when they topped Flandreau Indian School by 13 points Monday in Luverne.

LHS opened a nine-point (39-30) halftime lead and outscored FIS 35-31 in the second half to seal a 74-61 victory.

Luverne, which outscored FIS 25-11 at the charity stripe

LHS/continued on page 3B

Panther boys post first victory Thursday

By John Rittenhouse

The Ellsworth boys' basketball team posted its first win of the season when it played a pair of home games late last week.

The Panthers defeated Heron Lake-Okabenaby one point Thursday before falling by 24 points to Mountain Lake Area Saturday.

Ellsworth, 1-10 overall, plays in Hills Friday.

MLA 75, Ellsworth 51

The Panthers were unable to string together consecutive victories when they squared off against the Wolverines Saturday in Ellsworth.

MLA rolled to a 20-point lead in the first half and outscored EHS 29-25 in the second half to secure a 24-point win.

The Wolverines scored the first eight points of the game before EHS trimmed the difference to five (8-3) when Brandon Kramer converted a field goal at the 15:20 mark of the first half.

MLA, however, went on a 35-16 run over the next 13 minutes to open a 43-19 lead with 2:14 remaining in the opening stanza.

Ellsworth closed the margin to 18 points (44-26) when Jared Leuthold converted a layup with 29 seconds left, but the Wolverines scored the final two points of the half to make it a 46-26 game at the intermission.

EHS was unable to climb back into contention during the second stanza.

MLA scored the first four points of the half and went on an 18-9 run after that to open a 33-point lead (68-35) with 8:10 left to play.

EHS outscored the Wolverines 16-7 the rest of the night, but the Panthers never trailed



John Rittenhouse photo/0126 ebb 5

Ellsworth sophomore forward Carter Boyenga looks to put up a shot in the lane in front of Mountain Lake Area's Aaron Fast during Saturday's boys' basketball game in Ellsworth.

by less than 22 points.

Leuthold (16 points and three assists), Kramer (12 points and seven rebounds), Grant Jansma (12 points and five rebounds) and Zach Buntjer (three assists) led EHS statistically.

Box score
Wallenberg 0 0-0-0, Leuthold 6 11-2 16, Kruse 0 0-2-0, Curtis 1 2 0-0 8, Jansma 2 2 2-2 12, Boyenga 0 0-4 0, Kramer 6 0 0-0 12, Buntjer 1 0 1-2 3.

Team statistics
Ellsworth: 21 of 41 field goals (51 percent), four of 12 free throws (33 percent), 23 rebounds, 18 turnovers.

Ellsworth 64, HL-O 63

The Panthers picked up their first win of the season when they edged the Wildcats by one point in Ellsworth Thursday.

The victory snapped what was a nine-game losing streak

to start the season.

"It took a lot of weight off the shoulders of our boys. They were pretty excited about," said Panther coach Mac McDowell.

The win didn't come easily for EHS.

Leuthold canned a three-point shot before time expired in the first half to give

First/continued on page 3B

Three Cards reach finals Saturday

By John Rittenhouse

The Luverne wrestling team turned in a strong showing at the Sanford Wrestling Tournament in Sioux Falls Saturday.

Luverne placed sixth in a 14-team field, and three Cardinal athletes reached the championship match in their weight class at the event.

LHS scored 130 points as a team to finish sixth in a field paced by Aberdeen, which turned in a 224.5-point effort.

Luverne's Solomon Nielsen captured the 170-pound championship with a 3-0 record, while Jeremiah Dooyema and Jake Haugen placed second at 152 and 160 respectively.

Nielsen pinned Central Lyon's Braeden Schulte in 30 seconds and posted a 14-3 major decision against Pipestone's Garrett Ploeger to reach the finals.

The LHS standout recorded a 13-6 decision against Aberdeen's Brad Nelson in the title match.

Dooyema pinned Candy's Kylan Northern in 3:08, secured a 6-3 decision over Harrisburg's Ryan Meyer and claimed an 11-3 major decision against Aberdeen's Collin Haar to earn a berth in the championship match at 152.

Sioux Falls Roosevelt's Carter Lohr pinned Dooyema in 1:39 during the title tilt.

Haugen pinned Rock Valley's Zach Rau in 1:33 and won decisions against Canby's Jaden Kindopp (7-1) and Harrisburg's Nick Schirado (11-8) to reach the finals at 160.

Sioux Falls Roosevelt's Kobe Kortan handed Haugen a 7-2 setback in the title match.

Hunter Baker (3-2 at 106), Tucker Oeltjenbruns (3-2 at 126), Riley Baker (3-2 at 132) and Zach Luke (3-2 at 195) all placed fourth for LHS.

Zach Bradley, Justyce Ripka, Jed Dooyema, Dalton DeSollar and Carter Baumberger went 0-2 for the Cards.

The Cardinals wrestle at a triangular in Adrian Jan. 31.

Mankato East, Waseca extend slide for LHS girls

By John Rittenhouse

The Luverne girls' hockey team lost a pair of games to slip below the .500 mark for the season.

The Cardinals lost a three-goal decision in Waseca Saturday before falling by two goals to Mankato East at the Blue Mound Ice Arena Monday.

Luverne, 8-9-2 overall, skates in Marshall Thursday.

ME 4, Luverne 2

A stretch of not posting a win reached five when the Cardinals entertained the Cougars Monday in Luverne.

Mankato East scored three first-period goals and never lost the lead during a two-goal win that included the Cougars outshooting LHS 38-19.

Camryn Steinberg gave ME a 1-0 lead 1:58 into the game and Taylor Kanstrup made it 2-0 after netting a short-handed, unassisted goal at the 7:12 mark of the first period.

Luverne's Mariah Aukes cut ME's lead in half (2-1) when she scored after being set up by Regan Feit with 5:04 remaining in the opening stanza.

The Cougars, however, regained a two-goal cushion (3-1) when Ali Schreiber netted an unassisted tally with 21 sec-



Luverne senior forward Madison Crabtree badgers a Mankato East player with the puck during Monday's girls' hockey game at the Blue Mound Ice Arena. ME scored three first-period goals to set the stage for a 4-2 win.

John Rittenhouse photo/0126 lgh 6

onds remaining in the period. Luverne scored the lone goal of the second period as

Rozilyn Oye poked a pass from Claire Baustian into the net with 3:45 left in the stanza.

The score remained 3-2 until there was 1:17 remaining in the third period, when ME's Emma

Bodnar registered an unassisted goal to cap the scoring. Emilie Bartels stopped 34 of

the 38 shots she faced in goal for Luverne.

Waseca 4, LHS 1

The Cardinals lost their fourth Big South Conference game of the season when they tangled with the Blue Jays in Waseca Thursday.

Luverne defeated the Blue Jays when the teams met in Luverne in December, but WHS dominated the rematch.

The Blue Jays netted two goals in the first and second periods to open a 4-0 lead and went on to win the game by three goals.

Riley Brown opened the scoring for the hosts with 5:33 remaining in the first period and Averi Dahlberg added a goal with 1:09 left in the stanza to make it 2-0.

Jadye Pederson recorded an unassisted tally with 5:52 left in the second stanza and Dahlberg added an unassisted goal with 13 seconds remaining in the period to make it 4-0.

Luverne's Aukes capped the scoring with 8:24 left to play in the third period after being set up by Madison Crabtree.

Waseca sported a 20-19 edge in shots on goal in the game.

Bartels made 16 saves for the Cards.

Cardinals bounce back from loss to take care of Flandreau Indian School

By John Rittenhouse

The Luverne girls' basketball team broke even when it played a pair of games last week.

The Cardinals lost a 12-point Big South Conference game to Jackson County Central in Jackson Thursday before rolling to a 24-point home win over the Flandreau Indian School Monday.

Luverne, 7-9 overall, travels to Marshall Thursday.

Luverne 62, FIS 38

The Cardinals rolled to a 24-point home win when they entertained Flandreau Indian School Monday in Luverne.

LHS gained control of the game early by opening a 36-20 cushion at the intermission.

Luverne went on to outscore FIS 26-18 in the second half to complete a decisive victory.

Sierra Schmuck (17 points, five rebounds and four steals)

and Rachel Oftedahl (11 points and 10 rebounds) led LHS offensively.

Hailey Remme (five rebounds), Mallory Thorson (eight rebounds), Kami Sawtelle (nine rebounds), Mackenzie Petersen (five rebounds and three assists) and Joci Oye (three steals) made key contributions to the winning effort.

Box score
Schmuck 6 0 5-9 17, Remme 4 0 0-0 8, Oye 2 0 1-2 5, Anderson 2 0 0-0 4, Thorson 1 0 2-3 4, Sawtelle 1 0 2-7 4, Bosch 0 0 2-2 2, Oftedahl 4 0 3-5 11, Petersen 3 0 0-0 6, Hustoft 0 0 1-2 1.

Team statistics
Luverne: 23 of 75 field goals (31 percent), 16 of 30 free throws (53 percent), 50 rebounds, 14 turnovers.
FIS: 12 of 34 field goals (35 percent), 10 of 23 free throws (44 percent).

JCC 57, Luverne 45

Luverne's bid to win three consecutive games didn't become a reality when the Cardinals took on the Huskies in Jackson Thursday.

Luverne, which defeated JCC by eight points when the teams met in Luverne Dec. 22, fell by 12 points in the rematch.

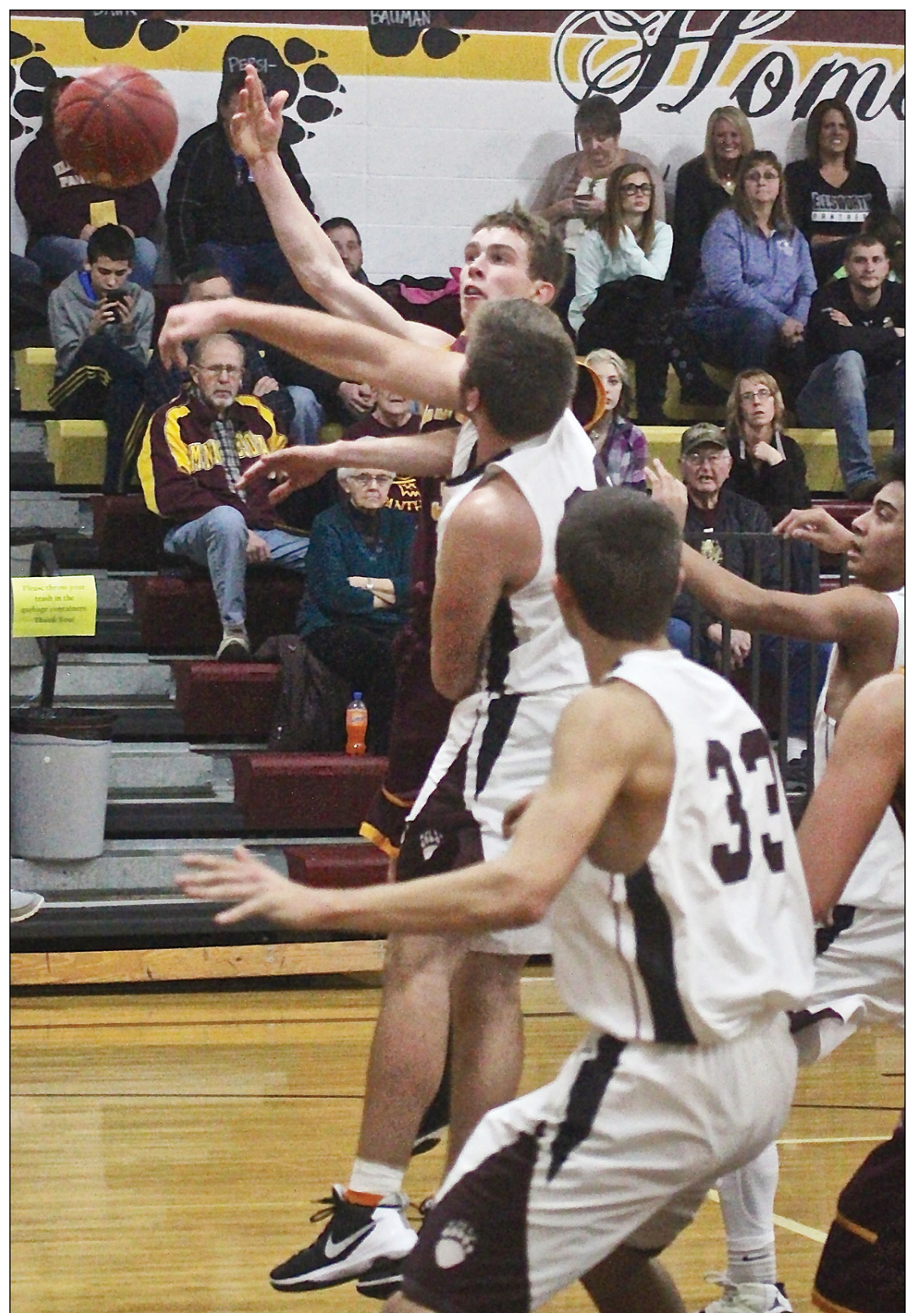
After sporting a modest 21-19 lead at halftime, the Huskies outscored the Cardinals 36-26 in the second half to secure the victory.

Jadyn Anderson (11 points and six rebounds) and Oye (10 points) led Luverne on the offensive end of the court.

Remme and Zayna Hustoft collected six and five rebounds respectively, while Sierra Schmuck turned in a five-rebound, four-assist effort.

Box score
Schmuck 2 0 3-6 7, Remme 1 0 2-4 4, Oye 2 2 0-0 10, Anderson 4 0 3-6 11, Thorson 0 0 0-0 0, Oftedahl 1 0 0-0 2, Petersen 0 0 0-2 0, Hustoft 3 0 0-0 6.

Team statistics
Luverne: 16 of 44 field goals (36 percent), 11 of 24 free throws (46 percent), 33 rebounds, 20 turnovers.
JCC: 16 of 41 field goals (39 percent), 20 of 26 free throws (77 percent).



Ellsworth senior Jared Leuthold scored 16 points and passed for three assists during a home loss to Mountain Lake Area Saturday. The Panthers posted their first win of the season Thursday.

John Rittenhouse photo/0126 ebb 8

H-BC sweeps series with EHS

By John Rittenhouse

The Hills-Beaver Creek girls' basketball team completed a sweep of its annual season series with Ellsworth Monday in Hills.

H-BC, which defeated EHS 70-36 when the teams met in Ellsworth Jan. 3, was even more impressive in the rematch.

The Patriots outscored the Panthers in both halves of a 68-27 victory.

H-BC was clicking early in the game as it rolled to a 43-13 advantage in the first half.

The Patriots used a 25-13 scoring cushion in the second half to clinch a 41-point win.

Sidney Fick (26 points, seven rebounds and five steals) and Grace Bundesen (15 points and 11 rebounds) led H-BC offensively.

Jasmine Lingen added three assists to the winning cause, while Avery Van Roekel and Kourtney Rozeboom chipped in three steals each.

Devin Dreesen led the Panthers with 11 points and six rebounds.

Kallie Chapa and Sierra Smith collected five caroms each for EHS.

The 11-3 Patriots take a four-game run of wins into a home tilt against Fulda Thursday.

The 1-13 Panthers attempt

to end a 12-game losing streak when they play in Westbrook Thursday.

Box score
Ellsworth
M. Dreesen 2 0 0-0 4, K. Chapa 3 0 2-2 8, Meester 0 0 3-4 3, D. Dreesen 3 1 2-2 11, Smith 0 0 1-2 1.

H-BC
Box score
Bos 1 0 0-0 2, Tilstra 0 0 0-0 0, Spath 1 0 1-2 3, Kolbrek 1 0 0-1 2, Lingen 0 1 0-0 3, Fick 6 3 5-5 26, Bundesen 6 1 0-1 15, Swan 1 1 0-0 5, Elbers 0 0 0-2 0, Van Roekel 2 0 4-6 8, Rozeboom 2 0 0-0 4.

Team statistics
Ellsworth: nine of 40 field goals (23 percent), eight of 10 free throws (80 percent), 20 rebounds, 20 turnovers.
H-BC: 26 of 68 field goals (38 percent), 10 of 17 free throws (59 percent), 34 rebounds, 11 turnovers.

LHS/continued from page 2B

in the game, received big performances from Andrew Bierman (17 points), Eli Haugom (16 points and five rebounds) and Cole Claussen (11 points, eight rebounds and four steals).

Riley Siebenahler collected five rebounds for the winners.

Box score
Robinson 1 0 5-6 7, Lundgren 0 0 1-2 1, Bierman 6 1 2-4 17, Claussen 2 1 4-4 11, Curtis 1 0 5-7 7, Jacobsma 2 0 3-3 7, Siebenahler 3 0 2-6 8, Haugom 5 1 3-6 16.

Team statistics
Luverne: 23 of 51 field goals (45 percent), 25 of 38 free throws (66 percent), 24 rebounds, six turnovers.

FIS: 22 of 58 field goals (38 percent), 11 of 17 free throws (65 percent).

JCC 94, Luverne 60

The Cardinals dropped their sixth Big South Conference game of the season when they challenged the Huskies in Jackson Thursday.

JCC seemingly scored points at will during both halves of a 34-point victory.

The Huskies led 52-30 at halftime before outscoring LHS 42-30 in the second half.

Layne Curtis and Haugom paced the LHS offense by

netting 13 and 12 points respectively.

Siebenahler led the Cards with seven rebounds and three assists, while Claussen grabbed six rebounds.

Box score
Robinson 1 2 0-0 8, Lundgren 0 0 1-2 1, Bierman 0 2 0-0 6, Guy 0 0 0-0 0, Claussen 4 0 1-2 9, Curtis 4 0 5-8 13, Jacobsma 0 2 1-2 7, Stemper 0 0 0-0 0, Siebenahler 0 1 1-3 4, Haugom 6 0 0-12.

Team statistics
Luverne: 22 of 47 field goals (47 percent), nine of 17 free throws (53 percent), 16 rebounds, 27 turnovers.

First/continued from page 2B

Ellsworth a 32-30 lead, and the Panthers padded the advantage to 13 points with three minutes remaining in the game.

HL-O came roaring back to trim the difference to one point (64-63) late in the game.

The Wildcats had an opportunity to win the game with a two-shot opportunity at the charity stripe with 10 seconds left to play, but HL-O couldn't cash in on the free throws.

Jansma (15 points), Kramer (14 points and seven rebounds) and Carter Boyenga (11 points and three steals) paced EHS offensively.

Leuthold added seven as-

sists and five rebounds to the winning cause, while Buntjer blocked three shots.

1 3 4-6 15, Boyenga 4 1 0-4 11, Kramer 5 0 4-4 14, Buntjer 1 0 4-5 6.

Box score
Wallenberg 1 0 2-4 4, Leuthold 2 1 0-0 7, Kruse 1 0 1-3 3, Curtis 2 0 0-4, Jansma

Team statistics
Ellsworth: 22 of 51 field goals (43 percent), 15 of 26 free throws (58 percent), 28 rebounds, 14 turnovers.

GLENN'S
Motorcoach Tours Inc.
Since 1991 • Rochester, MN

ALL TOURS DEPART from the MPLS & St. Paul area and SE Minnesota

Call 1-800-795-8516 For a complete listing of our tours.

Check out our website for a full list of our tours at: www.GlennsMotorCoachTours.com

LET'S RODEO

GINGH
WORLD'S TOUGHEST RODEO

Free Pre Show at 6 PM with ticket

Post Rodeo Concert Saturday Night featuring **PARMALEE**

February 3 & 4 - 7:30 PM

XCEL ENERGY CENTER BOX OFFICE, TICKETMASTER.COM, CHARGE-BY-PHONE 800.745.3000, GROUPS 651.312.3486, TDD/TTY 800.355.2525

THE CITY OF LUVERNE STREET DEPARTMENT REMINDS YOU THAT:

If it's snowing when you go to bed...
If snow is in the forecast...
If you're planning to be out of town...

REMEMBER TO MOVE YOUR VEHICLES OFF THE STREET UNTIL THE PLOW HAS GONE BY CURB TO CURB

Freshmen give hope for wrestling future

Any way one sums up the situation, it has been a rough winter for the Adrian High School wrestling program.



FROM THE SIDELINES

By John Rittenhouse, sports editor

With a 3-13 record as a team through Saturday's T-M-B Tournament, the Dragons already have taken more setbacks this season than they have in the last two seasons combined (11 losses), and there are still five outings remaining on the 2016-17 regular season schedule.

For a program that has thrived for decades, this has been a humbling winter that probably won't get much better for a team that is battling injuries and inexperience.

There are, however, two reasons to be positive about the future.

A pair of freshmen competitors have emerged as Adrian's most successful wrestlers this year.

In what has otherwise been a trying season for veteran AHS coach Gregg Nelson, the emergence of Logan Taylor and Scot Edwards has given him something to smile about.

"They have provided us with rays of sunshine during what has been a cloudy season," Nelson said.

"Having some kids like them to build around gives us a good start in getting our program back on track."

Taylor has been a pleasant surprise at AHS.

According to Nelson, Taylor was never big enough, or was battling injuries, to push for varsity mat time at 106 pounds the past two seasons.

He still is slightly light to be a force in his weight class, but Taylor has flashed his ability and leads the team with a 15-6 record to date.

"Logan really wasn't on the radar screen until this

year," Nelson admitted.

"He has grown and has gotten stronger, but he still is not a big 106-pounder. Logan will see a lot bigger, better kids in his weight class as the season goes on. We are extremely happy with the way he has wrestled for us so far."

Edwards did wrestle at 220 and heavyweight for AHS last season, so he does have past varsity experience.

His prior mat time appears to be paying off as Edwards now sports an 11-3 record after finishing the 2015-16 campaign with a 6-8 mark.

"Scot has been around before, but he has gotten bigger and stronger, too," Nelson said.

"He wrestled mostly at 220 for us last year, but he has grown out of that weight class and is a lighter heavyweight who has been successful for us this season."

How the rest of the season pans out for Adrian's fantastic freshmen remains to be seen, but there's no doubt they already have made a positive impact on the mat to date.

If they continue to progress as expected, Nelson has reason to be optimistic about Adrian's wrestling future.

"It's nice to know those two kids will be around the next three seasons," he said.

"With Scot, we should be set at heavyweight for a couple of years. Having Logan coming back somewhere at the top of our lineup is a good thing, too."

Adrian boys take down Luverne

By John Rittenhouse

Boys' basketball teams from Adrian and Luverne squared off in an entertaining game Jan. 17 in Luverne.

Both teams sported leads in both halves of the game, but it was a late surge by the Dragons that gave visiting Adrian a 72-67 victory.

A layup by Mark Robinson 3:08 into the game gave the Cardinals a 6-0 lead.

Luverne still led by six (8-2) when Adrian went on a 25-10 run ending with a three-point shot from Frank Serrao that gave the Dragons a 27-18 advantage at the 6:10 mark of the first half.

The Cardinals trimmed the difference to four points (27-23) when Eli Haugom sank one free throw with 3:50 remaining, but the Dragons outscored LHS 11-8 the rest of the half to sport a 38-31 advantage at the intermission.

Luverne opened the second half with an 11-3 run ending with a three-point shot by Cole Claussen to regain the lead at 42-41 at the 13:22 mark.

Adrian responded to the challenge to move in front 48-44 when Nate Lonneman registered a field goal at 11:40, and the Dragons still led by four (57-53) after Jacob Stamer canned a three-point shot with 7:21 left to play.

Luverne bounced back to knot the score at 57 when Andrew Bierman drained a pair of free throws at the 6:29 mark, and the score was tied at 61 when Adrian used a 5-1 spurt ending with a three-point play from Mitchell Lonneman to open a 66-62 lead with 52 seconds left.

Claussen sank two free throws for LHS with 43 seconds remaining to make it a 66-64 game, but the Dragons scored the next six points to up the lead to eight (72-64) before Luverne hit a late three-point shot to make it a five-point difference at game's end.

Mitchell Lonneman (17 points and eight rebounds), Stamer (13 points and five



John Rittenhouse photo/0126 la bb 14

Adrian senior Jacob Stamer lays in two of his 13 points in front of Luverne's Cole Claussen during a Jan. 17 game in Luverne. Stamer and the Dragons rallied late to secure a 72-67 victory.

rebounds), Zach Hendel (10 points and nine rebounds), Serrao (11 points) and Ryan Wieneke (10 points and eight assists) lifted AHS to victory.

Layne Curtis (14 points), Claussen (13 points and five rebounds), Bierman (12 points), Haugom (11 points

and Riley Siebenahler (five rebounds and four steals) led the Cardinals statistically.

Box score

Adrian: Stamer 2 3 0-0 13, Serrao 1 3 0-0 11, Bierman 0 0 0-0 0, Wieneke 2 2 0-0 10, White 0 1 0-0 3, N.Lonneman 3 0 2-2 8, Hendel 5 0 0-3 10, M.Lonneman 5 0 7-9 17.

Luverne: Robinson 1 1 0-0 5, Claussen 3 1 4-4 13, Curtis 5 0 4-4 14, Jacobsma 0 1 0-2 3, Bierman 4 0 4-4 12, Siebenahler 3 0 3-9 9, Haugom 4 0 3-4 11.

Team statistics: Adrian: 27 of 55 field goals (49 percent), nine of 14 free throws (64 percent), 35 rebounds, 21 turnovers. Luverne: 23 of 61 field goals (38 percent), 18 of 24 free throws (75 percent), 20 rebounds, eight turnovers.

Boys/continued from page 2B

Sterrett opened the scoring 4:32 into the game and Reed added a power-play tally before the first period was complete to give the Cards a 2-0 cushion.

Sterrett completed his hat trick during a four-goal second period that featured all four goals coming in the final 7:17 of the stanza.

Sterrett scored the first goal of the second period 9:43 into the stanza and capped the four-goal surge with 2:03 remaining.

Reisdorfer added an unas-

sisted tally with 6:38 left in the second period and Harder scored with 5:46 remaining.

Beers netted a power-play goal with 12:29 remaining in the third period to cap the scoring.

Luverne sported a 28-16 advantage in shots on goal during the game.

Serie led LHS with four assists, while Reed and Kruse added two each.

Reisdorfer and Beers chipped in one assist each to the winning cause.

Dragons slay W-WG girls

By John Rittenhouse

The Adrian girls' basketball team nailed down its fourth consecutive victory in Westbrook Friday.

Taking on the Westbrook-Walnut Grove Chargers on their home floor, the Dragons made themselves at home by outscoring the hosts in both halves of a 59-37 victory.

AHS led by 10 points (29-19) after 18 minutes of play before outscoring W-WG 30-18 in the second half to win by 22.

Paige Bullerman (20 points and eight rebounds), Kaitlyn Christians (13 points, five rebounds and four assists) and Lexi Slater (12 points and six rebounds) carried the load offensively for Adrian.

Miah Kunkel (six rebounds, four assists and four steals), Alexis Kemper (three assists) and Moriah Bullerman (four assists) also played well for the Dragons, who evened their record at 7-7.

Adrian plays in Okabena Thursday.

Box score

Kemper 0 0 0-0 0, M.Bullerman 2 0 1-3 5, Balster 0 0 0-0 0, Nelson 0 0 0-0 0, Kunkel 3 0 1-2 7, Christians 5 0 3-3 13, Slater 5 0 2-4 12, Heidebrink 1 0 0-0 2, P.Bullerman 7 0 6-8 20.

Team statistics

Adrian: 23 of 51 field goals (45 percent), 13 of 20 free throws (65 percent), 29 rebounds, 14 turnovers. W-WG: 14 of 46 field goals (30 percent), three of five free throws (60 percent), 24 rebounds, 23 turnovers.

AHS goes 0-3 Saturday

By John Rittenhouse

The Adrian wrestling team lost three consecutive matches at the Plum Creek Tournament in Tracy Saturday.

Adrian dropped matches to Minneota (75-6), Tracy-Milroy-Balaton-Westbrook-Walnut Grove (52-17) and New Ulm (42-27).

AHS senior Dylan Gyberg experienced a perfect day by recording three first-period pins.

Gyberg pinned Minneota's Josh Laleman in 1:17, T-M-B-W-WG's Tyler Timm in 1:47 and New Ulm's Hunter Landsteiner in 34 seconds.

Logan Taylor went 2-0 for AHS, while Scot Edwards was 1-0.

Preston Nelson, Chandler Combs, Marshall Taylor and Beau Bullerman compiled 1-2 marks.

Brandon Combs went 0-1, while Brent Hokeness, Tylor Hix, Jamie Castenada and Mitchell Wagner all went 0-3.

The 3-13 Dragons host Windom Thursday.

Match wrap-ups: Minneota 75, AHS 6

106 (M) Carrasco pins B.Combs. 113 (M) Laleman 9-1 Nelson. 120 (M) Pesch pins Hokeness. 126 (M) Laleman pins Hix. 132 (M) Reiss pins C.Combs. 138 (M) Rolbiecke pins Castenada. 145 (M) DeValeminck by forfeit. 152 (M) Overbeke pins M.Taylor. 160 (M) Buysse pins Bullerman. 170 (M) Lozinski by forfeit. 182 (M) Buellet by forfeit. 195 (A) Gyberg pins Laleman. 220 (M) Nelson pins Wagner. 285 (M) Esping by forfeit.

T-M-B-W-WG 52, Ahs 17 106 (A) L.Taylor 7-2 Horner. 113 (T) Ellingson 5-0 Nelson. 120 (T) Ellingson pins Hokeness. 126 (T) Van Dam 5-1 Hix. 132 (A) C.Combs 7-5 Vandendriessche. 138 (T) Schwartz pins Castenada. 145 (T) Axford pins M.Taylor. 152 (T) Byrne by forfeit. 160 (T) Eisfield pins Bullerman. 170 (T) Mayer by forfeit. 182 (T) Paplow by forfeit. 195 (A) Gyberg pins Timm. 220 (T) Bucholz 3-0 Wagner. 285 (A) Edwards pins Bauer.

New Ulm 42, Adrian 27 106 (A) L.Taylor 10-1 Bode. 113 (A) Nelson pins Brandes. 120 (N) Ranweiler pins Hokeness. 126 (N) Wacker pins Hix. 132 (N) Hawk by forfeit. 138 (N) Ranweiler pins C.Combs. 145 (N) Miller pins Castenada. 152 (A) M.Taylor pins Stark. 160 (N) Cason by forfeit. 170 (A) Bullerman pins Guggisberg. 182 (A) Gyberg pins Landsteiner. 195 (A-N) open. 220 (N) Wenninger pins Wagner. 285 (A-N) open.

LAND FOR SALE Sealed Bid Auction

Legal Description: The SE1/4 of Section 9, Township 104 N, Range 45 W of the 5th P.M. Rock County, Minnesota, except for a tract commencing 108 rods West of the Southeast corner of said Southeast Quarter; thence North 40 rods, thence East 32 rods; thence South 40 rods; thence West 32 rods to the point of beginning.

And The E1/2 of the SW1/4 of Section 9, Township 104 N, Range 45 W of the 5th P.M., Rock County, Minnesota. This property is located three miles north of the Hardwick corner on Hwy 75 and 1 1/4 mile west on 231 Street. This legal description includes 16 acres of pasture which will not be sold. This parcel will be surveyed off prior to sale.

Farm Data: 212.5 tillable acres, more or less. Corn base is 106.99 acres; Soybean base is 105.51 acres.

Average five year yield on 90% is: corn: 139 bushels/acre; soybean: 45 bushels/acre

The land is enrolled in the ARC-CO Program.

There are three income producing wind towers on the property (appx \$22,700.00 per year) This information is from sources deemed to be reliable, but accuracy is not warranted by the Sellers.

Terms of Sale:

- Interested Buyers shall submit a sealed bid to the Lynn A. Johnson Law Office at P. O. Box 217, Slayton, MN 56172 to be received no later than 5:00 p.m. on the 31st day of January, 2017.
- The sale will be held the next day at the Lynn A. Johnson Law Office, 2548 Broadway Avenue, Slayton, Minnesota at 10:00 a.m. on the 1st day of February 2017.
- All bidders should be present. The sale will be conducted in the usual auction manner. All bidders will be given the opportunity to raise their bids.
- The successful bidder shall be required to enter into a Purchase Agreement on the date of the sale.
- There shall be a down payment of 10% of the sale price due and payable on the date of the sale. The balance shall be due and payable without interest in approximately 30 days, or as soon thereafter as title becomes marketable.
- On the date of the closing, the seller will deliver a warranty deed and a current abstract of title conveying good and marketable title.
- The buyers shall pay all real estate taxes and assessments due and payable in 2017 and thereafter.
- Possession shall be given to the buyer on the date of closing.
- The seller reserves the right to reject any and all bids.
- All announcements made sale day will take precedence over all other printed matter.

For additional information, contact:
Lynn A. Johnson, Attorney at Law
2548 Broadway Avenue, Slayton, MN 56172
(507) 836-6757



Kaden Ericson

Sport: Hockey
Position: Goalie
Parents: Dann and Mona Ericson
Favorite Subject: Psychology
Extra Curricular Activities: Hockey, Baseball
Future Plans: Play junior hockey or attend college



Zayna Hustoft

Sport: Basketball
Position: Post
Parents: Brad and Shawn Hustoft
Favorite Subject: Math or Psychology
Extra Curricular Activities: Basketball, Softball, Cross Country, BPA, Mock Trial, Peer Helping, Choir, Math League, Spanish
Future Plans: I plan to attend college. I am not sure on my major but I plan to minor in Spanish.



Pipestone Pepsi | 1809 Forman Drive, Pipestone, MN 56164

You are cordially invited to the...
12TH ANNUAL RV & OUTDOOR SPORTS SHOW!
3 BIG DAYS OF FUN! | **February 3-5, 2017**
Fri 10-9 • Sat 10-9 • Sun 11-5

VERIZON WIRELESS CENTER
1 Civic Center Plaza • Mankato, MN 56001

For directions & more information visit
www.kroubetz.com or 888-215-1733

JANUARY 17 SPORTS REPLAY

Patriot girls win big in Slayton

The Hills-Beaver Creek girls rolled to a 55-39 victory when they took on Murray County Central in Slayton. H-BC opened a 27-13 lead in the first half and sported a 28-26 scoring edge in the second half to complete a 16-point victory. Grace Bundesen (19 points, 11 rebounds and three steals), Avery Van Roekel (12 points and five rebounds), Sidney Fick (11 points and four steals) and Jasmine Lingen (five rebounds) played key roles in the win.

Adrian wrestlers fall to Worthington

The Adrian wrestling team came up on the short end of a 57-15 decision when they entertained the Worthington Trojans. AHS led 6-0 when Logan Taylor opened the match with a pin, but the Trojans outscored the Dragons 57-9 the rest of the night to win by 42. Beau Bullerman registered a pin and Chandler Combs posted a decision victory for AHS.

Wolverines saddle EHS with 10th-straight loss

The Ellsworth girls' basketball team came up on the short end of a 51-34 decision when it entertained Mountain Lake Area for a Red Rock Conference game. The Wolverines opened a 12-point (30-18) halftime lead and outscored EHS 21-16 in the second half to prevail by 17 points. Ashlynn Meester netted 10 points for the Panthers and Devin Dreesen grabbed nine rebounds.

Eagles, Rebels extend H-BC's skid

By John Rittenhouse

The Hills-Beaver Creek boys dropped a pair of road contests as their season-long losing skid reached four games.

Southwest Christian topped the Patriots by four points in Edgerton Thursday, and H-BC fell by 14 points to Murray County Central in Slayton Saturday.

The 6-6 Patriots host Ellsworth Friday.

MCC 61, H-BC 47

A rough second half for the Patriots led to their fourth consecutive setback when they tangled with the Rebels in Slayton Thursday.

The Patriots put themselves in a position to end the slide when they trailed the Rebels by one point (25-24) at the intermission.

MCC, however, dominated play in the second half by outscoring H-BC 36-23 to secure a 61-47 victory.

Preston Wilhelmi played a strong game for the Patriots by scoring 23 points, grabbing five rebounds and charting four steals.

Jed Burgers (six rebounds and three steals) and Trenton Bass (three assists) also played well for H-BC.



John Rittenhouse photo/0126 hbb 5

Hills-Beaver Creek senior Isaiah Vis breaks away for a layup during Thursday's basketball game against SWC in Edgerton. Vis scored six points during a 65-61 loss to the Eagles.

Box score
Bass 1 0 0-0 2, Burgers 0 1 0-0 3, Forshey 3 0 2-2 8, Kueter 0 1 0-0 3, Scholten 2 1 1-2 8, Wilhelmi 3 3 8-12 23, Wysong 0 0 0-1 0.

Team statistics
H-BC: 15 of 38 field goals (39 percent), 11 of 17 free throws (65 percent), 23 rebounds, 19 turnovers.
MCC: 22 of 50 field goals (44 percent), nine of 19 free throws (47 percent), 27 rebounds, nine turnovers.

SWC 65, H-BC 61

The Patriots squandered a first-half lead when they dropped their third consecutive game Thursday in Edgerton.

H-BC sported a 35-31 lead after 18 minutes of play, but the home-standing SWC battled back to outscore the Patriots 34-26 in the second half to post a four-point victory. The teams exchanged leads

for the better part of the first half.

Zach Scholten netted a three-point shot 31 seconds into the game to give the Patriots a 3-0 lead, but the Eagles led by four (21-17) with 5:43 remaining in the first half.

The Patriots responded with a 13-3 run ending with a three-point shot from Wilhelmi to open a six-point (30-24) cushion with 2:08 remaining, but SWC scored the next seven points to move in front 31-20 with 49 seconds left.

Wilhelmi canned a three-point shot and converted a layup in the final 19 seconds

of the half to give H-BC a four-point (35-31) lead at the break.

SWC opened the second half with a 13-4 run to open a 44-39 lead at the 10:33 mark, but the Patriots answered the challenge.

H-BC knotted the score at 58 before Wilhelmi buried a three-point shot to give the Patriots a 61-58 lead with 1:43 left to play.

SWC settled the issue by scoring seven unanswered points the rest of the way to secure a five-point win.

Scholten (18 points, 11 rebounds and two blocked shots) and Wilhelmi (12 points

four steals) led H-BC statistically.

Isaiah Vis (four steals, three assists and six rebounds) and Bass (five rebounds and three assists) turned in productive nights as well.

Box score
Scholten 6 2 0-1 18, Vis 3 0 0-2 6, Burgers 2 0 0-0 4, Wilhelmi 1 3 1-2 12, Bass 2 0 2-2 6, Kueter 3 0 2-2 8, Forshey 1 0 0-0 2, Wysong 1 0 3-4 5.

Team statistics
H-BC: 24 of 65 field goals (37 percent), eight of 13 free throws (62 percent), 39 rebounds, 10 turnovers.
SWC: 25 field goals made, nine of 13 free throws (69 percent), 35 rebounds, 14 turnovers.

Gymnasts drop first BSC meet Friday

By John Rittenhouse

The Luverne gymnasts slipped to 1-1 in Big South Conference competition after dropping a meet in Jackson Friday.

With Abby Schneekloth and Brooklyn Schuett leading the charge, Jackson County Central rolled to a 138.825-131.975 victory over the Cardinals.

Schuett won the vault (9.15), bars (8.75) and all-around (35.6) titles for the Huskies.

Schuett took top honors on the beam and floor with respective 9.3 and 9.175 tallies.

Bergin Flom turned in a strong performance for the Cardinals.

Flom placed second on the vault (8.775) and finished fourth on the beam (8.45) and in the all-around competition (33.45).

Luverne's Madison Schandelmeier placed second on the bars with an 8.525.

The 8-5 Cardinals host Worthington Thursday.

Individual scores
Vault: B. Flom, 8.775; Samantha Pierce, 8.55; Meghan Witte, 8.55; Schandelmeier, 8.525; Shelbie Nath, 8.5.
Bars: Schandelmeier, 8.525; Witte, 7.9; B. Flom, 7.775; Nath, 7.65; Madigan Flom, 6.25; Anna Huisman, 6.25.
Beam: B. Flom, 8.45; Schandelmeier, 8.1; Pierce, 8.05; Nath, 7.175; M. Flom, 6.975.
Floor: Pierce, 8.675; Nath, 8.475; B. Flom, 8.45; Witte, 8.35; Schandelmeier, 7.05.

BOWLING CLIPBOARD

Thursday Night Bowling League

Jan. 19
Games won: PD's Bar Flies, 4; Billy Goats, 4; Kruser's Bruisers, 3; The Troublemakers, 1; Mark's Electric, 0.
High Scratch Game: Mike Hoover, 228; Zach Runia, 222; Billy Debates, 222.
High Scratch Series: Mike Hoover, 620; Billy Debates, 581; Zach Runia, 556.
Team High Scratch Game: Billy Goats, 699; Kruser's Bruisers, 678; PD's Bar Flies, 677.
Team High Scratch Series: Billy Goats, 2002; PD's Bar Flies, 1927; The Troublemakers, 1837.
Team High Handicap Game: Kruser's Bruisers, 910; PD's Bar Flies, 896; Billy Goats, 866.
Team High Handicap Series: PD's Bar Flies, 2584; Billy Goats, 2503; Kruser's Bruisers, 2443.

Wolverines top Adrian in conference clash

By John Rittenhouse

The Adrian boys' basketball team came up on the short end of an 85-77 decision in Mountain Lake Thursday.

Adrian cashed in on 49 percent of its field goals in the contest, but Mountain Lake Area shot 53 percent from the floor and that lifted the Wolverines to an eight-point win.

The Wolverines played well early and sported a 48-35 lead at the intermission.

Adrian sported a 42-37 scoring advantage in the second half, but it wasn't enough to

catch MLA. Mitchell Lonneman (26 points, nine rebounds and four assists), Nate Lonneman (14 points), Zach Hendel (14 points and six rebounds) and Ryan Wieneke (11 rebounds) turned in big offensive games for the Dragons.

Jacob Stamer recorded four assists and Frank Serrao charted three steals for the 8-6 Dragons, who host Fulda Monday.

Box score
Stamer 1 1 0-0 5, Serrao 0 1 0-0 3, Bierman 2 0 0-0 4, White 0 0 0-0 0, Wieneke 3 12-21 11, N. Lonneman 7 0 0-0 14, Hendel 6 0 2-5 14, M. Lonneman 12 0 2-3 26.

Team statistics
Adrian: 34 of 69 field goals (49 percent), six of 10 free throws (60 percent), 27 rebounds, 13 turnovers.
MLA: 33 of 62 field goals (53 percent), 15 of 21 free throws (71 percent), 31 rebounds, 14 turnovers.

WINTER SPORTS STANDINGS

BSC girls' hockey	New Ulm 4-4	Worthington 6-1
New Ulm 10-0	Fairmont 3-10	Marshall 5-2
Marshall 9-2	Windom 2-9	Luverne 2-5
Luverne 5-4-2	Worthington 0-11	JCC 2-5
Fairmont 5-5-2		Windom 1-5
Waseca 4-4		RWW 0-6
SP-L-H-TCU 4-5-2		
Windom 3-7		
Worthington 0-13		
BSC boys' hockey		
Luverne 9-2		
Marshall 9-2		
Waseca 7-2		
RWW 7-3		
SP-L-H-TCU 6-4		
BSC West boys' hoops		
Marshall 7-0		
RWW 5-3		
Pipestone 5-3		
JCC 4-3		
Worthington 4-4		
Luverne 1-6		
Windom 0-7		
BSC West girls' hoops		
Pipestone 8-0		

RRC Falcons rough up Panther girls

By John Rittenhouse

The Ellsworth girls were unable to upset one of the top teams in the Red Rock Conference Friday in Lamberton.

The Panthers faced the daunting task of taking on Red Rock Central, the lone undefeated team in the league. The home-standing Falcons

lived up to the billing by rolling to a 69-26 victory.

RRC led 48-9 after 18 minutes of play before outscoring Ellsworth 21-17 in the second half to win by 43 points.

Sierra Smith turned in a 10-point, five-rebound, three-steal effort for the Panthers. Morgan Dreesen collected

five rebounds and charted three assists.

Box score
K. Chapa 0 1 0-0 3, Meester 3 0 0-0 6, D. Dreesen 0 2 1-1 7, Smith 2 1 3-3 10, M. Dreesen 0 0 0-1 0.

Team statistics
Ellsworth: nine of 33 field goals (27 percent), four of five free throws (80 percent), 19 rebounds, 31 turnovers.

★ Dining & Entertainment ★

Luverne Christian School Society
Soup, Barbecue and Pie Supper

Wednesday, January 25
from 5 - 7:30 p.m.
at the
Luverne Christian Reformed Church
605 N. Estey, Luverne

Freewill donation.

Boys and Girls
Free Throw Championship
Sunday, January 29
4 p.m.
Luverne Cardinal Gym
Register at the door
Free for ages 9 to 14
(DOB as of 1-1-17)
Sponsored by St. Catherine
Knights of Columbus 4487
Contact Mike Smith at 605-864-1148

2017 ROCK NOBLES
CATTLEMEN
ANNUAL BANQUET

UP THE DAM CREEK
SUNDAY, FEB 5
3pm - until after the game

JOIN US FOR SUPER SUNDAY
POTLUCK - BRING SOMETHING TO PASS
Sponsored by Beaver Creek Fire Relief Association

SATURDAY, JANUARY 28
9pm-1am
Don't forget
Pirate Taxi

Downtown Beaver Creek • 507-204-7740
3-7 Mon-Thurs • 10am - 1am Fri & Sat

PUNTA CANA
From \$1,150 per person
5 nights, all-inclusive
Roundtrip air from Sioux Falls
Roundtrip transfers • Select April dates
Pricing based on 2 adults
Call for more details!

LONDON
From \$1,040 per person
4 nights hotel
Roundtrip air from Sioux Falls
Select April dates
Pricing based on 2 adults
Call for more information!

ALL ABOUT TRAVEL INC.
9-Year Winner! Layaway & Gift Certificates Available!
605-339-8911 • 1-800-390-6610
3801 S. Western Ave., Suite 103, Sioux Falls, SD
Open: Mon.-Fri. 8 a.m. - 7 p.m. • Saturday 9 a.m. - 3 p.m.
www.AllAboutTravel.org • www.facebook.com/AllAboutTravelInc
Helping You Find Your Personal Paradise!

DAVID OKERLUND • SPEAKER

DAVID OKERLUND, A TOP MOTIVATOR OF OUR TIME, WILL SPEAK ABOUT MAINTAINING POSITIVE ATTITUDES IN TIMES OF CHANGE. HE WILL PRESENT A LOOK AT BRINGING HARMONY AND TEAMWORK INTO YOUR BUSINESS WHERE FEWER PEOPLE ARE EXPECTED TO DO MORE WITH LESS.

MONDAY, FEBRUARY 6, 2017
GRAND PRAIRIE EVENTS
LUVERNE, MINNESOTA

SOCIAL HOUR AT 6PM
STEAK DINNER AT 6:30PM
FOLLOWED BY OUR SPEAKER.
TICKETS REQUIRED - \$20/PLATE.
AVAILABLE AT THE DOOR

Star Herald CHURCH

Page 6B January 26, 2017

St. Catherine Catholic Church

203 E. Brown St., Luverne
St. Catherine Ph.: 283-8502
St. Mary Catholic Church, Ellsworth
Thursday, Jan. 26: 4 p.m. Veterans Mass. Saturday, Jan. 28: 10 a.m. First Reconciliation. 5:30 p.m. Mass at St. Catherine. Sunday, Jan. 29: 8:30 a.m. Mass at St. Mary. 10:30 a.m. Mass at St. Catherine. 6 p.m. LCF. 7:30 p.m. Bible Study. Monday, Jan. 30: 7 p.m. Divorce Recovery. Tuesday, Jan. 31: 9:30 a.m. Bible Study. 4 p.m. Mass at Poplar Creek.

Luverne Christian Reformed Church

605 N. Estey St., Luverne
Office Ph. 283-8482; Prayer Line Ph. 449-5982
www.luverncrc.com — luverncrc@gmail.com
Roger Sparks, Pastor
Sundays: 9:30 a.m. Worship Service. 6:30 p.m. Worship Service. Mondays: 9 a.m. PERK UP. Tuesdays: 9:30 a.m. Coffee Break/Story Hour.

First Baptist Church

1033 N. Jackson St., P.O. Box 975, Luverne
Ph. 283-4091; email: fbcluv@iw.net — www.fbcluverne.org
Walt Moser, Pastor
Thursday, Jan. 26: 6 a.m. Men's Bible Study at First Baptist. 7 p.m. Worship on Channel 3. Sunday, Jan. 29: 9:15 a.m. Sunday School. 10:30 a.m. Morning Service. 6 p.m. Evening Service. Tuesday, Jan. 31: 7 a.m. Men's Bible Study at First Baptist. Wednesday, Feb. 1: 6:55 p.m. Awana. Thursday, Feb. 2: 6 a.m. Men's Bible Study at First Baptist. Noon Senior Focus Potluck. 7 p.m. Worship on Channel 3.

Grace Lutheran Church

500 N. Kniss Ave., Luverne
Ph. 283-4431; www.graceluverne.org — Nichols-glc@live.com
Ron Nichols, Pastor; Cole McCormick, Interim Pastor
Thursday, Jan. 26: 9 a.m. Naomi Circle at the Oaks. 9:30 a.m. Rachel Circle at Grace. 12:30 p.m. Lydia Circle at Grace. 4:30 p.m. Book Study. 7 p.m. Priscilla/Elizabeth Circle at Dianna Spath. Friday, Jan. 27: 6:30 p.m. Worship on Channel 3. Saturday, Jan. 28: 5:30 p.m. Worship and Healing Service. Sunday, Jan. 29: 8:15 a.m. Worship and Radio Broadcast. 9:15 a.m. Coffee. 9:30 a.m. Sunday School and Adult Study. 10:45 a.m. Worship and two-year-olds Prayer Pillows. 1:30 p.m. Worship at Mary Jane Brown Home. 2:15 p.m. Worship at Poplar Creek. 6-7:30 p.m. Estes Park group meeting. Monday, Jan. 30: 1-7 p.m. Red Cross Blood Mobile. 4:30 p.m. Worship on Channel 3. 5:45 p.m. Echoes. Tuesday, Jan. 31: 9 a.m. Staff meeting. 1:30 p.m. Communion at Mary Jane Brown Home. 2:30 p.m. Communion at Poplar Creek. 3:30 p.m. Communion at Vets Home.

Bethany Lutheran Church

720 N. Kniss Ave., Luverne
Ph. 507-283-4571 or 507-449-0291 or 605-215-9834
pastorapalmquist67@yahoo.com
Andrew Palmquist, Pastor
Sunday, Jan. 29: 9 a.m. Sunday School. 9:15 a.m. Bible Class. 10:15 a.m. Worship. Wednesday, Feb. 1: 3:45 and 6:30 p.m. Catechism Classes.

American Reformed Church

304 N. Fairview Dr., Luverne
Ph. 283-8600; email: office@arcluverne.org
Mike Altena, Pastor
Friday, Jan. 27: 6:30 a.m. Community Men's Bible Study. Sunday, Jan. 29: 9:30 a.m. Worship. 10:50 a.m. Family Education. 7 p.m. Junior and Senior RCYF. Tuesday, Jan. 31: 10 a.m. Staff meeting. 6:45 p.m. Bible Study Fellowship.

First Assembly of God Church

1075 110th Ave., 2 miles west of Luverne on County Rd. 4
Kenneth and Gloria Kashner, Pastors
Sundays: 9 a.m. Sunday School. 10 a.m. Morning Worship. 6:30 p.m. School of the Holy Spirit. Wednesdays: 7 p.m. Kids Connection; Men's Bible Study with Pastor Ken; Women's Bible Study with Pastor Gloria.

St. John Lutheran Church

803 N. Cedar St., Luverne
Ph. 283-2316, Dial-A-Devotion Ph. 283-4005
email: stjoh@iw.net — www.stjohnlutheranluverne.org
Gary Klatt, Pastor

Thursday, Jan. 26: 9 a.m. Little Lambs Devotions. Saturday, Jan. 28: St. John's 125th Anniversary Kickoff. 5:30 p.m. Worship. Sunday, Jan. 29: St. John's 125th Anniversary Kickoff. 9 a.m. Worship. 10:15 a.m. Anniversary brunch and program in Assembly Hall. Tuesday, Jan. 31: 11:15 a.m. Staff meeting. 1 and 6:30 p.m. Quilting. Wednesday, Feb. 1: 9 a.m. and 1 p.m. Little Lambs Devotions. 9:30 a.m. Bible Study. 6:15 p.m. Youth dinner. 6:30 p.m. Catechism. 7 p.m. High School Bible Study; KFC; Senior choir. 8 p.m. Kingdom Builders. Thursday, Feb. 2: 9 a.m. Little Lambs Devotions. 2 p.m. Women's Society.

Living Rock Church

500 E. Main St., Luverne
Ph. 449-0057; www.livingrockswmn.org
Billy Skaggs, Pastor
Sundays: 10:30 a.m. Worship; Kids Rock Children's Ministry. 6 p.m. Youth Ministry. Life groups meet throughout the week.

United Methodist Church

109 N. Freeman Ave., Luverne
Ph. 283-4529; email: luverneumc@iw.net
Dorie Hall, Pastor
Thursday, Jan. 26: 1-3 p.m. Rock County Food Shelf. Saturday, Jan. 28: 8 p.m. AA meeting. Sunday, Jan. 29: 9 a.m. Traditional Service. 10 a.m. Coffee Hour and Adult Sunday School. 11 a.m. Come as You Are Service. 6 p.m. A.L.I.V.E. Youth Group. Monday, Jan. 30: 8 p.m. AA meeting. Wednesday, Feb. 1: 6:30 p.m. F.U.E.L. Children's Ministry and Confirmation. 8 p.m. AA meeting. Thursday, Feb. 2: 1-3 p.m. Rock County Food Shelf.

First Presbyterian Church

302 Central Lane, Luverne
Ph. 283-4787; email: Firstpc@iw.net — www.fpcluverne.com50
Jason Cunningham, Pastor
Sunday, Jan. 29: 9 a.m. Sunday School. 10:15 a.m. Worship. Monday, Jan. 30: 5-6 p.m. Weight Watchers. Tuesday, Jan. 31: 5:30 p.m. Worship on Channel 3. Wednesday, Feb. 1: 6 p.m. Confirmation; bells. 7 p.m. Choir.

New Life Celebration Church

110 N. Oakley, Luverne
Ph. 449-6522; email: newlifecel@iw.net
Sundays: 9:30 a.m. Worship at 110 N. Oakley. Every third Thursday: 5 p.m. Food give-away at Senior Citizens Center. Bible Study groups meet at various times and days.

Zion Evangelical Lutheran Church

305 E. 2nd St., P.O. Box 36, Hardwick
Ph. 669-2855; email: revmumme@gmail.com — www.zionlutheranhardwick.com
Mark W. Mumme, Pastor
Thursday, Jan. 26: 3:30 p.m. Zion Worship on Channel 3. Friday, Jan. 27: 3:30 p.m. Zion Worship on Channel 3. Sunday, Jan. 29: 9 a.m. Sunday School/Adult Bible Study. 10 a.m. Mentor Program. 10:30 a.m. Worship/Choir sings. Monday, Jan. 30: 1 p.m. Quilting. Tuesday, Jan. 31: 7 p.m. Women's Bible Study. Wednesday, Feb. 1: 6 p.m. Confirmation. 7 p.m. LWML Meeting. 8 p.m. LWML Bible Study. Thursday, Feb. 2: 3:30 p.m. Zion Worship on Channel 3.

Ben Clare United Methodist Church

26762 Ben Clare Ave., Valley Springs, S.D.
igtwb@WOW.net
Bill Bates, Pastor
Sundays: 9 a.m. Worship; 10 a.m. Fellowship; 10:30 a.m. Sunday School for all ages.

First Lutheran Church

300 Maple St., Valley Springs, S.D.
Ph. (605) 757-6662
Sunday, Jan. 29: 9 a.m. Worship Service. 10 a.m. Sunday School. Wednesday, Feb. 1: 7 p.m. Confirmation; Choir Practice.

Palisade Lutheran Church

211 121st St., Garretson, S.D.
Ph. (507) 597-6257 — firstpalisade@alliancecom.net
Sunday, Jan. 29: 9:15 a.m. Sunday School. 10:30 a.m. Worship. Wednesday, Feb. 1: 7 p.m. Confirmation at First Lutheran.

First Presbyterian Church

201 S. 3rd St. P.O. Box 73, Beaver Creek
Ph. (507) 673-2428 — lori.1stpc@centurylink.net
Worship Leaders Michael Blank and Andy Anderson
Sundays: 9:30 a.m. Worship; 9:45 a.m. Sunday School. Deborah Circle — Third Wednesday of the month.

Magnolia United Methodist Church

501 E. Luverne St., Magnolia
Church Ph. 283-9698; cell 227-7821
adrmagumc@frontiernet.net — www.adrianmagnoliaumc.com
Kristi Franken, Pastor
Sundays: 9:30 a.m. Sunday School. 10:30 a.m. Worship. Wednesday, Feb. 1: 6:30 p.m. Confirmation in Magnolia; G1 in Adrian.

Steen Reformed Church

112 W. Church Ave., Steen
Ph. 855-2336
Jeremy Wiersema, Pastor
Sundays: 9:30 a.m. Worship. Sunday School follows Worship. 6:30 p.m. RCYF.

Bethlehem Lutheran Church

Pastor Maggie Berndt-Dreyer
112 N. Main St., Hills
Ph. 962-3270
e-mail: bethlehemluth@alliancecom.net
Maggie Berndt-Dreyer, Pastor

Sunday, Jan. 29: 9 a.m. Worship at Tuff Chapel. 9:30 a.m. Sunday School. 10:30 a.m. Communion at Bethlehem. 7-8:30 p.m. Grades 6-8 Youth Night. Tuesday, Jan. 31: 2:30 p.m. Bible Study at Tuff Home. 3:15 p.m. Bible Study at the Village. Wednesday, Feb. 1: 9 a.m. Quilting. 7 p.m. Confirmation. 7:30 p.m. Grades 9-12 Youth Night.

United in Christ

I am often asked, "Why are there so many different Christian churches?" The answer that I give is, "We can't come to agreement on what the Bible teaches." This disagreement has been around since Adam and Eve disobeyed God in the Garden of Eden. They and their children began to believe that their own ideas were more important than those of God. People began to place more value on their own ideas rather than on the wisdom of the cooperative ideas of the many.



BUILT ON A ROCK

By Pastor Gary Klatt, St. John Lutheran Church, Luverne

God's plan was that everyone and everything in creation would trust Him to provide the best care and direction for living in His world. He created male and female to be equal in every way and to work together for the good of all. He gave them different roles and vocations that each was to carry out. Man was given the role of headship in the family and this was to carry over into business and government. He would provide for his family the daily needs of food, clothing, house, home, education, and the like. Woman would be wife, mother, homemaker, and nurturer.

Sin entered when Adam and Eve listened to the devil with his lies rather than to the truth of God. This sin didn't just change Adam and Eve. It changed all of God's creation. Everything started to deteriorate as part of the dying process that came with sin. There was nothing man could do to correct or reverse this process. Over the years of decline the human population has grown further away from the truth of God's Word. God in His love for what He had created did not sit back as if He were helpless. He continued to interact with His creation.

He promised a Savior that would come one day from the "seed of the woman" (Gen. 3:15) to destroy the devil and the power of sin and death. He fulfilled that promise when His Son, Jesus Christ, was born of the Virgin Mary. He lived the obedient life according to God's Word and then He died the perfect sacrifice for sin and rose back to life again on the third day. Salvation had come. Victory had been won. All of mankind can again live forever if they simply believe the promises of God as they are recorded in Holy Scripture.

God has provided the source to perfect unity for mankind. It is by believing His Word and obeying it. He even gives us the power to do it through His Holy Spirit. He brings us to repentance and creates faith in our hearts. He nurtures that faith through the hearing of His Word. He does this because of His great love for what He has given life. But our sinful human nature and the devil are constantly tempting us to trust in other ways of getting right with God. All these ways fail because faith in Jesus is the only way that works, trusting God alone.

If we want unity rather than divisions in our life, in church, in government, or in business, we need to listen to the Creator of it all. His plan is still the best one. It is also a gift to all who will believe. Study God's Word and see if it doesn't deliver to you all that it promises.

Christ be your Savior and Lord!

Hills United Reformed Church

410 S. Central Ave., Hills
Office Ph. 962-3254
hillsurc@alliancecom.net
Alan Camarigg, Pastor
Sundays: 9:30 a.m. and 6 p.m. Worship Services.

These Weekly Church Page Messages are contributed to God's Work through the Church and by these concerned and responsible citizens & businesses:

Call Rick or Chantel to place your ad!

283-2333

Tuff Memorial Home, Retirement Apartments & Tuff Village
"A Home Where Residents SMILE"
Hills, Minnesota
Phone 507-962-3275



1-90 in Luverne, MN
507-283-9171 • 1-800-634-7701

Read us online!

Rock County STAR HERALD
www.Star-Herald.com

Trust In Him



110 E. Main, Luverne, MN
Phone 507-283-2379



McClure Electric
Alan M. Aanenson, owner
Farm, Home & Commercial Wiring
Luverne, MN Phone 507-283-4716



CWG Business Insurance.
Tri-State Region Period!

First Farmers & Merchants
303 E. Main, Luverne, MN
507-283-4463
www.fimbank.com
We believe in you.
Member FDIC. And the community.

Rock County STAR HERALD
Luverne, MN • 507-283-2333

HILLS STAINLESS STEEL & EQUIPMENT CO., INC.
506 W. Koehn, P.O. Box 987, Luverne, MN
PHONE 507-283-4405
Church is Important - Please Attend!

Bruce's Electric
residential, commercial and farm wiring
Bruce Umbreit
Electrical Contractor
1200 Linden, Luverne, MN 56156
Phone 507-283-4917

MINNWEST BANK
• 116 E. Main St., Luverne 507-283-2366
• S. Hwy. 75, Luverne 507-283-9131
• Main St., Beaver Creek 507-673-2333
Member FDIC www.minnwestbank.com

Luverne ANNOUNCER

HARTQUIST
Funeral and Cremation Services
- ENGBRETSON CHAPEL -
507-283-2777
www.HartquistFuneral.com
"Let our family help your family"
Serving the Luverne and Surrounding Communities

To Advertise Call 283-2333

Tollefson Publishing
117 W. Main
Luverne, MN 56156
507-283-2333

Star Herald PUBLIC NOTICES

Star Herald CLASSIFIEDS

Luverne HRA public hearing set for March 8

The Housing & Redevelopment Authority of Luverne has developed its Capital Fund Annual Plan. It is available for review at the Luverne HRA Office at 216 North McKenzie in Luverne, MN weekdays from 8 a.m. to 4 p.m. The public hearing will be held March 8, 2017 at the Authority's conference room at 11:30 a.m. The public may attend. (01-26)

Notice of Legal Action

STATE OF WISCONSIN
PRICE COUNTY
CIRCUIT COURT
FAMILY DIVISION

REX E. WOLLENBERG,
PETITIONER,

v.
MIRANDA STICKLING,
RESPONDENT

NOTICE OF LEGAL ACTION
CASE NO. 11-FA-58

PLEASE TAKE NOTICE that a formal action has been taken against you, Miranda Stickling. A Motion has been filed with the Price County Clerk of Court for Ex Parte Relief, Modification of Physical Placement, Request for Emergency Hearing, and Request for Appointment of Guardian ad Litem. Contact our office immediately.

HAUKAAS LAW OFFICE, S.C.
Vincent Kurta, Esq.
Attorney for Petitioner
101 Main Street West Suite 201
Ashland, WI 54806
715-685-1001

(01-26,02-02,02-09)

Rock County seeks proposals by March 3

NOTICE TO BIDDERS
REQUEST FOR PROPOSALS

Development of Construction Plans and Specifications for the Rehabilitation of Historic Spring Brook Bridge, Bridge L4646
Notice is hereby given that the Request for Proposals (RFP) for the development of Construction Plans and Specifications for the rehabilitation of historic Spring Brook Bridge (Bridge L4646) will be received by the Rock County Highway Engineer until 4:00 PM on 3rd day of March, 2017. Proposals received will be opened at that time. Proposals will be reviewed, evaluated, and scored the following week and presented to the Beaver Creek City Council on Wednesday, March 8th, 2017 at the scheduled Beaver Creek City Council meeting.

Proposal details may be obtained by contacting the Rock County Highway Department at the address and phone number found below:

Rock County Highway Department
Mark R. Sehr, PE – Rock County Highway Engineer
1120 N. Blue Mound Avenue
PO Box 808
Luverne, MN 56156-0808
(507) 283-5010

The Beaver Creek City Council reserves the right to reject any and/or all bids and to waive any irregularities.

Mark R. Sehr, P.E.
Rock County Highway Engineer
(01-26, 02-02, 02-09, 02-16, 02-23)

WINDOWS

We custom build and install Energy Star Therm-O-Loc Windows. Call Mike at Adrian Glass for a free in-home demonstration and estimate. 101 E. Pearl, Adrian, MN 56110. 507-483-2228 or 605-770-7677 or email mbyler@santel.net. (tc)

AGRICULTURAL

We have several crews of rock pickers and we also do any type of farm work. Call 712-943-2084. (tc)

RENTALS

For Rent: Three-bedroom apartment with attached garage, kitchen appliances, central air conditioning, electric heat, and laundry hookups. Call 507-283-2574. (1.12-1.29)

Mobile Home for rent in Luverne: two-bedroom, two-bath, central air, all appliances, water and sewer included. Call 605-366-7695. (1.22-2.9)

ROCK CREEK TOWNHOMES

Has ONE 3 bedroom left!
\$615/month. Includes water, sewer, trash
3 person income limit:
\$28,950
Questions? Call Tim:
507-220-0757
Equal Housing Opportunity
LloydManagementInc.com

WANTED

Seeking house rental in Luverne: A mature professional couple is seeking a house with a two car garage to rent with a multiple year lease, beginning spring of 2017. The couple includes a Worthington School District Administrator, and an Executive Director of Sioux Falls nonprofit. No children at home. No pets. Nonsmokers. References are available. Call Rev. Tim Olsen at 507-227-5919. (1.8-1.26)

MISCELLANEOUS

HAVE A UNIQUE SERVICE OR BUSINESS? Get the word out to over 1.4 million households. Call WIDE AREA CLASSIFIEDS today, 507-359-7326. (tc)

RECYCLE!

RENTALS

FOR LEASE CENTENNIAL APARTMENTS

1 Bedrooms
For those 50+ or Disabled
Income based rent +
All utilities included
JANE: 507-283-2652
Equal Housing Opportunity
LloydManagementInc.com

BLUE MOUND TOWER



Luverne HRA • Blue Mound Tower
216 McKenzie Street
Luverne, MN 56156

507-283-4922

Apartments available!

- All Ages Welcome
- Close to Senior Dining
- Close to Minnesota West College
- Income Based
- Handicap Accessible
- Pet Friendly
- Smoke Free
- Secure Entry System
- On Site Laundry
- Utilities included

www.star-herald.com

CARDS OF THANKS

We would like to thank the medical staff at Luverne Sanford for the excellent care given to Frances when she came to the ER. Grateful for the lady who came right to our car, which we had just exited and offered help. She was just coming out the back door, but stopped to get a wheelchair to bring Frances in and care began. Thanks to the ambulance crew who transported us to Sioux Falls Sanford. To Dr. Gust for successful surgery. Thanks to all of the other Doctors, Nurses, and persons involved in giving care. Thanks to all on the Rehab Units therapy team, who helped me improve quickly. Thanks to Rev. R. Sparks for sharing scripture and prayer with us before surgery and spending time with the family during surgery. Thanks to all who prayed for us, sent a card, or did an act of any kind to help us. Thankful it was in God's will to give a rapid recovery.

Frances and Albert Haak
(1.26-1.29)

We would like to thank everyone for the prayers, memorials, flowers, beautiful cards, phone calls, food and other acts of kindness during this time of Boyd's illness and death. Also, our thanks to those who come to his memorial service in Tyler. We thank the doctors who came twice a week and the staff in the Minnesota Veteran's Home, for their wonderful care over the past two and a half years of his stay. We thank the Rock County Hospice for the care he received and the Doctors at Sanford Pulmonary Hospital of Sioux Falls, and the Doctors and staff at the Sanford Luverne Hospital. Our thanks to Rev. Patrick Ziems and Rev. Thomas Voigt, Leona Hoek and Mark Wilmus for their meaningful service. Thanks to the Brookings, SD Masonic Lodge No. 34, the American Legion of Lake Benton for the Military Honors and the Ladies Aid of First English Lutheran Church of Tyler for serving the lunch. Our thanks to Jeff and Chris and staff at the Hartquist Funeral Home of Luverne and Tyler for their support. Your kindness will never be forgotten,

Donna Landsman
and families
(1.22-1.26)

CARDS OF THANKS

Thank you to the Doctors and great caring nurses at the Luverne Hospital for care given to "Bud". Also thank you to the Adrian Funeral Home and Father Colletti for their wonderful care and support. Thank you to family and friends for their expressions of sympathy, prayers and flowers. I am so thankful for each and every one of you for your loving care through this very trying time.

Elaine L. John
(1.26-1.29)

The family of Doug McClure would like to say thanks for all the kind words and prayers at this difficult time. A special thanks to the staff at the Veterans Home for the great care dad received, we could tell they really cared. You are the best! Thank you to the hospice staff for their help in keeping him comfortable and helping us to understand this final stage of his life. Thank you to Pastor Palmquist for your visits to dad and our family, and the kind words at his service. Also, thank you to Dingmann Funeral Home and to the Ladies Aid for the delicious lunch you served. Lastly, thanks to the American Legion and VFW for providing Military Honors at the cemetery. Dad was a very kind, special person and he will be greatly missed. We were very lucky to have him for a husband, a father, and a grandfather.

Darlene McClure
Dian and Gary Blattner
and family
Debi and Cliff Scholten
and family
Doug and Carol McClure
and family
Dustin Johnson
Derek Johnson
(1.26-1.29)

VISIT US ONLINE!

news
sports
videos
opinion
columns
star-herald.com

Star Herald CLASSIFIEDS

EMPLOYMENT

EMPLOYMENT

EMPLOYMENT

EMPLOYMENT

Immediate Job Openings



EARN EXTRA CASH BY
DELIVERING THE
ANNOUNCER



Luverne Announcer carriers needed for

LUVERNE

Luverne
ANNOUNCER
117 W. Main Street, Luverne

Call 283-2333 or stop in
at the Announcer Office.
(Ask for Jenn)

Interested in
Advertising
in the
Classifieds?

IT'S EASY!

Call 283-2333

or
Stop by our
offices at

117 W. Main
in Luverne

Star Herald CLASSIFIEDS

EMPLOYMENT
Registered Nurse/ LPN- Parkview Manor, a municipal skilled nursing facility is accepting applications for a part-time charge nurse position. Wages commensurate with experience. \$2000 scholarship available for students. Benefits include vacation, holiday, and PERA retirement plan. Contact Darnell Krull 308 Sherman Ave., Ellsworth, Mn 56129 or call 507-967-2482. (tc)

EMPLOYMENT
Southwestern Youth Services in Magnolia, MN is hiring for a part-time cook position. Paid holidays, days may vary. Standard shift runs from 1:00 pm - 6:00 pm. Must be 21 years old and have a high school diploma. Send application or resume to PO Box 40 Magnolia, MN 56158 or stop by for an application. For further information contact Don or Jeremy at 507-283-4425. (1.15-2.2)

EMPLOYMENT
Southwestern Youth Services in Magnolia, MN is hiring Night Supervisors (11pm - 7am) to work with male juveniles in a residential setting. Part-time and/or full-time, \$11.50 - \$12.00/hr (or based on education) benefits, paid holidays, day/evening shifts. Must be 21 years old and have a high school diploma. Send application or resume to PO Box 40 Magnolia, MN 56158 or stop by for an application. For further information contact Don or Jeremy at 507-283-4425. (1.15-2.2)

EMPLOYMENT
Nursing Assistant: Parkview Manor has openings for part-time nursing aides with benefits to include: health insurance, public retirement plan, and holiday pay. New wages \$11.90/ hr. or more with experience. \$2000 scholarships available for students. Will provide training or pay for experience. Contact Darnell Krull, 308 Sherman Ave. Ellsworth, MN 56129 or call 507-967-2388. (tc)

EMPLOYMENT
Direct Caregiver Staff Wanted: Earn money and gain valuable work experience working with people with disabilities! Client Community Services, Inc., with two homes in Luverne, Minnesota, has openings for four direct care staff, two of which are insurance-eligible positions! Starting pay during training is \$9.50/hour moving to \$10/hour upon successful completion of IEP. For more information on the duties and hours available, please contact Virginia Rath at 507-376-3171, extension 7, or apply on-line at www.clientcommunityservices.org. CCSI is an EEO/AA employer. (1.8-1.26)

EMPLOYMENT
R&R Feedlots is a progressive cattle operation located by Adrian, MN. We are currently accepting applications for full-time employees. Job includes operation of heavy equipment, computer skills, preferred but can be trained. No CDL required. Position also includes day to day operations such as commodity hauling, cattle feeding, pen maintenance and equipment upkeep. We are team oriented and need focused individuals that can contribute to a growing company dedicated to animal health and management. Please contact us at 507-220-8451. (1.19-2.5)

ACCOUNTANT / OFFICE MANAGER

We are looking to hire a full time accountant / office manager to work 30-40 hours a week in a small office setting. We offer competitive pay and benefits as well as flexible hours. Primary responsibilities would be to manage the day to day operations of an office including accounts receivable/accounts payable.

Requirements:

- Accounting Degree-Associates minimum
- 2 years experience
- Proficient in Word and Excel
- Ability to multi-task
- Self-motivated, ability to work independently, and organized
- Flexible

If interested, please submit your resume:
Email: info@kmconcreteinc.com
Mail: K & M Concrete Construction, Inc.
PO Box 236
Edgerton, MN 56128



HELP WANTED
Help wanted: full-time secretary/book keeper. Benefits include health care, 401K, holiday pay and PTO pay. send resume to ldsinc@lismoretele.com (1.19-2.5)

HELP WANTED
Cook/dietary aide: part-time 12-7pm. Wages \$11.50 MN PERA retirement plan Contact Sam Quam at Parkview Manor, 308 Sherman Ave, Ellsworth, MN 56129 or call 507-967-2482. (1.19-2.5)

HELP WANTED
Underwriter – Personal Lines

Reviews personal lines policy applications, change requests, and renewals to evaluate degree of risk, classify and rate for insurance and either accept, modify or decline risk following organization underwriting guidelines. Collects risk data to identify, evaluate and select applicable classification codes, forms, endorsements and rate. Serves as a consultant to producers, claims, processing, loss control, reinsurance, and marketing personnel for personal lines policy inquiries.



Email resume and cover letter to Ron at ron@hmicmn.com.

EMPLOYMENT
Drivers (CDL-A): Mail Route out of Sioux Falls, SD! \$20.20/hr + Fringe Benefits. Must meet DOT reg. Dizco Inc.: 1-800-727-7407 (1.26-2.5)

SUMMER JOBS
Fun and rewarding summer jobs that looks great on your resume and jobs after retirement! Applications are being accepted for seasonal summer employment at: Palisades State Park (Garretson) and Big Sioux Rec. Area (Brandon). Campground attendant, security, supervisor, education, maintenance, crew leader, and law enforcement. Crew Leader position will work from April 1 through October 31. Education coordinator to implement and lead our summer park programs. Application deadline 2/28/2017. Must be at least 17 years old by date of hire. Salaries from \$9.60-17.00/hour. Information and applications can be found online at: <https://bhr.sd.gov/workforus/gfp.aspx>. Questions can be answered at: Palisades and Big Sioux - 605-594-3824 EOE (12.22-2.16)

SON-D-FARMS ADRIAN

is hiring General Farm, Hog, Field Work, Truck Driver, Maintenance person, Farm Shop Mechanic & Farm Delivery Person. Experience wanted but willing to train. PTO benefits. Call (507) 483-2245, 370-1590 or e-mail office@sondfarms.com

HELP WANTED
CHS Eastern Farmers Luverne, MN is looking for a full-time **semi-feed truck driver** (JOB #8112BR). Must have a CDL and clean driving record. CHS Eastern Farmers offers a competitive pay and benefits package. **Apply online at www.chsinc.com click on careers.**



ADVERTISE TODAY
with the **Star Herald**
Call Rick or Chantel 507-283-2333
email sales@star-herald.com

DUININCK INCORPORATED

We're reaching out for great employees!

DUININCK, INC., NOW ACCEPTING APPLICATIONS FOR THE 2017 CONSTRUCTION SEASON
We currently have openings in several of our operations for the upcoming construction year, including:

AGGREGATES Crushing Foreman Crusher Operator Dozer/Loader Operator	ASPHALT/ROAD Superintendent Foreman Paver Operator Screed Operator Roller Operator Laborer
GRADING EQUIPMENT OPERATORS: Loader Dozer Excavator Blade	TRUCKING Semi & Tandem Drivers
BRIDGE Laborer Carpenter	UNDERGROUND Excavator Operator Backhoe Operator Pipelayer
UTILITY OPERATORS: Skid, Broom & Roller	

EEO/AA/M/F/Vet/Disability Employer
We are proud to be a third generation family-owned company. Our employees are the key to our success and we encourage all qualified candidates to apply, including women, minorities, veterans and individuals with disabilities. Duininck, Inc. offers a competitive benefits package.
Find more information and apply online at:
www.Duininck.com
or call 320-978-6011



PROJECT MANAGER / ESTIMATOR

We are looking to hire a full time Project Manager / Estimator to work in our Edgerton office.

Summary
The primary purpose of the project manager's role is to estimate, plan, direct, and coordinate the completion of projects for K & M Concrete. The project manager will participate in the conceptual development of a project and oversee its organization, scheduling, implementation so that a project can be completed on time and within budget.

Responsibilities

- Analyzes blueprints, specifications, proposals and other documentation to assist in the preparation of time, cost, materials and labor estimates for all phases of project
- Manage project objectives, timelines, budgets, and ensure quality control plan is in place for all jobs and plan work accordingly
- Identify, manage and control changes on assigned jobs, including developing change orders

Requirements

- Previous construction experience preferred
- Project management experience preferred
- Bachelor's Degree or equivalent experience, preferably in construction management
- Excellent math skills
- Excellent communication skills, both written and verbal
- Proficiency in use of technology including word and excel
- Ability to work both independently and as a team player

Competitive salary and benefits commensurate with experience.
If interested, please submit your resume:
Email: info@kmconcreteinc.com
Mail: K & M Concrete Construction, Inc.
PO Box 236
Edgerton, MN 56128



DOING WHAT WE SAY SINCE 1935. SEE FOR YOURSELF.

NOW HIRING DRIVERS FOR A NEW, LARGE DEDICATED ACCOUNT!

LIMITED TIME—UP TO \$10,000 SIGN-ON BONUS

Earn up to \$70,000/year
Home weekly | Haul freight for one customer

Additional opportunities available in our Van and Intermodal divisions.

SCHNEIDER schneiderjobs.com
800-44-PRIDE

MCAN Minnesota Classified Advertising Network

EMPLOYMENT RAILROAD VEGETATION CONTROL: Full-time traveling opportunity, 60-80 hours/week, \$12-\$15/hour starting, meal allowance, paid lodging & benefit package. RAW, Inc. in Cooperstown, ND 888/700-0292 info@rawapplicators.com www.rawapplicators.com	AUCTIONS HUGE 500+ GUN AUCTION! Sat. Feb.4th @ 9AM Prairie du Chien, WI. Henry, Winchester, Colts, Military & More! Preview: Friday Feb. 3rd 1-7 PM Online at www.kramersales.com	MISCELLANEOUS STOP OVERPAYING FOR YOUR PRESCRIPTIONS! Save! Call our licensed Canadian and International pharmacy, compare prices and get \$25.00 OFF your first prescription! Call 877/210-2257 Promo Code: CDC201725
HELP WANTED - DRIVERS CDL A DRIVERS \$7,500 sign-on-bonus. Medical benefits on day 1 & earn \$65k+ in your first year!! Guaranteed pay. Profit sharing, 401k with company match & more! Email mhr@mcclaneco.com or call Kalen now! 262/504-1617	HOMES FOR SALE RETIREMENT HOMES Resort style, gated 55+ Community. AZ Superstition Mountains. Beautiful Stucco/tile Roofs. \$110-157K, 3 bedroom, 2 Baths, Garage/Patio. Activities+, No-AZ-Tax on Re-sales! 612/282-9592 patisrogers@gmail.com	DISH TV – BEST DEAL EVER! Only \$39.99/mo. Plus \$14.99/mo Internet (where avail). Free Streaming. Free Install (up to 6 rooms). Free HD-DVR. Call 800/297-8706
SAVE MONEY! Call your local newspaper or MNA 800-279-2979 to find out how you can save money by placing your advertisement here!	MISCELLANEOUS GOT KNEE PAIN? Back Pain? Shoulder Pain? Get a pain-relieving brace - little or no cost to you. Medicare patients call health hotline now! 800/755-6807	DONATE YOUR CAR truck or boat to Heritage For The Blind. Free 3-day vacation, tax deductible, free towing, all paperwork taken care of 800/439-1735
	DRIVE WITH UBER No experience is required, but you'll need a Smartphone. It's fun and easy. For more information, call: 800/912-3649	IF YOU HAD hip implant revision surgery, you may be entitled to compensation without ever going to court. Call Attorney James Rolshouse 800/438-6453 or go to: rolshouselaw.com

POSITIONS AVAILABLE

- Great hours! Paid benefits including paid holidays.
- Hours vary between 6:30am – 4pm Monday through Friday
- Full time approximately 35 hours per week
- Sub hours as needed

We are seeking compassionate, assertive, reliable, energetic and self-motivated people to fill open full time, part time and substitute direct care staff positions on our team. On the job paid training provided. Experience related to human services such as working with people with disabilities, social work, psychology, special education, and/or C.N.A. is helpful but not required.

Call or stop by to pick up an application. RCO, 807 W Main St, Luverne, 507-283-4582.
If interested, submit your application before **January 26, 2017.**



Read us online!
star-herald.com