



# Rock County STAR HERALD

Rock County's oldest business, printing since 1873

Thursday, December 6, 2018

## City to buy 73 acres southeast of fairgrounds

Deal will provide space city needs for wastewater treatment expansion, stormwater runoff and Loop path

By Lori Sorenson

Warren Baker and the city of Luverne have a purchase agreement on nearly 72 acres of land along Freeman Avenue south of the fairgrounds.

According to details agreed upon Tuesday afternoon, the city will pay \$230,000 for the parcel that doesn't include the acreage.

The irregular-shaped parcel is bordered by the Baker acreage on the west, the Rock River to the east, the fairgrounds and city property to the north and by Hatting Street to the south.

According to City Administrator John Call, the agreement provides opportunities Luverne needs to grow.

"Speaking on behalf of the mayor and council, the city is excited to purchase an acreage of this size with this proximity to the city with all its future possibilities," Call said.

There are three distinct possibilities in mind for the land.

•In particular, the city is expanding its wastewater treatment capacity, and this will provide space for that south of the existing wastewater treatment plant.

•Also, the planned development of the future Towne Square on former Sharkee's and Mert's lots will require additional storm water runoff planning.

Water currently drains to the south and along the Hatting Street ditch, but the city has indicated a culvert would send runoff directly toward the river.

•The city has long been considering how to develop the third phase of the Luverne Loop path along the extension of Hatting Street toward the scenic areas east of town before it connects with the city park to close the loop.

Most of the parcel is enrolled in a 50-year conservation easement, Reinvest in Minnesota, which prohibits development, tillage and many other land uses in order to protect vulnerable ground.

However, the rules allow a 2-1 swap if acreage is removed from the

City buys Baker land/see page 3A



Mavis Fodness photos/1206 Hospice Tree 2018

## Ceremony honors, remembers loved ones during the holiday season

Sanford Luverne Hospice personnel and volunteers conducted their annual "Tree of Lights" ceremony Thursday night, Nov. 29, at the corner of Highway 75 and Main Street in Luverne. After a welcome, singing of Christmas carols, an inspiration message and tree lighting ceremony, almost 250 names were read in honor or remembrance of loved ones at the Luverne event. Similar ceremonies will be conducted Sunday, Dec. 9, at 2 p.m. at Tuff Village in Hills and at 4:30 p.m. at the Adrian Fire Hall.

Below left Alice Hansen (from left), Sharon Hamm, Jerry Johnson, Adell Johnson and David Klosterbuer listen as names are read at the 2018 "Tree of Lights" ceremony. Below, center, Norm DeJongh of Luverne reads along with the reciting of almost 250 names at the Luverne Sanford tree lighting ceremony Nov. 29. The tree will stay lit through the holiday season. At right, candlelight helps attendees read the "Tree of Lights" program.



## Rock County seeks its share of health partnership's assets

By Mavis Fodness

A request from Rock County officials to pay Southwest Health and Human Services \$272,727 for the county's involvement in Southern Prairie Community Care recently went unheard at a meeting in Redwood Falls.

SPCC is an integrated health

partnership comprised of 12 counties under a joint-powers agreement to improve the delivery of health care services for the member counties' income-eligible residents.

Rock County joined SPCC in 2012.

Earlier this year SPCC officials announced the organization will dissolve in 2020 due to projected deficits

and in June agreed to pay \$3 million from its reserves to Primewest Health Services, a 13-member managed health plan provider.

According to SPCC Executive Director Norris Anderson, the board decided to pay almost two-thirds of SPCC reserves directly to PrimeWest on behalf of the 12 member counties

to assist with the required county contributions.

"We didn't know how many counties would ultimately join (PrimeWest). At that time it could have been none or six or all of them," Anderson said.

Health partnership funds/see 3A

## Clothing recycler removes Luverne bins

Local efforts underway to replace the USAgain service

By Mavis Fodness

USAgain removed all of its recycling bins from Luverne last week, citing financial reasons.

For the past four years the Chicago-based recycler has accepted clothing, shoes and other household textiles left in its white- and green-colored metal bins in Luverne.

The USAgain Minneapolis Division announced more than a year ago that collection sites located the farthest from its Roseville recycling center would be eliminated.

Due to the volume of materials gathered from the local area, 11 bins were left in Luverne after the announcement, according to division manager Jesse Bauer.

"We did everything we could to

Recycled clothing/see page 8A



Mavis Fodness photo/1206 Clothing Recycling

Doug Willing, a driver with USAgain, maneuvers the last collection bin in Luverne onto the truck Nov. 27 at The Laundry Room.

## Walz seeks input about leadership in governor's office

By Lori Sorenson

Nearly 50 people gathered in the Rock County Courthouse Thursday afternoon when Governor-elect Tim Walz asked for input about whom he should hire for his upcoming administration.

"What do you think is the most important trait for people in these positions?" Walz said while his staff gave everyone in the room a notecard to jot down ideas.

"We're looking for people with a passion to serve Minnesota," he said, "and we need to make sure these agencies are working for everyone as efficiently as possible."

Traveling under the theme "One Minnesota," he and Lieutenant Governor-elect Peggy Flanagan toured the state to gauge public opinion on how the new governor's office can

With stops in all four corners of state, 'One Minnesota' tour includes listening sessions in 24 towns in Minnesota

better serve Minnesota residents.

Walz told the group he has plenty to learn about being governor and he wants Minnesotans to help him set priorities.

"They say it takes a village to raise a child," he said. "I say it takes a lot of village to raise a governor."

Luverne was the second stop on the five-day tour that would hit all

Walz governor tour/see page 2A



Opinion Page 4A  
Obituaries Page 7A

Sports 2B  
Public notices 5B

Volume 143, Number 49  
Luverne, MN 56156 USPS 468-040

Volume 143, Number 49  
Luverne, MN 56156 USPS 468-040

How to reach us

507-283-2333 PO Box 837  
editor@star-herald.com Luverne, MN 56156

www.star-herald.com

## COMMUNITY CALENDAR

### Meetings

**Rock County Township Association Annual meeting** will be at 1 p.m. Friday, Dec. 7, in the Rock County Library. All townships are encouraged to have representation at this meeting.

**Blue Mound Cemetery Association Christmas Party** will be at 6 p.m. Sunday, Dec. 9, at the home of Dick and Dolly Remme.

**Sanford Luverne Pink Ladies** will meet for a potluck lunch at noon Monday, Dec. 10, in the Sanford Luverne Blue Mound meeting room. Bring a dish to share and your own tableware. Call 507-283-2297 with questions.

**Beaver Creek Township Board** will meet at 7:30 p.m. Monday, Dec. 10, at the township hall.

**Vienna Township Board** will meet at 7 p.m. Tuesday, Dec. 11, in the Kenneth Community Center.

**Lady Luverne Red Hats** Christmas party will be at 5 p.m. Tuesday, Dec. 11, at The Bluestem in Luverne. RSVP to Connie at 283-8470 by Dec. 8.

**American Legion Auxiliary #123** will meet at 10 a.m. Wednesday, Dec. 12, at the Legion Hall. Call 283-1934.

### Bank Nite movie 'The Star' Dec. 6

The free Bank Nite movie, "The Star," rated PG, will begin at 6 p.m. Thursday, Dec. 6, at the Palace Theatre in Luverne. Sponsored by First Farmers & Merchants National Bank and Papik Motors, a free, family-friendly movie is shown on the first Thursday of every month as it was done for "Bank Nite" in the 1930s. A cash prize drawing will follow the movie. Must be present to win.

### Middle/High School concert Dec. 7

The Luverne Middle/High School choir concert will be at 7:30 p.m. Friday, Dec. 7, in the high school gym. The sixth-grade choir, seventh/eighth-grade choir, ninth/tenth grade girls' choir and high school concert choir will perform music of the season. Admission is a freewill donation to the Luverne Backpack Program.

### Kids' party at History Center Dec. 8

The Rock County Historical Society invites all area children to the History Center from 1 to 3 p.m. Saturday, Dec. 8, for a Christmas party. Activities include face-painting, a scavenger hunt, make 'n' take projects, Christmas storytime, photo op and snacks. The event is free.

### Cantata foodshelf benefit Dec. 8

The Carnegie Minstrels choir and orchestra will present the Community Christmas Cantata, "Let There Be Christmas," at 7 p.m. Saturday, Dec. 8, at the American Reformed Church in Luverne. The event is a benefit for the foodshelf. Cost is \$10 for adults, \$5 for age 12 and under.

### 'Sounds of Christmas' Dec. 8

Luverne Street Music students will present "The Sounds of Christmas" Dec. 8 at the Palace Theatre at 1:30 p.m., 4 p.m. and 6:30 p.m. Cost is a freewill offering.

### Hardwick Santa Claus Day Dec. 8

Hardwick Community Club will host Santa Claus Day from 2 to 3:30 p.m. Saturday, Dec. 8, at the Hardwick Legion Hall. Jim Oliver will kick off the free event at 2 p.m. with a puppet show. From 2:30 to 3:30 p.m. will be a cupcake walk, make and take crafts and cookie decorating. Mr. and Mrs. Claus will be available for pictures from 2:30 to 3:30 p.m.

### Dec. 13 event helps families with overdue lunch accounts

Food service employees at Luverne Public Schools are hosting a spaghetti supper from 5 to 7 p.m. Thursday, Dec. 13, in the Luverne Elementary School commons. Proceeds from the freewill donation will go toward the "Angel Fund," to assist families with negative school breakfast and lunch accounts. Volunteers will serve the privately purchased and donated food items. The event occurs prior to the 7:30 p.m. band concert in the high school gym.

### Red Cross blood drives Dec. 13 and 19

The American Red Cross has an urgent need for blood donors into the holiday season. Donors are asked to participate in one of two area blood drives. •Luverne: Thursday, Dec. 13, from 8 a.m. to 2 p.m. at the Luverne High School. •Jasper: Wednesday, Dec. 19, from 1:30-6:30 p.m. at the Evangelical Lutheran Church, 101 Spicer Street.

Make an appointment by downloading the free American Red Cross Blood Donor App, visiting RedCrossBlood.org or calling 1-800-RED CROSS (1-800-733-2767).



Lori Sorenson photo/1206 walz minnesota tour

Nearly 50 people gathered in the commissioners room of the Rock County Courthouse Thursday afternoon when Governor-elect Tim Walz asked for input about whom he should hire for his upcoming administration. "What do you think is the most important trait for people in these positions?" Walz said while his staff gave everyone in the room a notecard to jot down ideas. "We're looking for people with a passion to serve Minnesota," he said. Walz takes office as Minnesota's new governor in January.

## Walz 'One Minnesota' tour/continued from page 1A

four corners of the state and include 24 communities.

Walz recognized the fact that most Rock County voters supported his opponent in the recent election, but he said he was elected to serve all Minnesotans, even those who didn't vote for him.

"When the outcomes of an election turn out differently than someone wished, they tend to feel like their voices won't matter," Walz said.

"That won't be the case in our administration. Everybody's voice matters to us."

*"A budget is not just a fiscal document, it's a moral document. What does it say about what we value?"*

Governor-elect Tim Walz

The group in Luverne included leaders from schools, cities and counties, in addition to veterans' groups, labor groups, businesses and special interests.

Walz asked for questions and input that he could use as he builds his new team in St. Paul.

Topics that came up in-

cluded school funding, the child care shortage, transportation improvements, diversity in state leadership, support for disabled adults and seniors, gun rights and mental health — which overlapped several topics.

Walz said he would advocate for vulnerable Minnesota citizens.

"A budget is not just a fiscal document, it's a moral document," he said.

"What does it say about what we value?"

Walz's staff collected notecards from those who had shared ideas and he promised more conversations about the issues raised Thursday.

"There are so many more ties that bind us than those differences that divide us," Walz told the group in Luverne.

"This is about us and about what can make state government function better."

## Rooster Ridge illustrates how WMAs are established

*Step 4 of five steps in the process is to address survey requirements*

By Scott Rall  
Outdoors columnist

There are so many different parts and processes of acquiring land that is to become a wildlife management area (WMA). The past columns have covered willing sellers, potential funding and valuing the land with a Yellow Book Appraisal.

After the draft appraisal is completed, the seller can make his or her decision to sell the property or walk away. In many cases the offer is close to or equal to the appraised value. Not every purchase offer that is made is for the full appraised value of the land.

In some cases, the seller will sell the property for a sum less than the full appraised value and take the difference as a tax deduction to offset some of the taxes they would normally pay as a result of the sale.

This is more common than you might think.

In this case we will assume that the seller accepts Pheasants Forever's offer. PF then needs to request bids for the survey work that needs to



be completed. As discussed last week, the standards of the appraisal requirements are very high — much higher than what a person-to-person transaction would normally

require. The survey requirements are much the same way.

The data has to be compiled and sent to Pheasants Forever in specific formats to satisfy the long-term land manager's requirements.

A 160-acre parcel needs to be broken down into four separate 40-acre parcels and each will have notations about the specifics on that 40 acres. In many of the deals I have overseen, there have been times where a tract of land might have changed hands two to five times in the past 30 years and at no time did any of the buyers acquire a survey to know the exact number of acres they were purchasing.

Fence lines have been used as standard boundary markers for decades, and in many cases they are not in the right place. When a survey is completed, you might find that

neighbor has erected a carport with half of it on your property.

I have seen a neighbor farming 25 feet into the subject property. I even ran into a situation where the neighbor drilled a new well, and when the survey was completed, the well was nowhere near the correct property line. These issues can have a dramatic effect on whether a land acquisition can even come to fruition.

Let's use a fence that's in the wrong place. Let's just say it is 15 feet too far in one direction — that direction being farther into the property being sold. The seller's deed says he or she owns 160 acres, but the survey shows that using the current location of the fence, the seller only owns 150 acres.

The seller tells the neighbor that he needs to move the fence in order for the seller to sell the full 160 acres. The neighbor says "no way." He responds that he has used that grass or cultivated land for the past 45 years and that makes it his.

Can you see the difficulties that can pop up?

The seller and the neighbor have two choices. They can agree to move the fence

and the seller sells 160 acres. They can choose to fight and the seller will most likely have to deed away the 10 acres and sell PF 150 acres. All of these issues have to be settled before the closing date of the potential sale.

Once complete, the surveys have to be reviewed by another surveyor that works for the state or the federal agencies.

These reviews can add several more weeks to the process. When the survey is reviewed and approved, the appraisal is updated to reflect the exact number of acres for sale and the appraisal, now complete and formalized, will then need to be reviewed by another appraisal review person. Can you see why these projects can take 12-24 months?

Next time we talk title opinions and I'll share some unusual stories.

Scott Rall, Worthington, is a habitat conservationist, avid hunting and fishing enthusiast and is president of Nobles County Pheasants Forever. He can be reached at scottarall@gmail.com.

# Dial-A-Specialist

*Your One Stop Guide to Local Businesses*

**DR. MICHAEL SMITH**  
ROCK COUNTY CHIROPRACTIC  
• Men, Women & Children's Health  
• Custom Orthotics • Kinesiotape • Athletic Care • Massage Therapy • Work & Auto Injuries • Postural Restoration  
WWW.ROCKCOUNTYCHIROPRACTIC.COM  
283-2561 • 103 E. MAIN, LUVERNE  
Monday 7:30 a.m. - 6 p.m. • Tuesday 7:30 a.m. - 3 p.m.  
Wednesday 7:30 a.m. - 6 p.m. • Thursday 7:30 a.m. - 1 p.m.  
Friday 7:30 a.m. - 5 p.m.

**Most Insurance Accepted**

• **Chiropractic**

**STAR HERALD**  
LUVERNE ANNOUNCER  
117 W. Main, Luverne, MN  
507-283-2333

**Chantel Connell**  
Sales Representative

**Rick Peterson**  
General Manager

Email Chantel - sales@star-herald.com  
Rick - rick@star-herald.com

• **Advertising**

How may I help you?

**LUVERNE HEALTH & WELLNESS**  
Codie Zeutenhorst, D.C., C.Ac  
✓ Acupuncture ✓ Chiropractic Care  
✓ Family Care ✓ Sports Injuries  
✓ Kinesiotape ✓ Auto & Work Injuries  
Acupuncture and Massage Available  
Kris Van Der Brink M.T. & Amy Rosales M.T.  
www.luvernechiro.com  
109 S. Freeman Ave. | Luverne, MN  
507.449.4400

• **Chiropractic**

**Rock County EYE CLINIC**  
507-283-2345  
104 N. Freeman Ave.  
Luverne, Minnesota

Dr. Sandra Carman

• **Eye**

**Papik MOTORS**  
1-90 Luverne, MN  
Box 536 • 801 West Commerce Road  
Luverne, MN 56156  
(507) 283-9171  
(800) 634-7701  
www.papik.com

Certified USED VEHICLES  
certified pre-owned  
Jeep

• **Automotive**

**Luverne MINNESOTA City Offices**  
Love the life!  
PO Box 659, Luverne, MN 56156  
507-449-2388 (24 hour voice mail)  
www.cityofluverne.org

• **City**

**Dakota Land Surveying and Engineering, Inc.**

Steven B. Kor  
Professional Engineer  
Registered Land Surveyor

2000 W. 42nd Street, Suite B-6  
Sioux Falls, SD 57105  
605-334-4882  
605-334-5745 Fax

506 Almar  
Luverne, MN 56156  
507-283-3803  
steve.dis@midconetwork.com

• **Land Surveying**

## County requests share of IHP funds/ from page 1A

Reserves cover any possible shortfalls in annual insurance plan coverage for income-eligible members. Each county that decided to join PrimeWest was required to contribute to the reserve fund. The per-county buy-in averaged \$1 million.

The \$3 million from SPCC would lessen the buy-in amount per county. "This (reserve payment) decision was done prior to the individual county votes," Anderson said. "The decision to move forward with the PrimeWest recommendation was then up to each county board."

Rock County Commissioners decided July 24 not to invest the more than \$800,000 required buy-in with PrimeWest which would be in addition to the amount already budgeted for its annual health and human services.

Instead, the Rock County will offer insurance options directly through the state Department of Human Services for the 1,700 eligible Rock County residents of medical assistance, general assistance medical care and MinnesotaCare. The state then assumes the liability for any insurance plan shortfalls.

Rock County was the only SPCC member who chosen not to join PrimeWest.

At the Nov. 21 SPCC meeting, Rock County's board representative Greg Burger made the motion that the \$272,727 intended for Rock County's buy-in costs to PrimeWest be paid instead to Southwest Health and Human Services, Rock County's health and human services program.

Burger's motion died for lack of a second.

According to Robert's Rules of Order, without a second to the motion, the SPCC board was not obligated to discuss or formally vote on Burger's motion.

"I really truly believe it's not ethical on their part," Burger said after the SPCC meeting.

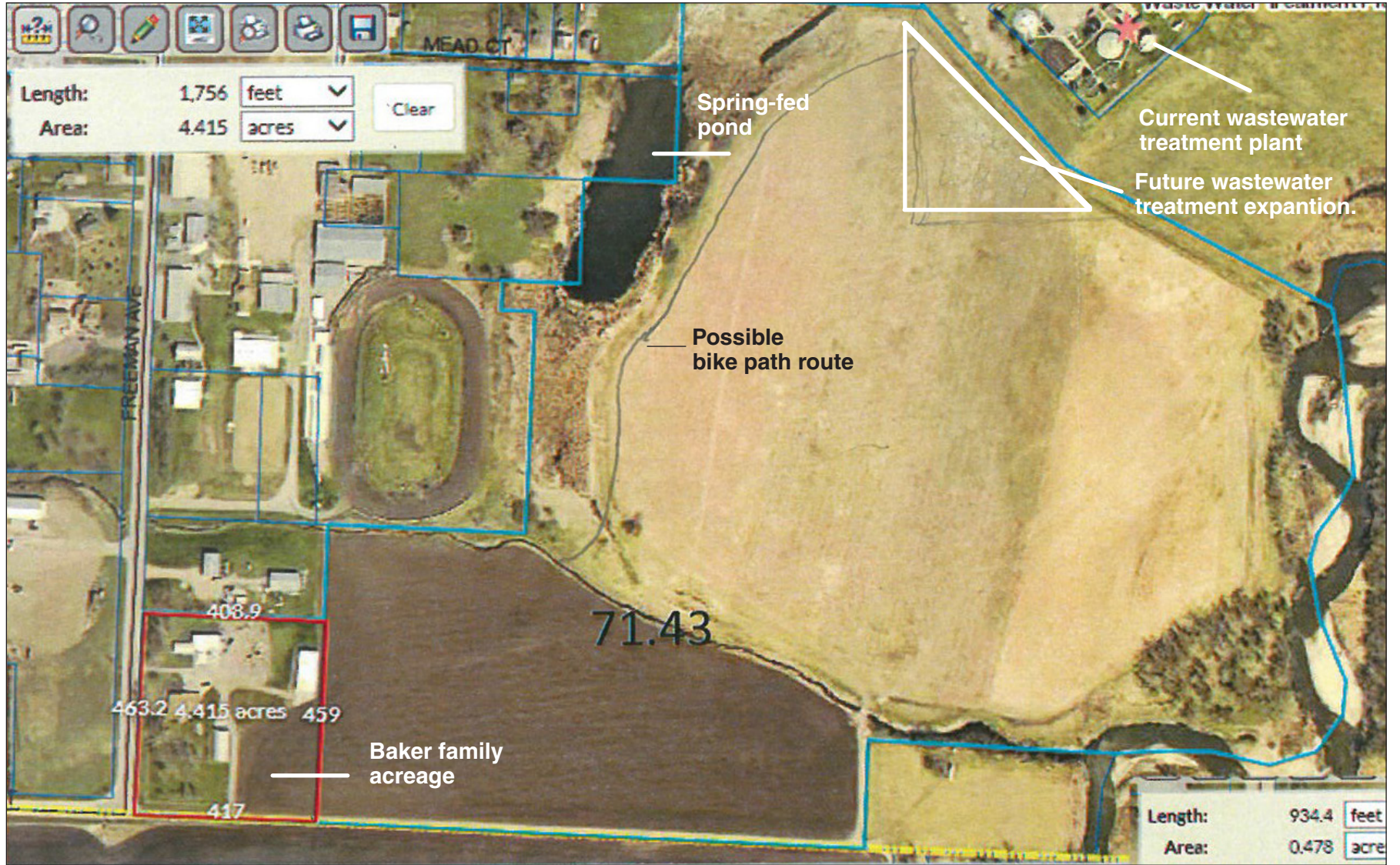
"We entered into a partnership in good faith where all partners will be treated equally. We are not being treated equally."

SWHHS invested \$50,000 to participate in SPCC five years ago and operates the financial assistance, child support, social services and public health programs for Rock, Murray, Redwood, Lyon and Lincoln counties.

According to Anderson, SPCC bylaws stipulate Rock County as well as the other member counties will split SPCC's remaining assets when the joint powers agreement is officially dissolved.

Dissolution starts in 2020 but a specific final date has not been determined.

Other SPCC members include Chippewa, Cottonwood, Jackson, Kandiyohi, Lincoln, Lyon, Murray, Nobles, Redwood, Swift and Yellow Medicine counties.



The parcel the city purchased from Warren Baker includes the 71.43 acres between the acreage on South Freeman to the Rock River to the existing wastewater treatment plant on the upper right corner of the image.

As part of the purchase agreement, the city will also have a 50-foot easement on the south property line of the Baker acreage in planning for Phase 3 of the Luverne Loop Bike path.

## City buys land southeast of fairgrounds/continued from page 1A

contract. In this case, if the city were to develop the bike path along the property, it would be required to put twice those acres in RIM somewhere else.

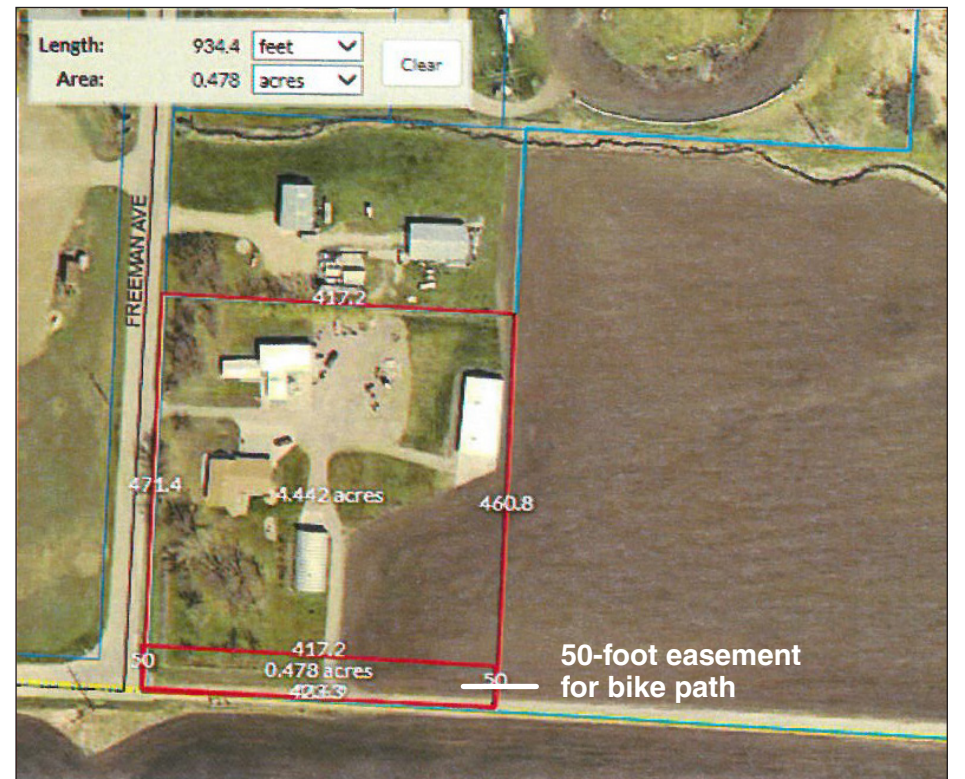
City-owned flood-plain ground north of Riverside Park and Luverne City Park would qualify as suitable ground to swap in such a deal.

Baker's home and acreage was initially included in the deal and the city would have subdivided the 4.4

acres to sell as residential property.

Since negotiations first started, one of Baker's family members expressed interest in buying it, so the agreement now excludes the home place.

As part of the agreement, the city bought a 50-foot easement (nearly a half-acre) along the south property line of the acreage to facilitate the future Loop bike path on the extension of Hating Street to the east.



Submitted photo

## Hams for the holidays

The Minnesota Veterans Home in Luverne recently received a donation of six holiday hams to be served for Thanksgiving and upcoming meals and occasions with residents and visitors. The Mankato Elks Lodge #225, in cooperation with Hormel from Austin, delivered six 7-pound hams to Luverne on Nov. 20. Pictured in the dining room that day are (from left) Veterans Home staff member Jeff Holmgren, Elks member Ron Sik, resident and Korean War veteran Gerald Bruxvoort, and Elks members John Nelson and Bob Kellogg.

## MNDOT urges motorists to be beware of snow-covered signals

The Minnesota Department of Transportation (MnDOT) urges the public to use extra caution when approaching traffic signals following a heavy snowfall event.

Motorists and pedestrians should be prepared to stop at intersections with traffic signals, as snow-covered traffic indications can be challenging to see.

For reasons of energy efficiency and longer service life, most of the state's traffic signals have switched from incandescent bulbs to light-emitting diodes (LEDs). LEDs produce less than half the heat as incandescent bulbs and do not emit enough heat to melt off snow and ice that may accumulate on them.

"Following a snow event, our top priority is clearing roads for the traveling public. Once complete, city, county, and state maintenance crews address other key areas," said MnDOT District Traffic Engineer Scott Thompson.

"We urge motorists to come to a complete stop before going through intersections with snow-covered traffic signals. It's the safest solution until city and county crews can clear them."

It requires three trucks per traffic signal to perform snow-removal maintenance.

Due to the number of traffic signals and the limited availability of maintenance crews during a snow event, MnDOT reminds the public that it can take up to a few days to address all snow-covered traffic signals.

For updated statewide road conditions, call 5-1-1 or visit [www.511mn.org](http://www.511mn.org).

## CELEBRATING 5 YEARS IN LUVERNE

### We Appreciate YOU!

On behalf of Prairie Rehabilitation Services, we want to say THANK YOU for being a loyal customer for the past five years. We are committed to providing our patients with the best care for their therapy needs. Because of constant feedback and referrals from clients like you, we have managed to continuously improve and grow our business.

The best way to thank us is to tell others about us! Do you know someone who could benefit from therapy? Refer them to Prairie Rehab - they will receive the same great results as you did and they'll have you to thank.

Physical Therapy,  
Occupational Therapy,  
Speech Therapy  
106 N Cedar St.  
Luverne, MN 56156  
(507) 449-2003

MICHELLE SCHUMAN, PT  
ERIC SZYMONSKI, OT  
AIMEE MORRILL, SLP

[www.prairierehab.com](http://www.prairierehab.com)



## Norma Schneekloth 90TH BIRTHDAY OPEN HOUSE

Sunday, December 9 • 2-4 p.m.

St. John's Lutheran Church Luverne

Greetings may be sent to 203 Oak Dr, Apt 126, Luverne, MN 56156



## Angel Tree



Please submit gifts by December 19

**SOUTHWESTERN YOUTH SERVICES**  
IN MAGNOLIA

Please remember these young men during the holiday season

Please stop by and pick up a card or call 507-283-4425 for more information.

**DON'T FORGET ABOUT SUNDAYS!**

Warm buses are running in the city of Luverne on Sundays 8:00 a.m. to noon.

Call today. 283-5058

Community Transit  
A program of United Community Action Partnership.

A subscription to the Star Herald makes a great Christmas gift. Call 507-283-2333 to inquire.

*Real vs. fake?*

## Despite our sincerest considerations, Christmas isn't about the Christmas tree

This will be the first Christmas in over 20 years that we don't have a real tree in our home.



### ON SECOND THOUGHT

By Lori Sorenson, editor

It looks great, but it was clearly never a living, growing, green thing ... with a thirsty trunk and sticky sap and loose needles.

When the kids were little, we went once or twice to a Christmas tree farm to select a live tree growing in rows of other living trees.

Mostly, though, we returned each year to our favorite little greenhouse that specialized in already harvested Christmas trees.

We got really good at knowing exactly what we wanted, how we wanted it, and how to beat the crowds for better selection and less waiting.

But these efficiencies also somewhat defeated the purpose of browsing for Christmas trees with the kids.

Did we want short and fat, or tall and skinny? Blue spruce, white pine or Fraser fir? Natural or flocked?

Did we want our tree put in the shaker to rid the extra needles and debris? (Of course.) And would we like to keep the greenery after the trunk is trimmed? (Definitely.)

The kids are now past the age of browsing as a family (for anything, for that matter), and truth be told, we've been questioning the merits of real versus fake trees.

Real ones — the recently harvested ones that didn't dry up right away — are getting really expensive.

And the fake trees are getting really real-looking — and real-feeling — with ever more reasonable price tags.

Therefore, we decided last year would be the last for real trees in our home at Christmas.

This year, hence, on the day after Thanksgiving, instead of bundling up and critically selecting our holiday centerpiece, I spent several hours online (on the couch in my pajamas).

I browsed various merchants and researched advice for selecting fake trees.

Several options hit the shopping cart before a Cyber Monday offer settled the matter and I clicked "proceed with purchase."

A week later (after learning our selection was out of stock), I canceled the order and searched online rummage posts for used artificial trees.

Lo and behold, a young family in Brandon was selling a gently used 9-foot, "real tip" fir tree for half the price of the 7-footer I first ordered.

It was meant to be. On Sunday we hauled home a large cardboard box and peeled off the packing tape to unveil what would be our family tree for Christmas to come.

It wasn't real, but when its "real tip" branches sparkled with white lights and shiny ornaments, we forgot all about the real vs. fake discussion.

In fact, the whole tree change-up was a gentle reminder that Christmas isn't about the tree.

... or the decorations on the tree, or the wrapped gifts under the tree.

It's about our loved ones gathered around the tree and the blessings celebrated on Christmas Day.

Happy Birthday, Jesus, and merry Christmas to all.

## Recycling clothing helps our environment and us

Recycling and reusing clothing benefits the environment.

Luverne and surrounding areas lost an integral link last month when finances prohibited USAgain from transporting our unwanted clothing items from Luverne to the Twin Cities for reuse elsewhere.

That means 20 tons of our materials could potentially be dropped into our ever-growing sanitary landfills, something we shouldn't allow when there's a better alternative.

According to the U.S. Environmental Protection Agency, the production of clothing is a large contributor to the destruction of the environment.

Those soft and comfortable synthetic textiles are created with hazardous chemicals and fossil fuels. Untold amounts of byproducts are likely being deposited into our soils and waterways.

Scientists are seeing these materials reaching our oceans. These

clumps of unsafe materials are not good for our wildlife or for us.

While these negative impacts may never be completely eradicated, their effects may be widely reduced simply by reusing and recycling textiles.

With USAgain services no longer available to our residents, we need to work harder to recycle the clothing we no longer use.

We can continue to collect our unwanted clothing and save it for recycling at a later time. Or we can find a way to repurpose our clothing.

We could give the good, usable clothing to non-profit organizations

like Redeemed Remnants, or to Sassy Seconds in Luverne for resale.

Consider purchasing or selling outfits at consignment shops. Better yet, carefully select an item that you will use for years instead of just for a short time.

Let's think outside the box and think of ways to have less of a negative impact on our environment.

We applaud Mike Jarchow for his efforts to find another recycler for our local unwanted textiles.

Let's do our part to reduce our carbon footprint on the environment and hopefully replace our local clothing recycling option.



## Only thing missing from Governor's Pheasant Hunting Opener was the governor

The Governor's Pheasant Hunting Opener Committee had its wrap-up meeting with the representatives from Explore Minnesota and the Department of Natural Resources recently.

The focus of the meeting was to go over the media numbers. By that I mean what kind of exposure Luverne received for hosting the event.

There were 41 different media outlets represented including 16 radio stations, 17 different print outlets, 3 television stations and 8 travel bloggers — all are record high numbers.

Because of those media outlets, Luverne received coverage for hosting the opener in 39 states, three Canadian provinces, Guam and New Zealand.



### FOR WHAT IT'S WORTH

By Rick Peterson, General Manager  
Tollefson Publishing

So just how many people had an opportunity to view, read or hear about Luverne? The number may surprise you — it is a whopping 263,718,087!

So what is that worth? According to Minnesota DNR information officer Dan Ruitter, in just the first few weeks after the opener Luverne

received just under a half million dollars worth of exposure. Now that number isn't anything to sneeze at and will continue to climb, but it was a bit disappointing to me. My disappointment stems from the fact that the half million dollar number is lower than last year's host city number.

When you consider we had more media in town than any other host city, we had the largest crowd for the Friday night banquet of any host city, we had better countywide support and overall participation for the event than any other host city, you have to ask yourself why our exposure numbers are down.

It's simple. While we set record numbers in every category that a host city is judged by, we were also the only host city in the eight-year history of the event where the governor was unable to attend.

Once the announcement was made late in the afternoon the day before the event that Governor Dayton was hospitalized due to back issues, major metro television

stations changed their focus from the Governor's Pheasant Hunting Opener to the governor's hospitalization and back surgery.

The governor's hospital stay lasted over a month, which was longer than anyone would have imagined. He is now out of the hospital and on the road to recovery, and of course we wish him nothing but the best in his recovery.

With the governor's event nearly two months in the rearview mirror, it's now time to start looking ahead to next year's opener event.

Some work has already been done to capitalize on momentum from this year's governor's opener, and rest assured, I'll keep you posted as time goes by.

E-mail: editor@star-herald.com Web site: star-herald.com  
Phone: 507-283-2333 Fax: 507-283-2335

Published Thursdays by Tollefson Enterprises, POSTMASTER:  
Send address changes to 117 West Main, P.O. Box 837, Luverne,  
MN 56156. Periodicals postage paid at Luverne, Permit #33 and at  
additional mailing offices.

**General manager:** Rick Peterson **News staff:**  
**Office manager:** Deb Lusty Lori Sorenson, editor  
**Circulation manager:** Jennifer Kor Mavis Fodness, reporter  
**Advertising:** Chantel Connell John Rittenhouse, sports editor  
**Production manager:** Abbe Kolar Esther Frakes, copy editor  
**Production:** Heather Johnson

Rock County  
**STAR HERALD**  
Rock County's newspaper since 1873

(ISSN 0889-888X)  
SUBSCRIPTION RATES

\$72 per year in Rock County; \$89 per year all other areas. Single copies \$1.25

Entire contents copyrighted by  
Tollefson Publishing Roger Tollefson, publisher

The *Star Herald* encourages letters to the editor expressing the opinions of readers and intends to print all letters. Letters not meeting the guidelines will not be printed. The *Star Herald* will verify the authenticity of all letters. Letters must have the name of the writer, a signature and address.

Unsigned letters will not be considered. The *Star Herald* will edit for grammar, spelling and clarity. Any letters containing offensive language, libelous or slanderous material, or misleading or false information will be rewritten before being published. The *Star Herald* will not publish letters written with the sole intent to advertise or serve as a thank-you. Letters with more than 300 words may be edited. The deadline for letters is Monday 10 a.m. They may be delivered or mailed to the editor, *Rock County Star Herald*, P.O. Box 837, 117 W. Main St., Luverne, Minn. 56156.

## ON THE RECORD

### Dispatch report

**Nov. 23**  
 •Complainant reported an alarm on South Kniss Avenue.  
 •Complainant reported cows on the roadway in Beaver Creek.  
 •Complainant reported a dead possum in the city lot behind State Farm.  
 •Complainant reported possible drug paraphernalia found in Steen.  
**Nov. 24**  
 •Complainant reported property found on East Main Street.  
 •Complainant found debris on the roadway in rural Kenneth.  
 •Deputy fingerprinted subject.  
 •Deputy assisted another agency on I-90 near Magnolia.  
**Nov. 25**  
 •Outage reported on Blue Mound Avenue.  
 •Assault reported on Blue Mound Avenue.  
 •Welfare check requested on subject on East Dodge Street.  
 •Bike found on Freeman Avenue.  
 •Accident reported on South Kniss and Koehn avenues.  
 •Complainant reported a fire alarm on County Road 6.  
**Nov. 26**  
 •Contact by Pipestone County Sheriff's Office.  
 •Complainant requested fingerprints.  
 •Deputy out at court.  
 •Deputy assisted another agency on 71st Street.  
 •Complainant reported a German Shepard loose in the store on East Warren.  
 •Complainant requested assistance in locating subject in Magnolia.  
 •Complainant reported his brother is driving on I-90 westbound and he has concerns.  
 •Complainant reported a front panic alarm on Kniss Avenue.  
 •Complainant in rural Magnolia reported harassing phone calls.

**Nov. 27**  
 •Complainant reported an intoxicated individual on South Kniss Ave.  
 •Complainant requested to speak to a deputy about a runaway on West Hatting Street.  
 •Complainant on South Kniss Avenue reported suspicious activity.  
**Nov. 28**  
 •Complainant reported a driver texting on North Hwy. 75  
 •Fire hydrant gushing water across from fairgrounds.  
 •Deputy conducted a follow-up on previous CFS.  
 •Theft reported in rural Beaver Creek.  
 •Cattle out on 161st Street.  
 •Complainant reported an accident on I-90 westbound.  
 •Complainant reported two-vehicle accident eastbound on I-90.  
 •Complainant reported assault on East Oakland Ave.  
 •Complainant reported theft on South Kniss Avenue.  
 •Complainant reported an order for protection violation on Luverne Street.  
 •Deputy assisted with State Patrol in Beaver Creek.  
 •Complainant reported a semitrailer driving recklessly in Beaver Creek.  
**Nov. 29**  
 •Complainant reported loud noise on West Hatting.  
 •Deputy conducted a follow-up on prior CFS on West Mead Court.  
 •Complainant reported an accident in Steen.  
 •Deputy conducted a follow-up on prior CFS on West Main Street.  
 •Complainant reported an accident in Kanaranzi.

In addition, officers responded to 2 deer accidents, 2 transports, 7 escorts, 18 ambulance runs, 3 animal complaints, 7 burn permits, 2 drug court tests, 3 permits to purchase/carry, 4 tests, 5 abandon 911 calls, 19 traffic stops, and 2 paper service attempts.



Lori Sorenson photos/1206 warren street demolition

### Out with the old ...

Demolition crews took down this blighted home at 115 West Warren Street Tuesday morning to improve the lot for future housing.

The city purchased the lot on Oct. 24 from James and Heidi Mehlhaff for \$35,000. "It's a nice area with some newer condos, so the neighbors will be happy," City Administrator John Call said at the Nov. 13 council meeting.



## Magnolia program seeks community support for Angel Tree; Donations accepted through Dec. 19 at west doors of building

Southwestern Youth Services is seeking community support for the young men (ages 10-20) enrolled at the Magnolia treatment facility through its annual Christmas Angel Tree.

"As many of you know, we have a constantly revolving door of students who are in need of almost everything from winter clothing, shoes, hygiene items, underwear,

coats, gloves and stocking caps," said Amber Shaw, office manager.

She said the facility is also hoping to enhance its library with games, DVDs and other activities for students to use when they're not in class.

"Throughout the years the surrounding community has amazed us with their caring, sharing and willingness to offer these boys a chance at

understanding the spirit of Christmas," Shaw said.

The Angel Tree is set up in the SYS front lobby and will be active to receive donations through Dec. 19 for the Dec. 21 Christmas party.

"Both the program and education staff at SYS feel deeply about our mission and we know from many years of experience that it cannot be done without the support from

the community," Shaw said.

"Thank you to the many of you who have embraced us in the past and continue to do so."

The south doors of the building are not accessible to the public, so Angel Tree participants are asked to ring the doorbell on the west side of the building.

Contact Shaw or Carol Nasz at 507-283-4425 or info@southwestyouth.org.

**Magnolia Café**  
 Magnolia, MN  
**Now Open Saturdays**  
 507-220-4067  
 Open Monday - Friday  
 6AM - 2PM  
 Saturday 7AM - 10:30AM  
 Special available every day  
 Good Homemade Food

# Dining and Entertainment

Deadline for registration is December 15 • Advance deposit \$200 per person

**Luverne Area Lions Club**  
**THE WINTER WALLEYE CONNECTION**

2019 ANNUAL LAKE OF THE WOODS ICE FISHING TRIP  
 Luverne to Baudette, MN

**Monday, February 4 to Thursday, February 7**

FOR MORE INFO & TO GET SIGNED UP  
 Call LeRoy Schomacker  
 507-283-8677

**PER PERSON PACKAGE INCLUDES \$420.00 per person**

Round trip coach transportation, three nights lodging, two days guided walleye ice fishing, two meals, angling equipment, fish processing

**Luverne Blue Mound Liquor**  
 319 W Main St, Luverne 507-449-5052

Gift Cards available

Follow us on Twitter @bluemoondliquor & Instagram luvernebluemoondliquor

**Holiday Wine Special**

**CARLOS CREEK WINERY**  
 \$14.90 per bottle

**25% OFF**

**THE LOCALS PRESENTS**

**A ROCK N ROLL CHRISTMAS**

A FUNDRAISER FOR LUVERNE STREET MUSIC

**DEC. 15, 2018 • 8PM**

**THE HISTORIC PALACE THEATRE**  
 LUVERNE, MINNESOTA

TICKETS AVAILABLE ONLINE AT WWW.PALACETHEATRE.US  
**\$20 ADULTS • \$10 STUDENTS**

Dingsman, GREAT PLANES TRAVEL, MYCOX IMPLEMENT, INC., SASSY OZONIS

**Azores Paradise**  
 From \$1250 per person  
 6 Nights  
 Hotel included  
 Includes daily breakfast  
 Airfare from Minneapolis  
 Select June dates  
 Pricing based on 2 adults  
 Call for more details!

**Cancun**  
 From \$1,300 per person  
 7 nights all-inclusive  
 Roundtrip airfare from Sioux Falls  
 Round trip airport transfers  
 Select April dates  
 Pricing based on 2 adults  
 Call for more details!

**ALL ABOUT TRAVEL**  
 10-Year Winner! Layaway & Gift Certificates Available!  
**605-339-8911 • 1-800-390-6610**  
 3801 S. Western Ave., Suite 103, Sioux Falls, SD  
 Open: Mon.-Fri. 8 a.m. - 7 p.m. • Saturday 9 a.m. - 1 p.m.  
 www.AllAboutTravel.org www.facebook.com/AllAboutTravelInc  
 Helping You Find Your Personal Paradise!

**PALACE THEATRE UPCOMING EVENTS**

**Thursday Dec. 6 6 p.m.** Bank Nite FREE Family Movie "The Star" Sponsored by Papik Motors and First Farmers & Merchants Bank

**Dec. 7 7 p.m.** Movie "A Star is Born"

**Dec. 9 2 p.m.**

**Dec. 8 1:30 p.m., 4 p.m., 6:30 p.m.** Luverne Street Music presents "Sounds of Christmas"

**Dec. 14-7 p.m. Dec. 16-2 p.m.** HELD OVER  
**Dec. 21-23** Movie "The Grinch"

**Saturday Dec. 15 8 p.m.** The Locals present "A Rock & Roll Christmas" \$20 adults, \$10 students, on sale at the Palace Box Office or www.palacetheatre.us

**Saturday Dec. 29 8 p.m.** Songblast Dueling Guitars \$20 tickets on sale at the Palace Box Office or www.palacetheatre.us

**PALACE THEATRE**  
 104 E. MAIN ST. • PO BOX 541 • LUVERNE, MN 56156  
 507.283.4339 • WWW.PALACETHEATRE.US

Palace Theatre Luverne  
**Box office is open**  
 Monday - Friday 12 p.m. - 5 p.m.  
**507-283-4339**

**Two great events Saturday, December 8**

**LUVERNE STREET MUSIC**  
 Students and Staff present  
*The Sounds of Christmas*  
 Historic Palace Theatre  
 1:30 pm - 4 pm - 6:30 pm Free Will Donation

followed by...

*Community Christmas Cantata* 7 pm  
 Carnegie Minstrels Choir & Orchestra present  
*"Let There Be Christmas"*  
 American Reformed Church  
 Benefit concert for the Rock County Foodshelf  
 \$10 - adult \$5 - 12 & under

**CELEBRATIONS**

**Open houses**

**Keith and Doris Hoven** will celebrate their 50<sup>th</sup> wedding anniversary with an open house from noon to 3 p.m. Sunday, Dec. 9, at the First Presbyterian Church in Edgerton.

**Norma Schneekloth** will celebrate her 90<sup>th</sup> birthday with an open house from 2-4 p.m. Sunday, Dec. 9, at St. John Lutheran Church in Luverne. Greetings may also be sent to her at 203 Oak Drive, Apt. 126.

**MENU**

**Monday, Dec. 10:** Chili, lettuce with dressing, cheese sandwich, cracker, sherbet.

Program: Pinochle.

**Tuesday, Dec. 11:** Egg bake with sausage and ham, oven baked potatoes, fruit cocktail, coffee cake.

Program: Half-Price Day sponsored by the Eagles. Millie's craft day.

**Wednesday, Dec. 12:** Creamed chicken, biscuit, broccoli, mandarin orange gelatin, brownie.

**Thursday, Dec. 13:** Meatballs in gravy, mashed potatoes, squash, bread, lemon sponge cake.

Program: Half-Price Day. Christmas music by Myrna Phelps and Betty Mann.

**Friday, Dec. 14:** Ham and potato soup, peaches, biscuit, bar.

Program: 11 a.m. Gloria Jean Wieneke; Half-Price Day.

*Senior Dining offers well-balanced and affordable meals in a community atmosphere.*

*Gift certificates are available at the meal site or online at [www.lssmn.org/nutrition](http://www.lssmn.org/nutrition).*

*Call Lauree Teunissen at 283-9846 to make dining reservations or for home-delivered meals.*

**COMMUNITY LIBRARY**

Contact the Rock County Library at [rocklibrarystaff@gmail.com](mailto:rocklibrarystaff@gmail.com) or 507-449-5040 for more information or to register for events.

**Trivia Night Championship**, 7 p.m. Thursday, Dec. 6, at Take 16.

**DIY Book Page Ornaments**, 6 p.m. Tuesday, Dec. 11, library community room.

**Gingerbread Holiday with ECFE**, 5:30 to 7 p.m. Monday, Dec. 17, library community room. Register with Luverne Community Education at 507-283-4724.

**Trivia Night at Take 16**, 7 p.m. Thursday, Jan. 3. One to 4 people on a team. Register at Take 16 from 6:30 to 7 p.m.

Library hours are Monday-Thursday from 10 a.m. to 8 p.m., Friday from 10 a.m. to 5 p.m., and Saturday from 10 a.m. to 2 p.m.

**COMMUNITY EDUCATION**

Contact Luverne Community Education at [C.Arends@isd2184.net](mailto:C.Arends@isd2184.net) or 507-283-4724.

Children ages 2-5 accompanied by an adult can participate in the **Gingerbread Holiday Event** on Monday, Dec. 17. Fee is \$5 per child.

The **4-hour Defensive Driving Refresher Class** will be Dec. 13 for adults 55 years of age or older. (Must have taken the 8-hour course.) Cost is \$20 prepaid.

A second **Kids in Kitchen Christmas Treats** is for students grades K-6. This newly added class will be Dec. 18. Fee is \$18 or register with sibling or friend and pay \$14/person.



Girls in Jessica Van Batavia's second-grade class brush their teeth in school during the first day of a pilot program sponsored by the Rock County Oral Health Task Force. Pictured from left are Lucy Bose, Emma Cowell, Destiny Brandt, Lilly Lanoue, Blakley Fick, Madeline Zavala Soto, Makenzie Smith, Adalyn Uithoven and Gracyn Woodley.

*Pilot program brings tooth brushing to second-graders*

**Story and photos by Mavis Fodness**

Jessica Van Batavia's second-grade students spent an extra five minutes after lunch Monday brushing their teeth in a pilot program spearheaded by a local citizens group.

The #Luv1LuvAll Rock County Oral Health Task Force received a \$1,000 grant from the Luverne Area Community Foundation and assistance from the Rock County 4-H Program to kick the pilot off this month.

"It will become part of their bathroom break after lunch," said task force member Wanda Jarchow.

The first day of the pilot the students took about five minutes to complete the task.

Van Batavia's 20 students are the first of five second-grade classrooms whose students will brush their teeth for two minutes after lunch each day for a month. The pilot program will end in April.

After students finish a month of brushing their teeth, they receive a ditty bag of oral health products to continue their lessons at home.

The local task force is working with the National Children's Oral Health Foundation and America's Tooth Fairy.

Minnesota Oral Health Zone Manager Mary Vanderwert talked with staff and students in Luverne Nov. 19 about proper brushing practices and why the daily task is



**Left:** Toothbrushes are lined up for 20 second-graders outside the bathrooms at Luverne Elementary School Monday. The students are the first to brush their teeth after lunch each day as part of the Rock County Oral Health Task Force pilot program. The special holder sanitizes the toothbrushes after each use, readying the toothbrushes for reuse.

**Below:** Maddox Schomacker (right) grabs a Dixie cup with a pea-sized amount of toothpaste on its edge while Ty Kopp (center) grabs a toothbrush labeled with his name. Elijah Ellefson waits his turn.

important. "Brushing teeth is a basic task that is often forgotten," she said.

Failing or forgetting to brush their teeth is leaving young children in poor oral health. Severe tooth decay translates into missed school days or underperforming in the classroom.

"When you don't feel good, it's hard to focus," Vanderwert said.

In Minnesota two out of every 10 third-graders in public schools have untreated tooth decay.

Locally, the oral health task force wants to educate children and adults on the importance of daily oral hygiene as one of its focuses.

Last year the group worked with school officials to orally screen all elementary and middle-high school students.

Students needing dental work may receive in-school services at a later date.

The oral health task force is a part of #Luv1LuvAll, a community group



working to end poverty in Rock County.

Earlier this year the group identified five poverty-related issues on which to focus.

Besides dental care, #Luv1LuvAll is working on affordable housing, one-stop access to resources, meal access for seniors and the stigma of mental health.

Originally the dental health group sought funds to conduct the tooth-brushing pilot program with all elementary children in Rock County.

The pilot program's scope was scaled back to match the grant dollars received. The group was helped by local 4-H families to also help with costs.

Rock County 4-H conducted a "Smile Drive," challenging each club to collect as many toothbrushes, boxes of toothpaste and Dixie cups as possible.

The clubs collected enough supplies for all needs for the local student pilot program. The adult supplies were donated to the Rock County Food Shelf.

The grant purchased a special toothbrush holder



Hayden Sauer is one of the first students to participate in the Rock County Oral Health Task Force pilot program.

to sanitize all the toothbrushes before the next day's use. Each brush is labeled with the student's name.

Monday students eagerly brushed their teeth for the first day of the pilot program. The brushing is monitored with the assistance of Minnesota West students and Luverne High

School peer helpers. Students hummed two rounds of "Happy Birthday To You" for the two-minute brushings.

Many said brushing their teeth in school was a positive experience.

"Now every day can be our birthday," said student Lilly Lanoue.



Blakely Fick hums "Happy Birthday To You" while brushing her teeth in school Monday.

## OBITUARIES

### Virginia Campbell

Virginia Louise Campbell, 94, Rock Rapids, Iowa, died Friday, Nov. 30, 2018, at Sanford Hospital in Rock Rapids.

A funeral service was Tuesday, Dec. 4, at the Christian Church Disciples in Rock Rapids, Iowa. Burial followed at Riverview Cemetery in Rock Rapids.

Virginia Skidmore was born on July 19, 1924, in Baxter, Kentucky. When she was three, her family settled on a farm near Rock Rapids where she spent her childhood. In 1940 she graduated from Wilson High School in Rock Rapids.

In 1942 she married Lyle Hansen and moved to the West Coast and Texas, returning to Rock Rapids after World War II. After their divorce she worked as a telephone operator and manager. She married Charles Campbell on Aug. 19, 1952, at the Little Brown Church in Nashua, Iowa. Together they purchased an acreage along the Rock River. They welcomed four more children, Steven, Carol, Patricia and Mary.

Virginia assisted Wayne on the farm by bookkeeping for his business with Iowa Breeders. She worked at J.C. Penney for 25 years where she created the catalog desk. She attended college courses at night and studied advanced mathematics. She later worked as a bookkeeper at the Rock Rapids Utilities office and Merrill Pioneer Community Hospital, and also as treasurer at the Christian Church Disciples.

Virginia was a 4-H leader and volunteer and was recognized as "Friend of the Fair." She was a member of Eastern

Star for over 50 years and supported community and school activities. She enjoyed sewing, reading, teaching Sunday school, dancing, attending cultural events, gardening, cooking and going for a daily walk.



The Christian Church Disciples and her family were the central focus of her life. Virginia lovingly gave full-time home care to Wayne for nearly 30 years.

She is survived by her children Jerri (Roger) Korenberg, Diane Sapp (wife of the late Douglas), Steven (Debra) Campbell, Carol (Randy Jensen) Vanderkolk, Patricia, and Mary (Donald) Smith; grandchildren Karen and Kevin Korenberg, Scott (Mona), Nichole, and Paul (Tanya) Campbell, Aaron (Miranda) and Collin (Katie Geerdes) Campbell, Dustin Vanderkolk, Leslie Jensen Campbell and Laura (Matt) Hickey, Julia (Trevor Bartlett) Campbell, Trey (Emmie) Smith, Cameron (Danielle) Smith, Spencer (Ashley) Smith, Brittany (Benjamin) Uphoff and Kelsey (Jacob Rohlik) Vogt; 22 great-grandchildren; many nieces and nephews and their families; brothers Bruce and Don (Grace) Skidmore; sister-in-law Miyo Skidmore and John Pudwill.

She was preceded in death by her husband, Wayne; a son, Douglas; her parents; her stepmother, Senora Skidmore; and her siblings Clel, Dorothy, Gene, Burleigh, Wilford, Vera and Thomas.

Arrangements were provided by Jurrens Funeral Home of George, Iowa, [www.jurrensfuneralhome.com](http://www.jurrensfuneralhome.com).

(1206 F)

### Darlene Matus

Darlene JoAnn Matus, 84, Beaver Creek, died Wednesday, Nov. 28, 2018, at the Sanford USD Medical Center in Sioux Falls, South Dakota.

Darlene Emery was born on June 28, 1934, to Lloyd and Minnie (Henningsen) Emery in Luverne. As a child she moved with her family to Kansas while her father served in the United States Army. The family then returned to the Luverne area where she attended school and graduated from Beaver Creek High School in 1952.

Following graduation, Darlene moved to Minneapolis, where she worked in a secretarial position. A short time later she returned to her home area and worked for J.D. Evans in Sioux Falls, South Dakota.

She married Dale Matus on Feb. 15, 1958, at the Luverne United Methodist Church. Following their marriage, they worked on a sheep farm for Jim Dunn until 1961 when they found their home. They moved onto a farm three miles north and two miles west of Beaver Creek where they raised animals and grain. Darlene also helped with daily chores of the farm, milking cows and doing whatever needed to be done. Darlene slowly moved toward retirement by spending time at their lake house in Canada during summers but remained living on their farm during planting and harvest.

Darlene was a member of Palisade Lutheran Church near rural Garretson, South Dakota. She loved her WELCA women's group and was very



involved in the church. She enjoyed fishing and taking various guided fishing tours. On their excursions, she not only loved to fish but also enjoyed taking care of base camp.

The couple purchased a cabin in 1983 in Waldof Bay, Ontario, Canada, and enjoyed spending time there with their family. Darlene also liked to travel. Through the years she enjoyed trips to Park Rapids, New York City, down south, and to Europe, where they were able to visit their exchange student from Switzerland.

Darlene is survived by her husband, Dale of Beaver Creek; three sons and their families, Todd Matus of Beaver Creek, his daughter Heather Matus of Carrollton, Georgia, and Todd's special friend, Tammy Makram of Luverne and her son Mason Makram of Los Angeles, California; Dan and Shanelle Matus of Sheldon, Iowa, and their children, Todd Helmers, Trista Helmers and Tamsyn Matus, all of Sheldon; Tim and Lori Matus of San Antonio, Texas, and their children Derek Matus of New York City, New York, Luke (Noemie Gagnon-Bergeron) Matus of Boston, Massachusetts, Kyra Matus of Boston, and Lorin Burton, Lexi Burton and Landon Burton, all of San Antonio; and her sister, Cheri (Dale) Macklanburg of Nevis.

She was preceded in death by her parents and a sister, Barbara Lowe.

Arrangements were provided by Hartquist Funeral Home of Luverne, [www.hartquistfuneral.com](http://www.hartquistfuneral.com).

(1206 F)

### Pauline Blom

Pauline Lois Blom, 91, Luverne, formerly of Leota, died Saturday, Dec. 1, 2018, at the Sanford Luverne Hospice Cottage.

A memorial service will be at 2 p.m. Friday, Dec. 28, at the Bethel Reformed Church in Leota. Burial was Wednesday, Dec. 5, at the Leota Community Cemetery.

Pauline Bruxvoort was born to Henry and Lucy (Meyer) Bruxvoort on Aug. 24, 1927, on a farm two miles southeast of Chandler. She received Christian infant baptism on Oct. 2, 1927, and made confession of her faith in Jesus on Oct. 6, 1946, at the Chandler Reformed Church. Pauline received her education at the Chandler Public School.

On Feb. 18, 1947, she married Dick Blom, and on March 1 they moved to a farm four miles east of Leota where they raised their four children.

Pauline has been a member of Bethel Reformed Church in Leota since she was married and enjoyed Women's Guild, teaching catechism and going to Sunday School. She also liked to attend women's Bible studies and worked at the World Home Bible League Thrift Store.

She is survived by four

children, Joan (Tom) Strauss, Elkader, Iowa, Dianne (Dave) Claassen, Brandon, Florida, Dean (Sue Rehder) Blom, New Hope, and Sherlyn (Jim) DeHoog, San Antonio, Texas; eight grandchildren; 13 great-grandchildren by birth and 16 guardianship; two sisters, Nellie Dierfeld, Edgerton, and Frances Veldkamp, Luverne; in-laws Henrietta Bruxvoort, Chandler, Alvin Blom, Luverne, Glenn and Geraldine Blom, Leota, Frank and Caroline Vander Woude, Chandler, and Earland Marsha Blom, Luverne.

She was preceded in death by her husband, Dick Blom; her parents; her parents-in-law, Chris and Josie Blom; a sister, Dorothy Moret; a brother, Harvey Bruxvoort; in-laws, John Moret, Wallace Dierenfeld, Don and Lois Blom, Jim Veldkamp, Gladys Blom; and a great-grandson, Daniel Zaragoza.

Memorials may be directed to Fishers of Men Mexico ([www.fishersofmenmexico.org](http://www.fishersofmenmexico.org)), an organization founded and directed by granddaughter Julie Claassen.

Arrangements were provided by Dingmann Funeral Home, [www.dingmannandsons.com](http://www.dingmannandsons.com).

(1206 F)

The Rock County Star Herald strives to publish obituaries that pay tribute to the lives of the deceased. Our policy is to summarize the education, professional history, places of residence, immediate family, achievements, hobbies and community involvement of your loved one.

Please indicate, when sending an obituary, if you would like it to be placed in the paper as an edited piece according to our newspaper format for \$49 OR if you would like it to run as submitted for \$149.

Either choice of obituary includes a photo and will be published in the Rock County Star Herald print edition as well as online at [www.star-herald.com](http://www.star-herald.com).

Death notices will continue to run at no charge.

## REMEMBER WHEN

### 10 years ago (2008)

Activity on Luverne's Rock River Bridge will pick up in the next few days, according to County Highway Engineer Mark Sehr. Traffic control markers and lights will be installed on either end of the structure, making it a one-lane bridge for the coming months.

The total replacement project is estimated to last nearly a year, but one lane of traffic will be open over the river for the majority of the work. At the most, the bridge will be closed for 72 hours at a time for a few times during the project.

The \$2.39 million, federally funded bridge replacement began in October with construction of a temporary pedestrian bridge.

The Main Street bridge, built in 1931, has an average daily traffic count of 3,000 and is ranked one of the five worst in the state with a sufficiency rating of 6.8 on a scale of 100.

### 25 years ago (1993)

Now that the ground is covered with snow, burn permits are no longer required for open fires. The issue of burn permits will continue to simmer, however, until a consensus can be reached on how burn regulations will be handled in the county.

At a special meeting Tuesday morning, Commissioners Jim Lewis, Ron Boyenga and Ken Hoime met with county residents, law enforcement and DNR officials in an effort to establish a burn

permitting system acceptable to all parties affected.

### 50 years ago (1968)

The county farm, west of Luverne, was sold at auction Wednesday to Marvin and Leroy Fick, both of Luverne township. Sale price was \$435 per acre for the 160-acre tract.

The county was the second owner of the land, having purchased it October 4, 1880, from Catharine Weber, who received title to it Nov. 5, 1878 from the United States Government.

The county originally paid \$1,600 for it, or \$10 an acre. County board records show that the property was paid for in two years time.

### 75 years ago (1943)

Rock county's December draft contingent which is slated to leave here one week from today for physical examination at Ft. Snelling will include no fathers, the local board announced this week.

Two of the contingent are married men, but have no children. The remaining 10 are single men.

Included in the group will be Paul Ingelson, Luverne, and Milton Nicks, Luverne, both of whom are married; Herbert Schmuck, Luverne; Roger Sweeney, Benjamin Sweeney, James Searles and Albert Schmuck, all of Beaver Creek; Robert Tuff,

Sioux Falls; Edwin Stoterau, Hills; Kenneth Johnson, Kenneth; Joseph Gates, Magnolia; and Obert Olson, Luverne. Searles and Olson were volunteers.

### 100 years ago (1918)

The First National Bank has moved the first of the week into its handsome new home, which has been under construction since early last spring. The job of the moving from its temporary quarters in a structure in the street into the new building was a big one, but it was accomplished without any interruption to business, and the work of getting settled in the new quarters is now nearly completed.

The new structure is one of the very finest, best equipped and most conveniently arranged bank buildings in this section of the Northwest, and not only provides a suitable home for the splendid institution that occupies it, but is a credit alike to the men back of the bank and to Luverne and the community in which the First National has steadily advanced into first place among the leading banking institutions of the state. While in the erection and equipment of the building much attention has been paid to architectural beauty and to convenience in arrangement for transaction of business, due attention also has been paid to providing for the convenience and comfort of the bank's patrons. The cost of the building, including furnishings, is placed at \$40,000

## 1953: Fire call numbers depict farm locations, directions for firefighters to help during emergencies

The following appeared in the Rock County Star Herald on November 12, 1953.

### New System Is Expected To Improve Rural Fire Service

A new system to improve service to farms in the eight townships subscribing to rural fire fighting service from Luverne will be placed into effect within the next several weeks.

Each rural telephone in each of the townships will be assigned a fire call number - a number which will give the local firemen all the information they need for going to a rural fire. All the firemen will have to do is look at a card bearing the number called and this card will show them where the farm is and how to travel to get there.

Purpose of the system is to speed calls, and decrease the margin for error in giving directions. Cooperating in setting up the system is the Luverne Civic and Commerce association, which purchased the adhesive



## BITS BY BETTY

By Betty Mann, president  
Rock County Historical Society

stickers on which the fire call numbers are printed, and which will be attached to each telephone. The local telephone exchange which has agreed to handle the calls on the basis of the new system is also cooperating in this effort to provide better rural fire protection.

### How It Works

A committee has been busy for almost a year setting up the system. Here is how it works:

Each township has a key number. Vienna township is No. 1; Mound, No. 2; Springwater, No. 3; Magnolia, No. 4; Luverne, No. 5; Kanaranzi, No. 6; Clinton, No. 7; and Martin, No. 8. Farms

are numbered, beginning with No. 1, also. Thus a farm in the northeast corner of Vienna township would have fire call No. 1-01. A farm in the northeast corner of Mound would be No. 2-01, etc.

### Must Call Luverne Operator

Should a person ever wish to notify the Luverne fire department of a rural fire, he would go to the telephone, call the Luverne operator, and give the fire call number attached to the telephone.

This number in turn would be relayed to the fire department. A card file, corresponding numerically

to fire call numbers, will be maintained by the fire department. These cards will show the exact route to take to reach the farm, the distance in miles each direction from Luverne, and will indicate the type of road over which the firemen will travel to reach the fire.

When there is a fire at a farm where there is no telephone, the number that will be given will be that of the farm from which the phone call originates. Someone will then stay at that farm until the firemen arrive, in order to give them directions where to go from there to reach the farm where the fire happens to be.

Donations to the Rock County Historical Society can be sent to the Rock County Historical Society, 312 E. Main Street, Luverne, MN 56156.

Mann welcomes correspondence sent to [mannmade@iu.net](mailto:mannmade@iu.net).

## DEATH NOTICE

### Raymond Veldhuizen

Raymond Veldhuizen, Ellsworth, died Friday, Nov. 30, 2018, at his home.

A private family memorial service will take place at a later date. Arrangements are provided by Dingmann Funeral Home in Adrian, [www.dingmannandsons.com](http://www.dingmannandsons.com). (1206 DN)

Have Sleep Apnea? Covered By Medicare?  
Get CPAP or BiPAP Replacement  
Supplies at NO COST!

**VERUS HEALTHCARE**

We help you get a restful night's sleep:

- Free Home Delivery
- Free Healthy Sleep Guide
- Free 5-Day Trial of our SleepTIME Supplement

We carry the brands you know  
Fisher & Paykel HEALTHCARE PHILIPS RESMED CPAP

Call Now And Qualify In Minutes For **FREE CPAP SUPPLIES 1.866.283.5689** Must Have Medicare To Qualify

as seen on... FOX NEWS CNN DISCOVERY

Verus Healthcare does not provide medical advice, diagnosis or treatment. Offer available only to qualified beneficiaries. No purchase necessary. Co-payments, deductibles and some restrictions may apply.



More than a dozen people met in Todd Matus' cornfield north of Beaver Creek Friday to help him finish his harvest. Pictured are (from left) Jason Van Belle, Todd Van Belle, Spencer Sells, Adam Kinsinger, Marv Tofteland, Eric Benson, David Tofteland, Albert Van Belle, Dale Bosch, Nick Van Belle and Bob Beyenhof. Not pictured are Bert Verhey, Dave Brandt, Dave Spykerboer, Jared Pap and Dick Kramer. The group ended up pulling out before the field was done, due to wet conditions, but they said they'll try again when weather permits.

Lori Sorenson photo/1206 matus harvest help

## Neighbors team up to help Beaver Creek farmer with corn harvest

By Lori Sorenson

Beaver Creek farmer Todd Matus found out who some of his friends are Friday when more than a dozen people showed up to help him finish his 2018 harvest.

Matus' mother, Darlene, died suddenly on Nov. 28, just two weeks after his combine burned in a fire on Nov. 12.

Albert Van Belle suggested a team harvest for the Matus corn to several farmers who were gathered at the Beaver Creek elevator last week.

"I just said, 'Hey guys, he's had a tough year; why don't we get together and knock out the rest of his corn?'" Van Belle told the

Star Herald Thursday.

"And right away someone said, 'I can help;' and another piped up, 'I can help,' and pretty soon we had enough people."

All totaled, the group rounded up four combines, four trucks, two grain carts, and a small army of other helpers for other details.

The weather, unfortunately, didn't cooperate as a heavy mist hung in the air, and occasional sprinkles added to the already damp conditions.

After a few rounds, one of the combines plugged and it was slow going for the others, so they decided to try again when conditions allowed.

Meanwhile, Matus said

he's grateful for the support.

"It's hard to accept," he said. "But you realize they're just really good people wanting to help out, so I'm OK with that."

He has about 150 acres of corn still standing, and after the weekend rain and snow he said he's not sure when the next harvest attempt will be.

Matus isn't the only one with corn still standing in the field this fall.

Rock County and nearby southwest Minnesota counties have lagged behind the rest of the state's harvest progress due to wet weather, and most local farmers still haven't started fall tillage work.



Todd Matus shared this photograph of his combine engulfed in flames on Nov. 12.

24/7 ... Rain or Shine ...

Your local, independent agent will be there.

Working for you-meeting your needs.



INSURANCE

South Hwy. 75, Luverne, MN • Ph. 507-283-2381

Auto-Owners INSURANCE

LIFE • HOME • CAR • BUSINESS



## Recycling bins for clothing removed from Luverne/from page 1A

hold on," he said.

Those efforts included additional collection boxes at The Laundry Room, located at Highway 75 and Main Street in Luverne, to extend the frequency of pickups, and The Laundry Room owner Mike Jarchow monitored the boxes to lessen the amount of non-recyclable materials placed in the collection bins. When they were avail-

able, the bins were well used by local citizens.

This year USAgain collected 27,000 pounds of unwanted clothing from The Laundry Room location.

Three bins located in the Luverne Ace Hardware parking lot on Lincoln Street collected 13,000 pounds.

"From 2014 until now The Laundry Room was in the top 10 percent of collection sites for us," Bauer said.

"From 2016-2017, Ace Hardware was also on the list."

These efforts and the volume of donations collected, however, didn't change the eight-hour round-trip drive to Luverne to collect the materials, and Nov. 27 the bins were removed.

Locally, Jarchow is looking to replace Sagan's service with another textile recycler.

"We are looking at getting some new bins," he said.

Until then Jarchow encourages people not to leave recyclable textiles in The Laundry Room parking



Mavis Fodness photo/1206 Clothing Recycling

USAgain driver Doug Willing loads one of the company's distinctive white-and-green-colored metal collection bins into his truck. Rising transportation costs prompted company to only collect unwanted clothing from locations closer to the Twin Cities. This year USAgain collected 27,000 pounds of unwanted clothing from The Laundry Room location at Highway 75 and Main Street. Three bins located in the Luverne Ace Hardware parking lot on Lincoln Street collected 13,000 pounds.

lot until new bins are available.

USAgain (pronounced use-again) is a for-profit company collecting unwanted textiles and reselling them,

diverting millions of pounds of clothing from landfills.

The company began in 1999 and operates 12,500 collection sites in 16 states.

## MERRY Christmas Special

Bring in two cans of non-perishable food and get a year subscription to the Rock County Star Herald for

\$45 - in county  
\$55 - out of county  
\$30 - online

offer valid now-12/21/18

Food donations will go to the Rock County Food Shelf

No expired food will be accepted. The Food Shelf is in most need of peanut butter, Ramen noodles, cereal and soup

Rock County STAR HERALD

507-283-2333 | circulation@star-herald.com | 117 W Main, Luverne, MN 56156

## Professional Ag Marketing 2nd Annual Holiday Open House and Ag Appreciation



Producer Families & Allied Industry Partners welcome

Join us! beverage tickets and hors d'oeuvres

Thursday Dec 13 6-10 p.m.



509 E Main, Luverne



Please join our team for a time of socializing, reminiscing and deep pontification.







Lori Sorenson photo/1206 snow and glow

Darrel and LaDonna Van Aartsen make their way down the lighted path that led park visitors to the shelterhouse Sunday night.

## Luverne celebrates Winterfest and Snow and Glow

By Lori Sorenson

Winter weather affected attendance at some of Luverne's Winterfest celebration events, but overall, Chamber Director Jane Wildung Lanphere said it was a good experience.

"A lot of people worked really hard, but it's just one of those things in life that you can't help," she said about the weekend events that suffered low attendance compared with other years.

Saturday's Winterfest Arts and Crafts Show took the biggest hit when gusty winds and intermittent snow created blizzard conditions for travelers.

"We were down about 40 vendors, and I stopped counting," Lanphere said. "My phone just kept ringing."

But many vendors who did brave the icy roads reported relatively good sales, and the school saw steady crowds, albeit reduced numbers.

Audience members who bought tickets for Saturday's USO Show were allowed to use their tickets for Sunday's matinee performance.

The Saturday show drew about 90 people, but the Palace was at capacity for Sunday's show.

"I had a guy tell me he would have paid \$100 at the Washington Pavilion; it was that good," Lanphere said.

The Winterfest weekend grand finale Sunday night, the CEO Snow and Glow and Nutcrackers on Patrol,



At left, the shelterhouse in Luverne City Park was the hub of activity where park visitors could warm up, mingle and enjoy cookies and hot cocoa.

Below, the park entrance was festively decorated with a heavy dose of colored Christmas lights to greet visitors.



Lori Sorenson photos/1206 snow and glow

welcomed the fresh snowfall and winter weather.

The event was a hit for the students and volunteers who hosted more than 400 people at their lighted event in Luverne's City Park to help fund their entrepreneurial projects.

Because of icy road surfaces, the horses were canceled for the sleigh rides, but a vehicle-towed hayrack was a decent substitute for touring the decorated playgrounds.

"The kids did an excellent job at

the park; it's just beautiful," Lanphere said. "The nice thing about that is people can enjoy it for a month."

The park will remain open and the displays will be lighted through the end of December.

"We can take our friends and families down there when they come to visit," Lanphere said. "That's a project we've talked and talked about doing, and here this creative bunch of kids took it on and made it work."



Lori Sorenson photo/1206 snow and glow

Above, Angie Janiszkeski and her children Eden (left) and Everen, purchase cookies and hot cocoa from Sara Knips in the shelterhouse of Luverne City Park where Santa and Mrs. Claus (Rodger and Dianne Ossenfort) also greeted families and visitors.



Lori Sorenson photo/1206 snow and glow

Above right, new vendor Sawdust Homemade Creations made its debut at the Winterfest arts and crafts show. Owner Kim Schmidt, Luverne, sold wood items such as Jenga and he shows Amber Scott of Luverne how to play.



Mavis Fodness photo/1206 Winter Fest 2018

Far left, Whitney and Ava Lafrenz take in the bright lights at Luverne City Park Sunday night during the CEO Snow and Glow.



Above left, Jonah Hailey, 3, and his brother, Mason, 19 months, pose for a photo with Santa and Mrs. Claus (Rodger and Dianne Ossenfort) by Jim Juhl with Myhre Studio. All proceeds were given to Rock County S.H.A.R.E. In the middle photo, St. Catherine LCCW offers a "blizzard" special of \$10 per container filled with cookies or bars Saturday as Jackie Pizel of Luverne begins selecting goodies for her container. At right, Justin DeKam (right) peers into the brown paper bag as 4-H'er Hunter Sandbulte closes it to conceal a Christmas gift Saturday morning at Santa's Workshop. As parents shopped at the arts and craft show in the Luverne Elementary commons and gymnasium, children in kindergarten through fourth grade could make or select holiday gifts with help from the 4-H "elves" like Sandbulte.



Mavis Fodness photos/1206 Winter Fest 2018

## Dragons top Dutchmen

By John Rittenhouse

The Adrian girls' hockey team posted a second-half rally by the Edgerton Flying Dutchmen to win their basketball season debut in Edgerton Nov. 27.

Adrian played well early and sported a 28-17 advantage at the intermission.

The Flying Dutchmen outscored the Dragons 30-23 in the second half, but it wasn't enough to keep Adrian from securing a 51-47 win.

Avery Balster (12 points and six steals) and Bailey Lonneman (10 points, nine rebounds and four steals) paced the Dragons offensively.

McKinley Nelson (five rebounds and three assists) and Shawna Rogers (six rebounds and three steals) emerged as key contributors for AHS.

**Box score**  
J.Zebe 1 0 0-0 2, B.Zebe 2 0 0-0 4, Bullerman 2 0 3-4 7, Balster 4 0 4-12 12, Nelson 1 0 0-1 2, Cauwels 1 0 2-2 4, Lehnhoff 1 0 0-0 2, Grussing 1 0 0-0 2, Rogers 1 0 2-2 4, Fuerstenberg 0 0 0-0 0.

**Team statistics**  
Adrian: 19 of 58 field goals (33 percent), 13 of 23 free throws (57 percent), 34 rebounds, 23 turnovers.  
Edgerton: 17 of 55 field goals (31 percent), nine of 12 free throws (75 percent), 33 rebounds, 32 turnovers.

# Cardinal girls slay BSC opponents

By John Rittenhouse

The Luverne girls' hockey team posted a pair of Big South Conference wins in a three-day span last week.

Luverne skated past Fairmont by six goals at the Blue Mound Ice Arena Nov. 27 before prevailing by three goals in Windom Thursday.

The Cardinals were scheduled to play a road game against Mankato West Saturday, but the contest was postponed until Jan. 25.

Luverne, 5-1-1 overall, hosts Waseca Saturday.

### LHS 4, Windom 1

The Cardinals raised their conference record to 3-1 with a three-goal road victory in Windom Thursday.

The score was knotted at one early in the second period, but Luverne outscored the Eagles 3-0 the rest of the way to earn its fifth win of the campaign.

Luverne, which received goals from four different players during the game, drew first blood in the contest when Rylee Olson found the net 5:18 into the game.

Windom erased the early deficit when Anna Volk tied the score at one 6:31 into the second period, but the rest of the game belonged to the Cardinals.

Reghan Bork snapped the deadlock when she registered an unassisted tally with 8:48 remaining in the second stanza.



John Rittenhouse photo/1206 lgh 2

Luverne sophomore Regan Feit charges out of the defensive zone with the puck during a Nov. 27 home game against Fairmont. The Cardinals rolled to a 7-1 victory over FHS.

Shelby Kracht made it a 3-1 game with a goal 1:43 later.

Luverne received a goal from Kamryn Van Batavia 5:11 into the third period to cap the scoring.

LHS, which sported a 28-18 advantage in shots on goal in the game, received a 17-save effort from Mallory Von Tersch.

Rozilyn Oye led the Cards with two assists, while Kracht,

Bork and Van Batavia added one assist each to the winning cause.

### LHS 7, Fairmont 1

The Cardinals picked up

their second conference win of the season when they squared off against Fairmont at the Blue Mound Ice Arena Nov. 27.

Luverne outshot the visitors 50-13 and received two-goal efforts from Van Batavia and Claire Baustian to highlight a six-goal victory.

The Cardinals gained the upper hand early by registering a pair of first-period goals.

Oye opened the scoring 7:33 into the game and Rylee Gee made it 2-0 with a power-play tally that came with 3:15 remaining in the opening stanza.

Fairmont made it 2-1 when Mackenzie Householder recorded a power-play goal 21 seconds into the second period, but LHS produced the next five goals to win the game handily.

Van Batavia netted her first goal of the game at the 10:12 mark of the second period before Baustian scored twice in a span of 2:08 to up the lead to 5-1.

Bork scored at the 6:49 mark of the third and Van Batavia capped the scoring with 2:46 left to play.

Cheyenne Schutz turned in a 12-save effort in goal for the Cards.

Van Batavia and Gee led the Cards with three and two assists respectively, while Kracht, Baustian and Bork chipped in one assist each to the winning effort.



John Rittenhouse photo/1206 gym 10

Luverne junior Meghan Mollberg produced a score of 7.35 on the floor during Friday's home meet against St. James. The Cardinals cruised to a 116.775-98.875 win in their season debut.

## Patriots pummel Knights

By John Rittenhouse

The Hills-Beaver Creek girls' basketball team opened a promising season by dismantling Russell-Tyler-Ruthton Nov. 27 in Hills.

The Patriots outscored the Knights in both halves of the game on the way to securing a 70-27 victory.

H-BC scored the first eight points of the game on the way to building a 14-2 advantage after Whitney Elbers buried a field goal at the 13:02 mark of the first half.

The Knights were unable to recover from H-BC's early onslaught as the Patriots continued to pad their lead in a first half that ended with the hosts sporting a 37-14 cushion after Sidney Fick capped the scoring in the stanza with a field goal that came with 30 seconds left.

The situation didn't get any better for R-T-R in the second half.

H-BC scored the first five points of the second stanza and went on to outscore the Knights 33-13 in the half to ice a 43-point conquest.

Fick (21 points, three steals and three blocked shots), Elbers (13 points and 12 rebounds) and Abby Knobloch (10 points) led the Patriots offensively.

Grace Bundesen turned in a six-rebound, three-assist effort for the winners, while Kenadie Fick added eight rebounds to the cause.

**Box score**  
K.Fick 0 0 5-6 5, Rauk 1 0 5-6 7, Birger 0 0 0-0 0, Spath 2 0 0-0 4, Hagen 0 0 0-0 0, Knobloch 5 0 0-0 10, S.Fick 8 1 2-5 21, Bundesen 1 1 3-4 8, Moser 1 0 0-0 2, Elbers 4 0 5-6 13.

**Team statistics**  
H-BC: 22 of 64 field goals (34 percent), 20 of 27 free throws (74 percent), 41 rebounds, 19 turnovers.  
R-T-R: nine of 49 field goals (18 percent), seven of 13 free throws (54 percent), 16 rebounds, 19 turnovers.



John Rittenhouse photo/1206 hgb 4

Senior Sidney Fick tossed in a game-high 21 points during a 70-27 home win over Russell-Tyler-Ruthton Nov. 27.

## Gymnasts win 2018-19 debut

By John Rittenhouse

The Luverne gymnastics team started the 2018-19 season in a positive way Friday at Luverne High School.

The Cardinals opened the season by locking horns with St. James Area.

Luverne stole the show as Cardinal athletes won all four individual events to highlight a 116.775-98.875 victory.

McKinley Nelson led the Cardinals to victory by claiming three event titles and winning the all-around championship with 32.675 points.

Along with placing second on the beam with a 7.7 effort, Witte won the vault (8.775), bars (7.55) and floor (8.65) crowns.

LHS also received an event title from Madigan Flom.

Flom, who shared second place with teammate Anna Huisman with 7.4 tallies on the floor, took top honors on the beam with a 7.8.

Huisman had a solid night for the Cards that included her placing third on the bars (6.0) and fourth on the vault (8.15) and second all-around (28.2).

Meghan Mollberg placed second on the vault (8.6) and fourth on the floor (7.35).

Ivy Hudson, Sydney Wicks and Melissa Teal also made key contributions to the winning effort.

Hudson placed third on the vault with an 8.4, Wicks third on the beam with a 6.95 and Teal fourth on the bars with a 5.05.



John Rittenhouse photo/1206 gym 8

Junior Meghan Witte won three event titles and the overall championship during Friday's home win over St. James.

The 1-0 Cardinals take on Fairmont-Martin County West Thursday in Welcome.

**Individual scores**  
Vault: Witte, 8.775; Mollberg, 8.6; Hud-

son, 8.4; Huisman, 8.15; Teal, 7.85.  
Bars: Witte, 7.55; Huisman, 6.0; Teal, 5.05; Flom, 4.3.  
Beam: Flom, 7.8; Witte, 7.7; Wicks, 6.95; Mollberg, 6.7; Huisman, 6.65.  
Floor: Witte, 8.65; Flom, 7.4; Huisman, 7.4; Mollberg, 7.35; Wicks, 6.75.

## Panthers open with 34-point victory

By John Rittenhouse

The Ellsworth girls' basketball team posted a victory during its 2018-19 debut in Okabena Nov. 27.

The Panthers squared off against Heron Lake-Okabena-Fulda to open the season.

Ellsworth dominated the scene by outscoring the Coyotes in both halves of a 69-35 victory.

The Panthers gained control of the game by rolling to a 35-15 lead in the first half.

When EHS outscored the Coyotes 34-20 in the second stanza, a 34-point conquest was complete.

Ashlyn Meester (21 points, three assists and three steals), Sierra Smith (14 points and 11 rebounds) and Kallie Chapa (10 points and 14 rebounds)

played well in the win for Ellsworth.

**Box score**  
Meester 4 2 7-8 21, Dreesen 2 0 3-6 7, K.Chapa 1 2 2-3 10, L.Chapa 1 1 1-2 6, Popkes 2 0 0-4, Custer 2 1 0-0 7, Smith 5 1 1-5 14.

**Team statistics**  
Ellsworth: 24 of 58 field goals (41 percent), 14 of 24 free throws (58 percent), 42 rebounds, 12 turnovers.



John Rittenhouse photo/1206 hgb 1

H-BC junior post Whitney Elbers draws contact from R-T-R's Jonni Biren during the season-opening basketball game in Hills Nov. 27. Elbers netted 13 points in a 70-27 win.

## Elbers gives H-BC girls extra weapon

Hills-Beaver Creek girls' basketball coach Kale Wiertzema may well be the envy of every other



### FROM THE SIDELINES

By John Rittenhouse, sports editor

who can play the post position, and Whitney helped us out when teams were focusing on defending Kourtney."

Rozeboom graduated from H-BC last spring, but Elbers seemed to hold her own without her post pal during the season opener against R-T-R last week.

Elbers basically dominated the first five minutes of the game and contributed 13 points and 12 rebounds to a 43-point victory.

"The biggest difference that I've seen in Whitney so far is that she is in a lot better shape than I thought she might be," Wiertzema said.

"She worked really hard in the first two weeks of practice because she knows we will need her to play more minutes for us this year."

Having players like Fick and Bundesen on the floor with her should help Elbers with her transition to the starting lineup.

She doesn't have to be the team's leading scorer in order for the Patriots to be successful.

"We don't necessarily need Whitney to be a scorer," Wiertzema said.

"Her role is to grab as many rebounds as she can and block as many shots as she can. We want her to think scoring first when she gets the ball down low, but she is a great passer too and that's another way she can help us. Defensively, Whitney is an absolute game-changer. We can do a variety of things on defense because we have Whitney and her ability to block shots protecting the basket."

Ultimately Elbers gives a good H-BC team an extra weapon to take advantage of.

That's encouraging news for the Patriots, who are hoping to improve over last year's 21-win season.

# Patriots win conference clash with EHS

By John Rittenhouse

Two girls' basketball teams from the Star Herald coverage area squared off against each other Friday in Hills.

The Hills-Beaver Creek Patriots entertained the Ellsworth Panthers for a Red Rock Conference clash that was the second game of the season for both squads.

The night belonged to H-BC, which upped its record to 2-0 after securing a convincing 69-25 victory.

H-BC gained control of the game by rolling to a 40-21 lead in the first half.

When the Patriots outscored the Panthers 29-4 in the second half, their 44-point conquest was complete.

Sidney Fick (19 points and eight rebounds) and Grace Bundesen (11 points, six rebounds and four assists) led the Patriots offensively.

Kenadie Fick added six assists and five steals to the winning cause, while Taryn Rauk chipped in five rebounds and four steals.

Ellsworth received a 10-point, six-rebound effort from Lizzie Chapa.

Kallie Chapa grabbed six rebounds for the 1-1 Panthers.

H-BC plays at Edgerton Public School Thursday, while Ellsworth plays in Adrian the same night.



John Rittenhouse photo/1206 hbc gb 2

Hills-Beaver Creek senior forward Grace Bundesen turned in an 11-point, six-rebound, four-assist effort during a 69-25 win over the Ellsworth Panthers Friday in Hills.

**Box score**  
Ellsworth  
Dreesen 2 0 0-0 4, K.Chapa 0 2 1-2 7, L.Chapa 2 1 3-4 10, Popkes 0 0 0-0 2, Smith 2 0 0-0 4.  
H-BC  
K.Fick 0 0 0-2 0, Rauk 1 0 3-4 5, Birger

**Team statistics**  
Ellsworth: nine of 34 field goals (26 percent), four of eight free throws (50 percent), 18 rebounds, 23 turnovers.

**H-BC: 30 of 72 field goals (42 percent), five of 12 free throws (42 percent), 39 rebounds, seven turnovers.**

## Bulldogs spoil Luverne's hockey opener Friday

By John Rittenhouse

The Luverne boys' hockey team opened the 2018-19 season Friday in Le Sueur.

The Cardinals squared off against Minnesota River in a Big South Conference showdown.

The score was tied at two after 17 minutes of play, but the host Bulldogs outscored LHS 3-1 in the final 34 minutes of play to secure a 5-3 victory.

Minnesota River, which outshot the Cardinals 41-28 in the game, gained the upper hand early when Hunter Wilmes

opened the scoring 1:36 into the contest.

Luverne fought back to gain a 2-1 edge by scoring twice before the 10-minute mark of the first period.

Tyler Roberts knotted the score at one with a goal at the 13:27 mark of the opening stanza before Mark Sterrett gave the Cards a one-goal lead with 7:04 left in the period.

Luverne, unfortunately, couldn't protect its advantage. The Bulldogs scored the next three goals of the game to open a 4-2 lead and went

on to prevail by two goals at game's end.

Minnesota River's Danny McCabe ignited the rally by registering a power-play goal with 6:22 remaining in the first period to knot the score at two.

Lane Schwarz regained the lead (3-2) for the Bulldogs when he scored 18 seconds into the second period and Jade Reicks made it a 4-2 game when he registered his first of two tallies at the 8:23 mark of the second stanza.

Luverne's Ben Serie capped the scoring in the second

period when he registered a power-play tally with 1:04 remaining, but that proved to be the last goal LHS would record in the contest.

Reicks iced Minnesota River's two-goal victory with a power-play tally 5:31 into the third period.

Luverne received one-assist efforts from Mark Sterrett, Mason Steensma, Austin Watts-Boll and Jacob Von Tersch.

Max Skattum made 36 saves in net for the Cardinals, who skate in Redwood Falls Thursday.

## Cards fall in second half

By John Rittenhouse

The Luverne Cardinals made their 2018-19 boys' basketball debut Friday at Southwest Christian High School in Edgerton.

Luverne turned in a solid showing during the first 18 minutes of play before falling 71-53 at game's end.

The Cardinals matched blows with the Eagles in a first half that ended in a deadlock with both teams registering 35 points.

LHS ran into foul trouble in the second half and couldn't keep pace with the Eagles, who took advantage of the situation by doubling Luverne's scoring output (36-18) in the final stanza.

Isaiah Bartels led the Cardinals with 21 points and grabbed five rebounds.

Matt Sehr collected five caroms and netted 11 points.

The 0-1 Cards play Fairmont in Marshall Saturday.

## CORRECTION

A correction needs to be made to the outline that ran under the photograph of the Luverne boys' basketball seniors inside the Winter Sports Preview that was a part of the Nov. 29 Rock County Star

Herald. Brayden Jacobsma is the senior on the left side of the photograph, not Brayden Tofteland as listed in the outline. We regret this error.

## BOWLING NEWS

**Thursday Bowling National League Nov. 29**  
Games won: Kougarettes 3 1/2, Three People 3, Bam Bams 3, Three Hole 1, Don't Know 1, Three Chumps 1/2.  
High Scratch Game Men: Mike Hoover 222; Billy Debates 209.  
High Scratch Game Women: Tammy Gehm 159; Kathy Matson 129.  
High Scratch Series Men: Mike Hoover 579; Billy Debates 561.

**High Scratch Series Women:** Tammy Gehm 355; Kathy Matson 353.  
**Team High Scratch Game:** Bam Bams 513; Don't Know 489.  
**Team High Scratch Series:** Bam Bams 1439; Don't Know 1332.  
**Team High Handicap Game:** Bam Bams 664; Three People 613.  
**Team High Handicap Series:** Bam Bams 1892; Three People 1715.



### Tia Hadler

**Sport:** Basketball  
**Position:** Guard  
**Parents:** Dawn Hadler  
**Favorite Subject:** English  
**Extra Curricular Activities:** Choir, track, colorguard, basketball  
**Future Plans:** Attend USD and pursue career in cardiovascular ultrasound.



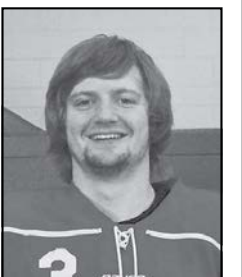
### Rylee Olson

**Sport:** Hockey  
**Position:** Wing  
**Parents:** Jeremy & Stacy Olson  
**Favorite Subject:** Biology  
**Extra Curricular Activities:** Hockey, volleyball, softball  
**Future Plans:** Go to Morningside for pre-med or pre-physical therapy and play softball.



### Skylar Dingmann

**Sport:** Hockey  
**Position:** Wing  
**Parents:** Dan & Monica Dingmann  
**Favorite Subject:** Math  
**Extra Curricular Activities:** Football, hockey, baseball  
**Future Plans:** Attend college.



Cracked Foundation?

AMERICAN WATERWORKS

Support Start Here

Free Estimates 800-795-1204

The Holidays Are HERE! SHOP at Family Fun Center for your GIFTS

Over 250 in Stock  
Buy Now — Pay Later  
blispay.com/familyfuncenter  
Family FUN CENTER  
2207 7th St. NW • Rochester, MN • 507-282-7682 • familyfuncenter.com

**Alaska** 7 Day Cruise & 7 Day Land Tour - Best of Alaska! 3 Departures - July 17 • July 31 • Aug 14, 2019

Seattle Tour • Pike Place Market • Boeing Aircraft Factory • Alaska's Largest Glacier Land Tours at Each Port • Extended Denali Park Tour • See More Wildlife! • Mt McKinley Center Pivot Irrigated Family Farm • Ultra Dome Rail Train • Dinner Theater • Sled Dogs Anchorage Trolley Tour • Riverboat Cruise • Eskimo Village • Trans-Alaska Pipeline Scenic Hatcher's Pass • Paddle Wheel Riverboat Cruise • Bush Pilot Piper Cub Demo

**Vietnam Battlefield Tour** March, 2019

See Famous Cities & Countryside • Cu Chi Tunnels • Reunification Palace • Hanoi Hilton Saigon River Dinner Cruise • LZ Baldy/Hill 63 • Marble Mountains • Quang Tri & former DMZ China Beach • Ben Hai River • Khe Sanh & Doc Mieu Base • Ha Long Bay Cruise • Luon Cave

**European Farm Tour** Visit 6 Countries July, 2019

World's Largest Flower Auction • Rhine River Cruise • Belgium Chocolate • Eagle's Nest Swiss Alps • Grain & Vegetable Farms • Salt Mine • Beautiful Alpine Scenery  
Call for Brochure 1-888-414-4177 RupiperTours.com

**INJURED AT WORK? DISABILITY DENIED?**  
Contact Us Today For Free Advice  
Workers' Compensation Long-Term Disability Social Security Disability  
Steve Fields Minnesota Attorney  
507-923-4169  
www.GetFields.com



Pipestone Pepsi | 1809 Forman Drive, Pipestone, MN 56164

# Star Herald CHURCH

## St. Catherine Catholic Church

203 E. Brown St., Luverne  
**St. Catherine Ph.: 283-8502; email: stcatherine@iw.net**  
 Thursday, Dec. 6: 9 a.m. Head Start. Friday, Dec. 7: 10 a.m. Mass at Poplar Creek and The Oaks. 5 p.m. Mass at St. Catherine. Saturday, Dec. 8: 10:30 a.m. Mass at St. Leo. 5 p.m. Mass at St. Catherine. Sunday, Dec. 9: 8:30 a.m. Mass at St. Catherine. 10:30 a.m. Mass at St. Leo. Tuesday, Dec. 11: 1-4 p.m. Mission Sewing. Wednesday, Dec. 12: 9 a.m. Mass at St. Catherine. 3:30 and 7 p.m. Faith Formation. 5 p.m. Program practice. Thursday, Dec. 13: 9 a.m. Head Start.

## Luverne Christian Reformed Church

605 N. Estey St., Luverne  
**Office Ph. 283-8482; Prayer Line Ph. 449-5982**  
**www.luvernrc.com — office@luvernrc.com**  
**Roger Sparks, Pastor**  
 Sunday, Dec. 9: 9:30 a.m. Worship Service. 10:50 a.m. Sunday School and Catechism classes. Noon Potluck. 6:30 p.m. Worship Service. Monday, Dec. 10: 9 a.m. Perk-up in Hills. Tuesday, Dec. 11: 9:30 a.m. Coffee Break/Story Hour. Wednesday, Dec. 12: 7 p.m. Youth Group.

## First Baptist Church

1033 N. Jackson St., P.O. Box 975, Luverne  
**Ph. 283-4091; email: fbcluv@iw.net — www.fbcluverne.org**  
**Walt Moser, Pastor**  
 Thursday, Dec. 6: 6 a.m. Men's Bible Study. 8 p.m. Worship Service on Channel 3. Sunday, Dec. 9: 9:15 a.m. Sunday School. 10:30 a.m. Morning Service. 3-7 p.m. Christmas Open House at Parsonage. NO Evening Service. Tuesday, Dec. 11: 7 a.m. Men's Bible Study. 7 p.m. Deacons' Meeting. Wednesday, Dec. 12: 6:30 p.m. Awana / Store / Socks for Union Gospel. Thursday, Dec. 13: 6 a.m. Men's Bible Study. 8 p.m. Worship Service on Channel 3.

## Grace Lutheran Church

500 N. Kniss Ave., Luverne  
**Ph. 507-283-4431; www.graceluverne.org — graceluverne@iw.net**  
**Ron Nichols, Pastor**  
 Thursday, Dec. 6: 9:30 a.m. MIA Christmas party. Friday, Dec. 7: 6:30 p.m. Worship on Channel 3. Saturday, Dec. 8: 5:30 p.m. Worship. Sunday, Dec. 9: 8:15 a.m. Radio Broadcast. 9 a.m. Christmas program. 10 a.m. Fellowship coffee/treats. 10:15 a.m. Adult Study and Sunday School. Monday, Dec. 10: 4:30 p.m. Worship on Channel 3. Tuesday, Dec. 11: 9 a.m. Staff Meeting. 6:45 p.m. Ministry meetings. 8 p.m. PPC meeting. Wednesday, Dec. 12: 7 a.m. Men's Bible Study. 3:30 p.m. Faithweavers. 5:15 p.m. Supper. 6 p.m. Woven Worship. 7 p.m. Chancel Choir rehearsal; Confirmation Grades 6-8. 7:30 p.m. Grade 9 Confirmation. 8 p.m. Exaltation rehearsal. Thursday, Nov. 13: 9:30 a.m. Rachel Circle at Centennial. 7 p.m. Priscilla/Elizabeth Circle at Judy F.

## Bethany Lutheran Church

720 N. Kniss Ave., Luverne  
**Ph. 507-283-4571 or 507-449-0291 or 605-215-9834**  
**pastorapalmquist67@yahoo.com**  
 Sunday, Dec. 9: 9 a.m. Sunday School. 9:15 a.m. Bible Class. 10:15 a.m. Worship with Communion. Wednesday, Dec. 12: 3:45 p.m. Catechism classes. 6 p.m. Soup Supper. 7 p.m. Advent Vespers. Thursday, Dec. 13: Noon Ladies Aid Christmas potluck.

## American Reformed Church

304 N. Fairview Dr., Luverne  
**Ph. 283-8600; email: office@arcluverne.org**  
**Mike Aitena, Pastor**  
 Thursday, Dec. 8: 5:30 p.m. Tumbling Tikes. Friday, Dec. 7: 6:30 a.m. Community Men's Bible Study. 4:30 p.m. REFIT Fitness. Saturday, Dec. 8: 7 p.m. Christmas Cantata; Union Gospel Mission Service. Sunday, Dec. 9: 9:30 a.m. Communion celebration. 10:50 a.m. Family Education. 7 p.m. Girls Night and Guys Night. Monday, Dec. 10: 6 p.m. Fellowship Hall reserved. Tuesday, Dec. 11: Noon Staff Meeting; Rebecca Circle. 5:30 and 6:30 p.m. Bible Study Fellowship. 7 p.m. Consistory meeting. Wednesday, Dec. 12: 4:30 p.m. REFIT Fitness. 5:30 p.m. Midweek Meal. 6:30 p.m. Pioneer Clubs; Junior and Senior Youth Groups. 7 p.m. Rachel Circle; Praise Team practice. Thursday, Dec. 13: 5:30 p.m. Tumbling Tikes.

## First Assembly of God Church

1075 110<sup>th</sup> Ave., 2 miles west of Luverne on County Rd. 4  
 Sundays: 9 a.m. Sunday School. 10 a.m. Morning Worship. 6:30 p.m. School of the Holy Spirit. Wednesdays: 7 p.m. Kids Connection; Men's Bible Study with Pastor Ken; Women's Bible Study with Pastor Gloria.

## Bethlehem Lutheran Church

Pastor Maggie Berndt-Dreyer  
 112 N. Main St., Hills  
**Ph. 962-3270**  
**e-mail: bethlehemluth@alliancecom.net**  
 Sunday, Dec. 9: 9 a.m. Worship at Tuff Chapel; Sunday School Christmas practice. 10:30 a.m. Communion at Bethlehem. 2 p.m. Village Tree of Lights. Tuesday, Dec. 11: 2:30 p.m. Bible Study at Tuff Home. 3:15 p.m. Bible Study at Tuff Village. Wednesday, Dec. 12: 9 a.m. Quilting. 6:30-8 p.m. Confirmation and Mentors. 7 p.m. Council Meeting. 7:30 p.m. Circle of Hope at Marilyn Nelson's home

## United Methodist Church

109 N. Freeman Ave., Luverne  
**Ph. 283-4529; email: luverneumc@iw.net**  
**Dorie Hall, Pastor**  
 Thursday, Dec. 6: 1-3 p.m. Rock County Food Shelf. Saturday, Dec. 8: 8 p.m. AA Meeting. Sunday, Dec. 9: 9 a.m. Coffee Hour; Adult Sunday School. 10 a.m. New United Church Service. Prayer Warriors after service. 4:30 p.m. Genesis/Revelation Bible Study. 6 p.m. ALIVE Youth Group — Family Night. Wednesday, Dec. 12: 6 p.m. F.U.E.L. and Confirmation. 8 p.m. AA meeting. Thursday, Dec. 13: 1-3 p.m. Rock County Food Shelf.

## First Presbyterian Church

302 Central Lane, Luverne  
**Ph. 283-4787; email: Firstpc@iw.net — www.fpcluverne.com**  
 Thursday, Dec. 6: 10 a.m. Worship Service on Channel 3. Sunday, Dec. 9: 9 a.m. Sunday School. 10:15 a.m. Worship. 11:15 a.m. Coffee Time; Music Staff. 4 p.m. Caroling. Tuesday, Dec. 11: 10 a.m. and 6 p.m. Worship Service on Channel 3. Wednesday, Dec. 12: 3:30 p.m. Youth Club. 5:30 p.m. Bells. 6 p.m. High School Fellowship. 6:15 p.m. Choir. 7:30 p.m. Deacons and Session. Thursday, Dec. 13: 10 a.m. Worship Service on Channel 3. 11 a.m. Rebekah Circle at Pizza Ranch.

## St. John Lutheran Church

803 N. Cedar St., Luverne  
**Ph. 283-2316; email: stjoh@iw.net**  
**www.stjohnlutheranluverne.org**  
**Gary Klatt, Pastor**  
 Thursday, Dec. 6: 2 p.m. Women's Society. Saturday, Dec. 8: 8:50 a.m. Worship with Communion. Sunday, Dec. 9: 9 a.m. Worship with Communion. 10:15-11:30 a.m. Christmas program practice. NO cards and games. 3:30 p.m. Youth Caroling at MJBH. Monday, Dec. 10: 7:30 p.m. Men's Club. Tuesday, Dec. 11: 6 p.m. Missionary Guild at Bluestem. Wednesday, Dec. 12: 9 a.m. Bible Study. 6 p.m. Advent Worship. 6:40 p.m. Supper. 7 p.m. Catechism; KFC; High School Youth Group; Catechism; Senior Choir.

## Living Rock Church

500 E. Main St., Luverne  
**Ph. 449-0057; www.livingrockswmn.org**  
**Billy Skaggs, Pastor**  
 Sundays: 10:30 a.m. Worship; Kids Rock Children's Ministry. 6 p.m. Youth Ministry. Life groups meet throughout the week.

## New Life Celebration Church

110 N. Oakley, Luverne  
**Ph. 449-6522; email: newlifecelebration@gmail.com**  
 Sundays: 9:30 a.m. Worship at 110 N. Oakley. Every third Thursday: 4:30 p.m. Food give-away at Senior Citizens Center. Bible Study groups meet at various times and days.

## Zion Evangelical Lutheran Church

305 E. 2<sup>nd</sup> St., P.O. Box 36, Hardwick  
 Thursday, Dec. 6: 3:30 p.m. Worship on Channel 3. Friday, Dec. 7: 3:30 p.m. Worship on Channel 3. Sunday, Dec. 9: 9:30 a.m. Adult Choir Practice. 9:45 a.m. Sunday School. 10:30 a.m. Worship; Sunday School Christmas Program; Adult Choir sings. 11:30 a.m. Meal in Parish Hall following program. Monday, Dec. 10: 1 p.m. Quilting. Tuesday, Dec. 11: 6:30 p.m. Elders Meeting. 7:30 p.m. Church Council. Wednesday, Dec. 12: 7 p.m. Advent Worship at Zion with Rev. Craig Grams. 7 p.m. Confirmation. 7:45 p.m. Choir practice. Thursday, Dec. 13: 3:30 p.m. Worship on Channel 3.

## Ben Clare United Methodist Church

26762 Ben Clare Ave., Valley Springs, S.D.  
**igtwb@WOW.net**  
**Bill Bates, Pastor**  
 Sundays: 9 a.m. Worship; 10 a.m. Fellowship; 10:30 a.m. Sunday School for all ages.

## First Lutheran Church

300 Maple St., Valley Springs, S.D.  
**Ph. (605) 757-6662**  
**Laura Phillips, Pastor**  
 Sunday, Dec. 9: 10 a.m. Sunday School; Worship Service with Christmas Cantata. 3 p.m. Advent Bible Study at Palisade.

## Palisade Lutheran Church

211 121<sup>st</sup> St., Garretson, S.D.  
**Ph. (507) 597-6257 — firstpalisade@alliancecom.net**  
**Laura Phillips, Pastor**  
 Sunday, Dec. 9: 9:30 a.m. Sunday School; 10:30 a.m. Worship Service at First Lutheran with Christmas Cantata. 3 p.m. Advent Bible Study at Palisade Lutheran. Wednesday, Dec. 12: 7 p.m. Youth Group at Palisade. Thursday, Dec. 13: 7 p.m. Palisade Council Meeting.

## First Presbyterian Church

201 S. 3<sup>rd</sup> St., P.O. Box 73, Beaver Creek  
**Ph. 507-935-5025**  
**Email: lori.firstpres@gmail.com**  
 Sundays: 9:30 a.m. Morning Worship.

## Sounds of Christmas

One of the things that marks the month of December as the preparation time for Christmas is the music.

Christmas music has been playing on the radio, in television commercials and in public places since before we even had time to finish all the leftover Thanksgiving turkey. Some people rejoice at this, and others bristle. But love it or hate it, it's unavoidable. Music helps us set the mood, remember the story of Christmas, and connect us to one another.

The Christmas story in Luke's gospel is full of songs as well. Mary's initial response when she learned that she would carry the Son of God into the world was to retreat to her relative Elizabeth, needing the comfort of a familiar face to help her process this big news. Yet once Elizabeth pointed out how much of a blessing this is, Mary responds in song. Luke 1:46-54 is known as the Magnificat, which is Latin for "magnifies" because she begins her song with "My soul magnifies the Lord." (Luke 1:46) Mary begins her song with praise and thanksgiving to God for choosing her for such a holy task, but then she uses her song to proclaim just how big of a deal God coming to live in the world as a human being is. Mary sings about how God scatters the proud, brings down the mighty from their thrones, lifts up the lowly, fills the hungry and sends the rich away empty. God topples expectations and turns social structures on their

## BUILT ON A ROCK

**By Reverend Maggie Berndt-Dreyer, Bethlehem Lutheran Church, Hills**

heads. Mary is in the perfect position to speak to this since she herself was an unwed young woman of humble stature, and yet she is the person God chooses to be the mother of Jesus. It's no doubt hard for her to wrap her head around. So perhaps she uses her own song to remind herself just what kind of God we have.

The Christmas story is one that changes the course of history forever. Jesus upends everything we think we know about what it means to be powerful as he befriends the outcasts and upsets the ruling powers enough to end up dead on the cross. And when he lives again in three days, he continues to defy our expectations and rewrite the rules, so death is no longer the end. Humanity, though messy and hard, is not a lost cause. God comes to us through people we wouldn't expect and surprises us with grace in the best way possible.

Whether you can't wait for the Christmas music to stop, or sing along as loud as you can, God comes to dwell with you, so that you may be lifted up and filled with good things.

## Magnolia United Methodist Church

501 E. Luverne St., Magnolia  
**Church Ph. 507-483-2492; email: adrmagumc@gmail.com**  
**www.facebook.com/adrianmagnoliaumc**  
 Sundays: 9 a.m. Magnolia Worship Service. Wednesdays: 6:30 p.m. Confirmation.

## Steen Reformed Church

112 W. Church Ave., Steen  
**Ph. 855-2336**  
**Jeremy Wiersema, Pastor**  
 Sundays: 9:30 a.m. Worship; service broadcast on KQAD. 10:45 a.m. Sunday School. 6 p.m. Youth Group. Evening worship at 6 p.m. first and third Sundays. Wednesdays: 7 p.m. Midweek.

## Hills United Reformed Church

410 S. Central Ave., Hills  
**Office Ph. 962-3254**  
**hillsurc@alliancecom.net**  
**Alan Camarigg, Pastor**  
 Sundays: 9:30 a.m. and 6 p.m. Worship Services.

**These Weekly Church Page Messages are contributed to God's Work through the Church and by these concerned and responsible citizens & businesses:**

Call Rick or Chantel to place your ad!  
**283-2333**

**Tuff Memorial Home, Retirement Apartments & Tuff Village**  
 "A Home Where Residents SMILE"  
 Hills, Minnesota  
**Phone 507-962-3275**

**I-90 in Luverne, MN**  
**507-283-9171 • 1-800-634-7701**

Read us online!

**Rock County STAR HERALD**  
**www.Star-Herald.com**

*Trust In Him*



**Pizza Ranch**  
 110 E. Main, Luverne, MN  
**Phone 507-283-2379**

**MANLEY**  
 TIRE & OIL SERVICE  
 Manley Minnesota  
**1-800-615-3704**  
 Open six days a week - Closed on Sundays  
 To God be the Glory.

**CWG**  
**Business Insurance.**  
 Tri-State Region *Period!*

**Rock County STAR HERALD**  
 Luverne, MN • 507-283-2333

*Advertise Here*

**Luverne ANNOUNCER**

**To Advertise Call 283-2333**

**Buffalo Ridge INSURANCE**  
**507-283-2381** www.buffaloridgeins.com E-mail: info@buffaloridgeins.com

**McClure Electric**  
 Alan M. Aanenson, owner  
**Farm, Home & Commercial Wiring**  
 Luverne, MN **Phone 507-283-4716**

**303 E. Main, Luverne, MN**  
**507-283-4463**  
 www.fmbank.com

**HILLS STAINLESS STEEL & EQUIPMENT CO., INC.**  
 506 W. Koehn, P.O. Box 987, Luverne, MN  
**PHONE 507-283-4405**  
*Church is Important - Please Attend!*

**116 E. Main St., Luverne 507-283-2366**  
**S. Hwy. 75, Luverne 507-283-9131**  
**Main St., Beaver Creek 507-673-2333**  
 Member FDIC www.minnwestbank.com

**-ENGBRETSON CHAPEL-**  
**507-283-2777**  
 www.HartquistFuneral.com  
*"Let our family help your family"*  
 Serving the Luverne and Surrounding Communities

**Tollefson Publishing**  
 117 W. Main  
 Luverne, MN 56156  
**507-283-2333**



# Star Herald CLASSIFIEDS

Page 6B December 6, 2018

## EMPLOYMENT

Full-Time Help Wanted in Meat Department. Cutting and wrapping meat. No experience necessary, paid overtime, insurance is available and also other benefits. Contact Chad or Julie at V&M Locker, Leota, MN 507-443-5372 or 507-227-3862. (11.21-12.13)

## EMPLOYMENT

Roos & Son is hiring for full-time milk haulers. Must have a CDL and tanker endorsements. To apply contact Scott Roos at 507-993-8801. (11.11-12.20)

Roos & Son is hiring for week-end milk haulers. Must have a CDL and tanker endorsements. To apply contact Scott Roos at 507-993-8801. (11.11-12.20)

## EMPLOYMENT

Ellsworth Public School is accepting applications for a full time Paraprofessional. Applications can be found on the school website, picked up in the office or by calling 507-967-2242. (11.21-12.13)

[www.Star-Herald.com](http://www.Star-Herald.com)  
[www.Star-Herald.com](http://www.Star-Herald.com)  
[www.Star-Herald.com](http://www.Star-Herald.com)

## CARDS OF THANKS

A big thank you from the Luverne Backpack Board to the Rock County DFL volunteers who filled the bags for the month of November. "Enriching children's lives one bite at a time" (12.2-12.6)

## SEEKING

I am looking for someone to remove snow in Luverne. Call me if interested at 507-283-2545 (11.29-12.2)

## RENTALS

Large apartment upstairs, downtown Luverne, utilities paid, stove and refrigerator included. References required, no pets, no smoking. Call 507-227-1589. (tc)

For Rent: one-bedroom apartment near downtown Luverne. \$290 per month. No pets. Call 605-201-6427. (tc)

## FOR SALE

For Sale: 5 month old Ashley oversized leather reclining couch. Brown in color. Was \$800 new, asking \$400 or best offer. Located in Jasper. Call 605-961-7006 or 507-215-7792. (11.29-12.16)

For Sale: two power reclining lift chairs. Just like new. Brand name is "golden" brown in color. Second chair brand name "Best" Blue in color. \$500 each or best offer. Call 507-220-4090. (11.18-12.6)

## MISCELLANEOUS

HAVE A UNIQUE SERVICE OR BUSINESS? Get the word out to over 1.4 million households. Call WIDE AREA CLASSIFIEDS today, 507-359-7326. (tc)

### Sanford Luverne Medical Center

is currently accepting applications for FT (Full-Time), PT (Part-Time) and PRN (Part-Time as Needed) positions:

- ASSOCIATE MAINTENANCE MECHANIC - FT
- MAINTENANCE MECHANIC - FT
- HOUSEKEEPING - PT, PRN
- LICENSED ADDICTION COUNSELOR - PT
- PATIENT CARE TECHNICIAN - FT, PT, PRN
- RN, INPATIENT - PRN
- RECEPTIONIST - PRN
- PARAMEDIC - FT

To apply, visit [sanfordhealth.jobs](http://sanfordhealth.jobs), search "Luverne" in the location search bar.

**SANFORD**

Luverne

877-673-0854

EE01AA

## HELP WANTED

### FULL TIME POSITION OPEN

#### General Plant Operations

#### Light Mechanical

#### Product Delivery

**DE KAM SEED & FERTILIZER LLC**  
**EDGERTON**  
**Darrin @ 507 442-6991**

## CONCRETE FLATWORK SUPERINTENDENT

K & M Concrete is searching for a Concrete Flatwork Superintendent to join our growing company.

### Summary

The Concrete Superintendent will be responsible for the planning, coordination and supervision of all activities of multiple jobsites. The Superintendent must be a skilled manager and organizer with the ability to decisively lead and motivate a crew in a fast paced environment, plan well, expertly execute work, and ensure personnel and job site safety.

### Responsibilities

- Safely manage projects on-site to produce quality workmanship within budget and schedule
- Ensures all company policy, procedures and standards are enforced at the project site
- Build and maintain good relationships with customers, owners, and subcontractors
- Responsible for all project safety
- Plans and supervises all activities of foremen and crews
- Effectively manage labor, material and equipment resources
- Maintain all paperwork needed for jobsite and employees

### Requirements

- At least 5 years experience leading a concrete crew of 10-15 people
- Experience with footings, walls, and flatwork - FLATWORK highly desirable
- Ability to plan day to day operations, as well as work with management to forecast schedules
- Valid driver's license with ability to obtain a CDL
- Travel
- Ability to read blueprints, plans, and specifications
- Excellent communication skills
- Bilingual in Spanish and English a plus
- Ability to work both independently and as a team player

Salaried up to 100K a year, health insurance, company match simple IRA, company pickup, company paid hotel, per diem, phone, and annual bonus potential.

If interested please contact Kristi at:

Email: [kristi@kmconcreteinc.com](mailto:kristi@kmconcreteinc.com)  
K & M Concrete Construction, Inc.  
235 Industrial St.  
Edgerton, MN 56128  
Phone: 507-442-4855

**K&M**  
**CONCRETE**  
**CONSTRUCTION**

## HIRING

### Feed Mill Manager

Must have experience working in a feed mill.



Call 507-483-2245 for more information.



The Tuff Memorial Home is currently hiring a **Social Services Coordinator 7am - 3:30pm, Mon.-Fri.;** **Business Office Manager - 32 hours/week** and an **Evening Cook - Full Time.** If interested, contact Eli Ripley at 507-962-3275. or email [eripley@tuffmemorialhome.com](mailto:eripley@tuffmemorialhome.com)

**Competitive Wage**  
**Full Benefits**  
**Pension Plan**  
**Friendly Atmosphere**

## HELP WANTED Blue Mound Area Theatre PT EXECUTIVE DIRECTOR

The Blue Mound Area Theatre (Palace Theatre), a 501 (c) 3 non-profit corporation is now accepting applications for a part-time Executive Director to manage the day to day operations of the Historic Palace Theatre in Luverne, MN.

### Duties:

- Technical theater operation: Sound, lights, rigging, digital projector, concessions and ticketing.
- Event management: Liaison to artists, performers and production companies.
- Program Development: Work with programming committee to schedule events. Book movies.
- Staff and volunteer management.
- Budget development and financial reporting.
- Work with regional and state arts organizations.
- Grant writing.
- Oversee facility maintenance and cleaning
- Advertising and promotion.
- Attend monthly board meetings

### Qualifications:

- At least a year of relevant experience.
- The ability to lift 40lbs.
- Management or theater degree a plus.



International Quality

**PALACE**  
**THEATRE**

Interested? Mail or email your resume to:  
Palace Theatre  
PO Box 541  
Luverne, MN 56156  
[luvernepalace@gmail.com](mailto:luvernepalace@gmail.com)

**K&M**  
**CONCRETE**  
**CONSTRUCTION**

PO Box 236  
235 Industrial Street  
Edgerton MN 56128  
office: 507-442-4855  
fax: 507-442-5110  
email: [info@kmconcreteinc.com](mailto:info@kmconcreteinc.com)  
[www.kmconcreteinc.com](http://www.kmconcreteinc.com)

## HELP WANTED!

K & M Concrete is looking for Concrete Foremen, Finishers, and Laborers to join our growing company.

We will train in English or Spanish.  
Pay starts at \$15/hour for laborers.  
More if you have experience.

Benefits include: health insurance, health savings account, company match retirement, per diem, company paid hotel and annual bonus potential.  
Travel is required.

If interested please contact Kristi at  
[Kristi@kmconcreteinc.com](mailto:Kristi@kmconcreteinc.com) or 507-442-4855  
Go to our website [www.kmconcreteinc.com](http://www.kmconcreteinc.com)  
Stop by our office in Edgerton.



## Papik picks of the week...



**2016 Buick Enclave Premium**  
50K • Stock #145901N **save \$3,000**  
Was \$31,990 Now \$28,990



**2018 Dodge Journey GT**  
14K • Stock #345608Z **save \$3,000**  
Was \$22,990 Now \$19,990



**2016 GMC Sierra 1500 SLT**  
14K • Stock #346427N **save \$3,000**  
Was \$39,990 Now \$36,990



**2018 GMC Yukon XL Denali**  
32K • Stock #134365N **save \$3,000**  
Was \$61,990 Now \$58,990

**283-9171**

**PAPIK.COM** I-90 Luverne, MN 56156



Rock County  
**STAR HERALD**

**Luverne**

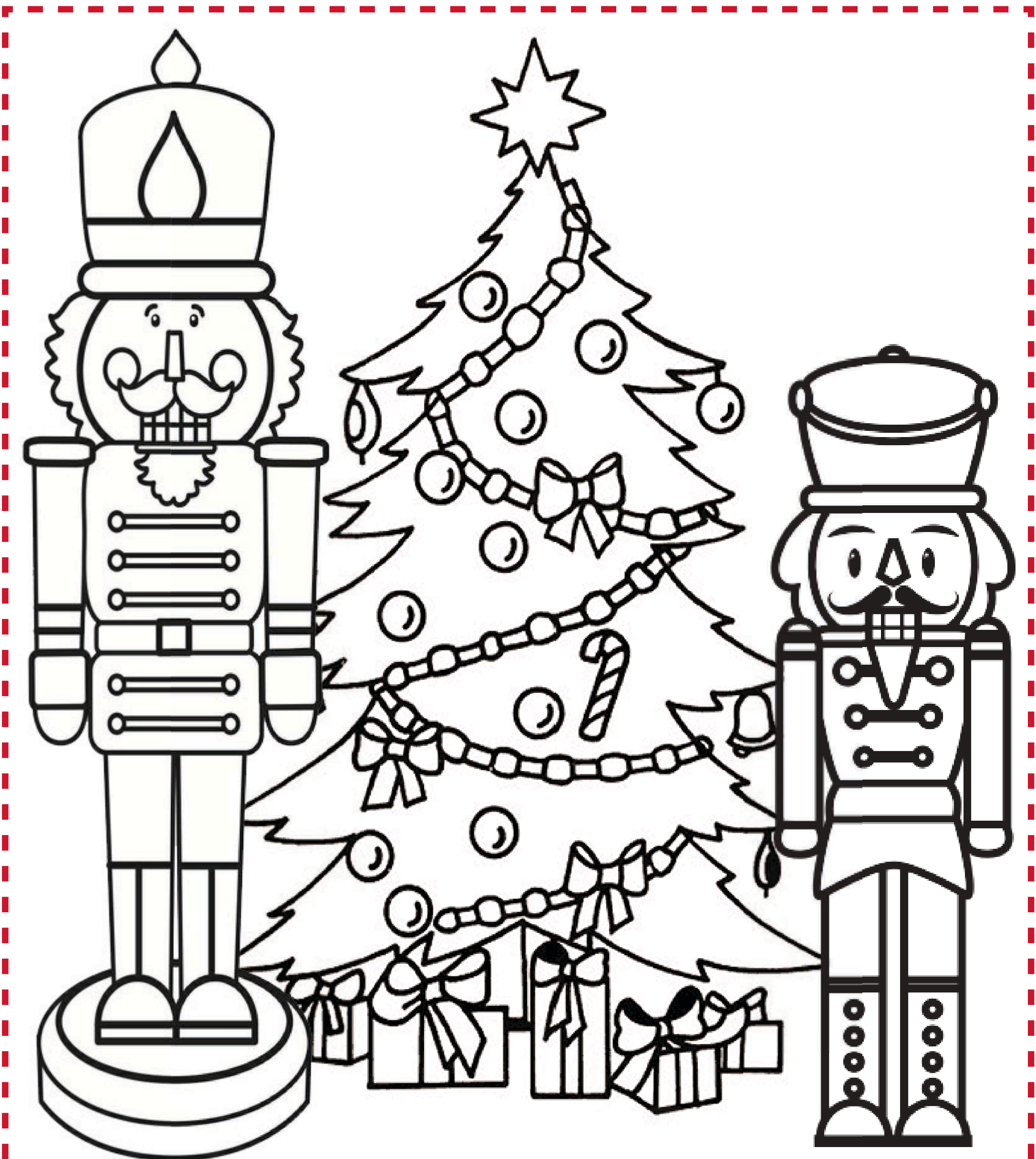
Area Chamber & CVB

# Christmas Coloring Contest

## RULES

1. Contest is open to children ages 4 through 9.
  2. Color the picture below with paints, markers, crayons or colored pencils.
  3. Decision of judges is final.
- ALL entries must be returned to the Star Herald office no later than **NOON ON WEDNESDAY, DECEMBER 12.**  
Please return your colored entry to the Star Herald office rolled or flat - **DO NOT FOLD.**

PRIZES WILL BE AWARDED IN  
EACH AGE CATEGORY!  
WINNERS ANNOUNCED IN THE  
DECEMBER 20 STAR HERALD



NAME \_\_\_\_\_ ADDRESS \_\_\_\_\_

AGE \_\_\_\_\_

PARENTS' NAME(S) \_\_\_\_\_

PHONE NUMBER \_\_\_\_\_

# Holiday Open House

Thursday, December 13 9:00am - 5:00pm

At all locations!

Luverne

Hills



Front row: Don Bryan, Ryan DeBates, Tyler Bush  
Back Row: Chelle DeGroot, Dani Klooster, Brent Gorter, Nicie Bosch, Carol Nelson, Sheryl Klaassen



Front row: Amanda Metzger, Heidi Van Wyhe, Tim Plimpton, Kylah Jellema, Marlys Rauk  
Back Row: Trista Bosch, Josh Tollefson, Kathy Fick, Caleb Ellingson, Angie Sjaarda, Aaron Erickson

Ellsworth



Front row: Laurie Deutsch, Jen Debeer, Kelly Kramer  
Back Row: Dorene Chapa, Dave Huisman, Mark Iveland, Theresa Theesfeld



**Exchange**  
STATE BANK  
Local. Dependable. Strong.

(507) 967-2570  
Ellsworth, MN

(507) 962-3250  
Hills, MN

(507) 449-6000  
Luverne, MN

Member  
**FDIC**

Christmas Season is approaching...

**GIVE THE GIFT THAT LASTS ALL YEAR!**

Rock County  
**STAR HERALD**



a subscription to the  
**Rock County Star Herald**  
or  
**Star Herald Online Edition**

to subscribe visit:  
**STAR-HERALD.COM**  
or call: **283-2333**

