



Rock County STAR HERALD

Rock County's oldest business, printing since 1873

Thursday, November 29, 2018

Luverne to celebrate Winterfest this weekend

By Lori Sorenson

Luverne's Winterfest celebration is this weekend, and event details are adding up to a festive occasion, according to Chamber Director Jane Wildung Lanphere.

She said Saturday night's USO Show with Bob Hope re-enactor Bill Johnson at the Palace will have broad holiday appeal among locals and visitors alike.

It starts at 7:30 p.m., also featuring the Andrews Sisters (Sandbulte sisters) and Marilyn Monroe actress and vocalist Jorie Kosel. The show returns Sunday for a 2 p.m. matinee.

"It's going to be a really fun event, with all new music and all new Christmas songs," Lanphere said.

"It will be a great way to come together with friends and family ... and what better gift than to bring them to the show?"

She said the Fulda Big Band was eager to be part of the show because it typically performs in the summer, and this will be a chance to perform holiday music.

The weekend lineup starts Friday with the Jim Oliver puppet show and story hour at the library in the morning, wine and beer tasting at the liquor store, and a cribbage tournament at the Eagles Club Friday night.

New to the Friday night lineup is Holiday Trivia at Take 16, hosted by the Rock County Community Library.

The Winterfest committee of the Chamber will provide prizes, but the library will come up with holiday trivia questions.

The Saturday Winterfest Arts and Crafts Show in the Luverne Elementary School commons and gym features several new vendors along with the popular Myhre Studio photographs with Santa (to benefit the food shelf) and the student-led Santa's Workshop.

The Hinkly House is decorated for the holidays and features needle felt displays by Luverne artist Carol Ceynowa.

The historic Victorian home will host an open house from 1 to 4 p.m. Saturday (see the related story).

Finally, Winterfest weekend will wrap up with the sounds and lights of Southwest Minnesota CEO Snow and Glow at Luverne City Park.

"The students have really put their hearts and souls into that event," Lanphere said.

It will feature lighted displays, music, hot chocolate, horse-drawn sleigh rides and a Santa appearance.

Details appear in this week's Luverne Announcer and on the Luverne Area Chamber website.



Mavis Fodness photo/1129 ALS Tofteland

The Tofteland family is working to bring awareness to and raise money for ALS research. They are Martha (sitting, left) with Liv, 3, and Ryan with Finn, 6, and Julie and Steve in back.

A personal battle

Toftelands take on ALS by sharing their story and supporting research

By Mavis Fodness

A Luverne High School graduate hopes his efforts to bring awareness to and raise money for ALS research will help others like him lead better lives.

Ryan Tofteland, LHS Class of 1998, was diagnosed with amyotrophic lateral sclerosis in August 2016.

Currently, ALS has no effective treatment or cure.

In the time he has before the disease ends his life, Tofteland and his family are determined to assist where they can.

They were the featured family for last month's "Light the Journey Gala," organized by the ALS Association of Minnesota, North Dakota and South Dakota Chapter.

"Their story is obviously heartbreaking," said ALS spokesman Mike Stephenson.

"They are determined to raise awareness

and funding for ALS research in hopes that other families will not have to experience the physical, financial and emotional consequences of this disease."

Video puts viewers in Tofteland's shoes

Gala attendees were introduced to Ryan and his family through a nine-minute video.

The video can be viewed on YouTube and is titled "Living with ALS: Ryan and Martha Tofteland's Story."

"We've found that sharing personal stories of those impacted by the disease has been the most impactful way to get others involved," Stephenson said.

In the video, the eldest son of Steve and Julie Tofteland of rural Luverne explains his initial ALS symptoms were subtle, beginning

Tofteland family takes on ALS/see page 2A

State seeks design bids for Luverne armory

By Mavis Fodness

Design plans are coming into focus for the joint Luverne-Pipestone Minnesota National Guard Readiness Center coming to Luverne in 2020.

State officials announced more than a year ago that Luverne would be the site of the new facility, and interviews with potential architects are scheduled for next month.

According to a request for proposals issued by the state Department of Administration Designer Selection Board, Nov. 12 was the deadline for potential parties to notify the state of their interest.

The board will select qualified applicants and schedule interviews in mid-December.

Minnesota National Guard officials selected Luverne as the new armory site at an Oct. 23, 2017, Leader's Briefing by now-retired Adjutant General Richard Nash.

Luverne's selection was influenced by a unique funding proposal through the K.A.H.R. Foundation.

Foundation founder and retired Minnesota National Guard Brevet Colonel Warren G. Herreid II approached guard officials in early 2017 with a proposal to use private funds to assist in the construction of the new National Guard armory.

Herreid pledged \$5 million toward the proposed \$15.2 million facility if it was located in Luverne.

The pledge accelerated plans for the joint preparedness center from 2026 to potential occupancy in late 2021.

The 47,413-square-foot facility will be constructed on 15 acres in the Luverne Industrial Park, directly west of Papik Motors and will face Interstate 90.

The one-floor facility is expected to contain an office area, conference classrooms and learning center, assembly hall large enough for two full-size basketball courts, commercial kitchen, locker rooms with showers and toilets, fitness area, information technology space, military unit storage rooms including arms vault, mechanical, electrical and equipment rooms.

Site improvements include a parking lot for soldiers' personal vehicles and a fenced-in military parking compound along with sidewalks, curb and gutter.

The facility is required to have a minimum life of 50 years, according to the proposal request.

After architect interviews are conducted Dec. 11, the selected company begins the yearlong design

Armory seeks design bids/see 5A

Luverne-Adrian hockey pairing to end in four years

By Mavis Fodness

Luverne School District will continue the hockey pairing program with Adrian Public Schools for another four years.

Luverne School Board members unanimously approved the agreement at their Monday night meeting (moved from Thursday due to Thanksgiving).

Four students from the Adrian School District are enrolled in the boys' hockey program for the current season. There are no girls from Adrian competing in the program.

"So these are the last four at this point in time," said Superintendent Craig Oftedahl.

Under the new four-year agreement approved Monday night, any

Adrian student eligible for the high school hockey program can join the respective girls' or boys' hockey teams until 2023, when the agreement will sunset.

After that, a player would have to be a Luverne High School student to play hockey in Luverne.

"If anybody new joins, they would have to open enroll or whatever they want to do," said board member Colleen Deutsch. "They have plenty of time to make those decisions."

Beginning this season, Adrian Public Schools will also pay a prorated amount based on the number of their students participating in

Hockey pairing/see page 3A

Hinkly House decorated for Winterfest



Lori Sorenson photo/1129 hinkly art santa's merry carnival

Carol Ceynowa's featured needle felt display in the Hinkly dining room is a circus setting with an elephant, giraffe, bear, puppy and other performing animals from the vintage pop-up book, "Santa's Merry Carnival."

By Lori Sorenson

Luverne's Victorian Hinkly House is decorated for Christmas and ready for holiday visitors, according to volunteer Diane Jauert.

"It's an amazing, lovely home that was donated to the county by the Hinkly family, and it has a wonderful history behind it," she said.

The home on North Freeman Street will be open from 1 to 4 p.m. Saturday, Dec. 1, during Luverne's annual Winterfest weekend festivities.

Visitors can enjoy hot apple cider, coffee and desserts in the elegant Hinkly dining room and tour the house that was once occupied by one of Luverne's most influential families.

This year, holiday visitors will also enjoy needle felt displays by

Hinkly needle felt/see page 3A



COMMUNITY CALENDAR

Meetings

Blue Mound Quilters will meet for their Christmas party at 6 p.m. Monday, Dec. 3, at the Luverne Pizza Ranch in the small party room. Bring a fat quarter for a Christmas exchange and your finished challenge in a brown bag.

Springwater Township Board will meet at 7 p.m. Tuesday, Dec. 4, in the new township hall.

Rock County Township Association Annual meeting will be at 1 p.m. Friday, Dec. 7, in the Rock County Library. All townships are encouraged to have representation at this meeting.

Blue Mound Cemetery Association Christmas Party will be at 6 p.m. Sunday, Dec. 9, at the home of Dick and Dolly Remme.

Sanford Luverne Pink Ladies will meet for a potluck lunch at noon Monday, Dec. 10, in the Sanford Luverne Blue Mound meeting room. Bring a dish to share and your own tableware. Call 507-283-2297 with questions.

Lady Luverne Red Hats Christmas party will be at 5 p.m. Tuesday, Dec. 11, at The Bluestem in Luverne. RSVP to Connie at 283-8470 by Dec. 8.

Narcotics Anonymous meets at a new time: 7:30 p.m. Tuesdays and Fridays in the basement of St. Catherine Catholic Rectory, 203 E. Brown St., Luverne. Use east door. Call 507-220-0137 with questions.

Women's Alcoholics Anonymous meets at 8 p.m. Mondays in the United Methodist Church.

Alcoholics Anonymous meets at 8 p.m. Wednesdays and Saturdays in the United Methodist Church, Luverne. Call 605-321-4324.

Alcoholics Anonymous meets from 8 to 9 p.m. every Tuesday in Runals Hall, Edgerton. Call 507-215-2956.

'Tree of Lights' scheduled

The Luverne Hospice "Tree of Lights" lighting ceremony is set for 5:30 p.m. Thursday, Nov. 29, at the corner of Main Street and Highway 75.

The **Adrian** ceremony is at 4:30 p.m. Sunday, Dec. 9, at the Adrian Fire Hall. The **Hills** ceremony is at 2 p.m. Sunday, Dec. 9, at Tuff Village.

Call the Hospice office at 283-1805 with questions.

Register for BQA/TQA by Nov. 30

BQA/TWA training for all cattlemen is Tuesday, Dec. 4, at Take 16 brewery in Luverne. Registration is at 6 p.m. with a meeting at 6:30 p.m. Cost is \$10, with free admission for Rock-Nobles Cattlemen's Association members. RSVP by Nov. 30 to Rock Vet Clinic at rockvet@iw.net or call 507-283-9524.

Register by Nov. 30 for bus trip

Luverne Community Ed is trying a new venue for a dinner theatre bus trip. Enjoy Daytrippers Dinner Theatre (located near the Mall of America) presenting "Ain't Retirement Grand" on Sunday, Dec. 9. Fee is \$85. Register by Nov. 30 by calling Community Education office at 507-283-4724.

Middle/High School concert Dec. 7

The Luverne Middle/High School choir concert will be at 7:30 p.m. Friday, Dec. 7, in the high school gym. The sixth-grade choir, seventh/eighth-grade choir, ninth/tenth grade girls' choir and high school concert choir will perform music of the season. Admission is a freewill donation to the Luverne Backpack Program.

Christmas Cantata benefit Dec. 8

The Carnegie Minstrels choir and orchestra will present the Community Christmas Cantata, "Let There Be Christmas," at 7 p.m. Saturday, Dec. 8, at the American Reformed Church in Luverne. The event is a benefit for the Rock County Foodshelf. Cost is \$10 for adults and \$5 for age 12 and under.

Students offer 'Sounds of Christmas'

The Luverne Street Music students will present "The Sounds of Christmas" Dec. 8 at the Palace Theatre. Show times are 1:30 p.m., 4 p.m. and 6:30 p.m. Cost is a donation.

Hardwick Santa Claus Day Dec. 8

Hardwick Community Club will host Santa Claus Day from 2 to 3:30 p.m. Saturday, Dec. 8, at the Hardwick Legion Hall.

Jim Oliver will kick off the free event at 2 p.m. with a puppet show. From 2:30 to 3:30 p.m. will be a cupcake walk, make and take crafts and cookie decorating. Mr. and Mrs. Claus will be available for pictures from 2:30 to 3:30 p.m.



Friends and family of Ryan and Martha Tofteland participated in the 2018 "Walk to Defeat ALS" in the Twin Cities. They donned matching red T-shirts with binary numbers representing R-A-T, Ryan Tofteland's initials and the name of their team. The group raised more than \$69,000 to support research, an ALS association chapter record.

Submitted photo

Toftelands take on ALS/continued from page 1A

with the feeling his left foot was "a little off."

A relentless search for a cause led the Toftelands to the Mayo Clinic in Rochester where they learned of the ALS diagnosis in its early stages and its bleak outlook.

Half of the more than 6,000 people in the U.S. diagnosed with ALS each year live at least three years after the initial diagnosis, according to information supplied by the ALS chapter.

Twenty percent of those with ALS live five years or more after diagnosis and only 10 percent live more than 10 years.

"No matter who it hits, it's going to rock that family," Martha said in the video. "His pace is rather slow ... There are families that don't get that time we have."

ALS is more commonly known as Lou Gehrig's disease and is a progressive neurological condition that damages the motor neurons in the body.

As the neurons die, muscles lose connection with the brain that initiates and controls movement. ALS progresses to affect a person's ability to walk, dress, speak, swallow and eventually breathe.

From his left foot feeling "a little off" more than two years ago, the disease now affects both of Tofteland's legs and he is no longer able to walk on his own. He gets around in a motorized wheelchair and needs considerable help with daily routines.

Care consumes the Tofteland family's lives

Martha is Ryan's full-time caregiver, a role she assumed this summer.

The couple devised an

"It has been really neat to see everyone rally and take something that hurts so much ... as an opportunity to show their love for someone they care about and who would be there for them."

— Lynden Reder, family friend

hours-long morning ritual to stretch Ryan's muscles and to dress for the day. The stretching is completed multiple times a day to alleviate the muscle stiffness caused by the ALS.

Up until May, Ryan continued to work as a software developer at home and in the office a couple of afternoons a week.

A slip and fall in the shower resulted in a broken femur and ended his ability to walk even short distances.

Shortly after the diagnosis, Martha's mother, Shirley Hemenway, moved into the couple's Orono home to help with their young children, Finn, now 6, and Liv, 3.

"You could see there was a need," she said in the video. "There is no way they could do it without a third adult."

And more adult help is planned for the future.

Over the Thanksgiving weekend when the Toftelands traveled to Ryan's childhood home south of Luverne, family members sat around the table and devised a long-range care plan. It includes help from Ryan's parents and his siblings Jason, John and Rachel.

The welfare of the couple's young children is a high priority.

"The toughest part mentally and emotionally is being able to do less and

less with the kids over time," Ryan said in the video.

"Answering, 'When are you going to get better?' is one of the ways we can kind of be honest with them and say, 'You know what? This probably isn't going to get better.'"

Research, fundraising moves family toward hope

While creating awareness of ALS and its devastating effects, Ryan is also participating in an ALS clinical trial through the Mayo Clinic with hopes that his participation helps researchers unlock some of the disease's mysteries.

His last stem cell treatment occurred in October with the trial slated to finish early next year.

The treatment hasn't hindered the ALS progression.

"The trial was something we hoped will help me but also help general research," Ryan said. "There is a lot of momentum in research right now."

Family and friends are helping to keep the momentum going by raising research funds through the "Walk to Defeat ALS" conducted annually the past 17 years in the Twin Cities.

"It has been really neat to see everyone rally and take something that hurts so

much," said Lynden Reder.

"But take it as an opportunity to show their love for someone they care about and who would be there for them."

Reder is also a Luverne graduate.

He is part of the ALS fundraising team calling themselves the "RAT Pack," devised from Tofteland's initials.

In 2018 RAT Pack raised a chapter record \$69,583 toward ALS research.

"(This) is the most ever raised by a single team in the history of the event at our chapter," said spokesman Stephenson. "That money is going to go a long way in the fight against ALS."

The event raised a total of \$488,298.

The ALS association helps couples like the Toftelands with resources and answers questions in preparation for the disease's progression.

Ultimately, the association is motivated to find a treatment that moves ALS from a deadly disease to a chronic one, slowing the disease so people can live their lives and not just battle a disease.

The Tofteland family embraces the association's mission.

"The beauty of it is it creates hope," Ryan's dad Steve said. "It is so important to donate ... so vibrant right now. It would be very sad to see if no one decided to help just when things are just starting to break to a more positive outcome."

Donations can be made to the ALS Association through the RAT Pack page at the website: <http://webmn.alsa.org/goto/theRATpack>.



Dial-A-Specialist

Your One Stop Guide to Local Businesses

 <p>DR. MICHAEL SMITH • Men, Women & Children's Health • Custom Orthotics • Kinesiotape • Athletic Care • Massage Therapy • Work & Auto Injuries • Postural Restoration WWW.ROCKCOUNTYCHIROPRACTIC.COM 283-2561 • 103 E. MAIN, LUVERNE Monday 7:30 a.m. - 6 p.m. • Tuesday 7:30 a.m. - 3 p.m. Wednesday 7:30 a.m. - 6 p.m. • Thursday 7:30 a.m. - 1 p.m. Friday 7:30 a.m. - 5 p.m.</p> <p>• Chiropractic</p>	 <p>Chantel Connell Sales Representative 117 W. Main, Luverne, MN 507-283-2333</p>  <p>Rick Peterson General Manager</p> <p>• Advertising</p>	<p>LUVERNE HEALTH & WELLNESS Codie Zeutenhorst, D.C., CAC</p> <ul style="list-style-type: none"> ✓ Acupuncture ✓ Family Care ✓ Kinesiotape ✓ Chiropractic Care ✓ Sports Injuries ✓ Auto & Work Injuries <p>Acupuncture and Massage Available Kris Van Der Brink M.T. & Amy Rosales M.T. www.luvernechiro.com 109 S. Freeman Ave. Luverne, MN 507.449.4400</p> <p>• Chiropractic</p>	<p>COMRAY COMPUTERS Computer Repair and System Builder</p> <p>Ray Hansen 1726 140th Ave., Luverne, MN 56156 507-669-2621 comraycom@gmail.com</p> <p>• Computer</p>
 <p>Rock County EYE CLINIC 507-283-2345 104 N. Freeman Ave. Luverne, Minnesota</p> <p>• Eye</p>	 <p>Papik MOTORS 1-90 Luverne, MN Box 536 • 801 West Commerce Road Luverne, MN 56156</p> <p>(507) 283-9171 (800) 634-7701 www.papik.com</p> <p>• Automotive</p>	<p>Luverne MINNESOTA City Offices <i>Love the life!</i></p> <p>PO Box 659, Luverne, MN 56156 507-449-2388 (24 hour voice mail) www.cityofluverne.org</p> <p>• City</p>	<p>Dakota Land Surveying and Engineering, Inc.</p>  <p>Steven B. Kor Professional Engineer Registered Land Surveyor</p> <p>2000 W. 42nd Street, Suite B-6 Sioux Falls, SD 57105 605-334-4882 605-334-5745 Fax</p> <p>506 Almar Luverne, MN 56156 507-283-3803 steve.dis@midconetwork.com</p> <p>• Land Surveying</p>

Rooster Ridge near Beaver Creek shows how wild life management areas are established

Step 3 of five steps in the process is to meet appraisal requirements

By Scott Rall
Outdoors columnist

This is the third column in a series of five writings that cover the high points of what it takes to bring a parcel of land all the way from the point of sale to the point where the Minnesota DNR pounds in the boundary stakes of a new wildlife management area.



projects), we never qualified for that rare 10 percent over exception.

So, for all practical purposes it is the appraised price or there is no deal.

The appraisals have to be done to what is called the Yellow Book Standard used by the state and the federal agencies as the gospel of appraisal standards.

There are very few appraisers in the state that are certified to write an appraisal to these stringent requirements.

That is why most local appraisals, done to a standard more than adequate for a local sale, can be completed for anywhere from \$300 to \$1,000 and received in about a week or two.

The normal charge for a Yellow Book Standard appraisal is about \$3,500. When the appraisal is ordered and if it is expected to cost more than the threshold set by the granting agencies, the appraisal has to be put on bids.

This ensures that the state is paying a fair price. It also adds extra time to the process.

If a bid is required, it can easily take two months or longer from the start date to an appraisal in hand.

Appraisals that are expected to exceed \$1 million require two separate appraisals.

The appraisal in hand is called a draft appraisal. It is showed to the landowner who can then say yea or nay based on this amount.

The reason it is a draft is because the exact number of acres to be sold will not be known until an actual survey of the property is completed.

This may change the actual sales amount due to change in acres and can be as little as zero acres up to plus or minus 5 acres or more.

Survey requirements and other issues related to them is next week's subject.

Scott Rall, Worthington, is a habitat conservationist, avid hunting and fishing enthusiast and is president of Nobles County Pheasants Forever. He can be reached at scottarall@gmail.com.

We have already covered the steps of finding a willing seller and long-term land manager and securing funding.

Today we will delve into the appraisal requirements. It is really easy to get a local auctioneer, land management company or other local resource to make up an appraisal.

These appraisals represent land values based on the expertise of the appraisers about what different types of land are bringing in the local area.

Land types include tilled land in cultivation, idle land in the Conservation Reserve Program through the USDA, wetlands and pasture lands.

Another example is land that has been permanently retired from any potential profit-producing effort through the sale of a conservation easement on the property, often known as RIM, or Reinvest in Minnesota, which is overseen by the state of Minnesota.

Each of these land types is valued at very different rates. Oftentimes when a seller wants an appraisal, the land type they have for sale has not been sold anywhere in the area for some time.

This makes valuing these lands difficult, as there are no comparison sales from which to draw a value.

When Pheasants Forever or any other recipient of funds from the Outdoor Heritage Fund uses those funds for their pre-approved purpose, they can never pay more than the appraised price.

There are very few exceptions that allow for a 10-percent increase over the appraised price, but in all of the dealings I have been involved with (more than 20 different

Hockey pairing agreement extended four years/from 1A

the Luverne hockey program.

Previously, the Adrian district didn't share in the costs to operate the hockey program.

On July 1 the Luverne Hockey Club Inc. entered a new five-year agreement with the Luverne district. The agreement ends June 30, 2023.

The club and the school district first signed an agreement in 1998 in order for students to compete in the interscholastic hockey program operated by the Minnesota State High School League.

Prior to the new agreement, the club paid all expenses associated with the high school hockey program. In subsequent agreements the school district paid for more expenses associated with hockey.

In addition to paying \$19,000 for coaches' salaries, the district also contributes an additional \$10,000 toward transportation for the next five years.

The hockey program is the

only extra-curricular activity Luverne currently cooperatively pairs with another school district.

Board members re-examined the hockey agreement after declining a sports pairing request with Hills-Beaver Creek in September.

In other business at the Monday meeting, the board:

- approved volunteer coaches Lance Ripka and Chris DenHoed to the respective wrestling and boys' hockey programs.

- hired Brian Snyders as middle school boys' basketball coach to replace Adam Geraets, who will coach ninth-grade boys' basketball.

- approved Christian Mader as middle school social studies teacher, effective Nov. 8, at a salary of \$28,192.

- accepted the district's audit report for fiscal year 2017-18 and noted no concerns.

- increased driver's education fees by \$10 to \$335 per student.



In the Hinkly House library oval windowsill, tiny penguins slide playfully on an iceberg as needle felt characters in the children's holiday story book about "The Penguin Who Wanted to be Different." (Lori Sorenson photos/1129 ceynowa felt penguins)

Hinkly House Winterfest display/continued from page 1A

Luverne artist Carol Ceynowa who felted a whole new batch of fuzzy characters for the 2018 Hinkly display.

Following the theme of children's Christmas storybooks, Ceynowa assembled more than 16 different displays around the house, each based on a different book.

"I've read them all with the kids," she said about her grandchildren, Jenya, 10, Brynna, 7, and Henry, 4, who are the children of Ali and Dan Breuer, Rock Valley, Iowa.

From fuzzy cats and dogs to mice and pigs — and a myriad of others in between, Ceynowa's fingertips and needlepoints have been busy cranking out 3-inch-tall fictional characters.

For example, her featured display in the Hinkly dining room is a circus setting with an elephant (a first for Ceynowa), giraffe, bear, puppy and other performing animals from the vintage pop-up book, "Santa's Merry Carnival."

In the Hinkly library oval windowsill, tiny penguins slide playfully on an iceberg for the story about "The Penguin Who Wanted to be Different."

On the antique mirrored buffet in the sitting room are bushy-tailed squirrels gathered in a hollow log around a tiny Christmas tree for the book, "The Littlest Christmas Tree."

From room to room, similar tales play out with the endearingly awkward needle felt creatures.

Needle felting is the art of sculpting wool with special barbed needles. Stabbing the wool over and over again meshes the wool fibers together.

Ceynowa typically works in pottery, ceramics, painting drama and other fine arts mediums, but she took up felting several years ago as a new challenge.

In addition to making characters for display and for sale, Ceynowa has



Ballerina mice are popular felt creatures, but this year Carol Ceynowa introduces ballerina pigs.



Fuzzy little dressed-up mice dance gleefully for their depiction of characters in the children's book, "Angelina's Christmas," by author Katharine Holabird.

given many as gifts, including those for her grandchildren, who shared them for the Hinkly displays.

Her son, Nic Ceynowa, and his wife, Nan, don't do needle felt art, but they did contribute to the Hinkly House parlor Christmas tree. Nan, who is Chinese, enjoys origami and made several paper kimono ornaments along with Ali for the tree.

'Most handsome house in all of southern Minnesota'

Jauert said she hopes Winterfest crowds find their way to the Hinkly House to enjoy all that it has to offer. "It's such a lovely home," she said.

The Hinkly House was built in 1892 by R.B. Hinkly, then the mayor of Luverne, as a home for his family. At the time, it was considered the "most handsome house" in all of southern Minnesota.

The home is built of local Sioux quartzite, with a pair of stone lions on either side of the steps ascending to the front porch.

A stained glass window above the double front doors features the Hinkly name, while an ornate, oak parquet floor in the entryway spells out a welcome to all who enter.

The four-story, 12-room house is furnished and decorated with period items, and much of it has been restored in the past 20 years to nearly historic accuracy under Jauert's watchful eye.

For example, the parlor wall covering is almost exactly as it was at the turn of the century, and the library key-patterned wallpaper is the original covering.

"We took it down, repainted it and put it back up," Jauert said.



Ballerina mice are back by popular demand from Carol Ceynowa's 2015 needle felt display.

The dining room was a different story.

"When we took the wallpaper down in the dining room, under it was an Italian mural with one continuous scene that stretched all the way around the room," Jauert said. "I knew that it had been done very well and I knew we couldn't afford it now."

Instead, she found a pattern that resembled what was popular in the day and completed the dining room restoration with financial help from Elizabeth Kaiser, R.B. Hinkly's granddaughter.

"We couldn't have done it without her," Jauert said. "It cost \$2,000, and that was 15 years ago."

Those unable to visit the Hinkly House on Saturday can arrange a tour by calling the Chamber office, 507-283-4061.

Jauert also points out that people can reserve the Hinkly House for private parties. "The holidays are a great time for that, when the house is decorated for Christmas."



Bushy-tailed needle felt squirrels gather around a tiny tree in a hollowed out log to depict the children's book "The Littlest Christmas Tree," pictured at left. At right "Duck and Goose" book needle felt characters frolic in the snow.



Come & Go Open House
50th Wedding Anniversary
Keith & Doris Hoven
Sunday, Dec. 9 • 12-3 p.m.
First Presbyterian Church, Edgerton

Justin Kemp
Owner
*Commercial
*Business
*Residential
*Ag *Industrial
KEMP ELECTRIC
PO Box 803 • Luverne, MN 56156 • 507-920-6961

RED GREEN
This Could Be THE TOUR
MAKES A GREAT CHRISTMAS GIFT
"It might not be his last tour. BUT why take the chance?"
SATURDAY, APRIL 6, 2019 - 7:00 PM
THE O'SHAUGHNESSY AT ST. CATHERINE UNIVERSITY - ST. PAUL
Tickets available in person at the ticket office, by calling 651-690-6700 or by visiting <http://oshag.stkate.edu>

READ THE NEWS ONLINE!
Subscribe to the online edition of the
Star Herald

House becomes even quieter with family dog's departure

My empty nest recently became a little more depleted.



RUMINATIONS

By Mavis Fodness, Reporter

Bree, the family dog and faithful companion for the past decade, is now resting in peace.

Her health decline was subtle, yet quick, and while we are not the first family to lose a beloved pet, the experience of Bree's death (or any beloved pet) breaks our hearts.

Bree came to us as a puppy and her Labrador breeding meant she would be a good hunting dog.

Or so we thought. Other than her fear of gunshots, thunder and other loud noises, she was great at keeping the frequent critters off the farmyard and often smelled like the skunks she scared away.

Hunting aside, Bree's obedience earned her and my daughter an appearance at the Minnesota State 4-H Dog Show. She was a good mother to two litters of pups and she joined in all the family activities at home.

One of those activities for the past two years was to greet me each morning as I stepped outside to complete the livestock chores.

Bree was excited because it meant her food bowl would be filled for the day.

The week before she died, she wasn't greeting me at the door. Then I would see her bowl wasn't immediately emptied.

More noticeably she would simply walk next to me and not run at full speed around the farm playing with her adult daughter.

That's when my head began battling with my heart.

For the past two winters Bree kept me company on those cold Saturday mornings when the house was quiet and I missed the hustle and bustle of raising four kids in a small house.

I would let her in the

kitchen and she would spend a couple of hours indoors with me.

She would lazily sunbathe in front of the French doors while I cleaned or enjoyed a cup of tea on the couch while reading or watching TV.

How both of us missed the kids was a column topic two years ago.

"Sometimes a hug from a needy dog is all we empty-nesters need, too" ended the story about how the family dog's role changed as the house became empty.

Since then Bree happily ran around the farm, played with daughter Goldie, and jumped in the water puddles — unaware that the tumor growing on her hind leg was noticeably getting bigger.

A talk with the veterinarian in April was when we decided the best healthcare plan was to do nothing. Let nature take its course.

Except nature came too soon and it was our turn to give her needed hugs and quiet words of what a good companion she is.

Always the comforter, Bree would slowly wag her tail until that ended Nov. 8.

That night I drove into the garage thinking about Bree and how she would greet me as I exited the car. A friendly face welcoming me home to the empty nest.

As I opened the door, the friendly face of daughter Goldie, who was feverishly wagging her tail in welcome, greeted me.

Her greeting comforted my hurting heart for she misses her mother, too. I can't help but think a little bit of Bree lives on through her offspring in the old adage: "Like mother, like daughter."

'If you see something, say something'

We're all in this farm crisis together; help is available for financial and mental health

GUEST EDITORIAL

According to the Minnesota Farmers Union, many of our local agricultural producers are facing difficult times right now. On top of typical farm stress factors — isolation, variability in weather, lack of access to health services — farmers have also had to deal with five consecutive years of falling commodity prices.

These conditions are leading to a rise in mental health issues, which sadly has led to all too familiar consequences like loss of interest in family, friends and community as well as suicide.

If you or someone you know needs help — be it financial counseling, spiritual guidance or just an open ear — please call or talk to someone.

Farmers often struggle to seek help for themselves. Many of us were taught to be independent and to grin and bear it when tough times come around. Please do not let your pride stand in the way of you getting the help that you need. And approaching someone — be it spouse, parent, relative or friend — who needs help can be just as challenging.

What if they do not want help? How can I even tell for sure if they need help? Here are some common warning signs from Rob Holcomb, University of Minnesota Extension Educator, that may indicate that someone needs a hand:

- They isolate themselves.
- They abruptly sell land/livestock or their equipment/farmstead falls into disrepair. Their substance use increases.
- They lack motivation, become less productive, or their mood changes. They use statements of hopelessness or giving up.
- Their sleep patterns are altered.
- They have unpaid bills.
- Their spouse/significant other/children exhibit stress.

The most important thing is that if you see something, say something.

Following are phone numbers, websites and other resources that can be used by farmers and others in rural communities.

And do not underestimate the power of a cup of coffee and a conversation. Taking 5 minutes out of your day to call someone may make the difference for a farmer and their family.

- Farm stress resources:
- Minnesota Farm & Rural Helpline: 833-600-2670
 - Ted Matthews, Rural Mental Health Counselor: 320-266-2390,

www.centerofagriculture.org (search for "mental health")

• Mobile Crisis Teams: www.mn.gov/dhs (search for "adult mental health phone numbers")

• University of Minnesota "Dealing with Stress" website: z.umn.edu/stressresources-2-1-1: www.211.org

Farm financial assistance:
• Farmer-Lender Mediation: 218-935-5785, www.extension.umn.edu/agriculture/farmerlendermediation

• Farmers Legal Action Group (FLAG): 877-860-4349, www.flaginc.org

• Minnesota Farm Advocates: 218-346-4866 or www.mda.state.mn.us/farmadvocates

• Minnesota Rural Finance Authority: 651-201-6556, www.mda.state.mn.us/agfinance

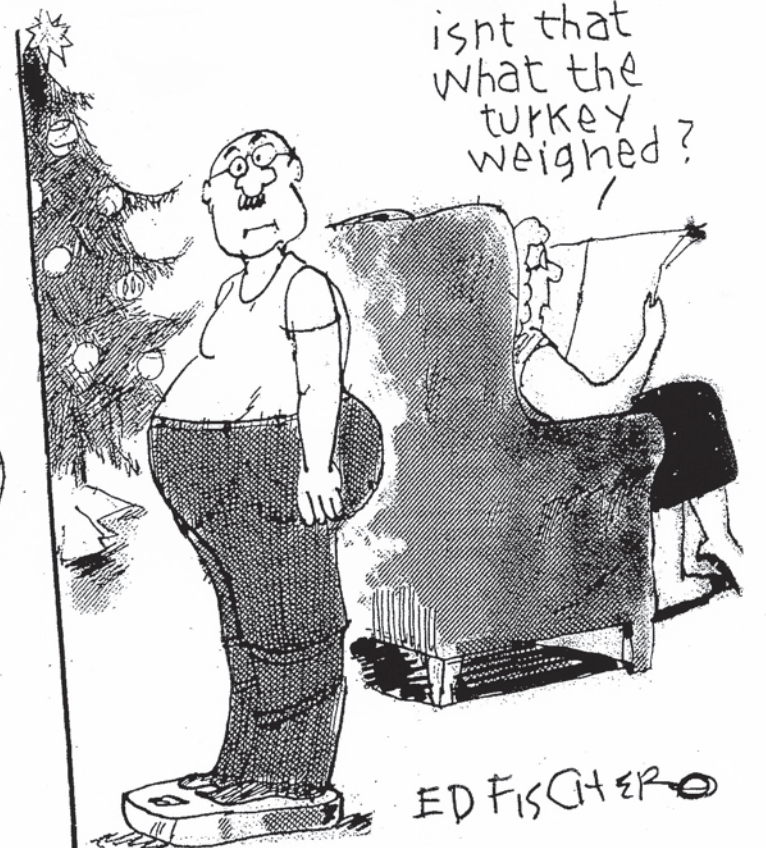
• Minnesota State Farm Business Management Education: 218-894-5163 or 507-389-7263, https://agcentric.org/farm-business-management

• University of Minnesota Extension Free, Confidential Financial Counseling for Farmers: 800-232-9077, z.umn.edu/financehelp.

MY GOSH I'VE GAINED 10 POUNDS!



isnt that what the turkey weighed?



ED FISCHER

Local ordinances may prohibit leaving vehicle running to warm engine in cold weather

Question: I do not have a remote starter installed on my car. Is it illegal to leave it running while I go inside my house as it warms up and defrosts the windows?

Answer: There is no state law that prohibits leaving your vehicle running, but most cities have local ordinances against it. Check your local city ordinances in reference to this rule.

Leaving your vehicle running unattended is also an invitation for thieves. Just the other day there was an attempt to locate a stolen vehicle that occurred while the owner left the vehicle running unattended. This happens far too often.

There are many vehicle thefts involving unattended vehicles with the keys inside, doors unlocked, and engine running. This makes it very easy for auto thieves to steal your vehicle. Get into the habit of locking



ASK A TROOPER

By Sgt. Troy Christianson, Minnesota State Patrol

your vehicle each time you are going to leave it and take the keys with you.

By following the below tips, you can reduce your chances of having your vehicle and/or your property stolen.

- Never leave your vehicle running unattended.
- Never leave your keys in the vehicle.
- Always lock your vehicle
- Look at purchasing a remote car

starter as most of them have built-in security features while your vehicle is running to prevent the vehicle from being driven.

• Don't leave valuables in plain sight. Place valuable items in the trunk if you can't take them with you.

Question: My friend went in the ditch last weekend and was given a citation for Failure to Drive with Due Care. It seems to me that it wasn't his fault because the wind was blowing

snow across the road making the roads slippery. Why was he issued a citation?

Answer: Speeding or traveling too fast for conditions is one of the top contributing factors in fatal and serious injury crashes on roadways. In most cases these tragic crashes are preventable if drivers would just slow down. Losing control of a vehicle is evidence that the driver committed a violation of a traffic or equipment law. When a vehicle loses control and leaves the roadway, a Failure to Drive with Due Care is the most common violation cited.

Many of the fatal and serious injury crashes that I have investigated are one-vehicle rollovers, or a two-vehicle crash where one of the vehicles was traveling too fast for conditions, lost control and struck another vehicle.

We all have an obligation to drive

with due care and adjust our driving skills to the weather, road and traffic conditions. This is especially true in the winter when weather and road conditions can frequently change.

Other excuses for a vehicle losing control on slippery road surfaces are typically: using cruise control on poor road conditions, following too close, distracted or fatigued driving, unsafe tires and driving while impaired.

You can avoid a ticket — and a crash — if you simply buckle up, drive at safe speeds, pay attention and always drive sober. Help us drive Minnesota Toward Zero Deaths.

If you have any questions concerning traffic related laws or issues in Minnesota send your questions to Sgt. Troy Christianson — Minnesota State Patrol at 2900 48th Street NW, Rochester MN 55901-5848. (Or reach him at, Troy.Christianson@state.mn.us)

E-mail: editor@star-herald.com Web site: star-herald.com
Phone: 507-283-2333 Fax: 507-283-2335

Published Thursdays by Tollefson Enterprises, POSTMASTER:
Send address changes to 117 West Main, P.O. Box 837, Luverne,
MN 56156. Periodicals postage paid at Luverne, Permit #33 and at
additional mailing offices.

General manager: Rick Peterson **News staff:**
Office manager: Deb Lusty Lori Sorenson, editor
Circulation manager: Jennifer Kor Mavis Fodness, reporter
Advertising: Chantel Connell John Rittenhouse, sports editor
Production manager: Abbe Kolar Esther Frakes, copy editor
Production: Heather Johnson

Rock County
STAR HERALD
Rock County's newspaper since 1873

(ISSN 0889-888X)
SUBSCRIPTION RATES

\$72 per year in Rock County; \$89 per year all other areas. Single copies \$1.25

Entire contents copyrighted by
Tollefson Publishing Roger Tollefson, publisher

The *Star Herald* encourages letters to the editor expressing the opinions of readers and intends to print all letters. Letters not meeting the guidelines will not be printed. The *Star Herald* will verify the authenticity of all letters. Letters must have the name of the writer, a signature and address.

Unsigned letters will not be considered. The *Star Herald* will edit for grammar, spelling and clarity. Any letters containing offensive language, libelous or slanderous material, or misleading or false information will be rewritten before being published. The *Star Herald* will not publish letters written with the sole intent to advertise or serve as a thank-you. Letters with more than 300 words may be edited. The deadline for letters is Monday 10 a.m. They may be delivered or mailed to the editor, *Rock County Star Herald*, P.O. Box 837, 117 W. Main St., Luverne, Minn. 56156.

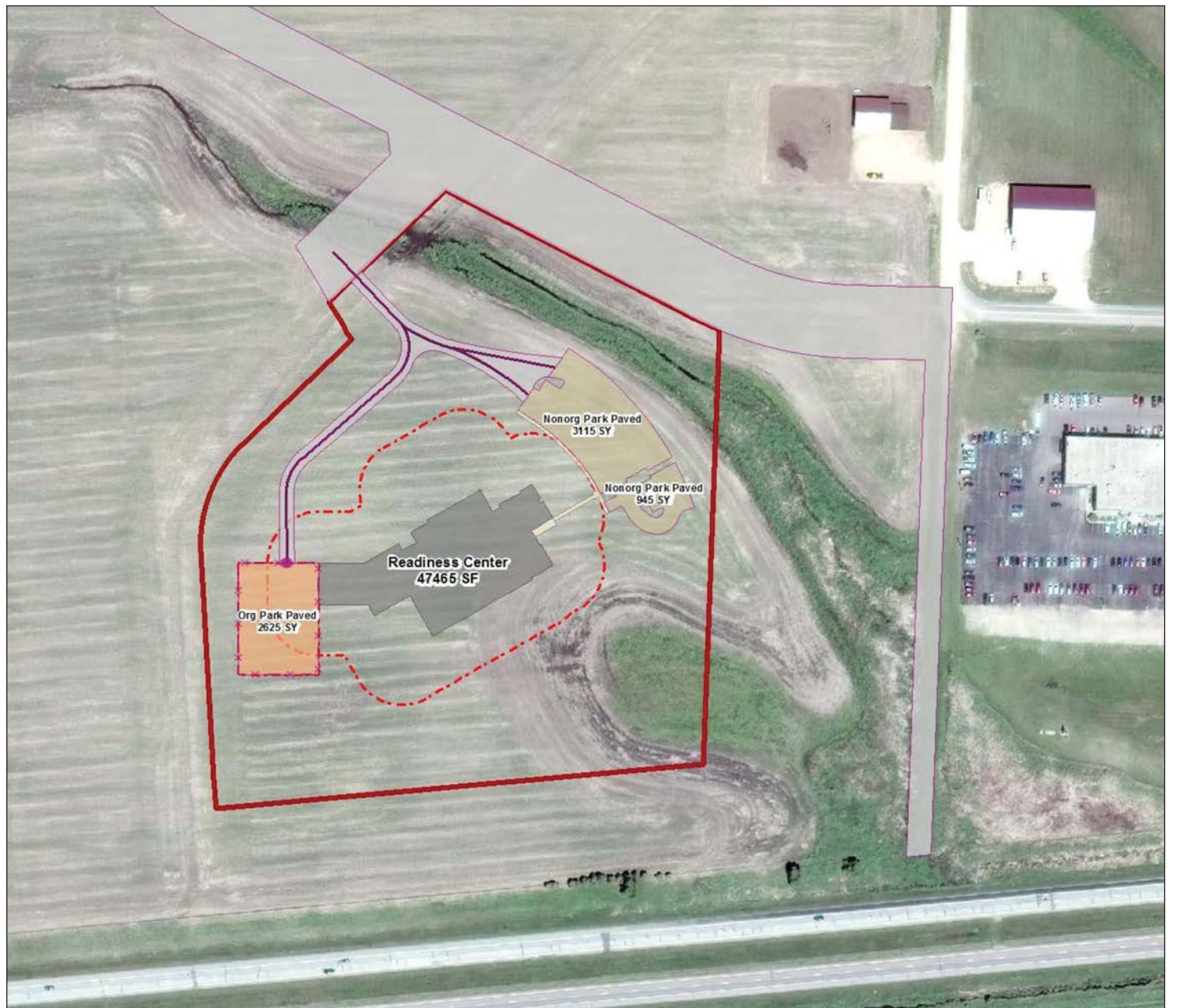
ON THE RECORD

Dispatch report

Nov. 16
 •Complainant reported possible drug use in Jasper.
 •Complainant reported a vehicle with expired registration in Beaver Creek.
 •Complainant requested assistance for a ride in Beaver Creek.
 •Complainant reported someone is digging up his lawn on West Veterans Drive.
 •Complainant reported that her storage unit was broken into on S. Kniss Ave.
 •Outside agency requested assistance from Rock County Sheriff's Office on Oak Drive.
 •Complainant reported a calf got out last night on 131st St.
 •Complainant reported narcotics information in Steen.
 •Complainant in Beaver Creek reported a runaway.
 •Complainant reported a vehicle broken down on S. Kniss Ave.
Nov. 17
 •Complainant reported he lost his wallet in the Luverne area.
 •Complainant reported they hit a guardrail on I-90 near Beaver Creek.
 •Complainant reported cows are out on 190th Ave.
 •Complainant on S. Kniss Avenue reported a hold-up alarm.
 •Complainant requested a possession tag for a deer that has been hit on Hwy. 75.
 •Complainant reported three cows out in Magnolia.
Nov. 18
 •Complainant reported harassment.
 •Complainant requested extra patrol on 140th Ave.
 •Deputies conducted a warrant check on S. Kniss Avenue.
 •Complainant on E. Warren Street reported suspicious activity.
Nov. 19
 •Complainant reported an erratic driver on Main St.
 •Complainant reported an injured deer on County Road 4 near Magnolia.
 •Property was lost on West Hatting Street.
 •Complainant requested to speak to a deputy about a mental health issue.
 •Complainant requested deputy to assist with a student at the Luverne High School.
 •Complainant reported a stolen vehicle and fuel

trailer.
 •Complainant in rural Jasper reported that a vehicle had trespassed on the weekend.
 •Complainant requested deputy report to court.
 •Suspicious activity reported on 221st Street near Hardwick.
 •Complainant came to the Law Enforcement Center and requested to speak to a deputy regarding criminal record.
 •Property found on Mag Road.
Nov. 20
 •Complainant requested a road kill deer tag.
 •Complainant requested to speak to a deputy about a mail issue.
 •Fire alarm reported on North McKenzie Street.
 •Complainant reported a possibly abandoned vehicle in Kenneth.
 •Complainant reported ten vehicles sped past her home on S. Donaldson Street on their way to the ice arena.
 •Complainant reported a pedestrian on County Rd. 4.
 •Complainant reported suspicious activity in Steen.
 •Complainant reported a driving complaint on Luverne Street.
Nov. 21
 •Deputy at ERU training in Slayton.
 •Complainant in rural Jasper reported a strange car.
 •Complainant requested a welfare check.
 •Complainant requested the fire department for a possible garage fire on 140th Avenue.
 •Complainant reported a deer injured in the road on County Road 8.
 •Complainant reported a possible break-in in Steen.
Nov. 22
 •Complainant reported a driving complaint on I-90.
 •Deputies conducted a warrant check on East Luverne Street.

In addition officers also responded to 2 motor vehicle accidents, 3 deer accidents, 2 vehicles in the ditch, 3 transports, 7 escorts, 18 ambulance runs, 3 animal complaints, 4 burn permits, 1 drug court test, 1 fingerprint request, 3 permits to purchase/carry, 7 paper services, 24 traffic stops, 1 abandon 911 call and 1 test.



Submitted graphics

The new Luverne-Pipestone Minnesota National Guard Readiness Center is planned for 15 acres in the Luverne Industrial Park. It will be located west of Papik Motors and face Interstate 90. In the graphic below, the state Department of Administration recently called for qualified design companies to submit proposals for the new Luverne-Pipestone Minnesota National Guard Readiness Center. The request for proposals included a graphic of the rooms proposed for the facility.

State seeks design bids for Luverne armory/continued from 1A

process in January. The chosen company is expected to facilitate a local design planning session with citizens and other collaborators to develop a vision for the development. Construction bids are scheduled to take place in early 2020 with completion projected for October 2021.



About the K.A.H.R. Foundation

Herreid and his wife Jeannine Rivet established the K.A.H.R. Foundation for philanthropic endeavors. The foundation supported other military tributes in Luverne including the Rock County Veterans Memorial and the Herreid Military Museum.

Enter To **WIN**
\$3,000

Newspaper sponsored shopping survey. No purchase necessary.

Enter to win now, go to:
www.pulsepoll.com

COURTYARD Marriott

Shopping Getaway

- 1 King or 2 Queen Beds
- Adjacent to Empire Mall
- Must present coupon at check-in
- Not valid with group blocks

Valid Thursday through Sunday until March 29, 2019
 Some blackout dates may apply

Complimentary Breakfast for Two Included! By the Empire Mall, Sioux Falls, SD
 Courtyard 605-444-4300

Ask for the "SHOP" rate of \$99
 \$99 Rate plus applicable taxes

DON'T FORGET ABOUT SUNDAYS!

Warm buses are running in the city of Luverne on Sundays 8:00 a.m. to noon.

Call today. 283-5058

Community Transit
 A program of United Community Action Partnership.

Papik MOTORS

Papik picks of the week...

Just in TRADES

2018 Cadillac XT5
 32K • Stock #156736Z **one-owner**
 \$34,990

2015 Chrysler Town & Country Touring-L
 63K • Stock #646618N **one-owner**
 \$19,990

2014 Jeep Grand Cherokee Limited
 34K • Stock #403888N **one-owner**
 \$24,990

2014 Chevrolet Traverse
 92K • Stock #290775N **one-owner**
 \$15,990

283-9171
PAPIK.COM I-90 Luverne, MN 56156

CHEVROLET GMC CHRYSLER DODGE Jeep RAM

CELEBRATIONS

Open houses

An open house bridal shower for **Missy Olson**, bride-to-be of **Blake Wilcoxon**, will be at 10 a.m. Saturday, Dec. 1, at Grace Lutheran Church in Luverne.

Keith and Doris Hoven will celebrate their 50th wedding anniversary with an open house from noon to 3 p.m. Sunday, Dec. 9, at the First Presbyterian Church in Edgerton.

MENU

Monday, Dec. 3: Swiss steak, mashed potatoes, peas and carrots, bread, pineapple.

Tuesday, Dec. 4: Honey mustard chicken breast, baked potato with sour cream, green bean casserole, bread, cake.

Program: Half-Price Day sponsored by McClure Electric.

Wednesday, Dec. 5: Lasagna, California blend vegetables, spiced pears, garlic bread, cookie.

Thursday, Dec. 6: Pork loin, whole potatoes, buttered cabbage, dinner roll, fruit crisp.

Program: Pastor of the Month: Pastor Sparks of Christian Reformed Church.

Friday, Dec. 7: Lemon pepper fish with tartar sauce, au gratin potatoes, mixed vegetables, bread, slice pie.

Program: Half-Price Day; Tell Your Favorite Joke Day.

Senior Dining offers well-balanced and affordable meals in a community atmosphere. Gift certificates are available at the meal site or online at www.lssmn.org/nutrition. Call Lauree Teuniszen at 283-9846 to make dining reservations or for home-delivered meals.

COMMUNITY EDUCATION

Contact Luverne Community Education at C.Arends@isd2184.net or 507-283-4724.

Children ages 2-5 accompanied by an adult will hear a story and make a graham cracker gingerbread house, plus have a chance to visit with Santa and Mrs. Claus, at the **Gingerbread Holiday Event** on Monday, Dec. 17. Fee is \$5 per child. Register by calling 283-4724.

String Art for grades 3-5 is 2 session class Dec. 3 and Dec. 10. Choose your design and have fun creating this piece of art. Fee is \$16.

The **4-hour Defensive Driving Refresher Class** will be Dec. 13 for adults 55 years of age or older. (Must have taken the 8-hour course.) Cost is \$20 prepaid.

A second **Kids in Kitchen Christmas Treats** class has been added to the schedule for students grades K-6. This newly added class will be Dec. 18. Fee is \$18 or register with sibling or friend and pay \$14/person.

Great gift idea! Mike Frisch School of Fish for students in third grade and older will be Feb. 2. Each child receives a new rod and reel with tackle. One adult per child may attend at no additional cost. Fee is \$30.

Com Ed is trying a new venue for a dinner theatre bus trip. Enjoy Daytrippers Dinner Theatre (located near the Mall of America) presenting **Ain't Retirement Grand** on Dec. 9. Fee is \$85. (Register by Nov. 30).

The **Luverne Community Education brochure** is online at the **Luverne School website**.



Kathleen Jacobsma stands next to several tables of farm toys her late husband, Bernard, collected over the past two decades. As part of his wishes, a two-day auction to sell the toys occurred at Grand Prairie Events in Luverne.

Family sells farm toys at request of former owner

Story and photos by Mavis Fodness

Retirement for the late Bernard Jacobsma didn't mean the former farmer forgot about his rural heritage.

For the past 20 years, Jacobsma collected toy farm equipment, traveling to various local and out-of-state auction sales seeking out models based on uniqueness, collectibility or because he worked with the real-life model.

At the time of his death in June, the 79-year-old had collected as many as 2,800 tractors, trucks and other agricultural equipment.

"It was his idea to sell them," wife Kathleen said.

For two days, Nov. 16 and 17, auctioneer Don Krommendyk of Hull, Iowa, with Zomer Auctioneering & Associates of Rock Valley, Iowa, spent a total of six hours selling Jacobsma's toy collection at Grand Prairie Events in Luverne.

And that was only half of the collection.

The total number of common toys Jacobsma collected is just an estimate, according to his son, Darrell of Stanchfield.

"We don't have a clue," he said. "We are finding boxes behind boxes."

The basement of the Jacobsma home is dedicated to displaying Bernard's collection. Many toys were still in their original boxes.

The floor-to-ceiling shelving organized the collection that began with a simple mission.

"He started out collecting everything he farmed with," Kathleen said.

"That's how it started and then it kind of got out of hand," Darrell added.

Several of the tractors became unique gifts to Jacobsma's eight children and numerous grandchildren including a pink tractor for each of his granddaughters.

The rest of Jacobsma's collection may be sold at another auction.

Krommendyk said a twist to



Many of the toys Bernard Jacobsma collected included farm implements.

The Jacobsma family estimates Bernard may have collected as many as 2,800 farm toys with about half sold during the two-day auction.



today's new generation of toy buyers is that they are collecting the equipment they used on the farm — the same reason Jacobsma began his collection years ago.

However, the next generation of toy collectors is purchasing the next generation of tractors, which are made in large reproduction



Kathleen Jacobsma recalls Bernard using scraps of leather to make the harnesses for the team of horses to pull a hay wagon.

quantities, lowering the toys' value.

"They don't sell like they used to," said Krommendyk, who has auctioneered for more than 25 years.

In addition to live auctions, on-line bidding has given out-of-town buyers a chance to buy certain toys and have the items shipped to them. Live auctions still garner the most sales.

A bidder from Idaho purchased one of the toys from the Jacobsma auction to add to a collection much like Jacobsma did routinely.

"He was at every sale we had and would buy something at every sale," Krommendyk said.

Those later purchases included items that he would restore or use to complete another toy he was repairing.

"He fixed a lot of them," Kathleen recalled.



Bits by Betty

By Betty Mann, president Rock County Historical Society

1953: Local publisher leads editors

The following appeared in the Rock County Star Herald on April 30, 1953.

Luverne Publisher To Head 5,600 Member Nat'l Editorial Ass'n

Alan C. McIntosh will be elected president of the National Editorial Association today at the 68th annual convention which is being held in New Orleans.

The publisher of the Star-Herald becomes president of the association, which numbers 5,600 newspapers in its membership, after having served as a member of the board of directors for five years.

McIntosh also serves as a member of the board of directors of Weekly Newspaper Representatives, the business corporation owned by the N.E.A., and formerly served for 5 years as a director of its predecessor Newspaper Advertising Service.

He is a former president of the Minnesota Editorial Association and a past president of the Inter State Press Association and a former member of the board of the Managing Editors Association of the Associated Press.

History Repeats Itself

This year's convention finds history repeating itself. First convention of the National Editorial Association was held in New Orleans in February 1885. Minnesotan B.B. Herbert of the Red Wing Republican, is credited with being the founder and was elected the first president.

McIntosh is the sixth Minnesota editor to serve as president of the association. Other Minnesotans thus honored, in addition to him and Mr. Herbert, were:

P. V. Collins, editor of the Agriculturist, A Minneapolis farm paper, who was elected the 19th president at the convention in Omaha in 1903.

Herbert C. Hotaling, of the Mapleton Enterprise, was elected the 33rd president at the convention in Minneapolis in 1917.

Will Wilke, who owned the Grey Eagle Gazette, was elected the 36th president at the 1920 convention held in Boston.

Herman Roe, of the Northfield news, was elected the 42nd president at the convention in Los Angeles in 1926.

Donations to the Rock County Historical Society can be sent to the Rock County Historical Society, 312 E. Main Street, Luverne, MN 56156.

Mann welcomes correspondence sent to mannmade@iw.net.

The History Center is decked out for Christmas with added displays. The Christmas Haus in the History Center offers a variety of holiday items for sale. Proceeds help to fund the History Center operation.



Darrell Jacobsma (center) holds one of hundreds of tractors in their original boxes up for auction Saturday afternoon, Nov. 17, as ring man Mark Zomer (left) and auctioneer Don Krommendyk call for bids.

Young artists invited to create, display works of art

Local gallery opens doors to area preschoolers in unique exhibit opportunity

By Lori Sorenson

Do you or someone you know have little ones with big imaginations? Little ones who love to make art? Little ones who are always coloring or drawing?

Artists Cody and Nicole Henrichs pose these questions to the community in a poster and online marketing about the "Little Hands, Big Ideas" event at their gallery next week.

They're encouraging families to bring their children ages 2 to second grade to the Lord Grizzly Gallery any time from 11 a.m. to 4 p.m. on Saturdays, Dec. 1, 8 and 15, to create original art.

"We will have tons of art making supplies available in our studio and they can create a one-of-a-kind masterpiece," Nicole said.

The creations will then be displayed in their one-weekend exhibition, "Little Hands, Big Ideas," on Dec. 28 and 29.

This exhibition will be co-curated by Cody Henrichs and 5-year-old Noël Henrichs, who pressed her parents to host an art event for kids.

"For quite some time now, with every show we've done, she's talked about wanting to do a preschooler show with art made by kids," Cody said.

'Little Hands, Big Ideas'

Creation Days:
Dec. 1, 8 and 15 from 11 a.m. to 4 p.m.

Exhibition days:
Dec. 28 and 29

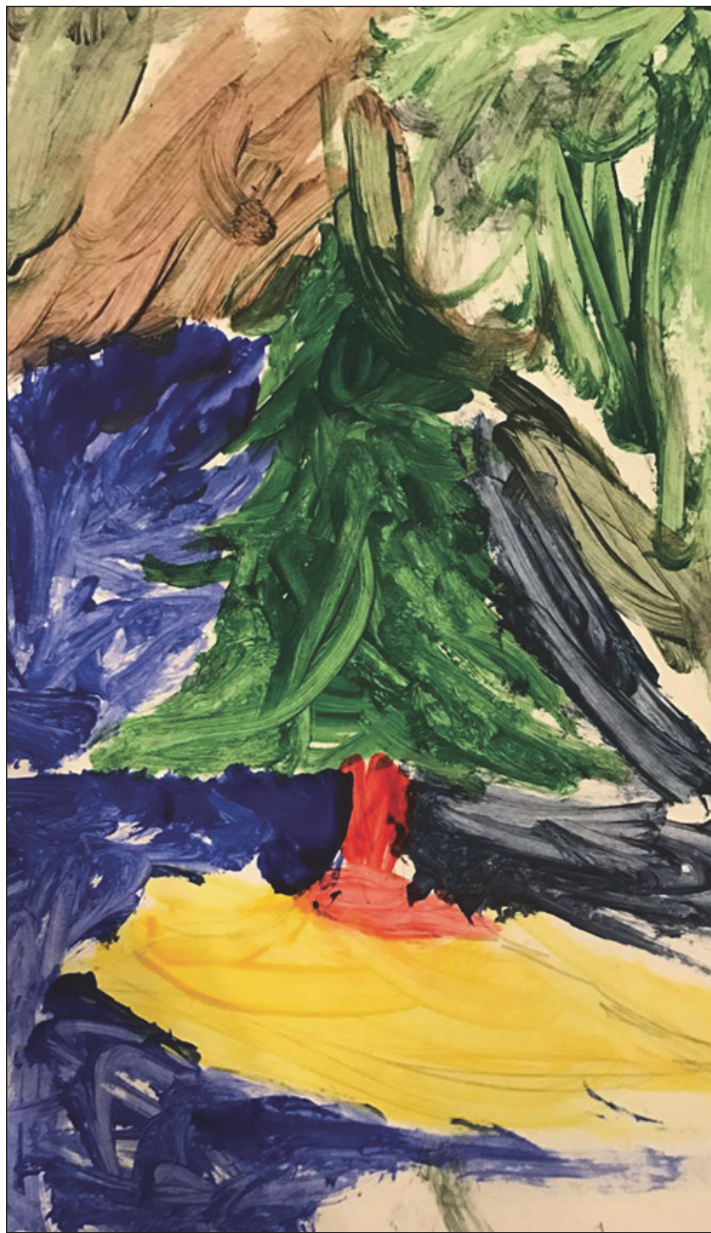
This event is free and open to the public.

"She's always drawing and creating and is regularly looking for opportunity to display her work ... and she has unique access here, so we decided we'd do it."

Nicole will handle the event logistics, and Cody and Noël will create and design the show.

"The gallery will also accept artworks made at home," Nicole said. "Every piece submitted between Dec. 1 and Dec. 15 will be carefully placed and labeled by Noël and Cody."

They can be reached at cca.t4d@gmail.com for more information.



Submitted photo

The preschool art exhibition will be co-curated by Cody Henrichs and 5-year-old Noël Henrichs, who has been asking her parents for a way to display some of the art she works on with them.

OBITUARIES

Donald Buntjer

Donald Wayne Buntjer, Worthington, Don farmed 82, rural Worthington, died Monday, Nov. 19, 2018, at his home.

A funeral service was Friday, Nov. 23, at St. Matthew Lutheran Church in Worthington. Interment with full military honors provided by the Ocheyedan American Legion and VFW was in the Ocheyedan Cemetery.

Donald Buntjer was born Jan. 13, 1936, to Henry and Hattie (Aielts) Buntjer in rural Rushmore. Don attended country school and graduated from Ocheyedan High School, Ocheyedan, Iowa. After high school he enlisted in the U.S. Army and served from 1956 to 1958 in Germany.

On Oct. 22, 1960, Don married Lorna Kohls at St. Matthew's Lutheran Church in Danube. They made their home in Kansas City, Missouri, until June 1961. They then moved to Ocheyedan and later to Luverne before settling on a farm in Bigelow Township, Nobles County, where they raised their family.

Don worked for Ostermann Construction of Ocheyedan, doing road work in Minnesota, Iowa and Missouri. When the couple purchased their farm south of

and raised livestock. He also worked for Iowa Beef Processors in Luverne for 30 years. Don enjoyed attending his grandchildren's sporting events and school activities. He was known for raising the best-tasting sweet corn in Worthington.

Don is survived by his wife, Lorna Buntjer, rural Worthington; four children, Kevin Buntjer, Worthington, Randy (Connie) Buntjer, Ellsworth, Julie Buntjer, Worthington, and Jason (Kari) Buntjer, Fairmont; 10 grandchildren, Andrew, Jacob (Ashlee) and Crystal Buntjer, Matthew (Kaitlin), Jessica, Zachary and Katie Buntjer, and Blake, Reece and Alayna Buntjer; eight great-grandchildren; sister-in-law Clarice Buntjer, Worthington; and brothers-in-law Orval (Gayle) Kohls, Wheaton, and Eldon (Kay) Kohls, Blomkest; and numerous nieces, nephews and cousins.

He was preceded in death by his parents and two siblings, Floyd Buntjer and Helen Loesch.

Arrangements were provided by Dingmann Funeral Home of Worthington, www.dingmannandsons.com. (1129 F)



REMEMBER WHEN

10 years ago (2008)

•Revenge will be on the mind of every Luverne player when the Cardinals take the field in the Metrodome for Friday's Prep Bowl.

One year after dropping a 14-7 decision to the Caledonia Warriors in the 2008 Class AA championship game, Luverne will have a chance to avenge that loss.

For the second straight year, Luverne and Caledonia will play one game for all the marbles starting at 4 p.m.

Although some 360 days have passed since the last meeting between the teams, some things have remained the same.

Just like last season, both teams bring 12-1 records and the momentum of extended winning streaks into the contest.

Caledonia, the champion of the Three Rivers Conference with a 5-0 record, has not dropped a game since Week 3 of the regular season.

25 years ago (1993)

•The long-awaited agreement with Missouri Basin to sell some of Luverne's diesel power should be final within the next few months, the Luverne City Council learned Monday.

Utilities Coordinator Red Arndt said the city attorney is reviewing the contract which will help Missouri Basin meet required reserve levels by purchasing capacity for power generation from Luverne and other member towns that maintained their diesel generators.

The contract will pay \$1.20 per kilowatt hour for the city's generating capacity if the diesel generators pass inspection. Luverne's generators could potentially provide 4,400 kilowatts. Missouri Basin will also pay the cost of fuel, taxes and any emission taxes plus 10 mills. The city will be responsible for paying labor and maintenance for the diesels.

50 years ago (1968)

•Between 70 and 80 per cent of Rock county's 1968 corn crop has been picked according to Kent Ringkob, Rock county agent.

"The average county corn yield is about 80-85 bushels to the acre but it's wet. A lot of the corn has an average of 25-30 per cent moisture. The wetness in the area has actually caused two problems. Besides the wet corn the farmers are having trouble getting their heavy equipment into the fields," the county agent said.

Several farmers have been putting the wet corn in silos for cattle feed. According to the county agent, the farmer is looking for corn with about 25 per cent moisture for the silo.

75 years ago (1943)

•Deferment of farm boys and men for agriculture and other employment will be conducted on a different basis beginning immediately, it was announced this week, following a joint meeting of the County USDA war board and the county selective service board. ...

Under existing conditions, it is not the purpose of selective service boards to induct experienced agricultural workers who are needed for agricultural production, but on the other hand, there are those who are abusing the privilege of deferment and the registrant so concerned must either decide whether he wishes to work on a farm where he is needed, or be made available for service in the armed forces, it was pointed out.

In view of the future farm labor shortage, the Boards definitely do not wish to have men with agricultural experience inducted into the armed forces, but any man who has been considered surplus labor on a farm by the local War Board will be immediately recommended for induction if he refuses to seek farm employment where he can be considered an essential farm employee.

100 years ago (1918)

•While participating in a four-handed game Monday evening at his bowling alleys, Evan Paulsen secured twelve consecutive strikes and thereby made a perfect score of 300 points. This is said to be the first time that this record has been made by a Luverne bowler. At least, it has never been accomplished since the present bowling alleys were opened in this city nearly a year and a half ago.

Previous to this achievement, Mr. Paulsen had held the high score with 288 pins, until two weeks ago, when R.G. Willert, of the Grand theatre, tied his score. At the time Mr. Willert made ten consecutive strikes, but drew a spare on his eleventh effort.

Hills-Beaver Creek releases first quarter honor rolls

A Honor Roll

Seniors: Amber Bos, Grace Bundesen, Sidney Fick, Ana Hagen, Mary-Frances Ladd, Luke LaRock, Garrett Raymon, Josie Scholten, Bailey Swan, Levi Vandenbosch, Preston Wilhelmi.

Juniors: Josie Bartels, Whitney Elbers, Larinda Kellenberger, Larissa Kruid, Kailey Rozeboom.

Sophomores: Thomas Dysthe, Hannah Fick, Abby Knobloch, Allison LaRock, Taryn Rauk, Lauren Tatge, Austin Wilhelmi.

Freshmen: Taylor Durst, Kenadie Fick, Leeanna

Gaugler, Danette Leenderts, Samantha Moser, Tara Paulsen, Liam Raymon, Tess Van Maanen.

Eighth grade: Devon Dysthe, Tyrae Goodface, Jenifer Martinyuk, Brayden Metzger, Leif Tollefson, Joshua Wiersema.

Seventh grade: Peyton Bennett, Sylvia Fick, Cooper Gehrke, Aiden Kerkhove-Brandt, Ty Leuthold, Brynn Rauk, Avril Susie, Olivia Susie.

B Honor Roll

Seniors: Hunter Bork, Oana Ela Hagen, George Merson, Madison Spath,

Wyatt Westrum.

Juniors: Joslyn Birger, Easton Harnack, Jo-Hannah Ladd, Jax Wysong.

Sophomores: Tyson Bork, Annie Bos, Chase Bosch, Erika Dysthe, Calvin Erickson, Ethan Gray, Abigail Olson, Jacob Sheppard, Jacey Vanden Hoek, Gavin Wysong, Zander Wysong.

Freshmen: Austin Allen, Jacob Axness, Oliver Deelstra, Troy Durst, Carter Hartz, Weston Kellenberger, Ethan Kruger, Donavon Leenderts, Drew Leenderts, Daniel Martinyuk, Dallas Page, Max Scholten, Aliyah Stoltenberg, MacKenzie

Voss.

Eighth grade: Carter Abels, Alexander Harris, Ellynor Klosterbuer, Britton McKenzie, Cody Moser, Elisha Taubert.

Seventh grade: Grace Anderson, Layla Deelstra, Lanae Elbers, Alexis Gardner-Swenson, Taylor Gehrke, Tahliya Kruger, Justin Roelfs, Taylor Spykerboer, Larissa Steinhoff, Riley Tatge.

READ US ONLINE!
star-herald.com

ENGAGEMENT



Blake Wilcoxon and Melissa Olson

David and Patti Olson, Luverne, announce the engagement of their daughter Melissa Olson to Blake Wilcoxon, son of Ryan and Melissa Wilcoxon.

A January wedding is planned in Sioux Falls, South Dakota.

Senior LinkAge Line, others offer help for Medicare option decisions

Due to the unprecedented Medicare changes happening in Minnesota, call volume to the Senior LinkAge Line is expected to be much higher than normal during open enrollment.

To help meet this demand, the Senior LinkAge Line has increased staff and expanded its hours to 8 a.m. to 6 p.m. Monday through Thursday and 8 a.m. to 4:30 p.m. Friday.

Even with these changes, wait times are anticipated to be longer than normal. To help manage the volume and ensure beneficiaries and caregivers get help:

•Call 1-800-Medicare for assistance with the Cost Plan transition.

•Call a trusted insurance agent or broker for help reviewing options and choosing a new plan or purchasing a policy.

•Those with Internet access can use the www.Medicare.gov Plan Finder to review options and enroll in a plan.

•Call the different plans to get information about their provider participation and preferred pharmacy network. The plans can also assist beneficiaries with enrollment.

•Prepare a complete list of prescription drugs and dosages before calling the Senior LinkAge Line, a plan or insurance agent. This will allow them to better assist with reviewing options.

WE WANT YOUR QUALITY MUSCLE CARS!!

Paying top dollar for your car!

Camaros Mopars Caddys
Corvettes Mustangs Convertibles
Chevelles Pontiacs Exotics
Classics

ADMCARS.COM 1500 Locust St. Des Moines, IA 50309
Call (515)245-9100
Email photos & info to contact@admcars.com

Crawl space problems don't get better with time... just more expensive!

Free Estimates! Call Today
1-800-795-1204

Radon | Foundation Repair | Basement Waterproofing | Crawl Space Repair

AMERICA'S ORIGINAL BUTCHER
OMAHA STEAKS
SINCE 1917

The Family Gourmet Feast

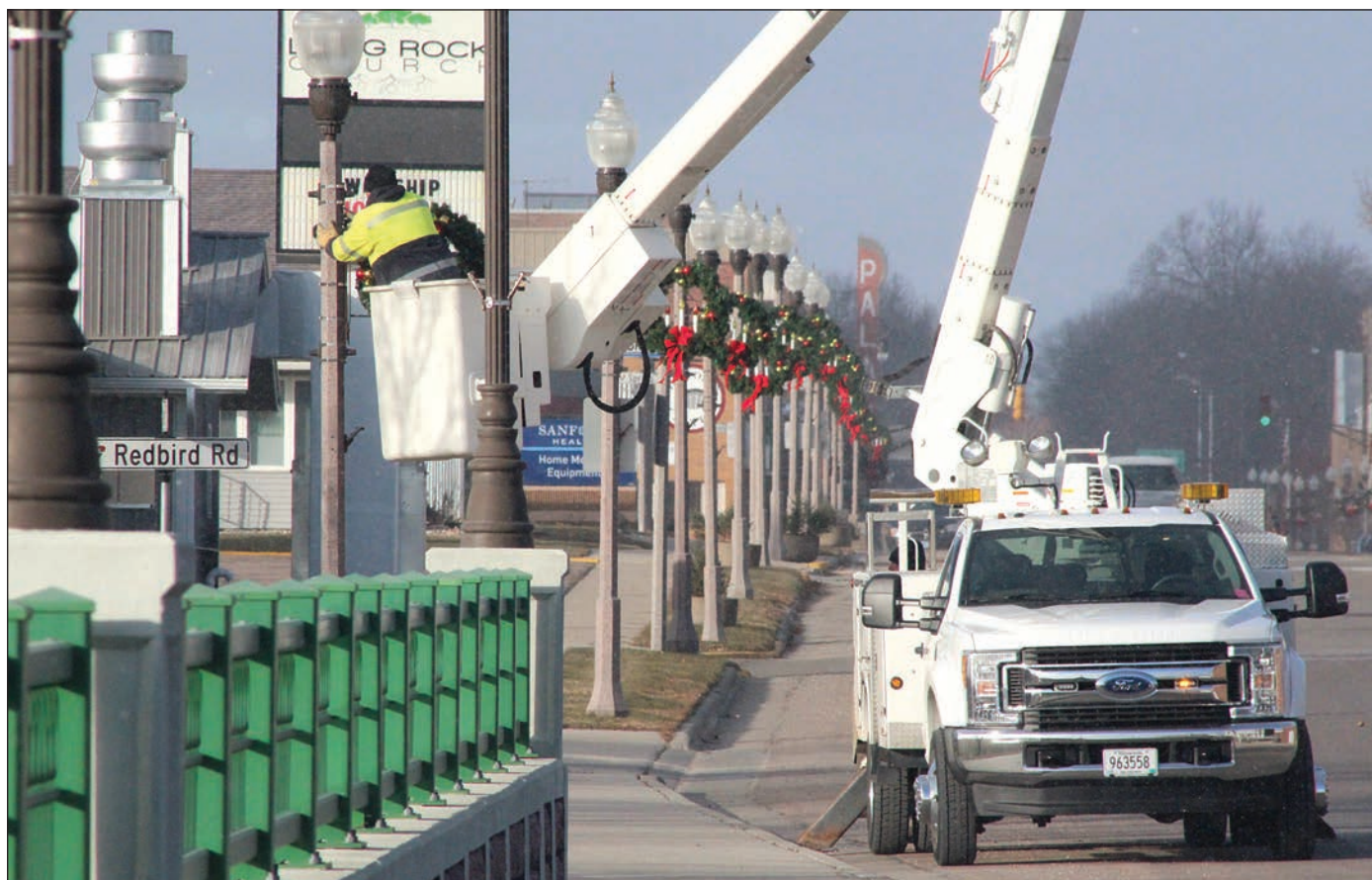
2 (5 oz.) Filet Mignons
2 (5 oz.) Top Sirloins
2 (4 oz.) Boneless Pork Chops
4 Boneless Chicken Breasts (1 lb. pkg.)
4 (3 oz.) Kielbasa Sausages
4 (4 oz.) Omaha Steaks Burgers
4 (3 oz.) Potatoes au Gratin
4 (4 oz.) Caramel Apple Tartlets
OS Seasoning Packet

Plus, 4 more Burgers FREE

55586TJH | \$199.99* separately
Item base price. Limit 2 pkgs. Free gifts must ship with #55586. Standard S&H will be added. Expires 2/28/19. ©2018 OCG 18M1531 Omaha Steaks, Inc.

Combo Price \$499

Call 1-855-351-5658 and ask for 55586TJH
www.OmahaSteaks.com/love17



Lori Sorenson photo/1129 city christmas wreaths

Deck the streets with Christmas wreaths

Workers with the city of Luverne electric utility department hang lighted wreaths on Main Street lightpoles Monday morning for the holiday season. This weekend is Luverne's annual Winterfest celebration (see the Page 1 story).

Beware the dangers of thin ice, especially with children this time of year

Now is the time to talk with kids about the dangers of ice. Ice thickness varies greatly on lakes, ponds and rivers throughout the state. Some water bodies have none, while others have several inches, according to the Minnesota DNR.

"Ice, especially early ice with snow cover, is extremely deceptive because you can't see dangerous cracks or the thickness of the ice under the snow," said DNR Conservation Officer Adam Block.

"Parents need to teach their kids that ice is never 100 percent safe. If your child is near the ice, you should be near your child."

Ice safety guidelines

No ice can ever be considered "safe ice," but following these guidelines can help minimize the risk:

- wear a life jacket on the ice (except when in a vehicle).
- Children should never be unsupervised around ice.

• Caution children to stay off ponds, streams, and other bodies of water.

• A thin coating of ice on a pond or lake doesn't mean it is safe.

• Check ice thickness at regular intervals — conditions can change quickly.

• Before heading out, inquire about conditions and known hazards with local experts.

• Avoid channels and rivers. The minimum ice thickness guidelines for new, clear ice are:

• 4 inches for ice fishing or other activities on foot.

• 5-7 inches for a snowmobile or all-terrain vehicle.

• 8-12 inches for a car or small pickup.

• 12-15 inches for a medium truck.

• Double these minimums for white or ice covered with heavy snow.

Visit mndnr.gov/icesafety and mndnr.gov/boatingsafety.



Home FOR THE Holidays

Saturday, December 1 ★ 7:30 p.m.
Sunday, December 2 ★ 2 p.m.

★ — All New — ★
Show & Music

PALACE THEATRE

Main Street Luverne

Christmas Show

BILL JOHNSON
as "Bob Hope"

TODD ECKART
as "Frank, Dean & Elvis"

JORIE KOSEL
as "Marilyn Monroe"

SANDBULTE SISTERS
as "Andrews Sisters"

SHEILA CROWLEY
and the instrumental sounds of
Fulda Big Band

RESERVED SEATS \$25
BALCONY \$15
At the Palace Box Office
Mon.-Fri. 12pm-5pm
507-283-4339

SPONSORED BY **The Rock County Star Herald**



Mavis Fodness photo/1129 scarf exchange

Luverne woman sets up scarf exchange

Winter scarves are tied to the handrail near the entrance of the Rock County Library in downtown Luverne along with a sign that reads, "Need a scarf, take a scarf. Have a scarf, leave a scarf." As temperatures and wind chills dropped into single digits this week, Holly Anderson of Luverne implemented the idea she read on social media earlier this year. The story told about an organization that left winter scarves for homeless residents to keep warm with during the cold weather. "I thought, 'Oh, that's cool,'" she said. Anderson collected scarves for the past several months along with adding some of her own for the collection she hung Monday night. Anderson is on the library board and thought the railing at the public library provided a central location where people could take or leave scarves as needed.



We believe in you.
Member FDIC And the community





First Farmers & Merchants

Thank you for another wonderful year of serving you.
Please join us as we kick off the holiday season.

Holiday Open House

Monday, December 3rd

9 a.m.-4:30 p.m.



Lending Team
Back L-R: Cris Oeltjenbruns, Ryan Wynia, Mike DeBates, Lois Leuthold; Front L-R: Michele Wessels, Natilee Woodley, Lisa Ehlers

Operations/CSR Team
Back L-R: Peg Gacke, Maryln VanGrootheest, Carol Foster; Front L-R: LaDonna VanAartsen, Tara Zewiske

Data Center Team
Back L-R: Karen Wohnoutka, Candice Mann
Front L-R: Brit Matt, Jared Schroeder

Teller Team
Back L-R: Paulette Richters, Jo Buss, Michelle Jansma
Front L-R: Jill Buss, Sandy Clark





303 E. MAIN ST. | LUVERNE | 507-283-4463

WWW.FFMBANK.COM



John Rittenhouse photo/1129 lgb 1

Luverne freshman guard Brooklynn Ver Steeg splits Edgerton defenders Madison Heard and Reece Wassink (33) to score two of her 10 points during Monday's 67-23 victory in Edgerton.

Cardinal basketball team coasts to big victory in Edgerton

By John Rittenhouse

The Luverne girls' basketball team made a statement during its 2018-19 season debut at Edgerton Public School Monday.

One year after putting together a winning record for the first time in years, the Cardinals picked up where they left off last season.

Luverne dominated both halves of the game and rolled to a 67-23 victory over the Flying Dutchmen in a non-

conference clash.

The Cardinals assumed control of the game early in the first half.

Luverne scored the first 10 points of the contest on the way to building an 18-2 advantage after Mackenzie Petersen canned a field goal at the 10:50 mark of the first half.

A three-point play by Edgerton made it a 13-point (18-5) difference, but the Cardinals

Coast/continued on page 2B

Girls split conference contests with New Ulm, Minnesota River

By John Rittenhouse

The Luverne girls' hockey team opened Big South Conference play by splitting a pair of contests.

New Ulm saddled the Cardinals with their first loss of the season Nov. 20 in New Ulm. LHS bounced back on Saturday to post a home win over Minnesota River.

Luverne, 3-1-1 overall, skates in Windom Thursday.

Luverne 8, MR 0

The Cardinals posted a lopsided victory when they entertained the Bulldogs at the Blue Mound Ice Arena Saturday.

Claire Baustian paced an LHS offense that sported a 40-14 advantage in shots on goal by registering a hat trick and Mallory Von Tersch recorded a shutout in goal to highlight an 8-0 victory.

LHS gained control of the game with a three-goal first period.

Baustian opened the scoring with an unassisted tally at the 12:57 mark of the stanza before Rylee Gee made it 2-0 with a power-play goal 2:17 later.

Kamryn Van Batavia capped the three-goal stanza with an unassisted goal with 6:36 remaining.

The Cards upped the lead with a two-goal second period.

Shelby Kracht scored 9:47 into the period and Gee made it 5-0 with a goal that came with 43 seconds remaining.

LHS finished the game strong by scoring three goals in the third period.

Baustian scored twice in the first 7:05 of the stanza before Van Batavia capped the scoring with an unassisted, short-handed goal with 4:30 left to play.

Gee registered two assists to lead LHS, while Brynn Thier, Reghan Bork, Billi Connell, Rozilyn Oye and Van Batavia chipped in one assist each.



John Rittenhouse photo/1129 lgh 9

Luverne eighth-grader Mallory Nelson battles for the puck with Minnesota River's Darbi Dunning during Saturday's Big South Conference girls' hockey game at the Blue Mound Ice Arena.

New Ulm 4, LHS 1

The Cardinals took their first loss of the season when they opened Big South Conference play in New Ulm Nov. 20.

The home-standing Eagles turned in a commanding effort by outshooting the Cardinals 41-13 during a three-goal victory.

New Ulm scored the game's first two goals and added a pair of tallies in the third period to end what was a run for

playing three games without taking a loss for LHS.

Madeline Gag gave the hosts a 1-0 cushion when she netted an unassisted goal 5:04 into the first period.

Alexa Steffl doubled New Ulm's lead (2-0) 54 seconds into the second period before Luverne made it a one-goal difference with a power-play tally at the 10:39 mark of the second period.

Thier scored the goal with

an assist going to Baustian.

New Ulm put the game away by scoring twice in the first 5:34 of the third period.

Molly Scheid registered a short-handed goal 2:14 into the final period before recording an unassisted tally to cap the scoring with 11:26 left to play.

Cheyenne Schutz stopped 37 of the 41 shots she faced in goal for LHS.



John Rittenhouse photo/1129 lhs fb

Luverne High School football players (from left) Payne Bonnett, Bailey Cowell, Brayden Jacobsma and Jed Dooyema made the 2018 All-South Central District White Division Football Team. James Chanthalangsy (pictured below) drew honorable mention from the White Division coaches.

Cards rake in All-District honors

By John Rittenhouse

Five Luverne High School football players drew postseason honors early this week.

Four Cardinals made the 2018 All-South Central White Division Football Team and another Cardinal player received one of 15 honorable mention selections doled out by district coaches.

Making the 29-player All-District squad for LHS are seniors Brayden Jacobsma, Payne Bonnett and Jed Dooyema and sophomore Bailey Cowell.

Senior James Chanthalangsy drew honorable mention.

White Division champion Redwood Valley led all teams with six all-district selections.

Seniors Logan Prouty, Kyle Huhnerkoch, Corbin Washa and Cole Woodford and juniors Kaleb Haase and Chad Maddock represent the Cardinals.

Jackson County Central landed five all-district picks.



Chanthalangsy

Seniors Zach Neal and Logan Bannister and juniors Rudy Voss, Bradley Buhl Jr. and Parker Benda made the team for the Huskies.

Pipestone matched LHS with four all-district picks.

Seniors Matt Enger, Braeden Rieck and Josh Tinklenberg and junior Jason Steenstra grace the roster for the Arrows.

Blue Earth Area and St. James received three all-

district selections each.

Juniors Adam Griffin and Koby Nagal and sophomore Max Ehrich made the squad for BEA, while seniors Parker Jones, Jscob Brey and Cole Durheim represent St. James.

Windom seniors Alex Borsgard and Jabari Carlton and Martin County West senior Nick Johnson and junior Miles Fitzgerald round out the all-district squad.

Other players drawing honorable mention include BEA senior Hunter Bless and junior Zac Murphy, JCC juniors Matt Stubbe and Noah Carr, MCW senior Hunter Swanson and sophomore Jaxon Rohman, Pipestone senior Chris Najera and junior Eric Lange, RWV senior Omar Arredondo and junior Adam Bommersbach, St. James senior Kobe Mohwinkel and junior Tallin Johnson and Windom junior Mikal Anderson and sophomore Kade Sammons.

Seven Patriots grace football list

By John Rittenhouse

Seven Hills-Beaver Creek High School football players collected postseason honors early this week.

Five Patriots made the 2018 All-South District Western Division Football Team and two other athletes received honorable mention.

Making the All-District squad for H-BC are seniors Bailey Susie and Garrett Raymon, junior Jax Wysong and sophomores Gavin Wysong and Tyson Bork.

Along with making the All-District Team, Raymon was named the District's Lineman of the Year.

H-BC seniors Hunter Bork and Luke LaRock landed two of the 19 honorable mention selections doled out by the District's coaches.

Mountain Lake Area led all teams by securing six All-District selections.

Seniors Eli Karschnik, Drake Harder and David Larson, juniors Abraham Stoesz and

Isaac Grev and sophomore Mace Herrig made the squad for the Wolverines.

Larson was named as the District's Defensive Player of the Year, while MLA mentor Tim Kirk was named the Coach of the Year.

Red Rock Central, Russell-Tyler-Ruthton and Westbrook-Walnut Grove received four All-District selections each.

RRC senior Jared Schroepfer and juniors Tavion Ryker, Jonah Hansen and Hahden Determan made the squad, as did R-T-R seniors Jack Kerr, Cooper Hansen and Carter Hansen and junior Kyle Fischer.

Cooper Hansen was named the District's Back of the Year.

Making the team from W-WG include seniors Ethan Parker and Andrew Quade, junior Jace Paplow and sophomore Ethan Mischke.

Cedar Mountain and Heron Lake-Okabena-Fulda placed three players each on the All-

District list.

Seniors Eli Samuelson, Nolan Freitag and Dain Dallenback represent Cedar Mountain, while seniors Andrew Madsen, Levi Spittle and Dylan Nelson cracked the roster for HL-O-F.

Renville County West senior Jaime Castillo and Jack Howard grace the All-District roster, while Edgerton-Ellsworth junior Carl Haag and MACCRAY senior Jakob Zuidema round out the team.

Other players drawing honorable mention include MLA senior Regan Syverson, R-T-R senior Jon Lucero and junior Payton Hess, RRC senior Austin Irlbeck and junior Derek Werner, W-WG senior Jake Kleven and sophomore Gabe Krick, E-E seniors Parker Carlson and Zach Johnson and junior Brayden Kuiper, MACCRAY senior Kelby Jaenisch and junior Rhys Schwitters and Renville County West senior Connor Aalderks.



John Rittenhouse photo/1129 hbc fb

Seven members of the Hills-Beaver Creek High School football program received postseason honors from South District Western Division officials this week. They are (from left) Luke LaRock, Hunter Bork, Bailey Susie, Gavin Wysong, Jax Wysong, Tyson Bork and Garrett Raymon.

Win over Green Bay provides season's worth of satisfaction

Now I'm completely satisfied.

It doesn't matter what the rest of the regular



season holds for the Minnesota Vikings because they gave me my prize Sunday night.

A 24-17 victory over the Green Bay Packers may seem to be a modest accomplishment for some, but not to me.

Every clash is my personal Super Bowl, and the fact Minnesota has endured two regular seasons without losing a game to our rivals from Wisconsin has me feeling giddy.

I just hope I'm not the only Minnesota fan feeling this way.

Although the Vikings do have a realistic shot at making the playoffs for the second consecutive season, it isn't my top concern right now.

It may happen, but I wouldn't be surprised if we didn't make the post-season due to a demanding remaining schedule facing a team that clearly is not as strong as it was one year ago.

How the playoff situation plays out remains to be seen, but what I do know is that it wasn't the Packers who played a negative role in our fate.

I didn't exactly celebrate the 29-29 deadlock the teams played at Lambeau Field in Week 2 of the regular season, but that was the result of the Vikings' rookie kicker missing some easy attempts that could have clinched a victory for the purple and gold.

Dan Bailey, the kicker

FROM THE SIDELINES

By John Rittenhouse, sports editor

who replaced Daniel Carlson after the debacle in Green Bay, missed a couple of long attempts in Sunday's rematch.

Those missed opportunities didn't hurt the Vikings this time.

Minnesota's defense did surrender a couple of prolonged touchdown drives early in the game, and the first one almost made me puke when I witnessed the classless Aaron Rodgers display his arrogance with a fist pump on national television.

Rodgers, however, became a non-factor in the second half that included a three-point showing by the Packers and a couple of turf naps for the Green Bay quarterback issued by Minnesota's defensive linemen.

By the end of the game, the arrogant one from Green Bay was relegated to moping on the bench for all to see as the Vikings' offense controlled the ball and produced enough points to seal the deal in the second half.

Ultimately it was that look on Rodgers' face that I will treasure for the rest of the season.

The Vikings may not be a team of championship caliber, but they are good enough not to be beat by the egotistical, fist-pumping quarterback who is featured in countless insurance commercials.

That, my friends, is good enough for me.



John Rittenhouse photo/1129 ahs fb photo

AHS football players (from left) Brandon Schnoor, Lance Luettel, Skylar Dingmann and Scot Edwards received postseason honors last week. Little and Edwards made the All-District Team, while Dingmann and Schnoor received honorable mention.

Adrian gridders draw football recognition

By John Rittenhouse

Four members of the Adrian High School football program collected postseason honors last week.

Two Dragons made the 2018 Southwest District East Sub-District Football team, and two more players earned honorable mention status.

Making the 28-player All-District squad for AHS are juniors Lance Luettel and Scot Edwards.

Senior Skylar Dingmann and junior Brandon Schnoor

received two of the 14 honorable mention selections doled out by District coaches.

District champion Murray County Central led all teams with six all-district picks.

Seniors Justin Benda, Kolton Wendorff, Noah Boerboom, Teagan Peschges, Danny Blankenship and Mason Woltdt made the team.

Tracy-Milroy-Balaton, New Ulm Cathedral and Springfield secured five all-district selections each.

T-M-B seniors Sam Bauer,

Jett Davis, Ryan Fogelson and Jake Byrne and junior Trevor Eisfeld grace the list, as do NUC seniors Alex Hillesheim, Zach Helget, Joey Griebel, David Berg and Aaron Pfortner.

Seniors Isaac Fink and James Ploeger and juniors Decker Scheffler, Mason Rummel and Ivan Hovland represent Springfield.

Sleepy Eye seniors Blake Tauer, Jacob Berg and Landon Strong cracked the all-district roster, as did Wabasso seniors Tristan Kuehn and Ryan Liebl.

Other players drawing honorable mention include MCC senior Caiden Like and sophomore Rylan Behnke, T-M-B seniors Matt Timmerman and Tyler Vandendriessche, New Ulm Cathedral senior Elliott Schoo and junior Tony Geiger, Springfield senior Mitchell Leonard and junior Nolan Hovland, Sleepy Eye seniors Nathan Walter and Isaac Velasquez and Wabasso seniors Brock Rohlik and Carl Swedzinski.

Coast/continued from page 1B

didn't let it spoil what was a solid first half for the visiting team.

Luverne outscored Edgerton 18-3 the rest of the opening stanza to sport a 36-8 lead at the intermission after Mallory Thorson ended the scoring in the first half with a field goal that came with three seconds remaining.

Edgerton was unable to challenge the Cardinals in the second half.

The Flying Dutchmen did score the first two points of the final stanza to make it a 36-10 game, but that proved to be as close as they would come to catching LHS.

Luverne outscored Edgerton 31-13 the rest of the stanza to prevail by 44 points at game's end.

Thorson and Petersen led Luverne offensively by netting 16 and 15 points respectively. Thorson chipped in eight rebounds and four assists to the winning cause.

Brooklyn Ver Steeg tossed in 10 points and Gabrielle Ferrell collected five caroms for Luverne.

The 1-0 Cardinals play in Adrian Tuesday.



John Rittenhouse photo/1129 lgb 2

Luverne junior Mallory Thorson started the 2018-19 basketball season in style Monday in Edgerton. Thorson turned in a 16-point, eight-rebound, four-assist effort during a 67-23 win.

Box score
Van Grootheest 0 0 0-0 0, Ver Steeg, 3 0 4-4 10, Anderson 0 0 3-4 3, Thorson 7 0 2-6 16, Nath 2 0 0-0 4, Tofteland 0 1

0-0 3, Sweeney 0 0 1-2 1, Petersen 6 1 0-1 15, Ferrell 3 1 0-0 6, Hadler 2 0 2-4 6.

Luverne: 16 of 55 field goals (47 percent), 12 of 21 free throws (57 percent), 21 rebounds, 10 turnovers.

Team statistics

WINTER SPORTS STANDINGS

BSC girls' hockey		Marshall	0-0
New Ulm	2-0	Minnesota River	0-1
Fairmont	1-0	Windom	0-1
Waseca	1-0	Worthington	0-1
Luverne	1-1		

PANCAKE BREAKFAST
Sunday, Dec. 2
9am - 1pm
 Adults \$7.00 10 & Under \$3.00
American Legion
Luverne
 124 W Main

Dining AND Entertainment

CHRISTMAS STORYTIME OPEN HOUSE

Serving: Dessert, Coffee, Hot Cider

Featuring Carol Ceynowa's Felt Critters

THE HINKLY HOUSE
 Saturday - December 1
 1 pm to 4 pm

Beautifully decorated with holiday décor, THE HINKLY HOUSE is available for your holiday parties. For information or to book an event: Call 507.283.4061

PALACE THEATRE UPCOMING EVENTS

Thursday Nov. 29 2 p.m. **Old Man Gun** Afternoon Escape Movie "The Old Man and the Gun" \$5 admission

Dec. 1 7:30 p.m. **USO Christmas Show** Tickets available at the Palace Box Office

Dec. 2 2 p.m.

Thursday Dec. 6 6 p.m. **Bank Nite FREE Family Movie "The Star"** Sponsored by Papik Motors and First Farmers & Merchants Bank

Dec. 8 1:30 p.m., 4 p.m., 6:30 p.m. **Luverne Street Music presents "Sounds of Christmas"**

Saturday Dec. 29 8 p.m. **Songblast Dueling Guitars** \$20 tickets on sale at the Palace Box Office or www.palacetheatre.us

PALACE THEATRE
 104 E. MAIN ST. • PO BOX 541 • LUVERNE, MN 56156
 507.283.4339 • WWW.PALACETHEATRE.US

Palace Theatre Luverne
Box office is open
 Monday - Friday 12 p.m. - 5 p.m.
 507-283-4339

ROCK COUNTY SNOWMASTERS FREE SWAP MEET

SATURDAY, DEC. 1 AT 10 AM
 Howling Dog parking lot
 (We will ride if there's snow)

& Rust Nuts Vintage Snowmobile **SHOW & SHINE** & Membership Drive

for more information contact: Greg at 507-920-5189

Come to a place where imaginations soar, roller coasters rock and dreams really do come true - the **Walt Disney World Resort**. Here, you'll create memories that will last a lifetime - magical moments you'll hold in your heart, happily ever after. Don't wait any longer. There's a magical Disney moment waiting for you right now!

To Learn more about these exciting vacation opportunities come to Disney Night at All About Travel, Inc.

November 29 • 6 p.m.
 All About Travel
 3801 S. Western Ave., Suite 103
 Sioux Falls, SD 57105

Please RSVP to hold your spot!
 Call us at 605-339-8911
 Email us at - aat@allabouttravel.org
 Sign up on our website: www.allabouttravel.org

ALL ABOUT TRAVEL
 10-Year Winner! Layaway & Gift Certificates Available!
605-339-8911 • 1-800-390-6610
 3801 S. Western Ave., Suite 103, Sioux Falls, SD
 Open: Mon.-Fri. 8 a.m. - 7 p.m. • Saturday 9 a.m. - 1 p.m.
 www.AllAboutTravel.org www.facebook.com/AllAboutTravelInc
 Helping You Find Your Personal Paradise!

St. Catherine Catholic Church

203 E. Brown St., Luverne
St. Catherine Ph.: 283-8502; email: stcatherine@iw.net
Thursday, Nov. 29: 9 a.m. Head Start. Saturday, Dec. 1: 5 p.m. Mass at St. Catherine. Sunday, Dec. 2: 8:30 a.m. Mass at St. Catherine. 10:30 a.m. Mass at St. Leo. Tuesday, Dec. 4: 1-4 p.m. Mission Sewing. 7 p.m. LCCW. Wednesday, Dec. 5: 9 a.m. Mass at St. Catherine. 3:30 and 7 p.m. Faith Formation. 5 p.m. Program practice. Thursday, Dec. 6: 9 a.m. Head Start.

Luverne Christian Reformed Church

605 N. Estey St., Luverne
Office Ph. 283-8482; Prayer Line Ph. 449-5982
www.luverncrc.com — office@luverncrc.com
Roger Sparks, Pastor
Sunday, Dec. 2: 9:30 a.m. Worship Service. 10:50 a.m. Sunday School and Catechism classes. 6:30 p.m. Worship Service. Monday, Dec. 3: 9 a.m. Perk-up at Poplar Creek. Tuesday, Dec. 4: 9:30 a.m. Coffee Break/Story Hour. Wednesday, Dec. 5: 2 p.m. Faith Builders Bible Study. 7 p.m. GEMS and Cadets.

First Baptist Church

1033 N. Jackson St., P.O. Box 975, Luverne
Ph. 283-4091; email: fbcluv@iw.net — www.fbcluverne.org
Walt Moser, Pastor
Thursday, Nov. 29: 6 a.m. Men's Bible Study. 8 p.m. Worship Service on Channel 3. Sunday, Dec. 2: 9:15 a.m. Sunday School. 10:30 a.m. Morning Service with Communion. 6 p.m. Evening Service. Monday, Dec. 3: 7 p.m. Constitution Review Team meeting. Tuesday, Dec. 4: 7 a.m. Men's Bible Study. Wednesday, Dec. 5: 6:30 p.m. Awana. Thursday, Dec. 6: 6 a.m. Men's Bible Study. 8 p.m. Worship Service on Channel 3.

Grace Lutheran Church

500 N. Kniss Ave., Luverne
Ph. 507-283-4431; www.graceluverne.org — graceluverne@iw.net
Ron Nichols, Pastor
Thursday, Nov. 29: 8:30 a.m. Missions in Action. 2 p.m. Sarah Circle at Camelot. Friday, Nov. 30: 6:30 p.m. Worship on Channel 3. Saturday, Dec. 1: 10 a.m. Olson/Wilcoxon bridal shower. 5:30 p.m. Worship with Communion. Sunday, Dec. 2: Noisy Sunday. 8:15 a.m. Radio Broadcast. 9 a.m. Worship with Communion. 10 a.m. Fellowship coffee/treats 10:15-11:15 a.m. Adult Study and Sunday School/Christmas practice. 4:30 p.m. Ride and Dine to First Lutheran Worthington. Monday, Dec. 3: 4:30 p.m. Worship on Channel 3. Tuesday, Dec. 4: 9 a.m. Staff Meeting. Wednesday, Dec. 5: 7 a.m. Men's Bible Study. 9:30 a.m. Naomi Circle at Mary Jane Brown Home. 10 a.m. Worship at Tuff Home. 3:30 p.m. Faithweavers. 5:15 p.m. Supper. 6 p.m. Woven Worship with Communion. 7 p.m. Chancel Choir rehearsal; Mentor night. 7 p.m. Confirmation Grades 6-8. 7:30 p.m. Grade 9 Confirmation. Thursday, Dec. 6: 9:30 a.m. MIA Christmas party.

Bethany Lutheran Church

720 N. Kniss Ave., Luverne
Ph. 507-283-4571 or 507-449-0291 or 605-215-9834
pastorapalmquist67@yahoo.com
Sunday, Dec. 2: 9 a.m. Sunday School. 9:15 a.m. Bible Class. 10:15 a.m. Worship. Wednesday, Dec. 5: 11:30 a.m. Rebekah Circle at Pizza Ranch. 3:45 p.m. Catechism classes. 6 p.m. Soup Supper. 7 p.m. Advent Vespers.

American Reformed Church

304 N. Fairview Dr., Luverne
Ph. 283-8600; email: office@arcluverne.org
Mike Altana, Pastor
Friday, Nov. 30: 6:30 a.m. Community Men's Bible Study. 4:30 p.m. REFIT Fitness. Sunday, Dec. 2: 9:30 a.m. Communion celebration. 10:50 a.m. Family Education. Monday, Dec. 3: 5:30 p.m. Esther Circle. Tuesday, Dec. 4: Noon Staff Meeting. 5:30 and 6:30 p.m. Bible Study Fellowship. Wednesday, Dec. 5: 4:30 p.m. REFIT Fitness. 5:30 p.m. Midweek Meal; Ladies Night Out. 6:30 p.m. Pioneer Clubs; Junior and Senior Youth Groups. 7 p.m. Rachel Circle; Praise Team practice. 8 p.m. Cantata rehearsal. Thursday, Dec. 8: 5:30 p.m. Tumbling Tikes.

First Assembly of God Church

1075 110th Ave., 2 miles west of Luverne on County Rd. 4
Sundays: 9 a.m. Sunday School. 10 a.m. Morning Worship. 6:30 p.m. School of the Holy Spirit. Wednesdays: 7 p.m. Kids Connection; Men's Bible Study with Pastor Ken; Women's Bible Study with Pastor Gloria.

First Presbyterian Church

302 Central Lane, Luverne
Ph. 283-4787; email: Firstpc@iw.net — www.fpcluverne.com
Thursday, Nov. 29: 10 a.m. Worship Service on Channel 3. Sunday, Dec. 2: 9 a.m. Sunday School. 10:15 a.m. Worship. 11:15 a.m. Congregational Meeting. Tuesday, Dec. 4: 10 a.m. and 6 p.m. Worship Service on Channel 3. Wednesday, Dec. 5: 3:30 p.m. Youth Club. 5:30 p.m. Bells. 6 p.m. Confirmation; Middle School Fellowship. 6:15 p.m. Choir. 7:15 p.m. Worship; Property; CE; Stewardship. Thursday, Dec. 6: 10 a.m. Worship Service on Channel 3.

United Methodist Church

109 N. Freeman Ave., Luverne
Ph. 283-4529; email: luvernumc@iw.net
Dorie Hall, Pastor
Thursday, Nov. 29: 1-3 p.m. Rock County Food Shelf. Saturday, Dec. 1: 8 p.m. AA Meeting. Sunday, Dec. 2: 9 a.m. Coffee Hour/ Adult Sunday School. 10 a.m. Traditional Family Christmas Service with potluck/cookie walk. 4:30 p.m. Genesis/Revelation Bible Study. No ALIVE Youth Group. Monday, Dec. 3: 7 p.m. Celebrate Recovery Bible Study. 8 p.m. AA Meeting. Tuesday, Dec. 4: 8 a.m. Priscilla Circle. Wednesday, Dec. 5: 1-3 p.m. Sewing Day. 6 p.m. F.U.E.L. and Confirmation. 8 p.m. AA meeting. Thursday, Dec. 6: 1-3 p.m. Rock County Food Shelf.

St. John Lutheran Church

803 N. Cedar St., Luverne
Ph. 283-2316; email: stjoh@iw.net — www.stjoh Lutheran Luverne.org
Gary Klatt, Pastor
Thursday, Nov. 29: 11:30 a.m. DCE Jess devotions at Mary Jane Brown Home. Saturday, Dec. 1: 8 a.m. Christmas decorating. 5:30 p.m. Worship. Sunday, Dec. 2: 9 a.m. Worship; Junior choir sings. 10:30 a.m. Christmas program practice. 4 p.m. Junior LYF. Monday, Dec. 3: 9 a.m. Winkel in Slayton. 7 p.m. Elders meeting. Tuesday, Dec. 4: 1 and 6:30 p.m. Quilting. 6:30 p.m. Mom's Night Out. Wednesday, Dec. 5: 9:30 a.m. Bible Study. 6 p.m. Advent Worship. 6:40 p.m. Supper. 7 p.m. Catechism; KFC; High School Youth Group. Thursday, Dec. 6: 2 p.m. Women's Society.

Living Rock Church

500 E. Main St., Luverne
Ph. 449-0057; www.livingrockswmn.org
Billy Skaggs, Pastor
Sundays: 10:30 a.m. Worship; Kids Rock Children's Ministry. 6 p.m. Youth Ministry. Life groups meet throughout the week.

New Life Celebration Church

110 N. Oakley, Luverne
Ph. 449-6522; email: newlifecel@iw.net
Sundays: 9:30 a.m. Worship at 110 N. Oakley. Every third Thursday: 4:30 p.m. Food give-away at Senior Citizens Center. Bible Study groups meet at various times and days.

Zion Evangelical Lutheran Church

305 E. 2nd St., P.O. Box 36, Hardwick
Thursday, Nov. 29: 3:30 p.m. Worship on Channel 3. Friday, Nov. 30: 3:30 p.m. Worship on Channel 3. Sunday, Dec. 2: 9 a.m. Sunday School and Adult Bible Study. 10 a.m. Mentor Program. 10:30 a.m. Worship with Communion; choir sings. Monday, Dec. 3: 1 p.m. Quilting. Wednesday, Dec. 5: 6 p.m. Advent Worship at St. John. 7 p.m. Confirmation. Thursday, Dec. 6: 3:30 p.m. Worship on Channel 3.

Ben Clare United Methodist Church

26762 Ben Clare Ave., Valley Springs, S.D.
igtwb@WOW.net
Bill Bates, Pastor
Sundays: 9 a.m. Worship; 10 a.m. Fellowship; 10:30 a.m. Sunday School for all ages.

First Lutheran Church

300 Maple St., Valley Springs, S.D.
Ph. (605) 757-6662
Laura Phillips, Pastor
Sunday, Nov. 18: 9 a.m. Worship service at Palisade. 10 a.m. Sunday School.

Palisade Lutheran Church

211 121st St., Garretson, S.D.
Ph. (507) 597-6257 — firstpalisade@alliancecom.net
Laura Phillips, Pastor
Sunday, Nov. 18: 9:30 a.m. Sunday School; 10:30 a.m. Worship service.

First Presbyterian Church

201 S. 3rd St., P.O. Box 73, Beaver Creek
Ph. 507-935-5025
Email: lori.firstpres@gmail.com
Sundays: 9:30 a.m. Morning Worship.

Magnolia United Methodist Church

501 E. Luverne St., Magnolia
Church Ph. 507-483-2492; email: adrmagumc@gmail.com
www.facebook.com/adrianmagnoliaumc
Sundays: 9 a.m. Magnolia Worship Service. Wednesdays: 6:30 p.m. Confirmation.

Hills United Reformed Church

410 S. Central Ave., Hills
Office Ph. 962-3254
hillsurc@alliancecom.net
Alan Camarigg, Pastor
Sundays: 9:30 a.m. and 6 p.m. Worship Services.

Thanksgiving segue to Christmas

I appreciate the fact that Thanksgiving is a few short weeks before Christmas. It brings me into the holiday season with a grateful attitude for what God, through His son, did for us. God sent Jesus to the earth as a human being to redeem the world to Himself.

As I Peter 3:18 states, "... Christ suffered once for our sins, the righteous for the unrighteous, that He might bring us to God."

It is incredible to think that the almighty God of the universe, the God who created all things, would even give us a thought. Yet He willingly sent his son to the earth to give us life. That should bring us to our knees in humble gratefulness.

As Thanksgiving ushers in the Christmas season, we can think about all the things that we have because "God so loved the world that He sent His one and only son, that whoever believes in Him, should not perish but have eternal life." John 3:16.

The first thing we can be grateful for is the gift of salvation. As we saw in 1 Peter 3 and John 3, God sent his son to pay the price of death for our sin because we could not. Now we have only to believe this and accept his forgiveness for our sin and we have eternal life. We will be forever in heaven with him and not in hell separated from

BUILT ON A ROCK

By Pastor Walt Moser,
First Baptist Church,
Luverne

God.

We are grateful that God is attentive to the cry of our heart. God is listening. "For the eyes of the Lord are on the righteous, and his ears are open to their prayer. But the face of the Lord is against those who do evil." I Peter 3:12

We are grateful that through Christ we can do all things. Nothing is impossible for those who believe. We are not helpless or hopeless. "I can do all things through him who strengthens me." Philippians 4:13

We are grateful that God never will abandon us. "I will never leave you nor forsake you." Hebrews 13:5. "For I am sure that neither death nor life, nor angels nor rulers, nor things present nor things to come, nor powers, nor height nor depth, nor anything else in all creation, will be able to separate us from the love of God in Christ Jesus our Lord." Romans 8:38-39

In the rush of Christmas, be grateful for all that God has given to those who believe.

Steen Reformed Church

112 W. Church Ave., Steen
Ph. 855-2336
Jeremy Wiersema, Pastor
Sundays: 9:30 a.m. Worship; service broadcast on KQAD. 10:45 a.m. Sunday School. 6 p.m. Youth Group. Evening worship at 6 p.m. first and third Sundays. Wednesdays: 7 p.m. Midweek.

Bethlehem Lutheran Church

Pastor Maggie Berndt-Dreyer
112 N. Main St., Hills
Ph. 962-3270
e-mail: bethlehemluth@alliancecom.net
Sunday, Dec. 2: 9 a.m. Communion at Tuff Chapel; Sunday School Christmas practice. 10:30 a.m. Communion at Bethlehem. Tuesday, Dec. 4: 2:30 p.m. Bible Study at Tuff Home. 3:15 p.m. Bible Study at Tuff Village. Wednesday, Dec. 5: 9 a.m. Quilting. 6:30-8 p.m. Deacons meeting.

These Weekly Church Page Messages are contributed to God's Work through the Church and by these concerned and responsible citizens & businesses:

Call Rick or Chantel to place your ad!
283-2333

Tuff Memorial Home, Retirement Apartments & Tuff Village
"A Home Where Residents SMILE"
Hills, Minnesota
Phone 507-962-3275

Papik Motors
LUVERNE, MINN.
I-90 in Luverne, MN
507-283-9171 • 1-800-634-7701

Read us online!
Rock County
STAR HERALD
www.Star-Herald.com

Trust In Him



Pizza Ranch
110 E. Main, Luverne, MN
Phone 507-283-2379

MANLEY
TIRE & OIL SERVICE
Manley Minnesota
1-800-615-3704
Open six days a week - Closed on Sundays
To God be the Glory.

CWG
Business Insurance.
Tri-State Region

Rock County
STAR HERALD
Luverne, MN • 507-283-2333

Advertise Here

Luverne
ANNOUNCER

To Advertise
Call
283-2333

Buffalo Ridge
INSURANCE
507-283-2381 www.buffaloridgeins.com E-mail: info@buffaloridgeins.com

McClure Electric
Alan M. Aanenson, owner
Farm, Home & Commercial Wiring
Luverne, MN Phone 507-283-4716

First Farmers & Merchants
303 E. Main, Luverne, MN
507-283-4463
www.fimbank.com
We believe in you.
Member FDIC. And the community.

HILLS STAINLESS STEEL & EQUIPMENT CO., INC.
506 W. Koehn, P.O. Box 987, Luverne, MN
PHONE 507-283-4405
Church is Important - Please Attend!

MINNWEST BANK
• 116 E. Main St., Luverne 507-283-2366
• S. Hwy. 75, Luverne 507-283-9131
• Main St., Beaver Creek 507-673-2333
Member FDIC www.minnwestbank.com

HARTQUIST
Funeral and Cremation Services
- ENGBRETSON CHAPEL -
507-283-2777
www.HartquistFuneral.com
"Let our family help your family"
Serving the Luverne and Surrounding Communities

Tollefson Publishing
117 W. Main
Luverne, MN 56156
507-283-2333

Star Herald PUBLIC NOTICES

Page 4B November 29, 2018

Proposed bank acquisition

NOTICE OF PROPOSED MERGER
BY
SECURITY SAVINGS BANK
CANTON, SOUTH DAKOTA

Notice is hereby given that Security Savings Bank, 100 West Road, Canton, South Dakota 57013 has made application to the Federal Deposit Insurance Corporation for its written consent to acquire through merger, Exchange State Bank, 310 Gabrielson Road, Luverne, Minnesota 56156. It is contemplated that all offices of the above-named institutions will continue to be operated.

Any person wishing to comment on this application may file his or her comments in writing with the Regional Director of the Federal Deposit Insurance Corporation at its regional office, located at 1100 Walnut Street, Suite 2100, Kansas City, Missouri 64106 no later than December 1, 2018. The non-confidential portions of the application are on file in the regional office and are available for public inspection during regular business hours. Photocopies of the non-confidential portion of the application file will be made available upon request.

Security Saving Bank
100 West Road
Canton, South Dakota 57013
Lincoln County
FDIC Certificate No. 15734
(11-01, 11-15, 11-29)

LPRW assessment hearing Dec. 26

STATE OF MINNESOTA
COUNTY OF LYON
In the Matter of
LINCOLN PIPESTONE RURAL WATER SYSTEM

IN DISTRICT COURT
FIFTH JUDICIAL DISTRICT
Subject Matter: 14 Other Civil
Court File No. 42-CV-06-1150
Tricia B. Zimmer

Petitioner
**NOTICE OF ASSESSMENT HEARING FOR
LINCOLN PIPESTONE RURAL WATER SYSTEM**

TO WHOM IT MAY CONCERN:

Notice is hereby given that Lincoln Pipestone Rural Water System ("LPRW") has filed a Petition at the Lyon County, Minnesota District Court, which requests that the real estate owned by all individuals and businesses who connected to LPRW in 2018, and who have not fully paid for their connection to LPRW, be assessed for all remaining costs to connect to LPRW.

A hearing on this Petition is going to occur in one of the courtrooms at the Lyon County Government Center, which is located at 607 West Main Street, Marshall Minnesota 56258 on December 26, 2018 at 3:30 p.m.

Written or oral objections will be considered at the hearing.

The proposed assessment rolls are on file with the County Auditors of Jackson County, Lincoln County, Lyon County, Nobles County, Pipestone County, Rock County, and Yellow Medicine County.

The area proposed to be assessed consists of every parcel of land benefited by the connection to LPRW, and which was previously petitioned for improvement by the owners of said parcel of land.

The assessments will be made without regard to acreage or frontage on the water mains or branches of the water system. No assessment will be made upon land, which has not been made the subject of a petition or has not been designated and requested to be served by the owner.

Karen Bierman
District Court Administrator
By: Amy
Deputy Court Administrator

This instrument drafted by:
Ronald J. Schramel
Attorney for Lincoln Pipestone Rural Water
Atty. Reg. No. 254757
Schramel Law Office
910 Fourth Avenue - PO Box 505
Windom, MN 56101
P - 507-831-1301
F-507-831-4200

(11-29)

2018 proposed tax levy

NOTICE OF PUBLIC HEARING ON PROPOSED 2018 TAX LEVY

NOTICE IS HEREBY GIVEN, by the City Administrator of the City of Luverne that a Budget Public Hearing will be held in the Council Chambers located in the City Offices Building, 305 East Luverne Street, Luverne, Minnesota, commencing at 6:00 p.m. on Tuesday, December 11, 2018.

All persons wishing to be heard should be present at the hearing or present written comments previous to the hearing to the City Administrator. Anyone needing reasonable accommodations or an interpreter should contact the City Clerk's Office, 305 East Luverne Street, Luverne, MN. (507) 449-9898.

John Call
City Administrator
(11-29)

Krogmann probate

PROBATE COURT
DISTRICT COURT
PROBATE DIVISION
Court File No. 67-PR-18-360

STATE OF MINNESOTA
COUNTY OF ROCK

In Re: Estate of
**John David Krogmann, a/k/a/ John Krogmann,
a/k/a John Krogman,
Deceased**

**ORDER AND NOTICE OF HEARING
FOR FORMAL PROBATE OF WILL AND
APPOINTMENT OF PERSONAL REPRESENTATIVE
IN SUPERVISED ADMINISTRATION
AND NOTICE TO CREDITORS**

TO ALL INTERESTED PERSONS AND CREDITORS:

It is Ordered and Notice is hereby given that on the 17th day of December, 2018 at 3:30 O'clock p.m., a hearing will be held in the above named Court at Rock County Courthouse, Luverne, Minnesota, for the formal probate of an instrument purporting to be the will of the above named deceased, dated April 21, 2015, and for the appointment of Imogene Krogmann whose address is 426 S. Fairview Drive, Luverne, Minnesota 56156, as personal representative of the estate of the above named decedent in supervised administration, and that any objections thereto must be filed with the Court. That, if proper, and no objections are filed, said personal representative will be appointed to administer the estate, to collect all assets, pay all legal debts, claims, taxes and expenses, and sell real and personal property, and do all necessary acts for the estate. Upon completion of the administration, the representative shall file a final account for the allowance and shall distribute the estate to the persons thereto entitled as ordered by the Court, and close the estate.

Notice is further given that ALL CREDITORS having claims against said estate are required to present the same to said personal representative or to the Court Administrator within four months after the date of this notice or said claims will be barred.

Dated: 11/21/2018
/s/ Douglas E. Eisma
Attorney for Petitioner
Eisma and Eisma
130 East Main
Luverne, MN 56156
(507)283-4828
I.D. #158343

/s/ Terry S. Vajrft
District Court Judge
Denise Brandel
Court Administrator
(COURT SEAL)

(11-29, 12-6)

City Planning Commission public hearings set for Dec. 10

NOTICE OF PUBLIC HEARING

NOTICE IS HEREBY GIVEN, by the City Planning Commission that a public hearing will be held in the Council Chambers located in the City Offices Building, 305 East Luverne Street, Luverne, Minnesota, commencing at 5:00 p.m. on Monday, December 10, 2018. The purpose of the hearings is to rule and make recommendation to the Luverne City Council on the following:

1. Creation of an Agricultural District in and for the City of Luverne, MN.
2. Designate Lot 1, Block 1, Mayes Addition, City of Luverne, MN as Agricultural according to MS 273.13, subd. 23i(2).

All persons desiring to be heard on these matters should be present at the hearing or present written comments prior to the hearing to the Building and Zoning Official, PO Box 659, Luverne, MN 56156. Anyone needing reasonable accommodations or an interpreter should contact the City Clerk's Office, 305 East Luverne Street, Luverne, MN. (507) 449-9898.

By order of the Luverne City Planning Commission, Luverne, Minnesota, this 21st day of November, 2018.

Jessica Mead
City Clerk
(11-29)

2019 property tax homestead notice

IMPORTANT PROPERTY TAX HOMESTEAD NOTICE
ROCK COUNTY PROPERTY OWNERS*

This will affect the amount of property tax you pay in 2019, and it may affect your eligibility for a property tax refund.

HOMESTEAD

Have you purchased or moved into a property in the past year?

Contact the Land Records Office to file a homestead application if you or a qualifying relative occupy the property as a homestead on or before December 1, 2018.

Who is a qualifying relative?

For agricultural property, a qualifying relative includes the child, grandchild, sibling, or parent of the owner or owner's spouse.

For residential property a qualifying relative also includes the owner's uncle, aunt, nephew, or niece.

When do I apply?

You must apply on or before December 15, 2018.

Once homestead is granted, annual applications are not necessary unless they

are requested by the Rock County Land Records Director.

Contact the Land Records Office by December 15, 2018 if the use of the property you own or occupy as a qualifying relative has changed during the past year.

CHANGES IN YOUR HOMESTEAD STATUS

If you should sell, move, or for any reason no longer qualify for the homestead classification, you are required to notify the Land Records Office within 30 days of the change in homestead status.

AGRICULTURAL PROPERTY OWNERS

If you have agricultural land that you own and farm yourself or have a son, daughter, son-in-law, daughter-in-law, brother, sister or other legal entity farm, you may be eligible for a special agricultural homestead.

If you think you are eligible, please stop in the Rock County Land Records Office, or if you have any questions, please call 507-283-5022.

Tom Houselog
Rock County Land Records Director
(11-29)

Mortgage foreclosure sale set for Jan. 10

**NOTICE OF MORTGAGE FORECLOSURE SALE
THE RIGHT TO VERIFICATION OF THE DEBT AND IDENTITY OF THE ORIGINAL CREDITOR WITHIN THE TIME PROVIDED BY LAW IS NOT AFFECTED BY THIS ACTION.**

NOTICE IS HEREBY GIVEN, that default has occurred in the conditions of the following described mortgage:

Mortgagor: Charlene Ann Ver Meer a single person

Mortgagee: M&I Bank FSB

Dated: 03/22/2002

Recorded: 03/27/2002

Rock County Recorder Document No. 152525

Transaction Agent: N/A

Transaction Agent Mortgage Identification Number: N/A

Lender or Broker: M&I Bank FSB

Residential Mortgage Servicer: BMO Harris Bank, N.A.

Mortgage Originator: M&I Bank FSB

LEGAL DESCRIPTION OF PROPERTY: Lot Seven (7) in Block Nine (9), in the Original Plat of Hills, Minnesota, County of Rock.

This is Abstract Property.

TAX PARCEL NO.: 15-0084-000

ADDRESS OF PROPERTY:

313 Church Ave S

Hills, MN 56138

COUNTY IN WHICH PROPERTY IS LOCATED: Rock

ORIGINAL PRINCIPAL AMOUNT OF MORTGAGE: \$39,000.00

AMOUNT DUE AND CLAIMED TO BE DUE AS OF DATE OF NOTICE: \$32,658.59

That prior to the commencement of this mortgage foreclosure proceeding Mortgagee/Assignee of Mortgagee complied with all notice requirements as required by statute; that no action or proceeding has been instituted at law or otherwise to recover the debt secured by said mortgage, or any part thereof;

PURSUANT to the power of sale contained in said mortgage, the above described property will be sold by the Sheriff of said county as follows:

DATE AND TIME OF SALE: January 10, 2019, 10:00 AM

PLACE OF SALE: Lobby of Rock County Law Enforcement Center, 1000 N Blue Mound Ave, Luverne, MN

to pay the debt then secured by said Mortgage, and taxes, if any, on said premises, and the costs and disbursements, including attorneys' fees allowed by law subject to redemption within 6 Months from the date of said sale by the mortgagor(s), their personal representatives or assigns.

DATE TO VACATE PROPERTY: The date on or before which the mortgagor must vacate the property if the mortgage is not reinstated under Minnesota Statutes section 580.30 or the property redeemed under Minnesota Statutes section 580.23 is July 10, 2019 at 11:59 p.m. If the foregoing date is a Saturday, Sunday or legal holiday, then the date to vacate is the next business day at 11:59 p.m.

MORTGAGOR(S) RELEASED FROM FINANCIAL OBLIGATION ON MORTGAGE:

NONE

THE TIME ALLOWED BY LAW FOR REDEMPTION BY THE MORTGAGOR, THE MORTGAGOR'S PERSONAL REPRESENTATIVES OR ASSIGNS, MAY BE REDUCED TO FIVE WEEKS IF A JUDICIAL ORDER IS ENTERED UNDER MINNESOTA STATUTES SECTION 582.032, DETERMINING, AMONG OTHER THINGS, THAT THE MORTGAGED PREMISES ARE IMPROVED WITH A RESIDENTIAL DWELLING OF LESS THAN FIVE UNITS, ARE NOT PROPERTY USED IN AGRICULTURAL PRODUCTION, AND ARE ABANDONED.

Dated: November 7, 2018

BMO Harris Bank N.A., as successor to M & I Bank FSB, Mortgagee

By: PFB LAW, PROFESSIONAL ASSOCIATION

Attorneys for:

BMO Harris Bank N.A., as successor to M & I Bank FSB, Mortgagee

55 East Fifth Street, Suite 800

St. Paul, MN 55101-1718


651-209-7599

651-228-1753 (fax)

THIS COMMUNICATION IS FROM A DEBT COLLECTOR ATTEMPTING TO COLLECT A DEBT. ANY INFORMATION OBTAINED WILL BE USED FOR THAT PURPOSE.

16327-18-00067-1

(11-15, 11-22, 11-29, 12-6, 12-13, 12-20)

 DEPARTMENT OF EDUCATION		Division of School Finance 1500 Highway 36 West Roseville, MN 55113-4266	District Revenues and Expenditures Budget for Fiscal Year (FY) 2018 and FY 2019				ED-00110-41	
General Information: Minnesota Statutes, section 123B.10, requires that every school board shall publish the subject data of this report.								
District Name: Luverne						District Number: 2184		
Fund	FY 2018 Beginning Fund Balances	FY 2018 Actual Revenues and Transfers In	FY 2018 Actual Expenditures and Transfers Out	June 30, 2018 Actual Fund Balances	FY 2019 Budget Revenues and Transfers In	FY 2019 Budget Expenditures and Transfers Out	June 30, 2019 Projected Fund Balances	
General Fund/Restricted	\$ 1,420,945	\$ 14,303,923	\$ 13,770,636	\$ 1,256,428	\$ 13,904,221	\$ 14,205,171	\$ 955,478	
General Fund/Other	\$ 7,197,502	\$ -	\$ -	\$ 7,895,305	\$ -	\$ -	\$ 7,895,305	
Food Service Fund	\$ 132,310	\$ 613,640	\$ 633,815	\$ 112,135	\$ 646,838	\$ 647,829	\$ 111,144	
Community Service Fund	\$ 85,705	\$ 524,250	\$ 492,911	\$ 117,044	\$ 548,328	\$ 506,499	\$ 158,873	
Building Construction Fund	\$ -	\$ 31,930,588	\$ 1,786,322	\$ 30,144,266	\$ -	\$ 1,277,250	\$ 28,867,016	
Debt Service Fund	\$ 202,660	\$ 906,026	\$ 908,775	\$ 199,911	\$ 899,164	\$ 908,775	\$ 190,300	
Trust Fund	\$ 536,847	\$ 44,042	\$ 29,944	\$ 550,945	\$ 47,378	\$ 85,800	\$ 512,523	
Internal Service Fund	\$ -	\$ -	\$ -	\$ -	\$ -	\$ -	\$ -	
*OPEB Revocable Trust Fund	\$ -	\$ -	\$ -	\$ -	\$ -	\$ -	\$ -	
*OPEB Irrevocable Trust Fund	\$ -	\$ -	\$ -	\$ -	\$ -	\$ -	\$ -	
*OPEB Debt Service Fund	\$ -	\$ -	\$ -	\$ -	\$ -	\$ -	\$ -	
Total - All Funds	\$ 9,575,969	\$ 48,322,469	\$ 17,622,403	\$ 40,276,034	\$ 16,045,929	\$ 17,631,324	\$ 38,690,639	
Long-Term Debt				Current Statutory Operating Debt per Minnesota Statutes, section 123B.81				
Outstanding July 1, 2017	\$ 890,000			Amount of General Fund Deficit, if any, in excess of 2.5% of expenditures 06/30/2018				
Plus: New Issues	\$ 30,270,000							
Less: Redemmed Issues	\$ 890,000			Cost per student - Average Daily Membership (ADM) 06/30/2018				
Outstanding June 30, 2018	\$ 30,270,000							
Short-Term Debt				Total Operating Expenditures				
Certificates of Indebtedness	\$ -			FY 2018 Total ADM Served + Tuitioned Out ADM + Adjusted Extended ADM				
Other Short-Term Indebtedness	\$ -			FY 2018 Operating Cost per ADM				
The complete budget may be inspected upon request to the superintendent.								
Comments: The Building Construction Fund Budget for 2018-19 will be adjusted after the building project bids are awarded.								

EMPLOYMENT

Nobles County Property Appraiser The Nobles County Assessor's Department is currently accepting applications to hire one of the following positions depending on qualifications: **Property Appraiser I:** supports the daily activities of the Nobles County Assessor's office in valuation, assessment, and administrative fields. Qualifications: high school diploma, or GED, with a minimum of one year experience in Real Estate, Carpentry, Appraisal, Administration, Accounting, or a related field. Ability to complete CMA designation within two years of hire. Valid driver's license required. **Property Appraiser:** Fairly, accurately and equitable appraises property for tax assessment purposes according to state and county guidelines. Qualifications: vocational/technical diploma in Real Estate, Administration, Accounting, or a related field, with a minimum of one year of experience working under a qualified Assessor, and licensure as a CMA. Ability to obtain Income Certification within one year and AMA certification within stated guidelines. Valid driver's license required. **APPLY TO:** Nobles County Administration Office, 3rd Floor, 315 10th Street, P.O. Box 757, Worthington, MN 56187. Visit our website at www.co.nobles.mn.us (507) 295-5201 (8:00 a.m. to 4:30 p.m.) **REQUIRED:** County application forms are required. Closing Date for Applications: Open until filled, first review date December 7, 2018. EEO/AA Employer (11.29-12.2)

EMPLOYMENT

Full-Time Help Wanted in Meat Department. Cutting and wrapping meat. No experience necessary, paid overtime, insurance is available and also other benefits. Contact Chad or Julie at V&M Locker, Leota, MN 507-443-5372 or 507-227-3862. (11.21-12.13)

Nobles County Assessor's Department The Nobles County Assessor's Department has the following openings: **Property Appraiser/Assessment Technician:** Supports the daily activities of the Nobles County Assessor's office in valuation, assessment, and administrative fields. Qualifications: vocational/technical diploma in Real Estate, Administration, Accounting, with a minimum of one year of experience working under a qualified Assessor and the ability to complete CMA certification within one year of hire. Valid driver's license required. **Deputy Assessor:** supports the daily activities of the Nobles County Assessor and the Nobles County Assessor's office. Qualifications: vocational/technical diploma in Real Estate, Administration, Accounting, or a related field, with a minimum of three years of experience as an Assessor or Real Estate Appraiser; must have an AMA certification and ability to obtain Tax Calculation Certification. Valid driver's license required. **APPLY TO:** Nobles County Administration Office, 3rd Floor, 315 10th Street, P.O. Box 757, Worthington, MN 56187. Visit our website at www.co.nobles.mn.us (507) 295-5201 (8:00 a.m. to 4:30 p.m.) **REQUIRED:** County application forms are required. Closing Date for Applications: Open until filled, first review date December 7, 2018. EEO/AA Employer (11.29-12.2)

Ellsworth Public School is accepting applications for a full time Paraprofessional. Applications can be found on the school website, picked up in the office or by calling 507-967-2242. (11.21-12.13)

EMPLOYMENT

Roos & Son is hiring for full-time milk haulers. Must have a CDL and tanker endorsements. To apply contact Scott Roos at 507-993-8801. (11.11-12.2)

Office Support Nobles County Library 4/5-Time (35 hours/week) The purpose of this position is to provide clerical and secretarial support to the Board and the Director of the Nobles County Library. Duties include, but are not limited to: record keeping, ordering and administering inventory of materials, handling receipts and providing customer service work in library operations. **QUALIFICATIONS:** High school diploma required with a minimum of two years' experience in bookkeeping and secretarial practices. **APPLY TO:** Nobles County Administration Office, 3rd Floor, 315 10th Street, P.O. Box 757, Worthington, MN 56187 (507)295-5201 (8:00 a.m. to 4:30 p.m.) Visit our website at www.co.nobles.mn.us **REQUIRED:** County application forms are required. Resumes WILL NOT be accepted as substitutes. Closing Date for Applications: November 30, 2018 EEO/AA Employer (11.25-11.29)

FOR SALE

For Sale: 5 month old Ashley oversized leather reclining couch. Brown in color. Was \$800 new, asking \$400 or best offer. Located in Jasper. Call 605-961-7006 or 507-215-7792. (11.29-12.16)

For Sale: two power reclining lift chairs. Just like new. Brand name is "golden" brown in color. Second chair brand name "Best" Blue in color. \$500 each or best offer. Call 507-220-4090. (11.18-12.6)

For Sale: farm fresh, cage free eggs. \$1.50 per dozen. Call or text 507-920-0573. (11.11-12.2)

CARDS OF THANKS

The family of Ron Mulder would like to thank our family and friends for the cards, flowers and kind expressions of sympathy shown following his sad passing. A special thanks to Dr. Judy and Dr. Stephan Chesley for their excellent care. Also thank you to Jeff Hartquist for the wonderful care and funeral services. Thank you to Pastor Ron and the Grace Lutheran church women for the lunch. Your support at this difficult time was very much appreciated and a great comfort to all of our family.

The family of Ron Mulder

Thanks to my family and friend who supported me during my recent knee surgery and recovery. Thank you for the many cards, prayers, food, rides to therapy and visits.

May God Bless you all,
Henrietta Elbers

MISCELLANEOUS

HAVE A UNIQUE SERVICE OR BUSINESS? Get the word out to over 1.4 million households. Call WIDE AREA CLASSIFIEDS today, 507-359-7326. (tc)

EMPLOYMENT

EMPLOYMENT

HIRING

Feed Mill Manager

Must have experience working in a feed mill.



Call 507-483-2245 for more information.

Put Extra Cash In Your Wallet

DELIVERING THE ARGUS LEADER IN LUVERNE

605-331-2261

Daily Route Immediately Available

CARRIERS@ARGUSLEADER.COM
Carriers Compensated Weekly

UP TO \$1,000 MONTHLY!

Argus Leader.

POSITION AVAILABLE

The Rock County Farm Service Agency (FSA) has a **Full-time Permanent Program Technician** (CO-1101, Grade 04-07) position open. Annual salary (\$29,847.00 to \$53,773.00) and entrance grade will depend upon qualifications.

This position is located at the Rock County FSA Office, 500 W. Gabrielson Road, Luverne, MN. Applicants must be a U.S. Citizen or U.S. National, be a high school graduate or equivalent and be 18 years of age or 17 years of age for high school graduates.

Apply online at <http://www.usajobs.gov> - Job Announcement MN-2019-0015 beginning on Friday, November 23, 2018. The entire announcement and all instructions can be found online. The application and all documents (including the required Knowledge, Skills and Abilities Statement) must be electronically submitted by 11:59 p.m. Eastern Time (ET) on Thursday, December 6, 2018. If assistance is needed to apply, and/or if applying online poses a hardship and an alternative method is required, please contact 706-552-2502 during business hours (8:00 a.m. - 4:00 p.m., Monday - Friday) well before the closing date. For other questions, please contact the Rock County FSA Office at 507-283-2369, ext. 2. FSA is an Equal Employment Opportunity Employer.

CARDS OF THANKS

Thank you to all who attended the 80th birthday celebration for Jim Vink and for those who sent cards of memories and greetings. We are grateful for you! (11.29-12.2)

Just as we have no words to express the pain of losing Zach, we have no words to express the depth of our gratitude to so many for food, flowers, monetary gifts, college fund memorials and all of the prayers, hugs and expressions of sympathy. The outpouring of encouragement and support is helping us walk this difficult road. Special thanks to the Luverne Fire Department crew and spouses for all the ways you have honored Zach. It has been beyond measure. Also, special thanks to Pastor Mike and the service group at ARC, Mark and Annie Opitz at Quality Printing, Jeff and staff at Hartquist and Jesse and Ashley Connell for organizing the Go-fundme drive. God's blessings to you all!

Emily and Jayce Cowell
Heather Kroon
Tim and Jessie Cowell
Kelsie Rivas and Riley Cowell
Brad and Janna Klarenbeck
Paul Klarenbeck and Megan Adamson
Brett and Shelby Rozenboom
(11.25-11.29)

SEEKING

I am looking for someone to remove snow in Luverne. Call me if interested at 507-283-2545 (11.29-12.2)

RENTALS

FOR RENT

Two-Bedroom Townhome

- * Attach Garage * No Steps
- * Outside Patio
- * Washer & Dryer Hook Ups
- * \$725/ Month Plus Utilities

Call Schomacker's
507-227-2183 for showings.

RENTALS

House for Rent: three-bedroom, two-story house for rent. No garage. \$850 per month, \$850 deposit. References required. Immediate possession. Call 507-283-2647 (11.25-11.29)

Large apartment upstairs, downtown Luverne, utilities paid, stove and refrigerator included. References required, no pets, no smoking. Call 507-227-1589. (tc)

For Rent: one-bedroom apartment near downtown Luverne. \$290 per month. No pets. Call 605-201-6427. (tc)

Two-bedroom apartment. Heat and water included, on-site laundry. Off street parking. Close to downtown, the Post Office and the Senior Center. No pets. Call 507-290-0266. (11.15-12.2)

NOW LEASING CENTENNIAL APARTMENTS

1 Bedroom
For those 62+ or Disabled
Includes ALL utilities!
507-283-2652
Equal Housing Opportunity
LloydManagementInc.com

Oakwood Apartments

401 Oak St., Ellsworth

- 1 Bedroom Unit Available
- Unit Available
- Cable, Water, Sewer & Garbage Included.
- Rent Based on Income
- AVAILABLE IMMEDIATELY**
- Van Binsbergen & Associates, Inc.**
- 320-269-6640 ext. 13
- Equal Housing Opportunity

www.vanblc.com

SOUTH DAKOTA STATE BANKING COMMISSION

Department of Labor and Regulation

DIVISION OF BANKING

NOTICE OF APPLICATION

Notice is hereby given that the Director of the South Dakota Division of Banking (Director) has received an application from Security Savings Bank, Canton, South Dakota, to merge Exchange State Bank, Luverne, Minnesota, with and into Security Savings Bank, Canton, South Dakota.

Notice is also given that, as provided in South Dakota Codified Law (SDCL) 51A-2-16, a fifteen-day period is provided to file a written objection or comment to this application. The comment period on this application opens on the date of this publication and will close on December 14, 2018. If you wish to submit a comment or objection to this application, please send your objection or comment in writing to the Director, no later than 5:00 PM CST on December 14, 2018, at the following address: SD Division of Banking, 1601 N. Harrison Avenue, Suite 1, Pierre, SD 57501; via email to banking@state.sd.us; or by facsimile at 1-866-326-7504.

At the conclusion of the fifteen-day comment period, the Director is provided fifteen days to consider any written objections and comments, and to make a decision on the application. When the Director's decision is issued, written notice will be sent to the applicant and to any individual who submitted a comment or objection to the application within the fifteen-day comment period. The applicant will then have fifteen days to request a hearing before the South Dakota Banking Commission. Anyone who submitted a comment or objection to the application may apply with the Banking Commission to become a party as provided in SDCL 1-26-17.1, and request a hearing before the Commission, within the same fifteen-day period. Any application to become a party must be filed within the same fifteen-day period from the date of the Director's decision and must demonstrate how the individual's interests are directly and immediately affected by the Director's decision. Any hearing before the Banking Commission will be held in conformity with SDCL 1-26.

If special accommodations are required for the disabled, please advise the Division of Banking 24 hours in advance at (605) 773-3421.

Dated this 29th day of November 2018.
/s/ Bret Afdahl
BRET AFDAHL, Executive Officer to the South Dakota State Banking Commission-Director of Banking, Pierre, SD 57501

Published at the approximate cost of \$141.84.



Minnesota Classified Advertising Network

EMPLOYMENT	WANTED TO BUY	MISCELLANEOUS
EARLY CHILDHOOD COORDINATOR FT, 183 Days. New London-Spicer Schools. Early Childhood license required. See www.nls.k12.mn.us/employment for more information.	MOTORCYCLES WANTED Running or not, 1985 and older motorcycles. Top cash paid! Call or text 608/332-5961	SAVE ON YOUR NEXT PRESCRIPTION World Health Link. Price match guarantee! Prescriptions required. CIPA certified. Over 1,500 medications available. Call today for a free price quote. 866/237-5131 Call now!
RAW (COOPERSTOWN, ND) Full-time traveling Commercial Applicators for railroad vegetation control, 60-80 hours/week, competitive wage and benefits, plus meal allowance, paid lodging. 888/700-0292 info@rawapplicators.com www.rawapplicators.com	FREON R12 WANTED: Certified buyer will pay CASH for R12 cylinders or cases of cans. 312/291-9169; www.refrigerantfinders.com	PLACE FOR MOM The nation's largest senior living referral service. Contact our trusted, local experts today! Our service is free, no obligation. Call 844/347-2104
HELP WANTED - DRIVERS ERIC LINSMEIER TRUCKING LLC based in Redwood Falls, MN is hiring company drivers and owner/operators to pull hopper bottom in the upper Midwest. Call 507/829-9043	EARN CASH DAILY Working at home, easy work. Excellent pay. Start immediately. Amazing recorded message reveals details. Call anytime 218/743-6566 Ext. # 7	DONATE YOUR CAR truck or boat to Heritage For The Blind. Free 3-day vacation, tax deductible, free towing, all paperwork taken care of 844/220-9501
Your ad here! Only \$279 to reach a statewide audience of 2.5 million readers!!! 1-800-279-2979	START SAVING BIG ON MEDICATIONS Up To 90% Savings from 90DAYMEDS! Over 3,500 Medications available! Prescriptions req'd. Pharmacy checker approved. Call today for your free quote 844/209-2877	DISH TV \$59.99 For 190 channels, \$14.95 high speed internet. Free installation, smart HD DVR included. Free voice remote. Some restrictions apply. Call 855/562-4309

Help Wanted

Valocity Studios in Hills is looking for a **part time cosmetologist**. Two-three days with some nights & weekends will be required. MN Cosmetology license required. Send Resume to valerie@valocystudios.com or call 507-962-3308.

VALOCITY STUDIOS
WWW.VALOCYSTUDIOS.COM

NOW HIRING AUTO & TRUCK MECHANIC

WANT TO LIVE & WORK IN THE COUNTRY, BUT BE CLOSE TO THE TWIN CITIES?

Full service, well established, auto, truck and tire repair center on Hwy 212 in Cologne is seeking an experienced auto and truck repair technician. Full time 40-45 hours, excellent benefits, competitive wage based on experience.

Mid-County Auto-Truck-Tire Center
710 Lake St W, Cologne, MN 55322

For more information visit midcountycorp.com/mechanic-job to apply contact Brent at (952) 466-3710 or brentg@midcountycorp.com

Sanford Luverne Medical Center
is currently accepting applications for FT (Full-Time), PT (Part-Time) and PRN (Part-Time as Needed) positions:

- ASSOCIATE MAINTENANCE MECHANIC - FT
- MAINTENANCE MECHANIC - FT
- HOUSEKEEPING - PT, PRN
- LICENSED ADDICTION COUNSELOR - PT
- MEDICAL LABORATORY TECHNICIAN - FT
- PATIENT CARE TECHNICIAN - FT, PT, PRN
- RN, INPATIENT - PRN
- RECEPTIONIST - PRN
- PARAMEDIC - FT

To apply, visit sanfordhealth.jobs, search "Luverne" in the location search bar.

SANFORD
Luverne

877-673-0854 EEO/AA

The Tuff Memorial Home is currently hiring a **Social Services Coordinator 7am - 3:30pm, Mon.-Fri.; Business Office Manager - 32 hours/week and an Evening Cook - Full Time.**

If interested, contact Eli Ripley at 507-962-3275. or email eripley@tuffmemorialhome.com

Competitive Wage
Full Benefits
Pension Plan
Friendly Atmosphere

Rock County
STAR HERALD

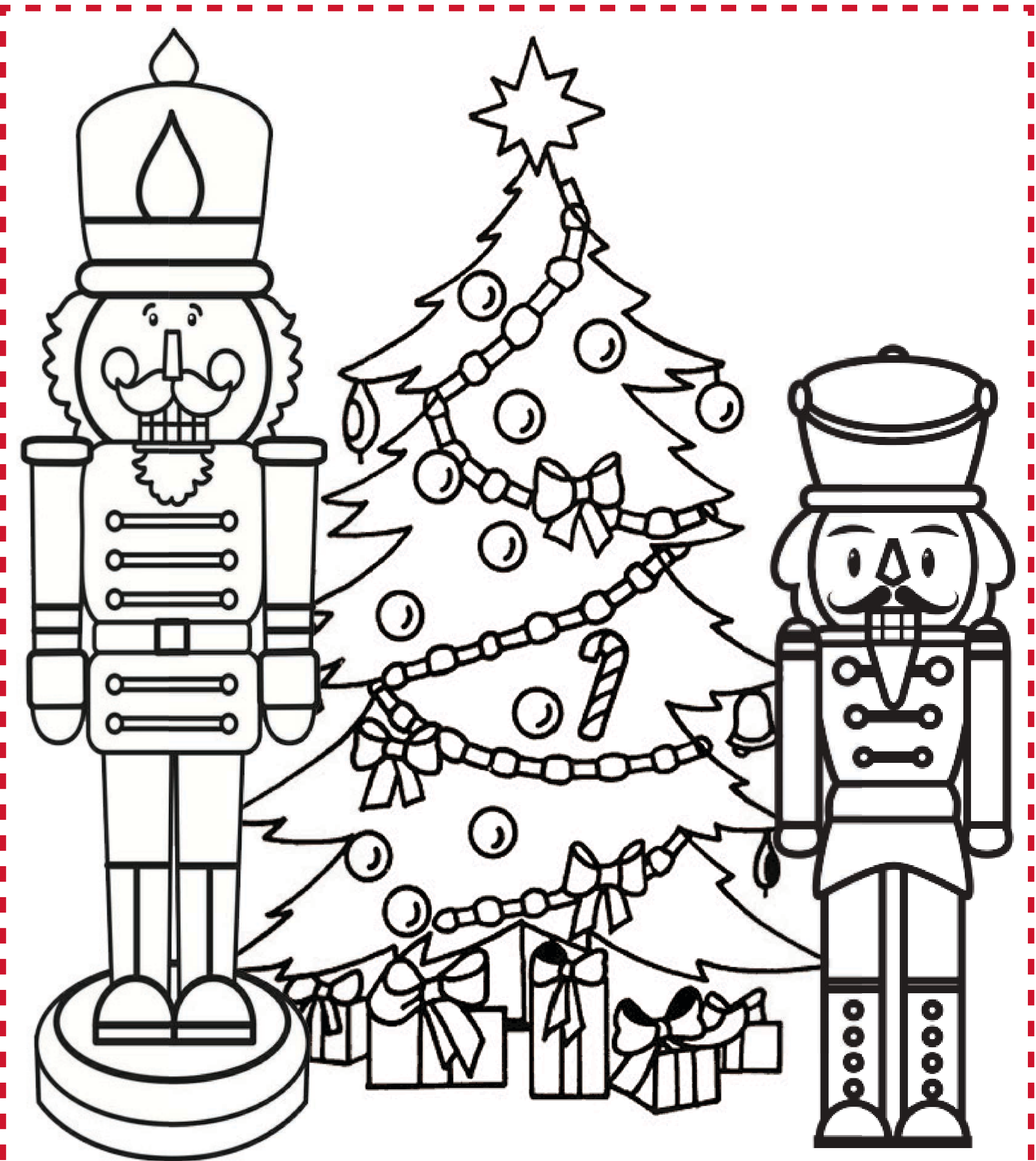
Luverne
Area Chamber & CVB

Christmas Coloring Contest

RULES

1. Contest is open to children ages 4 through 9.
 2. Color the picture below with paints, markers, crayons or colored pencils.
 3. Decision of judges is final.
- ALL entries must be returned to the Star Herald office no later than NOON ON WEDNESDAY, DECEMBER 12.
Please return your colored entry to the Star Herald office rolled or flat - DO NOT FOLD.

PRIZES WILL BE AWARDED IN EACH AGE CATEGORY!
WINNERS ANNOUNCED IN THE DECEMBER 20 STAR HERALD



NAME _____ ADDRESS _____

AGE _____

PARENTS' NAME(S) _____

PHONE NUMBER _____