



Rock County STAR HERALD

Rock County's oldest business, printing since 1873

Thursday, October 11, 2018

Ready, set, hunt!

Luverne braces for sea of blaze orange for weekend Governor's Hunt

By Lori Sorenson

The Minnesota Governor's Pheasant Hunting Opener is this weekend, and the 2018 event is shaping up to be the biggest in the event's eight-year history.

According to Rick Peterson, who chairs the local committee planning the event, 450 tickets are spoken for for the Friday night banquet, and the whole community has thrown its support into the celebration.

"The most satisfying thing for me has been seeing everyone get on board, wearing their orange shirts and planning their own events to host the visitors in town," Peterson said.

He said he was particularly

Luverne will host the big hunt along with events like Bird Dog Parade, Gould Brothers trick shooting, Church of Cash and more. Full schedule is on page 8B



pleased to see the fine arts organization build the wooden 30-foot pheasants that are displayed along South Highway 75. A nearby sign says, "Luverne, Love the Hunt."

The Luverne Area Chamber coordinated the printing and distribution

of hundreds of orange shirts for community members, businesses and organizations to wear in support of the Governor's Hunt weekend. "The involvement of so many people has been really neat," Peterson said.

The Saturday morning pheasant

hunt will involve Gov. Mark Dayton and registered participants, but the entire weekend has events and activities for the whole community.

For example, the Gould Brothers Exhibition Shooting is generating a buzz among gun enthusiasts who are planning to attend the freeshow at the Sportsman's Club Saturday afternoon.

The trick-shooting exhibition starts at 2 p.m. at the gun club east of Luverne. It follows the Hunter Host Bird Dog Parade — another crowd pleaser — that starts at 1:30 p.m. at the gun club.

"There are 50 guides and more than 50 dogs representing seven different breeds," Peterson said. "Most

dog guys are so proud of their dogs, they can't wait to show them off."

In addition to the dog parade and exhibition shooting, Peterson said the community is invited to a free Johnny Cash tribute band Friday night and Saturday afternoon at Take 16.

Dubbed the "Pheasant Pheasta," music by the Church of Cash will perform at 8 p.m. Friday and from 3:30 to 6 p.m. Saturday at Take 16 Brewery on East Main Street in Luverne.

Raffle tickets are still available for a chance to win the 2018 Polaris Ranger XP 1000. Stop in at the Star Herald office or at the Luverne Chamber, 507-283-4061.

See Page 8B for a list of events.

Schools not interested in resource officer

By Mavis Fodness

School officials indicated no interest in funding a school resource officer with the Rock County Sheriff's Office.

Hills-Beaver Creek voted unanimously at its Sept. 24 meeting to withdraw from further resource officer discussions.

"Finances were a factor in the board's decision," said H-BC Superintendent Todd Holthaus.

Luverne followed suit with a 5-0 vote to end discussions at their Sept. 27 board meeting. Members Shelley Sandbulte and Colleen Deutsch were not at the meeting.

Costs for the full-time officer were estimated at \$86,000 and funding split between the two school districts and the sheriff's office. Included in the costs were equipment and vehicle expenditures.

The officer was proposed to work the H-BC School District for 32 days for a cost to the district of \$10,085. Costs for 141 days in Luverne were estimated at \$43,853, and 86 days (summer months) with the sheriff's office at \$32,062.

Not estimated in the costs were possible overtime and any shift differential costs.

Luverne board members met in a Sept. 13 workshop discussing the possible resource officer.

Administrators and staff representatives discussed staffing needs, district funds and how a full-time resource officer could be utilized in the Luverne district with board members.

School resource officer/see 2A



Lori Sorenson photo/1011 centerpoint gas on south highway 75

Natural gas line construction creates obstacle course

Construction workers with Michels Corporation and CenterPoint Energy bury natural gas mains along the east side of South Highway 75 in order to meet industrial natural gas demand south of I-90. The work has created an obstacle course for motorists navigating narrower lanes.

Premium Iowa Pork has option on 28.75 more acres

By Lori Sorenson

Premium Iowa Pork is finalizing a purchase agreement with Gold 'N Plump on the former IBP packing plant on the west edge of Luverne.

As part of that agreement, PIP will acquire an option to buy an additional 28.75 acres of ground currently held by the Luverne Economic Development Authority.

The original option was negotiated in 2009 between the city and Gold 'N Plump at \$5,000 per acre and in 2014 it was extended another five years, set to expire in 2019.

Now PIP will have that option after the purchase agreement with Gold 'N Plump is complete around Nov. 1.

At Monday morning's Luverne Economic Development Authority meeting, the board approved the transaction.

EDA members unanimously approved a "motion to agree and consent to the assignment of the option agreement from seller (Gold 'N Plump) to Buyer (Premium Iowa

Pork)." PIP will have the exclusive right and option to purchase 28.75 acres of land at \$5,000 per acre for a purchase price of \$143,750. This option expires at midnight on May 12, 2019.

The Hospers, Iowa, pork processor
PIP option on land/see page 2A

Locals perform 'Mistress and King'

By Lori Sorenson

The Locals band members have been secretive about their upcoming performance, "The Mistress and the King," set for 8 p.m. Saturday in the Palace Theatre.

First of all, it's not just a concert — although the talented band members do plenty of singing and playing; it's what band leader Kenny Rolling calls a "musical theatre."

And to say too much about it gives away the dramatic ending, Rolling says, raising one eyebrow dramatically.

But he does offer some clues.

The show opens with Elvira, Mistress of the Dark (played by DJ

Mistress and the King/see page 5A



The butler, Bates (Ryan DeBates), Florence (Katie Walgrave), and Elvira (DJ Luethje) try to bring Elvis (Shawn Kinsinger) back to life.

Beaver Creek golf course has new owner

By Glenda McGaffee

The Beaver Creek Golf Course, Drivers Restaurant and Bar and the Beaver Lodge Banquet Hall has been sold to Rick Gourley.

The clubhouse restaurant, banquet hall and golf course are on 89 acres of land southeast of Spring Brook Road in Beaver Creek.

The facility was planned and built between 1999 and 2002 and operated by the Springbrook Development until 2005.

In 2005 the facility was put on the auction block with sealed bids required by Oct. 6, 2005. The facility was not sold at that time and it

returned to banker Huston Haugo.

Gourley, a Sioux Falls native, grew up in the family business, Gourley Distributing and Pro Audio. The business closed in 2000 and he got involved in property development.

In an interview Gourley shared his thoughts on the property.

"The golf course possibly will be affiliated with Great Life, but at this time nothing is definite," Gourley said.

He said the bar, grill and golf course will be a different entity.

"We are looking for people to

Beaver Creek golf course/see 3A



COMMUNITY CALENDAR

Meetings

Lady Luverne Red Hats will meet at 11 a.m. Friday, Oct. 12, in St. Catherine's east parking lot in Luverne to carpool to Grand Falls Casino near Larchwood, Iowa, for lunch and games. RSVP to Connie Wieneke, 283-8470.

Parkinson's Support Group will meet at 1 p.m. Thursday, Oct. 18, at St. John Lutheran Church in Luverne.

MS Support Group will meet at 7:30 p.m. Thursday, Oct. 18, at Southwest Health and Human Services in Luverne. All persons with MS, family and friends are invited. For info call 283-2069 or 283-2964.

Narcotics Anonymous meets at a new time: 7:30 p.m. Tuesdays and Fridays in the basement of St. Catherine Catholic Rectory, 203 E. Brown St., Luverne. Use east door. Call 507-220-0137 with questions.

Women's Alcoholics Anonymous meets at 8 p.m. Mondays in the United Methodist Church.

Alcoholics Anonymous meets at 8 p.m. Wednesdays and Saturdays in the United Methodist Church, Luverne. Call 605-321-4324.

Alcoholics Anonymous meets from 8 to 9 p.m. every Tuesday in Runals Hall, Edgerton. Call 507-215-2956.

'Try Hockey for Free' event coming

The Luverne Hockey Association is hosting "Try Hockey for Free" events for all ages at the ice arena, 601 W. Hatting St. Equipment will be provided.

Events are from 6 to 7 p.m. Thursday, Oct. 11, and from 11 to noon Saturday, Oct. 13. Call 507-449-9138.

Rock the Edge youth to collect food

Rock The Edge (area youth groups) will host a community food drive starting at 4 p.m. Sunday, Oct. 14. The group will canvass neighborhoods in Luverne collecting food to donate to the Rock County Food Shelf.

To participate, residents are encouraged to place food items, preferably in bags, on doorsteps, or hang a bag on an outside door handle. Youth may also knock on doors for donations. For more information, contact the United Methodist Church at 507-283-4529.

Author Joe Amato at library Oct. 15

Author Joseph Amato will visit the Rock County Community Library at 6:30 p.m. Monday, Oct. 15, to present his new historical fiction work, "Buffalo Man, Giant of the Waters and Winds," set in the 1850s in Territorial Minnesota. The free program open to the public is made possible through Minnesota's Arts and Cultural Heritage Fund.

Living with chronic conditions

"Living Well with Chronic Conditions" workshop series to help improve quality of life for older adults with chronic conditions will be from 9:30-11:30 a.m. every Wednesday for six weeks beginning Oct. 17 through Nov. 21 at the Luverne Senior Center. Cost is a suggested \$10 donation. Contact Norma Brands at 507-283-5064 for information or to register, or email ace.rock@co.rock.mn.us.

Sign up by Oct. 25 for Chanhassen trip

Luverne Community Education is offering a bus trip to the Chanhassen Dinner Theatre on Saturday, Nov. 17, to see Irving Berlin's "Holiday Inn" musical. Cost is \$115 for dinner theatre/bus. Register by Oct. 25 at Community Ed, 507-283-4742.

Hospice offers 'Tables and Vine'

The Hospice "Tour of Tables" is expanding to include "Tables & Vine" from 4-8 p.m. Friday, Oct. 26, at Grand Prairie Events. Cost of the charity event is \$10 which includes Round Lake Winery complimentary wine tastings paired with cheese and crackers, as well as craft beer samples from Take 16 Brewery. Participants will be able to "tour the tables" ahead of the Tour of Tables Brunch Saturday, Oct. 27.

Hospice 'Tour of Tables' Oct. 27

Deadline is Oct. 12 to sign up to decorate and host a table or donate gift baskets for the annual Hospice Tour of Tables Brunch from 9 a.m. to noon Saturday, Oct. 27, at Grand Prairie Events. Advance tickets only for \$15 are available at Sanford Luverne Hospice at 507-283-1805.

Historical Society dinner Oct. 29

The Rock County Historical Society has rescheduled its annual dinner meeting for Monday, Oct. 29, at Sterling's in downtown Luverne. Contact the History Center, 507-283-2122, for tickets or additional information.



Lori Sorenson photos/1011 corn stalks bonnema

Beautifying Luverne one pole at a time

Luverne horticulturalist and volunteer George Bonnema spent a good share of time last week decorating Luverne with fall displays of cornstalks. He wrapped 56 downtown light poles with 25 stalks to each pole, secured with baling twine, and he also planned to decorate the gun club for this weekend's Governor's Pheasant Hunting Opener in Luverne, in addition to the lot along South Highway 75 where the Rock County Fine Arts Association has 30-foot wooden pheasants displayed for the opener. Eric and Grant Binford of Binford Farms donated the cornstalks.

On Wednesday morning when Bonnema was working on a light pole near the library, children walking with Brenda Johnson's and Heather Frahm's day care businesses stopped to see what he was doing.

"Will people eat the corn?" one little boy wanted to know. "People won't eat them, but the squirrels probably will," Bonnema told the curious preschoolers who reached out to touch the corn kernels.



PIP land/ from page 1A

Rock County plans to slaughter 2,200 antibiotic-free hogs per day in the former Gold 'N Plump facility.

Once the purchase agreement on the existing 17.5-acre parcel is finalized Nov. 1, work will begin to retrofit the existing 78,000-square-foot facility and to expand it another 12,500 square feet.

Improvements and retrofits for the facility would cost PIP an estimated \$25 to \$30 million.

In addition, the company would pay \$6.76 million for necessary upgrades to Luverne's wastewater facilities due to the plant's sewage load into the city's system.

The company plans to hire 250 production workers (at \$13 to \$20 per hour) in Luverne. That number could increase to more than 300 employees, depending on growth.

Rock County joins Highway 23 Coalition with eye on Highway 75

By Mavis Fodness

Rock County Commissioners joined the Highway 23 Coalition with a \$1,000 membership that begins in January.

Coalition secretary and treasurer Aaron Backman spoke with commissioners during their regular meeting Oct. 2.

He said Highway 23 is recognized by the state Department of Transportation as a "Corridor of Commerce." (Highway 75 is not on corridor list.)

The Highway 23 Coalition was formed in May 2017 to secure \$105 million for the two, four-lane gaps (one is nine miles and the other is four miles) on Highway 23 between Willmar and I-94.

Backman said four-lane construction on Hwy. 23 last occurred in 2009 and work on the remaining 16 miles was not

included in MnDOT's 10-year Capital Highway Investment Plan.

"No more Minnesota Nice," he said. "We needed to pursue funding."

Improvements to the designated Corridors of Commerce are paid for through dedicated funding established in 2013 specifically for road improvements not on MnDOT's improvement plan.

Backman said even though the Highway 23 Coalition completed its primary vision for a four-lane highway, the Coalition continues to add members like Rock County to promote future improvements along the 343-mile corridor.

Highway 23 runs north-south through the county along its western-most border.

It was rebuilt in 2013, but commissioners voted 4-1 to join the coalition in hopes that

No resource officer/ from page 1A

Renee Guy is the school psychologist and works with K-12 staff to implement a variety of student interventions including the ALICE protocol, which local law enforcement has also been involved in implementing.

ALICE focuses on teaching students and staff survival techniques in cases of an armed intruder on campus.

As part of its focus on keeping students and staff safe, the ALICE committee is researching ways to incorporate mental health education into the district's current curriculum.

The resource officer's focus and licensure is rule enforcement and strict enforcement of the law, contrary to what school officials think is needed for today's students.

"The counseling staff and principals desire more hands-on assistance to help intervene with the social and emotional needs of the students across all levels," Guy said.

Sheriff Evan Verbrugge approached H-BC and Luverne school officials in April 2017 proposing the school resource officer position.

"They would be a liaison between schools and law enforcement," he said.

"It's not indicative that a problem exists but we have issues."

Among the duties Verbrugge cited that the resource officer would assist school officials with are truancy, de-escalating incidents and reintroducing the D.A.R.E. curriculum with fifth-graders, a program his office stopped teaching several years ago due to scheduling difficulties within his current 11-member staff.

In Verbrugge's proposal, the resource officer would work during the daytime, and overtime would be paid for working at evening events.



Dial-A-Specialist

Your One Stop Guide to Local Businesses

 <p>DR. MICHAEL SMITH • Men, Women & Children's Health • Custom Orthotics • Kinesiotape • Athletic Care • Massage Therapy • Work & Auto Injuries • Postural Restoration WWW.ROCKCOUNTYCHIROPRACTIC.COM 283-2561 • 103 E. MAIN, LUVERNE Monday 7:30 a.m. - 6 p.m. • Tuesday 7:30 a.m. - 3 p.m. Wednesday 7:30 a.m. - 6 p.m. • Thursday 7:30 a.m. - 1 p.m. Friday 7:30 a.m. - 5 p.m.</p> <p>• Chiropractic</p>	 <p>Chantel Connell Sales Representative 117 W. Main, Luverne, MN 507-283-2333</p>  <p>Rick Peterson General Manager</p> <p>• Advertising</p>	<p>LUVERNE HEALTH & WELLNESS Codie Zeutenhorst, D.C., CAC</p> <ul style="list-style-type: none"> ✓ Acupuncture ✓ Family Care ✓ Kinesiotape ✓ Chiropractic Care ✓ Sports Injuries ✓ Auto & Work Injuries <p>Acupuncture and Massage Available Kris Van Der Brink M.T. & Amy Rosales M.T. 507.449.4400 www.luvernechiro.com 109 S. Freeman Ave. Luverne, MN</p> <p>• Chiropractic</p>	<p>COMRAY COMPUTERS Computer Repair and System Builder</p> <p>Ray Hansen 1726 140th Ave., Luverne, MN 56156 507-669-2621 comraycom@gmail.com</p> <p>• Computer</p>
 <p>Rock County EYE CLINIC 507-283-2345 104 N. Freeman Ave. Luverne, Minnesota</p> <p>• Eye</p>	 <p>Papik MOTORS I-90 Luverne, MN Box 536 • 801 West Commerce Road Luverne, MN 56156</p> <p>(507) 283-9171 (800) 634-7701 www.papik.com</p> <p>• Automotive</p>	<p>Luverne MINNESOTA City Offices <i>Love the life!</i> PO Box 659, Luverne, MN 56156 507-449-2388 (24 hour voice mail) www.cityofluverne.org</p> <p>• City</p>	<p>Dakota Land Surveying and Engineering, Inc.</p>  <p>Steven B. Kor Professional Engineer Registered Land Surveyor</p> <p>2000 W. 42nd Street, Suite B-6 Sioux Falls, SD 57105 605-334-4882</p> <p>506 Almar Luverne, MN 56156 507-283-3803 steve.dis@midconetwork.com</p> <p>• Land Surveying</p>

We have speedy Internet; now what?

By Lori Sorenson

About 30 local leaders from various sectors of the community gathered Monday afternoon to brainstorm about ways to improve broadband use in Rock County.

The Blandin Foundation selected Rock County as one of four communities to receive a \$75,000 grant to fund projects that improve Internet use for residents, students, businesses and others.

As part of that process, the foundation hosted a "Broadband Community Vision" meeting at Grand Prairie Events involving representatives from the Rock County Board, senior citizens and underserved populations, the Chamber and local businesses, farmers and agribusinesses and from Luverne and Hills-Beaver Creek school districts.

Blandin facilitator Bill Coleman likened Internet use to an exercise bike. "If I don't use it, I don't get the benefit from having it," he said.

The group identified local strengths and gaps, shared project ideas and prioritized potential projects, many of them centering around accessibility.

For example, public Wi-Fi could be made available in more locations along with places that offer 24-hour computer access. Other ideas focused on education and training programs for differ-

ent groups.

The local steering committee will meet in two weeks to narrow down the priorities to be submitted for possible funding through the Blandin broadband grant.

Bernadine Joselyn, director of public policy and engagement for Blandin, said an important aspect of the project is making the community aware of the resources available.

"It's important to local people to make the community better and to claim the community they deserve," Joselyn said.

"The hope is that by December, we can get these submitted and approved so we can begin working on them."

As part of the grant process, Blandin is helping with planning and technical and financial support to bring the benefits of a broadband-enabled economy to the community.

The Rock County Library is the host organization for the Blandin broadband program.

"We have great broadband in Rock County, and our goal is to utilize it to its full potential," said Rock County Library Director Calla Jarvie.

"We're excited to finalize the projects and to get going on them."

Jarvie can be reached at cjarvie@plumcreeklibrary.net or 507-449-5040.



Mavis Fodness photo/1011 Pumpkin Fun

Everything's coming up pumpkins (and apples)

Parents, grandparents and children dodged rain and chilly temperatures Thursday afternoon, Oct. 4, at the Fall Fun Time event offered through Luverne Community Education. Thirty-four participants traveled to Harmony Gardens near Trosky for the event featuring pumpkin painting, eating dried apples and homemade apple cider by Harmony Gardens owner Noreen Hawes (center, holding apple).

In the photograph at right, Sean Bonilla watches his older brother Chris bob for apples.



In the photograph below, Brooks De Jong concentrates on adding yellow-green paint to his pumpkin.

In the photograph below, right, Sean Bonilla, 3, paints a pumpkin as her mother, Claudia Soto, watches.



Blue Mounds bison tours continue through Oct. 21

Ninety-minute weekend prairie and bison tours continue through Oct. 21 at Blue Mounds State Park where a tour truck take visitors into the prairie to see the bison.

Same-day tickets can be purchased at the park office until 15 minutes before the tour starts. Reservations are recommended.

Visitors are reminded that October days can be chilly and that the tour truck is open air, so dress for the weather.

Tours are offered at 10 a.m., 1 p.m. and 3 p.m. Tickets

are \$10 for adults and teens age 13 and older, and \$6 for children age 4 to 12.

Children under 4 years of age are not permitted on the tour truck due to safety restrictions.

A vehicle permit is needed to enter Minnesota state parks. The cost is \$7 per day, or \$35 per year for unlimited visits to all the state parks.

For more information on the tour and the park, go to mndnr.gov/bluemounds. To make a reservation, call 866-857-2757.

You might be a victim of sex trafficking if ...

Crisis Center advocate offers human trafficking information to businesses, community, students

By Lori Sorenson

#Luv1LuvAll and Southwest Crisis Center recently partnered to offer two free educational sessions on Sex Trafficking: What You Need To Know.

On Sept. 27, Allan Bakke with the Southwest Crisis Center returned to Luverne to address community businesses and local residents about how to recognize and prevent human trafficking.

During the morning session about 20 local businesses — including hotels, restaurants and retail stores — participated to learn what they could do to help.

In addition, representatives from the Rock County Sheriff's Office attended and plan to apply for funding to receive special training to deal with trafficking.

Bakke's Sept. 27 message was similar to one he brought to Luverne in August.

"It's an extremely important subject," said Bakke, who is also an ordained pastor. "It's about having healthy lives, it's about having healthy relationships and it's about having healthy communities in a time when there are so many unhealthy influences."

He said the more communities know about human trafficking — its causes, who's vulnerable, who's preying on young people, etc. — the more successful communities will be in preventing it and stopping it.

Bakke points out that no one chooses to be sold for sex and to be enslaved, but by the time most victims realize what's happening to them, it's difficult to escape.

Motivated by money

There are plenty of incentives for traffickers to keep recruiting new sex slaves.

"The only criminal activity

that brings in more money than human trafficking is the illegal sale of arms," Bakke said.

"It's so lucrative because it's not like a one-time sale of an inanimate object. You can sell a human over and over again. ... That's how this industry works — it devastates people's lives over and over and over again."

For example, a trafficker with a "stable" of three girls or women can easily make upwards of \$547,000 per year.

Broken down, a trafficker can make \$500 per girl (times 3) equals \$1,500 a night (times 365 nights a year) equals \$547,000 per year.

Traffickers may work alone or with another "associate" who is often still trafficked and plays a significant role in trafficking others.

Or, they may be part of a large syndicate (often gang related) with national or even international reach.

The business models may be escort services, massage parlors, brothels or street prostitution, but the most prevalent is online solicitation, and Bakke said traffickers are skilled at finding victims online.

Victims follow a pattern

He said traffickers scan social media for teens who may be insecure or frustrated at home, searching for phrases like, "I hate my parents," or "I hate how I look" or "I feel trapped."

Predators reach out to these teens and shower them with compliments and eventually meet them in person and ask them out on a date.

Some traffickers even meet the parents and present themselves as clean-cut, albeit older men.

After a dating period of buying concert tickets, clothes and other gifts, he'll start to

remind her that she owes him for all the money he's spent on her, and then he'll suggest she perform a sexual favor with another "friend" in order to get some cash.

"Then it's with someone else, and then others, and pretty soon she'll be trafficked for profit," Bakke said.

"And because the victim believes she owes her 'boyfriend,' she's afraid to tell him 'no' and she's too embarrassed to ask for help."

By the time it reaches this point, Bakke said, victims have typically turned against their parents or others because their "boyfriends" have convinced them their families are trying to break them up and need to be avoided.

"And here's the most heartbreaking thing," Bakke said.

"The victims blame themselves. They tell themselves, 'I made this bed, now I have to lie in it.'"

Beaver Creek Golf Course is sold/ from page 1A

lease and potentially operate the restaurant," he said.

He said the clubhouse needs the most work.

"The facility needs a liquor license and needs to be approved by the health inspector."

Gourley said he's optimistic the golf course will be operating late next year.

"The sprinkler system is close to being fully functioning, the greens reshaped and designated to become more player-friendly with wider fairways and it's not as rough," he said, adding that it will be a link course and will be available for the H-BC golf team.

"Beaver Creek is a wonderful community," Gourley said. "I have enjoyed visiting with the local people who are very genuine, willing and anxious for the facility to open."

Area residents shared their thoughts on the new business.

"I think it's a great deal for the community," Chad Rauk said.

Eldon Reyelts added, "I'm happy about it."

Ron Rauk said it will be an opportunity for Beaver Creek to thrive.

"It can't hurt our community," he said.

"It will keep the cash flowing and more lots have been sold on the course."

Dave Anderson commented on its effects on property values. "I'm happy about it even though the value of my acreage will increase," he said.

"I'm not a golfer but am glad more of the lots are sold."

Jerrin DeBoer said the news is encouraging for the community.

"I think it's marvelous and glad it's getting back into business," he said.

"It will help people recognize our town and will be easier to get to instead of traveling to Sioux Falls. It would also be good to see if H-BC will hold their after-prom there."

Bakke urges families to be aware of their children's online activity and nurture their children's emotional health — because girls who feel unloved are the most vulnerable to the attentions of a potential trafficker.

All youth are vulnerable but some may be at higher risk, including those who spend time alone, spend time online, are insecure and easily influenced by consumer goods, have a desire for romantic relationships, fight with their parents or feel like their parents don't care and who engage in risky behavior.

"Victims may not realize what's happening; they're attracted to the attention. ... Who doesn't want to feel loved?" Bakke said.

"It's not something happens suddenly; it insidiously creeps in until they own you."

Trafficking/see page 5A

Community Food Drive
Please Help • Sunday, October 14
Please put your food items out on your door step.
Youth will be out to collect.
Sponsored by Rock the Edge Youth Group

TWIN HOME FOR SALE
Single Family Residence located at 206 Oak Drive, Luverne, Minnesota 56156. This is a very nice home which has recently been remodeled.
For further details and information related to the property contact Nick Wassenaar, (507) 227-5008.

REAL ESTATE TAXES DUE
The second half real estate tax installment for all non-agricultural property is due **October 15, 2018**. To avoid penalty, payment may be made at the Auditor-Treasurer's Office in the Courthouse or mailed to the Rock County Auditor-Treasurer **postmarked on or before October 15th**. Please keep in mind the post office deadlines when mailing in payments and remit the appropriate stubs to assure proper credit. Payments postmarked after October 15th will be returned for the tax and penalty due at that time.
ASHLEY KURTZ
ROCK COUNTY AUDITOR-TREASURER
P. O. BOX 509
LIVERNE MN 56156-0509

LAND FOR SALE
Approximately 185.74 acres of productive farmland located in the NW 1/4 of the SE 1/4 and the SW 1/4 of 5-102-45, Rock County, Minnesota.
TERMS: Sealed bids will be accepted until 5:00 p.m., October 12, 2018, at the Eisma Law Office, 130 East Main, Luverne, MN. All bidders will have the opportunity to submit additional bids until property is sold. Highest bidder will be required to sign a Purchase Agreement with ten percent (10%) non-refundable earnest money down payment on the date of the sale and the balance at closing on or by January 15, 2019.
Sale is subject to approval by the heirs of Marian Savage Olson. For further details contact Douglas Eisma, Eisma & Eisma, Attorneys at Law, (507) 283-4828/(507) 227-2829.

Pleasant person says CT scan shows cancer is still gone

"Since your appointment with your oncologist has been delayed, I just thought I'd let you know every-



THE NORTHVIEW

By Brenda Winter, Columnist

Having had and surviving anal cancer gives me lifelong permission to be a pain in the butt.

thing looks great so you don't have to spend too much time wondering about the results," said the chipper voice on the other end of the phone.

This is no ordinary chipper voice. This chipper voice belongs to April, my nurse navigator at the Avera Cancer Center in Sioux Falls. She was giving me the results of the CT scan I had last week.

"Everything looks great. There is no sign of cancer. The two small spots on your liver are gone, so they must have been cysts."

April has a difficult job. She guides people through the labyrinth we call "medical treatment for cancer." She uses Small Words to explain Big Things to people in distress.

She goes between doctors and patients and tries to keep the lines of communication open and clear. She has relationships with people and then they die.

Or, they get better, like I did.

But being my nurse navigator hasn't been easy for April. She's actually my third. The other two handed me off, I guess.

I've been a big pain in the butt. Having had and surviving anal cancer gives me lifelong permission to be a pain in the butt. (Don't get me started on the butt jokes.)

I take pride in not doing what I'm supposed to do.

Them: Check-ups twice a year are recommended.

Me: "I'll come once a year and let you know if anything changes."

Them: Visual examination of the treatment site via anoscopy with biopsy is suggested every six months.

Me: "Mmmmm probably not."

Them: Your next scan is scheduled at the Cancer Center.

Me: "It's 90 percent cheaper in Nebraska. I'll send the discs."

And through all of this, April has been a dear.

She lets me think I'm the boss. She recognizes that proud, stubborn people must be allowed to think they are in control of something. (Anything?)

She knows how hard it is to face death in the ring and wonder who is going to win this round. She can empathize with the person who is overwhelmed by the word "cancer" and then she brings pleasant words when the cancer remains gone.

Words like, "Everything looks great."

Thanks for calling, April.

State makes gains in establishing prairie habitat, pheasant numbers

GUEST EDITORIAL

By Tom Landwehr
Minnesota Department of Natural Resources Commissioner

I love to hunt pheasants. Walking through the grasslands, watching the passion of hunting dogs pursue a rooster, busting birds out of heavy cover, and seeing autumn turn to winter - these are experiences that rejuvenate my spirit. The opening of the 2018 pheasant season is a very exciting day indeed.

I was surprised when this year's pheasant counts showed a statewide 19 percent increase. I feared that the wet spring and early summer would have pummeled pheasant numbers for the year. Sometimes pheasants are more resilient than we give them credit for.

But I should hasten to add that the state has helped immensely over the last eight years in creating and improving pheasant habitat. For pheasants - like all our wildlife species - habitat is key to sustainable populations. And for pheasants, that especially means grass and wetlands. That is equally important for white-tailed jackrabbits, prairie ducks, meadowlarks, grass-dependent bird species like bobolinks, pollinators, and a host of other species.

Over the last century, we've seen an inexorable decline in grassland habitats. That has caused a commensurate decline in most prairie wildlife species. Farm Bill programs - notably the Conservation Reserve

Program (CRP) - have given some short-term boosts, but we've lost nearly one million acres of CRP in the last decade.

Partly a result of Gov. Mark Dayton's 2014 Pheasant Summit, and the subsequent DNR Pheasant Plan, we have had good success in getting more permanent cover on the ground for these prairie species. Specifically, in the last eight years, we realized:

- developed 9-square mile "focus" areas where habitat conservation work will be concentrated. This will ensure the maximum benefit from public and private land habitat management and create large complexes where sustainable wildlife populations can prosper.

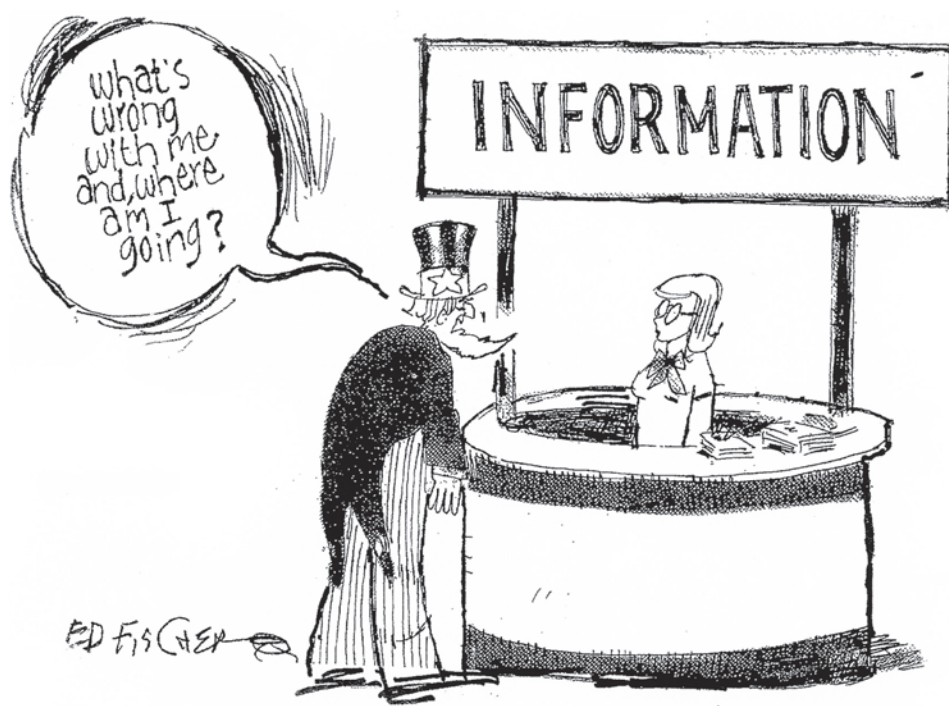
- a new Conservation Reserve Enhancement Program (CREP) that works with private landowners and will add 60,000 acres of permanent grass and wetlands in the pheasant range.

- the addition of at least 43,000

acres of Wildlife Management Areas (WMAs) - public lands for wildlife conservation and public hunting. With conservation partners like Pheasants Forever, Ducks Unlimited, the Minnesota Deer Hunters Association, The Nature Conservancy and the U.S. Fish and Wildlife Service, many thousands of additional acres of permanent cover have been created, and are now open to public hunting.

Other programs administered by soil and water conservation districts, watershed districts, counties and non-profit organizations will also increase habitat over the long term. Especially with the significant contributions from the Outdoor Heritage Fund (of the Legacy Amendment), the future will be brighter for Minnesota pheasants and hunters.

This kind of work takes time and patience, but when Mother Nature cooperates, the long-term prospects for pheasants, hunters and all prairie wildlife look good in Minnesota.



Pheasant opener weekend is finally here

Well, the big weekend is finally here.

Things get started Friday with the governor's entourage, other state officials and the media converging on Luverne. They will be busy with a host of activities from media tours to honing their shooting skills at the trap range.

The public is welcome to attend the 4 p.m. land dedication ceremony at the Rooster Ridge wildlife management area just west of Beaver Creek on County Road 4. Because of limited parking at the site, please take the shuttle bus from the Beaver Creek Golf Course. The shuttle buses will start running at 3:30 p.m.

The Governor's Banquet starts with the 5 p.m. social hour followed by the 6 p.m. dinner and the 7-ish program.

Just an FYI here: The banquet is casual dress. I am sure you have heard of shabby chic. Dress for the banquet is more like pheasant hunting chic -



FOR WHAT IT'S WORTH

By Rick Peterson, General Manager
Tollefson Publishing

even the governor will more than likely be wearing jeans.

After the banquet, or if you're attending the football game, everyone is invited to head down to the Take 16 Brewing Company and enjoy the Church of Cash show.

The media pheasant hunt will take place Saturday morning and wrap up at noon.

The Bird Dog Parade starts at 1:30 p.m. and the Gould Brothers trick shooting show gets underway right after the dog parade. Both of those events are staged at the Rock County Sportsman's Club.

Now, we all know the weather hasn't always been our friend, so dress for the weather. So if the weather is misbehaving, don't let that stop you from coming out and enjoying the show. After all, we are Minnesotans and a little weather issue isn't going to affect us.

Who knows? Maybe the weather gods will shine on us this weekend.

Before we close the book on the Governor's Opener weekend, you get one more chance to take in a performance by Church of Cash back down at Take 16 at 3:30 p.m. Saturday.

State's Real ID process kicked off Oct. 1

Question: Can you explain the new Real ID and Driver's License process in Minnesota?

Answer: REAL ID is a federal requirement that establishes minimum-security standards for state-issued driver's licenses and identification cards. The benefits to the new driver's license include use for domestic air travel and access to federal facilities such as military bases.

Beginning Oct. 1, Minnesotans will have the option to apply for a REAL ID-compliant card, although Minnesotans will be able to use their standard licenses and ID cards for federal purposes, including boarding domestic flights, until Oct. 1, 2020.

If there is no need to obtain a REAL ID at this time, state officials are suggesting that residents wait to apply unless they need to change their name or address, or renew their current license. This will help ease the transition to the new card and reduce wait times.

A pre-application feature will allow Minnesotans to enter a significant portion of their driver's license or ID card application online - including REAL ID applications - reducing the time spent in driver's license offices. An online tool to help Minnesotans decide which of the state's three license



options best meets their needs: a standard driver's license or ID card, a REAL ID-compliant license or ID card, or an Enhanced Driver's License (EDL) or ID card (EID).

For additional information and what documents you will need to bring with you, go to: <https://dps.mn.gov/divisions/dvs/real-id/Pages/default.aspx>.

You can avoid a ticket - and a crash - if you simply buckle up, drive at safe speeds, pay attention and always drive sober. Help us drive Minnesota Toward Zero Deaths.

If you have any questions concerning traffic related laws or issues in Minnesota send your questions to Sgt. Troy Christianson - Minnesota State Patrol at 2900 48th Street NW, Rochester MN 55901-5848. (Or reach him at, Troy.Christianson@state.mn.us).

E-mail: editor@star-herald.com Web site: star-herald.com
Phone: 507-283-2333 Fax: 507-283-2335

Published Thursdays by Tollefson Enterprises, POSTMASTER:
Send address changes to 117 West Main, P.O. Box 837, Luverne,
MN 56156. Periodicals postage paid at Luverne, Permit #33 and at
additional mailing offices.

General manager: Rick Peterson **News staff:**
Office manager: Deb Lusty Lori Sorenson, editor
Circulation manager: Jennifer Kor Mavis Fodness, reporter
Advertising: Chantel Connell John Rittenhouse, sports editor
Production manager: Abbe Kolar Esther Frakes, copy editor
Production: Heather Johnson

Rock County
STAR HERALD
Rock County's newspaper since 1873

(ISSN 0889-888X)
SUBSCRIPTION RATES

\$72 per year in Rock County; \$89 per year all other areas. Single copies \$1.25

Entire contents copyrighted by
Tollefson Publishing Roger Tollefson, publisher

The *Star Herald* encourages letters to the editor expressing the opinions of readers and intends to print all letters. Letters not meeting the guidelines will not be printed. The *Star Herald* will verify the authenticity of all letters. Letters must have the name of the writer, a signature and address.

Unsigned letters will not be considered. The *Star Herald* will edit for grammar, spelling and clarity. Any letters containing offensive language, libelous or slanderous material, or misleading or false information will be rewritten before being published. The *Star Herald* will not publish letters written with the sole intent to advertise or serve as a thank-you. Letters with more than 300 words may be edited. The deadline for letters is Monday 10 a.m. They may be delivered or mailed to the editor, *Rock County Star Herald*, P.O. Box 837, 117 W. Main St., Luverne, Minn. 56156.

ON THE RECORD

Dispatch report

Sept. 28
 •Complainant reported a truck parked on Maple Street for the last week.
 •Deputy escorted subject to the impound lot.
 •Complainant reported a driving complaint on South Kniss Avenue.
 •Complainant requested a background check for housing.
 •Complainant reported a camper parked on East Dodge Street.
 •Accident reported on South Kniss Avenue.
 •Deputy requested for property exchange on North Spring Street.
 •Keys were found on Cedar Street.
 •Extra patrol requested on North Kniss Avenue at Bark Street.
 •Complainant reported a rollover on Highway 23 near Garretson.
 •Complainant in Hardwick reported harassing communications.
Sept. 29
 •Complainant reported an unknown issue on Blue Mound Ave.
 •Complainant requested deputies on Blue Mound Ave.
 •Complainant reported driving complaint on I-90, mm 9.
 •Complainant reported a vehicle parked on Hwy 23 and 161st Street near Garretson.
 •Complainant reported a vehicle in the ditch on County Road 6.
 •Complainant reported vehicles speeding through Magnolia.
 •Assisted state patrol with clearing warrant.
 •Theft reported in Mead Court.
 •Domestic reported on North Estey Street.
 •Complainant requested assistance getting off the curb on East Main Street.
 •Complainant reported abandoned vehicle in Beaver Creek.
 •Complainant reported party with a warrant on South Kniss Avenue.
Sept. 30
 •Complainant reported subject with warrant on North Estey Street.
 •State patrol requested assistance with traffic control in Valley Springs.
 •Complainant reported an aggressive driver on I-90 near Magnolia.
 •Threats reported at location on North Freeman Avenue.
 •Complainant reported an erratic driver on Hwy 75.
Oct. 1
 •Complainant reported a suspicious vehicle on County Highway 6 near Hills.
 •Deputy conducted a follow-up on Warren Street.
 •Complainant requested deputy for court.
 •Complainant on Koehn Avenue reported vehicle vandalism.
 •Complainant reported her son was threatened with a knife at Luverne school campus.
 •Complainant requested deputy on Kniss Avenue.

•Complainant reported unauthorized wire/transfer attempt in Hills.
 •Subject reported damage to property in Kenneth.
 •Deputy assisted another department on Hwy 75.
Oct. 2
 •Deputy reported vehicle ran out of gas on Main Street.
 •Reserved for warrant arrest.
 •Reserved for a domestic.
 •Complainant reported the smell of paint in the hall on Luverne Street.
 •Complainant reported a person walking in the dark wearing dark clothing on County Road 4.
 •Complainant reported an electrical box was hit on West Warren Street.
 •Complainant reported a subject on the bridge at I-90 and County Road 6 near Beaver Creek.
 •Complainant reported stoplight out on Main Street.
 •Complainant reported subject is walking.
 •Complainant reported a body found in Steen.
 •Complainant reported that her boyfriend took some property that doesn't belong to him.
 •Deputy assisted state patrol with traffic stop on I-90.
 •Complainant reported possible information on robbery in Steen.
 •Complainant requested extra patrol on North Cedar Street.
Oct. 3
 •Complainant reported a woman needing assistance on Christensen Drive.
 •Complainant requested deputy post shut-off notice.
 •Complainant called wanting a ride.
 •Civil defense weather testing.
 •Complainant on East Brown Street reported a fire alarm.
 •Complainant reported a traffic complaint on East Main Street.
 •Suspicious activity reported at Red Bird Field.
 •Deputy escorted a subject to the impound.
 •Vandalism reported in the City Park.
Oct. 4
 •Complainant reported illegal dumping on East Main Street.
 •Complainant reported harassing communications.
 •Complainant requested a copy of their driving record.
 •Complainant requested a welfare check in Kenneth.
 •Complainant reported property damage on East Veterans Drive.
 •Complainant reported an accident on Freeman Ave.
 In addition officers responded to 2 deer accidents, 5 transports, 8 escorts, 20 ambulance runs, 4 animal complaints, 2 fingerprint requests, 6 burn permits, 4 drug court tests, 1 permit to purchase/carry, 2 abandon 911 calls, 9 traffic stops, 4 paper service attempts and 2 tests.



Lori Sorenson photo/1011 locals group photo

The Locals band performance of "The Mistress and the King" on Saturday involves (front, from left) Dean and DJ Luethje, Katie Walgrave, Keith Maine, (back) Shawn Kinsinger, Ryan DeBates and Kenny Rolling. Showtime is 8 p.m. Saturday.

'Mistress and the King' from page 1A

Luethje) revealing that she had a child with Elvis, the King of Rock 'n' Roll (played by Shawn Kinsinger).
 She sends her butler, Bates, (played by Ryan DeBates) to retrieve the body of the King, with the help of her now 41-year-old child, Florence (played by Katie Walgrave).
 They revive the body with a creative mixture of science, technology and hocus-pocus.
 The show ends with Elvis performing popular songs accompanied by a 1980s hair band (Rolling, Keith Maine and Dean Luethje) performing popular heavy metal songs from their era.
 For example, Elvis sings "I Can't Help Falling in Love With You" over Poison's "Talk Dirty To Me."
 Rolling calls it a "mashup," and strangely, it works.
 Another example is Elvis Presley's "In the Ghetto" and Led Zeppelin's "Whole Lotta Love."
 The mashup, of course, is "Whole Lotta Love in the Ghetto."
 The local actors and musicians wrote the whole script, which they have marketed as "adult comedy for the immature mind" for audiences 18 and older.
 "We were concerned in the beginning that it would be risqué," Rolling said. "But it's actually tamer than what you'd see on network television."
 He admitted the group had fun putting it together.

"We had to get into the minds of the characters that already exist and spoof them all," Rolling said.
 "This whole thing is a spoof of 1980s pop culture."
 Elvira sings one song in the show, but the other characters don't perform music.
 In fact, they discover Florence has none of her father's gift for song or dance. (She does, however, enjoy bananas and peanut butter like her father once did.)
 In a promotional piece he wrote for Etcetera Magazine, Rolling said, "The result of this unlikely turn of events will leave the audience in stitches and probably feeling just a little bit guilty for laughing at such sophomoric humor."
 He explains that The Locals band showcases local talent while raising money for local charities.
 "Each show is unique and the themes are diverse, so the lineup of performers changes from show to show," Rolling said.
 Some of the musicians who have been involved in The Locals shows are veteran stage performers while the experience is brand new for some.
 The charity beneficiary of Saturday's event is Luverne's own Green Earth Players community theater group.
 The one-time performance of "The Mistress and The King" is at 8 p.m. Saturday, Oct. 13, at the Palace Theatre.
 Tickets are available online at www.palacetheatre.us by phone at 507-283-4339 or at the box office.

Human trafficking/ from page 3A

You might be a victim if ...
 A group of high school students attended the evening session in Grand Prairie Events, and Bakke shared information with them about warning signs of exploitative relationships.
 He said you are a victim of exploitation if any of the following happen in your relationship:
 •Threatening to end your relationship if you don't have sex.
 •Asking or making you have sex with other people.
 •Expecting sex in return for food or a place to stay.
 •Sharing drugs or alcohol with you in return for sexual acts.
 •Threatening to stop being friends if you don't perform sexual 'dares'.
 •Giving you gifts or money in return for sexual acts.
 •Asking you to take sexual photos of yourself or share them online or by text.
 •Threatening to humiliate or share sexual images of you if you don't carry our more sex acts.
 Luverne High School students in David Rysdam's social studies class were assigned to attend the trafficking session and report on it.
 "Going to the sex trafficking meeting was extremely beneficial," wrote student Nicole Aanenson.
 "Just hearing about some of the statistics just blows my mind. ... It made me realize that this is much bigger than I thought and I need to look out for the (warning) signs."
 Student Grace Sweeney said the session was informative in several ways.
 "They really helped show what traffickers and their victims don't fit one single stereotype and helped show the huge magnitude of this industry," she wrote.
 Colton Schutz wrote, "I learned that sex trafficking can happen to anyone, anywhere, anytime and it can be very unexpected."
 Adriana Gonzalez wrote, "This was a very useful event that showed the truth about human trafficking."

PALACE THEATRE UPCOMING EVENTS

October 13 • 8:00 p.m.
 The Locals Present - "The Mistress & The King"
 Tickets available at www.palacetheatre.us or 283-4339
 Fundraiser concert for the Green Earth Players

October 17-19
 Firemen's Movie - "Teen Titans Go! To The Movies"
 Admission is a donation to the Luverne Fire Department

October 20 & 21 • 7:00 p.m.
 Movie - "Farmer of the Year"
 Cast includes locals, Ron & Jane Cole, Katie Walgrave & Scott Wessels
 Afternoon Escape **October 25 • 2:00 p.m. • \$5 admission**
 Movie - "Farmer of the Year"

November 2 • 7 p.m.
 Tonic Sol Fa
 \$15 for adults, \$10 for students, available at www.palacetheatre.us or 507-283-4339

PALACE THEATRE
 104 E. MAIN ST. • PO BOX 541 • LUVERNE, MN 56156
 507.283.4339 • WWW.PALACETHEATRE.US

Palace Theatre Luverne
Box office is open
 Monday - Friday 12 p.m. - 5 p.m.
507-283-4339

Fall Festival Soup and Sandwich Supper

Zion Lutheran Church
 Hardwick, MN

SUNDAY OCTOBER 14
5 - 7 P.M.

serving homemade soups -
 chicken noodle • chili
 cheesy broccoli
pulled pork sandwiches & pies, desserts

Free will offering to benefit local and regional missions.

Support provided by
 Thrivent Financial
 Action Team

handicap seating is available

Coming up at the Howling Dog

TV GIVE AWAYS Come in to show your football spirit **Monday nights, Sundays and Thursday nights!**

For every alcoholic beverage you purchase get 1 entry and get 2 for meals. Must be 18 to get entries with the meals.

HUNTERS PACKAGE GIVEAWAY
 Starting pheasant opener through deer opener - come in wearing any kind of hunting attire and purchase any alcoholic beverage get an entry in the drawing
Yeti cooler filled with all kinds of good stuff (must be 21)

Sunday Brunch
October 14 10:30am - 2:30pm

Adults \$12.99
 Seniors 60+ \$10.99
 Kids 6-12 \$8.99 | Kids 6 & under \$4.99
 Drink included with kids meals
 Mimosas and Bloody Mary specials

Come and enjoy our brunch!
 Something for everyone!

Howling Dog SALOON
 507-449-0454

LOOK. LISTEN. LEARN.
 Be aware. Fire can happen anywhere.
 FIRE PREVENTION WEEK: OCTOBER 7-13, 2018
firepreventionweek.org

Open house
 Luverne Fire Hall
Thursday, Oct. 11
6-8 p.m.

THERE WILL BE questions & answers trucks on display **FIRE SAFETY** smoke alarms

EDITH - exit drills in the home 5th grade posters will be on display for poster competition
Come join us!

Luverne
Blue Mound Liquor
Autumn Bus Tour
Saturday, October 27
 Leave from Luverne at 7 a.m. (northwest corner of Shopko parking lot)
 Return to Luverne 10:00 - 11:00 p.m.
\$95.00 / person
 (includes all wine & beer tasting and meals)

Spots on the bus are limited so please stop by the store or call (507) 449-5052 to sign up and prepare for a totally unique adventure.

MANKATO BREWERY
 Tour, tasting and catered lunch
 Mankato Brewery
 Mankato, MN

CHANKASKA CREEK
 RANCH & WINERY
 Tour, wine & spirits tasting and food - wood oven pizza
 Chankaska Creek Ranch & Winery
 Kasota, MN

We salute our Rock County Fire Departments

The Luverne Fire Department
 Open House, Thursday, October 11, from 6-8 p.m.
 Information on smoke alarms and
 EDITH (Exit Drills In The Home).
 Come join us!

Luverne Fire & Rescue Department



The Luverne Fire Department members include (front, from left) Brett Hood, Tyson Facile, Dustin Walters, Travis Chapa, Aaron Altman, Eric Lammert, Seth Miller, (second row) Craig Shelton, Nick Mead, Mike Ketterling, Tyler Lebrun, Anthony Graphenteen, Al Pilaczynski, Austin Kurtz, Derek Elbers, (back) Jon Kurtz, Eric Woodley, Mark Kurtz, Jesse Woodley, Travis Franken, Jordan Kopp, David Van Batavia, Cody Gehrke, Andrew Hamann and (on the truck) Chad Buss. Not pictured are Zach Cowell, Seth Goebel, Scott Ketterling, James Rahm, Jody Reisch, David Riphagen, Jordan Siebenahler, Aric Uithoven, Evan Verbrugge and Tim Walgrave. (Lori Sorenson photo)



Hardwick Fire & Rescue Department



Members of the Hardwick Fire Department include (front row from left) Tom Haas, Nic Johnson, Chief Lowell Schelhaas, Don Luitjens, Johnny Acevodo, Julie Fodness, Craig Mulder, (back) Jen Luitjens, Courtney McGuire and Joan Kindt. Not pictured are Dan Kindt, Emilee Johnson, Brian Gacke, Jason Thorson, Ethan-Thorson, Tony Roos, Miles Brown and John Javner. (Mavis Fodness photo)

FIRE PREVENTION WEEK
 OCTOBER 7-13, 2018
 firepreventionweek.org



**LOOK.
 LISTEN.
 LEARN.**

Be aware.
 Fire can happen
 anywhere.™



© 2018 NFPA MAGNET18
 Sparky® is a trademark of NFPA.

Magnolia Fire & Rescue Department



Magnolia Fire Department and First Responders include (from left) Stacie Dohlan, Jean DeGroot, Ben Peters, Luke Dohlmann, Jeremy Roelfs, Dennis Madison, (back) Josh Ossefoort, chief Scott Dohlmann, Derek Sandbulte, Steve DeGroot and Robert Somnis. Not pictured are David Dibbern, Jessica Dibbern, Angie Sandbulte, Jason Dohlmann and Tom Strassburg. (Lori Sorenson photo)

Hills Fire & Rescue Department



Members of the Hills Fire Department include (front, from left) Paul Page, Mark DeBoer, Mark Top, Dalton Bass, Justin Van Maanen, Tony Elbers, (back) Jeff Bass, Jared Rozeboom, Dan Fick, Dylan Klar-enbeek and Wade Jellerna. Not pictured are: Collin Leuthold, Lance Larson, Brian Kraayenhof, Derek Bundesen, Dakota Steensma, Mike Spath, Kelly Leuthold, Jesse Gaugler and Mitchell Leuthold. (Glenda McGaffee photo)

Beaver Creek Fire & Rescue Department



Members of the Beaver Creek Fire Department include (front, from left) Kelly Vis, Shannon Tatge, Travis Helgeson, Josh Haak, Travis Broesder, Andrew Blank, Matt Sandbulte, David Olson, (back) Jake Rauk, Randy Krull, Chad Rauk, Brad Hassebrook, Aaron Blank and Daryl Fuerstenburg. Not pictured are: Josh Teune and Ryan Rauk. (Glenda McGaffee photo)

Exchange STATE BANK
 Local. Dependable. Strong.
 (507) 962-3250 Hills, MN
 (507) 967-2570 Ellsworth, MN
 (507) 449-6000 Luverne, MN
 FDIC

Teals MARKET
 210 East Lincoln, Luverne, MN
 507-283-4429 | tealsmarket.com

EE & EISMA
 ATTORNEYS AT LAW
 130 E. MAIN STREET • 283-4828

Papik MOTORS
 1-90 Luverne, MN
PAPIK.COM

Buffalo Ridge INSURANCE
 808 S. Kniss, Luverne, MN
 507-283-2381

First Farmers & Merchants NATIONAL BANK
 We believe in you.
 303 East Main Luverne, MN 56156
 507-283-4448
 www.ffmbank.com

CATTNACH INSURANCE AGENCY
 South Hwy. 75, Luverne, MN
 507-283-8383 or 1-800-258-4471
 E-mail: info@Cattnach.com Website: www.cattnach.com

102 E. Maple, Luverne, MN
507-283-9151

Klosterbuer & Haubrich, LLP
 Attorneys-at-Law
 120 N. McKenzie Luverne, MN
 507-283-9111

SANFORD
 Luverne

Luverne MINNESOTA
 Love the life!

BILL'S WATER CONDITIONING
 RANDON WATER SOFTENER SERVICE
 Family owned since 1971
 SERVICE • RENTAL • SALES
 Luverne: 507-283-4448 Brandon: 605-582-6585
 www.billswater.com

Good Samaritan Society
 LUVERNE
 www.good-sam.com

LUVERNE FARM STORE
 Since 1948
 Quality & Service
 S. Highway 75, Luverne, MN
 507-283-9555 1-800-955-9556

Vander Kooi Law Offices, P.A.
 127 E Main, Luverne, MN
 507-283-9546

AGRI - ENERGY, LLC
 502 South Walnut, Luverne, MN 56156
gevo
 Phone: 507-283-9297
 Visit our website at www.gevo.com

920 Commerce Rd. • Luverne, MN 56156
 507.283.8711
Luverne BODY SHOP
 AUTO GLASS
 KEVIN AAKER
 kevin@luvernebodyshop.com
 ANDREW HEMME
 andrew@luvernebodyshop.com

Ketterling Services, Inc.
 401 S. Cedar St. • Luverne, MN • 507-283-2863 • www.ketterlingservicesinc.com
 Hours: Tues-Fri. 8:30 a.m. to Noon & 1 p.m. to 5 p.m. Sat. 8:30 a.m. to Noon
Roll-Off Service for Building Demo & Remodeling
 SANITATION: Commercial Residential Rural
 RECYCLING: Collection Dropoff
 Monthly - Weekly - Daily

Mark's PLUMBING, HEATING & A/C, LLC.
 Lic. # PC644664
 Master Plumber Lic. #066849-PM
 608 W. Hatting, Luverne • Mark Kurtz, owner
507-283-9245
TEMPSTA
 Heating and Cooling Products

Country Cupboards
 2 miles south of Luverne on Hwy. 75
507-283-8176

MINNWEST BANK
 116 East Main Street • Luverne • 507-283-2366
 Hwy. 75 • 800 South Kniss • Luverne • 507-283-9131
 Main Street • Beaver Creek • 507-673-2334
 www.minnwestbank.com • Member FDIC • MoneyLine 888-616 BANK

CHS

Teals Food & Gas Center
 North Highway 75, Luverne
(507) 283-4889

McCLURE ELECTRIC
 Providing residential, commercial and agricultural wiring services since 1927
 Luverne, MN 507-283-4716
 Alan M. Aanenson, owner
 Licensed in Minnesota and South Dakota

212 South Kniss, Luverne
 (507) 283-3704 or (877) 631-3704

Luverne Country Club
 507-283-4383 • Luverne, MN

Heidebrink & Associates Agency, Inc.
 FARM - HOME - BUSINESS - LONG TERM CARE
 AUTO - CROP - LIFE - HEALTH
 LUVERNE OFFICE
 224 East Main, Luverne, MN 56156 Phone 507-283-4085
 ADRIAN OFFICE
 216 Maine Ave., Adrian, MN 56110 Phone 507-483-2223

Cragoe Realty
 Selling Real Estate in the Heart of the PrairieLand
WWW.CRAGOE.COM
 Your hometown real estate broker for over 25 years
 Gene Cragoe, broker lic. in MN & SD info@cragoe.com
 Renee Guy, realtor, Renita Enninga, office manager
 507-283-2647 or 800-689-2647

Connell Car Care
 www.connellcar.com
 Luverne, MN
 (507)283-2341 www.connellcar.com

The Estenson Company, Inc.
 419 East Main St. Luverne, MN
507-283-2386

Dingmann Funeral Home & Cremation Services
 Luverne, MN • 507-283-4567
 www.dingmannandsons.com

McClure
 PLUMBING, HEATING, AIR CONDITIONING, INC.
 412 S KNISS AVE. LUVERNE, MN 56156
PHONE 507-449-2828
FAX 507-449-2829



Father Tom Jennings leads the Eucharist Procession of 35 vehicles from St. Mary's Catholic Church in Ellsworth Sunday afternoon stopping at the Luverne City Park. The procession brought St. Mary's Blessed Eucharist to Luverne as part of the newly merged Luverne-Pipestone parish. St. Mary's closed its doors Sunday after 133 years.



Above: Students from Luverne and Ellsworth schools pose with Father Tom Jennings (far right) at the Luverne City Park before leading the caravan to St. Catherine's in Luverne. Pictured in the front row (from left) are Jackson Jenniges, Ashton Pick, Rayden Boyenga, (back) Carson Tofteland, Claire Baus-tian, Tenley Nelson (hidden), MaKena Nelson, Cole Boltjes, Noah Wessels, Kade Boltjes, Sean Boltjes and Brayden Tofteland.

Welcome!

Ellsworth parishioners welcomed to Luverne in special Sunday night ceremony

Photos and story by Mavis Fodness

Amid tears, hugs and applause the parishioners of St. Mary's Catholic Church in Ellsworth were welcomed to St. Catherine's Church in Luverne Sunday night during a special Benediction Ceremony.

A caravan of 35 cars led by Father Tom Jennings arrived in Luverne from Ellsworth shortly before 6 p.m. Sunday, stopping at the city park by the eastern edge of Luverne.

The caravan was transporting several religious items from St. Mary's including the Blessed Sacrament and was met at the city park by another 10 vehicles driven by St. Catherine's parishioners. To finish the journey to the church on Brown Street, the 45-car caravan was led by youth runners from both parishes.

More than 100 St. Catherine's parishioners greeted the runners and the caravan, applauding each item as it was brought into the church.

St. Mary's parishioners were welcomed with handshakes and hugs, many of them in tears.

During the Benediction Ceremony to merge the two parishes, Father Tom Jennings invited individuals to address the 175 people who attended the service.

"I hope you feel welcome here and we can become part of a new family," said Jeanne Prekker of Luverne.

As part of the Winona Diocese's recluster process, St. Mary's Church in Ellsworth was closed



Above: Father Tom Jennings presides over Sunday night's Benediction Ceremony at St. Catherine's in Luverne to welcome St. Mary's parishioners from Ellsworth.



Left: St. Mary's Blessed Eucharist sits safely on St. Catherine's altar Sunday after traveling from Ellsworth.

Right: Joe Deutsch (left) and Larry Lewis carry a statue of St. Anthony into St. Catherine's Church in Luverne Sunday.



Right: In honor of Father Tom Jennings' retirement beginning Monday, Mary McLaughlin (far left) along with Mary Aaker and Sue Linebeck present Jennings with a \$25,000 check toward a new car. The money was donated by St. Catherine's and St. Mary's parishioners as a thank you for Jennings' 15 years of service in the communities.



and merged with St. Catherine's. St. Catherine's joins St. Leo's in Pipestone as the new Luverne-Pipestone parish.

Renee Pick, who grew up at St. Mary's in Ellsworth, said Sunday was an emotional day.

"Closing down a church is not something I wish upon anyone," she said. "It was not just a church to us. It was home. It was family."

The final St. Mary's service

Church merger/continued 10A

Possibility of 'friendlier' weather ahead for gardeners

I've scanned ahead and am happy to note some much "friendlier" weather in our long-range forecast. Not that I am expecting a burst of color from my lingering and languishing flowers, nor am I hoping for a big increase in produce from my garden. But some simple sunshine to recharge my battery and give me energy to finish the endless list of things I always seem to want to accomplish "yet" this season. Last November was perfect for me ... is another like it possible?

If you are contemplating cleaning out your planters, remember to save the growing medium if you want to fill the pot with evergreen branches, berries and winter décor. Most of these mixes are largely peat moss so they are not heavy. The root mass in the mix is what works well to hold the winter stems in place. If your container is breakable because of the expansion of the medium as it freezes, use a liner inside of the pot to allow room for that expansion.

I finally got all the light poles on Main Street dressed with cornstalks ...



KNOW IT AND GROW IT

By George Bonnema, Luverne Horticulturalist

then a blast of wind tried to rearrange the look, but we survived that trauma pretty well.

My personal thanks and gratitude to Eric and Grant Binford for being so willing to donate all the corn and then to tell me that they appreciate the look as much as everyone else. Seeing beauty in what we each produce is truly a gift.

Bonnema is a gardening enthusiast and former greenhouse owner. He can be reached at flowergb@iw.net.

REMEMBER WHEN

10 years ago (2008)

•Rock County Sheriff Evan Verbrugge said he estimates that convicted murderer Randy Swaney cost the Sheriff's Department \$77,260. ...

Other costs to the Sheriff's Department included:

- Transporting Swaney — \$1,018
- Benefits for deputies during trial — \$2,487
- Salaries for bailiffs during trial — \$2,475
- Transportation of prisoners who testified for the defense during trial — \$1,104
- Meals for staff and Swaney during trial — \$565
- Boarding of Swaney in Nobles County — \$24,203
- Purchase of TV and VCR/DVD player for use of the grand jury — \$428

Most costs for the trial itself and prosecution are state expenses.

25 years ago (1993)

•A wild moose made its way nonchalantly across the county earlier this week, sending gawkers scrambling after it with cameras and camcorders in hand. Don Bork alerted the Star Herald when the large creature crossed through his land near Beaver Creek Monday morning.

Earlier reports of presumably the same moose indicate that it is traveling in a northeasterly direction, with sightings reported in Renner and Brandon, S.D., Sunday night and near Hardwick Monday afternoon. Although the occurrence of moose in the region is rare, sometimes they get a case of "wanderlust," said Southwest Minnesota DNR information officer Tom Conroy. "Now and then one of these quirky things in nature causes them to appear where they shouldn't be," he said. "The unfortunate thing is one will get hit by a motorist or mistaken for a deer during hunting season."

50 years ago (1968)

•Walls of the old fire hall building came tumbling down last week, in compliance with council action taken at a special meet-

ing Sept. 26. The grounds will be leveled and graded for use as a parking lot as soon as debris has been removed.

Judge Harvey A. Holtan ruled that a motion by Leslie McDowell to stop the city from carrying out the council decision be denied. McDowell, together with Neil Frakes, Edwin Deutsch, Lloyd Herreid and Jake Boomgaarden had sought to have the matter of whether or not the building was to be razed submitted to the vote of the people.

75 years ago (1943)

•Outstanding work in tuberculosis eradication and control received recognition here Tuesday when Dr. C.L. Sherman Luverne, was awarded the Christmas Seal Distinguished Service plaque. Presentation was made by Dr. E.A. Meyerding, executive secretary of the Minnesota Public Health association, in connection with the ceremonies of accreditation for Rock, Nobles and Pipestone Counties.

Dr. Sherman has for over a quarter of a century been a leader in the fight against the disease in this section of the state, and worked for the establishment of the sanatorium at Worthington which now serves seven counties in the southwestern corner of Minnesota. He was the first president of the Southwestern Minnesota Sanatorium commission and has continued to hold that office for the past 28 years.

100 years ago (1918)

•Under an order filed in the clerk of court's office the fore part of the week, Judge L.S. Nelson finds that A.A. Cook is entitled to \$332 for labor performed and material furnished; \$50 as attorney's fees and against the Luverne Hotel Company.

The case was an action to compel payment for the remodeling and erection of fire escapes and other work on the Manitou hotel building done in the fall of 1916 by Mr. Cook, and was heard by Judge Nelson on June 18th.

Mr. Cook sought to collect \$455.65 for work and material, and asked \$75 as attorney's fees, while the defendant company set up the claim that the charges for doing the work were exorbitant.

CELEBRATIONS

Open houses

An open house bridal shower for **Kenzie VanBatavia**, bride-to-be of **Travis Helgeson**, will be at 10 a.m. Saturday, Oct. 20, at Steen Reformed Church.

MENU

Monday, Oct. 15: Swiss steak, mashed potatoes, peas and carrots, bread, pineapple.

Tuesday, Oct. 16: Honey mustard chicken breast, baked potato with sour cream, green bean casserole, bread, cake.

Program: Half-Price Day sponsored by Rock County Chiropractic (Dr. Smith).

Wednesday, Oct. 17: Barbecue riblet sandwich, tri-taters, corn, mandarin oranges, gelatin.

Program: Retired Teachers Day; Site Council.

Thursday, Oct. 18: Pork loin, gravy, mashed potatoes, buttered cabbage, bread, fruit crisp.

Program: Half-Price Day; Food Give-away.

Friday, Oct. 19: Lemon pepper fish with tartar sauce, au gratin potatoes, mixed vegetables, bread, slice pie.

Program: Birthday Party with Kitchen Band; Half-Price Day.

Senior Dining offers well-balanced and affordable meals in a community atmosphere.

Gift certificates are available at the meal site or online at www.lssmn.org/nutrition.

Call Lauree Teunissen at 283-9846 to make dining reservations or for home-delivered meals.

SCHOOL NEWS

Luther College

Courtney Wendland, a senior at Luverne High School, has been accepted for admission for the 2019-2020 academic year at Luther College, Decorah, Iowa, and has also been awarded the Martin Luther Award.

The Star Herald strives to recognize all academic accomplishments of students from its coverage areas, and our news department relies on multiple sources (colleges, students, parents, etc.) for that information. Send school news to editor@star-herald.com or call 507-283-2333.



"Miles" is one of the Tracy Area Animal Rescue pets available for adoption.



Lori Sorenson photos/1011 paws for dani

'Paws to Remember Dani'

The second annual "Paws to Remember Dani" was at Shopko Luverne Saturday to honor the late Dani Gacke and to give exposure to animals available for adoption through Tracy Area Animal Rescue. Dani, who died of suicide in June 2017, was known for her love of animals, so her parents, Wendy and Tony Gacke, are teamed up with Tracy Area Animal Rescue to honor Dani and to introduce the public to furry friends who are up for adoption. The Magnolia Juniors 4-H club was also on hand with super soft bunnies for people to pet.

Above: Wendy Gacke (right) visits with young pet visitors (from left) Lydia, Amelia and Tim Reed.

Left: Beth Capistran, Luverne, is an avid volunteer who fosters pets for Tracy Area Animal Rescue. She's pictured here introducing puppies to Claire (left) and Kristi Kruger.



1952: Senator Humphrey speaks in Luverne

The following appeared in the Rock County Star Herald on January 22, 1953.



BITS BY BETTY

By Betty Mann, president Rock County Historical Society

Humphrey To Address Farm Union Rally

Leading international and domestic agricultural issues will be discussed Thursday, January 29, at Luverne at a mid-winter farm rally for Rock county.

Guest speakers will be Senator Hubert H. Humphrey, U.S. Senator from Minnesota, and Russel Schwandt, state secretary of the Minnesota Farmers Union.

The rally will be at the Luverne armory and will begin at 7:45 p.m. All farmers in Rock and neighboring counties are invited to attend according to the Rock County Farmers Union, sponsor of the rally.

The Brewster Boosters will present their stage show during the program. Lunch will be served after the meeting.

Senator Humphrey will speak in "World Markets and World Trade as they Affect Minnesota Farmers."

He will discuss the dependence of the American farmer upon foreign markets for an outlet for surplus farm commodities and will indicate the role an expanded world trade could play in achieving a lasting world peace.

Senator Humphrey served on the Senate agricul-

ture committee in the last session of congress. He has been appointed to the key Senate foreign relations committee in the new congress.

Mr. Schwandt will speak on the "Parity Formulae and Fair Farm Prices."

Schwandt, a Sanborn farmer, will explain that no price support program can be effective unless the party figures are honest.

Donations to the Rock County Historical Society can be sent to the Rock County Historical Society, 312 E. Main Street, Luverne, MN 56156.

Mann welcomes correspondence sent to manmade@iu.net.

OBITUARIES

Virginia Allen

Virginia Mae Allen, 71, Luverne, died Friday, Oct. 5, 2018, at the Sanford USD Medical Center in Sioux Falls, South Dakota.

A memorial service was Tuesday, Oct. 9, at the First Baptist Church in Luverne. Burial followed at Maplewood Cemetery in Luverne.

Virginia Wharton was born June 20, 1947, to Everett and Sara (Norton) Wharton in Luverne. She grew up on the family farm outside of Luverne and graduated from Luverne High School in 1965. She continued her education at Worthington Community College and then transferred to the University of Minnesota in Duluth (UMD). In 1971 Virginia graduated from UMD with a bachelor's degree in education. She then moved to Georgia where she taught at various school districts. She began teaching at Newnan Christian School in Newnan, Georgia, in 1984.

Virginia married John Allen in 1989 at the Tri-County Baptist Church in Senoia, Georgia. They made their



home in Newnan, and Virginia continued teaching at the Christian School until her retirement in 2008. The couple then moved back to Luverne and resided at the Centennial Apartments. In September of 2016 Virginia became a resident at the Tuff Memorial Home in Hills.

Virginia was a member of the First Baptist Church in Luverne. She enjoyed listening to books on tape, playing SkipBo, and eating rhubarb. She was an avid fan of the Georgia Bulldogs football team, Minnesota Vikings and Twins. In her later years, she enjoyed attending and socializing at Luverne Senior Dining.

Virginia is survived by her husband, John; her brother, Robert Wharton of Luverne; and other relatives and friends.

She was preceded in death by her parents.

Arrangements were provided by Hartquist Funeral Home of Luverne, hartquistfuneralhome.com. (1011 F)

Dolores Strassburg

Dolores Strassburg, 95, Luverne, died Wednesday, Oct. 3, 2018, at the Sanford Luverne Medical Center.

A funeral Mass was Saturday, Oct. 6, at St. Catherine Catholic Church in Luverne. Burial followed at St. Catherine Cemetery.

Dolores Walgrave was born Jan. 21, 1923, to Charles and Adalida (DeSchepper) Walgrave in Sherman, South Dakota. She attended country school in Rock and Pipestone counties.

Dolores married Darrell Strassburg on June 20, 1946, at St. Catherine Catholic Church in Luverne. After their marriage the couple lived in Hardwick. They later lived in Canby before moving back to Luverne in 1953. Dolores worked at various businesses in Luverne. She was a cook for Luverne Public Schools for many years and was the head cook in her later years.

She was a member of Luverne Ladies Auxiliary and St. Catherine Catholic Church in Luverne, where she served on the LCCW for many years and was in charge of funeral



lunches. She enjoyed baking, gardening, walking, visiting with people and playing cards, especially pinochle and poker.

Dolores is survived by six children, Jeff (Sue) Strassburg, Elk Point, South Dakota; Dennis (Diane) Strassburg, Magnolia, Linda (Doug) Henrichs, Sioux Falls, South Dakota; Wendy (Wally) Cooper, Reading, Twyla Strassburg, Sioux Falls, and Pat (Barb) Strassburg, Adrian, and Don Walgrave, Brandon, South Dakota; a sister, Joyce (Roger) Walser, Eden Prairie; and special friends Lowell and Pat Ahrendt.

She was preceded in death by her parents; her husband, Darrell; a son, Michael; a grandson, Jim; five brothers, Harold, Robert, Eli, Paul and Arnold Walgrave; and three sisters, Alice Kammerud, Ruth Cook and June Erlanson.

Arrangements were provided by Dingmann Funeral Home in Luverne, www.dingmannandsons.com. (1011 F)

Marinus Cross

Marinus James Cross, 83, Luverne, died Monday, Oct. 8, 2018, at the Sanford Luverne Hospice Cottage.

A funeral service will be at 10:30 a.m. Thursday, Oct. 11, at the United Methodist Church in Luverne. Burial will follow at Memory Gardens Cemetery near Luverne. Visitation will be from 4-7 p.m. Wednesday, Oct. 10, at the Hartquist Funeral Home in Luverne.

Marinus Cross was born on April 9, 1935, to Clarence and Millie (Sexton) Cross in Mitchell, South Dakota. He was raised by his stepmother, Anna (Nelson) Cross, after his mother, Millie, died when he was four years old. Marinus grew up and lived in Mitchell until he was 16 years old.

On May 24, 1952, Marinus married JoAnn Vermeer at the First Baptist Church in Luverne. Following their marriage, the couple lived in Leota, Magnolia, and finally Luverne. Marinus was employed from 1952 to 1962 by Peter Koimann who farmed. From 1962 to 1982 he worked for Pat's Plumbing and Heat-



ing as a plumber. In 1982 Marinus began his own business, Cross & Son Construction, which he operated until his retirement in 2002. In February 2010 he and JoAnn moved into Luverne.

Marinus is survived by four children, Roxy (Archie) Bonnett of Magnolia, Linda (Rick) Bruhn of Magnolia, Kathy Medill of Sioux Falls, South Dakota, and Delwyn "D.J." Cross (special friend, Terry Ivie) of Branson, Missouri; 11 grandchildren, Bunny, Jamie, and Marty, Shawna, Tonya, and Josh, Wesley, Amy and Amber, Brock and Mary; 19 great-grandchildren; a sister, Clara Ochocki of Scottsbluff, Nebraska; and special friend Judy Ripley of Luverne.

He was preceded in death by his wife, JoAnn; a great-granddaughter, Montana Honnerman; his mother, Millie; and his father and stepmother, Clarence and Anna.

Arrangements were provided by Hartquist Funeral Home of Luverne, www.hartquistfuneral.com. (1011 F)

Pamela Bosch

Pamela Jo Bosch, 46, Steen, died unexpectedly on Tuesday, Oct. 2, 2018, at her home in Steen.

A funeral service was Saturday, Oct. 6, at the Steen Reformed Church in Steen. Burial was at Eastside Cemetery in Steen.

Pamela Bosch was born Aug. 7, 1972, in Winnebago, Nebraska. At three weeks of age she became the daughter of Roger and Carole (Martens) Bosch. She was raised in Mckenzie, Tennessee, and lived on a farm with her family until she was 12. She loved farm life, especially the animals. Her fondness for horses, dogs and cats was something that never left her. She attended middle school in Colo, Iowa, and graduated from high school in Savannah, Missouri. She spent several years living and working in Bellevue, Nebraska, before moving to Steen in 2008. Pam worked at Pizza Hut for several years, and since 2003 she has worked at Target.



Pam played trumpet and blew taps at many military funerals. She loved animals, especially her dog Dakota. She enjoyed NASCAR and following her favorite driver, Jimmie Johnson. She also liked all kinds of sports and was an avid Nebraska Cornhuskers fan.

She is survived by her sons Noah Bosch (special friend Tennessee Bruhn) of Luverne and Jonah Bosch of Steen; her parents, Roger and Carole Bosch; a sister, Anita Bosch of Sharon, Tennessee; brothers Jeff (Janet) Bosch of Valley Center, Kansas, Grant Bosch of Steen, and Jeremy (Sarah) Bosch of Shakopee; and many aunts, uncles, nieces, nephews and other extended family members.

She was preceded in death by her grandparents, Bill and Bertha Bosch and Jim and Bertie Martens.

Arrangements were provided by Jurrens Funeral Home of Hills, jurrensfuneralhome.com. (1011 F)

DEATH NOTICES

Mario Esposito Jr.

Mario Joseph Esposito Jr., 73, Luverne, formerly of Buffalo, died Monday, Oct. 8, 2018, at the Sanford USD Medical Center in Sioux Falls, South Dakota.

A time of fellowship will be from 6:30 to 8 p.m. Thursday, Oct. 11, at the Dingmann Funeral Home in Luverne. A private committal of cremains will be at a later date.

Arrangements are provided by Dingmann Funeral Home of Luverne, dingmannandsons.com. (1011 DN)

Jean Mitchell

Jean Anne Mitchell, 76, Soldier, Kansas, died on Aug. 28, 2018, at her home.

A memorial service will be at 1 p.m. Saturday, Oct. 13, at the United Methodist Church in Luverne. Burial will be at Maplewood Cemetery in Luverne.

See last week's Star Herald for her obituary. (1011 DN)

Oktoberfest

Saturday, October 20

Prairie du Chien, WI

10 am - 5 pm • St. Feriole Island Gardens

LIVE MUSIC ALL DAY WITH THE "JIM BUSTA BAND"

AND LA CROSSE OKTOBERFEST SINGERS

GERMAN FOOD • HAMMERSCHLAGEN-STEIN HOLDING

LARGE ENTERTAINMENT & FOOD TENTS • POTOSI BREWERY ROLLING BAR

KID'S INFLATABLES & ACTIVITIES & MORE!

For more information call 608-326-7207 or email mulrich@prairieduchien-wi.gov

Check out the area's incredible natural beauty and friendly people at our local businesses and lodging.

Tourist information www.prairieduchien.org 1-800-732-1673

INSPIRE KIDS TO DO

SPARK DOING. LEARN MORE AT Z.UMN.EDU/4H

4-H GROWS HERE

UNIVERSITY OF MINNESOTA EXTENSION

DELTA DENTAL

Smiles Are Powerful.

Protect Yours.

Individual dental plans starting at \$32 per month.

DeltaDentalMN.org

READ US ONLINE!

star-herald.com

Luverne fireman spends two weeks fighting Colorado forest fire

By Lori Sorenson

James Rahm is glad to be back home in Luverne after a two-week stint fighting forest fires in Colorado.

As a full-time firefighter with Sioux Falls Fire Rescue, Rahm was dispatched with a volunteer crew to battle the Ryan Fire on the Wyoming border in northwest Colorado.

"We got the call at 8:30 Sunday night and we left at 5 a.m. Monday morning," Rahm said about the trip that started Sept. 17.

He and two other Sioux Falls firemen drove out in a Type 6 engine capable of hauling 300 gallons of water, and once they arrived at base camp in Walden, Colorado, they hit the ground running.

"It was 14 straight days, 16-hour days and a total of 246 hours," Rahm said, adding that one shift got to be 36 hours long after a ground fire "blew up" with a change in weather.



Submitted photos/1011 rahm forest fires

Luverne firefighter James Rahm sets fire to brush along the perimeter of the Ryan Fire in order to establish a barrier to prevent the blaze from spreading. He's also pictured at right.

weather," he said. "You can see it suck the wind in, and eats up all the humidity. ... Some days the humidity was in the teens, which creates good fire conditions."

When he got home Monday, Oct. 1, Rahm said it felt good to breathe clean air.

"Breathing that kind of smoke isn't that good for you, but it's not as harmful as a



midday meals they carried with them.

These portable lunches consisted of fruit, candy, granola bars and other snacks, and it had to tide them over between 6 a.m. breakfast and 8 p.m. return to camp.

The work was hard and the days were long, but Rahm said it was overall a good experience.

"We got to do a little of everything," he said.

This included protecting structures, allowing fires to consume areas where pine beetles had killed foliage, guarding fire perimeters, setting controlled burns to create fire barriers and coordinating efforts with helicopters that dropped water.

When Rahm and the Sioux Falls crew left Colorado, the Ryan Fire was 35 percent contained, but by that time it had consumed 29,000 acres and racked up \$4.8 million in firefighting costs with more than 300 firefighting personnel on the scene.

Rahm and his wife, Becky, live in Luverne where he serves on the Luverne volunteer fire department.

They have two children — Michael, a freshman engineering student at the University of Minnesota, Twin Cities, and Ethan, a freshman at Luverne High School.

structure fire that burns synthetic materials," Rahm said. "It feels like you've been sitting in a camp fire for two weeks."

Even more than clean air, he said he appreciates real food again.

"We had roast beef sandwiches every day for five days in a row," he said about the

Church merger/from page 8A

was presided over by Bishop John Quinn, who confirmed the church's last three candidates: Kade Boltjes, Sean Boltjes and Noah Wessels.

Quinn also presented Bishop Medals to the Ellsworth Council of Catholic Women, its Knights of Columbus and to Dick and Rita Smook.

In addition to St. Mary's closure, both parishes bid goodbye to Father Tom Jennings, who retired Monday after serving the churches for 15 years.

"We wouldn't have wanted to go through this process with

anyone other than Father Tom," Pick added. "He will be greatly missed."

Jennings delayed his retirement during the three-year recluster process. He is returning to his hometown of Caledonia.

As a thank you for this service, Jennings was presented with a \$25,000 check, to be put toward the purchase of a new car. Parishioners from both St. Catherine's and St. Mary's donated the money.

"When God made you Father Tom, he did an awfully, awfully good job," said Dan Lorang of Ellsworth.

Jeep Cherokee Sales Event

The 2019 Jeep Cherokee was one of the hottest selling vehicles in the U.S. in September.

It's the perfect combination of size, utility, and fuel economy.

We currently have over 20 to choose from

 2019 Jeep Cherokee Trailhawk Elite Stock #300270J • Hydro Blue save \$7,000 MSRP. \$39,850 Papik Price \$32,850*	 2019 Jeep Cherokee Trailhawk Elite Stock #281811J • Granite save \$7,000 MSRP. \$39,055 Papik Price \$32,055*	 2019 Jeep Cherokee Trailhawk Elite Stock #226982J • Firecracker Red save \$6,600 MSRP. \$38,555 Papik Price \$31,955*	 2019 Jeep Cherokee Limited Stock #281838J • Velvet Red save \$6,000 MSRP. \$36,460 Papik Price \$30,460* <small>Also available in Billet Silver</small>
 2019 Jeep Cherokee Latitude Stock #309790J • Brownstone save \$5,000 MSRP. \$29,130 Papik Price \$24,130 <small>Also available in Billet Silver, Bright White, Diamond Black, Velvet Red</small>	 2019 Jeep Cherokee Latitude Stock #281927J • Billet Silver save \$5,000 MSRP. \$28,780 Papik Price \$23,780* <small>Also available in Velvet Red</small>	 2019 Jeep Cherokee Latitude Stock #242709J • White save \$5,000 MSRP. \$26,930 Papik Price \$21,930*	 2019 Jeep Cherokee Latitude Stock #246881J • Olive Green save \$5,000 MSRP. \$26,930 Papik Price \$21,930*

283-9171

PAPIK.COM

*When Financed with Chrysler Capital

I-90 Luverne, MN 56156

Cards spike Mavericks, Trojans

By John Rittenhouse

The Luverne volleyball team posted a pair of victories during a span of three days last week.

The Cardinals swept Martin County West in Luverne Oct. 2 before posting their initial Big South Conference win of the year Thursday in Worthington.

Luverne, 11-11 overall, caps the regular season in Adrian Tuesday.

Luverne 3, WHS 0

The Cardinals secured their first BSC conquest of the season when they swept the Trojans in Worthington Thursday.

Luverne dominated play by outscoring the hosts 75-48 overall to up its league mark to 1-4.

The Cards upended WHS 25-17, 25-15 and 25-16 in consecutive sets.

Tacey Baustian (14 set assists and 17 of 17 serving with one ace) and Greta Ahrendt (12 kills, eight digs, six block assists and one solo block) played well in the win.

Mackenzie Petersen (12 digs), Mallory Thorson (seven kills) and McCall Stegenga (16 of 16 serving with four aces) also made key contributions to the winning effort.

Luverne 3, MCW 0

The Cardinals celebrated Senior Night in Luverne by rolling to a three-set victory over the Mavericks Oct. 2.

Luverne pulled out a tight decision in the opening set before recording lopsided victories in the second and third sets to complete a sweep of MCW.

The Cards led 4-1 when Stegenga delivered a service point early in the opening set before falling behind by six points (13-7) after the Mavericks put together a 12-3 run.



Luverne's Greta Ahrendt played a solid match during a 3-0 home victory over Martin County West Oct. 2. Ahrendt led the Cardinals with seven kills and registered four blocks during the match.

LHS fought back to knot the score at 14 and 20 before Reghan Bork gave the hosts a 22-20 edge with a service point.

MCW registered the next two points to knot the score at 22, but the Cards countered with a

3-1 spurt to secure a 25-23 win.

Luverne sported four two-point advantages early in the second set before opening a seven-point (12-5) cushion when Petersen registered a service point.

MCW trimmed the difference to four points at three different occasions as the set progressed before LHS went on a 5-0 run capped by

Spike/continued on page 2B

Cunningham reaches singles semifinals

By John Rittenhouse

A Luverne High School LHS sophomore Elise Jarchow and Rozilyn Oye posted 6-1 and 6-3 wins over Fairmont's Brittany Bass and Lauren Green in the first round of doubles competition.

Pipestone's Paige Ahrendt and Lauren Laphorn, the top-seeded doubles team, eliminated Oye and Jarchow by 6-2 and 6-4 tallies in the quarterfinals.

St. James' entries Zoie Becker and Ellie Becker, the second-seeded doubles team, handed LHS junior Mela Jarchow and sophomore Ainslie Robinson 6-1 and 6-0 losses in the first round.

United South Central's Delaney Weber bested LHS senior Riley Severtson by 6-3 and 6-1 scores in the first round of singles play.

The rest of Luverne's tournament entries bowed

out of the event Friday.

LHS sophomores Elise Jarchow and Rozilyn Oye posted 6-1 and 6-3 wins over Fairmont's Brittany Bass and Lauren Green in the first round of doubles competition.

Pipestone's Paige Ahrendt and Lauren Laphorn, the top-seeded doubles team, eliminated Oye and Jarchow by 6-2 and 6-4 tallies in the quarterfinals.

St. James' entries Zoie Becker and Ellie Becker, the second-seeded doubles team, handed LHS junior Mela Jarchow and sophomore Ainslie Robinson 6-1 and 6-0 losses in the first round.

United South Central's Delaney Weber bested LHS senior Riley Severtson by 6-3 and 6-1 scores in the first round of singles play.



Cunningham

Football team blanks Blue Earth Area Friday

By John Rittenhouse

The Luverne Cardinals posted their second consecutive football victory Friday in Blue Earth.

After starting the season with four consecutive losses, the Cardinals now stand at 2-4 after securing a convincing 27-0 win over the Blue Earth Area Bucs.

"It probably was the best game we've played so far this year, especially on defense," said Cardinal coach Todd Oye.

LHS was sharp on defense. The Cardinals limited BEA to 148 total yards and created

three turnovers during their first defensive shutout of the season.

LHS also found some offensive success as the Cardinals piled up 220 rushing yards and put together four drives that covered 50 or more yards and yielded four touchdowns.

"We were able to sustain some drives against them," Oye offered.

The Cardinals assumed control of the game with a 20-point first half that was ignited by a key defensive play.

BEA moved the ball into

Blank/continued on page 2B



Serie



Luverne's Tenley Nelson captured the individual championship during the Luverne Cross Country Invitational Thursday.

Cardinal girls win Luverne Invitational

By John Rittenhouse

The female hosts of the Luverne Invitational did a good job of defending their turf Thursday.

The Cardinal girls faced a stiff challenge offered by Lac qui Parle Valley-Dawson-Boyd to capture the team championship of their annual meet.

Luverne turned in a 50-point effort to best LQPV (55 points) and the rest of the teams in a seven-squad field.

Strong races by Tenley Nelson and Regan Feit proved to be crucial for LHS.

Nelson won the race with

a time of 18:25, while Feit finished third in 19:40.

Elizabeth Wagner (12th in 21:18), Tiana Lais (15th in 21:27) and Grace Ingebretson (19th in 21:43) rounded out the team scoring for the Cardinals.

Gabrielle Ferrell placed 25th in 22:11 without influencing the scoring.

Here is a look at the rest of the results from Thursday's meet.

Junior high girls: Jenna DeBates, first, 13:29; Makena Nelson, second, 14:08.

Junior varsity girls: Claire Baustian, second, 23:48; Madigan Flom, eighth, 25:27; Madison Reisdorfer, ninth, 26:03.

Patriots rout rival Edgerton-Ellsworth 52-6

By John Rittenhouse

The Hills-Beaver Creek football team turned an annual rivalry game into a rout Friday in Edgerton.

The Patriots and Edgerton-Ellsworth normally play tightly contested games, but that didn't happen in 2018.

With H-BC receiving

standout efforts from Gavin and Jax Wysong, the Patriots coasted to a 52-6 victory.

"E-E probably was the most physical team we played so far," said Patriot coach Rex Metzger. "We just made a couple of big plays to get up on them early. Then we kept the pressure on them defensively."

More times than not, it was the Wysong boys applying the pressure for H-BC.

Gavin Wysong ran for two touchdowns and tossed three touchdown passes. Jax Wysong hauled in two of Gavin's touchdown passes and ran for another tally.

The Patriots didn't waste

much time in settling the issue as H-BC rolled to a 39-0 lead in the first half.

After forcing E-E to punt three plays into the game, Jax Wysong returned the kick 10 yards to the Flying Dutchmen 30-yard line.

Rout/continued on page 2B

Boys place second at home meet

By John Rittenhouse

The Luverne boys' cross country squad made a bid to win the team championship during the Luverne Invitational Thursday.

Unfortunately for the Cardinals, they had to settle for second place in a nine-team field.

Lac qui Parle Valley outscored the Cards 22-41 to celebrate with the team trophy at meet's end.

Placing four runners in the top 10 individual finishers played a key role in Luverne's second-place showing as a team.

Dalton DeSollar (fourth in 17:23), Brayden Tofteland (sixth in 17:28), Shane Berning (ninth in 17:39) and Austin Winter (10th in 17:40) paced the Cardinals during the varsity race.

Jonah Friedrichsen capped the team scoring by placing 12th in 17:59.

Jackson Golla, Brady Bork and D.J. Swenson placed 33rd, 34th and 36th with respective times of 19:11, 19:19 and 19:30 without impacting the team scoring.

Here is a look at the rest of Luverne's results from Thursday's meet.



Luverne's Dalton DeSollar (left), Austin Winter (middle) and Brayden Tofteland (right) helped the Cardinals place second as a team during the Luverne Cross Country Invitational Thursday.

Junior high boys: Carsten Tofteland, first, 12:21; Ryan Fick, fourth, 12:42; Camden Janiszski, fifth, 12:50; Ashton Eitrem, ninth, 12:59; Camden Hoven, 14th, 13:23. Luverne placed first as a team with 32 points.

Sam Emery, 10th, 20:35; Seno Chanthalangsy, 12th, 20:44; Matthew McClure, 24th, 22:21; Burke Johnson, 26th, 22:26; Ethan Rahm, 40th, 23:28;

Graham Cunningham, 42nd, 23:31; Nic Rogers, 63rd, 26:09. Luverne placed second as a team behind LQPV (23 points) with 32 points.



John Rittenhouse photo/1011 lvb 14

Luverne freshman Elise Ferrell fields a spike during a 3-0 home win over Martin County West Oct. 2.

Spike/continued from page 1B

an ace serve from Petersen to clinch a 25-16 victory.

The third set was tied at one when the Cards went on a 9-1 run to gain a 10-2 advantage when Rylee Olson recorded a kill.

MCW closed the margin to five points (11-6) moments later, but LHS answered the challenge by embarking on a 14-3 run to secure a 25-9 win after Ahrendt recorded a match-ending kill.

Blank/continued from page 1B

LHS territory and attempted a pass that was picked off by senior defensive back Brayden Jacobsma, who returned the ball 10 yards to midfield.

The LHS offense took the field for the third time and covered 50 yards in seven plays during a drive that ended with quarterback Ben Serie scoring his first of four touchdowns on a one-yard run.

Shaid Shearer added his first of three extra points following the touchdown, giving the Cards a 7-0 cushion with 2:20 remaining in the first quarter.

"The big thing for us in this game was creating three turnovers. That first interception by Jacobsma (his first of two interceptions) was a very big play for our team," Oye said.

The opening touchdown did seem to give the Cards some confidence, as they produced two more tallies with their next two offensive possessions.

LHS put together an eight-play, 64-yard march that started late in the first quarter and ended with Serie scoring on a three-yard run to make it a 14-0 game at the 10:14 mark of the second quarter.

The Cardinal offense covered 72 yards in 10 plays during its next possession.

Ahrendt (11 of 12 serving, seven kills, three block assists and one solo block), Petersen (14 digs and four kills) and Olson (four kills) turned in solid efforts for the winners.

Baustian, who led LHS with seven set assists, completed all 11 of her serves and recorded one ace.

Thorsen chipped in 10 digs and Bork five set assists to the winning cause.

Serie capped the march with a four-yard run with 3:30 left in the second quarter that gave LHS a 20-0 lead it would take into the second half.

The Cards iced the win with their first offensive possession of the third quarter.

LHS moved the ball 53 yards in five plays with Serie scoring on a 20-yard scamper to complete the scoring in the game with 8:23 left in the third stanza.

The Cardinals play their first of two consecutive home games to end the regular season when they take on 1-5 Martin County West Friday.

Team statistics
Luverne: 220 rushing yards, 72 passing yards, 292 total yards, 17 first downs, five penalties for 55 yards, zero turnovers.

BEA: 78 rushing yards, 70 passing yards, 148 total yards, 10 first downs, two penalties for 15 yards, three turnovers.

Individual statistics
Rushing: Serie 17-74, Jacobsma 9-63, Mark Stierrett 13-53, Trevor Halverson 3-13, Jed Dooyema 3-7, Bailey Cowell 3-6, Jacob Von Tersch 1-2, Nick Feit 1-2, Brody Bonnett 1-0.
Passing: Serie 5-8 for 66 yards, Cade Weninger 1-1 for six yards.
Receiving: Cowell 4-58, Jake Haugen 1-8, Matt Sehr 1-6.
Defense: Payne Bonnett 6.5 tackles, Haugen 4.5 tackles and one-half of one sack, James Chanthalangsy three tackles, Jacobsma two interceptions, Kameron Keene one fumble recovery, Dooyema one sack, Colby Crabtree one-half of one sack.

Dragons run in Luverne

By John Rittenhouse

The Adrian Dragon cross country runners made an appearance at the Luverne Invitational Thursday.

Competing as a complete team in the girls' varsity race, the Dragons capped a seven-squad field with 161 points.

Host Luverne claimed the team title with 50 points.

Moriah Bullerman ran a strong race for the Dragons by placing eighth in 21:03.

Gracia Elias (43rd in 24:06), Hiltyn Heitkamp (45th in 24:23), Halle Heitkamp (49th in 25:26.3) and Alysha Wieneke (50th in 25:26.5) made contributions to Adrian's team tally.

Here is a look at the rest of Adrian's results from Thursday's meet.

Junior high girls: Hunter Penning, 10th, 14:58; Kaysie Lenz, 29th, 18:43.

Junior high boys: Bruce Farinella, 21st, 13:49.



John Rittenhouse photo/1011 acc 2

Adrian's Halle Heitkamp (left) and Alysha Wieneke placed 49th and 50th respectively at the Luverne Invitational Thursday. The Dragons placed seventh as a team.

Adrian volleyball team recaptures winning form

By John Rittenhouse

The Adrian volleyball team upped its Red Rock Conference record to 6-1 with a pair of road wins last week.

The Dragons posted 3-0 victories in Mountain Lake Oct. 2 and in Fulda Thursday.

Adrian, 16-1 overall, hosts MCC Thursday.

Adrian 3, Fulda 0

The Dragons posted their sixth conference win of the season when they swept the

Raiders in Fulda Thursday.

Adrian limited Fulda to 11 or fewer points in two of the three sets and outscored the Raiders 75-40 overall.

The Dragons rolled to 25-11 and 25-9 victories in the first and third sets.

AHS prevailed 25-21 in the second set.

Marisa Lehnhoff led the Dragons with 11 kills and four ace serves in the match, while Kasie Tweet charted 29 set assists.

Mayssa Tweet, who registered a team-high 14 digs, completed 100 percent of her serves along with Shawna Rogers.

Adrian 3, MLA 0

The Dragons bounced back from taking their first loss of the season Sept. 27 by producing a sweep in Mountain Lake Oct. 2.

The Dragons, having lost a five-set home match to Southwest Christian in their last outing, didn't seem to

be bothered by the setback during the match against MLA.

AHS outscored the Wolverines 75-48 during a sweep.

Kasie Tweet completed 17 of 18 serves with eight aces for the winners, while Avery Balster completed all 18 of her serves and notched four aces.

Mayssa Tweet contributed 11 digs to the winning effort, while Miah Kunkel, Bailey Lonneman and Lehnhoff led the Dragons with nine kills.

CLIPBOARD

Rock County Sportsman's Club

The Rock County Sportsman's Club announced season winners at their end-of-year awards supper Friday, Sept. 21, at the gun club:

Handicap League:

Class A 1st place: Slocum Taxidermy 1 — Dave Stearns, Rick Ossefoort, Bruce Predmore, Chris Balster, Jim Slocum, Doug Deutsch and Jon Lang.

Class A 2nd place: Slocum Taxidermy 2 — Jim Slocum, Chris Balster, Steve Nath, Bruce Predmore, Jon Lang, Jeff Stearns and Dave Stearns.

Class B 1st place: Slocum Taxidermy 3 — Jon Lang, Jeff Stearns, Bruce Predmore, Del Gangestad, Jon Lang, Chris Balster, Scott Loosbrock and Jim Slocum.

Class B 2nd place: Luverne Body Shop — Steve Nath, Jeff Stearns, Bruce Predmore, Del Gangestad, Jon Lang, Chris Balster, Scott Loosbrock and Jim Slocum.

Bruce Predmore, Del Gangestad, Jon Lang, Chris Balster, Scott Loosbrock and Jim Slocum.

Class C 1st place: Mickie's Bar — Arnie Timmer, Joe Loosbrock, Scott Loosbrock, Tony Miller, Paul Steen, Larry Hawes and Cole Voss.

Class C 2nd place: Freedom Ranch Firearms — Jack Boomgaarden, Brian Boll, Mike Gangestad, Mike Metz, Dean VonHoltum, Tim Gangestad, Mike Taylor and Mike VanWhye.

16-yard League:
Champion: Jim Slocum
Year-end averages for handicap league:

High Overall: Jim Slocum at 23.17.
Class A high average: Doug Deutsch at 22.82.

Class B high average: Chris Balster at 22.81.
Class C high average: Paul Steen at 21.81.

Rout/continued from page 1B

Tyson Bork raced 24 yards for a touchdown three plays later and Gavin Wysong hooked up with Jax Wysong for a successful conversion pass following the touchdown to make it 8-0.

The teams exchanged punts before H-BC capped a 16-point first quarter with its third offensive possession.

A five-play, 55-yard drive ended with Jax Wysong racing 34 yards for a touchdown and Gavin Wysong carrying in the two-point conversion.

A 23-point second quarter cemented the win for H-BC.

H-BC put together a nine-play, 65-yard drive ending with an 11-yard run by Gavin Wysong and a successful Gavin Wysong-to-Bailey Susie conversion pass early in the second stanza.

The Patriots moved the ball 80 yards in three plays as the second quarter progressed.

Jax Wysong dashed 56 yards for a touchdown to cap the possession and Gavin Wysong hooked up with Bork for a successful conversion pass to up the lead to 32-0.

The Patriots managed to produce a 37-yard Gavin Wysong-to-Jax Wysong touchdown pass with one second remaining in the first half.

Chase Bosch booted the ensuing extra point to make it a 39-0 game at the intermission.

H-BC added two more touchdowns in the third quarter to increase the lead to 52-0.

Susie hauled in a screen pass from Gavin Wysong and raced 59 yards for a touchdown to end a two-play possession.

The Patriots wrapped up their 52-point effort late in the third quarter, when their third possession of the second half ended with Gavin Wysong scoring on an eight-yard run and Bosch adding his second extra point of the game.

E-produced a meaningless touchdown in the fourth quarter when Nolan Buckridge scored on an eight-yard run midway through the stanza.

The 5-1 Patriots host 5-1 Renville County West Friday.

Team statistics
H-BC: 213 rushing yards, 159 passing yards, 372 total yards, eight first downs, two penalties for 10 yards, zero turnovers.

E-E: 117 rushing yards, 27 passing yards, 144 total yards, eight first downs, three penalties for 15 yards, one turnover.

Individual statistics
Rushing: G. Wysong 10-54, T. Bork 7-20, J. Wysong 13-127, Carter Roozenboom 5-1, Liam Raymon 1-2.
Passing: G. Wysong 5-6 for 159 yards.
Receiving: J. Wysong 3-87, T. Bork 1-13, Susie 1-57.
Defense: G. Wysong eight tackles and one sack, Luke LaRock six tackles, Easton Harnack three tackles, Bosch three tackles, Susie 10 tackles, T. Bork seven tackles, Hunter Bork four tackles, Calvin Erickson four tackles and one fumble recovery, Tory Knobloch three tackles and one sack, Garrett Raymon 11 tackles and one sack, George Merson three tackles, Ty Bundesen four tackles, Donovan Leenderts two tackles, Jaxon Steensma three tackles.

CHOOSE THE EXPERTS

Sanford Luverne Rehabilitation Services

When you are recovering from an illness, injury or surgery traveling for therapy is the last thing you want to do. Sanford Luverne can help you stay at home and still receive the quality rehabilitative care you need.

Our team can help improve your range of motion, strength and endurance, and reduce your pain with latest techniques and equipment.

Schedule your therapy care in Luverne or Adrian by calling (507) 449-1229.

Monday - Friday 7 a.m. - 5:30 p.m.

sanfordluverne.org

SANFORD
Luverne

Exchange
STATE BANK
Local. Dependable. Strong.

31 Month CD Special
3.15% APY*

\$10,000 Minimum Deposit Required
Limited Time Offer - October 11 - November 11
Penalty for Early Withdrawal

Visit us at one of our three locations.

Luverne
310 Gabrielson Road
507-449-6000

Ellsworth
210 South Broadway St.
507-967-2570

Hills
116 County Rd 6
507-962-3250

Member FDIC
EQUAL HOUSING OPPORTUNITY

* Annual Percentage Yield (APY)

Visit our website at: www.exchangestatebankmn.com



John Rittenhouse photo/1011-hvb 2

Hills-Beaver Creek senior Sidney Fick finds an opening to spike the ball between a pair of Garretson blockers during Monday's match in Hills. Fick charted 19 kills and seven blocks during a 3-2 victory.

H-BC outlasts Garretson in five-setter

By John Rittenhouse

The Hills-Beaver Creek volleyball team posted a 2-1 record during a three-match week.

The Patriots rolled to a sweep in Fulda Oct. 2 before losing a three-set match in Slayton Thursday.

The Patriots entertained Garretson, South Dakota, for their Parents' Night match Monday and pulled out a five-set win.

H-BC, 11-6 overall, plays at Edgerton Public School Thursday.

H-BC 3, Garretson 2

The Patriots secured a victory on Parents' Night

when they outlasted the Blue Dragons in Hills Monday.

Both teams had their moments during the match, but it was the Patriots who rallied from a lopsided loss in the fourth set to win the decisive fifth set handily.

A 4-0 spurt ending with a service point from Abby Knobloch gave the Patriots a 5-1 lead that was trimmed to two points (7-5) early in the fifth set.

H-BC took control of the set by going on an 8-2 run capped by a tip from Knobloch to secure a 15-7 victory.

Garretson scored the first four points of the night and led 9-3 in the opening set

before H-BC countered with a 15-11 surge to make it a two-point difference (20-18) when Whitney Elbers recorded a block at the net.

The Blue Dragons countered with a 5-0 run to notch a 25-18 win.

The second set was tied at two when H-BC put together a 15-2 run ending with a kill from Grace Bundesen to open a commanding 17-4 cushion.

Garretson closed the gap to 10 points (17-7) before the Patriots went on an 8-2 run capped by a kill from Knobloch to prevail 25-9.

The third set was knotted at three before H-BC opened an 18-7 cushion with a kill from

Sidney Fick that completed a 15-4 surge.

Garretson trimmed the difference to seven points (20-13) as the set progressed, but H-BC prevailed 25-14 after Bundesen delivered a set-ending kill.

Garretson went on a 14-4 run to open the fourth set on the way to opening a 21-8 lead.

H-BC made it a nine-point (23-14) difference when Bundesen registered a kill, but the Blue Dragons scored two of the next three points to prevail 25-15.

Fick (19 kills and seven blocks), Bundesen (14 kills,

H-BC/continued on page 4B

Panthers post two wins during busy week

By John Rittenhouse

The Ellsworth volleyball team picked up a pair of wins during a stretch of playing at four venues in seven days.

The Panthers notched a Red Rock Conference home win over Edgerton Oct. 2 before dropping a league match in Westbrook Thursday.

EHS went 0-4 at the Harris-Lake Park Tournament Saturday in Lake Park, Iowa, but the Panthers swept Dell Rapids St. Mary's Monday in Dell Rapids, South Dakota.

Ellsworth, 8-15 overall, hosts Red Rock Central Thursday.

Ellsworth 3, DRSM 0

The Panthers won three consecutive sets during a tightly contested match Monday in Dell Rapids.

EHS claimed all three sets by two points as the Panthers registered 25-23, 26-24 and 25-23 victories.

Ashlyn Meester (nine kills, 11 digs and four ace serves), Kendra DeBeer (two kills, two ace serves, six digs and three blocks) and Morgan Dreesen (20 set assists, 14 digs and four blocks) played solid matches for the winners.

Kallie Chapa (21 digs and five kills), Sierra Smith (five kills and five digs), Lizzie

Chapa (10 digs and four ace serves) and Grace Mulder (seven digs) contributed to the winning effort as well.

H-LP tourney

The Panthers were unable to post a victory during the Harris-Lake Park Tournament Saturday in Lake Park, Iowa.

Ellsworth played four matches and turned two of them into three-set battles, but EHS ended the day with a 0-4 record.

Central Lyon saddled the Panthers with 21-6 and 21-11 setbacks in the opening round.

EHS made South O'Brien play three sets (12-21, 21-18, 8-15) in the second round before dropping 21-17 and 21-7 decisions to Trinity Christian in the third round.

Rock Valley topped the Panthers 12-21, 22-20, 7-21 in the final round.

W-WG 3, Ellsworth 0

The Panthers were unable to post consecutive conference wins when they took on the Chargers in Westbrook Thursday.

W-WG controlled play against the Panthers by outscoring EHS 75-50 during a three-set victory.

The Chargers came out on the winning end of 25-12, 25-21 and 25-17 tallies during the contest.

Meester (five kills and five digs), Kallie Chapa (six kills, four digs and one ace serve) and Dreesen (12 set assists and one block) played well for the Panthers.

Lizzie Chapa (nine digs), Smith (two kills) and Mulder (one ace serve) made positive contributions for EHS as well.

EHS 3, Edgerton 1

The Panther girls picked up their first conference win of the season when they took on the Flying Dutchmen in Ellsworth Oct. 2.

Ellsworth lost the first set of the evening before outscoring Edgerton 75-47 in the final three sets to secure a 3-1 win.

The Flying Dutchmen handed the Panthers a 25-18 setback in the opening set.

Ellsworth countered with 25-17, 25-10 and 25-20 conquests to win the battle.

Kallie Chapa (16 digs, three blocks and two kills), DeBeer (five set assists, three ace serves and two kills) and Lizzie Chapa (12 digs and four ace serves) played well for the winners.

Meester and Smith recorded seven and four kills respectively, while Dreesen charted 37 set assists.



Shane Berning



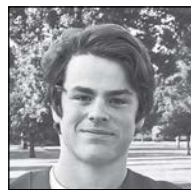
Sport: Cross country
Parents: Eric & Janel Berning
Favorite Subject: History
Extra-Curricular Activities: Speech, math league, cross country, track
Future Plans: Go to college and then join the military.

James Chanthalangsy



Sport: Football
Position: Wide receiver/corner back
Parents: Barry & Manivahn Chanthalangsy
Favorite Subject: Physical education
Extra-Curricular Activities: Football, hockey, baseball manager, fishing
Future Plans: Play college football somewhere and continue my military career.

Ben Serie



Sport: Football
Position: Quarterback
Parents: Dan & Christal Serie
Favorite Subject: History
Extra-Curricular Activities: Baseball, hockey, golf, football
Future Plans: Attend college and live a fun life.



Pipestone Pepsi | 1809 Forman Drive, Pipestone, MN 56164

Ball security is key to Luverne's football reversal

There are times when statistics can be misleading in the sport of high school football.



FROM THE SIDELINES

By John Rittenhouse, sports editor

transpired in 2018, I fully understand what Oye has been trying to teach me for years.

The proof can be found in Luverne's results through six games of play.

During the first four games of the season, all LHS losses, the Cards came up on the short end of a 16-5 ratio in turnovers.

LHS turned the ball over five times during losses to Maple River, Redwood Valley and Pipestone, while turning the ball over once in a loss in Jackson.

With an average of four turnovers per game through the first four games of the year, Luverne's opponents took advantage of the extra opportunities to win all four games.

The script has changed during the last two weeks, and so has Luverne's on-field performance.

The LHS defense has created six turnovers during games against St. James and Blue Earth Area, and the Cardinal offense didn't give the ball away once in those games.

The end result is consecutive wins for an LHS team that outscored St. James and BEA by a combined margin of 62-6.

It's pretty hard to argue with Oye's take on the turnover ratio.

As the 2018 Cardinals are beginning to learn, the team that does the best job of taking care of the ball usually will reap the benefits in positive results.

BOWLING NEWS

Thursday Bowling National League Oct. 4

Games won: Three People 4; 3 Chumps 4; Bam Bams 3; I Don't Know 1; Kougarettes 0; Three Hole 0.

High Scratch Game Men: Zach Runia 234; Mike Hoover 221.

High Scratch Game Women: Kathy Matson 158.

High Scratch Series Men: Zach Runia 564; Jeff Runia 563.

High Scratch Series Women: Kathy Matson 437.

Team High Scratch Game: Three Chumps 470; Bam Bams 460.

Team High Scratch Series: Three Chumps 1362; Three People 1337.

Team High Handicap Game: Three Chumps 640; Bam Bams 637.

Team High Handicap Series: Three Chumps 1872; Bam Bams 1811.

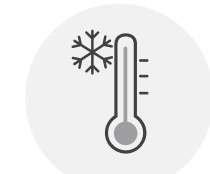
Justin Kemp
Owner

*Commercial
*Business
*Residential
*Ag *Industrial



PO Box 803 • Luverne, MN 56156 • 507-920-6961

REMINDER FROM Rock County Rural Water



Protect your water meter from freezing by covering your pit with a tarp or plastic, then put straw bales around and on top, sealing the structure from the cold, freezing, winds.

If the meter is in the basement, block off and seal drafty spots and provide heat for water meter.

Please contact the office at 507-283-8886 if you have any questions or need assistance.

Need Help With Child Care?
Looking for Child Care?
Child Care Aware is your Rock County Resource

LET'S CONNECT.
parentaware.org | 888.291.9811

Parent Aware is your search partner.

We help parents find the quality care and education their children need to succeed in school and life.



SMOC
PO Box 787,
Worthington, MN 56187
507-376-4195 or 800-658-2444

Rebels spoil Homecoming festivities at AHS Friday

By John Rittenhouse

The Adrian football team was in a position to win its Homecoming game Friday night when the Dragons took a three-point lead midway through the third quarter.

Unfortunately for the Dragons, they couldn't protect the lead.

Murray County Central scored 13 unanswered points in the game's final 15:40 to collect a 20-10 victory.

The loss was a disappointing one for the Dragons, who defeated the Rebels twice last season.

"It was disappointing," said AHS coach Randy Schettler.

"MCC is a good football team. They have some good athletes on their team and they made some big plays that we didn't make."

The game may have ended with MCC winning by 10 points, but it was a very competitive contest.

The score was deadlocked at seven at halftime, and the Dragons sported a 10-7 edge in a third quarter that ended with the Rebels protecting a 14-10 lead.

MCC added a fourth-quarter touchdown to its tally and kept AHS from scoring with its final two offensive possessions of the contest to ice the win.

The Rebels drew first blood in the contest with their second offensive possession, which turned into a 10-play, 78-yard march.

Quarterback Mason Woldt capped the drive with a two-yard run before booting his first of two extra points to make it 7-0 at 5:37 in the first quarter.

The Dragons battled back to tie the game in the second quarter.

Adrian's third offensive possession of the game covered 47 yards in 11 plays.

Fullback Brandon Schnoor



John Rittenhouse photo/0110 afb 8

Adrian quarterback Marshall Wagner ran for five yards and passed for 44 yards during Friday's home loss to MCC.

capped the march with a four-yard run and Dominiq Canales added the extra point to end the scoring in the first half with 10:06 left to play in the second quarter.

Adrian snapped the

deadlock with its first offensive possession of the third quarter.

The Dragons received the kickoff to start the second half and proceeded to move the ball to the MCC 15-yard line in 12 plays.

The drive featured a fourth-down conversion run out of punt formation by Canales, who eventually drilled a 33-yard field goal to give the Dragons a 10-7 lead at the 5:48 mark of the third quarter.

The Rebels answered the challenge by producing touchdowns with their next two offensive possessions.

Both drives featured key fourth-down conversions as well.

MCC lined up to punt during a fourth-down situation following Adrian's field goal.

The Rebels, however, completed a pass that resulted in a first down.

Two plays later, MCC's Danny Blankenship raced 33 yards for a touchdown to give the Rebels a 14-10 cushion with 3:40 remaining in the second stanza.

MCC's next offensive possession covered 80 yards during a series that was in jeopardy when the Rebels faced a fourth-down situation inside AHS territory.

The Rebels, however, stunned the Dragons when Woldt fired a 31-yard touchdown pass to Justin Benda to cap the scoring in the game with 9:49 left to play.

"When you don't get off the field during fourth-down situations, it becomes tough to win football games," Schettler said.

"I think our kids battled hard with them. We just didn't take advantage of some of the opportunities we had in the game."

The 1-5 Dragons host Canby Thursday.

Team statistics
Adrian: 168 rushing yards, 44 passing yards, 212 total yards, 14 first downs, four penalties for 17 yards, one turnover.
MCC: 226 rushing yards, 102 passing yards, 328 total yards, 14 first downs, four penalties for 40 yards, two turnovers.

Individual statistics
Rushing: Schnoor 22-84, Dakota John 15-59, Preston Nelson 3-15, Marshall Wagner 6-5, Canales 1-5.
Passing: Wagner 3-12 for 44 yards.
Receiving: Schnoor 1-9, Brady Vortherms 1-26, Trace Kremin 1-9.
Defense: Logan Taylor seven tackles, John six tackles and one fumble recovery, Nelson six tackles, Scot Edwards six tackles, Skylar Dingmann five tackles, Wagner four tackles, Schnoor four tackles and one interception, Lance Luettel three tackles, Vortherms three tackles, Christian Weidert three tackles.

Bucs bounce Cardinal girls from Section 3A tennis tourney

By John Rittenhouse

The Luverne Cardinal tennis team bowed out of the Section 3A Team Tournament Oct. 3 in Owatonna.

The seventh-seeded Cardinals squared off against No. 2 Blue Earth in the tournament's quarterfinal round.

The match featured a total of four, three-set showdowns.

BEA, however, won three of those battles to set the stage for a 6-1 victory.

Luverne ends team competition with a 7-7 record.

"We really gave them a

battle," said Cardinal coach Greg Antoine.

"I thought we played very well. We lost some key points at key moments. Otherwise this match could have ended a lot differently. When you lose three three-sets, you know it was a close match."

Luverne's Lauren Ver Steeg and Solveig Tofeland produced the team's lone point by pulling out a 3-6, 6-3, 7-5 victory over Lyndsey Borris and Kylie Rosenau at No. 3 doubles.

BEA's Carissa Engesser and Maddie McCleary won a three-set match (2-6, 6-4, 7-5) over Rozilyn Oye and

Elise Jarchow at first doubles, while Buc Britt Howard and Cali Beyer posted 7-5 and 6-3 victories over Mela Jarchow and Brynn Thier at No. 2.

Luverne's Carissa Cunningham (3-6, 7-6, 10-5 against Tea Armstrong) and Liz Kelm (3-6, 6-4, 6-3 against McKenna Dutton) dropped three-set matches at first and fourth singles respectively.

BEA's Arika Howard topped Riley Severson by 6-1 and 6-3 tallies at second singles, while Macie Stevermer handed Ainslie Robinson 6-2 and 6-1 setbacks at No. 3.

Ellsworth places eighth in Iowa

By John Rittenhouse

The Ellsworth boys fielded a complete cross-country varsity team for the George-Little Rock Invitational Thursday in George, Iowa.

The Panthers compiled 223 points as a team to cap an eight-squad field in the final standings.

Okoboji, Iowa, captured the team title with 67 points.

Robby Armstrong set the pace for the Panthers by placing 35th in 19:50.

Linkin Bossert (45th in 21:09), Kade Boltjes (51st in 22:53), Sam Kramer (53rd in 22:59.41) and Sean Boltjes (54th in 22:59.88) also represented

EHS in the varsity race. Here is a look at the rest of Ellsworth's results from Thursday's meet.

Junior varsity boys: Micah Onken, 38th, 24:05; Cole Boltjes, 39th, 24:19; Simon Boyenga, 45th, 25:58.

Junior high boys: Zach Onken, 38th, 13:30; Logan Bossert, 39th, 13:43; Xavier Nussbaum, 44th, 14:14.

H-BC/continued from page 3B

seven blocks, seven digs and 15 of 15 serving with two aces) and Elbers (nine kills and nine blocks) played strong matches for H-BC.

Kailey Rozeboom (45 set assists), Sadie Fuerstenberg (15 of 15 serving with two aces), Knobloch (19 of 19 serving) and Madison Spath (five digs) made key contributions as well.

MCC 3, H-BC 0

The Patriots received their fourth conference loss of the season when they took on the Rebels in Slayton Thursday.

With H-BC being limited to 17 or fewer points in three sets, H-BC came out on the short end of a three-set decision against MCC.

The Rebels saddled the Patriots with 25-15, 25-17 and 25-13 setbacks to leave H-BC with a 3-4 league mark.

Elbers (11 blocks), Pick (10 kills, 11 digs and eight blocks) and Bundesen (five kills and seven digs) turned in solid efforts at the net for H-BC.

Rozeboom notched 18 set assists, Fuerstenberg completed all eight of her serves and Knobloch and Spath went nine of 10 serving



John Rittenhouse photo/1011 hvb 3

Junior Kailey Rozeboom registers one of her 45 set assists during Monday's home victory over Garretson.

for the Patriots.

H-BC 3, Fulda 0

The Patriots turned in a commanding performance during an Oct. 2 match in Fulda.

The Patriots outscored the Raiders 75-43 during a three-set sweep.

Fick (11 of 12 serving with two aces, 16 kills, six blocks

and five digs), Bundesen (nine kills) and Elbers (seven blocks and nine kills) played strong matches at the net.

Rozeboom (20 ace assists and three ace serves), Annie Bos (nine set assists) and Spath (11 of 12 serving with three aces and five digs) emerged as key contributors for H-BC as well.

{warmulous}

(adj); amazingly cozy

Another Way We Make You Feel Better.

GET UP TO **\$1,600** IN REBATES* OR UP TO 60 MONTHS INTEREST FREE FINANCING**

with purchase of a Lennox® home comfort system.

Luverne, MN
(507) 449-2828
 412 S. Kniss, Luverne, MN 56156

Offer expires 11/23/2018.
 *Rebate requires purchase of qualifying items by 11/23/18 and submission of a completed rebate form (with proof of purchase) to www.lennoxconsumerrebates.com no later than 12/14/18. Rebate is paid in the form of a Lennox Visa® prepaid debit card. Card is subject to terms and conditions found or referenced on card and expires 12 months after issuance. Conditions apply. See www.lennox.com for complete rebate terms and conditions.
 **Offer available 8/3/18 - 11/23/18. Requires purchase of qualifying system. Financing available to well-qualified buyers on approved credit. No down payment required. 0% APR for 60 months, with equal monthly payments. Normal title charges apply. Cannot be combined with any other promotional offer. Minimum loan amount \$1,000. Maximum loan amount \$45,000. You may prepay your account at any time without penalty. Financing is subject to credit requirements and satisfactory completion of finance documents. Any finance terms advertised are estimates only. See Truth in Lending disclosures available from lender for more information.
 © 2018 Lennox Industries Inc. Lennox Dealers are independently owned and operated businesses.

VOTE

Jerry Benson

FOR
 LUVERNE
 SCHOOL
 BOARD

Some of my experiences in education that I have been involved in that would help me be a good, informed school board member are:

- *I taught social studies in the district for 47 years
- *Member of the state council for social studies for 37 years, eight of those years was president and three years as CEO
- *30 years 2nd Congressional District Coordinator for We the People, the largest curriculum project for the Celebration of the Constitution
- *30 years as a member of the Minnesota Geography Alliance
- *13 years South Dakota Alliance of geographic education
- *Coached speech for 47 years
- *L. Guilden Teacher of the Year Award 2002
- *Director for HAMEE a social studies consortium in southwest Minnesota
- *Minn. Dept of Education writing term for social studies state standards 1991/1994/1998/2002/2006
- *College teacher at MN West College in Worthington for psychology and geography
- *Civil War re-enactor & movie actor

Greetings,
 My name is Jerry Benson. I would appreciate your vote for the Luverne School Board.

St. Catherine Catholic Church

203 E. Brown St., Luverne

St. Catherine Ph.: 283-8502; email: stcatherine@iw.net

Thursday, Oct. 11: 9 a.m. Head Start. Friday, Oct. 12: 10 a.m. Veterans Home Mass. Saturday, Oct. 13: 5 p.m. St. Leo Mass. Sunday, Oct. 14: 8:30 a.m. St. Catherine Mass. 10:30 a.m. St. Leo's Mass. CLW. Monday, Oct. 15: 10 a.m. Book Bunch. Tuesday, Oct. 16: 1-4 p.m. Mission Sewing. 5:15 p.m. St. Leo's Mass. Thursday, Oct. 18: 9 a.m. Head Start.

Luverne Christian Reformed Church

605 N. Estey St., Luverne

Office Ph. 283-8482; Prayer Line Ph. 449-5982

www.luverncrc.com — office@luverncrc.com

Roger Sparks, Pastor

Sunday, Oct. 14: 9:30 a.m. Worship Service. 10:50 a.m. Sunday School and Catechism classes. Noon Potluck. 6:30 p.m. Worship Service. Tuesday, Oct. 16: 9:30 a.m. Coffee Break/Story Hour. Wednesday, Oct. 17: 7 p.m. GEMS and Cadets.

First Baptist Church

1033 N. Jackson St., P.O. Box 975, Luverne

Ph. 283-4091; email: fbcluv@iw.net — www.fbcluverne.org

Walt Moser, Pastor

Thursday, Oct. 11: 6 a.m. Men's Bible Study. 8 p.m. Worship Service on Channel 3. Sunday, Oct. 11: 9:15 a.m. Sunday School. 10:30 a.m. Morning Service. 6 p.m. Evening Service. Monday, Oct. 15: 7 p.m. Constitution Review Team Meeting. Tuesday, Oct. 16: 7 a.m. Men's Bible Study. Thursday, Oct. 18: 6 a.m. Men's Bible Study. 8 p.m. Worship Service on Channel 3.

Grace Lutheran Church

500 N. Kniss Ave., Luverne

Ph. 507-283-4431; www.graceluverne.org — graceluverne@iw.net

Ron Nichols, Pastor; Stephen Hilding, Associate Pastor

Thursday, Oct. 11: 8:30 a.m. Missions in Action. 2 p.m. GLCW at Tuff Home. Friday, Oct. 12: 6:30 p.m. Worship on Channel 3. Saturday, Oct. 13: 5:30 p.m. Worship. Sunday, Oct. 14: 8:15 a.m. Radio Broadcast. 9 a.m. Worship. 10 a.m. Fellowship coffee/treats. 10:15-11:15 a.m. Adult Study and Sunday School. 4 p.m. Confirmation pictures. 5:15 p.m. Confirmation meal. Monday, Oct. 15: Annual Meeting reports due. 4:30 p.m. Worship on Channel 3. 5:45 p.m. Bells. Tuesday, Oct. 16: 9 a.m. Staff meeting. 5:30 p.m. Ride & Dine. Wednesday, Oct. 17: 7 a.m. Men's Bible Study. 8:15 a.m. Caring Visitors. 6 p.m. Woven worship. Thursday, Oct. 18: 8:30 a.m. Mission in Action.

Bethany Lutheran Church

720 N. Kniss Ave., Luverne

Ph. 507-283-4571 or 507-449-0291 or 605-215-9834

pastorapalmquist67@yahoo.com

Thursday, Oct. 11: 2 p.m. Ladies Aid. Sunday, Oct. 14: 9 a.m. Sunday School. 9:15 a.m. Bible Class. 10:15 a.m. Worship with Communion. Monday, Oct. 15: 7 p.m. Quarterly Voters Meeting. Wednesday, Oct. 17: No Catechism classes.

American Reformed Church

304 N. Fairview Dr., Luverne

Ph. 283-8600; email: office@arcluverne.org

Mike Altena, Pastor

Thursday, Oct. 11: 5:30 p.m. Tumbling Tikes. Friday, Oct. 12: 6:30 a.m. Community Men's Bible Study. 4:30 p.m. REFIT Fitness. Saturday, Oct. 13: 8 p.m. Union Gospel Mission Service. Sunday, Oct. 14: 9:30 a.m. Worship. 10:50 a.m. Family Education. Noon: Commons reserved. 4 p.m. Rock the Edge Senior and Junior Youth Group Food Drive. Tuesday, Oct. 16: 10 a.m. Staff Meeting. 5:30 and 6:30 p.m. Bible Study Fellowship. 7 p.m. Rafter Team Meeting. Wednesday, Oct. 17: 4:30 p.m. REFIT Fitness. No Midweek activities. Thursday, Oct. 18: 5:30 p.m. Tumbling Tikes.

First Assembly of God Church

1075 110th Ave., 2 miles west of Luverne on County Rd. 4

Sundays: 9 a.m. Sunday School. 10 a.m. Morning Worship. 6:30 p.m. School of the Holy Spirit. Wednesdays: 7 p.m. Kids Connection; Men's Bible Study with Pastor Ken; Women's Bible Study with Pastor Gloria.

St. John Lutheran Church

803 N. Cedar St., Luverne

Ph. 283-2316, Dial-A-Devotion Ph. 283-4005

email: stjoh@iw.net — www.stjohnlutheranluverne.org

Gary Klatt, Pastor

Thursday, Oct. 11: 11 a.m. to 1 p.m. Salad Luncheon. Saturday, Oct. 13: 5:30 p.m. Worship with Communion. Sunday, Oct. 14: 9 a.m. Worship with Communion; Junior Choir sings. 10:15 a.m. Christian Education Hour. 11:15 a.m. Junior Choir. 1:30 p.m. Worship at Mary Jane Brown Home. 2-4 p.m. Cards and games; hot dog roast. 2:15 p.m. Worship at Poplar Creek. 4 p.m. Rock the Edge Youth Food Drive. Monday, Oct. 15: Newsletter deadline. 7 p.m. Parish Planning Council. Tuesday, Oct. 16: 1 and 6 p.m. Quilting. Wednesday, Oct. 17: No Bible Study; no evening activities. Thursday, Oct. 18: No Little Lambs. 1 p.m. Parkinson's Support Group.

United Methodist Church

109 N. Freeman Ave., Luverne

Ph. 283-4529; email: luverneumc@iw.net

Dorie Hall, Pastor

Thursday, Oct. 11: 1-3 p.m. Rock County Food Shelf. Saturday, Oct. 13: 10 a.m. — Noon M&M meal prep day. 8 p.m. AA Meeting. Sunday, Oct. 14: 9 a.m. Coffee Hour and Adult Sunday School. 10 a.m. New United Church Service with Communion. Prayer Warriors after Sunday service. 4:30 p.m. Genesis/Revelation Bible Study. 6 p.m. ALIVE Youth Group — Family Night. Monday, Oct. 15: 8 p.m. AA Meeting. Tuesday, Oct. 16: 6:30 p.m. PPR Meeting. Wednesday, Oct. 17: 1-3 p.m. Sewing Day. 6 p.m. F.U.E.L. No Confirmation. 8 p.m. AA Meeting. Thursday, Oct. 18: 1-3 p.m. and 5-6 p.m. Rock County Food Shelf.

First Presbyterian Church

302 Central Lane, Luverne

Ph. 283-4787; email: Firstpc@iw.net — www.fpcluverne.com

Thursday, Oct. 11: 10 a.m. Worship Service on Channel 3. 1 p.m. Bible Study. Sunday, Oct. 14: 9 a.m. Sunday School. 10:15 a.m. Worship. 11:15 a.m. Coffee and Fellowship. Monday, Oct. 15: 9 a.m. PW Executive Committee. Tuesday, Oct. 16: 10 a.m. and 6 p.m. Worship Service on Channel 3. Wednesday, Oct. 17: 9:15 a.m. Mary Circle. 1:30 p.m. Rebekah Circle. 6 p.m. Bells. 7 p.m. Choir. 8 p.m. Esther Circle. Thursday, Oct. 18: 10 a.m. Worship Service on Channel 3.

Living Rock Church

500 E. Main St., Luverne

Ph. 449-0057; www.livingrockswmn.org

Billy Skaggs, Pastor

Sundays: 10:30 a.m. Worship; Kids Rock Children's Ministry. 6 p.m. Youth Ministry. Life groups meet throughout the week.

New Life Celebration Church

110 N. Oakley, Luverne

Ph. 449-6522; email: newlifecelebration@gmail.com

Sundays: 9:30 a.m. Worship at 110 N. Oakley. Every third Thursday: 4:30 p.m. Food give-away at Senior Citizens Center. Bible Study groups meet at various times and days.

Zion Evangelical Lutheran Church

305 E. 2nd St., P.O. Box 36, Hardwick

Thursday, Oct. 11: 3:30 p.m. Worship on Channel 3. Friday, Oct. 12: 3:30 p.m. Worship on Channel 3. Saturday, Oct. 13: 9 a.m. LWML Delegate Board Meeting. Sunday, Oct. 14: 9 a.m. Sunday School. 9:15 a.m. Bible Study. 10 a.m. Mentor Program. 10:30 a.m. Worship Service. 5-7 p.m. LWML Soup Supper fundraiser. Monday, Oct. 15: 1 p.m. Quilting. Wednesday, Oct. 17: No Confirmation. 7 p.m. Choir practice. Thursday, Oct. 18: 2 p.m. Zion LWML hosts birthday party at Mary Jane Brown Home. 3:30 p.m. Worship on Channel 3.

Ben Clare United Methodist Church

26762 Ben Clare Ave., Valley Springs, S.D.

igtwb@WOW.net

Bill Bates, Pastor

Sundays: 9 a.m. Worship; 10 a.m. Fellowship; 10:30 a.m. Sunday School for all ages.

First Lutheran Church

300 Maple St., Valley Springs, S.D.

Ph. (605) 757-6662

Laura Phillips, Pastor

Sunday, Oct. 11: 9 a.m. Worship service at Palisade. 9:30 a.m. Sunday School.

Palisade Lutheran Church

211 121st St., Garretson, S.D.

Ph. (507) 597-6257 — firstpalisade@alliancecom.net

Laura Phillips, Pastor

Sunday, Oct. 11: 9:30 a.m. Sunday School; 10:30 a.m. Worship service.

First Presbyterian Church

201 S. 3rd St., P.O. Box 73, Beaver Creek

Ph. 507-935-5025

Email: lori.firstpres@gmail.com

Sundays: 9:30 a.m. Morning Worship.

Magnolia United Methodist Church

501 E. Luverne St., Magnolia

Church Ph. 507-483-2492; email: adrmagumc@gmail.com

www.facebook.com/adriannmagnoliaumc

Sundays: 9 a.m. Magnolia Worship Service. Wednesdays: 6:30 p.m. Confirmation.

Steen Reformed Church

112 W. Church Ave., Steen

Ph. 855-2336

Jeremy Wiersema, Pastor

Sundays: 9:30 a.m. Worship; service broadcast on KQAD. 10:45 a.m. Sunday School. 6 p.m. Youth Group. Evening worship at 6 p.m. first and third Sundays. Wednesdays: 7 p.m. Midweek.

Waiting ...

"Wait for the Lord and be strong. Take heart and wait for the Lord." Psalm 27:14.

I recently visited with a woman who has lived a full life. Nearing 100, she knows that she will not live forever, and she was reflecting on what it's like to live in that reality: knowing that the end of life on earth will inevitably come, as it does for everyone, but to have no idea precisely when, or what it will be like when it happens.

As a pastor, I've had plenty of conversations like this one before, but what struck me this time was how much I could relate to her, not in terms of facing the reality of death, as I'm only 32 and hopefully death is a long way off, but because I am awaiting the birth of my first child.

I know that this child will enter the world. No one stays pregnant forever, but I have no idea precisely when it will come or what it will be like when it happens. Neither I nor the woman I was visiting has any control over the situation as we wait.

There's a quote that makes its way around social media each fall, usually placed over a picture of leaves that says, "Autumn is about to teach us how beautiful it is to let things go." As the leaves change color and fall to the ground, the world around us takes on a unique beauty we only find during this season of transition from summer into winter. Letting go is hard. Letting go of control — or at least the illusion of it — is especially hard

BUILT ON A ROCK

By Reverend Maggie Berndt-Dreyer, Bethlehem Lutheran Church, Hills

when we move toward the unknown of something we've never experienced before, whether that be the end of this life, bringing new life into the world, or something less dramatic such as a new job or an impending move.

Waiting for the unknown, for the out-of-control, is hard. But there is beauty to be found as well. There is a holiness to be found in the waiting. The psalms are full of proclamations of waiting for the Lord. Patience is listed as a fruit of the Spirit, as a sign of God at work in our lives.

So while waiting is hard, it is also a place where we can feel God's presence more strongly than ever as we remember who God is and what God does. God is faithful. God's love is steadfast. God brings new life.

So though we must wait at times and have little control over much in life, we can find peace in the waiting, trusting that on the other side of the unknown, new life awaits. Whether that's life eternal for my friend, a new life entering the world in my first child, a new beginning or a renewed relationship, God brings new life. Always.

Bethlehem Lutheran Church

Pastor Maggie Berndt-Dreyer

112 N. Main St., Hills

Ph. 962-3270

e-mail: bethlehemluth@alliancecom.net

Sunday, Oct. 14: 9 a.m. Worship at Tuff Chapel. 9:30 a.m. Sunday School. 10:30 a.m. Communion at Bethlehem. Tuesday, Oct. 16: 2:30 p.m. Bible Study at Tuff Home. 3:15 p.m. Bible Study at Tuff Village. Wednesday, Oct. 17: 9 a.m. Quilting. 7 p.m. Circle of Hope at Marilyn Nelson's Home.

Hills United Reformed Church

410 S. Central Ave., Hills

Office Ph. 962-3254

hillsurc@alliancecom.net

Alan Camarigg, Pastor

Sundays: 9:30 a.m. and 6 p.m. Worship Services.

These Weekly Church Page Messages are contributed to God's Work through the Church and by these concerned and responsible citizens & businesses:

Call Rick or Chantel to place your ad!

283-2333

Tuff Memorial Home, Retirement Apartments & Tuff Village



"A Home Where Residents SMILE"
Hills, Minnesota
Phone 507-962-3275



I-90 in Luverne, MN
507-283-9171 • 1-800-634-7701

Read us online!

Rock County STAR HERALD
www.Star-Herald.com

Trust In Him



110 E. Main, Luverne, MN
Phone 507-283-2379



Manley Minnesota
1-800-615-3704
Open six days a week - Closed on Sundays
To God be the Glory.



Business Insurance.
Tri-State Region *Period!*



Rock County
STAR HERALD
Luverne, MN • 507-283-2333

Advertise Here



To Advertise Call 283-2333



507-283-2381 www.buffaloridgeins.com E-mail: info@buffaloridgeins.com

McClure Electric

Alan M. Aanenson, owner
Farm, Home & Commercial Wiring
Luverne, MN Phone 507-283-4716



303 E. Main, Luverne, MN
507-283-4463
www.fimbank.com



HILLS STAINLESS STEEL & EQUIPMENT CO., INC.
506 W. Koehn, P.O. Box 987, Luverne, MN
PHONE 507-283-4405
Church is Important - Please Attend!



• 116 E. Main St., Luverne 507-283-2366
• S. Hwy. 75, Luverne 507-283-9131
• Main St., Beaver Creek 507-473-2333
Member FDIC www.minnwestbank.com



"Let our family help your family"
Serving the Luverne and Surrounding Communities

Tollefson Publishing
117 W. Main
Luverne, MN 56156
507-283-2333

Star Herald CLASSIFIEDS

Star Herald PUBLIC NOTICES

Mortgage foreclosure sale set for Nov. 15

NOTICE OF MORTGAGE FORECLOSURE SALE
THE RIGHT TO VERIFICATION OF THE DEBT AND IDENTITY OF THE ORIGINAL CREDITOR WITHIN THE TIME PROVIDED BY LAW IS NOT AFFECTED BY THIS ACTION.

NOTICE IS HEREBY GIVEN, that default has occurred in conditions of the following described mortgage:

DATE OF MORTGAGE: December 15, 2010
 MORTGAGOR: Chad M. Gruis, single.
 MORTGAGEE: First Farmers & Merchants National Bank.
 DATE AND PLACE OF RECORDING: Recorded December 16, 2010 Rock County Recorder, Document No. 175211.

ASSIGNMENTS OF MORTGAGE: Assigned to: JPMorgan Chase Bank, National Association. Dated December 15, 2010 Recorded December 16, 2010, as Document No. 175212.

TRANSACTION AGENT: NONE
 TRANSACTION AGENT'S MORTGAGE IDENTIFICATION NUMBER ON MORTGAGE: NONE

LENDER OR BROKER AND MORTGAGE ORIGINATOR STATED ON MORTGAGE: First Farmers & Merchants National Bank
 RESIDENTIAL MORTGAGE SERVICER: JPMorgan Chase Bank, National Association

MORTGAGED PROPERTY ADDRESS: 811 North Spring Street, Luverne, MN 56156

TAX PARCEL I.D. #: 20-0286-000
 LEGAL DESCRIPTION OF PROPERTY:

The S. 7 feet of Lot 2 and the N. 65 feet of Lot 4 in Block 6 in Barck, Adams & Howe's Addition to the Village (now City) of Luverne, Rock County, Minnesota.

COUNTY IN WHICH PROPERTY IS LOCATED: Rock
 ORIGINAL PRINCIPAL AMOUNT OF MORTGAGE: \$78,963.00
 AMOUNT DUE AND CLAIMED TO BE DUE AS OF DATE OF NOTICE, INCLUDING TAXES, IF ANY, PAID BY MORTGAGEE: \$70,263.65

That prior to the commencement of this mortgage foreclosure proceeding Mortgagee/Assignee of Mortgagee complied with all notice requirements as required by statute; That no action or proceeding has been instituted at law or otherwise to recover the debt secured by said mortgage, or any part thereof;

PURSUANT to the power of sale contained in said mortgage, the above described property will be sold by the Sheriff of said county as follows:

DATE AND TIME OF SALE: November 15, 2018 at 10:00 AM
 PLACE OF SALE: Sheriff's Office, Main Entrance, Law Enforcement Center, 1000 North Blue Mound Avenue, Luverne, MN

to pay the debt then secured by said Mortgage, and taxes, if any, on said premises, and the costs and disbursements, including attorneys' fees allowed by law subject to redemption within six (6) months from the date of said sale by the mortgagor(s), their personal representatives or assigns unless reduced to Five (5) weeks under MN Stat. §580.07.

TIME AND DATE TO VACATE PROPERTY: If the real estate is an owner-occupied, single-family dwelling, unless otherwise provided by law, the date on or before which the mortgagor(s) must vacate the property if the mortgage is not reinstated under section 580.30 or the property is not redeemed under section 580.23 is 11:59 p.m. on May 15, 2019, unless that date falls on a weekend or legal holiday, in which case it is the next weekday, and unless the redemption period is reduced to 5 weeks under MN Stat. Secs. 580.07 or 582.032.

MORTGAGOR(S) RELEASED FROM FINANCIAL OBLIGATION ON MORTGAGE: None
 "THE TIME ALLOWED BY LAW FOR REDEMPTION BY THE MORTGAGOR, THE MORTGAGOR'S PERSONAL REPRESENTATIVES OR ASSIGNS, MAY BE REDUCED TO FIVE WEEKS IF A JUDICIAL ORDER IS ENTERED UNDER MINNESOTA STATUTES, SECTION 582.032, DETERMINING, AMONG OTHER THINGS, THAT THE MORTGAGED PREMISES ARE IMPROVED WITH A RESIDENTIAL DWELLING OF LESS THAN FIVE UNITS, ARE NOT PROPERTY USED IN AGRICULTURAL PRODUCTION, AND ARE ABANDONED."

Dated: September 12, 2018
 JPMorgan Chase Bank, National Association
 Mortgagee/Assignee of Mortgagee

USSET, WEINGARDEN AND LIEBO, P.L.L.P.
 Attorneys for Mortgagee/Assignee of Mortgagee
 4500 Park Glen Road #300
 Minneapolis, MN 55416
 (952) 925-6888
 30 - 18-006547 FC

THIS IS A COMMUNICATION FROM A DEBT COLLECTOR.
 (9-27, 10-4, 10-11, 10-18, 10-25, 11-1)

Star Herald CLASSIFIEDS

RENTALS

NOW LEASING CENTENNIAL APARTMENTS
1 Bedroom
 For those 62+ or Disabled
 Includes ALL utilities!
507-283-2652
 Equal Housing Opportunity
LloydManagementInc.com

Oakwood Apartments
401 Oak St., Ellsworth

• 1 Bedroom Unit Available
 Unit Available
 Cable, Water, Sewer & Garbage Included.
 Rent Based on Income
AVAILABLE IMMEDIATELY
Van Binsbergen & Associates, Inc.
 320-269-6640 ext. 13
 Equal Housing Opportunity

www.vanblc.com

RENTALS


Top Hat Luxury Unit
 2 bedroom | 1 bath
 w/ Garage
 All Appliances Included
301 E. Crawford
 Available November 1st
November Rent is FREE
 1 Cat Allowed
 No Smoking
 1 year Lease Required
 \$685 + Security Deposit
 To View Call
(507) 920-5595

Find Us Online!
 star-herald.com

NEW STORAGE UNITS FOR RENT
 30X40 - \$300
 10X24 - \$65
 6X10 - \$35
 Free month with year lease paid upfront
 Call Kurt for more information **507-220-8298**

RENTALS

Mobile home for rent in Luverne: two-bedroom one-bathroom, all appliances included. Water and sewer included. Call 605-366-7695.
 (10.7-10.25)

Large apartment upstairs, downtown Luverne, utilities paid, stove and refrigerator included. References required, no pets, no smoking. Call 507-227-1589.
 (tc)

For Rent: one-bedroom apartment near downtown Luverne. \$290 per month. No pets. Call 605-201-6427.
 (tc)

SERVICES

For Sale: Landscaping rock 1.5 and 3/4 inch rock. Also do stump grinding. Call Wayne Biever Construction at 507-227-4521 or 507-283-4614. Also have yard dirt.
 (10.4-10-21)

MISCELLANEOUS

HAVE A UNIQUE SERVICE OR BUSINESS? Get the word out to over 1.4 million households. Call WIDE AREA CLASSIFIEDS today, 507-359-7326.
 (tc)

EMPLOYMENT

New Position
 Wild Rose Home Care LLC is looking for a part-time **Personal Care Attendant (PCA)** in Luverne.
 15- 25 hrs per week working M- W Evening, 3-11pm with a female client. Must be able to pass a background check. This is a new position, qualified individuals must be dependable and reliable.

 Call for application
 507-337-1101

EMPLOYMENT

CARDS OF THANKS

I would like to send the deepest heart felt Thank You to everyone who supported me and my family at the benefit that was given for our family on September 29. The love and support we have received from family, friends, churches, and the community since I began my fight with cancer is overwhelming. We are truly blessed! THANK YOU ALL!!
Brian and Sheryl Schneekloth and family
 (10.7-10.11)

EMPLOYMENT

Ellsworth Public School is accepting applications for an Assistant/Jr. High Girls Basketball Coach for the 2018-2019 school year. Applications can be picked up at the school office or by calling 507-967-2242.
 (10.11-10.14)

Full and part-time drivers needed for local grain hauling. Must have a CDL. Call Jon at Jon Finke Trucking 507-290-1500.
 (10.4-10.21)

Career position in managing 5,200 head nursery barn near Pipestone, MN. Wage will depend upon experience. Call 605-351-7608.
 (9.30-10.18)

EMPLOYMENT

HELP WANTED
 CHS Luverne location is looking for a **CDL DRIVER** in our feed dept. Must be able to lift 50+ pounds + follow safety procedures. CHS offers competitive pay & benefits package + paid holidays & vacation. Apply online @ CHS under careers.
CHS Job #13711BR


 The Tuff Memorial Home is currently hiring day and night shifts for a **CNA**. Experience preferred. If interested, contact Eli Ripley at 507-962-3275, or email eripley@tuffmemorialhome.com
Competitive Wage
Full Benefits
Pension Plan
Friendly Atmosphere

EXTRA INCOME OPPORTUNITY
Earn Extra Cash
 By Delivering The **Argus Leader**
 Carriers Compensated Weekly
 In Luverne
 \$100 Sign On Bonus!
 Earn Up To \$1000 Per Month!
 For More Information Call 605-331-2261

HILLS-BEAVER CREEK SCHOOL DISTRICT
Substitute Teachers & Substitute Paraprofessionals
 Hills-Beaver Public Schools needs Substitute Teachers and Substitute Paraprofessionals, over the course of the school year. Please contact Todd Holthaus in the Hills-Beaver Creek District Office to inquire. 507-962-3240 x13, or email t.holthaus@isd671.net. These experiences can be rewarding!

HELP WANTED
 Seasonal Part-time General Office Assistant
 Join a multi-professional CPA firm in Luverne, Minnesota. We are looking for an individual who is organized, detail-oriented, self-motivated and flexible.
 Responsibility to perform a wide variety of office duties and strong communication skills necessary.
 Please mail resume/letter of interest by October 31 to:
 Meulebroeck, Taubert & Co., PLLP
 PO Box 685
 Luverne, MN 56156 Or email: contact@mtcocpa.com
Meulebroeck, Taubert & Co., PLLP

HILLS-BEAVER CREEK PUBLIC SCHOOLS
 Hills-Beaver Creek School District
 301 N. Summit Avenue - PO Box 547
 Hills, Minnesota 56139
 Website: www.hbc Patriots.com
 Email: j.phelps@isd671.net or 507-673-2541 ext. 11
 Telephone: (507) 673-2541

Long-Term Substitute
2018-2019 SCHOOL YEAR

- **Position:** Long-Term Substitute Teacher for Pre-School - Little Pates Academy. Also, part of day spent in Kindergarten and 1st grade classrooms.
- **Qualifications:** Must have a valid Minnesota Teaching License.
- **Application Deadline:** Position open until filled.
- **Starting Date:** January 12, 2019
- **Apply To:** Jason Phelps, Principal, Hills-Beaver Creek Schools, PO Box 49, 404 S. 4th St., Beaver Creek, MN 56116 or email - j.phelps@isd671.net. Submit a letter of application, resume, copy of teaching license, transcripts, and three (3) current letters of reference.
- **Contact:** For more details contact Elementary Principal Mr. Jason Phelps at j.phelps@isd671.net or 507-673-2541 ext. 11
- **Location:** The Hills-Beaver Creek School District is located in the far southwest corner of the state of Minnesota. The district lies just 20 miles east of Sioux Falls, South Dakota. We are a tiny (growing) family orientated school district with a strong desire to assist our students in their learning.

- An Equal Opportunity Employer -

HILLS-BEAVER CREEK PUBLIC SCHOOLS
 Hills-Beaver Creek School District
 301 N. Summit Avenue - PO Box 547
 Hills, Minnesota 56139
 Website: www.hbc Patriots.com
 Email: j.phelps@isd671.net or 507-673-2541 ext. 11
 Telephone: (507) 673-2541

Long-Term Substitute
2018-2019 SCHOOL YEAR

- **Position:** Long-Term Substitute Teacher for Grade 5
- **Qualifications:** Must have a valid Minnesota Teaching License.
- **Application Deadline:** Position open until filled.
- **Starting Date:** December 4, 2018
- **Apply To:** Jason Phelps, Principal, Hills-Beaver Creek Schools, PO Box 49, 404 S. 4th St., Beaver Creek, MN 56116 or email - j.phelps@isd671.net. Submit a letter of application, resume, copy of teaching license, transcripts, and three (3) current letters of reference.
- **Contact:** For more details contact Elementary Principal Mr. Jason Phelps at j.phelps@isd671.net or 507-673-2541 ext. 11
- **Location:** The Hills-Beaver Creek School District is located in the far southwest corner of the state of Minnesota. The district lies just 20 miles east of Sioux Falls, South Dakota. We are a tiny (growing) family orientated school district with a strong desire to assist our students in their learning.

- An Equal Opportunity Employer -


CLASS A CDL LIVESTOCK DRIVER
 Are you seeking a rewarding long term job, driving great equipment, with great pay and benefits and the ability to come home to your family each day? If so, we would like to speak with you about this position.
ESSENTIAL FUNCTIONS:

- Pre-trip inspections
- Responsible for the application of wood chips in trailers
- Loading/unloading pigs
- Execution of proper paperwork

Qualified applicants must have the ability to operate a commercial motor vehicle to transport livestock in a safe, courteous and professional manner while complying with all applicable federal, state and local regulations as well as company policies and procedures to ensure the welfare of the animals during loading, transportation and unloading.

Apply online at www.newhorizonfarms.com or call New Horizon Farms at 507.825.5202

New Horizon Farms LLP offers a competitive salary along with a great benefit package including, Paid Vacation/Sick Time, 100% Paid Health Insurance, Employer Funded Health Savings Account, Life Insurance, 401 (k) Retirement Plan and Bonus Incentives.
CALL TODAY!

319 N. HIAWATHA, PO BOX 708 - PIPESTONE, MN 56164
507.825.5462 / 800.906.7447 / 507.825.5877 (Fax)
www.newhorizonfarms.com

ADVERTISE TODAY with the Star Herald
 Call Rick or Chantel **507-283-2333**
 email **sales@star-herald.com**

EMPLOYMENT

New Life Treatment Center, Woodstock, MN, a faith-based non-profit sincerely dedicated to our clients, delivers quality care to clients with substance us disorder. Rewarding working environment. Competitive wages based on work history, great benefits, paid time off. EOE Call 507-777-4321 ext. 203 to apply. Positions available: Full/Part Time Nurse (LPN/RN) - Must be licensed in MN. Professionally challenging - Limited physical demands. Must be available to work all shifts. Full/Part Time LADC counselor - Must be licensed in MN Full/Part-time Cook - Join our dietary team. Health benefits available at 32hr/wk. Must be willing to work Friday and Saturday nights, plus one Sunday per month. Full/Part Time Client Care Tech - Opportunities for advancement. (9.27-10.14)

EMPLOYMENT

SEMI-DRIVER WANTED
Looking for a semi driver to deliver LTL Freight. Must have a CLASS A CDL, Haz Mat, and good driving record. Must be able to pass DOT and Company Physical and DOT Drug Screen. Home every night and weekends. Benefits include IRA, Health Ins., Vacation Days and Personal Days.
Contact Steve or Carol McCormack Trans. Co. Inc Rock Rapids, Iowa 51246 1-800-831-8549

RECYCLE!

EMPLOYMENT

POSITIONS AVAILABLE

- Great hours! Paid benefits including paid holidays.
- Hours vary between 5:45am - 4pm Monday through Friday
- Full time approximately 35 hours per week
- Sub hours as needed

We are looking for Direct Support Professionals! RCO has one full time position and several sub positions open. If you are compassionate, assertive, reliable, energetic, and self-motivated we want you to join our team. On the job paid training provided. Experience related to human services such as working with people with disabilities, social work, psychology, special education, and/or C.N.A. is helpful but not required.

Call or stop by to pick up an application. RCO, 807 W Main St, Luverne, 507-283-4582.

EMPLOYMENT

EMPLOYMENT



READ THE NEWS

**O
N
L
I
N
E**

News
Sports
Opinion
Videos
Photo Galleries
Columns

Subscribe to the online edition of the Star Herald
star-herald.com

Sanford Luverne Medical Center is currently accepting applications for FT (Full-Time), PT (Part-Time) and PRN (Part-Time as Needed) positions:

- HOME HEALTH AIDE | HOSPICE - PRN
- HOUSEKEEPING - PT
- LICENSED ADDICTION COUNSELOR - FT
- OCCUPATIONAL THERAPIST - FT
- PHYSICAL THERAPIST - FT
- PATIENT CARE TECHNICIAN - PT
- RECEPTIONIST - PT
- RN | INPATIENT - FT
- RN | HOME HEALTH - FT
- SUPERVISOR, NURSING | INPATIENT - FT

To apply, visit sanfordhealth.jobs, search "Luverne" in the location search bar.

SANFORD

877-673-0854

Luverne

EE01AA

Employment Opportunity

Four Way Insulation, Inc is looking for three or four hard working individuals to join our growing company. Job responsibilities include helping with the installation of foam and cellulose insulation and cleanup of job sites. Great starting pay/benefits and lots of room for advancement for the right person. Applicants should have a clean driving record. CDL class B or greater preferred but not required. On-site training provided.

Call (605) 212-9700 for an application and to set up an interview.

FWI
FOURWAYINSULATION.COM

Luverne, MN

SWINE PRODUCTION POSITIONS AVAILABLE

New Horizon Farms LLP currently has full-time positions available at our Sow Units, Nurseries and Finishers.

Apply online at www.newhorizonfarms.com or call 507.825.5462

New Horizon Farms LLP offers a competitive salary along with a great benefit package including, Paid Vacation/Sick Time, Life Insurance, Paid Health Insurance, Employer Funded Health Savings Account, 401 (k) Retirement Plan and Bonus Incentives.
APPLY TODAY!

319 N. HIAWATHA, PO BOX 708 - PIPESTONE, MN 56164
507.825.5462 / 800.906.7447 / 507.825.5877 (Fax)
www.newhorizonfarms.com



MCAN

Minnesota Classified Advertising Network



HELP WANTED - DRIVERS

LINSMEIER TRUCKING

A MN based company is now hiring Owner Operators to pull hopper bottom in the upper Midwest. Home weekends. Call 320/382-6644

WINDOW REPLACEMENT

WINDOW REPLACEMENT SPECIAL

Financing credit scores as low as 540 - 60 second approval - no effect on score. Any double hung \$489 Installed. 320/360-7756 www.greensourcewindows.com

ADVERTISE HERE STATEWIDE IN 260+ NEWSPAPERS FOR ONLY \$279 PER WEEK! CALL 800-279-2979

MISCELLANEOUS

START SAVING BIG ON MEDICATIONS

Up to 90% Savings from 90DayMeds! Over 3,500 medications available! Prescriptions req'd. Pharmacy checker approved. Call today for your free quote 844/209-2877

A PLACE FOR MOM

The nation's largest senior living referral service. Contact our trusted, local experts today! Our service is free, no obligation. Call 844/347-2104

DONATE YOUR CAR

truck or boat to Heritage For The Blind. Free 3-day vacation, tax deductible, free towing, all paperwork taken care of 844/220-9501

MISCELLANEOUS

DISH TV \$59.99

For 190 channels. \$14.95 high speed internet. Free installation, smart HD DVR included, free voice remote. Some restrictions apply. Call 855/562-4309

SAVE ON YOUR NEXT PRESCRIPTION

World Health Link. Price match guarantee! Prescriptions required. CIPA certified. Over 1,500 medications available. Call today for a free price quote. 866/237-5131 Call now!

YOUR AD HERE!

One phone call & only \$279 to reach a statewide audience of 2.5 million readers!!!
1-800-279-2979

