

Rock County STAR HERALD

Rock County's oldest business, printing since 1873

Thursday, September 27, 2018

Luverne hosts 68th Tri-State Band Fest Saturday

Seventeen bands to march in parade; 12 to participate in field competition

By Lori Sorenson

The 68th annual Tri-State Band Festival will be Saturday, Sept. 29, with 23 bands and more than 2,000 students participating.

Bands from Minnesota, South Dakota and Iowa converge on the Luverne community for one of the longest-running marching band competitions in the region.

"It is a joy to work with the bands and the band directors who bring their gifts and their passion to the band festival," Lanphere said. "That's an honor for all of us."

Parade competition begins at 9:30 a.m. on Main Street in downtown Luverne with 17 marching bands performing on the parade route.

Parade marshals are 1st Battalion, 125th Field Artillery, A Battery, Pipestone and Luverne National Guard.

The National Guard has provided security and safety for the bands attending the festival during the parade competition.

Twelve bands will participate in field competition that begins at 12:30 p.m. on Cardinal Field at Luverne High School, 709 North Kniss Avenue (on Highway 75) in Luverne.

Admission to the field competition is with the purchase of the Tri-State Band Festival button. Buttons can be purchased for \$5 each during the parade or will be sold at the gate.

Bands from Minnesota participating in the festival are Adrian, Murray County Central, Pipestone Area, Stewartville, Tracy and Worthington.

South Dakota bands include Brandon Valley, Brookings, Garretson, Huron, Lennox, Madison, O'Gorman, Sioux Falls Christian, Tea and West Central (Hartford).

Bands from Iowa are Boyden-Hull, George-Little Rock, Sibley-Ocheyedan, South O'Brien (Paulina), and West Lyon (Inwood).

Luverne Middle School and Luverne High School bands will host the event.

The Luverne Area Chamber can be reached at 507-283-4061 or luvernechamber@co.rock.mn.us.



Farewell, Father Tom

Lori Sorenson photo/Rock County Star Herald file photo

Father Tom Jennings participated in this year's Rock County Tractor Drive earlier this month. He used this image on a greeting card to community members thanking them for "15 years of miracles."

Jennings retires after 15 years with Luverne, Ellsworth parishes

By Mavis Fodness

Three years after announcing his plans to retire, Father Tom Jennings will make it official in less than two weeks.

"When I leave town, Monday, Oct. 8, and when I look back I will see, or hope to see, a rainbow affirming God's blessing," he said.

Jennings has served the parishes of St. Catherine's in Luverne and St. Mary's in Ellsworth for 15 years.

On Sunday afternoon parishioners hosted a farewell open house for Jennings where 275 community members gathered in Doyle Hall at St. Catherine's to say their goodbyes.

Another open house was at Luverne Pizza Ranch Tuesday night.

Goodbyes began months ago

This summer, decals appeared on the front doors of Jennings' white Ford Fusion.

"Thank you! St. Catherine's



Mavis Fodness photo/0927 Father Tom Retirement

Father Tom Jennings placed door decals on his car thanking the community for the 15 years he made Luverne his home. Jennings officially retires Oct. 8 and will move to his hometown of Caledonia. Pictured at lower left, Jennings wears a T-shirt with the words "Act Justly Love Tenderly Walk Humbly." All parishioners wore the shirts.

& St. Mary's" is the message, along with full-color pictures of both churches.

Jennings said he wanted to include the words "Rock County, Luverne and Ellsworth communities" in the decal but there wasn't enough room.

"I am grateful for 15 years of friendship, ministry, memories, love," he said. "It's been magical. It's been a magical time."

Since he came to Luverne in 2004, Jennings knew this would

be his last assignment. "And then it was the best assignment of all," he said.

Jennings grew up on a farm near Caledonia, the oldest of three boys.

The priesthood caught his interest at a young age.

"I loved, just love, watching the priests do their ministries," he said. "It started in the second grade and it got deeper and

Farewell, Father Tom/See 3A

Highway 75 work to wait until 2025 in Luverne

Council questions MNDOT about funding process, project priorities

By Lori Sorenson

By most accounts, Highway 75 in Luverne is in poor shape and it's rapidly deteriorating.

Yet, rebuilding the road hasn't been a priority for the Minnesota Department of Transportation, and Luverne City Council members expressed their frustration to state officials last week.

MNDOT representatives were in town to discuss future road and bridge projects in District 7 (13 counties in southwest and south central Minnesota), and Highway 75 in Luverne isn't on the list until 2025.

According to the plan, which is subject to change, Highway 75 will be milled off and overlaid from I-90 north to Trosky in 2025.

This schedule didn't sit well with Luverne City Council members who said state roadwork in Luverne has been delayed repeatedly.

"I can't believe they're going to wait seven years, and I can't believe we're doing only a mill-off and overlay," said Mayor Pat Baustian.

He described Highway 75 conditions in Luverne as deplorable and that it needs to be entirely rebuilt with new base materials and an 8-inch cement overlay on top of the base.

City Engineer Gary Kurth attended the Sept. 18 meeting and pointed out that Highway 75 hasn't been rebuilt since its initial construction.

"The 1930s concrete is disintegrating," he said. "There isn't much base there anymore."

In 2015 the state replaced the Highway 75 bridge over Poplar Creek, and at that time the city asked MNDOT to work on the road surface at the same time.

The state agreed to mill off and overlay South Highway 75, but the city of Luverne had to pay 25 percent of the cost (\$375,000), since it wasn't on the state's highway improvement plan that year.

That same year the state restriped Highway 75 through town from four lanes to three (one direction each way with a turn lane in the middle). To aid in the striping project the north half

Highway 75 schedule/See page 2A

School officials consider new project bid process

By Mavis Fodness

The bid process could be different the second time around for Luverne School District's building improvement project.

In a special board meeting Tuesday night, Sept. 18, program manager Todd Wetzell, with the Sioux Falls consulting firm ICS/FJJ, proposed a single contractor bid strategy.

Previously the strategy divided the building project into four areas — general construction, mechanical, electrical and fire protection — with ICS/FJJ as construction manager.

Under the new bid strategy, the single contractor manages the project with ICS/FJJ providing oversight.

With the strategy change, ICS/FJJ reduced its consulting fees by \$75,000.

The strategy would allow smaller contractors to better meet bond re-

quirements and the general contractors could leverage relationships with local companies to complete portions of the project.

More importantly, the bid strategy change could keep the project under budget, Wetzell said.

"Our goal as a design team is a base bid around \$24 million — so items can be added back in," he said.

The goal amount includes a contingency fund of \$1.235 million.

Project priorities include constructing a new performing arts center and a middle-high school commons/cafe. The main focus would also be to refresh the interior of the 1950s middle-high school building.

If bids amounts allow, the elementary and community education

School bid process/See page 5A



Lori Sorenson photo/0927 china inn demolition

W&N Construction begins demolishing the former China Inn building on Highway 75 Monday afternoon.

Former China Inn building demolished

By Lori Sorenson

The former China Inn restaurant building was demolished this week to make way for new development on that block of South Highway 75.

The city of Luverne bought the building this spring from Guo Ying Zheng and Mei Qin Lin for \$115,000 to prepare for housing and retail development.

At the same time, the city arranged a land swap with the adjacent Rock Motor Sports to clear the section for easements related to the development project.

Billy and Michelle Aanenson own 40 feet that

wraps around the east side of the China Inn, and they gave that to the city in exchange for more space for their Rock Motor Sports lot.

The China Inn restaurant has been closed since December, and interior equipment was cleared out this summer to prepare for demolition by W&N Construction.

Don Jahnke is working with area developers to construct workforce (market rate) housing on the

China Inn demolition/continued on page 5A



Opinion Page 4A Sports 1B
Community Page 6A Public notices 5B

www.star-herald.com

Volume 143, Number 39
Luverne, MN 56156 USPS 468-040

How to reach us
507-283-2333 PO Box 837
editor@star-herald.com Luverne, MN 56156

COMMUNITY CALENDAR

Meetings

Blue Mound Quilters will meet at 6 p.m. Monday, Oct. 1, at the Rock County Library. Members are to bring fabric and supplies for pillow cases. Call Sharon at 507-227-3821 with questions.

Springwater Township Board will meet at 7 p.m. Tuesday, Oct. 2, at the home of clerk/treasurer Teresa Kramer.

Sanford Luverne Pink Ladies will meet at 1:30 p.m. Monday, Oct. 8, in the hospital Blue Mound Room. Tim Knoll will present information regarding changes in Medicare and health insurance.

Narcotics Anonymous meets at a new time: 7:30 p.m. Tuesdays and Fridays in the basement of St. Catherine Catholic Rectory, 203 E. Brown St., Luverne. Use east door. Call 507-220-0137 with questions.

Women's Alcoholics Anonymous meets at 8 p.m. Mondays in the United Methodist Church.

Alcoholics Anonymous meets at 8 p.m. Wednesdays and Saturdays in the United Methodist Church, Luverne. Call 605-321-4324.

Alcoholics Anonymous meets from 8 to 9 p.m. every Tuesday in Runals Memorial Hall, Edgerton. Call Naomi, 507-215-2956.

Recognize signs of sex trafficking; attend education session Sept. 17

Luv! LuvAll and the Southwest Crisis Center are partnering to offer two, free education sessions for business professionals to recognize individuals who may be in trouble and respond to possible sex trafficking incidents.

Two sessions will be conducted Thursday, Sept. 27, at Grand Prairie Events in Luverne.

The first session from 9 to 11 a.m. is for managers for area restaurants, bars, convenience and grocery stores and hotels. The training meets new state requirements for hotel staff. The second session is open to the public and will take place from 6:30 to 8 p.m. Registration is not required by preferred. Contact ATLAS at 507-449-5777.

Barbecues served at History Center during Band Festival parade Sept. 29

The Rock County Historical Society will serve barbecue sandwiches and chips for \$3 from 9:30 to noon Saturday, Sept. 29, during and after the Tri-State Band Festival Parade in the History Center lot on East Main Street Luverne. The History Center phone number is 507-283-2122.

Master Gardener applications due

Applications for the 2019 Extension Master Gardener program are due Oct. 1. The next online class begins in January 2019 with class registration due by Dec. 1. Scholarship assistance may be available. Contact the Rock County Extension Office at 507-283-1302 for registration info.

Meet Laura Ingalls Wilder Oct. 2

Historian Melanie Stringer will present an interactive history experience about the life and experiences of Laura Ingalls Wilder. Stringer will be at the Rock County Library from 6 to 8 p.m. Tuesday, Oct. 2. This program is free to the public and funded through the Minnesota Arts and Cultural Heritage Fund.

Bank Nite movie Oct. 4 at Palace

The free Bank Nite Disney movie, "Hotel Transylvania 3," rated PG, will begin at 6 p.m. Thursday, Oct. 4, at the Palace Theatre in Luverne.

Sponsored by First Farmers & Merchants National Bank and Papik Motors, a free, family-friendly movie is shown on the first Thursday of every month as it was done for "Bank Nite" in the 1930s. A cash prize drawing will follow the movie. Must be present to win.

Shredding fundraiser Oct. 6

St. Catherine Carmelites and Dakota Shred-It will sponsor a shredding fundraiser from 9 a.m. to 1 p.m. Saturday, Oct. 6, in the parking lot of The Laundry Room at 310 W. Main Street in Luverne. Cost is a freewill offering. No need to remove staples or paperclips.

Historical Society dinner Oct. 29

The Rock County Historical Society has rescheduled its annual dinner meeting for Monday, Oct. 29, at Sterling's in downtown Luverne. Contact the History Center, 507-283-2122, for tickets or additional information.

Details come together for governor's opener Oct. 12-13 in Luverne

Photos and text by Lori Sorenson

Darrel Van Aartsen and Quality Printing put together this photo board to help promote the Minnesota Governor's Pheasant Hunter Opener that Luverne will host Oct. 12-13.

Van Aartsen placed it in front of the History Center and community members are encouraged to photograph themselves with their faces in the nutcracker cut-outs of the photo board.

They're encouraged to post their images on #MNGPHO2018 to help promote the Governor's Opener in Luverne.

Tickets are still available for the public to attend the Friday night banquet in Grand Prairie Events. Call the Luverne Area Chamber office, 283-4061, for tickets and information.

Also raffle tickets are still available for a chance to win the 2018 Polaris Ranger XP 1000. Stop in at the Star Herald office or at the Luverne Chamber.

The drawing will be at the Governor's Opener Banquet Friday night, Oct. 12. It's not necessary to be at the banquet to win.

See next week's Star Herald for a full rundown of all the weekend events and activities.



Prairie Ally Outdoor Center to host open house Oct. 5

The Prairie Ally Outdoor Center will host an open house from 3 to 6 p.m. Friday, Oct. 5, at its location on North Blue Mound Avenue, Luverne.

A public food forest and productive perennials riparian buffer demonstration site were installed at the site this spring, making way for educational opportunities, food, and community building, according to organizer Kim Rockman.

Drawing on elements of agroforestry, including per-

maculture, the project's focus is primarily on perennial plants, but Rockman said the first season of vegetables were also a success.

"The harvest has been abundant," she said.

Made possible by the generous support of volunteers, area businesses and several grant awards, the projects were completed in partnership with Sioux Falls-based nonprofit Project Food Forest and the University of Minnesota Extension Regional Sustainable Devel-

opment Partnerships.

In addition, four acres of the property surrounding the food forest and buffer are undergoing prairie restoration and oxbow excavation with the help of the U.S. Fish and Wildlife Service, which will provide wildlife habitat and improve water quality in the area.

The Oct. 8 open house, hosted by the University of Minnesota Extension, will "showcase and celebrate the work completed thus far and gain further com-

munity insight to continue to create a vision for the future," according to the community invitation.

Refreshments will be provided along with a variety of produce and flower seeds being offered free to visitors.

Updates and volunteer and opportunities can be found on Facebook at facebook.com/prairieally and on Instagram @prairieallymn. For more information, contact Kim Rockman, kimberlyelizabeth@live.com or Gary Wyatt, wyatt@umn.edu.

Highway 75 discussion about funding priorities/from page 1A

was chip sealed, but it wasn't repaired.

The council pointed out that several private engineers involved in that bidding process wondered in 2015 why the state was only doing a mill off and overlay when they believed Highway 75 needed to be rebuilt.

"When is it bad enough to do a full refurb?" Baustian asked MNDOT planning director Ronda Allis at the Sept. 18 meeting.

"That's exactly why we're here," she replied.

"There's not enough mon-

ey to take care of all the issues we have, so we're working on how to try to meet the needs of the community with the limited dollars we have."

She said transportation officials prioritize funding for projects, partially based on traffic counts and road conditions — measured by a utility vehicle equipped with technology to record bumps.

Baustian and council members said these road evaluations can be misleading if they're measured in the summer right after potholes are repaired.

"I would like to see your engineers come down here in the February frost heave season," Baustian said. "And I would encourage you to take a drive up there when you leave here and see what it's like."

Council members also pointed out that with major construction planned for TruShrimp and other projects next year, construction traffic will further beat up local road surfaces.

"We're told there are going to be 100 semi loads a day coming into town," Baustian said. "What's that going to

look like in two years? I think we're kidding ourselves if we think that road is going to last until 2025."

Allis and other MNDOT representatives attended the Sept. 18 Luverne City Council meeting to discuss a 2022 project on I-90 between Beaver Creek and Luverne.

The 9.3-mile, \$13.6 million project involves concrete grinding and concrete pavement rehabilitation.

More about MNDOT's project selection process can be found at <http://www.dot.state.mn.us/projectselection>.



Dial-A-Specialist

Your One Stop Guide to Local Businesses

 <p>ROCK COUNTY CHIROPRACTIC • Men, Women & Children's Health • Custom Orthotics • Kinesiotape • Athletic Care • Massage Therapy • Work & Auto Injuries • Postural Restoration WWW.ROCKCOUNTYCHIROPRACTIC.COM 283-2561 • 103 E. MAIN, LUVERNE Monday 7:30 a.m. - 6 p.m. • Tuesday 7:30 a.m. - 3 p.m. Wednesday 7:30 a.m. - 6 p.m. • Thursday 7:30 a.m. - 1 p.m. Friday 7:30 a.m. - 5 p.m.</p> <p>Most Insurance Accepted</p> <p>• Chiropractic</p>	 <p>STAR HERALD Luverne ANNOUNCER</p> <p>Chantel Connell Sales Representative</p> <p>117 W. Main, Luverne, MN 507-283-2333</p>  <p>Rick Peterson General Manager</p> <p>• Advertising</p>	<p>LUVERNE HEALTH & WELLNESS <i>Codie Zeutenhorst, D.C., CAC</i></p> <ul style="list-style-type: none"> ✓ Acupuncture ✓ Family Care ✓ Kinesiotape ✓ Chiropractic Care ✓ Sports Injuries ✓ Auto & Work Injuries <p>Acupuncture and Massage Available Kris Van Der Brink M.T. & Amy Rosales M.T.</p> <p>507.449.4400 www.luvernechiro.com 109 S. Freeman Ave. Luverne, MN</p> <p>• Chiropractic</p>	<p>COMRAY COMPUTERS Computer Repair and System Builder</p>  <p>Ray Hansen 1726 140th Ave., Luverne, MN 56156 507-669-2621 comraycom@gmail.com</p> <p>• Computer</p>
 <p>Rock County EYE CLINIC 507-283-2345 104 N. Freeman Ave. Luverne, Minnesota</p> <p>• Eye</p>	 <p>Papik MOTORS 1-90 Luverne, MN Box 536 • 801 West Commerce Road Luverne, MN 56156</p> <p>(507) 283-9171 (800) 634-7701 www.papik.com</p> <p>Certified USED VEHICLES No warranties certified pre-owned Jeep</p> <p>• Automotive</p>	<p>Luverne MINNESOTA City Offices <i>Love the life!</i></p> <p>PO Box 659, Luverne, MN 56156 507-449-2388 (24 hour voice mail) www.cityofluverne.org</p> <p>• City</p>	<p>Dakota Land Surveying and Engineering, Inc.</p>  <p>Steven B. Kor Professional Engineer Registered Land Surveyor</p> <p>2000 W. 42nd Street, Suite B-6 Sioux Falls, SD 57105 605-334-4882 605-334-5745 Fax</p> <p>506 Almar Luverne, MN 56156 507-283-3803 steve.dis@midconetwork.com</p> <p>• Land Surveying</p>

Father Tom bids farewell, thanks community for 15 years/continued from page 1A

deeper.”
He considered farming, becoming a meteorologist or a road contractor but none captured Jennings’ interest as much as becoming a priest.

After high school, Jennings attended Saint Mary’s University in Winona for four years before spending another four years at the Gregorian University in Rome.

He was ordained on Dec. 19, 1969, in Rome at the age of 25.

Jennings returned to Minnesota and for the next 48 years taught in various Catholic high schools, served several parishes and more recently was on the seminary staff in Winona before a desire to return to a parish ministry gripped him.

Jennings remembers the discussion he had with the bishop.

“Make my next assignment a good one,” Jennings said, because he knew it would be his last one.

Jennings serves with energy, compassion

Mary McLaughlin is the parish administrator, hired by Jennings 12 years ago.

“He said, ‘If you come work for me, you have to work for me until I retire,’” she said about her hiring.

McLaughlin focused on administrative duties while Jennings focused on the liturgy and pastoral care.

“He’s like the Energizer Bunny,” McLaughlin said. “He keeps on going and going and going.”

In addition to weekday and weekend services, Jennings presided over 378 baptisms, 212 funerals and 94 weddings in his 15 years in Luverne and Ellsworth.

Trever and Britton Stoffel were married by Jennings in June 2017.

“He always has a connection to what happened in his week or what was happening in the world,” Trever said.

“He made you feel comfortable about what God meant to you.”

Jennings was instrumental in Britton’s decision to join the Catholic Church.

“I might not have joined if it wasn’t for Father Tom,” she said. “He is great at answering all my questions and he was so non-judgmental.”

Mike and Cheryl Cox recently lost their son Brian after a lengthy illness, and they said Jennings helped their family handle their grief upon Brian’s death.

“In trying times you’re looking for comfort of some sort,” Mike said.

“He (Jennings) can say a lot without saying anything and I think that is a real gift.”

Jennings leaves lasting legacy with parishioners

Parishioners of St. Catherine’s and St. Mary’s wore gray T-shirts to Sunday’s Masses.

On the back are words from Micah 6:8 that read, “Act Justly. Love Tenderly. Walk Humbly.”

For many, the Bible verse summarizes Jennings’ impact in the communities he served as he strengthened the faith of his lay members.

Kevin Aaker began deacon studies nine years ago with plans for ordination next year.

He will assist Monsignor Kosse with Mass and other programming for St. Catherine’s 1,000 parishioners and the potential 75 families joining from St. Mary’s.

Jennings planted the dea-



Father Tom Jennings raised 12 Peking ducks in St. Catherine’s Church courtyard in 2010. Each duck was named after one of the 12 apostles. He later gave the live ducks away to parishioners.

con idea in Aaker’s mind through a casual greeting of “Deacon Kevin.”

Jennings often talked about God’s love and salvation through everyday conversations and casual meetings.

“He has planted seeds all over,” Aaker said. “Some have taken, some not, but he keeps on planting.”

Some of those seeds focused specifically on the youth.

Katie Baustian has worked as St. Catherine’s faith formation director for 17 years, 11 of those under Jennings.

One message stands out under his tutelage.

“We don’t have to make faith complicated,” she said.

Jennings often shared his love of nature and farming, weaving messages into his homilies.

“He is so creative in everything he does,” Baustian said. “He takes the littlest thing and makes it a message of faith.”

Jennings returns to hometown, no slowing down

On Oct. 8 Jennings will head east on Interstate 90 to his hometown of Caledonia near the Wisconsin border.

He plans to do some traveling, help his family on the family farm, keep up on his photography hobby and continue serving as a priest for the Winona Diocese.

“I will fill in wherever is needed in the diocese,” he said.

In the local community, Jennings’ presence will be missed as noted by the Cox family.

“He is going to be missed a whole bunch but what he left us is forever,” Mike said. “He sees God in everything.”

Connie Connell is a member of Grace Lutheran Church.

She along with Rhonna Jarchow and Dianne Ossenfort would invite Jennings to lunch. They dubbed themselves, “Three Lutherans and a Priest.”



At left, Sophia Nolz gives Father Tom Jennings a hug, as her mother Angie looks on, in recognition of his impending retirement as priest at St. Catherine’s Church in Luverne during an open house Sunday afternoon at the church. Sophia was baptized by Jennings, one of the 378 baptisms he performed during his 15 years at St. Catherine’s and St. Mary’s in Ellsworth.



In the photo at right, a love of nature and farming often drew Father Tom Jennings to community events and farming workshops like the Discovery Farm program presentation in western Rock County in 2014 when he spoke with soil and water research specialist Tim Radatz with the Minnesota Agricultural Water Resource Center.

The group picnicked at Blue Mounds State Park, where Jennings expressed his appreciation by giving out blessings.

“He even blessed the campers,” Connell said.

Winona Diocese reclusters local parishes

Jennings’ retirement finalizes the Winona Diocese’s recluster process, which replaces the current Luverne-Ellsworth cluster with a new Luverne-Pipestone cluster beginning Oct. 1.

As part of the process, St. Mary’s in Ellsworth will close. The last service will be Sunday, Oct. 7.

A shortage of priests forced diocesan officials to examine current cluster configurations, condensing parishes where possible for existing priests to more easily serve parishioners.

In the Pipestone cluster, St. Joseph’s in Jasper and St. Martin’s in Woodstock have already closed.

St. Leo’s in Pipestone and St. Catherine’s in Luverne remain open in the new Luverne-Pipestone cluster. St. Leo’s Monsignor Gerald Kosse will become the cluster’s new pastor.

Jennings, 74, had an opportunity to stay and serve the new cluster.

“Given my age and energy it would be pretty imprudent for me to stay,” he said.

His last day as a full-time priest is Sunday, Oct. 7.



Father Tom Jennings leads a memorial procession in June 2017 to help those hurting and confused over the suicide of 13-year-old parishioner Daniella Gacke.

Springwater Township Mowing Notice

Landowners are now responsible for mowing shoulders at least three times per summer, depending on rain and growth. It is recommended that shoulders be mowed around the 15th of each month in June, July, August and September. The last mowing should include the shoulder and one swath beyond and to be completed by October 1, 2018. Failure to do so will result in a township official performing the task at \$100 per half mile, per time.

80th Birthday OPEN HOUSE
ARLENE DEBEER
Saturday, September 29 • 2-4pm
Senior Citizen Center
319 E. Lincoln • Luverne, MN
Country Singer Entertainment
Greetings can be sent to:
1418 Evergreen Dr. Apt #1
Luverne, MN 56156

NOTICE ROSE DELL TOWNSHIP
The Township will be spraying the township ditches in the coming weeks. If you do not want your ditches sprayed, you can contact Nutrien Ag Solutions in Pipestone at 507-825-2008.
Rose Dell Township Board

REQUEST FOR BIDS
The Minnesota Veterans Home – Luverne is currently seeking Request for Bids for the following contracted service:
Snow Removal Services 11/1/2018 – 10/31/2020
To receive a Request for Bid for this service contract, please contact:
Anne C. Stegenga-Business Manager
Minnesota Veterans Home – Luverne
1300 North Kniss Avenue
PO Box 539
Luverne, MN 56156
507-283-6207
The deadline for the bid submission is 10:00am Tuesday, October 9, 2018, CDT, USA.

Rock County Rural Water
seasonal flushing will begin
Sept. 14 - Oct. 18
You may experience discolored water. Please call the office if you have any questions
283-8886.

View more photos from this story online! **Star-Herald.com**



Father Tom Jennings requests soil to use in his flowerbeds in Caledonia. “It’s a way that I will carry something of yours with me to Caledonia. I love prairie soil,” he wrote in the church bulletin.

In the thank you notes Jennings handed out at his open houses, he included a final message.

Jennings reflected on his participation in the annual Rock County Tractor Drive. He drove an International tractor in the event. “I saw so much more than I usually do in my car going 55,” he wrote.

“Going slow allows one to see what God sees — all the details of creation, light and shadows, fence posts, vast varieties of wildflowers and grasses, the cuts made by meandering streams, the shapes of clouds. Sounds are more accentuated when moving slowly. I felt so free moving at 12 mph.”

His message: “Go slow in September and enjoy the early days of Autumn. Go slow and see, hear and feel more than ever before.”

BISON MEATLOAF SUPPER
United Methodist Church downtown Luverne
WEDNESDAY, OCTOBER 10
SERVING 5:30-7:30PM
adults: \$8
10 and under: \$5
serving:
Bison meatloaf, cheesy potatoes, vegetable, dinner roll, dessert
BISON provided by
Prairie Heights Bison
TAKE OUT AVAILABLE

Will the band sound as good without my kid in the drum line?

(The photos won't tell)

This year, for the first time in 10 years, I'll attend the Tri-State Band Festival as a mere spectator rather than as a band mom.



ON SECOND THOUGHT

By Lori Sorenson, editor

If not for Facebook posts from other band moms at competitions, I might have forgotten what time of year it is for band families.

I miss the music, but secretly I've enjoyed weekends at home and porch time with neighbors. Life as a former band mom moves at a slower pace.

Saturday will be a different story, though, when the bands are here in Luverne. ... There will be no escaping the feeling that I'm a band mom left behind.

I'll be there — in a Star Herald professional capacity — just as I have for 25 years, but it will be a different experience.

I'll probably enjoy Luverne's performance as a whole, rather than listening intently to the trumpets or the snares and following their moves in the choreography. I'll probably take it all in as a general spectator would — without the band mom critiques in my head.

And at the end of the day, I'll head to the office like I always do after a Tri-State Band Festival in Luverne.

I'll download photos, write their captions and recap the day's experience in print, just like I do every year.

And the Star Herald will share the images and information with readers — who may or may not notice the missing kid in the drum line.

Good luck to all the bands in Luverne on Saturday. See page 1A for information about who's coming and the competition schedule.

Actually, I've been photographing the event for 25 years with my Star Herald pass, but it's been fun to show up with a dual purpose.

I focus my long lens on the Luverne kids rounding the corner on West Main Street, and then switch to the 35 mm as the red and white band approaches my corner of the block.

And then, after I get my images for the paper, I shoot my own kid for a few extra scrapbook images. First it was a trumpet player, and more recently a snare drummer.

But this year I won't be looking for my child's face among the uniformed marching musicians.

Carson announced this summer that he wouldn't be returning to band in order to free up more time for farming with Grandpa.

Of course, Grandpa always arranged farming opportunities around marching band schedules, and he strongly encouraged the drummer to remain with the band. We all did.

But, in the end, we let the kid choose, and he chose farming — which he very much enjoys and plans to pursue as a profession.

And, as the marching band season carries on without him in the drum line, the rest of us go about our lives without marching band competitions in our schedules.

While we're sad he's no longer a Marching Cardinal, we support his decision, and for the most part we've moved on.

Keep eye on our soggy crops

GUEST EDITORIAL

by Elizabeth Stahl, U of M Extension crop specialist

Although conditions were already soggy from rain showers over the past several days, a significant storm front tore across southern Minnesota Thursday, dropping anywhere from 0.5 to over 3 inches of rain across the region. For the month of September to date, many parts of southern Minnesota have received 6 to 9 inches of rain.

Soggy conditions have halted harvest across the region and water is standing once again in areas impacted by wet conditions earlier in the growing season. With corn and soybeans at physiological maturity across the region, keep in mind the following as we wait for field conditions to improve and harvest to proceed.

Keep an eye on corn stalk quality.

Wet soil conditions this spring have set up some fields for potential stalk rot problems. Waterlogged soils can hinder root growth, leading to compromised root systems that are not able to take up enough water and nutrients to adequately support plant growth and carbohydrate production. Ears will continue to take what is needed to fill grain, so when carbohydrate production is below normal, this can result in poor stalk

quality as stalks are depleted of carbohydrates. Soil compaction, severe drought, and pressure from pests like corn rootworm can also inhibit root growth and contribute to stalk quality problems.

Although some of the fungi causing stalk rots are a player in the natural process of recycling nutrients and organic matter back into the soil, decay of stalk pith prior to harvest can increase lodging potential. Harvest delays increase the chance of lodging due to stalk rots, and lodged plants decrease harvest-ability, leading to ears being left in the field.

To check for stalk rot, stalks can be split (check for stalk tissue disintegration), squeezed between your fingers (check if stalks are easily crushed by squeezing the second or third internode on the stalk above the soil surface), or pushed to a 45-degree angle (severely rotted stalks will kink

or lodge). Fields where more than 10 percent of the plants show stalk quality issues should be targeted for harvest as soon as feasible because of increased lodging potential. Fields with heavy infestations of European corn borer should also be targeted for harvest as soon as feasible.

Watch for ear rots and mold.

Corn grain quality can also be a concern when wet conditions delay harvest, particularly where ears may have been submerged for a period of time, such as in low spots of fields. Be on the lookout for ear rots. If grain becomes molded, test for mycotoxins prior to feeding to livestock.

Watch for soybean quality issues.

In soybean fields where pods

Editorial, continued page 8A

Baustian joins Minnesota mayors to support Walz for governor

To the Editor:

The towns and cities of Greater Minnesota are facing critically important issues that will have a direct impact on the future of their citizens. Luverne is no exception.

The next governor will play an important role in the decisions that will determine whether communities such as ours will thrive and prosper.

That's why I have joined with mayors from throughout Minnesota to support Tim Walz for governor.

One of the key issues that communities such as Luverne are facing is a day care crisis. Over the past several years we have lost day care providers to the point that demand for day care spots now far exceeds what's available. That's a significant problem because without adequate day care, it is difficult to attract or retain young families who are the lifeblood of any community.

For Luverne that problem is compounded even further by the fact that Premium Iowa Pork will be bringing 250 quality jobs to our town for which they will need workers, many of whom will want day care.

Infrastructure is another important issue that communities such as ours are up against. Anyone who has driven on Highway 75 can attest to the fact that we need the state to stop its band-aid approach to our crumbling infrastructure.

Quality roads and highways are critical to the ability of Greater Minnesota communities to thrive and prosper. The next governor will help determine if the state of Minnesota will finally get serious about transportation infrastructure needs.

As a member of Congress, Tim Walz worked with mayors and community leaders to come up with common sense strategies to these issues and more. He authored the Small Town and Regional Vitality Investment Act, which would provide funds to enable counties to make competitive grants to local units of government to address major community development and public infrastructure challenges, such as the day care crisis.

Tim has also made childcare a key priority of his campaign agenda, and as governor he will increase the child and dependent care tax

credit, remove red tape that hinders new child care centers from getting started, and create an innovation center to help child care programs operate and succeed.

Being from Greater Minnesota, Tim knows just how important our roads and infrastructure are to communities like Luverne. He has driven up and down them countless times as he has gone from town to town to meet with local citizens and mayors. He is committed to ending the band-aid approach to highways like Highway 75.

Time and again Tim has used his leadership skills to bring together diverse interests such as business leaders, city and county leaders and representatives of non-profits to work on developing ideas to make Minnesota's cities and towns as strong as they can be.

And for Tim, political affiliation has always taken a backseat to doing what's best for towns and cities like Luverne. Those are the characteristics we need in Minnesota's next governor.

Pat Baustian
Mayor of Luverne

This Over 60'er learns about Over 60 group as they learn more about pheasant opener

Today (Thursday) I'll be speaking at the Over 60 noon luncheon at the Presbyterian Church. I have been asked to speak about the upcoming Minnesota Governor's Pheasant Hunting Opener event Oct. 12 and 13.

Actually, for this engagement I am the "B" team because they asked Chamber Executive Jane Lanphere, but as you can imagine, she is really busy with this weekend's Tri-State Band Festival so she called and asked me to fill in for her.

I have to be honest here. When Jane first asked me to speak at the Over 60 noon luncheon, my first thought — albeit for just a second — was, "Gosh, what I am I getting myself into here?" I tried to picture who I would be speaking to. Then the fact that I am in that age group dawned on me.

So I guess you could say I'll be breaking bread with my fellow over 60'ers.

I have made about a dozen of these presentations over the last few



FOR WHAT IT'S WORTH

By Rick Peterson, General Manager
Tollefson Publishing

months and I really enjoy talking about the opener.

We're just three weeks away from the event, and everything is coming together nicely. Sure, there are a number of loose ends to tie up, but the committee has been working on this for over a year. As things go, we might have a hiccup or two along the way, but if we do, we'll handle it.

Tickets for the Polaris Ranger are selling fast so don't wait too long before you buy yours because they may be gone.

Also, tickets for the Governor's

Oct. 12 Banquet are still available, but again don't wait too long before you get yours.

You can get your raffle tickets at the Star Herald office and at the Chamber office as well. The banquet tickets are only available at the Chamber Office.

Now, back to my Presbyterian lunch buddies I want to thank them for inviting me (again, second choice) to share the story about the Pheasant Opener. It's great that they are interested in what is going on in their community.

Grasping at straws and the straw that broke the camel's back

To the Editor:

In doing some research on wind tower projects, we came across some disturbing data and news.

Several studies done by some very prominent and credible sources indicated land and property devaluation with wind tower farms. This is contrary to the claim by the RES tower representatives that your land value will not decrease by putting a wind tower on your property. Research has shown that property owners (house or bare land) can expect a 25- to 40-percent reduction in their land values that are on or next to wind towers.

So, if this is true (and I choose to believe this data over a windmill peddler), Rock County could have a serious problem. A decline in land value means less property tax for schools, roads, and county revenue! By the way, don't we already have towers and has the tax assessor devalued the property adjoining them? If not, several property tax rebates

VOICE OF OUR READERS

are in order.

This should bring up a debate among lawyers. If a person's property is devalued, are they entitled to compensation for that loss? Save room on the court's agenda for these claims. I wonder who's going to pay that one? Would it be the landowner, tower company, or the county who's "grasping for straws"? In their haste to grab the carrot from the tower peddlers, they have overlooked the damage that can and will be done to their county revenue - property tax. Will this be the straw that breaks the camel's back?

Gene "Pucky" Sandager
Hills

E-mail: editor@star-herald.com Web site: star-herald.com
Phone: 507-283-2333 Fax: 507-283-2335

Published Thursdays by Tollefson Enterprises, POSTMASTER:
Send address changes to 117 West Main, P.O. Box 837, Luverne,
MN 56156. Periodicals postage paid at Luverne, Permit #33 and at
additional mailing offices.

General manager: Rick Peterson **News staff:**
Office manager: Deb Lusty **Lori Sorenson, editor**
Circulation manager: Jennifer Kor **Mavis Fodness, reporter**
Advertising: Chantel Connell **John Rittenhouse, sports editor**
Production manager: Abbe Kolar **Esther Frakes, copy editor**
Production: Heather Johnson

Rock County
STAR HERALD
Rock County's newspaper since 1873

(ISSN 0889-888X)
SUBSCRIPTION RATES

\$72 per year in Rock County; \$89 per year all other areas. Single copies \$1.25

Entire contents copyrighted by
Tollefson Publishing Roger Tollefson, publisher

The *Star Herald* encourages letters to the editor expressing the opinions of readers and intends to print all letters. Letters not meeting the guidelines will not be printed. The *Star Herald* will verify the authenticity of all letters. Letters must have the name of the writer, a signature and address.

Unsigned letters will not be considered. The *Star Herald* will edit for grammar, spelling and clarity. Any letters containing offensive language, libelous or slanderous material, or misleading or false information will be rewritten before being published. The *Star Herald* will not publish letters written with the sole intent to advertise or serve as a thank-you. Letters with more than 300 words may be edited. The deadline for letters is Monday 10 a.m. They may be delivered or mailed to the editor, *Rock County Star Herald*, P.O. Box 837, 117 W. Main St., Luverne, Minn. 56156.

ON THE RECORD

Dispatch report

Sept. 14
 •Complainant reported people yelling in the parking lot on Lincoln Street.
 •Complainant reported suspicious activity on Donaldson Street.
 •Complainant reported a motorcyclist texting while driving on I-90.
 •Complainant reported speeding on Spring Street.
 •Erratic driver reported on Highway 75 by Hardwick.
 •Complainant requested extra patrol on Luverne Street.
 •Complainant reported driving complaint on I-90 near Magnolia.
Sept. 15
 •Complainant reported injured deer by the sand pits in Luverne.
 •Stalled vehicle reported on Highway 75.
 •Deputy out with abandoned vehicle.
 •Alarm activation on Lincoln Street.
 •Complainant reported harassing communication via text message.
 •Bike was found on Dodge Street.
 •Rollover accident reported on I-90 westbound near Beaver Creek.
 •Suspicious activity was reported just north of Sanford on Highway 75.
 •Scooter was found on Blue Mound Avenue.
 •Complainant reported a child in the car on Interstate Drive.
 •Complainant requested a transport for a transient on South Kniss Avenue.
 •Complainant reported a

hit and run near Brandon.
Sept. 16
 •Complainant reported loud music on Estey Street.
 •Complainant requested deputies for dispute on Donaldson Street.
 •Complainant reported tree in city park in Hills looks like it's going to fall.
 •Deputy conducted a traffic stop from citizen's complaint near Hills.
 •Theft reported on Cedar Street.
Sept. 17
 •Complainant reported wood scattered on the roadway by Hardwick.
 •Complainant reported subject arrested on Rock County warrant.
 •Deputy spoke to complainant regarding suspicious activity.
 •Complainant reported parking issues on Fairview Drive.
 •Complainant requested background check for housing.
 •Suspicious activity reported on Interstate Drive.
 •Complainant has questions regarding vehicle registration.
 •Hit and run accident reported on South Kniss Avenue.
 •Theft reported on Josephine Avenue in Hills.
 •Luverne Fire Department reported training.
 •Complainant reported cow in roadway on County Road 4 near Beaver Creek.
 •Assist another department with an attempt to locate near Beaver Creek.
 •Complainant on South Kniss Avenue reported he needs help changing a tire.

Sept. 18
 •Complainant reported a power outage on 90th Avenue.
 •Deputy out with stalled vehicle on Dodge Street.
 •Complainant reported stop sign on 5th Street and Central Avenue in Hills needs to be replaced.
 •Complainant reported unsatisfactory roof repair in Hills.
 •Complainant reported a student that won't go to school.
 •Complainant reported a stalled vehicle at the Kniss Avenue Gabrielson Road intersection. Driver is walking for help.
 •Deputy reported out with a stalled motorist on County Road 17 and 71st Street.
 •Complainant reported a tall man standing on Kniss Avenue and Main Street intersection looking around. He has been there for a long time.
 •Complainant on South Kniss Avenue reported a counterfeit bill.
 •Complainant reported an accident on Warren Street.
 •Complainant on East Lincoln Street requested building information.
 •Complainant requested to speak to a deputy.
 •Complainant requested a welfare check.
Sept. 19
 •Complainant reported a black cow in the ditch off Highway 75 by Hardwick.
 •Complainant reported a fuel spill on 141st Street.
 •Deputy conducted a follow-up.
 •Complainant on East Warren Street reported a burglary in progress.

•Complainant reported parking lot fender bender on East Warren Street.
 •Complainant requested lights for a pullout on I-90.
Sept. 20
 •Deputies conducted a search warrant on Warren Street.
 •Pedestrian signal is not working on Dodge Street.
 •Complainant reported flood warning.
 •Complainant reported lift station pumping in Steen due to rain.
 •Complainant reported lift station pumping in Jasper due to rain.
 •Complainant reported a motor vehicle accident on Dodge Street.
 •Complainant on Roundwind Road requested assistance.
 •Complainant reported a parking complaint on Spring Street.
 •Severe thunderstorm warning was issued for Rock County.
 •Complainant reported a tornado watch.
 •Complainant reported County Road 2 in Hardwick closed due to flooding.
 •Complainant reported 180th closed due to flooding.
 •Complainant reported 211th Street closed due to flooding.
 In addition officers responded to 1 transport, 6 escorts, 21 ambulance runs, 10 animal complaints, 2 burn permits, 6 drug court tests, 10 permits to purchase/carry, 26 traffic stops, 9 abandon 911 calls, 2 tests, 3 fingerprint requests and 3 paper services.



Lori Sorenson photo/0927 china inn demolition

Demolition began Monday and Tuesday with the lean-to on the east side of the old China Inn going first.

China Inn demolition/from 1A

block that used to house Sharkee's along Highway 75 and Mert's Repair to the east along Hatting Street.
 The overall plan is to redevelop the entire 6-acre area over the next five years into a commercial and housing neighborhood known as the Towne Square Addition.
 Property will be sold off as it is developed into housing and commercial

property in the mixed-use development.
 Because of the more immediate need for housing, Jahnke and investors will first build a 27-unit, one- and two-bedroom apartment building.
 Groundbreaking for that part of the project is anticipated to begin this fall.
 Retail tenants for the development will be announced at a later date.

School bid process/from 1A

additions could be added back into the project after the main bids are received.
 The change in bid strategy came as a result of board members rejecting all construction bids at their Aug. 23 meeting. The bids exceeded cost estimates by more than \$3 million.
 An advantage to redoing the bid process places the construction start date to the spring 2019, Wetzel said.
 Another advantage is the 17-week summer construction period created by adjusting the school for the next two years.

Under the previous bid strategy, construction was scheduled to already be underway.
 The new bid strategy is not as rushed.
 "We are not going to bid until you're ready," Wetzel said.
 The recommended timeline has the final building design completed in early November.
 Board members scheduled the next project meeting for 6 p.m. Thursday, Sept. 27, in the middle-high school media center. The regular board meeting begins at 7 p.m.



Dining & Entertainment

40th Anniversary
Erwin's Service & Towing
 Coffee, juice & bars served
OPEN HOUSE
 SATURDAY, OCTOBER 6 • 11AM-1PM
 Erwin's Service & Towing • 210 W 1st St, Hills, MN (507) 962-3256

67th ANNUAL ROCK COUNTY DFL
Chuckwagon Feed

 Tuesday, October 2
 Serving from 5:30 p.m. to 7:30 p.m.
 ☆ Through the regular buffet ☆
 Luverne Pizza Ranch
 (Paid for by Rock County DFL Committee. Allison Benjamin, Treasurer, Luverne)

Summer is almost over
 \$1 OFF 12 pack bottles
 Luverne Blue Mound Liquor
 Gift Cards available
 Follow us on Twitter @bluemoundliquor & Instagram luvernebluemoundliquor
 grab the last of summer shandy
 Luverne Blue Mound Liquor
 319 W Main St, Luverne 507-449-5052

Luverne Special Olympics
BENEFIT & AUCTION
 October 6 • 4-8pm
 Live Auction begins 7pm
 Silent Auction ends 7pm
 LUVERNE ELEMENTARY COMMONS
 West Dodge St., Luverne
 serving pulled pork & shredded chicken sandwiches
 meal includes two sandwiches, potato salad, chips, beans & pop
 COST: \$10 under 8 \$5
 Venue sponsored by Luverne Public School

2ND ANNUAL Fall Festival Street Dance
 SATURDAY 9 PM TO SEPT. 29 1 AM
 Fire pits will be available
 Drink Specials
 DJ STAVI
 Where Good Friends & Willie's Cold Beer Meet
 HILLS, MN

YOU'RE INVITED
 to celebrate the
Luverne Loop & Roll On Luverne RIBBON CUTTING and Community Bike Ride & Walk
Sunday, September 30
 1pm - Roll on Luverne Ribbon Cutting At GrandStay Hotel & Suites
 Roll on Luverne is a FREE sponsored bike loan program with 8 Adult and 4 Youth Bikes Available.
 1:30pm - Luverne Loop Phase 2 Ribbon Cutting at Hwy 75 & Gabrielson Dr.
 1:45-4pm - Community Bike Ride & Walk Friends and family bring your bikes to ride Luverne Loop. Begins at Hwy 75 & Gabrielson Dr. after the Ribbon Cutting.
 2-4pm - FREE Golf Cart Rides on the Loop A great way to see the trail if you can't ride or walk!
 2:30-4pm - FREE Root Beer Floats Celebrate the trail at Exchange State Bank.
 FREE Bike Reflector Lights "While They Last" Courtesy of SHIP
 Luverne Loop hike • bike • explore
 Roll on Luverne
 Blue Mounds Trail hike • bike • explore

Blue Mound Figure Skaters, Inc.
SKATING LESSONS

Classes Begin October 15th
 For More Info: Cathy 712-540-9021
 Katie 507-227-1999
 Offering Classes For...
 Learn To Skate
 Hockey Skating Fundamentals
 Figure Skating
 FUN All Ages! Great Exercise!
 Online Registration Opens September 5th
 http://www.bluemoundfigureskating.com
JOIN US FOR OUR Open House
MONDAY, OCTOBER 1 • 5:30-7:30PM
 Blue Mound Ice Arena

SATURDAY, OCTOBER 13TH
 WORTHINGTON MEMORIAL AUDITORIUM PERFORMING ARTS CENTER
MATT VEE FAMILY & FRIENDS CELEBRATE THE MUSIC OF NEIL DIAMOND
 I am... He said
TICKETS & INFO
 WWW.FRIENDSOFTHEAUDITORIUM.COM
 "The best produced, best performed and best received show we have ever had... It was phenomenal!"
 - Rich Schweigel, Chairman, Joetown Rocks / 20,000 attendance
 "An absolutely killer band... Broke records for fastest selling show at Pioneer Place - and for good reason - it's FANTASTIC!"
 - Dan Barth, Pioneer Place, St. Cloud, MN
 "The band all engage the audiences who respond with energy and rave reviews. The show always sells out fast!"
 - Ron Hermes, TWC Exec. Dir. Alexandria, MN
DON'T MISS THIS SHOW!!
 Mike Woll
 THIS EVENT SPONSORED BY MIKE WOLL INVESTMENT OFFICE

Dooyema, Ferguson receive LHS Homecoming crowns

Photos and story by Mavis Fodness

Luverne High School seniors Jed Dooyema and Julia Ferguson were crowned king and queen Monday night during the 2018 Homecoming Coronation ceremony in the Luverne Elementary School.

Luverne faculty members Mike Wenninger and Kari Lais placed the crowns on a disbelieving Dooyema and a surprised Ferguson to reveal who was elected by their peers to reign over the week's Homecoming activities.

The week culminates with the Homecoming football game against St. James. The game begins at 7 p.m. Friday.

Eight students were nominated as Homecoming royalty.

Besides Ferguson, queen candidates also included Jadynd Anderson, Mackenzie Petersen and Greta Ahrendt.

King candidates included Dooyema, Nathan Overgaard, Derek Lundgren and Joel Ortiz.

Seniors Riley Severtson and Jenna Zewiske

were mistresses of ceremonies at the coronation ceremony that included updates from fall activity representatives.

Serving as pages at the Homecoming ceremonies were Amelia Ganun, daughter of Joshua and Danielle Ganun and Oliver Carbonneau, son of Michael and Molly Carbonneau.

Each of the classes in grades 9-11 also elected class representatives. Freshman royalty were Hannah Baker and Jack Schlosser, sophomores elected Ainslie Robinson and Seno Chan-

thalangsy, and the junior class chose Tacey Baustian and Andrew Wagner as representatives.

Foreign exchange students were also invited to participate in the Homecoming coronation. Giulia Cilleni Nepis from Italy was escorted by Max Skattum, Ali Elsabagh from Egypt was accompanied by Lillian Donahue and Suwapat Kongchan from Thailand was escorted by Justyce Ripka.

Program attendants were Grace Steensma and Carter Stemper.



Luverne High School seniors Jed Dooyema (left) and Julia Ferguson were crowned Monday night during the 2018 Homecoming Coronation ceremonies in the Luverne Elementary gymnasium. The students were elected by the ninth- through twelfth-grade student body to preside over the week's activities.



Left: A disbelieving Jed Dooyema reacts to the crown placed on his head by Luverne faculty member Mike Wenninger. Right: Luverne faculty member Kari Lais places the crown on a surprised Julia Ferguson.



The formal portrait of the LHS 2018 Homecoming Royalty Court was taken by Michele Kruse of Portraits by Michele of Adrian. Pictured in front from left are Oliver Carbonneau and Amelia Ganun, (first row) Hannah Baker, Ainslie Robinson, Tacey Baustian, King Jed Dooyema, Queen Julia Ferguson, Greta Ahrendt, Jadynd Anderson, Mackenzie Petersen, (second row standing) Jack Schlosser, Seno Chanthalangsy, Andrew Wagner, Lillian Donahue, Ali Elsabagh, Max Skattum, Giulia Cilleni Nepis, Carter Stemper, Suwapat Kongchan, Grace Steensma, Justyce Ripka, Nathan Overgaard, Derek Lundgren and Joel Ortiz.



Amelia Ganun (left) and Oliver Carbonneau served as pages.

1952: Old Man Winter makes blustery appearance; schools closed due to storm

The following appeared in the Rock County Star Herald on November 27, 1952.

Winter Makes Blustery Debut Here This Week

Storm Results In Closing Of Many Schools

Old Man Winter furiously blustered into Rock County Tuesday and Wednesday, serving notice on Indian Summer that her time was up, and that she'd better "get out while the getting was good."

Starting with a few flakes of snow Tuesday morning, the weather changed gradually with more and more snow falling as the day progressed. By early evening, a junior size blizzard was raging, with a



BITS BY BETTY

By Betty Mann, president Rock County Historical Society

cold northwest wind reaching 35-to-50 miles an hour proportions. The storm had not abated by Wednesday morning, but the forecast was for subsiding winds late yesterday.

Approximately four inches of snow fell here, it was believed, but there was no way to measure the depth on the level because the wind was whipping it into drifts.

Roads were not blocked,

but they were slippery in many places. Traffic was reduced to a minimum Tuesday night and Wednesday forenoon because of the poor visibility.

Temperature Drops To 16

It wasn't extremely cold - the low recorded yesterday morning being 16 degrees above zero. Precipitation this week up to Wednesday morning totaled .11 of an inch of

moisture, according to the rain gauge at the municipal power plant.

The star route mail truck which operates between Worthington and Sioux Falls, due here at 5 a.m. daily, failed to arrive on time and rural carriers went out on their route without the mail from the east. As a matter of fact, it didn't arrive until mid afternoon.

There was the 9:25 p.m. bus here Tuesday from Worthington; no 9:20 a.m. Wednesday from Sioux Falls and no 11:15 a.m. bus Wednesday from Willmar.

Yesterday's "noon" train was about an hour late. Trains on the Omaha main line through Worthington were running one to three

hours late, A.P. Wagner, local agent, said.

Some Schools Closed

Schools were closed at Beaver Creek, Hills, Magnolia, Jasper, Steen, Garretson and Edgerton in this area. In Luverne, there was school in the kindergarten department and the first three grades.

Three long distance circuits were reported to be out of order - two to Pipestone and one to Sioux Falls. Local service was not impaired, but a heavy influx of calls Tuesday and Wednesday resulted in occasional slight delays in placing local calls.

Decorations Damaged

Only "casualty" of the storm noted up to yesterday was the big Santa Claus street decoration

which was suspended between the Palace theatre and Schlader's Jewelry. Whipped by the storm, northwest wind, the stress proved to be too great for the metal pension brackets, which eventually twisted off, plunging the big plastic figure to the street below. Faces of both sides were damaged to the extent that they had to be replaced. Cost of the new figure is \$67.50. The decoration was put up Tuesday morning.

Donations to the Rock County Historical Society can be sent to the Rock County Historical Society, 312 E. Main Street, Luverne, MN 56156.

Mann welcomes correspondence sent to manmade@iu.net.



Submitted photo

Adrian High School prepares for 2018 Homecoming

Adrian High School revealed its Homecoming king and queen candidates Monday during a pinning ceremony as a signal to the upcoming 2018 Homecoming Week Oct. 1-5. Candidates include (front row from left) Brisa Zebe, Miah Kunkel, Avery Balster, Halle Heitkamp, McKinley Nelson, (back) Braxon Vortherms, Skylar Dingmann, Beau Loosbrook, Christian Weidert and Dakota John. Coronation takes place 7 p.m., Monday, Oct. 1, in the Adrian Middle School gym. The Homecoming football game is at 7 p.m. Friday, Oct. 5, against Murray County Central.

CELEBRATIONS

Open houses

Arlene De Beer will celebrate her 80th birthday with an open house from 2-4 p.m. Saturday, Sept. 29, at the Senior Citizens Center, 319 E. Lincoln St., Luverne. Greetings may be sent to her at 1418 Evergreen Drive, Apt. 1; Luverne, MN 56156.

SENIOR MENU

Monday, Oct. 1:

Creamy vegetable soup, turkey sandwich, peaches, crackers, cookie.

Tuesday, Oct. 2: Cubed roast beef in gravy, mashed potatoes, peas, dinner roll, pudding dessert.

Program: Half-Price Day sponsored by Print Express.

Wednesday, Oct. 3:

Tater-tot hotdish, carrots, bread, fruit crisp.

Thursday, Oct. 4:

Chicken lasagna, fruit cocktail, broccoli raisin salad, garlic bread, bar.

Program: Half-Price Day.

Friday, Oct. 5:

Meatballs in gravy, mashed potatoes, stewed tomatoes, bread, ice cream.

Program: Half-Price Day.

Senior Dining offers well-balanced and affordable meals in a community atmosphere.

Gift certificates are available at the meal site or online at www.lssmn.org/nutrition.

Call Lauree Teunissen at 283-9846 to make dining reservations or for home-delivered meals.



KNOW IT AND GROW IT

By George Bonnema, Luverne Horticulturalist

Cooler nights, shorter days spell a-u-t-u-m-n

Cooler nights and shorter days spell autumn and the colors of flowers still trying their best to put on a show are amazing. The abundance of monarch butterflies that have been feeding on the zinnias and asters in my garden and at the Sanford Healing Garden have been a visual treat for all of us to enjoy.

So as we transition from summer to fall, I'll remind you that this is the time to plant spring-blooming bulbs like tulips, daffodils, etc. To get the flowers then, you have to plant the bulbs now and then wait ... for spring to happen ... and it will!

Drumstick alliums are an unfamiliar bulb to plant now. They take very little space, they bloom in early June and the violet-colored flowers last for a long time in the garden as well as being excellent cut flowers.

Also, if you have had houseplants vacationing outdoors for the summer, you want to start acclimating them to coming back indoors. A day or two indoors and then a day or two outdoors for a couple of weeks gives the plants a chance to adjust to the lower light but warmer temperature it will be living in for the next several months.

This is NOT the time to give these plants a severe "haircut." Shorter days are inviting the plants into a degree of dormancy and they are ready for a rest. Cutting them back in a sense forces them back into growth but with limited energy from the lower light and shorter days, the new growth will be feeble at best. Wait with the pruning until early March and the results will be much more acceptable.

I also recommend a thorough spray with an insecticide to prevent any hitchhikers from coming indoors with the plants. Pest populations explode indoors because of the lack of predators, the warmer temperature, and no weather issues like rain or wind to remove them. Once you notice an infestation, there often are so many bugs that it will be difficult to eradicate them. In addition to the spray, an application of systemic insecticide to the soil will give a great residual backup of defense.

If you have enjoyed the display of succulents for the summer, they are great candidates for using as houseplants indoors. They have to be in a location where they receive very bright sunlight and water sparingly on a biweekly basis. Don't be expecting a lot of growth during our short and often cloudy winter days ... just enjoy their being what they are.

Bonnema is a gardening enthusiast and former greenhouse owner. He can be reached at flowersgb@iw.net.



Glenda McGaffee photos/0927 HBC homecoming court

Luke LaRock and Sidney Fick crowned 2018 Hills-Beaver Creek Homecoming king and queen

The Hills-Beaver Creek 2018 Homecoming court includes front (from left) mistress of ceremonies Josie Scholten, queen candidates Grace Bundesen, Madison Spath and Bailey Swan, king candidates Garrett Raymon, Bailey Susie and Hunter Bork, and master of ceremonies Wyatt Westrum, (back) freshman attendant Kenadie Fick, sophomore attendant Adrienne Boltjes, junior attendant Jo-Hannah Ladd, queen Sidney Fick, king Luke LaRock, junior attendant Kadin Doerr, sophomore attendant Seth Klarenbeek and freshman attendant Brayden Mirth.

At right, H-BC 2017 Homecoming queen and king Megan Gehrke and Trenton Bass wait for the announcement of the 2018 homecoming royalty.



REMEMBER WHEN

10 years ago (2008)

•Luverne's Rich Dreckman has offered to purchase the former Midwest Fire building from the Luverne Economic Development Authority.

Dreckman's bid of \$26,000 was the best offer considered Tuesday morning during a special LEDA meeting when bids were reviewed.

"It will be good to get the building back on the tax rolls," said LEDA director Jill Wolf.

The 14,660-square-foot building at 308 East Maple St. includes separate office and shop spaces and two paint booths.

Dreckman plans to use the space to house equipment for his Tree Tech business, which is tree trimming and stump removal.

25 years ago (1993)

•Demolition crews have begun tearing down the city-owned Connell building located on the corner of Lincoln and McKenzie streets in Luverne.

Future plans for the site include construction of a professional office building and a parking lot for the building. Luverne attorneys Don Klosterbuer and Terry Vajgrt plan to buy the land and build there if construction costs come in as planned.

They are expected to make a decision by Oct. 1.

The Luverne City Council designated the area as a Tax Increment Financing district at its Sept. 13 meeting. It awarded the demolition bid to Henning

Construction, Adrian, for \$65,000.

50 years ago (1968)

•Two employees of the Tri-State Mutual Insurance Co., Elmer Piepgras and Jack Hensel, escaped with minor injuries after an airplane crash Tuesday morning about 10:15 at Mabel.

Both Piepgras and Hensel were examined at a doctor's office in Mabel and released. Piepgras was admitted to the Luverne Community Hospital Tuesday afternoon for burns on his hands and lacerations on his face.

Hensel, the pilot of the plane, and Piepgras were flying to Mabel on company business. According to Hensel, he was landing the plane and couldn't get it stopped while it was on the ground. He attempted to get the plane back into the air and hit a fence at the end of the runway.

Hensel managed to keep the plane upright but the plane went out of control and smashed into a grove of trees. The plane caught fire and was destroyed.

75 years ago (1943)

•One of Luverne's pioneer business firms, with a 60-year business history, will close its doors about October 1 — a wartime casualty.

Mrs. David Stephen, who has operated the Mrs. David Stephen Meat Market, announced Tuesday that she was quitting business because it was impossible

to secure enough meat to stay in business.

Mrs. Stephen has been in the business herself for 43 years.

One of the last "straws" to prompt her decision was when a delivery firm arrived and had only a small portion of the meat necessary to meet needs of her customers.

"We can't get the merchandise to sell so we will just have to quit," she said, "I will try to rent the building."

100 years ago (1918)

•Five stacks of oats on Mrs. Violet M. Barck's farm on section 22, Mound township, which is operated by Carl Anderson, were completely destroyed by fire Tuesday afternoon shortly after the dinner hour. The loss is estimated at 1,500 bushels, fully covered by insurance in the Rose Dell Mutual Fire Insurance Company.

The destroyed grain was part of a setting of eleven stacks upon which a crew of threshers were about to commence work when the grain was almost enveloped in flames, and it was only by much hard work on the part of the threshing crew, Mr. Anderson and neighboring farmers that the fire was kept from spreading to the other grain stacks.

The grain had been stacked in the barn yard about four rods from one of the barns, and owing to the danger of the fire spreading to the buildings, an appeal for aid was sent to Luverne. Members of the fire department with the Luverne fire truck and people responded, but the fire was under control when they reached the farm.

COMMUNITY EDUCATION

Contact Luverne Community Education at C.Arends@isd2184.net or 507-283-4724.

Early Childhood Family Education (ECFE) classes have openings Tuesday evening for parents with children ages 0-5 years, Thursday morning for parents with children ages 1-2 years and Mondays at 8:30 a.m. for infants birth to walking. Classes are held in the preschool rooms, giving children an opportunity for activities and parents time to explore topics relevant to child development for all ages. Call 283-4724 for more details.

Register by **Sept. 27 for Fall Fun Time** Oct. 4, an evening of activities for children ages 0-5 years with their parents at Harmony Gardens. Each child will receive a pumpkin. Fee is \$5/child. **A is for Apple** Kids in

the Kitchen class for students grades K-6 will be Sept. 27. Fee is \$18.

Students ages kindergarten and older have an opportunity to explore and improve running ability at a cross-country race during **Runnin' for Fun** on Sept. 27. Fee is \$5.

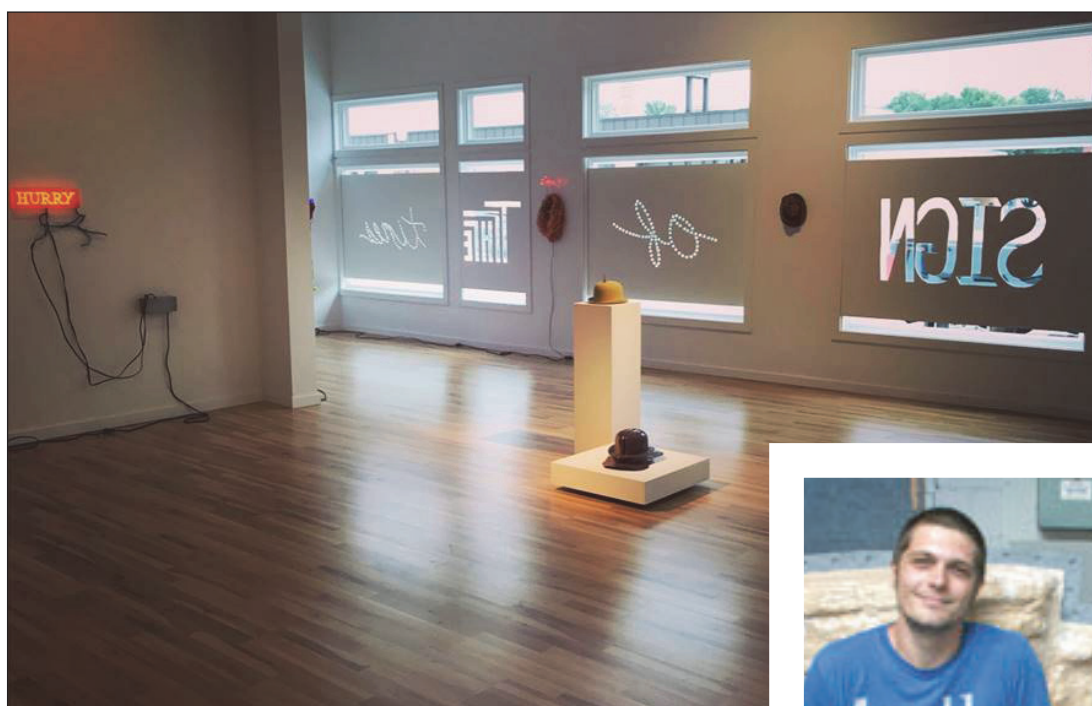
Using an old T-shirt that you bring to class, create a **No Sew Tote Bag** on Oct. 2. Fee is \$11.

The Luverne Community Education brochure is online at the Luverne School website.

Interested in Advertising in the Classifieds?

IT'S EASY!

Call 283-2333



Submitted photos

'Sign of the Times' open through Nov. 2

Coffey Contemporary Arts is currently hosting the work of Boston sculptor and fabricator Zach Gabbard in its Lord Grizzly Gallery in Luverne. Gabbard's current projects merge illuminated poetry with wordless sculptural abstracts. "I want to make work that lovingly defies rapid apprehension on any level and yet is somehow also welcoming," Gabbard said. The exhibit is open through Nov. 2.



Justin Kemp
Owner

- *Commercial
- *Business
- *Residential
- *Ag *Industrial

PO Box 803 • Luverne, MN 56156 • 507-920-6961



NOTICE ROSE DELL TOWNSHIP MOWING NOTICE

To all land owners and renters, please have all township road shoulders mowed by October 10, 2018.

If not done the township may hire it done and it will be charged to the landowners taxes.

Rose Dell Township Board

MOWING NOTICE: BEAVER CREEK TOWNSHIP

Notice is hereby given to all landowners or tenants to mow at least one swath along township road ditches, by September 15, 2018 and then again by October 15, 2018. If not done, the township may hire it done and have it assessed against the landowners taxes.

Beaver Creek Township Board

Community meeting to plan Internet projects Oct. 8

Rock County and the Rock County Community Library will host a Blandin Broadband Community Vision meeting to set priorities and develop projects to improve Internet access and use in Rock County.

In June Rock County was named one of four Blandin Broadband Communities, a program that provides planning, technical and financial support to communities that demonstrate the determination to bring the benefits of a broadband-enabled economy to their communities.

These four communities have access to a \$75,000 grant for projects that meet Blandin Foundation standards.

Community members are encouraged to attend a meeting at 1 p.m. Monday, Oct. 8,

at Grand Prairie Events to identify local strengths and gaps, brainstorm project ideas and prioritize potential projects.

Once projects emerge, local non-profits, schools and governments will have the opportunity to apply for up to \$75,000 in total grant funding over two years.

"We have great broadband in Rock County, and our goal is to utilize it to its full potential," said Rock County Library Director Calla Jarvie.

"In working with the Blandin Foundation and the community, our goal is to provide education and opportunities across sectors."

RSVP to Jarvie at cjarvie@plumcreeklibrary.net or 507.449.5040 by Oct. 3.



Public invited to ribbon-cutting Sept. 30 to celebrate Phase 2 of the Loop and Roll On Luverne bike program

Rick Peterson is pictured on one of 12 bicycles available to borrow through the Roll On Luverne bike borrowing system located at GrandStay Hotel and Suites property. The public is invited to a Roll On Luverne ribbon-cutting at 1 p.m. Sunday, Sept. 30, at GrandStay Hotel followed by a Luverne Loop Phase 2 ribbon-cutting at 1:30 p.m. at Highway 75 and Gabrielson Drive. Then everyone is invited to bike or walk the new trail. Free golf cart rides will be given from 2-4 p.m., and free root beer floats will be served at Exchange State Bank from 2:30-4 p.m. Bikes are available for 24 hours at a time; users leave a credit card or driver's license at the desk until the bike is returned. There is no charge to use the bikes. A grant through the Minnesota State Health Improvement Program (SHIP) covered the purchase of the bikes, and 12 local businesses, organizations and individuals agreed to donate \$150 per year to cover maintenance costs. The program has an agreement with Ken Petersen of Ken's Bike Shop in Luverne to keep the bikes in operating condition.

Extension advice for wet fields/from 4A

were submerged in standing water for a significant time period, seed quality is a concern.

Wet conditions combined with warm temperatures increase the risk of damage from fungal pathogens.

If areas are submerged for several days, stems may weaken or rot, increasing the chance of lodging and harvest losses.

Prior injury from hail or stem diseases may predispose plants to further injury.

Pod shatter prior to harvest is also of concern, especially if soybeans go through several cycles of drying and re-wetting.

Consider segregating grain with quality issues.

If soybeans were submerged in areas of the field, consider segregating these potentially lower quality soybeans.

Segregation may be particularly beneficial if soybeans were intended to be sold to a specialty market where premiums are based on soybean quality.

Consider segregating moldy corn as well.

Prioritize field operations.

Delayed harvest will also influence the ability to conduct fall tillage operations and fertilizer applications.

The main focus is, of course, to get crops out of the field.

As field conditions improve and harvest resumes, keep an eye on crop status when deciding which fields to harvest next to help maximize crop quality and yield.

Lizabeth Stahl can be reached at the University of Minnesota Extension, 507-372-3900 ext. 3912, or email her at stah0012@umn.edu.

GOULD BROTHERS EXHIBITION SHOOTING
LIVE SHOOTING ENTERTAINMENT

FREE

Saturday - October 13 - 2 pm
ROCK COUNTY SPORTSMAN'S CLUB
1477 111th Street - Luverne MN 56156

bleacher seating for 900

Sponsors:
Luverne Area Community Foundation
SIOUX VALLEY ENERGY

Governor's Opener Bird Dog Parade @ 1:30 pm
Luverne Area Chamber & CVB
For information: 507.283.4061
www.LuverneChamber.com

Interested in Advertising in the Classifieds?

IT'S EASY!

Call **283-2333** or Stop by our offices at **117 W. Main in Luverne**

24/7 ... Rain or Shine ...

Your local, independent agent will be there.

Working for you - meeting your needs.

Buffalo Ridge INSURANCE
South Hwy. 75, Luverne, MN • Ph. 507-283-2381

Auto-Owners INSURANCE
LIFE • HOME • CAR • BUSINESS

Marilyn Bloemendal, CPCU
Cory Bloemendal, CIC
Steve Stensland, CIC
Sponsor Riphagen

RANGER RAFFLE

Only 600 tickets will be sold

\$50 per ticket

2018 POLARIS XP1000 RANGER RAFFLE
Drawing to be held October 12

Need not be present to win
Winner responsible for any applicable fees or taxes
Must be 18 to win - 18.013
Permit #K-67001-18.013

limited number of tickets remain

Drawing will be held Friday, October 12 at the Governor's Pheasant Opener Community Banquet
need not be present to win

ON SALE NOW!

ticket sale proceeds help offset the cost of hosting the Minnesota Governor's Pheasant Opener

TICKETS AVAILABLE AT THE STAR HERALD, 117 W MAIN AND THE LUVERNE AREA CHAMBER, 213 E LUVERNE

Household Hazardous Waste Collections
Thursday, October 4, 2018 Noon to 6 p.m.
Rock County Transfer Station (old Landfill)

Acceptable Waste: paint, aerosol cans, hazardous household, automotive, lawn & garden, or home improvement products which you would like to dispose of properly. Any questions: Call Rock County Land Management Office at 507-283-8862.

Unusable and Unwanted Agriculture Pesticide Collection
THURSDAY, October 4, 2018 noon to 6 p.m. Rock County Transfer Station (old Landfill)

This is a great opportunity for farmers, gardeners, and all other pesticide users to safely dispose of unwanted and unusable pesticides. For most participants up to 300 lbs. of pesticides will be accepted without charge. We have a limited amount we can accept.
Call 283-8862 to pre-register.

Coming to Luverne

CHURCH OF CASH
World Class Johnny Cash Tribute

The weekend of the Minnesota Governor's Pheasant Opener

Two Free Shows
Friday, October 12 8pm - Midnight
Saturday, October 13 3-6pm

TAKE 16 BREWING
509 E Main St Luverne, MN

Sponsored by
LUVERNE AREA COMMUNITY FOUNDATION
LUVERNE ROTARY CLUB

BACK BY POPULAR DEMAND

The Luverne Area Community Foundation presents

The Fabulous Armadillos & Collective Unconscious

TRIBUTE TO THE EAGLES
LIVE IN CONCERT

TAKIN' IT TO THE LIMIT

Photo Credit: Donald Jay Olson

TICKETS ON SALE MONDAY, SEPT. 24

Historic Palace Theatre
Saturday, October 27 | 8 p.m.
\$35 Lower Level (reserved) | \$20 Balcony (general admission)
Available at the Palace Box Office (102 E Main, Luverne | 283-4339) or online at <http://www.palacetheatre.us/>

Late touchdowns clinch first win for Adrian

By John Rittenhouse

A second half rally gave the Adrian football team its first victory of the season Friday in Adrian.

After taking a 7-0 lead over Sleepy Eye in the game's first quarter, the Dragons fell behind 8-7 at the intermission and trailed 14-7 after three quarters of play.

The fourth quarter, however, belonged to the hosts.

Dakota John ran for a pair of touchdowns and Brandon Schnoor added a pair of two-point conversions to give the Dragons a 23-14 win.

"It was nice to get a win when you have the opportunity," said AHS coach Randy Schettler, who thought his team could have pulled out some victories earlier this season.

"I think the hard work the kids have been putting in is starting to pay off."

The Dragons definitely outworked the Indians in the fourth quarter, when they scored 16 unanswered points to snap a three-game losing skid.

AHS faced an uphill battle heading into the final period as Sleepy Eye expanded a one-point halftime lead into a 14-7 cushion in the third quarter.

The Dragons were on the move offensively in the third period, but in the ninth play of their opening possession Sleepy Eye's Jacob Berg intercepted a pass on the 50-yard line.

Berg came up big again three plays later when he raced 54 yards for a touchdown at the



John Rittenhouse photo/0927 afb 1

Adrian fullback Brandon Schnoor races to the end zone to register a first-quarter touchdown during Friday's home win over Sleepy Eye. AHS scored 16 points in the fourth quarter to pick up its first victory.

3:20 mark of the third quarter.

AHS made a bid to score early in the fourth quarter with an 11-play drive, but the possession stalled on downs at the Indians' 19.

The Dragons regained pos-

session of the ball two plays later when Schnoor ripped the ball out of the hands of a Sleepy Eye running back and carried it to the Indians' 40 at the 7:06 mark of the fourth quarter.

John scored on a 40-yard

run during the next play and Schnoor toted in the conversion to give the Dragons a 15-14 edge.

"Schnoor's takeaway on defense played a big part in the game," Schettler said.

"That seemed to turn things around for us. Then John started to run really hard with the help of our offensive line, which did a nice job of giving us holes to run through during the game."

Sleepy Eye did pick up one first down during its next offensive possession before losing the ball on downs on the Indians' 34.

The Dragons put the game away when John scored on an eight-yard run and Schnoor carried in the conversion to give AHS a nine-point lead with 1:46 left to play.

Adrian came up with the first big play of the first half when Dragon defender Skyler Dingmann recovered a fumble on the AHS 45 to end Sleepy Eye's initial offensive possession.

The AHS offense proceeded to move the ball inside the Indians' 10-yard line in eight plays before Schnoor capped a nine-play series with a five-yard touchdown run.

Dominic Canales added the extra point following the touchdown to give AHS a 7-0 cushion with 5:41 remaining in the opening quarter.

AHS moved the ball deep into Sleepy Eye territory with its second possession, which came to an end when Juan Cortez intercepted a pass on the Indians' 11-yard line.

Landon Strong scored on a 60-yard run six plays later before carrying in the two-point conversion that capped the scoring in the first half with 6:00 remaining in the second quarter.

The 1-3 Dragons play at New Ulm Cathedral Friday.

Team statistics
Adrian: 208 rushing yards, 84 passing

Late/continued on page 3B



John Rittenhouse photo/0927 tennis 12

Luverne's Elise Jarchow gains position to strike a backhand during a home match against St. James Sept. 18. The Saints saddled the Cardinals with a 7-0 setback.

Tennis team takes league loss from St. James Sept. 18

By John Rittenhouse

The Luverne tennis team dropped its second consecutive Big South Conference match when it came up on the short end of a 7-0 decision against St. James Sept. 18 in Luverne.

The Cardinals put up a good fight against the Saints, who are unbeaten in conference competition.

Luverne players took two of the seven matches to three sets without being able to record a win against a solid Saints team. "The match was closer than the final score indicates," said Cardinal coach Greg Antoine. "We were competitive against a team that is ranked sixth in the state."

Luverne's top efforts came at third singles and second doubles.

Ainslie Robinson posted a 6-3 win in the first set against Ellie Becker before falling 6-1



John Rittenhouse photo/0927 tennis 5
Luverne's Rozilyn Oye leaves the court to return a shot during a home loss to the St. James Saints Sept. 28.

and 12-10 in the second and third sets in singles.

Brynn Thier and Mela Jarchow lost the first set at No. 2

doubles by a 7-5 margin to Miranda Tetzloff and Noel Westcott before they evened the match with a 6-3 win in the second set.

The St. James pair pulled out a 13-11 victory in the finale.

The remaining matches went to the Saints in straight sets.

Hannah Loewen and Jaelyn Haler upended Rozilyn Oye and Elise Jarchow by 6-3 and 6-2 tallies at first doubles, while Gabriela Trapero and Mya Hanson notched a 7-5, 6-3 conquest over Solveig Tofteland and Lauren Ver Steeg at No. 3.

Other singles wins from St. James came from Renata Hernandez (6-1, 6-4 over Carissa Cunningham at No. 1), Zoie Becker (6-2, 6-2 over Riley Severson at No. 2) and Luci Kulseth (6-1, 6-0) over Liz Kelm at No. 4.

Battle Axe remains in Pipestone as Arrows upend Cardinals

By John Rittenhouse

The coveted Battle Axe trophy remains in Pipestone after the home-standing Arrows defeated Luverne in the 2018 version of the annual rivalry football game between the schools Friday.

Luverne had hopes of taking the Axe back from Pipestone after losing possession of the prize in 2017, but the Arrows had different ideas.

Pipestone took advantage of five LHS turnovers and a three-rushing touchdown effort from Jason Steenstra to secure a 33-12 victory.

"They completely dominated the game on both sides of the football," said Cardinal coach Todd Oye.

"They were physically stronger than we are. We turned the ball over five times and you can't do that in any game."

The Arrows assumed control of the contest by scoring 21 unanswered points in the game's first 17:24.

Pipestone put together scoring drives covering 48 and 47 yards to open a 14-0 advantage in the first quarter.

The Arrows took a 7-0 lead with their second offensive possession of the night.

A seven-play series ended with Steenstra scoring on a one-yard plunge and Cesar Villa Almaraz adding his first of three extra points at the 3:36 mark of the opening quarter.

Pipestone got the ball back when the first play of Luverne's ensuing offensive possession resulted in an interception.

The Arrows offensive proceeded to cover 47 yards in seven plays with Steenstra

capping the drive with a 16-yard run to make it a 14-0 game with 30 seconds remaining in the opening stanza.

The Arrows produced their third consecutive touchdown with their fourth possession of the game early in the second quarter.

Pipestone moved the ball 60 yards in nine plays with Matt Engers scoring on a 13-yard run with 6:36 left in the first half to up the lead to 21-0.

The teams exchanged possessions before Luverne snapped Pipestone's 21-point scoring run late in the second quarter.

LHS fielded a punt on its own 30-yard line with 2:51 remaining, where it started a 70-yard, 12-play scoring march.

The drive featured a 25-yard pass from Ben Serie to Jake Haugen during a fourth-and-six situation and a roughing the passer penalty on the Arrows during a third-and-16 play.

The drive ended with Serie firing a 13-yard touchdown strike to Bailey Cowell with 20 seconds left in the second period.

The ensuing pass for a two-point conversion failed, leaving LHS facing a 21-6 deficit at the intermission.

Neither team produced a point in the game's third quarter, but LHS did start a drive late in the stanza that enabled the Cardinals to trim the difference to nine points (21-12) early in the fourth quarter.

The Cards caught a break when Pipestone tried to punt the ball, but the snap sailed

over the punter's head. The punter recovered the loose ball and was ruled down on the Arrows' 21-yard line.

A personal foul penalty on the Arrows moved the ball to the eight-yard line during the first play of the fourth quarter and senior Jed Dooyema covered the remaining yards with a run that ended at the 11:50 mark of the final period.

A run for a two-point conversion failed, leaving the Arrows sporting a 21-12 lead.

Pipestone put the game away with its next offensive possession.

The Arrows advanced the ball 65 yards in 12 plays with Steenstra capping his three-touchdown effort with a two-yard run to make it a 27-12 game with 5:14 left to play.

Pipestone recorded another touchdown when Tyson Wacker intercepted a pass and returned it 40 yards for a score with 1:35 remaining.

The 0-4 Cardinals host 2-2 St. James for their Homecoming game Friday.

Team statistics
Luverne: 93 rushing yards, 80 passing yards, 173 total yards, 14 first downs, five penalties for 60 yards, five turnovers.
Pipestone: 157 rushing yards, 54 passing yards, 211 total yards, 20 first downs, four penalties for 55 yards, zero turnovers.

Individual statistics
Rushing: Serie 11-45, Mark Sterrett 6-29, Dooyema 2-8, Nick Felt 1-6, Brody Bonnett 1-5, Jake Haugen 1-0, Cowell 1-0, Hunter Baker 1-0.
Passing: Serie 8-19 for 80 yards, Cowell 0-2 for zero yards.
Receiving: Haugen 4-44, Crabtree 4-36.
Defense: Max Skattum eight tackles, Dooyema six tackles and one sack, Haugen 5.5 tackles, Derek Lundgren 4.5 tackles, Zach Ahrendt 4.5 tackles, Serie four tackles, Payne Bonnett four tackles and two sacks, Colby Crabtree four tackles.

Dragons run at Mega Meet

By John Rittenhouse

Six members of the Adrian cross country program made an appearance at the Milaca Mega Meet Saturday.

Billed as the largest meet in the nation, the 2018 version attracted more than 5,000 runners.

The Dragon girls competed as a team in the Di-

vision 4 varsity race, which consisted of 28 complete teams and 221 total runners.

AHS placed 24th in a field led by Mesabi East (117 points) with 529 points.

Moriah Bullerman led the Dragons by placing 30th in 21:18.

Gracia Elias (124th in 24:18), Hiltyn Heitkamp

(132nd in 24:36), Halle Heitkamp (162nd in 25:30) and Alysha Wieneke (167th in 25:42) made contributions to Adrian's team tally.

Dragon Bruce Farinella finished 90th with a time of 14:06 in the boys' seventh-grade race.

Adrian runs at the Luverne Invitational Oct. 4.

Dragons sweep Panthers

By John Rittenhouse

The Adrian Dragons continued to play winning volleyball Thursday in Ellsworth.

The Dragons, who have yet to take a loss this season, took care of business during a Red Rock Conference match against the Panthers.

Adrian outscored the hosts 75-36 during a 3-0 victory that upped its record to 14-0.

AHS led 6-0 in the opening set when Avery Balster registered a block at the net, but Ellsworth countered with a surge to trim the difference to two points (6-4) after Ashlyn Meester charted a kill.

The Dragons were clinging to a 12-9 lead when they went on a 12-3 run capped by a kill from Bailey Lonneman to open a 24-12 advantage before winning by 12 points (25-13) moments later.

Ellsworth's Lizzie Chapa served the first point of the second set and the Panthers remained in front by one (3-2) in the early stages of the set.

Adrian forged in front 6-5 before going on a 15-2 run ending with a service point from Miah Kunkel to gain a commanding 21-7 lead.

The Dragons went on to win by 14 (25-11) after Kasie Tweet served a set-ending ace.

Tweet served Adrian to a 6-0 lead in the third set before Ellsworth climbed back into contention with a 6-2 spurt to trail by two (8-6) after Morgan Dreesen recorded a service point.

The Dragons still led by two (9-7) before going on a 15-3 run ending with a service point from Tweet to sport a 24-10 advantage.



John Rittenhouse photo/0927 ae vb 10

Adrian junior Bailey Lonneman registers one of her team-high 11 kills over Ellsworth's Morgan Dreesen during Thursday's 3-0 victory over the Panthers in Ellsworth.

AHS prevailed by 13 (25-12) when the set was complete.

Tweet served six aces and recorded 38 set assists for Adrian, which received four ace serves from Shawna Rogers.

Lonneman and Kunkel led the Dragons with 11 and eight

kills respectively, while Balster paced the Dragons with five blocks.

Mayssa Tweet added 15 digs to the winning cause.

The 6-8 Panthers received three kills and 10 digs from Meester and two kills and five digs from Lizzie Chapa.

Kallie Chapa (four digs), Dreesen (14 set assists) and Grace Mulder (six digs and three set assists) turned in productive outings as well.

Adrian hosts Southwest Christian Thursday, and Ellsworth hosts Murray County Central the same night.

Patriots top Chargers in fourth quarter Saturday

By John Rittenhouse

A fourth-quarter push lifted the Hills-Beaver Creek football team to a 22-12 victory over Westbrook-Walnut Grove Saturday in Westbrook.

After surrendering a touchdown early in the fourth quarter, the Patriots found themselves on the short end of a 12-6 tally.

H-BC, however, registered 16 points in the game's final six minutes to secure a 10-point

win.

"We hung in there," offered H-BC coach Rex Metzger.

"We turned the ball over four times and you usually don't win a lot of games when that happens. They turned the ball over twice, but their turnovers came at crucial times."

H-BC's ability to answer the challenge proved to be the difference in the game.

With the score deadlocked at six at the intermission, the

Patriots were in a position to gain their second lead of the contest when they had a first-and-goal situation on the W-WG two-yard line in the third quarter.

The Chargers, however, kept the Patriots out of the end zone and the game's momentum remained on their side for the remainder of the stanza.

W-WG came up with a big play early in the fourth quarter when the Chargers recovered an H-BC fumble on the Patriots' 12.

The hosts took advantage of the field position when quar-

terback Nathan Ross scored on a one-yard run to give W-WG a 12-6 advantage.

The rest of the game belonged to H-BC.

The Patriot offense produced a crucial series when it covered 58 yards in six plays.

Hunter Bork capped the march with a 19-yard run and Easton Harnack carried in the ensuing two-point conversion to give H-BC a 14-12 edge with nearly five minutes left to play.

H-BC's defense put the game away moments later.

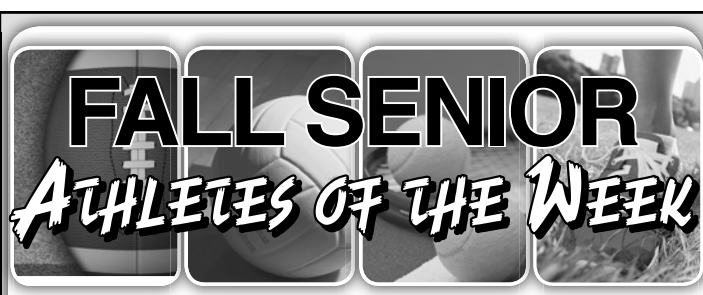
Top/continued on page 3B

LAND FOR SALE

Approximately 185.74 acres of productive farmland located in the NW 1/4 of the SE 1/4 and the SW 1/4 of 5-102-45, Rock County, Minnesota.

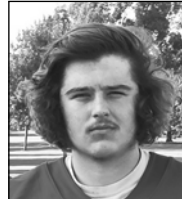
TERMS: Sealed bids will be accepted until 5:00 p.m., October 12, 2018, at the Eisma Law Office, 130 East Main, Luverne, MN. All bidders will have the opportunity to submit additional bids until property is sold. Highest bidder will be required to sign a Purchase Agreement with ten percent (10%) non-refundable earnest money down payment on the date of the sale and the balance at closing on or by January 15, 2019.

Sale is subject to approval by the heirs of Marian Savage Olson. For further details contact Douglas Eisma, Eisma & Eisma, Attorneys at Law, (507) 283-4828/(507) 227-2829.



Max Skattum

Sport: Football
Position: Offensive & defensive tackle
Parents: Nate & Mandy Skattum
Favorite Subject: Shop class
Extra-Curricular Activities: Football, FFA
Future Plans: Go to college and get a good paying job.



Jed Dooyema

Sport: Football
Position: Running back & linebacker
Parents: Doug & Pam Dooyema
Favorite Subject: Science
Extra-Curricular Activities: Football, track, wrestling, band, student council
Future Plans: No idea.



Jenna Zewiske

Sport: Volleyball
Position: Defensive specialist
Parents: Wayne & Tara Zewiske
Favorite Subject: Chemistry
Extra-Curricular Activities: Volleyball, choir, peer helping
Future Plans: Go to college, get a degree, then start a family and be happy.



Riley Severtson

Sport: Tennis
Parents: Dave & LaNore Severtson
Favorite Subject: Biology & science
Extra-Curricular Activities: Tennis, FCCLA, FFA, peer helping, figure skating with BMFS, work at the Luverne Country Club
Future Plans: Attend USD or SDSU for nursing.



Cardinal runners are finally drawing attention

Some light is being shed on what I've long believed to be one of the state's best-kept secrets.



FROM THE SIDELINES

By John Rittenhouse, sports editor

The Luverne girls' cross country team has found success for most of this decade mostly flying under the radar in many areas of the state.

That situation has changed in 2018.

According to the latest Class A poll, the three-time defending Section 3A champion Cardinals are no longer an afterthought.

LHS is ranked a lofty No. 3 in the state rankings, which leads me to believe that the Cardinals are finally being noticed.

All I want to say now is it's about time LHS has gained that type of recognition.

The Cardinals placed sixth in the Class A field at last year's state meet after turning in a pair of fourth-place performances the prior two state meets.

With that type of a track record, I believe the Cardinals deserve the extra attention.

Perham and Winona Cotter, who finished first and second respectively at the 2017 state classic, deserve to be ranked No. 1 and No. 2 in the most recent poll.

At the same time, I like where the Cardinals stand in the eyes of the Class A coaches throughout the state.

At No. 3, LHS has surpassed No. 6 Stewartville, No. 10 Fairmont and No. 12 Annandale in terms of expectations.

That's important because those three teams, along with Perham and Winona Cotter, are the squads that topped the Cardinals in Northfield last November.

Along with the team

considerations, I was happy to see two LHS individuals ranked among the state's top runners in the same poll.

Freshman Tenley Nelson, who made a name for herself by placing fifth at the state meet individually in 2018, is currently ranked fifth among Class A runners.

Sophomore Regan Feit, who made the all-state team by finishing 15th at the state meet last fall, was ranked as high as No. 10 this year and currently owns the No. 12 ranking.

While I like the attention thrown Luverne's way this year, I'm not so sure Cardinal coach Pete Janiszkeski is on board with me.

Like most coaches, probably Janiszkeski thinks being ranked in polls puts a target on his team at any meet the Cardinals will compete in the rest of the season.

It probably wouldn't hurt me to curb my enthusiasm for the team as well because there is a lot of season left.

Things can happen... like injuries and illnesses that can turn a quality team into an average one in a hurry.

That may be a fact, but I can't help feeling good about the attention currently being given to the Cardinal girls right now.

I know they work hard, and they are being recognized for their efforts.

That is a good thing, as would be LHS living up to its current ranking.

A third-place finish at the state meet would be a program record for a group of girls who deserve our respect.

Adrian girls erase 1-0 deficit against HL-O

By John Rittenhouse

The Adrian volleyball team came from behind to register its 13th consecutive victory Sept. 18 in Adrian.

The Dragons took on Heron Lake-Okabena in a Red Rock Conference contest.

After falling in the first set, Adrian rallied to outscore the Wildcats 75-67 in the final three sets to secure a 3-1 victory.

HL-O started the match strongly by securing a 25-21 win in the opening set.

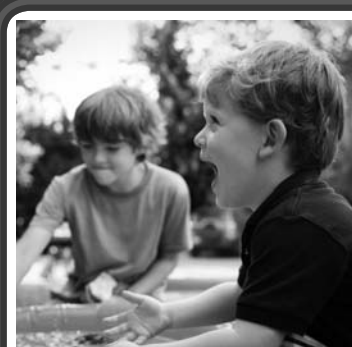
Adrian moved in front 2-1 by pulling out 25-22 and 29-27 wins in the second and third sets.

The Dragons settled the issue by racing to a 25-18 victory in the finale.

Miah Kunkel registered 16 kills for the winners, while Bailey Lonneman and Avery Balster chipped in 11 kills each.

Kasie Tweet, who recorded 32 set assists, completed all of her serves including four aces.

Mayssa Tweet added 11 digs to the winning cause.



Be Your Own Boss

The need for quality child care is greater than ever. Consider owning and operating a family child business. Be self-employed in your own home - doing a job you'll love!

You will have the satisfaction of knowing you are accomplishing something important - helping children grow and develop. You will also be fulfilling an important role as our communities grow and thrive. Child care keeps Southwest Minnesota working!

Contact us for information about becoming a family child care provider. We'll show you how to take your love for children and turn it into a living.

Region 8 Child Care Aware
Southwestern MN Opportunity Council
1106 3rd Avenue, PO Box 787
Worthington, MN 56187
507-376-4195
www.smoc.us



Quality Care and Education for Every Child



Pipestone Pepsi | 1809 Forman Drive, Pipestone, MN 56164

ATTENTION

ROCK COUNTY LICENSE CENTER SERVICE ANNOUNCEMENT

Due to a state-wide transition to a new driver's license system that will be able to issue REAL IDs in Minnesota, there will be limited services available in the Rock County License Center on Friday, September 28th.

The following services will be unavailable during this time period:

- Driver's license, permit and identification card renewals and applications

The following services will be available during this time period:

- Registration (Tab) Renewal
- License Plate Replacement
- Title Applications
- Department of Natural Resources (DNR) transactions

If you have any questions, please call the Rock County License Center at (507) 283-5024.

H-BC girls bow to W-WG Chargers

By John Rittenhouse

The Hills-Beaver Creek volleyball team came up on the short end of a hard-fought, 3-0 match against Westbrook-Walnut Grove Sept. 18 in Hills.

A total of nine points separated the teams in the three sets combined.

Unfortunately for the Patriots, they lost all three sets.

W-WG scored the first four points of the night before H-BC countered with an 11-4 run ending with a service point from Madison Spath to gain an 11-8 advantage.

The score was tied at four different occasions as the opening set progressed before the Chargers moved in front 20-18.

A 3-0 spurt capped by an ace tip from Sidney Fick gave the Patriots a 21-20 edge, and the score was deadlocked at 23 before W-WG produced the final two points of a 25-23 win.

H-BC led 3-1 early in the second set and sported a 15-12 advantage when Grace Bundesen registered a kill.

A 9-4 surge by the Chargers gave them a 21-18 lead, but

H-BC fought back to knot the score at 22 with a service point from Kailey Rozeboom.

W-WG answered the challenge by scoring the next three points to clinch a 25-22 victory.

H-BC trailed 7-5 in the third set before going on a 6-1 run ending with an ace tip from Fick to open an 11-8 cushion.

The Patriots still led by three (13-10) when W-WG reeled off seven consecutive points to move in front 17-13.

H-BC managed to tie the score at three different occasions as the set progressed before W-WG scored the final four points of the night to post a 25-21 win.

Fick led the Patriots with 17 kills and three blocks along with completing 14 of 14 serves with two aces.

Bundesen and Abby Knobloch added seven kills each to H-BC's cause, while Rozeboom and Bundesen led Patriots the with five and four digs respectively.

The 8-4 Patriots play Red Rock Central in Lamberton Thursday.



John Rittenhouse photo/0927 hvb 11

Hills-Beaver Creek sophomore Taryn Rauk tips the ball over Westbrook-Walnut Grove blockers Halle Steen (left) and Grace Woelber (right) during a Sept. 18 match in Hills. W-WG handed the Patriots their second league loss of the season.

JCC sweeps Cardinals

By John Rittenhouse

The Luverne Cardinal volleyball team remains winless in Big South Conference play after losing a 3-0 decision Thursday in Jackson.

The Cardinals put up a good fight by scoring 20 or more points in all three sets.

Jackson County Central, however, withstood the challenge to sweep LHS.

The Huskies prevailed by 25-20, 29-27 and 25-22 set tallies.

The loss left Luverne with an 0-3 conference record and a 7-10 overall mark.

Tacey Baustian (14 of 14 serving with two aces, nine set assists and six digs) and Greta Ahrendt (seven kills and three block assists) played well for the Cardinals.

Mallory Thorson led the Cards with 11 digs, Gracie Zewiske delivered three kills, and McCall Stegenga completed 12 of 13 serves for LHS.

FALL SPORTS STANDINGS

South Central District		MACCRAY 0-4	
White Division football			
Pipestone	3-0	BSC West volleyball	
JCC	3-0	JCC	3-0
RWV	3-0	Marshall	2-0
St. James	1-2	Windom	3-1
MCW	1-2	Pipestone	1-1
Windom	0-3	RWV	1-2
Luverne	0-3	Luverne	0-3
BEA	1-2	Worthington	0-3
Southwest District East			
Sub-District football			
MCC	3-0	BSC West tennis	
T-M-B	2-0	St. James	4-0
Springfield	2-1	Pipestone	2-1
Adrian	1-2	RWV	2-1
Sleepy Eye	1-2	Luverne	2-2
Wabasso	0-2	Marshall	1-3
NUC	0-2	Worthington	0-3
South District			
West Division football			
MLA	4-0	RRC volleyball	
H-BC	3-1	Adrian	4-0
R-TR	3-1	SWC	3-1
W-WG	2-2	MCC	3-1
RRC	2-2	RRC	2-1
HL-O-Fulda	2-2	HL-O	2-2
CM-C	2-2	W-WG	2-2
E-E	1-3	H-BC	1-2
RCW	1-3	MLA	1-3
		Edgerton	0-2
		Ellsworth	0-3
		Fulda	0-3

E-Gals roll over EHS

By John Rittenhouse

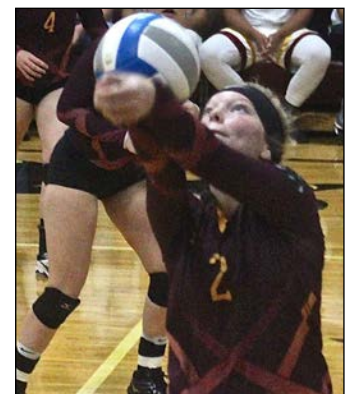
The Ellsworth volleyball team took on one of the Red Rock Conference's top teams Sept. 18 in Edgerton.

The visiting Panthers locked horns with Southwest Christian for a league match on the E-Gals' home court.

SWC controlled play by outscoring EHS 75-53 during a 3-0 victory.

The E-Gals prevailed by 25-17, 25-20 and 25-16 tallies.

Ashlyn Meester recorded six kills and served one ace for the Panthers, who received a three-kill effort from Kallie Chapa.



John Rittenhouse photo/0927 ae vb 1

Ellsworth junior Morgan Dreesen keeps a ball in play during a home match against Adrian in Ellsworth Thursday.

SPORTS CLIPBOARD

Rock County Sportsman's Club September 18

Team Scores:
 Mickie's Bar & Grill - 111
 Pizza Ranch - 110
 Luverne Body Shop - 79, 110
 Slocum Taxidermy 2 - 108, 109
 Minnwest Bank - 105
 Slocum Taxidermy 3 - 103, 101
 Agri-Energy LLC - 103
 Main St. Financial - 102
 Big Orv's Bar - 101
 Howling Dog - 101
 Slocum Taxidermy 1 - 100
 Loosbrock Electric - 95
 Freedom Ranch Firearms - 92
 Bill's H2O - 91
 Nergaard Construction - 80

Individual scores:

25 x 25
 Chris Balster
 Jim Slocum - 2
 Steve Nath
 Clark Steel
 Paul Steen

24 x 25
 Jim Slocum - 2
 Doug Deutsch
 Rick Ossefoort
 Adam Ossefoort
 Bob May
 Jon Lang
 Chris Denhoed
 Dean VonHoltum
 Cole Voss
 Paul Steen

BOWLING NEWS

Thursday Bowling National League Sept. 20

Games won: Troublemakers 4; Real Guys 4; Those Guys 3; Those Girls 1; Stoooges 0; Rock Stars 0.
 High Scratch Game Men: Zach Runia 209; Mike Hoover 205.
 High Scratch Game Women: Marie Opheim 133.
 High Scratch Series Men: Zach Runia 532; Tyler Hulstein 504.

High Scratch Series Women: Marie Opheim 355.

Team High Scratch Game: The Troublemakers 494; Those Guys 475.
 Team High Scratch Series: The Troublemakers 1388; The Real Guys 1289.
 Team High Handicap Game: Those Guys 645; The Real Guys 621.
 Team High Handicap Series: The Real Guys 1772; The Troublemaker 1751.

Top/continued from page 2B

The Chargers attempted a pass early in their next offensive possession, but H-BC senior Bailey Susie intercepted the ball and returned it 36 yards for a touchdown.

When Gavin Wysong toted in the ensuing two-point conversion, the scoring in the game was complete.

W-WG did have another opportunity to produce points by returning the kickoff following Susie's touchdown to the H-BC 17.

The Chargers, however, lost

the ball on downs before the Patriots chewed the remaining time off the clock by registering a couple of first downs during their next offensive possession.

The teams battled to a scoreless draw in the first quarter before H-BC produced the game's first points early in the second stanza.

H-BC put together a 10-play, 67-yard march ending with Wysong tossing a nine-yard touchdown pass to Susie to make it a 6-0 game.

W-WG knotted the score with a key play later in the second quarter.

Facing a fourth-and-seven situation, Ross hooked up with Andrew Quade for a 41-yard touchdown pass to even the tally.

The 3-1 Patriots, who have two consecutive games, entertain 2-2 Heron Lake-Okabena-Fulda for their Homecoming game Friday in Hills.

Team statistics
 H-BC: 370 rushing yards, 13 passing yards, 381 total yards, 18 first downs,

eight penalties for 60 yards, four turnovers.
 W-WG: 58 rushing yards, 137 passing yards, 195 total yards, eight first downs, 11 penalties for 65 yards, two turnovers.

Individual statistics
 Rushing: G. Wysong 21-210, Jax Wysong 16-59, Tyson Bork 8-67, H. Bork 2-34.
 Passing: G. Wysong 4-19 for 13 yards, Harnack 0-1 for zero yards.
 Receiving: Susie 1-9, T. Bork 2-6, Luke LaRock 1-minus 2.
 Defense: G. Wysong 15 tackles, LaRock seven tackles, Harnack two tackles, Chase Bosch four tackles, J. Wysong five tackles and one sack, Susie 11 tackles and one interception, T. Bork seven tackles, H. Bork one tackle and one interception, Garrett Raymon nine tackles, George Merson five tackles, Zander Wysong two tackles.



Papik picks of the week...



2014 Chevrolet Equinox LT
 70K • Stock #273280N
 \$14,990



2008 Chevrolet Tahoe
 110K • Stock #134713U
 \$14,990



2012 Chevrolet Silverado
 98K • Stock #192898U
 \$18,990



2014 GMC Acadia
 87K • Stock #167327N
 \$19,990

283-9171

PAPIK.COM I-90 Luverne, MN 56156



Star Herald CHURCH

Page 4B September 27, 2018

St. Catherine Catholic Church

203 E. Brown St., Luverne
St. Catherine Ph.: 283-8502; email: stcatherine@iw.net
Thursday, Sept. 27: 4 p.m. Veterans Home Mass. Saturday, Sept. 29: 5:30 p.m. St. Catherine's Mass. Sunday, Sept. 30: 8:30 a.m. St. Mary's Mass. 10:30 a.m. St. Catherine's Mass. Tuesday, Oct. 2: 9 a.m. St. Catherine's Mass. 1-4 p.m. Mission Sewing. 7 p.m. LCCW. Wednesday, Oct. 3: 5:15 p.m. Grade 2 Parents Meeting. 5:30 p.m. Partners. 3:30 and 7 p.m. Faith Formation. 6 p.m. Chris Stefanick event for grades 9-12. Thursday, Oct. 4: 9 a.m. St. Catherine's Mass; Head Start.

Luverne Christian Reformed Church

605 N. Estey St., Luverne
Office Ph. 283-8482; Prayer Line Ph. 449-5982
www.luvernecrc.com — office@luvernecrc.com
Roger Sparks, Pastor
Sunday, Sept. 30: 9:30 a.m. Worship Service. 6:30 p.m. Worship Service. Monday, Oct. 1: 9 a.m. Perk-up at Poplar Creek. Tuesday, Oct. 2: 9:30 a.m. CoffeeBreak/Story Hour. Wednesday, Oct. 3: 7 p.m. GEMS and Cadets.

First Baptist Church

1033 N. Jackson St., P.O. Box 975, Luverne
Ph. 283-4091; email: fbcluv@iw.net — www.fbcluverne.org
Walt Moser, Pastor
Thursday, Sept. 27: 6 a.m. Men's Bible Study. 8 p.m. Worship Service on Channel 3. Sunday, Sept. 30: 9:15 a.m. Sunday School. 10:30 a.m. Morning Service. 6 p.m. Hymn Sing. Tuesday, Oct. 2: 7 a.m. Men's Bible Study. Wednesday, Oct. 3: 6:30 p.m. Awana. Thursday, Oct. 4: 6 a.m. Men's Bible Study. 8 p.m. Worship Service on Channel 3.

Grace Lutheran Church

500 N. Kniss Ave., Luverne
Ph. 507-283-4431; www.graceluverne.org — graceluverne@iw.net
Ron Nichols, Pastor; Stephen Hilding, Associate Pastor

Thursday, Sept. 27: 9:30 a.m. Naomi Circle at Mary Jane Brown Home; Rachel Circle at Grace. 1:30 p.m. Lydia Circle at Grace. 2 p.m. Sarah Circle at Camelot. 7 p.m. Priscilla/Elizabeth Circle at Grace. Friday, Sept. 28: 6:30 p.m. Worship on Channel 3. Saturday, Sept. 29: 5:30 p.m. Worship. Sunday, Sept. 30: 8:15 a.m. Radio Broadcast. 9 a.m. Worship and 3-year-old milestones. 10 a.m. Fellowship coffee/treats. 10:15 a.m. Adult Study and Sunday School. Monday, Oct. 1: 4:30 p.m. Worship on Channel 3. Tuesday, Oct. 2: 9 a.m. Staff Meeting. Wednesday, Oct. 3: 7 a.m. Men's Bible Study. 10 a.m. Worship at the Tuff Home. 3:30 p.m. Faithweavers. 5:15 p.m. Supper. 6 p.m. Woven Worship. 7 p.m. Grades 6-9 confirmation; Chancel Choir rehearsal. 8 p.m. Grade 10 confirmation. Thursday, Oct. 4: 8:30 a.m. Missions in Action.

Bethany Lutheran Church

720 N. Kniss Ave., Luverne
Ph. 507-283-4571 or 507-449-0291 or 605-215-9834
pastorapalmquist67@yahoo.com
Sunday, Sept. 30: 9 a.m. Sunday School. 9:15 a.m. Bible Class. 10:15 a.m. Worship with Communion. Tuesday, Oct. 2: 2:30 p.m. Bible Study at Tuff Home. 3:15 p.m. Bible Study at Village. Wednesday, Oct. 3: 9:30 a.m. Rebekah Circle. 3:45 p.m. Catechism classes.

American Reformed Church

304 N. Fairview Dr., Luverne
Ph. 283-8600; email: office@arcluverne.org
Mike Altena, Pastor
Friday, Sept. 28: 6:30 a.m. Community Men's Bible Study. 4:30 p.m. REFIT Fitness. 6 p.m. Rehearsal. Saturday, Sept. 29: Borgen/Elbers Wedding. Sunday, Sept. 30: 9:30 a.m. Worship. 10:50 a.m. Family Education. Monday, Oct. 1: 7 p.m. Esther Circle. Tuesday, Oct. 2: 10 a.m. Staff meeting. 1:30 p.m. Rebecca Circle. 5:30 and 6:30 p.m. Bible Study Fellowship. 7 p.m. Ridder Team Meeting. Wednesday, Oct. 3: 4:30 p.m. REFIT Fitness. 5:30 p.m. Midweek Meal. 6:30 p.m. Pioneer Clubs, Junior and Senior Group. 7 p.m. Praise Team Practice. Thursday, Oct. 4: 5:30 p.m. Tumbling Tikes. 6 p.m. Ladies Night Out.

First Assembly of God Church

1075 110th Ave., 2 miles west of Luverne on County Rd. 4
Sundays: 9 a.m. Sunday School. 10 a.m. Morning Worship. 6:30 p.m. School of the Holy Spirit. Wednesdays: 7 p.m. Kids Connection; Men's Bible Study with Pastor Ken; Women's Bible Study with Pastor Gloria.

First Presbyterian Church

302 Central Lane, Luverne
Ph. 283-4787; email: Firstpc@iw.net — www.fpcluverne.com
Thursday, Sept. 27: 10 a.m. Worship Service on Channel 3. Noon: Over 60's. Sunday, Sept. 30: 9 a.m. Sunday School. 10:15 a.m. Worship. 11:15 a.m. Coffee and Fellowship. Tuesday, Oct. 2: 10 a.m. and 6 p.m. Worship Service on Channel 3. Wednesday, Oct. 3: 6 p.m. Bells. Middle School Fellowship. 7 p.m. Choir; Worship. 8 p.m. Property; CE. Thursday, Oct. 4: 10 a.m. Worship Service on Channel 3.

United Methodist Church

109 N. Freeman Ave., Luverne
Ph. 283-4529; email: luverneumc@iw.net
Dorie Hall, Pastor
Thursday, Sept. 27: 1-3 p.m. Rock County Food Shelf. Saturday, Sept. 29: 8 p.m. AA Meeting. Sunday, Sept. 30: 9 a.m. Coffee Hour and Adult Sunday School. 10 a.m. New United Church Service. 4:30 p.m. Genesis/Revelation Bible Study. 6:30 p.m. Family Fun Night/Bonfire. Monday, Oct. 1: 8 p.m. AA Meeting. Tuesday, Oct. 2: 8 a.m. Priscilla Circle. Wednesday, Oct. 3: 1-3 p.m. Sewing Day. 6 p.m. F.U.E.L. and Confirmation. 8 p.m. AA Meeting. Thursday, Oct. 4: 1-3 p.m. Rock County Food Shelf.

St. John Lutheran Church

803 N. Cedar St., Luverne
Ph. 283-2316, Dial-A-Devotion Ph. 283-4005
email: stjoh@iw.net — www.stjohnlutheranluverne.org
Gary Klatt, Pastor

Thursday, Sept. 27: 9:45 a.m. Rock County Ministerial Association at Grace Lutheran. 11:30 a.m. DCE Jess Devotions at Mary Jane Brown Home. 6:30 p.m. Chancel Guild. Saturday, Sept. 29: 5:30 p.m. Worship. Sunday, Sept. 30: 9 a.m. Worship. 10:15 a.m. Christian Education Hour. 11:15 a.m. Junior choir. 1 p.m. LYF Corn Maze. Monday, Oct. 1: 9 a.m. Winkel in Pipestone. 7 p.m. Elders meeting. Tuesday, Oct. 2: 1 and 6:30 p.m. Quilting. 6:30 p.m. Mom's Night Out. Wednesday, Oct. 3: 9:30 a.m. Bible Study. 6 p.m. Youth Dinner. 6:30 p.m. Catechism. 7 p.m. KFC; HS Youth Group; Senior Choir. 8 p.m. Kingdom Builders. Thursday, Oct. 4: 2 p.m. Women's Study.

Living Rock Church

500 E. Main St., Luverne
Ph. 449-0057; www.livingrockswmn.org
Billy Skaggs, Pastor
Sundays: 10:30 a.m. Worship; Kids Rock Children's Ministry. 6 p.m. Youth Ministry. Life groups meet throughout the week.

New Life Celebration Church

110 N. Oakley, Luverne
Ph. 449-6522; email: newlifecel@iw.net
Sundays: 9:30 a.m. Worship at 110 N. Oakley. Every third Thursday: 4:30 p.m. Food give-away at Senior Citizens Center. Bible Study groups meet at various times and days.

Zion Evangelical Lutheran Church

305 E. 2nd St., P.O. Box 36, Hardwick
Thursday, Sept. 27: 3:30 p.m. Worship on Channel 3. Friday, Sept. 28: 3:30 p.m. Worship on Channel 3. Sunday, Sept. 30: 9 a.m. Sunday School. 10 a.m. Mentor Program. 10:30 a.m. Worship. 1 p.m. Youth to Corn Maze.

Ben Clare United Methodist Church

26762 Ben Clare Ave., Valley Springs, S.D.
igtwlb@WOW.net
Bill Bates, Pastor
Sundays: 9 a.m. Worship; 10 a.m. Fellowship; 10:30 a.m. Sunday School for all ages.

First Lutheran Church

300 Maple St., Valley Springs, S.D.
Ph. (605) 757-6662
Laura Phillips, Pastor
Sunday, Sept. 30: 9:30 a.m. Sunday School at Palisade; 10:30 worship service at Palisade.

Palisade Lutheran Church

211 121st St., Garretson, S.D.
Ph. (507) 597-6257 — firstpalisade@alliancecom.net
Laura Phillips, Pastor
Sunday, Sept. 30: 9:30 a.m. Sunday School; 10:30 a.m. worship service.

First Presbyterian Church

201 S. 3rd St., P.O. Box 73, Beaver Creek
Ph. 507-935-5025
Email: lori.firstpres@gmail.com
Sundays: 9:30 a.m. Morning Worship.

Magnolia United Methodist Church

501 E. Luverne St., Magnolia
Church Ph. 507-483-2492; email: adrmagumc@gmail.com
www.facebook.com/adrianmagnoliaumc
Sundays: 9 a.m. Magnolia Worship Service. Wednesdays: 6:30 p.m. Confirmation.

The Raffle



BUILT ON A ROCK

By Martha Fick, Good Samaritan Western Network chaplain, retired

"All the ways of a man are pure in his own eyes, but the LORD weighs the spirit." Proverbs 16:2

Sven bought a mule from Lars for \$100. When Lars drove on the farmyard to deliver the mule the next day, he said, "Sorry, but der is some bad news. De mule died."

"Vell, den, yust gif me back de money."

"Yah sure, you betcha. Dat would be a good idea, but I haf already spent de money."

Sven scratched his chin for a minute and said, "Vell den, yust unload de mule."

"Vhat vill you do vith him?"

"I vill come up vith someting, maybe I vill raffle him off."

"Vhat! You cannot raffle off a dead mule?"

"Yah, sure I can. I yust von't tell anybody dat he is dead."

A couple of months later Lars saw Sven at the stockyards. "Say, vhat happened vith de dead mule?"

"Vell, I raffled him off. I sold 750 tickets for \$3 each and after expenses made a profit of \$2,132.47."

"But, I do not understand. Did not anyone complain dat de mule vas dead?"

"Vell, de guy dat von de mule vas not happy dat

it vas dead so I gave him back his \$3."

There is an old saying that "the end doesn't justify the means." God doesn't just look at what we do and say. He weighs our spirit and examines how and why we live our lives the way we do.

There are many ways to make actions and words look good, even when our intentions are not right. God wants us to have pure hearts. He asks us to listen to him and trust in him.

Dear Lord, We confess that we are very self-centered people. It is easy to worry about our own wants and needs instead of looking to you for guidance. Forgive us. Weigh the spirit of our words and actions. Show us how to live in a way that is good and gracious. Fill us with the light of your love. In Jesus' name we pray. Amen.

(This column first appeared in the Sept. 26, 2013, edition of the Rock County Star Herald.)

Steen Reformed Church

112 W. Church Ave., Steen
Ph. 855-2336
Jeremy Wiersema, Pastor
Sundays: 9:30 a.m. Worship; service broadcast on KQAD. 10:45 a.m. Sunday School. 6 p.m. Youth Group. Evening worship at 6 p.m. first and third Sundays. Wednesdays: 7 p.m. Midweek.

Bethlehem Lutheran Church

Pastor Maggie Berndt-Dreyer
112 N. Main St., Hills
Ph. 962-3270
e-mail: bethlehmluth@alliancecom.net
Sunday, Sept. 30: 9 a.m. Worship at Tuff Chapel. 9:30 a.m. Sunday School. 10:30 a.m. Communion at Bethlehem. Tuesday, Oct. 2: 2:30 p.m. Bible Study at Tuff Home. 3:15 p.m. Bible Study at Tuff Village. Wednesday, Oct. 3: 9 a.m. Quilting. 6:30 p.m. Confirmation.

Hills United Reformed Church

410 S. Central Ave., Hills
Office Ph. 962-3254
hillsurc@alliancecom.net
Alan Camarigg, Pastor
Sundays: 9:30 a.m. and 6 p.m. Worship Services.

These Weekly Church Page Messages are contributed to God's Work through the Church and by these concerned and responsible citizens & businesses:

Call Rick or Chantel to place your ad!

283-2333

Tuff Memorial Home, Retirement Apartments & Tuff Village

"A Home Where Residents SMILE"
Hills, Minnesota
Phone 507-962-3275

Papik
MOTOR OIL
LUVERNE, MINN.

I-90 in Luverne, MN
507-283-9171 • 1-800-634-7701

Read us online!

Rock County
STAR HERALD
www.Star-Herald.com

Trust In Him



Pizza Ranch
110 E. Main, Luverne, MN
Phone 507-283-2379

MANLEY
TIRE & OIL SERVICE
Manley Minnesota
1-800-615-3704
Open six days a week - Closed on Sundays
To God be the Glory.

CWG
Business Insurance.
Tri-State Region Period!

Rock County
STAR HERALD
Luverne, MN • 507-283-2333

Advertise Here

Luverne
ANNOUNCER

To Advertise
Call
283-2333

Buffalo Ridge
INSURANCE
507-283-2381 www.buffaloridgeins.com E-mail:info@buffaloridgeins.com

McClure Electric
Alan M. Aanenson, owner
Farm, Home & Commercial Wiring
Luverne, MN Phone 507-283-4716

First Farmers & Merchants
303 E. Main, Luverne, MN
507-283-4463
www.fimbank.com
We believe in you.
Member FDIC. And the community.

HILLS STAINLESS STEEL & EQUIPMENT CO., INC.
506 W. Koehn, P.O. Box 987, Luverne, MN
PHONE 507-283-4405
Church is Important - Please Attend!

MINNWEST BANK
• 116 E. Main St., Luverne 507-283-2366
• S. Hwy. 75, Luverne 507-283-9131
• Main St., Beaver Creek 507-673-2333
Member FDIC www.minnwestbank.com

HARTQUIST
Funeral and Cremation Services
- ENGBRETSON CHAPEL -
507-283-2777
www.HartquistFuneral.com
"Let our family help your family"
Serving the Luverne and Surrounding Communities

Tollefson Publishing
117 W. Main
Luverne, MN 56156
507-283-2333

New Creation Ministries assumes name

MINNESOTA SECRETARY OF STATE
CERTIFICATE OF ASSUMED NAME
MINNESOTA STATUTES, CHAPTER 333

The filing of an assumed name does not provide a user with exclusive rights to that name. The filing is required for consumer protection in order to enable consumers to be able to identify the true ownership of a business.

ASSUMED NAME: **New Creation Ministries**
PRINCIPAL PLACE OF BUSINESS:
575 County Highway 4 Beaver Creek, MN 56156 United States
NAMEHOLDER(S):
Name: **New Creation Ministries, Inc.**

Address: **575 County Highway 4 Beaver Creek, MN 56156 United States**

By typing my name, I, the undersigned, certify that I am signing this document as the person whose signature is required, or as agent of the persons(s) whose signature would be required who has authorized me to sign this document on his/her behalf, or in both capacities. I further certify that I have completed all required fields, and that the information in this document is true and correct and in compliance with the applicable chapter of Minnesota Statutes. I understand that by signing this document I am subject to the penalties of perjury as set forth in Section 609.48 as if I had signed this certificate under oath.

Signature : /s/ **Kate Anderson**
MAILING ADDRESS: **none provided**
EMAIL FOR OFFICIAL NOTICES: **kateearn@gmail.com**

(9-20, 9-27)

Buss probate

PROBATE COURT
DISTRICT COURT
PROBATE DIVISION
Court File No. **67-PR-18-269**

STATE OF MINNESOTA
COUNTY OF ROCK

In Re: Estate of
Daryel A. Buss, a/k/a Daryel Buss,
Deceased

ORDER AND NOTICE OF HEARING FOR FORMAL PROBATE OF WILL AND APPOINTMENT OF PERSONAL REPRESENTATIVE IN SUPERVISED ADMINISTRATION AND NOTICE TO CREDITORS

It is Ordered and Notice is hereby given that on the 8th day of October, 2018, at 3:30 O'clock P.M., a hearing will be held in the above named Court at Rock County Courthouse, Luverne, Minnesota, for the formal probate of an instrument purporting to be the will of the above named deceased, dated March 18, 2015, and for the appointment of Traci Schmid whose address is 47681 27th Street, Harrisburg, South Dakota 57032, as personal representative of the estate of the above named decedent in supervised administration, and that any objections thereto must be filed with the Court. That, if proper, and no objections are filed, said personal representatives will be appointed to administer the estate, to collect all assets, pay all legal debts, claims, taxes and expenses, and sell real and personal property, and do all necessary acts for the estate. Upon completion of the administration, the representative shall file a final account for the allowance and shall distribute the estate to the persons thereto entitled as ordered by the Court, and close the estate.

Notice is further given that ALL CREDITORS having claims against said estate are required to present the same to said personal representative or to the Court Administrator within four months after the date of this notice or said claims will be barred.

Dated: September 14, 2018
Eisma and Eisma
Douglas E. Eisma
Attorney for Petitioner
130 East Main
Luverne, MN 56156
(507)283-4828
I.D. #15834

/s/Terry S. Vajgrt
District Court Judge
/s/ Denise Brandel
Court Administrator
(COURT SEAL)

(9-20-9-27)

Mortgage foreclosure sale set for Nov. 1

NOTICE OF MORTGAGE FORECLOSURE SALE
THE RIGHT TO VERIFICATION OF THE DEBT AND IDENTITY OF THE ORIGINAL CREDITOR WITHIN THE TIME PROVIDED BY LAW IS NOT AFFECTED BY THIS ACTION.

NOTICE IS HEREBY GIVEN, that default has occurred in the conditions of the following described mortgage:

Mortgagor: **Charlene Ann Ver Meer** a single person
Mortgagee: **M&I Bank FSB**
Dated: **03/22/2002**
Recorded: **03/27/2002**
Rock County Recorder Document No. **152525**
Transaction Agent: **N/A**
Transaction Agent Mortgage Identification Number: **N/A**
Lender or Broker: **M&I Bank FSB**
Residential Mortgage Servicer: **BMO Harris Bank, N.A.**
Mortgage Originator: **M&I Bank FSB**
LEGAL DESCRIPTION OF PROPERTY: **Lot Seven (7) in Block Nine (9), in the Original Plat of Hills, Minnesota, County of Rock.**

This is Abstract Property.
TAX PARCEL NO.: **15-0084-000**
ADDRESS OF PROPERTY:
**313 Church Ave S
Hills, MN 56138**
COUNTY IN WHICH PROPERTY IS LOCATED: **Rock**
ORIGINAL PRINCIPAL AMOUNT OF MORTGAGE: **\$39,000.00**
AMOUNT DUE AND CLAIMED TO BE DUE AS OF DATE OF NOTICE: **\$33,141.85**

That prior to the commencement of this mortgage foreclosure proceeding Mortgagee/Assignee of Mortgagee complied with all notice requirements as required by statute; that no action or proceeding has been instituted at law or otherwise to recover the debt secured by said mortgage, or any part thereof;

PURSUANT to the power of sale contained in said mortgage, the above described property will be sold by the Sheriff of said county as follows:

DATE AND TIME OF SALE: **November 1, 2018, 10:00 AM**
PLACE OF SALE: **Lobby of Rock County Law Enforcement Center, 1000 N Blue Mound Ave, Luverne, MN**

to pay the debt then secured by said Mortgage, and taxes, if any, on said premises, and the costs and disbursements, including attorneys' fees allowed by law subject to redemption within 6 Months from the date of said sale by the mortgagor(s), their personal representatives or assigns.

DATE TO VACATE PROPERTY: The date on or before which the mortgagor must vacate the property if the mortgage is not reinstated under Minnesota Statutes section 580.30 or the property redeemed under Minnesota Statutes section 580.23 is **May 1, 2019 at 11:59 p.m.** If the foregoing date is a Saturday, Sunday or legal holiday, then the date to vacate is the next business day at 11:59 p.m.

MORTGAGOR(S) RELEASED FROM FINANCIAL OBLIGATION ON MORTGAGE: **NONE**

THE TIME ALLOWED BY LAW FOR REDEMPTION BY THE MORTGAGOR, THE MORTGAGOR'S PERSONAL REPRESENTATIVES OR ASSIGNS, MAY BE REDUCED TO FIVE WEEKS IF A JUDICIAL ORDER IS ENTERED UNDER MINNESOTA STATUTES SECTION 582.032, DETERMINING, AMONG OTHER THINGS, THAT THE MORTGAGED PREMISES ARE IMPROVED WITH A RESIDENTIAL DWELLING OF LESS THAN FIVE UNITS, ARE NOT PROPERTY USED IN AGRICULTURAL PRODUCTION, AND ARE ABANDONED.

Dated: September 12, 2018
BMO Harris Bank N.A., as successor to **M & I Bank FSB**, Mortgagee
By: **PFB LAW, PROFESSIONAL ASSOCIATION**

Attorneys for:
BMO Harris Bank N.A., as successor to **M & I Bank FSB**, Mortgagee
**55 East Fifth Street, Suite 800
St. Paul, MN 55101-1718
651-209-7599
651-228-1753 (fax)**

THIS COMMUNICATION IS FROM A DEBT COLLECTOR ATTEMPTING TO COLLECT A DEBT. ANY INFORMATION OBTAINED WILL BE USED FOR THAT PURPOSE.

(9-20, 9-27, 10-4, 10-11, 10-25, 10-30)

Mortgage foreclosure sale set for Nov. 15

NOTICE OF MORTGAGE FORECLOSURE SALE
THE RIGHT TO VERIFICATION OF THE DEBT AND IDENTITY OF THE ORIGINAL CREDITOR WITHIN THE TIME PROVIDED BY LAW IS NOT AFFECTED BY THIS ACTION.

NOTICE IS HEREBY GIVEN, that default has occurred in conditions of the following described mortgage:

DATE OF MORTGAGE: **December 15, 2010**
MORTGAGOR: **Chad M. Gruis, single.**
MORTGAGEE: **First Farmers & Merchants National Bank.**
DATE AND PLACE OF RECORDING: **Recorded December 16, 2010 Rock County Recorder, Document No. 175211.**

ASSIGNMENTS OF MORTGAGE: **Assigned to: JPMorgan Chase Bank, National Association. Dated December 15, 2010 Recorded December 16, 2010, as Document No. 175212.**

TRANSACTION AGENT: **NONE**
TRANSACTION AGENT'S MORTGAGE IDENTIFICATION NUMBER ON MORTGAGE: **NONE**

LENDER OR BROKER AND MORTGAGE ORIGINATOR STATED ON MORTGAGE: **First Farmers & Merchants National Bank**
RESIDENTIAL MORTGAGE SERVICER: **JPMorgan Chase Bank, National Association**

MORTGAGED PROPERTY ADDRESS: **811 North Spring Street, Luverne, MN 56156**

TAX PARCEL I.D. #: **20-0286-000**
LEGAL DESCRIPTION OF PROPERTY:
The S. 7 feet of Lot 2 and the N. 65 feet of Lot 4 in Block 6 in Barck, Adams & Howe's Addition to the Village (now City) of Luverne, Rock County, Minnesota.

COUNTY IN WHICH PROPERTY IS LOCATED: **Rock**
ORIGINAL PRINCIPAL AMOUNT OF MORTGAGE: **\$78,963.00**
AMOUNT DUE AND CLAIMED TO BE DUE AS OF DATE OF NOTICE, INCLUDING TAXES, IF ANY, PAID BY MORTGAGEE: **\$70,263.65**

That prior to the commencement of this mortgage foreclosure proceeding Mortgagee/Assignee of Mortgagee complied with all notice requirements as required by statute; That no action or proceeding has been instituted at law or otherwise to recover the debt secured by said mortgage, or any part thereof;

PURSUANT to the power of sale contained in said mortgage, the above described property will be sold by the Sheriff of said county as follows:

DATE AND TIME OF SALE: **November 15, 2018 at 10:00 AM**
PLACE OF SALE: **Sheriff's Office, Main Entrance, Law Enforcement Center, 1000 North Blue Mound Avenue, Luverne, MN**

to pay the debt then secured by said Mortgage, and taxes, if any, on said premises, and the costs and disbursements, including attorneys' fees allowed by law subject to redemption within six (6) months from the date of said sale by the mortgagor(s), their personal representatives or assigns unless reduced to Five (5) weeks under MN Stat. §580.07.

TIME AND DATE TO VACATE PROPERTY: If the real estate is an owner-occupied, single-family dwelling, unless otherwise provided by law, the date on or before which the mortgagor(s) must vacate the property if the mortgage is not reinstated under section 580.30 or the property is not redeemed under section 580.23 is **11:59 p.m. on May 15, 2019**, unless that date falls on a weekend or legal holiday, in which case it is the next weekday, and unless the redemption period is reduced to 5 weeks under MN Stat. Secs. 580.07 or 582.032.

MORTGAGOR(S) RELEASED FROM FINANCIAL OBLIGATION ON MORTGAGE: **None**
"THE TIME ALLOWED BY LAW FOR REDEMPTION BY THE MORTGAGOR, THE MORTGAGOR'S PERSONAL REPRESENTATIVES OR ASSIGNS, MAY BE REDUCED TO FIVE WEEKS IF A JUDICIAL ORDER IS ENTERED UNDER MINNESOTA STATUTES, SECTION 582.032, DETERMINING, AMONG OTHER THINGS, THAT THE MORTGAGED PREMISES ARE IMPROVED WITH A RESIDENTIAL DWELLING OF LESS THAN FIVE UNITS, ARE NOT PROPERTY USED IN AGRICULTURAL PRODUCTION, AND ARE ABANDONED."

Dated: September 12, 2018
JPMorgan Chase Bank, National Association
Mortgagee/Assignee of Mortgagee

USSET, WEINGARDEN AND LIEBO, P.L.L.P.
Attorneys for Mortgagee/Assignee of Mortgagee
**4500 Park Glen Road #300
Minneapolis, MN 55416
(952) 925-6888
30 - 18-006547 FC**

THIS IS A COMMUNICATION FROM A DEBT COLLECTOR.
(9-27, 10-4, 10-11, 10-18, 10-25, 11-1)

Keep up with what's happening in Rock County www.star-herald.com

Star Herald CLASSIFIEDS

RENTALS

For Rent: a smaller home in Luverne at 820 N. Cedar. Newly remodeled, very nice condition. Includes garage, stove and fridge. \$500 per month. No pets. Now accepting applications. Call 605-413-8862.
(8.30-10.7)

FOR RENT

Two-Bedroom Townhome

* Attach Garage * No Steps
* Outside Patio
* Washer & Dryer Hook Ups
* \$725/ Month Plus Utilities
Call Schomacker's
507-227-2183 for showings.

RENTALS

Taking application for a house for rent: three-bedroom, two-bath, all appliances, central air and double garage. References required. No pets. Call 283-8151.
(9.9-9.27)

Rooms for rent in Luverne. All utilities included including Dish and internet. Call 605-799-6587.
(9.9-9.27)

Large apartment upstairs, downtown Luverne, utilities paid, stove and refrigerator included. References required, no pets, no smoking. Call 507-227-1589.
(tc)

For Rent: one-bedroom apartment near downtown Luverne. \$290 per month. No pets. Call 605-201-6427.
(tc)

MISCELLANEOUS

HAVE A UNIQUE SERVICE OR BUSINESS? Get the word out to over 1.4 million households. Call WIDE AREA CLASSIFIEDS today, 507-359-7326.
(tc)

DEADLINE FOR LEGALS is MONDAY @ 10 a.m.

CARDS OF THANKS

The family of Colleen Thomas would like to thank everyone for their overwhelming love and support during the illness and loss of our wife, Mom, Grandma and sister. All the cards, texts, phone calls, food, and memorials were very much appreciated. A special thank you to the Nekali family for all their help. Thank you to the Luverne Sanford Hospital, The Cottage Hospice, Father Tom and the St. Catherine's staff & lunch ladies, and Dingmann Funeral Home staff for their kindness and care. Mom had a special connection with so many people and she will be greatly missed.

**Dan Thomas
Sheila, Mike, Bo & Carly
Siebenahler-Holland
Doug, Evonn, Damia &
Dougray Siebenahler**

**John, Quinton, Courtney, Riley & Savannah Siebenahler
Delbert & Carole Honermann**
(9.27-9.30)

CARDS OF THANKS

Thank you for remembering me on my 100th birthday with your special visits, wishes, cards, and gifts. Come visit again soon.
Gordon Holt and family
(9.23-9.27)

We would like to express a heartfelt "thank you" to our community. The outpouring of thoughts, prayers, and concerns during the illness and loss of our Father, Grandfather & Great-grandfather has sustained us all during this difficult time. Special thanks to everyone at Sanford Luverne Hospital, the Hospice Cottage, Hartquist Funeral Home and the American Reformed Church for all of their loving care and kindness. He is gone to a better place, but his memories will be with us all forever. God Bless all of you!
The Family of Cliff Boom
(9.23-9.27)

RECYCLE!



MCAN

Minnesota Classified Advertising Network



ANTIQUES & COLLECTIBLES

JUNKATHON FLEA MARKET
Sept. 29 - Oct. 1 Pine River, MN. Farm Estates, Yard Iron, Tractor and Car Parts, Rust to Repurpose! Loads and loads bigger!! Worth the drive! FirstMondayMn.com

WANTED TO BUY

MOTORCYCLES WANTED
Japanese 1970's & British 1970's. Two-stroke & four-stroke. Cash paid! Easy trailer pickup. Call today: 612/720-2142

HELP WANTED - DRIVERS

ERIC LINSMEIER TRUCKING LLC
based in Redwood Falls, MN is hiring company drivers and owner/operators to pull hopper bottom in the upper Midwest. Call 507/829-9043

FARM EQUIPMENT

GOT LAND?
Our hunters will pay top \$\$\$ to hunt your land. Call for a free info packet & quote. 866/309-1507 www.BaseCampLeasing.com

MISCELLANEOUS

DIRECTV SELECT PACKAGE
Over 150 channels, only \$35/month (for 12 mos.) Order now! Get a \$100 AT&T Visa Rewards gift card (some restrictions apply) Call 844/279-6018

A PLACE FOR MOM

The nation's largest senior living referral service. Contact our trusted, local experts today! Our service is free, no obligation. Call 844/347-2104

MISCELLANEOUS

DONATE YOUR CAR
truck or boat to Heritage For The Blind. Free 3-day vacation, tax deductible, free towing, all paperwork taken care of 844/220-9501

SAVE ON YOUR NEXT PRESCRIPTION

World Health Link. Price match guarantee! Prescriptions required. CIPA certified. Over 1,500 medications available. Call today for a free price quote. 866/237-5131 Call now!

HIRE YOUR HELP HERE

One phone call & only \$279 to reach a statewide audience of 2.5 million readers!!!
1-800-279-2979

Oakwood Apartments

401 Oak St., Ellsworth

• 1 Bedroom Unit Available

Unit Available
Water, Sewer & Garbage Included.

Rent Based on Income
AVAILABLE IMMEDIATELY

Van Binsbergen & Associates, Inc.
320-269-6640 ext. 22

Equal Housing Opportunity

www.vanblc.com



Star Herald CLASSIFIEDS

Page 6B September 27, 2018

EMPLOYMENT

Midwest Vision Centers **Optometrist Needed**

Midwest Vision Centers, a leading privately owned eye care provider, is looking for Optometrists to fill-in one or two days per week at their Red Wing location. Guarantees per day are available.

The experienced staff handles patient booking, operations and third party billing for the office allowing doctors to concentrate on their patients.

Call Cari Evans at 320 252-5777 ext 3 or email Cari at cevans@midwestvisioncenters.com to provide your contact information.

EMPLOYMENT

CITY OF LUVERNE *Love The Life!*

WATER/WASTEWATER OPERATOR

Entry level position to become an operator skilled in the technical work needed to operate, maintain and repair process, control and support systems at the City of Luverne Water/Wastewater Treatment Facilities. Full-time, union position, excellent benefits package, starting salary range of \$15.70-\$20.02/hour (DOQ).

Min. Req.: high school diploma or equivalent, 35-mile response area requirement must be met within 6 months of hire, must possess a MN Class A CDL with tanker endorsement or able to obtain one within 12 months of hire, satisfactory driving record, and must meet Federal DOT regulations. See job description for qualifications & further details. Applications available at: City Offices, 305 E. Luverne St., Luverne, MN 56156; (507) 449-9898; or at www.cityofluverne.org

Applications must be received by 4:30 p.m. on Tuesday, October 2, 2018.

The City of Luverne is an Affirmative Action/Equal Opportunity Employer.

GARAGE SALES

Fall rummage sale: 301 N. Broadway St., Magnolia. Friday, Sept. 28: 8 a.m. - 6 p.m. and Saturday, Sept. 29: 8 a.m. - Noon. Many items. 1/2 price on Saturday. Plants, antiques, ladies bikes. A rummagers wonderland of good stuff. (9.27)

FOR SALE

Beef for sale: Split half, split quarters. Call Marten Kruger at 507-920-9386. (8.30-10.7)

Oak dining room table with four chairs. Call 507-290-1688. (9.16-10.4)

RECYCLE!

EMPLOYMENT

Roos & Son, Inc. is seeking full-time milk haulers. Must have a Class A CDL and Tanker Endorsement. Inquire at 507-993-8801. (9.16-10.4)

Grandstay Hotel and Suites of Luverne is seeking part-time housekeepers. Hours include every other weekend. Applications available at 908 S. Kniss Ave. (9.20-10.7)

Roos & Son, Inc. is seeking part-time milk haulers. Must have a Class A CDL and Tanker Endorsement. Inquire at 507-993-8801. (9.13-9.30)

EMPLOYMENT

New Life Treatment Center, Woodstock, MN, a faith-based non-profit sincerely dedicated to our clients, delivers quality care to clients with substance use disorder. Rewarding working environment. Competitive wages based on work history, great benefits, paid time off. EOE Call 507-777-4321 ext. 203 to apply. Positions available: Full/Part Time Nurse (LPN/RN) - Must be licensed in MN. Professionally challenging - Limited physical demands. Must be available to work all shifts. Full/Part Time LADC counselor - Must be licensed in MN Full/Part-time Cook - Join our dietary team. Health benefits available at 32hr/wk. Must be willing to work Friday and Saturday nights, plus one Sunday per month. Full/Part Time Client Care Tech - Opportunities for advancement. (9.27-10.14)

Client Community Services, Inc. is accepting applications for Caregiver positions for our two homes located in Luverne! Our caregivers assist individuals with developmental and/or physical disabilities with daily living skills such as personal care, meal prep, laundry, shopping and attending community events. We offer block schedules with fixed hours. Schedules include every other weekend and some holidays. Currently, we have two overnight blocks and three day/afternoon/evening blocks open, averaging from 19 - 38 + hours per week depending on the block schedule you choose. Health insurance starts at just 30 hours per week. Other benefits include dental, vision, flex and retirement plans, PTO, paid training and holidays worked are paid double time. For more information on block schedules/hours available, please contact Linette at (507) 283-2062 or (507) 283-4170. You may also apply online at www.clientcommunityservices.org or in person at 826 Fifth Avenue, Worthington. CCSI is an EEO/AA Employer (9.16-10.4)

The daily news of Rock County
Star-Herald.com

EMPLOYMENT

HELP WANTED

Klarenbeek Rendering Daily Route Truck Driver. Class B CDL with air brake, clean driving record, paid holidays and vacations. Call Alan at 507-220-5669.

EMPLOYMENT

Now Hiring in our Concrete & Steel Divisions

Experienced Concrete Finishers to help us pour floors. Must be skilled at setting forms, screeding and finishing with hand and power trowels. Experienced footings and foundation crew members. Must be hard working, reliable and a team player. We need Pre-Engineered Metal Building Erectors experienced in all phases of metal building erection. We are a well-established, safety oriented company offering long term positions. Applicants should have reliable transportation and a good attitude.

In exchange we offer an excellent benefit package! To name just a few:
*Competitive Wages *Medical and Dental insurance *401K
*Flex Spending Account (FSA) *Health Savings Account (HSA)
*Employee Assistance Program (EAP) *Paid Time Off *Paid Holidays

Apply now at 618 E Maple Street Sioux Falls or send your resume to: hr@beckandhofer.com

BECK & HOFER CONSTRUCTION

HELP WANTED

CHS Luverne location is looking for a **CDL DRIVER** in our feed dept. Must be able to lift 50+ pounds + follow safety procedures. CHS offers competitive pay & benefits package + paid holidays & vacation. Apply online @ CHS under careers.

CHS Job #13711BR

TUFF MEMORIAL HOME
A HOME WITH A HEART

The Tuff Memorial Home is currently hiring day and night shifts for a **CNA**. Experience preferred. If interested, contact Eli Ripley at 507-962-3275. or email eripley@tuffmemorialhome.com

Competitive Wage
Full Benefits
Pension Plan
Friendly Atmosphere

Full-Time **Child Care Assistant** Position available

Rock Rapids Kids Club
Must be 16 years of age or older. Passion for children required. Now in our new facility. Contact for an application: **Desiree Kopp** Rock Rapids Kids Club Director
309 North Story Street
Rock Rapids, IA 51246
712-472-2686
kidsclubdirector@hickorytech.net

SEMI-DRIVER WANTED

Looking for a semi driver to deliver LTL Freight. Must have a **CLASS A CDL, Haz Mat, and good driving record. Must be able to pass DOT and Company Physical and DOT Drug Screen. Home every night and weekends. Benefits include IRA, Health Ins., Vacation Days and Personal Days.**

Contact Steve or Carol
McCormack Trans. Co. Inc
Rock Rapids, Iowa 51246
1-800-831-8549

Come & Be Part of a Great Team!



Part-Time Swine Technicians WANTED
In the Kenneth, MN Area

Apply online @ www.pipestonesystem.com or Call 866-918-7378 to explore your future with us. No experience necessary - we will train. Pre-employment drug testing and background screening required.

PIPESTONE
SYSTEM

HELP WANTED

Heartland Mutual Insurance Company in Lismore MN is expanding their staff. We are looking to add an **Inspector/Adjuster**, experience in carpentry or insurance is a plus. **Qualified individuals should have good customer service skills, a desire to learn and PC experience.**

Contact Ron at Heartland Mutual Insurance Company (507-472-8216) or by email at ron@hmicmn.com with any questions or to apply.

HEARTLAND MUTUAL INSURANCE
Lismore, MN • 507-472-8216

Southwestern Mental Health Intake Specialist
Avera Partner

Southwestern Mental Health Center is currently seeking applications for a Full-Time Intake Specialist position at our Luverne, MN office. Hours are Monday - Friday, 8 AM to 5 PM, with extended hours on Monday from 8:00 AM to 7:00 PM.

The Intake Specialist is responsible for the general functioning of the Front Office duties. Provide face-to-face and phone reception services to all clients, families, vendors, agencies, and co-workers. Enters new client data into Information System, completes clinical transactions in system. Assist Lead Intake Specialist with completing Initial Intake packets, Face-to-Face Intake packets, consent to treatment agreement, fee agreements and release of information & annual updates.

Knowledge of Microsoft Office Suite. Must be able to perform basis operations on a computer within the Windows operating system.

Apply online at Southwestern Mental Health Please apply at: <http://www.swmhc.org>

- Click on the Careers tab toward the top of the web page.
- Click on Search for Jobs.
- In the Quick Search, click on Positions by Locations.
- Click on Luverne, MN and search for this position to apply.

If you need further assistance, Email: david.vinzant@swmhc.org
Phone: 507-283-9511

EEO/AA

MN VETERANS HOME REGISTERED NURSE

The MN Veterans Home - Luverne is accepting applications for a Registered Nurse available to work the evening shift (2:45 pm - 11:15 pm). Must possess or be able to obtain MN license prior to hire. Excellent benefits package including health, dental, life, retirement program, and paid vacation, sick and holiday leave. Salary range: \$28.76 - \$42.59/hour depending on experience. Shift differential - \$1.50/hour. Apply online at <https://mn.mmb.gov/careers>. For further information contact Sandra Kelm, 507-283-6211; sandra.kelm@state.mn.us. AA/EOE



Sanford Luverne Medical Center is currently accepting applications for PT (Part-Time) and PRN (Part-Time as Needed) positions:

- HOME HEALTH AIDE - PRN
- LICENSED ADDICTION COUNSELOR - PT
- PATIENT CARE TECHNICIAN - PT
- PATIENT ACCESS REPRESENTATIVE - PT
- PHYSICIAN ASSISTANT OR NURSE PRACTITIONER - FT

To apply, visit sanfordhealth.jobs, search "Luverne" in the location search bar.

SANFORD
Luverne

877-673-0854 EEO/AA

Interested in Advertising in the Classifieds? IT'S EASY!

Call 283-2333

{warmulous}
(adj); amazingly cozy

Another Way We Make You Feel Better.

GET UP TO **\$1,600** IN REBATES* OR UP TO 60 MONTHS INTEREST FREE FINANCING**

with purchase of a Lennox® home comfort system.

LENNOX

McClure
PLUMBING, HEATING, AIR CONDITIONING, INC.
Luverne, MN
(507) 449-2828
412 S. Kniss, Luverne, MN 56156

Offer expires 11/23/2018. *Rebate requires purchase of qualifying items by 11/23/18 and submission of a completed rebate form (with proof of purchase) to www.lennoxconsumerrebates.com no later than 12/14/18. Rebate is paid in the form of a Lennox Visa® prepaid debit card. Card is subject to terms and conditions found or referenced on card and expires 12 months after issuance. Conditions apply. See www.lennox.com for complete rebate terms and conditions. **Offer available 9/3/18 - 11/23/18. Requires purchase of qualifying system. Financing available to well-qualified buyers on approved credit. No down payment required. 0% APR for 60 months, with equal monthly payments. Normal late charges apply. Cannot be combined with any other promotional offer. Minimum loan amount \$1,000. Maximum loan amount \$45,000. You may prepay your account at any time without penalty. Financing is subject to credit requirements and satisfactory completion of finance documents. Key finance terms advertised are estimates only. See Truth in Lending disclosures available from lender for more information. © 2018 Lennox Industries Inc. Lennox Dealers are independently owned and operated businesses.