



Rock County STAR HERALD

Rock County's oldest business, printing since 1873

Thursday, May 13, 2021

Chamber 'We will have to be top-notch'

Businesses welcome eased restrictions, but prepare for post-pandemic challenges

By Lori Sorenson

An indoor mask-wearing mandate will end by July 1, and restrictions on businesses and social gatherings will end May 28 under a plan that Gov. Tim Walz announced last week.

As of Friday there are no longer caps on capacity of gatherings for outdoor entertainment venues.

"We know that outdoor activities and events pose a relatively lower risk of COVID-19 transmission," Walz said.

"For that reason, and because of the positive trends we have seen from our vaccination efforts, we will take immediate steps to relax restrictions on outdoor venues."

He said there would be an expansion of caps for indoor venues, and an end to early bar and restaurant closing times.

All caps will be eliminated May 28 ahead of Memorial Day weekend.

Walz said the mandate requiring masks in indoor public spaces could be lifted before July 1 if the state can increase the rate of Minnesotans who have received COVID-19 vaccine to 70 percent.

Local response

Luverne Chamber Director Jane Wildung Lanphere said easing restrictions will make a big difference to local businesses that have operated in pandemic mode for over 15 months.

"Although we have to wait until after July 1 to expect 'normal' operations, this is certainly a big step," Lanphere said.

"With vacation travel starting in May, it is very important that these businesses are able to plan ahead — to have product and staff to handle business and be ready to meet the pent-up demand of our residents and visitors."

She said business owners will need to work hard to gain back

COVID restrictions/see 5A



Lori Sorenson photos/0513 farm safety

Farms are dangerous places

Luverne High School FFA students hosted Farm Safety Day presentations Monday for Luverne Elementary fourth-grade classes. More than a dozen stations were set up along the gravel road west of the elementary school leading to the ball diamonds to show the operations and potential hazards of farm machinery and equipment, as well as safe animal handling. FFA adviser Dennis Moritz conducted a similar farm safety demonstration Monday afternoon with the Adrian students who are part of the Luverne-Adrian FFA Chapter.

Above, fourth-graders (from left) Nolan Dekam, Allison Beyer, Summer Mollberg, Ty Kopp, Will Gehrke, Makenzie Smith, Gracyn Woodley and Naima French learn about ATV safety from FFA'ers (from left) Chris Aning, Harrison Uithoven, and Lucas Hansen



Trista Baustian and Morgan Ahrendt talk to fourth-graders about animal health, using a bison calf as an example.



FFA high school student Hunter Sandbulte talks to elementary students about how modern equipment injects liquid manure into the soil and tills it in to make the most of nutrient application.

City modifies finance plan for former Sharkee's lot

Towne Square development promises higher market value, thus higher returns

By Lori Sorenson

Luverne City Council members took action last week to modify tax increment financing for the former Sharkee's property on South Highway 75.

The city originally purchased the property and prepared the lot in 2016 for an unknown future development.

With Towne Square Apartments coming soon, the city took action to amend financing plans for what's now a certain development.

A public hearing Tuesday, May 4, addressed "the proposed modification of Tax Increment Financing District No. 23," commonly known as the former Sharkee's property.

Tammy Omdal of Northland Securities had worked with city staff on the original TIF district in 2016 and is now helping with the modification.

She attended the May 4 meeting by Zoom to offer background and answer questions.

"Now that the project is coming to fruition and more is known about the development that will occur, the projected tax increment that will be derived has increased," she said.

Based on the most recent adopted budget, the original estimate was about \$1.4 million of tax increment.

She said the present estimate for tax increment over the 26-year life of this redevelopment district increased to approximately \$4.9 million.

The modified plan will provide for use of those funds for project costs, and it will provide for the city to reimburse itself with interest from tax increments, Omdal said.

In order for the city council to plan for the use of tax increments for site improvements, utilities and other qualifying public

Sharkee's TIF/see page 3A

Luverne introduces e-bikes, users rent through smartphones

By Lori Sorenson

The city of Luverne is launching an e-bike rental program based at the East Main Street trailhead property (former Casey's) at the Blue Mound Avenue corner.

At their Monday morning meeting, members of the Luverne Economic Development Authority were introduced to electric bicycles that will be available to the public June 1.

LEDA Director Holly Sammons walked them through the process from downloading the Koloni app on their smartphones, scanning the QR codes to unlocking the bikes to initiate



Luverne e-bikes are equipped with kevlar tires for long wear.

rentals.

The e-bikes are equipped with locks that have both Bluetooth and GPS capabilities, so

they can be locked and unlocked through the Koloni software platform.

Riders return bikes to a "geo-fenced" drop zone at the trailhead to end their rental, at which point the transaction is charged to the accounts that are set up with the app.

"This is an exciting new addition to the community as our trail system continues to grow and more people are enjoying outdoor activities," Sammons said.

"Electric bikes are also increasing in popularity and offer

E-bike rental/see page 2A

H-BC prom goes outdoors as state eases COVID restrictions

By Mavis Fodness

Parent organizers for Saturday's Hills-Beaver Creek Secondary School junior-senior prom plan to conduct this year's event outside at SpringBrooke Events, Golf & Grill in Beaver Creek.

The public may attend and are encouraged to bring lawn chairs and practice social distance on the golf course.

The evening's events begin with the Grand March at 4:45 p.m. Students will walk the cement pathways on the back side of the SpringBrooke building.

Cost is \$2 for anyone from kindergarten through adult.

Kari Kueter is one of the junior parent organizers.

"This is all weather permitting," she said. "If the weather doesn't cooperate, the grand march will be held inside with only parents able to attend."

As of Monday, 43 couples are participating in the grand march.

In March the junior parents announced the annual prom activities would move from the Hugo Goehle gym in Hills to the events center in Beaver Creek due to current coronavirus restrictions on the number of

H-BC prom/see page 5A



COVID CORNER

County	Total Cases	DAILY average in last 7 days	Percent Change
Rock	1,278	2	+0.7%
Pipestone	1,149	2	+1.1%
Nobles	4,071	2	+0.1%
Minnehaha (SD)	31,535	25	+0.3%
Lyon (IA)	1,575	<1	+0%

14-day case rate in Rock County per 10,000 people:

Date Range	3/21-4/3	3/28-4/10	4/4-4/17	4/11-4/24
Rate	18.06	23.37	32.93	39.31

Vaccine Dashboard: ROCK COUNTY

- People with at least one dose: 3,528
- People with completed series: 3,262

Data as of 05-09-2021

For more Covid-19 vaccine information, please visit:
<https://www.health.state.mn.us/diseases/coronavirus/vaccine.html>

School Status

LUVERNE - Elementary: In-person | Middle/High School: In-person
 HBC - Elementary: In-person | Secondary: In-person/HYBRID

Current data as of May 11, 2021. Sources: MDH & The New York Times

Sponsored by: Rock County Emergency Management



Lori Sorenson photos/0513 LEDA e-bikes

Luverne Economic Development Authority Director Holly Sammons (second from left) leads LEDA members on a test drive of the new e-bikes rental program during their Monday morning meeting in Luverne City Hall Council Chambers. From left are Sherri Thompson, Sammons, Kevin Aaker, Mayor Pat Baustian and Mike Engesser.

COMMUNITY CALENDAR

Meetings

Generations membership meeting at Grand Prairie will be at 1 p.m. Tuesday, Monday, May 17, to vote on whether or not to purchase Grand Prairie Events. It will be an important meeting for Generations members to attend and be part of the decision.

Compassionate Friends Support Group will meet at 6:30 p.m. Monday, May 17, at the Luverne Foundation Office located at 102 E. Main Street in Luverne for those who have experienced the death of a child – a son or daughter, brother or sister or grandchild of any age and from any cause. There is no need to call to attend meetings. For information contact pat.saum@gmail.com.

Blue Mound Cemetery Association will meet at 2 p.m. Tuesday, May 18, at Blue Mound Lutheran Church.

H-BC music concerts

The Hills-Beaver Creek High School concert featuring the ninth- through 12th-grade band, choir and drumlines will be at 7 p.m. Friday, May 21. The concert will also be live-streamed through the H-BC Patriots Facebook page.

Bike Rodeo May 15

The Luverne Optimist Club will host the 2021 Bike Rodeo at 10 a.m. Saturday, May 15, at ice arena in Luverne. There will be many valuable prizes, including new bikes, and an obstacle course for bicycling. Ken Peterson of Ken's Bike Shop will be on hand to inspect and fix bikes for those who attend. This is a combined event for both the Luverne and H-BC communities.

Free food offered May 20

New Life Celebration Church will offer free food at 4:30 p.m. Thursday, May 20, at the Generations Building on East Lincoln Street in Luverne. Vehicles should enter the west parking lot from Lincoln Street and drive to the double glass doors on the west side of the building where volunteers will load groceries into cars. Walkers receive their pre-packaged groceries on the east side of the building. Call 507-283-4366.

Free food for seniors May 20

Nutrition Assistance Program for Seniors 60 and older, sponsored by A.C.E. of SW MN, will be from 2 to 3 p.m. Thursday, May 20, as a drive-through distribution in the parking lot at 319 E. Lincoln, Luverne. Call Linda Wenzel at 283-5064 for more info. pre-registration required, if not already enrolled.

Shredding event coming May 22

St. Catherine Church Luverne will bring Dakota Shred It to Luverne from 9 a.m. to noon Saturday, May 22, at Luverne Laundry on the corner of Main Street and Highway 75.

City of Luverne introduces e-bikes/continued from page 1A

people a way to enjoy biking regardless of their age, fitness level, or physical abilities. Electric bikes break down barriers to riding.”

Specifically, the battery-powered motors assist pedaling on uphill climbs or when riding against the wind.

“On pedal assist e-bikes, you control the amount of power the drive system provides and the assist only kicks in when you pedal,” Sammons said.

“The motor amplifies the power behind each of your pedal strokes, providing a natural riding feeling that makes it seem like your legs are supercharged.”

The bikes travel up to 20 mph and have a battery that lasts for roughly 25 miles.

“They’ll be able to ride to the Blue Mounds State Park and back — or anywhere they want to ride,” Sammons said.

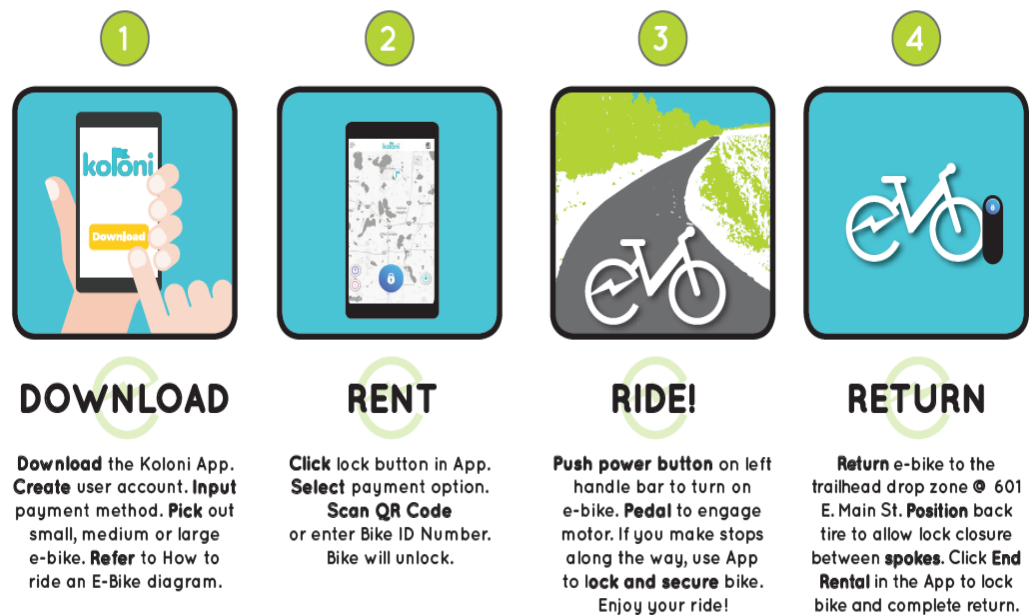
They’re currently available for rent between 8 a.m. and 8 p.m.

Sammons presented an hour’s worth of information Monday — including trouble-shooting tips, some frequently asked questions, and shared full-color power point, all of which will be available on the city’s website, cityofluverne.org.

“Most importantly, they are incredibly fun,” Sammons said. “Residents and visitors are able to ride farther, see more and explore the possibilities that come with a little extra power through the pedal-assist technology.”

LUVERNE E-BIKES HOW IT WORKS

rent and ride



NEED HELP? Try this!

- Ensure your phone’s Bluetooth is turned on
- Wake up the lock by pushing the power button on the top side of the lock
- Report all issues through the Main Menu in the app

Packet Pg. 2

She said the Luverne e-bike rental program will complement the existing “Roll on Luverne” bike loan program that allows riders to borrow traditional bikes for free from the GrandStay hotel.

The e-bikes are a pay-per-use rental program that is available at the trailhead.

Sammons and LEDA members discussed the fact that there will likely be hiccups as e-bikes are first used in the community, but she said the app allows users to request help if there are problems.

The e-bikes cost nearly \$2,000 apiece and were paid for by LEDA. There are currently six on hand and four more are on back order.

Sammons developed the e-bike rental program in Luverne in collaboration with city zoning administrator Chad McClure, who is a bicycling enthusiast and is familiar with the app and the equipment.

The bikes will be parked outside at the trailhead at 601 E. Main Street. By utilizing the Koloni app, the program is designed to be self-service so it does not need to be staffed daily. Riders can follow the instructions posted on the sign, brochures, and on the City’s website.

The trailhead building is currently housing city fitness center equipment so that members can continue working out while the Luverne Area Aquatics and Fitness Center construction is underway.

At Monday’s meeting Sammons also updated the LEDA on final construction segments of the Luverne Loop Trail and presented a to-scale map that shows the Loop in relation to the Blue Mound Trail.

The Loop will be completed in its entirety by early next year, so Sammons said it’s good to introduce the bike rental programs ahead of the trail completion.

Mayor Pat Baustian said the Loop and bike rentals are an economic development tool as well as a quality-of-life amenity for residents.

“When you look at visitors coming to town, the more that we expose them to these types of things, the more it exposes them to our community,” he said.

Dial-a-Specialist

Your One Stop Guide to Local Businesses

DR. MICHAEL SMITH

Laser Therapy • Custom Orthotics
Men, Women & Children’s Health
Athletic Care • Massage Therapy
Work & Auto Injuries • Postural Restoration

www.rockcountychiropractic.com
283-2561 • 103 E. MAIN, LUVERNE

• Chiropractic

Viking Electric LLC

Tim Gangestad
Owner

(507) 290-2595

Conquering all of your electrical needs!
Residential • Commercial • Agricultural

• Electrician

Luverne MINNESOTA City Offices

Love the life!

PO Box 659, Luverne, MN 56156
507-449-2388 (24 hour voice mail)

www.cityofluverne.org

• City

LUVERNE HEALTH & WELLNESS

Codie Zeutenhorst, DC
LuverneChiro.com

Chiropractic Acupuncture Massage
Auto, Work, and Sports Injuries

109 S Freeman Ave Luverne, MN
507.449.4400

• Chiropractic

STAR HERALD
Luverne ANNOUNCER

Chantel Connell
Sales Representative

117 W. Main, Luverne, MN
507-283-2333

Rick Peterson
General Manager

• Advertising

With live performances out, Luverne elementary students feature classroom lessons in music video

By Mavis Fodness

Spring traditionally is a busy time in the Luverne Elementary music department.

However, this year due to the coronavirus pandemic, choral instructors Morgan Van Holland and Beth Capistran and band instructor Angie Swenson have taken a different route by assembling a video.

"We chose a musical area for each grade level to focus on," Van Holland said. "Each class within that grade level has an activity they will be performing."

Fifth-grade band students performed lesson pieces by instrumental sections.

The kindergarten through fifth-grade performances offer an inside look into the teachers' daily lessons where students practice rhythm, reading music and/or learning body movements.

No singing occurred in the classrooms this year.

"In order to sing in our classrooms, students must be separated a minimum of 6 feet from each other," Capistran said. "We are not able to do that in our rooms."

Through masks, Von Holland said students hum as they listen to the prerecorded songs and learn the music movements in the classroom. They stay in their designated seating areas.

The teachers have uploaded songs the students hum in class so that they can sing at home.

"It has been a real struggle not singing," Capistran said.



Mavis Fodness photos/0513 LES Music Video

Kindergarten students perform the "Carnival of the Animals" Friday morning with Luverne Elementary School music instructor Morgan Van Holland (back, far left). A video featuring each classroom will be released this week in lieu of a public concert. Below, Madison Peters (center) makes fish movements while classmates Georgia Schlosser (left) and Baxter Meinerts move like water as they perform "Carnival of the Animals" Friday morning.

"We work very hard to help our students find their singing voices, sing correctly, breathe correctly and just find joy in singing. We encourage them to sing at home because it is so important."

This is the second year a musical production hasn't been performed for parents and the public as a finale to the school year. Last year at this time students were at home distance learning.

The lack of personal contact is taking a toll on the beginning band student numbers.

Swenson has noticed a drop in the number of band students this year.

"I'm sure it's due to the uncertainties of playing during a pandemic," she said.

Only individual lessons were conducted for the first half of the school year with students gradually coming together to play in small groups. No full band rehearsals took place this year.

The video called "Marvelous Musical Me" makes its debut this week on the elementary school Facebook page.



Live high school concerts return with limited audiences

By Mavis Fodness

In-person choral and instrumental concerts return to Luverne Middle-High School Friday for the first time in more than a year.

For the sixth-grade band students, the 6 p.m. concert will be their first concert together as a group. Joining them will be the seventh- and eighth-grade band and sixth- through eighth-grade choirs.

The high school band and choir follow at 7:30 p.m.

Friday's concerts will be livestreamed on the school's Facebook page, with a limited number of spectators watching the in-person performances.

The coronavirus pandemic affected the secondary music department in March 2020, just as the high school band and choirs were rehearsing with guest clinicians in preparation for the large group contests.

The contests were canceled for a second year this spring.

Seana Graber is completing her 26th year of teaching choir in Luverne. She said the past 14 months have been difficult.

"I never imagined having to teach during a pandemic involving a virus that was airborne," she said.

"As a singer, you breathe in deeper in order to sing though the phrases, and you expel more air when you are singing than when you speak, so I had to be very cautious and take every precaution to keep my singers and myself healthy."

Since returning to in-person instruction in January, both Graber and band instructor James



Mavis Fodness photo/0513 LHS Concerts Return

A section of the Luverne High School choir practices for Friday's in-person concert last week with choir instructor Seana Graber (in front, facing camera). Although Friday's event has limited spectators, it will be the first time the students will perform as a group in more than a year.

Jarvie have kept themselves and students masked and have kept students socially distanced, including splitting rehearsal times for smaller groups of students.

In the days leading up to Friday's concerts, both instructors are glad this spring means the return of in-person concerts.

"I am happy I have been able to work with them this year, but I look forward to when we can sing in front of a large audience again and share our love of singing and music," Graber said.

Dog Licenses Due During Month of May

City of Beaver Creek residents are reminded that dog licenses are due during month of May. Cost is \$4 per dog, however, residents age 65 and over are exempt from the license fee. Copy of current rabies vaccination required. A \$20 late fee will be added if license not renewed by 6-1-21. Clerk office hours are Monday 7am to 11am & Tuesday 5:30pm to 9pm. You can also leave payment and vaccination certificate copy in the clerk's drop box and license and tag will be mailed to you. If you no longer have your pet, please notify clerk's office at 673-2266.

/s/Jane Blank
City Clerk/Treasurer

REAL ESTATE TAXES DUE

The first half real estate tax installment is due **May 17, 2021**. To avoid penalty, payment can be dropped off at the Auditor-Treasurer's Office in the Courthouse or placed in the drop box outside of the Courthouse entry, or mailed to the Rock County Auditor-Treasurer **postmarked on or before May 17th**. Please keep in mind the post office deadlines when mailing in payments and remit the appropriate stubs to assure proper credit. Payments postmarked after May 17th will be returned for the tax and penalty due at that time.

ASHLEY KURTZ
ROCK COUNTY AUDITOR-TREASURER
P. O. BOX 509
LUVERNE MN 56156-0509

YOU CAN RECYCLE MORE THAN YOUR PAPER!



You can also recycle:
+ Metal + Paper + Cardboard
+ Plastic + Glass + Aluminum

'Foggy brain?'

'Languishing' is a real feeling during this pandemic year — and I've caught it

In the past year I've struggled with feelings of uncertainty, unanswered questions and an overwhelming cascade of local, state and federal happenings that have left my brain — well — foggy.



RUMINATIONS

By Mavis Fodness, reporter

Suffice it to say, Grace is still gone because I never heard the ending to the story.

The latest is "Cilka's Journey," by Heather Morris. I eagerly listened to her other book, "The Tattooist of Auschwitz," and enjoyed her weaving of history into fiction. Except Cilka's journey is never-ending, since I abandoned her in the concentration camp.

So how do I — and others, for that matter — stop the lack of focus and disinterest?

Experts say a concept called "flow" or an immersion into projects may help.

As a result, I've jumped back into volunteering.

Last fall I taught first-time horseback riders the joy that partnering with an animal can be for us humans.

I worked with four amazing students who came in as timid passengers and left eight weeks later with a little more confidence that I hope parents are noticing at home.

I've also returned to the Rock County 4-H horse project, which languished over the year. The pandemic canceled last year's Wednesday night riding sessions and the county fair. Many of these young riders sat at home, uncertain of what would become of the program.

I'm crossing my fingers that the flow of sharing an activity dear to my heart with students will replace that feeling of languishing brought on by this pandemic.

Last week, Minnesota Public Radio aired a segment about exactly what I've been feeling. Apparently, mental health professionals have a name for this unsettling feeling that isn't quite burnout or hopelessness, but an aimless and somewhat joylessness that creeps into the day.

Turns out, I may be "languishing" — the feeling you're muddling through your days, looking at life through a foggy windshield. The lack of motivation, lack of focus, quitting in the middle of tasks that once brought you joy.

One clue that I'm languishing is logged on my audiobook list. There are several books where I've abandoned the main character in the middle of his or her story. I have no interest in knowing how the plot ends.

I've always finished books because there's always a twist that makes it a good story.

First is "One of Us is Lying," by Karen McManus. It merges the "Breakfast Club" with "Pretty Little Liars" centering around five high school students in detention with only four of them walking out alive.

Sounds like a good story. Probably, but I never finished it.

Then there was "Grace is Gone," by Emily Elgar.

May is Mental Health Month

Don't forget brain health in spring fitness plan

STAR HERALD EDITORIAL

Anyone who's paid attention over the past 18 months knows we have an active group of smart, sincere individuals working to improve mental health in Rock County.

The #Luv1LuvAll Brain Health Committee led a series of informative sessions to call attention to mental health as a key component in a community's overall success.

One of the most important themes from one meeting to the next is that brain health is the same as cardiovascular health or vision health or dental health.

Mental illnesses are common. Each year, one in five adults experiences some mental illness, according to the Substance Abuse and Mental Health Services Administration.

One in five.

Conditions could stem from brain injuries, chemical imbalances, stressful life circumstances, sleep deprivation or a number of other causes.

But the point is our brain health needs attention like any other part of our bodies.

And when brain health needs

attention, we should address it no differently than we would a gout flare-up, a sinus infection or a sprained ankle.

We should seek professional help.

Yet, thanks to lingering stigma surrounding mental illness, someone with acute anxiety would rather suffer in silence than seek medical attention.

It's the equivalent of a person with heart disease ignoring chest pain for fear of being viewed as a lesser person.

The #Luv1LuvAll Brain Health group has worked hard to lay the groundwork in our community for practical and compassionate approaches to improving local mental health.

It's up to us to carry that work forward.

First, don't be part of the problem. Don't stigmatize mental

illness. If someone suffers from anxiety, they're not "crazy." Their brain health simply needs attention.

Second, pay attention to your own mental health. If depression is hanging on and is affecting your daily life, seek medical attention. There's no need to suffer in silence.

Finally, get educated about mental health and the symptoms and causes of brain health conditions.

Learn about them for yourself, should your own brain health need attention, and for those around you, should a friend or loved one need your help.

May is Mental Health Month. There's no better time than now to get in shape and be healthy, from head to toe.

Learn more at Luv1LuvAll's Facebook page where videos of the brain health sessions are archived.



High rates of speed occur inside city limits, too, with potential dangerous results

Question:

Are you seeing increased speed more in the metro or Greater Minnesota? Are those increased speeds on the highway or the city streets? What can we as drivers do about it?



Answer: The Minnesota State Patrol is seeing increased speeds across the state. Whether you live in the metro or Greater Minnesota, excessive speeds are a cause for concern.

Troopers don't want to

ASK A TROOPER

By Sgt. Troy Christianson, Minnesota State Patrol

meet you on the side of the road for dangerous driving behavior, or worse, respond to a crash with fatalities or serious injuries that involve you or your loved ones. If you speed, expect to be stopped.

People tend to think of dangerous speeds on the highway, but traveling at a high rate of speed

through a city can be just as tragic.

Law enforcement statewide recently cited 759 drivers for going 20 mph or more above the limit in a 30 mph zone (Feb. 1-March 31). The highest speed clocked in a 30 mph zone was 83 mph by Minneapolis Park Police. Imagine if a ball got away from a child or a person was crossing the street. At those speeds, it could be tragic.

Statewide, law enforcement cited 23,052 drivers for speed violations from Feb. 1-March 31 during the extra speed enforcement campaign. The highest speed clocked in the metro was 127 mph and 135 mph in Greater

Minnesota.

The Minnesota Department of Public Safety Office of Traffic Safety (DPS-OTS), in collaboration with the Minnesota departments of Health and Transportation announced the statewide campaign on Feb. 8. The campaign was created due to a significant increase in speed-related incidents and traffic fatalities in 2020.

If you are concerned about a person speeding or driving aggressively, find a safe place to call 911 and provide as much information about the vehicle as possible.

By driving smart and slowing down, we can all save lives on

Minnesota roads and help everyone arrive home safely at the end of the day. Visit DriveSmartMN.org for more information.

You can avoid a ticket — and a crash — if you simply buckle up, drive at safe speeds, pay attention and always drive sober. Help us drive Minnesota toward zero deaths.

If you have any questions concerning traffic-related laws or issues in Minnesota, send your questions to Sgt. Troy Christianson — Minnesota State Patrol at 2900 48th Street NW, Rochester MN 55901-5848. (Or reach him at, Troy.Christianson@state.mn.us)

E-mail: editor@star-herald.com Web site: star-herald.com
Phone: 507-283-2333 Fax: 507-283-2335

Published Thursdays by Tollefson Enterprises
POSTMASTER: Send address changes to 117 West Main, P.O. Box 837, Luverne, MN 56156. Periodicals postage paid at Luverne, Permit #33 and at additional mailing offices.

General manager: Rick Peterson **News staff:**
Advertising: Chantel Connell Lori Sorenson, editor
Office manager: Deb Lusty Mavis Fodness, reporter
Office assistant: Jennifer Nelson Brennen Rupp, sports reporter
Production: Heather Johnson Esther Frakes, copy editor
Production: Brooke Huisman

Rock County
STAR HERALD
Rock County's newspaper since 1873

(ISSN 0889-888X)
SUBSCRIPTION RATES
\$74 per year in Rock County; \$91 per year all other areas. Single copies \$1.25

Entire contents copyrighted by
Tollefson Publishing Roger Tollefson, publisher

The *Star Herald* encourages letters to the editor expressing the opinions of readers and intends to print all letters. Letters not meeting the guidelines will not be printed. The *Star Herald* will verify the authenticity of all letters. Letters must have the name of the writer, a signature and address.

Unsigned letters will not be considered. The *Star Herald* will edit for grammar, spelling and clarity. Any letters containing offensive language, libelous or slanderous material, or misleading or false information will be rewritten before being published. The *Star Herald* will not publish letters written with the sole intent to advertise or serve as a thank-you. Letters with more than 300 words may be edited. The deadline for letters is Monday 10 a.m. They may be delivered or mailed to the editor, *Rock County Star Herald*, P.O. Box 837, 117 W. Main St., Luverne, Minn. 56156.

ON THE RECORD

Dispatch report

April 30

•Complainant on U.S. Highway 75 and Luverne Street found key and remote.

•Complainant on S. Freeman Avenue reported cap off fire hydrant.

•Complainant in Rock Count requested to speak with a deputy.

•Complainant on N. Freeman Avenue reported a threatened assault.

•Complainant on 161st Street and 150th Avenue assisted motorist.

•Complainant requested identity theft information packet.

•Complainant west-bound on Interstate 90, mile marker 5-7, Beaver Creek, reported debris on road.

•Complainant on E. 1st Street, Hardwick, reported a ditch fire.

•Complainant reported drinking and driving.

May 1

•Complainant on E. Luverne Street reported suspicious activity.

•Complainant northwest of Luverne reported suspicious burning.

•Complainant on 150th Avenue, Luverne, reported a driving complaint.

•Complainant on N. Kniss Avenue reported a loud party and beer cans in his lawn.

May 2

•Complainant on Edgehill Street reported a driving complaint.

May 3

•Complainant on S. Kniss Avenue had questions about an accident that occurred.

•Information was requested about dog bites.

•Complainant on E. Brown Street reported a found cell phone.

•Complainant on 131st Street, Luverne, reported smoke smell.

•Dispatch assisted to Pipestone County Sheriff's office.

•Complainant on U.S. Highway 75, mile marker 20, Hardwick, reported lots of debris on the roadway.

•Complainant on N. Estey Street reported license plate tab theft.

May 4

•Complainant requested deputy assistance in filling out paperwork.

•Complainant on N. Kniss

Avenue reported vandalism to a vehicle tire.

•Complainant east-bound on Interstate 90, mile marker 4, Beaver Creek, reported debris on roadway.

•Complainant on 111st Street and 70th Avenue, Beaver Creek, reported visible smoke in the area.

May 5

•Complainant on S. Blue Mound Avenue, reported an assault on staff members.

•Complainant on Highway 75, mile marker 19, Hardwick, reported pedestrian at location.

•Complainant requested to speak to a deputy about a paper service.

•Complainant on S. Kniss Avenue reported a vehicle in the parking lot for an extended time.

•Complainant on N. Spring Street reported a scam.

•Complainant on N. Freeman Avenue reported items stolen from a vehicle.

•Complainant on W. Warren Street reported somebody broke a window and attempted to enter.

May 6

•Complainant on S. Kniss Avenue reported a disturbance.

•Complainant on N. Freeman Avenue reported suspicious activity.

•Complainant west-bound on Interstate 90, mile marker 15, Luverne, reported finding a wallet in the ditch at location.

•Complainant on 10th Avenue, Valley Springs, South Dakota, requested to speak to deputy about people speeding near location.

May 7

•Complainant on S. Kniss Avenue reported he is out of gas.

In addition, officers responded to 2 motor vehicle accidents, 1 vehicle in ditch, 8 escorts, 17 ambulance runs, 1 parking violation, 21 paper services, 16 animal complaints, 5 fingerprint requests, 21 burn permits, 1 background check, 1 drivers license check, 2 gas drive-offs, 2 alarms, 5 drug court tests, 8 purchase and carry permits, 2 stalled vehicles, 43 traffic stops, 8 abandoned 911 calls, 2 tests, 3 welfare checks, 1 OFP, 2 reports of cattle out and 5 follow-ups.



DFL group adopts, cleans segment of I-90

Members of the Rock County DFL organization worked along I-90 near Luverne Thursday, May 6, on their Adopt a Highway service project. From left are Beryl Haugen, Carol McDonald, Val Saarloos, Carol Serie, Lona Klosterbuer, Suanne Ohme, Keith Erickson, Al Stoakes, Ruth Stoakes, Greg Antoine, Pat Baustian, Nicole Henrichs, Larry Nelson, Randy Creeger and (not pictured) Carol Svingen.

Submitted photo

City signs reserve power agreement with MRES

By Lori Sorenson

The Luverne City Council approved a \$6.36 million reserve capacity agreement with Missouri River Energy Services for the 3,500 KW diesel-powered generator in the power plant building.

The 1967 generator has been in the power plant and under an reserve capacity agreement for many years, and according to City Administrator John Call, the agreement is mutually beneficial for both MRES and Luverne.

"The contract basically states that the city will own and maintain the generator and keep it available for MRES to purchase electrical load off of it during peak events like the polar vortex of last February," Call told the council at the April 27 meeting.

MRES pays the

city \$6,720 per month to own, operate and maintain the generator. Also, the city can use the generator for city emergency use when necessary.

"This contract makes sense to both the city and MRES as both entities have good reasons to have 'power on demand' in case of extenuating circumstances," Call said.

The new term of the reserve capacity agreement will extend to 2052 and recognizes the fact that the generation will be operating under the Southwest Power Pool transmission organization.

Once two new generators (3,100 KW each) are operational next year, they will be added to the agreement.

MRES will pay the city \$2.85 per KW or \$17,670 per month for 30 years or \$6,361,200.

'Pound the Mound' race May 15 in state park

The "Pound the Mound" 10-, 20- or 30-mile foot race over the trails of Blue Mounds State Park will be Saturday, May 15.

The event, sponsored by Friends of the Blue Mounds State Park and Luverne Area Chamber, will continue rain or shine.

For more information

contact race organizer Heather Namminga, 605-929-1937 or heather.namminga@premierbankcard.com or the Chamber, 507-283-4061 or luverne-chamber@co.rock.mn.us. Race sign-up is at <https://ultra-signup.com/register.aspx?did=83703>

H-BC prom/from page 1A

people inside the building.

"It is not that we didn't want to have it at school, we just wanted to attend in person," Kueter said. "So, we as junior parents decided we would do it all."

Saturday Minnesota Gov. Tim Walz removed some capacity limits and distancing requirements on outdoor events. No masks are required for outdoor venues of fewer than 500 people.

Events begin with the Grand March at 4:45 p.m. Students will walk the cement pathways on the back side of the Spring-Brooke building.

For indoor events, occupancy numbers were increased for large venues to no more than 250 people.

All H-BC prom activities take place at Spring-Brooke, including the meal, dance and after-prom activities that are scheduled to end at 1:30 a.m.

State eases restrictions for gatherings as COVID-19 vaccinations increase/continued from page 1A

the shoppers and patrons they lost during the pandemic restrictions.

"In the past year, people's habits for entertainment, shopping, business and travel have changed. We will have to work together to draw them back and when we get them back - we have to deliver everything top-notch," Lanphere said.

"Every person they meet, business they visit, experience they have - has to be out of this world. Our busi-

nesses in Luverne and Rock County have that reputation, and I believe that they will deliver."

She challenged businesses to be creative in drawing back customers.

"In this post-pandemic world, the secret may be to provide an experience that they can't duplicate any other way," Lanphere said.

"We hope that businesses are able to have the products and staff they need to handle pent-up demand."

However, some things

will be beyond the control of local business owners.

"Rising costs of materials ... how the costs of inputs are going to affect our ag producers, builders, production facilities, etc," she said.

"I would say that the biggest take-away is that there is pent-up demand and pent-up interest ... but many businesses are having a hard time delivering because they can't get product and don't have enough help to fill the demand."

She said some economic

experts predict that businesses who saw revenue grow in the pandemic may have a harder time in the post-pandemic economy, and those that suffered in the pandemic will grow.

Regardless, she said, it won't be easy for anyone in the coming months, but there is optimism as the economy emerges from pandemic restrictions.

"Our resourceful and creative businesses can respond to the needs of their customers and market their

products and services freely - without government control," Lanphere said.

"Rock County businesses have come through hardships before and have used their ingenuity to continue to flourish. I believe they will again."

Just in time for summer

Walz's announcements come just ahead of graduations, wedding season and summer community festivals and celebrations.

The immediate changes

on Friday allow indoor social gatherings of up to 50 people and outdoor gatherings or entertainment events with no caps or social distancing requirements.

Outdoor mask-wearing is no longer required by the state except in close-contact work situations and at entertainment venues and events with more than 500 people.

Indoor caps will remain in place for bars and restaurants until May 28, but servers can serve 10 people at one table instead of six.

DINING AND ENTERTAINMENT

PALACE THEATRE

UPCOMING EVENTS

Nomadland R

Friday, May 14
Saturday, May 15
Sunday, May 16

OSCARS
BEST PICTURE

Tickets: \$5 for kids age 3 - 12th grade
\$7 for adults.

7:00 pm
7:00 pm
7:00 pm

104 E. Main St. • Luverne, MN 56156 • 507.283.4339
WWW.PALACETHEATRE.US

OPTIMIST CLUB

2021 BIKE RODEO

May 15th | 10:00 am | Luverne Ice Arena

Lots of fabulous prizes - including NEW Bikes!

Ken Peterson will be there to inspect and fix bikes for kids that attend.

Blue Mound Liquor

Easy delivery and curbside pickup

Order over phone
Pay with credit card

319 W Main St, Luverne • 507-449-5052



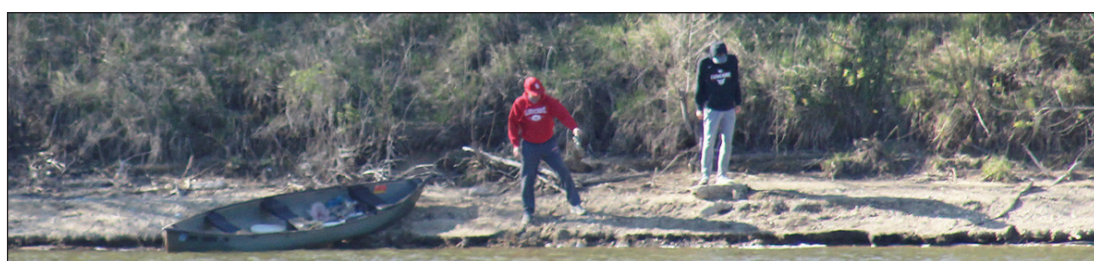
Mavis Fodness photos/0513 LHS Service Day

Luverne High School seniors repay community residents for their support

As a thank you to the Luverne community for its years of school support, the 90 seniors at Luverne High School spent Friday morning lending a hand at several public parks and nonprofit organizations for their annual senior service day. After a morning of service work, the students met for a picnic lunch in the city park before they were dismissed from classes the rest of the day. Service day replaces the seniors' traditional skip day.

Above: Seniors (from left) Cassie Flanagan, Trinity Carlson and Crystal Sayavong pick up trash at The Lake, while **below** classmates Ethan Beyer (left) and Ben Jarchow use a canoe.

At right: Senior Blake Koffron straightens the landscape edging at the Nature Explore Classroom on the school campus.



CELEBRATIONS

Open houses

An open house bridal shower for **Cathryn Hartz**, bride-to-be of **Nate Mitterdorf**, will be at 10 a.m. Saturday, May 15, at the American Reformed Church in Luverne.

May 13. Greetings may be sent to South Shore Care Center, c/o Social Service, 1307 South Shore Drive, Worthington, MN 56187.

Norman and Darlene Gyberg will celebrate their 50th wedding anniversary on Friday, May 14. Greetings may be sent to 2012 101st Street; Magnolia, MN 56158.

Card showers

Albert "Sonny" Mathiesen will celebrate his 80th birthday on Thursday,

COLLEGE NEWS

Holthaus graduates from MSU

Grace Holthaus will graduate summa cum laude from Minnesota State University Moorhead on Friday, May 14, with a Bachelor of Science in speech/language/hearing.

Grace, an H-BC graduate, is the daughter of Todd and Sherri Holthaus of Beaver Creek.

Harnack receives degree at CUNE

Whitney Harnack, Luverne, received a Master of Education degree at Concordia University Nebraska graduation ceremonies on May 8 in Seward, Nebraska.

Gillette earns degree at U of N

Isaac Gillette, Beaver Creek, received a Bachelor of Science degree in computer engineering from the College of Engineering at the University of Nebraska, Lincoln, on May 8.

MSU Mankato announces graduates

Minnesota State University, Mankato celebrated the Spring 2021 commencement by providing graduates "commencement-in-a-box" packages and personalized photo opportunities last week on a graduation stage with a virtual ceremony at 8 a.m. Saturday, May 8.

Graduates from Luverne are Griffin Ahrendt, magna cum laude, earning a Bachelor of Science in nursing and Michaela Sandbulte awarded a Bachelor of Science in biology.

MENU

Monday, May 17: Chicken and noodle casserole, mixed vegetables, peaches, cookie.

Tuesday, May 18: Meatloaf, mashed potatoes, stewed tomatoes, brownie.

Wednesday, May 19: Chicken a la king, biscuit, carrots, pears.

Thursday, May 20: Tater tot casserole, green beans, bread, peaches.

Friday, May 21: Turkey and mashed potatoes with gravy, squash, dinner roll,

frosted cake.

Half-Price Day anonymously sponsored.

LSS Dining offers well-balanced and affordable meals.

Call Lynette Hoiland at 283-9846 to arrange to pick up a dinner or for home-delivered meals.

Gift certificates are available at the meal site or online at www.lssmn.org/nutrition.

Luverne Elementary School achieves RAMP status

By Mavis Fodness

Luverne Elementary counselor Marie Atkinson-Smeins reached a career milestone recently when the American School Counselors Association (ASCA) designated Luverne Elementary School as a Recognized ASCA Model Program (RAMP).

RAMP recognizes schools committed to delivering an exemplary school counseling program by aligning their program with the ASCA National Model, a framework for

data-informed school counseling program.

Atkinson-Smeins set the goal to achieve the RAMP designation 10 years ago.

"I attended a day-long conference regarding RAMP," she said. "This has been one of my professional goals and it has been achieved."

As the only counselor for the 500 kindergarten through fifth-grade students at Luverne Elementary, Atkinson-Smeins found she didn't have an effective idea-

generating sounding board until two years ago.

In August 2019, she partnered with mentor-coach Rebecca Berry, a school social worker in Oklahoma.

"My success would not have been possible without Rebecca's help. I am also thankful to my advisory council," Atkinson-Smeins said.

"I am fortunate to work with a caring staff, supportive parents and a great group of students."

Advisory council members include local

staff and parents: Monica Edstrom, Damon Eisma, principal Stacy Gillette, Wanda Jarchow, Sandy Soto, Lynette Stensland, school board member David Wrigg, Lori Oechsle, Evelyn Perez and Randi Berghorst.

This year Luverne is one of 11 Minnesota schools achieving RAMP status and one of 139 schools in 27 states that will be recognized at the ASCA annual conference in July.

The RAMP designation is valid for five years and is ASCA's highest honor.

REMEMBER WHEN

10 years ago (2011)

Timing has been everything for Sgt. David Klein and his wife, Leslie, this spring as they relocated from Valley Springs, S.D., to their newly purchased century-old house in Ellsworth.

David has been deployed in Afghanistan since May 2010 with the 196th MEB unit. And his homecoming on Tuesday, May 3, included a surprise home makeover by family and friends to make their place livable.

The Kleins had been told earlier this year that their rental home in Valley Springs had been sold, and the family, which includes children Chris, 17, Brittney, 15, and Austin, 9, had to be out by May 1.

"Wow, it's a miracle," Leslie said about the home makeover. "Everyone worked—15 or 20 people—I can't begin to repay them."

According to Leslie's friend and fellow church member Rebecca Fritz, when David returned home, he had been prepared to begin work on the house but was surprised to find most of the work has already been finished.

25 years ago (1996)

Becky Jensen, a sophomore at Luverne High School, has been selected to be part of the Minnesota All-State Orchestra. Five trumpet players from the state are chosen for the group on the basis of auditions. Jensen will attend a week-long camp at Bemidji State University during the summer. The group will perform in concert at the end of the camp and again for the Minnesota Music Educators Association Convention. The concert for the convention will be broadcast on Minnesota Public Radio. According to band director Dale Nelson, nine Luverne students have been named all-state musicians in the past seven years. Becky is the daughter of Jerry and Delaine Jensen, Luverne.

50 years ago (1971)

Seven teacher resignations were accepted by the Luverne School Board at their meeting Tuesday night. At the same time,

they approved one replacement to the staff.

Leaving the Luverne schools system will be Tom Haugen, band instructor; William Nems, English III and debate; Robert Kolbe, biology and wrestling; Shirley Harrison, grade 1; Janet Capps, grade 4; Leora Turner, grade 4; and Linda Johnson, instrumental music.

Haugen, who has served as band instructor for the past six years; has accepted a position at Kellogg High School in Roseville, a St. Paul suburb. He also plans to study toward his master's degree.

75 years ago (1946)

An excellent and timely program will be given at a meeting of the Rock County Sportsmen's club here Monday evening, May 20, at 8 o'clock. The meeting will be held in the V.F.W. hall above the J. C. Penney store.

Main feature of the program will be the showing of a 37-minute sound technicolor movie entitled "Minnesota's Ten Thousand Lakes." This picture was taken by Path News on a tour which started at Winona, went through the Twin Cities and then into the northern lake and forest region.

There will also be a short business session, and as this is the last meeting, members of the club are urged to be present and bring up any matters which pertain to the organization.

An invitation is extended to the general public to see the motion picture.

100 years ago (1921)

Ten cans of small fry wall-eyed pike, approximately 100,000 in number, were planted in Rock river near the public park Tuesday.

The fish were secured from the State Fish and Game commission through efforts of Geo. W. Cottrell, Otto Ihlan and Ray Olson who drove to Worthington Tuesday and secured the small fry from the commissioner's fish car that was there for the day.

1950: New Beaver Creek cafe replaces one lost to fire

The following appeared in *The Rock County Star-Herald* on Jan. 19, 1950.

New Café To Open In Beaver Creek

"The Beaver Café" Will Hold Formal Opening Jan. 25

Geo. Schultz and C. L. Gray, Sioux Falls Man, Owners, Announce Business Staff

Formal opening of the new Beaver Creek will be held next Wednesday, January 25th. Although the café will be opened prior to that for serving meals and lunches, it is not thought that all the "final touches" will be done until about Wednesday.

As a feature of the opening, according to George Schultz one of the owners of the café, free coffee and doughnuts for adults and free ice cream cones for youngsters will be served on opening day.

The café is located in the former barber shop building, directly across the street from the old Beaver Café which was lost by the fire that swept the Beaver Creek buildings in



BITS BY BETTY

By Betty Mann, president Rock County Historical Society

December.

In partnership with Mr. Schultz in the café will be C. L. Gray of Sioux Falls.

A woman whose name has long been synonymous with good food for Beaver Creek patrons will be in charge of the cooking, Mrs. James Vopat. Also employed in the café will be Miss Vernice Olson and Mrs. Robert Tower.

The building has been redecorated and remodeled for the new business. A new front has been installed on

Bits, continued on p. 7A

Consider climate, planting location when selecting new evergreen varieties

I hope you have noticed the beautiful lavender flowers of the rhododendron shrubs that have been blooming for the last two weeks.

The variety is PJM, and these rhododendrons are broad-leaf evergreens, meaning that they do not drop their leaves in winter. This rhododendron grows to about 3 feet tall.

They prefer a slightly acidic soil, which is not what we have in this part of Minnesota, so amending the soil with peat moss when the shrub is planted will lower the soil pH enough to make the plants happy.

Most of our soil is heavy loam which can cause rhododendron roots to rot. A generous quantity of peat moss worked into the soil at planting time will help prevent this problem.

The potential for the foliage to winter-burn can be minimized by choosing a planting site in full to partial shade like the north, east, or west side of your house.

In the winter, broad-leaved evergreens planted in a sunny area can develop winter burn. This happens when their leaves warm enough to transpire moisture. The frozen ground prevents the plant from



KNOW IT AND GROW IT

By George Bonnema, Luverne Horticulturalist

replacing the lost moisture, resulting in "burned" foliage. Some winters are worse than others for this problem, but avoiding winter sun is the best preventative.

PJM is probably the best variety for our area of zone 4. Several other varieties are listed as hardy but most of them have a much larger leaf, making them less likely to survive our harsh winters.

Other varieties bloom earlier in the spring, and in the case of a spring like we are experiencing this year, the flowers would likely have been ruined by the cold.

Bonnema is a gardening enthusiast and former greenhouse owner. He can be reached at flowergb@iw.net.

H-BC students place at SWWC Creative Writing Contest

Two earn first-place medals

By Mavis Fodness

Four Hills-Beaver Creek students were recognized recently for their creative writing skills.

Sponsored through the Southwest West Central Service Cooperative based in Marshall, the 2021 Creative Writing Contest drew 162 entries from 110 students in grades three through twelve.

Students could enter one or more submissions in three categories: poetry, fiction and non-fiction.

Two H-BC students earned first-place from the judges.

Brekyn Klarenbeek placed first in fiction for grades 3-4.

Mazzi Moore was chosen first in non-fiction grades 7-8.

Each earned a \$20 gift certificate to Barnes & Noble.

Ryker Gehrke earned second place in fiction grades 3-4.

Penni Moore placed third in poetry grades 3-4.

Brystol Teune placed second in non-fiction grades 7-8.

All winning students were awarded a medal and anthology of the 2021 winning submissions in a virtual awards ceremony.

The Creative Writing Contest gives students a chance to shine by expressing themselves in their writing. The program is designed to encourage the love of language and writing for all students, as well as a way to recognize talented young writers.



Friends of Blue Mounds receives donation
Gordon Mulder (right), past president of Luverne Lions Club and current vice district governor 5M3, presents a donation to Friends of Blue Mounds chair Amy Nelson and Blue Mounds State Park manager Chris Ingebretsen. The donation will be used to purchase new bike racks for the state park to enhance biking safety and use within the park.

Bits/continued from 6A

the building and every effort has been made to provide a bright, attractive, restaurant again for Beaver Creek.

Four new booths will be installed in the near future. The counter now seats nine persons. Equipment and fixtures were those purchased several years ago for use in the Chez Paree lunch room building.

Regular lunches and meals will be served and it

is planned to keep the café open seven days a week, from 6 a.m. till 11:30 p.m. on week days with an earlier closing on Sundays.

Donations to the Rock County Historical Society can be sent to the Rock County Historical Society, 312 E. Main Street, Luverne, MN 56156.

Mann welcomes correspondence sent to manmade@iw.net.

Erwin Eisner

Erwin Eisner was born to Olga and August Eisner in Aleksandrovka by Zhytomir in the Ukraine on August 21, 1935. The village was primarily made up of German immigrants who survived the Great Famine of 1933.

After the Battle of Stalingrad in August 1942, the bloodiest battle in history, the Eisners were forced to flee from Russian soldiers. Along with thousands of refugees they made their way to Poland and into Germany, where they lived near Wolfsburg.

After the war, August was offered the opportunity to take the family to America to work on a farm in South Dakota. After a sea voyage through Cuba and New Orleans in 1952, the family, consisting of mother, father, daughters Maria and Olga, and sons Erwin and Helmut, traveled by train to Sioux Falls.

In 1963 Erwin met Annemarie Ermler. They married in 1964 and Erwin adopted Annemarie's son Walter after building a home in Brandon. Two brothers, Tom and Eric, followed in 1964 and 1968.

The family moved to Luverne in 1968 where

Erwin worked at the local power plant and Annemarie worked at the local library until 1997.

The family grew. In 1990 Walter married Jan, and in 1993 Tom gave them their first grandson, Christopher. Eric moved to the Black Hills where he met Ursula. They were married in Ursula's native Poland on New Year's Eve 2005. Two sons, Alex and Ean, followed in 2008 and 2011.

After 17 years of joyful retirement, Annemarie passed away in 2014.

Erwin is survived by his sons Walter, Thomas and Eric; daughters-in-law Jan and Ursula; grandsons Christopher, Alex and Ean; sister Maria Heinze (Jim); brother Helmut (Sharon); and niece Lisa Heinze.

Celebration of life service will be held at 3:00 p.m. Thursday, May 13, 2021, at Heritage Funeral Home, 4800 S. Minnesota Avenue, Sioux Falls, SD 57108. Visitation with family present will be from 1:00 p.m. to 3:00 p.m. prior to the service.

Arrangements are with Heritage Funeral Home at www.heritagefsd.com. (0513 V)

Paula Snyder

Paula Elizabeth Snyder, Salida, Colorado, went to her heavenly Father on Wednesday, April 28, 2021, in Salida.

Whenever Paula was asked how old she was, she would say, "I was born on Nov. 18, 1954," so you were left to figure out her age.

She was born on that date to Paul and Marguerite (LaRocca) Snyder in San Diego, California, and shortly thereafter she was diagnosed with cerebral palsy. Her father was a Naval officer, and in 1960 he moved the family to Oklahoma City to live out his Navy career. Paula attended Holy Child Catholic School in Oklahoma City, and after graduating, she worked at various workshops there while living at home.

In 2013, after her parents passed away, Paula lived with her sister Charlotte in Oklahoma City for four years. She enjoyed sitting on the front porch and wave to everyone who went by, often calling them up the steps so she could visit with them. That is how she affectionately became known as the "Mayor of 42nd Street." She always wanted to know what was going on in the neighborhood.

Paula was witty, fun-loving, smart, perceptive, and loved to tease people. She also had the unique ability to wrap anyone around her little finger. She never forgot a face or name and had many friends in Oklahoma City.

In 2017 Paula and Charlotte moved to Salida, Colorado, where they lived together, and Charlotte took great care of her. She went to the Starpoint Day Program where she made many friends. As her health began to fail,

she moved to the East Street Group Home in Salida, where she resided until her passing.

Paula enjoyed her life immensely and was an avid book and jewelry lover. She collected Bibles and Jesus books that she loved dearly. She also loved going to thrift stores, the library and McDonald's. She really enjoyed talking on the phone, visiting on FaceTime and listening to Elvis and Johnny Cash. But her greatest love of all was for Jesus, attending Mass and receiving Holy Communion.

Absolutely nothing in the world could keep Paula from living her life to the fullest. Not her disability, Not her health and Not Covid. Paula changed many lives for the better and her spirit was a true inspiration to everyone who knew her.

Paula was surrounded by her loving family the day of her passing, and God sent a beautiful rainbow outside her hospital window to welcome her home. To know her was to love her.

Paula is survived by her loving sisters Charlotte Sliva of Salida, Colorado, and Janet (Bill) Preuss of Luverne; her nephews Michael Hall of Salida and Jeff (Angie) Hicks of Jennings, Louisiana; her niece, Kim (Brian) Arends of Luverne; great-niece Nikki (Anthony) Novak of Albuquerque, New Mexico, and great-nephews Cooper and Tyler Arends of Luverne; and many devoted friends including special friends "Puppet" of Oklahoma City and Amy of Salida.

Memorials may be sent in Paula's name to St. Joseph's Catholic Church, 320 E 5th Street, Salida, CO 81201. (0513 V)

William Preuss

William Lynn Preuss, 78, Luverne, died Monday, May 3, at the Sanford USD Medical Center in Sioux Falls, South Dakota.

A memorial service was Tuesday, May 11, at the Dingmann Funeral Home in Luverne. A private family committal of cremains will be at a later date.

William Preuss was born Nov. 16, 1942, to Walter and Eleanor (Kortes) Preuss in St. Paul. When he was a young boy, his family lived in many places, including Germany, Arkansas and Colorado eventually moving back to St. Paul in 1952. During high school, Bill worked at a pharmacy, delivering medicine to CEOs of major corporations in St. Paul. This is where he developed his desire to excel and become financially secure. Bill graduated from St. Paul Johnson High School in 1960. He later graduated with a Doctor of Chiropractic's Degree from Northwestern University in Bloomington.

Bill married Debbie Burnett on June 18, 1965. They moved to Luverne in 1965 where Bill began his Preuss Chiropractic business. He retired in 2006. The couple divorced in 1980. During his chiropractic career, he dedicated himself to his profession which included being a friend and confidant to his patients.

Bill married Janet Hicks

Robert Bullerman

Robert John Bullerman, 92, Tyler, died Tuesday, May 4, 2021, at the Sunrise Manor in Tyler.

A Mass of Christian Burial will be at 2 p.m. Friday, May 7, at St. Dionysius Catholic Church in Tyler. Visitation will be one hour prior to the service. Interment will follow at St. Dionysius Catholic Cemetery in Tyler.

Robert Bullerman was born on July 15, 1928, to William and Elizabeth (Honnerman) Bullerman in Worthington. He grew up on a farm near Adrian and was baptized at the nearby Catholic church. When John was 11, the family relocated to Tyler. He graduated from Tyler High School in 1946.

Robert went on to farm for several years and then worked at the Co-op Station in Tyler. He later began his 35-year career with the Lincoln County Highway Department driving truck for the first 15 years, and then as a blade operator for the following 20 years.

Robert married Elin (Petersen) Sorensen on March 31, 1959, at St. Dionysius Catholic Church in Tyler. In

1960 they were blessed with their son, Jack. The couple worked and raised their family in Tyler. After Robert's retirement in 1992, he enjoyed many travels and winter retreats with Elin. The couple relocated to Danebod Village in Tyler and his wife, Elin, died on May 6, 2008. In June of 2019, Robert became a resident of the Sunrise Manor in Tyler and lived there until his death.

Robert was a member of St. Dionysius Catholic Church and was a previous member of the Knights of Columbus and the Lions. His fondest memories were made while traveling and spending time with his family.

Robert is survived by his son, Jack, of Tyler; brother Bill Bullerman of Luverne; and sister Mary Mueller of Tyler.

He was preceded in death by his wife, Elin; his parents; two infant siblings, Charles and Ann; and a brother, Ambrose "Bud."

Arrangements were provided by Hartquist Funeral Home of Tyler, hartquistfuneral.com. (0513 F)



PARKINSON'S?

Are you suffering with Parkinson's after exposure to Paraquat Herbicide?

Medical studies show a possible link between the common herbicide **PARAQUAT** and Parkinson's Disease.

Paraquat is sold as under such brand names as Gramoxone, Firestorm, Helmuquat, and Parazone

Give us a click or call - we can help you get compensation

PersonalInjuryMinnesota.com
PATTERSON DAHLBERG INJURY LAWYERS

507-424-3000 877-288-9122 612-474-3000

GENERAC

Prepare for power outages with a Generac home standby generator

REQUEST A FREE QUOTE!
855-984-8982

FREE
7-Year Extended Warranty*
A \$695 Value!

Offer valid February 15 - June 6, 2021

Special Financing Available
Subject to Credit Approval

*To qualify, consumers must request a quote, purchase, install and activate the generator with a participating dealer. Call for a full list of terms and conditions.

Cardinal Dash yields \$16,000 for Luverne Elementary booster club

PPIE meets goal, extra money goes toward two gaga pits

By Mavis Fodness

This year's annual Cardinal Dash fundraiser at Luverne Elementary School yielded \$16,180 for the school's Parent Partners in Education (PPIE) group.

The amount topped the group's \$13,000 goal.

The event returned this year (after last year's cancellation) under coronavirus guidelines.

Instead of running as a school in an end-of-the-day event, students completed their "dash" during scheduled physical education/music classes throughout Wednesday, May 5.

No visitors were allowed to participate with the students, and only a few parent volunteers were used.

Due to the rainy weather, several classes completed the dash in the gymnasium.

The Cardinal Dash



Contributed photo

Kindergartners in Monica Edstrom's and Jessica Van Batavia's classrooms at Luverne Elementary School race off the starting line May 5 during the annual running of the Cardinal Dash, a fun run fundraiser organized annually by Parent Partners In Education. The students complete a half-mile or a two-mile run, depending on grade level.

fundraiser kicked off in mid-April when each student was challenged to sell eight cardinal notes or pledges for \$10 apiece.

Students pledge to run a half-mile to a two-mile course as part of the Cardinal Dash. Second-graders were

the top pledge earners followed by first grade and the kindergartners earned third place. The second-grade

students of teacher Kristen Schomacker were the top pledge earners followed by the first-grade class of Angie Ahrendt/Lisa Lun-

dren. Following in third place was Lori Nath's second-grade class.

The first Cardinal Dash was in 2015 for the kindergarten through fifth-grade students. The event replaced PPIE's annual frozen food fundraiser.

PPIE uses the money to support special activities within Luverne Elementary.

In the past, the group has sponsored the Prairie Ecology Bus, family reading night, swimming lessons, author visits, respect lunch, school patrol trips, snacks during MCA tests and teacher appreciation gifts.

The money raised over the group's goal will go toward an outdoor Gaga Ball pit. Amy Chapa is PPIE president.

"The kids were so excited for the Gaga Ball pit that they sold, sold, sold! We made \$3,180 more than our goal so they will be getting two pits instead of one," she said.

"I am so proud of how hard they worked to help PPIE."

24/7 ... Rain or Shine ...

Your local, independent agent will be there.

Working for you-meeting your needs.

Buffalo Ridge INSURANCE

South Hwy. 75, Luverne, MN • Ph. 507-283-2381

Auto-Owners INSURANCE

LIFE • HOME • CAR • BUSINESS

MAKE YOUR MONEY WORK SMARTER.

HERITAGE BUILDER ANNUITY

- 2.00% 3 year guaranteed interest rate
- 2.60% 5 year guaranteed interest rate
- 2.75% 7 year guaranteed interest rate

Plus: includes access to your money with Free Withdrawal options and full account value death benefit. \$25,000 minimum.

PUT YOUR MONEY TO WORK TODAY. Call today for more information:

Christina Koedam
Main Street Financial Services
MN Insurance #40467489
212 E Main St, Luverne, MN 56156
507-283-9590
mainstreet@mainstreetfinancial.net

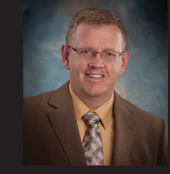
Main Street FINANCIAL SERVICES

RETIRE IN STYLE.

Rates effective 04-01-2021. Rates subject to change. This product is underwritten by Investors Heritage Life Insurance Company, Frankfort Kentucky. The product is not available in all states and product features may vary by state. Surrender and withdrawal fees may apply to early withdrawals and withdrawals may be subject to federal and state income tax and or penalties. Neither Investors Heritage Life Insurance Company nor its representatives provide legal or tax advice. You should consult your attorney or your tax advisor if you have questions. Policy forms: ICC18-SPDA1, SPDA1-FL, SPDA1-ND, SPDA1-SD.

Interested in Advertising?
Call Rick or Chantel at
283-2333

A note from Mayor Patrick T. Baustian *We're All in This Together*



Luverne and all of Rock County have always been at the top of the charts when it comes to the percentage of registered voters that actually vote each election. We set the bar high for all other cities and counties when it came to sending in our census forms. We show up at blood drives, we support our school and community and we pay our taxes. So now it's time to show the rest of the state that we aspire to be a leader in COVID-19 vaccinations. Please do your part. Continue mask up where appropriate, social distance and wash your hands.

WE WEAR THESE WITH PRIDE!



I am confident that Luverne Area Residents, working together, will emerge from this pandemic much stronger as a community.



Sincerely,

Mayor Patrick T. Baustian





H-BC Secondary students Samantha Moser (left), Kenadie Fick and Danette Leenderts enjoy the view across The Rez in Hills May 6 as they wait for the fish to bite.

Students try fishing luck with handmade rods

Below right: Junior and senior students in H-BC ag classes spent Thursday afternoon, May 6, at The Rez in Hills testing the fishing poles they constructed in class.

Below: Junior Journey Dwire removes the hook from a small bluegill.

Far right: Ty Bundesen poses with his catch before releasing the small bluegill back into the water at The Rez.

Story and photos by Mavis Fodness

Hills-Beaver Creek Secondary students spent Thursday afternoon, May 6, at The Rez, testing the handmade rods they made in ag classes with teacher Cloey Anderson.

Thirty students spent two weeks following kit instructions that included adding handles and fishing line guides to the bare poles.

The junior and senior students said they used a template to correctly space the guides along the poles. Each guide was then wound with colored nylon thread and

epoxied to repel water.

Anderson acquired the poles using classroom funds, but the students purchased their own reels. They also learned how to load the reels with fishing line.

“It is really good to get kids out and try a new hobby — a new way to spend their time,” she said.

Anderson, along with Beaver Creek Sportsman’s Club member Arlyn Gehrke, supervised the catch-and-release of the small bluegills several students caught with their handmade poles.

A special fishing waiver was granted to the group for the educational lesson.



Local farm income rises considerably in 2020 after seven years of poor income levels

The University of Minnesota recently reported that the median net farm income for southern and western Minnesota farmers in 2020 was \$102,848.

It’s the highest since 2012, which was followed by seven years (2013-2019) of poor income levels.

The 2020 net farm income levels in that region were enhanced by robust crop profits that resulted from above-average crop yields, improved grain market prices, and significant levels of government program payments. Livestock profit margins were also improved compared to recent years; however, at much more modest levels than crop profits.

Following are some of the key points and data that were



FOCUS ON AG

By Kent Thiesse, farm business analyst, MinnStar Bank

in the 2020 Farm Business Management summary:

Net farm income¹ is the income that remains after operation costs are paid.

• Median net farm income is the midpoint net farm income of all farm operations included in the FBM summary, meaning that half of the farms have a higher net farm income and half have a lower net income.

• A total of 1,543 farms from throughout south central, southwest, southeast

and west central Minnesota were included in the 2020 FBM summary.

• The average farm size was 671 acres. The top 20 percent net income farms averaged 975 acres, while the bottom 20 percent net income farms had 278 acres.

• 56 percent of the farm operations were cash crop farms, 16 percent were single entity livestock operations, with the balance being combinations of crop, livestock and other enterprises.

• 465 farms (30 percent) were under \$250,000 in gross farm sales in 2020; 352 farms (23 percent) were between \$250,000 and \$500,000 in gross sales; 366 farms (24 percent) were between \$500,000 and \$1 million in gross sales; and 360 farms (23 percent) were above \$1 million in gross sales.

• In 2020 the average farm business received \$110,244 in government program payments. The combination of one-time COVID-19 relief payments and crop disaster payments, together with regular farm program payments and crop insurance payments, accounted for approximately 74 percent of the 2020 net farm income.

• The average family

living expense in 2020 was \$60,814, which has declined in recent years, with medical expenses and health insurance costs accounting for 16 percent of the total expenses. The average non-farm income in 2020 was \$45,717, which represents over half of total annual non-farm expenses by families.

• In 2020 the average farm business spent \$959,834 for farm business operating expenses, capital purchases, and family living expenses. Most of these dollars were spent in local communities across the region, helping support the area’s overall economy.

Farm financial analysis
The average net farm income for southern and west

central Minnesota for 2020 was \$175,216. The median net farm income for the region in 2020 was \$102,848, which compares to median net farm income levels of \$36,547 in 2019, \$20,655 in 2018, \$25,377 in 2017, \$33,071 in 2016, and \$22,434 in 2015.

As usual, there was large variation in net farm income in 2020, with the top 20 percent averaging more than \$560,317 and the bottom 20 percent averaging a negative \$18,372. Less than 10 percent of the farm operations showed a negative average net farm income for 2020, which is at the lowest level in several years.

The average farm business in 2020 had a very fa-

Thiesse, continued on 8B

Luverne drubs Adrian; Cardinals improve to 12-1 overall

By Brennen Rupp

The Luverne Cardinals suffered their first loss of the season this past week against Blue Earth Area on Thursday, May 6.

Despite that loss the Cardinals still went 2-1 this past week and improved to 12-1 overall.

Blue Earth 11, LHS 5

The Cardinals were handed their first loss of the season on Thursday, May 6, when they fell to Blue Earth Area 11-5 in Luverne.

The Cardinals committed seven errors in the loss, and those costly mistakes came back to haunt the home team.

Luverne scored one run in the bottom of the first and added two more runs in the bottom of the second to take a 3-0 lead.

Blue Earth got on the board with one run in the top of the third to trim Luverne's lead to 3-1.

The visitors added two



Brennen Rupp photo/0513 LHS Baseball
Luverne's Connor Overgaard snags a line drive at third base during Luverne's matchup against Adrian on Monday, May 10. The Cardinals defeated the Dragons 24-3.

Baseball/page 3B

Cole Baker ties H-BC record in triple jump event

By Brennen Rupp

The Hills-Beaver Creek track team was one of four teams that competed at the Murray County Central invite on Friday, May 7, in Slayton.

The H-BC boys' track team tied for second place with Heron Lake-Okabena/Fulda. Both teams finished with a final points total of 121. MCC's team finished first overall with 237 points.

The H-BC girls finished third overall with a final points tally of 134.5. The MCC team finished first overall with a points total of 209.5.

A week after being a part of the 4-by-100 relay team that set the school record, Cole Baker etched his name in the H-BC track record book again.

Baker took home first place in the triple jump with a leap of 41-11.50. That jump matched a school record held by Aric Sundem since 1989.

"Anytime you get a school record it's a pretty

"Anytime you get a school record it's a pretty special accomplishment. I know he's excited that he tied it, but he's really hoping he can break it yet this year."

- H-BC track coach Rex Metzger

special accomplishment," H-BC track coach Rex Metzger said.

"I know he's excited that he tied it, but he's really hoping he can break it yet this year."

The H-BC boys owned the 100 meter, with three sprinters finishing in the Top Three.

Tyson Bork took home first place with a time of 11 seconds and 64 milliseconds. Dewell Rauk

finished in second place with a time of 11.98. Ty Bundesen finished in third place with a time of 12.07.

In the 800, Liam Raymon crossed the finish line with a time of 2:16.28 to take home first place for the Patriots.

Brock Harnack finished in third place in the 300-meter hurdles with a time of 49.16.

The 4-by-100-meter relay team of Bork, Rauk, Bundesen and Baker took home first place with a time of 46.75.

That same group of sprinters took first place in the 4-by-200-meter relay with a time of 1:36.94.

In the shot put, Casey Kueter took home first place with a throw of 40-07.25.

Max Scholten recorded a throw of 118-10 in the discus to finish in second place. Kueter finished in third place with a recorded throw of 100-03.

Baker leapt his way to

H-BC track/page 3B

Luverne tennis edges Pipestone, stays perfect

By Brennen Rupp

The Luverne Cardinals' tennis team improved to 9-0 with a 4-3 victory over Pipestone Area on Thursday, May 6, in Pipestone.

Luverne's top singles player, Pierce Cunningham defeated Tony Wacker in straight sets. Cunningham won the first set 6-0 and then picked up a 6-1 second-set victory to win the match.

Griffen Jarchow defeated Will Rops in a back and forth first set 6-4.

The second set was all Jarchow, who picked up a 6-0 victory to win the match for the Cardinals.

Luverne's Chance Tunnessen and Lucas Zupp played a competitive three-set match.

Tunnessen won the first set 7-6. Zupp answered back

by winning the second set 6-2. Zupp edged Tunnessen in the third set 11-9 to pick up the victory for the Arrows.

In doubles action, the duo of Blake Frahm and Ben Jarchow defeated Pipestone's Cole Paulson and Issac Stilas 6-4 and 6-1.

Luverne's Jayson Rops and John Miller won their match in straight sets.

The Cardinal duo defeated Pipestone's Cody Norberg and Chase Wilson 6-1 and 6-2 to help the Cardinals pick up the 4-3 victory.

The tennis team will be back home on Thursday, May 13, when they play host to Vermillion.

The Cardinals will then wrap up the week by traveling to St. James on Saturday, May 15.

Cardinals softball rides four-game winning streak to bring record back over .500

By Brennen Rupp

The Luverne Cardinals softball team went 4-2 last week to bring its overall record back over .500 at 8-7.

The Cardinals opened the week on Tuesday, May 4, with a pair of losses at home to Windom.

Luverne then bounced back by winning three straight to finish the week.

The Cardinals swept a doubleheader against Redwood Valley on Thursday, May 6, in Luverne. The Cardinals then defeated Fairmont on Friday, May 7, in Fairmont. Luverne wrapped up the busy



Brennen Rupp photo/0513 LHS Softball
Averill Sehr catches a fly ball during the game against Windom on Tuesday, May 4.

Softball/page 4B

Luverne girls' and boys' track teams turn in second-place finish at Pipestone meet

By Brennen Rupp

The Luverne Cardinals track team competed in two meets this past week.

They kicked off the week with a meet in Fairmont on Friday, May 7, and then wrapped up the week with a competition in Pipestone on Monday, May 10.

Fairmont

The Cardinals were one of three teams that competed in Fairmont on Friday, May 7, with both the boys and girls taking home second place.

Arekel McLaughlin finished in second place in the 100 meters with a time of 11 seconds and 75 milliseconds.

Ashton Sandbulte finished in second place in the 200 with a time of 23.17.

In the 400, Ethan Rahm finished in third place with a time of 58.59.

Camden Janiszkeski took home first place in the 800 with a time of 2:07.38. Camden also took home first place in the 1,600 with a time of 4:40.77.

Sage Viessman finished third in the 3,200 with a time of 11:47.34.

The 4-by-200 relay team of Sandbulte, Eli Radtke, La-



Kevin Kyle Pipestone Star photo/0513 LHS Track
Luverne's Elise Jarchow competes in the pole vault at a meet in Pipestone on Monday, May 10. Jarchow took home first place in the event for the Cardinals.

Shad Smith and McLaughlin took home first place with a time of 1:35.28.

The relay team of Sandbulte, Owen Janiszkeski, Smith and McLaughlin took home first place in the 4-by-400 with a time of 3:41.94.

In the shot put, Zach Ahrendt took home first place with a throw of 42-08.00.

Peter Baustian finished

third in the discus with a heave of 115-04.

Radtke finished in first place in the pole vault and Noah Mehlauff finished in second place.

Gavin DeBeer tied for second in the long jump with a leap of 16-07.50.

Elise Jarchow finished first in the pole vault. Elizabeth Wagner fin-

ished first in the high jump with a leap of 4-10-00. Mia Wenzel tied for second place with a jump of 4-08.00.

Jocelyn Hart took home first place in the discus with a throw of 98-11. Jadyn Hart finished

LHS track/page 3B

H-BC Patriots golf season in full swing

By Brennen Rupp

The Hills-Beaver Creek boys and girls golf teams both competed in Red Rock Conference meets on Tuesday, May 4.

The H-BC girls competed in Fulda, while the boys competed in Westbrook.

The H-BC girls were one of eight teams in Fulda and the Patriots finished in fourth place with a score of 905.

The Adrian/Ellsworth golf team finished first with a final score of 791.

Adrian's Josi Altman was the top individual performer with a final score of 186.

H-BC's Tess Van Maanen and Hannah Fick both tied for eighth place with a final score of 202.

H-BC's Tara Paulsen shot a 116.

Mackenzie Voss shot a 118 and Danette Leenders shot a 140.

"Leenderts and Paulson both posted their best scores ever," H-BC coach Dan Ellingson said.

The H-BC boys were one of eight Red Rock Conference teams that competed in Westbrook.

The Patriots placed second overall with a final 781.

"The boys played very well," Ellingson said.

"They placed second in the conference, which moved us up in the ranking for the conference quite a bit."

Adrian/Ellsworth and Heron Lake-Okabena/Fulda tied for first with a score of 727.

Adrian's Brock Henning was the top individual performer with a final score of 160.

H-BC's Jacob Axness tied for eighth place with three other golfers with a final score of 194. The other two golfers that tied with Axness were HLOF's Isaiah Schmid and Westbrook Walnut-Grove's Brady Ross.

Dallas Page shot a 199 for H-BC.

Thomas Dysthe and Austin Allen both shot a 201 for the Patriots.

Damien Meinerts shot a 251 for the Patriots. The H-BC golf teams were action on Tuesday, May 11. The girls team was in Slayton, while the boys competed in Sanborn.

Both teams will be in action on Thursday, May 13, in Adrian for a conference meet.

Redbirds suffer first loss of season in clash with Milroy Irish

By Brennen Rupp

The Luverne Redbirds amateur baseball team fell to the Milroy Irish on Sunday, May 9, in Luverne. The Irish bested the Redbirds 10-4.

The Redbirds struck first when Gaige Nath hit a solo homerun to lead off the game. The Irish scored three runs in the fourth to take a 3-1 lead.

Kendall Meyer hit an RBI double in the bottom of the fourth to trim Milroy's lead to 3-2.

The Irish got that run back in the top of the fifth inning to push their lead back to two at 4-2.

A Skyler Wenninger sacrifice trimmed Milroy's lead to 4-3.

The Irish once again answered by scoring three runs in the top of the seventh inning to take a 7-3 lead.

Ben Serie hit an RBI single in the bottom of the eighth for the Redbirds to trim Milroy's lead to 7-4.

The Irish scored three more runs in the top of the ninth to take a 10-4 lead.

The Redbirds unfortunately were unable to mount a rally in the bottom of the ninth and lost 10-4.

Nath led the Redbirds by going 2-4 at the plate with a

solo home run.

With the loss the Cardinals now own a 1-1 overall record.

The Redbirds will be back in action on Sunday, May 16, when they head to Hadley to take on the Hadley Buttermakers.

Milroy 0 0 0 4 1 0 3 0 3 10
Luverne 1 0 0 1 0 1 0 1 0 4

Batting: Nath 2-4, Serie 1-4, Zeutenhorst 1-4, Meyer 1-4
Doubles: Serie, Zeutenhorst, Meyer
Home Run: Nath
RBI: Nath, Serie, S. Wenninger, Meyer

Luverne golf teams compete in Pipestone against Arrows

By Brennen Rupp

The Luverne golf team competed in two events this past week.

The Cardinals kicked off their week with a meet in Pipestone on Thursday, May 6. They then wrapped up the week in Minnewaska at the Oakdale Invite on Monday, May 10.

The Luverne boys defeated the Arrows on Thursday, 156-190.

Owen Sudenga was the top individual performer with a round of 36.

Henry Hartquist came in second with a score of 38. Cooper Arends placed

third with a round of 39.

Brady Bork shot a 43 to finish fourth.

Tyler Arends placed fifth with a score of 44.

The Cardinal girls also competed in Pipestone on Thursday, May 6.

Pipestone's Emma Buden took home the top place with a round of 39.

Luverne's Morgan Gonneman and Paige Sandbulte tied for second with a score of 47.

Cheyenne Schutz shot a 48.

Lauren Hansen finished with a 49.

The LHS boys' team

was one of five teams that competed in Minnewaska on Monday. The Lakers took home first place with a final score of 315. Luverne placed second with a score of 325.

Hartquist was the top individual performer with a score of 72.

Sudenga and Bork both shot an 83 for the Cardinals. Tyler Arends shot an 85. Colin Schoeneman shot a 90 and Cooper Arends finished with a 94.

The Luverne golf teams will be back in action on Thursday, May 13, when they hit the road to take on Edgerton and Hills-Beaver Creek.

Luverne baseball/continued from page 2B

more runs in the top of the fifth to tie the game at 3-3.

Luverne reclaimed the lead with one run in the bottom of the fifth.

Blue Earth evened the score at 4-4 by scoring one run in the top of the sixth.

The Cardinals tallied one run in the bottom of the sixth to take a 5-4 lead into the final frame.

That's where the wheels came off for the home team. Blue Earth scored seven runs in the top of the seventh to take an 11-5 lead into the bottom half of the inning.

The Cardinals were unable to answer back and lost 11-5.

Cade Wenninger hit a triple and drove in two runs for the Cardinals.

Braydon Ripka collected two hits, including a double.

BEA 0 0 1 0 2 1 7 11 13 0
LHS 1 2 0 0 1 1 0 5 10 7

Batting: Wenninger 1-4, Beyer 1-3, Sehr 2-4, Ripka 2-3, Bosch 1-4, Anderson 1-3
Doubles: Ripka
Triples: Wenninger
RBI: Wenninger 2; Beyer; Sehr; Connell

LHS 25, Blue Earth 0

The Cardinals jumped all over Blue Earth in the second game of the doubleheader. Luverne scored 10 runs in the first inning.



Brennen Rupp photo/0513 LHS Baseball

Luverne's Casey Sehr rounds third base during Luverne's matchup against Adrian on Monday, May 10.

The Cardinals added two more runs in the second inning to take a 12-0 lead into the third inning.

In the third inning it was another offensive onslaught for the Cardinals. The Cardinals scored eight runs to take a 20-0 lead.

In the fourth inning the Cardinals tacked on five more runs to take a 25-0 lead.

As a team the Cardinals recorded 19 hits and limited Blue Earth to four hits.

Ethan Beyer led the way for the Cardinals with four hits, including three

doubles. Beyer also drove in a team-leading five runs.

Casey Sehr recorded three hits and drove in four runs.

Connor Connell recorded two hits and drove in four runs.

On the mound, Connell pitched five innings and recorded six strikeouts.

LHS 10 2 8 5 0 25 19 1
BEA 0 0 0 0 0 4 0

Batting: Cowell 2-3, Wenninger 2-4, Beyer 4-4, Sehr 3-5, Connell 2-2, Ripka 1-3, Bosch 1-4, Anderson 2-2, Behrend 1-1, Sneller 1-2
Doubles: Behrend, Sehr, Anderson, Ripka, Beyer 3
RBI: Cowell 2; Wenninger 3;

Beyer 5; Sehr 4; Connell 4; Ripka 2; Anderson 3, Sneller 2
Pitching: Connell 5 IP, 6 K

LHS 24, Adrian 3

The Cardinals used a 14-run second inning to pick up a 24-3 victory over Adrian on Monday, May 10, in Luverne.

Adrian scored two runs in the first inning. The Cardinals avoided further damage as the Dragons left the bases loaded.

Bailey Cowell started the first inning off reaching second base, thanks to a throwing error.

A passed ball allowed Cowell to advance to third base.

Cowell then crossed home plate due to another throwing error.

Casey Sehr recorded an RBI single with one out to tie the game at 2-2.

Connor Overgaard hit an RBI double to make it 3-2.

The Dragons scored one run in the top of the second to tie the game at 3-3.

Logan Bosch, like Cowell in the first inning, reached first base thanks to a throwing error.

Wenninger hit an RBI double to give the Cardinals a 4-3 lead.

Beyer was hit by a pitch to load the bases with one out.

Sehr hit a two-run

single to put the Cardinals up 6-3.

Ripka hit an RBI single to push the Cardinals' lead to 7-3.

With the bases loaded, Connell hit a two-run double to put the Cardinals up 9-3.

In his second at-bat of the inning, Bosch was hit by a pitch to load the bases.

The Cardinals went on to score five more runs in the inning to take a 17-3 lead into the third inning.

Luverne scored four runs in the third inning and three runs in the fourth inning to pick up the 24-3 victory.

By going 2-1 this past week the Cardinals improved to 12-1 overall this season.

Luverne will head to Worthington on Tuesday, May 11, to take on the Trojans.

The Cardinals will then travel to Redwood Falls on Thursday, May 13, to take on Redwood Valley.

Adrian 2 1 0 0 0 3 8 7
LHS 3 14 4 3 x 24 13 1

Batting: Wenninger 2-3, Beyer 2-4, Sehr 3-4, Overgaard 1-3, Ripka 1-4, Connell 2-4, Anderson 1-2, Behrend 1-1
Doubles: Beyer, Wenninger, Connell 2, Overgaard

H-BC track/ from page 2B

first place in the long jump with a recorded jump of 20-00.50.

Harnack finished in second place with a jump of 38-05.00.

Larissa Steinhoff tied for third in the high jump with MCC's Lindsay Hause. Both athletes recorded a jump of 4-06.00.

The Patriots had two athletes finish in the Top Three in the shot put. Abby Knobloch took home the gold with a throw of 29-09.50. Ally Birger finished in second place with a heave of 26-10.50.

In the 4-by-200-meter relay, the team of Ashlee Kelderman, Brynn Rauk, Abigail Harris and Taryn Rauk finished with a time of 1:55.83 to take home first place.

That same group of athletes finished in first place in the 4-by-100-meter relay with a time of 54.11.

Kenadie Fick finished in third place in the 1,600-meter run with a time of 6:10.67.

Fick also finished in third place in the 800-meter with a time of 2:56.29.

In the 400, Taylor Durst finished in second place with a time of 1:09.87.

Taryn Rauk finished in third place in the 100, with a time of 13:72.

Luverne track/continued from page 2B

second with a throw of 96-03. Jocelyn Hart finished second in the shot put with a throw of 34-09.00.

The 4-by-400 relay team of Gracie Zewiske, Tiana Lais, Christina Wagner and Regain Feit took home first place with a time of 4:18.37.

The 4-by-200 relay team of Sarah Stegenga, Kendra Thorson, Christina Wagner and Zewiske finished in first place with a time of 1:52.84.

The team of Wenzel, Isabella Oye, Anna Banck and Stegenga finished in first place in the 4-by-100 relay with a time of 54.58.

Regan Feit took home first place in the 300-meter hurdles with a time of 48.37. Feit finished in second place in the 100-meter hurdles with a time of 17.30.

Jenna DeBates took home first place in the 3,200 with a time of 11:16.82.

In the 1,600, Tenley Nelson finished in second place with a time of 5:34.29.

Nelson placed first in the 800 with a time of 2:34.69. Maria Rops finished third with a time of 2:46.88.

Zewiske took home first place in the 200 with a time of 27.38.

Wenzel finished in third place in the 100 with a time of 14:13.

Pipestone

The Cardinals were one of five teams that competed in the Pipestone meet on Monday, May 10.

The girls' track team took home first place, while the



Kevin Kyle Pipestone Star photo/0513

Luverne's Ashton Sandbulte competes in the 100 meter in Pipestone on Monday, May 10.

boys finished in second place.

Zewiske crossed the finish line first in the 100 with a time of 13.14. Oye finished third with a time of 13.97.

Zewiske finished first in the 200 with a time of 27.17.

Lais finished first in the 400 with a time of 1:04.11.

In the 800, Elizabeth Wagner finished first with a time of 2:43.28. Grace Ingebretson finished right behind her in second place with a time of 2:48.29.

The 1,600 was owned by the Cardinals. DeBates crossed the finish line first with a time of 5:23.37. Elizabeth Wagner finished second with a time of 5:57.27. Inge-

bretson finished third with a time of 5:57.82.

Nelson finished first in the 3,200 with a time of 11:46.96.

Feit took home first place in the 300-meter hurdles with a time of 48.69.

The 4-by-200 relay team of Wenzel, Oye, Christina Wagner and Stegenga finished first with a time of 1:56.42.

The 4-by-400 relay team of Feit, Lais, Christina Wagner and Zewiske finished first with a time of 4:19.48.

The 4-by-800 relay team of Feit, Lais, DeBates and Nelson took home first place with a time of 10:03.78.

Jocelyn Hart placed first in the shot put with a throw of 35-03.00. Jaydn Hart placed third with a throw of 31-06.00.

Jocelyn Hart placed second in the discus with a heave of 98-03. Jaydn Hart placed third with a throw of 96-10.

Wenzel and Elizabeth Wagner both tied for second in the high jump with a leap of 4-08.00.

Jarchow took home first place in the pole vault.

Lais placed second in the long jump with a leap of 15-04.00. Thorson placed third with a jump of 14-11.00.

Thorson took home third in the triple jump with a leap of 29-08.75.

Radtke took home first place in the pole vault and Mehlhaff placed second.

Ethan Teunissen placed third in the discus with a throw of 118-03.

Ahrendt placed second in the shot put with a throw of 45-02.00. Teunissen placed third with a heave of 44-03.00.

The 4-by-200 relay team of Sandbulte, Eli Radtke, La-Shad Smith and McLaughlin took home first place with a time of 1:37.14.

Camden Janiszkeski placed first in the 3,200 with a time of 10:31.95. Camden also finished first in the 1,600 with a time of 4:39.05.

McLaughlin placed second in the 200 with a time of 24.10.

Sandbulte placed first in the 100 with a time of 11.35.

STOP WISHING FOR A BETTER LIFE. BUILD IT!
We Build Strong Communities. And Lives!

We are a third generation, family-owned construction company that was founded in 1926 by three Duinick brothers. While our capabilities have expanded over the years, our values-based approach to each project has remained the same - we start with great relationships, do quality work, and honor our commitments.

WE NEED TRUCK DRIVERS
We hire the best in the field and we are committed to providing our employees with opportunities to grow in their jobs. We believe in supporting the communities we serve, investing in people, and living our values every day.

As a Truck Driver on our team, you will be responsible for transporting dirt, aggregate, asphalt, hot mix and/or equipment to job site locations. Trucks driven may include semi belly dump, Tri-Dump, end dump, flatbed, tandem, lowboy or quad dump trucks.

We need people who will safely operate their truck to deliver equipment or materials to job sites, who will secure loads for safe transport, and work closely with other crew members to coordinate work and ensure safety! Assists with loading and unloading truck as needed.

Qualifications needed include MSHA, Commercial Drivers License A, Current DOT Health Card and Tanker Endorsement. Check out our website for complete job details. We have other openings too! Give us a call!

Contact us to learn more about opportunities to join our team

phone **320-978-6011** web **duinick.com**

DUINICK

Duinick is an EEO/AA/M/F/Vet/Disability Employer

Luverne softball/continued from page 2B

week with a 7-6 victory over Edgerton on Monday, May 10.

Windom 8, LHS 6

The Cardinals led 6-2 going into the final inning against the Eagles at home Tuesday, May 4, but were unable to hold the four-run lead.

Luverne starting pitcher Gracie Nath began the inning by striking out the first batter.

The Eagles were able to get one run across and had runners on third and second with one out when a Windom batter hit a three-run home run to tie the game at 6-6.

The Eagles added two more runs in the top of the seventh inning and took an 8-6 lead into the bottom of the seventh.

Unfortunately for the Cardinals, they were unable to mount a rally and fell 8-6.

The game started with the Eagles scoring one run in the top of the first inning.

In the bottom half of the inning the Cardinals left a pair of runners stranded in scoring position.

Nath recorded a pair of strikeouts in the second inning and the Cardinals set down the Eagles in order.

Averill Sehr drew a walk to open the bottom of the second inning. Sehr then stole second base to get in scoring position.

Emma Beyer hit a single to drive in Sehr and tie the game at 1-1.

In the third inning the Eagles scored a run to claim a 2-1 lead. Nath recorded three strikeouts in the inning.

In the bottom of the fourth inning, Sehr hit a leadoff double. The Cardinals were unable to drive her in and the Eagles held onto their one-run lead.

All three outs in the top of the fifth were caught by Sehr in centerfield.

In the bottom of the



Reghan Bork takes a swing at a pitch during Luverne's contest against Windom on Tuesday, May 4. The Cardinals were swept by Windom 8-6 and 21-6.

fifth, Carly Olson hit an RBI double to tie the game at 2-2.

Roz Oye followed Olson's RBI double with an RBI double of her own to give the Cardinals a 3-2 lead.

With two outs, Sehr hit an RBI triple to put the Cardinals up 4-2.

Olson hit another RBI double in the bottom of the sixth to give the Cardinals a 5-2 lead. The Cardinals added one more run in the inning to take a 6-2 lead into the final inning.

The Eagles scored six runs in the inning to take an 8-6 lead. The Cardinals were unable to answer and fell to the Eagles 8-6.

Nath recorded nine strikeouts for the Cardinals.

Windom 1 0 1 0 0 0 6 8 11 1
LHS 0 1 0 0 4 1 0 6 10 2

Batting: Connell 2-4, Olson 2-3, Oye 2-3, Sehr 2-3, Boll 1-2, Beyer 1-4
Doubles: Olson 2; Sehr, Oye
Triples: Sehr
RBI: Olson 2; Oye, Sehr, Beyer
Pitching: Nath 7 IP, 9 Ks

Windom 21, LHS 6

The momentum that the Eagles picked up in the seventh inning of the first

game carried over into the second game of the May 4 doubleheader.

After the Cardinals scored one run in the top of the first, the Eagles scored 13 runs in the bottom half of the inning.

That 13-run first inning was too much to overcome for the Cardinals as they fell to the Eagles 21-6.

LHS 1 0 2 3 6 4 9
Windom 13 4 0 4 21 13 0

Batting: Connell 2-3, Oye 1-1, Wynia 1-1, Bork 1-1
Doubles: Connell 2
RBI: Connell 2; Oye, Sehr

LHS 13, RV 2

The Cardinals defeated Redwood Valley 13-2, on Thursday, May 6, in Luverne.

Luverne scored five runs in the bottom of the second inning to take a 5-0 lead.

Redwood Valley answered back by scoring two runs in the top of the third inning to trim the lead to 5-2.

Luverne answered back by scoring a pair of runs to push their lead back to five runs.

In the bottom of the fourth inning, Luverne

scored six runs to take a 13-2 lead.

RV 0 0 2 0 0 2 2 8
LHS 0 5 2 6 x 13 7 3

Batting: Connell 2-3, Robinson 1-2, Olson 1-3, Oye 1-3, Boll 1-2, Smith 1-3
RBI: Connell 3, Olson 1, Oye 2, Boll 1, Smith 3, Bork 1
Pitching: Nath: 5 IP, 7 Ks

LHS 16, RV 1

Luverne won Game 2 of the doubleheader against Redwood Valley, 16-1.

The Cardinals scored nine runs in the first two innings to coast to the 15-run victory.

"It's always good to bounce back after a tough loss with a couple of wins," Luverne coach Brooks Maurer said.

"We felt like Thursday's games were ones we needed to come out and take care of business right away and I felt like we did that."

Billi Connell collected three hits, including a home run.

Olson also recorded three hits, including a pair of doubles, for the Cardinals. Olson also drove in a team-leading four runs.

Beyer hit a pair of doubles.

Leah Wynia collected two hits, including a double.

Oye limited Redwood Valley to just one hit and recorded eight strikeouts in five innings.

LHS 3 6 0 4 3 16 17 3
RV 1 0 0 0 1 1 4

Batting: Connell 3-5, Robinson 3-4, Olson 2-5, Oye 1-3, Sehr 1-3, Wynia 2-3, Smith 1-3, Beyer 2-4, Bork 2-4
Doubles: Olson 2, Beyer 2, Wynia
HR: Connell
RBI: Connell 2, Robinson 2, Olson 4, Oye 1, Sehr 1, Wynia 2, Smith 1, Bork 2
Pitching: Oye 5 IP, 8 Ks

LHS 7, Fairmont 3

The Cardinals won their third straight game on Friday, May 7, by defeating Fairmont 7-3 in Fairmont.

Fairmont struck first by scoring three runs in the bottom of the second.

Luverne answered right back with three runs of their own in the top of the third inning to tie the game at 3-3.

Luverne scored one run in the fourth and fifth innings to claim a 5-3 lead.

In the top of the seventh inning, the Cardinals scored a pair of insurance runs to take a 7-3 lead.

Fairmont was unable to mount a rally and fell to Luverne 7-3.

Connell fell one single shy of hitting for the cycle. Connell hit a double, a triple and a home run to lead the Cardinals' offense. She also drove in three runs.

LHS 0 0 3 1 1 0 2 7 7 3
Fairmont 0 3 0 0 0 0 3 4 1

Batting: Connell 3-4, Robinson 1-3, Sehr 1-3, Beyer 1-3, Bork 1-3
Doubles: Sehr, Connell
RBI: Connell 3, Sehr 1, Boll 1, Beyer 1
Pitching: Nath 7 IP

LHS 7, Edgerton 6

The Cardinals extended their winning streak to four games with a thrilling 7-6 victory over Edgerton/Southwest Minnesota Christian on Monday, May 10, in Edgerton.

The Cardinals used a four run top of the seventh inning to defeat Edgerton 7-6.

"The seventh inning was a fun one," Maurer said.

"We really were battling all game and lost the lead for the first time in the sixth inning when they hit a grand slam."

The Cardinals trailed 6-3 heading into the final inning and needed a big rally.

Reghan Bork started the rally with a walk.

Connell followed Bork's walk with a walk of her own. Olson also drew a walk with one out to load the bases for the Cardinals.

With the bases juiced and facing a two-strike count, Oye drilled a single to drive in a pair of runs to trim the lead to 6-5.

Anika Boll hit the game-winner with two outs when she drilled a double down the right field line to put the Cardinals up 7-6.

With the win the Cardinals improved to 8-7 overall.

"I thought we played one of our best overall games Friday against Fairmont," Maurer said.

"It felt great to back that up with another well played game. It shows that we are working hard in practice and getting things going in a positive direction."

The Cardinals will look to extend their winning streak when they host Worthington on Tuesday, May 11.

Luverne will then be back in action on Tuesday, May 18, when they hit the road to take on Adrian/Ellsworth.

The Cardinals defeated the Dragons earlier this season in Luverne 6-4.

LHS 1 2 0 0 0 4 7 8 3
Edgerton 0 0 0 1 0 5 0 6 9 0

Batting: Connell 2-3, Robinson 1-3, Olson 1-3, Oye 2-4, Boll 1-4, Beyer 1-3
Doubles: Boll
HR: Connell
RBI: Connell; Oye 4; Boll 2



A SALUTE TO ALL BEEF PRODUCERS

MAY IS BEEF MONTH

We invite beef producers to discuss their financial needs with us to help improve and expand their operations.

SECURING YOUR FUTURE
bankwithssb.com

Member FDIC





mcan

Minnesota Classified Advertising Network



DINNER & DISCUSSION

FREE ADVANCE PLANNING SEMINAR



Tuesday, June 1, 2021 | 6:00 P.M.

Dingmann Funeral Home

300 N Kniss Ave | Luverne, MN 56156

RSVP: 320.815.9014

FEATURING LOCAL EXPERTS

Dan Dingmann, Owner & Funeral Director
Sean Petermeier, Advance Planning

Join your neighbors and friends to gain information. Advance registration is required to assist us in preparations. Please call our presenter, Sean Petermeier, at 320.815.9014 to make a reservation as there is limited seating.

EMPLOYMENT	EMPLOYMENT	MISCELLANEOUS
<p>NORTHWEST AREA SCHOOLS Multi-District/Education Cooperative in Isabel, South Dakota is seeking applications for the following instructor position/s: open until filled. Speech Language Pathologist, Early Childhood Special Education Instructor, Intro. to Drafting and Design/Architectural Drafting and Design (CTE CADD position). South Dakota licensure is required and work-related experience may count toward certification. NWAS offers competitive salary, benefits, transportation and SD Retirement. Contact Quinn Lenk, Director, at 605/466-2206, or email quinn.lenk@k12.sd.us. Northwest Area Schools Multi District/Education Cooperative does not discriminate on the basis of race, color, religion, national origin, sex, disability, or age in its programs and activities and provides equal access to the Boy Scouts and other designated youth groups.</p>	<p>COMMERCIAL APPLICATORS Competitive wage and benefits, meal allowance, paid lodging. Traveling position for railroad vegetation control, 60-80 hours/week. RAW (Cooperstown, ND) 888/700-0292 info@rawapplicators.com www.rawapplicators.com</p> <p style="text-align: center;">FULL-TIME LABORATORY TECHNICIAN Benefited position available at First Care Health Center in Park River, ND. CLS/CLT certification required. 32 hours per week. To apply or for more information, go to: www.firstcarehc.com/employment-opportunities</p>	<p>THE GENERAC PWRCELL A solar plus battery storage system. Save money, reduce your reliance on the grid, prepare for power outages and power your home. Full installation services available. \$0 Down financing option. Request a free, no obligation quote today. Call 888/913-5895</p> <p style="text-align: center;">AT&T WIRELESS Two great new offers! Ask how to get the new iPhone 11 or Next Generation Samsung Galaxy S10e on us with AT&T's Buy one, Give One offer. While supplies last! Call 855/332-0464</p>
<p style="text-align: center;">FREE ONLINE SEMINAR</p> <p>to energize your business. 30 successful business leaders share their secrets. Watch on demand, May 19-22. Details and registration: https://tinyurl.com/ImagineBestFuture</p>	<p style="text-align: center;">WANTED TO BUY</p> <p style="text-align: center;">WANTED: ALL 1970S MOTORCYCLES Running or not. Titled or not. Cash in exchange. Sell now while prices are high! Call Dan at 612/720-2142</p>	<p style="text-align: center;">DISH NETWORK \$64.99 for 190 Channels! Blazing fast internet, \$19.99/mo. (where available.) Switch & get a FREE \$100 Visa gift card. FREE voice remote. FREE HD DVR. FREE streaming on ALL devices. Call today! 855/562-4309</p>
<p style="text-align: center;">FREE ONLINE SEMINAR</p> <p>to energize your business. 30 successful business leaders share their secrets. Watch on demand, May 19-22. Details and registration: https://tinyurl.com/ImagineBestFuture</p>	<p style="text-align: center;">MISCELLANEOUS</p> <p style="text-align: center;">DONATE YOUR CAR truck or boat to Heritage For The Blind. Free 3-day vacation, tax deductible, free towing, all paperwork taken care of 844/220-9501</p>	<p style="text-align: center;">TIMESHARE CANCELLATION EXPERTS Over \$50,000,000 in timeshare debt & fees cancelled in 2019. Get free informational package & learn how to get rid of your timeshare! Free consultations. Over 450 positive reviews. Call 833/619-1117</p>
<p style="font-weight: bold;">ONLY \$279 to reach a statewide audience of 1.7 million readers!!! 1-800-279-2979</p>		

The Star Herald reached out to churches for their worship information in the absence of in-person worship services, due to coronavirus social distancing. Those that responded are listed here. Those that would like to have information posted here should call the Star Herald or email editor@star-herald.com.

St. Catherine Catholic Church

203 E. Brown St., Luverne
St. Catherine Ph. 283-8502; www.stscl.org
Monsignor Gerald Kosse, Pastor

Sundays 8:30 a.m. Mass. Public mass will be celebrated at FULL capacity in the church. Masses: 9 a.m. Wednesdays, 10 a.m. Friday and 8:30 a.m. Sunday. No mass, communion service or rosary at care centers at this time. 5 p.m. Saturdays and 8:30 a.m. mass will be live streamed on Facebook at <https://www.facebook.com/pg/stcluverne/videos/>. Visit www.stscl.org for more information.

Luverne Christian Reformed Church

605 N. Estey St., Luverne
Office Ph. 283-8482; Prayer Line Ph. 449-5982
www.luverneccrc.com — office@luverneccrc.com
Roger Sparks, Pastor

Sundays 9:30 a.m. Worship service. 6:30 p.m. Evening worship service. Sunday, May 16: 9:30 a.m. Worship service. 6:30 p.m. Worship service. Wednesday, May 19: 6:30 p.m. Ladies' Prayer Time. We are streaming Sunday services live on Roger Sparks' Facebook page at 9:30 a.m. and 6:30 p.m. Send him a friend request if you're not connected. You may also visit our website for delayed broadcasts. Also our services are on local cable TV at 5:30 p.m. on Wednesdays and at 6:30 p.m. on Thursdays. In all circumstances, may we joyfully declare: "Our help is in the name of the Lord, the Maker of heaven and earth." Psalm 124:8.

First Baptist Church

1033 N. Jackson St., P.O. Box 975, Luverne
Ph. 283-4091; email: fbcluv@iw.net — www.fbcluverne.org
Walt Moser, Pastor

Sundays, 10:30 a.m. In-person worship service. Service is also on Facebook Live at 10:30 a.m.

Grace Lutheran Church

500 N. Kniss Ave., Luverne
Ph. 507-283-4431; www.gracluverne.org — www.gracluverne.org
iw.net

Ann Zastrow, Pastor
Thursday, May 13: 8:30 a.m. Missions in Action. Saturday, May 15: 5:30 p.m. Worship service with Holy Communion. Sunday, May 16: 9 a.m. Worship service with Holy Communion and Baptism. 10:30 a.m. Adult Bible study via Zoom. Monday, May 17: Grace Notes deadline. 5:30 p.m. Ministry Retreat at Sterlings. Tuesday, May 18: 9 a.m. staff meeting. Wednesday, April 19: 7 a.m. Men's Bible study. 8:15 a.m. Caring Visitors meeting. Online, TV and Radio Worship options are still available. Online Sundays 9 a.m. on the church website www.gracluverne.org, click Worship tab or go directly to our Facebook page at Grace Lutheran ELCA, Luverne. TV: Vast Channel 3 will air our worship service Mondays at 4:30 p.m. and Fridays at 10 a.m. — NEW TIME! Radio: KQAD-AM Radio will air our worship service on Sundays at 8:15 p.m.

Bethany Lutheran Church

720 N. Kniss Ave., Luverne
Ph. 507-283-4571 or 507-449-0291 or 605-215-9834
pastorapalmquist67@yahoo.com
Andrew Palmquist, Pastor

Sundays, 10:15 a.m. Worship service; worship online as well. Mondays, 6:30 p.m. Zoom Bible study. See our Facebook page, Bethany Lutheran Church (Luverne). Also visit els.org with our sister churches for online worship opportunities.

American Reformed Church

304 N. Fairview Dr., Luverne
Ph. 283-8600; email: office@arcluverne.org
Mike Altena, Pastor

Friday, May 14: 6:30 a.m. Community Men's Bible study. Saturday, May 15: 10 a.m. Bridal shower for Cathryn Hartz and Nathan Mittendorf. Sunday, May 16: 8:15 a.m. Senior breakfast. 9:30 a.m. Worship service. 10:50 a.m. Sunday school. Tuesday, May 18: Noon Staff meeting. Worship services are also broadcast on Vast Channel 3 on Mondays at 6 p.m. and Wednesdays at 4 p.m. DVD's available upon request. To stay up to date on announcements, follow us on Facebook and Instagram @arcluverne.

Rock River Community Church

(formerly First Assembly of God)
1075 110th Ave., 2 miles west of Luverne on County Rd. 4
Ph. 612-800-1255; email info@rockrivercommunity.church
Bob Janak, Pastor; Annette Junak, Assistant Pastor

Sundays, 9 a.m. Sunday school; 10 a.m. Worship service. Children's church for ages 3-6th grade and nursery for ages 0-3 provided during our services. Wednesdays, 7 p.m. Worship service. All services are in-person and all are welcome.

United Methodist Church

109 N. Freeman Ave., Luverne
Ph. 283-4529; email: luverneumc@iw.net

Thursday, May 13: 1-3 p.m. Rock County Food Shelf curbside. Saturday, May 15: 8 p.m. AA meeting. Sunday, May 16: 9:30 a.m. Adult Sunday school. 10:30 a.m. Worship service. Senior Recognition Sunday. 4:30 p.m. Genesis to Revelation Bible study. Monday, May 17: 8 p.m. AA meeting. Messenger deadline. Tuesday, May 18: 6 p.m. Trustee meeting. 6:30 p.m.

Church council meeting. Wednesday, May 19: 8 p.m. AA meeting. Thursday, May 20: 1-3 p.m. and 5-6:30 p.m. Rock County Food Shelf curbside.

First Presbyterian Church

302 Central Lane, Luverne
Ph. 283-4787; email: Firstpc@iw.net — www.fpcluverne.com
Jason Cunningham, Pastor

Sunday, May 16: 9 a.m. Sunday school. 10:15 a.m. Worship service. Monday, May 17: 6:30 p.m. Confirmation. Wednesday, May In-person Worship service and through Facebook Live Sunday. Our Facebook page can be found under First Presbyterian Church of Luverne. We are also on the local Luverne cable station at 10 a.m. and 6 p.m. on Tuesdays and 10 a.m. on Thursdays.

St. John Lutheran Church

803 N. Cedar St., Luverne
Ph. 283-2316; email: stjohn@iw.net
www.stjohnlutheranluverne.org
Rev. Dr. Phil Booe, Pastor

Saturday, May 15: 5:30 p.m. Worship. Sunday, May 16: 9 a.m. Worship service. 10:15 a.m. Sunday school and Adult Bible study. 7 p.m. Online Bible study. Worship service is 75 people. Services will be available on the Vast channel 3 Sunday and online at the city website, cityofluverne.org.

Living Rock Church

500 E. Main St., Luverne
Ph. 449-0057; www.livingrockswmn.org
Billy Skaggs, Pastor

New Life Celebration Church

101 W. Maple, Luverne
Ph. 449-6522; email: newlifecelebration@gmail.com
Food mission every third Thursday.

Zion Evangelical Lutheran Church

305 E. 2nd St., P.O. Box 36, Hardwick
Ph. (507) 669-2855; zionoffice@alliancecom.net
Jesse Baker, Pastor

First Lutheran Church

300 Maple St., Valley Springs, S.D.
Ph. (605) 757-6662
Mark Eliason, Pastor

Sunday, May 16: 9 a.m. Worship at First Lutheran. Masks are highly recommended. Facebook live. Video worship via YouTube at <https://www.youtube.com/watch?v=LHdQwVxFcU4>

Palisade Lutheran Church

211 121st St., Garretson, S.D.
Ph. (507) 597-6257 — firstpalisade@alliancecom.net
Mark Eliason, Pastor

Sunday, May 16: 10:30 a.m. Worship at Palisade Lutheran. Masks are required. Worship will be streamed live on Facebook. Video worship via YouTube at <https://www.youtube.com/watch?v=LHdQwVxFcU4>

First Presbyterian Church

201 S. 3rd St., P.O. Box 73, Beaver Creek
Ph. 507-935-5025
email: lori.firstpres@gmail.com

Sundays, 9:30 a.m. Worship Service. Second Tuesday of each month, 7 p.m. Session meeting.

Magnolia United Methodist Church

501 E. Luverne St., Magnolia
Ph. 605-215-3429
email: magnoliannumc@gmail.com
Nancy Manning, Pastor

Sunday, 9 a.m., in-person with livestream available on the church's Facebook site.

Steen Reformed Church

112 W. Church Ave., Steen
Ph. 855-2336
Jeremy Wiersema, Pastor

Sunday, 9:30 a.m. and 6 p.m. Worship service in-person with livestream available on Facebook and YouTube. Radio worship on KQAD Sundays at 9:30 a.m.

Bethlehem Lutheran Church

112 N. Main St., Hills
Ph. 962-3270

Sunday, May 16: 9 a.m. Worship at Tuft Home. 9:30 a.m. Youth time. 10 a.m. Worship at Bethlehem. Wednesday, May 19: 9 a.m. Quilting. Worship will be streamed live to Facebook at Bethlehem of Hills. You can find more info on our website blchills.org.

Hills United Reformed Church

410 S. Central Ave., Hills
Office Ph. 962-3254
hillsurc@alliancecom.net
Alan Camarigg, Pastor

What really matters?

The cry from the streets across America today is "Black Lives Matter." Right next to them are signs saying, "All Lives Matter," or "Blue Lives Matter." On the next block the battle cry is for living wages for all people regardless of age, race, gender or education because that is most important to them.

Some might say that what really matters is that all people have food, shelter and clean water.

What about all the aborted babies? Is saving lives of the unborn what really matters?

Millions of kids and adults are caught in the cruel grasp of human trafficking. Is freeing these victims what really matters?

Another group of people speak of the environment as that is what really matters.

Some have even predicted we are just a few short years from our end because of climate change.

What really does matter? Of all the problems, what really matters?

People's lives are important. Safety and basic necessities are important. The environment is important, but what is the most important issue every person must face?

What really matters is your relationship with God. When you look at all the issues that people face, God is the issue that is most critical. If everyone's relationship with God was correct, all of the world's problems would be resolved.

You don't repaint your car to fix a flat tire. If your water heater quits working, you don't recarpet the house. As a people we see problems, but we change the

BUILT ON A ROCK

By Pastor Walt Moser,
First Baptist Church,
Luverne

When you look at all the issues that people face, God is the issue that is most critical.

paint, hoping it will fix the problem. Paint can cover rotten wood, but it doesn't fix the problem.

A person with a right relationship with God is kind, compassionate and forgiving. A person who seeks God's desires above their own desires will see others as a gift from God regardless of any issues.

The Bible repeatedly tells us that one day everyone will give an account to God for their belief in Him. What really matters above all else is your relationship with God.

What is a right relationship with God? Moses says, "You must love the Lord your God with all your heart, all your soul, and all your strength." (Deuteronomy 6:5) He goes on to say it is a part of all of your life from when you wake up to when you fall asleep.

What does really matter when all the chips are down? How you and God are getting along. Not your terms, but God's terms. Focus on what matters this week.

These weekly church page messages are contributed to God's Work through the Church and by these concerned and responsible citizens & businesses:

Call Rick or Chantel to place your ad!

283-2333

Read us online!

Rock County
STAR HERALD
www.Star-Herald.com

Trust in Him



Papik Motors
283-9171
PAPIK.COM
Luverne, MN
Rock Rapids, IA

HSS HILLS STAINLESS STEEL & EQUIPMENT CO., INC.
506 W. Koehn, P.O. Box 987, Luverne, MN
PHONE 507-283-4405
Church is Important - Please Attend!

Buffalo Ridge Insurance
507-283-2381
www.buffaloridgeins.com E-mail: info@buffaloridgeins.com

McClure Electric
Alan M. Aanenson, owner
Farm, Home & Commercial Wiring
Luverne, MN Phone 507-283-4716

TUFF MEMORIAL HOME
A HOME WITH A HEART!
Hills, MN • 507-962-3275

MINNWEST BANK
116 East Main Street • Luverne • 507-283-2366
Hwy. 75 • 800 South Kniss • Luverne • 507-283-9131
www.minnwestbank.com • Member FDIC • MoneyLine 888-616 BANK

Advertise Here

SECURITY SAVINGS BANK
bankwithssb.com 507.449.6000
Member FDIC Luverne, MN

HARTQUIST
Funeral and Cremation Services
Pipestone • Luverne • Lake Benton • Jasper • Tyler
www.HartquistFuneral.com

Pizza Ranch
110 E Main, Luverne 507-283-2379

CWG Business Insurance.
Tri-State Region Period!

MANLEY TIRE & OIL SERVICE
Manley Minnesota
1-800-615-3704
Open six days a week - Closed on Sundays
To God be the Glory.

Luverne ANNOUNCER

First Farmers & Merchants
303 E. Main, Luverne, MN
507-283-4463
www.flmbank.com
We believe in you.™
Member FDIC. And the community.

Breek Arms assumes name

MINNESOTA SECRETARY OF STATE
CERTIFICATE OF ASSUMED NAME
MINNESOTA STATUTES, CHAPTER 333

The filing of an assumed name does not provide a user with exclusive rights to that name. The filing is required for consumer protection in order to enable consumers to be able to identify the true ownership of a business.

ASSUMED NAME: **Breek Arms**
PRINCIPAL PLACE OF BUSINESS:
575 121st St., Luverne, MN 56156 USA
NAMEHOLDER(S):
Name: **Breek LLC**
Address: **100 N. 4th St., Beaver Creek, MN 56116 USA**

If you submit an attachment, it will be incorporated into this document. If the attachment conflicts with the information specifically set forth in this document, this document supersedes the data referenced in the attachment.

By typing my name, I, the undersigned, certify that I am signing this document as the person whose signature is required, or as agent of the person(s) whose signature would be required who has authorized me to sign this document on his/her behalf, or in both capacities. I further certify that I have completed all required fields, and that the information in this document is true and correct and in compliance with the applicable chapter of Minnesota Statutes. I understand that by signing this document I am subject to the penalties of perjury as set forth in Section 609.48 as if I had signed this document under oath.

Signature : /s/ **Joshua Boomgaarden**
MAILING ADDRESS: **100 N. 4th St., Beaver Creek, MN 56116**
EMAIL ADDRESS FOR OFFICIAL NOTICES: **joshua@breekllc.com**
(05-13, 05-20)

Notice of public hearing for conditional use permit

Pursuant to the Rock County Zoning Ordinance, notice is hereby given by the Rock County Planning and Zoning Commission that a public hearing will be held at the Rock County Law Enforcement Center located at 1000 North Blue Mound Avenue, Luverne, Minnesota at 7:00 p.m., Monday, May 24, 2021. The purpose of this hearing is to rule on the application for Conditional Use Permit for the following:

Applicant: Knife River Corp.
Property Owner: Ron Fick
Location: A portion of the SE 1/4 of Section 15 of Luverne Township, T102N, R45W, Rock County, Minnesota
Conditional Use: Placement and operation of a temporary hot mix asphalt plant
Zoning District: A-2, General Agriculture

We will be following current CDC and Minnesota Department of Health guidelines at this meeting which includes mandatory masks and appropriate spacing between seats. This meeting will also be available via teleconference. To access the meeting, dial the following phone number: (425) 436-6320. Then when prompted, enter the access code number: 108575

By order of the Rock County Planning and Zoning Commission
Eric A. Hartman, Zoning Administrator
311 W. Gabrielson Road
Luverne, MN 56156
507-283-8862 (05-13, 05-20)

Mortgage foreclosure sale set for July 1

NOTICE OF MORTGAGE FORECLOSURE SALE

THE RIGHT TO VERIFICATION OF THE DEBT AND IDENTITY OF THE ORIGINAL CREDITOR WITHIN THE TIME PROVIDED BY LAW IS NOT AFFECTED BY THIS ACTION.

NOTICE IS HEREBY GIVEN that default has occurred in the conditions of the following described mortgage:

DATE OF MORTGAGE: December 29, 2016
ORIGINAL PRINCIPAL AMOUNT OF MORTGAGE: \$33,781.00
MORTGAGOR(S): Linda S. Jordan, a single woman
MORTGAGEE: Mortgage Electronic Registration Systems, Inc., as mortgagee, as nominee for Quicken Loans Inc., its successors and assigns
DATE AND PLACE OF RECORDING:
Recorded: January 06, 2017 Rock County Recorder
Document Number: 189906
ASSIGNMENTS OF MORTGAGE:
And assigned to: Quicken Loans, LLC
Dated: November 02, 2020
Recorded: November 09, 2020 Rock County Recorder
Document Number: 198487
Transaction Agent: Mortgage Electronic Registration Systems, Inc.
Transaction Agent Mortgage Identification Number: 100039033650596798
Lender or Broker: Quicken Loans Inc.
Residential Mortgage Servicer: Quicken Loans, LLC
Mortgage Originator: Not Applicable
COUNTY IN WHICH PROPERTY IS LOCATED: Rock
Property Address: 821 N McKenzie St, Luverne, MN 56156-1336
Tax Parcel ID Number: 20-0242-000
LEGAL DESCRIPTION OF PROPERTY: The North Fifty-five (N.55) feet of Lot One (1), in Block Two (2), in Barck, Adams & Howe's Addition to the City of Luverne, Rock County, Minnesota, except the West Twenty-five (W.25) feet thereof
AMOUNT DUE AND CLAIMED TO BE DUE AS OF DATE OF NOTICE: \$35,469.91
THAT all pre-foreclosure requirements have been complied with; that no action or proceeding has been instituted at law or otherwise to recover the debt secured by said mortgage, or any part thereof;
PURSUANT to the power of sale contained in said mortgage, the above-described property will be sold by the Sheriff of said county as follows:
DATE AND TIME OF SALE: July 01, 2021 at 10:00 A.M.
PLACE OF SALE: Law Enforcement Center, Lobby, 1000 N. Blue Mound Ave., Luverne, Minnesota

to pay the debt secured by said mortgage and taxes, if any, on said premises and the costs and disbursements, including attorney fees allowed by law, subject to redemption within six (6) months from the date of said sale by the mortgagor(s), their personal representatives or assigns.
If the Mortgage is not reinstated under Minn. Stat. §580.30 or the property is not redeemed under Minn. Stat. §580.23, the Mortgagor must vacate the property on or before 11:59 p.m. on January 03, 2022, or the next business day if January 03, 2022, falls on a Saturday, Sunday or legal holiday.
Mortgagor(s) released from financial obligation: NONE
THIS COMMUNICATION IS FROM A DEBT COLLECTOR ATTEMPTING TO COLLECT A DEBT. ANY INFORMATION OBTAINED WILL BE USED FOR THAT PURPOSE.
THE RIGHT TO VERIFICATION OF THE DEBT AND IDENTITY OF THE ORIGINAL CREDITOR WITHIN THE TIME PROVIDED BY LAW IS NOT AFFECTED BY THIS ACTION.
THE TIME ALLOWED BY LAW FOR REDEMPTION BY THE MORTGAGOR, THE MORTGAGOR'S PERSONAL REPRESENTATIVES OR ASSIGNS, MAY BE REDUCED TO FIVE WEEKS IF A JUDICIAL ORDER IS ENTERED UNDER MINNESOTA STATUTES, SECTION 582.032, DETERMINING, AMONG OTHER THINGS, THAT THE MORTGAGED PREMISES ARE IMPROVED WITH A RESIDENTIAL DWELLING OF LESS THAN FIVE UNITS, ARE NOT PROPERTY USED IN AGRICULTURAL PRODUCTION, AND ARE ABANDONED.
DATED: May 13, 2021
ASSIGNEE OF MORTGAGEE: Quicken Loans, LLC
Wilford, Geske & Cook P.A.
Attorneys for Assignee of Mortgagee
7616 Currell Blvd; Ste 200
Woodbury, MN 55125-2296
(651) 209-3300
File Number: 044889F01
(05-13, 05-20, 05-27, 06-03, 06-10, 06-17)

Schwartz Family LLC applies for livestock feedlot permit

NOTIFICATION REQUIREMENTS
MINNESOTA RULE 7020.2000, SUBP. 4
NOTICE OF APPLICATION FOR LIVESTOCK FEEDLOT PERMIT

Notice is hereby given per Minnesota Statutes, Chapter 116, and Rock County's feedlot ordinance, that Schwartz Family LLC have made an application to the Minnesota Pollution Control Agency / County of Rock for a permit to build a new feedlot.

The new proposed feedlot will be located in the NE 1/4 of the NW 1/4 in Section 5 Martin Township, Rock County, Minnesota. The proposed new feedlot will be a 122'7" x 224' total confinement facility with a capacity of 3,330 head of finishing swine weighing between 55-300 pounds for a total of 999 animal units. The proposed barn will have an 8' deep concrete below barn manure storage pit with 12 months of storage. The total number of animal units after construction will be 999.

This publication shall constitute as notice to each resident and each owner of real property within 5000 feet of the perimeter of the proposed feedlot, as required by Minnesota State Law.
(05-13)

Rock County Commissioners meet April 6

Herreid Board Room 9:00 A.M.
Rock County Courthouse April 6, 2021

The meeting was called to order by the Chair with all Commissioners present; also in attendance were Administrator Kyle Oldre, Deputy Administrator Susan Skattum and Mavis Fodness.

The Pledge of Allegiance was recited by those in attendance.

Motion by Burger, seconded by Overgaard, to approve the April 06, 2021, County Board agenda, declared carried on a voice vote.

Motion by Overgaard, seconded by Reisch, to approve the March 16, 2021, County Board, declared carried on a voice vote.

Motion by Burger, seconded by Thompson, to call to order a Public Hearing at 9:02 A.M. to allow public comment on a tax abatement request for Kelly and Tammie Leuthold d.b.a Leuthold Salon and for a Rock Home Initiative application for Ross Van Hulzen, declared carried on a voice vote.

The County Board reviewed the Leuthold Salon abatement, requesting an abatement of 100% of the county tax for a period of ten years located in Martin Township; estimated total abatement is \$5,650. No public comments were received. The County Board also reviewed the Rock Home Initiative abatement request from Ross Van Hulzen for new construction located in Battle Plain Township for a period of 5-years; the estimated annual abatement is \$1,165.00. No public comments were received.

The Public Hearing was closed at 9:05 A.M. by order of the Chair.
Motion by Reisch, seconded by Burger, to approve Resolution No. 10-21, a tax abatement request for Kelly and Tammie Leuthold d.b.a Leuthold Salon with the following terms: 100% abatement for years 1-5 and a declining abatement thereafter for years 6-9, declared carried on a voice vote.

Motion by Overgaard, seconded by Thompson, to approve a Rock Home Initiative abatement for Ross Van Hulzen, for a new construction on a 2-acre tract in the NE Section of Battle Plain Township for a period of 5-years with an estimated annual abatement of \$1,165.00, declared carried on a voice vote.
Motion by Thompson, seconded by Reisch, to approve the consent agenda, declared carried on a voice vote.

- 1. Resolution No. 08-21, Recognition Day for Nation Service Proclamation
 - 2. Resolution No. 09-21, Rock County Snomasters 2021 Trail Agreement
- Ashley Kurtz, Auditor/Treasurer, presented the claims; motion by Overgaard, seconded by Burger, to approve declared carried on a voice vote. A complete listing of the claims is available upon request at the Auditor/Treasurer's office.
APRIL 6, 2021 CLAIMS OVER \$2,000

A & B BUSINESS INC	\$3,680.56
A.C.E. OF SOUTHWEST MINNESOTA	4,903.00
BAKER & TAYLOR	2,662.12
CENTERPOINT ENERGY	3,730.49
FLEET SERVICES DIVISION-ADMIN FMR	7,034.42
GRAHAM TIRE-WORTHINGTON	2,120.00
HILDI INC	3,800.00
MORRIS ELECTRONICS	9,239.85
NEWMAN SIGNS INC	7,096.60
NOBLES COUNTY AUDITOR-TREASURER	19,185.00
QUADIENT FINANCE USA INC	4,141.12
RACOM	7,711.76
REGENTS OF THE UNIVERSITY OF MINNESOTA	19,114.00
SANFORD HEALTH	2,100.00
TEXAS REFINERY CORP	2,089.80
TRANSOURCE TRUCK & EQUIPMENT INC	5,949.25
82 PAYMENTS LESS THAN \$2,000	23,985.92
TOTAL	\$128,543.89

The County Board was in receipt of the Fund Balance report which reflected some tax revenue, due to the distribution of tax statements. Motion by Overgaard, seconded by Williamson, to approve the Fund Balance report, declared carried on a voice vote.

Kurtz presented (3) tax abatement requests:
Parcel 03-0050-200 – a valuation change/correction due to incorrect soil map, abatement amount \$594.00.
Parcel 03-0050-300 – a valuation change/correction due to incorrect soil map, abatement amount \$508.00
Parcel 20-1409-600 – a valuation change/correction due to property improvements, abatement amount \$380.00

Motion by Burger, seconded by Thompson, to approve tax abatement on Parcel 03-0050-200 for \$594.00, declared carried on a voice vote.

Motion by Overgaard, seconded by Reisch, to approve tax abatement on Parcel 03-0050-300 for \$508.00, declared carried on a voice vote.

Motion by Thompson, seconded by Overgaard, to approve tax abatement on Parcel 20-1409-600 for \$380.00, declared carried on a voice vote.

Mark Sehr, Engineer, requested to bid let project SAP 067-612-010, a curb and gutter/sidewalk repair project on City of Luverne Main Street from TH 75 to Blue Mound Ave; motion by Overgaard, seconded by Thompson, approve a bid let date of May 3rd at 10:00 A.M. for SAP 067-612-010, declared carried on a voice vote.

The Engineer requested to add a mill/overlay project on CSAH 12, 1.2 miles west of TH75 to TH 75 on the Rock/Pipestone county line; the project would be a change order to SAP 067-612-010 the 2021 Pavement Rehabilitation project. Motion by Burger, seconded by Overgaard to approve the change order to SAP 067-612-010, declared carried on a voice vote.

Commissioner Overgaard requested to schedule a Road & Bridge tour, the date is yet to be determined.

Motion by Reisch, seconded by Overgaard, to approve a 5-year building lease agreement with DDJJ Partnership for office space for the Land Management Office effective January 01, 2021 at a rate of \$11.80/square foot, declared carried on a voice vote. The rate increase reflects the increases to utilities. The Administrator presented (3) bids to purchase a new lawn mower:

- John Deere/Z994R - \$15,100 less \$1,500 for broom attachment = \$13,600.00
- Jaycox/Ferris IS2600 – 15,278.00 (no trade)
- Rock Motor Sports/X-mark - \$17,199.00 less \$2,500 for broom attachment = \$14,699.00

The Administrator recommended purchasing the X-mark machine as the county already has an X-mark mower with an inventory of existing parts and accessories; motion by Thompson, seconded by Reisch, to accept the bid from Rock Motor Sports for an X-mark lawnmower for \$14,699.00, declared carried on a voice vote.

Motion by Overgaard, seconded by Reisch, to authorize Summer Help to be utilized between Building Maintenance and Rural Water to assist with lawn maintenance duties, declared carried on a voice vote.

The Administrator briefly discussed the Development Program Development District No. 5, a tax increment financing plan for TIF (Development) District No. 23, the former Sharkee's/Mert's properties; was presented as information only.

The Administrator presented a vaccine roll out update for Rock County stating that the estimate for persons vaccinated in Rock County is at 40%. Currently persons age 16 and over are eligible for the vaccination.

The County Board was informed that Minnesota Public Utilities Commission will be

holding public hearing via remote access on May 4, 2021 for the certificate of need and site permit application for proposed wind farm for Walleye Wind, LLC; no action was taken.

Motion by Reisch, seconded by Burger, to remove the appointment for services process currently being used for Licensing, Auditor/Treasurer, Land Records and Library and resume business operations as they were prior to COVID19 restrictions, effective May 1, 2021, declared carried on a voice vote.

The Administrator stated that he is still monitoring the American Rescue Plan; more information will be presented as it becomes available.

Commissioner Reisch stated that he had attended the following meetings: Plum Creek Library Executive Committee, City/County Liaison, SW Emergency Communications and SW Regional EMS.

Commissioner Thompson stated that she had attended the following meetings: Southwest Health & Human Services and A. C. E.

Commissioner Overgaard stated that he had attended the following meetings: Regional Solid Waste and Rural Energy, City/County Liaison.

Commissioner Burger stated that he had attended the following meetings: no meetings.

Commissioner Williamson stated that he had attended the following meetings: no meetings.

With no further business to come before the County Board, motion by Overgaard, seconded by Thompson to adjourn the meeting, declared carried on a voice vote.
(05-13)

Rock County Commissioners meet March 16

Herreid Board Room 9:00 A.M.
Rock County Courthouse March 16, 2021

The meeting was called to order by Vice Chair Reisch with Commissioners Thompson, Burger and Overgaard present and Commissioner Williamson absent; also in attendance were County Attorney Jeff Haubrich, Administrator Kyle Oldre, Deputy Administrator Susan Skattum and Mavis Fodness.

The Pledge of Allegiance was recited by those in attendance.

Motion by Burger, seconded by Thompson, to approve the March 16, 2021, County Board agenda, declared carried on a voice vote.

Motion by Thompson, seconded by Burger to approve the March 02, 2021, County Board minutes, declared carried on a voice vote.

Motion by Thompson, seconded by Overgaard, to approve the consent agenda, declared carried on a voice vote.

1. Resolution No. 07-21, LPRW Appointment – Peter Petersen
Doug Bos, Land Management Office Assistant Director, reviewed the 2020 County Feedlot Officer Annual report stating that Rock County has 547 registered feedlots of which 36 were inspected in 2020 and found in compliance. The feedlot summary also identified training and other program activities. Motion by Burger, seconded by Thompson, to approve the 2020 CFO Annual Report, declared carried on a voice vote.

Bos stated that new construction for feedlots has slightly decreased from 2020 to 2021.

Bos presented a brief update regarding One Watershed One Plan stating the joint powers organization received \$1.3 million in funds and \$510,000 have been spent for projects in the watershed districts in Rock County with more projects awaiting additional funding.

Mark Sehr, Engineer, presented (2) price quotes for the 2021 Pavement Marking project on various roadways throughout the county:

Traffic Marking Service, Inc.	\$71,294.40
AAA Striping Service	\$71,294.40

As both quotes were identical, the Engineer researched the issued and recommended that the Chair conduct a coin toss with the County Attorney as a witness and confirm the result; Traffic Marking Service, Inc was identified as "heads" and AAA Striping Service was identified as "tails". The coin toss resulted in Traffic Marking Service, Inc winning; motion by Burger, seconded by Overgaard, to award the project to Traffic Marking Service for \$71,294.40, declared carried on a voice vote.

Ashley Kurtz, Auditor/Treasurer, presented the claims; motion by Overgaard, seconded by Thompson, to pay the claims as presented, declared carried on a voice vote. A complete listing of the claims is available upon request at the Auditor/Treasurer's office.
MARCH 16, 2021 CLAIMS OVER \$2,000

BUTLER MACHINERY CO	\$2,651.90
CHS	5,300.75
COUNTIES PROVIDING TECHNOLOGY	6,584.00
FIALA/ERNEST G	2,400.00
GREAT PLAINS PSYCHOLOGICAL SERVICES	3,847.50
KETTERLING SERVICES INC	8,440.16
LYON COUNTY LANDFILL	12,491.30
MORRIS ELECTRONICS	2,095.00
ROCK COUNTY OPPORTUNITIES	2,023.23
SAFEASSURE CONSULTANTS INC	6,640.30
STAPLES ENTERPRISES INC	2,215.29
THYSSENKRUPP ELEVATOR CORP	2,181.02
TOLLEFSON PUBLISHING	2,467.81
WEX BANK	2,176.10
73 PAYMENTS LESS THAN \$2,000	21,057.37
TOTAL	\$82,571.73

The County Board was in receipt of the Fund Balance report; motion by Burger, seconded by Reisch, to approve declared carried on a voice vote.

The County Board was in receipt of the 2021 Tax Capacity rates; presented as information only.

The County Board was in receipt of a distribution report of the wind production tax; presented as information only.

Rock County	\$633,861.54
Denver Township	84,499.24
Luverne Township	931.28
Martin Township	418.32
Rose Dell Township	60,733.83
Springwater Township	11,882.70
Total	\$793,326.91

The Administrator presented an update on the American Rescue Plan Financing stating that recipients are awaiting guidance from the US Treasury on how to spend the funds and that each recipient must certify that they want the funds; upon certifying the distribution amount, recipients will receive half of their allotment after 60 days of the certification and the remaining balance will be received 12-months thereafter.

The Administrator informed the County Board of phone service issues impacting county offices, specifically Law Enforcement and 911 calls. The Administrator stated that Alliance Communications was contacted to inquire about providing phone services and replacing the current system with a voice over IP (VOIP) solution that utilizes the Alliance and county's fiber network; all current phone numbers would have portability/remain the same. While the Administrator was awaiting a price quote to determine the cost of the change, he anticipates the expenditure to be similar to the current expenses paid to Vast. The Administrator requested authorization to proceed with the phone service change and update; motion by Burger, seconded by Thompson, to approve, declared carried on a voice vote.

Motion by Burger, seconded by Overgaard, to set the Board of Appeal and Equalization for June 22, 2021 at 7:00PM and to move the start time of the June 22nd meeting to 5:00PM, declared carried on a voice vote.

Commissioner Reisch stated that he had attended the following meetings: Union Negotiation, Library, Community Corrections, Southwestern MN Opportunity Council.

Commissioner Thompson stated that she had attended the following meetings: Chief Elected Officials/PIC and they will be meeting with TCI to assist those that need new jobs.

Commissioner Overgaard stated that he had attended the following meetings: Magnolia Township, Mound Township, Denver Township, City of Hardwick, Rock County/Purdue Study group, Clean Energy Resource Team and Regional Extension.

Commissioner Burger stated that he had attended the following meetings: Southwest Mental Health, Community Correction, and Union Negotiation.

With no further business to come before the County Board, motion by Thompson, seconded by Reisch to adjourn the meeting, declared carried on a voice vote.
(05-13)

Read the
Public Notices online
www.star-herald.com

Oehlerts variance hearing set for May 24

Pursuant to the Rock County Zoning Ordinance, notice is hereby given by the Rock County Board of Adjustment that a public hearing will be held at the Rock County Law Enforcement Center located at 1000 North Bluemound Avenue, Luverne, Minnesota, at 7:10 p.m., Monday, May 24, 2021. The purpose of this hearing is to rule on the application submitted by Kevin and Donna Oehlerts to allow aggregate mining on a parcel less than 20 acres in size in the NE quarter corner of Section 23 of Beaver Creek Township, T102, R46W, Rock County, Minnesota.

We will be following current CDC and Minnesota Department of Health guidelines at this meeting which includes mandatory masks and appropriate spacing between seats. This meeting will also be available via teleconference. To access the meeting, dial the following phone number: (425)436-6320 then when prompted, enter the access code number: 108575

By order of the Rock County Planning and Zoning Commission
Eric A. Hartman, Zoning Administrator
311 W. Gabrielson Road
Luverne, MN 56156
507-283-8862

(05-13, 05-20)

Star Herald
CLASSIFIEDS

EMPLOYMENT

EMPLOYMENT



Luverne Public Schools
is accepting applications for

- Elementary Teacher
- Computer Teacher
- MS Science Teacher
- ECFE Teacher
- MS/HS Administrative Assistant
- Custodians – Full Time
- Custodians/Housekeeping FT and PT

Submit letter of application and resume form to Luverne Public Schools, 709 North Kniss Luverne, MN 56156
Open Until Filled • EOE

Looking for a New Experience?

We Will Train!
Join our TEAM!



FT & PT Opportunities in
Animal Care near Kenneth, MN

Must be interested in:

- Competitive wages
- Overtime after 40 hours/week
- Rewarding career
- Day shift
- Great Benefits
- Bonus potential
- Paid time off
- Growth opportunity

Apply @ www.pipestone.com
Questions Call 866.918.7378



EMPLOYMENT

Job Duties for Medical Billing Specialist— Seeking an experienced medical billing specialist contractor to work with our business. The ideal candidate will have a strong background in medical billing, with the skills necessary to improve our current billing procedures and reduce insurance claim denials and delayed payments. The successful applicant will have a number of tasks requiring data analysis, in-depth evaluation and exercising judgement within the appropriate scope of practice. This position will be responsible for the timely submission of medical claims to insurance companies, with follow-up, as needed, in a timely fashion. The position will be located within the organization's office, with the potential of working some hours from home. This is an hourly position, with the ability of a flexible work schedule. This is initially a part-time position, but has the ability to become full time. Rate of pay is determined by length of experience in the medical billing field, and upon successful 90-day probationary period, the applicant will be eligible for a pay increase. A minimum of three years of experience in performing medical billing. Experience with MN Medicaid is preferred. Knowledge of insurance guidelines including HMO/PPO, Medicare, Medicaid, and other payer requirements and systems. Effective communication abilities for phone contacts with insurance payers to resolve issues. Customer service skills for interacting with patients regarding medical claims and payments, including communicating with patients and family members of diverse ages and backgrounds. Ability to work well in a team environment. Being able to triage priorities, and the ability to handle conflict in a reasonable fashion. Problem-solving skills to research and resolve discrepancies, denials, appeals, collections. If interested, please call 507-449-6144 and leave your contact information with best times to call. (4.24-5.13)

EMPLOYMENT

Help Wanted: Culligan of Luverne/Pipestone is looking for a part time service technician. Must be good with technology and have a valid driver license. Stop in at 206 West Main for an application. (5.6-5.22)

Help Wanted: V&M Locker in Leota is looking for meat cutters, trimmers and wrappers. Come join our fabulous team and learn the meat cutting trade! No experience necessary. Full-Time positions, OT after 40 hours, health insurance, retirement plan, other benefits too. Email vmlocker@frontiernet.net for an application or stop in and talk to Chad or Julie 507-443-5372. (5.8-5.27)

CDL Driver Wanted! Pulling a hopper regionally for family owned company hauling fertilizer, feed ingredients, and whole grains. Home weekly. CDL experience required. Call 507-920-9152. (5.8-5.13)

Help Wanted: Looking for a full-time truck driver to run local. Home every day, hours vary, pay based on experience. Must have Class A CDL. Call 507-920-5469 or 507-227-0607. (tc)

FOR SALE

For Sale: 2013 Coachmen Catalina 272DBS camper. Rarely used; Excellent condition! Set of bunk beds and queen bed. Call 507-920-0889. (5.8-5.27)

For Sale: Invacare hospital bed with an upgraded mattress. Like new! \$300 or make an offer. Call 605-201-5275. (5.8-5.13)

LAWN & GARDEN

Lawn Care: garden tilling, mowing, thatching, lawn edging, hedge trimming; and other odd jobs. Free estimate, 507-227-2445. (5.6-5.22)

MISCELLANEOUS

HAVE A UNIQUE SERVICE OR BUSINESS? Get the word out to over 1.4 million households. Call WIDE AREA CLASSIFIEDS today, 507-359-7326. (tc)

EMPLOYMENT



Habilitative Services, Inc. in Luverne is hiring a **FT Program Director and Program Supervisor.** Supervisor position split between direct care and office.
Full and Part Time Direct Support Professional positions also available.
30 hours or more considered full time with great benefits.
Apply at JOBS.THEMENTORNETWORK.COM

RECYCLE!

SERVICES

BEAN WALKERS
ROCKS, STICKS, ETC...
WE HAVE SEVERAL CREWS
We also walk pastures with thistles and pick up sticks, tear down old fences and cover silage piles.
Any type of farm work.
26 YEARS EXPERIENCE
REFERENCES AVAILABLE.
FOR MORE INFO PLEASE CALL
CELL 712-251-3277
HOME 712-943-2084

EMPLOYMENT

HELP WANTED
Age 55+ workers needed for **part-time custodial work** at the Adrian & Beaver Creek rest areas on I-90
Contact Green View 651-639-1913

NOW HIRING!



GrandStay® Hotel & Suites of Luverne, MN is now accepting applications for the following positions:

- ~Full-time Night Audit/ Front Desk Agent
- ~Part-time Housekeeper

Apply in person!

GrandStay Hotel & Suites of Luverne
908 S. Kniss Ave, Luverne, MN 56156

Ask for Pam or Lisa -507-449-4949

help wanted: **Good Construction Workers**



- Experience a PLUS, but willing to train.
- Start Immediately
- Full-Time Preferably
- Vacation Time
- Paid Sick Time
- Paid Holiday

CLEVERINGA CONSTRUCTION INC
Call Merlin at 507-920-5631

CREATE YOUR CAREER WITH US

Maintenance Engineer

Sanford Health in Worthington is seeking a full time team member to handle a variety of duties to include general maintenance, general plumbing, HVAC, etc. Qualified candidates must be able to obtain special boilers license and have a valid driver's license. Our engineers work day shift hours in a clean, safe environment, with great company benefits. Join our team today!

To learn more and to apply, visit www.sanfordcareers.com, search "R-51480".

Equal Employment Opportunity/ Affirmative Action • 1-877-673-0854



Would you like to earn a competitive salary, get a \$5,000 sign on bonus while driving well maintained trucks?

Cliff Viessman, Inc. offers that and more! Now hiring regional & OTR TANKER & PNEUMATIC DRIVERS in the RENVILLE and MARSHALL areas. Industry leading benefits include:

- Health (single coverage: \$98/month, family coverage: \$520/month)
- Dental
- Life
- 401K (with 3% company match)
- Profit sharing (over the last five years, CVI has contributed 2-4% of employee earnings)
- Weekly settlements

Requirements: CDL with tanker endorsement, 1 year OTR or 6 months of experience for trucking school graduates, good driving record.



To apply call Tim at 605-272-3333 or apply online at www.viessmantrucking.com/careers/drivers/

Help Wanted

CITY OF HILLS
Taking applications for
PUBLIC WORKS SUPERINTENDENT

for the operations and maintenance of streets, parks, buildings, grounds, water/ wastewater system and facilities. Salary based on experience. Apply at Hills City Office, P.O. Box 172, 301 S. Main Ave., Hills, MN 56138 or call 507-962-3290. Applications accepted until position is filled.



MINNESOTA RIVER
Area Agency on Aging®

Information and Assistance Specialist

Full-time position

The Minnesota River Area Agency on Aging®, Inc. (MNRAAA) has a Senior Linkage Line® Information and Assistance Specialist position available. All specialist positions provide comprehensive, clear, and objective information and assistance to older adults and their family members. Some positions include providing education and outreach to community groups, providers and individuals. Candidates must be able to work from home office and live in one of the following counties: Cottonwood, Jackson, Murray, Pipestone or Rock.

A Bachelor's degree in social work, gerontology, nursing, or related human service field is required. Candidates for the Information and Assistance Specialist must have one year of professional or internship experience in the social services field, including long term care, health care, social services or lead agency setting. Degree in social work or nursing requires licensure or demonstrated progress/intent on securing licensure.

If you meet these qualifications, read the job description and submit and application by visiting www.mnraaa.org. Applications will be accepted until the position is filled with preference given to those applications received by May 28th. Resumes will not be accepted without a cover letter and completed application.

MNRAAA is an EOE/ADA Employer.

Hear it first at
www.star-herald.com

THE DEADLINE FOR CLASSIFIEDS IS MONDAY AT 10:00 a.m.

Thiesse/from page 1B

avorable profit margins (21.2) Any additional cash flow dollars over and above the term debt principal and interest payments that are earned by farm operation are available for machinery replacement or other capital improvements. In 2020 the average farm had \$116,287 available for those purposes, while the top 20 percent profitability farms had over \$400,000 available.

Bottom line

Local net returns from both crop and livestock operations were much improved for most farm operators in 2020 with wide variation from the top one-third of net farm income operations as compared to other farms. Livestock producers did not fare nearly as well as crop producers from a net profit standpoint in 2020.

The added government payments to farmers due to the COVID-19 pandemic and poor crop yields in 2019 had a big influence of farm profit levels.

Complete farm management results are available through the University of Minnesota Center for Farm Management FINBIN Program at: <http://www.finbin.umn.edu>



APRIL 29 - JUNE 2, 2021

SEIZE THE MAY

WITH DEPENDABLE DEALS

UP TO **\$200** VIA PREPAID CARD BY MAIL, WITH PURCHASE OF SELECT MAJOR MAYTAG® APPLIANCES.*



SCAN HERE FOR DETAILS

*See sales associate for rebate form with complete details. Only valid at participating Maytag brand retailers. Rebate in the form of a prepaid card by mail. Additional terms and conditions apply. ©2021 Maytag. All rights reserved. Printed in the USA. 921 001062

M & H Hardware & Appliance
813 Main Street • Edgerton, MN
mhardwareedgerton.com
507-442-5671

Stronger Together For Veterans
Minnesota Veterans Home Week
May 9-15, 2021




Thank you
to our Minnesota Veterans Homes staff!
You are heroes caring for heroes!





Paid-on-Call Firefighters



Everyday Heroes Wanted!

The City of Luverne is seeking applicants for part-time, Paid-on-Call Firefighters for the Luverne Fire Department.

Position Objectives

This position performs skilled work in the performance of fire suppression and first aid; respond to fire alarms and other emergency calls; extinguish and control fires.

Minimum Requirements

High school diploma or GED; or any equivalent combination of experience and training which provides the knowledge, skills and abilities to perform the work.

Must be 18 years of age. Possession of and ability to maintain a valid Minnesota driver's license. Seven minute emergency call response time is required to be met within six months of hire. Must pass a thorough background investigation, pre-employment physical examination including drug screen and physical agility test. May require 240 hours of paid training within first 18 months of hire.

Apply online at www.cityofluverne.org/employment. For questions, please call City Clerk Jessica Mead at (507)449-9898.

Date Posted: April 28, 2021
Department: Luverne Fire Department
Compensation: \$12.08/hr
Hours: On-Call as Needed
Deadline: Open until filled; first review date is May 28, 2021

Luverne
MINNESOTA
Love the life!



Oasis
CARE HOME

PRIVATE BEDROOM AVAILABLE



Oasis Care Home Currently has one private bedroom available. Oasis Care Home provides long term senior care licensed by the state of Minnesota.

Come see why our clients and their families are so satisfied with the care they are receiving. Come join our family. Call Mandy today at 507-449-6156 for more information.

ROCK COUNTY VETERANS

Do you have questions about:

- LEGISLATIVE CHANGES
- WARTIME SERVICE VS PEACE TIME
- DISABILITY COMPENSATION FOR SERVICE CONNECTED INJURY OR ILLNESS
- ADAPTIVE EQUIPMENT FOR DISABLED VETERANS
- PENSION
- SPOUSE OF A VETERAN WHO DIED FROM SERVICE CONNECTED CONDITION
- DEATH PENSIONS TO SURVIVING SPOUSE OR CHILDREN
- BURIAL BENEFITS
- HEALTHCARE BENEFITS
- DENTAL BENEFITS
- CHAMPVA
- TRICARE AND TRICARE FOR LIFE
- VOCATIONAL REHAB AND EMPLOYMENT SERVICES
- VET CENTERS
- EDUCATION BENEFITS
- LIFE INSURANCE
- HOME LOAN GUARANTIES
- AGENT ORANGE (Vietnam and Blue Water Navy)
- POST-TRAUMATIC STRESS DISORDER
- BENEFITS FOR FEMALE VETERANS
- STATE BENEFITS
- OBTAINING MILITARY RECORDS AND AWARDS
- CORRECTION OF MILITARY RECORDS
- NATIONAL GUARD VS ACTIVE DUTY

SOUTHWEST MN **CEO** TRADE SHOW

WEDNESDAY, MAY 19, 2021

5:00 - 8:00 PM

GRAND PRAIRIE EVENTS

LUVERNE, MN



Thank you for joining us in celebrating the hard work and accomplishments of the 2020-21 SWMN CEO class. The individual businesses are:

- | | |
|---|--|
| <p>Cutting Edge - Kaden Anderson
Regwicks - Reghan Bork
Kendall Nikole & Co. - Kendall Buss
Decker Designs - Wyatt Decker
Stick It Grafix - Keegan Fey
Poplar Creek Boutique - Elli Kracht
Porch Pirate Protector - Shelby Kracht</p> | <p>Hillel - Allison LaRock
Bumbelina - Elsie O'Neil
Rop's Gutter Cleaning - Jayson Rops
Mariposa & Co - Haleah Soto
Who I Am? - Jori Strasser
Jennie Grace - Cybil Vander Top
Mia's Legacy Tennis - Mia Wenzel</p> |
|---|--|

BUSINESSES WILL ACCEPT PAYMENT OF CASH OR CHECK
SOME BUSINESSES WILL BE ACCEPTING VENMO PAYMENTS, CREDIT AND DEBIT CARDS.



Help for veterans and families



Help Support the Rock County Veterans Services Office.

Rock County Veterans Services

507-283-5061
M-F: 8 a.m. to Noon
Rock County Courthouse