

Because we CARE and want YOU to stay CONNECTED during this time...



Rock County STAR HERALD

\$1.25

Rock County's oldest business, printing since 1873

Thursday, April 23, 2020

Rock County flanked by coronavirus 'hotspots'

Numbers climb over 1,500 to the west in Minnehaha County and rapidly increase to the east in Nobles

By Lori Sorenson

There are five MDH-confirmed cases of coronavirus in Rock County as of noon on Tuesday, but there are believed to be many more, considering recent developments in neighboring communities.

The outbreak in Smithfield Foods, Sioux Falls, is one of the worst "hotspots" in the nation with more than 1,500 cases in Minnehaha and Lincoln counties just over the border in South Dakota.

JBS Pork processing plant in Worthington closed its doors Monday after dozens of workers tested positive for the virus, bringing the Nobles County case number to more than 100.

According to Rock County Emergency Management Director Kyle Oldre, local cases remain minimal, but it's a matter of time before those numbers start increasing.

"There are 3,700 workers at Smithfield in Sioux Falls and 2,000 at JBS in Worthington," Oldre said. "We know we have Rock County workers in both plants, but we don't know how many or where they live."

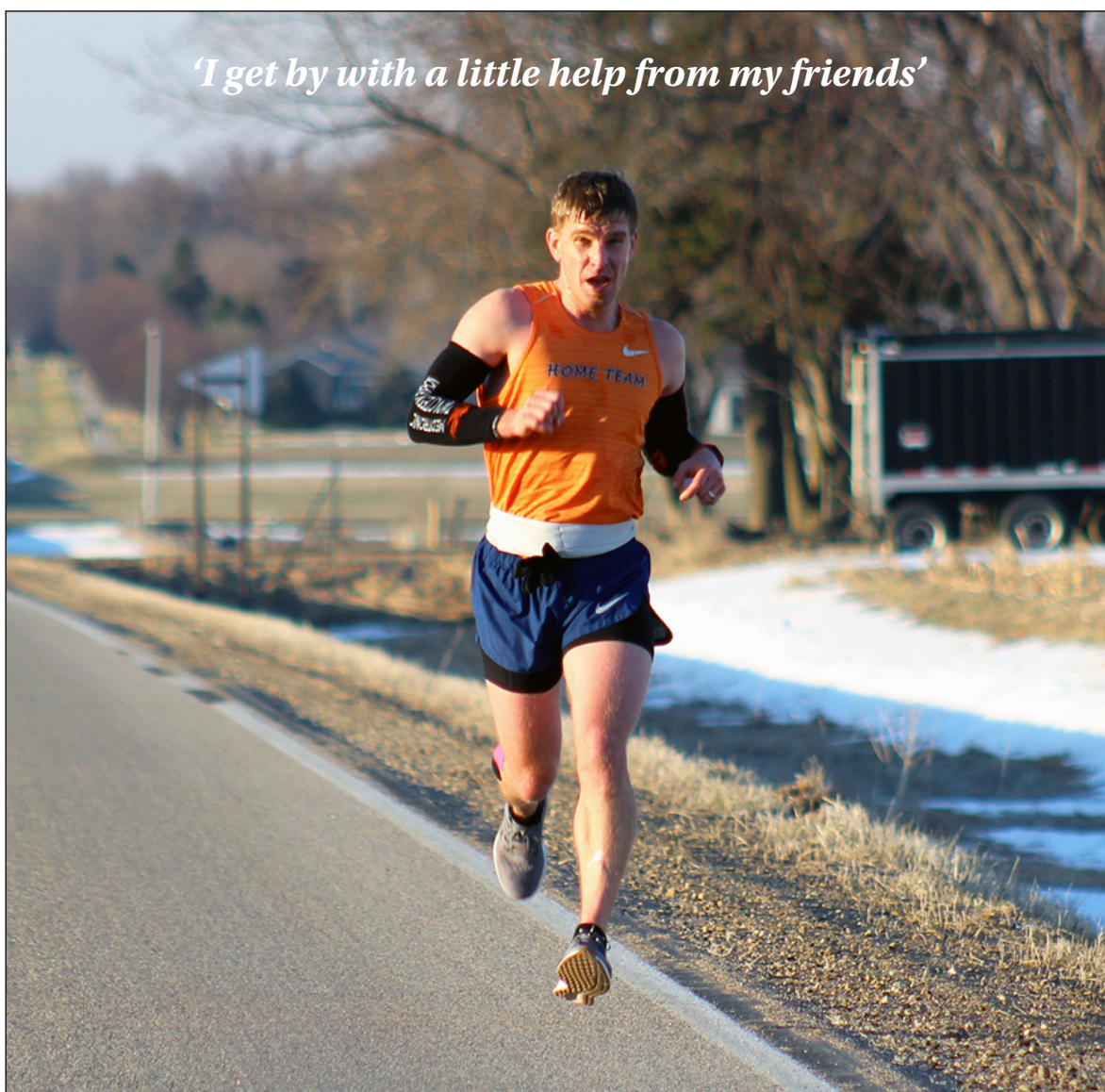
He said many of the processing plant workers live together and commute together, increasing the exposure once somebody gets sick. Also, employers are challenged to communicate safety policies with a workforce that uses more than 50 different languages.

Further, some housing arrangements include workers from both plants, and from operations in Pipestone and Chandler.

"It's about how they move between facilities and how they share housing," Oldre said. "It's going to be widespread."

Meanwhile, his office has been working with the state, with neighboring counties, with health care providers and with other agencies to prepare for a surge of coronavirus cases.

Coronavirus hotspots/see page 3



'I get by with a little help from my friends'

Mavis Fodness photo/Peter Janiszkeski Run

"It's like God's carrying you in this picture! Your feet aren't even on the ground," commented Peter Janiszkeski's cousin Stacey Belker Rubertus. Saturday morning Janiszkeski ran the "Luverne Marathon" by himself to honor three area families who lost loved ones in the past year. Below, he passes supporters along Highway 75 near the school where he's a math teacher and running coach.

Local runner finishes 'Luverne Marathon' with help from students, raises money for families grieving loss of loved ones

By Mavis Fodness

Small groups of people gathered along Peter Janiszkeski's running route Saturday as he substituted the Boston Marathon with his own 26.2-mile Luverne Marathon.

Friends, co-workers and community members cheered Janiszkeski as he ran along Dodge Street, Blue Mound Avenue, 131st Street and Highway 75. Many clapped, shouted words of encouragement and held up signs as he passed.

Written messages included, "Run, Pete, Run," "One Step at a Time," "You've Got This," "Running on Angel Wings" and one from a co-worker, "Worst Parade Ever."

Among the groups cheering Janiszkeski were...

'Luverne Marathon'/see page 10



JBS closes pork plant in Worthington

Company, public health scramble to contain spread of virus among workers and community

By Lori Sorenson

In response to dozens of confirmed coronavirus cases among its workforce, JBS on Monday announced the indefinite closure of its Worthington plant.

It employs more than 2,000 Nobles County workers and processes 20,000 hogs per day.

"We don't make this decision lightly," said Bob Krebs, president of JBS USA Pork. "We recognize JBS Worthington is critical to local hog producers, the U.S. food supply and the many businesses that support the facility each and every day."

After the first 16 cases were confirmed last week, Nobles County Commissioner Tom Johnson weighed in on community response.

"We are taking a united approach to this response by identifying people who are ill as quickly as possible, ensuring people get the medical care they need, and implementing additional screening and safety measures at the plant so it can continue to operate," Johnson said Friday.

"Our top priority is the health and safety of the workers, their families and the community. It is important that everyone in the community continue to take steps to prevent the spread of COVID-19."

The JBS facility began winding down operations earlier this week with a diminished staff to ensure existing product in the facility could be used to support the food supply.

Workers have been advised to follow stay-at-home orders until returning to work, and the company will continue to pay them during the plant closure.

Johnson released information to the public about the JBS outbreak but said Friday his office would no longer post numbers.

"The fact is, we are not a set of numbers. All these people are someone's neighbor or friend or family, and this pandemic will affect us all in some way," Johnson said.

"This is a time when we must pull together by staying apart as much as reasonable. The most powerful tool

Coronavirus at JBS/see page 3

Surviving COVID-19

Luverne woman loses dad to deadly illness, contracts virus

By Mavis Fodness

A simple text on the morning of March 27 pulled Martha Nowatzki from her home in Luverne into a face-to-face battle with the coronavirus.

The text from her stepsister was about her father, John Feight, 93, who had been taken by ambulance to the hospital after suffering various health issues for the past five years.

A shelter-in-place order had just been issued by Minnesota Gov. Tim Walz, but travel was allowed to care for family members.

"The scientists were saying we had to stay away, and none of us kids wanted to be the one to bring them any illness," Martha said. "I decided it was a big enough emergency that I needed to be there."

Her father died 10 days later and later tested positive for COVID-19.

No longer working in massage business, Martha is best help option for ill father

Nowatzki arrived in St. Louis Park March 27 just after closing her massage business with Salon 75.

"In the weeks before Gov. Walz made the executive order (to close non-essential

Nowatzki survives COVID-19/See page 6



Martha Nowatzki and her father, John Feight, are pictured in his St. Louis Park apartment last October. John died April 6 from COVID-19. Martha returned Sunday to Luverne after recovering from the virus she contracted while helping to care for her father in the apartment.

Cities, townships change tax appeal process to meet social distancing mandates

By Mavis Fodness

Social distancing requirements have changed the format for annual Board of Appeal and Equalization meetings where people would normally ask questions about property values and classifications.

Many Rock County communities have declared community health emergencies to voluntarily transfer the appeal process to Rock County.

Mayor Keith Elbers read the resolution at the April 14 Hills City Council meeting, conducted by videoconference.

"The city of Hills has determined that it would not be in the public's best interest to hold the local Board of Appeal and Equalization hearing at this time," he read.

Hills joins the cities of Luverne, Hardwick and Steen who chose an "open book" pro-

"By choosing one of these two options, there will be no face-to-face meetings."

— Tom Houselog, Rock County Land Records Director

cess for review of proposed property taxes payable in 2021.

Each of the county's townships have also chosen to conduct an open book. Only Denver Township and city of Beaver Creek chose a different option.

Open book is an informal meeting conducted by county

Appeals process/See page 3



Opinion Page 4 Community Page 6
Obituaries Page 7 Public notices Page 9

www.star-herald.com

Volume 145, Number 17
Luverne, MN 56156 USPS 468-040

How to reach us

507-283-2333 PO Box 837
editor@star-herald.com Luverne, MN 56156

COMMUNITY CALENDAR

A note about community events:

The Announcer and Star Herald will not list the activities and events that are canceled; it is assumed that most planned gatherings are canceled, per CDC mandates for safe social distancing. However individual inquiries should be directed toward appropriate planners. See www.star-herald.com, for the latest coronavirus coverage.

Spring weight restrictions lifted

Spring weight road restrictions on Rock County roadways were lifted April 20. Call Rock County Highway Engineer Mark Sehr at 507-283-5010 with questions.

Community Ed Summer Brochure

Luverne Community Ed Summer Brochure will be inserted in the April 26 Luverne Announcer. Peruse the classes and activities, but **WAIT to register until Monday, May 5**, the date that school is set to resume. **Things may change.** Community Education follows the state and school guidelines and make adjustments as needed that will be posted and announced.

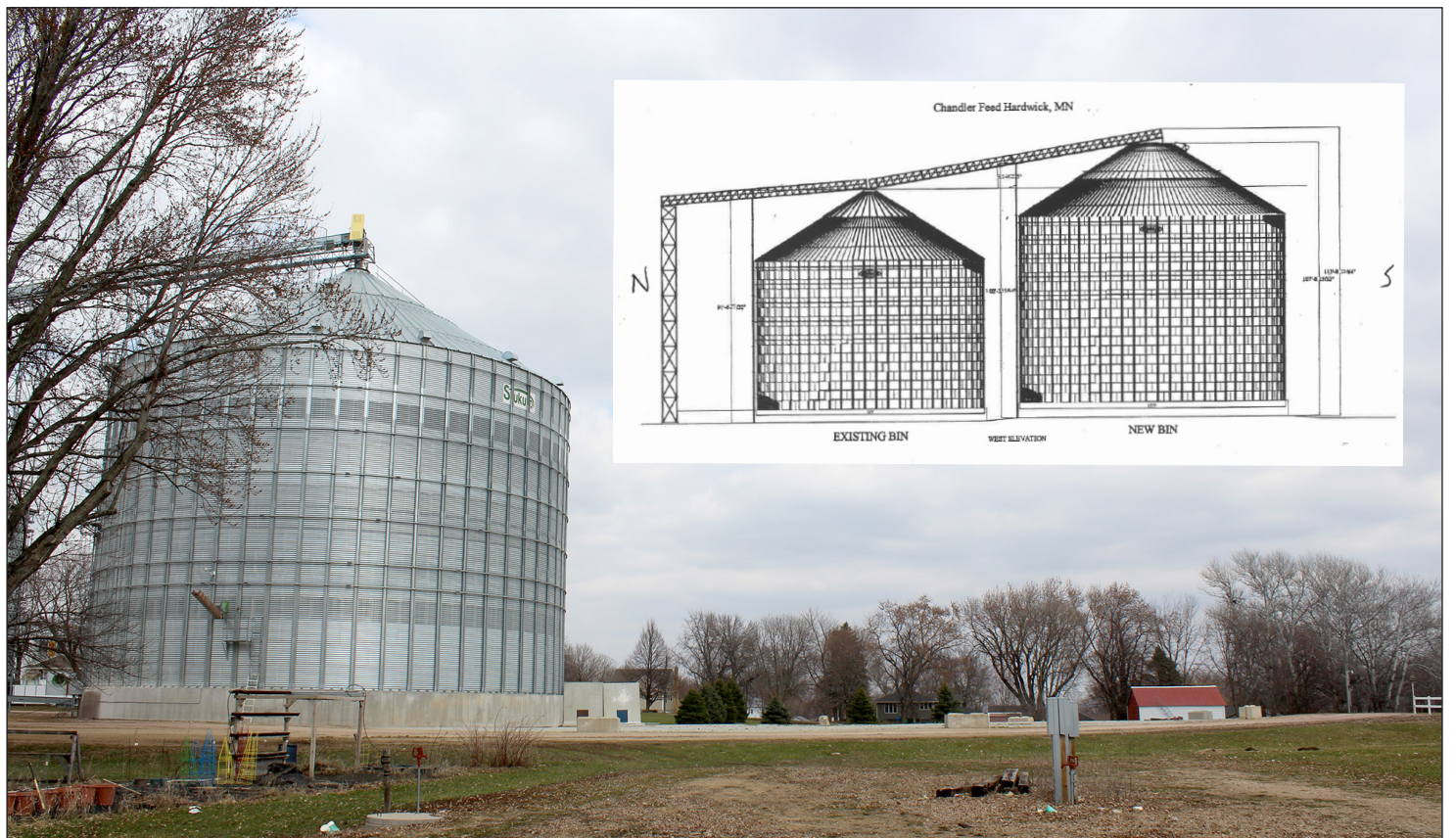
Help others struggling with coronavirus challenges

In response to residents and organizations overwhelmed by challenges related to the coronavirus, the Luverne Area Chamber is lining up volunteers to shop and/or deliver for those individuals who are unable to leave their homes.

The intent is to coordinate this as a service to residents supporting our local businesses. A protocol will minimize contact between volunteers and people requesting services. To join the list of volunteers, call the Chamber at (507)-283-4061.

Hospice dinner and auction rescheduled

Sanford Luverne Hospice Dinner and Auction scheduled for April 18 has been postponed and tentatively rescheduled for Saturday, Aug. 29. Ticketholders should save their tickets to use at the rescheduled event. Raffle drawings for the Blue Mound Quilters quilt and the cash raffle have been rescheduled for Aug. 29 also. Call the Hospice office at 507-283-1895 or email Helen Saum at helen.saum@sanfordhealth.org with questions.



Chandler Feed Company submitted a height variance request for 114 feet for a proposed 600,000 bushel grain bin next to its facility. Hardwick City Council approved the request at an April 14 public hearing conducted by teleconference.

Hardwick approves height variance for bin

By Mavis Fodness

A height variance was granted April 14 for Chandler Feed Company to build a new grain bin in Hardwick.

The Hardwick City Council conducted the teleconference variance hearing with Derek Krosschell and Miles Brown with Chandler Feed Company participating.

No face-to-face meeting took place amidst coronavirus concerns.

Hardwick City Clerk Tammy Johnson said she sent 35 letters out to residents whose properties were located within 500 feet of the

project.

While several people called into the teleconference, no one spoke about the project.

A question was received via the city's three-person variance committee about fans that circulate air through the bin and the noise the fans create.

Krosschell said the fans location and updated technology means newer, quieter models will be purchased.

"You won't hear them," he said. "And we are going to put them between the bins."

The approved variance

allows Chandler Feed Company to construct the new 600,000-bushel metal grain bin on property already owned by the feed company.

The proposed grain bin will be 107-feet in height with the proposed grain leg to fill the bin pushes the variance request to 114-feet.

Current Hardwick building ordinance restricts in-town structures to under 60 feet.

The estimated \$1 million project is expected to be completed this fall.

"We are looking at keeping grain off the ground,"

Krosschell said. "It will hopefully benefit farmers who can unload faster and get back out into the fields."

The new bin will be located south of the elevator's main storage area on First Street in Hardwick. The new bin will tie into the existing grain dump and grain leg system to fill and empty the bin.

The new 600,000-bushel grain bin doubles the elevator's current grain storage capacity of 675,000 bushels.

Chandler Feed Company purchased the Hardwick location from Mouw's Feed and Grain in 2018.

License center open for tabs, plate renewals

Mail, drop-off options, no face-to-face business

By Mavis Fodness

Rock County residents who need to renew vehicle license tabs can now do so under a no-contact process through the motor vehicle department in Luverne beginning today.

The process also includes license plates for farm vehicles and title transfers.

License tab renewals

In order to receive new license tabs, residents should complete the following steps:

1.) Complete the bottom portion of the registration renewal notice with the information regarding the vehicle's insurance information:

- Insurance company (not the agent).
- Insurance policy number.
- Full expiration date (month, day, year).

2.) Include a phone number on the renewal notice in case the office needs more information.

3.) Verify the address on the renewal notice as correct, as this is where the new tabs/plates will be mailed to. If it is incorrect, make a note of the

correct address.

4.) Include the entire notice (top and bottom).

5.) Make check payments payable to "Motor Vehicles" for the amount listed as total due.

6.) Return the renewal notice and payment one of the following ways:

- Drop off in the large mailbox in the Rock County Courthouse entryway.

- Mail to Rock County License Center; P.O. Box 509; Luverne, MN 56156.

Farm plate renewals

Residents renewing a farm plate will need to call the license center office in Luverne at 507-283-5024 and receive the correct payment amount due from a staff member.

If vehicle is over 55,000 pounds, residents will need to provide heavy vehicle use tax or HVUT form.

All requests mailed

Once the renewal is processed, the tabs or license plates will be mailed to the address on the renewal notice or other address if indicated.

Call the license center office (507-283-5024) if a title transfer is needed. The call will ensure all necessary information is included before placing the request in the drop-box in the courthouse entryway.

Requests take about one week to complete.

Timeline for processing

The mail-in and drop-off procedures will remain in effect until further notice due to coronavirus outbreak.

Renewals of drivers' license or ID cards cannot be completed at this time due to potential face-to-face contact.

Licenses or ID cards that expire during the peacetime emergency have two months after the governor ends the peacetime emergency declaration.

All state licensing centers were mandated closed from March 28 to May 13 following Governor Walz's peacetime emergency in response to the coronavirus pandemic.

No end to the peacetime emergency has been announced.

m MINNESOTA
#StayHomeMN

Buddy Check!

6 ways to help

1

Reach out to friends, family and neighbors, especially the elderly!

2

Volunteer to deliver groceries or other essential items to a neighbor staying at home.

3

Donate money to food shelves and other non-profits. Buy a gift card online from a nearby business.

4

Donate blood to combat a blood shortage during the COVID-19 pandemic.

5

Donate your time! Contact an organization registered with the Minnesota Voluntary Organizations Active in Disaster (MnVOAD).

6

Give new, unused Personal Protection Equipment (PPE) like gowns, masks and gloves. Contact your county or tribal emergency manager.

Dial-A-Specialist

Your One Stop Guide to Local Businesses

DR. MICHAEL SMITH

ROCK COUNTY CHIROPRACTIC

• Men, Women & Children's Health
• Custom Orthotics • Kinesiotape • Athletic Care • Massage Therapy • Work & Auto Injuries • Postural Restoration

WWW.ROCKCOUNTYCHIROPRACTIC.COM
283-2561 • 103 E. MAIN, LUVERNE
Monday 7:30 a.m. - 6 p.m. • Tuesday 7:30 a.m. - 3 p.m.
Wednesday 7:30 a.m. - 6 p.m. • Thursday 7:30 a.m. - 1 p.m.
Friday 7:30 a.m. - 5 p.m.

• **Chiropractic**

Chantel Connell

Sales Representative

117 W. Main, Luverne, MN
507-283-2333

• **Advertising**

Rick Peterson

General Manager

Viking Electric LLC

Tim Gangestad
Owner

(507) 290-2595

Conquering all of your electrical needs!
Residential • Commercial • Agricultural

• **Electrician**

Luverne MINNESOTA City Offices

Love the life!

PO Box 659, Luverne, MN 56156
507-449-2388 (24 hour voice mail)

www.cityofluverne.org

• **City**

LUVERNE HEALTH & WELLNESS

Codie Zeutenhorst, DC

Chiropractic • Acupuncture • Massage

Auto, Work, and Sports Injuries

109 S Freeman Ave Luverne, MN
507.449.4400

• **Chiropractic**

Viking Electric LLC

Tim Gangestad
Owner

(507) 290-2595

Conquering all of your electrical needs!
Residential • Commercial • Agricultural

• **Electrician**

Luverne MINNESOTA City Offices

Love the life!

PO Box 659, Luverne, MN 56156
507-449-2388 (24 hour voice mail)

www.cityofluverne.org

• **City**

Brosz ENGINEERING, INC.

PROFESSIONAL ENGINEERING & LAND SURVEYING SERVICES

2309 W 50TH STREET
SIOUX FALLS, SD 57105
P (605) 334-4882
F (605) 334-5745
W www.broszengineering.com

FOR OVER 35 YEARS, PROVIDING QUALITY ENGINEERING, SURVEYING & ARCHITECTURAL SERVICES

• **Land Surveying**

Coronavirus hotspots/ continued from Page 1

Personal protective equipment, hand sanitizer and other supplies continue to come for distribution and homemade masks are being donated from multiple sources.

For example, Sanford Luverne is making arrangements for extra hospital beds to accommodate more patients as critical cases move to Sioux Falls and less critical overflow patients come to Rock County.

"We don't anticipate needing them or having to go to that measure," said Sanford Luverne CEO Tammy Loosbrock. "But we do have plans if needed."

At Sanford Luverne more than 125 people have been tested for the virus.

Sanford Luverne tests over 125 people, shares checklist of preparations

According to Loosbrock, the hospital has made several changes and adjustments to prepare for an influx of patients.

"We've been busy cross training staff to key areas that we know would potentially be busy with increased cases," he said.

"We've designated one area within the clinic for testing patients to ensure separation, and we've converted one OB room and the 300 hall rooms to negative air pressure to handle Covid-19 patients."

- The list also includes:
- Checking employee temperatures daily.
 - Making an iPad available for inpatients to remain connected to their family since visitors are not allowed.
 - Conducting many clinic visits by video to allow patients to see their providers for care.
- "With that said, we are

still here for regular and important appointments, such as immunizations and other visits that need to be done in person," Loosbrock said.

- Partnering with area nursing homes to learn each other's capabilities and needs.

- Ensuring staff members have the right personal protective equipment and are trained to use it properly.

- Meeting often with Sanford partners to discuss what will happen when patient numbers spike.

"We've had many meetings with the system to discuss the flow of patients with Sioux Falls to ensure the higher level of care and support for patients and the role Luverne will play to support our patients and others from the region," Loosbrock said.

What if the ones helping victims become victims?

Despite all the preparation, Oldre said it all comes down to having enough "front line" health care workers to meet expected demand.

"I'm really worried about us maintaining a high enough number of medical professionals to take care of people," he said.

"They do a great job and they run an efficient operation, but it's not like they have a reserve of workers to draw from. Nobody overstaffs."

He said some health care workers are evaluating their risks and deciding to leave as numbers of virus cases increase.

Further, Oldre said, it's not uncommon for those helping victims to become victims.

"We only have a few pharmacists in town," he said.

"What do we do when one or two get sick?"

Coronavirus closes JBS/ continued from Page 1

we have to change this trend is social distancing. Please do your part in changing your lifestyle for a short time so we can get through this with the least amount of difficulty."

In the Monday press release, JBS said the company had taken aggressive actions to keep the virus out of its facility, but said, "This can be more challenging in communities where the virus has taken hold."

The release mentioned challenges with human response.

"When COVID-19 is prevalent in the community, fear is heightened, absenteeism rises and the challenge of keeping the virus out becomes greater," the release stated. "When absenteeism levels become too high, facilities cannot safely operate."

JBS plants have implemented preventive measures, including:

- Temperature testing all team members prior to entering facilities, including the use of hands-free thermometers and thermal imaging testing technology in all locations.
- Providing extra personal protective equipment (PPE), including protective masks, which are required to be worn at all times, to all team members.
- Promoting physical distancing by staggering starts, shifts and breaks, and increasing spacing in cafeterias, break and locker rooms, including plexiglass dividers in key areas.
- Increasing sanitation and disinfection efforts, including whole facility deep-cleaning every day.
- Hiring dedicated staff whose only job is to continuously clean facilities, including common areas beyond the production floor.
- Removing vulnerable populations from facilities, offering full pay and benefits.
- Requiring sick team members to stay home from work.
- Waiving short-term disability waiting periods.
- Relaxing attendance policies so people don't come to work sick.
- Providing free preventative care to all team members enrolled in the company's health plan.
- Offering free LiveHealth

Online services for team members enrolled in the company's health plan that allow for virtual doctor visits at no cost.

- Educating and encouraging team members to practice social distancing at home and in the community outside of work.

- Restricting access to facilities and not allowing visitors.

JBS USA operates more than 60 meat, poultry and prepared foods facilities across the United States.

The Worthington pork production facility is the third JBS USA plant to temporarily close, joining the Souderton, Pennsylvania, beef production facility, which reopened on Monday, April 20, and the Greeley, Colorado, beef production facility, which remains closed.

JBS USA is a leading global food company providing diversified food products for sale to customers in approximately 100 countries on six continents.



Lowell and Kathleen Fick are transferring 4.13 acres to the Gary and Maxine Thies Mission Foundation. Once the transaction is completed, the city will purchase it from the mission for \$20,000 per acre for future residential development.

City plans for more housing development, facilitates future industrial lot sale

By Lori Sorenson

Luverne city leaders are laying groundwork for another housing development adjacent to the recently purchased Lynn Lopau property on the west edge of town.

Lowell and Kathleen Fick are transferring 4.13 acres to the Gary and Maxine Thies Mission Foundation, which supports the Lutheran Church Missouri Synod World Mission.

Once the transaction is completed, the city will purchase it from the mission for \$20,000 per acre for future residential development.

"It's a win-win for us and the mission and for the Ficks," City Administrator John Call said during the council's April 14 videoconference meeting.

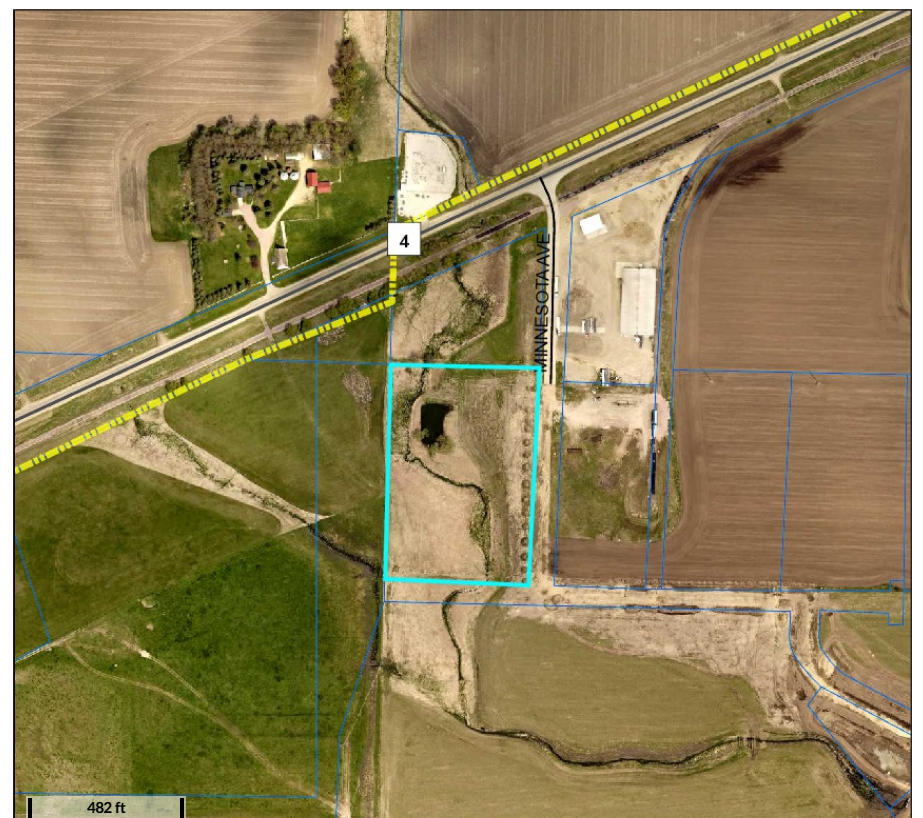
"It adds nicely to the Lopau property and sets us up for future development."

Call said Fick approached him several months ago about conveying the property through the mission. "Those four acres will add quite a few lots for that neighborhood," Call said.

The council took action that night to waive subdivision and recording requirements to convey the property. As such, all of the planning for future use and development has been addressed by the city.

It's been determined that the subdivision of this property will not lead to any negative impacts to adjacent properties or create any irregularities in remaining parcels.

Council members noted during their April 14 discussion that the residential development on both the Fick ground and the recently acquired Lopau land won't happen in the near future.



An ag business is planning to build a 40-by-60-foot warehouse for Stine Seed distribution on a 1.23-acre lot in Luverne's Special Industry Second Addition.

Stine Seed warehouse

In similar action April 14, the council waived subdivision and recording requirements for a piece of land on the city's west side near Minnesota Special Liquids.

An ag business is planning to build a 40-by-60-foot warehouse for Stine Seed distribution on a 1.23-acre lot in Luverne's Special Industry Second

Addition.

The Luverne Economic Development Authority will schedule a public hearing to consider the land sale in the future.

It's been determined that the subdivision of this property will not lead to any negative impacts to adjacent properties or create any irregularities in remaining parcels.

Happy 95th Birthday
Anna Mae Ver Steeg
April 30
Greetings may be sent to:
203 Oak Drive, #223
Luverne, MN 56156

Hass-A-stitch
Embroidery

Hass-A-stitch is still stitching and still on main street, just a bit further to the east. Please see us for all your mending, alterations, and embroidery needs at 412 East main.

Call or text 507-220-3139 or send me a message on Facebook.

Stay connected to community events with a subscription to the Rock County Star Herald!

GET THE STAR HERALD SUBSCRIPTION THAT fits your lifestyle!

12 months	\$46
24 Hour Access	99¢
Print Edition Only	
In County: 12 months	\$74
In County: 6 months	\$54
Out of County: 12 months	\$91
Out of County: 6 months	\$68
Online + Print Edition	
In County: 12 months	\$88
Out of County: 12 months	\$115

Rock County STAR HERALD

With over 40 years of experience **Cragoe Realty** is your TRUSTED name in real estate

Buying or selling real estate? You'll be SOLD on us!

1616 BLUE RIDGE DRIVE
LUVERNE | \$379,900

This Twin Home is just a few years old being built in 2013. Beautiful flooring, Lots of extra storage space! Ready to downsize to a smaller home? Call Cragoe Realty!

FOR COMPLETE LISTINGS LOG ONTO
WWW.CRAGOE.COM

From left, Renee Guy, realtor 605-359-7515
Sherri Thompson, realtor 507-227-6830
Gene Cragoe, broker/owner 507-920-8315
Emilie Boelman, administrative assistant

Cragoe Realty
Selling Real Estate in the Heart of the Prairieland.

Your hometown real estate broker for over 27 years
Gene Cragoe, broker lic. in MN & SD info@cragoe.com • 507-283-2647 or 800-689-2647

Dear Logan ... Letter to grandson recounts missed birthdays

Dear Logan,
We're sorry we won't be able to share your first birthday with you this year.



RUMINATIONS

By Mavis Fodness, Reporter

Again this MeeMaw will be late with her hugs and kisses of best wishes. It appears April 11 is just not a good date for us to get together.

You don't remember last year, but I was late meeting you in Iowa due to a blizzard here in Minnesota.

We lost electricity and Papa Bryan had to hook up a generator to warm the house and save the new chicks that we brought in from the barn. We charged our cell phones by plugging them into our vehicles.

It was good thing we charged our cell phones in our vehicles, because an early morning text woke us on April 11, 2019. Papa happily proclaimed that "Logan William" was here.

I finally met you at the Spirit Lake hospital 48 hours after your arrival into this world.

And what a world you have been born into.

This year we are missing your first birthday celebration due to a worldwide pandemic.

Even at our age, Papa and I haven't had any experience with health situations like this. We are relying on medical experts to make recommendations and government officials to implement safeguards for residents.

But the unknown has left us feeling anxious and perhaps a little scared at what is occurring outside our front doors.

Called COVID-19 by the World Health Organization, this coronavirus was first discovered in Wuhan, China, in late December. In four months since its discovery, COVID-19 has taken the lives of more than 10,000 people in the U.S. As your April 11 birthday approached, 24 people in my state of Minnesota have died, and that number is unfortunately still climbing.

Scientists have determined COVID-19 is spread through casual contact with other people, who may not

even be showing signs of a cough, fever and shortness of breath. I really don't know a lot about this illness but my state governor issued a stay-at-home order this morning of your first birthday.

On March 16 your governor also closed schools, including your group day care. Now my governor is recommending that I make no unnecessary travel plans.

This virus is in all of our Iowa and Minnesota communities, having traveled more than 7,000 miles across the Pacific Ocean in a matter of weeks. Its effect on human health needs to be respected.

More people have recovered from COVID-19 than have died, but a few months of isolation, frequent hand washing, staying at least six feet away from others are necessary to buy time for a treatment and, more importantly, a vaccine.

For this, I am willing to stay at home.

So sweet little one, Papa and I don't feel we can travel the 150 miles and see you for your first birthday. It would be too hard to resist kissing those chubby cheeks. I ultimately don't want to be the one who brings this virus to you, to your older sister, or to your mom and dad.

But we can "visit" you through FaceTime on our cell phones. Seeing the inside of your ear as you hold the phone to "talk" brings smiles to your Papa's and MeeMaw's faces.

As you blow out your candles today on the 365th day of life, rest assured that we will have many more birthdays together because we're going to stay healthy by staying home.

We know your first birthday is extra special, but understand that birthdays are not the only special times we will have together.

Say a little prayer, Logan, that April 11, 2021, is a better time for us to celebrate your birthday face-to-face.

Love, MeeMaw Mavis

Pandemic graduates to be celebrated just as they were when they arrived amid 9/11

There aren't many positive aspects about the coronavirus and its impact on our community, from a reeling economy to frontline workers in harm's way, and we fear we may lose loved ones to the deadly virus.

That's why staying home and suspending life's big events are so important — reduce exposure to stay safe. Our graduating seniors understand the necessary sacrifices that come with staying home, but it doesn't mean it's been easy. They're slowly watching the clock tick down on the final days of their high school careers, and they're not making those final memories with their high school classmates.

There's no spring sports season for many senior athletes to finally shine after years of building skills, strength and endurance.

There are no spring band and choir concerts for senior musicians to lead the collective sound. There's no spring play, no awards night, no prom and likely no graduation ceremony.

If we didn't know better, it's as if

the Class of 2020 is quietly fading away.

But we do know better, and we have outstanding community supporters making sure these students have a memorable high school send-off.

Everywhere we turn we see encouraging signs and inspiration. For example, Quality Printing teamed up with local sponsors to provide "Class of 2020" yard signs for senior families to have free of charge.

Businesses and organizations in some of our communities are pooling resources to make street banners honoring each of the seniors, and all over social media we're seeing Class of 2020 groups for parents, students and supporters of graduating seniors.

Don't worry, kids. You're not fading away. The Class of 2020 students will forever be celebrated as the generation born during 9/11 and having graduated during the coronavirus pandemic.

You, dear students, are symbols of human resiliency amid overwhelming challenges, and the rest of the world looks forward to your success.

The Star Herald is collecting senior information from Adrian, Ellsworth, Luverne and Hills-Beaver Creek, and we'll be honored to feature your profiles in our 2020 Graduation Special Edition.

Have questions? Contact editor@star-herald.com.

Want to support these pages, contact sales@star-herald.com.

Wenzel: 'Community pulls together in time of need'

To the Editor:

We want to send a huge "Thank You" to all our Rock County residents. Our American Red Cross blood drive on April 7 was an example of how our community pulls together in time of need.

A special thank you to Mike and Wanda Jarchow and their family for opening up their event center so we could utilize a large enough space to keep everyone safe.

A heartfelt thank you to all of our A.C.E. of SWMN volunteers for doing all the calling and sometimes reaching out three or four times to schedule

appointments with the donors. As a result our Red Cross account manager was able to secure another technician so we were able to make more appointments.

The results of Luverne Community Blood Drive were as follows: 68 donors, 18 first-time donors (which is awesome), 71 units collected and potential lives saved were 213.

Big thumbs up to Mike Jarchow for donating a roll of toilet paper and Lila from Pizza Ranch for a 20-percent-off coupon to each donor. Donors could leave the drive with a smile on their face, which helped take some of the

tension off of what is going on in our world.

Thank you to all the folks that called or stopped by the day of the drive. We were unable to accept walk-in appointments because of what is happening in our world. We look forward to serving everyone at our next blood drive July 27.

Thank you again, Rock County residents. It makes me so proud to live and serve in this wonderful community.

**Linda Wenzel, coordinator,
A.C.E. of SWMN, Rock County
Aging & Volunteer Services**

Thanks for the uplifting message

To the Editor:

Thank you for the uplifting article on the front page of the Announcer dated April 11, 2020.

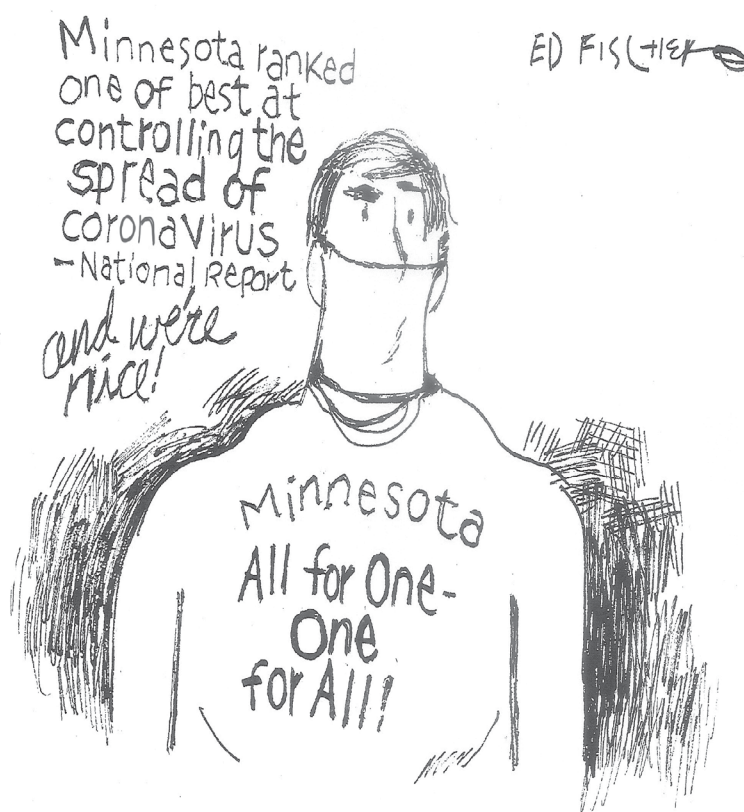
In light of the varying opinions on our current situation of the Covid-19 virus, one thing we know — we the people are not being told the entire story.

But in the words of George Washington who once said, and I quote, "Truth will ultimately prevail where there is pains taken to bring it to light."

Followed by Thomas Jefferson, who once said, and I quote, "If we are to guard against ignorance and remain free, it is the responsibility of every American to be informed."

As for the latest on the Covid-19, one thing is for sure: God still remains in control.

Thank you for reading this.
Marilyn Saker, Luverne



'New math' means jeans size getting smaller in this COVID-19-pound pandemic

It seems our minds have been flooded with numbers related to the coronavirus. How many people have been tested, how many positive results, how many negative results, how many are in ICU, how many, how many, how many ... and it changes by the hour.

I have my own coronavirus-related numbers, and they have nothing to do with the virus itself. I would like to give you an example of how to turn bad numbers into good numbers, if only in your mind.



FOR WHAT IT'S WORTH

By Rick Peterson,
Tollefson Publishing General Manager

Before the coronavirus outbreak, the jeans I wore were a 40-inch waist by 34-inch inseam. As you probably

can imagine, this stay-at-home thing has not been great for my waistline. So in the interest of comfort, I did what

we all put off as long as possible and sized up to a 42-inch waist. I keep telling myself this is only a temporary spike in belly circumference.

For whatever reason, the 42s are hard to keep up around my midsection where they belong. My guess is I may have come down with a case of donelap disease (where your belly done lapped over your belt).

So now that my jeans are riding a little lower than before, I had to buy a pair with a shorter inseam. So now my new size is 42-inch waist by

32-inch inseam. This is where the creative math comes into play and brightens my day.

Stay with me now: My pre-stay-at-home jean size was 40-inch waist by 34-inch inseam or 40 x 34 = 1,360. My new size jeans are 42-inch waist by 32-inch inseam or 42 x 32 = 1,344, which is 16 inches less material, so less material means smaller jeans.

So my way of thinking ... and this could be that new math parents are talking about ... but the way I look at it, I am actually getting trimmer.

E-mail: editor@star-herald.com Web site: star-herald.com
Phone: 507-283-2333 Fax: 507-283-2335

Published Thursdays by Tollefson Enterprises
POSTMASTER: Send address changes to 117 West Main, P.O. Box
837, Luverne, MN 56156. Periodicals postage paid at Luverne,
Permit #33 and at additional mailing offices.

General manager: Rick Peterson **Office manager:** Deb Lusty
Advertising: Chantel Connell **Office assistant:** Jennifer Nelson
Production: Heather Johnson **News staff:**
Production: Danae Meinerts Lori Sorenson, editor
Production: Alexis Hanson Mavis Fodness, reporter
Esther Frakes, copy editor

Rock County
STAR HERALD
Rock County's newspaper since 1873

(ISSN 0889-888X)
SUBSCRIPTION RATES

\$74 per year in Rock County; \$91 per year all other areas. Single copies \$1.25

Entire contents copyrighted by
Tollefson Publishing Roger Tollefson, publisher

The *Star Herald* encourages letters to the editor expressing the opinions of readers and intends to print all letters. Letters not meeting the guidelines will not be printed. The *Star Herald* will verify the authenticity of all letters. Letters must have the name of the writer, a signature and address.

Unsigned letters will not be considered. The *Star Herald* will edit for grammar, spelling and clarity. Any letters containing offensive language, libelous or slanderous material, or misleading or false information will be rewritten before being published. The *Star Herald* will not publish letters written with the sole intent to advertise or serve as a thank-you. Letters with more than 300 words may be edited. The deadline for letters is Monday 10 a.m. They may be delivered or mailed to the editor, *Rock County Star Herald*, P.O. Box 837, 117 W. Main St., Luverne, Minn. 56156.

ON THE RECORD

Dispatch report

April 10
 •Complainant at W. Bishop Street reported a burglary.
 •Complainant on N. Spring Street reported finding methamphetamine.

April 11
 •Complainant on E. 1st Street, Hardwick, reported a fire.

•Complainant on S. Freeman Avenue reported property damage and a hit and run.

•Complainant on S. Kniss Avenue reported a resident who walked away from a group home.

•Report of a door open in a storage building north of Vinnie's.

•Winter storm warning was reported for Rock County.

April 12
 •Complainant on S. Kniss Avenue reported accidental property damage.

April 13
 •Complainant on S. Kniss Avenue requested deputy for a guest refusing to leave.

•Complainant on W. Mead Court reported a deceased subject.

•Complainant on Veterans Drive reported a runaway from group home and deputy assistance was requested.

April 14
 •Complainant on E. Main Street reported someone is at the fitness center.

•Complainant on E. Luverne Street reported property dispute.

•Complainant on 91st Street, Beaver Creek, reported personal property

borrowed and not returned.

•Complainant on 101st Street reported a possible gas leak.

•Complainant reported a lost wallet.

April 16
 •Complainant on E. Luverne Street reported theft.

•Suspicious activity was reported on E. Luverne Street.

•Complainant on E. Main Street reported subject at closed business.

•Complainant on County Highway 4 reported a wood post in the west-bound lane.

•Complainant on S. Walnut Avenue reported a minor accident in parking lot.

•Complainant on W. Fairview Drive reported a scam.

•Complainant in Magnolia campground reported concerns of violation of executive order.

•Deputy out with troop on S. Kniss Avenue.

•Report of an open garage door on E. Lincoln Street.

April 17
 •Complainant reported a possible identity theft on N. River Road.

In addition, officers responded to 1 vehicle in ditch, 1 transport, 9 escorts, 20 ambulance runs, 3 animal complaints, 1 fingerprint request, 19 burn permits, 1 vehicle impound, 2 back-ground checks, 2 alarms, 7 purchase and carry permits, 1 stalled vehicle, 10 traffic stops, 6 abandoned 911 calls, 4 tests, 2 welfare checks, and 2 reports of cattle being out.

Facade work planned for 'Skinny Building'



LEDA to grant \$16,000 for the work through Historic Facade Improvement Program

By Lori Sorenson

The "Skinny Building" at the alley along Cedar Street is on deck for some exterior improvements, thanks to help from the Luverne Economic Development Authority.

During the April teleconference meeting last week, the LEDA approved a historic Façade Improvement Program application for John Deitering for a project at 115 1/2 N. Cedar Ave.

The scope of work includes repairing missing brickwork, installing new pre-finished metal cap along the roofline, and tuck-pointing the entire building on the east and north sides.

Deitering is applying for a grant in the amount of \$16,000 and choosing to forgo the loan option of the program.

The historic "Skinny Building," as it's known, was built as an office building in 1890 for Dr. B. Hinkly, and later for son R.B. Hinkly.

The building is a mere 10 feet wide and 26 feet long, but a full three stories tall.

Appeals process changes for distancing/continued from Page 1

officials. Land owners initiate a possible appeal directly to the Land Records office and discuss the specific property's evaluation and/or classification. The Land Records phone number is 507-283-5022.

If the property evaluation issue cannot be resolved through the open book process, property owners can appeal the decision to the Rock County Commissioners.

The commissioners' Board of Appeals and Equalization meeting is from 7 to 7:30 p.m. Tuesday, June 16.

Officials in Denver Township and the city of Beaver Creek opted for virtual

meetings via Zoom to be conducted by the Land Records office. Denver Township's meeting will take place from 7 to 7:30 p.m. Wednesday, May 13. Beaver Creek's meeting will be the same time-frame but on Monday, May 18.

The change in the Board of Appeals and Equalization process is to slow the spread of COVID-19 within communities.

"By choosing one of these two options, there will be no face-to-face meetings," said Land Records Director Tom Houselog.

Magnolia officials conducted their Board of Appeal and Equalization meet-

ing April 15, the regularly scheduled meeting date.

Council members maintained a social distance during the half-hour meeting at the city hall office. Houselog attended via telephone. No Magnolia property owners made inquiries on the 2.5 percent average increase in property values for 2021.

For cities other than Magnolia, the proposed 2020 valuation notices will be mailed by the end of April to Rock County property owners. In the statements, the specific property's Board of Appeal and Equalization meeting process will be explained.

'Giant' Canada geese bring signs of spring in southwest Minnesota

By Scott Rall
 Outdoors columnist

Snow in April is just a bummer, but it is better than last year when we had over 20 inches in the month of April. The month is not over yet so we will just have to see how the weather pans out.

The snow came early enough that I have no reason to believe it will have any effect on pheasant nesting or the majority of the waterfowl that are trying their best at a reproductive effort this spring.

There is one bird that nests early enough to get snowed on. That is the Canada goose. There are seven different subspecies of this bird, with the Giant Canada being the one that gets the most affection from hunters and birdwatchers alike.

These are the largest of the species and can weigh over 20 pounds with wingspans longer than 5 feet. They also live the longest, up to 30 years and four months for the oldest on record.

The giant Canada was once thought to be extinct. It was discovered at Silver Lake in Rochester, Minnesota, again in 1964. It is now at population levels that are causing some issues in different areas.

They seem to be able to adapt to just about any environment and number over 3 million nationwide. They have increased their population by about 3 percent per year since 1998.

I can remember back

in the day if you saw a giant Canada goose it was newspaper worthy. If you actually harvested one, you were considered one of the Great Hunters of the day. Times have really changed and today they routinely make up part of most water fowlers' daily harvest from across most of the Mississippi Flyway.

There are subspecies I have heard referred to as the Eastern Prairie Flock that are smaller in size and number. They migrate through southwest Minnesota and in an effort to protect them, the bag limits on geese where I live are lower than in other places you can hunt.

Canada geese in general mate for life and both parents help raise the young. The young eat different grasses and shoots and are unable to fly until August. During the summer the adults molt their flight feathers.

This means they replace them with new ones and cannot fly during that time. This period lasts about one month. This is when all of the goose banding by wildlife agencies takes place because a human can round them up and catch them. I have participated in this effort, which is used to estimate harvest rates and the bird's migration routes.

The snow this past week



left many geese sitting on their nests covered in snow. I have actually seen a nesting goose completely covered in snow with only the head and a little bit of the neck

showing through.

Mother Nature gives wildlife all they need to carry on. It won't be long until there are bright golden yellow goslings running

around.

I used to hunt geese a lot before I really got into the dog thing. Most geese are hunted in a harvested cornfield so dog work is not a giant necessity. It is easy for the hunter to walk out and pick them up. Statewide goose populations are doing so well that about 15 years ago they started to allow for an early season goose hunt that takes place in the first week of September. The limit was five per day and was

designed to reduce local populations before the annual migration started.

If you have ever tried to pluck a goose in September, you would not want to do it again. The feathers are new and "pin feathered" is an understatement.

I will never tire of the sound of a pair of Canada geese flying overhead. I am sure I have heard it more than a thousand times, and each one is as good as the last. They are signs of

spring that require no mask to enjoy. The giant Canada goose is one of the great all-time comeback stories of wildlife management. I will never take that for granted.

Scott Rall, Worthington, is a habitat conservationist, avid hunting and fishing enthusiast and is president of Nobles County Pheasants Forever. He can be reached at scottarall@gmail.com or on Twitter @habitat champion.



IOTT'S Greenhouse & Gardens

Open for the season!

Shop at our well-stocked greenhouse
 OR order by email or by phone for safe,
CONVENIENT CURBSIDE PICKUP
 at our greenhouse near Ward, SD.



See what we have available!
 Check out our complete plant list at
www.iottsgreenhouseandgardens.com

Shop at the greenhouse or place your order
 today to beautify your yard and garden! Open
 Monday-Friday 8-8, Saturday 8-6, Sunday 11-5.

E-mail iottsgreenhouse@gmail.com
 or phone **605-997-2816**
 Check out our Facebook page & website for more information!
www.iottsgreenhouseandgardens.com

Hwy 75 north, then west on Hwy 30, 1-1/2 miles past state line to 486th Ave, north 8 miles to 225th St, east 1-1/4 miles. From Ward, SD, 2 miles south on 487th Ave, 1/4 east on 225th.

Luverne

Blue Mound Liquor

We are offering delivery to your home!

\$50.00 minimum

City limits of Luverne only
Order over phone
Pay with credit card
Valid ID at the time of delivery
Curbside pick up also available

Gift Cards available

319 W Main St, Luverne
 507-449-5052

Follow Us On






Nutrien Ag Solutions

**Now is the time to get your
Lawn and Garden fertilizer
& crabgrass prevention on**




15-0-0 50#/bag
 22-0-4 w/crabgrass preventer 48#/bag
 12-12-12 garden fertilizer 40#/bag

Other weed and insect control products available
Fertilizer spreaders available for use

612 West Hatting St. Luverne, MN 56156 • 507-449-7679

Design Homes, Inc.



*Energy-Efficient
For A Lifetime Of Savings!*

**Our HUGE Cost Savings
Can Make Your NEW Home
Affordable!**

**We Deliver
Statewide To
IA, WI, MN, IL**



- ✓ Historically Low Interest Rates!
- ✓ Free Custom Plans!
- ✓ Homes in Inventory Ready Now!
- ✓ Every Home Built to State Codes

Our New "Classic Series" 3-Bedroom Home Starts at Around \$95,000!
 (Shown with a few options)

All Brand Names... Like Kohler, Pella & Mohawk

www.DesignHomes.com
507-451-2888
 Medford, MN

If your local Home or Farm Show was cancelled, remember

WE ARE STILL OFFERING OUR GREAT PRICES!

We'll contact you by email, fax, mail, text, phone or in person and you'll get the same great service and quality you can trust!



Get on the Spring Build Schedule before it fills up!

Local Sales Rep
Michael Luft
 Worthington
1-800-736-4510

WA

northlandbuildings.com

Surviving COVID-19 ... a Luverne woman's account

Martha Nowatzki/
continued from Page 1

businesses on March 17) I was busier than ever," she said.

"I was becoming concerned because it is impossible to do massage from six feet away. I massaged people who were back from cruises and fun in the sun. I ran into older clients who pulled me in for close talking while I kept backing up and trying to stay away. I began to realize, as long as I am available, people didn't seem to care about the risks to themselves or to others."

Without her massage clients, Martha decided she could stay at her dad's apartment to take over his care.

"When I got word that Dad was sick, I had to go," she said. "My risks are relatively low in comparison (to other family members.)"

'I'm in pretty good shape for the shape I'm in'

John Feight, a Navy veteran, spent most of his career as an agricultural journalist, his last job with North Dakota State University in Fargo. He also had a passion for bird watching and was a lifelong member of the Audubon Society. He lost his first wife, Phyllis, to cancer when she was 53.

"My dad was a smart, funny, complicated man and a talented writer who loved my mom," Martha said. "He remarried a year later because he was convinced he'd die without Phyl."

Martha and her family would visit regularly. "Whenever I asked him how he was doing, his standard answer was 'I'm in pretty good shape for the shape I'm in,'" Martha said. "And he could name juncos, downy woodpeckers and chickadees almost to his last day."

By March 27, however, John was still mostly unresponsive when she reached him at the hospital.

Tests showed no obvious diagnosis other than dehydration. After receiving fluids, he was allowed to go home March 29 primarily because Martha was available to assist in his care. Hospice services were quickly arranged to provide additional support.

As plans were made to bring John home, his second wife, Arlene, was experiencing COVID-like symptoms and reported a loss of taste. She had a slight fever, cough, chest tightness and extreme fatigue. She rested at home while Martha cared for her dad.

Soon after that, Martha too, began experiencing some of the same symptoms as her stepmom and dad.

"I was too busy trying to get Dad's fever down and getting meds into him to pay too much attention to (my) low-grade temp," she said.

Her temperature maxed out at 101.4 and she soon experienced a dry cough, slight chest tightness, gastrointestinal issues and extreme muscle weakness. A week later Martha lost her sense of taste.

"That was the weirdest — and fascinating thing," she said. "I've never lost smell and taste before. And it was just GONE."

As her COVID-19 symptoms came on, Martha celebrated her



Submitted photo

John Feight's favorite pastime was bird-watching from his favorite chair near the large window in his apartment.

dad's 94th birthday with an April 4 Zoom party with family members who shared bad jokes and limericks online.

"That was a last smile he managed as he seemed to respond to my brothers' laughter," Martha said.

John died April 6 surrounded by the music of his favorite singers, Billy Holiday, Etta James and Lena Horn, with his birds just outside the window.

A family service is planned for this summer, and his remains share an urn with Martha's mom.

Decision not to be tested

Martha and her stepmom were not tested for COVID-19, but her stepsister received one of the scarce tests in the Twin Cities on April 9. At the time only health care workers or relatives of health care workers were tested.

"She tested positive and was extremely fatigued, sick and scared," Martha said. Her spouse also tested positive for the virus, as did John, who was tested postmortem. The state Department of Health confirmed the findings.

"There's a slightly higher possibility of my getting tested but I'm less inclined to do it now," Martha shared with friends on her April 9 social media post.

Consensus of the calls to the Luverne clinic was that Martha likely had COVID-19. She was told to quarantine for 14 days after her symptoms cleared and to stay where she was in St. Louis Park.

"It seemed stupid to drive home, potentially infect people on the way home, potentially expose my (husband) Chris once I got there, and leave my grieving stepmother alone throughout her quarantine," Martha said.

"So I decided it didn't matter enough to me to get the test."

The quarantine was hard on Chris and their daughters, Kaia and Gretchen.

"My family was not able to help or see me in person to believe I wasn't sicker than I was letting on," Martha said. "I got a little irritated one day because all I wanted was to sleep and my husband wanted to Face Time and I could hardly hold the cell phone."

On April 12 Martha shared with friends her sense of smell was returning and her fever was subsiding. Her 14-day quarantine ended Sunday when she returned to Luverne.

After-effects of experience with COVID-19

Martha admits she'll need time to process the loss of her dad and her bout with the coronavirus.

"I can't be angry that COVID took him quickly and mercifully," she said. "But I am going to be unraveling the threads of all this for a long time."

Only a small percentage of those afflicted with COVID-19 die, but Martha said each life affected has a ripple effect on others.

"I have zero regrets for going up there when I did. It is without a doubt the most difficult thing I've ever had to do — but also, also the very biggest gift. So many families are struggling with their people dying alone with COVID-19 but we got super lucky. Everything clicked into place to give him a relatively peaceful death in his own home."

CELEBRATIONS

Card showers

Anna Mae Ver Steeg will celebrate her 95th birthday on Thursday, April 30. Greetings may be sent to her at 203 Oak Drive, #223, Luverne, MN 56156.

MENU

Monday, April 27: Salisbury steak, mashed potatoes with gravy, lettuce salad, peaches.

Tuesday, April 28: Pork loin, mashed potatoes with gravy, green peas, choice fruit, bar.

Wednesday, April 29: Choice soup, meat sandwich, choice fruit, corn muffin.

Thursday, April 30: Baked chicken, mashed potatoes with gravy, buttered beets, dinner roll, bar.

Friday, May 1: Roast beef with gravy, mashed potatoes, corn, cinnamon apples, breadstick.

LSS Dining offers well-balanced and affordable meals in a community atmosphere.

Call Lynette Hoiland at 283-9846 to arrange to pick up a dinner or for home-delivered meals.

Gift certificates are available at the meal site or online at www.lssmn.org/nutrition.

Volunteers needed for 'Minnesota Responds'

Minnesota Responds is a partnership of local and statewide volunteers to assist healthcare systems in emergencies that can overwhelm hospitals and clinics and improve overall response capabilities.

Minnesota Responds is recruiting medical (RNs, LPNs, CNAs) and others with medical type backgrounds, such as veterinary, dental, chiropractor and others. "Non-medical" volunteers are also needed to contribute skills and expertise during the COVID-19 crisis. We are looking for individuals that are working or retired and willing to offer assistance. An individual does not have to be in the health care field.

To register, have your personal information, licenses, certifications, competencies, and contact information available.

Contact the Minnesota Responds Volunteer Coordinator, Jen Nelson, at Southwest Health & Human Services at 507-829-0227. To register on-line, go to mnresponds.org and click on "Register Now." For the organization information, click on the county in which you live and select SWHHS MN Responds.

REMEMBER WHEN

10 years ago (2010)

A rural Beaver Creek man said he's grateful to be alive after surviving a grain bin accident Wednesday afternoon.

Beaver Creek fire and rescue crews were the first on the scene of the Everett Vande Voort farm where a 911 call from his wife, Jeanette, said he was trapped in the bin.

He had been augering corn out of the bin into a wagon and noticed wet corn was clogging the flow.

Vande Voort, 74, said he climbed inside to loosen the grain, and that's when the corn moved in around his legs, trapping him.

"I know better," he said. "I know you're not supposed to do that. And you're supposed to have someone on the outside when you do that. ... But we get so independent."

He said the corn had coned down the middle of the bin to about 4 feet deep, but it was steeper on the sides and started flowing downward on him. "Next thing I knew, I was in up to my armpits."

Stirator equipment suspended in the middle of the bin was the nearest support. "I reached up and hung on," he said.

It was 12:30 p.m. and Vande Voort said he was supposed to have a meeting with his banker at 1:30 p.m. at the farm.

"When I didn't show up at the house, he and my wife came looking for me," Vande Voort said.

25 years ago (1995)

At 2 p.m. Wednesday, immigration officials arrived at IBP, Luverne, with three vans and a list of 41 names.

The individuals on the list had been investigated by the

United States Department of Justice Immigration and Naturalization Service for possessing and using fraudulent identification documents. ...

The investigation was prompted in February when an IBP employee was arrested in Worthington. In the course of the arrest, police found fraudulent identification on the man and learned he had used those documents to gain employment at IBP, Luverne. ...

Wednesday's arrest was conducted in conjunction with several other immigrations arrests. On Tuesday, 23 people from neighboring areas were arrested. Monfort was not audited in this investigation.

By the end of the day Wednesday, about 50 additional arrests were made, including those at IBP. Two of these were found at the Minneapolis Convention Center by Secret Service agents during a security sweep prior to a visit by President Bill Clinton.

50 years ago (1970)

Federal spending in Rock County during the fiscal year ending June 30, 1969, amounted to more than \$9.9 million.

Impact of federally funded programs in the county for the year was disclosed in a report prepared by the State Office of Economic Opportunity.

The total figure, \$9,950,919, includes all federal outlays, including agriculture, welfare, conservation, post offices, savings bonds, OEO programs, social security, veterans and railroad pension, etc.

Biggest expenditure in Rock County was \$5,529,041, made by the Department of Agriculture. This included direct payments

to farmers, food for school lunches, rural electrification loans, county extension service, and agriculture stabilization and conservation service, just to name a few of the various programs.

75 years ago (1945)

David, two-year-old son of Mr. and Mrs. Gordon Gabrielson of Luverne, had his right leg broken above the knee Saturday when he was kicked by a horse. He was brought to a local doctor and later taken to the Sioux Valley hospital, where he is now a patient.

Gus Nelson, Luverne, who is working for Oliver Olson, of Hills, had his right leg broken Saturday while plowing at the Olson farm. He is convalescing at his home.

100 years ago (1920)

Hartenstein's Pharmacy, Luverne's new drug store, was opened to the public Wednesday in the Graaf building formerly occupied by the Cooper-Steward clothing store, under the ownership and management of E. S. Hartenstein.

Mr. Hartenstein has been here since last November awaiting the arrival of fixtures and stock for the store, but it was not until this week that he could open the store.

The new stock is confined exclusively to drugs and drug sundries, with the exception that the store will also cater to the soda fountain, fancy box candies and cigar trade.

Mr. Hartenstein was for several years engaged in the drug business at Spencer, S. D., is a registered pharmacist, a graduate of the Philadelphia College, and holds degrees of pharmaceutical chemistry and doctor of pharmacy.

OBITUARIES

Esther Fodness

Esther Ruth Fodness, 102, Tucson, Arizona, died Thursday, April 9, 2020, at her home in Tucson.

Esther Herrmann was born Dec. 3, 1917, to Henry and Anna (Hagen) Herrmann of Beaver Creek.

Interment will be in the Arlington National Cemetery in Arlington, Virginia, where

her husband is also interred.

She is survived by three daughters and two sons; 12 grandchildren; and 23 great-grandchildren.

She was preceded in death by her husband, the Rev. LeRoy Fodness; her parents; four sisters; two brothers; and one grandchild.

(0423 F)

Steven Nath

Steven Orlen "Steve" Nath, 68, Luverne, died Wednesday, April 15, 2020, after a courageous battle with cancer.

A private family graveside service was Friday at St. Catherine Catholic Cemetery in Luverne.

Steven Nath was born Jan. 14, 1952, to Orlen and Corinne (Ruddy) Nath in Luverne. He graduated from Luverne High School in 1970. He later earned his associate's degree from Worthington Community College.

Steve married Wendy Weasmer on Nov. 1, 1975, at St. Joseph Catholic Church in Sugar Creek, Iowa. He worked on the family farm for many years. He worked for IBP in Luverne until they closed. He worked for Luverne Body Shop as an auto body tech until he retired in 2019.

He was a member of St. Catherine Catholic Church in Luverne where he served on the Knights of Columbus. He was also a member of Rock County Sportsman's Club. He enjoyed trap shooting, the Minnesota Twins, bowling, playing pinocle, Yahtzee, camping, fishing, feeding the birds and squirrels, and spending time with his family, especially his grandchildren.

Steve is survived by his wife,

Wendy, Luverne; three children, Angie Nath, Luverne, Scott (Lani) Nath, Moorhead, and Jeremy (Sarah) Nath, Luverne; five grandchildren, Zan, Jayda (Seth), Payton, Saylor and Paisley; his mother, Corinne Nath, Luverne; his stepmother, Mary Jo Nath, Luverne; two brothers, Michael (Janet) Nath, Luverne, and Thomas (Lisa) Nath, Luverne; two sisters, Pamela (Michael) Welch, Yankton, South Dakota, and Joni (Kraig) Keck, Sioux Falls, South Dakota; a stepbrother, Kevin (Karen) Brandenburg, Burnsville; a stepsister, Susan (Randy) Schneekloth, Luverne; sister-in-law Sandy (Dan) Ricks, Bountiful, Utah; brothers-in-law Jim (Cheryl) Weasmer and Steve Harrity, all of Kansas City, Kansas; and many nieces and nephews.

Steve was preceded in death by his father, Orlen Nath; two brothers, Joel Nath and Gregg Nath; father- and mother-in-law, James and Joyce Weasmer; and sister-in-law Lori Harrity.

Arrangements were provided by Dingmann Funeral Home of Luverne, www.dingmannandsons.com.

(0423 F)

Rae Peterson Selvy

Rae Peterson Selvy, 88, Indian Orchard, Massachusetts, died Wednesday, April 18, 2020, at Baystate Medical Center.

A memorial service will be at Orchard Covenant Church at a later date.

Rae Peterson was born in Brockton, Massachusetts, to Paul Raymond and Adelaide Peterson. When she was nine, her family moved to Springfield, Massachusetts, where she attended local schools and graduated from the High School of Commerce. She was employed by Western Mass Electric Company until leaving New England in 1959.

She was an active member of the Evangelical Covenant Church of Springfield where she taught Sunday School for many years, worked with Pioneer Girls and belonged to the Ladies Aid (Covenant Women). Singing with the church choir and youth choir, the Gospelaire, brought her much joy. More recently, Rae attended Orchard Covenant Church in Indian Orchard.

Rae studied voice with the late Ruth Ekberg and, after leaving Springfield to live in Kansas and Minnesota, she continued her love of music by directing a children's choir.

She was a member of the Ladies Chorals of Luverne, where she was also personnel secretary for Iowa Beef Processors for 12 years until her return to Springfield in 1981. She rejoined WMEC (Eversource) until her retirement in 1993.

Besides her passion for gardening, Rae was an avid golfer for many years, a member of the American Figure Skating Association and a fan of the Boston Red Sox. She lived at Emerson Manor in Longmeadow for the past 14 years and enjoyed friendship with her neighbors.

Rae is survived by her son Daniel (Anita) Selvy of North Carolina and her daughter, Pamela (Roger) Schomacker of Minnesota; three grandchildren, Ashley, Jessica and Steffen; four great-grandchildren, Joshua, Anthony, Grayson and Pearl; and two nieces and a nephew.

Rae was preceded in death by her parents and sisters Lillian (Pete) Blaisdell and Polly Habel.

Wilbraham Funeral Home in Wilbraham, Massachusetts, is in charge of the arrangements.

(0423 F)

Sheila Knebel

Sheila R. Knebel, 66, Valley Springs, South Dakota, died Saturday, April 18, 2020, at home surrounded by family after a long illness.

Due to the ongoing virus crisis, there will be no service at this time. A date will be announced for a Celebration of Life event in the fall. Correspondence can be mailed to Tom Knebel, 200 Southside Ave., Valley Springs, SD 57068. The family requests no flowers.

Sheila Rae Olason was born in Watertown, South Dakota, on June 10, 1953, to John and Hazel Olason. She grew up on a dairy farm 10 miles west of Sisseton, South Dakota. She attended country school through the elementary grades and graduated with the class of 1971 at Sisseton High School. She received a secretarial degree from North Dakota State College of Science in Whapeton, North Dakota. She obtained her first secretarial job in Washington, D.C. She returned to South Dakota to be with family when her father died.

Sheila married Tom Knebel on Oct. 20, 1973, at Grace Lutheran Church in Sisseton. The couple immediately moved

to Valley Springs. In addition to raising four children, Sheila had many different jobs over the years including home day care, bookkeeping for Knebel Construction, and Sioux Valley Hospice, all involving customer service.

Sheila volunteered as a teacher and co-director of CCD at Risen Savior Catholic Church. She enjoyed time with family and friends and enjoyed playing cards and dice.

Sheila is survived by her husband, Tom; four children and 12 grandchildren, Paula (Matt) Adler, Dalton, Kathryn, and Lauren; Heather (Phillip) Swann, Santiago; Nick (Heidy) Knebel; and Shala (Brad) Koster, Trevor, Kara, Logan, Luke, Scott, Samantha, Landon and Mariah; her brother Ralph (Sharlene) Olason; two aunts, an uncle, and other relatives and friends.

Sheila was preceded in death by her parents and two brothers, Leonard and Clinton.

Arrangements are provided by Heartland Funeral Home, heartlandfunerals.com

(0423 F)



Lori Sorenson photo/0423 lions donation

Lions Club donates tuition

The Luverne Lions Club recently donated \$750 to cover tuition for local student Emma Deutsch, 13, to attend Camp Gilbert this summer in Waubay, South Dakota. The camp, located at Camp Nesodak, is for children ages 8 to 18 living with Type 1 diabetes. "We are very grateful," said Emma's mom, Sarah Deutsch. Pictured with Emma on March 12 at the Rock County Library are Luverne Lions members Gordon Mulder and LeRoy Schomacker.

1874: Albion becomes Springwater Township

Rock County will celebrate its 150th Anniversary this year. The news will be the history of Rock County, townships, and communities. The following appeared in the Rose History of Rock County, printed in 1911.

County and Township Organization — 1870-1878 (continued from 04-16 edition)

Albion (Springwater)

Late in March, 1874, the citizens of township 103, range 46, and of the fractional strip in range 47 presented a petition, headed by C. W. Curtis, asking to be set off from Gregory and organized. The signers of the petition, with two exceptions, signified their choice of Albion as a name.

The township was created May 5 under that name and it was provided that the first town meeting should be held at the home of George Collett, on the northwest quarter of section 22, on May 18. The change in name from Albion to Springwater was made by order of commissioners June 15, 1874, in accordance with the request of the voters of the new township as expressed by petition. Patents to Springwater township lands have been granted by the government as follows:

William A. Hackley (24), Michael Mead (26), Samuel H. Shoemaker (26), William Murphy (12r47), Thomas Murphy (8), Ernest Curtis (28-32), Frances M. Trunkey (32), Asa Canfield (24), Jacob Ashcraft (2r47), Frank A. Hyke (34), John M. Allen (32), Nelson R. Reynolds (14), James A. Claudman (12r47), Henry Munro (2), John T. Ladd (4), Alvin P. Reynolds (20-24r47), Lynn B. Cate (30), Edgar W. Eskridge (10), Wilber H. Spooner (20), George B. Collett (22), Myrta E. Curtis (28), Birch Chapin (22), Francis Rathbun (24r47), James Ryan, Jr. (12), William P. Noble (2), Andrew Givens (12), Charles A. Reynolds (2r47), Lars Pedersen (11r47), Clause Nelson (32), Albert Barck (34), Lewis Barck (34-26r47), Oren R. Smith (14r47), Samuel Coss



BITS BY BETTY

By Betty Mann, President Rock County Historical Society

(34), John L. Marsden (4), William Givens (12), Daniel Hoppes (10-22), Wallace Cochran (26r47), James D. Ladd (14), Cary C. Farnum (4), Chauncey L. Brock (2), Alfred Acheson (24r47), James Madison (18), Augustus R. Ladd (2), Perley Gillham (6), Nicholas E. Brennan (14r47), Augustus Birdsong (6), John A. Loeffler (8), Thomas Grimes (12), Ole Julson (26r47), Eliza A. Curtis (28), Nels Benson (30), James E. Chesley (30), Austine Grimes (10), Martin Williams (18), David Noonan (24r47), Alonzo C. Kimble (6), Oscar A. Headley (18-30), Patrick Gartland (8), Paul Ingleson (30), Martin Williams (24r47), Anthony B. Shroyer (14), John Halvorsen (26r47), William Coughlin (20), Timothy Bergin (8), John Hofelman (2), Burnham M. Pengra (22), Halsten Tvidt (10r47), Isaac Olson (34r47), August Birdsong (6), Platt Armstrong (28), Robert Phelan (12), Heirs of Charles Hall (14), Patrick Brennan (18), Michael Bergin (12r47), Henrik E. Jordahl (22r47), Clarence E. Dike (10).

Donations to the Rock County Historical Society can be sent to the Rock County Historical Society, 312 E. Main Street, Luverne, MN 56156.

Mann welcomes correspondences to manmade@iu.net.



INJURED AT WORK? DISABILITY DENIED?

Contact Us Today For Free Advice

Workers' Compensation
Long-Term Disability
Social Security Disability

507-923-4169
www.GetFields.com

Steve Fields
Minnesota Attorney

FIELDS LAW FIRM

MINNESOTA FARM & RURAL HELPLINE

833-600-2670
minnesotafarmstress.com

Free. Confidential. 24/7.

YOU ARE NOT ALONE

Need help finding a confidential financial or legal advisor?

Feeling alone sad, or worried and need a listening ear?



DEATH NOTICES

Maxine Brown

Maxine J. Brown, 91, Hills, died Friday, April 17, 2020, at the Tuff Memorial Home in Hills.

A private family service will be held.

Arrangements are provided by the Hartquist Funeral Home in Luverne, www.hartquistfuneral.com.

(0423 DN)

Jason King

Jason King, 55, Luverne, died Monday, April 13, 2020, at his home.

A private family service will take place at a later date.

Arrangements are provided by Dingmann Funeral Home of Luverne, www.dingmannandsons.com.

(0423 DN)

Julie Klomprens

Julie Klomprens, 48, Luverne, died peacefully Thursday, April 16, 2020, at her home in Luverne.

In accordance with the CDC and Minnesota Department of Health guidelines, a private family service will take place, with burial at Hillside Cemetery in Edgerton.

Arrangements are with the Colonial Funeral Chapel in Edgerton, www.edgertonburialassociation.com.

(0423 DN)

Warner Muns

Warner H. Muns, 89, Sioux Falls, South Dakota, died Monday, April 20, 2020, at the Primrose Retirement Communities in Sioux Falls.

A private family graveside service is at 2 p.m. Wednesday, April 22, at Maplewood Cemetery in Luverne. To live-stream the committal service, go to <https://www.facebook.com/DingmannFH>

Arrangements are provided by Dingmann Funeral Home of Luverne, dingmannandsons.com.

(0423 DN)

Mother's Day MOREL GIFT

CREATE A MOREL GARDEN IN YOUR BACK YARD

We provide the seed and easy to use instructions for preparing an outdoor *Morel Habitat*. You just sow the seed, maintain the *Morel Habitat*, and pick and enjoy pounds of fresh Morels

\$32.95 + \$8.65 S/H -- 707-829-7301


GOURMET MUSHROOMS

P.O. BOX 515 CN9 * GRATON, CA 95444

www.gmushrooms.org

Spawns Guaranteed to Produce

Soul



Mother Teresa Speaks

Mother Teresa's penetrating words of TRUTH about abortion spoken at the National Prayer Breakfast received a standing ovation. Here's part of Mother T's Message: "...But I feel that the greatest destroyer of peace today is abortion, because it is a war against the child, murder by the mother herself. And if we accept that a mother can kill even her own child, how can we tell other people not to kill one another? Jesus gave even his life to love us. So the mother who is thinking of abortion should be helped to love: that is, to give until it hurts her plans, or her free time, to respect the life of her child. "By abortion, the mother does not learn to love, but kills even her own child to solve her problems. And, by abortion, the father is told that he does not have to take responsibility all for the child he has brought in to the world. Any country that accepts abortion is not teaching its people to love, but to use violence to get whatever they want. This is why the greatest destroyer of love and peace is abortion."

Star Herald CHURCH

Page 8 April 23, 2020

The Star Herald reached out to churches for their worship information in the absence of in-person worship services, due to coronavirus social distancing. Those that responded are listed here. Those that would like to have information posted here should call the Star Herald or email editor@star-herald.com.

St. Catherine Catholic Church
203 E. Brown St., Luverne
St. Catherine Ph. 283-8502; www.stsccl.org
Monsignor Gerald Kosse, priest

Services are live-streamed through the St. Catherine Facebook page at 9 a.m. Sundays.

Luverne Christian Reformed Church
605 N. Estey St., Luverne
Office Ph. 283-8482; Prayer Line Ph. 449-5982
www.luvnrcrc.com — office@luvernecrc.com
Roger Sparks, Pastor

We are streaming Sunday services live on Roger Sparks' Facebook page at 9:30 am and 6:30 pm. Send him a friend request if you're not connected. You may also visit our website for delayed broadcasts. Also our services are on local cable TV at 5:30 pm on Wednesdays and at 6:30 pm on Thursdays. In all circumstances, may we joyfully declare: "Our help is in the name of the Lord, the Maker of heaven and earth." Psalm 124:8.

First Baptist Church
1033 N. Jackson St., P.O. Box 975, Luverne
Ph. 283-4091; email: fbcluv@iw.net — www.fbcluverne.org
Walt Moser, Pastor

Sunday 10:30 a.m. worship service can be viewed live on Facebook through a link on the website: www.fbcluverne.org or directly on our Facebook page: First Baptist Church of Luverne MN. Services are posted to the website on Tuesday and are available to view, along with past sermons. Vast Channel 3 will also air our service Thursdays at 8 p.m.

Grace Lutheran Church
500 N. Kniss Ave., Luverne
Ph. 507-283-4431; www.graceluverne.org — graceluverne@iw.net
Ron Nichols, Pastor / Ann Zastrow, Associate Pastor
Online, TV and Radio Worship. Pr. Ann, Pr. Ron and organist Beryl Haugen will be recording worship services until we can meet together as a group. Each week we will update our recorded1 worship. Online: Sundays at 9 a.m., our worship service can be viewed live from our website at www.graceluverne.org on the Facebook insert, or go directly to our Facebook page at Grace Lutheran ELCA, Luverne. TV: Vast Channel 3 will air our worship service Mondays at 4:30 PM and Fridays at 6:30 PM. Radio: KQAD-AM Radio will air our worship service on Sundays at 8:15 AM.

Bethany Lutheran Church
720 N. Kniss Ave., Luverne
Ph. 507-283-4571 or 507-449-0291 or 605-215-9834
pastorapalmquist67@yahoo.com
Andrew Palmquist, Pastor
Online worship and devotions at home. See our Facebook page, Bethany Lutheran Church (Luverne). Also visit els.org for online worship opportunities with our sister churches.

American Reformed Church
304 N. Fairview Dr., Luverne
Ph. 283-8600; email: office@arcluverne.org
Mike Altlen, Pastor
Join us for live online worship Sundays at 9:30 AM at www.arcluverne.org/watch-live/ or on our Facebook page @arcluverne. Services can also be viewed at a later time through these same avenues. Worship services are also broadcast on Vast Channel 3 on Mondays at 6 PM and Wednesdays at 4 PM. DVD's available upon request. To stay up to date on announcements, follow us on Facebook and Instagram @arcluverne.

First Assembly of God Church
1075 110th Ave., 2 miles west of Luverne on County Rd. 4

United Methodist Church
109 N. Freeman Ave., Luverne
Ph. 283-4529; email: luverneumc@iw.net
Sunday, 10 a.m. Worship Service — live streamed.

First Presbyterian Church
302 Central Lane, Luverne
Ph. 283-4787; email: Firstpc@iw.net — www.fpcluverne.com
Jason Cunningham, Pastor
Worship through Facebook Live at regular 10:15 time on Sunday morning. Our Facebook page can be found under First Presbyterian Church of Luverne. We are also on the local Luverne cable station at 10 a.m. and

6 p.m. on Tuesdays and 10 a.m. on Thursdays.

St. John Lutheran Church
803 N. Cedar St., Luverne
Ph. 283-2316; email: stjoh@iw.net
www.stjohnlutheranluverne.org
Gary Klatt, Pastor

Sunday Morning Service will be recorded at 5:30 p.m. with necessary personnel and will be available on the Vast channel 3 Tuesday at 4 p.m. and 7:30 p.m. and online at the chamber website. Pastor Klatt is available for family visits in their homes by invitation or at church for groups of less than 10 for the purpose of worship and prayer.

Living Rock Church
500 E. Main St., Luverne
Ph. 449-0057; www.livingrockswmn.org
Billy Skaggs, Pastor

New Life Celebration Church
110 N. Oakley, Luverne
Ph. 449-6522; email: newlifecelbration@gmail.com

Zion Evangelical Lutheran Church
305 E. 2nd St., P.O. Box 36, Hardwick
Ph. (507) 669-2855; zionoffice@alliancecom.net
Jesse Baker, Pastor

Ben Clare United Methodist Church
26762 Ben Clare Ave., Valley Springs, S.D.
igtwlb@WOW.net
Bill Bates, Pastor

First Lutheran Church
300 Maple St., Valley Springs, S.D.
Ph. (605) 757-6662
Laura Phillips, Pastor

Video worship via YouTube at <https://www.youtube.com/watch?v=LHdQwVxFcU4>

Palisade Lutheran Church
211 121st St., Garretson, S.D.
Ph. (507) 597-6257 — firstpalisade@alliancecom.net
Laura Phillips, Pastor

Video worship via YouTube at <https://www.youtube.com/watch?v=LHdQwVxFcU4>

First Presbyterian Church
201 S. 3rd St., P.O. Box 73, Beaver Creek
Ph. 507-935-5025
email: lori.firstpres@gmail.com

Thursday 10 a.m. worship service on VAST and Mediacom. 7 p.m. Sunday 10:15 a.m. worship service viewed live on First Presbyterian Church Facebook page. Tuesday 10 a.m. and 6 p.m. worship service on VAST and Mediacom.

Magnolia United Methodist Church
501 E. Luverne St., Magnolia
Ph. 605-215-3429
email: magnoliamnumc@gmail.com
Nancy Manning, Pastor

Steen Reformed Church
112 W. Church Ave., Steen
Ph. 855-2336
Jeremy Wiersema, Pastor

Bethlehem Lutheran Church
112 N. Main St., Hills
Ph. 962-3270
Maggie Berndt-Dreyer, Pastor

Worship at Bethlehem Lutheran Church in Hills will be online only through the end of March. Worship will be streamed live to Facebook at Bethlehem of Hills MN Sunday morning at 10:30AM. You can find more info on our website blchills.org.

Hills United Reformed Church
410 S. Central Ave., Hills
Office Ph. 962-3254
hillsurc@alliancecom.net
Alan Camarigg, Pastor

Remember during coronavirus pandemic that 'God is good'

"God is good all the time, and all the time God is good." It was a phrase uttered regularly after the release of the "God's Not Dead" movie a few years ago.

Such a simple statement I have believed in my heart since I was a little girl. I still hear people say the phrase, but perhaps not as often as I did when the movie was first released. Yet it is something I have reminded myself, and others, of in this season.

The Covid-19 virus has certainly stopped us all in our tracks in one way or another. To think how drastically our daily tasks have changed in just a few weeks is somewhat mind blowing. Many things we once took for granted look different right now, and I think many are ready for everything to return to normal.

But what if our normal never looks ... well, normal again? Could it be God is drawing us to something new? I get excited to think of a new, clean, fresh outlook on the ways I have allowed my life to become mundane and stagnant.

Yet, every ounce of the human within me wants nothing more than to go about my regular daily tasks again without having to think so hard and reinvent what once just was.

It's those moments when I cling to the phrases and scriptures I have come to know.

God is constantly at work to bring about good. On our Junior High Youth Group Zoom meeting a couple of weeks ago we talked about just that. We dug into Romans 8:28, "And we know that in all things God works for the good of those who love him, who have been called according to his purpose." All his promises are available to anyone who proclaims the name of Jesus! God uses everything and turns it to good for those who trust in Him, rather than the things of this world.

God is our Good Father. Whether it is the lyrics of the song "Good Good Father," or God's gentle whisper through the scriptures, I am constantly reminded of His

BUILT ON A ROCK

By Becky Ossefoort
Children and youth coordinator,
American Reformed Church, Luverne

love and faithfulness to His people. While we will never be able to explain why God allows things like the coronavirus to spread across the world like it has, we can fall back on the truth that He is in control and He is good.

The scriptures are full of God's goodness. One of my favorites that I am claiming in this season is, "They speak of the glorious splendor of your majesty — and I will meditate on your wonderful works. They tell of the power of your awesome works — and I will proclaim your great deeds. They celebrate your abundant goodness and joyfully sing of your righteousness." Psalm 145:5-7

Ultimately, God already has a plan and knows exactly how this season will end. He stands in the middle of all the chaos, holding things together and preventing anything from spiraling out of control.

I would agree many things feel a little uncertain and as though we are venturing into the unknown, but God is all-seeing, all-knowing, and all-powerful.

There are so many verses to find the comfort of God having all things held together, but today I leave you with this familiar one from Philippians 4:4-7 "Rejoice in the Lord always. I will say it again: Rejoice! Let your gentleness be evident to all. The Lord is near. Do not be anxious about anything, but in every situation, by prayer and petition, with thanksgiving, present your requests to God. And the peace of God, which transcends all understanding, will guard your hearts and your minds in Christ Jesus."

These weekly church page messages are contributed to God's Work through the Church and by these concerned and responsible citizens & businesses:

Call Rick or Chantel to place your ad!

283-2333

Read us online!

Rock County
STAR HERALD
www.Star-Herald.com

Trust in Him



Papik Motors
283-9171
PAPIK.COM
Luverne, MN
Rock Rapids, IA

HILLS STAINLESS STEEL & EQUIPMENT CO., INC.
506 W. Koehn, P.O. Box 987, Luverne, MN
PHONE 507-283-4405
Church is Important - Please Attend!

Buffalo Ridge Insurance
507-283-2381 www.buffaloridgeins.com E-mail: info@buffaloridgeins.com

McClure Electric
Alan M. Aanenson, owner
Farm, Home & Commercial Wiring
Luverne, MN Phone 507-283-4716

TUFF MEMORIAL HOME
A HOME WITH A HEART
Hills, MN • 507-962-3275

MINNWEST BANK
116 East Main Street • Luverne • 507-283-2366
Hwy. 75 • 800 South Kniss • Luverne • 507-283-9131
www.minnwestbank.com • Member FDIC • MoneyLine 888-616 BANK

Advertise Here

SECURITY SAVINGS BANK
bankwithssb.com 507.449.6000
Member FDIC Luverne, MN

HARTQUIST
Funeral and Cremation Services
Pipestone • Luverne • Lake Benton • Jasper • Tyler
www.HartquistFuneral.com

Pizza Ranch
110 E Main, Luverne 507-283-2379

CWG Business Insurance
Tri-State Region Period!

MANLEY TIRE & OIL SERVICE
Manley Minnesota
1-800-615-3704
Open six days a week - Closed on Sundays
To God be the Glory.

Luverne ANNOUNCER

First Farmers & Merchants
303 E. Main, Luverne, MN
507-283-4463
www.frbank.com
We believe in you.™
Member FDIC. And the community.

Mortgage foreclosure sale set for April 30

NOTICE OF MORTGAGE FORECLOSURE SALE THE RIGHT TO VERIFICATION OF THE DEBT AND IDENTITY OF THE ORIGINAL CREDITOR WITHIN THE TIME PROVIDED BY LAW IS NOT AFFECTED BY THIS ACTION.

NOTICE IS HEREBY GIVEN: That default has occurred in the conditions of the following described mortgage:
DATE OF MORTGAGE: August 02, 2007
ORIGINAL PRINCIPAL AMOUNT OF MORTGAGE: \$31,500.00
MORTGAGOR(S): Neale G. Hamann, a single person
MORTGAGEE: Peoples Bank
DATE AND PLACE OF RECORDING:
Recorded: August 14, 2007 Rock County Recorder
Document Number: 167229
ASSIGNMENTS OF MORTGAGE:
*And assigned to: Mortgage Electronic Registration Systems, Inc.
Dated: August 02, 2007
Recorded: August 14, 2007 Rock County Recorder
Document Number: 167230
*And assigned to: Iowa Bankers Mortgage Corporation
Dated: March 06, 2017
Recorded: March 14, 2017 Rock County Recorder
Document Number: 190262

TRANSACTION AGENT: Mortgage Electronic Registration Systems, Inc.
Transaction Agent Mortgage Identification Number: 1003445-0001089259-6
Lender or Broker: Peoples Bank
Residential Mortgage Servicer: Iowa Bankers Mortgage Corp.
Mortgage Originator: Not Applicable

COUNTY IN WHICH PROPERTY IS LOCATED: Rock
Property Address: 819 201st St, Hardwick, MN 56134-4048
Tax Parcel ID Number: 10-0122-000

LEGAL DESCRIPTION OF PROPERTY: That part of the SW 1/4, Section 25, Township 104 North, Range 46 West of the 5th P.M., Rock County, State of Minnesota, described as follows: Commencing at the Southwest Corner of said Section 25, thence North 90 degrees 00 minutes 00 seconds East (assumed bearing) along the South Line of the SW 1/4 of said Section 25 for a distance of 741.29 feet to the point of beginning, thence continuing North 90 degrees 00 minutes and 00 seconds East along said South Line for a distance of 746.44 feet; thence North 01 degrees 21 minutes 41 seconds East for a distance of 689.32 feet; thence North 83 degrees 17 minutes 46 seconds West for a distance of 169.66 feet; thence South 00 degrees 07 minutes 03 seconds West for a distance of 184.58 feet; thence South 89 degrees 31 minutes 22 seconds West for a distance of 612.69 feet; thence South 02 degrees 03 minutes 55 seconds East for a distance of 519.59 feet to the point of beginning
AMOUNT DUE AND CLAIMED TO BE DUE AS OF DATE OF NOTICE: \$10,772.39

THAT all pre-foreclosure requirements have been complied with; that no action or proceeding has been instituted at law or otherwise to recover the debt secured by said mortgage, or any part thereof;

PURSUANT to the power of sale contained in said mortgage, the above-described property will be sold by the Sheriff of said county as follows:
DATE AND TIME OF SALE: April 30, 2020 at 10:00 AM
PLACE OF SALE: Law Enforcement Center, Lobby, 1000 N. Blue Mound Ave., Luverne, Minnesota

to pay the debt secured by said mortgage and taxes, if any, on said premises and the costs and disbursements, including attorney fees allowed by law, subject to redemption within twelve (12) months from the date of said sale by the mortgagor(s), their personal representatives or assigns.

If the Mortgage is not reinstated under Minn. Stat. §580.30 or the property is not redeemed under Minn. Stat. §580.23, the Mortgagor must vacate the property on or before 11:59 p.m. on April 30, 2021, or the next business day if April 30, 2021 falls on a Saturday, Sunday or legal holiday.

Mortgagor(s) released from financial obligation: NONE
THIS COMMUNICATION IS FROM A DEBT COLLECTOR ATTEMPTING TO COLLECT A DEBT. ANY INFORMATION OBTAINED WILL BE USED FOR THAT PURPOSE.
THE RIGHT TO VERIFICATION OF THE DEBT AND IDENTITY OF THE ORIGINAL CREDITOR WITHIN THE TIME PROVIDED BY LAW IS NOT AFFECTED BY THIS ACTION.

THE TIME ALLOWED BY LAW FOR REDEMPTION BY THE MORTGAGOR, THE MORTGAGOR'S PERSONAL REPRESENTATIVES OR ASSIGNS, MAY BE REDUCED TO FIVE WEEKS IF A JUDICIAL ORDER IS ENTERED UNDER MINNESOTA STATUTES, SECTION 582.032, DETERMINING, AMONG OTHER THINGS, THAT THE MORTGAGED PREMISES ARE IMPROVED WITH A RESIDENTIAL DWELLING OF LESS THAN FIVE UNITS, ARE NOT PROPERTY USED IN AGRICULTURAL PRODUCTION, AND ARE ABANDONED.

DATED: March 12, 2020
ASSIGNEE OF MORTGAGEE: Iowa Bankers Mortgage Corporation
Wilford, Geske & Cook P.A.
Attorneys for Assignee of Mortgage
7616 Currell Blvd; Ste 200
Woodbury, MN 55125-2296
(651) 209-3300
File Number: 037264F02

(03-12, 03-19, 03-26, 04-02, 04-09, 04-16)

Motion by LaRock, second by Bosch, and carried to approve SWWC 2020-2021 Contract.

PERSONNEL:
Motion by Rozeboom, second by Bosch, and carried to approve Resolution for Termination/Non-Renewal of Meghan Zylstra as 1 FTE Elementary Education Teacher at the end of the 2019-2020 school year.

Motion by LaRock, second by Knobloch, and carried to approve Resolution for Termination/Non-renewal of Macy Ellingson as .5 FTE Elementary Education Teacher at the end of the 2019-2020 school year.

Motion by Wysong, second by Knobloch, and carried to approve assigning Dalton Bass as Building/Grounds/Transportation Supervisor beginning March 24.

Motion by LaRock, second by Rauk, and carried to approve accepting Stephanie Bass's resignation as Assistant Volleyball Coach at the end of the 2019-2020 school year.

DISTRICT NON-ACTION ITEMS:
•Secondary Principal Report
•Superintendent/Elementary Principal Report
•Legislative Update
•Committee Reports:

-Building/Grounds 03/16/2020
Agenda Items for the next regularly scheduled meeting: DATES TO REMEMBER:
•Regular Board Meeting, Monday, April 13
•Regular Board Meeting, Monday, April 27
Meeting adjourned at 7:58 p.m.

Tamara Rauk, Clerk (04-23)

Motion by Rozeboom, second by Bosch, and carried to approve the agenda. Visitor to the meeting was Mavis Fodness (Rock County Star Herald).

PATRIOT PRIDE:
•Great Students
•Great Staff
•Great Families

Motion by Rozeboom, second by Bosch, and carried to approve Minutes 3/11/2020. Motion by LaRock, second by Knobloch, and carried to approve Bills.

Motion by LaRock, second by Bosch, and carried to approve Student Accounts. Motion by LaRock, second by Rozeboom, and carried to approve Donations: \$100 from Ray Vander Wolde for lunch accounts.

Motion by Wysong, second by LaRock, and carried to approve utilizing ICS as Long Term Facility Maintenance and Facilities Consultant.

Motion by Knobloch, second by Bosch, and carried to approve High School Security Camera additions and changes.

Motion by Rauk, second by Wysong, and carried to approve 2020-2021 School Academic Calendar.

The non-refundable cost for plans and one proposal will be \$50.00
Bids must be accompanied by a certified check or corporate surety bond drawn in favor of the Rock County Treasurer in the amount of at least five percent (5%) of the proposal.
Sealed bids shall be clearly marked "PROJECT NO. SAP 067-401-021".
The Board of Rock County Commissioners reserves the right to reject any or all bids and to waive any defects therein.
Rock County is an Equal Opportunity/Affirmative Action Employer.

Mark R. Sehr, P.E.
Rock County Highway Engineer
(04-16, 04-23, 04-30)

Public hearing set for May 12

CITY OF LUVERNE
COUNTY OF ROCK
STATE OF MINNESOTA

NOTICE OF PUBLIC HEARING ON VACATION OF A PORTION OF AN ALLEYWAY PURSUANT TO MINNESOTA STATUTE §412.851

NOTICE IS HEREBY GIVEN that a public hearing will be held before the City Council on the 12th day of May, 2020, in the Council Chambers of City Offices located at 305 East Luverne Street, Luverne, Minnesota 56156, at 5:00 p.m., or by telephone or electronic means according to MS §13D.021 due to the COVID-19 health pandemic.

The public hearing is to consider the vacation of a portion of the North-South alley of Block 27 in Van Eps and Vary's Addition, City of Luverne, Rock County, Minnesota.

A complete copy of the legal description is available for inspection by any person during business hours in the office of the City Clerk, 305 East Luverne Street, Luverne, Minnesota. Due to the COVID-19 health pandemic, please call the City Clerk's Office at 507-449-9898 to schedule an inspection, or request an email copy at jmead@cityofluverne.org.

Published upon order of the City Council of Luverne, Minnesota.

City of Luverne, Minnesota
By /s/ Jessica Mead
City Clerk
(04-23, 04-30)

Summons for an adverse claims action

STATE OF MINNESOTA DISTRICT COURT

COUNTY OF ROCK FIFTH JUDICIAL DISTRICT
Case Type: Quiet Title

Henry W. Wallin Plaintiff,

vs.

Carol L. Bernardin and any unknown Personal Administrators, successor Personal Administrators, heirs, successors and assigns of the above Defendant and all unknown persons claiming any right, title, estate, interest or lien in the real estate described in the Complaint herein,

Defendants Court File No 67- CV-20-71

THE STATE OF MINNESOTA TO THE ABOVE NAMED DEFENDANTS:
You are hereby summoned and required to serve upon Plaintiff's attorney an Answer to the Complaint which is herewith served upon you within twenty (20) days after service of this Summons upon you, exclusive of the day of service. If you fail to do so, judgment by default will be taken against you for the relief demanded in the Complaint.

That this action involves the determination of title to the following described premises, located in Rock County, to wit:

The South Four (S.4) feet of Lot Four (4) of Lot Five (5), in Block Ten (10), of Original Plat of the City of Hills, Minnesota, subject to easements of record, if any.

The object of this action is to determine the adverse claim of said Defendants and each of them in or to the hereinbefore described real estate, and to obtain judgment that the Plaintiff is the absolute owner in possession of said real estate, and that none of said defendants have any right title, estate, lien or interest whatsoever in or to said real estate, or any part thereof.

Dated: March 6, 2020

/e/ Glen A. Petersen I.D. #290506
Glen A. Petersen
Petersen Law Office PLLC
Attorney for Plaintiffs
225 N. Tyler St., PO Box 671
Tyler, MN 56178
Telephone: (507) 247-5515
(04-23, 04-30, 05-05)

Organic Gatherings assumes name

MINNESOTA SECRETARY OF STATE
CERTIFICATE OF ASSUMED NAME
MINNESOTA STATUTES, CHAPTER 333

The filing of an assumed name does not provide a user with exclusive rights to that name. The filing is required for consumer protection in order to enable consumers to be able to identify the true ownership of a business.

ASSUMED NAME: **Organic Gatherings**
PRINCIPAL PLACE OF BUSINESS:
1373 60th Avenue Luverne, MN 56156 USA
NAMEHOLDER(S):
Name: **Mark D Gath**
Address: **1373 60th Ave Luverne, MN 56156**

If you submit an attachment, it will be incorporated into this document. If the attachment conflicts with the information specifically set forth in this document, this document supercedes the data referenced in the attachment.

By typing my name, I, the undersigned, certify that I am signing this document as the person whose signature is required, or as agent of the person(s) whose signature would be required who has authorized me to sign this document on his/her behalf, or in both capacities. I further certify that I have completed all required fields, and that the information in this document is true and correct and in compliance with the applicable chapter of Minnesota Statutes. I understand that by signing this document I am subject to the penalties of perjury as set forth in Section 609.48 as if I had signed this document under oath.

Signature : /s/ **Damon T. Eisma**
MAILING ADDRESS: None provided
EMAIL ADDRESS FOR OFFICIAL NOTICES: vrodegurl@hotmail.com
(04-16, 04-23)

Rock County Highway Department seeks bids by May 11

NOTICE TO CONTRACTORS
C. P. 067-401-021

Sealed proposals will be received by the Rock County Highway Department at Luverne, Minnesota until 11:00 A.M. on Monday, May 11, 2020.

READ CAREFULLY THE PROVISIONS FOR THE WAGE RATES AS CONTAINED IN THE SPECIAL PROVISIONS, AS THEY WILL AFFECT THIS PROJECT.

Attention is called to the fact that the contractor must comply with the Special Equal Employment Opportunity Provisions as contained in the Proposal.

Proposals will be opened and read publicly in the presence of the Rock County Highway Engineer at the Rock County Highway Building located at 1120 North Blue Mound Avenue in Luverne, Minnesota, immediately following the hour set for receiving bids for the following Rock County Highway work. Bids will be awarded on Tuesday, May 19, 2020, at the regular Board of Commissioners Meeting held in the Law Library at the Rock County Courthouse.

The Quantities of Work are: 2,830 gals of 4" ReflectORIZED Edgeline Pavement Marking Paint - White & 1,440 gals of 4" ReflectORIZED Centerline Pavement Marking Paint - Yellow.

Plans, specifications, and proposals may be viewed, and downloaded at www.questcdn.com and at the Rock County Highway Department website, www.co.rock.mn.us/highway.

Star Herald CLASSIFIEDS

CARDS OF THANKS

A hearty "thanks" to our family and friends for making my 80th and Sylvia's 79th Birthdays so special! The parade, the horn honks, treats, letters, cards and phone calls were overwhelming! We are truly blessed to live in our caring and loving community!
Roger and Sylvia Niessink
(4.23-4.25)

A thank you to everybody for all of the beautiful cards, phone calls, gifts and flowers we received for our 50th anniversary. We have made many memories.
Loren and Shirley Fick
(4.23-4.25)

MISCELLANEOUS

HAVE A UNIQUE SERVICE OR BUSINESS? Get the word out to over 1.4 million households. Call WIDE AREA CLASSIFIEDS today, 507-359-7326. (tc)

RENTALS

For Rent: Two-bedroom house for rent in Luverne. Call 507-215-2619. (tc)

For Rent: Two-bedroom, ground level apartment with AC available in Luverne. On-site laundry; off-street parking. Close to downtown and Senior Center. No pets; no smoking. Heat/water included in rent.
507-290-0266. (4.9-4.25)

EMPLOYMENT

The City of Hills is taking applications for a part-time seasonal maintenance position. Must be 18 or older to apply. Applications will be accepted until the position is filled. Contact the Hills City Office at 301 South Main Avenue or call 962-3290 to request an application. (4.16-5.2)

FOR RENT

2 & 3 Bedroom Townhome
* Available Immediately
* One-stall Garage
* Updated Amenities
* Quiet Neighborhood
* \$750 (2 bed)/\$825 (3 bed) /month. Utilities OYO
Call Schomacker's 507-227-2183 for showings.

Minnesota Classified Advertising Network

CLUBBING

WANTED TO BUY WANTED: ALL 1970S MOTORCYCLES Running or not. Titled or not. Prices will fall soon. Sell now while prices are high! Call Dan at 612720-2142	MISCELLANEOUS DISH NETWORK \$59.99 For 190 channels! Add high speed internet for only \$19.95/month. Call today for \$100 gift card! Best value & technology. Free installation. Call 855/562-4309 (some restrictions apply)	MISCELLANEOUS AT&T WIRELESS Two great new offers! Ask how to get the new iPhone 11 or Next Generation Samsung Galaxy S10e on us with AT&T's Buy one, Give One offer. While supplies last! Call 855/332-0464
SEED/FEED/GRAINS PROTECT YOUR YIELD from soybean white mold and SDS. Ask your seed dealer for Heads Up® Seed Treatment. Cost-effective. Proven results. headsUpST.com/plam20 or 866/368-9306	DONATE YOUR CAR truck or boat to Heritage For The Blind. Free 3-day vacation, tax deductible, free towing, all paperwork taken care of 844/220-9501	SAVE MONEY! Call your local newspaper or MNA 800-279-2979 to find out how you can save money by placing your advertisement here!
Advertise here statewide in 230+ newspapers for only \$279 per week! Call 800-279-2979	MOBILEHELP America's premier mobile medical alert system. Whether you're home or away. For safety and peace of mind. No long term contracts! Free brochure! Call today! 855/610-5151	ENJOY 100% PERFECTLY TENDER and guaranteed! 20 main courses plus get 4 free burgers. Order the Butcher's Bundle - only \$69.99. Call 844/331-1614 mention code: 610861TVG or visit www.omahasteaks.com/dinner397

READ THE STAR HERALD FREE ONLINE!

With coronavirus information changing daily, news is too important not to share. So, we're offering it for free at www.star-herald.com. We'll continue to print as long as presses keep running, but we're committed to connecting our community whether in ink or online.

Luverne marathon finishes with the help of students, family members/from page 1

zeski were family members of the late Jackson Facile, Anthony Boyenga and Brooke Thompson. All three had ties to the Luverne community, and each died in the past year.

When Janiszkeski learned that the Boston event was postponed until fall, he decided he would run the race on the same weekend as the Boston Marathon was originally scheduled. He dubbed it the "Luverne Marathon," and his one-man run became a fundraiser for the three families.

Saturday's event raised \$1,200. However, donations can still be dropped off at Security Savings Bank in Luverne, Hills and Ellsworth through Friday.

"I'm just an ordinary man who did something extra for those in need," Janiszkeski said. "All of us have the power to make a difference by how we treat and lift those around us by lending a helping hand, a kind word, or a listening ear."

However, the Luverne High School math teacher and cross country/track coach didn't anticipate he would need help finishing the last 8.2 miles of the 26.2-mile event on Saturday.

In an April 15 social media post, Janiszkeski referenced the possibility of not being able to finish.

"I have been experiencing some calf pain that got pretty intense last Saturday," he wrote. "If it's not cooper-



Submitted photo

When Peter Janiszkeski stopped running at 18th mile of the 26.2-mile Luverne Marathon, his sons along with members of the Luverne High School cross country team ran or biked the final 8.2 miles. The group gathered afterwards included (from left) Elizabeth Wagner, Makena Nelson, Tianna Lais, Jenna DeBates, Brooklynn Versteeg, Regan Feit, Peter Janiszkeski, son Camden Janiszkeski, Brayden Tofteland, Tenley Nelson, son Owen Janiszkeski and Carson Tofteland.



Mavis Fodness photos/Peter Janiszkeski Run

Far left: The Facile family and friends hold signs of encouragement as Peter Janiszkeski ran the Luverne Marathon Saturday morning. Pictured from left are Monica Facile, Ella Facile, Addilyn Chapa, Addisyn Facile, Amy Chapa, Travis Chapa and Jaycee Chapa. **Left:** In addition to a sign that read, "Run Pete Run," co-worker Becky Rahm also showed Peter Janiszkeski a sign for his lone marathon run that read "Worst Parade Ever." **Above:** Mason Facile (left) and Kamdyn Chapa sit with Kiley the dog and a sign that reads "Thank you."

ating come Saturday, I know I can and I promise to grind out a chunk of it, but I can't

promise I'll be able to finish if the pain gets too severe."

Mile 18 proved to be the "chunk" of it, and hip pain forced Janiszkeski to stop running.

Picking up where he stopped were a few of the LHS cross country athletes including his own sons, Camden and Owen.

"It was not planned," Janiszkeski said. "The plan was to try to grind through all 26.2 miles if my body would allow me to. I was feeling pretty good, had a great pace going, and the calves were bearable through 15-16 miles. "When the kids figured

out that I was going to stop and couldn't keep going, they decided that they were going to finish the final 8.2 miles for me."

The 11 students completed the race and lined up with Janiszkeski for a photograph, each athlete standing six feet from each other, about three hours after Janiszkeski began the marathon around 7 a.m.

Students in addition to Camden and Owen Janiszkeski were Elizabeth Wagner, Brady Bork, Makena Nelson, Tianna Lais, Jenna DeBates, Brooklynn Versteeg, Regan Feit, Brayden Tofteland, Tenley Nelson and Carson

Tofteland.

LHS social worker Stacy Schepel reflected on watching the students pick up where Janiszkeski left off on Janiszkeski's Facebook page.

"It's absolutely perfect because the reality is none of these families that you ran to support are running their races alone either," Schepel wrote. "My hope is ... that there is someone that can help them finish that minute task, day, activity, etc."

Janiszkeski had Bible verses written on his arms

in black ink: Philippians 4:13, Isaiah 40:31, John 16:33 and Hebrews 12:2.

"I had the initials of Anthony, Brooke and Jackson inside the hearts around John 16:33," he said.

"John 16:33 reminds me that despite the trials and tribulations we have, Jesus overcame the world, and these families have endured a loss like no other.

"It was very rewarding for me to not only do something special for the community, but also to see my team lift me up."

24/7 ... Rain or Shine ...

Your local, independent agent will be there.

Working for you-meeting your needs.

South Hwy. 75, Luverne, MN • Ph. 507-283-2381

Auto-Owners INSURANCE

LIFE • HOME • CAR • BUSINESS

A note from Mayor Patrick T. Baustian *We're All in This Together*

From our community health care professionals:

You are encouraged to wear fabric masks or cloth face coverings to help with preventing your germs from infecting others – especially in situations where you may spread the virus without symptoms. Facemasks can serve as a barrier for an individual who does not have signs and symptoms, as a way of limiting transmission of the virus for asymptomatic non-caregiver employees. Alternative facemasks are NOT considered personal protective equipment (PPE) since they have not been proven to protect caregivers. If we wear them, we protect each other essentially.

Care of Masks if used:

Cloth masks should be washed in very hot water (160 degrees) and detergent daily. When not used, fabric should be stored in a clean, closed paper bag or breathable container, folded with the dirty (exposed) side inward.

Please continue to follow Governor Walz's Stay at Home Executive Order and stay home if you're not feeling well, don't touch your face, sneeze into your arm, and wash your hands. Our efforts are making a difference in Minnesota and being recognized by others in our Nation. #StayHomeMN #MNStrong

Under the extended order, Minnesotans may leave their residences only to perform the following activities, and while doing so, they should practice social distancing:

- Relocation to ensure safety, such as relocating to a different location if your home is unsafe due to domestic violence, sanitation, or reasons related to essential operations.
- Health and safety activities, such as obtaining emergency services or medical supplies.
- Outdoor activities, such as walking, hiking, running, biking, hunting, or fishing.
- Necessary supplies and services, such as getting groceries, gasoline, or carry-out.
- Essential intrastate and interstate travel, such as returning to a home from outside this state.
- Care of others, such as caring for a family member, friend, or pet in another household.
- Displacement, such as moving between emergency shelters if you are without a home.
- Moving or relocation, such as moving to a new home or place of residence.
- Voting, including all local and state elections.
- Funerals, provided that no more than ten attendees are gathered and strict social distancing is enforced.
- Tribal activities and lands, such as activities by members within the boundaries of their tribal reservation.

I am confident that Luverne Area Residents, working together, will emerge from this pandemic much stronger as a community.

Help US keep YOU informed!

The City of Luverne occasionally needs to contact customers with important notifications. Please provide contact information so you will receive notifications about City services. You may receive automated messages about changes in City Operations including the City Offices, Liquor Store, Pool & Fitness Center, Refuse and Recycling pickup, Electric, Water & Sewers services as well as temporary water shutoffs, planned electric outages and other important messages.

Please update your contact information by completing the online form at www.cityofluverne.org/info.

Mask Sewing Update:

If you are already making them, a sincere thank you! If you are willing to donate fabric for sewers who have run out of material to sew, please contact myself at 507-920-7406 or Barb Bork at the Sewing Basket in Luverne 507-227-1589.

Barb Bork from the Sewing Basket is also willing to donate fabric to sewers willing to sew masks for our community needs. If you need fabric or would like to drop off completed masks please give Barb a call at 507-227-1589.

Find instructions and video courtesy of Deaconess at: <https://www.deaconess.com/How-to-make-a-Face-Mask>

Sincerely,

Mayor Patrick T. Baustian

Luverne
MINNESOTA

Love the life!

For Minnesota-specific information on the virus, along with resources about keeping yourself and those around you safe, the MDH <https://www.health.state.mn.us/> website has everything you need. Otherwise, read more from the CDC <https://www.cdc.gov/> on how to stay healthy and safe.

