



Rock County STAR HERALD

Rock County's oldest business, printing since 1873

Thursday, February 4, 2021

COVID-19 shots given as fast as doses arrive

County vaccination rate is at 10 percent, ahead of state rate at 8 percent of people vaccinated statewide

By Lori Sorenson

Three hundred Rock County residents 75 and older received the COVID-19 vaccine this week at Grand Prairie Events in Luverne.

Jason Kloss of Southwest Health and Human Services said local health professionals have had to respond quickly with schedules and communication as vaccine doses become available on short notice.

"I was informed on Friday that SWHHS would be receiving 300 doses the next week," Kloss said Saturday.

"We are charged to get the vaccine out in 72 hours. ... Our clinic schedule will become more routine as supplies increase."

By Monday morning, 250 people had already reserved appointments for Wednesday's clinic at Grand Prairie Events. Only people with appointments were able to participate and only people from Rock County.

Meanwhile, 140 Sanford Luverne patients 85 and older were vaccinated last week, and 45 more will be done this week.

"So many of the people that we had come in Friday dressed up for the day," said Sanford Luverne's Tammy Loosbrock.

"They were excited, and several said they hadn't been out of the house much if at all since last March. A few described it as the best Christmas present, and a couple said it was a gift from heaven. It truly warmed your heart to be able to be a part of the day."

In total, not including this week, she said 630 first doses and 237 second doses have been administered.

"We are continuing the 85-plus group and plan to move into the 80- to 84-year-old group next," Loosbrock said.

Mixed messages

Messaging has been challenging for residents who are provided information about "phases" and sub-categories of people eligible

COVID-19 vaccine/see page 2



Submitted photo Alice Hansen (right) gives Karsten Haas a big hug Saturday, Jan. 23, after the 7-year-old found Hansen's wedding ring in the snow on her deck in front of her Hardwick home. Hansen lost the ring weeks ago, and Haas found it while scooping her deck.

The lost is found

Boy discovers Hardwick woman's wedding ring under snow while scooping off her deck for school project

By Mavis Fodness

Several weeks ago Alice Hansen lost her wedding ring while working around her Hardwick home.

She searched outside and throughout the house, but the ring given to her by her late husband, Ron, 46 years ago was not to be found.

"I was upset and sad that I lost it," Hansen said. "I didn't know where I lost it."

On Saturday her 7-year-old neighbor, Karsten Haas, found it while scooping snow off her deck.

"I don't think Karsten understood what a heartwarming thing he did," Hansen said.

Karsten, a first-grader at Edgerton Public Elementary, decided to scoop snow to fulfill a school assignment called the "100 Dollar Project."

Since 2008, the first-grade class celebrates

the 100th day of school through a giving challenge and a field trip to the bank to see a \$100 bill.

The challenge meant that each student needed to earn \$12. When pooled, the money is given to a special person fighting a life-threatening disease, or to a family who experienced a tragic loss or is in need of financial help.

This year's 100 Dollar Project goal is to purchase a memorial plaque for a former classmate, Gauge Sprik, who died in September.

Total cost of the plaque is \$359.

Karsten chose scooping snow as a way to earn his \$12 contribution toward the memorial.

He made arrangements with Hansen, his neighbor, that at the next snowfall he would clean off her front deck.

Lost wedding ring/continued on page 14

Condition improves for 3-year-old farm accident survivor

By Mavis Fodness

Nora Matthiesen, 3, says she wants to return to her rural Magnolia home in time for calving and lambing because "Dad needs his little help to feed some of those babies on the farm."

Nora, daughter of Jed and Deann Matthiesen, suffered a head injury in a Jan. 13 farm accident in which she was struck by a moving tractor.

She spent 16 days in a Sioux Falls hospital where doctors kept her in a drug-induced coma for a week.

On Friday Nora traveled by ambulance with her mom to Madonna Rehabilitation Hospitals in Omaha, Nebraska, where twice-a-day exercises are helping her get stronger.

Nora's grandmother and Deann's mom, Lori Popkes, keeps friends and family updated on Caringbridge.com.

"There are still medications that are continuing to work their way out of Nora's little body, and that her body has a lot of work and strengthening to do that is all going to take continued patience and time," she wrote.

"It is also a bit of a ballet when you work with brain injury patients to encourage/challenge and push them without over-stimulating their little brains and/or wearing them out too much."

Nora's recovery is progressing daily.

Ten days after the accident Nora was talking and recognizing visitors, including her 17-month-old sister Mara.

She has started to walk again with assistance and will stay in Omaha until she reaches all her rehab milestones.

"We continue to be incredibly blessed with Nora's miraculous progress in her recovery, and every day that passes brings increasing strength for our little miracle girl," Popkes wrote.

Community members have reached out to the Matthiesen family sending pictures of snowflakes hung in support of Nora's recovery.

The snowflake represents the fragility combined with strength and resilience before it formed into one of God's beautiful masterpieces.

A neighbor to the Matthiesen farm encouraged people to display snowflakes as supportive symbols.

So far Nora's Caring Bridge site has had almost 170,000 visits since the posts began Jan. 13.

W-2's Quality Meats closes Luverne location

By Lori Sorenson

A "closed" sign appeared on the front door of W-2 Quality Meats over the weekend with a message from business owners Steven Wieneke and Troy Wietzema.

"We appreciate that you have chosen to do business with us. It has been our pleasure serving you," the sign said.

"Unfortunately, we've made a hard decision to close our Luverne location. Our Worthington location remains open if you need anything."

The owners said their decision was driven entirely by a staffing challenge they couldn't overcome.

"We lost our full-time guy and we couldn't find adequate help," said Wietzema. "There are just no meat cutters. It's a dying trade."

Nathan Kraft had been cutting meat full time for W-2's Quality Meats, splitting his hours between the Luverne and Worthington locations.

Kraft is starting his own business in Milford, Iowa, and purchased the east coolers and some equipment

W-2's Quality Meats/see page 5



Lori Sorenson photo/0204 W2 meats closing W-2's Quality Meats closed its Luverne location Saturday. The building at Main Street and Highway 75 is owned by Luverne Properties, a group of local investors.

County approves permit for Schwartz Farms swine operation

Permit provides more flexibility, no more hogs planned for now

By Mavis Fodness

Rock County Commissioners recently approved Schwartz Farms' request for a conditional use permit to increase the number of swine in an existing barn in Luverne Township.

No building addition is planned at the site, but the permit would allow the Pleasant View facility to operate at its maximum number of animals when needed, as the coronavirus pandemic demonstrated last year.


Kevin Barnhart, business developer with Schwartz Farms, said the request for the conditional use permit at the barn comes after pork processing plant closures during COVID-19 outbreaks.

He said Schwartz Farms' just-in-time production created a housing issue when the mature hogs could no longer be taken from the barn as the new feeder pigs were ready to enter.

The barn was built in 2014 to hold 1,089 animal units or 3,630 hogs.

Schwartz Farms permit approved/continued on page 2





County	Total Cases	DAILY average in last 7 days	Percent Change
Rock	1,130	1	+0.7%
Pipestone	983	2	+0.8%
Nobles	3,767	3	+0.5%
Minnehaha (SD)	27,015	34	+0.8%
Lyon (IA)	1,398	3	+1.3%

14-day case rate in Rock County per 10,000 people:

Date Range	12/13-12/26	12/20-1/2	12/27-1/9	1/3-1/16
Rate	47.81	43.56	67.99	63.74

Vaccine Dashboard: ROCK COUNTY

- People with at least one dose: 834
- People with completed series: 167

Data as of 01-31-2021

For more Covid-19 vaccine information, please visit:
<https://www.health.state.mn.us/diseases/coronavirus/vaccine.html>

School Status

LUVERNE - Elementary: In-person | Middle/High School: In-person
HBC - Elementary: In-person | Secondary: In-person/HYBRID

Current data as of February 2, 2021. Sources: MDH & The New York Times

Sponsored by: Rock County Emergency Management

COVID-19 vaccine continues locally/continued from page 1

for the shot. Often the vaccine is offered to different groups simultaneously at different locations.

"We are targeting the 75 and older group and any Phase 1a that have not received the vaccine yet," Kloss said.

"If we have leftover appointments, we will plan to have a call list for teachers and day care providers. MDH has not given us permission to expand to Phase 1b essential workers yet."

To be put on the call list, go to swmhhs.com.

"Residents can enter their contact information and we will notify them of vaccine opportunities that we schedule," Kloss said.

"We also will use this list to contact people if there are extra doses at a clinic. We will randomly select people according to priority group."

Sanford Luverne has focused on their patients 85 and older with the small amounts of vaccine it receives each week.

Counting the Wednesday vaccine clinic, Rock County's vaccination rate is at nearly 10 percent, which compares with about 8 percent of people vaccinated statewide.

Gov. Tim Walz on Monday announced 35,000 more vaccine doses



Sanford Luverne photos

Missy Cowell, an RN in Sanford Luverne's surgery department, was able to give the vaccine to her grandpa, Alvin Boomgaarden, who just turned 98.

would be made available to Minnesotans 65 and older at 100 clinics, hospitals and vaccination sites statewide.

Also on Monday, the state launched an online vaccine finder to help connect Minnesotans 65 and

older to vaccination opportunities in communities near where they live.

State officials also released a vaccine locator map showing where providers and clinics are offering shots.

It's found at <https://mn.gov/covid19/vaccine/find-vaccine>. While the locator currently provides information for seniors, it will expand over time as more Minnesotans become eligible for the vaccine.

The majority of people in Phase 1a have been vaccinated.

This group includes health care workers, EMS, nursing home and assisted living facility staff and residents, dental offices, pharmacies, mental/behavioral health settings, school nurses, funeral directors, correctional settings, and group homes settings.

Phase 1b includes teachers, grocery store workers, fire, food processing, day care workers, correctional workers, public transit and postal workers, as well as the 75-and-older population.

Staff in education and child care settings will be contacted directly if selected to sign up for appointments for the vaccine at a state site or community pharmacy this week.

Local public health departments will partner directly with school and child care programs in their communities.

COMMUNITY CALENDAR

Meetings

Vienna Township Board will meet at 7 p.m. Tuesday, Feb. 9, in the Kenneth Community Center.

Springwater Township Board will meet at 1 p.m. Tuesday, Feb. 9, in the township hall.

Aging Mastery Program

Luverne Community Education will offer a 10-week health and wellness Aging Mastery Program developed by the Minnesota River Area Agency on Aging.

The class, for adults, 55 years and older, is virtual through Zoom on your computer or iPad. On Feb. 4 the class addresses how to use Zoom. Class begins on Feb. 11. Fee is \$5. Call Community Ed at 507-283-2333 to register.

Christian Motorcyclists pizza giveaway Feb. 6

The Luverne Chapter of the Christian Motorcyclist Association will give away Papa Murphy's Pizza starting at 11 a.m. Saturday, Feb. 6, in the parking lot of Living Rock Church on East Main Street, Luverne. Call 605-366-0042 with questions.

Monthly food giveaway

New Life Celebration Church will host its monthly free food giveaway at 4:30 p.m. Thursday, Feb. 18, at the Generations building at 319 E. Lincoln Street in Luverne. Those in vehicles go to the double class doors on the west side of the building where volunteers will load groceries into vehicles. (Stay in your car). Walkers should go to the east side of the building where volunteers will have grocers pre-packed for pick-up. Call 507-283-4366 with questions.

Rock County Library winter activities

Register now at the library to participate in the Rock County Library 2021 Winter Reading Program, which began Jan. 1. Patrons who read at least 12 books from now until March 31 will win a prize for their efforts — and enjoy some good books.

Call the library at 507-449-5040 or email the library at rocklibrarystaff@gmail.com.

Check with the library to participate in Virtual Trivia. Receive weekday trivia to break up our quarantine schedules (until Trivia Nights in person can continue again.)

Community Ed

Call the Luverne Community Education office, 507-283-4724, for registration information.

How to play chess for students grades K-8 after school; three sessions Feb. 2, 9 and 16. Fee is \$15.

Register by Feb. 6 for the ACT Prep Class that will begin Feb. 22 virtually. Fee is \$125 and includes taking a practice test and an individual conference with the teacher to review the test and tips for taking the actual test. Fee is \$125.

Food Shelf cold weather procedures

The Rock County Food Shelf has changed its curbside process for winter. Wait in line to park in one of the two parking spaces closest to the building.

One at a time, enter the building (masks and distancing required) to register and pick up vouchers. Be prepared for volunteers to put pre-boxed groceries in the car. As the parking spaces empty, the next cars can pull in.

The process will require patience. See the Rock County Food Shelf Facebook page for updates.



Cornie Van Lant, 91, still farms by Chandler and said he didn't hesitate to come in. "My daughter is a nurse and she said if I had the chance to get the vaccine, I better take it," he said. "I'm glad I could get the shot."



Sanford Luverne received 100 doses of the COVID-19 vaccine last week, targeted for people 85 and older, and scrambled to administer the shots in the 72-hour allowed time frame. People began arriving at 9:50 a.m. Friday for their shots, and Gerrit and Harriet Kroontje, Leota, were the first in line. "I was pretty happy to hear that we could get it," Harriet said. Gerrit and Harriet are pictured with Sanford nurse Lana Baerenwald administering their vaccine.



Schwartz Farm permit approved/continued from page 1

However, Schwartz Farms only filled the barn with 990 animal units or 3,300 head, as was permitted six years ago.

"We actually built the building with more square footage than what we needed," Barnhart said. "Having the ability to overstock the barn was a godsend, and we had

a place to go with those pigs (instead of euthanizing)."

With packing plants now back to production capacity, the Luverne Township barn has returned to the original permitted levels.

The new conditional use permit will allow Schwartz Farms to add 330 more animals to the barn in case an-

other production interruption occurs in the future.

No one from the public brought issues to the Jan. 11 public hearing for the Schwartz Farms conditional use permit request.

Members of the county's planning and zoning commission recommended the County Board approve the

permit request.

Commissioners approved the request with a 4-0 vote. Commissioner Jody Reisch was not at the meeting.

Seven conditions were placed on the new permit including following all state and federal guidelines under the National Pollutant Discharge Elimination System.

Dial-a-Specialist

Your One Stop Guide to Local Businesses



DR. MICHAEL SMITH

ROCK COUNTY ROCC CHIROPRACTIC

Laser Therapy • Custom Orthotics
Men, Women & Children's Health
Athletic Care • Massage Therapy
Work & Auto Injuries • Postural Restoration

WWW.ROCKCOUNTYCHIROPRACTIC.COM
283-2561 • 103 E. MAIN, LUVERNE

Most Insurance Accepted



Viking Electric LLC

Tim Gangestad
Owner

(507) 290-2595

Conquering all of your electrical needs!
Residential • Commercial • Agricultural

Luverne
MINNESOTA City Offices

Love the life!

PO Box 659, Luverne, MN 56156
507-449-2388 (24 hour voice mail)

www.cityofluverne.org



LUVERNE HEALTH & WELLNESS

Codie Zeutenhorst, DC LuverneChiro.com

Chiropractic Acupuncture Massage
Auto, Work, and Sports Injuries

109 S Freeman Ave Luverne, MN
507.449.4400

• Chiropractic

• Electrician

• City

• Chiropractic



Above, Eli Ripka shows his message that reads, "Work hard and be kind." He said he planned to do just that on Monday. Pictured at right, Lucas Nieman pauses to read his kindness sticky note with classmate Joslyn Meinerts.



Lori Sorenson photos



STICKY SITUATION

School Counselor Week observed with kindness notes

This week, Feb. 1-5, is National School Counselor Week with the theme "School Counselors: All in for All Students." It highlights the impact school counselors can have in helping students achieve school success and plan for a career. Luverne Elementary School Counselor Marie Atkinson-Smeins is making the week special with a series of activities, including "kindness sticky notes."

She printed 493 sticky notes with kindness messages for all the lockers in grades K-5, and students arrived Monday morning to discover the encouraging messages. She said she's finding ways to connect with students despite the pandemic. "I am still teaching Second Step (my curriculum) to K-5 grade," she said. "I am leading small counseling groups and meeting with students individually. I wear a shield or mask all the time. I have a sneeze guard in my office when I meet with students one on one and we practice social distancing."



Charlotte Bierman reads her kindness note and announces that she intends to be kind Monday.

Teachers applied the "kindness sticky notes" to lockers before students arrived Monday morning. They contained a number of different messages, such as "Kindness is contagious," "Be the reason someone smiles," and "Have courage to be kind."



Pictured at far left, Ross Loosbrock reads his kindness message while opening his locker.

Star Herald awarded for excellence

The Rock County Star Herald was recognized by its peers for excellence in journalism during the Minnesota Newspaper Association's annual convention, which was held virtually Jan. 28-29.

Star Herald editor Lori Sorenson earned a first-place award in business writing for an April 16 story she

wrote about the plight of farming in the coronavirus economy.

The award recognizes excellence in business writing - specifically its readability, content, impact and local importance.

MNA works to "... secure improved standards in the practice and the profession of journalism." The

purpose of the annual contest is to recognize excellence in the various aspects of newspaper journalism so that the practice and profession in Minnesota may be advanced.

Newspaper staff from the Michigan Press Association judged the work entered in Minnesota's news contest this year.

Blue Mound Liquor
Easy delivery and curbside pickup

Order over phone
Pay with credit card

319 W Main St, Luverne • 507-449-5052

STAR HERALD
Rock County's oldest business, printing since 1873 Thursday, April 16, 2020

Farmers reeling from coronavirus economy, now Smithfield closing

By Lori Sorenson

Smithfield Foods closed its Sioux Falls pork processing plant over the weekend after more than 230 workers tested positive for coronavirus.

The plant is one of the nation's top pork processors, and it has many in the ag sector worried about food supply chains.

"It is impossible to keep our grocery stores stocked if our plants are not running," said Smithfield President and CEO Kenneth Sullivan in a statement.

"These facility closures will also have severe, perhaps disastrous, repercussions for many in the supply chain, first and foremost our nation's livestock farmers."

The Sioux Falls facility processes roughly 14,000 hogs per day, and its closure left suppliers scrambling for alternate pork buyers.

"... if you take away the processors ... It's not like I can deliver a steer to your front yard and say, 'Here's your beef.' You're going to see a disruption in the supply chain."

— Peter Bakken, Rock County Farm Bureau president

Smithfield back online, the better ... before the next plant goes down."

Barnhart, Luverne, works for Schwartz Farms, Rock County's largest hog supplier, which trucks thousands of animals per week from Rock County barns to Smithfield.

"Where will they go? Good question," he said Monday.

In addition, several other local operations truck finished hogs to Smithfield.

The hogs that were en route to Sioux Falls when the plant closed Sunday went to other processors in the region, such as JBS in Worthington, Tyson in Storm Lake, Hormel in Austin and Prime Pork in Windom.

But these plants are already operating over capacity to absorb

other truckloads intended for Smithfield, which is closed for at least two weeks.

Barnhart supports closing the plant for human safety, but he sees the downside of the hog market when a processor that large is shut down.

In addition to farming out loads to other processors, he said growers have suddenly put the brakes on production.

"We've adjusted rations to maintenance levels to slow growth so we can buy ourselves a week or two," Barnhart said.

"We're also co-mingling weaned pigs with larger animals and double-stocking the nursery."

None of these options are ideal,

Farming economy/see page 8

Card Shower to celebrate the
80th Birthday
of
Janice Vink
on February 12th.

Please feel invited to send cards to:
509 E. Barck Avenue,
Luverne, MN 56156

You can recycle more than your paper!

You can also recycle:

- + Metal
- + Plastic
- + Glass
- + Paper
- + Cardboard
- + Aluminum

Keep the OCEAN Clean

All under one roof
ATLAS, Redeemed Remnants move forward with co-location

ATLAS of Rock County and Redeemed Remnants, the ATLAS-sponsored thrift shop, plan to soon be under



THE NORTHVIEW

By Brenda Winter, columnist

Many people over the years have said that ATLAS is one of the best-kept secrets in Rock County. Along with giving us more space, we're hoping our new building will solve that problem, too.

one roof in the former Luverne Kawasaki building. (That's the former Bargain Center for you old-timers, the former Kenny's Super Valu for you really old-timers.)

The planned move has been the worst-kept secret in Rock County for about four months.

Real estate negotiations require a level of secrecy until they are final, but "secrecy" and small towns don't exactly mix.

The ATLAS Board, of which I am the current chairperson, began negotiating for the purchase of the Kawasaki building late last summer. Our offer on the Kawasaki building was contingent on the sale of our Redeemed Remnants building on Main Street, which was contingent on the buyer getting financing, which was contingent on the inspection results. All of which was to occur under utmost small-town secrecy.

While living under this cloud of secrecy, board members found it entertaining to field questions like, "You aren't going to raise the prices at Redeemed Remnants to pay for your big, new, fancy building, are you?"

What are we supposed to say? "What building? I don't know what you're talking about. You must have us confused with some other potential buyer of a big, fancy building." (ATLAS is a Christian mentoring organization, so lying is not an option.)

We did our best to remain tight-lipped while ordering inspections of roofs, plumbing, HVAC systems, and holding meetings in the old Kawasaki parking lot. (What are they do-

ing over there?)

We started calling it "The ATLAS Ministry Center" and began looking for tenants to fill some of the extra office spaces. (You know, just in case ATLAS would somehow have some extra office space - or not.)

Finally, on Jan. 21 the secrecy ended. The papers were signed and filed. Tony Gacke and his crew began turning a former motorcycle shop into a ministry center.

Tens of thousands of dollars began pouring into ATLAS to support the building purchase and remodel. (Funny how "building fund" donations began arriving even before we'd made an official announcement...)

Many people over the years have said that ATLAS is one of the best-kept secrets in Rock County. Along with giving us more space, we're hoping our new building will solve that problem, too.

Thanks for your support.

Support needed to keep local government aid; legislators need to be told of its importance

As the state continues to grapple with the COVID-19 pandemic and lawmakers begin to craft the next two-year state budget, we in greater Minnesota need to make sure our voices are heard.

On Friday the Star Herald participated in a press conference call with board members of the Coalition of Greater Minnesota Cities (CGMC). The meeting addressed priorities to bolster economic recovery in rural Minnesota, and key among them is Local Government Aid.

"The pandemic has taken a toll on our community," said Greg Zylka, mayor of Little Falls and president of the CGMC. "Some segments are still really struggling, and that pain has ripple effects across the city. As mayor, it's heartbreaking because you want to be there for everyone."

Local governments statewide are feeling the impacts. Since the start of the pandemic, the city of Luverne, like many cities, has assisted businesses by waiving fees, deferring property tax collections, bending rules and distributing federal coronavirus relief funds.

Meanwhile, cities still need to provide essential services like public safety, street maintenance, drinking water and wastewater facilities, and parks and trails.

As we continue to deal with the uncertainty of the pandemic, it's more important than ever for

STAR HERALD EDITORIAL

the State Legislature to continue supporting outstate communities with Local Government Aid.

For background, LGA was established in 1971 when state leaders recognized that rural communities were important - that it wouldn't be healthy to have the entire state population living in Minneapolis and St. Paul.

However, small towns have fewer resources to support basic services, so LGA was established to help make up the difference between a city's "revenue need" and its "ability to pay." The greater a city's revenue need in relation to its ability to pay, the more LGA the city would receive, all other things being equal.

"Ability to pay" has generally been measured based on the size of a city's property tax base; cities with a large per capita property tax base are considered to have a greater ability to generate revenue locally than cities with a small per capita base.

So far, Governor Tim Walz's budget supports current LGA funding, but with Minnesota facing

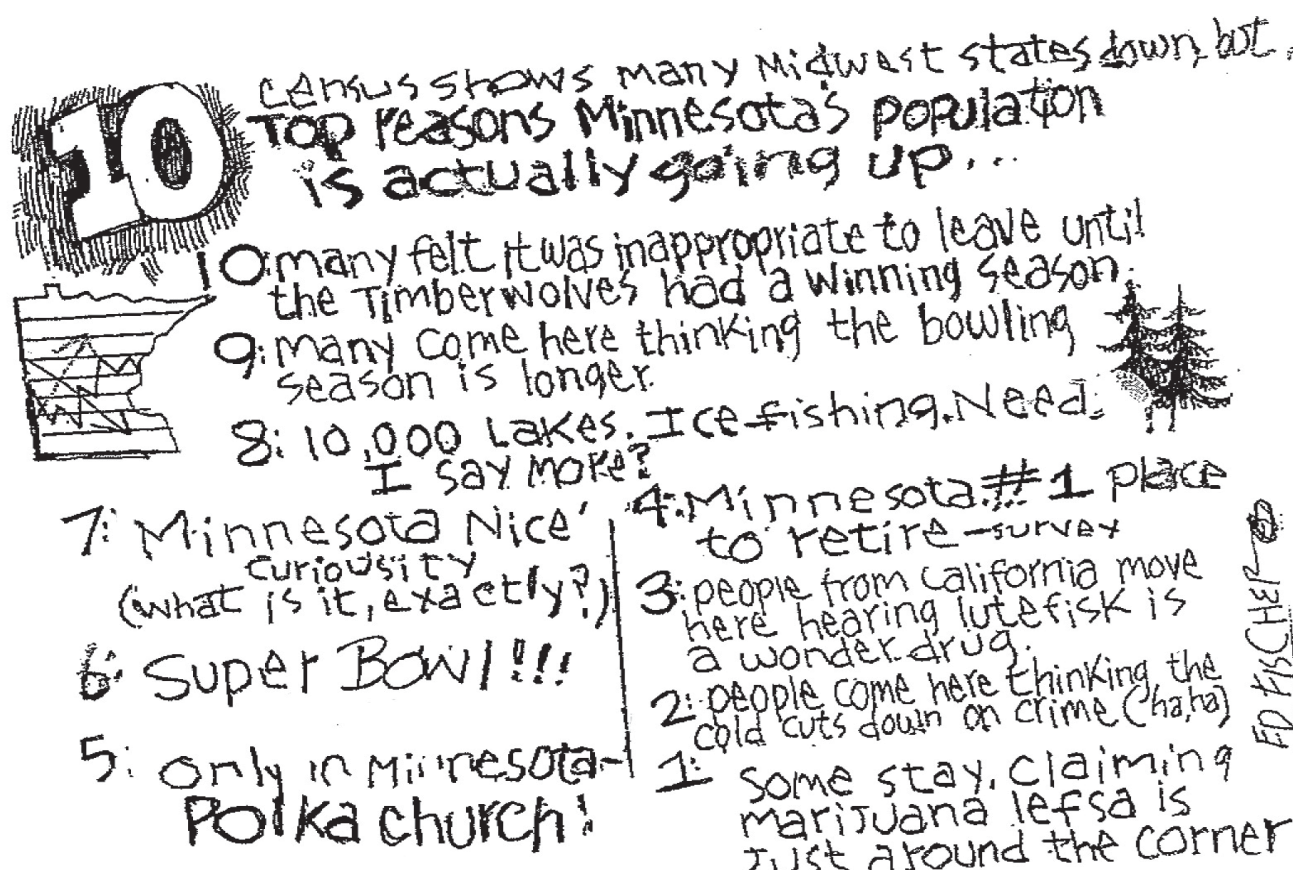
a potential \$1.3 billion deficit in the next biennium, we can't assume anything.

For many cities, any cut to the LGA program would be "devastating," according to Zylka.

"What would you do? What do you cut?" he asked Friday. "If the state were to cut LGA, the only way to remedy that without cutting services like police and fire is to tax the heck out of our communities. Our residents and businesses are hurting enough right now. Cutting LGA would be a huge setback in an already difficult time."

We believe our local representatives in St. Paul understand the importance of LGA to our communities, but it doesn't hurt to remind them. Rep. Joe Schomacker can be reached at 651-296-5505, or email: rep.joe.schomacker@house.mn. Sen. Bill Weber is at 651-296-5650, or email: sen.bill.weber@senate.mn.

Now's a good time to remind Rep. Schomacker and Sen. Weber to urge their colleagues to support maintaining an investment in greater Minnesota.



Trailer requirements vary depending on age, weight

Question: I am getting my 4 place snowmobile trailer ready for a trip. Do I need brakes on all the axles?

Answer: Brakes are required on all trailers with a gross weight of 3,000 pounds or more.

If brakes are required, they need to be on all wheels of a trailer manufactured after June 30, 1988.

Trailers equipped with three or more axles and manufactured prior to July 1, 1988, are not required to have brakes on the front axle, provided the brakes on all other wheels meet the performance standards prescribed by law.

The manufacturers of many new vehicles equipped with anti-lock brake systems require any towed unit be equipped with electric brakes and the towing vehicle be equipped



ASK A TROOPER

By Sgt. Troy Christianson, Minnesota State Patrol

with an electronic brake controller.

Every trailer with a gross weight of more than 3,000 pounds shall be equipped with a *breakaway brake* device which will automatically apply and hold the brakes, should the trailer accidentally become detached from the towing unit.

Question: I recently broke my

foot and have it in a cast. Am I still allowed to drive? Does it matter which foot it is?

Answer: There are not any blanket restrictions, but a physician may restrict a patient "for a temporary condition" on a case-by-case basis. A physician who diagnoses a physical or mental condition that will significantly impair the person's

ability to safely operate a motor vehicle may voluntarily report the person's name and other relevant information to the commissioner of the Department of Public Safety.

Every driver is responsible for maintaining control of their vehicle at all times and must use due care in operating a vehicle.

You can avoid a ticket — and a crash — if you simply buckle up, drive at safe speeds, pay attention and always drive sober. Help us drive Minnesota Toward Zero Deaths.

If you have any questions concerning traffic-related laws or issues in Minnesota, send your questions to Sgt. Troy Christianson — Minnesota State Patrol at 2900 48th Street NW, Rochester MN 55901-5848.

VOICE OF OUR READERS

Let's work together

To the Editor:

We all make mistakes in life. I have made many. A mistake is like a "teacher." If we make the same mistake over and over and over again, we aren't paying attention to our teacher.

Do we think Washington has learned from its mistakes or are we going to continue down this same "God-forsaken" path?

Let's hope they can work together peacefully, compromising, and continue forward truthfully.

Robert Fick
Luverne

E-mail: editor@star-herald.com Web site: star-herald.com
Phone: 507-283-2333 Fax: 507-283-2335

Published Thursdays by Tollefson Enterprises
POSTMASTER: Send address changes to 117 West Main, P.O. Box 837, Luverne, MN 56156. Periodicals postage paid at Luverne, Permit #33 and at additional mailing offices.

General manager: Rick Peterson
Advertising: Chantel Connell
Office manager: Deb Lusty
Office assistant: Jennifer Nelson
Production: Heather Johnson
Production: Samantha Casper

News staff:
Lori Sorenson, editor
Mavis Fodness, reporter
Brennen Rupp, sports reporter
Esther Frakes, copy editor

Rock County
STAR HERALD
Rock County's newspaper since 1873

(ISSN 0889-888X)
SUBSCRIPTION RATES

\$74 per year in Rock County; \$91 per year all other areas. Single copies \$1.25

Entire contents copyrighted by
Tollefson Publishing Roger Tollefson, publisher

The *Star Herald* encourages letters to the editor expressing the opinions of readers and intends to print all letters. Letters not meeting the guidelines will not be printed. The *Star Herald* will verify the authenticity of all letters. Letters must have the name of the writer, a signature and address.

Unsigned letters will not be considered. The *Star Herald* will edit for grammar, spelling and clarity. Any letters containing offensive language, libelous or slanderous material, or misleading or false information will be rewritten before being published. The *Star Herald* will not publish letters written with the sole intent to advertise or serve as a thank-you. Letters with more than 300 words may be edited. The deadline for letters is Monday 10 a.m. They may be delivered or mailed to the editor, *Rock County Star Herald*, P.O. Box 837, 117 W. Main St., Luverne, Minn. 56156.



Photo courtesy of Kaitlyn Anderson/LHS
 Luverne High School celebrates Snow Week Feb 8-11 and will crown a king and queen during a Monday live-stream coronation. Candidates include (from left) Regan Feit, Cade Wenninger, Roz Oye, Zach Ahrendt, Gracie Zewiske, Peter Baustian, Elise Jarchow, Xavier Carbonneau, Ainslie Robinson and Ethan Beyer.

Snow Week kicks off Monday with live-streamed coronation

By Mavis Fodness

Ten senior students received honors this week for their positive leadership at Luverne High School.

On Monday a king and queen will be named during a live-streamed ceremony, and the two will reign over the four-day Snow Week at LHS.

The program begins at noon on the school Facebook site.

King candidates include Cade Wenninger, Zach Ahrendt, Peter

Baustian, Xavier Carbonneau and Ethan Beyer.

Queen candidates are Regan Feit, Roz Oye, Gracie Zewiske, Elise Jarchow and Ainslie Robinson.

Unlike royalty selected by students for fall Homecoming activities, Snow Week candidates are nominated and voted on by high school faculty.

Instructors select students who display positive leadership

qualities in the classroom, in activities and in the community during the students' four years at LHS.

As faculty select Snow Week royalty, the student council plans the activities, many of which are similar to those conducted at Homecoming, except with a snow theme.

Students and faculty participate in dress-up days such as pajama, jersey, college and winter wear, and on Wednesday, Feb. 10,

students will attend a virtual pep fest from their classrooms.

Thursday, Feb. 11, is designated as "ride your snowmobile to school day" and an afternoon of outdoor activities are planned.

Student Council members planned activities around pandemic rules that prevent large group gatherings.

Jan. 26 was the first time all middle school and high school students gathered for in-person

instruction since distance learning began in March 2020.

To help prevent the virus from spreading, all students are assigned to pods and smaller groups.

"Normally all the student body would watch the coronation in person," said high school principal Ryan Johnson.

This year only seniors will attend Snow Week coronation in person, with grades 9-11 watching from classrooms.

ON THE RECORD

Dispatch report

Jan. 22
 •Complainant on N. East Park Street and W. Dodge Street reported threats.

•Complainant on W. Interstate Drive reported theft by check.

•Complainant on W. 4th Street, Sioux Falls, reported subject with Rock County warrant.

•Complainant reported fraud.

•Complainant on W. Mead Court reported he is being stalked.

•Complainant on Highway 23 and W. 8th, Jasper, reported a possible drunk driver.

Jan. 23
 •Complainant at location in Freeport reported getting threats via phone.

•Complainant westbound on Interstate 90, Valley Springs, reported an intoxicated driver.

•Complainant on S. Fairview Drive reported hit and run damage to mailbox.

•Complainant on Mead Court reported theft.

Jan. 24
 •Report of assisting SFPD at location.

•Complainant on S. Donaldson Street reported a parking issue.

•Complainant on 21st Street, Steen, reported an outage.

•Complainant on W. South Street, Magnolia, reported physical assault.

•Complainant on 113th Street reported a water main break.

•Complainant westbound on Interstate 90, mile marker 10, Luverne, reported a vehicle complaint.

Jan. 25
 •Deputies checked area at location on 121st Street for amber alert.

•Complainant on N. Freeman Avenue requested a warrant check.

•Assistance from other department was conducted on Oak Drive.

•Assistance from other department was conducted on 190th Avenue, Kenneth.

•Theft was reported at location on W. Interstate Drive.

•Complainant turned himself in on warrant.

Jan. 26

•Complainant on U.S. Highway 75 reported lost property.

•Complainant on N. Freeman Avenue reported windows with BB gun holes.

•Runaway was reported at location on W. Lincoln Street.

•Complainant on N. Cedar Street requested an unlock.

•Assistance from another department was conducted on S. Kniss Avenue.

•Trespassing issue was reported at location on E. Luverne Street.

•Complainant eastbound on Interstate 90, mile marker 5, Beaver Creek reported a driving complaint.

Jan. 27
 •Nobles County requested ride assistance westbound on Interstate 90, Adrian rest area.

•SFPD requested assistance with investigation at the Luverne High School.

•Complainant on S. Kniss Avenue reported suspicious activity.

•Complainant on S. Walnut Service Drive reported vandalism to building.

•Complainant on E. Warren Street reported harassment and vandalism.

Jan. 28
 •Complainant on S. Church Avenue reported harassing communication.

•Complainant on 121st Street, Luverne, reported a hog barn pit on fire.

•Complainant reported missing property.

•Complainant on E. Crawford Street and N. Spring Street reported suspicious activity.

Jan. 29
 •Complainant reported threats.

•Complainant turned in weapon parts.

•Property was found at location on N. Freeman Avenue.

•Report of property lost at location on E. Main Street.

In addition, officers responded to 1 deer accident, 4 motor vehicle accidents, 5 vehicles in ditch, 1 transport, 10 escorts, 20 ambulance runs, 7 paper services, 7 animal complaints, 6 fingerprint requests, 13 burn permits, 2 alarms, 14 purchase and carry permits, 1 stalled vehicle, 7 traffic stops, 4 abandoned 911 calls, 2 tests, 2 welfare checks, 2 OFP and 5 follow-ups.

W-2's Quality Meats closes in Luverne/continued from page 1

that was in the Luverne meat store.

Wieneke was full time in Luverne and Wietzema was full time in Worthington. Without their meat cutter, the partners felt closing the Luverne shop was their only option.

Their decision comes nearly seven years after opening in Luverne in March of 2014.

Wietzema said the decision to leave Luverne

wasn't driven by lack of revenue.

"We've had a good seven years," Wietzema said. "It wasn't the city of Luverne, it wasn't the patrons. Our meat cutter's last day was Saturday and we had a decision to make."

The company leased the corner lot building at Main Street and Highway 75 from Luverne Properties, which is a group of local investors working to gener-

ate more traffic and retail business in the community.

The group learned of W-2's plans to close only a week before it happened. "That was a surprise," said Mike Cox, one of the seven investors in the corner lot.

He said it was disappointing, but he understands the reasons.

Now the group is turning its attention to recruiting a new tenant for that space.

"It's the best piece of real estate in town," Cox said, referring to its gateway location for Luverne's downtown and South Highway 75 corridor.

"I thought we had the perfect business. We loved the idea of a meat market being in there," Cox said.

The Worthington store is located at 362 West Oxford Street. Call 507-376-4001.

Rock County 4-H "Fruit & More" Sale

Rock County 4-H'ers are selling assorted boxes of mouth watering fruit - apples, oranges, pears, grapefruit; along with cheeses, beef sticks, pickled herring, Puffins, PuffCrust Pizza and a variety of frozen foods. Here's your chance to eat healthy and support local youth. Contact a 4-H'er in your neighborhood or call the Rock County Extension Office (283-1302) from January 18th to February 7th to order. Delivery is March 19th.

READ THE NEWS ONLINE!

**Sports
Opinion
News
Classifieds**

Subscribe to the online edition of the
Star Herald

Valentine's Day

Goodies TO GO

\$10 "TAKE OUT BOXES"
 Including: Assorted Chocolate, Caramels, & Sugar Cookies

* A fundraiser for Luverne United Methodist Church

Winter blues?

Start planning your new building now -Spring will be here soon!

Northland Buildings Inc.

Local Sales Rep
 Michael Luft
 Worthington, MN
1-800-736-4510

50 YEAR SNOWLOAD WARRANTY!
 WA MN Lic #BC048615
 IA Lic C088675

LOT FOR SALE!

805 Ridge View Road
 Beaver Creek, MN
\$27,000

Overlooking Spring Brook Golf Course in Beaver Creek, MN.
 The lot is 95'x170' and just off 190, 20 minutes from Sioux Falls.

Cragoe Realty
Selling Real Estate in the Heart of the Prairieland

Gene Cragoe, broker/owner 507-920-3815 | Sherril Thompson, realtor 507-227-6830
 info@cragoe.com | 507-283-2647 or 800-689-2647

YOU CAN RECYCLE MORE THAN YOUR PAPER!

KEEP THE SEA PLASTIC FREE

You can also recycle:

+ Metal	+ Paper	+ Cardboard
+ Plastic	+ Glass	+ Aluminum

CELEBRATIONS

Card showers

Janice Vink will celebrate her 80th birthday on Friday, Feb. 12. Greetings may be sent to her at 509 E. Barck Ave.; Luverne, MN 56156.

MENU

Monday, Feb. 8: Barbecue chicken breast, baked potato with sour cream, California Normandy, bread, cake with frosting.

Tuesday, Feb. 9: Salisbury steak with gravy, mashed potatoes, green beans, dinner roll, gelatin with whipped topping.

Wednesday, Feb. 10: Chicken wild rice casserole, Oriental blend, peaches, bar.

Thursday, Feb. 11: Chef choice, vegetable, fruit, bread, dessert.

Friday, Feb. 12: Beef chili with beans, creamy coleslaw, corn muffin, orange, cookie.

LSS Dining offers well-balanced and affordable meals.

Call **Lynette Hoiland** at 283-9846 to arrange to pick up a dinner or for home-delivered meals.

Gift certificates are available at the meal site or online at www.lssmn.org/nutrition.

Let us share your good news

The Star Herald strives to recognize all academic accomplishments of students from its coverage areas, and our news department relies on multiple sources (colleges, students, parents, etc.) for that information. Send school news to editor@star-herald.com or call 507-283-2333.

The Star Herald will also publish other special happenings by using the forms on our website, www.star-herald.com/webforms.

Births, engagements, weddings and news tips are accepted by filling in the blanks and uploading picture(s).



Photos courtesy of Southwest MN CEO

CEO students serve more than 350 Souper Supper meals

Students enrolled in the 2020-21 Southwest Minnesota Creating Entrepreneur Opportunities (CEO) class completed their class business venture Sunday by serving 206 meals during the drive-through Souper Supper at the SpringBrooke Events in Beaver Creek. As a group the students organized, arranged and served take-out containers of soup complete with a sweet roll. The students from high schools in Luverne, Hills, Edgerton, Adrian and Pipestone conducted the same Souper Supper Jan. 23 at the Hiawatha Lodge in Pipestone, where 154 meals were sold and picked up by community members. Proceeds from the supper are used to kick-start the students' individual businesses this spring for their final CEO assignment.



Kaden Anderson delivers an order to a waiting vehicle. **Right:** Kendall Buss (left) fills a bowl with soup while Elli Kracht processes an order on her cellphone.



REMEMBER WHEN

10 years ago (2011)

On Wednesday, Feb. 3, Raymond Vogt turned 100 years old. To celebrate, Vogt's six children and other relatives enjoyed a birthday party on Saturday, Jan. 29, at the Mary Jane Brown Home where he lives.

"There were a lot of people," Vogt said.

The many attendees represent vast memories, most of which open the door to life in turn-of-the-century Nobles and Rock counties.

Along with Vogt, his sister, Ruth Ashby, son Alan, and daughters, Valoyce Sommers and Jolene Wessels, met to offer a window back to the early 1900s.

25 years ago (1996)

A hospice cottage in Luverne may provide another possible care option for terminally ill patients in southwest Minnesota.

Because of cancer and other terminal illnesses suffered by local residents, Hospice of Luverne and Adrian Community Hospitals has become an important part of many people's lives.

Since hospice began operating three years ago, nearly 100 patients have benefited from its services. According to program director Barb Glad this response is overwhelming.

"We had only anticipated about 10 a year when we started the program," she said. "But there are still a lot of patients not aware of the resources hospice offers."

Hospice is a special kind of care for the terminally ill that also provides support for caregivers and family members. A registered nurse is on call 24 hours a day for the patient and family, and home health aides, volunteers and social workers visit the patient intermittently.

When patients are no longer able to be cared for at home, hospice staff assist them and their families in moving them to either a nursing home or hospital or hiring a full-time caregiver.

50 years ago (1971)

The legislative Building commission has recommended an appropriation of \$122,000 for Blue Mounds State Park for the next biennium, Sen. John L. Olson announced Monday.

Their recommendation was made on the basis of needs outlined by the Division of State Parks, and their own appraisal of the park, made during a visit here by the committee last summer.

Biggest expenditure would be for improvements on the lower dam and to the swimming beach area. Sen. Olson said. The recommended appropriation for this phase of the program was \$50,000.

Because of the steady growth in camping, and to prevent water pollution, a \$33,000 appropriation has been recommended for a sewage disposal system for the park.

Another improvement brought about by the park's popular-

ity as a camping area is that of another campground toilet and shower facility. The recommended amount for this is \$30,000.

Other proposed improvements include more picnic area parking at a cost of \$2,000; completing the basement beneath the manager's residence, \$5,000 and \$2,000 for extending the fence around the buffalo pasture.

75 years ago (1946)

Herman Jochims this week purchased the 56 by 300 foot lot owned by Ray Martin, where the Luverne Monument Works is now located. The property is located on South Freeman avenue, directly south of the Palace theatre in the same block.

Mr. Martin said that the Luverne Monument Works business would be continued in another location which he will announce in the near future. He emphasized that it was occupied by the business, which had been sold. He will continue in that location until June 1.

Mr. Jochims previously owned the lot north of it, and the property south of it, the old contractor's building, used as a storage place for a number of years. Purchase of the Martin property gives Mr. Jochims an area 112 by 135 feet, south of the theatre. He said he has no definite plans as to how he will utilize it.

100 years ago (1921)

Teacher and pupils at school district No. 4, Luverne township, are having a week's enforced vacation because of a fire at the schoolhouse Friday morning which damaged the building quite badly and destroyed the library books and a considerable amount of other material and supplies. The blaze was due to spontaneous combustion caused by an over heated stove. The fire had been started in the stove at about 7:30 by Edmund Tofteland, who had been caring for the fires this winter, and everything was apparently as safe as usual when he left the building shortly afterwards. When the teacher, Miss Effie Olson, arrived at the school house about an hour later, and opened the doors, the walls and bookcase in the corner where the stove stood alone.

The prompt assistance of Mr. Jensen, who lives near the school house, and the fact that about eight or ten other patrons were able to reach the scene quickly, some having just arrived bringing their children to school, saved the building from being completely destroyed. By quick work in throwing water on the blaze the greater part of the damage was confined to the one side of the schoolhouse.

All the library books in the case near the stove, and quite an amount of material for primary work and other school supplies were entirely destroyed. The loss was covered by insurance. The damage to the building, which will be estimated when the work of painting, papering and repairing the walls and woodwork are completed this week, is also fully covered insurance.

COLLEGE NEWS

Gustavus Adolphus releases dean's list

Gustavus Adolphus College in St. Peter has named several area students to the Fall 2020 semester dean's list. To qualify, students must earn at least a 3.7 GPA on a 4.0 scale.

Named to the dean's list are Ariel DeBeer, Anika Gust and Kristen Ziegler from Luverne and Maritza Beltran, Anna Serrao and Kasie Tweet from Adrian.

UW-Stout names Sawtelle to dean's list

Kammon Sawtelle, a senior majoring in human development and family studies, was named to the Fall 2020 dean's list at the University of Wisconsin - Stout in Menomonie, Wisconsin. To qualify, students must earn a 3.5 GPA or higher.

USD names honor students

Several area students have been named to the Fall 2020 dean's list at the University of South Dakota in Vermillion. To be named, students must earn a minimum of a 3.5 GPA.

The following students made the dean's list:

Adrian: Avery Balster, Skylar Dingmann, Halle Heitkamp, Skylar Polzine, Ryan Wieneke.

Ellsworth: Morgan Dreesen, Devin Dreesen.

Hills: Joslyn Birger, Ashley Esselink.

Lismore: Dakota John.

Luverne: Jack Baustian, Mary-Frances Ladd, Mackenzie Petersen, Jenna Zewiske.

The following part-time students were named to the academic honors list with a 3.5 GPA or higher:

Luverne: Amanda Sterling.

Magnolia: Josie Crow.

Raymon on dean's list at Northwestern

Garrett Raymon has been named to the Fall 2020 dean's list at Northwestern College in Orange City, Iowa, having earned a 4.0 GPA.

Raymon, a junior biology-ecological science major, is the son of Mark Raymon and Becky Byrne of Hills.

U of M Duluth releases dean's list

The University of Minnesota Duluth has named area students to the dean's list for the Fall 2020 semester. To make the list, students must earn a 3.5 GPA or higher.

Area honor students are Samantha Ykema, Jasper, a senior in the Swenson College of Science and Engineering majoring in biology; and Mark Robinson, Luverne, a junior in the Swenson College of Science and Engineering majoring in stats and actuarial science.

OBITUARIES

Sandra Eitreim

Sandra Helen Eitreim, 80, Fridley, formerly of Luverne, died Sunday, Jan. 31, 2021, of multiple health issues while in hospice at White Pine of Fridley.

A family private burial will take place at a later date.

Sandra Eitreim was born March 15, 1940, in Sinai, South Dakota. She grew up in Luverne, where she was confirmed at Grace Lutheran Church. She graduated from Luverne High School in 1958 and then attended Nettleton College in Sioux Falls, South Dakota.

She moved to Mankato where she worked many years at MRCI Sheltered workshop. She transferred to Lifeworks, where she enjoyed the opportunity to pursue her love of art. She sold many of her drawings



and stationery featuring her best work. She was also skilled in creating beaded jewelry. She enjoyed creating Barbie doll and GI-Joe outfits for her niece and nephews.

Sandra's love of travel began with a trip to Norway with her parents.

She later became a member of the Mankato LEEP program and enjoyed traveling to Hawaii and Washington, D.C., among other destinations. She also was fond of spending time in Florida with her sister Barbara and brother-in-law Jim at their condo.

Sandra moved to Minneapolis to be closer to relatives. She looked forward to casino trips with her sister Barbara. Sandra also enjoyed

a good sense of humor and was known for her "knock, knock" jokes.

Sandra is survived by her sister, Barbara (James) of Minneapolis; four nephews, Mark (Ann), Steven (Tara), David, and Michael; one niece, Carolyn (Brendan); five great-nephews, Michael (friend Angela), Matthew (Robyn), Scott, Ryder, and Charlie; great-niece Caitlin (Paul); great-great-nieces and nephews; and her best friend Bonnie Gosewisch.

She was preceded in death by her parents, Harvey and Bernice Eitreim.

Memorials are preferred to Harvey G. Eitreim Dollars for Scholars, Minnesota Disability Law Center, or Autism Speaks.

Arrangements were provided by Dingmann Funeral Home of Luverne, dingmannandsons.com (0204 F)

Linda Vis

Linda Mae Vis, 66, Sioux Falls, South Dakota, formerly of Luverne, died Tuesday, Jan. 26, 2021, at Dougherty Hospice House in Sioux Falls.

A funeral service was at 10 a.m. Saturday, Jan. 30, at Shalom Christian Reformed Church in Sioux Falls. Burial was in Maplewood Cemetery in Luverne.

Linda Van Santen was born on Nov. 22, 1954, to Peter and Nellie (Van Hemert) Van Santen in Hawarden, Iowa. She was baptized at Hawarden Christian Reformed Church and spent her early years there until her family moved to a farm near Lake Park, Iowa. Linda attended Ocheyan Christian grade school and Western Christian High School until her family moved to a dairy farm north of Luverne in 1968. Linda graduated from Southwest Christian High School in Edgerton in 1972.

On May 31, 1974, Linda married Myron (Mike) Vis in Leota. They made their home in Leota for a short time before moving to Luverne in 1980. They were blessed with four boys. They lived in town for 10 years until moving to an acreage west of Luverne in 1990.



After her marriage to Mike ended in 2001, Linda moved to Brandon, South Dakota, where she began her real estate career. In 2003 she met Jim Feauto and they enjoyed a special relationship.

Linda moved to Sioux Falls in 2012 and lived there until she entered the Dougherty Hospice House on Dec. 29, 2020, after fighting ovarian cancer since June of 2018.

Linda was a member of the Shalom Christian Reformed Church in Sioux Falls at the time of her death.

To support a Christ-centered education for her sons, she worked jobs including the Mink Ranch, selling jewelry at the Diamond Center, raising calves, working as a teller at Minnwest Bank, working at Southwest Minnesota Mental Health, and later on selling real estate.

Linda enjoyed gardening, feeding and watching the birds, camping weekends, and a competitive game of Scrabble.

Later in life, she and Jim enjoyed traveling, including trips to deliver fire trucks. She

treasured family gatherings and her fond memories of cabin rentals, boating excursions and Christmas by the ocean with her family.

Linda is survived by her sons, Shawn (Karmen) Vis of Luverne, Jeremy (Leanne) Vis of Sioux Falls, Michael Vis of Sioux Falls, and Alex (Sarah) Vis of Winter Park, Florida; five grandchildren, Baily, Gabriel, Cullen, Larkin and Zion; siblings Marian Schneekloth of Luverne, Marlene (John) Weinstroer of Lenexa, Kansas, Marge Briese of Hartford, South Dakota, Steve (Carla) Van Santen of Luverne, Doug (Kathy) Van Santen of Brandon, Carolyn (Tim) Diedrich of Luverne, Rick (Carrie) Van Santen of Luverne, and Lori (Gary) Serum of Champlin; and her significant other, Jim Feauto of Akron, Iowa.

She was preceded in death by her parents; her brothers Jim Van Santen and Arvin Van Santen; and an infant sister, Betty Jean Van Santen.

Memorials are preferred to Children's Miracle Network or Make a Wish Foundation.

Arrangements were provided by Hartquist Funeral Home of Luverne, www.hartquistfuneral.com (0204 F)

Helga Hoffman

Helga Svanhild Hoffman, 87, was called home to be with the Lord Jesus on January 27, 2021.

Helga was born in Luverne, Minnesota, on August 27, 1933, to Reinert and Tilda (Akersmyr) Tofte. She was raised on the Tofte farm, where the family spoke Norwegian. Helga first learned English when she began her education in a one-room schoolhouse. She graduated from Augustana Academy and furthered her education at Augustana College in Sioux Falls.

On June 21, 1953, Helga married Wayne Hoffman at Zion Lutheran Church in Luverne. Their union was blessed by five exceptional children. Through their 67 years of marriage, Wayne and Helga made homes in South Dakota, Wisconsin, Minnesota, Pennsylvania, and Iowa. Helga was an integral and vital part of Wayne's ministry in the many churches he served as a Presbyterian pastor.

Helga had a strong connection to her Norwegian heritage, which she lovingly



shared with her family through food, language and traditions. She was greatly loved and admired by her family who continue to be blessed by her sweet and kind spirit. Her deep and abiding faith in God were evident in her gracious and gentle nature. At every dinner or party, Helga was everyone's favorite companion due to her genuine warmth and friendliness. When you left her home, she was always at the front window and gave her famous "grandma wave."

To cherish her memory, Helga leaves behind her husband Wayne, and children Peggy Ann Radio and her husband Tom; Pamela Jo Merrick and her husband John; Eric Jon and his wife Rebecca; Nancy Helga Thompson and her husband Stan; and Jason Wayne and his wife Tina. Helga is also survived by her 14 grandchildren: Ingrid Radio, Helga Radio, Erik (Elika Ortega) Radio, Courtney (Corey) Kopatch, Emily (Wade) Ballinger, Matthew (Rachel) Merrick, Rachel Jackson, Jon

(Jordan) Hoffman, Andrew (Mary Katherine) Thompson, Matthew Thompson, Samuel (Rachel) Thompson, Benjamin Thompson, Noah Hoffman and Jonah Hoffman; and 10 great grandchildren: Kylie, Kate and Carson Kopatch, Isla and Jude Jackson, Will and Clara Ballinger, Lincoln and Memphis Hoffman, and Tatum Thompson. She is also survived by her sister Lily Hartmann, sister and brother-in-law Shirley and Richard Schoffelman, sisters-in-law Marian Hoffman and Carolyn Tofte, and a large extended family.

She was preceded in death by her parents, her brothers Arthur and Arnold, and her sister Rosa.

A memorial service will be held on Saturday, February 6, 2021, at 2 p.m. at West Kirk Presbyterian Church, 2700 Colby Woods Drive, in Urbandale, or livestream at www.mclarrensresthavenchapel.com. The family respectfully requests that guests wear masks and practice social distancing.

Memorials to honor Helga may be directed to West Kirk Presbyterian Church. (0204 V)

Doreen Wiese

Doreen Wiese, 80, Luverne, died Tuesday, Jan. 26, 2021, at the Sanford Luverne Medical Center.

Visitation was Friday, Jan. 29, at Dingmann Funeral Home in Luverne. A private family graveside service will be at a later date.

Doreen Kiffmeyer was born Jan. 21, 1941, to Leo and Sylvia (Buerskin) Kiffmeyer in St. Augusta, Minnesota. She graduated from St. Cloud Technical High School and moved to Minneapolis in 1961.

Doreen married Robert "Ike" Wiese in 1963 at St. Joseph

Catholic Church in Waite Park.

The couple moved to Luverne in 1966. They enjoyed wintering in Mesa, Arizona. Doreen worked at AR Wood Manufacturing and Smith Furniture in Luverne. She later worked at The Furniture House.

She was a member of St. Catherine Catholic Church in Luverne. She enjoyed camping, boating, riding motorcycle, card making, flower gardening and especially her grandchildren and great-grandchild.

Doreen is survived by her husband, Ike Wiese, Luverne;



son Dan (Lisa) Wiese, Luverne; two grandchildren, Alex (Stacey) Wiese and Tanner Wiese; a great-granddaughter, Cali Wiese; five brothers, Clem (Evelyn) Kiffmeyer, Marvin (Diane) Kiffmeyer, Bob (Joni) Kiffmeyer, Vernon Kiffmeyer and Gene (Darlene) Kiffmeyer; and a sister, Carol Lafond.

She was preceded in death by her parents; a grandson, Scott Wiese; a brother, Roger Kiffmeyer; two sisters-in-law, Bev and Dorothy Kiffmeyer; and a brother-in-law, John Lafond.

Arrangements were provided by Dingmann Funeral Home of Luverne, dingmannandsons.com (0204 F)

Kitthachone 'John' Sengvongxay

Kitthachone "John" Sengvongxay, 49, Luverne, died suddenly on Friday, Jan. 29, 2021, at his home.

Visitation will be from 4-8 p.m. Thursday, Feb. 4, at the Dingmann Funeral Home in Luverne. A funeral service will be at 1 p.m. Friday at the Dingmann Funeral Home in Worthington.

Kitthachone "John" Sengvongxay was born June 7, 1971, in Laos to Boutsady and Ly (Pheng) Sengvongxay. John moved with his family to Bakersfield, California, in 1980.

After graduating from high school, he moved to Magnolia.

John married Souksamay Lim-sithi in Magnolia. The couple lived in Luverne. John worked at Grand Prairie Foods in Sioux Falls, South Dakota, as a maintenance technician. He enjoyed fishing, watching his children's sporting events, dancing and singing karaoke.

John is survived by his

parents, Boutsady and Ly Sengvongxay, Bakersfield; his wife, Souksamay Sengvongxay, Luverne; four children, Nikki Sengvongxay, Toby Sengvongxay, Devin Sengvongxay, and Xander Sengvongxay, all of Luverne; three brothers, Rasamy Sengvongxay, Sisomphone Sengvongxay and Viengxay Sengvongxay, all of Bakersfield; and a sister, Viengkeo Sengvongxay, also of Bakersfield.

Arrangements were provided by Dingmann Funeral Home of Luverne, dingmannandsons.com (0204 F)



DEATH NOTICES

Alvera Martinson

Alvera "Polly" Martinson, 102, Alliance Township of Moody County, South Dakota, died Thursday, Jan. 28, 2021, at her home.

Visitation will be from 11 a.m. to 12:30 p.m. on Thursday, Feb. 4, at the Jasper Evangelical Lutheran Church in Jasper. A prayer service will

follow at 12:30 p.m. at the church. Interment will be at the Jasper City Cemetery. Mask wearing and social distancing are required.

Arrangements are provided by Hartquist Funeral Home Jasper Chapel, www.hartquistfuneral.com. (0204 DN)

Herman Lupkes

Herman Lupkes, 86, Luverne, died Tuesday, Feb. 2, 2021, at the Pipestone County Hospice.

Arrangements are pending with Dingmann Funeral Home of Luverne, dingmannandsons.com. (0204 DN)



Mavis Fodness photo/0128 Rotary Donation

Luverne Community Education receives \$2,200 from local Rotary Luverne Rotary Club was among 13 local clubs that received a grant from the District Rotary 5610. The check for \$2,200 was donated to Luverne Community Education to lessen the effects of the coronavirus pandemic on community education's budget. Rotary Clubs across southwest Minnesota, northwest Iowa and northeastern Nebraska were invited to apply for grants to help organizations within their communities with the disaster relief funds received by the District. Rotary member Emily Crabtree (far right) wrote the grant and Rotary president Tammy Loosbrock (second from right) presented the check Monday to Luverne Community Education administrative assistant Cindy Arends (far left) and director Lisa Nath.

LAND FOR SALE

LEGAL: Approximately 245.13 acres located in the N1/2 of 3-104-44, Rock County, MN, unimproved, highly productive farmland.

TERMS: Sealed bids will be accepted until 5:00 p.m., February 5, 2021, at 130 East Main, Luverne, MN. All bidders who have submitted a bid prior to said deadline will have the opportunity to submit additional bids until property is sold. Highest bidder will be required to sign a Purchase Agreement with ten percent (10%) non-refundable earnest money down payment on the date of the sale and the balance at closing with possession going to Buyer for 2021.

Sale is subject to approval by the Heirs of Henry W. Spronk. For further details and an information packet contact Douglas Eisma, Eisma & Eisma, Attorneys at Law, (507) 283-4828.

Rock County EYE CLINIC

Rock County Eye Clinic, locally owned, community involved, clearly different.

507-283-2345

104 N. Freeman Ave., Luverne, MN
www.rockcountyeyeclinic.com

50% off frame with purchase of lenses*

February 1 - February 28, 2021

facebook *some restrictions apply



Two more books for children by former Luverne resident hit shelves

By Lori Sorenson

Local children's author Kathie Hendricks has had two more books published, "Please Don't Eat the Cupcakes" and "Backyard Hockey."

Featuring the same 8- and 11-year-old characters, Bean and Tommy, the cupcakes story is about kids helping to make cupcakes with frosting at Gramma Rosie's house, and the cupcakes talk.

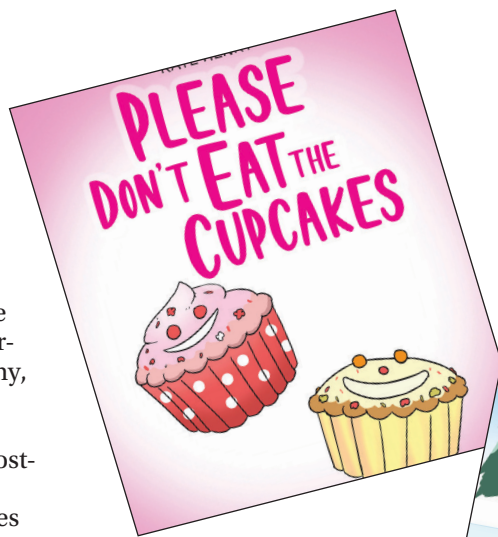
Backyard Hockey is appropriately based on the Hendricks family's experiences when Kathie and Bruce Hendricks' sons played hockey in Luverne.

"I learned to skate when I was a kid, and still skate today," she said.

The back cover describes the setting. "Kids in Minnesota couldn't wait for the weather to turn cold," it reads. "With the cold weather that means turning some backyards into rinks. Backyards are flooded, then turned into ice hockey rinks. Kids would skate and play hockey till the ice melts in the spring!"

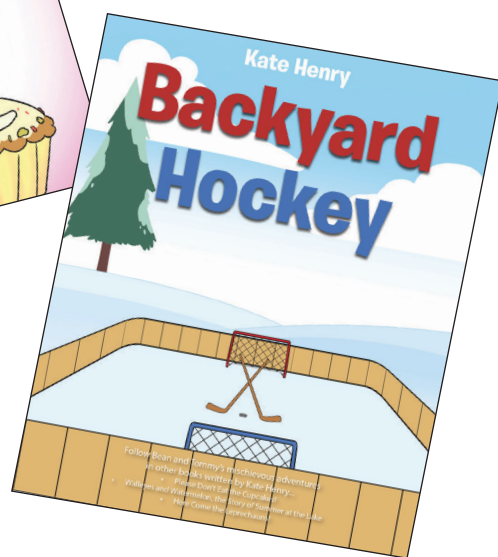
Two additional books are currently at the publishers awaiting release: "A Day at the Beach," and "My Friend Andee."

This time, Bean and



"Once I get an idea in my head, it doesn't take very long to write. It's not a novel; children's books are 20 pages or less."

— Kathie Hendricks



Under the pen name "Kate Henry," former Luverne resident Kathie Hendricks has written two additional children's books based on local experiences when she and her husband, Bruce, used to live in Luverne.

Tommy are excited to go the beach and wonder if they'll see a shark.

Hendricks said one part of the story recreates a mishap in 2015 when her grown children helped her escape the pull of crashing waves on a California beach.

The other book follows the adventures of Bean's imaginary friend, Andee, who is based on an imaginary friend that Hendrick's daughter spoke of in childhood.

"When we moved to Luverne, Andee moved to New York City," Hendricks recalled about 4-year-old Stephanie.

Her latest releases join two other books already on the market.

"Here Come the Lepre-

chauns" was released just ahead of St. Patrick's Day in 2019, and her first book, "Walleyes and Watermelon: The Story of Summer at the Lake," came out in January 2019.

Hendricks, a licensed in-home child care provider, said she had long dreamed of writing a children's book, but it wasn't until she had back surgery in 2017 that she found the time and motivation to do it.

By the end of her 10-week recuperation,

Hendricks had written nine more children's books, all neatly recorded in a stack of manuscripts ready to share with her publisher.

"Once I get an idea in my head, it doesn't take very long to write," she said. "It's not a novel; children's books are 20 pages or less."

She publishes under the pen name, "Kate Henry," through Christian Faith Publishing in Meadville, Pennsylvania.

Her books are available at Barnes and Noble, Amazon, and in bookstores.

1890: Bruce shows 'few signs of activity'

The following appeared in The Rose History in 1911.

Rock County Village (continued from 01-28-20 edition of the Star Herald)



BITS BY BETTY

By Betty Mann, president Rock County Historical Society

tion 3, seven miles from the county seat on the Watertown-Ellsworth branch of the Rock Island railroad. The business town consists of a store, elevators and shops that derive their support from the agricultural country adjoining.

The building of the Burlington railroad into Rock county in 1884 brought with it the possibility of new towns, and among the places to materialize was the station in Kanaranzi township. The grading of the proposed line was hardly commenced before there were negotiations between the railroad authorities and representatives of the farmers and landowners of Kanaranzi township in regard to locating a town, which it was expected would satisfy a long felt want for a more convenient market.¹⁴

But a whole year was allowed to pass before the agitators' hopes were realized. In August, 1885, the townsite company connected with the railroad took action. A survey was made during that month by LeRoy Grant, from which a town plat of nine blocks was made. The dedication occurred Septmeber 28, 1885, and on October 14 the instrument was placed on record.¹⁵ The land on which the town was located was originally the property of Charles Thompson.

¹⁴"The people here have not yet given up all hopes of obtaining a depot in Kanaranzi township. The distance from Luverne to some good location will be about ten or eleven miles, and the country around here will support a good town, as it will get much of the trade that now goes to Adrian and Rock Rapids. We believe the railroad company is working for its own interest, and, allowing this to be a fact, we see no reason why we should feel in doubt."—Correspondence in Rock County Herald, May, 16, 1884.

¹⁵One addition has been attached to the original townsite of Kanaranzi: Kanaranzi Village Outlots, by G. S. Snover, December 27, 1904.

The story of the village of Kanaranzi will continue in the Feb. 11 edition of the Star Herald.

Donations to the Rock County Historical Society can be sent to the Rock County Historical Society, 312 E. Main Street, Luverne, MN 56156.

Mann welcomes correspondence to tomannmade@iu.net.

Star-Herald.com

Get your Star Herald news anywhere, anytime.



Offering two ways to read online.

Read the newspaper online or browse through stories at www.star-herald.com in the e-edition format, available to all online subscribers at no additional cost.

Benefits for online subscribers

- Access to articles before they appear in print.
- All information from our print edition. (Plus some extra online-only content)
- News and information updated daily.
- Videos, photo galleries and columns from the Star Herald Staff.
- Easy search tool.
- Section jumps, hot links to websites and email addresses add to the overall experience.
- Print, save, or mail articles and pictures that you 'clip.'
- For 'on the go' reading, download the entire publication or specific sections to read offline.
- Set up email notifications based on keywords.

Online Edition Subscription Rates:

\$46 per year
that's only 88¢ per week!

If you're an existing Star Herald Print subscriber:

Add the **Online Edition** for the remainder of your print subscription.

Call **507-283-2333** for information



E-EDITION



BROWSER

The town of Bruce is today virtually controlled by one man, Hans N. Kjergaard, who is postmaster, only merchant, proprietor of the two elevators, stock buyer and station agent. He was one of the few who refused to leave Bruce in the day of its crisis, and largely through his determination to stay, Bruce has maintained its place on the map.

¹³T. F. Shannon and T. E. Munger, officials of the Illinois Central railroad, and N. T. Burroughs, of Cherokee, were in town Tuesday on townsite business. Mr. Burroughs proposes to start Bruce up again and will make a first-class country town of it. Mr. Burroughs is a man of great wealth and he intends to offer every inducement he can to business enterprises which he can get started at this place, and there is no doubt that in a short time Bruce will be one of the best country towns in this section of the country. We will have three good general stores running within a month from now."—Correspondence in Rock County Herald, April 21, 1893.

Kanaranzi

Numbered among the half dozen smaller villages of Rock county is Kanaranzi, named after the township within which it is located. Stated specifically, it is situated on the southeast quarter of sec-

*It beats across your lifetime -
For every moment
And every change of pace.*

A healthy heart supports a healthy life, which is why the cardiology team at Sanford Health uses the best of science and medicine together with the most advanced technologies -

all to protect *you,*
the human
behind the heart.

SANFORD
HEART
sanfordhealth.org

Health Goes Here

Go Green. Go Paperless.
WWW.STAR-HERALD.COM
- subscribe to the Star Herald Online Edition -

READ THE NEWS ONLINE!
Subscribe to the online edition of the **Star Herald**

Rock County STAR HERALD
www.star-herald.com • 507-283-2333



Brennen Rupp photo/0204 LHS G hockey photo

Luverne's Reghan Bork and Kamryn Van Batavia celebrate after a first-period goal from Bork against Morris-Benson Area on Saturday, Jan. 30. Bork and Van Batavia both finished the game with three goals apiece.

Cardinals improve to 3-1 after two convincing victories

By Brennen Rupp

After dropping a Top 10 battle against Rochester Lourdes 4-2 last week, the Luverne Cardinals bounced back by winning both of their games to improve to 3-1 overall.

Luverne opened the week with a 5-2 road victory over Minnesota River on Friday, Jan. 29.

They then wrapped up the week with a 9-0 victory over Morris-Benson Area on Saturday, Jan. 30, at Blue Mound Ice Arena.

LHS 5, MN River 2

The Bulldogs struck first on an even-strength goal from Darbi Dunning.

Regan Feit evened the game for the Cardinals by scoring a power-play goal. Mallory Nelson recorded the assist on Feit's goal.

Peyton Behr put the Cardinals up 2-1 when she scored a power-play goal in the second period. Kamryn Van Batavia notched the assist on Behr's goal.

The Bulldogs answered

right back with a goal to tie the game at 2-2.

Reghan Bork scored the first of her three goals in the game to put Luverne up 3-2 in the second period. Behr and Van Batavia each recorded an assist on Bork's goal.

Bork opened the scoring in the final period to put Luverne up 4-2. Van Batavia notched her third assist of the game on the goal.

Cardinal Hockey/Page 10

Luverne gymnasts edge Arrows 125.350-124.550

By Brennen Rupp

The Luverne gymnastics team improved to 2-1 with a 125.350-124.550 victory over Pipestone Area in Luverne on Monday, Feb. 1.

In the vault competition, it was Amira Cowell coming in first with a score of 8.900.

Fellow eighth-grader Ella Reisdorfer finished second with a score of 8.700.

Tiana Lais finished fourth with a score of 8.500.

In the bars, it was Reisdorfer finishing first with a score of 8.350.

Cowell placed second behind her teammate with a score of 8.050.

Sarah de Cesare finished fifth with a score of 6.975.

Haley Como finished with seventh in the bars with a score of 6.925.

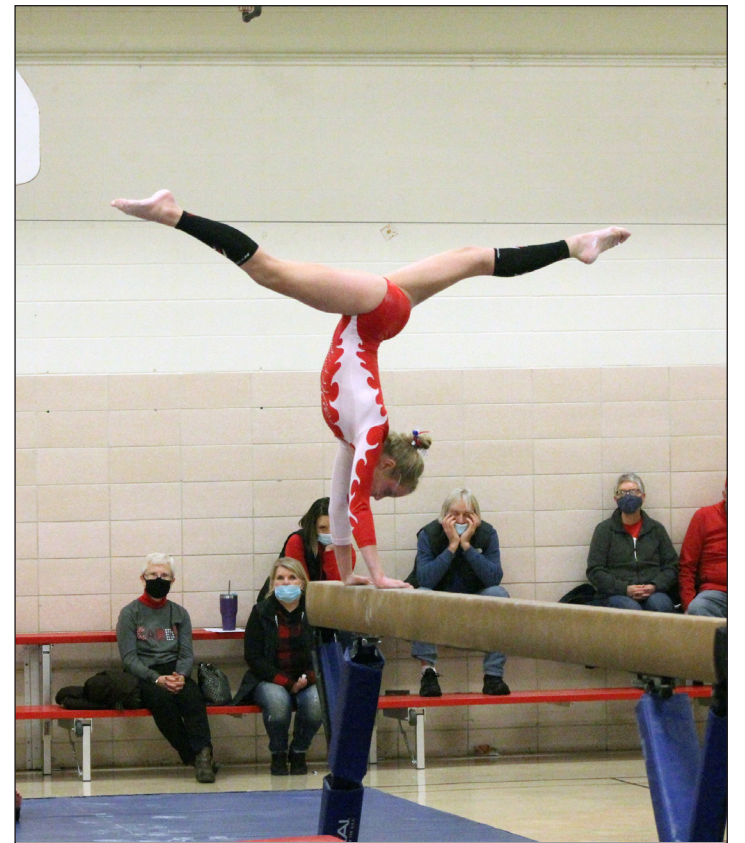
Kendra Thorson placed ninth with a score of 6.025 on the bars.

On the beam it was Reisdorfer taking home second place with a score of 7.925.

Cowell placed fifth with a score of 7.300.

Reisdorfer was first in the floor routine with a score of 8.950.

Cowell placed second with a score of 8.600.



Brennen Rupp photo/0204 Gymnastics photo
Luverne's Ella Reisdorfer performs on the beam during the team's home match against Pipestone Area on Monday, Feb. 1. The Cardinals defeated the Arrows 125.350-124.550.

Coming in fourth place was Kianna Woods with a score of 8.100.

Overall it was Reisdorfer taking home first place with a score of 33.925.

Cowell came in third with a final score of 32.850.

Lais finished sixth overall with a score of 21.425.

Thorson placed seventh with a final tally of 20.725.

Kianna Woods placed ninth with a score of 16.325.

de Cesare finished 12th with a final score of 14.275.

The gymnastics team will be back in action on Thursday, Feb. 4, when they host Jackson County Central. They'll look to make it three straight wins after dropping the season opener.

Cardinal boys suffer first loss of season to Marshall Tigers

By Brennen Rupp

The Luverne Cardinals boys' basketball team opened the season with a 3-0 start. That early success was halted, however, by a 59-42 loss to the sixth-ranked Marshall Tigers on Thursday, Jan. 28.

Marshall scored the first five points of the game and appeared ready to run the Cardinals out of the gym.

The Cardinals responded by going on a 10-2 run to take a 10-7 lead.

Marshall outscored the Cardinals 14-6 to close out the first half to take a 21-16 lead into the locker room.

"We held them to 21 points in the first half and we were really frustrating them with our defense," Luverne head coach John Sichmeller said.

"Our defense stayed strong in the second half, but we didn't make enough shots and had too many turnovers to get the win."

In the second half, Marshall outscored the visiting Cardinals 38-26 to pick up the win.

"I was really happy with our effort," Sichmeller said. "Sometimes you play a team like Marshall and make a couple of turnovers and heads go down and kids give up. Our guys kept fighting the whole game and kept it within striking distance until about seven minutes to go."

Sichmeller said that the matchup against the Tigers was a good litmus test for his team to see where they stack up.

"This was a good game for our kids," Sichmeller said. "To have to play against a very good team will make us better."

Bailey Cowell led the Cardinals with 14 points. The senior guard also dished out five assists.

Luverne boys/Page 10



Brennen Rupp photo/02-4 LHS GBB photo

Elizabeth Wagner drives to the basket during Luverne's home game against the Marshall Tigers on Friday, Jan. 29.

Luverne girls split games on home court

By Brennen Rupp

The Luverne Cardinals girls' basketball team split a pair of games this week. Luverne opened the week by defeating St. James 56-46 at home on Tuesday, Jan. 26.

The Cardinals then ran into a buzzsaw when they squared off against the sixth-ranked Marshall Tigers at home on Jan. 29. The visiting

Tigers bested the Cardinals 70-42.

LHS 56, St. James 46 Ver Steeg reaches 1,000

The Cardinals improved to 3-1 with their 56-46 victory over St. James on Tuesday.

Junior Brooklynn Ver Steeg led the Cardinals with 18 points, and during

the game she reached her 1,000-point milestone.

"Scoring 1,000 points is a great accomplishment," Luverne head coach TJ Newgard said. "Especially for someone who is a team-first person like Brooke. Reaching 1,000 points so early in her junior year gives her a legitimate chance to become the all-time leading scorer

by the time she graduates."

Ver Steeg added six rebounds and seven steals to her stat line.

Averill Sehr reached double figures with 10 points. Sehr recorded four steals.

LHS GBB/Page 10

LHS boys' hockey drops a pair of games

By Brennen Rupp

The Luverne boys' hockey team dropped a pair of games this week to bring its overall record to 1-3.

The Cardinals opened the week with a 7-2 road loss to Redwood Valley on Tuesday, Jan. 26.

Luverne then returned home and dropped a tightly contested game to Minnesota River 3-2 on Friday, Jan. 29.

RV 7, LHS 2

On Friday, Jan. 22, the Cardinals defeated Redwood Valley, 8-5 at the Blue Mound Ice Arena. Redwood Valley won the rematch in Redwood Falls 7-2 on Tuesday, Jan. 26.



Brennen Rupp photo/0204 LHS B hockey photo
Luverne's Zach Kruse dekes a defender moments before scoring the game's first goal during the team's contest against Minnesota River on Friday, Jan. 29.

LHS Hockey/Page 10

Patriots lose two nailbighters, fall to 1-3

By Brennen Rupp

The Hills-Beaver Creek boys' basketball team lost a pair of tightly contested games this week.

Playing in front of the home crowd on Friday, Jan. 29, the Patriots lost at the buzzer to Mountain Lake Area 57-55.

MLA 57, H-BC 55

The Patriots took a 24-21 lead into the locker room during their home game against MLA on Friday, Jan. 29.

In the second half, the two teams swapped leads, with neither team able to build a big lead.

H-BC Boys/Page 10



Brennen Rupp photo/0204 H-BC BB photo
Hills-Beaver Creek's Cole Baker goes up for a fast-break layup during the team's home game against Mountain Lake Area on Friday, Jan. 29.

Cardinal girls hockey/continued from page 9

Bork picked up the hat trick by scoring the final goal of the game to put Luverne up 5-2. Van Batavia recorded her fourth assist of the game on the goal.

LHS 9, Morris/Benson 0

The Cardinals had two players record hat tricks during their shutout victory over the Storm on Saturday, Jan. 31.

Luverne's offense erupted for five first-period goals to put the game out of reach for the visiting team right out of the gate.

Bork opened the scoring to put Luverne up 1-0. Behr and Van Batavia both recorded an assist on the goal.

Van Batavia scored the next two goals to put the Cardinals up 3-0.

Bork scored her second goal of the period to put the Cardinals up 4-0. Behr and Van Batavia both notched an assist on the goal.

Nelson wrapped up the scoring in the first period to put Luverne up 5-0.

Roz Oye scored a short-handed goal in the second to put the Cardinals up 6-0.

Bork and Nelson both recorded assists on the goal.

Van Batavia scored her third goal of the game when



Brennen Rupp photo/0204 LHS G Hockey hockey photo Luverne senior, Rylee Gee handles the puck behind the net during the team's contest against Morris-Benson Area on Saturday, Jan. 30. The Cardinals defeated the Storm 9-0.

she opened the scoring in the third period.

Bork recorded the assist on the goal.

Bork scored her third goal of the game to put Luverne up 8-0. Van Batavia recorded the assist on the goal.

Oye wrapped up the scor-

ing by notching her third goal of the game. Rylee Gee and Sophie Holmberg both recorded assists on the goal.

Mallory Von Tersch recorded 11 saves in the win.

The Cardinals will look to win their third straight game when they host Minnesota

River on Tuesday, Feb. 2.

The Cardinals will then wrap up the week when they hit the road to take on Dodge County on Friday, Feb. 5.

Luverne wrestlers go 0-4

By Brennen Rupp

The Luverne Cardinals wrestling team went 0-4 this week with losses to Fairmont-Martin County West (81-0) and Windom-Mountain Lake (51-24) on Tuesday, Jan. 26.

They then dropped a pair of matches to Worthington (61-16) and Minneota (78-6) on Thursday, Jan. 28.

Windom-Mountain Lake 51, Luverne 24

Riley Cowell defeated Thavien Xayachak by fall in the 120-pound division.

Jaden Reisch won by fall in the 160-pound division to pick up the second victory in the match for the Cardinals.

Worthington 61, LHS 16

The Cardinals fell to the Trojans on Thursday, Jan. 28,

61-16.

Cowell got the Cardinals' points by defeating Oscar Galvez by decision (12-4) in the 113-pound division.

In the 160-pound division, it was Reisch winning by fall over Mason Schutz.

Ayden Bonnett won by fall over Logan Barber in the 195-pound division.

Minneota 78, LHS 6

Cowell was the lone Cardinal to pick up a win for Luverne.

The senior improved to 4-1 on the season with a win by fall over Petyon Guiland in the 120-pound division.

The Cardinals will look to get back on the winning side of things on Thursday, Feb. 4, when they hit the road to take on Windom Area.

Luverne boys/from page 9

Gannon Ahrendt scored 12 points, grabbed five rebounds, and blocked four shots.

The Cardinals will look to bounce back when they play their first home game of the season on Tuesday, Feb. 2. Luverne will open their

2021 home slate when they host Redwood Valley. R

edwood Valley will enter the contest with a 3-2 record.

Luverne will then host Pipestone Area on Tuesday, Feb. 9. At press time the Arrows owned a 3-2 record.

The joys of puppy training

By Scott Rall, outdoors columnist

It was a little over six weeks ago that I shared with you the trials and tribulations of raising a high energy Labrador puppy.

My pint-sized powerhouse is not all that little anymore. He is 7 1/2 months old and has lost the cute puppy breath and replaced it with the "you should have seen what I found and ate in the backyard" breath.

When I am picking a puppy from a litter, I always try to identify the highest energy member of the group.

There is a saying in the dog world that it is a lot easier to wind them in than it is to wind them up.

Translation: High-energy dogs can have their energies channeled and controlled to do great work, but it's a lot harder to take the lazy couch potato boy and fire him up for the rigors of training and the work he will perform as an adult hunting companion.

He has really gotten the majority of the understanding when it comes to "here," and "sit," and he is starting to work on leash obedience for heel.

My dogs have their own dedicated room in my house where the floors are tile and the washing machine is nearby. It really does sound like a buffalo herd when whoever gets up first opens the four cages and 16 paws are all hitting the



ground at 60 mph headed to the back door for their morning constitutions and a big stretch.

When this is done, and if I happen to still be snoozing til the second alarm, Ghost will tear down the hallway at blistering speed and then from about 10 feet away, he will launch himself up on the bed with the intent of dispensing 75 good morning dog kisses.

It is about the same as a cold glass of water splashed in your face. There is no going back to sleep after this morning greeting.

My new addition really only has two trouble spots that I am concentrating on.

The first is that he just has to bark about three times when there is a commotion in the back yard or when he hears my truck in the driveway. It is not an incessant barking issue, but none of my other dogs bark at all. We are working on this issue. With an electronic training collar and some well-placed timing.

The other issue is that he really has a hard time not

rough-housing with my other older dogs.

They are very tolerant and there has never been any growling or nipping, but Ghost has not completely learned his place in the pack. I do not tolerate any measure of aggressive behavior in any of my dogs. Over the years with all of the dogs I have owned and trained, I have never had any of my dogs start a fight or altercation with another dog.

I cannot and will not hunt with anyone whose dogs are aggressive or are always trying to start something.

Some owners will just say, "My female is an alpha," or "My males have always been that way." I then tell them to take their dog far away where they can let them act any way they want, but not around my dogs.

Ghost gets some stern corrections for too much rough-housing, and as he grows and matures, it is getting a lot better.

One final parting thought when it comes to dog training: If you caught your kid smoking and made them quit on the spot, that is a lot easier than letting them smoke for 10 years and then trying to get them to quit.

Fix negative behaviors before they become a habit, be that with your child or your dog. A little work early is better than strenuous effort expended later, and in most cases is more successful.



Brennen Rupp photo/0204 HBC boys photo H-BC senior Zander Wysong looks to drive to the basket during the team's game against Mountain Lake Area on Friday, Jan. 29.

Hills-Beaver Creek boys/from page 9

With 3:33 left in the game, MLA held a 51-48 lead.

That lead slowly got trimmed to one point with MLA clutching a 52-51 lead with 1:53 left in the game.

A Cole Baker fast-break layup put the Patriots up 54-53 with 38.3 seconds left in the game.

MLA recaptured the lead to take a 55-54 lead with 13.3 seconds left.

Baker split a pair of free throws to tie the game

at 55-55 with less than 10 seconds to play.

The two teams looked to be on their way to overtime before a put-back layup at the buzzer gave MLA the thrilling 57-55 win.

Baker finished the game with 17 points and three steals.

Zander Wysong scored 16 points and grabbed nine rebounds.

Andrew Harris scored seven points and grabbed a team-leading 11 rebounds.

The pair of losses drops H-BC to 1-3 overall. All three of their losses have come by eight points or less.

HLOF 79, H-BC 74

H-BC opened the week with a 79-74 road loss to Heron Lake-Okabena-Fulda on Tuesday, Jan. 26. Information from that contest has not been made available.

Cardinal boys hockey/continued from page 9

Redwood Valley struck first to take a 1-0 lead.

Brock Behrend answered for the Cardinals to tie the game at 1-1.

Henry Hartquist recorded the assist on the goal.

Redwood Valley scored another goal to take a 2-1 lead into the locker room.

It was all Redwood Valley in the second period. Redwood Valley scored three goals to open a 5-1 lead.

Ethan Langseth opened the scoring in the second period to cut Redwood Valley's lead to 5-2.

Zach Kruse recorded the assist on the goal.

Redwood Valley scored the next two goals to make the final score 7-2.

Senior goalie, Shaid Shearer recorded 40 saves in the losing effort.

MN River 3, LHS 2

The Cardinals were unable to bounce back from Tuesday's loss as they fell to Minnesota River 3-2

on Friday, Jan. 29.

Kruse got the Cardinals on the board in the opening moments of the first period to give Luverne an early 1-0 lead.

Hartquist recorded the assist on the goal.

Minnesota River scored a goal later in the period to make it a 1-1 game at the end of the opening frame.

The visitors opened the scoring in the second period to take a 2-1 lead.

Behrend scored his eighth goal of the season to even the game at 2-2.

Minnesota River scored another goal in the period to take a 3-2 lead into the locker room.

Neither team could light the lamp in the third period as Minnesota River held on to hand the Cardinals their third loss of the season by the score of 3-2.

Shearer finished the game with an impressive 50 saves.

Luverne will look to win the rematch against Minnesota River on Tuesday, Feb. 2.



Brennen Rupp photo/0204 LHS boys hockey photo Luverne senior Cooper Arends handles the puck during the Cardinals' game against Minnesota River on Friday, Jan. 29.

LHS GBB/ from page 9

Elizabeth Wagner scored nine points, grabbed six rebounds and five steals.

Elise Ferrell added nine points.

Marshall 70, LHS 42

The sixth-ranked Tigers proved to be too much for the Cardinals on Friday, Jan. 29.

The two Big South Conference foes battled back and forth in the opening moments before the Tigers pulled away from the Cardinals en route to a 70-42 victory.

Ver Steeg finished the game with a team-leading 17 points.

Elizabeth Wagner reached double figures with 10 points.

The Cardinals will be back in action on Tuesday, Feb. 2, when they hit the road to take on Redwood Valley.

Redwood Valley will enter the contest with a 1-3 record.

The Star Herald reached out to churches for their worship information in the absence of in-person worship services, due to coronavirus social distancing. Those that responded are listed here. Those that would like to have information posted here should call the Star Herald or email editor@star-herald.com.

St. Catherine Catholic Church
203 E. Brown St., Luverne
St. Catherine Ph. 283-8502; www.stscl.org
Monsignor Gerald Kosse, Pastor

Public mass will be celebrated with a limit of 50 percent capacity of the church. Masses: 9 a.m. Wednesday, 10 a.m. Friday and 8:30 a.m. Sunday. No mass, communion service or rosary at care centers at this time. 5 p.m. Saturdays and 8:30 a.m. mass will be live streamed on Facebook at <https://www.facebook.com/pg/stcluverne/videos/>. Visit www.stscl.org for more information.

Luverne Christian Reformed Church
605 N. Estey St., Luverne
Office Ph. 283-8482; Prayer Line Ph. 449-5982
www.luvernecrc.com — office@luvernecrc.com
Roger Sparks, Pastor

We are streaming Sunday services live on Roger Sparks' Facebook page at 9:30 a.m. and 6:30 p.m. Send him a friend request if you're not connected. You may also visit our website for delayed broadcasts. Also our services are on local cable TV at 5:30 p.m. on Wednesdays and at 6:30 p.m. on Thursdays. In all circumstances, may we joyfully declare: "Our help is in the name of the Lord, the Maker of heaven and earth." Psalm 124:8.

First Baptist Church
1033 N. Jackson St., P.O. Box 975, Luverne
Ph. 283-4091; email: fbcluv@iw.net — www.fbcluverne.org
Walt Moser, Pastor

Sundays, 10:30 a.m. In-person worship service. Service is also on Facebook Live at 10:30 a.m.

Grace Lutheran Church
500 N. Kniss Ave., Luverne
Ph. 507-283-4431; www.graceluverne.org — graceluverne@iw.net
Ann Zastrow, Pastor

Thursday, Feb. 4: Missions in Action. Saturday, Feb. 6: 5:30 p.m. Worship service with Holy Communion. In-person worship service in Sanctuary. Sunday, Feb. 7: 9 a.m. Worship service with Holy Communion 9:15-9:45 a.m. Drive-thru Communion. 10-10:45 a.m. Sunday school. 10:30 a.m. Adult Bible Study via Zoom. Tuesday, Feb. 9: 9 a.m. Staff meeting. 6:45 p.m. Ministry meetings. 8 p.m. PPC Meeting. Wednesday, Feb. 10: 7 a.m. Men's Bible Study. Online, TV and Radio Worship options are still available. Online Sundays 9 a.m. on the church website www.graceluverne.org. click Worship tab or go directly to our Facebook page at Grace Lutheran ELCA, Luverne. TV: Vast Channel 3 will air our worship service Mondays at 4:30 p.m. and Fridays at 10 a.m. — NEW TIME! Radio: KQAD-AM Radio will air our worship service on Sundays at 8:15 p.m.

Bethany Lutheran Church
720 N. Kniss Ave., Luverne
Ph. 507-283-4571 or 507-449-0291 or 605-215-9834
pastorapalmquist67@yahoo.com
Andrew Palmquist, Pastor

Sunday, 10:15 a.m. Worship service; worship online as well. Monday, 6:30 p.m. Zoom Bible study. See our Facebook page, Bethany Lutheran Church (Luverne). Also visit els.org with our sister churches for online worship opportunities.

American Reformed Church
304 N. Fairview Dr., Luverne
Ph. 283-8600; email: office@arcluverne.org
Mike Altana, Pastor

Friday, Feb. 5: 6:30 p.m. Community Men's Bible study. Saturday, Feb. 6: 8 a.m. Consistory meeting. Sunday, Feb. 7: 9:30 a.m. Worship service. 10:50-11:50 a.m. Sunday school. Souper Bowl of Caring offering. Monday, Feb. 8: 3 p.m. Commons reserved. Tuesday, Feb. 9: 12 Noon staff meeting. 7 p.m. Consistory meeting. Wednesday, Feb. 10: 5:30 p.m. Midweek meal. 6:30 p.m. Pioneer Clubs; Youth groups. 7:30 p.m. PC Awards Night. Worship services are also broadcast on Vast Channel 3 on Mondays at 6 p.m. and Wednesdays at 4 p.m. DVD's available upon request. To stay up to date on announcements, follow us on Facebook and Instagram @arcluverne.

First Assembly of God Church
1075 110th Ave., 2 miles west of Luverne on County Rd. 4

United Methodist Church
109 N. Freeman Ave., Luverne
Ph. 283-4529; email: luverneumc@iw.net

Thursday, Feb. 4: 1-3 p.m. Food Shelf curbside. Saturday, Feb. 6: 8 p.m. AA meeting. Sunday Feb. 7: 9:30 a.m. Adult Sunday school. 10:30 a.m. Worship service — SD In-house worship service — Services held on radio and live on Facebook. YouTube will also have services posted. 4:30 p.m. Genesis to Revelation Bible Study with safe distancing. Monday, Feb. 8: 8 p.m. AA meeting. Chocolate gift box sale begins. Tuesday, Feb. 9: 6 p.m. Teachers meeting. Wednesday, Feb. 10: 6:15 p.m. FUEL. 6:30 p.m. Confirmation. 8 p.m. AA Meeting. Pizza Ranch takeout fundraiser. Thursday, Feb. 4: 1-3 p.m. Food Shelf curbside.

First Presbyterian Church
302 Central Lane, Luverne
Ph. 283-4787; email: Firstpc@iw.net — www.fpcluverne.com
Jason Cunningham, Pastor

Worship services in-person and through Facebook Live Sunday 10:15 a.m.* Our Facebook page can be found under First Presbyterian Church of Luverne. We are also on the local Luverne cable station at 10 a.m. and 6 p.m. on Tuesdays and 10 a.m. on Thursdays.

St. John Lutheran Church
803 N. Cedar St., Luverne
Ph. 283-2316; email: stjohn@iw.net
www.stjohnlutheranluverne.org
Rev. Dr. Phil Booe, Pastor

Saturday, Feb. 6: 5:30 p.m. Worship service. Sunday, Feb. 7: 9 a.m. Worship. 10:15 a.m. Sunday school; Bible study. 7 p.m. Online Bible study. Worship service is 75 people. Services will be available on the Vast channel 3 Sunday and online at the city website, cityofluverne.org.

Living Rock Church
500 E. Main St., Luverne
Ph. 449-0057; www.livingrockswmn.org
Billy Skaggs, Pastor

New Life Celebration Church
110 N. Oakley, Luverne
Ph. 449-6522; email: newlifecelbration@gmail.com

Zion Evangelical Lutheran Church
305 E. 2nd St., P.O. Box 36, Hardwick
Ph. (507) 669-2855; zionoffice@alliancecom.net
Jesse Baker, Pastor

Ben Clare United Methodist Church
26762 Ben Clare Ave., Valley Springs, S.D.
igtwlb@WOW.net
Bill Bates, Pastor

First Lutheran Church
300 Maple St., Valley Springs, S.D.
Ph. (605) 757-6662
Mark Eliason, Pastor
10 a.m. worship service; Facebook live. Video worship via YouTube at <https://www.youtube.com/watch?v=LHdQwVxFcU4>

Palisade Lutheran Church
211 121st St., Garretson, S.D.
Ph. (507) 597-6257 — firstpalisade@alliancecom.net
Mark Eliason, Pastor
Video worship via YouTube at <https://www.youtube.com/watch?v=LHdQwVxFcU4>

First Presbyterian Church
201 S. 3rd St., P.O. Box 73, Beaver Creek
Ph. 507-935-5025
email: lori.firstpres@gmail.com
Thursday 10 a.m. worship service on VAST and Mediacom. 7 p.m. Sunday 10:15 a.m. worship service viewed live on First Presbyterian Church Facebook page. Tuesday 10 a.m. and 6 p.m. worship service on VAST and Mediacom.

Magnolia United Methodist Church
501 E. Luverne St., Magnolia
Ph. 605-215-3429
email: magnoliannumc@gmail.com
Nancy Manning, Pastor
Sunday, 9 a.m., in-person with livestream available on the church's Facebook site.

Steen Reformed Church
112 W. Church Ave., Steen
Ph. 855-2336
Jeremy Wiersema, Pastor
Sunday, 9:30 a.m. and 6 p.m. Worship service in-person with livestream available on Facebook and YouTube. Radio worship on KQAD Sundays at 9:30 a.m.

Bethlehem Lutheran Church
112 N. Main St., Hills
Ph. 962-3270
Sunday, Feb. 7: 10 a.m. Worship service with Holy Communion at Bethlehem. 10 a.m. Sunday school. Worship will be streamed live to Facebook at Bethlehem of Hills. You can find more info on our website blchills.org. Tuesday, Feb 9: 2 p.m. Bible Study at Tuff Home. 2:45 p.m. Bible Study at Tuff Home. Wednesday, Feb. 10: 9 a.m. Quilting.

Hills United Reformed Church
410 S. Central Ave., Hills
Office Ph. 962-3254
hillsurc@alliancecom.net
Alan Camarigg, Pastor

Jesus invites us to come and see

READ: John 1:29-42

John the Baptist was standing there with two of his disciples, and as he was watching Jesus walk by he exclaimed, "Look! There is the Lamb of God!"

On the surface that doesn't sound like much, but there is a great significance to the way John writes this. Of the four Gospel writers, John is the one who often gives us double meanings: the surface story and the deeper significance all woven together in one strand.

John was watching Jesus. This is not just a casual glance or a fleeting observation. **The word in Greek points to an intense watching, a penetrating look: not just seeing, but pondering.** John the Baptist is seeing Jesus and also seeing something deeper: "Look, here is the Lamb of God." There's something more here than initially meets the eye.

Do you sometimes see someone or something, or experience some event and realize that something deeper than the surface is happening? Maybe you've heard people say, "I knew I was experiencing history at the time." Or "I knew something important and lasting was going on, and many missed it." What do you see?

Fast forward a little further in John's first chapter and you find Andrew bringing Peter to Jesus, an example that is often held up about the importance of sharing the good news of Jesus: "We found the Messiah!" Peter comes along and Jesus looks at him and says, "You are Simon and you will be called Cephas or Peter which means rock." Once again, it's that deeper look — not just a casual observation, not even just a paying attention to this new person in front of Jesus.

Jesus looked at Peter just like John the Baptist looked at Jesus. It's a looking and watching that is filled with meaning. What's going on here matters! These are not just random meetings or happenstance encounters. This is watching that comes with some punch — an intense look filled with purpose and the Spirit of God working in the background.

In between John looking at Jesus and Jesus looking at Peter, we're told about the two disciples who follow after

BUILT ON A ROCK

By Pastor Jason Cunningham
First Presbyterian Church, Luverne

Jesus and Jesus' question to them, "What are you looking for?" Their question to him: "Teacher, where are you staying?" And Jesus' invitation is, "Come and see."

Come and see! There's a call inside of those words! Those disciples find where Jesus is staying, but this looking and seeing comes with a certain intensity that overflows with meaning.

When Jesus says, "Come and see," we're not just talking only about a bed and a pillow and the house he is in. We are talking about more than Jesus' house number address. We are talking about the very presence of God with us.

This passage from John is often read on the heels of Christmas and Epiphany when the weather is cold here in Minnesota and days are still a bit dark ... Easter is still a ways off. We need the reminder that Christ has promised to be with us. We need the invitation to "come and see."

Some of you know there's a song called "Abide with me." I was talking with someone not very long ago about the significance of moments when God suddenly seems to break in and God's presence is felt, experienced, seen! This person was talking about singing "Abide With Me" — "Abide with me, fast falls the eventide. The darkness deepens, Lord with me abide! When other helpers fail and comforts flee, help of the helpless, O abide with me." The person shared about singing that song at a time when days were dark, and a loved one had been lost recently, and the soul seemed dry ... And then the song brought light and a connection with Christ.

May we look ... and come ... and see Jesus, who has promised to abide with us.

These weekly church page messages are contributed to God's Work through the Church and by these concerned and responsible citizens & businesses:

Call Rick or Chantel to place your ad!

283-2333

Read us online!

Rock County
STAR HERALD
www.Star-Herald.com

Trust in Him



Papik Motors
283-9171
PAPIK.COM
Luverne, MN
Rock Rapids, IA

HSS Hills Stainless Steel & Equipment Co., Inc.
506 W. Koehn, P.O. Box 987, Luverne, MN
PHONE 507-283-4405
Church is Important - Please Attend!

Buffalo Ridge Insurance
507-283-2381
www.buffaloridgeins.com E-mail: info@buffaloridgeins.com

McClure Electric
Alan M. Aanenson, owner
Farm, Home & Commercial Wiring
Luverne, MN Phone 507-283-4716

TUFF Memorial Home
A HOME WITH A HEART!
Hills, MN • 507-962-3275

MINNWEST BANK
116 East Main Street • Luverne • 507-283-2366
Hwy. 75 • 800 South Kniss • Luverne • 507-283-9131
www.minnwestbank.com • Member FDIC • MoneyLine 888-616 BANK

Advertise Here

SECURITY SAVINGS BANK
bankwithssb.com 507.449.6000
Member FDIC Luverne, MN

HARTQUIST
Funeral and Cremation Services
Pipestone • Luverne • Lake Benton • Jasper • Tyler
www.HartquistFuneral.com

Pizza Ranch
110 E Main, Luverne 507-283-2379

CWG Business Insurance
Tri-State Region Period!

MANLEY TIRE & OIL SERVICE
Manley Minnesota
1-800-615-3704
Open six days a week - Closed on Sundays
To God be the Glory.

Luverne ANNOUNCER

First Farmers & Merchants
303 E. Main, Luverne, MN
507-283-4463
www.ftmbank.com
We believe in you.™
Member FDIC. And the community.

ISD #2184 School Board meets Dec. 17

MINUTES OF THE SCHOOL BOARD MEETING OF INDEPENDENT SCHOOL DISTRICT NO. 2184, ROCK COUNTY, LUVERNE, MINNESOTA.

A regular meeting of the Board of Education, ISD #2184, was held in the District Office and also via Zoom on December 17, 2020, at 7:00 p.m.

The following members were present: Katie Baustian, Colleen Deutsch, Eric Hartman, Tim Jarchow, Shelley Sandbulte, and Reva Sehr. Absent: Jodi Bosch.

Also present: Craig Otfedahl, Marlene Mann, Jason Phelps, Ryan Johnson, Stacy Gillette, Becky Rahm, Lauren VerSteeg, Jeff Stratton, David Wrigg, Amy Sahly, April Wallace, Amy VonHoltum, Brenda Parsley – Conway, Deuth and Schmiessing, PLLP, and Mavis Fodness – Rock County Star Herald.

Vice-Chairperson Eric Hartman called the meeting to order with the Pledge of Allegiance. It was noted that there is an addendum to the agenda. Motion made by Jarchow, second by Deutsch, to approve the agenda with addendum.

Business Manager Marlene Mann conducted the Truth-in-Taxation hearing. She reviewed student enrollments and how funding is generated for the School District.

Administrative reports were given.

Motion made by Deutsch, second by Baustian, to approve the November 24, 2020, School Board minutes as presented. Motion unanimously carried.

Superintendent Otfedahl gave a brief building project update. Discussion was held regarding the color of the terrazzo in the new commons area. Motion by Jarchow, second by Deutsch, to approve an additional expenditure of \$60,000-\$70,000 for the upgraded terrazzo with the funds to be taken from the Cooperation and Combination monies. Motion unanimously carried.

Brenda Parsley, representing Conway, Deuth and Schmiessing, PLLP, presented the 2019-2020 audit report. Motion made by Deutsch, second by Sehr, to approve the audit report as presented. Motion unanimously carried.

Business Manager Marlene Mann reviewed the district bills. Motion made by Jarchow, second by Baustian, to approve payment of the bills in the amount of \$2,069,379.07; and payment of the Student Activity bills in the amount of \$1,568.31. Motion unanimously carried.

Motion made by Baustian, second by Sehr, to receive the Student Activity report showing the balances as of November 30, 2020. Motion unanimously carried.

Member Deutsch introduced the following Resolution and moved its adoption:

RESOLUTION ESTABLISHING COMBINED POLLING PLACES FOR MULTIPLE PRECINCTS AND DESIGNATING HOURS DURING WHICH THE POLLING PLACES WILL REMAIN OPEN FOR VOTING FOR SCHOOL DISTRICT ELECTIONS NOT HELD ON THE DAY OF A STATEWIDE ELECTION

BE IT RESOLVED by the School Board of Independent School District No. 2184, State of Minnesota, as follows:

1. Pursuant to Minnesota Statutes, Section 205A.11, the precincts and polling places for school district elections are those precincts or parts of precincts located within the boundaries of the school district which have been established by the cities or towns located in whole or in part within the school district. The board hereby confirms those precincts and polling places so established by those municipalities.

2. Pursuant to Minnesota Statutes, Section 205A.11, the board may establish a combined polling place for several precincts for school district elections not held on the day of a statewide election. The following combined polling places are established to serve the precincts specified for all school district special and general elections not held on the same day as a statewide election: Combined Polling Place: Luverne Middle/High School Gymnasium – 709 North Kniss Avenue, Luverne

"This combined polling place serves all territory in Independent School District No. 2184 located in Battle Plain Township; Beaver Creek Township; Clinton Township; Denver Township; Kanaranz Township; Luverne Township; Magnolia Township; Mound Township; Rose Dell Township; Springwater Township; Vienna Township; the City of Hardwick; the City of Kenneth; City of Luverne; and the City of Magnolia; in Rock County, Minnesota; and Leota Township, Lismore Township, and Westside Township in Nobles County, Minnesota"

3. Pursuant to Minnesota Statutes, Section 205A.09, the polling places will remain open for voting for school district elections not held on the same day as a statewide election between the hours of 10 o'clock a.m. and 8:00 o'clock p.m.

4. The clerk is directed to file a certified copy of this resolution with the county auditors of each of the counties in which the school district is located, in whole or in part, within thirty (30) days after its adoption.

5. As required by Minnesota Statutes, Section 204B.16, Subdivision 1a, the clerk is hereby authorized and directed to give written notice of new polling place locations to each affected household with at least one registered voter in the school district whose school district polling place location has been changed. The notice must be a nonforwardable notice mailed at least twenty-five (25) days before the date of the first election to which it will apply. A notice that is returned as undeliverable must be forwarded immediately to the appropriate county auditor, who shall change the registrant's status to "challenged" in the statewide registration system.

The motion was duly seconded by Member Jarchow. Those who voted in favor: Sandbulte, Jarchow, Baustian, Hartman, Deutsch, and Sehr; those who voted against: none; those absent: Bosch. Motion carried.

Middle School Principal Jason Phelps reviewed the Worlds Best Workforce report with the School Board. Due to no MCA testing being conducted last Spring because of COVID-19, the report did not have testing data included. Motion made by Deutsch, second by Baustian, to approve the report. Motion unanimously carried.

Motion made by Baustian, second by Jarchow, to approve the e-learning plan that was presented. This e-learning plan could possibly be utilized in place of snow days. Motion unanimously carried.

Superintendent Otfedahl and Business Manager Marlene Mann reviewed the 2020 Payable 2021 Levy Limitation and Certification information. Motion made by Jarchow, second by Deutsch, to certify the levy in the amount of \$3,904,506.98 which reflects a 4.40% decrease in the levy. Motion unanimously carried.

The School Board reviewed information provided by Community Education Director Lisa Nath in regard to the Driver's Education program fees. Motion made by Jarchow, second by Sehr, to set the 2020-2021 Driver's Education fee at \$340 per student. Motion unanimously carried.

Motion made by Baustian, second by Sehr, to approve the hiring of Sarah DeBeer as Girls Basketball C Team Coach. Motion unanimously carried.

Motion made by Deutsch, second by Sehr, to approve Makayla Sterrett as Girls Hockey volunteer coach. Motion unanimously carried.

Motion made by Baustian, second by Jarchow, to approve a request from SDSU for Garrett Buchanan to complete his student teaching with James Jarvie, instrumental teacher, during the second semester. Motion unanimously carried.

Motion made by Deutsch, second by Baustian, to accept the resignation of Avery VanRoekel as JV/Assistant Volleyball coach, C-squad/Assistant Girls Basketball coach, and JV/Assistant Softball coach effective November 26, 2020. Motion unanimously carried.

Motion made by Sehr, second by Jarchow, to accept the resignation of Fabiana Brockberg, M/HS Paraprofessional, effective December 18, 2020. Motion unanimously carried.

Motion made by Deutsch, second by Sehr, to accept the resignation of Diana Erickson as BPA Advisor for the 2020-21 school year effective December 7, 2020. Motion unanimously carried.

Motion made by Deutsch, second by Sehr, to approve the hiring of Katie Kopp as BPA Advisor. Motion unanimously carried.

Motion made by Baustian, second by Sehr, to approve the hiring of Meghan Elgersma as Special Services Administrative Assistant beginning December 15, 2020. Motion unanimously carried.

Motion made by Deutsch, second by Baustian, to approve the hiring of Madison Crabtree as M/HS Paraprofessional effective January 4, 2021. Motion unanimously carried.

Motion made by Jarchow, second by Sehr, to approve Kaden Ericson as Boys Hockey volunteer coach. Motion unanimously carried.

Motion made by Deutsch, second by Sehr, to approve Lance Ripka as Wrestling volunteer coach. Motion unanimously carried.

Motion made by Jarchow, second by Deutsch, to adopt the following:

RESOLUTION ACCEPTING DONATIONS TO INDEPENDENT SCHOOL DISTRICT 2184 – LUVERNE PUBLIC SCHOOLS

WHEREAS, the Luverne Public Schools is generally authorized to accept donations pursuant to Minnesota Statutes Section 465.03 for the benefit of its citizens, and is specifically authorized to accept gifts.

WHEREAS, persons and/or entities have offered to contribute the cash amounts set forth as attached: (schedule of donations to be attached)

WHEREAS, the terms or conditions of the donation(s), if any, are listed with each donation

WHEREAS, all such donations have been contributed to the school for the benefit of its students and citizens, as allowed by law; and

WHEREAS, the School Board finds that it is appropriate to accept the donations offered.

NOW THEREFORE, BE IT RESOLVED BY THE SCHOOL BOARD OF INDEPENDENT SCHOOL DISTRICT #2184, LUVERNE PUBLIC SCHOOLS, LUVERNE, MINNESOTA, AS FOLLOWS:

1. The donations described above are accepted and shall be used to establish and/or operate services either alone or in cooperation with others, as allowed by law.

2. The district clerk or designee is hereby directed to issue receipts to each donor acknowledging the school's receipt of the donor's donation.

The above resolution will be presented monthly along with a listing of donations received. Motion unanimously carried.

There were no committee reports. Vice-Chairperson Hartman reviewed the upcoming meeting dates.

Motion made by Deutsch, second by Sandbulte, to adjourn the meeting; Motion unanimously carried.

Dated: December 17, 2020

Tim Jarchow, Clerk (02-04)

Mortgage foreclosure sale set for March 10

NOTICE OF MORTGAGE FORECLOSURE SALE THE RIGHT TO VERIFICATION OF THE DEBT AND IDENTITY OF THE ORIGINAL CREDITOR WITHIN THE TIME PROVIDED BY LAW IS NOT AFFECTED BY THIS ACTION.

NOTICE IS HEREBY GIVEN: That default has occurred in the conditions of the following described mortgage:

DATE OF MORTGAGE: October 11, 2018 ORIGINAL PRINCIPAL AMOUNT OF MORTGAGE: \$145,000.00 MORTGAGOR(S): Traci Ann Scholl, a single woman

MORTGAGEE: Mortgage Electronic Registration Systems, Inc. TRANSACTION AGENT: Mortgage Electronic Registration Systems, Inc. MIN#: 10104012113923470

LENDER OR BROKER AND MORTGAGE ORIGINATOR STATED ON THE MORTGAGE: Flanagan State Bank

SERVICER: Specialized Loan Servicing LLC DATE AND PLACE OF FILING: Filed October 18, 2018, Rock County Recorder, as Document Number 193663

ASSIGNMENTS OF MORTGAGE: Assigned to: Specialized Loan Servicing LLC; Dated: December 9, 2020, filed: December 22, 2020, recorded as document number 198798

LEGAL DESCRIPTION OF PROPERTY: A tract in the W1/2 of Section 24, Township 104 North, Range 47 West of the 5th P.M., Rock County, Minnesota, described as follows: Beginning at the North west corner of the NW1/4 of Section 24, in said Township and Range aforesaid as the place of beginning, thence East 1320 feet to the Northeast corner of the W1/2 of the NW1/4; thence South 1100 feet; thence Northwesterly 720 feet to a point which is 1060 feet South of the North line of the NW1/4; thence South 200 feet; thence West 200 feet; thence South 260 feet; thence West 400 feet; thence North along the West side of the NW1/4 1520 feet to the point of beginning; excepting there from a strip or piece of land 200 feet wide extending across the Northwest corner of the described parcel granted by right of way deed dated April 23, 1888 to the Willmar and Sioux Falls Railway Company

PROPERTY ADDRESS: 2178 20th Ave, Jasper, MN 56144 PROPERTY IDENTIFICATION NUMBER: 10-0215-000 COUNTY IN WHICH PROPERTY IS LOCATED: Rock

THE AMOUNT CLAIMED TO BE DUE ON THE MORTGAGE ON THE DATE OF THE NOTICE: \$152,964.32

THAT all pre-foreclosure requirements have been complied with; that no action or proceeding has been instituted at law or otherwise to recover the debt secured by said mortgage, or any part thereof;

PURSUANT, to the power of sale contained in said mortgage, the above described property will be sold by the Sheriff of said county as follows:

DATE AND TIME OF SALE: March 10, 2021, 10:00 A.M. PLACE OF SALE: Sheriff's Main Office, West Side Sheriff Dept, Front Step, Luverne, MN 56156

to pay the debt secured by said mortgage and taxes, if any, on said premises and the costs and disbursements, including attorneys fees allowed by law, subject to redemption within 12 months from the date of said sale by the mortgagor(s) the personal representatives or assigns.

TIME AND DATE TO VACATE PROPERTY: If the real estate is an owner-occupied, single-family dwelling, unless otherwise provided by law, the date on or before which the mortgagor(s) must vacate the property, if the mortgage is not reinstated under section 580.30 or the property is not redeemed under section 580.23, is 11:59 p.m. on March 10, 2022, or the next business day if March 10, 2022 falls on a Saturday, Sunday or legal holiday.

THE TIME ALLOWED BY LAW FOR REDEMPTION BY THE MORTGAGOR, THE MORTGAGOR'S PERSONAL REPRESENTATIVES OR ASSIGNS, MAY BE REDUCED TO FIVE WEEKS IF A JUDICIAL ORDER IS ENTERED UNDER MINNESOTA STATUTES SECTION 582.032 DETERMINING, AMONG OTHER THINGS, THAT THE MORTGAGED PREMISES ARE IMPROVED WITH A RESIDENTIAL DWELLING OF LESS THAN 5 UNITS, ARE NOT PROPERTY USED FOR AGRICULTURAL PRODUCTION, AND ARE ABANDONED.

Dated: January 4, 2021

Specialized Loan Servicing LLC Assignee of Mortgagee LOGS LEGAL GROUP LLP BY _____

Melissa L. B. Porter - 0337778 Gary J. Evers - 0134764 Joseph M. Rossman - 0397070 Attorneys for Mortgagee

LOGS Legal Group LLP 12550 West Frontage Road, Suite 200 Burnsville, MN 55337 (952) 831-4060

THIS IS A COMMUNICATION FROM A DEBT COLLECTOR (01-14, 01-21, 01-28, 02-04, 02-11, 02-18)

STATE OF MINNESOTA COUNTY OF ROCK

FIFTH JUDICIAL COURT DISTRICT COURT PROBATE DIVISION

County File No. 67-PR-21-8

NOTICE AND ORDER OF HEARING ON PETITION FOR PROBATE OF WILL AND APPOINTMENT OF PERSONAL REPRESENTATIVE AND NOTICE TO CREDITORS

Estate of Lena J. Marbus a.k.a Lena Marbus, Decedent

It is Ordered and Notice is given that on February 22, at 8:30 a.m., a hearing will be held in this Court at 204 E Brown St, Luverne, Minnesota, for the formal probate of an instrument purporting to be the Will of the Decedent dated, August 15, 2013, ("Will"), and for the appointment of Dianne J. Boatright, whose address is 46230 West Shore PI, Hartford, SD, 57033 as Personal Representative of the Estate of the Decedent in an UNSUPERVISED administration. Any objections to the petition must be filed with the Court prior to or raised at the hearing. If proper and if no objections are filed or raised, the Personal Representative will be appointed with full power to administer the Estate including the power to collect all assets, to pay all legal debts, claims, taxes and expenses, to sell real and personal property, and to do all necessary acts for the Estate.

Notice is also given that (subject to Minnesota Statutes section 524.3-801) all creditors having claims against the Estate are required to present the claims to the Personal Representative or to the Court Administrator within four months after the date of this Notice or the claims will be barred.

Date Filed: January 15, 2021 BY THE COURT

COURT SEAL /s/ Terry Vajrt Judge of District Court

Attorney for Petitioner Jennifer L. J. Gilk Gilk Legacy Law PLLC 513 E. Bridge St. PO Box 126 Redwood Falls, MN 56283 Attorney License No: 238363 Telephone: (507) 627-4525 FAX: (507) 627-4528 Email: office@gilklegacylaw.com (01-28, 02-04)

Attorney for Petitioner Jennifer L. J. Gilk Gilk Legacy Law PLLC 513 E. Bridge St. PO Box 126 Redwood Falls, MN 56283 Attorney License No: 238363 Telephone: (507) 627-4525 FAX: (507) 627-4528 Email: office@gilklegacylaw.com (01-28, 02-04)

Attorney for Petitioner Jennifer L. J. Gilk Gilk Legacy Law PLLC 513 E. Bridge St. PO Box 126 Redwood Falls, MN 56283 Attorney License No: 238363 Telephone: (507) 627-4525 FAX: (507) 627-4528 Email: office@gilklegacylaw.com (01-28, 02-04)

Attorney for Petitioner Jennifer L. J. Gilk Gilk Legacy Law PLLC 513 E. Bridge St. PO Box 126 Redwood Falls, MN 56283 Attorney License No: 238363 Telephone: (507) 627-4525 FAX: (507) 627-4528 Email: office@gilklegacylaw.com (01-28, 02-04)

Attorney for Petitioner Jennifer L. J. Gilk Gilk Legacy Law PLLC 513 E. Bridge St. PO Box 126 Redwood Falls, MN 56283 Attorney License No: 238363 Telephone: (507) 627-4525 FAX: (507) 627-4528 Email: office@gilklegacylaw.com (01-28, 02-04)

Attorney for Petitioner Jennifer L. J. Gilk Gilk Legacy Law PLLC 513 E. Bridge St. PO Box 126 Redwood Falls, MN 56283 Attorney License No: 238363 Telephone: (507) 627-4525 FAX: (507) 627-4528 Email: office@gilklegacylaw.com (01-28, 02-04)

Attorney for Petitioner Jennifer L. J. Gilk Gilk Legacy Law PLLC 513 E. Bridge St. PO Box 126 Redwood Falls, MN 56283 Attorney License No: 238363 Telephone: (507) 627-4525 FAX: (507) 627-4528 Email: office@gilklegacylaw.com (01-28, 02-04)

Attorney for Petitioner Jennifer L. J. Gilk Gilk Legacy Law PLLC 513 E. Bridge St. PO Box 126 Redwood Falls, MN 56283 Attorney License No: 238363 Telephone: (507) 627-4525 FAX: (507) 627-4528 Email: office@gilklegacylaw.com (01-28, 02-04)

Attorney for Petitioner Jennifer L. J. Gilk Gilk Legacy Law PLLC 513 E. Bridge St. PO Box 126 Redwood Falls, MN 56283 Attorney License No: 238363 Telephone: (507) 627-4525 FAX: (507) 627-4528 Email: office@gilklegacylaw.com (01-28, 02-04)

Attorney for Petitioner Jennifer L. J. Gilk Gilk Legacy Law PLLC 513 E. Bridge St. PO Box 126 Redwood Falls, MN 56283 Attorney License No: 238363 Telephone: (507) 627-4525 FAX: (507) 627-4528 Email: office@gilklegacylaw.com (01-28, 02-04)

Attorney for Petitioner Jennifer L. J. Gilk Gilk Legacy Law PLLC 513 E. Bridge St. PO Box 126 Redwood Falls, MN 56283 Attorney License No: 238363 Telephone: (507) 627-4525 FAX: (507) 627-4528 Email: office@gilklegacylaw.com (01-28, 02-04)

Attorney for Petitioner Jennifer L. J. Gilk Gilk Legacy Law PLLC 513 E. Bridge St. PO Box 126 Redwood Falls, MN 56283 Attorney License No: 238363 Telephone: (507) 627-4525 FAX: (507) 627-4528 Email: office@gilklegacylaw.com (01-28, 02-04)

Attorney for Petitioner Jennifer L. J. Gilk Gilk Legacy Law PLLC 513 E. Bridge St. PO Box 126 Redwood Falls, MN 56283 Attorney License No: 238363 Telephone: (507) 627-4525 FAX: (507) 627-4528 Email: office@gilklegacylaw.com (01-28, 02-04)

Attorney for Petitioner Jennifer L. J. Gilk Gilk Legacy Law PLLC 513 E. Bridge St. PO Box 126 Redwood Falls, MN 56283 Attorney License No: 238363 Telephone: (507) 627-4525 FAX: (507) 627-4528 Email: office@gilklegacylaw.com (01-28, 02-04)

Attorney for Petitioner Jennifer L. J. Gilk Gilk Legacy Law PLLC 513 E. Bridge St. PO Box 126 Redwood Falls, MN 56283 Attorney License No: 238363 Telephone: (507) 627-4525 FAX: (507) 627-4528 Email: office@gilklegacylaw.com (01-28, 02-04)

Attorney for Petitioner Jennifer L. J. Gilk Gilk Legacy Law PLLC 513 E. Bridge St. PO Box 126 Redwood Falls, MN 56283 Attorney License No: 238363 Telephone: (507) 627-4525 FAX: (507) 627-4528 Email: office@gilklegacylaw.com (01-28, 02-04)

Attorney for Petitioner Jennifer L. J. Gilk Gilk Legacy Law PLLC 513 E. Bridge St. PO Box 126 Redwood Falls, MN 56283 Attorney License No: 238363 Telephone: (507) 627-4525 FAX: (507) 627-4528 Email: office@gilklegacylaw.com (01-28, 02-04)

Attorney for Petitioner Jennifer L. J. Gilk Gilk Legacy Law PLLC 513 E. Bridge St. PO Box 126 Redwood Falls, MN 56283 Attorney License No: 238363 Telephone: (507) 627-4525 FAX: (507) 627-4528 Email: office@gilklegacylaw.com (01-28, 02-04)

Attorney for Petitioner Jennifer L. J. Gilk Gilk Legacy Law PLLC 513 E. Bridge St. PO Box 126 Redwood Falls, MN 56283 Attorney License No: 238363 Telephone: (507) 627-4525 FAX: (507) 627-4528 Email: office@gilklegacylaw.com (01-28, 02-04)

Attorney for Petitioner Jennifer L. J. Gilk Gilk Legacy Law PLLC 513 E. Bridge St. PO Box 126 Redwood Falls, MN 56283 Attorney License No: 238363 Telephone: (507) 627-4525 FAX: (507) 627-4528 Email: office@gilklegacylaw.com (01-28, 02-04)

Attorney for Petitioner Jennifer L. J. Gilk Gilk Legacy Law PLLC 513 E. Bridge St. PO Box 126 Redwood Falls, MN 56283 Attorney License No: 238363 Telephone: (507) 627-4525 FAX: (507) 627-4528 Email: office@gilklegacylaw.com (01-28, 02-04)

Attorney for Petitioner Jennifer L. J. Gilk Gilk Legacy Law PLLC 513 E. Bridge St. PO Box 126 Redwood Falls, MN 56283 Attorney License No: 238363 Telephone: (507) 627-4525 FAX: (507) 627-4528 Email: office@gilklegacylaw.com (01-28, 02-04)

Board Committee Appointments:

-Personnel/Negotiations/Budget*: Arlyn Gehrke, Tami Rauk, Dan LaRock (*Also serves as Rock County Liaison)

-Building/Grounds: Tim Bosch, Dan LaRock, Ethan Rozeboom

-Transportation: Arlyn Gehrke, Tim Bosch, Chris Harnack

-MSHSL: Dan LaRock, Tim Bosch

-Policy: Renae Knobloch, Dan La Rock, Ethan Rozeboom

-Safety: Tim Bosch, Chris Harnack, Ethan Rozeboom

-Curriculum: Tami Rauk, Chris Harnack, Renae Knobloch

-Graduation Standards/Staff Development/Education: Tami Rauk

-Gifted and Talented: Renae Knobloch

-Community Education: Tim Bosch

-Legislation: Dan LaRock

-Teachers Administration Board-TAB: Arlyn Gehrke, Tami Rauk

PATRIOT PRIDE: -Back to School after Break

-Winter Activities in Full Stream

BOARD COMMITTEE MEETING REPORTS: -Staff Development-01/06/2021

-Building/Grounds Meeting -01/07/2021

Motion by LaRock, second by Rozeboom, and carried to approve Consent Agenda: -Minutes - 12/28/2020

-Bills

-Consider/Approve Accepting Valerie Meinerts Resignation as Paraprofessional effective at the end of the day on January 22, 2021

-Consider/Approve Hiring Arielle Larson as Special Needs Paraprofessional beginning Tuesday, January 26, 2021

-Consider/Approve assigning Heather Erickson as Weight Room Supervisor until the beginning of Track Season

-Consider/Designate District Depository as Security Savings Bank, Hills, MN

-Consider/Designate the Rock County Star-Herald as the district's official newspaper

-Consider/Designate the District Office Entrance #1 (301 N Summit Ave, Hills, MN) as the official location for posting notice of all district meetings and announcements

-Consider/Approve--Setting Second and Fourth Monday as Board Meeting Days at 7 p.m. in the Secondary School Board Room-301 N Summit Ave, Hills, MN for Regular Board Meetings for the 2021 year.

-Consider/Assign Knutson Flynn & Deans, PA as the District's Legal Counsel

-Consider/Assign Bonander Lachlan M Law Office for local legal matters

-Consider/Assign Superintendent and Board Chairperson as authorized to seek assistance for District legal matters with assigned legal counsel

-Consider/Authorize the Treasurer to Pay Bills

-Consider/Authorize the Superintendent and Business Office to perform the duties of Treasurer

-Consider/Authorize the Business Manager and Superintendent to make wire transfers for District Bond Payments

-Consider/Approve Resolution directing the Superintendent to make recommendations for adjustments in curriculum, program, and staff for the 2021-2022 school year.

-Consider/Authorize the Superintendent to contract for goods and services

-Consider/Authorize the Business Manager and Athletic Director to sign checks on the Imprest account.

-Consider/Assign the Elementary Principal, Todd Holthaus as Local Education Agency/Federal Programs Director

-Consider/Assign the Principal, Andrew Kellenberger, as the Title IX Coordinator

-Consider/Approve Mileage Reimbursement rate of 51 cents per mile for personal use of vehicle, when district vehicle is unavailable.

ACTION ITEMS: Motion by Bosch, second by Knobloch and carried to approve setting board member compensation:

-Meeting Pay - \$50.00

-Full Day Meeting Pay - \$50.00

-Committee Pay - \$50.00

-Mileage Reimbursement for attending district meetings – none.

Motion by Knobloch, second by Bosch, and carried to approve Resolution providing for combined polling places for school district elections not held on the day of a statewide election for the year 2022.

Motion by Rauk, second by LaRock, and carried to approve Resolution directing the Superintendent to make recommendations for adjustments in curriculum, programs, and staff for the 2021-2022 school year.

DISTRICT NON-ACTION ITEMS: -Secondary Principal Report

Van Santen trust: Notice to creditors

NOTICE TO CREDITORS OF DECEASED SETTLOR AND SUCCESSOR TRUSTEE

Notice is given that on November 26, 2020, Jim Van Santen died, who was the Settlor of the Jim and Marilyn Van Santen Living Trust dated March 30, 2015, and any amendments thereto.

Marilyn Van Santen, whose address is 1314 60th Ave., Luverne, MN 56156, is the current Trustee of the Jim and Marilyn Van Santen Living Trust dated March 30, 2015, and any amendments thereto.

Creditors of the deceased Settlor must file their claims within four (4) months after the date of the first publication of this Notice or any claim or collection efforts which otherwise could have been asserted or enforced against the trust or assets thereof may be barred.

Claims may be submitted to the Trustee by mailing a written statement of the claim to the Trustee at the address above.

Dated this 26th day of January, 2021

/s/ Marilyn Van Santen
Marilyn Van Santen
1314 60th Ave.
Luverne, MN 56156
(507) 673-2372

Evan Anema
Estate Planning Solutions Law Firm, PLLC
5027 S. Bur Oak Place
Sioux Falls, SD 57108
(605) 906-8118
www.epslawfirm.com

(02-04, 02-11)

Rock County Highway Department seeks bids by March 1

NOTICE TO CONTRACTORS

S.A.P. 067-602-009; S.A.P. 067-603-032; S.A.P. 067-605-013; S.A.P. 067-607-019;
S.A.P. 067-609-023

Sealed proposals will be received by the Rock County Highway Department at Luverne, Minnesota, until **11:00 A.M. on Monday March 1st, 2021.**

READ CAREFULLY THE PROVISIONS FOR THE WAGE RATES AS CONTAINED IN THE SPECIAL PROVISIONS, AS THEY WILL AFFECT THIS PROJECT.

Attention is called to the fact that the Contractor must comply with the **Special Equal Employment Opportunity Provisions** as contained in the Proposal. Proposals will be opened and read publicly in the presence of the Rock County Highway Engineer at the Rock County Highway Building located at 1120 North Blue Mound Avenue in Luverne, Minnesota immediately following the hour set for receiving bids for the following Rock County Highway work. Bids will be awarded on Tuesday, March 2nd, 2021, at the regular Rock County Board of Commissioners Meeting held in the Law Library at the Rock County Courthouse.

The Major Quantities of Work are: 51,282 Sq. Yds. Stabilized Full Depth Reclamation; 146,698 Gallons Bituminous Material for Mixture; 194,373 Sq. Yds. Mill Bituminous Pavement; 35,304 Tons Type SP 12.5 Bituminous Wear Course Mix; 8,989 Tons Aggregate Shouldering Class 1; 6,561 Gallons Bituminous Material for Fog Seal. 58 Ft. of 16'x7' PCST. Box Culvert + 2 End Sections; 54 Ft. of 12'x6' PCST.

Box Culvert + 2 End Sections; 54 Ft. of 12'x5' PCST. Box Culvert + 2 End Sections.

Plans, specifications and proposals may be viewed and downloaded on Quest at www.questcdn.com and at the Rock County Highway Department website, www.co.rock.mn.us/highway. Questions may be directed to the office of the Rock County Highway Engineer, 1120 North Blue Mound Avenue, P.O. Box 808, Luverne, MN 56156-0808 / (507) 283 - 5010.

The non-refundable cost for Plans and one proposal will be **\$50.00.**

Bids must be accompanied by a certified check or corporate surety bond drawn in favor of the Rock County Treasurer in the amount of at least five percent (5%) of the proposal.

Sealed bids shall be clearly marked **"PROJECT NO. SAP 067-602-009; Etc.**

The Board of Rock County Commissioners reserves the right to reject any or all bids and to waive any defects therein.

Rock County is an Equal Opportunity/Affirmative Action Employer.

Mark R. Sehr, P.E.
Rock County Highway Engineer
(02-04, 02-11, 02-18)

Keep up with what's
happening in Rock County
www.star-herald.com

Star Herald CLASSIFIEDS

EMPLOYMENT

CHS Nutrition has a
**Full Time
Maintenance Position**
available in our Corson, SD Feed Mill.

Comprehensive Benefit Package Including:
Health, Dental, Vision, 401k with Company
Match and a Company Funded Pension Plan



605-582-7551
Visit our careers page
www.chsinc.com/careers/
for full details and to
apply online.

EMPLOYMENT

New Prairie Insulation of Beaver Creek has full time insulation installer positions available. Monday-Friday; Health insurance, vacation pay, holiday pay, retirement plan, bonus, opportunities; will train. Call 605-376-3006. (tc)



**Habilitative
Services, Inc.**
is hiring a FT RN
or LPN in Luverne.
Good benefits.
Apply online at jobs.
thementornetwork.com

RECYCLE!

EMPLOYMENT

Adrian Public School is seeking applications for a classroom/special education paraprofessional at the Elementary. Candidates will work with teachers providing academic and behavioral support to students. Candidates should hold an associates degree, or have certification via the Para Pro assessment. If interested, please complete our online district application found at www.isd511.net. For additional information, please contact Molly Schilling at m.schilling@isd511.net Position open until filled. (1.21-2.6)

CARDS OF THANKS

Thank you very much for all the cards, gifts, visits, calls, thoughts and prayers I received for my 80th birthday. Everything was greatly appreciated. I haven't found the words to express the love and joy my sons, their wives, grandchildren, spouses and great-grandchildren gave me. They outdid the pandemic with the "Twelve Days of Avis." Each day was filled with anticipation and excitement. Thanks to Bob for his special wishes. It was the best birthday ever.
God Bless All of You,
Avis Fick (2.4-2.6)

CARDS OF THANKS

We would like to send out a huge thank you to everyone that sent cards for our 50th Anniversary! So great to hear from you all!
Robert & Dianna Tomlinson
(2.4-2.26)

A big thanks for all the cards, phone calls, treats and kind gestures I received for my 90th birthday.
Floyd Kraetsch
(2.4-2.6)

MISCELLANEOUS

HAVE A UNIQUE SERVICE OR BUSINESS? Get the word out to over 1.4 million households. Call WIDE AREA CLASSIFIEDS today, 507-359-7326. (tc)

RENTALS

Apartment for rent: One-bedroom, ground floor apartment with garage. No pets; no smoking. 507-283-9720. (tc)

For Rent: Two-bedroom house now available for rent with single garage; stove and refrigerator furnished. No smoking; no pets. Call 507-283-4095 or 507-290-1948. (tc)

For Rent in Luverne: Two-bedroom apartment with central air, on-site laundry, includes water, heat and one-stall garage. No smoking and no pets. 507-920-0406. (1.16-2.4)

START THE NEW YEAR IN A NEW HOME! CENTENNIAL APARTMENTS

1 Bedroom

For those 50+ or Disabled
Includes ALL Utilities!
507-283-2652

Equal Housing Opportunity
LloydManagementInc.com



**Owner Operators
Wanted!**

- » Consistent Freight!
- » Non forced dispatch
- » Fuel & Insurance discounts!
- » Lease Purchase Available!

**\$5,000
Sign-on Bonus***

*Contact Universal for details

Join the team! Call or Text Pierre @ (605) 403-0058

PEOPLE DRIVEN SOLUTIONS

www.DriveUniversal.com



HELP WANTED!!!

K & M Concrete Construction, Inc. is a full service concrete construction company performing commercial, industrial and institutional flatwork and structural concrete. We are searching for employees that want to become a part of a hard working, family orientated TEAM.

We are looking to fill the following positions. If you want great pay, good benefits, and want to work for a company that will strive to promote and improve together, we might be the company for you.

**Concrete Laborers
Concrete Finishers
Concrete Foremen
Equipment Operators**

Starting pay is \$20 - up to \$35/hr DOE. Company paid hotel. Daily per diem when on the road. Health insurance, company match IRA, HSA. Travel is required.

If interested, please submit your resume:
Email: kristi@kmcconcreteinc.com
Mail: K & M Concrete Construction, Inc.
PO Box 236
Edgerton, MN 56128
Phone: 507-442-4855
Fax: 507-442-5110



MCAN

Minnesota Classified Advertising Network



EMPLOYMENT

SPEECH PATHOLOGIST

KMS Public Schools has an opening beginning fall 2021. Qualifications: MN licensure. Apply online: www.kms.k12.mn.us and attach letter of interest, resume, transcripts, copy of license and three letters of recommendation.

LT SUBSTITUTE

KMS Public Schools has teaching positions available: High School English beginning February 2021; High School Social Studies beginning March 2021. Apply online: www.kms.k12.mn.us or send letter of interest, resume, references to KMS Public Schools, Box 168, Kerkhoven, MN 56252

SEED/FEED/GRAINS

PROTECT YOUR YIELD

from soybean white mold and SDS. Ask your seed dealer for Heads Up® Seed Treatment. Cost-effective. Proven results. HeadsUpST.com/plant21 or 866/368-9306

MISCELLANEOUS

TIMESHARE CANCELLATION EXPERTS

Over \$50,000,000 in timeshare debt & fees cancelled in 2019. Get free informational package & learn how to get rid of your timeshare! Free consultations. Over 450 positive reviews. Call 833/619-1117

4G LTE HOME INTERNET

Now available! Get GotW3 with lightning fast speeds, plus take your service with you when you travel! As low as \$109.99/mo! 844/960-4698

DIRECTV

Every live football game, every Sunday - anywhere - on your favorite device. Restrictions apply. Call IVS 877/350-0094

DONATE YOUR CAR

truck or boat to Heritage For The Blind. Free 3-day vacation, tax deductible, free towing, all paperwork taken care of 844/220-9501

MISCELLANEOUS

DISH NETWORK \$64.99

for 190 Channels! Blazing fast internet, \$19.99/mo. (where available.) Switch & get a FREE \$100 Visa gift card. FREE voice remote. FREE HD DVR. FREE streaming on ALL devices. Call today! 855/562-4309

AT&T WIRELESS

Two great new offers! Ask how to get the new iPhone 11 or Next Generation Samsung Galaxy S10e on us with AT&T's Buy one, Give One offer. While supplies last! Call 855/332-0464

Classified Advertising
that is
Easy!

THE MINNESOTA CLASSIFIED AD NETWORK
Make an impact with your advertising dollar with classified advertising that reaches over 2.5 million readers!

mcans
STATEWIDE
CLASSIFIEDS
Your newspaper representative can provide complete details.
The 224 Network is a program of the MNA, phone 800-278-2979



More can be recycled than your papers!

You can also recycle:

- + Metal
- + Plastic
- + Glass
- + Paper
- + Cardboard
- + Aluminum

Thank You!

Lost wedding ring found/continued from page 1

On Saturday a fresh layer of snow covered Hansen's deck.

Helping Karsten with the shoveling were his mom, Anna, and younger brother, Dax. His dad, Tom, was out of town at work.

Anna said as she worked to remove the snow ridge under the deck railing, Karsten followed and dumped the loosened snow over the railing. They were 20 minutes into the task when Karsten stopped.

"Suddenly he said, 'I saw a golden ring,'" Anna said. "I saw a golden ring, I swear."

Sifting through the snow, Karsten held up Hansen's lost wedding ring.

Cries of astonishment and tears of joy came from Hansen as she told the Haases about how she lost the ring weeks before, probably when she took down her Christmas lights.

Anna snapped pictures to document the find and shared the experience on her social media page.

"Every once in a while you get to experience a



Submitted photo Alice Hansen (far left) watches Karsten (center) and Dax Haas remove snow from her deck Saturday afternoon. Moments after the picture was taken, Karsten spied a golden ring, which turned out to be Hansen's lost wedding ring.

story that fills your heart with so much joy," Anna wrote.

"What a miracle this truly was and confirmation that our angels in

heaven are always watching over us."

Hansen said she tipped Haas for finding her ring, a portion of which he donated Sunday at church.



New year. New job.

Master Scheduler
Press Operator
Press Assistant
Finishing Operator
Plate Mounter
Maintenance Technician
Warehouse

Visit www.ccllabelsf.com for a full listing our job descriptions.
 Complete an application online or at the address below M-F 8 AM - 4 PM.

1209 W Bailey St. Sioux Falls, SD 57104
(605) 336-7940 • sfhr@cclind.com

Interested in Advertising?

Call **Rick or Chantel** to advertise in the Announcer

283-2333

24/7 ... Rain or Shine ...

Your local, independent agent will be there.

Working for you - meeting your needs.



INSURANCE


South Hwy. 75, Luverne, MN • Ph. 507-283-2381

Auto-Owners INSURANCE


LIFE • HOME • CAR • BUSINESS



A note from Mayor Patrick T. Baustian *We're All in This Together*



Governor Walz announced his Minnesota COVID-19 Recovery Budget earlier this week. Like every budget proposal it's a starting point. In this time of economic, educational recovery, in addition to rebuilding confidence in Minnesota, we need both sides of the political landscape in St. Paul to come together and put a budget together that works towards achieving those goals - the sooner the better. I encourage Governor Walz, the Minnesota House and Senate to put Minnesotans at the forefront of their debates so we can continue down the road of recovery. The residents of Luverne and all of Minnesota have endured the pain and suffering of the pandemic far too long. The last thing we need is some sort of political pandemic coming from St. Paul. Stay safe, stay six feet apart, but come together and get the job done.



Governor Walz's biennial budget proposal supports working families, ensures students catch up on learning, and helps small businesses stay afloat

Jan. 26, 2021 – Governor Tim Walz today announced Minnesota's COVID-19 Recovery Budget – his budget proposal for the next biennium. As Minnesota continues to battle the COVID-19 pandemic, Governor Walz's budget supports working families, ensures students catch up on learning, and helps small businesses stay afloat while driving economic recovery.

"Minnesotans have met the challenges of COVID-19 pandemic as they always do when faced with hardship – with grit and resiliency. Now, as we look toward the future, Minnesotans are ready to confront the challenges we face today while investing in a brighter future. That's why I am proposing Minnesota's COVID-19 Recovery Budget to ensure we emerge from this crisis stronger than before," said Governor Walz.

"Not every Minnesotan was impacted by the COVID-19 pandemic equally. We know the COVID-19 pandemic hit our working families, small businesses, and students particularly hard. They need our help," Governor Walz continued. "The budget I am unveiling today will make significant strides in helping those Minnesotans stay afloat."

"We have often said that a budget is not only a fiscal document – it's a moral document," said Lieutenant Governor Peggy Flanagan. "This budget reflects the morals of the majority of Minnesotans. I am proud that this budget makes smart choices to invest in the future by asking the wealthiest to pay their fair share and supporting those who have borne the heaviest burdens of the COVID-19 pandemic, all while maintaining a fair and balanced budget."

MINNESOTA'S

COVID-19 RECOVERY BUDGET



- Supporting small businesses and driving economic recovery**
- Ensuring students catch up on learning**
- Supporting working families**

SUPPORTING SMALL BUSINESSES & DRIVING ECONOMY RECOVERY

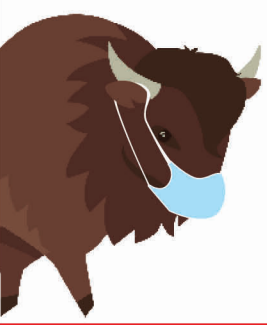
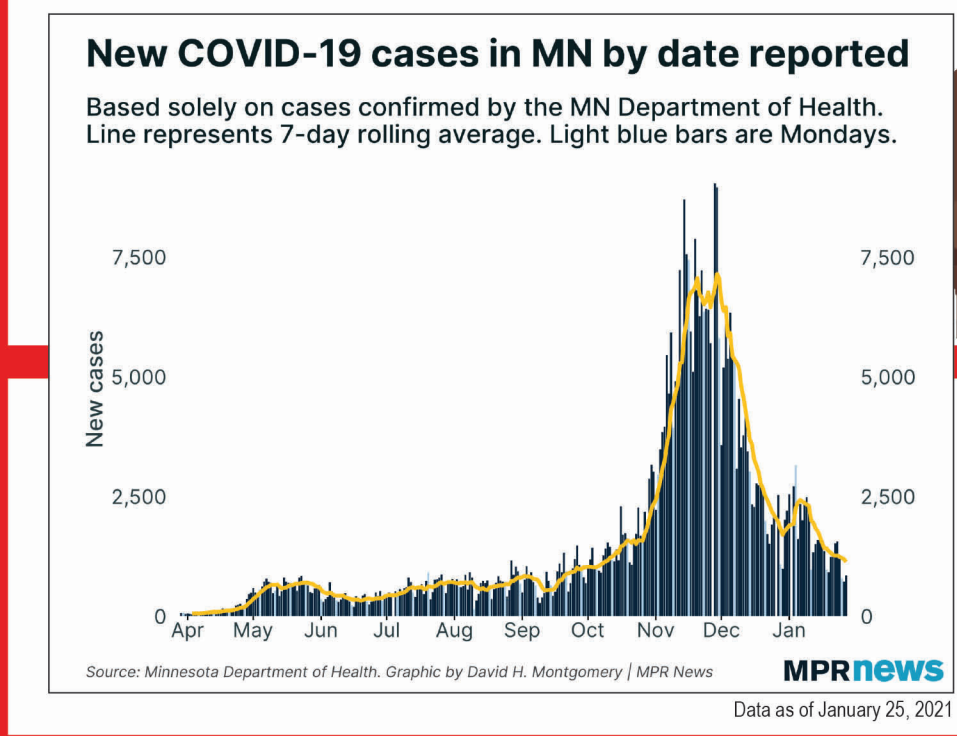
Minnesota's small businesses and workers are bearing a large burden of the COVID-19 pandemic in order to protect their entire community amid restrictions that are saving lives. By supporting small businesses and driving economic recovery, Governor Walz's budget ensures that communities across Minnesota aren't just surviving, they are thriving.

ENSURING STUDENTS CATCH UP ON LEARNING

Every child deserves a high-quality education, no matter their race or zip code. The COVID-19 pandemic has exacerbated existing disparities in education. As schools reopen to in-person learning, we must help students recover and catch up on learning.


SUPPORTING WORKING FAMILIES

Many working families lost everything due to the COVID-19 pandemic. Minnesotans know that we all do better when we all do better—and a lot of our neighbors need help. Governor Walz's budget ensures that those who have been hit hardest by the COVID-19 pandemic have the resources they need to survive by expanding access to critical assistance, investing in Minnesota's working parents, and helping workers stay on the job.



I am confident that Luverne Area Residents, working together, will emerge from this pandemic much stronger as a community.



Sincerely,

 Mayor Patrick T. Baustian

You can recycle more than just your paper!

Consider recycling:
Glass - Metal - Paper - Plastic

