



# Rock County STAR HERALD

Rock County's oldest business, printing since 1873

Thursday, February 3, 2022

## Luverne annexes 8.42 acres of Mound Township land on north side

Development to be divided into four large residential lots, 13 more lots likely in future expansion there

By Lori Sorenson

More than eight acres of land north of Luverne will become part of the city following action at the Jan. 25 council meeting.

In a last-minute addendum to the agenda, Luverne City Council members approved a "resolution for orderly annexation" with Mound Township for a parcel owned by Allen Schmuck and Patrick

Widboom.

The property owners petitioned the city requesting immediate annexation of the 8.42 acres into the city for the purpose of residential development.

The land, north of the hospital along the north side of 131st Street, will be divided into four large residential lots.

The parcel currently has no city utilities,

but city staff indicated those services can be provided for a price. The owners will pay for a large share of the improvements.

"I think this is our growth to the north," Call said, hinting at future annexation in that area near the Luverne's northern border.

"There's room for another 13-lot development that we'd like to the north there.

There'd be a lot of growth and taxation for the city."

Mound Township officials approved the petition Jan. 24, with signatures by Mound Township chair Keith Schmuck and clerk David DeBoer. As part of the agreement, the city of Luverne will make a one-time payment to Mound Township of \$2,000 for lost future tax revenue.

## Beaver Creek hauler fined for manure discharges

By Mavis Fodness

Cody Penning, owner of Penning Hauling of Beaver Creek, was fined \$9,650 for discharging thousands of gallons of liquid swine manure in 2019.

The discharge occurred in a sensitive drinking water supply area in Clinton Township.

Officials with the Minnesota Pollution Control Agency (MPCA) charged Penning with violating general standards for waters of the state, discharging waste into an unsaturated zone and failing to duly notify the MPCA directly to avoid water pollution.

Penning did not dispute the charges.

The Rock County Land Management Office assisted with the documentation of the incidents and the cleanup of the affected areas south of Luverne near the Rock County Rural Water treatment plant.

The manure discharges took place within the water district's sensitive drinking water supply management area.

RCRW Director Ryan Holtz told county commissioners Jan. 25 that testing revealed no contamination from the Oct. 28 and 29, 2019, incidents.

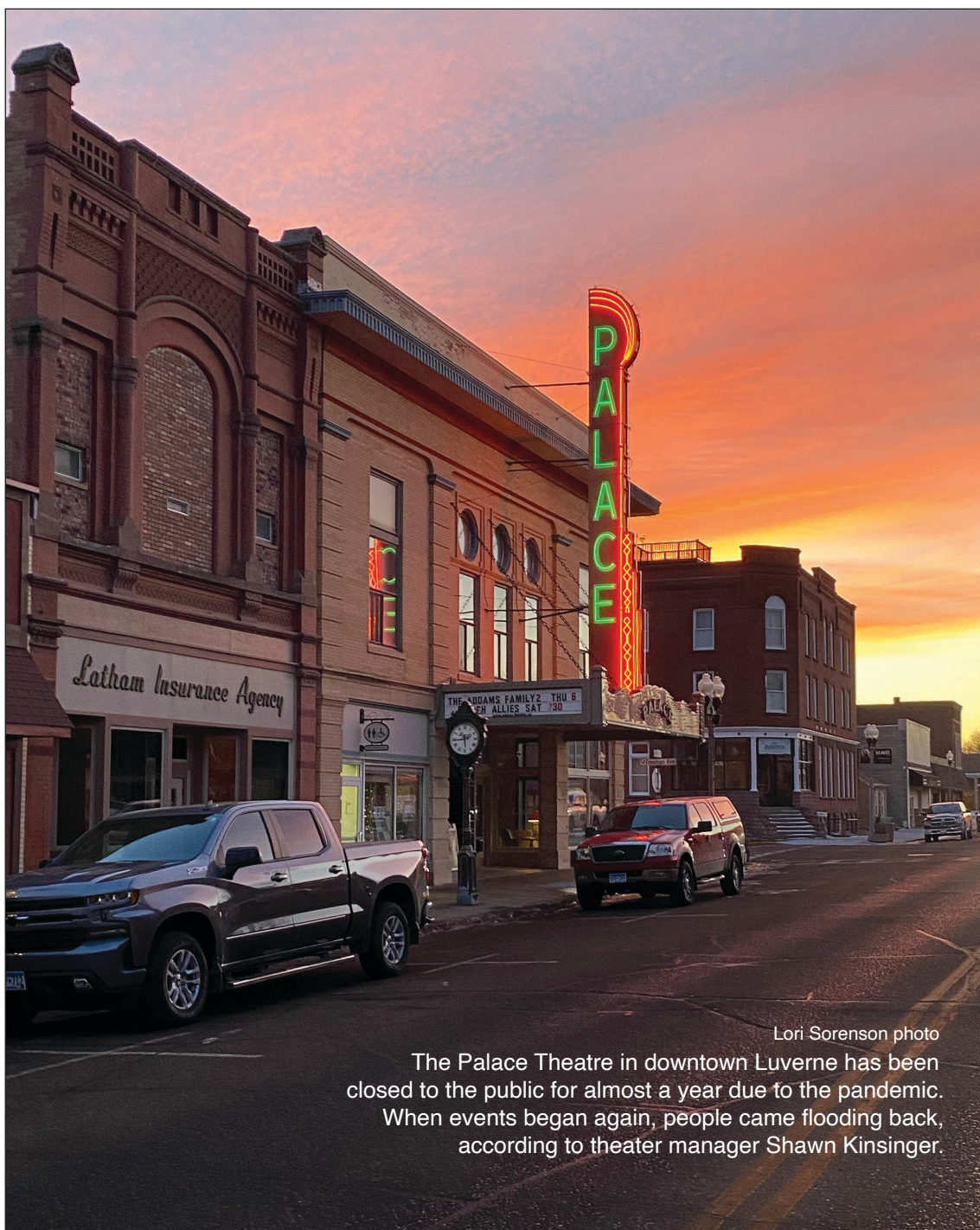
"It was very, very close to our treatment plant and our draw zone," Holtz said.

"Where the spill happened and the way the (Rock) river runs, it never — luckily — made it into any of our wells. That would have been catastrophic."

**Incidents occurred Oct. 28 and 29, 2019**

Penning was using a tractor and pulling two manure applicator tanks filled with liquid manure on Oct. 28, 2019, when he drove into a soft area in the field.

Manure spill fine/see page 3



Lori Sorenson photo

The Palace Theatre in downtown Luverne has been closed to the public for almost a year due to the pandemic. When events began again, people came flooding back, according to theater manager Shawn Kinsinger.

## Palace 'hitting on all cylinders' after pandemic setbacks

By Lori Sorenson

"We were right back at it, as if nothing ever changed."

That's how Palace Theatre director Shawn Kinsinger described the past several months since the pandemic.

"This past fall into winter, I was curious as to how much we would rebound after being closed over the last holiday season, which is typically really busy," he told Luverne City Council members during their Tuesday, Jan. 25, meeting.

"Everything's firing on all cylinders again.

Movies came back nicely after the holiday season. The numbers have been spectacular for all the shows we brought in."

**Mama Mia 'blew the doors off'**

Kinsinger said popular live events included the Dueling Pianos in October and the Shawn Johnson Holiday Show, but he said the locally produced "Mama Mia" in November was among the biggest hits.

"That absolutely blew the doors off the

Palace update/continued on page 2

## District hires health aide, accepts ag retirement

By Mavis Fodness

At their Jan. 27 meeting, Luverne School Board members unanimously supported hiring an existing employee to fill the newly created district health aide position.

Karen Hubbling works as a middle-high school paraprofessional and has worked for the local district since 2017. She is also a registered nurse.

Hubbling was one of 10 applicants for the \$25-per-hour position.

"In our applicant pool, we had very good candidates," said Superintendent Craig Oftedahl. "We had two other RNs and we had some LPNs also."

Minimally, the District required a licensed practical nurse (LPN).

The district posted the position in December after a divided vote from board members to move forward with the added position.

At that time, Oftedahl was uncertain if anyone would apply for the full-time position, for which health benefits would not be offered.

The health aide will spend half the work day serving "medically fragile" students and the rest of the day assisting the district school nurse.

The health aide's duties are subject to change as health needs change in the district.

Over the summer months, the health aide position reverts to part-time status.

Hubbling will become the district health aide once her paraprofessional position is filled.

**In other news, Luverne School Board members:**

- agreed to keep officers in the same position for 2022. Eric Hartman remains chairman with Tim Jarchow as vice chairman, Reva Sehr, clerk and Katie Baus-tian, treasurer.

- approved hiring Jon Schomacker as the 2022 summer recreation director with a salary of \$9,400, a \$200 increase over last year.

- approved hiring Peyton Elbers as the long-term substitute for elementary teacher Dana Wolf, beginning Feb. 24.

- accepted the resignation of Bill Thompson as the middle school Lego League adviser effective at the end of the current school year.

- accepted the retirement of agriculture teacher Dennis Moritz, also effective at the end of the current school year.

## City, non-profit ink contract on Child's Remembrance Garden

By Lori Sorenson

The Child's Remembrance Garden in Luverne is taking shape with the efforts of local volunteers, generous donations and help from city leaders.

The garden will provide a place for people who have lost a child to grieve, remember and heal.

Several local families who have lost children formed a non-profit and have been raising money to design and build the garden on a parcel of land owned by the city.

Last summer they approached the City Council about leasing the 140-foot by 60-foot parcel in the northwest corner of Tonto Park off James Street

near the Catholic cemetery.

At that July meeting, the city verbally agreed to provide the space free of charge with the understanding that long-term maintenance would be a shared responsibility.

At their Jan. 25 meeting council members and the non-profit group signed a "Contract for Management and Operation of Child's Remembrance Garden."

The contract states that the city will own the garden and its accessories, and the non-profit will be responsible for costs associated with operating, main-

Remembrance garden/see page 3



Lucas Stoffel  
Oak Haven Landscape and Design





## Rural Dementia Caregiver Project helps rural caregivers connect to online workshop

Millions of rural caregivers provide crucial support to family members or friends living with memory loss and dementia.

These same caregivers often feel stressed and isolated. An online workshop may help them.

The University of California, San Francisco, is conducting a study of a new online caregiver workshop.

The project is funded by the National Institutes of Health.

Caregivers may qualify if they live in a rural area, care for someone with memory loss, are 18 or older and provide care for at least 10 hours per week.

Caregivers who participate in the study of the workshop will be asked to complete four surveys on their caregiving experiences and will receive up to \$80 in cash for doing so.

### What does the online workshop offer?

The workshop is accessible to rural caregivers whenever they want it, day or night.

It teaches caregivers new skills to reduce their stress, take better care of themselves, manage challenging behaviors of their care partners, and plan for the future.

Caregivers also get a workbook to keep, support from other caregivers, and information on community resources.

Interested caregivers can go to the Rural Dementia Caregiver Project website, caregiverproject.ucsf.edu or call 1-833-634-0603 to get more information.

Organizations that work in rural communities or have contact with caregivers can use the same contact information.

## CGMC leaders: Now is the time to invest in key priorities that will bolster Greater Minnesota

### Local Government Aid, water infrastructure, child care and housing among coalition's top legislative priorities for 2022

As lawmakers plan for how to utilize the state's historic \$7.7 billion budget surplus, leaders from the Coalition of Greater Minnesota Cities (CGMC) are calling on Governor Walz and the Legislature to remember rural Minnesota.

"The Governor and legislators have a once-in-a-generation opportunity to make investments that will benefit our state now and well into the future," said CGMC director Bradley Peterson during a virtual meeting with statewide leaders and media Jan. 27.

Peterson, who was joined on the call by Luverne Mayor and CGMC President Pat Baustian and Owatonna Mayor Tom Kuntz, said for Greater Minnesota that means investing in Local Government Aid (LGA), wastewater and drinking water infrastructure, and in workforce needs like child care and housing.

### LGA hasn't kept up with rising expenses, inflation

As its top legislative priority for 2022, the CGMC is seeking a \$90 million increase in LGA, a statewide program that restrains property taxes, reduces inequities between communities and ensures all cities are able to provide quality services and quality-of-life amenities to residents and businesses.

"LGA is the lifeline for Greater Minnesota cities. Without it, rural Minnesota would crumble," Baustian said.

He noted that in Luverne, LGA makes up about 28 percent of the city's annual budget. He

said Greater Minnesota cities are strategic when planning their budgets, but increasing expenses and inflation continue to put a strain on city finances.

"Like other cities, our costs have increased a lot in recent years," Baustian said.

"Construction costs have gone up 35 to 50 percent over the last four years. We have an aging workforce, which drives up costs. But LGA has not kept pace with rising costs and inflation."

Peterson added that while local governments received pandemic relief from the federal government, that money is not a substitute for LGA.

"LGA is consistent funding with flexible uses that allows cities to better plan for the future as they set their budgets."

### Water infrastructure should be cornerstone of bonding bill

CGMC is also urging the Legislature to pass a large capital investment bill (a.k.a. "bonding bill") that includes \$299 million for water and wastewater infrastructure grant and loan programs.

"With low interest rates, a hefty budget surplus and federal money to leverage, now is the time for a transformational investment in Minnesota's water infrastructure," Peterson said.

"This funding is needed to make progress in addressing the backlog of water infrastructure projects across the state."

Peterson noted that costs to upgrade or build a new water treatment facility are often tens of millions of dollars which mostly fall on communities and their ratepayers.

"Cities are willing to pay their fair share, but it is incredibly difficult to pay for these massive projects without a grant or loan from the state," Peterson said.

CGMC/see page 5



Lucas Stoffel from Oak Haven Landscape and Design out of Sherburn will work to build the Child's Remembrance Garden in northwest Luverne beginning this spring. City crews already cleared the area of old evergreen trees.

## Remembrance garden/continued from page 1

taining and managing the property, including utilities for a water feature and lighting.

City public works crews have already helped by clearing some old, dying evergreens and preparing the site for development.

The garden will be professionally planned and installed by a landscape architect/designer hired by the non-profit group, and the city will review the plans before implementation.

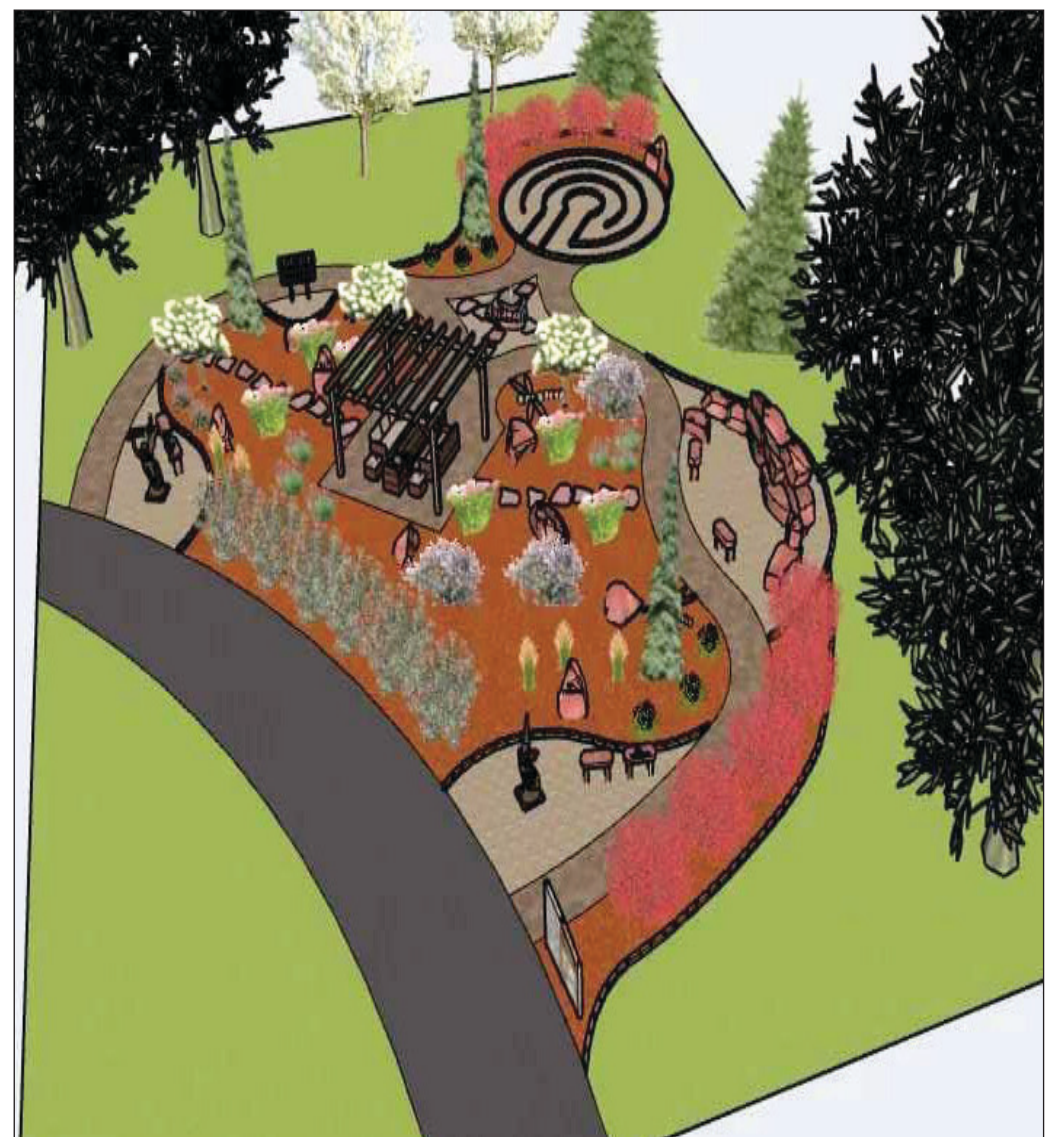
Lucas Stoffel from Oak Haven Landscape and Design out of Sherburn, Minnesota, will be working to build the garden in Spring 2022.

Among other specifications, the contract states that the group will not allow "the internment of human remains or scattering of ashes of human remains in the garden."

It also states that the non-profit will raise funds to establish a reserve for repair and replacement and improvement of the garden.

The initial timeline for the lease is for five years; then the parties will negotiate in good faith for further extensions.

"The garden will be an asset to the city park as it will be in close proximity to the Luverne Loop and provide a nice visual appeal to that corner of the park area.



In addition to city support, local donors have already given thousands toward the garden through the Luverne Area Community Foundation.

"We're so excited about it, and it's coming together so quickly," said Pat Saum, one of the group's founding members. "It's a beautiful spot. It's like

it was meant to be."

To donate, contact the Luverne Area Community Foundation at 507-227-2424. To help, contact maggie.siebenahler@gmail.com or pat.saum@gmail.com.

Learn more at [www.childsremembrancegarden.org](http://www.childsremembrancegarden.org) or on Facebook, Childs-Remembrance-Garden.

## Manure spill fine/continued from page 1

Frequent rains had been falling in the area and the heavy manure load caused the rig to get stuck.

Doug Bos, LMO assistant director, told commissioners that instead of transferring the liquid manure into another tank to lighten the stuck applicator tank, Penning pulled the gate valve, releasing an estimated 10,000 gallons of liquid manure onto the ground at about 7 a.m.

Penning, who has a commercial manure applicator's license, told Bos he was unaware he couldn't discharge the manure onto the ground and didn't know what else he could

have done to get the rig out of the mud.

At about 2 a.m. Oct. 29, 2019, less than 24 hours after the first discharge, Penning's rig became stuck again, and again he discharged manure onto the ground to lighten the load.

"Even though we warned him and the MPCA warned him, he pulled the plug and this time it (the manure) ran to a neighboring property and flooded their backyard," Bos said.

"You can imagine with hog manure it was quite a mess."

### Final ruling issued in August by MPCA

After several internal reviews, MPCA made their final ruling and assessed the monetary penalty to Penning in August.

Staff changes and restrictions due to the coronavirus pandemic delayed the final administrative penalty order to almost three years after the discharge incidents.

Penning didn't appeal the findings and has since completed a portion of the required corrective actions.

Penning was required to pay for the cleanup of both discharge incidents, which was factored into the fine amount. He is also required to prepare and

submit an Emergency Response Plan to the MPCA.

Penning continues to be licensed through the Minnesota Department of Agriculture to commercially apply manure in the state.

The Rock County LMO works with the Department of Ag and the University of Minnesota to host trainings for local commercial applicators.

Personal stories are normally included in the trainings.

"This is something we always use as education — when it makes a point with a fine, someone did this on purpose," Bos said.

## Luverne Township Notice

At the Luverne Township 2021 Annual meeting. It was resolved that the application of dust control products on Township roads is prohibited without prior written Board approval.

Luverne Township Board

**Are you at risk?**  
Get Screened for Risks of Stroke and Cardiovascular Disease  
5 Screening Package for \$149 Call 877-881-3319  
LIFE LINE SCREENING, The Power of Prevention

You can recycle more than your paper!  
You can also recycle:  
+ Metal  
+ Plastic  
+ Glass  
+ Paper  
+ Cardboard  
+ Aluminum  
Keep the OCEAN Clean

FROM \$2,549\*  
\$2,299\*  
BEST OF HAWAII FOUR-ISLAND TOUR  
12 days, departs year-round  
Oahu • Hawaii Island • Kauai • Maui — Enjoy a fully guided 4-island Hawaiian vacation with centrally located lodging in Waikiki on Oahu, and beachfront lodging on the "Big Island" of Hawaii, Kauai, and Maui. Guided throughout by our friendly Tour Directors—your local experts. Includes 3 inter-island flights.

VMT vacations  
promo code N7017  
1-877-375-2291

\*Prices are per person based on double occupancy plus \$299 in taxes & fees. Single supplement and seasonal surcharges may apply. Add-on airfare available. Offers apply to new bookings only, made by 3/31/22. Other terms & conditions may apply. Ask your Travel Consultant for details.

## Recycling 'tag of shame' becomes ray of sunshine

A friend of mine in Luverne put her recycling bin out on the wrong day. The



### THE NORTHVIEW

By Brenda Winter, columnist

*The bright yellow tag read, 'Not your recycling day - emptied it anyways.'*

next morning she discovered the bright yellow recycling "tag of shame" attached to it. The tag of shame is usually given to people who place non-recyclable items in recycling bins.

You know the kind – they don't wash the cans or remove the labels. (Yes, you are supposed to.)

They try to recycle types of plastic that aren't "on the list" or they repurpose plastic shopping bags to carry material to the bin and leave the bags in the recycling container. (No, you are not supposed to.)

Some have gone so far as to toss actual garbage into the recycling.

The Luverne garbage guys could probably fill a book with the tales of stupidity they encounter every week.

As for my friend, it's bad enough to be the only person on your side of the street to roll a giant recycling bin through the snow, across the ice berm and out to the curb on the wrong day, but to discover the bright yellow tag of shame twisting in the bitter Minnesota winds the next morning just makes it all the worse.

Sometimes a person just wants to blend in with the neighborhood, lie low and go unnoticed. No one wants to find the yellow tag boldly proclaiming to the neighbors, "A doofus lives here!" or "This person can't remember what day it is!"

No one wants the neigh-

bors wondering what "exactly" the problem is with the recycling situation.

My friend, seeing the tag and realizing her mistake, went to lug the giant bin back to the house.

It was empty.

The garbage guys had emptied the bin. Why?

The bright yellow tag read, "Not your recycling day – emptied it anyways."

At that moment, the bright yellow "tag of shame" became a little ray of sunshine on a cold Minnesota morning.

This isn't a sign to put out the recycling bin any day you want to. It's a sign that people are nice even when they don't have to be. Even when no one is looking.

Even when it's a little extra trouble on their part.

Thanks, garbage guys.

Have a nice day.

## Weber, Senate GOP announce session priorities

### GUEST EDITORIAL

By the Senate Republican Caucus

Senate Republicans recently announced session priorities that will focus on helping Minnesotans afford everyday life, reducing crime and empowering parents.

"Senate Republicans are focused on getting Minnesota back on track by making life affordable for Minnesotans, tackling crime, and improving education," Sen. Bill Weber (R-Luverne) said.

"We focused on the issues important to you, not on how we can increase government spending. With a record surplus, we can return money to Minnesotans and undo the damage that COVID and inflation have caused. We can help businesses recover and get the economy moving so that families have the resources they need to prosper."

#### Helping people afford their lives

The state's projected \$7.7 billion surplus will be one of the most discussed items in St. Paul.

Following stubborn and record inflation from runaway congressional spending, Senate Republicans are advancing a series of tax cuts targeted at working Minnesotans, families and seniors to help them afford their everyday life.

In the last five years, Republicans have secured billions in tax cuts, including exempting most seniors from taxes on social security and the

first income rate tax cuts in 20 years.

#### Safe communities and law enforcement support

Another priority this year will be investments in public safety and initiatives to drive down crime.

Senate Republicans plan to quickly address the urgent need to increase Minnesota's police presence while providing additional tools and resources to fight crime and recruit and retain police officers.

Republicans will also continue to be tough on crime, and address failed progressive policies that reduce or eliminate bail.

They will also introduce legislation increasing penalties for repeat offenders, carjackers, and crimes involving dangerous weapons.

#### Empowering parents as education partners

Republicans will also focus on education and getting schools back to the basics of meeting reading and math scores.

The closure of schools due to COVID has been an eye-opening

experience for parents across the state. These failed policies have left too many kids behind from COVID learning loss, which Republicans will rapidly address.

Additionally, parents have raised concerns about their kids' education coming at the cost of political activism.

To that end, Republicans propose increasing transparency and accountability in school, empowering parents and allowing them to be active partners in their child's education.

Senate Republicans have had control of the Senate since 2017 and consistently stopped harmful tax increases on working and low-income Minnesotans.

They stabilized the health care market in 2017 with the very successful reinsurance program and passed record funding for students in schools.

Senate Republicans also continue to reduce burdensome regulations on Main Street businesses and support economic development across the state.



## Snow, ice on vehicle are also hazards

We all know the dangers of driving with snow and ice on the roads, but driving with snow and ice on your vehicle is also a hazard.

Always take time to remove all snow and ice from your vehicle before traveling. This is for your safety and the safety of other drivers.

Snow and ice left on your hood, roof and trunk can shift and blow off – blinding you or the driver behind you.

Limited visibility can also occur if snow and ice are sucked into the fresh air intake of your vehicle (normally located near the bottom of the front windshield). It can create moisture fog inside your windows and windshield. It is also important to clear snow and ice from:

- **Headlights and tail-lights** to see and be seen.

- **External camera lenses**



### ASK A TROOPER

By Sgt. Troy Christianson, Minnesota State Patrol

and side view mirrors so you'll be able to see what's around you.

• **External sensors** to allow the assistive-driving features like automatic emergency braking to work.

When traveling behind a vehicle with ice or snow falling from it, give yourself plenty of room to avoid being hit with debris or having your vision obstructed. Pass the vehicle only if it is safe to do so.

You can avoid a ticket –

and a crash – if you simply buckle up, drive at safe speeds, pay attention and always drive sober. Help us drive Minnesota toward zero deaths.

If you have any questions concerning traffic-related laws or issues in Minnesota, send your questions to Sgt. Troy Christianson – Minnesota State Patrol at Statue 169.791 2900 48th Street NW, Rochester MN 55901-5848. (Or reach him at, Troy.Christianson@state.mn.us)

## Harrison: 'Habitat' is 'a fun and rewarding endeavor'

#### To the Editor:

As some of you know, Lowell and I have been doing Habitat for Humanity builds during our winter travels. It has been a fun and rewarding endeavor.

We have heard a number of heartwarming stories about the homeowners, but we were struck by the one we recently heard in Texas.

The daughter of a recent recipient of a home expressed an interest in helping this year's family. Her mother suggested she make a wreath for the door. The 11-year-old responded, "I want to buy the door, for I remember how I felt the first time I walked through the door of our new home."

She has a business of making decorated cakes and cupcakes, so she saved her earnings, and yesterday the door was delivered

### VOICE OF OUR READERS

by the family. Bless her heart.

The family of five children (ages 4-14) is hoping to either foster or adopt children after the current members are older.

Receiving a Habitat for Humanity home has been a life-changing event for many families. We have been privileged to be a small part of this effort. (FYI The family does pay for the home but, of course, it has a lower cost and is accompanied by a no-interest loan.)

Shirley Harrison, Luverne

E-mail: editor@star-herald.com Web site: star-herald.com  
Phone: 507-283-2333 Fax: 507-283-2335

Published Thursdays by Tollefson Enterprises  
POSTMASTER: Send address changes to 117 West Main, P.O. Box 837, Luverne, MN 56156. Periodicals postage paid at Luverne, Permit #33 and at additional mailing offices.

**General manager:** Rick Peterson **News staff:**  
**Advertising:** Chantel Connell Lori Sorenson, editor  
**Office manager:** Deb Lusty Mavis Fodness, reporter  
**Office assistant:** Jennifer Nelson Esther Frakes, copy editor  
**Production:** Heather Johnson **Sports inquiries:**  
**Production:** Brooke Huisman editor@star-herald.com

Rock County  
**STAR HERALD**  
Rock County's newspaper since 1873

(ISSN 0889-888X)  
SUBSCRIPTION RATES

\$74 per year in Rock County; \$91 per year all other areas. Single copies \$1.25

Entire contents copyrighted by  
Tollefson Publishing Roger Tollefson, publisher

The *Star Herald* encourages letters to the editor expressing the opinions of readers and intends to print all letters. Letters not meeting the guidelines will not be printed. The *Star Herald* will verify the authenticity of all letters. Letters must have the name of the writer, a signature and address.

Unsigned letters will not be considered. The *Star Herald* will edit for grammar, spelling and clarity. Any letters containing offensive language, libelous or slanderous material, or misleading or false information will be rewritten before being published. The *Star Herald* will not publish letters written with the sole intent to advertise or serve as a thank-you. Letters with more than 300 words may be edited. The deadline for letters is Monday 10 a.m. They may be delivered or mailed to the editor, *Rock County Star Herald*, P.O. Box 837, 117 W. Main St., Luverne, Minn. 56156.

## ON THE RECORD

### Dispatch report

**Jan. 21**  
 •Complainant on S. Kniss Avenue reported harassment via Snapchat.  
 •Complainant on County Road 17 and County Highway 4 reported a fire in the ditch.  
 •Smoke was reported at location of an earlier fire at location on County Road 17 and County Road 4.  
**Jan. 22**  
 •Nobles County requested RCSO assistance in Magnolia.  
 •Complainant on Main Street and Bluemound Avenue reported an illegally parked SUV.  
 •Complainant eastbound on Interstate 90, mile marker 21, Magnolia, reported a semitrailer swerving.  
 •Complainant on E. Warren Street reported he can hear someone yelling for help.  
 •Complainant on E. Main Street reported damage to a door.  
 •Complainant on E. State Street, Magnolia, reported a break-in at location.  
 •Trooper requested assistance with a DWI arrest at mile marker 6 on Interstate 90, Beaver Creek.  
 •Deputy reported an outage.  
**Jan. 23**  
 •Complainant on S. Kniss Avenue reported two unruly guests at location.  
 •Complainant on County Road 17 and County Road 4, Manley, reported a malfunction at railroad crossing.  
 •Complainant westbound on Interstate 90, mile marker 5, Beaver Creek, reported a vehicle swerving.  
 •Complainant on E. Mead Court reported damage to a storage unit.  
**Jan. 24**  
 •Complainant on 1<sup>st</sup> Street, Hardwick, reported someone shot his house.  
 •Nobles County requested deputy assistance on W. Warren Street.  
 •Complainant on S. Donaldson Street reported a damaged sign.  
**Jan. 25**  
 •Complainant on E. 4<sup>th</sup> Street, Hills, attempted a warrant service.

•Complainant on S. Steen Street, Steen, reported a civil issue.  
**Jan. 26**  
 •State patrol requested deputy assistance on Highway 270, Hills.  
 •Complainant in Luverne reported property damage to a school vehicle.  
 •Complainant on SE Park Street reported suspicious activity.  
 •Deputy completed a civil standby for property removal on S. Steen Street, Steen.  
 •Complainant on S. Broadway Street, Magnolia, reported a suspicious phone call.  
 •Complainant on N. Blue Mound Avenue reported a suspicious vehicle in the area.  
 •Complainant on 241<sup>st</sup> Street and 190<sup>th</sup> Avenue, Luverne, requested to tow a vehicle.  
 •Complainant on S. Central Avenue, Hills, reported a probation violation.  
**Jan. 27**  
 •Complainant north of Warren and Donaldson reported loud music.  
 •Complainant reported internet scam.  
 •Standby on S. Steen Street, Steen, for property removal.  
 •A warrant was issued on E. 4<sup>th</sup> Street, Hills.  
 •Deputy assisted with a property exchange on S. Steen Street, Steen.  
 •Complainant on Highway 75 and 131<sup>st</sup> Street, Luverne, reported an SUV all over the road.  
 •A warrant was issued on E. 4<sup>th</sup> Street, Hills.  
 •Complainant in Luverne reported a lost wallet.  
 In addition, officers responded to 5 motor vehicle accidents, 2 deer accidents, 2 vehicles in ditch, 2 escorts, 14 ambulance runs, 6 animal complaints, 2 fingerprint requests, 4 paper services, 14 burn permits, 1 background check, 3 alarms, 1 drug court test, 9 purchase and carry permits, 2 stalled vehicles, 20 traffic stops, 7 abandoned 911 calls, 1 report of cattle out.

# Spearfishing outing declared enjoyable even though pikes were elusive



## THE OUTDOORS

By Scott Rall  
 Outdoors columnist

Some fishing and hunting outings end with full game bags or fish stringers, and others end up with nothing but the receipts of the money you spent. Empty fish stringers don't always mean that the trip was not a fun or successful one, though. It depends on what criteria you use to define success.

I recently traveled to St. Cloud to attend the Minnesota Pheasants Forever state meeting. This event has been canceled the last few years, and attendance was a little lower than normal due to the recent surge in COVID-19.

I called a friend who I knew was also attending and asked him if he was interested in going up a day or two early to try our luck spearfishing on a lake that neither one of us had ever been on – or for that matter ever even heard of.

Being the adventurous sort, he agreed to give it a try. The name of the pond we tried was a 65-acre lake called School Section Lake in Stearns County. Everyone was driving their trucks on this lake, but I can't seem to bring myself to drive my dog truck on ice. I towed my ice rig Polaris Ranger with tracks on it, and we off-loaded that and went exploring with a rig that weighs 1,000 pounds instead of a truck that tips the scales at about 5,000 pounds including everything I carry.

When you cut a spear hole and then leave that spot, you try to mark it with a stick from the shore. This makes others on the lake know that there is a spot where the ice will be thinner than the overall lake. We saw several sticks protruding from the snow and decided if that spot was good enough for them, it would be good enough for someone who had never been on the lake before.

I had recently purchased a new battery-operated ice drill and was pretty excited to try it out. I attached the battery, and when I pulled the trigger it turned about two times and died. I tried again and got the same results. I knew that when the batteries were

cold, they would not operate at full capacity, but I thought they would at least work a little. I was wrong. I tried an additional new battery I bought with the unit, and it also did nothing.

Back to the truck we went, and after 30 minutes on the truck's defroster, they worked like a charm. I wonder if this only happens to me or if other battery-operated ice drills do the same thing. We got the hole cut, set up the portable, and we were off to the spearfishing races.

In spearfishing you sit still and hope the fish come to you. Most often you will use either a large sucker chub on a safety pin or other fake decoy to attract the pike to you. Some use spoons or painted golf balls to attract the fish. I had purchased four large suckers about 10 inches long from the local bait shop. When you are trying to decoy a pike, the goal is to have that pike come in nice and slow to check out if they want to eat your offering. If you use a smaller bait, they will often blast in and gobble up the decoy and flash out of sight in about a half a second. This slash and grab offers no opportunity to throw a spear. Bigger bait often slows down the approach.

I have had fish that have come into the hole and stayed for five minutes. Others will cruise on through without even stopping to sniff the potential meal.

My trip to St. Cloud was a smash and grab experience. I started with four large baits, and in about two hours I had no bait left

at all. The fish wanted nothing to do with my other decoys. It did not matter if that was a spinning spoon, a painted golf ball or one of about 15 different-colored and -sized hand-carved decoys I tried.

The fish we saw were all large fish. They engulfed a 10-sucker chub like I enjoy a single Lay's potato chip. It is very exciting to see big fish, even if they don't give you a shot to take them home in your truck. The other side benefits of spearing are you get to see all of the other fish in the lake. We saw multiple large-mouth bass that I estimated to weigh five pounds. We saw a few hundred pan fish, but they never looked like eater size. Turtles, frogs, crawfish and other lake inhabitants all come by to visit.

Southwestern Minnesota where I live has very few lakes with water clear enough to spear in. Not all that far north of me there are hundreds of lakes that qualify as crystal-clear lakes. After I got home, I was able to visit with a local that spears on the lake I tried. He explained that that lake has lots of spearing pressure and that the pike are now smart enough not to loiter in the kill zone. They flash in and flash out and in many cases get a free meal in the process.

I didn't think a pike could get that smart, but after two days I was proven wrong. We saw, if even for an instant, over 25 fish in two days and I did not manage to put a spear in a single one. It was still a great outing, and my lack of success has not dampened my desire to try again.

Spearing has experienced a resurgence over the past five years or so. More folks enjoying natural resources and buying licenses means more revenue to manage those resources.

There are a lot of lakes in Minnesota. Find an avenue to give this sport a try. You'll get hooked just like I did. I equate it to bow hunting for deer. You sit still for long periods but when the big one shows up, you forget it was 100 hours since you saw the last one.

Scott Rall, Worthington, is a habitat conservationist, avid hunting and fishing enthusiast. He can be reached at [scottarall@gmail.com](mailto:scottarall@gmail.com).

## CGMC: Now is time to invest in child care, housing, workforce/continued from page 3

### Child care, housing play major role in addressing workforce shortage

The CGMC is also calling for state investments in programs that address child care and housing shortages that have long hindered economic growth in Greater Minnesota.

"In Greater Minnesota, businesses of all sizes are scrambling to fill open positions," said Peterson.

"Simply put, employers can't get workers if there is nowhere for them to live and no one to look after their children while they are at work."

Baustian said child care is the No. 1 economic development priority in Luverne, a sentiment shared by many community leaders across Greater Minnesota.

"When we talk to our local businesses, all we hear is 'What are you going to do

about child care?'" Baustian said.

According to First Children's Finance, Greater Minnesota needs to add 40,000 new child care slots to keep up with demand.

Unlike in the metro area, Greater Minnesota communities rely heavily on in-home providers, many of whom have chosen to leave the profession in recent years.

Some cities have decided to purchase build-

ings for city-owned child care centers, and Baustian shared information about Luverne's recent move to do that with the former Total Card Inc. building.

This session, CGMC is requesting \$20 million for a child care capital grant program, which provides grants of up to \$500,000 to outstate communities to fund up to 50 percent of the costs to build, upgrade or expand child care facilities.

In addition, CGMC

is seeking \$5 million for the DEED child care grant program, which has proven successful at helping to create new and retain existing child care providers.

The shortage of housing, particularly market-rate housing for middle-income families and workers, is also a major concern across Greater Minnesota.

"In rural Minnesota, there aren't enough developers that have the cash and are willing to build in

our communities," Baustian said.

"We are also dealing with the issue of aging housing stock. When housing is already hard to come by, it is critical we are able to preserve and maintain the existing homes in our community."

CGMC is pursuing several legislative proposals to encourage construction and increase availability of housing across Greater Minnesota.

Proposals include

•the creation of a new "fix up fund" grant program to help cities rehabilitate dilapidated homes.

•state funding for public infrastructure, such as sewer connections and streets, needed for new housing developments.

•additional funding for the existing Workforce Development Grant Program.

**Rock County 4-H "Fruit & More" Sale**

Rock County 4-H'ers are selling assorted boxes of mouth watering fruit - apples, oranges, pears, grapefruit; along with cheeses, beef sticks, pickled herring, Puffins, PuffCrust Pizza and a variety of frozen foods. Here's your chance to eat healthy and support local youth.

Contact a 4-H'er in your neighborhood or call the Rock County Extension Office (283-1302) from Jan 17th -Feb 6th to order. Delivery is March 18th.

**TAKE 16**  
 BREWING CO.

**February Events**  
**Every Monday BOGO**

**Feb 1** • Mug Club Members Kickoff 4-10 pm  
**Feb 3** • Rock Country Library Trivia Night  
 Doors open at 6 pm, trivia at 7 pm.  
**Feb 4** • Vinyl with Keith Maine 6-9 pm  
**Feb 5** • Pintometer! Enjoy a drink outside by the fire, price of beer is the current temperature! Noon-Close  
**Feb 6** • Chili Cookoff 2 pm  
**Feb 11** • Meat Raffle 7-9 pm  
**Feb 12-14** • Valentine Special  
 Library Adult Show & Tell 7 pm  
**Feb 19** • Meat Raffle 4-6 pm  
**Feb 24** • Bingo hosted by Rotary.  
 Doors open at 6 pm, Bingo at 7 pm.  
**Feb 26** • Blue Mound Liquor Wine Tasting  
 Purchase tickets at Blue Mound Liquor.

509 E Main, Luverne | 1-855-5-Take16 | [take16beer.com](http://take16beer.com)  
 Watch our Facebook page for updates

*Get the most out of your tax return.*

No two tax returns are the same.  
 Partner with someone who will meet with you to learn about your personal tax situation.

Call, text, or e-Mail for appointment.  
 Drop offs welcome.  
 Located in Real Estate Retrievers Building

**Thompson Tax Prep**  
 Professional • Reliable • Confidential

SHERRI THOMPSON  
 507-227-6830 • [sherritaxprep@gmail.com](mailto:sherritaxprep@gmail.com)  
 Real Estate Retrievers Building  
 905 S. Kniss Avenue, Luverne MN 56156

**PALACE THEATRE** **UPCOMING EVENTS**

**The Addams Family 2** PG  
**BANK NITE MOVIE - FREE Admission**  
 Thursday, February 3 6:00 pm  
 Sponsored by: First Farmers & Merchants Bank and Papik Motors

**Encanto** PG  
 Friday, February 4 7:00 pm  
 (Saturday, February 5 - No Movie)  
 Sunday, February 6 2:00 pm  
 Tickets: \$5 for kids age 3 - 12<sup>th</sup> grade, \$7 for adults

**★ Special Event ★**  
**Arch Allies**  
 Saturday February 5 7:30 pm  
**Tickets on sale now!**  
 Tickets: \$20 for students \$25 for adults

104 E. Main St. • Luverne, MN 56156 • 507.283.4339  
[WWW.PALACETHEATRE.US](http://WWW.PALACETHEATRE.US)



## LHS celebrates Snow Week Feb. 7-11

Mavis Fodness photo/0202 Snow Week Candidates 2022

Luverne High School will break up the doldrums of winter with Snow Week Feb. 7-11 with various activities and the crowning of a Snow Week king and queen. Royalty candidates are (front, from left) Trista Baustian, Madee Schmuck, Trygve Gangestad, (back) Brooklynn VerSteege, Pierce Cunningham, Hope Thorson, Griffen Jarchow, Mary Opitz, Luke Thorson and Casey Sehr.

The royalty candidates are selected and voted on by LHS teachers and staff as recognition for positive leadership and character in the classroom and activities at school and in the community during their years at LHS. "These 10 seniors are well-rounded role models for other students to look up to and they represent what makes LHS teachers, staff and students proud of our school," said student council adviser Jason Berghorst.

The student council has organized various activities for Snow Week, including the coronation scheduled for 1:50 p.m. Monday, Feb. 7, in the performing arts center.

## CELEBRATIONS

### Card Shower

**Dorothy Petersen** celebrated her 95<sup>th</sup> birthday on Sunday, Jan. 30. Greetings may be sent to her at 603 Phyleon Drive; Luverne, MN 56156.

## MENU

**Monday, Feb. 7:** Chicken chow mein with brown rice, Oriental vegetables, mandarin oranges, pudding with whipped topping.

**Activities:** 8:30 a.m. Quilters. 10 a.m. SAIL class.

**Tuesday, Feb. 8:** Spaghetti with meat sauce, Romaine salad with dressing, pineapple, Texas toast, cookie.

**Activities:** 12:30 p.m. Pinochle and Yahtzee.

**Wednesday, Feb. 9:** Creamy chicken, mashed potatoes, peas and carrots, bread, warm fruit crisp.

**Activities:** 10 a.m. SAIL class.

**Thursday, Feb. 10:** Pork loin, candied yams, broccoli, bread, dessert.

**Friday, Feb. 11:** Meatloaf, baked potatoes, stewed tomatoes, bread, dessert.

Half-Price Day by anonymous sponsor.

**Activities:** 10 a.m. SAIL class.

Call *Lynette Hoiland at 283-9846* to arrange to pick up a dinner or for home-delivered meals.

## COLLEGE NEWS

### Kruse named to St. Mary's dean's list

Kasyn Kruse was named to the Fall 2021 semester dean's list at St. Mary's University of Minnesota in Winona. To be eligible, students must earn at least a 3.6 GPA on a 4.0 scale.

Kasyn is the son of Jason and Karla Kruse of Luverne.

### SMSU Marshall announces honor students

Rozilyn Oye and Cassidy Teunissen, both of Luverne, were named to the Honors list for the Fall 2021 semester at Southwest Minnesota State University, Marshall. To be eligible, students must earn at least a 3.5 GPA with a minimum of 12 graded credits.

### Tatge named to NDSU dean's list

Lauren Tatge, Beaver Creek, was named to the Fall 2021 dean's list at North Dakota State University in Fargo. To be eligible, students must earn at least a 3.5 GPA with a minimum of 12 graded credits.

Lauren is majoring in pharmaceutical sciences.

### Robinson named to U of M Duluth dean's list

Mark Robinson, Luverne, was named to the dean's list for the Fall 2021 semester at the University of Minnesota Duluth. Students must earn a minimum of a 3.5 grade point average.

Robinson is a senior majoring in stats and actuarial science in the Swenson College of Science and Engineering.

## REMEMBER WHEN

### 10 years ago (2012)

The federal government will have a greater impact on what ends up on the trays of 32 million kids who have school lunch every day—including those in Luverne.

Less salt and fat, more whole grains, fruit, veggies and low-fat dairy are what kids can expect in the school cafeteria, according to new nutrition standards for school meals announced by the U.S. Department of Agriculture this week.

Just over \$3 billion will be spent over the next five years to implement the changes, including setting limits on total calories for a meal.

While some kids aren't getting enough calories in a day, there's also the competing challenge of obesity.

In trying to balance these concerns, the USDA decided to set an age-appropriate calorie range for lunch:

550 to 650 calories for kindergarten through fifth grade; 600 to 700 for sixth through eighth grades; 750 to 850 for ninth through 12<sup>th</sup> grades.

### 25 years ago (1997)

As of Tuesday, Luverne schools have lost nine school days to snow, according to the district office. That doesn't count short days, when students arrived late or left early.

With a calendar that figured in four possible snow days, it means the district must schedule make-up classes on in-service days and vacation days.

According to Marlene Mann in the superintendent's office,

classes will be held on Feb. 14, Presidents Day Feb. 17, June 5, and if the district needs to make up the Governor's canceled day, probably on April 28. Students already made up one day on Jan. 24.

Easter Monday is still a possible vacation day ... but no one in the district office is willing to bet they've seen the last snow cancellation.

### 50 years ago (1972)

Margaret Erickson of the Blue Ribbon 4-H Club of Hills will represent Rock County in the District 4-H Radio Speaking Contest scheduled for this Saturday, Feb. 5, from 2-3 p.m. over KWOA Radio.

Miss Erickson was recently named County Champion and Rick Jauert was named Reserve Champion in the Rock County contest. In the Junior Division, Ruth Garnmeister was named Champion and Pam Heronimus was named reserve Champion.

### 75 years ago (1947)

Sales during December at Southwestern Minnesota department and general stores were up 26 per cent from last year, while total sales for the year registered a 29 per cent increase over those of 1945.

December retail trade volume in the entire Ninth Federal Reserve District averaged a 23 per cent increase over last month

Remember When, continued on page 7

## 1905: Luverne's Fourth of July celebration brings governor to town

The following appeared in *The Rock County Herald* on July 7, 1905.

**Was a Grand Success Such Was Luverne's Celebration of the Glorious Fourth 6000 People Were in Attendance Notwithstanding Preceding Unfavorable Weather Conditions, Luverne Observes Our Nation's Birthday With a Notable Successful Celebration—Occasion Graced by Presence of Governor John A. Johnson Who Delivers Inspiring Address—Splendid Program Carried Out to the Satisfaction of All**

This article is continued from last week.

### Ring Ride

While the ring ride on Main street was in progress, the streets were fairly packed with pleasure seekers who divided their time between watching the riding and the other attractions on the streets. There were a large number of entries for the ring



## BITS BY BETTY

By Betty Mann, president  
Rock County Historical Society

ride and this popular sport provided much enjoyment for all present. The prizes for the contest were awarded as follows: First prize, double driving harness, to Julius Wiese; second prize, riding saddle, to Will Sodemann; third prize, riding bridle, to Fred Lutgens; fourth prize, whip, to Ed. Biss.

### Street Sports

The various street sports took place on Main street immediately after the ring ride. The result of the races was as follows: 50-yard free-for-all, Irving Jargo first, Percy Mingus second; 100-yard race for boys under 12, J. R. Jones first, Walter Robinson second. In the 400-yard relay race there were three teams of four men

each. In the first team, which won the race, were Irving Jargo, Martin Snook, Geo. Gilbertson, Percy Mingus; in the second, Albert Helling, A. Schaeffer, Ed. Wiegel, Frank McClintock; in the third, Dewight Hulett, Verne Canfield, Chas. Preston and F. Brown.

### Tug of War

The tug of war between the north and the south end of the county was won by the south side. There were ten men on each side, the team from the north being captained by Wm. Goettsch, and that from the south by A. W. Scott.

### Greased Pig Chase

The chase for the greased pig closed the sports. The pig was turned loose in front of

the Vienna bakery and was captured by one of the contestants before it had scarcely left the box and also before the starters had given the word. It was accordingly again started and after a spirited chase was captured by R. S. Bailey. The pig mounted the sidewalk and ran through the crowd, scattering the people right and left and was caught in the doorway of the Eagle Clothing store.

### Band Concert

The program of the day's entertainment closed with an hour's concert by the South Dakota Fourth Regiment band and the Luverne band at 7 o'clock in the stand prepared for the purpose at the bank corners. The concert won high commendation for both bands and was greatly enjoyed by all who heard it.

### Carnival of Fun

Contrary to general expectations the crowd did not greatly diminish at the close of the sports, but nearly all remained to participate in the fun looked for in the evening. And all who looked for fun found it in any quantity

desired. From early in the evening until 11 o'clock it was fast and furious. All along Main street "confetti battles" raged furiously, and those who had restrained themselves from shooting fire crackers during the day indulged in that sport to their heart's content. While no public fireworks were displayed, a number of excellent displays were made by private parties in various parts of the city, which were greatly appreciated by those who had the opportunity to witness them.

### Indoor Entertainments

The indoor entertainments also drew large crowds. The vaudeville show in the Opera house by the Novelty Vaudeville company called out a packed house and all who witnessed the performance were well pleased. The dance in Union hall under the auspices of the Luverne band and Hook and Ladder company No. 1, furnished amusement for a crowd which taxed the capacity of the hall to the utmost. The music for this dance was furnished by the Hyke-Millhouse orchestra.

Another dance, given by the Fourth Regiment band in the Opera house after the show, also entertained a fair-sized crowd and added to the evening's enjoyment.

### All Are Pleased

So far as the Herald can learn, all are pleased with the celebration. The program of entertainments was an excellent one, everything promised was given, everything came off promptly on time, and everything was free. If in the judgement of those in attendance the celebration was worthy of the day and creditable to Luverne, the object sought has been accomplished. To the credit of those who planned the celebration and did vast amount of work required, it is only fair to say that the celebration was most admirably conducted.

Donations to the Rock County Historical Society can be sent to the Rock County Historical Society, 312 E. Main Street, Luverne, MN 56156.

Mann welcomes correspondence sent to manmade@iw.net.

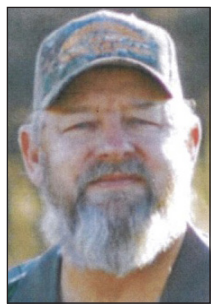
## OBITUARIES

### Johnny Jonas

Johnny Jonas, 55, died Thursday, Jan. 6, 2022, in Oklahoma.

A graveside service will be at 11 a.m. Saturday, Feb. 5, at the Grand Prairie Cemetery in Ellsworth, with full military honors provided by the Ellsworth American Legion. A time of fellowship will be from noon to 2 p.m. Saturday after the graveside service at the Magnolia Methodist Church in Magnolia.

Johnny Jonas was born on Sept. 10, 1966, to Robert and Viola (Emerine) Jonas in Winters, Texas. He attended school in and around Ballinger, Texas. Upon graduating from high school in 1986, Johnny joined the Air Force and trained at Chanute AFB, Illinois, to be an aerospace ground equipment (AGE) technician. His Air Force assignments included Holoman AFB in New Mexico,



Osan AB in Korea, and Tinker AFB in Oklahoma, where he remained until his retirement in 2017 with 20-plus years in service of his country. While stationed at Tinker, Johnny deployed in support of Desert Shield/Storm, Operation Provide Comfort, and many others.

After retirement from the Air Force, Johnny accepted a position as an auxiliary operator for OG&E at Horseshoe Lake plant in Harrah, Oklahoma, where he worked for 14 years. His work required his expert mechanical skills in providing Oklahoma and surrounding states with electrical power. He retired from OG&E in October 2021.

Johnny enjoyed all kinds of hunting and fishing with his sons, including bear hunting in Minnesota. He also loved tinkering on old Jeeps and helping others with their

mechanical needs.

Johnny and his wife of 23 years, Shawna, especially loved time with their children and supporting them in their activities.

Johnny is survived by his wife, Shawna (Bruhn) Jonas; his daughter Hunter; his son Jake; his two sisters, Karen (David) Lara and Mary (Dean) Harper, and his two brothers, Robert JR and Roy Jonas, all of Texas; his father- and mother-in-law, Richard and Linda Bruhn; sister- and brother-in-law Tonya and Jade Honermann; and brother- and sister-in-law Josh and April Bruhn, all of Minnesota; nieces and nephews; and other family and friends.

He was preceded in death by his parents, his grandparents, and two nieces.

Arrangements are provided by Hibbs Funeral Home of Choctaw, Oklahoma, and Dingmann Funeral Home of Adrian, Michigan. [dingmannandsons.com](http://www.dingmannandsons.com).

(0203 F)

### Florence Helle

Florence Mabel Helle, 91, Luverne, died Sunday, Jan. 30, 2022, at the Good Samaritan Society - Mary Jane Brown Home in Luverne.

Visitation is from 5 to 7 p.m. Thursday, Feb. 3, at the Hartquist Funeral Home in Luverne. A funeral service will be at 10:30 a.m. Friday, Feb. 4, at Grace Lutheran Church in Luverne. Burial will follow at Maplewood Cemetery in Luverne.

Florence Hoiland was born on Sept. 23, 1930, to Arne and Hilda (Josal) Hoiland in Luverne. She was confirmed at Zion Lutheran Church in Luverne.

She attended Luverne High School and graduated in 1948. She furthered her education in Mankato and completed the teacher's program for elementary education, graduating in 1950. She then taught elementary school in the Magnolia and Worthington districts.

On June 24, 1956, Florence married Oscar Helle at Zion Lutheran Church in Luverne.



Florence transitioned from teaching to being a homemaker and farm wife. She enjoyed her role on the farm as she raised chickens, harvested produce from the garden, grew beautiful flowers, kept the men fed while they worked in the field and raised their four children.

The couple farmed until 1990 when they then moved to the Hoiland family farm. In June of 2005 Oscar entered the Good Samaritan Society - Mary Jane Home in Luverne while Florence remained on the farm. Oscar died on July 19, 2005.

In 2017 Florence moved to The Oaks senior living apartments in Luverne, and in August of 2020 she became a resident of the Good Samaritan Society - Mary Jane Brown Home in Luverne.

Florence was a member of Grace Lutheran Church in Luverne. She was active in Circle, quilting, and held various GLCW Board positions. She was also

very involved in the community. She was a member of Lions 92 (receiving the Melvin Jones Fellowship Award), the Extension Club, Pink Ladies, Luverne Tourist Club, Beta Sigma Phi Sorority, Maplewood Cemetery Auxiliary, and volunteered with the Magnolia Juniors 4-H Club. Florence enjoyed gardening, cooking, baking, needlework, traveling with friends, bowling and volunteering.

Florence is survived by her children, Barbara (Terry) Kohn of Wheaton, Illinois, Sandra (Steve) Klosterbuer of Ellsworth, and David (Vicki) Helle of Luverne; seven grandchildren, Kelly (Kohn) Kohlmann, Kyle Kohn, Greg Helle, Amy (Helle) Lysne, Rachel (Helle) Horsman, Katie (Klosterbuer) Pedersen, and Casey Kosterbuer; nine great-grandchildren; and nieces and nephews.

She was preceded in death by her husband, Oscar Helle; her parents; a son, Steven Helle; and a sister, Norma Gertz.

Arrangements were provided by Hartquist Funeral Home of Luverne, [hartquistfuneral.com](http://hartquistfuneral.com). (0203 F)

### Glenyce Lecher

Glenyce Peterson Lecher, of Anderson, SC, formerly of Hendersonville, NC, passed away Sunday, January 23, 2022, at NHC Healthcare Anderson with her loving husband, John by her side.

Glenyce was a registered nurse who worked in many places in North Carolina during her career. She was a member of Zion United Methodist Church. She enjoyed fishing and living on Lake Hartwell.

She is survived by her husband of 36 years, John

J. Lecher; daughter, Jennifer Sanders and grandson, Thomas Cole Young of Wake Forest, NC. She is also survived by her stepchildren, Johnny Lecher, Tammy Lecher, and Tina Lecher, all of Niagara Falls, NY;

a brother, Elwayne Peterson of Luverne, MN; sister-in-law, Gale Beal (William) of Hendersonville, NC; 7 step grandchildren; and her nieces and nephews.

A memorial service will



be held Sunday, January 30, 2022, at 2:30 pm at Zion United Methodist Church with Rev. Beverly Crowe-Tipton officiating. The family will receive friends immediately following the service.

In lieu of flowers, memorial contributions may be made to Zion United Methodist Church, 5708 Hwy. 187 N., Anderson, SC 29625.

Messages of condolence may be left for the family by visiting The McDougald Funeral Home website, [www.dougaldfuneralhome.com](http://www.dougaldfuneralhome.com).

(0203 V)

### Sharon Riddle

Sharon Ann Riddle, 63, Luverne, died Wednesday, Jan. 26, 2022, at the Dougherty Hospice Home in Sioux Falls, South Dakota.

A funeral service was Monday, Jan. 31, at the Dingmann Funeral Home in Luverne. Burial was at Maplewood Cemetery in Luverne.

Sharon Ann Schouwenburg was born Aug. 8, 1958, to Henry and Lucille (Caswell) Schouwenburg in Rock Rapids, Iowa. She graduated from Hills High School.

Sharon married Robert

Riddle on July 20, 1985, in Etowah, Tennessee. The couple lived in Fort Campbell, Kentucky, for 10 years before moving to Luverne in 1995. Sharon worked at Continental Western in Luverne for over

20 years.

She enjoyed gardening and spending time with her family and friends. She especially loved her grandchildren.

Sharon is survived by her three daughters, Michelle (Ryan) Anderson, Meagan



Riddle, and Melissa Riddle, all of Sioux Falls; two grandchildren, Braxton Anderson and Hailey Riddle; two brothers, Melvin Schouwenburg, Bismarck, North Dakota, and Stan (Terri) Schouwenburg, Hills; a sister, Linda (Wayne) Yarrow, Sioux Falls; and three nieces, Kristi (Tom) Duncan, Lisa (Ryan) Vos and Amber (Brett) Dessel.

She was preceded in death by her parents and her husband, Robert, on Sept. 7, 2017.

Arrangements were provided by Dingmann Funeral Home of Luverne, [dingmannandsons.com](http://dingmannandsons.com).

(0203 F)

### Remember When/from page 6

and a 30 per cent increase over December 1945. According to the Final Department and General Store Summary just released by the Federal Reserve Bank of Minneapolis, sales reported to the bank in 1946 by 551 stores located throughout the district topped last year's sales at the same stores by 34 per cent.

#### 100 years ago (1922)

•Nine Rock county boys and girls have thus far definitely decided to join the Rock County Boys' and Girls' Calf club, and in most instances have already selected the calves on

which they hope to win honors next fall and winter.

Those who will join the club are: Eda and Esther Carlson, of Magnolia township; Ruth Axelson, Velma and Peter Vandemore, of Mound; Ethel Oesterle and George Godfrey, of Beaver Creek; Dick Aukes and Fred Paulsen, of Clinton. All were members of last year's club.

The Misses Carlsen, Axelson and George Godfrey will feed Shorthorn calves; Velma and Peter Vandemore, Herefords; and Miss Oesterle, Dick Aukes and Fred Paulsen, Abereen Angus.

### Jean Wallenburg

Jean Marie Wallenburg, 66, Inwood, Iowa, died Saturday, Dec. 18, 2021, at Ava's House in Sioux Falls, South Dakota, following a 15-month battle with pancreatic cancer.

A memorial service was Thursday, Dec. 23, 2021, at Bethany Reformed Church in Canton, South Dakota.

Jean Marie Hassebroek was born Sept. 24, 1955, to Jake and Anna Mae (Muller) Hassebroek in Sibley, Iowa, and first lived on the family farm near Ellsworth. When Jean was 3 years old, the family moved to a farm north of Magnolia. At 4 years old Jean started school at Magnolia until her junior year, when her parents moved back to a farm east of Ellsworth. She finished her senior year attending and graduating from Ellsworth High School.

Jean married Alan Eben in 1974 and they divorced in 2005. While married to Alan, Jean helped with the farm including milking cows, doing the chores and

fieldwork. They were blessed with four children, Stacy, Jodi, Curtis and Scott.

Jean enjoyed riding horse from childhood until her health prevented her from doing so. She bought her own Harley Davidson motorcycle and rode it many times in the Black Hills at the Sturgis Rally.

She loved to go camping, whether alone or with her grandchildren, Dax or Jesse. Jean also loved watching her two sons and her grandsons wrestle.

In January 2011, Jean met Dave Wallenburg. They married on July 7, 2018. Dave introduced her to many firsts, like shooting her first deer, shooting a Canadian goose, fishing for walleye, and trapping raccoons.

Jean was a member of the Bethany Reformed Church of Canton, South Dakota. She taught Bible School, Sunday School, and served on the Lyon County Dairy Board.

Jean is survived by her husband, Dave Wallenburg; four children and eight

grandchildren, Stacy (Todd) Dieren and their children, Paige and Trevor of Rock Rapids, Iowa, Jodi (Dan) De Groot and their children, Dax and Jesse of George, Iowa, Curtis (Amanda) Eben and their children, Graham, Rhett, Sage, and Nash of Rock Rapids, and Scott Eben of George; three stepchildren and eight step-grandchildren, Melissa (Greg) Van Den Berg and their children, Kyla and Nolan of Sioux Falls, South Dakota, Dustin (Roxy) Wallenburg their children, Ben and Sawyer of Canton, South Dakota, and Krista Wallenburg (Jared Cramer) and their children, Addie, Cameron, Norah, and Quinn of Sioux Falls; father- and mother-in-law, Gerald and Marion Wallenburg; and two brothers, Gary (Marcene) Hassebroek of Luverne, and Glen (Diane) Hassebroek of Adrian.

Jean was preceded in death by her parents. Memorials may be given to Lake Pahoja Recreation Area along with a memorial bench and Ava's House. Arrangements were provided by Porter Funeral Home of Inwood. (0203 F)





## Caring

# FOR YOU

### IN LUVERNE


At Sanford Health, we're committed to caring for you when you need it, where you need it. That's why we provide care close to where you live, work and play. Schedule an appointment with Kat Dahl to be seen for all medical concerns including:

- Well child exams
- Obstetrics
- Adult wellness exams
- Sports physicals and injuries

**Call (507) 283-4476 to make an appointment at Sanford Luverne Clinic today.**

**SANFORD**  
HEALTH

202-533-353 1/22



Kat Dahl, MD

### LAND/ACREAGE FOR SALE

LEGAL: Approximately 160 acres located in the NE1/4 of 9-103-46, Rock County, MN, improved, highly productive farmland and acreage.

TERMS: Sealed bids will be accepted until 5:00 p.m., February 18, 2022, at 130 East Main, Luverne, MN. All bidders who have submitted a bid prior to said deadline will have the opportunity to submit additional bids until property is sold. Highest bidder will be required to sign a Purchase Agreement with ten percent (10%) non-refundable earnest money down payment on the date of the sale and the balance at closing with possession going to Buyer for 2022.

Sale is subject to approval by the Heirs of James Klein. For further details and an information packet contact Douglas Eisma, Eisma & Eisma, Attorneys at Law, (507) 227-2829.



Kianna Winter, a Luverne eighth-grader, completes her vault Monday in front of a Parents Night crowd. The Cardinals won the home meet against MCC.

Mavis Fodness photo/0203 LHS Gymnastics

## LHS girls claim big wins in basketball

By Jason Berghorst

It was two more lopsided victories and another near upset for the Luverne girls' basketball team this week.

The Cardinals, now 13-4 on the season, defeated St. James by 40 points (74-34) Jan. 25 and Redwood Valley by 55 points (69-14) Jan. 28.

LHS then faced Wagner, South Dakota, Saturday at Augustana University in Sioux Falls. Wagner is 13-0 and ranked No.1 in their class in South Dakota girls' basketball. The Cardinals lost to Wagner 45-40.

The Luverne girls have a busy week ahead. The Cardinals host the Worthington Trojans tonight (Feb. 3) in a key Big South Conference rematch in the Luverne classic gym.

Friday night, Luverne travels to Southwest Christian in Edgerton before playing conference games in Pipestone Tuesday and in Windom next Thursday, Feb. 10.

### Luverne 74, St. James 34

Luverne made the trip to St. James to face the Saints Jan. 28. The Cardinals scored early and often in the contest. St. James held a brief 4-3 lead about five minutes into the game, but otherwise LHS dominated the game.

Luverne led 44-17 after the first half and outpaced the Saints 30-17 in the second half to earn the 74-34 road victory.

Elizabeth Wagner led the Cardinal offense with 36 points, including a three-pointer and seven of eleven free throws she attempted.

She also pulled in a team-

LHS girls BB/see page 10

## Luverne gymnasts make final push on the season with wins against MCA, Marshall

Last regular season gymnastics meet set for Friday in Marshall, sections start Feb. 12

By Mavis Fodness

Luverne gymnasts pulled together as a team in a rescheduled dual meet from December against Martin County Area Monday night.

At the Parents Night event, the Cardinals won over the Magic 131.625 to 127.375. They upped their season record to 6-2.

The win came at the heels of another win last week against Marshall, also at home on Jan. 27.

Luverne travels to St. James to take on the Saints Friday to finish out the 2021-22 season.

The 3A Section meet takes place Feb. 12 in Marshall.

**Luverne 131.625, MCA 127.375**

Luverne started the meet by posting their highest vault and beam scores of the season (35.75 and 33.075 respectively) before turning to the uneven bars.

While on the bars, freshman Amira Cowell fell during a transition and was unable to finish the routine. She also didn't compete in the last event for the Cardinals, the floor exercise.

Instead, teammate Hailey Como stepped up from junior varsity to round out the team of five on the floor.

The Cardinals swept the uneven bars and the floor exercise with scores of 29.95 and 32.85 respectively. MCA scored 33.075 on vault, 29.775 (bars), 32.150 (beam) and 32.375 (floor).

Luverne's Ella Reisdorfer finished first in all four events and posted the highest all-around score of the meet with a 35.45. She received scores of 9.15 (vault), 8.45 (bars), 9.075 (beam)

and 8.775 (floor).

Teammates scoring in the top four included Cowell second on the vault (9.025) and second on beam (8.4), Sarah deCesare third on vault (8.825) and third on bars (7.7), Tiana Lais fourth on vault (8.75), and Kianna Winter second on floor (8.55).

Luverne JV won over MCA 118.6 to 75.2.

Coach Phoebe Flom expects Cowell to return for the Cardi-

Gymnastics/see page 10

## Lady Pates win fifth-straight RRC game

By Dalton Bass  
For the Star Herald

The Hills-Beaver Creek girls' basketball team picked up two more games in the win column over the past week with Red Rock Conference victories over Adrian-Ellsworth and Okabena.

The Lady Pates easily took the Dragons 66-39 on their home court Tuesday, Jan. 25, and they coasted to a 61-46 victory over Heron Lake-Okabena-Fulda Friday in Fulda.

The games mark the Patriots' fifth-straight conference wins as they improve to 7-2 in the Red Rock Conference and 8-8 overall.

They will host Dell Rapids St. Mary's Monday night in Hills.

### H-BC 66, A-E 39

The Patriots won their fourth-straight Red Rock Conference game with a 27-point victory Tuesday night, Jan. 25, over Adrian-Ellsworth.

It was a 34-21 lead at the break that continued to grow throughout the second half and led to a 66-39 victory for the Lady Pates.

It was an all-around team effort for H-BC on both offense and defense.

Offensively, the Patriots assisted on 19 of their 27 field goals and came down with 11 offensive rebounds.

Sophomore Brynn Rauk led the way for the home team, knocking down all three of the three-pointers she shot while finishing with 13 points on the night.

Senior Kenadie Fick came away with a double-double, scoring 12 points to go along with 11 rebounds, eight assists and four steals.

MacKenzie Voss was also a contributor with 11 points and eight rebounds while Sam Moser, Lanae



Samantha McGaffee photo /0203 HBC girls bb bork

H-BC's Olivia Bork drives to the basket during the Jan. 25 game with Adrian-Ellsworth in Hills. She had eight points in the 66-39 win over the Dragons.

Elbers and Olivia Bork each added eight points of their own.

**Box score:**  
Fick 1 3 1-1 12, Rauk 2 3 0-0 13, L Deelstra 0 0 0-0 0, Voss 5 0 1-2 11, Bork 1 2 0-3 8, Steinhoff 1 0 0-0 2, Anderson 0 0 0-0 0, O Deelstra 0 0 0-0 0, Elbers 2 1 1-5 8, Fagerness 0 0 0-0 0, Moser 4 0 0-1 8, Spykerboer 0 0 0-0 0, Harris 2 0 0-1 4, E Deelstra 0 0 0-0 0

**Team stats:**  
H-BC: 27 of 56 (48 percent), 3 for 13 free throws (23 percent), 38 rebounds, 23 turnovers  
A-E: 15 of 58 (26 percent), 6 for 13 free throws (46 percent), 31 rebounds, 21 turnovers

### H-BC 61 HLOF 46

It was a very important Red Rock Conference matchup Friday night

in Okabena as the second-ranked Patriots took on fifth-ranked Heron Lake-Okabena/Fulda.

The Lady Pates got off to a hot start as they built up a double-digit halftime lead at 35-23.

The scoring was coming from all around for the Patriots, who had four different players score in double digits on the night.

The second half was more about playing good defense and maintaining that nice lead.

They outscored the Coyotes 25-22 the rest of the way to end the game with a 61-46 victory.

Kenadie Fick, Lanae Elbers, Abbie Harris, and MacKenzie Voss

H-BC girls BB/see page 10

## Luverne wrestlers secure medals; Ripka achieves milestone 100<sup>th</sup> career win

By Canaan Petersen  
For the Star Herald

The Cardinal wrestlers suffered four team losses but were able to secure three individual medals in competition over the past week.

On Thursday, Jan. 27, the Cardinals traveled to Tracy for four team matchups, and on Saturday they went to Wabasso for an invitational.

Luverne wrestlers were scheduled to travel to Beresford for a dual Tuesday and will host a meet next Tuesday.

### Wabasso Invitational

A few individuals found success at the Wabasso Invitational, and for the second time this season, three Cardinal wrestlers returned home with medals.

Wrestling at 126, seventh-grader Hudson Hough received a first-round bye before suffering a loss to William Flowers of Wabasso.

In consolation, Hough first defeated Nolan Hanson from Wabasso before pinning Norwood Young-America's Jack Kloempkin.

Hough then dropped a 11-4 decision to Mason Hansen from Paynesville Area and received sixth place.

Luverne's Noah Mehlhaff won his first-round



Luverne senior Braydon Ripka reached his 100th career win Thursday.

match at 132 by defeating Quad County's Gage Corner, but he suffered a second round 10-2 defeat to Paynesville Area's Brandon Hess.

In consolation, Mehlhaff strung together three consecutive wins in order to achieve fifth place.

He first pinned LeSeur-Henderson's Wyatt Genelin before besting Redwood Valley's Jordan Matson 16-10. In the fifth-place match, Mehlhaff pinned LeSeur-Henderson's Mark Boisjolie at the end of the first period.

The Cardinals' Braydon Ripka, wrestling at 145, received a first-round bye before defeating Benson's

LHS girls BB/see page 9



# Cardinal girls continue winning streak

## Wrestling/ from page 8

By Matt Lais  
For the Star Herald

The Luverne girls' hockey team continues its winning ways with two more victories in the past week.

The Cardinals took an easy 12-2 victory from the Trojans in Worthington Jan. 25 and took down the Marshall Tigers 4-1 at home Friday.

Luverne moves to 21-3 on the year and hosts Morris Benson Area Saturday in their final regular season game before section play begins.

### Luverne 12, Worthington 2

The Cardinal Girls hockey team went on the road for a varsity doubleheader Tuesday night in Worthington.

The Cardinals got an early lead and never let up against the Trojans. Luverne put seven first-period goals up on the scoreboard.

Mallory Nelson got Luverne going just under two minutes into the first period with the assist going to Kamryn Van Batavia.

It was Van Batavia's turn next midway through the period to give the Cardinals a 2-0 lead.

Worthington would answer back just 34 seconds later to cut the Cardinals' lead to 1.

Luverne then erupted for five consecutive goals in the last seven minutes of Period 1.

Scoring for the Cardinals were Reghan Bork (assisted by



Images by CD/0203 LHS girls hockey

Greta McClure passes the puck in the third period during the Friday home contest with Marshall.

Van Batavia and Nelson), Ella Apel (assisted by Greta McClure and Billi Connell), Van Batavia (assisted by Bork and Payton Behr), Van Batavia (unassisted), and Payton Behr (assisted by Van Batavia).

The Cardinals outshot the Trojans 22-4 in the first period,

with Luverne goalie Cheyenne Schutz making three saves.

In the second period Worthington inched a bit closer and cut the Cardinals' lead to 7-2 just 55 seconds into the period.

Then it was the Cardinals' turn, adding four more in the

second period to take a commanding 11-2 lead into intermission No. 2.

Scoring for the Cardinals were Van Batavia (assisted by Anika Boll), Payton Behr (assisted by Van Batavia and

Girls hockey/see page 10

# Boys hockey team drops close games, record moves to 8-9

By Matt Lais,  
For the Star Herald

The Luverne boys' hockey team moved its record to 8-9 after a series of road games over the past week.

The Cardinals came out on top of a close match with the Trojans in Worthington Jan. 25, but they lost to New Ulm 6-0 in New Ulm Jan. 27 and came out on the losing end of an overtime contest with Morris Benson Area in Benson 6-5 Friday.

The Cardinals were scheduled to travel to Marshall Tuesday and will host Morris Benson Area Thursday in the Blue Mound Ice Arena.

### Luverne 5, Worthington 4

The Luverne boys traveled to Worthington Ice Arena Tuesday night, Jan. 25, for a big southwest Minnesota tilt.

The first period saw a lot of back-and-forth action between the Cardinals and Trojans.

Brock Behrend got the

Cardinals on the board midway through the period with assists going to Owen Sudenga.

Luverne took a 1-0 lead into intermission. Shots on goal were in favor of the Cardinals 14-11.

Luverne goalie Tyler Arends made 11 big saves to keep the Trojans off the board.

Worthington evened the score just 11 seconds into Period 2. Luverne responded with two goals in the following two minutes.

Senior Jack Schlosser made the game 2-1 with assists going to Henry Hartquist and Behrend. Not even a minute later it was Behrend giving the Cardinals a 3-1 lead with assists going to Hartquist and Will Serie.

Worthington scored another goal in the second to cut Luverne's lead to 3-2 after two periods.

Shots on goal were 11-8 in favor of Luverne.

The final period saw a lot of action. Worthington tied

the game at three just over two minutes in.

Luverne sophomore Elliot Domagala scored a big short-handed goal a minute later to make it 4-3 Cardinals.

Worthington wouldn't go away, taking advantage of a Luverne penalty to even the score 4-4 with 10 minutes left in regulation.

Like a heavyweight fight with both competitors trading blows, Luverne battled back and took a 5-4 lead just 49 seconds later on a Brady Bork goal with assists going to Domagala and Patrick Kroski.

That's how the bout would end with the Cardinals holding on to a 5-4 win. Shots on goal for the period were in favor of Luverne 13-8 and for the game 38-27 in favor of Luverne.

Arends finished with 23 saves for Luverne.

### New Ulm 6, LHS 0

The Cardinal boys continued

their road trip in New Ulm for a Section 3 battle Thursday night, Jan. 27.

The hometown Eagles were able to get on the board just 19 seconds into the game and added two more first-period goals to take a 3-0 lead.

Luverne didn't have an answer and the period would end with the Eagles holding a 3-0 lead. Shots on goal for the period were 15-6 in favor of the Eagles.

In the second period the Cardinals were able to get some shots on goal and tried to cut into the Eagles' lead.

Just over five minutes into the period the hometown Eagles got three goals in a 46-second time frame to take a 6-0 lead after two periods. Shots on goal for the period were 13-12 in favor of the Cardinals.

The final period was scoreless for both teams with back and forth action, but the Cardi-

Boys hockey/see page 10

# Pates fall to Chargers, Rebels in close games

By Dalton Bass  
For the Star Herald

The Hills-Beaver Creek boys' basketball team suffered a couple of hard-fought losses over the past week with games at home and away.

The Patriots fell to Westbrook Walnut Grove 70-62 in Hills Thursday, Jan. 27, and the Murray County Central Rebels used a home-court advantage to take H-BC 64-50 Saturday in Slayton.

The Patriots, now 4-5 in conference play and 6-8 overall, travel to Westbrook Thursday for a rematch with the Westbrook Walnut Grove Chargers.



Samantha McGaffee photo /0203 HBC girls bb bork

Patriot Liam Raymon puts up a shot Saturday against the Rebels in Slayton. He scored nine points in the game.

on the night by senior Ty Bundesen (15 points) kept the Patriots in the ball game for most of the game.

Senior Cole Baker also added 16 points to lead the Pates in scoring while Andrew Harris (8 rebounds) rounded out the double digit scoring with 10 of his own.

Other contributors for the home team included Liam Raymon (9 points) and Oliver Deelstra (8 points) who each came

down with six rebounds.

Box score:  
Baker 2 2 6-10 16, Deelstra 4 0 0-0 8, Raymon 3 0 3-5 9, Harnack 0 0 0-0 0, Page 0 0 0-0 0, Leenderts 0 1 1-2 4, Bundesen 0 5 0-0 15, Gehrke 0 0 0-0 0, Metzger 0 0 0-0 0, Taubert 0 0 0-0 0, Tatge 0 0 0-0 0, Durst 0 0 0-0 0, Scholten 0 0 0-0 0, Harris 5 0 0-0 10, Wiersema 0 0 0-0 0

Team stats:  
HBC: 22 of 63 (35 percent), 10 of 17 free throws (59 percent), 32 rebounds, 12 turnovers  
WWG: 27 of 53 (51 percent), 9 for 14 free throws (64 percent), 31 rebounds, 14 turnovers

### MCC 64, H-BC 50

For the second game in a row, the Patriots started out with the lead heading into halftime but fell just short in the final few minutes of the game.

Saturday night in Slayton, the Pates held a 25-21 advantage at intermission before ultimately falling 64-50.

Senior Cole Baker gave his best effort, scoring 30 of H-BC's 50 points on the night, including a fast break dunk that gave them a five-point lead late in the first half.

The Rebels went on to outscore the Patriots 43-25 after the break to give them a 14-point victory.

Seniors Troy Durst and Liam Raymon each added five points for H-BC.

Box score:  
Baker 8 2 8-14 30, Deelstra 1 0 2-4 4, Raymon 1 1 0-0 5, Harnack 0 0 0-0 0, Page 0 0 0-0 0, Leenderts 0 1 0-1 3, Bundesen 1 0 1-2 3, Gehrke 0 0 0-0 0, Metzger 0 0 0-0 0, Taubert 0 0 0-0 0, Tatge 0 0 0-0 0, Durst 2 0 1-2 3, Scholten 0 0 0-0 0, Harris 0 0 0-0 0, Wiersema 0 0 0-0 0

Team stats:  
H-BC: 17 of 40 (43 percent), 12 for 23 free throws (52 percent), 15 rebounds, 19 turnovers  
MCC: 21 of 43 (49 percent), 21 of 40 free throws (53 percent), 34 rebounds, 18 turnovers

## SENIOR ATHLETES of the Week

### Connor Overgaard

Sport: Basketball

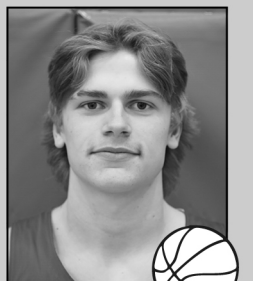
Parents: Chad and Carrie Overgaard

What I like most about Basketball:

The practices

Other extracurricular activities/hobbies: Football, baseball, cleaning my truck

Future Plans: Undecided



### Jack Schlosser

Sport: Hockey

Parents: Denise Schlosser and Mark Schlosser

What I like most about Hockey: Having something to look forward to in the winter and being part of the team.

Other extracurricular activities/hobbies: Trap shooting, hunting, fishing  
Future Plans: Attend college for welding or architecture.



### Reghan Bork

Sport: Hockey

Parents: Randy Bork and Susie Remme

What I like most about Hockey: We are one big family and it's fun spending every day with people you love being around.

Other extracurricular activities/hobbies: Volleyball, softball, peer helping  
Future Plans: I plan to play college hockey. The college and major are undecided at this time.



North Highway 75, Luverne  
(507) 283-4889



(507) 449-0335



**St. Catherine Catholic Church**  
203 E. Brown St., Luverne  
St. Catherine Ph. 283-8502; www.stscl.org  
Monsignor Gerald Kosse, Pastor

Sundays 8:30 a.m. Mass. Public Mass will be celebrated at FULL capacity in the church. Masses: 9 a.m. Wednesdays, 10 a.m. Friday at the nursing homes – check the bulletin. All Sunday masses will be live streamed on Facebook at <https://www.facebook.com/pg/stcluverne/videos/>. Visit [www.stscl.org](http://www.stscl.org) for more information.

**Luverne Christian Reformed Church**  
605 N. Estey St., Luverne  
Office Ph. 283-8482; Prayer Line Ph. 449-5982  
www.luverneccrc.com – office@luverneccrc.com

Sundays 9:30 a.m. Worship service. 6:30 p.m. Evening worship service. We are streaming Sunday services live on YouTube at 9:30 a.m. and 6:30 p.m. Send him a friend request if you're not connected. You may also visit our website for delayed broadcasts. Also our services are on local cable TV at 5:30 p.m. on Wednesdays and at 6:30 p.m. on Thursdays. In all circumstances, may we joyfully declare: "Our help is in the name of the Lord, the Maker of heaven and earth." Psalm 124:8.

**First Baptist Church**  
103 N. Jackson St., P.O. Box 975, Luverne  
Ph. 283-4091; email: fbcuv@iw.net – www.fbcuiverne.org  
Walt Moser, Pastor

Sundays, 10:30 a.m. In-person worship service. Service is also on Facebook Live at 10:30 a.m.

**Grace Lutheran Church**  
500 N. Kniss Ave., Luverne  
Ph. 507-283-4431; www.graceluverne.org – graceluverne@iw.net

Ann Zastrow, Pastor  
Dave Christenson, Interim Pastor  
Thursday, Feb. 3: 8:30 a.m. Missions in Action. Sunday, Jan. 30: 9 a.m. Worship Service with Holy Communion. 10 a.m. Coffee fellowship. 10 a.m. Sunday school. 5 p.m. Worship Service with Holy Communion. 6:30 p.m. Worship practice. Tuesday, Feb. 8: 9 a.m. Staff meeting. 1:30 p.m. Women's board meeting. 6:45 p.m. Ministry meetings. 8 p.m. PPC meeting. Wednesday, Feb. 9: 7 a.m. Men's Bible study. 3:15 p.m. Faithweavers. 5 p.m. Youth supper. 6:15 p.m. 6<sup>th</sup> and 7<sup>th</sup> grade Confirmation. 7:15 p.m. 8<sup>th</sup> grade Confirmation. 8:15 p.m. 9<sup>th</sup> grade Confirmation. Online, TV and Radio Worship options are available. Online: Sundays 9 a.m. on the church website [www.graceluverne.org](http://www.graceluverne.org), click Worship tab or go directly to our Facebook page at Grace Lutheran ELCA, Luverne. TV: Vast Channel 3 will air our worship service Mondays at 4:30 p.m. and Fridays at 10 a.m. Radio: KQAD-AM Radio will air our worship service on Sundays at 8:15 a.m.

**Bethany Lutheran Church**  
720 N. Kniss Ave., Luverne

Ph. 507-283-4571 or 605-215-9834  
Sundays, 10:15 a.m. Worship service; worship online as well (at els.org). Tuesdays, 6:30 p.m. Zoom Bible study. See our Facebook page, Bethany Lutheran Church (Luverne) for other classes and events.

**American Reformed Church**  
304 N. Fairview Dr., Luverne

Ph. 283-8600; email: office@arcluverne.org  
Thursday, Feb. 3: 9 a.m. Cookie Crew. 5:30 p.m. Tumbling Tykes. Friday, Feb. 4: 6:30 a.m. Community Men's Bible study. Sunday, Feb. 6: 9:30 a.m. Worship Service. 10:50 a.m. Sunday school. Tuesday, Feb. 8: 12 p.m. Staff meeting. 7 p.m. Consistory meeting. Wednesday, Feb. 9: 9:30 a.m. Worship center. 5:30 p.m. Midweek Meal. 6:30 p.m. Pioneer Club. 6:30 p.m. Jr. and Sr. High youth groups. Thursday, Feb. 10: 12:30 p.m. Piece Out (puzzle party). 5:30 p.m. Tumbling Tykes. Services are also broadcast on Vast Channel 3 on Mondays at 6 p.m. and Wednesdays at 4 p.m. DVD's available upon request. To stay up to date on announcements, follow us on Facebook and Instagram @arcluverne.

**Rock River Community Church (formerly First Assembly of God)**  
1075 110<sup>th</sup> Ave., 2 miles west of Luverne on County Rd. 4  
Ph. 612-800-1255; email info@rockrivercommunity.church  
Bob Junak, Pastor; Annette Junak, Assistant Pastor

Sundays, 9 a.m. Sunday school; 10 a.m. Worship service. Children's church for ages 3-6<sup>th</sup> grade and nursery for ages 0-3 provided during our services. Wednesdays, 7 p.m. Worship service. All services are in-person and all are welcome.

**United Methodist Church**  
109 N. Freeman Ave., Luverne  
Ph. 283-4529

Saturday, Feb. 5: 8 p.m. AA meeting. Sunday, Feb. 6: 9 a.m. Adult Sunday school. 9:15 a.m. Coffee. 10:30 a.m. 4-6:30 p.m. Spaghetti/Chocolate buffet. 4:30 p.m. Genesis/Revelation Bible study. Monday, Feb. 7: Pastor Dorie – Boom meeting. Tuesday, Feb. 8: Home visits. 1:30 p.m. Sewing ministry. 6 p.m. Teachers meeting. 7 p.m. Club Scout/Boy Scouts. Wednesday, Feb. 9: 6:15 p.m. FUEL. 6:30 p.m. Confirmation. 8 p.m. AA meeting. Pizza Ranch take out fundraiser night. Live streamed on Facebook and radio.

**First Presbyterian Church**  
302 Central Lane, Luverne

Ph. 283-4787; email: Firstpc@iw.net  
Sunday, Feb. 6: 9:30 a.m. Worship service. 10:30 a.m. Sunday school.

Wednesday, Feb. 9: 5:30 p.m. Bells. 6:15 p.m. Choir. 7:15 p.m. Session. In-person Worship service and live on Facebook. Our Facebook page can be found under First Presbyterian Church of Luverne. We are also on the local Luverne cable station at 10 a.m. and 6 p.m. on Tuesdays and 10 a.m. on Thursdays.

**St. John Lutheran Church**  
803 N. Cedar St., Luverne  
Ph. 283-2316; email: stjoh@iw.net  
www.stjohnlutheranluverne.org  
Rev. Dr. Phil Booe, Pastor

Saturday, Feb. 5: 5:30 p.m. Worship Service. Sunday, Feb. 6: 9 a.m. Worship Service. 10:15 a.m. Adult Bible class; Sunday School. Wednesday, Feb. 9: 9:30 a.m. Bible study. 6:30 p.m. Kids for Christ; 6:30-8 p.m. Confirmation. 7:30 p.m. High School Youth Group. Services will be available on the Vast Channel 3 Sunday and online at the city website, [cityofluverne.org](http://cityofluverne.org).

**Living Rock Church**  
500 E. Main St., Luverne  
Ph. 449-0057; www.livingrockswmn.org  
Billy Skaggs, Pastor

**New Life Celebration Church**  
101 W. Maple, Luverne  
Ph. (605) 368-1924; email: newlifecelebration@gmail.com  
Food mission every third Thursday.

**Zion Evangelical Lutheran Church**  
305 E. 2<sup>nd</sup> St., P.O. Box 36, Hardwick  
Ph. (507) 669-2855; zionoffice@alliancecom.net  
Jesse Baker, Pastor

Sunday, Feb. 6: 9 a.m. Worship service. 10:15 a.m. Sunday School. 10:30 a.m. Bible study. Worship service on Luverne cable at 3:30 p.m. every Thursday and Friday.

**First Lutheran Church**  
300 Maple St., Valley Springs, S.D.  
Ph. (605) 757-6662  
Mark Eliason, Pastor

Sunday, Feb. 6: 9 a.m. Worship service with Holy Communion. 10 a.m. Sunday school. Masks are strongly recommended, but not required, even if fully vaccinated. Worship will be streamed live on Facebook Video worship via YouTube at <https://www.youtube.com/watch?v=LHdQwVxFcU4>

**Palisade Lutheran Church**  
211 121<sup>st</sup> St., Garretson, S.D.

Ph. (507) 597-6257 – firstpalisade@alliancecom.net  
Mark Eliason, Pastor  
Sunday, Feb. 6: 9:30 a.m. Sunday school. 10:30 a.m. Worship service with Holy Communion. Masks are strongly recommended, but not required, even if fully vaccinated. Worship will be streamed live on Facebook. Video worship via YouTube at <https://www.youtube.com/watch?v=LHdQwVxFcU4>

**First Presbyterian Church**  
201 S. 3<sup>rd</sup> St., P.O. Box 73, Beaver Creek  
Ph. 507-935-5025  
email: lori.firstpres@gmail.com

Sundays, 9:30 a.m. Worship Service. Second Tuesday of each month, 7 p.m. Session meeting.

**Magnolia United Methodist Church**  
501 E. Luverne St., Magnolia  
Ph. 605-215-3429  
email: magnoliannumc@gmail.com  
Nancy Manning, Pastor

Sunday, 9 a.m., in-person with livestream available on the church's Facebook site.

**Steen Reformed Church**  
112 W. Church Ave., Steen

Ph. 855-2336  
Jeremy Wiersema, Pastor  
Sunday, 9:30 a.m. and 6 p.m. Worship service in-person with livestream available on Facebook and YouTube. Radio worship on KQAD Sundays at 9:30 a.m.

**Bethlehem Lutheran Church**  
112 N. Main St., Hills

Ph. 962-3270  
Sunday, Feb. 6: 9 a.m. Worship at Tuff Chapel. 10 a.m. Worship with Holy Communion. 9 a.m. Sunday School. 7-8:30 p.m. Youth group meets. Worship will be streamed live to Facebook at Bethlehem of Hills. You can find more info on our website [blchills.org](http://blchills.org). Tuesday, Feb. 8: 2 p.m. Tuff Home Bible study. 3:30 p.m. Tuff Village Bible study. Wednesday, Feb. 9: 9 a.m. Quilting. 6 p.m. Confirmation. 7 p.m. Social/dessert time. 7:15 p.m. Wednesday night worship service.

**Hills United Reformed Church**  
410 S. Central Ave., Hills

Office Ph. 962-3254  
hillsurc@alliancecom.net  
Alan Camarigg, Pastor

## Believe ... without all the answers

If understanding everything is a prerequisite to belief, you will never believe.

Jesus' fulfillment of Old Testament prophecies is nothing short of breathtaking. In at least 322 places, Jewish prophets, who wrote hundreds of years before Jesus' birth, predicted details about the coming Messiah's life. He would be born in Bethlehem, from the tribe of Judah and the lineage of David, flee to Egypt as a child, begin his ministry in Galilee, perform many miracles, enter as King into Jerusalem on a borrowed donkey, be betrayed by a friend for thirty pieces of silver, die by crucifixion between thieves, and then be resurrected and ascend to heaven – just to name a few.

Imagine if Jesus were to appear to you as you are reading this article and say to you, "I won't explain to you how this all works, but I want you to know that my claim to be God is true, and I want you to believe it and follow me even if you can't understand. Later I'll expand your thinking so that it makes sense. But today, until then, I just need you to trust me." Would you believe him?

Not all the disciples' questions were answered by Jesus while he walked on the earth. Consider what John records. "When many of his disciples heard [these things], they said, 'This is a hard saying: who can listen to it?' ... After this, many of his disciples turned back and no longer walked with him. So, Jesus said to the twelve, 'Do you

## BUILT ON A ROCK

By Pastor Walt Moser  
First Baptist Church, Luverne

*If understanding everything is a prerequisite to belief, you will never believe.*

want to go away as well?' Simon Peter answered him, 'Lord, to whom shall we go? You have the words of eternal life, and we have believed, and have come to know, that you are the Holy one of God.' (John 6:60,66-69 ESV)

Having faith in Jesus does not mean all questions will be answered; it means knowing there is One who does have all the answers. Peter confessed, "We have believed, and have come to know, that you are the Holy One of God"

"What we must avoid at all costs is editing Jesus, forcing him into a mold where he answers our questions the way we like. This is not worship of God; it's worship of ourselves. And it is the greatest substitute for true faith." (J.D. Greear)

These weekly church page messages are contributed to God's Work through the Church and by these concerned and responsible citizens & businesses:

Call Rick or Chantel to place your ad!

283-2333

Read us online!

Rock County  
**STAR HERALD**  
[www.Star-Herald.com](http://www.Star-Herald.com)

Trust in Him



**Papik Motors**  
283-9171  
PAPIK.COM  
Luverne, MN  
Rock Rapids, IA

**HSS HILLS STAINLESS STEEL & EQUIPMENT CO., INC.**  
506 W. Koehn, P.O. Box 987, Luverne, MN  
PHONE 507-283-4405  
Church is Important - Please Attend!

**Buffalo Ridge Insurance**  
507-283-2381  
www.buffaloridgeins.com E-mail: info@buffaloridgeins.com

**McClure Electric**  
Alan M. Aanenson, owner  
Farm, Home & Commercial Wiring  
Luverne, MN Phone 507-283-4716

**TUFF MEMORIAL HOME**  
A HOME WITH A HEART!  
Hills, MN • 507-962-3275

**MINNWEST BANK**  
116 East Main Street • Luverne • 507-283-2366  
Hwy. 75 • 800 South Kniss • Luverne • 507-283-9131  
www.minnwestbank.com • Member FDIC • MoneyLine 888-616 BANK

Advertise Here

**SECURITY SAVINGS BANK**  
bankwithssb.com 507.449.6000  
Member FDIC Luverne, MN

**HARTQUIST**  
Funeral and Cremation Services  
Pipestone • Luverne • Lake Benton • Jasper • Tyler  
www.HartquistFuneral.com

**Pizza Ranch**  
110 E Main, Luverne 507-283-2379

**CWG Business Insurance**  
Tri-State Region Period!

**MANLEY TIRE & OIL SERVICE**  
Manley Minnesota  
1-800-615-3704  
Open six days a week - Closed on Sundays  
To God be the Glory.

**Luverne ANNOUNCER**

**First Farmers & Merchants**  
303 E. Main, Luverne, MN  
507-283-4463  
www.ffmbank.com  
We believe in you.™  
Member FDIC. And the community.





# City approves plans, specs for final phases of Luverne Loop

By Lori Sorenson

The final links of the Luverne Loop will be built this summer, completing the city's seven-mile biking and pedestrian trail that's been seven years in the making.

At their Jan. 25 meeting City Council members approved plans and specifications for Phase 3B and Phase 4 of the loop project and authorized advertising for a Feb. 16 bid letting.

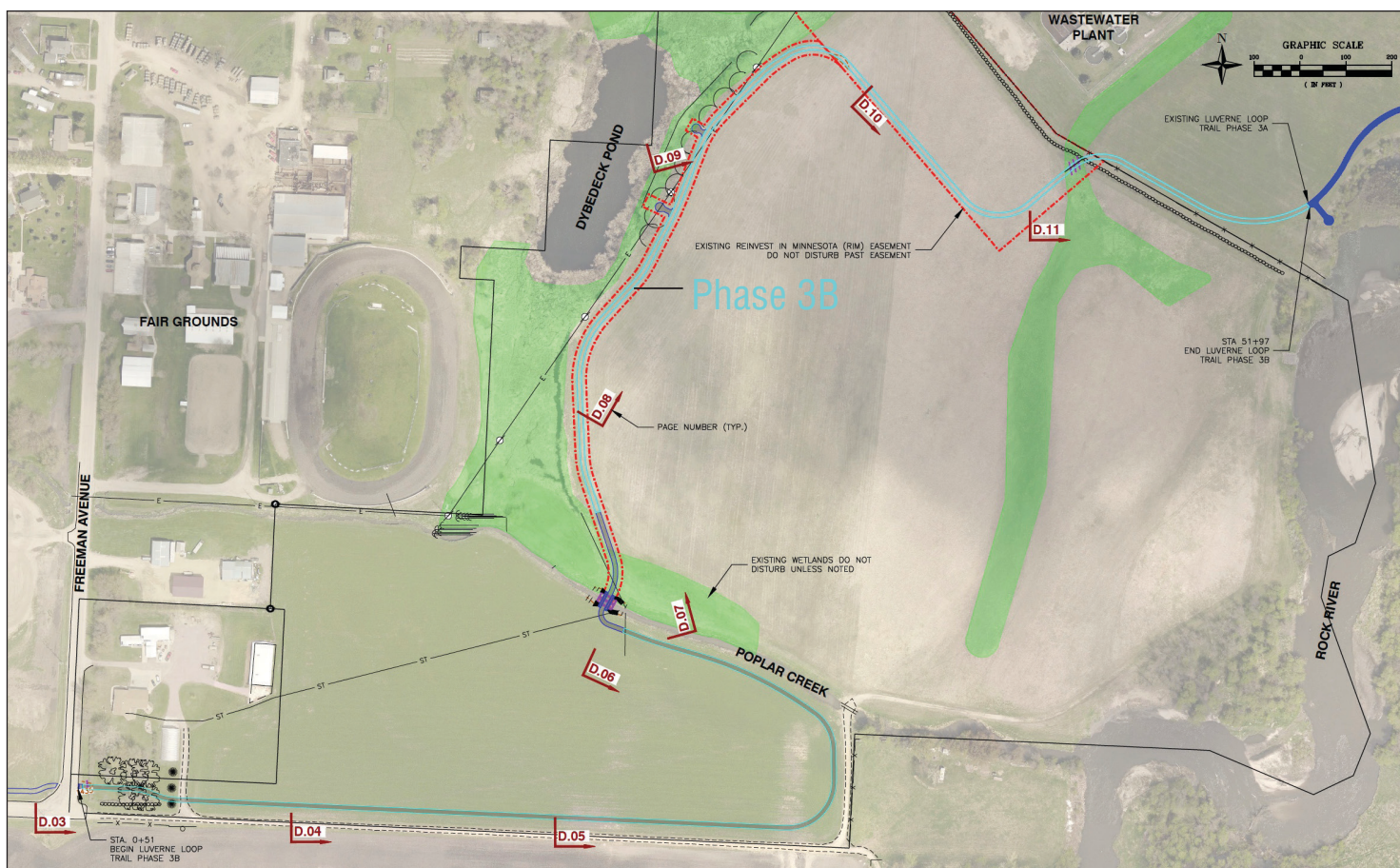
"These are the final two phases of the project and are the links that provide for a beautiful seven-mile biking and walking trail around the entire community," City Administrator John Call said.

Phase 4 is almost a mile long and will connect the trail from the Highway 75 Economy Lodge area to the existing trail that dead-ends at the Rock River near the Luverne wastewater treatment plant area.

The most recent construction, Phase 3A, built the Loop from the existing Blue Mound Trail along berm of the Rock River near the city park and behind Redbird Field and southward.

Phase 3B is .75 miles and will bring the trail at the north end of the community, around Sanford area and east to connect with the Blue Mound Trail.

The Phase 4 bids will



call out some options in surfacing to either concrete or asphalt and will give the City Council flexibility to use either concrete or asphalt on different areas of the trail.

Construction will start on or after April 4, with a completion date of Aug. 27,

2022.

Approximately 70 percent of the trail will be financed with grant funds from the state of Minnesota.

In capital improvement planning last year, the council budgeted \$732,000 for Phase 3B Trail work with a \$512,000 Legacy

Grant going toward that amount.

Phase 4 work, estimated at \$571,000, will be offset by a Legacy Grant in the amount of \$399,700.

The Loop and the Blue Mound Trail to the state park offers 13 contiguous miles, which is

popular among users and prompted the Greater Minnesota Regional Parks and Trails Commission to name the Loop a "Regional Trail of Significance."

That designation qualifies the local trail for more grant funds and other state support.

24/7 ... Rain or Shine ...

Your local, independent agent will be there.  
Working for you - meeting your needs.

**Buffalo Ridge**  
INSURANCE

**Auto-Owners**  
INSURANCE

LIFE • HOME • CAR • BUSINESS

Marilyn Bloemendal, CPCU

Cory Bloemendal, CIC

Steve Smolenski, CIC

Sadie Stone

South Hwy. 75, Luverne, MN  
507-283-2381

**EMPLOYMENT**

## CITY OF LUVERNE

### WATER/WASTEWATER OPERATOR

Entry level position to become an operator skilled in the technical work needed to operate, maintain and repair process, control and support systems at the City of Luverne newly remodeled Class A Wastewater Treatment Facility and Class C Water Treatment Facility. Full-time, union position, excellent benefits package, starting salary range of \$17.46-\$20.13/hour (DOQ). Min. Req.: high school diploma or equivalent, 35-mile response area requirement must be met within 6 months of hire, MN Class B CDL with tanker endorsement or able to obtain one within 12 months of hire, have certification, or work progressively towards certification within 24 months as a Wastewater Treatment Facility Operator at a Class "D" level by the MPCA, have certification, or work progressively towards certification within 24 months as a Water Supply System Operator at a Class "D" level by the MN Department of Health. Visit [www.cityofluverne.org/employment](http://www.cityofluverne.org/employment) for further details and information on how to apply.

**Applications must be received by 4:00 p.m. on Friday, February 18, 2022**

The City of Luverne is an Affirmative Action/Equal Employment Opportunity Employer.

**EMPLOYMENT**

## HELP WANTED

- Full-time CNA
- Part-time CNA (various shifts)
- Part-time Overnight RN/LPN
- Laundry Aide
- Full-time Cook and Dietary Aides

308 W. SHERMAN AVE. ELLSWORTH, MN  
CALL 507-967-2482

**EMPLOYMENT**

## NUTRATECH

### NOW HIRING!!

#### Sow Farm Manager Needed

- 5+ years experience in sow farm management
- responsible for approx. 3000 sows
- duties include: daily record keeping, feed ordering, following NT SOP's manual.
- pay based on experience

Please submit resumes to [becka@nutratec.net](mailto:becka@nutratec.net)

**EMPLOYMENT**

## HELP WANTED

### APPLIANCE REPAIR TECHNICIAN

FULL TIME

Installation and Delivery of new and used appliances!

**COMPETITIVE WAGES AND BENEFITS!**

Apply in person or email Jeff: [mh.appliance-jeff@hotmail.com](mailto:mh.appliance-jeff@hotmail.com)

**M & H HARDWARE & APPLIANCE**

PH. 504-442-5671 • 813 Main Street • Edgerton

**EMPLOYMENT**

## GROWER SOLUTIONS

### NOW HIRING

Accepting applications for full-time Crop Advisor position in Hatfield, MN. This position provides customer service to growers through the sale of crop nutrition, crop protection, seed, specialty, technology, and other agronomic products and consultative services. Give us a call at 507-825-3311 for more info or visit [careers.simplot.com](http://careers.simplot.com) to apply. A pre-employment drug screen and background check is required.

Simplot EOE/AAP

**RECYCLE**

## Rock County STAR HERALD

### Help Wanted

## SPORTS REPORTER

The Rock County Star Herald in Luverne, Minnesota, is looking for the right person to help navigate the fast-paced world of community sports reporting.

Our weekly award-winning newspaper covers two local districts and their high school sports teams, along with community outdoors and recreational activities.

We're working to enhance our daily presence with social media posts, sports column/blog and occasional streamed coverage with athletes, coaches and fans.

Our vision is to be on the local scene of whatever sports-related news is happening — whenever and wherever it occurs — and share that experience with sports fans to read and watch on social media and to enjoy in print and online pages.

**If you share the same vision of a local sports news presence, and if you're passionate about sports with the ability to write about it and share it with others, you may be the person we're looking for.**

We're accepting applications now for this **full-time position**. Sports reporting and photography experience is preferred, along with some knowledge of InDesign, PhotoShop and social media platforms.

Email cover letter, resume and work samples to Rick Peterson, general manager, at [rick@star-herald.com](mailto:rick@star-herald.com).

## WE ARE HIRING!

### Join Our Team

## Account Representative

We are looking for a part-time person to join our team as an Account Representative. Work with existing clients for the Rock County Star Herald, Luverne Announcer and Blue Mound Digital on both traditional print ads as well as digital advertising. Basic computer skills required. Sales experience preferred but not required. Familiarity of our local business community is important. Great work environment. Flexible, weekday hours. No nights, weekends or holidays. Competitive pay.

Submit resume to Rick Peterson at [rick@star-herald.com](mailto:rick@star-herald.com) or call 507-283-2333.

**Rock County STAR HERALD** **Luverne ANNOUNCER**