



Rock County STAR HERALD

Rock County's oldest business, printing since 1873

Thursday, June 13, 2019

Touch the Sky Prairie incorporates conservation grazing

By Lori Sorenson

A herd of cattle is grazing contentedly in the tall green grasses of Touch the Sky Prairie northwest of Luverne as part of a prairie management program through the U.S. Fish and Wildlife Service.

The agency is in charge of managing non-native species in the prairie restoration project, and grazing — along with controlled burns — is becoming an effective tool in that process.

This year 120 head of cattle are grazing 120 acres in the north edge of the 1,000-acre Touch the Sky Prairie.

The timing depends on which plantspeciesbiologistsaretargeting and the growing conditions each spring, according to Marty Baker, biological science technician with the Windom office of U.S. Fish and Wildlife Service.



Lori Sorenson photo/0613 conservation grazing

Cow-calf pairs graze 120 acres of Touch the Sky Prairie on the north end of the property Monday evening.

"There are meticulous things that we key in to allow this grazing process to happen," Baker said.

This year it's brome grass and Kentucky blue grass, which are prolific in local pastures and ditches

but not native to prairies.

Around May 22, these two species were expected to reach a reproductive state that would be best for grazing, and that's when the cows were turned loose in the tall grass.

"It's an excellent feed source for them," said Baker. "When the cow walks out there, the grass is up to her shoulder."

Conservation grazing/see 5A

'Whole new way to Relay'

Relay For Life adopts block party format at Take 16 on June 13

By Lori Sorenson

Rock County's Relay For Life will be using a new format for its June 13 fundraiser for the American Cancer Society.

Teams and supporters will gather at Take 16 Brewery on East Main Street in Luverne for the event that supports cancer survivors and to remember those who died of cancer.

"We couldn't be at the school this year because of construction," said Lisa Ehlers, chairwoman of Rock County Relay for Life.

Relay for Life/continued on 2A

Gevo plant goes 'green'

'Rock County Wind Fuel' will make GEVO first in U.S. powered by wind

By Mavis Fodness

Under a two-phase plan announced June 4, the Gevo, Inc., plant in Luverne is expected to become the first bio-based production company to use wind and livestock manure as energy sources to reduce its carbon footprint on the environment.

Gevo purchased the Agri-Energy production facility on the southwest edge of Luverne in 2010.

Chief Executive Officer Patrick Gruber spoke with 30 Luverne plant employees and other invited guests June 4 at Take 16 Brewing Co. on Main Street Luverne.

He outlined plans for expanding the production capacity and a two-phase plan to retrofit the Luverne plant so its corn-based products can be sold in the more profitable low-carbon fuel market, due to its use of renewable energy sources.

"Green energy is a big deal for all of us in biofuel production," Gruber said.

States like California, the first to enact low-carbon fuel standards in 2009, reward companies for decreasing carbon dioxide emissions in manufacturing processes.

Fuel manufacturers like Gevo receive carbon intensity ratings based on how the fuel is made and how much carbon is used in its generation.

The lower the CI rating, the higher

Gevo wind energy/see page 5A



Mavis Fodness photo/0613 Rock Edge 2019

Work on the Mead Court newly constructed sandbox was helped along by some of the neighborhood kids. Pictured from left are Mallory Thorson, Cylus Nieman, Gavin Reisch, Tyson Cowell, Lucas Nieman, Austin Ossefoort, Abel Hidalgo, Daniel Oaias and Becky Ossefoort.

More than 100 Rock the Edge teens put 'Service Over Self'

By Mavis Fodness

Recent Luverne High School graduate Emilie Staeffler closed out a week of community service Friday with a sense of pride.

The veteran of several mission trips through her own church, Staeffler said serving at home has special meaning.

"When you drive by, you can see your work. It's more rewarding," she said.

Staeffler was one of more than 115 area youth and 65 adults who spent last week completing 50 area projects that left a lasting impression in

their own backyards.

Each morning the youth and adult volunteers gathered at Grand Prairie Events in Luverne for fellowship, devotion and project assignments.

They were split into a dozen work teams and spent several hours — sometimes days — at various outdoor sites depending on the task. Some days youth broke into smaller groups to complete intergenerational activities.

They made home repairs, painted, cleaned, landscaped, tied fleece blankets and assisted

with several organizations and individuals who needed assistance.

The week focused on the theme "Unshaken" from 2 Corinthians 1:3-7, spreading grace through the gifts God enriched inside each youth.

The youth were encouraged to show "unshaken" conviction by working side-by-side with property owners who were touched by the youth's enthusiasm, expressions of kindness and positive attitudes.

Rock the Edge youth/continued on page 10A

Bruce T. hangs up play-by-play microphone

By Mavis Fodness

The "voice of Luverne Cardinal sports play-by-plays" made his last broadcast Thursday night, June 6, in Marshall.

Bruce Thalhuber took over broadcasting sports events for KQAD-AM in Luverne in 2001.

Several times a week he recounted the football, volleyball, girls' and boys' basketball, boys' and girls' hockey and baseball games for the public who could not attend the games in person.

Thalhuber said over the years he's felt he has become a member of the Cardinal teams as he announced their events on the field, rink or court.

"When they do something good, you naturally get excited," he said.

Something good happened Tuesday night, June 4, when the Cardinal baseball team broke a 2-2 tie in the bottom of the seventh to qualify for their third consecutive appearance



Mavis Fodness photo/0613 Bruce Thalhuber

June 6 marked the end of 19 years of Cardinal sports play-by-play for KQAD's Bruce Thalhuber when he announced the Luverne-Paynesville game in Marshall. The 45-year radio veteran will continue as an on-air personality for the Luverne station.

in the section finals. Thalhuber went against his play-by-play philosophy of "just call the game" by actively cheering Ben Serie's line drive to win the game against Fairmont. Shouting was not good for

a sports announcer's voice.

"I couldn't talk very well the next day," he admitted, happy he didn't have to announce another game the same night.

Thalhuber announced last fall that he would end his sports announcing career after the Spring 2019 season.

He wanted to leave the announcer's booth knowing that he was still able to give radio listeners an accurate account of what occurred on the field.

"The best compliment I can get from someone is them saying, 'It felt like I was there.'"

While Thalhuber retires from sports announcing, he will continue to work as the on-air personality known as "Bruce T" at the Luverne station and possibly attend Cardinal sports events as a fan from the stands.

"My wife (Phyllis) said she would not sit with me because I'll probably start doing play-by-plays," he said with a smile.

Luverne Veterans Home celebrates 25 years

Event recognizes employees who have worked 25 years at facility

By Lori Sorenson

It's been 25 years since the Minnesota Veterans Home in Luverne accepted its first military veteran as a resident, and the community celebrated this anniversary on Friday.

"Our veterans have proudly served their nation, and now it's our turn to proudly serve our veterans," Minnesota Department of Veterans Affairs Commissioner Larry Herke told crowds gathered on the Veterans Home property.

He was among several featured speakers that included Luverne Veterans Home Administrator Luke Schryvers and Luverne Mayor Pat Baustian.

"We've had 25 years of outstanding care for our veterans," Baustian said, referring also to early leadership in the community that led to the facility being built here.

"Without this forward-thinking committee, we

Veterans Home 25 years in Luverne/see page 3A



COMMUNITY CALENDAR

Meetings

MS Support Group will meet at 10:30 a.m. Tuesday, June 18, at the Luverne Pizza Ranch. All persons with MS, family and friends are invited. Call 283-2069 or 283-2964.

Parkinson's Support Group will meet at 1 p.m. Thursday, June 20, at St. John Lutheran Church.

Beaver Creek Cemetery Association will meet at the First Presbyterian Church in Beaver Creek for their annual meeting at 7 p.m. Thursday, June 20.

Lady Luverne Red Hats meetings are canceled until further notice due to health issues of members.

Women's Alcoholics Anonymous meets at 8 p.m. Mondays in the United Methodist Church.

Alcoholics Anonymous meets at 8 p.m. Wednesdays and Saturdays in the United Methodist Church, Luverne. Call 605-321-4324.

Alanon meets from 6:30 to 7:30 p.m. the second and fourth Thursdays in Sanford Luverne Blue Mound Room. 507-449-1246.

Alcoholics Anonymous meets from 8 to 9 p.m. every Tuesday in Runals Memorial Hall, Edgerton. Call Naomi, 507-215-2956.

Highway 23 project extends to June 22

The lane closure on Highway 23 just outside Jasper's northern city limits has been extended through June 22. Motorists can anticipate short delays when flagging operations are present. The lane closure occurs when the railroad receives shipments to repair a bridge at the site and requires space to unload materials onto the shoulder.

Two opportunities for children's theater

•A "Magical Musical Play" offered at Luverne Street Music the week of June 17 needs student actors grades K-4 (as attended during the past school year) to help save the crops in this fun country-style garden hoedown! Fee is \$40.

•Missoula Children's Theatre returns to Luverne the week of July 8. Spots are open for actors who attended kindergarten (past school year) through age 7 to perform Hans Christian Anderson's classic tale, "Snow Queen." Fee is \$35 if registered prior to June 15 at Community Education.

Blood Bank in Adrian June 17

The Community Blood Bank will host the All-American donor drive from 11:30 a.m. to 1:30 p.m. and from 3 to 6 p.m. Monday, June 17, in the Adrian EMS Hall. Donors will receive a free T-shirt and free lunch from Subway. Call 507-483-2668 or log on to cbbllifeblood.org. Walk-ins are welcome.

Brown bag lunch with music June 18

Bring your own lunch, maybe a chair, to the plaza at Main and McKenzie (History Center parking area) and enjoy the Brown Bag Concert with music by Ron and Jane Cote from 11 a.m. to 1 p.m. Tuesday, June 18.

Free food giveaway June 20

New Life Celebration Church will offer free produce, bread and meat from 4:30 to 5:30 p.m. Thursday, June 20, at the Generations building at 319 East Lincoln Street in Luverne for those having trouble putting food on the table. Bring your own bags and boxes. Call 507-283-3466.

Summer theater camp for youth June 24

Area youth, grades 6-9, are invited to participate in a 7-week summer theater arts camp beginning June 24 and will meet from 5:30 to 9 p.m. Monday through Thursday at the Quartziter Community Center in Jasper. Participants will learn about theater through the "Lion King" experience. Performances are set for Aug. 11, 12, and 13 at Hiawatha Pageant Park in Pipestone. Register at <https://amp.mymusicstaff.com/Youth-Musical-Summer-Camp> or call 605-695-8626 or email pipestonecamp@gmail.com.

Master Gardeners Tour set for June 25

Join the Rock County Master Gardeners on their annual Garden Tour on June 25. Fee is \$10 prepaid by June 19 or \$15 after that.

Register for VBS at Bethlehem

Bethlehem Lutheran Church of Hills will offer a free Vacation Bible School program titled "To Mars and Beyond" from Sunday, July 7, through Thursday, July 11, for children ages 3 through eighth grade. Classes will be from 5:30 to 8:30 p.m. with supper served every night.

Register by **July 1** by calling Kari Kueter at 507-962-3656 or email kjueter@alliancecom.net.



State Rep. Joe Schomacker, Dist. 1 Congressman Jim Hagedorn, and state Sen. Bill Weber lead an agriculture roundtable Friday, June 7, in the Rock County Commissioners room of the Rock County Courthouse.

Congressman, state legislators lead ag discussion

By Lori Sorenson

U.S. Congressman Jim Hagedorn joined state Republican legislators Rep. Joe Schomacker and Sen. Bill Weber, both of Luverne, in a Friday roundtable discussion about regional farming challenges this spring.

Hagedorn (R-Minnesota District 1) said he's committed to doing everything he can to support farmers.

"Agriculture is the backbone of our society," he said. "I'm here to listen."

Questions and discussions ranged from trade and tariffs to roads and infrastructure, but the issue at hand dealt with late and prevented issues as they relate to USDA rules for cover crops.

"Farmers will need to make prevent plant decisions in the next week," said Doug Bos of the Rock County Land Management Office.

Hagedorn said he would pressure the USDA to decide on the rules so farmers could make their decisions.

Magnolia farmer Gary Overgaard urged Hagedorn to hurry.

"Something has to be done sooner than later, because later is too late and it's hurting the local ag economy," Overgaard said. "Farmers are now planting for crop insurance, and that's a bad deal."

Beaver Creek farmer Pe-

"I wish they would use common sense. I lived through the Russian grain embargo and it's taken generations to recover. ... The longer this goes on the worse the damage is."

— Gary Overgaard, Magnolia

ter Bakken spoke as a township official frustrated with FEMA disaster aid response.

"We're working on last year's FEMA aid," he said.

"We've been approved for \$4,000 but we haven't seen a thing. ... We're getting nowhere with the federal government to fix our roads that were damaged 18 months ago."

Hagedorn addressed issues as they related to the United States-Mexico-Canada Agreement and U.S. relations with China.

"I support the USMCA and free and reciprocal trade," he said, adding that he also supports efforts to improve trade leverage with China.

"What was going on with China and what the president is doing is way overdue. Most of us understand why he's doing it. China is a tough customer."

Bos pointed out that Mexico buys about a third of American cheese exports. "This could be the last nail in the coffin for our dairy pro-

ducers," he said about tariffs at the border.

Hagedorn praised President Trump's efforts to curtail immigration at the U.S.-Mexico border.

"We have to secure our border," he said. "And the president is making proposals to secure our borders. I'm telling you this problem has to stop, and I stand ready to do it. ... Do we want the farmers to be in the middle of it? No. It's a big deal; I get it."

Overgaard encouraged Hagedorn to understand how relations with China are affecting farmers.

"I wish they would use common sense," he said. "I lived through the Russian grain embargo and it's taken generations to recover. ... The longer this goes on the worse the damage is."

He described a "perfect storm" of devastating weather, market upheaval, trade wars and decreasing profit margins on the farm.

"There's a lot of stress

out here in rural Minnesota," Overgaard said.

Discussion turned to health care as another expense that's threatening farm family budgets.

Hagedorn explained that Obama Care sent premiums skyrocketing and that the current administration is working on a plan to fix that.

When participants at Friday's round table pressed for specifics about what the administration has in mind to replace the ACA, Hagedorn suggested people consider forming associations.

"... like Farm Bureau members could form their own health insurance pool, and the government could take care of the really sick people," he said.

When someone asked how that was different from Universal Health Care, Hagedorn said European citizens spend half their income on taxes and they have to wait for care.

Farm Bureau representative Carolyn Olson said her health insurance premiums are \$28,000 per year, and health care costs are already stressing her family's farm income.

"My husband has MS and one dose of his medicine costs \$146,000, and he needs it twice a year," she said through tears. "We need reforms in this. You have to keep pushing."

Relay for Life celebrates at Take 16/continued from page 1A

"So we decided to try something different."

The evening begins at 5:30 with a meal donated by Teal's to raise money with donations and team activities.

"We'll still use some of the same Relay for Life features, like the basket auction," Ehlers said. "But this will be a whole new way to Relay."

This year's Relay at the brewery will introduce some new ideas, such as a "Beer'd Contest" for the best beards starting at 6:30 p.m.

Also new this year will be more kids' entertainment, in-

cluding a mechanical bull that will be available for riding for a donation. The Kid's Zone will also have face painting, tattoos, sidewalk chalk and beanbags.

The standard Relay for Life luminary fundraiser continues to seek donations from supporters who purchase a luminary bag and decorate it in honor or memory of a loved one.

These will be placed around the Take 16 perimeter and continued around the block east and then north on Blue Mound and possibly west on Lincoln as far as the

luminaries reach.

A new twist this year will be digital luminaries that allow supporters to send images of their loved ones to be featured in a slideshow during the event.

Kim and Maggie Schmidt are the honored Relay for Life survivor and caregiver, and they'll share their stories during opening ceremonies, which start at 7 p.m.

The event wraps up with the survivors' balloon release at roughly 8:45 and the Glow Run/Walk at 9 p.m.

The annual Relay was

in the Luverne Elementary School commons last year, and for many years prior to that it was at Luverne City Park.

Relay For Life raises money for the American Cancer Society to support breakthrough therapies and research for a cure and help patients gain access to treatment and community support.

Since 1985 Relay For Life events in the U.S. have raised more than \$6.3 billion.

More information about the 2019 event is at RelayForLife.org/RockCountyMN or 877-957-7848.



Dial-A-Specialist

Your One Stop Guide to Local Businesses

DR. MICHAEL SMITH
 • Men, Women & Children's Health
 • Custom Orthotics • Kinesiotape • Athletic Care • Massage Therapy • Work & Auto Injuries • Postural Restoration
 WWW.ROCKCOUNTYCHIROPRACTIC.COM
 283-2561 • 103 E. MAIN, LUVERNE
 Monday 7:30 a.m. - 6 p.m. • Tuesday 7:30 a.m. - 3 p.m.
 Wednesday 7:30 a.m. - 6 p.m. • Thursday 7:30 a.m. - 1 p.m.
 Friday 7:30 a.m. - 5 p.m.

• Chiropractic

Viking Electric LLC
Tim Gangestad
 Owner
 (507) 290-2595
 Conquering all of your electrical needs!
 Residential • Commercial • Agricultural

• Electrician

STAR HERALD
LUVERNE ANNOUNCER
Chantel Connell
 Sales Representative
 117 W. Main, Luverne, MN
 507-283-2333
Rick Peterson
 General Manager

• Advertising

LUVERNE HEALTH & WELLNESS
Codie Zeutenhorst, D.C., CAC
 Acupuncture Chiropractic Care
 Family Care Sports Injuries
 Kinesiotape Auto & Work Injuries
Acupuncture and Massage Available
 Kris Van Der Brink M.T. & Amy Rosales M.T.
 507.449.4400
 www.luvernechiro.com
 109 S. Freeman Ave. | Luverne, MN

• Chiropractic

Rock County EYE CLINIC
 507-283-2345
 104 N. Freeman Ave.
 Luverne, Minnesota
Dr. Sandra Carman

• Eye

Papik MOTORS
 1-90 Luverne, MN
 Box 536 • 801 West Commerce Road
 Luverne, MN 56156
 (507) 283-9171
 (800) 634-7701
 www.papik.com
 Certified USED VEHICLES
 Certified pre-owned
 GMC Cadillac CHEVROLET DODGE Jeep RAM

• Automotive

Luverne MINNESOTA City Offices
Love the life!
 PO Box 659, Luverne, MN 56156
 507-449-2388 (24 hour voice mail)
 www.cityofluverne.org

• City

Dakota Land Surveying and Engineering, Inc.
Steven B. Kor
 Professional Engineer
 Registered Land Surveyor
 2000 W. 42nd Street, Suite B-6
 Sioux Falls, SD 57105
 605-334-4882
 605-334-5745 Fax
 506 Almar
 Luverne, MN 56156
 507-283-3803
 steve.dis@midconetwork.com

• Land Surveying

Farmers weigh over crop options for prevent plant and drowned-out acres

Editor's note: Doug Bos of the Rock County Land Management Office in Luverne recommends the following reading for farmers weighing their options for acres that they haven't been able to plant or are drowned out. "Don't leave the field bare. The effects of a farmer choosing to leave a field black can create what is called fallow syndrome," Bos said. "The effects of no living plants kills all microbial action in the soil and can create a 10- to 15-percent yield reduction next year." Read on:

By Elizabeth Stahl, Anna Cates and Phyllis Bongard, University of Minnesota Extension Services

Excessive precipitation and persistently wet conditions have prevented the planting of corn and soybeans in some fields and led to ponding and drown-out areas in others.

On acres where "prevent plant" is claimed for insurance, the USDA-Risk Management Agency (RMA) requires protection from erosion and control of noxious weeds.

Planting a cover crop to these areas can help control weeds and prevent erosion, while enhancing soil structure and preventing "fallow syndrome."

Fallow syndrome, which can hurt crop yield the following year, can occur when there is not enough living root material for beneficial soil mycorrhizal fungi to survive.

These "good fungi" facilitate the uptake of nutrients that are less mobile in the soil, such as phosphorus and zinc.

Planting a cover crop that is a host to these good fungi can help prevent fallow syndrome.

Important considerations when planting a cover crop:

- Check the herbicide history of the affected area.

Cereal rye and oats tend to be among the most tolerant cover crops to previously applied herbicides, although this will vary depending on the herbicide applied, application rate, soil type, environmental conditions, and time of application.

In general, herbicides with longer residual activity have greater potential to hinder cover crop establishment.

Also, there tends to be more risk to grass cover crops if a residual grass herbicide was applied, and more risk to a broadleaf cover crop if a residual broadleaf herbicide was applied.

- Think ahead to next spring. Cover crops that winterkill, such as oats, sudangrass, sorghum-sudangrass, radish, turnip, barley, and crimson or berseem clover, eliminate the need to plan a spring termination.

Meanwhile, cover crops such as cereal rye and winter wheat will overwinter, so they need a spring termination plan.

- Select a cover crop. Cost, availability of seed, and when you can plant the cover crop are key factors when deciding what cover crops to plant.

Consult with your local

NRCS to determine approved cover crops and practices on prevent plant acres.

- Seed a cover as early as possible to compete with weeds.

Winter cereals (e.g. rye, winter wheat, and winter triticale) and warm season grasses like sorghum, sudangrass, or sorghum-sudangrass hybrids are favored by planting dates in mid-June through July.

Keep in mind spring cereals seeded during this time, such as oat, barley, and spring wheat, will likely develop a seed head, and brassicas (e.g. radish, turnip, rapeseed) may bolt and produce seed if planted before August.

- If it gets late, adapt. Control weeds with an herbicide or tillage before planting a cover crop. If you use an herbicide, keep in mind the potential for herbicides to impact cover crop establishment.

- Use a reliable seed source. Use good quality seed that has been cleaned, tested for germination and weed seed contamination.

Utilize local sources of seed as much as possible to help prevent the introduction of invasive noxious weeds such as Palmer amaranth.

Note that if you are considering using bin run seed as a cover crop, most of the seed purchased today is protected by the Plant Variety Protection Act and other seed laws and regulations.

This means that at a minimum most bin run seed cannot be sold or given to another person to plant, and depending on the protections of the seed originally purchased, any planting of the bin run seed may be illegal. Also note that FSA does not allow straight seeding of corn or soybean on prevent plant acres.

- Utilize available resources. Check U of MN resources at <http://z.umn.edu/cover-crops> and consult with your local NRCS to ensure you have an approved cover crop plan.
- Follow insurance dates and restrictions.

To be eligible for the full prevent plant payment, you cannot hay or graze the cover crop before Nov. 1 or harvest the cover crop at any time.

Consult with your crop insurance representative for further details regarding potential options and impacts on insurance payments and APH plan.

More details on prevent plant can be found on the U of MN Extension Crops website at <http://z.umn.edu/crops> (click on the "Current Issues and Highlighted Resources" link).



Lori Sorenson photos/0613 veterans home 25 year anniversary

Minnesota Department of Veterans Affairs Commissioner Larry Herke addresses crowds Friday afternoon during the 25th anniversary celebration of the Minnesota Veterans Home facility in Luverne.

Veterans Home celebrates 25 years in Luverne/from page 1A

wouldn't be having this celebration today."

He shared information about the economic impact of the Veterans Home in Luverne over the past two decades.

According to current Luverne Economic Development Authority director Holly Sammons, five new housing subdivisions sprouted up since 1991.

They include the Veterans Addition, Evergreen First and Second Additions, Sybesma Addition and Manfred Heights Addition.

All five developments comprise 210 lots, of which 182 parcels have been developed with new homes. The cumulative estimated market value of those homes totals more than \$53 million.

Friday's highlights included a performance by the Minnesota Veterans Home Luverne choir and recognition of employees who have been with the facility for 25 years.

Business manager Anne Stegenga was the first one hired in 1993 before veterans moved in. She said Friday that her career has been rewarding.

"It's been a great place to work and to serve our veterans," Stegenga said Friday. "It's a wonderful place in the community, and our veterans deserve this."

Other 25-year employees are (in order of their hires) Lori Carlson, Sandy Kelm, Missy Verbrugge, Sherri Ladd, Daniel Spreiter, Astrid Rit-



Lori Sorenson photos/0613 veterans home 25 year anniversary

Twenty-five of the Veterans Home 25-year employees were honored during Friday's celebration. Twenty-two of them were on hand for the event. They are (kneeling in front) Rita DeBoer, (first row, from left) Sandy Kelm, Susan Vis, Bonnie Groen, Anne Stegenga, Lori Carlson, Dawn Esselink, Minnesota Department of Veteran Affairs Commissioner Larry Herke, (second row) Veterans Home Administrator Luke Schryvers, Becky Ranschau, Sherri Ladd, (third row) Twana Smith, Nancy Lofthus, Maggie Fick, Missy Verbrugge, Lynette Springman, Michelle Madison, (back) Dan Spreiter, Jodi Clark, Carolyn Norman, Becky VanderPoel, Linette Eischens, Teresa Kooiman and Rachelle VanderWaal. Not pictured are Astrid Rittenhouse, Kathy Fey and Margene Behrens.

In the photo below, left, Administrator Luke Schryvers leads the program.

tenhouse, Linette Eischens, Kathy Fey, Carolyn Norman, Bonnie Groen, Dawn Esselink, Becky VanderPoel, Nancy Lofthus, Lynette Springman,

Jodi Clark, Susan Vis, Rita DeBoer, Maggie Fick, Michelle Madison, Teresa Kooiman, Rachelle VanderWaal, Becky Ranschau, Margene Behrens and Twana Smith.

The facility currently employs more than 190 people with an annual payroll of \$8.4 million.

Schryvers said the Minnesota Veterans Home in Luverne has cared for 841 Minnesota veterans and their families since opening in 1994.

The facility currently cares for 85 residents in three different living spaces, including a 17-bed special care unit for those with dementia.

"We are committed to creating a community where life is truly worth living — with activities and interactions that residents find meaningful and enjoyable," said Veterans Home Administrator Luke Schryvers.



READ THE NEWS ONLINE!

Sports Opinion News Classifieds

Subscribe to the online edition of the **Star Herald** star-herald.com

ALON & FILEEN Hemme

50th Anniversary

Friday, June 14

Love, your family

Best wishes may be sent to: 1957 90th Ave. Hardwick, MN 56134

Happy Birthday!

Don and Phyllis Schouwenburg are both celebrating their **85th birthdays in June!**

Greetings can be sent to: 4510 Prince of Peace Place #207 Sioux Falls, SD 57103

Come & Go Bridal Shower

Levi Rust bride-to-be of **Tony Lynn**

Wednesday, June 19 6:30 p.m.

American Reformed Church, Luverne

the couple is registered at Target, & Bed, Bath & Beyond

FREE BIBLE

We are offering free of charge an easy-to-read Bible. It's the GOOD NEWS BIBLE in today's English. The volumes we distribute contain the Old & New Testaments, maps, and helpful features to assist the reader. If you would like to receive a copy, simply write to us at the address below. This is a free offer. There will be no follow-up correspondence. We do not ask for money.

Gift Of The Word

P.O. Box 1787 Batavia, New York 14021

1606 Blue Ridge Dr., Luverne \$399,000

OPEN HOUSE Saturday, June 15 • 1-2PM

TWIN HOME

- Two bedroom
- Two bath
- 2,020 Square Feet
- Built in 2012

Enjoy this ranch style twin-home finished with upgrades throughout the home. You will be greeted at the door with engineered hickory flooring along with a gas fireplace and crown molding in the family room. The crown molding extends to the kitchen, dining, and master bedroom as well. Granite counter-tops in the kitchen and a wine fridge will make this home stand out from the rest. When its time to relax, the family room is where you will want to be, with a view of the city walking trail and an additional fireplace. The master bedroom holds a nice size walk-in closet, master bathroom, and tray ceiling. Finishing off the home is the second bedroom, office with built in storage, main floor bathroom, and large laundry room. This home is handicap accessible and comes with an HOA that includes lawn care and snow removal.

605 REAL ESTATE

Kaylee Van Middendorp 605 Real Estate 507-220-1615

Brad Stearns 605-789-1492

Please Join Us

LUVERNE PUBLIC SCHOOLS

Performing Arts Center

Groundbreaking Ceremony

Thursday, June 20 6:00 p.m.-7:00 p.m.

'Out of box' experience results in challenging, enjoyable summer job

Well, it must be June.

June means I'm back working part time at the Star Herald during summer break from my real job.

Each June I start by filling in for vacationing sports editor John Rittenhouse for a couple of weeks.

And that means each June I step out of my comfort zone.

Don't get me wrong. I enjoy writing and I'd say I follow high school sports pretty closely.

Until it's time to write detailed articles about tennis or golf. Or even track or baseball.

It turns out watching sports or even reading what John or others write about sports is way different from being the one to actually do the writing.

It's actually a huge challenge to accurately report all the aspects of all the different sports that this newspaper covers.

It's a yearly reminder that I don't know quite as much about sports as I might think.

It's humbling.

It's very much stepping out of my box.

And that's a very good thing.

It's good to step out of our usual boxes and stretch our normal boundaries.

At least that's what I tell myself when I get to dig through state track results from four different schools while trying my best to keep prelims and finals separate, getting the numbers all correct and not accidentally forgetting any athletes.

Or when I have to wrap my head around how a base-



IN OTHER WORDS

By Jason Berghorst, reporter

ball batter who has no hits in a game can actually have two RBIs in the same game.

That's batting in two runners who score, for those of you who have to step out of your box to understand baseball stats.

See, isn't this fun?

Maybe it's time for you to step out of your box as well.

Not everyone gets the opportunity to try a different career for a short time like I do each summer.

But there are many other ways you can try new things or expand what's "normal."

Why not try a whole new hobby, eat at a restaurant you've never heard of, listen to a new radio station or sit in a different spot in church?

OK, maybe that last one is too much adventure.

But I bet you get the idea.

I have a ways to go in stepping outside of my admittedly tightly bordered box.

But my summer gig here at the Star Herald always helps.

So how about you?

Will you talk to a stranger who is different from you? Cross a vacation spot off your bucket list? Forgive the fill-in sports guy who gets your kid's stats wrong in the local paper?

Or maybe listen to a cable news channel that doesn't perfectly fit your political leanings?

Whatever it is, get out of your box and enjoy the new scenery.

And if you're curious, a walk with the bases loaded or a sacrifice hit both count as RBIs without being counted as hits.

There's so much to learn outside my box.

DPS offers survival tips during 100 deadliest days on Minnesota roads

Memorial Day through Labor Day marks the 100 deadliest days on Minnesota roads.

Preliminary numbers show the 100-day stretch last year accounted for 124 of the 381 fatalities, making up 33 percent of all the traffic deaths in 2018.

Preliminary numbers by the Department of Public Safety Office of Traffic Safety show 107 fatalities on Minnesota roads in 2019 compared with 112 this time last year.

Your final destination is never guaranteed

Driver behaviors continue to play a significant role in motor vehicle crashes.

Speed, distraction, lack of seat belt use and drunk driving are the top contributing factors in Minnesota road fatalities.

Buckle up for better odds

Expect the unexpected: You may

be a safe driver but you never know what to expect from others on the road.

Buckling up and having your passengers properly secured in the vehicle is the first line of defense in a crash.

Preliminary numbers show 92 unbelted motorists lost their lives on Minnesota roads in 2018.

Extra enforcement on Minnesota roads in June, July

As the weather heats up, so do speeds. Extra enforcement targeting speeding motorists will take place June 18 - July 21.

Alcohol-related crashes not only take lives, they change them forever.

An average of 304 life-changing injuries are caused by alcohol-related

crashes each year.

The "Drive Sober or Get Pulled Over" extra enforcement campaign runs Aug. 16 - Sept. 2.

Speak up and save lives

If you are with a driver who is distracted, speak up, tell them to put the phone down and offer to be their designated texter.

Refuse to drive until every passenger is buckled up.

Slow down — trying to save a few minutes off your drive isn't worth causing a crash.

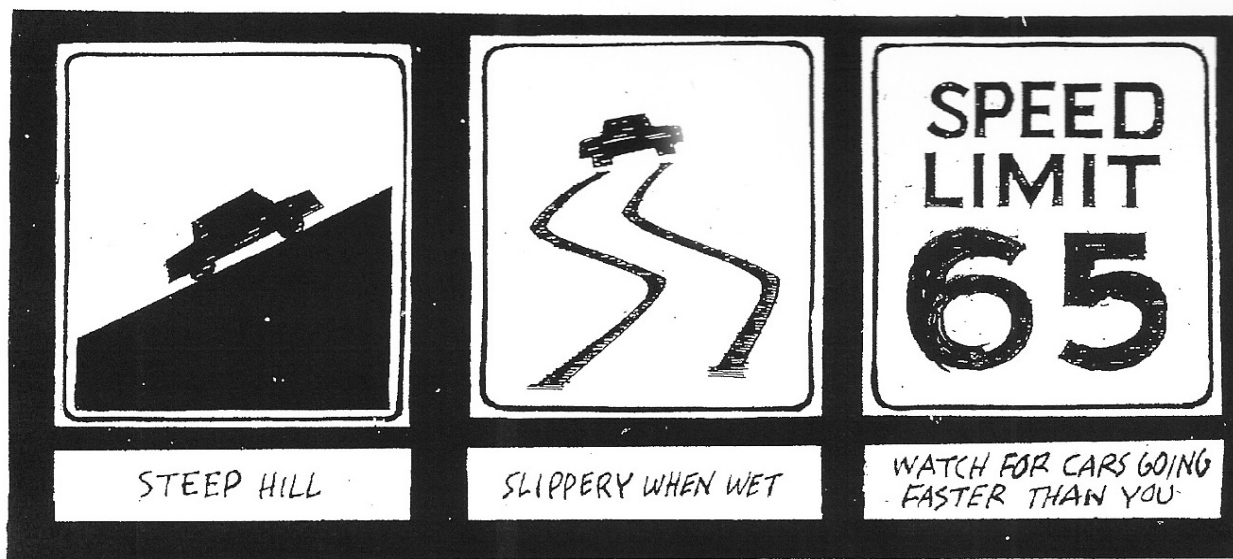
Plan ahead before you go out by designating a sober driver, and if you see a person who has had too much to drink, speak up and find them a safe ride home.

GUEST EDITORIAL

100 Deadliest Days: Memorial Day - Labor Day

Year	All Fatalities	Drunk Driving	Speed	Distraction	Unbelted
2018 preliminary	124	36	30	9	18
2017	121	27	23	8	19
2016	120	24	21	14	20
2015	140	35	18	18	24
2014	116	26	25	27	26
2014-2018	621	148	117	76	107

Know your highway signs!



ED FISCHER

Golf carts follow motor vehicles laws, think safety when moving equipment

Question: When golf carts are using a pedestrian crosswalk, are vehicles required to yield? This happens in some towns where the roadway separates a golf course.

Answer: Unless there is an ordinance or some other special allowance set by local or state officials, golf carts are treated as motor vehicles and not pedestrians. Minnesota State Statute talks about electric personal assistive mobility devices and how the person operating one has the rights and responsibilities of a pedestrian, but this does not include golf carts.

In Minnesota where traffic-control signals are not in place or in operation, the driver of a vehicle shall stop to yield the right-of-way to a pedestrian crossing the roadway within a marked crosswalk or at an intersection with no marked crosswalk. The driver must remain stopped until the pedestrian has passed the lane in which the vehicle is stopped. Drivers should try to stop far enough back so drivers in other lanes can also see in time to stop. Also, do not block crosswalks while stopped,



ASK A TROOPER

By Sgt. Troy Christianson, Minnesota State Patrol

and don't pass other vehicles stopped in these areas.

No pedestrian shall suddenly leave a curb or other place of safety and walk or run into the path of a vehicle which is so close that it is impossible for the driver to yield. Pedestrians, don't count on drivers paying attention — make eye contact with motorists before crossing. Continue to be alert and check for vehicles when walking in a crosswalk.

Just a reminder that anyone who is operating a golf cart under the influence can be arrested for DWI, as it fits the definition of a motor vehicle. The DWI statute says that it is against

the law to operate any motor vehicle anywhere in the state of Minnesota. No matter what vehicle you plan on driving, line up a sober ride before you decide to drink.

Question: I heard one of my neighbors got pulled over by a State Trooper for driving his combine down the road. The Trooper told him he needed a pilot car. Is this true?

Answer: Farm equipment may be driven or towed to the left of the center of a roadway only if it is escorted at the front by a vehicle displaying hazard warning lights visible in normal sunlight. The equipment also must not extend into the left half of the

roadway more than is necessary.

Motorists traveling on Minnesota highways need to be aware of large farm equipment transporting crops to markets, grain elevators and processing plants. Farm equipment is large and heavy, making it hard for operators to accelerate, slow down and stop. The machines also make wide turns and sometimes cross over the center line. In addition, farm vehicles can create large blind spots, making it difficult for operators to see approaching vehicles. All of these factors can cause serious crashes.

During 2015-17, 386 traffic crashes took place on Minnesota roads involving at least one farm vehicle, resulting in six fatalities and 166 injuries. Of the six fatalities, three were farm vehicle riders; of the 166 injuries, 57 were farm vehicle riders. The biggest factors contributing to farm equipment/vehicle crashes are inattention and speed. Motorists should always slow down and use caution when approaching farm equipment.

Motorists should:

- watch for debris dropped by trucks hauling crops. It is safer to brake or drive through debris than to veer into oncoming cars or off the road.

- wait for a safe place to pass.
- wear seat belts.
- drive with headlights on at all times.

Equipment operators should:

- use lights and flashers to make equipment more visible.

- use slow-moving vehicle emblems on equipment traveling less than 30 mph.

- consider using a follow vehicle when moving equipment, especially at night.

You can avoid a ticket — and a crash — if you simply buckle up, drive at safe speeds, pay attention and always drive sober. Help us drive Minnesota Toward Zero Deaths.

If you have any questions concerning traffic related laws or issues in Minnesota send your questions to Sgt. Troy Christianson - Minnesota State Patrol at 2900 48th Street NW, Rochester MN 55901-5848.

E-mail: editor@star-herald.com Web site: star-herald.com
Phone: 507-283-2333 Fax: 507-283-2335

Published Thursdays by Tollefson Enterprises, POSTMASTER:
Send address changes to 117 West Main, P.O. Box 837, Luverne,
MN 56156. Periodicals postage paid at Luverne, Permit #33 and at
additional mailing offices.

General manager: Rick Peterson
Office manager: Deb Lusty
Office assistant: Jennifer Nelson
Advertising: Chantel Connell
Production manager: Abbe Kolar
Production: Heather Johnson

News staff:
Lori Sorenson, editor
Mavis Fodness, reporter
John Rittenhouse, sports editor
Esther Frakes, copy editor

Rock County
STAR HERALD
Rock County's newspaper since 1873

(ISSN 0889-888X)
SUBSCRIPTION RATES

\$74 per year in Rock County; \$91 per year all other areas. Single copies \$1.25

Entire contents copyrighted by
Tollefson Publishing Roger Tollefson, publisher

The *Star Herald* encourages letters to the editor expressing the opinions of readers and intends to print all letters. Letters not meeting the guidelines will not be printed. The *Star Herald* will verify the authenticity of all letters. Letters must have the name of the writer, a signature and address.

Unsigned letters will not be considered. The *Star Herald* will edit for grammar, spelling and clarity. Any letters containing offensive language, libelous or slanderous material, or misleading or false information will be rewritten before being published. The *Star Herald* will not publish letters written with the sole intent to advertise or serve as a thank-you. Letters with more than 300 words may be edited. The deadline for letters is Monday 10 a.m. They may be delivered or mailed to the editor, *Rock County Star Herald*, P.O. Box 837, 117 W. Main St., Luverne, Minn. 56156.

ON THE RECORD

Dispatch report

May 31

•Complainant on Freeman Street reported two people acting suspiciously.

•A deputy was out with ATV near Luverne.

•Complainant reported a pickup parked on North Cedar Street for a week.

•Deputy received a complaint of a white pickup abandoned at 91st Street and 10th Avenue near Beaver Creek.

•Complainant reported a car parked on Main Street while they are trying to set up.

•Complainant reported a right of way encroachment at 81st Street and 10th Avenue near Manley.

•Assistance with a walk-through during public event downtown Luverne.

•Complainant reported a vehicle for driving conduct at the Iowa state line near Hills.

•Reserved per deputy request on Main and Estey streets.

•Complainant on Lincoln and North East Park Street reported loud party.

June 1

•All Luverne units out for the parade on Main Street.

•Complainant requested deputy in Luverne.

•Complainant reported a car over center line on Kniss and Main Street.

•Complainant near Hardwick requested a deputy to pick up some property.

•Complainant on West Interstate Drive reported harassment.

•Complainant in Steen reported having an issue with ex.

•Complainant reported driving complaint on I-90 westbound at mile marker 24 near Luverne.

•Complainant on North Spring Street reported two packages stolen.

•Complainant near Luverne reported a vehicle for driving conduct.

June 2

•Complainant reported a black cow on the road near Ellsworth.

•Complainant reported a theft on South Kniss Avenue.

•Complainant reported a theft on West Luverne Street.

•Deputy reported an emergency rescue unit callout in Windom.

•Fire department out for special duty in Luverne.

•Subject arrested on Rock County warrant.

June 3

•Complainant on North Freeman Avenue reported a burglary alarm.

•Complainant reported hazmat spill on 120th Avenue near Luverne.

•Complainant on East Lincoln Street requested deputy.

•Complainant in Luverne requested Red Cross assistance.

•Complainant on Roundwind Road in Luverne requested a deputy.

•Complainant near Kenneth reported a calf in ditch near roadway.

June 4

•Complainant reported de-

bris on roadway at mile marker 10 on Highway 23 near Jasper.

•Complainant on West Hatting Street reported an assault.

•Deputy stood by for civil issue on 141st Street near Luverne.

•Complainant on West Edgehill Street reported theft.

•Complainant on East Main Street reported illegal burning.

•Complainant on West Interstate Drive requested to speak to deputy.

•Tractor drove through construction on South Kniss and Koehn avenues.

June 5

•Deputy out with vehicle on West Interstate Drive.

•Complainant reported lost wallet in Luverne.

•Complainant requested to speak with deputy about recent theft in Luverne.

•Complainant requested to speak with deputy in Luverne.

•Complainant reported debris on roadway on West Dodge Street.

•Complainant reported natural gas smell on 190th Avenue near Kenneth.

•Complainant reported debris on roadway on County Road 4 and 100th Avenue near Luverne.

•Complainant near Luverne requested a welfare check.

•Complainant on East Adams Street requested a curfew check.

June 6

•Complainant reported vehicle parked for two weeks on South East Park Street and Warren Street.

•Complainant reported vehicle parked longer than two months on East Luverne Street.

•Student athlete send-off took place in Luverne.

•Complainant in Luverne reported missing wallet.

•Complainant reported vehicle parked in hazardous way on county roads 4 and 6 near Beaver Creek.

•Complainant reported vehicle for driving erratically at 241st Street and 70th Avenue near Jasper.

•Complainant on West Main Street reported theft.

•Complainant on 121st Street reported unable to find subject.

•Complainant on North Linden Street reported possible stolen trailer.

•Complainant on Cedar Street reported unlicensed driver.

•Complainant on West Hatting Street reported burglary alarm.

In addition, officers responded to 7 escorts, 10 ambulance runs, 4 paper services, 12 animal complaints, 6 fingerprint requests, 5 burn permits, 1 gas drive-off, 4 drug court tests, 3 stalled vehicles, 21 traffic stops, 7 abandoned 911 calls and 2 tests.

Gevo announces wind energy plan/continued from page 1A

the retail prices for its products.

Gruber said he aims to make the Luverne plant the lowest CI-rated site in America.

"This is the fastest way to make this plant profitable," he said.

In the past nine years, Gevo invested about \$70 million to add new biofuels to its original ethanol production and increase its animal feed production capacities.

Phase 1 of the green energy plan is to develop the Rock County Wind Fuel project, which focuses on lowering the plant's use of electricity from coal-fired generators.

Gevo will spend \$1.8 million for electricity in 2019, produced from carbon sources.

It's partnering with Juhl Energy of Chanhausen, Minnesota, to construct two wind turbines to provide electricity directly to the Luverne plant.

"Of all the projects we are involved in, this is the most exciting," said Clay Norrbom, Juhl Energy's managing director.

Under the plan, Juhl and Gevo officials will ask county leaders for approval to begin construction this fall on two wind turbines along County Road 4 about 2 1/2 miles west of the plant.

Project completion is expected in 2020. Capital expenditures for the project are estimated to be \$20 million.

The wind fuel project will be the first to apply for a permit under the county's new renewable energy ordinance approved in the fall of 2018.

Gevo is expected to apply for the permit this month.

The county permits wind farms producing 5 megawatts or less of electricity. Larger production farms require a state permit.

Once finished, the Gevo plant will blend electricity from the city grid with that generated from the turbines in its production process.

Lowering the carbon impact



Mavis Fodness photo/0613 Gevo Expansion

Patrick Gruber, chief executive office of Gevo, Inc., explains plans to use wind turbines to power the Luverne plant to a group of about 30 people, mainly Gevo Luverne employees, June 4 at Take 16 Brewing Co. in Luverne.

rating for the plant output is expected to increase Gevo's use of corn by half a million bushels to 7.5 million annually.

Phase 2 of Gevo's green energy plan involves developing a \$100 million biogas production facility near Luverne using cattle manure.

The idea is to use biogas to reduce the plant's use of natural gas in the plant.

Construction for the biogas facility takes place after 2020 with no specific timeframe outlined at the June 4 meeting.

Gevo expects that the successful implementation of all phases of its green energy plan would increase its current workforce from 30 direct workers and 20 contractors to 50 workers with the pos-

sibility of an additional 50 contractors.

Gevo became the first biobased plant to produce isobutanol in 2012.

The Luverne plant was originally built in 1996 with ethanol production beginning in 1998.

In addition to isobutanol and ethanol, Gevo also manufactures jet fuel and isooctane from corn.

The Luverne plant will continue corn oil production and the planned expansion will also increase the amount of high protein animal feed from the biobased fuel production process.

More information is at www.gevoluvernewind.com.

Conservation grazing at Touch the Sky/continued from 1A

Grass is greener, but rules are strictive

Green grass is always attractive to cattle producers, but conservation grazing rules aren't always practical.

For one thing, farmers are responsible for their own fencing around the identified grazing areas, and the grazing time frame is typically only a few weeks in the spring, depending on weather.

The cattle currently grazing Touch the Sky Prairie started May 26, and they'll be gone at the end of June after the non-native species are grazed down.

"In order to graze it for the good of the prairie, there's a narrow window to do it," Baker said.

For most producers it's hardly worth the effort of fencing and moving the cattle. The contracts are for three-year terms, and fences can remain intact during that time, but they often require maintenance after a long grass and heavy snow lean on electric wires.

Cattle farmers in Rock and Pipestone counties were invited earlier this year to bid on the grazing opportunity with U.S. Fish and Wildlife Service for mid-May through the end of June.

When there weren't any takers, Baker reached out to Tracy cattleman Ryan Verlinde, who has previously contracted for conservation grazing in Murray County.

"It's a good deal," Verlinde said. "Any time you don't have to run diesel fuel to haul feed and manure, it's a good deal."

"Any time you don't have to run diesel fuel to haul feed and manure, it's a good deal. ... It's always cheaper to haul cows to the feed than feed to the cows."

— Ryan Verlinde, cattle farmer

... It's always cheaper to haul cows to the feed than feed to the cows."

This year, with flooded feedlots and pastures, Verlinde said grass is particularly welcome.

"Your herd health is so much better on grass," he said, "especially this time of year when you can get them out of that muddy feedlot."

While it would seem counter-intuitive to haul cattle that many miles for only a few weeks of grazing, Verlinde said it's well worth his effort, especially since he's made modifications with fencing and cattle moving to make the process smoother.

"It buys us more time before we go to our own pastures," he said. "If you go out there too early, you tend to overgraze it pretty quick."

As far as Baker is concerned, it's all about the condition of the prairie.

"We are doing it for the good of the prairie and for wildlife habitat," he said. "We are not doing it to give the producer another pasture."

Wildfires, grazing, rest

Protecting and preserving prairie ecosystems at one time involved setting them aside entirely from environmental impacts, but over time, biologists discovered they needed to do more.

"We have found that resting the prairie is up to six times worse than we originally believed," Baker said, adding that prairies have never really been at rest.

"During pre-settlement times, large herds of bison and elk would graze prairies heavily for a period of time, and then move on, not returning for several months or years."

He said wildfires were common, followed by periods of rest.

"The prairies responded by increasing flowering plants, seed production and diversity," Baker said.

"We can take advantage of this process and use grazing to increase plant diversity, structural diversity (short and tall vegetation, and sparse and dense areas) and reduce invasive non-native plants."

Grazing Touch the Sky Prairie is part of a study of native prairie adaptive management that began in 2010.

So far it has resulted in a 6-percent increase in native species, and grazing had little to no impact on nesting. The results of the current grazing contract will be evaluated in three years.



The All-New 2019 Ram 1500 is the Most Awarded Light-Duty Pickup Truck in America. With its groundbreaking exterior style, unrelenting capability and uncompromising luxury it's truly the best combination of grit and grace. It's truck month at Papik Motors and we are offering 25% off any new 2019 Ram 1500 that is In-Stock. Pick out your Ram at <https://www.papik.com/New-RAM>.

283-9171

PAPIK.COM I-90 Luverne, MN 56156

25% OFF ANY NEW 2019 RAM



CELEBRATIONS

Births

Agirl, Olivia Grace, weighing 8 pounds, 6 ounces, and 20 1/2 inches long, was born Monday, June 3, 2019, in Sioux Falls, South Dakota, to **Jordan and Alicia Van Maanen**, Sioux Falls. She joins siblings Abel, 6, and Addison, 4. Grandparents are Vern and Nancy Van De Berg, Luverne, and Brad and Amy Van Maanen, Sioux Falls. Great-grandparents are Joan Van De Berg of Luverne, Ken and Jan Van Maanen of Brookings, South Dakota, and Jerry and Norma Marion of Arizona.

Open houses

An open house bridal shower for **Lexi Rust**, bride-to-be of **Tony Lynn**, will be at 6:30 p.m. Wednesday, June 19, at the American Reformed Church in Luverne.

Card showers

Alon and Eileen Hemme will celebrate their 50th wedding anniversary on Friday, June 14. Greetings may be sent to them at 1957 90th Avenue, Hardwick, MN 56134.

Don and Phyllis Schouwenburg are both celebrating 85th birthdays in June. Greetings may be sent to them at 4510 Prince of Peace Place #207, Sioux Falls, SD 57103.

Four local youth participate in this year's state Legion programs

By Mavis Fodness

Four Luverne High School juniors are participating in the annual Girls and Boys State programs sponsored by local American Legions in Minnesota.

Locally, the Hardwick American Legion Auxiliary is sponsoring Sophie Lanoue and the Luverne Auxiliary is sponsoring Hannah Ehlers to the Minnesota Girls State program.

Girls State takes place June 9-15 at Bethel University in St. Paul.

Boys State is conducted during the same week but at St. John's University in Collegeville.

Gunnar Oldre is the Hardwick American Legion representative and Jordan Winter represents the Luverne American Legion.

Open to high school juniors only, the state program provides participants with the opportunity to experience how government works. Participants also work on leadership skills and learn about their rights as citizens.

American legions and auxiliaries across Minnesota finance the experience for the selected high school juniors.



Mavis Fodness photo/0530 Girls Boys State 2019

Hardwick and Luverne American Legions and Auxiliaries are represented by four Luverne High School juniors at this week's Girls and Boys State programs. Selected as participants are (from left) Hannah Ehlers, Jordan Winter, Sophie Lanoue and Gunnar Oldre.

MENU

Monday, June 17: Hamburger with bun, oven-browned potatoes, creamed corn, rhubarb sauce. Program: 8:30 a.m. Quilting. 9 a.m. Bone Builders. Honor Father's Day. 1 p.m. Pinochle refresher.

Tuesday, June 18: Taco salad (taco meat, cheese, shredded lettuce, tomatoes, salsa, sour cream), fresh fruit, bar. Program: Half-Price Day sponsored by Main Street Financial.

Wednesday, June 19: Cubed roast beef in gravy, mashed potatoes, peas, bread, cream puff dessert. Program: 9 a.m. Bone Builders.

Thursday, June 20: Barbecue pork loin, sweet potatoes, carrots, bread, poke cake. Program: Half-Price Day. Food Give-Away 1-3 NAPS Food.

Friday, June 21: Italian meat sauce, spaghetti, lettuce with dressing, green beans, garlic bread, ice cream. Program: 9 a.m. Bone Builders. Birthday Party - Kitchen Band.

Senior Dining offers well-balanced and affordable meals in a community atmosphere.

Gift certificates are available at the meal site or online at www.lssmn.org/nutrition.

Call Lauree Teunissen at 283-9846 to make dining reservations or for home-delivered meals.

1958: Lowest city taxes

The following appeared in the Rock County Star Herald on April 17, 1958.

Luverne's Tax One Of Lowest In State

Only 15 cities with more than 2,500 population in the State of Minnesota have a lower tax rate than Luverne. Only one of them is in southwestern Minnesota.

According to an announcement by the Minnesota Taxpayers Association, Luverne's tax rate for 1957, payable in 1958, is 180.36 mills, which is lower than its neighboring cities.

Nearby cities that have a higher tax rate include Pipestone, 186.51 mills; Worthington, 200 mills; Tracy, 204.73 mills; St. James, 220.57 mills; Marshall, 198.39 mills; and Windom, 211.37 mills. Only area city that is lower than Luverne is Jackson, with a levy of 177.71 mills.

Three Fourths over 200

More than three fourths of the 101 cities and villages with more than 2,500 residents have property tax rates higher than 200 mills this year, the tax association reports. Highest rate is 577.12 in Eveleth (in

the northeast part of the State), and the lowest is 142.63 at New Ulm. Luverne's low tax rate, compared to other cities, is especially notable in view of the fact that the city has a new junior-senior high school, a new sewage disposal plant; completed an ambitious program of applying hard surface to several blocks of city streets last year, and has completed a tie-in power line with Interstate Power Co. A new community hospital was also completed here last year.



BITS BY BETTY

By Betty Mann, president Rock County Historical Society

SCHOOL NEWS

Mount Marty releases dean's list

Mitchell Lonneman, Adrian, was named to the Spring 2019 dean's list at Mount Marty College in Yankton, South Dakota. To be honored, students must be enrolled full time and earn a GPA of 3.5 or higher.

NDSU names honor students

James Erickson and Derek Krueger, both of Luverne, have been named to the North Dakota State University, Fargo, Spring 2019 dean's list. To be eligible, students must be enrolled in at least 12 credits and earn a GPA of 3.5 or higher.

Erickson is majoring in civil engineering, and Krueger is majoring in biological sciences.

Alexandria Tech names dean's list

Erica DeBoer, Luverne, was named to the dean's list for the Spring 2019 semester at Alexandria Technical and Community College. To be eligible, students must achieve a GPA of 3.5 or higher.

Esselink graduates from SMSU

Kelli Esselink graduated summa cum laude from Southwest Minnesota State University May 11 with a degree in elementary education and a minor in special education.

Van Wyhe graduates from Georgetown U

Captain Trey Van Wyhe graduated with a master's degree from Georgetown University, McCourt School of Public Policy in Washington, D.C., on Saturday, May 16.

Van Wyhe received an Office of Secretary Defense and Joint Staff Fellowship from the U.S. Army and will serve at the Pentagon for two years.

Trey and his wife, Jody, live in Arlington, Virginia, with their children Owen, 3, and Ella, six months.

Augustana releases dean's list

Caitlin Hartman, Cody Rofshus, and Hope Van Meeteren, all of Luverne, were named to the Augustana University, Sioux Falls, South Dakota, dean's list for the Spring 2019 semester.

To be eligible, students must earn a minimum of 12 graded credits with a GPA of 3.5 or higher on a 4.0 scale.

USF awards degrees to area students

Three area students were awarded degrees from the University of Sioux Falls Sunday, May 10, at the Washington Pavilion of Arts and Science.

Katelyn Hart, Luverne, graduated summa cum laude with a Bachelor of Science in Nursing.

Kendra Paulsen, Hills, graduated summa cum laude with a Bachelor of Arts in elementary education and music education.

Erin Sietsema, Luverne, received a Bachelor of Arts in business.

Area students make USF dean's list

Kendra Paulsen, Hills, and Katelyn Hart, Luverne, were named to The University of Sioux Falls dean's list for the Spring 2019 semester. To qualify, students must earn a minimum of 3.5 GPA on a 4.0 scale.

Kendra is a senior majoring in music education and elementary education, and Katelyn is a student in the accelerated nursing program.

DSU names honor students

Marissa Fick and Logan Stratton, both of Luverne, qualified for the dean's list for the Spring 2019 semester at Dakota State University in Madison, South Dakota.

To be named, students must be full time with a minimum of a 3.5 GPA on a 4.0 scale.

Check those potato plants for bugs, take another look at those roses

If you followed my advice for using systemic rose care for your shrub roses



when I first wrote about it this year, the product should be reapplied three times per season at six-week intervals, and this is six weeks after that initial application, so give them another treatment. Most roses are at their most vigorous growth period right now, so they will reward you later with more and bigger blooms. This also the time when the chewing and sucking insects attack them so the insecticide protection is a step ahead of the critters ... that's always a good maneuver!

I saw Colorado potato bugs on my potato plants already and this just seems too early to be battling them, but there they are, just feasting. Eight, an insecticide under the Bayer brand, is labeled for control of many

vegetable pests and is really effective. If you have just a few potato plants, pick the beetles by hand and drop in a dish of soapy water. These bugs reproduce fast and can defoliate a plant in short order. Significant leaf loss really shows up in decreased yield at harvest so protection is important.

As the early blooming spring bulbs finish their display, be sure to cut the seed pods off before the plant pumps a lot of energy into seed production. We want that energy going into the bulb instead. And then, also remember to allow the foliage to yellow before cutting it off. That foliage is building next year's flower in the bulb right now so removing it before it dies down naturally is basically removing next year's

flowers.

Lilacs are finished blooming, so get any pruning you have to do done now. Remember that if you are pruning to control size, cut them back far enough to give them room to grow. It doesn't work to cut them to the size you want them to be.

Weigelas, mock orange, and bridal wreath spireas are next on the list in about two weeks. With these three, it's important to remove the old "branchy" stems and allow the new straight stems to replace that old growth. That is called renewal pruning and makes maintaining the shrub much easier.

Bonnema is a gardening enthusiast and former greenhouse owner. He can be reached at flowersgb@iuw.net.



Mavis Fodness photo/0613 Library Summer 2019 Kick Off

Twisting into some summer Showtime reading

Mr. Twister (aka Bob Anderson of Sioux Falls, South Dakota) kicks off the Rock County Library summer reading events Tuesday afternoon, June 4, with a balloon show attended by 235 children and adults. Mr. Twister used his balloon creations to tell the story of "Captain Spaceship and the Giant Mutant Space Worms," among other stories involving twisting balloons into various shapes.

This year's summer reading theme is "Showtime at your Library." In addition to youth and adult reading programs, the Rock County Library kicked off a variety of weekly events including Story & Art, Story Hour, Laptime, Teen Group and an upcoming Peace Park event at various public locations in Luverne throughout July. Friends of the Rock County Library sponsored an ice cream social after the Mr. Twister event and are also sponsoring a free book to any youth signing up for the summer reading program. "That has been going over very well," said children's librarian Bronwyn Wenzel. For adults the Friends group is sponsoring gift baskets for the adult reading program. See the library's website www.rockcountycitylibrary.com for specific times and dates, or stop at the library located on Main Street Luverne.

OBITUARIES

Loretta Baker

Loretta Kay Baker, 70, Luverne, died Monday, June 3, 2019, at the Sanford Luverne Hospice Cottage of uterine cancer.

A memorial service was Saturday, June 8, at the American Reformed Church in Luverne.

Loretta Olson was born on Dec. 25, 1948, to Fern and LeRoy Olson at the Luverne Community Hospital.

She lived with her family on a farm and attended school in Beaver Creek, graduating in 1966 from Hills-Beaver Creek High School. Following graduation she moved to Sioux Falls, South Dakota, and worked for Western Surety.

On Nov. 3, 1967, Loretta married Warren Baker at the First Lutheran Church of Valley Springs, South Dakota.

The couple moved to a farm close to Steen, where they lived for 43 years.

Loretta helped in the milk barn until the barn burned down in 1973. She also was involved with a small hog confinement, which farrowed approximately 12 hogs.

She took great pride in her operation. Loretta also loved gardening and canning. In 1983 Loretta began working at Tri-State Insurance (later Continental Western Group) in Luverne.

Warren and Loretta sold their farm and moved to a small acreage on the edge of Luverne in 2008. Loretta continued to work until December of 2013 when she retired from Continental Western Group after 30 years of service. Loretta was a member of the American Reformed Church in Luverne.



She enjoyed reading, attending Bible studies, teaching catechism, going to the lakes and trips with her family, Loretta enjoyed being a mother and grandmother and nurturing her family.

She enjoyed baking and caring for her family. She loved sharing her faith with her children and grandchildren, attending their events and helping others in need. She loved to give of her time and served in any capacity she could to help others. Oftentimes she would bake things and bring them to others to brighten their day.

Loretta is survived by her husband, Warren; her children, Beth (Keith) Herman of Reliance, South Dakota, Randy (Janie) Baker of Steen, Dean (Tracy) Baker of Luverne, and Londa (Rick) Kruger of Mankato; a brother, Douglas (Ellen) Olson; 16 grandchildren, Mara (Skyler) Eriksen, Leah (Willem) Engelbrecht, Sara Herman, Keanu Herman, Sadie Herman, Emma Baker, Cole Baker, Kelsey Baker, Paige Baker, Riley Baker, Hunter Baker, Hannah Baker, Kaison Baker, Tyla Kruger, Levi Kruger and Nora Kruger; and two great-grandchildren, Lillie and Leo Eriksen.

She was preceded in death by her parents.

Memorials may be directed to the Luverne BackPack Program or Rock County Generations.

Arrangements were provided by Hartquist Funeral Home of Luverne, www.hartquistfuneral.com.

(0613 F)

Diane Ossenfort

Diane Ossenfort, 69, Westbrook, died Tuesday, June 4, 2019, at the Good Samaritan Society Nursing Home in Westbrook.

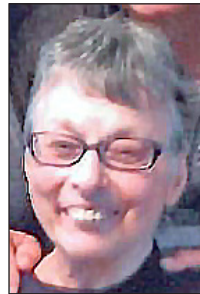
At Diane's request, a private graveside burial took place on Saturday, June 8, at St. Francis Xavier Cemetery in Windom.

Diane M. Determan was born on June 29, 1949, to Lyle and Doris (Bernholtz) Determan in Carroll, Iowa.

At age 4 she started school in Sioux Falls, South Dakota, and later transferred to the Crippled Children's School in Worthington, where she finished her education.

On June 15, 1974, Diane married Dennis Ossenfort at St. Francis Xavier Church in Windom.

Diane worked in the secretary department at the Crippled Children's School and



later at TAC in Worthington until retiring in 2017.

Dennis passed away on Sept. 7, 2016, and Diane continued living in her home in Worthington until June 9, 2017, when she moved to the Good Samaritan Society Nursing Home in Westbrook.

Diane is survived by her siblings Jack (Ruth) Determan of Jeffers, Connee (Craig) Therstad of Alexandria, Kevin (Diane) Determan of Jeffers, and David Determan of Jeffers; and many nieces and nephews.

She was preceded in death by her husband, Dennis; and her parents, Lyle and Doris Determan.

Arrangements were provided by LaCanne Family Funeral Service of Windom, www.lacannefuneralhome.com.

(0613 F)

Mary West

Mary Laverne West, 60, Luverne, died Sunday, June 2, 2019, at the Sanford Clinic in Luverne following an eight-month battle against lung cancer.

Mary was born on January 29, 1959, in Kentucky. She said that, as a child, she never had toys and that they played with the mud and sometimes even ate the mudpies they made. Mary started fishing with her Daddy as soon as she could hold the pole. We believe that Mary's father worked as a coal miner and at some point she moved with her family to Indiana. Mary had one brother, and another brother who died at birth, and four sisters. Her father died when she was around 13 years old and as a result her family was dispersed.

Mary traveled much in her life, living and working from coast to coast. Whether it was as a caregiver, a food server, a grocery clerk, a gas station attendant, a hotel employee, or as a laborer in a hog barn, Mary worked hard and she always gave her best. She considered her special skills to be cooking, cleaning house and cleaning fish.



Mary was especially proud of her GED diploma, which she earned at age 52. Mary knew SO many people and seemed to always remember their names. Mary was a daughter, granddaughter, sister, wife, auntie, daughter-in-law, sister-in-law, mother, companion and a friend.

Mary rarely complained. She enjoyed many things, such as gardening, having coffee or some beers with friends, playing slot machines, watching scary movies, spending time with her family and her step-grandchildren, whom she treated as her own. Mostly she enjoyed simply fishing with her family and friends.

Mary is survived by her daughter, Monica, of whom she was so very proud. Grateful to have also shared her life are her longtime companion, Cliff Enninga; her little dog, Petey; and a number of friends.

Mary did her best, and now she is at rest. Arrangements were provided by Hartquist Funeral Home of Luverne, www.hartquistfuneral.com.

(0613 V)



Submitted photo

MHS Class of 1969 celebrates 50-year reunion

The Magnolia High School Class of 1969 conducted its 50th class reunion May 31-June 1. Pictured from left are Wes Boomgaarden, Colleen (Klarenbeek) Spahr, Dianna (Bowen) Brandenburg, Lynette (Klooster) Shishado, Dave Nieuboer, Linda (VonHoltum) Dooyema, Wilvina (Brands) Kas and Leroy Tweet.

REMEMBER WHEN

10 years ago (2009)

•Minnesota's primary seat belt law went into effect Tuesday, giving both drivers and passengers even more incentive to buckle up.

The new law means drivers and passengers in all seats — including the backseat — must be buckled up or in the correct child restraint.

Making it a primary offense means law enforcement can stop motorists solely for seat belt violations. This includes both drivers and unbelted passengers.

25 years ago (1994)

•Monti Ossenfort made Luverne High School sports history by becoming the first player to qualify for the Minnesota State Class A Tennis Tournament during the section 3A Individual Tournament in Montevideo Wednesday and Thursday, May 25 and 26. Ossenfort won four of five matches during the tournament and placed second to Benson senior Ben Jacobson in the 16-player singles field. The top two place earners in section competition advance to the state tournament. ...

Ossenfort, a sophomore, is expected to represent southwest Minnesota well. The four matches he won during section play lasted just two sets. His lone loss went to a player who placed third at the state tournament last year and is ranked No. 2 in Class A this season.

50 years ago (1969)

•Reinhold Opp, who for the past three years has been superintendent at Magnolia High School, has resigned to become superintendent at Clearbrook High School.

Opp accepted the position as Magnolia principal in the fall of 1964 and replaced Lewis Schetman as superintendent in the fall of 1966.

The Magnolia School Board hasn't named a replacement for Opp. He plans to move to Clearbrook with his family the last week in June. He'll start in the Clearbrook system July 1.

75 years ago (1944)

•Eleven persons miraculously escaped injury, but two cars were badly damaged in a collision at the intersection of U.S. 75, a half mile west of Hardwick Sunday afternoon.

Driver of one of the cars was Charley Kemerling, of near Hardwick, while the other was driven by Hans Ask of Kanaranzi. There were four persons in the Kemerling car and seen in the Ask car. The accident occurred when Kemerling, who was headed east, on a side road, drove onto U. S. 75 on which Ask was traveling at the time. Impact of the collision tipped the Ask car over on its side.

Damage to the Kemerling car amounted to about \$250 while damage to the Ask car was about \$200.

100 years ago (1919)

•Plans have been completed for the modernization of Nelson Brothers' department store front, and work is to be started thereon within a short time.

In the work of remodeling, the plate glass window lines will be moved out eighteen inches to conform with second-story walls, and the wide stairway at the west side of the store will be entirely eliminated, giving much additional display window space.

The floors of the show windows will be lowered about eighteen inches, and the iron pillars and all other visible steel supports for the plate glass front will be encased in brick of the same finish and style construction as that of the second floor front.

This will provide for a plate glass front that will extend out to the east and west walls of the store, on a line with the edge of the sidewalk, with entrance through four plate glass doors at the center.

These doors will open into a vestibule ten by fifteen feet in size, the plate glass show windows on the sides of the vestibule being on straight line, north and south. Entrance to the store proper will remain on about the same line as it is now, and will be through a revolving door. The plans provide for a plate glass door on each side of the revolving door, for use during the summer months.

LIBRARY NEWS

Contact the library at rocklibrarystaff@gmail.com or call 507-449-5040.

Story Hour, 10 to 11 a.m. Thursdays through July 25 for ages 4, 5 and kindergarten.

Laptime, 10:30 to 11 a.m. Fridays through July 26.

Story & Art, 3 to 4 p.m. Wednesdays through July 24 for children in first- through fifth-grade.

Teen Group book club, 3 to 4 p.m. Thursdays through July 25.

Movie & a Snack, 3 p.m. Tuesday, June 11. **Musician Ralph Concert**, 4 p.m., Wednesday, June 26.

Peaceful Park Summer Book Club, 10 a.m., Wednesdays, July 3-31 at various parks. The July 3 session is at the Luverne City Park. Bring your own chair and a beverage.

Library hours are Monday-Thursday from 10 a.m. to 8 p.m., Friday from 10 a.m. to 5 p.m., and Saturday from 10 a.m. to 2 p.m.



Nursing Home Report Card

Choosing a nursing home for yourself or a loved one can be challenging. For information to help decide, visit:

nhreportcard.dhs.mn.gov



Minnesota Department of Human Services
Minnesota Department of Health

FISHING

For guys and gals who like fishing

Minnesota's Lake of the Woods is the Walleye Capital of the World. Guide boats average eighty fish per day. It's your best chance to catch a ten-pound trophy walleye. Be part of the adventure. Your vacation includes lodging, fishing, meals, the works!

Kids 21 years and under are HALF PRICE!

Call and ask about our "Fish-Cation Specials."



1-800-776-2675

FishBallards.com

Design Homes, Inc.

Our HUGE Cost Savings Can Make Your NEW Home Affordable!

We Build All Over IA, WI & MN!

Our New "Classic Series" 3-Bedroom Home Starts at Around \$95,000!

(Shown with a few options)

All Brand Names...Like Kohler Pella Mohawk

www.DesignHomes.com
800-627-9443

MDA issues advisory on cover crop seed

Minnesota Seed Law must be followed on prevented plant acres

Poor planting conditions this spring are forcing some farmers to make decisions on prevented planting.

The Minnesota Department of Agriculture (MDA) is advising farmers about the legal requirements for selling and buying seed in Minnesota. This includes cover crop seed.

There are several issues the MDA has found in past years that violate Minnesota's Seed Law.

Buying grain from an elevator for the purpose of sowing is not legal. It is also illegal to brown bag or sell grain out of a bin. Furthermore, all seed sold in the state must be labeled.

"There are numerous reasons why Minnesota's Seed Law restricts these activities," said Denise Thiede, MDA's Seed Unit supervisor. "Farmers could be bringing in weeds through unlabeled and untested seed, or they may not be getting the type or quality of seed they paid for."

In addition, almost all seed

varieties have some form of intellectual property protection that restricts the use and sale of the variety under the federal Plant Variety Protection Act. Violations of this act can lead to significant fines for both the seller and the buyer.

If farmers are buying seed to sow on their land, the MDA offers the following advice:

- Make sure the seed has a label.

- Confirm the seed has been tested for noxious weed seeds, including Palmer amaranth.

- Make sure that it is a legal sale by asking the seller if they have the legal authority to sell the product.

- Ask about the variety of seed. A variety protected by the Plant Variety Protection Act must be sold by variety name and may be required to be sold as a class of certified seed.



Glenda McGaffee photos

Jared Hoogendoorn (driving) and family members ride on a parade float titled "Santa on Vacation" during the parade.

Hills celebrates Friendship Days weekend June 7-9

The city of Hills, its residents and visitors celebrated Friendship Days over the weekend of June 7-9 under the theme, "Come and play with us."

The local organization Helping Build Communities Stronger organized the celebration that included new components and popular activities.

Mild weather prevailed for weekend lineup of events, which included a soapbox derby, car show, 3-on-3 basketball and a one-mile and 5K run.

A kiddie tractor pull and kiddie parade joined the regular parade, which featured another appearance by the Sioux Falls Shriners.

The weekend was full of activities organized by the Helping Build Communities Stronger including Saturday morning's parade where

Right: Rich Leenderts represented the Hills American Legion and Auxiliary on their 100-year anniversary float. **Below, left:** Eli Horsman has fun sliding down one of several inflatables open to children Saturday afternoon at Jacobson Park. **Below, right:** Sam Kruger (left) poses with his mother, Amy, next to a 1934 Plymouth rat rod owned by her father, Jim Hanson, during the "Show Us What You've Got" car show Saturday afternoon on Main Street.



USDA seeks county committee nominations

USDA's Farm Service Agency (FSA) will begin accepting nominations for county committee members on Friday, June 14, 2019. Agricultural producers who participate or cooperate in an FSA program may be nominated for candidacy for the county committee. Individuals may nominate themselves or others as a candidate.

Committees make important decisions about how federal farm programs are administered locally. Their input is vital on how FSA carries out disaster programs, as well as conservation, commodity and price support programs, county office employment and other agricultural issues.

The committees are made of three to 11 members and typically meet once a month. Members serve three-year terms. Producers serving on our FSA county committees play a critical role in the day-to-day

operations of the agency.

Producers should visit their local FSA office today to find out how to get involved in their county's election.

Check with your local USDA service center to see if your local administrative area is up for election this year. Organizations, including those representing beginning, women and minority producers, also may nominate candidates.

To be considered, a producer must sign an FSA-669A nomination form. The form and other information about FSA county committee elections are available at fsa.usda.gov/elections. All nomination forms for the 2019 election must be postmarked or received in the local FSA office by Aug. 1, 2019.

Election ballots will be mailed to eligible voters beginning Nov. 4, 2019.

Local artists paint nutcrackers to promote Luverne's unique History Center collection of 3,000 pieces as tourism draw

By Lori Sorenson

Luverne's 3,000-piece nutcracker collection is the third largest in the world (after Germany and Leavenworth, Washington) and visitors increasingly stop off I-90 and venture into town to see it.

City leaders are looking to capitalize on this traffic and invited local artists to create ten 18-inch nutcrackers to be exhibited at the History Center where the nutcracker collection is housed.

These works of art are now finished, and community members attended a public unveiling Monday evening, June 10, at the History Center.

The 10 artists who created the nutcrackers are Janine Brands, Lori Hallstrom, Cody Henrichs, Jen Huisman, Cora Mumme Miller, Chris Nowatzki, Mary Petersen, Kristen Peterson, Kim Schmidt and Lois Young.

"There are some very talented people in our community," said Chamber Director Jane Wildung Lanphere. "We did this project to see if not-your-typical nutcracker could be seen as art."

In particular, planners are



Lori Sorenson photos/0613 nutcracker art

Artist Kristin Peterson (left) chats with Barb Hunter and 1-year-old Devorah and Beth Fennema with 3-year-old Constance, all of Edgerton, during Monday night's reception at the History Center.

gauging local feedback to the pieces that may be displayed on a few street corners to promote Luverne's tourism draw.

"Experts say this is our unique brand," Lanphere said. "We'll see how people respond to them. Would you stop and take your picture with an 8-foot nutcracker?"

The project is supported by a grant of the Southwest Minnesota Arts Council and coordinated by LIFT in partnership with the Rock County Historical Society.



The painted nutcrackers are rich with detail, as seen on this one by artist Janine Brands.



The hand-painted nutcrackers will become part of the permanent collection at the History Center in Luverne.

Community Ed offers activities

Register by e-mailing C.Arends@isd2184.net or calling 507-283-4724.

"Crit Happens" at Coffey Contemporary Arts is for all practicing artists, ages 17 and older, to bring a completed work to be critiqued at the professional level with the large group. **Free of charge, but requires registration-** call 283-4724. Meet at 7 p.m. on June 14, July 12, July 26, Aug. 9, Aug. 23

Take your skills further at **Google 102 on June 20** when you learn tips and tricks for getting more out of your google account. Fee is \$5. Brought to you in part by Blandin Broadband Community grant.

Hands-on Fun Project Day is for students who attended grades 3-7 during the 18-19 school year. Students will choose three activities and may even complete a project that could be entered into the county fair. Fee is \$15 for this four-hour class on **June 17**.

Create a one-of-a-kind project at **Chalk Culture on June 17**. Fee is \$35. Open to grade 7 through adult.

PROTECT YOUR ASH
Tree injections now available



Call 507-360-6081 or 507-478-4103, or email 1scottros@gmail.com for an estimate!

Justin Kemp
Owner

- *Commercial
- *Business
- *Residential
- *Ag *Industrial



PO Box 803 • Luverne, MN 56156 • 507-920-6961

NOTICE!

CONSUMER CONFIDENCE REPORT
CITY OF HARDWICK

The 2018 Consumer Confidence Water Report will not be mailed or published, but is available upon request.

To request a copy of the report, contact
Verlyn Van Batavia at 507-227-0166

St. Catherine Catholic Church
203 E. Brown St., Luverne

St. Catherine Ph. 283-8502; email: stcatherine@iw.net
Thursday, June 13: St. Anthony Salad Luncheon. Friday, June 14: 10 a.m. Mass at Veterans Home. Saturday, June 15: 5 p.m. Mass at St. Leo. Sunday, June 16: 8:30 a.m. Mass at St. Catherine. 10:30 a.m. Mass at St. Leo. 1 p.m. Bilingual Mass at St. Leo. Tuesday, June 18: 1-4 p.m. Mission Sewing. Wednesday, June 19: 9 a.m. Mass at St. Catherine.

Luverne Christian Reformed Church
605 N. Estey St., Luverne

Office Ph. 283-8482; Prayer Line Ph. 449-5982
www.luvernrcrc.com — office@luvernrcrc.com
Roger Sparks, Pastor
Sunday, June 16: 9:30 a.m. Worship service. 6:30 p.m. Evening worship service.

First Baptist Church

1033 N. Jackson St., P.O. Box 975, Luverne
Ph. 283-4091; email: fbcluv@iw.net — www.fbcluverne.org
Walt Moser, Pastor
Thursday, June 13: 6 a.m. Men's Bible Study. 8 p.m. Worship Service on Channel 3. Friday, June 14: 6 p.m. Ladies' Camp at Shetek. Sunday, June 16: 9:15 a.m. Sunday School. 10:30 a.m. Morning Worship. 6 p.m. Evening Worship. Tuesday, June 18: 7 a.m. Men's Bible Study. 8 p.m. Worship Service on Channel 3.

Grace Lutheran Church
500 N. Kniss Ave., Luverne

Ph. 507-283-4431; www.graceluverne.org — graceluverne@iw.net
Ron Nichols, Pastor
Thursday, June 13: 7:30 a.m. Mom's Bible Study at The Bean. 8:30 a.m. Missions in Action. Friday, June 14: 6:30 p.m. Worship on Channel 3. Saturday, June 15: 5:30 p.m. Worship with Communion. Sunday, June 16: 8:15 a.m. KQAD Radio Broadcast. 9 a.m. Worship with Communion. 10 a.m. Fellowship coffee. Monday, June 17: Grace Notes deadline. 4:30 p.m. Worship on Channel 3. Tuesday, June 18: 9 a.m. Staff meeting. 5 p.m. Youth—Pizza and Thunder Road. 5:30 p.m. Ride and Dine. Wednesday, June 19: 7 a.m. Men's Bible Study. 8:15 a.m. Caring Visitors meeting. 11 a.m.- 5 p.m. Jady Anderson's American Red Cross Scholarship Drive. Thursday, June 20: 7:30 a.m. Mom's Bible Study at The Bean. 8:30- a.m. Missions in Action.

Bethany Lutheran Church
720 N. Kniss Ave., Luverne

Ph. 507-283-4571 or 507-449-0291 or 605-215-9834
pastorapalmquist67@yahoo.com
Thursday, June 13: 2 p.m. Ladies Aid. Sunday, June 16: No Bible class. 10:15 a.m. Worship.

American Reformed Church
304 N. Fairview Dr., Luverne

Ph. 283-8600; email: office@arcluverne.org
Mike Altena, Pastor
Thursday, June 13: 7 p.m. Blessing for Youth Mission Trip. Friday, June 14: 6:30 a.m. Community Men's Bible Study. 4:30 p.m. REFIT Fitness. Sunday, June 16: 9:30 a.m. Worship. Tuesday, June 18: Noon Staff meeting. Wednesday, June 19: 4:30 p.m. REFIT Fitness. 6:30 p.m. Bridal shower for Lexi Rust. 7 p.m. Praise Team.

First Assembly of God Church
1075 110th Ave., 2 miles west of Luverne on County Rd. 4

Sundays: 9 a.m. Sunday School. 10 a.m. Morning Worship. 6:30 p.m. School of the Holy Spirit. Wednesdays: 7 p.m. Kids Connection; Men's Bible Study with Pastor Ken; Women's Bible Study with Pastor Gloria.

United Methodist Church
109 N. Freeman Ave., Luverne

Ph. 283-4529; email: luverneumc@iw.net
Thursday, June 13: 1-3 p.m. Rock County Food Shelf. Saturday, June 15: 8 p.m. AA Meeting. Sopkowiak Wedding. Sunday, June 16: 9 a.m. Coffee Hour and Adult Sunday School. 10 a.m. Worship Service. 4:30 p.m. Genesis/Revelation Bible Study.

First Presbyterian Church
302 Central Lane, Luverne

Ph. 283-4787; email: Firstpc@iw.net — www.fpcluverne.com
Thursday, June 13: 10 a.m. Worship on Channel 3. 1 p.m. Presbyterian Women Bible Study. Sunday, June 16: 9:30 a.m. Worship Service. 10:30 a.m. Coffee and Fellowship. Tuesday, June 18: 10 a.m. and 6 p.m. Worship on Channel 3. Wednesday, June 19: 4:30 p.m. Mary Circle. 1:30 p.m. Rebekah Circle. 6:30 p.m. Esther Circle.

Ben Clare United Methodist Church
26762 Ben Clare Ave., Valley Springs, S.D.

igtwlb@WOW.net
Bill Bates, Pastor
Sundays: 9 a.m. Worship; 10 a.m. Fellowship; 10:30 a.m. Sunday School.

St. John Lutheran Church
803 N. Cedar St., Luverne

Ph. 283-2316; email: stjoh@iw.net
www.stjohnlutheranluverne.org
Gary Klatt, Pastor
Thursday, June 13: 1:30 p.m. Communion at Mary Jane Brown Home. 2:15 p.m. Communion at Poplar Creek. 3:30 p.m. Communion at Minnesota Veterans Home. 8:15 p.m. VBS Closing Program. Saturday, June 15: 5:30 p.m. Worship with Communion. Sunday, June 16: 9 a.m. Worship Service. Monday, June 17: Newsletter deadline. 7 p.m. Parish Planning Council. Tuesday, June 18: 10 a.m. and 6 p.m. Worship on Channel 3. Wednesday, June 19: No Bible Study. 6:30 p.m. National Youth Gathering group meeting and mock walk. Thursday, June 20: 1 p.m. Parkinson's Support Group.

Living Rock Church
500 E. Main St., Luverne

Ph. 449-0057; www.livingrockswmn.org
Billy Skaggs, Pastor
Sundays: 10:30 a.m. Worship; Kids Rock Children's Ministry. 6 p.m. Youth Ministry. Life groups meet throughout the week.

New Life Celebration Church
110 N. Oakley, Luverne

Ph. 449-6522; email: newlifecel@iw.net
Sundays: 9:30 a.m. Worship Service at 110 N. Oakley. Every third Thursday: 4:30 p.m. Food give-away at Generations Building. Bible Study groups meet at various times and days.

Zion Evangelical Lutheran Church
305 E. 2nd St., P.O. Box 36, Hardwick

Thursday, June 13: 3:30 p.m. Worship service on Channel 3. Friday, June 14: 3:30 p.m. Worship on Channel 3. Sunday, June 16: 10:30 a.m. Worship with Communion. Monday, June 17: 1 p.m. Quilting. Wednesday, June 19: Newsletter deadline. Thursday, June 20: 3:30 p.m. Worship on Channel 3.

First Lutheran Church
300 Maple St., Valley Springs, S.D.

Ph. (605) 757-6662
Laura Phillips, Pastor
Sunday, June 16: 10 a.m. Combined worship at First Lutheran.

Palisade Lutheran Church
211 121st St., Garretson, S.D.

Ph. (507) 597-6257 — firstpalisade@alliancecom.net
Laura Phillips, Pastor
Thursday, June 13: 8 p.m. Palisade Council Meeting. Sunday, June 16: 10 a.m. Combined Worship Service at First Lutheran Church. 5-7 p.m. Ice cream social at Palisade Lutheran Church.

First Presbyterian Church
201 S. 3rd St., P.O. Box 73, Beaver Creek

Ph. 507-935-5025
email: lori.firstpres@gmail.com
Sundays: 9:30 a.m. Morning Worship.

Magnolia United Methodist Church
501 E. Luverne St., Magnolia

Pastor Nancy Manning
Ph. 605-215-3429
email: magnoliamumc@gmail.com
Sundays: 9 a.m. Magnolia Worship Service. Wednesdays: 6:30 p.m. Confirmation.

Steen Reformed Church
112 W. Church Ave., Steen

Ph. 855-2336
Jeremy Wiersema, Pastor
Sundays: 9:30 a.m. Worship; service broadcast on KQAD. 10:45 a.m. Sunday School. 6 p.m. Youth Group. Evening worship at 6 p.m. first and third Sundays. Wednesdays: 7 p.m. Midweek.

Bethlehem Lutheran Church
Pastor Maggie Berndt-Dreyer

112 N. Main St., Hills
Ph. 962-3270
e-mail: bethlehemluth@alliancecom.net
Sunday, June 16: 9 a.m. Worship at Tuff Chapel. 10 a.m. Communion at Bethlehem. Tuesday, June 18: 2:30 p.m. Bible Study at Tuff Chapel. 3:15 p.m. Bible Study at Tuff Village. Wednesday, June 19: 9 a.m. Quilting.

Hills United Reformed Church
410 S. Central Ave., Hills

Office Ph. 962-3254
hillsurc@alliancecom.net
Alan Camarigg, Pastor
Sundays: 9:30 a.m. and 6 p.m. Worship Services.

Take heart!

Are things weighing you down? Is the news overwhelming? The cool, wet weather causing you to fear for your future? Things are out of control and it seems like there is no bright spot peeking through the darkness. It is times like this that you can be glad that you are a Christian, a child of the Triune God, a member of the family of God. You have a God and Father who has promised to care for you under every circumstance, and there is no exception to His promise. His faithfulness is sure.

Your heavenly Father has claimed you through the waters of Holy Baptism. He has sent His only-begotten Son, Jesus Christ, to take on human flesh so that He could take on all of the powers of this world that are out to destroy the things of God. Jesus has defeated them all by facing them head-on. He defeated sin by facing every temptation and refusing to give into it. He lived a perfect and holy life. He defeated the devil one-on-one and also through every under-handed trick and deception. Jesus trusted in the Word of His Father that promised Him victory. Jesus also defeated death by giving Himself in sacrifice on the cross and then rising from the dead on the third day. The power of God revealed itself to be all-powerful. This power of God shields and protects us as God's children from all of the evil powers of this world.

The facts are in. The victory is won and it belongs to all who have been baptized and believe the Word of God. So why am I afraid of these things that weigh heavy on my mind and heart? The answer is you are still a sinful human being. Your sins have been forgiven in Christ, but your flesh (and mind) struggles to accept this as a gift from God. You still want to claim some control and merit where there is none. We don't like to admit that we are helpless and totally dependent upon God because He might change His mind and we would be left out without any way of getting back in.

These are unfounded

BUILT ON A ROCK

By Pastor Gary Klatt, St. John Lutheran Church

fears planted by our sinful flesh and the Devil still trying to snatch us away from God. Every word of the Bible shows us that God is faithful and will never change from what He has promised. God's people have always been sinful and weak since the fall of Adam and Eve. But God has never given up on anyone that has shown the least bit of faith in Him. He is always present with His beloved, and where He is present so is all of His power to save.

So when fears seem over-whelming, talk with your heavenly Father or your Savior, Jesus Christ. They will remind you that they are in control of everything and it will work out for your good. They have their reasons for allowing difficult times to enter your life. Sometimes they humble us and remind us of who is and needs to be in charge. Sometimes we need to be reminded of how great God is in His love and mercy toward us. But whatever God's reasons may be, they will always be for our good and the good of those around us.

Jesus faced all of the hardship that this world had to throw at Him. He stood firm and faithful against all of them. He did this for our benefit and the benefit of all who would believe and be saved. He told His disciples, "I have said these things to you, that in me you may have peace. In the world you will have tribulation. But take heart; I have overcome the world." (John 16:33).

Whatever your troubles, trust in the Lord and He will lead you through to the light, for He is the Light of the world. His love will always be with you, in Jesus Christ.

These weekly church page messages are contributed to God's Work through the Church and by these concerned and responsible citizens & businesses:

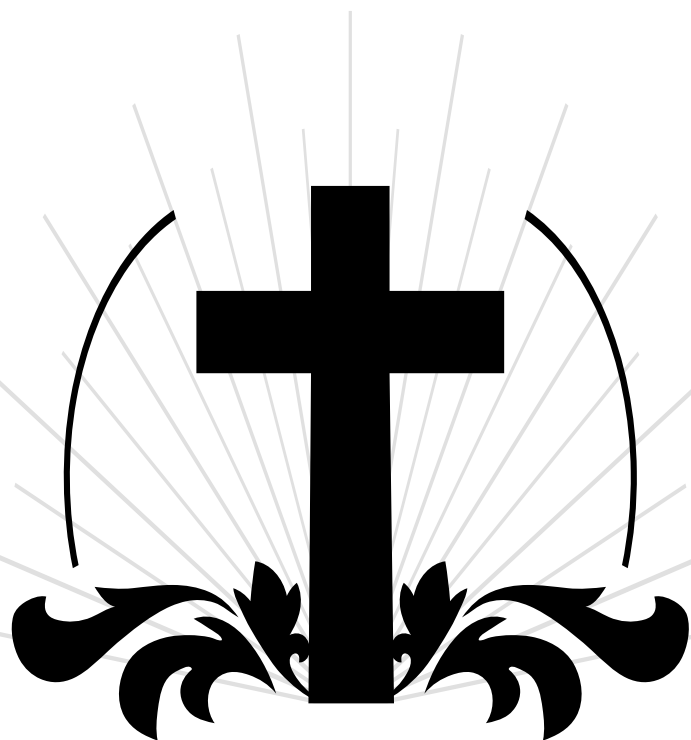
Call Rick or Chantel to place your ad!

283-2333

Read us online!

Rock County
STAR HERALD
www.Star-Herald.com

Trust in Him



Papik Motors
283-9171
PAPIK.COM
1-90 Luverne, MN

HILLS STAINLESS STEEL & EQUIPMENT CO., INC.
506 W. Koehn, P.O. Box 987, Luverne, MN
PHONE 507-283-4405
Church is Important - Please Attend!

Buffalo Ridge Insurance
507-283-2381
www.buffaloridgeins.com E-mail: info@buffaloridgeins.com

McClure Electric
Alan M. Aanenson, owner
Farm, Home & Commercial Wiring
Luverne, MN Phone 507-283-4716

TUFF MEMORIAL HOME
A HOME WITH A HEART
Hills, MN • 507-962-3275

MINNWEST BANK
116 East Main Street • Luverne • 507-283-2366
Hwy. 75 • 800 South Kniss • Luverne • 507-283-9131
Main Street • Beaver Creek • 507-473-2334
www.minnwestbank.com • Member FDIC • MoneyLine 888-616 BANK

Advertise Here

SECURITY SAVINGS BANK
bankwithssb.com 507.449.6000
Member FDIC Luverne, MN

HARTQUIST
Funeral and Cremation Services
Pipestone • Luverne • Lake Benton • Jasper • Tyler
www.HartquistFuneral.com

Pizza Ranch
110 E Main, Luverne 507-283-2379

CWG Business Insurance
Tri-State Region
Proud!

MANLEY TIRE & OIL SERVICE
Manley Minnesota
1-800-615-3704
Open six days a week - Closed on Sundays
To God be the Glory.

Luverne ANNOUNCER

First Farmers & Merchants
303 E. Main, Luverne, MN
507-283-4463
www.ffbank.com
We believe in you.
Member FDIC. Add the community.

Rock the Edge youth complete 'Service Over Self' mission work/continued from page 1A

"I really like the idea of being 'Unshaken,' sticking with God," Staeffler said.

"We are all one body."

Many youth also learned new skills, such as those used at the building sites, doing landscaping or gardening, under the tutelage of adult volunteers.

Youth from ten Luverne churches completed projects in Luverne, Magnolia, Hills and Hardwick.

Adult volunteer Becky Ossefoort reflected on her experience with the children who came and helped the service youth construct and

fill a sandbox.

One child said he never before had a sandbox to play in at home.

"His home is a lot different than mine. His life is a lot different than mine," Ossefoort reflected on the differences plus one commonality.

"He loves Jesus. I love Jesus and Jesus loves both of us."

Ossefoort's reflections came Friday during the last morning gathering, this time at the Palace Theatre in downtown Luverne.

"We really touched a lot of people's lives," said organizer Wanda Jarchow. "We were all



In the photo at left, Mallory Nelson (left) helps tie fleece blankets with Poplar Creek residents Marie Klarenbeek (center) and Alma Birchard. The blankets were donated to the S.H.A.R.E. program in Luverne. In the photo at right, Eric Somnis (left), adult volunteer professional Dave Sandbulte and Casey Sehr remove the wood siding from the shelter at Hardwick City Park.



24/7 ... Rain or Shine ...

Your local, independent agent will be there.

Working for you-meeting your needs.

Buffalo Ridge INSURANCE

South Hwy. 75, Luverne, MN • Ph. 507-283-2381

Auto-Owners INSURANCE

LIFE • HOME • CAR • BUSINESS

the hands and feet of Jesus."

A morning gathering at the Palace Theatre wrapped up the weeklong event where a 27-minute slideshow depicted a portion of the projects completed during the "Service Over Self" event.

Jarchow explained area churches came together several years ago to form a youth group called "Rock the Edge."

Last year "Service Over

Self" was added as a group activity after one pastor suggested the idea of the stay-at-home mission trip.

"We have lots of local people that need help," Jarchow said.

"Why go to other places?"

Each youth participant contributed \$50 to defray the costs of food and drinks.

Businesses donated or discounted the cost of sup-

plies and equipment for several projects. Many companies and individuals also provided professional assistance as well as assistance from municipalities.

Grants were also received by Rock the Edge as well as assistance from the participating churches.

Service Over Self is currently in the planning stages for 2020. Dates have not been

determined.

The event is open to all youth in grades eight through twelve.

Churches involved in the Service Over Self event for 2019 included America Reformed, Bethany Lutheran, First Baptist, First Presbyterian, Grace Lutheran, Living Rock, St. Catherine, St. John Lutheran, Luverne Christian Reformed and United Methodist.

Open House SAVINGS

June 21 ★ June 22

An additional \$500 in Rebates on top of discounted appliances
• 36 month financing on mattresses • Discounted flooring

Exclusive Savings, Refreshments, Door Prizes

SCHOMACKERS

Downtown Luverne • schomackers.com • 507-227-2183

ROCK COUNTY VETERANS

minnesotaveteran.org | 1-888-LinkVet (546-5838)

Did you serve on Active Military Duty?

Do you have an honorable discharge?

Contact your veteran services officer to discuss eligibility for federal and state benefits.

Help for veterans and families

Rock County Veterans Services

507-283-5061
M-F: 8 a.m. to Noon
Rock County Courthouse

say hello

THE HOUSE CALL OF THE FUTURE™

Virtual medical exams

Sanford Health + Tyto Care

Get care wherever you are with virtual medical exams. This next level video visit puts the exam tools in your hands, allowing a Sanford Health provider to get accurate results in real time. Receive a diagnosis and treatment plan for minor illnesses, including:

- Ear pain
- Cold and flu
- Bug bites
- Fever
- Pink eye
- Rashes
- Cough
- Nausea

See how it works at SanfordVirtualExam.com

tytocare™ **SANFORD HEALTH**

019038-00527 6/19

Luverne girls' 3,200-meter relay repeats as state champs

Cardinal girls medal in six track events

By Jason Berghorst

"It felt like a huge weight off our shoulders."

That's how Luverne senior Jadyn Anderson describes her 3,200-meter relay team's second straight Class A state championship.

"Last year, winning felt like a dream come true," she said. "This year we felt a lot of pressure to win again. It felt great when we did."

Anderson joined sophomore Regan Feit and freshmen Tenley Nelson and Brooklynn Ver Steeg as repeat champions at the Minnesota State Class A Track and Field Championships.

The meet showcased the best high school track and field athletes from throughout Minnesota June 7 and 8 at Hamline University in St. Paul.

A total of twelve Cardinal girls earned the opportunity to compete at the state classic in nine different events.

Six of those nine events ended with a podium finish for the LHS athletes.

"This was one of the most memorable state meets I've had in the 19 years I've been a coach," Luverne head coach Pete Janiszski said.

"To walk away with that many medals shows tremendous effort, buy-in and selflessness by the kids," he added.

The 3,200-meter relay team capped a truly record-breaking season with a win at the state meet.

The team won and set the meet record at the prestigious Howard Wood Dakota Relays in early May.

On May 30 they won the section championship and broke their own school record with a time of 9:27.41.

One week later in St. Paul, the team broke that school record with a time of 9:22.92 to win another state championship.

"It was the perfect season," Ander-



Submitted Photo

Luverne's Brooklynn Ver Steeg runs the anchor leg of the state championship-winning 3,200-meter relay Saturday at Hamline University in St. Paul. The Cardinal relay team broke its own school record while repeating as state champions in the 3,200-meter race at the Minnesota State Class A Track and Field Championships.

son said. "A million things could have gone wrong this season, but somehow we made it."

In addition to the 3,200-meter relay championship, Luverne medaled in five other events at the state meet.

The 800-meter relay team of Autumn Nath, Ivy Hudson, Gracie Zewiske and Sydney Bieber qualified for the finals with a 1:47.04 effort in the prelims.

In the finals the team placed fifth overall with a time of 1:46.84.

Nelson placed sixth overall with a

time of 11:30.82 in the 3,200-meter run.

Two Cardinal girls competed in the 300-meter hurdles at Hamline.

Feit placed seventh overall with a time of 46.75. Gabrielle Ferrell recorded a time of 51.47 in the prelims.

Luverne's 1,600-meter relay team also set a new school record with its performance in the prelims.

Feit, Nath, Anderson and Ver Steeg combined forces for a record time of 4:02.07 to qualify for finals.

In the finals eighth-grader Tiana

Lais replaced the injured Ver Steeg and ran the third leg of the relay.

The team placed ninth in Class A with a time of 4:07.58.

Prior to her injury, Ver Steeg also set a school record in the prelims of the 400-meter dash.

Her time of 58.91 set the record and qualified her for the finals, where she placed ninth with a time of 1:02.38.

Luverne's 400-meter relay team of Hudson, Mallory Oye, Zewiske and

Boys' 1,600-meter relay team claims fifth-place finish

By Jason Berghorst

The Luverne boys' track team was well represented at the Minnesota State Class A Track and Field Championships.

The annual showcase of the state's best track athletes was staged Friday and Saturday at Hamline University in St. Paul.

The Cardinals had seven boys compete at the state meet in three different events.

Luverne athletes placed on the podium in two of three events.

"We used all of our alternates this year and everyone contributed," said Luverne head coach Pete Janiszski.

"The effort and selflessness by the kids was tremendous from my perspective," the coach added.

The 1,600-meter relay topped the Luverne boys' results with a fifth-place finish.

In the prelim race Friday, Jordy Thone, Ashton Sandbulte, Jonah Friedrichsen and Jed Dooyema qualified for the finals with a time of 3:28.38.

Friedrichsen suffered an injury before competing in the high jump and was replaced by senior Nicholas Kiers in the relay finals.

Thone, Sandbulte, Kiers and Dooyema finished the 1,600-meter relay race in 3:28.01 to place fifth in Class A and contribute five points to Luverne's team total.

Friedrichsen, who won the Section 3A championship in the high jump, was unable to compete in that event in St. Paul because of the injury.

The Cardinals also competed in the 3,200-meter-relay at the state meet.

Brayden Tofteland, Dalton DeSollar, Kiers and Thone finished with a

Girls/continued on page 3B

Boys/continued on page 3B

Ellsworth boys earn medals in four out of five track events at state championship

Panther team finishes 17th overall in Class A

By Jason Berghorst

The Ellsworth boys' track team had a memorable and impressive appearance at the Minnesota State Class A Track and Field Championships.

The Panthers finished 17th overall with 18 team points at the annual event June 7 and 8 at Hamline University in St. Paul.

The team from Jordan High School finished first overall in

Class A with 87 points.

Ellsworth was represented by five athletes competing in five events at the state's premier track and field event.

Panther athletes represented EHS in the 200-meter dash, the 300-meter hurdles, the long jump, and the 400- and 800-meter relays.

Ellsworth athletes reached the podium in four of the five events at the state meet.

The 800-meter relay team made up of senior Sean Boltjes, senior Noah Kruse, junior Bobby Armstrong and senior Kade Boltjes placed fifth in Class A with a finals time of 44.24.

The 400-meter relay finished

fifth overall with a finals time of 44.13.

Members of that relay team include Sean Boltjes, Kruse, freshman Cole Boltjes and Kade Boltjes.

Sean Boltjes also competed in the 300-meter hurdles. He qualified for finals with a prelim time of 40.26 before finishing sixth overall with a time of 40.34 in the finals.

Kade Boltjes qualified to compete in two different individual events in St. Paul as well.

In the 200-meter dash, Boltjes finished in seventh place in the finals with a time of 22.83.

In the long jump, he recorded a distance of 18-07.25 but did not place.



Ellsworth's boys' 800-meter relay team placed fourth at the Minnesota State Class A State Track and Field Championships. Pictured are, from left, Sean Boltjes, Noah Kruse, Robby Armstrong and Kade Boltjes.

Cardinal boys' tennis team wraps up season at state tournament

By Jason Berghorst

The Luverne High School boys' tennis team competed in its 10th consecutive Class A Minnesota State Boys' Tennis Team Tournament June 4.

The event was staged at the Reed-Sweatt Family Tennis Center in Minneapolis.

The Cardinals suffered identical 6-1 losses to Rochester Lourdes and Thief River Falls at the state tournament.

"The team played hard both matches," said Luverne coach Greg Antoine. "We had good points in each and every match."

Antoine said the team just needed more consistent play in order to be competitive at the state level.

"It's very fast and intense tennis at the state tournament," he said. "We just don't see that all season until we get up there."

The lone Luverne victory in each match came from Cardinal freshmen Blake Frahm and Griffen Jarchow who won two matches Monday at No. 3 doubles.

"Blake and Griffen really have improved over the season," Antoine said. "They put it all together in the state tournament and won both of their matches. It will be fun to watch them improve the next three years."

Antoine said nine of the starting 10 players on the LHS team will return next year.

"Our goal next year will be to be more consistent," he added.

Luverne ended its season with a 13-8 record.



Submitted Photo

Luverne's Carson Ehde and his partner Jordan Winter competed at No. 2 doubles at the Minnesota Class A State Boys' Tennis Team Tournament June 4. Ehde and Winter were undefeated coming into the state tournament.

Mounds Park Academy defeated St. Paul Academy and Summit School 4-3 to win the Class A state boys' tennis team title.

TRF 6, Luverne 1

A 6-1 loss to Rochester Lourdes in the morning quarterfinal round of the tournament sent Luverne to an afternoon consolation bracket match Tuesday.

The Cardinals lost to Thief River Falls 6-1 and brought their season to a close.

At No. 1 singles, Luverne's Matt Jelken lost to TRF's Cole Gillespie 6-1, 6-3.

TRF's Camden Broadwell defeated Graham Cunningham 6-1, 6-1 at No. 2 singles.

Cardinal Colin Schoeneman fell to Tucker Skime of TRF 6-1, 6-0 at No. 3 singles.

At No. 4 singles, Luverne's Pierce Cunningham was defeated by TRF's

Tennis/continued on page 2B



Cole Stoltenberg and his doubles partner Matt Sehr competed in the state individual tennis tournament June 6.

Sehr, Stoltenberg represent Luverne in doubles play at state tennis tournament

By Jason Berghorst

Two Luverne High School juniors competed in the Class A Minnesota State Boys' Tennis Doubles Tournament Thursday, June 6.

The tournament was played at the Reed-Sweatt Family Tennis Center in Minneapolis.

Luverne's Matt Sehr and Cole Stoltenberg earned the chance to represent the Cardinals at state after placing second at the Section 3A meet May 28.

Luverne competed as a team at the state tournament as well after winning their tenth consecutive Section 3A team championship.

Sehr and Stoltenberg opened the

doubles tournament against Jeffrey Huang and Brennan Keogh of St. Paul Academy and Summit School.

The Cardinals lost 6-0, 6-4 in the quarterfinal round.

Huang and Keogh went on to win the Class A state doubles championship.

In the consolation bracket, Sehr and Stoltenberg lost to Virginia's Ryan Scherf and Jace Westerbur 6-0, 6-2 to end the tournament.

"Matt and Cole played hard but just couldn't get a win," said Luverne coach Greg Antoine.

"They showed some great points and rallies, but just not consistently enough to get a win."

Edwards ends track season at state event

The Adrian Dragon track and field team was represented by junior Scot Edwards at the Minnesota Class A State Track and Field Championships.

Edwards competed in the shot put at the annual event staged at Hamline University in St. Paul June 7 and 8.

He earned the opportunity to compete in St. Paul by placing second at the Section 3A meet in Luverne May 30.

Edwards recorded a throw of 46-09.75 at the state meet.

H-BC finishes track season

By Jason Berghorst

The Hills-Beaver Creek Patriots were represented by five athletes competing in three events at the Minnesota Class A State Track and Field Championships.

The annual event showcasing the top high school track and field athletes from around Minnesota was staged at Hamline University in St. Paul June 7 and 8.

At the Section 3A meet in Luverne May 30, H-BC qualified runners for the state meet in the girls' 100-meter dash, the boys' 100-meter dash and the girls' 800-meter relay.

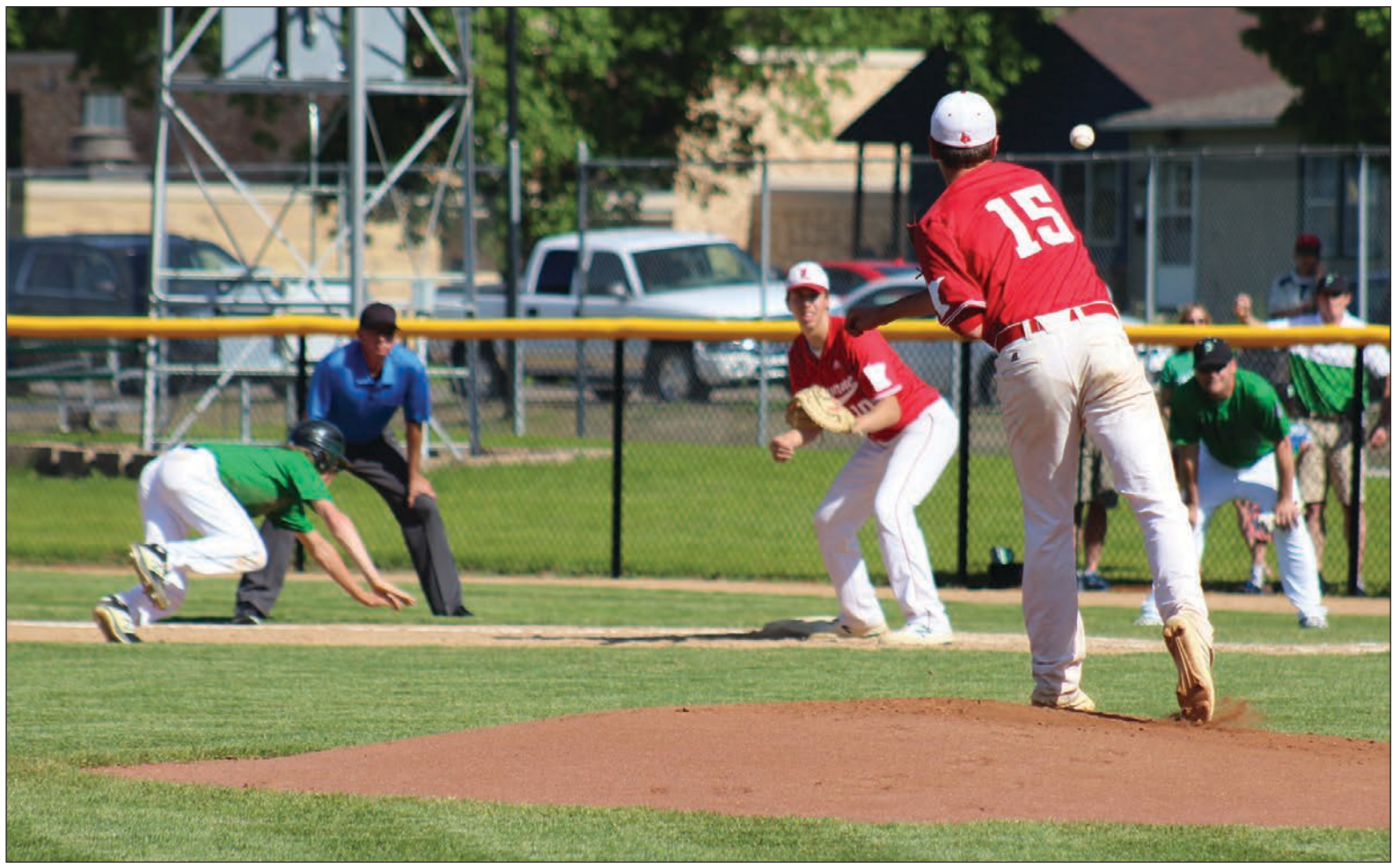
The 800-meter relay team was comprised of senior Madison Spath, senior Sidney Fick, seventh-grader Layla Deelstra and sophomore Taryan Rauk.

The Patriot foursome finished seventh in their prelim heat with a time of 1:49.47 and did not qualify for finals.

In the girls' 100-meter dash prelims, Deelstra recorded a time of 13.55 seconds.

Tyson Bork, who won the Section 3A title in the boys' 100-meter dash, competed in the same event at the state meet.

Bork ran a prelim time of 11:57 and just missed qualifying for finals by two-hundredths of a second.



Mavis Fodness photos/0613 LHS Baseball

Luverne pitcher Ben Serie attempts to catch a Paynesville player off base on his throw to first baseman Isaiah Bartels.

LHS baseball team comes up short in third consecutive Section 3AA championship game

By Jason Berghorst

The Luverne Cardinals baseball team finished its season as the Section 3AA runner-up for the third year in a row.

Paynesville punched its ticket to the Class AA Minnesota State Baseball Tournament with a 4-0 victory over Luverne in the section championship game Thursday (June 6) at Legion Field in Marshall.

Luverne reached the section title game with a dramatic walk-off 3-2 victory over Fairmont June 4.

The Cardinals end their season at 21-4.

Many of this year's seniors have played varsity for three years and played in three consecutive section title games.

Luverne's overall record is 65-15 over those three seasons.

"It's been a nice run for these seniors," LHS coach Mike Wenninger said.

"But it's always disappointing not to win your last game," he added. "One of these times it would be nice to win one (section championship)."

Paynesville 4, Luverne 0

Luverne faced Paynesville for the second time in five days at Legion Field in Marshall Thursday.

Unfortunately for the Cardinals, the opponent and location weren't the only

things that didn't change.

The pitcher and results were the same as well.

Paynesville's Grady Fuchs pitched all seven innings of both games and stymied the Cardinals.

In those 14 innings, Fuchs gave up no runs and only five hits to Luverne.

The Cardinals only managed one hit, a double by Ben Serie, in the title game.

Serie was the starting pitcher for Luverne. The senior pitched 2 1/3 innings, giving up four runs off of four hits. He struck out two and walked four Bulldog batters.

Jake Haugen pitched the final 4 2/3 innings for the Cardinals. He gave up no runs and three hits and struck out two.

Paynesville scored one run in the top of the first inning and three more in the third.

Box score	AB	R	H	BI
Nath	3	0	0	0
Crabtree	2	0	0	0
Serie	3	0	1	0
Lundgren	2	0	0	0
Haugen	3	0	0	0
Bartels	3	0	0	0
Reisch	1	0	0	0
Nekall	2	0	0	0
Cowell	1	0	0	0
Sterrett	2	0	0	0

Luverne 3, Fairmont 2

The Luverne baseball team earned a spot in the Section 3A championship game for the third year in a row with a victory over Fairmont Tuesday, June 4.

The Cardinals fended off

elimination from the tournament with the 3-2 walk-off victory in the game played in Jackson.

Luverne senior Ben Serie's RBI double to right field in the bottom of the seventh inning won the game for the Cardinals.

"I just wanted to find a gap on the right side of the field to score Mark (Sterrett) from second base," Serie said.

"When I got the fastball I wanted, I just swung hard and the ball went where I wanted."

The game-winning hit was one of two RBIs Serie had in the contest.

Fairmont scored first in the top of the first inning with two runs off of two hits.

"We talk a lot in baseball about showing resilience. We score first if we can, but if we don't, we need to answer back," said Luverne coach Mike Wenninger.

The Cardinals did answer back by tying the score with one run each in the bottom of the first and third innings.

"What I liked about this game is we were down early, and our defense and pitching kept us in it," Wenninger said.

Derek Lundgren pitched the first 5 2/3 innings for the Cardinals, giving up two runs and four hits while striking out four Fairmont batters.

Jake Haugen replaced Lundgren on the mound



Cardinal Charlie Reisch gets a free pass to first base after being hit by a pitch against Paynesville.

giving up one hit and striking out two.

The game was tied entering the seventh, and final, inning.

Fairmont loaded the bases in the top of the inning with only one out. Haugen struck out the next two batters to get out of the inning without a run scored.

When Luverne came to bat at the bottom of the seventh, Mark Sterrett led off with a walk.

"Sterrett had a great at bat. He saw seven pitches to get that lead off walk," Wenninger said.

Fairmont then intentionally walked Colby Crabtree before Serie came to the plate to deliver the game-winning RBI to right field that scored Sterrett. "I was just happy to provide

for the boys," Serie said.

"Right when the ball fell, I looked over at the dugout and saw all the guys running out," he added. "It was the best feeling seeing everyone so happy that we get the chance to play for a section championship."

Offensively the Cardinals were led by Charlie Reisch who was three for three at the plate.

Serie, Isaiah Bartels and Sterrett each had two hits for Luverne.

Box score	AB	R	H	BI
Nath	2	1	1	0
Crabtree	2	0	0	0
Serie	4	0	2	2
Bartels	3	0	2	1
Haugen	2	0	0	0
Lundgren	3	0	0	0
Reisch	3	0	3	0
Nekall	3	0	0	0
Sterrett	2	2	2	0

Tennis/continued from page 1B

Jack Onkka 6-0, 6-2.

The No. 1 Luverne doubles team of Matt Sehr and Cole Stoltenberg lost to TRF's Noah Rupprecht and Dylan Hahn 6-3, 6-1.

TRF's Aiden Martell and Ethan Janisch defeated Luverne's Jordan Winter and Carson Ehde 6-0, 6-3 at No. 2 doubles.

At No. 3 doubles, Cardinals Griffen Jarchow and Blake Frahm defeated TRF's Reece Janisch and Rhett Janisch 6-0, 6-2.

Jarchow and Frahm ended their season with a record of 11-4, including two wins at the state tournament.

Lourdes 6, Luverne 1

The Cardinals opened the state tournament with an 8 a.m. quarterfinal match against Rochester Lourdes.

In No. 1 singles, Lourdes' Jonathan Onigkei defeated Matt Jelken of Luverne 6-3, 6-4.

Mirjan Veldic of Lourdes defeated Luverne's Graham Cunningham at No. 2 singles 6-0, 6-1.

At No. 3 singles, Colin Schoeneman of Luverne lost to Lourdes' Nolan Morrey 6-1, 6-1.

Cardinal Pierce Cunningham was defeated by Ethan Lesser of Lourdes



Submitted Photo

Luverne freshmen Blake Frahm and Griffen Jarchow went 2-0 at No. 4 doubles at the state tennis tournament.

6-2, 6-3 at No. 4 singles.

In doubles play Luverne's Cole Stoltenberg and Matt Sehr lost to Nick Pittner and Birch Lewis of Lourdes in the No. 1 slot 6-3, 6-1.

At No. 2 doubles, Lourdes' Frederick Suhler and Thomas Eckel defeated Cardinals Jordan Winter and Carson Ehde 6-1, 6-1.

The loss was the first loss of the season for Winter and Ehde.

Luverne's only win in the match was earned during the No. 3 doubles match.

Freshmen Griffen Jarchow and Blake Frahm defeated Lourdes' Ethan Hubbard and William Rooke 6-4, 0-6, 10-2.

DAIRY MONTH

Saluting the Dairy Industry during June, National Dairy Month

Thanks to all local Dairy Producers!

Proud partner of the Dairy Industry!

Since 1948

LUVERNE FARM STORE

Quality & Service

Find us on Facebook

S. Highway 75 • Luverne, MN
507-283-9555 or 1-800-956-9556
www.luvernefarmstore.com

Quality & Service

Junior Legion team wins five out of seven home games

By Jason Berghorst

The Luverne Junior Legion (formerly VFW) baseball team went 5-2 during a very busy week of games all staged at Redbird Field in Luverne.

Luverne split a double-header with Sioux Falls East Tuesday (June 2) and went 3-1 during its annual home tournament Friday-Sunday before defeating Slayton 10-1 Monday.

The 6-2 Junior Legion squad is scheduled to host Marshall Blue tonight (Thursday) before playing in Worthington Monday.

Luverne 10, Slayton 0

Luverne played its seventh home game in seven days Monday night and came out with a 10-0 win over Slayton.

Shaïd Shearer shut down the Slayton batters, giving up only one hit while pitching the entire game.

Shearer helped his cause by striking out five Slayton batters.

The home team insured the victory by scoring three runs in each of the fifth and sixth innings after scoring single runs in the first and third innings and two runs in the fourth.

Luverne was led at the plate by Cade Wenninger and Jaime Palmquist who had two hits each.

Box score	AB	R	H
Sehr	1	1	0
Beyer	3	1	1
Cowell	3	0	1
Wenninger	3	1	2
Baker	2	1	0
Von Tersch	2	1	0
Palmquist	3	1	2
Overgaard	2	0	0
Shearer	3	0	1
Bosch	0	1	0
Ripka	1	1	1

Kruse	0	1	0
Gangestad	1	0	1
Halverson	0	1	0
K.Anderson	1	0	1

Windom 4, Luverne 3

Luverne came up short in its quest to win its home tournament Sunday.

After going 3-0 in tournament pool play, the home team fell to Windom in the championship game with a score of 4-3 at Redbird Field.

Casey Sehr started on the mound for Luverne. He pitched two innings giving up three runs and striking out two. Hunter Baker, Braydon Ripka, Luke Bosch and Jaime Palmquist also pitched for Luverne in the game.

At the plate, Palmquist had an RBI double.

Ethan Beyer and Bailey Cowell each had two hits in the game.

Shaïd Shearer, Sehr and Cowell each scored a run for Luverne.

Box score	AB	R	H
Wenninger	4	0	0
Beyer	4	0	2
Cowell	2	1	2
Crabtree	3	0	1
Baker	1	0	0
Ripka	1	0	1
Bosch	1	0	0
Sehr	2	1	0
R.Anderson	1	0	0
K.Anderson	1	0	0
Palmquist	3	0	1
Shearer	3	1	1
Overgaard	1	0	0
Von Tersch	3	0	1

Luverne 8, Watertown 0

Luverne's Cade Wenninger started the game versus Watertown, Minnesota, on the right foot, and his team didn't look back en route to an 8-0 win Saturday night.

Wenninger hit a lead-off triple in the first inning and

scored one run in the game.

Bailey Cowell and Connor Overgaard each hit doubles in the fourth and sixth innings respectively.

Overgaard, Ethan Beyer and Hunter Baker also had two RBIs in the game.

Beyer and Jaime Palmquist offered two hits in the contest.

Wenninger pitched the whole game. He struck out seven batters and gave up three hits.

Box score	AB	R	H	BI
Wenninger	3	1	1	0
Beyer	3	1	2	2
Cowell	4	1	1	0
Baker	1	0	0	2
Ripka	0	1	0	0
Sehr	3	0	0	0
Overgaard	1	0	1	2
Von Tersch	3	1	1	0
Palmquist	4	1	2	0
K.Anderson	1	1	0	0
R.Anderson	1	0	1	1
Shearer	1	1	0	0
Gangestad	1	0	0	0

Luverne 7, Worthington 6

Luverne earned its second-straight walk-off victory in less than 24 hours Saturday afternoon.

The home team defeated Worthington 7-6 in its second game of the Luverne Junior Legion tournament.

In the seventh and final inning, Colby Crabtree hit a double. A passed ball moved him to third before a single by Casey Sehr sent Crabtree home to win the game.

Crabtree pitched five innings for Luverne and also hit a two-run homerun in the fourth inning.

Bailey Cowell replaced Crabtree on the mound for the last two innings.

Offensively Luverne was led by Sehr with three hits. Crabtree and Shaïd Shearer



Jason Berghorst photo

Luverne's Colby Crabtree and teammates celebrate his two-run homerun in the fourth inning of the Junior Legion game versus Worthington Saturday. Crabtree was also the winning pitcher and scored the winning run in the walk-off victory.

had two hits each.

Cade Wenninger and Crabtree each scored twice for the home team.

Box score	AB	R	H	BI
Cowell	4	0	1	0
Beyer	3	0	0	0
Wenninger	5	2	1	0
Crabtree	3	2	2	2
Sehr	4	1	3	1
Von Tersch	2	0	1	0
Palmquist	1	1	0	0
Ripka	2	0	0	0
K.Anderson	1	0	0	0
Shearer	3	1	2	0

Luverne 3, Harrisburg 2

Luverne opened its home Junior Legion tournament by defeating Harrisburg, South Dakota, 3-2 Friday night at Redbird Field.

The hosts won in extra innings in walk-off fashion.

In the bottom of the ninth, Shaïd Shearer received a walk before Bailey Cowell bunted him to second base.

Ethan Beyer then earned a walk before a fake bunt by Cade Wenninger led to a double steal that put Luverne runners on second and third base.

A wild pitch to Wenninger allowed Shearer to score and win the game for Luverne.

Beyer pitched eight innings for the hosts, striking out eight batters and giving up four hits. Cowell replaced Beyer on the mound for the

final inning.

Box score	AB	R	H	BI
Cowell	5	0	0	0
Beyer	3	0	0	0
Wenninger	3	0	2	2
Baker	3	0	0	0
Sehr	3	0	0	0
Von Tersch	4	1	1	0
Palmquist	3	0	1	0
Overgaard	3	1	0	0
Shearer	1	1	0	1

Luverne 11, SF East 9

Luverne earned a split with Sioux Falls East by winning the second game of a double-header at Redbird Field June 2. The hosts came out on top 11-9. Luverne had balanced of-

Legion/continued on page 4B

Girls' track team places 10th overall in Class A track and field tournament/continued from 1B

Biever ran a time of 51.35 in the prelims and did not qualify for finals.

Zewiske also competed in the 200-meter dash in St. Paul. She recorded a time of 27.75

in the prelims.

Luverne's Mallory Thorson recorded a distance of 33-02 in the triple jump at the state meet.

The Cardinals placed tenth

overall as a team with 26 points. The Blake School of Minneapolis won the Class A team championship with 57 points.

Overall, Janiszkeski was

thrilled with his team's performance over the weekend.

"To say that I am proud of this group might be the largest understatement I've ever made," he said.

"They excelled and performed at the highest level on the biggest stage and embraced the team concept with a champion's mentality," Anderson echoed her

coach's sentiments.

"I have been so blessed this year," she said. "I cherish the memories we shared."



Luverne High School was well-represented at the Minnesota Class A State Track and Field Championships. Pictured are (front, left) Tiana Lais, Regan Feit, Tenley Nelson, Jady Anderson, Ivy Hudson, Sydney Biever, Mallory Oye, (middle) Jordy Thone, Brooklynn Ver Steeg, Braydon Tofteland, Dalton DeSollar, Autumn Nath, Gabrielle Ferrell, Gracie Zewiske, Jed Dooyema, (back) Nick Kierns, Jonah Freidrichsen, Austin Winter and Ashton Sandbulte. Missing is Mallory Thorson. Submitted Photo



Dinner Train/Motel Package
2.5 hr Train Ride, 4 course elegant dinner, cash bar, overnight at Country House Motel with Pool and Spa
Now includes Shuttle Bus from Motel to Train
Special \$169 / couple
Tuesday - Thursday Evenings through 12-21-19
\$199/couple Fri & Sat Evenings
Reservations 715-635-3200
www.spoonetrainride.com

BROWN BAG CONCERT SERIES
TUESDAY, JUNE 18
11AM - 1PM
The Plaza at Main & McKenzie
Live music with Ron & Jane Cote
Rain location is inside the History Center
Bring your lunch...maybe a chair & enjoy this FREE concert!
Luverne Area Chamber & CVB
213 East Luverne St.
www.LuverneChamber.com



Jed Dooyema was a member of the fifth-place relay team.

Boys'/continued from 1B

time of 8:38.70 in the 3,200 relay, which placed fifteenth overall. Dooyema also competed at the state meet in the 400-meter dash.

He qualified for finals by placing first in his heat with a time of 50.53 in the prelims.

In the finals, Dooyema placed eighth in Class A with a time of 51.25 and contributed two points to the team.

Luverne finished 44th overall as a team in the boys' competition with seven points. Jordan's boys' team placed first overall in Class A with 87 points.

"Just getting to state is a huge accomplishment," Janiszkeski said.

"Our replacements stepped right in and did a great job," he added. "We couldn't have had the success we did without the team effort of everyone."

On Sale - \$9.60 regular price \$19.20
1.75L bottle
Don Q. Coco Puerto Rican Rum (coconut flavored)
pick up some of your favorite cola to mix!
Luverne Blue Mound Liqueur
Follow us on Twitter @bluemoundliquor 319 W Main St, Luverne 507-449-5052
& Instagram luvernebluemoundliquor

Cancun
From \$950 per person
5 nights, all-inclusive • Round trip airfare from Sioux Falls • Round trip airport transfers • Select August dates • Pricing based on 2 adults & 2 kids • Pricing based on availability • Call for more details!
Puerto Vallarta From \$1350 per person
5 nights, all-inclusive • Adults only resort
Round trip airfare from Sioux Falls
Round trip airport transfers • Select August dates • Pricing based on 2 adults
Pricing based on availability
Call for more details!
ALL ABOUT TRAVEL INC.
10-Year Winner! Layaway & Gift Certificates Available!
605-339-8911 • 1-800-390-6610
3801 S. Western Ave., Suite 103, Sioux Falls, SD
Open: Mon.-Fri. 8 a.m. - 7 p.m. • Saturday 9 a.m.-1p.m.
www.AllAboutTravel.org www.facebook.com/AllAboutTravelInc
Helping You Find Your Personal Paradise!

Roundup? Cancer?
Diagnosed with Cancer?
Regular user of Roundup?
Give us a click or call - we can help you get compensation
CLASSACTIONCLAIMCENTER.COM
PATTERSON DAHLBERG 507-424-3000
INJURY LAWYERS

Speak up on controversial conservation issues June 15

By Scott Rall

Why is that sportsmen and women in general are so reluctant to speak up about conservation issues that are important to them? It is almost universal all over the county. Only when an issue is so controversial will more than the normal 2-3 percent of hunters and anglers actually get fired up and expend some energy to make their views known.

It has been this way for a very long time and it is time for this situation to change. In this past legislative session, a metro legislator and his friends were successful in delegating language in a grant program that required lands acquired in fee with Land and Legacy money to be open to the taking of fish and game in regulated seasons. This now allows metro parks to buy land to add to the holdings with no regard to the wishes of sportsmen or the constitutional language that was created to stop this very action.

I have been and continue to be active on the grass roots side of conservation issues. I wish more folks who like to hunt and fish did the same.

I spoke with a gentleman by the name of Dave Carlson. He represents a group called the Minnesota Outdoor Heritage Alliance. They are not a lobbyist group. They are a non-profit made up of a large number of



THE OUTDOORS

By Scott Rall

different conservation organizations with the intent of representing you and me on Minnesota legislative issues.

They are going to be in Worthington on June 15 at the Elks Lodge from 6-9 p.m. to listen. I will repeat, they have no specific message of their own. They are traveling about the state looking for input from sportsmen so they can prioritize their efforts when the state legislature convenes next year.

Now is the time to make your voices heard and to do so with one of the best available sounding boards.

Any topic is open to discussion, and I can assure you this is a listening session and no debates will take place this night.

Chronic wasting disease is killing our wild deer herd. Public lands concerns and many more topics will likely come up. Now is the time to get off the couch and be one of those

folks that actually show up.

Remember, be it in this arena, natural resources, or any other, decisions and directions are made by those who actually show up. There will be chips and barbecues at 6:30 till gone.

Please make the trip to Worthington with your conservation concerns and bring a few friends along as well. I can't think of a more important thing to do with your precious conservation effort and time. Put your actions into words on June 15 for a better conservation community for our great state.

Scott Rall, Worthington, is a habitat conservationist, avid hunting and fishing enthusiast and is president of Nobles County Pheasants Forever. He can be reached at scottarall@gmail.com.



Mavis Fodness photo/0613 LHS Trap 2019 Championship

LHS team to compete in championships

Sixteen members of the Luverne High School trap shooting team will travel to the 2019 Trap Shooting Championship Saturday in Alexandria. The top 11 teams and top 100 individuals will advance to the Minnesota State High School League Clay Target Shooting Tournament later this month. Traveling to the championships are (front row, from left) Holden Overgaard, coach Scott Loosbrock, coach Joe Loosbrock, Leah Wynia, (second row) Mason Wenzel, Jaden Knips, Camron Kopp, Justin Dohlmann, Grant Wieneke, (back) Marshall Dammann, Austin Watts-Boll, Cooper Arends, Chase Overgaard and Jacob Henning. Not pictured: Carter Loosbrock, Trygve Gangestad, Mitchell Schomacker and Austin Henning.

Luverne Redbirds suffer first three losses before returning to win column

By Jason Berghorst

The Luverne Redbirds amateur baseball team is 6-3 on the season after going 2-3 during its most recent five games.

The Redbirds played the Irish at Milroy Wednesday and will compete at the Atwater tournament Friday and Saturday.

Luverne 6, Tracy 1

Luverne got back into the win column on Sunday with a 6-1 game in Tracy.

Tyler Reisdorfer pitched the entire game for the Redbirds. He struck out ten batters and gave up two hits and three walks.

Luverne opened the game by scoring three runs in the first inning and adding one run in the second and two runs in the fourth.

Tracy scored its lone run in the sixth inning.

Luverne was led at the plate by Declan Beers with three hits and one RBI.

Skyler Wenninger and Zach

Loosbrock had two hits each for Luverne.

Reisdorfer and Brooks Mauer each scored two runs in the game.

Box score	AB	R	H	BI
Reisdorfer	5	2	1	0
Hoffman	4	0	0	0
Beers	5	0	3	1
Wenninger	4	1	2	2
Norman	5	1	1	1
Loosbrock	5	0	2	0
Crabtree	4	0	1	1
DeBoer	4	0	0	0
Mauer	3	2	1	0

Windom 6, Luverne 5

The Luverne amateur baseball team lost a close game to Windom Saturday on the road.

The game was tied at four at the top of the ninth inning. Luverne scored one run in the top of the ninth to take the lead.

The lead was short-lived, however. Windom scored two runs in the bottom of the ninth to secure the win.

Brooks Mauer pitched the full game for the Redbirds. He struck out two batters, walked four and gave up nine hits in

the game.

Luverne hitters were led by Phil Paquette, Skylar Wenninger and Connor Crabtree with two hits apiece.

Wenninger also had two RBIs in the contest.

Box score	AB	R	H	BI
Norman	3	1	0	1
Beers	4	1	0	0
Paquette	4	0	2	1
Wenninger	4	0	2	2
Loosbrock	3	1	0	0
Crabtree	5	1	2	0
Hiller	3	0	0	0
Mauer	3	1	0	0
Sehr	4	0	0	0

Renner 10, Luverne 5

The Luverne Redbirds came up short against the Renner Monarchs Thursday (June 6) in Luverne.

The hosts scored four runs in the top of the first and added one more run in the fifth inning.

Ryan Gonzalez pitched the first three innings for the Redbirds and gave up four runs.

Zane Hiller replaced Gonzalez on the mound for the

next two innings and gave up three runs.

Brooks Mauer pitched the next two innings and Andrew DeBoer pitched the final inning for the Redbirds.

Skyler Wenninger led the Redbirds at the plate with three hits. He also scored a run and had one RBI.

Logan Norman had two RBIs for Luverne.

Box score	AB	R	H	BI
Reisdorfer	5	1	1	0
Beers	5	1	2	0
Paquette	5	1	1	0
Wenninger	4	1	3	1
Nelson	4	1	1	1
Norman	4	0	1	2
DeBoer	3	0	1	1
Mauer	4	0	0	0
Gonzalez	3	0	1	0
Hiller	1	0	1	0

Fairmont 12, Luverne 6

A short-handed Redbirds team traveled to Fairmont Wednesday (June 5) and lost to the Martins 12-6.

Luverne scored two runs in the first, one in the third, one in the seventh and two in the

eighth inning.

Fairmont took a 7-3 lead by scoring five runs in the third inning and didn't look back, adding four insurance runs in the fourth and one more in the fifth inning.

Connor Crabtree pitched the first four innings for Luverne. Connor Hoffman replaced him on the mound for the remainder of the game. Logan Norman produced an RBI triple for the Redbirds in the third inning.

Luverne did have 12 hits in the game, but gave up too many walks and a couple of costly errors, according to manager Brooks Mauer.

No box score was available for this game.

Luverne 11, Heron Lake 1

The Luverne Redbirds amateur baseball team defeated the Heron Lake Lakers 11-1 Sunday, June 2, in Luverne.

The locals upped their re-

cord to 5-0 with the six-inning victory.

Luverne's Codie Zeutenhorst pitched the complete game.

The Redbirds were led at the plate by Zeutenhorst and Connor Hoffman with three hits apiece.

Jaxon Nelson scored two runs and batted in four more runs for Luverne, including a two-run double. Skylar Wenninger also plated two runs and batted in two runners for the home team.

Tyler Reisdorfer, Declan Beers and Wenninger each had two hits for Luverne.

Box score	AB	R	H	BI
Reisdorfer	4	1	2	0
Hiller	1	0	0	0
Beers	5	2	2	0
Paquette	3	1	0	0
Crabtree	1	0	1	0
Wenninger	4	2	2	2
Zeutenhorst	3	1	3	2
Loosbrock	3	1	1	0
Nelson	4	2	2	4
Norman	1	0	1	0
Hoffman	4	1	3	1

Legion/ from page 3B

fense by scoring three runs in the first inning, three runs in the fourth, one run in the fifth and four runs in the sixth.

Shaid Shearer led Luverne at the plate with three hits and scored two runs in the game.

Braydon Ripka, Jaime Palmquist and Riley Anderson each had two hits for Luverne.

Shearer, Casey Sehr, Anderson and Trygve Gangestad scored two runs each. Sehr also batted in three runners.

Box score	AB	R	H	BI
Ripka	3	1	2	2
Shearer	4	2	3	1
Sehr	2	2	1	3
Palmquist	5	0	2	2
K.Anderson	4	0	1	0
Bosch	4	1	1	1
R.Anderson	4	2	2	0
Overgaard	3	1	0	0
Gangestad	3	2	2	0

SF East 11, Luverne 1

A short-handed Luverne Junior Legion team suffered its first loss of the season June 2 versus Sioux Falls East.

A number of Junior Legion players were in Jackson with the Luverne High School team the same night.

Luverne lost to Sioux Falls East 11-1 at Redbird Field.

Riley Anderson had Luverne's only hit in the game. Braydon Ripka scored the run and Jaime Palmquist had the RBI.

Box score	AB	R	H	BI
Ripka	2	1	0	0
Shearer	1	0	0	0
Sehr	2	0	0	0
Palmquist	2	0	0	1
K.Anderson	2	0	0	0
Overgaard	1	0	0	0
R.Anderson	2	0	1	0
Bosch	1	0	0	0
Kruse	0	0	0	0
Gangestad	1	0	0	0



Palisade Lutheran Church
HOMEMADE PIE ICE CREAM Social
SUNDAY, JUNE 16
5 to 7 p.m.
Menu:
Grilled Hamburger or Hot Dog Meal
Pies and Ice Cream
Free will donation
LOCATION: Rural Rock County, MN
Corner of MN Hwy 23 & Cty Rd 5 (121st Street)
Everyone Welcome!
proceeds will go to fund WELCA projects
Thrivent Action Team sponsored.

TAKE 16
BREWING
509 E MAIN ST • LUVERNE, MN

JOIN US AT

LUVERNE HOCKEY

TAKE 16 BLOCK PARTY
FRIDAY JUNE 14
5:00PM START
NACHO BAR SERVED BY
LUVERNE HOCKEY
music • food • games

SUMMER ARTS CAMP
Disney
THE LION KING JR.
PRESENTED BY ARTS & MENTORING PROJECT

THIS IS A SUMMER ARTS CAMP FOR 6th-9th GRADE YOUTH
IT'S A 7 WEEK LONG EXPERIENCE
Beginning June 24 during evening hours 5:30-9:00 p.m. in Jasper, MN

Participants will learn the foundations of theatre through the Lion King Experience Curriculum, will then audition and rehearse **DISNEY'S THE LION KING JR.** at AMP's studio in Jasper, MN.
Performance dates are August 11, 12, 13
at the Hiawatha Pageant Park in Pipestone, MN.

Registration can be completed at amp.mymusicstaff.com.
Questions should be directed to Reggie Gorter (AMP's Executive Director), at 605-695-8626 or pipestoneamp@gmail.com

CLEAN WATER LAND & LEGACY AMENDMENT
This activity is funded in part with a grant from the Southwest Minnesota Arts Council made possible by the voters of Minnesota, thanks to a legislative appropriation from the arts and cultural heritage fund.

PALACE THEATRE UPCOMING EVENTS

June 14, Kids Summer Cinema Movies
July 19, Kids Summer Cinema Movies
Aug. 9, Kids Summer Cinema Movies
9:30 a.m. \$5 admission
Sponsored by Security Savings Bank and American Family Insurance - Nicholas Domagala, Agent

June 14-15-16, Rocketman
7 p.m. Movie "Rocketman"

PALACE THEATRE
104 E. MAIN ST. • PO BOX 541 • LUVERNE, MN 56156
507.283.4339 • WWW.PALACETHEATRE.US

Palace Theatre Luverne
Box office is open
Monday - Friday 12 p.m. - 5 p.m.
507-283-4339

KIDS ROCK SPORTS CAMP
sponsored by Living Rock Church
Luverne, MN | June 17-21 | 6:30-8:30pm

Completed K-5th Grade
registration \$10 / \$30 family maximum
sign up at: www.livingrockswmn.org/sportscamp
or call 507-449-0057

Join us for skills in soccer, basketball, football, track & field and cheerleading at the Luverne City Park
There will be Bible study, give-aways, t-shirts and of course loads of fun for participants!!!
Friday night will feature food, awards & games!

www.livingrockswmn.org

Mortgage foreclosure sale set for July 18

NOTICE OF MORTGAGE FORECLOSURE SALE
THE RIGHT TO VERIFICATION OF THE DEBT AND IDENTITY OF THE ORIGINAL CREDITOR WITHIN THE TIME PROVIDED BY LAW IS NOT AFFECTED BY THIS ACTION.

NOTICE IS HEREBY GIVEN: That default has occurred in the conditions of the following described mortgage:

NOTICE OF MORTGAGE FORECLOSURE SALE
DATE OF MORTGAGE: August 31, 2005
MORTGAGOR: Pamela G. Den Herder, a married person
MORTGAGEE: ABN AMRO Mortgage Group, Inc.
DATE AND PLACE OF RECORDING:

Recorded: September 12, 2005
Rock County Recorder
Document #: 162275

ASSIGNMENTS OF MORTGAGE:
Said mortgage was assigned to Pretium Mortgage Credit Partners I Loan Acquisition, LP on December 2, 2015 and said assignment was recorded on December 3, 2015 and given document number 187419 and subsequently assigned to Wilmington Savings Fund Society, FSB, D/B/A Christiana Trust, not individually but as Trustee for Pretium Mortgage Acquisition Trust on December 21, 2015 and said assignment was recorded on January 19, 2016 and given document number 187696 and subsequently assigned to Mortgage Stanley Mortgage Capital Holdings LLC on September 6, 2018 and said assignment was recorded on November 1, 2018 and given document number 193737 and subsequently assigned to FV-I, Inc. in trust for Morgan Stanley Mortgage Capital Holdings LLC on February 14, 2019 and said assignment was recorded on March 18, 2019 and given document number 194407.

LEGAL DESCRIPTION OF PROPERTY:
The West 1/2 of Lots 2 and 3, Block 2 in H. Snook Addition to the City of Luverne, Rock County, Minnesota.
PARCEL ID #: 20-1323-0000
PROPERTY ADDRESS: 601 S. Donaldson St., Luverne, Minnesota 56156
TRANSACTION AGENT: N/A
TRANSACTION AGENT ID NO.: N/A
CURRENT MORTGAGE SERVICER: NewRez LLC d/b/a Shellpoint Mortgage Servicing

COUNTY IN WHICH PROPERTY IS LOCATED: Rock
ORIGINAL PRINCIPAL AMOUNT OF MORTGAGE: \$70,000.00
AMOUNT DUE AND CLAIMED TO BE DUE AS OF DATE OF NOTICE, INCLUDING TAXES, IF ANY PAID BY MORTGAGEE: \$62,722.59

That prior to the commencement of this mortgage foreclosure proceeding Mortgagee/Assignee of Mortgagee complied with all notice requirements as required by statute; that no Mortgages have been released from financial obligation on said Mortgage; that no action or proceeding has been instituted by law to recover that debt secured by said Mortgage, or any part thereof; that all conditions precedent to foreclose of the Mortgage and acceleration of the debt secured thereby have been fulfilled;

PURSUANT to the power of sale therein contained, said Mortgage will be foreclosed and the above described property will be sold by the Sheriff of said county as follows:

DATE AND TIME OF SALE: July 18, 2019 at 10:00 am
PLACE OF SALE: Rock County Sheriffs Office, 1000 N. Blue Mound Ave., Luverne, MN 56156

to pay the debt the debt then secured by the Mortgage, and taxes, if any, on said premises, and the costs and disbursements, including attorneys' fees allowed by law, subject to redemption within six (6) months from the date of sale by the mortgagor, their personal representatives or assigns.

DATE TO VACATE PROPERTY: The date on or before which the mortgagor must vacate the property if the mortgage is not reinstated under Minnesota Statutes section 580.30 of the property redeemed under Minnesota Statutes sections 580.23 is January 18, 2020 at 11:59 p.m. If the foregoing date is Saturday, Sunday, or a legal holiday, then the date to vacate is the next business day at 11:59 p.m.

MORTGAGOR RELEASED FROM FINANCIAL OBLIGATION ON MORTGAGE:
None

THE TIME ALLOWED BY LAW FOR REDEMPTION BY THE MORTGAGOR, THE MORTGAGOR'S PERSONAL REPRESENTATIVES OR ASSIGNS, MAY BE REDUCED TO FIVE WEEKS IF A JUDICIAL ORDER IS ENTERED UNDER MINNESOTA STATUTES, SECTION 582.032, DETERMINING, AMONG OTHER THINGS, THAT THE MORTGAGED PREMISES ARE IMPROVED WITH A RESIDENTIAL DWELLING OF LESS THAN FIVE UNITS, ARE NOT PROPERTY USED IN AGRICULTURAL PRODUCTION, AND ARE ABANDONED.

THIS COMMUNICATION IS FROM A DEBT COLLECTOR ATTEMPTING TO COLLECT A DEBT. ANY INFORMATION OBTAINED WILL BE USED FOR THAT PURPOSE.

Dated: May 20, 2019
FV-I, Inc. in trust for Morgan Stanley Mortgage Capital Holdings LLC
Mortgagee

Kenneth J. Johnson
Minnesota State Bar No. 0246074
Johnson, Blumberg & Associates, LLC
Attorney for Mortgagee
230 W. Monroe St., Ste. 1125
Chicago, IL 60606
Phone 312-541-9710
Fax 312-541-9711

(05-30, 06-06, 06-13, 06-20, 06-27, 07-04)



CITY OF LUVERNE, MINNESOTA SUMMARY FINANCIAL REPORT

The purpose of this report is to provide a summary of financial information concerning the City of Luverne to interested citizens. The complete financial statements may be examined at City Offices, 305 East Luverne Street, Luverne, MN, 56156. Questions about this report should be directed to Barbara Berghorst at (507) 449-9900.

Summary Financial Report Revenues and Expenditures For General Operations Governmental Funds For the Years Ended December 31, 2018 and 2017

	Total 2018	Total 2017	Percent Increase (Decrease)
Revenues			
Taxes	\$ 2,346,963	\$ 2,194,702	6.94 %
Special assessments	857	953	(10.07)
Licenses and permits	81,025	103,446	(21.67)
Intergovernmental	2,458,231	1,715,416	43.30
Charges for services	825,037	804,978	2.49
Fines and forfeits	13,828	13,076	5.75
Investment earnings	79,290	66,875	18.56
Miscellaneous	65,830	50,589	30.13
Total Revenues	\$ 5,871,061	\$ 4,950,035	18.61 %
Per Capita	\$ 1,248	\$ 1,056	18.15 %
Expenditures			
Current			
General government	\$ 794,627	\$ 836,609	(5.02) %
Public safety	1,254,223	1,258,731	(0.36)
Public works	996,616	978,701	1.83
Culture and recreation	1,168,031	1,110,519	5.18
Conservation and development	594,967	298,702	99.18
Capital outlay			
General government	42,362	100,031	(57.65)
Public safety	249,195	53,097	369.32
Public works	329,192	372,500	(11.63)
Culture and recreation	541,485	234,533	130.88
Conservation and development	21,646	62,500	(65.37)
Debt service			
Principal	389,356	408,655	(4.72)
Interest and other costs	65,548	83,113	(21.13)
Total Expenditures	\$ 6,447,248	\$ 5,797,691	11.20 %
Per Capita	\$ 1,370	\$ 1,237	10.78 %
Total Long-term Indebtedness	\$ 1,286,581	\$ 1,675,937	(23.23) %
Per Capita	273	358	(23.53)
General Fund Balance - December 31	\$ 2,779,612	\$ 2,488,296	11.71 %
Per Capita	591	531	11.28

Statement of Net Position Proprietary Funds December 31, 2018

	Business-type Activities - Enterprise Funds			Business-type Activities - Enterprise Funds			Governmental Activities - Internal Service Funds
	601 Water	602 Sewer	604 Electric	609 Liquor	Other Proprietary Funds	Totals	
Assets							
Current Assets							
Cash and temporary investments	\$ 1,506,998	\$ 3,174,140	\$ 10,214,128	\$ 462,276	\$ 980,164	\$ 16,337,706	\$ 1,156,835
Receivables (net of allowance for uncollectibles)							
Accrued interest	5,250	10,809	23,564	1,229	2,764	43,616	3,246
Accounts, net	109,509	95,428	466,584	-	58,947	730,468	-
Loans	2,588	4,169	4,005	-	5,574	16,336	3,982
Delinquent special assessments	168	-	-	-	-	168	-
Intergovernmental	26,602	44,368	-	-	82,468	153,438	-
Due from other funds	-	-	759,000	-	-	759,000	62,311
Inventories	-	-	423,562	178,719	-	602,281	-
Prepaid items	-	-	-	-	-	-	7,344
Total Current Assets	1,651,115	3,328,914	11,890,843	642,224	1,129,917	18,643,013	1,233,718
Noncurrent Assets							
Restricted assets							
Cash and temporary investments	383,902	217,899	243,502	-	5,010	850,313	-
Special assessments receivable							
Noncurrent	293	334	-	-	1,132	1,759	-
Loans receivable - noncurrent	39,077	39,180	40,945	-	84,166	203,368	60,119
Capital assets							
Land	102,967	218,528	369,325	78,860	99,968	869,648	-
Buildings	973,702	409,094	1,428,528	107,064	79,566	2,997,954	226,134
Improvements and infrastructure	12,576,990	9,202,229	18,391,135	26,721	1,667,078	41,864,153	79,763
Machinery and equipment	368,128	539,716	830,471	82,185	903,925	2,724,425	565,609

Star Herald PUBLIC NOTICES

Construction in progress	568,987	828,562	1,888,158	-	647,930	3,933,637	-
Total capital assets	14,590,774	11,198,129	22,907,617	294,830	3,398,467	52,389,817	871,506
Less accumulated depreciation	(6,368,499)	(6,138,820)	(12,382,598)	(165,358)	(1,680,631)	(26,735,906)	(654,169)
Total Capital Assets (Net Of Accumulated Depreciation)	8,222,275	5,059,309	10,525,019	129,472	1,717,836	25,653,911	217,337
Total Noncurrent Assets	8,645,547	5,316,722	10,809,466	129,472	1,808,144	26,709,351	277,456
Total Assets	10,296,662	8,645,636	22,700,309	771,696	2,938,061	45,352,364	1,511,174
Deferred Outflows of Resources							
Deferred Pension Resources	31,411	41,763	17,168	18,036	14,916	123,294	46,823
Deferred other postemployment benefits	249	343	196	88	127	1,003	327
Total Deferred Outflows of Resources	31,660	42,106	17,364	18,124	15,043	124,297	47,150
Liabilities							
Current Liabilities							
Accounts payable	64,711	73,417	394,595	47,017	14,085	593,825	11,165
Contracts payable	110	85,254	514,393	-	17,834	617,591	-
Retainage payable	24,502	32,257	133,148	-	20,510	210,417	-
Due to other funds	196	17	-	-	-	213	213
Due to other governments	948	-	19,880	12,895	4,336	38,059	-
Accrued interest payable	40,412	8,959	53,138	-	-	102,509	-
Wages and related benefits payable	2,920	5,307	2,897	2,149	1,867	15,140	5,275
Compensated absences payable - current	9,963	18,644	14,701	5,783	9,216	58,307	82,884
Customer deposits payable	8,990	8,440	40,364	1,540	5,010	64,344	-
Bonds payable - current	334,500	200,500	150,000	-	-	685,000	-
Total Current Liabilities	487,252	432,795	1,323,116	69,384	72,858	2,385,405	99,537
Noncurrent Liabilities							
Compensated absences payable	46,620	81,987	53,946	12,852	31,308	226,713	296,616
Other postemployment benefits liability	16,800	23,095	13,200	5,909	8,449	67,453	22,015
Bonds payable	3,208,526	850,323	4,866,105	-	-	8,924,954	-
Pension liability	161,998	215,384	88,542	93,008	76,924	635,856	241,477
Total Noncurrent Liabilities	3,433,944	1,170,789	5,021,793	111,769	116,681	9,854,976	560,108
Total Liabilities	3,921,196	1,603,584	6,344,909	181,153	189,539	12,240,381	659,645
Deferred Inflows of Resources							
Deferred pension resources	43,890	58,354	23,988	25,199	20,841	172,272	65,422
Net Position							
Net investment in capital assets	4,989,249	4,008,486	8,644,288	129,472	1,717,836	19,489,331	217,337
Restricted for debt service	428,497	220,039	-	-	-	648,536	-
Unrestricted	945,490	2,797,279	7,704,488	453,996	1,024,888	12,926,141	615,920
Total Net Position	<u>\$ 6,363,236</u>	<u>\$ 7,025,804</u>	<u>\$ 16,348,776</u>	<u>\$ 583,468</u>	<u>\$ 2,742,724</u>	<u>\$ 33,064,008</u>	<u>\$ 833,257</u>

Adjustment to Reflect the Consolidation
of Internal Service Fund Activities Related
to Enterprise Funds 385,286

Net Position of Business-type Activities \$ 33,449,294

Statement of Revenues, Expenses and Changes in Net Position
Proprietary Funds
For the Year Ended December 31, 2018

	Business-type Activities - Enterprise Funds			Business-type Activities - Enterprise Funds		Governmental Activities - Internal Service Funds	
	601 Water	602 Sewer	604 Electric	609 Liquor	Other Proprietary Funds		Totals
Operating Revenues							
Charges for services/sales	\$ 1,706,293	\$ 1,303,937	\$ 6,892,075	\$ 1,325,391	\$ 816,530	\$ 12,044,226	\$ 869,409
Cost of sales	-	-	-	(1,002,281)	-	(1,002,281)	-
Service income	20,636	48,650	126,976	-	7,180	203,442	-
Other income	1,814	852	113,437	-	525	116,628	5,308
Total Operating Revenues	<u>1,728,743</u>	<u>1,353,439</u>	<u>7,132,488</u>	<u>323,110</u>	<u>824,235</u>	<u>11,362,015</u>	<u>874,717</u>
Operating Expenses							
Personal services	326,437	404,978	238,226	158,420	155,582	1,283,643	431,751
Supplies	133,194	133,515	238,165	13,788	68,402	587,064	73,543
Other services and charges	485,443	437,008	1,520,434	90,932	227,658	2,761,475	355,917
Power purchased/delivered	-	-	3,791,531	-	-	3,791,531	-
Depreciation	364,383	352,396	846,831	7,359	116,707	1,687,676	48,199
Pension expense	(8,864)	(6,098)	(1,096)	(2,294)	(2,967)	(21,319)	(871)
Total Operating Expenses	<u>1,300,593</u>	<u>1,321,799</u>	<u>6,634,091</u>	<u>268,205</u>	<u>565,382</u>	<u>10,090,070</u>	<u>908,539</u>
Operating Income (Loss)	<u>428,150</u>	<u>31,640</u>	<u>498,397</u>	<u>54,905</u>	<u>258,853</u>	<u>1,271,945</u>	<u>(33,822)</u>
Nonoperating Revenues (Expenses)							
Property taxes	-	363	-	-	-	363	-
Investment income	8,455	16,976	36,520	1,883	5,126	68,960	8,156
Rental income	3,720	448	135	-	980	5,283	-
Pension revenue	1,202	1,598	657	690	572	4,719	1,791
Interest and other costs	(98,690)	(22,250)	(53,138)	-	(10)	(174,088)	-
Interest on customer deposits	(19)	(18)	(1,029)	-	-	(1,066)	-
Amortization expense	2,102	(856)	7,427	-	-	8,673	-
Contributions to component unit	(40,000)	(65,000)	(70,000)	-	(40,000)	(215,000)	-
Total Nonoperating Revenues (Expenses)	<u>(123,230)</u>	<u>(68,739)</u>	<u>(79,428)</u>	<u>2,573</u>	<u>(33,332)</u>	<u>(302,156)</u>	<u>9,947</u>
Income (Loss) Before Capital Contributions and Transfers	304,920	(37,099)	418,969	57,478	225,521	969,789	(23,875)
Transfers Out	(125,000)	(270,000)	(840,000)	(45,000)	(270,000)	(1,550,000)	(50,000)
Capital Contributions From Component Unit	-	-	-	-	145,336	145,336	-
Capital Grants and Contributions	106,823	174,291	-	-	331,165	612,279	-
Change in Net Position	286,743	(132,808)	(421,031)	12,478	432,022	177,404	(73,875)
Net Position, January 1	6,076,493	7,158,612	16,769,807	570,990	2,310,702	32,886,604	907,132
Net Position, December 31	<u>\$ 6,363,236</u>	<u>\$ 7,025,804</u>	<u>\$ 16,348,776</u>	<u>\$ 583,468</u>	<u>\$ 2,742,724</u>	<u>\$ 33,064,008</u>	<u>\$ 833,257</u>

Change in Net Position as Shown Above \$ 177,404

Adjustment to Reflect the Consolidation
of Internal Service Fund Activities
Related to Enterprise Funds. (61,162)

Change in Net Position of Business-type
Activities \$ 116,242

Star Herald PUBLIC NOTICES

June 13, 2019 Page 7B

Statement of Cash Flows Proprietary Funds For the Year Ended December 31, 2018						
	Business-type Activities - Enterprise Funds			Business-type Activities - Enterprise Funds		Governmental Activities - Internal Service Funds
	601 Water	602 Sewer	604 Electric	609 Liquor	Other Proprietary Funds	
Cash Flows from Operating Activities						
Cash receipts from customers	\$ 1,724,675	\$ 1,351,324	\$ 7,844,504	\$ 1,324,281	\$ 819,352	\$ 13,064,136
Cash paid to suppliers	(593,626)	(507,182)	(5,698,097)	(1,099,620)	(301,594)	(8,200,119)
Cash paid to and on behalf of employees	(347,137)	(407,894)	(230,422)	(158,888)	(154,053)	(1,298,394)
Other receipts	4,922	2,046	792	690	1,552	10,002
Net Cash Provided (Used) by Operating Activities	788,834	438,294	1,916,777	66,463	365,257	3,575,625
Cash Flows from Noncapital Financing Activities						
Transfers to other funds	(125,000)	(270,000)	(840,000)	(45,000)	(270,000)	(1,550,000)
Payment to component unit	(40,000)	(65,000)	(70,000)	-	(40,000)	(215,000)
Loans made	-	-	(1,389)	-	-	(1,389)
Loan payments received	8,249	10,650	58,371	-	17,766	95,036
(Increase) decrease in due from other funds	13,110	13,110	(229,138)	-	13,110	(189,808)
Increase (decrease) in due to other funds	6	-	-	-	-	6
Property taxes received	-	363	-	-	-	363
Net Cash Provided (Used) by Noncapital Financing Activities	(143,635)	(310,877)	(1,082,156)	(45,000)	(279,124)	(1,860,792)
Cash Flows from Capital and Related Financing Activities						
Proceeds from bonds issued, net of premium	-	-	5,023,532	-	-	5,023,532
Acquisition of capital assets	(570,845)	(909,607)	(2,212,924)	-	(606,388)	(4,299,764)
Capital grants received	80,221	129,923	-	-	248,697	458,841
Payment from component unit	-	-	-	-	108,000	108,000
Principal paid on long-term borrowings	(336,500)	(203,500)	-	-	-	(540,000)
Interest and fiscal charges paid on long-term borrowings	(101,002)	(23,718)	-	-	-	(124,720)
Net Cash Provided (Used) by Capital and Related Financing Activities	(928,126)	(1,006,902)	2,810,608	-	(249,691)	625,889
Cash Flows from Investing Activities						
Interest received	7,841	14,269	28,032	1,506	4,563	56,211
Net Increase (Decrease) in Cash and Cash Equivalents	(275,086)	(865,216)	3,673,261	22,969	(158,995)	2,396,933
Cash and Cash Equivalents, January 1	2,165,986	4,257,255	6,784,369	439,307	1,144,169	14,791,086
Cash and Cash Equivalents, December 31	\$ 1,890,900	\$ 3,392,039	\$ 10,457,630	\$ 462,276	\$ 985,174	\$ 17,188,019
Cash and Cash Equivalents are Comprised of						
Cash and temporary investments	\$ 1,506,998	\$ 3,174,140	\$ 10,214,128	\$ 462,276	\$ 980,164	\$ 16,337,706
Restricted assets						
Cash and temporary investments	383,902	217,899	243,502	-	5,010	850,313
Total Cash and Cash Equivalents	\$ 1,890,900	\$ 3,392,039	\$ 10,457,630	\$ 462,276	\$ 985,174	\$ 17,188,019
Reconciliation of Operating Income (Loss) to Net Cash Provided (Used) by Operating Activities						
Operating income (loss)	\$ 428,150	\$ 31,640	\$ 498,397	\$ 54,905	\$ 258,853	\$ 1,271,945
Adjustments to reconcile operating income (loss) to net cash provided (used) by operating activities						
Depreciation	364,383	352,396	846,831	7,359	116,707	1,687,676
Other income related to operations	4,922	2,046	792	690	1,552	10,002
Interest paid on customer deposits	(19)	(18)	(1,029)	-	(10)	(1,076)
(Increase) decrease in assets						
Accounts receivable	(2,557)	(3,304)	715,133	-	(4,101)	705,171
Special assessments receivable	647	2,285	-	-	233	3,165
Due from other governments	-	1,550	-	-	-	1,550
Inventories	-	-	(14,772)	(23,778)	-	(38,550)
Prepaid items	-	-	-	-	-	-
(Increase) decrease in deferred outflows of resources						
Deferred pension resources	20,331	25,438	10,062	10,889	9,307	76,027
Deferred other postemployment benefit resources	(249)	(343)	(196)	(88)	(127)	(1,003)
Increase (decrease) in liabilities						
Accounts payable	16,504	57,261	(131,961)	28,276	(8,742)	(38,662)
Due to other governments	(338)	-	(1,301)	589	251	(799)
Wages and related benefits payable	152	1,656	825	564	464	3,661
Deposits payable	(956)	(1,048)	(2,460)	(420)	(443)	(5,327)
Compensated absences payable	(13,931)	(1,312)	6,693	643	3,149	(4,758)
Other postemployment benefits liability	2,192	3,181	1,578	707	1,010	8,668
Pension liability	(29,643)	(33,508)	(12,309)	(14,117)	(12,788)	(102,365)
Increase (decrease) in deferred inflows of resources						
Deferred pension resources	(754)	374	494	244	(58)	300
Total Adjustments	360,684	406,654	1,418,380	11,558	106,404	2,303,680
Net Cash Provided (Used) by Operating Activities	\$ 788,834	\$ 438,294	\$ 1,916,777	\$ 66,463	\$ 365,257	\$ 3,575,625
Schedule of Noncash Investing, Capital and Financing Activities						
Book value of disposed/traded of capital assets	\$ -	\$ -	\$ 35,452	\$ -	\$ -	\$ 35,452
Capital assets acquired on account	24,612	117,511	647,541	-	38,344	828,008
Capital assets acquired with grants (due from other governments)	106,823	174,291	-	-	-	281,114
Capital assets contributed from component unit	-	-	-	-	37,336	37,336
Amortization of bond (premium) discount	(2,102)	856	(7,427)	-	-	(8,673)

The notes to the financial statements are an integral part of this statement.

Rock County Commissioners meet May 7

Herreid Board Room 9:00 A.M.
Rock County Courthouse May 7, 2019

The meeting was called order by Chair Burger with all Commissioners present; also in attendance were Administrator Kyle Oldre, and Deputy Administrator Susan Skattum.

The Pledge of Allegiance was recited by members and guests.

Motion by Williamson, seconded by Overgaard, to approve the May 07, 2019 County Board agenda, declared carried on a voice vote.

Motion by Reisch, seconded by Overgaard, to approve the April 16, 2019 County Board minutes, declared carried on a voice vote.

Jay Trusty, Executive Director and Robin Weis, Economic Development Director of the Southwest Regional Development Commission presented the Committee Report that resulted from the EDA Study Committee. The report identified the current levels, existing gaps in programs and services and capacity and ability to expand services and/or opportunities for development in the areas of Economic Development, Housing and Community Development Programs and Services. The EDA Study Committee recommended the following:

- The establishment of a new Economic Development Authority in Rock County, operating in each city and/or township
- Each city or township must elect by resolution to participate in the EDA for purposes of providing Rock County with all available tools to pursue economic development in the county
- Defining the area around cities over which a city may exercise its "control" as it relates to development as two miles from the city border
- The EDA Board be comprised of (9) nine members

After discussion, motion by Overgaard, seconded by Reisch, to approve Resolution No. 13-19, an Enabling Resolution Establishing an Economic Development Authority in and for Rock County, declared on a voice vote.

The Administrator presented an update regarding a project update from GEVO; currently they are pursuing a project for plant improvements that will incorporate wind energy and bio gas which will create a low carbon foot print and will qualify the site as "green", making the company more marketable. The wind energy and bio gas will require local permitting and the employee base is projected to increase by 20 employees.

The County Board was also in receipt of a request from Geronimo Wind requesting comments regarding Elk Creek and Elk Creek II solar projects to be located in Vienna and Magnolia Townships. After discussion, the Chair directed the Administrator to draft a letter of support for Phase 1, Elk Creek Solar project to be located in Vienna Township.

Ashley Kurtz, Auditor/Treasurer, presented the claims and per diems of \$800.00; motion by Williamson, seconded by Thompson, to approve the claims, declared carried on a voice vote. A complete listing of the claims is available upon request at the Auditor/Treasurer's office.

MAY 7, 2019 CLAIMS OVER \$2,000	
A & B BUSINESS INC	\$2,364.36
COUNTIES PROVIDING TECHNOLOGY	7,572.00
EMERGENCY AUTOMOTIVE TECHNOLOGIES	4,154.90
FLEET SERVICES DIVISION-ADMIN FMR	6,053.30
HEIMAN INC.	2,146.32
HILDI INC	3,900.00
LIVERNE FARM STORE INC	6,061.55

LIVERNE/CITY OF MORRIS ELECTRONICS 69,145.66
4,177.34
NOBLES COUNTY AUDITOR-TREASURER 22,547.75
ROCK MOTOR SPORTS, LLC 7,200.00
STAPLES ENTERPRISES INC 3,876.63
TOLLEFSON PUBLISHING 2,588.00
93 PAYMENTS LESS THAN \$2,000 41,307.13
\$183,094.94

The County Board was in receipt of the Fund Balance report which reflected an increase due to tax collections. Motion by Overgaard, seconded by Reisch, to approve the Fund Balance report, declared carried on a voice vote.

Mark Sehr, Engineer, presented Resolution No. 12-19, a grant agreement to the State Transportation Fund for \$138,598.00 in MVST Bridge Funds for SAP 067-98-020, a bridge replacement project on County Highway 59 in Springwater Township; motion by Williamson, seconded by Burger, to approve Resolution No. 12-19, declared carried on a voice vote.

The Engineer provided an update regarding Bridge L67501 over the Kanaranzi Creek on CSAH that received extensive damage from spring flooding. Currently, the north bound lane has been closed and is posted as a ten ton weight limit; in addition to local monitoring, the bridge status and condition has been evaluated by MnDOT as well. The Engineer stated that the repair is deemed an emergency and is covered 100-percent by Federal Highway Relief Funds.

The Engineer also discussed other road repairs due to spring flood event on County Road 8 and on County Road 59; those expenses are FEMA eligible and will be identified the county's preliminary damage assessment.

Other construction project updates include: Walnut Street and bridge construction in Kanaranzi Township.

Eric Hartman, Land Management Office Director requested to set a Public Hearing date for the purpose of discussing potential amendments to the Rock County Zoning Ordinance regarding Section 4, Subdivision 2 definition of a Campground and Section 16, Subdivision 3 Conditional Uses; motion by Overgaard, seconded by Thompson, to set the Public Hearing for May 21, 2019 at 9:15AM in the Herreid Board meeting room, declared carried on a voice vote.

The Land Management Office Director presented a conditional use permit for Duinink, Inc. for a hot mix plant located in Section 15 of Laverne Township; Hartman stated that comments from the public hearing resulted in additional conditions identified on permit. Motion by Williamson, seconded by Reisch, to approve the conditional use permit with all permit conditions, declared carried on a voice vote.

Calla Jarvie, Rock County Community Library Director, presented a programming update; the Trivia Night recently celebrated its one-year anniversary and in honor of the anniversary, Take 16 Brewing awarded the library staff the naming rights to their newest beer, which is now called 641.873, the Dewey decimal for beer brewing. Jarvie stated that the average attendance for the monthly Trivia event is 70-90 people.

The Administrator presented a Spring Flood event/disaster update stating the FEMA is scheduled to be in Rock County on May 8 to collect preliminary damage assessment worksheets from eligible applicants; also stated that Rock County Rural Water is a late applicant as they sustained damages to some of the access roads to their wells.

The County Board was in receipt of correspondence from the University of MN School of Dentistry - Outreach Division regarding the status of a Mobile Dental Clinic; currently Rock County does not have enough UCare membership to deploy a mobile unit, which results in seeing a low number of patients. They also stated that the UCare membership data is reviewed annually to determine the mobile unit sites. The Administrator also stated that Delta Dental does not have mobile units

but rather invests in bricks and mortar (buildings) and assists in recruiting dentists to communities that need more dental services. Delta Dental will also investigate Minnesota client access into South Dakota for the western border counties.

The County Board was in receipt of a draft resolution identifying the importance of transportation funds and that the state has a role in helping local units of government repair and maintain their highway infrastructure. After considerable discussion, the County Board took no action and directed the Administrator to send a letter to our state representatives voicing our concerns.

Commissioner Reisch stated that he attended the following meetings and events: Laverne Economic Development Commission, Plum Creek Library, GEVO project expansion, Community Corrections.

Commissioner Thompson stated that she attended the following meetings and events: ACE and ACE Annual meeting.

Commissioner Williamson stated that he attended the following meetings and events: Rock County Opportunities, SWCD, (2) 1Water1Plan meetings and Building committee meetings.

Commissioner Overgaard stated that he attended the following meetings and events: Land Use, Blandin, Hardwick City Council.

Commissioner Burger stated that he attended the following meetings and events: SWHHS, Community Corrections, Gevo project expansion, Nurse-Family Partnership.

With no further business to come before the County Board, meeting was declared adjourned.

(6-13)

Planning Commission public hearings set for June 24

**City Planning Commission
Public Hearing Set for June 24, 2019
NOTICE OF PUBLIC HEARING**

NOTICE IS HEREBY GIVEN, by the City Planning Commission that four public hearings will be held in the Council Chambers located in the City Offices Building, 305 East Laverne Street, Laverne, Minnesota, commencing at 5:00 p.m. on Monday, June 24, 2019. The purpose of the hearings is to rule and make recommendation to the Laverne City Council on the following:

1. Land use amendment at an undeveloped parcel in Lots 1 & 2, Uithoven Addition, Laverne, MN to rezone from Residential Reserve to R-1 Single Family Residential.
2. The Replat of Uithoven Addition, Laverne, MN.
3. The Platting of Walnut Third Industrial Subdivision, Laverne, MN; which includes amendments to the utility easements.
4. A Conditional Use Permit (CUP) submitted by Mike and Traci Davis for a commercial campground located at three contiguous parcels (20-0228-000, 20-0227-000, and 20-0228-300), Laverne, MN.

All persons desiring to be heard on these matters should be present at the hearing or present written comments prior to the hearing to the Building Official, PO Box 659, Laverne, MN 56156. Anyone needing reasonable accommodations or an interpreter should contact the City Clerk's Office, 305 East Laverne Street, Laverne, MN. (507) 449-9898.

By order of the Laverne City Planning Commission, Laverne, Minnesota, this 13th day of June, 2019.

Jessica Mead
City Clerk
(06-13)

Star Herald PUBLIC NOTICES

Page 8B June 13, 2019

Rock County Commissioners meet May 21

Herreid Board Room 9:00 A.M.
Rock County Courthouse May 21, 2019

The meeting was called order by Chair Burger with all Commissioners present; also in attendance were Administrator Kyle Oldre, Deputy Administrator Susan Skattum and County Attorney Jeff Haubrich.

The Pledge of Allegiance was recited by members and guests. Motion by Thompson, seconded by Reisch, to approve the May 21, 2019 County Board Agenda, declared carried on a voice vote.

Motion by Burger, seconded by Overgaard, to approve the May 07, 2019 County Board minutes, declared carried on a voice vote.

The County Board was made aware of a correction to the April 16, 2019 County Board minutes as action on Resolution No. 11-19 was not identified; motion by Overgaard, seconded by Thompson, to approve the amended April 16, 2019 minutes, declared carried on a voice vote.

Mark Sehr, Engineer, requested approval of Resolution No. 14-19, a grant agreement to the State Transportation Fund for SAP 67-612-009, the a bridge construction project in Denver Township; motion by Reisch, seconded by Williamson, to approve, declared carried on a voice vote.

The Engineer informed the County Board that he had bid let SAP 067-598-022, the replacement of Bridge L2165 on County Highway 52 over the BNSF Railroad for May 20, 2019 and that no bids were submitted. He stated that he will re-advertise in August-September of 2019 for a 2020 construction; the 2020 construction delay will not impact the bonding dollars allotted for the project.

The Engineer also presented a brief construction update with no action taken.

Motion by Reisch, seconded by Thompson, to recess the regular County Board meeting and to into a Public Hearing for proposed amendments to the Rock County Zoning Ordinance regarding Campgrounds at 9:15AM, declared carried on a voice vote. Those in attendance were: Mike Davis, Billy Cowell, Eric Hartman. Comments from Davis and Cowell were that they were in support of the amendments as Public Health has good guidelines.

Motion by Williamson, seconded by Overgaard to close the Public Hearing at 9:28AM, declared carried on a voice vote.

Motion by Reisch, seconded by Overgaard, to reconvene the regular County Board meeting, declared carried on a voice vote.

Davis and Cowell gave a brief update regarding their campground stating that the site has Rural Water and they are currently working on electrical and sewer and waste water installations along with a conditional use permit.

Motion by Reisch, seconded Overgaard, to adopted Resolution No. 15-19, amending the Rock County Zoning Ordinance, Section 4, Subdivision 2 definitions and Section 16 Subdivision 3 condition uses all relating to campgrounds, declared carried on a voice vote.

Beth Wilms, Director and Sara Kirscher, Finance Manager of Southwest Health & Human Services (SWHHS) presented an organizational structure update along with program and budget updates; in summary, the financial health of the organization has improved. Currently, all vacancies are reviewed by the finance with final approval by the SWHHS Board; Wilms stated that she anticipates additional staff requests for 2020. The County Board discussed the current JPA funding formula; after discussion, motion by Williamson, seconded by Thompson, to direct the Administrator to send a letter to the SWHHS Chair requesting and review and modification of the current funding formula, declared carried on a voice vote.

Rick Gorley, Owner of Spring Brook Golf Course in Beaver Creek introduced himself to the County Board and presented a project update stating that the focus of the property will be the Event Center for 2019; plans for the golf course are currently under review for rehabilitation and development. The County Board thanked Mr. Gorley for the introduction and project update.

Doug Bos, Land Management Office Assistant Director, requested approval of Resolution No. 16-19, the approval and submittal of the Missouri River Basin Watershed One Water One Plan; motion by Williamson, seconded by Overgaard, to approve, declared carried on a voice vote. Adoption will follow after the approval from Minnesota Board of Water and Soil Resources.

Ashley Kurtz, Auditor/Treasurer, presented the claims; motion by Williamson, seconded by Reisch, to approve, declared carried on a voice vote. A complete listing of the claims is available upon request at the Auditor/Treasurer's office.

MAY 21, 2019 CLAIMS OVER \$2,000		
BUFFALO RIDGE CONCRETE	\$	3,415.00
CHS		8,595.37
COUNTIES PROVIDING TECHNOLOGY		6,322.00
DLT SOLUTIONS		3,322.20
ELECTION SYSTEMS & SOFTWARE INC		3,960.00
ERICKSON ENGINEERING		4,498.46
KETTERLING SERVICES INC		11,369.15
LIBERTY TIRE RECYCLING LLC		2,022.40
LUVERNE/CITY OF		7,336.16
LYON COUNTY LANDFILL		17,454.70
NEWMAN SIGNS INC		2,921.93
REKER CONSTRUCTION & AGGREGATE LLC		24,381.05
ROCK COUNTY OPPORTUNITIES		2,548.25
W & N CONSTRUCTION INC		9,665.36

84 PAYMENTS LESS THAN \$2,000 27,608.24
\$ 135,420.27

The Auditor/Treasurer presented the following (4) Lost Warrant Affidavits and requested to re-issue; motion by Thompson, seconded by Reisch, to approve, declared carried on a voice vote.

- #43524 for \$513.59
- #43575 for \$1,052.91
- #43712 for \$464.65
- #77926 for \$14.00

The County Board was in receipt of the Fund Balance report; motion by Burger, seconded by Overgaard, to approve, declared carried on a voice vote. The Auditor/Treasurer stated that she is currently working on settlement from the first half property tax collection.

The County Board briefly discussed attendance at the AMC District VIII meeting scheduled for June 6th at the Tyler Country Club.

The Administrator presented a meeting update with MnDOT regarding the status of US Highway 75 within the City of Luverne. The condition of the highway has been changed to "emergency repairs" and will receive a mill and overlay repair in the driving lanes only and will begin in June of 2019. This will be a temporary fix to bridge the gap of a total re-construction scheduled for 2025.

The County Board was in receipt of a notice to amend the Rock County Library Board By Laws regarding per diems for Library Board members; action for the By Laws amendment is scheduled for July 2, 2019.

Commissioner Reisch stated that he attended the following meetings and events: Library Board, Building Committee and City/County Liaison.

Commissioner Thompson stated that she attended the following meetings and events: A. C. E. Interviews, Southwest Regional Development Commission, Southwest Health & Human Services and CEO Trade Show.

Commissioner Williamson stated that he attended the following meetings and events: Building Committee, One Watershed One Plan, Rural Water, Southwest Mental Health and FEMA briefing.

Commissioner Overgaard stated that he attended the following meetings and events: MnDOT/US Highway 75 meeting and City/County Liaison.

Commissioner Burger stated that he attended the following meetings and events: Southwest Mental Health, Community Corrections, Southwest Health & Human Services/Public Health Assessment Needs.

With no further business to come before the County Board, meeting was declared adjourned.

(6-13)

Walgrave probate

STATE OF MINNESOTA
COUNTY OF ROCK

FIFTH JUDICIAL DISTRICT
DISTRICT COURT
PROBATE DIVISION

Estate of
Audrey Walgrave,
Decedent

Court File No. 67-PR-19-171

NOTICE AND ORDER OF HEARING ON PETITION FOR FORMAL ADJUDICATION OF INTESTACY, DETERMINATION OF HEIRSHIP, APPOINTMENT OF PERSONAL REPRESENTATIVE AND NOTICE TO CREDITORS

It is Ordered and Notice is given that on June 24, 2019, at 3:30 p.m., a hearing will be held in this Court at 204 E. Brown, Luverne, Minnesota, for the adjudication of intestacy and determination of heirship of the Decedent, and for the appointment of Daniel Walgrave, whose address is 6048 Covington Terrace, Minnetonka, MN, 55345 as Personal Representative of the Estate of the Decedent in an UNSUPERVISED administration. Any objections to the petition must be filed with the Court prior to or raised at the hearing. If proper and if no objections are filed or raised, the Personal Representative will be appointed with full power to administer the Estate, including power to collect all assets, to pay all legal debts, claims, taxes and expenses, to sell real and personal property, and to do all necessary acts for the Estate.

Notice is also given that (subject to Minnesota Statutes section 524.3-801) all creditors having claims against the Estate are required to present the claims to the Personal Representative or to the Court Administrator within four months after the date of this Notice or the claims will be barred.

Dated: 6/3/2019

/s/ Terry S. Vajgrt
Judge of District Court
Denise Brandel
Court Administrator
By: /s/ Jennifer Thode

Dated: 6/3/2019

Attorney for Petitioner
Donald R. Klosterbuer
Klosterbuer & Haubrich, LLP
120 N. McKenzie, PO Box 538
Luverne, MN, 56156
Attorney License No: 0056674
Telephone: (507) 283-9111
FAX: (507) 283-9113
Email: drklosterbuer@khlawmn.com

Filed in District Court
State of Minnesota
Dated: 6-3-19

(06-06, 06-13)

Mortgage foreclosure sale set for July 11

NOTICE OF MORTGAGE FORECLOSURE SALE
THE RIGHT TO VERIFICATION OF THE DEBT AND IDENTITY OF THE ORIGINAL CREDITOR WITHIN THE TIME PROVIDED BY LAW IS NOT AFFECTED BY THIS ACTION.

NOTICE IS HEREBY GIVEN: That default has occurred in the conditions of the following described mortgage:

DATE OF MORTGAGE: November 18, 2011
ORIGINAL PRINCIPAL AMOUNT OF MORTGAGE: \$70,200.00
MORTGAGOR(S): Mark W. Verba and Nikki Verba, husband and wife
MORTGAGEE: U.S. Bank National Association ND, n/k/a U.S. Bank National Association successor by merger to U.S. Bank National Association ND
DATE AND PLACE OF FILING: Recorded on December 16, 2011 as Document Number 178158 in the Office of the County Recorder of Rock County, Minnesota.
ASSIGNMENTS OF MORTGAGE: Assigned to: None.
LEGAL DESCRIPTION OF PROPERTY: The North Seventy-two (N.72) feet of Lot Four (4), in Block Four (4), in P.J. Kniss' Addition to the City of Luverne, Minnesota. Subject to all easements, covenants, conditions, reservations, leases and restrictions of record, all legal highways, all right of way, all zoning, building and other laws, ordinances and regulations, all rights of tenants in possession, and all real estate taxes and assessments not yet due and payable.

Being the same property conveyed by deed recorded in Document No. 167033, of the Rock County, Minnesota Records.

STREET ADDRESS OF PROPERTY: 323 LINCOLN ST W, LUVERNE, MN 56156-1429

COUNTY IN WHICH PROPERTY IS LOCATED: Rock County, Minnesota.
THE AMOUNT CLAIMED TO BE DUE ON THE MORTGAGE ON THE DATE OF THE NOTICE: \$59,337.00

TRANSACTION AGENT: None
NAME OF MORTGAGE ORIGINATOR: U.S. Bank National Association ND, n/k/a U.S. Bank National Association successor by merger to U.S. Bank National Association ND

RESIDENTIAL SERVICER: U.S. Bank National Association
TAX PARCEL IDENTIFICATION NUMBER: 20-0981-000
TRANSACTION AGENT'S MORTGAGE IDENTIFICATION NUMBER: None

THAT no action or proceeding has been instituted at law to recover the debt then remaining secured by such mortgage, or any part thereof, or, if the action or proceeding has been instituted, that the same has been discontinued, or that an execution upon the judgment rendered therein has been returned unsatisfied, in whole or in part. PURSUANT, to the power of sale contained in said mortgage, the above described property will be sold by the Sheriff of said county as follows:
DATE AND TIME OF SALE: July 11, 2019 at 10:00 AM.
PLACE OF SALE: Rock County Sheriff's Office, in the Lobby of the Rock County Law Enforcement Center, 213 East Luverne, Luverne, Minnesota.

to pay the debt then secured by said mortgage and taxes, if any actually paid by the mortgagee, on the premises and the costs and disbursements allowed by law. The time allowed by law for redemption by said mortgagor(s), their personal representatives or assigns is six (6) months from the date of sale.

TIME AND DATE TO VACATE PROPERTY: Unless said mortgage is reinstated or the property redeemed, or unless the time for redemption is reduced by judicial order, you must vacate the premises by 11:59 p.m. on January 13, 2020.

THE TIME ALLOWED BY LAW FOR REDEMPTION BY THE MORTGAGOR, THE MORTGAGOR'S PERSONAL REPRESENTATIVES OR ASSIGNS, MAY BE REDUCED TO FIVE WEEKS IF A JUDICIAL ORDER IS ENTERED UNDER MINNESOTA STATUTES, SECTION 582.032, DETERMINING, AMONG OTHER THINGS, THAT THE MORTGAGED PREMISES ARE IMPROVED WITH A RESIDENTIAL DWELLING OF LESS THAN FIVE UNITS, ARE NOT PROPERTY USED IN AGRICULTURAL PRODUCTION, AND ARE ABANDONED.

MORTGAGOR(S) RELEASED FROM FINANCIAL OBLIGATION ON MORTGAGE: None

Dated: May 1, 2019

U.S. BANK NATIONAL ASSOCIATION
Mortgagee

TROTT LAW, P.C.
By:
N. Kibongni Fondungallah, Esq.
Samuel R. Coleman, Esq.
Corbin C. Smith, Esq.
Attorneys for Mortgagee
25 Dale Street North
St. Paul, MN 55102
(651) 209-9760
(19-0183-FC01)

THIS IS A COMMUNICATION FROM A DEBT COLLECTOR
(05-16, 05-23, 05-30, 06-06, 06-13, 06-20)

Star Herald CLASSIFIEDS

FOR SALE

For Sale: Craftsman drill press, floor model ban saw, floor model air compressor, and Coast to Coast garden tiller. Call 507-215-2619. (5.26-6.13)

For Sale: Landscaping rock 1.5 and 3/4 inch rock. Also do stump grinding. Call Wayne Biever Construction at 507-227-4521 or 507 283-4614. Also have yard dirt. (6.9-6.27)

CARDS OF THANKS

Thank You!! To our kids for throwing us a great 50th Anniversary party! Great food and fun shared with our family and friends. **Bill and Carolyn Ketterling** (6.13-6.16)

The residents of Luverne would like to thank the children and leaders for all of the help given to the people in our community this past week. It was very much appreciated. (6.13-6.16)

AGRICULTURAL

WE HAVE SEVERAL CREWS OF BEAN WALKERS.

We also pick rock, put up and take down fences. We will do any type of farm work. Call 712-943-2084, 712-251-3277 or 712-899-5219

RENTALS

EXTENDED STAY APARTMENTS

Two bedroom apartments for rent, completely remodeled, next to a park. Rent is \$750/mo plus \$500 security deposit. No smoking. No pets. One-year lease, references and application required. Call Terry at 507-920-5181

RENTALS

For Rent: one-bedroom apartment near downtown Luverne. \$290 per month. No pets. Call 605-201-6427. (tc)

For Rent: Furnished upstairs one-bedroom apartment with car port. No pets or smoking. Call 507-283-9720. (tc)

MISCELLANEOUS

HAVE A UNIQUE SERVICE OR BUSINESS? Get the word out to over 1.4 million households. Call WIDE AREA CLASSIFIEDS today, 507-359-7326. (tc)

RENTALS

Top Hat Luxury Unit
Large, (approx 1,400 sq ft)
two bedroom, one bath, all appliances included, all electric.
Very upscale and classy.
1 year lease required
\$700 or \$750 with garage
If interested call Archie at 507-920-5595

Oakwood Apartments
401 Oak St., Ellsworth

- 1 Bedroom Unit Available
- Unit Available
- Cable, Water, Sewer & Garbage Included.
- Rent Based on Income
- AVAILABLE IMMEDIATELY**
- Van Binsbergen & Associates, Inc.**
- 320-269-6640 ext. 13
- Equal Housing Opportunity

www.vanblc.com

EMPLOYMENT

Help wanted: Full-time persons to plant, spray and combine corn. Also semi truck driver, No CDL required. Benefits, local farm. Call 507-370-1590. (5.19-6.27)

Senvion USA Corp. is looking to fill an entry level wind turbine technician position in

EMPLOYMENT

Southwest Minnesota. Previous wind experience is not necessary however strong mechanical aptitude and a willingness to work safely and learn are required. If interested contact Michael at 219-229-4253 or michael.keleher@senvion.com or Greg at 503-926-2383 or greg.barbour@senvion.com. (6.6-6.23)

Join our growing team!

Sanford Luverne Medical Center is currently accepting applications for FT (Full-Time), PT (Part-Time) and Part-Time as Needed (PRN) positions:

- LICENSED ADDICTION COUNSELOR - PT
- LPN HOSPICE - PT, PRN
- EMERGENCY MEDICAL TECHNICIAN - PRN
- PARAMEDIC - FT, PRN
- RN, HOSPITAL - FT

To apply, visit sanfordhealth.jobs, search "Luverne" in the location search bar.

SANFORD

Luverne

877-673-0854

EEO/AA

EMPLOYMENT

EMPLOYMENT

EMPLOYMENT

EMPLOYMENT

EMPLOYMENT

EMPLOYMENT



The Tuff Memorial Home is currently hiring a full time **Evening Cook** - 11am - 7pm and a **Part-time Day Cook**.

If interested, contact Eli Ripley at 507-962-3275 or email eripley@tuffmemorialhome.com

**Competitive Wage | Full Benefits
Pension Plan | Friendly Atmosphere**



Hills Stainless Steel

505 West Koehn Ave
Luverne, MN 56156

Looking for a career with a well established business, then we're the place for you! We are looking for individuals who are highly motivated with a desire to succeed.

Current Opening for Purchasing and Inventory Control Specialist

- REQUIREMENTS
- Two year college with an associate degree.
- Previous parts experience helpful.
- Mechanical background helpful.

BENEFITS INCLUDE:

- Great work schedule 8 a.m. to 5 p.m. Monday-Friday
- Competitive wages
- Health, Dental and Life Insurance
- Paid holidays and vacation
- Simple IRA with company match

If you take pride in quality work and enjoy working with metal fabricating & welding servicing area, Hills Stainless Steel has a team oriented workplace you can be proud to be a part of.

To apply: Please stop into our office at 505 W. Koehn Ave., Luverne, MN from 8 a.m. to 5 p.m. Monday to Friday. For more information call 507-283-4405.

**HELP WANTED:
Maintenance Technician**

Agri-Energy is seeking a hard working individual with a good work ethic to fill the position of Maintenance Technician. Industrial maintenance experience is preferred. Please send resume and cover letter to:

AGRI-ENERGY
502 S. WALNUT AVE.
LUVERNE, MN 56156
Or email to: plund@gevo.com



Berkley Classics
| a Berkley Company

Berkley Classics seeks a talented Customer Service Representative to join our team in Luverne. The CSR provides information to customers and agents, responds to inquiries about products and services and assists individual's interests in servicing accounts. This a full time Monday-Friday role.

What you'll need to be successful: High School diploma required. BA/BS degree preferred. 2+ years of experience in phone based customer/client services. Exceptional oral and written communication skills. Proficiency using Microsoft office products and the ability to learn our proprietary programs.

Apply on line today at www.wrberkley.com or email your resume to Kfous@wrberkley.com

ADVERTISE TODAY!

with the
Star Herald
Call Rick or Chantel
507-283-2333

MINNESOTA STATE



**Southwest Minnesota State University
Assistant to the Director
of Trio Upward Bound**

SMSU invites applications for an externally funded, part-time position of Assistant to the Director of Trio Upward Bound. This position is responsible for the day-to-day operating functions relating to the Upward Bound Program, in addition to assisting the Director with coordination and management of the Upward Bound program. This is a professional position requiring higher level thinking skills and responsible decision-making. The Assistant to the Director will assist the Director with coordination and management of the federally funded Upward Bound program providing academic support services to high school first generation/low income students. Coordination of the Summer Program and the development of Student Success Plans are two primary functions. The Assistant to the Director will be responsible for selection, training and supervision of college student tutors and mentors who will be working with the UB high school students, management and analysis of the financial and academic records for timely submission in accordance with federal regulations for the Annual Performance Reports (APR), data privacy, and Minnesota State IT policies. The Assistant to the Director will assist in the development and creation of materials, recruitment of students, and presentation of program to community, students, parents, and partner schools. This position serves the Worthington High School.

This position is a nine-month appointment September – May, 8 hours/day. Review of the applications will begin ASAP and will continue until the position is filled. The complete job description listing responsibilities and qualifications for this position along with information regarding the online application process can be viewed at <http://www.smsu.edu/administration/humanresources/neogov.html>. Additional information on Southwest Minnesota State University can be found at: www.SMSU.edu

Southwest Minnesota State University is a member of the Minnesota State system and is an equal opportunity educator and employer.

Daily News → star-herald.com



- ◇ Great hours! Paid benefits including paid holidays.
- ◇ Hours vary between 8am – 4pm Monday through Friday
- ◇ Full time approximately 35 hours per week
- ◇ Sub hours as needed

RCO is hiring!! We are looking for energetic, motivated Direct Support Professionals!

RCO has one full time position and several sub positions open. If you are compassionate, assertive, reliable, and self-motivated we want you to join our team. On the job paid training provided. Experience related to human services such as working with people with disabilities, social work, psychology, special education, and/or C.N.A. is helpful but NOT required.

Call or stop by to pick up an application. RCO, 807 W Main St, Luverne, 507-283-4582.

BORN TO DRIVE?



NOW HIRING Petroleum Transport Drivers

We have an opening for an additional Petroleum Transport Driver based out of the Luverne, MN area. We operate throughout Minnesota, northern Iowa and eastern South Dakota serving our customer's needs with great attention to detail and excellent service and safety standards on a daily basis. Monday through Friday, occasional Saturdays, no Sundays.

Qualifications:

- Prior Class A driving experience
- Good driving record
- Operate computerized loading system
- Willing to learn/perform a variety of tasks
- HazMat and Tanker endorsements or the ability to obtain



www.StaplesOil.com

Excellent benefits!

Interested candidates should email:
peteb@staplesoil.com

Call: **Pete Bartelt at 507-220-4521**

Or apply online: www.StaplesOil.com



MCAN

Minnesota Classified Advertising Network

EMPLOYMENT

SUCCESSFUL PRACTICE SEEKS
Associate Dentist because of increase in patient volume. Potential earnings \$300K plus. Includes benefits. Email drb@friendlysmilesfargo.com

HELP WANTED - DRIVERS

ERIC LINSMEIER TRUCKING LLC
based in Redwood Falls, MN is hiring company drivers and owner/operators to pull hopper bottom in the upper Midwest. Call 507/829-9043

SAVE MONEY!

Call your local newspaper or MNA 800-279-2979 to find out how you can save money by placing your advertisement here!

HEALTH

FARMERS, LANDSCAPERS OR GARDENERS

did you or a loved one use Roundup Weed Killer and were diagnosed with Non-Hodgkin's Lymphoma (Cancer)? You may be entitled to compensation. Call Attorney Charles Johnson 800/535-5727

MISCELLANEOUS

A PLACE FOR MOM

The nation's largest senior living referral service. Contact our trusted, local experts today! Our service is free, no obligation. Call 844/347-1104

DISH TV \$59.99

for 190 channels. Add high speed internet for only \$14.95/month. Best technology. Best value. Smart HD DVR included. Free installation. Some restrictions apply. Call 855/562-4309

MISCELLANEOUS

SAVE ON YOUR NEXT PRESCRIPTION

World Health Link. Price match guarantee! Prescriptions required. CIPA certified. Over 1,500 medications available. Call today for a free price quote. 866/237-5131 Call now!

DONATE YOUR CAR

truck or boat to Heritage For The Blind. Free 3-day vacation, tax deductible, free towing, all paperwork taken care of 844/220-9501

START SAVING BIG ON MEDICATIONS

Up To 90% Savings from 90DAYMEDS! Over 3,500 Medications available! Prescriptions req'd. Pharmacy checker approved. Call today for Your free quote 844/209-2877

HEALTH programs

LUVERNE CENTER

CHOOSE FROM OVER 7 PROGRAM OPTIONS!

Liberal Arts • Medical Assistant • Medical Laboratory Technician
Phlebotomy • Radiologic Technology • Surgical Technology
NEW this fall - Dental Assistant



Minnesota West
COMMUNITY & TECHNICAL COLLEGE

A member of Minnesota State.

An affirmative action equal opportunity educator/employer.

www.mnwest.edu
800-658-2330

[f](https://www.facebook.com/minnesotawest) [@minnesotawest](https://www.instagram.com/minnesotawest)



Let us tell you a story.

Rock County STAR HERALD

Telling the story of Rock County every Thursday.

Interested in Advertising in the Classifieds?

IT'S EASY!

Call **283-2333**

or

Stop by our offices at **117 W. Main in Luverne**

Thank you

to all the volunteers and businesses who donated to the service projects!



Mavis Fodness photo/0613 Rock Edge 2019

A portion of the group participating in the Service Over Self 2019 event posed for a picture Thursday morning, June 6, at Grand Prairie Events in Luverne. In the front row from left are Jessica Van Batavia, Heather Johnson, Grace Ingebretsen, Ashlyn Johnson, Lauren VerSteege, Ainslie Robinson, Anita Cole-Kraty, Kynzie Hamann, Elise Jarchow, Kamryn Van Batavia, Mary Opitz, Jessica Blocker, (second row) Jill Wagner, Anyuon Aten, Riley Sneller, Parker Carboneau, Ethan Nath, Ross Bergman, Camden Hoven, Luke Thorson, Xavier Carboneau, Noah Mehlhaff, Logan Ommen, Hans Hoven, Tara Zewiske, (third row) Dianne Karlstad, Lindsie Fick, Isabella Lanoue, Josie Anderson, Leah Wynia, Sadie Reisdorfer, McKenzie VanGrootheest, Anna Boltjes, Mallory Thorson, Mela Jarchow, Alexa Chesley, Claire Baustian, Meagan Hansen, Wanda Jarchow, Jeanne Bowron, (third row) Carlene Boll, Dorie Hall, Abigail Anderson, Reese Louwagie, Carly Olson, Solveig Totteland, Kaitlyn Anderson, Reka Meinerts, Anna Huisman, Sophia Van Surksun, Sophia Lanoue, Olivia Wieneke, Brenn Siebenahler, Hannah Baker, Rylee Anderson, Katie Baustian, Cassie Uithoven, (fourth row) Josh Hayden, Renae Reu, Anja Jarchow, Cheyenne Schultz, Olivia Huisman, Grace Sandbutte, Kaylee Voorhees, Mallory Nelson, Kayetlin Huiskes, Grace Zewiske, Rebecca Austin, Jacey Smith, Becky Ossefoort, Lana Henrichs, Keith Erickson, (fifth row) Mike Altana, Shawn Swenson, Dave Sandbutte, Val Saarloos, Karlin VanOtterloo, Luke Thielbar, Eli Radke, Burke Johnson, Chase Overgaard, Hunter Gaffaney, Trygve Gangestad, Jordan Winter, Brenda Winter, Kat Pizel, Jackie Pizel, (sixth row) Derek Sandbutte, Carrie Overgaard, Annie Bork, Heidi Sehr, Casey Sehr, Peter Baustian, Randy Saker, Justin Dohlmann, Eric Somnis, Conner Overgaard, Austin Ossefoort, Jonah Louwagie, Nathan Overgaard, Isaac DeBoer, Mitch Logeais and George Bonnema.

Not pictured: Micah Andersen, Talitha Anderson, Emma Beyer, Lauren Buss, Tyson Cowell, Julia Ferguson, Lauren Hansen, Jady Hart, Jocelyn Hart, Griffen Jarchow, Kacie Kracht, Carlton Oftedahl, Rozilyn Oye, Gavin Reisch, Averill Sehr, Emilee Staeffler, Brynn Thier, Christina Wagner, Elizabeth Wagner, Cade Wenninger, Austin Winter, Corrine Kelvin, Laura Luitjens, Adam Agdorf, Brooke Barnhart, Travis Chapa, Judy Chesley, Lisa Dinger, Bruce Henrichs, Lynette Ossefoort, Anna Sarez, Amber Scott, Kim Rockman, Stacey Thone, Andrea Luitjens, Nora Louwagie, Katia Jarchow, Kayla Bloemendahl, Tom Fick, Theresa Miller, Darrel Van Aartsen, LaDonna Van Aartsen, Gayle Walgrave, Bret Smith, Mike Jarchow, Pat Baustian, Mike Davis, Traci Davis, Adam Brands, Norma Brands, Jesse Woodley, Dale Nelson, Abby Boltjes and Nan Skattum.

SERVICE OVER SELF PROJECTS FOR 2019

- * PAINT HOUSE (2)
- * RE-SIDE HOUSE (2)
- * PAINT GARAGE (4)
- * PAINT CEMETERY ENTRANCE
- * PAINT PARK SHELTER in Hardwick
- * PAINT GAZEBO in Kenneth
- * OTHER PAINTING PROJECTS (10)
- * WASH SIDING (3)
- * POWER WASH TRAILER
- * STAIN/PAINT FENCE (2)
- * PAINT/STAIN DECK (4)
- * INSTALL FLOORING
- * FREE CAR WASH (3 afternoons)
- * BUILD A SANDBOX AT THE TRAILER COURT
- * CLEAN OUT GROVE/SHELTER BELT (3)
- * REMOVE AND REPLACE DECK (2)
- * MEALS ON WHEELS (4 days)
- * CLEAN WHEEL CHAIRS at Tuff Home in Hills
- * DISTRIBUTE SUMMER SCHEDULE FOR VBS PROGRAMS to area daycares & other locations
- * PROVIDE A DEVOTIONAL AT MARY JANE BROWN HOME
- * PROVIDE ROOT BEER FLOATS (7 locations - Tuff Home, Mary Jane Brown Home, Stone Creek, Trailer Park, Blue Mound Towers, Centennial Apartments, RCO)
- * HISTORICAL SOCIETY CLEANING PROJECT
- * DUST SHELVES AT LIBRARY
- * VBS SET UP
- * LANDSCAPING/TREE TRIMMING/YARDWORK (15)
- * CLEAN GUTTERS (3)
- * WASH WINDOWS (10)
- * TIE BLANKETS FOR SHARE (30+ ADULT, 30+ YOUTH)
- * ORGANIZE FOOD SHELF
- * ORGANIZE AT REDEEMED REMNANTS

- * CLEAN A BASEMENT AFTER SEWER BACK UP
- * CLEAN UP AFTER TREE/STUMP REMOVAL
- * HOME/PROPERTY REPAIRS (5)
- * CLEAN/ORGANIZE HOMES/BUILDINGS (12)
- * PRAIRIE ALLEY OUTDOOR CENTER MAINTENANCE
- * OUTDOOR NATURE CLASSROOM MAINTENANCE

Thank you

ROCK

You are Amazing!

Rock the Edge's 2019 Service Over Self Mission Week
116 youth volunteers & 64 adult volunteers participated

the EDGE

Eph 4:4
JESUS IS OUR ROCK
Rock County's Christian Youth in Action

Luverne
MINNESOTA
Love the life!
305 E. Luverne St
Luverne, MN
(507) 449-2388

EISMA AND EISMA
ATTORNEYS AT LAW

P.O. Box 625, 130 East Main St.
Luverne MN
507-283-4828

Cragoe Realty
Selling Real Estate in the Heart of the Prairie.
Your hometown real estate broker for over 27 years
Gene Cragoe, broker lic. in MN & SD
info@cragoe.com
507-283-2647 or 800-689-2647

LUVERNE AREA COMMUNITY FOUNDATION
P.O. Box 623 | 102 E. Main
Luverne, MN | 507-220-2424
www.luvacf.org

DEN HERDER CONSTRUCTION, INC.
Jim Den Herder & Cal Den Herder
P.O. Box 522
Luverne, MN
56156-0522
507-920-8916
507-920-8917
denherderconstruction@gmail.com

Stroeh's Auto Center
507-283-4226
321 E. Main, Luverne
Open Monday - Friday 7:30 - 5:00

CWG
a W. R. Berkley Company
www.cwgins.co
800-533-0303

Since 1948
LUVERNE FARM STORE
Quality & Service
S. Highway 75 • Luverne
Find us on Facebook
www.luvernefarmstore.com
507-283-9555

Van Aartsen Construction Inc.
Darrel Van Aartsen, Owner
507-920-9499

• New Home & Remodeling
MN Residential Building Contractors License #4416

PHIL & DENISE GORTER
G&S Auto
201 S Kniss, Luverne
283-8146

Kozlowski
Insurance Agency & Financial Services, Inc.
212 S Kniss, Luverne, MN
507-283-3704 or Toll Free 1-877-631-3704
Pipestone 888-825-3366
www.kozlowski-insurance.com

FRANKEN CONSTRUCTION
113 E BARCK AVE, LUVERNE, MN
Travis Franken
Lic. #20627459
CELL: 507-920-8253
CALL TODAY FOR A FREE ESTIMATE

SECURITY SAVINGS BANK
SECURING YOUR FUTURE
bankwithssb.com

CLEVERINGA CONSTRUCTION, INC.
507-920-5631
Merlin Cleveringa
Luverne
507-283-2698 Home
Lic. #BC-20552185

First Farmers & Merchants
We believe in you.
Member FDIC. And the community.
303 E. Main, Luverne, MN
507-283-4463
www.ffmbank.com

Luverne Building Center
102 E Maple St,
Luverne, MN

Teals MARKET
205 E. Warren, Luverne
507-283-4429

Papik MOTORS
1-80 Luverne, MN
507-283-9171

Luverne ACE
So much more than just a Hardware store
210 E. Lincoln • (507) 283-4161
Mon-Wed 8-7, Thurs 8-8, Fri 8-7
Sat 8-6, Sun 11-4

KLOSTERBUER & HAUBRICH, LLP
Attorneys-at-law
Donald R. Klosterbuer
Jeffrey L. Haubrich

120 N. McKenzie
P.O. Box 538
Luverne, MN 56156
Phone: 507-283-9111
Fax: 507-283-9113

Pizza Ranch
110 E. Main, Luverne
507-283-2379

Main Street FINANCIAL SERVICES
Luverne, MN • 212 East Main Street
507-283-9590 or 1-800-260-1014
www.mainstreetfinancial.net

Grand Prairie EVENTS
105 S. ESTEY • LUVERNE, MN
507-283-9664 • 507-227-3017
www.grandprairieevents.org
info@grandprairieevents.org

Randy Saker Construction
Lic # 20627489
1015 141st St.
Luverne, MN 56156
605-261-4050 Cell