

# A Luverne ANNOUNCER

117 West Main St. • Luverne, MN 56156-0837 • Phone 507-283-2333 • Address Service Requested

PRSR STD  
U.S. POSTAGE  
PAID  
Permit No. 22  
Page 1 Printers  
Postal Customer

VOLUME 87 NUMBER 47

ROCK COUNTY'S FREE CIRCULATION PUBLICATION SINCE 1931

November 19, 2017

## Community Update

### Meetings

**Luverne Music Boosters** will meet at 7 p.m. Tuesday, Nov. 21, in the Luverne High School Choir Room. All parents of choir and band students are welcome to attend.

**Battle Plain Township Board** will meet at 7 p.m. Tuesday, Nov. 21, at the home of Lloyd Prins.

**Meditation and Mindfulness Practice** will meet at 7 p.m. Wednesday, Nov. 22, in Hilger Commons at 215 N. Cedar Street in Luverne. For more information call Kim at 507-353-0041 or email kimberlyelizabeth@live.com.

**Caregiver Support Group** will meet from 5 to 6:30 p.m. Tuesday, Nov. 28, in the Mary Jane Brown Good Samaritan Home.

**Narcotics Anonymous** will meet every Thursday evening at 6:30 p.m. at the Steen Reformed Church. Contact Robert for more information 507-329-2642.

**Women's Alcoholics Anonymous** meets at 8 p.m. Mondays in the United Methodist Church.

**Alcoholics Anonymous** meets at 8 p.m. Wednesdays and Saturdays in the United Methodist Church, Luverne. Call 605-321-4324.

### Enjoy community Thanksgiving meal at UMC Wednesday

The community is invited to a Thanksgiving meal at 5:30 p.m. Wednesday, Nov. 22, at the United Methodist Church in Luverne. A freewill donation will be accepted but is not required.

### Blue Mounds State Park hosts Family Turkey Trek Nov. 24

Is all that Thanksgiving turkey weighing you down? Join our naturalist from 3 to 4 p.m. Friday, Nov. 24 in the Blue Mounds State Park for a Family Turkey Trek

Meet at the visitor's center (former Interpretive Center) parking lot for a 1 mile hike to the upper cliff line of the historic quarry. Continue further down the on the trail with your family or hike back to your car at your leisure. We'll talk about wild turkeys and their unique history in Minnesota. Trail is uneven in places and may require stepping up or down. Comfortable footwear and warm clothes recommended.

Admission is free on the day after Thanksgiving in all Minnesota state parks. Call 507-283-6057 with questions.

### Join De-Light-Ful 5K race Nov. 25

The 15<sup>th</sup> Annual De-Light-Ful 5K is planned for 6 p.m. Saturday, Nov. 25, starting and ending at the Luverne Armory at 309 South Freeman Avenue. Registration is online at [www.allsportcentral.com](http://www.allsportcentral.com) or at 5 p.m. at the armory the day of the race. A post-race party/dance will follow at the armory with the Casey Meussigmann Band. There is no cover charge for the dance.

For more information contact Dave Duffy at [dduffy@rconnect.com](mailto:dduffy@rconnect.com) or 507-920-3345.

### Sign up by Nov. 30 for SHARE; distribution is Dec. 6 at Armory

The Rock County SHARE program will distribute groceries, clothing and toys to Rock County residents in need from noon to 1:30 p.m. Wednesday, Dec. 6, at the Luverne National Guard Armory on South Freeman Avenue. Those wishing to receive from the program must apply by Thursday Nov. 30.

Note: The SHARE program no longer accepts donations of used items. To support SHARE, mail tax-deductible donations to SHARE, P.O. Box 792, Luverne, MN 56156. Call Molly at 507-227-9282.

### Tax credit information for landowners and new farmers Dec. 11

Minnesota West Community & Technical College Farm Business Management program will host an informational meeting at 6:30 p.m. Monday, Dec. 11, at the Luverne campus in Room 208 about new tax credit legislation for landowners and beginning farmers in multiple communities throughout southwest Minnesota.

Registration is not required. The same information is offered in several other communities on other dates. Call 800-828-6651.

### CoffeeBreak and StoryHour meets

Luverne Christian Reformed Church will host the community Bible study CoffeeBreak and StoryHour at 9:30 a.m. Tuesdays.

The study of Jonah will begin Tuesday, Oct. 10. It's for all faiths — no previous Bible knowledge is needed. StoryHour is available for children ages 2 through kindergarten and nursery if available for babies. Call Kristi at 227-5102 with questions.

**IN THIS ISSUE** Inside find inserts\* from

**MENARDS®**

**Teals MARKET**

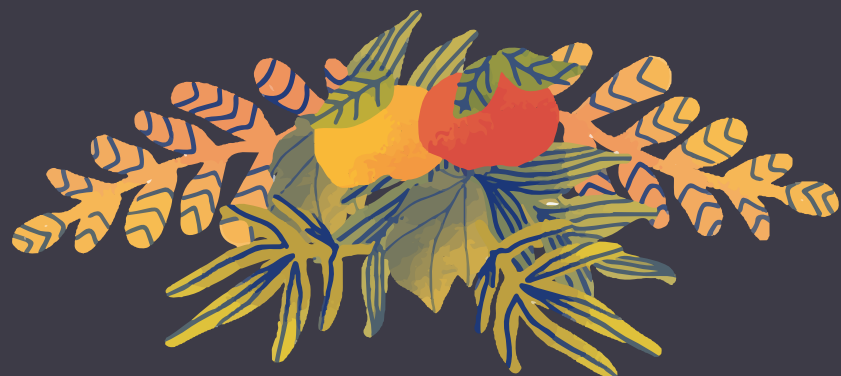
**GRAND FALLS CASINO & GOLF RESORT™**

**SCHOMACKER FLOORING & APPLIANCE**

**bomgaars** What You Need... When You Need It

**SHOPKO® Hometown**

\*Not all Announcers will have all inserts



*Happy Thanksgiving*



Front row (left to right): Marilyn VanSanten, Lynette Ossefoort, Nancy VanDeBerg, Alexis Klarenbeek, and Christina Koedam  
Back row (left to right): Michael Cox, Teresa Hup, Edna Buys, David Riphagen

**Main Street**  
FINANCIAL SERVICES

Luverne, MN • 212 East Main Street  
507-283-9590 or 1-800-260-1014  
[www.mainstreetfinancial.net](http://www.mainstreetfinancial.net)

The office will be closed  
Thursday, November 24.  
Open Friday by appointment only.

Securities offered through Registered Representatives of Cambridge Investment Research, Inc., a broker-dealer member FINRA/SIPC. Advisory services through Cambridge Investment Research Advisors, Inc., a Registered Investment Advisor. Cambridge and Main Street Financial Services, Inc., are not affiliated.

*Give thanks with a grateful heart*



**Craft Show**  
324 W Main St  
Luverne

Friday November 24 | 10am-6pm  
Saturday, November 25 | 10am-6pm  
Sunday, November 26 | 2-5pm

**Cragoe Realty**  
*Selling Real Estate in the Heart of the Prairie!*

Your hometown real estate broker for over 25 years  
Gene Cragoe, broker lic. in MN & SD info@cragoe.com  
Scott Adams, owner/broker Renee Guy, Real Estate Agent  
Renita Enninga, office manager  
507-283-2647 or 800-689-2647

**We have buyers! WE NEED YOUR LISTING!**  
FOR COMPLETE LISTINGS LOG ONTO  
[WWW.CRAGOE.COM](http://WWW.CRAGOE.COM)

Visit our website for great quality used cars

**Happy Thanksgiving**

[WWW.CONNELLCAR.COM](http://WWW.CONNELLCAR.COM)  
**PUT YOUR TRUST IN US!**

**Connell**  
Car Care

310 S. Kniss, Luverne, MN • 507-283-2341 • 800-884-2341  
We want your trades! **We Finance**

**Duane J. Mulder Realty**  
DUANE MULDER AUCTION SERVICE  
Office 507-283-4901

**AUCTION SCHEDULE**  
Currently Taking Consignments For Our Next Indoor Auction At The Duane Mulder Auction Center, Downtown Beaver Creek, MN. **Yes, we sell cars, pickups, trailers, campers & boats on these auctions.** Call 507-283-4901 Or 507-220-3558 To Get Your Items Consigned To This Auction.

--WE ARE NOW EQUIPPED TO CONDUCT LIVE INTERNET & LIVE AUCTIONS AT THE SAME TIME--

**DUANE MULDER** - Auctioneer - Real Estate Broker - Certified Agricultural Appraiser. Office Phone 507-283-4901 - Cell Phone 507-220-3558.

**OPEN HOUSE**  
Sunday, November 19  
1-2:30 p.m.

904 N CEDAR, LUVERNE | \$140,000

GREAT family home with ample living space on the main floor! The main floor features two family spaces - a family room with a gas fireplace with patio doors to the back yard AND an additional living room! Beautifully updated bathrooms on the main floor. One full bath with gorgeous tile, new vanity and mirror with another updated 1/2 bath on the main. There are two nice size bedrooms on the main with a possible 3rd on the lower level. A playroom/family room highlights the lower level with additional 3/4 bath. Much storage and closet space throughout. Since 2008 furnace, AC, water heater have been replaced as well as cement drive and roof in 2011.

**RE/MAX**

**Dave Hup**  
Broker/Owner  
507-920-5910  
dave.landandhome@gmail.com

**Billy Cowell**  
Realtor/Owner  
605-254-5450  
billy.landandhome@gmail.com

For all our listings visit  
[LuverneLandandHome.com](http://LuverneLandandHome.com)

**RE/MAX Land and Home**  
507-449-6111  
117 East Main Street • Luverne, MN  
Each Office Independently Owned and Operated

**NEW PRICE**

**615 Trosky Rd Edgerton**  
Well maintained split foyer, open concept, vaulted ceilings, 4 season porch, hot tub room, beautiful view

**\$149,900**

Thank you for your business for the past six years

Give thanks not just on Thanksgiving Day, but every day of your life. Appreciate and never take for granted all that you have.

~ Catherine Pulsifer

**Closed Thanksgiving Day**

Full service Case-IH dealership, truck and trailer service and parts

**JAYCOX IMPLEMENT, INC.**

Happy Thanksgiving from all of us at Jaycox!

410 Koehn Avenue, Luverne, MN | 507-283-2319 | [www.jaycoximplement.com](http://www.jaycoximplement.com)

Your source for daily news [star-herald.com](http://star-herald.com)

**Winter Break Courses**  
December 26 - January 4

EARN 3 CREDITS IN SEVEN DAYS!

**REGISTER NOW!**

**Spring Semester**  
Registration is now open!  
Classes begin January 8, 2018.

[www.mnwest.edu](http://www.mnwest.edu)  
800-658-2330  
@minnesotawest

**Minnesota West**  
COMMUNITY & TECHNICAL COLLEGE

A member of Minnesota State.  
An Affirmative Action Equal Opportunity Educator/Employer.

WE ALL HAVE SOMETHING TO BE GRATEFUL FOR.  
*Happy Thanksgiving!*

Your local agent and Grinnell Mutual are thankful for our loyal customers.

We wish you a happy, healthy and safe holiday season.

**Kozlowski**  
Insurance Agency & Financial Services, Inc.

212 South Kniss, Luverne  
(507) 283-3704 or (877) 631-3704  
[www.kozlowski-insurance.com](http://www.kozlowski-insurance.com)  
Pipetone 888-825-3366

**GRINNELL MUTUAL**

**Real Estate Retrievers**  
ALL STATE TEAM

Keith Elbers, Realtor/Auctioneer 507-920-6131  
Deb Aanenson, Realtor/Office Manager/Broker Assistant 507-920-9921  
Gene Aanenson, Realtor 507-920-9920  
Jen Rolfs, Realtor 507-227-2985

LUVERNE, MN • 507-283-4216  
HILLS, MN • 507-962-3433

[REALESTATRETRIEVERS.COM](http://REALESTATRETRIEVERS.COM) • [REALTOR.COM](http://REALTOR.COM) • [HOMEVIEWSIOUXFALLS.COM](http://HOMEVIEWSIOUXFALLS.COM)

May the good things in life be yours in abundance, at Thanksgiving and throughout the New Year.  
We will be closed on Thanksgiving.

**FEATURED LISTINGS**

**NEW LISTING**

**100 Elm St. W., Luverne \$139,900**  
Owned and lovingly cared for by the same family for over 40 years, this 3 bedroom, 2 bathroom, ranch style home is ready for you! This home offers you a spacious living room, open concept kitchen/dining room, 3 generous bedrooms with floor to ceiling closets and a large family/rec room in the basement. Recent updates include new kitchen appliances, new flooring, lighting, window treatments and paint throughout the home in 2013. New water heater in 2014. Private patio, mature professionally landscaped yard, new front door in 2010 and new siding in 2011. Tuck under double garage with floor drain and an abundance of storage. With so many positives, you don't want to miss out, give your favorite agent a call today!

**1013 Linden St., Luverne \$198,500**  
WOW! A must see, this completely renovated 3 bedroom, 2 bathroom ranch home is ready for you to call home. Spacious living room opens up to your new kitchen. The kitchen was completely remodeled in 2014 with custom Country Cupboards cabinetry, laminate counter tops, flush mount sink, flooring, lighting & appliances. Enjoy quick lunches & breakfasts at the center island or stay a while & enjoy family meals in your dining room. The main floor boasts 2 spacious updated bedrooms with fresh paint, crown molding & new carpeting. Tastefully updated main bathroom with a shower, tile work, Shaw vinyl flooring, new dark finish vanity, mirror and lighting. If main floor laundry is on your list, this home has it! Just finished this September, the basement was completely updated as well! Call today!

We have some private listings we would be happy to visit with you about.

**Elbers Auction Service**  
"Quality Auctions Since 1988"

Keith Elbers, AUCTIONEER/REAL ESTATE SALES  
Lic #67-62  
[www.ElbersAuction.com](http://www.ElbersAuction.com)

Visit us online!  
**Star-Herald.com**



**DD GRAVEL** **WE DELIVER** 507-825-5552

**HAULING - ROCK, GRAVEL, RECYCLED CONCRETE, DEMOLITION & SPOILS**

**DOUBLE D GRAVEL • 611 4TH STREET NE, PIPESTONE, MN 56164**

*Happy Thanksgiving*

We will be **CLOSED** Thanksgiving Day and Friday, November 24 to spend time with family.

AUTO • FARM/HOME • HEALTH • CROP/HAIL • COMMERCIAL • LIFE • LONG TERM CARE • DISABILITY

South Hwy. 75, Luverne, MN  
507-283-8383 or 1-800-258-4471  
E-mail: info@cattnach.com  
Web site: www.cattnach.com

**CATTNACH INSURANCE AGENCY**

**CITY OF LUVERNE**  
**THANKSGIVING GARBAGE SCHEDULE**  
**THURSDAY'S ROUTE MOVES TO FRIDAY**

Happy Thanksgiving

North of Dodge recycling will be picked up on Friday as scheduled.

**Luverne**  
*Love the life!*

**Black Friday Sales Event**

Purchase any New or Used vehicle and get a chance to pop a balloon for an **EXTRA BONUS!!!** Everyone Wins!

<b>Ford Fusions</b> As Low As \$10,986	<b>Ford Escapes</b> As Low As \$14,495	<b>Ford F-150s</b> As Low As \$14,995
---	---	--

0% for up to 72 months Plus \$1,000 Bonus Cash on Select New For Models!

Rebates up to \$6,750 on Select 2017 Ford Models!

**Service Savings!**

5 Quart **OIL CHANGE** TAXES & DISPOSAL NOT INCLUDED **\$26.95**

**THE BIG TIRE EVENT** UP TO **\$140 OFF**

IS IT TIME FOR AN **ALIGNMENT CHECK** **\$19.95**

**Herman Ford**  
LUVERNE, MN Since 1932  
507-283-4427  
624 Kniss Ave • Luverne, MN  
www.hermanmotor.com

Minnwest Bank is happy to donate \$1,000 to this worthwhile program.

**SHARE** the Spirit of Thanksgiving

**SHARE** donation box is in bank lobby for your cash donations.  
Donation Deadline: Friday, December 1st

happy Thanksgiving from everyone at:

**MINNWEST BANK**  
Minnwest Bank All locations  
**CLOSED on Nov. 23rd**

116 East Main Street • Luverne • 507-283-2366  
Hwy. 75 • 800 South Kniss • Luverne • 507-283-9131  
304 East 1st Ave. • Beaver Creek • 507-673-2334

MoneyLine 888-616 BANK www.minnwestbank.com Member FDIC

**LAND AUCTION**

**+/- 82.14 Acres of Productive High Percentage Tillable & Extremely Well Located Palisade Township, Minnehaha County, SD Land - Situated in an Excellent Agricultural Area Between Garretson & Sherman, SD and Just 1 mile west of Rock County, MN**

We will offer the following real property at auction at the land located from Garretson, SD (Curve on the NE Corner of Town - Jct. of 253rd St./Co. Hwy. #120 & 486th Ave.) - 1 mile east on 253rd St./Co. Hwy. #120 and 2 miles north on Co. Hwy. #103 (487th Ave.) to the NE Corner of the land at the Jct. of 487th Ave. & 251st St.; from the Sherman SD (Jct. of 250th St. & 487th Ave.) - 1 mile south.

**FRIDAY DECEMBER 8, 2017 SALE TIME: 10:00 AM**

This auction awards an opportunity to purchase this land which is located in an excellent agricultural area of Eastern Minnehaha County SD that is located between Garretson & Sherman, SD. This Choice Parcel of Unimproved Minnehaha Co., SD land will be offered as a unit, which based on a recent survey contains +/-82.14 acres. The land being offered for sale on this auction is a choice parcel of land with some very high caliber soils and is virtually all tillable with the exception of roadways which border two sides of this land. Co. Hwy. #103/487th Ave. - a hard surfaced highway that borders the land on the east and 251st St. that borders the land on the north. According to FSA this farm has approx. 80.80 acres of cropland, with a 38.8 acre corn base with a 143 bu. PLC yield and a 38.5 acre soybean base with a 36 bu. PLC yield and is enrolled under the County ARC farm program election. According to the M'haha Co. Assessor this farm has an excellent overall soil rating/parcel rating of .748, info. from Surety AgriData, Inc. indicates this land has a Productivity Index of 76.3 and is comprised of predominately Class II & III Soils. According to M'haha. Co. P&Z this property has 2 rural housing eligibilities available by permitted use. This property has potential to fulfill the needs of a variety of buyers including those looking for extremely high quality productive cropland or investors in the market for land. This is a very desirable parcel of land with an extremely high percentage tillable that truly must be seen to be appreciated.

**LEGAL DESC.:** The N½ NE¼ of Sec. 9, T. 103N., R. 47W., (Palisade Twp.), Minnehaha Co., SD.

**TERMS:** CASH - A 10% nonrefundable earnest money payment on sale day & the balance on or before Jan. 24, 2018 with full possession for the 2018 crop year; possession will be subject to the existing tenant's rights under their current farm lease and their rights to harvest the 2017 crops. For add'l information, contact the auctioneers or see www.suttonauction.com

**TERRY & DEBORAH McVENES, Owners**  
Dean Hammer - Vogt, Brown, Merry & Hammer  
Attorney for the Seller - Dell Rapids, SD  
CHUCK SUTTON - AUCTIONEER & LAND BROKER -  
SIOUX FALLS, SD - PH. 605-336-6315 & FLANDREAU, SD - PH. 605-997-3777  
DEAN STOLTENBERG - RE BROKER ASSOC. & AUCTIONEER - JASPER, MN - PH. 507-348-7352  
JARED SUTTON - RE BROKER ASSOC. & AUCTIONEER - FLANDREAU, SD - PH. 605-864-8527  
& BOB JULSON - RE AUCTIONEER & BROKER ASSOC. - GARRETSON, SD - PH. 605-351-2654

**MORNING LAND AUCTION**  
**80.00 +/- Acres of Prime Rock County Farmland**  
**At Public Auction**  
*Auction will be held in the Hills American Legion Hall, Hills, Minnesota.*  
**WEDNESDAY, NOVEMBER 29TH SALE TIME 10:00 A.M.**

**AUCTIONEERS NOTE:** We are extremely honored to have been asked to represent the Renza H. Anderson Trust with the sale of this property. This is a great opportunity to bid on a high quality tract of farmland, to add to your operation or investment portfolio. Please come prepared to purchase as the sellers have chosen the auction method to market this land. We look forward to seeing everyone at the auction. Remember that the auction begins at 10:00 A.M. sharp, so don't be late. Respectfully, Randy Buntjer Auction & Realty LLC.

**FARM LOCATION** - From the intersections of County Road #6/60th Ave. and State Hwy. #270/31st Street, (Bank Corner) on the east edge of Hills, Minnesota, 2 miles West on State Hwy. 270th, then 1 mile North on 40th Ave. to southeast corner of land.

**LEGAL DESCRIPTION:** 80.00 +/- acres in the South Half (S ½) of Southeast Quarter (SE ¼) less .53 acres for CR #52 Section 18, Martin Township Rock County Minnesota.

**TAXES & ASSESSMENTS:** The Taxes due and payable in 2017 have been paid by the sellers. Taxes due and payable in 2018 will be paid by the buyer. Taxes and Assessments are currently estimated at \$4,132 Non-Homestead at the Rock County, MN Courthouse.

**FSA & GENERAL INFORMATION:** According to the Rock County, FSA Office this tract of land has 74.83 DCP cropland acres with a Corn base of 37.80 acres, and a PLC yield of 171 Bushels. The soybean base is 35.40 acres, with a PLC Yield of 51. This tract contains no wetlands. According to the Rock County Courthouse information the CER is 96.41.

**SOIL TYPES INCLUDE:** Moody, Whitewood and Trent silty clay loams, the Crop Productivity Rating on the farm is 94.30

**POSSESSION:** Will be granted upon closing, when final settlement has been made.

**AUCTION TERMS:** The successful Buyer(s) at the conclusion of the auction will enter into a Purchase Agreement / Contract and shall make a 10% NON-refundable earnest money down-payment immediately after the auction. The sale will NOT be contingent upon any buyer financing. The unpaid balance will be due on December 29th 2017. The buyer will have possession for 2018 crop year. The Buyer(s) shall pay all real estate taxes that are due and payable in 2018 and there after. Property is being sold "AS IS", Property is being sold subject to any easements including road, drainage, utility or other easements of record. The sellers do not warranty or guarantee that existing fences lie on the true boundary and any new fencing, if any, will be the responsibility of the purchaser pursuant to MN statutes. The buyers are Responsible for all inspections of the property prior to their purchase of it. The sale is subject to the Seller's approval. Any statements made at the auction may take precedence over any printed information. Auction Company & Staff represent the seller in this transaction. The information contained in this sale bill and other information provided by the sellers & their agents is believed to be correct, but is not guaranteed. Any lines on maps are for informational purposes only and are not guaranteed to actual boundary lines of property. The buyers shall make themselves familiar with the property and verify all information & data for themselves. The auctioneers and the sales staff are representing the seller.

**Auction booklets including Soil maps are available upon request by contacting Randy Buntjer Auction and Realty LLC. @ 507-360-2650**

**RENZA H. ANDERSON TRUST, OWNER**  
Donald R. Klosterbuer, Closing Attorney, Luverne, MN  
**SALE ARRANGED AND CONDUCTED BY**

**RANDY BUNTJER AUCTION & REALTY LLC**  
Randy Buntjer Lic 53-18 Ph. 507-360-2650  
Duane Mulder Lic 67-44 Ph 507-220-3558  
Jim VonHoltum Lic 53-10 Ph 507-220-3556  
J.J. VonHoltum Lic. 67-80 Ph 507-227-8029

Interested in Advertising?  
Call **Rick** or **Chantel**  
to advertise in this week's Announcer  
**283-2333**



*Happy Thanksgiving*

We are thankful and grateful today and every day for our customers.



**Rock Motorsports, LLC**  
MOTORSPORTS AND POWER EQUIPMENT  
PARTS-SALES-SERVICE  
507-449-4386

**BILL & MICHELLE AANENSON**  
621 S KNISS AVE • LUVERNE, MN 56156

Give thanks with a grateful heart.



**Dingmann**  
Funeral Home & Cremation Service

Wishing all of you and your loved ones a *Happy Thanksgiving*

Worthington 507-372-4250    Adrian 507-483-2761    Wilmont 507-372-4250    Luverne 507-283-4567

[www.dingmannandsons.com](http://www.dingmannandsons.com)

**Black Friday Specials**

Save 50% off select merchandise

BUY one get one 1/2 price on:  
\*Beanies \* Gloves \* Scarves

30% off Boutique Clothing & Jewelry

closet to closet Inc. Consignment

200 Maine Ave., Adrian 507-483-2050  
Hours: Tues, Wed, Fri 9 a.m. - 5 p.m.; Thurs, 9 a.m. - 7 p.m.; Sat, 9 a.m. - 3 p.m.

**Small Business Saturday**

20% off Adrian Dragon apparel ~ makes great Christmas gifts!

Thanksgiving is beyond the turkey and the feast, It teaches us to find reasons to smile and bond with our loved ones! Happy Thanksgiving Day to you and your loved ones!

Wishing a very sincere **Thank You** from your family at **Rock Veterinary Clinic**

South Hwy. 75, 1295 101 St., Luverne  
507-283-9524 or 1-800-632-8838

Please join us for our Holiday Open House  
Mon., Dec. 4th 9 a.m. - 4:30 p.m.

**Happy Thanksgiving**  
We will be CLOSED on Thanksgiving Day so that we may all give thanks and enjoy the holiday traditions with family and friends.



**First Farmers & Merchants**  
We believe in you.  
Member FDIC. And the community.

Online Banking & our FF&M Mobile app are available 24/7. We will be closing at 4:30 p.m. Friday, Nov. 24th.

303 E. Main St. | Luverne | [www.ffmbank.com](http://www.ffmbank.com)

**Orv & Sons, Inc.**  
Plumbing ~ Heating ~ Cooling  
507-967-2464

Hours of Operation: Mon. - Fri. 7:00-Noon & 1:00-5:30  
Office Hours: Mon. - Fri. 7:30-Noon & 1:00-5:00

**CLOSED Saturday & Sunday (Emergency Calls ONLY)**

\*Licensed for pump installation, sewer installation & Backhoe Services  
\*Roto-rooter, Pipe Location & Camera Inspection System  
\*Oxyblast-water treatment Product  
\*Lennox Furnaces & Air Conditioners

308 S. Broadway Street, Ellsworth, MN 56129 ~ Thank You!

**SNOW REMOVAL BIDS**



Jasper Sunrise Village is looking for snow removal! Please submit your bid to Brittney Baustian at Sunrise Village.

Snow removal will be for our main entrance driveway and back parking lot. Also looking for walkways to be done at Sunrise and the Townhomes.

With Warm Wishes at *Thanksgiving*

**McClure Electric**  
Alan M. Aanenson, owner  
121 N. Cedar, Luverne  
507-283-4716



**JASPER SUNRISE VILLAGE**  
100 Robert Ave. N., Jasper, MN 56144  
Phone: 507-348-8620

Get your local news online [www.Star-Herald.com](http://www.Star-Herald.com)

**Amdahl Motors BLACK FRIDAY SALE**  
PIPESTONE, MN | 800.658.2327

SEE COMPLETE INVENTORY OF NEW & USED AT [WWW.AMDAHLMOTORS.COM](http://WWW.AMDAHLMOTORS.COM)

<p><b>2017 BUICK ENCLAVE AWD</b></p> <p>#27049, Leather group, forward collision alert, trailing equip, quicksilver metallic. MSRP \$47,955 \$9,592 Discounts</p> <p><b>20% OFF</b> SALE PRICE: <b>\$38,363*</b></p>	<p><b>2017 CHEVY SILVERADO 1500 4X4 LTZ CREW</b></p> <p>#77059, 6 chrome assist steps, Nav, heated &amp; cooled seats, LTZ Plus pkg, enhanced driver alert pkg. MSRP \$53,315 • \$6,740 Discounts</p> <p>SALE PRICED: <b>\$46,575*</b></p>	<p><b>2017 CHEVY CRUZE LT</b></p> <p>#77015, Tungsten Metallic, driver confidence pkg., convenience pkg. MSRP \$23,970 • \$3,988 Discounts</p> <p><b>20% OFF</b> SALE PRICED: <b>\$19,176*</b></p>
<p><b>2017 CHEVY SILVERADO 1500 4X4 LTZ CREW</b></p> <p>#77086, Leather bucket seats, trailing mirrors, Nav, Deep Ocean Blue, heated &amp; cooled seats, max trailing package, LTZ Plus pkg. MSRP \$53,295 • \$6,727 Discounts</p> <p>SALE PRICED: <b>\$46,528*</b></p>	<p><b>2017 CHEVY SILVERADO 1500 4X4 LTZ CREW</b></p> <p>#77089, Leather bucket seats, Nav, heated &amp; cooled seats, LTZ Plus pkg., Chrome Essentials pkg., 20" chrome wheels, LED cargo lights, Enhanced Driver Alert Pkg. MSRP \$55,670 • \$6,995 Discounts</p> <p>SALE PRICED: <b>\$48,675*</b></p>	<p><b>2017 CHEVY COLORADO 4X4 Z71 EXT. CAB</b></p> <p>#77090, Cyber Green, spray on bedliner, assist steps, Nav, trailer brake, all terrain tires, black painted wheels, sport bar. MSRP \$42,940 • \$5,132 Discounts</p> <p>SALE PRICED: <b>\$39,108*</b></p>
<p><b>2017 GMC YUKON DENALI 4WD</b></p> <p>#97079, Power boards, sunroof, 20" chrome wheels, all weather mats, adaptive cruise. MSRP \$74,955 • \$4,344 Discounts</p> <p>SALE PRICED: <b>\$70,611*</b></p>	<p><b>2017 CORVETTE STINGRAY COUPE</b></p> <p>#77104, Competition sport seats, 6 spd paddle shift auto transmission, SLI equipment group, MSRP \$69,910 • \$7,446 Discounts</p> <p>SALE PRICED: <b>\$62,462*</b></p>	<p><b>2017 CHEVY CRUZE 4DR LT</b></p> <p>#77022, Sun &amp; sound pkg., RS pkg., convenience pkg. MSRP \$25,665 • \$5,133 Discounts</p> <p><b>20% OFF</b> SALE PRICED: <b>\$20,532*</b></p>
<p><b>2017 CHEVY SILVERADO 4X4 LTZ CREW</b></p> <p>#77093, MSRP \$48,820 • \$6,167 Discounts</p> <p>SALE PRICED: <b>\$42,653*</b></p>	<p><b>2017 CHEVY SUBURBAN 4X4 PREMIER PKG.</b></p> <p>#77104, Siren red clearcoat, max trailing pkg., sun/vent/destination pkg., 20" chrome wheels, all weather mats. MSRP \$73,240 • \$6,940 Discounts</p> <p>SALE PRICED: <b>\$66,300*</b></p>	<p><b>2017 CHEVY SUBURBAN 4X4 PREMIER PKG.</b></p> <p>#77061, Max trailing pkg., sun/vent/destination pkg., interior protection pkg., 22" chrome wheels, heads up display, adaptive cruise. MSRP \$76,360 • \$7,332 Discounts</p> <p>SALE PRICED: <b>\$69,028*</b></p>
<p><b>2017 CHEVY SILVERADO 1500 4X4 LTZ CREW</b></p> <p>#77059, 6 chrome assist steps, Nav, heated &amp; cooled seats, LTZ Plus pkg, enhanced driver alert pkg. MSRP \$53,315 • \$6,740 Discounts</p> <p>SALE PRICED: <b>\$46,575*</b></p>	<p><b>2017 CHEVY CRUZE LT</b></p> <p>#77015, Tungsten Metallic, driver confidence pkg., convenience pkg. MSRP \$23,970 • \$3,988 Discounts</p> <p><b>20% OFF</b> SALE PRICED: <b>\$19,176*</b></p>	<p><b>2018 CHEVY CRUZE HATCHBACK LT</b></p> <p>#80065, Automatic, kinetic blue metallic, RS pkg., convenience pkg. MSRP \$25,035 • \$2,504 Discounts</p> <p><b>10% OFF</b> SALE PRICED: <b>\$22,531*</b></p>
<p><b>2017 CHEVY SILVERADO 4X4 LTZ CREW</b></p> <p>#77093, MSRP \$48,820 • \$6,167 Discounts</p> <p>SALE PRICED: <b>\$42,653*</b></p>	<p><b>2017 CHEVY SUBURBAN 4X4 PREMIER PKG.</b></p> <p>#77104, Siren red clearcoat, max trailing pkg., sun/vent/destination pkg., 20" chrome wheels, all weather mats. MSRP \$73,240 • \$6,940 Discounts</p> <p>SALE PRICED: <b>\$66,300*</b></p>	<p><b>2017 CHEVY SUBURBAN 4X4 PREMIER PKG.</b></p> <p>#77061, Max trailing pkg., sun/vent/destination pkg., interior protection pkg., 22" chrome wheels, heads up display, adaptive cruise. MSRP \$76,360 • \$7,332 Discounts</p> <p>SALE PRICED: <b>\$69,028*</b></p>

\*INCLUDES DISCOUNT AND REBATES. SELECT UNIT PRICING SUBJECT TO CHANGE. SEE DEALER FOR DETAILS.

SEE COMPLETE INVENTORY & Apply Online for Pre-Approved Financing @ [amdahlmotors.com](http://amdahlmotors.com)

**Amdahl Motors** WWW.AMDAHLMOTORS.COM

CONTACT US @ 1-800-658-2327 HOURS: Monday through Friday, 9 a.m. to 5:30 p.m., Saturday from 10 a.m. to 4 p.m., Sunday 12 p.m. to 4 p.m. (Hours subject to change without notice)

88.61 +/- Acres of Vienna Twp, Rock Co. MN. Farmland

**PUBLIC AUCTION**  
Thursday December 7, 2017  
Sale Time 10:00 am

More Information, Maps & Land Data at [www.elbersauction.com](http://www.elbersauction.com)  
Location of Land: From Luverne go North 1 Mile on Highway 75, 2 Miles East on Co. RD 8 (141th St.) & 1 Mile South on 150th Ave. to auction site.

Land will be sold at the farm location. Watch for Auction Signs.

**LEGAL DESCRIPTION:** Sect-31, Twp-103, Range 44, S 1/2 of NW 1/4, N 1/2 of SW 1/4 & SW 1/4 of SW 1/4 Exc. 91 acre Tr. DESC AS: BEG at SW Corner (Subject to Survey)

**GENERAL DESCRIPTION:** This is a productive, 88.61 +/- acre tract that consists of 73.45 acres of tillable acres, 13.76 acres of Waterways and 1.4 acres roadways and ditches. According to Rock Co. Assessors Office this tract has a CER rating of 76.49. Tract does not contain a wetland. Predominate soil types are Spilloco silty loam and Calco silty clay loam. Property offer some fertile land for crop production or a great tract of land for hunting and recreation as it along the Rock River.

**CORN/SOYBEAN BASE & YIELD:** The corn base on this tract is 38.20 acres with a PLC Yield of 168 bu. Soybean base of 35.30 acres with a PLC Yield of 47 bu.

**TAXES:** Current Real Estate Taxes are \$1982.00. Taxes reflect Agri Non-Homestead status. Taxes due and payable in 2017 will be paid by seller and taxes due and payable 2018 and beyond will be paid by buyer.

**POSSESSION:** Possession will be given at closing or when the 2017 crop has been removed. Land will be available for 2018 crop year.

**TERMS:** 10% down (non-refundable) immediately after auction. Buyer will be required to sign a purchase agreement at time of auction with the balance due and payable on or before Jan 12, 2018 when a clear and marketable abstract of title and warranty deed will be delivered to the buyer. Payment will be made on surveyed acres. Elbers Auction Service represents the sellers only in this transaction. Property is being offered "AS IS" with no warranty given or implied as to the condition or use of property. This property is being offered as a cash only sale with no financing contingency. Although every effort has been made to the accuracy of the information given, all potential buyers are encouraged to verify all information given. Property is offer for sale subject to any easements, restrictions, reservations or right of way easements of record if any. Sale of property is subject to owner's confirmation. Any announcements made the day of auction will take precedence over any printed material. For more information, land data & maps they are available on request, by contacting one of the auctioneers or by visiting website at [www.elbersauction.com](http://www.elbersauction.com)

**AUCTIONEERS NOTE:** It is a pleasure for us to offer this very attractive tract of farmland. This is an excellent opportunity to purchase a productive tract of farmland that would be a great addition to your current farming operation or as investment in some farmland or recreational land. If you are in the market for a very desirable tract of farmland or recreational land you don't want to miss this auction.

**Marilyn Bloemendaal Trust, Owner**  
Damon T. Eisma, Attorney for seller

**Elbers Auction Service**  
"Quality Auctions Since 1988"  
P.O. Box 196 Hills, Minnesota 56138

Keith Elbers 507-962-3433 or 920-6131 [www.elbersauction.com](http://www.elbersauction.com) Clark Ahders 712-470-4700

Interested in Advertising?  
Call Rick or Chantel to place an ad in the Announcer  
**283-2333**

Visit us online! [Star-Herald.com](http://Star-Herald.com)



**Check out our selection of GOLDEN POWER LIFT RECLINERS!**



**Golden Power Lift Recliners Offer the MOST Customizable Options**

- Junior Petite Option - For those under 5' tall
- Tall Option - For those above 6'3"
- Extra Wide/Increased Weight Capacity - Up to 700 lbs.
- Gel Memory Foam - Cooling gel beads that promote air circulation
- Nanotex - Stain resistant, antibacterial fabric
- Brisa - Breathable, luxury fabric upgrade
- Autoflex - Power lumbar system
- Heat & Massage - For soothing rejuvenation
- PowerPillow - Powered head and neck positioning
- Straight Lift - Lifts you straight out of the chair
- Foot Rest Extension - Extends chair length by 3"

**SANFORD**  
HOME MEDICAL EQUIPMENT

Monday-Friday 9am-5pm

**20% OFF**

**ALL CASH & CARRY ITEMS**

**SANFORD**  
HOME MEDICAL EQUIPMENT

No Insurance Billed • Expires 12/31/17



*"Locally owned and operated by the Hartquist family."*

Wishing you the gift of faith and the blessing of hope this Thanksgiving.

We give a special thanks for friends like you, who placed your trust and confidence in us during this past year of professionally serving families in the Luverne and surrounding communities.

**HARTQUIST**  
Funeral and Cremation Services

Pipestone • Luverne • Tyler • Lake Benton • Jasper  
www.HartquistFuneral.com

**DON'T TAX ADVERTISING.**

Every \$1.00 of advertising creates \$19.00 of economic activity.

Every \$1 million spent on advertising supports 67 American jobs.

**A tax on advertising is a tax on economic growth.**



Brought to you by the News Media Alliance and National Newspaper Association

To contact your representatives, please visit: <https://www.house.gov/representatives/find/>  
For more information visit The Advertising Coalition at: <http://www.theadvertisingcoalition.com>



1-90 Luverne, MN

**283-9171 | PAPIK.COM**



**2017 GMC Acadia SLT**

Stock #260797Z  
12K



*Papik Price* \$32,990

**2013 GMC Savana Explorer**

Stock #161762N  
107K



*Papik Price* \$30,990

**2017 Subaru Forester**

Stock #39976N  
9K



*Papik Price* \$27,990

**2016 Toyota Sequoia Limited**

Stock #136231N  
4K



*Papik Price* \$49,990

**Here's My Card**

Your Quick & Easy Guide to Area Businesses

**Kozlowski**  
Insurance Agency & Financial Services, Inc.

**Shirley Top**  
Sales Representative MN Lic. 27249  
P.O. Box 766 | 212 South Kniss Ave.  
Luverne, MN 56156  
Phone: 507-283-3704  
Toll Free: 1-877-631-3704  
Fax: 507-283-3733  
shirley@kozlowski-insurance.com  
www.kozlowski.com  
*For all your insurance & investment needs!*

**McClure**  
PLUMBING, HEATING, AIR CONDITIONING, INC.  
412 S. Kniss • Luverne, MN • 507-449-2828

**Jerry Buss**  
Lic. #002732PM

**Troy Buss**  
Lic. #005573PM

**RAIN BIRD** **CARRIER**  
**LENNOX** **BRADFORD WHITE**  
SD # Luv-MN-R1117-98-1262C

**Licensed, Bonded and Insured in Minnesota and South Dakota**

**H&A**  
HEIDBRINK & ASSOCIATES

Farm • Home • Business • Auto • Crop • Life • Health • Long Term Care

heidbrinkinsurance.com  
Luverne, MN 56156 • 507-283-4085

Place your business card  
**HERE!**  
Call 283-2333 today!

**CLEVERINGA CONSTRUCTION**  
507-920-5631

• For All Your Building Needs • Additions • New or Remodel

www.cleveringaconstruction.com

**Merlin Cleveringa** 879 - 100th Ave., Luverne, MN  
507-283-2698 Home Lic. # BC-20552185

**FLOWERAMA** We live in and deliver to Hills.

**Chuck & Sandie Kuntze**  
Phone: (605) 275-0053 • Fax: (605) 275-2579  
Toll Free: (800) 273-4053  
41st & Marion Rd. Sioux Falls, SD 57106  
www.floweramasioxfalls.com

**ROCK COUNTY REC CHIROPRACTIC**

• Men, Women & Children's Health  
• Custom Orthotics • Kinesiotape • Athletic Care • Massage Therapy • Work & Auto Injuries • Postural Restoration

**DR. MICHAEL SMITH**  
Most Insurance Accepted

WWW.ROCKCOUNTYCHIROPRACTIC.COM  
283-2561 • 103 E. MAIN, LUVERNE  
Monday 7:30 a.m. - 6 p.m. • Tuesday 7:30 a.m. - 3 p.m.  
Wednesday 7:30 a.m. - 6 p.m. • Thursday 7:30 a.m. - 1 p.m.  
Friday 7:30 a.m. - 5 p.m.

**M L ELECTRIC**  
Residential • Commercial • Farm Wiring • Trenching  
Licensed • Bonded • Insured **Mike Buss, Owner**

507-449-8005

**LUVERNE HEALTH & WELLNESS**

**Codie Zeutenhorst, D.C., CAc**

- Acupuncture
- Chiropractic Care
- Family Care
- Kinesiotape
- Sports Injuries
- Auto & Work Injuries

Acupuncture and Massage Available  
Kris Van Der Brink M.T. & Amy Rosales M.T.

507.449.4400 www.luvernechiro.com  
109 S. Freeman Ave. | Luverne, MN

**Meulebroeck, Taubert & Co., PLLP**  
Certified Public Accountants  
P.O. Box 685 • 109 S. Freeman • Luverne, MN 56156  
507-283-4055

Experienced tax preparers with offices in Luverne, Pipestone, Marshall, Tyler & Lake Wilson

- Tax planning and preparation
- Accounting and bookkeeping services • Payroll services
- Quickbooks set-up and assistance

Dave Friedrichsen, Daryl Kanthak, Krista Kroon, Cayla Hamm, Amy Mollberg, Karen Berning, Janet Slieter and Samantha Gerloff

**Loosbrock Electrical Construction, LLC**

Licensed • Bonded • Insured  
Residential • Commercial • Industrial • Agriculture

**Scott Loosbrock**  
Owner

507-360-5418 • scott@loosbrockelectric.com  
www.loosbrockelectric.com

Call us for all your residential, commercial and farm wiring needs!

**McClure Electric**  
Luverne, MN 507-283-4716  
Alan M. Aanenson, owner

**Rock County EYE CLINIC**

**Dr. Sandra Carman**

507-283-2345

102 N. Freeman Ave., Luverne, Minnesota

**FRANKEN CONSTRUCTION**

**Travis Franken**, Lic #20627458 & Insured  
1332 181st St., Luverne  
507-920-8253

Call today for a FREE ESTIMATE.

REMODELING • NEW ADDITIONS • SIDING  
DECKING • WINDOW/DOOR REPLACEMENT  
GARAGE DOORS • CONCRETE  
NO JOB IS TOO SMALL!!!

New Construction • Home Additions • Interior & Exterior  
Home Remodeling • Windows • Siding • Drywall •  
Foundation Work & Walls • Sidewalks & Driveways  
30 Years Experience

**Oehlerts & Son Construction**  
Kevin Oehlerts, Luverne,  
www.OehlertsAndSonConstruction.com  
507-673-2206

**Den Herder Construction, Inc.**  
Jim Den Herder Cal Den Herder  
P.O. Box 522, Luverne, MN 56156-0522  
**Phone 507-920-8917**  
License Number 1656



# the classifieds

To place a classified ad in the Luverne Announcer, call 283-2333, stop by our office at 117 W. Main, Luverne, or visit [www.star-herald.com](http://www.star-herald.com).

### WORK WANTED

Wanted: snow removal jobs in the Luverne area. Call 507-920-0573 to inquire. (11.12-12.31)

Work wanted for a senior companion: will do light house-keeping, laundry, groceries and shopping. Call 507-962-3214. (11.5-11.23)

### GIVE AWAY

Free to a good, loving home: three adorable, kittens. Would like them to stay together if possible. Call 507-283-9794. (11.16-12.3)

Two beautiful kittens, sweet, playful and litter box trained. Free to good, indoor homes. Call 507-204-8046. (11.16-11.19)

### FOR SALE

2003 Jeep Wrangler. 5.8L V6. 124K miles. 4X4. Automatic. Great Condition. Price: \$2100 Call or text: 507-564-2654. (11.19-11.23)

### WINDOWS

We custom build and install Energy Star Therm-O-Loc Windows. Call Mike at Adrian Glass for a free in-home demonstration and estimate. 101 E. Pearl, Adrian, MN 56110. 507-483-2228 or 605-770-7677 or email [mbyler@santel.net](mailto:mbyler@santel.net). (tc)

### MISCELLANEOUS

HAVE A UNIQUE SERVICE OR BUSINESS? Get the word out to over 1.4 million households. Call WIDE AREA CLASSIFIEDS today, 507-359-7326. (tc)

### RENTALS

For Rent: one-bedroom apartment near downtown Luverne. \$290 per month. No Pets. Call 605-201-6427. (tc)

Mobile Home for rent in Luverne: two-bedroom, one-bath, all appliances included. Water and sewer included. Call 605-366-7695 (11.5-11.23)

For Rent: two-bedroom apartment. Off street parking, on-site laundry, wall a/c, heat and water provided. Close to Senior Center and Post Office. Call 507-290-0266. (11.2-11.19)

For Rent: Two-bedroom apartment with central air. Water and heat and one-car garage included. On-site laundry. Quiet area. No smoking and no pets. Call 507-920-0406. (10.29-11.16)

For Rent: 2 Bedroom Duplex in Luverne. \$500 a month. No smokers, no pets. Call 507-227-1423 (11.16-12.3)

**Oakwood Apartments**  
401 Oak St., Ellsworth

• 1 Bedroom Unit Available

Unit Available  
Water, Sewer & Garbage Included.  
Rent Based on Income  
**AVAILABLE IMMEDIATELY**  
Van Binsbergen & Associates, Inc.  
320-269-6640 ext. 22  
Equal Housing Opportunity

[www.vanblc.com](http://www.vanblc.com)

### CARDS OF THANKS

It's hard to put in words our heartfelt thanks for the sympathy and help extended toward our family during the sudden passing of Verlyn. We deeply appreciate all the food, gifts, kind words, prayers and offerings of harvest help. Verlyn touched so many lives and we are grateful for all who came to honor him and the stories you shared. The outpouring of love and support has been overwhelming; please know your generosity has given us strength to face each day. We will always remember and be thankful for the warm and loving community we live in. You're forever in our hearts,  
**The Family of Verlyn Hoff**  
(11.19-11.23)

Thank you to Dave Van Batavia and the Luverne Fire Department, Evan Verbrugge, Lori Halsne, Justin Kemp with Kemp Electric, Mike and Brian from city utilities and Pat Strassburg from Pat's Electric for all their help during the scary situation at the Howling Dog on Thursday. Thanks again, Craig and Jodi  
**At the Howling Dog**  
(11.19-11.23)

A special thank you to the residents and staff at Good Samaritan- Mary Jane Brown for packaging the bags for October.

**Luverne Backpack Program**  
(11.16-11.19)

The family of Royce Becker would like to thank everyone for the cards, food and memorials we received following our recent loss. Due to the overwhelming number of memorials we received, we would like to express our thanks in this manner.

**Marlene Becker**  
**Lance and Nancy and family**  
**Ken and Rhonda and family**  
**Gene and Shelly and family**  
(11.16-11.19)

### SERVICES

**ELECTROLUX**  
Central Vacuums • Upright Vacuums  
Canister Vacuums  
Sales • Service • Supplies  
**ELAINE BOLT**  
507-442-7721 Edgerton, MN

**DD Backhoe Service**  
**Doug Dooyema**  
Hydrants, waterline repairs, tile line repairs, small tile jobs, and hole digging  
Call 507-283-8357 or Cell 507-220-8218

**Tree Tech Inc.**  
Luverne, MN  
507-283-8552  
507-920-6424 cell  
tree removal  
tree trimming  
stump grinding  
tree moving

CALL  
**RICK or CHANTEL**  
TO ADVERTISE IN THE ANNOUNCER!  
283-2333

### EMPLOYMENT

**NOW HIRING!**  
**Swine Technicians**  
Full time in Southern MN or Eastern SD  
Relocation Assistance Available

**AHORA CONTRATANDO!**  
**Técnicos Porcinos**  
Tiempo completo en el Sur de MN o en el Este de SD  
Asistencia de reubicación disponible

**PIPESTONE SYSTEM**  
WWW.PIPESTONESYSTEM.COM

## Smithfield Sioux Falls Meat Your Career

- \*Production Team Members
- \*Warehouse Team Members
- \*Maintenance Team Members
- \*Maintenance Supervisor

### Sizzling Hot Benefits

- Competitive Pay
- Excellent Medical, Dental & Vision
- Pay as little as \$24.71 per week
- Paid vacations, holidays, bereavement and sick leave
- Tuition Reimbursement Up to \$6,000 per year
- Company Meat Store Discounts
- 401(k) Plan with Matching Funds
- Many opportunities to advance your career!

See all our sizzling hot careers at:

**Smithfield**

[www.smithfieldfoods.com/career](http://www.smithfieldfoods.com/career)

Or call 605-330-3354

Smithfield is an EEO/AA Employer

Go Green. Go Paperless.  
**WWW.STAR-HERALD.COM**  
Go Green by saving money and the planet! Subscribe to the Star Herald online at our website today!  
**\$44.00**  
One-year online Subscription

## CADNET NATIONAL ADVERTISING NETWORK

### AUTOS WANTED

NOT AN OLDER CAR, VAN OR SUV? DO THE HUMANE THING. DONATE IT TO THE HUMANE SOCIETY. CALL 1-855-558-3509

CARS/TRUCKS WANTED!!! ALL MAKES/ MODELS 2000-2016! ANY CONDITION! RUNNING OR NOT. TOP \$\$\$ PAID! FREE TOWING! WE'RE NATIONWIDE! CALL NOW: 1-888-985-1806

### EMPLOYMENT

PAID IN ADVANCE! MAKE \$1,000 A WEEK MAILING BROCHURES FROM HOME! WWW.EASYCASH77.COM ##### EARN \$1,000'S! PROCESSING MAIL! RUSH SASE: LISTS/ CAD, SPRINGHOUSE, PA 19477-0396

### MEDICAL

DONATE YOUR KNEE OR BACK PAIN? SUFFERING FROM KNEE OR BACK PAIN? LEARN HOW A BRACE CAN HELP! FAST & EASY MEDICARE APPROVALS. FREE SHIPPING. RELIEVE YOUR PAIN NOW! 24/7 CALL CENTER. CALL 1-844-502-1809

### MISCELLANEOUS

BECOME A PUBLISHED AUTHOR! PUBLICATIONS SOLD AT ALL MAJOR

SECULAR & SPECIALTY CHRISTIAN BOOKSTORES. CALL CHRISTIAN FAITH PUBLISHING FOR YOUR FREE AUTHOR SUBMISSION KIT. 1-855-548-5979

DISH NETWORK. 190+ CHANNELS. FREE INSTALL. FREE HOPPER HD-DVR. \$49.99/ MONTH! (24 MONTHS) ADD HIGH SPEED INTERNET - \$14.95 (WHERE AVAIL.) CALL TODAY & SAVE 25%! 1-855-837-9146

LUNG CANCER? AND AGE 60+? YOU AND YOUR FAMILY MAY BE ENTITLED TO SIGNIFICANT CASH AWARD. CALL 866-428-1639 FOR INFORMATION. NO RISK. NO MONEY OUT OF POCKET.

SPECTRUM TRIPLE PLAY! TV, INTERNET & VOICE FOR \$29.99 EA. 60 MB PER SECOND SPEED. NO CONTRACT OR COMMITMENT. MORE CHANNELS. FASTER INTERNET. UNLIMITED VOICE. CALL 1-855-652-9304

LIFELOCK IDENTITY THEFT PROTECTION. DO NOT WAIT! START GUARDING YOUR IDENTITY TODAY. 3 LAYERS OF PROTECTION. DETECT, ALERT, RESTORE. RECEIVE 10% OFF. CALL FOR DETAILS 1-855-399-2089

ENJOY 100% GUARANTEED, DELIVERED TO- THE-DOOR OMAHA STEAKS! SAVE 75% PLUS GET 4 MORE BURGERS & 4 MORE KIELBASA FREE! ORDER THE FAMILY GOURMET BUFFET - ONLY \$49.99. CALL 1-855-895-0358 MENTION CODE 51689LX OR VISIT WWW.

OMAHASTEAKS.COM/COOK03

MAKE A CONNECTION. REAL PEOPLE. FLIRTY CHAT. MEET SINGLES RIGHT NOW! CALL LIVELINKS. TRY IT FREE. CALL NOW: 1-888-909-9905 18+

A PLACE FOR MOM. THE NATION'S LARGEST SENIOR LIVING REFERRAL SERVICE. CONTACT OUR TRUSTED, LOCAL EXPERTS TODAY! OUR SERVICE IS FREE/NO OBLIGATION. CALL 1-844-722-7993

HUGHESNET SATELLITE INTERNET? 25MBPS FOR JUST \$49.99/MO! GET MORE DATA FREE OFF-PEAK DATA. NO PHONE LINE REQUIRED! FAST DOWNLOAD SPEEDS. WIFI BUILT IN! FREE STANDARD INSTALLATION! CALL 1-855-440-4911

### WANTED TO BUY

WANTS TO PURCHASE MINERALS AND OTHER OIL AND GAS INTERESTS. SEND DETAILS TO P.O. BOX 13557 DENVER, CO. 80201

CASH PAID- UP TO \$25/BOX FOR UNEXPIRED, SEALED DIABETIC TEST STRIPS. 1-DAYPAYMENT.1-800-371-1136

ADVERTISE TO 10 MILLION HOMES ACROSS THE USA! PLACE YOUR AD IN OVER 140 COMMUNITY NEWSPAPERS.

Southwestern Center for Independent Living (SWCIL), is seeking an Independent Living (IL) Specialist for Murray, Rock, and Nobles Counties. Full time: 40 hours per week during normal business hours. Must have knowledge of disabilities and their characteristics, reliable transportation, and pass a DHS background study. Primary job functions include: providing independent living skills training, advocacy, and peer counseling services to individuals with disabilities including youth in schools and adults in the community. This position will also provide benefit planning services in coordination with the area Workforce Center. Persons with disabilities constitute more than 50% of SWCIL's governing board and employees in decision-making and staff positions. Persons with disabilities are strongly urged to apply. Minimum qualifications require a four year degree in a human/social services or related field or a two year degree in a human/social services field combined with one year of experience in a disability related position. To apply, send cover letter, resume and 3 references to: ILS Program Manager, SWCIL, 109 S. 5th Street, #700, Marshall MN 56258 or [swcil@swcil.org](mailto:swcil@swcil.org). SWCIL is an equal opportunity employer. (11.16-12.7)

WANTED: Assistant Teacher for Rock Rapids Head Start Center. Monday- Thursday, 26 hours a week, 37 weeks per year. Eligible for benefits, including IPERS. For more information or to apply online, please visit [www.midsioux.org](http://www.midsioux.org). 1-800-859-2025. An Equal Opportunity Employer. (11.19-12.7)

Adrian Public School is currently seeking applicants for a Long Term Substitute Middle School Language Arts/9-10 English Instructor beginning January 2nd through February 5, 2018. Interested Applicants please send a letter of application, resume, current letters of recommendation, college transcripts, a copy of MN Teaching license, and a completed district application to Mr. Roger Graff, Superintendent, Adrian, Public School, PO Box 40 Adrian, MN 56110 (11.12-11.30)

## ifpa

WITH CIRCULATION TOTALING OVER 10 MILLION HOMES, CONTACT INDEPENDENT FREE PAPERS OF AMERICA (IFPA) AT DANIELLEBURNETT-IFPA@LIVE.COM OR VISIT OUR WEBSITE CADNETADS.COM FOR MORE INFORMATION

READER ADVISORY: THE NATIONAL TRADE ASSOCIATION WE BELONG TO HAS PURCHASED THE ABOVE CLASSIFIEDS. DETERMINING THE VALUE OF THEIR SERVICE OR PRODUCT IS ADVISED BY THIS PUBLICATION. IN ORDER TO AVOID MISUNDERSTANDINGS, SOME ADVERTISERS DO NOT OFFER EMPLOYMENT BUT RATHER SUPPLY THE READERS WITH MANUALS, DIRECTORIES AND OTHER MATERIALS DESIGNED TO HELP THEIR CLIENTS ESTABLISH MAIL ORDER SELLING AND OTHER BUSINESSES AT HOME. UNDER NO CIRCUMSTANCE SHOULD YOU SEND ANY MONEY IN ADVANCE OR GIVE THE CLIENT YOUR CHECKING, LICENSE ID, OR CREDIT CARD NUMBERS. ALSO BEWARE OF ADS THAT CLAIM TO GUARANTEE LOANS REGARDLESS OF CREDIT AND NOTE THAT IF A CREDIT REPAIR COMPANY DOES BUSINESS ONLY OVER THE PHONE IT IS ILLEGAL TO REQUEST ANY MONEY BEFORE DELIVERING ITS SERVICE. ALL FUNDS ARE BASED IN US DOLLARS. TOLL FREE NUMBERS MAY OR MAY NOT REACH CANADA.

## Midwest Free Community Papers Midwest Classifieds

Call 507-825-3333 or 800-325-6440 to place your Minnesota Free Community Paper classified ad.

WANTED TO BUY: Basswood logs by truckload delivered to Dodgeville, WI. Bark intact, harvested in dormancy, delivered FRESH cut. Pre-arranged purchases only. Call Al Ladd at 608-935-2341 ext.333 (MCN)

ADOPTION? CONSIDERING ADOPTION? Call us first. Living expenses, housing, medical, and continued support afterwards. Choose adoptive family of your choice. Call 24/7. 855-390-6047 (Void in IL & IN) (MCN)

AUTOMOBILES DONATE YOUR CAR TO CHARITY. Receive maximum value of write off for your taxes. Running or not! All conditions accepted. Free pickup. Call for details. 855-752-6680 (MCN)

CASH FOR CARS: We Buy Any Condition Vehicle. 2002 and Newer. Competitive Offer! Nationwide! FREE Pick Up! Call Now For a Free Quote! 888-366-5691! (MCN)

CABLE/INTERNET SWITCH TO DIRECTV. From \$50/Month, includes FREE Genie HD/DVR # 3 months HBO, SHOWTIME, CINEMAX, STARZ. Get a \$50 Gift Card. Call 888-606-6673 (MCN)

Change the way you watch TV- Get rid of cable and get DIRECTV! You may also qualify to receive \$100 VISA gift card when you sign up today - Limited time only. CALL NOW! 844-359-1203 (MCN)

Stop paying too much for cable, and get DISH today. Call 855-589-1962 to learn more about our special offers! (MCN)

DISH Network Satellite Television Service. Now Over 190 channels for ONLY \$49.99/mo! FREE Installation, FREE Streaming, FREE HD.Add Internet for \$14.95 a month. 1-800-732-9635 (MCN)

EMPLOYMENT/HELP WANTED Paid in Advance! Make \$1,000 a Week Mailing Brochures From Home! www.EasyCash77.com ##### Earn \$1,000'S! Processing Mail! RUSH SASE: LISTS/ IA, Springhouse, PA 19477-0396 (MCN)

NEW AUTHORS WANTED! Page Publishing will help you self-publish your own book. FREE author submission kit! Limited offer! Why wait? Call now: 855-623-8796 (MCN)

FINANCIAL Are you in BIG trouble with the IRS? Stop wage & bank levies, liens & audits, unfiled tax returns, payroll issues, & resolve tax debt FAST. Call 888-606-6673 (MCN)

STUDENT LOAN PAYMENTS got you down? We can help reduce payments and get finances under control. call: 866-871-1626 (MCN)

HEALTH & MEDICAL LIVING WITH KNEE OR BACK PAIN? Medicare recipients may qualify to receive a pain relieving brace at little or no cost. Call now! 844-668-4578 (MCN)

OXYGEN - Anytime. Anywhere. No tanks to refill. No deliveries. The All-New Inogen One G4 is only 2.8 pounds! FAA approved! FREE info kit: 844-852-7448 (MCN)

OXYGEN - Anytime. Anywhere. No tanks to refill. No deliveries. The All-New Inogen One G4 is only 2.8 pounds! FAA approved! FREE info kit. Call 844-550-4772 (MCN)

VIAGRA & CIALIS! 60 pills for \$99. 100 pills for \$150 FREE shipping. Money back guaranteed! 1-800-496-3171 (MCN)

YOU or a loved one have an addiction? Very private and Confidential Inpatient care. Call NOW for immediate help! 800-761-9934 (MCN)

CASH PAID FOR unexpired, sealed DIABETIC TEST STRIPS! 1 DAY PAYMENT & PREPAID shipping. HIGHEST PRICES! Call 1-888-389-0695. [www.cash4diabeticsupplies.com](http://www.cash4diabeticsupplies.com) (MCN)

HOME IMPROVEMENT SAVE THOUSANDS ON SURPRISE COSTLY HOME REPAIRS!! With Nations Home Warranty we pay 100% of covered Home repairs! CALL FOR A FREE QUOTE TODAY!! 888-925-8106 (MCN)

Leaky Faucet? Broken toilet? Call NOW and get the best deals with your local plumbers. No hassle appointment setup. Call NOW! 866-865-1875 (MCN)

and get a quote today! 855-398-7133(MCN)

Water Damage? Dealing with water damage requires immediate action. Local professionals that respond immediately! Nationwide and 24/7. No mold calls. Call today! 1-877-417-5824 (MCN)

Call Empire today to schedule a FREE in-home estimate on Carpeting & Flooring. Call Today! 1-800-213-9527 (MCN)

MISCELLANEOUS Moving out of state? Best Interstate Moving and Storage offers a FREE Quote and a Price Plus Promise. Call 855-428-6241 Now! (MCN)

Paying too much for car insurance? Not sure? Want better coverage? Call now for a free quote and learn more today! 855-417-7382 (MCN)

Cross country Moving, Long distance Moving, Company move, of state move, \$799 Long Distance Movers. Get Free quote on your Long distance move. 1-800-503-6126 (MCN)

VOICES/TRAVEL DOES WARM WINTERS SOUND GOOD?? Bring your RV down to the warm Rio Grande Valley, J-5 RV Park in Mission Tx. will welcome you with a country setting, friendly people and lots of activities to keep you busy. We have a special for first time visitors. Phone us at 956-882-7495 or 515-418-3214Email [j5rvpark@gmail.com](mailto:j5rvpark@gmail.com) com Tom and Donna Tuttle, Managers (MCN)

CHEAP FLIGHTS Call now! 1-877-295-2904 (MCN)



# the classifieds

To place a classified ad in the Luverne Announcer, call 283-2333, stop by our office at 117 W. Main, Luverne, or visit [www.star-herald.com](http://www.star-herald.com).

## EMPLOYMENT

Drivers (CDL-A): Full-Time Holiday/Temporary Sioux Falls, SD Mail Route. \$20.40/hr + Fringe Benefits. Must meet DOT reg. Dizco Inc.: 1-855-979-4510. 11.9-11.19)

Lutheran Social Service of MN is seeking dedicated volunteers for our innovative new service in both metro and rural areas across the state. I have an opening in Luverne Volunteers interested in sharing their skills, meeting new people and having fun in their community are invited to apply. As a volunteer you will: Do something meaningful and fun. Be an ongoing friend, advocate and resource for an older adult. Provide transportation to medical appointments, grocery shopping and errands and receive a monthly stipend of \$90/client and mileage reimbursement. Contact Gail Sumerfelt at 507-530-2295. (11.9-11.26)

Earn Extra Cash At A Rewarding Volunteer Position in Luverne & Surrounding area: Become a Senior Companion by making friendly visits to older adults in need. Senior Companions must be 55 years of age or older; flexible service of 15 hours or more a week earns a small tax free hourly stipend, plus receive mileage reimbursement and other benefits. 507.530.2295 for more information. (11.9-11.26)

Dietary Aide: Parkview Manor is looking for part-time Dietary Aides! Benefits include vacation, PERA retirement plan, and holiday pay. Training is available on-site. Wages are based on experience level. If interested, contact Sam or Arlys at 507-967-2482, or come visit us to pick up an application! (tc)

## EMPLOYMENT

CNA: Parkview Manor is looking for CNAs! Benefits include health insurance, PERA retirement plan, holiday pay, and a \$2,000 scholarship available for students! We will provide training or pay for experience. Wages are based on experience level. If interested, contact Darnell Krull at (507) 967-2388 or Sam Quam at (507) 967-2482. (tc)

CSR Fueler/Washer/Detailer, Part-time Opening in Sioux Falls, SD. Excellent Hourly Pay! Great opportunity to learn the fundamentals of preventative maintenance on diesel vehicles and grow into a diesel career or vehicle maintenance. Call Penske Truck Leasing: 855-517-2507. (11.16-11.26)

Help Wanted: Hiawatha Manor Inc. has 2 Direct Support Professional positions available in Luverne, MN. Hours include paid sleep time! Position 1: Every Thursday 2p.m. to Friday 8:30 a.m. and Every Sunday 12 p.m. to Monday 8:30 a.m. Position 2: Every Monday, Wednesday and Friday from 8:30 a.m. to 2 p.m. Applicants must be at least 18 years of age, have a valid driver's license, pass background study, and possess excellent life coaching skills, any additional training needed will be provided. For additional information regarding either position or to request an application call or text your inquiry to 605-530-4440. (11.9-11.26)

**HELP WANTED**  
Age 55+ workers needed for part-time custodial work at the Adrian rest areas  
Contact Green View 651-639-1913

## EMPLOYMENT

The Tuff Memorial Home is currently hiring a full time **Activity Director/Aide**. If interested contact Alex Dysthe at 507-962-3275 or email [adysthe@tuffmemorialhome.com](mailto:adysthe@tuffmemorialhome.com)

**Benefits**  
Competitive Wage  
Pension Plan  
Friendly Atmosphere



## EMPLOYMENT

**Skattum's Confinement HELP WANTED**

Skattum's Confinement Luverne, MN  
Office Manager & Bookkeeper Position  
Two Year Accounting Degree Required.  
Quickbooks Experience.  
Inventory And Sales Tax Knowledge Is A Plus.  
Email Resume And References To: [ndilly@sondfarms.com](mailto:ndilly@sondfarms.com)

## EMPLOYMENT

**HELPING PEOPLE ~ CHANGING LIVES**

**Dispatcher – Rock County**

Part-time Dispatcher for local public transit system. Must work well with the public and team members, be capable of working with various computer programs, 2-way radios, telephone system, and have the ability to complete multi-tasked projects in a fast-paced environment.

Read about us, learn more about this opportunity, and apply online at [www.unitedcapmn.org](http://www.unitedcapmn.org).

AA/ADA/EOE Employer.

## EMPLOYMENT

**HELP WANTED**  
**FULL TIME INFORMATION SYSTEMS ASSISTANT**

Perform operational computer-related tasks within a bank data center located in Luverne. Qualified candidate will have a strong attention to detail, problem solving skills and computer skills with an emphasis in computer applications and processes. Two year post-secondary education with technology emphasis is preferred.

Please send resume to: [timnissen@ffmbank.com](mailto:timnissen@ffmbank.com)  
First Farmers & Merchants Bank  
Attn: Tim Nissen  
PO Box 867, Luverne, MN 56156  
We are an equal opportunity employer



**AGROPUR HAS THE FOLLOWING OPENINGS:**

**Maintenance Techs**  
Maintains and repairs all production equipment, including motors, valves, boilers, and ammonia compressors. Will perform PMs. Electrical experience and/or previous maintenance experience preferred. Must be highly motivated and able to work in a team or independently.

**Production Operators**  
Operate cheese equipment in a clean and safe environment; good attendance and teamwork required; work only 7 shifts in 2 weeks; must be able to lift 55#.

- Stable, growing business • Great work schedule
- Work only 7 shifts in 2 weeks • Generous benefits package
- Double pay on Sundays and Holidays
- Health, dental and vision insurance at a reasonable cost

✓ Check out our great benefits!

**AGROPUR**

APPLICATIONS AVAILABLE AT:  
Agropur, Inc. Hull Facility  
332 Division St., PO Box 820, Hull, IA 51239  
1/4 mile south of Casey's General Store in Hull  
Phone 712.439.6780



Apply at [www.agropurcheese.com](http://www.agropurcheese.com) Agropur Inc. is an equal opportunity employer. Pre-employment drug screen required.

**DISPATCHER**  
**ROCK COUNTY SHERIFF'S OFFICE**

The Rock County Administrator is now accepting applications for the position of Dispatcher in the Rock County Sheriff's Office until November 22, 2017 at 5:00PM. This is a full time position with full benefits and works on a rotating shift basis. Minimum qualifications are a High School diploma or equivalent with one year of work related experience. Applicants must possess excellent communication skills, have the abilities to read a map and multi-task duties in a fast paced environment. Starting hourly wage will be \$14.83 - \$16.04 per hour DOQ.

A detailed job description and an application form for this position can be accessed at <http://www.co.rock.mn.us/employment.html> or by emailing [susan.skattum@co.rock.mn.us](mailto:susan.skattum@co.rock.mn.us) or by phone 507-283-5065.

An Equal Opportunity Employer

**ROCK RAPIDS PIZZA RANCH NOW HIRING!**

MANAGEMENT POSITIONS AVAILABLE	PART TIME DAYS & NIGHTS
<ul style="list-style-type: none"> <li>-FREE meal during shifts</li> <li>-Discount meals when you're not working</li> <li>-Fun Work Environment</li> <li>-Flexible Hours</li> <li>-Employee Assistance Program</li> <li>-Scholarship Opportunities</li> </ul>	<ul style="list-style-type: none"> <li>-FREE Uniforms</li> <li>-401K</li> <li>-Optional Supplemental Insurance</li> <li>-Advancement Opportunities</li> <li>-Referral Bonus</li> </ul>

205 S Union | Rock Rapids  
712-472-3258  
[www.pizzaranch.com/careers](http://www.pizzaranch.com/careers)



**Gates**

**NOW HIRING**  
2ND AND 3RD SHIFT ASSEMBLY OPERATORS, MAINTENANCE TECHS AND HEALTH, SAFETY AND ENVIRONMENTAL TECHS

Gates Corporation is excited to join the Community! Formerly Atlas Hydraulics, Gates is GROWING and we are hiring 2nd and 3rd shift Assembly Operators, Maintenance Techs and Health, Safety and Environmental Techs in Brandon, SD. These roles have competitive pay and benefits.

Applications will be accepted online at [www.gates.com/careers](http://www.gates.com/careers) or in person at our facility (700 East Redwood Blvd, Brandon SD).

Gates Corporation is the world's leading manufacturer of power transmission belts and fluid transfer products. Gates products are recognized by distributors, original equipment manufacturers, and installers as the premium brand for quality and technological innovation, a reputation we have built for over a century since our founding in 1911.

**If it moves you, there's a good chance Gates has a part in it.**  
**Gates. Powering Progress.**

**Sanford Luverne Medical Center**  
is currently accepting applications for FT (Full-Time), PT (Part-Time) and PRN (Part-Time as Needed) positions:

CERTIFIED MEDICATION ASSISTANT – PT, PRN  
CERTIFIED REGISTERED NURSE ANESTHETIST – FT  
HOME HEALTH AIDE – PT, PRN  
LICENSED ALCOHOL AND DRUG COUNSELOR – PT  
LPN, HOSPICE – PRN  
PARAMEDIC – FT  
RECEPTIONIST – PT  
SURGICAL TECHNOLOGIST – PRN

To apply, visit [sanfordhealth.jobs](http://sanfordhealth.jobs) search "Luverne" in the location search bar.

**SANFORD HEALTH**  
"Your Calling Your Place."  
Sanford Luverne Medical Center | 877-243-1372



Who inspires  
*our team with fresh ideas, new insights and real faith?*

You inspire.

We believe that, "In Christ's Love, Everyone Is Someone," and that each person should be treated with dignity, love and respect. Join us, and help make a difference. You'll enjoy great benefits and receive encouragement and opportunities to grow personally and professionally with the support of your peers and supervisors.

If this sounds like an environment that calls to you, we invite you to join us in serving those who most need our skilled talents and loving hearts.

Nursing Assistants | CNA's | Dietary  
Universal Workers | Nurses

Show YOU care. Join us today.  
[good-sam.com/careers](http://good-sam.com/careers)



**Help Wanted**

**Jasper Sunrise Village is hiring:**

- PT R.N.
- PT Maintenance
- PT Director/Office (Seasonal)
- Cook

*Please stop in for an application*

**Jasper Sunrise Village**

100 Robert Ave. N • Jasper, MN 56144 • 507-348-8620

The Evangelical Lutheran Good Samaritan Society is an affirmative action/equal opportunity employer and does not discriminate on the basis of race, religion, color, national origin, gender (including pregnancy, gender identity, gender expression and sexual orientation), genetic information, age, marital or familial status, disability, veteran status, or other protected status. All faiths or beliefs are welcome. © 2017 The Evangelical Lutheran Good Samaritan Society. All rights reserved. 17-G1499





dining & entertainment

The Jesse James Players present  
**The Golden Girls Holiday Mystery**

Friday, December 8 6:30 pm  
 Saturday, December 9 6:30 pm

Garretson American Legion

This is an interactive dinner theater

Friday - Spaghetti Dinner & Show \$20  
 Saturday - Grilled Steak Dinner & Show \$30

Tickets available at Treasure Chest or First Bank & Trust in Garretson or Family Floors and Furniture in Brandon, or by calling 605-321-3758

Thanksgiving Eve 9-1 Wednesday, November 22  
 drink specials

**Howling Dog SALOON**

507-449-0454

OPEN at 5pm on Thanksgiving Day November 23

9-1 Friday, November 24  
 Tammy Binford

Happy Thanksgiving from all of us at the Howling Dog

**De-Light-Ful Dance**

SATURDAY, NOVEMBER 25  
 8:45pm-12:45am (doors open at 8:15pm)

LIVE MUSIC  
 Luverne Armory  
 BAR PROVIDED BY THE BLUESTEM

**Casey Messigmann**  
 Dream Big, Live Big!

NO COVER CHARGE - PUBLIC INVITED

**Movie**  
**BAD MOMS CHRISTMAS**

FRI., NOV. 24 - 7 P.M.  
 SAT., NOV. 25 - 7 P.M.  
 SUN., NOV. 26 - 7 P.M.

**Music**  
**CHASE OVATION**  
 presents  
 A Salute to the Music of **PRINCE**

SAT., DEC. 30 | 8 P.M.

\$30 Tickets - on sale November 20 for season members and business underwriters, November 27 for the public

**PALACE THEATRE**  
 104 E. MAIN ST. • PO BOX 541 • LUVERNE, MN 56556  
 507.283.4939 • WWW.PALACETHEATRE.US

**Thanksgiving Buffet**  
 THURSDAY • NOVEMBER 23  
 11 A.M. - 2 P.M.

Adults \$12.95  
 10 and under \$6.95

Turkey and all the trimmings with salad bar.  
 Drinks included.

Stay and watch the Vikings vs. Detroit game with us.

Happy Thanksgiving from all of us at **Green Lantern.**

**GREEN LANTERN CAFE & BAR**  
 HARDWICK, MN  
 507-669-2246

**THE EAGLES CLUB**

Call the Club Manager at 283-9661 if you're interested in booking the Eagles Club for wedding receptions, class reunions, parties, etc.

Phone 283-9661 • Lic #00258

Luverne Eagles Auxiliary is hosting  
**Thanksgiving Dinner**  
 THURSDAY, NOV 23  
 11 a.m.-1 p.m.

MENU:  
 TURKEY  
 MASHED POTATOES  
 GRAVY  
 DRESSING  
 CORN  
 ROLL  
 CRANBERRIES  
 PUMPKIN PIE  
 MILK/WATER/COFFEE

Dine In/Carry Out 11 a.m.-1 p.m.  
 Delivery goes out at 11 a.m.  
 Call 283-9661 for in town delivery

Free will donations

For more information call or check Luverne Eagles Club on Facebook

Call Rick at 283-2333 to advertise in the Announcer

**APPRECIATION DAY & A VISIT WITH SANTA**

Monday • November 27  
 Meal from 5 p.m. to 7 p.m.

Lighting of the Unity (Community) Tree following meal

AMERICAN LEGION BUILDING Hills

Santa will be visiting during this time. Bring your camera!

Sponsored by Helping Build Communities Stronger and your area businesses in Steen, Beaver Creek & Hills.

**'TIS THE SEASON TO PARTY AT TAKE 16**

GIVE THANKS FOR BEER WEDNESDAY, NOV. 22 | 7-12

BLACK FRIDAY SALE FRIDAY, NOV. 24 | 5-10

UGLY SWEATER PARTY SATURDAY, NOV. 25 | 5-10

UGLY SWEATER CHRISTMAS PARTY SATURDAY, DEC. 23 | 5-12

THE MOST WONDERFUL TIME FOR A BEER NEW YEAR PARTY SATURDAY, DEC. 30 | 5-12

**DOWNTOWN LUVERNE**  
 509 EAST MAIN STREET, LUVERNE

Happy Thanksgiving

During this special holiday, we are especially thankful for all our valued customers. Your patronage during the past year is appreciated and we look forward to saving you again soon.

**Bath stores closed Thursday, November 23**

**True Value**  
**LUVERNE FARM STORE**  
 Quality & Service

S. Highway 75 • Luverne, MN • 507-283-9555 or 1-800-956-9556

**The Star Herald Nose**

www.star-herald.com

**Ketterling Services, Inc.**  
 401 S. Cedar St. • Luverne, MN • 507-283-2863 • www.ketterlingservicesinc.com  
 Hours: Tues.-Fri. 8:30 a.m. to Noon & 1 p.m. to 5 p.m. Sat. 8:30 a.m. to Noon

Roll-Off Service for Building Demo & Remodeling

SANITATION: Commercial Residential Rural  
 RECYCLING: Collection Dropoff

Monthly - Weekly - Daily

**Mark's PLUMBING, HEATING AND A/C, LLC.**  
 Lic.# PC644664 Master Plumber Lic#066849-PM  
 608 W. Hatting, Luverne • Mark Kurtz, owner  
**507-283-9245**

A.O. Smith Water Heaters Gas & Electric  
 MOEN Faucets  
 TEMPSTA 3 Heating and Cooling Products

Reduce - Reuse - Recycle Recycle newsprint



# Rock County STAR HERALD

# Christmas Coloring Contest



PRIZES WILL BE AWARDED  
IN EACH AGE CATEGORY!  
WINNERS ANNOUNCED IN THE  
DECEMBER 21 STAR HERALD

## RULES

1. Contest is open to children ages 4 through 9.
2. Color the picture below with paints, markers, crayons or colored pencils.
3. Decision of judges is final.

ALL entries must be returned to the Star Herald office no later than NOON ON WEDNESDAY, DECEMBER 13.  
Please return your colored entry to the Star Herald office rolled or flat - DO NOT FOLD.



NAME \_\_\_\_\_ ADDRESS \_\_\_\_\_

AGE \_\_\_\_\_

PARENTS' NAME(S) \_\_\_\_\_

PHONE NUMBER \_\_\_\_\_



**CHEVY YEAR END EVENT** Come celebrate with us!



**DeBoer EDGERTON**  
507-442-4341

<p><b>NEW</b></p>  <p>MSRP: \$27,290 <b>\$21,876</b></p> <p>2017 CHEVROLET MALIBU LT #17101</p>	<p><b>NEW</b></p>  <p>MSRP: \$54,710 <b>\$46,778</b></p> <p>2017 CHEVROLET SILVERADO 1500 LTZ, SPORT PKG, BOSE SOUND #1726</p>	<p><b>NEW</b></p>  <p>MSRP: \$68,230 <b>\$59,450</b></p> <p>2017 CHEVROLET SUBURBAN LT, LUX PKG, ENTERTAINMENT PKG #17116</p>
 <p>MSRP: \$20,775 <b>\$18,865</b></p> <p>2014 BUICK ENCORE PREMIUM PKG, MEMORY PKG, 39K #A1731</p>	 <p>MSRP: \$36,745 <b>\$32,985</b></p> <p>2016 CHEVROLET COLORADO 4WD LT, HEATED SEATS, LUX PKG, 13K #1836A</p>	 <p>MSRP: \$55,350 <b>\$53,750</b></p> <p>2017 CHEVROLET TAHOE LT, LUXURY PKG, CHROME PKG., 11K #1845A</p>




[www.deboerchev.com](http://www.deboerchev.com)

**The Bluestem**  
CASUAL • FRESH • LOCAL

So many blessings to be thankful for,  
including our loyal customers.  
**Happy Thanksgiving!**

**WEDNESDAY, NOVEMBER 22**  
**BAR BINGO**  
Chance to win \$100 bar tab that night and many other prizes including gift cards and a TV

**HAPPY HOUR ALL NIGHT**  
**\$3 POUNDERS | \$1 MYSTERY SHOTS**

**CLOSED** • Thanksgiving Day • Dec. 24 and Dec. 25 • New Year's Day



NOW BOOKING HOLIDAY CATERING & PARTIES  
Just email us at [bluestemparties@outlook.com](mailto:bluestemparties@outlook.com)

507-449-2583  
1202 S Kniss, Luverne, MN  
[www.the-bluestem.com](http://www.the-bluestem.com)

Like us on **facebook** for weekly updates

# HAPPY THANKSGIVING

Give thanks TO THE LORD FOR HE IS GOOD; HIS LOVE *endures forever.* PSALM 136:1

**Exchange STATE BANK**  
Local. Dependable. Strong.

**LUVERNE**

Front row: Ryan DeBates, Tyler Bush, Brent Gorter

Back row: Heather Erickson, Chelle DeGroot, Don Bryan, Nicie Bosch, Sheryl Klaassen, Carol Nelson



**HILLS**

Front row: Angie Sjaarda, Amanda Metzger, Tim Plimpton, Heidi Van Wyhe, Marlys Rauk

Back row: Erin Metzger, Josh Tollefson, Kathy Fick, Caleb Ellingson, Trista Bosch, Aaron Erickson, Kylah Jellema



**ELLSWORTH**

Front row: Laurie Deutsch, Jen Debeer, Kelly Kramer

Back Row: Dorene Chapa, Dave Huisman, Mark Iveland, Theresa Theesfeld

(507) 962-3250 Hills, MN      (507) 967-2570 Ellsworth, MN      (507) 449-6000 Luverne, MN

**Member FDIC**

**New Prairie Insulation, Inc.**  
Serving Residences & Contractors  
**FREE ESTIMATES**  
---Insulation---

Beaver Creek, MN

507-673-2548 or 1-800-232-7089



Loans, leases, and crop insurance



Pat Barnett  
866-601-0506  
[compeer.com](http://compeer.com)

**COMPEER FINANCIAL**

Compeer Financial, LLC is an Equal Credit Opportunity Lender and Equal Opportunity Provider. ©2017

GET THE STAR HERALD SUBSCRIPTION THAT FITS YOUR LIFESTYLE!

Get the Star Herald Online \$44 for 12 months

**Print Edition Only**

In County:  
12 months - \$72  
6 months - \$52

Out of County\*:  
12 months - \$89  
6 months - \$65

**Online + Print Edition**

In County:  
12 months - \$85

Out of County\*:  
12 months - \$110

\*Mailed as periodicals. Allow up to 2 weeks out of state.

