

# A Luverne ANNOUNCER

117 West Main St. • Luverne, MN 56156-0837 • Phone 507-283-2333 • Address Service Requested

PRSR STD  
U.S. POSTAGE  
PAID  
Permit No. 22  
Page 1 Printers  
Postal Customer

VOLUME 88 NUMBER 39

ROCK COUNTY'S FREE CIRCULATION PUBLICATION SINCE 1931

September 23, 2018

## Community Update

### Meetings

**Town and Country Garden Club** will meet at 7 p.m. Tuesday, Sept. 25, at the Law Enforcement Center in Luverne. Carol Zwaan will host an "End of the Garden" soup cook-off. Favorite soups from you garden produce will be shared. Call 507-597-6378 for details. All are welcome.

**Blue Mound Quilters** will meet at 6 p.m. Monday, Oct. 1, at the Rock County Library. Members are to bring fabric and supplies for pillow cases. Call Sharon at 507-227-3821.

### Historical Society dinner Oct. 29

The Rock County Historical Society postponed its annual dinner meeting to Oct. 29. The meeting was scheduled for Monday, Sept. 17, at Sterling's in downtown Luverne. Contact the History Center, 507-283-2122, for tickets.

### Adopt-a-Crag Cleanup at Blue Mounds

The Friends of Blue Mounds State Park are hosting an Adopt-a-Crag Cleanup event from 1-4 p.m. Saturday, Sept. 22. Participants should bring safety or sunglasses, gloves, and hand tools if possible. Register at the climber's lot from 12:30-1 p.m. Call Renae Pick at 507-227-5520 with questions.

### Auditions for 'Best Christmas Pageant Ever' Sept. 23-24

Green Earth Players community theater group will host auditions for their next production, "Best Christmas Pageant Ever," from 5 to 7 p.m. Sunday and Monday, Sept. 23 and 24, at the new West Main Street location. Actors of both genders and all ages are encouraged to audition for more than 20 roles in the play. Actors of all abilities will be needed, in addition to members for a children's choir. Production dates are the two weekends prior to Thanksgiving, Nov. 9-11 and Nov. 15-18. More information is at the Green Earth Players Facebook page.

### LHS Coronation is Monday, Sept. 24

Luverne High School's Homecoming Coronation ceremony is at 7 p.m. Monday, Sept. 24, in the Luverne Elementary gymnasium. The event is open to the public. Admission is \$1 or a donation of a non-perishable food item. A root beer float reception follows in the elementary commons.

### Bloodmobile in Luverne Sept. 24

The American Red Cross Bloodmobile will be in Luverne from 1 to 7 p.m. Monday, Sept. 24, in Grace Lutheran Church. Save time by using RapidPass® to make an appointment and complete pre-donation reading and health history online.

### Coffeebreak kicks off Sept. 25

The Coffeebreak Bible Study at the Luverne Christian Reformed Church will kick off the new year with a brunch and a speaker from Southwest Crisis Center at 9:30 a.m. Tuesday, Sept. 25. The first Bible study is at 9:30 a.m. Oct. 3. All women are welcome; no prior Bible knowledge is necessary. A nursery and story hour for children ages 0-kindergarten is available. Call Kristi at 507-227-5102 with questions.

### 'See you at the pole' meets Sept. 26

"See you at the pole" will meet at 7:40 a.m. Wednesday, Sept. 26, at the flagpoles of the Luverne elementary and high schools for a time of prayer. This is a student-led event organized by Rock the Edge.

### Free meal at UMC Sept. 26

A free meal open to the public begins at 5:30 p.m. Wednesday, Sept. 26, at the United Methodist Church on Main Street.

### Recognize signs of sex trafficking Sept. 27

Luv!LuvAll and the Southwest Crisis Center will offer two, free education sessions for business professionals to recognize individuals who may be in trouble and respond to possible sex trafficking incidents Thursday, Sept. 27, at Grand Prairie Events in Luverne. The first session from 9 to 11 a.m. is for managers for area restaurants, bars, convenience and grocery stores and hotels. The training meets new state requirements for hotel staff. The second session is open to the public from 6:30 to 8 p.m. Registration is not required but preferred. Call 507-449-5777.

### Barbecues served during parade Sept. 29

The Rock County Historical Society will serve barbecue sandwiches and chips for \$3 from 9:30 to noon Saturday, Sept. 29, during and after the Tri-State Band Festival Parade in the History Center lot on East Main Street Luverne. The History Center phone number is 507-283-2122.

IN THIS  
ISSUE

Inside  
find inserts\* from

Teal's MARKET

SHOPKO<sup>®</sup>  
Hometown

bomgaars  
What You Need... When You Need It

\*Not all Announcers will have all inserts

Happy  
first  
day of  
AUTUMN!

BACK  
BY  
POPULAR  
DEMAND

The Luverne Area Community Foundation presents *a fundraising event*

The Fabulous Armadillos & Collective Unconscious  
TRIBUTE TO THE  
**EAGLES**  
LIVE IN CONCERT  
**TAKIN' IT TO THE LIMIT**  
Photo Credit: Donald Jay Olson

TICKETS  
ON SALE  
MONDAY,  
SEPT. 24

Historic Palace Theatre  
Saturday, October 27 | 8 p.m.

\$35 Lower Level (reserved) | \$20 Balcony (general admission)

Available at the Palace Box Office (102 E Main, Luverne | 283-4339)

or online at <http://www.palacetheatre.us/>



**Real Estate Retrievers**  
 ALL STATE TEAM  
 Keith Elbers, Realtor/Auctioneer 507-920-6131  
 Deb Aanenson, Realtor/Office Manager/Broker Assistant 507-920-9921  
 Gene Aanenson, Realtor 507-920-9920  
 Jen Rolfs, Realtor 507-227-2985

REALESTATERETRIEVERS.COM  
 REALTOR.COM  
 HOMEVIEWSIUXFALLS.COM

**OPEN HOUSE**  
**SUNDAY, SEPT. 30 • 1-3 PM**

Plan the upcoming holidays for your family in this two story, 4 Bedroom, 4 Bath home. Enter through the main door and experience the natural light of this home and the open staircase. Enter the huge living room with dimmable ceiling lights as you cozy around the fireplace and extend into the formal dining room. Retreat to the updated sunroom for reading or relaxation. Gather around the table as meals are prepared in the spacious kitchen with matching appliances, at the breakfast bar or in the formal dining room. Enjoy watching the kids play in a fully enclosed backyard with views from the kitchen and sunroom. Work from home in the main floor office or use this room as a bedroom complete with an updated bathroom. Beautiful hardwood floors line the much of the main and upper level and many new windows in 2014. Make your way upstairs to enjoy a spacious master suite- complimented by 3 additional large bedrooms. A large Rec/TV room, storage/laundry area (new washer & Dryer) Call Today!

**211 W. Dodge St.  
 Luverne \$189,900**

**LAND FOR SALE**

Approximately 185.74 acres of productive farmland located in the NW 1/4 of the SE 1/4 and the SW 1/4 of 5-102-45, Rock County, Minnesota.

**TERMS:** Sealed bids will be accepted until 5:00 p.m., October 12, 2018, at the Eisma Law Office, 130 East Main, Luverne, MN. All bidders will have the opportunity to submit additional bids until property is sold. Highest bidder will be required to sign a Purchase Agreement with ten percent (10%) non-refundable earnest money down payment on the date of the sale and the balance at closing on or by January 15, 2019.

Sale is subject to approval by the heirs of Marian Savage Olson. For further details contact Douglas Eisma, Eisma & Eisma, Attorneys at Law, (507) 283-4828/(507) 227-2829.

**Large Morning PUBLIC AUCTION**  
 Furniture, Appliances, Sauna, Collectibles, Household, Lawn & Garden, Tools, Outdoor & Misc.  
**Saturday September 29, 2018 10:30 am**  
 American Legion Building Hills, MN

**HOUSEHOLD:** Amana Ref / freezer; Amana gas stove; Amana chest deep freezer; Amana Commercial washer & Dryer; GE microwave; Dining room table / 6 rolling chairs; China hutch; Bar stools; La-Z-Boy recliner; La-Z-Boy leather recliner; (3) glider rockers; Sofa; 5-pc queen bedroom set with adjustable sleep number mattress; 3 pc. Queen bedroom set; 2 pc. Full size bedroom set; Dressers; Chest of drawers; Roll top desk; TV stand; End tables; Lamps; Pole lamps; Wall décor; Mirrors; Book shelves; Towels & linens; Blankets; Kirby Vacuum; Kitchen Aid stand mixer; Euro-Pro toaster oven; Electric roaster; Small kitchen appliances; Pots & pans; Cooking utensils; Bakeware; Mixing bowls; Dishes; Oreck air purifier; Stackable chairs; Bemis humidifier; Stackable chairs; Pro Form tread mill; Fans; Plant stands; Fruit jars; Boxes of greeting cards; Luggage; Medical assistance equip. Many boxes of general household items;

**SAUNA:** Soft Heal sauna (easy takedown & set up)

**ANTIQUES & COLLECTIBLES:** Oak buffet w/ back mirror (over 100 yrs. old); Round Oak dining room table w/ chairs; China set; Crystal glass; dishes; Quilts; Egg pails;

**LAWN, GARDEN & OUTDOOR:** Hustler Sport 42", 17.5 hp, zero turn riding mower; Gilson rear tine garden tiller; Snapper 10hp, 30" snow blower w/ comfort cover; Ryobi gas trimmer; Elect hedge trimmer; 3 gal. Shop vac; Craftsman tool chest; Hand tools; Portable air tank; Folding aluminum ladder; Keller step ladder; Aluminum ext. ladder; Fert. Spreader; Log chains; wheel barrow; Fishing poles; Car ramps; Gas cans; Garden hand tools; Hand sprayer; Sunbeam gas grill; Steel patio chair w/ table; Garden hose; Ext. cords; Golf Clubs;

**MUCH MISC TOO NUMEROUS TO MENTION**

**Albert & Johanna Korthals, Owners**

TERMS: Cash or good check, Visa, Mastercard, Nothing to be removed until settled for. NO GUARANTEES

**Elbers Auction Service**  
 "Quality Auctions Since 1988"  
 P.O. Box 196 Hills, Minnesota 56138

Keith Elbers 507-962-3433 or 920-6131 www.elbersauction.com Clark Ahders 712-470-4700

**80th Birthday OPEN HOUSE**  
**ARLENE DEBEER**  
 Saturday,  
 September 29 • 2-4pm

Senior Citizen Center  
 319 E. Lincoln • Luverne, MN  
 Country Singer Entertainment

Greetings can be sent to:  
 1418 Evergreen Dr. Apt #1  
 Luverne, MN 56156

**honeycomb**  
 welcomes  
**KRIS KNUTSON**  
 Fridays - 8am - 5pm

call 507-290-9346 to make your appointment  
 222 East Main St., Luverne, MN

I hope you are enjoying the items you purchased with the money you stole from Casey V.E.'s piggy bank.  
 Love, Grandma

**New Prairie Insulation, Inc.**  
 Serving Residences & Contractors  
**FREE ESTIMATES**  
**---Insulation---**

Beaver Creek, MN  
 507-673-2548 or  
 1-800-232-7089

**Duane J. Mulder Realty**  
**DUANE MULDER AUCTION SERVICE**  
 Office 507-283-4901

**AUCTION SCHEDULE**  
 Currently Taking Consignments For Our Next Indoor Auction At The Duane Mulder Auction Center, Downtown Beaver Creek, MN.  
 Call 507-283-4901 Or 507-220-3558 To Get Your Items Consigned To This Auction.

**DUANE MULDER** - Auctioneer - Real Estate Broker. Office Phone 507-283-4901 - Cell Phone 507-220-3558.

**Cragoe Realty**  
 Selling Real Estate in the Heart of the Prairieland.

Your hometown real estate broker for over 25 years  
 Gene Cragoe, broker lic. in MN & SD info@cragoe.com  
 Renee Guy, realtor  
 Renita Enninga, office manager  
 507-283-2647 or 800-689-2647

**We have buyers! WE NEED YOUR LISTING!**  
**FOR COMPLETE LISTINGS LOG ONTO WWW.CRAGOE.COM**

The first step to successfully selling your home is listing it with us!  
**330 SW PARK, LUVERNE | \$84,500**

This home offers 3 bedrooms and 1 full bath. Main floor has one bedroom, bath, kitchen, dining room & living room. The upper level offers the 2 additional bedrooms. Great back yard.

**Loans, leases, and crop insurance**

**Pat Barnett**  
 866-601-0506  
 compeer.com

**COMPEER FINANCIAL**

**RECYCLE NEWSPRINT!**

**CONGRATULATIONS**  
 Retirement Celebration  
 FOR  
**ELAINE HARMS & SHARON BOLTJES**  
 AT HOWLING DOG  
**WEDNESDAY, SEPTEMBER 26th**  
 4-7 PM  
 CAKE AND GOODIES PROVIDED.

**MOWING NOTICE: BEAVER CREEK TOWNSHIP**

Notice is hereby given to all landowners or tenants to mow at least one swath along township road ditches, by September 15, 2018 and then again by October 15, 2018. If not done, the township may hire it done and have it assessed against the landowners taxes.

**Beaver Creek Township Board**

**Springwater Township Mowing Notice**

Landowners are now responsible for mowing shoulders at least three times per summer, depending on rain and growth. It is recommended that shoulders be mowed around the 15th of each month in June, July, August and September. The last mowing should include the shoulder and one swath beyond and to be completed by October 1, 2018. Failure to do so will result in a township official performing the task at \$100 per half mile, per time.

**Justin Kemp**  
 Owner

\*Commercial  
 \*Business  
 \*Residential  
 \*Ag \*Industrial

**KEMP ELECTRIC**

PO Box 803 • Luverne, MN 56156 • 507-920-6961

**ADVERTISE IN THE ANNOUNCER!**  
 CALL RICK OR CHANTEL 283-2333

Please dial 283-2333 to advertise in the Announcer

**Real Estate Retrievers**  
 ALL STATE TEAM  
 Keith Elbers, Realtor/Auctioneer 507-920-6131  
 Deb Aanenson, Realtor/Office Manager/Broker Assistant 507-920-9921  
 Gene Aanenson, Realtor 507-920-9920  
 Jen Rolfs, Realtor 507-227-2985

REALESTATERETRIEVERS.COM • REALTOR.COM • HOMEVIEWSIUXFALLS.COM

**FEATURED LISTINGS**

**NEW LISTING**  
 YOU'LL LOVE THIS ONE - well cared for 3 bedroom, 2 bath home which has undergone some extensive renovations. Most of the home has received, new Marvin windows, custom made cabinetry by Country Cupboards in Kitchen and Bath's, Tiled backsplash, new solid core doors, new trim work and new flooring throughout the main level of the home. There is also a main level laundry room. The only room left to update is the living room on the main level. You'll absolutely LOVE the 16 x 18 3 season room with plenty of sunlight, new flooring just a great retreat to relax in at the end of the day. In the lower level you'll find a huge 42 x 12.5 family room, a finished office area, full bath and a large utility/storage room. For your tools and toys is a 14 x 22 storage shed. The oversized two stall attached garage and the well manicured lawn have been lovingly maintained over the years.  
**510 S. 3rd St.  
 Beaver Creek \$189,900**

**NEW LISTING**  
 Fabulous 3 bedroom, 2 bath ranch located on a quiet cul de sac is calling you home. This home has received many updates over the past few years. 2009 flooring in the kitchen, baths and entry. New gutters, garage door, exterior paint and finished basement in 2010 which features a spacious family room, 3/4 bath and 3rd bedroom with legal egress and custom barn door closet. New roof and water heater in 2012. In 2014 new windows with a transferable warranty & dishwasher. Plus this home features a master bedroom with a 5x6 walk in closet, spacious 2nd bedroom, main floor laundry, updated bathroom in 2015 with tiled tub surround, stunning living room updated in 2017 with new carpeting, rustic feature wall with electric fireplace and Mini split wall unit, beautiful hardwood floors in the kitchen and dining area with a patio door which leads to a new cement patio, private backyard with lush landscaping and mature grove. Don't miss out and give your favorite agent a call today!  
**906 White Thunder Cir.  
 Luverne \$199,500**

**NEW LISTING**  
 Possibilities are unlimited in this 48 x 64 Pole style building with 15' side-walls. The two overhead doors measure 13 x 18 and 12 x 13, both doors have automatic openers. Building is located in Luverne's new Industrial Park Area. Don't miss out on this excellent opportunity. Combine with 801 Walnut Service Drive and you would have a great opportunity for office or storage/warehouse space.  
**801 Walnut Service Dr.  
 Luverne \$112,000**

**NEW LISTING**  
 All roughed in and ready for your finishing touches. This 30' x 50' building has been roughed in for wiring, 1 bath and has been spray foamed with insulations. There is an Airheat unit, an all metal roof and has been freshly resided. There is a 8 x 12 overhead door with opener. Combining the property with 801 Walnut Service Drive you would've a great business opportunity for office and storage space. Preview these two properties today.  
**802 Walnut Service Dr.  
 Luverne \$89,900**

**Elbers Auction Service**  
 "Quality Auctions Since 1988"

Keith Elbers, AUCTIONEER/REAL ESTATE SALES  
 Lic #67-62  
 www.ElbersAuction.com

2018 Minnesota  
**Renaissance Festival**

**New for 2018**  
 Battle Axe Pub  
 Bow Blast  
 Cock-A-Doodle-Zoo  
 Magic the Live Unicorn  
 Ye Old Bingo  
 Mermaids, Fairies,  
 Vikings & much more!

Full Contact Live Jousting  
 16 Stages of Exciting Entertainment  
 50 FREE FamilyFriendly Activities  
 250 Artisans for Endless Shopping  
 Enjoy Craft Beer & Feast Like A King

Open Saturdays and Sundays August 18th-September 30th  
 Plus Labor Day and Festival Friday, September 28th  
 Rain or Shine 9am-7pm RenaissanceFest.com  
 952-445-7361 FREE Parking

**Cub FOODS** **DUNN BROTHERS COFFEE** **SUPERAMERICA** **MENARDS**

# YOU'RE INVITED

Please Join Us For

## Coffee at the Exchange

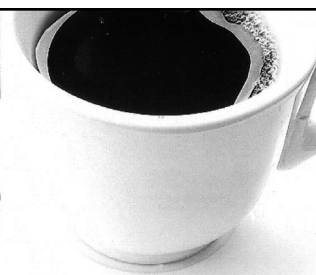
9:00 am - 11:00 am Exchange State Bank  
310 Gabrielson Rd • Luverne, MN

2018 Coffee at the Exchange Schedule: Coffee & goodies served.

**Tuesday, September 25, 2018**

MARK YOUR CALENDAR & BRING YOUR FRIENDS.  
ENJOY REFRESHMENTS & FELLOWSHIP.

**Exchange**  
STATE BANK  
Local. Dependable. Strong. Member FDIC



Cattnach Insurance  
Welcomes Tri-State Band  
Festival Participants ~  
**GOOD LUCK!**



South Hwy. 75, Luverne, MN  
507-283-8383 or 1-800-258-4471  
E-mail: info@Cattnach.com  
Website: www.cattnach.com

### REQUEST FOR BIDS

The Minnesota Veterans Home – Luverne is currently seeking Request for Bids for the following contracted service:

**Snow Removal Services 11/1/2018 – 10/31/2020**

To receive a Request for Bid for this service contract, please contact:

Anne C. Stegenga-Business Manager  
Minnesota Veterans Home – Luverne  
1300 North Kniss Avenue  
PO Box 539  
Luverne, MN 56156  
507-283-6207

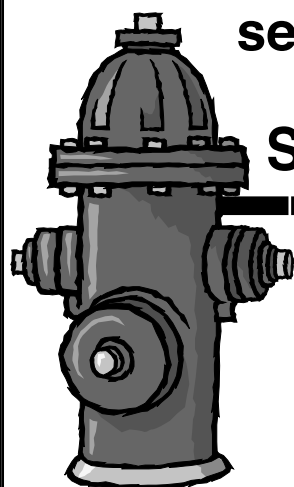


The deadline for the bid submission is 10:00am Tuesday, October 9, 2018, CDT, USA.

### Rock County Rural Water

seasonal flushing will begin

**Sept. 14 - Oct. 18**



You may experience discolored water. Please call the office if you have any questions

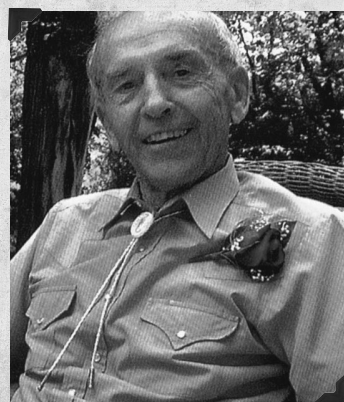
**283-8886.**

### IN LOVING MEMORY OF RALPH PETERSEN

FEBRUARY 22, 1924 - SEPTEMBER 18, 2008

Every day I say your name  
Routine goes on...  
It's not the same.  
From day to day  
There are things to do.  
And I'll wait & pray,  
Until I join you.

Your loving wife,  
**Loretta**



## Papik picks of the week...



**2016 Ram 1500 Laramie**  
24K • Stock #251516N **save \$4,000**  
Was \$33,990 Now \$29,990



**2010 GMC Sierra 1500**  
169K • Stock #180026U **save \$3,000**  
Was \$9,990 Now \$6,990



**2014 GMC Yukon Denali**  
105K • Stock #187655U **save \$4,000**  
Was \$28,990 Now \$24,990



**2014 Chrysler Town & Country Touring**  
81K • Stock #311311N **save \$2,000**  
Was \$16,990 Now \$14,990

**283-9171**

**PAPIK.COM** I-90 Luverne, MN 56156



# Here's My Card

Your Quick & Easy Guide to Area Businesses

**PROFESSIONAL Ag MARKETING INC.**  
Agricultural Risk Management and Brokerage Firm  
507-449-2030  
professionalagmarketing.com

**GARY'S PAINTING SERVICE**  
Interior Painting  
Exterior Painting  
Kitchen Cupboards  
Staining & Varnishing  
Commercial & Residential  
*Professional Painting at a Reasonable Price.*  
Gary Theesfeld Cell 507-227-7344  
Luverne, MN 56156 Office 507-283-8594  
Terri Baker Cell 507-227-2053

**Deuschle Studio**  
Jerry and Kathy Deuschle  
Owners  
1294 131st St  
Luverne MN 56156  
Cell: Jerry 507-920-9466 Kathy 507-920-0048  
jkdeuschle@yahoo.com  
www.deuschlestudio.weebly.com

**McClure**  
PLUMBING, HEATING, AIR CONDITIONING, INC.  
412 S. Kniss • Luverne, MN • 507-449-2828  
Jerry Buss Lic. #002732PM **RAIN BIRD** Carrier  
Troy Buss Lic. #005573PM **LENNOX BRADFORD WHITE**  
SD # Luv-MN-R117-98-1262C  
\*Licensed, Bonded and Insured in Minnesota and South Dakota\*

**CLEVERINGA CONSTRUCTION**  
507-920-5631  
• For All Your Building Needs • Additions • New or Remodel  
www.cleveringaconstruction.com  
Merlin Cleveringa 879 - 100th Ave., Luverne, MN  
507-283-2698 Home Lic. # BC-20552185

**H&A HEIDBRINK & ASSOCIATES**  
Farm • Home • Business • Auto • Crop • Life • Health • Long Term Care  
heidbrinkinsurance.com  
Luverne, MN 56156 • 507-283-4085

**ROCK COUNTY REC CHIROPRACTIC**  
• Men, Women & Children's Health  
• Custom Orthotics • Kinesiotape • Athletic Care • Massage Therapy • Work & Auto Injuries • Postural Restoration  
WWW.ROCKCOUNTYCHIROPRACTIC.COM  
283-2561 • 103 E. MAIN, LUVERNE  
Monday 7:30 a.m. - 6 p.m. • Tuesday 7:30 a.m. - 3 p.m.  
Wednesday 7:30 a.m. - 6 p.m. • Thursday 7:30 a.m. - 1 p.m.  
Friday 7:30 a.m. - 5 p.m.

**M L ELECTRIC**  
Residential • Commercial • Farm Wiring • Trenching  
Licensed - Bonded - Insured Mike Buss, Owner  
507-449-8005

**LUVERNE HEALTH & WELLNESS**  
Codie Zeutenhorst, D.C., CAc  
• Acupuncture • Chiropractic Care  
• Family Care • Sports Injuries  
• Kinesiotape • Auto & Work Injuries  
Acupuncture and Massage Available  
Kris Van Der Brink M.T. & Amy Rosales M.T.  
www.luvernechiro.com  
507.449.4400 109 S. Freeman Ave. | Luverne, MN

**Meulebroeck, Taubert & Co., PLLP**  
Certified Public Accountants  
P.O. Box 685 • 109 S. Freeman • Luverne, MN 56156  
507-283-4055  
Experienced tax preparers with offices in Luverne, Pipestone, Marshall, Tyler & Lake Wilson  
• Tax planning and preparation  
• Accounting and bookkeeping services • Payroll services  
• Quickbooks set-up and assistance  
Dave Friedrichsen, Daryl Kanthak, Krista Kroon, Cayla Hamm, Amy Mollberg, Karen Bering, Janet Slieter and Samantha Gerloff

Scott Loosbrock  
Owner  
**Loosbrock Electrical Construction, LLC**  
Licensed • Bonded • Insured  
Residential • Commercial • Industrial • Agriculture  
507-360-5418 • scott@loosbrockelectric.com  
www.loosbrockelectric.com

Call us for all your residential, commercial and farm wiring needs!  
**McClure Electric**  
Luverne, MN 507-283-4716  
Alan M. Aanenson, owner

**Rock County EYE CLINIC**  
Dr. Sandra Curman  
507-283-2345  
102 N. Freeman Ave., Luverne, Minnesota

**FRANKEN CONSTRUCTION**  
Travis Franken, Lic #20627458 & Insured  
1332 181st St., Luverne  
507-920-8253  
REMODELING • NEW ADDITIONS • SIDING  
DECKING • WINDOW/DOOR REPLACEMENT  
GARAGE DOORS • CONCRETE  
NO JOB IS TOO SMALL!!!  
Call today for a FREE ESTIMATE.

New Construction - Home Additions - Interior & Exterior  
Home Remodeling - Windows - Siding - Drywall -  
Foundation Work & Walls - Sidewalks & Driveways  
30 Years Experience  
**Oehlerts & Son Construction**  
Kevin Oehlerts, Luverne,  
www.OehlertsAndSonConstruction.com  
507-673-2206

**Den Herder Construction, Inc.**  
Jim Den Herder Cal Den Herder  
P.O. Box 522, Luverne, MN 56156-0522  
**Phone 507-920-8917**  
License Number 1656







# the classifieds

To place a classified ad in the Luverne Announcer, call 283-2333, stop by our office at 117 W. Main, Luverne, or visit [www.star-herald.com](http://www.star-herald.com).

### FOR SALE

For Sale: Jazy power chair - \$900. Six-speed ladies Schwinn bike with basket - \$75. Call 605-351-2934. (9.20-9.23)

Beef for sale: Split half, split quarters. Call Marten Kruger at 507-920-9386. (8.30-10.7)

Oak dining room table with four chairs. Call 507-290-1688. (9.16-10.4)

### MISCELLANEOUS

HAVE A UNIQUE SERVICE OR BUSINESS? Get the word out to over 1.4 million households. Call WIDE AREA CLASSIFIEDS today, 507-359-7326. (tc)

### RENTALS

Taking application for a house for rent: three-bedroom, two-bath, all appliances, central air and double garage. References required. No pets. Call 283-8151. (9.9-9.27)

Rooms for rent in Luverne. All utilities included including Dish and internet. Call 605-799-6587. (9.9-9.27)

For Rent: a smaller home in Luverne at 820 N. Cedar. Newly remodeled, very nice condition. Includes garage, stove and fridge. \$500 per month. No pets. Now accepting applications. Call 605-413-8862. (8.30-10.7)

Large apartment upstairs, downtown Luverne, utilities paid, stove and refrigerator included. References required, no pets, no smoking. Call 507-227-1589. (tc)

For Rent: one-bedroom apartment near downtown Luverne. \$290 per month. No pets. Call 605-201-6427. (tc)

### FOR RENT



**Two-Bedroom Townhome**  
 \* Attach Garage \* No Steps  
 \* Outside Patio  
 \* Washer & Dryer Hook Ups  
 \* \$725/ Month Plus Utilities  
 Call Schomacker's  
 507-227-2183 for showings.

## Oakwood Apartments

401 Oak St., Ellsworth

• 1 Bedroom Unit Available  
 Unit Available  
 Water, Sewer & Garbage Included.  
 Rent Based on Income  
**AVAILABLE IMMEDIATELY**  
**Van Binsbergen & Associates, Inc.**  
 320-269-6640 ext. 22  
 Equal Housing Opportunity  
[www.vanblc.com](http://www.vanblc.com)

### AGRICULTURAL

**WE HAVE SEVERAL CREWS OF BEAN WALKERS.**  
 We also pick rock, put up and take down fences. We will do any type of farm work. Call 712-943-2084, 712-251-3277 or 712-899-5219

**Tree Tech Inc.**  
 Luverne, MN  
**507-283-8552**  
**507-920-6424 cell**  
 tree removal  
 tree trimming  
 stump grinding  
 tree moving

### CARDS OF THANKS

Thank you for remembering me on 100th birthday with your special visits, wishes, cards, and gifts. Come visit again soon.  
**Gordon Holt and family**  
 (9.23-9.27)

We would like to express a heartfelt "thank you" to our community. The outpouring of thoughts, prayers, and concerns during the illness and loss of our Father, Grandfather & Great-grandfather has sustained us all during this difficult time. Special thanks to everyone at Sanford Luverne Hospital, the Hospice Cottage, Hartquist Funeral Home and the American Reformed Church for all of their loving care and kindness. He is gone to a better place, but his memories will be with us all forever. God Bless all of you!  
**The Family of Cliff Boom**  
 (9.23-9.27)

The family of Francis (Tony) Haper is so grateful for everyone's support during this difficult time. We truly appreciate your visits, words of comfort, flowers, food, gifts and cards. Tony will miss you all. Thank you also to Jeff Hartquist and his staff for the wonderful service and Father Tom for his spiritual support.  
**Loretta and family**  
 (9.20-9.23)

### EMPLOYMENT

Grandstay Hotel and Suites of Luverne is seeking part-time housekeepers. Hours include every other weekend. Applications available at 908 S. Kniss Ave. (9.20-10.7)

Client Community Services, Inc. is accepting applications for Caregiver positions for our two homes located in Luverne! Our caregivers assist individuals with developmental and/or physical disabilities with daily living skills such as personal care, meal prep, laundry, shopping and attending community events. We offer block schedules with fixed hours. Schedules include every other weekend and some holidays. Currently, we have two overnight blocks and three day/afternoon/evening blocks open, averaging from 19 - 38 + hours per week depending on the block schedule you choose. Health insurance starts at just 30 hours per week. Other benefits include dental, vision, flex and retirement plans, PTO, paid training and holidays worked are paid double time. For more information on block schedules/hours available, please contact Linette at (507) 283-2062 or (507) 283-4170. You may also apply online at [www.clientcommunityservices.org](http://www.clientcommunityservices.org) or in person at 826 Fifth Avenue, Worthington. CCSI is an EEO/AA Employer (9.16-10.4)

Roos & Son, Inc. is seeking full-time milk haulers. Must have a Class A CDL and Tanker Endorsement. Inquire at 507-993-8801. (9.16-10.4)

Roos & Son, Inc. is seeking part-time milk haulers. Must have a Class A CDL and Tanker Endorsement. Inquire at 507-993-8801. (9.13-9.30)

### SERVICES

For Sale: Landscaping rock 1.5 and 3/4 inch rock. Also do stump grinding. Call Wayne Biever Construction at 507-227-4521 or 507-283-4614. Also have yard dirt. (9.9-9.27)

**ELECTROLUX**  
 Central Vacuums • Upright Vacuums  
 Canister Vacuums  
**Sales - Service - Supplies**  
**ELAINE BOLT**  
 507-442-7721 Edgerton, MN

**DD Backhoe Service**  
**Doug Dooyema**  
 Hydrants, waterline repairs, tile line repairs, small tile jobs, and hole digging  
 Call 507-283-8357 or Cell 507-220-8218

### EMPLOYMENT

**HELP WANTED**  
 CHS Luverne location is looking for a **CDL DRIVER** in our feed dept. Must be able to lift 50+ pounds + follow safety procedures. CHS offers competitive pay & benefits package + paid holidays & vacation. Apply online @ CHS under careers.  
 Job #13711BR

## MN VETERANS HOME

**CERTIFIED NURSING ASSISTANTS (Human Services Technicians)**  
 Join an organization dedicated to serving Minnesota's Veterans and their families. Positions are eligible for comprehensive health, dental and life insurance; pension plan; paid vacation, sick leave and holiday pay. Salary range: \$14.55/hour - \$23.08 per hour plus \$0.65/hour shift differential (depending on experience). Training assistance available. Apply online: <https://mn.gov/mmb/careers/> Call 507-283-6211 for additional information.

**HELP WANTED**  
**General Construction Workers**  
 Cleveringa Construction, Inc. has immediate openings - full time preferred. We offer sign-on bonus after six months, 401k, vacation & sick pay.  
**Contact Merlin at 507-920-5631**

**Sanford Luverne Medical Center**  
 is currently accepting applications for PT (Part-Time) and PRN (Part-Time as Needed) positions:

- HOME HEALTH AIDE - PRN
- LICENSED ADDICTION COUNSELOR - PT
- PATIENT CARE TECHNICIAN - PT
- PATIENT ACCESS REPRESENTATIVE - PT

To apply, visit [sanfordhealth.jobs](http://sanfordhealth.jobs), search "Luverne" in the location search bar.

**SANFORD**  
 Luverne

877-673-0854 EEO/AA

## MN VETERANS HOME

**HOUSEKEEPER**  
 The Minnesota Veterans Home is accepting applications for a **Housekeeper (General Maintenance Worker)** to substitute as needed for regular staff absences. Hours may be 6:00 am - 2:30 pm; 2:00 pm - 10:30 pm or 4:30 pm - 9:00 pm. Duties include cleaning resident rooms, bathrooms & offices; shampooing carpets; stripping and waxing floors; cleaning wheelchairs and other miscellaneous housekeeping and light maintenance duties. Starting hourly wage: \$14.54 + .65/hr shift differential for evening hours. Apply online: <https://mn.gov/mmb/careers/>. For further information, please call 507-283-6211. AA/EEO

## HELP WANTED

**Heartland Mutual Insurance Company**  
**in Lismore MN is expanding their staff.**  
 We are looking to add an **Inspector/Adjuster**, experience in carpentry or insurance is a plus. **Qualified individuals should have good customer service skills, a desire to learn and PC experience.**  
**Contact Ron at Heartland Mutual Insurance Company (507-472-8216) or by email at [ron@hmicmn.com](mailto:ron@hmicmn.com) with any questions or to apply.**

**HEARTLAND MUTUAL INSURANCE**  
 Lismore, MN • 507-472-8216

### EMPLOYMENT

**TUFF**  
 MEMORIAL HOME  
 A HOME WITH A HEART

The Tuff Memorial Home is currently hiring day and night shifts for a **CNA**. Experience preferred. If interested, contact Eli Ripley at 507-962-3275. or email [eripley@tuffmemorialhome.com](mailto:eripley@tuffmemorialhome.com)

Competitive Wage  
 Full Benefits  
 Pension Plan  
 Friendly Atmosphere

### EMPLOYMENT

Luverne Public Schools is seeking applications for a long-term substitute teacher in mathematics for eight to ten weeks beginning approximately October 6. Submit letter of application and resume to Craig Oftedahl, Superintendent, Luverne Public Schools, 709 North Kniss, Luverne, MN 56156. EOE (9.13-9.23)

### EMPLOYMENT

**HELP WANTED**  
 Klarenbeek Rendering  
 Daily Route  
 Truck Driver.  
 Class B CDL with air brake, clean driving record, paid holidays and vacations.  
 Call Alan at 507-220-5669.

### SEMI-DRIVER WANTED

Looking for a semi driver to deliver LTL Freight. Must have a **CLASS A CDL, Haz Mat, and good driving record. Must be able to pass DOT and Company Physical and DOT Drug Screen. Home every night and weekends. Benefits include IRA, Health Ins., Vacation Days and Personal Days.**  
**Contact Steve or Carol McCormack Trans. Co. Inc Rock Rapids, Iowa 51246 1-800-831-8549**

### Full-Time Child Care Assistant Position available

**Rock Rapids Kids Club**  
 Must be 16 years of age or older. Passion for children required. Now in our new facility. Contact for an application:  
**Desiree Kopp**  
**Rock Rapids Kids Club Director**  
 309 North Story Street  
 Rock Rapids, IA 51246  
 712-472-2686  
[kidsclubdirector@hickorytech.net](mailto:kidsclubdirector@hickorytech.net)

**Come & Be Part of a Great Team!**

## Part-Time Swine Technicians WANTED In the Kenneth, MN Area

Apply online @ [www.pipestonesystem.com](http://www.pipestonesystem.com) or Call 866-918-7378 to explore your future with us. No experience necessary - we will train. Pre-employment drug testing and background screening required

**PIPESTONE**  
 SYSTEM

**CITY OF LUVERNE** *Luverne Love the life!*  
**WATER/WASTEWATER OPERATOR**  
 Entry level position to become an operator skilled in the technical work needed to operate, maintain and repair process, control and support systems at the City of Luverne Water/Wastewater Treatment Facilities. Full-time, union position, excellent benefits package, starting salary range of \$15.70-\$20.02/hour (DOQ).  
 Min. Req.: high school diploma or equivalent, 35-mile response area requirement must be met within 6 months of hire, must possess a MN Class A CDL with tanker endorsement or able to obtain one within 12 months of hire, satisfactory driving record, and must meet Federal DOT regulations. See job description for qualifications & further details. Applications available at: City Offices, 305 E. Luverne St., Luverne, MN 56156; (507) 449-9898; or at [www.cityofluverne.org](http://www.cityofluverne.org)  
**Applications must be received by 4:30 p.m. on Tuesday, October 2, 2018.**  
 The City of Luverne is an Affirmative Action/Equal Employment Opportunity Employer.

**the GAS STOP**  
 We're On Your Way

The Gas Stop, owns and operates Holiday branded convenience stores across South Dakota and Minnesota. The Gas Stop is a leader in the convenience store industry. We are committed to providing top-tier fuel along with an extensive product selection, great value and friendly, helpful service.

The Gas Stop in Worthington, MN (Worthington Travel Plaza) is currently accepting applications for the following positions:

- Sales Associates
- Deli Associates
- Overnight Associates

Working at The Gas Stop isn't just a job—it's a full customer service experience. You will receive top pay in a fast-paced and highly interactive environment—just part of what makes us so fun to work for!

Jump start your career with an industry leader. Apply now to ensure this opportunity doesn't pass you by!

Apply at our store at:  
 2411 Hwy 60 NE, Worthington, MN  
 or online at:  
**[www.GasStop.com](http://www.GasStop.com)**





2018 CHEVROLET CAMARO



SS, REAR VISION CAMERA, CONVERTIBLE #18184  
MSRP: \$47,615 **\$40,671<sup>1</sup>**

2018 CHEVROLET COLORADO



Z71, HEATED LEATHER #1829  
MSRP: \$38,135 **\$31,616<sup>1</sup>**

2018 CHEVROLET EQUINOX



PREMIER, HEATED SEATS, DRIVER CONFIDENCE PKG #18191  
MSRP: \$35,890 **\$31,402<sup>2</sup>**

2018 CHEVROLET SILVERADO 1500



LT, ALL-STAR EDITION, REMOTE START #18152  
MSRP: \$48,260 **\$38,675<sup>2</sup>**



<sup>1</sup>MUST QUALIFY FOR CONQUEST DISCOUNT, HAVE QUALIFYING TRADE AND FINANCE WITH GM FINANCIAL  
<sup>2</sup>MUST FINANCE WITH GM FINANCIAL, HAVE QUALIFYING TRADE AND QUALIFY FOR APPLICABLE DISCOUNTS

[www.deboerchev.com](http://www.deboerchev.com)

507-442-4341



## Household Hazardous Waste Collections

Thursday, October 4, 2018 Noon to 6 p.m.  
Rock County Transfer Station (old Landfill)

Acceptable Waste: paint, aerosol cans, hazardous household, automotive, lawn & garden, or home improvement products which you would like to dispose of properly. Any questions: Call Rock County Land Management Office at 507-283-8862.

## Unusable and Unwanted Agriculture Pesticide Collection

THURSDAY, October 4, 2018 noon to 6 p.m. Rock County Transfer Station (old Landfill)

This is a great opportunity for farmers, gardeners, and all other pesticide users to safely dispose of unwanted and unusable pesticides. For most participants up to 300 lbs. of pesticides will be accepted without charge. We have a limited amount we can accept.

Call 283-8862 to pre-register.

### Ketterling Services, Inc.

401 S. Cedar St. • Luverne, MN • 507-283-2863 • [www.ketterlingservicesinc.com](http://www.ketterlingservicesinc.com)

Hours: Tues.-Fri. 8:30 a.m. to Noon & 1 p.m. to 5 p.m. Sat. 8:30 a.m. to Noon

Roll-Off Service for Building Demo & Remodeling

SANITATION:  
Commercial  
Residential  
Rural



RECYCLING:  
Collection  
Dropoff

Monthly - Weekly - Daily

## Mark's PLUMBING, HEATING AND A/C, LLC.

Lic.# PC644664 Master Plumber Lic#066849-PM

608 W. Hatting, Luverne • Mark Kurtz, owner

507-283-9245



**GOULD BROTHERS EXHIBITION SHOOTING**  
**LIVE SHOOTING ENTERTAINMENT**

**FREE**

**Saturday - October 13 - 2 pm**  
**ROCK COUNTY SPORTSMAN'S CLUB**  
1477 111th Street - Luverne MN 56156

bleacher seating for 900

Sponsors:  
Luverne Area Community Foundation  
SIOUX VALLEY ENERGY

Governor's Opener Bird Dog Parade @ 1:30 pm  
**Luverne Area Chamber & CVB**

For information: 507.283.4061  
[www.LuverneChamber.com](http://www.LuverneChamber.com)

**Be Your Own Boss**

The need for quality child care is greater than ever. Consider owning and operating a family child business. Be self-employed in your own home - doing a job you'll love!

You will have the satisfaction of knowing you are accomplishing something important - helping children grow and develop. You will also be fulfilling an important role as our communities grow and thrive. Child care keeps Southwest Minnesota working!

Contact us for information about becoming a family child care provider. We'll show you how to take your love for children and turn it into a living.

Region 8 Child Care Aware  
Southwestern MN Opportunity Council  
1106 3rd Avenue, PO Box 787  
Worthington, MN 56187  
507-376-4195  
[www.smoc.us](http://www.smoc.us)

**Child Care Aware OF MINNESOTA**  
Quality Care and Education for Every Child

**ADVERTISE IN THE ANNOUNCER!**  
CALL RICK OR CHANTEL 283-2333

**ATTENTION**

**ROCK COUNTY LICENSE CENTER SERVICE ANNOUNCEMENT**

Due to a state-wide transition to a new driver's license system that will be able to issue REAL IDs in Minnesota, there will be limited services available in the Rock County License Center on Friday, September 28th.

The following services will be unavailable during this time period:

- Driver's license, permit and identification card renewals and applications

The following services will be available during this time period:

- Registration (Tab) Renewal
- License Plate Replacement
- Title Applications
- Department of Natural Resources (DNR) transactions

If you have any questions, please call the Rock County License Center at (507) 283-5024.

**RANGER RAFFLE**

Only 600 tickets will be sold

**\$50 per ticket**

**2018 POLARIS XP1000 RANGER RAFFLE**  
Drawing to be held October 12  
\$50 PER TICKET

Need not be present to win  
Winner responsible for any applicable fees or taxes  
Must be 18 to win  
Permit #X-67001-18-013

limited number of tickets remain

Drawing will be held Friday, October 12 at the Governor's Pheasant Opener Community Banquet  
need not be present to win

**ON SALE NOW!**

ticket sale proceeds help offset the cost of hosting the Minnesota Governor's Pheasant Opener

**TICKETS AVAILABLE AT THE STAR HERALD, 117 W MAIN AND THE LUVERNE AREA CHAMBER, 213 E LUVERNE**

Coming to Luverne

The weekend of the Minnesota Governor's Pheasant Opener

**CHURCH OF CASH**  
World Class Johnny Cash Tribute

**Two Free Shows**

Friday, October 12  
8pm - Midnight

Saturday, October 13  
3-6pm

At **TAKE 16 BREWING CO.**  
509 E Main St  
Luverne, MN

Sponsored by **LUVERNE AREA COMMUNITY FOUNDATION** and **LUVERNE ROTARY INTERNATIONAL**