

# A Luverne ANNOUNCER

117 West Main St. • Luverne, MN 56156-0837 • Phone 507-283-2333 • Address Service Requested

PRSR STD  
U.S. POSTAGE  
PAID  
Permit No. 22  
Page 1 Printers  
Postal Customer

VOLUME 87 NUMBER 38

ROCK COUNTY'S FREE CIRCULATION PUBLICATION SINCE 1931

September 17, 2017

## Community Update

### Meetings

**Battle Plain Township Board** will meet at 7:30 p.m. Tuesday, Sept. 19, in the home of Mark Vander Pol.

**Luverne Music Boosters** will meet at 7 p.m. Tuesday, Sept. 19, in the Luverne High School Choir Room. All parents of band and choir students are encouraged to attend.

**MS Support Group** will meet at 7:30 p.m. Thursday, Sept. 21, at Southwest Health and Human Services in Luverne. All persons with MS, family and friends are invited. Call 283-2069.

**Friends of Blue Mounds State Park** will meet at 6 p.m. Tuesday, Sept. 12, in the lower level of the Luverne Chamber Office for membership interest and community input on how to enhance the park.

**Rock County VFW Post 2757** will meet at 7 p.m. Tuesday, Sept. 12, in the Rock County Military Museum.

**Vienna Township Board** will meet at 7 p.m. Tuesday, Sept. 12, in the Kenneth Community Center.

**American Legion and Auxiliary** will meet at 7:30 p.m. Wednesday, Sept. 13, in the post home.

**Caregivers Support Group** will meet from 5 to 6:30 p.m. Tuesday, Sept. 26, at Mary Jane Brown Good Samaritan Society in the conference room. Anyone dealing with caregiving or with questions regarding resources is encouraged to attend.

**Grand Prairie Cemetery Association** will meet at 5:30 p.m. Wednesday, Sept. 20, at the Grand Prairie Cemetery. In case of rain, the meeting will be in the back room of Orv and Sons Plumbing in Ellsworth. Call Robert Essman at 507-290-0368 with questions.

**Meditation and Mindfulness Practice** will meet at 7 p.m. Wednesday, Sept. 27, in the lower level of Hilger Commons at 215 N. Cedar Street in Luverne. For more information call Kim at 507-353-0041 or email kimberlyelizabeth@live.com.

### Additional actors sought for 'Miracle'

Adult actors and actresses are needed to complete the cast for the Green Earth Players production of "Miracle on 34<sup>th</sup> Street."

Try-outs were conducted and director Bruce Kurtz is in search of adult actors (ages 40-70) to fill open male and female roles of including that of Dr. Pierce, Macy, Bloomingdale and Judge Harper. Contact Kurtz at 712-229-7616. Rehearsals are Monday, Tuesday and Thursday evenings at the GEP building, 401 E. Edgehill St., Luverne. Production dates are Nov. 10-12 and Nov. 16-19 at the Palace Theatre, Luverne.

### Library book sale runs Sept. 21-23

The Friends of the Library will host their annual book sale open to the public from 10 a.m. to 8 p.m. on Thursday, Sept. 21; from 10 a.m. to 5 p.m. Friday, Sept. 22; and for the bag day special from 10 a.m. to 2 p.m. Saturday, Sept. 23.

A pre-sale from 5-7 p.m. Wednesday, Sept. 20, is for Friends of the Library only.

### Food ministry Sept. 21

New Life Celebration Church monthly food ministry will be from 5 to 6 p.m. Thursday, Sept. 21, in the Luverne Senior Center for those having trouble putting food on the table. **Please bring a box or bags for food.** Children are asked to wait outside. Call 283-4366.

### Leaders Partnering to End Poverty

#### Kick-off event set for Sept. 21

Leaders Partnering to End Poverty (LPEP) will host their kick-off event of a year-long leadership program from 8:30 a.m. to 3:30 p.m. Thursday, Sept. 21, at Grand Prairie Events, 105 South Estey Street, Luverne. An evening condensed version is from 6:30 to 8:30 p.m. the same day.

The workshop will be led by nationally known speaker Jodi Pfarr. A free lunch and free child care are available but preregistration is required. Contact ATLAS of Rock County at 507-449-5777, and check Luv1LuvAll facebook page.

### Cub Scouts sign-up meeting Sept. 21

Sioux Council BSA invites interested boys in grades K-5 and their parents to a School Night for Scouting from 6-7 p.m. Thursday, Sept. 21.

Cost to join Cub Scouts is \$43 per boy, which covers registration and insurance through January 2019. No one will be turned away because of cost. Those who sign up will receive a "Hero Scouts" Frisbee. More information is at [www.heroscouts.org](http://www.heroscouts.org) or at 605-361-2697.

### Bloodmobile in Luverne Sept. 25

The American Red Cross Bloodmobile will be in Luverne from 1 to 7 p.m. Monday Sept. 25, in Grace Lutheran Church.

IN THIS ISSUE

Inside find inserts\* from

**Teals MARKET**

**bomgaars**  
What You Need... When You Need It

**SHOPKO**  
Hometown

\*Not all Announcers will have all inserts

Coming this week in the *Rock County Star Herald*

### League perfection

Carissa Cunningham and the Luverne tennis team remained unbeaten in Big South Conference Western Division by posting a pair of home wins last week. The Cardinals swept Worthington Tuesday and Pipestone Thursday to up their league mark 3-0. Read about the wins in next week's Star Herald.



## Looking to sell your home? Call Real Estate Retrievers



505 COTTAGE GROVE, LUVERNE  
5 BEDROOM, 3 BATH  
\$319,900



806 BLUE WATER CIR., LUVERNE  
4 BEDROOM, 3 BATH  
\$249,900



502 JAMES, LUVERNE  
5 BEDROOM, 3 BATH  
\$239,900



1001 N ESTEY, LUVERNE  
3 BEDROOM, 2 BATH  
\$189,000



101 E BARCK, LUVERNE  
4 BEDROOM, 2 BATH  
\$175,000



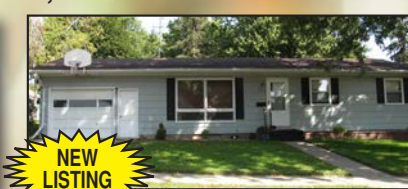
421 W LUVERNE, LUVERNE  
4 BEDROOM, 2 BATH  
\$140,000



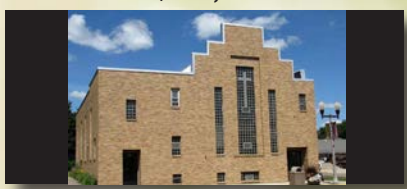
616 W MAIN, LUVERNE  
4 BEDROOM, 2 BATH  
\$129,000



907 N BLUE MOUND, LUVERNE  
2 BEDROOM, 1 BATH  
\$124,500



214 W LINCOLN, LUVERNE  
5 BEDROOM, 2 BATH  
\$120,000



202 W MAIN, LUVERNE  
CHURCH  
\$119,900



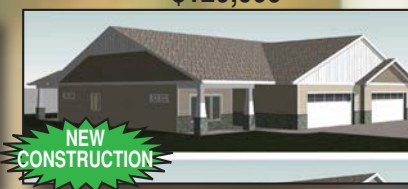
609 W LAWN PARK, LUVERNE  
2 BEDROOM, 2 BATH  
\$110,000



306 E BISHOP, LUVERNE  
3 BEDROOM, 2 BATH  
\$110,000



218 N FREEMAN, LUVERNE  
2 BEDROOM, 1 BATH  
\$89,900



304 E 6TH, HILLS  
2 BEDROOM, 3 BATH  
\$249,900



308 CENTRAL, HILLS  
2 BEDROOM, 1 BATH  
\$87,500



117 S WATER, HILLS  
2 BEDROOM, 1 BATH  
\$82,500



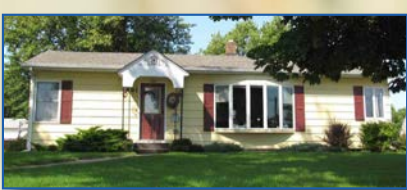
10 LOTS AVAILABLE IN HILLS  
STARTING AT \$10,000



224 111TH, BEAVER CREEK  
3 BEDROOM, 2 BATH  
\$224,900



101 S DAKOTA, STEEN  
4 BEDROOM, 3 BATH  
\$119,200



401 MECHANIC, EDGERTON  
2 BEDROOM, 2 BATH  
\$99,000



43 POMMIER LN, GARVIN  
2 BEDROOM, 1 BATH  
\$140,000



110 BUTLER, ELLSWORTH  
3 BEDROOM, 2 BATH  
\$64,900



2150 100TH AVE, HARDWICK  
2 BEDROOM, 1 BATH  
\$244,900



2492 120TH AVE, HARDWICK  
4 BEDROOM, 3 BATH  
\$169,900



**Real Estate Retrievers**

**ALL STATE TEAM**  
SERVING THE TRI-STATE AREA



LUVERNE 507-283-4216 | HILLS 507-962-3433

*Bridal Shower*  
**Cora Mumme**  
 Bride to be of  
 Anthony Miller  
 Saturday, Sept. 23 • 1p.m.  
 Zion Lutheran Church Fellowship Hall  
 Hardwick, MN  
 Please bring a favorite recipe (or two) on a recipe card  
 registered at Target and on Amazon

*Open House  
 Bridal Shower*  
**KRISTA  
 VAN DYK**  
 bride-to-be of TAYLOR RIGNELL  
 Saturday, Sept. 23  
 9:30 am  
 American Reformed Church  
 Luverne, MN

*Marguerite Hoh's*  
**100th Birthday**  
 September 24  
 Greetings may be sent to:  
 110 S Walnut, #138  
 Luverne, MN, 56156

**September 25 - October 5**  
**TWO WEEKS  
 TAE KWON DO  
 FREE!**

**BOB FICK**  
**80<sup>th</sup> Birthday!**  
**Card Shower**  
 September 22  
 greetings may be sent to:  
 1479 Co. Hwy. 4,  
 Luverne, MN 56156  
*no gifts please*

**Springwater Township Mowing Notice**  
 Landowners are now responsible for mowing shoulders at least three times per summer, depending on rain and growth. It is recommended that shoulders be mowed around the 15th of each month in June, July, August and September. The last mowing should include the shoulder and one swath beyond and to be completed by October 1, 2017. Failure to do so will result in a township official performing the task at \$100 per half mile, per time.

INTRODUCTORY CLASS TIMES: Monday & Thursdays  
 3 class sessions from 4:15-5:45 p.m.  
**---Family discounts available---**  
**Martial Arts may be exactly what you need...**  
*This sport is an excellent way children to develop Balance, Coordination, Self-Discipline, Self-Respect and Self-Confidence. Adults can improve Self-Control, Self-Confidence, Flexibility, Weight Control and Physical Fitness.*  
 For more information: **Call Wes Grieme at 507-283-8390 or 605-321-8818** or simply come to class!

**DEBOER EDGERTON**  
 507-442-4341

<p><b>NEW</b> <b>CHEVY BONUS TAG</b></p> <p>MSRP: \$51,385  <b>\$43,832</b></p> <p>2017 CHEVROLET SILVERADO 3500HD          LT, CONV. PKG, Z71 APPEAR. PKG #17141</p>	<p><b>NEW</b> <b>CHEVY BONUS TAG</b></p> <p>MSRP: \$47,110  <b>\$40,194</b></p> <p>2017 CHEVROLET TRAVERSE          PREMIER #1799</p>	<p><b>NEW</b> <b>CHEVY BONUS TAG</b></p> <p>MSRP: \$27,557  <b>\$27,557</b></p> <p>2018 CHEVROLET EQUINOX          LT, DRIVER CONVENIENCE PKG #1815</p>
<p><b>WAS: \$29,575</b>  <b>\$27,925</b></p> <p>2017 CHEVROLET IMPALA          PREMIER, CONV. PKG, 13K #A1725</p>	<p><b>WAS: \$19,550</b>  <b>\$18,650</b></p> <p>2008 FORD F-150          XLT, 102K #1788B</p>	<p><b>WAS: \$27,400</b>  <b>\$25,745</b></p> <p>2012 CHEVROLET SILVERADO 1500          LT, Z71, ALL STAR EDITION, 62K #A1724B</p>

**GM Certified USED VEHICLES** **CHEVROLET SILVERADO** **Auto Check** **www.deboerchev.com**

**Meet Your New Boss**  
 The need for quality child care is greater than ever. Consider becoming a family child care provider. Be self-employed in your own home - doing a job you'll love!  
 The rewards of working in child care are numerous. You will have the satisfaction of knowing you are accomplishing something important - helping children grow and develop. You will also be helping our communities grow and thrive. Child care keeps Southwest Minnesota working!  
 Contact us for information about becoming a family child care provider. We'll show you how to take your love for children and turn it into a living.

Region 8 Child Care Aware  
 Southwestern MN Opportunity Council  
 1106 3rd Avenue, PO Box 787  
 Worthington, MN 56187  
 507-376-4195  
 www.smoc.us

**ChildCare Aware**  
 OF MINNESOTA  
 Quality Care and Education for Every Child

**Duane J. Mulder Realty**  
**DUANE MULDER AUCTION SERVICE**  
 Office 507-283-4901

**AUCTION SCHEDULE**  
 Currently Taking Consignments For Our Next Indoor Auction At The Duane Mulder Auction Center, Downtown Beaver Creek, MN. **Yes, we sell cars, pickups, trailers, campers & boats on these auctions.** Call 507-283-4901 Or 507-220-3558 To Get Your Items Consigned To This Auction.  
**--WE ARE NOW EQUIPPED TO CONDUCT LIVE INTERNET & LIVE AUCTIONS AT THE SAME TIME--**  
**Saturday morning, September 16 & Monday morning September 18 – 10:00 A.M.** both days  
 – Large 2-day Consignment Auction near Luverne, MN. Livestock equipment, boats, ATV's, lawn mowers, garden items, shop items and misc. items sell on Saturday. Farm equipment, vehicles & trailers sell on Monday at the Duane Mulder Auction Lot.  
**Thursday evening, October 5** – Evenings meal at Grand Prairie Events followed by a live benefit auction for the local Rock County Pheasants Forever chapter.  
**November 17** – Retirement farm equipment auction near Iona, MN.  
**DUANE MULDER** – Auctioneer – Real Estate Broker – Certified Agricultural Appraiser. Office Phone 507-283-4901 - Cell Phone 507-220-3558.

**33<sup>rd</sup> Annual Banquet**  
**Thursday, October 5**  
 Grand Prairie Events, 105 S. Estey, Luverne, MN  
**Crowing Time 5:30 - 7:00 p.m. | Meal 7:00 p.m.**

**ROCK COUNTY PHEASANTS forever**

**A Night of Pheasants & Football**  
 Raise money for Pheasants Forever and watch the game **New England vs. Tampa Bay**  
 Game will be shown on BIG SCREEN TV that will be raffled off after the game!

**Drawings • Raffles • Live Auction • Silent Auction**

**RAFFLE TICKETS ON SALE NOW:**  
 2017 Banquet Gun Raffle  
 Benelli Montefeltro 12 gauge 3" mag (or \$800 cash option)

**New this year!** **BUY YOUR TICKETS BEFORE OCTOBER 1 TO BE ENTERED IN THE EARLY BIRD DRAWING**  
 for a chance to win a \$100 punch card!

**Earlybird Registration**

<p><b>MEMBERSHIP RECORD</b></p> <p>Name _____          Mailing Address _____          City/State/Zip _____          Phone _____</p> <p>Membership/Dinner \$60  <input type="checkbox"/> Spouse Dinner \$25 (spouse name) _____  <input type="checkbox"/> Ringneck \$15 (DOB) _____ (parent name) _____  <input type="checkbox"/> Sponsor Member \$300 (Member #) _____</p>	<p><b>PAYMENT OPTIONS</b></p> <p>Checks payable to Rock County Pheasants Forever          OR fill in Credit Card info below</p> <p>Name on card _____          Card number _____          3 digit code _____ Exp. Date _____          Phone _____</p>
--	---

Mail to Matt Sorenson 1337 State Hwy 23, Garretson, SD 57030  
 Or call Darrin Kindt 507-920-7544 or Rick Peterson at 507-283-2333  
 Tickets also available at the Rock County Star Herald office.  
 Limited tickets will be available at the door.  
 Pre-paid tickets will be completed and ready at the door

**Cragoe Realty**  
*Selling Real Estate in the Heart of the Prairieland.*  
 Your hometown real estate broker for over 22 years  
 Gene Cragoe, broker lic. in MN & SD info@cragoe.com  
 Renee Guy, Real Estate Agent  
 507-283-2647 or 800-689-2647

**We have buyers! WE NEED YOUR LISTING!**  
**FOR COMPLETE LISTINGS LOG ONTO WWW.CRAGOE.COM**

The first step to successfully selling your home is *listing it with us!*  
**815 N FREEMAN, LUVERNE | \$174,900**

Beautiful 2 story home offers beautiful wood work, open staircase, bonus room on the main floor now being used as a daycare room with bathroom, 3 bedrooms on the upper floor, 3 piece bath on the upper level, living space available in the attic and so much more! Freshly painted exterior.

**1108 N CAROL, LUVERNE | \$185,000** **NEW LOWER PRICE**

Beautiful ranch style home with 3 bedrooms on the main level. Large living room, covered front entry, large back yard deck, beautiful landscaping and lots of finished space in the lower level make this the perfect home.

Call **Rick** or **Chantel**  
 to advertise in next week's Announcer  
**283-2333**

**2017 Rock River PUMPKIN FESTIVAL**  
 Edgerton, Mn  
*A great place for families to come and have fun!*  
**Sat., September 30**  
 Main events start at 11:00 a.m.  
 \$3.00 Wristband covers activities. Pumpkins are a separate charge.


- Corn Maze
- Amazing Pumpkin Race
- Concessions
- Vendor Fair & Farmers Market
- Pumpkin Pie Eater Contest
- 5K Pumpkin Fun Run/Walk
- Scarecrow Contest
- Inflatables, Petting Zoo, Hay Rides
- Kids Games, Pumpkin Patch
- Climbing Wall, Balloon Art, Face Painting

**\*\*Great Food! Great Fun!\*\***

Located at the Southwest MN Christian High Parking Lot, 550 Elizabeth Street W.  
**www.rockriverpumpkinfestival.com**

**New Prairie Insulation, Inc.**  
 Serving Residences & Contractors  
**FREE ESTIMATES**  
**---Insulation---**  
 Beaver Creek, MN  
 507-673-2548 or 1-800-232-7089

IN LOVING MEMORY OF  
**RALPH PETERSEN**



February 22, 1924 - September 18, 2008

My heart still aches with sadness, and secret tears still flow.  
 What it meant to love you, no one can ever know.  
 You are gone but not forgotten.  
 Although we are apart your spirit lives within me forever in my heart.  
 Your loving wife Loretta

Bring in your current policy for a comparison today!



**CATTNACH INSURANCE AGENCY**

South Hwy. 75, Luverne, MN  
 507-283-8383 or 1-800-258-4471  
 E-mail: info@cattnach.com  
 Website: www.cattnach.com

**Mark's PLUMBING, HEATING AND A/C, LLC.**  
 Lic.# PC644664 Master Plumber Lic#066849-PM  
 608 W. Hatting, Luverne • Mark Kurtz, owner  
**507-283-9245**

A.O. Smith Water Heaters Gas & Electric  
 MOEN Faucets  
 TEMPSTAR Heating and Cooling Products

Your source for daily news  
**Star-Herald.com**


**Dave & Pat Stoltenberg**  
 Open House  
 Saturday, September 23 • 1-4 p.m.  
 Luverne Senior Center  
 319 E Lincoln  
 No gifts please




**Happy 50th Anniversary**

**ALWAYS FREE ESTIMATES!**

We provide **FULL EXCAVATION SERVICES**



**DD GRAVEL** 611 4TH STREET NE, PIPESTONE, MN 56164 **507-825-5552**

**LAND AUCTION**  
 +/-195.04 Acres of High Producing Alliance Twp. Moody County, SD and Eden Twp., MN  
 Land with Excellent Quality Soils, Productive Cropland & Pasture and a Former Building Site with Mature Trees and More!!

We will offer the following real property at auction at the land located from Flandreau, SD - 10 miles south on Hwy. #13 (481st Ave.) and 5 1/2 miles east on Co. Hwy. (240th St.), 2 miles south on 487th Ave. and 1/2 mile east on 242nd St.; from Garretson, SD - approx. 10 miles north on SD Hwy. #11 to 487th Ave., then 2 miles north on 487th Ave. and 1/2 mile east on 242nd St.; from Pipestone, MN - approx. 6 miles southwest on Hwy. #23 to Ihlen, MN, then approx. 1 3/4 miles west on Co. Hwy. #2 (41st St.), then 2 miles south on 30th Ave. and 2 miles west on 21st St.; from the west edge of Jasper, MN - 2 miles north on 30th Ave. and 2 miles west on 21st St.

**FRIDAY SEPTEMBER 29, 2017 SALE TIME: 10:00 AM**

**AUCTIONEER'S NOTE:** This auction presents a terrific opportunity to purchase land that has been in the Pedersen Family for over 65 years, dating back on the SD portion to the 1940's and the MN portion to the 1950's. This land is located in a highly regarded agricultural area in the "Garden Spot of Eastern SD & Western MN. This farm features excellent quality high producing soils on the cropland and has been maintained in an excellent state of cultivation and portions have been drain tiled. The pastureland has a mature stand of grass and has a dugout and is traversed by a creek. This land would be well suited to serve as an addition to a row crop, and/or crop-livestock operation or investment.

This is a unique parcel of land as it is divided by the SD-MN State line and will be offered as TRACT #1 - +/- 105.99 Acres in Alliance Twp., Moody County, SD, TRACT #2 - +/- 89.05 Acres in Eden Twp. of Pipestone County, MN or as TRACTS #1 & #2 Combined - the +/- 195.04 Acre Combined Unit. As a Combined Unit this farm has a total of 195.04 surveyed acres with approx. 145.37 acres of cropland - Surveyed Acres Stated are Based On Preliminary Calculations and Will be Subject to Final Surveyors Review & Certification.

**TRACT #1: +/- 105.99 Acres - Legal Desc.: Lots 1 & 2 of Sec. 22, T. 105 N., R. 47W., (Alliance Twp.), Moody County, SD.**

This +/-105.99 acres according to FSA information is part of FSA Farm #1403 with the South Dakota portion being identified as Tract #11183 with the FSA 156EZ indicating this parcel has approx. 102.05 acres of farmland with approx. 86.86 acres of cropland with a 42.8 acre corn base with a 156 bu. PLC yield and a 42.7 acre soybean base with a 44 bu. PLC yield. According to the Moody County Assessor this land has an Overall Soil Rating (OSR) of .875, comparatively info. obtained from Surety Agri-Data, Inc. indicates that this parcel in its entirety has a respectable Overall Weighted Productivity Index of an 82.7. The non-tillable portions of this land consist of a +/- 8.5 acre pasture on the south end of the property, a +/-5 acre former bldg. site primarily comprised of trees and a few acres of grassland/hayland and a grassed waterway. The RE Taxes payable in 2017 on this property are ... \$3,393.56.

**TRACT #2: +/- 89.05 Acres - Legal Desc.: Lots 3 and 4 in the W 1/2 of Sec. 23, T. 105 N., R. 47W., (Eden Twp.), Pipestone County, MN.**

This +/-89.05 acres according to FSA information is part of FSA Farm #1403 with the MN portion being identified as Tract #11184 with the FSA 156EZ indicating this parcel has approx. 86.84 acres of Farmland with approx. 58.51 acres of cropland with a 28.7 acre corn base with a 156 bu. PLC yield and a 28.6 acre soybean base with a 44 bu. PLC yield. According to the Pipestone County Assessor and their soils data, this parcel has a CER/Soil Rating of 73.27; comparatively information obtained from Surety Agri-Data, Inc. indicates that this parcel in its entirety has an Overall Weighted Productivity Index of a 72.4. The non-tillable portions of this farm consist of a +/-28.5 acre pasture and a grassed waterway. The pasture has a dugout and is traversed by a tributary of the Pipestone Creek. The RE Taxes payable in 2017 on this property are ... \$2,128.00.

**TERMS:** Cash - A 10% non-refundable downpayment on the day of the sale and the balance on a short term installment sale with an add'l. 40% on Dec. 28, 2017 and the remaining 50% on Jan. 2, 2018 w/full possession. Fall tillage privileges may be allowed, subject to the rights of the existing tenant to harvest the 2017 standing crops and the tenant's rights under the 2017 farm lease. Title will be conveyed by a Warranty Deed(s) and owner's title insurance will be provided on the SD land w/the cost of the owner's policy divided 50-50; at the seller's option on the MN portion either an abstract of title continued to date will be continued to date and furnished to the buyer for examination prior to closing, or in lieu of an abstract title insurance may be provided with the cost divided 50-50 between the buyer & seller. On both the SD & MN portions of this property the buyer will be credited at closing for the 2017 RE taxes based on the amounts payable in 2017, with the buyers to incur any increases over the 2017 amounts payable in 2018. The acres are based on the acres as stated on the County tax records, with the acres understood to be "more or less". The sellers do not guarantee that existing fences lie on the true and correct boundary and any new fencing, if any, will be the responsibility of the purchaser(s) pursuant to SD Law. FSA yields, bases, payments & other information is estimated and not guaranteed and are subject to County Committee Approval. Information contained herein is deemed to be correct but is not guaranteed. This property is sold in "AS IS" CONDITION and subject to any existing easements, restrictions, reservations or highways of record if any, as well as any or all Moody Co., SD & Pipestone Co., MN Zoning Ordinances. The RE licensees in this transaction are acting as agents for the sellers. Sold subject to confirmation of the owners.

**THE HEIRS OF CLIFFORD & ARDYCE PEDERSEN**  
 CHUCK SUTTON - AUCTIONEER & LAND BROKER -  
 SIOUX FALLS, SD - PH. 605-336-6315 & FLANDREAU, SD - PH. 605-997-3777  
 DEAN STOLTENBERG - AUCTIONEER & RE BROKER ASSOCIATE  
 - JASPER, MN - PH. 507-348-7352  
 & JARED SUTTON - AUCTIONEER & RE BROKER ASSOCIATE  
 - FLANDREAU, SD - PH. 605-864-8527

**COLLECTOR CARS-PARTS-MEMORABILIA- ANTIQUE TRACTORS-FARM SALE- LAND**  
**PLAN TO ATTEND THESE AMAZING AUCTIONS!**  
 VanDerBrink Auctions, LLC has a great line up of auction this Fall. Everything from Collector Cars to Highly Productive Farm Ground- We'll see you At the Auction!

Sept. 16th, 2017 - 9:30 AM - Gering, NE - Approx. 200 Collector Cars-Pickups & Parts, The Eich & Friends Collections  
 Sept. 23rd, 2017 - 10AM - Mitchell, SD - 40 Fabulous Collector Vehicles! The Dale Martin Collection  
 Sept. 30th, 2017 - 9AM - Hutchinson, MN - McCleod Fairgrounds- HUGE Pontiac GTD & Parts Auction!  
 Oct. 21st, 2017 - 9:30 AM - Lawton, OK - Amazing Pre-War Collector Cars & Trucks- The John Lewis Collection  
 Oct. 26th, 2017 - 10:30 AM - Jasper, MN - 155 Acres HIGHLY productive Rock County, MN Farm Ground - CER of 93.971 and 5 Acre Acreage after land-Approx. 12:30- IH 656 Tractor & Personal Property  
 Nov. 4th, 2017 - 9 AM - Moorhead, MN - Fabulous Collector Cars, Memorabilia, Elvis & More- The Jerry Johnson Collection  
 Nov. 11th, 2017 - 9AM - Luverne, MN - Antique Tractors, Parts, Farm Tractors, Tools & More- The John Klarenbeek Farm Auction

Watch for Date - Approx. 148 Acres of Nobles County Farm Ground!

FOR CATALOGS, PICTURES, MAPS & MORE- WWW.VANDERBRINKAUCTIONS.COM

If You Are thinking of having an auction- selling your Collection- LAND- We want to work with you!  
 \*Excellent Marketing \*Live & On-Line Auctions \*Personal Service \*National & Local Exposure

VanDerBrink Auctions, LLC • Yvette VanDerBrink- Auctioneer/Broker • MN 67-73 SD 12105 & MN 20454959  
 507-673-2517 or 605-201-7005 • yvette@vanderbrinkauctions.com

*"Complete Auction Service ... with the Seller in mind"*  
**VanDerBrink Auctions LLC**  
 507-673-2517 or 605-201-7005  
 \* Excellent Marketing Advertising \* Online and On Site Auctions \* Personal & Professional Service \* Call Yvette - Professional Service  
 www.vanderbrinkauctions.com

**APPROX. 155 HIGHLY PRODUCTIVE ROCK COUNTY FARM GROUND & ACREAGE AT AUCTION**  
**THURSDAY, OCTOBER 26TH, 10:30AM- AT THE FARM**  
 275 191ST ST., JASPER, MINNESOTA, 56144  
**PERSONAL PROPERTY-TRACTOR-SKIDLOADER- COLLECTIBLES & MORE**  
**ALSO SELLING FOLLOWING LAND AUCTION- APPROX. 12:30-1PM**

VanDerBrink Auctions is pleased to bring you the Hemme Land/Acreage Auction. This farm has been in the family and now will be offered to the public at auction. Farms of this quality don't come up for auction every day and you'll want to plan to attend this auction of highly productive SW MN Farm ground along with a well-located acreage.

**Tract 1- Approx. 155 Acres of Highly Productive SW MN Farm ground:**  
 Tract 1 Consists of Approx. 155 acres of highly productive SW MN Farm Ground. The farm will be surveyed. The Farm has easy access from the road and the topography of the land is gentle slope and level areas and lays beautifully. The field is nearly all tillable with some areas of grass for waterways and smaller pastures that could be farmed. The soils are Primarily Moody Silty Clay Loam with also Trent and Marcus Silty Clay Loams. According to Rock County Land Records, The Average CER is 93.97! According to FSA Records, the farm is divided into 2 tracts and on farm 1 There is 84.16 acres Farmland with 70.54 acres of cropland and base acreage of 11.4 of Oats with PLC yield history of 57 bushels/acre, 47.5 base acreage of corn with PLC yield of 155 bushels/acre, and 11.3 base acres of soybeans with PLC yield of 46 bushels/acre. Tract 2 has 72.37 acres of farmland with 67.92 acres of cropland. There is a 47.8 base acreage of corn with PLC yield of 175 bushels/acre. There is 17.6 base acreage of Soybeans with PLC yield of 47 bushels/acre. The Land will have no leases for 2018. This field is one of those that farmers dream. These well situated, highly productive, and wonderful topography. Plan now to add this fabulous SW MN farm to your farming operation or investment portfolio. This tract will be offered individually.

**Tract 2- Approx. 5 Acre Farmstead:**  
 Tract 2 Consists of Approx. 5 Acres, subject to survey, older farmstead. The Acreage is located minutes from Sioux Falls, SD, Garretson, SD, and area MN towns. It is an older 2 story farm house in need of updates and or would be great place to build. Short Drive to Sioux Falls, Garretson, and surrounding towns. The home has a drilled shallow well, and non-conforming septic system. The farmstead will be offered as a separate tract.

**LEGAL:** To be Re-surveyed. Currently S36,T104,R47, S1/2 of SE 1/4 Less 1.01 Acres CSAH #14, Rock County, MN & S36,T104, R47, N1/2 of SE 1/4 80 acres, Rock county, MN. 160 Acres.

**REAL ESTATE TERMS:** 10% Down, NON-REFUNDABLE, Day of Sale. Balance within 30 days at Close. Signed Executable Purchase Agreement Day of Sale. Possession at Closing. Warranty Deed to the Buyer at Close from Seller. Abstract will be updated by the Seller for the Buyer. Title insurance optional for each party. Property being sold AS IS and according to surveyed acres. Survey will be paid for by the seller. Taxes Made current and paid by the seller and prorated to closing. Taxes are \$1918/year. Purchase Price will be according to surveyed acres. Auctioneer is agent of the seller. Farm will be offered live at the location and also on-line. Contact Auctioneer with any questions. Preview will be Day of Sale and Wednesday October 25th, 2017 and also by appointment. Both Tracts, sold subject to confirmation of seller. For any other questions, please contact the Auctioneers.



**FOLLOWING ACREAGE AND LAND AUCTION - APPROX. 12:30PM- 1PM**  
**TRACTOR-SKIDLOADER- PERSONAL PROPERTY- GARAGE**  
**AND MORE:**  
 IH 656 TRACTOR W LOADER, FLATBEDS, GRAVITY BOX, FLARE SIDE BOX WAGON, GATES, BUNKS, TOOLS, BALE FORK, BOLTS, CHAIN SAW, COLLECTIBLES- AND MORE..

**Kathleen Hemme - Owner**

**TERMS:** Cash, Check, CC with payment in full Day of Sale. AS-IS and all sales are final. ON-Line bidding available with separate terms for tractor, Removal day of sale or within 5 days. Not responsible for accidents or theft. Buyer responsible for all loading and removal.

**Kathleen Hemme & Jackie Hansen- Owners**

VanDerBrink Auctions, LLC  
 Yvette VanDerBrink- Auctioneer/Broker MN 67-73 SD 12105 & MN 20454959 605-201-7005 or 507-673-2517  
 Bob W. Julson- Auctioneer MN 605-351-2654  
 For More Auctions, Pictures, Inventory, and More... www.vanderbrinkauctions.com

Visit us online!  
**Star-Herald.com**

CONTACT US @ 1-800-658-2327



# KICKOFF TO SAVINGS

Select Units Up To 20% Off

WWW.AMDAHLMOTORS.COM

## DEMO SALE! BIG DISCOUNTS ON REMAINING 2017 DEALS

<p style="text-align: center; font-weight: bold;">'17 CHEVY MALIBU LT</p>  <p style="font-size: 0.8em;">#47006 Nightfall Gray Metallic, NAV, Convenience + Tech Pkg, Leather Pkg, Driver Confidence MSRP: \$29,900 • Discount: \$5,200 SALE PRICE: <b>\$24,740</b></p>	<p style="text-align: center; font-weight: bold;">'17 CHEVY MALIBU LT</p>  <p style="font-size: 0.8em;">#47012 Cajun Resort, Clearcoat Convenience Tech Pkg MSRP: \$27,290 • Discount: \$4,790 SALE PRICE: <b>\$22,500</b></p>	<p style="text-align: center; font-weight: bold;">'17 GMC TERRAIN AWD SLE</p>  <p style="font-size: 0.8em;">#97004 Graphite Gray Metallic MSRP: \$30,505 • Discount: \$7,534 SALE PRICE: <b>\$22,971</b></p>
<p style="text-align: center; font-weight: bold;">'17 BUICK ENVISION AWD ESSENCE</p>  <p style="font-size: 0.8em;">#27019 Panoramic Roof, Summit White MSRP: \$42,485 • Discount: \$4,497 SALE PRICE: <b>\$37,988</b></p>	<p style="text-align: center; font-weight: bold;">'17 CHEVY IMPALA 1LT</p>  <p style="font-size: 0.8em;">#47002 Silver Ice, Convenience Pkg, Driver Confidence MSRP: \$33,175 • Discount: \$5,178 SALE PRICE: <b>\$27,997</b></p>	<p style="text-align: center; font-weight: bold;">'17 CHEVY EQUINOX AWD LT</p>  <p style="font-size: 0.8em;">#77005 Nightfall Gray Metallic, Driver Confidence Pkg, Power Rear Lift Gate MSRP: \$31,725 • Discount: \$6,737 SALE PRICE: <b>\$24,988</b></p>

'17 CHEVY CORVETTE STINGRAY COUPE

#47018 10% Off Competition Sport Seats, 8 Speed Automatic Shift Trans, Equip Pkg MSRP: \$69,910 • Discount: \$6,992  
SALE PRICE: **\$62,918**

'17 CHEVY CRUZ 4DR LT

#47015 Driver Confidence Pkg, Convenience Pkg MSRP: \$23,970  
Discount: \$4,795  
SALE PRICE: **\$19,175**

'17 CHEVY CRUZE 4DR LT

#47022 Sun & Sound Pkg, RS Pkg, Convenience Pkg MSRP: \$25,665  
Discount: \$5,133  
SALE PRICE: **\$20,532**

'17 CHEVY SILVERADO 4X4 LT CREW

#77044 All Star Edition, Trailer Brake Controller, Driver Front + Passenger Heated Seats, 18" Aluminum Wheels MSRP: \$47,670 • Discount: \$9,906  
SALE PRICE: **\$37,769**

'17 CHEVY COLORADO 4X4 Z71

#77090 Ext. Cab, Spray On Liner, Boards, Trailer Brake, Spots Bar, Prem. Bose MSRP: \$42,940 • Discount: \$2,750  
SALE PRICE: **\$40,190**

'17 CHEVY COLORADO 4X4 Z71 CREW

#77103 Crew Cab, Bed Liner, NAV, Trailer Brake, Pre. Bose Audio MSRP: \$39,715 • Discount: \$2,750  
SALE PRICE: **\$36,965**

'17 CHEVY EQUINOX AWD LT

#77106 Trailer Brake Controller, Heated Seats, All Star Edition, LED Cargo Lighting MSRP: \$47,670 • Discount: \$9,901  
SALE PRICE: **\$37,769**

'17 CHEVY SILVERADO 4X4 LT CREW

#77109 Crew Cab, Heated Bucket Seats, 5.3 V6 LT Plus Package, LED Cargo Lighting MSRP: \$49,780 • Discount: \$10,043  
SALE PRICE: **\$39,737**

'17 CHEVY SILVERADO 4X4 LT

#77100 Crew Cab, Deep Ocean Blue, Heated Seats Automatic, All Star Edition MSRP: \$48,585 • Discount: \$9,983  
SALE PRICE: **\$38,602**

'18 CHEVY EQUINOX AWD LT

#78017 Black, Sun & Infotainment Pkg, Convenience & Convenience Pkg MSRP: \$33,385  
Discount: \$3,750  
SALE PRICE: **\$29,635**

'18 CHEVY EQUINOX AWD LT

#78020 Night Fall Gray Pkg, Sun & Infotainment Pkg MSRP: \$35,780 • Discount: \$3,750  
SALE PRICE: **\$32,030**

'18 CHEVY EQUINOX AWD LT

#78022 Sun & Infotainment Pkg, Convenience & Convenience Pkg MSRP: \$33,385  
Discount: \$3,750  
SALE PRICE: **\$29,635**

'18 CHEVY EQUINOX AWD LT

#78020 Night Fall Gray Pkg, Sun & Infotainment Pkg MSRP: \$35,780 • Discount: \$3,750  
SALE PRICE: **\$32,030**

'18 CHEVY EQUINOX AWD LT

#78022 Sun & Infotainment Pkg, Convenience & Convenience Pkg MSRP: \$33,385  
Discount: \$3,750  
SALE PRICE: **\$29,635**

'18 CHEVY EQUINOX AWD LT

#78020 Night Fall Gray Pkg, Sun & Infotainment Pkg MSRP: \$35,780 • Discount: \$3,750  
SALE PRICE: **\$32,030**

'17 GMC YUKON DENALI

#97079 Onyx Black, Jet Black Interior, Power Roof, 20" Chrome Wheels, All Weather Mats, Adapt. Cruise MSRP: \$74,955 • Discount: \$6,844  
SALE PRICE: **\$68,111**

'17 GMC SIERRA DENALI 4X4 CREW

#97092 Onyx Black, Ultimate Pkg, 22" Tires MSRP: \$64,010 • Discount: \$9,553  
SALE PRICE: **\$54,457**

'17 BUICK ENCORE FWD

#27036 Quicksilver Metallic MSRP: \$25,685 • Discount: \$4,367  
SALE PRICE: **\$21,318**

'17 BUICK ENCORE PREMIUM FWD

#27038 Coastal Blue, NAV MSRP: \$32,290 • Discount: \$5,488  
SALE PRICE: **\$26,792**

## USED CARS & TRUCKS!

THE AREA'S BEST SELECTION & BEST CONDITION ANYWHERE!

\*INCLUDES DISCOUNT AND REBATES. SELECT UNIT PRICING SUBJECT TO CHANGE. SEE DEALER FOR DETAILS.



SEE COMPLETE INVENTORY & Apply Online for Pre-Approved Financing @ [amdahlmotors.com](http://amdahlmotors.com)

WWW.AMDAHLMOTORS.COM

CONTACT US @ 1-800-658-2327

HOURS: Monday through Friday: 9am to 5:30pm, Saturday 9am to 4pm, Sun. 10am to 2:30pm, MN PH: (907) 927-2327 or 1-800-658-2327



## Orv & Sons, Inc.

Plumbing - Heating - Cooling  
507-967-2464

Hours of Operation: Mon. - Fri. 7:00-Noon & 1:00-5:30  
Office Hours: Mon. - Fri. 7:30-Noon & 1:00-5:00  
CLOSED Saturday & Sunday (Emergency Calls ONLY)

\*Licensed for pump installation, sewer installation & Backhoe Services  
\*Roto-rooter, Pipe Location & Camera Inspection System  
\*Oxyblast-water treatment Product  
\*Lennox Furnaces & Air Conditioners

308 S. Broadway Street, Ellsworth, MN 56129 ~ Thank You!

## Ketterling Services, Inc.

401 S. Cedar St. • Luverne, MN • 507-283-2863 • [www.ketterlingservicesinc.com](http://www.ketterlingservicesinc.com)  
Hours: Tues.-Fri. 8:30 a.m. to Noon & 1 p.m. to 5 p.m. Sat. 8:30 a.m. to Noon

Roll-Off Service for Building Demo & Remodeling


SANITATION:  
Commercial  
Residential  
Rural



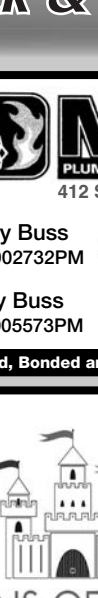
Monthly - Weekly - Daily

RECYCLING:  
Collection  
Dropoff

### Loans, leases, and crop insurance



Pat Barnett  
866-601-0506  
[compeer.com](http://compeer.com)



Compeer Financial, ACA is an Equal Credit Opportunity Lender and Equal Opportunity Provider. ©2017

## Read Recycle Reuse

Please recycle your newspaper when finished with the paper.

News updated daily.

## Star-Herald.com

# Har•vest /v./

- To gain, win, acquire, or use.

## Gather the facts at Star-Herald.com

Here's My Card

Your Quick & Easy Guide to Area Businesses



Find it here!



We live in and deliver to Hills.

Chuck & Sandie Kuntze

Phone: (605) 275-0053 • Fax: (605) 275-2579  
Toll Free: (800) 477-2573  
41st & Marion Rd. Sioux Falls, SD 57106  
[www.floweramasioxfalls.com](http://www.floweramasioxfalls.com)



Insurance Agency & Financial Services, Inc.

Shirley Top

Sales Representative MN Lic. 27249  
P.O. Box 766 | 212 South Kniss Ave.  
Luverne, MN 56156  
Phone: 507-283-3704  
Toll Free: 1-877-631-3704  
Fax: 507-283-3733  
[shirley@kozlowski-insurance.com](mailto:shirley@kozlowski-insurance.com)  
[www.kozlowski.com](http://www.kozlowski.com)  
For all your insurance & investment needs!



McClure

PLUMBING, HEATING, AIR CONDITIONING, INC.  
412 S. Kniss • Luverne, MN • 507-449-2828

Jerry Buss Lic. #002732PM **RAIN BIRD** Carrier

Troy Buss Lic. #005573PM **LENNOX BRADFORD WHITE** SD # Luv-MN-R1117-98-1262C

\*Licensed, Bonded and Insured in Minnesota and South Dakota\*



HEIDEBRINK & ASSOCIATES

Farm • Home • Business • Auto • Crop • Life • Health • Long Term Care

[heidebrinkinsurance.com](http://heidebrinkinsurance.com)  
Luverne, MN 56156 • 507-283-4085



Sovanna Beekman

Associate  
An Independent Associate Representing Aflac  
Real Cash Benefits  
Garretson, SD 57030  
[sovanna\\_beekman@us.aflac.com](mailto:sovanna_beekman@us.aflac.com) 605.770.3758 cell  
[aflac.com](http://aflac.com) 605.594.3323 fax



CLEVERINGA CONSTRUCTION

507-920-5631

• For All Your Building Needs • Additions • New or Remodel  
[www.cleveringaconstruction.com](http://www.cleveringaconstruction.com)

Merlin Cleveringa 879 - 100th Ave., Luverne, MN  
507-283-2698 Home Lic. # BC-20552185



ALEX SMART

Event Coordinator  
507-600-9040  
TONS-OF-FUN.COM

FACEBOOK.COM/TONSOFFUN  
INFLATABLESANDGAMES



ROCK COUNTY REC

• Men, Women & Children's Health  
• Custom Orthotics • Kinesiotape • Athletic Care • Massage Therapy • Work & Auto Injuries • Postural Restoration

[WWW.ROCKCOUNTYCHIROPRACTIC.COM](http://WWW.ROCKCOUNTYCHIROPRACTIC.COM)  
283-2561 • 103 E. MAIN, LUVERNE  
Monday 7:30 a.m. - 6 p.m. • Tuesday 7:30 a.m. - 3 p.m.  
Wednesday 7:30 a.m. - 6 p.m. • Thursday 7:30 a.m. - 1 p.m.  
Friday 7:30 a.m. - 5 p.m.



M L ELECTRIC

Residential • Commercial • Farm Wiring • Trenching  
Licensed - Bonded - Insured Mike Buss, Owner

507-449-8005

LUVERNE HEALTH & WELLNESS

Codie Zeutenhorst, D.C., C&C

• Acupuncture • Chiropractic Care  
• Family Care • Sports Injuries  
• Kinesiotape • Auto & Work Injuries

Acupuncture and Massage Available  
Kris Van Der Brink M.T. & Amy Rosales M.T.

507.449.4400 [www.luvernechiro.com](http://www.luvernechiro.com)  
109 S. Freeman Ave. | Luverne, MN

Meulebroeck, Taubert & Co., PLLP

Certified Public Accountants  
P.O. Box 685 • 109 S. Freeman • Luverne, MN 56156  
507-283-4055

Experienced tax preparers with offices in Luverne, Pipestone, Marshall, Tyler & Lake Wilson

• Tax planning and preparation  
• Accounting and bookkeeping services • Payroll services  
• Quickbooks set-up and assistance

Dave Friedrichsen, Daryl Kanthak, Krista Kroon, Cayla Hamm, Amy Mollberg, Karen Berning, Janet Slieter and Lois Mulder



Loosbrock Electrical Construction, LLC

Licensed • Bonded • Insured  
Residential • Commercial • Industrial • Agriculture

Scott Loosbrock  
Owner

507-360-5418 • [scott@loosbrockelectrical.com](mailto:scott@loosbrockelectrical.com)  
[www.loosbrockelectrical.com](http://www.loosbrockelectrical.com)

Call us for all your residential, commercial and farm wiring needs!

McClure Electric

Luverne, MN 507-283-4716

Alan M. Aanenson, owner



Rock County EYE CLINIC

Dr. Sandra Carman

507-283-2345

102 N. Freeman Ave., Luverne, Minnesota



FRANKEN CONSTRUCTION

Travis Franken, Lic #20627458 & Insured  
1332 181st St., Luverne  
507-920-8253

REMODELING • NEW ADDITIONS • SIDING  
DECKING • WINDOW/DOOR REPLACEMENT  
GARAGE DOORS • CONCRETE  
Call today for a FREE ESTIMATE.  
NO JOB IS TOO SMALL!!!

New Construction - Home Additions - Interior & Exterior Home Remodeling - Windows - Siding - Drywall - Foundation Work & Walls - Sidewalks & Driveways

30 Years Experience

Oehlerts & Son Construction

Kevin Oehlerts, Luverne,  
[www.OehlertsAndSonConstruction.com](http://www.OehlertsAndSonConstruction.com)  
507-673-2206

Den Herder Construction, Inc.

Jim Den Herder Cal Den Herder  
P.O. Box 522, Luverne, MN 56156-0522

Phone 507-920-8917

License Number 1656

# the classifieds

To place a classified ad in the Luverne Announcer, call 283-2333, stop by our office at 117 W. Main, Luverne, or visit [www.star-herald.com](http://www.star-herald.com).

**EMPLOYMENT      EMPLOYMENT      EMPLOYMENT      EMPLOYMENT      EMPLOYMENT      EMPLOYMENT**

**CALL TODAY!**

Call **RICK** or **CHANTEL** to advertise in the **Star Herald** **283-2333**

**CALL TODAY!**

**HELP WANTED**

Age 55+ workers needed for **part-time custodial work** at the Adrian and Beaver Creek rest areas and Blue Mound State Park

Contact **Green View** **651-639-1913**

**HILLS-BEAVER CREEK PUBLIC SCHOOLS**

Hills-Beaver Creek School District  
301 N. Summit Avenue – PO Box 547  
Hills, Minnesota 56138  
Website: [www.hbc Patriots.com](http://www.hbc Patriots.com)  
Email: [t.holthaus@isd671.net](mailto:t.holthaus@isd671.net)  
Telephone: (507)-962-3240 ext. 13

**PARAPROFESSIONAL 2017-2018 SCHOOL YEAR**

- **Position:** District paraprofessional
- **Hours:** 8:00 a.m. – 2:30 p.m.
- **Qualifications:** Candidate must have a two-year degree or 60 hours of college credits or be willing to fulfill the required competencies for eligibility.
- **Description:** Person will work directly with students to meet individual needs. Generally, will work with a small number of students in the classroom setting. A portion of the day will be at the elementary school and another portion of the day will be at the secondary school.
- **Application Deadline:** Position open until filled.
- **Starting Date:** September 18, 2017
- **Contact:** For more details contact Mr. Todd Holthaus at the secondary school office. [t.holthaus@isd671.net](mailto:t.holthaus@isd671.net), 507-962-3240 ext. 13 or Mr. Jason Phelps at the elementary office. [j.phelps@isd671.net](mailto:j.phelps@isd671.net), 507-673-2541 ext. 11

- An Equal Opportunity Employer -

September 13, 2017

**CHS - Luverne, Magnolia, Kanaranzi, Jasper, MN**

is seeking seasonal fall help in the grain department. Call 283-4418 and ask for Gary in Luverne or call 507-348-3911 in Jasper. We are an EOE Employer.



**Sanford Luverne Medical Center** is currently accepting applications for FT (Full-Time), PT (Part-Time) and PRN (Part-Time as Needed) positions:

CERTIFIED MEDICATION ASSISTANT – PT, PRN  
HOME HEALTH AIDE – PT, PRN  
HOUSEKEEPING – PT  
LEAD ENVIRONMENTAL SERVICE TECHNICIAN – FT  
LICENSED ALCOHOL AND DRUG COUNSELOR – PT  
LPN, HOSPICE – PRN  
RN, INPATIENT – PT  
PATIENT ACCESS REPRESENTATIVE – FT  
PATIENT CARE TECHNICIAN – FT, PT  
PARAMEDIC – FT

To apply, visit [sanfordhealth.jobs](http://sanfordhealth.jobs) search "Luverne" in the location search bar.



Sanford Luverne Medical Center | 877-243-1372

**POSITION AVAILABLE:**

The Rock County Farm Service Agency (FSA) has a Full-time Permanent Program Technician (CO-1101, Grade 04-07) position open. Annual salary (\$29,356.00 to \$52,893.00) and entrance grade will depend upon qualifications. This position is located at the Rock County FSA Office, 500 W Gabrielson Road, Luverne, MN. Applicants must be a U.S. Citizen or U.S. National, be a high school graduate or equivalent and be 18 years of age or 17 years of age for high school graduates.

Apply online at <http://www.usajobs.gov> – Job Announcement (MN-2017-0024) beginning on Wednesday, September 13, 2017. The entire announcement and all instructions can be found online. The application and all documents (including the required Knowledge, Skills and Abilities Statement) must be electronically submitted by 11:59 p.m. Eastern Time (ET) on Tuesday, September 26, 2017. If assistance is needed to apply, and/or if applying online poses a hardship and an alternative method is required, please contact 979-680-5161 during business hours (8:00 a.m. - 4:00 p.m., Monday - Friday) well before the closing date. For other questions, please contact the Rock County FSA Office at 507-283-2369, ext. 2. FSA is an Equal Employment Opportunity Employer.

**PIPESTONE TRANSPORT HAS AN OPENING FOR Full-Time DRIVER**

Responsibilities would include:

- Baby pig delivery
- Semi and/or Gooseneck Loads Available
- Livestock hauling experience not required
- No Weekends
- Home Daily

CDL Required with Air Brake endorsement

Apply today – flexible work schedules and Very Competitive Pay!

Pipestone Transport offers an excellent compensation & benefit package:

- HEALTH & DENTAL COVERAGE
- Competitive Wages - based on position and experience
- 401k Retirement Plan
- Life and Long Term Disability Insurance
- Paid Holidays and PTO Scholarship Programs
- Flex Plan



**PIPESTONE** TRANSPORT

[WWW.PIPESTONESYSTEM.COM](http://WWW.PIPESTONESYSTEM.COM)

Apply online at [www.pipestonesystem.com](http://www.pipestonesystem.com) or email [hr@pipestone.com](mailto:hr@pipestone.com) or call Human Resources at 507-825-2532 to explore your future with us.

Pre-employment drug testing and background screening required.

**help wanted**

The Southwest Minnesota Creating Entrepreneurial Opportunities (CEO) Board of Directors is seeking a creative and innovative facilitator. The facilitator will create a learning environment where students are encouraged to explore and discover entrepreneurial thinking and experiential learning in business settings.

The CEO facilitator position is a part-time position leading students from multiple communities in Southwest Minnesota. The School Districts involved include, Adrian, Pipestone, Edgerton, Hills-Beaver Creek, Southwest Christian, Ellsworth, and Luverne.

The CEO Board of Directors is seeking an interested candidate with a Bachelor's Degree (education degree preferred, but not required) and must possess a passion for students and must be able to connect with people and the business community of Southwest Minnesota. Interested candidates should send a resume, a transcript, and three (3) letters of reference to:

Craig Oftedahl, Superintendent  
Luverne Public School  
709 N. Kniss Avenue  
Luverne, MN 56156  
For further information, please contact Mr. Craig Oftedahl at 507-283-8088. Applications accepted through September 29, 2017.

**Join our team!**

**WE HAVE AN OPENING FOR A OVER THE ROAD TRANSPORT OPERATOR IN THE PIPESTONE, MN AREA**

**Objective:** Ensure timely and bio secure delivery of product(s) to target destination(s). Secondary assist Warehouse team with order fulfillment.

**Essential Functions**

- The ability to drive tractor/trailer to deliver product
- Understanding & adherence to Bio-Security rules & requirements
- 2/3 overnights a week • Home every weekend
- Effective communicator, team player, trustworthy and the ability to work independently

**Position Specifications**

- **Education:** High School Diploma / GED preferred not required
  - CDL required
  - Hazmat endorsement or able to obtain soon after hiring
- **Experience:** Truck driving experience preferred

**PIPESTONE** VETERINARY SERVICES

**We offer an excellent compensation & benefit package:**

- HEALTH, DENTAL & VISION COVERAGE
- Competitive Wages - based on position & experience
- 401k
- Life, Long & Short Term Disability Insurance
- Paid Holidays
- PTO
- Scholarship Programs
- Production Bonus
- Pork Program
- Flex Plan

**If you or someone you know is interested in these opportunities, apply today online at [www.pipestonesystem.com](http://www.pipestonesystem.com) or call Human Resources at 507.825.2532**

Pre-employment drug testing & background screening required

**PART-TIME LIQUOR CLERK**

The City of Luverne is seeking applicants for the position of a part-time Liquor Clerk for night and weekend hours. Desirable qualifications: experience in retail sales. Salary will be based on experience and qualifications. Position is open until filled. First review date is September 29, 2017 at 4:00 p.m. Application packets are available online at [www.cityofluverne.org](http://www.cityofluverne.org) or from City Clerk Jessica Mead at City Offices, 305 E. Luverne Street, PO Box 659, Luverne, MN 56156 (507) 449-9898. EOE.



**MAKE THE WISE CHOICE!**



**RECYCLE THIS NEWSPAPER!**

**HELP WANTED Sales Associate**

DeBoer Chevrolet is growing and we are looking for a Sales Associate to join our team. Competitive compensation along with performance bonuses, 401K, healthcare assistance, paid training.

Contact **Stewart Kreun** at **507-442-4341 ext. 15**



**www.deboerchev.com**  
507-442-4341 or 1-800-658-2395  
Wed. Nights til 8 p.m. & Sat. 8-12 Open Mon-Fri 8-5  
930 S Main St. Edgerton, MN 56128

**HELP WANTED Full Time Service Tech**

DeBoer Chevrolet is growing and we are looking for a full time Service Tech to join our team. Competitive compensation, benefits.

Contact **Stewart Kreun or Brian Jonas** at **507-442-4341**



**www.deboerchev.com**  
507-442-4341 or 1-800-658-2395  
Wed. Nights til 8 p.m. & Sat. 8-12 Open Mon-Fri 8-5  
930 S Main St. Edgerton, MN 56128

**"To you, it's the perfect lift chair. To me, it's the best sleep chair I've ever had."** — J. Fitzgerald, VA

It's a "Sleep Chair" – for a comfortable and relaxing night's sleep

It's a "Chair" – for crafting, eating, visiting with friends and family

It's a "Sit Back Chair" – for reading, watching TV and resting

**The Perfect Sleep Chair®**  
**1-888-297-8047**  
Please mention code 105087.

**NEED EXTRA CASH?**

Luverne Announcer Carriers needed for **LUVERNE**

Call **283-2333** or stop in at the Announcer office

**Help Wanted**

Looking to hire Full-Time Equipment Installers. Willing to train. 7:30-5:00 Monday - Thursday 7:30-4:30 Friday

Benefits, competitive wages. Training provided, willingness to learn. Contact **brad@skattums.com** Luverne, MN



**SKATTUM'S CONFINEMENT SYSTEMS and SUPERIOR BUILDINGS, LLC**

MORE HD CHANNELS, FASTER INTERNET AND UNLIMITED VOICE.

**\$29.99**

**\$89.97**

**855-652-9304**



# the classifieds

To place a classified ad in the Luverne Announcer, call 283-2333, stop by our office at 117 W. Main, Luverne, or visit [www.star-herald.com](http://www.star-herald.com).

## EMPLOYMENT

New Life Treatment Center, Woodstock, MN, a faith-based non-profit sincerely dedicated to our clients, delivers quality care to clients who are chemically dependent. Great working environment. Competitive wages, great benefits, paid time off. EOE Call 507-777-4321 ext. 203 to apply. Positions available: Full/Part Time LPN or RN - Must be licensed in MN. Limited physical demands. Must be available to work all shifts, hiring for primarily nights. Full/Part Time client care tech, TMA preferred but not required. (9.17-10.5)

Full-Time Help Wanted in our growing Meat Department. No experience necessary, paid overtime, insurance is available and also other benefits. Contact Chad or Julie at V&M Locker, Leota, MN 507-443-5372 or 507-227-3862. (9.14-10.1)

Earn Extra Cash At A Rewarding Volunteer Position in Luverne & Surrounding area: Become a Senior Companion by making friendly visits to older adults in need. Senior Companions must be 55 years of age or older; flexible service of 15 hours or more a week earns a small tax free hourly stipend, plus receive mileage reimbursement and other benefits. 507.530.2295 for more information. (9.10-9.21)

Dietary Aide: Parkview Manor is looking for part-time Dietary Aides! Benefits include vacation, PERA retirement plan, and holiday pay. Training is available on-site. Wages are based on experience level. If interested, contact Sam or Arlys at 507-967-2482, or come visit us to pick up an application! (tc)

Cook: Parkview Manor is looking for a part-time cook! Benefits include vacation, PERA retirement plan, and holiday pay. Training is available on-site. Wages are based on experience level. If interested, contact Sam or Arlys at 507-967-2482, or come visit us to pick up an application! (tc)

RN/LPN: Parkview Manor is looking for a part-time RN/LPN to fill in as needed! Benefits include vacation, PERA retirement plan, and holiday pay. Wages are based on experience. If interested, contact Darnell Krull at 507-967-2388. (tc)

CNA: Parkview Manor is looking for CNAs! Benefits include health insurance, PERA retirement plan, vacation and sick time, holiday pay, and a \$2,000 scholarship available for students! We will provide training or pay for experience. Wages are based on experience level. If interested, contact Darnell Krull at (507) 967-2388 or Sam Quam at (507) 967-2482. (tc)

New Prairie Insulation of Beaver Creek has a full-time Insulation Installer position available. Monday through Friday, health insurance, vacation, holiday, bonus opportunities. Will train. Call Dean at 605-376-3006 or 507-673-2548. (tc)

## CARDS OF THANKS

THANK YOU for the lovely and thoughtful cards and greetings acknowledging our 50th anniversary. God bless you.  
**Fred & Carol Cook**  
(9.17-9.21)

We want to thank everyone who made our 60th wedding anniversary so wonderful.  
**Del & Eileen Domagala**  
(9.17-9.21)

I want to thank everyone for the birthday cards and phone greetings for my 103rd birthday.  
**Dallas Bowron**  
(9.17-9.21)

## AGRICULTURAL

WE HAVE SEVERAL CREWS OF BEAN WALKERS. We also pick rock, put up and take down fences. We will do any type of farm work. Call 712-943-2084, 712-251-3277 or 712-899-5219. (4.27-9.20)

## WINDOWS

We custom build and install Energy Star Therm-O-Loc Windows. Call Mike at Adrian Glass for a free in-home demonstration and estimate. 101 E. Pearl, Adrian, MN 56110. 507-483-2228 or 605-770-7677 or email [mbyler@santel.net](mailto:mbyler@santel.net). (tc)

## FOR SALE

For Sale: Landscaping rock 1 1/2 or 3/4 inch, gravel, dirt. Also do tree stump grinding. Phone 507-227-4521. Wayne Bieber. (9.3-9.21)

For Sale: 1997 Terry 27 ft. Fifth Wheel Camper. In great shape. \$6,000 or best offer. Please call 283-2460 Marinus Cross. (8.31-9.17)

## GARAGE SALES

ELLSWORTH RUMMAGE SALES Thursday 9/21 Friday 9/22 Saturday 9/23 Many Homes with several families. Treasurers for everyone. Join us. Complete list at Ellsworth Food Center (9.17-9.21)

## MISCELLANEOUS

HAVE A UNIQUE SERVICE OR BUSINESS? Get the word out to over 1.4 million households. Call WIDE AREA CLASSIFIEDS today, 507-359-7326. (tc)

## RENTALS

1 and 2 bedroom apartment. Stove and refrigerator furnished. No smokers and no pets. 507-283-4095 or 507-290-1948. (tc)

## Oakwood Apartments

401 Oak St., Ellsworth

• 1 Bedroom Unit Available

Unit Available  
Water, Sewer & Garbage Included.  
Rent Based on Income

AVAILABLE IMMEDIATELY

Van Binsbergen & Associates, Inc.  
320-269-6640 ext. 22  
Equal Housing Opportunity

[www.vanblc.com](http://www.vanblc.com)



Hear it first at [www.star-herald.com](http://www.star-herald.com)

## SERVICES

**ELECTROLUX**  
Central Vacuums • Upright Vacuums  
Canister Vacuums  
Sales - Service - Supplies  
**ELAINE BOLT**  
507-442-7721 Edgerton, MN

**Tree Tech Inc.**  
Luverne, MN  
507-283-8552  
507-920-6424 cell  
tree removal  
tree trimming  
stump grinding  
tree moving

**DD Backhoe Service**  
**Doug Dooyema**  
Hydrants, waterline repairs, tile line repairs, small tile jobs, and hole digging  
Call 507-283-8357 or Cell 507-220-8218

CALL  
**RICK or CHANTEL**  
TO ADVERTISE IN THE ANNOUNCER!  
**283-2333**

## The Star Herald Nose

[www.star-herald.com](http://www.star-herald.com)

## CADNET NATIONAL ADVERTISING NETWORK ifpa

**AUTOS WANTED**  
CARS/TRUCKS WANTED!!! ALL MAKES/ MODELS 2000-2016! ANY CONDITION. RUNNING OR NOT. TOP \$\$\$ PAID! FREE TOWING! WE'RE NATIONWIDE! CALL NOW: 1-888-985-1806

GOT AN OLDER CAR, VAN OR SUV? DO THE HUMANE THING. DONATE IT TO THE HUMANE SOCIETY. CALL 1-855-558-3509

**EMPLOYMENT**  
MAKE \$1,000 WEEKLY! PAID IN ADVANCE! MAILING BROCHURES AT HOME. EASY PLEASANT WORK. BEGIN IMMEDIATELY. AGE UNIMPORTANT. WWW.HOMEBUCKS.US \$\$\$\$\$ \$1,000'S WEEKLY! PROCESSING MAIL! SEND SASE: LISTS/CAD, SPRINGHOUSE, PA 19477-0396

**MISCELLANEOUS**  
ATTENTION VIAGRA USERS: GENERIC 100 MG BLUE PILLS OR GENERIC 20 MG YELLOW PILLS. GET 45 PLUS 5 FREE \$99 + S/H. GUARANTEED, NO PRESCRIPTION NECESSARY. CALL 844-848-7463

BECOME A PUBLISHED AUTHOR! PUBLICATIONS SOLD AT ALL MAJOR SECULAR & SPECIALTY CHRISTIAN BOOKSTORES. CALL CHRISTIAN FAITH PUBLISHING FOR YOUR FREE AUTHOR SUBMISSION KIT. 1-855-548-5979

HUGHESNET: GEN4 SATELLITE INTERNET IS ULTRA FAST AND SECURE. PLANS AS LOW AS \$39.99 IN SELECT AREAS. CALL 1-855-440-4911 NOW TO GET A \$50 GIFT CARD!

SOCIAL SECURITY DISABILITY? UP TO \$2,671/MO. (BASED ON PAID-IN AMOUNT). FREE EVALUATION! CALL BILL GORDON & ASSOCIATES. 1-855-498-6323. MAIL: 2420 N ST NW, WASHINGTON DC. OFFICE: BROWARD CO. FL., MEMBER TX/NM BAR.

A PLACE FOR MOM. THE NATION'S LARGEST SENIOR LIVING REFERRAL SERVICE. CONTACT OUR TRUSTED, LOCAL EXPERTS TODAY! OUR SERVICE IS FREE/NO OBLIGATION. CALL 1-844-722-7993

MAKE A CONNECTION. REAL PEOPLE. FLIRTY CHAT. MEET SINGLES RIGHT NOW! CALL LIVELINKS. TRY IT FREE. CALL NOW: 1-888-909-9905 18+.

PRESCRIPTION MEDICATIONS FOR UP TO 85% OFF RETAIL PRICES! STOP PAYING

SO MUCH! \$15 OFF FOR FIRST TIME CUSTOMERS. FREE SHIPPING. PRICE MATCH GUARANTEE. CALL FOR FREE QUOTE: 1-877-627-7239 OR VISIT [MAILMEDSPUS.NET/ DISCOUNT](http://MAILMEDSPUS.NET/ DISCOUNT)

LIFELOCK IDENTITY THEFT PROTECTION. DO NOT WAIT! START GUARDING YOUR IDENTITY TODAY. 3 LAYERS OF PROTECTION. DETECT, ALERT, RESTORE. RECEIVE 10% OFF. CALL FOR DETAILS 1-855-399-2089

LUNG CANCER? AND AGE 60+? YOU AND YOUR FAMILY MAY BE ENTITLED TO SIGNIFICANT CASH AWARD. CALL 866-428-1639 FOR INFORMATION. NO RISK. NO MONEY OUT OF POCKET.

**WANTED TO BUY**  
WANTS TO PURCHASE MINERALS AND OTHER OIL AND GAS INTERESTS. SEND DETAILS TO P.O. BOX 13557 DENVER, CO. 80201

CASH PAID- UP TO \$25/BOX FOR UNEXPIRED, SEALED DIABETIC TEST STRIPS. 1-DAYPAYMENT. 1-800-371-1136

ADVERTISE TO 10 MILLION HOMES ACROSS THE USA! PLACE YOUR AD IN

OVER 140 COMMUNITY NEWSPAPERS, WITH CIRCULATION TOTALING OVER 10 MILLION HOMES. CONTACT INDEPENDENT FREE PAPERS OF AMERICA IFPA AT [DANIELLEBURNETT-IFPA@LIVE.COM](mailto:DANIELLEBURNETT-IFPA@LIVE.COM) OR VISIT OUR WEBSITE [CADNETADS.COM](http://CADNETADS.COM) FOR MORE INFORMATION [NETADS.COM](http://NETADS.COM) FOR MORE INFORMATION

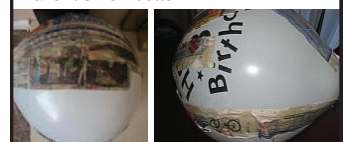
READER ADVISORY: THE NATIONAL TRADE ASSOCIATION WE BELONG TO HAS PURCHASED THE ABOVE CLASSIFIEDS. DETERMINING THE VALUE OF THEIR SERVICE OR PRODUCT IS ADVISED BY THIS PUBLICATION. IN ORDER TO AVOID MISUNDERSTANDINGS, SOME ADVERTISERS DO NOT OFFER EMPLOYMENT BUT RATHER SUPPLY THE READERS WITH MANUALS, DIRECTORIES AND OTHER MATERIALS DESIGNED TO HELP THEIR CLIENTS ESTABLISH MAIL ORDER SELLING AND OTHER BUSINESSES AT HOME. UNDER NO CIRCUMSTANCE SHOULD YOU SEND ANY MONEY IN ADVANCE OR GIVE THE CLIENT YOUR CHECKING, LICENSE ID, OR CREDIT CARD NUMBERS. ALSO BEWARE OF ADS THAT CLAIM TO GUARANTEE LOANS REGARDLESS OF CREDIT AND NOTE THAT IF A CREDIT REPAIR COMPANY DOES BUSINESS ONLY OVER THE PHONE IT IS ILLEGAL TO REQUEST ANY MONEY BEFORE DELIVERING ITS SERVICE. ALL FUNDS ARE BASED IN US DOLLARS. TOLL FREE NUMBERS MAY OR MAY NOT REACH CANADA.

**CREATIVE recycling**

## Paper Mache

Cut the paper 3" x 3" or them in strips

**Make the paste.** Take one part flour to two parts water. Mix the flour and water together until you have a consistency that is a bit runny. Mix well to get out all of the lumps. Add a few tablespoons of salt to help prevent mould. You may consider adding a little bit of cinnamon to your paste to make it smell better.



Dip the paper into the prepared paste. Place the paper over the paste bowl and squeeze out the excess paste. Stick the paper square over the form you want and smooth it over with your fingers. Cover the form you wish to use in at least 2 layers of paper.

Let the form dry completely. Anywhere between 12-24 hours for it to dry completely.



Decorate and you are finished. Make pinatas, masks, decorations, ornaments, etc..

## Midwest Free Community Papers Midwest Classifieds

Call 507-825-3333 or 800-325-6440 to place your Minnesota Free Community Paper classified ad.

**AUTOMOBILES/MOTORCYCLES WANTED**  
MOTORCYCLES: TOP CASH PAID! For Old Motorcycles! 1900-1979. DEAD OR ALIVE! 920-371-0494 (MCN)

**ADOPTION**  
PREGNANT? CONSIDERING ADOPTION? Call us first. Living expenses, housing, medical, and continued support afterwards. Choose adoptive family of your choice. Call 24/7. 855-390-6047 (Void in IL & IN) (MCN)

**ANNOUNCEMENTS**  
GILBERT'S SALE YARD REC & GUN CONSIGNMENT SALE, OCT. 14, 9:00 A.M. Need gun permits to buy before sale. Advertising deadline is Sept. 29. 641-398-2218, Hwy, 218, Floyd, IA, [www.gilbertsaleyard.com](http://www.gilbertsaleyard.com) (MCN)

**AUTOMOBILES**  
DONATE YOUR CAR TO CHARITY. Receive maximum value of write off for your taxes. Running or not! All conditions accepted. Free pickup. Call for details. 855-752-6680 (MCN)

DONATE YOUR CAR, TRUCK OR BOAT TO HERITAGE FOR THE BLIND. Free 3 Day Vacation, Tax Deductible, Free Towing, All Paperwork Taken Care Of. 1-800-283-0205 (MCN)

CASH FOR CARS: We Buy Any Condition Vehicle, 2002 and Newer. Competitive Offer! Nationwide FREE Pick Up! Call Now For a Free Quote! 888-366-5659! (MCN)

**CABLE/INTERNET**  
Spectrum Triple Play: TV, Internet & Voice for \$29.99 ea. 60 MB per second speed. No contract or commitment. We buy your existing contract up to \$500! 1-800-919-3588 (MCN)

Exede satellite internet. Affordable, high speed broadband satellite internet anywhere in the U.S. Order now and save \$100. Plans start at \$39.99/month. Call 1-800-712-9365 (MCN)

Cut the Cable! CALL DIRECTV. Bundle & Save! Over 145 Channels PLUS Genie HD-DVR. \$50/month for 2 Years (with AT&T Wireless). Call for Other Great Offers! Call 1-800-203-4378 (MCN)

SWITCH TO DIRECTV. From \$50/Month, includes FREE Genie HD/DVR # 3 months HBO, SHOWTIME, CINEMAX, STARZ. Get a \$50 Gift Card. Call 877-894-5275 (MCN)

Change the way you watch TV- Get rid of cable and get DIRECTV! You may also qualify to receive \$100 VISA gift card when you sign up today - Limited time Only. CALL NOW! 844-359-1203 (MCN)

Stop paying too much for cable, and get DISH today. Call 855-589-1962 to learn more about our special offers! (MCN)

DISH NETWORK. TV for Less, Not Less TV! FREE DVR. FREE Install (up to 6 rooms.) \$49.99/mo. PLUS Hi-Speed Internet - \$14.95/mo (where available). Call 1-855-434-0020 (MCN)

"DIRECTV-\$50/month, 4 receivers, 3 months of HBO/Showtime/Cinemax & Starz free. \*AT&T wireless customers eligible for \$25/month bill credits. \*Free NFL Sunday Ticket on select packages. 800-966-2429" (MCN)

SAVE on internet and TV bundles! Order the best exclusive cable and satellite deals in your area! If eligible, get up to \$300 in Visa Gift Cards. CALL NOW! 1-800-925-0146 (MCN)

**EMPLOYMENT/HELP WANTED**  
TRUCK DRIVER NEEDED for growing company. Good pay and benefits. Driver friendly. Great equipment. No touch freight. Experience with Class A license required. North Central Regional. Call 800-533-0564 ext.205 [www.MCFGTL.com](http://www.MCFGTL.com) (MCN)

> MAKE \$1,000 WEEKLY! Paid in advance! Mailing Brochures at Home! Easy pleasant work. Begin Immediately! Age unimportant! WWW.HomeBucks.US ##### Earn \$1,000's Processing Mail Details: Rush SASE: LISTS/IA, Springhouse, PA 19477-0396 \*\*\*\*\*\$1,000'S Weekly! Mailing Postcards! [www.cardmoney123.com](http://www.cardmoney123.com) (MCN)

PAID IN ADVANCE! Make \$1000 A Week Mailing Brochures From Home! No Experience Required. Helping home workers since 2001! Genuine Opportunity. Start Immediately! [www.MailingBucks.com](http://www.MailingBucks.com) (MCN)

**FINANCIAL**  
Do You Owe The IRS \$10K or more? You May qualify for Relief today! Espanol Available, Free consultation. Not Valid in MN, ND, M-T 8-8pm, F-8-6pm, Sat 9-5pm CST Call NOW 1-800-511-2181 (MCN)

Are you in BIG trouble with the IRS? Stop wage & bank levies, liens & audits, unfiled tax returns, payroll issues, & resolve tax debt FAST. Call 888-606-6673 (MCN)

STUDENT LOAN PAYMENTS got you down? We can help reduce payments and get finances under control, call: 866-871-1626 (MCN)

Reduce your total credit card payments by up to 30% to 50%! Call Consolidated Credit NOW! 844-764-1891 (MCN)

Buying a home and need a mortgage? Or, have a home and want to lower your monthly fees and refinance? Getting a mortgage is quicker and easier than ever. Call now! 855-715-4721 (MCN)

**FOR SALE**  
Trailer Sale! New 6'X12' V-nose, rampdoor cargo

\$2,775.00: New 7'X16' V-nose rampdoor cargo \$4,399.00: DUMP trailers \$2,989.0 and up!, 2-Place enclosed snowmobile trailers; 4-place open snowmobile trailers; Scissor lift tilt beds; Horse & livestock trailers coming soon! 515-972-4554 [www.FortDodgeTrailerWorld.com](http://www.FortDodgeTrailerWorld.com) (MCN)

**HEALTH & MEDICAL**  
LIVING WITH KNEE OR BACK PAIN? Medicare recipients may qualify to receive a pain relieving brace at little or no cost. Call now! 844-668-4578 (MCN)

STOP OVERPAYING for your prescriptions! SAVE! Call our licensed Canadian and International pharmacy, compare prices and get \$25.00 OFF your first prescription! CALL 888-438-6461 Promo Code CDC201625 (MCN)

OXYGEN - Anytime. Anywhere. No tanks to refill. No deliveries. The All-New Inogen One G4 is only 2.8 pounds! FAA approved! FREE info kit: 844-852-7448 (MCN)

Got Knee Pain? Back Pain? Shoulder Pain? Get a pain-relieving brace at little or NO cost to you. Medicare Patients Call Health Hotline Now! 1- 800-604-2613 (MCN)

ATTENTION: VIAGRA AND CIALIS USERS! A cheaper alternative to high drugstore prices! 50 PILL Special - \$99 FREE Shipping! 100 Percent Guaranteed. CALL NOW: 1-800-795-9687 (MCN)

OXYGEN - Anytime. Anywhere. No tanks to refill. No deliveries. The All-New Inogen One G4 is only 2.8 pounds! FAA approved! FREE info kit: 855-995-5653 (MCN)

WE SHOP, YOU SAVE on Medicare Supplement Insurance! Call 855-399-8023 today to compare Medicare benefits and costs from up to 20 top-rated carriers. Receive the best option for you. (MCN)

CASH PAID for unexpired, sealed DIABETIC TEST STRIPS! 1 DAY PAYMENT & PREPAID Shipping. HIGHEST PRICES! Call 1-888-389-0695. [www.cash4diabeticsupplies.com](http://www.cash4diabeticsupplies.com) (MCN)

**HOME IMPROVEMENT**  
ALL THINGS BASEMENT!! Basement Systems Inc. Call us for all of your basement needs! Waterproofing, Finishing, Structural Repairs, Humidity and Mold Control. FREE ESTIMATES! Call 1-800-640-8195 (MCN)

Save money with solar! Custom Designed Systems, Free Maintenance, Free Quote & Design. No Out of Pocket Costs. Call now! 866-944-4754 (MCN)

SAVE THOUSANDS ON SURPRISE COSTLY HOME REPAIRS!! With Nations Home Warranty we pay 100% of covered Home repairs! CALL FOR A FREE QUOTE TODAY!! 888-925-8106 (MCN)

Water Damage in your Home? Call 1-855-402-0070 Now for a Free Estimate and we will be immediately Connected to a Professional Near You. 1-855-402-0070 (MCN)

Get the perfect yard without lifting a finger! Everything you need from lawn care, soil analysis, weed control, pest control, and more! Call Now 855-675-5704 (MCN)

Leaky Faucet? Broken toilet? Call NOW and get the best deals with your local plumbers. No hassle appointment setup. Call NOW! 866-865-1875 (MCN)

Got Mold- or think you might have it? Mold can be hazardous to you and your family's health! Get rid of it now! Call our experts and get a quote today! 855-398-7133 (MCN)

**LEGAL**  
Diagnosed with Mesothelioma or Asbestos Lung Cancer? If so, you and your family may be entitled to a substantial financial award. We can help you get cash quickly! Call 24/7: 866-924-0504 (MCN)

**MISCELLANEOUS**  
A PLACE FOR MOM. The nation's largest senior living referral service. Contact our trusted, local experts today! Our service is FREE/ no obligation. CALL 1-800-442-5148 (MCN)

Lower that Cell Phone Bill. Get 2 lines of unlimited data for \$100/mo. with AutoPay-taxes & fees included. Video Streaming & Mobile Hotspot included. Limited offer/Restrictions Apply. Call Today and Save. 855-549-9399 (MCN)

Paying too much for car insurance? Not sure? Want better coverage? Call now for a free quote and learn more today! 855-417-7382 (MCN)

Moving out of state? Best Interstate Moving and Storage offers a FREE Quote and A Price Plus Promise. Call 855-428-6241 Now! (MCN)

NEW AUTHORS WANTED! Page Publishing will help you self-publish your own book. FREE author submission kit! Limited offer. Why wait? Call now: 855-623-8796 (MCN)

**PERSONALS**  
MEET SINGLES RIGHT NOW! No paid operators, just real people like you. Browse greetings, exchange messages and connect live. Try it free. Call now: 800-357-4970 (MCN)

Wanna flirt and have some fun? Livelinks in the best chatline for meeting real singles who know how to have a good time! Call Livelinks and make a real connection. 866-910-1044 (MCN)

**WANT TO BUY**  
Want to purchase minerals and other oil/gas interests. Send details to: P.O. Box 13557, Denver CO 80201 (MCN)

Interested in Advertising?  
Call Rick or Chantel to advertise in the Announcer  
**283-2333**

# Dining & Entertainment

*Hey Girlfriend! Come join our women's brunch*

**"GOD, GIRLFRIENDS & CHOCOLATE"**  
 Saturday, September 23 • 9 am - 12 pm  
 Celebration United Methodist Church  
 500 Pasque Flower Tr, Brandon, SD

All proceeds to benefit missions in Haiti

Keynote speaker:  
**Gaye Lindfors**

Tickets at door \$35.00

- Bring a canned good item for the Brandon Area Food Pantry
- Pamper yourself with shopping at our vendor booths
- Door prizes every 15 minutes!
- Raffle tickets available for "Pamper Yourself" basket

FOR TICKETS: Call Julie Johnson 605-366-1363 or the church office 605-582-7995

**Public Supper**  
 WEDNESDAY  
**September 20**  
 4:30 - 7 p.m.  
**Bethany Lutheran Church**  
 Elevator Available  
 Hwy 75 Luverne

- Cube beef & gravy
- Mashed potatoes
- Candied carrots • Salads & rolls • Desserts & drinks

**\$8 Adults \$3 12 & under**  
 Supported by Thrivent Financial #30614

**St John Lutheran Church**  
 1892 - 2017  
 ON CHRIST PRESENTS

**CHORD-AYRES** FREE  
**SUNDAY, SEPTEMBER 24 | 2 P.M.**  
 The Palace Theatre, Luverne

in celebration of ST. JOHN LUTHERAN CHURCH'S 125TH ANNIVERSARY  
 A free-will donation will be collected for the Rock County Food Shelf

**MEGAN LEAVEY** THURSDAY, SEPT. 21 **PALACE THEATRE**

**"Megan Leavey"**  
 2PM  
*Afternoon Escape*  
 Admission is \$5

Cordially invites you to an exclusive event  
**Tuesday, September 26**  
 6 pm - 8 pm

Treat yourself to a presentation about Uniworld Boutique River Cruise Collection - the only boutique, luxury river cruise line on the water. Appetizers will be provided on behalf of All About Travel & the Uniworld Boutique River Cruise Collection.

**UNIWORLD**  
 BOUTIQUE RIVER CRUISE COLLECTION

Please RSVP to hold your spot!  
 Call us at - 605-339-8911  
 Email us at - [aat@allabouttravel.org](mailto:aat@allabouttravel.org)  
 Sign up on our website: [www.allabouttravel.org](http://www.allabouttravel.org)

**ALL ABOUT TRAVEL INC.**  
 10-Year Winner! Layaway & Gift Certificates Available!  
**605-339-8911 • 1-800-390-6610**  
 3801 S. Western Ave., Suite 103, Sioux Falls, SD  
 Open: Mon.-Fri. 8 a.m. - 7 p.m. • Saturday 9 a.m. - 1 p.m.  
[www.AllAboutTravel.org](http://www.AllAboutTravel.org) [www.facebook.com/AllAboutTravelInc](https://www.facebook.com/AllAboutTravelInc)  
 Helping You Find Your Personal Paradise!

Come celebrate with us! **85th Anniversary**

**Open House**

**Herman Ford**  
 LUVERNE, MN Since 1932

**Cruise-in**  
 Refreshments & Grilling

sign up for prizes

**Friday, Sept. 22 | 4-7pm**  
 624 S. KNISS AVE. • LUVERNE • 855-383-4427 • 507-283-4427



## What can a table and your creativity create?

### Tour of Tables Brunch

**Oct. 28, 9 a.m., Grand Prairie Events**

Use your time and talent for a good cause. Set your table's theme and invite your guests to attend. Guests will tour tables, enjoy brunch and participate in a raffle and basket auction.

Sign up for your table or donate a themed gift basket by October 13. A limited number of tickets are available for \$15, with proceeds benefitting Sanford Luverne Hospice.

Call (507) 283-1805 for information.

**SANFORD**  
 Luverne

018019-00123 Rev. 8/17

**Give Where You Live**  
 today, tomorrow & beyond

**LUVERNE AREA COMMUNITY FOUNDATION**

**GRANT APPLICATIONS DUE SEPTEMBER 30, 2017**

Who can apply?  
 Not-for-profit organizations (either singly or as a consortium), government agencies, academic and research institutions located within Rock County are among the organizations eligible to request support from the Luverne Area Community Foundation.

The Luverne Area Community Foundation invites applications that will enhance the quality of life in the following areas:

- Arts & Humanities
- Social & Economic Growth
- Environment
- Education
- Community Health & Wellness including physical & mental health
- Community & Civic Affairs
- Nutrition
- Recreation
- Support Programs - children to senior citizen

How to apply?  
 Apply online at **www.luvacf.org** or contact Emily Crabtree at 507-220-2424 or [emily@luvacf.org](mailto:emily@luvacf.org) or stop at office 102 E. Main St. Luverne

**LUVERNE AREA COMMUNITY FOUNDATION**  
 P.O. Box 623 | Luverne, Minnesota | 507-220-2424  
 Allow us to help you establish your legacy.  
**www.luvacf.org**

**recycle.**  
**reduce.**  
**reuse.**

# FALL INTO SAVINGS

## PAPIK MOTORS

**ASK ADVISOR HOW TO SAVE \$100 MORE ON SET OF TIRES!**

**AT PAPIK MOTORS, THE FALL SPECIALS HAVE JUST BEGUN! OFFERS SUCH AS...**

**PAPIK MOTORS**  
**\$100.00 TIRE REBATE**  
**\$100.00 MAIL-IN REBATE**  
**(DEBIT CARD)**  
**ON A SET OF FOUR SELECT TIRES\***

\*Eligible tire brands: Bridgestone, Continental, Goodyear, Hankook and Pirelli. See dealer for details and rebate form, which must be postmarked by 12/31/2017. Allow 6 to 8 weeks for delivery of debit card. Not valid with other offers. Offer valid through 11/30/2017.

Certified Service

**283-9171 | PAPIK.COM**

## HOCKEY REGISTRATION NIGHT

### 2017-2018 SEASON

Wednesday, Sept. 27  
 5 to 7 p.m.  
 Blue Mound Ice Arena

**BOARD MEMBERS WILL BE AROUND TO ANSWER QUESTIONS ABOUT THE UPCOMING SEASON AND REGISTRATION PROCESS**

**BRING YOUR OWN IPAD OR LAPTOP IF YOU HAVE THEM TO SET UP AN ACCOUNT. REGISTRATION CAN ALSO BE DONE ONLINE ON THE LUVERNE HOCKEY WEBSITE UNDER THE REGISTRATION TAB [HTTP://LUVERNEHOCKEY.ORG](http://LUVERNEHOCKEY.ORG)**

### PRIME FARMLAND FOR SALE BY SEALED BIDS

FSA information is available from the  
**Lynn A. Johnson Law Office, LLC**  
 PO Box 217  
 Slayton, MN 56172  
**P: 507-836-6757 ; email [lynnj1@frontiernet.net](mailto:lynnj1@frontiernet.net)**

**LEGAL DESCRIPTION:** The Northeast Quarter (NE1/4) of Section Twenty-seven (27), Township One-Hundred Four (104), Range Forty-four (44), located in Rock County, Minnesota.

**FARM INFORMATION:** Farmland includes 72.18 tillable acres in W1/2 of the NE1/4, 71.76 tillable acres in the E 1/2 of the NE1/4; 6.75 acres in the pasture and 7.37 acres, more or less, in the building site. CER is 82.08.

**METHOD OF SALE:** Sealed bids, with the privilege of increasing the same, will be received at Lynn A. Johnson Law Office, LLC, either by delivering the bids or by mailing the bids to her office at P. O. Box 217, Slayton, MN 56172 on or before **September 21, 2017, at 10:00 a.m.** At such time, the bids will be opened and all bidders present will be allowed to increase their bid until the successful high bid is reached and approved by the seller.

**TERMS OF SALE:** The successful bidder will be required to enter into a written purchase agreement along with a lender pre-approved letter or a proof of funds letter. A 10% non-refundable earnest money payment will be due immediately after the sale from the successful bidder. Buyer will enter into a purchase agreement immediately after the sale. The balance of the purchase price is due and payable at closing in cash. Closing will be held within sixty (60) days of the sale at the office of Lynn A. Johnson Law Office, LLC. Sellers will provide marketable title to Buyer as evidenced by an Abstract of Title continued and certified to date. 2017 Real Estate Taxes will be paid by the Seller. Possession will be given to buyer on the date of closing. Buyer will be able to prepare the land for 2018 crop once all 2017 crops have been harvested and removed. Seller reserves the right to reject any and all bids. All property is sold "as is-where is" with no warranties or guarantees, expressed or implied, by the owner or it's agents.  
**Lynn A. Johnson, Attorney for the Iris Fodness family.**

The Daily News of Rock County  
[star-herald.com](http://star-herald.com)

# BEAT the BOUG

## GET YOUR FLU SHOT

### FLU SHOTS @ CLINIC

**Thursday, Sept. 28th**  
**8:30AM - 7:00PM**

Flu Vaccines Available:  
 Quadrivalent (4 strains) or High Dose (recommended for persons 65 years and up).

No out-of-pocket expenses with your Medicare Part B coverage; some exclusions may apply. You must provide ALL Medicare cards.

- We are not permitted to vaccinate pregnant women.
- Age limits vary from state to state to receive shot.
- While Quantities Last

**Lewis** family drug  
 LUVERNE  
 507.283.9549