

A Luverne ANNOUNCER

117 West Main St. • Luverne, MN 56156-0837 • Phone 507-283-2333 • Address Service Requested

PRSR STD
U.S. POSTAGE
PAID
Permit No. 22
Page 1 Printers
Postal Customer

VOLUME 87 NUMBER 33

ROCK COUNTY'S FREE CIRCULATION PUBLICATION SINCE 1931

August 13, 2017

Featured Commercial and Ag Listings for the week!

401 W. Hatting, Luverne

This property, formerly known as Blue Mound Banquet Center, offers a great opportunity for many different types of commercial use.



\$349,000

311 Gabrielson St., Luverne

Great investment opportunity for someone that is looking for office space to rent out with a building that has been well maintained. Lots of off street parking handicap access.



\$385,000

920 S. Kniss, Luverne

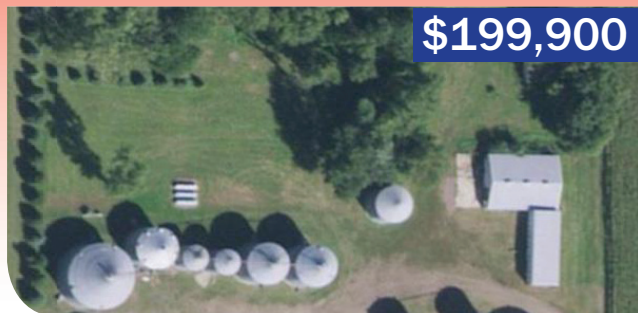
This is a great opportunity to purchase a business that already has a excellent established clientele.



\$379,000

160th Ave. Bin Site, Luverne

Great opportunity for fall storage. This property has 180,000 bushel of storage including 2 dryer Bins Machine shed and several other buildings with plenty of room for expansion. House with heated shop on same location could be purchased separately.



\$199,900

W. Gabrielson Lot, Luverne

Commerical Land



\$45,900



Dave Hup
Broker/Owner
507-920-5910
dave.landandhome@gmail.com

Billy Cowell
Realtor/Owner
605-254-5450
billy.landandhome@gmail.com

RE/MAX Land and Home
507-449-6111

For all our listings visit
LuverneLandandHome.com

117 East Main Street • Luverne, MN
Each Office Independently Owned and Operated

150TH STARS & STRIPES USO SHOW

Experience an authentic USO Show re-enactment!

SATURDAY, AUGUST 26 ★ 7:30 P.M.

SUNDAY MATINEE, AUGUST 27 ★ 2 P.M.

HISTORIC PALACE THEATRE
MAIN STREET ★ LUVERNE

We encourage time period appropriate attire!



WITH SPECIAL PERFORMANCES BY

Marilyn Monroe
(aka Jorie Kosel)

Frank Sinatra
(aka Todd Eckhart)

The Andrew Sisters

Sheila Crowley

Spotlight Dance's "Swing Troop"

★ TICKETS ★
ON SALE NOW

RESERVED SEATS \$20 (STUDENTS 12 & UNDER \$10)
AVAILABLE AT THE PALACE THEATRE BOX OFFICE ★ 507-283-4339

SPONSORED BY K.A.H.R Foundation, Lyon County Riverboat Foundation, Rock County Star Herald & K101/KQAD



Orv & Sons, Inc.
 Plumbing ~ Heating ~ Cooling
 507-967-2464

Office hours: M-F 7:30-noon & 1-5 ~ Sat 7:30-9 a.m.
 *Licensed for pump installation, sewer installation & Backhoe services
 *Roto-roooter, Pipe Location & Camera Inspection System
 *Oxyblast-water treatment Product
 *Lennox Furnaces & Air Conditioners
****NOW ACCEPTING CREDIT CARDS****

308 S. Broadway St.
 Ellsworth, MN

New Prairie Insulation, Inc.
 Serving Residences & Contractors
FREE ESTIMATES
---Insulation---

Beaver Creek, MN

507-673-2548 or
 1-800-232-7089



CONSIGNMENTS WANTED
FOR OUR 2-DAY OPEN CONSIGNMENT AUCTION
NEAR LUVERNE, MINNESOTA
10 ACRES OF FARM & LIVESTOCK EQUIPMENT, VEHICLES & MISC.
SATURDAY MORNING, SEPTEMBER 16 - SALE TIME 10:00 A.M.
LIVESTOCK EQUIPMENT & MISC. ITEMS
MONDAY MORNING, SEPTEMBER 18 - SALE TIME 10:00 A.M.
TRACTORS, COMBINES, FARM MACHINERY, TRUCKS, PICKUPS & CARS
 (Vehicle Titles Must Be In The Current Owners Name – No Exceptions)
 Commission Rates: 15% - items up to \$500; 10% - items \$501 to \$999; 5% - items over \$1,000.
ADVERTISING DEADLINE – AUGUST 30
Duane Mulder Auction Service - Office Phone 507-283-4901 - Cell Phone 507-220-3558
All Items Are Advertised Free, And Advertising Is Important. The Earlier You Consign, The More Free Advertising You Receive. All Items To Be Advertised Must Be In On August 30 To Meet Our Advertising Deadline.
 We Will Start Accepting Items At Our Auction Lot From 8:00 A.M. In The Morning Until 6:00 P.M. Starting On Friday Morning, September 8. Forklifts & Auction Crew Members Will Be On The Lot To Unload Your Equipment & Misc. Items. Lot Closes At Dark

Call Any Of The Auctioneers Listed Below To Consign

SALE ARRANGED & CONDUCTED BY:
DUANE MULDER AUCTION SERVICE
 Luverne, Mn -- Phone 507 283 4901
 DUANE MULDER, AUCTIONEER (67-44), LUVERNE, MN -- 507-220-3558
 JIM VON HOLTUM, AUCTIONEER (53-10), LISMORE, MN -- 507-220-3556
 RANDY BUNTJER, AUCTIONEER (53-18), ELLSWORTH, MN -- 507-360-2650
 J.J. VON HOLTUM, AUCTIONEER (67-80), LUVERNE, MN -- 507 227 - 8029



RETIREMENT FARM EQUIPMENT AUCTION

Case-IH 2377 Axial Flow Combine & Heads, JD 8330 MFWD Tractor, JD 7810 Tractor, JD 4000 Dsl. Tractor w/WF, JD 2940 Dsl. Tractor, JD 1760 Maxi-Merge XP 12 Row 30" Planter, Tillage Equipment, 2 Semi Tractors, 2 Grain 42' Grain Trailers, GPS Equipment, Grain Handling Equipment & More!

We will offer the following items of farm equipment at auction at the bin site located at 924 141st Street (Note the Residence and acreage Adjacent to the Bin Site has been sold, so please be respectful of the owners) please use the east driveway into the Bin Site prior to and on sale day; The Bin Site/Sale Site is located from Luverne, MN (Sanford Luverne Medical Center) – 1 mile north on Hwy. #75 to the Blue Mound State Park, then 3/4 miles west on 141st St. (Hwy. 8); from the Hills-Beaver Creek Exit #5 on I-90 - 5 1/2 miles north on 60th Ave. (Hwy. #6) and 3 1/4 miles east on 141st St. (Hwy. 8); from Jasper MN - 5 miles south on Hwy. #23, 2 1/2 miles east on 201st St. (Hwy. #7), 6 miles south on 60th Ave (Hwy. 6) and 3 1/4 miles east on 141st St.; or from the Hardwick, MN Corner on Hwy. #75 – 6 miles south on Hwy. #75 and 3 3/4 miles west on 141st St.

THURSDAY AUGUST 17, 2017 SALE TIME: 11:00 AM

Lunch by Dell Rapids Foresters
JERRY & RENAE REU, Owners
 Ph. 507-220-3392 or 507-220-3393

CHUCK SUTTON - AUCTIONEER & LAND BROKER
 – SIOUX FALLS, SD - PH. 605-336-6315 & FLANDREAU, SD – PH. 605-997-3777 AND
 DEAN STOLTENBERG - AUCTIONEER & RE SALESPERSON - JASPER, MN - PH. 507-348-7352
 & JARED SUTTON – AUCTIONEER & RE SALESPERSON – FLANDREAU, SD – PH. 605-864-8527
 CLERK: CHUCK SUTTON AUCTION SERVICE, LLC

19th Annual Fall Machinery Consignment Auction
SATURDAY, AUGUST 19TH 10:00 A.M.

Lunch on Grounds by Country Side Inn

AUCTIONEERS NOTE: If you have items you would still like to consign to this auction you may bring them in anytime starting August 14th –August 18th between 8am-6pm. as always there will be many more items by sale date. For late listings you can visit my web-site @ www.randybuntjerauctionandrealtyllc.com or drive through the lot on Thursday of Friday evening.

LOCATION- 31250 320th Street, From Worthington, MN Follow Hwy 59/60 South to County Road #57 on the West side of Worthington, then 7 miles South on County road #57 to County Road #4, then 1 mile West on County Road #4. Or From Bigelow, MN. 2-Miles North, on Hwy 60, Then 2 miles East on County Road #4 or 320th ST.

Ring #1 Misc. Items sell at 10:00 Ring #2 Machinery Starts at 11:00

DON & SHARON ONKEN RETIREMENT ITEMS: FOR INFO. CALL 507-360-7255
 Ford TW-20 6,500 Hrs w/1,500 hrs on O.H. 2wd, axel duels: 1982 JD 6620 4,500 Hrs. w/chopper and spreader, been through shop less than 300 acres ago: JD 220 20' Bean Head with Black reel. JD 220 20' Bean Head: JD 444 Corn head converted to 30" rows: IH 480 20 Disc: 1979 IH 1724 single axel Grain truck, 67,240 miles, w/4x2 trans, and 14' wood box: 1987 Alumna Craft competitor 16' Boat w/70 Hp motor, Bilge pump, remote trolling motor, depth finder on roller trailer: Cat. II Quick Hitch: JD 350 7' Trail type sickle mower: Sudenga 8"x50 Auger w/swing hopper: 2-7" truck augers w/gas engines:

JIM BROESDER, ESTATE, TRACTOR COLLECTION, TRACTOR PARTS AND SHOP ITEMS
 1948 JD "A" repainted: 1935 Oliver Hart Parr 70 repainted: 1952 Case DC: 1952 Case DC for parts: Oliver 77 w/miller loader and comfort cover: F-20 on steel: 1926 Farmall Regular: 1948 Allis C, W.F. repainted: 1937 F-30: Thiemann tractor frame: Farmall Regular (parts tractor): 1935 Oliver Hart Parr on steel w/fenders: Case DC engine w/fresh O.H.: 4-Spoked rear tractor wheels: Assortment of old tractor fenders: Set of Oliver steel wheels w/steel lugs: 2-Case DC Narrow fronts: Case DC Rear end: IH 2 Bottom Plow: Elect. Motors: 18' Car trailer: Power Hacksaw: Small Anvil on stand: Runner Sled: 2-Precision Built Stick welders: White walk behind snow blower: Belly mounted tractor mower: Anvil/vise combination: Building Jacks: Knipco heater: plus many more items:

TRACTORS, BACKHOE, & ACCESSORIES: 1994 CIH 7230 MFD 6,593 Hrs. 20.8x42 Rubber: CIH 7130 MFD 8,857 Hrs. 20.8x38 Rubber: CIH 7110 2WD 6,100 Hrs 4 reverse: Ford 555 backhoe, 201 3 Cyl. Diesel engine, with complete recent O.H: IH 756 German Diesel 7,500 Hrs, W.F. new clutch 18.4x38 rubber: Pair of 14.9x30 tractor tires: Pair of 16.9x R30 Tractor tires:

COMBINES: 1991 IH 1660 Combine 4,500 Hrs with 800 Hrs on new Cummings engine, chopper, spreader, Grain tank extension: CIH 2188 Rear wheel assist, 2,805 Engine Hrs. 2,310 Separator, AFX Rotor, Rock Trap, Chopper, Bin Ext: CIH 1680 Combine 4,500 Hrs, Grain Loss, chopper, spreader: 2007 CIH 2588 1,510 engine, 1,120 Separator hrs., AFX rotor, chopper, spreader, duals and grain loss monitor:

TILLAGE EQUIPMENT: JD 710 7 Shank Disc Ripper: DMI Turbo Tiger II 5 shank disc ripper w/leveler: DMI 730B 7 shank disc ripper w/cushion gang and leveler: IH 720 5 Bottom Plow: Glencoe 11 Shank disc chisel: IH 490 21" Disc: IH 720 5x20 Plow w/auto reset: JD 400 25 Rotary Hoe w/end transport: Wil-Rich 3pt. 5 shank v-ripper with spring reset: JD 2700 5 Bottom variable width Plow: JD 5 Bottom Plow: JD 4 Bottom Plow

WAGONS & GEARS: 2-Brent 744 (Nice): 2-Demco 365 w/385x65 tires (green):3-Demco 325: Demco 365: Parker 2500 w/JD 740 Gear: JD 1065 Running gear: Flair box wagon w/hoist: Dakon 225 Bu: Balzer tandem axel gear: Brent 500 Bu. Center dump: J&M 250 Bu: J&M 250 Bu. w/seed auger and roof:

HAY & SILAGE EQUIPMENT: 2-Balzer 16' Silage wagons w/10 ton Gears: JD 115 w/12 ton Westendorf gear & JD 112 Silage wagons: Rex 14'Silage Wagon: IH 56 short hopper silage blower: Gehl 99 silage blower: N.H. 276 Square baler: JD Hay Rake:

AUGERS AND GRAIN HANDLING EQUIPMENT: JD 1210A Grain Cart: Feterl 10"x66" Auger w/swing hopper: JD 8'x 52" Auger w/ electric motor: Drive over pit: Poly auger hopper: Alco 1,600 Bu. Portable Holding bin w/roof:

MISC. FARM EQUIPMENT: Brady 4 row stalk chopper: 30' Stalk Chopper: Lindsey 7 section spike tooth drag on Hyd. Cart: 500 Gal tank on gear (used for fertilizer): Snow Machine 8' snow blower: 500 Gal water tank: 2-Ford pickup box trailers: 1,000 Gal. Anhydrous tank converted to fuel tank w/new pump: 3pt. 52' sprayer boom:

MISC. LIVESTOCK EQUIPMENT: Artsway 800 mixer wagon w/scale: Powder River portable working chute with scale bars (no scale head):

PICKUP: 1992 Chevy S-10 163,173 Miles, V-6, 2wd, Automatic, Box cover:

HAY: 20-Alafalfa mixed rounds: 26 Grass rounds:

TREES: 60 Evergreen trees

GENERATOR: Taylor 35 KW w/Perkins Diesel and transfer switch:

BOAT, LAWN MOWER & ATVS: Grasshopper 1822 w/52" Cut: 1966 Mariner 16' w/65 Hp. 4 cyl. Mercury engine, power tilt, trim and stabilizer, hyd. leveler plate, depth finder on roller style trailer: 2006 Club Car side by side 1,300 Hrs, 4x4, Auto: 2007 Arctic Cat 400 4 wheeler 4x4 only 450 miles:

SHOP TOOLS AND OUTDOOR ITEMS: Aussie Gas Grill: Self propelled lawn mower: Alton Air compressor: Saw Table: B&D cordless weed eater: Leaf blower: Fire Ring: Miter saw: Saw horses: Roto Zip: Staple gun: pop riveter: tap and die set: several wrenches and socket sets: peak portable power system: hand saws: come-a-along: Chain saw: Air hose: Drills: vise: work bench: tool chest: step ladders: battery charger: Milwaukee heat gun: Hand grinder: Extension cords: Pipe Bender: Shovels & Rakes: Dewalt Hammer drill and Drill set w/charger and batteries: Electric chain saw: tree saw: pair of waders: Lawn Chair: Drill Bits: plus several other tools.

MISC. ITEMS: ATV/Snowmobile Hyd. lift work Bench: 110 gal pickup fuel tank: 300 Gal. diesel barrel w/elect. pump: Tool Boxes: 3-Rolls of wood cribbing: Stockade Panels: Chain Hoist: 32 Fuel Cell: Snowmobile engine: B-Mod Roller: Rubber hose: Rubber belting: Hyd. Cylinders: 2-Furnace blower fans: Many Implement, Car and Pickup tires: 2- 18.4 x 26 Roorda spreader tires 10 bolt: 2-10.00x20 tires: Well pump w/pressure tank (like new): 3' x 40' wood beams: Triple axels off trailer house : plus more items by sale time.

TERMS- all items must be settled for immediately after the auction. ID required for bid number, the Auction Company are selling agents only and do not guarantee any items, as to fitness or condition all guarantees are between the buyer and seller. And all buyers will be buying under these conditions. Not responsibly for accidents of theft. Restrooms on grounds

SALE ARRANGED AND CONDUCTED BY



Randy Buntjer Auction & Realty LLC.

AUCTIONEERS:
Randy Buntjer Lic 53-18 Ph. 507-967-2611 or cell 507-360-2650
Duane Mulder Lic 67-44 Ph 507-220-3558
Jim VonHoltum Lic 53-10 Ph 507-220-3556
J.J. VonHoltum Lic. 67-80 Ph 507-227-8029



ALL STATE TEAM
 REAL ESTATE SALES

Keith Elbers, Realtor/Auctioneer
 507-920-6131
 Deb Aanenson, Realtor/Office Manager/Broker Assistant
 507-920-9921
 Gene Aanenson, Realtor
 507-920-9920
 Jen Rolfs, Realtor
 507-227-2985

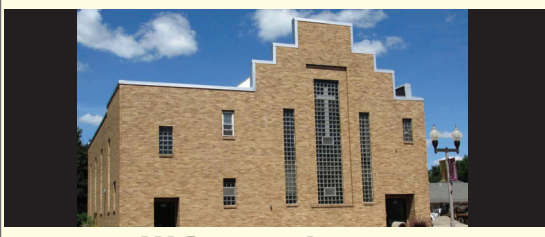
LUVERNE, MN • 507-283-4216
 HILLS, MN • 507-962-3433

MLS REALTOR

REALESTATETRREIVERS.COM • REALTOR.COM • HOMEVIEWSIOUXFALLS.COM

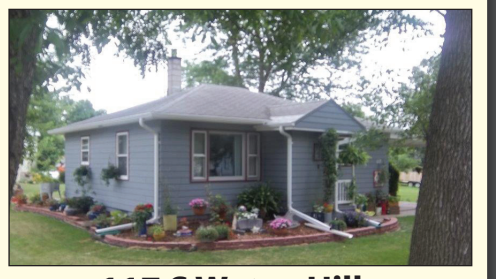


FEATURED LISTINGS



202 W Brown, Luverne
\$119,900

Remodeled and upgraded mixed use residential/commercial property for sale in Luverne, MN (see http://www.cityofluverne.org/). Unique opportunity to live in a church and walk downstairs (or upstairs) to work. Two residential and three commercial units total. 10000+ sq ft. Two "Main Street" addresses/doors, one side street entrance with loading ramp, and additional rear entry/exit to Annex. On and off street parking. New architectural metal roof. High visibility building on thriving small town Main Street with new microbrewery, restaurant, theater, art gallery, boutiques, antique store, etc. two blocks away. Live BIG, live/work, lease some, or lease all! Just 25 easily-commutable miles from Sioux Falls, SD.



117 S Water, Hills
\$82,500

Attractive bungalow located in Hills, MN. The property is near the public school system on a large beautifully landscaped yard. The home features two bedrooms, with some rooms having hardwood flooring. The main floor bathroom was previously renovated with a step in shower. The kitchen has an eat-in area and ample cabinetry space for all your needs. The lower level has a finished bedroom with, shower/sink/toilet area. There is an oversized detached single garage. Enjoy peaceful living in this tranquil setting, check it out today.

Elbers Auction Service
 "Quality Auctions Since 1988"

Keith Elbers, AUCTIONEER/REAL ESTATE SALES
 Lic #67-62
 www.ElbersAuction.com

RETIREMENT FARM EQUIPMENT AUCTION

Case IH #1680 Axial Flow Combine, Case IH #1063 Corn Head, Case IH #1020 Bean Head, Case IH MXU125 MFWD Tractor, Case IH #7130 MFWD Tractor, JD #8640 4x4 Tractor, JD #7200 Max Emerge 2 Planter, JD #726 Soil Finisher, Hardi Navigator Sprayer, Augers, Gravity Wagons, Farm Equipment & More!

As we have decided to retire from farming, we will offer the following items at our farm located at 449 US Hwy. 75, Pipestone, MN - from Pipestone, MN - 6 miles south on Hwy. #75 or from Ihlen, MN - 5 miles east on Co. Rd. 2 (41st St.) to Hwy #75 then 1/2 mile north on Hwy. 75.

THURSDAY, AUGUST 24, 2017 Sale Time: 11:00 am

**Note - Not a lot of small items - be on time! **
Lunch by Dell Rapids Foresters

COMBINE & HEADS: Case IH #1680 Axial Flow Combine w/Specialty Rotor, 30.5x32" Drive Tires 4,130 Machine Hrs., \$7,500.00 spent 5-6 Yrs. Ago on Hydro Repair (1989); Case IH #1063 6RW 30" Corn Head; Case IH #1020 25' Bean Head, SN0329340 (2004); Shop Made Head Trailer; 4 Case Cast Iron Rear Wheel Wts.

TRACTORS: Case IH MXU125 MFWD Tractor w/Cab & Case LX156 Loader, Dual Hyd., 3 Pt., 540/1000 PTO, 16 Spd. High/Low Trans, 4 Spd. Powershift, Joystick, 18.4x42 Rears, 4800 Hrs.; Case IH #7130 MFWD Tractor w/Cab, Dual 540/1000 PTO, Triple Hyd., 3 Pt., 18.4x42" Tires, 8100 Hrs. (250 Hrs. on Major OH); JD #8640 4x4 Tractor w/SG Cab, 16 Spd. Triple Hyd. , Quad Range, 3 Pt. PTO, 20.8x38" Tires & Duals, 7021 Hrs., SN 86408006818RW.

FARM EQUIPMENT: JD #7200 Max Emerge 2 12R30" Planter, Yetter Trash Whippers, Insect., 2 Sets Corn Plates, 1 Set Bean Plates; JD #726 Soil Finisher, Cushion Gang Disks, Nearly New Shovels & 5 Bar Harrow; Hardi Navigator Sprayer w/50' Booms, 550 Gal. Low Pro Poly Tank (1 Owner); Hiniker Econ-o-Till 6RW 30" Cult - 3 Pt.; PMI #527 5 Shank Disk Ripper; Demco 3 Pt. Sprayer w/18' Folding Booms, 50 Gal. Poly Tank w/PTO Pump; AC 21' Tandem Disk w/Hyd. Wings; Balzer 20' Stalk Chopper w/1000 PTO; Krause 8RW30" Cult - 3 Pt; Buhler Farm King #960 Snowblower, 540, PTO (VG); Westfield 10"x60" Auger w/Hyd. Lift, Hyd. Hopper & End PTO Drive; 8" Truck Auger w/5HP Elec. Motor; 7" Truck Auger w/Elec. Motor; 15" & 11" Sweep Augers w/Elec. Motors; Jump Auger w/Elec. Motor; Schweiss 3 Seat Bean Buggy w/B&S 18HP Gas Engine & 25 Gal. Poly Tank; Unverferth 530 Gravity Wagon w/Brakes, Lites, Cushion Tongue, 425/65R22.5 Cement Truck Tires; Minnesota 400 Bu. Gravity Wagon w/MN 15T Gear w/425/R225 Cement Truck Tires; Wagon Running Gear; 2- 250 Bu. Kory Gravity Wagons; Lundell 220 Bu. Gravity Wagon w/Split Hopper; M&S 20' Car Trailer w/8 Bolt Wheels, Bumper Hitch & Ramp; Winco 12,000 Watt PTO Alternator; Sm. Sq. Bale Elevator; 1000 Gal. Poly Tank; 3 Osborne Hog Feeders; 24- 5'x7' Steel Hog Risers; Heat Lamps; Broyhill PT Yard Sprayer w/Elec. Pump; Flatbed w/Gear; Rock Picker; Sgl. Disk for Iron; 80' of 220 Power Cord; Horse Fly Netting; Sm. Hand Corn Sheller; Copper; Scrap Iron; 2 Childs Sleds & Misc.

Consigned by Steve Kollman – ph. 507-215-2177– AC D-17 Series II Dsl. Tractor, WF, 3 Pt, PTO, Snap Coupler Hitch, Engine OH in 2012, Dsl. Inj. Pump Repaired in 2017 (Nice); Glenco 20 Field Cult. w/ Harrow – PT; JD #630 Tandem Disk 24' w/9" Spacing & 22" Blades (Exc. Cond.); Feterl Mdl. 70 Rotary Grain Screener w/220V Motor; 7 1/2HP 220V Elec. Motor

ALAN & GEORGIA BAHN, Owners
 ph. 507-215-1669 (cell) or 507-825-4038 (Home)

CHUCK SUTTON – AUCTIONEER & LAND BROKER –
 SIOUX FALLS, SD – PH. 605-336-6315 & FLANDREAU, SD – PH. 605-997-3777
 DEAN STOLTENBERG – AUCTIONEER & RE SALESPERSON – JASPER, MN – PH. 507-348-7352 &
 JARED SUTTON – AUCTIONEER & RE SALESPERSON – FLANDREAU, SD – PH. 605-864-8527
 CLERK: CHUCK SUTTON AUCTION SERVICE, LLC

Duane J. Mulder Realty

DUANE MULDER AUCTION SERVICE
Office 507-283-4901



AUCTION SCHEDULE

Currently Taking Consignments For Our Next Indoor Auction At The Duane Mulder Auction Center, Downtown Beaver Creek, MN. **Yes, we sell cars, pickups, trailers, campers & boats on these auctions.** Call 507-283-4901 Or 507-220-3558 To Get Your Items Consigned To This Auction.

--WE ARE NOW EQUIPPED TO CONDUCT LIVE INTERNET & LIVE AUCTIONS AT THE SAME TIME--

Saturday morning, August 19 – 10:00 A.M. – Large double ring auction selling farm equipment, vehicles, trailers, livestock equipment & misc. auction near Worthington, MN at the Randy Buntjer Auction Lot.

Thursday evening, August 24 – 5:00 P.M. – Household & misc. auction located at 215 E. 6th Street, Adrian, MN. Lila Nelson, owner.

Saturday morning, September 16 & Monday morning September 18 – 10:00 A.M., both days – Large 2-day Consignment Auction near Luverne, MN. Livestock equipment, boats, ATV's, lawn mowers, garden items, shop items and misc. items sell on Saturday. Farm equipment, vehicles & trailers sell on Monday at the Duane Mulder Auction Lot.

November 17 – Retirement farm equipment auction near Iona, MN.

DUANE MULDER – Auctioneer – Real Estate Broker – Certified Agricultural Appraiser. Office Phone 507-283-4901 - Cell Phone 507-220-3558.

MOWING NOTICE: DENVER TOWNSHIP

Notice is hereby given to all landowners or tenants to mow at least one swath along township road ditches, by August 15, 2017. If not done, the township may hire it done and have it assessed against the landowners taxes.

Denver Township Supervisors

Get your local news online
Star-Herald.com

MINI STOR ALL OF LUVERNE

I-90 & Hwy. 75
Luverne, MN
(507)283-9220

The following units will be sold at auction on **August 31, 2017 at 10 a.m.**

GARY GRABILL #011

KATHRYN MYSHAK #012

TONIA WACHTER #043

Units contain household items, clothing, tools and misc.

For more information contact us at Mini Stor All 501 E 41st Street Sioux Falls, SD 57105 (605) 333-9873



Your hometown real estate broker for over 22 years
Gene Cragoe, broker lic. in MN & SD info@cragoe.com
Renee Guy, Real Estate Agent

507-283-2647 or 800-689-2647

We have buyers! WE NEED YOUR LISTING!

FOR COMPLETE LISTINGS LOG ONTO **WWW.CRAGOE.COM**

The first step to successfully selling your home is *listing it with us!*

815 N FREEMAN, LUVERNE | \$174,900



Large 3 bedroom, possibly 4 bedroom home with all new forced air heating and cooling systems. New roof in 2015. Refinished maple hardwood flooring has been sanded and stained. This home has a beautiful beamed ceiling and original woodwork. Attic has been sheetrocked for extra living space. Large backyard with play area.



At Southwest Health & Human Services, we need foster parents of all ethnic backgrounds to open their hearts and homes to children with difficulties within their families.

This includes children of all ages but particularly older children and sibling groups.

TRAINING SESSIONS START SEPTEMBER 13 AT THE HUMAN SERVICES OFFICE IN PIPESTONE.

Check out our website at **SWMHHS.com/Foster Parent tab** for more information and to register

or contact Karyn Groenewold at 507-532-1217 or karyn.groenewold@swmhhs.com for more information.



19th Annual Pre-Harvest Farm Machinery Consignment Auction

Monday August 21, 2017 Gobblestop Lunch on Grounds Sale Time 9:30 AM Sharp

Case of Inclement Weather, Please Listen to KLQL-FM (101.1) or Check Our Website

Located at the Ahders Auction Lot located 6 1/4 miles west of George, Iowa on Blacktop A-34 or 6 miles south on Highway 75 and 2 3/4 miles east on Blacktop A-34 from Rock Rapids, Iowa or 11 miles north on Blacktop K-52 and 3/4 miles east on Blacktop A-34 from Hull, Iowa.

TRACTORS, LOADERS, BACKHOE, SKIDLOADERS, & ACCESSORIES: JD 8110 MFWD w/ 3pt, 5 hyd, 480-80R/46 Firestone rear tires and duals, RTK guidance system, 16 spd PS trans, quick hitch, front fenders, 8590 hours (Super Sharp); Case IH 9370 Steiger 4x4 w/ recent reman Cummins 855 engine, 12 spd PS, 4 hyd, bare back., 18.4x42 tires and duals, 26 front suitcase weights (Excellent Condition); JD 4040 2wd w/ CAH, 3pt, 2 hyd, 8 spd PS, 6400 hours (One Family Tractor, Sharp); 1985 MF 3545 2wd w/ CAH, 3 hyd, 3pt, 16 spd forward, 4 spd reverse, power adjust wheels, 4365 actual hours; IH 856 D w/ WF, 2 hyd, 2pt, split rear weights, Year-A-Round cab, OH less than 500 hours ago; JD 2020 D utility w/ JD 47 loader, 2 hyd, recent OH; Case 970 D open station w/ power shift, 2 hyd, 3pt, WF, 5700 hours; White 2-85 D open station w/ WF, over/under, 2 hyd, 3pt, 4598 hours (Nice); Oliver 1600 G w/ West WL-30 loader, WF, 3pt, 2 hyd, (Nice); AC D-17 Series IV G w/ AC trip bucket loader (Runs Good); Ford diesel backhoe w/ loader, open station, outriggers; JD 48" skidloader pallet forks; Miller M-12 loader w/ 7ft bucket, IH mounts; West. WL-30 loader; Various assortment of IH & JD suitcase and wheel weights; West QT bale spear; 2-18.4x38 rear tires and rims; Several 3pt post hole augers; JD HD quick hitch; 3-HD 7" 3pt blades; Gnuise 7" 3pt loader bucket; 2008 JD 7330 Premium tractor MFWD, 3250 hrs, IVT trans., new single tires 480/42 inch rears, quick hitch, 1 set 450 lb. rear weights, left hand reverser, 125 PTO HP, 741 self-leveling loader; Near new grapple bucket for skidloader; Loftness rock picker to fit skidloader (power reel); JD 4640 CAH Quad 3 hyd 3 pt. 18.4 x 38 w/duals, (12) suitcase weights, new style step; IH 784 D 3 pt. 2 hyd gear shift; Swartz loader w/AC & JD brackets; Farmall '400' tractor w/WF, good tires, good tin; Farmall 'H' tractor; Koyker K-5 loader; JD 4440 quad, 7000 hrs; White 2-155 3 pt, 2 hyd, 4800 hrs; 2015 JD 326 skidloader w/air & heat, fully loaded, like new 50 hrs. (owner has retired); NH 455 skidloader 60" bucket, diesel; Oliver 1500 for parts; Oliver 1650 gas tractor WF, 3 pt w/ West. 40 loader; JD 158 loader; '81 IH 986 7200 hrs, rock box, Firestone 18.4/38, 3 pt. 2 hyd.; '81 IH 1486 5258 hrs, 12 ft. Wts., Firestone 18.4 x 38 & axle duals, 3 pt., 2 hyd.; '81 IH 1586 4556 hrs, 12 ft. Wts., Goodyear 20.8-38 & axle duals, 3 pt., 3 hyd.

The following (3) IH tractors are from the Walter Ranschau Estate: '81 IH 986 3 pt., 2 hyd., rock box, Firestone 18.4 x 38, 7200 hrs.; '81 IH 1486 3 pt. 2 hyd., 12 front wts., Firestone 18.4 x 38 on tractor & axle duals, 5258 hrs.; '81 IH 1586 3 pt., 3 hyd., 12 front wts., Goodyear 20.8 x 38 on tractor & duals, 4556 hrs.

COLLECTABLE TRACTORS, GAS ENGINES, & EQUIPMENT: 1929 JD GP tractor w/ full set of steel wheels, older restoration, runs good; 1935 JD A tractor w/ full set of round spoke wheels, rear near, older restoration, runs good; 1937 JD A tractor w/ rear round spokes, restored, runs good; 1949 MM ZA tractor w/ 2 row mounted cult, runs good; Case 500 G tractor w/ WF, loader, PS; JD 60 tractor w/ PS, NF, near new rear tires, clam shell fenders; 1957 IH 350 G tractor w/ newer rear tires on power adjust rims, NF; IH B tractor w/ new rear tires, elec start, runs great; MH 33 G tractor w/ newer Firestone tires, older restoration; Ford 8N tractor w/ older restoration, 3pt; 1948 JD A tractor w/ buzz-saw; 1945 IH M tractor w/ Norden WF; Fairbanks-Morse 1 1/2 hp gas engine; Fairbanks-Morse Model D 2 hp gas engine; Cushman 4 hp binder gas engine; Whitte 2 hp gas engine; Fairmont RR engine; JD Model E 1 1/2 hp gas engine; IH LB 1 1/2 hp gas engine; Stover burr mill; AC No. 505 8 T running gear; MM 1210 sheller w/ drag feeds; 2-JD 3-14 PT plows; David Bradley walk behind garden tractor w/ disk and cult; Set of rear steel wheels for IH Regular tractor; IHC binder trucks; Buzz-saws; 2-JD 6 cyl gas combine power units; JD 802 running gears on rubber; JD 10A 10" hammer mill w/ dust collector (Nice); 2-IH tractor single front wheels; Walking plow; Potato plow; JD 2 b plow; JD 1 shank sub soiler on steel; AC WD-45 complete restoration w/new tires; DeLaval 518 cream separator; JD 630 tractor; (2) JD 620 tractors.

COMBINES AND HEADS: 2008 JD 9670STS combine w/ duals, Bullet Rotor, Maurer grain tank ext, straw chopper, long unloading auger, Ag Leader and GreenStar monitors, 1771 engine hours, 1137 separator hours (Retirement, Sharp, Phone: 712-631-0101); JD 1293 12 row 30" CH w/ poly snoots, hyd deck plates, header height control (Sharp); JD 935F 35' BH w/ full finger auger, for-aft; Stud King 40' head trailer; 1996 JD 9500 combine w/ straw chopper, Maurer grain tank ext, Vittetoe chaff spreader, near new tires, 3388 engine hours, 2267 separator hours (Nice); 2000 JD 693 6 row 30" CH w/ poly snoots; 1998 JD 925 25' flex BH w/ poly snoots; 1987 Case IH 1660 Axial-Flow combine w/ 4362.5 hours, Vittetoe chaff spreader, IH engine, field tracker, complete rebuild 800 acres ago, \$20K spent on repairs (Retirement); IH 944 4 row 36" CH; IH 1420 Axial-Flow combine w/ German diesel; IH 820 20' BH; IH 844 4 RW CH; 1981 IH 1420 Axial-Flow combine w/ German diesel (Good Machine); MF 850 combine w/ gray cab and auger, straw chopper, excellent tires; MF 1163 6 row 30" CH; MF 1859 20' BH w/ U2 reel; 3-MF 750 D combines, all in running order (As-Is); JD 212 small grain head w/ 4 belt pickup; Case IH 1063 6 row 30" CH (Reconditioned); 2017 37' head trailer w/ fenders, lights; 2011 Harvester 5308-C 8R30 chopping cornhead; IH 1020 25' BH w/field tracker; IH 1044 4RW CH; JD '6620' combine; IH 820 BH 17 1/2'; '96 C-IH 2188 combine field tracker, bubble up auger, chaff spreader, bin ext., 4700 engine, 3600 sep.; JD 930F full finger BH; Stud King 30' head trailer; JD 7720 combine; '89 JD 9500 combine 4100 eng., 3600 sep.; (2) JD 643 CH; (2) JD 925 BH; JD 220 BH.

TILLAGE EQUIPMENT: 2014 Landoll 2211 16' 11 shank disk chisel w/ closing disks, rolling basket (Like New); 2011 Kuhn Krause 4850 Dominator 21' disk ripper w/ closing coulters, (Sharp); JD 512 7 shank disk ripper w/ Summers harrow; 2-JD 510 5 shank disk rippers; JD 630 23' disk w/ harrow; JD 960 28' FC w/ walking tandems, harrow; JD 1010 20' flat fold FC w/ harrow; Case IH 6500 9 shank disk chisel; Case IH 6500 9 shank disk chisel; JD 400 36' flat fold rotary hoe; JD 400 20' rotary hoe; Wil-Rich 24' 3 bar harrow for FC (Nice); White 445 9 shank disk chisel; JD 4-16 steerable plow; Oliver 4-16 steerable plow; JD 230 24' disk; JD 825 6 row 30" 3pt cultivator w/ Danish tines; Noble 6 row 30" cultivator; Oliver 14' disk; JD BW 14' disk; Kewanee 620 18' disk; JD 1600 14 shank 3pt chisel plow; Oliver 14 shank 3pt chisel plow; Taylor-Way 11 shank 3pt chisel plow; Case 5-16 plow (like new); DMI 3 pt. 5 shank inline ripper; Sunflower 4301 7 shank disk ripper w/harrow; Krause "Excelsior" 26" vertical tillage; JD 512 disk ripper 5 shank; JD 6R30 cultivator; JD 15' rotary hoe; C-IH 25' 496 disk w/CH-3 bar harrow.

HAY EQUIPMENT: JD 566 round baler w/ net wrap/twine (Excellent); Demco 15 T gear w/ 40' steel round bale rack, brakes; Kuhn 66 7' sickle mower; IH 1100 7' PT sickle mower; NH 855 round baler w/ new apron, net wrap; NH 851 round baler; NH 269 square baler; Woods 6' 3pt finish mower; 8' 3pt rotary mower; 30' portable bale conveyor w/ elec motor; 14' hay rack on Rockford gear; 6' 3pt gyro-mower; Bush Hog 5' 3pt rotary mower; 2006 JD 946 MoCo w/flail crimper; JD 4 bar rake w/hyd raise; Vermeer BP 7000 bale processor; 2012 JD "Premium" 569 Rf baler, mega wide net wrap, 7500 bales; 9' x 20' Doon Saw Mill on 10T Parker gear; JD 38 sickle mower 9'; NH 56 rake; JD 24T hay baler; JD 336 baler (super shape).

SILAGE EQUIPMENT: Richardton 700 hyd dump silage wagon (Excellent, Shredded); 2-Roorda 16' rear unload silage wagons w/ 1/2 roofs, hyd drive, triple web, West. 12 T gears w/ cement truck tires (Nice); NH 770 silage chopper w/ 2 row wide or narrow CH, HH; Gehl 800 silage chopper w/ wide and narrow CHs, HH; 2-Gehl 16' front unload silage wagons on 10 T gears; Farmhand 14' front unload silage wagon on 8 T gear; IH 600 silage blower; Kools KB-200R long hopper blower; Roorda 12' rear unload silage wagon on West. 8 T gear w/ roof; Richardton dump wagon; (2) 2013 Meyers rear unload wagons w/roofs & hyd; JD 3960 2R chopper & HH; JD 3970 chopper w/343 corn head, screen & extra new knives; JD 125 16' chuck wagon; Roorda hyd 12' wagon on 8T gear; New Lancaster Kernel processor for JD 6000 series chopper.

PICKUPS, TRUCKS, CARS, TRAILERS, & BOAT: 2013 Chevrolet Silverado 1500 4x4 1/2 ton pickup w/ 5.3L V8 engine, crew cab, cloth interior, fully loaded, toolbox, near new tires, 2nd owner, green in color, 89K actual miles (Sharp); 2003 Chevrolet Silverado 1500 4x4 1/2 ton pickup w/ 5.3L V8, auto trans, cloth interior, Z71 package, red in color, 133K miles (Estate Owned); 1988 IH tandem axle day cab truck/tractor w/ twin screw, 855 Cummins engine, 13 spd trans, air ride; 1978 40' aluminum/steel grain trailer w/ roll tarp, near new tires; 2005 Featherlite 7'x 20' GN aluminum livestock trailer w/ 2 compartments (Like New, Low Miles); 2012 Chevrolet G4500 cab/chassis w/ 6.6 Duramax diesel engine, auto trans, 230K miles; 2011 Ford E450 cab/chassis w/ 6.8L V10 engine, auto trans, 345K miles; 2002 Ford E450 ambulance w/ 7.3L Power Stroke diesel, auto trans, 95K actual miles; 21' bumper pull flatbed trailer w/ beaver tail, stand up ramps, 8 bolt axles; 1995 Buick Century 4 door car w/ AC, cruise, auto trans, 3800 engine, 160K miles (One Family Car); 1980 Chevrolet C30 pickup w/ 10' hyd bed, 454 engine, 4 spd trans, PTO; 2004 Ford Windstar van w/ AC, auto trans, 215K miles; 1994 Blue Bird 72 passenger school bus w/ Cummins 5.9L engine, auto trans, 218K miles; 1979 GMC single axle truck w/ 366 V8 engine, 5x2 trans, 350 bu center dump gravity box; 400 bu GN grain trailer; M&S 32' GN flatbed trailer w/ round bale sides; 1989 Ford F700 single axle truck w/ 16' dump box, gas engine, 5x2 trans; Allen 6'x 16' bumper pull livestock trailer (Needs Floor); M&S 6.5'x 8' 2 place side ramp ATV trailer w/ lights; 20' gravel box on truck frame; 2006 PJ 26' tandem duals flip ramps very little use, shedded; 1976 Featherlite 24' GN livestock trailer; 1992 Buick LeSabre 4 door 3800 engine; 2010 Chrysler Town & Country van fully loaded, leather, back up camera, 102K miles; 1999 Delta 7'x 26' GN trailer w/tandem axles, good tires; 16' Champion livestock trailer; 20' tandem truck box trailer w/hoist; 1996 Buick LeSabre 4 door 3800 engine, 140K; '97 Freightliner tandem axle truck Cummins, 10 speed; '82 42' American steel twin hopper grain trailer.

UTVS, ATVS AND LAWN MOWERS: 2012 Polaris Ranger 800 LE Browning Edition w/ windshield, roof, rear window; 2011 Polaris Ranger 500 w/ windshield, roof, back window, 2900 miles; 2008 Arctic Cat 250cc 4x4 ATV w/ elec start; Honda 185cc ATC 3 wheeler; Honda 110cc ATC 3 wheeler; 2-Snapper 30" rear engine mowers (Nice); 4-Dixon zero-turn riding mowers; 2-Big Mow riding mowers; JD garden tractor; 2012 Polaris 550x2 4x4 4-wheeler, 3900 1 owner miles.

GRAIN HANDLING EQUIPMENT: Westfield 13'x 71' auger w/ hyd raise, mech hopper (Sharp); Sudenga 8'x 65' auger w/ scissor lift, mech hopper; Sudenga 8'x 31' truck auger w/ elec motor; Feterl 8'x 61' auger; 7-Sudenga 8'x 57' augers w/ hoppers; Hi-Cap rotary grain screener w/ elec motor; Shop Built drive over hoist; Farm King "Convey Air" 6640 grain vac (new).

GRAIN CART AND WAGONS: Parker 960A 950 bu grain cart w/ corner auger, roll tarp, backup and auger cameras, scale, hyd spout pivot (Green in Color); Brent 874 grain cart w/ corner auger; Demco 650 bu GF wagon w/ lights, brakes, (Red, Sharp); Demco 550 bu GF wagon w/ lights, brakes, (Red, Sharp); 2-Demco 550 bu GF wagons w/ lights, brakes, green/black; Demco 450 bu GF wagon w/ lights (Red); 2-Demco 365 bu GF wagons w/steel ag tops, cement truck tires; 2-Demco 325 bu GF wagons w/ steel ag tops, cement truck tires; 2-Demco 365 bu GF wagons w/ cement truck tires; 2-Demco 325 bu GF wagons w/ truck tires; Demco 365 bu GF wagon w/ lights, green/yellow, 12 T gear; J&M 350 bu GF wagon on 13 T gear w/ truck tires, roll tarp; DMI 300 bu center dump wagon; JD 953 & 1064 gears; Approx 25 200-300 bu GF boxes on 8-10 T gears; Various West. And other brand 8-10 T gears; Several steel and wood flare and barge box wagons on gears; Several older 6 T running gears; Brush auger for GF box w/ hyd drive; 5-set of Agri-Hitch quick hitches for wagons; (2) 365 Demco w/cement truck tires; Demco 650 (green); Demco 12T gear; (2) 2007 Demco 550 red.

PLANTERS, DRILLS, AND SPRAYERS: JD 1770 24 row 30" center fill planter w/ air bag down pressure, elec row shutoffs/Precision, row cleaners, 7800 acres, (One Owner, Retirement); Top Air 1200 gal sprayer w/ 90' boom, monitor (Used Very Little); Demco Conquest 1100 gal sprayer w/ Ag Leader monitor, 60' booms w/ 6 shutoffs; JD 250 500 gal pull-between tank (New); JD 200 planter trailer; Donahue 24' planter trailer; 2-500 gal PT sprayers; JD 12 ft. drill w/grass on low rubber.

STALK CHOPPERS AND SNOWBLOWER: JD 120 20' PT stalk chopper w/ end transport (Like New); JD 220 20' PT stalk chopper; 2-Brady 1680 15' stalk choppers; Rhino RO-20 20' stalk chopper; Schultz 15' stalk chopper w/ windrow attachment (Reconditioned); Alloway 20' 3pt stalk chopper w/ large and small 1000 shafts (Nice); Arts-Way 20' stalk chopper; Lundell 20' stalk chopper; Lundell 4 row flail chopper; McKee 7' 3pt snowblower w/ hyd spout, 540 PTO; Red Devil 8 ft. w/hyd. spout; JD 27 stalk chopper; Alloway Ran 20' 3 pt stalk chopper.

LIVESTOCK EQUIPMENT: Spread-All "TR-20T" 20 T tandem axle horizontal beater spreader w/ slop gate; Knight 3300 Reel Auggie mixer wagon w/ scale (Good Condition); NI 3726 spreader w/ slop gate; NI 3626 spreader w/ slop gate, poly floor, always shedded; NH 355 grinder/mixer; Roorda 220 bu spreader w/ slop gate; MF 130 PTO single beater spreader (Only Used For Bedding, Never Used in Manure!); Roorda 4'x10' feeder wagon (Nice); Barron Built calf creep feeder on wheels (Nice); Notch 24 stall calf feed bunk; 175'-4' of fence line cement feed bunks; Several 16' wooden feed bunks; 4-Smidley 4 hole SS waterers; Large assortment of 12-20' hog and cattle gates, corral panels, and wire panels; Several Osborne 60-80 bu hog feeders; Many SS pig feeders; Hawes steel pickup stock rack; Feed shed on running gear; Portable cattle loading chute; Several round bale feeders; Several stock tanks (Steel and Poly); Many good wood and steel fence posts; Bridge planks and timbers; 20' wooden cattle self-feeder; Jet PTO wire winder; (8) 80 bu. Osborne feeders; 2016 Westendorf 10' box scraper; NH 327 single beater spreader; Many bulk bins.

STRAW AND HAY: 600 small square bales of 2017 oat straw; 100 small square bales of 2017 alfalfa/grass mix.

TOOLS, SHOP EQUIPMENT, AND MISC: Winco 45KW PTO generator on cart w/ control panel; Large quantity of new shop steel (Channel, Angle, Flat, and Sheet Steel); New 30' x 36' grain bin floors; New 30' bin roof; Bin fan; 420-Case IH 1000 series BH reel fingers; 80 gal fuel barrel w/ elec pump; MI5-M 3000 PSI power washer; 3-Groeneweg MFG 16' hyd drag feeds; Hog certain controller; 2-LB White heaters; Reveral 300 gal fuel barrels on stands; 2 man gas powered post hole auger; 2-table saws; Power mitre saw; Walk behind tiller; 12-new 29' rafters; 2-small barn cupolas (Very Old, Good Condition); Large assortment of used barn steel; Platform scale; Commercial egg incubator; Triggs PT seeder.

LARGE SELECTION OF NEW TRACTOR & COMBINE TIRES (ALL RADIALS: MICHELIN, GOODYEAR & TITAN): Sizes: (4) 620/70-46 on JD rims; (2) 320/85-R38 on JD MFWD ext. rims; (2) 380/85x34 on JD MFWD ext. rims; (2) 420/90-30 on JD MFWD ext. rims; (2) 420/85-34 on JD MFWD ext. rims; (2) 320/90-50 on JD MFWD rims; (2) 710/R-42 on JD rims; (2) 710/70 R42; (5) 800/70 R38; (2) 710/70 R42; (4) 710/70-38; (2) 380/90-54; (10) 480/80-50; (2) 480/80-46; (2) 620/70-46; (4) 380/90-46; (2) 520/85-42; (2) 380/90-46; (2) 520/85-38; (3) 520/85-42; Plus many new combine & tractor rims. (All new tires come with full factory warranty).

TERMS: CASH OR GOOD CHECK DAY OF SALE. NOT RESPONSIBLE FOR ACCIDENTS OR THEFT. NO GUARANTEES. NOT RESPONSIBLE FOR ADVERTISED ITEMS THAT DID NOT COME BY SALE TIME.

AHDEES AUCTION SERVICE

Clark Ahders
712-472-2005
712-470-4700

Keith Elbers
507-962-3433
507-920-6131

Kevin T. Klaassen
712-754-3500
712-348-1965

Jess Donkersloot, Tyson Meyeraan, and Nathan Tjaden, Associate Auctioneers

Visit www.ahders.com for additions and photos

Community Update

Meetings

Sanford Pink Ladies will meet at 1:30 p.m. Monday, Aug. 14, in the Blue Mound Room at Sanford Luverne Hospital. Call LaDell 283-4987.

Parkinson's Support Group will meet at 1 p.m. Thursday, Aug. 17, in St. John Lutheran Church for a program explaining Rock Steady Boxing.

Matthew 6 Board of Directors will meet at 7 p.m. Monday, Aug. 16, at the Pizza Ranch.

MS Support Group will meet at 7:30 p.m. Thursday, Aug. 17, at Southwest Health and Human Services in Luverne. All persons with MS, family and friends are invited. For info call 283-2069 or 283-2964.

United States Bowling Congress (USBC) meeting will be at 6:45 p.m. Thursday, Aug. 24, in Luverne Lanes.

Narcotics Anonymous will meet every Thursday evening at 6:30 p.m. at the Steen Reformed Church. Contact Robert for more information 507-329-2642.

Women's Alcoholics Anonymous meets at 8 p.m. Mondays in the United Methodist Church.

Narcotics Anonymous meets at 7 p.m. Fridays and for basic text study at 7:30 p.m. Tuesdays in the basement of St. Catherine Rectory, Luverne. Use east door. 507-220-0137.

Alcoholics Anonymous meets at 8 p.m. Wednesdays and Saturdays in the United Methodist Church, Luverne. Call 605-321-4324.

Alcoholics Anonymous meets from 8 to 9 p.m. every Tuesday in Runals Hall, Edgerton. Call Naomi, 507-215-2956.

Watershed public meetings Aug. 22, 23

Two public meetings are scheduled to gain Rock County residents' input in the One Watershed-One Plan initiative.

Each meeting consists of a 30-minute information session followed by self-guided information stations on various conservation measures and focuses.

Participants vote for their top concern or focus for the final comprehensive water plan being assembled by area soil and water conservation districts located in the Missouri River Basin Watershed, including all of Rock County.

The first meeting is from 6 to 8 p.m., Tuesday, Aug. 22, at the Hickory Lodge, 2015 N. Humiston Ave., in Worthington.

The second meeting is from 9 to 11 a.m., Aug. 23, at the Pipestone County Emergency Services building, 811 Fifth St. SE, in Pipestone. For more information contact the Rock County Land Management Office, 507-283-8862.

Road closure from Manley to I-90

County Highway 17 (20th Avenue) between Manley and I-90 is closed for the construction of a new bridge over the Beaver Creek. The project will take 10-14 weeks. Motorists should use County Highway 4 to Manley during the closure. Call 507-283-5010 with questions.

Register new students to Luverne schools

New residents to Luverne School District 2184 should come to respective school offices and register students for the 2017-2018 school year. To register for the high school/middle school, call for an appointment at 507-283-4491 for students in grades six-12 this year. Elementary is open for new students to register, 507-283-4497. School starts Tuesday, Sept. 5.

Food ministry Aug. 17

New Life Celebration Church monthly food ministry will be from 5 to 6 p.m. Thursday, Aug. 17, in the Luverne Senior Center for those having trouble putting food on the table. Children are asked to wait outside. Call 283-4366.

Mandatory activities meeting Aug. 14

The Luverne High School Activities Eligibility Meeting is set for 7 p.m. Monday, Aug. 14, in the Luverne Elementary School gym. This is a mandatory meeting for students and their parents/guardians in grades 9-12 who plan to participate in Minnesota State High School League activities during the 2017-18 school year. Topics include MSHSL rules and school policies. Fall sports sign-up is available after the meeting.

Fifth-grade band lessons in August

Band lessons for students entering the fifth grade are offered for 30-minute sessions in Beth Capistran's elementary music room Mondays through Thursdays from Aug. 14-17 and from Aug. 21-24. Participants need instruments and books. Flutes, 1 p.m.; clarinets, 1:30 p.m.; saxophones, 2 p.m.; trumpets, 2:30 p.m.; trombones, 3 p.m.; French horns, baritones and tubas, 3:30 p.m., and percussion, 4 p.m. Contact Angie Swenson, a.swenson@isd2184.net or 283-4491 ex. 2670.

'Sounds of Strings' at Hinkly Aug. 17

Harold Tilstra will perform "Sounds of Strings" at 7 p.m. Thursday, Aug. 17, at the Hinkly House. A reception will follow. Freewill donations are appreciated. The Victorian home is also open from 2-4 p.m. Thursdays during the summer.

Steen Reformed Church carnival Aug. 16

The Steen Reformed Church annual carnival is from 5:30-8 p.m. Wednesday, Aug. 16. It includes inflatables, games, a cruise-in, and a meal of pork sandwiches, hot dogs, beans, chips and dessert for a freewill offering. Auto enthusiasts can bring a vehicle to the Cruise'n for Christ car and tractor show. Call Brad at 507-855-2284, or Kathy at 507-673-0085.

Build a Bison: Hooves to Horns Aug. 25

Help a naturalist "build" a bison by transforming an audience member through dress-up. This program is for youth of all ages to learn the anatomy of a bison and what makes this animal perfect for the prairie. Meet at 7 p.m. Friday, Aug. 11, or Friday, Aug. 25, in the amphitheater at Blue Mounds State Park. Bring a chair or blanket.

Mammals of the Mounds Aug. 18

Learn about the tracks and trails of common mammals at Blue Mounds State Park. Meet at 7 p.m. Friday, Aug. 18, in the amphitheater at Blue Mounds. Bring a chair or blanket.

Historic quarry hike Aug. 19

Learn the history behind man's relationship with the rocks of Blue Mounds with a slow-paced hike of less than a mile with some rocky areas and stepping down required. This tour will explore the Historic Quarry Trail on the south end of the park. Meet at the climbers' parking lot, (second parking lot on County Road 8) at 10 a.m. Aug. 19.

INSIDE THIS ISSUE

Inside find inserts* from

Teals MARKET

SHOPKO
Hometown

bomgaars
What You Need... When You Need It

*Not all Announcers will have all inserts

Coming this week in the *Rock County Star Herald*

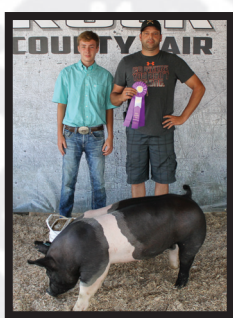


John Rittenhouse photo/0817 vfw 1

Successful debut

The Luverne VFW baseball team opened the Minnesota State VFW Baseball Tournament in Willmar with a 2-1 victory over Duluth East Thursday. Trailing 1-0 entering the bottom half of the fifth inning, Luverne scored twice in the frame to pave the way to victory. Declan Beers slides across the plate with the decisive run in the photo above. Look for a complete recap of the tournament in Thursday's Star Herald.

2017 ROCK COUNTY FAIR SALE OF CHAMPIONS



Alek Schoeneman
Grand Champion Market Gilt
Cleveringa Construction



Cassie Flanagan
Reserve Champion Market Goat
Mouw Feed & Grain



Christian Kruse
Grand Champion Wether Lamb
Express Ag and Hull Feed & Produce



Drew Fick
Reserve Champion Market Heifer
Exchange State Bank



Ella Sammons
Grand Champion Winter Calf
First Farmers & Merchants



Hannah Kruse
Grand Champion Market Heifer
Exchange State Bank



Harrison Uithoven
Reserve Champion Market Ewe
Cleveringa Construction



Hunter Baker
Reserve Champion-Market Ewe
Wyffels Hybrids



Jacob Raak
Grand Champion Ayrshire 2Yr old Dairy
Chandler Coop



Joshua Raak
Reserve Champion Dairy Steer
Pipestone Livestock Auction Market



Kytton Fritz
Grand Champion Market Ewe
Minnwest Bank



Mira Uithoven
Reserve Champion Wether Lamb
Luverne Farm Store



Riley Baker
Overall Grand Champion Market Ewe
First Farmers & Merchants



Sean Elbers
Grand Champion Beef Steer
Chandler Feed



Tacey Baustian
Reserve Champion Wether Lamb
Exchange State Bank



Tanner Baustian
Reserve Champion Market Gilt
Exchange State Bank



Trey Baustian
Grand Champion Market Barrow
Skattum Confinement & Superior Buildings



Whitney Elbers
Reserve Champion Beef Steer
Wyffels Hybrids

The Rock County 4-H Families would like to thank the following businesses for their support in 2017:

REISCH SCHOLARSHIP

- Chandler Coop
- CHS Eastern Farmers-Garretson
- Cleveringa Construction
- Cragoe Realty
- D&L Farms
- Exchange State Bank
- First Farmers & Merchants
- First Farmers Bank & Trust
- Garry Overgaard
- John & Kari Flanagan
- Kibble Equipment
- Luverne Farm Store
- Minnwest Bank
- Nath Simmental
- Raak Dairy
- Wyffels Hybrids

DONATIONS

- Buffalo Ridge Insurance
- Christianson Farms LLP
- CHS Eastern Farmers
- Nath Simmental
- New Horizon Farms LLP
- New Vision
- Sanford Clinic Luverne
- Schwartz Farms

BUYERS

- Alliance Communications
- Big Orv's
- Brake Trucking
- Chandler Coop
- Chandler Feed
- Cleveringa Construction
- CHS Eastern Farmers - Garretson
- Exchange State Bank
- Express Ag
- First Farmers & Merchants Bank
- Hull Feed & Produce
- Latham Insurance Agency
- Luverne Farm Store
- McClure Electric
- Minnwest Bank
- Mouw's Feed & Grain
- Nergaard Construction
- Pioneer Hybrid
- Pipestone Livestock Auction Market
- Rock County American Dairy Association
- Sanford Clinic Luverne
- Skattum Confinement & Superior Buildings
- Wyffels Hybrids

Juicy Tree-ripened Colorado Peaches
 Luverne, MN - August 29
 20# lug \$32 • 1/2 lugs available.
 Taste the tree-ripened difference.
Reserve yours today. Crystal 605-360-7599
 mcclaryfarmproduce@gmail.com
 mcclaryfarmproduce.com



Loans, leases, and crop insurance



Pat Barnett
 866-601-0506
 compeer.com

COMPEER FINANCIAL
 f t in @
Member FDIC. ACLA is an Equal Credit Opportunity Lender and Equal Opportunity Provider. ©2017

Bring in your current policy for a comparison today!



CATTNACH INSURANCE AGENCY

South Hwy. 75, Luverne, MN
 507-283-8383 or 1-800-258-4471
 E-mail: info@Cattnach.com
 Website: www.cattnach.com

SUMMER PEDICURE SPECIAL
\$25

Call Meegan
 605-595-4532


honeycomb
 222 East Main St.,
 Luverne, MN



Ketterling Services, Inc.
 401 S. Cedar St. • Luverne, MN • 507-283-2863 • www.ketterlingservicesinc.com
 Hours: Tues.-Fri. 8:30 a.m. to Noon & 1 p.m. to 5 p.m. Sat. 8:30 a.m. to Noon

Roll-Off Service for Building Demo & Remodeling

SANITATION: Commercial Residential Rural
RECYCLING: Collection Dropoff



Monthly - Weekly - Daily

Mark's PLUMBING, HEATING AND A/C, LLC.
 Lic.# PC644664 Master Plumber Lic#066849-PM
 608 W. Hatting, Luverne • Mark Kurtz, owner
507-283-9245

A.O. Smith Water Heaters Gas & Electric
MOEN Faucets
TEMPSTAT Heating and Cooling Products

2017'S MULES ARE HERE

2017 ATVS & UTVS ARE HERE



Luverne
Kawasaki
 Let the Good Times Roll!™
 101 W. Maple, Luverne, MN 56156
 507-283-1800

Something for Everyone!

New fall merchandise arriving daily

30-50% OFF
 Adrian Dragon gear

BACK TO SCHOOL

Check out what's new at C to C Boutique in store only

CALL TO CONSIGN YOUR FALL & WINTER MERCHANDISE

closet to closet Inc. 200 Maine Ave., Adrian 507-483-2050
 Consignment Hours: Tues, Wed, Fri 9 a.m. - 4:30 p.m.; Thurs. 9 a.m. - 7 p.m.; Sat. 9 a.m. - 3 p.m.

Interested in Advertising?
 Call Rick or Chantel to advertise in next week's Announcer
283-2333

Papik MOTORS
 1-90 Luverne, MN

283-9171 | PAPIK.COM

Meet Your New Boss

The need for quality child care is greater than ever. Consider becoming a family child care provider. Be self-employed in your own home - doing a job you'll love!

The rewards of working in child care are numerous. You will have the satisfaction of knowing you are accomplishing something important - helping children grow and develop. You will also be helping our communities grow and thrive. Child care keeps Southwest Minnesota working!

Contact us for information about becoming a family child care provider. We'll show you how to take your love for children and turn it into a living.

Region 8 Child Care Aware
 Southwestern MN Opportunity Council
 1106 3rd Avenue, PO Box 787
 Worthington, MN 56187
 507-376-4195
 www.smoc.us

ChildCare Aware OF MINNESOTA
 Quality Care and Education for Every Child



CHEVROLET GMC CHRYSLER DODGE Jeep RAM

<p>2011 Kia Optima</p> <p>Stock # 151128N 76K</p>  <p>Papik Price \$8,990</p>	<p>2016 Maxda CX-5</p> <p>Stock #729942U 27K</p>  <p>Papik Price \$20,990</p>
<p>2015 Mercedes-Benz GL 350</p> <p>Stock # 556891N 35K</p>  <p>Papik Price \$46,990</p>	<p>2011 Toyota Highlander</p> <p>Stock #62992U 86K</p>  <p>Papik Price \$18,990</p>

Bridal Shower?
Wedding Announcement?

Get the word out with the Star Herald!

283-2333



www.Star-Herald.com

Would you like to advertise your event or celebration in the Announcer?
 Call **Rick or Chantel**
 to advertise in next week's Announcer
283-2333

Back To School SALE!



FREE LENSES!

OFFER EXTENDED TO EVERYONE!
FREE PAIR OF SINGLE VISION POLYCARBONATE LENSES WITH PURCHASE OF FRAME!

Receive a \$105 credit when purchasing no-line bi-focals or polarized sunglasses!

Offer cannot be combined with insurance Expires August 31, 2017



Rock County Eye Clinic, locally owned, community involved, clearly different.



507-283-2345
 102 N. Freeman Ave. | Luverne, Minnesota
www.rockcountyeclinic.com

News, Sports, Opinion, Variety and More!
www.STAR-HERLAD.com



Happy 40th Anniversary

Dad and Mom on August 13th

HAPPY 80th Birthday Gert Kooiker

AUGUST 18

Greetings may be sent to:
 401 E Crawford
 Luverne, MN 56156



Happy 50th Anniversary

Jarnet & Jan Johansen

August 19

Greetings may be sent to:
 1270 201st St.
 Hardwick, MN 56134



THANK YOU...

to the following community members and businesses for supporting Rock County Youth in the 20th Annual Rock County Golf Scrambler for Kids held on Monday, August 7

EVENT SPONSOR

Teals Market

HOLE SPONSORS

- | | | |
|-----------------------------|---------------------------------|---------------------------|
| Berkley Insurance Company | Hartquist Funeral Home | Mc Clure Electric |
| Busse Plumbing & Heating | Hills Stainless Steel | Minnwest Bank |
| Casey's General Store | Howling Dog Saloon | Monsanto |
| Cleveringa Construction | Klosterbuer & Haubrich, LLP | Nergaard Construction |
| Continental Western Group | Luverne Body Shop | Professional Ag Marketing |
| Country Cupboards | Luverne Building Center | Quality Printing |
| Dan Pick Painting | Luverne Farm Store | Randy's Pumping Service |
| Eastern Farmers Cooperative | Luverne Pizza Ranch | Rock County Chiropractic |
| Exchange State Bank | Luverne Rotary | Rock County Eye Clinic |
| Facco, USA | Luverne United Methodist Church | Sanford Health |
| First Farmers & Merchants | Main Street Financial Services | The Bluestem |

OTHER SUPPORTERS

- | | | |
|------------|--------------------|-------------------------|
| Lewis Drug | The Bluestem | Sterlings Cafe & Grille |
| Bomgaars | Howling Dog Saloon | |

SPECIAL THANKS TO:

- Master of Ceremonies: Gary Golla & Mike Smith
 Grillers: Stan & Vickie Steensma
 Chicken Breasts: Gold 'n Plump
 Cake - Susan Schneekloth
 Salads - Tuesday Morning Coffee Group
 Awards - Terry's Trophies
 Luverne Country Club: Denise Hanson & staff
 The Teams & Golfers

Here's My Card

Your Quick & Easy Guide to Area Businesses



Kozlowski
 Insurance Agency & Financial Services, Inc.

Shirley Top
 Sales Representative MN Lic. 27249
 P.O. Box 766 | 212 South Kniss Ave.
 Luverne, MN 56156
 Phone: 507-283-3704
 Toll Free: 1-877-631-3704
 Fax: 507-283-3733
shirley@kozlowski-insurance.com
www.kozlowski.com
For all your insurance & investment needs!

McClure
 PLUMBING, HEATING, AIR CONDITIONING, INC.
 412 S. Kniss • Luverne, MN • 507-449-2828

Jerry Buss Lic. #002732PM **RAIN-BIRD** **Carrier**

Troy Buss Lic. #005573PM **LENNOX** **BRADFORD WHITE**
 SD # Luv-MN-R1117-98-1262C

Licensed, Bonded and Insured in Minnesota and South Dakota

H&A
 HEIDEBRINK & ASSOCIATES

Farm • Home • Business • Auto • Crop • Life • Health • Long Term Care
heidebrinkinsurance.com
 Luverne, MN 56156 • 507-283-4085

Aflac

Sovanna Beekman
 Associate
 An Independent Associate Representing Aflac
 Real Cash Benefits
 Garretson, SD 57030
sovanna_beekman@us.aflac.com
 605.770.3758 cell
 605.594.3323 fax
aflac.com

CLEVERINGA CONSTRUCTION
 507-920-5631

• For All Your Building Needs • Additions • New or Remodel
www.cleveringaconstruction.com
Merlin Cleveringa 879 - 100th Ave., Luverne, MN
 507-283-2698 Home Lic. # BC-20552185

ALEX SMART
 Event Coordinator
 507-600-9040
 TONS-OF-FUN.COM
 FACEBOOK.COM/TONSOFFUN
 TONSOFFUN
 INFLATABLESANDGAMES

REC CHIROPRACTIC

• Men, Women & Children's Health
 • Custom Orthotics • Kinesiotape • Athletic Care • Massage Therapy • Work & Auto Injuries • Postural Restoration

DR. MICHAEL SMITH
 Most Insurance Accepted

WWW.ROCKCOUNTYCHIROPRACTIC.COM
 283-2561 • 103 E. MAIN, LUVERNE
 Monday 7:30 a.m. - 6 p.m. • Tuesday 7:30 a.m. - 3 p.m.
 Wednesday 7:30 a.m. - 6 p.m. • Thursday 7:30 a.m. - 1 p.m.
 Friday 7:30 a.m. - 5 p.m.

MIL AND ELECTRIC

Residential • Commercial • Farm Wiring • Trenching
 Licensed • Bonded • Insured **Mike Buss, Owner**
 507-449-8005

LUVERNE HEALTH & WELLNESS
Codie Zeutenhorst, D.C., CAc

• Acupuncture • Chiropractic Care
 • Family Care • Sports Injuries
 • Kinesiotape • Auto & Work Injuries

Acupuncture and Massage Available
 Kris Van Der Brink M.T. & Amy Rosales M.T.

507.449.4400 www.luvernechiro.com
 109 S. Freeman Ave. | Luverne, MN

Meulebroeck, Taubert & Co., PLLP
 Certified Public Accountants
 P.O. Box 685 • 109 S. Freeman • Luverne, MN 56156
 507-283-4055

Experienced tax preparers with offices in Luverne, Pipestone, Marshall, Tyler & Lake Wilson

- Tax planning and preparation
- Accounting and bookkeeping services • Payroll services
- Quickbooks set-up and assistance

Dave Friedrichsen, Daryl Kanthak, Krista Kroon, Cayla Hamm, Amy Mollberg, Karen Bernina, Janet Slieter and Lois Mulder

Loosbrock Electrical Construction, LLC

Licensed • Bonded • Insured
 Residential • Commercial • Industrial • Agriculture

Scott Loosbrock
 Owner

507-360-5418 • scott@loosbrockelectric.com
www.loosbrockelectric.com

Call us for all your residential, commercial and farm wiring needs!

McClure Electric
 Luverne, MN 507-283-4716
 Alan M. Aanenson, owner

Rock County EYE CLINIC

Dr. Sandra Curman

507-283-2345
 102 N. Freeman Ave., Luverne, Minnesota

FRANKEN CONSTRUCTION

Travis Franken, Lic. #20627458 & Insured
 1332 181st St., Luverne
 507-920-8253

Call today for a FREE ESTIMATE.

REMODELING • NEW ADDITIONS • SIDING
 DECKING • WINDOW/DOOR REPLACEMENT
 GARAGE DOORS • CONCRETE
 NO JOB IS TOO SMALL!!!

New Construction • Home Additions • Interior & Exterior
 Home Remodeling • Windows • Siding • Drywall •
 Foundation Work & Walls • Sidewalks & Driveways
 30 Years Experience

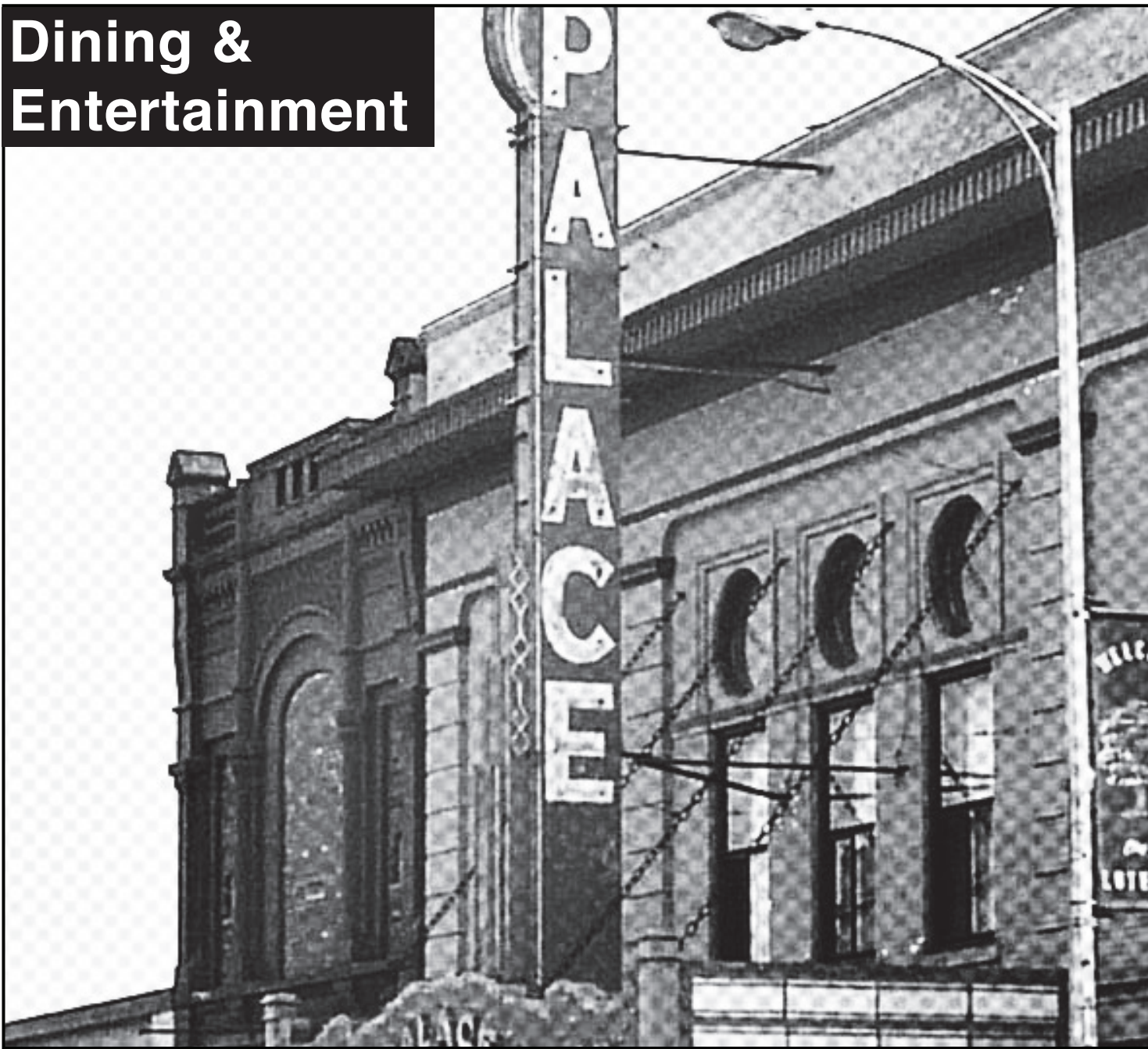
Oehlerts & Son Construction
 Kevin Oehlerts, Luverne,
www.OehlertsAndSonConstruction.com
 507-673-2206

Den Herder Construction, Inc.
 Jim Den Herder Cal Den Herder
 P.O. Box 522, Luverne, MN 56156-0522
Phone 507-920-8917
 License Number 1656

Call Chantel or Rick to advertise your event in the Announcer!

507-283-2333

Dining & Entertainment

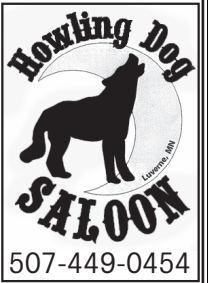


Sunday Brunch August 20 11am - 3pm

Adults \$12.99
Seniors 60+ \$10.99
Kids 6-12 \$8.99 | Kids 6 & under \$4.99
Drink included with kids meals
Mimosas and Bloody Mary specials



Come and enjoy our brunch!
Something for everyone!



507-449-0454

Celebrating 150 YEARS ON THE PRAIRIE

SATURDAY - AUGUST 19



PIPESTONE CARVING CLASSES
At 12 noon or 2 pm
Blue Mounds State Park Main Gate
Learn how to carve with Bud & Rona Johnston
Class size limited to 20
\$10/person (includes supplies)
Reservations—507.283.4061
or luvernechamber@co.rock.mn.us

LEARN POW WOW, DANCE & DRUMMING—7 PM
Blue Mounds State Park INTERPRETIVE CENTER



FREE
Native American cultural events presented by KEEPERS OF THE SACRED TRADITION OF PIPEMAKERS
Visit us at www.luvernechamber.com for more information.

ENJOY THE SOUNDS OF STRINGS AT THE HINKLY HOUSE
THURSDAY - AUGUST 17 - 7 PM
STRING DEMONSTRATION AND RECEPTION
WITH HAROLD TILSTRA

SCHEDULED HOURS:
Thursdays: 2 to 4 pm
June, July, August
Open by Appointment:
Call 507.283.4061
217 NORTH FREEMAN AVE. LUVERNE MN
Donations Lovingly Accepted!

Luverne's Fully-restored...Victorian Home!

UP THE DAM CREEK
In the Wind Karaoke
COME CELEBRATE
TOM & MICHELLE'S WEDDING
AUGUST 18 • 9pm - 1am

AUGUST 19
2ND ANNUAL STREET DANCE WITH PIRATE TAXI
9PM - 1AM

Downtown Beaver Creek • 507-673-2528
3-7 Mon-Thurs • 10am - 1am Fri & Sat

pipestone performing arts center
CLEAN WATER LAND & LEGACY

DONSHELBY'S AN EVENING WITH
Mark Twain
An After-Show Talkback Session Will Follow The Show.
7:30 PM ON SATURDAY AUG. 19th
\$20 ADULTS • \$5 STUDENTS • \$45 FAMILY
PIPESTONE PERFORMING ARTS CENTER
Box Office: 507-825-2020 or Toll Free 877-722-2787

ANNUAL CARNIVAL
in the Reformed Church of Steen parking lot
WED., AUG. 16 • 5:30-8 P.M.
All ages come for food, fun & fellowship!

INFLATABLES: Bumper Slide, Obstacle Course & Jump Tent

GAMES: Basketball Shoot, Pop Ring Toss, Treat Walk, Duck Pond, Balloon Darts and MORE!

CRUISE 'N FOR CHRIST CAR, TRACTOR & CYCLE SHOW: Come check out the entries. If you wish to bring something to display, contact Brad Bosch at 507-855-2284 or Kathy Fick at 507-673-0085 for registration details.

MEAL: Pork Sandwiches, Hot dogs, Beans, Chips, Dessert, & Drink. Free will offering.

All proceeds go to the Sunday School Department

Interested in Advertising?
Call **Rick or Chantel 283-2333**
or email **Sales@Star-herald.com**
to advertise in the Announcer

Customer Appreciation Open House
Thursday, August 17
5 - 8 pm

FREE FOOD! LIVE MUSIC! DRAWINGS INCLUDING NEW TIRES, TWINS/ VALLEYFAIR FAMILY WEEKEND WITH HOTEL, DINNER CERTIFICATES & MORE! PLUS INFLATABLES FOR THE KIDS!
BRING YOUR LAWN CHAIR OR BLANKET

COUNTY ROAD 4 VALLEY SPRINGS, MN
MANLEY TIRE & OIL SERVICE
Manley, Minnesota

2017 Minnesota Renaissance Festival

Live Armoured Jousting • 7 Theme Weekends
16 Stages of Live Entertainment
250 Artisan Booths for shopping • Food fit for a King
Throne of Swords • Mermaids, Fairies & more!

Open Weekends • August 19th - October 1st • Plus Labor Day & Festival Friday, Sept. 29th
Rain or Shine • 9am - 7pm • 952.445.7361 • RenaissanceFest.com • FREE PARKING

the classifieds

To place a classified ad in the Luverne Announcer, call 283-2333, stop by our office at 117 W. Main, Luverne, or visit www.star-herald.com.

GARAGE SALES

KANARANZI VILLAGE WIDE GARAGE SALE: Thursday, August 17: 8 a.m. to 5 p.m. Friday August 18: 8 a.m. to 5 p.m. Saturday August 19: 8 a.m. to noon with everything half price. (8.10-8.13)

WINDOWS

We custom build and install Energy Star Therm-O-Loc Windows. Call Mike at Adrian Glass for a free in-home demonstration and estimate. 101 E. Pearl, Adrian, MN 56110. 507-483-2228 or 605-770-7677 or email mbyler@santel.net. (tc)

SERVICES

ELECTROLUX

Central Vacuums • Upright Vacuums
Canister Vacuums
Sales - Service - Supplies
ELAINE BOLT
507-442-7721 Edgerton, MN

SERVICES

DD Backhoe Service

Doug Dooyema
Hydrants, waterline repairs, tile line repairs, small tile jobs, and hole digging

Call 507-283-8357 or Cell 507-220-8218

Tree Tech Inc.

Luverne, MN
507-283-8552
507-920-6424 cell
tree removal
tree trimming
stump grinding
tree moving

RECYCLE

RENTALS

Mobile home for rent: two-bedroom two-bath. Central air, water and sewer included. Call 605-366-7695. (8.6-8.24)

One bedroom apartment in Luverne. Stove and refrigerator furnished with off the street parking. No pets or smoking \$450 per month utilities included; security deposit and minimum six month lease required. Text or Call (605) 370-2251, references required and verified. (8.3-8.20)

FOR LEASE

CENTENNIAL APARTMENTS 1 BEDROOMS

50+ or Disabled Income based
ALL utilities included
JANE: 507-283-2652
LloydManagementInc.com
Equal Housing Opportunity

RENTALS

For rent two-bedroom house in Steen, MN . \$700 a month and deposit. Washer and dryer on main floor. Call 605-310-7970 or 507-855-2100. (8.13-8.17)

Oakwood Apartments

401 Oak St., Ellsworth

• 1 Bedroom Unit Available
Unit Available
Water, Sewer & Garbage Included.
Rent Based on Income
AVAILABLE IMMEDIATELY
Van Binsbergen & Associates, Inc.
320-269-6640 ext. 22
Equal Housing Opportunity

www.vanblc.com

RENTALS

BLUE MOUND TOWER



1 bedroom apartments available!

- All Ages Welcome
- Close to Senior Dining
- Close to Minnesota West College
- Income Based

Luverne HRA • Blue Mound Tower
216 McKenzie Street
Luverne, MN 56156

507-283-4922 

- Handicap Accessible
- Pet Friendly
- Smoke Free
- Secure Entry System
- On Site Laundry
- Utilities included

Read us Online!
www.star-herald.com

EMPLOYMENT

EMPLOYMENT

MISCELLANEOUS

Are You Still Paying Too Much For Your Medications?

You can save up to 97% when you fill your prescriptions with our Canadian and International prescription service.

Their Price
Crestor™
\$914.18

Special 90 Day Price for 30 Days x 100

Our Price
Rosuvastatin™
\$148

Generic equivalent of Crestor™
Generic price for 30 Days x 100

Call the number below and save an additional \$15 plus get free shipping on your first prescription order with Canada Drug Center. **Expires December 31, 2017.** Offer is valid for prescription orders only and can not be used in conjunction with any other offers. Valid for new customers only. One time use per household. **Use code 15FREE to receive this special offer.**

Toll free: 855-541-5141

Please note that we do not carry controlled substances and a valid prescription is required for all prescription medication orders. Use of these services is subject to the Terms of Use and accompanying policies at www.canadadrugcenter.com.

MISCELLANEOUS

WE'RE HIRING

PIPESTONE

SYSTEM

Full-time Swine Technicians WANTED

In the Kenneth, MN Area

- Competitive Wages - based on position and experience
- Health, Dental & Vision Insurance
- Referral Bonus Program • Scholarship Program • Bereavement Leave • Jury Duty
- Production Bonus • Flex Plan • 401K Plan • Life, Long & Short Term Disability Insurance
- Paid Holidays and Paid Time Off (PTO)

Apply @ www.pipestonesystem.com
Call 866-918-7378 to explore your future with us.

No experience necessary - we will train
Full-time Employees average 40-45 hrs/wk, Overtime after 40 hrs
Pre-employment drug testing and background screening required



CADNET NATIONAL ADVERTISING NETWORK

AUTOS WANTED

GOT AN OLDER CAR, BOAT OR RV? DO THE HUMANE THING. DONATE IT TO THE HUMANE SOCIETY. CALL 1-855-558-3509

CARS/TRUCKS WANTED!!! ALL MAKES/ MODELS 2000-2016! ANY CONDITION. RUNNING OR NOT. TOP \$\$\$ PAID! FREE TOWING! WE'RE NATIONWIDE! CALL NOW: 1-888-985-1806

EDUCATION

AIRLINE MECHANIC TRAINING - GET FAA TECHNICIAN CERTIFICATION. APPROVED FOR MILITARY BENEFITS. FINANCIAL AID IF QUALIFIED. JOB PLACEMENT ASSISTANCE. CALL AVIATION INSTITUTE OF MAINTENANCE 866-453-6204

MEDICAL

GOT KNEE PAIN? BACK PAIN? SHOULDER PAIN? GET A PAIN-RELIEVING BRACE AT LITTLE OR NO COST TO YOU. MEDICARE PATIENTS CALL HEALTH HOTLINE NOW! 1-844-502-1809

MISC. FOR SALE

DIATOMACEOUS EARTH-FOOD GRADE 100% OMRI LISTED-MEETS ORGANIC USE STANDARDS. BUY ONLINE ONLY: HOMEDEPOT.COM

MISCELLANEOUS

HUGHESNET: GEN4 SATELLITE INTERNET IS ULTRA FAST AND SECURE. PLANS AS LOW AS \$39.99 IN SELECT AREAS. CALL 1-855-440-4911 NOW TO GET A \$50 GIFT CARD!

A PLACE FOR MOM. THE NATION'S LARGEST SENIOR LIVING REFERRAL SERVICE. CONTACT OUR TRUSTED, LOCAL EXPERTS TODAY! OUR SERVICE IS FREE/NO OBLIGATION. CALL 1-844-722-7993

MAKE A CONNECTION. REAL PEOPLE. FLIRTY CHAT. MEET SINGLES RIGHT NOW! CALL LIVELINKS. TRY IT FREE. CALL NOW: 1-888-909-9905 18+.

SOCIAL SECURITY DISABILITY? UP TO \$2,671/MO. (BASED ON PAID-IN AMOUNT). FREE EVALUATION! CALL BILL GORDON

& ASSOCIATES. 1-855-498-6323. MAIL: 2420 N ST NW, WASHINGTON DC. OFFICE: BROWARD CO. FL., MEMBER TX/NM BAR.

LIFELock IDENTITY THEFT PROTECTION. DO NOT WAIT! START GUARDING YOUR IDENTITY TODAY. 3 LAYERS OF PROTECTION. DETECT, ALERT, RESTORE. RECEIVE 10% OFF. CALL FOR DETAILS 1-855-399-2089

LUNG CANCER? AND AGE 60+? YOU AND YOUR FAMILY MAY BE ENTITLED TO SIGNIFICANT CASH AWARD. CALL 866-428-1639 FOR INFORMATION. NO RISK. NO MONEY OUT OF POCKET.

WANTED TO BUY

WANTS TO PURCHASE MINERALS AND OTHER OIL AND GAS INTERESTS. SEND DETAILS TO P.O. BOX 13557 DENVER, CO. 80201

CASH PAID- UP TO \$25/BOX FOR UNEXPIRED, SEALED DIABETIC TEST STRIPS. 1-DAYPAYMENT.1-800-371-1136

ADVERTISE TO 10 MILLION HOMES ACROSS THE USA! PLACE YOUR AD IN

OVER 140 COMMUNITY NEWSPAPERS, WITH CIRCULATION TOTALING OVER 10 MILLION HOMES. CONTACT INDEPENDENT FREE PAPERS OF AMERICA IFPA AT DANIELLEBURNETT-IFPA@LIVE.COM OR VISIT OUR WEBSITE CADNETADS.COM FOR MORE INFORMATION

READER ADVISORY: THE NATIONAL TRADE ASSOCIATION WE BELONG TO HAS PURCHASED THE ABOVE CLASSIFIEDS. DETERMINING THE VALUE OF THEIR SERVICE OR PRODUCT IS ADVISED BY THIS PUBLICATION. IN ORDER TO AVOID MISUNDERSTANDINGS, SOME ADVERTISERS DO NOT OFFER EMPLOYMENT BUT RATHER SUPPLY THE READERS WITH MANUALS, DIRECTORIES AND OTHER MATERIALS DESIGNED TO HELP THEIR CLIENTS ESTABLISH MAIL ORDER SELLING AND OTHER BUSINESSES AT HOME. UNDER NO CIRCUMSTANCE SHOULD YOU SEND ANY MONEY IN ADVANCE OR GIVE THE CLIENT YOUR CHECKING, LICENSE ID, OR CREDIT CARD NUMBERS. ALSO BEWARE OF ADS THAT CLAIM TO GUARANTEE LOANS REGARDLESS OF CREDIT AND NOTE THAT IF A CREDIT REPAIR COMPANY DOES BUSINESS ONLY OVER THE PHONE IT IS ILLEGAL TO REQUEST ANY MONEY BEFORE DELIVERING ITS SERVICE. ALL FUNDS ARE BASED IN US DOLLARS. TOLL FREE NUMBERS MAY OR MAY NOT REACH CANADA.

MN VETERANS HOME

ACCOUNT CLERK

Applications are being accepted for a part-time Account Clerk (average of 30 hours per week). This position is responsible for reviewing and processing all payroll related transactions, employee expense documents and other related clerical tasks and backup support in supply and accounting. Excellent benefit package. Hourly wage: \$16.16-\$21.42. View complete job announcement and apply online: <https://mn.gov/careers>
Deadline to apply: August 18, 2017.
For further information, call 507-283-6211.

EEO/AAO




Sanford Luverne Medical Center

is currently accepting applications for FT (Full-Time), PT (Part-Time) and PRN (Part-Time as Needed) positions:

- CERTIFIED MEDICATION ASSISTANT - PT, PRN
- EMERGENCY MEDICAL TECHNICIAN - PRN
- HOME HEALTH AIDE - PT, PRN
- HOUSEKEEPING - PT
- LPN, CLINIC - PRN
- LPN, HOSPICE - PRN
- PATIENT ACCESS REPRESENTATIVE - FT
- PATIENT CARE TECHNICIAN - PT
- PARAMEDIC - FT
- RN, INPATIENT - PT

To apply, visit sanfordhealth.jobs search "Luverne" in the location search bar.



SANFORD HEALTH

"Your Calling, Your Place."

Sanford Luverne Medical Center | 877-243-1372

EEO/AA

Midwest Free Community Papers Midwest Classifieds

Call 507-825-3333 or 800-325-6440 to place your Minnesota Free Community Paper classified ad.

AUTOMOBILES/MOTORCYCLES WANTED
MOTORCYCLES: TOP CASH PAID! For Old Motorcycles! 1900-1979. DEAD OR ALIVE! 920-371-0494 (MCN)

ADOPTION
PREGNANT? CONSIDERING ADOPTION? Call us first. Living expenses, housing, medical, and continued support afterwards. Choose adoptive family of your choice. Call 247. 855-390-6047 (Void in IL & IN) (MCN)

AUTOMOBILES
DONATE YOUR CAR TO CHARITY. Receive maximum value of write off for your taxes. Running or not! All conditions accepted. Free pickup. Call for details. 855-752-6680 (MCN)

DONATE YOUR CAR, TRUCK OR BOAT TO HERITAGE FOR THE BLIND. Free 3 Day Vacation, Tax Deductible, Free Towing, All Paperwork Taken Care Of. 1-800-283-0205 (MCN)

CABLE/INTERNET
Spectrum Triple Play: TV, Internet & Voice for \$29.99 ea. 60 MB per second speed. No contract or commitment. We buy your existing contract up to \$500! 1-800-919-3588 (MCN)

Exede satellite internet. Affordable, high speed broadband satellite internet anywhere in the U.S. Order now and save \$100. Plans start at \$39.99/month. Call 1-800-712-9365 (MCN)

Cut the Cable! CALL DIRECTV. Bundle & Save! Over 145 Channels PLUS Genie HD-DVR. \$50/month for 2 Years (with AT&T Wireless.) Call for Other Great Offers! Call 1-800-203-4378 (MCN)

SWITCH TO DIRECTV. From \$50/Month, includes FREE Genie HD/DVR # 3 months HBO, SHOWTIME, CINEMAX, STARZ. Get a \$50 Gift Card. Call 877-894-5275 (MCN)

Change the way you watch TV. Get rid of cable and get DIRECTV! You may also qualify to receive \$100 VISA gift card when you sign up today - Limited time Only. CALL NOW! 844-359-1203 (MCN)

Stop paying too much for cable, and get DISH today. Call 855-589-1962 to learn more about our special offers! (MCN)

DISH NETWORK. TV for Less, Not Less

TV! FREE DVR. FREE Install (up to 6 rooms.) \$49.99/mo. PLUS Hi-Speed Internet - \$14.95/mo (where available.). Call 1-855-434-0020 (MCN)

SAVE on internet and TV bundles! Order the best exclusive cable and satellite deals in your area! If eligible, get up to \$300 in Visa Gift Cards. CALL NOW! 1-800-925-0146 (MCN)

EMPLOYMENT/HELP WANTED
MAKE \$1,000 WEEKLY! Paid in advance! Mailing Brochures at Home! Easy pleasant work. Begin immediately! Age unimportant! WWW.HomeBucks.US ##### Earn \$1,000's Processing Mail! Details: Rush SASE: LISTS/IA, Springhouse, PA 19477-0396 (MCN)

Over the Road carrier seeking experienced drivers. Midwest and west coast, no east coast. Drivers average 3,000+ miles per week, loaded and empty miles paid. Call recruiting 1-800-645-3748. www.gfltruck.com (MCN)

FINANCIAL
Are you in BIG trouble with the IRS? Stop wage & bank levies, liens & audits, unfiled tax returns, payroll issues, & resolve tax debt FAST. Call 888-606-6673 (MCN)

STUDENT LOAN PAYMENTS got you down? We can help reduce payments and get finances under control, call: 866-871-1626 (MCN)

Reduce your total credit card payments by up to 30% to 50%! Call Consolidated Credit NOW! 844-764-1891 (MCN)

Buying a home and need a mortgage? Or, have a home and want to lower your monthly fees and refinance? Getting a mortgage is quicker and easier than ever. Call now! 855-715-4721 (MCN)

Owe the IRS? You May qualify for Relief today! Stop Bank Levy's & Wage Garnishments. Mon-Thurs 8-8pm, Fri 8-6pm and Saturdays 9-5pm CST Español Available, Free consultation. NT Valid in MN, WV & ND CALL NOW 1-800-511-2181 (MCN)

FOR SALE
Trailer Sale: 4-place snowmobile trailers 20' & 24'. Scissor lift trailers; 2017 7'X16' V-nose ramp door \$4,442.00; 2017 6'X12' V-nose ramp door \$2,775.00; 2017 18'

7k Car hauler MX speedloader \$2,799.00; 515-972-4554 www.FortDodgeTrailerWorld.com for inventory & prices! (MCN)

HEALTH & MEDICAL
LIVING WITH KNEE OR BACK PAIN? Medicare recipients may qualify to receive a pain relieving brace at little or no cost. Call now! 844-668-4578 (MCN)

Stop OVERPAYING for your prescriptions! SAVE! Call our licensed Canadian and International pharmacy, compare prices and get \$25.00 OFF your first prescription! CALL 888-438-6461 Promo Code CDC201625 (MCN)

OXYGEN - Anytime. Anywhere. No tanks to refill. No deliveries. The All-New Inogen One G4 is only 2.8 pounds! FAA approved! FREE info kit: 844-852-7448 (MCN)

Got Knee Pain? Back Pain? Shoulder Pain? Get a pain-relieving brace at little or NO cost to you. Medicare Patients Call Health Hotline Now! 1- 800-604-2613 (MCN)

ATTENTION: VIAGRA AND CIALIS USERS! A cheaper alternative to high drug-store prices! 50 Pill Special - \$99 FREE Shipping! 100 Percent Guaranteed. CALL NOW: 1-800-795-9687 (MCN)

OXYGEN - Anytime. Anywhere. No tanks to refill. No deliveries. The All-New Inogen One G4 is only 2.8 pounds! FAA approved! FREE info kit: 855-995-5653 (MCN)

Diagnosed with Mesothelioma or Asbestos Lung Cancer? If so, you and your family may be entitled to a substantial financial award. We can help you get cash quick! Call 24/7: 866-924-0504 (MCN)

CASH PAID for unexpired, sealed DIABETIC TEST STRIPS! 1 DAY PAYMENT & PREPAID shipping. HIGHEST PRICES! Call 1-888-389-0695. www.cash4diabeticsupplies.com (MCN)

HOME IMPROVEMENT
ALL THINGS BASEMENT! Basement Systems Inc. Call us for all of your basement needs! Waterproofing, Finishing, Structural Repairs, Humidity and Mold Control. FREE ESTIMATES! Call 1-800-640-8195 (MCN)



people ready
A TRUEBLUE COMPANY

507-537-9656

HIRING EVENT

for the Sioux Falls, Edgerton and Worthington areas

At the **Luverne Library**

201 W Main St, Luverne, MN

Wednesday, August 16

3 pm to 7 pm

EOE

If you are unable to make the event please call People Ready at 507-537-9656

www.peopleready.com/marshall

visit us online

WWW.STAR-HERALD.COM

the classifieds

To place a classified ad in the Luverne Announcer, call 283-2333, stop by our office at 117 W. Main, Luverne, or visit www.star-herald.com.

EMPLOYMENT

WANTED: Assistant Teacher for Rock Rapids Head Start Center. Monday- Thursday, 26 hours a week, September through May. Eligible for benefits, including IPERS. For more information or to apply online, please visit www.mid-sioux.org. 1-800-859-2025. An Equal Opportunity Employer. (8.13-8.31)

SUBSTITUTES NEEDED for the 2017-18 school year at Blue Mound Learning Center in Pipestone, MN. Substitute Teachers must have MN Special Education licensure and will be paid \$125 per day. Substitute Paraprofessionals with EBD experience preferred. Paraprofessional pay starts at \$12.20 per hour. Complete on-line application at www.swsc.org/application and include cover letter, application form, copy of license (if applicable), resume, and two letters of reference. For questions about the position contact Steve Rops at 507-825-5858, ext. 2716 or steve.rops@swsc.org. EOE. (8.13-9.3)

Bus Driver - Rock County Community Transit of United Community Action Partnership is seeking part and full time bus drivers for our Rock County Area. We offer flexible hours, training to obtain a CDL with passenger endorsement, PTO, holiday pay, and a competitive benefits package for eligible positions. Qualified applicants should have a clean driving record and will be required to pass a pre-employment drug screen and background check. Read about us, learn more about this opportunity, and apply online at www.unitedcapmn.org. AA/ADA/EOE Employer. (8.13-8.17)

Driver
HOME DAILY DEDICATED ACCOUNT
 Based in Sioux Falls, SD
Full & Part Time Positions Available!
No Touch Freight
 CDL-A w/ 1yr. T/T Exp. Tank Endorsement Required
800-879-7826
www.ruan.com/jobs
RUAN
 Dedicated to Diversity. EOE

EMPLOYMENT

L.G. Everist Inc. is looking for an enthusiastic and talented saw operator for our cut stone division in Jasper, MN. We offer a competitive salary and benefits package in a family friendly environment. Please log on to www.lgeverist.com and select the About Us/Careers tab to submit an application online, email hr@lgeverist.com or apply in person at 309 S Sherman, Jasper, MN. (8.10-8.8.27)

Adrian Public School is seeking applications for a classroom/special education paraprofessionals at the Elementary and Middle/High School. Candidates will work with teachers providing academic and behavioral support to students. Candidates should hold an associates degree, or have certification via the Para Pro assessment. If interested, please submit a letter of application, resume, current letters of reference, and a completed district application found at www.isd511.net. Send application materials to: Adrian Public School, PO Box 40, Adrian, MN 56110. For additional information on the Para Pro assessment, please contact Cate Koehne at c.koehne@isd511.net or Russ Lofthus at r.lofthus@isd511.net. Positions open until filled. (8.6-8.24)

CAREGIVER/DSP: Earn money, have fun, and gain valuable work experience working with people with disabilities! Client Community Services, Inc., based in Worthington, Minnesota, has openings for staff at our two homes located in Luverne, Minnesota. Variable hours. Contact Virginia Rath at 507-376-3171, extension 7, or apply on line at www.clientcommunityservices.org. CCSI is an Equal Opportunity/Affirmative Action Employer (8.3-8.20)

TEAM LEAD: Client Community Services, Inc., based in Worthington, Minnesota, has an opening for a 39/hour/week team lead position in Luverne, Minnesota. The Team Lead provides direct care, program implementation and community integration for persons with disabilities in a home setting and assists the supervisor in the home's day-to-day activities, including office duties. Salary commensurate with experience. Contact Virginia Rath at 507-376-3171, extension 7, or apply on line at www.clientcommunityservices.org. CCSI is an Equal Opportunity/Affirmative Action Employer (8.3-8.20)

EMPLOYMENT

SUPERVISOR: Sign-on Bonus!!! Client Community Services, Inc., based in Worthington, Minnesota, has an opening for a full-time PROGRAM SUPERVISOR position managing two of our homes Luverne, Minnesota. The Supervisor provides supported living services for persons with disabilities and includes the supervision and scheduling of direct care staff; implementation of consumer program goals; support and evaluation of ongoing services; medication administration; management of budgeted finances and compliance with relevant rules governing the program. Salary commensurate with experience. Contact Virginia Rath at 507-376-3171, extension 7, or apply on line at www.clientcommunityservices.org. CCSI is an Equal Opportunity/Affirmative Action Employer (8.3-8.20)

Call **283-2333** to advertise in the Star Herald & Announcer

EMPLOYMENT

Become a Senior Companion by making friendly visits to older adults in need. Senior Companions must be 55 years of age or older; flexible service of 15 hours or more a week earns a small tax free hourly stipend, plus receive mileage reimbursement and other benefits. 507.530.2295 for more information. (8.3-8.20)

Dietary Aide: Parkview Manor is looking for part-time Dietary Aides! Benefits include vacation, PERA retirement plan, and holiday pay. Training is available on-site. Wages are based on experience level. If interested, contact Sam or Arlys at 507-967-2482, or come visit us to pick up an application! (tc)

Cook: Parkview Manor is looking for a part-time cook! Benefits include vacation, PERA retirement plan, and holiday pay. Training is available on-site. Wages are based on experience level. If interested, contact Sam or Arlys at 507-967-2482, or come visit us to pick up an application! (tc)

EMPLOYMENT

RN/LPN: Parkview Manor is looking for a part-time RN/LPN to fill in as needed! Benefits include vacation, PERA retirement plan, and holiday pay. Wages are based on experience. If interested, contact Darnell Krull at 507-967-2388. (tc)

CNA: Parkview Manor is looking for CNAs! Benefits include health insurance, PERA retirement plan, vacation and sick time, holiday pay, and a \$2,000 scholarship available for students! We will provide training or pay for experience. Wages are based on experience level. If interested, contact Darnell Krull at (507) 967-2388 or Sam Quam at (507) 967-2482. (tc)

New Prairie Insulation of Beaver Creek has a full-time Insulation Installer position available. Monday through Friday, health insurance, vacation, holiday, bonus opportunities. Will train. Call Dean at 605-376-3006 or 507-673-2548. (tc)

FOR SALE

For Sale: Landscaping rock 1 1/2 or 3/4 inch, gravel, dirt, also do tree stump grinding. Phone: 507-227-4521. (7.30-8.17)

For Sale: Yearling Red Angus Bulls - EPD, semen-tested, shots, \$2,000 to \$3,000. Baltic, South Dakota. Call Paul 605-360-2556. (6.22-8.20)

AGRICULTURAL

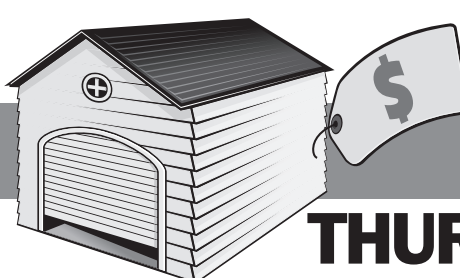
WE HAVE SEVERAL CREWS OF BEAN WALKERS. We also pick rock, put up and take down fences. We will do any type of farm work. Call 712-943-2084, 712-251-3277 or 712-899-5219. (4.27-9.20)

MISCELLANEOUS

HAVE A UNIQUE SERVICE OR BUSINESS? Get the word out to over 1.4 million households. Call **WIDE AREA CLASSIFIEDS** today, 507-359-7326. (tc)

RECYCLE

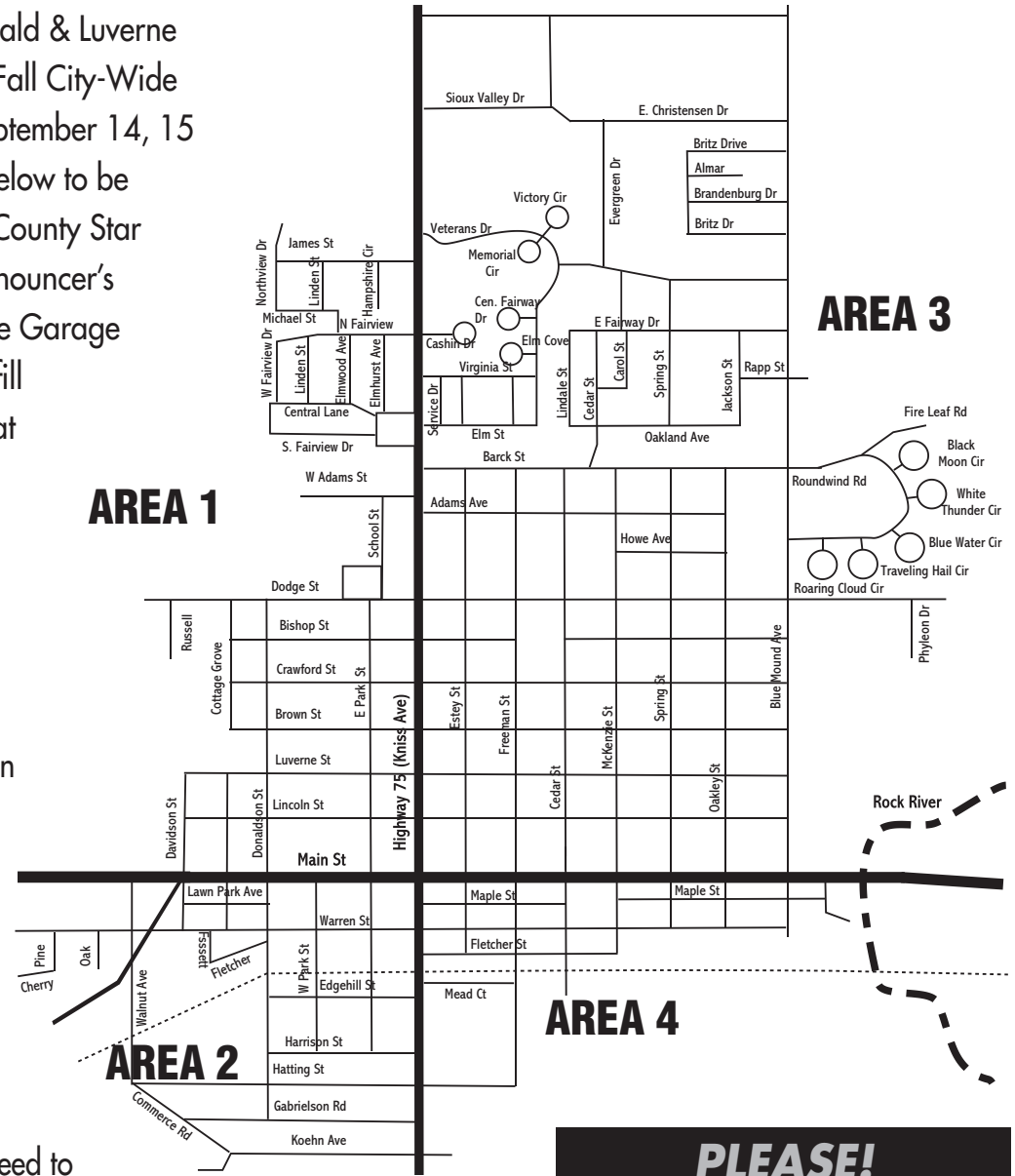
LUVERNE FALL CITY-WIDE GARAGESALE THURS, FRI & SAT, SEPTEMBER 14, 15, 16



Rock County Star Herald & Luverne Announcer's Annual Fall City-Wide Garage Sales are September 14, 15 & 16. Use the form below to be included in the Rock County Star Herald & Luverne Announcer's Annual Fall City-Wide Garage Sale, or stop by and fill one out at our office at 117 W. Main St.

Ads must be paid for before they will run.

All of the garage sale ads will be published in the *Rock County Star Herald and Luverne Announcer* with a Garage Sale header & September 14, 15 & 16 date on top of the page - you don't need to include these in your ad. Also included will be a map divided into 4 areas. The garage sales will be divided by area on the page to assist those going to your sale.



PLEASE! LIST THE AREA YOUR ADDRESS FALLS IN!

Dividing lines are Hwy. 75 (Kniss Ave.) & Main Street - see map

****** NOTE: An additional \$4 will be charged for an additional address placed in an ad. Limit 2 addresses per coupon. ******

Your ad will look like this:
 000 Any Street
 Sat., 00 am - 00 pm
 Group rummage sale! Children's and adult clothing, toys and other miscellaneous items. Also, baked items and crafts.

Please list your address first and time of the sale second! These words will be counted as part of the ad. Also, specify if sale will be Thursday, Friday & Saturday, or Saturday only.

ADVERTISING DEADLINE: Tues., Sept. 5 AT NOON SHARP!

****** CLIP & USE THIS COUPON ******
 All ads will run two times -
SEPT. 10 ANNOUNCER & SEPT. 14 STAR HERALD
 20 words \$15.00 25 words \$17.50 30 words \$20.00
 Please mail your check with this coupon! **PAYMENT REQUIRED WHEN COUPON IS TURNED IN!**

Address _____
 Day(s) & Time(s) _____
 Ad copy _____

 NAME _____
 PHONE _____ AMT. PAID _____
 CC# _____
 _____ MC _____ Visa _____ Disc. _____ Exp. Date _____
 SIGNATURE _____

PLEASE CIRCLE AREA OF SALE!
 1 2 3 4
 The Star Herald is not responsible if no area is circled!

MAIL OR DROP OFF AT:
 Rock County Star Herald
 117 W. Main Street
 P.O. Box 837
 Luverne, MN 56156

Questions? Call 507-283-2333

AUTOMOTIVE TECHNICIAN
 We are a modern, progressive shop looking for a motivated individual to work in our air-conditioned shop. Must be able to disassemble and assemble automotive systems. Diagnose customer complaints and repairs as needed. We specialize in domestic models but foreign experience is helpful. Pay is based on experience, and we will pay the right technician top scale wages! Hours are 7:30-4:30 M-F, no Saturdays or Sundays. Paid holidays and vacation. 401k. Health insurance. Must have own hand tools (scanners & monitors provided)

Send Resume to 310 S Kniss or drop it off to Terry at Connell Car Care in Luverne.

Connell Car Care
 800-884-2341

AM AVIATION INSTITUTE OF MAINTENANCE AIRLINE CAREERS

Get FAA approved maintenance training at campuses coast to coast. Job placement assistance. Financial Aid for qualifying students. Military friendly.

Call Aviation Institute of Maintenance
800-481-7894

Call **283-2333** to advertise in the Star Herald & Announcer

Tired of large class size and building referendums? It is time to check out Ellsworth Schools Ellsworth Public Schools

A High Quality, Small School Education in Southwest Minnesota
Ellsworth Public School gives your child a high quality education in a small school setting in grades pre K-12. Your child will be immediately comfortable with the family oriented, intimate learning environment dedicated to academic, social and relationship building success for each child. Your child will have a seamless transition to a school with high academic standards and the small school feel where every child thrives. Choosing the best school for your child is one of the most important decisions you will ever make, and we offer a strong educational excellence in a safe small school setting. If you're thinking of changing schools or want to discuss the advantages of enrolling in **Ellsworth Public School** we would be happy to talk to you.
Call 507-967-2242



ADVANTAGES INCLUDE:

- Small Classes • Active Parent Support
 - Extra-Curricular Activities • Transportation at NO COST
- Students picked up at your door step

Reward School
Minnesota Department of Education
Ellsworth Public School
513 Broadway Street, Ellsworth, MN 56129 • 507-967-2242

HELLO LUVERNE!

EXCITING FALL YOUTH PROGRAMS!

Boys & Girls Ages 3-17

Basketball	Horseback Riding
Birthday Parties	Gymnastics
Kids Yoga	Soccer

SIoux FALLS FAMILY YMCA
(605) 336-3190
WWW.SIOUXFALLSYMCA.ORG

Read the Announcer online www.star-herald.com
Updated every Saturday

DeBoer

EDGERTON

507-442-4341

<p>NEW</p> <p>CHEVY BONUS TAG</p> <p>MSRP: \$34,870 \$27,896</p> <p>2017 CHEVROLET IMPALA LT #17133</p>	<p>NEW</p> <p>CHEVY BONUS TAG</p> <p>MSRP: \$27,290 \$20,845</p> <p>2017 CHEVROLET MALIBU LT #17101</p>	<p>NEW</p> <p>CHEVY BONUS TAG</p> <p>MSRP: \$26,530 \$20,211</p> <p>2017 CHEVROLET CRUZE LT #1733</p>
<p>WAS: \$38,125 \$35,985</p> <p>2013 CHEVROLET TAHOE LTZ, HTD & CL LTR, 69K #A1712</p>	<p>WAS: \$36,625 \$33,785</p> <p>2014 CHEVROLET SILVERADO 1500 LTZ, 79K #17127A</p>	<p>WAS: \$24,050 \$20,987</p> <p>2009 DODGE RAM 1500 SPORT, HEMI, 80K #1781B</p>

www.deboerchev.com

News for all ages.

www.star-herald.com

Best care in sight.

2nd Location Open

at Arrowhead Plaza, just South of Menards
5418 E. Arrowhead Pkwy.
Sioux Falls, SD 57110

Comprehensive Eye Exams Available

- VSP, Eyemed, Medicare, SD Medicaid
 - Many other plans accepted
- Large Selection of Eyewear
 - Coach, Jimmy Choo, Ray-Ban and more
- Contact Lens Specialist
 - Visit our Website to learn more

www.DakotaVisionCenter.com

Call to schedule an appointment today!

605-271-0464

CAN YOU SEE ME NOW?

The Star Herald Nose

www.star-herald.com

Subscribe to the Star Herald Online Edition!

Call 283-2333 for more details.