

A Luverne ANNOUNCER

117 West Main St. • Luverne, MN 56156-0837 • Phone 507-283-2333 • Address Service Requested

PRSR STD
U.S. POSTAGE
PAID
Permit No. 22
Page 1 Printers
Postal Customer

VOLUME 88 NUMBER 32

ROCK COUNTY'S FREE CIRCULATION PUBLICATION SINCE 1931

August 5, 2018

Community Update

Meetings

Beaver Creek Township Board will meet at 7:30 p.m. Monday, Aug. 6, in the township hall.

Springwater Township Board will meet at 7 p.m. Tuesday, Aug. 7, at the home of clerk Teresa Kramer.

Lady Luverne Red Hats will meet at 3:20 p.m. Friday, Aug. 10, in the St. Catherine Church east parking lot to carpool to Renner, South Dakota, for a tour of the Strawbale Winery. Dinner location to be announced. Call Connie, 283-8470, by Aug. 8 to RSVP.

Pink Ladies will meet at 1:30 p.m. Monday, Aug. 13, at Minnesota West Community and Technical College in Luverne for a tour of the facility. The business meeting and lunch follow in the Blue Mound Room at Sanford Luverne. Call 283-2597.

Vienna Township Board will meet at 7 p.m. Tuesday, Aug. 14, at the Kenneth Community Center.

Donate blood Aug. 6

The Community Blood Bank will host a blood drive Monday, Aug. 6, from 11 a.m. to 1:30 p.m. and from 3 to 6 p.m. at Sanford Luverne. All blood types are in critical need, with all blood donated going to help the blood supply at Sanford Luverne.

Donors must be at least 17 years old (16 years old with a signed parent consent form found at www.cbblifeblood.org), weigh 110 pounds or more and be in good general health. Bring an I.D. Log onto www.cbblifeblood.org or call at 507-283-2321.

Hansen to speak at Pub Theology Aug. 6

Former NFL Pro-Bowler Brian Hansen will speak at Pub Theology at 7:30 p.m. Monday, Aug. 6, at the Take 16 Tap Room in Luverne. Hansen, an NFL player from 1984-1999, is currently the ministry director for the Fellowship of Christian Athletes (FCA) in South Dakota. Pub Theology is a Christian men's ministry and Bible study group that meets each month to discuss topics of faith and life in a relaxed atmosphere.

Steen Reformed carnival Aug. 8

The Steen Reformed Church will host their annual Carnival and Cruise-in for Christ Car, Tractor and Cycle Show from 5:30 to 8 p.m. Wednesday, Aug. 8, at the church. A pulled pork supper will be served. To sign up car show entries, call Brad Bosch at 507-855-2284.

Historical Society hosts 'Life in Trenches'

The Rock County Historical Society will sponsor Michael Eckers, noted speaker and historian, as he presents his program, "Life in the Trenches," at 7 p.m. Thursday, Aug. 9, at the History Center in Luverne. His program deals with World War I before and after the United States entered the war.

LBA golf scrambler coming up Aug. 10

Luverne Basketball Association will host its fourth-annual four-person team golf scrambler Friday, Aug. 10, at the Luverne Country Club. The event provides fun with family and friends while raising additional funds to support the Luverne Basketball Association. Cost is \$30 per person and includes nine holes of golf, golf cart rental and a meal. Registration is at 4:30 p.m. for the 5 p.m. shotgun start. Meal and awards ceremony follow.

Fifth-grade band lessons start Aug. 13

Free beginner band lessons will be Monday through Thursday, Aug. 13 through 16 and Aug. 20-23, in Beth Capistran's elementary music room. Flutes are at 1 p.m., clarinets 1:30, saxophones at 2, trumpets at 2:30, trombones at 3, French horns, baritones and tubas are at 3:30 and percussion is 4. Lessons are free. Come as often as possible. Students need their instruments and summer lesson books. If books were ordered, they'll be delivered to school. Call Angie Swenson, 283-4491 ext. 2670, with questions.

'Homestyle BBQ Social' Aug. 14

The Luverne Senior Citizens will host a Homestyle Barbecue Social from 5-7 p.m. Tuesday, Aug. 14, at the Luverne Senior Center. The menu includes barbecue, baked beans, potato chips, pie and ice cream for \$8 single or \$10 double barbecue. The ice cream is donated by the Rock County American Dairy Association.

Free food Aug. 16

New Life Celebration Church will offer free food from 4:30 to 5:30 p.m. Thursday, Aug. 16, in the Luverne Senior Citizens Building on East Lincoln Street in Luverne for those having trouble putting food on the table. Bring your own boxes and bags. Call 507-283-4366 with questions.

IN THIS
ISSUE

Inside
find inserts* from

SHOPKO[®]
Hometown

Teals MARKET

bomgaars
What You Need... When You Need It

Pizza Ranch

Rock Rapids

*Not all Announcers will have all inserts

COMMERCIAL PROPERTY



124 W MAIN ST,
LUVERNE
COMMERCIAL
\$95,000



1000 MAIN ST, EDGERTON
COMMERCIAL
\$199,900



802 BLUE WATER CIR, LUVERNE
4 BEDROOM, 3 BATH
\$257,900



314 W LINCOLN ST, LUVERNE
2 BEDROOM, 1 BATH
\$45,000



410 W CRAWFORD ST, LUVERNE
4 BEDROOM, 2 BATH
\$139,900



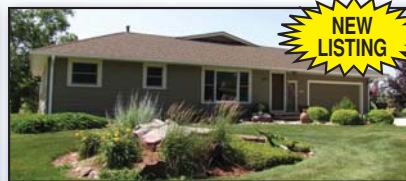
420 E WARREN ST, LUVERNE
4 BEDROOM, 1 BATH
\$54,900



504 W CRAWFORD ST, LUVERNE
4 BEDROOM, 3 BATH
\$225,000



217 W WARREN ST, LUVERNE
DUPLEX - 3 BED, 1 BATH / 2 BED, 1 BATH
\$97,500



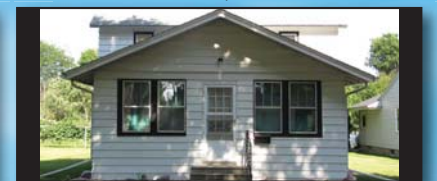
609 N COTTAGE GROVE AVE, LUVERNE
3 BEDROOM, 3 BATH
\$299,900



613 N FREEMAN AVE, LUVERNE
3 BEDROOM, 2 BATH
\$159,900



703 N SPRING ST, LUVERNE
2 BEDROOM, 1 BATH
\$89,900



728 N ESTEY ST, LUVERNE
3 BEDROOM, 2 BATH
\$85,000



514 W MAIN ST, LUVERNE
2 BEDROOM, 1 BATH
\$69,900



806 BLUE WATER CIR, LUVERNE
4 BEDROOM, 3 BATH
\$249,900



818 N MCKENZIE ST, LUVERNE
3 BEDROOM, 2 BATH
\$89,900



1000 CAROL ST, LUVERNE
4 BEDROOM, 3 BATH
\$165,000



1011 N CEDAR ST, LUVERNE
3 BEDROOM, 2 BATH
\$147,900



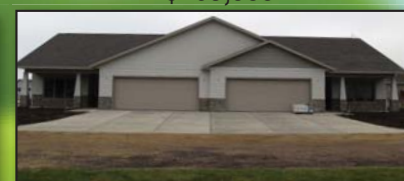
104 N ROSS AVE, HARDWICK
3 BEDROOM, 2 BATH
\$68,500



105 E 1ST ST, HARDWICK
3 BEDROOM, 2 BATH
\$75,000



2150 100TH AVE, HARDWICK
2 BEDROOM, 1 BATH
\$225,000



304 / 306 E 6TH ST, HILLS
CONDOS - 2 BEDROOM, 2 BATH
\$229,900



LOTS FOR SALE
HILLS
\$10,000 - \$15,000



104 W 5TH ST, ADRIAN
3 BEDROOM, 1 BATH
\$99,000



2047 DOGWOOD AVE, ALVORD
5 BEDROOM, 3 BATH
CALL AGENT



401 MECHANIC ST, EDGERTON
2 BEDROOM, 2 BATH
\$79,900



609 SW 5TH ST, PIPESTONE
3 BEDROOM, 1 BATH
\$79,900



310 D SCHOLTEN DR, STEEN
3 BEDROOM, 2 BATH
\$299,900

SALE PENDING

214 W. LINCOLN ST., LUVERNE
418 W. LUVERNE ST., LUVERNE
915 N. SPRING ST., LUVERNE
318 S. STEEN ST., STEEN
408 N. ESTEY ST., LUVERNE
425 W. DODGE ST., LUVERNE



Real Estate
Retrievers

ALL STATE TEAM
SERVING THE TRI-STATE AREA



LUVERNE 507-283-4216 | HILLS 507-962-3433

Come & Go
Bridal Shower
Ashley Dohmann
Bride-to-be of
Timothy
Tooley
Saturday,
Aug. 11 | 2 pm
Luverne Pizza Ranch
registered at
Kohls &
Target

I'm looking for APPLIANCES
Luverne
ANNOUNCER
CLASSIFIEDS

**MOWING
NOTICE:
DENVER
TOWNSHIP**
Notice is hereby given to all landowners or tenants to mow at least one swath along township road ditches, by August 15, 2018. If not done, the township may hire it done and have it assessed against the landowners taxes.
Denver Township Supervisors

Loans, leases, and crop insurance
Pat Barnett
866-601-0506
compeer.com
COMPEER FINANCIAL
Compeer Financial, ACA is an Equal Credit Opportunity Lender and Equal Opportunity Provider. ©2017

Mark's PLUMBING, HEATING AND A/C, LLC.
Lic.# PC644664 Master Plumber Lic#066849-PM
608 W. Hatting, Luverne • Mark Kurtz, owner
507-283-9245
A.O. Smith Water Heaters Gas & Electric
MOEN Faucets
TEMPSTAR Heating and Cooling Products

Congratulations
Jerry & Martha Morse
50TH ANNIVERSARY
Saturday, August 11
greetings may be sent to
504 Brandenburg St, Luverne, MN 56156

New Prairie Insulation, Inc.
Serving Residences & Contractors
FREE ESTIMATES
---Insulation---
Beaver Creek, MN
507-673-2548 or 1-800-232-7089
CERTIFIED ENERGY EXPERT

Orv & Sons, Inc.
Plumbing ~ Heating ~ Cooling
507-967-2464
Hours of Operation: Mon. - Fri. 7:00-Noon & 1:00-5:30
Office Hours: Mon. - Fri. 7:30-Noon & 1:00-5:00
CLOSED Saturday & Sunday (Emergency Calls ONLY)
*Licensed for pump installation, sewer installation & Backhoe Services
*Roto-rooter, Pipe Location & Camera Inspection System
*Oxyblast-water treatment Product
*Lennox Furnaces & Air Conditioners
308 S. Broadway Street, Ellsworth, MN 56129 ~ Thank You!

JOIN US ON FRIDAYS AT NOON FOR A BBQ
ALLIED INDUSTRY AND AREA PRODUCERS ARE WELCOME TO STOP BY
904 S KNISS AVE LUVERNE 507-449-2030
PROFESSIONAL Ag MARKETING
Your Partner and Resource for Good Marketing Decisions

Is my Ash tree worth treating for EMERALD ASH BORER?
Ash trees can be a valuable part of landscape and help to reduce electrical costs by shading your home.
ARBOR CARE, LLC.
Licensed, insured, in MN & SD
Dave Knips 507-227-4851 or Matt Knips 507-227-7957

Cragoe Realty
Selling Real Estate in the Heart of the Prairieland.
Your hometown real estate broker for over 25 years
Gene Cragoe, broker lic. in MN & SD info@cragoe.com
Renee Guy, realtor
Renita Enninga, office manager
507-283-2647 or 800-689-2647
We have buyers! WE NEED YOUR LISTING!
FOR COMPLETE LISTINGS LOG ONTO WWW.CRAGOE.COM
The first step to successfully selling your home is listing it with us!
NEW LISTING
702 N MCKENZIE, LUVERNE | \$94,900
Special Features: A must see home! Completely remodeled and move in ready. This two bedroom one bath home is beautifully redone inside and out. The home offers hickory cabinets, stainless steel appliances, new lighting and new flooring throughout. New siding, room, windows, doors and landscaping all tastefully completed. Attached single car garage. Plus brand new water heater and so much more!
515 N ESTEY, LUVERNE | \$499,000
HISTORIC HOME TAKE A LOOK TODAY

JMSI
JENSEN MANAGEMENT SERVICE, INC
REAL ESTATE - APPRAISALS - MANAGEMENT
108 W. Crawford St
CALL TODAY PRICE JUST LOWERED
Check out our listings at:
WWW.JMSI.NET
Call: 507-283-2391
Call about our private listings.
William (Bill) V. Weber, broker - 507-220-4803
William (Bill) J. Korth - 507-227-4958
Tamra (Tammy) Jo Makram - 507-227-7010

Duane J. Mulder Realty
DUANE MULDER AUCTION SERVICE
Office 507-283-4901
AUCTION SCHEDULE
Currently Taking Consignments For Our Next Indoor Auction At The Duane Mulder Auction Center, Downtown Beaver Creek, MN.
Call 507-283-4901 Or 507-220-3558 To Get Your Items Consigned To This Auction.
Thursday, August 9 - Sale time 4:00 P.M. - Large double ring auction: Household, appliance, furniture, tools, shop items, sporting items, antique & collectible items located at the Duane Mulder Auction Center Main Street of Beaver Creek, MN.
Live & On Line Auction: Saturday morning, August 11 - Sale time 10:00 A.M. Late model line of retirement farm equipment near Fulda, MN. Dale & Deb Kremer, owners
Live & On Line Auction: Thursday morning, August 21 - Sale time 10:00 A.M. Late model line of retirement farm equipment near Brewster, MN. Tim & Julie Baumgard/Jay & Beth Baumgard, owners
Saturday morning, August 25: Sale time 10:00 A.M. Large double ring open consignment auction near Worthington, MN at the Randy Buntjer auction Lot.
Wednesday evening, September 5: Sale time 5:00 P.M. Acreage at auction followed by a household auction near Kenneth, MN. Doris Nelson, owner
Thursday morning, September 13: Sale time 10:00 A.M. 160 acre farm at auction near Kanaranzi, MN. Bruce Tofteland & Sonya Miller, owners
DUANE MULDER - Auctioneer - Real Estate Broker - Certified Agricultural Appraiser. Office Phone 507-283-4901 - Cell Phone 507-220-3558.

star-herald.com

Interested in Advertising?
Call Rick or Chantel to advertise in next week's Announcer
283-2333

Get your local news online
Star-Herald.com

Find it here!
Here's My Card
Your Quick & Easy Guide to Area Businesses

D Deuschle Studio
Jerry and Kathy Deuschle
Owners
1294 131st St
Luverne MN 56156
Cell: Jerry 507-920-9466 Kathy 507-920-0048
jkdeuschle@yahoo.com
www.deuschlestudio.weebly.com

McClure
PLUMBING, HEATING, AIR CONDITIONING, INC.
412 S. Kniss • Luverne, MN • 507-449-2828
Jerry Buss Lic. #002732PM RAIN BIRD Carrier
Troy Buss Lic. #005573PM LENNOX BRADFORD WHITE
SD # Luv-MN-R1117-98-1262C
Licensed, Bonded and Insured in Minnesota and South Dakota

CLEVERINGA CONSTRUCTION
507-920-5631
For All Your Building Needs • Additions • New or Remodel
www.cleveringaconstruction.com
Merlin Cleveringa 879 - 100th Ave., Luverne, MN 507-283-2698 Home Lic. # BC-20552185

H&A
HEIDBRINK & ASSOCIATES
Farm • Home • Business • Auto • Crop • Life • Health • Long Term Care
heidbrinkinsurance.com
Luverne, MN 56156 • 507-283-4085

ROCK COUNTY REC
CHIROPRACTIC
Men, Women & Children's Health
Custom Orthotics • Kinesiotape • Athletic Care • Massage Therapy • Work & Auto Injuries • Postural Restoration
WWW.ROCKCOUNTYCHIROPRACTIC.COM
283-2561 • 103 E. MAIN, LUVERNE
Monday 7:30 a.m. - 6 p.m. • Tuesday 7:30 a.m. - 3 p.m.
Wednesday 7:30 a.m. - 6 p.m. • Thursday 7:30 a.m. - 1 p.m.
Friday 7:30 a.m. - 5 p.m.

M L ELECTRIC
Residential • Commercial • Farm Wiring • Trenching
Licensed • Bonded • Insured Mike Buss, Owner
507-449-8005

LUVERNE HEALTH & WELLNESS
Codie Zeutenhorst, D.C., CAc
Acupuncture • Chiropractic Care
Family Care • Sports Injuries
Kinesiotape • Auto & Work Injuries
Acupuncture and Massage Available
Kris Van Der Brink M.T. & Amy Rosales M.T.
507.449.4400 www.luvernechiro.com
109 S. Freeman Ave. | Luverne, MN

Meulebroeck, Taubert & Co., PLLP
Certified Public Accountants
P.O. Box 685 • 109 S. Freeman • Luverne, MN 56156
507-283-4055
Experienced tax preparers with offices in Luverne, Pipestone, Marshall, Tyler & Lake Wilson
Tax planning and preparation
Accounting and bookkeeping services • Payroll services
Quickbooks set-up and assistance
Dave Friedrichsen, Daryl Kanthak, Krista Kroon, Cayla Hamm, Amy Mollberg, Karen Berning, Janet Slieter and Samantha Gerloff

Scott Loosbrock
Owner
Loosbrock Electrical Construction, LLC
Licensed • Bonded • Insured
Residential • Commercial • Industrial • Agriculture
507-360-5418 • scott@loosbrockelectrical.com
www.loosbrockelectrical.com

Call us for all your residential, commercial and farm wiring needs!
McClure Electric
Luverne, MN 507-283-4716
Alan M. Aanenson, owner

Rock County EYE CLINIC
Dr. Sandra Carman
507-283-2345
102 N. Freeman Ave., Luverne, Minnesota

FRANKEN CONSTRUCTION
Travis Franken, Lic #20627458 & Insured
1332 181st St., Luverne
507-920-8253
Call today for a FREE ESTIMATE.
REMODELING • NEW ADDITIONS • SIDING
DECKING • WINDOW/DOOR REPLACEMENT
GARAGE DOORS • CONCRETE
NO JOB IS TOO SMALL!!!

New Construction - Home Additions - Interior & Exterior Home Remodeling - Windows - Siding - Drywall - Foundation Work & Walls - Sidewalks & Driveways
30 Years Experience
Oehlerts & Son Construction
Kevin Oehlerts, Luverne,
www.OehlertsAndSonConstruction.com
507-673-2206

Den Herder Construction, Inc.
Jim Den Herder Cal Den Herder
P.O. Box 522, Luverne, MN 56156-0522
Phone 507-920-8917
License Number 1656

DENTAL Insurance

Physicians Mutual Insurance Company

A less expensive way to help get the dental care you deserve

- ✓ If you're over 50, you can get coverage for about \$1 a day*
- ✓ Keep your own dentist! You can go to any dentist you want
- ✓ NO annual or lifetime cap on the cash benefits you can receive
- ✓ No wait for preventive care and no deductibles - you could get a checkup tomorrow
- ✓ Coverage for over 350 procedures including cleanings, exams, fillings, crowns, even dentures

FREE Information Kit
1-877-308-2834
www.dental50plus.com/cadnet

*Individual plan. Product not available in MN, MT, NH, NM, RI, VT, WA. Acceptance guaranteed for one insurance policy/certificate of this type. Contact us for complete details about this insurance solicitation. This specific offer is not available in CO, NY, call 1-800-969-4781 or respond for similar offer. Certificate CS50A (ID: CS50E, PA, CS200); Insurance Policy P150 (GA, P150GA, NY: P150NY, OK: P150OK, TN: P150TN) 6096E-0917 MB17-AM0806E

Emerald Ash Borers ARE COMING

Do you have favorite ash trees you'd like to save? **Free Estimates**

Tree Injections (lasts two years)
Call today for more info
 507-227-2805
 fully insured and licensed

LEENDERTS LAWN CARE

Bring in your current policy for a comparison today!





South Hwy. 75, Luverne, MN
 507-283-8383 or 1-800-258-4471
 E-mail: info@Cattnach.com
 Website: www.cattnach.com

Your source for daily news
Star-Herald.com

Justin Kemp

Owner



- *Commercial
- *Business
- *Residential
- *Ag *Industrial

PO Box 803 • Luverne, MN 56156 • 507-920-6961

Ketterling Services, Inc.

401 S. Cedar St. • Luverne, MN • 507-283-2863 • www.ketterlingservicesinc.com
 Hours: Tues.-Fri. 8:30 a.m. to Noon & 1 p.m. to 5 p.m. Sat. 8:30 a.m. to Noon

Roll-Off Service for Building Demo & Remodeling

SANITATION:
 Commercial
 Residential
 Rural



RECYCLING:
 Collection
 Dropoff

Monthly - Weekly - Daily

Kenneth City Council positions open

Notice of filing

Affidavit of Candidacy for Council Members/Mayor
City of Kenneth, Minnesota

NOTICE IS HEREBY GIVEN that the filing for Council Members will open on Tuesday, July 31, 2018, and shall close on Tuesday, August 14, 2018, at 5:00 p.m. The following criteria must be met for the Council/Mayor seats. The candidates

- Must be an eligible voter
- Has no other affidavit on file as candidate for any office at the general election
- Is, or will be on assuming office, 21 years of age or older
- Will have maintained residence in the City of Kenneth for 30 days before the election
- Must pay a \$2.00 filing fee at the time of filing to 171 Park Ave, Kenneth, MN 56147

The offices to be elected for which filings are open are as follows:
Council members – 2 (four-year terms)
Mayor – (two-year term)

Sue Tweet
 City Clerk - Treasurer

RETIREMENT FARM EQUIPMENT AUCTION

Saturday, August 11th 2018 at 10:00 A.M.

Lunch on grounds by: Country Side Inn Adrian, MN.

The auction will be held on the Kremer Farm located at 10959 Palm Ave. Fulda Minnesota, which is located From the I-90 & Hwy. 59 exit in Worthington MN. 13 Miles North on Hwy #59, then 2 Miles West on County Road 18/120th St., then 1 Mile North on Palm Ave. Or from Fulda, MN 3.5 Miles South on Hwy #59 then 2 Miles West on County Road 18/120th St., then 1 Mile North on Palm Ave.

This auction will also be telecast live for or online bidding. For live on line bidding go to randybuntjerauctionandrealtyllc.com and click on the BidCaller tab for registering, catalog and internet buyer's auction terms.

For pictures visit our web sites at randybuntjerauctionandrealtyllc.com or midwestauctions.com/duanemulder

RECYCLE NEWSPRINT!

AUCTIONEERS NOTE: We are extremely honored to be asked to represent Dale & Deb Kremer with the sale of this exceptionally clean line of farm equipment. Dale has taken great pride in his farm equipment, so please don't miss out on the opportunity to buy some very clean and well kept farm machinery. Thank You, Randy

Viewing will be Thursday & Friday from 10:00 am. To 6:00 pm.

Tractors and Accessories:
 CIH STX 325 4WD Serial# JEE0108765, Approximately 3,010 Hrs, 480/80 R46 Rubber (like new), PTO, Rock Box, 4-Remotes, deluxe cab: JD 8100 MFWD Serial#RW8100P00588, 5,368 Hrs, 14.9 x R46 Rears, 380/85R30 Fronts, w/hub duals, front fenders, rock box and 3-remotes: JD 6300 MFWD w/JD 640A Loader, Serial#L06300V122620, 4,331 Hrs, 16.9x38 Rears, 14.9x24 Fronts, Quad Range, 3pt, 2-Remotes: JD 4640 Serial#4640P011031R, 6,480 Hrs, Power shift, 18.4x 42 Rears w/Hub Duals, Rock Box and 3-Remotes: JD 4020 Diesel, Syncro Trans, 3pt, 2-remotes, ROPS, W.F. Serial #SNT213R134346R: IH 560 Gas, N.F, Fenders, 2 pt: 2-Cat. III Quick Hitches: 80" Rock Bucket off JD 640A Loader:

Combine, Heads and Head Movers:
 JD 9660 STS Serial#H09660S706379, 2,884 Engine Hrs, 2,061 Separator Hrs, Chopper, Spreader, Grain Tank Extension, Contour master, 18.4x42 rubber w/duals: JD 630F 30' Bean Head, serial #H00630F706315: JD 893 8RN Corn Head w/head sight and Calmers chopping knife rolls, Serial #H00893X71604: 30' Head Mover: 20' Head mover:

Semi and Grain Trailer:
 2004 Volvo semi tractor with sleeper, 742,626 miles, Vector 380 hp engine, Eaton super 10 speed trans, VIN #4V4NC9GG74N359136: 2006 Timpte Super Hopper 40'x 96" grain trailer, with 66" sides and electric roll tarp:

Tillage Equipment:
 JD 2700 5 shank Disc ripper w/rear leveling gang, Serial#1N02700XTB07282: JD 980 35 1/2 Field Cult. w/ walking tandems and 3 bar Harrow: Kewanee 1020 20' Disc:

Planter:
 JD 7200 Max Emerge II 16r 30", Serial # A072000D501401, w/E-Sets, trash whippers, Insecticide and JD 250 Monitor:

Grain Cart, Wagons and Bale Racks:
 Demco 950 Grain cart, Serial#40054 w/roll tarp, DT 900/60R32 Tires (Red): 2-Demco 650 Gravities w/cement truck tires, (green): Flair Box Wagon w/hoist: 20' Bale Rack w/MN 7 Ton Gear: 250 Bu. Gravity wagon w/ Sudenga Brush Auger:

Misc. Farm Equipment:
 Bestway Field Pro III Sprayer, Serial#14884-02, 1,200 Tank with Hyd. 80'Front Fold Boom, Foamer, Rinse Tank, and Raven 440 Monitor: Schwies 8' Double Auger Snow Blower: King Kutter 7' 3 pt. Rotary Mower: M.F. 238 belt drive 3 pt. Sickle Mower w/7' bar: 200 gal 3pt. Sprayer w/PTO pump: 70 Gal. Spray tank w/15' Boom: IH 2 Bottom Plow on steel:

Augers
 Westfield 10"x61' Auger w/swing hopper (like new): Westfield 8"x31' truck auger w/5 Hp. Elect. Motor (nice): Feterl 10"x55' w/swing hopper and Hyd. Lift: Feterl 8"x48' auger w/7 1/2 Elect. Motor: Feterl 8"x46' truck auger (for parts):

Shop Items:
 Pro 3400 Pressure washer w/9 Hp. Gas engine: Steele 9,000 Watt Generator w/Elect. Start: Torch set w/tanks: King 16 speed 1/2" Drill Press: Century 230 Arc welder: Master Mechanic 6" Bench Grinder: Makita Chop Saw: 2-50 Gal. Stackable Poly Oil Containers: Assortment of hand tools: Welding Bench w/vise: Alum. Extension Ladder: Table Saw: Misc. Lumber & Shop Iron:

Misc. Items
 12' Bin Sweep: 1 Hp. Electric Motor (new): 100 Gal. Galvanized Livestock water Tank: Electric Cords: Rail Road Ties: 2-Maytag wringer washers: 1,400 Gal. Poly Tank: Transfer Pump: Wood & Steel Post: Tires: 200 Gal. Diesel Barrel w/12 volt pump on cart: 6-6' Poly Hog Panels: 5-Hog Panels: Round Bale Feeder: 2 wheel trailer: 5 H.P. Electric motor.

Antique & Collectable Items:
 Golden Sun Feeds Clock: Old Wrenches: Hand Corn Planter: Runner Sleds: 2-Man Saw: Corn Dryers: Barn Door Pulley System: Barn Lanterns:

Dale & Deb Kremer, Owners

For more information contact
 Dale @ 507-360-9905

AUCTION TERMS: U.S. funds - cash or bankable check payable the day of the auction. Owners & sales staff are not responsible for accidents. All items are being sold as is with no stated or implied warranty. Statements made the day of the auction taken precedence over any & all printed material. The information given is believed to be true & correct to best of the owners & sales staff's ability, but IS NOT GUARANTEED. Buyer assumes full responsibility for all items upon purchase. Buyer shall make all inspections of items prior to purchase and relies solely on their judgment as to condition, age, hours, mileage and any safety or other defects. All out of the area buyers shall provide letter of credit to the auction company prior to purchasing. All buyers must register for buyer's number prior to bidding. All sales are final, not responsible for accidents or theft of items purchased, Restroom on grounds.

Sale Arranged and Conducted by:





Randy Buntjer Auction & Realty, LLC
 10330 310th Street
 Ellsworth, MN 56129
 Phone 507-360-2650
 Auctions • Real Estate • Appraisals

Auctioneers
Randy Buntjer, Auctioneer (53-18) Ellsworth, MN 507-360-2650
Duane Mulder, Auctioneer (67-44), Luverne, MN 507-220-3558
Jim Von Holtum, Auctioneer (53-10) Lismore, MN 507-220-3556
J.J. Von Holtum Auctioneer (67-80) Luverne, MN 507-227-8029

LAND AUCTION

LARKIN TOWNSHIP, NOBLES COUNTY, MN

Friday, August 10, 2018 10:30 AM

Where: Lismore American Legion located on Main St. Lismore, MN on Friday, August 10, 2018 at 10:30 AM.

Legal Description: SW 1/4 Section 5-103-42

AUCTIONEER'S NOTE: This farm would be an excellent addition to anyone's operation. Information booklets are available upon request prior to the sale date from Jensen Management Service, Inc. 507-283-2391. Announcements day of the sale take precedence over any printed materials. Seller reserves the right to reject any and all bids. Broker and auctioneer are representing the seller.
 Visit Korth Auction Service at www.korthauction.com or Jensen Management Service Inc at www.jmsi.net

KELLEN HEIRS, Owners

MACHINERY AUCTION

Friday, August 10, 2018 1:00 PM

Location: From Lismore, MN 2 miles east on 170th ST

Tractors: Massey Ferguson 1135, Massey Ferguson 1100 w/Westendorf loader, Massey Ferguson 180
Combine/Harvest Equipment: 1983 Massey Ferguson 860 w/heads, (3) 400 bu Minnesota wagons w/gears, Farm Fans AB 180 A dryer w/1500 bu holding bin
Tillage: IH 480 21' disc, 24' 3 pt Brady field cult., 18' 3 pt Glencoe chisel plow
Auctioneers note: this is only a partial listing for a complete listing and pictures go to www.korthauction.com

Sales arranged and conducted by
JENSEN MANAGEMENT SERVICE, INC.
and
KORTH AUCTION SERVICE

PO Box 836	William V. Weber, Broker	507-220-4803
111 N. Cedar	Bill Korth, Auctioneer, Salesperson	507-227-4958
Luverne, MN 56156	Nate Ebberts, Auctioneer	507-360-8382

LARGE EVENING AUCTION IN BEAVER CREEK, MN

THURSDAY EVENING, AUGUST 9 -- SALE TIME 4:00 P.M.

VERY LARGE DOUBLE RING AUCTION -- VERY PARTIAL LISTING

AUCTIONEERS NOTE: This is a very large auction. Inside ring starts with table items at 4:00 P.M. & outside ring starts with yard, garden & misc. items at 4:00 P.M. We will be selling several complete households, plus numerous consignments. Space will not allow us to advertise all the items on this auction. We have a facility with lunch counter, chair seating & rest rooms.

HOUSEHOLD APPLIANCES: Whirlpool electric kitchen range; Sears Cold spot refrigerator; near new white Whirlpool refrigerator; Amana washer; Sears electric dryer; several flat screen TVs.

HOUSEHOLD FURNITURE: twin beds; single beds; bed room sets; dining room & kitchen tables; wood chairs; piano bench; sofas; wood rocker; office chair; drop leaf tables; plant stand; card tables with chairs; cabinets; recliners; glider rocker; loft bed frame; roll top desk; leather sofa; wood end tables; futon; bar stool utility stool; desk; book shelves; high chair; window bench; console stereo; coffee tables; plus other pending furniture.

ANTIQUE & COLLECTIBLE FURNITURE: enamel top table; Singer sewing machine; treadle sewing machine; other misc. old & collectible furniture.

TABLE ITEMS: approximately 30 double tables of misc. items with a mixture of antique & collectible items.

MISC. HOUSEHOLD ITEMS: China sets; pots; pans; silverware; kitchen utensils; griddle; western paperback books; cook books; jewelry boxes; Disney videos; child's books; toys; boom box; desk fans; picnic basket, linens, towels; table clothes; yarn; quilts; much more misc. household items too numerous to mention.

ANTIQUE & COLLECTIBLE ITEMS: Red Flyer coaster wagon; ammo boxes; wood blocks; sponge Bob cookie jar; collectible cookie jars; enamelware; collector plates; pink depression glassware; nail keg; 8-12-15-25 gallon Red Wing crocks; metal lunch boxes; oil lamps; toy train; race car set; old sheet music; coke collectibles; old typewriter; custom jewelry; watches; old baby buggy.

SPORTING ITEMS: fishing equipment; life jackets; tackle boxes; fillet knives; gun cases; baseball gloves; mounted birds; skis.

HEALTH & EXERCISE ITEMS: Solo power wheel chair/scooter with battery charger; bath stools.

LAWN, YARD & GARDEN ITEMS: Cub Cadet Model 1046, series 1000 rider mower; weed eaters; patio table; lawn chairs; sprinklers; grill; snow blower.

SHOP ITEMS: jig saw; tool cabinet; table saw; hand tools; power tools; hand saws; other misc. tools.

MISC. ITEMS: step ladder; file cabinet; storage cabinets; chicken picker; Knipco heater; case of Chargette Refrigerant 12; other misc. items to numerous to mention.

TERMS: Complete settlement immediately after the auction. No guarantees. Not responsible for accidents or theft of items purchased. Computerized driver's license machine in use. All buyers are required to provide clerks with identity information.

WWW.MIDWESTAUCTION.COM-DUANE MULDER AUCTION & REALTY

SALE ARRANGED & CONDUCTED BY:
DUANE MULDER AUCTION SERVICE
 DUANE MULDER -- E-MAIL: duanejmulder@gmail.com
 REAL ESTATE BROKER (MN, IA, SD) -- CERTIFIED AGRICULTURAL APPRAISER
 1470 COUNTY HWY 4, LUVERNE, MN -- OFFICE PHONE 507-283-4901



DUANE MULDER, AUCTIONEER (67-44), LUVERNE, MN -- 507-220-3558
 JIM VON HOLTUM, AUCTIONEER (53-10), LISMORE, MN -- 507-220-3556
 RANDY BUNTJER, AUCTIONEER (53-18), ELLSWORTH, MN -- 507-360-2650
 J.J. VON HOLTUM, AUCTIONEER (67-80), LUVERNE, MN -- 507-227-8029


2018-2019 ELLSWORTH SMART START PRESCHOOL REGISTRATION

Currently accepting registrations for the 2017-2018 school year. We have openings in both 3 year old & 4/5 year old classes.

MWF (4/5 year old class) \$90 per month
T/TH (3 year old class) \$60 per month
There is a \$35 registration fee.

Classes run from 8:20 a.m. to 11:15 a.m.
Free transportation to and from school.

To request a registration form,
please contact Ellsworth Public School at
507-967-2242



A+
ELLSWORTH PUBLIC SCHOOL REGISTRATION

STARTING SCHOOL SEPT. 4

TUES., AUGUST 7
11 am - 7 pm
WED., AUGUST 8
9:00 am - 2:00 pm

All students need to register.
If you are unable to attend these days,
please call the school office at
507-967-2242.

the classifieds

RENTALS

Large apartment upstairs, downtown Luverne, utilities paid, stove and refrigerator included. References required, no pets, no smoking. Call 507-227-1589.(c)

For Rent: one-bedroom apartment near downtown Luverne. \$290 per month. No pets. Call 605-201-6427. (tc)

Dean Christians mobile home for rent. 2 Bedrooms, 1 Bath, all appliances, sewer and water included. Call Dean at 605-366-7695 (7.19-8.5)

For Rent: Smaller homes in Luverne, accepting applications, \$500 per month plus deposit. Must have good work and rental history required. No pets. No smoking. Call 605-413-8862 for an appointment. (8.5-8-23)

RENTALS

Oakwood Apartments

401 Oak St., Ellsworth

• 1 Bedroom Unit Available

Unit Available
Water, Sewer & Garbage Included.

Rent Based on Income
AVAILABLE IMMEDIATELY

Van Binsbergen & Associates, Inc.
320-269-6640 ext. 22

Equal Housing Opportunity

www.vanblc.com



Top Hat Luxury Units

2 bedroom | 1 bath
Approx. 1,400 sq ft
all electric

washer & dryer
glass top stove | microwave
refrigerator | dishwasher

Hi-Boy toilet
air conditioner | ceiling fans
2" wood blinds

water softener, we supply salt
rev. osmosis drinking system

garage with opener
snow removal &
gardening all done for you

Live Carefree!
1 year lease
\$695 + deposit

If interested call Archie at
507-920-5595

FOR SALE

For Sale: 2002 Kawasaki Eliminator 125 motorcycle. Vikings purple paint job. Runs and drives great. In great condition. A great in town cruiser. \$1200. Call 507-920-6168 or stop at 1010 N. Spring St. (8.5-8.9)

For Sale: Yard dirt, 1.5" rock gravel, 3.25" rock gravel, also do tree stump grinding. Call 507-283-4614 or 507-227-4521. Wayne Biever, Luverne, MN. (7.22-8.9)



Vikings Fans!
We have seats available for all home games, so go check out the new US Bank Stadium and avoid the Ticketmaster surcharges by giving us a call.

All of our seats are in Section 142/143(Lower Level)
Preseason tickets are \$40 each
All regular season tickets are \$240 and up

Call Melissa at 507-360-4641

GARAGE SALES

Rummage Sale: Thursday, August 9: 2-8 p.m. Friday and Saturday, August 10 and 11: 9 a.m. - 12 p.m. 1412 Evergreen Dr., Luverne. Clothing M/L/XL, purses, shoes 9/10, Lululemon, Nike, Coach, Ralph Lauren. Excellent condition, furniture, desk, household items.

MISCELLANEOUS

HAVE A UNIQUE SERVICE OR BUSINESS? Get the word out to over 1.4 million households. Call WIDE AREA CLASSIFIEDS today, 507-359-7326. (tc)

AGRICULTURAL

WE HAVE SEVERAL CREWS OF BEAN WALKERS.

We also pick rock, put up and take down fences. We will do any type of farm work. Call 712-943-2084, 712-251-3277 or 712-899-5219

SERVICES

ELECTROLUX

Central Vacuums • Upright Vacuums
Canister Vacuums
Sales • Service • Supplies
ELAINE BOLT
507-442-7721 Edgerton, MN

STORAGE

DC STORAGE, LLC

NEW UNITS NOW AVAILABLE!
10X15'S/10X20'S/10X40

RESERVE NOW!

GRAND OPENING SPECIAL:
PAY 12 MOS. GET 13 MO. FREE

507-227-5502 OR 605-360-9770

RECYCLE!



509 E. Main, Luverne, MN
www.connellcar.com
507-283-2341 • 800-884-2341

Call me 920-8859
THOMAS STERRETT

2013 BUICK ENCLAVE maroon, chocolate interior, new tires, 61K.....\$23,900
2017 CHRYSLER PACIFICA backup camera, heated leather, stow and go, 37K.....\$23,990
2015 FORD EDGE awd, heated frt seats and dual power seats, remote start 71K.....\$19,950
1997 FORD EXPEDITION local trade, new tires, 4.6 v8, 154K.....\$4,900
2002 FORD F-150 1 owner local trade, heated leather, 5th wheel ball, full running boards, 5.4 v8, 183k.....\$4,500
2010 FORD F-150 local trade in, leather, air bag system in rear with auto pump, good after market remote start, 195K.....\$13,500
2013 FORD F-150 platinum, 3.5 eco boost, loaded, 91K.....\$26,990
1994 FORD MUSTANG local car, pwr convertible top, pwr windows, locks cruise, 29K.....\$9,950
2001 GMC SIERRA 2500HD 8.1 V-8, very nice truck, low miles for its age, b&w 5th wheel flip ball, 134K.....\$12,990
2015 GMC TERRAIN 1 owner, heated leather, very clean, fwd excellent gas mileage, 58K.....\$17,990
2014 RAM PICKUP 1500 ram boxes, heated and cooled leather, new tires, 6.5' box, 49K.....\$31,990

 2013 CHRYSLER TOWN AND COUNTRY LOCAL TRADE IN, VERY CLEAN, TIRES LIKE NEW. WE HAVE THE SERVICE RECORDS FOR THIS VAN FROM A LONG TIME AGO. 95K \$12,990	 2015 FORD F-150 3.5 ECOBOOST V6 LOADED TO THE MAX, LARIAT PKG HTD AND COOLED SEATS, DUAL MOONROOF, NAVIGATION, BOX COVER, STEP TAILGATE. 64K \$33,550	 2015 FORD F-150 VERY CLEAN LARIAT, ALL THE GOODIES, 5.0 V8 HTD FRT AND REARS AND COOLED FRT SEATS, DUAL MOONROOF. 65K \$33,500
 2015 JEEP GRAND CHEROKEE VERY NICE VERY CLEAN JEEP WITH ALL THE OPTIONS, HTD AND COOLED SEATS, DUAL GLASS ROOF, PWR LIFT GATE. 47K \$29,900	 2015 GMC TERRAIN AWD, EXCELLENT GAS MILEAGE, VERY CLEAN INSIDE AND OUT. GOOD USED SUV. COME CHECK THIS ONE OUT. 46K \$19,950	 2015 CHEVY EQUINOX AWD EQUINOX, GREAT GAS MILEAGE, CLOTH INT, PWR DRIVERS SEAT, BACK UP CAMERA. VERY CLEAN. 78K \$15,500
 2016 JEEP RENEGADE VERY COOL SMALLER SUV, THIS BABY HAS THE LOOK, IF YOUR LOOKING FOR A COOL RIDE PLEASE COME CHECK THIS OUT. 27K \$19,500	 2016 HONDA CRV ONE OWNER LOCAL TRADE IN, THIS THING IS JUST LIKE NEW. CAME FROM A GOOD HOME AND HAS HAD EXCELLENT SERVICE DONE. AWD. 32K \$26,600	 2016 GMC SAVANA CARGO VERY NICE CARGO VAN 3/4 TON, 4.8 V8, PWR WINDOWS AND LOCKS, FULL RUNNING BOARDS, JUST LIKE NEW. 12K \$23,250

TRADE-IN BARGAINS

2008 CHEVROLET AVALANCHE 202K.....\$6,500
2003 CHEVROLET SILVERADO 1500 212K.....\$3,990
2006 CHRYSLER TOWN AND COUNTRY 182K.....\$1,990
1999 FORD EXPLORER.....\$1,750
2003 FORD EXPLORER 147K.....\$1,900

*** FINANCING AVAILABLE**
ON APPROVED CREDIT.
ASK FOR DETAILS

LAUNDRY SERVICE

THE LAUNDRY ROOM & RCO

together we can do your laundry for you!




- convenient drop off and pick up at RCO (807 W Main, Luverne - open weekdays 5:30am-4pm)
- can arrange delivery of clean laundry to home or job site if needed
- email or text notifications to let you know when your laundry is ready
- bag & tag so nothing gets lost - buy a reusable bag for \$7.50
- you are charged for: quarters used in machines, detergent, labor to wash, dry & fold your clothes
- pay online with PayPal

FOR MORE INFO
CONTACT BETH AT RCO 507-283-4582
ESCHEAR@ROCKCOUNTYOPP.COM

Tree Tech Inc.

Luverne, MN
507-283-8552
507-920-6424 cell



tree removal
tree trimming
stump grinding
tree moving

DD Backhoe Service

Doug Dooyema
Hydrants, waterline repairs, tile line repairs, small tile jobs, and hole digging

Call 507-283-8357 or Cell 507-220-8218



The Daily News of Rock County.
star-herald.com

Papik MOTORS

Papik picks of the week...



2006 Chrysler Town & Country
101K • Stock #858102U
\$4,990



2013 Chevrolet Silverado
88K • Stock #221518N
\$22,990



2008 GMC Canyon
109K • Stock #190213U
\$9,990



2014 GMC Terrain
65K • Stock #339834N
\$16,990

283-9171

PAPIK.COM I-90 Luverne, MN 56156



the classifieds

To place a classified ad in the Luverne Announcer, call 283-2333, stop by our office at 117 W. Main, Luverne, or visit www.star-herald.com.

EMPLOYMENT

Luverne Public Schools is seeking applications for part-time Title Paraprofessionals and full-time Special Education Paraprofessionals. Two-year college degree preferred. Submit letter of application and resume to Luverne Public Schools, 709 North Kniss, Luverne, MN 56156. EOE. (8.5-8.16)

Luverne Public Schools is seeking applications for a part-time Early Childhood Paraprofessional. Submit letter of application and resume to Luverne Public Schools, 709 North Kniss, Luverne, MN 56156. EOE. (8.5-8.16)

Family Floors and Furniture in Brandon is looking for full time help. Warehouse work, deliveries, furniture assembly and sales (all rolled up into one job). We will train you on the job from the ground up if necessary. Some heavy lifting is part of the job. For more details stop in and pick up an application at 224 South Splitrock Blvd, Brandon. (7.26-8.12)

Looking for a driver in the Edgerton, MN area - flexible hours. \$500 bonus after 6 months. Call 507-920-6831 for more details. (8.5-8.23)

HELP WANTED

CHS Luverne location is looking for a **CDL DRIVER** in our feed dept. Must be able to lift 50+ pounds + follow safety procedures. CHS offers competitive pay & benefits package + paid holidays & vacation. Apply online @ CHS under careers.

CHS Job #13711BR

EMPLOYMENT

Help Wanted: full-time bottle feeder for calves and working with pigs. Must have the ability to drive a pickup truck and trailer and have general farm knowledge to run farm equipment. South of Magnolia. Call 507-920-5742 for more information. (8.5-8.23)

The Hillcrest is seeking house keeping help. Days and times will vary. Stop in at the Hillcrest Motel at 210 W. Virginia, Luverne, MN to visit about the position. (8.5-83.9)

Southwestern Youth Services (SYS), a nonprofit residential behavior treatment center for boys ages 10-18, is seeking applications for a full- or part-time teacher for the 2018-2019 school year, mid-August to early June. Weekends off and summer teaching is optional. Full-time hours are 7:30a-3:30p w/ paid holidays. Part-time days/hours are negotiable. MN teaching license required but will consider SD teaching license with the understanding that application for a MN license would occur within one year. All certifications considered. Salary based on experience. SYS is located one mile north of Interstate 90 in Magnolia, MN, 26 miles east of Brandon and 27 miles west of Worthington. For more information, please email Carole Naasz. cnaasz@southwestyouth.org (8.2-9.9)

Southwestern Youth Services in Magnolia, MN is hiring for a Part-Time Cook position. Paid holidays, days may vary, shifts may vary. Standard shift runs from 1:00 pm-6:00 pm. Must be 21 yrs old and have high school diploma. Send application or resume to PO Box 40 Magnolia, MN 56158 or stop by for an application. For further information contact Don or Jeremy at 507-283-4425. (7.22-8.16)

EMPLOYMENT



Now Hiring
Production Team Members
Starting at \$14.35 hr.
Excellent Benefits
Tuition Reimbursement

Positions located at Sioux Falls facility
APPLY TODAY!
www.smithfieldfoods.com/careers
Smithfield is an EEO/AA Employer




Now Hiring!
Assistant Manager

This position is Full-Time and will assist in the management of our retail facility with an emphasis in Food Service Operations. We offer a total compensation package, including a competitive wage, health insurance, dental insurance, vacation time and a company match 401K program.

Customer Service Representatives

We need motivated individuals to join our team as Part-Time Cashiers. We provide a friendly and fast-paced work environment and offer flexible hours!

New to the Store - starting 9/1/18
Deli/Food Service Employees
HIRING FAIR - OPEN INTERVIEWS
Wednesday, August 15 | 1pm-6pm
At the store - 1002 S Kniss, Luverne

3 EASY WAYS TO APPLY
Apply Online:
www.expresswaystores.com
or e-mail a resume to: jobs@stapleoil.com
or stop in to see us for an application!

1002 South Kniss Ave Luverne, MN 56156 (507) 283-3942

CARDS OF THANKS

The family of Colleen Thomas would like to thank everyone for their overwhelming love and support during the illness and loss of our wife, Mom, Grandma and sister. All the cards, texts, phone calls, food, and memorials were very much appreciated. A special thank you to the Nekali family for all their help. Thank you to the Luverne Sanford Hospital, The Cottage Hospice, Father Tom and the St. Catherine's staff & lunch ladies, and Dingmann Funeral Home staff for their kindness and care. Mom had a special connection with so many people and she will be greatly missed. (8.5-8.9)

Thanks to all for the good wishes and cards for our 50th Anniversary. We are so blessed to live in such a wonderful community. Love the life in Luverne.
Tim and Sue Dispanet
(8.5-8.9)

CARDS OF THANKS

The family of Bill DeBates would like to express our sincere gratitude for all the food, flowers, memorials and friendship during this difficult time. Thank you to Avera Hospital and the Dingmann Funeral Home for your care and compassion. Thank you also, to the Hardwick Legion and LCCW for the wonderful lunch. A special thank you to Father Tom and Dick Smook for your visits and prayers and the beautiful service.

Thank you all,
Marilyn DeBates
Laura DeBates
Bill Jr. and Janine DeBates
Dave and Terri Siebenahler
Mike and Sam DeBates
Patti DeBates
Brian and Amy Dykstra
(8.5-8.9)

RECYCLE NEWSPRINT!

EMPLOYMENT

Sanford Luverne Medical Center is currently accepting applications for FT (Full-Time), PT (Part-Time) and PRN (Part-Time as Needed) positions:

- DIRECTOR, NURSING & CLINICAL SERVICES - FT
- CERTIFIED MEDICATION ASSISTANT, HOSPICE - PT
- HOUSEKEEPING - PT, PRN
- HOME HEALTH AIDE - PRN
- LICENSED ADDICTION COUNSELOR - PT
- LPN, HOSPICE - PRN
- PATIENT CARE TECHNICIAN - FT
- RN, INPATIENT - FT
- RECEPTIONIST - PT, PRN

To apply, visit sanfordhealth.jobs, search "Luverne" in the location search bar.

SANFORD
Luverne

877-673-0854

EE0AA

HELP WANTED

Graphic Designer

IMMEDIATE OPPORTUNITY

The Rock County Star Herald, an award-winning weekly newspaper in Luverne, Minnesota, is seeking a dependable, hard working part-time Graphic Designer to join our Production Department. Two years graphics experience preferred.

Must have experience with Adobe Creative Suite (specifically InDesign and Photoshop), Mac OS X, Microsoft Office, Knowledge of Final Cut Pro, Dreamweaver, HTML and CSS helpful.

Design and create ads for the three newspapers we produce weekly. Design a variety of print media to meet the needs of our customers.

If you would like to work in a friendly, fast-paced environment with tight deadlines, please send letter of application and resume to Rick Peterson at rick@star-herald.com or call 507-283-2333.

CONTACT US TODAY ABOUT THIS EXCITING CAREER

Apply TODAY

Your new career is CALLING

Check out STAR-HERALD.COM

DESIGN NEWSPAPER

STYLE & FUNCTION

HELP WANTED

Luverne ANNOUNCER

117 W. Main Street, Luverne

Get exercise and get PAID at the same time!
WE HAVE IMMEDIATE JOB OPENINGS

Luverne Announcer carriers needed for

LUVERNE

Call 507-283-2333 or stop in at the Announcer Office. (Ask for Jenn)

Earn extra cash by delivering the Announcer

CADNET NATIONAL ADVERTISING NETWORK



AUTOS WANTED
CARS/TRUCKS WANTED!!! ALL MAKES/ MODELS 2002-2018! ANY CONDITION. RUNNING OR NOT. TOP \$\$\$ PAID! FREE TOWING! WE'RE NATIONWIDE! CALL NOW: 1-888-985-1806

EDUCATION
AIRLINE MECHANIC TRAINING - GET FAA TECHNICIAN CERTIFICATION. APPROVED FOR MILITARY BENEFITS. FINANCIAL AID IF QUALIFIED. JOB PLACEMENT ASSISTANCE. CALL AVIATION INSTITUTE OF MAINTENANCE 866-453-6204

FINANCIAL
IRS TAX DEBTS? \$10K+? TIRED OF THE CALLS? WE CAN HELP! \$500 FREE CONSULTATION! WE CAN STOP THE GARNISHMENTS! FREE CONSULTATION CALL TODAY 1-855-823-4189

MISCELLANEOUS
A PLACE FOR MOM. THE NATION'S LARGEST SENIOR LIVING REFERRAL SERVICE. CONTACT OUR TRUSTED, LOCAL EXPERTS TODAY! OUR SERVICE IS FREE/NO OBLIGATION. CALL 1-844-722-7993

ATTENTION VIAGRA AND CIALIS USERS! SATISFY YOUR PARTNER! TODAY'S SPECIAL: 120 PILLS \$99, 180 PILLS \$150, ALL GENERIC. 100% GUARANTEED! FAST FREE SHIPPING. CALL NOW: 888-885-4096

SLEEP APNEA PATIENTS - IF YOU HAVE MEDICARE COVERAGE, CALL VERUS HEALTHCARE TO QUALIFY FOR CPAP SUPPLIES FOR LITTLE OR NO COST IN MINUTES. HOME DELIVERY, HEALTHY SLEEP

GUIDE AND MORE - FREE! OUR CUSTOMER CARE AGENTS AWAIT YOUR CALL. 1-844-545-9175

CROSS COUNTRY MOVING, LONG DISTANCE MOVING COMPANY. OUT OF STATE MOVE \$799 LONG DISTANCE MOVERS. GET FREE QUOTE ON YOUR LONG DISTANCE MOVE 1-800-511-2181

DISH TV \$59.99 FOR 190 CHANNELS \$14.95 HIGH SPEED INTERNET. FREE INSTALLATION, SMART HD DVR INCLUDED. FREE VOICE REMOTE. SOME RESTRICTIONS APPLY. CALL 1-855-837-9146

WHERE YOU AN INDUSTRIAL TRADESMAN (MACHINIST/BOILERMAKER/PIPEFITTER ETC) AND RECENTLY DIAGNOSED WITH LUNG CANCER? YOU MAY BE ENTITLED TO A SIGNIFICANT CASH AWARD. RISK FREE CONSULTATION! 877-781-1769

GENERIC VIAGRA AND CIALIS! 100 PILLS \$99.00 FREE SHIPPING! 100% GUARANTEED. 24/7 CALL NOW! 888-889-5515

DO YOU OWE MORE THAN \$5000 IN TAX

DEBT? CALL WELLS & ASSOCIATES INC. WE SOLVE TAX PROBLEMS! PERSONAL OR BUSINESS IRS, STATE AND LOCAL. 30 YEARS IN BUSINESS! CALL NOW FOR A FREE CONSULTATION AT AN OFFICE NEAR YOU. 1-877-242-6911

EARTHLINK HIGH SPEED INTERNET. AS LOW AS \$14.95/MONTH (FOR THE FIRST 3 MONTHS) RELIABLE HIGH SPEED FIBER OPTIC TECHNOLOGY. STREAM VIDEOS, MUSIC AND MORE! CALL EARTHLINK TODAY 1-855-520-7938

UNABLE TO WORK DUE TO INJURY OR ILLNESS? CALL BILL GORDON & ASSOC. SOCIAL SECURITY DISABILITY ATTORNEYS! FREE EVALUATION. LOCAL ATTORNEYS NATIONWIDE 1-855-498-6323 (MAIL: 2420 N ST HW, WASHINGTON DC. OFFICE: BROWARD CO. FL (TX/NM BAR))

HUGHESNET SATELLITE INTERNET - 25MBPS STARTING AT \$49.99/MO! FAST DOWNLOAD SPEEDS. WIFI BUILT IN! FREE STANDARD INSTALLATION FOR LEASE CUSTOMERS! LIMITED TIME. CALL 1-800-610-4790

CALL EMPIRE TODAY! TO SCHEDULE A FREE IN-HOME ESTIMATE ON CARPETING & FLOORING. CALL TODAY! 1-800-508-2824

START SAVING BIG ON MEDICATIONS! UP TO 90% SAVINGS FROM 90DAYMEDS! OVER 3500 MEDICATIONS AVAILABLE! PRESCRIPTIONS REQ'D. PHARMACY CHECKER APPROVED. CALL TODAY FOR YOUR FREE QUOTE. 844-776-7620

VOICE FOR \$29.99 EA. 60 MB PER SECOND SPEED. NO CONTRACT OR COMMITMENT. MORE CHANNELS. FASTER INTERNET. UNLIMITED VOICE. CALL 1-855-652-9304

WANTED TO BUY
WANTS TO PURCHASE MINERALS AND OTHER OIL AND GAS INTERESTS. SEND DETAILS TO P.O. BOX 13557 DENVER, CO. 80201

ADVERTISE TO 10 MILLION HOMES ACROSS THE USA! PLACE YOUR AD IN OVER 140 COMMUNITY NEWSPAPERS. WITH CIRCULATION TOTALING OVER 10 MILLION HOMES. CONTACT INDEPENDENT FREE PAPERS OF AMERICA IFPA AT DANIELLEBURNETT-IFPA@LIVE.COM OR VISIT OUR WEBSITE CADNETADS.COM FOR MORE INFORMATION

READER ADVISORY. THE NATIONAL TRADE ASSOCIATION WE BELONG TO HAS PURCHASED THE ABOVE CLASSIFIEDS. DETERMINING THE VALUE OF THEIR SERVICE OR PRODUCT IS ADVISED BY THIS PUBLICATION. IN ORDER TO AVOID MISUNDERSTANDINGS SOME ADVERTISERS DO NOT OFFER EMPLOYMENT BUT RATHER SUPPLY THE READERS WITH MANUALS, DIRECTORIES AND OTHER MATERIALS DESIGNED TO HELP THEIR CLIENTS ESTABLISH MAIL ORDER SELLING AND OTHER BUSINESSES AT HOME. UNDER NO CIRCUMSTANCE SHOULD YOU SEND ANY MONEY IN ADVANCE OR GIVE THE CLIENT YOUR CHECKING, LICENSE ID, OR CREDIT REPAIR COMPANY DOES BUSINESS ONLY OVER THE PHONE IT IS ILLEGAL TO REQUEST ANY MONEY BEFORE DELIVERING ITS SERVICE. ALL FUNDS ARE BASED IN US DOLLARS. TOLL FREE NUMBERS MAY OR MAY NOT REACH CANADA.

EXTRA! EXTRA! EXTRA! SPECTRUM TRIPLE PLAY! TV, INTERNET & VOICE FOR \$29.99 EA. 60 MB PER SECOND SPEED. NO CONTRACT OR COMMITMENT. MORE CHANNELS. FASTER INTERNET. UNLIMITED VOICE. CALL 1-855-577-7502 (MCN)

EXTRA! EXTRA! EXTRA! SPECTRUM TRIPLE PLAY! TV, INTERNET & VOICE FOR \$29.99 EA. 60 MB PER SECOND SPEED. NO CONTRACT OR COMMITMENT. MORE CHANNELS. FASTER INTERNET. UNLIMITED VOICE. CALL 1-855-577-7502 (MCN)

ADOPTION
PREGNANT? CONSIDERING ADOPTION? Call us first. Living expenses, housing, medical, and continued support afterwards. Choose adoptive family of your choice. Call 24/7. 877-445-7244 (MCN)

ANNOUNCEMENTS
Experience life as it should be lived when you visit Bluff Country. Authentic dining, fine wine, craft beer, hiking, biking, canoeing, kayaking. The adventure starts at www.visitbluffcountry.com (MCN)

GILBERT'S SALE YARD MACHINERY CONSIGNMENT SALE. SEPTEMBER 10th, 9:00 A.M. Advertising Deadline August 24. No Small Items. Tires after August 31. CON-SIGN TODAY. 641-398-2218, Hwy 218, Floyd, IA. www.gilbertsleyard.com (MCN)

AUTOMOBILES
DONATE YOUR CAR TO CHARITY. Receive maximum value of write off for your taxes. Running or not! All conditions accepted. Free pickup. Call FREE author submission kit! Limited offer! Why wait? Call now: 855-623-8796 (MCN)

CASH FOR CARS: We Buy Any Condition Vehicle. 2002 and Newer. Competitive Offer! Nationwide FREE Pick Up! Call Now For a Free Quote! 888-366-5659! (MCN)

EXTRA! EXTRA! EXTRA! SPECTRUM TRIPLE PLAY! TV, INTERNET & VOICE FOR \$29.99 EA. 60 MB PER SECOND SPEED. NO CONTRACT OR COMMITMENT. MORE CHANNELS. FASTER INTERNET. UNLIMITED VOICE. CALL 1-855-577-7502 (MCN)

As 14.95/month (for the first 3 months). Reliable High Speed Fiber Optic Technology. Stream Videos, Music and More! Call Earthlink Today 1-855-679-7096 (MCN)

DIRECTV Call & Switch Now - Get NFL Sunday Ticket for FREE! Every Game. Every Sunday. CHOICE- All-Included Package. Over 185 Channels. \$60/month (for 12 Months.) CALL 1-844-245-2232 (MCN)

Get an iPhone 8 or Samsung Galaxy8 for \$34/month. Call AT&T Wireless today to learn how to get a new phone. Call while supplies last. 1-844-290-8275 (MCN)

DISH TV \$59.99 For 190 Channels + \$14.95 High Speed Internet. Free Installation, Smart HD DVR Included, Free Voice Remote. Some restrictions apply 1-800-732-9835 (MCN)

EMPLOYMENT/HELP
WANTED NEW AUTHORS WANTED! Page Publishing will help you self-publish your own book. FREE author submission kit! Limited offer! Why wait? Call now: 855-623-8796 (MCN)

EXTRA! EXTRA! EXTRA! SPECTRUM TRIPLE PLAY! TV, INTERNET & VOICE FOR \$29.99 EA. 60 MB PER SECOND SPEED. NO CONTRACT OR COMMITMENT. MORE CHANNELS. FASTER INTERNET. UNLIMITED VOICE. CALL 1-855-577-7502 (MCN)

As 14.95/month (for the first 3 months). Reliable High Speed Fiber Optic Technology. Stream Videos, Music and More! Call Earthlink Today 1-855-679-7096 (MCN)

DIRECTV Call & Switch Now - Get NFL Sunday Ticket for FREE! Every Game. Every Sunday. CHOICE- All-Included Package. Over 185 Channels. \$60/month (for 12 Months.) CALL 1-844-245-2232 (MCN)

Get an iPhone 8 or Samsung Galaxy8 for \$34/month. Call AT&T Wireless today to learn how to get a new phone. Call while supplies last. 1-844-290-8275 (MCN)

DISH TV \$59.99 For 190 Channels + \$14.95 High Speed Internet. Free Installation, Smart HD DVR Included, Free Voice Remote. Some restrictions apply 1-800-732-9835 (MCN)

EMPLOYMENT/HELP
WANTED NEW AUTHORS WANTED! Page Publishing will help you self-publish your own book. FREE author submission kit! Limited offer! Why wait? Call now: 855-623-8796 (MCN)

EXTRA! EXTRA! EXTRA! SPECTRUM TRIPLE PLAY! TV, INTERNET & VOICE FOR \$29.99 EA. 60 MB PER SECOND SPEED. NO CONTRACT OR COMMITMENT. MORE CHANNELS. FASTER INTERNET. UNLIMITED VOICE. CALL 1-855-577-7502 (MCN)

references to: apply@mfcg.org (MCN)

FINANCIAL
Behind on your MORTGAGE? Denied a Loan Modification? Bank threatening foreclosure? CALL Homeowner Protection Services now! New laws are in effect that may help. Call Now 1-800-496-4918 (MCN)

Attention all homeowners in jeopardy of foreclosure? We can help stop your home from foreclosure. The Foreclosure Defense helpline can help save your home. The Call is absolutely free. 1-800-217-0828 (MCN)

HEALTH & MEDICAL
Get Health insurance that is right for you and your family. You are one quick phone call away. Stop waiting and get the best deals on health insurance with the firm that cares. Call today 1-800-453-4792 (MCN)

VIAGRA & CIALIS! 60 pills for \$99. 100 pills for \$150 FREE shipping. Money back guaranteed! 1-800-496-3171 (MCN)

EXTRA! EXTRA! EXTRA! SPECTRUM TRIPLE PLAY! TV, INTERNET & VOICE FOR \$29.99 EA. 60 MB PER SECOND SPEED. NO CONTRACT OR COMMITMENT. MORE CHANNELS. FASTER INTERNET. UNLIMITED VOICE. CALL 1-855-577-7502 (MCN)

Seniors & Disabled GET HELP NOW! One Button Medical Alert. We will be there when falls, fires & emergencies happen. 24/7 Protection. Low Monthly Cost with Free Shipping and Free Activation. Call 1-844-646-5592 Today for more information. (MCN)

MISCELLANEOUS
ALL THINGS BASEMENT! Basement Systems Inc. Call us for all of your basement needs! Waterproofing, Finishing, Structural Repairs, Humidity and Mold Control. FREE ESTIMATES! Call 1-800-640-8195 (MCN)

Paying too much for car insurance? Not sure? Want better coverage? Call now for a free quote and learn more today! 855-417-7382 (MCN)

Cross country Moving, Long distance Moving Company out of state move \$799 Long Distance Movers Get Free quote on your Long distance move. 1-800-503-6126 (MCN)

A PLACE FOR MOM has helped over a million families find senior living. Our trusted, local advisors help find solutions to your unique needs at no cost to you. Call 1-888-894-7038 (MCN)

EXTRA! EXTRA! EXTRA! SPECTRUM TRIPLE PLAY! TV, INTERNET & VOICE FOR \$29.99 EA. 60 MB PER SECOND SPEED. NO CONTRACT OR COMMITMENT. MORE CHANNELS. FASTER INTERNET. UNLIMITED VOICE. CALL 1-855-577-7502 (MCN)

Have an idea for an invention/new product? We help everyday inventors try to patent and submit their ideas to companies! Call InventionHelp@FREE INFORMATION! 1-855-716-1814 (MCN)

PERSONALS
MEET SINGLES RIGHT NOW! No paid operators, just real people like you. Browse greetings, exchange messages and connect live. Try it free. Call now: 800-357-4970 (MCN)

WANTED TO BUY
Want to purchase minerals and other oil/gas interests. Send details to P.O. Box 13557, Denver CO 80201 (MCN)

Dining + Entertainment

WHITE CLAW
 Black Cherry
 Natural Lime
 Raspberry
 Ruby Grapefruit




LuVerne
 Blue Mound Liquor

Gift Cards available

Follow us on Twitter @bluemoundliquor & Instagram luvernebluemoundliquor


LuVerne
 Blue Mound Liquor
 319 W Main St, Luverne 507-449-5052

Luverne Farmers Market
 Thursdays - 4 to 7 pm June - October
REDBIRD FIELD



POP
 POWER OF PRODUCE CLUB

SNAP
 Accepted Here



GREEN LANTERN Steakhouse
NOW OPEN
 Daily at 5 p.m.

Call us for your anniversaries, graduations, small business meetings

Sunday Brunch Every Sunday 10 a.m. - 2 p.m.

- ROAST BEEF • HAM
- BACON • SAUSAGE
- EGGS • FRENCH TOAST
- AND LOTS MORE!

Adults \$10.95
 Kids under 13 \$7.95

GREEN LANTERN Opens 7 a.m. daily
 CAFE & BAR
 HARDWICK, MN
 507-669-2246

THE MOST DRAMATIC & EXOTIC SUITES



Imagine SkyPool Suites with private infinity-edge plunge pools on the balcony, Beachfront Walkout Suites with private Tranquility Soaking Tubs™ for two, or unique Swim-up Crystal Lagoon Suites that allow you to float up to your private patio—all with Professional English Guild-Trained Butlers to cater to your every whim. Sandals®, the world's only five-star Luxury Included® Resorts, has suites that are so exotic, so opulent, so decadently romantic, they could only be named Love Nest Suites®. These dreamy retreats surround you in uncompromising comfort and world-class luxuries like our king-size Tranquility Blissful Beds™ with fine Egyptian cotton linens and feathered down pillow choices to ensure a good night's sleep. It's all included, all unlimited, all the time.

Sandals®
 JAMAICA • ANTIGUA • SAINT LUCIA
 BAHAMAS • GRENADA • BARBADOS

605-339-8911
 1-800-390-6610
 3801 S. Western Ave., Suite 103, Sioux Falls, SD
 Open: Mon-Fri, 9 a.m.-7 p.m.
 Saturday 9 a.m.-11 p.m.
 www.AllAboutTravel.org
 AllAboutTravelInc

*Amenities vary by resort. Sandals® is a registered trademark. Unique Vacations, Inc. is an affiliate of Unique Travel Corp., the worldwide representative of Sandals Resorts.

2018 Rock County Corn & Soybean Growers GOLF Outing

Monday, August 13 • Registration 1pm • Shotgun Start 2pm

Luverne Country Club
FREE Golfing & Dinner for current Corn/Soybean Members & Associate Members
 (1 FREE golf round per membership)

memberships available at the door

Rib ticklers sponsored by RC Pork Producers



WELCOME KATY ZOGG, FNP-C
 Family Medicine

"I try to provide holistic patient care and strive for every patient to know that I am committed to them personally and professionally."

At Sanford Luverne Clinic we recognize you want comprehensive health care from local providers at medical centers and clinics you know and trust. Providers who are convenient. Close to home. Connected to the community.

Katy Zogg, FNP-C is accepting new family medicine patients and is committed to providing you a lifetime of health and healing.

SANFORD
 Luverne

To schedule an appointment, call Sanford Luverne Clinic at (507) 283-4476. sanfordluverne.org



75% Off STOREWIDE (summer consignments)

CRAZY SALE

Check out the new fall items arriving daily

JULY 31 - AUGUST 8

30-50% Off DRAGON APPAREL & SELECT BOUTIQUE ITEMS

Call to make your fall consignment appointment today!

closet to closet Inc. 200 Maine Ave., Adrian 507-483-2050
 Consignment
 Hours: Tues, Wed, Fri 9 a.m. - 5 p.m.; Thurs, 9 a.m. - 7 p.m.; Sat, 9 a.m. - 3 p.m.

Announcer Printing
 283-2333



Tired of large class size and building referendums? It is time to check out Ellsworth Schools
Ellsworth Public Schools



A High Quality, Small School Education in Southwest Minnesota
 Ellsworth Public School gives your child a high quality education in a small school setting in grades pre K-12. Your child will be immediately comfortable with the family oriented, intimate learning environment dedicated to academic, social and relationship building success for each child. Your child will have a seamless transition to a school with high academic standards and the small school feel where every child thrives. Choosing the best school for your child is one of the most important decisions you will ever make, and we offer a strong educational excellence in a safe small school setting. If you're thinking of changing schools or want to discuss the advantages of enrolling in **Ellsworth Public School** we would be happy to talk to you.
 Call 507-967-2242

ADVANTAGES INCLUDE:

- Small Classes
- Active Parent Support
- Extra-Curricular Activities
- Transportation at NO COST

Students picked up at your door step

Ellsworth Public School
 513 Broadway Street, Ellsworth, MN 56129 • 507-967-2242

The news of Rock County.
Star-Herald.com

DeBoer Edgerton



<p>2017 CHEVROLET CAMARO</p>  <p>LT, RS PACKAGE, MOON ROOF, 15K #1804 MSRP: \$28,850 \$24,985</p>	<p>2017 CHEVROLET SILVERADO 1500</p>  <p>LTZ, Z71, HEATED-VENTED SEATS, REMOTE START, 31K #18126A MSRP: \$44,500 \$39,450</p>	<p>2017 CHEVROLET SILVERADO 1500</p>  <p>HIGH COUNTRY, ENHANCED DRIVER ALERT PKG, 14K #18179A MSRP: \$46,995 \$46,995</p>	<p>2016 CHEVROLET IMPALA</p>  <p>PREMIER, SUNROOF, ADVANCED TECH PKG, 43K #A1813 MSRP: \$24,985 \$24,985</p>
--	---	--	---

*MUST FINANCE WITH GM FINANCIAL

507-442-4341

Auto Check www.deboerchev.com

CERTIFIED SERVICE